

Crieff Connexions

Scotland · Charity number SC051160

Details

Status	Active
Legal form	SCIO (Scottish Charitable Incorporated Organisation)
Registered	2021-07-28
Register	View on the OSCR register

Contact

Address	8 Strathearn Terrace Crieff Perth and Kinross PH7 3AQ
Website	www.crieffconnexions.org.uk

Activities

Activities: 'It carries out activities or services itself'

Purposes: 'the prevention or relief of poverty', 'the advancement of citizenship or community development', 'the advancement of environmental protection or improvement', 'the relief of those in need by reason of age, ill-health, disability, financial hardship or other disadvantage'

What the charity does: Crieff Connexions is a charity (SC0511 60) connecting people to services life opportunities and other people in Crieff, Scotland Working in partnership with Logos Strathearn Youth Project, local churches and other community groups and service providers we seek to deal with issues of loneliness, poverty, underemployment as well as caring for people in our community. We provide essential goods, equipment and some furniture to families, school uniform, a safe place to meet and access services, low cost / free food and household items, as well as conversation, counselling, advice, free access to WiFi and computers, and even Christmas meals. Volunteers are provided with training opportunities to gain new skills and qualifications.

Beneficiaries: 'No specific group, or for the benefit of the community'

Objectives: The organisation's purposes are: (a) To advance community development, including the provision of a safe and welcoming space, through which people in Crieff and Strathearn are brought together and connected with partner organisations and services. (b) To advance citizenship in Crieff and Strathearn. (c) To relieve local poverty in Crieff and Strathearn. (d) To advance sustainability and the reduction of pollution and waste in Crieff and Strathearn. (e) To provide relief from loneliness and isolation for those living in Crieff and Strathearn.

Geography

- **Main operating location:** Perth And Kinross
- **Geographical spread:** Wider, but within one local authority area

Finances

Period end	Income	Expenditure	Assets	Employees
2025-12-31	£0	£0	-	1
2024-12-31	£94,235	£75,834	-	1
2023-12-31	£76,640	£75,250	-	1
2022-12-31	£86,911	£52,800	-	0

Crieff Connexions

Scotland - Charity number SC051160

Accounts

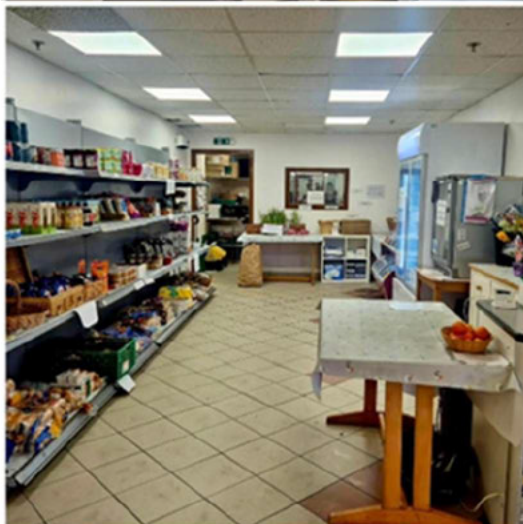
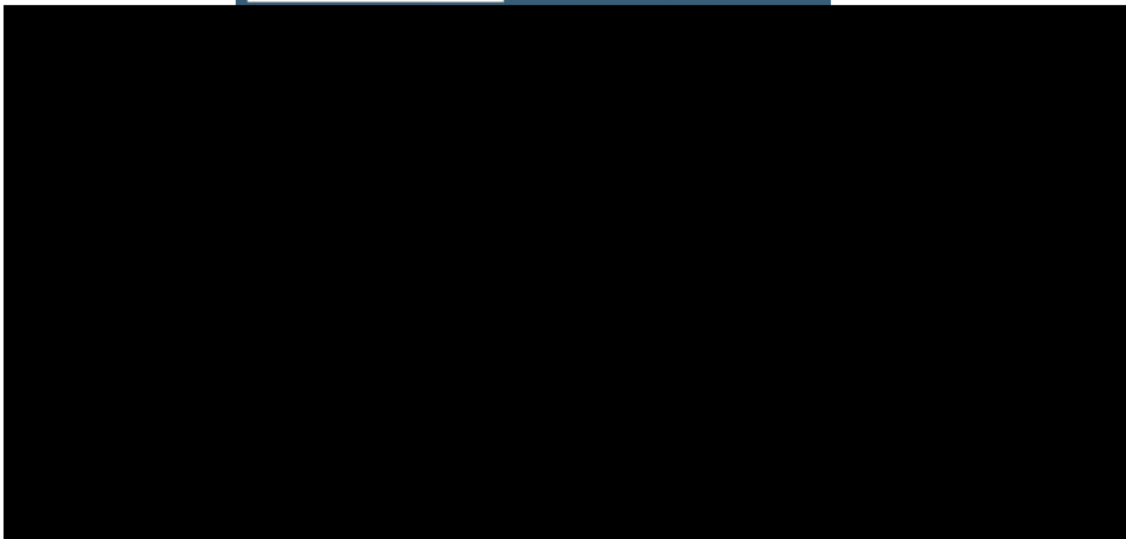
crieffconneXions

Annual Report 2024

OSCR

Scottish Charity Regulator
www.oscr.org.uk

Registered
SCIO
SC051160



Charity contact information

Crieff Connexions
Scottish Charity Number: SC051160
Registered address 8 Strathearn Terrace
Crieff
PH7 3AQ
Telephone number 01764 218976

Operational address Crieff Connexions Centre
Church Street
Crieff
PH7 3AE
Telephone number 01764 218933

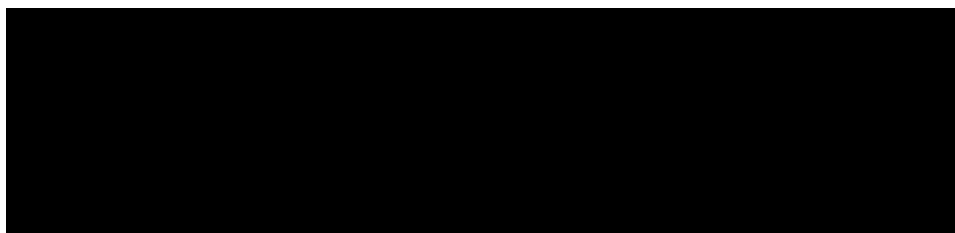
Email address admin@crieffconnexions.org.uk

Website www.crieffconnexions.org.uk

Twitter [crieffconnex](https://twitter.com/crieffconnex)

Facebook [crieffconnexions](https://www.facebook.com/crieffconnexions)

Charity Trustees



Structure, governance and management

Type of governing document

Crieff Connexions is a Scottish Charitable Incorporated Organisation (SCIO) registered in its current legal form with the Office of the Scottish Charity Regulator (OSCR) on 28th July 2021. The charity was previously a constituted community group but changed its legal form to a SCIO. The assets of the group were transferred to the SCIO on 28th July 2021. It has a single tier structure and as such the trustees are the members of the charity. In order to develop more options for the charity we are moving towards a two tier constitution and looking to broaden the membership, opening it up to the community.

Trustee recruitment and appointment

The CHARITY TRUSTEES form the BOARD are also the MEMBERS of the organisation for the purposes of the Charities and Trustee Investment (Scotland) Act 2005. The Board also appoints Trustees to fill vacancies, and the people serving on the Board have power

to make changes to the constitution itself. Trustees are recruited following advertising and recommendation followed by an interview and references being taken up. Trustees are also checked through Disclosure Scotland. The Trustees so appointed bring a breadth of experience and expertise to the organisation.

Our Charitable purposes

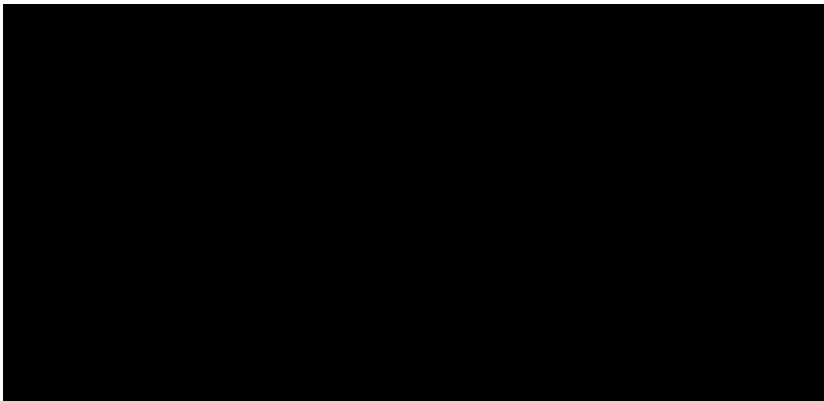
- To advance community development, including the provision of a safe and welcoming space, through which people in Crieff and Strathearn are brought together and connected with partner organisations and services.
- To advance citizenship in Crieff and Strathearn.
- To relieve local poverty in Crieff and Strathearn.
- To advance sustainability and the reduction of pollution and waste in Crieff and Strathearn.
- To provide relief from loneliness and isolation for those living in Crieff and Strathearn

Above you will see the charitable purposes of Crieff Connexions based in Church Street, Crieff. In this past year we have endeavoured to fulfil these purposes and to respond to the needs of the people who are part of our community. Crieff Connexions as a safe and welcoming safe continues to develop physically as we make small improvements to the building and the space it offers. Partnerships with other organisations have changed and developed over the year. Our volunteers and staff inspire others to engage in citizenship and to support people in the community through offers of help and donations. We have shared our citizenship with young people from the High school through the YPI initiative. We have worked with those on a low income, people who have suffered abuse and distress, people trying to set up a home for the first time, people taking on Kinship caring responsibilities and those arriving in Crieff as economic migrants who come to work but have little. Through each contact we have reduced loneliness and isolation as well as offered further support for individuals and families. Woven throughout our actions is the goal of reducing waste and making best use of the resources that people have given us.

“... thanks for all the hard work” - service user

In the past year we have enjoyed again the warm space initiative that has been supported by Perth and Kinross Council. Through this funding we were able to provide tea, coffee and activities to folks in need of a warm and welcoming space. This contributed to breaking social isolation over the winter period and reducing fuel costs.

This space was used for the repair café (REMAKE Scotland) for some of the year which was of mutual benefit to our organisations. In addition, the space has been used for a men’s night run by one of the Trustees. This offers a space for reflection and support



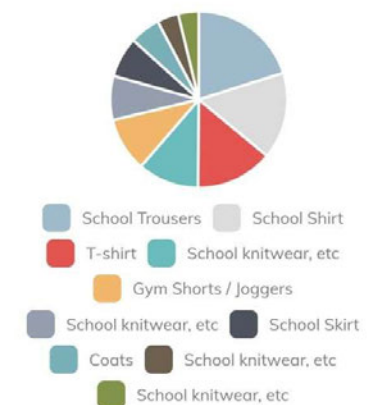
targetter at men who are vulnerable due to social isolation or alcohol/drug misuse.

Lately, we have begun to strengthen links with the PKC community learning team who have been meeting people, signposting to

courses and other supports in the community. We look forward to seeing how this will develop over the next year.

Our school uniform shop remains open year-round with a turnover of 1023 items this year. Uniform is gently used and turned out at £1/item or less. Contact is made on a regular basis with local schools. We serve all the schools in the Crieff High School cluster which consists of 4 primary schools and 1 secondary. Referrals for support have reduced, possibly due to the accessibility of uniform. Staff and volunteers use their own judgement on providing uniform to families who do present in need when the come. Families using the service include those on a low income and those who choose second hand to reduce environmental impact and waste. We run an annual sale promoting the gently used uniform to families in the community, This is a busy period. We are aware that some people from out with our community use the service. When we have surplus uniform or items that is not useful for our schools we pass this onto Social Flock or use appropriate waste streams to deal with this.

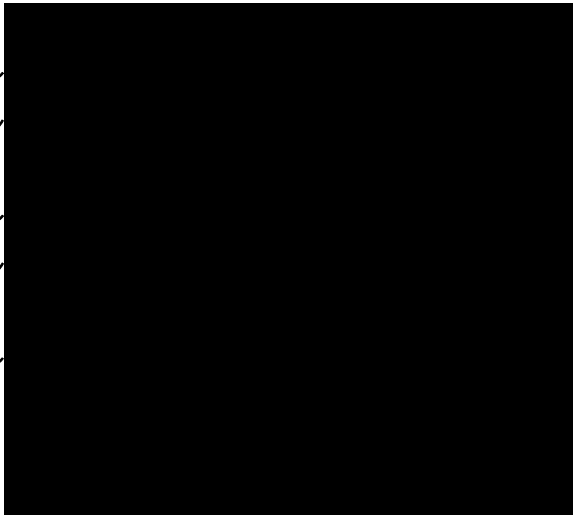
Top 10 Products (by quantity sold)



The community pantry remains popular and have settled into a good routine using food from various sources. Over the year we have dealt with fluctuating donations, and due to our rural location we are limited in the sources of food which we have access to. We use

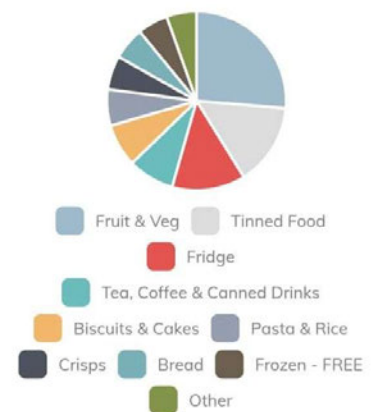
FareShare as well as community donations to stock shelves. We collect donations from Aldi and the Coop who have premises in the town which are frozen or refrigerated and offered for free to people. This allows us to provide a selection of low cost and free produce 3 times a week. We have a large amount of vegetables and prepacked salads on a daily basis.

“I was in Crieff this morning meeting with trustees and volunteers at Crieff Connexions - an amazing initiative providing services from a food pantry to a range of clothes, advice, counselling, education and skills as well as a brilliant community cafe. People make our communities.” Local MP visit



Additionally, we offer free sanitary products supported by Perth and Kinross Council, continence products and toiletries. The surplus flowers and plants from the shops are popular and light up the day for many of our customers. The pantry helps people to take part in waste reduction, reduce their cost of living and connect with further support through meeting with volunteers and staff who they can build relationships with. The demographic is broad including young families, elderly and working couples. We average 82 transactions over the week. Our waste reduction is reflected in the picture on the left from the neighbourly website. 19920 items were passed on over the year, that's 383 items a week.

Top 10 Products (by quantity sold)



Through engaging with people coming into Crieff Connexions listening to their stories and responding to needs where possible we have started a Home Essentials service. This is been funded for an initial period by the National Lottery. Through this funding and in collaboration with “the Big Hoose” project we are able to create packs of home essentials for people who find themselves in need of support. This can be due to a number of factors. Once we have provided support through this we are able to offer ongoing support through our other services and partnerships. This is achieved through a referral process and in collaboration with professionals in the community. Our goal is to support 35 families in the first period.

“You provide a great service” FB comment

Outside the building we have developed a community garden. The garden produces a variety of fruit and vegetables. 2 groups have worked on the garden in the past year. A once-a-month Saturday group, running when Crieff Connexions is open and a group for families with young children “little growers” on Tuesdays to encourage families to make use of the garden.

More generally we provide anyone who requires it with access to Wi-Fi, computers, telephone and printing. Our public Wi-Fi connections are over 2000 over the year. This sits alongside our desire to provide people with signposting and support them with access to services that they require. A number of organisations have used our facility to meet people and provide support. Mindspace, CATH, the Heat project, Community learning and development.

“A great book sale! 📖 I've just picked up a couple of bags of books for my new class in August. ❤️ 📖” - Book sale

We continue to seek to engage with the community through social media, local contact and events which we are involved in. A community survey has gained around 70 responses that help us to inform our work moving forward. As an organisation we were pleased to support the initial phase of the

Banking Hub in Crieff by providing space for this service in our building. This was put in place when all the local banks closed. We have been involved in the participatory budgeting process and event as well as in community action planning. We welcomed two classes of young people from the High school who were interested in considering Crieff Connexions as a subject for their YPI award.

We ran events at Crieff Connexions to encourage people to venture into the space. These have included a toy sale, homewares sale, a concert, and Easter event for families, and Narnia experience. Each targeted a different element of the community and allowed people to see what services we offer.

“Great idea. Well done to everyone at Crieff Connexions - a great community-focused organisation - for making it happen, and for collaborating closely with Remake Scotland, one of the other key parts of what makes Crieff such a fantastic town!” - Narnia Experience



Crieff Connexions is run by a small staff team and a group of volunteers. Each person brings their unique skillset to the organisation. The Trustee group of 5 people are actively involved in the work of the charity. As we move to a 2 tier SCIO our current membership of this is made up mainly of users of the service. As a grassroots organisation we are glad of this. Volunteers are involved in the day to day running tasks of the project areas, other volunteers collect food in the evenings and others return crates to the shops we partner with. All volunteers and staff continue to develop their skills with inhouse and external courses. Food hygiene and safety have been the focus in the past year.

Moving forward we continue to look to secure the building at Church Street for community use and with this to further develop our projects in response to community needs.

Receipts and payments accounts							
For the period from	Period start date			to	Period end date		
	Day	Month	Year		Day	Month	Year
	1	January	2024		31	December	2024

Section A Statement of receipts and payments

	Unrestricted funds	Restricted funds	Expendable endowment funds	Permanent endowment funds	Total funds current period	Total funds last period
A1 Receipts						
Donations - identifiable	1,220.69	705.01	-	-	1,925.70	3,715.46
Donations - general	1,663.01	644.81	-	-	2,307.82	13,140.00
Legacies	-	-	-	-	-	-
Grants	12,546.21	46,702.31	-	-	59,248.52	38,321.50
Receipts from fundraising activities	-	-	-	-	-	-
Gross trading receipts	-	22,290.96	-	-	22,290.96	17,255.66
Income from investments other than land and buildings	2,182.53	-	-	-	2,182.53	2,403.22
Rents from land & buildings	6,279.96	-	-	-	6,279.96	1,804.50
Gross receipts from other charitable activities	-	-	-	-	-	-
A1 Sub total	23,892.40	70,343.09	-	-	94,235.49	76,640.34
A2 Receipts from asset & investment sales						
Proceeds from sale of fixed assets	-	-	-	-	-	-
Proceeds from sale of investments	-	-	-	-	-	-
A2 Sub total	-	-	-	-	-	-
Total receipts	23,892.40	70,343.09	-	-	94,235.49	76,640.34
A3 Payments						
Expenses for fundraising activities	-	400.00	-	-	400.00	40.00
Gross trading payments	-	2,927.21	-	-	2,927.21	1,313.45
Investment management costs	-	-	-	-	-	-
Payments relating directly to charitable activities	25,848.44	46,659.13	-	-	72,507.57	73,696.44
Grants and donations	-	-	-	-	-	-
Governance costs:	-	-	-	-	-	-
Audit / independent examination	-	-	-	-	-	200.00
Preparation of annual accounts	-	-	-	-	-	-
Legal costs	-	-	-	-	-	-
Other	-	-	-	-	-	-
A3 Sub total	25,848.44	49,986.34	-	-	75,834.78	75,249.89
A4 Payments relating to asset and investment movements						
Purchases of fixed assets	-	-	-	-	-	-
Purchase of investments	-	-	-	-	-	-
A4 Sub total	-	-	-	-	-	-
Total payments	25,848.44	49,986.34	-	-	75,834.78	75,249.89
Net receipts / (payments)	-1,956.04	20,356.75	-	-	18,400.71	1,390.45
A5 Transfers to / (from) funds	4,583.00	-4,583.00	-	-	-	-
Surplus / (deficit) for year	2,626.96	15,773.75	-	-	18,400.71	1,390.45

Section B Statement of balances

2024

2023

Categories	Details	Unrestricted funds	Restricted funds	Expendable endowment funds	Permanent endowment funds	Total current period	Total last period
B1 Cash funds	Cash and bank balances at start of year	11,407.88	72,419.46	0.00	0.00	83,827.34	82,448.29
	Surplus / (deficit) shown on receipts and payments account	13,831.02	4,569.69	0.00	0.00	18,400.71	1,390.45
	Cash and bank balances at end of year	25,238.90	76,989.15	0.00	0.00	102,228.05	83,838.74

	Details	Fund to which asset belongs	Market valuation to nearest £	Last year to nearest £
B2 Investments	n/a		-	
	n/a		-	
	Total		-	-

	Details	Date purchased	Fund to which asset belongs	Cost (if available) to nearest £	Current value (if available) to nearest £	Last year to nearest £
B3 Other assets	Hand sprayers / dispensers	2022	General	115.47	-	38.49
	Roller door	2022	General	2,100.00	-	700.00
	Laptops HP 840 G3 i5 6th Gen (2)	2022	General	598.00	-	199.33
	Washing Machine	2022	General	339.99	-	113.33
	Rails	2022	General	192.10	-	64.03
	Workmates (6)	2022	Golf	120.00	-	40.00
	Fire extinguishers	2022	General	200.00	-	66.67
	Heaters (5)	2022	General	491.43	-	163.81
	Shelving	2022	General	482.76	-	160.92
	Door & disabled alarm	2022	General	148.76	-	49.59
	Router, access points & filter	2022	General	752.34	-	250.78
	POS equipment	2023	General	417.60	139.20	278.40
	Fan heaters	2023	General	422.46	140.82	281.64
	Access points	2023	General	706.74	235.58	471.16
	Planter troughs	2023	General	1,104.00	368.00	736.00
	Total			8,191.65	883.60	2,125.35

	Details	Fund to which liability relates	Amount due to nearest £	Last year to nearest £
B4 Liabilities	n/a		-	-
	n/a		-	-
	Total		-	-

	Details	Fund to which liability relates	Amount due to nearest £	Last year to nearest £
B5 Contingent liabilities	n/a		-	-
	n/a		-	-
	Total		-	-

Signed by one or two trustees on behalf of all the trustees

Signature

Print Name

Date of approval

3rd April 2025

Section C Notes to the Accounts

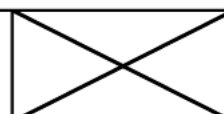
C1 Nature and purpose of funds

General fund: for all expenses relating to the activities of the organisation, other than the following - Restricted funds (see analysis of funds worksheets).

	Type of activity or project supported	Individual / institution	Number of grants made	£
C2 Grants	n/a	n/a	-	-
			Total	-

C3a Trustee

If no remuneration was paid during the period to any charity trustee or person connected to a trustee cross this box (otherwise complete section 3b)



Authority under which paid

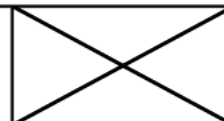
£

C3b Trustee remuneration -

n/a	-
-----	---

C4a Trustee

If no expenses were paid to any charity trustee during the period then cross this box (otherwise complete section 4b)



C4b Trustee expenses - details

	Number of trustees	£
n/a	-	-

C5 Transactions with trustees and

Nature of relationship	Transaction amount (£)	Balance outstanding at period end (£)
n/a		

C6 Other information

n/a

Additional analysis (1)**Analysis of receipts and payments****1 Donations**

	Unrestricted funds	Restricted funds	Total current period	Total last period
Donations - identifiable donors for Gift Aid	1,220.69	705.01	1,925.70	3,715.46
Donations - general donations	1,663.01	644.81	2,307.82	13,140.00
Total	2,883.70	1,349.82	4,233.52	16,855.46

2 Grants

	Unrestricted funds	Restricted funds	Total current period	Total last period
Arnott Trust	-	-	-	1,000.00
Circular Communities Fund	-	815.00	815.00	-
Coop Community Grant	5,731.21	-	5,731.21	-
Coop (Hubbub)	-	1,000.00	1,000.00	-
Crieff Community Trust	-	-	-	250.00
Gannochy Trust	-	10,200.00	10,200.00	6,900.00
Groundwork (Tesco)	-	-	-	500.00
National Lottery - Café	-	-	-	6,900.00
Open for business	-	-	-	4,728.81
PKC	-	-	-	3,365.00
PKC - CCLD fund	-	32,000.00	32,000.00	-
PKC - Communities Investment Fund	-	-	-	6,000.00
PKC - Garden grant	-	927.31	927.31	-
PKC - Good Food Fund	-	-	-	2,350.00
PKC - Warm spaces fund	2,575.00	-	2,575.00	2,475.00
Pretty Little Things (Magic Grants)	-	-	-	500.00
Robertson Trust	6,000.00	-	6,000.00	6,000.00
The Wood Foundation YPI initiative	-	-	-	2,500.00
Total	14,306.21	44,942.31	59,248.52	43,468.81

3 Gross receipts from other charitable activities

	Unrestricted funds	Restricted funds	Total current period	Total last period
n/a	-	-	-	-
Total	-	-	-	-

4 Payments relating directly to charitable activities

	Unrestricted funds	Restricted funds	Total current period	Total last period
Rent	18,000.00	0.00	18,000.00	15,500.00
Insurance	232.00	0.00	232.00	216.97
Signage & Promotional leaflets	53.96	0.00	53.96	-
Wages, pension, etc.	594.04	11,361.08	11,955.12	1,074.99
Consultancy fees	0.00	21,396.66	21,396.66	21,641.30
Account Inspection Fees	0.00	0.00	0.00	200.00
Stationery	195.42	0.00	195.42	169.88
PPE / Cleaning	2,275.20	3.98	2,279.18	1,809.89
Equipment	1,445.62	1,763.99	3,209.61	9,827.86
Repairs & Renewals	810.56	138.37	948.93	1,107.95
Catering	23.88	68.23	92.11	184.43
Food stock	11.28	2,930.79	2,942.07	1,295.65
Services & Events	7.50	440.00	447.50	2,012.21
School Uniform	0.00	0.00	0.00	32.25
Training	0.00	0.00	0.00	60.00
Sumup (banking) fees	638.03	291.60	929.63	109.09
Telephone & Internet	510.49	315.50	825.99	922.46
Electricity	1,050.46	11,276.14	12,326.60	19,084.96
Total	25,848.44	49,986.34	75,834.78	75,249.89

Additional analysis (2)

5 Breakdown of unrestricted funds

	Unrestricted fund 1 - enter name of fund below	Unrestricted fund 2 - enter name of fund below	Total unrestricted funds	Total unrestricted funds last period
	General Fund	Reserve Fund		
Receipts				
Donations - identifiable	1,220.69	0.00	1,220.69	2,970.00
Donations - general	1,663.01	0.00	1,663.01	7,228.94
Legacies	0.00	0.00	0.00	0.00
Grants	12,546.21	0.00	12,546.21	19,615.00
Receipts from fundraising activities	0.00	0.00	0.00	0.00
Gross trading receipts	0.00	0.00	0.00	0.00
Income from investments other than land and buildings	2,182.53	0.00	2,182.53	2,403.22
Rents from land & buildings	6,279.96	0.00	6,279.96	1,804.50
Gross receipts from other charitable activities	0.00	0.00	0.00	0.00
Sub total	23,892.40	0.00	23,892.40	34,021.66
Receipts from asset & investment sales				
Proceeds from sale of fixed assets	0.00	0.00		0.00
Proceeds from sale of investments	0.00	0.00		0.00
Sub total	0.00	0.00	0.00	0.00
Total receipts	23,892.40	0.00	23,892.40	34,021.66
Payments				
Expenses for fundraising activities	0.00	0.00	0.00	0.00
Gross trading payments	0.00	0.00	0.00	0.00
Investment management costs	0.00	0.00	0.00	0.00
Payments relating directly to charitable activities	25,848.44	0.00	25,848.44	26,652.87
Grants and donations	0.00	0.00	0.00	0.00
Governance costs:	0.00	0.00	0.00	0.00
Audit / independent examination	0.00	0.00	0.00	200.00
Preparation of annual accounts	0.00	0.00	0.00	0.00
Legal costs	0.00	0.00	0.00	0.00
	0.00	0.00	0.00	0.00
	0.00	0.00	0.00	0.00
Sub total	25,848.44	0.00	25,848.44	26,852.87
Payments relating to asset and investment movements				
Purchases of fixed assets	0.00	0.00	0.00	0.00
Purchase of investments	0.00	0.00	0.00	0.00
Sub total	0.00	0.00	0.00	0.00
Total payments	25,848.44	0.00	25,848.44	26,852.87
Net receipts / (payments)	-1,956.04	0.00	-1,956.04	7,168.79
Transfers to / (from) funds	15,787.06	0.00	0.00	0.00
Surplus / (deficit) for year	13,831.02	0.00	-1,956.04	7,168.79

Nature and purpose of funds

General fund - for all activities related to the work of the organisation

Additional analysis (3)

6 Breakdown of designated funds

	Designated fund 1 - enter name of fund below	Designated fund 2 - enter name of fund below	Designated fund 3 - enter name of fund below	Designated fund 4 - enter name of fund below	Designated fund 5 - enter name of fund below	Designated fund 6 - enter name of fund below
	A Place to Call Home	Art Project	Café	CCLD	Charity Shop	Development
Receipts	GOLF	ART	CAFÉ	CCLD	SHOP	DEV
Donations	-	-	-	-	66.81	-
Grants	-	-	-	32,000.00	-	-
Receipts from fundraising activities	-	-	-	-	-	-
Gross trading receipts - cash	-	-	924.67	-	9,636.42	-
Gross trading receipts - vouchers	-	-	-	-	5.00	-
Income from investments other than land and buildings	-	-	-	-	-	-
Rents from land & buildings	-	-	-	-	-	-
Gross receipts from other charitable activities	-	-	-	-	-	-
Sub total	-	-	924.67	32,000.00	9,708.23	-
Receipts from asset & investment sales						
Proceeds from sale of fixed assets	-	-	-	-	-	-
Proceeds from sale of investments	-	-	-	-	-	-
Sub total	-	-	-	-	-	-
Total receipts	-	-	924.67	32,000.00	9,708.23	-
Payments						
Expenses for fundraising activities	-	-	-	-	-	-
Gross trading payments	-	-	-	-	-	-
Investment management costs	-	-	-	-	-	-
Payments relating directly to charitable activities	-	-	8,434.47	25,582.39	-	11,588.78
Grants and donations	-	-	-	-	-	-
Governance costs:						
Audit / independent examination	-	-	-	-	-	-
Preparation of annual accounts	-	-	-	-	-	-
Legal costs	-	-	-	-	-	-
Sub total	-	-	8,434.47	25,582.39	-	11,588.78
Payments relating to asset and investment movements						
Purchases of fixed assets	-	-	-	-	-	-
Purchase of investments	-	-	-	-	-	-
Sub total	-	-	-	-	-	-
Total payments	-	-	8,434.47	25,582.39	-	11,588.78
Net receipts / (payments)	-	-	-7,509.80	6,417.61	9,708.23	-11,588.78
Transfers to / (from) funds	-	-	1,130.95	3,468.47	-9,713.23	771.84
Surplus / (deficit) for year	-	-	-6,378.85	9,886.08	-5.00	-10,816.94

Nature and purpose of funds

A place to call home (GOLF)

Funds to bring people together for wellbeing activities - initially men's golf workshop (since 2021).

Art Project (ART)

Funds for creative art purposes (since 2020).

communitycafe (CAFÉ)

FUNDS relating to the communitycafe

CCLD (CCLD)

CCLD - drawdown award of £32,000 for expenditure related to wages, contractor and utilities (£7k) between October 2023 to March 2024.

new2you shop (SHOP)

Funds to set up and run new2you shop, generating income for the charity and rehoming donated items (since 2022).

Development (DEV)

Funds to cover wages and contractor costs relating to development of charity (since 2020).

Additional analysis (3) cont.

	Designated fund 7 - enter name of fund below	Designated fund 8 - enter name of fund below	Designated fund 9 - enter name of fund below	Designated fund 10 - enter name of fund below	Designated fund 11 - enter name of fund below	Designated fund 12 - enter name of fund below
	Food Shop	Fundraising Fund	Garden Project	Household Hardship Fund	Staffing	Food Stock
Receipts	FOOD	FUNDRAISING	GARDEN	HHF	STAFFING	STOCK
Donations	705.01	578.00	-	-	-	-
Grants	1,000.00	-	927.31	-	10,200.00	-
Receipts from fundraising activities	-	-	-	-	-	-
Gross trading receipts - cash	10,066.87	-	-	-	-	-
Gross trading receipts - vouchers	28.60	-	-	-	-	-
Income from investments other than land and buildings	-	-	-	-	-	-
Rents from land & buildings	-	-	-	-	-	-
Gross receipts from other charitable activities	-	-	-	-	-	-
Sub total	11,800.48	578.00	927.31	-	10,200.00	-
Receipts from asset & investment sales	FOOD	FUNDRAISING	GARDEN	HHF	STAFFING	STOCK
Proceeds from sale of fixed assets	-	-	-	-	-	-
Proceeds from sale of investments	-	-	-	-	-	-
Sub total	-	-	-	-	-	-
Total receipts	11,800.48	578.00	927.31	-	10,200.00	-
Payments	FOOD	FUNDRAISING	GARDEN	HHF	STAFFING	STOCK
Expenses for fundraising activities	-	-	-	-	-	-
Gross trading payments	-	-	-	-	-	-
Investment management costs	-	-	-	-	-	-
Payments relating directly to charitable activities	3.58	400.00	1,009.91	40.00	-	2,927.21
Grants and donations	-	-	-	-	-	-
Governance costs:						
Audit / independent examination	-	-	-	-	-	-
Preparation of annual accounts	-	-	-	-	-	-
Legal costs	-	-	-	-	-	-
Sub total	3.58	400.00	1,009.91	40.00	-	2,927.21
Payments relating to asset and investment movements	FOOD	FUNDRAISING	GARDEN	HHF	STAFFING	STOCK
Purchases of fixed assets	-	-	-	-	-	-
Purchase of investments	-	-	-	-	-	-
Sub total	-	-	-	-	-	-
Total payments	3.58	400.00	1,009.91	40.00	-	2,927.21
Net receipts / (payments)	11,796.90	178.00	- 82.60	- 40.00	10,200.00	- 2,927.21
Transfers to / (from) funds	- 11,825.50	-	82.60	- 1,000.00	-	2,927.21
Surplus / (deficit) for year	- 28.60	178.00	- 0.00	- 1,040.00	10,200.00	-

Nature and purpose of funds

communitypantry (FOOD)	Funds related to the running of the communitypantry
Fundraising (FUNDRAISING)	Proceeds of fundraising activities on behalf of the charity.
Garden (GARDEN)	Funds to create and maintain garden area at front and side of building.
Household Hardship Fund (HHF)	Funds to be distributed at the discretion of the charity relating to household hardship (since 2022).
Staffing	Funds obtained for staffing purposes (since 2024)
Stock (STOCK)	Funds awarded for stocking the communitypantry

Additional analysis (3) cont.

	Designated fund 13 - enter name of fund below	Designated fund 14 - enter name of fund below	Designated fund 15 - enter name of fund below	Total designated funds	Total designated funds last period
	Swim & Bike Challenge	Uniform Bank Fund (UNI)	Warm Spaces (WARM)		
Receipts	SWIM	UNI	WARM		
Donations	-	-	-	1,349.82	6,656.52
Grants	-	-	2,575.00	46,702.31	18,706.50
Receipts from fundraising activities	-	-	-	-	-
Gross trading receipts - cash	-	1,629.40	-	22,257.36	17,255.66
Gross trading receipts - vouchers	-	-	-	33.60	-
Income from investments other than land and buildings	-	-	-	-	-
Rents from land & buildings	-	-	-	-	-
Gross receipts from other charitable activities	-	-	-	-	-
Sub total	-	1,629.40	2,575.00	70,343.09	42,618.68

Receipts from asset & investment sales	SWIM	UNI	WARM		
Proceeds from sale of fixed assets	-	-	-	-	-
Proceeds from sale of investments	-	-	-	-	-
Sub total	-	-	-	-	-
Total receipts	-	1,629.40	2,575.00	70,343.09	42,618.68

Payments	SWIM	UNI	WARM		
Expenses for fundraising activities	-	-	-	-	-
Gross trading payments	-	-	-	-	-
Investment management costs	-	-	-	-	-
Payments relating directly to charitable activities	-	-	-	49,986.34	48,408.40
Grants and donations	-	-	-	-	-
Governance costs					
Audit / independent examination	-	-	-	-	-
Preparation of annual accounts	-	-	-	-	-
Legal costs	-	-	-	-	-
Sub total	-	-	-	49,986.34	48,408.40

Payments relating to asset and investment movements	SWIM	UNI	WARM		
Purchases of fixed assets	-	-	-	-	-
Purchase of investments	-	-	-	-	-
Sub total	-	-	-	-	-
Total payments	-	-	-	49,986.34	48,408.40
Net receipts / (payments)	-	1,629.40	2,575.00	20,356.75	- 5,789.72
Transfers to / (from) funds	-	- 1,629.40	-	- 15,787.06	- 41,760.86
Surplus / (deficit) for year	-	-	2,575.00	4,569.69	- 47,550.58

Nature and purpose of funds

Swim & Bike (SWIM)	Funds raised through sponsored swim and bike ride - donations given in cash and through "go fund me" (since 2021)
Uniform Bank (UNI)	Funds received from grants, donations & sale of uniform items. Income used to finance purchase of new uniform items for people referred by the schools, along with other related costs and overheads (since 2018).
Warm Spaces (WARM)	Funds to set up and run warm space and related activities - grant augmented from general fund (since 2022).

APPENDIX 3



<p>Report to the trustees/members of</p> <p>Registered charity number</p> <p>On the accounts of the charity for the period</p> <p>Set out on pages</p>	Independent examiner's report on the accounts v2						
	Crieff Connexions						
	SC051160						
	Period start date				Period end date		
	Day	Month	Year		Day	Month	Year
	1	January	2024	to	31	December	2024
	Appendix 2 1-15						

Respective responsibilities of trustees and examiner

The charity's trustees are responsible for the preparation of the accounts in accordance with the terms of the Charities and Trustee Investment (Scotland) 2005 Act and the Charities Accounts (Scotland) Regulations 2006 (as amended). The charity trustees consider that the audit requirement of Regulation 10(1) (d) of the Accounts Regulations does not apply. It is my responsibility to examine the accounts as required under section 44(1) (c) of the Act and to state whether particular matters have come to my attention.

Basis of independent examiner's statement

My examination is carried out in accordance with Regulation 11 of the 2006 Accounts Regulations. An examination includes a review of the accounting records kept by the charity and a comparison of the accounts presented with those records. It also includes consideration of any unusual items or disclosures in the accounts and seeks explanations from the trustees concerning any such matters. The procedures undertaken do not provide all the evidence that would be required in an audit and, consequently, I do not express an audit opinion on the view given by the accounts.

Independent examiner's statement

In the course of my examination, no matter has come to my attention

1. which gives me reasonable cause to believe that in any material respect the requirements:
 - to keep accounting records in accordance with section 44(1) (a) of the 2005 Act and Regulation 4 of the 2006 Accounts Regulations, and
 - to prepare accounts which accord with the accounting records and comply with Regulation 9 of the 2006 Accounts Regulations
 have not been met, or
2. to which, in my opinion, attention should be drawn in order to enable a proper understanding of the accounts to be reached.

Signed:  **Date:** 25/04/2025

Name: 

Relevant professional qualification(s) or body (if any): 

Address: 