

# Blairgowrie District Community Shed

Scotland · Charity number SC046799

## Details

---

Status	Active
Legal form	SCIO (Scottish Charitable Incorporated Organisation)
Registered	2016-08-22
Register	<a href="#">View on the OSCR register</a>

## Contact

---

**Address**  
Bow Cottage  
Bogside Road  
Coupar Angus  
Perthshire  
PH13 9AY

## Activities

---

**Activities:** 'It carries out activities or services itself'

**Purposes:** 'the provision of recreational facilities, or the organisation of recreational activities, with the object of improving the conditions of life for the persons for whom the facilities or activities are primarily intended', 'the relief of those in need by reason of age, ill-health, disability, financial hardship or other disadvantage'

**What the charity does:** Our organisation is to provide a safe and comfortable environment allowing members to develop friendship and to exchange skills. We are open to all over the age of eighteen years regardless of gender or creed. To provide workshop space and equipment to enable development of skills and expand the knowledge of others.

**Beneficiaries:** 'Older People', 'People with disabilities or health problems'

**Objectives:** The purpose of the organisation is to provide recreational facilities and advance the social needs, health and well being of men of all ages and backgrounds living in Blairgowrie, Rattray and Coupar Angus being defined by post code PH10 & PH13. By: a) Creating, developing and maintaining a facility, namely Blairgowrie District Community Shed. b) Offering opportunities for all members in the Blairgowrie district to meet and undertake creative, physical, purposeful and recreational activities of their choice. c) Reducing isolation of all members in the district thus contributing to their physical and mental wellbeing. d) Developing the capacity of all within the Blairgowrie district to share their skills and knowledge with others in the community. e) To provide support to the community within the Blairgowrie district by providing a welcoming safe place to meet and carry out tasks that help to create community spirit.

## Geography

---

- **Main operating location:** Perth And Kinross
- **Geographical spread:** More than one local authority area in Scotland

## Finances

---

Period end	Income	Expenditure	Assets	Employees
2025-08-31	£9,467	£6,872	-	0
2024-08-31	£7,738	£2,038	-	0
2023-08-31	£5,049	£1,625	-	0
2022-08-31	£995	£2,721	-	0
2021-08-31	£2,036	£945	-	0

**Blairgowrie District Community Shed**

Scotland - Charity number SC046799

---

# Accounts

---



Formerly:

# Blaireowrie District Community Shed

## Chairmans Report Year September 1st/24 to August 31st/ 25

This past year has seen us finally taking over the building in Candlehouse Lane, namely The Old Granary.

The building was secured for our use on a twenty five year lease with the option to purchase, this being facilitated by the Thermafloor Pension Fund. A short term peppercorn rent was agreed, this has since been extended to allow the drawn out process of funding through the Scottish Land Fund. Since our first application the fund has ceased to take applications until the Scottish government elections in May 2026



This delay has proved a frustration but we have confidence that the our application will come to fruition.

Meanwhile we have taken occupancy and started the process of tailoring it to suit our needs. We cleaned up the Mezzanine floor , installed carpet tiles, moved our furniture over from the High St shed added tub chairs and coffee tables fitted improved LED lighting and cobbled together a tea

making area thus creating a social lounge space. Without any proper heating , it was not the most comfortable over the winter months. To counter this we agreed to apply for funding through the NetZero government scheme to fit Air to Air heat pumps along with solar PV roof panels and a storage battery system. The argument for this was to keep our energy costs as low as



possible and therefor maintaining affordable membership to the Shed. we employed The Natural Energy Company to advise us and to quote for the contract. application through the government agent Cares Organisation was subsequently put in motion.

Meanwhile we turned our attention to the ground floor worksop area, previously a dark, dismal and cold space. Dry lining the largest area with studding and plywood, foam board insulation and rewiring with new LED lights





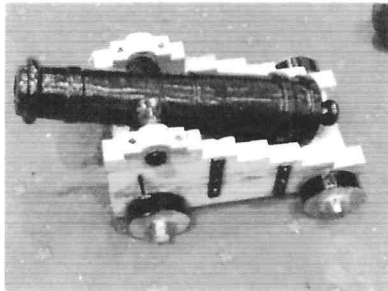
Formerly:

## Blairilowrie District Community Shed

We unsuccessfully applied for an improvement grant through Perth & Kinross council sponsored by two large construction companies. We should have been successful with the application but for not having the planning permissions that would be needed. We live and learn and apart from a very nice consolation gift of £500 we did receive help and advice from the company architects (BAM construction)

Fundraising has been relatively successful as can be seen in the treasurers report. Once again the Charity/Reuse shop has boosted our income along with the very generous donation from Alice Bowman who donates the proceeds from the craft markets that she organises. Membership fees increased during the year along with other donations.

Activities included a fiery and fearsome demonstration and talk on things that go bang by our resident pyromaniac Joe, who is threatening to fire the canon we renovated.



A great talk on life in a South Atlantic whaling station from Rab Fergusson. A visit to a private vintage car collection which raised funds for Ukraine.



Our Christmas dinner was held at the local Red House Hotel which was enjoyed by all.

Sheddybrek continues to be a popular gathering whenever it is possible to organise.( if you don't know what it is then come along and find out.

Who knows what the future holds!

We are planning to construct a steel extension to our mezzanine along with a lift enabling the less able bodied members to gain easier access to the 1st



## Blairgowrie District Community Shed

Formerly:



floor and to gain additional storage for materials and equipment. The expansion of our membership and activities which is to be inclusive to all. As ever we are, or should be a member led organisation, so it is up to you to help support the organisation of events and activities.

We look forward to taking ownership of the building which will give us a secure base for the future.

Thanks to you all for your help in making the Blairgowrie District Community Shed what it is and you continuing support and friendship.  
Keith Langelaan  
Chairman

**Blairgowrie District Community Shed**

Scotland - Charity number SC046799

---

# Accounts

---



Formerly:

## Blairgowrie District Community Shed

### Chairmans Report Year September 1st/23 to August 31st/ 24

The year has been eventful in some ways, the main event being the decision to expand our shed.

Since its inception we have been operating under the restrictive conditions. Firstly in the building shared with Wisecraft in Blairgowrie, followed by moving to 1, High Street. Although this building has been kindly loaned without charge we have still had to bear the costs of both electricity and building insurance. All the time lurking in the background the knowledge that we could be asked to leave at any time. This occupation has not been the easiest due in part to lack of space. We have also put up with the basement flooding soaking our meagre timber store, but also water ingress to our workshop ceiling. This has meant a less than comfortable experience during the cold Scottish winters. Space has also been very restricted in both the social area and the workshop.



Much discussion has taken place on how we could improve our lot. After many enquiries a plot of land was identified as a possible site for our use, but it was just that, a piece of Land. We investigated the prospect of erecting a simple building but at approximately three hundred thousand pounds for the building only which was out of our reach.

However, as we were investigating this possibility another building near by came to our attention, The Old Granary. Not the most inspirational building from the outside, but the inside space could have been designed for Shed activities. The bonus is that it is in good structural order and much more affordable at under one hundred thousand freehold.



Following discussions with our members it was decided that we should move towards taking ownership of the building, the wheels were set in motion, and plans drawn up. Ownership gives us the advantage of security of tenure and enables us to secure our future.

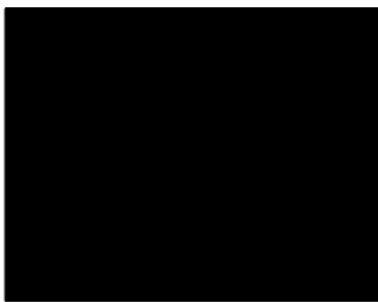


## Blairgowrie District Community Shed

Formerly:



Otherwise little else took place other than the usual repair, crafting and putting the rest of the world to rights during our regular Tuesday evenings. The Thursday afternoon meetings stopped due to lack of interest, but the alternate weeks of Sheddyprek carried on with enthusiasm.



In July we were invited to take a pitch at an outdoor fund raising event at the Cycle hub. We opted to provide smash burgers. The event was well attended but in spite of all the hard and hot work of our volunteers, we made no profit. Looking at the bright side we learned a lot from this our first effort and certainly met many people, which raised awareness of the Shed.

A good evening was enjoyed by all with the final meeting of the year taking the form of a Christmas dinner at the Blackbird Inn at Alyth. Financially we recovered well from the remnants of Covid and are managing to cover our own costs now that membership is expanding.

Thanks to all those who have put in a great effort with fundraising, I will not name individuals, but the leading members know who you are. I will mention that the Charity shop sales have proved most rewarding and continue to be so on a twice yearly basis.

We welcome all new members and with the planned expansion the hope is that many more will follow. To this end we will be changing our identity by re-registering as the Blairgowrie District Community Shed thereby showing that we are open to all rather than exclusively men. The Mens Shed will be incorporated into the organisational changes.

We look forward to the challenges of the coming year which we hope will give recognition and strength to the future of our group.





# Blairgowrie District Community Shed

Formerly:



## Treasurers Report to August 31st 2024

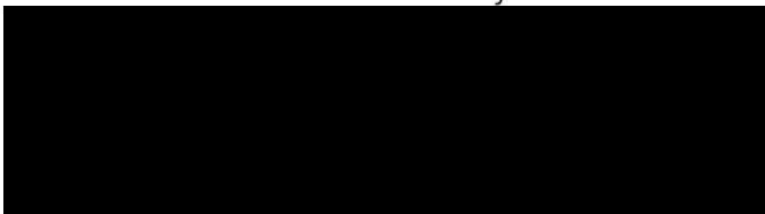
The year has built on our strengths financially, not only are we proving to be self supporting by covering our expenses but we are managing a profit. A large proportion of our income has come from donations from various sources, in some cases repairs and services to the public and in some from the generosity of those who support the work and benefits we do towards our main objectives of a Mens Shed.

By far the largest portion of income is proceeds from the twice yearly sales at the Charity Shop. Thanks to all who collected goods to sell and to those who's hard work running the shop makes it such a success. Not liking to name individuals who put in the good work, I make one exception, that being to [REDACTED] who heads up the organisation of the sale, shifts the stock and makes sure we have plenty to sell.

Electricity continues to be an unavoidably expensive overhead although we have done our utmost to reduce the expense by changing provider, we should, hopefully be able to keep the expense to affordable levels by judicious use and by using energy saving appliances whenever possible.

During the latter part of the year and with the prospect of moving to larger premisses you will have noticed that vehicle hire is shown. This enabled us to take advantage of an scheme that provides excess furniture and equipment. The cost to us is just the hire charge, fuel and volunteer time. This represents a good investment in resources and a very good return, an example would be obtaining more than sufficient carpet tiles for the sitting area of the new building plus replacement chairs and tables saving us literally thousands of pounds.

We start the next period with a healthy bank balance for a membership of our size. The coming year will be a challenge as we move forward to expansion, but with good management and a bit of luck we can secure the future of our Mens Shed for years to come.





# Blairgowrie District Community Shed

Formerly



## Statement of accounts 1st September 2023 until 31st August 2024

<b>Opening Balance:</b>	<b>£4433.27</b>
<b>Income:</b>	<b>£7738.43</b>
<b>Expenditure:</b>	<b>£2038.96</b>
<b>Closing Balance:</b>	<b>£10132.74</b>

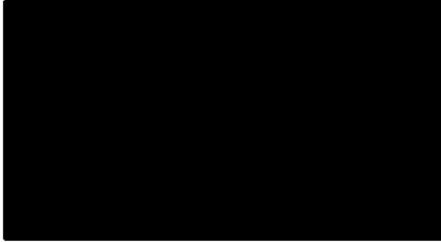
### **Receipts:**

General Sales:	£172.99
Membership Subs:	£720.00
Donations Received:	£1557.34
Payment for work:	£97.00
Grant Income:	£900.00
Tea Money:	£332.42
Reuse Shop sales (2 weeks):	£3938.68
Miscellaneous income:	<u>£30.00</u>
<b>TOTAL INCOME:</b>	<b>£7738.43</b>

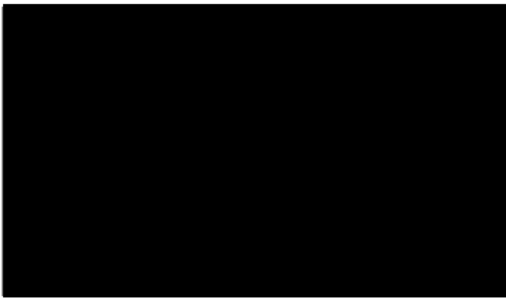
### **Expenditure:**

Electricity:	£622.15
Gas: (Bottled):	£100.00
Fuel: (for van)	£66.58
VanHire:	£187.20
Licences	£20.00
Energy Consultant fees:	£118.80
Equipment Hire:	£85.06
Repairs and renewals:	£218.59
Donations:	£210.00
Clothing Costs (Aprons):	£55.14
Insurance :	<u>£355.44</u>
<b>TOTAL EXPENSES</b>	<b>£2038.96</b>

*For information only Bank balance as at 4.00pm 27th May 2025 £11014.53*



I confirm that I have checked the figures presented by The Strathmore Mens Shed SCIO for the year from 1st September 2023 until 31st August 2024, I have found them to be a true record of their financial accounts.



Dated :

23/05/25

Created 16 May 2025  
Report Date 31 August 2024

**STRATHMORE MEN'S SHED**  
**Balance Sheet**  
(All values reported in GBP)

**Fixed Assets**

---

**Total Fixed Assets** **0.00**

**Current Assets**

---

1200 Current Account

8,721.99

**Total Current Assets** **8,721.99**

**Current Liabilities**

---

**Total Current Liabilities** **0.00**

**NET Current Assets** **8,721.99**

**Total Assets less Current Liabilities** **8,721.99**

**Long Term Liabilities**

---

**Total Long Term Liabilities** **0.00**

**NET Assets** **8,721.99**

**Capital and Reserves**

---

P&L Account

8,721.99

**Total Capital and Reserves** **8,721.99**

Created 16 May 2025  
From Date 1 September 2023  
To Date 31 August 2024

**STRATHMORE MEN'S SHED**  
**Profit & Loss Statement**  
(All values reported in GBP)

**Turnover**

---

4000	General Sales	90.49
4010	Membership Subs	720.00
4011	Donations Received	1,639.84
4012	Payment for Work	97.00
4013	Grant Income	900.00
4014	Tea Money	332.42
4015	Re-Use Shop	3,928.68
4900	Miscellaneous Income	30.00
	<b>Total Turnover</b>	<b><u>7,738.43</u></b>

**Less Cost of Sales**

---

5000	General Purchases	(1,380.69)
	<b>Total Cost of Sales</b>	<b><u>(1,380.69)</u></b>
	<b>Gross Profit</b>	<b><u>6,357.74</u></b>

**Less Expenses**

---

7200	Electricity	(622.15)
7201	Gas	(100.00)
7300	Fuel and Oil (MOTOR)	(66.58)
7302	Licences	(20.00)
7401	Car and Van Hire	(187.20)
7602	Consultancy Fees	(118.80)
7700	Equipment Hire	(85.06)
7800	Repairs and Renewals	(218.59)
8200	Donations	(210.00)
8202	Clothing Costs	(55.14)
8204	Insurance	(355.44)
	<b>Total Expenses</b>	<b><u>(2,038.96)</u></b>
	<b>Profit Before Tax</b>	<b><u>4,318.78</u></b>



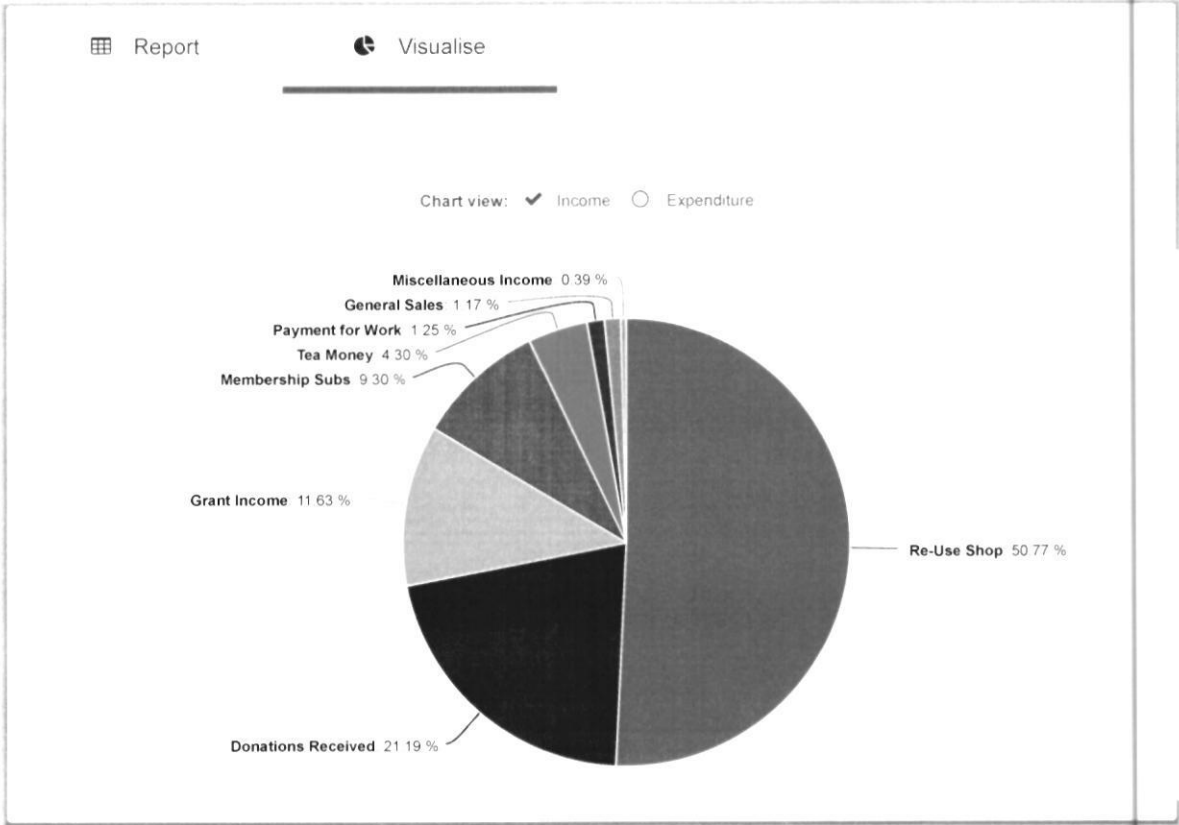
For monthly, quarterly and yearly P&L comparisons click here

>>

## ⊕ Reports - Profit & Loss Report

📄 Export Data   🖨️ Print Report   📅 Preset Date Ranges   ◀️ Previous Year   Next Year ▶️

Date Range: From 01/09/2023 To 31/08/2024



◀️ Back

For monthly, quarterly and yearly P&L comparisons click here

>>

## ⊕ Reports - Profit & Loss Report

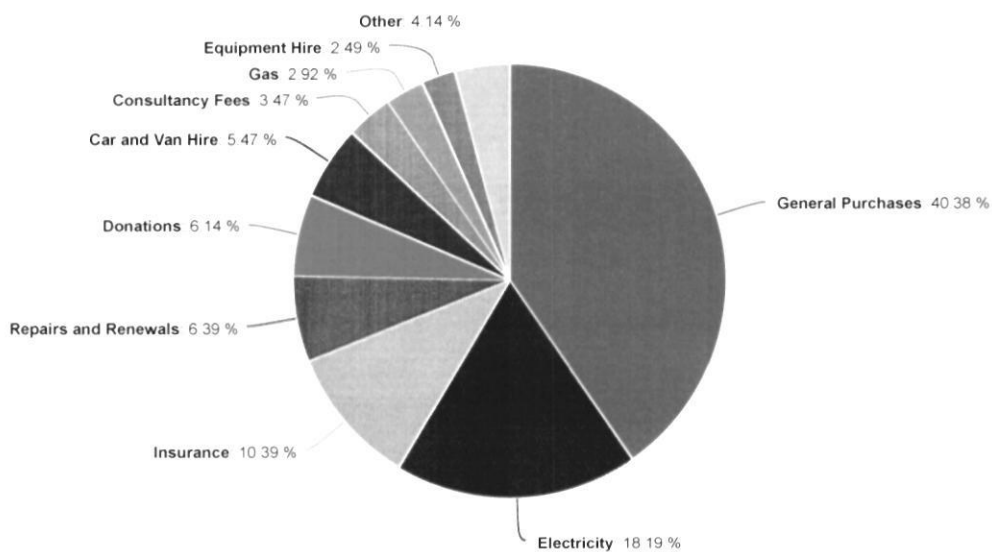
📄 Export Data   🖨️ Print Report   📅 Preset Date Ranges   ◀ Previous Year   Next Year ▶

Date Range: From 01/09/2023 To 31/08/2024

📊 Report

📈 Visualise

Chart view:  Income    Expenditure



◀ Back