

The Froglife Trust

Scotland · Charity number SC041854

Details

Known as	Froglife
Status	Active
Legal form	Trust (founding document is a deed of trust) (other than educational endowment)
Registered	2010-10-29
Register	View on the OSCR register

Contact

Address
Brightfield Business Hub
Bakewell Road
Orton Southgate
Peterborough
Cambridgeshire
PE2 6XU

Website www.froglife.org

Activities

Activities: 'It carries out activities or services itself'

Purposes: 'the advancement of education', 'the advancement of the arts, heritage, culture or science', 'the advancement of environmental protection or improvement', 'the advancement of animal welfare'

Beneficiaries: 'No specific group, or for the benefit of the community'

Objectives: To promote (directly or indirectly) the conservation and welfare of amphibians and reptiles, in the UK and anywhere else in the world (including, without limitation, habitat reclamation, remediation and restoration), and to promote education amenity and research activities for the benefit of the public at large relevant to amphibian and reptiles and to publish the useful results of such research for the public benefit.

Geography

- **Main operating location:** Outwith Scotland
- **Geographical spread:** Scotland and other parts of the UK

Finances

Period end	Income	Expenditure	Assets	Employees
2025-09-30	£1,548,094	£1,231,947	-	24
2024-09-30	£1,095,638	£1,064,950	-	25
2023-09-30	£1,245,863	£1,336,166	-	25
2022-09-30	£1,114,761	£1,096,602	-	24
2021-09-30	£1,010,091	£965,098	-	23

The Froglife Trust

Scotland - Charity number SC041854

Accounts

The Froglife Trust

*Leaping forward for amphibian
and reptile conservation
Working together to save the species*



ANNUAL REPORT AND ACCOUNTS October 2024 - September 2025



TRANSFORMING LANDSCAPES

TRANSFORMING LIVES

TRANSFORMING RESEARCH

CONTENTS

ABOUT FROGLIFE.....	3
ACHIEVING OUR VISION AND MISSION.....	6
PUBLIC BENEFIT	7
ENVIRONMENTAL ACTIONS	8
DIVERSITY, EQUALITY AND INCLUSION	8
STAFF WELLBEING	8
STRUCTURE, GOVERNANCE AND MANAGEMENT	9
REMUNERATION OF KEY MANAGEMENT PERSONNEL	10
RELATIONSHIPS WITH RELATED PARTIES.....	11
TRANSFORMING LANDSCAPES.....	13
TRANSFORMING LIVES	19
TRANSFORMING RESEARCH	23
TRANSFORMING COMMUNICATIONS.....	26
TRANSFORMING FROGLIFE ECOLOGICAL SERVICES (FES)	30
TRANSFORMING OUR FUTURE.....	32
RISK MANAGEMENT AND INTERNAL CONTROLS.....	37
FINANCIAL REVIEW.....	41
RESERVES POLICY	41
INVESTMENT POLICY	41
STATEMENT OF TRUSTEES' RESPONSIBILITIES	42
INDEPENDENT AUDITORS REPORT TO THE TRUSTEES AND MEMBERS OF THE FROGLIFE TRUST	43
ACCOUNTS	46
NOTES TO THE FINANCIAL STATEMENTS FOR YEAR ENDED 30 SEPTEMBER 2025	51

ABOUT FROGLIFE

The Froglife Trust (known as Froglife) is a national nature conservation charity with a specific focus on reptiles and amphibians and their habitats. Froglife's vision is a world in which reptile and amphibian populations are flourishing as part of healthy ecosystems. Amphibians are declining globally at a faster rate than birds and mammals. These declines are being witnessed in the UK. Using the IUCN Red List methodology an assessment of extinction risk has been undertaken to establish the UK's amphibian and reptile status. The exercise revealed that 4 out of 13 species (31%) are in one of the "Threatened" categories. The assessment listed the common toad as "Near Threatened", and adder as "Vulnerable in England" and "Near Threatened" at all other scales. As reptile and amphibian species are an integral part of our ecosystem, it is essential that we work together to address these declines.

At Froglife we believe we can reverse reptile, and amphibian declines by raising awareness, enhancing knowledge, restoring and creating habitats, undertaking species condition monitoring, and surveying to establish accurate species population numbers, and encouraging as many people as possible from all sectors of society to act. To ensure that our work is sustainable we deliver an extensive volunteer training programme, training volunteers across the UK in species identification and habitat management. We also recognise that those that fund our work want to be reassured that the habitat sites funded by them are maintained to optimum condition for the foreseeable future, which of course also fits with our objectives. To ensure this we have a commitment in our Strategy to review all habitat works undertaken by Froglife 1, 3, 5 & 10-years post completion.



Our work is grass roots, applied, evidence-based conservation. The habitat works benefit countless species from aquatic invertebrates and plants, to amphibians, reptiles, birds, and small mammals. Our work enhances the UK's biodiversity.

Our holistic approach to nature conservation enables us to take individuals on a wildlife journey, whilst also delivering quantifiable results for our reptile and amphibian species.

The strategic direction of Froglife is set by the board of trustees, consisting of ten trustees, who collectively bring a range of experiences and expertise – lived experiences, social awareness, species and habitat expertise and science and research. Our board reflects some of the diversity of the UK population, with a spread across age ranges, sexual orientation, religion and ethnic backgrounds.

“It was really good to revisit the site and see the ponds flourishing with good water quality and frog activity.” Rother Valley, Technical Lead after Froglife Ecologist site visit.

Our Strategy covers January 2023 – December 2030 in line with UK individual country targets of 30% recovery by 2030 (30/30) and the Environment Act's aim to halt biodiversity loss by 30% of land and sea by 2030 in

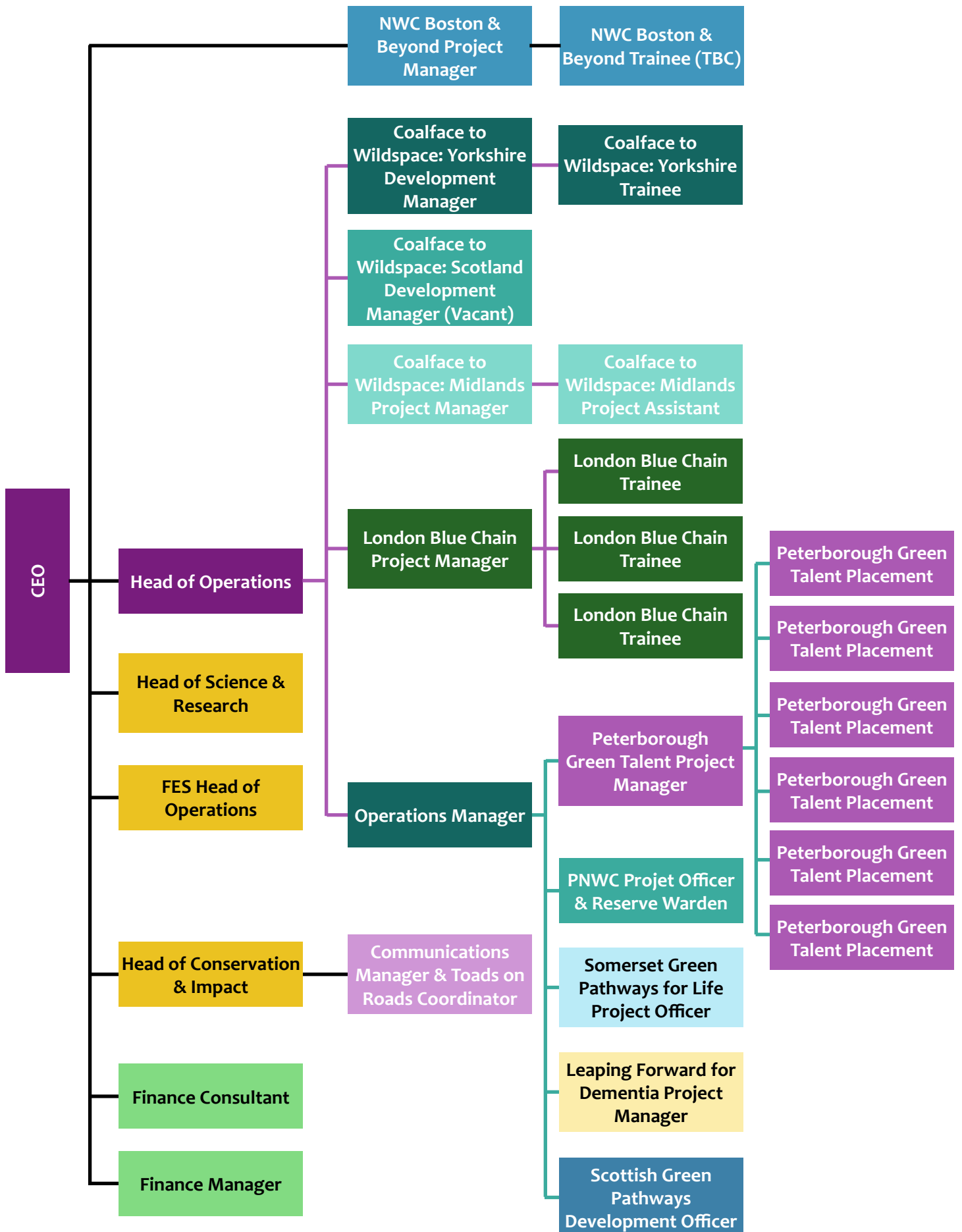
England. We regularly review our strategic targets and overall, we are on track to deliver against our targets, however there are a couple of areas where we need to place more focus, and the Senior Management Team is working on addressing these areas.

The delivery of the strategy and the day-to-day management of the organisation is delegated to the Chief Executive Officer (CEO) who is supported by the Senior Management Team (SMT). The SMT meet every six to eight weeks and organisation strategy, project delivery and financial management is reviewed at each meeting (as well as Health and Safety and Safeguarding).

The Froglife Trust did receive one complaint during the year regarding a Toads on Roads Patrol, this matter was swiftly and efficiently resolved. The subsidiary company Froglife Ecological Services (FES) received no complaints during the year. No complaints have been received during the year about anyone representing the charity or the subsidiary company.

“Thanks for visiting our community garden to inspect the pond even though the project has ended. Your advice was incredibly helpful.” Discovering Dewponds project legacy.





PUBLIC BENEFIT

In carrying out their duties the trustees have had regard to public benefit guidance by the Charity Commission. The trustees note that the charitable activities focus on species conservation and public involvement. The work that the charity does plays an important role in environmentally sustainable development creating more sustainable, resilient communities.

Within urban environments, plants filter pollutants and absorb carbon dioxide from the air, helping to improve air quality.

- Some freshwater habitats, such as lakes, ponds and ditches, act as carbon sinks, helping to offset some of the negative impacts of global warming and climate change.
- Aquatic habitats and plants help to stabilise high temperatures brought about by heat generated by buildings and transport systems.
- Blue spaces and soft ground help to soften noise in urban environments.
- Freshwater, vegetation, and soft ground help to alleviate the risk of flooding.
- Natural blue and green spaces benefit the health and wellbeing of people.

The Board of Trustees have assessed the major risks to which the charity is exposed, particularly those relating to the operations, reputation, business, and finances of the Froglife Trust and Froglife Ecological Services. The CEO assesses and updates the likelihood and impact of material risks on a risk management matrix, which is reviewed by the board on a quarterly basis at trustee meetings.

A traffic light system is used to grade the level of the risk. This is reviewed quarterly to reflect the seasonality of the work.

Health and safety procedures and general and project specific risk assessments are reviewed annually in January. Health and Safety reports are a standing item on the quarterly board agenda. A trustee has been identified to be responsible for monitoring health and safety and is made aware of all reported incidents, and when necessary, appropriate action is taken. Health and Safety is an important element of staff inductions, and where relevant, training is provided.

All staff working with young people and/or vulnerable adults are cleared through Disclosure and Barring Service in England and Disclosure Scotland in Scotland. All staff and trustees are obliged to attend a Safeguarding course every three years.

Safeguarding is a standard item on the SMT agenda.

ENVIRONMENTAL ACTIONS

We continue to work to reduce our environmental impact across all our work. As a national organisation, one of our main impacts is travel, and the use of heavy equipment for habitat works. We have found ways to use more environmentally friendly forms of transport and using virtual channels we have reduced the need to travel to meetings. Most of our staff work remotely, working predominantly from home, this reduces travel to and from offices. We do not track heavy equipment back and forth for habitat works but instead store the equipment on site for the duration of the works. We do not transport the spoil off site to landfill but use it on site for further habitat enhancements. We avoid the use of pond liners and predominantly allow ponds to

naturalise with plants and allow them to fill naturally with rainwater.

We expect staff to upcycle, recycle and re-use materials wherever possible, to avoid using plastic in any project materials, to use sustainably sourced wood and other materials. We share equipment and resources between projects and either donate tools to local groups at the end of the project to build capacity and ensure ongoing maintenance of habitat sites or pass them on to the next Froglife project.

Our carbon footprint for 2024 was completed and is hosted on our website.

DIVERSITY, EQUALITY AND INCLUSION

Froglife is committed to social justice, and to tackling injustice and inequality. Since 2007 Froglife has been delivering projects designed entirely to empower new audiences and those that are often excluded from nature conservation initiatives to take action to help conserve the UK's natural environment. Diversity, Equality and Inclusion is a key aim of Froglife's Strategic Plan, and we have a dedicated Trustee and Senior Management Team member to lead on EDI. We have delivered projects working with people Not in Employment, Education or Training, young offenders and ex-offenders, disadvantaged and/or vulnerable children and young people, young people leaving care, young carers, LGBTQ+ people and families, ethnic minority groups, people with mental and/or physical disabilities, people living with dementia and their carer's, men as part of the MENTal Wellbeing programme and others.

This year we drafted an Anti-Racism statement which was reviewed by CEMVO (the support organisation for ethnic minority community groups in Scotland) and our EDI Working Group. We also did blogposts for Black History Month, Pride Month, Mental Health Awareness Week and Dementia Action Week. We have regular review meetings with CEMVO EDI adviser. Most staff attended Anti Racism Training and training on Developing an Inclusive Culture. We presented on our progress at Nature for All events and helped produce a series of videos on Froglife's EDI progress to inspire other organisations.

However, we recognise that we still have a long way to go to be a truly Diverse, Equitable, and Inclusive organisation. To address this, we have undertaken several initiatives and continue to build on these.

STAFF WELLBEING

Froglife has had a long-term commitment to mental health and staff wellbeing, and has strong support systems in place through, for example, our appraisal and supervision system, and our peer mentor programme. This is formalised through our Wellbeing Strategy. We have improved our induction system and providing staff with more opportunities to visit each other in person.

"I loved your presentations this morning – they were fantastic in terms of content and images and, what's more, your enthusiasm came through so beautifully, despite it being a formal session. You have set the bar so high and put the whole project in an excellent position for the future". Feedback to staff member from Senior Management member.

And response: *"Thank you. The word enthusiasm, or passion, comes up a bit in my session evaluation forms. The truth is, I think I'm still as excited to see a frog as a 5-year-old, if not more! Thank you again for the opportunity to work for Froglife and on this brilliant project. I've hugely enjoyed and valued the whole experience, and I'm sure inspired in*

me a life-long fascination with reptiles, amphibians and ponds."

"That is so kind of Froglife – thanks to all of you, I feel quite emotional. I also feel very honoured." Staff member on receiving a Happy Work Anniversary email from the Senior Management Team

We put in place a new recruitment process to attract wider diversity amongst our staff.



Pond build at a member of staff's home hand built by Froglife staff

STRUCTURE, GOVERNANCE AND MANAGEMENT

Registered name: The Froglife Trust operating under the name of Froglife.

Registered address: Brightfield Business Hub, Bakewell Road, Orton Longueville, Peterborough, PE2 6XU.

Charity Registration Number: 1093372 (England & Wales); SC014854 (Scotland).

Bankers: Barclays Bank Plc, 1 Church Street, Peterborough, PE1 1XE.

Auditors: Saffery, Chartered Accounts, Westpoint, Peterborough Business Park, Lynch Wood, Peterborough, PE2 6FZ.

The trust is a company limited by guarantee and is constituted by its trust deed. The trust has a subsidiary undertaking, Froglife Ecological Services (FES), the subsidiary offers a range of ecological services with all profits donated to the charity.

The trust has two patrons Mr Jules Howard and Ms Kate Bradbury. Together they bring a wealth of wildlife conservation, education, digital technology, broadcasting and writing skills. Both contribute an enormous amount of time and energy to the work of the trust.

The trustees, who are also directors for the purpose of company law, and who served during the year were:

Ms Inez Smith (Chair)

Professor Roger Downie (Vice Chair)

Mr Frank Clark

Dr Philip Wheeler

Dr Silviu Petrovan

Mr Xavier Mahele

Mr Gordon Maclellan

Dr Charlotte Regan

Ms Melissa Solly

Mr Richard Yates

None of the trustees have any beneficial interest in the company. All the trustees are members of the company and guarantee to contribute £10 in the event of insolvency.

The Froglife Trust is governed by its Trustee Board

which is responsible for setting the objectives and policy of the charity. The trustees ensure that the charity satisfies its legal and contractual obligations. The Board of Trustees meet at a minimum quarterly.

The Board of Trustees are also responsible for the charities subsidiary company, Froglife Ecological Services (FES). FES provides a range of ecological services that are paid for by its clients. All profits are donated to the charity.

The Board of Trustees set the strategy for the charity and delegate the day-to-day management of the charity to the Chief Executive Officer who is supported by the Senior Management Team. The Board of Trustees are responsible for making decisions regarding the governance and financial matters for the Trust and Ltd Company. Major Human Resources decisions are taken by the Trustees, including the recruitment of senior members of staff, trustees and setting and approving staff and volunteer policies and procedures. The Trustees have elected one Trustee to be responsible for Health & Safety. The Trustees all undergo three yearly Safeguarding Training and are responsible for ensuring that all staff members do Safeguarding Training and where relevant obtain Debarring Service Scotland and DBS England & Wales clearance. Where relevant the Trustees will elect a trustee/s to represent the board on internal working groups such as Equality, Diversity and Inclusion working group and the Froglife Ltd work that is being undertaken with a consultant on developing a growth strategy for Froglife Ltd.

The Board of Trustees will decide when it is prudent to recruit new trustees based on a skills audit undertaken with existing trustees and identifying skills gaps. The Board of Directors will advertise the trustee role widely. The Chair and the CEO will interview shortlisted suitable trustees with a final recommendation made to the Board of Trustees. New trustees will be elected at the Annual General Meeting held in December each year. New trustees will be given the Trustee Guidance paper, Trustee Induction Pack and will take part in an induction process which includes visiting nature reserves managed by Froglife. Trustees are invited to an annual staff away day to provide them with an opportunity to get to know staff and their areas of work.

The Chair of the Board is nominated by the Board of Trustees, preference is given to an existing trustee taking on the role, however if none of the existing trustees put themselves forward, the role will be externally advertised. There is a Role of the Chair document setting out the chair's responsibilities.

The Board of Trustees serve a term of three years, at the end of their three-year term they can be re-elected to serve another three-years, there is no limit to the number of terms that they can serve. New trustees are elected through a recruitment process and are advertised externally with an aim to fill any skills gaps that have been identified within the existing board of trustees.

Senior Management Team (The Froglife Trust):

Chief Executive Officer – Kathy Wormald

Head of Operations – Sheila Gundry

Head of Conservation & Impact – Jenny Tse-Leon

Head of Science & Research – Dr Andrew Smart

Senior Management Team (FES)

Chief Executive Officer – Kathy Wormald

Head of Operations – James McAdie

REMUNERATION OF KEY MANAGEMENT PERSONNEL

At the Board of Trustees meeting in March 2025, in line with inflation and based on the charity's financial stability, the trustees approved a 3% pay-rise for all staff members. The pay-rise came into effect on 1st April 2025.

Other pay reviews are conducted on a staff-by-staff basis and are increased if roles have changed, and they have moved into the next grade. The CEO's salary is

set and reviewed by the board of trustees on guidance from the chair. The last review was in November 2014 to ensure that the salary was comparable with other CEO positions within the sector and with similar levels of responsibility. The board is of the view that the salary remains comparable, and no further review is required.



RELATIONSHIPS WITH RELATED PARTIES AND OTHER CHARITIES AND ORGANISATIONS WITH WHICH FROGLIFE CO-OPERATES IN PURSUIT OF ITS CHARITABLE OBJECTIVES

Froglife has continued to be an active member of Wildlife & Countryside Link and the Head of Conservation & Impact, and the Head of Science & Research share the workload, with each representing Froglife on relevant sub-groups. The CEO has oversight of all papers that require sign-up by Froglife and if appropriate will approve sign-up. The CEO and Vice-Chair represent Froglife on Scottish Environment Link sub-groups and is a trustee of the network.

In this year Froglife has reviewed 28 consultations, letters or policy statements and have signed up to several documents as a participating member.

We have continued to be supported by Scottish MSPs as Nature Champions (Martin Whitfield MSP supporting adders; Emma Harper MSP supporting natterjack toads, ponds & small lochs; Fulton McGregor MSP supporting great crested newts; Daniel Johnson MSP supporting slow-worms, Murdo Fraser MSP supporting palmate newts and Clare Haughey MSP supporting common toads).

Froglife co-operates and works in partnership with a wide range of organisations and charities including those working within the nature conservation sector and from the wider charitable sector. Froglife works closely with landowners and land managers, local and central councils, schools, colleges, universities, and corporate partners.

We have remained Evidence Champions for Conservation Evidence and sit on the Conservation Evidence working group. We are a member of Cambridge Conservation Forum representing conservation organisations worldwide. This year we accepted a request from Conservation Evidence to use sections of our annual review response as examples of best practice.

We have remained a crucial partner in the Garden Wildlife Health Forum and have contributed actively through promoting the project, reporting amphibian disease/mortality reports through our INFO service and social media, collaborated on scientific publications and have attended regular partnership meetings.

Many thanks again for submitting these common

frogs for post-mortem examination. Please find the examination reports on page 12.

As part of our relationship with the South Downs National Park Authority we sit on the grants panel to award grants to South Downs National Park Authority reserve staff and other landowners for the creation and restoration of freshwater habitats.

We sit on various fundraising, business support, woman leadership, corporate and other groups all of which help to inform our operations and raise the profile of the charity. Our Head of Operations has continued to be a Trustee of the National Association of Environmental Education.

Froglife has provided advice and shared documents with other organisations, namely:

- All reports with the group we shared which was subsequently shared with National Numeracy and Marine Conservation.
- Our staff handbook and the Heritage Fund bids with Peoples Trust for Endangered Species.
- Meeting/mentoring support through our CEO with two NGOs CEO's.
- Through the Catalyse Change programme the Head of Operations has this year mentored another mentee.
- CEO receiving support from the CEO of Essex Wildlife Trust. They have also provided human resources and documents to benefit Froglife.
- Head of Conservation & Impact gives and receives support from CEO in another NGO.

TABLE 1: GLOBAL STATISTICS

Category	2022/23	2023/24	2024/25
Habitats	381	110	256
Hectares	66	207	89
Volunteers	394	788	694
Hours	2,803	3,254	3,636
Sessions	901	892	948
People	65,217	64,662	52,228

Amphibian Disease Report

Ref: Common frog (*Rana temporaria*) XT0152-25

This was an adult female common frog in normal body condition with a small amount of internal body fat. Examination of some body systems was limited by a moderate state of carcass decomposition.

The most significant findings were consistent with predation injuries: there was a deep penetration wound on the right lower back with associated bleeding, and small pinpoint injuries were observed on the left upper underside as well as the left wrist; we observed a full mid-length fracture of the right femur (upper thigh bone) with bleeding in the surrounding muscle tissue.

No other abnormalities were detected apart from those consistent with the state of carcass preservation.

Ref: Common frog (*Rana temporaria*) XT0153-25

This was an adult female common frog in normal body condition with no visible internal fat deposits. Unfortunately, examination of most body systems was limited by an advanced state of carcass decomposition.

The most significant finding was a full mid-length fracture of right femur with associated bleeding in the surrounding tissue.

No other abnormalities were observed; however, the advanced state of decomposition may have masked subtle changes.

Tissue samples from both common frogs were taken for routine molecular tests to screen for the presence of chytrid fungi and ranavirus infection, which are important infectious diseases of amphibians. We will contact you again should the results for either of these agents be positive in any of the frogs.

Summary:

The cause of death in both common frogs is considered to be predation (e.g. mammal or avian).

So far, we were unable to detect any underlying disease conditions that might have predisposed these animals to such a traumatic incident; however, at this time of the year, amphibians dedicate all their energy to breeding activity, often becoming victim to e.g. trauma or predation amongst other breeding associated complications.

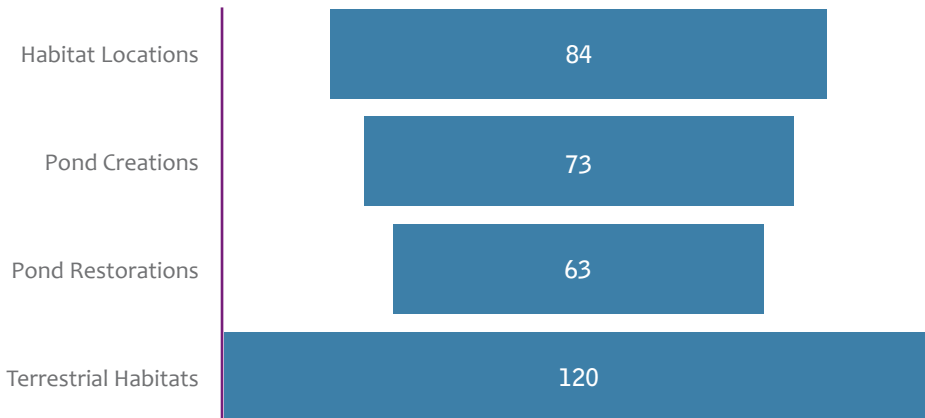
Additional information regarding other conditions that we commonly see in amphibians and other garden wildlife can be found on our website:

<https://www.gardenwildlifehealth.org/garden-wildlife/>

Once again, we would like to thank you for taking the time to participate in our project. Every contribution is invaluable to our understanding of the conditions affecting British garden wildlife.

TRANSFORMING LANDSCAPES

TRANSFORMING LANDSCAPES 2024 - 2025



“Thank you so much for taking the time to reply. Although it took a while to get the pond in, via resistance to the idea, resistance to the location and general time constraints, it is clearly a big success. And it wouldn't have happened without the talk from Froglife.”

How we did delivering our key indicators

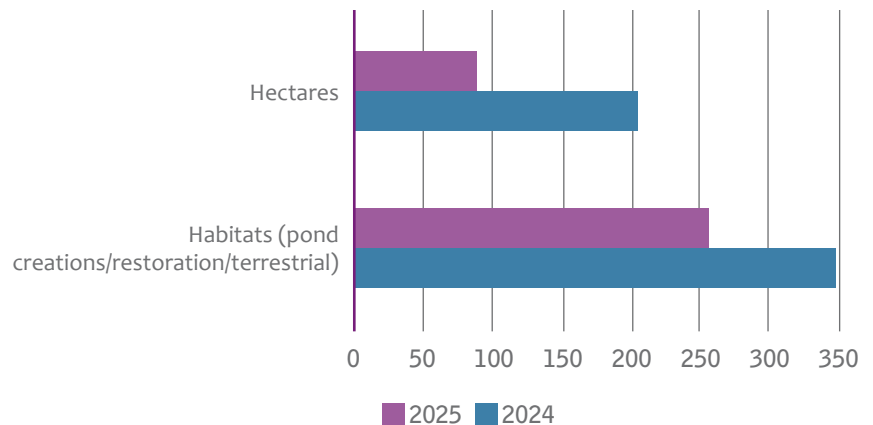
We have continued with our successful habitat creation and restoration programme, and this year we have created and restored 256 freshwater and terrestrial habitats, covering 89 hectares. This compares to 381 in 2023/24 covering 207 hectares.

Hampton Nature Reserve

This year we have continued to improve habitat at Hampton Nature Reserve for great crested newts, grass snakes, adders and bearded stonewort. During the reptile season the team and volunteers did a hard cut back on 2 of the reptiles transects this helps with the fortnightly reptile surveys that are undertaken, following the protocol developed by our Head of Science and Research. As well as these fortnightly surveys we have



TRANSFORMING LANDSCAPES COMPARISON 2023 & 2024



set-up additional surveys to monitor disturbance of tins and the possible impact it has on reptiles using the tins. The outcome will help to inform future survey methodology. The team and volunteers cut scallops for amphibian surveys in 30 ponds. The amphibian surveys take place overnight using torches to count numbers. On alternate fortnights butterfly surveys are carried out.

The Reserve Warden hosted a 'Reserve Warden for a day' for a young person who attended with his father.

“Thank you for your time on Saturday, Jacob absolutely loved it. He was buzzing all evening, right up until bedtime.”

We have since had further bookings and two volunteers from the 'Reserve Warden for a day' scheme have joined the reptile survey team.



Digging scallops and completed scallop at Hampton Nature Reserve

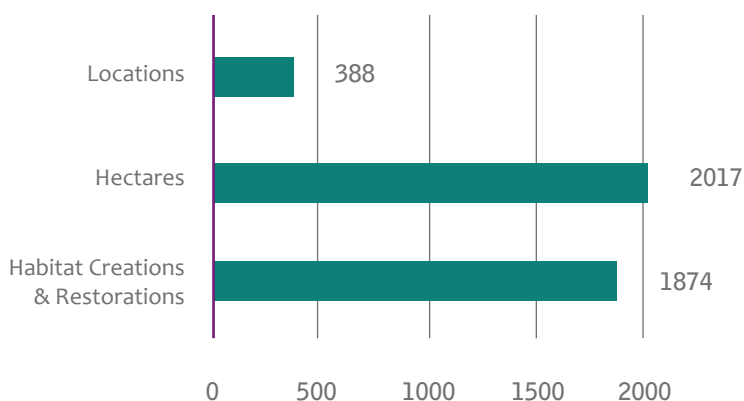
Boardwalks Nature Reserve

Three new ponds have been dug to expand the habitat for great crested newts and habitat improvements have been undertaken for grass snakes to use as egg laying sites. There has been ongoing pond management on ponds created in previous years and the dead hedging is working well with keeping dogs out of the ponds.

Eye Green Nature Reserve

A lot of time has been spent at Eye Green Nature Reserve on pathway management to ensure that public can navigate the reserve safely. This also encourages visitors to stick to the paths and not to disturb wildlife areas within the reserve. The team and volunteers have also been spending time on pond management.

TRANSFORMING LANDSCAPES OCT 2019 - SEPT 2026 (6 YEARS DATA)

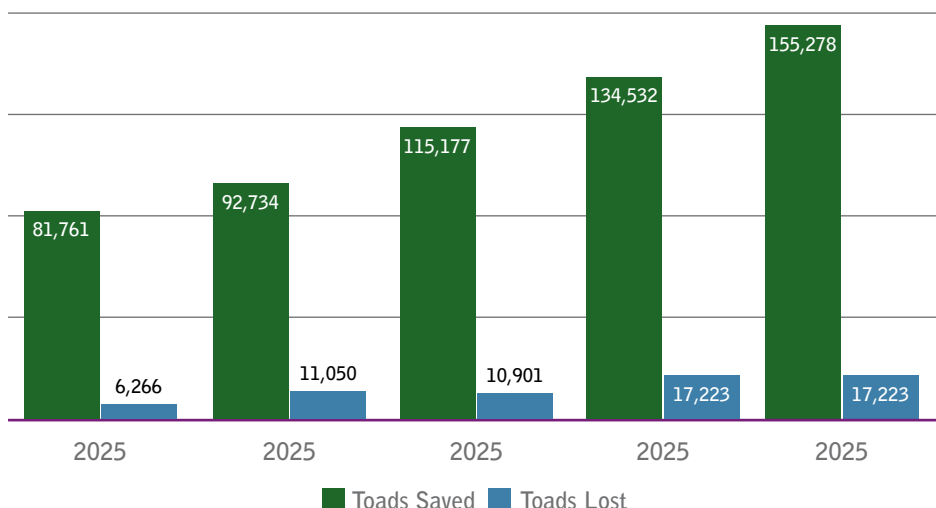


Toads on Roads

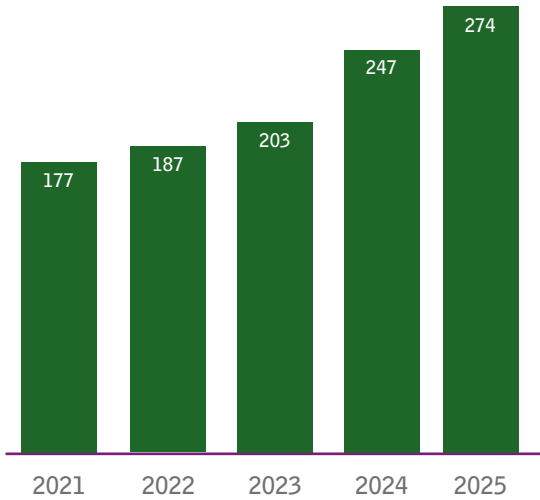
The toad migration season took place in early spring. Thanks to toad managers and their patrollers 147,409 toads were rescued from road mortality and safely helped to their breeding ponds. We continued to register new patrols and this year we have welcomed new patrols with the total number of patrols operating nationally and submitting data now stands at 274 patrols.

A road closure at a Somerset toad patrol site generated a huge amount of press interest, with Froglife staff doing interviews with Radio 4, Radio 3, Radio 5, BBC Breakfast, numerous local radio stations and several

TOADS SAVED & LOST: 2021-



PATROLS RETURNING DATA 2021-2025



newspaper articles including The Independent, The Telegraph and The Times newspapers. We were also interviewed on television including BBC Newsround. The Toads on Roads project was featured in 20 different media outlets.

The take up of the online Toads on Roads reporting portal has seen a steady increase in patrollers choosing to report online, with many commenting on how useful the tool is.



Rogan Jones

Thanks for all you do coordinating us. Its been a massive help. The new patrol portal is great.

1d Love Reply



We have entered our third year of the R S MacDonald Foundation grant, part of which is to support Toads on Roads in Scotland.

Discovering Dewponds

This project completed at the end of November and was reported on in the 2023/24 Annual Report. However, since then the main donor National Lottery Heritage Fund gave permission for an underspend on the project grant to be retained by Froglife to carry out legacy work in and around the South Downs, Sussex. As part of this legacy work our CEO has visited several community gardens and allotments and given advice on habitat creation, restoration and maintenance. She has also attended events to promote the legacy of the project and has given talks to groups that



have requested these and gave a lecture to Brighton University students.

“To let you know that I’ve been offered a role with the South Downs National Park, working to lead a series of dewpond restorations and engagement activities through their ‘Downs to the Sea’ project. To say thank you again to all at Froglife for the support and experience I’ve gained across the past three years, that I’ll continue to draw upon in this new role”. Discovering Dewponds Project Manager moves on to new job.

Transforming Lives: Trainees

This project came to an end in June 2025 with 13 trainees successfully completing the traineeship. The project supported trainees who had not worked before and those looking to change careers. The completion of the traineeships for some has been a massive achievement with them overcoming mental and physical issues to give themselves the best



Paul Arestides · 1st

Seasonal wildlife surveyor & organic wildlife gardener.

My last week with Froglife is fast approaching. Looking forward to my next journey in wildlife conservation.

I will miss the reserves and the amazing fellow trainees & volunteers. Thank you to the charity for enabling me to gain my first official job in the sector.



chance of getting into the conservation sector. For some/others it was building on the experience they had from being out in nature themselves and their volunteering experience. All have felt that it has given them a better chance of getting into the conservation sector as they had no other ways of accessing the sector.

The evaluation report that can be found on our website details the achievements against the aims of the project. The project reached all but one aim based around volunteer recruitment. This is an ongoing challenge largely due to the seasonality and timing of our work.

“Thanks for giving Chloe the opportunity to take part in the changing lives project. It really helped improve her confidence”.
Trainees Mum.

London Blue Chain

All ten large scale habitat works (large ponds & terrestrial improvements) have been completed during the habitat season 2024/5. The replacement sites that came into the fold due to council owned site problems have been a real success story of the project. The lack of rain over the summer months have slowed down the development of some of the ponds, but once we have rain they will develop well.

To date the project has created four of the five medium sized ponds and forty five of the eighty-five small ponds. We will have completed seventy of the eighty-five small ponds by July 2026 with the final fifteen being completed in the final year of the project. We will be creating a Neighbourhood Wildlife Corridor in the Brixton and Loughborough Junction areas of Lambeth. The restoration of a medium sized pond at Rockingham Estate in Elephant & Castle, in Southwark, will see the completion of the fifth medium sized ponds.



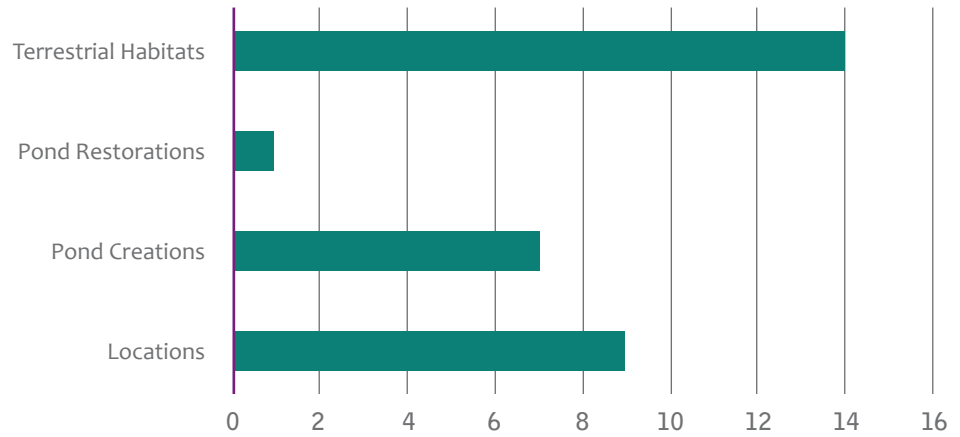
The Green Pathways Scheme & London Leaping Forward for Dementia (London, Somerset, Peterborough & Fenlands, Scotland)

The Green Pathways Scheme and the Leaping Forward for Dementia projects have also contributed to our Transforming Landscapes programme. These include freshwater and terrestrial improvements. This work has taken place on allotments, green spaces, housing association land and community gardens. Leaping Forward for Dementia – London project did 2 pond restorations and 2 terrestrial habitat improvements.

Neighbourhood Wildlife Corridor: Boston & Beyond

This is a new two-year project that started in August 2025, we have recruited a Project Manager who has been setting up the project to start full delivery. This project will like most of our projects contribute to our Transforming Landscapes and Transforming Lives programmes. On the Transforming Landscapes programme, the project will:

Scottish Green Pathways Scheme: Habitat Creations & Restorations



Peterborough Green Talent

This new three-year project will deliver against the Transforming Landscapes programme by engaging local communities, school students and volunteers to create and improve up to 100 wildlife habitats including ponds, hedgerows, wildflower areas and insect hotels.

TABLE 2: APPROVED PURPOSES: NATIONAL LOTTERY HERITAGE FUND

Activity	Location
Create six new large-scale ponds	Freiston Shore & Frampton Marsh (Boston)
Restore two ponds	Jenny Wood (Boston)
Create a Neighbourhood Wildlife Corridor to include: 10 new ponds; 4 wildflower strips; 50 other interventions including hibernacula, wildlife boxes and bug hotels	Across the Boston area
Create two Speaking Statues with wildlife boxes & hibernacula	Installed in public places within the Boston area



Pond Restoration at Manor Farm Community Centre

Volunteering Programme

Our volunteering programme is crucial to maintaining our habitat work and includes training volunteers on sites to equip them with the skills to maintain the habitats post completion and working with other organisations such as The Conservation Volunteers (TCV) Scotland, ARG Sussex, Birmingham and Black Country ARG and ARG London. This is further supported by Froglife's commitment to assess all sites on a 1-, 3-, 5-, & 10-year basis and to undertake remedial works if required.

"This is wonderful news and we're so grateful for this to be installed. It means a lot to me and all my family. We have been so heartbroken by her loss and to have a small piece of nature that we can visit in her memory is important to us." Family and friends donate to Froglife in memory of a sad loss.

The key donor for our Transforming Landscapes programme is the National Lottery Heritage Fund, and we are enormously grateful to lottery players for supporting our valuable work. We are also grateful to the many other donors that support our work, a full list is available in the accounts. Our Transforming Landscapes has also benefited from donations from individuals and corporates and legacies.

"I have raised £30 for you as part of my Charity Badge for Brownies. I asked people for their 1ps and 2ps for the Tuppence A Toad. I have used the money to sponsor a toad, a snake and a newt on your website. I picked your charity to fundraise for because I love animals especially reptiles. I think it is good that you are helping the reptiles to survive. I hope my donation helps you."
7-year-old raised funds for Froglife



TRANSFORMING LIVES

TABLE 3: TRANSFORMING LIVES

Number of people benefiting	52,228
Sessions	896
Events & Talks	57
Scientific Publications	5
Disadvantaged %	51%

Peterborough Neighbourhood Wildlife Corridor

This project started again in May 2025. It will be working with school children and young people on continuing with the creation of the Neighbourhood Wildlife Corridor across Peterborough. Over the summer holidays the project delivered one off sessions with youth clubs and groups as well as home education group sessions.

Coalface to Wildspace Midlands

This project will be coming to an end in December 2025, and all large-scale habitat works were completed early in the project. The final year of the project has focused on public engagement and events. Frogglebox, a 3D film, has been viewed by 30 different primary schools and 4 nursery groups, it reached 4732 learners, exceeding the target of 4500.

The project, thanks to funding from the Ironmongers Trust installed a spectacular frog sculpture and an interpretation sign was designed and installed alongside the sculpture. The deputy Mayor of Walsall unveiled the sculpture and sign.

To end the project celebration events have been run in the parks and greenspaces where the Speaking Sculptures have been installed. The final year has also seen the hosting of bat walks, dawn chorus, bioblitz and several pond dipping events.

“I was delighted to hear how the Coalface to Wildspace Midlands has been able to make use of my donation. It sounds like the money has been used really well to the benefit of the environment for frogs and children’s education. I had a good look at the link you sent to me. I love the Frogglebox Film, especially the narration which gave just the right amount of information and using the voices of the children was a brilliant idea.”

“We did an event on Saturday with one of the community gardens that had nearly 400 people attend which was positive and I did a dawn chorus on Sunday I did find that the nest box on the speaking sculpture in Reedswood park has Blue Tits using it. That makes 2 of the nest boxes in use that we know of now!” Staff member



Bird box being used



Speaking Sculpture – Coalface to Wildspace Midlands



Frog Sculpture created as part of Coalface to Wildspace Midlands

Neighbourhood Wildlife Corridor: Boston & Beyond

TABLE 4: APPROVED PURPOSES: NATIONAL LOTTERY HERITAGE FUND

Activity	Number of Sessions	Number of people
Volunteer Training	24 sessions	144 volunteers
Volunteer Days	32 days	320 volunteers
Wildlife Gardening Workshops	14 workshops	420 people
Speaking Statue Workshops	12 workshops	180 people
Talks & events	8 Talks	400 people

London Blue Chain

During this Annual Report period the project has directly engaged with 813 people through 55 sessions and 5 events. During 2024/25 the first cohort of three Trainees successfully completed their traineeships, with one trainee moving into a Project Officer position within Froglife. In July the project's second cohort of three Trainees started working with Froglife on a year-long full-time contract. During the latter part of their training period they will each take on two Personal Projects, relating to habitats and people.

We have identified two non-English languages for each of the six boroughs we are working in across South London. We will consult with relevant groups to develop partnerships to inform the translations, and we will translate relevant materials into these two languages.



Froglife
6,207 followers
1d · 📍

Our [#LondonBlueChain](#) team went on tour this week, to [Royal Horticultural Society's Hampton Court Garden Festival](#).

They partnered with [National Park City](#), London, to create a beautiful wildlife pond in their 'Aster of Senses' garden, designed by renowned landscape architect Yoni Carnice.

It was a fantastic opportunity to spread word of the importance of ponds for biodiversity!

[#londonbluechain](#) [#ponds](#) [#urbanwildlife](#) [#bluespace](#) [#rshamptoncourt](#) [#londonnationalparkcity](#) [#amphibians](#)

Emily Langston ✓ · 3rd+ · 10h
Strategic Partnerships · Growth & Sca...

I loved learning about ponds with the [Froglife](#) team! I had no idea how far frogs travel to hibernate in the winter - more volunteers are needed to help with frog and toad road crossings 🐸

Pond Power in Oxleas Woods!

[Friends of Oxleas Woodlands](#) have been hard at work improving their local habitats, with a fantastic pond planting day recently completed!

Froglife was proud to support the effort by donating native aquatic plants, following initial enhancement works by our London Blue Chain team.

♥️ Read more about the day and see the team in action on their blog:

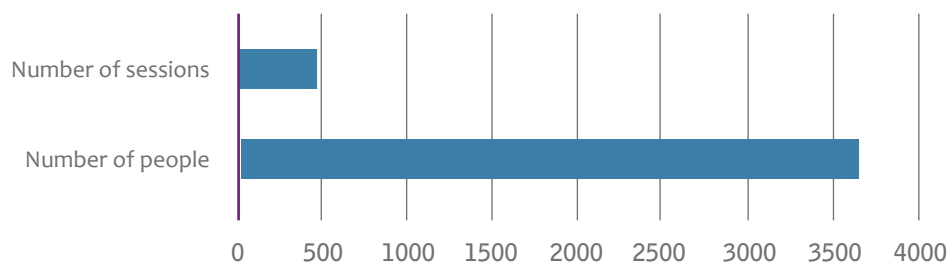
👉 <https://ow.ly/vgXe50Wrg2W>

[#PondPlanting](#) [#OxleasWoods](#) [#Froglife](#) [#HabitatRestoration](#) [#UrbanWildlife](#) [#CommunityAction](#)



The Green Pathways Scheme & London Leaping Forward for Dementia (London, Somerset, Peterborough & Fenlands, Scotland)

Green Pathways Scheme & Leaping Forward for Dementia



Somerset Green Pathways Scheme Pond on allotment site



Somerset Green Pathways Scheme working with people living with dementia and their carers

Peterborough Green Talent

This new three-year project will deliver the following:

TABLE 5: APPROVED PURPOSES: NATIONAL LOTTERY HERITAGE FUND

Activity	Number
Recruit Placements and provide participants with experience in a range of subjects including conservation, wildlife surveying, and habitat creation	18 Placements
Recruit Traineeships that build on learning from the placements and provide additional experience including in fundraising, event management, volunteer recruitment and management	6 Trainees
Undertake access improvements for local green and blue spaces to support communities in engaging with freshwater natural heritage	
Deliver a programme of taster sessions for conservation activities to support the recruitment of Placements	

Case Study

I have been asking advice about changing my pond from a broken formed one to a liner and your help has been great. I finally finished last week. There are several cave areas for the frogs. The front left has a climb up and low bridge to come out into the shallower water in the sun. There is the plant right back for climb out and a long slope at the front coming out by the slanted stone on the right. I will replace that stone with a bigger flatter one when I find one. The 2 bare spots by the trellis and at the front right will grow the Zandestra plant for good cover. I am thrilled with it! Not bad, I think for 69 and arthritis! 🐸 Thank you so much for your help.



TRANSFORMING RESEARCH

During the past year Froglife staff have authored, co-authored or contributed towards the following five publications:

- Petrovan, S.O., Moor, H. & Schmidt, B.R. Increasingly uncommon common toads: multidecadal, ongoing abundance decline of a widespread amphibian despite volunteer conservation action. *Biodivers Conserv* (2025). <https://doi.org/10.1007/s10531-025-03150-6>
- Horne, J., De Lappe, J., Anand, P., Tse-Leon, J., Wormald, K., Carr, C., & Vseteckova, J. (2025). Ecotherapy and out-of-classroom learning for vulnerable and disadvantaged young people: an evaluation of a project in England. *Environmental Education Research*, 1–14.
- Pickles, B. J., Tse-Leon, J. (2025) Impacts of the installation of basking banks on four UK reptile species in a before–after control–intervention experiment. *Conservation Science and Practice* 7, 1, e13282.
- Ball, S., Petrovan, S., Ashe-Jepson, E., Dobson, C., Lawson, B., Morrison, L., & Garner, G., (2024) Genetic study of an isolated population of adders *Vipera berus* founded by historic translocation: implications for conservation. *The Herpetological Journal* 34, 4, pp. 197-210
- O’Connell, M. J., White, R. L., Haysom, K. A., Seo, M., Dooner, P., Macadam, C., Plowman, A., Bulman, C. R., Hayns, S., Nason, M., Groves, L., Orr, H. G., Meakin, K., Dagley, J., Stringer, A., Smart, A., Hynes, J., Stone, D., Hails, R. S., ... Jackson, H. A. (2024). A vision for the future conservation evidence landscape. *Ecological Solutions and Evidence*, 5, e12397. <https://doi.org/10.1002/2688-8319.12397>

Online Research Conference

Froglife hosted a very successful Froglife Research Conference with six Froglife linked research publications – over 800 people visited the conference landing page with approximately 290 signed up for the

conference. At its peak between 170 – 180 people were attending the conference. Five of the six presentations had a Froglife author, co-author, were linked as a CASE study or had a Froglife contribution to the research:

- Impact of Froglife work and programmes on lives of disadvantaged young people - Dr Jitka Vseteckova, Open University & Jenny Tse-Leon, Froglife
- AI future in monitoring amphibians- an example from the garden - Dr Silviu Petrovan, University of Cambridge / Froglife
- Changes in Reptile and Amphibian records over the last 20 years - Dr Andrew Smart, Froglife & Rhiannydd Stock, National Biodiversity Network
- How do we represent species’ interests in landscape decision-making? - Dr Emma Gardner, UK Centre of Ecology & Hydrology
- Amphibians in Saline Habitats: Resilience and Adaptation in a Changing World - John Howieson, University of the West of Scotland
- Installing basking banks as a practical conservation action for UK reptiles - Dr Brian Pickles, University of Reading & Jenny Tse-Leon, Froglife

Plans are underway to repeat an online meeting in the autumn of 2026.

Current Research

Froglife is currently funded through Natural England's Species Recovery Programme to look at the value of 'lost' heathland and rough grassland habitats as locations for adder dispersal within a network of adder sites. Thomson Ecology will complete the AI mapping work.

Academic CASE studies linked to Froglife

John Howieson has completed his PhD thesis (Amphibians in Saline Habitats: Resilience and Adaptation in a Changing World) at the University of the West of Scotland.

Emily Seccombe has started a PhD CASE award study at the University of Reading linked to the Froglife habitat hub data (with a Froglife Joint Supervisor).

A further PhD CASE award with Frances Orton, Heriot-Watt University has been approved (with a Froglife Joint Supervisor) and is awaiting candidate selection.

PhD Students and Interns

We have this year benefited from input by several research volunteers including those from various universities. Their input into our research programme is invaluable and we would like to thank them for giving their time free of charge to Froglife:

- Dr. Roger Wood - proofreader and editor.
- Josie McPherson, University of Edinburgh, Gartcosh final report & Dragon Finder record verification.
- Alex Dawson, conference support.
- Michael Vinnicombe, Anglia Ruskin University, data analysis of Toad on Road data to review patrol locations.
- Emily Seccombe, University of Reading, design of methodology for review of pond loss in UK counties since 1980s.

Data Recording

During the year Froglife entered into six formal non-commercial data sharing agreements with academic researchers and/or records centres.

This year our Dragon Finder App Citizen Scientists

generated 766 records (31/10/24 to 2/10/25). Our Dragon Finder data up to 2025 has been submitted to the National Biodiversity Network (NBN), this data helps to inform our conservation work and helps other organisations with their conservation work. The Dragon Finder data is currently being reviewed to generate information about our Froglife Citizen Scientists and the data they share with us on the App. We continue to collect Toads on Roads data, and this is used widely by various researchers, researching different topics covering toad ecology, migration patterns etc. We are currently reviewing the Toads on Roads data to determine information about all 'rescued' species and about the longevity of toad patrols.

During the 12 months up to 2/10/25, Dragon Finder and Toads on Road (ToR) data was downloaded from the NBN Atlas on 1,317 different occasions, generating access to 214,967 records. The use was split into the following broad categories:

Category of use	Number of events	Number of records downloaded
Academic research	121	49,300
Citizen sci /personal use	96	34,598
Commercial	106	6,981
Conservation management	40	4,114
Education	706	86,149
Research	116	21,820
Use by a statutory body	132	12,005

The ToR data accessed from the NBN Atlas has supported four academic publications in the past year. The Dragon Finder data has supported 27 publications since the start of 2025 (not including Nov & Dec 2024) including: 5 on climate change, 5 on invasives, 4 on biodiversity, 4 on ecology and 3 on conservation.

We have finished the analysis of the Gartcosh monitoring data and are working with a PhD student volunteer with an aim to publish.

UK Policy

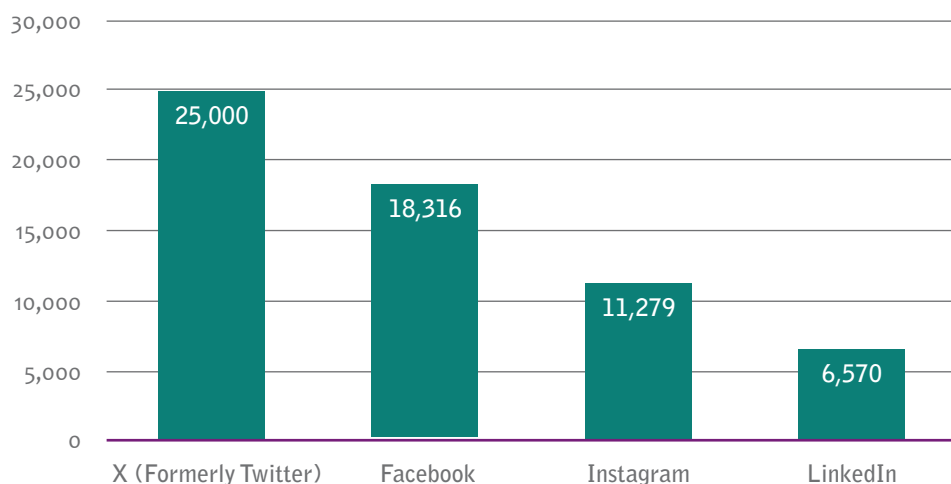
As of October 2nd, Froglife has participated in the production of and/or signed onto the following UK policy documents:

- March for Clean Water Campaign lead by River Action and Wildlife & Countryside Link (WCL)
- WCL letter to Prime Minister for Clean Water
- Response to online safety act re animal abuse consultation
- 30x30 progress report
- National Planning Policy Framework
- Blueprint PR24 scorecard report
- Flooding draft briefing lead by Scottish Environment Link (SEL)
- Hydropower and Freshwater Briefing (SEL)
- Wildlife Crime report
- National Planning Policy Framework Consultation
- Letter re upcoming budget (SEL)
- DPLR Committee's Call for Views on the use of Framework Bills and Henry VIII powers
- Ofwat 'renumeration and governance' consultation
- Blueprint Small Waters Charter
- Economic Environment for Farming Letter
- Water (Special Measures) Bill – Commons 2nd reading briefing
- EAC inquiry
- Environmental sustainability and housing growth evidence for inquiry
- Letter to Steve Reed re: Water Restoration Fund.
- EAC Flood Resilience Inquiry
- Ramsar sites in Scotland consultation response.
- National drought consultation response
- Planning and Infrastructure Bill
- WCL response to Cunliffe Review
- Land use framework consultation
- Response to the Rural Affairs and Island Committee's Call for Views on the Natural Environment Bill (SEL)
- Response to heather and grassland burning consultation
- Open letter to the Prime Minister and Chancellor to demand an end to the systematic dismantling of environmental protection
- Letter to the Chancellor of the Duchy of Lancaster regarding the future of the National Lottery Heritage Fund
- RSPB SFI Reform paper
- Link Species report response to NRF
- Response to Ofwat biodiversity planning approach
- Supporting Wounded Veterans policy paper on a 'Cross-Sector Consensus for Clean and Plentiful Water'
- Invasive species pathway Action Plan response
- Permitted development right for pond creation - briefing for HoL - Planning and Infrastructure Bill
- NWSG briefing on the NHS 10-Year Health Plan
- 30x30 report 2025
- Local Govt outcomes framework
- UK plastic waste ban
- LINK response to the Scottish Government's draft Environment Strategy
- Open Letter to PM regarding National Parks and Landscapes Duty
- Letter to Ed Miliband regarding methane regulation

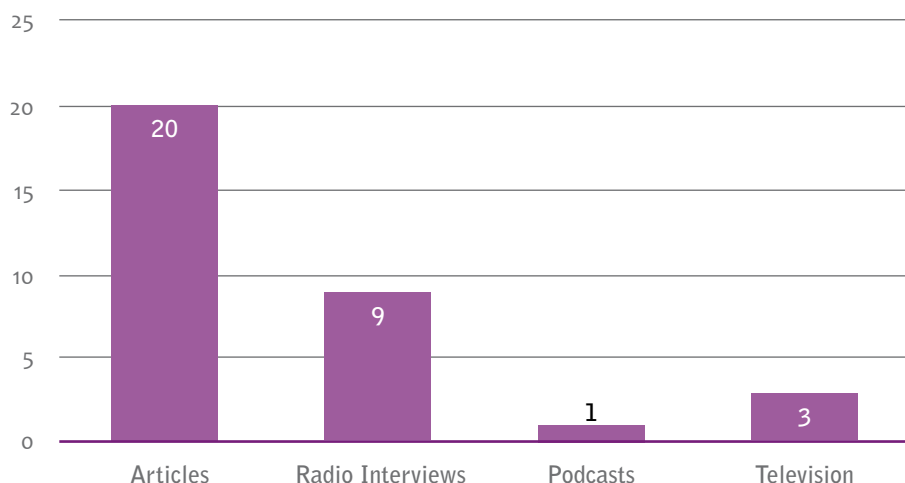
TRANSFORMING COMMUNICATIONS

We have continued to gain excellent media coverage through local and national press outlets and through our social media channels.

Social Media Followers



Media Coverage



We have ensured that our website is kept up to date and that we refresh pages with new content. Our social media following continues to climb. The email enquiry service has continued to receive less emails, this is attributed to more social media enquiries.

We have continued to support special days and promote these where relevant.

“Thank you for your piece about anxiety and OCD. It is good of you to share your mental health journey and similarly I have had similar experiences. Nature is my solace.”

Author
Spink-Bugs & Bits - New
Spink-Bugs & Bits - New if your local council has a wildlife/ biodiversity officer, it may be worth getting in touch with them directly and explaining the situation. They might be able to organise getting the pond looked at and maintained.
 2d Like Reply 1 🤔

Spink-Bugs & Bits - New
Spink-Bugs & Bits - New all sorted, in touch with our local Biodiveristy Officer, meeting him tomorrow and we'll prob help him and his 2 person team as volunteers. There's so much we could help them with and we're going to help with them to protect the great cresties where I live better. He was actually really grateful 😊 thank you so much for your advice xx
 4h Love Reply 1 ❤️



Alison Gibb

Best post I've seen in ages. Thank you for saying people should be "listening". This is the correct message. Not that people should "talk". What's the point in talking if no one will listen. Well done for sharing Froglife and Ash 🙌

4d Love Reply Hide



Our analysis of our communications has shown the following:

Website Users

217K July-June 24

258K July-June 25

= Increase of 41K users this year.

Croaks

The industry standard for email open rates in the nonprofit sector varies depending on the source and the specific type of organization. For medium-sized UK charities, recent benchmarks provide the following insights:

- **Average Open Rate:** The industry standard for email open rates among medium-sized UK charities typically ranges between **30% and 46%**, influenced by factors such as audience engagement, content relevance, and list quality.
- **Click-Through Rate (CTR):** The industry standard for email newsletters sent by medium-sized UK

charities typically falls between **1.9% and 2.3%**. This range reflects the percentage of recipients who click on at least one link within an email, indicating active engagement with the content.

Regularly monitoring these metrics and comparing them to industry standards can help us to assess the effectiveness of our email campaigns and identify areas for improvement.

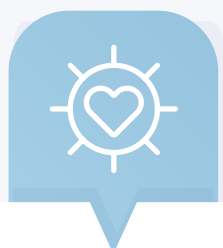
For this year the average open rate for Froglife Croaks has been 45.06% and the average click through rate has been 17.75%.

We have this year, thanks to a grant from the Esmée Fairbairn Foundation, undertaken research on how we could maximise the use of Artificial Intelligence (AI) to relieve staff of some of the more mundane tasks enabling them to focus more on project delivery and to enhance what we can offer. We worked with Torchbox and the first output was for Froglife to have a set of AI Principles.



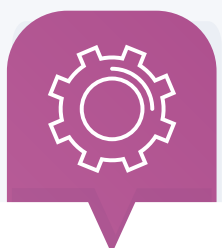
PRIORITISE HUMAN OVERSIGHT

Trust your expertise and judgement when reviewing AI-generated content. The 'machine' should always be in the middle with a human starting any process involving AI and a human checking the output. It's the person using AI who must take responsibility for the output.



MAINTAIN CONSERVATION VALUES

Consider the ethical implications and potential impact of AI use on amphibian and reptile conservation, our supporters, and the communities we work with. Always ensure that AI tools support rather than undermine our conservation mission and core values.



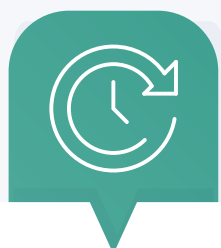
PROTECT DATA PRIVACY

Be mindful of the data you collect, use and share when working with AI tools. Only gather and access the minimum amount of personal information necessary for your tasks, ensure its protection and comply with data protection regulations including GDPR.



BE TRANSPARENT

Clearly communicate when AI is being used in our work and be prepared to explain how and why we're using it. Take ownership of the information presented and ensure its credibility by fact-checking against reliable conservation sources.



EFFICIENCY

Use AI to handle routine tasks and data processing, freeing up more time for meaningful conservation work and community engagement. Remember that AI cannot replace the passion, expertise and personal connections that define Froglife's approach to amphibian and reptile conservation.



LEARN & ADAPT

Share experiences with AI tools across the organisation, evaluate their effectiveness for conservation work and be open to changing how we use AI as we learn more. Continuously assess whether AI applications are helping us achieve our mission of amphibian and reptile conservation.

At Froglife, we are mindful of the environmental impacts that digital technologies, including artificial intelligence, can have. While AI offers opportunities to support our conservation and engagement work, we recognise that it also carries an ecological footprint through energy use, resource extraction, and electronic waste. To address this, we have undertaken due diligence in assessing the environmental costs and benefits of the AI tools we use, ensuring they align with our wider sustainability values. We are committed to minimising unnecessary usage, choosing responsible providers where possible, and continuously reviewing our practices so that our use of AI supports rather than undermines our mission to protect wildlife and the natural world.

After several internal workshops and meetings, we produced AI Guidance and undertook an Environmental Impact Assessment and produced a report. The final output from the project was Froglife in partnership with Torchbox hosting an online AI

workshop for other organisations in which we shared our AI Journey and experiences. The workshop was very well attended with organisations following up afterwards for more information. **We are not trialling ChatGPT to see how useful it is to us in our operations.**

Newt Year Honours

We gave out Newt Year Honours again this year and pleased to report that amongst recipients was a former staff member and toad patrollers.

“That is so kind of Froglife – thanks to all of you, I feel quite emotional. I also feel very honoured”. Newt Year Honours recipient.

Our e-newsletter and bi-annual newsletter has received many positive comments and it very pleasing to know that the efforts that our Communications Team puts into producing these is appreciated and enjoyed.

We have run our ‘Stop Spawn Sales’, ‘Paws Against Ponds’ and ‘Just Add Water’ campaigns.



Newt Year Honour recipients

Case Study Info Service

In the entry on Toad in the authoritative book *The Gods and Symbols of Ancient Mexico and the Maya* by Mary Miller and Karl Taube (1993) it states that 'Toads, like people, possess 20 digits' (hence the toad was the symbol for the ancient 20-day 'month' for the ancient Maya). How true (or not) this is is important as I'm currently preparing an article on toads for the Flora & Fauna section of our 100% educational website on Ancient Mesoamerica Mexicolore.

For the life of me, I can't discover the truth about this! Clearly most online sources tell you that toads have 4 digits at the front and 5 at the back, making 18 in total. But I've also seen references in academic articles to 'pseudo-thumbs' and 'sixth digits'...

Please can you tell me how likely it might be that the ancient Maya might have believed that the toad had/has 20 digits?! I'd greatly appreciate your guidance...

Answers:

there isn't an easy answer!

a) In biology, then I don't know about extra digits etc but would go for 18 digits on frogs and toads... including the most obvious central American ones

b) In Mayan art, it's not always easy to see on carved frogs how many toes they are meant to have but generally it would seem to be 4 on front and 5 (or 4) on back. However, there is carving of the Mayan god of happiness (Itzamna) as a frog with 5 toes on the front feet! But that might be because the rest of the time the god is in human form....

All of which suggests that there is a bit of optimism in the 20-digit hypothesis.... I'd be interested to see what sources were used for *The Gods and Symbols of Ancient Mexico and the Maya* by Mary Miller and Karl Taube. Maybe they just took someone else's comment at face value.

And perhaps for the Maya, they simply wanted frogs to have 20 digits because frogs were special, and this meant they could be connected to the calendar - Froglife Trustee 1.

The number of true digits in anurans is 2x4 (fingers) and 2x5 (toes). However, there is variable occurrence of a structure called the pre-pollex on the hands. This can appear as a substantial cartilaginous spike, employed by males in conflict. It is very variable: some species have no discernible prepollex. In two Asiatic frogs of the genus *Babina*, the structure is ossified and given the name pseudo-thumb (see Takita and Iwai, 2010, *Biology Letters* 6, 517-20). Fabrezi (2001) did a review of prepollex occurrence and certainly found it present in some toad species (Fabrezi- 2001, *Zool J Linn Soc* 131, 227-248). So, my answer to the query is that since the Mayans would not have differentiated between true toes and pre-pollices, they may well have counted the number of fingers as 2x5. I did have a look at Martha Crump's book on lore and mythology. She refers often to the Mayans but has no mention of digit numbers. Froglife Trustee 2.

"Thank you for your prompt reply and detailed explanation. I will take your advice and wait sometime before making changes to my pond." Enquirers response



TRANSFORMING FROGLIFE ECOLOGICAL SERVICES (FES)



FES Operations Manager planting up a pond created by FES

FES, through delivering paid-for ecological services including District Level Licensing contracts, providing Great Crested Newt Obtaining a License, reptile and habitat management courses, delivering ecological work through projects and running paid-for sessions through projects, has contributed enormously to our charitable

objectives through gift-aiding all profits to the charity. This provides much needed unrestricted funding.

FES receives a lot of positive feedback from the Great Crested Newt training courses which are really appreciated and enjoyed by Ecologists from all over England.

Through the District Level Licensing contract Froglife created 33 ponds this year. These are all landscape scale and interconnect vital habitats by creating networks of ponds across the landscapes. This year we did eDNA testing on all the ponds created in 2024. We were also asked to do eDNA testing on ponds created by another delivery partner who could not take on the eDNA testing. We are awaiting the results and will report in the next Annual Report.



Project Pond Restoration and Newt habitat



Like Comment Send Share

7

Most relevant



Author

Oaksbrook Retreat

Froglife the pond restoration has been a great success.



Tayler Ensor • 2nd

A dedicated and passionate Ecologist with a strong commitment to conservat...

18h • Edited • 🔄



Last week, I had the opportunity to attend [Froglife](#) 's Great Crested Newt – Working Towards a Licence course with COOMBES! 😊

We kicked things off with an engaging theory session on all things newts, followed by practical fieldwork where we conducted refugia checks, set bottle traps, and carried out egg and torch searches. The next morning, we checked the traps and were thrilled to find and identify some GCN! 😊

The practical element of the course was based at the stunning Hampton Nature Reserve, a 300-acre site south of Peterborough.

The site is designated as a Special Area of Conservation (SAC), Site of Special Scientific Interest (SSSI), and a Natura 2000 site, all due to the presence of protected species like the GCN.

The reserve, which was once a brick clay extraction site, is now home to 320 ponds created by former spoil heaps and trenches - making for excellent newting 🔍👁️

This hands-on training was not only insightful but also one step closer to earning my Level 1 Survey Licence for GCN (CL08) 😊

A big thank you to everyone involved! 🌸🌻





TRANSFORMING OUR FUTURE

Our 2023 – 2030 Strategy has identified the following Aims and Targets:



aim 1 Increase the availability of freshwater and terrestrial habitats for reptiles and amphibians.

target Increase total area of habitat improvements to 5,000 ha by 2025 and 10,000 ha by 2030.

aim 2 Carry out landscape scale conservation projects.

target Deliver 5 large scale landscape scale conservation projects by 2030.

aim 3 Improve connectivity between sites by creating wildlife corridors.

target Create 2 wildlife corridors between key habitats by 2030 and 20 Neighbourhood Wildlife Corridors by 2030.

aim 4 Maintain favourable status at Froglife managed reserves and project sites.

target Publish favourable evaluation report of condition monitoring at Froglife reserves and 1,3,5-, and 10-year site assessments of project sites by 2030.



aim 1 Ensure Froglife is fully inclusive and has good representation from all backgrounds.

target Equality statistics of staff, volunteers and participants reflect those for the UK population by 2030.

aim 2 Expand Froglife’s reach particularly focusing on people who are new to conservation and from areas of multiple deprivation.

target Engage over 50,000 people annually with Froglife activities by 2030, mainly from areas of multiple deprivation across the UK.

aim 3 Progress people on their wildlife journey.

target 90% of people that take part in Froglife activities (and provide evaluation data) report they have progressed in at least one area of the Froglife curriculum.



aim 1 Provide evidence for population trends for the 9 “common” UK amphibians and reptiles.

target Carry out historic data review by 2025 and increase quantity of data collected by 50% by 2030.

aim 2 Carry out applied research into the impacts of different conservation actions.

target Meet our commitment in the “routine testing of management” paper to test one intervention per year by 2025 and exceed this by 2030.

aim 3 Act as the public portal for amphibian and reptile disease mortality reports.

target Actively engage and support the national Garden Wildlife Health project.



How we have progressed towards delivering this strategy:

Coalface to Wildspace: Ayrshire, South Lanarkshire & the Lothians:

Thanks for National Lottery Heritage Fund and lottery players we secured a grant to develop a new large-scale five-year project spanning Ayrshire,

South Lanarkshire & the Lothians. This project will be submitted to the Heritage Fund for a delivery grant in November 2025 and if successful the delivery of the project will start in July 2026. This project delivers against the Aims and Targets for Transforming Landscapes and Transforming Lives.

The proposed approved purposes for this project are as follows:

TABLE 6: APPROVED PURPOSES		
	NUMBERS	PEOPLE
Habitats	75 pond creations & restorations 24 terrestrial habitat improvements	
Neighbourhood Wildlife Corridors	9 corridors; 36 ponds; 72 interventions;	1,600 passionate people
Digital Outputs	Digital Film QR Codes on Speaking Sculptures Website, existing Apps	2,000 downloads 600 downloads 2250 downloads; 5100 website visitors
Public Engagement Activities	72 Natural Art Workshops 90 Speaking Statue creation workshops 36 Mapestry workshops 192 Wildlife Gardening Workshops 48 Performance art school sessions 140 Guardian Training sessions 9 Speaking Statues - 1 per corridor	1,080 people 2,250 people 540 people 2,880 people 1,440 children 700 guardians
Events	3D Film Tour x 42 screenings Mapestry Tour x 24 venues 14 Celebration Events	8,400 people 6,000 people 2,800 people
Direct Engagement		32,540 people
Direct and Indirect Engagement		42,180 people



Coalface to Wildspace Yorkshire

Again, thanks to National Lottery Heritage Fund and lottery players we secured a grant to develop a new large-scale five-year project spanning Yorkshire. This project will be submitted to Heritage Fund for a

delivery grant in March 2025 for a delivery phase grant and if successful the delivery phase will commence in September 2026. The project delivers against the Aims and Targets for Transforming Landscapes and Transforming Lives. The proposed approved purposes are:

TABLE 7: APPROVED PURPOSES		
	NUMBERS	PEOPLE
Habitats	60 pond creations and restorations 47 terrestrial improvements	
Neighbourhood Wildlife Corridors	40 new & restored ponds; 225 other wildlife interventions	2,500 passionate people
Neighbourhood Wildlife Corridors	40 new & restored ponds; 225 other wildlife interventions	2,500 passionate people
Wildspace Guardian Scheme	Training in Species Identification & habitat management	570 guardians
Dipping Platforms	Installing dipping platforms	5 platforms
Wildspace Amphibian Hops	75 sessions with school children	1875 school children
Wildspace Wildlife Gardening Workshops	100 Workshops	2500 people
Digital outputs	Wildspace 3D Film - 75 screenings	25,700 people viewing the screenings
Wildspace Parades	180 sessions - 15 parades & 2 grand finale parades	45 schools - 4500 school children
Wildspace Speaking Statues	75 workshops	1125 people
	Unveiling ceremonies	625 attendees
Wildspace Festivals	10 festivals	5000 people
Direct Engagement		52,975 people
Direct and Indirect Engagement		124,188 people





New Projects:

This year we secured grants thanks to National Lottery Heritage Fund and lottery players for two new projects. One working in and around Boston, Neighbourhood Wildlife Corridors: Boston & Beyond and the other in Peterborough, Peterborough Green Talent. A full explanation of both projects has been provided under Transforming Landscapes and Transforming Lives sections of this Annual Report. Both these projects are delivering against our Transforming Landscapes and Transforming Lives Aims and Targets.

Thanks for a grant from Natural England through the Species Recovery Programme we have started a new research project building on the Hissing Heathlands research with this project focusing on adder dispersal. This project delivers against our Transforming Research Aims and Targets.

FES has secured further DLL contracts and has several private contracts, contracts with schools and councils in the pipeline. FES will continue to deliver the popular Great Crested Newt Training Courses.

Existing Projects:

We will continue to attempt to secure sufficient funding to enable our Green Pathways Scheme and Leaping Forward for Dementia projects to continue to deliver the excellent work that they have achieved to date. The new project in development in Yorkshire and Scotland require a substantial amount of co-funding, for this reason the SMT and Board of Trustees have taken the decision to focus on securing funding for existing projects and the co-funding for these two new projects, and not to develop any further new projects during the coming year.

Finally, we would like to thank our Board of Trustees, staff, volunteers and all our supporters for their dedication, commitment, work and support that they have provided to the Trust and FES. We would particularly like to thank our back-office staff, often out of sight, but without whom we would not be able to achieve what we do.

RISK MANAGEMENT AND INTERNAL CONTROLS

The board of trustees have overall responsibility for the system of internal controls for Froglife and its subsidiary which include ensuring that there are procedures in place for the prevention and detection of fraud and other irregularities. However, such a system can only provide reasonable, but not absolute assurance against errors and fraud.

The charity operates a comprehensive annual planning and budgeting process, which is approved by the board. Performance is monitored using activity and financial targets. Reports are made to the board which compare the actual results against activity targets and against phased budgets which link to financial performance with resource and activity levels.

Internal controls are subject to scrutiny by the charity's Senior Management Team and the Finance Team which carry out a programme of cyclical reviews.

The charity has risk management policies and procedures through which risks arising from existing operations and strategic developments are identified and evaluated. Managers are required to identify and analyse the risk relevant to their scope of activity, assess them accordingly to the impact on the charity and the likelihood of occurrence; and report of the procedures which are in place, or are being developed or enhanced, to provide assurance that the risk is being monitored.



The Risk Register as at September 2022:

Risk	Level	Actions	Revised Level
Human Resources			
Loss of key staff	Low	Excellent HR processes & procedures are in place; all staff are well supported; good benefits package.	Low
Stress Management	Low	Excellent HR processes & procedures are in place; all staff are well supported; good benefits package.	Low
Mental Health & Wellbeing	Low	Monitored on an ongoing basis through line management meetings; staff reporting wellbeing issues are signposted to relevant support.	Low
Equality, Diversity & Inclusion (EDI)	Low	Ongoing monitoring & staff EDI group to advise.	Low
Long-term illness	Low	None to date	Low
Financial Management			
Unrestricted funding	Medium	Core funding always difficult - expanding core income generation.	Medium
Cashflow	Medium	Expanded operations = healthy cash flow	Low
Under-funded projects	Medium	Several projects require substantial match funding	High
Accountancy procedures	Low	Good procedures & processes in place	Low
Trustees			
Loss of Chair/Vice Chair	Low	Contingency in place.	Low
Professional Services			
Accountants, Solicitors etc	Low	Good relationships in place. Understand the organisation.	Low
Consultants	Low	All have clear contracts and reporting procedures	Low
Contractors	Low	Seasonally adjusted.	Medium

Risk	Level	Actions	Revised Level
Reputational Damage			
Inappropriate behaviour by trustees/staff/volunteers	Low	Required behaviour clearly set-out in procedures.	Low
Carbon Footprint	Medium	Work in progress	Medium
Green Policy	Medium	Work in progress.	Medium
Sites			
HNR, Eye & Boardwalks Financial/ Reputation/Long-term	High	Financial & long-term remain a medium risk.	Medium
Reputational risk associated with not managing the reserve	High	High risk due to financial constraints/lack of adequate funding.	High
Projects		Projects covered by Project Risk Assessments	
Events		Covered by Events Risk Assessments	
Press			
Incorrect/ Misrepresentation/ incredible stories etc	Low	Difficult to manage what the press will print/say.	Medium
Social Media			
Ensure that social media posts are monitored and are accurate	Medium	Alol posts are carefully monitored	Low
Website			
Inappropriate info/ sabotage etc	Medium	Regularly reviewed.	Low
IT Security			
IT Consultant	Medium	Developed in a way that will be relatively easy for someone else to pick it up.	Low

Risk	Level	Actions	Revised Level
Data protection: Server/Cloud etc	Low	Monitored.	Low
Email: Inappropriate/incorrect/poorly phrased etc	Low	Email conduct in place.	Low
Social Media: Inappropriate/incorrect/poorly phrased etc	Low	Monitored on an ongoing basis.	Low
Social Media: hacking & cyber attacks	Medium	Monitored but difficult to stop.	Medium
Artificial Intelligence	Medium	Inappropriate use - errors occurring - must be monitored	Medium
Publications			
Mistakes/incorrect etc	Low	All are carefully checked.	Low
Fundraising			
Fundraising Standards & guidance	Low	Monitored and proof read.	Low
Inappropriate funding	Low	Vetted where possible	Low
Charity Commission			
Failure to report any major issues	Low	No issues to report, would report if needed to.	Low
Froglife Ecological Services (FES)			
Training courses	Medium	Well structure course in place & delivered by professional staff.	Low
Financial	Low	Healthy contract schedule.	Low

FINANCIAL REVIEW

The financial statements include the results of both The Froglife Trust and its trading subsidiary Froglife Ltd t/a Froglife Ecological Services (FES) for the 12-month period ending 30th September 2025.

Significant events that have affected the financial performance and the financial position of Froglife during the period are:

- The increase in Employers National Insurance contributions has impacted on both restricted and unrestricted funds. Most restricted grants include a contingency and inflation element which has been used to cover the increase in project staff costs. Froglife has used its unrestricted funding to cover the increase for core funded staff i.e. staff not in direct project delivery.
- We are experiencing a challenging fundraising environment with demand for grants far outweighing the amount of grant funding that is available for the environmental sector. Societal needs means that funding is redirected to addressing these than focusing on environmental issues.
- Rising costs and less consumer demand has impacted the profits for the Corporate Sector resulting in many corporates either reducing or removing their support for charitable organisations. Froglife does not have many Corporate Supporters but has found it difficult to engage with the Corporate Sector to attract funding to match fund grants.

Froglife has a diverse range of income streams and enjoys the support of a wide range of grant making organisations. Most of this funding is for direct project delivery, however we are very appreciative of the unrestricted grants that we receive from the Esmeé Fairbairn Foundation, People Postcode Animal Lottery, Garfield Weston Foundation and Jean Sainsbury Animal Welfare Trust and to donors who provide Full Cost Recovery elements in their grants. We are also appreciative of the donations, legacies and other support that we receive from our many supporters and friends. Froglife is very reliant on FES to provide unrestricted funds in the form of gift-aided profits to the charity. These funds help to support the core functions of the charity.

Our largest donor has continued to be the National Lottery Heritage Fund (NLHF). This year thanks to lottery players we are in the process of developing two

new large projects and started delivery on two other projects.

Obtaining grants from grant making foundations and trusts has remained incredibly competitive, with donors requiring a much higher level of evidence of impact and long-term sustainability of projects/ organisations. The requirements for increased supporting evidence and other documentation to be submitted with grant applications does put an enormous strain on staff capacity to meet these requirements. Likewise, donor reporting has become a lot more demanding and complex putting further strain on project and financial staff capacity.

We have witnessed a huge increase in the demands on our Human Resources capacity, this is largely around work required on Diversity, Equality, and Inclusion (DEI) and gathering the necessary data to be able to report on our DEI of staff, trustees, participants, and job vacancy applicants. We are also spending a lot more time on ensuring the mental and physical well-being of our staff.

Consolidated income for 12 months is £1,548,094. This is up on the previous year by £452,456.

National Lottery Heritage Fund grants equates to £767,111.

RESERVES POLICY

Unrestricted reserves position is £546,821 which equates to 19 months of operational costs. Froglife's reserve policy is to hold a minimum of 12 months unrestricted funds to cover operational obligations should the trust need to be wound up. The charity also holds unrestricted funds to cover grant payments that are received in arrears from funders. Restricted reserves position is £281,848 Restricted grants received in advance are ringfenced in the cashflow and are released as the funds are spent on the restricted purpose. Restricted funds are not available for general purposes of The Froglife Trust.

INVESTMENT POLICY

Froglife has a policy not to invest funds in the stock market or through any other forms of investment. We do place funds in a Treasury Reserve Account which pays higher interest rates. These are placed on a three-month basis and cannot be accessed during the three-month period. The level of funds placed in the account is assessed prior to investing the funds.

CORPORATE SPONSORS

Travel Chapter-Holiday Cottages
Cornish Horizons
Wales Cottage Holidays
Homegrown Timber
Waterside Nursery
Puddleplants
AquaPond
Environment Jobs
Evergreen Insurance
Ethical State

STATEMENT OF TRUSTEES' RESPONSIBILITIES

The trustees (who are also directors of The Froglife Trust for the purposes of company law) are responsible for preparing the Trustees' Annual Report and financial statements in accordance with the applicable law and United Kingdom Accountancy Standards (United Kingdom Generally Accepted Accounting Practices).

Company law requires the trustees to prepare the financial statements for each financial year, which give a true and fair view of the state of affairs of the charitable company and its subsidiary and of the incoming resources and application of resources, including the income and expenditure, of the charitable company and its subsidiary for that period in preparing these financial statements, the trustees are required to:

- Select suitable accounting policies and then apply them consistently.
- Observe the methods and principles in the SORP 2019 (FRS 102).
- Make judgements and estimates that are reasonable and prudent.
- State whether UK Accounting Standards have been followed, subject to any material departure disclosed and explained in the financial statements.
- Prepare the financial statements on the going concern basis unless it is inappropriate to presume that the charitable company will continue in operation.

The trustees are responsible for keeping adequate

records that disclose with reasonable accuracy at any time the financial position of the charitable company and enable them to ensure that the financial statements comply with the Companies Act 2006, the Charities and Trustees investment (Scotland) Regulations 2006 (as amended). They are also responsible for safeguarding the assets of the charitable company and hence for taking reasonable steps for the prevention and detection of fraud and other irregularities.

The trustees are responsible for the maintenance and integrity of the corporate and financial information included on the charitable company's website.

Legislation in the United Kingdom governing the preparation and dissemination of financial statements may differ from legislation in other jurisdictions.

Disclosure of information to the auditors

In so far as the trustees are aware:

- There is no relevant audit information of which the Trust's auditors are unaware; and
- The trustees have taken all steps that they ought to have taken to make themselves aware of any relevant audit information and to establish that the auditor is aware of that information.

Auditors

An audit sub-group met on 10th June 2025 to evaluate audit tenders received from Accountancy Companies. Subsequently a resolution proposing that Saffery Chartered Accountants be appointed as auditors was

put to the 12th of June 2025 Trustee Meeting, the proposal was unanimously approved.

This report has been prepared in accordance with the special provisions relating to companies subject to small companies' regime within Paragraph 15 of the

Companies Act 2006.

This report has been approved by the Board on 15th December 2025 and signed on its behalf by the Chair.

Signed by:

A7A661A9FBDCC48C...
Richard Yates
Chair of Trustees

INDEPENDENT AUDITORS REPORT TO THE TRUSTEES AND MEMBERS OF THE FROGLIFE TRUST

Opinion

We have audited the financial statements of The Froglife Trust (the 'parent charitable company') and its subsidiaries (the 'group') for the year ended 30 September 2025 which comprise the consolidated and charity statements of financial activities, the consolidated and charity balance sheets, the charity and consolidated statement of cash flows and notes to the financial statements, including significant accounting policies. The financial reporting framework that has been applied in their preparation is applicable law and United Kingdom Accounting Standards, including Financial Reporting Standard 102, the Financial Reporting Standard applicable in the UK and Republic of Ireland (United Kingdom Generally Accepted Accounting Practice).

In our opinion the financial statements:

- give a true and fair view of the state of the affairs of the group and the parent charitable company as at 30 September 2025 and of the group's incoming resources and application of resources, including its income and expenditure, for the year then ended;
- have been properly prepared in accordance with United Kingdom Generally Accepted Accounting Practice; and
- have been prepared in accordance with the requirements of the Companies Act 2006, the Charities and Trustee Investment (Scotland) Act 2005 and regulations 6 and 8 of the Charities Accounts (Scotland) Regulations 2006 (as amended).

Basis for opinion

We conducted our audit in accordance with International Standards on Auditing (UK) (ISAs (UK))

and applicable law. Our responsibilities under those standards are further described in the Auditor's responsibilities for the audit of the financial statements section of our report. We are independent of the group and parent charitable company in accordance with the ethical requirements that are relevant to our audit of the financial statements in the UK, including the FRC's Ethical Standard, and we have fulfilled our other ethical responsibilities in accordance with these requirements. We believe that the audit evidence we have obtained is sufficient and appropriate to provide a basis for our opinion.

Conclusions relating to going concern

In auditing the financial statements, we have concluded that the trustees' use of the going concern basis of accounting in the preparation of the financial statements is appropriate.

Based on the work we have performed, we have not identified any material uncertainties relating to events or conditions that, individually or collectively, may cast significant doubt on the group or the parent charitable company's ability to continue as a going concern for a period of at least twelve months from when the financial statements are authorised for issue.

Our responsibilities and the responsibilities of the trustees with respect to going concern are described in the relevant sections of this report

Other information

The other information comprises the information included in the annual report, other than the financial statements and our auditor's report thereon. The trustees are responsible for the other information. Our opinion on the financial statements does not cover the other information and, except to the extent otherwise explicitly stated in our report, we do not express any form of assurance conclusion thereon. Our

responsibility is to read the other information and, in doing so, consider whether the other information is materially inconsistent with the financial statements or our knowledge obtained in the course of the audit or otherwise appears to be materially misstated. If we identify such material inconsistencies or apparent material misstatements, we are required to determine whether this gives rise to a material misstatement in the financial statements themselves. If, based on the work we have performed, we conclude that there is a material misstatement of this other information; we are required to report that fact.

We have nothing to report in this regard.

Other matters prescribed by the Companies Act 2006

In our opinion, based on the work undertaken in the course of the audit:

- the information given in the Trustees' Annual Report which includes the Directors' Report for the financial year for which the financial statements are prepared is consistent with the financial statements; and
- the Trustees' Annual Report which includes the Directors' Report has been prepared in accordance with applicable legal requirements.

Matters on which we are required to report by exception

In the light of the knowledge and understanding of the group and parent charitable company and their environment obtained in the course of the audit, we have not identified material misstatements in the Trustees' Annual Report.

We have nothing to report in respect of the following matters where the Companies Act 2006 and the Charities Accounts (Scotland) Regulations 2006 (as amended) require us to report to you if, in our opinion:

adequate accounting records have not been kept by the parent charitable company, or returns adequate for our audit have not been received from branches not visited by us; or

- the parent charitable company's financial statements are not in agreement with the accounting records and returns; or
- certain disclosures of trustees' remuneration specified by law are not made; or
- we have not received all the information and explanations we require for our audit; or
- the trustees were not entitled to prepare the

financial statements in accordance with the small companies' regime and take advantage of the small companies' exemption in preparing the Trustees' Annual Report.

Responsibilities of trustees

As explained more fully in the Statement of Trustees' Responsibilities set out above, the trustees (who are also the directors of the parent charitable company for the purposes of company law) are responsible for the preparation of the financial statements and for being satisfied that they give a true and fair view, and for such internal control as the trustees determine is necessary to enable the preparation of the financial statements that are free from material misstatement, whether due to fraud or error.

In preparing the financial statements, the trustees are responsible for assessing the group and the parent charitable company's ability to continue as a going concern, disclosing, as applicable, matters related to going concern and using the going concern basis of accounting unless the trustees either intend to liquidate the group or the parent charitable company or to cease operations, or have no realistic alternative but to do so.

Auditor's responsibilities for the audit of the financial statements

We have been appointed as auditors under the Companies Act 2006 and under the Charities and Trustee Investment (Scotland) Act 2005 and report in accordance with regulations made under those Acts.

Our objectives are to obtain reasonable assurance about whether the group and parent financial statements as a whole are free from material misstatement, whether due to fraud or error, and to issue an auditor's report that includes our opinion. Reasonable assurance is a high level of assurance, but is not a guarantee that an audit conducted in accordance with ISAs (UK) will always detect a material misstatement when it exists. Misstatements can arise from fraud or error and are considered material if, individually or in the aggregate, they could reasonably be expected to influence the economic decisions of users taken on the basis of these financial statements.

Irregularities, including fraud, are instances of non-compliance with laws and regulations. We design procedures in line with our responsibilities, outlined above, to detect material misstatements in respect of irregularities, including fraud. The specific procedures for this engagement and the extent to which these are

capable of detecting irregularities, including fraud are detailed below.

Identifying and assessing risks related to irregularities:

We assessed the susceptibility of the group and parent charitable company's financial statements to material misstatement and how fraud might occur, including through discussions with the trustees, discussions within our audit team planning meeting, updating our record of internal controls and ensuring these controls operated as intended. We evaluated possible incentives and opportunities for fraudulent manipulation of the financial statements. We identified laws and regulations that are of significance in the context of the group and parent charitable company by discussions with trustees and updating our understanding of the sector in which the group and parent charitable company operate.

Audit response to risks identified:

We considered the extent of compliance with these laws and regulations as part of our audit procedures on the related financial statement items including a review of financial statement disclosures. We reviewed the parent charitable company's records of breaches of laws and regulations, minutes of meetings and correspondence with relevant authorities to identify potential material misstatements arising. We discussed the parent charitable company's policies and procedures for compliance with laws and regulations with members of management responsible for compliance.

During the planning meeting with the audit team, the engagement partner drew attention to the key areas which might involve non-compliance with laws and regulations or fraud. We enquired of management whether they were aware of any instances of non-compliance with laws and regulations or knowledge of any actual, suspected or alleged fraud. We addressed the risk of fraud through management override of controls by testing the appropriateness of journal entries and identifying any significant transactions that were unusual or outside the normal course of business. We assessed whether judgements made in making accounting estimates gave rise to a possible indication of management bias. At the completion stage of the audit, the engagement partner's review included ensuring that the team had approached their work with appropriate professional scepticism and thus the capacity to identify non-compliance with laws and regulations and fraud.

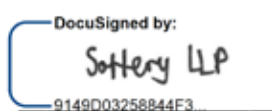
There are inherent limitations in the audit procedures

described above and the further removed non-compliance with laws and regulations is from the events and transactions reflected in the financial statements, the less likely we would become aware of it. Also, the risk of not detecting a material misstatement due to fraud is higher than the risk of not detecting one resulting from error, as fraud may involve deliberate concealment by, for example, forgery or intentional misrepresentations, or through collusion.

A further description of our responsibilities is available on the Financial Reporting Council's website at: www.frc.org.uk/auditorsresponsibilities
This description forms part of our auditor's report.

Use of our report

This report is made solely to the parent charitable company's members, as a body, in accordance with Chapter 3 of Part 16 of the Companies Act 2006, and to the parent charitable company's trustees, as a body, in accordance with Regulation 10 of the Charities Accounts (Scotland) Regulations 2006. Our audit work has been undertaken so that we might state to the parent charitable company's members and trustees those matters we are required to state to them in an auditor's report and for no other purpose. To the fullest extent permitted by law, we do not accept or assume responsibility to anyone other than the parent charitable company, the parent charitable company's members and trustees as a body, for our audit work, for this report, or for the opinions we have formed.



DocuSigned by:
Saffery LLP
9149D03258844F3

Gareth Norris (Senior Statutory Auditor)

for and on behalf of Saffery LLP

Date: 19 December 2025

Westpoint
Peterborough Business Park
Lynch Wood
Peterborough
PE2 6FZ

Statutory Auditors

Saffery LLP is eligible to act as an auditor in terms of section 1212 of the Companies Act 2006

THE FROGLIFE TRUST CONSOLIDATED STATEMENT OF FINANCIAL ACTIVITIES
(inc Income and Expenditure Account) FOR YEAR ENDED 30 SEPTEMBER 2025

	<i>Note</i>	Unrestricted	Restricted	Total 2025	Total 2024
		£	£	£	£
INCOME					
Donations and legacies	2a	51,427	11,770	63,197	31,880
Grants	2b	166,460	991,092	1,157,552	783,977
Charitable activities	3	31,300	28,868	60,168	58,557
<i>Income from other trading activities:</i>					
Other income	4	13,238	-	13,238	6,661
Commercial trading operation		244,826	-	244,826	208,401
Investment income	5	9,113	-	9,113	6,162
Total income		516,364	1,031,730	1,548,094	1,095,638
EXPENDITURE ON:					
Raising funds	7	194,762	-	194,762	177,121
Charitable activities	6	18,538	1,018,647	1,037,185	887,829
Total expenditure		213,300	1,018,647	1,231,947	1,064,950
Net income / (expenditure) for the year		303,064	13,083	316,147	30,688
Transfers between funds	17a	(214,414)	214,414	-	-
Net movement in funds		88,650	227,497	316,147	30,688
Reconciliation of funds:					
Total funds brought forward	17a	458,171	54,351	512,523	481,834
Total funds carried forward		546,821	281,848	828,670	512,522

The statement of financial activities includes all gains and losses recognised in the year.
All income and expenditure derive from continuing activities.
The notes on the following pages form part of these accounts.

THE FROGLIFE TRUST CHARITY STATEMENT OF FINANCIAL ACTIVITIES
(inc Income and Expenditure Account) FOR YEAR ENDED 30 SEPTEMBER 2025

	Note	Unrestricted £	Restricted £	Total 2025 £	Total 2024 £
INCOME					
Donations and legacies	2a	51,427	11,770	63,197	31,880
Grants	2b	166,460	991,092	1,157,552	783,977
Charitable activities	3	31,300	28,868	60,168	58,557
<i>Income from other trading activities:</i>					
Other income	4	13,238	-	13,238	6,661
Investment income	5	59,177	-	59,177	37,442
Total income		321,602	1,031,730	1,353,332	918,517
EXPENDITURE ON:					
Charitable activities	6	18,538	1,018,647	1,037,185	887,829
Total expenditure		18,538	1,018,647	1,037,185	887,829
Net income / (expenditure) for the year		303,064	13,083	316,147	30,688
Transfers between funds	17a	(214,414)	214,414	-	-
Net movement in funds		88,650	227,497	316,147	30,688
Reconciliation of funds:					
Total funds brought forward	17a	441,665	54,351	496,016	465,327
Total funds carried forward		530,315	281,848	812,162	496,015

The statement of financial activities includes all gains and losses recognised in the year.
All income and expenditure derive from continuing activities.
The notes on the following pages form part of these accounts.

THE FROGLIFE TRUST CONSOLIDATED BALANCE SHEET AS AT 30 SEPTEMBER 2025:

	Note	2025	2024
FIXED ASSETS			
Tangible fixed assets	11	-	-
CURRENT ASSETS			
Stocks		614	545
Debtors	14	91,677	144,138
Cash at bank and in hand		<u>812,434</u>	<u>424,634</u>
		904,725	569,317
CURRENT LIABILITIES			
Creditors: amounts due within one year	15	(76,056)	(56,795)
NET CURRENT ASSETS		<u>828,669</u>	<u>512,522</u>
TOTAL ASSETS LESS CURRENT LIABILITIES		828,669	512,522
Creditors: amounts due after one year		-	-
TOTAL NET ASSETS		<u><u>828,669</u></u>	<u><u>512,522</u></u>
FUNDS OF THE CHARITY			
Restricted funds	17	281,848	54,351
Unrestricted funds	17	<u>546,821</u>	<u>458,171</u>
		<u><u>828,670</u></u>	<u><u>512,522</u></u>

The trustees have prepared group accounts in accordance with section 398 of the Companies Act 2006 and section 138 of the Charities Act 2011. These accounts are prepared in accordance with the special provisions of Part 15 of the Companies Act relating to small companies and constitute the annual accounts required by the Companies Act 2006 and are for circulation to members of the company. The notes on the following pages form part of these accounts.

The financial statements were approved by the Board of Trustees on ^{15/12/25}..... and signed on their behalf by:

Signed by:

 A7A661A9FBDC48C...
Mr Richard Yates
 Chair

Company Registration No: 04382714 (E&W)

THE FROGLIFE TRUST CHARITY BALANCE SHEET AS AT 30 SEPTEMBER 2025:

	Note	2025	2024
FIXED ASSETS			
Tangible fixed assets	11	0	0
Investments	12	<u>100</u>	<u>100</u>
		100	100
CURRENT ASSETS			
Stocks		614	545
Debtors	14	360,725	348,825
Cash at bank and in hand		<u>516,466</u>	<u>198,252</u>
		877,805	547,622
CURRENT LIABILITIES			
Creditors: amounts due within one year	15	(65,743)	(51,707)
NET CURRENT ASSETS		<u>812,062</u>	<u>495,915</u>
TOTAL ASSETS LESS CURRENT LIABILITIES		812,162	496,015
Creditors: amounts due after one year		-	-
TOTAL NET ASSETS		<u>812,162</u>	<u>496,015</u>
FUNDS OF THE CHARITY			
Restricted funds	17	281,848	54,351
Unrestricted funds	17	<u>530,315</u>	<u>441,664</u>
		<u>812,162</u>	<u>496,015</u>

The notes on the following pages form part of these accounts.

The financial statements were approved by the Board of Trustees on ^{15/12/25}..... and signed on their behalf by:

Signed by:

A7A661A9FBDC46C...
Mr Richard Yates
Chair

Company Registration No: 04382714 (E&W)

**THE FROGLIFE TRUST STATEMENT OF CASH FLOWS
AND CONSOLIDATED STATEMENT OF CASH FLOWS AS AT 30 SEPTEMBER 2025:**

	<i>Note</i>	2025	2025	2024	2024
		Group	Charity	Group	Charity
		£	£	£	£
Cash Flows From Operating Activities					
Net cash provided by / (used in) operating activities	19	378,687	259,037	12,957	(79,628)
Cash Flows from Investing Activities					
Investment interest		9,113	59,177	6,162	37,442
Change in cash and cash equivalents in the year					
		387,800	318,214	19,119	(42,186)
Cash and cash equivalents brought forward		424,634	198,252	405,515	240,438
Cash and cash equivalents carried forward					
	21	812,434	516,466	424,634	198,252

NOTES TO THE FINANCIAL STATEMENTS FOR YEAR ENDED 30 SEPTEMBER 2025:

1. ACCOUNTING POLICIES

The principal accounting policies adopted, judgements and key sources of estimation uncertainty in the preparation of the financial statements are as follows:

a. Basis of preparation of financial statements

The financial statements have been prepared in accordance with Accounting and Reporting by Charities: Statement of Recommended Practice applicable to charities preparing their accounts in accordance with the financial reporting Standard applicable in the UK and Republic of Ireland (FRS102), the Companies Act 2006, the Charities and Trustee Investment (Scotland) Act 2005 and regulation 8 of the Charities Accounts (Scotland) (as amended).

The charity meets the definition of a public benefit entity under FRS 102. Assets and liabilities are initially recognised at historical cost or transaction value unless otherwise stated in the relevant accounting policy notes.

The accounts are produced with the underlying currency being GBP.

b. Legal status of the Charity

The charity is a company limited by guarantee and has no share capital. In the event of the charity being wound up, the liability in respect of the guarantee is limited to £1 per member of the charity.

c. Going concern

At the time of approving the financial statements, the trustees have reasonable expectations that the Trust has adequate resources to continue in operational existence for the foreseeable future. The trustees have considered the level of funds held and the expected level of income and expenditure for 12 months from authorising these financial statements. The trust is reliant on grants to be able to carry out its objectives. The Trust has an adequate number of grant applications already in place or accepted for the coming 12 months.

Additionally, further grants have been accepted post year end. Thus, the trustees continue to adopt the going concern basis of accounting in preparing the financial statements.

d. Group financial statements.

The financial statements consolidate the results of the charity and its wholly owned subsidiary Froglife Trading Ltd on a line-by-line basis.

e. Fund accounting.

Unrestricted funds are available to spend on activities that further any of the purposes of the charity.

Restricted funds account for situations where a donor requires their donation must be spent on a specific purpose or where funds have been raised for a specific purpose.

The aim and use of each material restricted fund is set out in the notes to the financial statements.

f. Income

Income is recognised when the charity has entitlement to the funds, any performance conditions attached to the items of income have been met, it is probable that the income will be received, and the amount can be measured reliably.

Where income has related expenditure (as with fundraising or contract income), the income and related expenditure are reported gross in the Statement of Financial Activities.

Donations, grants and gifts are recognised when receivable. If a donation is subject to fulfilling performance conditions before the charity is entitled to the funds, the income is deferred and not recognised until it is probable that those conditions will be fulfilled in the reporting period.

Income from Gift Aid tax reclaims is recognised for any donation with relevant Gift Aid certificates recognised in income for the year. Any amounts of

Gift Aid not received by the year end are accounted for in income and accrued income in debtors. For legacies, entitlement is taken on a case by case basis as the earlier of the date on which: the charity is aware that probate has been granted, the estate has been finalised and notification has been made to the executor(s) to the charity that distribution will be made, or when a distribution is received from the estate. Receipt of a legacy, in whole or in part, is only considered probable when the amount can be measured reliably, and the charity has been notified of the executor's intentions to make a distribution. If the legacy is in the form of an asset other than cash or an asset listed on a recognised stock exchange, recognition is subject to the value of the asset able to be reliably measured and title to the asset has passed to the charity. Where legacies have been notified or the charity is aware of the granting of probate, and the criteria for income has not been met, then the legacy is treated as a contingent asset and disclosed if material.

Income received in advance for a future fundraising event or for visitor fees received in advance of an event are deferred until the criteria for the income recognition are met.

Interest on deposit funds held is included when receivable and the amount can be measured reliably by the charity which is normally upon notification of the interest paid or payable by the bank. Dividends are recognised once the dividend has been declared and notification has been received of the dividend due. This is normally upon notification by our investment advisor of the dividend yield of the investment portfolio. Income tax recoverable in relation to investment income is recognised at the same time the investment income is receivable.

Sponsorship from events, fundraising and events registration fees are recognised in income when the event takes place.

Trading income is recognised on point of sale for both donated and purchased goods.

g. Expenditure and irrecoverable VAT

Expenditure is recognised if there is a legal or constructive obligation to make a payment to a third party, it is probable that settlement will be required, and the amount of the obligation can be

measured reliably. All expenditure is accounted for on an accrual's basis under the following headings: Costs of raising funds are those costs incurred in attracting voluntary income and those incurred in fundraising.

Expenditure on charitable activities includes expenditure associated with conservation of reptiles and amphibians, education and training and providing information and awareness and include both the direct and support costs relating to those activities.

Where costs cannot be directly attributed to particular headings, they have been allocated to activities on a basis that is consistent with the use of those resources.

h. Volunteers

The value of the services provided by volunteers cannot be reliably estimated and therefore is not incorporated into these financial statements. Further details are provided in the Trustee's Report.

i. Fixed Assets

All assets are capitalised at their historical cost when purchased.

Depreciation is provided to write off the cost less estimated residual value of all fixed assets over their expected economic useful lives as follows:

The need for any impairment of a fixed asset write down is considered if there is concern over the carrying value of an asset and is assessed by comparing that carrying value against the value in use or realisable value of the asset when appropriate.

j. Investments

Fixed asset investments represent the equity share in Froglife Ltd, the wholly owned subsidiary company and are stated at cost in the charity balance sheet.

k. Stock

Stocks have been valued at the lower of cost and net realisable value.

Net realisable value is based upon estimation of selling price less further costs expected to be

incurred to disposal. Provision is made for obsolete and slow-moving items when appropriate.

i. Debtors

Trade and other debtors are recognised at the settlement amount after any trade discounts offered. Prepayments are valued at the amount prepaid net of any trade discounts due. Accrued income and tax recoverable is included at the best estimate of the amount's receivable at the balance sheet date.

m. Cash at bank and in hand

Cash at bank and cash in hand includes cash and short-term highly liquid investments with a short maturity of three months or less from the date of acquisition or opening of the deposit or similar account.

n. Creditors

Creditors are recognised where the charity has a present obligation resulting from a past event that will probably result in the transfer of funds to a third party and the amount due to settle the obligation can be measured or estimated reliably. Creditors are normally recognised at their settlement amount after allowing for any trade discounts due.

o. Financial instruments

The Trust has elected to apply the provision on Section 11 'Basic Financial Instruments' and Section 12 'Other Financial Instrument Issues' of FRS 102 to all its financial instruments.

Financial assets are recognised in the Trust's Statement of Financial Position when the Trust becomes party to the contractual provisions of the instrument.

Financial assets are classified into specified categories. The classification depends on the nature and purpose of the financial assets and is determined at the time of recognition.

Basic financial assets, which include trade and other debtors, are initially measured at transaction price including transaction costs and are subsequently carried at amortised cost using the effective interest method unless other arrangements constitutes a financial transaction,

when the transaction is measured at the present value of the future receipts discounted at a market rate of interest. Other financial assets classified as fair value through the statement of financial activities are measured at fair value.

Other financial assets

Trade debtors, loans and other receivables that have fixed or determinable payments that are not quoted in an active market are classified as 'loans and receivable'. Loans and receivables are measured at amortised cost using the effective interest method, less any impairment.

Interest is recognised by applying the effective interest rate, except for short-term receivables when the recognition of interest would be immaterial. The effective interest method is a method of calculating the amortised cost of a debt instrument and of allocating the interest over the relevant period. The effective interest rate is the rate that exactly discounts estimated future cash receipts through the expected life of the debt instrument to the net carrying amount of initial recognition.

Impairment of financial assets

Financial assets, other than those held at a fair value through the statement of financial activities, are assessed for indicators of impairment at each reporting end date.

Financial assets are impaired when there is objective evidence that, as a result of one or more events that occurred after the initial recognition of the financial asset, the estimated future cash flows have been affected. The impairment loss is recognised in the statement of financial activities.

Derecognition of financial assets

Financial assets are derecognised only when the contractual rights to the cash flows from the asset expires, or when it transfers the financial asset and substantially all the risks and rewards of ownership to another entity.

Classification of financial liabilities

Basic financial liabilities

Basic financial liabilities, including trade and other

creditors, bank loans, loans from fellow groups are initially recognised at transaction price unless the arrangement constitutes a financing transaction, where the debt instrument is measured at the present value of the future receipts discounted at a market rate of interest.

Trade creditors are obligations to pay for goods or services that have been acquired in the ordinary course of business from suppliers. Accounts payable are classified as 'creditors: amounts falling due within one year' if payment is due within one year or less. If not, they are presented as 'creditors: amounts falling due after more than one year'. Trade creditors are recognised initially at transaction price and subsequently measured at amortised cost using the effective interest method.

Other financial liabilities, including debt instruments that do not meet the definition of a basic financial instrument, are measured at fair value, net of transaction costs. They are subsequently measured at amortised cost using the effective interest method.

The effective interest method is a method of calculating the amortised cost of a financial liability and of allocating interest expense over the relevant period. The effective interest rate is the rate that exactly discounts estimated future cash payments through the expected life of a financial liability to the net carrying amount on initial recognition.

Derecognition of financial liabilities

Financial liabilities are derecognised when, and only when, the Charity's obligations are discharged, cancelled, or they expire.

p. Operating leases

Operating leases are recognised over the period of which the lease falls due.

Benefits received and receivable as an incentive to sign an operating lease are recognised on a straight-line basis over the period of the lease.

q. Taxation

The company is considered to pass the test set out in Paragraph 1 Schedule 6 of the Finances Act 2010 and therefore it meets the definition of a charitable company for UK corporation tax purposes. Accordingly, the company is potentially exempt from taxation in respect of income and capital gains received within categories covered by Chapter 3 Part 11 of the Corporation Tax Act 2010 or Section 256 of the Taxation of Chargeable Gains Act 1992, to the extent that such income or gains are applied exclusively to charitable purposes.

2a DONATIONS AND LEGACIES

	2025	2025	2024	2024
	Group	Charity	Group	Charity
	£	£	£	£
Unrestricted funds:				
Donations	51,427	51,427	30,882	30,882
	<u>51,427</u>	<u>51,427</u>	<u>30,882</u>	<u>30,882</u>
	2025	2025	2024	2024
	Group	Charity	Group	Charity
	£	£	£	£
Restricted funds:				
Donations	11,770	11,770	998	998
	<u>11,770</u>	<u>11,770</u>	<u>998</u>	<u>998</u>

2b GRANTS RECEIVED

	2025	2024
Group and charity	£	£
Unrestricted funds:		
Esmee Fairbairn Foundation	108,460	100,000
Postcode Animal Lottery	50,000	50,000
Jean Sainsbury	5,000	-
James Gibson Charitable Trust	3,000	3,000
Garfield Weston Trust	-	50,000
Henocq Law	-	5,000
Other grants under £1,000	-	700
Total unrestricted funds	<u>166,460</u>	<u>208,700</u>
Group and charity	£	£
Restricted funds:		
National Heritage Lottery Fund	767,111	343,664
Natural England	122,534	58,435
City Bridge Trust	38,700	39,400
The Robertson Trust	28,000	30,800
The Hospital Saturday Fund	10,000	2,000
Nene Park Trust	7,497	-
Hugh Fraser Foundation	5,000	5,000
Ironmongers Trust Company	4,750	-
Cambridgeshire Community Foundation	3,000	15,952
Nineveh Trust	2,000	-
Glasgow Natural History Society	2,000	-
R S Mcdonald	-	15,000
Masonic Charitable Trust	-	14,735
Department for work & pensions	-	12,375
Simon Gibson Trust	-	9,133
Heart of England-WMCA	-	9,012
CLA Charitable Trust	-	5,000
St James Place	-	4,767
Neighbourly Foundation	-	3,000
Westham House	-	1,675
Wild Wet Web	-	1,500
Enjoolata Foundation	-	1,479
Coop Community Fund	-	1,100
The Edward & Dorothy Foundation	-	1,000
Other grants under £1,000	500	250
	<u>991,092</u>	<u>575,277</u>

3 INCOME FROM CHARITABLE ACTIVITIES	2025	2024
Group and Charity	£	£
Conservation of amphibians and reptiles	21,450	21,450
Education and training	8,435	27,668
Information and awareness	1,415	404
Unrestricted funds:	<u>31,300</u>	<u>49,522</u>
Conservation of amphibians and reptiles	24,100	3,051
Education and training	4,768	865
Information and awareness	-	5,119
Restricted funds:	<u>28,868</u>	<u>9,035</u>
4 OTHER INCOME	2025	2024
Group and charity	£	£
Corporate sponsorship	2,388	2,046
Other income	10,850	4,615
	<u>13,238</u>	<u>6,661</u>

All fundraising event income in both the current and previous year relate to unrestricted funds.

5 INVESTMENT INCOME	2025	2025	2024	2024
	Group	Charity	Group	Charity
	£	£	£	£
Bank interest	9,113	5,731	6,162	3,417
Profits from trading company	-	53,446	-	34,025
	<u>9,113</u>	<u>59,177</u>	<u>6,162</u>	<u>37,442</u>

All investment income in both the current year and prior year relate to unrestricted funds.

6 EXPENDITURE	Direct	Support	2025
Expenditure on Charitable Activities - Current Year	Costs	Costs	Total
Group and Charity	£	£	£
Conservation of amphibians and reptiles	284,196	144,993	429,189
Education and training	381,595	194,684	576,279
Information and awareness	21,002	10,715	31,717
	<u>686,793</u>	<u>350,392</u>	<u>1,037,185</u>

Included within expenditure on charitable activities are restricted funds of £1,018,647 and unrestricted funds of £18,538.

6 EXPENDITURE (continued)

Expenditure on Charitable Activities - Prior Year

	Direct Costs £	Support Costs £	2024 Total £
Group and Charity			
Conservation of amphibians and reptiles	204,795	208,659	413,454
Education and training	322,955	105,935	428,890
Information and awareness	39,065	6,420	45,485
	<u>566,815</u>	<u>321,014</u>	<u>887,829</u>

Included within expenditure on charitable activities are restricted funds of £854,320 and unrestricted funds of £33,509.

7 RAISING FUNDS

Expenditure on raising funds as shown in the group statement of financial activities relates to costs incurred by the trading subsidiary which relate to unrestricted funds in both the current and prior year.

8 ANALYSIS OF SUPPORT COSTS

	Conservation £	Education & Training £	Information & awareness £	2025 Total £
Rent and rates	5,867	7,878	434	14,179
Insurance	2,873	3,858	212	6,943
Cleaning and waste	-	-	-	-
Travel and Subsistence	2,252	3,024	166	5,442
Printing, postage and stationery	1,021	1,371	75	2,467
Computer and telephone	7,645	10,265	565	18,475
Repairs and renewals	1,379	1,852	102	3,333
Staff costs	107,992	145,002	7,981	260,975
Recruitment and training	25	33	2	60
Legal and professional fees	6,727	9,033	497	16,257
Depreciation	-	-	-	-
Bank charges	183	245	13	441
Miscellaneous	3,554	4,772	263	8,589
Governance - trustee expenses	226	304	17	547
Governance - audit costs	5,249	7,047	388	12,684
	<u>144,993</u>	<u>194,684</u>	<u>10,715</u>	<u>350,392</u>

8 ANALYSIS OF SUPPORT COSTS (Continued)

	Conservation	Education & Training	Information & awareness	2024 Total
	£	£	£	£
Rent and rates	9,251	4,697	285	14,233
Insurance	4,169	2,117	128	6,414
Cleaning and waste	9	5	0	14
Travel and Subsistence	7,811	3,966	240	12,017
Printing, postage and stationery	3,128	1,588	96	4,812
Computer and telephone	9,782	4,966	301	15,049
Repairs and renewals	600	305	18	923
Staff costs	155,564	78,979	4,787	239,330
Recruitment and training	405	206	12	623
Legal and professional fees	2,097	1,065	65	3,227
Depreciation inc loss on disposal	-	-	-	-
Bank charges	256	130	8	394
Irrecoverable VAT on support costs	-	-	-	-
Miscellaneous	5,423	2,751	168	8,342
Governance - trustee expenses	368	187	11	566
Governance - audit costs	9,796	4,973	301	15,070
	<u>208,659</u>	<u>105,935</u>	<u>6,420</u>	<u>321,014</u>

In 2025 and 2024 support costs have been allocated in line with the aims of the project and its activity undertaken.

9 STAFF EMOLUMENTS AND TRUSTEE EXPENSES

	2025	2024
	£	£
Wages and salaries	655,417	616,062
Social security costs	65,470	53,615
Pension costs	13,908	13,195
	<u>734,795</u>	<u>682,872</u>

Pension costs were paid under the new auto-enrolment requirements to the National Employers Savings Trust.

	2025	2024
	No	No
The average number of employees during the year was:		
Commercial trading operations	1	1
Direct Charitable activities	16	17
Support services	7	7
	<u>24</u>	<u>25</u>

One employee received emoluments in excess of £60,000 (2024: one)

9 STAFF EMOLUMENTS AND TRUSTEE EXPENSES (continued)

The charity considers its key management personnel to comprise of the Trustees and the senior management team as disclosed in the Trustees' Report. None of the trustees received any remuneration or benefits in kind from the charity during the year (2024: £nil). The total employee benefits of 4 key management personnel (2024: 4 key management personnel) were £178,849 (2024: £162,131).

Expenses relating to travel and subsistence for attendance at Trustee meetings was reimbursed to 5 trustees (2024: 2) during the year amounted to £547 (2024: £566).

10 NET INCOMING / (EXPENDITURE)

	2025	2024
	£	£
Net incoming /(expenditure) is stated after charging:		
Auditors' remuneration:		
for audit services	15,504	18,551
for other services	2,400	2,235
Operating lease rentals	14,933	18,635

11 TANGIBLE FIXED ASSETS

Group and charity	Office Equipment	Computer Equipment	Total
	£	£	£
Cost or Valuation			
As at 1 October 2024	2,172	23,932	26,104
As at 30 September 2025	2,172	23,932	26,104
Depreciation			
As at 1 October 2024	2,172	23,932	26,104
Charge for the year	-	-	-
As at 30 September 2025	2,172	23,932	26,104
Net Book Value			
As at 30 September 2025	-	-	-
As at 30 September 2024	-	-	-

12 INVESTMENTS

	2025	2024
	£	£
Charity		
Equity investment in trading subsidiary	100	100
Total charity investment	100	100

13 TRADING SUBSIDIARY

The Charity owns 100 shares of £1 each in its trading subsidiary, Froglife Ltd (Company No: 02348393) incorporated in the United Kingdom, whose principle place of business is Brightfield Business Hub, Bakewell Road, Orton Southgate, Peterborough PE2 6XU and whose main purpose is to carry out the commercial conservation contracts and surveys. These are the only shares allotted, called up and fully paid. The activities and results of this company are summarised as follows:

13 TRADING SUBSIDIARY (continued)

	2025	2024
	£	£
Turnover	244,826	208,401
Costs of sales	(184,056)	(165,153)
Gross Profit	60,770	43,248
Operating expenses	(9,440)	(10,535)
Profit on ordinary activities before interest	51,330	32,713
Interest receivable	3,382	2,744
Interest payable	(1,266)	(1,432)
Net trading profit	53,446	34,025
Gift aid donated to parent charity	(53,446)	(34,025)
Profit for the year	-	-
 Balance Sheet:		
Current assets	300,325	226,403
Liabilities	(283,718)	(209,796)
Net assets	16,607	16,607
 Represented by:		
Capital	100	100
Reserves	16,507	16,507
	16,607	16,607

14 DEBTORS

	2025	2025	2024	2024
	Group	Charity	Group	Charity
	£	£	£	£
Trade debtors	12,085	11,578	2,110	2,090
Amounts owed by group undertakings	-	273,405	-	204,707
Taxation recoverable	-	-	-	-
Other debtors	750	750	750	750
Prepayments and accrued income	78,842	74,992	141,278	141,278
	91,677	360,725	144,138	348,825

15 CREDITORS: Amounts falling due within one year

	2025	2025	2024	2024
	Group	Charity	Group	Charity
	£	£	£	£
Trade creditors	11,425	11,425	23,886	23,886
Taxation and social security	36,516	34,428	13,131	12,723
Other creditors	-	-	-	-
Accruals and deferred income	28,115	19,890	19,778	15,098
	76,056	65,743	56,795	51,707

16 COMMITMENTS UNDER OPERATING LEASES

At 30 September the group and charity had total commitments under non-cancellable operating leases as follows:

	2025 Land and buildings	2025 Other	2024 Land and buildings	2024 Other
Due within one year	1,287	432	13,314	1,080
Due in 2-5 years	-	1,188	-	270
	<u>1,287</u>	<u>1,620</u>	<u>13,314</u>	<u>1,350</u>

17a FUNDS -current year	Brought forward 1/10/24	Income	Expenditure	Transfers	Carried forward 30/9/25
Group	£	£	£	£	£
<u>Unrestricted Funds</u>					
General funds	458,171	516,364	(213,300)	(214,414)	546,821
<u>Restricted Funds</u>					
Green Pathways Glasgow	20,232	37,365	(75,171)	17,574	-
Somerset Green Pathways for Life	18,458	19,636	(38,756)	5,346	4,684
Leaping forward for Dementia - London	-	63,100	(53,395)	11,920	21,625
Leap Frog Schools - habitat projects	5,183	-	-	-	5,183
Discovering Dewponds - Sussex	-	16,533	(19,272)	2,739	-
Coalface to Wildspace - Midlands	1,213	78,518	(128,431)	59,985	11,285
Transforming Lives	1,297	55,297	(86,620)	30,026	-
Peterborough Neighbourhood Wildlife Corridors	7,968	1,364	(17,385)	8,053	-
London Blue Chain-Main project	-	329,350	(378,712)	49,362	-
Coalface to Wildspace - Scotland	-	84,289	(90,662)	6,373	-
Coalface to Wildspace - Yorkshire	-	67,583	(79,657)	17,668	5,594
Peterborough Green Talent	-	130,195	(23,587)	357	106,965
Boston and Beyond	-	125,000	(14,852)	907	111,055
Natural England - priority locations for adder dispersal	-	23,500	(12,147)	4,104	15,457
Total Restricted Funds	<u>54,351</u>	<u>1,031,730</u>	<u>(1,018,647)</u>	<u>214,414</u>	<u>281,848</u>
Total Funds	<u>512,522</u>	<u>1,548,094</u>	<u>(1,231,947)</u>	<u>-</u>	<u>828,669</u>

Included in expenditure for restricted funds are support costs that are not covered by grant income, charitable activities and donations; thus it is necessary to transfer funds from unrestricted funds to cover these costs. A full cost record of the project is required when reporting to funders.

Charity

Funds are as the table above but included within Unrestricted General Funds brought forward and carried forward is £16,507 (2024: £16,507) which relates to Froglife Limited, the Charity's trading subsidiary.

17b FUNDS -prior year	Brought forward				Carried forward
Group	1/10/23	Income	Expenditure	Transfers	30/9/24
	.	£	£	£	£
<u>Unrestricted Funds</u>					
General funds	387,075	510,328	(210,629)	(228,602)	458,171
<u>Restricted Funds</u>					
Green Pathways Glasgow	8,250	57,684	(83,137)	37,435	20,232
Wildlife surveys & research tunnels	16,747	-	(26,232)	9,485	-
Somerset Green Pathways for Life	1,500	30,196	(33,149)	19,911	18,458
Leaping forward for Dementia - London	13,399	39,400	(62,236)	9,437	-
Leap Frog Schools - habitat projects	5,183	-	-	-	5,183
Discovering Dewponds - Sussex					
incorporating Access to Work	-	74,196	(109,763)	35,567	-
London Blue Chain-Development	-	1,267	(2,708)	1,441	-
Coalface to Wildspace - Midlands	-	84,854	(145,920)	62,279	1,213
West Midlands District Council, co					
funding Coalface to Wildspace - Midlands	34,680	18,145	(23,839)	(28,986)	-
Transforming Lives	-	113,870	(154,871)	42,298	1,297
Peterborough Neighbourhood Wildlife					
Corridors	15,000	7,867	(30,816)	15,917	7,968
London Blue Chain-Main project	-	157,831	(181,649)	23,818	-
Total Restricted Funds	94,759	585,310	(854,322)	228,602	54,351
Total Funds	481,834	1,095,638	(1,064,949)	-	512,522

Charity

Funds are as the table above but included within Unrestricted General Funds brought forward and carried forward is £16,507 (2023: £16,507) which relates to Froglife Limited, the Charity's trading subsidiary.

17. FUNDS NOTES

Leaping Forward for Dementia – London: through the support of a City Bridge Trust, we have continued to deliver sessions with people living with dementia on several green spaces in London.

London Blue Chain: Delivery phase is well underway, and the project has entered into its second year.

Peterborough & Scotland Green Pathways Scheme: Peterborough Green Pathways was on hold whilst the staff member was on maternity leave. It has started again in 2025. These projects deliver outdoor nature focused sessions with vulnerable and/or disadvantaged children and young people.

Somerset Green Pathways for Life delivers sessions at venues around Frome for people living with dementia.

Discovering Dewponds: This project ended during this Annual Review period. However, thanks to legacy funding advice, talks and lectures have taken place in and around Brighton.

Coalface to Wildspace Midlands: This project is in its final year. The habitat works are all completed, and it continues with its programme of public engagement.

Transforming Lives: Froglife Trainees: the project successfully trained its third cohort of trainees in Reserve Nature management and volunteer engagement. This project ended during this Annual Report period.

Peterborough Green Talent: This project has replaced the Transforming Lives project and will over the course of the project train twelve people in reserve management, volunteer management and in

hosting events.

Neighbourhood Wildlife Corridor - Boston & Beyond: This is a new project in a new region for Froglife. The project started in August and will shortly start delivery the approved purposes.

Coalface to Wildspace – Yorkshire: This project is in its development phase with delivery planned for 2026.

Coalface to Wildspace – Ayrshire, South Lanarkshire & the Lothians: This project is in its development phase with delivery planned for 2026.

Amphibian Mortality: our partnership with the Zoological Society of London, British Trust for Ornithology and RSPB has continued, with Froglife receiving reports of amphibian diseases and mortality.

Toads on Roads: we continue to co-ordinate the seasonal Toads on Roads patrols and analyse the data that they submit to us.

Reserve Management: we have continued with the management Hampton, Eye Green and Boardwalks Nature Reserves.

Research: This year we have entered and completed several applied research projects. Through the Species Recovery Programme, we are undertaking mapping of adder sites to establish dispersal rates.

Social media/Enquiry Service: our social media engagement continues to rise particularly as we engage in new social media platforms. We have seen a drop in email enquiries, but these are now directed through social media.

Digital: we have continued to expand our digital outputs, this year creating statues with QR codes.

Artificial Intelligence: We completed a project with an external provider to investigate Artificial Intelligence (AI) and how it can benefit our work/staff.

Website: we continue to update and maintain our website to a very high standard.

Froglife Ltd t/a Froglife Ecological Services (FES): FES has continued to grow and explore new areas of work for private contract work.

18a ANALYSIS OF NET ASSETS BETWEEN FUNDS-current year

Group	Unrestricted £	Restricted £	Total 2025 £
Tangible fixed assets	-	-	-
Current assets	589,028	315,697	904,725
Creditors: amount falling due within one year	(42,207)	(33,849)	(76,056)
Creditors: amount falling due in more than one year	-	-	-
	<u>546,821</u>	<u>281,848</u>	<u>828,669</u>
Charity	Unrestricted £	Restricted £	Total 2025 £
Tangible fixed assets	100	-	100
Current assets	562,108	315,697	877,805
Creditors: amount falling due within one year	(31,894)	(33,849)	(65,743)
Creditors: amount falling due in more than one year	-	-	-
	<u>530,314</u>	<u>281,848</u>	<u>812,162</u>

18b ANALYSIS OF NET ASSETS BETWEEN FUNDS-prior year

Group	Unrestricted	Restricted	Total 2024
	£	£	£
Tangible fixed assets	-	-	-
Current assets	488,588	80,729	569,317
Creditors: amount falling due within one year	(30,417)	(26,378)	(56,795)
Creditors: amount falling due ion more than one year	-	-	-
	<u>458,171</u>	<u>54,351</u>	<u>512,522</u>

Charity	Unrestricted	Restricted	Total 2024
	£	£	£
Tangible fixed assets	100	-	100
Current assets	466,893	80,729	547,622
Creditors: amount falling due within one year	(25,329)	(26,378)	(51,707)
Creditors: amount falling due ion more than one year	-	-	-
	<u>441,664</u>	<u>54,351</u>	<u>496,015</u>

19**RECONCILIATION OF NET MOVEMENT IN FUNDS TO NET CASH FLOW FROM OPERATING ACTIVITIES**

	2025	2025	2024	2024
	Group	Charity	Group	Charity
	£	£	£	£
Net income / (expenditure) for the year	316,147	316,147	30,688	30,688
Adjustment for:				
Depreciation charges including loss on disposal	-	-	-	-
Interest from investments	(9,113)	(59,177)	(6,162)	(37,442)
(Increase) / Decrease in stocks	(69)	(69)	(21)	(21)
(Increase) / Decrease in debtors	52,461	(11,900)	(14,951)	(89,641)
(Decrease) / Increase in creditors	19,261	14,036	3,403	16,788
Net cash provided by/(used in) operating activities	<u>378,687</u>	<u>259,037</u>	<u>12,957</u>	<u>(79,628)</u>

20 ANALYSIS OF NET DEBT

Group	At 30	Cash Flow	Non Cash	At 30
	September 2024		Flow	September
				2025
Cash in hand	<u>424,634</u>	<u>387,800</u>	-	<u>812,434</u>
Charity				
Cash in hand	<u>198,252</u>	<u>318,214</u>	-	<u>516,466</u>

21 ANALYSIS OF CASH AND CASH EQUIVALENTS

	2025 Group £	2025 Charity £	2024 Group £	2024 Charity £
Cash at bank and in hand	812,434	516,466	424,634	198,252
Total cash and cash equivalents	<u>812,434</u>	<u>516,466</u>	<u>424,634</u>	<u>198,252</u>

22 RELATED PARTIES

There have been no related party transactions in the reporting period except those already addressed in note 9.



The Froglife Trust

*Leaping forward for amphibian
and reptile conservation*

Working together to save the species

