

**FIVEMILETOWN PRIMARY SCHOOL AND
NURSERY UNIT PTFA**



AGM

CHAIR'S REPORT

2021 / 2022



Chair's Report 2021 / 2022



- Expression of thanks
- Our role in enhancing our children's education
- Today's **CHALLENGING** environment for fundraising
- 2021 / 2022 – Key learning and success.



Chair's Report – 2021 / 2022 Objectives

CLEAR
communication on
GOALS, ACTIVITIES
and **PROGRESS**

ALL parents and staff
to feel **INCLUDED** in
PTFA life regardless
of whether they are a
committee member

ENCOURAGE regular
feedback

Ensure all activities
are **TARGETED** and
EFFECTIVE

PTFA RE-STRUCTURE

2021 / 2022



Four Officers



Seven Ordinary / Other Committee Members

School Principal – Mrs Florence Pryce

Staff Liaison / Vice Principal – Mrs Heather

~~Graydon~~
Catering Coordinator

Grants Coordinator

Marketing Coordinator

Sponsorship Coordinator

Volunteer Coordinator

QUESTIONS



TREASURER'S REPORT



TREASURER'S REPORT - INCOME



The opening balance of the PTFA's bank account as at 1st September 2021 was £3454.68



The total money raised through fundraising for the year was £8291.71

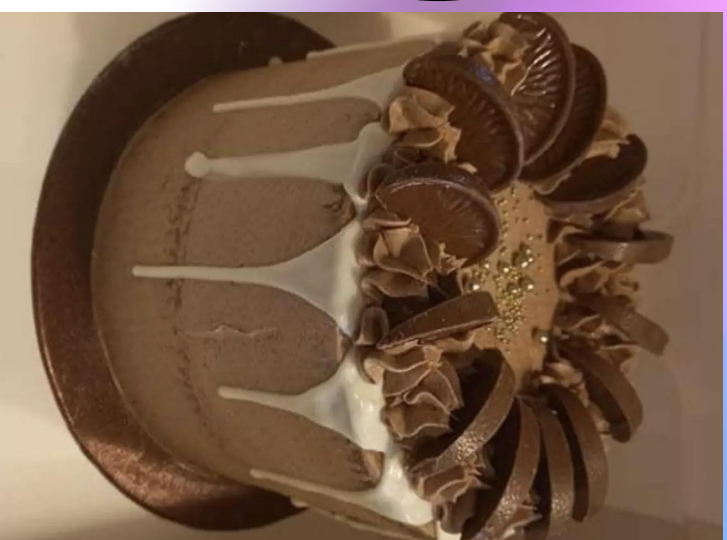


Additionally, Easy fundraising and Bank Interest totalled £116.17

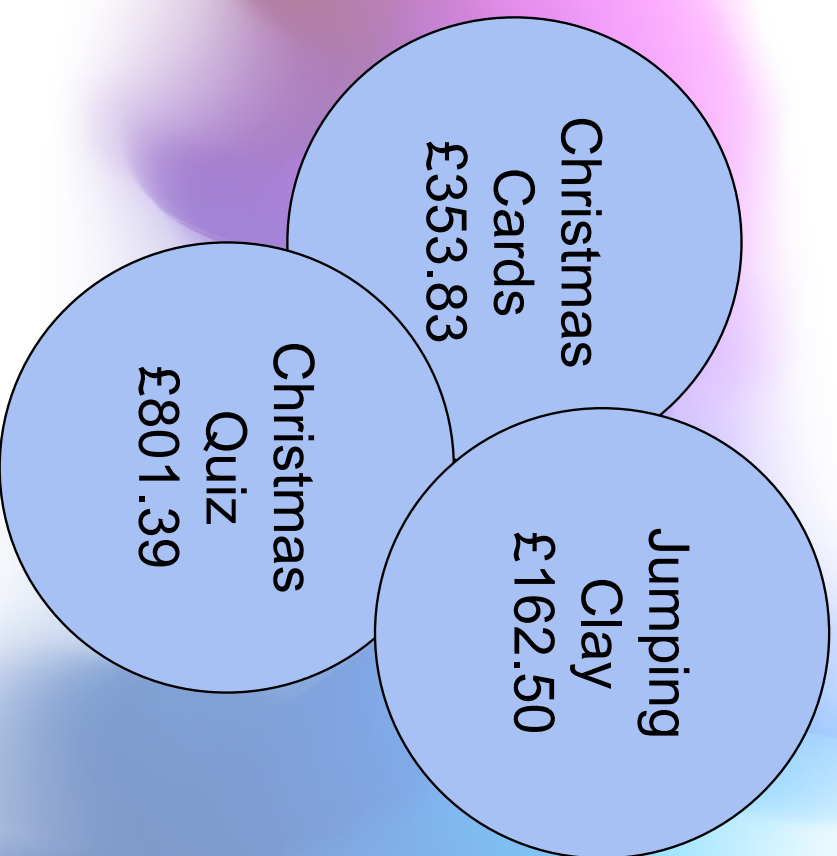
TREASURER'S REPORT CONT..



Cake Sale
£1475.22



TREASURER'S REPORT CONT..



TREASURER'S REPORT CONT..



Log
Storage
Unit
£743.80

Car
Treasure
Hunt
£701.00



TREASURER'S REPORT CONT..

Car Wash
£677.50



TREASURER'S REPORT CONT..



Sports Day
£706.50



TREASURER'S REPORT CONT..

Fun Run
£26669.97



TREASURER'S REPORT – EXPENSES – TOTAL £11,139.24

Mathletics -
£999.00

Accelerated
Reading
Subscription -
£1534.38

Accelerated
Reading
expenses -
£2303.61

P7 Leavers
Event – £286.00

Sports day
medals -
£180.00

Parent Kind
Subscription -
£116.00

Shed -
£1424.12

Purchase of
Books -
£1600.00

Library
Refurbishment -
£2100.00

Bank Fees -
£52.09

Christmas gifts
for all children -
£311.73

General
expenses -
£232.31



TREASURER'S REPORT

CURRENT BANK BALANCE

Opening Balance as
at 1st September
2021
£3017.83



Plus Income as
outlined
£8407.88



Less Expenses as
outlined
(£11,139.24)



Closing Balance
as at 31st August
2022
£286.47

QUESTIONS

