

Sliabh Beagh Arts

Northern Ireland · Charity number 106219

Details

Status	Received
Registered	2017-04-07
Register	View on the Charity Commission for Northern Ireland register

Contact

Address	14 Carnmore Road Corranny Rosslea Enniskillen BT92 7bs BT92 7BS
Phone	02867751989 07547793393
Email	info@sliabhbeagh.org

Activities

Purposes: The Objects / 'Sliabh Beagh Arts' purposes The Charity's objects are to advance education and promote arts and culture, in particular rural community arts, by:- (1) Carrying out research into community arts and to record, document and showcase / develop it in an effort to preserve its unique aspects and so as to further its development and its relevance to the cultural heritage of the sector. (2) Educating people in an effort to encourage awareness and appreciation for community arts in N. Ireland through the presentation of exhibitions performances, lectures, workshops, classes and the provision of resources. (3) Encouraging the people of Sliabh Beagh and any other interested members of the general public to learn and practice all aspects of community arts.

What the charity does: The advancement of the arts, culture, heritage or science

How the charity works: Arts,Community development,Cross-border/cross-community,Cultural

Who the charity helps: Children (5-13 year olds),General public,Men,Older people,Women,Youth (14-25 year olds)

Finances

Period end	Income	Expenditure	Assets	Employees
2025-03-31	£65,112	£52,448	£0	1

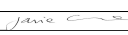
Trustees

Name	Role	Appointed
Anita Conlon		
Janie Crone		
Mr Noel Maguire		

Sliabh Beagh Arts

Northern Ireland - Charity number 106219

Accounts

Receipts And Payment Accounts up to March 31st 2025						
Charity Name:	Sliabh Beagh Arts					
Charity Number	NIC106219					
From:	01-04-2023					
To:	31-03-2025					
		Unrestricted funds	Restricted funds	Endowment funds	Total funds	Last year
RECEIPTS						
<i>Funding Body</i>						
ACNI			53453.27	0	53453.27	46430.38
Fermanagh Trust			750.00		750.00	
Monaghan County Council			6761.8	0	6761.8	0
Fermanagh / Omagh County Council			270.00	0	270.00	0.00
Cavan County Council			1,332.76		1,332.76	
FUNDRAISING/ SERVICE PROVISION / FEES			2,544.38	0	2,544.38	3,643.81
Sub total (Gross income for the Annual Return)			65112.21	0	65112.21	50074.19
Asset and investment sales			0	0	0	0
A2 Sub total			0	0	0	0
Total receipts			65112.21	0	65112.21	50074.19
PAYMENTS						
<i>Expenditure Heading</i>						
Salaries and Pension Costs			26,625.62		26,625.62	25,148.98
Travel and subsidence			300.00		300.00	729.00
Overheads			1000		1000	1789
Exhibitions & performances			997.26		997.26	6,999.26
Course Materials			4,440.53		4,440.53	6,434.60
Bank Fees & Charges			65.61		65.61	101.89
Artist Fees			18,418.05		18,418.05	15,880.00
Publicity			96.24		96.24	406.70
Venue Hire			350.00		350.00	770.00
Refunded eventbrite			155.24		155.24	
Sub total			52,448.55		52,448.55	58,259.43
Asset and investment purchases			0	0	0	0
Sub total			0	0	0	0
Total payments					52,448.55	58,259.43
Net of receipts/payments					12,663.66	-8,185.24
Transfers between funds			0		0	0
Balance Carried Forward					8,029.96	16,215.00
Account Balance 31 March 2024					20,693.62	8,029.76
B) Statements of Assets and Liability up to March 31 2024						
		Unrestricted funds	Restricted funds	Endowment funds	Total funds	Last year
B1 Cash Funds		0	20693.62	0	20693.62	8029.76
B2 Other monetary assets		0	0	0	0	0
B3 Investment Assets		0	0	0	0	0
		Details	Fund to which asset belongs			
B4 Assets retained for the organisations personal use		iMac Pro system	Restricted Funds			
		Audio Monitors	Restricted Funds			
		Media Rack System	Restricted Funds			
		Digital Video Camera	Restricted Funds			
		Macbook Pro	Restricted Funds			
		Lighting Kit	Restricted Funds			
		Gas Kiln	Restricted Funds			
		Electric Kiln	Restricted Funds			
B5 Liabilities		Shadow & Shade Programme ACNI				
Signed		JANIE CRONE	Chairperson			

Sliabh Beagh Arts

Northern Ireland - Charity number 106219

Accounts

Receipts And Payment Accounts up to March 31st 2024						
Charity Name:	Sliabh Beagh Arts					
Charity Number	NIC106219					
From:	01-04-2023					
To:	31-03-2024					
	Unrestricted funds	Restricted funds	Endowment funds	Total funds	Last year	
RECEIPTS						
<i>Funding Body</i>						
ACNI		46430.38	0	46430.38	33355.86	
HALIFAX COMMUNITY FOUNDATION		0	0	0	3530	
FODC		0.00	0	0.00	1,860.00	
FUNDRAISING/ SERVICE PROVISION / FEES		3,643.81	0	3,643.81	288.48	
Refunds		0.00		0.00	486.26	
Sub total (Gross income for the Annual Return)		50074.19	0	50074.19	39520.6	
Asset and investment sales		0	0	0	0	
A2 Sub total		0	0	0	0	
Total receipts			0	50074.19	39520.6	
PAYMENTS						
<i>Expenditure Heading</i>						
Salaries and Pension Costs		25,148.98		25,148.98	28,003.14	
Travel and subsidence		729.00		729.00	1,162.00	
Overheads		1789		1789	2023.33	
Exhibitions & performances		6,999.26		6,999.26	1,698.67	
Course Materials		6,434.60		6,434.60	3,357.08	
Bank Fees & Charges		101.89		101.89	76.79	
Artist Fees		15,880.00		15,880.00	12,531.26	
Publicity		406.70		406.70	183.35	
Venue Hire		770.00		770.00	0.00	
Stationary		0.00		0.00	90.96	
Sub total		58,259.43		58,259.43	49,126.58	
Asset and investment purchases						
Sub total		0	0	0	0	
Total payments		58,259.43		58,259.43	49126.58	
Net of receipts/payments		-8,185.24		-8,185.24	-9,605.98	
Transfers between funds		0		0	0	
Balance Carried Forward		16,215.00			25,821.18	
Account Balance 31 March 2024		8,029.76		8,029.76	16215.2	
B) Statements of Assets and Liability up to March 31 2024						
	Unrestricted funds	Restricted funds	Endowment funds	Total funds	Last year	
B1 Cash Funds	0	8029.76	0		25821.18	
B2 Other monetary assets	0	0	0	0	0	
B3 Investment Assets	0	0	0	0	0	
	Details	Fund to which asset belongs				
B4 Assets retained for the organisations personal use	iMac Pro system	Restricted Funds				
	Audio Monitors	Restricted Funds				
	Media Rack System	Restricted Funds				
	Digital Video Camera	Restricted Funds				
	Macbook Pro	Restricted Funds				
	Lighting Kit	Restricted Funds				
	Gas Kiln	Restricted Funds				
	Electric Kiln	Restricted Funds				
B5 Liabilities	Lasting Light Programme ACNI					
Signed		JANIE CRONE	Chairperson			

Sliabh Beagh Arts

Northern Ireland - Charity number 106219

Annual report

Annual Overview 2024

Sliabh Beagh Arts had a successful year in delivering arts activity to the local rural communities of the Sliabh Beagh Area. We had focused Artist development and explored collaborations with new groups in Co Monaghan and Co Cavan. Through the 'Lasting Light 24' programme we have animated, fostered and promoted considerable contacts and collaboration on a cross community / cross border basis, using Visual Arts, Music, Sculpture, Environmental Arts, Photography, Literature, Digital Media, Ceramics, Performance and Exhibition to facilitate the growth of creativity. We are pushing boundaries, showing people that they can create and experience quality art within the rural environment. The S.B.A programme creates high interest value amongst the rural population providing innovative projects which are designed to inspire and enthuse. Our workshop strands are fun and attract participation from a diverse range of people.

'Lasting Light 24' offered creative vision as its content was an imaginative response to rural life. We engaged with an array of talented local artists who worked collaboratively to ensure our programme was of the highest standard. We continued our Public Artwork programme and outdoor event structure, taking art out of the gallery and into the landscape which created accessibility for all. Our rural initiatives are our greatest tool of engagement and are unique to the Sliabh Beagh Area. The response to our quirky offerings are amazing, increasing cultural tourism and increased community pride. We are improving the health and wellbeing of communities through quality arts engagement, creating the opportunity for social interaction and the development of creative skills.

We have received continuous support from the Arts Council of N.Ireland, The Fermanagh Trust & Monaghan County Council for which we are very grateful. We will continue to nurture the growth of the Arts within the Sliabh Beagh Region, creating opportunities for engagement and providing support to local artists and the wider community.



Aims

- Increase Rural Arts Engagement
- Improve mental health and well being...increased quality of life for rural communities
- Promote the arts through quality community arts activity, engaging with a wide section of the local community , in particular young people and rural men.
- Protect and preserve rural traditions and our distinctive natural environment.
- Encourage integration and acceptance of cultural difference
- Provide employment, training, equipped space and technical support to local artists
- Increase Cultural tourism by creating a unique artistic landscape
- Raise the profile of Sliabh Beagh Arts and the services we provide
- Continue to support and repair after the effects of the Pandemic.

Objectives

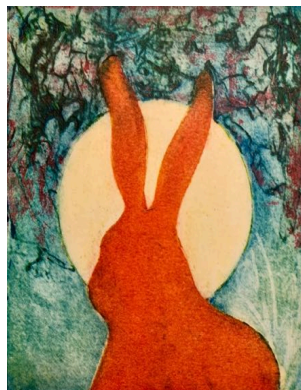
- Create Access to the Arts by delivering a range of outreach arts activity
- Provide opportunities for young people and men to express themselves creatively
- Increase training and employment for local community artists.
- Improve health and well being through arts participation outdoor rural initiatives.
- Promote tolerance and cultural diversity...by bringing communities from various cultural backgrounds together
- Promote the uniqueness of the Sliabh Beagh ecosystem and the need for preservation.
- Produce a comprehensive marketing campaign.



Activity Overview

Printmaking

Printmaker Fionnuala O'Neil facilitated a workshop program in St Mary's Hall Maguiresbridge with two groups and a total of 31 participants. The group focused on Lino and Collagraph printmaking with the introduction of China-collé. There were some fabulous results from the group of first time printers and everyone was inspired and excited about the possibilities of the medium. Printmaking is something that has worked extremely well in the area and is a successful tool in engaging communities in arts practice. Moving forward we hope to develop further printmaking programmes in the Sliabh Beagh Area.



The Arty Acre

Our pilot programme to create a piece of artwork on the surface of a field was challenging as so many conditions needed to be right and as always the rain caused hill farming issues in relation to grass growth and harvest. After a period of experimentation with paint formulas and equipment Artists Kevin McHugh and Kev Largey completed a large-scale Magpie on the surface measuring 70m sq . When all the elements aligned the piece came together and worked wonderfully . The sheer scale of the artwork was impressive, using string to grid out the field and map the image. The process was captured using a drone and a short piece of film has been created documenting the artworks creation.

<https://www.facebook.com/share/v/QQhvfXCWfGERri7J/> We will continue this project into next year and develop it further. An exciting addition to our rural initiatives.



In

Memory of Ash

The local landscape is dramatically changing due to the removal of dead or dying ash trees, some of which are hundreds of years old. Due to Ash Dieback disease these large structures are being taken down and a void exists in their place. Through this funding we began the process of documenting the majestic trees that have fallen. Artist Elaine Agnew produced a series of prints from the stumps to record the tree ring topography. Each ring structure is unique and the patterns themselves are very beautiful and intricate. These rings mark year by year chapters in the life of a living organism. Each tree cookie must be dried, planed, sanded, scorched, wire brushed and cleaned before printing is possible. A time consuming process resulting in very beautiful imagery. Local people have really embraced the project and stories are being gathered about connections and memories people have to the trees that are gone. This is an ongoing project which will continue to archive and inspire.



Thriftwood Sculpture

Artist Charlie Clifford created another epic sculpture from found wood waste and scrap metal. ‘The Fisherman’ sits proudly on Loch Lea in Co Fermanagh adding creative merit to the landscape. It is highly detailed yet its rustic nature fits in beautifully to the landscape without interruption. A team of local volunteers were instrumental in its installation to whom we are very grateful.

<https://www.facebook.com/share/r/vkH6JumG9ga3spO3/>



Lilly Lanterns

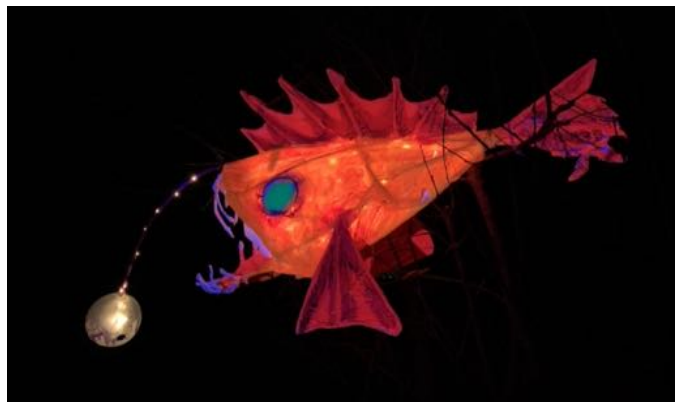
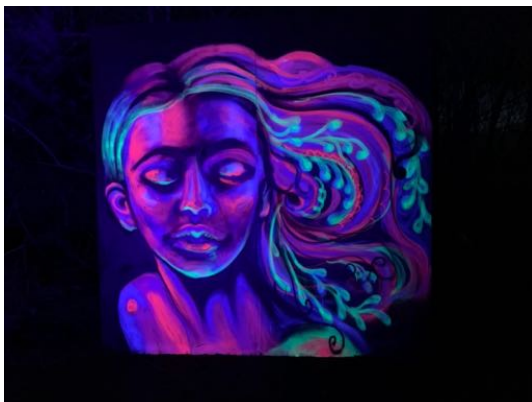
A wonderful community project in which 192 school children from 4 local Primary schools aged 8-11 years created floating lotus lanterns in the weeks prior to our Lakes of Light event. The children were instructed by artists Lisa McCabe and Kevin McHugh, expertly guided through each step of the origami process. Although the children found the folding difficult at first they soon became master folders. Each lantern was then placed on a bed of expanded cork in order to make them more robust for the lake .



U.V Artwork

A series of murals, cellograffs & sculptural fish lanterns were created by Artists Elaine Agnew & Jonny McKerr for display at our lakes of light event on 23rd March 2024

All of the artwork was U.V reactive and thematic of the Spring Equinox and Mother Nature. The large, vibrant pieces looked spectacular when illuminated by blacklight and were a very special addition to our event . The attendees at the event were in awe as darkness fell and the work began to glow.



Glow Stones

Artist Elaine Agnew worked in 3 different locations Newtownbutler, Donagh and Magheravelley to teach the Art of Mandala painting to people aged between 15 and 76 years old. Participants created a range of mandala stones with u.v reactive paint creating over 55 individual stones. A very therapeutic and mindful workshop which brought focus and joy to all the participants.



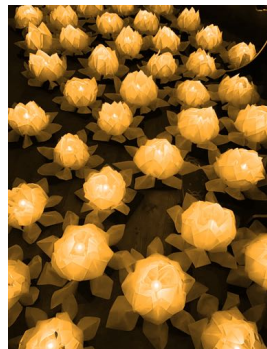
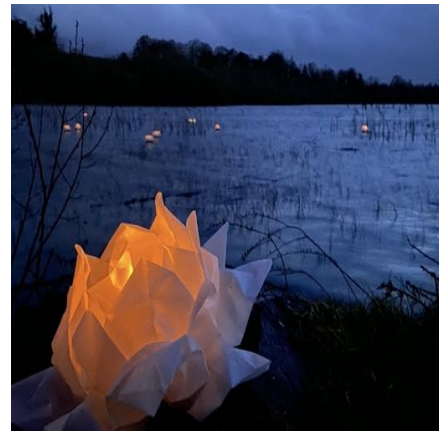
Singing Workshops

Sessions were guided by experienced musician and music practitioner Sinead Connolly, using a wide range of musical material. Songs are taught by ear, by call and response and no one is put on the spot. It offers a moment out of the rush of life and is empowering, uplifting and moving. The goal of the singing circle is to improve rhythm, improvisation, and pitch while also fostering motivation, excitement and self-assurance! The singing circle has provided the opportunity for a wide range of voices to gather and just enjoy the practice of singing together.



Lakes of Light Event

The Lakes of Light event was held on March 23rd at Killyfole lake with 241 people in attendance . A stormy day settled and as dusk fell the crowd made their way to the water's edge , launching 200 lanterns on the lake . The U.V artwork trail illuminated the pathway and the wonderful Tully performed to the crowd. We are so grateful to everyone who braved the weather to join us to celebrate the Spring Equinox. It was a wonderful demonstration of the strong sense of community that exists in the Sliabh Beagh area. A team of legends were once again working behind the scenes to ensure that everyone had an amazing evening. A massive thank you to Killyfole and Magheraveely Men's Shed for all the practical support and all of our volunteers without whom these things would never happen! Artists Kevin Mc Hugh Elaine Agnew Lisa McCabe Jonny McKerr did a fabulous job creating lanterns and U.V Artwork for the evening.



Art Shelters

Over the past 5 years we have created a series of 48 Art Shelters throughout the Sliabh Beagh area, engaging with a range of artists and community members in the process. The little green bus shelters are an integral part of everyday life in the region and are the perfect method of introducing local communities to quality artworks. The response to the work has been immensely positive and it has been a wonderful way to add artistic merit to the local landscape. This year we created 6 new artworks on the shelters engaging with a range of different artists including Elaine Agnew, Alexandra Demine , Jonny McKerr, Kev Largey and Kevin McHugh



The Arty Barge

Over two days the Arty Barge travelled around upper lough Erne delivering workshops to children in African Drumming, Samba, Singing, Botanical Printing and Pottery. The project was a great success and the children involved were engaged and excited about exploring the arts in an outdoor setting. The weather was challenging at times but a total of 74 Children participated over the course of the project ranging from 4- 15 years. . In addition to our public engagement workshops the artists involved had the opportunity to gather and express opinions in relation to local artist development and future community engagement workshops for the Sliabh Beagh Area. The conversations were guided by Arts Consultant Janie Crone. Moving forward we will use the information gathered to develop programmes and opportunities which will nurture the growth of artistic activity within our area.



Raku Pottery

The Raku Pottery programme was facilitated by Lisa McCabe and delivered to 16 people in total. Programme 1 was delivered at an intermediate level for those who had experience with ceramics and programme 2 was for complete beginners with no experience. Each participant made a range of vessels on day one during our make session and on day two the pieces were fired and exposed to a range of combustibles. A gathering of wonderful people who, together, experimented, laughed, encouraged and supported each other throughout the workshops. The process created high energy, nervous excitement and anticipation, resulting in some beautiful and unexpected pieces. A memorable set of workshops that inspired us all !



Graffiti Bales

Artist Kev Largey created another set of quirky character bales on wrapped silage. The Bales always receive positive attention within the community prompting great debate amongst the older generation of farmers. The silage bales are the perfect rural canvas for public artworks bringing quality works into the landscape for all to enjoy. They are also an effective tool in terms of bringing artwork on farms and engaging with local Farmers.



Sliabh Beagh Arts

Northern Ireland - Charity number 106219

Annual return

Martin Carey Insurance
Independent Financial Advisors

87 Main Street, Lisnaskea, Co Fermanagh, BT920JD

Telephone: 02867723700

Fax: 02867723701

Date; 22-04-24

Independent Verification Reports REF; "Sliabh Beagh Arts"

I have Inspected the Financial Statements of;

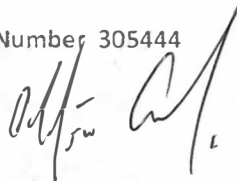
"Sliabh Beagh Arts" for the year Ending 31st March 2024, which comprises the Receipts and Payments Accounts and the Statement of Assets and Liabilities.

I conducted the independent verification that includes examination on a test basis of the evidence relevant to the accounts and disclosures in the financial statements. I planned and performed my verification, so as to obtain all the relevant information and explanations which I consider necessary in order to provide me with sufficient evidence to give reasonable assurance that the financial statements are free from material misstatement whether caused by fraud or other irregularity or error.

In my opinion the financial statement has been properly prepared and give a fair and true view of the Accounts as of 31st March 2024.

Martin Carey

Fca Number 305444



Martin Carey Insurance

87 Main Street
Lisnaskea, BT92 0JD
Tele: 02867723700
Email: martincareyins@aol.com
FSA No: 305444

Sliabh Beagh Arts

Northern Ireland - Charity number 106219

Accounts

Receipts And Payment Accounts up to March 31st 2023						
Charity Name:	Sliabh Beagh Arts					
Charity Number	NIC106219					
From:	01-04-2022					
To:	31-03-2023					
		Unrestricted funds	Restricted funds	Endowment funds	Total funds	Last year
RECEIPTS						
<i>Funding Body</i>						
ACNI		33355.86		0	33355.86	60780.96
HALIFAX COMMUNITY FOUNDATION		3530		0	3530	0
FODC		1,860.00		0	1,860.00	2500
Workshop Provision/ Fee		288.48		0	288.48	1074.67
Refunds		486.26			486.26	0
Sub total (Gross Income for the Annual Return)		39520.6		0	39520.6	64355.63
Asset and investment sales		0		0	0	0
A2 Sub total		0		0	0	0
Total receipts		39520.6		0	39520.6	64355.63
PAYMENTS						
<i>Expenditure Heading</i>						
Salaries and Pension Costs		28,003.14			28,003.14	24,769.60
Travel and subsidence		1,162.00			1,162.00	332.4
Overheads		2023.33			2023.33	1831.75
Exhibitions & performances		1,698.67			1,698.67	1760.87
Course Materials		3,357.08			3,357.08	2,912.73
Bank Fees & Charges		76.79			76.79	85.85
Artist Fees		12,531.26			12,531.26	9,426.35
Publicity		183.35			183.35	206.82
Digital Content Management		0.00			0.00	1500
Stationary		90.96			90.96	0.00
Sub total		49,126.58			49,126.58	42,826.37
Asset and investment purchases						
Sub total		0		0	0	0
Total payments		49,126.58			49,126.58	42,826.37
Net of receipts/(payments)		-9,605.98			-9,605.98	21529.26
Transfers between funds		0			0	0
Balance Carried Forward		25,821.18			25,821.18	4,291.92
Account Balance 31 March 2023		16215.2			16215.2	25821.18
B) Statements of Assets and Liability up to March 31 2022						
		Unrestricted funds	Restricted funds	Endowment funds	Total funds	Last year
B1 Cash Funds		0	25821.18	0	25821.18	4291.92
B2 Other monetary assets		0	0	0	0	0
B3 Investment Assets		0	0	0	0	0
		Details	Fund to which asset belongs			
B4 Assets retained for the organisations personal use		iMac Pro system	Restricted Funds			
		Audio Monitors	Restricted Funds			
		Media Rack System	Restricted Funds			
		Digital Video Camera	Restricted Funds			
		Macbook Pro	Restricted Funds			
		Lighting Kit	Restricted Funds			
		Gas Kiln	Restricted Funds			
		Electric Kiln	Restricted Funds			
B5 Liabilities		Re-Invigor-Art Programme ACNI				
Signed	<i>Janie Crone</i>	JANIE CRONE	Chairperson			

Sliabh Beagh Arts

Northern Ireland - Charity number 106219

Annual report

Overview 2022-2023

The 'Re-Invigor-Art' project was a multi-strand programme of creative activity delivered to the rural communities within the Sliabh Beagh Region. Its aim was to reinvigorate arts activity within the area, sensitively supporting the return to group working practice after the pandemic. A widespread appreciation of how the arts organically supports social interaction and promotes positive mental health and well being has been highlighted by their absence. The 'Re-Invigor-art' project inspired local people to make creative activity a focused part of life again . It has been an extremely difficult few years and people have become somewhat insular as a result. Mental health issues, in particular social anxiety, have crippled many. Our programmes provide the opportunity for arts engagement in a low pressure, joyful environment, promoting mindfulness through creative expression. The 'Re-Invigor-art' programme featured a number of innovative, quirky rural initiatives. Our programme of public art remains an integral part of our activities as they have a tremendous impact on the area. In addition we supported local artists and inspired them to actively engage with community led projects. 'Re-Invigor-Art' reaffirmed connections which had been stifled throughout the pandemic, allowing collaborations to develop naturally once again. A wealth of local artistic talent was utilised throughout the project ensuring quality, collaborative work was produced and that positive experiences were provided at all levels. We are mindful that the process involved and the experiences given to participants are the main focus of our work. The unique nature and joy of Rural Arts was at the heart of the program and promoted and reaffirmed the importance of access to the arts for all regardless of background, ability, belief or location. ' Re-Invigor- Art ' made the arts accessible and available to everyone. We received continuous support from the Arts Council of N.Ireland, The Halifax Foundation N.I & Fermanagh & Omagh District Council for which we are very grateful. We will continue to nurture the growth of the Arts within the Sliabh Beagh Region, creating opportunities for engagement and providing support to local artists and the wider community

Project Aims

- Improve mental health and well being ...increased quality of life for rural communities
- Promote the arts through quality community arts activity, engaging with a wide section of the local community , in particular young people
- Protect and preserve rural traditions and our distinctive natural environment.
- Encourage integration and acceptance of cultural difference
- Provide employment, training, equipped space and technical support to local artists
- Increase Cultural tourism by creating a unique artistic landscape

Creature Feature

Artist Charlie Clifford created a series of pieces in the outdoor realm using features to personify existing natural structures within the landscape. The beautiful natural structures which exist throughout the forests and bogland of Sliabh Beagh are already spectacular. The addition of human features brings the sculptural forms to life creating characters such as 'The Crone', 'Geoffrey' and 'Willie'. During the second strand of the programme we will be working with Artist Elaine Agnew who will take a more painterly approach to the brief, creating characters by personifying man made structures.



During the second strand of the programme Artist Elaine Agnew took a more painterly approach to the brief, creating characters by personifying objects within the landscape, creating interest and enquiry from the passer by.



Art Shelters

Over the past 4 years we have created a series of 41 Art Shelters throughout the Sliabh Beagh area, engaging with a range of artists and community members in the process. The little green bus shelters are an integral part of everyday life in the region and are the perfect method of introducing local communities to quality artworks. The response to the work has been immensely positive and has been a wonderful way to add artistic merit to the local landscape. This year we created 9 new artworks on the shelter engaging with a range of different artists



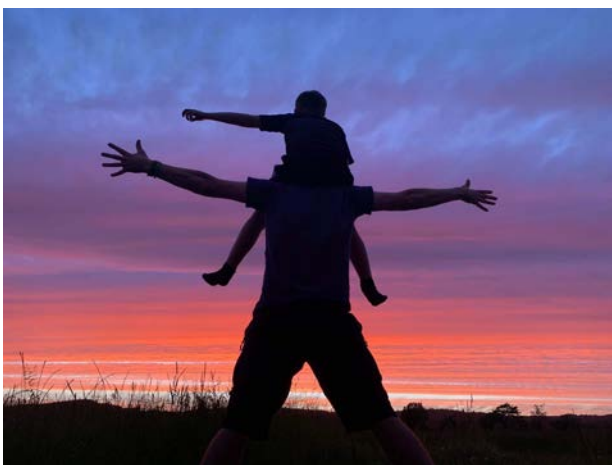
Encaustic Art

The wonderful Niamh O'Connor delivered a series of Encaustic Workshops in Derrygannon Hall. All of the participants achieved some beautiful work and really enjoyed the process of experimenting with the Encaustic waxes. Niamh will be back with us in May to deliver a more advanced session to build on previous skills developed.



Photography

A total of 6 participants worked with photographer Brain McNamee over 5 weeks learning skills in Digital Photography. Participants began by learning the features of their digital cameras and progressed onto a number of practical applications exploring composition, subject matter, colour and tonal. Participants grew in confidence and produced a range of skillful shots. We intend to run an extension of this project in the Summer months to develop skills further with the group.



Coppersmithing

A series of workshops with Matthew and Caron from Lake and Oak were delivered within the Knocks Hall and Donagh Millennium Hall. A fantastic opportunity to learn about coppersmithing which was thoroughly enjoyed by everyone. Participants were taught how to shape, imprint, colour and cut copper to create a series of stylised leaves and organic shapes.



Patchwork Pottery

Ceramicist Lisa McCabe (Corranry Forest Pottery) worked with 42 students from Fivemiletown College & St Kevins College to create a wonderfully detailed piece exploring the theme of Intention. The final sculpture is a tactile, dynamic totem representing the thoughts and feelings of the young people who participated.



Spray It Don't Spray It

Graffiti Artist Kev Largey worked with 7 adults, most of whom are local practising artists, exploring spray painting techniques and applications. The artists involved all undertake mural projects and to date have been using brushes which are slow and labour intensive.. By upskilling them with spraying techniques they can work on a larger scale more productively . All of the artists involved fully embraced the medium and were grateful for the opportunity to learn new skills.



Graffiti Bales

Artist Kev Largey created a series of quirky characters on wrapped silage bales. The Bales always receive positive attention within the community prompting great debate amongst the older generation of farmers. The silage bales are the perfect rural canvas for public artworks bringing quality works into the landscape for all to enjoy.



Mending with Mosaic

Artist Elaine Agnew created a series of mosaics in cracks & potholes throughout the area creating public art which is unexpected and surprising within the landscape. We aim to continue the project on a larger scale throughout the area, tackling the Fermanagh pothole crisis one artwork at a time!



Barn Mural

Artist Kevin Mchugh created a large powerhouse mural depicting the mythical sea serpent of Lough Erne using a powerhouse. The reverse graffiti project creates outdoor artworks in a farm setting encouraging engagement from local farmers



Cyanotype Printing

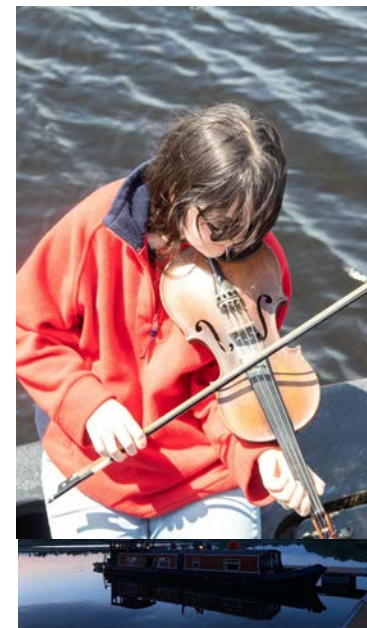
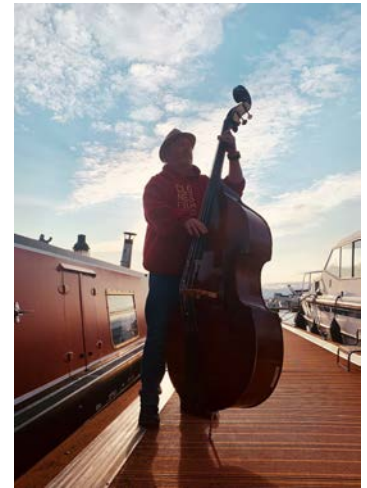
Print Artist Fionnuala McNichol brought the joys of cyanotype printing to the Sliabh Beagh area with a series of workshops in Corranry Studio, St Kevins College, Lisnaskea and Fivemiletown College. Cyanotypes are one of the oldest photographic printing processes in the history of photography. The distinctive feature of the print is its shade of cyan blue, which results from its exposure to ultraviolet light. All of the participants really enjoyed the process and achieved some beautiful results



Drift

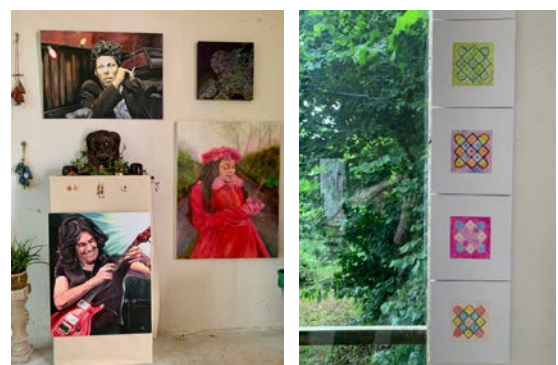
The Drift project was designed to bring together local musicians to “retreat and reconnect with each other after Covid, giving them a chance to compose and play. A creative collaboration which allowed the musicians to make connections, disseminate ideas and inspire each other in a free environment. The group of talented border musicians included composer Rose Connolly, Robert Perry (Dead Can Dance) Rita Perry, artist and performer Annie June Callaghan, Cormac McCann, Stephen O’Dwyer, Patrick McCabe, Jamie Bishop, and Simon O’Reilly. Together they travelled the inland waterways of Lough Erne on a barge named ‘Erne Rambler’, starting off in Galloon, before eventually completing their journey to Belturbet.

“What was really nice was refraining from the songs that everyone already knows, and together having the opportunity to make music that was totally new and inspired in and by the moment,” Robbie explains. “While the boat brought us together, like a womb, and it took us from A-B, coming outside then in a new place, a new space, you don’t make music like that in this fashion very often. So that was really special.” *Robert Perry*



Final Exhibition

The Re-Invigor-Art Exhibition was a photographic review of the past year, celebrating rural arts within the Sliabh Beagh Area. A collection of original works by the S.B.A facilitators in addition to a range of project outcomes were on display in the bespoke setting off Corranry studio & forest, creating an immersive experience for all involved. Participants from throughout the various programme strands gathered to celebrate their achievements and view their work which created a sense of pride amongst the creators. Music was provided by the 'Drift' Collective and Tully creating a wonderfully joyous atmosphere for all.



Sliabh Beagh Arts

Northern Ireland - Charity number 106219

Annual return

Martin Carey Insurance
Independent Financial Advisors

87 Main Street, Lisnaskea, Co Fermanagh, BT920JD

Telephone: 02867723700

Fax: 02867723701

Date; 26-04-23

Independent Verification Reports REF; "Sliabh Beagh Arts"

I have Inspected the Financial Statements of;

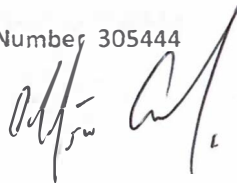
"Sliabh Beagh Arts" for the year Ending 31st March 2023, which comprises the Receipts and Payments Accounts and the Statement of Assets and Liabilities.

I conducted the independent verification that includes examination. on a test basis of the evidence relevant to the accounts and disclosures in the financial statements. I planned and performed my verification, so as to obtain all the relevant information and explanations which I consider necessary in order to provide me with sufficient evidence to give reasonable assurance that the financial statements are free from material misstatement whether caused by fraud or other irregularity or error.

In my opinion the financial statement has been properly prepared and give a fair and true view of the Accounts as of 31st March 2023.

Martin Carey

Fca Number 305444



Martin Carey Insurance

87 Main Street
Lisnaskea, BT92 0JD
Tele: 02867723700

Email: martincareyins@aol.com
FSA No: 305444