

# Tartaraghan Presbyterian Church Congregation of the Presbyterian Church in Ireland

Northern Ireland · Charity number 104792

## Details

---

Status Received

Registered 2016-08-08

Register [View on the Charity Commission for Northern Ireland register](#)

## Contact

---

Address 11 Cloncarrish Road  
Portadown  
Craigavon  
County Armagh  
BT62 1rn  
BT62 1RN

Phone 028 38851756

Website [www.tartaraghan.org](http://www.tartaraghan.org)

## Activities

---

**Purposes:** THE PRESBYTERIAN CHURCH IN IRELAND, as a Reformed Church within the wider body of Christ is grounded in the Scriptures, and exists to love and honour God through faith in His Son and by the power of His Spirit, and to enable her members to play their part in fulfilling God's mission to our world

**What the charity does:** The advancement of religion

**How the charity works:** Religious activities

**Who the charity helps:** General public

## Finances

---

Period end	Income	Expenditure	Assets	Employees
2025-12-31	£244,199	£103,838	£0	2
2024-12-31	£175,704	£99,478	£0	2

## Trustees

---

Name	Role	Appointed
Mr Leslie Brush		
Mr Mark Wilson		
Mr Neil Cornett		
Mr Norman Cornett		
Mr Philip Mcmenemy		
Mr Stephen Mcombe		
Rev Andrew Martin		

---

**Tartaraghan Presbyterian Church Congregation of the Presbyterian Church in Ireland**

Northern Ireland - Charity number 104792

---

# Accounts

---



# Tartaraghan Presbyterian Church

## Financial Report 2025

Registered With NICC, Charity No. 104792

**TARTARAGHAN CONGREGATION OF THE PRESBYTERIAN CHURCH IN  
IRELAND**

**Trustees Annual Report and Financial Statements  
for the year ended 31 December 2025**

**Registered Charity in Northern Ireland (NIC104792)**

**TARTARAGHAN CONGREGATION OF THE PRESBYTERIAN CHURCH IN IRELAND  
TRUSTEES ANNUAL REPORT**

The Trustees present their Annual Report and Financial Statements for the year ended 31 December 2025 including a Statement of Assets and Liabilities as at that date.

**REFERENCE AND ADMINISTRATIVE DETAILS**

Tartaraghan congregation of the Presbyterian Church in Ireland  
28 Cloncarrish Road, Portadown, Co Armagh, BT62 1RN  
Registered Charity in Northern Ireland (NIC104792)

**CHARITY TRUSTEES**

The Charity Trustees who served during the year or who were trustees at the date of this report were

Leslie Brush  
Neil Cornett  
Norman Cornett  
Andrew Martin

Stephen McCombe  
Philip McMenemy  
Mark Wilson

**PRINCIPAL OFFICE BEARERS**

Minister  
Clerk of Session  
Treasurer

Rev Andrew Martin  
Norman Cornett  
Andrew Cornett

**INDEPENDENT EXAMINER**

GDP Accountants  
122A Moore Street, Aughnacloy, County Tyrone, BT69 6AA

**BANKERS**

Danske Bank, 45-48 High Street, Portadown  
Ulster Bank, 20 High Street, Portadown

**SOLICITORS**

**T D Gibson & Co**

Morrison House, 107 Church Street, Portadown, County Armagh BT62 3DB

## **STRUCTURE AND MANAGEMENT**

### **The Kirk Session**

The charity trustees of the congregation are the members of its Kirk Session. Under the congregation's governing document, The Code, the book of the constitution and government of the Presbyterian Church in Ireland, the Kirk Session seeks to watch over and promote the spiritual interest of the congregation and of persons not connected with any congregation who are within its bounds. It ensures pastoral care is in place in the congregation and seeks to further the contribution of the Church to Christian witness and service in the local community. The Kirk Sessions has delegated to its Congregational Committee the temporal affairs of the congregation including administering all funds and property belonging to the congregation. Members of the Kirk Session are ex-officio members of the Congregational Committee.

The Kirk Session consists of the ordained minister and the ruling elders of the congregations. All members are entitled to propose, speak and exercise equal votes at meetings, except that the Moderator, the ministers in active duty in the congregation, has no deliberative but only a casting vote.

Stated meetings of the Kirk session are held a number of times each year or as appropriate.

To be chosen for the office of the eldership in the congregation a person must be a voting member and a regular attendant on its ordinances. The selection of those proposed to be called to the office can be either by the congregation or by the Kirk Session. Members are elected if they obtain two-thirds of those who vote.

### **Presbytery**

Under the Presbyterian Church in Ireland form of governance the corporate oversight of a congregation is the responsibility of a Presbytery which superintends generally the spiritual and temporal affairs of the congregations assigned to it by the General Assembly of the Presbyterian Church in Ireland. Tartaraghan congregation of the Presbyterian Church has been assigned to the Armagh Presbytery of the Presbyterian Church in Ireland. The membership of the Presbytery consists mainly of the active ministers of congregations assigned to it by the General Assembly, ministers who have retired from active duty and an elder appointed by the Kirk Session of the congregation.

## **The General Assembly**

The General Assembly is the supreme court of the Church, representing in one body the whole Church and acting as its supreme legislative, administration and judicial authority, in dealing with all matters brought before it. The General Assembly is normally constituted during the first week in June for worship and to conduct its business. At the end of business, it is dissolved. The membership of the General Assembly consists mainly of the active ministers of each congregation, retired ministers and a representative elder appointed by the Kirk Session of each congregation.

## **DESCRIPTION AND PURPOSE**

The charitable purpose of the congregation is the advancement of religion.

Tartaraghan congregation of the Presbyterian Church is a congregation of the Presbyterian Church in Ireland. The Presbyterian Church in Ireland, as a Reformed Church within the wider body of Christ is grounded in the Scriptures, and exists to love and honour God through faith in His Son and by the power of His Spirit, and to enable her members to play their part in fulfilling God's mission to our world.

The congregation's mission purpose is by the grace of God, to help people of all ages become fully devoted followers of Jesus Christ. Our vision is, by the grace of God, to be an inclusive, welcoming community of Christ's people of all ages, which:

- is increasingly characterised by love for God, and love and concern for others;
- is committed to the historic Christian gospel as revealed in the Bible;
- is relevant to people of this time and place.

The congregation aims to live out its Mission and Vision as a family of God's people by being:

- A Covenant Community: where our relationships are rooted in the promises of God by living faithfully toward him and toward one another
- An Intergenerational Community: where adults intentionally take the lead to engage with, encourage and nurture younger members to maturity in Christ.
- An Outward looking Community: where we want the blessings of God that belong to us in the gospel to become blessings for others beyond the bounds of our community.
- As a congregation of the Presbyterian Church in Ireland, we believe that the Bible is the supreme authority over all we do, and that the Westminster Confession of Faith, along with the Larger and Shorter Catechisms set out what we understand the Bible teaches on key matters of Christian faith and practice

### **ACTIVITIES AND OBJECTIVES**

The congregation meets for worship every Sunday and visitors are welcome to join. Children's Church and Crèche run concurrently. The Sacrament of the Lords Supper is observed on several occasions during the year and all those who have been baptised and who have made a profession of faith in the Lord Jesus Christ are admitted to the Lord's Supper. The congregation holds regular bible study meetings and has a wide range of organisations including

- Sunday School
- Bible Classes
- Women's Keep Fit
- Women's Bible Study
- Girls' Brigade
- Men's Group
- Women's Group
- Youth Club
- Youth Fellowship
- Mothers and Toddlers Group
- Discipleship Groups (3)
- Senior Fellowship Group
- Family@4
- Holiday Bible Club
- Men@10.30

### **ACHIEVEMENTS AND PERFORMANCE**

#### **Worship and prayer**

The congregation normally meets for worship each Sunday at 10.30am and monthly (September to June) at 6.30pm. During the week the Discipleship Groups provide an opportunity for members to meet together for fellowship, to study the scriptures and for a time of prayer. Prayer meetings are also held on Sunday mornings before worship.

At 31 December 2025 there were 107 communicant members and 153 families connected with the congregation. Average attendance at morning services was 170. Average at monthly evening services was 118.

**Pastoral care** - Members of the congregation who are unable to attend church due to sickness or age are visited on a regular basis by the minister, elders or by either of the two Pastoral & Community Outreach Workers. CD and DVD recordings of services are produced and made available to those who are unable to attend in person or access online.

### **Mission and outreach**

At a local level the congregation have been effective in connecting with the surrounding community through the different organisations, catering for all age groups.

There is also adult evangelism through personal friendships, literature distribution, and evangelistic services/meetings.

Involvement in overseas Mission has been developing, and this was enhanced by our congregational connection with Awake Ministries working in northern Portugal; the Loney family (Acre) working in southern Portugal. Also locally, the Charis Youth Club, Dungannon.

The congregation supports the United Appeal for Mission which is a central fund of the Presbyterian Church in Ireland. This fund enables congregations to support the wider mission of the denomination and to do mission and outreach on a denominational basis beyond what the congregation could do on its own. The United Appeal Fund provides financial support for mission personnel at home and overseas, assists congregations with the deployment of locally based staff, enables church planting, provides grant support for the upkeep of church premises, assist with the running costs of Union Theological College, the Church's training college for ministry students, and financially supports congregation in the areas of worship, discipleship, global mission, outreach, leadership and pastoral care.

The congregation also contributes to the denomination's special appeals.

### **Presbytery**

The congregation is represented at the regular meetings of Presbytery by our minister and / or one of the elders. This provides an important link between the congregations and the wider structures of the church.

### **General Assembly**

The minister and one of our elders are nominated to attend the meeting of the General Assembly of the Presbyterian Church in Ireland held in Assembly Buildings, Belfast, in June.

### **Property**

During the year there has been ongoing repair and maintenance of property and grounds.

There were no major repair or refurbishment projects in 2025.

## Organisations

Sunday School – Meet each Sunday 9.30 – 10.20am, September to June. Sunday School plays a vital role in the life of our congregation. Our aim is to introduce children to Jesus and to teach them what it means to be a Christian; through Bible based lessons, songs, memory verses, worksheets and other activities all within a safe and relaxed environment. There are three classes and we welcome all children between 4 and 12 years of age. Average attendance: 62

Bible Classes – Are a follow-on from Sunday School and meet each Sunday 9.30 – 10.20am, prior to the morning service. Average attendance: 18

Family @ 4 - Meet 4 – 6pm, first Sunday of each month (October to May) and is for the whole family whether children are toddlers or teenagers. Activities include messy crafts, bible stories and an evening meal. Average attendance: 70

Women's Keep Fit – Meet Monday evenings 7.30 – 8.30pm. Set up to encourage women from the congregation and the local area to meet together and socialise while improving their physical well-being.

Women's Bible Study - Meet on alternate Tuesday mornings, 10.15 – 11.15am, September to June, to study God's Word in an informal setting. For all ages. Average attendance: 16

Girls' Brigade – Meet 6.30 – 9.30pm on Tuesday evenings in the church hall, September – March. There are four groups: Explorers, Juniors, Seniors and Brigaders. Our aim is to help girls to become followers of the Lord Jesus Christ, and through self-control, reverence and a sense of responsibility, to find true enrichment of life. Average attendance: 105

Youth Club – Meet on Friday evenings 8.00 – 10.00pm, September – June and is for the age range P7 and older offering a fun and safe place for young people to meet. There are plenty of games and sports to try like pool, table tennis, football and dodgeball or a chance to relax in the coffee bar and chat with friends. Each evening there is opportunity to hear a bible or gospel message. Average attendance: 30

Youth Fellowship - is all about young people meeting together to learn more about Jesus. It's a great opportunity to study God's word in an informal setting with friends and to have a chance to chat over issues facing them. There are also times of fun, food and fellowship at the meetings as well as an annual weekend away. Meet fortnightly on Sunday evenings at 7.00pm, jointly with youth from Loughgall Presbyterian Church. Average attendance: 16

Mothers and Toddlers Group – Meet each Wednesday, 10.00 – 11.45am. The children enjoy themselves with various toys, games and crafts in a safe environment while carers have fellowship and a chat over a cup of tea/coffee. Average attendance: 16 children + carers

Discipleship Groups – are small groups who meet together regularly to learn more about the bible, grow in their faith and also become better disciples of Jesus. Meet in homes and in church hall. There are presently three groups, one meeting on Tuesday evening and the other two meeting on Wednesday, all at 8.00pm. Overall average attendance: 25

Men's Group (Ir'n Men) – For men of all ages. Meets second Wednesday of each month at 8.00pm, September – May. Each meeting usually consists of a praise time, ice breakers, games, personal testimonies, food and teaching from God's word. Particular emphasis is placed on what how God's word relates to men and how this can be applied to everyday life. Average attendance: 18

Women's Group (PW) – Meet second Thursday of each month at 8.00pm for a time of fellowship, encouragement and discipleship; seeking different fun and exciting ways of reaching women for Christ. In addition to this, various missions at home and overseas are supported. Average attendance: 30

Senior Fellowship Group - meet on a monthly basis on the third Thursday of each month at 2.30pm. The aim is to meet for fellowship, have a chat and cup of tea and also hear something of how God is working in people's lives. The programme each month is varied with interesting Christian speakers from different walks of life. The group also have an outing twice a year. Attendance: 19

Bible Club - An annual event held at the end of June, over three nights. Attendance: 90

Men@10.30 - A time of friendship and fellowship at 10:30am each Monday in the Church Hall. These informal drop in sessions are an opportunity to meet up and enjoy board games, darts, craft, bowls, table tennis and other activities along with a short Bible Slot. Refreshments are available. Open to men of all ages. Average attendance: 19

## **Volunteers**

The Trustees wish to acknowledge their deep appreciation of those who give freely of their time by serving on committees and helping with organisations and other church activities. Our organisations involve around 40 leaders/teachers, not counting others who help with Crèche, Children's Church and the annual Bible Club.

## **PUBLIC BENEFIT STATEMENT**

The Presbyterian Church in Ireland meets the public benefit requirement by providing benefit to its members and the general public by making known the Christian Gospel of the Lord Jesus Christ through the advancement of religion.

The direct benefits which flow from the purposes of the Church include the gaining of an understanding in Christian beliefs as set out in the Bible and in the Church's subordinate standards (the Westminster Confession of Faith and the Shorter and Larger Catechisms) leading to spiritual and moral development and opportunities for response to Bible teaching. In turn, this framework leads to practical expressions of Christian beliefs and standards in the local community such as through the care of those in need (including the sick, disabled and bereaved).

Generally the above benefits are delivered locally by congregations and their members, or are facilitated through presbyteries or are organised and delivered centrally. Local delivery is facilitated by central resources in almost all cases. Public access is made known through the use of noticeboards, printed material, press advertisement, websites, and social media or in other ways.

The benefits are demonstrated through regular evaluation of the services and informal and ad-hoc feedback from members, their families, and members of the public.

The purpose does not lead to harm. The only private benefit flowing from our purpose is related to Ministers, Missionaries, Deaconesses, Irish Mission workers and Lay Agents who receive benefits as a result of their holding office or employment. However, this is incidental and necessary in order to further our charitable purpose. There are no other private benefits. The beneficiaries of this purpose are members, their families, other individuals that the Presbyterian Church in Ireland is in direct and indirect contact with, the community in which pastoral services are provided and other communities throughout Northern Ireland, the Republic of Ireland, and worldwide which benefit from our engagement with and support for both Christian and other secular organisations, charities and individual members of the public. The Kirk Session has had regard to the Charity Commission's Public benefit requirement statutory guidance.

## FINANCIAL REVIEW

The congregation's main source of income is members' contributions through the Weekly Freewill Offering. There were 95 contributors during the year donating a total of £165,987 (£126,510 in previous year, 2024)

Total Income of the congregation during the year was £244,199, compared to £175,704 in the previous year, 2024. Total expenditure increased from £99,478 to £103,838.


## STATEMENT OF TRUSTEE RESPONSIBILITIES

The Trustees are responsible for preparing the annual report and the financial statements of the congregation in accordance with applicable law and generally accepted accounting practice.

As the congregation's total income does not exceed £250,000, the Trustees have elected under Section 64(3) of the Charities Act (Northern Ireland) 208 to prepare a receipts and payment account and a statement of assets and liabilities.

The Trustees are responsible for keeping adequate accounting records that are sufficient to show and explain the congregation's transactions and disclose with reasonable accuracy at any time its financial position. They are also responsible for safeguarding the assets of the congregation and hence for taking reasonable steps for the prevention and detection of fraud and other irregularities.

Approved by the Kirk Session at a meeting on 25<sup>th</sup> May 2026 and signed on its behalf by



Norman Cornett

25<sup>th</sup> May 2026



Rev Andrew Martin

25<sup>th</sup> May 2026

**Charity No: NIC 104792**

**Tartaraghan Congregation  
of the  
Presbyterian Church in Ireland**

**Trustee Report  
and  
Receipts and Payments Account  
for the year ended 31 December 2025**

**Tartaraghan Congregation of the Presbyterian Church in Ireland**

**Independent Examiner's Report to the Charity Trustees of  
Tartaraghan Congregation of the Presbyterian Church in Ireland**

I report on the accounts of the Charity for the year ended 31 December 2025.

**Respective responsibilities of charity trustees and examiner:**

As the charity's trustees you are responsible for the preparation of the accounts in accordance with the Charities Act (Northern Ireland) 2008.

It is my responsibility to:

- examine the accounts under section 65 of the Charities Act, to follow the procedures laid down in the general directions given by the Commission under section 65(9)(b) of the Charities Act,
- Charities Act,
- to state whether particular matters have come to my attention.

**Basis of independent examiner's report:**

I have examined your charity accounts as required under section 65 of the Charities Act and my examination was carried out in accordance with the general directions given by the Charity Commission for Northern Ireland under section 65(9)(b) of the Charities Act.


My examination included a review of the accounting records kept by the charity and a comparison of the accounts presented with those records. It also included consideration of any unusual items or disclosures in the accounts, and seeking explanations from you as charity trustees concerning any such matters.

My role is to state whether any material matters have come to my attention giving me cause to believe:

- 1 That accounting records were not kept in accordance with section 63 of the Charities Act.
- 2 That the accounts do not accord with those accounting records.
- 3 That the accounts do not comply with the accounting requirements of the Charities Act.
- 4 That there is further information needed for a proper understanding of the accounts to be reached.

**Independent examiner's statement**

I have completed my examination and have no concerns in respect of the matters (1) to (4) listed above and, in connection with following the directions of the Charity Commission for Northern Ireland, I have found no matters that require drawing to your attention.

  
\_\_\_\_\_  
Graeme Parr FCCA CTA  
GDP Accountants Ltd  
122A Moore Street  
Aughnacloy  
Co Tyrone  
BT69 6AA

25/05/2026  
Date

**Tartaraghan Congregation of the Presbyterian Church in Ireland**

**Statement of Financial Activity (Receipts and Payments Account) for the Year Ended 31 December 2025**

	Note	Unrestricted Funds £	Restricted Funds £	Endowment Funds £	Total 2025 £	Total 2024 £
<b>Receipts</b>						
Donations & Legacies	2	87,884	127,799	-	215,683	157,647
Charitable Activities	3	551	10,139	-	10,690	12,214
Other trading activities	4	800	-	-	800	800
Investment income	5	4,391	10,152	-	14,543	3,541
Other income	6	1,053	1,430	-	2,483	1,502
<b>Total Receipts</b>		<b>94,679</b>	<b>149,520</b>	<b>-</b>	<b>244,199</b>	<b>175,704</b>
<b>Payments</b>						
Raising Funds	7	-	-	-	-	562
Charitable Activities	8	73,691	30,147	-	103,838	98,916
<b>Total Payments</b>		<b>73,691</b>	<b>30,147</b>	<b>-</b>	<b>103,838</b>	<b>99,478</b>
Net Receipts / Payments		20,988	119,373	-	140,361	76,226
Transfers net		100	(100)	-	-	-
Net movement in funds		21,088	119,273	-	140,361	76,226
Funds brought forward 1 January		142,963	413,273	-	556,236	480,010
Deduct non cash/bank related Endowment Funds		-	-	-	-	-
Funds carried forward 31 December	9	164,051	532,546	-	696,597	556,236

Tartaraghan Congregation of the Presbyterian Church in Ireland

Statement of Assets and Liabilities as at 31 December 2025

	Unrestricted Funds £	Restricted Funds £	Endowment Funds £	Total 2025 £	Total 2024 £
<b>Funds Reconciliation</b>					
Bank and cash at start of year	142,963	413,273	-	556,236	480,010
Net movement in funds	21,088	119,273	-	140,361	76,226
Bank & cash at end of year	164,051	532,546	-	696,597	556,236

**Bank & Cash Balances**

Bank Current Accounts & Cash				696,597	556,236
Total				696,597	556,236

**Memorandum Note Only**

**Fixed Assets**


Assets retained for the Church's own use comprise the following properties and are stated at own valuations or at insured values.

Church Buildings and Contents				1,270,887	1,270,887
Church Hall and Contents				1,063,686	1,063,686
Manse at Cloncarrish Road, Portadown				137,194	137,194
Outbuildings				77,225	77,225
Agricultural Land at valuation				72,000	72,000
Agricultural Land Acquired				20,000	20,000
				2,640,992	2,640,992

**General Investments**

				9,270	9,686
--	--	--	--	-------	-------

Approved by trustees on 25/05/2026 and signed on its behalf by:



Trustee - Clerk of Session  
Mr Norman Cornett

Date: 25/05/2026



Trustee - Minister  
Rev. Andrew Martin

Date: 25/05/2026

**Tartaraghan Congregation of the Presbyterian Church in Ireland**

**Notes to the Accounts - Year Ended 31 December 2025**

**1. ACCOUNTING POLICIES**

**BASIS OF FINANCIAL STATEMENTS**

As the total income of the congregation is less than £250,000 the congregation have elected in accordance with the provisions in The Charities (Accounts and Reports Regulations (Northern Ireland) 2015 to prepare its accounts on a receipts and payments basis.

**FUND ACCOUNTING**

Endowment funds are funds, the capital of which must be retained either permanently or at the congregation's discretion; the income derived from the endowment is to be used either as restricted or unrestricted income funds depending upon the purpose for which the endowment was established in the first place.

Restricted funds comprise (a) income from endowments which is to be expended only on the restricted purposes intended by the donor and (b) revenue donations or grants for a specific congregational activity intended by the donor. Where these funds have unspent balances, interest on their pooled investment is apportioned to the individual funds on an average balance basis.

Unrestricted funds are income funds which are to be spent on the congregation's general purposes.

Designated funds are general funds set aside by the congregation for use in the future.

**RECEIPTS**

**2. DONATIONS & LEGACIES**

	Unrestricted Funds £	Restricted Funds £	Endowment Funds £	Total 2025 £
Loose collections	5,084	1,504	-	6,588
Donations & gifts	67,854	113,044	-	180,898
Gift Aid	14,946	13,251	-	28,197
Legacies & bequests	-	-	-	-
	<u>87,884</u>	<u>127,799</u>	<u>-</u>	<u>215,683</u>

**3. CHARITABLE ACTIVITIES**

	Unrestricted Funds £	Restricted Funds £	Endowment Funds £	Total 2025 £
Income from charitable activities & fundraising	551	6,737	-	7,288
Membership Fees	-	-	-	-
Grants	-	3,402	-	3,402
	<u>551</u>	<u>10,139</u>	<u>-</u>	<u>10,690</u>

**4. OTHER TRADING ACTIVITIES**

	Unrestricted Funds £	Restricted Funds £	Endowment Funds £	Total 2025 £
Other Activities	800	-	-	800
	<u>800</u>	<u>-</u>	<u>-</u>	<u>800</u>

Tartaraghan Congregation of the Presbyterian Church in Ireland

Notes to the Accounts - Year Ended 31 December 2025

5. INVESTMENT INCOME

	Unrestricted Funds £	Restricted Funds £	Endowment Funds £	Total 2025 £
Interest on Bequests	96	-	-	96
Bank Interest	4295	10,152	-	14,447
	<u>4,391</u>	<u>10,152</u>	<u>-</u>	<u>14,543</u>

6. OTHER INCOME

	Unrestricted Funds £	Restricted Funds £	Endowment Funds £	Total 2025 £
Wedding, Grave & Funeral Donations	390	1,430	-	1,820
Other - Loughgall Contributions	663	-	-	663
	<u>1,053</u>	<u>1,430</u>	<u>-</u>	<u>2,483</u>

PAYMENTS

7. RAISING FUNDS

	Unrestricted Funds £	Restricted Funds £	Endowment Funds £	Total 2025 £
Church Envelopes	-	-	-	-
	<u>-</u>	<u>-</u>	<u>-</u>	<u>-</u>

8. CHARITABLE ACTIVITIES

	Unrestricted Funds £	Restricted Funds £	Endowment Funds £	Total 2025 £
General Assembly	10,791	-	-	10,791
Presbytery Fees	497	-	-	497
Ministry & Support Staff	38,314	-	-	38,314
Running Costs	20,398	10,542	-	30,940
Donations to Missions/Charities	-	19,605	-	19,605
Governance costs	3,691	-	-	3,691
	<u>73,691</u>	<u>30,147</u>	<u>-</u>	<u>103,838</u>

Tartaraghan Congregation of the Presbyterian Church in Ireland

Notes to the Accounts - Year Ended 31 December 2025

9. FUND BALANCES

	Balance at start £	Receipts £	Payments £	Surplus/ (Deficit) £	Transfers nett £	Balance at end £
<b>Unrestricted Funds</b>						
General	17,560	90,434	73,691	16,743	100	34,403
General - Danske- Easy Savings Account	40,403	560	-	560	-	40,963
General - Danske - 1 Year Fixed Term Deposit	85,000	3,685	-	3,685	-	88,685
	<u>142,963</u>	<u>94,679</u>	<u>73,691</u>	<u>20,988</u>	<u>100</u>	<u>164,051</u>
<b>Restricted Funds</b>						
United Appeal	-	5,536	5,820	(284)	1,161	877
Mission	1,161	8,313	8,228	85	(1,161)	85
Presbyterian Orphan Society	592	840	-	840	-	1,432
Special Collections - Lemos	-	749	749	-	-	-
Special Collections - Sasko	80	1,462	1,462	-	-	80
Catering Current Account	757	354	16	338	(138)	957
Donations Savings Account	9,538	136	-	136	-	9,674
Building and repair Account	30,322	110,204	2,154	108,050	(83,297)	55,075
Church Manse Current Account No 1	2,805	32	-	32	-	2,837
Church Manse Current Account No 2	2,464	28	-	28	-	2,492
Friendship Group	60	-	-	-	-	60
PWA Current Account	1,689	1,196	1,676	(480)	-	1,209
Youth Fellowship	976	-	60	(60)	-	916
Girls Brigade Current Account	13,433	9,079	7,826	1,253	(750)	13,936
Girls Brigade Savings Account	2,147	32	-	32	-	2,179
Youth Club	1,092	1,202	1,608	(406)	(100)	586
Family@Four	157	314	378	(64)	-	93
Ir'n Men	-	622	170	452	-	452
Building - Danske - 2 Year Fixed Term Deposit	130,000	-	-	-	-	130,000
Building - Danske - 6 Month Fixed Term Deposit	106,000	3,606	-	3,606	-	109,606
Catering - 1 Year Fixed Money Desk Deposit	110,000	4,862	-	4,862	138	115,000
Danske Bank - Fixed Term Deposit	-	-	-	-	85,000	85,000
Danske Bank - Fixed Term Deposit	-	953	-	953	(953)	-
	<u>413,273</u>	<u>149,520</u>	<u>30,147</u>	<u>119,373</u>	<u>(100)</u>	<u>532,546</u>
<b>Total Funds</b>	<u>556,236</u>	<u>244,199</u>	<u>103,838</u>	<u>140,361</u>	<u>-</u>	<u>696,597</u>

Envelope Number	WFO	Building & Repair Fund	United Appeal, Missions & Harvest Collections	Presbyterian Children's Society
1	430.00	-	-	-
2	-	-	-	-
3	-	-	-	-
4	110.00	-	-	-
5	-	-	-	-
6	-	-	-	-
7	530.00	650.00	570.00	70.00
8	-	-	-	-
9	400.00	-	-	-
10	1,480.00	3,600.00	-	-
11	270.00	12.00	22.00	-
12	625.00	40.00	40.00	20.00
13	-	-	-	-
14	305.00	300.00	130.00	20.00
15	480.00	440.00	140.00	20.00
16	210.00	100.00	-	-
17	255.00	180.00	75.00	10.00
18	36.00	480.00	20.00	-
19	2,040.00	4,000.00	1,200.00	-
20	2,250.00	8,260.00	520.00	-
21	2,020.00	1,480.00	250.00	-
22	502.00	140.00	-	-
23	695.00	1,160.00	370.00	20.00
24	-	535.00	-	-
25	720.00	410.00	60.00	-
26	-	-	-	-
27	-	-	-	-
28	1,135.00	1,440.00	400.00	40.00
29	260.00	130.00	73.00	20.00
30	1,250.00	1,510.00	90.00	20.00
31	520.00	220.00	110.00	20.00
32	357.00	85.00	5.00	-
33	385.00	-	20.00	20.00
34	54.50	-	10.00	-
35	105.00	-	-	-
36	180.00	-	-	-
37	600.00	140.00	20.00	-
38	-	-	-	-
39	-	-	-	-
40	10.00	40.00	-	-
41	157.00	24.00	29.00	5.00
42	180.00	-	-	-
43	380.00	400.00	-	-
44	260.00	-	-	-
45	-	-	-	-

<b>Envelope Number</b>	<b>WFO</b>	<b>Building &amp; Repair Fund</b>	<b>United Appeal, Missions &amp; Harvest Collections</b>	<b>Presbyterian Children's Society</b>
46	500.00	1,750.00	20.00	-
47	100.00	-	-	-
48	148.00	-	-	-
49	-	-	-	-
50	520.00	300.00	40.00	-
51	-	-	-	-
52	104.50	-	-	-
53	990.00	860.00	-	-
54	-	-	-	-
55	520.00	2,750.00	140.00	20.00
56	480.00	-	-	-
57	145.00	-	-	-
58	253.20	-	-	-
59	-	13,000.00	-	-
60	-	-	-	-
61	730.00	500.00	60.00	20.00
62	-	-	-	-
63	-	-	-	-
64	120.00	50.00	5.00	-
65	790.00	2,180.00	130.00	10.00
66	610.00	400.00	495.00	-
67	515.00	240.00	150.00	5.00
68	265.00	325.00	140.00	20.00
69	100.00	-	-	-
70	347.50	-	23.00	-
71	304.00	-	40.00	-
72	1,420.00	2,500.00	1,300.00	100.00
73	270.00	120.00	-	-
74	305.00	110.00	10.00	-
75	825.00	-	-	-
76	890.00	1,000.00	-	-
77	1,800.00	4,120.00	920.00	-
78	-	-	-	-
79	745.00	130.00	40.00	-
80	960.00	2,000.00	80.00	20.00
81	600.00	220.00	140.00	10.00
82	305.00	100.00	85.00	5.00
83	154.00	50.00	5.00	-
84	625.00	1,175.00	-	-
85	1,290.00	500.00	300.00	-
86	1,200.00	1,200.00	40.00	-
87	-	-	-	-
88	-	-	-	-
89	530.00	600.00	150.00	20.00
90	520.00	240.00	20.00	-

<b>Envelope Number</b>	<b>WFO</b>	<b>Building &amp; Repair Fund</b>	<b>United Appeal, Missions &amp; Harvest Collections</b>	<b>Presbyterian Children's Society</b>
91	1,030.00	820.00	140.00	20.00
92	600.00	2,400.00	180.00	-
93	495.00	2,068.00	400.00	20.00
94	200.00	-	-	-
95	6,240.00	1,440.00	970.00	120.00
96	1,200.00	4,000.00	230.00	-
97	-	-	-	-
98	475.00	100.00	150.00	-
99	500.00	440.00	140.00	-
100	50.00	825.00	-	-
101	960.00	235.00	120.00	20.00
102	1,275.66	-	-	-
103	120.00	120.00	-	-
104	-	-	-	-
105	520.00	220.00	120.00	10.00
106	265.00	240.00	260.00	-
107	365.60	230.00	92.00	20.00
108	890.00	-	-	-
109	7,830.00	5,800.00	1,440.00	-
110	340.00	200.00	200.00	20.00
111	600.00	-	60.00	20.00
112	505.00	80.00	65.00	-
113	20.00	-	-	-
114	-	-	-	-
115	-	-	-	-
116	-	-	-	-
117	100.00	-	-	-
118	2,760.00	1,200.00	-	-
119	550.00	1,700.00	-	-
120	790.00	-	-	-
<b>Totals</b>	<b>67,853.96</b>	<b>84,314.00</b>	<b>13,054.00</b>	<b>765.00</b>

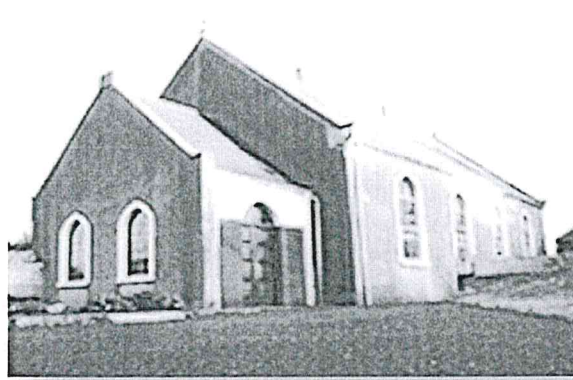
**Tartaraghan Presbyterian Church Congregation of the Presbyterian Church in Ireland**

Northern Ireland - Charity number 104792

---

# Accounts

---



# Tartaraghan Presbyterian Church

## Financial Report 2024

Registered With NICC, Charity No. 104792



**TARTARAGHAN CONGREGATION OF THE PRESBYTERIAN CHURCH IN  
IRELAND**

**Trustees Annual Report and Financial Statements  
for the year ended 31 December 2024**

**Registered Charity in Northern Ireland (NIC104792)**

**TARTARAGHAN CONGREGATION OF THE PRESBYTERIAN CHURCH IN IRELAND  
TRUSTEES ANNUAL REPORT**

The Trustees present their Annual Report and Financial Statements for the year ended 31 December 2024 including a Statement of Assets and Liabilities as at that date.

**REFERENCE AND ADMINISTRATIVE DETAILS**

Tartaraghan congregation of the Presbyterian Church in Ireland  
28 Cloncarrish Road, Portadown, Co Armagh, BT62 1RN  
Registered Charity in Northern Ireland (NIC104792)

**CHARITY TRUSTEES**

The Charity Trustees who served during the year or who were trustees at the date of this report were

Leslie Brush  
Neil Cornett  
Norman Cornett  
Andrew Martin

Stephen McCombe  
Philip McMenemy  
Mark Wilson

**PRINCIPAL OFFICE BEARERS**

Minister  
Clerk of Session  
Treasurer

Rev Andrew Martin  
Norman Cornett  
Andrew Cornett

**INDEPENDENT EXAMINER**

WHR Accountants Ltd  
56 Upper English St, Armagh BT61 7LG

**BANKERS**

Danske Bank, 45-48 High Street, Portadown  
Ulster Bank, 20 High Street, Portadown

**SOLICITORS**

**T D Gibson & Co**  
Morrison House, 107 Church Street, Portadown, County Armagh BT62 3DB

## **STRUCTURE AND MANAGEMENT**

### **The Kirk Session**

The charity trustees of the congregation are the members of its Kirk Session. Under the congregation's governing document, The Code, the book of the constitution and government of the Presbyterian Church in Ireland, the Kirk Session seeks to watch over and promote the spiritual interest of the congregation and of persons not connected with any congregation who are within its bounds. It ensures pastoral care is in place in the congregation and seeks to further the contribution of the Church to Christian witness and service in the local community. The Kirk Sessions has delegated to its Congregational Committee the temporal affairs of the congregation including administering all funds and property belonging to the congregation. Members of the Kirk Session are ex-officio members of the Congregational Committee.

The Kirk Session consists of the ordained minister and the ruling elders of the congregations. All members are entitled to propose, speak and exercise equal votes at meetings, except that the Moderator, the ministers in active duty in the congregation, has no deliberative but only a casting vote.

Stated meetings of the Kirk session are held a number of times each year or as appropriate.

To be chosen for the office of the eldership in the congregation a person must be a voting member and a regular attendant on its ordinances. The selection of those proposed to be called to the office can be either by the congregation or by the Kirk Session. Members are elected if they obtain two-thirds of those who vote.

### **Presbytery**

Under the Presbyterian Church in Ireland form of governance the corporate oversight of a congregation is the responsibility of a Presbytery which superintends generally the spiritual and temporal affairs of the congregations assigned to it by the General Assembly of the Presbyterian Church in Ireland. Tartaraghan congregation of the Presbyterian Church has been assigned to the Armagh Presbytery of the Presbyterian Church in Ireland. The membership of the Presbytery consists mainly of the active ministers of congregations assigned to it by the General Assembly, ministers who have retired from active duty and an elder appointed by the Kirk Session of the congregation.

## **The General Assembly**

The General Assembly is the supreme court of the Church, representing in one body the whole Church and acting as its supreme legislative, administration and judicial authority, in dealing with all matters brought before it. The General Assembly is normally constituted during the first week in June for worship and to conduct its business. At the end of business, it is dissolved. The membership of the General Assembly consists mainly of the active ministers of each congregation, retired ministers and a representative elder appointed by the Kirk Session of each congregation.

## **DESCRIPTION AND PURPOSE**

The charitable purpose of the congregation is the advancement of religion.

Tartaraghan congregation of the Presbyterian Church is a congregation of the Presbyterian Church in Ireland. The Presbyterian Church in Ireland, as a Reformed Church within the wider body of Christ is grounded in the Scriptures, and exists to love and honour God through faith in His Son and by the power of His Spirit, and to enable her members to play their part in fulfilling God's mission to our world.

The congregation's mission purpose is by the grace of God, to help people of all ages become fully devoted followers of Jesus Christ. Our vision is, by the grace of God, to be an inclusive, welcoming community of Christ's people of all ages, which:

- is increasingly characterised by love for God, and love and concern for others;
- is committed to the historic Christian gospel as revealed in the Bible;
- is relevant to people of this time and place.

The congregation aims to live out its Mission and Vision as a family of God's people by being:

- A Covenant Community: where our relationships are rooted in the promises of God by living faithfully toward him and toward one another
- An Intergenerational Community: where adults intentionally take the lead to engage with, encourage and nurture younger members to maturity in Christ.
- An Outward looking Community: where we want the blessings of God that belong to us in the gospel to become blessings for others beyond the bounds of our community.
- As a congregation of the Presbyterian Church in Ireland, we believe that the Bible is the supreme authority over all we do, and that the Westminster Confession of Faith, along with the Larger and Shorter Catechisms set out what we understand the Bible teaches on key matters of Christian faith and practice

### **ACTIVITIES AND OBJECTIVES**

The congregation meets for worship every Sunday and visitors are welcome to join. Children's Church and Crèche run concurrently. The Sacrament of the Lord's Supper is observed on several occasions during the year and all those who have been baptised and who have made a profession of faith in the Lord Jesus Christ are admitted to the Lord's Supper. The congregation holds regular bible study meetings and has a wide range of organisations including

- Sunday School
- Bible Classes
- Women's Keep Fit
- Women's Bible Study
- Girls' Brigade
- Men's Group
- Women's Group
- Youth Club
- Youth Fellowship
- Mothers and Toddlers Group
- Discipleship Groups (3)
- Senior Fellowship Group
- Family@4
- Holiday Bible Club
- Men@10.30

### **ACHIEVEMENTS AND PERFORMANCE**

#### **Worship and prayer**

The congregation normally meets for worship each Sunday at 10.30am and monthly (September to June) at 6.30pm. During the week the Discipleship Groups provide an opportunity for members to meet together for fellowship, to study the scriptures and for a time of prayer. Prayer meetings are also held on Sundays in person and Friday mornings online.

As well as our regular services during 2024 we acknowledged God's gift of new life at 3 Sacraments of Baptism.

At 31 December 2024 there were 110 communicant members and 152 families connected with the congregation. Average attendance at morning services was 165. Average at monthly evening services was 120.

**Pastoral care** - Members of the congregation who are unable to attend church due to sickness or age are visited on a regular basis by the minister, elders or by either of the two Pastoral & Community Outreach Workers. CD and DVD recordings of services are produced and made available to those who are unable to attend, or access online.

### **Mission and outreach**

At a local level the congregation have been effective in connecting with the surrounding community through the different organisations, catering for all age groups.

There is also adult evangelism through personal friendships, literature distribution, and evangelistic services/meetings.

Involvement in overseas Mission has been developing, and this was enhanced by our congregational connection with Awake Ministries working in northern Portugal; the Loney family (Acre) working in southern Portugal. Also locally, the Charis Youth Club, Dungannon.

The congregation supports the United Appeal for Mission which is a central fund of the Presbyterian Church in Ireland. This fund enables congregations to support the wider mission of the denomination and to do mission and outreach on a denominational basis beyond what the congregation could do on its own. The United Appeal Fund provides financial support for mission personnel at home and overseas, assists congregations with the deployment of locally based staff, enables church planting, provides grant support for the upkeep of church premises, assist with the running costs of Union Theological College, the Church's training college for ministry students, and financially supports congregation in the areas of worship, discipleship, global mission, outreach, leadership and pastoral care.

The congregation also contributes to the denomination's special appeals.

### **Presbytery**

The congregation is represented at the regular meetings of Presbytery by our minister and / or one of the elders. This provides an important link between the congregations and the wider structures of the church.

### **General Assembly**

The minister and one of our elders are nominated to attend the meeting of the General Assembly of the Presbyterian Church in Ireland held in Assembly Buildings, Belfast, in June.

### **Property**

During the year there has been ongoing repair and maintenance of property and grounds. There were no major repair or refurbishment projects in 2024.

## Organisations

Sunday School – Meet each Sunday 9.30 – 10.20am, September to June. Sunday School plays a vital role in the life of our congregation. Our aim is to introduce children to Jesus and to teach them what it means to be a Christian; through Bible based lessons, songs, memory verses, worksheets and other activities all within a safe and relaxed environment. There are three classes and we welcome all children between 4 and 12 years of age. Average attendance: 54

Bible Classes – Are a follow-on from Sunday School and meet each Sunday 9.30 – 10.20am, prior to the morning service. Average attendance: 20

Family @ 4 - Meet 4 – 6pm, first Sunday of each month (October to May) and is for the whole family whether children are toddlers or teenagers. Activities include messy crafts, bible stories and an evening meal. Average attendance: 80

Women's Keep Fit – Meet Monday evenings 7.30 – 8.30pm. Set up to encourage women from the congregation and the local area to meet together and socialise while improving their physical well-being.

Women's Bible Study - Meet on alternate Tuesday mornings, 10.15 – 11.15am, September to June, to study God's Word in an informal setting. For all ages. Average attendance: 15

Girls' Brigade – Meet 6.30 – 9.30pm on Tuesday evenings in the church hall, September – March. There are four groups: Explorers, Juniors, Seniors and Brigaders. Our aim is to help girls to become followers of the Lord Jesus Christ, and through self-control, reverence and a sense of responsibility, to find true enrichment of life. Average attendance: 110

Youth Club – Meet on Friday evenings 8.00 – 10.00pm, September – June and is for the age range P7 and older offering a fun and safe place for young people to meet. There are plenty of games and sports to try like pool, table tennis, football and dodgeball or a chance to relax in the coffee bar and chat with friends. Each evening there is opportunity to hear a bible or gospel message. Average attendance: 35

Youth Fellowship - is all about young people meeting together to learn more about Jesus. It's a great opportunity to study God's word in an informal setting with friends and to have a chance to chat over issues facing them. There are also times of fun, food and fellowship at the meetings as well as an annual weekend away. Meet fortnightly on Sunday evenings at 7.00pm, jointly with youth from Loughgall Presbyterian Church. Average attendance: 18

Mothers and Toddlers Group – Meet each Wednesday, 10.00 – 11.45am. The children enjoy themselves with various toys and games in a safe environment while carers have fellowship and a chat over a cup of tea/coffee. Average attendance: 15 children + carers

Discipleship Groups – are small groups who meet together regularly to learn more about the bible, grow in their faith and also become better disciples of Jesus. Meet in homes and in church hall. There are presently three groups, one meeting on Tuesday evening and the other two meeting on Wednesday, all at 8.00pm. Overall average attendance: 24

Men's Group (Ir'n Men) – For men of all ages. Meets second Wednesday of each month at 8.00pm, September – May. Each meeting usually consists of a praise time, ice breakers, games, personal testimonies, food and teaching from God's word. Particular emphasis is placed on what how God's word relates to men and how this can be applied to everyday life. Average attendance: 18

Women's Group (PW) – Meet second Thursday of each month at 8.00pm for a time of fellowship, encouragement and discipleship; seeking different fun and exciting ways of reaching women for Christ. In addition to this, various missions at home and overseas are supported. Average attendance: 35

Senior Fellowship Group - meet on a monthly basis on the third Thursday of each month at 2.30pm. The aim is to meet for fellowship, have a chat and cup of tea and also hear something of how God is working in people's lives. The programme each month is varied with interesting Christian speakers from different walks of life. The group also have an outing twice a year. Attendance:18

Bible Club - An annual event held at the end of June. Attendance: 90

Men@10.30 - A time of friendship and fellowship at 10:30am each Monday in the Church Hall. These informal drop in sessions are an opportunity to meet up and enjoy board games, darts, craft, bowls, table tennis and other activities along with a short Bible Slot. Refreshments are available. Open to men of all ages. Average attendance: 19

### **Volunteers**

The Trustees wish to acknowledge their deep appreciation of those who give freely of their time by serving on committees and helping with organisations and other church activities. Our organisations involve around 40 leaders/teachers, not counting others who help with Crèche, Children's Church and the annual Bible Club.

#### **PUBLIC BENEFIT STATEMENT**

The Presbyterian Church in Ireland meets the public benefit requirement by providing benefit to its members and the general public by making known the Christian Gospel of the Lord Jesus Christ through the advancement of religion.

The direct benefits which flow from the purposes of the Church include the gaining of an understanding in Christian beliefs as set out in the Bible and in the Church's subordinate standards (the Westminster Confession of Faith and the Shorter and Larger Catechisms) leading to spiritual and moral development and opportunities for response to Bible teaching. In turn, this framework leads to practical expressions of Christian beliefs and standards in the local community such as through the care of those in need (including the sick, disabled and bereaved).

Generally the above benefits are delivered locally by congregations and their members, or are facilitated through presbyteries or are organised and delivered centrally. Local delivery is facilitated by central resources in almost all cases. Public access is made known through the use of noticeboards, printed material, press advertisement, websites, and social media or in other ways.

The benefits are demonstrated through regular evaluation of the services and informal and ad-hoc feedback from members, their families, and members of the public.

The purpose does not lead to harm. The only private benefit flowing from our purpose is related to Ministers, Missionaries, Deaconesses, Irish Mission workers and Lay Agents who receive benefits as a result of their holding office or employment. However, this is incidental and necessary in order to further our charitable purpose. There are no other private benefits. The beneficiaries of this purpose are members, their families, other individuals that the Presbyterian Church in Ireland is in direct and indirect contact with, the community in which pastoral services are provided and other communities throughout Northern Ireland, the Republic of Ireland, and worldwide which benefit from our engagement with and support for both Christian and other secular organisations, charities and individual members of the public. The Kirk Session has had regard to the Charity Commission's Public benefit requirement statutory guidance.

## FINANCIAL REVIEW

The congregation's main source of income is members' contributions through the Weekly Freewill Offering. There were 96 contributors during the year donating a total of £126,510 (£103,082 in previous year, 2023)

Total Income of the congregation during the year was £175,704, compared to £151,306 in the previous year, 2023. Total expenditure increased from £72,120 to £99,478.

## STATEMENT OF TRUSTEE RESPONSIBILITIES

The Trustees are responsible for preparing the annual report and the financial statements of the congregation in accordance with applicable law and generally accepted accounting practice.

As the congregation's total income does not exceed £250,000, the Trustees have elected under Section 64(3) of the Charities Act (Northern Ireland) 208 to prepare a receipts and payment account and a statement of assets and liabilities.

The Trustees are responsible for keeping adequate accounting records that are sufficient to show and explain the congregation's transactions and disclose with reasonable accuracy at any time its financial position. They are also responsible for safeguarding the assets of the congregation and hence for taking reasonable steps for the prevention and detection of fraud and other irregularities.

Approved by the Kirk Session at a meeting on 24<sup>th</sup> March 2025 and signed on its behalf by



Norman Cornett

24<sup>th</sup> March 2025



Rev Andrew Martin

24<sup>th</sup> March 2025

**Charity No: NIC 104792**

**Tartaraghan Congregation  
of the  
Presbyterian Church in Ireland**

**Trustee Report  
and  
Receipts and Payments Account  
for the year ended 31 December 2024**

**Tartaraghan Congregation of the Presbyterian Church in Ireland**

**Independent Examiner's Report to the Charity Trustees of  
Tartaraghan Congregation of the Presbyterian Church in Ireland**

I report on the accounts of the Charity for the year ended 31 December 2024.

**Respective responsibilities of charity trustees and examiner:**

As the charity's trustees you are responsible for the preparation of the accounts in accordance with the Charities Act (Northern Ireland) 2008.

It is my responsibility to:

- examine the accounts under section 65 of the Charities Act,  
to follow the procedures laid down in the general directions given by the Commission under section 65(9)(b) of the Charities Act,
- Charities Act,
- to state whether particular matters have come to my attention.

**Basis of independent examiner's report:**

I have examined your charity accounts as required under section 65 of the Charities Act and my examination was carried out in accordance with the general directions given by the Charity Commission for Northern Ireland under section 65(9)(b) of the Charities Act.

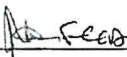
My examination included a review of the accounting records kept by the charity and a comparison of the accounts presented with those records. It also included consideration of any unusual items or disclosures in the accounts, and seeking explanations from you as charity trustees concerning any such matters.

My role is to state whether any material matters have come to my attention giving me cause to believe:

- 1 That accounting records were not kept in accordance with section 63 of the Charities Act.
- 2 That the accounts do not accord with those accounting records.
- 3 That the accounts do not comply with the accounting requirements of the Charities Act.
- 4 That there is further information needed for a proper understanding of the accounts to be reached.

**Independent examiner's statement**

I have completed my examination and have no concerns in respect of the matters (1) to (4) listed above and, in connection with following the directions of the Charity Commission for Northern Ireland, I have found no matters that require drawing to your attention.

  
James Robinson FCCA  
WHR Accountants Limited  
Chartered Certified Accountants  
56 English Street  
Armagh  
BT61 7LG

24/03/2025  
Date

Tartaraghan Congregation of the Presbyterian Church in Ireland

Statement of Financial Activity (Receipts and Payments Account) for the Year Ended 31 December 2024

	Note	Unrestricted Funds £	Restricted Funds £	Endowment Funds £	Total 2024 £	Total 2023 £
<b>Receipts</b>						
Donations & Legacies	2	83,828	73,819	-	157,647	133,315
Charitable Activities	3	469	11,745	-	12,214	12,800
Other trading activities	4	800	-	-	800	2,401
Investment income	5	637	2,904	-	3,541	1,908
Other income	6	30	1,472	-	1,502	882
<b>Total Receipts</b>		<b>85,764</b>	<b>89,940</b>	<b>-</b>	<b>175,704</b>	<b>151,306</b>
<b>Payments</b>						
Raising Funds	7	562	-	-	562	535
Charitable Activities	8	64,246	34,670	-	98,916	71,585
<b>Total Payments</b>		<b>64,808</b>	<b>34,670</b>	<b>-</b>	<b>99,478</b>	<b>72,120</b>
<b>Net Receipts / Payments</b>		<b>20,956</b>	<b>55,270</b>	<b>-</b>	<b>76,226</b>	<b>79,186</b>
Transfers net		338	(338)	-	-	-
<b>Net movement in funds</b>		<b>21,294</b>	<b>54,932</b>	<b>-</b>	<b>76,226</b>	<b>79,186</b>
<b>Funds brought forward 1 January</b>		<b>121,669</b>	<b>358,341</b>	<b>-</b>	<b>480,010</b>	<b>400,824</b>
<b>Deduct non cash/bank related Endowment Funds</b>		<b>-</b>	<b>-</b>	<b>-</b>	<b>-</b>	<b>-</b>
<b>Funds carried forward 31 December</b>	9	<b>142,963</b>	<b>413,273</b>	<b>-</b>	<b>556,236</b>	<b>480,010</b>

Tartaraghan Congregation of the Presbyterian Church in Ireland

Statement of Assets and Liabilities as at 31 December 2024

	Unrestricted Funds £	Restricted Funds £	Endowment Funds £	Total 2024 £	Total 2023 £
<b>Funds Reconciliation</b>					
Bank and cash at start of year	121,669	358,341	-	480,010	400,824
Net movement in funds	21,294	54,932	-	76,226	79,186
Bank & cash at end of year	142,963	413,273	-	556,236	480,010
<b>Bank &amp; Cash Balances</b>					
Bank Current Accounts				556,236	480,010
<b>Total</b>				556,236	480,010

Memorandum Note Only

Fixed Assets


Assets retained for the Church's own use comprise the following properties and are stated at own valuations or at insured values.

Church Buildings and Contents	1,270,887	1,210,368
Church Hall and Contents	1,063,686	1,013,034
Manse at Cloncarrish Road, Portadown	137,194	130,661
Outbuildings	77,225	73,547
Agricultural Land at valuation	72,000	72,000
Agricultural Land Acquired	20,000	20,000
	<u>2,640,992</u>	<u>2,519,610</u>
<b>General Investments</b>	<u>9,686</u>	<u>9,249</u>

Approved by trustees on 24/03/2025 and signed on its behalf by:

  
 Trustee - Clerk of Session  
 Mr Norman Cornett

Date: 24/03/2025

  
 Trustee - Minister  
 Rev. Andrew Martin

Date: 24/03/2025

Tartaraghan Congregation of the Presbyterian Church in Ireland

Notes to the Accounts - Year Ended 31 December 2024

1. ACCOUNTING POLICIES

BASIS OF FINANCIAL STATEMENTS

As the total income of the congregation is less than £250,000 the congregation have elected in accordance with the provisions in The Charities (Accounts and Reports Regulations (Northern Ireland) 2015 to prepare its accounts on a receipts and payments basis.

FUND ACCOUNTING

Endowment funds are funds, the capital of which must be retained either permanently or at the congregation's discretion; the income derived from the endowment is to be used either as restricted or unrestricted income funds depending upon the purpose for which the endowment was established in the first place.

Restricted funds comprise (a) income from endowments which is to be expended only on the restricted purposes intended by the donor and (b) revenue donations or grants for a specific congregational activity intended by the donor. Where these funds have unspent balances, interest on their pooled investment is apportioned to the individual funds on an average balance basis.

Unrestricted funds are income funds which are to be spent on the congregation's general purposes.

Designated funds are general funds set aside by the congregation for use in the future.

RECEIPTS

2. DONATIONS & LEGACIES

	Unrestricted Funds £	Restricted Funds £	Endowment Funds £	Total 2024 £
Loose collections	6,680	2,483	-	9,163
Donations & gifts	64,327	62,183	-	126,510
Gift Aid	12,821	9,153	-	21,974
Legacies & bequests	-	-	-	-
	<u>83,828</u>	<u>73,819</u>	<u>-</u>	<u>157,647</u>

3. CHARITABLE ACTIVITIES

	Unrestricted Funds £	Restricted Funds £	Endowment Funds £	Total 2024 £
Income from charitable activities & fundraising	-	6,912	-	6,912
Membership Fees	-	750	-	750
Grants	469	4,083	-	4,552
	<u>469</u>	<u>11,745</u>	<u>-</u>	<u>12,214</u>

4. OTHER TRADING ACTIVITIES

	Unrestricted Funds £	Restricted Funds £	Endowment Funds £	Total 2024 £
Other Activities	800	-	-	800
	<u>800</u>	<u>-</u>	<u>-</u>	<u>800</u>

Tartaraghan Congregation of the Presbyterian Church in Ireland

Notes to the Accounts - Year Ended 31 December 2024

5. INVESTMENT INCOME

	Unrestricted Funds £	Restricted Funds £	Endowment Funds £	Total 2024 £
Interest on Bequests	94	-	-	94
Bank Interest	543	2,904	-	3,447
	<u>637</u>	<u>2,904</u>	<u>-</u>	<u>3,541</u>

6. OTHER INCOME

	Unrestricted Funds £	Restricted Funds £	Endowment Funds £	Total 2024 £
Wedding, Grave & Funeral Donations	30	1,472	-	1,502
	<u>30</u>	<u>1,472</u>	<u>-</u>	<u>1,502</u>

PAYMENTS

7. RAISING FUNDS

	Unrestricted Funds £	Restricted Funds £	Endowment Funds £	Total 2024 £
Church Envelopes	562	-	-	562
	<u>562</u>	<u>-</u>	<u>-</u>	<u>562</u>

8. CHARITABLE ACTIVITIES

	Unrestricted Funds £	Restricted Funds £	Endowment Funds £	Total 2024 £
General Assembly	9,228	-	-	9,228
Presbytery Fees	560	-	-	560
Ministry & Support Staff	19,885	-	-	19,885
Running Costs	29,937	10,828	-	40,765
Donations to Missions/Charities	-	23,842	-	23,842
Governance costs	4,636	-	-	4,636
	<u>64,246</u>	<u>34,670</u>	<u>-</u>	<u>98,916</u>

Tartaraghan Congregation of the Presbyterian Church in Ireland

Notes to the Accounts - Year Ended 31 December 2024

9. FUND BALANCES

	Balance at start £	Receipts £	Payments £	Surplus/ (Deficit) £	Transfers nett £	Balance at end £
<b>Unrestricted Funds</b>						
General	121,669	85,361	64,808	20,553	(124,662)	17,560
General - Danske- Easy Savings Account	-	403	-	403	40,000	40,403
General - Danske - 1 Year Fixed Term Deposit	-	-	-	-	85,000	85,000
	<u>121,669</u>	<u>85,764</u>	<u>64,808</u>	<u>20,956</u>	<u>338</u>	<u>142,963</u>
<b>Restricted Funds</b>						
United Appeal	-	5,589	6,170	(581)	581	-
Mission	1,161	8,799	8,799	-	-	1,161
Installation Collection - Student Bursary	-	1,520	1,520	-	-	-
Presbyterian Orphan Society	1,080	592	1,080	(488)	-	592
Moderators Appeal	2,178	-	2,178	(2,178)	-	-
Special Collections - Lemos	-	706	706	-	-	-
Special Collections - Sasko	1,868	356	2,144	(1,788)	-	80
Catering Current Account	109,929	844	16	828	(110,000)	757
Donations Savings Account	9,383	155	-	155	-	9,538
Building and repair Account	211,444	54,537	1,787	52,750	(233,872)	30,322
Church Manse Current Account No 1	2,765	40	-	40	-	2,805
Church Manse Current Account No 2	2,429	35	-	35	-	2,464
Friendship Group	30	710	680	30	-	60
PWA Current Account	755	1,642	708	934	-	1,689
Youth Fellowship	1,036	-	60	(60)	-	976
Girls Brigade Current Account	11,028	9,833	6,678	3,155	(750)	13,433
Girls Brigade Savings Account	2,124	23	-	23	-	2,147
Youth Club	986	2,083	1,808	275	(169)	1,092
Family@Four	145	348	336	12	-	157
Men @ 10:30	-	500	-	500	(500)	-
Building - Danske - 2 Year Fixed Term Deposit	-	-	-	-	130,000	130,000
Building - Danske - 6 Month Fixed Term Deposit	-	1,628	-	1,628	104,372	106,000
Catering - 1 Year Fixed Money Desk Deposit	-	-	-	-	110,000	110,000
	<u>358,341</u>	<u>89,940</u>	<u>34,670</u>	<u>55,270</u>	<u>(338)</u>	<u>413,273</u>
<b>Total Funds</b>	<u>480,010</u>	<u>175,704</u>	<u>99,478</u>	<u>76,226</u>	<u>-</u>	<u>556,236</u>

<b>Envelope Number</b>	<b>WFO</b>	<b>Building &amp; Repair Fund</b>	<b>United Appeal, Missions &amp; Harvest Collections</b>	<b>Presbyterian Children's Society</b>
1	420.00	30.00	30.00	-
2	-	10.00	20.00	-
3	-	-	-	-
4	120.00	-	-	-
5	-	-	-	-
6	-	-	-	-
7	530.00	300.00	460.00	60.00
8	197.00	-	-	-
9	600.00	-	-	-
10	1,740.00	3,000.00	-	-
11	250.00	13.00	22.00	-
12	640.00	40.00	80.00	20.00
13	-	-	-	-
14	280.00	130.00	100.00	20.00
15	495.00	160.00	40.00	-
16	200.00	-	-	-
17	250.00	120.00	35.00	10.00
18	20.00	-	10.00	-
19	2,170.00	2,100.00	1,200.00	-
20	2,160.00	2,350.00	520.00	20.00
21	2,795.00	740.00	190.00	20.00
22	460.00	200.00	40.00	10.00
23	830.00	400.00	290.00	20.00
24	195.00	325.00	-	-
25	160.00	180.00	-	-
26	-	-	-	-
27	-	-	-	-
28	910.00	720.00	280.00	40.00
29	244.00	120.00	66.00	-
30	980.00	730.00	40.00	-
31	520.00	120.00	165.00	20.00
32	257.00	25.00	5.00	-
33	305.00	-	20.00	-
34	50.00	10.00	15.00	-
35	-	-	-	-
36	180.00	-	-	-
37	600.00	-	-	-
38	-	-	-	-
39	-	-	-	-
40	-	-	-	-
41	149.80	24.00	29.00	3.00
42	200.00	-	10.00	-
43	635.00	-	-	-
44	280.00	-	-	-

<b>Envelope Number</b>	<b>WFO</b>	<b>Building &amp; Repair Fund</b>	<b>United Appeal, Missions &amp; Harvest Collections</b>	<b>Presbyterian Children's Society</b>
45	-	-	-	-
46	-	750.00	20.00	-
47	70.00	-	-	-
48	120.00	-	-	-
49	-	-	-	-
50	520.00	300.00	90.00	-
51	-	-	-	-
52	130.00	-	-	-
53	910.00	280.00	-	-
54	-	-	-	-
55	530.00	120.00	140.00	20.00
56	440.00	-	-	-
57	180.00	-	-	-
58	250.00	-	-	-
59	-	-	-	-
60	20.00	-	-	-
61	610.00	-	130.00	-
62	-	-	-	-
63	-	-	-	-
64	105.00	55.00	10.00	-
65	677.00	480.00	130.00	10.00
66	500.00	400.00	280.00	-
67	520.00	210.00	160.00	10.00
68	260.00	180.00	145.00	15.00
69	90.00	-	-	-
70	140.00	-	20.00	-
71	265.00	20.00	60.00	-
72	1,110.00	5,950.00	1,300.00	20.00
73	305.00	120.00	-	-
74	270.00	15.00	-	-
75	160.00	-	-	-
76	710.00	1,000.00	20.00	-
77	1,800.00	3,480.00	803.00	-
78	-	-	-	-
79	435.00	120.00	25.00	-
80	840.00	300.00	160.00	20.00
81	560.00	170.00	120.00	-
82	430.00	-	20.00	-
83	150.00	45.00	5.00	-
84	-	-	-	-
85	1,435.00	2,485.00	180.00	-
86	1,200.00	1,200.00	140.00	-
87	-	-	-	-
88	-	-	-	-

<b>Envelope Number</b>	<b>WFO</b>	<b>Building &amp; Repair Fund</b>	<b>United Appeal, Missions &amp; Harvest Collections</b>	<b>Presbyterian Children's Society</b>
<b>89</b>	520.00	240.00	150.00	10.00
<b>90</b>	520.00	240.00	40.00	-
<b>91</b>	990.00	320.00	90.00	20.00
<b>92</b>	600.00	2,400.00	310.00	20.00
<b>93</b>	557.20	122.00	290.00	30.00
<b>94</b>	170.00	-	10.00	-
<b>95</b>	4,560.00	1,360.00	260.00	-
<b>96</b>	1,200.00	4,000.00	420.00	-
<b>97</b>	-	-	-	-
<b>98</b>	470.00	10.00	210.00	-
<b>99</b>	700.00	-	130.00	-
<b>100</b>	40.00	100.00	-	-
<b>101</b>	960.00	500.00	-	-
<b>102</b>	718.00	3,315.00	-	-
<b>103</b>	-	-	-	-
<b>104</b>	-	-	-	-
<b>105</b>	550.00	240.00	130.00	10.00
<b>106</b>	260.00	240.00	260.00	-
<b>107</b>	330.00	170.00	120.00	20.00
<b>108</b>	840.00	-	-	-
<b>109</b>	7,900.00	1,800.00	1,320.00	-
<b>110</b>	300.00	180.00	250.00	20.00
<b>111</b>	530.00	-	-	20.00
<b>112</b>	165.00	20.00	20.00	-
<b>113</b>	120.00	40.00	20.00	20.00
<b>114</b>	12.00	-	-	-
<b>115</b>	-	-	-	-
<b>116</b>	-	-	-	-
<b>117</b>	250.00	-	-	-
<b>118</b>	3,270.00	800.00	-	-
<b>119</b>	520.00	1,200.00	-	-
<b>120</b>	960.00	-	-	-
<b>Totals</b>	<b>63,577.00</b>	<b>46,824.00</b>	<b>11,655.00</b>	<b>508.00</b>

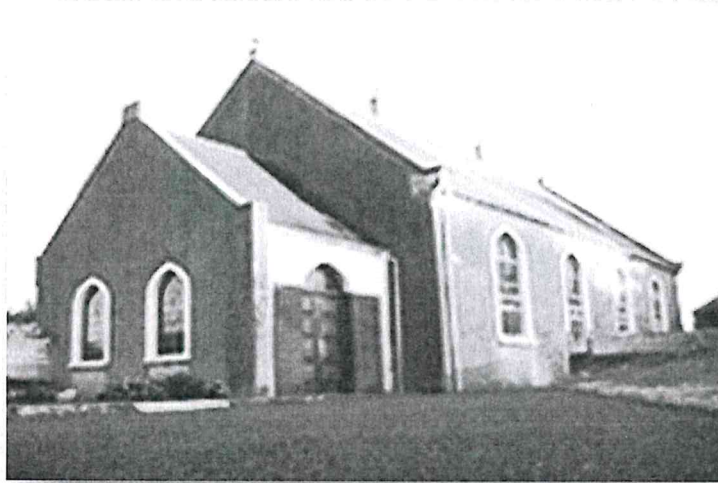
**Tartaraghan Presbyterian Church Congregation of the Presbyterian Church in Ireland**

Northern Ireland - Charity number 104792

---

# Accounts

---



# Tartaraghan Presbyterian Church

## Financial Report 2023

Registered With NICC, Charity No. 104792

# **TARTARAGHAN CONGREGATION OF THE PRESBYTERIAN CHURCH IN IRELAND**

**Trustees Annual Report and Financial Statements  
for the year ended 31 December 2023**

**Registered Charity in Northern Ireland (NIC104792)**

**TARTARAGHAN CONGREGATION OF THE PRESBYTERIAN CHURCH IN IRELAND  
TRUSTEES ANNUAL REPORT**

The Trustees present their Annual Report and Financial Statements for the year ended 31 December 2023 including a Statement of Assets and Liabilities as at that date.

**REFERENCE AND ADMINISTRATIVE DETAILS**

Tartaraghan congregation of the Presbyterian Church in Ireland  
28 Cloncarrish Road, Portadown, Co Armagh, BT62 1RN  
Registered Charity in Northern Ireland (NIC104792)

**CHARITY TRUSTEES**

The Charity Trustees who served during the year or who were trustees at the date of this report were

Leslie Brush  
Neil Cornett  
Norman Cornett  
Stephen McCombe

Philip McMenemy  
Mark Wilson

**PRINCIPAL OFFICE BEARERS**

Minister  
Clerk of Session  
Treasurer

Rev Alastair McNeely (Convener)  
Norman Cornett  
Andrew Cornett

**INDEPENDENT EXAMINER**

WHR Accountants Ltd  
56 Upper English St, Armagh BT61 7LG

**BANKERS**

Danske Bank, 45-48 High Street, Portadown  
Ulster Bank, 20 High Street, Portadown

**SOLICITORS**

**T D Gibson & Co**

Morrison House, 107 Church Street, Portadown, County Armagh BT62 3DB

## **STRUCTURE AND MANAGEMENT**

### **The Kirk Session**

The charity trustees of the congregation are the members of its Kirk Session. Under the congregation's governing document, The Code, the book of the constitution and government of the Presbyterian Church in Ireland, the Kirk Session seeks to watch over and promote the spiritual interest of the congregation and of persons not connected with any congregation who are within its bounds. It ensures pastoral care is in place in the congregation and seeks to further the contribution of the Church to Christian witness and service in the local community. The Kirk Sessions has delegated to its Congregational Committee the temporal affairs of the congregation including administering all funds and property belonging to the congregation. Members of the Kirk Session are ex-officio members of the Congregational Committee.

The Kirk Session consists of the ordained minister and the ruling elders of the congregations. All members are entitled to propose, speak and exercise equal votes at meetings, except that the Moderator, the ministers in active duty in the congregation, has no deliberative but only a casting vote.

Stated meetings of the Kirk session are held a number of times each year or as appropriate.

To be chosen for the office of the eldership in the congregation a person must be a voting member and a regular attendant on its ordinances. The selection of those proposed to be called to the office can be either by the congregation or by the Kirk Session. Members are elected if they obtain two-thirds of those who vote.

### **Presbytery**

Under the Presbyterian Church in Ireland form of governance the corporate oversight of a congregation is the responsibility of a Presbytery which superintends generally the spiritual and temporal affairs of the congregations assigned to it by the General Assembly of the Presbyterian Church in Ireland. Tartaraghan congregation of the Presbyterian Church has been assigned to the Armagh Presbytery of the Presbyterian Church in Ireland. The membership of the Presbytery consists mainly of the active ministers of congregations assigned to it by the General Assembly, ministers who have retired from active duty and an elder appointed by the Kirk Session of the congregation.

## **The General Assembly**

The General Assembly is the supreme court of the Church, representing in one body the whole Church and acting as its supreme legislative, administration and judicial authority, in dealing with all matters brought before it. The General Assembly is normally constituted during the first week in June for worship and to conduct its business. At the end of business, it is dissolved. The membership of the General Assembly consists mainly of the active ministers of each congregation, retired ministers and a representative elder appointed by the Kirk Session of each congregation.

## **DESCRIPTION AND PURPOSE**

The charitable purpose of the congregation is the advancement of religion.

Tartaraghan congregation of the Presbyterian Church is a congregation of the Presbyterian Church in Ireland. The Presbyterian Church in Ireland, as a Reformed Church within the wider body of Christ is grounded in the Scriptures, and exists to love and honour God through faith in His Son and by the power of His Spirit, and to enable her members to play their part in fulfilling God's mission to our world.

The congregation's mission purpose is by the grace of God, to help people of all ages become fully devoted followers of Jesus Christ. Our vision is, by the grace of God, to be an inclusive, welcoming community of Christ's people of all ages, which:

- is increasingly characterised by love for God, and love and concern for others;
- is committed to the historic Christian gospel as revealed in the Bible;
- is relevant to people of this time and place.

The congregation aims to live out its Mission and Vision as a family of God's people by being:

- A Covenant Community: where our relationships are rooted in the promises of God by living faithfully toward him and toward one another
- An Intergenerational Community: where adults intentionally take the lead to engage with, encourage and nurture younger members to maturity in Christ.
- An Outward looking Community: where we want the blessings of God that belong to us in the gospel to become blessings for others beyond the bounds of our community.
- As a congregation of the Presbyterian Church in Ireland, we believe that the Bible is the supreme authority over all we do, and that the Westminster Confession of Faith, along with the Larger and Shorter Catechisms set out what we understand the Bible teaches on key matters of Christian faith and practice

## **ACTIVITIES AND OBJECTIVES**

The congregation meets for worship every Sunday and visitors are welcome to join. Children's Church and Crèche run concurrently. The Sacrament of the Lords Supper is observed on several occasions during the year and all those who have been baptised and who have made a profession of faith in the Lord Jesus Christ are admitted to the Lord's Supper. The congregation holds regular bible study meetings and has a wide range of organisations including

- Sunday School
- Bible Classes
- Women's Keep Fit
- Women's Bible Study
- Girls' Brigade
- Men's Group
- Women's Group
- Youth Club
- Youth Fellowship
- Mothers and Toddlers Group
- Discipleship Groups (3)
- Senior Fellowship Group
- Family@4
- Holiday Bible Club
- Men@10.30

## **ACHIEVEMENTS AND PERFORMANCE**

### **Worship and prayer**

The congregation normally meets for worship each Sunday at 10.30am and monthly (September to June) at 6.30pm. During the week the Discipleship Groups provide an opportunity for members to meet together for fellowship, to study the scriptures and for a time of prayer. Prayer meetings are also held on Sundays in person and Friday mornings online.

As well as our regular services during 2023 we acknowledged God's gift of new life at 2 Sacraments of Baptism.

At 31 December 2023 there were 103 communicant members and 150 families connected with the congregation. Average attendance at morning services was 160. Average at monthly evening services was 120.

**Pastoral care** - Members of the congregation who are unable to attend church due to sickness or age are visited on a regular basis by the minister, elders or by either of the two Pastoral & Community Outreach Workers. CD and DVD recordings of services are produced and made available to those who are unable to attend, or access online.

### **Mission and outreach**

At a local level the congregation have been effective in connecting with the surrounding community through the different organisations, catering for all age groups.

There is also adult evangelism through personal friendships, literature distribution, and evangelistic services/meetings.

Involvement in overseas Mission has been developing, and this was enhanced by our congregational connection with Awake Ministries working in northern Portugal; the Loney family (Acre) working in southern Portugal. Also locally, the Charis Youth Club, Dungannon.

The congregation supports the United Appeal for Mission which is a central fund of the Presbyterian Church in Ireland. This fund enables congregations to support the wider mission of the denomination and to do mission and outreach on a denominational basis beyond what the congregation could do on its own. The United Appeal Fund provides financial support for mission personnel at home and overseas, assists congregations with the deployment of locally based staff, enables church planting, provides grant support for the upkeep of church premises, assist with the running costs of Union Theological College, the Church's training college for ministry students, and financially supports congregation in the areas of worship, discipleship, global mission, outreach, leadership and pastoral care.

The congregation also contributes to the denomination's special appeals.

### **Presbytery**

The congregation is represented at the regular meetings of Presbytery by our minister and / or one of the elders. This provides an important link between the congregations and the wider structures of the church.

### **General Assembly**

The minister and one of our elders are nominated to attend the meeting of the General Assembly of the Presbyterian Church in Ireland held in Assembly Buildings, Belfast, in June.

### **Property**

During the year there has been ongoing repair and maintenance of property and grounds. There were no major repair or refurbishment projects in 2023.

## Organisations

Sunday School – Meet each Sunday 9.30 – 10.20am, September to June. Sunday School plays a vital role in the life of our congregation. Our aim is to introduce children to Jesus and to teach them what it means to be a Christian; through Bible based lessons, songs, memory verses, worksheets and other activities all within a safe and relaxed environment. There are three classes and we welcome all children between 4 and 12 years of age. Average attendance: 55

Bible Classes – Are a follow-on from Sunday School and meet each Sunday 9.30 – 10.20am, prior to the morning service. Average attendance: 17

Family @ 4 - Meet 4 – 6pm, first Sunday of each month (October to May) and is for the whole family whether children are toddlers or teenagers. Activities include messy crafts, bible stories and an evening meal. Average attendance: 80

Women's Keep Fit – Meet Monday evenings 7.30 – 8.30pm. Set up to encourage women from the congregation and the local area to meet together and socialise while improving their physical well-being.

Women's Bible Study - Meet on alternate Tuesday mornings, 10.15 – 11.15am, September to June, to study God's Word in an informal setting. For all ages. Average attendance: 15

Girls' Brigade – Meet 6.30 – 9.30pm on Tuesday evenings in the church hall, September – March. There are four groups: Explorers, Juniors, Seniors and Brigaders. Our aim is to help girls to become followers of the Lord Jesus Christ, and through self-control, reverence and a sense of responsibility, to find true enrichment of life. Average attendance: 105

Youth Club – Meet on Friday evenings 8.00 – 10.00pm, September – June and is for the age range P7 and older offering a fun and safe place for young people to meet. There are plenty of games and sports to try like pool, table tennis, football and dodgeball or a chance to relax in the coffee bar and chat with friends. Each evening there is opportunity to hear a bible or gospel message. Average attendance: 35

Youth Fellowship - is all about young people meeting together to learn more about Jesus. It's a great opportunity to study God's word in an informal setting with friends and to have a chance to chat over issues facing them. There are also times of fun, food and fellowship at the meetings as well as an annual weekend away. Meet fortnightly on Sunday evenings at 7.00pm, jointly with youth from Loughgall Presbyterian Church. Average attendance: 18

Mothers and Toddlers Group – Meet each Wednesday, 10.00 – 11.45am. The children enjoy themselves with various toys and games in a safe environment while carers have fellowship and a chat over a cup of tea/coffee. Average attendance: 15 children + carers

Discipleship Groups – are small groups who meet together regularly to learn more about the bible, grow in their faith and also become better disciples of Jesus. Meet in homes and in church hall. There are presently three groups, one meeting on Tuesday evening and the other two meeting on Wednesday, all at 8.00pm. Average overall attendance: 25

Men's Group (Ir'n Men) – For men of all ages. Meets second Wednesday of each month at 8.00pm, September – May. Each meeting usually consists of a praise time, ice breakers, games, personal testimonies, food and teaching from God's word. Particular emphasis is placed on what how God's word relates to men and how this can be applied to everyday life. Average attendance: 18

Women's Group (PW) – Meet second Thursday of each month at 8.00pm for a time of fellowship, encouragement and discipleship; seeking different fun and exciting ways of reaching women for Christ. In addition to this, various missions at home and overseas are supported. Average attendance: 35

Senior Fellowship Group - meet on a monthly basis on the third Thursday of each month at 2.30pm. The aim is to meet for fellowship, have a chat and cup of tea and also hear something of how God is working in people's lives. The programme each month is varied with interesting Christian speakers from different walks of life. The group also have an outing twice a year. Average attendance: 20

Bible Club - An annual event held at the end of June. Average attendance: 90

Men@10.30 - A time of friendship and fellowship at 10:30am each Monday in the Church Hall. These informal drop in sessions are an opportunity to meet up and enjoy board games, darts, craft, bowls, table tennis and other activities along with a short Bible Slot. Refreshments are available. Open to men of all ages. Average attendance: 18

## **Volunteers**

The Trustees wish to acknowledge their deep appreciation of those who give freely of their time by serving on committees and helping with organisations and other church activities. Our organisations involve around 40 leaders/teachers, not counting others who help with Crèche, Children's Church and the annual Bible Club.

## **PUBLIC BENEFIT STATEMENT**

The Presbyterian Church in Ireland meets the public benefit requirement by providing benefit to its members and the general public by making known the Christian Gospel of the Lord Jesus Christ through the advancement of religion.

The direct benefits which flow from the purposes of the Church include the gaining of an understanding in Christian beliefs as set out in the Bible and in the Church's subordinate standards (the Westminster Confession of Faith and the Shorter and Larger Catechisms) leading to spiritual and moral development and opportunities for response to Bible teaching. In turn, this framework leads to practical expressions of Christian beliefs and standards in the local community such as through the care of those in need (including the sick, disabled and bereaved).

Generally the above benefits are delivered locally by congregations and their members, or are facilitated through presbyteries or are organised and delivered centrally. Local delivery is facilitated by central resources in almost all cases. Public access is made known through the use of noticeboards, printed material, press advertisement, websites, and social media or in other ways.

The benefits are demonstrated through regular evaluation of the services and informal and ad-hoc feedback from members, their families, and members of the public.

The purpose does not lead to harm. The only private benefit flowing from our purpose is related to Ministers, Missionaries, Deaconesses, Irish Mission workers and Lay Agents who receive benefits as a result of their holding office or employment. However, this is incidental and necessary in order to further our charitable purpose. There are no other private benefits. The beneficiaries of this purpose are members, their families, other individuals that the Presbyterian Church in Ireland is in direct and indirect contact with, the community in which pastoral services are provided and other communities throughout Northern Ireland, the Republic of Ireland, and worldwide which benefit from our engagement with and support for both Christian and other secular organisations, charities and individual members of the public. The Kirk Session has had regard to the Charity Commission's Public benefit requirement statutory guidance.

## FINANCIAL REVIEW

The congregation's main source of income is members' contributions through the Weekly Freewill Offering. There were 93 contributors during the year donating a total of £103,082 (£95,093 in previous year, 2022)

Total Income of the congregation during the year was £151,306, compared to £152,453 in the previous year, 2022. Total expenditure decreased from £101,469 to £72,120.

## STATEMENT OF TRUSTEE RESPONSIBILITIES

The Trustees are responsible for preparing the annual report and the financial statements of the congregation in accordance with applicable law and generally accepted accounting practice.

As the congregation's total income does not exceed £250,000, the Trustees have elected under Section 64(3) of the Charities Act (Northern Ireland) 208 to prepare a receipts and payment account and a statement of assets and liabilities.

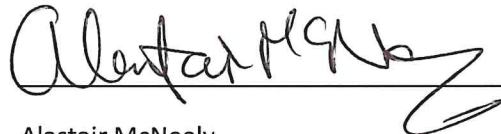
The Trustees are responsible for keeping adequate accounting records that are sufficient to show and explain the congregation's transactions and disclose with reasonable accuracy at any time its financial position. They are also responsible for safeguarding the assets of the congregation and hence for taking reasonable steps for the prevention and detection of fraud and other irregularities.

Approved by the Kirk Session at a meeting on 23 May 2024 and signed on its behalf by



Norman Cornett

23 May 2024



Alastair McNeely

23 May 2024

**Charity No: NIC 104792**

**Tartaraghan Congregation  
of the  
Presbyterian Church in Ireland**

**Trustee Report  
and  
Receipts and Payments Account  
for the year ended 31 December 2023**

## Tartaraghan Congregation of the Presbyterian Church in Ireland

### Independent Examiner's Report to the Charity Trustees of Tartaraghan Congregation of the Presbyterian Church in Ireland

I report on the accounts of the Charity for the year ended 31 December 2023.

#### Respective responsibilities of charity trustees and examiner:

As the charity's trustees you are responsible for the preparation of the accounts in accordance with the Charities Act (Northern Ireland) 2008.

It is my responsibility to:

- examine the accounts under section 65 of the Charities Act, to follow the procedures laid down in the general directions given by the Commission under section 65(9)(b) of the Charities Act,
- Charities Act,
- to state whether particular matters have come to my attention.

#### Basis of independent examiner's report:

I have examined your charity accounts as required under section 65 of the Charities Act and my examination was carried out in accordance with the general directions given by the Charity Commission for Northern Ireland under section 65(9)(b) of the Charities Act.

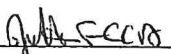
My examination included a review of the accounting records kept by the charity and a comparison of the accounts presented with those records. It also included consideration of any unusual items or disclosures in the accounts, and seeking explanations from you as charity trustees concerning any such matters.

My role is to state whether any material matters have come to my attention giving me cause to believe:

- 1 That accounting records were not kept in accordance with section 63 of the Charities Act.
- 2 That the accounts do not accord with those accounting records.
- 3 That the accounts do not comply with the accounting requirements of the Charities Act.
- 4 That there is further information needed for a proper understanding of the accounts to be reached.

#### Independent examiner's statement

I have completed my examination and have no concerns in respect of the matters (1) to (4) listed above and, in connection with following the directions of the Charity Commission for Northern Ireland, I have found no matters that require drawing to your attention.

  
James Robinson FCCA  
WHR Accountants Limited  
Chartered Certified Accountants  
56 English Street  
Armagh  
BT61 7LG

23/05/2024

Date

Tartaraghan Congregation of the Presbyterian Church in Ireland

Statement of Financial Activity (Receipts and Payments Account) for the Year Ended 31 December 2023

	Note	Unrestricted Funds £	Restricted Funds £	Endowment Funds £	Total 2023 £	Total 2022 £
<b>Receipts</b>						
Donations & Legacies	2	79,075	54,240	-	133,315	137,474
Charitable Activities	3	6,225	6,575	-	12,800	13,796
Other trading activities	4	1,611	790	-	2,401	539
Investment income	5	354	1,554	-	1,908	469
Other income	6	482	400	-	882	175
<b>Total Receipts</b>		<b>87,747</b>	<b>63,559</b>	<b>-</b>	<b>151,306</b>	<b>152,453</b>
<b>Payments</b>						
Raising Funds	7	535	-	-	535	518
Charitable Activities	8	49,717	21,868	-	71,585	100,951
Purchases Fixed Assets		-	-	-	-	-
<b>Total Payments</b>		<b>50,252</b>	<b>21,868</b>	<b>-</b>	<b>72,120</b>	<b>101,469</b>
Net Receipts / Payments		37,495	41,691	-	79,186	50,984
Transfers net		785	(785)	-	-	-
Net movement in funds		38,280	40,906	-	79,186	50,984
Funds brought forward 1 January		83,389	317,435	-	400,824	349,840
Deduct non cash/bank related Endowment Funds		-	-	-	-	-
Funds carried forward 31 December	9	121,669	358,341	-	480,010	400,824

Tartaraghan Congregation of the Presbyterian Church in Ireland

Statement of Assets and Liabilities as at 31 December 2023

	Unrestricted Funds £	Restricted Funds £	Endowment Funds £	Total 2023 £	Total 2022 £
<b>Funds Reconciliation</b>					
Bank and cash at start of year	83,389	317,435	-	400,824	349,840
Net movement in funds	38,280	40,906	-	79,186	50,984
Bank & cash at end of year	121,669	358,341	-	480,010	400,824

**Bank & Cash Balances**

Bank Current Accounts				480,010	400,824
<b>Total</b>				480,010	400,824

**Memorandum Note Only**

**Fixed Assets**

Assets retained for the Church's own use comprise the following properties and are stated at own valuations or at insured values.

Church Buildings and Contents	1,210,368	1,125,924
Church Hall and Contents	1,013,034	942,357
Manse at Cloncarrish Road, Portadown	130,661	121,545
Outbuildings	73,547	68,416
Agricultural Land at valuation	72,000	72,000
Agricultural Land Acquired	20,000	20,000
	<u>2,519,610</u>	<u>2,350,242</u>

**General Investments**

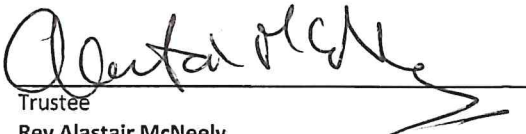
	<u>9,249</u>	<u>8,481</u>
--	--------------	--------------

Approved by trustees on 23/05/2024 and signed on its behalf by:



Trustee  
Norman Cornett

Date: 23/05/2024



Trustee  
Rev Alastair McNeely

Date: 23/05/2024

**Tartaraghan Congregation of the Presbyterian Church in Ireland**

**Notes to the Accounts - Year Ended 31 December 2023**

**1. ACCOUNTING POLICIES**

**BASIS OF FINANCIAL STATEMENTS**

As the total income of the congregation is less than £250,000 the congregation have elected in accordance with the provisions in The Charities (Accounts and Reports Regulations (Northern Ireland) 2015 to prepare its accounts on a receipts and payments basis.

**FUND ACCOUNTING**

Endowment funds are funds, the capital of which must be retained either permanently or at the congregation's discretion; the income derived from the endowment is to be used either as restricted or unrestricted income funds depending upon the purpose for which the endowment was established in the first place.

Restricted funds comprise (a) income from endowments which is to be expended only on the restricted purposes intended by the donor and (b) revenue donations or grants for a specific congregational activity intended by the donor. Where these funds have unspent balances, interest on their pooled investment is apportioned to the individual funds on an average balance basis.

Unrestricted funds are income funds which are to be spent on the congregation's general purposes.

Designated funds are general funds set aside by the congregation for use in the future.

**RECEIPTS**

**2. DONATIONS & LEGACIES**

	Unrestricted Funds £	Restricted Funds £	Endowment Funds £	Total 2023 £
Loose collections	6,259	3,090	-	9,349
Donations & gifts	60,381	42,701	-	103,082
Gift Aid	12,435	8,449	-	20,884
Legacies & bequests	-	-	-	-
	<u>79,075</u>	<u>54,240</u>	<u>-</u>	<u>133,315</u>

**3. CHARITABLE ACTIVITIES**

	Unrestricted Funds £	Restricted Funds £	Endowment Funds £	Total 2023 £
Income from charitable activities & fundraising	-	-	-	-
Membership Fees	-	2,775	-	2,775
Grants	6,225	3,800	-	10,025
	<u>6,225</u>	<u>6,575</u>	<u>-</u>	<u>12,800</u>

**4. OTHER TRADING ACTIVITIES**

	Unrestricted Funds £	Restricted Funds £	Endowment Funds £	Total 2023 £
Other Activities	1,611	790	-	2,401
	<u>1,611</u>	<u>790</u>	<u>-</u>	<u>2,401</u>

Tartaraghan Congregation of the Presbyterian Church in Ireland

Notes to the Accounts - Year Ended 31 December 2023

5. INVESTMENT INCOME

	Unrestricted Funds £	Restricted Funds £	Endowment Funds £	Total 2023 £
Interest on Bequests	74	-	-	74
Bank Interest	280	1,554	-	1,834
	<u>354</u>	<u>1,554</u>	<u>-</u>	<u>1,908</u>

6. OTHER INCOME

	Unrestricted Funds £	Restricted Funds £	Endowment Funds £	Total 2023 £
Magazines	132	-	-	132
Grave Fees	50	-	-	50
Wedding & Funeral Donations	300	400	-	700
	<u>482</u>	<u>400</u>	<u>-</u>	<u>882</u>

PAYMENTS

7. RAISING FUNDS

	Unrestricted Funds £	Restricted Funds £	Endowment Funds £	Total 2023 £
Church Envelopes	535	-	-	535
	<u>535</u>	<u>-</u>	<u>-</u>	<u>535</u>

8. CHARITABLE ACTIVITIES

	Unrestricted Funds £	Restricted Funds £	Endowment Funds £	Total 2023 £
General Assembly	7,817	-	-	7,817
Presbytery Fees	298	-	-	298
Ministry & Support Staff	17,651	-	-	17,651
Running Costs	21,602	7,270	-	28,872
Donations to Missions/Charities	-	14,598	-	14,598
Governance costs	2,349	-	-	2,349
	<u>49,717</u>	<u>21,868</u>	<u>-</u>	<u>71,585</u>

Tartaraghan Congregation of the Presbyterian Church in Ireland

Notes to the Accounts - Year Ended 31 December 2023

9. FUND BALANCES

	Balance at start £	Receipts £	Payments £	Surplus/ (Deficit) £	Transfers nett £	Balance at end £
<b>Unrestricted Funds</b>						
General	83,389	87,747	50,252	37,495	785	121,669
	<u>83,389</u>	<u>87,747</u>	<u>50,252</u>	<u>37,495</u>	<u>785</u>	<u>121,669</u>
<b>Restricted Funds</b>						
United Appeal	-	5,387	5,607	(220)	220	-
Mission	-	7,352	6,191	1,161	-	1,161
Presbyterian Orphan Society	492	588	-	588	-	1,080
Moderators Appeal	70	2,108	-	2,108	-	2,178
Special Collections - Lemos	-	780	780	-	-	-
Special Collections - Sasko	-	1,868	-	1,868	-	1,868
Special Collections - Newry Hospice	-	160	160	-	-	-
Catering Current Account	108,708	1,237	16	1,221	-	109,929
Donations Savings Account	9,279	104	-	104	-	9,383
Building and repair Account	178,295	33,209	60	33,149	-	211,444
Church Manse Current Account No 1	2,729	36	-	36	-	2,765
Church Manse Current Account No 2	2,400	29	-	29	-	2,429
Friendship Group	30	-	-	-	-	30
PWA Current Account	1,101	1,373	1,719	(346)	-	755
Youth Fellowship	1,096	-	60	(60)	-	1,036
Girls Brigade Current Account	9,787	7,114	5,123	1,991	(750)	11,028
Girls Brigade Savings Account	2,095	29	-	29	-	2,124
Youth Club	1,207	1,800	1,766	34	(255)	986
Family@Four	146	385	386	(1)	-	145
	<u>317,435</u>	<u>63,559</u>	<u>21,868</u>	<u>41,691</u>	<u>(785)</u>	<u>358,341</u>
<b>Total Funds</b>	<u>400,824</u>	<u>151,306</u>	<u>72,120</u>	<u>79,186</u>	<u>-</u>	<u>480,010</u>

### **Supplementary Pages**

The additional information provided on the following pages does not form part of the congregation's independently examined Church Accounts. The figures shown have however been incorporated into the accounts on which the congregation's examiner has given their report.

Envelope Number	WFO	Building & Repair Fund	United Appeal, Missions & Harvest Collections	Presbyterian Children's Society	Gift Aid 2022	Gift Aid 2023 (Missions)	
1	330.00	-	30.00	-	67.50	-	
2	60.00	-	40.00	-	-	-	
3	-	-	-	-	-	-	
4	90.00	-	-	-	-	-	
5	-	-	-	-	-	-	
6	-	-	-	-	-	-	
7	550.00	-	540.00	30.00	-	-	
8	100.00	-	80.00	20.00	-	-	
9	500.00	-	-	-	-	-	
10	1,320.00	-	-	-	265.00	-	
11	260.00	12.00	22.00	-	-	1.75	
12	555.00	160.00	100.00	20.00	-	-	
13	-	-	-	-	-	-	
14	260.00	100.00	120.00	-	-	15.00	
15	335.00	130.00	20.00	-	85.00	-	
16	200.00	-	-	-	68.75	-	
17	285.00	120.00	35.00	10.00	-	-	
18	-	-	-	-	-	-	
19	2,080.00	1,200.00	1,300.00	-	1,186.25	175.00	
20	2,090.00	1,850.00	600.00	40.00	1,140.00	100.00	
21	3,035.00	365.00	180.00	50.00	941.25	20.00	
22	375.00	140.00	50.00	-	87.50	-	
23	645.00	270.00	165.00	20.00	185.00	17.50	
24	375.00	405.00	-	-	162.50	-	
25	-	-	-	-	-	-	
26	-	-	-	-	-	-	
27	20.00	20.00	-	10.00	-	-	
28	880.00	480.00	240.00	-	340.00	25.00	
29	195.00	80.00	40.00	10.00	-	-	
30	930.00	490.00	120.00	-	340.00	10.00	
31	265.00	120.00	155.00	20.00	-	-	
32	218.00	5.00	5.00	-	-	-	
33	380.00	100.00	30.00	-	-	-	
34	205.00	15.00	-	-	-	-	
35	-	-	-	-	-	-	
36	180.00	-	-	-	-	-	
37	600.00	-	-	-	155.00	-	
38	160.00	-	-	-	-	-	
39	-	-	-	-	-	-	
40	-	-	-	-	-	-	
41	160.60	23.90	34.00	3.00	-	-	
42	120.00	-	-	-	-	-	
43	745.00	540.00	-	-	96.25	-	
44	220.00	-	-	-	-	-	
45	-	-	-	-	3.87	-	
46	750.00	750.00	20.00	-	380.00	-	

Envelope Number	WFO	Building & Repair Fund	United Appeal, Missions & Harvest Collections	Presbyterian Children's Society	Gift Aid 2022	Gift Aid 2023 (Missions)	
47	105.00	-	-	-	-	-	
48	84.00	-	-	-	-	-	
49	-	-	-	-	-	-	
50	530.00	300.00	50.00	-	215.00	-	
51	-	-	-	-	-	-	
52	-	-	-	10.00	-	-	
53	590.00	180.00	-	-	165.00	-	
54	-	-	-	-	-	-	
55	530.00	120.00	130.00	15.00	382.50	17.50	
56	243.00	-	-	-	-	-	
57	200.00	-	-	-	-	-	
58	240.00	-	-	-	-	-	
59	400.00	400.00	400.00	-	-	-	
60	-	-	-	-	52.50	-	
61	540.00	100.00	140.00	20.00	220.00	12.50	
62	-	-	-	-	-	-	
63	-	-	-	-	-	-	
64	185.00	30.00	-	-	48.75	-	
65	689.00	480.00	110.00	10.00	319.00	15.00	
66	490.00	200.00	290.00	-	-	-	
67	530.00	140.00	140.00	20.00	183.75	17.50	
68	265.00	120.00	150.00	20.00	-	-	
69	50.00	-	10.00	-	-	-	
70	-	-	-	-	-	-	
71	327.00	10.00	10.00	-	89.25	-	
72	1,210.00	1,750.00	1,310.00	20.00	642.50	207.50	
73	265.00	85.00	-	-	-	-	
74	270.00	-	10.00	-	-	-	
75	610.00	-	130.00	-	-	-	
76	800.00	1,000.00	20.00	-	162.50	-	
77	1,735.39	2,037.00	729.38	-	1,175.48	94.75	
78	600.00	-	-	-	-	-	
79	370.00	40.00	10.00	-	-	-	
80	-	-	-	-	-	-	
81	540.00	220.00	170.00	20.00	222.50	17.50	
82	-	-	-	-	-	-	
83	108.00	40.00	-	-	-	-	
84	200.00	250.00	20.00	-	485.00	-	
85	1,040.00	1,960.00	400.00	-	912.50	10.00	
86	1,200.00	1,200.00	30.00	-	630.00	-	
87	-	-	-	-	-	-	
88	-	-	-	-	-	-	
89	530.00	190.00	170.00	10.00	232.50	22.50	
90	530.00	240.00	20.00	-	180.00	-	
91	885.00	160.00	130.00	20.00	262.50	17.50	
92	600.00	1,800.00	300.00	20.00	615.00	40.00	

Envelope Number	WFO	Building & Repair Fund	United Appeal, Missions & Harvest Collections	Presbyterian Children's Society	Gift Aid 2022	Gift Aid 2023 (Missions)	
93	533.00	210.00	420.00	40.00	291.25	47.50	
94	140.00	-	-	-	-	-	
95	3,520.00	960.00	730.00	-	940.00	90.00	
96	1,180.00	2,000.00	470.00	-	470.00	27.50	
97	-	-	-	-	-	-	
98	415.00	-	90.00	-	105.16	7.50	
99	840.00	-	130.00	-	-	15.00	
100	-	-	-	-	180.00	-	
101	960.00	-	100.00	-	270.00	7.50	
102	355.00	-	-	-	-	-	
103	100.00	100.00	-	-	-	-	
104	200.00	-	-	-	-	-	
105	550.00	240.00	100.00	10.00	220.00	10.00	
106	230.00	220.00	240.00	-	-	-	
107	323.00	160.00	55.00	20.00	-	-	
108	800.00	-	-	-	178.75	-	
109	7,815.00	1,550.00	-	-	2,388.75	-	
110	300.00	170.00	260.00	20.00	143.75	42.50	
111	400.00	-	40.00	-	-	-	
112	-	-	-	-	-	-	
113	200.00	40.00	40.00	-	115.00	-	
114	20.00	-	-	-	-	-	
115	-	-	-	-	-	-	
116	-	-	-	-	-	-	
117	600.00	-	-	-	170.00	-	
118	3,390.00	-	-	-	877.50	-	
119	520.00	1,200.00	-	-	-	-	
120	-	-	-	-	-	-	
	-	-	-	-	265.66	-	Interest received on Gift Aid claims
	-	-	-	-	484.44	-	Gift Aid Small Donations Scheme
<b>Totals</b>	<b>60,355.99</b>	<b>27,277.90</b>	<b>11,480.38</b>	<b>508.00</b>	<b>19,800.36</b>	<b>1,084.00</b>	

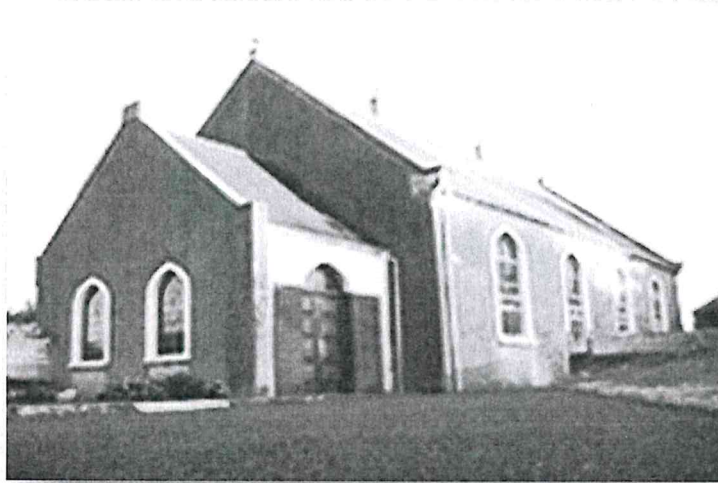
**Tartaraghan Presbyterian Church Congregation of the Presbyterian Church in Ireland**

Northern Ireland - Charity number 104792

---

# Annual report

---



# Tartaraghan Presbyterian Church

## Financial Report 2023

Registered With NICC, Charity No. 104792

**TARTARAGHAN CONGREGATION OF THE PRESBYTERIAN CHURCH IN  
IRELAND**

**Trustees Annual Report and Financial Statements  
for the year ended 31 December 2023**

**Registered Charity in Northern Ireland (NIC104792)**

**TARTARAGHAN CONGREGATION OF THE PRESBYTERIAN CHURCH IN IRELAND  
TRUSTEES ANNUAL REPORT**

The Trustees present their Annual Report and Financial Statements for the year ended 31 December 2023 including a Statement of Assets and Liabilities as at that date.

**REFERENCE AND ADMINISTRATIVE DETAILS**

Tartaraghan congregation of the Presbyterian Church in Ireland  
28 Cloncarrish Road, Portadown, Co Armagh, BT62 1RN  
Registered Charity in Northern Ireland (NIC104792)

**CHARITY TRUSTEES**

The Charity Trustees who served during the year or who were trustees at the date of this report were

Leslie Brush  
Neil Cornett  
Norman Cornett  
Stephen McCombe

Philip McMenemy  
Mark Wilson

**PRINCIPAL OFFICE BEARERS**

Minister  
Clerk of Session  
Treasurer

Rev Alastair McNeely (Convener)  
Norman Cornett  
Andrew Cornett

**INDEPENDENT EXAMINER**

WHR Accountants Ltd  
56 Upper English St, Armagh BT61 7LG

**BANKERS**

Danske Bank, 45-48 High Street, Portadown  
Ulster Bank, 20 High Street, Portadown

**SOLICITORS**

**T D Gibson & Co**

Morrison House, 107 Church Street, Portadown, County Armagh BT62 3DB

## **STRUCTURE AND MANAGEMENT**

### **The Kirk Session**

The charity trustees of the congregation are the members of its Kirk Session. Under the congregation's governing document, The Code, the book of the constitution and government of the Presbyterian Church in Ireland, the Kirk Session seeks to watch over and promote the spiritual interest of the congregation and of persons not connected with any congregation who are within its bounds. It ensures pastoral care is in place in the congregation and seeks to further the contribution of the Church to Christian witness and service in the local community. The Kirk Sessions has delegated to its Congregational Committee the temporal affairs of the congregation including administering all funds and property belonging to the congregation. Members of the Kirk Session are ex-officio members of the Congregational Committee.

The Kirk Session consists of the ordained minister and the ruling elders of the congregations. All members are entitled to propose, speak and exercise equal votes at meetings, except that the Moderator, the ministers in active duty in the congregation, has no deliberative but only a casting vote.

Stated meetings of the Kirk session are held a number of times each year or as appropriate.

To be chosen for the office of the eldership in the congregation a person must be a voting member and a regular attendant on its ordinances. The selection of those proposed to be called to the office can be either by the congregation or by the Kirk Session. Members are elected if they obtain two-thirds of those who vote.

### **Presbytery**

Under the Presbyterian Church in Ireland form of governance the corporate oversight of a congregation is the responsibility of a Presbytery which superintends generally the spiritual and temporal affairs of the congregations assigned to it by the General Assembly of the Presbyterian Church in Ireland. Tartaraghan congregation of the Presbyterian Church has been assigned to the Armagh Presbytery of the Presbyterian Church in Ireland. The membership of the Presbytery consists mainly of the active ministers of congregations assigned to it by the General Assembly, ministers who have retired from active duty and an elder appointed by the Kirk Session of the congregation.

## **The General Assembly**

The General Assembly is the supreme court of the Church, representing in one body the whole Church and acting as its supreme legislative, administration and judicial authority, in dealing with all matters brought before it. The General Assembly is normally constituted during the first week in June for worship and to conduct its business. At the end of business, it is dissolved. The membership of the General Assembly consists mainly of the active ministers of each congregation, retired ministers and a representative elder appointed by the Kirk Session of each congregation.

## **DESCRIPTION AND PURPOSE**

The charitable purpose of the congregation is the advancement of religion.

Tartaraghan congregation of the Presbyterian Church is a congregation of the Presbyterian Church in Ireland. The Presbyterian Church in Ireland, as a Reformed Church within the wider body of Christ is grounded in the Scriptures, and exists to love and honour God through faith in His Son and by the power of His Spirit, and to enable her members to play their part in fulfilling God's mission to our world.

The congregation's mission purpose is by the grace of God, to help people of all ages become fully devoted followers of Jesus Christ. Our vision is, by the grace of God, to be an inclusive, welcoming community of Christ's people of all ages, which:

- is increasingly characterised by love for God, and love and concern for others;
- is committed to the historic Christian gospel as revealed in the Bible;
- is relevant to people of this time and place.

The congregation aims to live out its Mission and Vision as a family of God's people by being:

- A Covenant Community: where our relationships are rooted in the promises of God by living faithfully toward him and toward one another
- An Intergenerational Community: where adults intentionally take the lead to engage with, encourage and nurture younger members to maturity in Christ.
- An Outward looking Community: where we want the blessings of God that belong to us in the gospel to become blessings for others beyond the bounds of our community.
- As a congregation of the Presbyterian Church in Ireland, we believe that the Bible is the supreme authority over all we do, and that the Westminster Confession of Faith, along with the Larger and Shorter Catechisms set out what we understand the Bible teaches on key matters of Christian faith and practice

## **ACTIVITIES AND OBJECTIVES**

The congregation meets for worship every Sunday and visitors are welcome to join. Children's Church and Crèche run concurrently. The Sacrament of the Lords Supper is observed on several occasions during the year and all those who have been baptised and who have made a profession of faith in the Lord Jesus Christ are admitted to the Lord's Supper. The congregation holds regular bible study meetings and has a wide range of organisations including

- Sunday School
- Bible Classes
- Women's Keep Fit
- Women's Bible Study
- Girls' Brigade
- Men's Group
- Women's Group
- Youth Club
- Youth Fellowship
- Mothers and Toddlers Group
- Discipleship Groups (3)
- Senior Fellowship Group
- Family@4
- Holiday Bible Club
- Men@10.30

## **ACHIEVEMENTS AND PERFORMANCE**

### **Worship and prayer**

The congregation normally meets for worship each Sunday at 10.30am and monthly (September to June) at 6.30pm. During the week the Discipleship Groups provide an opportunity for members to meet together for fellowship, to study the scriptures and for a time of prayer. Prayer meetings are also held on Sundays in person and Friday mornings online.

As well as our regular services during 2023 we acknowledged God's gift of new life at 2 Sacraments of Baptism.

At 31 December 2023 there were 103 communicant members and 150 families connected with the congregation. Average attendance at morning services was 160. Average at monthly evening services was 120.

**Pastoral care** - Members of the congregation who are unable to attend church due to sickness or age are visited on a regular basis by the minister, elders or by either of the two Pastoral & Community Outreach Workers. CD and DVD recordings of services are produced and made available to those who are unable to attend, or access online.

### **Mission and outreach**

At a local level the congregation have been effective in connecting with the surrounding community through the different organisations, catering for all age groups.

There is also adult evangelism through personal friendships, literature distribution, and evangelistic services/meetings.

Involvement in overseas Mission has been developing, and this was enhanced by our congregational connection with Awake Ministries working in northern Portugal; the Loney family (Acre) working in southern Portugal. Also locally, the Charis Youth Club, Dungannon.

The congregation supports the United Appeal for Mission which is a central fund of the Presbyterian Church in Ireland. This fund enables congregations to support the wider mission of the denomination and to do mission and outreach on a denominational basis beyond what the congregation could do on its own. The United Appeal Fund provides financial support for mission personnel at home and overseas, assists congregations with the deployment of locally based staff, enables church planting, provides grant support for the upkeep of church premises, assist with the running costs of Union Theological College, the Church's training college for ministry students, and financially supports congregation in the areas of worship, discipleship, global mission, outreach, leadership and pastoral care.

The congregation also contributes to the denomination's special appeals.

### **Presbytery**

The congregation is represented at the regular meetings of Presbytery by our minister and / or one of the elders. This provides an important link between the congregations and the wider structures of the church.

### **General Assembly**

The minister and one of our elders are nominated to attend the meeting of the General Assembly of the Presbyterian Church in Ireland held in Assembly Buildings, Belfast, in June.

### **Property**

During the year there has been ongoing repair and maintenance of property and grounds. There were no major repair or refurbishment projects in 2023.

## Organisations

Sunday School – Meet each Sunday 9.30 – 10.20am, September to June. Sunday School plays a vital role in the life of our congregation. Our aim is to introduce children to Jesus and to teach them what it means to be a Christian; through Bible based lessons, songs, memory verses, worksheets and other activities all within a safe and relaxed environment. There are three classes and we welcome all children between 4 and 12 years of age. Average attendance: 55

Bible Classes – Are a follow-on from Sunday School and meet each Sunday 9.30 – 10.20am, prior to the morning service. Average attendance: 17

Family @ 4 - Meet 4 – 6pm, first Sunday of each month (October to May) and is for the whole family whether children are toddlers or teenagers. Activities include messy crafts, bible stories and an evening meal. Average attendance: 80

Women's Keep Fit – Meet Monday evenings 7.30 – 8.30pm. Set up to encourage women from the congregation and the local area to meet together and socialise while improving their physical well-being.

Women's Bible Study - Meet on alternate Tuesday mornings, 10.15 – 11.15am, September to June, to study God's Word in an informal setting. For all ages. Average attendance: 15

Girls' Brigade – Meet 6.30 – 9.30pm on Tuesday evenings in the church hall, September – March. There are four groups: Explorers, Juniors, Seniors and Brigaders. Our aim is to help girls to become followers of the Lord Jesus Christ, and through self-control, reverence and a sense of responsibility, to find true enrichment of life. Average attendance: 105

Youth Club – Meet on Friday evenings 8.00 – 10.00pm, September – June and is for the age range P7 and older offering a fun and safe place for young people to meet. There are plenty of games and sports to try like pool, table tennis, football and dodgeball or a chance to relax in the coffee bar and chat with friends. Each evening there is opportunity to hear a bible or gospel message. Average attendance: 35

Youth Fellowship - is all about young people meeting together to learn more about Jesus. It's a great opportunity to study God's word in an informal setting with friends and to have a chance to chat over issues facing them. There are also times of fun, food and fellowship at the meetings as well as an annual weekend away. Meet fortnightly on Sunday evenings at 7.00pm, jointly with youth from Loughgall Presbyterian Church. Average attendance: 18

Mothers and Toddlers Group – Meet each Wednesday, 10.00 – 11.45am. The children enjoy themselves with various toys and games in a safe environment while carers have fellowship and a chat over a cup of tea/coffee. Average attendance: 15 children + carers

Discipleship Groups – are small groups who meet together regularly to learn more about the bible, grow in their faith and also become better disciples of Jesus. Meet in homes and in church hall. There are presently three groups, one meeting on Tuesday evening and the other two meeting on Wednesday, all at 8.00pm. Average overall attendance: 25

Men's Group (Ir'n Men) – For men of all ages. Meets second Wednesday of each month at 8.00pm, September – May. Each meeting usually consists of a praise time, ice breakers, games, personal testimonies, food and teaching from God's word. Particular emphasis is placed on what how God's word relates to men and how this can be applied to everyday life. Average attendance: 18

Women's Group (PW) – Meet second Thursday of each month at 8.00pm for a time of fellowship, encouragement and discipleship; seeking different fun and exciting ways of reaching women for Christ. In addition to this, various missions at home and overseas are supported. Average attendance: 35

Senior Fellowship Group - meet on a monthly basis on the third Thursday of each month at 2.30pm. The aim is to meet for fellowship, have a chat and cup of tea and also hear something of how God is working in people's lives. The programme each month is varied with interesting Christian speakers from different walks of life. The group also have an outing twice a year. Average attendance: 20

Bible Club - An annual event held at the end of June. Average attendance: 90

Men@10.30 - A time of friendship and fellowship at 10:30am each Monday in the Church Hall. These informal drop in sessions are an opportunity to meet up and enjoy board games, darts, craft, bowls, table tennis and other activities along with a short Bible Slot. Refreshments are available. Open to men of all ages. Average attendance: 18

## **Volunteers**

The Trustees wish to acknowledge their deep appreciation of those who give freely of their time by serving on committees and helping with organisations and other church activities. Our organisations involve around 40 leaders/teachers, not counting others who help with Crèche, Children's Church and the annual Bible Club.

## **PUBLIC BENEFIT STATEMENT**

The Presbyterian Church in Ireland meets the public benefit requirement by providing benefit to its members and the general public by making known the Christian Gospel of the Lord Jesus Christ through the advancement of religion.

The direct benefits which flow from the purposes of the Church include the gaining of an understanding in Christian beliefs as set out in the Bible and in the Church's subordinate standards (the Westminster Confession of Faith and the Shorter and Larger Catechisms) leading to spiritual and moral development and opportunities for response to Bible teaching. In turn, this framework leads to practical expressions of Christian beliefs and standards in the local community such as through the care of those in need (including the sick, disabled and bereaved).

Generally the above benefits are delivered locally by congregations and their members, or are facilitated through presbyteries or are organised and delivered centrally. Local delivery is facilitated by central resources in almost all cases. Public access is made known through the use of noticeboards, printed material, press advertisement, websites, and social media or in other ways.

The benefits are demonstrated through regular evaluation of the services and informal and ad-hoc feedback from members, their families, and members of the public.

The purpose does not lead to harm. The only private benefit flowing from our purpose is related to Ministers, Missionaries, Deaconesses, Irish Mission workers and Lay Agents who receive benefits as a result of their holding office or employment. However, this is incidental and necessary in order to further our charitable purpose. There are no other private benefits. The beneficiaries of this purpose are members, their families, other individuals that the Presbyterian Church in Ireland is in direct and indirect contact with, the community in which pastoral services are provided and other communities throughout Northern Ireland, the Republic of Ireland, and worldwide which benefit from our engagement with and support for both Christian and other secular organisations, charities and individual members of the public. The Kirk Session has had regard to the Charity Commission's Public benefit requirement statutory guidance.

## FINANCIAL REVIEW

The congregation's main source of income is members' contributions through the Weekly Freewill Offering. There were 93 contributors during the year donating a total of £103,082 (£95,093 in previous year, 2022)

Total Income of the congregation during the year was £151,306, compared to £152,453 in the previous year, 2022. Total expenditure decreased from £101,469 to £72,120.

## STATEMENT OF TRUSTEE RESPONSIBILITIES

The Trustees are responsible for preparing the annual report and the financial statements of the congregation in accordance with applicable law and generally accepted accounting practice.

As the congregation's total income does not exceed £250,000, the Trustees have elected under Section 64(3) of the Charities Act (Northern Ireland) 208 to prepare a receipts and payment account and a statement of assets and liabilities.

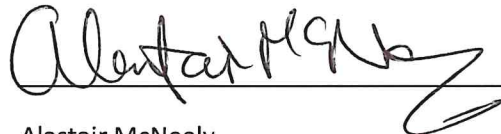
The Trustees are responsible for keeping adequate accounting records that are sufficient to show and explain the congregation's transactions and disclose with reasonable accuracy at any time its financial position. They are also responsible for safeguarding the assets of the congregation and hence for taking reasonable steps for the prevention and detection of fraud and other irregularities.

Approved by the Kirk Session at a meeting on 23 May 2024 and signed on its behalf by



Norman Cornett

23 May 2024



Alastair McNeely

23 May 2024

**Charity No: NIC 104792**

**Tartaraghan Congregation  
of the  
Presbyterian Church in Ireland**

**Trustee Report  
and  
Receipts and Payments Account  
for the year ended 31 December 2023**

**Tartaraghan Congregation of the Presbyterian Church in Ireland**

**Independent Examiner's Report to the Charity Trustees of  
Tartaraghan Congregation of the Presbyterian Church in Ireland**

I report on the accounts of the Charity for the year ended 31 December 2023.

**Respective responsibilities of charity trustees and examiner:**

As the charity's trustees you are responsible for the preparation of the accounts in accordance with the Charities Act (Northern Ireland) 2008.

It is my responsibility to:

- examine the accounts under section 65 of the Charities Act, to follow the procedures laid down in the general directions given by the Commission under section 65(9)(b) of the Charities Act,
- Charities Act,
- to state whether particular matters have come to my attention.

**Basis of independent examiner's report:**

I have examined your charity accounts as required under section 65 of the Charities Act and my examination was carried out in accordance with the general directions given by the Charity Commission for Northern Ireland under section 65(9)(b) of the Charities Act.

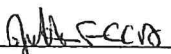
My examination included a review of the accounting records kept by the charity and a comparison of the accounts presented with those records. It also included consideration of any unusual items or disclosures in the accounts, and seeking explanations from you as charity trustees concerning any such matters.

My role is to state whether any material matters have come to my attention giving me cause to believe:

- 1 That accounting records were not kept in accordance with section 63 of the Charities Act.
- 2 That the accounts do not accord with those accounting records.
- 3 That the accounts do not comply with the accounting requirements of the Charities Act.
- 4 That there is further information needed for a proper understanding of the accounts to be reached.

**Independent examiner's statement**

I have completed my examination and have no concerns in respect of the matters (1) to (4) listed above and, in connection with following the directions of the Charity Commission for Northern Ireland, I have found no matters that require drawing to your attention.

  
James Robinson FCCA  
WHR Accountants Limited  
Chartered Certified Accountants  
56 English Street  
Armagh  
BT61 7LG

23/05/2024  
Date

Tartaraghan Congregation of the Presbyterian Church in Ireland

Statement of Financial Activity (Receipts and Payments Account) for the Year Ended 31 December 2023

	Note	Unrestricted Funds £	Restricted Funds £	Endowment Funds £	Total 2023 £	Total 2022 £
<b>Receipts</b>						
Donations & Legacies	2	79,075	54,240	-	133,315	137,474
Charitable Activities	3	6,225	6,575	-	12,800	13,796
Other trading activities	4	1,611	790	-	2,401	539
Investment income	5	354	1,554	-	1,908	469
Other income	6	482	400	-	882	175
<b>Total Receipts</b>		<b>87,747</b>	<b>63,559</b>	<b>-</b>	<b>151,306</b>	<b>152,453</b>
<b>Payments</b>						
Raising Funds	7	535	-	-	535	518
Charitable Activities	8	49,717	21,868	-	71,585	100,951
Purchases Fixed Assets		-	-	-	-	-
<b>Total Payments</b>		<b>50,252</b>	<b>21,868</b>	<b>-</b>	<b>72,120</b>	<b>101,469</b>
Net Receipts / Payments		37,495	41,691	-	79,186	50,984
Transfers net		785	(785)	-	-	-
Net movement in funds		38,280	40,906	-	79,186	50,984
Funds brought forward 1 January		83,389	317,435	-	400,824	349,840
Deduct non cash/bank related Endowment Funds		-	-	-	-	-
Funds carried forward 31 December	9	121,669	358,341	-	480,010	400,824

Tartaraghan Congregation of the Presbyterian Church in Ireland

Statement of Assets and Liabilities as at 31 December 2023

	Unrestricted Funds £	Restricted Funds £	Endowment Funds £	Total 2023 £	Total 2022 £
<b>Funds Reconciliation</b>					
Bank and cash at start of year	83,389	317,435	-	400,824	349,840
Net movement in funds	38,280	40,906	-	79,186	50,984
Bank & cash at end of year	121,669	358,341	-	480,010	400,824

**Bank & Cash Balances**

Bank Current Accounts				480,010	400,824
<b>Total</b>				480,010	400,824

**Memorandum Note Only**

**Fixed Assets**

Assets retained for the Church's own use comprise the following properties and are stated at own valuations or at insured values.

Church Buildings and Contents	1,210,368	1,125,924
Church Hall and Contents	1,013,034	942,357
Manse at Cloncarrish Road, Portadown	130,661	121,545
Outbuildings	73,547	68,416
Agricultural Land at valuation	72,000	72,000
Agricultural Land Acquired	20,000	20,000
	<u>2,519,610</u>	<u>2,350,242</u>

**General Investments**

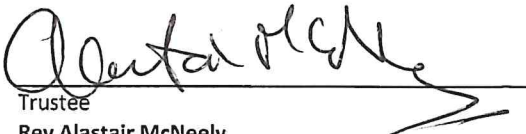
	<u>9,249</u>	<u>8,481</u>
--	--------------	--------------

Approved by trustees on 23/05/2024 and signed on its behalf by:



Trustee  
Norman Cornett

Date: 23/05/2024



Trustee  
Rev Alastair McNeely

Date: 23/05/2024

**Tartaraghan Congregation of the Presbyterian Church in Ireland**

**Notes to the Accounts - Year Ended 31 December 2023**

**1. ACCOUNTING POLICIES**

**BASIS OF FINANCIAL STATEMENTS**

As the total income of the congregation is less than £250,000 the congregation have elected in accordance with the provisions in The Charities (Accounts and Reports Regulations (Northern Ireland) 2015 to prepare its accounts on a receipts and payments basis.

**FUND ACCOUNTING**

Endowment funds are funds, the capital of which must be retained either permanently or at the congregation's discretion; the income derived from the endowment is to be used either as restricted or unrestricted income funds depending upon the purpose for which the endowment was established in the first place.

Restricted funds comprise (a) income from endowments which is to be expended only on the restricted purposes intended by the donor and (b) revenue donations or grants for a specific congregational activity intended by the donor. Where these funds have unspent balances, interest on their pooled investment is apportioned to the individual funds on an average balance basis.

Unrestricted funds are income funds which are to be spent on the congregation's general purposes.

Designated funds are general funds set aside by the congregation for use in the future.

**RECEIPTS**

**2. DONATIONS & LEGACIES**

	Unrestricted Funds £	Restricted Funds £	Endowment Funds £	Total 2023 £
Loose collections	6,259	3,090	-	9,349
Donations & gifts	60,381	42,701	-	103,082
Gift Aid	12,435	8,449	-	20,884
Legacies & bequests	-	-	-	-
	<u>79,075</u>	<u>54,240</u>	<u>-</u>	<u>133,315</u>

**3. CHARITABLE ACTIVITIES**

	Unrestricted Funds £	Restricted Funds £	Endowment Funds £	Total 2023 £
Income from charitable activities & fundraising	-	-	-	-
Membership Fees	-	2,775	-	2,775
Grants	6,225	3,800	-	10,025
	<u>6,225</u>	<u>6,575</u>	<u>-</u>	<u>12,800</u>

**4. OTHER TRADING ACTIVITIES**

	Unrestricted Funds £	Restricted Funds £	Endowment Funds £	Total 2023 £
Other Activities	1,611	790	-	2,401
	<u>1,611</u>	<u>790</u>	<u>-</u>	<u>2,401</u>

Tartaraghan Congregation of the Presbyterian Church in Ireland

Notes to the Accounts - Year Ended 31 December 2023

5. INVESTMENT INCOME

	Unrestricted Funds £	Restricted Funds £	Endowment Funds £	Total 2023 £
Interest on Bequests	74	-	-	74
Bank Interest	280	1,554	-	1,834
	<u>354</u>	<u>1,554</u>	<u>-</u>	<u>1,908</u>

6. OTHER INCOME

	Unrestricted Funds £	Restricted Funds £	Endowment Funds £	Total 2023 £
Magazines	132	-	-	132
Grave Fees	50	-	-	50
Wedding & Funeral Donations	300	400	-	700
	<u>482</u>	<u>400</u>	<u>-</u>	<u>882</u>

PAYMENTS

7. RAISING FUNDS

	Unrestricted Funds £	Restricted Funds £	Endowment Funds £	Total 2023 £
Church Envelopes	535	-	-	535
	<u>535</u>	<u>-</u>	<u>-</u>	<u>535</u>

8. CHARITABLE ACTIVITIES

	Unrestricted Funds £	Restricted Funds £	Endowment Funds £	Total 2023 £
General Assembly	7,817	-	-	7,817
Presbytery Fees	298	-	-	298
Ministry & Support Staff	17,651	-	-	17,651
Running Costs	21,602	7,270	-	28,872
Donations to Missions/Charities	-	14,598	-	14,598
Governance costs	2,349	-	-	2,349
	<u>49,717</u>	<u>21,868</u>	<u>-</u>	<u>71,585</u>

Tartaraghan Congregation of the Presbyterian Church in Ireland

Notes to the Accounts - Year Ended 31 December 2023

9. FUND BALANCES

	Balance at start £	Receipts £	Payments £	Surplus/ (Deficit) £	Transfers nett £	Balance at end £
<b>Unrestricted Funds</b>						
General	83,389	87,747	50,252	37,495	785	121,669
	<u>83,389</u>	<u>87,747</u>	<u>50,252</u>	<u>37,495</u>	<u>785</u>	<u>121,669</u>
<b>Restricted Funds</b>						
United Appeal	-	5,387	5,607	(220)	220	-
Mission	-	7,352	6,191	1,161	-	1,161
Presbyterian Orphan Society	492	588	-	588	-	1,080
Moderators Appeal	70	2,108	-	2,108	-	2,178
Special Collections - Lemos	-	780	780	-	-	-
Special Collections - Sasko	-	1,868	-	1,868	-	1,868
Special Collections - Newry Hospice	-	160	160	-	-	-
Catering Current Account	108,708	1,237	16	1,221	-	109,929
Donations Savings Account	9,279	104	-	104	-	9,383
Building and repair Account	178,295	33,209	60	33,149	-	211,444
Church Manse Current Account No 1	2,729	36	-	36	-	2,765
Church Manse Current Account No 2	2,400	29	-	29	-	2,429
Friendship Group	30	-	-	-	-	30
PWA Current Account	1,101	1,373	1,719	(346)	-	755
Youth Fellowship	1,096	-	60	(60)	-	1,036
Girls Brigade Current Account	9,787	7,114	5,123	1,991	(750)	11,028
Girls Brigade Savings Account	2,095	29	-	29	-	2,124
Youth Club	1,207	1,800	1,766	34	(255)	986
Family@Four	146	385	386	(1)	-	145
	<u>317,435</u>	<u>63,559</u>	<u>21,868</u>	<u>41,691</u>	<u>(785)</u>	<u>358,341</u>
<b>Total Funds</b>	<u>400,824</u>	<u>151,306</u>	<u>72,120</u>	<u>79,186</u>	<u>-</u>	<u>480,010</u>

### **Supplementary Pages**

The additional information provided on the following pages does not form part of the congregation's independently examined Church Accounts. The figures shown have however been incorporated into the accounts on which the congregation's examiner has given their report.

Envelope Number	WFO	Building & Repair Fund	United Appeal, Missions & Harvest Collections	Presbyterian Children's Society	Gift Aid 2022	Gift Aid 2023 (Missions)	
1	330.00	-	30.00	-	67.50	-	
2	60.00	-	40.00	-	-	-	
3	-	-	-	-	-	-	
4	90.00	-	-	-	-	-	
5	-	-	-	-	-	-	
6	-	-	-	-	-	-	
7	550.00	-	540.00	30.00	-	-	
8	100.00	-	80.00	20.00	-	-	
9	500.00	-	-	-	-	-	
10	1,320.00	-	-	-	265.00	-	
11	260.00	12.00	22.00	-	-	1.75	
12	555.00	160.00	100.00	20.00	-	-	
13	-	-	-	-	-	-	
14	260.00	100.00	120.00	-	-	15.00	
15	335.00	130.00	20.00	-	85.00	-	
16	200.00	-	-	-	68.75	-	
17	285.00	120.00	35.00	10.00	-	-	
18	-	-	-	-	-	-	
19	2,080.00	1,200.00	1,300.00	-	1,186.25	175.00	
20	2,090.00	1,850.00	600.00	40.00	1,140.00	100.00	
21	3,035.00	365.00	180.00	50.00	941.25	20.00	
22	375.00	140.00	50.00	-	87.50	-	
23	645.00	270.00	165.00	20.00	185.00	17.50	
24	375.00	405.00	-	-	162.50	-	
25	-	-	-	-	-	-	
26	-	-	-	-	-	-	
27	20.00	20.00	-	10.00	-	-	
28	880.00	480.00	240.00	-	340.00	25.00	
29	195.00	80.00	40.00	10.00	-	-	
30	930.00	490.00	120.00	-	340.00	10.00	
31	265.00	120.00	155.00	20.00	-	-	
32	218.00	5.00	5.00	-	-	-	
33	380.00	100.00	30.00	-	-	-	
34	205.00	15.00	-	-	-	-	
35	-	-	-	-	-	-	
36	180.00	-	-	-	-	-	
37	600.00	-	-	-	155.00	-	
38	160.00	-	-	-	-	-	
39	-	-	-	-	-	-	
40	-	-	-	-	-	-	
41	160.60	23.90	34.00	3.00	-	-	
42	120.00	-	-	-	-	-	
43	745.00	540.00	-	-	96.25	-	
44	220.00	-	-	-	-	-	
45	-	-	-	-	3.87	-	
46	750.00	750.00	20.00	-	380.00	-	

Envelope Number	WFO	Building & Repair Fund	United Appeal, Missions & Harvest Collections	Presbyterian Children's Society	Gift Aid 2022	Gift Aid 2023 (Missions)	
47	105.00	-	-	-	-	-	
48	84.00	-	-	-	-	-	
49	-	-	-	-	-	-	
50	530.00	300.00	50.00	-	215.00	-	
51	-	-	-	-	-	-	
52	-	-	-	10.00	-	-	
53	590.00	180.00	-	-	165.00	-	
54	-	-	-	-	-	-	
55	530.00	120.00	130.00	15.00	382.50	17.50	
56	243.00	-	-	-	-	-	
57	200.00	-	-	-	-	-	
58	240.00	-	-	-	-	-	
59	400.00	400.00	400.00	-	-	-	
60	-	-	-	-	52.50	-	
61	540.00	100.00	140.00	20.00	220.00	12.50	
62	-	-	-	-	-	-	
63	-	-	-	-	-	-	
64	185.00	30.00	-	-	48.75	-	
65	689.00	480.00	110.00	10.00	319.00	15.00	
66	490.00	200.00	290.00	-	-	-	
67	530.00	140.00	140.00	20.00	183.75	17.50	
68	265.00	120.00	150.00	20.00	-	-	
69	50.00	-	10.00	-	-	-	
70	-	-	-	-	-	-	
71	327.00	10.00	10.00	-	89.25	-	
72	1,210.00	1,750.00	1,310.00	20.00	642.50	207.50	
73	265.00	85.00	-	-	-	-	
74	270.00	-	10.00	-	-	-	
75	610.00	-	130.00	-	-	-	
76	800.00	1,000.00	20.00	-	162.50	-	
77	1,735.39	2,037.00	729.38	-	1,175.48	94.75	
78	600.00	-	-	-	-	-	
79	370.00	40.00	10.00	-	-	-	
80	-	-	-	-	-	-	
81	540.00	220.00	170.00	20.00	222.50	17.50	
82	-	-	-	-	-	-	
83	108.00	40.00	-	-	-	-	
84	200.00	250.00	20.00	-	485.00	-	
85	1,040.00	1,960.00	400.00	-	912.50	10.00	
86	1,200.00	1,200.00	30.00	-	630.00	-	
87	-	-	-	-	-	-	
88	-	-	-	-	-	-	
89	530.00	190.00	170.00	10.00	232.50	22.50	
90	530.00	240.00	20.00	-	180.00	-	
91	885.00	160.00	130.00	20.00	262.50	17.50	
92	600.00	1,800.00	300.00	20.00	615.00	40.00	

Envelope Number	WFO	Building & Repair Fund	United Appeal, Missions & Harvest Collections	Presbyterian Children's Society	Gift Aid 2022	Gift Aid 2023 (Missions)	
93	533.00	210.00	420.00	40.00	291.25	47.50	
94	140.00	-	-	-	-	-	
95	3,520.00	960.00	730.00	-	940.00	90.00	
96	1,180.00	2,000.00	470.00	-	470.00	27.50	
97	-	-	-	-	-	-	
98	415.00	-	90.00	-	105.16	7.50	
99	840.00	-	130.00	-	-	15.00	
100	-	-	-	-	180.00	-	
101	960.00	-	100.00	-	270.00	7.50	
102	355.00	-	-	-	-	-	
103	100.00	100.00	-	-	-	-	
104	200.00	-	-	-	-	-	
105	550.00	240.00	100.00	10.00	220.00	10.00	
106	230.00	220.00	240.00	-	-	-	
107	323.00	160.00	55.00	20.00	-	-	
108	800.00	-	-	-	178.75	-	
109	7,815.00	1,550.00	-	-	2,388.75	-	
110	300.00	170.00	260.00	20.00	143.75	42.50	
111	400.00	-	40.00	-	-	-	
112	-	-	-	-	-	-	
113	200.00	40.00	40.00	-	115.00	-	
114	20.00	-	-	-	-	-	
115	-	-	-	-	-	-	
116	-	-	-	-	-	-	
117	600.00	-	-	-	170.00	-	
118	3,390.00	-	-	-	877.50	-	
119	520.00	1,200.00	-	-	-	-	
120	-	-	-	-	-	-	
	-	-	-	-	265.66	-	Interest received on Gift Aid claims
	-	-	-	-	484.44	-	Gift Aid Small Donations Scheme
<b>Totals</b>	<b>60,355.99</b>	<b>27,277.90</b>	<b>11,480.38</b>	<b>508.00</b>	<b>19,800.36</b>	<b>1,084.00</b>	

**Tartaraghan Presbyterian Church Congregation of the Presbyterian Church in Ireland**

Northern Ireland - Charity number 104792

---

# Annual return

---

**Tartaraghan Congregation of the Presbyterian Church in Ireland**

**Independent Examiner's Report to the Charity Trustees of  
Tartaraghan Congregation of the Presbyterian Church in Ireland**

I report on the accounts of the Charity for the year ended 31 December 2023.

**Respective responsibilities of charity trustees and examiner:**

As the charity's trustees you are responsible for the preparation of the accounts in accordance with the Charities Act (Northern Ireland) 2008.

It is my responsibility to:

- examine the accounts under section 65 of the Charities Act, to follow the procedures laid down in the general directions given by the Commission under section 65(9)(b) of the Charities Act,
- Charities Act,
- to state whether particular matters have come to my attention.

**Basis of independent examiner's report:**

I have examined your charity accounts as required under section 65 of the Charities Act and my examination was carried out in accordance with the general directions given by the Charity Commission for Northern Ireland under section 65(9)(b) of the Charities Act.

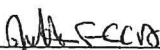
My examination included a review of the accounting records kept by the charity and a comparison of the accounts presented with those records. It also included consideration of any unusual items or disclosures in the accounts, and seeking explanations from you as charity trustees concerning any such matters.

My role is to state whether any material matters have come to my attention giving me cause to believe:

- 1 That accounting records were not kept in accordance with section 63 of the Charities Act.
- 2 That the accounts do not accord with those accounting records.
- 3 That the accounts do not comply with the accounting requirements of the Charities Act.
- 4 That there is further information needed for a proper understanding of the accounts to be reached.

**Independent examiner's statement**

I have completed my examination and have no concerns in respect of the matters (1) to (4) listed above and, in connection with following the directions of the Charity Commission for Northern Ireland, I have found no matters that require drawing to your attention.

  
James Robinson FCCA  
WHR Accountants Limited  
Chartered Certified Accountants  
56 English Street  
Armagh  
BT61 7LG

23/05/2024  
Date

**Tartaraghan Presbyterian Church Congregation of the Presbyterian Church in Ireland**

Northern Ireland - Charity number 104792

---

# Accounts

---



# Tartaraghan Presbyterian Church

## Financial Report 2022

Registered With NICC, Charity No. 104792

# **TARTARAGHAN CONGREGATION OF THE PRESBYTERIAN CHURCH IN IRELAND**

**Trustees Annual Report and Financial Statements  
for the year ended 31 December 2022**

**Registered Charity in Northern Ireland (NIC104792)**

**TARTARAGHAN CONGREGATION OF THE PRESBYTERIAN CHURCH IN IRELAND  
TRUSTEES ANNUAL REPORT**

The Trustees present their Annual Report and Financial Statements for the year ended 31 December 2022 including a Statement of Assets and Liabilities as at that date.

**REFERENCE AND ADMINISTRATIVE DETAILS**

Tartaraghan congregation of the Presbyterian Church in Ireland  
28 Cloncarrish Road, Portadown, Co Armagh, BT62 1RN  
Registered Charity in Northern Ireland (NIC104792)

**CHARITY TRUSTEES**

The Charity Trustees who served during the year or who were trustees at the date of this report were

Norman Cornett  
Leslie Brush  
Neil Cornett  
Stephen McCombe

Philip McKelvey  
Philip McMenemy  
Jim Strain  
Mark Wilson

**PRINCIPAL OFFICE BEARERS**

Minister  
Clerk of Session  
Treasurer

Rev Philip McKelvey  
Norman Cornett  
Doreen Collen

**INDEPENDENT EXAMINER**

WHR Accountants Ltd  
56 Upper English St, Armagh BT61 7LG

**BANKERS**

Danske Bank, 45-48 High Street, Portadown  
Ulster Bank, 20 High Street, Portadown

**SOLICITORS**

**T D Gibson & Co**

Morrison House, 107 Church Street, Portadown, County Armagh BT62 3DB

## **STRUCTURE AND MANAGEMENT**

### **The Kirk Session**

The charity trustees of the congregation are the members of its Kirk Session. Under the congregation's governing document, The Code, the book of the constitution and government of the Presbyterian Church in Ireland, the Kirk Session seeks to watch over and promote the spiritual interest of the congregation and of persons not connected with any congregation who are within its bounds. It ensures pastoral care is in place in the congregation and seeks to further the contribution of the Church to Christian witness and service in the local community. The Kirk Sessions has delegated to its Congregational Committee the temporal affairs of the congregation including administering all funds and property belonging to the congregation. Members of the Kirk Session are ex-officio members of the Congregational Committee.

The Kirk Session consists of the ordained minister and the ruling elders of the congregations. All members are entitled to propose, speak and exercise equal votes at meetings, except that the Moderator, the ministers in active duty in the congregation, has no deliberative but only a casting vote.

Stated meetings of the Kirk session are held a number of times each year or as appropriate.

To be chosen for the office of the eldership in the congregation a person must be a voting member and a regular attendant on its ordinances. The selection of those proposed to be called to the office can be either by the congregation or by the Kirk Session. Members are elected if they obtain two-thirds of those who vote.

### **Presbytery**

Under the Presbyterian Church in Ireland form of governance the corporate oversight of a congregation is the responsibility of a Presbytery which superintends generally the spiritual and temporal affairs of the congregations assigned to it by the General Assembly of the Presbyterian Church in Ireland. Tartaraghan congregation of the Presbyterian Church has been assigned to the Armagh Presbytery of the Presbyterian Church in Ireland. The membership of the Presbytery consists mainly of the active ministers of congregations assigned to it by the General Assembly, ministers who have retired from active duty and an elder appointed by the Kirk Session of the congregation.

## **The General Assembly**

The General Assembly is the supreme court of the Church, representing in one body the whole Church and acting as its supreme legislative, administration and judicial authority, in dealing with all matters brought before it. The General Assembly is normally constituted during the first week in June for worship and to conduct its business. At the end of business, it is dissolved. The membership of the General Assembly consists mainly of the active ministers of each congregation, retired ministers and a representative elder appointed by the Kirk Session of each congregation.

### **DESCRIPTION AND PURPOSE**

The charitable purpose of the congregation is the advancement of religion.

Tartaraghan congregation of the Presbyterian Church is a congregation of the Presbyterian Church in Ireland. The Presbyterian Church in Ireland, as a Reformed Church within the wider body of Christ is grounded in the Scriptures, and exists to love and honour God through faith in His Son and by the power of His Spirit, and to enable her members to play their part in fulfilling God's mission to our world.

The congregation's mission purpose is by the grace of God, to help people of all ages become fully devoted followers of Jesus Christ. Our vision is, by the grace of God, to be an inclusive, welcoming community of Christ's people of all ages, which:

- is increasingly characterised by love for God, and love and concern for others;
- is committed to the historic Christian gospel as revealed in the Bible;
- is relevant to people of this time and place.

The congregation aims to live out its Mission and Vision as a family of God's people by being:

- A Covenant Community: where our relationships are rooted in the promises of God by living faithfully toward him and toward one another
- An Intergenerational Community: where adults intentionally take the lead to engage with, encourage and nurture younger members to maturity in Christ.
- An Outward looking Community: where we want the blessings of God that belong to us in the gospel to become blessings for others beyond the bounds of our community.
- As a congregation of the Presbyterian Church in Ireland, we believe that the Bible is the supreme authority over all we do, and that the Westminster Confession of Faith, along with the Larger and Shorter Catechisms set out what we understand the Bible teaches on key matters of Christian faith and practice

## **ACTIVITIES AND OBJECTIVES**

The congregation meets for worship every Sunday and visitors are welcome to join. Children's Church and Crèche run concurrently. The Sacrament of the Lords Supper is observed on several occasions during the year and all those who have been baptised and who have made a profession of faith in the Lord Jesus Christ are admitted to the Lord's Supper. The congregation holds regular bible study meetings and has a wide range of organisations including

- Sunday School
- Bible Classes
- Women's Keep Fit
- Women's Bible Study
- Girls' Brigade
- Men's Group
- Women's Group
- Youth Club
- Youth Fellowship
- Mothers and Toddlers Group
- Discipleship Groups (3)
- Senior Fellowship Group
- Family@4
- Holiday Bible Club
- Men@10.30

## **ACHIEVEMENTS AND PERFORMANCE**

### **Worship and prayer**

The congregation normally meets for worship each Sunday at 10.30am and monthly (September to June) at 6.30pm. During the week the Discipleship Groups provide an opportunity for members to meet together for fellowship, to study the scriptures and for a time of prayer. Prayer meetings are also held on Sunday and Friday mornings. online.

As well as our regular services during 2022 we acknowledged God's gift of new life at 5 Sacraments of Baptism.

At 31 December 2022 there were 101 communicant members and 150 families connected with the congregation. Average attendance at morning services was 140. Average at monthly evening services was 108.

**Pastoral care** - Members of the congregation who are unable to attend church due to sickness or age are visited on a regular basis by the minister, elders or by either of the two Pastoral & Community Outreach Workers. CD and DVD recordings of services are produced and made available to those who are unable to attend, or access online.

## **Mission and outreach**

At a local level the congregation have been effective in connecting with the surrounding community through the different organisations, catering for all age groups.

There is also adult evangelism through personal friendships, literature distribution, and evangelistic services/meetings.

Involvement in overseas Mission has been developing, and this was enhanced by our congregational connection with Global Mission workers Chris and Rachel Humphries, who served with Comunidade Pedras Vivas (CPV), a church plant of the Christian Presbyterian Church of Portugal; Awake Ministries working in northern Portugal; the Loney family (Acre) working in southern Portugal; Charis Youth Club, Dungannon.

The congregation supports the United Appeal for Mission which is a central fund of the Presbyterian Church in Ireland. This fund enables congregations to support the wider mission of the denomination and to do mission and outreach on a denominational basis beyond what the congregation could do on its own. The United Appeal Fund provides financial support for mission personnel at home and overseas, assists congregations with the deployment of locally based staff, enables church planting, provides grant support for the upkeep of church premises, assist with the running costs of Union Theological College, the Church's training college for ministry students, and financially supports congregation in the areas of worship, discipleship, global mission, outreach, leadership and pastoral care.

The congregation also contributes to the denomination's special appeals.

## **Presbytery**

The congregation is represented at the regular meetings of Presbytery by our minister and / or one of the elders. This provides an important link between the congregations and the wider structures of the church.

## **General Assembly**

The minister and one of our elders are nominated to attend the meeting of the General Assembly of the Presbyterian Church in Ireland held in Assembly Buildings, Belfast, in June.

## **Property**

During the year there has been ongoing repair and maintenance of property and grounds. There were no major repair or refurbishment projects in 2022.

## Organisations

Sunday School – Meet each Sunday 9.30 – 10.20am, September to June. Sunday School plays a vital role in the life of our congregation. Our aim is to introduce children to Jesus and to teach them what it means to be a Christian; through Bible based lessons, songs, memory verses, worksheets and other activities all within a safe and relaxed environment. There are three classes and we welcome all children between 4 and 12 years of age. Average attendance: 44

Bible Classes – Are a follow-on from Sunday School and meet each Sunday 9.30 – 10.20am, prior to the morning service. Average attendance: 14

Family @ 4 - Meet 4 – 6pm, first Sunday of each month (October to May) and is for the whole family whether children are toddlers or teenagers. Activities include messy crafts, bible stories and an evening meal. Average attendance: 80

Women's Keep Fit – Meet Monday evenings 7.30 – 8.30pm. Set up to encourage women from the congregation and the local area to meet together and socialise while improving their physical well-being.

Women's Bible Study - Meet on alternate Tuesday mornings, 10.15 – 11.15am, September to June, to study God's Word in an informal setting. For all ages. Average attendance: 15

Girls' Brigade – Meet 6.30 – 9.30pm on Tuesday evenings in the church hall, September – March. There are four groups: Explorers, Juniors, Seniors and Brigaders. Our aim is to help girls to become followers of the Lord Jesus Christ, and through self-control, reverence and a sense of responsibility, to find true enrichment of life. Average attendance: 105

Youth Club – Meet on Friday evenings 8.00 – 10.00pm, September – June and is for the age range P7 and older offering a fun and safe place for young people to meet. There are plenty of games and sports to try like pool, table tennis, football and dodgeball or a chance to relax in the coffee bar and chat with friends. Each evening there is opportunity to hear a bible or gospel message. Average attendance: 70

Youth Fellowship - is all about young people meeting together to learn more about Jesus. It's a great opportunity to study God's word in an informal setting with friends and to have a chance to chat over issues facing them. There are also times of fun, food and fellowship at the meetings as well as an annual weekend away. Meet fortnightly on Sunday evenings at 7.00pm, jointly with youth from Loughgall Presbyterian Church. Average attendance: 20

Mothers and Toddlers Group – Meet each Wednesday, 10.00 – 11.45am. The children enjoy themselves with various toys and games in a safe environment while carers have fellowship and a chat over a cup of tea/coffee. Average attendance: 15 children + carers

Discipleship Groups – are small groups who meet together regularly to learn more about the bible, grow in their faith and also become better disciples of Jesus. Meet in homes and in church hall. There are presently three groups, one meeting on Tuesday evening and the other two meeting on Wednesday, all at 8.00pm. Average overall attendance: 25

Men's Group (Ir'n Men) – For men of all ages. Meets second Wednesday of each month at 8.00pm, September – May. Each meeting usually consists of a praise time, ice breakers, games, personal testimonies, food and teaching from God's word. Particular emphasis is placed on what how God's word relates to men and how this can be applied to everyday life. Average attendance: 18

Women's Group (PW) – Meet second Thursday of each month at 8.00pm for a time of fellowship, encouragement and discipleship; seeking different fun and exciting ways of reaching women for Christ. In addition to this, various missions at home and overseas are supported. Average attendance: 35

Senior Fellowship Group - meet on a monthly basis on the third Thursday of each month at 2.30pm. The aim is to meet for fellowship, have a chat and cup of tea and also hear something of how God is working in people's lives. The programme each month is varied with interesting Christian speakers from different walks of life. The group also have an outing twice a year. Average attendance: 20

Bible Club - An annual event held at the end of June. Average attendance: 90

Men@10.30 - A time of friendship and fellowship at 10:30am each Monday in the Church Hall. These informal drop in sessions are an opportunity to meet up and enjoy board games, darts, craft, bowls, table tennis and other activities along with a short Bible Slot. Refreshments are available. Open to men of all ages. Average attendance: 16

## **Volunteers**

The Trustees wish to acknowledge their deep appreciation of those who give freely of their time by serving on committees and helping with organisations and other church activities. Our organisations involve around 40 leaders/teachers, not counting others who help with Crèche, Children's Church and the annual Bible Club.

## **PUBLIC BENEFIT STATEMENT**

The Presbyterian Church in Ireland meets the public benefit requirement by providing benefit to its members and the general public by making known the Christian Gospel of the Lord Jesus Christ through the advancement of religion.

The direct benefits which flow from the purposes of the Church include the gaining of an understanding in Christian beliefs as set out in the Bible and in the Church's subordinate standards (the Westminster Confession of Faith and the Shorter and Larger Catechisms) leading to spiritual and moral development and opportunities for response to Bible teaching. In turn, this framework leads to practical expressions of Christian beliefs and standards in the local community such as through the care of those in need (including the sick, disabled and bereaved).

Generally the above benefits are delivered locally by congregations and their members, or are facilitated through presbyteries or are organised and delivered centrally. Local delivery is facilitated by central resources in almost all cases. Public access is made known through the use of noticeboards, printed material, press advertisement, websites, and social media or in other ways.

The benefits are demonstrated through regular evaluation of the services and informal and ad-hoc feedback from members, their families, and members of the public.

The purpose does not lead to harm. The only private benefit flowing from our purpose is related to Ministers, Missionaries, Deaconesses, Irish Mission workers and Lay Agents who receive benefits as a result of their holding office or employment. However, this is incidental and necessary in order to further our charitable purpose. There are no other private benefits. The beneficiaries of this purpose are members, their families, other individuals that the Presbyterian Church in Ireland is in direct and indirect contact with, the community in which pastoral services are provided and other communities throughout Northern Ireland, the Republic of Ireland, and worldwide which benefit from our engagement with and support for both Christian and other secular organisations, charities and individual members of the public. The Kirk Session has had regard to the Charity Commission's Public benefit requirement statutory guidance.

## FINANCIAL REVIEW

The congregation's main source of income is members' contributions through the Weekly Freewill Offering. There were 93 contributors during the year donating a total of £95,093 (£94,912 in previous year, 2021)

Total Income of the congregation during the year was £152,453, compared to £121,191 in the previous year, 2021. Total expenditure increased from £88,771 to £101,469.

## STATEMENT OF TRUSTEE RESPONSIBILITIES

The Trustees are responsible for preparing the annual report and the financial statements of the congregation in accordance with applicable law and generally accepted accounting practice.

As the congregation's total income does not exceed £250,000, the Trustees have elected under Section 64(3) of the Charities Act (Northern Ireland) 2008 to prepare a receipts and payment account and a statement of assets and liabilities.

The Trustees are responsible for keeping adequate accounting records that are sufficient to show and explain the congregation's transactions and disclose with reasonable accuracy at any time its financial position. They are also responsible for safeguarding the assets of the congregation and hence for taking reasonable steps for the prevention and detection of fraud and other irregularities.

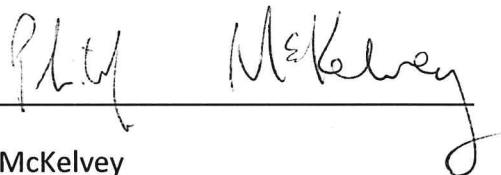
Approved by the Kirk Session at a meeting on 17 April 2023 and signed on its behalf by



---

Norman Cornett

17 April 2023



---

Philip McKelvey

17 April 2023

**Charity No: NIC 104792**

**Tartaraghan Congregation  
of the  
Presbyterian Church in Ireland**

**Trustee Report  
and  
Receipts and Payments Account  
for the year ended 31 December 2022**

**Tartaraghan Congregation of the Presbyterian Church in Ireland**

**Independent Examiner's Report to the Charity Trustees of  
Tartaraghan Congregation of the Presbyterian Church in Ireland**

I report on the accounts of the Charity for the year ended 31 December 2022.

**Respective responsibilities of charity trustees and examiner:**

As the charity's trustees you are responsible for the preparation of the accounts in accordance with the Charities Act (Northern Ireland) 2008.

It is my responsibility to:

- examine the accounts under section 65 of the Charities Act, to follow the procedures laid down in the general directions given by the Commission under section 65(9)(b) of the Charities Act,
- to state whether particular matters have come to my attention.

**Basis of independent examiner's report:**

I have examined your charity accounts as required under section 65 of the Charities Act and my examination was carried out in accordance with the general directions given by the Charity Commission for Northern Ireland under section 65(9)(b) of the Charities Act.


My examination included a review of the accounting records kept by the charity and a comparison of the accounts presented with those records. It also included consideration of any unusual items or disclosures in the accounts, and seeking explanations from you as charity trustees concerning any such matters.

My role is to state whether any material matters have come to my attention giving me cause to believe:

- 1 That accounting records were not kept in accordance with section 63 of the Charities Act.
- 2 That the accounts do not accord with those accounting records.
- 3 That the accounts do not comply with the accounting requirements of the Charities Act.
- 4 That there is further information needed for a proper understanding of the accounts to be reached.

**Independent examiner's statement**

I have completed my examination and have no concerns in respect of the matters (1) to (4) listed above and, in connection with following the directions of the Charity Commission for Northern Ireland, I have found no matters that require drawing to your attention.

  
James Robinson FCCA  
WHR Accountants Limited  
Chartered Certified Accountants  
56 English Street  
Armagh  
BT61 7LG

17/04/2023  
Date

Tartaraghan Congregation of the Presbyterian Church in Ireland

Statement of Financial Activity (Receipts and Payments Account) for the Year Ended 31 December 2022

	Note	Unrestricted Funds £	Restricted Funds £	Endowment Funds £	Total 2022 £	Total 2021 £
<b>Receipts</b>						
Donations & Legacies	2	82,638	54,836	-	137,474	96,702
Charitable Activities	3	5,998	7,798	-	13,796	23,558
Other trading activities	4	10	529	-	539	410
Investment income	5	279	190	-	469	376
Other income	6	175	-	-	175	145
<b>Total Receipts</b>		<b>89,100</b>	<b>63,353</b>	<b>-</b>	<b>152,453</b>	<b>121,191</b>
<b>Payments</b>						
Raising Funds	7	518	-	-	518	518
Charitable Activities	8	72,714	28,237	-	100,951	88,253
Purchases Fixed Assets		-	-	-	-	-
<b>Total Payments</b>		<b>73,232</b>	<b>28,237</b>	<b>-</b>	<b>101,469</b>	<b>88,771</b>
Net Receipts / Payments		15,868	35,116	-	50,984	32,420
Transfers net		(284)	284	-	-	-
Net movement in funds		15,584	35,400	-	50,984	32,420
Funds brought forward 1 January		67,805	282,035	-	349,840	317,420
Deduct non cash/bank related Endowment Funds		-	-	-	-	-
Funds carried forward 31 December	9	83,389	317,435	-	400,824	349,840

Tartaraghan Congregation of the Presbyterian Church in Ireland

Statement of Assets and Liabilities as at 31 December 2022

	Unrestricted Funds £	Restricted Funds £	Endowment Funds £	Total 2022 £	Total 2021 £
<b>Funds Reconciliation</b>					
Bank and cash at start of year	67,805	282,035	-	349,840	317,420
Net movement in funds	15,584	35,400	-	50,984	32,420
Bank & cash at end of year	83,389	317,435	-	400,824	349,840

**Bank & Cash Balances**

Bank Current Accounts				400,824	349,840
Total				400,824	349,840

**Memorandum Note Only**

**Fixed Assets**

Assets retained for the Church's own use comprise the following properties and are stated at own valuations or at insured values.

Church Buildings and Contents	1,125,924	1,047,371
Church Hall and Contents	942,357	876,612
Manse at Cloncarrish Road, Portadown	121,545	113,065
Outbuildings	68,416	63,643
Agricultural Land at valuation	72,000	72,000
Agricultural Land Acquired	20,000	20,000
	<u>2,350,242</u>	<u>2,192,691</u>


**General Investments**

	<u>8,481</u>	<u>9,241</u>
--	--------------	--------------

Approved by trustees on 17/04/2023 and signed on its behalf by:

  
 \_\_\_\_\_  
 Trustee  
 Norman Cornett

Date: 17/04/2023

  
 \_\_\_\_\_  
 Trustee  
 Philip McKelvey

Date: 17/04/2023

Tartaraghan Congregation of the Presbyterian Church in Ireland

Notes to the Accounts - Year Ended 31 December 2022

1. ACCOUNTING POLICIES

BASIS OF FINANCIAL STATEMENTS

As the total income of the congregation is less than £250,000 the congregation have elected in accordance with the provisions in The Charities (Accounts and Reports Regulations (Northern Ireland) 2015 to prepare its accounts on a receipts and payments basis.

FUND ACCOUNTING

Endowment funds are funds, the capital of which must be retained either permanently or at the congregation's discretion; the income derived from the endowment is to be used either as restricted or unrestricted income funds depending upon the purpose for which the endowment was established in the first place.

Restricted funds comprise (a) income from endowments which is to be expended only on the restricted purposes intended by the donor and (b) revenue donations or grants for a specific congregational activity intended by the donor. Where these funds have unspent balances, interest on their pooled investment is apportioned to the individual funds on an average balance basis.

Unrestricted funds are income funds which are to be spent on the congregation's general purposes.

Designated funds are general funds set aside by the congregation for use in the future.

RECEIPTS

2. DONATIONS & LEGACIES

	Unrestricted Funds £	Restricted Funds £	Endowment Funds £	Total 2022 £
Loose collections	3,412	1,824	-	5,236
Donations & gifts	57,179	37,914	-	95,093
Gift Aid	22,047	15,098	-	37,145
Legacies & bequests	-	-	-	-
	<u>82,638</u>	<u>54,836</u>	<u>-</u>	<u>137,474</u>

3. CHARITABLE ACTIVITIES

	Unrestricted Funds £	Restricted Funds £	Endowment Funds £	Total 2022 £
Income from charitable activities & fundraising	147	2,138	-	2,285
Membership Fees	-	1,360	-	1,360
Grants	5,851	4,300	-	10,151
	<u>5,998</u>	<u>7,798</u>	<u>-</u>	<u>13,796</u>

4. OTHER TRADING ACTIVITIES

	Unrestricted Funds £	Restricted Funds £	Endowment Funds £	Total 2022 £
Other Activities	10	529	-	539
	<u>10</u>	<u>529</u>	<u>-</u>	<u>539</u>

Tartaraghan Congregation of the Presbyterian Church in Ireland

Notes to the Accounts - Year Ended 31 December 2022

5. INVESTMENT INCOME

	Unrestricted Funds £	Restricted Funds £	Endowment Funds £	Total 2022 £
Interest on Bequests	76	-	-	76
Bank Interest	203	190	-	393
	<u>279</u>	<u>190</u>	<u>-</u>	<u>469</u>

6. OTHER INCOME

	Unrestricted Funds £	Restricted Funds £	Endowment Funds £	Total 2022 £
Insurance	-	-	-	-
Grave Fees	175	-	-	175
	<u>175</u>	<u>-</u>	<u>-</u>	<u>175</u>

PAYMENTS

7. RAISING FUNDS

	Unrestricted Funds £	Restricted Funds £	Endowment Funds £	Total 2022 £
Church Envelopes	518	-	-	518
	<u>518</u>	<u>-</u>	<u>-</u>	<u>518</u>

8. CHARITABLE ACTIVITIES

	Unrestricted Funds £	Restricted Funds £	Endowment Funds £	Total 2022 £
General Assembly	10,018	-	-	10,018
Presbytery Fees	274	-	-	274
Ministry & Support Staff	29,354	-	-	29,354
Running Costs	18,626	7,634	-	26,260
Donations to Missions/Charities	-	20,603	-	20,603
Governance costs	14,442	-	-	14,442
	<u>72,714</u>	<u>28,237</u>	<u>-</u>	<u>100,951</u>

Tartaraghan Congregation of the Presbyterian Church in Ireland

Notes to the Accounts - Year Ended 31 December 2022

9. FUND BALANCES

	Balance at start £	Receipts £	Payments £	Surplus/ (Deficit) £	Transfers nett £	Balance at end £
<b>Unrestricted Funds</b>						
General	67,805	89,100	73,232	15,868	(284)	83,389
	<u>67,805</u>	<u>89,100</u>	<u>73,232</u>	<u>15,868</u>	<u>(284)</u>	<u>83,389</u>
<b>Restricted Funds</b>						
United Appeal	-	5,668	5,668	-	-	-
Mission	-	8,993	9,277	(284)	284	-
Presbyterian Orphan Society	-	987	495	492	-	492
Moderators Appeal	20	1,930	1,880	50	-	70
Special Collections	-	1,205	1,205	-	-	-
Catering Current Account	108,565	159	16	143	-	108,708
Donations Savings Account	9,111	168	-	168	-	9,279
Building and repair Account	144,141	34,203	49	34,154	-	178,295
Church Manse Current Account No 1	2,726	3	-	3	-	2,729
Church Manse Current Account No 2	2,395	5	-	5	-	2,400
Friendship Group	187	443	600	(157)	-	30
PWA Current Account	1,554	1,651	2,104	(453)	-	1,101
Youth Fellowship	1,156	-	60	(60)	-	1,096
Girls Brigade Current Account	9,438	5,722	5,373	349	-	9,787
Girls Brigade Savings Account	2,094	1	-	1	-	2,095
Youth Club	542	1,800	1,135	665	-	1,207
Family@Four	106	415	375	40	-	146
	<u>282,035</u>	<u>63,353</u>	<u>28,237</u>	<u>35,116</u>	<u>284</u>	<u>317,435</u>
<b>Total Funds</b>	<u>349,840</u>	<u>152,453</u>	<u>101,469</u>	<u>50,984</u>	<u>-</u>	<u>400,824</u>

### **Supplementary Pages**

The additional information provided on the following pages does not form part of the congregation's independently examined Church Accounts. The figures shown have however been incorporated into the accounts on which the congregation's examiner has given their report.

Envelope NO.	WFO	Repair Fund	United Appeal & Missions	Presbyterian Children's Society	Moderator's Appeals	Gift Aid 2020 & 2021 Reclaimed
1	£ 260.00	£ -	£ 10.00	£ -	£ -	£ 55.00
2	£ 70.00	£ 35.00	£ 20.00	£ -	£ -	£ -
4	£ 70.00	£ -	£ -	£ -	£ -	£ -
7	£ 610.00	£ -	£ 380.00	£ 40.00	£ 100.00	£ -
8	£ 120.00	£ -	£ 60.00	£ 40.00	£ -	£ -
9	£ 400.00	£ -	£ -	£ -	£ -	£ -
10	£ 1,060.00	£ -	£ -	£ -	£ -	£ 450.00
11	£ 260.00	£ 13.00	£ 21.00	£ -	£ -	£ -
12	£ 500.00	£ 150.00	£ 160.00	£ 20.00	£ -	£ -
13	£ -	£ -	£ -	£ -	£ -	£ 80.00
14	£ 190.00	£ 100.00	£ 110.00	£ 10.00	£ 20.00	£ -
15	£ 200.00	£ 100.00	£ 20.00	£ -	£ 20.00	£ 243.75
16	£ 200.00	£ 55.00	£ -	£ 20.00	£ -	£ 130.00
17	£ 260.00	£ 130.00	£ 25.00	£ -	£ -	£ -
18	£ 90.00	£ -	£ 20.00	£ -	£ -	£ -
19	£ 2,045.00	£ 1,100.00	£ 1,300.00	£ -	£ 300.00	£ 2,520.00
20	£ 2,280.00	£ 1,560.00	£ 400.00	£ 20.00	£ 300.00	£ 2,091.25
21	£ 3,210.00	£ 360.00	£ 175.00	£ 20.00	£ -	£ 2,230.00
22	£ 270.00	£ 60.00	£ 20.00	£ -	£ -	£ 197.50
23	£ 355.00	£ 205.00	£ 130.00	£ 20.00	£ 30.00	£ 612.50
24	£ 325.00	£ 325.00	£ -	£ -	£ -	£ 288.75
25	£ -	£ -	£ -	£ -	£ -	£ 30.00
28	£ 680.00	£ 360.00	£ 220.00	£ -	£ 100.00	£ 417.50
29	£ 195.00	£ 115.00	£ 39.00	£ 20.00	£ -	£ -
30	£ 1,160.00	£ 90.00	£ 110.00	£ -	£ -	£ 707.50
31	£ 250.00	£ 120.00	£ 130.00	£ 10.00	£ -	£ 347.50
32	£ 127.00	£ 18.00	£ -	£ -	£ -	£ -
33	£ 275.00	£ 100.00	£ 20.00	£ -	£ -	£ -
34	£ 149.00	£ 20.00	£ 8.00	£ -	£ -	£ -
36	£ 180.00	£ -	£ -	£ -	£ -	£ -
37	£ 600.00	£ -	£ 20.00	£ -	£ -	£ 300.00
40	£ -	£ -	£ -	£ -	£ -	£ 62.50
41	£ 147.10	£ 21.00	£ 32.50	£ -	£ -	£ 108.25
42	£ 85.00	£ -	£ -	£ -	£ -	£ -
43	£ 385.00	£ -	£ -	£ -	£ -	£ 85.75
44	£ 260.00	£ -	£ -	£ -	£ -	£ -
45	£ 13.00	£ -	£ 2.50	£ -	£ -	£ -
46	£ 750.00	£ 750.00	£ 20.00	£ -	£ -	£ 627.50
47	£ 70.00	£ -	£ -	£ -	£ -	£ -
48	£ 61.00	£ -	£ -	£ -	£ -	£ -
50	£ 520.00	£ 300.00	£ 40.00	£ -	£ -	£ 420.00
52	£ 70.00	£ -	£ -	£ -	£ -	£ -
53	£ 390.00	£ 270.00	£ -	£ -	£ -	£ 192.50
55	£ 1,030.00	£ 240.00	£ 220.00	£ -	£ 40.00	£ 791.25
57	£ 180.00	£ -	£ -	£ -	£ -	£ -
59	£ 1,000.00	£ 1,000.00	£ 240.00	£ -	£ -	£ 437.50
60	£ 180.00	£ -	£ 30.00	£ -	£ -	£ 90.00
61	£ 580.00	£ 100.00	£ 160.00	£ 40.00	£ -	£ -
63	£ -	£ -	£ -	£ -	£ -	£ 5.25
64	£ 145.00	£ 40.00	£ 10.00	£ -	£ -	£ 48.75
65	£ 676.00	£ 420.00	£ 130.00	£ 10.00	£ 40.00	£ 658.00
66	£ 560.00	£ 100.00	£ 260.00	£ -	£ 30.00	£ -
67	£ 520.00	£ 60.00	£ 125.00	£ 10.00	£ 20.00	£ 315.00
68	£ 260.00	£ 120.00	£ 140.00	£ 15.00	£ 30.00	£ -
69	£ -	£ -	£ -	£ -	£ -	£ 72.50

Envelope NO.	WFO	Repair Fund	United Appeal & Missions	Presbyterian Children's Society	Moderator's Appeals	Gift Aid 2020 & 2021 Reclaimed
71	£ 327.00	£ -	£ 10.00	£ -	£ 20.00	£ 140.00
72	£ 1,040.00	£ 600.00	£ 860.00	£ 20.00	£ 50.00	£ 1,252.50
73	£ 275.00	£ 90.00	£ -	£ -	£ -	£ -
74	£ 275.00	£ 10.00	£ 20.00	£ -	£ -	£ -
75	£ 490.00	£ -	£ 20.00	£ -	£ -	£ -
76	£ 650.00	£ -	£ -	£ -	£ -	£ 852.50
77	£ 1,787.00	£ 2,182.91	£ 732.00	£ -	£ -	£ 2,346.66
78	£ 150.00	£ -	£ -	£ -	£ -	£ -
79	£ 325.00	£ 5.00	£ 10.00	£ -	£ 50.00	£ -
81	£ 510.00	£ 190.00	£ 170.00	£ 20.00	£ -	£ 402.50
83	£ 134.00	£ 47.00	£ 5.00	£ -	£ -	£ -
84	£ 600.00	£ 1,000.00	£ 290.00	£ -	£ 50.00	£ 940.00
85	£ 960.00	£ 2,240.00	£ 350.00	£ -	£ 100.00	£ 1,075.00
86	£ 1,200.00	£ 1,200.00	£ 20.00	£ -	£ 100.00	£ 1,327.50
89	£ 520.00	£ 210.00	£ 150.00	£ 20.00	£ 30.00	£ 357.50
90	£ 490.00	£ 230.00	£ -	£ -	£ -	£ 358.75
91	£ 700.00	£ 200.00	£ 130.00	£ 20.00	£ -	£ 560.00
92	£ 500.00	£ 1,800.00	£ 60.00	£ -	£ 100.00	£ 1,027.50
93	£ 496.00	£ 134.00	£ 415.00	£ 50.00	£ 70.00	£ 632.25
94	£ 280.00	£ -	£ 10.00	£ -	£ -	£ -
95	£ 2,640.00	£ 800.00	£ 320.00	£ -	£ -	£ 1,902.50
96	£ 960.00	£ 600.00	£ 300.00	£ 20.00	£ -	£ 1,012.50
97	£ 40.00	£ -	£ -	£ -	£ -	£ -
98	£ 330.60	£ 20.00	£ 70.00	£ -	£ -	£ 265.00
99	£ 560.00	£ -	£ 140.00	£ -	£ 20.00	£ 445.00
100	£ -	£ -	£ -	£ -	£ -	£ 185.00
101	£ 960.00	£ -	£ 120.00	£ -	£ -	£ 400.00
102	£ 430.00	£ -	£ -	£ -	£ -	£ -
103	£ 100.00	£ 50.00	£ -	£ -	£ -	£ -
104	£ 150.00	£ -	£ 20.00	£ -	£ -	£ -
105	£ 520.00	£ 240.00	£ 110.00	£ 10.00	£ -	£ 440.00
106	£ 260.00	£ 240.00	£ 260.00	£ -	£ -	£ -
107	£ 268.00	£ 190.00	£ 75.00	£ 20.00	£ -	£ -
108	£ 695.00	£ -	£ 20.00	£ -	£ -	£ 210.00
109	£ 7,905.00	£ 1,300.00	£ 350.00	£ -	£ -	£ 4,110.00
110	£ 175.00	£ 160.00	£ 200.00	£ 20.00	£ 20.00	£ 315.00
111	£ 300.00	£ -	£ 10.00	£ -	£ 20.00	£ -
113	£ 360.00	£ 70.00	£ 30.00	£ -	£ -	£ -
117	£ 580.00	£ -	£ -	£ -	£ 100.00	£ 295.00
118	£ 3,510.00	£ -	£ -	£ -	£ -	£ 1,417.50
119	£ 645.00	£ 1,200.00	£ -	£ -	£ -	£ -
<b>Total</b>	<b>£ 57,370.70</b>	<b>£ 23,445.91</b>	<b>£ 10,085.00</b>	<b>£ 495.00</b>	<b>£ 1,760.00</b>	<b>£ 36,886.16</b>

**Tartaraghan Presbyterian Church Congregation of the Presbyterian Church in Ireland**

Northern Ireland - Charity number 104792

---

# Annual report

---



# Tartaraghan Presbyterian Church

## Financial Report 2022

Registered With NICC, Charity No. 104792

# **TARTARAGHAN CONGREGATION OF THE PRESBYTERIAN CHURCH IN IRELAND**

**Trustees Annual Report and Financial Statements  
for the year ended 31 December 2022**

**Registered Charity in Northern Ireland (NIC104792)**

**TARTARAGHAN CONGREGATION OF THE PRESBYTERIAN CHURCH IN IRELAND  
TRUSTEES ANNUAL REPORT**

The Trustees present their Annual Report and Financial Statements for the year ended 31 December 2022 including a Statement of Assets and Liabilities as at that date.

**REFERENCE AND ADMINISTRATIVE DETAILS**

Tartaraghan congregation of the Presbyterian Church in Ireland  
28 Cloncarrish Road, Portadown, Co Armagh, BT62 1RN  
Registered Charity in Northern Ireland (NIC104792)

**CHARITY TRUSTEES**

The Charity Trustees who served during the year or who were trustees at the date of this report were

Norman Cornett	Philip McKelvey
Leslie Brush	Philip McMenemy
Neil Cornett	Jim Strain
Stephen McCombe	Mark Wilson

**PRINCIPAL OFFICE BEARERS**

Minister	Rev Philip McKelvey
Clerk of Session	Norman Cornett
Treasurer	Doreen Collen

**INDEPENDENT EXAMINER**

WHR Accountants Ltd  
56 Upper English St, Armagh BT61 7LG

**BANKERS**

Danske Bank, 45-48 High Street, Portadown  
Ulster Bank, 20 High Street, Portadown

**SOLICITORS**

**T D Gibson & Co**

Morrison House, 107 Church Street, Portadown, County Armagh BT62 3DB

## **STRUCTURE AND MANAGEMENT**

### **The Kirk Session**

The charity trustees of the congregation are the members of its Kirk Session. Under the congregation's governing document, The Code, the book of the constitution and government of the Presbyterian Church in Ireland, the Kirk Session seeks to watch over and promote the spiritual interest of the congregation and of persons not connected with any congregation who are within its bounds. It ensures pastoral care is in place in the congregation and seeks to further the contribution of the Church to Christian witness and service in the local community. The Kirk Sessions has delegated to its Congregational Committee the temporal affairs of the congregation including administering all funds and property belonging to the congregation. Members of the Kirk Session are ex-officio members of the Congregational Committee.

The Kirk Session consists of the ordained minister and the ruling elders of the congregations. All members are entitled to propose, speak and exercise equal votes at meetings, except that the Moderator, the ministers in active duty in the congregation, has no deliberative but only a casting vote.

Stated meetings of the Kirk session are held a number of times each year or as appropriate.

To be chosen for the office of the eldership in the congregation a person must be a voting member and a regular attendant on its ordinances. The selection of those proposed to be called to the office can be either by the congregation or by the Kirk Session. Members are elected if they obtain two-thirds of those who vote.

### **Presbytery**

Under the Presbyterian Church in Ireland form of governance the corporate oversight of a congregation is the responsibility of a Presbytery which superintends generally the spiritual and temporal affairs of the congregations assigned to it by the General Assembly of the Presbyterian Church in Ireland. Tartaraghan congregation of the Presbyterian Church has been assigned to the Armagh Presbytery of the Presbyterian Church in Ireland. The membership of the Presbytery consists mainly of the active ministers of congregations assigned to it by the General Assembly, ministers who have retired from active duty and an elder appointed by the Kirk Session of the congregation.

## **The General Assembly**

The General Assembly is the supreme court of the Church, representing in one body the whole Church and acting as its supreme legislative, administration and judicial authority, in dealing with all matters brought before it. The General Assembly is normally constituted during the first week in June for worship and to conduct its business. At the end of business, it is dissolved. The membership of the General Assembly consists mainly of the active ministers of each congregation, retired ministers and a representative elder appointed by the Kirk Session of each congregation.

### **DESCRIPTION AND PURPOSE**

The charitable purpose of the congregation is the advancement of religion.

Tartaraghan congregation of the Presbyterian Church is a congregation of the Presbyterian Church in Ireland. The Presbyterian Church in Ireland, as a Reformed Church within the wider body of Christ is grounded in the Scriptures, and exists to love and honour God through faith in His Son and by the power of His Spirit, and to enable her members to play their part in fulfilling God's mission to our world.

The congregation's mission purpose is by the grace of God, to help people of all ages become fully devoted followers of Jesus Christ. Our vision is, by the grace of God, to be an inclusive, welcoming community of Christ's people of all ages, which:

- is increasingly characterised by love for God, and love and concern for others;
- is committed to the historic Christian gospel as revealed in the Bible;
- is relevant to people of this time and place.

The congregation aims to live out its Mission and Vision as a family of God's people by being:

- A Covenant Community: where our relationships are rooted in the promises of God by living faithfully toward him and toward one another
- An Intergenerational Community: where adults intentionally take the lead to engage with, encourage and nurture younger members to maturity in Christ.
- An Outward looking Community: where we want the blessings of God that belong to us in the gospel to become blessings for others beyond the bounds of our community.
- As a congregation of the Presbyterian Church in Ireland, we believe that the Bible is the supreme authority over all we do, and that the Westminster Confession of Faith, along with the Larger and Shorter Catechisms set out what we understand the Bible teaches on key matters of Christian faith and practice

## **ACTIVITIES AND OBJECTIVES**

The congregation meets for worship every Sunday and visitors are welcome to join. Children's Church and Crèche run concurrently. The Sacrament of the Lords Supper is observed on several occasions during the year and all those who have been baptised and who have made a profession of faith in the Lord Jesus Christ are admitted to the Lord's Supper. The congregation holds regular bible study meetings and has a wide range of organisations including

- Sunday School
- Bible Classes
- Women's Keep Fit
- Women's Bible Study
- Girls' Brigade
- Men's Group
- Women's Group
- Youth Club
- Youth Fellowship
- Mothers and Toddlers Group
- Discipleship Groups (3)
- Senior Fellowship Group
- Family@4
- Holiday Bible Club
- Men@10.30

## **ACHIEVEMENTS AND PERFORMANCE**

### **Worship and prayer**

The congregation normally meets for worship each Sunday at 10.30am and monthly (September to June) at 6.30pm. During the week the Discipleship Groups provide an opportunity for members to meet together for fellowship, to study the scriptures and for a time of prayer. Prayer meetings are also held on Sunday and Friday mornings. online.

As well as our regular services during 2022 we acknowledged God's gift of new life at 5 Sacraments of Baptism.

At 31 December 2022 there were 101 communicant members and 150 families connected with the congregation. Average attendance at morning services was 140. Average at monthly evening services was 108.

**Pastoral care** - Members of the congregation who are unable to attend church due to sickness or age are visited on a regular basis by the minister, elders or by either of the two Pastoral & Community Outreach Workers. CD and DVD recordings of services are produced and made available to those who are unable to attend, or access online.

## **Mission and outreach**

At a local level the congregation have been effective in connecting with the surrounding community through the different organisations, catering for all age groups.

There is also adult evangelism through personal friendships, literature distribution, and evangelistic services/meetings.

Involvement in overseas Mission has been developing, and this was enhanced by our congregational connection with Global Mission workers Chris and Rachel Humphries, who served with Comunidade Pedras Vivas (CPV), a church plant of the Christian Presbyterian Church of Portugal; Awake Ministries working in northern Portugal; the Loney family (Acre) working in southern Portugal; Charis Youth Club, Dungannon.

The congregation supports the United Appeal for Mission which is a central fund of the Presbyterian Church in Ireland. This fund enables congregations to support the wider mission of the denomination and to do mission and outreach on a denominational basis beyond what the congregation could do on its own. The United Appeal Fund provides financial support for mission personnel at home and overseas, assists congregations with the deployment of locally based staff, enables church planting, provides grant support for the upkeep of church premises, assist with the running costs of Union Theological College, the Church's training college for ministry students, and financially supports congregation in the areas of worship, discipleship, global mission, outreach, leadership and pastoral care.

The congregation also contributes to the denomination's special appeals.

## **Presbytery**

The congregation is represented at the regular meetings of Presbytery by our minister and / or one of the elders. This provides an important link between the congregations and the wider structures of the church.

## **General Assembly**

The minister and one of our elders are nominated to attend the meeting of the General Assembly of the Presbyterian Church in Ireland held in Assembly Buildings, Belfast, in June.

## **Property**

During the year there has been ongoing repair and maintenance of property and grounds. There were no major repair or refurbishment projects in 2022.

## Organisations

Sunday School – Meet each Sunday 9.30 – 10.20am, September to June. Sunday School plays a vital role in the life of our congregation. Our aim is to introduce children to Jesus and to teach them what it means to be a Christian; through Bible based lessons, songs, memory verses, worksheets and other activities all within a safe and relaxed environment. There are three classes and we welcome all children between 4 and 12 years of age. Average attendance: 44

Bible Classes – Are a follow-on from Sunday School and meet each Sunday 9.30 – 10.20am, prior to the morning service. Average attendance: 14

Family @ 4 - Meet 4 – 6pm, first Sunday of each month (October to May) and is for the whole family whether children are toddlers or teenagers. Activities include messy crafts, bible stories and an evening meal. Average attendance: 80

Women's Keep Fit – Meet Monday evenings 7.30 – 8.30pm. Set up to encourage women from the congregation and the local area to meet together and socialise while improving their physical well-being.

Women's Bible Study - Meet on alternate Tuesday mornings, 10.15 – 11.15am, September to June, to study God's Word in an informal setting. For all ages. Average attendance: 15

Girls' Brigade – Meet 6.30 – 9.30pm on Tuesday evenings in the church hall, September – March. There are four groups: Explorers, Juniors, Seniors and Brigaders. Our aim is to help girls to become followers of the Lord Jesus Christ, and through self- control, reverence and a sense of responsibility, to find true enrichment of life. Average attendance: 105

Youth Club – Meet on Friday evenings 8.00 – 10.00pm, September – June and is for the age range P7 and older offering a fun and safe place for young people to meet. There are plenty of games and sports to try like pool, table tennis, football and dodgeball or a chance to relax in the coffee bar and chat with friends. Each evening there is opportunity to hear a bible or gospel message. Average attendance: 70

Youth Fellowship - is all about young people meeting together to learn more about Jesus. It's a great opportunity to study God's word in an informal setting with friends and to have a chance to chat over issues facing them. There are also times of fun, food and fellowship at the meetings as well as an annual weekend away. Meet fortnightly on Sunday evenings at 7.00pm, jointly with youth from Loughgall Presbyterian Church. Average attendance: 20

Mothers and Toddlers Group – Meet each Wednesday, 10.00 – 11.45am. The children enjoy themselves with various toys and games in a safe environment while carers have fellowship and a chat over a cup of tea/coffee. Average attendance: 15 children + carers

Discipleship Groups – are small groups who meet together regularly to learn more about the bible, grow in their faith and also become better disciples of Jesus. Meet in homes and in church hall. There are presently three groups, one meeting on Tuesday evening and the other two meeting on Wednesday, all at 8.00pm. Average overall attendance: 25

Men's Group (Ir'n Men) – For men of all ages. Meets second Wednesday of each month at 8.00pm, September – May. Each meeting usually consists of a praise time, ice breakers, games, personal testimonies, food and teaching from God's word. Particular emphasis is placed on what how God's word relates to men and how this can be applied to everyday life. Average attendance: 18

Women's Group (PW) – Meet second Thursday of each month at 8.00pm for a time of fellowship, encouragement and discipleship; seeking different fun and exciting ways of reaching women for Christ. In addition to this, various missions at home and overseas are supported. Average attendance: 35

Senior Fellowship Group - meet on a monthly basis on the third Thursday of each month at 2.30pm. The aim is to meet for fellowship, have a chat and cup of tea and also hear something of how God is working in people's lives. The programme each month is varied with interesting Christian speakers from different walks of life. The group also have an outing twice a year. Average attendance: 20

Bible Club - An annual event held at the end of June. Average attendance: 90

Men@10.30 - A time of friendship and fellowship at 10:30am each Monday in the Church Hall. These informal drop in sessions are an opportunity to meet up and enjoy board games, darts, craft, bowls, table tennis and other activities along with a short Bible Slot. Refreshments are available. Open to men of all ages. Average attendance: 16

## **Volunteers**

The Trustees wish to acknowledge their deep appreciation of those who give freely of their time by serving on committees and helping with organisations and other church activities. Our organisations involve around 40 leaders/teachers, not counting others who help with Crèche, Children's Church and the annual Bible Club.

## **PUBLIC BENEFIT STATEMENT**

The Presbyterian Church in Ireland meets the public benefit requirement by providing benefit to its members and the general public by making known the Christian Gospel of the Lord Jesus Christ through the advancement of religion.

The direct benefits which flow from the purposes of the Church include the gaining of an understanding in Christian beliefs as set out in the Bible and in the Church's subordinate standards (the Westminster Confession of Faith and the Shorter and Larger Catechisms) leading to spiritual and moral development and opportunities for response to Bible teaching. In turn, this framework leads to practical expressions of Christian beliefs and standards in the local community such as through the care of those in need (including the sick, disabled and bereaved).

Generally the above benefits are delivered locally by congregations and their members, or are facilitated through presbyteries or are organised and delivered centrally. Local delivery is facilitated by central resources in almost all cases. Public access is made known through the use of noticeboards, printed material, press advertisement, websites, and social media or in other ways.

The benefits are demonstrated through regular evaluation of the services and informal and ad-hoc feedback from members, their families, and members of the public.

The purpose does not lead to harm. The only private benefit flowing from our purpose is related to Ministers, Missionaries, Deaconesses, Irish Mission workers and Lay Agents who receive benefits as a result of their holding office or employment. However, this is incidental and necessary in order to further our charitable purpose. There are no other private benefits. The beneficiaries of this purpose are members, their families, other individuals that the Presbyterian Church in Ireland is in direct and indirect contact with, the community in which pastoral services are provided and other communities throughout Northern Ireland, the Republic of Ireland, and worldwide which benefit from our engagement with and support for both Christian and other secular organisations, charities and individual members of the public. The Kirk Session has had regard to the Charity Commission's Public benefit requirement statutory guidance.

## FINANCIAL REVIEW

The congregation's main source of income is members' contributions through the Weekly Freewill Offering. There were 93 contributors during the year donating a total of £95,093 (£94,912 in previous year, 2021)

Total Income of the congregation during the year was £152,453, compared to £121,191 in the previous year, 2021. Total expenditure increased from £88,771 to £101,469.

## STATEMENT OF TRUSTEE RESPONSIBILITIES

The Trustees are responsible for preparing the annual report and the financial statements of the congregation in accordance with applicable law and generally accepted accounting practice.

As the congregation's total income does not exceed £250,000, the Trustees have elected under Section 64(3) of the Charities Act (Northern Ireland) 2008 to prepare a receipts and payment account and a statement of assets and liabilities.

The Trustees are responsible for keeping adequate accounting records that are sufficient to show and explain the congregation's transactions and disclose with reasonable accuracy at any time its financial position. They are also responsible for safeguarding the assets of the congregation and hence for taking reasonable steps for the prevention and detection of fraud and other irregularities.

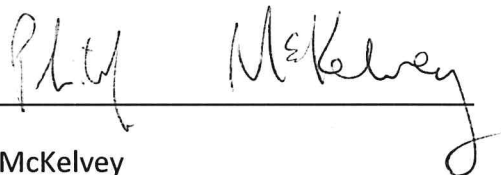
Approved by the Kirk Session at a meeting on 17 April 2023 and signed on its behalf by



---

Norman Cornett

17 April 2023



---

Philip McKelvey

17 April 2023

**Charity No: NIC 104792**

**Tartaraghan Congregation  
of the  
Presbyterian Church in Ireland**

**Trustee Report  
and  
Receipts and Payments Account  
for the year ended 31 December 2022**

**Tartaraghan Congregation of the Presbyterian Church in Ireland**

**Independent Examiner's Report to the Charity Trustees of  
Tartaraghan Congregation of the Presbyterian Church in Ireland**

I report on the accounts of the Charity for the year ended 31 December 2022.

**Respective responsibilities of charity trustees and examiner:**

As the charity's trustees you are responsible for the preparation of the accounts in accordance with the Charities Act (Northern Ireland) 2008.

It is my responsibility to:

- examine the accounts under section 65 of the Charities Act, to follow the procedures laid down in the general directions given by the Commission under section 65(9)(b) of the Charities Act,
- to state whether particular matters have come to my attention.

**Basis of independent examiner's report:**

I have examined your charity accounts as required under section 65 of the Charities Act and my examination was carried out in accordance with the general directions given by the Charity Commission for Northern Ireland under section 65(9)(b) of the Charities Act.


My examination included a review of the accounting records kept by the charity and a comparison of the accounts presented with those records. It also included consideration of any unusual items or disclosures in the accounts, and seeking explanations from you as charity trustees concerning any such matters.

My role is to state whether any material matters have come to my attention giving me cause to believe:

- 1 That accounting records were not kept in accordance with section 63 of the Charities Act.
- 2 That the accounts do not accord with those accounting records.
- 3 That the accounts do not comply with the accounting requirements of the Charities Act.
- 4 That there is further information needed for a proper understanding of the accounts to be reached.

**Independent examiner's statement**

I have completed my examination and have no concerns in respect of the matters (1) to (4) listed above and, in connection with following the directions of the Charity Commission for Northern Ireland, I have found no matters that require drawing to your attention.

  
James Robinson FCCA  
WHR Accountants Limited  
Chartered Certified Accountants  
56 English Street  
Armagh  
BT61 7LG

17/04/2023  
Date

Tartaraghan Congregation of the Presbyterian Church in Ireland

Statement of Financial Activity (Receipts and Payments Account) for the Year Ended 31 December 2022

	Note	Unrestricted Funds £	Restricted Funds £	Endowment Funds £	Total 2022 £	Total 2021 £
<b>Receipts</b>						
Donations & Legacies	2	82,638	54,836	-	137,474	96,702
Charitable Activities	3	5,998	7,798	-	13,796	23,558
Other trading activities	4	10	529	-	539	410
Investment income	5	279	190	-	469	376
Other income	6	175	-	-	175	145
<b>Total Receipts</b>		<b>89,100</b>	<b>63,353</b>	<b>-</b>	<b>152,453</b>	<b>121,191</b>
<b>Payments</b>						
Raising Funds	7	518	-	-	518	518
Charitable Activities	8	72,714	28,237	-	100,951	88,253
Purchases Fixed Assets		-	-	-	-	-
<b>Total Payments</b>		<b>73,232</b>	<b>28,237</b>	<b>-</b>	<b>101,469</b>	<b>88,771</b>
Net Receipts / Payments		15,868	35,116	-	50,984	32,420
Transfers net		(284)	284	-	-	-
Net movement in funds		15,584	35,400	-	50,984	32,420
Funds brought forward 1 January		67,805	282,035	-	349,840	317,420
Deduct non cash/bank related Endowment Funds		-	-	-	-	-
Funds carried forward 31 December	9	83,389	317,435	-	400,824	349,840

Tartaraghan Congregation of the Presbyterian Church in Ireland

Statement of Assets and Liabilities as at 31 December 2022

	Unrestricted Funds £	Restricted Funds £	Endowment Funds £	Total 2022 £	Total 2021 £
<b>Funds Reconciliation</b>					
Bank and cash at start of year	67,805	282,035	-	349,840	317,420
Net movement in funds	15,584	35,400	-	50,984	32,420
Bank & cash at end of year	83,389	317,435	-	400,824	349,840

**Bank & Cash Balances**

Bank Current Accounts				400,824	349,840
Total				400,824	349,840

**Memorandum Note Only**

**Fixed Assets**

Assets retained for the Church's own use comprise the following properties and are stated at own valuations or at insured values.

Church Buildings and Contents	1,125,924	1,047,371
Church Hall and Contents	942,357	876,612
Manse at Cloncarrish Road, Portadown	121,545	113,065
Outbuildings	68,416	63,643
Agricultural Land at valuation	72,000	72,000
Agricultural Land Acquired	20,000	20,000
	<u>2,350,242</u>	<u>2,192,691</u>


**General Investments**

	<u>8,481</u>	<u>9,241</u>
--	--------------	--------------

Approved by trustees on 17/04/2023 and signed on its behalf by:

  
 \_\_\_\_\_  
 Trustee  
 Norman Cornett

Date: 17/04/2023

  
 \_\_\_\_\_  
 Trustee  
 Philip McKelvey

Date: 17/04/2023

Tartaraghan Congregation of the Presbyterian Church in Ireland

Notes to the Accounts - Year Ended 31 December 2022

1. ACCOUNTING POLICIES

BASIS OF FINANCIAL STATEMENTS

As the total income of the congregation is less than £250,000 the congregation have elected in accordance with the provisions in The Charities (Accounts and Reports Regulations (Northern Ireland) 2015 to prepare its accounts on a receipts and payments basis.

FUND ACCOUNTING

Endowment funds are funds, the capital of which must be retained either permanently or at the congregation's discretion; the income derived from the endowment is to be used either as restricted or unrestricted income funds depending upon the purpose for which the endowment was established in the first place.

Restricted funds comprise (a) income from endowments which is to be expended only on the restricted purposes intended by the donor and (b) revenue donations or grants for a specific congregational activity intended by the donor. Where these funds have unspent balances, interest on their pooled investment is apportioned to the individual funds on an average balance basis.

Unrestricted funds are income funds which are to be spent on the congregation's general purposes.

Designated funds are general funds set aside by the congregation for use in the future.

RECEIPTS

2. DONATIONS & LEGACIES

	Unrestricted Funds £	Restricted Funds £	Endowment Funds £	Total 2022 £
Loose collections	3,412	1,824	-	5,236
Donations & gifts	57,179	37,914	-	95,093
Gift Aid	22,047	15,098	-	37,145
Legacies & bequests	-	-	-	-
	<u>82,638</u>	<u>54,836</u>	<u>-</u>	<u>137,474</u>

3. CHARITABLE ACTIVITIES

	Unrestricted Funds £	Restricted Funds £	Endowment Funds £	Total 2022 £
Income from charitable activities & fundraising	147	2,138	-	2,285
Membership Fees	-	1,360	-	1,360
Grants	5,851	4,300	-	10,151
	<u>5,998</u>	<u>7,798</u>	<u>-</u>	<u>13,796</u>

4. OTHER TRADING ACTIVITIES

	Unrestricted Funds £	Restricted Funds £	Endowment Funds £	Total 2022 £
Other Activities	10	529	-	539
	<u>10</u>	<u>529</u>	<u>-</u>	<u>539</u>

Tartaraghan Congregation of the Presbyterian Church in Ireland

Notes to the Accounts - Year Ended 31 December 2022

5. INVESTMENT INCOME

	Unrestricted Funds £	Restricted Funds £	Endowment Funds £	Total 2022 £
Interest on Bequests	76	-	-	76
Bank Interest	203	190	-	393
	<u>279</u>	<u>190</u>	<u>-</u>	<u>469</u>

6. OTHER INCOME

	Unrestricted Funds £	Restricted Funds £	Endowment Funds £	Total 2022 £
Insurance	-	-	-	-
Grave Fees	175	-	-	175
	<u>175</u>	<u>-</u>	<u>-</u>	<u>175</u>

PAYMENTS

7. RAISING FUNDS

	Unrestricted Funds £	Restricted Funds £	Endowment Funds £	Total 2022 £
Church Envelopes	518	-	-	518
	<u>518</u>	<u>-</u>	<u>-</u>	<u>518</u>

8. CHARITABLE ACTIVITIES

	Unrestricted Funds £	Restricted Funds £	Endowment Funds £	Total 2022 £
General Assembly	10,018	-	-	10,018
Presbytery Fees	274	-	-	274
Ministry & Support Staff	29,354	-	-	29,354
Running Costs	18,626	7,634	-	26,260
Donations to Missions/Charities	-	20,603	-	20,603
Governance costs	14,442	-	-	14,442
	<u>72,714</u>	<u>28,237</u>	<u>-</u>	<u>100,951</u>

Tartaraghan Congregation of the Presbyterian Church in Ireland

Notes to the Accounts - Year Ended 31 December 2022

9. FUND BALANCES

	Balance at start £	Receipts £	Payments £	Surplus/ (Deficit) £	Transfers nett £	Balance at end £
<b>Unrestricted Funds</b>						
General	67,805	89,100	73,232	15,868	(284)	83,389
	<u>67,805</u>	<u>89,100</u>	<u>73,232</u>	<u>15,868</u>	<u>(284)</u>	<u>83,389</u>
<b>Restricted Funds</b>						
United Appeal	-	5,668	5,668	-	-	-
Mission	-	8,993	9,277	(284)	284	-
Presbyterian Orphan Society	-	987	495	492	-	492
Moderators Appeal	20	1,930	1,880	50	-	70
Special Collections	-	1,205	1,205	-	-	-
Catering Current Account	108,565	159	16	143	-	108,708
Donations Savings Account	9,111	168	-	168	-	9,279
Building and repair Account	144,141	34,203	49	34,154	-	178,295
Church Manse Current Account No 1	2,726	3	-	3	-	2,729
Church Manse Current Account No 2	2,395	5	-	5	-	2,400
Friendship Group	187	443	600	(157)	-	30
PWA Current Account	1,554	1,651	2,104	(453)	-	1,101
Youth Fellowship	1,156	-	60	(60)	-	1,096
Girls Brigade Current Account	9,438	5,722	5,373	349	-	9,787
Girls Brigade Savings Account	2,094	1	-	1	-	2,095
Youth Club	542	1,800	1,135	665	-	1,207
Family@Four	106	415	375	40	-	146
	<u>282,035</u>	<u>63,353</u>	<u>28,237</u>	<u>35,116</u>	<u>284</u>	<u>317,435</u>
<b>Total Funds</b>	<u>349,840</u>	<u>152,453</u>	<u>101,469</u>	<u>50,984</u>	<u>-</u>	<u>400,824</u>

### **Supplementary Pages**

The additional information provided on the following pages does not form part of the congregation's independently examined Church Accounts. The figures shown have however been incorporated into the accounts on which the congregation's examiner has given their report.

Envelope NO.	WFO	Repair Fund	United Appeal & Missions	Presbyterian Children's Society	Moderator's Appeals	Gift Aid 2020 & 2021 Reclaimed
1	£ 260.00	£ -	£ 10.00	£ -	£ -	£ 55.00
2	£ 70.00	£ 35.00	£ 20.00	£ -	£ -	£ -
4	£ 70.00	£ -	£ -	£ -	£ -	£ -
7	£ 610.00	£ -	£ 380.00	£ 40.00	£ 100.00	£ -
8	£ 120.00	£ -	£ 60.00	£ 40.00	£ -	£ -
9	£ 400.00	£ -	£ -	£ -	£ -	£ -
10	£ 1,060.00	£ -	£ -	£ -	£ -	£ 450.00
11	£ 260.00	£ 13.00	£ 21.00	£ -	£ -	£ -
12	£ 500.00	£ 150.00	£ 160.00	£ 20.00	£ -	£ -
13	£ -	£ -	£ -	£ -	£ -	£ 80.00
14	£ 190.00	£ 100.00	£ 110.00	£ 10.00	£ 20.00	£ -
15	£ 200.00	£ 100.00	£ 20.00	£ -	£ 20.00	£ 243.75
16	£ 200.00	£ 55.00	£ -	£ 20.00	£ -	£ 130.00
17	£ 260.00	£ 130.00	£ 25.00	£ -	£ -	£ -
18	£ 90.00	£ -	£ 20.00	£ -	£ -	£ -
19	£ 2,045.00	£ 1,100.00	£ 1,300.00	£ -	£ 300.00	£ 2,520.00
20	£ 2,280.00	£ 1,560.00	£ 400.00	£ 20.00	£ 300.00	£ 2,091.25
21	£ 3,210.00	£ 360.00	£ 175.00	£ 20.00	£ -	£ 2,230.00
22	£ 270.00	£ 60.00	£ 20.00	£ -	£ -	£ 197.50
23	£ 355.00	£ 205.00	£ 130.00	£ 20.00	£ 30.00	£ 612.50
24	£ 325.00	£ 325.00	£ -	£ -	£ -	£ 288.75
25	£ -	£ -	£ -	£ -	£ -	£ 30.00
28	£ 680.00	£ 360.00	£ 220.00	£ -	£ 100.00	£ 417.50
29	£ 195.00	£ 115.00	£ 39.00	£ 20.00	£ -	£ -
30	£ 1,160.00	£ 90.00	£ 110.00	£ -	£ -	£ 707.50
31	£ 250.00	£ 120.00	£ 130.00	£ 10.00	£ -	£ 347.50
32	£ 127.00	£ 18.00	£ -	£ -	£ -	£ -
33	£ 275.00	£ 100.00	£ 20.00	£ -	£ -	£ -
34	£ 149.00	£ 20.00	£ 8.00	£ -	£ -	£ -
36	£ 180.00	£ -	£ -	£ -	£ -	£ -
37	£ 600.00	£ -	£ 20.00	£ -	£ -	£ 300.00
40	£ -	£ -	£ -	£ -	£ -	£ 62.50
41	£ 147.10	£ 21.00	£ 32.50	£ -	£ -	£ 108.25
42	£ 85.00	£ -	£ -	£ -	£ -	£ -
43	£ 385.00	£ -	£ -	£ -	£ -	£ 85.75
44	£ 260.00	£ -	£ -	£ -	£ -	£ -
45	£ 13.00	£ -	£ 2.50	£ -	£ -	£ -
46	£ 750.00	£ 750.00	£ 20.00	£ -	£ -	£ 627.50
47	£ 70.00	£ -	£ -	£ -	£ -	£ -
48	£ 61.00	£ -	£ -	£ -	£ -	£ -
50	£ 520.00	£ 300.00	£ 40.00	£ -	£ -	£ 420.00
52	£ 70.00	£ -	£ -	£ -	£ -	£ -
53	£ 390.00	£ 270.00	£ -	£ -	£ -	£ 192.50
55	£ 1,030.00	£ 240.00	£ 220.00	£ -	£ 40.00	£ 791.25
57	£ 180.00	£ -	£ -	£ -	£ -	£ -
59	£ 1,000.00	£ 1,000.00	£ 240.00	£ -	£ -	£ 437.50
60	£ 180.00	£ -	£ 30.00	£ -	£ -	£ 90.00
61	£ 580.00	£ 100.00	£ 160.00	£ 40.00	£ -	£ -
63	£ -	£ -	£ -	£ -	£ -	£ 5.25
64	£ 145.00	£ 40.00	£ 10.00	£ -	£ -	£ 48.75
65	£ 676.00	£ 420.00	£ 130.00	£ 10.00	£ 40.00	£ 658.00
66	£ 560.00	£ 100.00	£ 260.00	£ -	£ 30.00	£ -
67	£ 520.00	£ 60.00	£ 125.00	£ 10.00	£ 20.00	£ 315.00
68	£ 260.00	£ 120.00	£ 140.00	£ 15.00	£ 30.00	£ -
69	£ -	£ -	£ -	£ -	£ -	£ 72.50

Envelope NO.	WFO	Repair Fund	United Appeal & Missions	Presbyterian Children's Society	Moderator's Appeals	Gift Aid 2020 & 2021 Reclaimed
71	£ 327.00	£ -	£ 10.00	£ -	£ 20.00	£ 140.00
72	£ 1,040.00	£ 600.00	£ 860.00	£ 20.00	£ 50.00	£ 1,252.50
73	£ 275.00	£ 90.00	£ -	£ -	£ -	£ -
74	£ 275.00	£ 10.00	£ 20.00	£ -	£ -	£ -
75	£ 490.00	£ -	£ 20.00	£ -	£ -	£ -
76	£ 650.00	£ -	£ -	£ -	£ -	£ 852.50
77	£ 1,787.00	£ 2,182.91	£ 732.00	£ -	£ -	£ 2,346.66
78	£ 150.00	£ -	£ -	£ -	£ -	£ -
79	£ 325.00	£ 5.00	£ 10.00	£ -	£ 50.00	£ -
81	£ 510.00	£ 190.00	£ 170.00	£ 20.00	£ -	£ 402.50
83	£ 134.00	£ 47.00	£ 5.00	£ -	£ -	£ -
84	£ 600.00	£ 1,000.00	£ 290.00	£ -	£ 50.00	£ 940.00
85	£ 960.00	£ 2,240.00	£ 350.00	£ -	£ 100.00	£ 1,075.00
86	£ 1,200.00	£ 1,200.00	£ 20.00	£ -	£ 100.00	£ 1,327.50
89	£ 520.00	£ 210.00	£ 150.00	£ 20.00	£ 30.00	£ 357.50
90	£ 490.00	£ 230.00	£ -	£ -	£ -	£ 358.75
91	£ 700.00	£ 200.00	£ 130.00	£ 20.00	£ -	£ 560.00
92	£ 500.00	£ 1,800.00	£ 60.00	£ -	£ 100.00	£ 1,027.50
93	£ 496.00	£ 134.00	£ 415.00	£ 50.00	£ 70.00	£ 632.25
94	£ 280.00	£ -	£ 10.00	£ -	£ -	£ -
95	£ 2,640.00	£ 800.00	£ 320.00	£ -	£ -	£ 1,902.50
96	£ 960.00	£ 600.00	£ 300.00	£ 20.00	£ -	£ 1,012.50
97	£ 40.00	£ -	£ -	£ -	£ -	£ -
98	£ 330.60	£ 20.00	£ 70.00	£ -	£ -	£ 265.00
99	£ 560.00	£ -	£ 140.00	£ -	£ 20.00	£ 445.00
100	£ -	£ -	£ -	£ -	£ -	£ 185.00
101	£ 960.00	£ -	£ 120.00	£ -	£ -	£ 400.00
102	£ 430.00	£ -	£ -	£ -	£ -	£ -
103	£ 100.00	£ 50.00	£ -	£ -	£ -	£ -
104	£ 150.00	£ -	£ 20.00	£ -	£ -	£ -
105	£ 520.00	£ 240.00	£ 110.00	£ 10.00	£ -	£ 440.00
106	£ 260.00	£ 240.00	£ 260.00	£ -	£ -	£ -
107	£ 268.00	£ 190.00	£ 75.00	£ 20.00	£ -	£ -
108	£ 695.00	£ -	£ 20.00	£ -	£ -	£ 210.00
109	£ 7,905.00	£ 1,300.00	£ 350.00	£ -	£ -	£ 4,110.00
110	£ 175.00	£ 160.00	£ 200.00	£ 20.00	£ 20.00	£ 315.00
111	£ 300.00	£ -	£ 10.00	£ -	£ 20.00	£ -
113	£ 360.00	£ 70.00	£ 30.00	£ -	£ -	£ -
117	£ 580.00	£ -	£ -	£ -	£ 100.00	£ 295.00
118	£ 3,510.00	£ -	£ -	£ -	£ -	£ 1,417.50
119	£ 645.00	£ 1,200.00	£ -	£ -	£ -	£ -
<b>Total</b>	<b>£ 57,370.70</b>	<b>£ 23,445.91</b>	<b>£ 10,085.00</b>	<b>£ 495.00</b>	<b>£ 1,760.00</b>	<b>£ 36,886.16</b>

**Tartaraghan Presbyterian Church Congregation of the Presbyterian Church in Ireland**

Northern Ireland - Charity number 104792

---

# Annual return

---

**Tartaraghan Congregation of the Presbyterian Church in Ireland**

**Independent Examiner's Report to the Charity Trustees of  
Tartaraghan Congregation of the Presbyterian Church in Ireland**

I report on the accounts of the Charity for the year ended 31 December 2022.

**Respective responsibilities of charity trustees and examiner:**

As the charity's trustees you are responsible for the preparation of the accounts in accordance with the Charities Act (Northern Ireland) 2008.

It is my responsibility to:

- examine the accounts under section 65 of the Charities Act, to follow the procedures laid down in the general directions given by the Commission under section 65(9)(b) of the Charities Act,
- to state whether particular matters have come to my attention.

**Basis of independent examiner's report:**

I have examined your charity accounts as required under section 65 of the Charities Act and my examination was carried out in accordance with the general directions given by the Charity Commission for Northern Ireland under section 65(9)(b) of the Charities Act.


My examination included a review of the accounting records kept by the charity and a comparison of the accounts presented with those records. It also included consideration of any unusual items or disclosures in the accounts, and seeking explanations from you as charity trustees concerning any such matters.

My role is to state whether any material matters have come to my attention giving me cause to believe:

- 1 That accounting records were not kept in accordance with section 63 of the Charities Act.
- 2 That the accounts do not accord with those accounting records.
- 3 That the accounts do not comply with the accounting requirements of the Charities Act.
- 4 That there is further information needed for a proper understanding of the accounts to be reached.

**Independent examiner's statement**

I have completed my examination and have no concerns in respect of the matters (1) to (4) listed above and, in connection with following the directions of the Charity Commission for Northern Ireland, I have found no matters that require drawing to your attention.

  
James Robinson FCCA  
WHR Accountants Limited  
Chartered Certified Accountants  
56 English Street  
Armagh  
BT61 7LG

17/04/2023  
Date