



**FINANCIAL STATEMENTS 31ST MARCH 2021**

THE GREEN HOUSE BRISTOL

Company Registration Number 2414332 Charity Number 800806

REPORT AND FINANCIAL STATEMENTS FOR THE YEAR ENDED 31ST MARCH 2021

## Contents

1	AIMS AND OBJECTIVES .....	4
2	OUR WORK.....	5
2.2	Our Children and Young People's Service .....	7
2.3	Our Adults Service .....	9
2.3	BlueStar CSA Project .....	11
3	FINANCIAL REVIEW .....	12
3.1	Reserves policy.....	12
3.2	Future Plans .....	12
4	Structure, Management and Governance Governing Document.....	13
4.1	Appointment of the Board of Trustees.....	13
4.2	Trustee Induction and Training.....	13
4.3	Staff structure .....	13
4.4	Partnership Working.....	13
4.5	Risk Management .....	14
4.6	Public Benefit .....	14
5	Thank you.....	15
6	Statement of Directors and Trustees' Responsibilities.....	16
7	Independent Examiner's Report.....	17

## THE GREEN HOUSE BRISTOL

### REFERENCE AND ADMINISTRATIVE DETAILS OF THE CHARITY YEAR ENDED 31ST MARCH 2020

---

#### **Status**

The Green House Bristol is a company limited by guarantee Reg No. 2414332 and has a charitable status Reg No 800806

#### **Main premises and registered office**

Registered Offices: St Agnes Lodge, 45 Thomas St. St Pauls Bristol BS2 9LJ

#### **Trustees**

The Board of Trustees presents their report for the year ended 31st March 2021. Due to the trustee's status as directors under the Companies Act 2006, this report constitutes a directors' report as required by the Companies Act 2006 and has been prepared taking advantage of the special provisions under part 15 of the Companies Act 2006.

The Trustees are as follows:

Steve Livings - Chair

Alan Rogan – Treasurer

Karen Michael-Cox (resigned)

Gemma Halliwell

Hazel Cawood

Kamala Das

Cecilia Batten

Peter Walker

Laetitia Fernando

**Senior Leadership Team**

CEO (interim)	Karen Michael-Cox
Operations Manager	Polly Theedom
Adults Counselling Clinical Lead	Emma Bull
Children and Young People's Clinical Lead	Emma Reeves

**Independent Examiner**

David Baptiste ACPA, Linden Accountants Limited, Scrapstore House, 21 Sevier Street, Bristol, BS2 9LB

**Bankers**

Co-operative Bank, 14 Broadmead, BS13HH

## 1 AIMS AND OBJECTIVES

### Purposes

The Green House purposes are set out in the objects contained in the company's articles of association are specifically restricted to the following:

To relieve the sickness and distress of people who have suffered any kind of sexual abuse.

### Our mission:

The Green House mission is to provide therapy and support services at the right time for each beneficiary. To address the ever-increasing and complex needs of sexual violence survivors in our community, the Green House must expand its range of services by augmenting our core service with modern, innovative, and evidence-based approaches.

### Objectives:

- To provide specialist psychotherapy, counselling and other services to people affected directly and indirectly by sexual violence and abuse.
- To advocate locally and nationally for services and support for sexual violence survivors.
- To undertake continuous, high-quality research to inform our service offering.
- To create holistic, community-wide service provision from prevention to crisis intervention by working with other charities who share our purpose.
- To ensure that Green House services are shaped by lived experience by creating a community of sexual violence survivors and amplifying the voices of survivors in research, policy and public discourses.

### Ensuring The Green House's work delivers on our aims

The Green House refers to the Charity Commission guidance on public benefit when reviewing our aims and objectives and what activities we should undertake. The CEO and Trustees look ahead to the next three years and agree on the strategic priorities. We consult with key stakeholders, including staff, during our annual Strategic Review, which informs the business plan. Trustees receive reports from the Senior Management Team at quarterly board meetings, and quarterly KPI reports. This enables them to review the success of our key activities and the benefits they have brought to our service users.

In recent years The Green House has seen a significant increase in people coming forward for help, driven by social movements and high profile cases in the media. We have grown our core counselling provision by maximising the use of our organisation's resources.

We witness daily the life-changing impact of therapy. The specialist support of our highly skilled teams gives people the opportunity and the tools to make sense of their traumatic experiences, find helpful ways of coping, and build their resilience. The benefit of our work goes well beyond

the clients that we have direct contact with as sexual abuse and rape have ripple effects across families and communities. By helping survivors cope and recover from their trauma, we are preventing the symptoms of family breakdown, addiction, antisocial and criminal behaviour that can often result.

One of our core values is a commitment to quality and excellence in all that we do. All our counselling staff are qualified professionals and highly experienced in working with trauma. This enables us to work with often complex and severe mental health issues and ensures that we can safely and effectively support each client that presents to the service. This quality is reflected in the level of engagement that we manage to achieve with a hard-to-reach client group and the difference we see in clients after receiving therapy.

## 2 OUR WORK

The Green House provides free, quality counselling for people affected by sexual abuse and rape to improve their physical, emotional, and mental health and build their resilience. We work with people of all ages and backgrounds, including many from Bristol's most deprived communities.

### 2.1 Impact of Covid-19

It is important to contextualise service delivery at The Green House against the impact of the Covid-19 pandemic, which required us to close our waiting lists and move our services online. In response to the pandemic, the government enforced restrictions on the UK population at the end of March 2020. The Green House started the new financial year with disruptions to services, but we continued to operate through this challenging period.

#### **Impact on our services**

From April 2020, The Green House made the unprecedented decision to close our waiting lists for both our adults and children's service. We also paused therapy for all clients under 18 from this time. This pause enabled our operational teams to swiftly improve The Green House's infrastructure to support a remote way of working and build the appropriate safety measures and guidance to support staff and clients with the return to in-person therapy (which happened from June 2020).

In May 2020, the adults service started seeing new clients in remote therapy for the first time, supported by new processes and infrastructure. By June 2020, we started seeing children and young people in person again, supported by COVID-19 risk assessments and guidance for staff.

A large part of our infrastructure improvement was focused on setting up a remotely accessed data base, to enable our therapists and administrative staff to work effectively from home. This project completed in September 2020 and by November 2020 all staff were training and using a new database.

#### **Impact on our reporting and data quality**

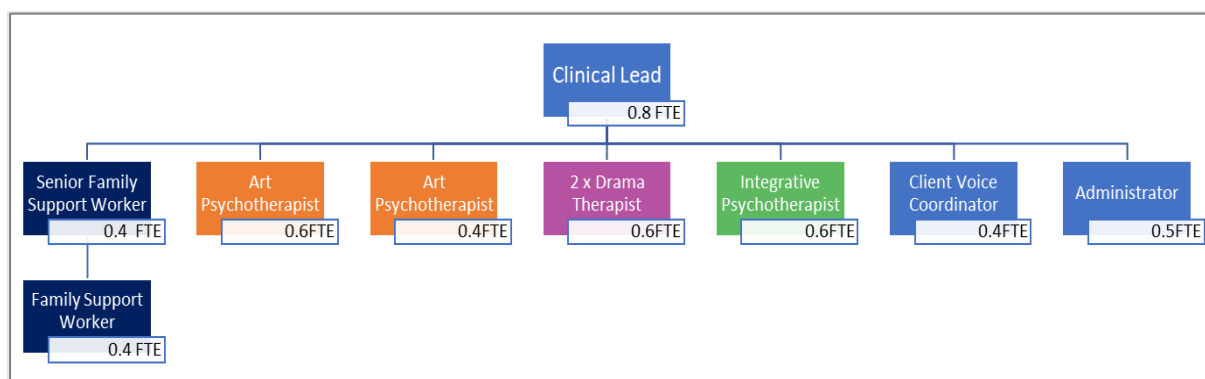
In response to the COVID-19 pandemic, several funders gave The Green House and other organisations in the charitable sector additional funds to support new ways of working.

The Ministry of Justice was particularly generous during the year; we received £74,426 COVID support funds from the MoJ to fund infrastructure changes, as well as compensate for any funds lost due to the cancellation of charitable activities. This was unrestricted income.

Many funders, under considerable pressure themselves, paused or altered reporting requirements. For some, this meant regular, monthly reporting on service basics (such as referrals and waiting list numbers) to keep track of trends in the sexual violence system. For others, they suspended reporting completely giving themselves and services more time to focus on operational delivery.

Due to service disruption and our change over to a new database, our data from April 2020 and October 2020 is patchy as our regular reporting processes were disrupted. We have incomplete datasets for this period.

## 2.2 Our Children and Young People's Service



Our Children and Young People's Service is there for when a child bravely chooses to seek help. Our highly skilled therapists focus on using creative approaches such as art and drama therapy to help children heal and recover from their experiences. It can often be difficult for children to articulate their painful memories, so these creative sessions provide accessible, non-threatening ways for children and young people to express their feelings and make sense of their complex experiences. This specialist support in a safe environment can be life-changing, helping children to give a voice to their experiences and building their confidence and resilience for the future. We work with children as young as three and young people up to the age of 18, many of whom have experienced other forms of disadvantage or adversity in addition to sexual abuse.

### Client Feedback on our CYP service

"Therapy has been life-changing for my daughter. It has helped her process and deal with her emotions in a more healthy way. It has given her a space each week that was just for her, and an opportunity to be creative, listened to, and challenged. My daughter really enjoyed therapy and was very sad to finish it."

"It has reduced my flashbacks massively and improved my confidence."

"My child has been able to talk/ explore her worries and coping strategies."

"The therapist listened to us and offered support worked with Laura to address our concerns at the start and on-going."

"Such a brilliant service."

"Nightmares have stopped. Able to talk more easily and more sociable around people."

### Our impact

We received just over 294 referrals to the service in 2020-21. Our team offered over 1359 hours of therapy during the year (the highest ever for The Green House).

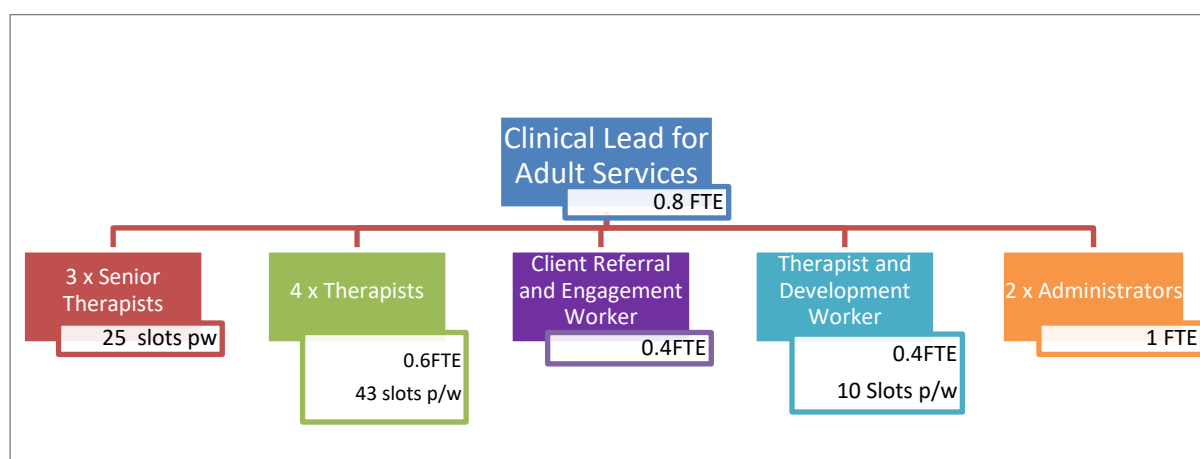
The Green House closed its waiting list for new referrals into our Children and Young People's Service from March 2020 to October 2020 due to the Covid19 pandemic. We opened to referrals in October 2020.



In September 2020, the Children and Young Person's Service started using a new case management system to record our service outputs and outcomes. The data below is taken from the period of October 2020 – March 2021.

- 84% of clients reported improved overall wellbeing
- 81% of clients became more personally empowered because of therapy
- 84% of clients had better relationships with family and peers
- 88% of clients exhibited a greater sense of self-esteem

## 2.3 Our Adults Service



Our Adults Service works with adults of any gender who have experienced sexual abuse or rape. The Green House closed its waiting list to adults from March 2020 to December 2020 due to the Covid19 pandemic. We opened to referrals for remote therapy for adults on 4th January 2021. In 2020/21, our adult service team offered 1676 therapy sessions.

We offer a hybrid of in-person and remote (online and telephone) therapy within our Adult Counselling service, ensuring our services remain as accessible as possible. We are developing new methods of supporting clients on our waiting list for therapy. At the point of referral, clients may book in for a Connect session with our referral and engagement worker. The sessions are tailored to the individual and provide clients with an opportunity to connect with The Green House, ask any questions about the counselling offer, equip them with resources to support them whilst waiting for therapy and signpost them to other relevant services.

Sexual abuse can cause severe trauma and deep physical, emotional and psychological stress. Many of the adults we work with experienced sexual abuse during their childhood, leading to chronic mental health issues, problems developing basic life skills, social isolation, and vulnerability to further harm. We have seen a significant increase in the complexity of our client's needs and presenting issues.

### Our Projects

The Green House will be piloting a MOJ-funded men's therapy group in Spring 2022, which will be offered to men currently on our waiting list for therapy. We noted that men on our waiting list were 40% more likely than women to opt for in-person therapy during the pandemic. This pilot of an in-person men's therapy group will support us to address the higher proportion of men waiting for in-person therapy while providing other therapeutic options for their recovery.

The Green House has started a Survivor Voice working group with clients who have completed therapy with The Green House. This group aims to support The Green House in co-creating a larger survivor voice network within The Green house and the wider Sexual violence Sector. The group will also have the additional benefit of supporting The Green House to develop services and resources that are led and co-created by survivors.

## Our Impact

The Green House closed its waiting list to adults from March 2020 to December 2020 due to the Covid19 pandemic. We opened to referrals for remote therapy for adults on 4th January 2021. In November 2020, the Adult Service started using a new case management system to record our service outputs and outcomes. The data below is taken from the period of November 2020 – March 2021.

Clients completing therapy report:

- 80% say their mental health has improved
- 83% demonstrate improved coping skills and ability to function
- 70% report more stable relationships with family or friends
- 43% say they engaged more in social, educational, or creative activities since starting counselling
- 60% report using other mental health services less frequently

## Client Feedback on our Adult Service

"Thank you. The help and support you have provided has helped me to move on with my life and start to do all the things I have always wanted to do."

"It was helpful to know I had a safe space to go to each week where I could safely share my story without judgement and that I had sufficient time, support and expertise in place to ensure I was able to process things safely without becoming completely overwhelmed or dysregulated as I had done in the past."

"It was helpful to know I had a safe space to go to each week where I could safely share my story without judgement and that I had sufficient time, support and expertise in place to ensure I was able to process things safely without becoming completely overwhelmed or dysregulated as I had done in the past."

"...a massive thank you to everyone who supported me at The Green House. It's an invaluable service to trauma survivors, and so appreciates all you guys are doing - there aren't enough words really!"

"[My Counsellor] was amazing; she remembered details so well and had a brilliant knack of linking them back at the perfect time. She created a safe environment for me to be vulnerable and had endless empathy and understanding. She was exactly what I needed her to be"

## 2.4 BlueStar CSA Project

Bluestar is our flagship research project funded by the Home Office's Child Sexual Abuse Support Services Transformation Fund April 2020- March 2022.

### ***Research overview – O1: Pre-trial therapy***

Our first outcome aims to understand the barriers and facilitators of pre-trial therapy for CSA and to inform future service developments, national guidance, and policies with our findings. The outcome of the research is to design best practice resources to improve access to pre-trial therapy.

We have completed a scoping review, "Keeping Secrets", which will be released with the launch of our new website (mid-November), alongside a summary of the CSA therapist practitioner survey. The survey is now closed with a total number of 118 responses representing CSA therapists, private therapists and SARCs across 75 Local Authority areas in the UK. Interviews with therapists and wider professionals are also now complete (Therapists n=11; Wider Professionals n=14).

### ***Research overview – O2: Online Support***

The aim of our research of online support services for CSA is to understand what works and for whom. The research outcome is to design a toolkit for CSA therapists and wider services that can help guide best practices.

The analysis of the scoping review is now complete, and the research team are preparing a manuscript for peer-review publication. Interviews with clinicians are also complete (n=22), and analysis is underway. We presented findings from a rapid literature review at a Ministry of Justice chaired COVID-19 Victim and Witness Silver Command meeting.

Our survivor voice groups ensure the voices of survivors are present both in shaping the research approach and in learning about experiences of pre-trial and online support.

We have delivered four groups for parent's and carers and ran our first group for adult survivors of CSA. We have recruited an Authentic Voice Co-ordinator for our children and young people's Survivor Voice Group. We have recruited four young people and two adults to the O1 research. We have arranged training in February 2022 for the whole organisation to ensure that our approach is sufficiently trauma informed.

## 3 FINANCIAL REVIEW

---

### Financial Position

The Green House had a successful year of fundraising with £782,355 raised for our charitable activities (FY19/20 £394,327), which included continued sizeable grants from Avon and Somerset PCC and NHS England. In addition, there was £15,086 received from donations (FY19/20 £37,727).

Total expenditure on charitable activities was £539,075 compared with £463,903 in the prior year. The increase is primarily due to the need to increase investment in our frontline counselling capacity to meet the increasing demand. This is reflected in the increased expenditure of salaried staff £308,879 (FY19/20 £246,115).

The year ended with £213,910 general funds (fy19/20 £133,182), and £156,163 restricted funds (fy19/20 £0). The building is recognised as an asset of the charity, outside of unrestricted reserves, with a designated value of £293,254.

### 3.1 Reserves policy

The trustees have established a policy whereby the unrestricted reserves not invested in tangible fixed assets held by the charity should be kept more than three months of expenditure, which equates to approximately £138,363 for the financial year of 2020/21. On 31st March 2021 there were unrestricted reserves of £213,910 which meets our reserves policy. The trustees are committed to ensuring the adequacy of unrestricted reserves on an on-going basis and are confident that the Charity will be able to continue to operate and fulfil its obligations.

### 3.2 Future Plans

With our new therapy centre up and running, our larger and much-improved facilities offer the scope to expand our work

In line with our operational maturity plan, we have commenced work on several key areas for improvement with our data quality improvement project, performance, finance and quality reporting, client journey and engagement, and Survivor Voice project to deliver our charitable mission sustainably and proactively

Developed partnerships and undertaken research to improve our in-depth understanding of the needs of all beneficiaries (clients, sexual violence survivors, families and our community) to inform our charitable mission and deploy new services

Expanded our client-centred service to address the demand for the right service for each beneficiary at the right time; and

Engage in local and national advocacy for sexual violence survivors so that future parliamentary decision making and the commissioning of services better impact survivors dealing with the experience of trauma in both practical and emotional terms.

## 4 Structure, Management and Governance Governing Document

The Green House is a charitable company limited by guarantee. The Charity was established in 1980 and became incorporated as a company limited by guarantee in 1989. The company was established under a Memorandum of Association which established the objects and powers of the charitable company and is governed under its Articles of Association, which have been reviewed in 2021 by the Board.

### 4.1 Appointment of the Board of Trustees

The directors of the company are also charity trustees for the purposes of charity law.

The Board of Trustees comprises a wide range of skills, expertise, and experience directly relevant and applicable to the Green House's work and beneficiary groups.

Professions represented: Education, Social Work (child sexual abuse specialism), Psychotherapy, Police (specialism child protection and the sex offenders register), Child Protection Training, Strategic Change Management, Personnel and Human Resources.

Overall assessment: All board members make a valuable contribution to the organisational development and infrastructure of the Green House and the planning and implementation of services. Board members are well-connected locally and/or nationally, helping the organisation remain updated with current policy and practice.

Gender balance and diversity: The Board has a good gender balance and is diverse in reflecting the community groups it serves.

### 4.2 Trustee Induction and Training

New members of the Board of Trustees are given clear advice and support in relation to their obligations. All relevant documentation is made available, including details of its resourcing, the current financial position as set out in the latest set of accounts and information about the future and the strategic development of the Charity.

### 4.3 Staff structure

In March 2021, the team consisted of sixteen members of staff and eight contractors.

The CEO oversees and line manages a Senior Management Team comprising the Operations Manager, the Adults Lead and the Children and Young People's Clinical Lead.

### 4.4 Partnership Working

The Green House has a strong collaborative working culture and has developed mutually beneficial relationships with many statutory and voluntary organisations. We have a history of working as a Consortium with two other sexual violence providers in the city - SARSAS and Womankind. This has been very successful, and we have been awarded funding from statutory agencies based on the strength of this partnership and the scale and expertise it provides.

## 4.5 Risk Management

The Board of Trustees reviews the major risks via a Risk Register that the CEO updates every quarter and is approved annually by the Finance and Resources Committee. Health and Safety and Safeguarding are standing items on all Trustee Agendas.

## 4.6 Public Benefit

The Trustees have had due regard to the Charity Commission guidance on public benefit in deciding what activities the Centre should undertake and confirm that all the Centre's activities are undertaken to further our charitable purposes for the public benefit.

## 5 Thank you

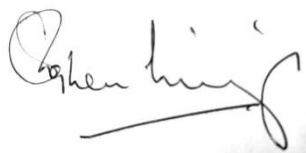
The Trustees wish to acknowledge the exceptional work of the staff and clinicians and all who have supported the services in 2020/21. This year has marked a period of growth and change for The Green House, but this change has ultimately embedded the maturity and practice to develop a plan to take the charity forward into the next three years and beyond.

I wish to thank my fellow trustees for their teamwork and commitment demonstrated by their willingness to respond to issues, support staff with advice and take critically important decisions on the strategic direction and governance of the services.

Thank you to our funders: Bristol City Council, The Home Office, NHS Bristol, Ministry of Justice, PCC, Quartet, Comic Relief, The Rotary Club of Bristol Breakfast, and Safer Bristol.

The Trustees invite all who are interested in supporting this mission to join us in building this service further in the coming year.

For and on behalf of the Trustees,

A handwritten signature in black ink, appearing to read 'Steve Livings', with a long horizontal flourish extending to the right.

Steve Livings – Chair of the Board      Dated: 16<sup>th</sup> November 2021



## 6 Statement of Directors and Trustees' Responsibilities

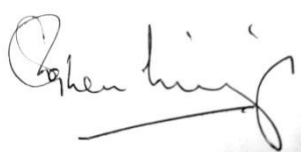
The Trustees (who are also Directors for the purposes of company law) are responsible for preparing the Directors and Trustees' Report and the financial statements in accordance with applicable law and United Kingdom Accounting Standards (UK Generally Accepted Accounting Practice).

Company Law requires the Directors and Trustees to prepare financial statements for each financial year, which give a true and fair view of the state of affairs of the Charity and of the income resources and application resources, including the income and expenditure, of the Charity for that period.

In preparing these Financial Statements, the Trustees are required to:

- Select suitable accounting policies and then apply them consistently
- Observe the methods and principles of the Charities SORP
- Make judgements and estimates that are reasonable and prudent
- State whether applicable UK Accounting Standards have been followed, subject to any material departures disclosed and explained in the financial statements
- Prepare the financial statements on the going concern basis unless it is inappropriate to presume that the charity will continue in operation.
- The Trustees are responsible for keeping proper accounting records that disclose with reasonable accuracy at any time the financial position of the Charity and enable them to ensure that the Financial Statements comply with the Companies Act 2006.
- They are also responsible for safeguarding the assets of the Charity and hence for taking reasonable steps for the prevention and detection of fraud and other irregularities.

This report was approved by the Trustees and signed for and on their behalf by,

A handwritten signature in black ink, appearing to read 'Steve Livings', with a long horizontal stroke extending from the end.

Steve Livings – Chair of the Board of Trustees

Dated: 16<sup>th</sup> November 2021

## 7 Independent examiner's report year ended 31st March 2021

I report to the charity trustees on my examination of the accounts of The Green House for the year ended 31st March 2021.

### Responsibility and basis of report

As the charity's trustees are also its directors for the purposes of company law, you are responsible for the preparation of the accounts in accordance with the Companies Act 2006 ('the 2006 Act').

Having satisfied myself that the accounts of The Green House are not required to be audited under Part 16 of the 2006 Act and are eligible for independent examination, I report in respect of my examination of your charity's accounts as carried out under section 145 of the Charities Act 2011 ('the 2011 Act'). In carrying out my examination I have followed the Directions given by the Charity Commission under section 145(5)(b) of the 2011 Act.

### Independent examiner's statement

Since the company's gross income exceeded £250,000 your examiner must be a member of a body listed in section 145 of the 2011 Act. I confirm that I am qualified to undertake the examination because I am a member of the Certified Public Accountants Association, which is a listed body.

I have completed my examination. I confirm that no matters have come to my attention in connection with the examination giving me cause to believe:

- Accounting records were not kept in respect of the company as required under section 386 of the 2006 Act: or
- The accounts do not accord with those records; or
- The accounts do not comply with the accounting requirements under section 396 of the 2006 Act other than any requirement that the accounts give a true and fair view which is not a matter considered as part of my independent examination: or
- The accounts have not been prepared in accordance with the methods and principles of the Statement of Recommended Practice for accounting and reporting by charities applicable to charities preparing their accounts in accordance with the Financial Reporting Standard applicable in the UK and Republic of Ireland (FRS 102).

I have no concerns and have come across no other matters in connection with the examination to which attention should be drawn in this report in order to enable a proper understanding of the accounts to be reached.



David Baptiste ACPA

Linden Accountants, Scrapstore House, 21 Sevier Street, St Werburghs, Bristol, BS2 9LB

Date: 16<sup>th</sup> November 2021

THE GREEN HOUSE BRISTOL

STATEMENT OF FINANCIAL ACTIVITIES (Including Income  
and Expenditure Account)

YEAR ENDED 31 MARCH 2021

		Unrestricted Funds	Restricted Funds	Total Funds 2021	Total Funds 2020
	Note	£	£	£	£
<b>INCOME</b>					
Donations and legacies	2	18,086	1,000	19,086	82,127
Income from charitable activities	3	352	782,355	782,707	395,527
Income from investments		-	-	-	81
Income from sale of assets		-	-	-	231,293
<b>TOTAL INCOME AND ENDOWMENTS</b>		<b>18,439</b>	<b>783,355</b>	<b>801,794</b>	<b>709,028</b>
<b>EXPENDITURE</b>					
Expenditure on raising funds	4	562	13,814	14,377	15,325
Expenditure on charitable activities:					
Provision of counselling services	5	52,549	461,051	513,599	414,302
Move to new premises	5	8,549	16,927	25,476	49,601
<b>TOTAL EXPENDITURE</b>		<b>61,661</b>	<b>491,792</b>	<b>553,452</b>	<b>479,228</b>
Revaluations	8	-	-	-	(89,476)
<b>NET INCOME/(EXPENDITURE)</b>		<b>(43,222)</b>	<b>291,563</b>	<b>248,342</b>	<b>229,800</b>
<b>Balances brought forward</b>		<b>434,985</b>	<b>-</b>	<b>434,985</b>	<b>294,661</b>
Gross Transfers Between Funds	12	135,400	(135,400)	-	-
<b>Balances carried forward</b>	<b>12</b>	<b>527,164</b>	<b>156,163</b>	<b>683,327</b>	<b>434,985</b>

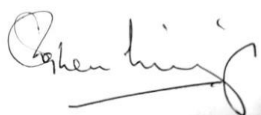
The charity has no recognised gains or losses other than the results for the year as set out above.

All of the activities of the charity are classed as continuing.

THE GREEN HOUSE BRISTOL  
BALANCE SHEET  
YEAR ENDED 31 MARCH 2021

	Note	2021 £	2020 £
<b>FIXED ASSETS:</b>			
Tangible assets	8	293,254	301,803
<b>CURRENT ASSETS:</b>			
Debtors	9	-	2,903
Cash at bank and in hand		420,785	158,543
		<u>420,785</u>	<u>161,446</u>
<b>CURRENT LIABILITIES:</b>			
Creditors: falling due within one year	10	(30,712)	(28,264)
<b>NET CURRENT ASSETS:</b>		<u>390,073</u>	<u>133,182</u>
<b>CREDITORS:</b> Amounts falling due after one year		-	-
<b>NET ASSETS:</b>		<u><u>683,327</u></u>	<u><u>434,985</u></u>
<b>FUNDS</b>			
General funds	12	213,910	133,182
Designated funds	12	402,730	391,279
Revaluation reserve	12	(89,476)	(89,476)
Restricted funds	12	156,163	-
		<u><u>683,327</u></u>	<u><u>434,985</u></u>

These financial statements were approved by the directors and authorised for issue on 16th November 2021 and are signed on their behalf by:



Steve Livings - Chair of Trustees

Company Registration Number: 2414332

The notes on pages 20 to 24 form part of these financial statements

## 1 ACCOUNTING POLICIES

### Accounting convention

The financial statements have been prepared under the historic cost convention. The financial statements have been prepared in accordance with the Statement of Recommended Practice: Accounting and Reporting by Charities (FRS 102 SORP) issued in July 2014, and applicable UK Accounting Standards and the Charities Act 2011.

### Funds structure

Unrestricted income funds comprise those funds which the trustees are free to use for any purpose in furtherance of the charitable objects. Unrestricted funds include designated funds where the trustees, at their discretion, have set aside resources for a specific purpose.

Restricted funds are funds which are to be used in accordance with specific restrictions imposed by the donor or the terms of a specific appeal.

### Income

All income is recognised once the charity has entitlement to the resources, it is certain that the resources will be received and the monetary value of income can be measured with sufficient reliability.

Income from donations is included when these are receivable, except as follows:

- When the donors specify that the donations given to the charity must be used in future accounting periods.
- When donors impose conditions which have to be fulfilled before the charity becomes entitled to use such income, the income is deferred until the pre-conditions have been met.

Income from grants, where there are performance or service deliverables required by the terms of the grant, are accounted for as the charity earns the right to payment through its performance.

### Expenditure

Liabilities are recognised as expenditure as soon as there is a legal or constructive obligation committing the charity to the expenditure. All expenditure is accounted for on an accruals basis and has been classified under headings that agree all costs related to the category. Support costs have been allocated 100% towards the charitable activities of the charity.

### Charitable activities

Charitable expenditure comprises those costs incurred by the charity in the delivery of its activities and services for its beneficiaries. It includes both the direct pay and non-pay costs and support costs relating to those activities.

### Going concern

After making appropriate enquiries, the trustees have a reasonable expectation that the charity has adequate resources to continue its operations for the foreseeable future and therefore they have continued to adopt the going concern basis when preparing the financial statements.

### Governance costs

Governance cost include those costs associated with meeting the constitutional and statutory requirements of the charity, and include its independent examination fees and costs linked to the strategic management of the charity including trustee expenses.

### Tangible fixed assets and depreciation

Depreciation has been provided on all tangible fixed assets at rates calculated to write off the cost, less estimated residual value of each asset, over its expected useful life. The rates used are 2% reducing balance on freehold property and improvements and 10%-20% reducing balance on other fixed assets.

The market value of St Agnes Lodge was reviewed during 2020 following extensive redevelopment. As a consequence, the property in the accounts reflects this valuation.

THE GREEN HOUSE BRISTOL  
NOTES TO THE FINANCIAL STATEMENTS  
YEAR ENDED 31 MARCH 2021

1 ACCOUNTING POLICIES (Continued)

**Volunteers**

In accordance with the SORP, and in recognition of the difficulties in placing a monetary value on the contribution of volunteers, the contribution of volunteers is not included with the income of the charity.

However, the trustees value the significant contribution made to the activities of the charity by unpaid volunteers, which is referred to in the Report of the Trustees.

**Pensions**

The charity operates a defined contribution pension scheme. The assets of the scheme are held separately from those of the charity in an independent administered fund and the pension charge represents the amounts payable by the charity to the fund in respect of the year.

2 DONATIONS AND LEGACIES

	Unrestricted Funds £	Restricted Funds £	Total Funds 2021 £	Total Funds 2020
Donations	14,086	1,000	15,086	37,727
Charitable Trusts	4,000	-	4,000	44,400
	<u>18,086</u>	<u>1,000</u>	<u>19,086</u>	<u>82,127</u>

3 INCOME FROM CHARITABLE ACTIVITIES

	Unrestricted Funds £	Restricted Funds £	Total Funds 2021 £	Total Funds 2020
Grants receivable	-	782,355	782,355	394,327
Gift Aid	352	-	352	1,200
	<u>352</u>	<u>782,355</u>	<u>782,707</u>	<u>395,527</u>

**GRANTS RECEIVABLE**

	Unrestricted Funds £	Restricted Funds £	Total Funds 2021 £	Total Funds 2020
Bristol City Council Impact Fund	-	64,692	64,692	69,380
Bristol Clinical Commissioning Group	-	63,543	63,543	65,109
Children In Need	-	10,000	10,000	9,500
Comic Relief	-	-	-	34,000
Home Office Innovation Fund	-	166,868	166,868	-
Ministry of Justice FRSF	-	183,846	183,846	120,411
MoJ & PCC COVID-19 Support Funding	-	89,926	89,926	-
NHS AQP	-	149,267	149,267	39,334
NHS England	-	-	-	-
PCC (previously Home Office)	-	48,213	48,213	48,213
Safer Bristol	-	6,000	6,000	8,380
	<u>-</u>	<u>782,355</u>	<u>782,355</u>	<u>394,327</u>

THE GREEN HOUSE BRISTOL  
NOTES TO THE FINANCIAL STATEMENTS  
YEAR ENDED 31 MARCH 2021

4 EXPENDITURE ON RAISING FUNDS

Fundraising and Publicity

	Unrestricted Funds £	Restricted Funds £	Total Funds 2021 £	Total Funds 2020
Salaried staff costs	-	13,814	13,814	14,914
Other costs	562	-	562	411
	<u>562</u>	<u>13,814</u>	<u>14,377</u>	<u>15,325</u>

5 DIRECT CHARITABLE EXPENDITURE

Charitable Activities

	Unrestricted Funds £	Restricted Funds £	Total Funds 2021 £	Total Funds 2020
Salaried staff costs	22,622	272,443	295,065	231,201
Sessional staff costs	-	80,313	80,313	81,359
Costs associated with counselling	1,891	24,498	26,389	64,038
Other costs	28,036	83,797	111,833	37,703
	<u>52,549</u>	<u>461,051</u>	<u>513,599</u>	<u>414,302</u>
New Premises	8,549	16,927	25,476	49,601
	<u>61,098</u>	<u>477,977</u>	<u>539,075</u>	<u>463,903</u>

6 CORPORATION TAX

The charity is exempt from tax on income and gains falling within section 505 of the Taxes Act 1988 or section 252 of the Taxation of Chargeable Gains Act 1992 to the extent that these are applied to its charitable objects. No tax charges have arisen in the charity.

7 STAFF COSTS

	2021 £	2020
Salaries, National Insurance and Pensions	308,879	246,115
Temporary Staff and Other Costs	-	-
	<u>308,879</u>	<u>246,115</u>

No employee received emoluments of more than £60,000 (2020: None)

The average number of full-time equivalent employees during the year was 7.5 (2020: 8)

No trustee or person connected to them received remuneration, and no trustee or person connected to them reclaimed expenses (2020: None)

The key management personnel of the charity are the trustees and the CEO. The total key management personnel compensation was £42,146 (2020: £40,000).

THE GREEN HOUSE BRISTOL  
NOTES TO THE FINANCIAL STATEMENTS  
YEAR ENDED 31 MARCH 2021

8 TANGIBLE FIXED ASSETS

	Freehold Property £	Improving Property £	Fixtures & Fittings £	Totals £
<b>COST:</b>				
At 1 April 2020	225,000	82,948	3,005	310,954
Additions	-	-	-	-
Disposals	-	-	-	-
Revaluations	-	-	-	-
At 31 March 2021	<u>225,000</u>	<u>82,948</u>	<u>3,005</u>	<u>310,954</u>
<b>DEPRECIATION:</b>				
At 1 April 2020	4,500	3,448	1,202	9,150
Charge for the year	4,500	3,448	601	8,549
At 31 March 2021	<u>9,000</u>	<u>6,897</u>	<u>1,803</u>	<u>17,700</u>
<b>NET BOOK VALUE:</b>				
At 31 March 2021	<u>216,000</u>	<u>76,052</u>	<u>1,202</u>	<u>293,254</u>
At 31 March 2020	<u>220,500</u>	<u>79,500</u>	<u>1,803</u>	<u>301,803</u>

The market value of St Agnes Lodge was reviewed during 2020 following extensive redevelopment. As a consequence, the property in the accounts reflects this valuation.

9 DEBTORS

	2021 £	2020 £
Debtors	-	2,903
Prepayments	-	-
	<u>-</u>	<u>2,903</u>

10 CREDITORS: amounts falling due within one year

	2021 £	2020 £
Creditors and Accruals	30,712	28,264
	<u>30,712</u>	<u>28,264</u>

11 ANALYSIS OF NET ASSETS BETWEEN FUNDS

	Unrestricted Funds £	Restricted Funds £	Total Funds 2021 £
Fixed Assets	293,254	-	293,254
Current Assets	288,657	132,127	420,785
Current Liabilities	(6,676)	(24,035.74)	(30,712)
Long Term Liabilities	-	-	-
	<u>575,235</u>	<u>108,092</u>	<u>683,327</u>



THE GREEN HOUSE BRISTOL  
NOTES TO THE FINANCIAL STATEMENTS  
YEAR ENDED 31 MARCH 2021

12 ANALYSIS OF CHARITABLE FUNDS

Analysis of Fund movements	Balance b/fwd £	Income £	Expenditure £	Transfers £	Fund c/fwd £
<b>Unrestricted funds:</b>					
Fixed Assets fund	391,279	-	(8,549)	-	382,730
Revaluation reserve	(89,476)	-	-	-	(89,476)
General funds	133,182	18,439	(53,111)	115,400	213,910
Survivor Voice designated fund	-	-	-	20,000	20,000
	<b>434,985</b>	<b>18,439</b>	<b>(61,661)</b>	<b>135,400</b>	<b>527,164</b>
<b>Restricted funds:</b>					
	Balance b/fwd £	Income £	Expenditure £	Transfers £	Fund c/fwd £
Children and Young People	-	171,668	(208,578)	38,502	1,592
Adult Service	-	107,504	(224,371)	123,992	7,125
Adult Service - NHS	-	63,543	-	(37,818)	25,725
Infrastructure	-	-	-	-	-
Home Office Fund	-	166,868	(8,447)	(36,700)	121,722
COVID-19 Support Fund	-	89,926	(50,396)	(39,530)	-
Ministry of Justice Flexible Fund	-	183,846	-	(183,846)	-
	<b>-</b>	<b>783,355</b>	<b>(491,792)</b>	<b>(135,400)</b>	<b>156,163</b>
Total	434,985	801,794	(553,452)	-	683,327

Children and Young People

This service is dedicated to provide therapy for children and adolescents who have suffered sexual trauma.

Adult service

This is a counselling service for adults who have experienced any form of sexual abuse at any point in their lives. This service is supported by Bristol City Council, NHS England, the Ministry of Justice, and other funders.

Home Office fund

This is a home office funded innovation project aimed at achieving better outcomes for children/young people in pre-trial therapy or engaging in online therapy

COVID-19 support fund

Extraordinary funding offered by MoJ and PCC to support the charity to survive and adapt during the COVID-19 Pandemic.

13 RELATED PARTY TRANSACTIONS

There were no related party transactions between the charity and the trustees or persons or entities connected to them during the year (2020: None)