

Princess Frederica Parent Staff Association
Annual Report and Accounts 2025

(August 2024 – July 2025)

1. Reference and Administrative Details

Registered name: Princess Frederica Parent Staff Association

Charity number: 800472

Principal address: Princess Frederica CE Primary School, Brent, North-West London

Trustees serving during the year

- Mark Adriano Castro (appointed February 2024)
- Barbara Walker (appointed November 2024)
- Nifa McLaughlin (appointed February 2023)
- Clare Kathleen Laurance (appointed February 2023)
- Kathryn Thomas (appointed February 2024)
- Penelope Anne Wynne Capper (appointed February 2024)

Independent Examiner

- Martin Skitt ACA

Contact details

Email: admin@princessfrederica.brent.sch.uk

Telephone: 020 8830 0218

2. Structure, Governance and Management

The PSA is an independent charity established to support Princess Frederica CE Primary School. It is governed by a constitution adopted on 21 June 1988 and subsequently amended on 18 March 1992, 6 July 2007 and 20 February 2024.

The PSA is entirely volunteer-led and has no paid staff. Membership is open automatically to parents, carers and staff of the school, with no membership fee.

The charity is overseen by an Executive Committee elected annually by members at the Annual General Meeting (AGM). Executive Committee members typically also act as trustees. In practice, trustees are usually current parents or carers at the school. Trustees and committee members are not remunerated.

The Executive Committee meets at least three times per year, including the AGM, which is open to all members. AGM minutes are recorded and shared, and members are invited to vote on key priorities and expenditure plans.

Trustees work collaboratively with the school leadership team to agree priorities for fundraising and expenditure, while retaining independent decision-making responsibility.

3. Objectives and Activities

Charitable purposes

The PSA exists to **advance the education of pupils** at Princess Frederica CE Primary School by providing and assisting in the provision of **facilities, equipment and activities** that enhance pupils' educational experience and wellbeing.

How the PSA delivers its purposes

In furtherance of its charitable purposes, the PSA:

- organises social, educational and fundraising activities;
- supports the school and enhances pupils' experience beyond the core curriculum;
- promotes engagement and communication between staff, parents, carers and others associated with the school; and
- applies funds raised to purchase items, equipment and experiences for the benefit of pupils.

4. Public Benefit, Achievements and Performance

The trustees confirm that they have had due regard to the Charity Commission's guidance on public benefit when planning and reviewing the PSA's activities.

Public benefit and inclusion

The PSA supports all pupils at Princess Frederica CE Primary School regardless of personal background, faith, gender or personal circumstances. Trustees give particular consideration to inclusion and accessibility when planning activities and allocating funds, to ensure that all children are able to benefit from the charity's work.

The identifiable public benefits delivered through the PSA's activities include:

- improving pupil wellbeing and happiness at school;
- improving access to, and inclusion in, enriching educational and extracurricular activities;
- enabling pupils to broaden their horizons and develop confidence in their future potential; and
- strengthening parental engagement and cohesion within the school community.

These benefits are delivered through a combination of targeted enrichment activities, community-building events and investment in facilities that support pupils' social, emotional and educational development.

Key focus during the year: OPAL (Outdoor Play and Learning)

The principal focus of PSA activity and expenditure during the year was the continued development of the **OPAL (Outdoor Play and Learning)** programme, delivered in partnership with the school leadership team.



Children spend a significant proportion of the school day outdoors. Trustees therefore consider the quality, accessibility and inclusivity of the playground environment to be a key means of delivering public benefit, supporting social interaction, creativity, physical activity and wellbeing for all pupils.

During the year, the PSA funded and supported OPAL-related developments intended to broaden play opportunities and support different styles of play, including:

- a **music wall** supporting sensory and creative play;
- development of a **Peace Garden**, providing a calmer space for quieter play;
- **A-frames** supporting adventurous and imaginative play;
- **chalk boards** enabling creative and collaborative activities;
- **scooters** supporting active outdoor play; and
- a **storage shed** improving organisation and access to play equipment.



The PSA also funded infrastructure improvements to address areas of the playground that were frequently unusable due to mud. The installation of rubber mulch enabled more consistent use of outdoor space throughout the year and reduced the need for temporary closures.

Following observation and discussion with staff, the PSA also supported smaller adaptations to OPAL provision, including the introduction of larger play items and barriers to improve engagement among older pupils.

Impact

Staff and volunteers reported high levels of pupil engagement with the OPAL resources introduced during the year. The expanded range of play opportunities supported different preferences and needs, including physical, creative and quieter play. The Peace Garden provided an alternative space for pupils who preferred less active play. Trustees believe these developments delivered clear public benefit by enhancing pupils' daily school experience and supporting inclusive outdoor play.

Other educational enrichment and community engagement

In addition to OPAL, the PSA funded a range of educational and enrichment activities, including **Book Week**, **arts and craft supplies** and **music and sports provision**, contributing to a broad enrichment offer beyond the classroom.

The PSA also agreed a **discretionary inclusivity support fund** to assist low-income families with the cost of school trips, administered by the school leadership team.

Community-building and fundraising activities during the year included:

- Cultural Unity Day and New Parents' Welcome events;
- Christmas activities and the children's Christmas Disco; and
- fundraising events such as Fredstival, Fred's Christmas Trees, Kensal Tri and Fred's Parkrun Takeover.

Feedback from staff and volunteers indicated strong engagement across activities delivered during the year.

5. Financial Review

The PSA prepares its accounts on a **receipts and payments basis**, in accordance with Charity Commission guidance for small charities.

Total income for the year was £73,028, primarily generated through fundraising activities, donations and grants. Total expenditure was £43,717, with the majority of spending directed towards school enrichment activities and OPAL developments. This resulted in a surplus of £29,311 for the year.

Receipts and Payments Statement

For the year ended 31 July 2025

£	Receipts	Payments	Profit/(Loss)
PSA Led Fundraising	61,210	9,717	51,493
Prior Year Events	1,450	800	650
Fredstive			-
Ceillidh	3,663	1,377	2,286
Clothing Sale			-
Fredstival	12,778	3,808	8,970
Secondhand Uniform	814	-	814
Christmas Activities	6,464	3,184	3,280
Spring Fundraising	30,196	548	29,648
Cake Sales	5,845		5,845
Donations & Sponsorship	9,271	413	8,858
Grants	7,375	413	6,962
Donations	1,896	-	1,896
Friends of Freds support			-
Other Income (Interest & Solar Pannels)	2,547	-	2,547
School Enrichment Activities	-	15,176	(15,176)
Art Week	-	31	(31)
Book Week	-	3,271	(3,271)
Christmas Crafts	-	828	(828)
Embankment Provision	-	561	(561)
Art Supplies (Children's Scrap Project)	-	370	(370)
Sports Equipment Provision	-	1,015	(1,015)
Music Provision	-	912	(912)
Classroom Provisions (from Cake Sales)	-	5,797	(5,797)
Discretionary Inclusivity Support Fund	-	1,723	(1,723)
Cultural Unity Day	-	517	(517)
Parent Workshop	-	150	(150)
School Enrichment Projects	-	16,755	(16,755)
Class Refurbishment	-	998	(998)
Opal Play	-	14,318	(14,318)
Peace Garden (from Memorial Fund)	-	1,439	(1,439)
Operating Costs	-	1,656	(1,656)
Total	73,028	43,717	29,311

Bank Account Movements

The PSA's bank balance increased from £38,674 at the start of the year to £67,985 at 31 July 2025.

Opening Bank Balance (as at 1 August 24)	£38,674
Income for period 01 August 2024 to 31 July 2025	£73,028
Expenditure for period 01 August 2024 to 31 July 2025	(£43,717)
Closing Bank Balance (as at 31 July 25)	<u>£67,985</u>

Reserves

As of 31 July 2025, the PSA held unrestricted reserves of **£60,789**.

Our target is to maintain reserves equivalent to one year of typical annual expenditure (excluding major one-off projects), estimated at **£12,500–£15,000**, to ensure financial stability. The current reserve level is **above** this target.

In addition, **£12,196** is ringfenced:

- **£4,088** from cake sales, held for class-specific spending by teachers for classroom provisions.
- **£3,108** from a family memorial donation, designated for the **Peace Garden**, in line with the donor's wishes. This has reduced from last year as £1,439 was spent on the **Peace Garden**

Thomas Sinded Developers Grant was reported as restricted funds last financial year. This has been spent during this financial year on OPAL play in line with the grant stipulations.

A grant of £6,250 was received from Tesco's (restricted funds) in this year and spent on the stage for the playground (OPAL Play).

6. Plans for Future Periods

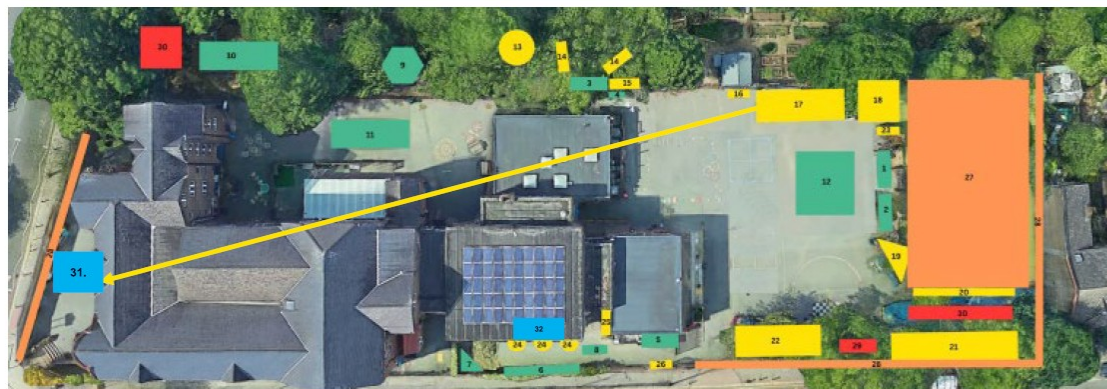
Over the coming years, the PSA aims to build on recent progress and continue delivering its charitable objectives by focusing on the following priorities:

- maintaining a balanced and inclusive programme of fundraising activities to support school enrichment;
- strengthening engagement with parents and carers through **regular communication and opportunities for involvement**, including targeted support for new parents;
- continuing to fund core enrichment activities, including Book Week, music and sports provision, and wider arts enrichment through the **Artful Ambitions programme**;
- **maintaining and sustaining existing OPAL (Outdoor Play and Learning) provision**, including funding for ongoing consumables and replacement items required to keep the programme effective and accessible over time;
- delivering the **final phase of the OPAL (Outdoor Play and Learning) programme**, including progression towards a proposed **Multi-Use Games Area (MUGA)**, subject to funding and school priorities; and
- retaining flexibility to respond to other enrichment opportunities that fall within the PSA's charitable remit and available resources.

OPAL Play Status

STATUS KEY

- ✓ Complete
- Funding Secure/in progress
- Fundraising required



STAGE 1: 2024/2025

1. Sheds for storage ✓
2. Temporary Large parts storage ✓
3. Mud Kitchen ✓
4. Temporary welly storage ✓
5. Gardeners corner & chalkboards in peace garden ✓
6. Jasmine mixed in with the ivy ✓
7. Arch with levelled astroturf and basic planting ✓
8. Benches for peace garden ✓
9. Pergola with small world ✓
10. Construction area with new bark chip ✓
11. Wheels area (new trikes to be bought) ✓
12. Large parts play area ✓

STAGE 2: 2024/2025 & 2024/ 2026

13. Clear area for 'embankment room' ✓
14. Paths to mud kitchen ✓
15. Permanent welly storage sheds ✓
16. Water Wall with new tap installed ✓
17. Sand pit with tyres (transitioned to Nursery) ✓
18. Permanent Large Parts Storage ✓
19. Music wall ✓
20. Chalk boards ✓
21. Zoned areas/ Teepees ✓
22. Stage with 4 Tiers ✓
23. Planting herbs and jasmine around site ✓
24. Gravel beds with plants in peace garden ✓
25. Reading area in peace garden with bean bags ✓
26. Arts and crafts cupboard for peace garden ✓

STAGE 3: 2026/ 2027

27. MUGA
28. Greening project

REMAINING THE SAME

29. Reading Bus
30. Playground hardware

ADDITIONS

31. Weigh & Scales Station, Mud Kitchen Corner and Messy Table ✓
32. Retractable Canopy for Peace Garden

7. Acknowledgements:

The trustees would like to thank all parents, carers, staff and pupils who supported the PSA during the year. Particular thanks are extended to those who gave significant voluntary time and commitment to PSA activities and governance.

8. Trustee Approval

Approved by the trustees and signed on their behalf:

Name of trustee	Mark Castro
Role	Trustee
Signature	X
Date	21/05/2026

Bank Account Movements

CAF Bank Cash Account as at 31 July 24	£6,906
CAF Bank Gold Account as at 31 July 24	£31,768
Opening Bank Balance (as at 1 August 24)	£38,674
Income for period 01 August 2024 to 31 July 2025	£73,028
Expenditure for period 01 August 2024 to 31 July 2025	(£43,717)
Closing Bank Balance (as at 31 July 25)	£67,985

Balance Sheet Statement

Assets

CAF Bank Cash Account as at 31 July 25	£35,494
CAF Bank Gold Account as at 31 July 25	£32,491
Total Funds	£67,985

Reconciliation Check:

1

Ringfenced Funds:

Memorial Funds	£3,108
Cake Sale	£4,088
Grant	

Restricted Reserves

£7,196

Unrestricted Reserves

£60,789

Reconciliation Check:

1

Opening Bank Balance (as at 1 August 24)	£38,674
Net Cash Movement FY24/25	£29,311
Closing Bank Balance (as at 31 July 25)	£67,985

Of which:

Memorial Funds	£3,108
Cake Sale	£4,088
Grant	
Restricted Reserves	£7,196
Unrestricted Reserves	£60,789

Receipts and Payments Statement - Pivot (for easy interigation by Independent Assessor)

			Data	
Fundraising events	Park Run	Column L	Sum of Income	Sum of Expense
Cake Sale	Nursery	(empty)	327.28	302.62
	Reception	(empty)	424.19	280.00
	Year 1	(empty)	239.73	
	Year 2	Thistle		49.60
		(empty)	436.67	14.62
	Year 3	(empty)	407.66	240.00
	Year 4	Apple		504.06
		Cherry		374.50
		(empty)	554.99	236.32
	Year 5	(empty)	398.20	186.66
Donations	Year 6	(empty)	66.42	644.21
	(empty)	(empty)		53.33
	Mr Tang	(empty)	1,000.00	
	(empty)	(empty)	896.18	
Fundraising events	2nd had uniform	(empty)	814.17	
	Ceilidh	Band		710.00
		(empty)	3,663.20	667.08
	Fredstival	Bar		144.00
		Crafts		211.20
		Merch	193.78	1,129.02
		Music		1,250.00
		Raffle	904.66	
		(empty)	11,520.90	1,074.22
	Fredstival 2023	(empty)		256.84
	Fredstival 2024	BBQ		55.00
		Merchandise		488.02
		Sponsorship	1,450.00	
	Kensal Tri	(empty)	4,732.32	
	Park Run	(empty)	13,271.63	547.61
	Xmas disco	DJ		362.50
		Sweets		413.74
		(empty)	1,685.15	
	Xmas trees	(empty)	2,890.00	1,435.64
	Xmas wreaths	(empty)	1,888.74	972.45
Grants	National Grid	(empty)	6,250.00	

	Tesco	(empty)	1,125.00	
Investments	Class refurb	Carpet	753.90	
		Paint	243.66	
	Embankment	(empty)	560.75	
	Grants	(empty)	413.37	
	Mr Chantler	(empty)	1,014.92	
	Mr Tang	(empty)	912.20	
	OPAL	(empty)	14,318.26	
	Peace garden	(empty)	1,438.85	
	Trolleys	(empty)	176.38	
Nets off	(empty)	(empty)	55.00	55.00
Other Income	Interest	(empty)	743.42	
	Solar panels	(empty)	1,803.98	
Running costs	Bank fees	(empty)	60.00	
	Insurance	(empty)	162.00	
	Meals	(empty)	98.00	
	Solar panels	(empty)	1,160.00	
School initiatives	Art week	(empty)	31.20	
	Book week	(empty)	3,270.69	
	Mobile phone work	(empty)	150.00	
	Residential trips	(empty)	1,723.00	
	SCRAP	(empty)	370.40	
	Unity Day	(empty)	516.93	
	Xmas crafts	(empty)	828.01	
Yr6	Disco	(empty)	395.00	
	Hoodies	(empty)	1,429.74	
	Mothers day	(empty)	933.00	387.50
	Production	(empty)	121.50	
	Quiz night	(empty)	2,056.80	577.80
(empty)	(empty)	(empty)		
Total Result			60,733.07	43,772.30

Receipts and Payments Statement

For the year ended 31 July 2025

Sum of Value
24.66
144.19
239.73
- 49.60
422.05
167.66
- 504.06
- 374.50
318.67
211.54
- 577.79
- 53.33
1,000.00
896.18
814.17
- 710.00
2,996.12
- 144.00
- 211.20
- 935.24
- 1,250.00
904.66
10,446.68
- 256.84
- 55.00
- 488.02
1,450.00
4,732.32
12,724.02
- 362.50
- 413.74
1,685.15
1,454.36
916.29
6,250.00

£	Reciepts	Payments
PSA Led Fundraising	61,210	9,717
Prior Year Events	1,450	800
Fredstive		
Ceilidh	3,663	1,377
Clothing Sale		
Fredstival	12,778	3,808
Secondhand Uniform	814	-
Christmas Activities	6,464	3,184
Spring Fundraising	30,196	548
Cake Sales	5,845	
Donations & Sponsorship	9,271	413
Grants	7,375	413
Donations	1,896	-
Friends of Freds support		
Other Income (Interest & Solar Pannels)	2,547	-
School Enrichment Activities	-	15,176
Art Week	-	31
Book Week	-	3,271
Christmas Crafts	-	828
Embankment Provision	-	561
Art Supplies (Children's Scrap Project)	-	370
Sports Equipment Provision	-	1,015
Music Provision	-	912
Classroom Provisions (from Cake Sales)		5,797
Discretionary Inclusivity Support Fund	-	1,723
Cultural Unity Day	-	517
Parent Workshop	-	150
School Enrichment Projects	-	16,755
Class Refurbishment	-	998
Opal Play	-	14,318

1,125.00
- 753.90
- 243.66
- 560.75
- 413.37
- 1,014.92
- 912.20
- 14,318.26
- 1,438.85
- 176.38
-
743.42
1,803.98
- 60.00
- 162.00
- 98.00
- 1,160.00
- 31.20
- 3,270.69
- 150.00
- 1,723.00
- 370.40
- 516.93
- 828.01
- 395.00
- 1,429.74
545.50
- 121.50
1,479.00
-
16,960.77

Peace Garden (from Memorial Fund) - 1,439

Operating Costs	-	1,656
------------------------	---	--------------

Total	73,028	43,717
--------------	---------------	---------------



Profit/(Loss)

51,493

650
-
2,286
-
8,970
814
3,280
29,648
5,845

8,858

6,962
1,896
-

2,547

(15,176)

(31)
(3,271)
(828)
(561)
(370)
(1,015)
(912)
(5,797)
(1,723)
(517)
(150)

(16,755)

(998)
(14,318)

£

Prior Year Events
Ceilidh
Fredstival
Secondhand Uniform
Christmas Activities
Spring Fundraising
Cake Sales

PSA Led Fundraising

Grants
Donations
Friends Of Freds Support

Donations & Sponsorship

Other Income (Interest & Solar Pannels)

Total Funds Raised

£

Art week
Book Week
Christmas Crafts

School Led Enrichment Activities

Class Refurbishment
Embankment Provision
Unity Day
Mobile phone workshop
Residential trips
Opal Play
Peace Garden
Children's Scrap Project
Sports Equipment Provision
Music Provision

(1,439)

(1,656)

29,311

Classroom provisions (from Cake Sales)

School Enrichment Projects

Operating Costs

Total Expenditure

-1

Profit/(Loss)

650

2,286

8,970

814

3,280

29,648

5,845

51,493

6,962

1,896

-

8,858

2,547

62,898

Profit/(Loss)

(31)

(3,271)

(828)

(4,130)

(998)

(561)

(517)

(150)

(1,723)

(14,318)

(1,439)

(370)

(1,015)

(912)

(5,797)

(27,800)

(1,656)

(33,587)

Posting Date Value Date

5/6/2025	5/6/2025
7/16/2025	7/16/2025
12/4/2024	12/4/2024
1/23/2025	1/23/2025
9/2/2024	9/2/2024
12/16/2024	12/16/2024
7/10/2025	7/10/2025
1/23/2025	1/23/2025
7/10/2025	7/10/2025
10/15/2024	10/15/2024
1/2/2025	1/2/2025
5/7/2025	5/7/2025
6/16/2025	6/16/2025
5/14/2025	5/14/2025
4/1/2025	4/1/2025
4/14/2025	4/14/2025
1/23/2025	1/23/2025
1/23/2025	1/23/2025
5/12/2025	5/12/2025
3/17/2025	3/17/2025
12/9/2024	12/9/2024
7/10/2025	7/10/2025
7/1/2025	7/1/2025
7/18/2025	7/18/2025
4/8/2025	4/8/2025
4/28/2025	4/28/2025
7/10/2025	7/10/2025
6/9/2025	6/9/2025
3/28/2025	3/28/2025
5/7/2025	5/7/2025
11/29/2024	11/29/2024
4/16/2025	4/16/2025
3/24/2025	3/24/2025
6/25/2025	6/25/2025
7/15/2025	7/15/2025
7/2/2025	7/2/2025
4/23/2025	4/23/2025
4/23/2025	4/23/2025
9/17/2024	9/17/2024
9/17/2024	9/17/2024
7/15/2025	7/15/2025
6/23/2025	6/23/2025
3/31/2025	3/31/2025
1/8/2025	1/8/2025
3/5/2025	3/5/2025
3/31/2025	3/31/2025

7/11/2025	7/11/2025
5/8/2025	5/8/2025
3/31/2025	3/31/2025
7/14/2025	7/14/2025
9/26/2024	9/26/2024
9/23/2024	9/23/2024
5/28/2025	5/28/2025
3/31/2025	3/31/2025
7/23/2025	7/23/2025
5/20/2025	5/20/2025
6/2/2025	6/2/2025
12/27/2025	12/27/2025
6/5/2025	6/5/2025
3/26/2025	3/26/2025
6/18/2025	6/18/2025
10/21/2024	10/21/2024
6/26/2025	6/26/2025
7/10/2025	7/10/2025
12/5/2024	12/5/2024
9/25/2024	9/25/2024
12/6/2024	12/6/2024
4/30/2025	4/30/2025
3/11/2025	3/11/2025
1/22/2025	1/22/2025
5/12/2025	5/12/2025
3/31/2025	3/31/2025
3/17/2025	3/17/2025
5/28/2025	5/28/2025
11/27/2024	11/27/2024
4/30/2025	4/30/2025
3/5/2025	3/5/2025
6/11/2025	6/11/2025
3/3/2025	3/3/2025
12/3/2024	12/3/2024
12/4/2024	12/4/2024
12/5/2024	12/5/2024
11/20/2024	11/20/2024
1/29/2025	1/29/2025
1/21/2025	1/21/2025
6/4/2025	6/4/2025
3/4/2025	3/4/2025
12/3/2024	12/3/2024
12/9/2024	12/9/2024
6/17/2025	6/17/2025
3/3/2025	3/3/2025
3/20/2025	3/20/2025
6/11/2025	6/11/2025
12/6/2024	12/6/2024

12/9/2024	12/9/2024
7/2/2025	7/2/2025
12/10/2024	12/10/2024
11/19/2024	11/19/2024
9/13/2024	9/13/2024
12/9/2024	12/9/2024
4/2/2025	4/2/2025
12/18/2024	12/18/2024
8/29/2024	8/29/2024
9/30/2024	9/30/2024
10/30/2024	10/30/2024
11/28/2024	11/28/2024
12/24/2024	12/24/2024
2/27/2025	2/27/2025
3/28/2025	3/28/2025
4/29/2025	4/29/2025
5/29/2025	5/29/2025
6/27/2025	6/27/2025
7/30/2025	7/30/2025
10/3/2024	10/3/2024
5/6/2025	5/6/2025
7/14/2025	7/14/2025
3/3/2025	3/3/2025
3/19/2025	3/19/2025
10/28/2024	10/28/2024
11/5/2024	11/5/2024
12/4/2024	12/4/2024
1/6/2025	1/6/2025
2/5/2025	2/5/2025
3/5/2025	3/5/2025
4/3/2025	4/3/2025
5/6/2025	5/6/2025
6/4/2025	6/4/2025
7/3/2025	7/3/2025
10/30/2024	10/30/2024
3/26/2025	3/26/2025
8/13/2024	8/13/2024
9/11/2024	9/11/2024
10/11/2024	10/11/2024
11/13/2024	11/13/2024
12/11/2024	12/11/2024
1/13/2025	1/13/2025
2/12/2025	2/12/2025
3/12/2025	3/12/2025
4/11/2025	4/11/2025
5/14/2025	5/14/2025
6/11/2025	6/11/2025
7/11/2025	7/11/2025

6/26/2025	6/26/2025
3/5/2025	3/5/2025
9/26/2024	9/26/2024
5/29/2025	5/29/2025
12/27/2024	12/26/2024
10/16/2024	10/16/2024
2/26/2025	2/26/2025
12/20/2024	12/20/2024
3/26/2025	3/26/2025
3/28/2025	3/28/2025
7/10/2025	7/10/2025
3/28/2025	3/28/2025
12/16/2024	12/16/2024
1/23/2025	1/23/2025
7/16/2025	7/16/2025
7/10/2025	7/10/2025
7/10/2025	7/10/2025
1/23/2025	1/23/2025
3/28/2025	3/28/2025
12/16/2024	12/16/2024
7/16/2025	7/16/2025
7/10/2025	7/10/2025
12/11/2024	12/11/2024
7/16/2025	7/16/2025
7/10/2025	7/10/2025
2/26/2025	2/26/2025
7/18/2025	7/18/2025
5/15/2025	5/15/2025
10/15/2024	10/15/2024
10/3/2024	10/3/2024
1/8/2025	1/8/2025
12/16/2024	12/16/2024
7/10/2025	7/10/2025
12/16/2024	12/16/2024
3/28/2025	3/28/2025
1/23/2025	1/23/2025
7/18/2025	7/18/2025
3/28/2025	3/28/2025
3/28/2025	3/28/2025
12/16/2024	12/16/2024
12/16/2024	12/16/2024
12/16/2024	12/16/2024
7/10/2025	7/10/2025
7/10/2025	7/10/2025
7/14/2025	7/14/2025
3/28/2025	3/28/2025
7/16/2025	7/16/2025
3/28/2025	3/28/2025

7/16/2025	7/16/2025
6/16/2025	6/16/2025
9/26/2024	9/26/2024
7/16/2025	7/16/2025
7/16/2025	7/16/2025
3/28/2025	3/28/2025
3/17/2025	3/17/2025
7/16/2025	7/16/2025
1/23/2025	1/23/2025
7/16/2025	7/16/2025
7/10/2025	7/10/2025
7/10/2025	7/10/2025
3/28/2025	3/28/2025
2/26/2025	2/26/2025
1/23/2025	1/23/2025
12/16/2024	12/16/2024
3/28/2025	3/28/2025
12/16/2024	12/16/2024
9/12/2024	9/12/2024
9/26/2024	9/26/2024
10/25/2024	10/25/2024
12/16/2024	12/16/2024
5/15/2025	5/15/2025
10/3/2024	10/3/2024
12/9/2024	12/9/2024
12/16/2024	12/16/2024
7/10/2025	7/10/2025
1/23/2025	1/23/2025
3/28/2025	3/28/2025
8/15/2024	8/15/2024
9/16/2024	9/16/2024
10/15/2024	10/15/2024
11/15/2024	11/15/2024
12/16/2024	12/16/2024
1/15/2025	1/15/2025
2/17/2025	2/17/2025
3/17/2025	3/17/2025
4/15/2025	4/15/2025
5/15/2025	5/15/2025
6/13/2025	6/13/2025
7/15/2025	7/15/2025
5/13/2025	5/13/2025
5/14/2025	5/14/2025
5/19/2025	5/19/2025

Description	Expense
FP 4438862 PRINCESS F JUSTGIVING	
BACS Credit PAYPAL INC. PRINCESS FREDERICA	
BACS LGTXN00590168 LOCALGIVING LTD	
Online transfer to PRINCESS FREDERICA CE SCH Autumn term 2	
BACS GE FIT 46980 GOOD ENERGY	
Online transfer to PRINCESS FREDERICA CE SCH Autumn term 1	8,843.00
Online transfer to PRINCESS FREDERICA CE SCH Summer invoice	3,270.69
Online transfer to PRINCESS FREDERICA CE SCH Autumn term 2	2,839.53
Online transfer to PRINCESS FREDERICA CE SCH Summer invoice	1,723.00
Online transfer to Clare Laurance Trolleys	176.38
DD PARENTKIND PTA964577-80216901	162.00
BACS PRINCESS FREDERICA PAYPAL INC.	
FP JUSTGIVING 4525369 PRINCESS	
FP 4469872 PRINCESS F JUSTGIVING	
FP 4370459 PRINCESS F JUSTGIVING	
FP 4397138 PRINCESS F JUSTGIVING	
Online transfer to PRINCESS FREDERICA CE SCH Autumn term 2	
Online transfer to PRINCESS FREDERICA CE SCH Autumn term 2	
FP 4460898 PRINCESS F JUSTGIVING	
BACS PRINCESS FREDERICA PAYPAL INC.	
BACS GWUK GROUNDWORK UK - TE	
Online transfer to PRINCESS FREDERICA CE SCH Summer invoice	
FP KATE BROOKFIELD LI Kate brookfield	
FP NEILL D T MR TANG MUSIC DEP	
FP 4387662 PRINCESS F JUSTGIVING	
FP 4433372 PRINCESS F JUSTGIVING	
Online transfer to PRINCESS FREDERICA CE SCH Summer invoice	387.50
FP JUSTGIVING 4511613 PRINCESS	
Online transfer to PRINCESS FREDERICA CE SCH Spring invoice 1	439.44
FP 4453600 PRINCESS F JUSTGIVING	
BACS GE FIT 46980 GOOD ENERGY	
FP 4409478 PRINCESS F JUSTGIVING	
FP 4357632 PRINCESS F JUSTGIVING	
FP JUSTGIVING 4552742 PRINCESS	
BACS Credit PAYPAL INC. PRINCESS FREDERICA	
FP BASESPACE LO LTD CHARITY DONATION	
FP 4422223 PRINCESS F JUSTGIVING	
FP 4425915 PRINCESS F JUSTGIVING	
ICS BACS 000586	
ICS BACS 000587	
BACS Credit PAYPAL INC. PRINCESS FREDERICA	
FP JUSTGIVING 4537986 PRINCESS	
ICS BACS 000589	
ICS BACS 000591	
BACS GE FIT 46980 GOOD ENERGY	
ICS BACS 000593	

BACS Credit PAYPAL INC. PRINCESS FREDERICA

BACS PRINCESS FREDERICA PAYPAL INC.
ICS BACS 000592

BACS Credit PAYPAL INC. PRINCESS FREDERICA

Interest

FP 4056513 PRINCESS F JUSTGIVING
FP 4487461 PRINCESS F JUSTGIVING
ICS BACS 000588
FP SPIRIT INK LIMITED Spirit Ink Fundra
FP 4480948 PRINCESS F JUSTGIVING
FP 4500766 PRINCESS F JUSTGIVING

Interest

BACS GE FIT 46980 GOOD ENERGY

Interest

FP JUSTGIVING 4544910 PRINCESS
FP CAKE SALE MINT BAGNIEWSKA N

Interest

BACS Credit PAYPAL INC. PRINCESS FREDERICA

BACS PRINCESS FREDERICA PAYPAL INC.
BACS PRINCESS FREDERICA PAYPAL INC.
FP ST MARK S &REV DAV Roberts David
BACS PRINCESS FREDERICA PAYPAL INC.
FP 4337487 PRINCESS F JUSTGIVING
BACS PRINCESS FREDERICA PAYPAL INC.
BACS PRINCESS FREDERICA PAYPAL INC.
ICS BACS 000590
FP 4351041 PRINCESS F JUSTGIVING
FP 4496414 PRINCESS F JUSTGIVING
BACS PRINCESS FREDERICA PAYPAL INC.
FP 4442835 PRINCESS F JUSTGIVING
BACS PRINCESS FREDERICA PAYPAL INC.
BACS Credit PAYPAL INC. PRINCESS FREDERICA
FP ASDA Cashpot PARENTKIND
FP Morgan 8ft Tree MORGAN NE&LE
FP Orla Quirke O Quirke
FP Xmas Tree 7-8ft TAKAGI C
BACS PRINCESS FREDERICA PAYPAL INC.
BACS PRINCESS FREDERICA PAYPAL INC.
BACS PRINCESS FREDERICA PAYPAL INC.
FP 4514035 PRINCESS F JUSTGIVING
BACS PRINCESS FREDERICA PAYPAL INC.
FP KATH MORGAN 7FT K Morgan
FP Carys 6ft 14th Thomas Am Cur
BACS Credit PAYPAL INC. PRINCESS FREDERICA
FP 4311688 PRINCESS F JUSTGIVING
BACS PRINCESS FREDERICA PAYPAL INC.
FP JUSTGIVING 4533648 PRINCESS
FP Hockings HOCKINGS CATHERI

FP Rodgers / Tree George Rodgers
FP WALKER Donation M Oddi
BACS PRINCESS FREDERICA PAYPAL INC.
BACS PRINCESS FREDERICA PAYPAL INC.
REJ ONLINE TRANS Polly Holmes 2 INVALID SORT CODE
FP IOU LINDSAY P
FP 4383847 PRINCESS F JUSTGIVING
BACS PRINCESS FREDERICA PAYPAL INC.
BACS CT50873 CHARITIES TRUST
BACS CT50873 CHARITIES TRUST
BACS CT50873 CHARITIES TRUST
BACS CT50873 CHARITIES TRUST
BACS CT50873 CHARITIES TRUST
BACS CT50873 CHARITIES TRUST
BACS CT50873 CHARITIES TRUST
BACS CT50873 CHARITIES TRUST
BACS CT50873 CHARITIES TRUST
BACS Credit CHARITIES TRUST CT50873
BACS Credit CHARITIES TRUST CT50873
BACS PAYROLL GIVING CHARITABLE GIVING
BACS PRINCESS FREDERICA PAYPAL INC.
FP N Wimple ICE SKATING CLARA
FP HARRIS XMAS WREATH HARRIS EJ
FP 4363460 PRINCESS F JUSTGIVING
BACS PRINCESS FREDERICA PAYPAL INC.
BACS PAYROLL GIVING CHARITABLE GIVING
BACS PAYROLL GIVING CHARITABLE GIVING
BACS PAYROLL GIVING CHARITABLE GIVING
BACS PAYROLL GIVING CHARITABLE GIVING
BACS PAYROLL GIVING CHARITABLE GIVING
BACS PAYROLL GIVING CHARITABLE GIVING
BACS PAYROLL GIVING CHARITABLE GIVING
BACS Credit CHARITABLE GIVING PAYROLL GIVING
BACS PRINCESS FREDERICA PAYPAL INC.
FP 4377136 PRINCESS F JUSTGIVING
BACS 24080896760CF CAF24080896760CF
BACS 24090697024CF CAF24090697024CF
BACS 24100897168CF CAF24100897168CF
BACS 24110896620CF CAF24110896620CF
BACS 24120697999CF CAF24120697999CF
BACS 25010899772CF CAF25010899772CF
BACS 25020796287CF CAF25020796287CF
BACS 25030796600CF CAF25030796600CF
BACS 25040897316CF CAF25040897316CF
BACS 25050996127CF CAF25050996127CF
BACS Credit CAF25060696724CF 25060696724CF
BACS Credit CAF25070896222CF 25070896222CF

Interest - Capitalise Interest to Date
FP 4329515 PRINCESS F JUSTGIVING
INTEREST TO DATE

FP 4505140 PRINCESS F JUSTGIVING
INTEREST TO DATE

FP 4108479 PRINCESS F JUSTGIVING

FP 4318199 PRINCESS F JUSTGIVING

BACS PRINCESS FREDERICA PAYPAL INC.
INTEREST TO DATE

Online transfer to PRINCESS FREDERICA CE SCH Spring invoice 1	1435.64
Online transfer to PRINCESS FREDERICA CE SCH Summer invoice	1,429.74
Online transfer to PRINCESS FREDERICA CE SCH Spring invoice 1	1344.6
Online transfer to PRINCESS FREDERICA CE SCH Autumn term 1	1,290.85
Online transfer to PRINCESS FREDERICA CE SCH Autumn term 2	1,160.00
Online transfer to Spirit Ink Ltd Fredstival Merch	1,129.02
Online transfer to PRINCESS FREDERICA CE SCH Summer invoice	1,105.31
Online transfer to PRINCESS FREDERICA CE SCH Summer invoice	1,014.92
Online transfer to PRINCESS FREDERICA CE SCH Autumn term 2	817.66
Online transfer to PRINCESS FREDERICA CE SCH Spring invoice 1	800
Online transfer to PRINCESS FREDERICA CE SCH Autumn term 1	753.90
Online transfer to Laura Matthews Fredstival Music	750.00
Online transfer to PRINCESS FREDERICA CE SCH Summer invoice	710.00
Online transfer to Clare Emburey Wreaths	629.35
Online transfer to Clare Laurance Fredstival Dip	518.42
Online transfer to PRINCESS FREDERICA CE SCH Summer invoice	504.21
Online transfer to Clare Laurance Park Run	500
Online transfer to Ioannis Anastasiou Fredstival Sound	500.00
Online transfer to Charles Macpherson Ceiledh	499.93
Online transfer to Penny Capper Fredstival merch	488.02
Online transfer to Clare Laurance Unity Day	473.97
Online transfer to Clare Laurance PSA reimbursement	413.74
Online transfer to PRINCESS FREDERICA CE SCH Autumn term 1	413.37
Online transfer to PRINCESS FREDERICA CE SCH Summer invoice	395.00
Online transfer to PRINCESS FREDERICA CE SCH Autumn term 1	377.98
Online transfer to PRINCESS FREDERICA CE SCH Spring invoice 1	370.4
Online transfer to PRINCESS FREDERICA CE SCH Autumn term 2	362.50
Online transfer to Barbara Walker Fredstival	325.82
Online transfer to PRINCESS FREDERICA CE SCH Spring invoice 1	296.32
Online transfer to PRINCESS FREDERICA CE SCH Spring invoice 1	280
Online transfer to PRINCESS FREDERICA CE SCH Autumn term 1	274.50
Online transfer to PRINCESS FREDERICA CE SCH Autumn term 1	264.43
Online transfer to PRINCESS FREDERICA CE SCH Autumn term 1	256.84
Online transfer to PRINCESS FREDERICA CE SCH Summer invoice	243.66
Online transfer to PRINCESS FREDERICA CE SCH Summer invoice	240.00
Online transfer to JOHN ANDERSON Fredstival	229.98
Online transfer to PRINCESS FREDERICA CE SCH Spring invoice 1	229.19
Online transfer to JANKA RYCHTER Fredstival Crafts	211.20
Online transfer to PRINCESS FREDERICA CE SCH Spring invoice 1	200

Online transfer to PRINCESS FREDERICA CE SCH SCHOOL REIMBURSE	185.82
Online transfer to Chant Sempill CA Ceilidh Food	167.15
Online transfer to Papaya Mobile Phone Workshop	150.00
Online transfer to PRINCESS FREDERICA CE SCH SCHOOL REIMBURSE	148.00
Online transfer to THE WILLIAM PUB (KENSAL RISE) Fredstival bar	144.00
Online transfer to PRINCESS FREDERICA CE SCH Spring invoice 1	140
Online transfer to Jerome Armit PSA reimbursement	138.36
Online transfer to PRINCESS FREDERICA CE SCH SCHOOL REIMBURSE	133.32
Online transfer to PRINCESS FREDERICA CE SCH Autumn term 2	126.08
Online transfer to Yasmin Eady Yr 6 Production	121.50
Online transfer to PRINCESS FREDERICA CE SCH Summer invoice	120.84
Online transfer to PRINCESS FREDERICA CE SCH Summer invoice	112.20
Online transfer to PRINCESS FREDERICA CE SCH Spring invoice 1	103
Online transfer to ALEXANDRA CAMPBELL Wreathes	102
Online transfer to PRINCESS FREDERICA CE SCH Autumn term 2	100.00
Online transfer to PRINCESS FREDERICA CE SCH Autumn term 1	98.00
Online transfer to PRINCESS FREDERICA CE SCH Spring invoice 1	65.82
Online transfer to PRINCESS FREDERICA CE SCH Autumn term 1	62.08
Online transfer to Polly Holmes 2 Fredstival bbq	55.00
Online transfer to Polly Holmes 3 Fredstival bbq	55.00
Online transfer to Waneta Newell 2 PSA reimbursement	53.33
Online transfer to PRINCESS FREDERICA CE SCH Autumn term 1	49.60
Online transfer to Clare Laurance Park Run	47.61
Online transfer to Waneta Newell 2 Unity Day	42.96
Online transfer to Nifa McLaughlin Wreaths	41.10
Online transfer to PRINCESS FREDERICA CE SCH Autumn term 1	31.20
Online transfer to PRINCESS FREDERICA CE SCH Summer invoice	14.62
Online transfer to PRINCESS FREDERICA CE SCH Autumn term 2	11.35
Online transfer to PRINCESS FREDERICA CE SCH Spring invoice 1	10.35
Monthly Account Fee	5.00
Monthly Account Fee	5.00
Monthly Account Fee	5.00
Monthly Account Fee	5.00
Monthly Account Fee	5.00
Monthly Account Fee	5.00
Monthly Account Fee	5
Monthly Account Fee	5
Monthly Account Fee	5
Monthly Account Fee	5
Charge - Capitalise Monthly Account Fee	5.00
Charge - Capitalise Monthly Account Fee	5.00
Opening balance	
BACS PRINCESS FREDERICA PAYPAL INC.	
BACS PRINCESS FREDERICA PAYPAL INC.	
BACS PRINCESS FREDERICA PAYPAL INC.	

Income	Book Balance	Balance check	#VALUE!	Value
12191.56	21382.05	#REF!	#REF!	12,191.56
11,520.90	38,427.48	32,902.95	5,524.53	11,520.90
6,250.00	14,965.05	44,677.48 -	29,712.43	6,250.00
2,200.00		17,165.05 -	17,165.05	2,200.00
637.25	7,588.25	637.25	6,951.00	637.25
	16,118.03 -	1,254.75	17,372.78 -	8,843.00
	28,723.56	12,847.34	15,876.22 -	3,270.69
		25,884.03 -	25,884.03 -	2,839.53
	27,000.56 -	1,723.00	28,723.56 -	1,723.00
	7,759.26	26,824.18 -	19,064.92 -	176.38
	3,329.65	7,597.26 -	4,267.61 -	162.00
2593.90	22232.34	#VALUE!	#VALUE!	2,593.90
2,554.10	32,456.27	24,786.44	7,669.83	2,554.10
2119.46	26209.13	34,575.73 -	8,366.60	2,119.46
1929.06	3657.73	28,138.19 -	24,480.46	1,929.06
1715.88	6433.32	5,373.61	1,059.71	1,715.88
1,640.00		8,073.32 -	8,073.32	1,640.00
1,399.00		1,399.00 -	1,399.00	1,399.00
1367.18	23958.69	1,367.18	22,591.51	1,367.18
1231.8	4803.74	25,190.49 -	20,386.75	1,231.80
1,125.00	16,724.58	5,928.74	10,795.84	1,125.00
1,030.00	34,470.34	17,754.58	16,715.76	1,030.00
1,000.00	34,500.12	35,470.34 -	970.22	1,000.00
1,000.00	35,260.38	35,500.12 -	239.74	1,000.00
983.71	4707.64	36,244.09 -	31,536.45	983.71
968.43	8862.85	5,676.07	3,186.78	968.43
933.00	9,408.35	9,408.35	-	545.50
827.33	29,917.37	10,235.68	19,681.69	827.33
825		30,302.93 -	30,302.93	385.56
810.99	22193.04	810.99	21,382.05	810.99
717.46	8,485.05	22,910.50 -	14,425.45	717.46
717.06	7145.38	9,202.11 -	2,056.73	717.06
619.01	5484.67	7,764.39 -	2,279.72	619.01
467.78	33,450.81	5,952.45	27,498.36	467.78
298.22		33,749.03 -	33,749.03	298.22
450.00	34,950.12	450.00	34,500.12	450.00
417.33	7562.71	35,367.45 -	27,804.74	417.33
331.71	7894.42	7,894.42	-	331.71
316.76	7,909.81	8,211.18 -	301.37	316.76
311.60	8,221.41	8,221.41	-	311.60
309.00	26,911.58	8,530.41	18,381.17	309.00
292.94	32,983.03	27,204.52	5,778.51	292.94
288.9	939.81	33,271.93 -	32,332.12	288.90
286.15	3,635.69	1,225.96	2,409.73	286.15
265.49	3314.52	3,901.18 -	586.66	265.49
244.8	1728.67	3,559.32 -	1,830.65	244.80

241.20	26,119.12	1,969.87	24,149.25	241.20
238.23	22552.21	26,357.35 -	3,805.14	238.23
233	1172.81	22,785.21 -	21,612.40	233.00
208.64	26,375.56	1,381.45	24,994.11	208.64
207.71				207.71
200.80	8,422.21	200.80	8,221.41	200.80
199	28484.15	8,621.21	19,862.94	199.00
194.5	1483.87	28,678.65 -	27,194.78	194.50
193.78	35,454.16	1,677.65	33,776.51	193.78
190.08	28285.15	35,644.24 -	7,359.09	190.08
188.88	28815.14	28,474.03	341.11	188.88
185.81				185.81
183.78	29,090.04	183.78	28,906.26	183.78
170.37				170.37
167.40	32,690.09	167.40	32,522.69	167.40
163.46	7,437.07	32,853.55 -	25,416.48	163.46
159.26				159.26
156.60	156.60	156.60	-	156.60
154.64	15,219.58	311.24	14,908.34	154.64
145.71	8,567.92	15,365.29 -	6,797.37	145.71
140.00	15,359.58	8,707.92	6,651.66	140.00
135.86	9131.3	15,495.44 -	6,364.14	135.86
135.22	3562.14	9,266.52 -	5,704.38	135.22
129.89	3,430.42	3,692.03 -	261.61	129.89
126.00	22591.51	3,556.42	19,035.09	126.00
116.56	1289.37	22,708.07 -	21,418.70	116.56
110.99	4771.37	1,400.36	3,371.01	110.99
97.36	28581.51	4,868.73	23,712.78	97.36
96.61	7,727.59	28,678.12 -	20,950.53	96.61
92.59	8995.44	7,820.18	1,175.26	92.59
92.51	3426.92	9,087.95 -	5,661.03	92.51
86.60	30,064.52	3,513.52	26,551.00	86.60
81.79	2909.96	30,146.31 -	27,236.35	81.79
80.00	8,635.05	2,989.96	5,645.09	80.00
80.00	8,715.05	8,715.05	-	80.00
80.00	15,064.94	8,795.05	6,269.89	80.00
76.74	7,630.98	15,141.68 -	7,510.70	76.74
75.81	3328.11	7,706.79 -	4,378.68	75.81
73.78	3,300.53	3,401.89 -	101.36	73.78
71.23	28886.37	3,371.76	25,514.61	71.23
70.35	3041.9	28,956.72 -	25,914.82	70.35
70.00	8,555.05	3,111.90	5,443.15	70.00
70.00	15,489.58	8,625.05	6,864.53	70.00
66.42	32,522.69	15,556.00	16,966.69	66.42
61.59	2971.55	32,584.28 -	29,612.73	61.59
61.04	4865.66	3,032.59	1,833.07	61.04
60.55	29,977.92	4,926.21	25,051.71	60.55
60.00	15,419.58	30,037.92 -	14,618.34	60.00

60.00	15,599.58	15,479.58	120.00	60.00
60.00	35,010.12	15,659.58	19,350.54	60.00
59.10	16,742.58	35,069.22 -	18,326.64	59.10
58.55	7,554.24	16,801.13 -	9,246.89	58.55
55.00	7,598.05	7,609.24 -	11.19	55.00
50.00	15,539.58	7,648.05	7,891.53	50.00
46.31	3704.04	15,585.89 -	11,881.85	46.31
43.27	3,445.55	3,747.31 -	301.76	43.27
40.00	6,951.00	3,485.55	3,465.45	40.00
40.00	8,407.99	6,991.00	1,416.99	40.00
40.00	7,451.31	8,447.99 -	996.68	40.00
40.00	7,767.59	7,491.31	276.28	40.00
40.00	3,487.51	7,807.59 -	4,320.08	40.00
40	2793.17	3,527.51 -	734.34	40.00
40	5540.67	2,833.17	2,707.50	40.00
40	8902.85	5,580.67	3,322.18	40.00
40	28626.26	8,942.85	19,683.41	40.00
40.00	33,500.12	28,666.26	4,833.86	40.00
40.00	35,494.16	33,540.12	1,954.04	40.00
39.78	8,447.77	35,533.94 -	27,086.17	39.78
39.3	9190.49	8,487.07	703.42	39.30
38.00	26,166.92	9,228.49	16,938.43	38.00
35	2828.17	26,201.92 -	23,373.75	35.00
33.25	4804.62	2,861.42	1,943.20	33.25
27.57	7,411.31	4,832.19	2,579.12	27.57
19.89	7,490.89	7,431.20	59.69	19.89
19.89	14,984.94	7,510.78	7,474.16	19.89
19.89	3,349.54	15,004.83 -	11,655.29	19.89
19.89	3348	3,369.43 -	21.43	19.89
19.89	3334.41	3,367.89 -	33.48	19.89
19.89	3723.93	3,354.30	369.63	19.89
19.89	9151.19	3,743.82	5,407.37	19.89
19.89	28906.26	9,171.08	19,735.18	19.89
19.89	35,030.01	28,926.15	6,103.86	19.89
19.69	7,471.00	35,049.70 -	27,578.70	19.69
14.25	5500.67	7,485.25 -	1,984.58	14.25
9.80	6,916.00	5,510.47	1,405.53	9.80
9.80	7,598.05	6,925.80	672.25	9.80
9.80	7,940.64	7,607.85	332.79	9.80
9.80	7,500.69	7,950.44 -	449.75	9.80
9.80	16,752.38	7,510.49	9,241.89	9.80
9.80	3,231.75	16,762.18 -	13,530.43	9.80
9.8	3357.8	3,241.55	116.25	9.80
9.8	3571.94	3,367.60	204.34	9.80
9.8	4717.44	3,581.74	1,135.70	9.80
9.8	26751.56	4,727.24	22,024.32	9.80
9.80	30,074.32	26,761.36	3,312.96	9.80
9.80	26,128.92	30,084.12 -	3,955.20	9.80

9.31	33,460.12	26,138.23	7,321.89	9.31
7.13	3049.03	33,467.25 -	30,418.22	7.13
5.07	8,572.99	3,054.10	5,518.89	5.07
4.75	28586.26	8,577.74	20,008.52	4.75
4.14	3,491.65	28,590.40 -	25,098.75	4.14
2.37	7,273.61	3,494.02	3,779.59	2.37
2.37	3355.17	7,275.98 -	3,920.81	2.37
1.96	3,447.51	3,357.13	90.38	1.96
1.75	5486.42	3,449.26	2,037.16	1.75
		4,050.78 -	4,050.78 -	1,435.64
	25,175.82 -	1,429.74	26,605.56 -	1,429.74
		23,831.22 -	23,831.22 -	1,344.60
	16,118.03 -	1,290.85	17,408.88 -	1,290.85
		14,958.03 -	14,958.03 -	1,160.00
	37,298.46 -	1,129.02	38,427.48 -	1,129.02
	31,994.25	36,193.15 -	4,198.90 -	1,105.31
	33,211.76	30,979.33	2,232.43 -	1,014.92
		32,394.10 -	32,394.10 -	817.66
		- 800.00	800.00 -	800.00
	16,118.03 -	753.90	16,871.93 -	753.90
	35,086.20 -	750.00	35,836.20 -	750.00
	33,440.34	34,376.20 -	935.86 -	710.00
	16,123.03	32,810.99 -	16,687.96 -	629.35
	36,424.84	15,604.61	20,820.23 -	518.42
	34,150.34	35,920.63 -	1,770.29 -	504.21
	2753.17	33,650.34 -	30,897.17 -	500.00
	34,260.38	2,253.17	32,007.21 -	500.00
	26246.63	33,760.45 -	7,513.82 -	499.93
	7,271.24	25,758.61 -	18,487.37 -	488.02
	7,930.84	6,797.27	1,133.57 -	473.97
	3,221.95	7,517.10 -	4,295.15 -	413.74
	16,118.03	2,808.58	13,309.45 -	413.37
	26,605.56	15,723.03	10,882.53 -	395.00
	16,118.03	26,227.58 -	10,109.55 -	377.98
		15,747.63 -	15,747.63 -	370.40
		- 362.50	362.50 -	362.50
	34,760.38 -	325.82	35,086.20 -	325.82
		34,464.06 -	34,464.06 -	296.32
		- 280.00	280.00 -	280.00
	16,118.03 -	274.50	16,392.53 -	274.50
	16,118.03	15,853.60	264.43 -	264.43
	16,118.03	15,861.19	256.84 -	256.84
	34,226.68	15,874.37	18,352.31 -	243.66
	34,775.39	33,986.68	788.71 -	240.00
	26,145.58	34,545.41 -	8,399.83 -	229.98
	650.91	25,916.39 -	25,265.48 -	229.19
	36,943.26	439.71	36,503.55 -	211.20
		36,743.26 -	36,743.26 -	200.00

			-	185.82	
29,902.17	-	167.15	30,069.32	-	167.15
8,422.99	29,752.17	-	21,329.18	-	150.00
35,836.20	8,274.99		27,561.21	-	148.00
37,154.46	35,692.20		1,462.26	-	144.00
	37,014.46	-	37,014.46	-	140.00
4660.38	-	138.36	4,798.74	-	138.36
	4,527.06	-	4,527.06	-	133.32
	-	126.08	126.08	-	126.08
36,303.34	4,538.88		31,764.46	-	121.50
34,654.55	36,182.50	-	1,527.95	-	120.84
33,099.56	34,542.35	-	1,442.79	-	112.20
	32,996.56	-	32,996.56	-	103.00
3253.17	-	102.00	3,355.17	-	102.00
	3,153.17	-	3,153.17	-	100.00
16,118.03	-	98.00	16,216.03	-	98.00
	16,052.21	-	16,052.21	-	65.82
16,118.03	-	62.08	16,180.11	-	62.08
7,543.05	16,063.03	-	8,519.98	-	55.00
8,367.99	7,488.05		879.94	-	55.00
7,383.74	8,314.66	-	930.92	-	53.33
16,118.03	7,334.14		8,783.89	-	49.60
26199.02	16,070.42		10,128.60	-	47.61
8,404.81	26,156.06	-	17,751.25	-	42.96
16,683.48	8,363.71		8,319.77	-	41.10
16,118.03	16,652.28	-	534.25	-	31.20
35,015.39	16,103.41		18,911.98	-	14.62
	35,004.04	-	35,004.04	-	11.35
	-	10.35	10.35	-	10.35
6,911.00	-	5.00	6,916.00	-	5.00
7,593.05	6,906.00		687.05	-	5.00
7,935.64	7,588.05		347.59	-	5.00
7,495.69	7,930.64	-	434.95	-	5.00
16,118.03	7,490.69		8,627.34	-	5.00
3,226.75	16,113.03	-	12,886.28	-	5.00
3352.8	3,221.75		131.05	-	5.00
4798.74	3,347.80		1,450.94	-	5.00
6428.32	4,793.74		1,634.58	-	5.00
26746.56	6,423.32		20,323.24	-	5.00
30,069.32	26,741.56		3,327.76	-	5.00
26,906.58	30,064.32	-	3,157.74	-	5.00
6,906.20					
24089.67	6,906.20		17,183.47		-
26741.76	24,089.67		2,652.09		-
28095.07	26,741.76		1,353.31		-

Grouping	Category	Sub Category	Notes	Account Type
Fundraising events	Park Run			Current
Fundraising events	Fredstival			Current
Grants	National Grid			Current
Fundraising events	Xmas trees			Current
Other Income	Solar panels			Current
Investments	OPAL			Current
School initiatives	Book week			Current
Investments	OPAL			Current
School initiatives	Residential trips			Current
Investments	Trolleys			Current
Running costs	Insurance			Current
Fundraising events	Ceilidh			Current
Fundraising events	Kensal Tri			Current
Fundraising events	Park Run			Current
Fundraising events	Park Run			Current
Fundraising events	Park Run			Current
Fundraising events	Xmas wreaths			Current
Fundraising events	Xmas disco			Current
Fundraising events	Park Run			Current
Yr6	Quiz night			Current
Grants	Tesco			Current
Fundraising events	Ceilidh			Current
Fundraising events	Fredstival 2024	Sponsorship		Current
Donations	Mr Tang			Current
Fundraising events	Park Run			Current
Fundraising events	Park Run			Current
Yr6	Mothers day			Current
Fundraising events	Kensal Tri			Current
Yr6	Quiz night			Current
Fundraising events	Park Run			Current
Other Income	Solar panels			Current
Fundraising events	Park Run			Current
Fundraising events	Park Run			Current
Fundraising events	Kensal Tri			Current
Fundraising events	Fredstival	Raffle		Current
Fundraising events	Fredstival 2024	Sponsorship		Current
Fundraising events	Park Run			Current
Fundraising events	Park Run			Current
Cake Sale	Year 4		From prior year to be	Current
Cake Sale	Year 5		From prior year to be	Current
Fundraising events	2nd had uniform			Current
Fundraising events	Kensal Tri			Current
Cake Sale	Reception			Current
Fundraising events	Xmas disco			Current
Other Income	Solar panels			Current
Cake Sale	Year 3			Current

Fundraising events	Fredstival	Raffle	Current
Cake Sale	Year 4		Current
Cake Sale	Year 2		Current
Fundraising events	Fredstival	Raffle	Current
Other Income	Interest		Current
Fundraising events	Park Run		Current
Fundraising events	Park Run		Current
Cake Sale	Year 1		Current
Fundraising events	Fredstival	Merch	Current
Fundraising events	Park Run		Current
Fundraising events	Kensal Tri		Current
Other Income	Interest		Current
Other Income	Solar panels		Current
Other Income	Interest		Current
Fundraising events	Kensal Tri		Current
Cake Sale	Nursery		Current
Other Income	Interest		Current
Fundraising events	Fredstival	Raffle	Current
Fundraising events	Xmas wreaths		Current
Fundraising events	2nd had uniform		Current
Fundraising events	Xmas trees		Current
Fundraising events	Park Run		Current
Fundraising events	Park Run		Current
Cake Sale	Year 2		Current
Fundraising events	2nd had uniform		Current
Cake Sale	Nursery		Current
Fundraising events	Park Run		Current
Fundraising events	Kensal Tri		Current
Fundraising events	2nd had uniform		Current
Fundraising events	Park Run		Current
Cake Sale	Year 3		Current
Cake Sale	Year 5		Current
Donations			Current
Fundraising events	Xmas trees		Current
Fundraising events	Xmas trees		Current
Fundraising events	Xmas trees		Current
Cake Sale	Reception		Current
Fundraising events	2nd had uniform		Current
Cake Sale	Year 2		Current
Fundraising events	Kensal Tri		Current
Cake Sale	Year 3		Current
Fundraising events	Xmas trees		Current
Fundraising events	Xmas trees		Current
Cake Sale	Year 6		Current
Fundraising events	Park Run		Current
Fundraising events	2nd had uniform		Current
Fundraising events	Kensal Tri		Current
Fundraising events	Xmas trees		Current

[illegible]

Other Income	Interest		Current
Fundraising events	Park Run		Current
Other Income	Interest		Current
Fundraising events	Kensal Tri		Current
Other Income	Interest		Current
Fundraising events	Park Run		Current
Fundraising events	Park Run		Current
Cake Sale	Year 1		Current
Other Income	Interest		Current
Fundraising events	Xmas trees		Current
Yr6	Hoodies		Current
Investments	OPAL		Current
Investments	Peace garden		Current
Running costs	Solar Panels		Current
Fundraising events	Fredstival	Merch	Current
Investments	OPAL		Current
Investments	Mr Chantler		Current
School initiatives	Xmas crafts		Current
Investments	Mr Tang		Current
Investments	Class refurb	Carpet	Current
Fundraising events	Fredstival	Music	Current
Fundraising events	Ceilidh	Band	Current
Fundraising events	Xmas wreaths		Current
Fundraising events	Fredstival		Current
Cake Sale	Year 6		Current
Fundraising events	Park Run		Current
Fundraising events	Fredstival	Music	Current
Fundraising events	Ceilidh		Current
Fundraising events	Fredstival 2024	Merchandise	Current
School initiatives	Unity Day		Current
Fundraising events	Xmas disco	Sweets	Current
Investments	Grants		Current
Yr6	Disco		Current
Cake Sale	Year 4	Apple	Current
School initiatives	SCRAP		Current
Fundraising events	Xmas disco	DJ	Current
Fundraising events	Fredstival		Current
Investments	Embankment		Current
Cake Sale	Reception		Current
Cake Sale	Year 4	Cherry	Current
Investments	Embankment		Current
Fundraising events	Fredstival 2023		Current
Investments	Class refurb	Paint	Current
Cake Sale	Year 3		Current
Fundraising events	Fredstival		Current
Cake Sale	Nursery		Current
Fundraising events	Fredstival	Crafts	Current
Fundraising events	Xmas wreaths		Current

[illegible]

Posting Date	Value Date	Description
		Opening balance
8/13/2024	8/13/2024	BACS 24080896760CF CAF24080896760CF
8/15/2024	8/15/2024	Monthly Account Fee
8/29/2024	8/29/2024	BACS CT50873 CHARITIES TRUST
9/2/2024	9/2/2024	BACS GE FIT 46980 GOOD ENERGY
9/11/2024	9/11/2024	BACS 24090697024CF CAF24090697024CF
9/12/2024	9/12/2024	Online transfer to Polly Holmes 2 Fredstival bbq
9/13/2024	9/13/2024	REJ ONLINE TRANS Polly Holmes 2 INVALID SORT CODE
9/16/2024	9/16/2024	Monthly Account Fee
9/17/2024	9/17/2024	ICS BACS 000586
9/17/2024	9/17/2024	ICS BACS 000587
9/23/2024	9/23/2024	FP 4056513 PRINCESS F JUSTGIVING
9/25/2024	9/25/2024	BACS PRINCESS FREDERICA PAYPAL INC.
9/26/2024	9/26/2024	INTEREST TO DATE
9/26/2024	9/26/2024	Online transfer to Papaya Mobile Phone Workshop
9/26/2024	9/26/2024	Online transfer to Polly Holmes 3 Fredstival bbq
9/30/2024	9/30/2024	BACS CT50873 CHARITIES TRUST
10/3/2024	10/3/2024	BACS PAYROLL GIVING CHARITABLE GIVING
10/3/2024	10/3/2024	Online transfer to Waneta Newell 2 Unity Day
10/3/2024	10/3/2024	Online transfer to Clare Laurance Unity Day
10/11/2024	10/11/2024	BACS 24100897168CF CAF24100897168CF
10/15/2024	10/15/2024	Monthly Account Fee
10/15/2024	10/15/2024	Online transfer to Clare Laurance Trolleys
10/15/2024	10/15/2024	Online transfer to Penny Capper Fredstival merch
10/16/2024	10/16/2024	FP 4108479 PRINCESS F JUSTGIVING
10/21/2024	10/21/2024	FP CAKE SALE MINT BAGNIEWSKA N
10/25/2024	10/25/2024	Online transfer to Waneta Newell 2 PSA reimbursement
10/28/2024	10/28/2024	BACS PRINCESS FREDERICA PAYPAL INC.
10/30/2024	10/30/2024	BACS CT50873 CHARITIES TRUST
10/30/2024	10/30/2024	BACS PRINCESS FREDERICA PAYPAL INC.
11/5/2024	11/5/2024	BACS PAYROLL GIVING CHARITABLE GIVING
11/13/2024	11/13/2024	BACS 24110896620CF CAF24110896620CF
11/15/2024	11/15/2024	Monthly Account Fee
11/19/2024	11/19/2024	BACS PRINCESS FREDERICA PAYPAL INC.
11/20/2024	11/20/2024	BACS PRINCESS FREDERICA PAYPAL INC.
11/27/2024	11/27/2024	BACS PRINCESS FREDERICA PAYPAL INC.
11/28/2024	11/28/2024	BACS CT50873 CHARITIES TRUST
11/29/2024	11/29/2024	BACS GE FIT 46980 GOOD ENERGY
12/3/2024	12/3/2024	FP KATH MORGAN 7FT K Morgan
12/3/2024	12/3/2024	FP Morgan 8ft Tree MORGAN NE&LE
12/4/2024	12/4/2024	FP Orla Quirke O Quirke
12/4/2024	12/4/2024	BACS LGTXN00590168 LOCALGIVING LTD
12/4/2024	12/4/2024	BACS PAYROLL GIVING CHARITABLE GIVING
12/5/2024	12/5/2024	FP Xmas Tree 7-8ft TAKAGI C
12/5/2024	12/5/2024	BACS PRINCESS FREDERICA PAYPAL INC.
12/6/2024	12/6/2024	FP ST MARK S &REV DAV Roberts David

12/6/2024	12/6/2024 FP Hockings HOCKINGS CATHERI
12/9/2024	12/9/2024 FP Carys 6ft 14th Thomas Am Cur
12/9/2024	12/9/2024 FP IOU LINDSAY P
12/9/2024	12/9/2024 FP Rodgers / Tree George Rodgers
12/9/2024	12/9/2024 BACS GWUK GROUNDWORK UK - TE
12/9/2024	12/9/2024 Online transfer to Nifa McLaughlin Wreaths
12/10/2024	12/10/2024 BACS PRINCESS FREDERICA PAYPAL INC.
12/11/2024	12/11/2024 BACS 24120697999CF CAF24120697999CF
12/11/2024	12/11/2024 Online transfer to Clare Emburey Wreaths
12/16/2024	12/16/2024 Monthly Account Fee
12/16/2024	12/16/2024 Online transfer to PRINCESS FREDERICA CE SCH Autumn term 1
12/18/2024	12/18/2024 BACS PRINCESS FREDERICA PAYPAL INC.
12/20/2024	12/20/2024 BACS PRINCESS FREDERICA PAYPAL INC.
12/24/2024	12/24/2024 BACS CT50873 CHARITIES TRUST
12/27/2024	12/26/2024 INTEREST TO DATE
1/2/2025	1/2/2025 DD PARENTKIND PTA964577-80216901
1/6/2025	1/6/2025 BACS PAYROLL GIVING CHARITABLE GIVING
1/8/2025	1/8/2025 ICS BACS 000591
1/8/2025	1/8/2025 Online transfer to Clare Laurance PSA reimbursement
1/13/2025	1/13/2025 BACS 25010899772CF CAF25010899772CF
1/15/2025	1/15/2025 Monthly Account Fee
1/21/2025	1/21/2025 BACS PRINCESS FREDERICA PAYPAL INC.
1/22/2025	1/22/2025 BACS PRINCESS FREDERICA PAYPAL INC.
1/23/2025	1/23/2025 Online transfer to PRINCESS FREDERICA CE SCH Autumn term 1
1/29/2025	1/29/2025 BACS PRINCESS FREDERICA PAYPAL INC.
2/5/2025	2/5/2025 BACS PAYROLL GIVING CHARITABLE GIVING
2/12/2025	2/12/2025 BACS 25020796287CF CAF25020796287CF
2/17/2025	2/17/2025 Monthly Account Fee
2/26/2025	2/26/2025 FP 4318199 PRINCESS F JUSTGIVING
2/26/2025	2/26/2025 Online transfer to ALEXANDRA CAMPBELL Wreathes
2/26/2025	2/26/2025 Online transfer to Clare Laurance Park Run
2/27/2025	2/27/2025 BACS CT50873 CHARITIES TRUST
3/3/2025	3/3/2025 FP HARRIS XMAS WREATH HARRIS EJ
3/3/2025	3/3/2025 FP ASDA Cashpot PARENTKIND
3/3/2025	3/3/2025 FP 4311688 PRINCESS F JUSTGIVING
3/4/2025	3/4/2025 BACS PRINCESS FREDERICA PAYPAL INC.
3/5/2025	3/5/2025 FP 4329515 PRINCESS F JUSTGIVING
3/5/2025	3/5/2025 BACS GE FIT 46980 GOOD ENERGY
3/5/2025	3/5/2025 BACS PAYROLL GIVING CHARITABLE GIVING
3/5/2025	3/5/2025 BACS PRINCESS FREDERICA PAYPAL INC.
3/11/2025	3/11/2025 FP 4337487 PRINCESS F JUSTGIVING
3/12/2025	3/12/2025 BACS 25030796600CF CAF25030796600CF
3/17/2025	3/17/2025 BACS PRINCESS FREDERICA PAYPAL INC.
3/17/2025	3/17/2025 Monthly Account Fee
3/17/2025	3/17/2025 Online transfer to Jerome Armit PSA reimbursement
3/17/2025	3/17/2025 FP 4351041 PRINCESS F JUSTGIVING
3/19/2025	3/19/2025 FP 4363460 PRINCESS F JUSTGIVING
3/20/2025	3/20/2025 BACS PRINCESS FREDERICA PAYPAL INC.

3/24/2025	3/24/2025 FP 4357632 PRINCESS F JUSTGIVING
3/26/2025	3/26/2025 INTEREST TO DATE
3/26/2025	3/26/2025 FP 4377136 PRINCESS F JUSTGIVING
3/28/2025	3/28/2025 BACS CT50873 CHARITIES TRUST
3/28/2025	3/28/2025 Online transfer to PRINCESS FREDERICA CE SCH Spring invoice 1
3/31/2025	3/31/2025 ICS BACS 000589
3/31/2025	3/31/2025 ICS BACS 000592
3/31/2025	3/31/2025 ICS BACS 000590
3/31/2025	3/31/2025 ICS BACS 000588
3/31/2025	3/31/2025 ICS BACS 000593
4/1/2025	4/1/2025 FP 4370459 PRINCESS F JUSTGIVING
4/2/2025	4/2/2025 FP 4383847 PRINCESS F JUSTGIVING
4/3/2025	4/3/2025 BACS PAYROLL GIVING CHARITABLE GIVING
4/8/2025	4/8/2025 FP 4387662 PRINCESS F JUSTGIVING
4/11/2025	4/11/2025 BACS 25040897316CF CAF25040897316CF
4/14/2025	4/14/2025 FP 4397138 PRINCESS F JUSTGIVING
4/15/2025	4/15/2025 Monthly Account Fee
4/16/2025	4/16/2025 FP 4409478 PRINCESS F JUSTGIVING
4/23/2025	4/23/2025 FP 4422223 PRINCESS F JUSTGIVING
4/23/2025	4/23/2025 FP 4425915 PRINCESS F JUSTGIVING
4/28/2025	4/28/2025 FP 4433372 PRINCESS F JUSTGIVING
4/29/2025	4/29/2025 BACS CT50873 CHARITIES TRUST
4/30/2025	4/30/2025 FP 4442835 PRINCESS F JUSTGIVING
4/30/2025	4/30/2025 BACS PRINCESS FREDERICA PAYPAL INC.
5/6/2025	5/6/2025 BACS PAYROLL GIVING CHARITABLE GIVING
5/6/2025	5/6/2025 BACS PRINCESS FREDERICA PAYPAL INC.
5/6/2025	5/6/2025 FP 4438862 PRINCESS F JUSTGIVING
5/7/2025	5/7/2025 FP 4453600 PRINCESS F JUSTGIVING
5/7/2025	5/7/2025 BACS PRINCESS FREDERICA PAYPAL INC.
5/8/2025	5/8/2025 BACS PRINCESS FREDERICA PAYPAL INC.
5/12/2025	5/12/2025 BACS PRINCESS FREDERICA PAYPAL INC.
5/12/2025	5/12/2025 FP 4460898 PRINCESS F JUSTGIVING
5/13/2025	5/13/2025 BACS PRINCESS FREDERICA PAYPAL INC.
5/14/2025	5/14/2025 FP 4469872 PRINCESS F JUSTGIVING
5/14/2025	5/14/2025 BACS PRINCESS FREDERICA PAYPAL INC.
5/14/2025	5/14/2025 BACS 25050996127CF CAF25050996127CF
5/15/2025	5/15/2025 Monthly Account Fee
5/15/2025	5/15/2025 Online transfer to Charles Macpherson Ceiledh
5/15/2025	5/15/2025 Online transfer to Clare Laurance Park Run
5/19/2025	5/19/2025 BACS PRINCESS FREDERICA PAYPAL INC.
5/20/2025	5/20/2025 FP 4480948 PRINCESS F JUSTGIVING
5/28/2025	5/28/2025 FP 4487461 PRINCESS F JUSTGIVING
5/28/2025	5/28/2025 FP 4496414 PRINCESS F JUSTGIVING
5/29/2025	5/29/2025 FP 4505140 PRINCESS F JUSTGIVING
5/29/2025	5/29/2025 BACS CT50873 CHARITIES TRUST
6/2/2025	6/2/2025 FP 4500766 PRINCESS F JUSTGIVING
6/4/2025	6/4/2025 FP 4514035 PRINCESS F JUSTGIVING
6/4/2025	6/4/2025 BACS PAYROLL GIVING CHARITABLE GIVING

6/5/2025	6/5/2025 BACS GE FIT 46980 GOOD ENERGY
6/9/2025	6/9/2025 FP JUSTGIVING 4511613 PRINCESS
6/11/2025	6/11/2025 BACS Credit CAF25060696724CF 25060696724CF
6/11/2025	6/11/2025 BACS Credit PAYPAL INC. PRINCESS FREDERICA
6/11/2025	6/11/2025 FP JUSTGIVING 4533648 PRINCESS
6/13/2025	6/13/2025 Charge - Capitalise Monthly Account Fee
6/16/2025	6/16/2025 FP JUSTGIVING 4525369 PRINCESS
6/16/2025	6/16/2025 Online transfer to Chant Sempill CA Ceilidh Food
6/17/2025	6/17/2025 BACS Credit PAYPAL INC. PRINCESS FREDERICA
6/18/2025	6/18/2025 FP JUSTGIVING 4544910 PRINCESS
6/23/2025	6/23/2025 FP JUSTGIVING 4537986 PRINCESS
6/25/2025	6/25/2025 FP JUSTGIVING 4552742 PRINCESS
6/26/2025	6/26/2025 Interest - Capitalise Interest to Date
6/27/2025	6/27/2025 BACS Credit CHARITIES TRUST CT50873
7/1/2025	7/1/2025 FP KATE BROOKFIELD LI Kate brookfield
7/2/2025	7/2/2025 FP WALKER Donation M Oddi
7/2/2025	7/2/2025 FP BASESPACE LO LTD CHARITY DONATION
7/3/2025	7/3/2025 BACS Credit CHARITABLE GIVING PAYROLL GIVING
7/10/2025	7/10/2025 Online transfer to PRINCESS FREDERICA CE SCH Summer invoice
7/10/2025	7/10/2025 BACS Credit PAYPAL INC. PRINCESS FREDERICA
7/11/2025	7/11/2025 BACS Credit CAF25070896222CF 25070896222CF
7/11/2025	7/11/2025 BACS Credit PAYPAL INC. PRINCESS FREDERICA
7/14/2025	7/14/2025 Online transfer to JOHN ANDERSON Fredstival
7/14/2025	7/14/2025 BACS Credit PAYPAL INC. PRINCESS FREDERICA
7/14/2025	7/14/2025 FP N Wimble ICE SKATING CLARA
7/15/2025	7/15/2025 Charge - Capitalise Monthly Account Fee
7/15/2025	7/15/2025 BACS Credit PAYPAL INC. PRINCESS FREDERICA
7/16/2025	7/16/2025 Online transfer to Laura Matthews Fredstival Music
7/16/2025	7/16/2025 Online transfer to PRINCESS FREDERICA CE SCH SCHOOL REIMBURSE
7/16/2025	7/16/2025 Online transfer to Yasmin Eady Yr 6 Production
7/16/2025	7/16/2025 Online transfer to Clare Laurance Fredstival Dip
7/16/2025	7/16/2025 Online transfer to JANKA RYCHTER Fredstival Crafts
7/16/2025	7/16/2025 Online transfer to THE WILLIAM PUB (KENSAL RISE) Fredstival bar
7/16/2025	7/16/2025 Online transfer to Spirit Ink Ltd Fredstival Merch
7/16/2025	7/16/2025 BACS Credit PAYPAL INC. PRINCESS FREDERICA
7/18/2025	7/18/2025 FP NEILL D T MR TANG MUSIC DEP
7/18/2025	7/18/2025 Online transfer to Ioannis Anastasiou Fredstival Sound
7/18/2025	7/18/2025 Online transfer to Barbara Walker Fredstival
7/23/2025	7/23/2025 FP SPIRIT INK LIMITED Spirit Ink Fundra
7/30/2025	7/30/2025 BACS Credit CHARITIES TRUST CT50873

Expense	Income	Book Balance	Balance check	-	35,494.16
		6,906.20			
		9.80	6,916.00	6,916.00	-
5.00			6,911.00	6,911.00	-
		40.00	6,951.00	6,951.00	-
		637.25	7,588.25	7,588.25	-
		9.80	7,598.05	7,598.05	-
55.00			7,543.05	7,543.05	-
		55.00	7,598.05	7,598.05	-
5.00			7,593.05	7,593.05	-
		316.76	7,909.81	7,909.81	-
		311.60	8,221.41	8,221.41	-
		200.80	8,422.21	8,422.21	-
		145.71	8,567.92	8,567.92	-
		5.07	8,572.99	8,572.99	-
150.00			8,422.99	8,422.99	-
55.00			8,367.99	8,367.99	-
		40.00	8,407.99	8,407.99	-
		39.78	8,447.77	8,447.77	-
42.96			8,404.81	8,404.81	-
473.97			7,930.84	7,930.84	-
		9.80	7,940.64	7,940.64	-
5.00			7,935.64	7,935.64	-
176.38			7,759.26	7,759.26	-
488.02			7,271.24	7,271.24	-
		2.37	7,273.61	7,273.61	-
		163.46	7,437.07	7,437.07	-
53.33			7,383.74	7,383.74	-
		27.57	7,411.31	7,411.31	-
		40.00	7,451.31	7,451.31	-
		19.69	7,471.00	7,471.00	-
		19.89	7,490.89	7,490.89	-
		9.80	7,500.69	7,500.69	-
5.00			7,495.69	7,495.69	-
		58.55	7,554.24	7,554.24	-
		76.74	7,630.98	7,630.98	-
		96.61	7,727.59	7,727.59	-
		40.00	7,767.59	7,767.59	-
		717.46	8,485.05	8,485.05	-
		70.00	8,555.05	8,555.05	-
		80.00	8,635.05	8,635.05	-
		80.00	8,715.05	8,715.05	-
		6,250.00	14,965.05	14,965.05	-
		19.89	14,984.94	14,984.94	-
		80.00	15,064.94	15,064.94	-
		154.64	15,219.58	15,219.58	-
		140.00	15,359.58	15,359.58	-

	60.00	15,419.58	15,419.58	-
	70.00	15,489.58	15,489.58	-
	50.00	15,539.58	15,539.58	-
	60.00	15,599.58	15,599.58	-
	1,125.00	16,724.58	16,724.58	-
41.10		16,683.48	16,683.48	-
	59.10	16,742.58	16,742.58	-
	9.80	16,752.38	16,752.38	-
629.35		16,123.03	16,123.03	-
5.00		16,118.03	16,118.03	-
12,715.75		3,402.28	3,402.28	-
	43.27	3,445.55	3,445.55	-
	1.96	3,447.51	3,447.51	-
	40.00	3,487.51	3,487.51	-
	4.14	3,491.65	3,491.65	-
162.00		3,329.65	3,329.65	-
	19.89	3,349.54	3,349.54	-
	286.15	3,635.69	3,635.69	-
413.74		3,221.95	3,221.95	-
	9.80	3,231.75	3,231.75	-
5.00		3,226.75	3,226.75	-
	73.78	3,300.53	3,300.53	-
	129.89	3,430.42	3,430.42	-
178.12			3,252.30 -	3,252.30
	75.81	3,328.11	75.81	3,252.30
	19.89	3,348.00	3,348.00	-
	9.80	3,357.80	3,357.80	-
5.00		3,352.80	3,352.80	-
	2.37	3,355.17	3,355.17	-
102.00		3,253.17	3,253.17	-
500.00		2,753.17	2,753.17	-
	40.00	2,793.17	2,793.17	-
	35.00	2,828.17	2,828.17	-
	81.79	2,909.96	2,909.96	-
	61.59	2,971.55	2,971.55	-
	70.35	3,041.90	3,041.90	-
	7.13	3,049.03	3,049.03	-
	265.49	3,314.52	3,314.52	-
	19.89	3,334.41	3,334.41	-
	92.51	3,426.92	3,426.92	-
	135.22	3,562.14	3,562.14	-
	9.80	3,571.94	3,571.94	-
	1,231.80	4,803.74	4,803.74	-
5.00		4,798.74	4,798.74	-
138.36		4,660.38	4,660.38	-
	110.99	4,771.37	4,771.37	-
	33.25	4,804.62	4,804.62	-
	61.04	4,865.66	4,865.66	-

	619.01	5,484.67	5,484.67	-
	1.75	5,486.42	5,486.42	-
	14.25	5,500.67	5,500.67	-
	40.00	5,540.67	5,540.67	-
4,889.76		650.91	650.91	-
	288.90	939.81	939.81	-
	233.00	1,172.81	1,172.81	-
	116.56	1,289.37	1,289.37	-
	194.50	1,483.87	1,483.87	-
	244.80	1,728.67	1,728.67	-
	1,929.06	3,657.73	3,657.73	-
	46.31	3,704.04	3,704.04	-
	19.89	3,723.93	3,723.93	-
	983.71	4,707.64	4,707.64	-
	9.80	4,717.44	4,717.44	-
	1,715.88	6,433.32	6,433.32	-
5.00		6,428.32	6,428.32	-
	717.06	7,145.38	7,145.38	-
	417.33	7,562.71	7,562.71	-
	331.71	7,894.42	7,894.42	-
	968.43	8,862.85	8,862.85	-
	40.00	8,902.85	8,902.85	-
	92.59	8,995.44	8,995.44	-
	135.86	9,131.30	9,131.30	-
	19.89	9,151.19	9,151.19	-
	39.30	9,190.49	9,190.49	-
	12,191.56	21,382.05	21,382.05	-
	810.99	22,193.04	22,193.04	-
	39.30	22,232.34	22,232.34	-
	319.87	22,552.21	22,552.21	-
	39.30	22,591.51	22,591.51	-
	1,367.18	23,958.69	23,958.69	-
	130.98	24,089.67	24,089.67	-
	2,119.46	26,209.13	26,209.13	-
	532.63	26,741.76	26,741.76	-
	9.80	26,751.56	26,751.56	-
5.00		26,746.56	26,746.56	-
499.93		26,246.63	26,246.63	-
47.61		26,199.02	26,199.02	-
	1,896.05	28,095.07	28,095.07	-
	190.08	28,285.15	28,285.15	-
	199.00	28,484.15	28,484.15	-
	97.36	28,581.51	28,581.51	-
	4.75	28,586.26	28,586.26	-
	40.00	28,626.26	28,626.26	-
	188.88	28,815.14	28,815.14	-
	71.23	28,886.37	28,886.37	-
	19.89	28,906.26	28,906.26	-

	183.78	29,090.04	29,090.04	-
	827.33	29,917.37	29,917.37	-
	9.80	30,074.32	29,927.17	147.15
	86.60	30,064.52	30,160.92 -	96.40
	60.55	29,977.92	30,125.07 -	147.15
5.00		30,069.32	29,972.92	96.40
	2,554.10	32,456.27	32,623.42 -	167.15
167.15		29,902.17	32,289.12 -	2,386.95
	66.42	32,522.69	29,968.59	2,554.10
	167.40	32,690.09	32,690.09	-
	292.94	32,983.03	32,983.03	-
	467.78	33,450.81	33,450.81	-
	9.31	33,460.12	33,460.12	-
	40.00	33,500.12	33,500.12	-
	1,000.00	34,500.12	34,500.12	-
	60.00	35,010.12	34,560.12	450.00
	450.00	34,950.12	35,460.12 -	510.00
	19.89	35,030.01	34,970.01	60.00
9,308.69		25,877.92	25,721.32	156.60
	156.60	35,186.61	26,034.52	9,152.09
	9.80	26,128.92	35,196.41 -	9,067.49
	241.20	26,119.12	26,370.12 -	251.00
229.98		26,145.58	25,889.14	256.44
	208.64	26,375.56	26,354.22	21.34
	38.00	26,166.92	26,413.56 -	246.64
5.00		26,906.58	26,161.92	744.66
	766.00	26,911.58	27,672.58 -	761.00
750.00		35,086.20	26,161.58	8,924.62
467.14		35,836.20	34,619.06	1,217.14
121.50		36,303.34	35,714.70	588.64
518.42		36,424.84	35,784.92	639.92
211.20		36,943.26	36,213.64	729.62
144.00		37,154.46	36,799.26	355.20
1,129.02		37,298.46	36,025.44	1,273.02
	11,520.90	38,427.48	48,819.36 -	10,391.88
	1,000.00	35,260.38	39,427.48 -	4,167.10
500.00		34,260.38	34,760.38 -	500.00
325.82		34,760.38	33,934.56	825.82
	193.78	35,454.16	34,954.16	500.00
	40.00	35,494.16	35,494.16	-
			35,494.16 -	35,494.16

	Value	Grouping	Category	Sub Category	Notes
	9.80	Donations			
-	5.00	Running costs	Bank fees		
	40.00	Donations			
	637.25	Other Income	Solar panels		
	9.80	Donations			
-	55.00	Nets off			
	55.00	Nets off			
-	5.00	Running costs	Bank fees		
	316.76	Cake Sale	Year 4		
	311.60	Cake Sale	Year 5		
	200.80	Donations			
	145.71	Fundraising events	2nd had uniform		
	5.07	Other Income	Interest		
-	150.00	School initiatives	Mobile phone workshop		
-	55.00	Fundraising events	Fredstival 2024	BBQ	
	40.00	Donations			
	39.78	Donations			
-	42.96	School initiatives	Unity Day		
-	473.97	School initiatives	Unity Day		
	9.80	Donations			
-	5.00	Running costs	Bank fees		
-	176.38	Investments	Trolleys		
-	488.02	Fundraising events	Fredstival 2024	Merchandise	
	2.37	Donations			
	163.46	Cake Sale	Nursery		
-	53.33	Cake Sale			
	27.57	Cake Sale	Nursery		
	40.00	Donations			
	19.69	Cake Sale	Nursery		
	19.89	Donations			
	9.80	Donations			
-	5.00	Running costs	Bank fees		
	58.55	Cake Sale	Reception		
	76.74	Cake Sale	Reception		
	96.61	Fundraising events	2nd had uniform		
	40.00	Donations			
	717.46	Other Income	Solar panels		
	70.00	Fundraising events	Xmas trees		
	80.00	Fundraising events	Xmas trees		
	80.00	Fundraising events	Xmas trees		
	6,250.00	Grants	National Grid		
	19.89	Donations			
	80.00	Fundraising events	Xmas trees		
	154.64	Fundraising events	Xmas wreaths		
	140.00	Fundraising events	Xmas trees		

	60.00	Fundraising events	Xmas trees	
	70.00	Fundraising events	Xmas trees	
	50.00	Fundraising events	Xmas trees	
	60.00	Fundraising events	Xmas trees	
	1,125.00	Grants	Tesco	
-	41.10	Fundraising events	Xmas wreaths	
	59.10	Fundraising events	Xmas wreaths	
	9.80	Donations		
-	629.35	Fundraising events	Xmas wreaths	
-	5.00	Running costs	Bank fees	
-	12,715.75	School Autumn invoice 1		
	43.27	Cake Sale	Year 1	
	1.96	Cake Sale	Year 1	
	40.00	Donations		
	4.14	Other Income	Interest	
-	162.00	Running costs	Insurance	
	19.89	Donations		
	286.15	Fundraising events	Xmas disco	
-	413.74	Fundraising events	Xmas disco	Sweets
	9.80	Donations		
-	5.00	Running costs	Bank fees	
	73.78	Cake Sale	Year 2	
	129.89	Cake Sale	Year 2	
-	178.12	School Autumn invoice 2		
	75.81	Fundraising events	2nd had uniform	
	19.89	Donations		
	9.80	Donations		
-	5.00	Running costs	Bank fees	
	2.37	Fundraising events	Park Run	
-	102.00	Fundraising events	Xmas wreaths	
-	500.00	Fundraising events	Park Run	
	40.00	Donations		
	35.00	Fundraising events	Xmas wreaths	
	81.79	Donations		
	61.59	Fundraising events	Park Run	
	70.35	Cake Sale	Year 3	
	7.13	Fundraising events	Park Run	
	265.49	Other Income	Solar panels	
	19.89	Donations		
	92.51	Cake Sale	Year 3	
	135.22	Fundraising events	Park Run	
	9.80	Donations		
	1,231.80	Yr6	Quiz night	
-	5.00	Running costs	Bank fees	
-	138.36	Yr6	Quiz night	
	110.99	Fundraising events	Park Run	
	33.25	Fundraising events	Park Run	
	61.04	Fundraising events	2nd had uniform	

	619.01	Fundraising events	Park Run
	1.75	Other Income	Interest
	14.25	Fundraising events	Park Run
	40.00	Donations	
-	4,889.76	School Spring invoice 1	
	288.90	Cake Sale	
	233.00	Cake Sale	
	116.56	Cake Sale	
	194.50	Cake Sale	
	244.80	Cake Sale	
	1,929.06	Fundraising events	Park Run
	46.31	Fundraising events	Park Run
	19.89	Donations	
	983.71	Fundraising events	Park Run
	9.80	Donations	
	1,715.88	Fundraising events	Park Run
-	5.00	Running costs	Bank fees
	717.06	Fundraising events	Park Run
	417.33	Fundraising events	Park Run
	331.71	Fundraising events	Park Run
	968.43	Fundraising events	Park Run
	40.00	Donations	
	92.59		
	135.86		
	19.89		
	39.30		
	12,191.56		
	810.99		
	39.30		
	319.87		
	39.30		
	1,367.18		
	130.98		
	2,119.46		
	532.63		
	9.80		
-	5.00		
-	499.93		
-	47.61		
	1,896.05		
	190.08		
	199.00		
	97.36		
	4.75		
	40.00		
	188.88		
	71.23		
	19.89		

	183.78
	827.33
	9.80
	86.60
	60.55
-	5.00
	2,554.10
-	167.15
	66.42
	167.40
	292.94
	467.78
	9.31
	40.00
	1,000.00
	60.00
	450.00
	19.89
-	9,308.69
	156.60
	9.80
	241.20
-	229.98
	208.64
	38.00
-	5.00
	766.00
-	750.00
-	467.14
-	121.50
-	518.42
-	211.20
-	144.00
-	1,129.02
	11,520.90
	1,000.00
-	500.00
-	325.82
	193.78
	40.00
	-

Current account opening balance (01/08/24)

CAF Bank

Registered office: CAF Bank Ltd, 25 Kings Hill Avenue, Kings Hill,
T: 03000 123 456 E: cafbank@cafonline.org W: www.cafonline.org/b

Princess Frederica School Parent Staff
Association
Mr Mark Castro
86 Holland Road
London
NW10 5AY

Current Gross Interest Rate is 0.20 %

Date	Particulars
31/07/24	Brought forward
	Online transfer to Tessa
	Clarfelt Clothing Sale
	Rebate
	Online transfer to Kirsty
	Witters Clothing Sale Rebate
	Online transfer to Marina
	Beaumont Clothing Sale
	Rebate
	Online transfer to Jacinta
	Faithfull Clothing Sale
	Rebate
31/07/24	Carried forward

Your deposit is eligible for protection b

*
* Protecting Your Acc
* Sometimes we will send you a text messa
* complete a card or online banking payme
*
* Please remember you should never share
* CAF Bank will never ask you to share th
*
* If you receive an unexpected text messa
* please contact us as soon as possible o
*

Savings account opening balance (01/08/24)

CAF Bank

Registered office: CAF Bank Ltd, 25 Kings Hill Avenue, King
T: 03000 123 456 E: cafbank@cafonline.org W: www.cafonline.org

Princess Frederica School Parent Staff
Association
Mr Mark Castro
86 Holland Road
London
NW10 5AY

Current Gross Interest Rate is 2.50 %

Date	Particulars
22/07/24	Brought forward
31/07/24	Carried forward

Your deposit is eligible for protection

*
* Protecting Your
* Sometimes we will send you a text message
* complete a card or online banking process
*
* Please remember you should never share your details
* CAF Bank will never ask you to share your details
*
* If you receive an unexpected text message
* please contact us as soon as possible
*

6,906.20

Statement

West Malling, Kent, ME19 4JQ
anking

CafCash Account
Number 1 Account

Account Name: Princess Frederica
School Parent Staff
Association
Date: 31 July 2024
Sort Code: 40-52-40
Account Number: 00015498
IBAN: GB78CAFB40524000015498
Statement Number: 211
Page Number: 2
Accrued Interest is £ 2.80

Debit	Credit	Balance
		7,202.20
15.00		
100.00		
48.50		
132.50		

6,906.20

y the Financial Services Compensation Scheme.

ount From Fraud
ge containing a Passcode so you can
nt.
this code with anyone else and
is code during any telephone calls.
ge from CAF Bank containing a code
n 03000 123 456.

31,767.80

Statement

gs Hill, West Malling, Kent, ME19 4JQ
e.org/banking

CAF Gold Account
Savings Account

Account Name:	Princess Frederica School Parent Staff Association	a ff
Date:	31 July 2024	
Sort Code:	40-52-40	
Account Number:	00092136	
IBAN:	GB56CAFB40524000092136	
Statement Number:	211	
Page Number:	1	92136
Accrued Interest is £ 83.69		

Debit	Credit	Balance
		31,767.80
		31,767.80

on by the Financial Services Compensation Scheme. 78

***** 78

```
*
*
* Account From Fraud
*
* Message containing a Passcode so you can
*
* Payment.
*
*
*
* Share this code with anyone else and
*
*
* Use this code during any telephone calls.
*
*
*
* Message from CAF Bank containing a code
*
*
* File on 03000 123 456.
*
*
*
* *****
```


Current account closing balance (31/07/25)

35,494.16



STAT

Princess Frederica School Parent Staff
Association
Mark Adriano Castro
86 Holland Road
London
NW10 5AY

Account Name: Number
Account Number: 00015498
Sort Code: 405240
IBAN: GB78CA

CAF Cash Account

30/06/2

Money In 15,704.81
Money Out -13,710.77

Opening Balance as of 30/06/2025 :
Closing Balance as of 31/07/2025 :
Interest Rate as of 31/07/2025 :

Date	Description	Type	Money In (£)	Money Out (£)
30/06/2025	Opening Balance			
01/07/2025	FP KATE BROOKFIELD LI Kate brookfield	FP	1,000.00	0.0
02/07/2025	FP BASESPACE LO LTD CHARITY DONATION	FP	450.00	0.0
02/07/2025	FP WALKER Donation M Oddi	FP	60.00	0.0
03/07/2025	BACS Credit CHARITABLE GIVING PAYROLL GIVING	BACS Credit	19.89	0.0
10/07/2025	BACS Credit PAYPAL INC. PRINCESS FREDERICA	BACS Credit	156.60	0.0
10/07/2025	Online transfer to PRINCESS FREDERICA CE SCH Summer invoice	Online trf to	0.00	-9,308.6
11/07/2025	BACS Credit PAYPAL INC. PRINCESS FREDERICA	BACS Credit	241.20	0.0
11/07/2025	BACS Credit CAF25070896222CF 25070896222CF	BACS Credit	9.80	0.0
14/07/2025	FP N Wimble ICE SKATING CLARA	FP	38.00	0.0
14/07/2025	BACS Credit PAYPAL INC. PRINCESS FREDERICA	BACS Credit	208.64	0.0
14/07/2025	Online transfer to JOHN ANDERSON Fredstival	Online trf to	0.00	-229.9

Telephone calls may be monitored or recorded for security/training purposes. Lines are open Monday Friday 9am – 5pm (excluding English bank holidays).
CAF Bank Limited is authorised by the Prudential Regulation Authority and regulated by the Financial Conduct Authority and the Prudential Regulation Authority (Financial Services Register number: 2044
CAF Bank Limited Registered office is 25 Kings Hill Avenue, Kings Hill, West Malling, Kent ME19 4JC
Registered in England and Wales under number 1837656.



Date	Description	Type	Money In (£)	Money Out (£)
15/07/2025	BACS Credit PAYPAL INC. PRINCESS FREDERICA	BACS Credit	766.00	0.0
15/07/2025	Monthly Account Fee	Charge Cap.	0.00	-5.0
16/07/2025	BACS Credit PAYPAL INC. PRINCESS FREDERICA	BACS Credit	11,520.90	0.0
16/07/2025	Online transfer to Spirit Ink Ltd Fredstival Merch	Online trf to	0.00	-1,129.0
16/07/2025	Online transfer to THE WILLIAM PUB (KENSAL RISE) Fredstival bar	Online trf to	0.00	-144.0
16/07/2025	Online transfer to JANKA RYCHTER Fredstival Crafts	Online trf to	0.00	-211.2
16/07/2025	Online transfer to Clare Laurance Fredstival Dip	Online trf to	0.00	-518.4
16/07/2025	Online transfer to Yasmin Eady Yr 6 Production	Online trf to	0.00	-121.5
16/07/2025	Online transfer to PRINCESS FREDERICA CE SCH SCHOOL REIMBURSE	Online trf to	0.00	-467.1
16/07/2025	Online transfer to Laura Matthews Fredstival Music	Online trf to	0.00	-750.0
18/07/2025	Online transfer to Barbara Walker Fredstival	Online trf to	0.00	-325.8
18/07/2025	Online transfer to Ioannis Anastasiou Fredstival Sound	Online trf to	0.00	-500.0
18/07/2025	FP NEILL D T MR TANG MUSIC DEP	FP	1,000.00	0.0
23/07/2025	FP SPIRIT INK LIMITED Spirit Ink Fundra	FP	193.78	0.0
30/07/2025	BACS Credit CHARITIES TRUST CT50873	BACS Credit	40.00	0.0
31/07/2025	Closing Balance			

Savings account closing balance (31/07/25)

32,490.95



STA

Princess Frederica School Parent Staff
Association
Mark Adriano Castro
86 Holland Road
London
NW10 5AY

Account Name: Savin
Account Number: 0009:
Sort Code: 4052:
IBAN: GB56

CAF Gold Account

30/0

Money In 150.08
Money Out 0.00

Opening Balance as of 30/06/20:
Closing Balance as of 30/09/20:
Interest Rate as of 30/09/20:

Date	Description	Type	Money In (£)	Mon
30/06/2025	Opening Balance			
26/09/2025	Interest to Date	Interest Cap.	150.08	

Information about the Financial Services Compensation Scheme

Important information about how your account(s) is protected

The deposits in this account are eligible for protection under the Financial Services Compensation Scheme (FSCS). An Information Sheet and Exclusion List which provides information about the FSCS and the protection that it provides can be found at

www.cafonline.org/home/caf-bank/about-us/regulatory-information#fscs.

For further information about the compensation provided by the FSCS, refer to the FSCS website at www.FSCS.org.uk.

Christmas and New Year Holidays

We're open as usual except for the bank holidays of 26 Dec 2025 and 1 Jan 2026) and we're closed on Christmas Eve (at 1pm, 24 Dec 2025).

Online payments which need to reach us by 12pm on Christmas Day must be set up and authorised by 12pm on Christmas Eve (24 Dec 2025).

Online payments which need to reach us by 12pm on New Year's Day must be set up and authorised by 12pm on New Year's Eve (31 Dec 2025).

To guarantee that payments arrive by 12pm on New Year's Day we recommend they're sent by 4pm on 29 Dec 2025.

Telephone calls may be monitored or recorded for security/training purposes. Lines are open Monday to Friday 9am – 5pm (excluding English bank holidays).

CAF Bank Limited is authorised by the Prudential Regulation Authority and regulated by the Financial Conduct Authority and the Prudential Regulation Authority (Financial Services Register number: 214144). CAF Bank Limited Registered office is 25 Kings Hill Avenue, Kings Hill, West Malling, Kent ME19 4AB. Registered in England and Wales under number 1837656.

EMENT

1 Account
B

FB40524000015498

025 - 31/07/2025

33,500.12
35,494.16
0.2%

0)	Balance (£)
	33,500.12
0	34,500.12
0	34,950.12
0	35,010.12
0	35,030.01
0	35,186.61
9	25,877.92
0	26,119.12
0	26,128.92
0	26,166.92
0	26,375.56
8	26,145.58

to

INVESTORS IN PEOPLE
We invest in people Gold

51).

2.



Page 1 of 3

3)	Balance (£)
0	26,911.58
0	26,906.58
0	38,427.48
2	37,298.46
0	37,154.46
0	36,943.26
2	36,424.84
0	36,303.34
4	35,836.20
0	35,086.20
2	34,760.38
0	34,260.38
0	35,260.38
0	35,454.16
0	35,494.16
	<u>35,494.16</u>

STATEMENT

ings Account
2136
40
CAFB40524000092136

6/2025 - 30/09/2025

25 32,490.95
25 32,641.03
25 1.75%

ay Out (£)	Balance (£)
	32,490.95
0.00	32,641.03

ours

ank holidays (25-26 Dec
ing early on Christmas Eve
: 2025 and 31 Dec 2025).

h a beneficiary before
uthorised before 12pm on

h a beneficiary before New
rised before 12pm on New

efore the bank holidays, we
23 and 30 Dec 2025.

nday to

ncial
204451).
4JQ.

INVESTORS IN PEOPLE
We invest in people Gold



Total quantity	Unit	Total cost amount (GBP)	Total excluding VAT (GBP)	Total VAT (GBP)	Total including VAT (GBP)
340			5733.00	0.00	5,733.00
202			1627.99	0.00	1,627.99
104			857.00	0.00	857.00
82			1559.62	0.00	1,559.62
60			750.00	0.00	750.00
48			477.00	0.00	477.00
30			65.00	0.00	65.00
21			110.00	0.00	110.00
19			169.00	0.00	169.00
9			61.00	0.00	61.00
9			48.00	0.00	48.00
5			25.00	0.00	25.00
2			45.00	0.00	45.00
1			5.00	0.00	5.00
1			1.00	0.00	1.00
			11533.61	0.00	11,533.61

Sales by product

Company name Princess Frederica School Parent Staff Association
Company number 800472
Period: 01/05/2025 - 16/05/2025

Name	Variant	Category	Profit (GBP)
CEILIDH RAFFLE TICKETS £5 4 3			
Drinks			
Food Ceilidh			
Food cake sale			
Clothing			
CEILIDH ENTRY TICKETS			
Tokens			
Treats			
Books			
Quiz donation			
Total			

Profit margin	Sold quantity	Sold amount (GBP)	Returned quantity	Returned amount (GBP)	Discounts deducted (GBP)	Total quantity	Unit	Total cost amount (GBP)
	270	1350.00		0.00	0.00	270		
	75	677.00		0.00	0.00	75		
	62	291.00		0.00	0.00	62		
	30	128.00		0.00	0.00	30		
	17	340.00		0.00	0.00	17		
	17	185.00		0.00	0.00	17		
	11	30.00		0.00	0.00	11		
	1	2.00		0.00	0.00	1		
	1	2.00		0.00	0.00	1		

Total excluding VAT (GBP)	Total VAT (GBP)	Total including VAT (GBP)	
1350.00	0.00	1350.00	1,328.94 Ceilidh
677.00	0.00	677.00	666.44 Ceilidh
291.00	0.00	79.00	77.77 Ceilidh
		212.00	208.69 Cake sale Yr4
128.00	0.00	128.00	126.00 Second hand clothing sale
340.00	0.00	340.00	334.70 Ceilidh
185.00	0.00	185.00	182.11 Ceilidh
30.00	0.00	30.00	29.53 Cake sale Yr4
2.00	0.00	2.00	1.97 Ceilidh
2.00	0.00	2.00	1.97 Ceilidh
3005.00	0.00	3005.00	2958.13

2,593.90 Ceilidh
238.23 Cake sale Yr4
126.00 Second hand clothing sale

Sales by product

Company name Princess Frederica School Parent Staff Association
Company number 800472
Period: 25/04/2025 - 30/04/2025

Name	Variant	Category	Profit (GBP)

Coffee

CEILIDH ENTRY TICKETS

Total

Profit margin	Sales				Returns		Unit	Total cost amount (GBP)
	Sold quantity	Sold amount (GBP)	Returned quantity	Returned amount (GBP)	Discounts deducted (GBP)	Total quantity		
	69	138.00		0.00	0.00	69		
	2	40.00		0.00	0.00	2		

Total excluding VAT (GBP)	Total VAT (GBP)	Total including VAT (GBP)
138.00	0.00	138.00
40.00	0.00	40.00
178.00	0.00	178.00

175.16
1.6%

Sales by product

Company name Princess Frederica School Parent Staff Association
Company number 800472
Period: 12/03/2025 - 14/03/2025

Name	Variant	Category	Profit (GBP)
Quiz beer			
Quiz bar			
Quiz glass of wine			
Clothing			
Quiz joker			
Quiz Bottle of wine			
Quiz ticket			
Drinks			
Quiz other			
Quiz soft drink			
<hr/>			
Total			

Profit margin	Sold quantity	Sold amount (GBP)	Returned quantity	Returned amount (GBP)	Discounts deducted (GBP)	Total quantity	Unit	Total cost amount (GBP)
	52	260.00		0.00	0.00	52		
	27	328.00		0.00	0.00	27		
	21	105.00		0.00	0.00	21		
	20	62.00		0.00	0.00	20		
	16	320.00		0.00	0.00	16		
	8	120.00		0.00	0.00	8		
	4	60.00		0.00	0.00	4		
	2	50.00		0.00	0.00	2		
	2	24.00		0.00	0.00	2		
	1	2.00		0.00	0.00	1		

Total excluding VAT (GBP)	Total VAT (GBP)	Total including VAT (GBP)
260.00	0.00	260.00
328.00	0.00	328.00
105.00	0.00	105.00
62.00	0.00	62.00
320.00	0.00	320.00
120.00	0.00	120.00
60.00	0.00	60.00
50.00	0.00	50.00
24.00	0.00	24.00
2.00	0.00	2.00
1331.00	0.00	1331.00

Sales by product

Company name Princess Frederica School Parent Staff Association
Company number 800472
Period: 27/02/2025 - 28/02/2025

Name	Variant	Category	Profit (GBP)
Food			
Total			

Profit margin	Sold quantity	Sold amount (GBP)	Returned quantity	Returned amount (GBP)	Discounts deducted (GBP)	Total quantity	Unit	Total cost amount (GBP)
	69	165.50		0.00	0.00	69		

Total excluding VAT (GBP)	Total VAT (GBP)	Total including VAT (GBP)
165.50	0.00	165.50
165.50	0.00	165.50

Sales by product

Company name Princess Frederica School Parent Staff Association
Company number 800472
Period: 24/01/2025

Name	Variant	Category	Profit (GBP)

Clothing

Other

Total

Profit margin	Sold quantity	Sold amount (GBP)	Returned quantity	Returned amount (GBP)	Discounts deducted (GBP)	Total quantity	Unit	Total cost amount (GBP)
	23	75.00		0.00	0.00	23		
	1	2.00		0.00	0.00	1		

Total excluding VAT (GBP)	Total VAT (GBP)	Total including VAT (GBP)
75.00	0.00	75.00
2.00	0.00	2.00
77.00	0.00	77.00

Sales by product

Company name Princess Frederica School Parent Staff Association
Company number 800472
Period: 15/01/2025 - 16/01/2025

Name	Variant	Category	Profit (GBP)

Food

Custom Amount

Total

Profit margin							Total cost	
	Sold quantity	Sold amount (GBP)	Returned quantity	Returned amount (GBP)	Discounts deducted (GBP)	Total quantity	Unit	amount (GBP)
	16	47.00		0.00	0.00	16		
	10	28.00		0.00	0.00	10		

Total excluding VAT (GBP)	Total VAT (GBP)	Total including VAT (GBP)
47.00	0.00	47.00
28.00	0.00	28.00
75.00	0.00	75.00

Sales by product

Company name Princess Frederica School Parent Staff Association
Company number 800472
Period: 16/12/2024 - 17/12/2024

Name	Variant	Category	Profit (GBP)
Clothing			
Total			

Profit margin	Sold quantity	Sold amount (GBP)	Returned quantity	Returned amount (GBP)	Discounts deducted (GBP)	Total quantity	Unit	Total cost amount (GBP)
	1	2.00		0.00	0.00	1		

Total excluding VAT (GBP)	Total VAT (GBP)	Total including VAT (GBP)
2.00	0.00	2.00
2.00	0.00	2.00

Sales by product

Company name Princess Frederica School Parent Staff Association
Company number 800472
Period: 12/12/2024 - 13/12/2024

Name	Variant	Category	Profit (GBP)
Treats			
Total			

Profit margin	Sold quantity	Sold amount (GBP)	Returned quantity	Returned amount (GBP)	Discounts deducted (GBP)	Total quantity	Unit	Total cost amount (GBP)
	22	44.00		0.00	0.00	22		

Total excluding VAT (GBP)	Total VAT (GBP)	Total including VAT (GBP)
44.00	0.00	44.00
44.00	0.00	44.00

Sales by product

Company name Princess Frederica School Parent Staff Association
Company number 800472
Period: 05/12/2024 - 10/12/2024

Name	Variant	Category	Profit (GBP)
Wreaths 2024			
Wreath-Making drinks			
Total			

Profit margin	Total cost					Unit	Total cost amount (GBP)
	Sold quantity	Sold amount (GBP)	Returned quantity	Returned amount (GBP)	Discounts deducted (GBP)		
	1	40.00		0.00	0.00	1	
	1	20.00		0.00	0.00	1	

Total excluding VAT (GBP)	Total VAT (GBP)	Total including VAT (GBP)
40.00	0.00	40.00
20.00	0.00	20.00
60.00	0.00	60.00

Sales by product

Company name Princess Frederica School Parent Staff Association
Company number 800472
Period: 02/12/2024 - 03/12/2024

Name	Variant	Category	Profit (GBP)
Wreaths 2024			
Wreath-Making drinks			
Total			

Profit margin							Total cost	
	Sold quantity	Sold amount (GBP)	Returned quantity	Returned amount (GBP)	Discounts deducted (GBP)	Total quantity	Unit	amount (GBP)
	3	120.00		0.00	0.00	3		
	3	37.00		0.00	0.00	3		

Total excluding VAT (GBP)	Total VAT (GBP)	Total including VAT (GBP)
120.00	0.00	120.00
37.00	0.00	37.00
157.00	0.00	157.00

Sales by product

Company name Princess Frederica School Parent Staff Association
Company number 800472
Period: 22/11/2024 - 26/11/2024

Name	Variant	Category	Profit (GBP)
Clothing			
Total			

Profit margin	Sold quantity	Sold amount (GBP)	Returned quantity	Returned amount (GBP)	Discounts deducted (GBP)	Total quantity	Unit	Total cost amount (GBP)
	22	98.10		0.00	0.00	22		

Total excluding VAT (GBP)	Total VAT (GBP)	Total including VAT (GBP)
98.10	0.00	98.10
98.10	0.00	98.10

Sales by product

Company name Princess Frederica School Parent Staff Association
Company number 800472
Period: 15/11/2024 - 16/11/2024

Name	Variant	Category	Profit (GBP)
Custom Amount			
Total			

Profit margin	Sold quantity	Sold amount (GBP)	Returned quantity	Returned amount (GBP)	Discounts deducted (GBP)	Total quantity	Unit	Total cost amount (GBP)
	27	78.00		0.00	0.00	27		

Total excluding VAT (GBP)	Total VAT (GBP)	Total including VAT (GBP)
78.00	0.00	78.00
78.00	0.00	78.00

Sales by product

Company name Princess Frederica School Parent Staff Association
Company number 800472
Period: 13/11/2024 - 14/11/2024

Name	Variant	Category	Profit (GBP)
Custom Amount			
Total			

Profit margin	Sold quantity	Sold amount (GBP)	Returned quantity	Returned amount (GBP)	Discounts deducted (GBP)	Total quantity	Unit	Total cost amount (GBP)
	24	59.50		0.00	0.00	24		

Total excluding VAT (GBP)	Total VAT (GBP)	Total including VAT (GBP)
59.50	0.00	59.50
59.50	0.00	59.50

Sales by product

Company name Princess Frederica School Parent Staff Association
Company number 800472
Period: 01/09/2024 - 30/09/2024

Name	Variant	Category	Profit (GBP)
Clothing			
Custom Amount			
Total			

Profit margin	Sold quantity	Sold amount (GBP)	Returned quantity	Returned amount (GBP)	Discounts deducted (GBP)	Total quantity	Unit	Total cost amount (GBP)
	35	147.00		0.00	0.00	35		
	1	1.00		0.00	0.00	1		

Total excluding VAT (GBP)	Total VAT (GBP)	Total including VAT (GBP)
147.00	0.00	147.00
1.00	0.00	1.00
148.00	0.00	148.00

Independent Examination of Princess Frederica CE Primary School Parent Staff Association

(Reg. Charity No.800472)

Year ended 31 July 2025

Examiner

I, Martin Skitt ACA, have been asked to perform the independent Examination for the year ended 31 July 2025 following performing the same for years ending 2023 and 2024.

Qualifications:

- Qualified accountant with the ICAEW (Membership number 1177436) for 20 years, Fellow of the ICAEW for the past 10 years.
- Senior Audit Manager at Deloitte (2004-2010)
- Current professional position is Chief Financial Officer of Siemens Financial Services Limited.
- Previously a Parent Governor at Widmer End Community Combined School, High Wycombe being the Governor in charge of Data security and Maths. Decided to decline re-election with other commitments as of 1st May 2026.

Independence:

- It is confirmed that I have no close relationship with the school or the trustees.

Work Performed

Completeness:

- Draft Annual report reviewed and agreed to be complete and consistent with the financial performance and accounts.
- Account summary and transactions tied to the movement in the bank balances.
- All bank balances tied to the opening/closing bank statement positions.

Completeness checks noted that

- i) Expenses and Income were both £55 higher per the detailed bank transactions list than noted in the accounts.

This was discussed with Mark Castro who noted that there was a transaction for £55 that is recorded in the transaction listing as a returned payment. This transaction was therefore in both Expense and then income before then subsequently being processed correctly.

As this was a returned payment, the Financial statements record it as net which is appropriate. No further action required.

Testing:

A sample of 11 was selected using a mixture of judgemental sampling, for some of the larger items or items that stood out upon review of the transactional list, as well as a statistical sample where each item had equal chance of selection using a random number generator.

Total coverage of the sample was comfortably in excess of 10% of the payment and receipt values respectively at 39% and 45% and thus confirmed that the sample tests a range of items with sufficient coverage.

Supporting documentation of the 11 items sampled were requested. The results of the findings are noted in the table and accompanying commentary below (also attached as Appendix A):

Sample Number	Posting Date	Description	Expense	Income	Grouping	Category	Tied to Confirmation	Confirmation Type
1	16/12/2024	Online transfer to PRINCESS FREDERICA CE SCH Autumn term 1	8,843.00		Investments	OPAL	Yes	School Invoice + Statement
2	10/07/2025	Online transfer to PRINCESS FREDERICA CE SCH Summer invoice	3,270.69		School initiatives	Book week	Yes	School Invoice + Statement
3	23/01/2025	Online transfer to PRINCESS FREDERICA CE SCH Autumn term 2	2,839.53		Investments	OPAL	Yes	School Invoice + Statement
4	10/07/2025	Online transfer to PRINCESS FREDERICA CE SCH Summer invoice	1,723.00		School initiatives	Residential trips	Yes	School Invoice + Statement
5	15/10/2024	Online transfer to Clare Laurance Trolleys	176.38		Investments	Trolleys	Yes	Invoice
6	02/01/2025	DD PARENTKIND PTA964577-80216901	162.00		Running costs	Insurance	Yes	Invoice
7	06/05/2025	FP 4438862 PRINCESS F JUST GIVING		12,191.56	Fundraising events	Park Run	Yes	Statement confirmation
8	16/07/2025	BACS Credit PAYPAL INC, PRINCESS FREDERICA		11,520.00	Fundraising events	Fredstival	Yes	Zettle Report
9	04/12/2024	BACS LGTXNQ0590168 LOCAL GIVING LTD		6,250.00	Grants	National Grid	Yes	Application, Bank statement
10	23/01/2025	Online transfer to PRINCESS FREDERICA CE SCH Autumn term 2		2,200.00	Fundraising events	Xmas trees	Yes	School Invoice + Statement
11	02/09/2024	BACS GE FIT 46980 GOOD ENERGY		637.25	Other Income	Solar panels	Yes	Tariff payment confirmation
			17,014.00	32,799.71				
		Total Expense/Income in the year	43,772.30	72,924.63				
		Coverage	39%	45%				

During the testing it was noted that

- i) Just Giving we are not able to run detailed reports to reconcile to the cash deposits. The evidence provided on all Just giving receipts amounted to £30,865.01 and per the bank cleared funds they amounted to £29,999.65. Mark Castro noted that it is understood that the difference is the Just Giving platform fees. Independent enquiry notes Just Giving fees to be "**Payment processing fee: usually 1.9% + 30p per donation** in the UK". Thus rationalising the difference to be satisfactory.

Through the test of a sample of items no material issues noted of concern.


Further observations/Recommendations:

- 1) Given the objective is to provide for the pupils at the school, the balances held at the end of the year of £67,985 (£60,789 unrestricted) appear to be excessive given last year's equivalent was £24,683. Section 6 of the annual report notes a number of future measures that will use funds to provide for the pupils over the coming months.
- 2) The Minutes of the AGM held on 5th November 2025 were reviewed with no issues or concerns noted.

Conclusion:

In accordance with the Charity Commission guidance on independent examination of charity accounts (CC32) there are no material observations or areas of concern with the accounts as presented and the financial information in the Annual Report.

I would also like to thank Mark Castro for his rapid responses to my queries throughout the independent examination process after preparation of a thorough pack demonstrating detailed record keeping.



Martin Skitt ACA (Member No. 1177436), 19th May 2026

Appendix A:

Sample Number	Posting Date	Description	Expense	Income	Grouping	Category	Tied to Confirmation	Confirmation Type
1	16/12/2024	Online transfer to PRINCESS FREDERICA CE SCH Autumn term 1	8,843.00		Investments	OPAL	Yes	School Invoice + Statement
2	10/07/2025	Online transfer to PRINCESS FREDERICA CE SCH Summer invoice	3,270.69		School initiatives	Book week	Yes	School Invoice + Statement
3	23/01/2025	Online transfer to PRINCESS FREDERICA CE SCH Autumn term 2	2,839.53		Investments	OPAL	Yes	School Invoice + Statement
4	10/07/2025	Online transfer to PRINCESS FREDERICA CE SCH Summer invoice	1,723.00		School initiatives	Residential trips	Yes	School Invoice + Statement
5	15/10/2024	Online transfer to Clare Laurance Trolleys	176.38		Investments	Trolleys	Yes	Invoice
6	02/01/2025	DD PARENTKIND PT4964577-80216901	162.00		Running costs	Insurance	Yes	Invoice
7	06/05/2025	FP 4438862 PRINCESS F JUSTGIVING		12,191.56	Fundraising events	Park Run	Yes	Statement confirmation
8	16/07/2025	BACS Credit PAYPAL INC. PRINCESS FREDERICA		11,520.90	Fundraising events	Festival	Yes	Zettle Report
9	04/12/2024	BACS LGTXN00590168 LOCALGIVING LTD		6,250.00	Grants	National Grid	Yes	Application, Bank statement
10	23/01/2025	Online transfer to PRINCESS FREDERICA CE SCH Autumn term 2		2,200.00	Fundraising events	Xmas trees	Yes	School Invoice + Statement
11	02/09/2024	BACS GEFIT 46980 GOOD ENERGY		637.25	Other Income	Solar panels	Yes	Tarif payment confirmation
			17,014.60	32,799.71				
		Total Expense/Income in the year	43,772.30	72,924.63				
		Coverage	39%	45%				