

9th Wyre Forest (Spennells) Scout Group

England & Wales · Charity number 700427

Details

Other names	KD 9 SCOUT GROUP, KIDDERMINSTER SCOUT GROUP 9 (KD 9), WF9 Scout Group
Status	Registered
Legal form	Other
Registered	1988-07-04
Register	View on the Charity Commission register

Contact

Address	1 Shrubbery Street Kidderminster DY10 2QZ
Phone	07748392818
Email	davidfish165@gmail.com
Website	http://www.wyreforest.scoutsonline.co.uk/Groups/GroupDetails?GlobalGrpld=82

Activities

Objects: THE INSTRUCTION OF BOYS OF ALL CLASSES IN THE PRINCIPLES OF DISCIPLINE, LOYALTY AND GOOD CITIZENSHIP.

Activities: Scouting for all ages in the Kidderminster and surrounding areas

Classification

- **How:** Other Charitable Activities
- **What:** Education/training
- **Who:** Children/young People, The General Public/mankind

Geography

- Worcestershire

Finances

Period end	Income	Expenditure	Assets	Employees
2025-03-31	£27,792	£23,423	-	-
2024-03-31	£20,761	£27,796	-	-
2023-03-31	£26,728	£23,902	-	-
2022-03-31	£21,144	£22,282	-	-
2021-03-31	£11,860	£7,576	-	-

Trustees

Name	Role	Appointed
Clare Elizabeth Hodges		2021-04-01
DAVID LEON FISH		2011-10-19
Doug Hine		2025-07-10
Nicola Collett		2024-04-22
Scott Gale		2025-07-10
William Edward Fellows		2025-07-10

9th Wyre Forest (Spennells) Scout Group

England & Wales - Charity number 700427

Accounts



WF9 Spennells Scout Group

(9th Wyre Forest Scout Group)

Trustee Report

for the period 1st April 2024 to 31st March 2025





WF9 Spennells Scout Group

Trustee Report for the period 1st April 2024 to 31st March 2025



1. Reference and Administration Details

Charity Name: WF9 (Spennells) Scout Group

Charity Number: 700427

Principal Address: 1 Shrubbery Street, Kidderminster, Worcs, DY10 2QZ

Trustees: All members of the executive committee are registered as Trustees of the WF9 Charity

The Executive Committee Membership:

Ex Officio Members:

Ex-officio members have a role on the Committee due to their role in Scouting

Nicki Hitchcock (Group Lead Volunteer)

Melanie Williams (Beaver Scout Lead Volunteer)

Elected members:

Elected members stand for election at the Annual General Meeting and are elected by the Group Scout Council to take on the role

Clare Hodges (Chairperson)

David Fish (Treasurer)

Nicola Collett

Zoe Day (Shop)

Nominated members:

Nominated members are nominated by the Group Scout Leader in partnership with the Group Chair and approved at the Annual General Meeting;

Doug Hine (Independent)



2. Introduction by Chair of the Trustees

As Chair of the Trustees of WF9 scout group, I would like to extend a heartfelt thank you to all parents, carers, and volunteers, especially our fantastic Section Leaders for your continued support of our Scout Group over the past year. Your commitment and encouragement have played a vital role in enabling our young people to enjoy such a wide variety of fun, adventurous, and meaningful experiences in Scouting.

This year marks an important transition for our Group as we say farewell to Nicki, who is retiring from her role as Group Scout Leader. Nicki has been a cornerstone of Scouting in our area for over 25 years, offering unwavering dedication, support, and leadership. We are incredibly grateful for all she has done and the lasting impact she has made on so many young people's lives.

We are also delighted to welcome Will as our new Group Scout Leader. Will brings great energy and enthusiasm to the role, and we look forward to working with him as he leads the Group into its next chapter.

I would also like to extend our sincere thanks to Zoe for her many years of service on the Trustee Board and for running the Scout Shop and working with the Explorer section. Her behind-the-scenes contributions have helped to keep the Group running smoothly, and we appreciate all her hard work and commitment.

As we look ahead, I encourage parents and carers to consider joining the Trustee Board. The role of a trustee is not a significant time commitment, but it is incredibly important in supporting our Section Leaders and ensuring the Group runs effectively. Trustees help with governance, oversight, and planning, allowing our leaders to focus on delivering excellent programmes for the young people.

We would be grateful for your support with the following roles:-

Shop

Explorers Admin/finance support

Scout Admin/finance support

Easy Fundraising/Wyre Forest Lottery promotion and monitoring

Whilst there is no requirement to have a parent to manage the accounts for a section, it is good from a governance perspective and makes for a more robust process.

You may be aware that we have faced ongoing delays in the handover of the changing room site, coupled with rising building costs. After careful consideration, the Trustees have made the difficult decision not to proceed with the proposed new Scout Hut at Spennells. While disappointing, this decision reflects our commitment to acting responsibly in the long-term interest of the Group.

I encourage you to read the reports from each Section Leader in this annual report. They highlight the exciting, varied, and adventurous activities our young people have taken part in



WF9 Spennells Scout Group

Trustee Report for the period 1st April 2024 to 31st March 2025



this year. It's a great reflection of the time and effort our volunteers put in to make Scouting fun and fulfilling.

Looking ahead, we hope to build on this year's successes and continue providing high-quality Scouting experiences for every young person. Your ongoing support—whether by helping out occasionally, joining the Trustee Board, or simply encouraging your child—is essential and greatly appreciated.

Thank you once again for being part of our Scouting family. Let's look forward to another great year together!

Yours in Scouting

Clare Hodges

Chair of the Trustees

9th Wyre Forest (Spennells) Scout Group



3. Structure, Governance and Management

Governing Document

The Group's governing documents are those of The Scout Association. They consist of a Royal Charter, which in turn gives authority to the Bye Laws of the Association and The Policy, Organisation and Rules of The Scout Association.

Constitution

The group is a trust established under its rules which are common to all scouts (available on request)

Trustee Selection

The Trustees are appointed in accordance with the Policy, Organisation and Rules of The Scout Association.

Group Trustee Board

The Group is managed by the Group Trustee Board, the members of which are the 'Charity Trustees' of the Scout Group which is an educational charity. As Charity Trustees they are responsible for complying with legislation applicable to charities.

This includes registration, keeping proper accounts and making returns to the Charity Commission as appropriate.

The Committee consists of 2 representatives, Chair, Treasurer and 3 Members. Group Lead Volunteer is a member and there are representatives from the sections. The Trustee Board has an independent administrator that is not a trustee and has no voting rights. Trustee board meets at least once every school term.

The Group Trustee Board exists to support the Group Lead Volunteer in meeting the responsibilities of the appointments and is responsible for:

- The raising of funds and the administration of Group finance
- The insurance of persons, property, and equipment
- Group public occasions.
- Appointing any sub committees that may be required.
- Appointing Group Administrators and Advisors other than those who are elected.
- Ensuring the group meets its statutory requirements in terms of health and safety.
- Maintains the risk register.

The Trustee Board must have at least 4 members present to be quorate.



WF9 Spennells Scout Group

Trustee Report for the period 1st April 2024 to 31st March 2025



WF9 Group Structure

Forenames	Surname	Role Scout Group Section
Nicki	Hitchcock	Group Lead Volunteer
Xime	Carrillo	WF9 Squirrel Scout Section
Nicky	Nevin	WF9 Squirrel Scout Section
Mark	Allen	WF9 Squirrel Scout Section
Mel	Williams	WF9 Beaver Scout Section and WF9 Squirrel Section
Jo	Watson	WF9 Beaver Scout Section
Hannah	Bingham	WF9 Beaver Scout Section
Dawn	Churchley	WF9 Beaver Scout Section
Sharon	Hudson	WF9 Beaver Scout Section
Rachel	Maiden	WF9 Beaver Scout Section
Sarah	Wright	WF9 Beaver Scout Section
Amanda	Ashton	WF9 Cub Scout Section
Will	Fellows	WF9 Cub Scout Section
Kirsten	Littley	WF9 Cub Scout Section
Vern	Littley	WF9 Cub Scout Section
Val	Jarvis	WF9 Cub Scout Section
Chris	Mikolajczyk	WF9 Cub Scout Section
Jo	Lyons	WF9 Scout Section
Steve	Lyons	WF9 Scout Section
Scott	Gale	WF9 Explorer Scout Section
Lucy	Wilding	WF9 Explorer Scout Section
Clare	Hodges	WF9 Trustee Chair
David	Fish	WF9 Trustee Group Treasurer
Zoe	Day	WF9 Trustee Shop
Nicola	Collett	WF9 Trustee
Doug	Hine	WF9 Trustee



4. Risk and Internal Control

General

The group has in place systems of internal controls that are designed to provide reasonable assurance against material mismanagement or loss; these include 2 signatories for payments and comprehensive insurance policies to ensure that insurable risks are covered.

The Group Trustee Board has identified the major risks to which they believe the Group is exposed. These have been reviewed and systems have been established to mitigate against them. The main areas of concern that have been identified are:

Damage to property and equipment.

The Group would request the use of buildings, property, and equipment from neighboring organisations such as the District Rhydd Activity Centre and other Scout Groups. The Group has sufficient buildings and contents insurance in place to mitigate against permanent loss.

Injury to leaders, helpers, supporters, and members.

The Group through the capitation fees contributes to the Scout Association's national accident insurance policy. Risk Assessments are undertaken before and during activities.

Reduced income from fund raising.

The Group is primarily reliant upon income from subscriptions and fundraising. The group does hold reserves to ensure the continuity of activities should there be a major reduction in income. The Trustee Board could raise the value of subscriptions to increase the income to the group on an ongoing basis, either temporarily or permanently.

Reduction or loss of leaders.

The group is totally reliant upon volunteers to run and administer the activities of the group. If there was a reduction in the number of leaders to an unacceptable level in a particular section or the group then there would have to be a contraction, consolidation or closure of a section. In the worst-case scenario this would result in the complete closure of the Group.

Reduction or loss of members.

The Group provides activities for all young people aged 4 to 18. If there were a reduction in membership in a particular section or the group as a whole then there would have to be a contraction, consolidation, or closure of a section. In the worst-case scenario this would result in the complete closure of the Group.



5. Objects and Activities

The Purpose of Scouting

The purpose of Scouting is to contribute to the development of young people in achieving their full physical, intellectual, social and spiritual potentials, as individuals, as responsible citizens and as members of their local, national and international communities.

The Values of Scouting

As Scouts we are guided by these values:

- **Integrity** - We act with integrity; we are honest, trustworthy and loyal.
- **Respect** - We have self-respect and respect for others.
- **Care** - We support others and take care of the world in which we live.
- **Belief** - We explore our faiths, beliefs and attitudes.
- **Cooperation** - We make a positive difference; we cooperate with others and make friends.

The Scout Method

Scouting takes place when young people, in partnership with adults, work together based on the values of Scouting and:

- Enjoy what they are doing and have fun
- Take part in activities indoors and outdoors
- Learn by doing
- Share in spiritual reflection
- Take responsibility and make choice
- Undertake new and challenging activities; and
- Make and live by their Promise



6. Membership

We ended this year with 13 Squirrels, 18 Beavers, 23 Cubs, 18 Scouts and 27 Explorers. Scout numbers are lower than they have been for a while, but this is the ongoing impact of covid and lower numbers coming through from other sections. Also, the changes to the leader team have had an impact. Other sections are thriving, and Explorers is proving very popular.

7. Adult Support.

The Scout Section has less leaders than previously but we have opened a Squirrel Section and gained a new leader team and additional helpers.

We specifically need help in the following roles for the coming year:

- Fund Raising Trustee Board Committee member.
- Shop coordinator
- Admin support for Scouts and Explorers
- Scout section leaders
- Explorer Leader

There are many reasons for people choosing to help WF9 including:

- It's fun!
- Helping the local community
- Using existing talents
- Encouraging the next generation
- Gaining new skills
- Enhancing career prospects
- Meeting new and interesting people

If anyone is interested in helping or would like to know more about the positions, we have available then please contact Will Fellows, Group Lead Volunteer,

add contact details



8. Overview of Activities 2024/2025

Group Lead Volunteers Review

WF9 leaders have continued to deliver a varied and fun programme for our young people this year. They have taken part in a full range of activities that led to badges and awards. The activities help young people to develop outdoor skills and confidence. Without our leaders' commitment and hard work, we would have no group. I can only thank them for their continued volunteering. We now have an active Squirrel Section and a committed leader team. With our Explorer Unit we are now a 5 section group for the first time. Jo Lyons has taken on the role of Scout Lead Volunteer this year with the support of other leaders and parents. This has stabilised the Scout Section and it is good to see numbers increasing again.

Now for the goodbyes. Zoe Day will be stepping down at the AGM and she has been running the shop for the group and supporting the Explorer section with their admin. I would like to thank her for all she has done and if anyone would be interested in stepping in to this role then please let Will know. Zoe has written a full set of notes for anyone who would like more information.

We will also say goodbye to Sarah Wright (and Andy Wright) from the Beaver Section and thank them for all they have done over the years to support this section.

Kate Cannon has been supporting the Scout section with their admin and is also stepping away due to work commitments. I want to also thank her (and Richard) for all they have done to support the Scout Section during a challenging time. Again, this role is available if anyone feels able to assist.

I would also like to thank Miles Bethell who was a section assistant with Scouts whose role has also come to an end.

I have made the decision that it is time for me to step away from WF9. It will always hold a place in my heart as it is a group I have been a part of since 1998 and will always be proud to have been a part of but it is time for someone new to take up the reins, who has the passion, energy and skills. I am pleased to say that Will Fellows has agreed to take up the role and I am confident the Group will thrive under his leadership.

I would like to thank all those who have supported me over the years and wish everyone all the best.

Yours in Scouting

Nicki Hitchcock
Outgoing Group Lead Volunteer
WF9 Scout Group

Squirrel Section Report

We were very excited to welcome Squirrels to our new drey in WF9 Spennells at the beginning of this school year in September. We had so much fun and it gets better and better as the time goes by; for the first term we met in Heronswood School, and we have been very busy.

We have done different activities this year from reading stories and doing a variety of crafts and also knowing ourselves, our feelings, our powers and making new friends; but without a doubt the most popular activity has been making a campfire, cooking marshmallows and singing campfire songs.



We had visitors coming to our sessions to help us do yoga, make decorations with nature, and our local community police who showed us their police van with their blue lights, sirens and tried on their uniform.



We also visited Father Christmas who was visiting Bewdley Museum. We also had the opportunity to visit Bells Farm to learn about our local farms and where our local food comes from.



We have made bird feeders, lanterns, masks, wands, and celebrate a number of festivals including Halloween, Chinese New Year, Burns night, St Patrick's Day and a summer party.





WF9 Spennells Scout Group

Trustee Report for the period 1st April 2024 to 31st March 2025



We took part in the County Squirrel Pirate Day at the Lakeside Campus and the District Squirrel Day Around the world.

Both days were full of activities that our young people really enjoyed, and they had the opportunity to meet new squirrels and try different activities like going in a boat on the lake or enjoying the huge inflatables.



It was our first time joining St George's Parade, we couldn't be prouder of our Squirrels who did a fantastic job at parading on a hot day, sang songs and listened carefully at the ceremony and parade back.



As soon as the weather got better, we have been meeting outdoors, we went to Spennells Nature Reserve for a scavenger hunt; Rhydd for campfires and outdoor activities and games and visited some of the sites there.

We went to the Wyre Forest Visitor Centre to do the Stickman trail and to some parks nearby to learn map reading. It has been an amazing opportunity for us to meet our young people and for our squirrels to have opportunities to have fun while learning about our scouting world.



Thank you to all our squirrels for coming each week; thank you to our Cheetah for your help every night, thank you to our volunteers Wolf, Ch Fox for helping run the sessions and thank you to all our parents for your help this to be possible and to have a fantastic WF9.

Thank you Owl

Beaver Section Report



We have had another busy year, it has been lovely seeing our Beaver Scouts make new friends, learn new skills and continue to grow in confidence.

We started the year with the annual St Georges Day Parade, with all sections celebrating together at Kidderminster Harriers Stadium, the Beavers did their very best & credit to WF9 and scouting.



During the summer term we met outside at Rhydd Covert trying out the caving trailer, assault course, campfire cooking, scavenger hunts and learnt about trails and tracking.

The Beavers enjoyed swimming, walking along the river in Bewdley, eating chips and Tubing on the dry ski slope at

Wolverley, which was a new activity for all and loved by everyone.



In June we joined Beavers & Cubs from across Wyre Forest District for a 'Weekend at the Musicals' themed camp, our musical was Shrek. The Beavers enjoyed games & crafts, bouny castles and inflatables, a talent show and campfire and camped for 2 nights under canvas.



In September we were lucky enough to meet at Rhydd for the first few weeks of the new term, cooking on the campfire and trying out the bouldering wall. In October the Beavers and Cubs hosted a McMillan cake & coffee evening raising an amazing £224.34. The Beavers also enjoyed a visit from Fizz Pop Science as part of their experiment badge.

There was a Halloween themed District funday with themed crafts, pumpkin carving and a fancy dress party.



There was great excitement at the Christmas sleepover, the Beavers baked & decorated shortbread, made Christmas decorations and crafts. The Beavers visited Santa at WMSP with other Beaver Scouts from the Wyre Forest District. I'm not sure which was most exciting, seeing Santa or visiting the sweet shop!

Massive well done & thank you to all those Beavers and parents who held deliver the Scout Christmas post, it was great to see our young people out in the local community.

In the new year the Beavers attended the local Monday Night Group Pantomime, Cinderella and had a very jolly time joining in with great enthusiasm. There was also plenty of badge work completed, we have some budding designers and engineers, making models from recycling, book reading, visiting the library & making bird feeders.



During the Spring Term the Beavers also tried different foods from around the world as part of their international badge. Plates were painted for a Mothers



WF9 Spennells Scout Group

Trustee Report for the period 1st April 2024 to 31st March 2025



Day surprise and we finished the term with an Easter egg hunt at Rhydd.

We have been lucky this year to have help of young leaders, Eleanor, Theo, Lizzie & Maia who are always willing to join in a game, help with craft or tidy up. Theo & Lizzie were Beavers with our group, it is so rewarding to see how our young people grow and return to share their skills.



The success of this group would not be possible without the help and support of Jo, Rachel, Sarah, Dawn, Sharon & Hannah. I would just like to say a huge thank you to them, they are the best team. These amazing ladies also make it possible for me to carry on my role as ADC Beaver Scouts, so "Thank You ladies".

Sadly, we say goodbye to Sarah this term, who joined us as an extra pair of hands in 2012 when her son Alex joined Beavers. We will very much miss Sarah's craft skills, delicious cakes and happy smile.



Finally, we would also like to take this opportunity to thank all of you, the parents, for your continued support, you have all been amazing, you all deserve a Well Done Beavers badge. We have a wonderful group of children who are a credit to you all.





WF9 Spennells Scout Group

Trustee Report for the period 1st April 2024 to 31st March 2025





Cub Section Report

WF9 SCOUTS – SEPTEMBER 2024 – JUNE 2025.

This is my (Jo Lyons) first year of running this this scout troop (or any other). The first thing that I would like to put in this report is that we have a really great troop, all the scouts in general get along really well and whilst we have a shortage of leaders we benefit from amazing parent help each week.

The picture below shows the evening I was invested by Nicki Hitchcock in November:



We started the year with two patrols, which have now grown to three, we are very lucky that we have had two very stable Patrol Leaders in Alistair Thomas and Matt Lyons and one very capable Senior Patrol Leader in Ben Holyman. Now that we have a third patrol, Nathaniel Bylett has stepped up to patrol leader with no experience as an assistant patrol leader. This was due to some of the older scouts leaving before their turn to be appointed. Nathanel has taken on the role in the summer term and is doing an excellent job alongside our other Patrol Leaders and our Senior Patrol Leader and appears to be a natural leader.

The departure of older scouts also left Assistant Patrol Leader positions open and these have enthusiastically been taken by Malachi Bylett (Alistair's APL), Jack Price (Matt's APL) and Joe Turner (Nathaniel's APL).

BADGE WORK

This year the scouts worked towards their creative challenge badge in the autumn / winter term, they created their own crazy golf course, made stop motion pictures from Lego and made their own desk top catapults.

The image below shows Crazy Golf Night.



Once we completed the creative challenge badge scouts started to work towards their world challenge badge. Scouts have completed a number of tasks towards this, we celebrated Chinese New Year, were very fortunate that Councillor Doug Hine was able to come and speak to us about the local council and projects that the scouts can get involved in, we also put our best foot forward and did a litter pick around Spennells to serve our local community. The picture below show our rubbish haul.



PARADES

This year we had an excellent turn out for both Remembrance Day and St Georges Day Parades. It was fantastic to see our very smart troop turning out.

This one is Remembrance Day:



This one is St Georges Day:



CHALLENGES & FUND RAISING

WF9 took part in the C4 Challenge this year. We entered 1 team and came a very respectable 5th out of over 20 teams. Matt Flew the flag for WF9 in the colour run this year and had lots of fun in the process.



FUN STUFF

Around working towards badges we have made time to have fun, we have lit fires, played games, gone on a Chip Shop Hike had a water fight, have done lots of cooking and most nights we take time for the scout's favourite game, Tracker.





CAMP

The Scouts went camping for the first time in a while this year on the 06th – 08th June on site 7 at Rhydd, we had an amazing weekend playing games, learning wood chopping skills and doing Archey. Hopefully it will be a weekend scouts will remember.



THANK YOU'S

SCOUT PARENTS

For being supportive, being willing to come along to support and for stepping in last minute when others can't make it. We have only had to cancel a few times due to lack of adults, scout parents have been invaluable.



WF9 Spennells Scout Group

Trustee Report for the period 1st April 2024 to 31st March 2025



STEVE LYONS

Steve is an official volunteer but not officially a leader, he comes along any weeks that he can (more often than not) and supported our camp this year when another leader couldn't make it.

WILL FELLOWS

Will came with us on camp as permit holder, the weekend wouldn't have happened without him and we are truly grateful.

NICKI HITCHCOCK

Our hugest thanks to Nicki! WF9 Scouts will miss you as our Group Scout Leader, you have given us amazing support and helped (on occasion with Luke) on many of our evenings, often stepping in at the last minute when we didn't have enough help. Nicki has been an amazing support to Jo, helping to navigate the admin, practical activities, training courses and generally offering support, guidance and reassurance, I really can't thank her enough.



WF9 Spennells Scout Group

Trustee Report for the period 1st April 2024 to 31st March 2025



Explorer Section Report

I hope this message finds you all in good spirits. I wanted to take a moment to share some exciting updates and highlights from this year. It has truly been a fantastic year filled with new adventures and memorable experiences.

One of the notable achievements was successfully completing our second year of the Monopoly Run in London, which turned out to be a great success. The enthusiasm and enjoyment were evident, as many participants have already booked their spots for next year's event. It's wonderful to see how popular and enjoyable it has become.

Looking ahead, we have numerous camps already getting booked for the upcoming year, promising even more fun and engaging activities. We've had a variety of great activities this year, and there are still a few left to look forward to.

Thank you all for your continued enthusiasm and support. Let's make the next year even more remarkable, with many badges being awarded!

Scott Gale
Explorer Leader





9. Financial Review

Treasurers Statement 2024/2025

The attached account statement shows the WF9 Group Income and Expenditure details and Bank Account balances as at our financial year end of 31st March 2025 (FY25).

The Group and all Sections operate and report on a Cash Accounting basis. Our main sources of Income are Subscriptions, Gift Aid, Donations and Fund Raising...

- Subscription fee rates remained unchanged from the previous year
- Gift Aid is claimed on the prior year's activities (subs and sponsorship)



WF9 Spennells Scout Group

Trustee Report for the period 1st April 2024 to 31st March 2025



- An investment account pays interest on Group reserves
- Donations totalled £750. £250 from Councillor Hine; £500 from TSA Charity Account for Squirrels start-up funds
- The Wyre Forest Community Lottery scheme £491 and Easyfundraising.org £264.70 continue to provide a reliable income stream
- The Scout Christmas Post scheme generated £329.28

Everyone can help boost Fund Raising by using Easyfundraising.org where funds are donated to WF9 by retailers as a reward for online shopping and also by signing up to the Wyre Forest Community Lottery and nominating WF9 as your organisation to support.

Other income this year included £4.5k from an insurance claim on damaged kit in the old container, £130 from equipment sales, £200 from GoCardless for Squirrels section sign up and £75 compensation from Lloyds Bank for account set up delay and errors.

Expenses can be categorised as Scout Organisation statutory commitments, tents and equipment, badges and Section meeting night activity costs, including hall hire.

- The charges from the local and national Scout Organisations saw some rate increases that were all able to be met from normal income
- Hall Hire costs are minimised by holding Section activities at Rhydd where possible
- Camp costs show a negative balance for FY25. The timing of camps each Section attends can result in year end balances being positive or negative. Every camp is budgeted to breakeven. Some trips are funded all or partly from Section monies.
- Equipment purchases were made by Group to replace the required kit damaged in the old container

Overall WF9 made a £4.3k gain in 2024/25, predominantly because of the insurance claim and the timing of camp costs. The underlying position excluding these was a gain of £903.

With regards to Finances for 2025/26 – WF9 is expecting a normal trading year with a breakeven position come March 2026.



WF9 Spennells Scout Group

Trustee Report for the period 1st April 2024 to 31st March 2025



The Section accounts have been audited and Group's accounts audit is to start soon. All fully audited accounts will be available shortly on the Charity Commission website and within the Trustee Report circulated on our Facebook page.

David Fish WF9 Group Treasurer June 2025

9th Wyre Forest Scout Group - Group & Sections Consolidation for Year Ended 31st March 2025

	Squirrels	Beavers	Cubs Tuesday	Cubs Thursday	Scouts Thursday	Explorers	WF9 Sections Total	WF9 Group	FY25 WF9 Total	FY24 WF9 Total	FY23 WF9 Total	FY22 WF9 Total	FY21 WF9 Total
Opening Balance	£ -	£ 438.31	£ 20.18	£ 1,014.76	£563.97	£ 994.86	£ 3,032.08	£13,734.32	£ 16,766.40	£ 23,801.28	£ 20,975.10	£ 22,113.02	£ 17,829.01
Income													
WF9 Hut Project	£ -	£ -	£ -	£ -	£ -	£ -	£ -	£ -	£ -	£ -	£ -	£ -	£ -
Subs	£ 1,058.19	£ 2,305.00	£ -	£ 2,231.87	£ 1,328.95	£ 2,822.65	£ 9,746.66	£ 1,740.69	£ 9,746.66	£ 7,402.78	£ 7,413.95	£ 6,616.09	£ 4,745.79
Gift Aid	£ -	£ -	£ -	£ -	£ -	£ -	£ -	£ 250.00	£ 1,740.69	£ 1,417.29	£ 1,708.85	£ 1,072.37	£ 1,959.87
Donations	£ 500.00	£ -	£ -	£ -	£ -	£ -	£ 500.00	£ 250.00	£ 750.00	£ 1,200.00	£ 2,500.00	£ 500.00	£ 3,601.00
Investment	£ -	£ -	£ -	£ -	£ -	£ -	£ -	£ 271.26	£ 271.26	£ 261.42	£ 603.50	£ 755.73	£ 194.50
Wyre Forest Lottery	£ -	£ -	£ -	£ -	£ -	£ -	£ -	£ 491.00	£ 491.00	£ 784.00	£ 603.50	£ 755.73	£ 194.50
WF9 Shop	£ -	£ 217.50	£ -	£ -	£ -	£ -	£ 217.50	£ 692.72	£ 910.22	£ 390.00	£ 568.73	£ 1,117.50	£ -
Bag Packing	£ -	£ -	£ -	£ -	£ -	£ -	£ -	£ -	£ -	£ -	£ -	£ -	£ -
Pledge Piod	£ 133.00	£ 697.00	£ -	£ 208.59	£ 163.96	£ 206.00	£ 1,408.55	£ -	£ 1,408.55	£ 688.87	£ 893.80	£ 175.00	£ 788.80
Other Fund Raising	£ -	£ -	£ -	£ -	£ -	£ -	£ -	£ 828.77	£ 828.77	£ 550.72	£ 545.32	£ 522.33	£ -
Camp & Trip Fees	£ 48.44	£ 1,731.00	£ -	£ 1,133.35	£ 468.26	£ 3,414.50	£ 6,795.55	£ -	£ 6,795.55	£ 8,022.74	£ 12,231.26	£ 9,405.58	£ 545.00
Other	£ 100.00	£ -	£ -	£ 8.00	£ -	£ 175.00	£ 283.00	£ 4,543.57	£ 4,826.57	£ 43.00	£ 264.06	£ 979.60	£ 25.04
Total Income	£ 1,839.63	£ 4,950.50	£ -	£ 3,581.81	£ 1,961.17	£ 6,618.15	£ 18,951.26	£ 8,818.01	£ 27,769.27	£ 20,760.82	£ 26,728.47	£ 21,144.20	£ 11,860.00
Expenditure													
WF9 Hut Project	£ -	£ -	£ -	£ -	£ -	£ -	£ -	£ -	£ -	£ -	£ -	£ -	£ -
Capitation	£ 225.00	£ 920.00	£ -	£ 942.00	£ 507.00	£ 1,209.00	£ 3,803.00	£ 2,113.00	£ 5,916.00	£ 4,080.00	£ 3,787.10	£ 3,394.50	£ 3,585.00
District Levy	£ -	£ 126.00	£ -	£ 150.00	£ 78.00	£ 180.00	£ 534.00	£ 132.00	£ 666.00	£ 540.00	£ 539.50	£ 477.00	£ 567.00
Other fees to District etc.	£ -	£ -	£ -	£ -	£ -	£ -	£ -	£ 832.50	£ 832.50	£ 862.50	£ 862.15	£ 636.00	£ 315.00
Scout Insurance	£ -	£ -	£ -	£ -	£ -	£ -	£ -	£ 221.79	£ 221.79	£ 211.44	£ 285.04	£ 179.43	£ 175.04
WF9 Shop	£ -	£ 212.96	£ -	£ -	£ -	£ -	£ 212.96	£ 967.34	£ 1,180.30	£ 566.28	£ 802.92	£ 1,057.27	£ 83.82
Training	£ -	£ -	£ -	£ -	£ -	£ -	£ -	£ -	£ -	£ -	£ 40.00	£ 60.00	£ -
Hall Hire	£ 400.00	£ -	£ -	£ 141.75	£ 252.50	£ 794.25	£ 794.25	£ -	£ 794.25	£ 778.50	£ 1,785.13	£ 140.00	£ 555.00
Camp & Trip Costs	£ 105.00	£ 1,933.92	£ -	£ 1,123.56	£ 490.00	£ 4,242.68	£ 7,895.16	£ -	£ 7,895.16	£ 11,440.45	£ 10,988.43	£ 12,778.11	£ 417.50
Meeting Night Costs	£ 90.46	£ 1,652.56	£ -	£ 948.35	£ 426.06	£ 360.11	£ 3,477.54	£ -	£ 3,477.54	£ 2,277.62	£ 3,365.40	£ 1,949.55	£ 1,254.29
Tents & Equipment	£ -	£ 28.98	£ -	£ 143.10	£ 17.00	£ 70.09	£ 259.17	£ 1,565.67	£ 1,824.84	£ 6,029.20	£ 708.32	£ 1,311.42	£ 159.99
Badges	£ 19.35	£ 185.12	£ -	£ 92.98	£ 42.50	£ 55.35	£ 395.30	£ 20.00	£ 415.30	£ 486.73	£ 415.65	£ 702.42	£ 283.35
Other	£ 43.99	£ 21.52	£ -	£ 39.00	£ 27.00	£ -	£ 131.51	£ 67.32	£ 198.83	£ 522.98	£ 324.65	£ 96.42	£ 180.00
Total Expenditure	£ 883.80	£ 5,081.06	£ -	£ 3,580.74	£ 1,840.06	£ 6,117.23	£ 17,502.89	£ 5,919.62	£ 23,422.51	£ 27,795.70	£ 23,902.29	£ 22,282.12	£ 7,575.99
Closing Balance	£ 955.83	£ 307.75	£ 20.18	£ 1,015.83	£685.08	£1,495.78	£ 4,480.45	£ 16,632.71	£ 21,113.16	£ 16,766.40	£ 23,801.28	£ 20,975.10	£ 22,113.02
FY25 Movement	£ 955.83	£ 130.56	£ -	£ 1.07	£121.11	£500.92	£ 1,448.37	£ 2,898.39	£ 4,346.76	£ 7,034.88	£ 2,826.18	£ 1,137.92	£ 4,284.01
Statement Balances													
Bank Lloyds	£852.64	£273.05	£20.18	£895.09	£585.65	£1,495.78	£4,122.39	£16,632.71	£20,755.10	£16,589.53	£23,666.75	£20,922.54	£22,049.06
Cash/Bank Barclays	£103.19	£34.70	£0.00	£120.74	£99.43	£0.00	£358.06	£0.00	£358.06	£176.87	£134.53	£52.56	£63.96
Total	£955.83	£307.75	£20.18	£1,015.83	£685.08	£1,495.78	£4,480.45	£16,632.71	£21,113.16	£16,766.40	£23,801.28	£20,975.10	£22,113.02



Declaration

The trustees declare that they have approved the trustees' report above.
Signed on behalf of the charity's trustees.

Signature

Clare Hodges
Chair of the Trustee Board

Will Fellows

Group Lead Volunteer

Melanie Williams

Beaver Scout Section Leader

Tel: 07885 380240

Amanda Ashton

Cub Scout Leader

Tel: 07884230753

Jo Lyons

Scout Section Leader

Scott Gale

Explorer Scout Leader

9th Wyre Forest Scout Group - Group & Sections Consolidation for Year Ended 31st March 2025

	Squirrels	Beavers	Cubs Tuesday	Cubs Thursday	Scouts Thursday	Explorers	WF9 Sections Total	WF9 Group	FY25 WF9 Total
Opening Balance	£ -	£ 438.31	£ 20.18	£ 1,014.76	£563.97	£ 994.86	£ 3,032.08	£13,734.32	£ 16,766.40
Income									
WF9 Hut Project	£ -	£ -	£ -	£ -	£ -	£ -	£ -	£ -	£ -
Subs	£ 1,058.19	£ 2,305.00	£ -	£ 2,231.87	£ 1,328.95	£ 2,822.65	£ 9,746.66	£ -	£ 9,746.66
Gift Aid	£ -	£ -	£ -	£ -	£ -	£ -	£ -	£ 1,740.69	£ 1,740.69
Donations	£ 500.00	£ -	£ -	£ -	£ -	£ -	£ 500.00	£ 250.00	£ 750.00
Investment	£ -	£ -	£ -	£ -	£ -	£ -	£ -	£ 293.78	£ 293.78
Wyre Forest Lottery	£ -	£ -	£ -	£ -	£ -	£ -	£ -	£ 491.00	£ 491.00
WF9 Shop	£ -	£ 217.50	£ -	£ -	£ -	£ -	£ 217.50	£ 692.72	£ 910.22
Bag Packing	£ -	£ -	£ -	£ -	£ -	£ -	£ -	£ -	£ -
Pledge Plod	£ 133.00	£ 697.00	£ -	£ 208.59	£ 163.96	£ 206.00	£ 1,408.55	£ -	£ 1,408.55
Other Fund Raising	£ -	£ -	£ -	£ -	£ -	£ -	£ -	£ 828.77	£ 828.77
Camp & Trip Fees	£ 48.44	£ 1,731.00	£ -	£ 1,133.35	£ 468.26	£ 3,414.50	£ 6,795.55	£ -	£ 6,795.55
Other	£ 100.00	£ -	£ -	£ 8.00	£ -	£ 175.00	£ 283.00	£ 4,543.57	£ 4,826.57
Total Income	£ 1,839.63	£ 4,950.50	£ -	£ 3,581.81	£ 1,961.17	£ 6,618.15	£ 18,951.26	£ 8,840.53	£ 27,791.79
Expenditure									
WF9 Hut Project	£ -	£ -	£ -	£ -	£ -	£ -	£ -	£ -	£ -
Capitation	£ 225.00	£ 920.00	£ -	£ 942.00	£ 507.00	£ 1,209.00	£ 3,803.00	£ 2,113.00	£ 5,916.00
District Levy	£ -	£ 126.00	£ -	£ 150.00	£ 78.00	£ 180.00	£ 534.00	£ 132.00	£ 666.00
Other Fees to District etc.	£ -	£ -	£ -	£ -	£ -	£ -	£ -	£ 832.50	£ 832.50
Scout Insurance	£ -	£ -	£ -	£ -	£ -	£ -	£ -	£ 221.79	£ 221.79
WF9 Shop	£ -	£ 212.96	£ -	£ -	£ -	£ -	£ 212.96	£ 967.34	£ 1,180.30
Training	£ -	£ -	£ -	£ -	£ -	£ -	£ -	£ -	£ -
Hall Hire	£ 400.00	£ -	£ -	£ 141.75	£ 252.50	£ -	£ 794.25	£ -	£ 794.25
Camp & Trip Costs	£ 105.00	£ 1,933.92	£ -	£ 1,123.56	£ 490.00	£ 4,242.68	£ 7,895.16	£ -	£ 7,895.16
Meeting Night Costs	£ 90.46	£ 1,652.56	£ -	£ 948.35	£ 426.06	£ 360.11	£ 3,477.54	£ -	£ 3,477.54
Tents & Equipment	£ -	£ 28.98	£ -	£ 143.10	£ 17.00	£ 70.09	£ 259.17	£ 1,565.67	£ 1,824.84
Badges	£ 19.35	£ 185.12	£ -	£ 92.98	£ 42.50	£ 55.35	£ 395.30	£ 20.00	£ 415.30
Other	£ 43.99	£ 21.52	£ -	£ 39.00	£ 27.00	£ -	£ 131.51	£ 67.32	£ 198.83
Total Expenditure	£ 883.80	£ 5,081.06	£ -	£ 3,580.74	£ 1,840.06	£ 6,117.23	£ 17,502.89	£ 5,919.62	£ 23,422.51
Closing Balance	£ 955.83	£ 307.75	£ 20.18	£ 1,015.83	£685.08	£1,495.78	£ 4,480.45	£ 16,655.23	£ 21,135.68
FY25 Movement	£ 955.83	£- 130.56	£ -	£ 1.07	£121.11	£500.92	£ 1,448.37	£ 2,920.91	£ 4,369.28
Statement Balances									
Bank Lloyds	£852.64	£273.05	£20.18	£895.09	£585.65	£1,495.78	£4,122.39	£16,655.23	£20,777.62
Cash/Bank Barclays	£103.19	£34.70	£0.00	£120.74	£99.43	£0.00	£358.06	£0.00	£358.06
Total	£955.83	£307.75	£20.18	£1,015.83	£685.08	£1,495.78	£4,480.45	£16,655.23	£21,135.68

Bank Statement Summaries for 9th Wyre Forest Scout Group (excluding Sections)
Year Ended 31st March 2025

Opening Balances		Current Balances		Movement YTD
Item	£	Item	£	£
Bank Current Account	£3,664.49	Bank Current Account	£1,291.62	(£2,372.87)
Group Activity Spend	£47.06	Group Activity Spend	£47.06	£0.00
32 Day Notice Account	£10,022.77	32 Day Notice Account	£15,316.55	£5,293.78
Total	£13,734.32	Total	£16,655.23	£2,920.91

Bank Statement Summaries for 9th Wyre Forest Scout Group Sections
Year Ended 31st March 2025

Opening Balances				Current Balances			Movement YTD	
Item	Cash	Bank	Total	Item	Cash	Bank	Total	£
WF9 Squirrels	£0.00	£0.00	£0.00	WF9 Squirrels	£103.19	£852.64	£955.83	£955.83
WF9 Beavers	£0.00	£438.31	£438.31	WF9 Beavers	£34.70	£273.05	£307.75	(£130.56)
WF9 Cubs (Tuesday)	£0.00	£20.18	£20.18	WF9 Cubs (Tuesday)	£0.00	£20.18	£20.18	£0.00
WF9 Cubs	£65.04	£949.72	£1,014.76	WF9 Cubs	£120.74	£895.09	£1,015.83	£1.07
WF9 Scouts	£99.43	£464.54	£563.97	WF9 Scouts	£99.43	£585.65	£685.08	£121.11
WF9 Explorers	£0.00	£994.86	£994.86	WF9 Explorers	£0.00	£1,495.78	£1,495.78	£500.92
Total Sections	£164.47	£2,867.61	£3,032.08	Total Sections	£358.06	£4,122.39	£4,480.45	£1,448.37

Bank Statement Summaries for 9th Wyre Forest Scout Group (ALL)
Year Ended 31st March 2025

Opening Balances				Current Balances			Movement YTD	
Item	Cash	Bank	Total	Item	Cash	Bank	Total	£
Total WF9	£164.47	£2,867.61	£16,766.40	Total WF9	£358.06	£4,122.39	£21,135.68	£4,369.28

10 Hollywood Lane
Hollywood
Birmingham
B47 5PX

20th August 2025

To whom it may concern,

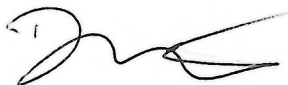
RE: Independent Examination of the financial records of WF9 Scout Group for Y/E 31st March 2025.

I was asked by David Fish to conduct an independent examination of the financial transactions of WF9 Scout Group for year ending 31st March 2025.

Having reviewed the transactions, I am comfortable they represent a true reflection of the group's activities. My review was focused on the group transactions only with the relevant supporting data available.

Please contact me on 07773304919 or via email at darylwaters@hotmail.co.uk should you have any questions with regards to this review.

Yours sincerely

A handwritten signature in black ink, appearing to read 'Daryl Waters', with a stylized flourish extending to the right.

Daryl Waters ACMA CGMA

9th Wyre Forest (Spennells) Scout Group

England & Wales - Charity number 700427

Accounts



WF9 Spennells Scout Group

(9th Wyre Forest Scout Group)

Trustee Report

for the period 1st April 2022 to 31st March 2023





WF9 Spennells Scout Group

Trustee Report for the period 1st April 2022 to 31st March 2023



Charity Number: 700427

Principal Address: 1 Shrubbery Street, Kidderminster, Worcs, DY10 2QZ

Trustees: All members of the executive committee are registered as Trustees of the WF9 Charity

The Executive Committee Membership:

Ex Officio Members:

Ex-officio members have a role on the Committee due to their role in Scouting

Nicki Hitchcock (Group Scout Leader)

Melanie Williams (Beaver Scout Leader)

Elected members:

Elected members stand for election at the Annual General Meeting and are elected by the Group Scout Council to take on the role

Clare Hodges (Chairperson)

David Fish (Treasurer)

Clare Wilcox (Secretary)

Zoe Day (Shop)

Nominated members:

Nominated members are nominated by the Group Scout Leader in partnership with the Group Chair and approved at the Annual General Meeting;

Cath Lendon-Montrose (Parent Representative)



2. Introduction by Chair of the Trustees

The current year of scouting in WF9 has been a busy one; a huge range of activities, put on by a committed leadership team, supported by volunteers both for parents of current WF9 young people and also from the wider community.

All sections have had the opportunity to participate in camps, ranging from the Beavers to the Explorer section with camps taking place everywhere from Rhydd to most recent Scout camp in Dorset. As ever the leadership team have been incredibly generous in giving their free time and holiday leave to provide the members with meaningful and memorable experiences which will form an important part of their childhood memories of their scouting experiences. It is worth also bearing in mind that these activities at weekends and in holidays build so many of the characteristics for which Scouts are justifiably known: teamwork, resilience, perseverance and independence. Neither we nor the Scouts could do it without them, so, as ever, a huge thank you.

It is also worth flagging the importance of scouting in the community. The scouts have a real opportunity to be role models for young people in the local community, and we see this each year, notable with activities such as the Christmas post, and the litter picks undertaken by various sections - through the cubs had a more exciting time of it than they bargained for this year with some of the "litter" that they discovered on their pick! Again, and very visibly we are pleased that the sections are able to support both the Remembrance Sunday parade each year as well as the St George's day parade. These are both important events in the local (and local scouting) calendar and give the young people both the opportunity to remember the service of other generations as well as to demonstrate the core scout values of integrity, respect and care.

Following on from this, and in very exciting news, we finally have some progress on the potential development of a community hub and scout hut for WF9. For a number of reasons, not least the Covid pandemic, and various ecological surveys, matters have progressed much more slowly than we had hoped. You may have seen, however, in local Facebook groups that finally the council have finally given planning permission for the demolition of the changing rooms on Spennells playing fields. This has been a long and drawn-out process, but we understand that work is likely to start this month. This is a necessary first step to the transfer of land to WF9 with a view to then building a scout hut, which we also expect to form part of the community assets of Spennells. The purpose of the new build would not be to replace or to take away from the amazing experience that our scouts currently enjoy here at Rhydd, but to provide a meeting place (especially in the winter months for the younger sections, somewhere water and windproof to store our equipment, and hopefully an asset for the wider community to hire to use for local groups and events.

To make this a reality, we are going to need to raise significant funds, both from grant



WF9 Spennells Scout Group

Trustee Report for the period 1st April 2022 to 31st March 2023



making bodies, local and national businesses, as well as the more traditional fundraising activities that we ask the scouts to be involved in. We would be grateful for all ideas and support to help us make this a reality for our scouts. The leaders give so much in scouting experiences to our children, and it would be great if we, as a group of parents, can lend our time, skills, and contacts to support this project. It can only become a reality with support for the WF9 parents, and the wider community.

I would also invite any parents who want to become involved in supporting our leadership team to consider putting themselves forward for the Executive Committee. It enables those of us who are unable to act as parent helpers to support our leaders in their efforts to support our scouts. We only meet 4 times a year (in the pub!) and are friendly and welcoming. You do not need to have any scouting experience or skills (I don't!); just lots of enthusiasm!

In summary, although challenging in many ways, this has been another great year for WF9; we have a committed leadership team, and a really vibrant cohort of young people. I invite you to enjoy the presentations and reports from the various sections of WF9; and I would ask for your time and support to ensure that 2023-2024 is another outstanding year for WF9.

Clare Hodges
Chair of the Trustee Board



3. Structure, Governance and Management

Governing Document

The Group's governing documents are those of The Scout Association. They consist of a Royal Charter, which in turn gives authority to the Bye Laws of the Association and The Policy, Organisation and Rules of The Scout Association.

Constitution

The group is a trust established under its rules which are common to all scouts (available on request)

Trustee Selection

The Trustees are appointed in accordance with the Policy, Organisation and Rules of The Scout Association.

Group Trustee Board

The Group is managed by the Group Trustee Board, the members of which are the 'Charity Trustees' of the Scout Group which is an educational charity. As Charity Trustees they are responsible for complying with legislation applicable to charities.

This includes the registration, keeping proper accounts and making returns to the Charity Commission as appropriate.

The Committee consists of 3 independent representatives, Chair, Treasurer and Secretary together with the Group Scout Leader, and a representative parent from each section of the Group. Additionally, some members are co-opted onto the Committee from time to time. The Committee meets at least once every school term.

The Group Trustee Board exists to support the Group Scout Leader in meeting the responsibilities of the appointments and is responsible for:

- The maintenance of Group property and equipment
- The raising of funds and the administration of Group finance
- The insurance of persons, property and equipment
- Group public occasions
- Assisting in the recruitment of leaders and other adult support
- Appointing any sub committees that may be require
- Appointing Group Administrators and Advisors other than those who are elected.



WF9 Spennells Scout Group

Trustee Report for the period 1st April 2022 to 31st March 2023



WF9 Group Structure

Forenames	Surname	Role Scout Group Section
Nicki	Hitchcock	Group Scout Leader
Mel	Williams	WF9 Beaver Scout Section
Jo	Watson	WF9 Beaver Scout Section
Hannah	Bingham	WF9 Beaver Scout Section
Dawn	Churchley	WF9 Beaver Scout Section
Sharon	Hudson	WF9 Beaver Scout Section
Rachel	Maiden	WF9 Beaver Scout Section
Sarah	Wright	WF9 Beaver Scout Section
Amanda	Ashton	WF9 Thursday Cub Scout Section
Will	Fellows	WF9 Thursday Cub Scout Section
Ade	Gilder	WF9 Thursday Cub Scout Section
Kirsten	Littley	WF9 Thursday Cub Scout Section
Vern	Littley	WF9 Thursday Cub Scout Section
Val	Jarvis	WF9 Thursday Cub Scout Section
Chris	Mikolajczyk	WF9 Thursday Cub Scout Section
Steve	Bailey	WF9 Thursday Scout Section
Fran	Davies	WF9 Thursday Scout Section
Logan	Ashdown	WF9 Thursday Scout Section
Lee	Ashton	WF9 Thursday Scout Section
Miles	Bethell	WF9 Thursday Scout Section
Ollie	Biggin	WF9 Thursday Scout Section
Clare	Hodges	WF9 Trustee Chair
David	Fish	WF9 Trustee Group Treasurer
Cath	Lendon-Montrose	WF9 Trustee Committee Member
Zoe	Day	WF9 Trustee Shop
Clare	Wilcox	WF9 Trustee Secretary



4. Risk and Internal Control

General

The group has in place systems of internal controls that are designed to provide reasonable assurance against material mismanagement or loss; these include 2 signatories for payments and comprehensive insurance policies to ensure that insurable risks are covered.

The Group Executive Committee has identified the major risks to which they believe the Group is exposed. These have been reviewed and systems have been established to mitigate against them. The main areas of concern that have been identified are:

Damage to property and equipment.

The Group would request the use of buildings, property and equipment from neighboring organisations such as the District Rhydd Activity Centre and other Scout Groups. The Group has sufficient buildings and contents insurance in place to mitigate against permanent loss.

Injury to leaders, helpers, supporters and members.

The Group through the capitation fees contributes to the Scout Association's national accident insurance policy. Risk Assessments are undertaken before and during activities.

Reduced income from fund raising.

The Group is primarily reliant upon income from subscriptions and fundraising. The group does hold reserves to ensure the continuity of activities should there be a major reduction in income. The Committee could raise the value of subscriptions to increase the income to the group on an ongoing basis, either temporarily or permanently.

Reduction or loss of leaders.

The group is totally reliant upon volunteers to run and administer the activities of the group. If there was a reduction in the number of leaders to an unacceptable level in a particular section or the group as a whole then there would have to be a contraction, consolidation or closure of a section. In the worst case scenario this would result in the complete closure of the Group.

Reduction or loss of members.

The Group provides activities for all young people aged 6 to 18. If there were a reduction in membership in a particular section or the group as whole then there would have to be a contraction, consolidation or closure of a section. In the worst case scenario this would result in the complete closure of the Group.



5. Objects and Activities

The Purpose of Scouting

The purpose of Scouting is to contribute to the development of young people in achieving their full physical, intellectual, social and spiritual potentials, as individuals, as responsible citizens and as members of their local, national and international communities.

The Values of Scouting

As Scouts we are guided by these values:

- **Integrity** - We act with integrity; we are honest, trustworthy and loyal.
- **Respect** - We have self-respect and respect for others.
- **Care** - We support others and take care of the world in which we live.
- **Belief** - We explore our faiths, beliefs and attitudes.
- **Cooperation** - We make a positive difference; we cooperate with others and make friends.

The Scout Method

Scouting takes place when young people, in partnership with adults, work together based on the values of Scouting and:

- Enjoy what they are doing and have fun
- Take part in activities indoors and outdoors
- Learn by doing
- Share in spiritual reflection
- Take responsibility and make choice
- Undertake new and challenging activities; and
- Make and live by their Promise



6. Membership

This year has seen a return to face to face scouting and normal activities. We have ended the year with 25 Beavers, 19 Cubs and 25 Scouts. There is a waiting list for Beavers and we receive regular requests to join the other sections. At the present time this means all sections are more or less at capacity. We now have an active Explorer Unit with 15 members and more waiting to join.

7. Adult Support.

Our Adult support continues to be high with 21 adult leaders across the sections supporting the young people. We have had a couple of leaders step down over the last 12 months due to other commitments, but they have been replaced with 1 new leader who is supporting cubs. We continue to support young leaders to develop and the 10 we currently have been invaluable to the sections. We have a good supply of occasional helpers too and parents who will step in when needed.

We specifically need help in the following roles for the coming year:

- Fund Raising Trustee Board Committee member.
- Trustee Board Members & Trustees
- Occasional Helpers (for camps and the odd section meeting)

There are many reasons for people choosing to help WF9 including:

- It's fun!
- Helping the local community
- Using existing talents
- Encouraging the next generation
- Gaining new skills
- Enhancing career prospects
- Meeting new and interesting people

If anyone is interested in helping or would like to know more about the positions, we have available then please contact **Nicki Hitchcock** (Group Scout Leader) email: nicki.hitchcock@gmail.com Tel: 01562 741126



8. Overview of Activities 2022/2023

Group Scout Leaders Review



As you will see from the section reports this year has seen a return to regular scouting. We have taken part in District and County Activities as well as a full programme of our own. The leader team remain dedicated and hardworking and I very much appreciate the time that they put in to provide such great activities and opportunities for our young people. We need to thank Lauren Wheeldon for her support of the group and wish her every success in her new role with Hereford and Worcester Scout

County. As a group the efforts leaders made during lockdown to maintain scouting has meant that numbers of young people remain strong with all sections full. We have been able to launch an Explorer Unit and numbers are rising.

A highlight for me is always to see our young people and leaders representing us at St George's Day Parade and when they return from camp full of stories of the adventures they have had.

We are still hoping to procure land for our own HQ on Spennells but until then we continue to make use of Heronswood School, Rhydd and other scout groups HQ's when required.

Fundraising has been low key this year but we have received grants from local councillors – Councillor Helen Dyke, Councillor Doug Hines and Councillor Marcus Hart and donations from Easy Fundraising and the Wyre Forest Lottery.

Yours in Scouting

Nicki Hitchcock
Group Scout Leader
WF9 Scout Group

We have had an amazing year, it has been lovely seeing our Beaver Scouts make new friends, learn new skills and grow in confidence.

We started the year leading the annual St Georges Day Parade, which for the first time saw all sections celebrating together at Kidderminster Harriers Stadium and an unforgettable talk from the Bishop of Worcester. The Beavers did their very best marching and were a credit to WF9 and scouting.



During the summer term we met outside at Rhydd Covert, trying out the climbing tower, caving trailer and assault course. The Beavers tried pond dipping and learned about the local wildlife at Bodenham Arboretum. There was also the usual campfire cooking of hot dogs & s'morzes, scavenger hunts and den building.

In June the Beavers joined Cubs from across Wyre Forest District for a giant inflatable funday to mark the Platinum Jubilee. This was swiftly followed by a District Safari Sleepover in Tree Tops Pavilion at WMSP. The Beavers enjoyed safari themed games and crafts, picnic lunch, an afternoon of wild rides at WMSP, ending the day with a campfire and movie before snuggling down in their tents. This really is a once in a lifetime opportunity and we are very grateful to WMSP for supporting us to hold this event.



In September we were lucky enough to meet at Rhydd for the first few weeks of the new term, once again cooking on the campfire.



In October the Beavers had a visit from SARA and tried out the rescue boats on dry land and learned about personal safety.



In November the Beavers enjoyed learning about emergency aid, which included practising their bandaging skills on each other.



I'm not sure who was more excited, Leaders or Beavers, that we were able to hold our annual Christmas sleepover once again. The Beavers enjoyed making Christmas crafts, cookies, games and of course a Christmas movie with hot chocolate and popcorn.



The Beavers also visited Santa at WMSP with other Beaver Scouts from the Wyre Forest District. I'm not sure which was most exciting, seeing Santa or visiting the sweet shop!

Massive well done & thank you to all those Beavers and parents who held deliver the Scout Christmas post, it was great to see our young people out in the local community.



During the Spring Term the Beavers were lucky enough to visit the local fire station, even getting to have a turn with the fire hose. There was also a taster session at the local Judo club and a visit from Fizz Pop Science.

Plants were planted for a Mothers Day surprise and we finished the term with an easter egg hunt at Rhydd.



We have been lucky this year to have help of young leaders, Eleanor and Theo who are always willing to join in a game, help with craft or just tidy up. Theo was one of our Beavers Scouts, time flies, it is so rewarding to see how our young people grow and come back to share their skills with us.

The success of this group would not be possible without the help and support of Jo, Rachel, Sarah, Dawn, Sharon & Hannah. I would just like to say a huge thank you to them, they are the best team. These amazing ladies also make it possible for me to carry on my roll as ADC Beaver Scouts, so "Thank You ladies".

WF9 Cub Section Report

These reports seem to start with what a busy year it has been. I am going to follow this with what an exceptionally busy year it has been in the Cubs section for WF9.

You only have to look back at the Facebook posts and pictures to capture the adventures we have been on and all the new skills and fun we have had as a group. We welcomed WF20 to our pack nights until their new leader was ready to take over which has made our pack nights even busier.

We had a some very exciting news when Will Fellows asked if we needed another leader well what could be say but "Yes". So, Will joined us with his raft of experience in scouting and it has been a blast.

First Aid training with our special guest Woody which we all really enjoyed along with Woody's fascinating stories of all the places he has visited as an Army medic.

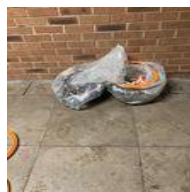


Remembrance Day run by Vern not sure many cubs' groups can say they had a real Soldier in full uniform to run the night.

Food, Food, Food. Cubs love to cook and even more love to eat what they have made and the chicken stew for camp was amazing.



Litter pick – was another exciting night who thought WF9 Cubs would make the papers from an innocent litter



Pick of Spennells.

As this brief report highlights that we are a very active pack that continues to grow. It has not been without its own challenges. With the leadership team in cubs growing along with 4 young leaders who do a fantastic job supporting all the cubs. A big well done to 3 of our Young Leaders who have



WF9 Spennells Scout Group

Trustee Report for the period 1st April 2022 to 31st March 2023



now completed all their Young Leader training modules and missions, where they have planned and run some fantastic nights. They will all be returning to us in September.

It's the effort and enthusiasm put in by all the Cubs, parents and the leadership team that has made this a great year and as a parent said to us, "I know my child has had the best time look how dirty they are!! "

YIS

WF9 Cub Leaders





WF9 Spennells Scout Group

Trustee Report for the period 1st April 2022 to 31st March 2023



The WF9 Scout Section

Although we didn't camp as much as usual, we still had a busy year in scouts. An active summer camp based at Rhydd, an expedition camp for older scouts with explorers along to assist as well as great results in Bald Eagle, which I have been told they intend to improve on this year. A survival/pioneer camp in winter showed their resilience. Lots of cooking as well as some interesting activities at normal meeting nights. We had an emergency response night and were able to complete challenges with mobile technology. We also competed in the C4 Challenge.

Had some great help on parent rota and some offers from parents to show off their skills to run a night as well

WF9 Explorers

Here at Explorers although we've only been together for just over 2 terms but we have already enjoyed a variety of activities such as going to Alton Towers, skinning rabbits, go-karting, camping, hiking, cooking, competitive shooting and many others.

Some of the highlights of these exciting activities was skinning rabbits for the first time. Another particularly fun experience was the survival camp where we survived with the bare minimum and used several different cutting tools for supplying our campfire wood.

There are now 15 of us and we meet every other Wednesday evening, mainly at Rhydd. We will have new members joining us from WF9 Scouts and WF1 and WF14 in the Autumn

Most of us are also young leaders so we are undertaking our training and supporting other sections in the group. This is helping us to gain new skills and share our skills with the younger members of the group.





9. Financial Review

Reserves Policy

The Group's policy on reserves is to hold sufficient resources to continue the charitable activities of the group should income and fundraising activities fall short. The Group Trustee Board considers that the group should hold a sum equivalent to 3 years running costs, circa £6,000 in reserve.

Investment Policy

The Group's Income and Expenditure is small and as a consequence does not have sufficient funds to invest in longer-term investments such as stocks and shares. The Group has therefore adopted a low risk strategy to the investment of its funds. All funds are held in cash using only mainstream banks and potentially The Scout Association's Short Term Investment Service (although to date we have not used this facility)



Treasurers Statement 2022/2023

The attached account statements show the WF9 Group Income and Expenditure details and Bank Account balances as at our financial year end of 31st March 2023 (FY23). The Group and all Sections operate and report on a Cash Accounting basis.

Our main sources of **Income** are Subscriptions, Gift Aid, Donations and Fund Raising...

- Subscription fee rates remained unchanged from the previous year.
- Gift Aid is claimed on the prior year's activities.
- Donations totalled £2,500. Group received £1,000 COVID Support from District Scouts; £250 from Monday Night Group; £500 from Worcestershire County Council. Explorers received £500 Start-up fund from District Scouts. Beavers received £250 from Monday Night Group
- The Wyre Forest Community Lottery scheme and Easyfundraising.org continue to provide a reliable income stream. There was no opportunity for bag packing at local supermarkets.

Everyone can help boost Fund Raising by using Easyfundraising.org where funds are donated to WF9 by retailers as a reward for online shopping and by signing up to the Wyre Forest Community Lottery and nominating WF9 as your organisation to support.

Expenses can be categorised as Scout Organisation statutory commitments, tents and equipment, badges and Section meeting night activity costs, including hall hire.

- The charges from the local and national Scout Organisations saw some rate increases that were all able to be met from normal income.
- Hall Hire costs included charges from the previous financial year.
- Camp costs currently show a positive balance as payments are received for activities in FY24
- We increased our insurance cover following an audit of all equipment held.
- There were no financial transactions relating to the WF9 Hut Project last year. The Group holds £14,000 against this project.

Overall WF9 made a £2.8k surplus in 2022/23 predominantly because of Donations. This matched budget expectations. The release of funds held for Camps from prior years and the collection of funds for future camps are the main drivers of balance changes in the Sections. The underlying position was breakeven.

With regards to Finances for 2023/24 – the Group surplus will be used to fund tent upgrade purchases and weather proofing the WF9 container on the Rhydd site. Any surplus will be allocated to the Hut Project, of which progress is expected to resume now COVID-19 complications are behind us.

The Section accounts and Group accounts have all been audited. Fully audited accounts will be available shortly on our website (www.WF9.org.uk) and on the Charity Commission website whereby law we have to publish details as a registered charity.

David Fish WF9 Group Treasurer June 2023



WF9 Spennells Scout Group

Trustee Report for the period 1st April 2022 to 31st March 2023



9th Wyre Forest Scout Group - Group & Sections Consolidation for Year Ended 31st March 2023

	Beavers	Cubs Tuesday	Cubs Thursday	Scouts Thursday	Explorers	WF9 Sections Total	WF9 Group	WF9 Total
Opening Balance	£1,088.61	£20.18	£1,465.03	£99.43	£0.00	£ 2,673.25	£18,301.85	£ 20,975.10
Scouts Balance Transfer	£ -	£ -	£ -	£ 2,000.00	£ -	£ 2,000.00	-£ 2,000.00	£ -
Income								
WF9 Hut Project	£ -	£ -	£ -	£ -	£ -	£ -	£ -	£ -
Subs	£ 2,257.50	£ -	£ 1,728.88	£ 3,031.74	£ 395.83	£ 7,413.95	£ -	£ 7,413.95
Gift Aid	£ -	£ -	£ -	£ -	£ -	£ -	£ 1,708.85	£ 1,708.85
Donations	£ 250.00	£ -	£ -	£ -	£ 500.00	£ 750.00	£ 1,750.00	£ 2,500.00
Wyre Forest Lottery	£ -	£ -	£ -	£ -	£ -	£ -	£ 603.50	£ 603.50
WF9 Shop	£ -	£ -	£ -	£ -	£ -	£ -	£ 568.73	£ 568.73
Bag Packing	£ -	£ -	£ -	£ -	£ -	£ -	£ -	£ -
Pledge Plod	£ 382.00	£ -	£ 174.38	£ 281.42	£ 55.00	£ 892.80	£ -	£ 892.80
Other Fund Raising	£ -	£ -	£ -	£ -	£ -	£ -	£ 545.32	£ 545.32
Camp & Trip Fees	£ 1,139.00	£ -	£ 660.66	£ 9,601.60	£ 830.00	£ 12,231.26	£ -	£ 12,231.26
Other	£ -	£ -	£ -	£ -	£ 200.00	£ 200.00	£ 64.06	£ 264.06
Total Income	£ 4,028.50	£ -	£ 2,563.92	£ 12,914.76	£ 1,980.83	£ 21,488.01	£ 5,240.46	£ 26,728.47
Expenditure								
WF9 Hut Project	£ -	£ -	£ -	£ -	£ -	£ -	£ -	£ -
Capitation	£ 934.50	£ -	£ 888.00	£ 1,020.00	£ 24.00	£ 2,866.50	£ 920.60	£ 3,787.10
District Levy	£ 120.00	£ -	£ 90.00	£ 140.00	£ 96.00	£ 446.00	£ 93.50	£ 539.50
Other Fees to District etc.	£ -	£ -	£ -	£ -	£ -	£ -	£ 862.15	£ 862.15
Scout Insurance	£ -	£ -	£ -	£ -	£ -	£ -	£ 285.04	£ 285.04
WF9 Shop	£ 45.95	£ -	£ 36.00	£ 71.78	£ -	£ 153.73	£ 649.19	£ 802.92
Training	£ -	£ -	£ 40.00	£ -	£ -	£ 40.00	£ -	£ 40.00
Hall Hire	£ 500.00	£ -	£ 328.13	£ 955.00	£ -	£ 1,783.13	£ -	£ 1,783.13
Camp & Trip Costs	£ 1,548.13	£ -	£ 804.14	£ 7,716.14	£ 860.02	£ 10,928.43	£ 60.00	£ 10,988.43
Meeting Night Costs	£ 825.44	£ -	£ 949.78	£ 1,301.57	£ 288.61	£ 3,365.40	£ -	£ 3,365.40
Tents & Equipment	£ 181.44	£ -	£ -	£ 84.60	£ 287.28	£ 553.32	£ 155.00	£ 708.32
Badges	£ 314.78	£ -	£ 100.87	£ -	£ -	£ 415.65	£ -	£ 415.65
Other	£ -	£ -	£ 14.50	£ 110.15	£ -	£ 124.65	£ 200.00	£ 324.65
Total Expenditure	£ 4,470.24	£ -	£ 3,251.42	£ 11,399.24	£ 1,555.91	£ 20,676.81	£ 3,225.48	£ 23,902.29
Closing Balance	£ 646.87	£ 20.18	£ 777.53	£3,614.95	£424.92	£ 5,484.45	£ 18,316.83	£ 23,801.28
FY23 Movement	-£ 441.74	£ -	-£ 687.50	£3,515.52	£424.92	£ 2,811.20	£ 14.98	£ 2,826.18
Statement Balances								
Bank Lloyds	£634.47	£20.18	£754.83	£3,515.52	£424.92	£5,349.92	£18,316.83	£23,666.75
Cash/Bank Barclays	£12.40	£0.00	£22.70	£99.43	£0.00	£134.53	£0.00	£134.53
Total	£646.87	£20.18	£777.53	£3,614.95	£424.92	£5,484.45	£18,316.83	£23,801.28



WF9 Spennells Scout Group

Trustee Report for the period 1st April 2022 to 31st March 2023



Declaration

The trustees declare that they have approved the trustees' report above.
Signed on behalf of the charity's trustees.

Signature

Clare Hodges
Chair of the Trustee Board

Nicki Hitchcock
Group Scout Leader
5 Coates Road
Kidderminster
DY10 2TZ
Tel: 01562 741126

Melanie Williams
Beaver Scout Section Leader
41 Humphrey Drive
Kidderminster
DY10 1XQ
Tel: 07885 380240

Amanda Ashton
Cub Scout Leader
20 Swift Park Grove
KIDDEMRINSTER
DY10 4HN
Tel: 07884230753

Steve Bailey
Scout Section Leader
12 Tutors Way,
KIDDERMINSTER
DY10 1PH
Tel: 07757767818



**Oxfordshire
Geology Trust**

OXFORDSHIRE GEOLOGY TRUST

AGM July 2023

TREASURER'S REPORT
for the financial year 2022-23

Balance sheet

The end-year balance totals £14,570 compared to £15,210 the previous year.

Income and expenditure account

Our financial ledger, invoices and statements for the year have been independently checked by Mr Brian Smith, whose help is gratefully acknowledged.

We received no project grants during the year and our income of £560 came mainly from the sale of trail guides (£460) and events (£100).

Expenditure was £1,200, including £818 for rent of a storeroom and £296 for insurance costs. Expenditure exceeded income by £640.

Projected cash flow 2023-2024

OGT income next year may be less than £600, whilst expenditure is likely to remain around £1,200. If the anticipated budget shortfall comes from our accumulated existing funds, it could leave an end-year total bank balance of under £14,000.

W.T. Horsfield
OGT Treasurer

Balance sheet for year ending March 31st 2023

Current Assets		
OGT bank account	14,570	
Petty cash	0	
		£14,570
Current Liabilities		
Accruals	0	
		£14,570
Financed by		
Balance from previous year	£15,210	
Deficit this year	-640	£14,570

Income and Expenditure for year ending March 31st 2023

Income		
Consultancy	100	
Donations	0	
Guide sales and other income	460	
		£560
Expenditure		
Rent	818	
Insurance	296	
Professional services	86	
Memberships	0	
Purchases	0	
		£1,200
Excess of Expenditure over Income		£640

10 Hollywood Lane

Hollywood

Birmingham

B47 5PX

27th July 2023

To whom it may concern,

RE: Independent Examination of the financial records of WF9 Scout Group for Y/E 31st March 2023.

I was asked by David Fish to conduct an independent examination of the financial transactions of WF9 Scout Group for year ending 31st March 2023.

Having reviewed the transactions, I am comfortable they represent a true reflection of the group's activities. My review was focused on the group transactions only with the relevant supporting data available.

Please contact me on 07773304919 or via email at darylwaters@hotmail.co.uk should you have any questions with regards to this review.

Yours sincerely

A handwritten signature in black ink, appearing to read 'Daryl Waters', written in a cursive style.

Daryl Waters ACMA CGMA