



EASTERN RAVENS

*"Supporting Children, Young People  
& Families for over 50 years"*



**ANNUAL REPORT 2021 - 2022**

## **Annual Report Year Ended 31<sup>st</sup> March 2022**

<b>Contents</b>	<b>Page</b>
Chairperson's Report	2
Trust Manager's Report	3
Ravens Retreat	5
Roseworth Community	6
Young Carers Support Service	9
Acknowledgement & Thanks	14

## **Chairperson's Report**

This is my fifteenth annual report as Chair of the Trust. This year has been largely one of a return to near normality following the worst of the Covid-19 pandemic. This, despite some continuing restrictions on normal business with the surge in Omicron variant infections and associated self-isolation of our staff, partners and families receiving our services.

Nevertheless, we have still achieved much, including:

- Continued delivery of the Young Carers Support Service and a delivery partner for Youth United Stockton
- Continued funding from the Ballinger Charitable Trust towards core costs
- Young Carers 21<sup>st</sup> Birthday (1<sup>st</sup> April 2021), press release including quote from the Director of Children's Services & feature in the Council's Stockton-on-Tees News
- Making use of the Job Retention Scheme – several staff remained on furlough until September 2021
- Successful £10k bid from the Masonic Charitable Foundation to extend young carers provision in communities
- Caravan Holiday Home worth £45k donated from a former lottery winner to provide respite breaks and holidays to young carers and their families
- Addressing holiday hunger and providing holiday enrichment commissioned by the Council and Roseworth Big Local Lottery Programme throughout the year and featuring in their success stories.

None of this continued success would have been possible without the continuing hard work and commitment of many people but not least our staff and volunteer Directors. On behalf of the vulnerable adults, children, young people and families who benefitted from all this, I offer an unreserved 'Thank You'.

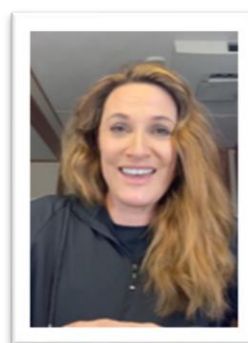
**Jim Beall**

## Trust Manager's Report

April 2021 to March 2022 has certainly been a year to remember on a number of levels. Not only were we able to return to some regular activity following the covid-19 pandemic, the organisation also expanded its service delivery to isolated and disadvantaged children, young people and their families which has been incredible.

The first headline of the year was the return to our office base after working from home for 13 months. With covid secure measures in place, the young carers team and I were extremely happy to be back together and seeing each other regularly – safe distanced of course.

This year saw an outstanding milestone for the organisation – 21 years of supporting young carers in our Borough. The very first young carers group met on 1<sup>st</sup> April 2000 and although we couldn't celebrate our 21<sup>st</sup> birthday as we'd have liked to, young carers enjoyed some small party themed activity days during the Easter holidays. The organisation received some lovely messages on social media from colleagues, friends and former service users alongside several video messages from TV celebrities including actors James Murray and Sarah Parish.



The caravan holiday home was a fitting donation in the young carers service's 21<sup>st</sup> birthday year. Given to our organisation to provide young carers with respite breaks and holidays for their families, 'Ravens Retreat' has proven invaluable in its first few months of operation with some wonderful feedback.

Throughout the year, young carers support groups have continued to take place at Primrose Hill Community Centre (PHCC). Our thanks go to Paul Surtees and Julie Derbyshire from EPIC Teesside CIO for their continued support and providing us with a safe space for young carers to meet during term time and school holidays.

Our positive partnership with EPIC Teesside CIO led to us taking over the running of the youth club at PHCC on a Wednesday evening in this disadvantaged community.

The sessions have worked extremely well and provide a welcoming place to support children and young people's personal and social development.

Our work in Roseworth has gone from strength to strength this year. We commenced a programme of detached youth work in May with the overall aim of ensuring young people's voices are heard and the opportunity to be represented in Roseworth. We were also able to implement the long awaited after-school club in June thanks to Roseworth Big Local funding following a pilot in 2019/2020. It has been so good to see this club develop and thrive with attendance growing each week.

While we were back in our base, the opportunity to recommence our open access youth session via Youth United Stockton was still not possible. With the agreement of Stockton-on-Tees Borough Council, we re-located our session to Roseworth in November 2021. Providing open access youth sessions at both Primrose Hill and Roseworth is proving to be time and cost-effective. Both sessions have seen some good attendance and positive changes to young people's lives.

One of the things we missed during the pandemic was the opportunity to network and meet with people so the opportunity to attend the Catalyst Conference was most definitely welcome. Not only did we see partner agencies who we haven't seen for a while, we were also able to make new links with Thirteen Housing which resulted in one of our families moving to a new, more appropriate property. This new link with the social housing provider, led to us working with them on Young Carers Action Day in March 2022 to raise awareness of young carers and their families with their staff, more work is planned for the coming year.



It goes without saying, I am very proud of all our accomplishments this year. My sincere thanks go to our dedicated Board of Directors for their continued support and to the amazing team of staff who always go the extra mile for the children, young people and families we work with; we've all played a huge part in improving children, young people and family's lives. I hope you enjoy reading the remainder of this annual report and gaining a greater understanding of our vital work here in Stockton-on-Tees.

**Tracey Hamilton**



## Ravens Retreat

Located on the beautiful Northumberland coast, minutes from the beach, on a site with an indoor swimming pool, play area, green spaces, entertainment complex, arcade, kids club, multi-sports court, restaurant and minutes from the beach. Young carers and their families have taken the opportunity to have an affordable holiday which can be vital in supporting emotional health and wellbeing.



***"We have had a fantastic weekend in this caravan, some quality time with the family"***



***"I've made new friends while I've been at the caravan"***

***"We have loved every minute"***



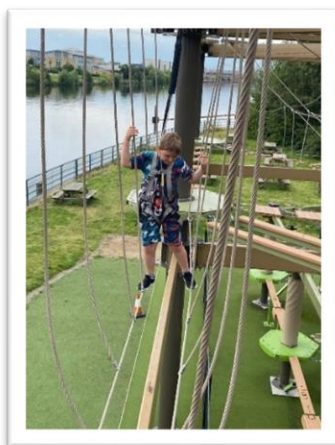
## Roseworth Community

We have continued to provide school holiday programmes which encompass enrichment activities, a healthy meal and snacks. The programmes are targeted at children and young people who are in receipt of benefits related free school meals, however, thanks to funding from Roseworth Big Local, we are also able to offer places to children and young people who are not in receipt of free school meals. Our programmes are for children and young people from age 5 and have continued to be delivered from the Elim Hope Centre in the community; the space enables children/young people to play safely indoors and outdoors.

We began this year in the middle of our Easter programme and mindful that some families were still fearful of covid-19, we offered an activity pack and lunch with 3 options:

- Safe distanced face to face activities with limited numbers
- Collection
- Home delivery service.

We also offered the same options during May half term as covid was still having an impact in our communities. However, the summer holiday programme was a full return to normality and a great time was had by all. Children and young people took part in a range of centre based and off-site activities and it was brilliant to see everyone having such a good time. We also worked alongside a range of external providers to completely enhance the summer holiday programme which included Creative Village, Tees Active and Strictly Dance Fusion.



Over the summer 67 individual children and young people attended our provision which was delivered for 4 hours per day, 4 days per week for 4 weeks (4 x 4 x 4).

## Feedback from children and young people included:

**I learned  
how to play  
bat & ball**

**Helping me to get  
out and make  
friends**

**Kind staff,  
creative  
activities**

In maintaining consistency, we ran the October (37 in attendance) and February half term (45 in attendance) programmes on the 4 x 4 x 4 model. We asked children and young people to sum up the February half term in one word...



The after-school club commenced in June of this year following a 10-week pilot with Little Sprouts Health and Wellbeing which took place in 2019/2020. Thanks to funding from Roseworth Big Local, the after-school club was due to continue from April to December 2020. However, the club was put on hold due to covid-19. Since June, the after-school club has offered a menu of activities at each session. Examples include:

- Art & crafts
- Den building (one member of staff is Forest School trained)
- Dodge ball
- Food tasting
- Football



We have encouraged children and young people to 'take the lead' and let us know what they would like to do at each session. As such, children and young people have obtained a sense of ownership of their club.

The initial proposal to continue the after-school club, identified the following achievements for children/young people:

- Develop their learning through play
- Experience new opportunities
- Learn new skills
- Increase confidence/self-esteem
- Increase participation in physical activity

The staff team report improvements in conduct and behaviour, manners – saying please and thank you, listening skills, social skills, friendships and confidence. Examples are detailed in the following case study:

Charlotte\* is a 13-year-old girl who lives with her younger and older siblings in the care of grandmother. Charlotte's younger sibling is very sociable and friendly, her elder sibling has Asperger's syndrome and does not leave the house. Charlotte started coming to the after-school club with her younger sister, she had zero confidence, would not make conversation and would not engage with anyone or anything when she came along. Over the coming months, Charlotte engaged in activities in very small steps at each session. The small steps eventually led to a girl who now helps others, is confident and she has developed some positive friendships at the after-school club.

\* Name has been changed

We asked children/young people what they enjoy about the after-school club:



## **Young Carers Support Service**

This service provides support to children, young people and their families in our Borough where a child/young person is identified as a young carer. Young carers are children and young people aged 5 to 18 years who provide physical care, emotional care and/or practical support to a family member that is affected by ill health, disability, mental health illness and/or substance misuse. Young carers undertake physical and emotional tasks which are often inappropriate and excessive for their age. This can include cooking, cleaning, doing the laundry and sitting with the person they care for. As such, young carers are often bullied because they are different, have poor physical and mental health and miss out on the many life chances experienced by their peers. This year, we received 166 new referrals and supported over 300 young carers. Due to covid-19 restrictions, certain elements of the service were delivered slightly differently.

Access to support is via the service's referral form or an involvement form from the local authority. Referrers include children's/adult's social workers, voluntary sector organisations, family support workers and teachers. Parents/guardians/family members can also make a self-referral.

### **Key Worker Role**

When a referral is received, it is allocated to a Key Worker at our weekly allocation meeting. The only exception to this is where a young carer is identified as being at crisis point and the referral is allocated within 24 hours. Before contacting a family to arrange a young carers and whole family assessment, Key Workers make contact with the referrer to gain further information if required and review any risks. Under normal circumstances, assessments are completed in the family home. However, as covid-19 is still having an impact and many families are extremely vulnerable, the majority of assessments were completed over the phone or in schools. As the weather got a little warmer, we were able to sit in families' gardens to complete the assessments where it was appropriate. After completing both assessments, Key Workers are able to establish the unmet needs which are placing a child/young person in a caring role and identify a plan of support which is tailored and bespoke to the young carer and their family's needs. Often this involves signposting and referrals to external agencies and includes:

- Adult Social Care
- Children's Hub
- Stockton Parent Carer Forum
- Autism Parents Together
- Citizens Advice Bureau
- Talking Therapies

## **Whole Family Support**

The service is commissioned to include a whole family approach. As such, we support the cared for and family members within the household. Again, support is tailored & bespoke as we understand no two families are the same. Key Workers follow up on signposts, referrals, encourage parents/family members to engage with other services, offer a listening ear and often handhold when physical or mental health prevents them from accessing other services. Many families are still feeling the effects of the pandemic and lockdowns. We have seen an increase in anxiety and depression and the need for more one-to-one support for parents/guardians this year.

## **Young Carers Support**

During the year we have provided fortnightly, centre based, evening drop-in sessions during term time for the 4 age-appropriate groups. Young carers (and staff) have played games, undertaken teambuilding & confidence building activities and learned new skills e.g. healthy eating & cooking. Lots of activities had to be ran slightly differently due to social distancing but we still managed to have lots of fun. Many young carers do not require group activities, instead they receive one to one support or regular texts and telephone calls which works for them, knowing they are supported and someone is there for them.

Following the donation last year of laptops and tablets, we amended our assessment paperwork to proactively ask if a young carer has access to I.T. equipment. We continued to loan laptops and tablets to assist young carers to complete their homework and socialise online throughout the year.

On our 21<sup>st</sup> birthday young carers arrived for the session and wondered who the 21<sup>st</sup> birthday balloons were for. We arranged a treasure hunt for letters which spelt out Happy



Birthday Young Carers. Many were amazed and also proud to be a part of something which has been running for so long. We also had cupcakes with Eastern Ravens & 21 on them, yummy!!

## School Holiday Programmes

During Easter, we had lots of centre-based activity days (while socially distancing) with lunch provided. Young carers particularly enjoyed making their own fruit kebabs.



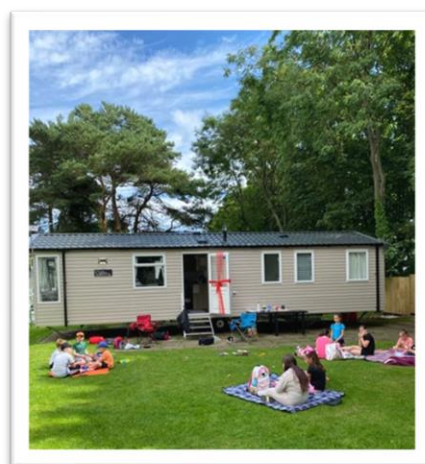
During May half term, 17 young carers were able to attend a 3-day residential to Peat Rigg Outdoor Centre courtesy of the Cohen Fund. This was the first residential since the pandemic and it was brilliant to get back to some outdoor activities. Young carers took part in canoeing, high ropes, low ropes,



zip line, night line and orienteering. For many young carers, they were experiencing these activities for the very first time in their lives. The staff team carried out some workshops during the 3 days to obtain young carers voices and opinions in the run up to Carers Week. The young people were incredibly open and their responses to the workshops were very thought provoking and honest.



The school summer holidays were spent located at our new caravan and surrounding area each day. We were blessed with great weather and spent days at the beach, exploring rock pools, catching various sea life including crabs and starfish; we were also lucky enough to see several pods of dolphins. When the tide was in, we enjoyed wave jumping and once had a visit from a friendly seal. There has been something to suit all ages with sandcastle building, playing in the park, outdoor games and collecting shells. We made & ate lunch at the caravan each day. Even the minibus was fun with lots of chatter & some dubious singing!

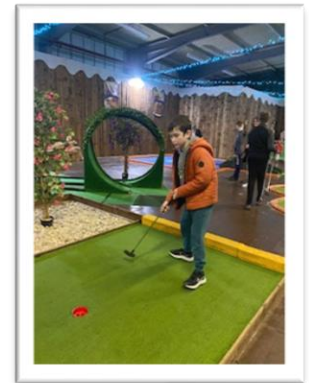






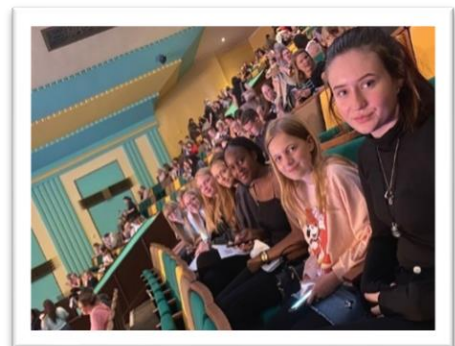
During October half term, the two younger groups enjoyed Go Climb and the older groups ice skating at Billingham Forum. The groups went back to the centre for lunch followed by an afternoon of activities

including Halloween bingo, cookie decorating and marshmallow eyeballs. All groups went to Holey Molies, during February half term and enjoyed a game of indoor crazy golf on the world's longest indoor course with lunch afterwards.



At Christmas, each group was invited to a meal at a restaurant in Norton. Each session was well attended and young carers had a lovely time. In the weeks leading up to Christmas, all groups got creative with Christmas crafts, making cards, door hangers, magnets, keyrings and gift bags with a few games of bingo to win some little treats.

Thanks to our colleagues at Adult Social Care, we received 10 VIP tickets to attend the opening of Stockton Globe and the McFly concert. Eight young carers aged 14+ were invited and they all had an amazing evening. Several of the young people had never been to a concert before so it was great to see their faces as they took in the atmosphere.



## Donations

Once again, we have received some amazing donations from partner agencies, local businesses and the public to help and support young carers and families. Donors this year include:

- Sprouts Community Food Charity
- Sainsbury's, Yarm
- Lisa Evans – Cabinet Member for Children and Young People
- Susan Targar - Tesco Community Champion
- Boots High Street Store



## Improving Identification

Understandably, we have not been able to engage face to face with many agencies due to covid-19 restrictions. We have continued to attend online events and use social media to raise awareness of young carers where possible and also used this medium to highlight other initiatives/resources which may be relevant to young carers and their families or external agencies. Alongside the work on Young Carers Action Day with Thirteen Housing, the service also created a poster which was shared with all schools in our Borough, over 300 professionals from external agencies and on social media. The theme of the day was 'Taking Action on Isolation' which highlighted how young carers can be isolated and miss out on activities and opportunities that their peers enjoy, especially after the pandemic. A number of schools and agencies shared, retweeted and commented on our social media posts.



Similarly, educational settings were also being careful and we weren't able to deliver any workshops until the back end of the year. As restrictions eased, schools began to allow Key Worker's in to undertake assessments on a one-to-one basis. Despite the pandemic, we have continued to receive referrals and remained in regular contact with educational settings in supporting young carers and their families. Examples include:

- Raising awareness with a new teacher who was unaware of the service
- Requesting some one-to-one time for a young carer with their teacher
- Making school aware that a young carer is not able to access online sessions
- Informing school that a young carer is being bullied
- Brokering access to school counselling services.

In raising the profile of young carers to improve identification, we have given a presentation at the online Stockton-on-Tees Governors meeting; delivered a team training session to 15 staff at Egglecliffe Primary School; took part in 'Bridging the Gap' online forum with school head teachers/senior leaders from the Tees Valley/North Yorkshire and met with a member of staff from Our Lady and St Bede Catholic Academy who was made aware of the service by a pupil who is a young carer. The school are keen to work towards the Young Carers in School Award.

## **Acknowledgements & Thanks**

The work of **EASTERN RAVENS TRUST** would not be possible without the constant support of a loyal and dedicated team. Thanks go to:

### **Board of Directors**

Jim Beall – Chair

Kenny McGarvey – Vice Chair

Lesley Cooke

Evaline Cunningham

Pam Norman

### **Trust Manager**

Tracey Hamilton

### **Admin & Team Support**

Ann-Marie Wilson

### **Young Carers Key Workers**

Simon Honeywell

Sue McGee

Star Wilson

### **Youth Work Lead**

Jan Brown

### **Youth Workers**

Barbara Hampson

Emma Hayes

Natalie Johnson

Danielle Jones

Hannah Newsome

Danielle Rollinson

Shirley Stenburge

Gordon Wills

Thanks also go to our **funders, partners** and **stakeholders**.

If you would like to know more about Eastern Ravens Trust  
and our work, please give us a call:

01642 678454.

or

send us an email:

[info@easternravenstrust.org](mailto:info@easternravenstrust.org)

**EASTERN RAVENS TRUST**  
(A company limited by guarantee not having a share capital)

**REPORT AND FINANCIAL STATEMENTS**

**YEAR ENDED 31<sup>ST</sup> MARCH 2022**

**COMPANY NUMBER : 02206156**

**REGISTERED CHARITY : 519907**

## **EASTERN RAVENS TRUST**

### **Contents**

### **Page**

**Report of the Council of Management**

**2**

**Report of the Independent Examiner**

**7**

**Statement of financial activities**

**8**

**Balance Sheet**

**9**

**Notes forming part of the financial statements**

**10**



**EASTERN RAVENS TRUST**  
**REPORT OF THE BOARD OF DIRECTORS (DIRECTORS AND TRUSTEES)**  
**YEAR ENDED 31<sup>ST</sup> MARCH 2022**

The Trustees present their report and the audited financial statements of the charity for the year ended 31<sup>st</sup> March 2022. The trustees have adopted the provisions of the Statement of Recommended Practice (SORP) "Accounting and Reporting by Charities" (FRS 102) in preparing the annual report and financial statements of the charity.

The financial statements have been prepared in accordance with the accounting policies set out in the notes to the accounts and comply with the charity's governing document, the Charities Act 2011 and Accounting and Reporting by Charities: Statement of Recommended Practice applicable to charities preparing their accounts in accordance with the Financial Reporting Standard applicable in the UK and Republic of Ireland published on 16 July 2014 (as amended by Update Bulletin 1 published on 2 February 2016).

**REFERENCE AND ADMINISTRATIVE INFORMATION**

Charity name:	Eastern Ravens Trust
Charity registration number:	519907
Company registration number:	02206156
Registered office and operational address:	Community Zone North Shore Academy Talbot Street Stockton on Tees TS20 2AY

**Board of Directors:**

Jim Beall	Chair
Kenny McGarvey	Vice-chair
Lesley Cooke	
Evaline Cunningham	
Pamela Norman	

**Company Secretary**

Tracey Hamilton

**Trust Manager**

Tracey Hamilton

**Independent Examiner**

Mr J Gresham FCCA

Azets, New Garth House, Upper Garth Gardens, Guisborough, TS14 6HA

## **EASTERN RAVENS TRUST**

### **REPORT OF THE COUNCIL OF MANAGEMENT (DIRECTORS AND TRUSTEES)**

**YEAR ENDED 31<sup>ST</sup> MARCH 2022**

#### **REFERENCE AND ADMINISTRATIVE INFORMATION (continued)**

##### **BANKERS**

Nat West Bank plc, Stockton on Tees Branch, 123 High Street, Stockton TS18 1NW

#### **STRUCTURE, GOVERNANCE & MANAGEMENT**

##### Governing Document

Eastern Ravens Trust is a company limited by guarantee and a registered charity governed by its Memorandum and Articles of Association dated 16<sup>th</sup> December 1987 as amended by special resolutions dated 13<sup>th</sup> April 1997 and 22<sup>nd</sup> April 1998.

##### Recruitment and appointment of the Board of Directors

The Board of Directors (who are trustees of the charity) composes of not less than 5 but not more than 12, as the members of the Trust think fit. The Board of Directors are elected by the members of the Trust at each Annual General Meeting and hold office for a period of 3 years from the Annual General Meeting at which they are elected. At each Annual General Meeting one third of the Board of Directors retires but they can offer themselves for re-election. Those retiring are those longest in office since their last retirement. The Board of Directors has to meet at least 6 times a year. Trustees are recruited from the membership of the charity.

##### Trustee induction and training

New trustees are briefed on their legal obligations under company and charity law. They are provided with a copy of the Memorandum and Articles of Association and the most recent audited accounts, as well up to date management information. Trustees are encouraged to attend appropriate external training events where these will facilitate their role.

##### Risk management

The trustees monitor progress against budget and objectives and review their strategic objectives at their regular meetings. They also review the risks faced by the charity and implement strategies to mitigate those risks. This included the computerisation of the accounting records to ensure that management reports can be produced on a timely basis.

##### Organisational structure

The trustees are responsible for administering the charity and for its strategic direction. A manager is appointed by the trustees to manage the day to day operations of the charity.

##### Related parties

The charity does not have any related parties other than trustees and their immediate families.

## **EASTERN RAVENS TRUST**

### **REPORT OF THE COUNCIL OF MANAGEMENT (DIRECTORS AND TRUSTEES)**

**YEAR ENDED 31<sup>ST</sup> MARCH 2022**

#### **Objectives, activities, achievement and performance including public benefit statement**

The principal activity of the Company in the year under review was the informal education of young people aged 8 to 16 years who are experiencing social exclusion and/or disadvantage.

The trustees have referred to the guidance contained in the Charity Commission's general guidance on public benefit when reviewing the charity's aims and objectives and in planning its future activities.

#### **Chairperson's Report**

This is my fifteenth annual report as Chair of the Trust. This year has been largely one of a return to near normality following the worst of the Covid-19 pandemic. This, despite some continuing restrictions on normal business with the surge in Omicron variant infections and associated self-isolation of our staff, partners and families receiving our services.

Nevertheless, we have still achieved much, including;

- Continued delivery of the Young Carers Support Service and a delivery partner for Youth United Stockton
- Continued funding from the Ballinger Charitable Trust towards core costs
- Young Carers Service 21<sup>st</sup> Birthday (1<sup>st</sup> April 2021), press release including quote from the Director of Children's Services & feature in the Council's Stockton-on-Tees News
- Making use of the Job Retention Scheme – several staff remained on furlough until September 2021.
- Successful £10k bid from the Masonic Charitable Foundation to extend young carers provision in communities
- Caravan Holiday Home worth £45K donated from a former lottery winner to provide respite breaks and holidays to young carers and their families
- Addressing holiday hunger and providing holiday enrichment commissioned by the Council and Roseworth Big Local Lottery Programme throughout the year and featuring in their success stories.

None of this continued success would have been possible without the continuing hard work and commitment of many people but not least our paid staff and Directors. On behalf of the vulnerable adults, children, young people and families who benefitted from all this, I offer an unreserved 'Thank You'.

**Jim Beall**

**EASTERN RAVENS TRUST**  
**REPORT OF THE COUNCIL OF MANAGEMENT (DIRECTORS AND TRUSTEES)**  
**YEAR ENDED 31<sup>ST</sup> MARCH 2022**

**Investment powers**

Under the Memorandum and Articles of Association, the charity has the power to make any investment which the Trustees see fit.

**Reserves policy**

The trustees aim to expend all funds on their charitable objects but recognise the need to maintain a certain level of reserves as a cushion against possible future funding difficulties. Free reserves (i.e. those reserves not tied up in fixed assets, designated or restricted funds) of £70,000 would allow the charity to continue its operations for around 4 months, while alternative funding sources were sought.

At 31<sup>st</sup> March 2022, free reserves amounted to £44,164.

**EASTERN RAVENS TRUST**  
**REPORT OF THE COUNCIL OF MANAGEMENT (DIRECTORS AND TRUSTEES)**  
**YEAR ENDED 31<sup>ST</sup> MARCH 2022**

**Statement of Trustees' Responsibilities**

The trustees (who are also directors of Eastern Ravens Trust for the purposes of company law) are responsible for preparing the Trustees' Annual Report and the financial statements in accordance with applicable law and United Kingdom Accounting Standards (United Kingdom Generally Accepted Accounting Practice).

Company law requires the trustees to prepare financial statements for each financial year, which give a true and fair view of the state of affairs of the charitable company and of the incoming resources and application of resources, including the income and expenditure, of the charitable company for that period. In preparing these financial statements, the trustees are required to:

- select suitable accounting policies and then apply them consistently;
- observe the methods and principles in the Charities SORP;
- make judgements and estimates that are reasonable and prudent;
- state whether applicable UK Accounting Standards have been followed, subject to any material departures disclosed and explained in the financial statements;
- prepare the financial statements on the going concern basis unless it is inappropriate to presume that the charitable company will continue in operation.

The trustees are responsible for keeping adequate accounting records that disclose with reasonable accuracy at any time the financial position of the charitable company and enable them to ensure that the financial statements comply with the Companies Act 2006. They are also responsible for safeguarding the assets of the charitable company and hence for taking reasonable steps for the prevention and detection of fraud and other irregularities.

By order of the trustees:

J Beall  
Trustee  
13<sup>th</sup> September 2022





## **Independent Examiner's Report to the Trustees of Eastern Ravens Trust**

I report on the accounts of the company for the year ended 31<sup>st</sup> March 2022 which are set out on pages 8 to 19.

### **Respective responsibilities of trustees and examiner**

The trustees (who are also the directors of the company for the purposes of company law) are responsible for the preparation of the accounts. The trustees consider that an audit is not required for this year under section 144(2) of the Charities Act 2011 (the 2011 Act) and that an independent examination is needed.

Having satisfied myself that the charity is not subject to audit under company law and is eligible for independent examination, it is my responsibility to:

- examine the accounts under section 145 of the 2011 Act;
- follow the procedures laid down in the general Directions given by the Charity Commission under section 145(5)(b) of the 2011 Act; and
- state whether particular matters have come to my attention.

### **Basis of independent examiner's report**

My examination was carried out in accordance with the general Directions given by the Charity Commission. An examination includes a review of the accounting records kept by the charity and a comparison of the accounts presented with those records. It also includes consideration of any unusual items or disclosures in the accounts, and seeking explanations from you as trustees concerning any such matters. The procedures undertaken do not provide all the evidence that would be required in an audit and consequently no opinion is given as to whether the accounts present a "true and fair view" and the report is limited to those matters set out in the statement below.

### **Independent examiner's statement**

In connection with my examination, no matter has come to my attention:

- 1 which gives me reasonable cause to believe that, in any material respect, the requirements:
  - to keep accounting records in accordance with section 386 of the Companies Act 2006; and
  - to prepare accounts which accord with the accounting records, comply with the accounting requirements of section 396 of the Companies Act 2006 and with the methods and principles of the Statement of Recommended Practice: Accounting and Reporting by Charitieshave not been met; or
- 2 to which, in my opinion, attention should be drawn in order to enable a proper understanding of the accounts to be reached.

Mr J Gresham FCCA  
Azets  
Accountants  
13<sup>th</sup> September 2022



New Garth House  
Upper Garth Gardens  
GUISBOROUGH  
TS14 6HA

**EASTERN RAVENS TRUST**

**STATEMENT OF FINANCIAL ACTIVITIES  
(INCLUDING INCOME & EXPENDITURE ACCOUNT)  
FOR THE YEAR ENDED 31<sup>ST</sup> MARCH 2022**

	<b>Note</b>	<b>Unrestricted Funds £</b>	<b>Restricted Funds £</b>	<b>Total Funds 2022 £</b>	<b>Total Funds 2021 £</b>
<b>INCOME</b>					
Donations & legacies	2	18796	-	18796	26016
<i>Income from charitable activities</i>					
Youth activities	2	18276	163376	181652	174111
Investment income		1	-	1	37
<b>TOTAL INCOME</b>		<b>37073</b>	<b>163376</b>	<b>200449</b>	<b>200164</b>
<b>EXPENDITURE</b>					
<i>Expenditure on charitable activities</i>					
Cost of youth activities work	3	37639	166717	204356	196363
<b>TOTAL EXPENDITURE</b>	3	<b>37639</b>	<b>166717</b>	<b>204356</b>	<b>196363</b>
Net income/(expenditure) for the year		(566)	(3341)	(3907)	3801
Transfers between funds	7	(7188)	7188	-	-
Net movement in funds		(7754)	3847	(3907)	3801
Total funds brought forward		84664	25663	110327	106526
Total funds carried forward		76910	29510	106420	110327

**EASTERN RAVENS TRUST  
BALANCE SHEET AS AT 31<sup>ST</sup> MARCH 2022**

	NOTE	2022		2021	
		£	£	£	£
<b>FIXED ASSETS</b>	7		7844		-
<b>CURRENT ASSETS</b>					
Debtors	8	8829		25307	
Cash at bank and in hand		109699		113845	
		<u>118528</u>		<u>139152</u>	
<b>CREDITORS: AMOUNTS FALLING DUE WITHIN ONE YEAR</b>	9	(19952)		(28825)	
		<u></u>		<u></u>	
<b>NET CURRENT ASSETS</b>			98576		110327
			<u></u>		<u></u>
<b>NET ASSETS</b>			106420		110327
			<u></u>		<u></u>
<b>CAPITAL AND RESERVES</b>					
<b>Funds</b>					
Restricted	10	29510		25663	
Designated	10	32746		32746	
Unrestricted	10	44164		51918	
		<u></u>		<u></u>	
			106420		110327
			<u></u>		<u></u>

For the year ending 31<sup>st</sup> March 2022 the company was entitled to exemption from audit under section 477 of the Companies Act 2006 relating to small companies.

Directors' responsibilities:

- The members have not required the company to obtain an audit of its accounts for the year in question in accordance with section 476;
- The directors acknowledge their responsibilities for complying with the requirements of the Act with respect to accounting records and the preparation of accounts.

The Financial Statements have been prepared in accordance with the special provisions of Part 15 of the Companies Act 2006 relating to small companies.

Approved by the Trustees on 13<sup>th</sup> September 2022 and signed on their behalf by

J Beall..........Trustee

**EASTERN RAVENS TRUST**  
**NOTES FORMING PART OF THE FINANCIAL STATEMENTS**  
**FOR THE YEAR ENDED 31<sup>ST</sup> MARCH 2022**

**1. ACCOUNTING POLICIES**

**(a) General information and basis of preparation**

Eastern Ravens Trust is a company limited by guarantee and registered in England. In the event of the charity being wound up, the liability in respect of the guarantee is limited to £1 per member of the charity. The address of the registered office is given in the charity information on page 2 of these financial statements. The nature of the charity's operations and principal activities are the informal education of young people aged 8 to 16 years who are experiencing social exclusion and/or disadvantage.

The charity constitutes a public benefit entity as defined by FRS 102. The financial statements have been prepared in accordance with 'Accounting and Reporting by Charities: Statement of Recommended Practice applicable to charities preparing their accounts in accordance with the Financial Reporting Standard applicable in the UK and Republic of Ireland (FRS 102) issued on 16 July 2014 (as updated through Update Bulletin 1 published on 2 February 2016), the Financial Reporting Standard applicable in the United Kingdom and Republic of Ireland (FRS 102), the Charities Act 2011, the Companies Act 2006 and UK Generally Accepted Practice as it applies from 1 January 2015.

The charity has applied Update Bulletin 1 as published on 2 February 2016 and does not include a cash flow statement on the grounds that it is applying FRS 102 Section 1A.

The financial statements are prepared on a going concern basis under the historical cost convention, modified to include certain items at fair value. The financial statements are presented in sterling which is the functional currency of the charity and rounded to the nearest £.

The significant accounting policies applied in the preparation of these financial statements are set out below. These policies have been consistently applied to all years presented unless otherwise stated.

The charity adopted SORP (FRS 102) in the current year but this has not affected the financial position or performance.

**(b) Funds**

Unrestricted funds are available for use at the discretion of the trustees in furtherance of the general objectives of the charity and which have not been designated for other purposes.

Designated funds comprise unrestricted funds that have been set aside by the trustees for particular purposes. The aim and use of each designated fund is set out in the notes to the financial statements.

Restricted funds are funds which are to be used in accordance with specific restrictions imposed by donors or which have been raised by the charity for particular purposes. The cost of raising and administering such funds are charged against the specific fund. The aim and use of each restricted fund is set out in the notes to the financial statements.

**EASTERN RAVENS TRUST**  
**NOTES FORMING PART OF THE FINANCIAL STATEMENTS**  
**FOR THE YEAR ENDED 31<sup>ST</sup> MARCH 2022**

**1. ACCOUNTING POLICIES**

**(c) Income recognition**

All incoming resources are included in the Statement of Financial Activities (SoFA) when the charity is legally entitled to the income after any performance conditions have been met, the amount can be measured reliably and it is probable that the income will be received.

For donations to be recognised the charity will have been notified of the amounts and the settlement date in writing. If there are conditions attached to the donation and this requires a level of performance before entitlement can be obtained then income is deferred until those conditions are fully met or the fulfilment of those conditions is within the control of the charity and it is probable that they will be fulfilled.

Donated facilities and donated professional services are recognised in income at their fair value when their economic benefit is probable, it can be measured reliably and the charity has control over the item. Fair value is determined on the basis of the value of the gift to the charity. For example the amount the charity would be willing to pay in the open market for such facilities and services. A corresponding amount is recognised in expenditure.

No amount is included in the financial statements for volunteer time in line with the SORP (FRS 102). Further detail is given in the Trustees' Annual Report.

For legacies, entitlement is the earlier of the charity being notified of an impending distribution or the legacy being received. At this point income is recognised. On occasion legacies will be notified to the charity however it is not possible to measure the amount expected to be distributed. On these occasions, the legacy is treated as a contingent asset and disclosed.

Investment income is earned through holding cash in a deposit account and is recognised when it is earned.

**(d) Expenditure recognition**

All expenditure is accounted for on an accruals basis and has been classified under headings that aggregate all costs related to the category. Expenditure is recognised where there is a legal or constructive obligation to make payments to third parties, it is probable that the settlement will be required and the amount of the obligation can be measured reliably. All direct costs relate to the charity's charitable activities.

**EASTERN RAVENS TRUST**  
**NOTES FORMING PART OF THE FINANCIAL STATEMENTS**  
**FOR THE YEAR ENDED 31<sup>ST</sup> MARCH 2022**

**1. ACCOUNTING POLICIES**

**(e) Support costs allocation**

Support costs are those that assist the work of the charity but do not directly represent charitable activities and include office costs, governance costs, administrative payroll costs. They are incurred directly in support of expenditure on the objects of the charity and include project management carried out at Headquarters. Where support costs cannot be directly attributed to particular headings they have been allocated to cost of raising funds and expenditure on charitable activities on a basis consistent with use of the resources.

The analysis of these costs is included in note 3.

Irrecoverable VAT is charged as an expense against the activity for which expenditure arose.

**(f) Tangible fixed assets**

Tangible fixed assets are stated at cost (or deemed cost) or valuation less accumulated depreciation and accumulated impairment losses. Cost includes costs directly attributable to making the asset capable of operating as intended.

Depreciation is provided on all tangible fixed assets, at rates calculated to write off the cost, less estimated residual value, of each asset on a systematic basis over its expected useful life as follows:

Equipment	25% straight line
-----------	-------------------

**(g) Debtors and creditors receivable / payable within one year**

Debtors and creditors with no stated interest rate and receivable or payable within one year are recorded at transaction price. Any losses arising from impairment are recognised in expenditure.

**(h) Provisions**

Provisions are recognised when the charity has an obligation at the balance sheet date as a result of a past event, it is probable that an outflow of economic benefits will be required in settlement and the amount can be reliably estimated.

**EASTERN RAVENS TRUST  
NOTES FORMING PART OF THE FINANCIAL STATEMENTS  
FOR THE YEAR ENDED 31<sup>ST</sup> MARCH 2022**

**1. ACCOUNTING POLICIES**

**(i) Employee benefits**

When employees have rendered service to the charity, short-term employee benefits to which the employees are entitled are recognised at the undiscounted amount expected to be paid in exchange for that service.

The charity operates a defined contribution plan for the benefit of its employees. Contributions are expensed as they become payable.

**(j) Tax**

The charity is an exempt charity within the meaning of schedule 3 of the Charities Act 2011 and is considered to pass the tests set out in Paragraph 1 Schedule 6 Finance Act 2010 and therefore it meets the definition of a charitable company for UK corporation tax purposes.

**(k) Going concern**

The financial statements have been prepared on a going concern basis as the trustees believe that no material uncertainties exist. The trustees have considered the level of funds held and the expected level of income and expenditure for 12 months from authorising these financial statements. The budgeted income and expenditure is sufficient with the level of reserves for the charity to be able to continue as a going concern.



**EASTERN RAVENS TRUST**  
**NOTES FORMING PART OF THE FINANCIAL STATEMENTS**  
**FOR THE YEAR ENDED 31<sup>ST</sup> MARCH 2022**

2. INCOMING RESOURCES	Unrestricted Funds £	Restricted Funds £	Total 2022 £	Total 2021 £
<i>Donations &amp; legacies</i>				
Legacy	-	-	-	-
Core - JRS	10633	-	10633	20836
Sundry donations	8163	-	8163	5180
	<u>18796</u>	<u>-</u>	<u>18796</u>	<u>26016</u>
	<u>Unrestricted Funds £</u>	<u>Restricted Funds £</u>	<u>Total 2022 £</u>	<u>Total 2021 £</u>
<i>Income from charitable activities</i>				
SBC carers' grant	-	105123	105123	105123
Big Local – Roseworth	-	-	-	8464
Freemasons of Durham	-	10250	10250	-
Roseworth Holiday Programme	-	20703	20703	-
CCG Health Initiatives	-	-	-	-
YUS Income	-	9460	9460	3480
Fundraising	1187	-	1187	-
Miscellaneous	-	-	-	90
Primrose Hill Youth Club	-	2764	2764	-
Roseworth After School Club	-	6538	6538	-
Roseworth Detached Youth Work	-	846	846	-
Public Health	-	742	742	5765
Caravan Income	-	6950	6950	-
Ballinger Charitable Trust	16000	-	16000	16000
Tees Valley Comm Foundation	-	-	-	1000
Dept for Digital, Culture, Media & Sport	-	-	-	25307
Maintaining & Improving MH in Covid	-	-	-	2000
Street Games	-	-	-	1882
Martin Lewis Coronafund	-	-	-	5000
Core	1089	-	1089	-
	<u>18276</u>	<u>163376</u>	<u>181652</u>	<u>174111</u>

Of total income of £200449 in 2022 (2021: £200164), £163376 (2021: £127714) was credited to restricted funds and £37073 (2021: £72450) was credited to unrestricted funds.

**EASTERN RAVENS TRUST**  
**NOTES FORMING PART OF THE FINANCIAL STATEMENTS**  
**FOR THE YEAR ENDED 31<sup>ST</sup> MARCH 2022**

**3. EXPENDITURE**

	<b>Basis of allocation</b>	<b>Charitable Costs</b>	<b>Governance costs</b>	<b>2022 Total</b>	<b>2021 Total</b>
<b>Costs directly allocated to activities</b>					
		<b>£</b>	<b>£</b>	<b>£</b>	<b>£</b>
Staff costs	Direct	90087	-	90087	93179
Professional fees	Direct	1351	-	1351	1466
Activities	Direct	65133	-	65133	34691
Transport costs	Direct	275	-	275	-
Subscription	Direct	744	-	744	-
Sessional staff	Direct	-	-	-	-
Insurance	Direct	1126	-	1126	1111
Staff travel	Direct	1928	-	1928	3277
Training	Direct	324	-	324	168
Advertising	Direct	467	-	467	1002
Independent Exam	Direct	-	1590	1590	1590
Miscellaneous	Direct	294	-	294	624
<b>Support costs allocated to activities</b>					
Staff costs	Staff time	30667	1614	32281	55590
Depreciation	Usage	2353	262	2615	399
Premises costs	Usage	3600	400	4000	-
Professional	Usage	330	329	659	1568
Office costs	Usage	1334	148	1482	1698
<b>Total</b>		<b>200013</b>	<b>4343</b>	<b>204356</b>	<b>196363</b>

Of the £204356 of expenditure in 2022 (2021: £196363) £166717 was charged to restricted funds (2021: £136704) and £37639 was charged to unrestricted funds (2021: £59659).

**EASTERN RAVENS TRUST**  
**NOTES FORMING PART OF THE FINANCIAL STATEMENTS**  
**FOR THE YEAR ENDED 31<sup>ST</sup> MARCH 2022**

**4. NET (OUTGOING)/INCOMING RESOURCES FOR THE YEAR**

This is stated after charging:	<b>2022</b>	<b>2021</b>
	<b>£</b>	<b>£</b>
Trustees' emoluments and expenses	Nil	Nil
Independent Examiner's Fee (including VAT)	1590	1590
Depreciation of tangible fixed assets	2615	399
	<u>          </u>	<u>          </u>

**5. STAFF COSTS & NUMBERS**

	<b>2022</b>	<b>2021</b>
	<b>£</b>	<b>£</b>
Wages and Salaries	141912	138593
Social Security Costs	6454	6798
Pension costs	3311	3378
Recruitment costs	-	-
	<u>          </u>	<u>          </u>
	<u>151677</u>	<u>148769</u>

There were no employees whose emoluments as defined for taxation purposes amounted to over £60,000 (2021: NIL). The average number of employees during the year was 14 (2021: 6) being the manager and support staff. In addition sessional workers are employed.

**6. TRANSFERS BETWEEN FUNDS**

These relate to transfers which account for management and other charges from unrestricted to restricted funds.

**EASTERN RAVENS TRUST**  
**NOTES FORMING PART OF THE FINANCIAL STATEMENTS**  
**FOR THE YEAR ENDED 31<sup>ST</sup> MARCH 2022**

**7. FIXED ASSETS**

	<b>Equipment</b>
	<b>£</b>
<b>COST</b>	
At 1 <sup>st</sup> April 2021	10158
Additions	10459
	<hr/>
At 31 <sup>st</sup> March 2022	20617
	<hr/> <hr/>
<b>DEPRECIATION</b>	
At 1 <sup>st</sup> April 2021	10158
Charge for the year	2615
	<hr/>
At 31 <sup>st</sup> March 2022	12773
	<hr/> <hr/>
<b>NET BOOK VALUE</b>	
At 31 <sup>st</sup> March 2022	7844
	<hr/> <hr/>
At 31 <sup>st</sup> March 2021	-
	<hr/> <hr/>

There were no commitments to capital expenditure at 31<sup>st</sup> March 2022 or at 31<sup>st</sup> March 2021.

**8. DEBTORS**

	<b>2022</b>	<b>2021</b>
	<b>£</b>	<b>£</b>
Other debtors and prepayments	8829	25307
	<hr/> <hr/>	<hr/> <hr/>

**EASTERN RAVENS TRUST**  
**NOTES FORMING PART OF THE FINANCIAL STATEMENTS**  
**FOR THE YEAR ENDED 31<sup>ST</sup> MARCH 2022**

**9. CREDITORS: Amounts falling due within one year**

	<b>2022</b>	<b>2021</b>
	<b>£</b>	<b>£</b>
Trade creditors	1749	-
Accruals	1880	1880
Deferred Income	16000	26250
Pension	323	695
	<u>19952</u>	<u>28825</u>

**10. MOVEMENT IN FUNDS**

	<b>At 1<sup>st</sup> April 2021</b>	<b>Incoming Resources</b>	<b>Outgoing Resources</b>	<b>Transfers</b>	<b>At 31<sup>st</sup> March 2022</b>
	<b>£</b>	<b>£</b>	<b>£</b>	<b>£</b>	<b>£</b>
<b>Restricted Funds</b>					
Young Carers	-	105123	(112311)	7188	-
Tristar Homes Buzzin	12387	-	(3722)	-	8665
Roseworth After School Club	-	6538	(3303)	-	3235
Roseworth Detached YW	-	846	(846)	-	-
Primrose Youth Club	-	2764	(2764)	-	-
YUS	3015	9460	(12475)	-	-
Teesside University	4600	-	(41)	-	4559
Public Health	-	742	(742)	-	-
Butterwick Partnership Pilot	4230	-	-	-	4230
Roseworth Holiday Programme	(451)	20703	(20252)	-	-
Freemasons of Durham	-	10250	(4224)	-	6026
Street games	1882	-	-	-	1882
Caravan	-	6950	(6037)	-	913
<b>Total Restricted</b>	<b>25663</b>	<b>163376</b>	<b>(166717)</b>	<b>7188</b>	<b>29510</b>
<b>Unrestricted Funds</b>					
General	51918	37073	(37639)	(7188)	44164
Designated					
Kathy Lindsey Memorial Fund	3181	-	-	-	3181
Lucy Evers Memorial Fund	8726	-	-	-	8726
Redundancy Standby Fund	20000	-	-	-	20000
Terry Wood Memorial Fund	839	-	-	-	839
<b>Total Unrestricted</b>	<b>84664</b>	<b>37073</b>	<b>(37639)</b>	<b>(7188)</b>	<b>76910</b>
<b>Total Funds</b>	<b>110327</b>	<b>200449</b>	<b>(204356)</b>	<b>-</b>	<b>106420</b>

**EASTERN RAVENS TRUST**  
**NOTES FORMING PART OF THE FINANCIAL STATEMENTS**  
**FOR THE YEAR ENDED 31<sup>ST</sup> MARCH 2022**

**10. MOVEMENT IN FUNDS continued**

**PURPOSES OF RESTRICTED FUNDS**

<b>Young Carers</b>	Bespoke & tailored support to young carers and their families within the Borough of Stockton-on-Tees.
<b>Tristar Homes Buzzin'</b>	This funding is to deliver a project that gives young people in need, accredited outcomes and life skills.
<b>Roseworth Big Local</b>	These grants from Big Local are to provide for positive activities for young people in the Roseworth Ward of Stockton.
<b>Youth United Stockton</b>	Delivery of 30 open access youth session per year for children from age 10.
<b>Primrose Hill Youth Club</b>	Delivery of a term time open access youth session for children from age 8 in the community.
<b>Teesside University</b>	Delivery of a term time girls only group (Tees Valley Sport) in the Roseworth Community.
<b>Butterwick Partnership Pilot</b>	To improve support for children & young people affected by a family member's cancer/life limiting illness, increase capacity of the children's support group and further identify hidden young carers.
<b>Roseworth Holiday Programmes</b>	Free school holiday activities and food provision for children and young people at a time which can be particularly hard for some families.
<b>Freemasons of Durham</b>	Regenerating Young Carers – increased access to respite breaks in communities.
<b>Caravan Holiday Home</b>	To provide young carers with a respite break and holidays with their family.

**PURPOSES OF DESIGNATED FUNDS**

**Kathy Lindsey Memorial Fund**, may be used at the discretion of the trustees to make grants to families in need.

**Lucy Evers Memorial Fund** is to be used to provide one-off grants to support children and young people in achieving their aspirations where little or no assistance is available elsewhere.

**Redundancy Standby Fund** is a contingency against any future redundancy costs.

**EASTERN RAVENS TRUST**  
**NOTES FORMING PART OF THE FINANCIAL STATEMENTS**  
**FOR THE YEAR ENDED 31<sup>ST</sup> MARCH 2022**

**11. ANALYSIS OF NET ASSETS BETWEEN FUNDS**

	<b>Unrestricted Funds £</b>	<b>Restricted Funds £</b>	<b>Total £</b>
Fixed Assets	-	-	-
Net Current Assets	76910	29510	106420
	<u>76910</u>	<u>29510</u>	<u>106420</u>





**EASTERN RAVENS TRUST**  
(A company limited by guarantee not having a share capital)

**REPORT AND FINANCIAL STATEMENTS**

**YEAR ENDED 31<sup>ST</sup> MARCH 2022**

**COMPANY NUMBER : 02206156**

**REGISTERED CHARITY : 519907**

## **EASTERN RAVENS TRUST**

### **Contents**

	<b>Page</b>
Report of the Council of Management	2
Report of the Independent Examiner	7
Statement of financial activities	8
Balance Sheet	9
Notes forming part of the financial statements	10

**EASTERN RAVENS TRUST**  
**REPORT OF THE BOARD OF DIRECTORS (DIRECTORS AND TRUSTEES)**  
**YEAR ENDED 31<sup>ST</sup> MARCH 2022**

The Trustees present their report and the audited financial statements of the charity for the year ended 31<sup>st</sup> March 2022. The trustees have adopted the provisions of the Statement of Recommended Practice (SORP) "Accounting and Reporting by Charities" (FRS 102) in preparing the annual report and financial statements of the charity.

The financial statements have been prepared in accordance with the accounting policies set out in the notes to the accounts and comply with the charity's governing document, the Charities Act 2011 and Accounting and Reporting by Charities: Statement of Recommended Practice applicable to charities preparing their accounts in accordance with the Financial Reporting Standard applicable in the UK and Republic of Ireland published on 16 July 2014 (as amended by Update Bulletin 1 published on 2 February 2016).

**REFERENCE AND ADMINISTRATIVE INFORMATION**

Charity name:	Eastern Ravens Trust
Charity registration number:	519907
Company registration number:	02206156
Registered office and operational address:	Community Zone North Shore Academy Talbot Street Stockton on Tees TS20 2AY

**Board of Directors:**

Jim Beall	Chair
Kenny McGarvey	Vice-chair
Lesley Cooke	
Evaline Cunningham	
Pamela Norman	

**Company Secretary**

Tracey Hamilton

**Trust Manager**

Tracey Hamilton

**Independent Examiner**

Mr J Gresham FCCA

Azets, New Garth House, Upper Garth Gardens, Guisborough, TS14 6HA

## **EASTERN RAVENS TRUST**

### **REPORT OF THE COUNCIL OF MANAGEMENT (DIRECTORS AND TRUSTEES)**

**YEAR ENDED 31<sup>ST</sup> MARCH 2022**

#### **REFERENCE AND ADMINISTRATIVE INFORMATION (continued)**

##### **BANKERS**

Nat West Bank plc, Stockton on Tees Branch, 123 High Street, Stockton TS18 1NW

#### **STRUCTURE, GOVERNANCE & MANAGEMENT**

##### Governing Document

Eastern Ravens Trust is a company limited by guarantee and a registered charity governed by its Memorandum and Articles of Association dated 16<sup>th</sup> December 1987 as amended by special resolutions dated 13<sup>th</sup> April 1997 and 22<sup>nd</sup> April 1998.

##### Recruitment and appointment of the Board of Directors

The Board of Directors (who are trustees of the charity) composes of not less than 5 but not more than 12, as the members of the Trust think fit. The Board of Directors are elected by the members of the Trust at each Annual General Meeting and hold office for a period of 3 years from the Annual General Meeting at which they are elected. At each Annual General Meeting one third of the Board of Directors retires but they can offer themselves for re-election. Those retiring are those longest in office since their last retirement. The Board of Directors has to meet at least 6 times a year. Trustees are recruited from the membership of the charity.

##### Trustee induction and training

New trustees are briefed on their legal obligations under company and charity law. They are provided with a copy of the Memorandum and Articles of Association and the most recent audited accounts, as well up to date management information. Trustees are encouraged to attend appropriate external training events where these will facilitate their role.

##### Risk management

The trustees monitor progress against budget and objectives and review their strategic objectives at their regular meetings. They also review the risks faced by the charity and implement strategies to mitigate those risks. This included the computerisation of the accounting records to ensure that management reports can be produced on a timely basis.

##### Organisational structure

The trustees are responsible for administering the charity and for its strategic direction. A manager is appointed by the trustees to manage the day to day operations of the charity.

##### Related parties

The charity does not have any related parties other than trustees and their immediate families.

## **EASTERN RAVENS TRUST**

### **REPORT OF THE COUNCIL OF MANAGEMENT (DIRECTORS AND TRUSTEES)**

**YEAR ENDED 31<sup>ST</sup> MARCH 2022**

#### **Objectives, activities, achievement and performance including public benefit statement**

The principal activity of the Company in the year under review was the informal education of young people aged 8 to 16 years who are experiencing social exclusion and/or disadvantage.

The trustees have referred to the guidance contained in the Charity Commission's general guidance on public benefit when reviewing the charity's aims and objectives and in planning its future activities.

#### **Chairperson's Report**

This is my fifteenth annual report as Chair of the Trust. This year has been largely one of a return to near normality following the worst of the Covid-19 pandemic. This, despite some continuing restrictions on normal business with the surge in Omicron variant infections and associated self-isolation of our staff, partners and families receiving our services.

Nevertheless, we have still achieved much, including;

- Continued delivery of the Young Carers Support Service and a delivery partner for Youth United Stockton
- Continued funding from the Ballinger Charitable Trust towards core costs
- Young Carers Service 21<sup>st</sup> Birthday (1<sup>st</sup> April 2021), press release including quote from the Director of Children's Services & feature in the Council's Stockton-on-Tees News
- Making use of the Job Retention Scheme – several staff remained on furlough until September 2021.
- Successful £10k bid from the Masonic Charitable Foundation to extend young carers provision in communities
- Caravan Holiday Home worth £45K donated from a former lottery winner to provide respite breaks and holidays to young carers and their families
- Addressing holiday hunger and providing holiday enrichment commissioned by the Council and Roseworth Big Local Lottery Programme throughout the year and featuring in their success stories.

None of this continued success would have been possible without the continuing hard work and commitment of many people but not least our paid staff and Directors. On behalf of the vulnerable adults, children, young people and families who benefitted from all this, I offer an unreserved 'Thank You'.

**Jim Beall**

**EASTERN RAVENS TRUST**  
**REPORT OF THE COUNCIL OF MANAGEMENT (DIRECTORS AND TRUSTEES)**  
**YEAR ENDED 31<sup>ST</sup> MARCH 2022**

**Investment powers**

Under the Memorandum and Articles of Association, the charity has the power to make any investment which the Trustees see fit.

**Reserves policy**

The trustees aim to expend all funds on their charitable objects but recognise the need to maintain a certain level of reserves as a cushion against possible future funding difficulties. Free reserves (i.e. those reserves not tied up in fixed assets, designated or restricted funds) of £70,000 would allow the charity to continue its operations for around 4 months, while alternative funding sources were sought.

At 31<sup>st</sup> March 2022, free reserves amounted to £44,164.

**EASTERN RAVENS TRUST**  
**REPORT OF THE COUNCIL OF MANAGEMENT (DIRECTORS AND TRUSTEES)**  
**YEAR ENDED 31<sup>ST</sup> MARCH 2022**

**Statement of Trustees' Responsibilities**

The trustees (who are also directors of Eastern Ravens Trust for the purposes of company law) are responsible for preparing the Trustees' Annual Report and the financial statements in accordance with applicable law and United Kingdom Accounting Standards (United Kingdom Generally Accepted Accounting Practice).

Company law requires the trustees to prepare financial statements for each financial year, which give a true and fair view of the state of affairs of the charitable company and of the incoming resources and application of resources, including the income and expenditure, of the charitable company for that period. In preparing these financial statements, the trustees are required to:

- select suitable accounting policies and then apply them consistently;
- observe the methods and principles in the Charities SORP;
- make judgements and estimates that are reasonable and prudent;
- state whether applicable UK Accounting Standards have been followed, subject to any material departures disclosed and explained in the financial statements;
- prepare the financial statements on the going concern basis unless it is inappropriate to presume that the charitable company will continue in operation.

The trustees are responsible for keeping adequate accounting records that disclose with reasonable accuracy at any time the financial position of the charitable company and enable them to ensure that the financial statements comply with the Companies Act 2006. They are also responsible for safeguarding the assets of the charitable company and hence for taking reasonable steps for the prevention and detection of fraud and other irregularities.

By order of the trustees:

J Beall  
Trustee  
13<sup>th</sup> September 2022





### **Independent Examiner's Report to the Trustees of Eastern Ravens Trust**

I report on the accounts of the company for the year ended 31<sup>st</sup> March 2022 which are set out on pages 8 to 19.

### **Respective responsibilities of trustees and examiner**

The trustees (who are also the directors of the company for the purposes of company law) are responsible for the preparation of the accounts. The trustees consider that an audit is not required for this year under section 144(2) of the Charities Act 2011 (the 2011 Act) and that an independent examination is needed.

Having satisfied myself that the charity is not subject to audit under company law and is eligible for independent examination, it is my responsibility to:

- examine the accounts under section 145 of the 2011 Act;
- follow the procedures laid down in the general Directions given by the Charity Commission under section 145(5)(b) of the 2011 Act; and
- state whether particular matters have come to my attention.

### **Basis of independent examiner's report**

My examination was carried out in accordance with the general Directions given by the Charity Commission. An examination includes a review of the accounting records kept by the charity and a comparison of the accounts presented with those records. It also includes consideration of any unusual items or disclosures in the accounts, and seeking explanations from you as trustees concerning any such matters. The procedures undertaken do not provide all the evidence that would be required in an audit and consequently no opinion is given as to whether the accounts present a "true and fair view" and the report is limited to those matters set out in the statement below.

### **Independent examiner's statement**

In connection with my examination, no matter has come to my attention:

- 1 which gives me reasonable cause to believe that, in any material respect, the requirements:
  - to keep accounting records in accordance with section 386 of the Companies Act 2006; and
  - to prepare accounts which accord with the accounting records, comply with the accounting requirements of section 396 of the Companies Act 2006 and with the methods and principles of the Statement of Recommended Practice: Accounting and Reporting by Charitieshave not been met; or
- 2 to which, in my opinion, attention should be drawn in order to enable a proper understanding of the accounts to be reached.

Mr J Gresham FCCA  
Azets  
Accountants  
13<sup>th</sup> September 2022



New Garth House  
Upper Garth Gardens  
GUISBOROUGH  
TS14 6HA

**EASTERN RAVENS TRUST**

**STATEMENT OF FINANCIAL ACTIVITIES  
(INCLUDING INCOME & EXPENDITURE ACCOUNT)  
FOR THE YEAR ENDED 31<sup>ST</sup> MARCH 2022**

	<b>Note</b>	<b>Unrestricted Funds £</b>	<b>Restricted Funds £</b>	<b>Total Funds 2022 £</b>	<b>Total Funds 2021 £</b>
<b>INCOME</b>					
Donations & legacies	2	18796	-	18796	26016
<i>Income from charitable activities</i>					
Youth activities	2	18276	163376	181652	174111
Investment income		1	-	1	37
<b>TOTAL INCOME</b>		<u>37073</u>	<u>163376</u>	<u>200449</u>	<u>200164</u>
<b>EXPENDITURE</b>					
<i>Expenditure on charitable activities</i>					
Cost of youth activities work	3	37639	166717	204356	196363
<b>TOTAL EXPENDITURE</b>	3	<u>37639</u>	<u>166717</u>	<u>204356</u>	<u>196363</u>
Net income/(expenditure) for the year		(566)	(3341)	(3907)	3801
Transfers between funds	7	(7188)	7188	-	-
Net movement in funds		(7754)	3847	(3907)	3801
Total funds brought forward		<u>84664</u>	<u>25663</u>	<u>110327</u>	<u>106526</u>
Total funds carried forward		<u>76910</u>	<u>29510</u>	<u>106420</u>	<u>110327</u>

**EASTERN RAVENS TRUST  
BALANCE SHEET AS AT 31<sup>ST</sup> MARCH 2022**

	NOTE	2022		2021	
		£	£	£	£
<b>FIXED ASSETS</b>	7		7844		-
<b>CURRENT ASSETS</b>					
Debtors	8	8829		25307	
Cash at bank and in hand		109699		113845	
		<u>118528</u>		<u>139152</u>	
<b>CREDITORS: AMOUNTS FALLING DUE WITHIN ONE YEAR</b>	9	(19952)		(28825)	
		<u></u>		<u></u>	
<b>NET CURRENT ASSETS</b>			98576		110327
			<u></u>		<u></u>
<b>NET ASSETS</b>			106420		110327
			<u></u>		<u></u>
<b>CAPITAL AND RESERVES</b>					
<b>Funds</b>					
Restricted	10	29510		25663	
Designated	10	32746		32746	
Unrestricted	10	44164		51918	
		<u></u>		<u></u>	
			106420		110327
		<u></u>	<u></u>	<u></u>	<u></u>

For the year ending 31<sup>st</sup> March 2022 the company was entitled to exemption from audit under section 477 of the Companies Act 2006 relating to small companies.

Directors' responsibilities:

- The members have not required the company to obtain an audit of its accounts for the year in question in accordance with section 476;
- The directors acknowledge their responsibilities for complying with the requirements of the Act with respect to accounting records and the preparation of accounts.

The Financial Statements have been prepared in accordance with the special provisions of Part 15 of the Companies Act 2006 relating to small companies.

Approved by the Trustees on 13<sup>th</sup> September 2022 and signed on their behalf by

J Beall..........Trustee

**EASTERN RAVENS TRUST**  
**NOTES FORMING PART OF THE FINANCIAL STATEMENTS**  
**FOR THE YEAR ENDED 31<sup>ST</sup> MARCH 2022**

**1. ACCOUNTING POLICIES**

**(a) General information and basis of preparation**

Eastern Ravens Trust is a company limited by guarantee and registered in England. In the event of the charity being wound up, the liability in respect of the guarantee is limited to £1 per member of the charity. The address of the registered office is given in the charity information on page 2 of these financial statements. The nature of the charity's operations and principal activities are the informal education of young people aged 8 to 16 years who are experiencing social exclusion and/or disadvantage.

The charity constitutes a public benefit entity as defined by FRS 102. The financial statements have been prepared in accordance with 'Accounting and Reporting by Charities: Statement of Recommended Practice applicable to charities preparing their accounts in accordance with the Financial Reporting Standard applicable in the UK and Republic of Ireland (FRS 102) issued on 16 July 2014 (as updated through Update Bulletin 1 published on 2 February 2016), the Financial Reporting Standard applicable in the United Kingdom and Republic of Ireland (FRS 102), the Charities Act 2011, the Companies Act 2006 and UK Generally Accepted Practice as it applies from 1 January 2015.

The charity has applied Update Bulletin 1 as published on 2 February 2016 and does not include a cash flow statement on the grounds that it is applying FRS 102 Section 1A.

The financial statements are prepared on a going concern basis under the historical cost convention, modified to include certain items at fair value. The financial statements are presented in sterling which is the functional currency of the charity and rounded to the nearest £.

The significant accounting policies applied in the preparation of these financial statements are set out below. These policies have been consistently applied to all years presented unless otherwise stated.

The charity adopted SORP (FRS 102) in the current year but this has not affected the financial position or performance.

**(b) Funds**

Unrestricted funds are available for use at the discretion of the trustees in furtherance of the general objectives of the charity and which have not been designated for other purposes.

Designated funds comprise unrestricted funds that have been set aside by the trustees for particular purposes. The aim and use of each designated fund is set out in the notes to the financial statements.

Restricted funds are funds which are to be used in accordance with specific restrictions imposed by donors or which have been raised by the charity for particular purposes. The cost of raising and administering such funds are charged against the specific fund. The aim and use of each restricted fund is set out in the notes to the financial statements.

**EASTERN RAVENS TRUST**  
**NOTES FORMING PART OF THE FINANCIAL STATEMENTS**  
**FOR THE YEAR ENDED 31<sup>ST</sup> MARCH 2022**

**1. ACCOUNTING POLICIES**

**(c) Income recognition**

All incoming resources are included in the Statement of Financial Activities (SoFA) when the charity is legally entitled to the income after any performance conditions have been met, the amount can be measured reliably and it is probable that the income will be received.

For donations to be recognised the charity will have been notified of the amounts and the settlement date in writing. If there are conditions attached to the donation and this requires a level of performance before entitlement can be obtained then income is deferred until those conditions are fully met or the fulfilment of those conditions is within the control of the charity and it is probable that they will be fulfilled.

Donated facilities and donated professional services are recognised in income at their fair value when their economic benefit is probable, it can be measured reliably and the charity has control over the item. Fair value is determined on the basis of the value of the gift to the charity. For example the amount the charity would be willing to pay in the open market for such facilities and services. A corresponding amount is recognised in expenditure.

No amount is included in the financial statements for volunteer time in line with the SORP (FRS 102). Further detail is given in the Trustees' Annual Report.

For legacies, entitlement is the earlier of the charity being notified of an impending distribution or the legacy being received. At this point income is recognised. On occasion legacies will be notified to the charity however it is not possible to measure the amount expected to be distributed. On these occasions, the legacy is treated as a contingent asset and disclosed.

Investment income is earned through holding cash in a deposit account and is recognised when it is earned.

**(d) Expenditure recognition**

All expenditure is accounted for on an accruals basis and has been classified under headings that aggregate all costs related to the category. Expenditure is recognised where there is a legal or constructive obligation to make payments to third parties, it is probable that the settlement will be required and the amount of the obligation can be measured reliably. All direct costs relate to the charity's charitable activities.

**EASTERN RAVENS TRUST**  
**NOTES FORMING PART OF THE FINANCIAL STATEMENTS**  
**FOR THE YEAR ENDED 31<sup>ST</sup> MARCH 2022**

**1. ACCOUNTING POLICIES**

**(e) Support costs allocation**

Support costs are those that assist the work of the charity but do not directly represent charitable activities and include office costs, governance costs, administrative payroll costs. They are incurred directly in support of expenditure on the objects of the charity and include project management carried out at Headquarters. Where support costs cannot be directly attributed to particular headings they have been allocated to cost of raising funds and expenditure on charitable activities on a basis consistent with use of the resources.

The analysis of these costs is included in note 3.

Irrecoverable VAT is charged as an expense against the activity for which expenditure arose.

**(f) Tangible fixed assets**

Tangible fixed assets are stated at cost (or deemed cost) or valuation less accumulated depreciation and accumulated impairment losses. Cost includes costs directly attributable to making the asset capable of operating as intended.

Depreciation is provided on all tangible fixed assets, at rates calculated to write off the cost, less estimated residual value, of each asset on a systematic basis over its expected useful life as follows:

Equipment	25% straight line
-----------	-------------------

**(g) Debtors and creditors receivable / payable within one year**

Debtors and creditors with no stated interest rate and receivable or payable within one year are recorded at transaction price. Any losses arising from impairment are recognised in expenditure.

**(h) Provisions**

Provisions are recognised when the charity has an obligation at the balance sheet date as a result of a past event, it is probable that an outflow of economic benefits will be required in settlement and the amount can be reliably estimated.

**EASTERN RAVENS TRUST  
NOTES FORMING PART OF THE FINANCIAL STATEMENTS  
FOR THE YEAR ENDED 31<sup>ST</sup> MARCH 2022**

**1. ACCOUNTING POLICIES**

**(i) Employee benefits**

When employees have rendered service to the charity, short-term employee benefits to which the employees are entitled are recognised at the undiscounted amount expected to be paid in exchange for that service.

The charity operates a defined contribution plan for the benefit of its employees. Contributions are expensed as they become payable.

**(j) Tax**

The charity is an exempt charity within the meaning of schedule 3 of the Charities Act 2011 and is considered to pass the tests set out in Paragraph 1 Schedule 6 Finance Act 2010 and therefore it meets the definition of a charitable company for UK corporation tax purposes.

**(k) Going concern**

The financial statements have been prepared on a going concern basis as the trustees believe that no material uncertainties exist. The trustees have considered the level of funds held and the expected level of income and expenditure for 12 months from authorising these financial statements. The budgeted income and expenditure is sufficient with the level of reserves for the charity to be able to continue as a going concern.



**EASTERN RAVENS TRUST**  
**NOTES FORMING PART OF THE FINANCIAL STATEMENTS**  
**FOR THE YEAR ENDED 31<sup>ST</sup> MARCH 2022**

2. INCOMING RESOURCES	Unrestricted Funds £	Restricted Funds £	Total 2022 £	Total 2021 £
<i>Donations &amp; legacies</i>				
Legacy	-	-	-	-
Core - JRS	10633	-	10633	20836
Sundry donations	8163	-	8163	5180
	<u>18796</u>	<u>-</u>	<u>18796</u>	<u>26016</u>
	<u>Unrestricted Funds £</u>	<u>Restricted Funds £</u>	<u>Total 2022 £</u>	<u>Total 2021 £</u>
<i>Income from charitable activities</i>				
SBC carers' grant	-	105123	105123	105123
Big Local – Roseworth	-	-	-	8464
Freemasons of Durham	-	10250	10250	-
Roseworth Holiday Programme	-	20703	20703	-
CCG Health Initiatives	-	-	-	-
YUS Income	-	9460	9460	3480
Fundraising	1187	-	1187	-
Miscellaneous	-	-	-	90
Primrose Hill Youth Club	-	2764	2764	-
Roseworth After School Club	-	6538	6538	-
Roseworth Detached Youth Work	-	846	846	-
Public Health	-	742	742	5765
Caravan Income	-	6950	6950	-
Ballinger Charitable Trust	16000	-	16000	16000
Tees Valley Comm Foundation	-	-	-	1000
Dept for Digital, Culture, Media & Sport	-	-	-	25307
Maintaining & Improving MH in Covid	-	-	-	2000
Street Games	-	-	-	1882
Martin Lewis Coronafund	-	-	-	5000
Core	1089	-	1089	-
	<u>18276</u>	<u>163376</u>	<u>181652</u>	<u>174111</u>

Of total income of £200449 in 2022 (2021: £200164), £163376 (2021: £127714) was credited to restricted funds and £37073 (2021: £72450) was credited to unrestricted funds.

**EASTERN RAVENS TRUST**  
**NOTES FORMING PART OF THE FINANCIAL STATEMENTS**  
**FOR THE YEAR ENDED 31<sup>ST</sup> MARCH 2022**

**3. EXPENDITURE**

	<b>Basis of allocation</b>	<b>Charitable Costs</b>	<b>Governance costs</b>	<b>2022 Total</b>	<b>2021 Total</b>
<b>Costs directly allocated to activities</b>					
		<b>£</b>	<b>£</b>	<b>£</b>	<b>£</b>
Staff costs	Direct	90087	-	90087	93179
Professional fees	Direct	1351	-	1351	1466
Activities	Direct	65133	-	65133	34691
Transport costs	Direct	275	-	275	-
Subscription	Direct	744	-	744	-
Sessional staff	Direct	-	-	-	-
Insurance	Direct	1126	-	1126	1111
Staff travel	Direct	1928	-	1928	3277
Training	Direct	324	-	324	168
Advertising	Direct	467	-	467	1002
Independent Exam	Direct	-	1590	1590	1590
Miscellaneous	Direct	294	-	294	624
<b>Support costs allocated to activities</b>					
Staff costs	Staff time	30667	1614	32281	55590
Depreciation	Usage	2353	262	2615	399
Premises costs	Usage	3600	400	4000	-
Professional	Usage	330	329	659	1568
Office costs	Usage	1334	148	1482	1698
<b>Total</b>		<b>200013</b>	<b>4343</b>	<b>204356</b>	<b>196363</b>

Of the £204356 of expenditure in 2022 (2021: £196363) £166717 was charged to restricted funds (2021: £136704) and £37639 was charged to unrestricted funds (2021: £59659).

**EASTERN RAVENS TRUST**  
**NOTES FORMING PART OF THE FINANCIAL STATEMENTS**  
**FOR THE YEAR ENDED 31<sup>ST</sup> MARCH 2022**

**4. NET (OUTGOING)/INCOMING RESOURCES FOR THE YEAR**

This is stated after charging:	<b>2022</b>	<b>2021</b>
	<b>£</b>	<b>£</b>
Trustees' emoluments and expenses	Nil	Nil
Independent Examiner's Fee (including VAT)	1590	1590
Depreciation of tangible fixed assets	2615	399
	<u>          </u>	<u>          </u>

**5. STAFF COSTS & NUMBERS**

	<b>2022</b>	<b>2021</b>
	<b>£</b>	<b>£</b>
Wages and Salaries	141912	138593
Social Security Costs	6454	6798
Pension costs	3311	3378
Recruitment costs	-	-
	<u>          </u>	<u>          </u>
	<u>151677</u>	<u>148769</u>

There were no employees whose emoluments as defined for taxation purposes amounted to over £60,000 (2021: NIL). The average number of employees during the year was 14 (2021: 6) being the manager and support staff. In addition sessional workers are employed.

**6. TRANSFERS BETWEEN FUNDS**

These relate to transfers which account for management and other charges from unrestricted to restricted funds.

**EASTERN RAVENS TRUST**  
**NOTES FORMING PART OF THE FINANCIAL STATEMENTS**  
**FOR THE YEAR ENDED 31<sup>ST</sup> MARCH 2022**

**7. FIXED ASSETS**

	<b>Equipment</b>
	<b>£</b>
<b>COST</b>	
At 1 <sup>st</sup> April 2021	10158
Additions	10459
	<hr/>
At 31 <sup>st</sup> March 2022	20617
	<hr/> <hr/>
<b>DEPRECIATION</b>	
At 1 <sup>st</sup> April 2021	10158
Charge for the year	2615
	<hr/>
At 31 <sup>st</sup> March 2022	12773
	<hr/> <hr/>
<b>NET BOOK VALUE</b>	
At 31 <sup>st</sup> March 2022	7844
	<hr/> <hr/>
At 31 <sup>st</sup> March 2021	-
	<hr/> <hr/>

There were no commitments to capital expenditure at 31<sup>st</sup> March 2022 or at 31<sup>st</sup> March 2021.

**8. DEBTORS**

	<b>2022</b>	<b>2021</b>
	<b>£</b>	<b>£</b>
Other debtors and prepayments	8829	25307
	<hr/> <hr/>	<hr/> <hr/>

**EASTERN RAVENS TRUST**  
**NOTES FORMING PART OF THE FINANCIAL STATEMENTS**  
**FOR THE YEAR ENDED 31<sup>ST</sup> MARCH 2022**

**9. CREDITORS: Amounts falling due within one year**

	<b>2022</b>	<b>2021</b>
	<b>£</b>	<b>£</b>
Trade creditors	1749	-
Accruals	1880	1880
Deferred Income	16000	26250
Pension	323	695
	<u>19952</u>	<u>28825</u>

**10. MOVEMENT IN FUNDS**

	<b>At 1<sup>st</sup> April 2021</b>	<b>Incoming Resources</b>	<b>Outgoing Resources</b>	<b>Transfers</b>	<b>At 31<sup>st</sup> March 2022</b>
	<b>£</b>	<b>£</b>	<b>£</b>	<b>£</b>	<b>£</b>
<b>Restricted Funds</b>					
Young Carers	-	105123	(112311)	7188	-
Tristar Homes Buzzin	12387	-	(3722)	-	8665
Roseworth After School Club	-	6538	(3303)	-	3235
Roseworth Detached YW	-	846	(846)	-	-
Primrose Youth Club	-	2764	(2764)	-	-
YUS	3015	9460	(12475)	-	-
Teesside University	4600	-	(41)	-	4559
Public Health	-	742	(742)	-	-
Butterwick Partnership Pilot	4230	-	-	-	4230
Roseworth Holiday Programme	(451)	20703	(20252)	-	-
Freemasons of Durham	-	10250	(4224)	-	6026
Street games	1882	-	-	-	1882
Caravan	-	6950	(6037)	-	913
<b>Total Restricted</b>	<b>25663</b>	<b>163376</b>	<b>(166717)</b>	<b>7188</b>	<b>29510</b>
<b>Unrestricted Funds</b>					
General	51918	37073	(37639)	(7188)	44164
Designated					
Kathy Lindsey Memorial Fund	3181	-	-	-	3181
Lucy Evers Memorial Fund	8726	-	-	-	8726
Redundancy Standby Fund	20000	-	-	-	20000
Terry Wood Memorial Fund	839	-	-	-	839
<b>Total Unrestricted</b>	<b>84664</b>	<b>37073</b>	<b>(37639)</b>	<b>(7188)</b>	<b>76910</b>
<b>Total Funds</b>	<b>110327</b>	<b>200449</b>	<b>(204356)</b>	<b>-</b>	<b>106420</b>

**EASTERN RAVENS TRUST  
NOTES FORMING PART OF THE FINANCIAL STATEMENTS  
FOR THE YEAR ENDED 31<sup>ST</sup> MARCH 2022**

**10. MOVEMENT IN FUNDS continued**

**PURPOSES OF RESTRICTED FUNDS**

<b>Young Carers</b>	Bespoke & tailored support to young carers and their families within the Borough of Stockton-on-Tees.
<b>Tristar Homes Buzzin'</b>	This funding is to deliver a project that gives young people in need, accredited outcomes and life skills.
<b>Roseworth Big Local</b>	These grants from Big Local are to provide for positive activities for young people in the Roseworth Ward of Stockton.
<b>Youth United Stockton</b>	Delivery of 30 open access youth session per year for children from age 10.
<b>Primrose Hill Youth Club</b>	Delivery of a term time open access youth session for children from age 8 in the community.
<b>Teesside University</b>	Delivery of a term time girls only group (Tees Valley Sport) in the Roseworth Community.
<b>Butterwick Partnership Pilot</b>	To improve support for children & young people affected by a family member's cancer/life limiting illness, increase capacity of the children's support group and further identify hidden young carers.
<b>Roseworth Holiday Programmes</b>	Free school holiday activities and food provision for children and young people at a time which can be particularly hard for some families.
<b>Freemasons of Durham</b>	Regenerating Young Carers – increased access to respite breaks in communities.
<b>Caravan Holiday Home</b>	To provide young carers with a respite break and holidays with their family.

**PURPOSES OF DESIGNATED FUNDS**

**Kathy Lindsey Memorial Fund**, may be used at the discretion of the trustees to make grants to families in need.

**Lucy Evers Memorial Fund** is to be used to provide one-off grants to support children and young people in achieving their aspirations where little or no assistance is available elsewhere.

**Redundancy Standby Fund** is a contingency against any future redundancy costs.

**EASTERN RAVENS TRUST**  
**NOTES FORMING PART OF THE FINANCIAL STATEMENTS**  
**FOR THE YEAR ENDED 31<sup>ST</sup> MARCH 2022**

**11. ANALYSIS OF NET ASSETS BETWEEN FUNDS**

	<b>Unrestricted Funds £</b>	<b>Restricted Funds £</b>	<b>Total £</b>
Fixed Assets	-	-	-
Net Current Assets	76910	29510	106420
	<u>76910</u>	<u>29510</u>	<u>106420</u>
	<u><u>76910</u></u>	<u><u>29510</u></u>	<u><u>106420</u></u>

