

THE BELL CONCORD EDUCATIONAL TRUST

TRUSTEES' REPORT AND ACCOUNTS FOR THE YEAR ENDED 31 AUGUST 2023

Registered Company Number: 01503040

Registered Charity Number: 326279



WHERE
FUTURES
ARE
FOUND

THE BELL CONCORD EDUCATIONAL TRUST

CONTENTS

	Page
Trustees' Annual Report	3
Independent Auditors' Report	13
Consolidated Statement of Financial Activities	16
Charity & Consolidated Balance Sheets	17
Cash Flow Statement	18
Notes to the Financial Statements	19 - 32

THE BELL CONCORD EDUCATIONAL TRUST

TRUSTEES' ANNUAL REPORT

FOR THE YEAR ENDED 31 AUGUST 2023

The Board of Trustees of the Bell Concord Education Trust present their report and the audited financial statements for the year ended 31 August 2023 under the Charities Act 2011 and the Companies Act 2006, thus including the Directors' Report and Strategic Report under the 2006 Act, together with the audited financial statements for the year.

OBJECTIVES AND ACTIVITIES

Purpose of the Bell Concord Educational Trust

The purpose of the Bell Concord Educational Trust ('the Trust') is to promote and provide for the advancement of education and in particular to carry on, acquire and develop in the United Kingdom or elsewhere any boarding or day schools or colleges.

Main aims and activities

The Trust is responsible for the governance of Concord College, Acton Burnell, Shrewsbury, Shropshire, SY5 7PF ('the College'). The College is an independent boarding school responsible for the delivery of the GCSE and A-level curriculum. In addition the College also delivers educational courses during the summer months.

The primary objective of the Trust is to set the very highest standards in the provision of the education delivered. Concord College is unusual in that the majority of the students are resident outside the United Kingdom, coming from over 40 countries. In addition to helping the students realise their academic potential our staff strive to develop a sense of community, to engender a respect for each other's cultures and beliefs and to provide a wide range of activities to broaden their outlook and wellbeing.

The short term aim of Concord College is to continue with the provision of high-quality education, the development of independent learning and confidence building to enable students to gain excellent academic success and to strengthen the College's financial position. Alongside this is an aim to develop in all students a moral code of responsibility and tolerance towards their fellows together with an understanding and appreciation of British values. Some 80% of the students will return home to a country other than the United Kingdom and many will become leaders in that country having completed degree studies in leading universities. Their experience in Concord should benefit intercultural and business relations between their home country and the United Kingdom for the benefit of both.

The medium to long term aim is the continuous improvement in the provision of education to enable all students to compete with the very top of their international peer group and gain entry into the world's leading universities.

The strategy for achieving these aims will be the continued recruitment, selection and retention of the highest quality staff and the development of facilities to ensure the delivery of academic and non-academic education in the best possible environment.

Public benefit

The Board of Trustees is aware of the obligations placed upon it by the Charities Act 2011 and confirms that it has complied with the duty placed upon it by this Act and has paid due regard to the Charity Commission guidance on public benefit. The College strives to accept students from as wide a range of countries and backgrounds as possible and seeks to admit all who meet our academic standards irrespective of their financial status.

The Trustees have given due regard to the public benefit guidance issued by the Charity Commission and continue to work to support the local community, widen access to education and facilities, and provide employment opportunities.

Public benefit (continued)

During the past year a range of activities have taken place that contribute to public benefit. These activities include academic outreach to support local schools, making our recreational facilities available to the local community and to other schools, opening up key events such as the Medical Futures Conference to other schools, and providing facilities for community events such as the village fete. A local shop and post office is provided at a subsidised rent.

The Trust aims to make it possible for young people who may not normally be able to afford the full fees to benefit from attending Concord at reduced fees, either through scholarships or means-tested bursaries in order to attract the most able students irrespective of background. In 2022/23 scholarships to the value of £258k (£328k in 2021/22) were awarded on academic merit and bursaries to the value of £585k (£521k in 2021/22) were awarded to 30 students based on a means test of their parents (34 in 2021/22).

In addition to scholarships and bursaries, the Trust has set the fees for day students at Concord College to ensure affordability in the local market for parents. The Trustees continue to look for opportunities to support disadvantaged students and are exploring ways to work with charities such as Springboard, as well as utilising the Anthony Morris Scholarship Fund to support students who may not normally be able to afford to attend Concord College.

ACHIEVEMENTS AND PERFORMANCE

During 2023/24 Concord College had a total of 571 students on roll, including students from more than 40 countries. Of the total students, 467 were boarders and 104 were day students.



571
Number of students



68% of A-level
grades were
A* or A



More than 100
places at World Top
100 universities

Academic achievements 2023

Excellent academic results continue to be achieved by Concord students. Grade boundaries for public exams returned to their pre-pandemic levels and so in full context Concord's results were excellent. Most notably, 1% of all the students in England who achieved A*A*A* at A-level were Concord students.

A-Level and AS Level

At A-Level 31% of grades were A*, 68% of grades were A*/A and 87% of grades were A*-B. 90 students achieved AAA or better, 33 achieved A*A*A* or better and 14 achieved A*A*A*A*. The A* rate was surpassed in individual departments including English (58%) and Maths (44%).

At AS-Level Concord students equalled our best ever results with 82% at A grade.

I/GCSE

At I/GCSE it was Concord College's best ever set of results: 55% at grade 9, 77% at grade 8-9, and 90% at grade 7-9. The 8-9 rate was surpassed in individual departments including Chemistry (84%), Statistics (87%), Computer Science (97%), French (87%), Further Maths (98%), Geography (81%), History (82%), Maths (87%), Physics (82%) and Spanish (92%).

ACHIEVEMENTS AND PERFORMANCE (continued)

University destinations

In terms of university destinations, over 100 students secured places at World Top 100 universities, including 37 students achieving a place at a World Top 10 university. Five Concord students have gone to Oxford, seven students to Cambridge and one to Cornell University. 22 students gained places at UCL, eight students at Imperial College and twelve at Warwick University. There is a continued trend for a large number of students to study medicine (23), along with four students studying dentistry and two veterinary. Overseas places were taken up at Waseda (Japan), Dublin, Fudan (China), HKUST (Hong Kong), Ann Arbor, Chicago, Cornell, UCSD, UW (USA), Melbourne (Australia), Amsterdam, Toronto, UBC (Canada), KMITL, Ladkrabang (Thailand).

Summer school

In summer 2023 the College successfully ran two Summer School sessions for 272 children from all around the World including Italy, Turkey, China, Thailand and Spain. For the first time a new set of programmes was introduced to help diversify the Summer School academic offering and to provide wider market appeal. These new streams were offered as Discovery Workshops for children aged 10-12 and Academic Projects for 13-17 year olds.

Fundraising

The Anthony Morris Scholarship Fund was set up in 2016 to encourage donations to a fund that supports academically gifted students who may not be able to afford to attend Concord College. While the Trustees continue to welcome donations to the Anthony Morris Scholarship Fund, there has been no active fundraising activity in the year.

The Trust has not used a commercial fundraiser or commercial participator and there have been no complaints regarding fundraising activities.

Carbon and energy reporting

During the year the Trust took the following energy efficiency actions:

- Upgrading of existing fluorescent and tungsten lighting across the college upon failure, with new LED fittings and PIR sensors in areas of low use.
- General good housekeeping on energy equipment and lighting across all areas
- New Building Management System (BMS) for space heating control.

The Trust's emissions for 2022/23 are set out in the table below with a comparison to the previous year.

Summary for 1 September 2022 to 31 August 2023	2023	2022
Energy use	6,990.3 MWh	7,527.7 MWh
Associated greenhouse gas emissions Tonnes CO2 equivalent	1,691.9 tCO2	1,804.9 tCO2
Intensity ratio Emissions per student	2.97 tCO2 per student	3.01 tCO2 per student

In the reporting of carbon and energy the Trust has used the GHG Protocol Corporate Accounting and Reporting Standard (revised edition). Further emission factors were used from UK Government's GHG Conversion Factors for Company Reporting.

FINANCIAL REVIEW

Income and expenditure

The details of income and expenditure are shown in the Consolidated Statement of Financial Activities on page 16.

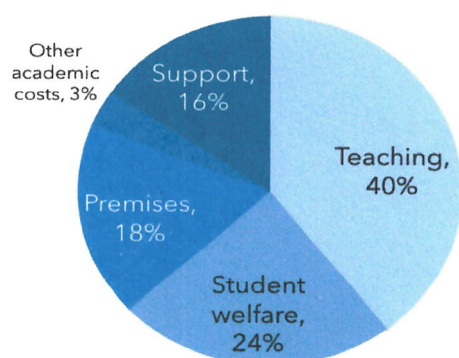
The Trust achieved net income in the year of £2.6 million (2022: £3.6 million).

Total revenue in 2022/23 was £27.5 million (2022: £26.2 million). Income from school fees, net of bursaries, scholarships and other remissions was £23.3 million (2022: £23.6 million). The College saw a small decrease in demand for places from students with the right level of academic ability and this has therefore impacted our school fee income. Total revenue was also contributed to by a recovery in Summer School numbers and the two sessions run in 2023 generated net income of £1.2 million (2022: £0.5 million).

Income from investments and other bank deposits was £852,116 (2022: £81,708). The performance of the investment portfolio was sluggish during the year, but the College was able to benefit from increases in the Bank of England base rate and the impact of this on deposit accounts.

Income from donations to the Anthony Morris Scholarship Fund was £141,293 (2022: £4,857), and the Trust was fortunate to benefit from a single large anonymous donation during the year.

How we spent our money in 2022/23



During 2022/23 costs incurred in operating the charitable activities increased to £24.5 million (2022: £22.9 million).

The increase in our expenditure was primarily driven by wider inflationary pressures, particularly on energy and food. Active management of costs during the year helped control expenditure below budgeted levels.

The chart opposite shows the proportion of expenditure across each area of the Trust's operations.

Consolidated net assets were £7.1 million (2022: £3.5 million).

The Trust's cash reserves increased in the period by £5.6 million (2022: increase of £4.6 million).

Reserves policy

The Trust's policy is to maintain adequate reserves for the following purposes:

1. to provide the liquidity needed to enable the Trust to sustain its high academic and non-academic standards in the event of a temporary fall in student numbers;
2. to provide the funds needed for continuing capital expenditure on enhanced teaching, domestic and recreational facilities; and
3. to provide bursaries for students from families who would not normally be able to afford to attend Concord College.

Total funds as at 31 August 2023 were £48.7 million (£46.1 million in 2022). Of these funds, £816,428 was held in restricted funds (2022: £675,135), with the remaining funds invested in fixed assets. The Trust does not hold free general reserves.

FINANCIAL REVIEW (continued)

Investments

At 31 August 2023 the investments were £6.7 million (2022: £6.7 million). The Trust's total portfolio of investments is held in the Cazenove Charity Responsible Multi-Asset Fund. The objective of the fund is long-term investment with a diversified strategy investing in equities, bonds, property and alternative assets to deliver a return of 4% per annum and managed with a long term performance target relative to inflation. It adopts a responsible investment approach seeking sustainable long-term returns, using exclusions, the integration of environmental, social and governance considerations in equities and engagement throughout share ownership.

Concord College International

The Trust's trading subsidiary, Concord College International Limited, made a gift aid contribution to the Trust of £294,023 (2022: £334,828). Concord College International has two principal activities: to license the Concord brand to sister schools in other countries; and to develop online learning through the Virtual Exam Tutor platform. The Shanghai Concord Bilingual School now operates two campuses in Shanghai, the most recent opening in September 2023. A new school is being constructed in Sunsuria City Malaysia and will open in September 2024.

Plans for the future and going concern

Objectives for the coming year are as follows:

1. Approve a new strategic plan for the Trust and Concord College;
2. Begin the construction of a new 60-bed boarding residence and a new sports hall on the campus;
3. Complete the review of key systems, including MIS and finance, and implement a smooth transition;
4. Develop a holistic approach to dealing with EDI issues and inclusion;
5. Develop and approve supporting strategies and plans for finance, IT and sustainability.

As part of their strategic review the Trustees have approved a major capital programme for the next five years based around a revised campus plan for Concord College which creates campus zones for key activities - learning, sport and activities, and boarding. Plans are being developed for new boarding houses and a permanent replacement to the temporary extension to the sports hall. In addition, there are plans for a new dining hub at the centre of the campus. Funding for the projects will come through reinvestment of surpluses. The bank loan of £5m will be utilised as required to support this investment in the campus.

The Board has a reasonable expectation that the College has adequate resources to continue in operational existence for the foreseeable future and therefore continues to adopt the going concern basis in preparing the financial statements.

THE BELL CONCORD EDUCATIONAL TRUST

TRUSTEES' ANNUAL REPORT (continued)

FOR THE YEAR ENDED 31 AUGUST 2023

Risk management and principle risks and uncertainties

The Trustees have reviewed the major strategic, business and operational risks which the Trust faces. Systems have been established to enable regular reports to be produced so that necessary steps can be taken to mitigate these risks.

A risk register is in place and is fully reviewed by the Trustees on an annual basis. The risk factor of each risk is reviewed alongside the corresponding control measures. Risk management is also discussed regularly at Board meetings. The controls used by Concord College to minimise risk include:

- a. Safeguarding procedures as required by law for the protection of children and wider stakeholders;
- b. Terms of reference, together with formal agendas, for committee and Board meetings;
- c. Careful Trustee recruitment, with appropriate skills, to ensure all risks are covered;
- d. Established organisational structures and lines of reporting;
- e. Formal written policies;
- f. Appropriate regulatory vetting, safeguarding procedures and registers as required by law and regulation;
- g. Continued professional development and training;
- h. Use of an independent Health & Safety consultant who reviews arrangements for Health & Safety;
- i. Other independent contractors and experts are used as required to bring in specialist advice to address risks;
- j. Comprehensive budgeting and monitoring including the preparation of sensitivity analysis.

Key areas of risk that are considered by the Board and the Concord Senior Team include:

1. Threats related to regulatory compliance with the requirements of (amongst others) the Independent Schools Inspectorate, UK Visas and Immigration, HM Revenue and Customs and the Charities Commission, which may in turn impact the College's reputation and/or financial position;
2. Maintaining recruitment of sufficient students of high academic ability;
3. Threats to the independent school sector as a whole, including political volatility. These may include changes to taxation of school fees or taxation matters affecting College employees;
4. Security of IT systems and the risk of cyber attack;
5. Market dependence and the risk of loss of a key market;
6. Threats impacting on the wellbeing of students and other stakeholders. These encompass the risk of physical or mental harm arising from the actions of staff, pupils or persons external to the organisation.

Equality, Diversity and Inclusion

The Trustees have a commitment to challenge and address inequality. A Trustee has been given responsibility for the oversight of EDI, and initiatives are being led by a named member of the Concord Senior Team. The Trust recognises that while it does deliver some good work to address EDI, further efforts are needed to bring this together into a comprehensive plan and actions.

THE BELL CONCORD EDUCATIONAL TRUST

TRUSTEES' ANNUAL REPORT (continued)

FOR THE YEAR ENDED 31 AUGUST 2023

STRUCTURE, GOVERNANCE AND MANAGEMENT

Constitution

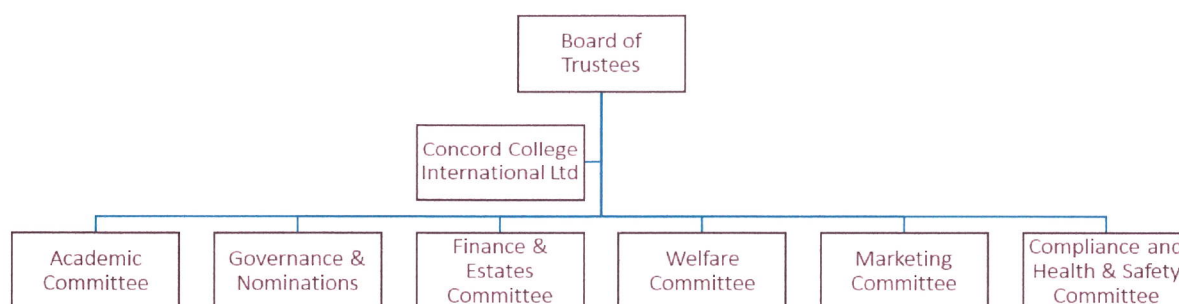
The Trust is a private company limited by guarantee. It is governed by its Memorandum and Articles of Association. It is registered as a charity (registered charity number: 326279).

Organisational management

The business of the Trust is managed by the Board of Trustees and the Articles of Association stipulate that their number must not be less than four nor more than twelve. New Trustees are recommended to the Board by the Governance & Nominations Committee and are nominated and are selected on the basis of professional qualities, experience, personal competence and availability and appointed where they have the necessary skills to contribute to the Trust's development. The Board of Trustees meets five times a year.

The Trustees determine the strategy and policies of Concord College. The Board of Trustees delivers its responsibilities through sub-committees which report to the Board. These committees are as follows:

A Finance & Estates Committee which meets as necessary and with external advisers, from whom reports are received as required. The Board ratifies the decisions of the Finance & Estates Committee. There is also an Academic Committee, a Welfare Committee, a Marketing Committee, a Governance & Nominations Committee and a Compliance and Health & Safety Committee, all of which meet a number of times a year. In addition there is an advisory committee for the Anthony Morris Foundation and the activities of Concord College International are overseen by the directors of CCIL Ltd.



The Board approves each year the delegated powers given to the Principal and Bursar to enable them to administer the daily working of the Trust. They are also supported by the Vice Principal (Academic), Vice Principal (Pastoral) Head of Lower School and Assistant Principals and they, together with the Principal and Bursar, comprise the Concord Senior Team and the key management personnel.

New Trustees are inducted through meetings with the Chair, the Principal, the Bursar and other members of the Concord Senior Team, including an introduction to college policies and procedures. Training is provided both internally and through external sources such as AGBIS and Trustees are regularly invited to attend courses designed to keep them informed and updated on current issues in the sector and regulatory requirements.

Remuneration for the key management personnel is set by the Board. Appropriate incentives are considered to encourage enhanced performance and for rewarding fairly and responsibly individual contributions to the College's success. The appropriateness and relevance of the remuneration policy is reviewed annually including reference to comparisons with other independent schools to ensure that the College remains sensitive to the broader issues of pay and employment conditions elsewhere. Delivery of the Trust's charitable vision and purpose is primarily dependent on our key management personnel and staff costs are the largest single element of our charitable expenditure.

THE BELL CONCORD EDUCATIONAL TRUST

TRUSTEES' ANNUAL REPORT (continued)

FOR THE YEAR ENDED 31 AUGUST 2023

Corporate governance

The Board of Trustees seeks to have a governance framework that is fit for purpose, compliant and efficient. The Board supports the Charity Governance Code and is aware that the areas in which we currently do not fully comply are recruitment processes, diversity, term limits and review of Board performance. Subsequent to the year end the Board has established a Governance & Nominations Committee which is tasked with enhancing governance arrangements.

Promotion of the success of the organisation to benefit its members

The Board of Trustees confirm that in accordance with Section 172(1) of the Companies Act it acts in a way it considers most likely to achieve the purposes of the Bell Concord Educational Trust. In making this assessment the Trustees consider the following:

a. The likely consequences of any decision in the long term

The long-term sustainability of the operating model is considered by the Board through short and long term financial projections and key risks that could negatively impact the sustainability of the Trust. The Board and its committees review management information, budgets, cashflow projections, forecasts and progress against objectives on a regular basis.

b. The interests of the Trust's employees

The Board and its committees receive regular reports from management on staff matters including turnover and staff morale. Selected staff are invited to meet Trustees at social events four times a year. The College has an inclusive policy for disabled employees and applications for employment are considered without reference to disability. Training and career development are also awarded without reference to disability. Employment, staff welfare and other policies are reviewed and updated regularly. The Principal and Bursar hold regular meetings with their teams, both individually and collectively.

c. The need to foster the Trust's relationship with suppliers, customers and stakeholders

The Trust works with suppliers to build strong relationships, and our terms are that supplier payment is due within 30 days after the invoice is received from the supplier. High value contracts require a tender process. In addition, the Trustees have regard to the need to foster relationships with the parents of the College students, being our customers and stakeholders.

d. The impact of the Trust on the community and the environment

An independent review of energy use has been commissioned and a review of greenhouse gas emissions is provided on page 6 in line with the Streamlined Energy and Carbon Reporting requirements. The work done by the Trust in support of the community is set out in the section on Public Benefit on page 3.

e. The desirability of the Trust maintaining a reputation for high standards of business conduct

The Trust takes a zero tolerance approach towards fraud, bribery and corruption. It is committed to applying all applicable laws and regulations relating to fraud, bribery and corruption. Expectations of employees are clearly set out in the Staff Code of Conduct and the related policies.

Gender pay gap

Concord College publishes its gender pay gap report on its website. All applicants, regardless of gender, are encouraged to apply for senior positions when these become available.

Staffing

During the year two long serving members of staff took retirement. Mr Tom Lawrence served as Vice-Principal (Academic) and was well known to many students and staff following his long career at Concord. Mrs Barbara Belfield Dean retired as Bursar after working for Concord College since 1979, and guiding the College to growth and success over this period.

REFERENCE AND ADMINISTRATIVE DETAILS

Patron Datuk Lim Chee Wah

Trustees Dr I M Bride - Chairman (*until 23 October 2023*)
Dr C A Stanford - Chairman (*from 23 October 2023*)
Mr B R Yates - Vice-Chairman
Miss F Akinlose (*from 8 September 2023*)
Mrs F Brown (*from 8 September 2023*)
Mr A F S Donovan
Mr R G Dyson
Mr T C Hughes (*until 9 December 2022*)
Ms J Krasocki
Mrs R M Mannell
Mr P S Ruben
Mr P Yong

Six Trustees have served more than nine years, their re-election being on the basis of their skills and contribution to the Board.

Officers Dr M R Truss, Principal
Mrs B M Belfield Dean, Bursar & Clerk to the Trustees (*until 31 December 2022*)
Mr M Z Hodge, Bursar & Clerk to the Trustees (*from 1 January 2023*)

Registered & Principal Office Acton Burnell Hall
Acton Burnell
Shrewsbury
Shropshire
SY5 7PF

Bankers Barclays Bank PLC
44-46 Castle Street
Shrewsbury
Shropshire
SY1 2BU

Auditors Haysmacintyre LLP
Registered Auditors
10 Queen Street Place
London
EC4R 1AG

Solicitors Farrer & Co
66 Lincoln's Inn Fields
London
WC2A 3LH

Investment Managers Cazenove Capital
Schroder & Co Ltd
1 London Wall Place
London
EC2Y 5AU

THE BELL CONCORD EDUCATIONAL TRUST

TRUSTEES' ANNUAL REPORT (continued)

FOR THE YEAR ENDED 31 AUGUST 2023

STATEMENT OF TRUSTEES' RESPONSIBILITIES

The Trustees, who are also the directors of the charitable company, are responsible for preparing the Trustees' Report and the financial statements in accordance with applicable law and United Kingdom Accounting Standards (United Kingdom Generally Accepted Accounting Practice).

Company law requires the Trustees to prepare financial statements for each financial year which give a true and fair view of the state of affairs of the charitable company and of the incoming resources and application of resources, including the income and expenditure, of the charitable company for that year. In preparing these financial statements, the Trustees are required to:

- select suitable accounting policies and then apply them consistently;
- observe the methods and principles in the Charities SORP;
- make judgements and accounting estimates that are reasonable and prudent;
- state whether applicable UK Accounting Standards have been followed, subject to any material departures disclosed and explained in the financial statements;
- prepare the financial statements on the going concern basis unless it is inappropriate to presume that the company will continue in business.

The Trustees are responsible for keeping proper accounting records that disclose with reasonable accuracy at any time the financial position of the charitable company and enable them to ensure that the financial statements comply with the Companies Act 2006. They are also responsible for safeguarding the assets of the charitable company and hence for taking reasonable steps for the prevention and detection of fraud and other irregularities.

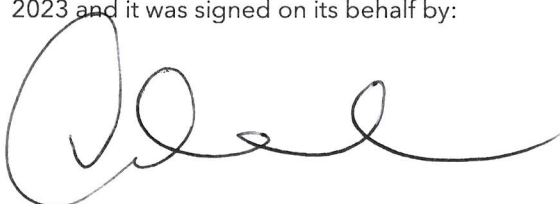
So far as each of the Trustees is aware at the time the report is approved:

- there is no relevant audit information of which the company's auditors are unaware; and
- the Trustees have taken all steps that they ought to have taken to make themselves aware of any relevant audit information and to establish that the auditors are aware of that information.

AUDITORS

The Auditors, Haysmacintyre LLP, have expressed their willingness to be re-appointed as auditors of the Trust in accordance with Section 485 of the Companies Act 2006.

The Trustees have approved and authorised the Trustees Annual Report at its meeting on 1 December 2023 and it was signed on its behalf by:



Dr C A Stanford
1 December 2023

INDEPENDENT AUDITORS' REPORT TO THE MEMBERS OF

THE BELL CONCORD EDUCATIONAL TRUST

Opinion

We have audited the financial statements of The Bell Concord Educational Trust for the year ended 31 August 2023 which comprise the Consolidated Statement of Financial Activities, the Consolidated and Charity Balance Sheets, the Consolidated Cash Flow Statement and notes to the financial statements, including a summary of significant accounting policies. The financial reporting framework that has been applied in their preparation is applicable law and United Kingdom Accounting Standards, including Financial Reporting Standard 102 The Financial Reporting Standard applicable in the UK and Republic of Ireland (United Kingdom Generally Accepted Accounting Practice).

In our opinion, the financial statements:

- give a true and fair view of the state of the group's and the parent charitable company's affairs as at 31 August 2023 and of the group's net movement in funds, including its income and expenditure, for the year then ended;
- have been properly prepared in accordance with United Kingdom Generally Accepted Accounting Practice; and
- have been prepared in accordance with the requirements of the Companies Act 2006.

Basis for opinion

We conducted our audit in accordance with International Standards on Auditing (UK) (ISAs (UK)) and applicable law. Our responsibilities under those standards are further described in the Auditor's responsibilities for the audit of the financial statements section of our report. We are independent of the group in accordance with the ethical requirements that are relevant to our audit of the financial statements in the UK, including the FRC's Ethical Standard, and we have fulfilled our other ethical responsibilities in accordance with these requirements. We believe that the audit evidence we have obtained is sufficient and appropriate to provide a basis for our opinion.

Conclusions relating to going concern

In auditing the financial statements, we have concluded that the trustees' use of the going concern basis of accounting in the preparation of the financial statements is appropriate.

Based on the work we have performed, we have not identified any material uncertainties relating to events or conditions that, individually or collectively, may cast significant doubt on the charitable company's ability to continue as a going concern for a period of at least twelve months from when the financial statements are authorised for issue.

Our responsibilities and the responsibilities of the trustees with respect to going concern are described in the relevant sections of this report.

Other information

The trustees are responsible for the other information. The other information comprises the information included in the Trustees' Annual Report. Our opinion on the financial statements does not cover the other information and, except to the extent otherwise explicitly stated in our report, we do not express any form of assurance conclusion thereon.

In connection with our audit of the financial statements, our responsibility is to read the other information and, in doing so, consider whether the other information is materially inconsistent with the financial statements or our knowledge obtained in the audit or otherwise appears to be materially misstated. If we identify such material inconsistencies or apparent material misstatements, we are required to determine whether there is a material misstatement in the financial statements or a material misstatement of the other information. If, based on the work we have performed, we conclude that there is a material misstatement of this other information, we are required to report that fact. We have nothing to report in this regard.

Opinions on other matters prescribed by the companies Act 2006

In our opinion, based on the work undertaken in the course of the audit:

- the information given in the Trustees' Annual Report (which includes the strategic report and the directors' report prepared for the purposes of company law) for the financial year for which the financial statements are prepared is consistent with the financial statements; and
- the strategic report and the directors' report included within the Trustees' Annual Report have been prepared in accordance with applicable legal requirements.

INDEPENDENT AUDITORS' REPORT TO THE MEMBERS OF

THE BELL CONCORD EDUCATIONAL TRUST (continued)

Matters on which we are required to report by exception

In the light of the knowledge and understanding of the group and the parent charitable company and its environment obtained in the course of the audit, we have not identified material misstatements in the Trustees' Annual Report (which incorporates the strategic report and the directors' report).

We have nothing to report in respect of the following matters in relation to which the Companies Act 2006 requires us to report to you if, in our opinion:

- adequate accounting records have not been kept by the parent charitable company; or
- the parent charitable company financial statements are not in agreement with the accounting records and returns; or
- certain disclosures of trustees' remuneration specified by law are not made; or
- we have not received all the information and explanations we require for our audit.

Responsibilities of trustees for the financial statements

As explained more fully in the trustees' responsibilities statement set out on page 12, the trustees (who are also the directors of the charitable company for the purposes of company law) are responsible for the preparation of the financial statements and for being satisfied that they give a true and fair view, and for such internal control as the trustees determine is necessary to enable the preparation of financial statements that are free from material misstatement, whether due to fraud or error.

In preparing the financial statements, the trustees are responsible for assessing the group's and the parent charitable company's ability to continue as a going concern, disclosing, as applicable, matters related to going concern and using the going concern basis of accounting unless the trustees either intend to liquidate the group or the parent charitable company or to cease operations, or have no realistic alternative but to do so.

Auditor's responsibilities for the audit of the financial statements

Our objectives are to obtain reasonable assurance about whether the financial statements as a whole are free from material misstatement, whether due to fraud or error, and to issue an auditor's report that includes our opinion. Reasonable assurance is a high level of assurance but is not a guarantee that an audit conducted in accordance with ISAs (UK) will always detect a material misstatement when it exists. Misstatements can arise from fraud or error and are considered material if, individually or in the aggregate, they could reasonably be expected to influence the economic decisions of users taken on the basis of these financial statements.

Irregularities, including fraud, are instances of non-compliance with laws and regulations. We design procedures in line with our responsibilities, outlined above, to detect material misstatements in respect of irregularities, including fraud. The extent to which our procedures are capable of detecting irregularities, including fraud is detailed below:

Based on our understanding of the charitable company and the environment in which it operates, we identified that the principal risks of non-compliance with laws and regulations related to ISI regulations, safeguarding regulations, health and safety law, GDPR and employment law and we considered the extent to which non-compliance might have a material effect on the financial statements. We also considered those laws and regulations that have a direct impact on the preparation of the financial statements such as the Companies Act 2006, the Charities Act 2011, and payroll tax.

We evaluated management's incentives and opportunities for fraudulent manipulation of the financial statements (including the risk of override of controls), and determined that the principal risks were related to posting inappropriate journal entries to revenue and management bias in accounting estimates. Audit procedures performed by the engagement team included:

inspecting correspondence with regulators and tax authorities;

discussions with management including consideration of known or suspected instances of non-compliance with laws and regulation and fraud;

evaluating management's controls designed to prevent and detect irregularities;

INDEPENDENT AUDITORS' REPORT TO THE MEMBERS OF

THE BELL CONCORD EDUCATIONAL TRUST (continued)

Auditor's responsibilities for the audit of the financial statements (continued)

identifying and testing journals, in particular journal entries posted with unusual account combinations, postings by unusual users or with unusual descriptions; and

challenging assumptions and judgements made by management in their critical accounting estimates.

Because of the inherent limitations of an audit, there is a risk that we will not detect all irregularities, including those leading to a material misstatement in the financial statements or non-compliance with regulation. This risk increases the more that compliance with a law or regulation is removed from the events and transactions reflected in the financial statements, as we will be less likely to become aware of instances of non-compliance. The risk is also greater regarding irregularities occurring due to fraud rather than error, as fraud involves intentional concealment, forgery, collusion, omission or misrepresentation.

A further description of our responsibilities for the audit of the financial statements is located on the Financial Reporting Council's website at: www.frc.org.uk/auditorsresponsibilities. This description forms part of our auditor's report.

Use of our report

This report is made solely to the charitable company's members, as a body, in accordance with Chapter 3 of Part 16 of the Companies Act 2006. Our audit work has been undertaken so that we might state to the charitable company's members those matters we are required to state to them in an Auditor's report and for no other purpose. To the fullest extent permitted by law, we do not accept or assume responsibility to anyone other than the charitable company and the charitable company's members as a body, for our audit work, for this report, or for the opinions we have formed.



Vikram Sandhu

(Senior Statutory Auditor)

For and on behalf of Haysmacintyre LLP (Statutory Auditors)

Date: 18 December 2023

10 Queen Street Place
London
EC4R 1AG

THE BELL CONCORD EDUCATIONAL TRUST

CONSOLIDATED STATEMENT OF FINANCIAL ACTIVITIES

FOR THE YEAR ENDED 31 AUGUST 2023

(INCORPORATING INCOME & EXPENDITURE ACCOUNT)

	Notes	Unrestricted Funds £	Restricted Funds £	2023 Total £	2022 Total £
Income from:					
Charitable activities					
School fees receivable	1	25,107,660	-	25,107,660	24,937,675
Other academic income		930,029	-	930,029	748,547
Other College activities					
Rental income and sale of fixed assets	2	13,800	-	13,800	4,200
Other trading activities					
Concord College International Limited	3	495,275	-	495,275	442,515
Investments					
Bank and other interest		852,116	-	852,116	81,708
Donations					
Donations		-	141,293	141,293	4,857
Total income		27,398,880	141,293	27,540,173	26,219,502
Expenditure on:	4				
Raising funds		-	-	-	-
Charitable activities		24,214,659	-	24,214,659	22,825,315
Trading activities		232,159	-	232,159	144,676
Corporation tax liability on trading activities		-	-	-	-
Total expenditure		24,446,818	-	24,446,818	22,969,991
Operating result for the year before gains/losses on investments		2,952,062	141,293	3,093,355	3,249,511
Net (loss) / gain on investments	11	17,626	-	17,626	397,069
Net (loss) / gain on disposal of assets		(543,584)	-	(543,584)	
Net income and net movement of funds		2,426,104	141,293	2,567,397	3,646,580
Reconciliation of funds					
Total funds brought forward		45,415,433	675,135	46,090,568	42,443,988
Total funds carried forward	17	47,841,537	816,428	48,657,965	46,090,568

No summary income and expenditure account has been prepared because this information is clearly identified in the above statement.

There were no recognised gains and losses other than those shown in the above Statement of Financial Activities.

The accompanying notes form an integral part of this Statement of Financial Activities.

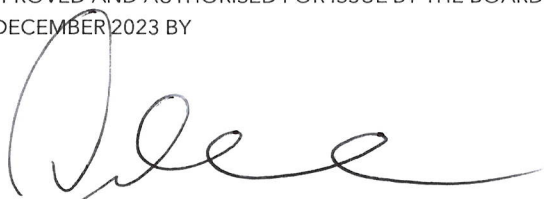
THE BELL CONCORD EDUCATIONAL TRUST

CHARITY AND CONSOLIDATED BALANCE SHEETS

AS AT 31 AUGUST 2023

	Notes	Group				Charity			
		2023		2022		2023		2022	
		£	£	£	£	£	£	£	£
Fixed assets									
Tangible fixed assets	10		39,778,819		40,913,761		39,778,819		40,913,761
Investments	11		6,734,564		6,716,938		6,734,565		6,716,939
			<u>46,513,383</u>		<u>47,630,699</u>		<u>46,513,384</u>		<u>47,630,700</u>
Current assets									
Stocks			57,949		60,005		57,949		60,005
Debtors	12		639,122		501,743		718,152		539,896
Cash at bank and in hand			28,256,288		23,047,668		27,904,620		22,705,973
			<u>28,953,359</u>		<u>23,609,416</u>		<u>28,680,721</u>		<u>23,305,874</u>
Creditors: due within one year	13	(21,808,777)		(20,149,547)		(21,803,071)		(20,143,844)	
Net current assets			7,144,582		3,459,869		6,877,650		3,162,030
Bank loan	14		(5,000,000)		(5,000,000)		(5,000,000)		(5,000,000)
Net assets			<u>48,657,965</u>		<u>46,090,568</u>		<u>48,391,034</u>		<u>45,792,730</u>
Represented by:									
Unrestricted (general) funds:									
Designated funds:									
Fixed assets fund	17		47,841,537		45,415,433		47,574,606		45,117,595
			<u>47,841,537</u>		<u>45,415,433</u>		<u>47,574,606</u>		<u>45,117,595</u>
Restricted fund	17		816,428		675,135		816,428		675,135
			<u>48,657,965</u>		<u>46,090,568</u>		<u>48,391,034</u>		<u>45,792,730</u>

APPROVED AND AUTHORISED FOR ISSUE BY THE BOARD AND SIGNED ON ITS BEHALF ON
1 DECEMBER 2023 BY



DR C A STANFORD
CHAIRMAN OF THE BOARD OF TRUSTEES

The accompanying notes are an integral part of these balance sheets.

THE BELL CONCORD EDUCATIONAL TRUST

CONSOLIDATED CASH FLOW STATEMENT

FOR THE YEAR ENDED 31 AUGUST 2023

	Note	2023		2022	
		£	£	£	£
Net cash outflow from operations					
Net cash provided by operating activities	(i)	5,008,617		4,575,437	
Cash flows from investing activities:					
Investment income - bank interest and other income		852,116		81,708	
Sale of tangible fixed assets		12,000		3,000	
Purchase of investments		-		(6,605,000)	
Disposal of investments		-		6,605,005	
Disposal of tangible fixed assets		543,584			
Purchase of tangible fixed assets		(1,207,697)		(449,108)	
Net cash provided by investing activities		200,003		(364,395)	
Cash flows from financing activities:					
Increase in bank loan		-		-	
Net cash provided in financing activities		-		-	
Change in cash and cash equivalents in the reporting period		5,208,620		4,211,042	
Cash and cash equivalents at the beginning of the reporting period		23,047,668		18,836,626	
Cash and cash equivalents at the end of the reporting period	(ii)	28,256,288		23,047,668	

Notes:

(i) Reconciliation of net income to net cash flow from operating activities

	2023		2022	
	£	£	£	£
Net movement in funds	2,567,397		3,646,580	
Adjustments for:				
Depreciation	1,799,055		1,956,472	
(Profit) / loss on sale of fixed assets	(12,000)		(3,000)	
Investment income - bank interest	(852,116)		- 81,708	
Net (gain) / loss on investments	(17,626)		(397,069)	
(Increase) / decrease in debtors	(137,379)		(127,659)	
(Decrease) / increase in creditors	1,659,230		(435,962)	
(Increase) / decrease in stocks	2,056		17,783	
	2,441,220		928,857	
Net cash provided by operating activities	5,008,617		4,575,437	

(ii) Analysis of cash to cash equivalents

	2023		2022	
	£		£	
Cash at bank and in hand	28,256,288		23,047,668	

THE BELL CONCORD EDUCATIONAL TRUST

NOTES TO THE FINANCIAL STATEMENTS

FOR THE YEAR ENDED 31 AUGUST 2023

ACCOUNTING POLICIES

A summary of the principal accounting policies adopted (which have been applied consistently, except where noted) is set out below.

Basis of preparation

The financial statements have been prepared in accordance with the Financial Reporting Standard applicable in the UK and Republic of Ireland (FRS102), the Companies Act 2006 and the Statement of Recommended Practice applicable to charities preparing their accounts in accordance with the Financial Reporting Standard applicable in the UK and Republic of Ireland (FRS 102) - effective 1 January 2019.

The company has taken advantage allowed under section 408 of the Companies Act 2006 and has not presented its own Statement of Financial Activities.

General information

The Charity is a company limited by guarantee, incorporated in England and Wales (company number: 01503040 and charity number: 326279. The Charity's registered office address is: Acton Burnell Hall, Acton Burnell, Shrewsbury, Shropshire, SY5 7PF.

The accounts are drawn up on the historical cost basis of accounting, as modified by the revaluation of investments.

Going concern

Having reviewed the funding facilities available to the College together with the expected ongoing demand for places and the College's future projected cash flows, the Board has a reasonable expectation that the College has adequate resources to continue its activities for the foreseeable future and consider that there were no material uncertainties over the College's financial viability. Accordingly, the Board continues to adopt the going concern basis in preparing the financial statements.

Public benefit

The Company, incorporated on 19 June 1980, is a Public Benefit Entity registered as a charity in England and Wales and a company limited by guarantee.

Trading subsidiary

The wholly owned trading subsidiary of the Trust, Concord College International Limited, has been active during the year in exploring opportunities for the development of international schools overseas and in the UK. The results of the year for assets and liabilities for the Company have been consolidated into these accounts on a line by line basis.

Critical accounting judgements and estimates and key sources of estimation uncertainty

In the application of these accounting policies, the Trustees are required to make judgements, estimates and assumptions about the carrying value of assets and liabilities that are not readily apparent from other sources.

Estimates and judgements are continually evaluated and are based on historical experience and other factors, including expectations of future events that are believed to be reasonable under the circumstances. Although these estimates are based on management's best knowledge of the amount, events or actions, actual results may ultimately differ from those estimates.

THE BELL CONCORD EDUCATIONAL TRUST

NOTES TO THE FINANCIAL STATEMENTS (continued)

FOR THE YEAR ENDED 31 AUGUST 2023

Revisions to accounting estimates are recognised in the period in which the estimate is revised if the revision affects only that period, or in the period of the revision and future periods if the revision affects current and future periods. The Trustees consider the following items to be areas subject to estimation and judgement:

Depreciation:

The useful economic lives of tangible fixed assets are based on management's judgement and experience. When management identifies that actual useful economic lives differ materially from the estimates used to calculate depreciation, that charge is adjusted retrospectively. Although tangible fixed assets are significant, variances between actual and estimated useful economic lives will not have a material impact on the operating results. Historically, no changes have been required.

The following principal accounting policies have been applied:

Income and endowments

All income and endowments are recognised when the criteria of entitlement, measurement and probability of receipt have been satisfied. Tuition and boarding fees, less any allowances, bursaries or scholarships awarded, are recognised in the period in which they are received. There is no advanced fee fund scheme in place; on occasion, some parents may attempt to pay for fees in advance but they are free to utilise their account balances as they see fit which may include the anticipation of future invoices or the immediate need for school trips and visits. Consequently, the most appropriate method to treat fee income is to allocate it in the period it is received.

Donations and legacies are recognised when the conditions of entitlement, probability and measurement are met. Where the probability and/or measurement criteria for legacies and donations are not satisfied as at the balance sheet date but subsequent events resolve the uncertainty such that the criteria are met, an adjustment is made to recognise the income.

Investment income from dividends, bank balances and fixed interest securities is included when receivable and the amount can be measured reliably by the College. Dividends are recognised once the dividend has been declared and notification has been received that the dividends are due.

Expenditure

Expenditure is accounted for on an accruals basis where there is a legal and constructive obligation to make a payment to a third party and the amount of the obligation can be measured reliably, expenditure is allocated to the appropriate headings relevant to the charitable activities. Expenditure is recognised as soon as the related liability is incurred and has been classified under headings that aggregate all costs relating to that category. Liabilities are recognised as soon as there is a legal or constructive obligation committing the Charity to the expenditure. Employment benefits, including holiday pay, are recognised in the period in which they are earned. Termination benefits are recognised in the period in which the decision is made and communicated to the relevant employee(s). Expenditure on raising funds comprises commissions, advertising and marketing and associated travel and subsistence. Expenditure on charitable activities comprises personnel, catering and domestic, property, repairs and maint

Support costs represent indirect costs relating to raising funds and the Charity's charitable activities. Support costs, including governance costs, are allocated to activities on bases that represent the Trustees' best estimate of actual use. The bases used to allocate costs to the above categories of expenditure are set out in note 5.

Governance costs comprise the costs of running the charity, including strategic planning for its future development, auditors' remuneration, certain legal costs and all costs of complying with constitutional and statutory requirements, such as costs of Board meetings and preparing the statutory accounts and are included in note 6.

THE BELL CONCORD EDUCATIONAL TRUST

NOTES TO THE FINANCIAL STATEMENTS (continued)

FOR THE YEAR ENDED 31 AUGUST 2023

Pension costs

Retirement benefits to employees of the College are provided through two pension schemes. The pension costs charged in the Statement of Financial Activities are determined as follows:

(a) The Teachers' Pension Scheme - This scheme is a multi-employer pension scheme. It is not possible to identify the College's share of the underlying assets and liabilities of the Teachers' Pension Scheme on a consistent and reasonable basis and therefore, under FRS 102, the scheme is accounted for as if it were a defined contribution scheme. The College's contributions, which are in accordance with the recommendations of the Government Actuary, are charged in the period in which the salaries to which they relate are payable.

(b) The Pensions Trust Flexible Retirement Plan - The plan is a multi-employer defined contribution money purchase scheme. All contributed costs are accounted for on the basis of charging the cost of providing pensions over the period when the College benefits from the employees' services. The College has no further liability under the scheme.

The College has implemented a phased withdrawal from the Teachers' Pension Scheme. From the 1st January 2024 TPS will be closed to new members. New teaching staff will be eligible to join the Aviva Pensions Trust for Independent Schools ("APTIS") scheme.

Operating leases

Rentals under operating leases are charged on a straight-line basis over the lease term. Benefits received and receivable as an incentive to sign an operating lease are similarly spread on a straight-line basis over the lease term.

Tangible fixed assets

Assets are capitalised if they have a value over £2,500, with occasional variations (eg. computers).

Tangible fixed assets are stated at cost less depreciation. Depreciation is provided at rates calculated to write

Freehold property	2% straight line (except new sports hall six years, temporary classrooms three years)
Plant and machinery	20% straight line
Motor vehicles	20% straight line
Fixtures and fittings	20% straight line
IT Equipment	20% - 33.33% straight line

No depreciation is provided on freehold land.

Investments

Investments held for the long-term to generate income or capital growth are carried at fair value as fixed assets. Realised gains are the difference between sales proceeds and the carrying value of the investment. The carrying value is the fair value at the beginning of the year or the purchase cost where the investment was acquired during the year. Unrealised gains are the change in value of investments after taking into account any movements in investment holdings such as purchases and disposals of investments. Realised and unrealised gains are accounted for within the Statement of Financial Activities.

Stock

Stock represents goods for resale and is valued at the lower of cost and net realisable value.

THE BELL CONCORD EDUCATIONAL TRUST

NOTES TO THE FINANCIAL STATEMENTS (continued)

FOR THE YEAR ENDED 31 AUGUST 2023

Financial instruments

Basic financial instruments transactions that result in the recognition of financial assets and liabilities like trade and other accounts receivable and payable are accounted for on the following basis:

Cash and cash equivalents

Cash and cash equivalents includes cash in hand, deposits held at banks, other short-term highly liquid investments with original maturities of three months or less and bank overdrafts. Bank overdrafts, when applicable, are shown within current liabilities.

Debtors and creditors

Debtors and creditors are measured at the transaction price less any provision for impairment. Any losses arising from impairment are recognised as expenditure.

Fund accounting

The charitable trust funds of the College are accounted for as unrestricted or restricted income in accordance with the terms of trust imposed by the donors or any appeal to which they may have responded.

General funds are unrestricted funds which are available for use at the discretion of the Trustees in furtherance of the general objectives of the Trust and which have not been designated for other purposes. Designated funds are funds set aside by the Trustees for particular purposes where their use remains at the discretion of the Trustees.

Restricted funds represent amounts donated to the College for specific purposes such as funding building developments, scholarships, bursaries and prizes.

THE BELL CONCORD EDUCATIONAL TRUST

NOTES TO THE FINANCIAL STATEMENTS (continued)

FOR THE YEAR ENDED 31 AUGUST 2023

1. Charitable activities - fees receivable

	2023 £	2022 £
Fees receivable consist of:		
Gross fees: Main term	24,522,271	24,918,800
Gross fees: charges for half terms, Christmas & Easter	522,217	626,225
Gross fees: Summer courses	1,203,790	562,860
Less: total bursaries, scholarships and allowances	<u>(1,140,618)</u>	<u>(1,170,210)</u>
	<u>25,107,660</u>	<u>24,937,675</u>

Main term scholarships, bursaries and allowances were paid to 121 pupils (118 pupils in 2021/22). Within this, means tested bursaries totalling £584,932 were paid to 30 pupils (£521,487 to 34 pupils in 2021/22).

2. Other College income

	2023 £	2022 £
Rental income	1,800	1,200
Profit on sale of fixed assets	<u>12,000</u>	<u>3,000</u>
	<u>13,800</u>	<u>4,200</u>

3 Income from subsidiary's trading activities

	2023 £	2022 £
Turnover	495,275	442,515
Costs of trading	-	-
Gross profit	<u>495,275</u>	<u>442,515</u>
Administrative expenses	<u>(232,159)</u>	<u>(144,676)</u>
Operating profit	<u>263,116</u>	<u>297,839</u>
Retained profit	<u>263,116</u>	<u>297,839</u>
Current assets	368,731	366,480
Current liabilities	<u>(101,799)</u>	<u>(68,641)</u>
Net assets/(liabilities)	<u>266,933</u>	<u>297,839</u>

The Trust owns the whole of the £1 ordinary share capital of Concord College International Limited, incorporated in England. The principal activity of the Company is to provide business and consultancy services. Its trading results for the period, as extracted from the audited accounts, are summarised above.

The management charge from The Bell Concord Educational Trust Limited to Concord College International Limited was £232,158 (£144,676 in 2022).

THE BELL CONCORD EDUCATIONAL TRUST

NOTES TO THE FINANCIAL STATEMENTS (continued)

FOR THE YEAR ENDED 31 AUGUST 2023

4. Analysis of total resources expended

Total expenditure	Staff costs (note 8) £	Depreciation (note 10) £	Other £	Total 2023 £
Cost of raising funds				
Fundraising	-	-	-	-
Total for the charity	-	-	-	-
Trading costs of subsidiary activities	-	-	232,159	232,159
Total for the group	-	-	232,159	232,159
Charitable expenditure				
Teaching costs	7,507,365	600,068	1,463,364	9,570,797
Welfare	3,849,013	69,463	1,776,086	5,694,562
Premises	1,263,712	1,129,524	1,992,084	4,385,320
Other academic costs	-	-	800,032	800,032
Support costs of schooling (including governance)	1,857,388	-	1,906,560	3,763,948
Total charitable expenditure	14,477,478	1,799,055	7,938,126	24,214,659
Total resources expended for the group	14,477,478	1,799,055	8,170,285	24,446,818
Comparisons to 2022:				
	Staff costs £	Depreciation £	Other £	Total 2022 £
Cost of raising funds				
Fundraising	-	-	-	-
Total for the charity	-	-	-	-
Trading costs of subsidiary activities	-	-	144,676	144,676
Total for the group	-	-	144,676	144,676
Charitable expenditure				
Teaching costs	7,129,349	686,636	1,337,523	9,153,508
Welfare	3,570,043	87,143	1,643,610	5,300,796
Premises	1,214,061	1,182,693	1,887,311	4,284,065
Other academic costs	-	-	667,384	667,384
Support costs of schooling (including governance)	1,639,318	-	1,780,244	3,419,562
Total charitable expenditure	13,552,771	1,956,472	7,316,072	22,825,315
Total resources expended for the group	13,552,771	1,956,472	7,460,748	22,969,991

THE BELL CONCORD EDUCATIONAL TRUST

NOTES TO THE FINANCIAL STATEMENTS (continued)

FOR THE YEAR ENDED 31 AUGUST 2023

5. Analysis of direct and allocated costs

Support costs all relate to the direct operating costs of the College and principally comprise the following:

	2023	2022
	£	£
Administration and related costs	2,663,582	2,447,661
Promotion and related costs	1,043,176	916,709
Governance (see note 6)	55,346	34,764
	<u>3,762,104</u>	<u>3,399,134</u>

6. Governance

	2023	2022
	£	£
Trustees' travel	27,863	3,898
Trustees training	2,074	585
Audit and accountancy	24,748	29,660
Professional and registration fees	661	621
	<u>55,346</u>	<u>34,764</u>

7. Grants, awards and prizes

	2023	2022
	£	£
<i>From unrestricted funds:</i>		
Bursaries	584,932	521,487
Scholarships	257,776	327,972
Other fee remission	262,509	283,941
Summer Course reductions	35,401	36,810
	<u>1,140,618</u>	<u>1,170,210</u>

8. Staff costs

	2023	2022
	£	£
Salaries and wages	11,400,800	10,632,999
Social security costs	1,201,043	1,148,054
Pension contributions	1,596,075	1,517,080
Health insurance	44,353	36,220
PHI, DIS & personal accident	128,508	125,413
Other staff related costs	106,699	93,005
	<u>14,477,478</u>	<u>13,552,771</u>

THE BELL CONCORD EDUCATIONAL TRUST

NOTES TO THE FINANCIAL STATEMENTS (continued)

FOR THE YEAR ENDED 31 AUGUST 2023

	2023 £	2022 £
Aggregate employee benefits of key management personnel	1,072,502	1,036,053

Neither the Trustees nor persons connected with them received any remuneration or other benefits from the College. 8 Trustees (2022: 8) were reimbursed travel, accommodation and other expenses relating to their duties as Trustees during the year amounting to £27,996 (2022: £3,898) which includes amounts paid directly to third parties on behalf of Trustees during the year totalling £5,306 (2022: £2,169).

Number of higher paid employees in bands of:	2023	2022
£60,001 to £70,000	24	18
£70,001 to £80,000	9	2
£80,001 to £90,000	6	6
£90,001 to £100,000	1	-
£120,001 to £130,000	-	1
£130,001 to £140,000	1	-
£150,001 to £160,000	-	1

The average weekly number of full-time equivalent employees during the year was made up as follows:

	No of FTEs	No of FTEs
Teaching	91	92
Teaching support	11	13
Welfare	86	83
Premises	30	29
Support (including management and administration)	43	41
	261	258
Average headcount:		
Teaching	96	98
Teaching support	24	21
Welfare	125	125
Premises	30	32
Support (including management and administration)	46	40
	321	316

THE BELL CONCORD EDUCATIONAL TRUST

NOTES TO THE FINANCIAL STATEMENTS (continued)

FOR THE YEAR ENDED 31 AUGUST 2023

9. Net income	2023	2022
	£	£
Net income includes:		
Auditors' remuneration (including VAT) for:		
Audit	29,658	25,040
Other services	4,086	4,620
Depreciation	1,799,055	1,956,472
Operating lease costs	48,980	46,647

10. Tangible fixed assets

Group and Charity	Freehold Land and Buildings £	Plant, Machinery & Equipment £	Motor Vehicles £	Furniture and Fittings £	Total
Cost					
At 1 September 2022	51,399,568	5,608,678	294,137	4,788,802	62,091,185
Additions	885,075	266,824	36,689	19,109	1,207,697
Disposals	(543,584)		(57,148)		(600,732)
At 31 August 2023	51,741,059	5,875,502	273,678	4,807,911	62,698,150
Depreciation					
At 1 September 2022	11,801,263	4,805,817	185,949	4,384,395	21,177,424
Charge for the year	989,208	531,226	33,589	245,032	1,799,055
Disposals			(57,148)		(57,148)
At 31 August 2023	12,790,471	5,337,043	162,390	4,629,427	22,919,331
Net carrying value at 31 August 2023	38,950,588	538,459	111,288	178,484	39,778,819
Net carrying value at 31 August 2022	39,598,305	802,861	108,188	404,407	40,913,761

On 20 April 2017 the College entered into a loan agreement with Barclays Bank Plc. There is legal charge over the freehold of various properties (land and buildings) owned by the College on the College site and in the village of Acton Burnell (see note 14).

THE BELL CONCORD EDUCATIONAL TRUST

NOTES TO THE FINANCIAL STATEMENTS (continued)

FOR THE YEAR ENDED 31 AUGUST 2023

11. Investments

	2023 £	2022 £
Market value brought forward	6,716,939	6,319,875
Additions	-	6,605,000
Disposals	-	(6,605,005)
Net gain on investments	17,626	397,069
	6,734,565	6,716,939
Cash on deposit	-	-
	6,734,565	6,716,939
Market value carried forward	6,734,565	6,716,939
Historical cost	6,605,000	6,605,000
Investments comprise:	2022 £	2022 £
Listed investments in the UK	6,734,564	6,716,938
Unlisted investments in the UK	1	1

Unlisted investments relate to the charitable company holding a £1 share in the wholly owned subsidiary, Concord College International Limited, registered in the UK (company number 10783635) and incorporated on 22 May 2017.

12. Debtors

	Group		Charity	
	2023 £	2022 £	2023 £	2022 £
Tuition fees	50,967	105,065	50,967	105,065
Prepayments	574,255	396,678	571,092	393,193
Other debtors	13,900	-	-	-
Amount due from trading subsidiary	-	-	96,093	41,638
	639,122	501,743	718,152	539,896

THE BELL CONCORD EDUCATIONAL TRUST

NOTES TO THE FINANCIAL STATEMENTS (continued)

FOR THE YEAR ENDED 31 AUGUST 2023

13. Creditors: due within one year

	Group		Charity	
	2023	2022	2023	2022
	£	£	£	£
Trade creditors	388,231	239,373	388,231	239,373
Accruals and other creditors	602,611	630,145	596,905	624,442
Fees received in advance	14,186,640	13,088,989	14,186,640	13,088,989
Deposits	6,287,985	5,850,727	6,287,985	5,850,727
Other taxes and social security	290,046	270,158	290,046	270,158
Capital expenditure	53,264	70,155	53,264	70,155
	<u>21,808,777</u>	<u>20,149,547</u>	<u>21,803,071</u>	<u>20,143,844</u>

14. Long term loan

On 20 April 2017 the College entered into a loan agreement with Barclays Bank Plc for £12,500,000 repayable over 25 years. Interest charged is linked to SONIA.
As at 31 August 2023 £5,000,000 had been utilised. On the 10th of August 2023 the College formally surrendered the remaining undrawn facility of £7,500,000.

15. Financial instruments

	2023	2022
	£	£
Financial assets measured at amortised cost (a)	28,307,255	23,152,733
Financial assets measured at fair value (b)	6,734,565	7,114,003
Financial liabilities measured at amortised cost (c)	(21,518,731)	(19,879,389)
	<u>13,523,089</u>	<u>10,387,347</u>

- (a) Financial assets include cash, trade and fee debtors, other debtors, accrued income
(b) Financial assets held at fair value include assets held as investments
(c) Financial liabilities include deposits, fees in advance, trade creditors, accruals and other creditors

Impairment losses charged to financial assets measured at amortised cost in the year amounted to £48,529 (2022: £34,338).

16. Leases

At 31 August 2022, the College had the following future minimum operating lease commitments:

	2023	2022
	£	£
up to 1 year	30,000	48,980
between 1 - 5 years	-	25,714
more than 5 years	-	-
Total	<u>30,000</u>	<u>74,694</u>

Amounts charged to the Statement of Financial Activities are £48,980 (2022: £46,647)

THE BELL CONCORD EDUCATIONAL TRUST

NOTES TO THE FINANCIAL STATEMENTS (continued)

FOR THE YEAR ENDED 31 AUGUST 2023

17. Statement of funds: movements in the year

	1 September 2022 £	Income £	Expenditure £	Transfers/ gains/losses £	31 August 2023 £
Designated funds					
Fixed assets fund	45,415,433	-	-	2,426,104	47,841,537
General fund	-	27,398,880	(24,446,818)	(2,952,062)	-
Total unrestricted funds	45,415,433	27,398,880	(24,446,818)	- 525,958	47,841,537
Restricted funds	675,135	141,293	-	-	816,428
Total funds	46,090,568	27,540,173	(24,446,818)	- 525,958	48,657,965
Comparisons to 2022:					
	1 September 2021 £	Income £	Expenditure £	Transfers/ gains/losses £	31 August 2022 £
Designated funds					
Fixed assets fund	41,773,710	-	-	3,641,723	45,415,433
General fund	-	26,214,645	(22,969,991)	(3,244,654)	-
Total unrestricted funds	41,773,710	26,214,645	(22,969,991)	397,069	45,415,433
Restricted funds	670,278	4,857	-	-	675,135
Total funds	42,443,988	26,219,502	(22,969,991)	397,069	46,090,568

Designated funds have been set aside by the Trustees as described in the Reserves Policy on page 6.

The transfer from the Reserves Fund to the Fixed Asset Fund represents the investment in fixed assets during the year or such lesser amount as is available from free reserves.

Restricted funds:

Scholarship fund - the scholarship fund was set up during 2016 to receive donations for the funding of scholarships and bursaries for deserving students.

18. Taxation

The Trust is a registered charity and no taxation is payable on its charitable income.

19. Capital commitments

At the year end, commitments for future capital expenditure totalled £nil (£nil in 2021).

THE BELL CONCORD EDUCATIONAL TRUST

NOTES TO THE FINANCIAL STATEMENTS (continued)

FOR THE YEAR ENDED 31 AUGUST 2023

20. Analysis of net assets between funds of the charity and group

	Unrestricted Funds 2023 £	Restricted Funds 2023 £	Total Funds 2023 £
Tangible fixed assets	39,778,819	-	39,778,819
Fixed asset investments	6,734,564	-	6,734,564
Current assets	28,953,359	816,428	29,769,787
Creditors due within one year	(22,991,685)	-	(22,991,685)
Creditors due in more than one year	(5,000,000)	-	(5,000,000)
Total for charity	47,475,057	816,428	48,291,485
Subsidiary	366,480	-	366,480
Total for group	47,841,537	816,428	48,657,965

Comparison to 2022:

	Unrestricted Funds 2022 £	Restricted Funds 2022 £	Total Funds 2022 £
Tangible fixed assets	40,913,761	-	40,913,761
Fixed asset investments	7,114,002	-	7,114,002
Current assets	23,609,416	675,135	24,284,551
Creditors due within one year	(21,191,162)	-	(21,191,162)
Creditors due in more than one year	(5,000,000)	-	(5,000,000)
Total for charity	45,446,017	675,135	46,121,152
Subsidiary	366,480	-	366,480
Total for group	45,812,497	675,135	46,487,632

THE BELL CONCORD EDUCATIONAL TRUST

NOTES TO THE FINANCIAL STATEMENTS (continued)

FOR THE YEAR ENDED 31 AUGUST 2023

21. Pensions

The College contributes to two pension schemes for the benefit of staff as follows.

Teachers' Pension Scheme

The College participates in the Teachers' Pension Scheme ("the TPS") for its teaching staff. In Spring 2023 the School implemented a phased withdrawal from the TPS and from the 1st January 2024 new teachers will be auto-enrolled into the Aviva Pensions Trust for Independent Schools ("APTIS").

The pension charge for the year includes contributions payable to the TPS of £1,152,469 (£1,112,160 in 2020/21) and at the year-end £144,406 (£138,894 in 2021/22) was accrued in respect of contributions to this scheme.

The TPS is an unfunded multi-employer defined benefits pension scheme governed by The Teachers' Pensions Regulations 2010 (as amended) and The Teachers' Pension Scheme Regulations 2014 (as amended). Members contribute on a "pay as you go" basis with contributions from members and the employer being credited to the Exchequer. Retirement and other pension benefits are paid by public funds provided by Parliament.

The employer contribution rate is set by the Secretary of State following scheme valuations undertaken by the Government Actuary's Department. The most recent actuarial valuation of the TPS was prepared as at 31 March 2020 and the related Valuation Report was published in October 2023.

The valuation confirmed that the employer contribution rate for the TPS would increase from 23.6% to 28.6% from 1 April 2024. Employers are also required to pay a scheme administration levy of 0.08% giving a total employer contribution rate of 28.68%.

Following the McCloud judgement, the remedy proposed that when benefits become payable, eligible members can select to receive them from either the reformed or legacy schemes for the period 1 April 2015 to 31 March 2022. The actuaries have assumed that members are likely to choose the option that provides them with the greater benefits, and in preparing the 2020 valuation have valued the 'greater value' benefits for groups of relevant members.

Group Personal Pension Plans

The College operates group personal pension plans for its non-teaching staff. Contributions are made to separately administered funds managed by The Pensions Trust.

Contributions charged to the Statement of Financial Activities during the year totalled £379,495 (£364,611 in 2021/22). Amounts outstanding at the year-end totalled £55,370 (£51,977 in 2021/22).

22. Events after balance sheet date

There were no events after the balance sheet date.

23. Related party transactions

There were no related party transactions in the year.