

Triangle Adventure Playground Association

Charity No. 303145

Trustees' Report and Unaudited Accounts

31 March 2024

	Pages
Trustees' Annual Report	3 to 18
Independent Examiner's Report	19
Statement of Financial Activities	20
Balance Sheet	21
Notes to the Accounts	22 to 27
Detailed Statement of Financial Activities	27 to 29

The trustees present their report with the unaudited financial statements of the charity for the year ended 31 March 2023. The trustees have adopted the provisions of Accounting and Reporting by Charities: Statement of Recommended Practice applicable to charities preparing their accounts in accordance with the Financial Reporting Standard applicable in the UK and Republic of Ireland (FRS 102) (effective 1 January 2019).

Reference and Administrative details

Charity No. 303145

Principal Office

The Triangle Adventure Playground
Association
Ashmole Street
London
SW8 1NE

Trustees

The following trustees served during the year:

V. Garwolinski
J. Hobday
S.M. Lyell
K.R. Poulton (Resigned 30 November 2023)
A. Sutton

Key Management Personnel

Veronika Tugendraich Garwolinski – Chair
Alan Sutton – Vice Chair
Sarah Heath – Treasurer
Juliet Hobday – Secretary

Accountants

Sherwin Currid Accountancy Limited
32 London Road
Guildford
GU1 2AB

Statement of trustees' responsibilities in relation to the financial statements

The charity trustees are responsible for preparing a trustees' annual report and financial statements in accordance with applicable law and United Kingdom Accounting Standards (United Kingdom Generally Accepted Accounting Practice).

The trustees are responsible for keeping proper accounting records that disclose with reasonable accuracy at any time the financial position of the charity and to enable them to ensure that the financial statements comply with the Charities Act 2011, the applicable Charities (Accounts and Reports) Regulations, and the provisions of the Trust deed. The Trustees are also responsible for safeguarding the assets of the charity and hence taking reasonable steps for the prevention and detection of fraud and other irregularities.

ANNUAL REPORT for the year ending 31 March 2024

Charity: The Triangle Adventure Playground Association

Charity Registration Number: 303145 **Environmental Body:** 284635



Objective, Aims and Activities of the Association

The Triangle Adventure Playground Association was formed in 1957. The constitution states that it is the Association's purpose to service, fund and maintain the Triangle Adventure Playground for the benefit of young people between the ages of six and seventeen. The Association's primary aim is to provide a safe and secure environment in which all the young people of the community may develop personal and social skills through creative interaction in enjoyable play. Members of the Association believe that it is through such interaction and activities that young people establish active lifestyles; come to feel secure in themselves and in their ability to make full use of their education; achieve their maximum potential; develop fulfilling relationships with their peers; avoid being drawn into crime and involve themselves positively in the wider community.

The Association provides staff, structures, movable equipment, tools, and materials in a triangle of green space on the Ashmole estates in North Lambeth. The playground is heavily used by local children and young people who otherwise have no access to supervised, outdoor, natural play space within a built-up urban environment. Young people who use the playground are encouraged by its staff to develop a sense of ownership of their playground and to experience 'active citizenship' in that they create and 'police' the playground's code of conduct and lead the development of the site through regular 'Youth Forum' meetings.

The Triangle operates as an open-access playground. All young people aged 6-17 are welcome to come and go as they please. Access is free. Users are required to complete a registration form for health and safety reasons and to provide monitoring information for our funders.

Trustees go through this report at the AGM

Achievements and Performance



The Triangle can look back on 2023 - 2024 as another successful and impactful twelve months. Exciting capital improvements, expansion of service and continued high attendance are all proof of vibrant life at London's oldest adventure playground. Our dedication to our community and our ethos of child led free play stand as strong as ever, giving young people the chance to flourish through play. The Triangle regularly surveys the young people who attend and one reply in particular stood out in our May 2023 survey.

Q: "The Triangle makes me feel...?"

A: "Triangle makes me feel loved."

Capital works



The Triangle is both London's oldest and smallest on site adventure playground. Limited space means we must carefully consider changes to the landscape. Cognisant that we could not build further outward, we decided to build upward. Consultation with the young people followed and The Triangle Aerial Walkway idea was born. Thanks to funding from The London Marathon Foundation (previously London Marathon Charitable Trust) Active Spaces fund and The Rose Foundation we hired TreeHouse Life to install a 30 metre long walkway through our trees. Young people have delighted in the walkway, overcoming initial nerves to climb the ladder before taking in the view, chilling with friends or escaping the seeker in a game of hide and seek!

The installation of three phase electricity stage two has seen the installation of cables and new fusebox to bring the power to our hut along with improved external lighting for winter evening play. Thanks to Edward Madden Electrics for conducting the works.

Looking ahead to 2024 - 2025 we are planning to build a new kitchen within our hut to expand our delivery of free lunches and cooking activities.

Expansion of service



In 2022 - 2023 The Triangle trialed an expansion of service to include 36 lunchtime play sessions for visiting schools as a part of their PSHE (Physical, Health, Social and Economic Education) session. Feedback from the schools involved led to us seek funding to provide these sessions in 2023 - 2024 and we are exploring plans to increase the number of sessions in 2024 - 2025. Thanks to the Community Connections Fund and St Walter St John Educational Trust for supporting the sessions.

Do you feel that the regular visits to the Triangle Adventure Playground have had a positive impact on the overall learning experience and academic progress of your students?

Yes, it allows children to release energy. Children develop good communication skills, collaborative skills and problem solving which in turn helps in them academically.

In your opinion, what are the benefits of taking your class to the Triangle Adventure Playground?

Improved Self confidence, Improved problem-solving skills, Improved Mental health and emotional wellbeing - Mr S. Ingram Headteacher St Marks Primary School (2023)

Competition winners



Summer 2023 included a documentary film making workshop and the short film created by the young people won “Best Flick” at The London Play Adventure Playground of the Year Awards. Visit our youtube channel to view the film and hear from the young people about what makes The Triangle so special to them. Thanks to Rebecca Sainsot Reynolds and Anna Baum.

Corporate Partnership



After four fantastic years The Triangle’s corporate charity partnership with The Berkeley Foundation has come to an end. The variety of financial and practical support has been incredibly impactful for the Triangle and we would like to thank the Foundation and Berkeley St Edward Oval Village for multiple donations over the last four years including Easter Eggs, advent calendars and Halloween pumpkins. Large groups of our young people were also welcomed by the Berkeley St Edward Oval Village team for pancake day celebrations and Christmas lunches. Particular thanks to the many Berkeley Group staff who have taken part in fundraising events or contributed donations.

Volunteer days

A crucial part of our ongoing maintenance of the playground is the corporate volunteer days we host throughout the year. This year teams from M&G Plc, Informa Group and Berkeley Foundation put in many hours on site, painting structures, digging ditches and much more.

Kevin from the Berkeley Foundation: *It was a real pleasure helping you and the team out today. Being a Lambeth resident it's great to see some fantastic community outreach going on in my own backyard. I hope with the Foundation's support you can continue the fantastic work in the future.*

Talking Tables

Trips & Workshops



Ferrets and snakes come to play

Besides the wide range of play on site we also make an effort to offer young people new experiences through external workshops at The Triangle and trips around London. These vary between sporting, cultural and educational themes and young people are at the forefront of choosing where to go or who to invite to the playground. A wild highlight of 2023 - 2024 was that the AnimalEd crew came to visit the playground!

Besides our annual Littlehampton seaside trip for 70 we also visited the Cinema, played Wall Ball in Surrey Quays, foraged and explored Epping Forest, welcomed a professional coach for boxing sessions, became directors in a documentary video workshop, a Saatchi Gallery collage workshop on site, Gasworks sound art workshops, Nature trips to Morden city farm and The Wetlands Centre, bike maintenance and building at Upcycle, the annual adventure playground football tournament and a very fun drama day with Really Big Pants Theatre Company.

Sport and physical play



Run jump flip catch kick and roll...our play just doesn't stop moving! The new large play structures of zipline and aerial walkway have been busy all year round. Daily group chase games bring dozens together and test speed and agility. Trampolining, football and basketball remain our most popular sports but our boxing training sessions have a professional coach who has got hundreds of young people building coordination, resilience and strength.

Outdoor Adventure Play



Come rain or shine we are playing outside. During Summer our special camping week once again gave over 30 young people the chance to camp out at Triangle, making a campfire, setting up tents and telling ghost stories late into the night. The bushcraft, ropes and camping skills developed during our annual camping week are utilised throughout the year, building canopies, shelters, dens and camouflaged hideouts! Our land has a rich history buried within and archaeology and geology play involved young people cracking stones to find precious gems and digging deep for Victorian pottery.

Art and creative play



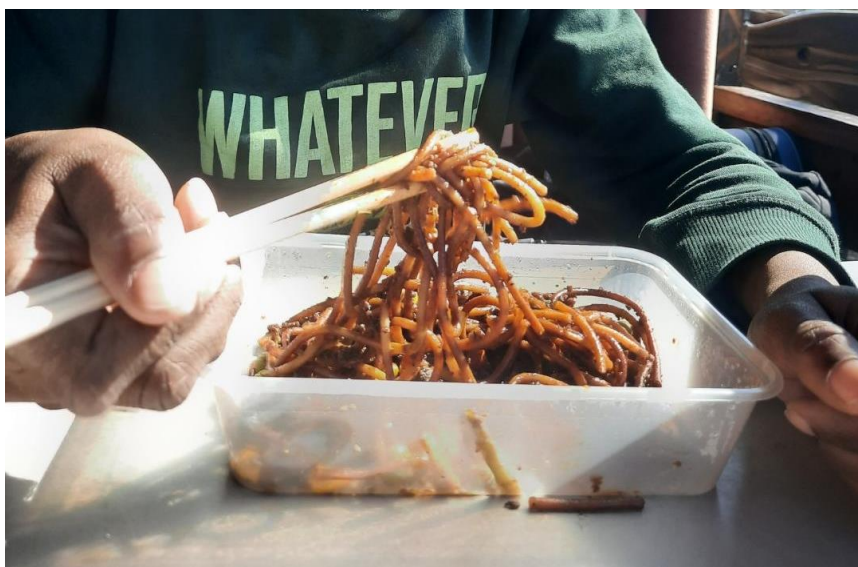
Young people's creativity is limitless and this year our arts and crafts activities continue to be a highlight of our play. Clay, lego, badge making, bracelet and necklace making, Hama bead art, model making, cardboard creations, drawing and painting on paper as well as tiles, faces and on our structures! Visiting workshops from Saatchi Gallery and our ongoing work with Gasworks Gallery brought professional artists to site to share skills and inspire our young people through the mediums of collage and sound art. Our documentary workshop in Summer gave our young people the opportunity to learn how to film, record sound and storyboard a film.

Free Play



Free to play, free to dream and free to let imaginations run wild. A crucial part of childhood mental health support and development is the free play we provide. Our supportive, encouraging, and playful environment means young people can partake in any imaginary or role play game they wish, enlisting our fancy dress box and playworkers to help create the world! This play helps young children work out problems and express themselves through play.

Food



Our commitment to supporting our young people facing food insecurity continued this year. Thanks to support from Lambeth HAF and Mayors Fund Kitchen Social we were able to provide hot lunches for all throughout holiday sessions. Fresh fruit is offered throughout all play sessions of the year, with a later snacktime providing biscuits, rice cakes and yoghurts for the children. We are working towards a new kitchen in 2024 - 2025 which will enhance our on site cooking activities.

Nature Club



The young people had opportunities to learn about the life cycles of different insects, such as ladybirds; identify different species of birds and mammals; identify different plants and flowers, creating ID signs to help others do the same; learn about predator prey relationships in mammals in Africa; exploring our wormery; nature fact posters; animal roleplay and creating a mini weather station. Creating a number of nature crafts that have coincided and sparked conversations with green facts such as nature crowns, animal hama beads, animal origami, leaf prints, winter terrariums, apple volcanoes, spider web designs and lego animal design. Other activities that took place included making a temporary hedgehog home, designing and creating birdfeeders, squirrel watch and feeding, creating pollinator beds in the allotment, making mud for birds to use, worm and bug hunts and building bug hotels. Being able to create more permanent structures, such as the hedgehog home, pond and bug hotels, allowed for the young people to have a sense of ownership in the playground and nature equipment, they became more inspired to explore what biodiversity there was within the playground. We planted carrots, spinach, onions, leeks, potatoes, broccoli, strawberries, raspberries and sunflowers. Throughout the year many gardening sessions took place, teaching the young people how to grow their own food; using gardening tools and the signs of garden pests such as slugs and snails. The young people were able to harvest many of the things that they grew which was very rewarding for them. We also learnt how to use mulch in the garden to protect the plants growing.

Staff matters

The Triangle Management committee would like to thank all our playworkers for their tireless efforts this year.

The range of staff training and qualifications gained or in progress this year include paediatric first aid, safeguarding level 3, a level 2 Youthwork NVQ and Food Hygiene and Allergen training level 2 for two more staff members.

Our volunteer to playworker scheme continues to provide employment opportunities for local young adults. Two more young adults (whom spent their childhood playing at Triangle) have begun the 100 hours of volunteering and training on site. Upon successful completion they will be invited to join our pool of sessional playworkers, all paid above the London Living Wage. We have also supported other young people with work experience opportunities.

The Triangle community was delighted to receive news on July 2nd 2023 that our long time sessional playworker Eldith Lawrencin had welcomed a beautiful baby girl, Aniyah-Lexi. We look forward to welcoming Aniyah-Lexi to play in six years time!

Statistics 2023/24

The Triangle continues to welcome hundreds of children each year to our sessions.

This year saw 560 children make a total of 12682 visits to our after school and holiday sessions.

Our 38 lunchtime school sessions welcomed 226 children who visited twice each.

TermTime M-F	Hours	Holidays M-F	Dates	Hours	Closure	Dates
17-28/4	15:30-18:00	Easter	3-14 April	12:00-18:00	Easter	7&10th April
2-5/4	15:30-18:00	Summer 1/2 Term	30/5-2/6	12:00-18:00	BH Mon	1/5
9-26/5	15:30-18:00	Summer	21/7-1/9	12:00-18:00	Coronation	8/5
5/6-20/7	15:30-18:00	Autumn 1/2 Term	23-27/10	12:00-18:00	BH Mon	29/5
11/9-20/10	15:30-18:00	Christmas	3-8/1	12:00-18:00	Aug BH	28/8
30/10-22/12	15:30-18:00	Spring 1/2 Term	12-16/2	12:00-18:00	Staff Holiday	4-8/9
9/1-9/2	15:30-18:00	Spring 1/2 Term		12:00-18:00	Christmas	25-26/12
19/2-28/3	15:30-18:00				Staff Holiday	27-29/12-2/1
	15:30-18:00				New year	1/1
	15:30-18:00				Good Friday	29/3
	15:30-18:00					

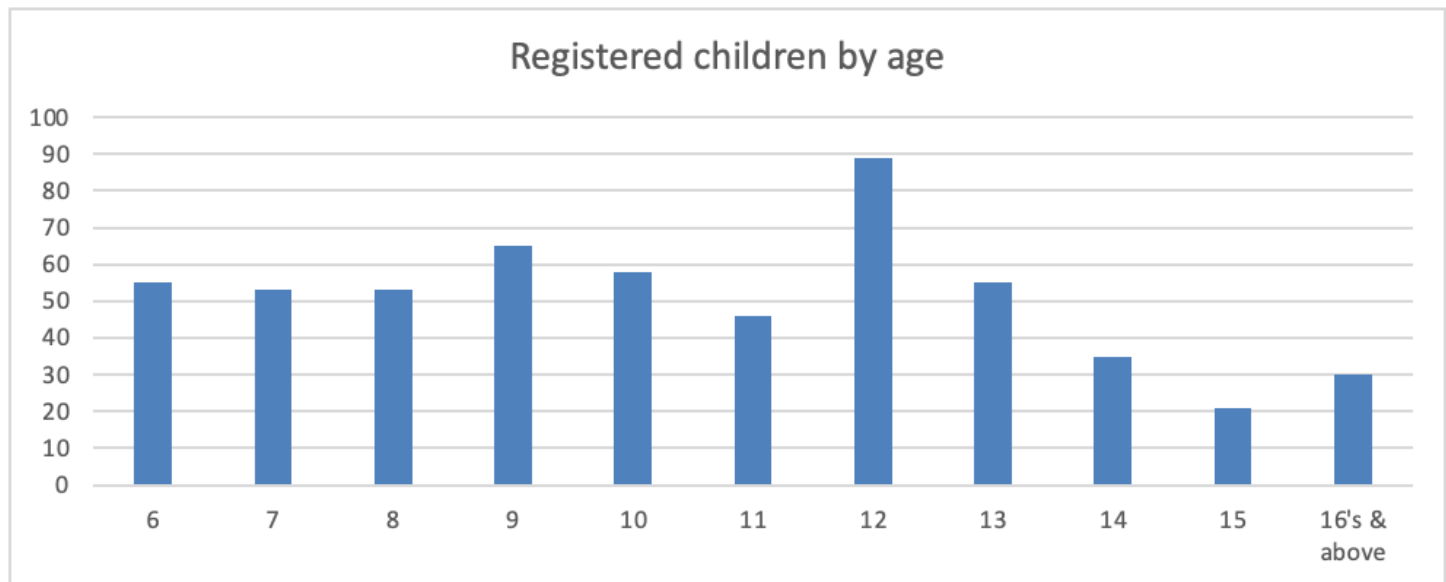
This year we ran 241 Sessions. 57 during the holidays and 184 during term. We were closed 19 days in total, 9 for normal staff holidays, 9 bank holidays, 1 day for the coronation.

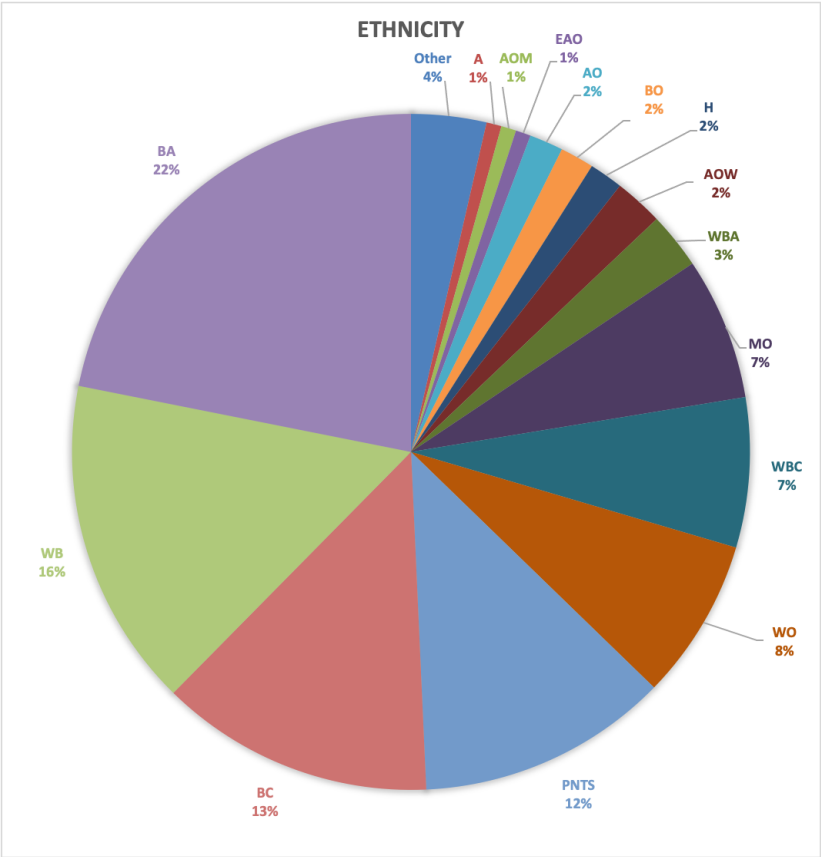
We had 12,682 attendances over the year with the average attendance per session being 53.

	Q1 April-June	Q2 Jul-Sept	Q3 Oct-Dec	Q4 Jan-Mar	Total
Number of sessions	60	59	62	60	241
Attendances	3531	3253	2949	2949	12682
Average attendance per session	59	55	48	49	53
Session hours	192	252.5	171	186.5	802
Play hours	11299	13922	8134	9166	42521

We have 560 registered users. 53% Male 47% Female.

We have 30 different nationalities registered. Our neighbourhood ranks in the worst 20% for Crime, health and multiple deprivation (IMD 2019)





Contributions from volunteers and funders - Thank you!

The Berkeley Foundation for their amazing support across the year. We had a wonderful visit to Berkeley St Edward Oval Village for an all you can eat Pancake day party, received donations of Easter eggs, Halloween pumpkins and advent calendars too. Particular thanks to the many Berkeley Group staff who have taken part in fundraising events or contributed donations.

St Walter St John Educational Charity for funding of our Nature Club/Environmental Play project and lunchtime school sessions

Lambeth Council for funding holiday lunches, activities and Take and Make boxes via HAF, and a new fridge

Lambeth Community Connection Fund for funding our school lunchtime sessions and general play scheme.

Mayor's Fund for London Kitchen Social for helping fund the cost of our holiday and strike day lunches and donating Take & Make boxes, Build a Bears, art supplies, water bottles and sanitary products

Mayors Fund for London New Deal for Young People for funding our mentoring work

The Lovington Foundation for supporting our organisational capacity and play sessions

UK Youth for their multiyear support for our play sessions

The Clothworkers Foundation for funding our zip line replacement

The Rose Foundation for helping fund our aerial treetop walkway

The London Marathon Foundation for helping fund our aerial treetop walkway

Sport England funding our Together project

YLC Lambeth Early Intervention Prevention services for support of the general playscheme

Stephen Ludlow for his advice, generous donations and support.

M&G PLC for volunteering on site to tidy up our allotment, revarnish the hut and more over two days

Informa for their volunteer day

St Marks Primary

Henry Fawcett Primary

Ashmole Primary

Gasworks Gallery

Aimee Furnival of Another Studio for their generous support.

Rahul Moodgal for his generous donations and continued exceptional support

Anne Rogers & Martyn Thomas for their very generous long-term support

Charlotte and Matthew Vaight for their generous long-term support

Lady Susanna Lyell for their generous support, Nature Club volunteering and representing The Triangle at the Lambeth VCS forums

Veronica Porter for her incredible support over many years

Oval Garage for donations and go kart repair assistance

Treehouse Life for installing our aerial treetop walkway

Big Belly Bwoy Catering for catering holiday lunches

Talking Tables for donating Summer Party decorations and sending two volunteers to help set up

All fellow organisations in our **North Lambeth Youth Consortium** - Active Communities Network, Oasis Play, Oasis Waterloo, Alford House, Young People Matter, Fight4Change.

We would like to express our deep gratitude to all the individual supporters who have donated this year.

Financial Review

As at the end of March 2024, cash at bank was £381,137. Total income reached £371,691 for the FY 23/24 period and expenditure, including depreciation, finished on £194,150 leaving a surplus of £177,541.

Income was generated mainly from grants making up 63% of the income, donations made up 35% and the remaining balance was primarily from bank interest.

With the multi-year projects (Active Communities & City Bridge Trust) finishing at the end of 2022, it created a significant gap in income, however several successful grant applications gave future security to the running costs of the playground. Grant income reached close to £236,000 (excluding £18,624 for The National Lottery Grant to be used in FY 24/25).

New large grants brought in an extra £110,000 and included Community Connections fund £29,775, Postcode Lottery £22,500, London Marathon grant £19,800, Youth Grant £20,000 and Clothworkers Grant £17,300. It's important to note that some of the new grants cover multiple years, giving more secure income for the future.

Donations income was strong, reaching £131,267, 28% increase compared to £102,872 from the previous year. The corporate partnership with Berkeley brought in over £92,000 of income and completed a brilliant 3 years of unrestricted funding that could be reinvested into the playground.

Regular donors including gift aid came to £31,017, and £8,304 came from several separate donations including the volunteering days. Over the course of the year we maintained around 75 regular donors, contributing a regular monthly average amount of £12/month.

Expenditure was dominated by payroll costs, which came to £153,578 or 79% of expenditure. Other large costs £14,852 came from the 2nd and 3rd (final) payment for the aerial walkway as we continue to update the playground with new equipment.

Our reserves policy requires that the level of reserves must be based on running costs for six months plus closure costs.

Structure, Governance and Management

The Association is registered as a charity with the Charity Commission and operates from The Triangle Adventure Playground, Ashmole Street, London SW8 1NE. Trustees and the management committee are elected at each Annual General Meeting (AGM) and hold office only until the following AGM. Trustees and Management Committee members may be elected between AGMs by the Management Committee if necessary and will then serve until the following AGM. Trustees and the Management Committee are required to retire from office at each AGM but may stand for re-election. All Trustees and Management Committee members are required to have a valid Disclosure and Barring certificate and are encouraged to attend appropriate training events that will facilitate the undertaking of their role.

Reference and Administrative details

Charity name: The Triangle Adventure Playground Association

Registered charity number: 30145

Charity's principal address: The Triangle Adventure Playground, Ashmole Street,
London SW8 1NE

List of Trustees

Veronika Tugendraich Garwolinski; Chair

Alan Sutton; Vice Chair

Juliet Hobday;

Lady Susanna Lyell (From October 2023)

Kate Poulton (Left November 2023)

Management Committee

Sarah Heath; Treasurer

Rosie Twogood; Payroll administrator

Laura Quick; Secretary

Declarations

The trustees declare that they have approved the trustees' report above.

Signed on behalf of the charity's trustees

Alan Sutton

11 November 2024

Independent Examiner's Report to the trustees of Triangle Adventure Playground Association

I report to the trustees on my examination of the financial statements of Triangle Adventure Playground Association for the year ended 31 March 2024.

Responsibilities and basis of report

As the charity's trustees you are responsible for the preparation of the financial statements in accordance with the requirements of the Charities Act 2011 ('the Act').

I report in respect of my examination of the charity's financial statements carried out under section 145 of the 2011 Act and in carrying out my examination I have followed all the applicable Directions given by the Charity Commission under section 145(5)(b) of the Act.

Independent examiner's statement

I have completed my examination. I can confirm that no material matters have come to my attention in connection with the examination giving me cause to believe that in any material respect:

- the accounting records were not kept in respect of the charity as required by section 130 of the Act; or
- the financial statements do not accord with those records; or
- the financial statements do not comply with the applicable requirements concerning the form and content of financial statements set out in the Charities (Accounts and Reports) Regulations 2008 other than any requirement that the financial statements give a 'true and fair' view which is not a matter considered as part of an independent examination.

I have no concerns and have come across no other matters in connection with the examination to which attention should be drawn in this report in order to enable a proper understanding of the financial statements to be reached.

Max Sherwin ACCA
Sherwin Currid Accountancy Limited
32 London Road
Guildford
GU1 2AB
7 November 2024

Triangle Adventure Playground Association
Statement of Financial Activities

for the year ended 31 March 2024

		Unrestricted funds 2024 £	Restricted funds 2024 £	Total funds 2024 £	Total funds 2023 £
	Note				
Income and endowments					
from:					
Donations and legacies	3	304,492	62,657	367,149	231,930
Other trading activities	4	100	-	100	652
Investments	5	4,442	-	4,442	948
Total		309,034	62,657	371,691	233,530
Expenditure on:					
Other	6	131,493	62,657	194,150	206,905
Total		131,493	62,657	194,150	206,905
Net income	7	177,541	-	177,541	26,625
Transfers between funds		-	-	-	-
Net movement in funds		177,541	-	177,541	26,625
Reconciliation of funds:					
Total funds brought forward		231,225	-	231,225	204,600
Total funds carried forward		408,766	-	408,766	231,225

Triangle Adventure Playground Association**Balance Sheet****at 31 March 2024****Charity No. 303145**

		2024	2023
		£	£
Fixed assets			
Tangible assets	10	<u>30,017</u>	<u>22,678</u>
		30,017	22,678
Current assets			
Cash at bank and in hand		<u>381,137</u>	<u>212,989</u>
		381,137	212,989
Creditors: Amount falling due within one year	11	<u>(2,388)</u>	<u>(4,442)</u>
Net current assets		378,749	208,547
Total assets less current liabilities		408,766	231,225
Total net assets		<u>408,766</u>	<u>231,225</u>
The funds of the charity			
Restricted funds	12		
Restricted income funds		<u>-</u>	<u>-</u>
		-	-
Unrestricted funds	12		
General funds		<u>408,766</u>	<u>231,225</u>
		408,766	231,225
Total funds		<u>408,766</u>	<u>231,225</u>

Approved by the trustees on 11 November 2024

And signed on their behalf by:

Alan Sutton

Trustee

11 November 2024

1 Accounting policies

Basis of preparation

The financial statements have been prepared in accordance with Statement of Recommended Practice: Accounting and Reporting by Charities preparing their accounts in accordance with the Financial Reporting Standard applicable in the UK and Republic of Ireland (FRS 102) issued on 16 July 2014 and the Financial Reporting Standard applicable in the United Kingdom and Republic of Ireland (FRS 102) and the Charities Act 2011.

Change in basis of accounting or to previous accounts

There has been no change to the accounting policies (valuation rules and method of accounting) since last year and no changes have been made to accounts for previous years.

Fund accounting

Unrestricted funds These are available for use at the discretion of the trustees in furtherance of the general objects of the charity.

Restricted funds These are available for use subject to restrictions imposed by the donor or through terms of an appeal.

Income

Recognition of income Income is included in the Statement of Financial Activities (SoFA) when the charity becomes entitled to, and virtually certain to receive, the income and the amount of the income can be measured with sufficient reliability.

Expenditure

Recognition of expenditure Expenditure is recognised on an accruals basis. Expenditure includes any VAT which cannot be fully recovered, and is reported as part of the expenditure to which it relates.

Taxation

The charity is exempt from tax on its charitable activities.

Tangible fixed assets and depreciation

Depreciation is provided at the following annual rates in order to write off each asset over its estimated useful life:

Plant and machinery 25% Reducing balance

Cash and cash equivalents

Cash and cash equivalents comprise cash at bank and on hand, demand deposits with banks and other short-term highly liquid investments with original maturities of three months or less and bank overdrafts. In the statement of financial position, bank overdrafts are shown within borrowings or current liabilities. In the Statement of Cash Flows, cash and cash equivalents are shown net of bank overdrafts that are repayable on demand and form an integral part of the company's cash management.

Notes to the Accounts

Trade and other creditors

Short term creditors are measured at the transaction price. Other creditors and provisions are recognised where the charity has a present obligation resulting from a past event that will probably result in the transfer of funds to a third party and the amount due to settle the obligation can be measured or estimated reliably. Creditors and provisions are normally recognised at their settlement amount after allowing for any trade discounts due.

Pension costs

The charity operates a defined contribution plan for its employees. A defined contribution plan is a pension plan under which the charity pays fixed contributions into a separate entity. Once the contributions have been paid the charity has no further payments obligations. The contributions are recognised as expenses when they fall due. Amounts not paid are shown in accruals in the balance sheet. The assets of the plan are held separately from the charity in independently administered funds.

Receipt of donated goods, facilities and services

All donated goods, facilities and services received are recognised within incoming resources and expenditure at an estimate of the value to the charity.

2 Statement of Financial Activities - prior year

	Unrestricted funds 2023 £	Restricted funds 2023 £	Total funds 2023 £
Income from:			
Donations and legacies	134,444	97,486	231,930
Other trading activities	652	-	652
Investments	948	-	948
Total	136,044	97,486	233,530
Expenditure on:			
Other	109,419	97,486	206,905
Total	109,419	97,486	206,905
Net gains on investments	-	-	-
Net income	26,625	-	26,625
Reconciliation of funds:			
Total funds brought forward	204,600	-	204,600
Total funds carried forward	231,225	-	231,225

Triangle Adventure Playground Association
Notes to the Accounts

3 Income from donations and legacies

	Unrestricted	Restricted	Total 2024	Total 2023
	£	£	£	£
Donations	131,267	-	131,267	102,405
Grants	173,225	62,657	235,882	129,525
	<u>304,492</u>	<u>62,657</u>	<u>367,149</u>	<u>231,930</u>

Grants received

	Total 2024	Total 2023
	£	£
Sports England Active Communities	1,627	43,502
Lambeth Council Grants	80,805	41,200
London Community Fund	9,901	9,901
The National Lottery	18,624	
Postcode Lottery	22,500	
SWSJ	14,575	
UK Youth	20,000	
Kitchen Social	2,750	
Clothworkers	17,300	
The Lovington Foundation	10,000	
M&G Plc	3,000	
Rose Foundation	5,000	
ACN Mentoring SLA	10,000	
LMCT Aerial Walkway	19,800	
Community Connections		14,888
City Bridge Trust		12,784
Mayors Fund for London		2,250
Active Communities Together		5,000
	<u>235,882</u>	<u>129,525</u>

4 Income from other trading activities

	Unrestricted	Total 2024	Total 2023
	£	£	£
Other sales receipts	100	100	652
	<u>100</u>	<u>100</u>	<u>652</u>

5 Income from investments

	Unrestricted	Total 2024	Total 2023
	£	£	£
Deposit account interest	4,442	4,442	948
	<u>4,442</u>	<u>4,442</u>	<u>948</u>

6 Other expenditure

	Unrestricted	Restricted	Total 2024	Total 2023
	£	£	£	£
Employee costs	102,121	51,457	153,578	148,891
Motor and travel costs	51		51	1,164
Premises costs	767		767	653
Depreciation	7,513		7,513	7,218
Administrative costs	18,653	11,200	29,853	46,591
Legal and professional costs	2,388		2,388	2,388
	<u>131,493</u>	<u>62,657</u>	<u>194,150</u>	<u>206,905</u>

7 Net income before transfers

	2024	2023
	£	£
This is stated after charging:		
Depreciation of owned fixed assets	7,513	7,218

8 Trustee remuneration and expenses

None of the trustees have been paid any remuneration in the current or prior periods.

9 Staff costs

	2024	2023
	£	£
Salaries and wages	143,144	142,443
Recruitment	56	139
Training	-	140
Social security costs	5,047	4,640
Pension costs	5,331	1,529
	<u>153,578</u>	<u>148,891</u>

No employee received emoluments in excess of £60,000.

The average monthly number of full time equivalent employees during the year was as follows:

2024	2023
Number	Number
5	5

Triangle Adventure Playground Association
Notes to the Accounts

10 Tangible fixed assets

	Equipment	Total
	£	£
Cost		
At 1 April 2023	31,130	31,130
Additions	14,852	14,852
At 31 March 2024	<u>45,982</u>	<u>45,982</u>
Depreciation		
At 1 April 2023	8,452	8,452
Depreciation charge	7,513	7,513
At 31 March 2024	<u>15,965</u>	<u>15,965</u>
Net book values		
At 31 March 2024	<u>30,017</u>	<u>30,017</u>
At 31 March 2023	<u>22,678</u>	<u>22,678</u>

11 Creditors:

amounts falling due within one year

	2024	2023
	£	£
Other taxes and social security	-	1,807
Other creditors	-	247
Accruals	2,388	2,387
	<u>2,388</u>	<u>4,441</u>

12 Movement in funds

	At 1 April 2023	Incoming resources	Resources expended	At 31 March 2024
	£	£	£	£
Restricted income funds:				
Lambeth Community Fund	-	51,030	(51,030)	-
Sport England Active	-	11,627	(11,627)	-
	-	-	-	-
<i>Total</i>	-	62,657	(62,657)	-
Unrestricted funds:				
General funds	231,225	371,691	(194,150)	408,766
<i>Total</i>	231,225	371,691	(194,150)	408,766

13 Analysis of net assets between funds

	Unrestricted funds	Restricted funds	Total
	£	£	£
Fixed assets	30,017	-	30,017
Net current assets	378,749	-	378,749
	408,766	-	408,766

14 Related party disclosures

There were no related party transactions for the year ended 31 March 2024.

Triangle Adventure Playground Association
Detailed Statement of Financial Activities
for the year ended 31 March 2024

	Unrestricted funds 2024 £	Restricted funds 2024 £	Total funds 2024 £	Total funds 2023 £
Income				
Donations and grants				
Donations	131,267	-	131,267	102,405
Grants	173,225	62,657	235,882	129,525
	<u>304,492</u>	<u>62,657</u>	<u>367,149</u>	<u>231,930</u>
Other trading activities				
Receipts from services	100	-	100	652
	<u>100</u>	<u>-</u>	<u>100</u>	<u>652</u>
Investments				
Deposit account interest	4,442	-	4,442	948
	<u>4,442</u>	<u>-</u>	<u>4,442</u>	<u>948</u>
Total income	309,034	62,657	371,691	233,530
Expenditure on:				
Salaries/wages	91,687	51,457	143,144	142,443
Employer's NIC	5,047	-	5,047	4,640
Pension costs	5,331	-	5,331	1,529
Staff recruitment	56	-	56	139
Staff training	-	-	-	140
	<u>102,121</u>	<u>51,457</u>	<u>153,578</u>	<u>148,891</u>
Motor and travel costs				
Travel and subsistence	51	-	51	1,164
	<u>51</u>	<u>-</u>	<u>51</u>	<u>1,164</u>
Premises costs				
Rates	767	-	767	653
	<u>767</u>	<u>-</u>	<u>767</u>	<u>653</u>

Triangle Adventure Playground Association
Detailed Statement of Financial Activities

General administrative expenses

Depreciation	7,513	-	7,513	7,218
Bank charges	174	-	174	180
Activities and food	12,826	11,200	24,026	26,813
Repairs	1,687	-	1,687	15,340
General insurances	2,044	-	2,044	1,936
Software and related costs	1,157	-	1,157	1,440
Telephone	765	-	765	882
	<u>26,166</u>	<u>11,200</u>	<u>37,366</u>	<u>53,809</u>
Legal and professional costs				
Accountancy and bookkeeping	2,388	-	2,388	2,388
	<u>2,388</u>	<u>-</u>	<u>2,388</u>	<u>2,388</u>
Total of expenditure of other costs	<u>131,493</u>	<u>62,657</u>	<u>194,150</u>	<u>206,905</u>
Net movement in funds	<u>177,541</u>	<u>-</u>	<u>177,541</u>	<u>26,625</u>
Reconciliation of funds:				
Total funds brought forward	-	-	-	204,600
Total funds carried forward	<u>177,541</u>	<u>-</u>	<u>177,541</u>	<u>231,225</u>