

BEECH VILLAGE HALL AND RECREATION GROUND

England & Wales · Charity number 301738

Details

Status Registered

Legal form Other

Registered 1963-04-08

Register [View on the Charity Commission register](#)

Contact

Address c/o 1 Wellhouse Road
Beech
Alton
GU34 4AQ

Phone 07501187496

Email feedback@beechvillage.org.uk

Website <http://www.beechvillage.org.uk/village-hall/>

Activities

Objects: VILLAGE HALL AND RECREATION GROUND

Activities: The provision and maintenance of a Village Hall, Green and Recreation ground for the use of the inhabitants of Beech and the immediate surroundings. Specifically, for the purposes of lectures, meetings, classes, physical recreation, leisure activities and all other forms of recreation with the object of improving the conditions of life for the inhabitants of Beech and its environs.

Classification

- **How:** Provides Buildings/facilities/open Space
- **What:** Amateur Sport, Economic/community Development/employment
- **Who:** Children/young People, People With Disabilities, Other Defined Groups, The General Public/mankind

Geography

- **Area of benefit:** BEECH AND THE NEIGHBOURHOOD
- Hampshire

Finances

Period end	Income	Expenditure	Assets	Employees
2025-06-30	£142,920	£67,806	-	-
2024-06-30	£46,996	£54,244	-	-
2023-06-30	£39,079	£38,167	-	-
2022-06-30	£64,569	£56,109	-	-
2021-06-30	£40,052	£35,563	-	-

Trustees

Name	Role	Appointed
Richard Whitaker	Chair	2022-01-10
Cheryl Fisher		2025-07-30
Dan Soutar		2023-10-27
Joanna Helen Curtis		2024-10-23
Kim Eakers		2019-10-26

BEECH VILLAGE HALL AND RECREATION GROUND

England & Wales - Charity number 301738

Accounts



Beech Village Hall & Recreation Ground, 1 Wellhouse Road, Beech, Alton GU34 4AQ
Website: www.beechvillage.org.uk Email: bookings@beechvillage.org.uk
Registered Charity No. 301738

Annual report of the Chair of the Trustees

Report for the financial year ending June 30, 2025, presented to the Annual General Meeting on October 17, 2025 at Beech Village Hall

Our Community Hub makes great strides



During 2024-25, our village community hub has continued its transformation by delivering a record amount of social, culture and health and wellbeing opportunities for those who live in our village, as well as some people from surrounding areas.

As a **Social Hub**, we enjoyed Bonfire Night, 11 monthly social evenings, Christmas activities and the weekly coffee shop.

Our **Culture Hub** took off following a successful pilot in May 2024, with nine film screenings and three National Theatre Live performances during the financial year, underpinned by a major update to our audio-visual equipment.

At our **Health and Wellbeing Hub**, our weekly classes in the Hall continued and we solidified our plans to redevelop the old Annexe into The Wellhouse; we obtained funding for the majority of the cost, and contracted with a builder to deliver the work.

As a **Celebration Hub**, we continued to hire the Hall out successfully for wedding receptions, children's parties and family celebrations. We achieved our financial objective of returning the Hall's regular operations to breakeven, with an operating surplus of £1,385.

The Social Hub

Our monthly **Friday evening Socials** each attracted around 25-40 attendees. We ran 11 socials, including eight with supper from a professional caterer, a barbecue, a pub night with nibbles, and a pub night with fish and chips. Old friends and newcomers alike enjoyed the convivial and informal atmosphere.



As usual, the Rec was packed for the annual **Bonfire Night**, with the torchlit procession, bonfire, fireworks display, and the usual burgers, sausages and drinks. Martin Littlewood and Dan Soutar led an army of volunteers to deliver this event.

The **Christmas Fair**, organised by Sally Cox, was once again a success, with a good variety of stalls to tempt us with interesting gift ideas. Andrea Neary organised another **Christmas wreath-making workshop** in association with Willow & Sage Florist, and Sarah Neish and Karen Littlewood organised an evening of **Christmas carols** on the Village Green around the Beech Family Tree, which is growing well.

The Friday **coffee shop** continued to be popular, with a lively, informal atmosphere as both regulars and occasional visitors enjoy excellent coffee, delicious cakes and pleasant conversation. Many thanks to Sarah Neish and all the volunteer cake creators and coffee grinders.

We now only have two people in our Events Team, Karen Littlewood and Jo Curtis, as Andrea Neary and Jo Schneider have stepped down. We have therefore become even more reliant upon the volunteers who help out with setup, running the bar, serving food and clearing up afterwards. Many thanks to our events team, everyone who assisted at our events and, of course, to those who came along and helped to create that special Beech atmosphere. Thanks also to Anne Moore of Plan B Catering, who has consistently delivered tasty meals at a very reasonable price.

The Culture Hub

Our community cinema initiative, the Screen by the Green, really took off in 2024-25. We screened nine movies and three National Theatre Live plays during the year. Our format of limited attendees, cabaret style seating, an open bar and a short interval in the middle makes it “more than a movie” and has generated many favourable comments. Our screenings are usually sold out in advance, and people often stay to socialise for some time after the screening.



Movies

Wicked Little Letters
Baltimore
The Fall Guy
The Critic
Small Things Like These
Gladiator II
Conclave
The Brutalist
A Complete Unknown

National Theatre Live

The Importance of Being Earnest
Dr Strangelove
A Streetcar Named Desire

In order to be accepted as a venue by the National Theatre, we needed to upgrade our audio-visual equipment, and we were fortunate to be able to finance this through a Rural Grant of £35,367 from East Hampshire County Council, funded by DEFRA’s Rural England Prosperity Fund. The Hall now has an enormous screen, a BluRay 4K UHD player, top-of-the-range projector, Dolby 5.1 surround sound and additional speakers, all of which give our screenings enormous impact.

The Health and Wellbeing Hub

We continued to host around a dozen clubs and classes each week, catering for the wellbeing of both body and mind. These included dance, pilates, yoga, Baby Sensory, Toddler Sense, LittleKickers and bridge, as well as the Beech Art Group and Beech Embroiderers.

A number of additional classes started during the year, but in some cases it was difficult for class leaders to secure enough attendance to be viable. We have started to offer class leaders marketing ideas and suggestions to help them develop their attendance, and we plan to promote health and wellbeing classes more in the future.



Our plans to redevelop the Annexe into a health and wellbeing hub have moved forward dramatically. Our vision for The Wellhouse is to create a versatile, tranquil and welcoming space that can be used for social interaction, community support, wellness practices and healthy living.

The design satisfies our key physical requirements:

- Damp-proof membranes for the walls, roof repairs and new windows with trickle vents
- Lighter-weight tables and chairs and a large storage area for furniture and equipment
- Improved lighting, decoration and window blinds
- A well lit lobby/waiting area on a single level with seating and tea and coffee facilities
- Underfloor heating powered by an air-source heat pump
- A small biodiverse garden area
- Enhanced storage to replace some of the garage space which we will lose

We engaged experts to perform a dampness investigation, a roof inspection and an asbestos test (fortunately negative). Following a tender process, we contracted with Flint Construction to perform the building works, and we hope The Wellhouse will open in early 2026.

As the plans developed, the costs reached a total of £135,000 including an allowance for marketing costs for the launch. Undeterred, our team applied for as many grants as they could, with astonishing results. We have secured a total of £113,914 in grants from the Veolia Environmental Trust, the National Lottery Community Fund, Beech Parish Council, Alton Town Council, EHDC, and the Government Boiler Upgrade Scheme; the grants from the three councils have been allocated from developer funding (the Community Infrastructure Levy). We have received some of this funding already, to allow us to make staged payments to the builders; the balance will come once the works are complete. We await decisions on some further grant applications, and we will meet any shortfall from our own financial reserves.

Towards the end of the financial year, we launched a local appeal to help with furniture and fittings for The Wellhouse. As well as helping financially, this gives villagers the opportunity to feel that they are part of the effort. We thank all those who have made donations so far.

We have started to build a community of therapists and practitioners who may consider using The Wellhouse. One such therapist is already offering a monthly foot clinic, using the lounge area of the main hall temporarily.

Thanks are due to The Wellhouse team for getting us to this point, including Kim Eakers, who leads the project; Karen Littlewood, Jo Curtis and Richard Whitaker from the Charity's management team, and Sara Varo, who has done a fantastic job of lining up interest among health and wellbeing practitioners. Nick Carey-Thomas helped a lot by preparing the architect's drawings.

The Celebration Hub

We are still busy with weddings, children's parties and family celebrations. Our Hall and village remain very attractive, and we consistently receive positive feedback from hirers. We are very proud that our average review score on Google continues to be 4.7 out of 5.



At the start of the 2024-25 financial year, we moved to a new pricing model, increasing some prices to reflect past inflation, but also simplifying our rates and charging higher prices for periods of peak demand. This has helped us to maintain our revenues and reduce administrative costs.

Managing the Hall and green spaces

The picnic bench outside the Hall was collapsing, so we replaced it with a new bench made of recycled plastic. Beech Parish Council, which funded the original bench, kindly gave us a grant to cover the cost of the new one.

Our insurers decided that our use of key safes was no longer acceptable, so we installed a new electronic access control system which was 50% funded through a grant from our district councillor, Tony Costigan. Our regular users now have key fobs, and our occasional users are allocated an access code by the Hall booking system.



Sheila Sorby continues to make sure the green spaces remain tidy and attractive. On the Rec, Sheila regularly organises a team of volunteers to help clear brambles and weeds from Nick's Little Copse, and we have had professional help to remove sycamore saplings that threaten to take over. Outside the Hall, the planters are always full of seasonal flowers.

Andrea Neary continues to coordinate the team who empty the dog poo bins on the Green and Rec. Many thanks to this team.

The collection bin for clothes, shoes and bed linen outside the Hall provides a useful resource for the village, while supporting the Hampshire and Isle of Wight Air Ambulance.

Public benefit and community engagement

We estimate that there were about 2,650 visits to the Hall for social events during the financial year, an increase of around 30% on 2023-24 largely due to the film and National Theatre screenings. In addition, many villagers attended health and wellbeing classes in the Hall and used the Rec, Village Green and children's play equipment, and a few hired the Hall for private parties.

Our membership programme grew from 58 members to 107, including 76 full members living in Beech. They come from 60 households, more than a quarter of the village. Members receive direct email updates, as well as special rates if they hire the Hall. We conducted three online surveys of the full Members during the year, with a very high response rate. We are very grateful to everyone who took the time to share their views, which we analysed carefully and took into account.



Nothing that we do would happen without volunteers. We estimate that more than 50 volunteers contributed 1,050 hours of their time during the year to deliver the village social programme. (This doesn't include the work performed by the Management Team to run the Charity.) We are delighted that a number of new people are now helping out from time to time, whether it's by baking cakes, serving food or drinks, helping to set up for events, or working on our

green spaces. Feedback from some of the new volunteers is that they find it very satisfying to work as a team to make something great happen for the village!

Managing the charity

As I mentioned in last year's report, rising costs led us into a financial deficit for 2023-24. For this year, we put in place a set of specific objectives, and we have performed well against them:

Year to June 30, 2025	Objective	Result
Social Hub & Culture Hub		
Attendees at events (estimated)	2,640	2,652
Surplus from events	£7,500	£10,240
Health & Wellbeing Hub		
New clubs & classes	Add new clubs & classes	Limited progress
The Wellhouse	Pursue redevelopment	Ready to start work
Managing the Charity		
Hall Hire revenue	£33,800	£30,274
Cost base*	Less than £40,000	£36,327
Surplus from normal operations	Breakeven	£1,385
Community engagement		
Active volunteers	Up from 50 to 60	50+
Volunteer hours	Up 27% to 1,080	1,052
Membership total	From 58 to 85	76
Membership – household coverage	From 17% to 25%	26%

*Cost base includes property, estate and administrative costs, but excludes the direct costs of fundraising events, preparation costs for The Wellhouse, and depreciation.

Our Statement of Financial Activities is more complicated than usual because of the grants we have received and the timing of The Wellhouse development. Grants are shown as restricted funds because they are for a specific purpose.

- **The upgrade of the audio-visual equipment for the Culture Hub** was funded by a grant from EHDC. We are depreciating this over three years, starting half-way through this financial year, in line with the warranty. This results in an accounting surplus but has no impact on our cash position.
- **For the Wellhouse**, we received £51,172 in grants during the financial year; an initial stage payment from Veolia and the grant from the National Lottery. A condition of the grant from Veolia was that we had to pay them 10% of the value of their grant up front as a Contributing Third Party Payment, and this is shown as a cost of £6,828. At the end of the financial year, building work had yet to start on The Wellhouse, so the account is in surplus and we are carrying more cash than usual. The cost of the project will be borne in the 2025-26 financial year, when further grant payments will also be received.
- The other grants were for **the keyless entry system** and the new **picnic bench**.
- **“Restricted Funds: other”** refers to funds received in prior years which must be spent on projects and assets for children; the only such expense in 2024-25 was the annual inspection of the play equipment on the Village Green.

Our Constitution

When we were applying for grants for The Wellhouse, some of the funding organisations required our Constitution to have a Dissolution Clause, to specify what would happen to the Charity's assets if it had to be wound up. We therefore added the standard clause recommended by the Charity Commission, with its approval. At the same time, we made some further updates to the Constitution. These changes were approved at an extraordinary general meeting held in late December, 2024.

At this meeting, it was pointed out that the overall "Objects" in our constitution were out of date in some respects, so we consulted with the village about a redrafted version. We sent a new draft to the Charity Commission for approval. Unfortunately, they were not willing to consent to this, so our overall objects remain unchanged:

"The provision and maintenance of a village hall and recreation ground for the use of the inhabitants of Beech and the neighbourhood without distinction of sex, religious or other political opinions and in particular for the use of meetings, lectures and classes and for other forms of recreation (including physical recreation) and other leisure-time occupations, with the object of improving the conditions of life for the said inhabitant."

Our Management Team

We are delighted that Cheryl Fisher has been co-opted onto our Management Team as our Finance Lead. Her initial task has been to document our financial processes, following a recommendation from Elspeth Mackeggie, who has kindly reviewed our accounts. Cheryl is now working closely with Nicola Kitney, our financial controller, and will stand for election as a trustee at the AGM.

Kim Eakers and Richard Whitaker have reached the end of their current three-year terms as trustees, and will be standing for re-election at the AGM. I have decided to step down as Chair at the AGM, and the management team has elected Richard Whitaker to succeed me.

Thank you

Many thanks to our management team – Jo Curtis, Kim Eakers, Cheryl Fisher, Karen Littlewood, Dan Soutar and Richard Whitaker. They work so hard to make sure we have one of the best village halls in the country, with an amazing programme of events and entertainment for villagers to enjoy. I also want to thank our team of contractors who help us with finance, admin, cleaning and maintenance – Nicola Kitney, Vicky Smart, Debra and Dunstan Rickhaus, Simon Hodgson, Stuart Lee and Lucy Loosemore.

We depend very heavily on our volunteers; many thanks to everyone who helps: baking, serving coffee, bartending, emptying dog poo bins, letting off fireworks, shifting tables and

chairs around, putting the marquee up, and so on. If you would like to take part from time to time, please get in touch.

Finally, thanks to everyone in the village who uses the Hall, Village Green and Rec. You make our volunteers' efforts worthwhile!

On a personal note . . .

As I retire from the team, I find myself reflecting on the extraordinary journey I've had as both Social Chair and Chair of Beech Village Hall. What began as a commitment to serve has grown into something far richer—a tapestry of shared moments, meaningful connections, and joyful memories that I will carry with me always.

Beech Village Hall has never been just bricks and mortar. It has been a living, breathing space where laughter echoed through the rafters, friendships blossomed over cups of tea and glasses of wine, and the spirit of community came alive in every event, meeting, and celebration. From summer fêtes to quiz nights, from quiet planning sessions to bustling gatherings, I've had the privilege of witnessing how a simple idea—bringing people together—can transform lives.

I've been humbled by the generosity, creativity, and warmth of those who've volunteered, participated, and supported our efforts. Together, we've built more than a calendar of events—we've built a culture of belonging. Whether it was dancing under fairy lights or sharing stories by the fire, the joy we created was always rooted in togetherness.

To my fellow committee members, volunteers, and neighbours: thank you for your trust, your humour, and your unwavering support. You've made the role not just fulfilling, but fun. I've learned that leadership isn't about titles—it's about listening, laughing, and lifting others up. And I've been lifted, time and again, by this wonderful community.

As I step back, I do so with deep gratitude and great hope. Beech Village Hall will continue to thrive, evolve, and welcome new voices. I'll be cheering from the sidelines, knowing that the friendships and laughter we've shared will echo long into the future.

With heartfelt thanks,

Dr Jane Freeman-Hunt

Trustee and Chair, Beech Village Hall & Recreation Ground
Management Committee

October 17, 2025



BEECH VILLAGE HALL & RECREATION GROUND
STATEMENT OF FINANCIAL ACTIVITIES
for the year ended 30 June 2025

	NOTES	Unrestricted Funds	Restricted Funds: Children	Restricted Funds: Culture Hub	Restricted Funds: Wellhouse	Other Grants Received	TOTAL: 30/6/25	TOTAL: 30/6/24
							£	£
INCOME								
Fundraising events	1	23,566					23,566	14,784
Hall hire	2	30,274					30,274	30,756
Culture Hub grant				35,366			35,366	-
Wellhouse Project grants					51,172		51,172	-
Other grants received						1,172	1,172	-
Miscellaneous income							-	150
Bank interest received		1,104					1,104	1,285
Donations received		266					266	21
		55,210	-	35,366	51,172	1,172	142,920	46,996
EXPENDITURE								
Fundraising events	1	13,326					13,326	9,055
Property and estate costs	3	24,869	88			1,172	26,129	32,102
Other administrative costs	4	11,458					11,458	9,930
Depreciation	6	2,997		5,893			8,890	2,997
Wellhouse Project preparation costs		1,175					1,175	-
Wellhouse Project expenditure					6,828		6,828	-
		53,825	88	5,893	6,828	1,172	67,806	54,084
Surplus / (Deficit) for the year		1,385	(88)	29,473	44,344	0	75,114	(7,088)
Funds b/f		384,456	1,509	-	-	-	385,965	393,053
Funds c/f		385,841	1,421	29,473	44,344	0	461,079	385,965

BEECH VILLAGE HALL & RECREATION GROUND
BALANCE SHEET
as at 30 June 2025

	Notes	30-Jun-25			30-Jun-24		
		£	£	£	£	£	£
Fixed Assets	6						
Land and buildings			319,559		319,559		
Improvements to property			-		-		
Culture Hub			29,467		-		
Fixtures and fittings			2,960		5,457		
				351,986			325,016
Current Assets							
Bar stock		1,249			967		
Trade debtors		7,610			7,059		
Prepayments	7	2,769			1,619		
Cash at bank and in hand		115,256			67,449		
			126,884		77,094		
Current Liabilities							
Trade creditors		2,909			2,762		
Deferred income	8	10,580			8,084		
Accrued expenses	9	208			319		
VAT		1,694			2,580		
Booking deposits		2,400			2,400		
			17,791		16,145		
Net Current Assets				109,093			60,949
Total Assets less Current Liabilities				<u>461,079</u>			<u>385,965</u>
Reserves	5						
Restricted reserves				75,238			1,509
General reserves				385,841			384,456
Total				<u>461,079</u>			<u>385,965</u>

Approved on behalf of the Trustees on
Dr J.E. Freeman-Hunt

17/10/2025

J.E. Freeman-Hunt

BEECH VILLAGE HALL & RECREATION GROUND
NOTES TO THE ACCOUNTS
for the year ended 30 June 2025

1 Fundraising events	30-Jun-25			30-Jun-24		
	INCOME	EXPENSES	TOTAL	INCOME	EXPENSES	TOTAL
Social evenings	5,542	4,257	1,285	4,581	4,210	371
Coffee Shop	5,154	1,854	3,300	5,027	1,768	3,259
Film Night	5,548	3,067	2,481	597	349	248
NT Live	3,224	1,517	1,707	0	0	0
Bonfire Night	2,977	1,926	1,051	2,700	1,801	899
Christmas Fayre	641	311	330	410	61	349
Christmas Wreath Making	480	394	86	830	783	47
Quiz Night	0	0	0	639	170	469
Totals	23,566	13,326	10,240	14,784	9,142	5,642

2 Hall hire	£	£
Health & Wellbeing	15,571	15,660
Weddings	5,167	5,325
Private Parties	7,471	8,310
Meetings	1,903	1,361
Other	162	0
	<u>30,274</u>	<u>30,656</u>

BEECH VILLAGE HALL & RECREATION GROUND
NOTES TO THE ACCOUNTS
for the year ended 30 June 2025

	30-Jun-25	30-Jun-24
3 Property and Estate Costs	£	£
Cleaning / check in-out	7,674	9,079
Kitchen supplies	14	38
Grounds maintenance	1,838	2,698
Maintenance and repairs	5,627	10,067
Insurance	1,578	1,747
Broadband	423	409
Utilities	7,407	6,966
Equipment costs	0	795
Playground equipment	0	86
Rates	115	72
Coffee shop equipment & maintenance	149	145
Bar equipment and supplies	44	0
	<u>24,869</u>	<u>32,102</u>
4 Other Administrative Costs	£	£
Administration costs	3,219	3,665
Subscriptions	901	965
Hall support admin	4,106	2,649
Advertising	1,740	1,189
Licences	973	924
Printing, postage & stationery	89	43
Sundry	78	56
Bank service charges	60	60
Card processing fees	292	292
Professional fees	0	0
	<u>11,458</u>	<u>9,843</u>

BEECH VILLAGE HALL & RECREATION GROUND
NOTES TO THE ACCOUNTS
for the year ended 30 June 2025

5 Reserves	Unrestricted Funds	Restricted Funds: Children	Restricted Funds: Culture Hub	Restricted Funds: Wellhouse	TOTAL
Balance at 1st July 2024	384,456	1,509	0	0	385,965
Surplus in period	1,385	(88)	29,473	44,344	75,114
Transfer between reserves	0	0	0	0	0
Balance at 30th June 2025	385,841	1,421	29,473	44,344	461,079

6 Fixed assets	Land and buildings	Culture Hub	Improvements to Property	Fixtures and fittings	TOTAL
Cost b/f 1st July 2024	319,559	0	45,103	22,806	387,468
Additions	0	35,360	0	500	35,860
Disposals	0	0	0	(398)	(398)
Cost c/f 30th June 2025	319,559	35,360	45,103	22,908	422,930
Depreciation b/f 1st July 2024	0	0	45,103	17,349	62,452
Charge for the period	0	5,893	0	2,997	8,890
Disposals	0	0	0	(398)	(398)
Depreciation c/f 30th June 2025	0	5,893	45,103	19,948	70,944
Net book value 30th June 2025	319,559	29,467	(0)	2,960	351,986

7 Prepayments	£	£
Insurance	1,422	830
Event costs	419	0
Advertising	0	160
Licences and subscriptions	927	629
	2,768	1,619

8 Deferred income	£	£
Hall hire	10,435	8,084
Wellhouse fundraising	145	0
	10,580	8,084

9 Accrued expenses (bills yet to come)	£	£
Electricity	0	120
Gas	27	19
Admin Expenses	180	180
	207	319



**CHARITY COMMISSION
FOR ENGLAND AND WALES**

**Independent examiner's report on the
accounts**

Section A

Independent Examiner's Report

Report to the trustees

Charity Name
Beech Village Hall and Recreation Ground

**On accounts for the year
ended**

30 June 2024 ~~24~~ 5
Charity no (if any) 301738

Set out on pages

1 to 6

(remember to include the page numbers of additional sheets)

I report to the trustees on my examination of the accounts of the above charity ("the Trust") for the year ended **30/06/2024**.

**Responsibilities and
basis of report**

As the charity's trustees, you are responsible for the preparation of the accounts in accordance with the requirements of the Charities Act 2011 ("the Act").

I report in respect of my examination of the Trust's accounts carried out under section 145 of the 2011 Act and in carrying out my examination, I have followed all the applicable Directions given by the Charity Commission under section 145(5)(b) of the Act.

**Independent
examiner's statement**

[The charity's gross income exceeded £250,000 and I am qualified to undertake the examination by being a qualified member of [insert name of applicable listed body]]. *Delete [] if not applicable.*

I have completed my examination. I confirm that no material matters have come to my attention in connection with the examination (other than that disclosed below *) which gives me cause to believe that in, any material respect:

- the accounting records were not kept in accordance with section 130 of the Charities Act; or
- the accounts did not accord with the accounting records; or
- the accounts did not comply with the applicable requirements concerning the form and content of accounts set out in the Charities (Accounts and Reports) Regulations 2008 other than any requirement that the accounts give a 'true and fair' view which is not a matter considered as part of an independent examination.

I have no concerns and have come across no other matters in connection with the examination to which attention should be drawn in this report in order to enable a proper understanding of the accounts to be reached.

* Please delete the words in the brackets if they do not apply.

Signed: Elspeth Mackenzie Gurney

Date: 21.01.26

Name: ELSPETH MACKENZIE GURNEY

**Relevant professional
qualification(s) or body**

[Empty box for professional qualification(s) or body]

Address:

45 WENTEN STREET

ALTON

HAMPSHIRE GU34 1HE

Section B

Disclosure

Only complete if the examiner needs to highlight material matters of concern (see CC32, Independent examination of charity accounts: directions and guidance for examiners).

Give here brief details of any items that the examiner wishes to disclose.

BEECH VILLAGE HALL AND RECREATION GROUND

England & Wales - Charity number 301738

Accounts



Section A Independent Examiner's Report

Report to the trustees

Charity Name: Beech Village Hall and Recreation Ground

On accounts for the year ended

30 June 2024 Charity no (if any) 301738

Set out on pages

1 to 6 (remember to include the page numbers of additional sheets)

I report to the trustees on my examination of the accounts of the above charity ("the Trust") for the year ended 30/06/2024.

Responsibilities and basis of report

As the charity's trustees, you are responsible for the preparation of the accounts in accordance with the requirements of the Charities Act 2011 ("the Act").

I report in respect of my examination of the Trust's accounts carried out under section 145 of the 2011 Act and in carrying out my examination, I have followed all the applicable Directions given by the Charity Commission under section 145(5)(b) of the Act.

Independent examiner's statement

[The charity's gross income exceeded £250,000 and I am qualified to undertake the examination by being a qualified member of [insert name of applicable listed body]]. Delete [] if not applicable.

I have completed my examination. I confirm that no material matters have come to my attention in connection with the examination (other than that disclosed below *) which gives me cause to believe that in, any material respect:

- the accounting records were not kept in accordance with section 130 of the Charities Act; or
the accounts did not accord with the accounting records; or
the accounts did not comply with the applicable requirements concerning the form and content of accounts set out in the Charities (Accounts and Reports) Regulations 2008 other than any requirement that the accounts give a 'true and fair' view which is not a matter considered as part of an independent examination.

I have no concerns and have come across no other matters in connection with the examination to which attention should be drawn in this report in order to enable a proper understanding of the accounts to be reached.

* Please delete the words in the brackets if they do not apply.

Signed: E.M. Mackeggie Gurney

Date: 28/10/2024

Name: ELSPETH MACKEGGIE GURNEY

Relevant professional qualification(s) or body

ACA

(if any):

Address: 45 Kenton Street
ALTON
GU34 1HE

Section B Disclosure

Only complete if the examiner needs to highlight material matters of concern (see CC32, Independent examination of charity accounts: directions and guidance for examiners).

Give here brief details of any items that the examiner wishes to disclose.

BEECH VILLAGE HALL
INCOME and EXPENDITURE STATEMENT for the year ending 30 June 2024

		£	£
	Notes	30-Jun-24	30-Jun-23
Income			
Fundraising events	1	9,757	4,457
Coffee Shop	2	5,027	4,634
Hall hire	3	30,756	29,495
Total		45,540	38,586
Other income			
Bank interest received		1,285	467
Miscellaneous income		150	0
Donations		21	26
Grants		-	0
Rates Relief		-	0
Total		1,456	493
Total income		46,996	39,079
Expenditure			
Fundraising events	1	7,287	3,183
Coffee Shop	2	1,768	1,692
Property and estate	4	32,102	23,919
Depreciation	8	2,997	2,902
Other costs	5	10,090	6,471
Total		54,244	38,168
Surplus / deficit	7	(7,248)	911

BEECH VILLAGE HALL
BALANCE SHEET as at 30 June 2024

	Notes	£ 30-Jun-24	£ 30-Jun-23
Fixed Assets			
Land and buildings	8	319,559	319,559
Improvements to property	8	(0)	(0)
Fixtures and fittings	8	5,457	5,433
Total		<u>325,016</u>	<u>324,992</u>
Current Assets			
Bar Stocks		967	1,058
Debtors		7,059	12,736
Prepayments	9	1,619	1,334
Cash at bank and in hand - General Funds	10	15,788	21,247
Cash at bank and in hand - Refurbishment Fund	10	51,661	50,415
Current Liabilities			
Creditors		2,762	1,677
Deferred income	11	8,084	9,834
Accrued expenses	12	319	529
VAT		2,580	3,827
Booking deposits		2,400	2,862
Net Current Assets		<u>60,949</u>	<u>68,061</u>
Total Assets less Current Liabilities		<u>385,965</u>	<u>393,053</u>
Reserves			
Restricted reserves	7	1,509	1,595
General reserves	7	384,456	391,458
Total		<u>385,965</u>	<u>393,053</u>

Approved on behalf of the Trustees on 25 October 2024
Dr J.E. Freeman-Hunt

Joanne Freeman-Hunt

BEECH VILLAGE HALL
NOTES TO THE ACCOUNTS FOR THE YEAR ENDING 30 June 2023

	30-Jun-24	30-Jun-23
1 Fundraising events	£	£
Quiz Night	639	-
Expenses	170	0
Net income	469	0
Bonfire Night	2,700	0
Expenses	1,801	0
Net income	899	0
Christmas Fayre	410	405
Expenses	61	35
Net income	349	370
Adults Christmas Party	-	0
Expenses	-	80
Net income	-	(80)
Burns Evening	-	0
Expenses	-	255
Net income	-	(255)
Social evenings	4,581	2,266
Expenses	4,150	821
Net income	431	1,445
Christmas Wreath Making	830	1,786
Expenses	783	1,505
Net income	47	281
Film Night	597	0
Expenses	322	50
Net income	275	(50)
Jazz on the Green	-	0
Expenses	-	400
Net income	-	(400)
Barn Dance	-	0
Expenses	-	31
Net income	-	(31)
Coronation Picnic	-	0
Expenses	-	6
Net income	-	(6)
Total income from events	9,757	4,457
Total expenses	7,287	3,183
Net income	2,471	1,274

Net surplus from bar sales, included in fund raising, after stock write off costs: 1,170 956

BEECH VILLAGE HALL
NOTES TO THE ACCOUNTS FOR THE YEAR ENDING 30 June 2023

2 Coffee Shop	30-Jun-24	30-Jun-23
Income	5,027	4,634
Expenses	1,768	1,692
Net income	<u>3,259</u>	<u>2,942</u>
3 Hall hire	30-Jun-24	30-Jun-23
Classes	10,045	9,930
Clubs	4,989	3,643
Commercial	0	0
Committee meetings	242	162
Marquee hire	0	0
Private parties	8,114	7,848
Weddings	5,325	5,687
Other	2,041	2,224
	<u>30,756</u>	<u>29,495</u>
4 Property and estate	30-Jun-24	30-Jun-23
Cleaning / Check in-out	9,079	5,852
Kitchen supplies	38	102
Grounds maintenance	2,698	5,161
Maintenance and repairs	10,067	4,523
Insurance (mainly property)	1,747	1,324
Broadband	409	275
Water	450	639
Electricity	4,276	2,640
Gas	2,240	1,782
Equipment costs	795	1,312
Playground equipment	86	82
Rates	72	127
Coffee Shop Equipment & Maintenance	145	29
Bar Equipment and Supplies	0	71
	<u>32,102</u>	<u>23,920</u>
5 Other administrative costs	30-Jun-24	30-Jun-23
Administration costs	8,826	4,772
Licences	726	508
Print, Post and Stationery	43	3
Sundry	56	50
Bank service charges	439	274
Professional Fees	0	864
	<u>10,090</u>	<u>6,471</u>

BEECH VILLAGE HALL
NOTES TO THE ACCOUNTS FOR THE YEAR ENDING 30 June 2023

6 Surplus / deficit	30-Jun-24	30-Jun-23
Transfer to/(from) restricted reserves	(86)	(82)
Transfer to/(from) general reserves	(7,162)	994
	<u>(7,248)</u>	<u>912</u>

7 Reserves	Restricted	Unrestricted	Total
Balance at 1 July 2023	1,595	391,458	393,053
Surplus in period	0	(7,248)	(7,248)
Transfer between reserves	(86)	86	0
Balance at 30th June 2024	<u>1,509</u>	<u>384,296</u>	<u>385,805</u>

8 Fixed assets	Land and buildings	Improvements to property	Fixtures and fittings
Cost brought forward 01 July 2023	319,559	45,103	21,386
Additions	0	0	3,020
Disposals	0	0	(1,600)
Cost carried forward 30 June 2024	<u>319,559</u>	<u>45,103</u>	<u>22,806</u>
Depreciation brought forward 01 July 2023	0	45,103	15,952
Charge for the period	0	0	2,997
Disposals	0	0	(1,600)
Depreciation carried forward 30 June 2024	<u>0</u>	<u>45,103</u>	<u>17,349</u>
Net book value 30 June 2024	<u>319,559</u>	<u>(0)</u>	<u>5,457</u>

9 Prepayments	30-Jun-24	30-Jun-23
Insurance	830	917
Water	0	19
Licences, and subscriptions	629	397
	<u>1,459</u>	<u>1,333</u>

10 Cash at bank and in hand	30-Jun-24	30-Jun-23
Cash in hand - bar float	100	256
Cash at bank: Paypal/Stripe	93	527
Cash at bank: Current Acct General Funds	15,595	20,464
Cash at bank: CAF Gold Acct Refurbishment Fund	51,661	50,415
	<u>67,449</u>	<u>71,662</u>

BEECH VILLAGE HALL
NOTES TO THE ACCOUNTS FOR THE YEAR ENDING 30 June 2023

11 Deferred income	30-Jun-24	30-Jun-23
Hall hire	8,084	9,834
100 club liability	0	0
	<hr/>	<hr/>
	8,084	9,834
	<hr/>	<hr/>
12 Accrued expenses (bills yet to come)	30-Jun-24	30-Jun-23
Electricity	120	204
Gas	19	12
Maintenance	0	0
Admin Expenses	180	0
Social Costs	0	313
	<hr/>	<hr/>
	319	529
	<hr/>	<hr/>



Beech Village Hall & Recreation Ground, 1 Wellhouse Road, Beech, Alton GU34 4AQ
Website: www.beechvillage.org.uk Email: bookings@beechvillage.org.uk
Registered Charity No. 301738

Annual report of the Chair of the Trustees

Report for the financial year ending June 30, 2024, presented to the Annual General Meeting on October 25, 2024 at Beech Village Hall

New directions for our Community Hub

Beech Village Hall had another good year of activity in 2023-24. Village events were well supported, hall hiring revenue increased and we kept the fabric of the Hall and green spaces in good shape. We have improved our connection with the community by launching a Membership Programme, and by doing more to recognise the many volunteers who support us.

Sensing a change in interests among villagers, we explored new entertainment and social options. After surveying residents, we launched a pilot 'Screen by the Green' Film Night in May 2024; the event was well received and Film Night has now become a regular feature on our calendar.

We've initiated two major projects to expand our offerings:

1. Expanding beyond Film Night to include theatre via the National Theatre's NT Live programme
2. Redesigning the Annexe to create a versatile space for specialist training and therapy sessions, both individual and small group.

We believe the improved Annexe will be an asset for villagers who want to access a smaller space. More details about both projects are available in the appendices and we welcome feedback and offers of assistance.

Our vision for the Hall and Rec is to be Beech's community hub, focusing on three areas:

- **Social Hub:** Regular social events, Bonfire Night and the coffee shop
- **Health and Wellbeing Hub:** Weekly classes in the Hall and therapy sessions in The Wellhouse.
- **Culture Hub:** Film Nights, with plans to expand to NT Live and possibly live screenings.

While we primarily serve Beech residents, we welcome participation from surrounding areas.

We continue to hire the Hall out successfully for wedding receptions and private parties; these make a big contribution to covering our running costs. Our hiring income increased by 4.3% in 2023-24 but the cost of running the Charity, excluding the cost of village events,

rose by nearly 36%, resulting in an annual deficit of £7,088 – our first for many years. Whilst we still had a healthy year-end cash balance of £67,449, including the refurbishment fund and working capital, our financial plan is designed to return the Charity to a positive cash flow over the next two years.

The Social Hub



The Friday coffee shop continued to be popular, with a lively, informal atmosphere as both regulars and occasional visitors enjoy excellent coffee, delicious cakes and pleasant conversation. Many thanks to Sarah Neish and all the volunteer cake creators and coffee grinders.

Support for the monthly Friday evening socials was excellent. During the year, we moved from volunteer cooks to a professional caterer, with all meals pre-booked via Ticketsource. The Socials provide a great opportunity for old friends to get together, and for newcomers to meet up with their neighbours, in a convivial and informal atmosphere.

Peter and Sally Cox organised a challenging but enjoyable Quiz Night in September, but the Spring

2024 Quiz Night had to be cancelled due to insufficient participation.

The turnout for Bonfire Night 2023 was magnificent, with around 300 people flocking to the Rec, many marching from the Hall with their torches, to enjoy an enormous fire, a wonderful fireworks display, and the usual burgers, sausages and drinks. Martin Littlewood and Dan Soutar led an army of volunteers to deliver this event.



The Christmas Fair, organised by Sally Cox, was once again a success, with a good variety of stalls to tempt us with interesting gift ideas. Andrea Neary organised our first Christmas wreath-making workshop in association with Willow & Sage Florist; around 30 people spread across two sessions enjoyed themselves and

gave positive feedback. We planted a young Christmas Tree on the Village Green near the Hall, now known as the Beech Family Tree, and Sarah Neish and Karen Littlewood organised an evening of Christmas carols round the tree.

Our Social team has undergone some changes, with myself, Anne Whitaker and Ingrid McCormack stepping down. Many thanks to Karen Littlewood, who has taken on the role of Chair of the social team, and the remaining members, Andrea Neary, Jo Schneider and Jo Curtis, who joined during the year. And thanks to everyone who assisted at our events and, of course, to those who came along and helped to create that special Beech atmosphere.

The Health and Wellbeing Hub



We continued to host around a dozen clubs and classes each week, catering for the wellbeing of both body and mind. These included several dance classes, pilates, yoga, Baby Sensory, Toddler Sense, LittleKickers and bridge. The Beech Art Group met in the Annexe (now known as The Wellhouse) every week, and Beech Embroiderers met every other month.

East Hampshire District Council approved our application to extend our opening hours, which means that class leaders will now be able to offer early morning classes, from 7am onwards, if they wish.

We have had some success in hiring out The Wellhouse, formerly the Annexe, for small group meetings and therapy sessions. With the demand for therapy of all types increasing, we are developing ideas for improving this space so that we can offer more.

The Culture Hub

Community cinema has become a popular concept, and we ran a pilot screening in May at Beech's Screen by the Green. This was an engaging and enjoyable evening, with the movie *One Life* moving many to tears. Nearly all the tickets were snapped up in advance and the feedback was overwhelmingly positive. As a result, Film Night is now a regular feature in our calendar, and we are looking to offer more cultural events in the future.



Managing the Hall and green spaces

We are still busy with weddings and private parties. Our Hall and village remain very attractive, and we consistently receive positive feedback from hirers. We are very proud that our average review score on Google continues to be 4.7 out of 5.

Towards the end of the financial year, we reviewed our prices and hiring structure, which have been unchanged for more than 15 years. Our intention is that revenue from hiring out the Hall should cover most of our basic running costs so we can deliver community



events at an attractive price. These costs have been increasing, not only due to general inflation but also because of the need to pay contractors to do jobs which have previously been done by volunteers. At the same time, our previous pricing structure had become quite complex, with 288 different rates for hiring all or part of the Hall!

At the start of the 2024-25 financial year, we moved to a new pricing model, based on:

- Simplification - making it easier for hirers to understand how much they will pay and reducing administrative costs and errors.
- Customer value – charging higher prices for periods of peak demand
- Revenue – increasing prices to reflect past cost inflation

The inside of the Hall had a fresh coat of paint, and we installed buffer rails around the walls to prevent the paintwork being damaged by stacks of chairs knocking into it. So far, this solution has held up very well and the Hall still looks very smart. Thanks to Nick Charman for using his nautical knowledge to find a solution that's not unlike fenders on the dockside, and to Simon Hodgson for his help with this and a myriad of other, less visible maintenance and repair jobs.

Our dishwasher finally gave up the ghost, and we installed a more modern unit which is easier to use. Testing of the fire alarm and emergency lighting system revealed a number of issues and faults, which have now been addressed.

As we saw an uptick in the use of The Wellhouse, we installed new, remote-controlled heaters to help keep the damp at bay and ensure users are comfortable, while minimising energy costs.

We also installed a mirror to help drivers leaving the Hall car park to see traffic past the blind spots in both directions.



Sheila Sorby continued to make sure the green spaces remained tidy and attractive. On the Rec, Sheila periodically organised a team of volunteers to help clear brambles and weeds from Nick's Little Copse, in what she has dubbed 'Secateur Saturdays'. Sadly, the oak sign which celebrated Nick's leadership and the efforts of everyone in the village to renew this area was stolen, but it will be replaced.

Andrea Neary continues to coordinate the team who empty the dog poo bins on the Green and Rec. Many thanks to this team.

The collection bin for clothes, shoes and bed linen outside the Hall provides a useful resource for the village, while supporting the Hampshire and Isle of Wight Air Ambulance.

Public benefit and community engagement

Many Beech residents, as well as people from the surrounding area, enjoyed the weekly coffee shop, monthly socials, quiz night, Bonfire Night, Christmas events, and Film Night. We estimate that there were about 2,000 customer visits to the Hall for social events during the financial year, an increase of around 10% on 2022-23. In addition, many villagers attended health and wellbeing classes in the Hall and made use of our green spaces and children's play equipment, and a few hired the Hall for private parties.

During the year, we launched our membership programme to help people to connect with the Village Hall more easily. Members receive direct updates about social events and developments at the Charity, a copy of this Chair's report and the financial statement, and special rates if they hire the Hall. Membership is free and open to all adults living in Beech. Associate Membership is available for those who live outside the village but participate in our social life. As of June 30, 58 people had signed up for the programme, including 48 full members living in Beech; the latter represented 17% of the 230 households in Beech.

In the early part of the financial year, the Social Team conducted a paper survey of the village. Whilst this gave some useful insights, the response rate was relatively low. We plan to conduct future surveys online via the membership programme.

Nothing that we do would happen without volunteers. We estimate that more than 50 volunteers contributed nearly 900 hours of their time during the year to deliver the village social programme. (This doesn't include the work performed by the Management Team to

run the Charity.) We are delighted that a number of new faces are now helping out from time to time, whether it's by baking cakes, serving food or drinks, helping to set up for events, or working on our green spaces. A great camaraderie always develops as volunteers come together to support their village, and this contributes to our community spirit.

During National Volunteers Week, we hosted a coffee morning to say thank-you to our existing band of volunteers, and as an opportunity for those who may be thinking about helping to find out more. We plan to run this regularly in future.

Managing the charity

Our Management Team did not change during the financial year, but Anne Whitaker left the Management Team in August 2024 and Nick Charman intends to step down as Treasurer at the end of October. Joanna Curtis has been co-opted onto the team, and a search is underway to find a new Treasurer.

We have welcomed four newcomers to the team of contractors who help to keep the Hall running. Nicola Kitney has taken over our book-keeping, accounts preparation and overall management system from Sarah Branch, who left us during the year. Vicky Smart has taken on the new role of bookings administrator, and is responsible for working with our hirers, invoicing and chasing for payment. Debra and Dunstan Rickhaus have taken over as caretakers/cleaners from Chris Foote. Simon Hodgson continues with repairs and maintenance in the Hall and grass cutting, Lucy Loosemore and her team of Green Goddesses do the gardening work, and Stuart Lee cuts our hedges.

As I mentioned earlier, rising costs have become a source of concern and have led us into a financial deficit for the year. We have increased our use of paid contractors, including an expanded caretaker/cleaning role and a new role providing administrative support to our volunteer bookings manager. Every year comes with the need to upgrade and improve aspects of the Hall, and this year maintenance and repair costs increased by £5,500, largely due to an overhaul of the fire safety systems and a substantial internal redecoration of the Hall. Energy costs increased by £2,000 after our previous fixed-price tariff expired. We have also incurred additional expenditure in our efforts to secure future business, including advertising and applying for permission to open the Hall earlier in the morning.

Elsbeth Mackeggie has kindly reviewed our accounts on a *pro-bono* basis.

During the year, we have reviewed and formally approved all our policy documents and risk assessments, including Health & Safety, Data Protection, Safeguarding and Equal Opportunities, and we have established an annual review cycle to make sure they are always up to date. One benefit is that when we apply for grants to help fund new initiatives, the funding providers often ask to see up-to-date, approved policy documents.

Looking to the future

We have now set ourselves specific, measurable objectives for the next financial year (which, of course, is already well underway). Our overall aim, as stated in our Constitution, remains unchanged: "The provision and maintenance of a village hall and recreation ground

for the use of the inhabitants of Beech and the neighbourhood without distinction of sex, religious or other political opinions and in particular for the use of meetings, lectures and classes and for other forms of recreation (including physical recreation) and other leisure-time occupations, with the object of improving the conditions of life for the said inhabitant.”

For 2024-25, we have translated this to a set of specific objectives:

- **Social Hub:** Run a great social programme including Bonfire Night. Maintain the number of annual visits for the coffee shop and social events at approximately 2,000 with an overall financial surplus of £5,000.
- **Culture Hub:** Run regular Film Nights and introduce NT Live, to achieve at least 640 customer attendances at Screen by the Green events, to deliver a financial surplus of £2,500.
- **Health & Wellbeing Hub:** Find opportunities for new clubs and classes and pursue the redevelopment of The Wellhouse.
- **Managing the Charity:** Achieve £33,800 of Hall Hire revenue and manage our cost base to less than £40,000. Along with the small surpluses from the Social Hub and Culture Hub, this should result in break-even.
- **Community engagement:** Increase our team of active and engaged volunteers from 50 to 60 and increase annual volunteer hours by 27% to 1,080, to support the increased Culture Hub activity. Increase our total membership from 58 to 85, with Beech household coverage to rise from 17% to 25%.

When the new Hall opened 16 years ago, the redevelopment of the Annexe meeting room was put on hold for financial reasons. Ideas to improve the Annexe have been considered since then, ranging from cosmetic improvements to a complete rebuild. The management team concluded that replacing the Annexe with a newly built multi-function space would be the ideal solution and began to place surplus funds retained from operations into a Refurbishment Fund, which stood at £51,661 as of June 30.

However, the Annexe replacement has proved to be challenging. It would probably require at least £250,000 at today's prices, and we are not sure the benefit to villagers would justify this even if we could secure external funding. Furthermore, this would take a few years and a massive effort to bring to fruition, and the demolition and construction would cause considerable disruption.

We have now defined two capital projects which are smaller in scale and cost and could bring benefits to the village in a relatively short period of time. Our research indicates that they are also likely to be attractive for external funding. The first project addresses the Culture Hub, and the second addresses the Health & Wellbeing Hub. The appendices contain more information about both projects.

Thank you

Our community depends on a great team of volunteers who run the Hall and the Rec. I have peppered this review with thanks, but here I must give a huge thanks to our management team, who work so hard to ensure the Hall and its surroundings are in fine fettle, and our social team, who provide a great programme of events and entertainment for villagers to

enjoy. If you would like to join us, you will find village life all the more rewarding, so please let me know if you can offer a bit of your time and expertise.

Many other people contribute to village life: baking, serving coffee, bartending, emptying dog poo bins, letting off fireworks and so on. There are way too many to name individually, but heartfelt and abundant thanks to you all.

I also want to thank our team of contractors who help us run the Hall and Rec – Nicola Kitney, Vicky Smart, Debra and Dunstan Rickhaus, Simon Hodgson, Stuart Lee and Lucy Loosemore – as well as those who left during the year, Sarah Branch and Chris Foote.

Finally, thanks to everyone in the village who uses the Hall, Village Green and Rec. You make the work that our volunteers do worthwhile! For those of you who have moved in recently, I want to welcome you to this stunning village, and I hope you enjoy living here and taking part in village life for many years to come.

Dr Jane Freeman-Hunt

Trustee and Chair, Beech Village Hall & Recreation Ground Management Committee

October 25th 2024

Appendix 1. Beech Culture Hub – NT Live

During 2023-24, we started to offer monthly film nights at Beech Village Hall, and we are now exploring exciting plans to expand our screenings to include theatre via National Theatre Live.

NT Live broadcasts exceptional theatre performances from the UK to cinemas worldwide. Recent popular productions include:

- *Prima Facie*: Jodie Comer's award-winning one-woman play
- *Nye*: Michael Sheen portraying Nye Bevan and his vision for the NHS
- *Present Laughter*: Noël Coward's classic comedy starring Andrew Scott
- *The Motive and the Cue*: Sam Mendes' new play with Mark Gatiss and Johnny Flynn
- *Dear England*: A play about Gareth Southgate with Joseph Fiennes



NT Live offers the opportunity to experience world-class theatre in the comfort and convenience of our own venue, at a very reasonable price. This will require a much better sound and vision system, which will also greatly improve the experience at our existing monthly film nights, and will open up

the possibility of other live screenings, such as sporting events.

We have built a specification for the new sound and vision equipment, including a larger screen, BluRay 4K UHD player, Digital 5.1 surround sound, a new projector and additional speakers. The investment required will exceed £30,000 and we have applied for grant funding to help us to realise this opportunity.

A survey of Beech Village Hall Members and Film Night attendees conducted in early September 2024 demonstrated strong support for NT Live performances being shown in Beech. We are delighted to have secured letters of support from Arts Society Alton, the Alton Society, Community First (East Hants) and the Alton U3A to support our application for funding.

With NT Live, we plan to deliver a similar experience to our Film Nights, with the cultural performance supported by an open bar and limited cabaret-style seating to encourage conversation and create a welcoming atmosphere. We anticipate these events will attract a diverse audience of all ages, not only from Beech, but also from the surrounding areas. However, we will continue to prioritise Beech Village Hall Members by offering them first access to performance tickets.

Research indicates that of the population of over 32,000 living within 5 miles of the Hall, approximately 658 would be interested in attending a theatre performance monthly. If we can secure even a small share of this potential audience, this initiative will not only make a

valuable social contribution to Beech and its surrounding communities, but also provide a financial boost to the Hall.

Delivering the Culture Hub will rely heavily on volunteers. The social team will need support with promoting the evenings, and on each film or theatre night we will need a projectionist (training available!), a “front of house” manager to welcome the audience, and bar stewards. Any offers of help will be greatly appreciated!

Appendix 2. Health & Wellbeing – The Wellhouse

For years, Beech Village Hall has prioritized health and wellbeing, offering regular classes and clubs that enhance both physical and mental health, including yoga, dance, pilates, bridge, and art.

Local demand and vision

Out of a population of 32,700 people living within a 5-mile radius of Beech Village Hall, research indicates that around 4,000 may be receiving some form of therapy to improve their wellbeing. This highlights significant local demand for therapy and for other personal development offerings.

Our vision for the Annexe is to create a versatile space that can easily be adapted for various purposes, such as one-to-one therapy sessions, art classes or meetings for up to 12 people.

Types of therapy and personal development

Therapy and personal development include various approaches:

- Talking therapies (e.g. cognitive behavioural therapy, hypnotherapy)
- Physical therapies (e.g. physiotherapy)
- Complementary and alternative therapies (e.g. massage, acupuncture, aromatherapy)
- Coaching and specialised training
- Creative therapies (e.g. music and art therapy)

These services are typically provided one-on-one or in small group settings.

The Wellhouse: current status and future plans

We have renamed the Annexe “The Wellhouse” and are now assessing how to make this space more suitable for therapists to hire without undergoing a prohibitively expensive redevelopment. Villagers would benefit from local access to therapies, and from the availability of a flexible, refurbished space that they could use for small-group activities (e.g., music practice, games).

A specialist training provider has been successfully using The Wellhouse on a regular basis, appreciating its privacy, tranquillity, and location. We have partially addressed the persistent damp, musty smell by implementing regular cleaning routines and upgrading the heating system.

Key features and requirements

To create an ideal space, we envision the following key features:

- Flexible seating and lighting arrangements
- Optional tables, projector, and network connectivity
- Accommodation for specialist equipment (e.g., massage tables)
- Essential soundproofing

The key physical requirements for this upgrade include:

- Damp-proof membranes for the walls, roof repairs and new windows with trickle vents
- A large storage area to store tables and chairs when they are not being used; we would achieve this by knocking into the garage next door
- Lighter-weight tables and chairs which can easily be moved in and out of storage
- Improved lighting, decoration and window blinds to create a more relaxing space
- A lobby/waiting area on a single level with better lighting, a chair and tea and coffee facilities

Cost and funding

We estimate that these changes will cost more than £50,000. We will be able to cover some of this using our Refurbishment Fund, but we will be reliant on grant funding. We anticipate that it will take several months, and possibly longer, to secure this.

These changes aim to enhance The Wellhouse's value to both professional hirers and community members, creating a versatile and welcoming space for various wellbeing activities.

BEECH VILLAGE HALL AND RECREATION GROUND

England & Wales - Charity number 301738

Accounts



Section A

Independent Examiner's Report

Report to the trustees

Charity Name
Beech Village Hall and Recreation Ground

**On accounts for the year
ended**

30 June 2023	Charity no (if any)	301738
--------------	--------------------------------	--------

Set out on pages

1 to 6
(remember to include the page numbers of additional sheets)

I report to the trustees on my examination of the accounts of the above charity ("the Trust") for the year ended 30/06/2023.

**Responsibilities and
basis of report**

As the charity's trustees, you are responsible for the preparation of the accounts in accordance with the requirements of the Charities Act 2011 ("the Act").

I report in respect of my examination of the Trust's accounts carried out under section 145 of the 2011 Act and in carrying out my examination, I have followed all the applicable Directions given by the Charity Commission under section 145(5)(b) of the Act.

**Independent
examiner's statement**

I have completed my examination. I confirm that no material matters have come to my attention in connection with the examination which gives me cause to believe that in, any material respect:

- the accounting records were not kept in accordance with section 130 of the Charities Act; or
- the accounts did not accord with the accounting records; or

I have no concerns and have come across no other matters in connection with the examination to which attention should be drawn in this report in order to enable a proper understanding of the accounts to be reached.

Signed: W. Croucher.

Date: 20/12/2023

Name: WENDY CROUCHER

**Relevant professional
qualification(s) or body
(if any):**

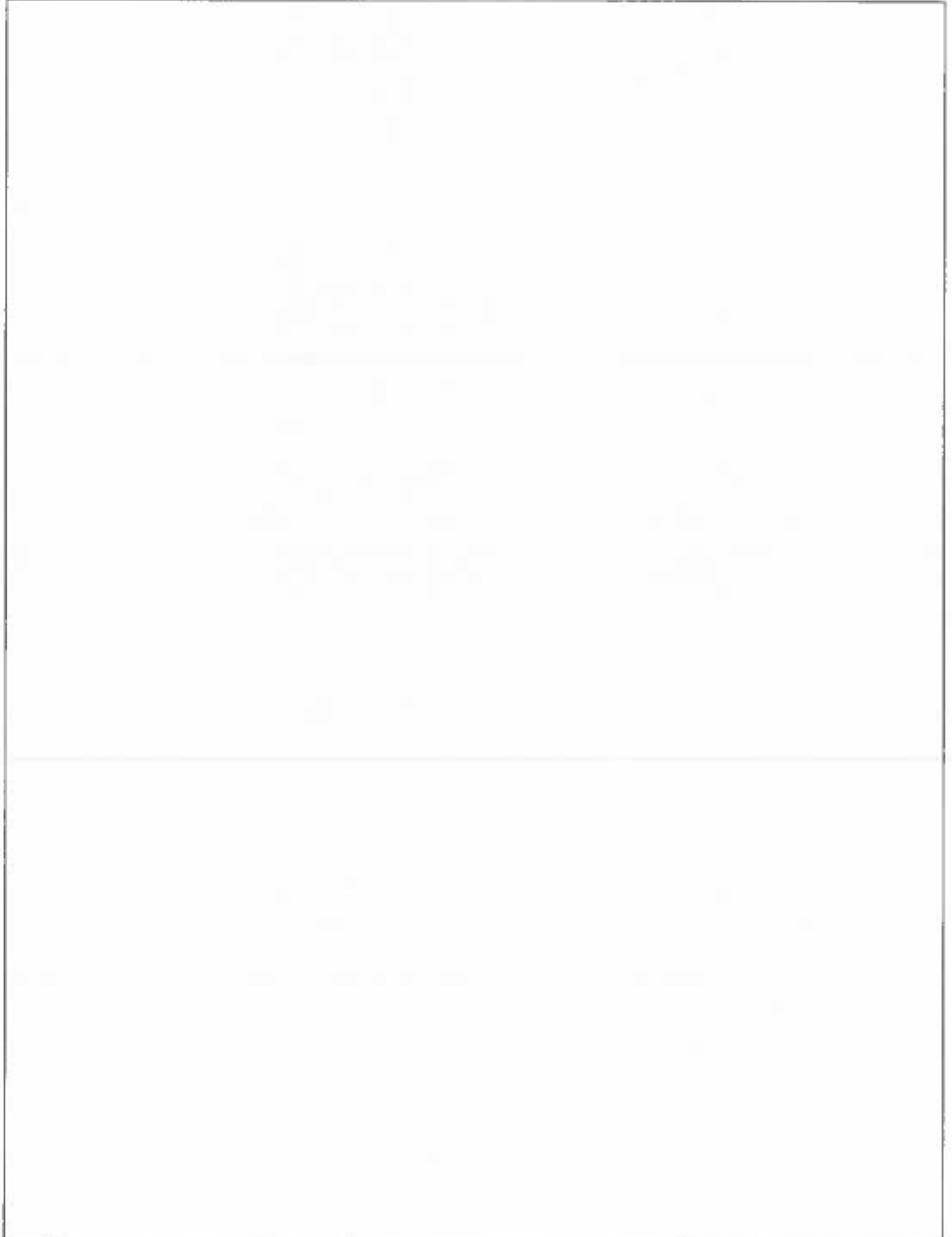
FCCA

Address:

MARKET HOUSE, 21 LENTEN STREET
ALTON
GU34 1HG

Only complete if the examiner needs to highlight material matters of concern (see CC32, Independent examination of charity accounts: directions and guidance for examiners).

Give here brief details of any items that the examiner wishes to disclose.



BEECH VILLAGE HALL
INCOME and EXPENDITURE STATEMENT for the year ending 30 June 2023

	Notes	£ 30-Jun-23	£ 30-Jun-22
Income			
Fundraising events	1	4,457	19,633
Coffee Shop	2	4,634	3,824
Hall hire	3	29,495	29,051
Total		<u>38,586</u>	<u>52,508</u>
Other income			
Bank interest received		467	6
Miscellaneous income		0	0
Donations		26	2,009
Grants		0	10,047
Rates Relief		0	0
Total		<u>493</u>	<u>12,061</u>
Total income		39,079	64,569
Expenditure			
Fundraising events	1	3,183	14,862
Coffee Shop	2	1,692	327
Property and estate	4	23,919	31,202
Depreciation	8	2,902	4,543
Other costs	5	6,471	5,174
Total		<u>38,167</u>	<u>56,109</u>
Surplus / deficit	7	<u>912</u>	<u>8,461</u>

BEECH VILLAGE HALL
BALANCE SHEET as at 30 June 2023

	Notes	£ 30-Jun-23	£ 30-Jun-22
Fixed Assets			
Land and buildings	8	319,559	319,559
Improvements to property	8	(0)	(0)
Fixtures and fittings	8	5,433	7,690
Total		<u>324,992</u>	<u>327,249</u>
Current Assets			
Bar Stocks		1,058	1,061
Debtors		12,736	8,286
Prepayments	9	1,334	1,286
Cash at bank and in hand - General Funds	10	21,247	18,032
Cash at bank and in hand - Refurbishment Fund	10	50,415	50,000
Current Liabilities			
Creditors		1,677	1,075
Deferred income	11	9,834	6,349
Accrued expenses	12	529	920
VAT		3,827	2,830
Booking deposits		2,862	2,600
Net Current Assets		68,061	64,892
Total Assets less Current Liabilities		<u>393,053</u>	<u>392,141</u>
Reserves			
Restricted reserves	7	1,595	1,677
General reserves	7	391,458	390,464
Total		<u>393,053</u>	<u>392,141</u>

Approved on behalf of the Trustees on
Dr J.E. Freeman-Hunt

Jan Freeman-Hunt

11 Dec 2023

BEECH VILLAGE HALL
NOTES TO THE ACCOUNTS FOR THE YEAR ENDING 30 June 2023

1 Fundraising events	30-Jun-23	30-Jun-22
	£	£
Quiz Night	-	789
Expenses	0	237
Net income	0	552
Bonfire Night	0	2,827
Expenses	0	2,093
Net income	0	734
Christmas Fayre	405	359
Expenses	35	95
Net income	370	264
Adults Christmas Party	0	0
Expenses	80	194
Net income	(80)	(194)
Childrens Christmas Party	0	0
Expenses	0	34
Net income	0	(34)
Burns Evening	0	0
Expenses	255	83
Net income	(255)	(83)
Wine & Cheese	0	280
Expenses	0	435
Net income	0	(155)
Social evenings	2,266	3,529
Expenses	821	1,783
Net income	1,445	1,747
Celebration Ball	0	4,588
Expenses	0	3,676
Net income	0	912
Comedy Night	1,786	3,360
Expenses	1,505	2,633
Net income	281	727
Queens Jubilee	0	2,698
Expenses	50	2,538
Net income	(50)	161
Jazz on the Green	0	1,202
Expenses	400	1,060
Net income	(400)	142
Barn Dance	0	0
Expenses	31	0
Net income	(31)	0
Coronation Picnic	0	0
Expenses	6	0
Net income	(6)	0
Total income from events	4,457	19,633
Total expenses	3,183	14,862
Net income	1,274	4,771

Net surplus from bar sales, included in fund raising, after stock write off costs: 956 2,542

BEECH VILLAGE HALL
NOTES TO THE ACCOUNTS FOR THE YEAR ENDING 30 June 2023

2 Coffee Shop	30-Jun-23	30-Jun-22
Income	4,634	3,824
Expenses	1,692	327
Net income	<u>2,942</u>	<u>3,497</u>
3 Hall hire	30-Jun-23	30-Jun-22
Classes	9,930	10,257
Clubs	3,643	2,505
Commercial	0	300
Committee meetings	162	645
Marquee hire	0	0
Private parties	7,848	9,420
Weddings	5,687	5,923
Other	2,224	0
	<u>29,495</u>	<u>29,051</u>
4 Property and estate	30-Jun-23	30-Jun-22
Cleaning / Check in-out	5,852	4,019
Kitchen supplies	0	0
Grounds maintenance	5,161	7,694
Maintenance and repairs	4,523	5,640
Insurance (mainly property)	1,324	1,247
Broadband	275	310
Water	639	420
Electricity	2,640	2,135
Gas	1,782	734
Equipment costs	1,312	1,568
Playground equipment	82	77
Rates	127	119
Coffee Shop Equipment & Maintenance	29	6,935
Bar Equipment and Supplies	71	103
Kitchen Supplies	102	201
	<u>23,919</u>	<u>31,202</u>
5 Other administrative costs	30-Jun-23	30-Jun-22
Administration costs	4,772	3,830
Licences	508	538
Print, Post and Stationery	3	171
Sundry	50	0
Bank service charges	274	525
Professional Fees	864	110
	<u>6,471</u>	<u>5,174</u>

BEECH VILLAGE HALL
NOTES TO THE ACCOUNTS FOR THE YEAR ENDING 30 June 2023

6 Surplus / deficit	30-Jun-23	30-Jun-22
Transfer to/(from) restricted reserves	(82)	(77)
Transfer to/(from) general reserves	994	8,538
	<u>912</u>	<u>8,461</u>

7 Reserves	Restricted	Unrestricted	Total
Balance at 1 July 2022	1,677	390,464	392,141
Surplus in period	0	912	912
Transfer between reserves	(82)	82	0
Balance at 30th June 2023	<u>1,595</u>	<u>391,458</u>	<u>393,053</u>

8 Fixed assets	Land and buildings	Improvements to property	Fixtures and fittings
Cost brought forward 01 July 2022	319,559	45,103	20,740
Additions	0	0	645
Disposals	0	0	0
Cost carried forward 30 June 2023	<u>319,559</u>	<u>45,103</u>	<u>21,385</u>
Depreciation brought forward 01 July 2022	0	45,103	13,050
Charge for the period	0	0	2,902
Disposals	0	0	0
Depreciation carried forward 30 June 2023	<u>0</u>	<u>45,103</u>	<u>15,952</u>
Net book value 30 June 2023	<u>319,559</u>	<u>(0)</u>	<u>5,433</u>

9 Prepayments	30-Jun-23	30-Jun-22
Insurance	917	865
Water	19	31
Licences, and subscriptions	397	390
	<u>1,334</u>	<u>1,286</u>

10 Cash at bank and in hand	30-Jun-23	30-Jun-22
Cash in hand - bar float	256	100
Cash at bank: Paypal/Stripe	527	25
Cash at bank: Current Acct General Funds	20,464	15,083
Cash at bank: Current Acct Refurbishment Fund	0	50,000
Cash at bank: CAF Gold Acct Refurbishment Fund	50,415	2,825
	<u>71,662</u>	<u>68,032</u>

BEECH VILLAGE HALL
NOTES TO THE ACCOUNTS FOR THE YEAR ENDING 30 June 2023

11 Deferred income	30-Jun-23	30-Jun-22
Hall hire	9,834	6,349
100 club liability	0	0
	<hr/>	<hr/>
	9,834	6,349
	<hr/>	<hr/>
12 Accrued expenses (bills yet to come)	30-Jun-23	30-Jun-22
Electricity	204	352
Gas	12	53
Maintenance	0	515
Social Costs	313	0
	<hr/>	<hr/>
	529	920
	<hr/>	<hr/>



BEECH VILLAGE HALL

Beech Village Hall & Recreation Ground, 1 Wellhouse Road, Beech, Alton GU34 4AQ

Website: www.beechvillage.org.uk Email: bookings@beechvillage.org.uk

Registered Charity No. 301738

Annual report of the Chair of the Trustees

Presented to the Annual General Meeting, October 27, 2023 at Beech Village Hall

A year of consolidation

After a bumper year in 2021-22 following the lifting of Covid restrictions, our social events have been less well supported in the latest financial year, which ended on June 30, 2023. However, hall hirings have been steady, the fabric of the Hall and green spaces remain in good shape, and we returned a small financial surplus.

The social hub for the Beech Community

The main focus for social activity within our community has been the Friday morning coffee shop and the monthly socials on the last Friday evening of the month.

The Friday coffee shop continues to be popular. We took the difficult decision to reduce the hours to 10am-1pm, as our small base of volunteers were finding it difficult to cover the entire day, and there was limited attendance in the afternoon. This has resulted in some very busy Friday mornings, however, with a lively atmosphere and many new friendships made.



The monthly Friday evening socials were all well attended, and the volunteer cooks very much appreciated the informal booking system, which gave them an idea of how many people might wish to eat. These have provided a great opportunity for old friends to get together, and for newcomers to the village to meet up with their new neighbours, in a convivial and informal atmosphere. The July 2022 social took the form

of a village barbecue, which was particularly well attended and provided an opportunity for younger villagers to take part.



The Christmas Fair was once again a successful day, organised by Sally Cox, with a good variety of stalls to tempt us with interesting gift ideas.

In March 2023, the hall was packed for the Comedy and Chilli evening, with three quite different comedians and a compere to make

everyone laugh. Volunteers provided excellent home-cooked chilli and dessert for everyone. Many thanks for Carol Kemp and her team.

Other social events have become more challenging to organise. Informal feedback suggests that, after the hiatus caused by Covid, many people in Beech who have previously attended village events have become much busier with family commitments, holidays, work and, sadly, in some case, health issues. As a result, it has become more difficult to find volunteers willing to organise complex events, and even when we could, a number of events had to be cancelled due to insufficient bookings.

We have begun to move towards simpler events with less reliance on volunteers. We had planned to run a party to celebrate the Coronation, but instead we simply invited villagers to bring picnics, chairs and gazebos for an informal gathering on the Village Green. This turned out to be a well attended and fun afternoon for all ages.

Hall bookings

We continue to host around a dozen clubs and classes each week, including bridge, baby and toddler classes, dance, pilates and yoga. The Beech Art Group meets in the Annexe every week, and Beech Embroiderers meet every other month. However, some of the clubs and classes are still running with reduced numbers since the pandemic so we are doing our best to support their marketing efforts. Some new classes began in 2023, including Tai-Chi and a Deep Meditation Soundbath, but unfortunately they did not attract enough attendees to be viable in the long term, despite good support from the village itself.



We are still very busy with weddings and private parties, demand for which has held up well after the surge in interest after the pandemic, and despite an increase in prices and a slight reduction in hours to address neighbours' concerns about noise. Our Hall and village remain very attractive and we consistently receive very positive feedback from hirers. We are very proud of our average review score on Google, 4.7 out of 5.



Kimberley Fowell

8 reviews · 1 photo

★★★★★ a year ago

This is by far the best village hall in Alton and the surrounding area - spacious, bright, modern and clean with amazing facilities. We had to move our party twice due to covid and the manager couldn't have been more helpful. Lovely play area for the kids outside and plentiful parking - highly recommend!

Managing the Hall and green spaces

The Hall has not required too much maintenance attention this year. The lights in the car park failed during the winter, and have been replaced by a low-voltage LED system. In response to a noise complaint, we engaged an expert firm to conduct a noise survey and purchased a noise monitor, which we can use to check noise levels remotely. We also resolved issues with the automatic system which cuts off power when noise levels reach an unacceptable level.

On the Rec, Nick's Little Copse goes from strength to strength, with many saplings now poking out of their support tubes and the whole area providing a nice mix between being accessible and being wild and natural.

The collection bin for clothes, shoes and bed linen outside the Hall provides a useful resource for the village, while supporting the Hampshire and Isle of Wight Air Ambulance.

Public benefit

Many Beech residents have enjoyed the coffee shop and monthly socials, as well as the Christmas Fair, comedy evening and Coronation picnic. Our green spaces continue to be appreciated.

None of these activities would happen without volunteers. A great camaraderie always develops as volunteers come together to support their village, and this in itself boosts our community spirit.

Managing the charity

Sadly, we lost a long-standing and enthusiastic member of our management team when Ian Gibson passed away in April. Anne Whitaker stepped down from her role as chair of the social team at the end of the financial year but remains a member of the management team.

Our cleaner, Max Laney, left us in the Spring and Chris Foote has taken on an expanded role of caretaker/cleaner. Sarah Branch continues to cover our book-keeping, accounts preparation and bookings administration needs. Simon Hodgson is often busy behind the scenes making sure everything in and around the Hall is in working order, and out in the open cutting the grass, and Sheila Sorby has the lead on making sure the green spaces are tidy and attractive. The Alton firm of accountants, Wettone Matthews, have once again kindly reviewed our accounts on a *pro-bono* basis.

Our financial position remains relatively strong, as we have maintained our bookings revenues and kept our costs roughly consistent with previous years. However, our smaller social programme has resulted in a reduced contribution from social events, and in the previous year we benefited from grant funding to help us rebuild our operations after the pandemic. Although our surplus is lower, our cash position has improved, and we are now starting to earn interest on our refurbishment fund, which is earmarked for future development of the Annexe.

Recent developments after the year-end

In response to changing demand for social events, the Social team have conducted a survey across the village, to find out what people really want us to organise. This will inform decisions about our future social events programme. Many thanks to everyone who responded.

It has become increasingly difficult to find volunteer cooks for the monthly socials, so we have decided to bring in external caterers for them, starting in September 2023. Although this means a slight increase in price, it allows these much appreciated events to continue. There is no longer a need to book, but we can't ask our caterers to cook unlimited quantities of food, so it will be available on a first come, first served basis! The bar and coffee shop will continue to be run by volunteers.

I am delighted to welcome Dan Soutar and Karen Littlewood to the management team. Dan has been helping with the bar and coffee shop and is providing thoughtful input on team decisions. Karen is now chairing the social team and will be working with her team on our future social programme.

Thank you

Our community depends on a team of a great team of volunteers who run the Hall and the Rec. A huge thank you to our management team, who work so hard to ensure the Hall and its surroundings are in fine fettle, and our social team, who provide a great programme of events for villagers to enjoy. If would like to join us, you will find village life all the more rewarding, so please let me know if you can offer a bit of your time and expertise.

Many other people contribute to village life; cooking, baking, serving coffee, bartending, emptying dog poo bins, erecting the marquee and so on. There are way too many to name individually, but heartfelt and abundant thanks to you all.

I also want to thank our team of contractors who help us run the Hall and Rec – Chris Foote, Simon Hodgson, Sarah Branch, Max Laney and Lucy Loosemore.

We have many new villagers and I want to welcome you to this stunning village. It's great to have been able to meet many of you and get to know you.

Dr Jane Freeman-Hunt

Trustee and Chair, Beech Village Hall & Recreation Ground Management Committee
October 27th 2023

BEECH VILLAGE HALL AND RECREATION GROUND

England & Wales - Charity number 301738

Accounts



Section A Independent Examiner's Report

**Report to the trustees/
members of**

Charity Name
Beech Village Hall and Recreation Ground

**On accounts for the year
ended**

30 June 2022

**Charity no
(if any)**

301738

Set out on pages

1 to 6

(remember to include the page numbers of additional sheets)

I report to the trustees on my examination of the accounts of the above charity ("the Trust") for the year ended 30/06/2022.

**Responsibilities and
basis of report**

As the charity's trustees, you are responsible for the preparation of the accounts in accordance with the requirements of the Charities Act 2011 ("the Act").

I report in respect of my examination of the Trust's accounts carried out under section 145 of the 2011 Act and in carrying out my examination, I have followed all the applicable Directions given by the Charity Commission under section 145(5)(b) of the Act.

**Independent
examiner's statement**

I have completed my examination. I confirm that no material matters have come to my attention in connection with the examination which gives me cause to believe that in, any material respect:

- the accounting records were not kept in accordance with section 130 of the Charities Act;
- the accounts did not accord with the accounting records;

I have no concerns and have come across no other matters in connection with the examination to which attention should be drawn in this report in order to enable a proper understanding of the accounts to be reached.

Signed: W. Croucher.

Date: 27/01/2022

Name: WENDY CROUCHER

**Relevant professional
qualification(s) or body
(if any):**

FCCA

Address:

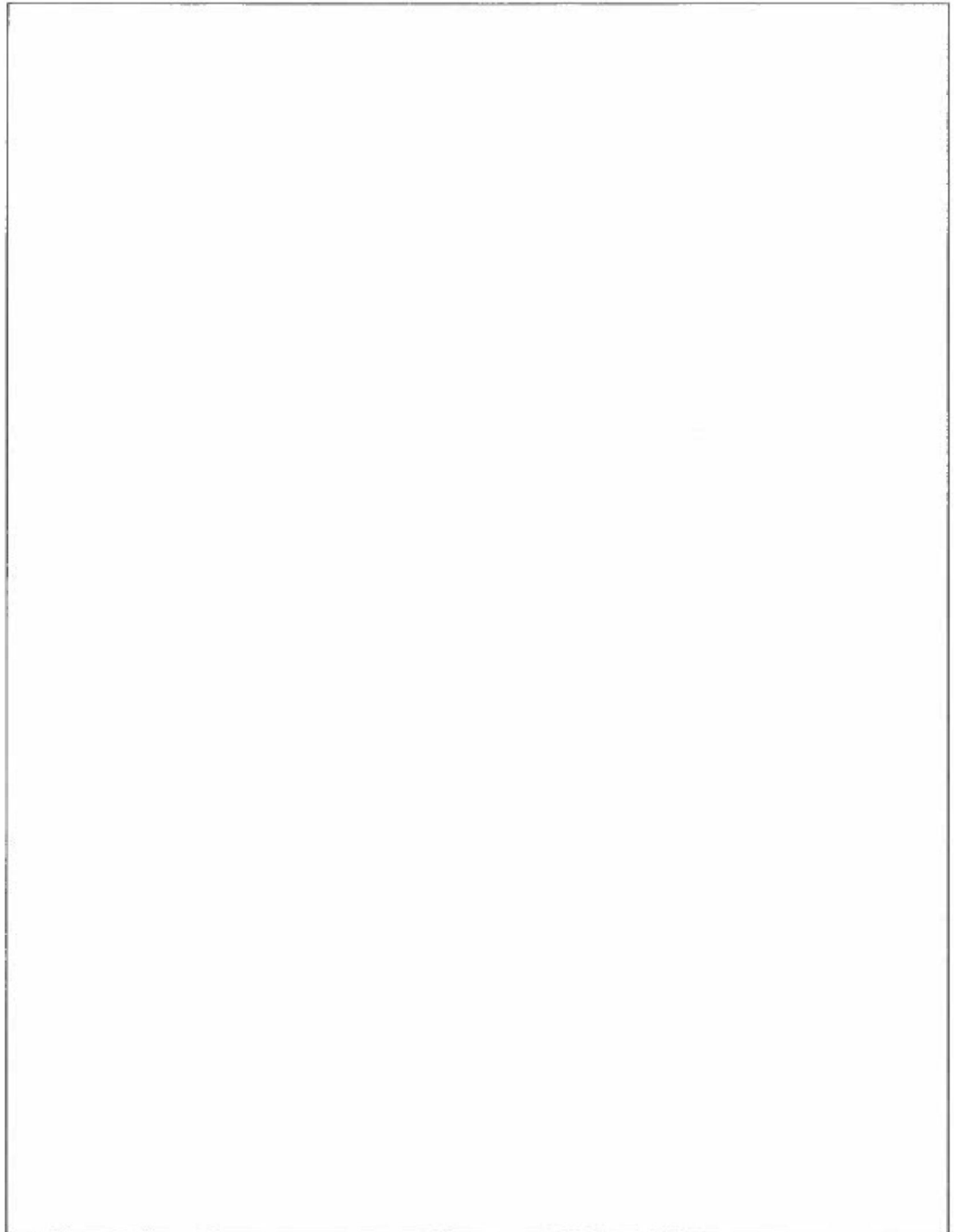
MARKET HOUSE, 21 LENTEN STREET

ALTON

GU34 1HG

Only complete if the examiner needs to highlight material matters of concern (see CC32, Independent examination of charity accounts: directions and guidance for examiners).

Give here brief details of any items that the examiner wishes to disclose.



BEECH VILLAGE HALL
INCOME and EXPENDITURE STATEMENT for the year ending 30 June 2022

		£	£
	Notes	30-Jun-22	30-Jun-21
Income			
Fundraising events	1	19,633	607
Fundraising 100 club	2	-	3,540
Coffee Shop	3	3,824	-
Hall hire	4	29,051	6,159
Total		52,508	10,306
Other income			
Bank interest received		6	-
Miscellaneous income		-	-
Donations		2,009	7,668
Grants		10,047	22,077
Rates Relief		-	-
Total		12,061	29,746
Total income		64,569	40,052
Expenditure			
Fundraising events	1	14,862	483
Fundraising 100 club	2	-	2,400
Coffee Shop	3	327	-
Property and estate	5	31,202	23,943
Depreciation	9	4,543	5,645
Other costs	6	5,174	3,092
Total		56,109	35,563
Surplus / deficit	7	8,461	4,488

BEECH VILLAGE HALL
BALANCE SHEET as at 30 June 2022

	Notes	£ 30-Jun-22	£ 30-Jun-21
Fixed Assets			
Land and buildings	9	319,559	319,559
Improvements to property	9	-	1,599
Fixtures and fittings	9	7,690	9,225
Total		<u>327,249</u>	<u>330,383</u>
Current Assets			
Bar Stocks		1,061	823
Debtors		8,286	5,213
Prepayments	10	1,286	2,665
Accrued income	11	-	-
Cash at bank and in hand - General Funds	12	18,032	14,175
Cash at bank and in hand - Refurbishment Fund	12	50,000	40,000
Current Liabilities			
Creditors		1,075	398
Deferred income	13	6,349	4,502
Accrued expenses	14	920	490
VAT		2,830	1,384
Booking deposits		2,600	2,800
Net Current Assets		64,892	53,304
Total Assets less Current Liabilities		<u>392,141</u>	<u>383,686</u>
Reserves			
Restricted reserves	8	1,677	1,754
General reserves	8	390,464	381,932
Total		<u>392,141</u>	<u>383,686</u>

Approved on behalf of the Trustees on
Dr J.E. Freeman-Hunt

Jane Freeman-Hunt

Date: 28 October 2022

BEECH VILLAGE HALL
NOTES TO THE ACCOUNTS FOR THE YEAR ENDING 30 June 2022

1 Fundraising events	30-Jun-22	30-Jun-21
	£	£
Quiz Night	789	-
Expenses	237	-
Net income	552	-
Bonfire Night	2,827	-
Expenses	2,093	121
Net income	734	(121)
Christmas Fayre	359	-
Expenses	95	-
Net income	264	-
Adults Christmas Party	-	-
Expenses	194	26
Net income	(194)	(26)
Childrens Christmas Party	-	-
Expenses	34	-
Net income	(34)	-
Burns Evening	-	-
Expenses	83	-
Net income	(83)	-
Wine & Cheese	280	-
Expenses	435	-
Net income	(155)	-
Social evenings	3,529	607
Expenses	1,783	336
Net income	1,747	271
Celebration Ball	4,588	-
Expenses	3,676	-
Net income	912	-
Comedy Night	3,360	-
Expenses	2,633	-
Net income	727	-
Queens Jubilee	2,698	-
Expenses	2,538	-
Net income	161	-
Jazz on the Green	1,202	-
Expenses	1,060	-
Net income	142	-
Total income from events	19,633	607
Total expenses	14,862	483
Net income	4,771	124

Net surplus from bar sales, included in fund raising, after stock write off costs: 2,542 271

2 Fundraising: 100 Club	30-Jun-22	30-Jun-21
Income	-	3,540
Expenses	-	2,400
Net income	-	1,140

BEECH VILLAGE HALL
NOTES TO THE ACCOUNTS FOR THE YEAR ENDING 30 June 2022

3	Coffee Shop	30-Jun-22	30-Jun-21
	Income	3,824	-
	Expenses	327	-
	Net income	3,497	-
4	Hall hire	30-Jun-22	30-Jun-21
	Classes	10,257	3,884
	Clubs	2,505	407
	Commercial	300	121
	Committee meetings	645	206
	Marquee hire	-	-
	Private parties	9,420	264
	Weddings	5,923	777
	Other	-	500
		29,051	6,159
5	Property and estate	30-Jun-22	30-Jun-21
	Cleaning / Check in-out	4,019	3,939
	Kitchen supplies	-	246
	Grounds maintenance	7,694	12,194
	Maintenance and repairs	5,640	2,818
	Insurance (mainly property)	1,247	1,220
	Broadband	310	327
	Water	420	124
	Electricity	2,135	1,277
	Gas	734	771
	Equipment costs	1,568	950
	Playground equipment	77	76
	Rates	119	-
	Coffee Shop Equipment & Maintenance	6,935	-
	Bar Equipment and Supplies	103	-
	Kitchen Supplies	201	-
		31,202	23,943
6	Other administrative costs	30-Jun-22	30-Jun-21
	Administration costs	3,830	2,412
	Licences	538	406
	Print, Post and Stationery	171	190
	Bank service charges	525	84
	Professional Fees	110	-
		5,174	3,092
7	Surplus / deficit	30-Jun-22	30-Jun-21
	Transfer to/(from) restricted reserves	(77)	(346)
	Transfer to/(from) general reserves	8,538	4,834
		8,461	4,488

BEECH VILLAGE HALL
NOTES TO THE ACCOUNTS FOR THE YEAR ENDING 30 June 2022

8 Reserves	Restricted	Unrestricted	Total
Balance at 1 July 2021	1,754	381,932	383,686
Surplus in period		8,461	8,461
Transfer between reserves	(77)	77	-
Balance at 30th June 2022	<u>1,677</u>	<u>390,469</u>	<u>392,146</u>

9 Fixed assets

	Land and buildings	Improvements to property	Fixtures and fittings
Cost brought forward 01 July 2021	319,559	45,103	19,330
Additions	-	-	1,410
Disposals	-	-	-
Cost carried forward 30 June 2022	<u>319,559</u>	<u>45,103</u>	<u>20,740</u>
Depreciation brought forward 01 July 2021	-	43,505	10,105
Charge for the period	-	1,598	2,945
Disposals	-	-	-
Depreciation carried forward 30 June 2022	<u>-</u>	<u>45,103</u>	<u>13,050</u>
Net book value 30 June 2022	<u><u>319,559</u></u>	<u><u>-</u></u>	<u><u>7,690</u></u>

10 Prepayments

	30-Jun-22	30-Jun-21
Fireworks Stock (wax torches/bracelets)	-	1,571
Insurance	865	815
Water	31	12
Licences, and subscriptions	390	201
Christmas items (lights, table stands, etc)	-	66
	<u>1,286</u>	<u>2,665</u>

11 Accrued income

	30-Jun-22	30-Jun-21
Gift Aid	-	-
	<u>-</u>	<u>-</u>

12 Cash at bank and in hand

	30-Jun-22	30-Jun-21
Cash in hand - bar float	100	100
Cash at bank: Paypal/Stripe	25	-
Cash at bank: Current acct General Funds	15,083	11,251
Cash at bank: Current acct Refurbishment Fund	50,000	40,000
Cash at bank: CAF Gold Acct	2,825	2,824
	<u>68,032</u>	<u>54,175</u>

BEECH VILLAGE HALL

NOTES TO THE ACCOUNTS FOR THE YEAR ENDING 30 June 2022

13 Deferred income	30-Jun-22	30-Jun-21
Hall hire	6,349	4,502
	<hr/>	<hr/>
	6,349	4,502
14 Accrued expenses (bills yet to come)	30-Jun-22	30-Jun-21
Electricity	352	59
Gas	53	17
Maintenance	515	414
	<hr/>	<hr/>
	920	490



BEECH VILLAGE HALL

Beech Village Hall & Recreation Ground, 1 Wellhouse Road, Beech, Alton GU34 4AQ

Website: www.beechvillage.org.uk Email: bookings@beechvillage.org.uk

Registered Charity No. 301738

Annual report of the Chair of the Trustees

Presented to the Annual General Meeting, October 28, 2022 at Beech Village Hall

A year of recovery

The beginning of our financial year on July 1, 2021 coincided with the removal of most of the Covid 19 restrictions which had severely impacted the Village Hall in 2020-21. We took full advantage by relaunching our programme of social activities in the village, and by opening our Friday coffee and cake shop, which has become a focal point for friendship and community.

Most of our hirers returned with regular classes, which are enjoyed by many Beech residents as well as people from the surrounding area. The pent-up demand arising from two years of restrictions meant that we became very busy with weddings and private parties, which are now making a significant contribution. To help tide us over as activities built up, we received a further grant from the local authority.

Sadly, we lost Nick Sorby early in 2022. We miss his inspiration, drive and company, but the phone box book exchange and the Copse on the Rec, now named after him, serve as permanent memories.

Back in business for the Beech Community



Damp but not dampened: Jazz on the Green 2021

We ran our first post-Covid social event, a barbecue, in July 2021 with more than 70 people of all ages attending. We followed up with a rescheduled Jazz on the Green in August. Undeterred by the village green being vandalised the night before, around 20 villagers dropped everything in the morning to clear the green so that the event could go ahead. More than 100 people came and enjoyed the Farnham Big Band, their singer Anna, and a pleasant social occasion – despite the rain. The *Alton Herald* summed up our village spirit with its headline: “Broken glass and nails can’t stop us”.

From late August, we resumed our monthly Friday evening socials, now with an informal booking system. The cooks have very much appreciated having an idea of how many people might attend.

The coffee and cake shop opened at the Village Show in late September and has become a weekly feature on Fridays. A team of volunteers now bakes cakes and serves coffee weekly, and around 40 people typically come along to take the opportunity to socialise during the day in an informal setting, including those who find it difficult to come to evening events.



Service with smiles at Beech Coffee & Cake



More than 80 people attended the celebration ball in early October, with drinks, dinner, music, dancing, a raffle and, of course, a great atmosphere.

Beech celebrated the end of lockdown in style

On November 6, the village came together for our first Bonfire Night since 2018. More than 250 people enjoyed the procession, bonfire, food, beer and mulled wine, as well as the spectacular firework display.



Bonfire Night was a roaring success

The Christmas season started well with the return of the annual Christmas Fair, but unfortunately the Christmas Lunch was not such a popular idea and had to be cancelled due to lack of numbers. Likewise, the Burns evening also failed to attract enough bookings to allow it to go ahead.

In contrast, the first big event of 2022 was the March Comedy and Curry Evening, which sold out within 10 days of tickets going on sale. Many attendees commented on the high standard of the comedians, and it was great to see so many people laughing after such a

difficult two years. However, the food was disappointing so there will be a different food offer next time.

In April, a smaller group gathered for a wine tasting evening hosted by Neil Gibson. A selection of Ridgeback wines from South Africa was soaked up with cheeses and savouries. Shortly after that, the ever popular Spring Quiz made its return, hosted by Peter Cox and delivering the classic mixture of tricky questions, trick questions, drinks, nibbles and humour.



June saw Beech celebrating our late Queen's Platinum Jubilee in style, with two very enjoyable and convivial events. Our Fizz & Chips Night was a sell-out, with around 90 people enjoying traditional fish and chips, along with drinks including local sparkling wine and Jubilee Ale, and Buckingham Palace gin. Several villagers entered fantastic Jubilee-themed puddings into the Great Beech Jubilee Bake-off. After Carol Kemp's creation was declared the winner, the puddings were all eaten and live coverage of the beacon lighting ensued.

Jane Freeman-Hunt and her assistant, Caleb, judged the great British puddings

Three days later, around 170 people convened on the Green for the BIG Beech Jubilee Lunch. They enjoyed entertainment from Farnham Big Band and Anna, as well as an amazing buffet including more traditional English food and a fantastic cake. Unlike Jazz on the Green, the rain held off until the band were playing the last number!



Great food, great music, great company - a typical Beech celebration, this time for the Platinum Jubilee



Hall bookings



Progressive Motion Dance for young people with additional needs

Most of our regular classes re-established themselves in the early part of our new financial year, and we now host around a dozen clubs and classes each week, including bridge, baby and toddler classes, dance, pilates and yoga. The Beech Art Group meets in the Annexe every week, and Beech Embroiderers have been meeting every other month. However, we are conscious that some of the clubs and classes have been running with reduced numbers since the pandemic. We are doing our best to encourage new classes and we hope a new Tai-Chi class will start soon.

We have been very busy with weddings and private parties since the pandemic, helped by strong demand, the attractiveness of our Hall and village, and our promotional efforts. These include the online booking system, Google advertisements and the promotional video, which has now been viewed over 900 times. We now offer standard packages for weddings and children's parties, and we have substantially increased the cost of the wedding package for future years. This has made no discernible difference to the demand! We receive consistently great feedback from hirers about the Hall and the village.



A wedding setup from 2022

Improvements to the Hall and green spaces



Following an amazing initiative led by Nick Sorby, the little copse on the Rec was officially opened in August 2021 by East Hampshire councillor Tony Costigan, who also unveiled the roll of tree dedications which is now in place in the Hall. Following Nick's sad passing, we have renamed this Nick's Little Copse, and we have installed a welcome sign celebrating the efforts of Nick and the whole village to make this happen.

In the Hall, the opening of the coffee shop in late September followed several weeks of hard work and modifications. This project involved buying a bean to cup coffee machine, making new shelving in the bar area from Thedden Oak, new chairs, pictures on the walls, a host of smaller items, and a lot of work to ensure we meet food safety regulations, culminating in a glowing 5 rating after our first food inspection. A number of villagers enjoyed decorating cups and plates. The initial investment costs were largely covered by donations from villagers and grants from East Hampshire District Council and the National Lottery Communities Fund.

At the same time, we installed a permanent digital noticeboard in the Hall, replacing a fairly chaotic set of hard-copy notices with a smart screen containing information about clubs, classes, future social events, village news and pictures. This 65in screen sits inside an elegant frame made from Thedden Oak and is often taken over by hirers to show family photographs or a welcome to their guests.

We are now supporting the Hampshire and Isle of Wight Air Ambulance by hosting a collection bin for clothes, shoes and bed linen outside the Hall.

Inevitably, maintenance works have been necessary during the year. We had some roof repairs done to keep the Hall and Annexe waterproof. We have replaced a large section of the grass on either side of the path across the Village Green, so that we could remove all the last traces of glass and nails following the vandalism incident. We have bought new barbecues and trestle tables for our outside events.

Public benefit

Many Beech residents have enjoyed our varied and comprehensive programme of events, including Jazz on the Green, the Jubilee celebrations, comedy, the quiz night, the Celebration Ball and Bonfire Night, as well as our monthly Friday night socials and the coffee shop. Our green spaces continue to be appreciated. Anyone who has not so far participated in our village social scene, including those who have moved in recently, will receive a very warm welcome should they wish to join in.



All these activities are run by volunteers. Dozens of people are involved in some way, either year-round or on specific projects or events. A great camaraderie always develops as volunteers come together to support their village, and this in itself boosts our community spirit. We are always ready to welcome new or returning volunteers who would like to help!

Our neighbours

Since we reopened after Covid, BVH has re-established itself as a very popular venue for weddings and private parties. They make a big contribution to the running costs of the Hall, allowing us to offer Beech residents a wide range of social opportunities at an affordable price, and to build a fund for future refurbishment. This has led to a small number of complaints about noise and disturbance from people who live near the Hall. The management team is very sensitive to this issue and is addressing it.



Beech is a great party venue but hirers must monitor and control the noise

We have an automatic system which cuts off the power to amplifiers when party noise reaches an unacceptable level. It has not been working, but this has been corrected and we will perform a noise survey and make adjustments if necessary. We will also install a noise monitor in the Hall with a digital display to allow hirers to monitor the noise level.

We are now asking hirers to finish their parties 30 minutes earlier than our licence permits, so serving of drinks and playing of music stops at 10.30pm instead of 11pm, and all guests leave by 11pm. This change will take place over time, as we already have contracts in place with a number of hirers. It will not apply to community events.

We are now limiting the number of bookings for wedding receptions that we will accept, and we will not allow teenage parties for people outside Beech.

Everyone who hires the Hall for a wedding reception or private party is informed both in person and in writing about the noise sensitivities and the actions they need to take.

The Village Green is a big attraction for our private party hirers, but we are now making it clearer to hirers that they do not have exclusive use of the Green, and that local residents will be walking across the green and using the play equipment during their events.

We have updated our Website and marketing materials to reflect these changes, and to emphasise the importance of minimising noise and disturbance generally.

Managing the charity

Our preparatory work during the pandemic meant that the Hall was ready for action as soon as it was needed, and it was very satisfying to welcome our Beech residents again for events and socials, our regular hirers for their clubs and classes, and our occasional hirers for weddings and private parties.

Meetings of Charity's core management team, known formally as the Management Committee, have become smaller, following the sad loss of Nick Sorby, Ingrid McCormack's

decision to retire from the team and, more recently, Ian Gibson's serious illness. Additions to the team would be very welcome. It's a satisfying role and does not have to be time-consuming; we are a flexible, informal team of like-minded people, and fun and friendship are as important to us as the formal business that needs to be done. If you are interested in finding out more, please talk to me or one of my colleagues.

Fortunately, we have a great social team, who have run an amazing programme since lockdown, with the help of many villagers who have pitched in to help with the larger events. Our village has benefited enormously from the volunteer cake-bakers, coffee grinders and shop stewards who have turned our dream of a coffee shop into weekly reality.

Our book-keeper, Lynda West, left us this summer and we have welcomed Sarah Branch, who has taken an expanded role covering book-keeping, accounts preparation, bookings administration, and Secretary to the charity. Max Laney, Simon Hodgson and Lucy Loosemore continue to do sterling service to make sure everything in the Hall is clean and in working order, and the green spaces are tidy and attractive. The Alton firm of accountants, Wettone Matthews, have once again kindly reviewed our accounts on a pro-bono basis.

The future

We have emerged from the pandemic with a revitalised social programme, a good selection of clubs and classes, and a healthy pipeline of bookings for wedding receptions and private parties. This balance of revenue streams is essential; if some of the clubs and classes do not continue into the long term, the party bookings will help to compensate.

We are fortunate that we have been able to increase our cash balance further, and we have decided to split this into two parts. Our "General Funds" category of a little over £18,000 is working capital that we need to make sure we can pay our regular bills and cover urgent repairs without running out of cash. We have allocated the remaining £50,000 to a "Refurbishment Fund". This is intended to support capital projects, the principal one being the potential redevelopment of the Annexe.



There is potential to replace the Annexe with an attractive, up to date facility

Part of the original hall building, the Annexe is a single-skinned structure which is suffering from unresolvable damp issues. We believe it would be desirable to replace this building to offer additional opportunities for the community. Our intention is to expand this fund over time until we have sufficient funds available to contemplate this project, which would also require substantial grant funding to match what we are able to raise ourselves.

We have begun informal discussions about what form the replacement Annexe might take. In order to take this project forward, we will need to establish that there is demand for an additional room that would be smaller than the Main Hall but a bit larger and much more attractive to users than the existing Annexe. We will also be looking for help from any villagers who have skills in architecture, project management and planning.

Thank you

This post-pandemic year has been especially busy. Many people have been engaged in restoring community life to its former glory, not that the spirit of the village was diminished! We have seen a gradual return to socialising and it has been fantastic to see many villagers in our coffee shop.

Our community depends on a team of a great team of volunteers who run the Hall and the Rec. A huge thank you to our Management Team and Social Team who work so hard to ensure the Hall and its surroundings are a welcoming place to be. Our social team work their socks off to provide a programme of events for villagers to enjoy. This group of people are amazing to work with and give so freely of their time. I can promise that if you would like to join us, you will find village life all the more rewarding. There are always things for people to help with, so don't be shy!!

Many other people contribute to village life; emptying dog waste bins, running the coffee shop, cooking for social events, serving drinks, erecting the dreaded marquee and so on. There are way too many to name individually, but heartfelt and abundant thanks to you all. I would, however, like to thank Sheila Sorby, who has taken on the care of our green spaces.

I also want to thank our team of contractors who help us run the Hall and Rec – Simon Hodgson, Max Laney, Lucy Loosemore, Lynda West and Sarah Branch.

We have many new villagers and I want to welcome you to this stunning village. It's great to have been able to meet many of you and get to know you.

Dr Jane Freeman-Hunt

Trustee and Chair, Beech Village Hall & Recreation Ground Management Committee

October 28th 2022

BEECH VILLAGE HALL AND RECREATION GROUND

England & Wales - Charity number 301738

Accounts



Section A

Independent Examiner's Report

**Report to the trustees/
members of**

Charity Name
Beech Village Hall and Recreation Ground

**On accounts for the year
ended**

30th June 2021

**Charity no
(if any)**

301738

Set out on pages

1 to 5

(remember to include the page numbers of additional sheets)

I report to the trustees on my examination of the accounts of the above charity ("the Trust") for the year ended **30 / 06 / 2021**.

**Responsibilities and
basis of report**

As the charity's trustees, you are responsible for the preparation of the accounts in accordance with the requirements of the Charities Act 2011 ("the Act").

I report in respect of my examination of the Trust's accounts carried out under section 145 of the 2011 Act and in carrying out my examination, I have followed all the applicable Directions given by the Charity Commission under section 145(5)(b) of the Act.

**Independent
examiner's statement**

I have completed my examination. I confirm that no material matters have come to my attention in connection with the examination which gives me cause to believe that in, any material respect:

- the accounting records were not kept in accordance with section 130 of the Charities Act; or
- the accounts did not accord with the accounting records; or

I have no concerns and have come across no other matters in connection with the examination to which attention should be drawn in this report in order to enable a proper understanding of the accounts to be reached.

** Please delete the words in the brackets if they do not apply.*

Signed: W. Croucher

Date: 18/01/2022

Name: WENDY CROUCHER

**Relevant professional
qualification(s) or body
(if any):**

FCCA

Address:

MARKET HOUSE, 21 LENTEN STREET

ALTON

GU34 1HG

Section B

Disclosure

Only complete if the examiner needs to highlight material matters of concern (see CC32, Independent examination of charity accounts: directions and guidance for examiners).

Give here brief details of any items that the examiner wishes to disclose.

[Empty box for disclosure details]

BEECH VILLAGE HALL
INCOME and EXPENDITURE STATEMENT for the year ending 30 June 2021

		Notes	£ 30-Jun-21	£ 30-Jun-20
Income				
	Fundraising events	1	607	5,709
	Fundraising 100 club	2	3,540	3,525
	Hall hire	3	6,159	15,585
	Total		<u>10,306</u>	<u>24,819</u>
Other income				
	Bank interest received		0	4
	Miscellaneous income		-	-
	Donations		7,668	68
	Grants		22,077	10,000
	Rates Relief		-	1,835
	Total		<u>29,746</u>	<u>11,907</u>
Total income			40,052	36,726
Expenditure				
	Fundraising events	1	483	3,828
	Fundraising 100 club	2	2,400	2,400
	Property and estate	4	23,943	15,541
	Depreciation	7	5,645	3,413
	Other costs	5	3,092	5,550
	Total		<u>35,563</u>	<u>30,733</u>
Surplus / deficit		6	<u>4,488</u>	<u>5,994</u>

BEECH VILLAGE HALL
BALANCE SHEET as at 30 Jun 2021

	Notes	£ 30-Jun-21	£ 30-Jun-20
Fixed Assets			
Land and buildings	8	319,559	319,559
Improvements to property	8	1,599	4,526
Fixtures and fittings	8	9,225	2,034
Total		<u>330,383</u>	<u>326,118</u>
Current Assets			
Bar Stocks		823	602
Debtors		5,213	151
Prepayments	9	2,665	6,000
Accrued income	10	-	0
Cash at bank and in hand	11	54,175	50,797
Current Liabilities			
Creditors		398	433
Deferred income	12	4,502	2,605
Accrued expenses	13	490	292
VAT		1,384	240
Booking deposits		2,800	900
Net Current Assets		53,304	53,079
Total Assets less Current Liabilities		<u>383,686</u>	<u>379,197</u>
Reserves			
Restricted reserves	7	1,754	2,100
General reserves	7	381,932	377,098
Total		<u>383,686</u>	<u>379,197</u>

Approved on behalf of the Trustees on
Dr J.E. Freeman-Hunt

21st October 2021

Jane Freeman-Hunt

BEECH VILLAGE HALL
NOTES TO THE ACCOUNTS FOR THE YEAR ENDING 30 June 2021

	30-Jun-21	30-Jun-20
	£	£
1 Fundraising events		
Quiz Night	-	1,001
Expenses	-	401
Net income	0	600
Bonfire Night	-	-
Expenses	121	135
Net income	(121)	135
Christmas Fayre	-	490
Expenses	-	81
Net income	0	409
Adults Christmas Party	-	1,467
Expenses	26	1,591
Net income	(26)	124
Summer party	-	-
Summer party costs	-	-
Net income	-	-
Easter Egg Hunt	-	-
Expenses	-	-
Net income	0	0
Burns Evening	-	-
Expenses	-	-
Net income	0	-
Wine & Cheese	-	675
Expenses	-	552
Net income	-	123
Social evenings	607	2,077
Expenses	336	1,068
Net income	271	1,009
Total income from events	607	5,709
Total expenses	483	3,828
Net income	124	1,882

Free bar Net surplus from bar sales, included in fund raising, after stock write off costs: 271 1,017

	30-Jun-21	30-Jun-20
2 Fundraising: 100 Club		
Income	3,540	3,525
Expenses	2,400	2,400
Net income	1,140	1,125

	30-Jun-21	30-Jun-20
3 Hall hire		
Classes	3,884	4,889
Clubs	407	5,938
Commercial	121	415
Committee meetings	206	214
Marquee hire	-	-
Private parties	264	3,528
Weddings	777	372
Other	500	229
	6,159	15,585

BEECH VILLAGE HALL
NOTES TO THE ACCOUNTS FOR THE YEAR ENDING 30 June 2021

4 Property and estate	30-Jun-21	30-Jun-20	
Cleaning / Check in-out	3,939	4,417	
Kitchen supplies	246	-	
Grounds maintenance	12,194	3,889	
Maintenance and repairs	2,818	1,067	
Insurance (mainly property)	1,220	1,210	
Broadband	327	228	
Water	124	24	
Electricity	1,277	1,813	
Gas	771	693	
Equipment costs	950	100	
Playground equipment	76	69	
Rates	-	2,031	
	23,943	15,541	
5 Other administrative costs	30-Jun-21	30-Jun-20	
Administration costs	2,412	3,672	
Licences	406	474	
Print, Post and Stationery	190	67	
Sundry	-	1,270	
Bank service charges	84	67	
	3,092	5,550	
6 Surplus / deficit	30-Jun-21	30-Jun-20	
Transfer to/(from) restricted reserves	(346)	-	
Transfer to/(from) general reserves	4,834	5,994	
	4,488	5,994	
7 Reserves	Restricted	Unrestricted	Total
Balance at 1 July 2020	2,100	377,098	379,197
Surplus in period		4,488	4488
Transfer between reserves	(346)	346	-
Balance at 30th June 2021	1,754	381,932	383,686

BEECH VILLAGE HALL
NOTES TO THE ACCOUNTS FOR THE YEAR ENDING 30 June 2021

8 Fixed assets

	Land and buildings	Improvements to property	Fixtures and fittings
Cost brought forward 01 July 2020	319,559	45,102	12,072
Additions	-	-	9,910
Disposals	-	-	(2,652)
Cost carried forward 30 June 2021	<u>319,559</u>	<u>45,102</u>	<u>19,330</u>
Depreciation brought forward 01 July 2020	-	40,577	10,039
Charge for the period	-	2,927	2,718
Disposals	-	-	(2,652)
Depreciation carried forward 31 June 2021	<u>-</u>	<u>43,504</u>	<u>10,105</u>
Net book value 31 June 2021	<u><u>319,559</u></u>	<u><u>1,599</u></u>	<u><u>9,225</u></u>

9 Prepayments

	30-Jun-21	30-Jun-20
Fireworks Stock (wax torches/bracelets)	1,571	1,652
Insurance	815	813
Water	12	-
Kitchen Equipment	-	3,130
Licences, and subscriptions	201	313
Christmas items (lights, table stands, etc)	66	92
	<u>2,665</u>	<u>6,000</u>

10 Accrued income

	30-Jun-21	30-Jun-20
Gift Aid	-	0
	<u>-</u>	<u>0</u>

11 Cash at bank and in hand

	30-Jun-21	30-Jun-20
Cash in hand - bar float	100	100
Cash at bank: Current acct	51,251	47,873
Cash at bank: CAF Gold Acct	2,824	2,824
	<u>54,175</u>	<u>50,797</u>

12 Deferred income

	30-Jun-21	30-Jun-20
Hall hire	4,502	385
100 club liability	-	2,220
	<u>4,502</u>	<u>2,605</u>

13 Accrued expenses (bills yet to come)

	30-Jun-21	30-Jun-20
Electricity	59	281
Gas	17	-
Licences	-	11
100 Club prize not cashed yet	-	-
Maintenance	414	-
Accounting QB	-	-
Equipment	-	-
	<u>490</u>	<u>292</u>



BEECH VILLAGE HALL

Beech Village Hall & Recreation Ground, 1 Wellhouse Road, Beech, Alton GU34 4AQ
Website: www.beechvillage.org.uk Email: bookings@beechvillage.org.uk
Registered Charity No. 301738

Annual report of the Chair of the Trustees

Presented to the Annual General Meeting, October 29, 2021 at Beech Village Hall

The impact of the pandemic on the Charity

When our financial year started on July 1, 2020, the Village Hall was still closed due to government restrictions imposed as a result of the Covid-19 pandemic. We had already prepared a comprehensive set of Covid-secure rules and guidelines so we would be ready to open. As restrictions began to ease from late July, we were able to open the Hall for very limited activities, and classes gradually built up. However, the requirement to maintain social distancing meant that we were unable to reintroduce social events or host large weddings or parties.

In the Autumn, the national situation worsened and a second lockdown came into force in early November, only to be followed by a third starting on January 6, 2021. The government relaxed restrictions in phases starting in mid-April, and we were gradually able to re-start classes again, but we had to wait until July before we could host large events and socials.

The pandemic resulted in our income from hall hire and social activities being about a quarter of what we would expect in a normal year. However, Government compensation, in the form of grants, helped us to cover our normal running costs. Generous donations from villagers, combined with a grant from the local authority, helped us to pay for improvements in the Recreation Ground.

Community activities

The pandemic meant that we were unable to hold any of our community social events indoors during the 2020-21 financial year. Our attention therefore turned to what we could do online, and outdoor projects that would deliver improvements in the village, along with some socially distanced camaraderie.



Spooky Week winner

There were some eerie scarecrow appearances in Beech during Spooky Week in the runup to Halloween, 2020. We ran a virtual Autumn Quiz. The monthly 100 Club draws took place on Facebook throughout the year. In Spring 2021, we arranged for the Posh



Posh Scoff burgers helped us get through lockdown

Scoff burger van to visit Beech on several occasions. This provided our locked down villagers with a different Saturday night dining experience. When limited outdoor socialising was allowed, we opened the bar as well.

The old telephone box, which had been hidden behind a hedge in lower Wellhouse Road for years, re-emerged as the Beech Book Exchange thanks to restoration work from a team of villagers led by Nick Sorby. This is now packed with books and a great, free resource for the village. We launched our first (mostly) online fundraising campaign to support this, and we are very grateful that villagers provided half of the funds we needed.



Our new book exchange

Our second outdoor project was much bigger and was also inspired and led by Nick Sorby. We realised that 30 ash trees, mostly on the Rec but including a large one on the village green, were suffering from ash dieback disease. For safety reasons, and following a consultation with villagers, we decided that these would need to be felled. After our professional tree surgeon had done his work, an energetic band of villagers cleared the massive amount of logs and brush. Logs were made available to villagers, who were invited to make a donation.



Family tree planting day, February 2021

In February, 2021, 11 families arrived in staggered Covid-compliant order to plant 110 tree saplings. A log trail and log castle were created for children. Log piles were left to nature. The copse is now a haven for wildlife, native plants and local people of all ages. It was officially opened in September 2021 by East Hampshire Councillor Tony Costigan. This expensive project needed very little funding from our reserves, thanks to very generous donations from villagers, who took the opportunity to dedicate trees to their loved

ones, and a grant from East Hampshire District Council.

Preparing the Hall for the future

The hiatus in normal Hall activity during the pandemic provided us with an opportunity to prepare ourselves to take advantage of future opportunities, and to make improvements to the Hall itself. With most people now searching for venues online, we upgraded our website and put in place an online booking system so that potential hirers can see when the Hall is available and make a reservation. As site visits were impossible, local media studies student Will Fleming made a promotional video of the Hall which includes drone footage and a



Our virtual tour helps potential hirers

walk-through of the Hall's facilities. This has proved very popular and has been a big help in securing party bookings.

To help would-be hall hirers find us, we improved our positioning on Google and on numerous wedding and venue search sites. We launched a modest paid-for advertising programme with Google, focusing on weddings and children's parties. This is paying off very well; more than 40% of our wedding and party sales now come from Google, with most of the balance being from recommendations or people who know the Hall already.

Inside the Hall, the new oven, taps and cupboards were fitted in the kitchen. New, brighter LED lights were installed in the Main Hall. We purchased a new point of sale system to allow us to take card payments; this is also giving us helpful sales data and is making stock management much easier.



The digital sign is now fully working

We installed a prototype digital noticeboard in the Hall, replacing a fairly chaotic set of hard-copy notices with a smart screen containing information about clubs, classes, future social events, village news and pictures. After the end of the financial year, we replaced this with a new 65in screen inside an elegant frame made from Thedden Oak. This can be taken over by hirers to show family photographs or a welcome to their guests.

During the latter part of the financial year, we started to investigate the feasibility of a popup coffee shop in the lounge. The idea was to offer people an opportunity to socialise during the day, in an informal setting, with a particular focus on families and other people who find it difficult to come to evening events.

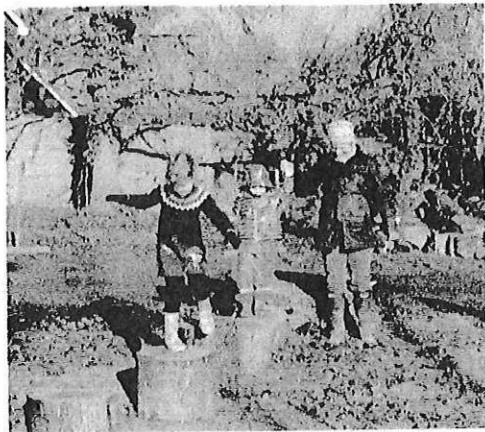
Engaging with the community

We held online consultations on a variety of questions, including whether to hold a somewhat different, Covid-compliant fireworks event in 2020, how to deal with the ash dieback problem, potential changes to the monthly socials, and whether villagers would like a public charging facility for electric vehicles. The responses helped us to shape our plans and we are very grateful for them.

We are also extremely grateful for the generous donations from a large number of villagers, which have helped us to pay for the refurbishment of the phone box, the redevelopment of the Little Copse on the Rec and, later, the new Coffee Shop.

The 100 Club has been running successfully for several years and has been a lot of fun, but our experience with other initiatives led us to rethink our approach to fundraising. We suspended the 100 Club after the draw on June 30. Instead, we will run fundraising campaigns for specific purposes when needed, which means villagers will know exactly how

their contributions will be spent, the Hall volunteers will save on 100 Club sales and administration and, in many cases, the Charity will be able to benefit from Gift Aid.



The copse is now a great amenity for all the family

Public benefit

With limited opportunity to organise the usual social activities, we instead turned to other means, including the Spooky Week scarecrows, the virtual online quiz, the online 100 Club draws and the Posh Scoff burger evenings. The renovation of the Beech Book Exchange and the Copse on the Rec provided valuable outlets for people who were constrained by lockdowns, and both are now permanent amenities. In response to our survey on socials, we have put a greater emphasis on family activities and we will continue to do so.

Managing the charity

The Management Committee had a very busy year, bringing their many and varied skills together to make sure the Hall was ready for a future without restrictions, and leading the outdoor projects on the Rec and village green.

At the end of the financial year, Elaine King retired from the committee after many years of service to the village. I would like to thank Elaine for her unstinting support and look forward to seeing Elaine and Alan at future social events.

Peter Cox will retire from the Committee at the end of October, having led the Hall as Chair and managed our bookings and customers with extreme professionalism for many years. The Hall would not be what it is without Peter, so we all owe him a debt of gratitude. He has agreed to make an occasional appearance in the future, so we can expect see him at the Bonfire Night event, the Christmas Fair which Sally will be running for us, and the Spring Quiz in 2022. I am sure we will see Peter and Sally regularly at social events.

We have co-opted Martin Littlewood onto the Management Committee temporarily because he has taken responsibility for the overall running of the Bonfire Night event in 2021.

A dispute with a resident of Beech continued on and off throughout this financial year, and into 2021-22. This had started in mid-2019, when his offer to chair our Social Sub-Committee was declined. There was a lengthy series of emails and a number of personal meetings. The Management Committee offered mediation but this was declined. In July 2020, the villager concerned took this into the public arena by making allegations on the Nextdoor social media platform, which removed most of these posts.

In an attempt to force a vote of no confidence in the Management Committee at the 2020 AGM, he delivered a flyer to most households in the village and posted critical messages on

Nextdoor. He accepted an opportunity to speak at the meeting, apologised for the flyer and explained his grievance. Following a number of comments by villagers, all the Management Committee's resolutions were passed overwhelmingly.

More recently, he repeated his allegations on Nextdoor and urged people to boycott the Village Hall; again, these posts were removed almost immediately. The Management Committee continues to update the Charity Commission about this dispute, as we are required to do. This matter is now in the hands of our solicitors.

Developments since June

Social activities

The new 2021-22 financial year started with the relaxation of Covid restrictions, so we were able to run our first outdoor events, a well attended barbecue and the much appreciated Jazz on the Green. From late August, we resumed our monthly Friday evening socials, now with an informal booking system. The cooks have very much appreciated having an idea of how many people might attend. More than 80 people attended the celebration ball in early October, with drinks, dinner, music, dancing, a raffle and, of course, a great atmosphere.



Jazz on the Green: a great success despite the rain!

As many villagers are aware, the village green was vandalised during the night before the Jazz on the Green event. Around 20 villagers dropped everything in the morning to come and clear the green so that the event could go ahead. This was reported to the police and the Charity Commission, and the Alton Herald summed up our village spirit with its headline: "Broken glass and nails can't stop us".

Bookings

Bookings have almost returned to normal, with around 15 classes and clubs using the hall every week, a couple of weddings and numerous family parties.



The coffee shop is now open every Friday

Coffee and Cake

The coffee and cake shop opened at the Village show in late September and is now a weekly feature on Fridays. The project involved buying a bean to cup coffee machine, making new shelving in the bar area (again, from Thedden Oak), new chairs, pictures on the walls, a host of smaller items, and significant work to ensure we meet food safety regulations. A number of villagers enjoyed decorating cups and plates. A team of volunteers now bakes cakes and serves coffee weekly. The initial investment costs were covered by donations from villagers and grants from East Hampshire District

Council and the National Lottery Communities Fund. Many thanks to the launch team – Kim Eakers, Nick Sorby, Sarah Neish, Philip Bennett and Richard Whitaker.

The future

Most of our regular hirers are back, along with some new ones, our pipeline of bookings for private events is looking healthy, and we have a varied social programme planned well into 2022. So, the future looks bright, as long as there is no resumption of Covid restrictions.

We are fortunate that we have been able to maintain a healthy cash balance to enable us to maintain the hall and tackle things like roof repairs. We continue to build our cash reserve to support capital projects, the principal one being the potential redevelopment of the Annexe. Part of the original hall building, the Annexe is a single-skinned structure which is suffering from unresolvable damp issues. In the medium term, we believe it would be desirable to replace this building to offer additional opportunities for hirers and the community.



Over 80 people enjoyed the Celebration Ball

Thank you

Running a village hall that has been closed for a large part of the year, and severely restricted for all of it, has been interesting, and busier than you might expect!

As usual in Beech, our strong community spirit has come to the fore as we adjusted to a restricted social life. We are completely dependent on an amazing group of volunteers to run the Hall and the Rec. Our fantastic Management Committee and Social Committee form a cohesive unit of great people who are wonderful to work with. However, they are only the tip of the iceberg. Many other people in the village have helped in so many ways – refurbishing the phone box, shifting logs, planting trees, making the video and, more recently, baking cakes, serving drinks, cooking food and running the celebration ball. There are too many of you to list individually, but a thousand thanks to you all.

I also want to thank our team of employees who help us run the Hall and Rec – Simon Hodgson, Max Laney, Lucy Loosemore and Lynda West, as well as Wettone Matthews, the Alton firm of accountants who have kindly reviewed our accounts.

Last but not least, may I offer a big welcome to all our new villagers. It's great to have been able to meet many of you and get to know you better.

Dr Jane Freeman-Hunt

Trustee and Chair, Beech Village Hall & Recreation Ground Management Committee
October 29th 2021