

Vauxhall Gardens Community Centre

Trustees' Annual Report and Accounts

for the year ending 31 March 2023





The trustees are pleased to present their annual report together with financial statements of the charity for the year ended 31 March 2023.

The Trustee Annual Report and Accounts comply with Charity Commission guidance and the Charities Act.

Contents

| | |
|--|----|
| Foreword..... | 4 |
| Reference and Administration | 5 |
| Strategic Report for the year ending 31 March 2023 | 7 |
| Achievement and Performance | 7 |
| Fun Time Fitness (Keep Fit Programme)..... | 8 |
| A celebration of Black Excellence (Black History Month Showcase) | 9 |
| Culture Chic Shock (CYP Holiday Programmes) | 12 |
| Sewing Group (Just Like Us) | 15 |
| Foodbank..... | 16 |
| Cool it Art | 19 |
| Neon Performing Arts..... | 22 |
| Studios and other users | 26 |
| Future Connected | 27 |
| Trustees' Report | 28 |
| Risk Management | 28 |
| Financial Review | 28 |
| Going Concern | 28 |
| Reserve Policy | 29 |
| Future Plans | 29 |
| Structure & governance..... | 31 |
| Employment & remuneration policy..... | 31 |
| Objectives & activities..... | 31 |
| Public benefit | 31 |
| Trustees' responsibilities..... | 32 |
| Independent Examiners Report..... | 33 |
| Statement of Financial Activities..... | 33 |
| Balance Sheet..... | 33 |
| Notes to the Financial Statements..... | 33 |
| With thanks to our supporters..... | 45 |

Foreword

Dear Friends, Supporters, and Community Members,

It is with great pleasure and a profound sense of community pride that I welcome you to the 2022/2023 Annual Report of the Vauxhall Gardens Community Centre (VGCC). As we reflect on the past year, it is evident that our shared commitment to fostering a vibrant and inclusive community has borne fruit in countless ways.

The pages that follow offer a comprehensive glimpse into the heart and soul of Vauxhall Gardens Community Centre, where the power of unity, compassion, and collaboration has continued to transform lives. In a world where connection and support are more crucial than ever, our centre has served as a beacon of hope and a hub for positive change. Throughout the year, we have witnessed the resilience of our community members, the unwavering dedication of our staff, and the generosity of our supporters. Together, we have celebrated successes, navigated challenges, and emerged stronger, more connected, and more determined to create an environment where everyone can thrive.

Our programmes and initiatives have touched the lives of individuals of all ages, from dynamic educational opportunities for our youth, to empowering workshops for adults. The diverse range of activities, events, and services offered at Vauxhall Gardens Community Centre reflects our commitment to meeting the evolving needs of our community, ensuring that no one is left behind.

As we look ahead, we envision a future where VGCC continues to be a catalyst for positive change, a place where individuals come together to learn, grow, and build lasting connections. The stories shared in this report illustrate the profound impact that our community centre has had, not only in the lives of individuals but on the fabric of our entire community.

I extend my deepest gratitude to our dedicated staff, passionate volunteers, and generous supporters who have made all of this possible. Your unwavering commitment to our shared vision has fuelled the success of Vauxhall Gardens Community Centre and has helped create a foundation upon which we can continue to build a brighter future.

Thank you for being a part of our journey. Together, let us continue to cultivate a community where everyone has the opportunity to thrive, and where the spirit of Vauxhall Gardens is a beacon of hope for generations to come.

With heartfelt appreciation,

Your Chair of the Board of Trustees

Reference and Administration

Trustees

Natalie Cole (Chair)
Pamela Fry (Treasurer)
Tim Kalvis
Patrick Agyeman (Vice Chair)
Rosa Da Cruz Costa*
Ernest Ako (Secretary)
Dorette Newton

Charity Number

296876

Principal Office

5 Glasshouse Walk
London
SE11 5ES

Independent Examiner

Kathleen Moss ACMA, CGMA
Kathleen Moss Ltd
48 Lawn Terrace
London
SE3 9LP

Bankers

CAF Bank Ltd
25 Kings Hill Avenue
Kings Hill
Kent
ME19 4JQ

* Rosa joined the board and was subsequently hospitalised due to ill health. She was therefore unable to attend any meetings or send her apologies. We wish her all the best for the future.



Strategic Report for the year ending 31 March 2023

Achievement and Performance

Since publishing the last annual report, the amazing work at Vauxhall Gardens Community Centre has continued. Our dedicated staff and volunteers have demonstrated true devotion and resilience during an unimaginable crisis in the community. As the cost of living continues to rise, the health and well-being outcomes of substantial portions of the community have become increasingly strained. VGCC serves the community with vital services such as a Foodbank; an Emergency Response to the Cost-of-Living Crisis and a Keep Fit programme to improve mental and physical health. It also continues to be a standalone hub for Arts and Culture in the community, not only through our support of local artists, Neon Performing Art's School and Cool it Art, but also through our collaborations and partnerships that deepen our cultural connections in the community, especially to particularly oppressed communities. The internal operational team have built and developed strategic partnerships through the initiatives we describe below, including with Lambeth Council, Vauxhall One, City Grove, our surplus food providers ZHeroes, Felix project, City Harvest etc. All of this building the resilience of the centre, its profile, and its ability to do more for our stakeholders now and in the future. Additionally, in recognition of our value and contribution to the development of the community in North Lambeth primarily and indeed the borough, VGCC was accepted on to the prestigious Future Connected programme sponsored by Lambeth Council.

By ensuring that our community offers are completely free or affordable, much of what is on offer is accessible to everyone in the community. We will continue to inspire hope and empower agents of change by connecting inspired community members and meeting them at their individual points of need. Our goal remains to unite and build a cohesive, engaged, sustainable community that has access to competitively priced, inclusive arts, culture, and wellbeing activities. None of this would be possible without the ongoing support of our landlord CLS Holdings plc. a special thank you to them for all they do!





Fun Time Fitness (Keep Fit Programme)

Supported by Sport England, VGCC hosted a 30-week well-being, fitness, and community connectivity programme, primarily aimed at sanctuary seekers in the Lambeth borough. Hour-long sessions of multi-sports activities for all fitness levels ran weekly for mixed and women-only groups. This initiative targeted low-income members of the community, particularly sanctuary seekers (including asylum seekers and refugees). We took into consideration this group's complex mental health needs which can be exacerbated by the challenging circumstances in which they live and difficulties accessing health services. In addition, a lack of integration into local communities as well as negative perceptions towards the group can create or exacerbate poor wellbeing, and social isolation. An understanding that regular moderate physical activity can improve mental health and therefore is a useful strategy to achieve this uplift in wellbeing provided the rationale for the project. Against the backdrop of refreshments, we provided an opportunity for sanctuary seekers to mingle and form connections in an unconfined space without judgment, thereby embedding themselves in the local community.



A celebration of Black Excellence (Black History Month Showcase)

As part of our mission to improve community cohesion and foster links between the diverse cultural groups of residents in the local area, during Black History Month in October 2022; VGCC put together a special showcase to entertain, inform, and educate guests as well as participants. The project involved a special *Hope* themed musical to 'Amapiano' a popular sound that emerged from the Southern African Underground. In addition to spoken word performances from diverse voices on the topics of race relations, integration, and identity formation in the UK, we offered a complimentary 'Soul Food inspired' Afro-Caribbean buffet. The showcase culminated with a premiere of our first-ever documentary, directed, and featuring VGCC staff, volunteers, and members, on the topic of citizenship and acceptance in the UK from the lens of first, second, and third-generation immigrants. The project was a critically acclaimed success, with attendees expressing how 'seen, heard, valued, and included' they felt, with the topics hitting raw nerves for many. This project was supported financially by Vauxhall One.





Culture Chic Shock (CYP Holiday Programmes)

VGCC partnered with Neon to deliver **Culture Chic Shock** an innovative yearlong multi-disciplinary cultural programme throughout the holidays in 2022/2023 celebrating London's diverse, colourful, and multi-ethnic heritage. Through this programme, participants were enriched, by widening their existing knowledge of cultures through music, fashion, and food, as well as diverse arts and crafts workshops in a fun and engaging way. We offered structured, focused combined art activities for 8–16-year-olds aimed at promoting art and culture and highlighting the rich and diverse multiculturalism and heritage present within Lambeth. Children and young people engaged in a range of activities including ceramics, jewellery making, Up-Cycling, music production, drama, creative writing, and performing arts.









Sewing Group (Just Like Us)

“Just Like Us” is a project that provides space and time for carers to respite. Although the group commenced after the summer (due to the ill health of the facilitator), this did not disaffect the project, with numerous new activities being planned for the rest of the year as well as welcoming several new members to the group. Currently, the group is concentrating on sewing, after feeling inspired by a big comeback of clothes making. Realising the benefits for the participants, but also the environment, coupled with its popularity amongst all age groups eager to learn how to, upcycling became the group’s focus. Sylvie (the facilitator) notes that “crochet and knitting too is something that is popular.” Sylvie is not just a facilitator but an enthusiastic member of the community happy to pass on her skills.

Participants gain an opportunity to be creative, free and have fun. In recognition of the invaluable support the group offers, they are backed by several organisations including the Old Vic and Morley College. The group has produced several amazing drama workshops with the Old Vic with 100% positive feedback from attendees. A huge thank you to The Old Vic for assisting with this project. In the winter, the group will embark on new activities and venture into making beautiful pots and sculptures as a result of Sylvie achieving a Level 4 qualification in Pottery. They invite anyone in the community with an interest to join in the fun!

“We are incredibly grateful to the amazing staff and management at VGCC. They have been very accommodating, supportive, and kind to us. We love the space we use as it is amazing with lots of natural light. We have enough resources to use and to work with. This facility makes a significant difference to our group as many attendees are people with disabilities.”

Sewing Group Participant (anonymous)

Foodbank

Since opening the doors of our foodbank in 2021, the emergency provision has steadily grown to serve both the local community in Lambeth and other neighbouring boroughs. As more people face financial difficulties due to the soaring cost of living, VGCC continues to aid by distributing food and hygiene products to the growing number of people who walk through the doors every week.

The cost of living is estimated to have increased sharply across the UK during 2021 and 2022, with the annual rate of inflation topping 11.1% in October 2022, a 41-year high. VGCC has seen increasing numbers of people requiring assistance, no doubt as a result. It is a delicate balancing act, with the same number of resources having to be distributed between a rocketing number of households. We are anything if not resourceful, however, thanks to an army of volunteers, devoted staff, and new rules, our foodbank is fair for all.

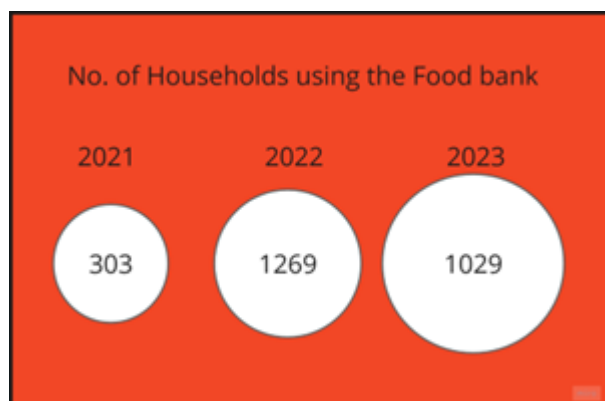
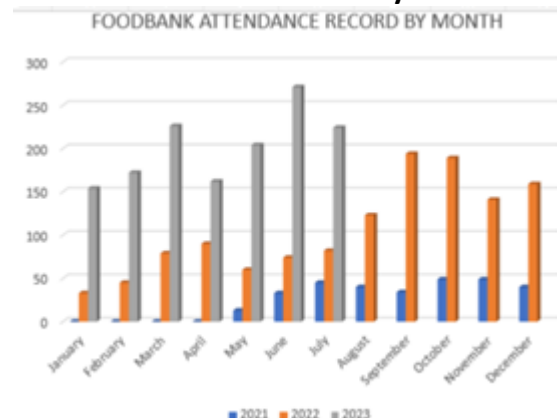


We could not have done this without the continuous support from our partners and sponsors, Citygrove, Fair Share/Felix Project, Plan Zheroes, City Harvest, individual members of the community, and local churches (Lambeth Mission & St Mary's, and St Anslem's). A huge thank you to all our supporters and donors, we are incredibly grateful for your generosity.

A special mention goes to our volunteers, we are immensely appreciative for your commitment to support your community. We could not have achieved this impact, without your effort and dedication. As the funding for the foodbank draws to a close, we focus our efforts on designing a sustainable ecosystem, in which the community can address their food insecurities. We will co-design this new structure along with our service users and thus invite the recipients of the food bank to be part of this process.



Foodbank statistics from May 2021 to June 2023



Cool it Art

Cool it Art had another productive year, continuing the 9th yearly programme of “Cool it Art Kids” at VGCC, starting in Sept 2021 - August 2022, with a total of 1,638 attendances over 44 classes and 3 trips to cultural organisations over August. The trips over the Summer were the first time since the pandemic we could take the class easily to external venues following COVID restrictions, we took the group to the Tate Modern, Wallace Collection & the V&A. Young at ‘Art was funded for another year by the National Lottery as well as an additional month from Lambeth to minimise the break between programmes - March 2022 - April 2023, delivering a total of 55 sessions of creativity for adults in Lambeth, we also went on our first trip - going to Tate Britain to draw from artworks in situ.

We were also asked to curate an exhibition of “Cool it Art Kids: VGCC” and “Young at ‘Arts” artworks at GreatArt Shoreditch Store on Kingsland Road. The exhibition which was up for a month (May/June 2022) was a celebration of all Cool it Art core project attendees' creativity over that year's program with newly created artworks as well as a photographic exhibition alongside it capturing all the attendees to date.



Cool it Art will celebrate its 10th Anniversary in May 2023, with a party for the children and families at VGCC complete with a visit from Magician Trixy! Looking back over a decade, Amanda, shares her top moments in Cool it Art for 10 years of Creativity; including

1. Designing and building an 8 ft x 6ft sculpture for a float for Lord Mayor's Show 2013 for the Worships Company of Tax Advisors, the theme being around "Green Taxes" with a sculpture made from recycled materials. Running a pop-up Art school in the middle of Waterloo Train Station concourse for the launch of It's Our World in 2014. This innovative platform was the largest digital gallery of artworks made by young people in response to environmental issues; giving future custodians a voice through creativity on what matters most to them. One year later, being part of the Charity Art Auction committee at Christie's, raising over 100k to support The Big Draw and Jupiter Artland.
2. Transition Animation Project in 2015 working with handpicked primary school leavers most at risk of falling through the gaps, to create an animated film about the journey from primary to secondary giving an authentic voice from young people to other young people to benefit from.
3. Collaborating with Vauxhall City Farm as we had raised extra money from our Royal Society of Arts supported Kickstarter for Cool it Art Kids; to benefit even more people in the local community we put on a "Big Draw Event" - "Every Drawing Tells a Story" In 2015, collaborating with storytellers on the event to make it a multifaceted project.
4. Being asked to run a workshop for the Dutch Royal State visit 2018 at Pop Brixton, taking inspiration from Delft pottery to create artworks celebrating the rich tapestry of heritage in Brixton - local children got the opportunity to wow Queen Maxima of the Netherlands with their striking blue and white depictions of their local neighbourhoods.
5. "6 WoW" - one of the online pandemic projects Cool it Art provided in 2020 - combining the Arts and Mindfulness to promote well-being through unprecedented times. We taught Art, Drama, Dance, Mindfulness, Written Word, Sewing/Upcycling, and Yoga for children as a comprehensive online summer program exploring the 6 ways of well-being to enhance children's skills around managing their own well-being.

Cool it Art hopes to be able to continue to provide free creative opportunities for communities in Lambeth and beyond for many more years to come!



Neon Performing Arts

Neon remains one of the only Performing Arts Schools with a social purpose in the UK, to offer a fully comprehensive multidisciplinary programme for 4 to 30-year-olds. We provide 648 technical classes across the academic year and 45 classes for “Culture Chic Shock” in partnership with VGCC as a play scheme/holiday programme.

Since forming in 2013, to date Neon has worked with families from Lambeth (73%) and Southwark (27%), engaging over 300 students from 214 family units.



Our main programme of classes from Neon Performing Arts School works with 4-18-year-olds delivering classes in all styles of dance, singing, and acting every afternoon, weekdays during the school term.



In September, we launched NeonELEVATE, a prototype for a Youth Company through funding from Lambeth ELEVATE. This groundbreaking project gave a platform for young Lambeth talents as well as Neon to evolve, building on 8 years of partnership work with Artists and Arts organisations.

This theatre making Youth Company develops original and innovative creative work, whilst giving ownership to young creatives and developing their employability skills through the multi-disciplinary arts programme. NeonELEVATE, has delivered 2 full production shows, 3 festivals, 5 events, and 6 shows within a school tour with LambethELEVATE Education and Old Vic.

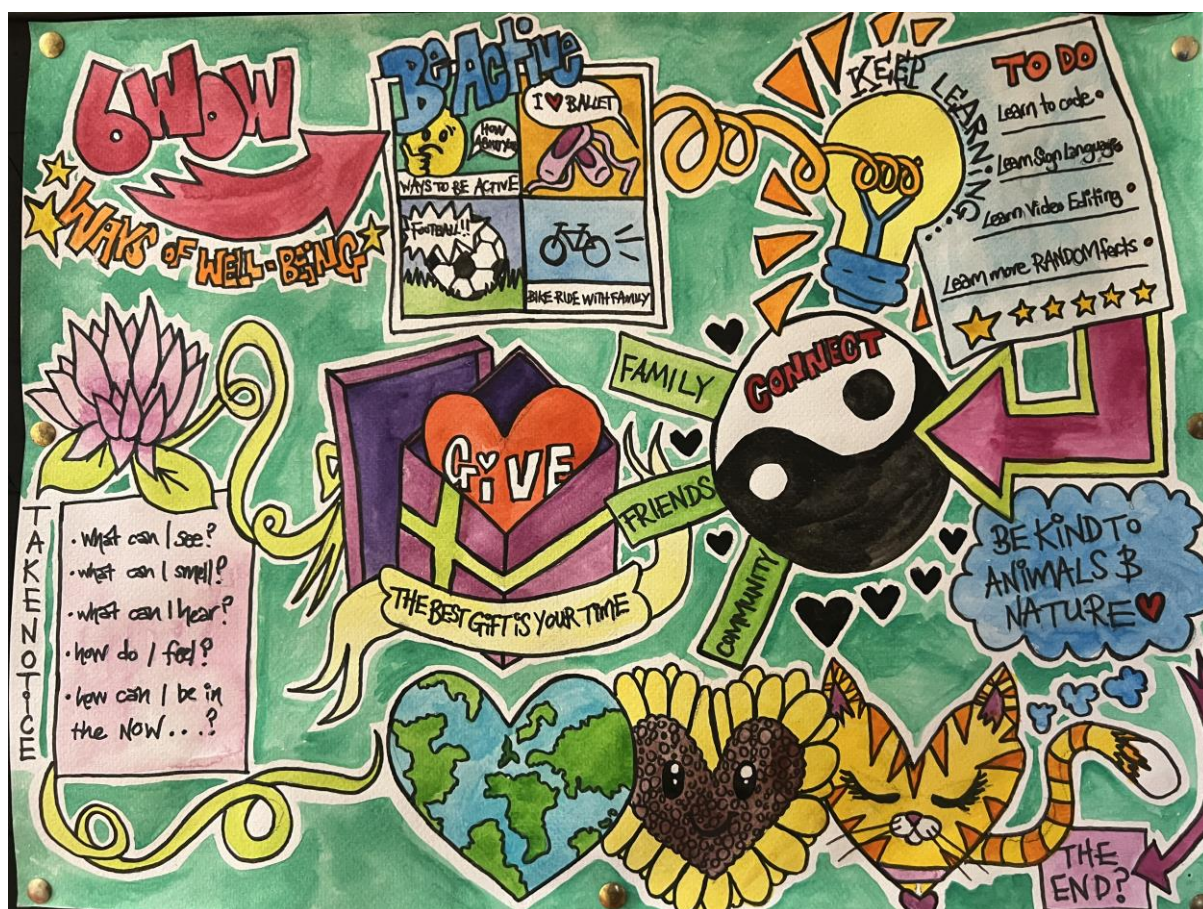
NeonELEVATE's last Show BREATHE has been selected from Lambeth Education and Old Vic to tour secondary schools in Lambeth from Sept 22 to January 23 under the Creative Career Funds. We have offered paid work opportunities to over 45 young people through NeonELEVATE including teaching, commissioned shows and events and working with organisations such as the National Theatre, Channel 4 and ITV. We work in Partnership with Cool it Art; Flawless Dance Hub; Base Studios; Birds Eye View; Birdgang and The Old Vic. We also have a longstanding relationship with Lambeth Council.

To date, we have produced 27 shows with Peckham Theatre, The Vaults Theatre, Blue Elephant Theatre, The Albany Theatre, The Lost Theatre, VGCC, and "The Foundry: A Place for Change. 15 of these shows were written by our students, giving the youth a platform to have an authentic voice. Our mission is to build social capital and open pathways and opportunities for those who are most in need. Two-thirds of our graduates have taken part in professional performances with critically acclaimed artists such as Stormzy and Ashton Merrygold, and have joined prestigious performing arts schools, many on scholarships – including The Royal Opera House, Royal Academy of Dance, The Place, and Trinity Laban CAT Scheme, Rambert, The Royal Ballet, The National Theatre Youth Company, Brits School, Avant Garde Dance Company, ZooNation, IMD Legion.

In January 2023, we set up House of Neon Events to generate more commercial opportunities for our network of creatives. House of Neon curates unique and diverse artistic/cultural events across London. From our AFROFUSION nights to SOULFOOD SUNDAY sessions, we want to highlight underrepresented artists and their work in elegant, warm, and atmospheric environments.

In February 2023 Neon created a partnership with "Love Seega " founder of Clean Bandit to produce a new Show and Festival in the Summer of 2024 under the "Live + Breathe " Campaign funded by Purpose funds and Arts Council and partnered with Lambeth Care Leavers (young people aged 16 plus) and The Lambeth Youth Offending Service (youth aged under 18) through "Kalimotxo". Kalimotxo is a networking and performance event for young people – promoting inclusion through creativity. We have used these events to recruit young people to NeonELEVATE to become part of the current programme as well as the paid Youth Company. Giving these young people not just the chance to be creative, training them to be work ready, but also giving them transferable skills as well as increased wellbeing.





Studios and other users

VGCC continues to actively support the vibrant arts and culture community in Lambeth by supporting various organisations and individuals who positively contribute to the community and the furtherance of the arts and culture within Lambeth (particularly those from marginalised or oppressed communities). We do so by providing low-cost studios and spaces to operate from. Currently, VGCC supports seven artists in different fields, from graphic design to jewellery artists based in our studios on the second floor.

The artists are part of the fabric and core of VGCC and provide a vibrant internal atmosphere full of creativity and entrepreneurship. There is a symbiotic relationship between our artists and the centre as well as the wider community. The internal and external community benefits from the inspiration and improved environment the art provides, and the artists' craft is honed and supported. Furthermore, they are committed to the success and development of the centre and collaborate on projects and volunteer whenever possible.

The Centre has also supported a startup business called Alby's bakery by providing generously competitive rates for the use of the kitchen to expand the business of these 2 young entrepreneurs. In addition, VGCC facilitates fundamental pillars of community such as space for church worship, community workshops, meetings, and training, as well as

community events such as wedding receptions, birthdays, social events, dance classes, funerals, etc. Supporting our local community is at the core of what we aim to achieve. We are excited to collaborate with the community in the future to expand our current programme of activities. We are looking forward to creating an even more positive impact on the community.

Future Connected

Our development manager was one of 12 cultural leaders awarded a sought-after place and subsequently completed the first 12-month intensive *Future Connected* programme. Future connected, is a values-led leadership development programme that gives Directors of grassroots and smaller-scale organisations tools to grow dynamic businesses that inspire and represent their communities. The yearlong course brought together cultural leaders to develop skills, build connections and make a collective contribution to the vibrancy of our communities. With inspiration offered first hand by national and international experts, we were able to refine and imagine a new model for our business. As a result of our participation, we have developed a new 3-year strategic plan which will allow us to continue to expand VGCC's profile and presence within the community through the delivery and effective co-ordination of our programmes, projects, and management of our inter-dependencies. The programme has been transformational for us in terms of clarity of vision and communication of our organisation and its values.



Trustees' Report

Major non-financial risks are a decline in community engagement and the safety of our members and, indeed, all users of our facilities. The trustees and staff engage continuously with members of the wider community to keep Centre usage high, and the Centre staff are scrupulous in their oversight of the Centre's health and safety responsibilities, including the relevant accreditation and maintenance procedures.

VGCC continues to run the office with a Centre Manager, a contractor, and a Caretaker. We want to thank them for their hard work during the year and all those who volunteered their time and helped in many ways.

Risk Management

The trustees are aware of any risks facing the charity and have been implementing robust financial procedures to safeguard the stability of the charity.

Financial Review

A thorough review of the accounts has been carried out by the board of trustees and is correct and complete to the best of the trustees' knowledge.

In the year to 31st March 2023, VGCC had total income of £179,891; restricted £34,115 and unrestricted £145,766 in comparison to the previous year: 2022 total £157,015- unrestricted £137,410 restricted £19,605.

The total expenditure in the year to 31st March 2023 was £180,958 of which unrestricted £140,233 and restricted £40,725. This left an unrestricted surplus of £5,543 in comparison to £13,061 in 2022. The restricted Surplus from the previous year; 2022 of £4,133 was carried forward and spent in full, which is why the restricted expenditure of £40,725 in 2023 exceeds the restricted income £34,115.

This means VGCC's total funds carried forward is £120,090 of which £112,357 are unrestricted funds. The trustees have every confidence in the future of the organisation and its ability to remain agile to respond to the rapidly changing environment and needs of the community.

Going Concern

The trustees are confident that with current reserves, as well as committed and expected future income that the charity is a going concern and will continue its operations for the foreseeable future.

Reserve Policy

It is the policy of the board of trustees to hold reserves an adequate amount to fund the basic running expenses of the Community Centre for six months and to contribute towards its direct charitable activities. Our reserves are currently in excess of this policy to designate funds for updates to the building, to increase staff's wages due to the sharp increase in the cost of living and to expand the team.

Future Plans

We have some exciting plans for VGCC, kicking off with a rebranding project which will also include a much-needed update to the website. The board is keen to invite new members with a broad range of skills as we continue to work on finalising the 5- and 10-year plan as well as streamlining our aims, objectives, and mission. With a new website in place, there will be more capacity to focus on organisational development as opposed to enquiries. We are confident that this work will allow us to be more successful in securing funding to continue and expand on the important work that we do e.g., facilitating support workers to provide wrap around services for our emergency provisions, community support groups, testing new ways of supporting the community that are more sustainable.

Partnerships are imperative to us realising the aims detailed in our strategic plan; we will work with public sector teams, mental health providers, local developers and a range of key stakeholders including local creatives to develop further strategies. This we believe is the most effective and worthwhile way forward to deliver our goal of a resilient, vibrant community. The organisation is moving in an exciting direction, and this is an exhilarating time.





Vauxhall Gardens Community Centre

Trustees' Report *continued*

The financial statements have been prepared in accordance with the accounting policies set out in notes to the accounts and comply with the charity's governing document, the Charities Act 2011, the Charities Statement of Recommended Practice ("SORP (FRS 102)") applicable to charities preparing their report and financial statements in accordance with the Financial Reporting Standard applicable in the UK (FRS 102) (effective 1 January 2019).

Structure and Governance

The Community Centre was set up in 1986 and registered as an unincorporated charity on 24 June 1987. The charity is governed by its Constitution and Rules adopted on 13 February 1986 and subsequently amended on 8 March 2016 and 10 May 2016.

Key management personnel are represented by the trustees, who are responsible for the strategic vision of the Community Centre, together with the Centre Manager to whom day-to-day responsibility of running the Centre has been devolved.

Employment and remuneration policy

VGCC is an equal opportunities employer and therefore there is no discrimination between men and women or between full and part time workers in deciding their remuneration.

The remuneration of all staff, including key management personnel other than the trustees, is reviewed each year by the Management Committee. No trustee received any remuneration during the current or prior year.

Objectives and activities

The charitable objects of the Community Centre have been to promote the benefit of the inhabitants of the triangle created by the boundaries formed by the South side of Black Prince Road, the North West side of Kennington Lane and the Railway Viaduct (the "area of benefit"). In 2016 with the permission of the Charity Commission, the area of benefit was expanded to include the whole of postcode SE11, stretching across Bishop's, Prince's and Oval Wards in North Lambeth, to reflect more accurately those using the Centre and to pursue the Centre's vision of working with a wider community while keeping the original area of benefit central to activity.

It does so by associating the Local Authorities, voluntary organisations and inhabitants in a common effort to advance education, relieve poverty, sickness and distress, further health and to provide facilities in the interest of social welfare for recreation and leisure-time occupation with the object of improving the conditions of life for the aid inhabitants.

Public Benefit

The trustees have complied with their duty under Section 4 of the Charities Act 2006 to have due regard to public benefit guidance published by the Charity Commission. The trustees judge that activities in pursuit of the above objectives fully meet the public benefit test which they keep in mind when reviewing their objectives and activities and in the planning of future activities.

In delivering services and in the appointment of staff, volunteers and trustees, the Community Centre operates without distinction of sex or race or of political, religious or other opinions.

Vauxhall Gardens Community Centre

Trustees' Report *continued*

Trustee responsibilities

The charity trustees are responsible for preparing the trustees' report and the financial statements in accordance with applicable law and United Kingdom Accounting Standards (United Kingdom Generally Accepted Accounting Practice).

The law applicable to charities in England & Wales requires the trustees to prepare financial statements for each financial year which give a true and fair view of the state of affairs of the charity and of the incoming resources and application of resources of the charity for that period. In preparing these financial statements, the trustees are required to:

- select suitable accounting policies and then apply them consistently;
- observe the methods and principles in the Charities SORP;
- make judgements and estimates that are reasonable and prudent;
- state whether applicable UK Accounting Standards have been followed, subject to any material departures disclosed and explained in the financial statements; and
- prepare the financial statements on the going concern basis unless it is inappropriate to presume that the charity will continue in operation.

The trustees are responsible for keeping adequate accounting records that disclose with reasonable accuracy at any time the financial position of the charity and enable them to ensure that the financial statements comply with the Charities Act 2011, the Charity (Accounts and Reports) Regulations 2008 and the provisions of the trust deed. They are also responsible for safeguarding the assets of the charity and hence for taking reasonable steps for the prevention and detection of fraud and other irregularities.

In so far as the trustees are aware:

- there is no relevant information of which the charity's examiners are unaware; and
- the trustees have taken all steps that they ought to have taken to make themselves aware of any relevant information and to establish that the examiners are aware of that information.

The trustees are responsible for the maintenance and integrity of the corporate and financial information included on the charity's website.

Our Independent Examiner, as appointed by the board, Kathleen Moss

Approved by the Board of Trustees on 9/11/23 and signed on their behalf by:



Natalie Core

Chair



Pamela Fry
Treasurer

Independent Examiner's Report

To the Trustees of Vauxhall Gardens Community Centre

I report to the trustees on my examination of the financial statements of Vauxhall Gardens Community Centre ('the charity') for the year ended 31 March 2023 which comprise the Statement of Financial Activities, the Balance Sheet and related notes. This report is made solely to the charity's trustees, as a body, in accordance with section 145 of the Charities Act 2011. My work has been undertaken so that I might state to the charity's trustees those matters I am required to state to them in this report and for no other purpose. To the fullest extent permitted by law, I do not accept or assume responsibility to anyone other than the charity and the charity's trustees as a body, for my work, for this report, or for the opinions I have formed.

Responsibilities and basis of report

As the trustees of the charity you are responsible for the preparation of the financial statements in accordance with the requirements of the Charities Act 2011 ('the Act').

I report in respect of my examination of the charity's financial statements carried out under section 145 of the Act and in carrying out my examination I have followed all the applicable Directions given by the Charity Commission under section 145(5)(b) of the Act.

An independent examination does not involve gathering all the evidence that would be required in an audit and consequently does not cover all the matters that an auditor considers in giving their opinion on the financial statements. The planning and conduct of an audit goes beyond the limited assurance that an independent examination can provide.

Consequently I express no opinion as to whether the financial statements present a 'true and fair' view and my report is limited to those specific matters set out in the independent examiner's statement.

Independent examiner's statement

I have completed my examination. I confirm that no material matters have come to my attention in connection with the examination giving me cause to believe that in any material respect:

- accounting records were not kept in respect of the charity as required by section 130 of the Act; or
- the financial statements do not accord with those records; or
- the financial statements do not comply with the applicable requirements concerning the form and content of accounts set out in the Charities (Accounts and Reports) Regulations 2008 other than any requirement that the accounts give a 'true and fair view which is not a matter considered as part of an independent examination.

I have no concerns and have come across no other matters in connection with the examination to which attention should be drawn in this report in order to enable a proper understanding of the financial statements to be reached.

Kathleen Moss ACMA, CGMA

Kathleen Moss Limited

48 Lawn Terrace

London

SE3 9LP



Dated: 26th January 2024

Vauxhall Gardens Community Centre

Statement of Financial Activities including Income and Expenditure Account For the year ended 31 March 2023

| | | Unrestricted Funds | Restricted Funds | Total Funds 2023 | Unrestricted Funds | Restricted Funds | Total Funds 2022 |
|--|-------|-----------------------|---------------------|------------------------|-----------------------|---------------------|------------------------|
| Income | Notes | £ | £ | £ | £ | £ | £ |
| Donations and legacies | 3 | 14,560 | 34,115 | 48,675 | 14,520 | 19,605 | 34,125 |
| Charitable activities | 4 | 130,919 | - | 130,919 | 122,887 | - | 122,887 |
| Investments | 5 | 297 | - | 297 | 3 | - | 3 |
| Total income | | 145,776 | 34,115 | 179,891 | 137,410 | 19,605 | 157,015 |
| Expenditure: | 6 | | | | | | |
| Raising funds | | 12,375 | - | 12,375 | 12,851 | - | 12,851 |
| Charitable activities | | 127,858 | 40,725 | 168,583 | 111,498 | 15,472 | 126,970 |
| Total expenditure | | 140,233 | 40,725 | 180,958 | 124,349 | 15,472 | 139,821 |
| Net income and net movement in funds for the year | | 5,543 (| 6,610) (| 1,067) | 13,061 | 4,133 | 17,194 |
| Transfer between funds | | (630) | 630 | - | | | |
| | | 4,913 (| 5,980) (| 1,067) | 13,061 | 4,133 | 17,194 |
| Reconciliation of funds | | | | | | | |
| Total funds brought forward | | 107,444 | 13,713 | 121,157 | 94,383 | 9,580 | 103,963 |
| Total funds carried forward | | £ 112,357 | £ 7,733 | £ 120,090 | £ 107,444 | £ 13,713 | £ 121,157 |

The statement of financial activities includes all gains and losses recognised in the year. All income and expenditure derives from continuing activities.

The accompanying notes on the following pages form part of these accounts.


Vauxhall Gardens Community Centre


Balance Sheet As at 31 March 2023

| | Note | 2023 £ | 2022 £ |
|---|------|-----------|-----------|
| Fixed assets | | | |
| Tangible Assets | 9 | 18,441 | 25,414 |
| Current assets | | | |
| Debtors | 10 | 11,149 | 26,201 |
| Cash at bank and in hand | | 119,297 | 92,407 |
| | | 130,446 | 118,608 |
| Liabilities: | | | |
| Creditors: Amount falling due within one year | 11 | (28,797) | (22,865) |
| Net current assets / (liabilities) | | 101,649 | 95,743 |
| Net assets | | 120,090 | 121,157 |
| The funds of the charity: | 12 | | |
| Restricted income funds | 13 | 7,733 | 13,713 |
| Unrestricted income funds | 13 | - | - |
| Designated funds | | - | - |
| General reserve | | 112,357 | 107,444 |
| Total charity funds | | 120,090 | 121,157 |

The accompanying notes on the following pages form part of these accounts.

The accounts were approved by the trustees on 9/11/23 and signed on their behalf by


 Trustee
 Name Natalie Core
 Title Chair


 Pamela Fry
 Treasurer

Charity Registration No.: 296876

Vauxhall Gardens Community Centre

Notes to the financial statements for the year ended 31 March 2023

1 Statutory information

Vauxhall Gardens Community Centre is a charity, registered in England and Wales number 296876. The charity's principal address is 5 Glasshouse Walk, London, SE11 5ES. The functional currency is sterling.

2 Accounting policies

2.1 Basis of preparation

The accounts (financial statements) have been prepared in accordance with the Statement of Recommended Practice: Accounting and Reporting by Charities preparing their accounts in accordance with the Financial Reporting Standard applicable in the UK and Republic of Ireland (FRS 102) 1 January 2019, and the Charities Act 2011 and UK Generally Accepted Practice. The accounts (financial statements) have been prepared to give a 'true and fair' view and have departed from the Charities (Accounts and Reports) Regulations 2008 only to the extent required to provide a 'true and fair view'.

Assets and liabilities are initially recognised at historical cost or transaction value unless otherwise stated in the relevant accounting policy or note.

The financial statements have been prepared under the historical cost convention.

2.2 Public benefit entity

The charity meets the definition of a public benefit entity under FRS 102.

2.3 Going concern

The trustees consider that there are no material uncertainties about the charity's ability to continue as a going concern. The charity can comfortably operate based on confirmed funding with sufficient reserves.

The trustees do not consider that there are any sources of estimation uncertainty at the reporting date that have a significant risk of causing a material adjustment to the carrying amounts of assets and liabilities within the next reporting period.

2.4 Income

Income is recognised when the charity has entitlement to the funds, any performance conditions attached to the income have been met, it is probable that the income will be received and that the amount can be measured reliably.

Where donations and grants are restricted to future accounting periods, they are deferred and recognised in those future accounting periods. Grants for immediate financial support and assistance, or to reimburse costs previously incurred, are recognised immediately.

For legacies, entitlement is taken as the earlier of the date on which either: the charity is aware that probate has been granted, the estate has been finalised and notification has been made by the executor(s) to the charity that a distribution will be made, or when a distribution is received from the estate. Receipt of a legacy, in whole or in part, is only considered probable when the amount can be measured reliably and the charity has been notified of the executor's intention to make a distribution. Where legacies have been notified to the charity, or the charity is aware of the granting of probate, and the criteria for income recognition have not been met, then the legacy is treated as a contingent asset and disclosed if material.

Hall hire, rental and trading income is accounted for on a receivable basis.

Vauxhall Gardens Community Centre

Notes to the financial statements for the year ended 31 March 2023: *continued*

2.5 Interest receivable

Interest on funds held on deposit is included when receivable and the amount can be measured reliably by the charity; this is normally upon notification of the interest paid or payable by the bank.

2.6 Fund accounting

Restricted funds are to be used for specific purposes as laid down by the donor. Expenditure which meets these criteria is charged to the fund.

Unrestricted funds are donations and other incoming resources received or generated for the charitable purposes.

Designated funds are unrestricted funds earmarked by the trustees for particular purposes.

2.7 Expenditure and basis of apportioning costs

Expenditure is recognised once there is a legal or constructive obligation to make a payment to a third party, it is probable that settlement will be required and the amount of the obligation can be measured reliably. Expenditure is accounted for on an accruals basis with the irrecoverable element of VAT included with the item to which it relates and has been classified under headings that aggregate all costs related to the category. Expenditure is classified under the following activity headings:

Raising funds: Costs of raising funds relate to the costs incurred by the charity in inducing third parties to make voluntary contributions to it, as well as the cost of any activities with a fundraising purpose.

Charitable activities: Expenditure on charitable activities includes costs associated with the delivery of the charity's activities and services for its beneficiaries, and include both the direct costs and support costs relating to these activities. Governance costs include those incurred in the governance of the charity and its assets and are primarily associated with constitutional and statutory requirements. Support costs include office costs and those of other central functions.

2.8 Tangible fixed assets and depreciation

The charity operates a policy of capitalising fixed asset items over £500. Tangible fixed assets are stated at cost less depreciation. Depreciation is provided at rates calculated to write off the cost less estimated residual value of each asset over its expected useful life as follows:

| | |
|--------------------------------|-------------|
| Fixtures, fittings & equipment | 25% on cost |
|--------------------------------|-------------|

2.7 Leasing and hire purchase commitments

Rental charges are charged on a straight line basis over the term of the lease.

2.8 Cash at bank and in hand

Cash at bank and in hand includes cash and short term highly liquid investments.

The trustees seek to use short term deposits to maximise the return on monies held at the bank and to manage cash flow.

The charity only has financial assets and financial liabilities of a kind that qualify as basic financial instruments. Basic financial instruments are initially recognised at transaction value and subsequently measured at their settlement value with the exception of bank loans which are subsequently measured at amortised cost using the effective interest method.

2.9 Debtors

Trade and other debtors are recognised at the settlement amount due after any trade discount offered. Prepayments are valued at the amount prepaid net of any trade discounts due.

Vauxhall Gardens Community Centre

Notes to the financial statements for the year ended 31 March 2023: continued

2.10 Creditors and provisions

Creditors and provisions are recognised where the charity has a present obligation resulting from a past event that will probably result in the transfer of funds to a third party and the amount due to settle the obligation can be measured or estimated reliably. Creditors and provisions are normally recognised at their settlement amount after allowing for any trade discounts due.

2.11 Fundraising

Funds are raised through individual donations, grants from Trusts, Foundations and Government grants and contracts. Some fundraising events may also be carried out.

2.12 Pensions

The charity operates an Auto Enrolment defined contribution pension scheme. Contributions are charged to the Statement of Financial Activities as they are incurred.

2.13 Volunteers and donated services and facilities

The value of services provided by volunteers is not incorporated into these financial statements as it is impractical to estimate such value.

Where services and facilities are provided to the charity as a donation that would normally be purchased from our suppliers, this contribution is included in the financial statements at an estimate based on the value of the contribution to the charity.

Vauxhall Gardens Community Centre

Notes to the financial statements for the year ended 31 March 2023: continued

3 Donations and legacies

| | Unrestricted | Restricted | Total 2023 £ | Unrestricted | Restricted | Total 2022 £ |
|---|---------------|---------------|--------------------|---------------|---------------|--------------------|
| Grants: | | | | | | |
| London Borough of Lambeth | - | 11,875 | 11,875 | 12,000 | 15,280 | 27,280 |
| London Borough of Lambeth: Kickstart | 9,895 | - | 9,895 | 2,120 | - | 2,120 |
| Vauxhall One | | 1,500 | 1,500 | - | - | - |
| One Day TV Ltd | | 250 | 250 | - | - | - |
| Sport England - ESC Lottery | | 9,490 | 9,490 | - | - | - |
| Lambeth Mission Development | - | - | - | - | 2,000 | 2,000 |
| Citygrove Securities PLC | - | 11,000 | 11,000 | - | 2,000 | 2,000 |
| Donations: | | | | | | |
| Sundry donations | 4,665 | - | 4,665 | 400 | 325 | 725 |
| | 14,560 | 34,115 | 48,675 | 14,520 | 19,605 | 34,125 |

4 Income from charitable activities

| | Unrestricted | Restricted | Total 2023 £ | Unrestricted | Restricted | Total 2022 £ |
|---------------------------------|----------------|------------|--------------------|----------------|------------|--------------------|
| Community Centre income: | | | | | | |
| Hall hire | 55,169 | - | 55,169 | 46,555 | - | 46,555 |
| Studio and office rentals | 58,369 | - | 58,369 | 55,375 | - | 55,375 |
| Basement/Café rental | 12,573 | - | 12,573 | 13,135 | - | 13,135 |
| Sundry income | 4,808 | - | 4,808 | 7,822 | - | 7,822 |
| | 130,919 | - | 130,919 | 122,887 | - | 122,887 |

5 Income from investments

| | Unrestricted | Restricted | Total 2023 £ | Unrestricted | Restricted | Total 2022 £ |
|---------------------|--------------|------------|--------------------|--------------|------------|--------------------|
| Interest receivable | 297 | - | 297 | 3 | - | 3 |

Vauxhall Gardens Community Centre

Notes to the financial statements for the year ended 31 March 2023: continued

6 Analysis of expenditure

| | Centre management | Other Centre costs | Community projects | 2023 £ | 2022 £ |
|-------------------------------|----------------------|-----------------------|-----------------------|----------------|----------------|
| | £ | £ | £ | | |
| Cost of raising funds: | 12,375 | - | - | 12,375 | 12,851 |
| Charitable activities: | | | | | |
| Staff costs (note 8) | 47,631 | - | - | 47,631 | 44,859 |
| Administrative support | 12,375 | - | - | 12,375 | 12,851 |
| Premises costs | - | 66,983 | - | 66,983 | 49,046 |
| Office costs | - | 3,030 | - | 3,030 | 3,334 |
| Insurance | - | 3,157 | - | 3,157 | 4,191 |
| Finance costs | - | 84 | - | 84 | (4,659) |
| Miscellaneous expenses | - | 208 | - | 208 | 657 |
| VGCC Project | - | - | 17,563 | 17,563 | 10,245 |
| Foodbank | - | - | 7,906 | 7,906 | 2,607 |
| Depreciation charges | - | 6,973 | - | 6,973 | 2,496 |
| Other costs | - | 989 | - | 989 | 623 |
| Governance Costs: | | | | | |
| Trustee training | - | 120 | - | 120 | - |
| AGM costs | - | 604 | - | 604 | - |
| Independent Examination | - | 960 | - | 960 | 720 |
| Charitable activities | 60,006 | 83,108 | 25,469 | 168,583 | 126,970 |
| Total expenditure 2023 | 72,381 | 83,108 | 25,469 | 180,958 | 139,821 |

| | | | |
|---------------------------|---------------------|-------------------|--------------|
| Of the total expenditure: | Unrestricted | Restricted | Total |
| 2023 £ | 140,233 | £ 40,725 | £ 180,958 |
| 2022 £ | 124,349 | £ 15,472 | £ 139,821 |

Analysis of expenditure - prior year comparative

| | Centre management | Other Centre costs | Community projects | 2022 £ | Total £ |
|-------------------------------|----------------------|-----------------------|-----------------------|----------------|------------|
| | £ | £ | £ | | |
| Cost of raising funds: | 12,851 | - | - | 12,851 | |
| Charitable activities: | | | | | |
| Staff costs (note 8) | 44,859 | - | - | 44,859 | |
| Administrative support | 12,851 | - | - | 12,851 | |
| Premises costs | - | 49,046 | - | 49,046 | |
| Office costs | - | 3,334 | - | 3,334 | |
| Insurance | - | 4,191 | - | 4,191 | |
| Finance costs | - | (4,659) | - | (4,659) | |
| Miscellaneous expenses | - | 657 | - | 657 | |
| VGCC Project | - | - | 10,245 | 10,245 | |
| Christmas Party | - | 2,607 | - | 2,607 | |
| Depreciation charges | - | 2,496 | - | 2,496 | |
| Other costs | 600 | 23 | - | 623 | |
| Governance costs: | | | | | |
| Independent Examination | - | 720 | - | 720 | |
| Charitable activities | 58,310 | 58,415 | 10,245 | 126,970 | |
| Total expenditure 2022 | 71,161 | 58,415 | 10,245 | 139,821 | |

Vauxhall Gardens Community Centre

Notes to the financial statements for the year ended 31 March 2023: continued

7 Net income for the year

| | | |
|--|-------------|-------------|
| The net income for the year is stated after charging: | 2023 | 2022 |
| | £ | £ |
| Depreciation of tangible fixed assets owned by the Charity | 6,973 | 2,496 |
| Independent Examination | 960 | 720 |

8 Staff costs

| | | |
|---|---------------|---------------|
| Staff costs during the year were: | 2023 | 2022 |
| | £ | £ |
| Salaries and wages | 46,831 | 44,067 |
| Social Security costs | - | - |
| Employer's contribution to defined contribution pension schemes | 800 | 792 |
| | 47,631 | 44,859 |

There were no full-time members of staff (2022: none) and two part-time members of support staff (2022: two) during the year, with one additional member of support staff paid on a freelance basis. During the year 2 apprentices were employed under the KickStart programme.

There were no employees whose annual remuneration was £60,000 or more.

The key management personnel of the charitable company are the trustees who do not receive remuneration and the centre manager. Total employee benefits in the year paid to key management personnel including NIC and pension were £35,292 (2022: £39,688).

None of the Trustees (or any person connected with them) received any remunerations from the charity during the year.

9 Tangible fixed assets

| | Fixtures & fitting | Boiler Office equipment | Total |
|-------------------------|-------------------------------|--------------------------------|---------------|
| | £ | £ | £ |
| Cost: | | | |
| At 1 April 2022 | 10,146 | 25,602 | 38,334 |
| Additions at cost | - | - | - |
| At 31 March 2023 | 10,146 | 25,602 | 38,334 |
| Depreciation: | | | |
| At 1 April 2022 | 9,606 | 2,134 | 12,920 |
| Charge for year | 180 | 6,402 | 6,973 |
| At 31 March 2023 | 9,786 | 8,536 | 19,893 |
| Net book value: | | | |
| At 31 March 2023 | 360 | 17,066 | 18,441 |
| <i>At 31 March 2022</i> | <i>540</i> | <i>23,468</i> | <i>25,414</i> |

Vauxhall Gardens Community Centre

Notes to the financial statements for the year ended 31 March 2023: continued

| 10 Debtors | 2023 | 2022 |
|----------------------------------|---------------|---------------|
| Due within one year: | £ | £ |
| Accrued income and other debtors | - | 2,593 |
| Trade debtors | 5,423 | 18,608 |
| Prepayments | 5,726 | 5,000 |
| | 11,149 | 26,201 |

| 11 Creditors | 2023 | 2022 |
|--------------------------------------|---------------|---------------|
| Amounts falling due within one year: | £ | £ |
| Trade creditors | - | - |
| Social Security and other taxes | 155 | 724 |
| Deposits | 9,951 | 10,661 |
| Deferred income | 13,344 | 6,478 |
| Accruals | 5,347 | 5,002 |
| | 28,797 | 22,865 |

| 12 Analysis of net assets between funds | Unrestricted Funds | Restricted Funds | Total Funds |
|--|--------------------|------------------|----------------|
| | £ | £ | £ |
| Fund Balances at 31 March 2023 are represented by: | | | |
| Tangible Fixed Assets | 18,441 | - | 18,441 |
| Current Assets | 122,713 | 7,733 | 130,446 |
| Creditors: Amounts falling due within one year | (28,797) | - | (28,797) |
| Total net assets | 112,357 | 7,733 | 120,090 |

Analysis of net assets between funds - prior year comparative

| | Unrestricted Funds | Restricted Funds | Total Funds |
|--|--------------------|------------------|----------------|
| | £ | £ | £ |
| Fund Balances at 31 March 2022 are represented by: | | | |
| Tangible Fixed Assets | 25,414 | - | 25,414 |
| Current Assets | 100,762 | 17,846 | 118,608 |
| Creditors: Amounts falling due within one year | (22,865) | - | (22,865) |
| Total net assets | 103,311 | 17,846 | 121,157 |

Vauxhall Gardens Community Centre

Notes to the financial statements for the year ended 31 March 2023: continued

13 Funds

The income funds of the charity include restricted and unrestricted funds comprising the following unexpended balances of donations and grants held on trust:

| | At 1 April 2022 | Incoming | Outgoing | Transfer between funds | At 31 March 2023 |
|-------------------------------|-----------------|----------------|------------------|------------------------------|------------------|
| | £ | £ | £ | £ | £ |
| Restricted Funds | | | | | |
| Sport England Grant | - | 9,490 | (8,650) | - | 840 |
| Black History Month | - | 1,750 | (2,380) | 630 | - |
| VGCC HAF Project | 12,320 | 11,875 | (21,695) | - | 2,500 |
| Foodbank | 1,393 | 11,000 | (8,000) | - | 4,393 |
| Total Restricted Funds | 13,713 | 34,115 | (40,725) | 630 | 7,733 |
| Unrestricted funds: | | | | | |
| General funds | 107,444 | 145,776 | (140,233) | (630) | 112,357 |
| Total funds | 121,157 | 179,891 | (180,958) | - | 120,090 |

Description of restricted funds

Sport England Grant – grant from Sport England to continue providing free fitness classes to the local community in partnership with Sportworks.

VGCC HAF Project – this a Lambeth Council funded programme to tackle food poverty, this is targeted to school aged children during holiday periods following the campaign by footballer Marcus Rushford.

Black History month – a special showcase to entertain, inform and educate invited guests as well as participants to improve community cohesion and foster links between the diverse cultural groups of residents in the local area, during Black History Month in October

Foodbank – VGCC project to tackle food poverty so this programme provides food parcels to families who are struggling with cost of living. This is being funded with donations from Citygrove Securities PLC, Fare Share/Felix Project, Planzheros (surplus food from Borough Market), Lambeth Mission and St Mary's and St Anselm's churches and individuals.

| Funds - prior year comparative | At 1 April 2021 | Incoming | Outgoing | between | At 31 March 2022 |
|---------------------------------------|------------------------|-----------------|-------------------|----------------|-------------------------|
| | £ | £ | £ | £ | £ |
| <i>Restricted Funds</i> | | | | | |
| <i>Sport England Grant</i> | <i>9,580</i> | <i>-</i> | <i>(9,580)</i> | | <i>-</i> |
| <i>VGCC HAF Project</i> | <i>-</i> | <i>15,605</i> | <i>(3,285)</i> | | <i>12,320</i> |
| <i>Foodbank</i> | <i>-</i> | <i>4,000</i> | <i>(2,607)</i> | | <i>1,393</i> |
| Total Restricted Funds | 9,580 | 19,605 | (15,472) | - | 13,713 |
| <i>Unrestricted funds:</i> | | | | | |
| <i>General funds</i> | <i>94,383</i> | <i>137,410</i> | <i>(124,349)</i> | <i>-</i> | <i>107,444</i> |
| Total funds | 103,963 | 157,015 | (139,821) | - | 121,157 |

Vauxhall Gardens Community Centre

Notes to the financial statements for the year ended 31 March 2023: continued

14 Related parties

There are no related party transactions to disclose for 2023 (2022: none).

There are no donations from related parties which are outside the normal course of business and no restricted donations from related parties.

15 Trustees

1 trustee was paid or reimbursed expenses during the year amounting to £40 (2022: Nil), no other person connected with trustees received expenses or payments (2022:Nil) and no trustee or person connected with them received any emolument or payment for professional or other services (2022:Nil).

16 Pension and other post-retirement benefit commitments

Defined contribution

| | 2023 £ | 2022 £ |
|---|-----------|-----------|
| Contributions payable by the company for the year | 800 | 792 |

At 31 March 2022 £155 was outstanding (2022:£155).

17 Operating lease commitments

There are no commitments under non-cancellable operating leases at 31 March 2023 (2022:Nil)

18 Contingent assets or liabilities

There are no contingent assets or liabilities at 31 March 2023 (2022: Nil).

Due to its charitable status the Community Centre is a tax exempt entity. The trustees are not aware of any matters which might prejudice the tax status of the Community Centre.

With thanks to our supporters



