

COMPANY REGISTRATION NUMBER 1883734

HACKNEY CITY FARM LIMITED
COMPANY LIMITED BY GUARANTEE
FINANCIAL STATEMENTS
31 MARCH 2024



Charity Number 291211

FINANCIAL STATEMENTS

YEAR ENDED 31 MARCH 2024

CONTENTS	PAGE
Members of the Board and professional advisers	1
Trustees Annual Report	5
Independent examiner's report to the members	23
Statement of financial activities (incorporating the income and expenditure account)	24
Balance sheet	25
Notes to the financial statements	26

Hackney City Farm Ltd - Company Limited by Guarantee

MEMBERS OF THE BOARD AND PROFESSIONAL ADVISORS

Registered charity name	Hackney City Farm Limited
Charity number	291211
Company registration number	1883734
Principal office	Hackney City Farm 1A Goldsmiths Row London E2 8QA
Trustees	David Brook Sergio Almasy Sarah Leach Jan Fuscoe Catrin Lewis
Secretary	Sergio Almasy
Farm Director	Chris Pounds
Independent examiner	Stephen Welch FCA Long Acre, Howe Lane Great Sampford Essex, CB10 2NY
Bankers	National Westminster 403 Bethnal Green Road London E2 0AF

TRUSTEES ANNUAL REPORT
YEAR ENDED 31 MARCH 2024

The trustees, who are also directors for the purposes of company law, present their report and the unaudited financial statements of the company for the year ended 31 March 2024.

REFERENCE AND ADMINISTRATIVE DETAILS

Reference and administrative details are shown in the schedule of members of the board and professional advisers on page 1 of the financial statements.

THE TRUSTEES

The trustees who served the company during the period were as follows:

David Brook

Sergio Almasy

Sarah Leach

Jan Fuscoe

Catrin Lewis

STRUCTURE, GOVERNANCE AND MANAGEMENT

Hackney City Farm Ltd (the Farm) is a Registered Charity and Limited Company. It is governed by the Articles of Association (Companies Act 1948) agreed in 1984 and Trustees were appointed and elected in accordance with the memorandum at the Annual General Meeting 13th December 2008.

ORGANISATION, MANAGEMENT AND DECISION-MAKING STRUCTURE

The management of Hackney City Farm is vested in Trustees, meeting as the Management Committee and responsible for the administration of the Farm's affairs and the general policy of the Farm in accordance with clause 43 of the Memorandum of Articles. There are 5 Trustees serving during the 2023/24 term. The day to day management of the Farm is carried out by a paid Farm Director.

POLICY STATEMENTS

Reserves

The reserves are the resources from the Farm's unrestricted income to spend at the Trustee's direction in the furtherance of the Farm's objects once it has met its commitments and covered its planned expenditure. The Trustees direct that sums are to be held as reserves when it is their considered view that it is in the Charity's best interest to do so. The review is made annually, normally at budget approval and at other times as the Trustees consider prudent. Currently the

Farm maintains a 3 month operating cost reserve with any remainder designated to Farm development projects.

Investments

The Trustees have reviewed the deposition of the Farm's reserves funds and approve a policy of placing reserved funds with deposit taking institutions where appropriate. No more than the maximum covered by the Financial Services Compensation Scheme is to be placed with any one deposit taker.

Risk Analysis

The Farm has developed a Risk Management System and associated working policies. This has been in conjunction with the PQASSO Quality Standards Scheme.

Quality Standards

The Farm holds the Charity Evaluation Services PQASSO Standard Level One in all areas.

Public Benefit

The objects of the Farm are for public benefit, specifically around food farming and the wider environment. The City Farm serves to create and maintain a lifelong learning environment where local people can gain knowledge, green skills, confidence and learning opportunities through Farm activities and the education & training programmes. In planning and reviewing the Farm Business Plan and the activities taking place, the Trustees are mindful of the Charity Commission's guidance on public benefit.

TRUSTEES ANNUAL REPORT
YEAR ENDED 31 MARCH 2024

ACTIVITIES

Our projects come from the ideas of volunteers, partners and visitors to the Farm. We work in collaboration to deliver activities that everyone involved feels part of creating.

We get things done by working in mixed ability groups, mostly outside, where decisions are made by consensus. These activities cut across three main areas:

Community - Through volunteering we build strong relationships in and across communities, building personal resilience and improving wellbeing

Farming and the Environment - We have created inspiring green spaces around the Farm to promote urban ecology and for visitors and volunteers to learn about farming and environmental issues.

Young People – We have dedicated services supporting young people to learn and grow, with a particular focus on supporting those with special educational needs and disabilities.



OBJECTIVES AND ACTIVITIES

To promote for the public benefit of the inhabitants of Hackney, neighbouring boroughs and surrounding areas the provision of facilities for recreation or other leisure time occupation of individuals who have need of such facilities by reason of their youth, age, infirmity or disablement, financial hardship or social and economic deprivation or for the public at large in the interests of social welfare and with the object of improving the condition of life of the said inhabitants.

To advance the education of inhabitants of Hackney, neighbouring boroughs and the surrounding area in subjects relating to sustainable development, local food production and the protection, enhancement and rehabilitation of the environment.

To advance the education of the public in the subjects of sustainable food production, farming and the production of food through the exhibition of animals in common agricultural and domestic use.

To develop the capacity and skills of socially and economically disadvantaged inhabitants of Hackney, neighbouring boroughs and surrounding areas in such a way that they are better able to identify, and help meet, their needs and to participate more fully in society.

To provide opportunities for social interaction and support and to provide education and training opportunities that are accessible to residents of Hackney and neighbouring boroughs.

TRUSTEES ANNUAL REPORT
YEAR ENDED 31 MARCH 2024

CO-OPERATING WITH OTHER CHARITIES AND RELATED PARTIES

There are no relationships between Farm and related parties that fall within the requirements for disclosure under Charity SORP 2005.

The Farm works in partnership with a number of organisations on various projects:

Haggerston Park User Group	Hackney Bike Workshop
Social Farms and Gardens	SoleShare
Hackney Wood Craft Group	Hackney Herbal
Get Loose	Living Windows
Denizen Works	Food Cycle
Fonic	Hackney Food Network
Hackney Fine Arts	Felix Project
Gary March Design	The Feel Good Community
Gala Therapy	Growing Communities
London Greenwood	

The Farm is a member of / works closely with:

Farms for Schools
Sebright Children's Centre
Hackney Community Transport
London Orchard Project
Inspire
London Association of City Farms and Community Gardens

Our Funders

In addition to the generosity of individual supporters, we received funds from:

Hackney Giving
London Borough of Hackney
The National Lottery
North London Waste Authority
Avison Young
Fidelity
Worshipful Co. Woolmen

TRUSTEES ANNUAL REPORT
YEAR ENDED 31 MARCH 2024

ACHIEVEMENTS AND PERFORMANCE

This last year has been a busy time on the Farm with lots of activities and visitors. The numbers at times have been breathtaking and demonstrate the diversity of the Farm's work and recognition of the projects by its many users. We are pleased with the work taken place particularly on the capital development programme and look forward to another successful year.

MANAGEMENT

The Farm has continued to be managed by Chris Pounds with assistance from Charlie-Jane Banks - Farmyard Manager, these are the main full-time roles and are aided by a team of dedicated sessional staff in the day-to-day running of the Farm and its activities.

These include Michelle Frank, Jadzia Biegun, Robyn Lamminman, Magda Juszcak, Kat Hatwell, Sunni Sunderland, Rosanna Bailey and Ellie Ryder.

Jadzia and Kat additionally manage the corporate volunteer days, whilst Magda assists in the general office and site maintenance. Robyn runs garden volunteering and education groups/green activities.

Rosana Bailey oversees the food bank; operation, fundraising, monitoring and provides additional admin and finance assistance. Our long-term bookkeeper Stefania Valente manages payroll and staff payments.

Two younger people; Grae and Poppy also assist at weekends and with the mini and maxi farmer groups.



TRUSTEES ANNUAL REPORT
YEAR ENDED 31 MARCH 2024
BUSINESS PLAN

This year we developed the Farm Business Plan for the next three years (2024 to 2027) - a copy of this can be seen in Appendix Two of this report. The key areas of work identified were;

- Progression of the capital development programme
- Management of a succession strategy.
- Creation of new seasonal activities.

In addition to the Xero digital accounting system embedded, we have also developed a monthly management account process to enable accurate management and forecasting of the Farm's finances.

ANIMALS

The animals continue to be the heart and soul of the farm, this year there were four litters of piglets (50 in total), 14 goat kids bred and born on site, 12 lambs born, two donkeys were sold onto new homes, and we attended four Christmas Nativities and 2 Palm Sunday events. Additionally they were centre of attention in films and photo shoots including a BBC promotion for the Archers Radio 4 series.



VOLUNTEERING

Volunteering is an essential part of the farm and although we no longer have a full-time volunteer co-ordinator we continue to provide volunteering opportunities.



In the last 12 months there have been 40 mini and maxi farmer sessions (average of 6 young people per session) and six work experience placements of between 1 and 2 weeks. A huge 2000 volunteers helped at the Farm at one of the 80 corporate volunteer days as well as 10 regular volunteers who helped in the garden and around the site. We also worked with volunteers from the good gym on regular fortnightly sessions.

OTHER ACTIVITIES

These included; animal drawing classes, a pumpkin carving competition, grow your own window box salad workshop, knitting and natter group, Easter egg hunt, swing dance events and in addition to weddings and other formal events the straw bale room was used for over 40 children's parties. In the course of the past 12 months the Farm had over 100 school visits from over 2000 pupils.



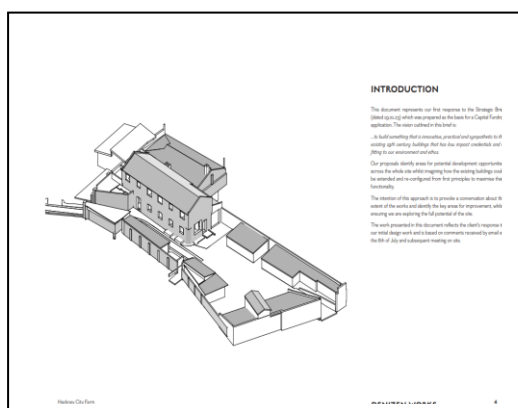
TRUSTEES ANNUAL REPORT
YEAR ENDED 31 MARCH 2024
SITE IMPROVEMENTS

The Farm has now purchased a digger which has been used to carry out various tasks including cleaning the muck heaps, pig pen and preparing the ground for the re-siting the food bank.

A cable avoidance tool was also bought and following a training course we can now dig holes more safely on site.

Other improvements have been; renewing the floor in the straw bale room, a comprehensive periodic electrical inspection, repairs to the main building, a new entrance door to the pottery and numerous other improvements to the farmyard facilities.

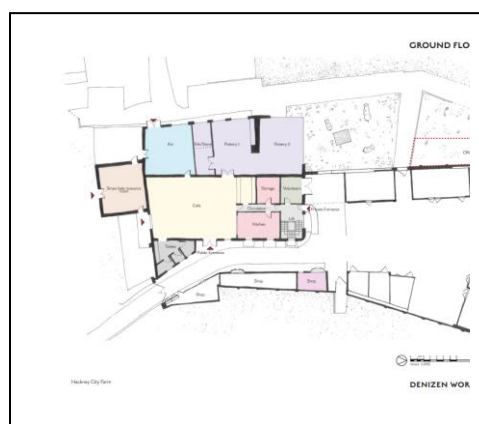
CAPITAL INVESTMENT PROJECT



The Farm has been assisted by Denizen Works Architects to develop a building improvement programme. Based on the Strategic brief presented in 2023 there are now some exciting building development ideas ready for consultation and subsequent planning consent. The Farm is also currently working with a quantity surveyor specialist to determine an overall cost of this programme and to identify potential funders. It is hoped that the project will commence in 2025 and result in a community farm fit for another 40 years.

To help these maintenance works the Farm has received generous donations of materials from JF Hunt Demolition and Onduline Roofing.

Using a financial donation from Avison Young we were able to re-roof the Get Loose shop. It was important that the materials were environmentally sustainable in keeping with the ethos of the shop. We sourced a combination of cork and wool board insulation with an EPDM rubber roof layer. The work was carried out by Cyriaque - one of the London Greenwood cooperative members.



TRUSTEES ANNUAL REPORT
YEAR ENDED 31 MARCH 2024
POTTERY

The Farm runs a busy pottery workshop led by Rob Jones and Sonia Stobik and over the last 12 months there have been over 120 adult classes attended by over 1500 people as well as 80 classes for younger children with over 600 visitors.



We also take the pottery classes off site and have run a weekly session for elderly people at the nearby Sundial Centre.

We host mosaic sessions (951 participants over 45 classes), a Trans-femme social group each month with over 30 people as well as several RSPB campaign stalls over the year.

LONDON ASSOCIATION

The Farm is involved with the London Association of City Farms and Community Gardens at trustee level and works in the active engagement, joint fund raising and profile raising of all City Farms in London.



Hackney City Farm has also participated in the City Farms Harvest Festival event run for all the farms and gardens across London.

Additionally the Farm has been represented at the British Guild of Agricultural Journalist Autumn event, Farmers Weekly New Scientists Live planning meeting and provided organisational and governance support to another project.

TRUSTEES ANNUAL REPORT
YEAR ENDED 31 MARCH 2024

WORK AS A HUB

The Farm is also a hub to other activities & groups and monitoring and feedback of these is collated below;

GET LOOSE

The aims of Get Loose are to bring the people of Hackney, fairly priced, high quality, tasty, ethical food, made by small producers where possible. The products for sale in the shop include; cereals, chutneys & spreads, cleaning products, confectionary, dairy, drinks, herbs and spices, honeys and syrups, flour and baking, meatless meats, nuts, fruits and seeds, oils, vinegars, soy, and pasta.

It is staffed by a mixture of volunteers and paid staff and tries to work as a community campaign group promoting waste reduction and recycling initiatives.



Key successes this year included;

- New roof for increased warmth for volunteers and members of the public.
- Danceathon event where £200 was raised for the shop during quiet periods.
- 120 new products procured to bring in healthier sales.
- Open hours extended an extra day per week.
- Olio system set up where our cardboard boxes from deliveries are kept and local people can come and collect them for moving house. 6 boxes per week are collected on average.
- New Supplier Blogs. These detail their environmental credentials as well as other health and social benefits - [Spudos](#) , [Vegan Cheese](#) , [Raw Chocolate Company](#)
- New Info Blogs. These give people tips on health and sustainability - [Benefits of home sprouting](#), [Benefits of Soya](#).
- Awarded from Next Door as 'Fave Local Shop' Voted for by Next door users.

Get Loose has had a total of 20 volunteers over the year and its work resulted in a reduction of 3.4 tonnes of waste saved.



TRUSTEES ANNUAL REPORT
YEAR ENDED 31 MARCH 2024

HACKNEY FINE ARTS

The CIC's aims are to address the growing inequality evidenced in the borough of Hackney by creating opportunities for people from low-income households, retired and SEND learners to participate in the arts. They have a particular focus on encouraging learners from communities that are often excluded from art based on race, gender, sexuality or ability.



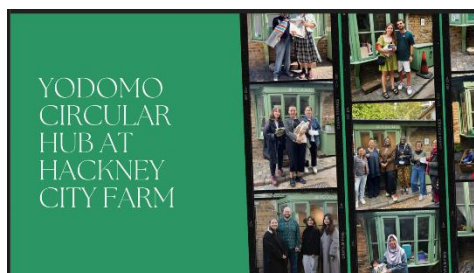
The groups aim is to demonstrate to its students that fine art education is for everyone, regardless of their age, background, identity and ability, everyone's expression matters. Their mission is to continue to grow to help support creative education in Hackney, in a fully inclusive and diverse learning environment where all are welcome and nurtured. They offer 3 points of access: free for adults with the CIC courses and concessionary or full fee for young people, teens and adults on the paid courses.

This is such a wonderful course. The teaching is exceptional, the standards are high, and the students are given well thought out goals that are unique to their talents and skill levels. There is an excellent balance between developing their technical skills and creative expression which is clear in the work produced. The atmosphere is warm, supportive and always feels like the students and Tutors are having fun. Cannot recommend it enough
Nana Fani-Kayode



Hackney Fine Arts delivered 14 weekly term time classes for young people over a period of 39 weeks, totalling 546 classes for 182 regular participants. Plus 12 weeks of holiday classes, running 136 sessions for 3400 non-regular participants. For its adult classes it ran 14 weekly term time classes over a period of 45 weeks, for approximately 350 regular participants. Around 15% - 20% of the student base is SEND and/or disabled. 30% of the students are on concessionary rate and it also has an annual bursary for free tuition in our afterschool club for a child a year. It employs 20 teachers, 1 SEND teaching assistant, an admin assistant and an accountant.

TRUSTEES ANNUAL REPORT
YEAR ENDED 31 MARCH 2024
YODOMO



Yodomo is a social venture on a mission to increase wellbeing and promote the understanding of reuse of materials by facilitating wider participation in making and crafts. It believes that making is good for you and good for the planet. It collects textile waste from businesses and makes it available to creative people who transform it into something new. Yodomo

encourages participation in crafts and making by bringing the expertise of independent artists and makers directly to people. The makers teach either online, through kits or at live events.

Yodomo opens each Sunday and welcomes an estimated 50 people per day, engaging them in re-use of materials as well as providing free and low-cost materials for their crafts – the total estimated across the year is 2,000 people. Additionally it facilitated 2 x volunteer days engaging over 30 volunteers in the straw bale room and distributed a huge 3 tonnes of textiles over the year from the farm.

Yodomo Key Aims

- encourage repurposing and reducing of waste by promoting the idea of making things from what is already available or using recycled materials
- raise awareness of materials, where they come from, and how they can be reused, leading to a shift in attitudes and behaviours toward sustainability
- support community-building by bringing people together through activities such as workshops and classes
- provide skills and training in areas such as sewing, weaving, and upcycling, increasing the capability and confidence to repurpose materials
- support the creation of new products and markets for recycled and upcycled goods, providing new economic opportunities and supporting local communities.



TRUSTEES ANNUAL REPORT

YEAR ENDED 31 MARCH 2024

Yodomo partnered with the Library of Things, Fibre Lab and ReLondon through this project. Additionally, they have been involved in a series of stakeholder engagement workshops with the North London Waste Authority and there are plans to work with London Greenwood, a neighbour at Hackney City Farm, to facilitate joint workshops using materials from both organisations. They also joined EETG as a paid-up member to enable them to put the Yodomo Circular Hub at Hackney City Farm on their physical print map.

GAIA COLLECTIVE

Over the past year 2023-24, Gaia Therapy Collective has provided over 250 hours worth of free/reduced-fee therapy through its therapy service for the local community. Since Gaia Therapy Collective formed in late 2021 it has offered over 750 hours of free/low therapy hours to the local community.



Gaia Therapy Collective became a CIC in July 2023, and it's focus has been on becoming more sustainable for the future. There are currently 7 members of the team including an administrator, all of which are clinically trained.

It's dedication for creating an inclusive therapy service, has been helped by being situated in Hackney City Farm, with many of the clients benefitting from the vibrant community. Many have expressed their appreciation of spending time in the garden and farm before or after sessions. The connection to nature and farm life has enabled many clients to feel more connected to the natural world.



I have no doubt that without the intervention and support of the Gaia, I would still find many aspects of my life today a challenge. Instead, I am now volunteering at a charity, travelling and able to enjoy parts of my life that were cut off from me for so long

At this first appointment I was made to feel secure and listened to, the assessing therapist recommending a counsellor for me to work with. Since then, my Gaia therapist has provided personalised care and helped me create bespoke mechanisms to recognise potential triggers for my range of mental health issues and to find a grounding in my life. With this cognitive apparatus I can now positively face scenarios which would have provoked anxiety and depressive thoughts before I entered therapy at the Gaia. Today I am confident in many situations that I thought just one year ago would be impossible for me to confront.

TRUSTEES ANNUAL REPORT

YEAR ENDED 31 MARCH 2024

One of the therapist's facilitates a very successful eco-therapy gardening group aimed at global majority members. The purpose of the group is to help re-connect members to the natural world and help participants work through collective and personal trauma using plants and nature. The sessions are co-facilitated by an external herbalist and has kindly been funded by Necessity in recent years.

Gaia Therapy Collective seeks to reach people who have been excluded from mainstream services often due to having a marginalised identity. 100% of clients accessing this service are experiencing financial difficulty, are either unemployed and/or are receiving benefits. Most of the service users (75%) identify as coming from a global majority with just over 40% identifying as LBTQIA+.

As a collective it endeavors to represent the communities that it works with; some of the therapists are involved with other therapy organisations such as the Feminist Therapy Network, Therapists against Conversion Therapy and Transphobia and the Black and Asian Therapy network.

In November 2023 it once again was awarded a grant of £10,000 by the charity Necessity. The funding will help continue the development as it further establishes itself as a community interest company. In the last 3 years the service has received over 300 enquiries seeking longer term therapeutic support. It hopes to extend the therapy service offered, by applying for further funding to subsidise more therapy hours and has recently recruited 2 new therapists to help deliver that commitment.

In addition, there are plans to organise regular skills-sharing events with other therapists interested in community-based approaches. Here it is hoped to be able to explore approaches to psychotherapy that are grounded in anti-oppressive, ecological, and embodied practice.

"A couple of years ago, I was struggling with many facets of my life, from work to relationships and socialising. I felt I had no grounding and had spent many months attempting to find affordable therapy to understand and alleviate the impact of suicidal thoughts, severe depression and anxiety disorder. When I heard about the Gaia Therapy Project through a friend, I emailed with a brief history of my symptoms and received a reply quickly, inviting me to an initial consultation."



TRUSTEES ANNUAL REPORT

YEAR ENDED 31 MARCH 2024

GAIA THERAPY GARDENING PROJECT

This past year it has offered 20 people free, long term therapeutic community. All are people of colour who struggle with mental ill health, and who have previously felt unwelcome in green spaces. The age ranges from 22-73.

This year we have been exploring more creative ways of connecting with plants, and as well as growing and making tinctures of herbs we are also exploring the herbs we grow through art making.

Membership remains stable – with many people staying in the group for 2 or 3 years, while others stay for a year

or so before finding jobs or leaving London. There is something special about being able to offer longer-term community for people who might otherwise be unable to afford short term therapy. A particular kind of depth of individual transformation and collective solidarity can emerge.



During the previous year we had spent much time deepening our sense of rootedness by growing an herb patch and sharing personal experiences that wove together into collective stories of ancestral grief and healing, colonialism and enslavement, and dreaming new ways of accompanying ourselves. Much of the work felt gentle and deep, with space for grief, tears and hope. We grew and connected with herbs and plants that were considered weeds but that had qualities of soothing and connecting to body; particularly yarrow and dandelion.



After the summer break we returned to find a giant thistle had grown in the patch. Sprawling its bright pink and green prickles over the carefully gardened patch, it had uprooted the camomile we planted.

The group has also been spreading through word of mouth, and two other urban nature centres have contacted us as they are interested in establishing projects exploring race, creativity and nature connection. We are in the process of thinking how to do this, as it feels right for members of the group to also be involved in the consultancy or supervision of projects to which we are invited.

TRUSTEES ANNUAL REPORT
YEAR ENDED 31 MARCH 2024
HACKNEY FOOD HUB

Hackney City Farm Food Hub has managed to deliver another successful year. We bulk purchased last year to ensure we had stock all year round.

Hackney Community Food Share serves about 98 people weekly. About 38% of their service uses are households with children under 19, 30% are Households with disabled persons, 32% Households with pensioners aged 65+ and they did not record the vulnerable households. In June 2023 we were lucky enough to receive the Hackney Resident Support fund food grant, which was made up of 2 elements and was a well needed support. The grant gave us £25,200 to spend on food, and £2,800 for operation cost. We were able to make a bulk purchase delivered to the food hub and used this food to top up the falling food supplies received from the Felix Project twice a week. This enabled us to have a continuous supply of food to supply to the community partners. We were also able to purchase vouchers from Tesco which enabled us to be able to continuously make purchases to ensure we do not experience the problem of little or no food.

Family information by Group:

Connecting all Communities serves about 150 people weekly. About 50% of their service uses are households with children under 19, 25% are Households with disabled persons, 10% Households with pensioners aged 65+ and 15% other vulnerable households.

Ida Community serves about 400 people weekly. About 55% of their service uses are households with children under 19, 5% are Households with disabled persons, 15% Households with pensioners and 25% are other vulnerable person's.

E5 Food Pantry serves about 60 people weekly. About 29% of their service uses are households with children under 19, 14% are Households with disabled persons, 20% Households with pensioners aged 65+ and 37% other vulnerable households.



The fridge and freezer from the King Charles project, has been an excellent addition to the hub and is used continuously. We often receive more food than the fridge / freezer capacity. Continued communication with the groups collecting enabled us to arrange collection outside of our schedule times to enable this food to be collected on the day it is received. So far this grant has equipped us with the resources enabling us to work through supply problems with the Felix Project and partners and maintain a regular supply of a range of food products. We intend to continue exploring ways to work with community partners beyond delivery and collection of food so as to build longer term resilience for families and

TRUSTEES ANNUAL REPORT

YEAR ENDED 31 MARCH 2024

communities experiencing hardship.

LONDON GREENWOOD

London Green Wood is a not-for-profit cooperative and a community of green woodworkers whose aim is to encourage crafty-ness, creativity and self-reliance in everybody. From their outdoor woodland workshop, using locally felled wood, they bring heritage crafts to the heart of the city and make basic woodcraft skills available to all. They use hand tools and green wood straight from the log. They operate as a cooperative.

A really fantastic course, with passionate tutors that are generous with their knowledge and very gentle. The location is perfect and an insight to a lovely community. The course structure is perfect, ending in a gentle spoon carving after a more physical day of learning how to use the lathe. Tips and tricks make you feel quickly confident using sharp tools and get into a meditative state surrounded by likeminded and supportive people! Thank you - I can't wait to return!



Had such a great afternoon at London Green Wood! Thank you Andrea for being such a great teacher really enjoyed the course.

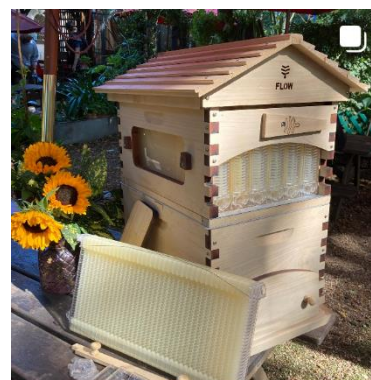
The members' workshop is open every Wednesday, Thursday, Friday, Saturday and a couple of Sundays each month. During members' sessions there is no formal teaching but there are people around to advise. Tools and wood are provided. Membership is open to anyone who supports the aims of London Green Wood and has sufficient green woodworking experience to work independently. This year their Co-op members increased from 60 to 71 and they ran 138 courses for 739 people. There were 290 discounted places. Of the members 43 pay full fee and 27 the concessionary rate.

This was an excellently paced and facilitated course. I absolutely loved it. It had just the right balance of hands-on help and being left to explore wood turning on the pole lathe. The setting of Hackney city farm gave it an extra special dimension!. I thoroughly enjoyed this course and would recommend it. Thank you for such a great day.

TRUSTEES ANNUAL REPORT
YEAR ENDED 31 MARCH 2024

BEE KEEPING

Serayna Solanki, our beekeeper ran sessions for people of colour fortnightly to get together to talk about bees and make some balms and tinctures. The group BPoC had between 5 to 8 people in it and was free. Robyn took over in September and although 3 colonies did not make it through the winter due to disease we have partnered with St Mary's Secret Garden to buy three more hives and establish some new colonies.



OTHER PROJECTS

Hackney City Farm supports Haggerston Orchard Project, is a satellite to Growing Communities organic veg box scheme, hosts Sole Share sustainable fish project, Living Windows Garden Company, Gary March Sculptures and various other organisations and activities. Staff are also involved in external consultation projects and this year have been advising on community engagement of a proposed new development in Shoreditch.



Charity Number 291211



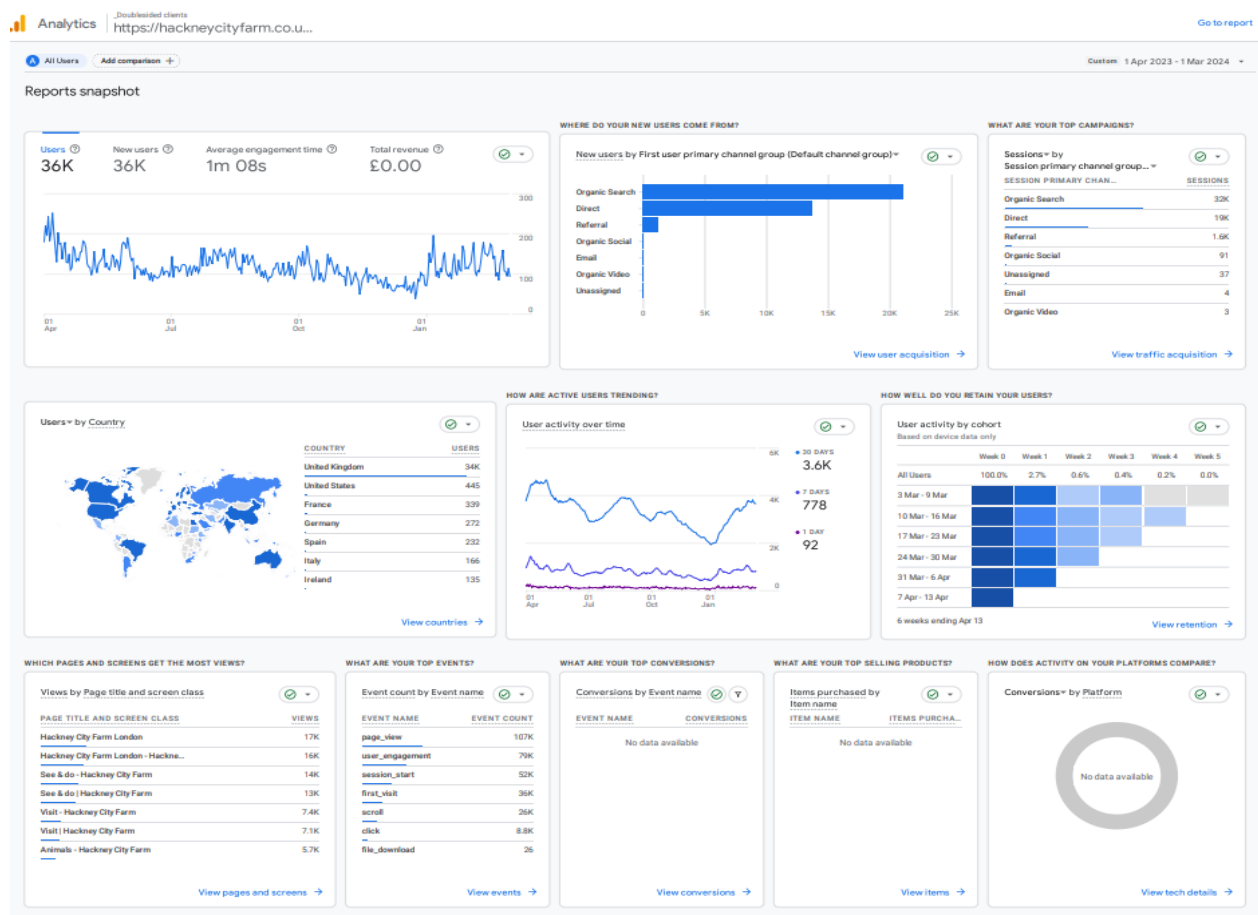
TRUSTEES ANNUAL REPORT

YEAR ENDED 31 MARCH 2024

FEEDBACK

Google analytics.

Below is a breakdown of the data for the farm's website for the last 12 months. There were more than 36 000 visitors with 107,000 page views. 34000 were from the UK and the remainder were from US and Europe. The average time on the website was 1m 8s, equivalent to 1700 days.



Google Reviews

Hackney City Farm

4.5 ★★★★★ 1,616 Google reviews ⓘ ⋮

Farm in London, England



Website



Directions



Save




Call

TRUSTEES ANNUAL REPORT
YEAR ENDED 31 MARCH 2024

Instagram

We had an increase in our followers by 3000 people in this last year and on average we get three new followers a day. Approximately 30% of visits are made in response to new baby animal posts. We have hundreds of local business supporters who share our stories.





Social Media Key Figures 2023 - 2024

Facebook 2700 followers

Instagram 7551 followers

Twitter 5438 followers

Google 4.5 stars out of 1616 Reviews

VISITOR NUMBERS

An Immotion People sensor is used at the front door to monitor the numbers of visitors using the main building. These equate to approximately ¼ of the total visitors as often people come in and out through the main yard and front garden. The graph below illustrates visitors over Qtr Four 2024 and a calculation shows an estimate for total visitors for the year.



Visitor Numbers Calculation		
Period	69	6604
Per day	96	
Days	351	33594
Front door only		Approx 1/4 of visitors

TRUSTEES ANNUAL REPORT

YEAR ENDED 31 MARCH 2024

LOOKING AHEAD

In the last 12 months we have successfully completed our Five-Year Strategy and achieved our aim of diversifying income away from grants and building organisational capacity.

We have delivered on objectives for income generation by increasing individual donations and diversifying social enterprise revenue. The latter has been specifically directed at establishing the Farm as a hub organisation, nurturing and supporting similarly focused projects to develop on our site. In terms of organisational capacity, we now have digital financial control systems and online booking mechanisms that enable us to make our resources go further.



5 years ago we aimed to **increase charitable income by 8%** year on year and to expand and enhance charitable outcomes within projects and increase operational capacity to support delivery. To build resilience we aimed to **increase reserves by 10% by the end of the plan**. Despite the pressures put upon the project over those 5 years by the pandemic and subsequent lockdowns and the cost-of-living pressures, we have achieved financial stability through secure reserves.

We anticipated the changes we would deliver were to **bring more people from diverse backgrounds together more often, create outdoor educational spaces rich in biodiversity and increase efficient allocation of charity resources**. Through the ongoing development as a hub organisation we have already seen good evidence of this through the diverse outputs delivered on site by Hackney Fine Arts, London Greenwood and Gaia Therapy.

For the people taking part, these activities have been shown to **promote social inclusion**, combat loneliness, encourage independence and develop personal resilience. In short, our activities enable people to **live their best lives**.



We continue to be a working farm in the heart of London, providing free access, where people can learn and grow regardless of their circumstances, **helping to narrow the gap in outcomes** between certain disadvantaged groups and the wider community. A successful and significant development because of the pandemic was the Food hub initiated in a partnership with Hackney Council. In the last 12 months it has moved sites, yet still has **distributed more than 50 tonnes of food** to organisations supporting people living in acute poverty. This hub, now wholly managed by the Farm has continued to secure funding support.

TRUSTEES ANNUAL REPORT
YEAR ENDED 31 MARCH 2024

- In the plan formulated for work over the next 3 years we will look at stand-alone drop-in activities and sessions particularly for weekend visitors. These provide impromptu activities **to learn and get involved** and will be based particularly on the Farmyard and animals. The trustees and staff have also identified that a management succession strategy is a **priority area** to ensure continued Farm operation and development.

Most significantly however, we will carry out a full audit of the Farm and its facilities and building upon work we have previously carried out, initiate and execute a development programme to **improve and develop the site**. This will bring about expansion of our activities as well as those provided in partnership with other organisations.

The building has become a well-used and vital space for community based green activities and the current capital development plan will strengthen the delivery of vital services far into the future.

Chris Pounds

Farm Director

TRUSTEES ANNUAL REPORT

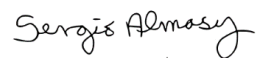
YEAR ENDED 31 MARCH 2024

6. INDEPENDENT EXAMINER

Stephen Welch FCA has been re-appointed as independent examiner for the ensuing year.

Registered office:
1a Goldsmiths Row
London
E2 8QA

Signed by order of the trustees



7th December 2024

Sergio Almas
Company Secretary

INDEPENDENT EXAMINER'S REPORT TO THE MEMBERS OF HACKNEY CITY FARM LIMITED
YEAR ENDED 31 MARCH 2024

I report on the accounts of the company for the year ended 31 March 2023 which are set out on pages 16 to 24.

RESPECTIVE RESPONSIBILITIES OF TRUSTEES AND EXAMINER

The trustees (who are also the directors of Hackney City Farm Limited for the purposes of company law) are responsible for the preparation of the accounts. The trustees consider that an audit is not required for this year under section 144(2) of the Charities Act 2011 (the 2011 Act) and that an independent examination is needed.

Having satisfied myself that the company is not subject to audit under company law and is eligible for independent examination, it is my responsibility to:

- examine the accounts under section 145 of the 2011 Act;
- to follow the procedures laid down in the general Directions given by the Charity Commission under section 145(5)(b) of the 2011 Act; and
- to state whether particular matters have come to my attention.

BASIS OF INDEPENDENT EXAMINER'S REPORT

My examination was carried out in accordance with the general Directions given by the Charity Commission. An examination includes a review of the accounting records kept by the company and a comparison of the accounts presented with those records. It also includes consideration of any unusual items or disclosures in the accounts and seeking explanations from you as trustees concerning any such matters. The procedures undertaken do not provide all the evidence that would be required in an audit and consequently no opinion is given as to whether the accounts present a 'true and fair view' and the report is limited to those matters set out in the statement below.

INDEPENDENT EXAMINER'S STATEMENT

In connection with my examination, no matter has come to my attention:

(1) which gives me reasonable cause to believe that in any material respect the requirements:


- to keep accounting records in accordance with section 386 of the Companies Act 2006; and
- to prepare accounts which accord with the accounting records, comply with the accounting requirements of section 396 of the Companies Act 2006 and with the methods and principles of the Statement of Recommended Practice: Accounting and Reporting by Charities

have not been met; or

(2) to which, in my opinion, attention should be drawn in order to enable a proper understanding of the accounts to be reached.

Stephen Welch FCA

Stephen Welch FCA


Independent examiner
7th December 2024

Long Acre,
Howe Lane
Great Sampford
Essex, CB10 2NY

STATEMENT OF FINANCIAL ACTIVITIES
(INCORPORATING THE INCOME AND EXPENDITURE ACCOUNT)
 YEAR ENDED 31 MARCH 2024

	Note	Unrestricted Funds £	Restricted Funds £	Total Funds 2024 £	Total Funds 2023 £
INCOME AND ENDOWMENTS					
Donations and legacies	2	50,674	101,255	151,929	274,084
Other trading activities	3	305,830	–	305,830	249,154
Investment income	4	1,866	–	1,866	–
TOTAL INCOME		358,370	101,255	459,625	523,238
EXPENDITURE					
Expenditure on:					
Raising donations and legacies	5	(340,111)	–	(340,111)	(321,062)
Charitable activities	6	–	(125,064)	(125,064)	(194,856)
TOTAL EXPENDITURE		(340,111)	(125,064)	(465,175)	(515,918)
NET (EXPENDITURE) /INCOME		18,259	(23,809)	(5,550)	7,776
NET INCOME		18,259	(23,809)	(5,550)	7,776
Total funds brought forward		285,219	33,216	318,435	310,659
TOTAL FUNDS CARRIED FORWARD		303,478	9,407	312,885	318,435

The Statement of financial activities includes all gains and losses in the year.

BALANCE SHEET

31 MARCH 2024

	Note	2024 £	2023 £
FIXED ASSETS			
Tangible assets	12	27,330	23,179
CURRENT ASSETS			
Debtors	13	5,501	8,405
Cash at bank and in hand		306,439	292,828
		<u>311,940</u>	<u>301,233</u>
CREDITORS: Amounts falling due within one year	14	<u>(26,385)</u>	<u>(6,433)</u>
NET CURRENT ASSETS		285,555	294,800
TOTAL ASSETS LESS CURRENT LIABILITIES		<u>312,885</u>	<u>317,979</u>
NET ASSETS		<u>312,885</u>	<u>317,979</u>
FUNDS OF THE CHARITY			
Restricted income funds	15	9,407	33,216
Unrestricted income funds	16	303,478	284,763
TOTAL CHARITY FUNDS		<u>312,885</u>	<u>317,979</u>

For the year ended 31 March 2024 the company was entitled to exemption from audit under section 477 of the Companies Act 2006 relating to small companies.

Trustees' responsibilities:

- ☐ The members have not required the company to obtain an audit of its accounts for the year in question in accordance with section 476; and
- ☐ The trustees acknowledge their responsibilities for complying with the requirements of the Act with respect to accounting records and the preparation of accounts.

These accounts have been prepared in accordance with the provisions applicable to small companies subject to the small companies regime and in accordance with FRS102 SORP.

These financial statements were approved by the members of the committee and authorised for issue on the 7th December 2024 and are signed on their behalf by:



David Brook



Sergio Almas

Company Registration Number: 1883734

The notes on pages 18 to 24 form part of these financial statements.

NOTES TO THE FINANCIAL STATEMENTS
YEAR ENDED 31 MARCH 2024

1. ACCOUNTING POLICIES

Basis of accounting

These accounts have been prepared in accordance with the Statement of Recommended Practice: Accounting and Reporting by Charities preparing their accounts in accordance with the Financial Reporting Standard applicable in the UK and Republic of Ireland (FRS 102) issued on 16 July 2014.

Going Concern

It is the opinion of the Directors of the company that it is appropriate to prepare these accounts on the Going Concern basis

Incoming resources

Voluntary income is included in the statement of financial activities (sofa) when the charity is legally entitled to the income and the amount can be quantified with reasonable certainty.

Grant income is included when the related conditions to the grant have been met.

Donations are credited to the revenue account when received.

All other income is accounted for on a receivable basis

Fund accounting

Unrestricted general funds

The charity maintains a general unrestricted fund, which represents funds which are expendable at the discretion of the Trustees in furtherance of the objects of the charity. Such funds may be held to finance both working capital and capital investment.

Restricted funds

Restricted funds have been provided to the charity for particular purposes and it is the policy of the board of trustees to carefully monitor the application of those funds in accordance with the restrictions placed upon them.

Resources expended

All resources are accounted for on an accruals basis.

Costs of generating funds are those costs incurred in attracting voluntary and grant related income.

Expenditure on charitable activities include the direct costs of the activities including those costs previously shown as Governance costs.

Fixed assets

All fixed assets are initially recorded at cost.

NOTES TO THE FINANCIAL STATEMENTS
YEAR ENDED 31 MARCH 2024

2. DONATIONS AND LEGACIES

	Unrestricted Funds £	Restricted Funds £	Total Funds 2024 £
Donations			
Donation at farm	50,674	–	50,674
Grants receivable			
GAIA	–	10,500	10,500
Food Bank	–	57,755	57,755
LBH Specialist Grant	–	33,000	33,000
	<u>50,674</u>	<u>101,255</u>	<u>151,929</u>

	Unrestricted Funds £	Restricted Funds £	Total Funds 2023 £
Donations			
Donation at farm	71,618	–	71,618
Grants receivable			
GAIA	–	37,611	37,611
Food Bank	–	54,500	54,500
Grants and donations for School Expenditure	60,000	–	60,000
LBH Specialist Grant	30,000	–	30,000
HCF Get Loose	–	2,278	2,278
Fidelity Small Grant	–	2,300	2,300
	<u>161,618</u>	<u>112,466</u>	<u>274,084</u>

3. OTHER TRADING ACTIVITIES

	Unrestricted Funds £	Total Funds 2024 £	Unrestricted Funds £	Total Funds 2023 £
Sale of produce / other	17,434	17,434	17,163	17,163
Café	35,074	35,074	27,500	27,500
Room Hire	14,525	14,525	17,568	17,568
Licence fees from Workshops	97,047	97,047	97,441	97,441
Corporate Volunteering	75,558	75,558	26,110	26,110
Pottery	57,140	57,140	54,792	54,792
Other activities for generating funds	9,052	9,052	34,690	34,690
	<u>305,830</u>	<u>305,830</u>	<u>249,154</u>	<u>249,154</u>

NOTES TO THE FINANCIAL STATEMENTS
YEAR ENDED 31 MARCH 2024

4. INVESTMENT INCOME

	Unrestricted Funds	Total Funds 2024	Unrestricted Funds	Total Funds 2023
	£	£	£	£
Bank interest receivable	1,866	1,866	456	456

5. COSTS OF RAISING DONATIONS AND LEGACIES

	Unrestricted Funds	Total Funds 2024	Unrestricted Funds	Total Funds 2023
	£	£	£	£
Costs of generating income	336,505	336,505	321,062	321,062

6. COSTS OF CHARITABLE ACTIVITIES BY FUND TYPE

	Unrestricted Funds	Restricted Funds	Total Funds 2024
	£	£	£
LBH Specialist Grant	–	33,000	33,000
GAIA	–	20,613	20,613
Food Bank	–	71,451	71,451
	–	125,064	125,064

	Unrestricted Funds	Restricted Funds	Total Funds 2023
	£	£	£
School	97,162	–	97,162
Back to Work	–	15,777	15,777
GAIA	–	45,728	45,758
Food Bank	–	31,581	31,581
Fidelity Small Grant	–	2,300	2,300
	97,162	97,694	194,856

NOTES TO THE FINANCIAL STATEMENTS
YEAR ENDED 31 MARCH 2024

7. NET (OUTGOING)/INCOMING RESOURCES FOR THE YEAR

This is stated after charging:

	2024	2023
	£	£
Depreciation	<u>3,606</u>	<u>7,297</u>

8. FUND TRANSFERS

A net transfer of unrestricted core funds to restricted funds of £Nil (2023 - £nil) has been made, in order that restricted reserves, carried forward, are in accordance with the individual project reserves which were held at 31st. March 2024.

9. RESTRICTED FUNDS

Income and expenditure related to specific projects is shown as restricted funds. These cover the projects as set out in note 6 above.

10. STAFF COSTS AND EMOLUMENTS

Total Gross staff costs, excluding Furlough receipts, were as follows:

	2024	2023
	£	£
Wages and salaries	156,689	225,835
Social security costs	6,792	13,974
Other Pension costs	2,260	3,828
	<u>165,741</u>	<u>243,637</u>

Particulars of employees:

The average number of employees during the year, was as follows:

	2024	2023
	No.	No.
Number of staff	<u>6</u>	<u>11</u>

No employee received remuneration of more than £60,000 during the year (2023 - Nil).

11. TRUSTEES' REMUNERATION

No Trustee received either remuneration or reimbursement of expenditure during the year.

NOTES TO THE FINANCIAL STATEMENTS
YEAR ENDED 31 MARCH 2024

12. TANGIBLE FIXED ASSETS

	Equipment	Motor Vehicles	Total
	£	£	£
COST			
At 1 April 2023 and 31 March 2024	20,676	31,362	52,038
Additions	19,161	600	19,671
Disposals	–	(15,402)	(15,402)
At 31 March 2024	39,837	16,560	56,397
DEPRECIATION			
At 1 April 2023	18,567	10,296	28,863
Charge for the year	2,582	1,024	3,606
On disposals	–	(3,402)	(3,402)
At 31 March 2024	21,149	7,918	29,067
NET BOOK VALUE			
At 31 March 2024	18,688	8,642	27,330
At 31 March 2023	1,285	28,096	29,381

Leasehold property of £266,706 was written down to £0 over 10 years ago and it is therefore not considered of any value at this stage to continue to show this in the above schedule

13. DEBTORS

	2024	2023
	£	£
Trade debtors	5,481	8,405
Other debtors	20	–
	5,501	8,405

14. CREDITORS: Amounts falling due within one year

	2024	2023
	£	£
Trade creditors	24,985	4,166
Taxation, social security and pension	–	587
Other creditors	–	180
Accruals	1,400	1,500
	26,385	6,433

NOTES TO THE FINANCIAL STATEMENTS
YEAR ENDED 31 MARCH 2024

15. RESTRICTED INCOME FUNDS

	Balance at 1 Apr 2023	Incoming resources	Outgoing resources	Transfers	Balance at 31 Mar 2024
	£	£	£	£	£
GAIA	6,640	10,500	(20,613)	–	(3,473)
Food Bank	26,576	57,755	(71,451)	–	12,880
LBH Specialist Grant	–	33,000	(33,000)	–	–
	<u>33,216</u>	<u>101,255</u>	<u>(125,064)</u>	<u>–</u>	<u>9,407</u>

16. UNRESTRICTED INCOME FUNDS

	Balance at 1 Apr 2023	Incoming resources	Outgoing resources	Transfers	Balance at 31 Mar 2024
	£	£	£	£	£
General Funds	285,219	358,370	(340,111)	–	303,478
	<u>285,219</u>	<u>358,370</u>	<u>(340,111)</u>	<u>–</u>	<u>303,478</u>

NOTES TO THE FINANCIAL STATEMENTS
YEAR ENDED 31 MARCH 2024

17. ANALYSIS OF NET ASSETS BETWEEN FUNDS

	Tangible fixed assets	Net current assets	Total
	£	£	£
Restricted Income Funds	–	9,407	9,407
Unrestricted Income Funds	27,330	276,148	303,478
	<hr/>	<hr/>	<hr/>
Total Funds	27,330	285,555	312,885
	<hr/> <hr/>	<hr/> <hr/>	<hr/> <hr/>