



ANGLO-SWEDISH SOCIETY



Annual Report 2021



Ami-Louise Johnsson
(violin & viola)



CONTENTS

1	Reference & Administrative Information
3	HM King Carl XVI Gustaf of Sweden
4	HRH The Duke of Edinburgh KG KT
5	Scholars
21	Chairman's Report
23	Independent Examiner's Report
24	Statement of Financial Activities
25	Balance Sheet
26	Notes to the Accounts
34	Members
39	Events
50	Patrons of the Arts, Friends of the Arts & Corporate Members
51	From the Archives
53	Credits

Reference and Administrative Information

Charity name: Anglo-Swedish Society

Charity registration number: 289688

Address:

Sweden House
5 Upper Montagu St.
London W1H 2AG

Bankers:

Handelsbanken
1 Kingsway
London WC2B 6AN

CafCash Limited

Kings Hill
West Malling
Kent ME19 4TA

(a wholly owned subsidiary of
Charity Aid Foundation)

Patrons	HM King Carl XVI Gustaf of Sweden HRH The Duke of Edinburgh KG KT (died 9 April 2021) HE The Ambassador of Sweden
President	The Baroness Maddock (died 26 June 2021) The Lord Beith PC (elected 6 November 2021)
Vice Presidents	Sir John Ure KCMG, LVO Anthony Arfwedson PatrSstGM
Honorary Members	Count Bertil Bernadotte af Wisborg Countess Jill Bernadotte af Wisborg The Lord Beith PC

Council

Chairman	Alexander Malmaeus
Vice-Chairman	Michael Sayers QC
Hon. Treasurer	Erik Berggren
Hon. Secretary	Christian Bjärnram
Johan Aurén Elisabet Baldwin Christina Cadogan Maggie Dan-Lersten Robert Freeman Dr Cecilia Geijke	Professor David Goldsmith Professor Neil Kent Sara Lindgren (elected 6 November 2021) Andreas Nilsson Martina Westin Lu Zhou
Secretary	Lucy af Sandeberg
Hon. Solicitor	Christian Bjärnram
Independent Examiner	Ransford Agyei-Boamah





SCHOLARSHIPS & Awards 2020 - 2021



Jo Burmeister-Andersson

Jo is a glass artist who graduated from Konstfack in Stockholm in 2020. She will take up a residency at the Royal College of Art in London in spring 2022.



Isac Johansson

Isac graduated from Nyköpings Restaurangskola in 2020 and was selected to spend a month as an intern at the Michelin-starred Elystan Street Restaurant in London.



Ami-Louise Johnsson

Ami-Louise is a violin and viola player and was in her second year of BMus course at the Guildhall School of Music and Drama.



Emma Mounsey

Emma is a ceramics artist and graduated with a Master's Degree from the Royal College of Art in 2020. She took up a residency at Konstfack in Stockholm in spring 2021.





JO BURMEISTER- ANDERSSON

glass artist

Jo is a glass artist who graduated from Konstfack in Stockholm in 2021. She will take up a residency at the Royal College of Art in London in spring 2022.

At Konstfack, Jo's research has explored how glass and light can be used to create sensory

environments which promote wellbeing and positivity. The blown glass vessels which form the core of her practice speak of the fluidity and movement which are at the heart of glass blowing.



AMI-LOUISE JOHNSSON

violinist & violist

Ami-Louise is a violinist and viola player and was in her second year of BMus course at the Guildhall School of Music and Drama.

Ami-Louise was born in Stockholm 2001. She began her violin studies at the age of 5 with Nina and Oleg Balabine at Lilla Akademien music institution in Stockholm. In 2009 she solo debuted with the Swedish Radio Symphony Orchestra in Berwaldhallen. She regularly plays with O/modernt Chamber Orchestra, lead by London based violinist Hugo Ticcianti, with whom she also studied in Stockholm.

Ami-Louise began her violin studies at the Guildhall School of Music and Drama in 2019 together with Prof. D.Takeno and she began playing the viola in 2021.

Ami-Louise has played with highly esteemed musicians such as Alasdair Beatson, Staffan Scheja, Henrik Måwe, Priya

Mitchell etc. She participated in masterclasses with members of the Endellion quartet, The Gould Trio, Malin Broman, Simon Crawford-Phillips, Priya Mitchell, Vicky Powell, Natacha Kudritskaya etc.

She received multiple awards in Stockholm international music competition 2015 and Rovere d'Oro, Italy 2015. She won several chamber music competitions in Sweden and around the Baltic countries as well as scholarships from The Royal Swedish Academy of Music. She is the violist of the Fibonacci quartet, which won 1st prize at both the St James chamber music competition and Beethoven competition March 2021, where they also received the audience prize. Ami-Louise had the privilege of becoming one of the "Talent Unlimited" artists in the UK in July 2021. She plays a violin by Peter Westerlund, generously loaned to her by Welin Foundation, Stockholm.

During the Covid-19 pandemic, Ami-Louise continued her development by signing up to online masterclasses and meeting artists and musicians through internet platforms. She entered the Max and Peggy Viola competition at the Guildhall in November 2021 as the youngest contestant and managed to receive the award of playing at a recital at St. James's Church, Piccadilly. She received a junior award from the prestigious Hattori Foundation in London and was invited to festivals in Norway, Italy, Germany, the United Kingdom and Sweden.

A heart-warming award came from the culture department of Solna, Ami's home municipality in Stockholm. The Solna City Kraus Scholarship 'Krausstipendiet' is awarded to support and encourage young talents between the ages of 16-21 in classical music in memory of Joseph Martin Kraus's (1756-1792) musical life work.



The most beautiful and moving point about this year, was the determined mindset of not letting the world situation stop musicians from sharing the music we all love. Thank you, Elisabet, for your support and trust in me. Without you and the Anglo-Swedish Society, I wouldn't have been where I am now, and for that, I am truly thankful.

EMMA MOUNSEY

ceramic artist

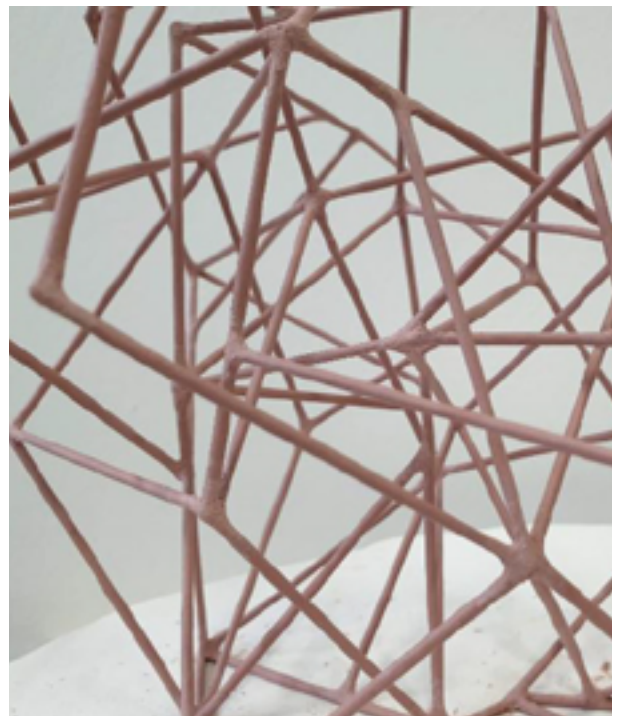
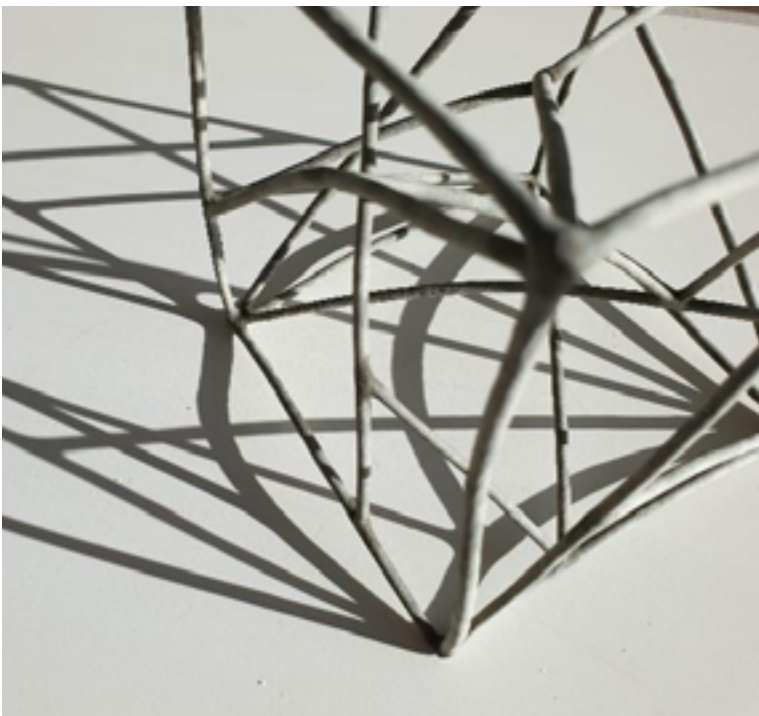
Emma is a ceramics artist who graduated with a Masters Degree from the Royal College of Art in 2020. She took up a residency at Konstfack in Stockholm in autumn 2021.

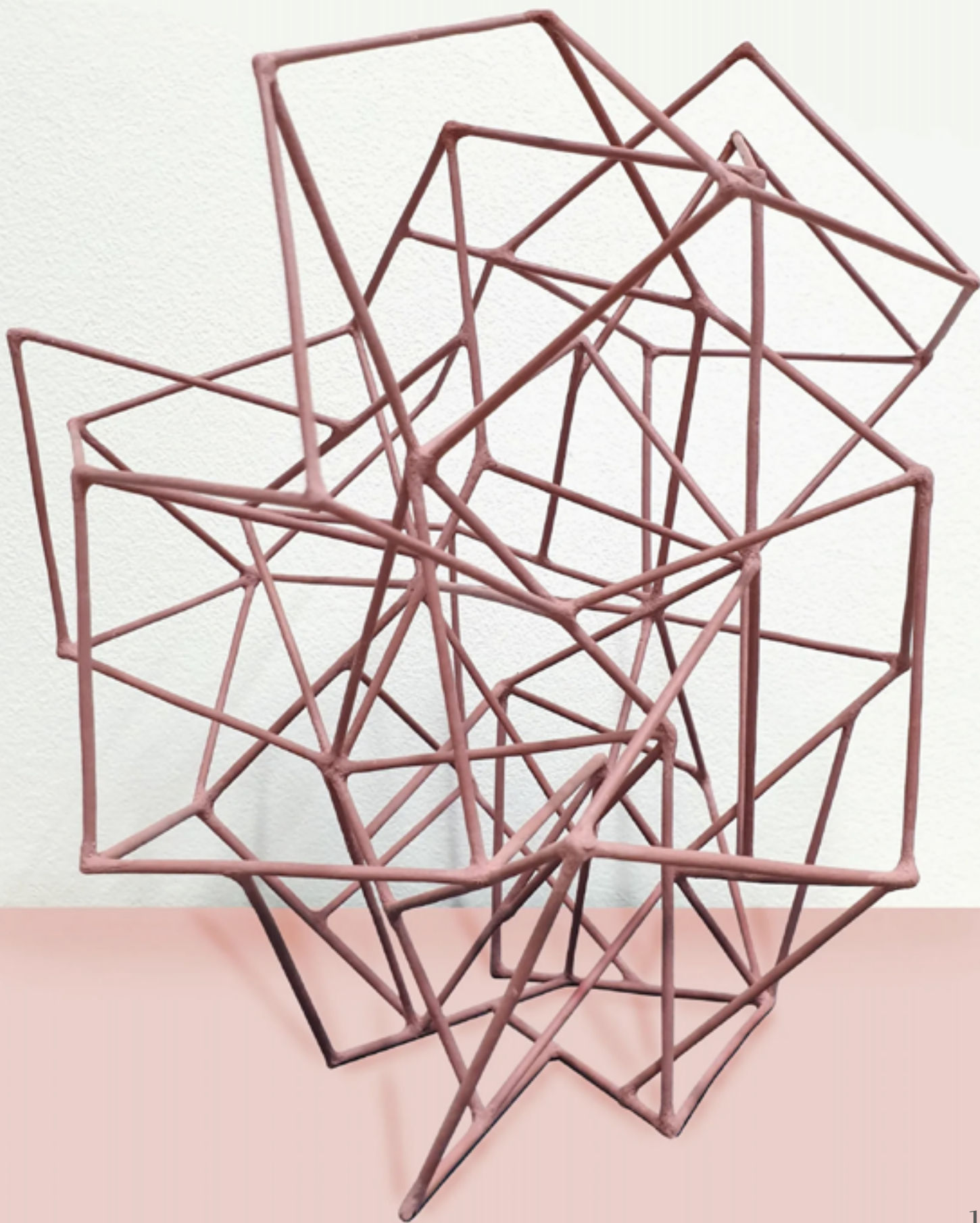
Emma's practise centres around the exploration of delicate handbuilt ceramic structures using hand rolled rods of paperclay to draw in space. The project has foundations in architectural structures, looking at supportive frameworks, the scaffolding that provides an armour to protect incomplete buildings, the bridges that span and connect divides whilst

drawing our attention to their existence, hiding and revealing simultaneously. It is also about anxiety, a point where chaos and order meet, where fragility and resilience collide. The work is rooted in boundaries and barriers, the confines she defines for herself.

During her residency at Konstfack, she worked towards further developing this body of work looking at introducing inclusions of new materials and new forms and partial physical constraints. She developed the idea of interacting objects, the tension between these fragile

structures and more solid objects surrounding or being surrounded and explored the idea of different objects influencing each other whether that be influencing the confines she places or physically impacting on the warp and flow of the piece, pushing the idea of the relationship between the enclosed and the exposed, the experience of space created by her sculptures.





SCHOLARSHIPS & Awards 2021 - 2022



Liz Jackson

Liz graduated from the Royal College of Art with a MA in ceramics. She will be supported as an exchange student at Konstfack in Stockholm for 3 months, starting January 2022.



Ami-Louise Johnson

Ami-Louise is a violin and viola player and is in her third year of BMus course at the Guildhall School of Music and Drama.



Elin Sundström

Elin is a 2021 MA graduate from Konstfack in Stockholm. She will be supported during her exchange to the Royal College of Art in Winter/Spring 2022.



London Nordic Choir

The Anglo-Swedish Society supported the choir's tours to York and Liverpool, featuring works by Nordic and international composers.



LIZ JACKSON

ceramics artist

Liz graduated from the Royal College of Art with a MA in ceramics. She will be supported as an exchange student at Konstfack in Stockholm for 3 months, starting January 2022.

Elizabeth works to commission as well as for exhibitions. She welcomes conversations with galleries and organisers and looks to partake in residencies globally.

Her work explores the way in which meaning can emerge through making and the ambiguity of composition. Using colour, glaze, intuitive and considered making she look to create work which evokes thought or feeling in the viewer and might offer a reflection on the human condition and modes of being.



At the centre of my practice I am a gatherer of things: words, abstract objects, everyday objects, colours, gestures, and questions. At Konstfack I will once again use gathering as a starting point for my work in clay, a way into intuitive making, an attempt at translating thoughts, feelings and experience that might not be easily translated through the use of language.

ELIN SUNDSTRÖM

glass & ceramics artist

Elin is a 2021 MA graduate from Konstfack in Stockholm. She will be supported during her exchange to the Royal College of Art in Winter/Spring 2022.

Elin is a materialbased artist living outside Uppsala, Sweden. Her practice is multi-disciplinary and performative using photography, ceramic sculpture, land art and installation, as well as writing. Her work is concerned with the relationship between human and nature, negotiating non-hierarchical ways of relating to the other-than-human. She holds a BFA from HDK, the University College of Design and Crafts, Gothenburg and a MFA from Konstfack, the university of Arts, Craft and Design, Stockholm, and

she has participated in various group shows in Sweden.

A deep care for nature permeates her processes and methods, and much of the work takes place outdoors. She often works site-specific in proximity to water, which holds an important place in her art through its physical and philosophical properties of spreading and thereby binding together species, bodies and landscapes.

elinsundstrom.net



I am intrigued to see what could be learned from working with a city as a landscape, and it would be quite the challenge to hear the places through the urban noise. I am prepared to be unprepared. Maybe there are some new materials, waiting to be put to work?



HRH THE DUKE OF EDINBURGH KG KT

Patron from 1954 to 2021

Prince Philip of Greece and Denmark, as he was styled until his engagement to Crown Princess Elizabeth of England, was born on Corfu on 10 June 1921. When he was two years old, his mother's sister, Lady Louise Mountbatten, married Crown Prince Gustaf Adolf of Sweden. This marked the start of Prince Philip's life-long relationship with Sweden.

In 1930, he was sent to England to divide his time between the homes of his maternal grandmother, Lady Victoria Mountbatten, and his maternal uncle, Lord George Mountbatten. George Mountbatten's sister-in-law, Lady Zia Wernher, was married to Sir Harold Wernher.

Sir Harold Wernher was Chairman of the Swedish manufacturer Electrolux and moved its headquarters to Luton in 1926. He was also President of the Anglo-Swedish Society from the late 1940s to the early 1960s.

Queen Elizabeth II's first inbound state visit was by the King and Queen of Sweden in June 1954. Ahead of the visit, the Duke of Edinburgh was created the 725th Knight of the Seraphim since the Order's institution in 1748.

This is the highest honour that can be conferred by Sweden's head of state.

In the same year, Prince Philip became Patron of the Anglo-Swedish Society, alongside the King of Sweden and Swedish Ambassador. As with all the organisations he was involved with, played an active part.

HRH The Duke of Edinburgh hosted and attended many Anglo-Swedish Society occasions. Members will recall the ease and good humour with which he spoke at the Friendship Ball at the Dorchester in 2004. The sixtieth anniversary of his Patronage was celebrated at Buckingham Palace on 4 November 2014 and was to be the last time he hosted or attended an Anglo-Swedish Society event. With his customary good humour and charm, he spoke with all his guests and made everyone feel welcome.

He died on 9 April 2021, two months before his hundredth birthday and was the longest-serving Royal consort in history. The funeral was held at St George's Chapel at Windsor Castle on 17 April.

Also on 17 April 2021, the bells of the Riddarholm Church in Stockholm rang a Seraphim Toll for His Royal Highness The Prince Philip, Duke of Edinburgh. This Toll is traditionally rung on the same day as the knight's funeral, and lasts for one hour. During the Seraphim Toll, the Duke's coat of arms was positioned in the chancel by Per Sandin, Vice Chancellor of the Royal Orders of Knighthood. They now hang in the church together with the arms of other deceased knights and members.

A service of thanksgiving for the Duke's life was held at Westminster Abbey on 29 March 2022. The 1,800-strong congregation included hundreds of representatives from the Duke's charities. These included the Anglo-Swedish Society's President, Lord Alan Beith, and Chairman, Alexander Malmaeus.

HRH THE DUKE OF EDINBURGH
60th Anniversary Celebration
Buckingham Palace, 4 November 2014



Achievements and Performance

Virtual talks continued to attract an audience from beyond the United Kingdom and allowed members of our sister societies abroad to attend.

Emma Mounsey took up a residency at Konstfack in Stockholm in September 2021.

The Anglo-Swedish Society's music scholar Ami-Louise Johnsson shared Second Prize at the prestigious Oskar Nedbal Viola Competition in Prague. The jury could not decide who would be given 1st prize so they decided for us to split the shares of both prizes, although Officially no one received the 1st. Ami-Louise also won the prize for the best interpretation of Oskar Nedbal Romantic Piece op.18. Congratulations are in order!

Translator Nichola Smalley (Anglo-Swedish Society Scholar 2007-08) and author Andrzej Tichý made it to the longlist for the International Booker Prize 2021 for the English translation of the novel *Wretchedness* ('Eländet'). To celebrate this, the Swedish Embassy in and the Swedish English Literary Translators' Association hosted a live streamed event on Thursday 15th April, featuring the duo in conversation. The talk was moderated by Dr Anja Tröger, Teaching Fellow in Scandinavian Studies at the University of Edinburgh and members of the Anglo-Swedish Society were invited to attend.

Christina Cadogan gave a talk on *Nordic Light In Swedish Painting*, Dr Isabelle Charmantier of the Linnean Society of London spoke on Carl Linnaeus; Professor David Goldsmith and Erik Orłowski on *Swedish Pioneers*, Neil Sandberg on Raising SS Egypt; Josefin Roos on her book *Black Swallow* ('Svartsvala') and earlier works; Professor Claire Thomson on *Secret Stockholm*; Professor Neil Price of Uppsala University on *Dealing With The Dead In The Viking Age*, Eivor Martinus on *In the Shadow of a Saint*; December 14: Dr Henrik Malm on *Computational Design And Architecture*. The majority of talks were recorded and are available online.

The Anglo-Swedish Society was pleased to welcome the Linnean Society of London as its newest Corporate Member. The two societies have had an association for many decades and it is hoped that this marks an even closer connection in the future.

Professor Wilhelm Engström, editor and co-author of the recently published book "*Frank Heller och England*" gave an online talk on the author's adventurous life and relationship with England. We were most grateful to our sister society, the Anglo-Swedish Society in Gothenburg, for arranging this joint event.

It is with great sadness that we note the death of HRH The Duke of Edinburgh KG KT. He remained our Patron from 1954 until his death, some 67 years. The 60th anniversary of this Patronage was celebrated at Buckingham Palace on 4 November 2014. His Royal Highness became Patron when Major-General Sir Harold Augustus Wernher was President of the Society and remained our active supporter though the following decades.

Sir Roger Gifford (born 1955) died in May 2022. When he became Lord Mayor in 2012, he invited the Anglo-Swedish Society to enter a float titled "*The Kingdom of Sweden*" in the Lord Mayor's Show seen by 500,000 people in the City of London and 1.5 million on the BBC. He hosted the Society's white tie Punsch Ball at Mansion House in 2013. Roger was made a Commander of the Order of the Polar Star in 2007 for Swedish culture and Knight Bachelor for services to international business, culture and the City of London.

The former President of our sister society, the Swedish-British Society in Stockholm, Dr Håkan Mogren, died aged 77. He succeeded Dr Peter Wallenberg in 2008 as President of the Swedish British Society, holding the position until 2016.

Financial Review

The Trustees have forecast the level of free reserves (that is, both funds not tied up in fixed assets and designated and restricted funds) the Charity will require in order to sustain its operations and make appropriate adjustments should there be a material reduction in the Charity's income. The Trustees consider that the most appropriate level of free reserves is a sum equivalent to twelve months of the Charity's running costs, which is calculated as total bank and payment charges, secretarial and website domain costs together with printing and stationary for the year 2021: £4,381 (2020: £3,752).

At 31 December 2021 the Society had unrestricted reserves of £89,053 (2020: £81,131). Of this, £26,736 (2020: £23,581) is held in investments to provide income, leaving free reserves of £62,317 (2020: £57,550). In addition, restricted reserves of £32,890 (2020: £31,673) are held, taking total reserves to £121,944 (2020: £112,804).

The year-on-year stable level of reserves provide confidence that the Society will continue to be able to cover operational costs and award scholarships as promised.

Responsibilities of the Council

The members of the Council ("The Trustees") are required to prepare accounts for each financial year which give a true and fair view of the state of affairs and of the surplus or deficit of the Society for that period. In preparing these accounts the Trustees are required to:

- select suitable accounting policies and then apply them consistently;
- make judgments and estimates that are reasonable and prudent;
- state whether Applicable Accounting Standards have been followed, subject to any material departures disclosed and explained in the accounts;
- prepare the accounts on the going concern basis unless it is inappropriate to presume that the Society will continue in business.

The Trustees are responsible for keeping proper accounting records which disclose with reasonable accuracy at any time the financial position of the Society and which enable them both to ascertain its financial position and ensure that the accounts comply with the Charities Act 1993. They are also responsible for safeguarding the assets of the Society and hence for taking reasonable steps for the prevention and detection of fraud and other irregularities. In particular they are responsible for investing charitable funds wisely to maximise the return in a manner conducive to its charitable needs and demands.

By order of the Trustees

Alexander Malmaeus
Chairman of the Council
22 April 2022

Independent Examiner's Report to the Trustees and Council of Anglo-Swedish Society

I report to the Trustees on my examination of the accounts of Anglo-Swedish Society (the charity), charity number 289688, for the year ended 31 December 2021, which are set out on pages 14 to 23.

Respective Responsibilities of Trustees and Examiner

The charity's Trustees are responsible for the preparation of the accounts in accordance with the Charities Act 2011 ("the Act").

The charity's trustees consider that an audit is not required for this year under section 144 of the Act and that an independent examination is needed.

It is my responsibility to:

- examine the accounts under section 145 of the Charities Act,
- to follow the applicable Directions given by the Charity Commission (under section 145(5)(b) of the Act, and
- to state whether particular matters have come to my attention

Basis of Independent Examiner's Report

My examination was carried out in accordance with general Directions given by the Charity Commission. An examination includes a review of the accounting records kept by the charity and a comparison of the accounts presented with those records. It also includes consideration of any unusual items or disclosures in the accounts, and seeking explanations from the trustees concerning any such matters. The procedures undertaken do not provide all the evidence that would be required in an audit, and consequently no opinion is given as to whether the accounts present a 'true and fair' view and the report is limited to those matters set out in the statement below.

Independent Examiner's Statement

In connection with my examination, no material matters have come to my attention which gives me cause to believe that in, any material respect:

- the accounting records were not kept in accordance with section 130 of the Charities Act; or
- the accounts did not accord with the accounting records; or
- the accounts did not comply with the applicable requirements concerning the form and content of accounts set out in the Charities (Accounts and Reports) Regulations 2008 other than any requirement that the accounts give a 'true and fair' view which is not a matter considered as part of an independent examination.

I have no concerns and have come across no other matters in connection with the examination to which attention should be drawn in this report in order to enable a proper understanding of the accounts to be reached.

Ransford Agyei-Boamah FCCA ACA | Director | Harmer Slater Limited
22 April 2022

STATEMENT OF FINANCIAL ACTIVITIES FOR THE YEAR ENDED 31 DECEMBER 2021

Incoming resources	Notes	Unrestricted funds	Restricted funds	Total 2021	Unrestricted Funds 2020	Restricted Funds 2020	Total 2020
Incoming resources from generating funds:	2	£	£	£	£	£	£
Voluntary income	2a	7,290	17,861	25,151	9,460	15,561	25,021
Activities for generating funds	2b	30	-	30	1,490	-	1,490
Investment income	2c	1,273	-	1,273	1,197	-	1,197
Total incoming resources		8,593	17,861	26,454	12,147	15,561	27,708
Resources expended							
Cost of generating funds:							
Cost of generating funds & voluntary income	3	-	-	-	280	-	280
Charitable activities	4	993	16,643	17,636	1,188	10,085	11,273
Governance costs	5	2,833	-	2,833	3,569	-	3,569
Total resources expended		3,826	16,643	20,469	5,037	10,085	15,122
and losses		4,767	1,218	5,985	7,110	5,476	12,586
Gains / (Losses) on investment assets	6	3,155	-	3,155	(4,950)	-	(4,950)
Net movement in funds		7,922	1,218	9,140	2,160	5,476	7,636
Fund balances brought forward		81,131	31,673	112,804	78,971	26,197	105,168
Fund balances carried forward		89,053	32,891	121,944	81,131	31,673	112,804

The notes on pages 16 to 23 form part of these accounts

BALANCE SHEET FOR THE YEAR ENDED 31 DECEMBER 2021

		2021		2020	
	Notes	£	£	£	£
Fixed Assets					
Investments	6		26,736		23,581
Current Assets					
Balance at Bank and accounts		95,208		89,703	
		<u>95,208</u>		<u>89,703</u>	
Liabilities: amounts falling due within one year					
	7	<u>-</u>		<u>480</u>	
Net Current Assets			95,208		89,223
Net Assets	9		<u>121,944</u>		<u>112,804</u>
Funds:					
Unrestricted	9		89,053		81,131
Restricted: Scholarships & Awards Fund	9		32,890		31,673
			<u>121,943</u>		<u>112,804</u>

Chairman: Alexander Malmaeus

Hon. Treasurer: Erik P.O. Berggren

22 April 2022

The notes on pages 16 to 23 form part of these accounts

NOTES TO THE ACCOUNTS FOR THE YEAR ENDED 31 DECEMBER 2021

1. Accounting Policies

The principal accounting policies are summarised below. The accounting policies have been applied consistently throughout the year and in the preceding year.

a. Basis of accounting

The financial statements have been prepared under the historical cost convention in accordance with Accounting and Reporting by Charities: Statement of Recommended Practice applicable to charities preparing their accounts in accordance with the Financial Reporting Standard applicable in the UK and Republic of Ireland (FRS 102), the Charities Act 2011 and applicable regulations.

Anglo-Swedish Society meets the definition of a public benefit entity under FRS 102.

The financial statements are drawn up on the going concern basis which assumes the Charity will continue in operational existence for the foreseeable future. The Trustees consider the current and forecast cash resources to be sufficient to cover the working capital requirements of the charity for at least 12 months.

The Trustees are of an opinion that at the time of approval of these financial statements there were no indications suggesting that the charity would not be able to continue as a going concern in the foreseeable future.

b. Fund accounting

The funds held by the charity fall into the following categories:

Unrestricted funds are available for use at the discretion of the trustees in furtherance of the general objectives of the charity.

Restricted funds can only be used for particular restricted purposes within the objectives of the charity. Restrictions arise when specified by a donor or when funds are raised for particular restricted purposes.

The Trustees consider that the most appropriate level of free reserves is a sum equivalent to twelve months of the Charity's running costs

c. Incoming resources

All incoming resources are included in the statement of financial activities when the charity is entitled to the income and the amount can be quantified with reasonable accuracy. The following specific policies are applied to particular categories of income:

Voluntary income is received by way of grants, donations, subscriptions, sponsorship and gifts and is included in full in the Statement of Financial Activities ("SoFA") when received. Grants, where entitlement is not conditional on the delivery of a specific performance by the charity, are recognised when the charity becomes unconditionally entitled to the grant.

Income from investments is included in the SoFA on the accruals basis. Tax recoverable on such income is recognised in the same accounting year. Incoming resources from charitable activities are accounted for in the period in which the performance takes place.

Donated services and facilities are included at the value to the charity where this can be quantified. The value of services provided by volunteers has not been included in these accounts.

NOTES TO THE ACCOUNTS
FOR THE YEAR ENDED 31 DECEMBER 2021

d. Subscriptions

Subscriptions for individuals are included in the income and expenditure account on the accruals basis.

Corporate subscriptions are included in the accounts on an accruals basis.

e. Resources expended

Expenditure is recognised on an accruals basis as a liability is incurred. Expenditure includes any VAT and is reported as part of the expenditure to which it relates.

Costs of generating funds comprise the costs associated with attracting voluntary income.

Charitable expenditure comprises those costs incurred by the charity in the delivery of its activities and services for its beneficiaries. It includes both costs that can be allocated directly to such activities and those costs of an indirect nature necessary to support them.

Governance costs include those costs associated with meeting the constitutional and statutory requirements of the charity and include any independent examination fees and costs linked to the strategic management of the charity.

All costs are allocated between the expenditure categories of the SoFA on a basis designed to reflect the use of the resource.

f. Investments

Investments are stated at market value. Gains or losses on revaluation are included in the SoFA.

NOTES TO THE ACCOUNTS FOR THE YEAR ENDED 31 DECEMBER 2021

2 Incoming Resources	Unrestricted funds 2021 £	Restricted funds 2021 £	Total 2021 £	Unrestricted Funds 2020 £	Restricted funds 2020 £	Total 2020 £
(a) Voluntary income						
Subscriptions						
Individuals	5,890	-	5,890	7,060	-	7,060
Corporate Members	1,400	-	1,400	2,400	-	2,400
Other Members	-	11,971	11,971	-	10,921	10,921
Friends of the Arts	-	2,890	2,890	-	1,640	1,640
Patrons of the Arts	-	3,000	3,000	-	3,000	3,000
	7,290	17,861	25,151	9,460	15,561	25,021
(b) Activities for generating funds						
Function income	30	-	30	1,490	-	1,490
	30	-	30	1,490	-	1,490
(c) Investment Income						
Dividends and interest	1,273	-	1,273	1,197	-	1,197
	1,273	-	1,273	1,197	-	1,197
Total incoming resources	8,593	17,861	26,454	12,147	15,561	27,708

NOTES TO THE ACCOUNTS FOR THE YEAR ENDED 31 DECEMBER 2021

(d) Membership

At the end of 2021, there were a total of 244 members (2020: 256). Of these, 3 were corporate members (2020: 5), 52 were family members (2020: 62), 80 were life members (2020: 77), 63 were individual members (2020: 70), 5 were 25-and-under members (2020: 4), 38 were 65-and-over members (2020: 35) and 3 were overseas members (2020: 3). There were 3 Patrons of the Arts (2020: 4) and 10 Friends of the Arts (2020: 14).

Life membership was closed to new members from 1995, but was re-introduced at the 2018 AGM, at 15 times annual individual membership, which means £600 with a 50% discount for individuals aged 65 and over.

The annual subscription is payable in advance on January 1st each year. Where appropriate, tax is reclaimed under Gift Aid on subscriptions.

Subscriptions are currently as follows:

- (i) for persons that are Members, £40 per year (2008: £20)
- (ii) for Family Membership, £50 per year (2008: £25)
- (iii) for Firms or Corporations which are Members, £200 per year (2008: £100)

An overseas subscription rate was introduced at the 2013 AGM:

- (iv) for persons that are Members and resident overseas, £20 per year (2013: £40)

A 25-and-under subscription rate was introduced at the 2018 AGM:

- (vi) for persons that are Members and 25 years or younger, £10 per year (2017: £40)

A 65-and-over subscription rate was introduced at the 2018 AGM:

- (v) for persons that are Members and 65 years or older, £20 per year (2017: £40)

10 members payed pre-2009 membership fees (2018: 16) and the Society is pursuing members to review their standing orders to ensure they are paying the correct amount.

Persons joining after 1 October need pay one-half of the appropriate subscription for that year.

NOTES TO THE ACCOUNTS

FOR THE YEAR ENDED 31 DECEMBER 2021

3 Costs of generating voluntary income	Unrestricted Funds 2021 £	Restricted Funds 2021 £	Total 2021 £	Unrestricted Funds 2020 £	Restricted Funds 2020 £	Total 2020 £
Function expenses	-	-	-	280	-	280
	-	-	-	280	-	280
4 Charitable activities						
Grants and awards	-	16,643	16,643	-	10,085	10,085
Printing, stationary & postage	360	-	360	407	-	407
Website domain costs	-	-	-	413	-	413
Website upgrade costs	633	-	633	368	-	368
	993	16,643	17,636	1,188	10,085	11,273
5 Governance costs						
Secretary's salary and graphical work	2,378	-	2,378	2,350	-	2,350
Bank and payment charges	455	-	455	1,219	-	1,219
	2,833	-	2,833	3,569	-	3,569
Total resources expended	3,826	16,643	20,469	5,037	10,085	15,122

NOTES TO THE ACCOUNTS
FOR THE YEAR ENDED 31 DECEMBER 2021

6 Investments		2021	2020
		£	£
M&G The Equities Investment Fund for Charities			
Cost	£10,000		
Income Units	£1,718		
Market Value at 1 January		23,581	28,531
Gain / (Loss) on revaluation at 31 December		3,155	(4,950)
Market value at 31 December		26,736	23,581
7 Liabilities: amounts falling due within one year		2021	2020
		£	£
Payments received in advance (for next year)		-	480
		-	480

NOTES TO THE ACCOUNTS FOR THE YEAR ENDED 31 DECEMBER 2021

8 Funds

	As at 01.01.21 £	Incoming resources £	Resources expended £	Unrealised invest. gain £	As at 31.12.21 £
Unrestricted Funds	81,131	8,593	(3,826)	3,155	89,053
Anglo-Swedish Arts Foundation Fund	-	-	-	-	-
Scholarships & Awards Fund	31,673	17,861	(16,643)	-	32,891
	112,804	26,454	(20,469)	3,155	121,944
	As at 01.01.20 £	Incoming resources £	Resources expended £	Unrealised invest. loss £	As at 31.12.20 £
Unrestricted Funds	78,971	12,147	(5,037)	(4,950)	81,131
Scholarships & Awards Fund	26,197	15,561	(10,085)	-	31,673
	105,168	27,708	(15,122)	(4,950)	112,804

The Scholarships & Awards Fund was established in 2002 to provide scholarships and academic support together with grants for similar purposes.

NOTES TO THE ACCOUNTS FOR THE YEAR ENDED 31 DECEMBER 2021

8 Funds - continued

Grants and scholarships were paid out as follows during the year:		£
January 2021	The Swedish Church donation	60
January 2021	Coscan donation	33
September 2021	'Royal College of Art 20/21 (Emma Mounsey)	4,500
October 2021	Eivor Martinus for the production of the book " <i>I skuggan av ett Helgon</i> "	1,250
October 2021	London Nordic Choir	1,300
October 2021	Guildhall School of Music 21/22	5,000
December 2020	Konstfack 21/22 (Elizabeth Jackson)	4,500
		<u>16,643</u>

9 Analysis of net assets by fund

	Unrestricted Funds £	Restricted Funds £	Total 2021 £
Fixed Assets	26,736	-	26,736
Current Assets	62,317	32,891	95,208
	<u>89,053</u>	<u>32,891</u>	<u>121,944</u>

	Unrestricted Funds £	Restricted Funds £	Total 2020 £
Fixed Assets	28,581	-	23,581
Current Assets	58,030	31,673	89,703
Current Liabilities	(480)	-	(480)
	<u>81,131</u>	<u>31,673</u>	<u>112,804</u>

10 Trustees' remuneration

No members of the council nor any person connected with them has received or is due to receive any reimbursement of expenses or any remuneration for the year or all prior years.

There were no fees or expenses paid for the year or all prior years with respect to the independent examination of the accounts..

11 Commitments

The Society has made no commitments for payments in 2022 as at 31st December 2021 not included in these accounts.

MEMBERS

FOR THE YEAR ENDED 31 DECEMBER 2021

Nina Åberg	Christian & Isabelle Bjärnram
Kerstin Adams *	Caroline Boggis-Rolfe
Rikard af Ekenstam	Sir Roger & Lady Bone
Mr & Mrs Jason & Lucy af Sandeberg	Sir Peter & Lady Bonfield
Peter Ahlås	Mr & Mrs M C Bonsor *
Eva Ahrell *	K M Broad *
Ulric G Almqvist	Louise Brooker *
Erik Andre	Åsa Brown *
Mr & Mrs George Andersson	Kerstin S Bruno
Jan Ankarcrona *	Dr David Buckley *
Mr & Mrs Anthony & Kate Arfwedson	Professor Tom Burns & Mrs *
Dr Gunilla Assmundson	Eva Burns-Lundgren *
Pehr Johan Aurén	Kristina E Byng *
Georgios Bakoulis	Mr & Mrs Charles & Christina Cadogan
Elisabet Baldwin	Sven Calvén *
Baron & Baroness Peder & Christine Banér	Camilla Carlbom Flinn
Allison JB Barclay-Michaels	Dr Terry Carlbom *
Jeremy Barlow	Dr Isabelle Charmantier *
Peter Barnes	Christina Chamberlain *
Johan Beckman *	Roger O Cohen *
B R Bendeus *	Professor Vincent Peter Collins
Claes Bennet	Dr & the Rev'd Canon Judith Richardson-Bunbury & The Rev'd Canon Jonathan Collis
Peter Berg *	Eva Crispin *
Erik Berggren	Agneta Crosfield
Mr & Mrs Johan & Anna Berglund	Mr & Mrs Stephen W Curran
Count & Countess Bertil & Jill Bernadotte *	Kerstin Niblaeus & Ulf Dahlsten
Paul Binding	Dr Sarah Death

MEMBERS (continued)
FOR THE YEAR ENDED 31 DECEMBER 2021

W F de Coverly Veale *	Professor David Goldsmith
Maria Luiza de Freitas	Nina Good
Mish Dev *	Dr Christina Goodacre *
Dr & Dr Lucy & Christopher Douglas	Dr Elizabeth Goodwin-Andersson
Mr Luka Drulovic	Eva Gothall
Anna-Lena Edmonds	Brita Gould *
Mr & Mrs William R B Edwards	Aubrey-James Greenshields
Wictor Ehrendal	Mr & Mrs Mikael & Marina Grut
Ulla Elias *	Annika E Hall
Dr Peter Ellis	Dr Anders Hallengren *
Staffan Elmgren	Ulla Halliway *
Eva Elrin *	Jan Haraldson
Ingela Evans	Dr Michael Hardingham *
K Eyles *	Cecilia & Mark Haszlakiewicz
Gunilla Falk *	Christian C Henriksson
Mr & Mrs Mark & Alexia Florman	David Stewart & Elisabeth Hogfors-Stewart
Timothy J Forster	Charlotte Holdsworth-Hunt *
Inger Freeman *	Alan J Hovell
Mr & Mrs Robert J & Elizabeth Freeman	Mr & Mrs Nicholas & Candy Iliff
Abbot Redwood Fryxell *	Kamran Iqbal
Margareta Gadd	John Islander & Linda Nordlund
Mr & Mrs Kenneth & Lillemor Gardener	Benjamin Jaglom
Björn Gävert *	Nina Jahanbin
Anders Rydell & Cecilia Gejke	Anders Simon Gunnar Jay
Nicholas C Gibbon *	Henrik Johnsson
Sir Roger Gifford	Nicholas G Jones
Dr Jenny Gimpel	Rhidian Jones *

MEMBERS (continued)
FOR THE YEAR ENDED 31 DECEMBER 2021

Oscar Knut Franz Jonson	Christina H D L Mathieu
Christian & Oksana Kåberg	Barbro McAusland *
Mr & Mrs Ted Kalborg	Aidan McGee
Kristoffer Kenttä	Mr & Mrs Nina & Peter Möller
Thomas H F Kidman	E K Munding *
Jacob Kinde *	Raluca Nastase
Kevin King	Derek William Netts
Henric & Lena Kjellgren	Andreas Nilsson
Mark Klos	Sophie Nilsson
Astrid Lagerberg	Gunilla Nordquist-Turner *
Anne Lamming	Carl R J Norström
Mrs & Mr Maria Borelius-Larson & Greger Larson	Jenny Nunn
Anna, Andreas, Camilla, Julius Lehmann	Mr & Mrs Magnus & Melanie Nylén
Joj Eva Lind	Robert Ogden
Sara Lindgren	Geoffrey B Orr *
Michael & Maud Logan	Bey Marwan Hani Osseiran
Allan Luskow *	Ulla Pålson-Möller
The Rt Hon Lord Beith *	Baron & BaronessMarkel & Åsa Konstantia Palmstierna
Mr & Mrs Carl & Annica Malmaeus *	DrShirin Parsno
Alexander Malmaeus *	Christine I Peel *
Jacqueline Appel Malmaeus	Erik Penser *
Mr & Mrs Björn & Kristina Malmström *	Jan W G Penser
Lady Karin Mander *	David Percival
Anders Christian Martensson	Lennart Perlhagen
Nils Mårtensson	Ingrid Philipps
Mr & Mrs Patrick & Maria Mårtensson	Celia J Pilkington
Alexander Hoare & Claudia Martin	Lena Portoff Saläng

MEMBERS (continued)
FOR THE YEAR ENDED 31 DECEMBER 2021

David R W Potter *	Peter Schofield *
John W Prior *	Mr & Mrs Laurent & Åsa Schönbach
Katherine Råge	Christina, Countess of Shaftesbury
Howard Raingold	Richard John Shelton
Helen Rennie-Smith	Stephen Magnus Sheppard *
Karin B Richards *	Lotta Slingsby *
Svea Riches *	Sylvia G H Smith *
Mr & Mrs Torsten B Ringdahl *	Mr & Mrs Carol & Staffan Söderlind
Dr Eva Robards	Oliver Spencer
Hon Maurice Robson MA FCA *	Arabella St John Parker
Maria Romano	Dr & Mrs Michael & Annette St John Parker
Ebba Roos	Baron Jan Staël von Holstein *
Mrs & Mr Helen & Göran Roos	Barbro Stenfot *
Mr & Mrs Sten & Jill Rosenlund *	Nicole Stjernswärd
Baron Henrik Rosenørn-Lehn	Ulrich Stoof
Gunilla Rudder *	Gunilla Sutton *
Eva-Lena M Ruhnbro	Lotta Sutton
James G Ryeland *	Steve Sutton
Charlotte Salford	Tina Tamman
Professor & Mrs Ifor & Vanessa Samuel	Zuming Tang
Gunvor Sandblad *	Gunilla C Taylor *
Maj Sanders *	Mr & Mrs Jeremy H Taylor *
Mr & Mrs Bryan & Sirkka Sanderson *	Cllr Cem Kemahli & Elizaneth Tegnér
Mr & Mrs Peter & Donna Sanderson	Joshua Tellvik
Björn Savén	Carin E Terry *
Mr & Mrs Michael & Moussie Sayers	Anna Tham
Mattias Scheibel-Larsson	Dr Dywayne Thomas

Claire Thomsen

Maria Tibblin

Charles Tolkein-Gillett

Mr & Mrs Jeffrey & Gunilla Tuite

Gulvie Tye *

Sir John Ure KCMG LVO *

Annika Vallgren

Vips Vallis *

Mrs & Mr Judith Atkins & James Vaux

Mattias Vendelmans

Claudio Magnesi & Gerard Versteegh *

Giles Ward

Torun Watkins

John Weatherall

Saga Wedin

Martina Westin

Peter Westman

Mr & Mrs John T White *

Staffan Widenfelt *

Mr & Ms Ivo Wiesendanger & Elife Hanhart

Camilla Williams *

Joe, Rose and May Payne & Kate Wilson

Jennifer Winberg

Claes Zangenberg

Lu Zhou

* Life Members

NORDIC LIGHT

How Swedish Art achieved its own identity in the late Nineteenth and early Twentieth Century

12 January 2021

Christina Cadogan, Art Advisor and Director of Cadogan Fine Arts, spoke about how artists in Sweden forged a Nordic identity and celebrated their culture through painting by turning to history, folklore, literature and the unique Scandinavian landscape and light. Artists included Carl Larsson, Anders Zorn and the fairytale painter and illustrator John Bauer. Christina Cadogan is an art consultant and fine art dealer

specialising in Nordic art. She previously worked for Bonhams auctioneers in London specialising in Nordic art. Christina holds a Master's degree in the History of Art from the University of Cambridge and has been a member of the Council of the Anglo-Swedish Society since 2009.

An edited version of the talk, including the Q&A session, has been published on our YouTube Channel.



Christina Cadogan





CARL LINNÆUS

3 February 2021

Dr Isabelle Charmantier of the Linnean Society of London gave the Anglo-Swedish Society a virtual tour of the Linnean Society and a talk about Carl Linnaeus. She was supported by Dr Will Beharrell.

An edited version of the talk, including the Q&A session, has been published on our YouTube Channel.



Dr Isabelle Charmantier



SWEDISH PIONEERS

24 March 2021

A talk by Professor David Goldsmith and Erik Orłowski exploring how the Swedish emigration crisis of the late 19th and early 20th Centuries spawned the birth of Swedish Social Democracy.

David described the emigration, its causes and consequences. Eric explained the impacts on Sweden in the first part of the 20th Century, with special focus on the first of the great Swedish “Mount Rushmore (Rushmoreberg)” Statsministers, Karl Hjalmar Branting, and the first glimpse of Social Democracy in Sweden.

An edited version of the talk, including the Q&A session, has been published on our YouTube Channel.



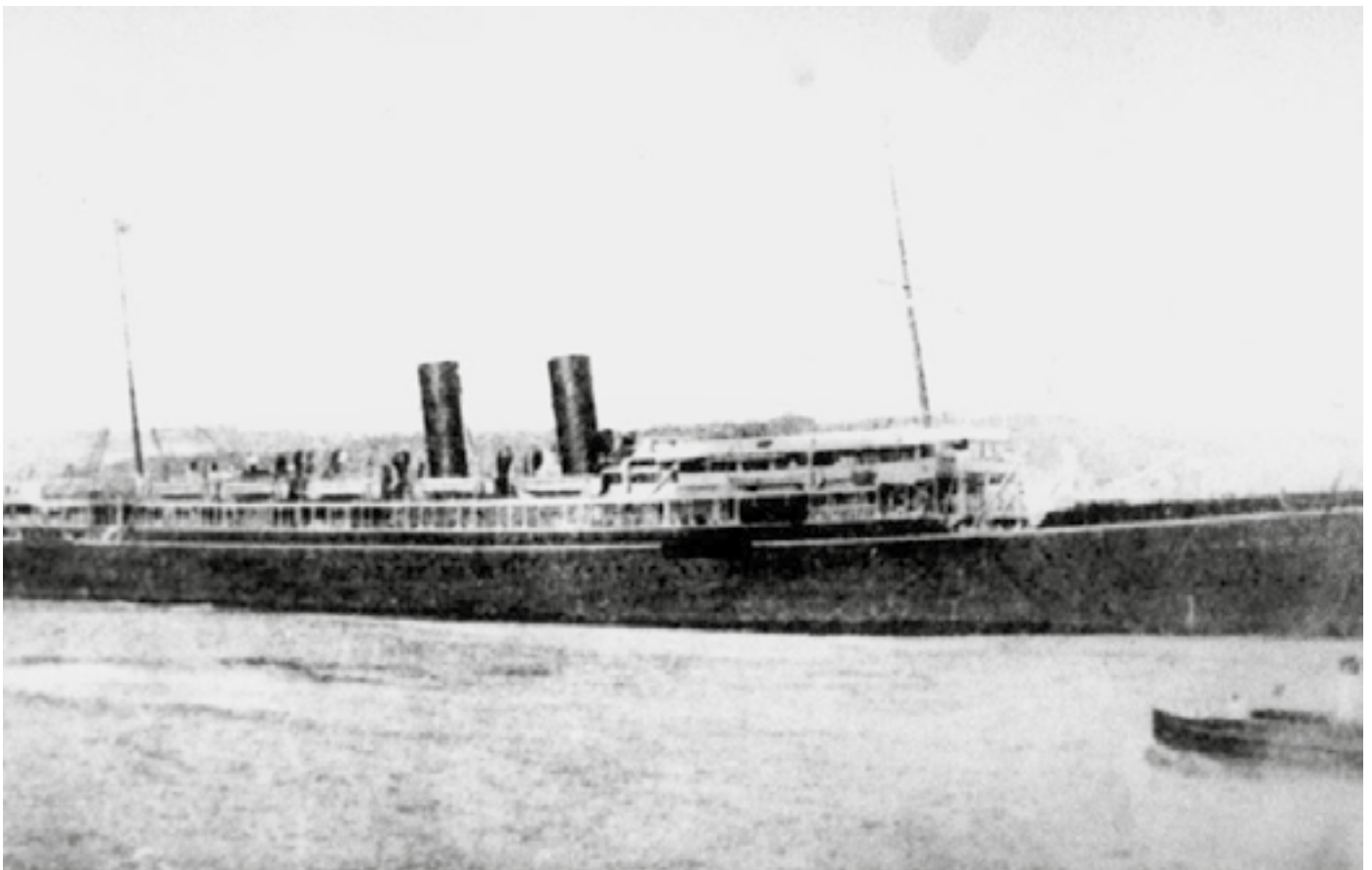
Professor David Goldsmith (left)
& Erik Orłowski (right)

RAISING SS EGYPT

7 April 2021

The P&O Liner SS Egypt sank off Brest in 1922. Amongst its cargo was £1million in gold. Neil Sandberg described the salvage of the cargo, which was at a depth of 65 fathoms (400ft). The deepest known salvage until then was at 25 fathoms (150ft), so very few believed that recovery was possible ... apart from a Swedish engineer called Peter Sandberg, Neil's Great Uncle.

An edited version of the talk, including the Q&A session, has been published on our YouTube Channel.



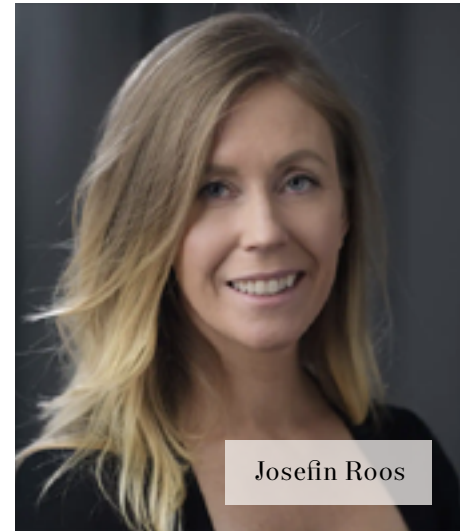
JOSEFIN ROOS

7 April 2021

Author Josefin Roos gave a fascinating talk about her latest critically acclaimed book *Black Swallow* ('Svartsvala') and about her earlier books. In *Black Swallow*, Lucía recovers consciousness after a stroke. She has no short-term memory and has to re-learn everything from scratch. Her doctor tells her that she is liable to have another stroke any time and that a pregnancy would be particularly dangerous, but she meets someone and has a child by him. Years later she falls in love again,

but she is not sure if her new love is someone that she knew previously and with whom she has she already had a relationship. *Black Swallow* is a novel about love, about oblivion and about living and loving in the shadow of death. We were grateful to Council member Robert Freeman for arranging and hosting the online event.

An edited version of the talk, including the Q&A session, has been published on our YouTube Channel.



Josefin Roos



SECRET STOCKHOLM

14 September 2021



Dr Claire Thomson



Doctor Claire Thomson gave a talk to the Society about the use of short film by the Swedish Government. Her talk, entitled *Screening Mid-Century Sweden*, focused on the use of short information films by the Government of Sweden following the end of World War II.

In the wake of WWII, governments, businesses, and international organisations made use of short films to instruct and persuade their populations about matters ranging from public health to cultural heritage. Short films were also made for

distribution abroad as a tool of tourism, nation branding and cultural diplomacy. Sweden was no exception. This talk introduced a range of Swedish short films made between 1947 and 1963 which present Sweden, and particularly Stockholm, to the world as a progressive, prosperous, picturesque, and modern nation. Films including *Människor i Stad* (Rhythm of a City, Arne Sucksdorff, 1947), *The Riddle of Sweden* (Gösta Werner, 1963) and *Secret Stockholm* (Edward Maze, 1963) can be accessed via www.filmarkivet.se.

Claire Thomson is Associate Professor of Scandinavian Film and Director of Film Studies at UCL. Claire is the author of the books *Thomas Vinterberg's Festen* (Seattle, 2013), *Short Films from a Small Nation* (Edinburgh, 2018), and co-editor of *A History of Danish Cinema* (Edinburgh, 2021). Claire gave a fascinating and very popular talk to the Society at the end of last year on the classic silent film *Körkarlen* (The Phantom Carriage).



DEALING WITH THE DEAD IN THE VIKING AGE

6 October 2021

Professor Neil Price of Uppsala University, arguably the global doyen of matters Viking, and the author of a superb book on Viking history and culture, *The Children of Ash and Elm* (2020) gave a fascinating talk to our members. Neil shared with us his scholarship and learning around a very interesting facet of that remarkable epoch, the relationship between the living and spirit worlds, both of which were very prominent and important in those times. Professor Neil Price is Distinguished Professor of Archaeology and Chair of the Department of Archaeology and Ancient History at the University of Uppsala (a chair that dates back to 1662 when Olof Verelius was made 'Professor of the Fatherland's Antiquities'); he holds his degrees from the University of Uppsala (Ph.D.) and the Institute of Archaeology, University College London. Professor Price has worked on over 50 sites, has published prolifically, and has served as a consultant on numerous television, radio, and public media projects. The evening was hosted by our Council member, Professor David Goldsmith.



Professor Neil Price

Yu-Wei Hu (left)
& Johan Löfving (right)

IN THE SHADOW OF A SAINT

2 November 2021

The renowned author Eivor Martinus talked (in English) about her recent book *I Skuggan av ett Helgon* which explores the role Swedish Saint Birgitta's (c. 1303 – 1373) daughter Katarina (c. 1332 – 1381) played in her life and how she was instrumental in the foundation of the Bridgettine convent. Without her, St. Birgitta would probably not have been canonized. Eivor Martinus was born in Sweden and has lived in England since the 1960s. She has been awarded literary prizes from the Swedish Academy, the British Comparative Literature Association and the Swedish Writers' Union. The evening was hosted by our Council member, Professor David Goldsmith.





COMPUTATIONAL DESIGN AND ARCHITECTURE

14 December 2021

Dr Henrik Malm, Architect and Computational Designer at FOJAB, gave a talk on how innovation is driving sustainable design. Dr Malm gave a talk to the Anglo-Swedish Society in June 2017, while he was working at Foster + Partners in London. In 2014, he was awarded a scholarship by the Society of Swedish Engineers in Great Britain to work on his Master's Thesis on the restoration and redesign of Sainsbury's old meat processing factory on Bankside in central London.



Dr Henrik Malm

From the Archives

HRH The Duke of Edinburgh

The archives and Court Circulars bear witness to the active part The Duke of Edinburgh played as Patron of the Anglo-Swedish Society from 1954 until his death in 2021.

Our archivist would be most grateful to receive copies of any material which relates to the Anglo-Swedish Society.

archivist@angloswedishsociety.org.uk



Celebration of HRH The Duke of Edinburgh's 60th anniversary as the Society's Patron, 4 November 2014.



HRH The Duke of Edinburgh at the Society's 75th anniversary celebration, 18 May 1994.



HRH The Duke of Edinburgh with the HE Swedish Ambassador Leif Leifland and Mrs Karin Swanberg at the Society's annual dinner, 6 June 1983.



ANGLO-SWEDISH SOCIETY

The Duke of Edinburgh was the guest of honour and the Swedish Ambassador was present at the Anglo-Swedish Society's dinner and dance held at Claridge's Hotel last night. Sir Harold Wernher, president of the society, and Lady Zia Wernher received guests, who included:—

The Secretary of State for Foreign Affairs, Mr. Selwyn Lloyd, the Marshal of the Diplomatic Corps, Major-General Sir Guy Salisbury-Jones, and the president of the Federation of British Industries, Sir Graham Mayman.

The Times, 26 June 1956

BUCKINGHAM PALACE
November 4th

The Duke of Edinburgh this evening held a Reception at Buckingham Palace for the Anglo-Swedish Society to mark the Sixtieth Year of His Royal Highness's Patronage.

Daily Telegraph, 5 November 2014



HRH The Duke of Edinburgh greeting, the Society's President Baroness Maddock with HE The Swedish Ambassador Mats Bergquist, at the Society's Friendship Ball, 28 April 2004.



Celebration of HRH The Duke of Edinburgh's 60th anniversary as the Society's Patron, Buckingham Palace, 4 November 2014.

Back: Viktoria Westin, Maggie Dan-Lersten, Anna Grundberg, Miachael Sayers, Elisabet Baldwin, Stephen Sutton, Martina Westin, Marcus Ohlin
Front: Anthony Arfwedson, Jacqueline Appel-Malmaeus, Alexander Malmaeus, HRH The Duke of Edinburgh, HE Nicola Clase, Baroness Maddock

Structure, Governance and Management

The Anglo-Swedish Society (hereafter referred to as “the Society” or “the Charity”) was formally established on 17 February 1919 and Registered as a Charity in England and Wales on 21 June 1984 under rules adopted on 16 May 1984.

A Board of Trustees, known as the Council, comprising the Officers and up to 12 members, administers the Society. The Officers are: the President, the Chairman, the Vice-Chairman, the Honorary Treasurer and Honorary Secretary. The President is elected by the Society’s members for 3 years and may be re-elected. The Officers and Council Members are elected by the Society’s members and hold office until the next Annual General Meeting at which they may be re-elected. The Trustees receive no emoluments.

The President, although an Officer of the Society, takes no part in the management of the Society.

The Council has appointed an Executive Committee from its members with the Society Chairman as its Chairman and a membership comprising the Officers of the Society and the Chairmen of the Awards and Events Committees.

The Society has the power to make any investment which the Trustees see fit. The Council has considered the most appropriate policy for investing funds and has found that specialised unit trusts, designed for the charity sector, and bank accounts paying high tax free interest, meet their requirements to generate both income and capital growth. The Council is constantly reviewing the performance of its investments.

Objectives and Activities

The objects of the Society, which shall have no political character, are:

- (a) the advancement of the education of the public in the science, art, literature, music, history, economics, philosophy, culture and other recognised academic subjects of Great Britain and Sweden;
- (b) the support of any other charitable activities.

In furtherance of the above-mentioned objects, but not further or otherwise, the Society shall:

- (i) arrange fund-raising events and activities;
- (ii) arrange lectures, classes, exhibitions, readings, concerts and broadcasts;
- (iii) print and publish such literature as shall be necessary for the attainment of the objects;
- (iv) administer any funds available for charitable and educational purposes.

Although grant making is not the main way the Society carries out its purpose, the Scholarships and Awards programme, re-established in 2003, is an important part of the charity’s work.

PATRONS OF THE ARTS



LUND

A charitable fund of Lisbet Rausing and Peter Baldwin

Dr Lisbet Rausing & Professor Peter Baldwin
Alexander Malmaeus & Jacqueline Appel
Gerard Versteegh & Claudio Magnesi

FRIENDS OF THE ARTS

Jan & Sandra Ankarcrona
Erik P O Berggren
Mark & Alexia Florman
Lillemor & Kenneth Gardener
Michael Ingelög
Rhidian Jones
Oscar Knut Franz Jonson
Alan Luskow
Carl & Annica Malmaeus

Nina & Peter Möller
Marwan Osserian
Maria Romano
Ulrich Stoof
Vips Vallis
Hans & Jaana von Rettig
Ivo Wiesendanger & Elife Hanhart
Zuming Tang

CORPORATE MEMBERS

A M Visualisation
Anelca Clinic
Axel Johnson Group
IK Investment Partners
Linnean Society of London
Scandinavian Kitchen
Swedish Chamber of Commerce
Swedish Church in London
Swedish School in London

Front cover:..... Liz Jackson, Ceramics, Library of things, RCA 2021

Inside front cover:..... Ami-Louise Johnsson, Violin & Viola

Inside back cover:..... Anglo-Swedish Society website, relaunched 2021

Back cover:..... Emma Mounsey, Ceramics

Design:..... Antonios Marinis, A M Visualisation Limited

Event photography: Olga Kotovska



350 YEARS OF FRIENDSHIP

April 2004

EVENTS

22 March 2022 (17:30 - 18:30)

Tjölöholm Castle

22 April 2022 (18:30 - 19:30)

Annual General Meeting

22 April 2022 (19:00 - 23:30)

Valborg 2022

9 May 2022 (18:30 - 19:30)

Åbo Swedish Theatre

15 June 2022 (10:30 - 18:00)

Royal Ascot

[READ MORE](#)

VALBORG 2022

FEATURED EVENT

FRIDAY APR 22 2022
(19:00 - 23:30)

The welcome return of our traditional Valborg dinner will be a week early in order to avoid the May Bank Holiday. We will welcome spring and sing with extra gusto, accompanied by the Society's music scholar.

Dresscode: Black tie £40 (25 & under) / £90 (member) / £100 (non-member)

[READ MORE](#)

COMPUTATIONAL DESIGN AND ARCHITECTURE

TUESDAY DEC 14 2021

Dr Henrik Malm, Architect and Computational Designer at FQJAB, gave a talk on how innovation is driving sustainable design. Dr Malm gave a talk to the Anglo-Swedish Society in June 2017, while he was working at Foster + Partners in London. In 2014, he was awarded a scholarship by the Society of Swedish Engineers in...

[READ MORE](#)

COSCAN MAGAZINE

TUESDAY DEC 14 2021

Among articles of general interest this time we have an article on place-names of Scandinavian origin in Britain and an update on the state of radioactivity in Nordic reindeer caused by the Chernobyl accident. Further, as December is upon us, we look at where Christmas trees from Norway have been donated since the Second World...

[READ MORE](#)

HÅKAN MOGREN 1944-2021

TUESDAY DEC 7 2021

The former President of our sister society, the Swedish-British Society (Stockholm), Dr Håkan Mogren, has died aged 77. After being awarded for his DSc at Kungliga Tekniska Högskolan with a thesis entitled "Mechanical disintegration in the processing of single-cell protein", he devoted his career to industry. Firstly as CEO of the confectionary company Marabou AB...

[READ MORE](#)

IN THE SHADOW OF A SAINT

TUESDAY NOV 2 2021

The renowned author Elvira



DEALING WITH THE DEAD IN THE VIKING AGE

WEDNESDAY OCT 6 2021



AMI-LOUISE JOHNSON IN PRAGUE

SUNDAY OCT 3 2021

The Anglo-Swedish Society's



SECRET STOCKHOLM

TUESDAY SEP 14 2021

Doctor Claire Thomson gave a talk to the Society about the use of short film by the Swedish



angloswedishsociety.org.uk