



Annual  
Review  
2024/2025

# Contents

	PG
Report of the Trustees	5 - 20
Report of the Independent Auditors	21 - 22
Statement of Financial Activities	23
Balance Sheet	24
Cash Flow Statement	25
Notes to the Cash Flow Statement	26
Notes to the Financial Statements	27 - 45
Detailed Statement of Financial Activities	46



## Our Vision

A world where  
domestic abuse  
no longer exists



## Our Mission

For all victims  
and survivors of  
domestic abuse to  
receive the support  
they need, when  
they need it

## Our Values

Respect  
Inclusion  
Trust  
Empowerment



## Our Aim For Survivors To

Have control over their own  
lives and the opportunity to  
make informed choices

~

Be involved in decisions  
about every aspect of the  
service they receive

~

Be treated with respect,  
compassion and dignity

~

Have their diversity respected  
and have equal rights and  
opportunities

# Chair of Trustees Report

**Supporting survivors of domestic abuse is difficult and traumatic work, made more challenging as commissioners are trying to meet local needs and having to make decisions as to where their funding is directed. With Emma, our new CEO completing her first full year in post we are immensely proud to be in a relatively stable position as we complete this financial year.**

The recruitment of our full-time fundraiser, Louise, has also proved to have been an invaluable asset to the organisation this year. The cost of living increase and the current housing crisis has impacted our survivors, sector and services. Greater economic challenges make it even harder to leave an abuser. Survivors are not only facing domestic abuse but also housing, mental health and immigration disadvantages.

Our staff work incredibly hard to offer support at a time other services are being cut back or withdrawn. In the face of our cost challenges and funding pressures for those who commission our service, our staff and volunteers continue to work tirelessly with passion and determination to be there for survivors who need help. I am proud that the work being done stands out because of the deeply ingrained desire to empower survivors to rebuild their lives.



**Sally Stimpson**  
Chair of Trustees

The Board have recruited a further three new trustees with specific skills that we were missing. This now means that we have a team who bring a wealth of knowledge and experience to our diverse and growing organisation. We continue to ensure we always have a Board Member who has lived experience to enable us to understand the journey of a survivor through refuge. As chair, I am grateful for the support and enthusiasm that the Board brings, not only to myself but to I Choose Freedom. Once again, I would like to celebrate the incredible progress that I Choose Freedom has made this year and thank our CEO, staff, volunteers, trustees, fundraisers and donors, who have helped to make it happen.



# CEO Report

**My first year as CEO has been focused on stabilising the charity and looking at our longer-term plans including developing our strategy for 2025 - 2028 which will be shared in Winter 2025.**

This year saw the implementation of our innovative project Opening Doors, which is a scheme we have created to help survivors get back into employment. The project involves us working in collaboration with a professional CV writer who provides guidance and support to survivors living in refuge around CV writing, coaching sessions for interview preparation and a voucher to purchase appropriate clothing for interview. The first year of the pilot has been a huge success seeing survivors who were struggling to even get shortlisted for interview back into secure employment. This project was shaped by survivors whose voices told us that this was a barrier in coming to refuge and a difficulty they faced after leaving refuge.

For many years we have been aware of the issues that survivors encounter at Family Court. We have continued to advocate for survivor's voices to be heard and listened to, as they have shared that they have not been believed, their children's voices have not been heard, and perpetrators have successfully used 'Parental Alienation' as a way of manipulating the courts into granting contact. Along with the distress that this causes both the survivor and their children, some decisions made by the Family Courts have increased the risk of harm to the children themselves. We have worked closely over the last year with the charity 'Rights of Women' to improve outcomes for survivors of domestic abuse within the family courts. This has involved training court staff and exploring the physical considerations within the court setting.

At I Choose Freedom, we campaign around football to raise awareness with football audiences as there is a link between reports of domestic abuse and big football games. The studies that exist mainly compare prevalence of domestic abuse (as recorded by police or other emergency services) on the days that football games take place against prevalence on non-match days. Significant data from World



**Emma Bray**  
CEO  
I Choose Freedom

Cups and from local matches has been analysed with all of these studies, however limited in number, showing what appears to be a link between domestic abuse and football. The evidence consistently shows a correlation between the occurrence of certain football matches and increased reports of domestic abuse on match days. Percentage increases vary depending on the study, with increases ranging from 28% to a shocking 139%.

At I Choose Freedom we saw referrals almost double in the first two weeks of the Euros in 2024. This year we have collaborated with premier league club Fulham FC to tackle domestic abuse on a wider scale.

Over the next year our commitment remains to strengthening and diversifying our services to ensure that we are targeting and meeting any unmet needs of survivors and reducing barriers that we know adult and child survivors face when coming into and leaving refuge.

I am incredibly grateful to the Board, the staff team, our volunteers and donors for the ongoing support that enables our doors to remain open so that we can continue our life saving services.

# Head of Services Report

## I'm Zoe Snelgrove, Head of Services at I Choose Freedom.

At the start of the year, my focus was on strengthening and improving our service for all survivors who make the courageous decision to come to refuge. This journey is never an easy one and it is our responsibility to ensure that every individual who arrives at I Choose Freedom is met with compassion, safety and respect from the very first moment.

A key area of development this year has been embedding empowerment across all our provisions. In practice, this has meant building a team of skilled, reflective practitioners who are trained to the highest standards to deliver trauma-informed and person-centred support. Our approach places survivors at the heart of every decision, ensuring that each person's voice is heard and their choices are honoured.

Our goal has been to create a stable, calm and nurturing environment – one that provides the safety and space survivors need to begin their healing journey. Within this environment, we want survivors to rediscover hope, identify new goals and rebuild confidence in their future.

We have worked tirelessly to tailor our support to the needs of every adult and child who comes into refuge. By focusing on inclusivity, empowerment and individual growth, we continue to strengthen our culture of care – one that recognises the unique experiences of each survivor and provides the foundations for lasting change.

As we look ahead to the coming year, our focus remains on growth, sustainability and deepening the quality of the support we provide. We will continue to invest in our staff team, ensuring they have the skills, resilience and resources needed to deliver exceptional, trauma-informed care.



**Zoe Snelgrove**  
Head of Services,  
I Choose Freedom

We are also committed to strengthening our partnerships and amplifying the voices of survivors – ensuring their experiences continue to shape and guide our services. Looking forward, I Choose Freedom will keep striving to create environments where every survivor, adult and child alike, can rebuild their lives, regain their confidence and move towards a future defined not by trauma, but by hope, safety, and empowerment.



**We want survivors to rediscover hope, identify new goals and rebuild confidence in their future.**





**Jo Millward MSc**  
Head of Safer  
Communities  
Community Protection  
& Emergencies Directorate  
Surrey County Council



**I've seen first-hand the incredible impact I Choose Freedom has on adults and children escaping domestic abuse. Their compassion, professionalism, and unwavering commitment to safety and empowerment make them an essential part of our work to build safer communities across Surrey.**

What really stands out to me is their forward-thinking approach. They don't just respond to the needs of survivors—they anticipate them. Their Refuge for All service is a brilliant example of this, offering inclusive, tailored support that breaks down barriers and creates safe, welcoming spaces for anyone needing help.

I also deeply value the way they support survivors to rebuild their independence, especially through employment. Helping survivors regain confidence, develop skills, and find pathways back into work is life-changing—and I Choose Freedom does this with care, expertise, and a genuine belief in every woman's potential.



**I Choose Freedom offer compassion and hope to each survivor and family reaching them from unimaginable circumstances.**

Keeping the voice of the survivor central, they are also powerful advocates in the campaign to end violence against women and girls. I am honoured and humbled to have played a small part in supporting Emma and the team in their vital work.



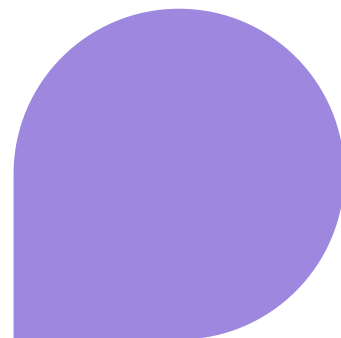
**Cllr Ruth Ritter**  
Ward Cllr for Earlswood  
and Whitebushes  
Reigate and Banstead  
Borough Council





# Women in refuge

**We received 1056 referrals in total for our services between the 1st April 2024 - 31st March 2025. On average we had to turn away eight survivors and their families for each room space that became available. We helped 138 adults and 141 children this year. We were unable to help 918 survivors in need.**



## Maxgate

**Another great year advocating for families fleeing their homes due to domestic abuse.**

At I Choose Freedom our advocacy begins from the moment the survivor picks up the phone to ask for support. The families receive emotional and practical support from the time they make their decision to come to the refuge all the way until they are ready to live independently and start their new life free from abuse and fear.

The survivor's safety is at the heart of every conversation and interaction their Domestic Abuse Refuge Advocate (DARA) has with them. Our aim is to end domestic abuse for women and children and to ensure safeguarding is put in place while with us in refuge.

The DARA has many conversations with the survivor to assess their needs and priorities to tailor their support and achieve the best possible outcome from their journey in the refuge. DARAs walk alongside the survivors to empower them and help them gain confidence to make decisions about their future.

Some women arrived with uncertain immigration status and no recourse to public funds due to the abuse and control to which they were subjected. Their DARA supports them through referral to immigration solicitors to apply for Indefinite Leave to Remain and gain access to public funds. We have celebrated some survivors gaining Indefinite Leave to Remain whilst still in the refuge. This has enabled security, stability and reassurance that they will be able to take care of themselves and their children in the UK where they can live safely and independently.

DARAs have supported survivors with dealing with the effects of economic abuse by referring them to relevant organisations who have helped them establish the extent of their situation and find solutions to minimise the impact on their lives.

Our survivors have faced many challenging situations whilst in the refuge from attending courts to struggling to find secure, safe and suitable accommodation when they are ready to move on. Their DARA ensures that they feel supported and strong enough to deal with these situations by guiding and encouraging them through the process.

DARAs have advocated heavily for survivors to make sure that their voice is heard and listened to.

Some survivors signed up and completed courses in preparation for their jobs in the future. They also worked with CV writers to prepare for job interviews.

For many of our survivors, English is not their first language which can be a big disadvantage in day-to-day life, but they are keen to improve their

language skills by attending classes. Thanks to our volunteers, we have been able to facilitate English lessons on site.

We have been able to provide arts and crafts sessions which have been very popular with our women. Some of them said that they had never been able to do anything just for themselves and enjoyed the creativity and focus being on them.

The women and staff celebrated various events and religious holidays and had fun sharing each other's culture and traditions.

Staff and the survivors organised an International Women's Day and Mother's Day party in celebration of all the women in our lives.

As a charity, I Choose Freedom embraces diversity and ensures that every survivor feels appreciated and valued.

**Sam, Service Manager at Maxgate**



**"I want to thank all of you for your help with me and my children and helping us get out of the situation we was in and keeping us safe. You saved us. Thankyou.**  
(Survivor)



# Women in refuge

## Hill House

**Advocacy remains at the core of what we do. Each survivor arriving at I Choose Freedom is supported by a dedicated Domestic Abuse Refuge Advocate (DARA). These advocates work tirelessly to ensure that survivor's voices are heard, whether that involves navigating welfare systems, securing future housing or accessing essential health and social care services.**

In addition to this individual advocacy, we have continued to develop a broader range of therapeutic pathways. While counselling remains available, creative approaches such as art therapy have given survivors more options for emotional support that can be tailored to their individual needs. The clothing room has also played a role in advocacy by empowering women and children to make their own choices, a small but powerful step towards restoring independence.

Our engagement in regional networks and DARAs attendance at local meetings, ensures that I Choose Freedom is not only informed by wider developments but is also contributing to them. This active involvement strengthens our ability to advocate for survivors at a systemic level, ensuring their experiences and needs are represented in conversations around policy and practice.

Building partnerships, creating opportunities, and widening access to community resources has been a key focus this year. A local church has generously provided free singing lessons and English classes, which have been a real confidence boost for our survivors who have attended. These opportunities have offered far more than skill-building: they have created social connections, reduced isolation and supported language development. A local arts and cultural organisation has offered creative workshops and we are continuing discussions with them about securing additional free or subsidised sessions. Practical support has also come from businesses, who have donated food and childcare items, helping to ease financial pressures on families during difficult times.

In addition, the Opening Doors project has provided a structured pathway for survivors seeking to return to work or gain new employment skills. These sessions are available to survivors currently in refuge or those who have recently left, and there is flexibility for group or one-to-one support, delivered remotely where necessary. This initiative not only equips survivors with practical skills to pursue employment but also improves their confidence. By engaging in this way, survivors can feel empowered, supported and better prepared to take their next steps after refuge.

**Joanna, Service Manager at Hill House**



**By engaging in this way, survivors can feel empowered, supported and better prepared to take their next steps after refuge.**



# Children in refuge

## Another incredible year in refuge has come round again.

At I Choose Freedom we carry out a holistic approach in supporting the children in our care. We are there to play alongside them as they journey through refuge and start a new life.

We have been working closely with many children who have fled their unsafe homes to a place of safety. The children are greeted at the door or sometimes picked up at the local train station, with big smiles and a warm and friendly welcome. They come with very little, sometimes still in their school uniform, as their mum has grabbed the opportunity to flee straight from school pick up or under the pretence of the school run.

We try to make the house as welcoming as possible, with welcome packs in their rooms containing toys, cuddly teddy bears and books and colouring. This is to show they are cared for and thought about and to provide a welcome distraction while mum unpacks and settles into the room.

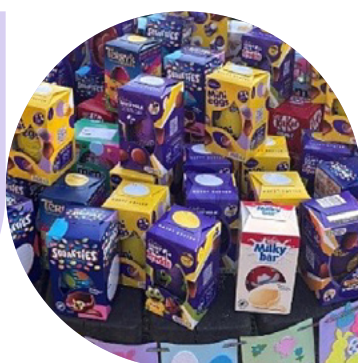
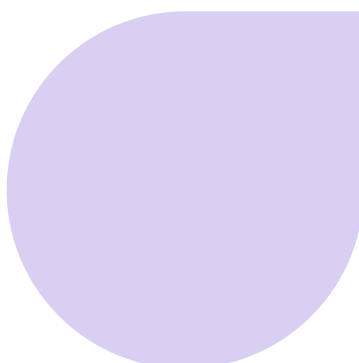
We endeavour to create routine, structure, warmth and safety as soon as possible. We spend time with the children building trusting relationships. Showing them what that looks like by modelling positive behaviours with safe adults.

Working with mum we support with school and/or nursery applications. Reaching out to charities for school uniform and new shoes to make sure the children do not stand out on their first day. Working closely with the designated safeguarding leads at the school so they have an

understanding around domestic abuse and how to fully support the children.

As well as education, Children Advocates help with dental, GP and optician appointments. This might be something a mum has never done before, and we advocate for the children's health while they are with us.

We celebrate birthdays and religious celebrations. Occasional trips out and seasonal parties are always great fun bringing children and women together for craft and food. We have had many of these throughout the year.



**"From the beginning, everyone was helpful, kind and caring, and I'm very thankful for their support that they gave me in time of need. Their support give me comfort and hope in the time of great difficulty."**

*Picture (left) was created by a 4-year-old boy showing him with his family at the Sea Life centre at Chessington.*



# Children in refuge (cont.)

## Spring Party

We celebrated the Spring half term with activities and lots of sticking and chocolate! We are always so well thought of around this time and, thanks to our amazing network of supporters, the children and women receive plenty of eggs to enjoy.

The Rotary Club were very kind to support us with a trip out to Chessington World of Adventures. Fun was had on the coach with singing and laughter on the way there. Followed by lots of happy sleeping children on the way back.

## Summer activites

The 6 weeks holidays are filled with lots of activities and fun. We try to arrange as many different pastimes as we can. From outdoor pursuits, cooking, gardening, craft and picnics.

These activities are not only for the children but the mums and women too. Supporting bonding and attachment and creating happy spaces they can enjoy together. The women enjoy painting and craft as much as the children. It is a wonderful sight to see them relaxing and laughing.

## Autumnal Party

Autumnal Party was great fun with staff dressing up and eating pizza.

## Winter Party

brought Father Christmas and a wonderful grotto. The nearer it gets to Christmas the more talk of presents and Father Christmas is heard.

"How will he know where to find us?" "Does Father Christmas come to refuge?" "Will Father Christmas know we've moved?"

The great news is that we can tell the children, "Yes, Father Christmas does come to refuge and knows exactly where you are!".

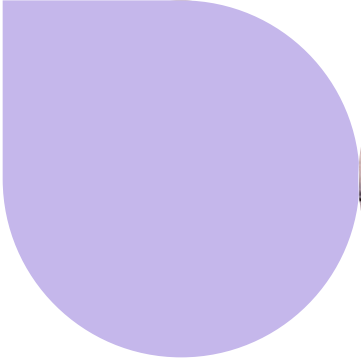
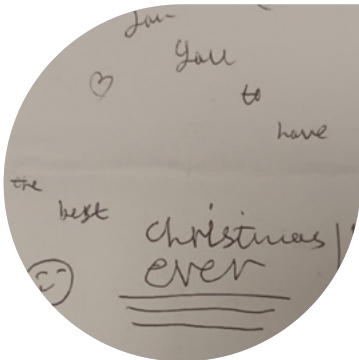
As we get closer to Christmas, Mums will come to us with concerns and worries over being able to provide their children with presents. Many women in refuge aren't financially able to provide Christmas presents. For some children, they've never had a visit from Father Christmas,

"Father Christmas never comes, Daddy says it's because I'm naughty".

With the help and support from extremely kind members of the public, companies and charities we can deliver the mothers with presents they can put under the Christmas tree this year. We are so thankful for the amazing support provided and we go all out to provide a safe and happy Christmas for the families.

Spread Some Sunshine provided us with a Priory Farm trip. The families got to experience meeting Father Christmas and toasting marshmallows, while drinking hot chocolate.

Our children help us to create Christmas cards to thank our wonderful supporters over the year.





## Children in refuge (cont.)

### Mothers day

Mothers day is celebrated with a bag of goodies for all the women and a handmade card. We make sure all the women feel special at this time, whether they are a mum or not, whether they have their children with them or at this time they are elsewhere.

A mums parenting support group is regularly run to support the mum. Sharing their stories with no judgement helps them feel less alone. Introducing parenting skills and ideas together can help them support each other and overcome difficulties together. They do this over a cuppa and a plate of biscuits.

Work around safe relationships and BIG emotions is carried out supporting children's self-esteem and awareness of acceptable and unacceptable behaviours. Assisting the children to work together while living together and to embrace differences.

Play therapy and creative arts counselling is offered to the children from 4 to 18 years old. Those that may struggle to find their words can use play and creativity to work through muddled thoughts and feelings. They may play out an argument in the doll house or a teenager may recreate their feelings out of clay. Both processing consciously and unconsciously what they have been through and what has brought them

to refuge. Working with a therapeutic objective every week with a safe trusted adult supports the children and young people to work through their confusion, explore and understand the world around them

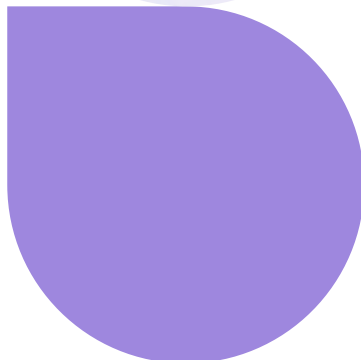
When a 14-year-old girl was invited to think about how she had felt about coming to counselling vs now, she wrote nervous and then exciting.

She was happy for this to be shared with other children and teenagers who might be feeling

worried or apprehensive about starting therapy. (She provided permission for her work to be shared)

Goodbyes come after 6 months. In the time they have been with us we hope to have supported a greater attachment and empowered families ready to take on the next step. These children are extremely vulnerable and have a greater risk of struggles in the future. We hope through their journey in refuge they have learnt who they can turn to if they need help

in the future and understand that domestic abuse is not their fault. Much of their future is still unknown but we hope that together their family unit is stronger, and they are ready to go forward and transition into their new life.



**"I would be chained if I did not come here. I would be sacrificing my life, feel depressed, I would not do anything for myself. I lived in past but after coming here, I learnt to enjoy life. It helped me build my confidence and strength. Now I look forward to bright future. I want to do something for myself now. I know I can fight any difficulty... If I compare my past with my present, like the life I was living with the life after I came here, it changed a lot."**

# Refuge Accommodation for All (RAFA) Report

**The Refuge for All service (RAFA) offers safe accommodation and specialist support to survivors of domestic abuse who may experience barriers in accessing communal refuges. This includes, but is not limited to, men, LGBTQ+ survivors, Gypsy Roma Traveller survivors, older women, and women whose health needs make shared accommodation unsuitable.**

When I Choose Freedom first launched RAFA, it was in response to a clear gap in provision across the country. Many survivors told us they had nowhere safe to turn because existing options did not meet their needs. Working with Surrey County Council, we created self-contained spaces designed to remove those barriers.

By March 2025, RAFA continued to provide eight dedicated units. Six of these are for single people, alongside one property for a parent with one child, and a larger home that can accommodate a parent with up to five children. These properties remain in high demand, reflecting the urgent need for flexible, inclusive refuge.

Over the past year, our focus has been on embedding the service and extending our network of specialist partners.

We now have stronger links with agencies such as Galop, Mankind, local community wellbeing organisations, faith groups, debt advice charities, and health professionals. This joined-up approach means survivors can access the right help at the right time, without

having to repeat their story.

We have also placed more emphasis on raising awareness. Members of the team have delivered presentations at Job Centres and council services and have taken part in a range of voluntary sector networking events. The RAFA LGBTQ+ Professionals Forum, which meets quarterly, has continued to grow and now draws in a wider pool of practitioners across Surrey. It has become a valuable platform for sharing ideas and shaping more inclusive services.

Representation within our team is an ongoing strength. Having staff who identify as LGBTQ+ has enabled us to offer a genuine “by and for” approach that builds trust and understanding. Survivors have told us that this makes a meaningful difference to their experience of refuge.

Beyond providing accommodation, RAFA aims to support people to rebuild their lives. Over the past year, clients have been helped to access gyms, education and training, apprenticeships, and employment. Families have been supported to settle

into schools and nurseries in new areas, creating stability and a sense of belonging.

During this period, the service received 218 referrals and accepted 17 clients. This included 5 men underlining the importance of having a dedicated pathway for those who are too often left out of refuge provision.

Looking forward, RAFA will continue to strengthen its partnerships, broaden awareness of the barriers survivors face, and champion the message that safe accommodation should be accessible to all, regardless of gender, sexuality, or background.



# Resettlement Report

The Resettlement service is a core part of our support package at I Choose Freedom and this past year. It has played an integral part in supporting survivors who resettled in Surrey after leaving refuge. Even with the support of our service while at refuge, many of our clients face struggles, barriers and complications once they leave refuge. With increasing cuts to funding and support across services, the resettlement service has provided invaluable support for many of our clients. The service has responded

to the relevant and current needs of our clients facing serious issues. The challenges faced by our clients include but are not limited to housing insecurity, financial instability and an overwhelming feeling of social isolation. Unresolved immigration, ongoing court cases with the family courts and difficulties with managing bills or paying debts. In the face of all these issues often the difference between having access to resettlement support or not, could mean that a family does

or does not return to their danger areas or alleged perpetrator(s).

Our resettlement service is ever changing, innovative and creative in its attempts to combat the needs of our clients and the barriers they face when navigating life after refuge. It offers practical support, such as, supporting with getting clients and their children into employment or education, referrals into specialist debt services, support with school applications, support with attaining legal aid solicitors

to support with ongoing court cases, co-creating budget plans and ensuring that our clients' voices are being heard in relation to permanent housing. Resettlement service also offers emotional support in various forms – this includes face to face check-in, regular phone check ins and attending local social clubs with clients to help build community ties. This has been especially important in light of ongoing current issues like the housing crisis and the political climate regarding immigration.

## Case study

P left refuge with her son last year and was supported through the resettlement service. P was a carer in the nursing home in her local community before fleeing to refuge. P was keen to return to work and expand her education and skill set. With our encouragement and support P applied for an access to nursing course once she has resettled into her new home, we were able to support her to swiftly get her son back into full time education in her new area which allowed her time to complete coursework and study full time. Our service offered practical solutions by applying for funding for a laptop for P and offered emotional support, checking in and providing motivation when P was feeling discouraged. P has now been given two conditional offers at two separate Universities to attend and begin her chosen degree in September 2025.

This is a testament to how integral the resettlement service can be to the journey of a client. Supporting a client to realise and achieve goals they hadn't thought possible before fleeing to refuge. The aim of this service is to walk alongside clients in their journey to freedom and independence, provide fresh perspectives and offer new options that they may have thought unthinkable in the past. This can range from simply finding new safe social connections to returning to education or employment. Whatever their goals and visions are for their future, we are there to support and empower every step of the way.

**On leaving the resettlement service  
87% of adults reported an increase  
in feeling confident enough to  
advocate for themselves.**

# Donations, Grants and Fundraising

To enable I Choose Freedom to continue supporting as many survivors of domestic abuse as possible, as a charity we are dependent on the organisations and individuals who support us.

Our main funders are Surrey County Council. Without their support we would not be able to deliver our current services and the continued growth of the organisation.

We are enormously grateful to them.

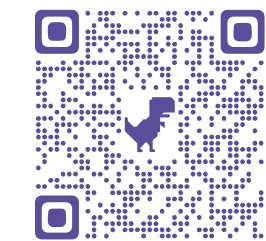
We would also like to thank everyone who has raised funds or donated, no matter how large or small. Every penny we receive helps to further our efforts to support survivors of domestic abuse and provide opportunities for them to have greater control over their lives. Our supporters and donors from the past year include those shown below and many more.

Berkshire Asset Management
Jenny Wren
CWU South East Regional Committee
The Alchemy Foundation
Howden Joinery Ltd
Joseph Limited
Masonic Charitable Foundation
Michael Hill
Miss K.M Harbinson Charitable Trust

Redgate Specialist Finance Ltd
Reigate WI
Ruth Barker
Savills (UK) Ltd
Surbiton High School
Reigate and Banstead Borough Council
Farnham Town Council
Skipton Building Society
Gatwick Airport Community Trust

B&Q Foundation
Schroder Charity Trust
Tesco Stronger Starts
Community Foundation for Surrey
The Wisley Foundation
The Hobson Charity
Horley Lions Club
Hurst Lea Foundation
The Haley Charitable Trust
Farnham Lions
Pattenmakers

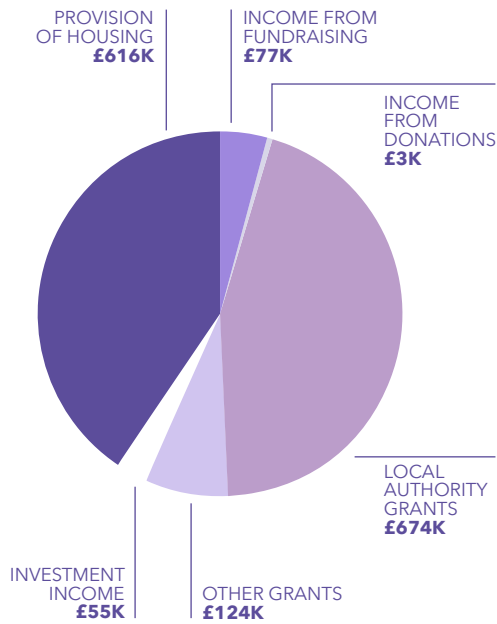
Surrey Freemasonry
Bryden Johnson
St Faiths Trust
Bunzl Family Charitable Fund



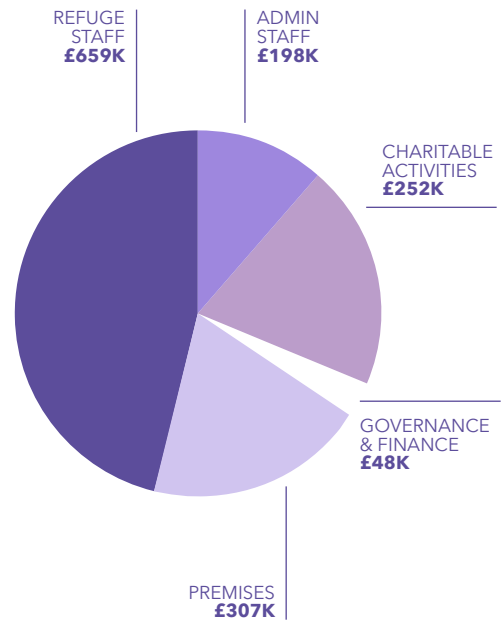
Scan to donate or use the donate button on our website:  
[www.ichoosefreedom.co.uk](http://www.ichoosefreedom.co.uk)  
For larger donations, please contact us at [info@ichoosefreedom.co.uk](mailto:info@ichoosefreedom.co.uk)



Breakdown of income in the financial year 2024 – 2025:



Breakdown of costs associated in the financial year 2024 – 2025:



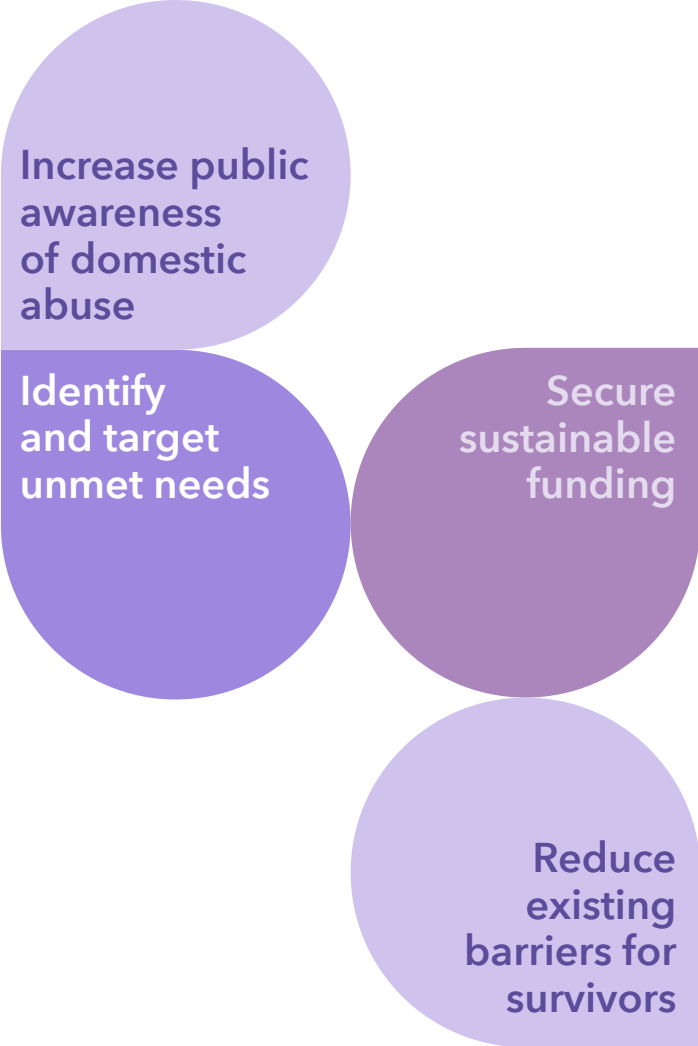


# Future Plans

Our intention is to continue to enable any adult and child to begin the recovery process from their experience of domestic abuse, by offering a high standard of refuge accommodation which provides:

- A safe and welcoming place for all survivors of domestic abuse
- Good standards of accommodation and on-site facilities for families, and especially children
- Individual support plans
- Emotional support
- Resettlement support
- Therapeutic intervention
- Assistance in applying for re-housing
- Practical help for survivors
- Assistance in claiming benefits
- Support to get into employment/education
- Liaison with health services

- Advice regarding activities within the area, including faith organisations, clubs, groups, paid or voluntary work, etc.
- Structured group work to allow service users to understand domestic abuse, regain their self-esteem and avoid a similar situation in the future.
- To ensure our service is inclusive and diverse and supports every survivor regardless of age, gender, sexuality, race, disability or religion



# Financial Review

**During the year total income was £1,549,256 (2024: £1,322,624); the final result of the year was a surplus of £85,354 (2024: £75,433 deficit).**

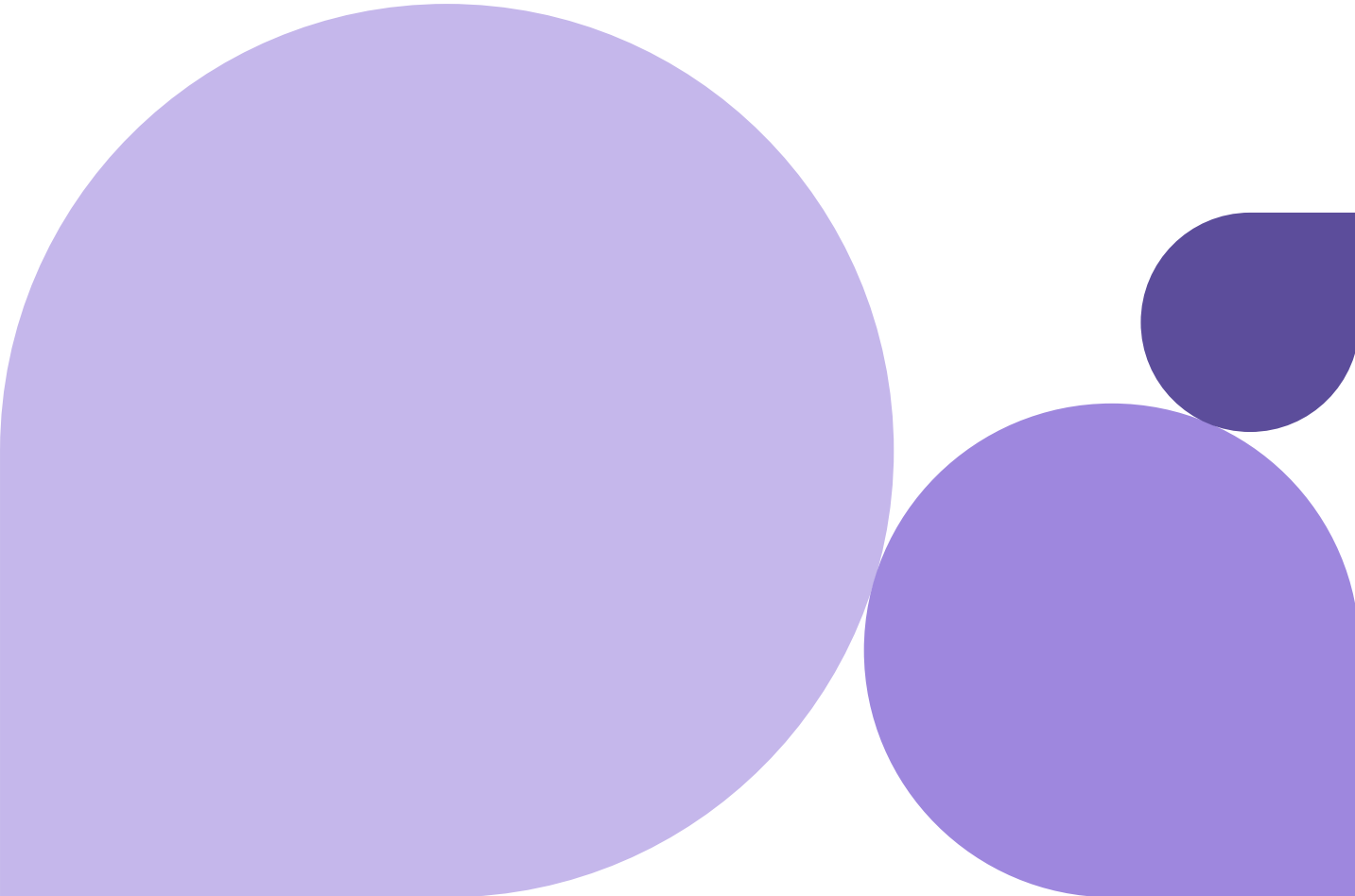
## Reserves policy

The Board of Trustees has examined the Charity’s requirements for reserves in light of the main risks to the organisation. It has established a policy whereby the unrestricted funds not committed or invested in tangible fixed assets held by the Charity should be equal to six months operating costs.

- Unrestricted reserves are held for the following purposes:**
- 1. To maintain services through periods of reduced funding and cash flow;
  - 2. To develop new projects;
  - 3. To pay redundancy and recruitment costs; and
  - 4. To respond to adverse incidents.

At the year end the charity held total reserves of £1,069,517 (2024: £984,163) of which £327,586 (2024: £340,262) were unrestricted general funds; £400,000 (2024: £400,000) were designated general funds and £341,931 (2024: £243,901) were restricted funds.

ICF holds reserves to protect against drops in income and to allow ICF to take advantage of new opportunities.



# Structure & Governance

## Governing document

The charity is controlled by its governing document, a deed of trust, and constitutes a limited company, limited by guarantee, as defined by the Companies Act 2006.

I Choose Freedom (ICF) is a company limited by guarantee and a registered charity. It is governed according to the Memorandum of Association and the Articles of Association.

## Recruitment and appointment of new trustees

Directors are recruited from those who have supported the organisation or through recognised channels such as the Council for Voluntary Service (CVS) and Reach which undertakes national recruitment for voluntary organisations. Personal contacts and local organisations are also sources of directors.

The induction programme for directors (trustees) includes information from directors and staff, trustee training courses, as well as Surrey DA awareness and safeguarding training. Relevant printed material is also given including ICF documentation and national publications.

All members of the committee give their time voluntarily and receive no benefits from the charity. Any expenses claimed from the charity are set out in note 9 to these financial statements. ICF recognises that a diverse, skilled and committed group of directors is essential for the effective governance and management of the charity. Recruitment of new directors is the responsibility of existing directors.

## Organisational Structure

The management committee meets on ten occasions during the year and is responsible for the strategic direction and policies of the organisation. They also monitor performance and compliance with requirements of stakeholders. The CEO attends each meeting on a non-voting basis, with input from other staff members as requested.

The CEO assumes responsibility for the provision of service, and for meeting the monitoring and evaluation requirements of stakeholders. The Head of Services assumes responsibility for the day to day operations and reports to the CEO. The lines of accountability, support and supervision are well established within the organisation ensuring good practice in delivering a high-quality service.

ICF is a member of the Women’s Aid Federation of England and is part of the Surrey Domestic Abuse Management Board which links with the Surrey Domestic Abuse Commissioning Group.

## Key management personnel

The directors comprise the Board of Directors, who are the charity’s Trustees, and the senior management team comprise the key management personnel of the charity in charge of directing and controlling, running and operating the charity on a day to day basis. All directors give of their time freely and no director received remuneration in the year. Details of the remuneration of key management personnel and trustees’ expenses are disclosed in note 9 to the accounts.

Remuneration for CEO is set by the trustees using a benchmarking process and is reviewed annually.

The NCVO’s Code of Governance and Charity Commission’s Essential Duties of a Trustee were discussed in detail.

## Induction and training of new trustees

The Committee comprises directors of the company, who are also trustees under charity law. Committee members are elected at a Board meeting and normally serve for three years.

A committee member may serve for three years, and then be available for re-election for a further three years. They would not normally be eligible for re-election after two full terms until one year has elapsed, but this may be waived if it would not be in the interests of the Company for the services of the member to be lost by requiring the member to stand down.

Committee members are required to disclose all relevant interests and register them with the secretary and in accordance with the charity’s policy withdraw from decisions where a conflict of interest arises. Neither the charity nor any of the directors presently have such interests but any such interests would be disclosed should they arise.

# Structure & Governance (cont.)

## Risk management

The trustees have a duty to identify and review the risks to which the charity is exposed and to ensure appropriate controls are in place to provide reasonable assurance against fraud and error. The Committee has considered the risks to which the charity is exposed. Systems and procedures have been established to mitigate the risks the charity faces. We recognise the importance of effective risk management and have developed a risk management plan to identify, assess and manage risks to ensure the charity's resilience and continued success. This will be reviewed quarterly at the Trustee Meetings.

Procedures are in place to protect staff, volunteers and service users. These procedures are regularly reviewed

to ensure that they continue to meet the needs of the charity. The Committee has assessed the relevant safeguarding risks and have decided that all Directors undergo a DBS check every three years.

## Statement of trustees' responsibilities

The trustees (who are also the directors of I Choose Freedom Charity for the purposes of company law) are responsible for preparing the Report of the Trustees and the financial statements in accordance with applicable law and United Kingdom Accounting Standards (United Kingdom Generally Accepted Accounting Practice).

Company law requires the trustees to prepare financial statements for each financial year which

give a true and fair view of the state of affairs of the charitable company and of the incoming resources and application of resources, including the income and expenditure, of the charitable company for that period. In preparing those financial statements, the trustees are required to

- select suitable accounting policies and then apply them consistently;
- observe the methods and principles in the Charity SORP;
- make judgements and estimates that are reasonable and prudent;
- prepare the financial statements on the going concern basis unless it is inappropriate to presume that the charitable company will continue in business.

The trustees are responsible for keeping proper accounting records which disclose

with reasonable accuracy at any time the financial position of the charitable company and to enable them to ensure that the financial statements comply with the Companies Act 2006. They are also responsible for safeguarding the assets of the charitable company and hence for taking reasonable steps for the prevention and detection of fraud and other irregularities.

In so far as the trustees are aware:

- there is no relevant audit information of which the charitable company's auditors are unaware; and
- the trustees have taken all steps that they ought to have taken to make themselves aware of any relevant audit information and to establish that the auditors are aware of that information.

## Auditors

The auditors, Williams & Co Epsom LLP, will be proposed for re-appointment at the January 2025 Trustee Meeting

This report has been prepared in accordance with the special provisions of Part 15 of the Companies Act 2006 relating to small companies.

Approved by order of the Board of Trustees on

17 December 2025

and signed on its behalf by:

*Sally Stimpson*  
**Mrs S J Stimpson**  
Trustee

## Trustees

**Ms S Gregory**  
Consultant  
(appointed 10.12.22)

**Ms M King**  
Head Of Risk  
(appointed 10.12.22)

**Ms K Curtis**  
Finance Director  
(appointed 6.9.24)

**Mrs S J Stimpson**  
Maternity  
Safeguarding Specialist

**Mrs H A Edwards**  
Project Director  
Corporate Events

**Ms C N Kinyanjui**  
Person With Lived  
Experience

**Ms C Booth**  
Legacy Marketing  
Manager  
(appointed 10.12.22)

**Ms J Healey**  
Retired HR Manager  
(appointed 18.2.24)

**Ms P Greenway**  
Director of People  
& Improvement  
(appointed 6.9.24)

**Mr D Hallam**  
Retired CEO/  
Business Owner  
(appointed 6.9.24)

**Company secretary**  
**Ms C.N. Kinyanjui**  
(appointed 01/03/24)

**Registered office**  
Po Box 54, Reigate,  
Surrey RH2 0AZ

**Registered company number**  
01806055  
(England & Wales)

**Registered charity number** 289508

**Auditors**  
Williams & Co,  
Epsom LLP  
8-10 South Street,  
Epsom, Surrey KT18 7PF

**Bankers**  
Lloyds Bank Plc  
11 High Street, Horley,  
Surrey RH6 7BJ



# Independent Auditors Report

## Opinion

We have audited the financial statements of I Choose Freedom charity (the 'charitable company') for the year ended 31 March 2025 which comprise the Statement of Financial Activities, the Balance Sheet, the Cash Flow Statement and notes to the financial statements, including a summary of significant accounting policies. The financial reporting framework that has been applied in their preparation is applicable law and United Kingdom Accounting Standards (United Kingdom Generally Accepted Accounting Practice).

### In our opinion the financial statements:

- give a true and fair view of the state of the charitable company's affairs as at 31 March 2025 and of its incoming resources and application of resources, including its income and expenditure, for the year then ended;
- have been properly prepared in accordance with United Kingdom Generally Accepted Accounting Practice; and
- have been prepared in accordance with the requirements of the Companies Act 2006.

## Basis for opinion

We conducted our audit in accordance with International Standards on Auditing (UK) (ISAs (UK) and applicable law. Our responsibilities under those standards are further described in the Auditors' responsibilities for the audit of the financial statements

section of our report. We are independent of the charitable company in accordance with the ethical requirements that are relevant to our audit of the financial statements in the UK, including the FRC's Ethical Standard, and we have fulfilled our other ethical responsibilities in accordance with these requirements. We believe that the audit evidence we have obtained is sufficient and appropriate to provide a basis for our opinion.

## Conclusions relating to going concern

In auditing the financial statements, we have concluded that the trustees' use of the going concern basis of accounting in the preparation of the financial statements is appropriate.

Based on the work we have performed, we have not identified any material uncertainties relating to events or conditions that, individually or collectively, may cast significant doubt on the charitable company's ability to continue as a going concern for a period of at least twelve months from when the financial statements are authorised for issue.

Our responsibilities and the responsibilities of the trustees with respect to ongoing concern are described in the relevant sections of this report.

## Other information

The trustees are responsible for the other information. The other information comprises the information included in the Annual Report, other than the financial statements

and our Report of the Independent Auditors thereon.

Our opinion on the financial statements does not cover the other information and, except to the extent otherwise explicitly stated in our report, we do not express any form of assurance conclusion thereon.

In connection with our audit of the financial statements, our responsibility is to read the other information and, in doing so, consider whether the other information is materially inconsistent with the financial statements or our knowledge obtained in the audit or otherwise appears to be materially misstated. If we identify such material inconsistencies or apparent material misstatements, we are required to determine whether this gives rise to a material misstatement in the financial statements themselves. If, based on the work we have performed, we conclude that there is a material misstatement of this other information, we are required to report that fact. We have nothing to report in this regard.

## Opinions on other matters prescribed by the Companies Act 2006

In our opinion, based on the work undertaken in the course of the audit:

- the information given in the Report of the Trustees for the financial year for which the financial statements are prepared is consistent with the financial statements; and

- the Report of the Trustees has been prepared in accordance with applicable legal requirements.

## Matters on which we are required to report by exception

In the light of the knowledge and understanding of the charitable company and its environment obtained in the course of the audit, we have not identified material misstatements in the Report of the Trustees.

We have nothing to report in respect of the following matters where the Companies Act 2006 requires us to report to you if, in our opinion:

- adequate accounting records have not been kept or returns adequate for our audit have not been received from branches not visited by us; or
- the financial statements are not in agreement with the accounting records and returns; or
- certain disclosures of trustees' remuneration specified by law are not made; or
- we have not received all the information and explanations we require for our audit; or
- the trustees were not entitled to take advantage of the small companies exemption from the requirement to prepare a Strategic Report or in preparing the Report of the Trustees.

# Independent Auditors Report (cont)

## Responsibilities of trustees

As explained more fully in the Statement of Trustees' Responsibilities, the trustees (who are also the directors of the charitable company for the purposes of company law) are responsible for the preparation of the financial statements and for being satisfied that they give a true and fair view, and for such internal control as the trustees determine is necessary to enable the preparation of financial statements that are free from material misstatement, whether due to fraud or error.

In preparing the financial statements, the trustees are responsible for assessing the charitable company's ability to continue as a going concern, disclosing, as applicable, matters related to going concern and using the going concern basis of accounting unless the trustees either intend to liquidate the charitable company or to cease operations, or have no realistic alternative but to do so.

## Our responsibilities for the audit of the financial statements

Our objectives are to obtain reasonable assurance about whether the financial statements as a whole are free from material misstatement, whether due to fraud or error, and to issue a Report of the Independent Auditors that includes our opinion. Reasonable assurance is a high level of assurance, but is not a guarantee that an audit conducted in accordance with ISAs (UK) will always detect a material misstatement when it exists. Misstatements can arise from fraud or error and are considered material if, individually or in the aggregate, they could reasonably be expected to influence the economic decisions of users taken on the basis of these financial statements.

### The extent to which our procedures are capable of detecting irregularities, including fraud is detailed below:

- Our assessment of the financial statements susceptibility to material misstatement, including how fraud may occur, included a review of the sales process and ensuring timing of income was in accordance with accounting standards. The audit engagement team identified the risk of management override of controls as the area where the financial statements were most susceptible to material misstatement due to fraud. Audit procedures performed

included but were not limited to testing manual journal entries and other adjustments and evaluating the rationale in relation to any significant, unusual transactions and transactions entered into outside of the normal course of business.

- Our tests were designed to ensure income was correctly reported in the correct accounting period and at the right level with significant testing of deferred income. In addition, given the significant balances held at bank, we sought third party verification of bank balances and carried out testing of these balances against pre and post balance sheet entries.
- We have tested controls over payment authorisations and sample payments from the bank to ensure all major items are properly accounted for.

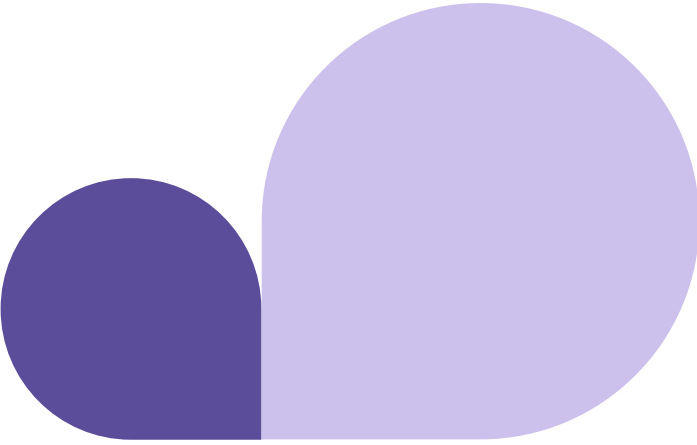
A further description of our responsibilities for the audit of the financial statements is located on the Financial Reporting Council's website at [www.frc.org.uk/auditorsresponsibilities](http://www.frc.org.uk/auditorsresponsibilities). This description forms part of our Report of the Independent Auditors.

## Use of our report

This report is made solely to the charitable company's members, as a body, in accordance with Chapter 3 of Part 16 of the Companies Act 2006. Our audit work has been undertaken so that we might state to the charitable company's members those matters we are required to state to them in an auditors' report and for no other purpose. To the fullest extent permitted by law, we do not accept or assume responsibility to anyone other than the charitable company and the charitable company's members as a body, for our audit work, for this report, or for the opinions we have formed.

**Henry Williams**  
(Senior Statutory Auditor)  
for and on behalf of  
Williams & Co Epsom LLP  
8-10 South Street  
Epsom  
Surrey  
KT18 7PF  
Date: 17 December 2025

  
.....  
to be signed by auditors



# Statement of Financial Activities

for the year ended 31 March 2025

	Notes	Unrestricted funds £	Restricted funds £	31.3.25 Total funds £	31.3.24 Total funds £
<b>Income and endowments from</b>					
Donations and legacies	2	2,936	213	3,149	21,104
<b>Charitable activities</b>	4				
Supporting & accommodating victims of domestic abuse		15,001	782,990	797,991	681,470
Investment income	3	55,281	-	55,281	6,128
Other income		692,835	-	692,835	613,922
<b>Total</b>		<b>766,053</b>	<b>783,203</b>	<b>1,549,256</b>	<b>1,322,624</b>
<b>Expenditure on</b>					
<b>Charitable activities</b>	5				
Supporting & accommodating victims of domestic abuse		768,415	695,487	1,463,902	1,398,057
<b>Net income /(expenditure)</b>		<b>(2,362)</b>	<b>87,716</b>	<b>85,354</b>	<b>(75,433)</b>
<b>Transfers between funds</b>	15	<b>(10,315)</b>	<b>10,315</b>	<b>-</b>	<b>-</b>
<b>Net movement in funds</b>		<b>(12,677)</b>	<b>98,031</b>	<b>85,354</b>	<b>(75,433)</b>
<b>Reconciliation of funds</b>					
Total funds brought forward		740,263	243,900	984,163	1,059,596
<b>Total funds carried forward</b>		<b>727,586</b>	<b>341,931</b>	<b>1,069,517</b>	<b>984,163</b>

# Balance Sheet

31 March 2025

	Notes	Unrestricted funds £	Restricted funds £	31.3.25 Total funds £	31.3.24 Total funds £
<b>Fixed assets</b>					
Tangible assets	12	10,835	44,573	55,408	65,792
<b>Current assets</b>					
Debtors	13	37,044	-	37,044	36,150
Cash at bank and in hand		764,768	297,358	1,062,126	976,326
		801,812	297,358	1,099,170	1,012,476
<b>Creditors</b>					
Amounts falling due within one year	14	(85,061)	-	(85,061)	(94,105)
<b>Net current assets</b>		716,751	297,358	1,014,109	918,371
<b>Total assets less current liabilities</b>		727,586	341,931	1,069,517	984,163
<b>Net assets</b>		727,586	341,931	1,069,517	984,163
<b>Funds</b>					
	15				
Unrestricted funds				727,586	740,263
Restricted funds				341,931	243,900
<b>Total funds</b>				1,069,517	984,163

These financial statements have been prepared in accordance with the provisions applicable to charitable companies subject to the small companies regime.

The financial statements were approved by the Board of Trustees and authorised for issue on

17 December 2025

and were signed on its behalf by:

Mrs S J Stimpson - Trustee



# Cash Flow Statement

for the year ended 31 March 2025

	Notes	31.3.25 £	31.3.24 £
<b>Cash flows from operating activities</b>			
Cash generated from operations	1	32,726	(17,602)
Net cash (used in)/provided by operating activities		32,726	(17,602)
<b>Cash flows from investing activities</b>			
Purchase of tangible fixed assets		(2,207)	(2,034)
Interest received		55,281	6,128
Net cash provided investing activities		53,074	4,094
<b>Change in cash and cash equivalents in the reporting period</b>			
		85,800	(13,508)
<b>Cash and cash equivalents at the beginning of the reporting period</b>			
		976,326	989,834
<b>Cash and cash equivalents at the end of the reporting period</b>			
		1,062,126	976,326

# Notes to the Cash Flow Statement

for the year ended 31 March 2025

## 1. Reconciliation of net income /(expenditure) to net cash flow from operating activities

	31.3.25 £	31.3.24 £
<b>Net income/(expenditure) for the reporting period (as per the Statement of Financial Activities)</b>	<b>85,354</b>	<b>(75,433)</b>
<b>Adjustments for:</b>		
Depreciation charges	12,590	13,722
Interest received	(55,281)	(6,128)
Increase in debtors	(893)	(16,053)
(Decrease)/increase in creditors	(9,044)	66,290
<b>Net cash (used in)/provided by operations</b>	<b>32,726</b>	<b>(17,602)</b>

## 2. Analysis of changes in net funds

	At 1.4.24 £	Cash flow £	At 31.3.24 £
<b>Net cash</b>			
Cash at bank and in hand	976,326	85,800	1,062,126
<b>Total</b>	<b>976,326</b>	<b>85,800</b>	<b>1,062,126</b>

# Notes to the Financial Statements for the Year Ended 31 March 2025

## 1. Accounting policies

### Basis of preparing the financial statements

The financial statements of the charitable company, which is a public benefit entity under FRS 102, have been prepared in accordance with the Charities SORP (FRS 102) 'Accounting and Reporting by Charities: Statement of Recommended Practice applicable to charities preparing their accounts in accordance with the Financial Reporting Standard applicable in the UK and Republic of Ireland (FRS 102) (effective 1 January 2019)', Financial Reporting Standard 102 'The Financial Reporting Standard applicable in the UK and Republic of Ireland' and the Companies Act 2006. The financial statements have been prepared under the historical cost convention.

The accounts have been prepared in accordance with the Statement of Recommended Practice: Accounting and Reporting by Charities preparing their accounts in accordance with the Financial Reporting Standard applicable in the UK and Republic of Ireland (FRS 102) effective 1 January 2015 and with the Financial Reporting Standard applicable in the United Kingdom and Republic of Ireland (FRS 102).

The accounts have been prepared to give a 'true and fair' view and have departed from the Charities (Accounts and Reports) Regulations 2008 only to the extent required to provide a 'true and fair view'. This departure has involved following Accounting and Reporting by Charities preparing their accounts in accordance with the Financial Reporting Standard applicable in the UK and Republic of Ireland (FRS102) effective 1 January 2015 rather than the Accounting and Reporting Charities: Statement of Recommended Practice effective from 1 April 2005 which has since been withdrawn.

The Charity constitutes a public benefit entity as defined by FRS 102. The Trustees consider that there are no material uncertainties about the Charity's ability to continue as a going concern.

### Incoming resources

All income is recognised in the Statement of Financial Activities once the charity has entitlement to the funds, it is probable that the income will be received and the amount can be measured reliably. Income (including rents and contributions) is recognised when the charity has entitlement to the funds, any performance conditions

attached to the item(s) of income have been met, it is probable that the income will be received, and the amount can be measured reliably. Income from grants, whether 'capital' grants or 'revenue' grants, is recognised when the charity has entitlement to the funds, any performance conditions attached to the grants have been met, it is probable that the income will be received, and the amount can be measured reliably and is not deferred. Bank and Building Society interest are accounted for on the basis of monies receivable in the year.

### Resources expended

Liabilities are recognised as expenditure as soon as there is a legal or constructive obligation committing the charity to that expenditure, it is probable that a transfer of economic benefits will be required in settlement and the amount of the obligation can be measured reliably. Expenditure is accounted for on an accruals basis and has been classified under headings that aggregate all cost related to the category. Where costs cannot be directly attributed to particular headings they have been allocated to activities on

a basis consistent with the use of resources. Resources expended are allocated to the particular activity where the cost relates directly to that activity. Governance costs Governance costs comprise the costs of running the charity including amounts paid to the independent examiner.

# Notes to the Financial Statements for the Year Ended 31 March 2025 (cont)

## 1. Accounting policies (cont)

### Tangible fixed assets

Depreciation is provided at the following annual rates in order to write off each asset over its estimated useful life.

Improvements to property	10% on cost
Fixtures and fittings	25% on cost

### Taxation

The charity is exempt from corporation tax on its charitable activities.

### Fund accounting

Unrestricted funds can be used in accordance with the charitable objectives at the discretion of the trustees.

Restricted funds can only be used for particular restricted purposes within the objects of the charity. Restrictions arise when specified by the donor or when funds are raised for particular restricted purposes.

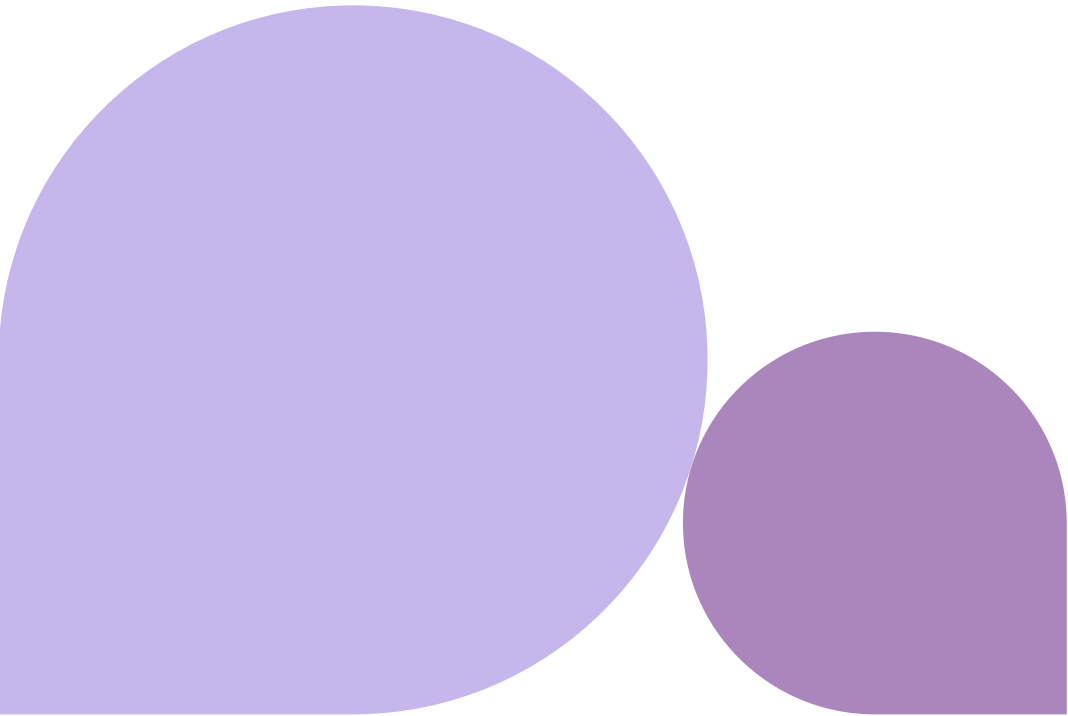
Further explanation of the nature and purpose of each fund is included in the notes to the financial statements.

### Hire purchase and leasing commitments

Rentals paid under operating leases are charged to the Statement of Financial Activities on a straight line basis over the period of the lease.

### Pension costs and other post-retirement benefits

The charitable company operates a defined contribution pension scheme. Contributions payable to the charitable company's pension scheme are charged to the Statement of Financial Activities in the period to which they relate.





# Notes to the Financial Statements for the Year Ended 31 March 2025 (cont)

	31.3.25 £	31.3.24 £
<b>2. Donations and legacies</b>		
Donations	3,149	21,104
<b>3. Investment income</b>		
Deposit account interest	55,281	6,128
<b>4. Income from charitable activities</b>		
<b>Grants</b>	Activity	
	Supporting & accommodating victims of domestic abuse	797,991 681,470
<b>Grants received, included in the above, are as follows:</b>		
	Local Authority Grants	26,550 30,240
	Housing Related Support Grant	644,562 526,445
	Optivo Grant	15,000 15,000
	St Faiths Trust	1,500 1,500
	Wisley	20,000 11,200
	Community Foundation for Surrey	7,000 5,000
	PCC Grants	- 14,546
	Farnham Round Table	- 400
	C Elliss	3,750 21,250
	Rotary Club	- 300
	Charles Safapour	- 625
	Kids Out	160 465
	Lifetime Chances	4,210 3,199
	Raven Housing	- 1,000
	<b>Carried forward</b>	<b>722,732 631,170</b>

# Notes to the Financial Statements for the Year Ended 31 March 2025 (cont)

## 4. Income from charitable activities (cont)

	31.3.25 £	31.3.24 £
<b>Brought forward</b>	<b>715,732</b>	<b>631,170</b>
Next Step Nursing	-	1,500
Pauline Bourne	6,450	25,200
Meryl Gray	-	2,600
Pattenmakers	12,000	2,000
Epsom College	-	5,000
Shanly Foundation	-	2,000
The Bob Trust	-	10,000
The Charles Lewis Foundation	-	2,000
52 Lives	600	-
Allison Raeside	313	-
B&Q Foundation	7,500	-
Beck Fitzgerald	500	-
Bryden Johnson	2,000	-
Bunzl Family Charitable Fund	500	-
Cosoraf	210	-
David Michael Watson Smith	500	-
Farnham Lions	1,500	-
Farnham Town Council	2,000	-
Gatwick Airport Community Trust	2,500	-
Horley Lions Club	6,120	-
Mothers Union at Church of the Good Shepherd	132	-
O3E	250	-
Schroder Charity Trust	5,000	-
Skipton Building Society	3,000	-
Spread Some Sunshine	250	-
St Nicholas Shopping Centre	934	-
Surrey Freemasonry	1,000	-
Surrey Hills Morris Minor Club	150	-
Tesco Stronger Starts	3,000	-
The Alchemy Foundation	1,000	-
The Hobson Charity	5,600	-
The Haley Charitable Trust	2,000	-
Hurst Lea Foundation	9,750	-
Redhill Redstone Rotary Club	500	-
	<b>797,991</b>	<b>681,470</b>

# Notes to the Financial Statements for the Year Ended 31 March 2025 (cont)

## 5. Charitable activities costs

	Direct Cost £	Support cost (See note 6) £	Totals £
Supporting & accommodating victims of domestic abuse	1,412,306	51,596	1,463,902

## 6. Support costs

	Finance £	Governance costs £	Totals £
Supporting & accommodating victims of domestic abuse	726	50,870	51,596

	31.3.25 Supporting & accommodating victims of domestic abuse £	31.3.24 Total activities £
Support costs, included in the above, are as follows:		
Bank charges	726	741
Auditors' remuneration	4,740	4,620
Accountancy and legal fees	42,719	33,108
Subscriptions	3,411	2,434
	51,596	40,903

## 7. Net income/(expenditure)

	31.3.25 £	31.3.24 £
Net income/(expenditure) is stated after charging/(crediting):		
Depreciation - owned assets	12,591	13,722
Other operating leases	136,351	71,382

## 8. Auditors' remuneration

Fees payable to the charity's auditors for the audit of the charity's financial statements	4,740	4,620
--	-------	-------

## 9. Trustees' remuneration and benefits

There were no trustees' remuneration or other benefits for the year ended 31 March 2025 nor for the year ended 31 March 2024.

### Trustees' expenses

There were no trustees' expenses paid for the year ended 31 March 2025 nor for the year ended 31 March 2024.

# Notes to the Financial Statements for the Year Ended 31 March 2025 (cont)

## 10. Staff costs

	31.3.25	31.3.24
	£	£
Wages and salaries	772,513	781,338
Social security costs	68,360	64,075
Other pension costs	15,874	16,986
	856,747	862,399

The average monthly number of employees during the year was as follows:

Administration	7	5
Refuge Workers	19	22
	26	27

The number of employees whose employee benefits (excluding employer pension costs) exceeded £60,000 was:

£60,001 - £70,000	1	1
£70,001 - £80,000	1	-
	2	1

## 11. Comparatives for the statement of financial activities

	Unrestricted funds	Restricted funds	Total funds
	£	£	£
<b>Income and endowments from</b>			
Donations and legacies	21,104	-	21,104
<b>Charitable activities</b>			
Supporting & accommodating victims of domestic abuse	15,000	666,470	681,470
Investment income	6,128	-	6,128
Other income	613,922	-	613,922
<b>Total</b>	<b>656,154</b>	<b>666,470</b>	<b>1,322,624</b>
<b>Expenditure on charitable activities</b>			
Supporting & accommodating victims of domestic abuse	539,880	858,177	1,398,057
<b>Net income/(expenditure)</b>	<b>116,274</b>	<b>(191,707)</b>	<b>(75,433)</b>
Transfers between funds	(2,828)	2,828	-
<b>Net movement in funds</b>	<b>113,446</b>	<b>(188,879)</b>	<b>(75,433)</b>
<b>Reconciliation of funds</b>			
Total funds brought forward	626,816	432,780	1,059,596
<b>Total funds carried forward</b>	<b>740,262</b>	<b>243,901</b>	<b>984,163</b>



# Notes to the Financial Statements for the Year Ended 31 March 2025 (cont)

## 12. Tangible fixed assets

	Improvements to property £	Fixtures & fittings £	Totals £
<b>Cost</b>			
At 1 April 2024	101,138	59,166	160,304
Additions	-	2,207	2,207
Disposals	-	(11,601)	(11,601)
At 31 March 2025	101,138	49,772	150,910
<b>Depreciation</b>			
At 1 April 2024	55,538	38,974	94,512
Charge for year	6,990	5,601	12,591
Eliminated on disposal	-	(11,601)	(11,601)
At 31 March 2025	62,528	32,974	95,502
<b>Net book value</b>			
At 31 March 2025	38,610	16,798	55,408
At 31 March 2024	45,600	20,192	65,792

## 13. Debtors: amounts falling due within one year

	31.3.25 £	31.3.24 £
Trade debtors	7,547	9,474
Accruals	11,824	11,222
Prepayments	17,673	15,454
	<b>37,044</b>	<b>36,150</b>

## 14. Creditors: amounts falling due within one year

	31.3.25 £	31.3.24 £
Trade creditors	40,271	30,735
Social security and other taxes	19,992	25,172
Other creditors	15,851	13,607
Accrued expenses	7,229	8,249
Deferred government grants	1,718	16,342
	<b>85,061</b>	<b>94,105</b>

## Notes to the Financial Statements for the Year Ended 31 March 2025 (cont)

### 15. Movement in funds

	At 1.4.24 in funds £	Net movement in funds £	Transfer between funds £	At 31.3.25 £
<b>Unrestricted funds</b>				
General fund	337,411	(2,362)	(10,315)	324,734
Contingency Reserve	400,000	-	-	400,000
Renewals Fund	2,852	-	-	2,852
	<b>740,263</b>	<b>(2,362)</b>	<b>(10,315)</b>	<b>727,586</b>
<b>Restricted funds</b>				
Surrey County Council	49,099	118,891	(1)	167,989
PCC Victim Transition Fund	3,340	(3,340)	-	-
Psychotherapy Fund	-	61	-	61
Children's Fund	-	1,500	-	1,500
Masons Shed	2,196	(366)	-	1,830
Therapy Cabin	28,767	(4,795)	-	23,972
SCC HH Support Grant	861	(216)	-	645
PCC IT Grant	977	(244)	-	733
Caterham School Transition	61	(61)	-	-
Vinci CCT fund	3,200	(800)	-	2,400
Wisley Foundation	2,158	(539)	-	1,619
C Elliss Equipment	12,665	(2,098)	-	10,567
Gift fund	70	3,546	-	3,616
NRPF	36,949	5,710	-	42,659
SCC Inclusion Refuge restricted	157	(9,531)	9,797	423
HH Masons Play Area	2,560	(320)	-	2,240
Diversity and Inclusion Fund	3,018	(822)	-	2,196
RBBC Household Support Fund	2,288	(2,544)	256	-
Lifetime Chances	-	10	-	10
Wisley Welcome Pack Fund	10,948	(9,649)	(12)	1,287
Caroline Ellis Court Fund	26,371	(26,371)	-	-
Mildred Jackson Fund	22,758	4,154	(2)	26,910
Kerslake PT Fund	2,175	(1,680)	-	495
Pattenmakers Shoe Fund	1,282	-	(1,282)	-
Caroline Ellis 2024	25,000	(21,250)	-	3,750
Children's Advocate Salary	5,000	(5,262)	262	-
Charles Lewis Foundation TV fund	2,000	(1,248)	-	752
Skipton Building Society	-	258	-	258
Horley Lions Club	-	481	-	481
Pattenmakers Adults Fund	-	592	641	1,233
Pattenmakers Childrens Fund	-	690	641	1,331
Gatwick Airport Community Trust	-	(16)	16	-
O3E	-	(1)	1	-
MXG/MAR Restricted	-	331	-	331
HH Restricted	-	1,999	-	1,999
B&Q Foundation	-	5,051	-	5,051
SCC Opening Doors	-	10,088	-	10,088
Tesco - Arts & Crafts	-	500	-	500

# Notes to the Financial Statements for the Year Ended 31 March 2025 (cont)

## 15. Movement in funds (cont)

	At 1.4.24	Net movement in funds	Transfer between funds	At 31.3.25
	£	£	£	£
Tesco Welcome Pack	-	2	(2)	-
The Hobson Charity Limited	-	5	-	5
The Wisley Foundation - Opening Door Project	-	20,000	-	20,000
SCC - Welcome Pack	-	5,000	-	5,000
	243,900	87,716	10,315	341,931
Total funds	984,163	85,354	-	1,069,517

## Notes to the Financial Statements for the Year Ended 31 March 2025 (cont)

### 15. Movement in funds (cont)

Net movement in funds, included in the above are as follows:

	Incoming resources £	Resources expended £	Movement in funds £
<b>Unrestricted funds</b>			
General fund	766,052	(768,414)	(2,362)
<b>Restricted funds</b>			
Surrey County Council	336,081	(217,190)	118,891
RBBC	21,600	(21,600)	-
PCC Victim Transition Fund	-	(3,340)	(3,340)
Psychotherapy Fund	33,520	(33,459)	61
Children's Fund	2,310	(810)	1,500
Masons Shed	-	(366)	(366)
Therapy Cabin	(1)	(4,794)	(4,795)
SCC HH Support Grant	(1)	(215)	(216)
PCC IT Grant	-	(244)	(244)
Caterham School Transition	-	(61)	(61)
Vinci CCT fund	-	(800)	(800)
Wisley Foundation	1	(540)	(539)
C Elliss Equipment	1	(2,099)	(2,098)
Gift fund	4,962	(1,416)	3,546
NRPF	29,120	(23,410)	5,710
SCC Inclusion Refuge restricted	185,000	(194,531)	(9,531)
HH Masons Play Area	-	(320)	(320)
Diversity and Inclusion Fund	(1)	(821)	(822)
RBBC Household Support Fund	2,200	(4,744)	(2,544)
Lifetime Chances	4,210	(4,200)	10
Wisley Welcome Pack Fund	-	(9,649)	(9,649)
Caroline Ellis Court Fund	-	(26,371)	(26,371)
Mildred Jackson Fund	6,300	(2,146)	4,154
Kerslake PT Fund	-	(1,680)	(1,680)
Caroline Ellis 2024	3,750	(25,000)	(21,250)
Children's Advocate Salary	26,251	(31,513)	(5,262)
Charles Lewis Foundation TV fund	-	(1,248)	(1,248)
RBBC DA Funding Grant	13,750	(13,750)	-
The Alchemy Foundation	1,000	(1,000)	-
Skipton Building Society	3,000	(2,742)	258
SCC HSF	26,900	(26,900)	-
Horley Lions Club	1,120	(639)	481
Pattenmakers Adults Fund	1,000	(408)	592
Pattenmakers Childrens Fund	1,000	(310)	690
Farnham Lions	1,500	(1,500)	-
Gatwick Airport Community Trust	2,500	(2,516)	(16)
O3E	250	(251)	(1)
MXG/MAR Restricted	882	(551)	331
HH Restricted	13,899	(11,900)	1,999
B&Q Foundation	7,500	(2,449)	5,051
SCC Opening Doors	20,000	(9,912)	10,088



# Notes to the Financial Statements for the Year Ended 31 March 2025 (cont)

## 15. Movement in funds (cont)

Net movement in funds, included in the above are as follows:

	Incoming resources £	Resources expended £	Movement in funds £
Tesco - Arts & Crafts	500	-	500
Tesco Welcome Pack	2,500	(2,498)	2
The Hobson Charity Limited	5,600	(5,595)	5
The Wisley Foundation - Opening Door Project	20,000	-	20,000
SCC - Welcome Pack	5,000	-	5,000
	783,204	(695,488)	87,716
Total funds	1,549,256	(1,463,902)	85,354

## Notes to the Financial Statements for the Year Ended 31 March 2025 (cont)

### 15. Movement in funds (cont)

#### Comparatives for movement in funds

	At 1.4.23	Net movement in funds	Transfer between funds	At 31.3.24
	£	£	£	£
<b>Unrestricted funds</b>				
General fund	199,618	116,815	20,978	337,411
Contingency Reserve	300,000	-	100,000	400,000
New House Fund	123,806	-	(123,806)	-
Renewals Fund	3,392	(540)	-	2,852
	<b>626,816</b>	<b>116,275</b>	<b>(2,828)</b>	<b>740,263</b>
<b>Restricted funds</b>				
Surrey County Council	258	48,840	1	49,099
PCC Victim Transition Fund	5,704	(2,364)	-	3,340
Psychotherapy Fund	2,240	(2,240)	-	-
Children's Fund	1,419	(1,782)	363	-
Masons Shed	2,562	(366)	-	2,196
Therapy Cabin	33,561	(4,794)	-	28,767
SCC HH Support Grant	1,147	(286)	-	861
PCC IT Grant	1,303	(326)	-	977
Douglas Bradley Residents Tech	1,580	(1,580)	-	-
Caterham School Transition	1,500	(1,439)	-	61
Optivo internal decorating	-	(1,296)	1,296	-
Vinci CCT fund	4,267	(1,067)	-	3,200
Wisley Foundation	2,877	(719)	-	2,158
C Elliss Equipment	15,897	(3,232)	-	12,665
Gift fund	285	(215)	-	70
NRPF	17,729	19,220	-	36,949
SCC Inclusion Refuge restricted	282,807	(282,650)	-	157
Leathersellers IT Security	48	-	(48)	-
HH Masons Play Area	3,058	(517)	19	2,560
Georgia Treweek transition fund	6,944	(6,941)	(3)	-
Diversity and Inclusion Fund	4,813	(1,795)	-	3,018
Creating Healthy Communities Community support programme	6,393	(7,562)	1,169	-
RBBC Household Support Fund	1,388	900	-	2,288
Wisley Welcome Pack Fund	10,000	917	31	10,948
Caroline Ellis Court Fund	25,000	1,371	-	26,371
Mildred Jackson Fund	-	22,758	-	22,758
Kerslake PT Fund	-	2,175	-	2,175
Pattenmakers Shoe Fund	-	1,282	-	1,282
Caroline Ellis 2024	-	25,000	-	25,000
Children's Advocate Salary	-	5,000	-	5,000
Charles Lewis Foundation TV fund	-	2,000	-	2,000
	<b>432,780</b>	<b>(191,708)</b>	<b>2,828</b>	<b>243,900</b>
<b>TOTAL FUNDS</b>	<b>1,059,596</b>	<b>(75,433)</b>	<b>-</b>	<b>984,163</b>

## Notes to the Financial Statements for the Year Ended 31 March 2025 (cont)

### 15. Movement in funds

Comparative net movement in funds, included in the above are as follows:

	Incoming resources £	Resources expended £	Movement in funds £
<b>Unrestricted funds</b>			
General fund	656,154	(539,339)	116,815
Renewals Fund	-	(540)	(540)
	<b>656,154</b>	<b>(539,879)</b>	<b>116,275</b>
<b>Restricted funds</b>			
Surrey County Council	457,323	(408,483)	48,840
RBBC	21,000	(21,000)	-
PCC Victim Transition Fund	-	(2,364)	(2,364)
Psychotherapy Fund	-	(2,240)	(2,240)
Children's Fund	1,045	(2,827)	(1,782)
Masons Shed	-	(366)	(366)
Therapy Cabin	-	(4,794)	(4,794)
PCC Childrens Grant	14,546	(14,546)	-
SCC HH Support Grant	1	(287)	(286)
PCC IT Grant	-	(326)	(326)
Douglas Bradley Residents Tech	-	(1,580)	(1,580)
Caterham School Transition	-	(1,439)	(1,439)
Optivo internal decorating	-	(1,296)	(1,296)
Vinci CCT fund	-	(1,067)	(1,067)
Wisley Foundation	-	(719)	(719)
C Elliss Equipment	-	(3,232)	(3,232)
Gift fund	3,625	(3,840)	(215)
NRPF	29,120	(9,900)	19,220
SCC Inclusion Refuge restricted	-	(282,650)	(282,650)
HH Masons Play Area	-	(517)	(517)
Georgia Treweek transition fund	-	(6,941)	(6,941)
Diversity and Inclusion Fund	120	(1,915)	(1,795)
Creating Healthy Communities Community support programme	-	(7,562)	(7,562)
SCC Fuel costs	30,000	(30,000)	-
RBBC Household Support Fund	20,241	(19,341)	900
Lifetime Chances	3,199	(3,199)	-
Wisley Welcome Pack Fund	11,200	(10,283)	917
Caroline Ellis Court Fund	6,250	(4,879)	1,371
Mildred Jackson Fund	25,200	(2,442)	22,758
Kerslake PT Fund	2,600	(425)	2,175
Pattenmakers Shoe Fund	2,000	(718)	1,282
Epsom College Advocate salaries	5,001	(5,001)	-
Shanly Children's Advocate Salary	1,999	(1,999)	-
Caroline Ellis 2024	25,000	-	25,000
Children's Advocate Salary	5,000	-	5,000
Charles Lewis Foundation TV fund	2,000	-	2,000
	<b>666,470</b>	<b>(858,178)</b>	<b>(191,708)</b>
<b>Total funds</b>	<b>1,322,624</b>	<b>(1,398,057)</b>	<b>(75,433)</b>

## Notes to the Financial Statements for the Year Ended 31 March 2025 (cont)

### 15. Movement in funds (cont)

A current year 12 months and prior year 12 months combined position is as follows:

	At 1.4.23 £	Net movement in funds £	Transfer between funds £	At 31.3.25 £
<b>Unrestricted funds</b>				
General fund	199,618	114,453	10,663	324,734
Contingency Reserve	300,000	-	100,000	400,000
New House Fund	123,806	-	(123,806)	-
Renewals Fund	3,392	(540)	-	2,852
	<b>626,816</b>	<b>113,913</b>	<b>(13,143)</b>	<b>727,586</b>
<b>Restricted funds</b>				
Surrey County Council	258	167,731	-	167,989
PCC Victim Transition Fund	5,704	(5,704)	-	-
Psychotherapy Fund	2,240	(2,179)	-	61
Children's Fund	1,419	(282)	363	1,500
Masons Shed	2,562	(732)	-	1,830
Therapy Cabin	33,561	(9,589)	-	23,972
SCC HH Support Grant	1,147	(502)	-	645
PCC IT Grant	1,303	(570)	-	733
Douglas Bradley Residents Tech	1,580	(1,580)	-	-
Caterham School Transition	1,500	(1,500)	-	-
Optivo internal decorating	-	(1,296)	1,296	-
Vinci CCT fund	4,267	(1,867)	-	2,400
Wisley Foundation	2,877	(1,258)	-	1,619
C Elliss Equipment	15,897	(5,330)	-	10,567
Gift fund	285	3,331	-	3,616
NRPF	17,729	24,930	-	42,659
SCC Inclusion Refuge restricted	282,807	(292,181)	9,797	423
Leathersellers IT Security	48	-	(48)	-
HH Masons Play Area	3,058	(837)	19	2,240
Georgia Treweek transition fund	6,944	(6,941)	(3)	-
Diversity and Inclusion Fund	4,813	(2,617)	-	2,196
Creating Healthy Communities Community support programme	6,393	(7,562)	1,169	-
RBBC Household Support Fund	1,388	(1,644)	256	-
Lifetime Chances	-	10	-	10
Wisley Welcome Pack Fund	10,000	(8,732)	19	1,287
Caroline Ellis Court Fund	25,000	(25,000)	-	-
Mildred Jackson Fund	-	26,912	(2)	26,910
Kerslake PT Fund	-	495	-	495
Pattenmakers Shoe Fund	-	1,282	(1,282)	-
Caroline Ellis 2024	-	3,750	-	3,750
Children's Advocate Salary	-	(262)	262	-
Charles Lewis Foundation TV fund	-	752	-	752
Skipton Building Society	-	258	-	258
Horley Lions Club	-	481	-	481
Pattenmakers Adults Fund	-	592	641	1,233
Pattenmakers Childrens Fund	-	690	641	1,331
Gatwick Airport Community Trust	-	(16)	16	-
O3E	-	(1)	1	-
MXG/MAR Restricted	-	331	-	331
HH Restricted	-	1,999	-	1,999



# Notes to the Financial Statements for the Year Ended 31 March 2025 (cont)

## 15. Movement in funds (cont)

A current year 12 months and prior year 12 months combined position is as follows:

	At 1.4.23 £	Net movement in funds £	Transfer between funds £	At 31.3.25 £
B&Q Foundation	-	5,051	-	5,051
SCC Opening Doors	-	10,088	-	10,088
Tesco - Arts & Crafts	-	500	-	500
Tesco Welcome Pack	-	2	(2)	-
The Hobson Charity Limited	-	5	-	5
The Wisley Foundation - Opening Door Project	-	20,000	-	20,000
SCC - Welcome Pack	-	5,000	-	5,000
	432,780	(103,992)	13,143	341,931
Total funds	1,059,596	9,921	-	1,069,517

## Notes to the Financial Statements for the Year Ended 31 March 2025 (cont)

### 15. Movement in funds (cont)

A current year 12 months and prior year 12 months combined net movement in funds, included in the above are as follows:

	Incoming resources £	Resources expended £	Movement in funds £
<b>Unrestricted funds</b>			
General fund	1,422,206	(1,307,753)	114,453
Renewals Fund	-	(540)	(540)
	<b>1,422,206</b>	<b>(1,308,293)</b>	<b>113,913</b>
<b>Restricted funds</b>			
Surrey County Council	793,404	(625,673)	167,731
RBBC	42,600	(42,600)	-
PCC Victim Transition Fund	-	(5,704)	(5,704)
Psychotherapy Fund	33,520	(35,699)	(2,179)
Children's Fund	3,355	(3,637)	(282)
Masons Shed	-	(732)	(732)
Therapy Cabin	(1)	(9,588)	(9,589)
PCC Childrens Grant	14,546	(14,546)	-
SCC HH Support Grant	-	(502)	(502)
PCC IT Grant	-	(570)	(570)
Douglas Bradley Residents Tech	-	(1,580)	(1,580)
Caterham School Transition	-	(1,500)	(1,500)
Optivo internal decorating	-	(1,296)	(1,296)
Vinci CCT fund	-	(1,867)	(1,867)
Wisley Foundation	1	(1,259)	(1,258)
C Elliss Equipment	1	(5,331)	(5,330)
Gift fund	8,587	(5,256)	3,331
NRPF	58,240	(33,310)	24,930
SCC Inclusion Refuge restricted	185,000	(477,181)	(292,181)
HH Masons Play Area	-	(837)	(837)
Georgia Treweek transition fund	-	(6,941)	(6,941)
Diversity and Inclusion Fund	119	(2,736)	(2,617)
Creating Healthy Communities Community support programme	-	(7,562)	(7,562)
SCC Fuel costs	30,000	(30,000)	-
RBBC Household Support Fund	22,441	(24,085)	(1,644)
Lifetime Chances	7,409	(7,399)	10
Wisley Welcome Pack Fund	11,200	(19,932)	(8,732)
Caroline Ellis Court Fund	6,250	(31,250)	(25,000)
Mildred Jackson Fund	31,500	(4,588)	26,912
Kerslake PT Fund	2,600	(2,105)	495
Pattenmakers Shoe Fund	2,000	(718)	1,282
Epsom College Advocate salaries	5,001	(5,001)	-
Shanly Children's Advocate Salary	1,999	(1,999)	-
Caroline Ellis 2024	28,750	(25,000)	3,750
Children's Advocate Salary	31,251	(31,513)	(262)
Charles Lewis Foundation TV fund	2,000	(1,248)	752
RBBC DA Funding Grant	13,750	(13,750)	-
The Alchemy Foundation	1,000	(1,000)	-
Skipton Building Society	3,000	(2,742)	258
SCC HSF	26,900	(26,900)	-
Horley Lions Club	1,120	(639)	481
Pattenmakers Adults Fund	1,000	(408)	592

# Notes to the Financial Statements for the Year Ended 31 March 2025 (cont)

## 15. Movement in funds (cont)

A current year 12 months and prior year 12 months combined net movement in funds, included in the above are as follows:

	Incoming resources £	Resources expended £	Movement in funds £
Pattenmakers Childrens Fund	1,000	(310)	690
Farnham Lions	1,500	(1,500)	-
Gatwick Airport Community Trust	2,500	(2,516)	(16)
O3E	250	(251)	(1)
MXG/MAR Restricted	882	(551)	331
HH Restricted	13,899	(11,900)	1,999
B&Q Foundation	7,500	(2,449)	5,051
SCC Opening Doors	20,000	(9,912)	10,088
Tesco - Arts & Crafts	500	-	500
Tesco Welcome Pack	2,500	(2,498)	2
The Hobson Charity Limited	5,600	(5,595)	5
The Wisley Foundation - Opening Door Project	20,000	-	20,000
SCC - Welcome Pack	5,000	-	5,000
	1,449,674	(1,553,666)	(103,992)
Total funds	2,871,880	(2,861,959)	9,921

# Notes to the Financial Statements

## for the Year Ended 31 March 2025 (cont)

### 15. Movement in funds (cont)

#### Transfers between funds

Transfers represent amounts transferred to the individual restricted funds from general funds to provide additional funding for the particular project(s) in the year.

*The purpose of the individual restricted funds is set out below:*

#### Unrestricted Funds

##### General Purpose Fund

This represents the working capital of the Refuge.

##### Contingency Reserve

Although some insurance is in place, the Directors regard it as essential to hold a contingency reserve should the above revenue be curtailed.

##### Renewals Fund

There is a continuing need for replacement furnishings and garden equipment which will be financed by this reserve.

#### Restricted Funds

##### Children's fund

This fund has been set up to provide activities and facilities for the children during their stay in the Refuge. It is funded from donations and fundraising.

##### New Shed

This restricted fund was given to enable us to set up a garden project. This has been completed in 2020/21.

##### Therapy Cabin

This grant was received to provide a new Therapy cabin. This has been completed in 2020/21.

##### Psychotherapy Fund

This fund has been set up to provide Adolescent Therapy sessions.

##### Vinci CCTV Fund

This grant was given to set up a CCTV system for security reasons.

##### C Elliss Equipment

This grant was given to provide new play equipment at the refuge.

##### Gift fund

This fund was set up to provide Christmas gifts and support items to the women and children at the refuge.

##### Diversity and Inclusion Fund

This grant was given to help make the refuge and its activities more inclusive for its residents.

##### Wisley Welcome Pack Fund

This grant was given to help purchase items when residents arrive at the refuge.

##### SCC Fuel costs

This grant was provided to support residents with housing costs during the cost of living crisis.

##### RBBC Household Support Fund

This grant was provided to support residents with housing costs during the cost of living crisis.

##### Caroline Ellis Court Fund

This grant was given to support residents in court proceedings.

##### Lifetime Chances

This grant is provided to meet one-off expenses for residents' personal development and life achievement.

##### Mildred Jackson Fund

This grant is provided to support residents travel costs.

##### Kerslake PT Fund

This grant was given to provide physical therapy and wellness services for residents.

##### Pattenmakers Fund

This grant is given to purchase shoes for residents and children.

##### Caroline Ellis 2024

This grant is provided to support the cost of the DA advocate roles within the refuge.

##### Children's Advocate Salaries

This grant is provided to support the cost of the DA advocate roles within the refuge.

##### MM TV Fund

This grant is provided to purchase new TVs for the refuge.

##### RBBC DA Funding

This grant is provided to support residents of Reigate and Banstead who are experiencing or at risk of domestic abuse, to include those in refuge support.

##### The Alchemy Foundation

This grant is provided to support the cost of the DA advocate roles within the refuge.

# Notes to the Financial Statements

## for the Year Ended 31 March 2025 (cont)

### 15. Movement in funds (cont)

#### Skipton Building Society

This grant was given to help purchase items when residents arrive at the refuge.

#### SCC Household support fund

This grant was provided to support residents with housing costs during the cost of living crisis.

#### Horley Lions Club

This grant was given to help purchase items when residents arrive at the refuge.

#### Farnham Lions

This grant was provided to purchase sports and play equipment for children at the refuge.

#### Gatwick Airport Community Trust

This grant was given to help purchase items when residents arrive at the refuge.

#### O3E

This grant was given to help purchase items when residents arrive at the refuge.

#### B&Q Foundation

This grant was provided to purchase household items for residents to use at the refuge.

#### SCC Opening Doors Project

This grant was given to provide funding to help residents with career and personal development beyond the refuge.

#### Tesco - Arts & Crafts

This grant was provided to purchase arts and crafts items for children at the refuge.

#### Tesco Welcome Pack

This grant was given to help purchase items when residents arrive at the refuge.

#### The Hobson Charity Limited

This grant was provided to purchase household items for residents to use at the refuge.

#### The Wisley Foundation - Opening Door Project

This grant was given to provide funding to help residents with career and personal development beyond the refuge.

#### SCC Welcome Pack

This grant was given to help purchase items when residents arrive at the refuge.



16. Related party disclosures

There were no related party transactions for the year ended 31 March 2025.

Detailed Statement of Financial Activities  
for the Year Ended 31 March 2025

	31.3.25 £	31.3.24 £
<strong>Income and endowments</strong>		
<strong>Donations and legacies</strong>		
Donations	3,149	21,104
<strong>Investment income</strong>		
Deposit account interest	55,281	6,128
<strong>Charitable activities</strong>		
Grants	797,991	681,470
<strong>Other income</strong>		
Resident's Contributions	59,896	52,897
Housing Benefit & Rent Income	555,854	503,891
Fundraising Income	77,085	57,134
	<strong>692,835</strong>	<strong>613,922</strong>
<strong>Total incoming resources</strong>	<strong>1,549,256</strong>	<strong>1,322,624</strong>
<strong>Expenditure</strong>		
<strong>Charitable activities</strong>		
Wages	772,513	781,338
Social security	68,360	64,075
Pensions	15,874	16,986
Other operating leases	136,351	71,382
Rates and water	13,317	7,779
Insurance	5,215	5,051
Light and heat	37,606	13,182
Telephone	15,634	14,176
Postage and stationery	3,100	3,971
Sundries	10,976	11,257
Travel	4,869	4,978
Computer & IT	21,357	22,974
Repairs & Renewals	35,674	16,540
Cleaning & Waste	7,127	5,696
Bad debts	25	210
Training	5,694	9,886
Vouchers & Fundraising	7,869	709
Charitable Activities	238,155	293,243
Improvements to property	6,990	6,990
Fixtures and fittings	5,600	6,731
	<strong>1,412,306</strong>	<strong>1,357,154</strong>
<strong>Support costs</strong>		
<strong>Finance</strong>		
Bank charges	726	741
<strong>Governance costs</strong>		
Auditors' remuneration	4,740	4,620
Accountancy and legal fees	42,719	33,108
Subscriptions	3,411	2,434
	<strong>50,870</strong>	<strong>40,162</strong>
<strong>Total resources expended</strong>	<strong>1,463,902</strong>	<strong>1,398,057</strong>
<strong>Net (expenditure)/income</strong>	<strong>85,354</strong>	<strong>(75,433)</strong>

# Case study

"When I arrived at the refuge I was frightened and uncertain about my future. I had no idea where I was going or what to expect.

However, meeting [my Advocate] changed everything. Her warmth and kindness put me at ease. She took me to a place I never imagined. A beautiful welcoming environment, complete with a welcome pack and all the necessities I needed. In that moment I was overwhelmed with emotion, unable to believe.

Beyond providing shelter, she reassured me about my immigration status, guided me through all the necessary paperwork, and ensured I had all the crucial information to move forward. She didn't just do her job she truly cared. That kind of compassion is something which I will never forget.

Every member of the I Choose Freedom team was incredibly supportive. The refuge became my home when I had nowhere else to go. And now after overcoming those difficult times, I have regained my independence, secured my job again, and feel free once more.

I will forever be grateful for the care, kindness, and hope you all gave me. With heartfelt thanks for unwavering support from I Choose Freedom.

I often find myself thinking about how different my life would have been if I hadn't come to the refuge when I was at my lowest, I felt lost, frightened and unsure of what the future held. I had no where to turn, and the uncertainty was overwhelming.

If I hadn't found refuge at I Choose Freedom, I can't imagine where I would be today. I was given a safe place to heal, rebuild, and find my strength again. The support I received from the entire team changed my life in ways I never thought possible.

The guidance, reassurance, and genuine care I experienced helped me regain control over my life. I was not just given shelter, I was given hope, dignity, and a chance to get back on my feet again.

My message to all survivors is to never lose hope, fight for your right."

**"If I hadn't found refuge  
at I Choose Freedom,  
I can't imagine where  
I would be today."**

# Set up a regular donation!

**£10**



For just £10 a month you can help ensure we have enough toiletries to put in our welcome packs for when survivors arrive with very little or often nothing but the clothes they are wearing.

**£15**



For £15 a month you can help us give each survivor a voucher for the local supermarket so that every new resident can have a hot meal on their first night in refuge

**£20**



For £20 a month you can help us treat our survivors to exciting days out! Trips to the cinema, to the leisure centre, maybe even a theme park!

**You can set up a monthly gift via our JustGiving page**

[www.justgiving.com/ichoosefreedom](http://www.justgiving.com/ichoosefreedom)



**Ichoosefreedomcharity**



**I Choose Freedom**

"You can do anything here, we are like your family including all the staff. The staff take care of you, you just forget about things you faced in past. You don't think it's just a refuge, it's like your home."





### **How to get in touch?**

For any queries email us on:  
[info@ichoosefreedom.co.uk](mailto:info@ichoosefreedom.co.uk)  
0303 330 0033

### **How do I get help?**

For general help and advice call  
the National Domestic Abuse  
Helpline on: 0808 2000 247

**[www.ichoosefreedom.co.uk](http://www.ichoosefreedom.co.uk)**