



Trustees' Annual Report & Financial Statements

for the year ending
31 July 2025

The International Glaucoma Association Limited operating as
Glaucoma UK

Kent House,
81 Station Road
Ashford,
Kent,
TN23 1PP

Phone: 01233 648 164, Email: info@glaucoma.uk, Website: glaucoma.uk

Welcome From the Chair of Trustees

It is my privilege to present this year's Annual Report on behalf of Glaucoma UK. The period from August 2024 to July 2025 has been one of both challenge and opportunity, shaped by wider pressures in the economy and in the health system that directly affect the people we serve.

Across the charity sector, fewer people are donating regularly and many households remain under significant financial strain. This has made fundraising more difficult, and yet we are deeply grateful for the generosity and commitment shown by our supporters in such circumstances. Every gift, no matter its size, helps us continue our work and reach people who need us most.

In parallel, the eye care sector is under immense pressure. Ophthalmology remains one of the largest areas of NHS backlog, with hundreds of thousands waiting for hospital eye care, while workforce shortages continue to affect timely access to diagnosis and treatment. For those living with glaucoma, the need for reliable support, clear information and strong advocacy has never been greater.

Despite these challenges, there are also reasons for optimism. Constantly evolving treatments and service innovations like technician-led or virtual clinics, are beginning to reshape how care is delivered. Glaucoma UK is committed to ensuring that people understand these changes and can make informed choices about their care, while continuing to campaign for fair and equitable access for all.

Looking back on the year, I am proud of what has been achieved. Our helpline, patient information and other support services have reached more people than ever before. We have spoken up for those whose voices are not always heard, and we have worked in partnership with clinicians, researchers and policy makers to help influence the future of glaucoma care.

On behalf of the Board, I want to thank our dedicated staff, volunteers, members and supporters. Your passion and commitment enable Glaucoma UK to stand alongside everyone affected by glaucoma. Together, we will continue to fight sight loss and ensure that no one faces glaucoma alone.

Professor Anthony King, Consultant Ophthalmologist and Glaucoma UK Chair of Trustees

A Message From the CEO

This year has been one of remarkable growth and momentum for Glaucoma UK. Building on the energy of our 50th anniversary, we have seen expansion in almost every area of our work, culminating in nearly one million instances of contact and support for people affected by glaucoma. Maintaining this upward trajectory, especially after last year's spike in activity, has been both encouraging and inspiring.

Our community has grown stronger, with a 40% increase in membership sign-ups on the previous year and a significant rise in people sharing their experiences on our online forum. The dedication of our supporters, members, and partners has enabled us to extend our reach and deepen our impact, even as economic pressures continue to affect households and charitable giving.

This year, Glaucoma UK's influence in the glaucoma care pathway has been recognised nationally, with our inclusion in the draft 'Getting it Right First Time' Best Practice Operational Strategy for Glaucoma in England. We have also stepped up our political activity, contributing to the NHS 10-year plan consultation, co-hosting a parliamentary event during Glaucoma Awareness Week, and submitting evidence to a Westminster Hall Debate on Glaucoma Awareness.

Our commitment to supporting those most at risk has been demonstrated through the delivery of our "Eye Health for All" pilot project, engaging African Caribbean communities across the UK, and through the launch of our ambitious Glaucoma Patient Voice Study. These initiatives ensure that the voices and needs of people living with glaucoma are at the heart of everything we do.

Financially, we have made significant progress towards our three-year plan of achieving operating growth whilst increasing our research funding. We awarded over £800,000 in research grants in 2025 - the highest in our 50-year history. The introduction of our first Pitts Crick Career Fellowship marks a major investment in the future of glaucoma research.

Our team has grown to 31 colleagues, with new roles focused on patient information and support, ensuring we can meet the increasing demand for our services. Looking ahead, we remain committed to diversifying our income, expanding our support for those navigating stretched eye services, and investing in research, information, and advocacy that can change lives.

Glaucoma UK exists because glaucoma changes lives. We are here to ensure that support is available when and how it is needed.

Joanne Creighton, Chief Executive Officer

Our Vision and Priorities

Glaucoma UK is dedicated to ending avoidable sight loss caused by glaucoma—a group of eye conditions that can damage the optic nerve and result in permanent vision loss or blindness. We estimate that over 1 million people in the UK are living with glaucoma, yet almost half are unaware, due to the lack of symptoms in the early stages of the disease.

The most reliable way to detect glaucoma is through a thorough routine eye examination, but more than one in three adults in the UK do not attend regular check-ups. This challenge is even greater among high-risk groups, such as people facing economic hardship and those of African-Caribbean heritage, where attendance rates are lower still. That's why we are committed to increasing awareness about the importance of early detection in every community.

Early diagnosis, prompt treatment, and ongoing monitoring are all vital to helping people with glaucoma protect their sight. However, with growing demand and long waiting times, there is still much to do to ensure everyone can access consistent and effective care across the UK. We are passionate about making sure the experiences and needs of people with glaucoma are heard by clinicians, policymakers, and those who commission services.

Research is at the heart of our mission to prevent sight loss. We invest in studies to better understand what causes glaucoma, how it can be prevented, which treatments work best, and—ultimately—how it might be cured. Through our annual grants programme, we support innovative research into new medical and surgical approaches, as well as improved models of care. We also add value to other research programmes through the provision of expert advice and help researchers to recruit patients, who have an essential role to play by contributing their lived experience to research studies.

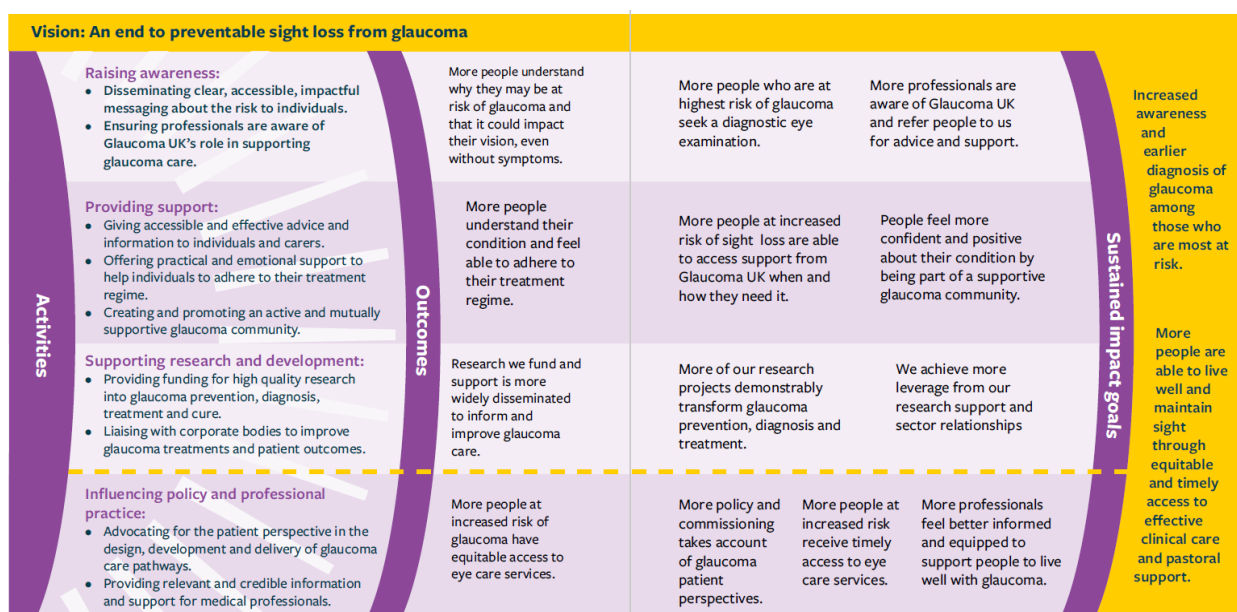
Our Theory of Change

Our Theory of Change describes the lasting difference we want to make for people affected by glaucoma. Through our work, we aim to:

1. Boost awareness and promote earlier diagnosis, especially among those at greatest risk.
2. Enable more people to live well and maintain their vision by ensuring fair and timely access to high-quality clinical care and emotional support.

To achieve these goals, we focus on four main priorities:

- **Raising awareness:** Sharing clear, accessible information about glaucoma risk and making sure professionals know about Glaucoma UK's role in supporting care.
- **Providing support:** Offering practical advice, emotional support, and information to people with glaucoma and their carers, and building a strong, supportive community.
- **Supporting research and development:** Funding high-quality research into prevention, diagnosis, treatment, and potential cures, and working with partners to improve outcomes.
- **Influencing policy and professional practice:** Championing the patient perspective in the design and delivery of glaucoma services, and providing trusted information and support to healthcare professionals.



Strategic Report

What we achieved in 2024-25

Priority 1 - Raising Awareness

Glaucoma UK's Theory of Change sets out the following core objectives for our awareness raising work:

- More people understand why they may be at risk of glaucoma and that it could impact their vision, even without symptoms.
- More people who are at highest risk of glaucoma seek an eye examination.

How did we do?

Through a series of national campaigns, targeted outreach, and innovative digital tools, Glaucoma UK reached millions of people across the UK with messages about glaucoma risk, the importance of regular eye tests, and the support available from the charity. Our work also engaged high-risk communities and strengthened professional awareness of our services.

More people understand why they may be at risk of glaucoma and that it could impact their vision, even without symptoms

Key Activities:

- **National Eye Health Week (September 2024):** Our campaign, themed '*Your essentials: Put your eye health on the list*', used relatable graphics like fridge magnets to encourage regular eye tests. The campaign reached 471,390 people on social media and a further 480,000 via Kent & Medway TV (KMTV) and trade media.
- **Glaucoma Awareness Week (June 2025):** Focused on the symptomless nature of glaucoma, with calls to action encouraging people to check their risk and book an eye test. Activities included a trustee-led radio day, which secured over 21 hours of radio airtime across stations with a potential listenership of 55 million. Print coverage was secured in national publications (including The Mail on Sunday and the Sunday Times) with a combined readership of 21 million, and online campaign messaging reached 321,742 social media users.
- **Motorway Poster Campaign:** Branded awareness posters in both printed and digital format were displayed across 12 motorway service stations, with a potential cumulative footfall of 1.8 million people.
- **Online Risk Quiz:** Our brand new 'Know Your Risk' tool was developed to help individuals assess their individual glaucoma risk, find out more about the disease and

access further support and advice. Over 3,000 individuals completed the quiz during its launch in Glaucoma Awareness Week.

- **Family Storytelling Campaign:** This initiative encouraged people to share their family history of glaucoma to raise awareness and promote conversations about eye health.

Impact

People living with undiagnosed glaucoma: Glaucoma messaging conveyed to millions of people across broadcast, print, digital, and in-person channels. Increased public understanding of glaucoma and its symptomless nature. Thousands of individuals prompted to assess their risk and seek eye tests.

More people who are at highest risk of glaucoma seek an eye examination.

Key Activities:

- **Ramadan Campaign:** Delivered in partnership with the British Islamic Medical Association and the Muslim Council of Britain, this campaign used targeted audience-specific TV, radio, and print media to encourage people to maintain their eye drop routine during Ramadan, and seek regular eye checks. The campaign aired on 171 subscriber radio stations, with a combined potential reach of over 17 million listeners. A video was featured on the Islam TV channel and website, with a potential audience of 8 million viewers, as well as a live interview with a member of Glaucoma UK staff.
- **Spreading the Word:** Via 45 talks to community groups across the UK, we helped to raise awareness of glaucoma and the importance of regular eye examinations amongst over 1,000 individuals.

Impact

People living with, or at risk of, glaucoma: Targeted activities across national media and local community outreach raised awareness, encouraged adherence to treatment and prompted individuals to seek eye examinations.

Priority 2 - Providing Support

Glaucoma UK's Theory of Change sets out three core objectives for our work to provide support:

- More people understand their condition and feel able to adhere to their treatment regime.
- More people at increased risk of sight loss are able to access support from Glaucoma UK when and how they need it.
- People feel more confident and positive about their condition by being part of a supportive glaucoma community.

How did we do?

During the year, the charity provided 932,851 instances of support, information, or guidance for people living with glaucoma. The impact of our work in this area is evident not only in the numbers, but in the stories, understanding and increased confidence we see in the feedback we receive.

More people understand their condition and feel able to adhere to their treatment regime

Key Activities

- **Digital Glaucoma Support Groups (DGSGs):** Twelve online webinars were delivered, with 1,199 real-time attendees and over 17,000 views of the recordings on demand via the Glaucoma UK YouTube channel. 79% of participants reported a better understanding of their glaucoma, and 98% would recommend the sessions to others. The most popular topics included glaucoma and cataracts, eye drops, treatment options and glaucoma research.
- **Health Information:** We received 108,718 orders for our information booklets and a further 6,057 electronic versions were downloaded from our website. Two of our most popular booklets (“All About Glaucoma” and “Trabeculectomy”) were updated to further improve accessibility and readability, in line with Patient Information Forum (PiF) standards. Our online guidance received over 720,000 views.
- **Helpline:** Glaucoma UK’s helpline advisors responded to 5,106 enquiries – up 44% from the previous year. This represented over 570 hours of guidance in support of time-strapped eye care professionals. The most common topics included eye drops, driving, surgery, and support for the newly diagnosed.
- **Free Drop-aids:** We supported people who were struggling to administer their eye drops with the provision of 2952 free drop aids – a 22% increase on 2023-24.

Impact:

- **People living with glaucoma:** Improved understanding and confidence in managing their condition, reduced anxiety, and better adherence to treatment. The high engagement with webinars and booklets, and positive feedback, show that people feel more empowered to manage their health.

“This lecture was so clear and informative, describing all the many different treatments and answering some interesting questions. I feel I could have gone on listening . Luckily the webinar is usually available afterwards on the Glaucoma UK website on You Tube. Thank you to Glaucoma UK and the consultant for such a helpful talk. (DGSG attendee)”

- **Treatment providers:** Clinicians able to refer patients to trusted, accessible resources, knowing that Glaucoma UK’s information is PIF TICK accredited and up to

date. Our helpline complements clinical care, providing essential reassurance and support when time at appointments is limited.

More people at increased risk of sight loss are able to access support from Glaucoma UK when and how they need it

Key Activities:

- **Helpline Expansion:** The recruitment of additional staff increased the capacity and responsiveness of our helpline service. Around 70% of helpline contacts were by phone and 30% by email, demonstrating flexibility across communication channels.
- **Targeted Outreach:** Our new “Eye Health for All” outreach project (due to run until March 2026) with African Caribbean communities reached 1642 attendees during 46 events across Manchester, Croydon, Belfast, Cardiff and Glasgow. Free eye test vouchers were distributed at some of these events in partnership with Specsavers.
- **Online Forum:** A total of 5,780 peer-to-peer conversations took place on the Glaucoma UK ‘HealthUnlocked’ forum, a 44% increase on the previous year. The forum is a valuable space for people to share their experiences, provide practical tips and give emotional reassurance, all overseen and moderated by our knowledgeable helpline advisors.

Impact:

- **People living with glaucoma:** Easier access to support, especially for those in high-risk or underserved groups. Increased options for seeking advice and guidance outside normal working hours. Outreach and digital channels reduce barriers related to geography, mobility, or the stigma of seeking health advice.
- **Treatment providers:** Enhanced referral options and confidence that patients can access ongoing support between appointments, reducing risk of disengagement or non-adherence to their treatment plan.

People feel more confident and positive about their condition by being part of a supportive glaucoma community

Key Activities:

- **Membership Growth:** 425 new members joined Glaucoma UK, a 40% increase in sign-ups on the previous year.
- **Insight Magazine:** Over 12,000 copies of our membership magazine ‘Insight’ were distributed during the year, with a further 5,000 digital copies accessed online. Filled with latest news, research information and advice from people living with glaucoma, this popular publication remains the cornerstone of our membership support.

- **Buddy Scheme:** We facilitated 91 buddy pairings during the year (a 47% increase on the previous year). The scheme provides invaluable peer support for those considering or recovering from glaucoma surgery.
- **Case Studies:** Our bank of lived-experience case studies rose to 100 (an 11% increase on 2023-24). The willingness of these individuals to share their stories and personal insights via our membership magazine and during our webinars is a vital source of support and encouragement for our glaucoma community.
- **Face-to-Face Support Groups:** Our Training & Engagement Officers welcomed 400 attendees at 34 support group sessions– a valuable option for those who prefer to connect in person or are unable to engage online.
- **Volunteers:** The charity benefited from the invaluable effort and commitment of 79 volunteers during the course of the year who offered their advice as buddies or served on our consultation and readers’ panels.

Impact:

- **People living with glaucoma:** Increased sense of belonging, reduced isolation, and greater optimism about managing their condition. Feedback highlights the comfort and reassurance provided by Glaucoma UK’s community

“I am a Life Member and was so impressed with the Autumn Insight. The full information about support for research projects confirmed for me the importance of Glaucoma UK”

- **Treatment providers:** Patients who feel supported are more likely to engage positively with treatment and follow-up, leading to better clinical outcomes.

Priority 3 – Supporting Research and Development

As the only UK charity solely dedicated to funding research into glaucoma, our work in this area is of vital importance. Desired outcomes of our research and development programme include:

- More of our research projects demonstrably transform glaucoma prevention, diagnosis and treatment.
- Research we fund is more widely disseminated to inform and improve glaucoma care.
- We achieve more leverage from our research support and sector relationships.

How did we do?

We have been investing in the administration and governance of our research work, to provide more robust data around the research we fund and its impact. We've also been building links with partners, to help encourage participation in research and ensure the voices of people with glaucoma are heard in the planning, delivery and dissemination of research. We disbursed the greatest sum of annual research grants in the history of the charity.

More of our research projects demonstrably transform glaucoma prevention, diagnosis and treatment.

Key activities:

- **Pitts Crick Research Fellow:** We awarded the first ever Pitts Crick Career Development Fellowship to Dr Giovanni Montesano, for his project "A digital twin for glaucoma". This three-year grant, worth £424,644, will support Giovanni in developing a framework for digital models of patients, another step forward in personalised medicine. Giovanni presented his plans at the AGM and Annual Lectures event in March 2025.
- **Glaucoma UK Grant Awards:** Having amalgamated our smaller funding streams in 2024-25, we awarded three projects grants during the year. These were to:
 - Associate Professor Kuang Hu, at UCL Institute of Ophthalmology for his project 'Clarifying the Prognosis: Identifying Glaucoma Progression Patterns with Artificial Intelligence'. The project will look at an AI tool called SuStain to identify subtypes of glaucoma from OCT scans. It has previously been successfully used in Alzheimer's dementia, and could help risk stratify patients with more confidence. The grant is worth just under £90,000 and his project will last 18 months.
 - Dr Lucy Bosworth and her team at the University of Liverpool for her project 'LIVTM: A Regenerative Cell-Based Implant to Restore Natural Eye Drainage in Glaucoma'. The project will involve looking at a bioengineered scaffold which is implanted into the trabecular meshwork drainage channels of the eye. Lucy and her colleagues are hoping that, as well as improving drainage of fluid out of the eye, the scaffold might restore the health of the meshwork. The grant is worth just under £100,000 and the project will last a year.
 - Dr Colin Chu and collaborators, also at UCL Institute of Ophthalmology for a project entitled 'Characterising the 3D Spatial Biology of the Human Optic Nerve Head in Glaucoma'. By imaging and mapping the optic nerve head (where the nerve cells leave the eye and head towards the brain), Dr Chu is hoping that scientists and clinicians will have a better understanding of

what's happening at a cellular level in this crucial part of the eye. This could help identify changes that occur in glaucoma which affect the health of the nerve cells. The grant is worth just under £50,000 and the project will last a year.

- **Joint UKEGS and Glaucoma UK Grant:** The grant was awarded to Dr Bledi Petriti, for his project 'Mitochondrial metabolism in glaucoma: Effects of the Optineurin E50K mutation and the reversal of dysfunction through pharmacological intervention'. The grant is worth just under £50,000 and his project is due to last 12 months. This is a follow-on project from work we previously funded looking at normal tension glaucoma, which was published in Nature Medicine in 2024.
- **The 2024 Open Call Grant:** This grant was awarded during the financial year 2024-25 due to delays signing the contract. The recipient was Professor David Crabb at City St George's University, London, for his project 'Visual field loss in primary angle closure glaucoma'. This project revisits visual field test results from a previous landmark trial to help us understand the patterns of sight loss in this less common form of glaucoma.
- **Co-Funded Projects:** We also co-funded two projects in partnership with other organisations:
 - Dr Keir Yong, at University College London, received £5,000 to support a project investigating cortical visual dementia, a form of dementia which can be confused with glaucoma due to the impact it has on visual fields. The project aims to improve identification and diagnosis of people with cortical visual dementia, so they can receive the treatment they need, and free up space in glaucoma clinics. The project is also funded by Vivensa Foundation and the National Brain Appeal.
 - Dr Ngan Pan Bennett Au, at the University of Surrey, received £7,500 as part of our joint small grant programme with Fight for Sight. His project, 'Targeting members of the IgLON family as a novel and translatable approach to promote neuroprotection and nerve repair', is looking at a novel family of proteins which may be implicated in the death of critical nerve cells in glaucoma.

Impact:

- **People living with glaucoma:** The research funded this year offers the potential for earlier diagnosis, more personalised care, and new treatment options. Projects exploring regenerative implants and AI-driven risk profiling could lead to safer surgeries, better monitoring, and improved long-term outcomes—helping people preserve their sight and manage their condition with greater confidence.
- **Treatment providers:** Clinicians will benefit from tools that support more accurate risk stratification, deeper understanding of disease mechanisms, and improved trial

design. These advances will help target resources more effectively, inform clinical decisions, and support innovation in glaucoma care.

Research we fund is more widely disseminated to inform and improve glaucoma care.

Key activities:

- **Monitoring Impact:** For the first time, we subscribed to Researchfish, a tool widely used in research to monitor the impact of funding. Of the responses submitted for grants funded between 2016 and 2023, we found that research we supported resulted in:
 - 25 papers being published
 - 21 examples of awards or recognition
 - 15 examples of dissemination to non-academic audiences
 - 15 collaborations and partnerships
- **Website Improvements:** We relaunched the “Research We’ve Funded” page of our website, with more information about the grants we’ve provided, and the impact projects have had. This improved transparency and publicity around our research helps to increase engagement from clinicians, people with glaucoma and other researchers.
- **Better Research Communications:** We have also increased the communications around our research activity to our different audiences. For example,
 - A digital glaucoma support group in April 2025, titled “Glaucoma Research: an overview” was attended 117 people.
 - The recipients of the 2024 research grants were invited to our inaugural research showcase at the AGM and Annual Lectures in March 2025. This enables researchers and Glaucoma UK members to meet and share ideas.
- **Presentation of Research Findings Overseas:** Research we funded, and carried out by Dr Giovanni Montesano, won the prize of Best Paper at the American Academy of Ophthalmology meeting and garnered significant media interest. The work showed that visual field loss is 30% slower for people receiving laser treatment than eye drops, based on data from the landmark LiGHT trial.

Impact:

- **People living with glaucoma:** Improved communication of research findings has helped people affected by glaucoma better understand the condition and the progress being made to treat it. Updates to our website and digital support groups have made research more accessible, while showcasing projects at public events has helped build trust and engagement with the research process.

- **Treatment providers:** The use of Researchfish has enabled us to track and share the real-world impact of our funded research, including published papers, collaborations, and clinical recognition. Dissemination of findings—such as evidence supporting laser treatment over eye drops—has attracted media attention and may influence clinical practice, helping providers deliver more effective care.

We achieve more leverage from our research support and sector relationships.

Key activities:

- **Partnership Working with Other Research Funders:** The new CERT partnership (Charities for Eye Research Transformation), between Glaucoma UK, Fight for Sight, Macular Society and Retina UK, is starting to bear fruit. Glaucoma UK's Head of Research was invited to speak at a new event for early career researchers, on the importance of engaging the public and patients in research.
- **Visionary Conference Workshop:** Our Head of Research co-hosted a workshop at the Visionary conference, with the Macular Society. The focus was on increasing participation in research, understanding the barriers to engagement and identifying new ways to overcome them. These talks are critical in building the framework for growth in engagement in research.
- **Presentations at Key Sector Events:** Talks were also given to a range of professional audiences including UKEGS conference delegates, the Moorfields International Glaucoma Symposium and international representatives of industry partner Santen.
- **The 'Future of Glaucoma' Steering Group:** We were invited by pharmaceutical company Santen to join a steering group - along with other leading members of the glaucoma community from across the UK and Ireland - to discuss and debate the trends that are going to impact how patients with glaucoma are diagnosed, treated and managed in the future. The main output will be a series of articles in autumn 2025 and a range of sector 'asks' for those devising policy and making decisions about glaucoma care.

Impact:

- **People living with glaucoma:** By strengthening partnerships and increasing our visibility across the research and eye health sectors, Glaucoma UK is helping to ensure that the needs and experiences of people with glaucoma are embedded in future research. Our involvement in public engagement events and steering groups means that patient voices are shaping the direction of research and influencing how care is delivered.
- **Treatment providers:** Our growing presence in sector-wide collaborations and industry-led initiatives is helping to drive innovation and influence policy. By contributing to strategic discussions and sharing insights at national and

international events, we are supporting the development of more responsive, evidence-based approaches to glaucoma diagnosis, treatment and service design.

Glaucoma UK Academic Chair of Ophthalmology

In partnership with University College London the charity once again supported the role of the Glaucoma UK Academic Chair of Ophthalmology for Glaucoma and Allied Studies – Professor David (Ted) Garway-Heath.

Professor Garway-Heath's achievements for the year include:

- **Six new scientific publications and an editorial** – publications included the topics of metabolic changes in glaucoma and potential therapeutic compounds, laser treatment for eye pressure lowering after medical treatment, the impact of laser treatment on visual field preservation, the effect of blood pressure medication on visual field worsening, visual field improvement after eye pressure lowering, and the relationship between progression measures in structure and function.
- **A cumulative total of over 22,600 citations** (with 8,500 of those in just the last 5 years). Ted has had 236 papers cited at least 10 times and eight papers cited over 500 times.
- **Ten lectures at national and international conferences during 2024-25** - including for the European Glaucoma Society, Italian Glaucoma Society, Korean Glaucoma Society, (UK) Association of Optometrists, (international) Imaging and Perimetry Society, UK & Eire Glaucoma Society and the (international) Glaucoma Research Society.
- **Reviewing editor of the European Glaucoma Society (EGS) Guidelines for Laser Surgery** – Ted also contributed the Foreword to the 6th Edition of the EGS Terminology and Guidelines for Glaucoma.
- **Publication of the 'EGS research priorities for glaucoma care' in the British Journal of Ophthalmology in July 2024** – Ted continues to further the EGS patient advocacy project, the aims of which are to engage patients in the works of the EGS and to determine how the organisation can support patients across Europe and beyond.
- **EGS Ambassador to the American Glaucoma Society** - with the aim of strengthening the links and collaborations between the two societies in relation to the education and training of ophthalmologists.
- **Leadership of Project Oriel: the new Moorfields and Institute of Ophthalmology** - Ted leads the 'Innovation Hub' and 'Social Value' workstreams of this ambitious building project. The Innovation Hub is a showcase department of the new centre for advancing eye health bringing together innovators in digital medicine and aiming to accelerate bringing new diagnostics and treatments to patients. The Social Value workstream aims to optimise the building's contribution to the wellbeing of its users (patients, staff, students and the public) through a Creative Strategy encompassing Arts, Heritage and Science-on-show.

Professor Garway-Heath's research activities for the year also included work as Chief Investigator on the following ongoing projects:

- **'Identifying the genetic basis for heritable normal tension glaucoma, with a focus on mitochondrial function'**. Further joint Glaucoma UK and UKEGS funding for this work was secured by Dr Bledi Petriti "Mitochondrial metabolism in glaucoma: Effects of the Optineurin E50K mutation and the reversal of dysfunction through pharmacological intervention" with Prof Garway-Heath as a co-applicant. The outcome of this research is in draft paper form, with the aim to submit to a high impact journal by the end of 2025.
- **'NicotinAMide in Glaucoma (NAMinG): A randomised, placebo-controlled, multi-centre, Phase III trial'** - to test the effectiveness of vitamin B3 as a treatment for glaucoma. So far, 274 participants have been recruited, with a further 21 screened and eligible, representing almost 60% of the target of 496. The recruitment period has been extended, additional trial sites added and a costed extension will be submitted to the NIHR by mid-November.
- **REVAMP** – this Medical Research Council funded project (lead by Dr Redmond in Cardiff, a former post-doctoral student of Professor Garway-Heath's) aims to develop a more accurate and precise visual field test. This project is nearing completion and the study team has been invited to submit a renewal of the grant, following a successful outline application.

Priority 4 – Influencing Policy & Professional Practice

By working to influence policy and professional practice, we seek to achieve the following objectives:

- More people at increased risk of glaucoma have equitable and timely access to eyecare services.
- Those making decisions on policy and commissioning take greater account of glaucoma patient perspectives.
- More professionals feel better informed and equipped to support people to live well with glaucoma.

How did we do?

We continued our efforts to influence glaucoma care policy and professional practice by contributing to national consultations, engaging with decision-makers, and supporting professionals through training and events. While challenges remain, our work helped raise awareness and brought patient perspectives into important conversations about service design and delivery.

More people at increased risk of glaucoma have equitable and timely access to eyecare services

Key Activities:

- **NHS 10-year Plan Consultation:** Glaucoma UK contributed to the NHS England 10-Year Plan consultation, advocating for measures to ensure equitable access to eye care, especially for high-risk and underserved groups. We called for targeted screening, education, and tailored care pathways for populations with the highest risk and lowest engagement with health services, such as people of African, Caribbean, or Asian descent, and those in rural or socioeconomically disadvantaged areas. We also called for reduced waiting times, especially for follow-up appointments, and improved communication about treatment delays.
- **Promoting Timely Eye Care:** Glaucoma UK's new "Know Your Risk" online tool was launched during Glaucoma Awareness Week 2025 to help people understand their risk and seek timely eye health checks.

Impact:

Policy and Decision Makers: Our work helped raise awareness, promote early diagnosis, and push for fairer access to eye care—especially for high-risk and underserved groups. These efforts support timely treatment and reduce the risk of avoidable sight loss.

Those making decisions on policy and commissioning take greater account of glaucoma patient perspectives

Key Activities:

- **Representing Patients:** The Glaucoma UK team represented patient interests at key sector forums during the year, including the Clinical Council for Eye Health Commissioning, the Ophthalmology National Steering Group, and the UK Ophthalmology Alliance. Glaucoma UK also contributed to NICE consultations and took part in DVLA stakeholder sessions.
- **Capturing the Patient Voice:** UK launched a new and ambitious Glaucoma Patient Voice Study in June 2025. In preparation for an ambitious national survey in 2026 that collects more glaucoma patient perspectives than ever before, we sought early feedback on the topics our members and supporters would like to see featured. We received over 1,400 responses, giving us invaluable insight into the priorities of the people we serve. Early feedback has highlighted that appointment timeliness and experience at diagnosis are key areas of concern. The national survey will inform a national report for NHS leaders and policymakers.
- **Glaucoma in Parliament:** During Glaucoma Awareness Week 2025, we co-hosted a parliamentary drop-in event with the medtech company Glaukos. It was an

invaluable opportunity to raise awareness of the disease and advocate for more consistent and effective eye care provision across the UK. We also provided a briefing for a 'Glaucoma Awareness' Westminster Hall debate, which explored the importance of routine eye tests, the role of community optometry, and the need for a national glaucoma care pathway.

Impact:

- **Policy and Decision Makers:** These activities ensured that the lived experiences and priorities of people with glaucoma were understood and directly communicated to policymakers and commissioners.

More professionals feel better informed and equipped to support people to live well with glaucoma

Key Activities:

- **United Kingdom and Éire Glaucoma Society Conference:** The annual UKEGS conference brings together top glaucoma experts and researchers to explore latest developments in treatment and professional practice. The 2024 event, hosted at the National Oceanography Centre in Southampton, welcomed 430 attendees across the two days. The conference programme included a 'Patients First' session which showcased the importance of more effective communication and the benefits of patient involvement in treatment planning.
- **Training for Professionals:** Our Training and Engagement Officers delivered 19 General Optical Council accredited glaucoma training sessions for 223 professionals across social care, occupational therapy, optometry, vision rehabilitation and pharmacy to help raise awareness of Glaucoma UK's services and encourage patient referrals. Whilst the training receives excellent feedback, we are currently reviewing the content to ensure it remains up to date and to add more interactivity.

Impact:

- **Treatment Providers:** Our work in this area helped to enhance the knowledge and confidence of professionals, equipping them with up-to-date information and practical tools to support people living with glaucoma.

Fundraising Review 2024–25

Overview

The 2024–25 financial year was marked by both challenge and resilience for Glaucoma UK’s fundraising efforts. Against a backdrop of economic uncertainty and increased competition for charitable giving, our community of supporters once again demonstrated remarkable commitment, with total voluntary income of £2,058,718 (2023–24: £1,787,919) – a very encouraging 15% increase on the previous year.

Legacy Income

Legacy gifts continued to be the cornerstone of our fundraising, with £1,777,367 in legacy donations received during the year (2023–24: £1,528,917). Accounting for 86% of our total voluntary income, legacy gifts are essential to Glaucoma UK. They enable us to plan confidently for the future, expand our reach, and invest in sight-saving research. We are deeply grateful to all those who remembered us in their wills and who placed their trust in our mission end preventable sight loss from glaucoma.

Despite this strong performance, the number of new legacy notifications fluctuated throughout the year, highlighting the need for continued investment in legacy marketing and stewardship. Initiatives to raise the profile of legacy giving included a redesign of our legacy web pages and the sharing of case studies in our Insight magazine.

Donations, Appeals, and Events

Other fundraising income, including general donations, appeals and events, was up by just under 10% on the previous year (£281,351 versus £259,002 in 2023–24). This was a pleasing continuation of the momentum created during our 50th anniversary year, with funds still coming in to support the Pitts Crick Research Fellowship during the current financial year.

Event fundraising continued to engage supporters through challenge events such as the London Marathon and the Ultra MMA Challenge. Our new “Run for Charity” platform began to match fundraisers to events nationwide.

Trusts, Foundations, and Corporate Support

Income from trusts and foundations totalled £15,450 (2023–24: £11,083), with significant contributions from the Orr Mackintosh Foundation and the Wyseliot Rose Charitable Trust. However, recruitment challenges in the fundraising team meant that anticipated growth was not realised in this area. Corporate support also fell below expectations, with £21,075 received, largely due to third-party delays in renewing sponsorship agreements and work to refresh our professional engagement strategy.

We were grateful to Specsavers for their contribution of £20,000 in respect of our annual licencing agreement which – along with considerable in-kind support – helps to amplify our messaging and expand the reach of our awareness raising work.

Membership

Membership income was £60,794 (2023–24: £51,460), with 425 new joiners during the year. Retention will be a key focus going forward, particularly for those approaching the end of their first year. Planned actions include exit surveys, enhanced stewardship, and a review of benefits to better further improve the experience of our membership community.

Fundraising Controls

At Glaucoma UK, maintaining the trust of our donors and the wider public is fundamental to the success of our fundraising. We are committed to ensuring that all our fundraising activity is transparent, ethical, and fully compliant with current regulations.

Oversight is provided at the highest level through a designated Fundraising Trustee Advocate on our Board of Trustees. In addition, our Finance and Governance Committee conducts quarterly reviews to monitor fundraising performance, regulatory compliance, and internal controls.

We are registered with the Fundraising Regulator and adhere to the Code of Fundraising Practice. We uphold the principles of the Fundraising Promise and clearly outline our complaints policy on our website. We received no complaints about our fundraising activities during the year, and no requests were made through the Fundraising Preference Service to opt out of communications.

To safeguard vulnerable individuals, we follow the Institute of Fundraising's guidance on supporting people in vulnerable circumstances. Our Ethical Fundraising Policy and Supporter Promise guide all our fundraising practices.

We also monitor any third parties working on our behalf to ensure they meet the highest standards of data protection and supporter care. In 2024–25, we worked with one third-party provider—Bequeathed Limited—to deliver our free wills service. We did not engage any external professional fundraising agencies during the year.

Our lottery activities continue to be managed under our Gambling Commission licence, ensuring we meet all legal obligations and provide appropriate protections for participants.

Thank You to Our Donors and Fundraisers

Once again, Glaucoma UK's work has been made possible by the extraordinary generosity and commitment of our donors, fundraisers, members, and supporters. In a period marked by economic uncertainty and increased pressures on household finances, your willingness to stand with us has enabled the charity to maintain and expand vital services for people living with glaucoma.

Every gift—no matter its size—has helped us reach further, support more people, and invest in research and advocacy that can change lives. We are deeply grateful to those who have remembered Glaucoma UK in their wills, to everyone who has made a donation, taken on a fundraising challenge, or supported our appeals and campaigns. Your passion and commitment have taken us closer to our goal of an end to preventable sight loss from glaucoma.

We also want to thank our dedicated volunteers and partners, whose efforts and enthusiasm have been the foundation of our achievements this year. Whether you have amplified our messages, mentioned us in your own press campaign, organised an event, shared your personal story, or simply encouraged others to get involved, you have made a real difference to the lives of people affected by glaucoma.

Among the many inspiring stories this year:

- Debbie Page, a GP practice nurse living with chronic angle-closure glaucoma, took to the skies in a wing walk at Duxford. After losing four stone to meet the weight requirement, Debbie completed the challenge and raised over £1,500 for Glaucoma UK. Her courage and determination—despite ongoing treatment and vision loss—are a powerful reminder of the strength within our community.
- Professor Dan Lindfield, consultant ophthalmologist at the Royal Surrey County Hospital, ran the 2025 London Marathon for Glaucoma UK, raising over £8,000. His dedication to both his patients and the charity exemplifies the powerful connection between clinical care and community support.
- Jill Chapman, a long-standing member and volunteer telephone buddy, donated her winnings from a local Scrabble tournament. Her thoughtful gesture reminds us that fundraising can be personal, meaningful, and rooted in everyday passions.
- Linsey and fellow walkers took part in the Glasgow Kiltwalk, raising funds while enjoying the sights of the city. Their efforts helped us continue providing support and information to those navigating glaucoma treatment and diagnosis.
- UKEGS conference delegates contributed over £1,000 through a raffle in support of Dan Lindfield's marathon appeal, and an additional £1,292 towards our 50th Anniversary Research Fellowship.

These are but a few examples of the extraordinary effort and generosity shown by our many fundraisers and supporters during the year. On behalf of the Board, staff, and everyone we serve, thank you for your support.

Organisations Who Helped Us

We would also like to take this opportunity to thank the following organisations for their support during the year:

Direct Line Group
Inner Wheel Club of Workington
I-Star Medical
McPherson Optometry Ltd
National Tool Hire Ltd
Saint Laurence The Parish Church of Upminster
Seaton and District Club for the Visually Impaired
ShareGift, The Orr Mackintosh Foundation
Specsavers Optical Group HQ
The Dandy Charitable Trust
The Emily Weircroft Charitable Trust
The Wyndham Charitable Trust
Thea Pharmaceuticals Ltd
Topcon Healthcare
Trade Gear Limited
United Reformed Church Eastern Synod Office
VISUFarma
Wyseliot Rose Charitable Trust
Younger Lives Ltd

Looking Ahead

With our milestone 50th anniversary now behind us, and major changes to the eye health system afoot, we are more motivated than ever to ramp up our efforts to support those living and working with glaucoma. To that end, we have a busy year ahead. Across the UK, the Glaucoma UK team will be working hard to deliver the following projects:

National Patient Voice Study

Using insights gained from our member and supporter community during the 2025 Glaucoma Awareness Week, we will be working with the Picker Institute to undertake an ambitious UK-wide survey in early 2026. We want to gather more glaucoma patient perspectives than ever before to help us influence policy makers, commissioners and those delivering glaucoma care.

Review and Development of Our New Community Outreach Programme

Following the success of our pilot projects in Belfast, Croydon, Manchester and Glasgow, we will be evaluating outcomes and further refining our 'Eye Health for All' outreach programme. Designed to raise awareness in communities at highest risk of sight loss from glaucoma, rolling out this programme across the UK will be a key priority for the foreseeable future.

Patient and Public Involvement and Engagement in Research

Increasing opportunities for patient engagement in research will be a key area of focus in the coming year. We are developing plans for database of people interested in participating in and supporting research. In addition, we plan to collaborate with our charity partners at Macular Society, Retina UK and Fight for Sight on the creation of guidance resources and training modules for researchers. We will be focusing particularly on support for early career researchers, to help them understand the importance of working with patients at all stages of research.

Website Update and Review

With over 720,000 visits to the support pages of our website last year, it is vital that our material remains up to date and accessible for those who seek our help online. We will be undertaking a thorough review and refresh of our website content during 2025-26.

Financial Review

In the context of ongoing economic uncertainty and sector-wide fundraising challenges, Glaucoma UK ended the financial year 2024–25 in a robust position, with total funds of £8,832,445 (2024: £8,767,960).

Net income for the year showed a surplus of £64,485 (2024: £720,213). This was despite a significant planned increase in charitable expenditure of £2,709,519 (2024: £2,077,745), in line with our strategic objective of drawing down reserves to maximise reach and impact.

Incoming Resources

Total income for the year increased to £2,541,707, an 8% increase on the previous year (2024: £2,358,050). Our main sources of income included:

Voluntary income (made up of donations, legacies, and subscriptions), which remained the cornerstone of our funding, accounting for £2,058,718 (2024: £1,787,919). Legacies continued to be the largest single source, representing 86% of voluntary income. The year saw a particularly strong performance in legacy gifts, with £1,777,367 received, exceeding both budget and prior year figures. This was supported by several high-value bequests, including a significant legacy from a long-term supporter, which provided vital stability and enabled us to invest further in our charitable objectives.

Other fundraising streams - such as general donations, in memoriam gifts, trust and foundation grants, corporate support, and events—which delivered mixed results. General donations and Christmas card sales performed well, while income from trusts, foundations, and corporate partners fell short of targets, largely due to recruitment delays and a challenging external environment. The lottery and events income also underperformed against budget, though both remain important areas for future growth.

Membership income, which totalled £60,794 (2024: £51,460), reflecting successful acquisition of over 400 new members. While recruitment of new members was encouraging, retention—particularly among first-year members—remains a key focus for improvement.

Investment income, which contributed £189,522 (2024: £198,496), with the charity's portfolio managed in line with a medium-risk, total return strategy. The year saw unrealised gains of £225,467 (2024: £439,908) on investments, reflecting continued market volatility. Realised gains totalled £6,830 (2024: 0).

We benefitted from the Google Ads grant scheme during the year, with free advertising to the value of US\$71,748 (£54,332 as at 31 July 2025). Google Ads enabled us to serve advertisements to people searching online for particular keywords and encourage traffic to the charity's website.

Resources Expended

Total expenditure rose to £2,709,519 (2024: £2,077,745), reflecting our commitment to delivering on our Theory of Change and expanding our services. Key areas of increased spend included:

- **Staff costs**, which rose to £1,166,415 (2024: £975,235), as we invested in an additional helpline advisor, a new Digital Communications Assistant role and extra hours for our graphic designer and finance officer. This investment **not only helps to address the current growth in service demand but will also position us well for greater impact and income growth in due course.**
- **Research grants**, with £814,470 awarded (2024: £363,222), supporting a wide range of innovative projects and the launch of the new Pitts Crick Research Fellowship.
- **Support services and outreach**, with an increase of £52,936 on the previous year including delivery of the new Eye Health for All project and increased expenditure on our helpline service.
- **Raising awareness and influencing policy**, with increased investment of £17,509 in national campaigns, parliamentary engagement, and the development of new digital tools.

Restricted and Designated Funds

At year-end, restricted funds stood at £1,671,357 (2024: £1,629,944), including the Academic Chair Fund for the Professor of Ophthalmology at UCL (£1,509,186), a series of smaller project-specific funds (£23,739) and funds to support the work of the UK & Eire Glaucoma Society (£138,431). The overall increase was largely the result of strong delegate income for the November 2024 UKEGS conference in Southampton, without the elevated costs of the previous year's London venue.

A new Patient Voice Restricted Fund was created during the year to support the delivery of our national survey in 2026. The London Fund was wound up, with all restricted funds having been spent on delivering projects to support underserved audiences.

Designated funds totalled £3,800,322, a £540,469 reduction on the previous year (2024: £4,340,791). This drawdown – £ 424,445 of which related to the Pitts Crick Research Fellowship – reflects our financial objective to invest designated funds into growing the charity and expanding our services and research funding.

A total of £4,922 was undesignated during the year relating to the West Yorkshire Support Fund. This fund was originally set up by the trustees for activities in West Yorkshire but an initiative to fund volunteer-led support groups in the area did not result in any applications. The released funds will now be used to support the delivery of the 'Eye Health for All' outreach project.

Reserves Policy

The Trustees remain committed to maintaining a prudent reserves policy that ensures Glaucoma UK can meet its ongoing commitments, respond to unforeseen challenges, and invest in future growth. Our approach is to hold sufficient cash reserves and working capital

to cover both the charity's day-to-day operational needs and our planned development activities.

This strategy provides a stable foundation for delivering sustainable support to our beneficiaries and enables us to pursue ambitious, long-term objectives to prevent sight loss from glaucoma.

Recognising the inherent risks associated with a heavy reliance on legacy income—as well as broader economic uncertainties and fluctuations in investment markets—the Board has reaffirmed its policy of holding cash reserves equivalent to at least 12 months' operating costs.

At 31 July 2025, Glaucoma UK's general funds stood at £3,360,766 (2024: £2,797,225), comfortably exceeding the minimum cash reserves requirement for the year of £2,051,635. This surplus will be used to underpin the continued delivery of our Theory of Change and to support the expansion of our services and research activities over the coming years.

In addition to general funds, the charity held £3,800,322 (2024: £4,340,791) in designated funds at year-end. Of this, £3,413,634 is earmarked for research investment, supporting our ongoing commitment to funding innovative glaucoma research, including the Pitts Crick Research Fellowship, new PhD studentships, and collaborative projects with other sight sector charities. A further £363,782 is set aside for infrastructure development, ensuring we have the resources to maintain and enhance our operational capacity as we grow.

The Trustees regularly review the reserves policy to ensure it remains appropriate in light of the charity's financial position, strategic priorities, and the external environment.

Going Concern

The Board has reviewed the charity's financial position and is satisfied that Glaucoma UK remains a going concern, with adequate resources to meet its obligations and deliver its mission in the years ahead.

Investment Policy

Glaucoma UK's investment portfolio is managed by Rathbones Group Plc, under a balanced mandate with the objective of maximising total return over the long term, subject to a medium risk profile. The portfolio is managed with a 6-to-10 year time horizon and adopts a total return approach, with income arising within the portfolio transferred to the capital account for reinvestment.

The Trustees maintain a clear ethical policy, excluding direct investment in companies manufacturing tobacco or tobacco products, as well as companies deriving more than 10% of their revenues from alcoholic beverages, armaments, gambling, high-interest rate lending, or pornography. The portfolio is managed in accordance with the ethical policy of the Rathbone Core Investment Fund for Charities.

Oversight of the investment portfolio is delegated to the Finance and Governance Committee, which reviews performance benchmarks with the fund managers on an annual basis.

Portfolio Performance

As at 31 July 2025, the value of Glaucoma UK's investment portfolio stood at £7,665,582 (2024: £7,448,765), and dividend income received totalled £189,522 for the year. A drawdown of £225,000 was made during the year to help manage cash flow while awaiting a delayed legacy payment. This comprised £179,000 from the portfolio and £46,000 from the quarterly dividend. Over the 12 months to 31 July 2025, the portfolio delivered a total return of +5.8% (net of fees).

Trustees, Advisors and Staff

Serving trustees (who are also directors under company law) were:

Professor Anthony King	Chair of Trustees
Mr Stephen Epstein	Vice Chair (Chair, Finance & Governance Committee)
Mr Prabhakar Sundaresan	Hon Treasurer (Finance & Governance Committee)
Miss Winifred Nolan	Chair, Clinical Advisory Panel
Dr Susan Blakeney	(Finance & Governance Committee)
Ms Teresa Borsuk	(Finance & Governance Committee)
Professor Roxanne Crosby-Nwaobi	
Professor Cecilia Fenerty	
Mr Christopher Hunton	Academic Chair Fund Advocate (Finance & Governance Committee)
Mrs Yolanda Laybourne	Fundraising Advocate (Finance & Governance Committee)
Professor Roshini Saunders	
Mr Raymond Spendiff	(Finance & Governance Committee)

CEO & Company Secretary

Company Number

Charity Number

OSCR Number

Registered office &
operational address

Joanne Creighton
1293286
274681
SC041550
Kent House, 81 Station Road
Ashford, Kent, TN23 1PP
www.glaucoma.uk

Bankers

Barclays Bank plc, 1 Churchill Place, London,
E14 5HP
CAF Bank Ltd, 25 Kings Hill Avenue, Kings Hill,
Kent, ME19 4JQ
HSBC Bank plc, Camberwell Green,
23 Denmark Hill, London, SE5 8RP

Auditors

Xeinadin Audit Limited,
12 Conqueror Court, Sittingbourne
ME10 5BH

Investment Managers

Rathbones Investment Management Ltd,
30 Gresham Street, London EC2V 7QN

Structure and Management

Glaucoma UK is the operating name of the International Glaucoma Association Ltd, which was incorporated on 15 July 1976 and registered as a charity on 20 December 1977. As Glaucoma UK is both a charity and a company limited by guarantee, all board members are directors for the purposes of company law and trustees for the purposes of charity law. The objects of the charity are defined by its Articles of Association (last updated in 2025), which also set out trustees' powers and the permitted activities of the charity.

Following the review and refresh of the Articles of Association undertaken during our 50th Anniversary year in 2024, two further updates were agreed by the membership at the AGM on 13 March 2025:

- Membership criteria changes must be ratified by the Membership at a General Meeting.
- If fewer than 12 Trustees are elected or appointed in any year, the Board must explain the rationale at the Annual General Meeting.

The Board and Committees

The Board comprises not fewer than 8 and no more than 15 persons elected by the Members (or appointed by the Board to fill a temporary vacancy); and not more than three persons co-opted by the Board.

The current Board comprises people living with glaucoma, those with close family connections with the condition and others with backgrounds in ophthalmology, nursing, optometry, finance, public relations and business. At least three trustee positions are held each year by Fellows of The Royal College of Ophthalmologists or medically qualified equivalents.

Trustees retire after serving a three-year term but are eligible for re-election to a maximum of nine years' service. Those serving prior to the 2023 AGM are entitled to serve for a maximum of 12 years. Board meetings take place four times a year on either a face-to-face, virtual or hybrid basis.

There are two sub-committees:

- The Finance and Governance Committee, which has delegated responsibility for overseeing finance, investments, risk management and policy. Consisting of 7 trustees, the committee meets quarterly in advance of each Board meeting and on an ad-hoc basis, should the need arise.
- The UKEGS Committee, which has delegated responsibility for promoting the exchange of knowledge between glaucoma specialists and stimulating glaucoma research by bringing together scientists and clinicians at an open educational scientific meeting every year (the UKEGS annual conference). The Committee comprises 3 independent glaucoma professionals – the current President of UKEGS (who chairs the Committee and hosts the annual conference), immediate Past President and President Elect. The Chair of Glaucoma UK is also a member of the sub-committee, which meets on a regular basis throughout the year and monthly in the run-up to the annual conference.

The charity also has a Clinical Advisory Panel (CAP) to advise on clinical matters. The chair of the CAP oversees the award of research grants.

Trustee Recruitment and Training

When seeking new Board members, trustees have regard to any existing skills or knowledge gaps or any new disciplines that would be helpful in delivering the charity's future plans. Due consideration is also given to diversity and the need to ensure that the Board appropriately represents the communities served by the charity. New trustees are sought using existing networks, advertising or professional recruitment agencies, as required. Candidates are interviewed by a sub-committee of trustees, followed by a meeting with the Chair of Trustees. Suitable individuals are invited to meet the remaining trustees at a Board meeting and are then put forward to the membership as the Board's preferred candidates at the Annual General Meeting. Voting members are also eligible to nominate themselves or others for election.

A secure area is available for trustees on the charity's SharePoint system, featuring key resources and information, including Charity Commission guidance on trustee roles and responsibilities. A personalised induction is provided for all new trustees, including a charity overview and briefings on finance, fundraising, support services and communication. Trustees are required to undertake 'Understanding Governance' training within six months of joining the Board. Ongoing training is provided as required, including attendance on external courses or participation in internal workshops and briefings.

Operating Responsibility

Day-to-day responsibility for delivering services and achieving strategic and financial aims within organisational policies and the law is delegated to the Chief Executive, supported by the Senior Management Team.

Statement of Public Benefit

Glaucoma UK exists to raise awareness of the risks of glaucoma, support people to live well with the condition and fund research into the causes, prevention and treatment of the disease.

When reviewing the charity's objectives and planning future activities, the trustees refer to Charity Commission guidance on public benefit and can confirm that all Glaucoma UK's activities are undertaken to further our charitable purposes for public benefit, in accordance with Section 17 of the Charities Act 2011.

Related Parties and Connected Charities

Glaucoma UK acted as an agent for the unincorporated organisation the United Kingdom Paediatric Glaucoma Society (UKPGS) during the year, providing infrastructure and administrative support. UKPGS exists to promote the exchange of knowledge between glaucoma specialists, stimulate research, establish a scientific community and promote interest in glaucoma as an ophthalmological sub-specialty. One trustee of Glaucoma UK also sits on the trustee board of UKPGS. In July 2025 UKPGS established themselves as a

Charitable Incorporated Organisation and withdrew funds totalling £29,124 previously held by Glaucoma UK, bringing the agency arrangement to a close.

In 2022 Glaucoma UK awarded a research grant of £57,300.56 to Nottingham University Hospital in respect of a project for which Professor Anthony King, Chair of Glaucoma UK, is the lead researcher. This was duly disclosed and recorded. The project finished during 2025, with the final report signed off by Glaucoma UK. The outstanding balance (£31,515.56) will be paid upon receipt of invoices from Nottingham University Hospital.

Risk Management and Internal Control

The Board of Trustees retains overall responsibility for risk management at Glaucoma UK, with formal assessment and review delegated to the Finance and Governance Committee. The Chief Executive submits a comprehensive risk register on a quarterly basis, identifying current and emerging risks, rating each by likelihood, impact, and velocity, and detailing the controls and mitigations in place.

During 2024–25, the trustees have reviewed and assessed the principal risks facing Glaucoma UK as follows:

1. Lack of Income Diversity

Despite ongoing efforts to diversify income streams, Glaucoma UK remains heavily reliant on legacy gifts. For the year, legacy income accounted for approximately **70% of total income** (legacy income: £1,777,367; total income: £2,541,707,058,718). The following measures are in place to mitigate this risk:

- **Regular monitoring:** Monthly management accounts and quarterly reports are reviewed by the Finance & Governance Committee.
- **Cash flow and pipeline oversight:** Cash flow forecasts and legacy gift pipeline reports are presented at each quarterly committee meeting.
- **Reserves and investment:** The charity maintains cash reserves and a diversified investment portfolio to cover medium and long-term income shortfalls.
- **Theory of Change and impact reporting:** The new Theory of Change framework and outcome reporting mechanisms are in place to better demonstrate impact and secure higher levels of corporate, major donor, and charitable trust support.

2. Investment Failure

All investments are subject to the risk of sustained or long-term decline in value. The Board seeks to offset these risks through:

- **Professional management:** Investments are held in a professionally managed portfolio, with access to live online reports.
- **Regular review:** Quarterly reporting to the Finance & Governance Committee and annual meetings with investment managers.
- **Policy oversight:** The Investment Policy is reviewed annually.
- **Liquidity:** A minimum of two months' operating costs is held in cash accounts to ensure operational resilience.

3. Compromised IT Systems and Cyber Security Failure

With the increasing prevalence of cybercrime and a stringent data protection environment, Glaucoma UK has implemented robust mitigations:

- **Professional support:** External agency retained to provide helpdesk support, ongoing staff training and regular system security monitoring.
- **Cyber Essentials:** Accreditation maintained (achieved June 2025), confirming compliance with best practice.
- **Staff training:** Cyber security training is mandatory for all staff.
- **Technical controls:** Multi-factor authentication, strict access controls, regular software updates, patch management, and daily offsite backups.
- **System protections:** Firewall, antivirus, anti-malware, and Intrusion Detection and Prevention Systems (IDPS) are in place.
- **Data protection:** Encryption of sensitive data and annual review of Information Governance, ICT, and Data Protection policies.
- **Cyber insurance:** Comprehensive cover, including post-incident support.
- **Website security:** 'reCAPTCHA' technology is installed on the online shop to prevent automated transactions.

4. Other Key Risks

- **Operational change:** The charity is managing risks associated with the transition to a new accounting system, with a detailed project plan and specialist third-party support to ensure continuity and compliance.
- **Compliance and data protection:** Anticipated changes to data protection regulations are being monitored, with new procedures under development to ensure ongoing compliance.

Remuneration Policy

The trustees consider the Board of Trustees and the Chief Executive as comprising the key management personnel, in charge of directing, controlling and operating the charity on a day-to-day basis.

All trustees give of their time freely and no trustee remuneration was paid in the year. Trustees are required to disclose all relevant interests and withdraw from decisions where a conflict of interest arises.

The pay of the charity's Chief Executive is reviewed annually by the Chair of Trustees and Finance and Governance Committee. The Chief Executive reviews all other staff salaries annually and makes recommendations to the Board as part of the annual budget setting process.

When setting salaries, trustees are guided by a remuneration policy that considers factors such as pay comparability (benchmarked within our own sector but also referencing public and private sector pay increase estimates), affordability, sustainability, and appropriateness.

Glaucoma UK aims to set salaries at a level where the ratio between the highest and lowest full-time equivalent is below 4.5:1 and the ratio between the highest and median (midpoint) salary is less than 3.5:1. As at 1 August 2025 these ratios were 3.5:1 and 2.5:1 respectively.

Statement of Trustee Responsibilities

The trustees are responsible for preparing the Trustees' Annual Report including the strategic report and financial statements in accordance with applicable law and United Kingdom accounting standards (UK generally accepted accounting practice).

Company law requires the trustees to prepare financial statements which give a true and fair view of the state of affairs of the charitable company and of the incoming resources and application of resources, including the income and expenditure of the charitable company for that period. In preparing these financial statements, the trustees are required to:

- select suitable accounting policies and then apply them consistently;
- observe the methods and principles in the Charities SORP;
- make judgments and estimates that are reasonable and prudent;
- state whether applicable UK accounting standards have been followed, subject to any material departures disclosed and explained in the financial statements;
- prepare the financial statements on the going concern basis unless it is inappropriate to presume that the charitable company will continue in business.

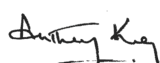
The trustees are responsible for keeping proper accounting records that disclose with reasonable accuracy at any time, the financial position of the charitable company and enable them to ensure that the financial statements comply with the Companies Act 2006. They are also responsible for safeguarding the assets of the charitable company and hence for taking reasonable steps for the prevention and detection of fraud and other irregularities.

The trustees are responsible for the maintenance and integrity of the corporate and financial information included on the charitable company's website. Legislation in the United Kingdom governing the preparation and dissemination of financial statements may differ from legislation in other jurisdictions.

In so far as the trustees are aware:

- there is no relevant audit information of which the charitable company's auditor is unaware; and
- the trustees have taken all steps that they ought to have taken to make themselves aware of any relevant audit information and to establish that the auditor is aware of that information.

The Trustees' Annual Report is approved by order of the Board of Trustees, and the Strategic Report (included therein) is approved by the Board of Trustees in their capacity as directors, in their meeting on 25 November 2025, and signed on its behalf by



Professor Anthony King Chair of Trustees

Independent Auditors' Report

We have audited the financial statements of The International Glaucoma Association Limited for the year ended 31 July 2025 on pages 39 to 53. The financial reporting framework that has been applied in their preparation is applicable law and FRS 102 (effective January 2015), as well as the Statement of Recommended Practice for Charities (effective January 2015).

This report is made solely to The International Glaucoma Association's members and Board of Trustees, as a body, in accordance with Section 144 of the Charities Act 2011, and regulations made under Section 154 of that Act, as well as Section 44 (1) (c) of the Charities and Trustee Investment (Scotland) Act 2005 and the Charities Accounts (Scotland) Regulations 2006. Our audit work has been undertaken so that we might state to the charitable company's members and Council of Management those matters we are required to state to them in an auditors' report and for no other purpose. To the fullest extent permitted by law, we do not accept or assume responsibility to anyone other than the charitable company and the charitable company's trustees as a body, for our audit work, for this report, or for the opinions we have formed.

Respective Responsibilities of Trustees and Auditors

As explained more fully in the Trustees' Responsibilities set out on page 35, the trustees (who are also the directors of the charitable company for the purposes of company law) are responsible for the preparation of the financial statements and for being satisfied that they give a true and fair view.

We have been appointed as auditors under Section 44 (1) (c) of the Charities and Trustee Investment (Scotland) Act 2005 and the Charities Accounts (Scotland) Regulations 2006 and report in accordance with regulations made under those Acts.

Our responsibility is to audit and express an opinion on the financial statements in accordance with applicable law and International Standards on Auditing (UK and Ireland). Those standards require us to comply with the Auditing Practices Board's Ethical Standards for Auditors.

Scope of the Audit of the Financial Statements

An audit involves obtaining evidence about the amounts and disclosures in the financial statements sufficient to give reasonable assurance that the financial statements are free from material misstatement, whether caused by fraud or error. This includes an assessment of whether the accounting policies are appropriate to the charitable company's circumstances and have been consistently applied and adequately disclosed; the reasonableness of significant accounting estimates made by the trustees; and the overall presentation of the financial statements. In addition, we read all the financial and non-financial information in the Trustees' Annual Report to identify material inconsistencies with the audited financial statements and to identify any information that is apparently materially incorrect based on, or materially inconsistent with, the knowledge acquired by us in the course of performing the audit. If we become aware of any apparent material misstatements or inconsistencies, we consider the implications for our report.

Irregularities, including fraud, are instances of non-compliance with laws and regulations. We design procedures in line with our responsibilities, outlined above, to detect material misstatements in respect of irregularities. The extent to which our procedures can detect irregularities, including fraud, is detailed below:

- Gaining a full and extensive knowledge of the entity, environment and the regulatory framework to which it must abide by.
- Evaluating and assessing the extent to which the entity's internal systems are adhering to these as well as gaining a full and comprehensive understanding of the entity's activities and effectiveness of its control environment (including those in place to identify and prevent fraud).

We achieved this by carrying out the following:

- Enquiry of the detailed communication with management and those charged with governance.
- Reviewing internal systems and controls.
- Reviewing financial statement disclosures and compliance with applicable laws and regulations.

Opinion on the Financial Statements

In auditing the financial statements, we have concluded that the trustees/directors' use of the going concern basis of accounting in the preparation of the financial statements is appropriate.

Based on the work we have performed, we have not identified any material uncertainties relating to events or conditions that, individually or collectively, may cast significant doubt on the entity's ability to continue as a going concern for a period of at least twelve months from when the financial statements are authorised for issue.

Our responsibilities and the responsibilities of the trustees/directors with respect to going concern are described in the relevant sections of this report.

In our opinion, the financial statements:

- give a true and fair view of the state of the charitable company's affairs as at 31 July 2025 and of its incoming resources and application of resources, including its result, for the year then ended;
- have been properly prepared in accordance with the Financial Reporting Standards 102 (effective January 2015);
- have been prepared in accordance with the requirements of the Companies Act 2006, and Section 44 (1) (c) of the Charities and Trustee Investment (Scotland) Act 2005 and the Charities Accounts (Scotland) Regulations 2006.

Matters on Which We Are Required to Report by Exception

We have nothing to report in respect of the following matters where the Companies Act 2006, the Charities Act 2011 and the Charities Accounts (Scotland) Regulations 2006 requires us to report to you if, in our opinion:

- the information given in the Report of the Board of Trustees is inconsistent in any material respect with the financial statements; or
- the charitable company has not kept adequate accounting records; or
- the financial statements are not in agreement with the accounting records and returns; or
- we have not received all the information and explanations we require for our audit.

Rosanna Turner

Rosanna Turner (Jan 30, 2026 13:08:52 GMT)

Rosanna Turner ACA DChA

For and on behalf of Xeinadin Audit Limited,

Registered Auditors

12 Conqueror Court, Sittingbourne ME10 5BH

Eligible to act as an auditor in terms of Section 1212 of the Companies Act

Glaucoma UK (the operating name of the International Glaucoma Association Limited)

Statement of financial activities (incorporating an income and expenditure account)

For the year ended 31 July 2025

	Note	Restricted £	Unrestricted £	2025 Total £	2024 Total £
Income					
Donations, legacies and subscriptions	2	76,650	1,982,068	2,058,718	1,787,919
Investment income	3	38,113	152,911	191,024	199,934
<i>Charitable activities</i>					
Professor of Ophthalmology for Glaucoma and Allied Studies at UCL	4	-	-	-	9,130
Influencing policy & practice	4	244,357	-	244,357	254,950
Corporate support	4	200	20,875	21,075	81,950
Lottery	4	-	19,794	19,794	18,256
Christmas cards	4	-	5,753	5,753	4,721
Other income	4	-	986	986	1,190
Total income		359,320	2,182,387	2,541,707	2,358,050
Expenditure on:					
<i>Raising funds</i>					
Cost of generating funds		-	231,732	231,732	293,181
		-	231,732	231,732	293,181
<i>Expenditure on charitable activities</i>					
Raising awareness		-	277,901	277,901	244,342
Providing support		12,149	875,636	887,786	615,290
Supporting research and development		171,729	782,081	953,810	457,490
Influencing policy and practice		181,149	177,141	358,290	465,154
Total expenditure	5	365,027	2,344,492	2,709,519	2,077,745
Realised gains on investment assets	11	1,374	5,456	6,830	-
Net Income		(4,333)	(162,105)	(160,982)	280,305
Unrealised gains on investment assets	11	45,746	179,721	225,467	439,908
Net incoming resources before transfers	6	41,413	23,072	64,485	720,213
Gross transfer between funds		-	-	-	-
Net movement in funds		41,413	23,072	64,485	720,213
Reconciliation of funds					
Total funds brought forward		1,629,944	7,138,016	8,767,960	8,047,747
Total funds carried forward		1,671,357	7,161,088	8,832,445	8,767,960

All of the results above are derived from continuing activities. There were no other recognised gains or losses other than those stated above. Movements in funds are disclosed in Note 16 to the financial statements.

Glaucoma UK (the operating name of the International Glaucoma Association Limited)**Charity No 274681****Balance sheet****Scotland No SC041550****Company No. 1293286****As at 31 July 2025**

	Note	2025 £	2024 £
Fixed assets			
Tangible fixed assets	10	715	806
Investments	11	<u>7,665,583</u>	<u>7,481,765</u>
Total fixed assets		7,666,298	7,482,571
Current assets			
Debtors	12 19	1,595,210	1,692,539
Cash at bank and in hand		<u>1,046,423</u>	<u>554,254</u>
		2,641,633	2,246,793
Liabilities			
Creditors: amounts due within one year	13 18, 19	<u>1,002,536</u>	<u>798,304</u>
Net current assets		<u>1,639,097</u>	<u>1,448,489</u>
Total assets less current liabilities		<u>9,305,395</u>	<u>8,931,060</u>
Creditors: amounts due after more than one year	14, 19	<u>472,950</u>	<u>163,100</u>
Net assets	15	<u>8,832,445</u>	<u>8,767,960</u>
Funds	16		
Restricted funds		1,671,357	1,629,944
Unrestricted funds			
Designated funds		3,800,322	4,340,791
General funds		<u>3,360,766</u>	<u>2,797,225</u>
Total funds		<u>8,832,445</u>	<u>8,767,960</u>

Approved by the board of trustees of the International Glaucoma Association Limited and signed on its behalf by Mr Stephen Epstein, Trustee

Stephen Epstein
Stephen Epstein (Jan 29, 2026 18:01:06 GMT)

Glaucoma UK (the operating name of the International Glaucoma Association Limited)**Statement of cash flow****For the year ended July 2025**

Cashflows from operating activities:	2025	2024
<i>Net cash provided by (used in) operating activities</i>	253,739	(95,529)
Cashflows from investing activities		
Dividends and interest from investments	191,024	199,934
Purchase of property, plant and equipment	(1,074)	(1,208)
Proceeds from sale of property, plant and equipment	-	452
Proceeds from sale of investments	179,111	-
Purchase of investments	(130,166)	(181,719)
<i>Net cash provided by (used in) investing activities</i>	238,895	17,459
<i>Change in cash and cash equivalents in the reporting period</i>	492,634	(78,070)
Cash and cash equivalents at the beginning of the reporting period	554,403	632,473
Cash and cash equivalents at the end of the reporting period	1,047,037	554,403
<i>Increase/Decrease in cash balances</i>	492,634	(78,070)
Reconciliation of net movement in funds to net cash flow from operating activities		
<i>Net movements in funds for the reporting period (as per the statement of financial activities)</i>	64,485	720,213
Adjustments for:		
Depreciation	1,164	3,160
Dividends & interest from investments	(191,024)	(199,934)
Loss/(Profit) on sale of investments	(232,297)	(439,908)
(Increase)/Decrease in stock	-	3,656
(Increase)/Decrease in debtors	97,329	(242,032)
Increase/(Decrease) in creditors	514,082	59,316
<i>Net cash provided by (used in) operating activities</i>	253,739	(95,529)
Analysis of cash and cash equivalents		
Cash in hand	1,046,423	554,254
Investments Capital account	614	149
	1,047,037	554,403

Glaucoma UK (the operating name of the International Glaucoma Association Limited)

Notes to the financial statements

For the year ended 31 July 2025

1. Accounting policies

The financial statements have been prepared under the historical cost convention, as modified by the revaluation of

- a) fixed asset investments, and in accordance with applicable accounting standards and the Companies Act 2006. They follow the recommendations in the Statement of Recommended Practice, Accounting and Reporting by Charities. The accounting standards policies have been prepared under Financial Reporting Standard 102, the Financial Reporting Standard applicable in the UK and Republic of Ireland' (United Kingdom Generally Accepted Accounting Practice) and SORP 2019. The Trustees confirm that the charitable company is a public benefit entity. The accounts are prepared in sterling pound and rounded to the nearest £1. The charity is a company limited by guarantee from 627 voting members incorporated on 15 July 1976 and registered as a charity on 20 December 1977. The objects of the charity are defined by its Articles of Association (last updated in 2024). The International Glaucoma Association Ltd (IGA) is constituted both as a charity and as a company limited by guarantee and as such the members of its Board are directors for the purposes of company law and trustees of the charity for the purposes of charity law. The powers of the Board and the permitted activities of the association are described in its governing document, which is the Articles of Association. The International Glaucoma Association Ltd registered office is Kent House, 81 Station Road, Ashford, Kent, TN23 1PP. The International Glaucoma Association Ltd is registered as a company in the United Kingdom.

In assessing the charity's status as a going concern, the trustees have considered a range of information in relation to the financial year ahead, including the current status of the UK economy, the charity's cash resources and known liabilities. The charity's 3-year financial plan for the period 2024-2027 shows the charity to have adequate resources to continue operating an effective service for at least 36 months and to meet its obligations as they fall due. The financial

- b) statements have therefore been prepared on a going concern basis.

Voluntary income received by way of subscriptions, donations and gifts are included in full in the statement of financial activities when receivable.

- c) Income from legacies is accounted for on a receivable basis, recognised when entitlement to the income has been established and it is probable that Glaucoma UK will receive the amounts ascertained. This treatment is within SORP 2019 and Financial Reporting Standard 102 the Financial Reporting Standard applicable in the UK and Republic of Ireland (United Kingdom Generally Accepted Accounting Practice).

Sales income represents sale of goods excluding VAT where appropriate.

Investment income is accounted for on an accruals basis.

- d) Restricted funds are to be used for specific purposes as laid down by the donor. Expenditure which meets these criteria is charged to the fund.

Unrestricted funds are donations and other incoming resources received or generated for general charitable purposes.

- e) Designated funds are unrestricted funds earmarked by the Board of trustees for particular purposes. Within these
f) funds is money awarded as grants, funding a range of research projects to develop more effective methods of glaucoma diagnosis and treatment.

- g) Costs of generating funds relates to the costs incurred in fundraising activities.

- h) Critical accounting judgements are used within these accounts as follows:

Residual legacy income debtors are valued at 85% of the expected value of the legacy when certain criteria are met and receipt is probable. Residual legacies that are over the material amount set by Glaucoma UK at £300,000 are recorded in the accounts at 100% once criteria is met and receipt is probable.

The support and governance costs are re-apportioned by staff time as explained in note (i). The staff costs attributed to each activity are reviewed each year when the new budget is set.

Resources expended are recognised in the period in which they are incurred. Resources expended include attributable VAT which cannot be recovered.

Glaucoma UK (the operating name of the International Glaucoma Association Limited)

Notes to the financial statements

For the year ended 31 July 2025

- i) Resources expended are allocated to a particular activity where the cost relates directly to that activity. However, the cost of overall direction and administration of each activity, comprising the salary and overhead costs of the central function which includes finance and support and governance is apportioned on the following basis which is an estimate based on staff time of the amount attributable to each activity.

Support costs

Cost of generating funds	13%
Expenditure on charitable activities	78%
Research	8%

- j) Grants awarded are charged to the Statement of Financial Activities in the year in which they are awarded and are subject to receipt of progress reports.
- k) Governance costs are the costs associated with the governance of the charity, including constitutional and statutory requirements and costs associated with the strategic management of the charity's activities.
- l) Monetary assets and liabilities in foreign currencies are translated into sterling at the Bank of England exchange rate for that day.
- m) Investments held as fixed assets are revalued at market value at the balance sheet date. The Trustees consider that market value is a reasonably accurate representation of the fair value. The gain or loss for the period is taken to the statement of financial activities.
- n) The fixed assets are held at cost less depreciation and any impairment. Depreciation is provided at rates calculated to write down the cost of each asset to its estimated residual value over its expected useful life. The depreciation rates in use are as follows:

Fixtures, fittings and equipment	20%
Computers	33%

Items of equipment are capitalised where the purchase price exceeds £1,000. Depreciation costs are allocated to activities on the basis of the use of the related assets in those activities. Assets are reviewed for impairment if circumstances indicate their carrying value may exceed their net realisable value and value in use.

- o) Stocks are stated at the lower of cost and net realisable value. In general, cost is determined on a first in first out basis. Net realisable value is the price at which stocks can be sold in the normal course of business after allowing for the costs of realisation. Provision is made where necessary for obsolete, slow moving and defective stock. During the year the charity received donated items that have been stated at fair value.
- p) The charity contributes to a defined contribution pension scheme. The assets of the scheme are held separately from those of the charity in an independently administered fund. Contributions payable are charged as an expense in the SOFA (Statement of financial activities) within staff costs then shared between the SOFA categories by staff time within these activities.
- q) Financial instruments assets and liabilities are valued in the accounts at fair value and are subsequently carried at amortised cost shown in Note 19.
- r) Debtors are stated at their net realisable value after allowing for bad and doubtful debts. The recoverability of debtors is reviewed at year end and provision is made, either general or specific, based on value, age and composition of our year end debtor balance.
- s) Trade creditors are recognised in the accounts at its settlement amount when there is a present obligation to the entity arising from past events.

Glaucoma UK (the operating name of the International Glaucoma Association Limited)

Notes to the financial statements

For the year ended 31 July 2025

2. Voluntary income

	2025	2024	2025	2024	2025	2024
	Restricted	Restricted	Unrestricted	Unrestricted	Total	Total
	£		£		£	£
Donations and subscriptions	23,937	41,139	256,064	215,620	280,001	256,759
Corporate donations	-	-	1,350	2,243	1,350	2,243
Legacies	52,713	6,432	1,724,654	1,522,485	1,777,367	1,528,917
Total	76,650	47,571	1,982,068	1,740,348	2,058,718	1,787,919

3. Investment income

	2025	2024	2025	2024	2025	2024
	Restricted	Restricted	Unrestricted	Unrestricted	Total	Total
	£	£	£	£	£	£
Interest	21	-	1,481	1,438	1,502	1,438
Dividends	38,092	41,605	151,430	156,891	189,522	198,496
Total	38,113	41,605	152,911	158,329	191,024	199,934

4. Incoming resources from charitable activities

	2025	2024	2025	2024	2025	2024
	Restricted	Restricted	Unrestricted	Unrestricted	Total	Total
	£	£	£	£	£	£
Professor of Ophthalmology for Glaucoma and Allied Studies at UCL	-	9,130	-	-	-	9,130
Influencing policy & practice	244,357	254,950	-	-	244,357	254,950
Corporate support	200	2,500	20,875	79,450	21,075	81,950
Lottery	-	-	19,794	18,256	19,794	18,256
Christmas cards	-	-	5,753	4,721	5,753	4,721
Other income	-	-	986	1,190	986	1,190
	244,557	266,580	47,408	103,617	291,965	370,197

Glaucoma UK (the operating name of the International Glaucoma Association Limited)

Notes to the financial statements

For the year ended 31 July 2025

5. Total Expenditure

	Charitable activities	Raising funds	Staff costs (Note 7)	Finance & Governance	2025 Total	2024 Total
Cost of generating funds	-	47,976	123,926	-	171,902	225,904
Raising awareness	93,724	-	124,210	-	217,934	200,425
Providing support	144,745	-	501,111	-	645,856	474,461
Supporting research and development (Note 8)	814,470	-	79,057	22,115	915,642	431,080
Influencing policy and practice	150,586	-	140,077	-	290,663	389,193
Finance and administration	-	-	163,645	264,165	427,810	318,736
Governance	-	-	34,389	5,323	39,712	37,946
Total	1,203,525	47,976	1,166,415	291,603	2,709,519	2,077,745

Expenditure note 5 continued

Finance, administration and governance costs reallocated

	Cost of generating funds	Raising awareness	Providing support	Supporting research and development	Influencing policy and practice	2025 Total	2024 Total
Finance, admin & governance costs	59,830	59,967	241,930	38,168	67,627	467,522	356,682
Direct costs	171,902	217,934	645,856	915,642	290,663	2,241,997	1,721,063
Total SOFA	231,732	277,901	887,786	953,810	358,290	2,709,519	2,077,745

Notes to the financial statements

For the year ended 31 July 2025

6. Net (outgoing)/incoming resources

This is stated after charging/crediting:

	2025	2024
	£	£
Depreciation charge for the year - owned assets	1,164	3,160
Auditors' remuneration:		
audit	6,930	6,300
other services	1,650	4,319
Trustees' expenses	1,262	2,161
Investment managers fee	15,898	12,006

Trustees' expenses represent the travel and subsistence costs of 6 trustees for 8 meetings £1,262 (2024: £2,161). Within 2025 most of the Trustees meetings were held virtually.

Donations totalling £501 were received from Trustees, (2024: £664).

No Trustees received remuneration for their services during the financial year.

7. Staff costs and numbers

Staff costs were as follows:

	2025	2024
	£	£
Salaries and wages	1,015,290	846,577
Social security costs	101,682	87,068
Pension contributions	49,443	41,590
	1,166,415	975,235

Only one member of key management personnel earned £80,000 or more in the year.

	2025	2024
	No.	No.
£70,000- £80,000	0	0
£80,000- £90,000	0	1
£90,000- £100,000	1	0

Pension contributions in respect of the above £90,000 - £100,000 full-time employee totalled £4,475 (2024: £4,134).

NI contributions in respect of the above £90,000-£100,000 employee totalled £11,622 (2024: £10,155)

The calculated unspent staff holiday entitlement at year end was £905 (2024: £2,907).

The charity contributes to a Royal London defined contribution pension scheme for employees.

The Key Management Personnel having authority and responsibility for planning, directing and controlling the activities of Glaucoma UK are the Senior Management Team. The total of Key Management personnel, employee benefits and remuneration were £491,353, (2024: £381,319)

When setting salaries, trustees are guided by a remuneration policy that considers factors such as pay comparability (benchmarked within our own sector but also referencing public and private sector pay increase estimates), affordability, sustainability, and appropriateness. Glaucoma UK aims to set salaries at a level where the ratio between the highest and lowest full-time equivalent is below 4.5:1 and the ratio between the highest and median (midpoint) salary is less than 3.5:1. As at 1 August 2025 these ratios were 3.5:1 and 2.5:1 respectively.

Notes to the financial statements

For the year ended 31 July 2025

7. Staff costs and numbers (continued)

The average weekly number of employees (full-time equivalent) during the year was:

	2025 No.	2024 No.
Cost of generating funds	2.16	3.95
Patient information and support	11.12	7.44
Professional information and support	3.17	5.35
Campaigning and awareness	2.78	1.49
Research	1.36	1.27
Governance	0.57	0.52
Finance and Support costs	3.26	2.86
	24.42	22.88

The actual number of staff (including part time and full time) at July 2025 was 31 (2024: 27) at year end.

8. Grants Awarded

	2025	2024
University College London's Institute of Ophthalmology - Glaucoma UK Chair Fund	79,114	74,673
Fight for Sight	7,500	-
City University London	42,512	-
University College London	144,237	-
Moorfields Eye Hospital NHS Foundation Trust	474,637	-
Ulster University	-	99,919
Manchester University NHS Foundation Trust	-	49,791
Liverpool University	99,782	50,000
University of Birmingham	-	99,652
Grants underspent by researchers	(33,312)	(10,813)
	814,470	363,222

These grants were awarded in accordance with the Glaucoma UK grants policy, and were awarded to fund research into the diagnosis and treatment of glaucoma.

Glaucoma UK awards its funding through open competition and uses a panel of independent experts to support in decision making. The host institution is considered as part of this process, to ensure the support and infrastructure are available for a successful project. Glaucoma UK is not affiliated with any particular research institution

The negative figure represents underspend by researchers on grants awarded in previous years.

9. Taxation

The charity is exempt from corporation tax and income tax as all its income is charitable and is applied for charitable purposes.

Notes to the financial statements

For the year ended 31 July 2025

10. Tangible fixed assets

	Computer equipment £	Total £
Cost		
At the start of the year	37,941	37,941
Additions in year	1,074	1,074
Disposals in year	-	-
At the end of the year	39,015	39,015
Depreciation		
At the start of the year	37,135	37,135
Charge for the year	1,165	1,165
Disposals in year	-	-
At the end of the year	38,300	38,300
Net book value		
At the end of the year	715	715

11. Investments

	2025 £	2024 £
Rathbones Core Investments fund for charities		
At 1st August 2024	7,481,616	6,859,989
Additions at historic cost	130,166	181,719
Disposal proceeds	(179,111)	0
Realised gains	6,830	0
Unrealised gains/losses	225,467	439,908
Market value at the end of the year	7,664,968	7,481,616
Cash held as part of portfolio	614	149
Total	7,665,582	7,481,765

Notes to the financial statements

For the year ended 31 July 2025

11. Investments continued

Investment management costs were £15,898 (£12,006 - 2024)

Glaucoma UK Ltd, Glaucoma International Ltd, Glaucoma Europe Ltd, and Glaucoma Association Ltd are dormant companies historically held by Glaucoma UK (the operating name of the International Glaucoma Association Limited) in order to protect the company identity and to give future flexibility in terms of the charity name. International Glaucoma Association hold 100% of all the dormant companies.

Glaucoma UK Limited number 04323894 total shareholder funds £1. Glaucoma Europe Limited number 04591043 total shareholders funds £1. Glaucoma International Limited number 04323990 total shareholders funds £1. Glaucoma Association Ltd number 05316092 shareholders funds £1.

12. Debtors

	2025	2024
	£	£
Trade debtors	6,205	47,102
Legacy debtors	1,510,764	1,619,363
Prepayments and accrued income	77,986	26,074
Vat Liability	255	-
	1,595,210	1,692,539

Glaucoma UK (the operating name of the International Glaucoma Association Limited)

Notes to the financial statements

For the year ended 31 July 2025

13. Creditors: amounts due within one year

	2025 £	2024 £
Trade creditors	117,482	166,396
Obligations under grant agreemer	629,067	403,061
Funds held as agent	-	28,214
Accruals & Deferred income	255,987	196,789
Vat liability	-	3,844
	1,002,536	798,304

Funds held as agent represent those held for UKPGS, for which Glaucoma UK provided administration and infrastructure support during the year, as shown in note 18. In July 2025 UKPGS was established as a Charitable Incorporated Organisation in its own right and closing funds were duly transferred.

14. Creditors: amounts due after one year

	2025 £	2024 £
Obligations under grant agreements	472,950	163,100
	472,950	163,100

15. Analysis of net assets between funds

	Restricted funds £	Designated funds £	General funds £	Total funds £
Tangible fixed assets	-	-	715	715
Investments	1,671,357	3,800,322	2,193,904	7,665,583
Net current assets	-	-	1,639,097	1,639,097
Creditors: amounts falling due after more than one year	-	-	(472,950)	(472,950)
Net assets at the end of the year	1,671,357	3,800,322	3,360,766	8,832,445

Glaucoma UK (the operating name of the International Glaucoma Association Limited)

Notes to the financial statements

For the year ended 31 July 2025

16. Movements in funds

	At the start of the year £	Incoming resources £	Outgoing resources £	Other gains and losses £	Transfers £	At the end of the year £
Restricted funds:						
Academic Chair fund	1,504,578	40,313	(82,825)	47,120	-	1,509,186
North East fund	6,150	-	(2,759)	-	-	3,391
Research fund	-	54,590	(54,590)	-	-	-
Folkestone fund	3,293	-	(71)	-	-	3,222
Children and Young People's Support fund	8,662	-	(2,700)	-	-	5,962
London fund	1,587	-	(1,587)	-	-	-
Scottish Optom fund	5,918	-	(5,032)	-	-	886
UK & Eire Glaucoma Society fund	75,223	244,357	(181,149)	-	-	138,431
50th Anniversary fund	24,533	9,781	(34,314)	-	-	-
Patient Voice Study fund	-	10,279	-	-	-	10,279
Total restricted funds	1,629,944	359,320	(365,027)	47,120	-	1,671,357
Unrestricted funds:						
<i>Designated funds:</i>						
Income Endowment	22,906	-	-	-	-	22,906
Equipment Replacement and Infrastructure fund	434,745	-	(70,963)	-	-	363,782
Research Investment fund	3,878,078	-	(464,444)	-	-	3,413,634
West Yorkshire Support fund	5,062	-	(140)	-	(4,922)	-
<i>Total designated funds</i>	<i>4,340,791</i>	<i>-</i>	<i>(535,547)</i>	<i>-</i>	<i>(4,922)</i>	3,800,322
General funds	2,797,225	2,182,387	(1,808,945)	185,177	4,922	3,360,766
Total unrestricted funds	7,138,016	2,182,387	(2,344,491)	185,177	-	7,161,088
Total funds	8,767,960	2,541,707	(2,709,519)	232,297	-	8,832,445

Movements in Funds

16. (continued)

Purposes of restricted funds

The Academic Chair fund is used to fund the post of Professor of Ophthalmology for Glaucoma and Allied Studies at University College London.

The North East fund was established following receipt of a legacy and is restricted to supporting our work in the North East of England.

The Research fund represents donations, charitable trust and legacies income received specifically to fund glaucoma research. The fund was drawn on throughout the year as detailed on Note 8.

The Folkestone fund comprises legacy income restricted to work in Folkestone.

The Children and Young People's Support fund comprises income donated for services for young people affected by glaucoma and their families and carers. It aims to help us better understand their particular support needs and deliver appropriate services in response.

The London fund is restricted to the London area and has been used mainly for awareness raising and support work with BAME communities at greatest risk of glaucoma sight loss.

The Scottish Optom training fund is charitable trust income earmarked for eye drop adherence training for optometrists across Scotland. Following delays due to Covid-19 and changes to the professional training landscape in the intervening period, we have now developed new training courses for optometrists and other staff in optical practices. We are hoping to get this accredited by the GOC and roll out the training over the next two years.

The UKEGS fund comprises money for the work of the United Kingdom and Eire Society (UKEGS), a national scientific society that operates under the aegis of Glaucoma UK.

The 50th anniversary research fund comprises income donated as part of our 50th anniversary appeal. It is to be used towards the Pitts Crick Research Fellowship award to support research into glaucoma to improve the lives of people affected by glaucoma.

The Patient Voice Study restricted fund supports our work to gather insights from people living with glaucoma. Donations will directly support the collection of these voices during 2026 which will be compiled into a comprehensive report to share with policymakers and healthcare professionals, helping to drive improvements in glaucoma care.

The designated income endowment fund represents the donation of shares which form the basis of a stock market portfolio, with the eventual goal of providing for the running costs of the association.

The designated Equipment Replacement and Infrastructure fund is held to cover the cost of equipment replacement, infrastructure development, premises costs and dilapidations.

The designated Research Investment fund aims to produce a reliable income stream specifically to fund the charity's research priorities in the years ahead.

The West Yorkshire Support fund was undesignated during the year. This fund was originally set up by the trustees for activities in West Yorkshire but an initiative to fund volunteer-led support groups in the area did not result in any applications. The released funds will now be used to support the delivery of the Eye Health for All community outreach project.

Glaucoma UK (the operating name of the International Glaucoma Association Limited)

Notes to the financial statements

For the year ended 31 July 2025

17. Operating lease commitments

The charity had annual commitments at the year end under operating leases expiring as follows:

	Property	
	2025	2024
	£	£
Within one year	12,858	19,834
Within 1 -2 Years	-	-

We have given notice on the lease office building and are renting a small room in an office building. The lease finishes December 2025.

18. Related Parties

In 2022 Glaucoma UK awarded a grant of £57,300.56 to Nottingham University Hospital for which the lead researcher was Glaucoma UK Chair, Professor Anthony King. This was duly disclosed and recorded. The research project finished during 2025, with the final report signed off by Glaucoma UK and the outstanding balance of £31,515.56 to be paid upon receipt of invoices from Nottingham University Hospital. Included in Note 13 are funds due to related parties held for the UK Paediatric Glaucoma Society (UKPGS) for which Glaucoma UK provided administration and infrastructure support. One Glaucoma UK Trustee was also a UKPGS committee member during the financial year.

Financial Statement of UKPGS	2025	2024
	£	£
Income	22,450	15,720
Expenditure	(21,539)	(19,710)
Closing balance	911	(3,990)
Balance brought forward	28,213	32,204
Total funds transferred to UKPGS	29,124	28,213

19. Financial Instruments

Financial Debt instruments measured at amortised cost	2025	2024
	£	£
Trade debtors	6,205	47,102
Legacy debtors	1,510,764	1,619,363
Prepayments, accrued income and Vat liability	78,241	26,074
	1,595,210	1,692,539
Financial instruments measured at amortised cost		
Trade creditors	117,482	166,396
Obligations under grant agreements	1,102,017	566,161
Funds held as agent	-	28,214
Accruals & Deferred income	255,987	196,789
Vat & National Insurance liability	-	3,844
	1,475,486	961,404