

CHEC

ANNUAL REPORT

2020





**The Commonwealth Human Ecology Council (CHEC)
is a Commonwealth civil society organisation and UK Registered Charity
that promotes,
disseminates and applies the principles of Human Ecology in the
Commonwealth and beyond.**

**It has been a catalyst in promoting sustainability, particularly in terms of human
settlements, fisheries, afforestation and strengthening community action,
especially for the advancement of women and youth.**

**CHEC is highly active in advocating and promoting the role of civil society and
participatory decision making in good governance and sustainable development**

ANNUAL REPORT 2019

Commonwealth Human Ecology Council (CHEC)

Registration address:
c/o Brown McLeod
The Old Workshop
1 Ecclesall Road South
Sheffield S11 9PA

Tel: +44 (0)20 3689 0979

e-mail:
contact@checinternational.org

Website:
www.checinternational.org

Registered Charity No. 272018

** NGO in Special Consultative
Status with the UN Economic and
Social Council (ECOSOC)

** Accredited to the
Commonwealth Secretariat
**Member of Commonwealth
Consortium for Education (CCfE)
**Member of BOND

Editors: Ian Douglas
Eva Ekehorn
Mark Robinson

Layout: Eva Ekehorn

Cover photo:
Mangrove photo Ian Douglas

CONTENTS

	Page
1. Message from Chairman	4
2. Projects	4
3. Publications	7
4. Website	7
5. News from CHEC's network	9
6. CHEC's partners	11
7. CHEC Governance	12
8. Financial Statement 2019	13

1. Message from the Chairman

Mark Robinson

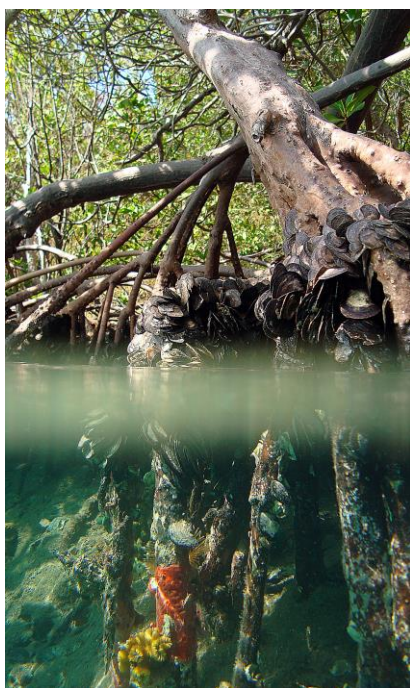
During 2020 CHEC has focused on areas of great international concern such as climate change, air pollution, food and water security, plastic in the oceans, urban resilience as well as the role of education where CHEC believes human ecological thinking can help towards sustainability. CHEC's work on Mangroves, which was supported by the Commonwealth Secretariat, highlighted the concerns of rising sea levels, tropical storms and protection of coastal fishing grounds.

CHEC UK works with other CHEC Chapters and contacts around the Commonwealth, and in partnership with other civil society organisations with a similar focus. CHEC is a member of the Informal Forum of Commonwealth Organisations (IFCO) which brings Commonwealth Accredited Organisations together to discuss where they can work in greater harmony and partnership. CHEC is also in Special Consultative Status with the UN Economic and Social Council (ECOSOC). As human ecology is a global subject, CHEC also works in partnership with other ecological organisations, supporting conferences on sustainability and human ecology as well as other relevant activities. CHEC works in concert with both the Commonwealth Secretariat, to which it is accredited, and the Commonwealth Foundation. CHEC has also registered for COP26, to be held in Glasgow November 2021. The approval of the application is still pending.

In October 2020 CHEC moved out of its office in London and become a virtual organisation. This means that meetings take place on Zoom, and an archive will be set up online, to facilitate access for CHEC's Governing Board members.

2. Projects

2019-2020 Mangrove Project



In July 2019, CHEC decided to respond to an invitation to bid for funds for activities as part of the Commonwealth at 70 celebrations (<https://thecommonwealth.org/commonwealth-70>). Mangroves were seen as a crucial issue of environmental and social significance to people throughout the Commonwealth and are a major focus within the Commonwealth Blue Charter. Many Commonwealth countries with tropical shorelines, from Belize to Australia, have significant areas of mangroves. For many island states, such as the Maldives and Kiribati, mangroves are crucial protectors of the coastline and nurseries for fisheries. CHEC trustees and partners in the SW Pacific and West Africa made suggestions about partners to involve in two actions: the production of a special issue of the journal "Human Ecology" and the making of small grants to NGOs in low-income countries.

Mangrove forests, occupying less than 14 million hectares, just 2.5% of the size of the Amazon rainforest, provide a broad array of ecosystem services. Mangroves are critical nursery habitats for fish, birds and marine mammals; act as effective nutrient filters; buffer coastal communities from storm surges; and support

numerous rural economies. These ecosystem service benefits have been valued at an average of 4200 US\$ per hectare per year in Southeast Asia. Fishing, in addition to being a source of nourishment and income (provisioning services), frequently provides spiritual activity and aesthetic benefits for communities and individuals.

The Journal special issue contained contributions from Australia, India, Malaysia, New Zealand, The Gambia and the UK. It is available online at [CHEC Journal - 'Human Ecology 30: Mangroves' Published - CHEC International](#). The writers of the articles made suggestions about organisations which would benefit from a small activity grant. Confirmation of funding (£ 5,000) came with a request that the expenditure be

completed within a month. However, that challenge was met by engaging swiftly with key personnel in Fiji, the Gambia, India, Malaysia, Maldives, and Samoa. Activities varied from workshops for fisherfolk and for community members in Kerala, the World Mangrove celebrations in Malaysian coastal villages, the preparation of exhibition posters in Fiji and Samoa, and mangrove replanting exercises in Maldives and the Gambia. Many hundreds of people benefitted from these activities, through the effective outreach organised by our partners.

It demonstrated that practical action can be achieved with limited resources through effective personal interaction. Reports on the activities and their outcomes are available at:

[CHEC Celebrates World Mangrove Day 2020 on Three Oceans - CHEC International](#)

[Maldives-Mangrove-Project-Report.pdf \(checinternational.org\)](#)

[Mangrove Project activities under COVID-19 in Kerala, India - CHEC International](#)

This model of rapid establishment and delivery of small community-based participatory events could make an effective mechanism for helping on-going conservation and community development programmes or initiating interest in longer term project plans.

Bees and Pollinators

The CHEC Uganda Youth-led beekeeping and entrepreneur pilot project got off to a wonderful start in the Spring of 2020 with the YOFENET (Young Farmers Entrepreneur Network), a community-led organisation managed by Mathias Walwana, and a professional young trainer, Angela Namukwaya, who worked with YOFENET training youth in beekeeping. Prior to the CHEC pilot project, the young farmers of YOFENET had been mentored by Dave Bonner of Bees Abroad for several years. During that time the young people had been trained in beekeeping and set up a training apiary. They had learned to make their own hives and harvest honey. They had been taken to Nairobi for extensive expert beekeeping training and sold their harvested honey at Uganda agriculture fairs. Angela Namukwaya, the project manager, was chosen for her extensive experience in beekeeping training working with many Uganda beekeeping and honey producing companies. She had a knowledge of VSLAs, (Village Savings and Loan Associations). This was vital for preparation of the beneficiaries to ensure the young entrepreneurs would safeguard their livelihoods in producing honey. Angela had provided CHEC with a dynamic proposal for the training of 16 young single mothers who had dropped out of school in four parishes of Baitambogwe Sub-County, Mayuge district of eastern Uganda. The VSLA, would provide them with the foundation of saving skills for their business. When the CHEC review team first considered their application, we recognised Mathias and Angela were the only youth-led community organisation who had provided us with such a detailed project proposal. They were also a young organisation, which had limited capacity still to be realised, yet a substantial amount of enthusiasm, drive and determination which Dave Bonner of Bees Abroad confirmed. We agreed, with the ongoing support and guidance of our Uganda advisor Bosco Okello, CEO of Apitrade Africa, and Dave Bonner, from Bees Abroad, the YOFENET youth-led organisations would have the skills and encouragement to attain the goals of the project.

Bees Abroad visited the CHEC/YOFENET pilot project in February 2020 to check the beekeeping equipment purchased with the CHEC Grant and confirm it was up to standard. Dave provided a wonderful film with Angela, the YOFENET young farmers and the beneficiaries. Bosco Okello attended the pilot project a few weeks later when the YOFENET young farmers and Angela organised a ceremony to hand over the equipment to the 16 beneficiaries with their families. The training began and continued through February and March providing an extensive overview of beekeeping theory and practical skills including making handmade basket beehives and smokers.

The 48 Kenya top bee hives were then sited at sixteen apiaries across four parishes along with 32 handmade hives providing a total of five hives for each beginner's apiary. The training included learning to bait the hives, hive management, inspirational talks and introduction of a village saving and loan group so the young mothers could learn to save from their honey sales. The CHEC and HEF Grant included providing

lunches for the single mothers during the training sessions. Following the siting of the hives, within the first weeks, 20 hives had been colonised. The plan was for Bosco Okello to attend twice a month to assist Angela, the trainer, and the YOFENET team, to attend each apiary and oversee hive and apiary management with each of the 16 single mothers for the next eight months. Due to the young single mothers having no formal education, and forced to drop out of school due to pregnancy, they lacked confidence and discipline. For these reasons, the CHEC Review team impressed upon both Angela and Mathias, that a condition of the grant was that the YOFENET young farmers' organisation and Angela would need to support the inexperienced beneficiaries with hive management each month during the early stages of hive management, April to December, until their confidence and skills of hive management and honey harvesting increased. Hive management skills included colonization, managing swarms and abscondment of bees and the ongoing decongestion, cleaning from ants, rodents, rebaiting, and debranching and overall health of apiaries.



The news of the Covid-19 Pandemic reaching Uganda mid-March sent everyone into an instant panic. Having experienced past pandemics, they knew what was coming. The President of Uganda immediately called for a lockdown of everything, banning all transport, travel, including closing the airports. It was by far the earliest and harshest lockdown in all the African countries. The CHEC Uganda advisor, Bosco, based in Kampala, was forced to lock down in Northern Uganda where his company is based and did not see his family in Kampala for many months. Angela, the trainer and project manager with YOFENET, was in lockdown in Western Uganda where her full-time work was based. Bees Abroad, based in the UK, could not travel to Uganda and indeed they agreed to provide funds to YOFENET to grow emergency food crops.

The Uganda lockdown remained in place for many months. Mathias and YOFENET were left with sole responsibility to oversee monthly hive management training with the beneficiaries and support of the 16 apiaries across four parishes. This should have been possible as the 16 beneficiaries had completed the basic training, and agriculture and beekeeping were considered frontline work and could continue during the lockdown. Unfortunately, YOFENET, as a young organisation, did not withstand the extreme strain of the pandemic. Mathias lost the support and could not delegate work to the other trained beekeeper farmers needed to oversee and encourage the 16 beneficiaries and their apiaries across four parishes. It was not until July when CHEC realised no one had followed up with hive management of the single mothers. Indeed, of the 20 hives colonised in March, 16 colonies had absconded. The honey harvest subsequently failed in July through to September primarily due to neglect of colonisation and hive management.

The pilot project was to end in December 2020 but it was not until September 2020 before CHEC could arrange for the Uganda project advisor, Bosco Okello, and Angela, the trainer, to get to the site by renting cars, staying in hotels in a different town as the local guest's houses nearest to the project site remained closed. The reports of both Bosco and Angela confirmed, that the YOFENET organisation with

trained bee-keeping farmers were no longer functioning to the agreed responsibilities; the other Beekeeper farmers were no longer involved. Due to the pandemic many of the 16 beneficiaries had to leave the area for a variety of reasons. Those that remained had lost their morale when by September not one of the 80 hives harvested honey. Without a local committed organisation to provide the needed support to the remaining beneficiaries, and with lockdown restrictions continuing to make it extremely difficult for both Bosco and Angela to travel to the site, it was agreed to bring the project to a close. During the months of October and November, Mathias on his own attempted another honey harvest without any success. Then in January 2021, one of the beneficiaries who had family encouraging her beekeeping skills, harvested her own honey. It was a blessing, a glimmer of hope; that out of the hardship of the pandemic lockdown, one apiary had succeeded to yield honey, and one of the young women would continue with beekeeping.

CHEC was not alone with projects collapsing due to the pandemic and severe lockdown in Uganda. Yet for the CHEC project, the pandemic could not have happened in Uganda at a worst time when the beneficiaries were most vulnerable having just sited their hives and without the skills to manage their apiaries. Six months later and the 16 single mothers would have had the confidence to oversee the hive management on their own. It was a real disappointment yet this must not overshadow what YOFENET and Angela had achieved from the early days of their project with the enthusiasm of the baseline survey, determining the 16 beneficiaries, involving local community leaders and experts, a remarkable project launch, the purchasing and distributing of equipment and the siting of 16 apiaries in four parishes. Their project had enormous potential for success and no doubt if it were not for the pandemic arriving when it did, would have succeeded. A great deal was learned and all efforts appreciated by everyone involved along the way.

CHEC would like to thank Angela Namukwaya, the project manager with YOFENET; Mathias Walwana, co-founder and director of YOFENET; Jane Samuels, chair of CHEC bee and pollinator steering group; Ian Douglas CHEC Trustee and Chair of HEF; Caryll Stephens CHEC Trustee; John McDonnell CHEC member and CHEC website editor; the Uganda Advisor, Bosco Okello CEO of Apitrade Africa for his continued support and advice throughout, and David Bonner at Bees Abroad.

Ponds and Freshwater

Background: For decades to come, cost-effective and environmentally appropriate water systems will be a priority for managing water scarcity and building resilience in the rapidly expanding cities and city regions of South Asia. The proposal is to look at urban local ponds, and the potential to link them with domestic water systems and build resilience. The proposal builds upon research that local urban ponds can facilitate resilient water-supply provision by making them an integral part of the urban waterscape. It highlights a multitude of benefits that ponds can potentially bring to urban resilience, in particular affordable and accessible water provision with low environmental footprint, managing climate shocks or stresses, ecological restoration in urban areas as well as potentially generating new skills and livelihoods for communities.



Images: Taken in Khulna, Bangladesh (2019) and Bhubaneswar, India (2020) by Ripin Kalra

3. Publications

Journal 30 Mangroves

CHEC published a new Journal in 2020 titled, “**Human Ecology 30: Mangroves**”. The journal addresses the important issue of mangroves in the global context. As it is known, mangroves are an important part of ecosystems and play a vital function in the world today, however, the impacts of climate change are damaging mangroves all over which is having devastating effects. The journal looks to address some of these issues and features contributions from people across the Commonwealth and world. The Journal is published on CHEC’s website: [human ecology journal on mangroves](#).

4. Website

The CHEC website has continued to grow at a good rate over the last year. The website is updated regularly, and new features have been added that are aimed at increasing engagement with the website. These features include:

- A new way to view PDFs in an interactive way on the website.
- A new sidebar that is aimed to keep users engaged with the CHEC website
- Language options to have pages on the CHEC website converted to the users’ language.
- A rework of the CHEC Points Page
- A revamp of the CHEC newsletter
- The addition of further sharing functions to ensure CHEC’s content can be shared easily.

Work has also focussed on the back end of the website with the aim of making the CHEC website load quicker and faster. Furthermore, a number of important new posts have been added to the website to increase website traffic.

Social Media

CHEC has continued to use social media as a way to share information relating to CHEC. As a result of this CHEC’s social media presence has increased over the last year. At this time last year CHEC was only active on Twitter and Facebook. Today, however, we have active accounts on YouTube, Instagram and LinkedIn as well. This will help in the long run build CHEC’s online presence and see more users come to the website. This year has also seen CHEC reach over 500 Twitter followers.

CHEC would also like to record a big thank you to CHEC trustee, Emily Robinson, for her work on reactivating the LinkedIn page and running the CHEC Instagram page, as well as to J mcd for his hard work in developing both the website and interaction with social media.

CHEC is dependent on the contributions of members, both in the form of voluntary work and through contributions from funds. We have a range of membership options available and will also display any job or volunteer opportunities on this page.

We have annual and life-long memberships available as well as a student membership and concessions for over 65s and SHE Members.

<https://www.checinternational.org/support-chec/>

5. News from CHEC's Network

New Zealand: Zena Daysh Doctoral Fellowship Waikato



Dr Sangion Tiu from Papua New Guinea, the first recipient of the University of Waikato's Zena Daysh Doctoral Fellowship for Sustainability, has graduated with her PhD



Shaaliny Jaufar, the second choice for Zena Daysh's Doctoral Fellowship has left her home in the Maldives to study for her PhD at the University of Waikato. Her topic is: ***Young People and Sustainable Citizenship.***

She's a woman with a social conscience and has been awarded the Zena Daysh Fellowship in Sustainable Development from the university to research what factors and experiences inspire young people to become active citizens. Shaaliny's focus is to demonstrate what it means to enact "sustainable citizenship" in the face of climate change. Sustainable citizenship is a concept that two of her supervisors, Professors Priya Kurian and Debashish Munshi, have developed, and she is planning to apply it in her doctoral research. She is based in the Political Science and Public Policy programme of the Faculty of Arts and Social Sciences during her time in New Zealand.

"There is this view that democracy is in crisis and that young people are not interested or engaged in political issues but I don't believe that," Shaaliny says. "I think young people are very much invested, and engaged in new and different ways for social and environmental activism. It is my aim to find out what fosters active young citizens."

CHEC KENYA

In Kenya, we had very few activities that took place due to Covid 19 Pandemic that swept across the entire country. We are grateful that those in the cities did not suffer loss of a life.

We missed the services of the Germany Volunteers that we have been getting through the American field service (AFS). However, the following activities were implemented:

1. We were supported by the Lake Victoria North Water Works Agency and implemented the Mukwa community micro water supply and piped water from a drilled bore hole to serve, Mukwa primary school, Mukwa market, Mukwa Health facility and the Mukwa community.
2. With the support of a NGO from Turkey, we developed six community water points within Siboti Ward of Bungoma County. People in these rural areas at long last are having clean and safe water.

We have had discussions with our Government Parastatal (Lake Basin Development Authority) to assist with the provision of tree sockets to continue with our seedlings production.



A picture from CHEC's former office at Hurlingham Studios

6. CHEC's partners

Australia

Dr Donnell Davis
UNA Australia
PO Box 2029
Runcorn
4113 Australia
Donnell.davis@unaa.org.uk

The Gambia

Mr. Badara N. Bajo
PO Box 21, Banjul
The Gambia
Fax: +220 4486026
Tel: +220 4486301/9955063
gepadg@yahoo.com

India

President: Prof T I Khan
Vice president,
Dr Rashmi Pareek
Mrs Gerda Unnithan,
International relations
University of Rajasthan
Jaipur – 302004
Rajasthan, India
gjunithan@hotmail.com

Kenya

Mr. Norbert M. Sangura
PO Box 1702-50200
Nairobi, Kenya
Tel: +254 735 409867
chec.kenya@yahoo.com

New Zealand

Margret Evans
TOTI
www.toti.co.nz
www.Facebook.com/TOTItrust
info@toti.co.nz

Nigeria

Hon. Levi Oguike
C Plot 118, Z Close,
21Road, Festac
G.P.O. Box 9216, Marina
Lagos.
levi.oguike@gmail.com

Pakistan

Dr Saadyah Chishti
House 29A, Street 18, F6/2
Islamabad, Pakistan
Tel: +92 – 51 864 077/824 944

CIANEA, Uganda

Patricia Kabatabazi
Community based Impact Assessment
Network for Eastern Africa (CIANEA)
P.O. Box 8277, Kampala- Uganda
Tel: 256 – 414–221277
cianeauganda@yahoo.co.uk
Website: cianeauganda.org

7. CHEC's Governance

Members of the CHEC Governing Board Nov 2020

Honorary President:	Hon. Levi Oguike, CHEC Nigeria
Patrons:	Mr Norman Stannard, New Zealand Ms Narelle Townsend, Australia
Chairman:	Mark Robinson, CHEC UK
Honorary Treasurer:	John Bonham, CHEC UK
Company Secretary:	Eva Ekehorn, CHEC UK

Other Members of the Board:

Rhonda Cox, Trinidad & Tobago High Commission, UK
Dr Saadyah Chishti, CHEC Pakistan
Hon. Sannusi Daggash, CHEC Nigeria
Dr Donnell Davis, CHEC Australia
Emeritus Prof Ian Douglas, School of Environment, Education and Development,
University of Manchester, UK
Dr Morteza Honari, Dr Honari Education Institute, Tehran
Daniel Hunt, Santander UK
Subbu Loganathan, Pico Analytics UK
Patricia Kabatabazi, CIANEA, Uganda
Ripin Kalra, University of Westminster, UK
Dr T I Khan, Indira Gandhi's Centre for Human Ecology, Univ. of Rajasthan, Jaipur, India
Michael Mutter OBE (formerly DFID UK)
Trevor Peel, National Liberal Club, UK
Emily Robinson, Pico Analytics, UK
James Ross, Commonwealth Resound, UK
Norbert Sangura, CHEC Kenya
Caryll Stephen, Foundation for Water Research, UK
Jane Samuels, Tools of Change, UK
Kabir Shaikh CBE, formerly UNESCO, UK

Staff and Consultants:

Yahya al-Witri, Accounts and Office Manager, retired in 2020
John McDonnell, Communication Officer

Zena Daysh and Donald Denman Human Ecology Foundation (HEF)

CHEC is supported by its subsidiary charity, the Human Ecology Foundation (HEF). This can provide support to small projects either solely or in joint funding, either financial or in kind, with other partner in Commonwealth developing countries.

8. Financial Statement 2020

	£	31.12 2020	31.12.2019
INCOMING RESOURCES			
Voluntary income			
Grants		5,000	
Subscriptions & Donations		1,478	1,401
Total		<u>6,478</u>	<u>1,401</u>
Investment income			
Investment income received		18,999	19,427
Deposit account interest		6	85
Total		<u>19,005</u>	<u>19,512</u>
Total incoming resources		<u>25,483</u>	<u>20,913</u>
RESOURCES EXPENDED			
Charitable activities			
Project expenditure		5,798	1,800
Project consultancy		-	293
Total		5,798	2,003
Finances, charges, interest		16	114
Governance costs			
Wages		1,633	7,566
Accountancy and legal fees		1,500	2,190
			9,756
Support costs			
Management			
Trustees' expenses		746	1,480
Rent, rates & insurance		7,679	9,638
Light and heat		1,303	345
Postage, telephone & fax		645	613
Printing, publications & stationery		13	1,979
Sundry expenses		1,696	1,268
Travel, conferences		239	3,349
Administration		1,050	830
IT Consultancy		8,272	8,174
Fixtures and fittings		-	249
Loss on sale of tangible fixed assets		1,408	
Total resources expended		<u>31,998</u>	<u>38,898</u>
Net Expenditure		<u>(6,515)</u>	<u>(17,985)</u>

SUPPORT CHEC

There are several ways you can help and support CHEC and the work we do:

Become a member!

Membership information and a membership form can be found at <https://www.checinternational.org/joining-chec/>

£10 for students, £30 for ordinary members and £20 for those over 65.

Donate!

Any sum is most welcome! Please send a cheque to CHEC or pay by bank transfer: Sort Code: 20-69-15; A/C 73900398



Follow us on Twitter!

@CwHumanEcology



Join us on Facebook

/InternationalCHEC/

Instagram

REGISTERED COMPANY NUMBER: 00966772 (England and Wales)
REGISTERED CHARITY NUMBER: 272018

Report of the Trustees and
Unaudited Financial Statements
for the Year Ended 31 December 2020
for
COMMONWEALTH HUMAN ECOLOGY COUNCIL LTD

Brown McLeod Limited
Chartered Accountants
The Old Workshop
1 Ecclesall Road South
Sheffield
South Yorkshire
S11 9PA

COMMONWEALTH HUMAN ECOLOGY COUNCIL LTD

**Contents of the Financial Statements
for the Year Ended 31 December 2020**

	Page
Report of the Trustees	1 to 4
Independent Examiner's Report	5
Statement of Financial Activities	6
Balance Sheet	7 to 8
Notes to the Financial Statements	9 to 13
Detailed Statement of Financial Activities	14 to 15

COMMONWEALTH HUMAN ECOLOGY COUNCIL LTD

Report of the Trustees for the Year Ended 31 December 2020

The trustees who are also directors of the charity for the purposes of the Companies Act 2006, present their report with the financial statements of the charity for the year ended 31 December 2020. The trustees have adopted the provisions of Accounting and Reporting by Charities: Statement of Recommended Practice applicable to charities preparing their accounts in accordance with the Financial Reporting Standard applicable in the UK and Republic of Ireland (FRS 102) (effective 1 January 2019).

OBJECTIVES AND ACTIVITIES

Objectives and aims

The aim of the Commonwealth Human Ecology Council (CHEC) is to further the importance of a holistic and sustainable view of the world and a continuing emphasis on development through the implementation of human ecology. CHEC's programmes strive to awaken the official world to the need for deeper human and ecological philosophies and for a wider coalition between all levels of society and the natural world on which they depend.

Mission Statement

Human Ecology embraces the principles of natural and moral philosophy. It draws on knowledge and understanding from the sciences and humanities in order to develop and promote holistic and sustainable initiatives, ideas and development projects with the aim of enhancing and strengthening people's relationships with each other and with their natural environments. Human Ecology operates at all levels of human co-operation, from families and communities to global initiatives such as those of the United Nations agencies. Human Ecology emphasises the contribution of the individual, the sharing of skills and experiences, and the dignity and insight of social and cultural and religious experiences. From this standpoint, human ecology works to create sustainable, lasting improvements in people's lives by fostering projects that engage and enhance the skills of local communities, involve all sectors of society, improve livelihoods and maintain environmental benefits.

Human Ecology is a philosophy and a process: it is constantly learning and adapting, just as it is constantly educating, encouraging and stimulating others. It has become an academic field of enquiry, a developmental philosophy, an approach to sustainability and a new means of unifying political, economic and social endeavours to provide a meaningful future for rural and urban people everywhere.

COMMONWEALTH HUMAN ECOLOGY COUNCIL LTD

Report of the Trustees for the Year Ended 31 December 2020

OBJECTIVES AND ACTIVITIES

Significant activities

During 2020, which marked CHEC's 50th anniversary, the organisation has focused on areas of great international concern such as climate change, air pollution, food and water security, plastic in the oceans, urban resilience as well as the role of education where CHEC believes human ecological thinking can help towards sustainability. Its efforts in this regard support the principles outlined by Heads of Government in the Commonwealth Blue Charter adopted at their London meeting in 2018. CHEC's work on mangroves, which was supported by the Commonwealth Secretariat, through its Commonwealth @70 initiative, highlighted the concerns of rising sea levels, tropical storms and protection of coastal fishing grounds through a project activated in Fiji, India, Malaysia, Maldives, Samoa and The Gambia.

CHEC UK works with other CHEC Chapters and contacts around the Commonwealth, and in partnership with other civil society organisations with a similar focus. CHEC is a member of the Informal Forum of Commonwealth Organisations (IFCO) which brings Commonwealth Accredited Organisations together to discuss where they can work in greater harmony and partnership. CHEC is also in Special Consultative Status with the UN Economic and Social Council (ECOSOC). As human ecology is a global subject, CHEC also works in partnership with ecological organisations, supporting conferences on sustainability and human ecology as well as other relevant activities. CHEC works in concert with both the Commonwealth Secretariat, to which it is accredited, and the Commonwealth Foundation. CHEC has also registered for COP26, to be held in Glasgow November 2021. Approval of the application is pending.

In October 2020 CHEC moved out of its office in London and become a virtual organisation. Meetings take place on Zoom during the Covid pandemic but face to face arrangements will be restored when conditions allow. An archive will be set up online to facilitate access for CHEC's Governing Board members.

Projects

Work on the bees and pollinators programme has been continued, but due to the COVID19 pandemic it had to be cut short. Ideas are also being developed on ponds and water management in Bangladesh and India and work on this will continue. CHEC received funding from the Commonwealth Secretariat for a project on mangroves (detailed above) to mark CHEC's 50th Anniversary and the 70th year since the signing of the London Declaration, which founded the modern Commonwealth as it is perceived today.

Publications and Website

In June 2020, CHEC published Human Ecology Journal No. 30 on Mangroves, which involved Australia, India, Malaysia, New Zealand, The Gambia and the United Kingdom. Work started on Human Ecology Journal No 31 on Pollution which will be available for the next CHOGM and COP26. CHEC's website keeps friends of human ecology alert and updated on discussions around the Commonwealth on climate change adaptation and mitigation; the state of the soil, rivers, lakes and oceans. It looks at how our consumption affects the environment and what we can do about it.

FINANCIAL REVIEW

Principal funding sources

The finances of CHEC are monitored by the Finance Committee. A Skipton savings account provide a backup income to support CHEC's work. Financial support is also received from the Human Ecology Foundation which incorporates the legacy of CHEC's Founder, Zena Daysh.

FUTURE DEVELOPMENTS

An active year is expected as CHEC will be involved with Commonwealth and other international meetings in the build up to Cop26, Glasgow, scheduled to be held in November 2021.

COMMONWEALTH HUMAN ECOLOGY COUNCIL LTD

Report of the Trustees for the Year Ended 31 December 2020

STRUCTURE, GOVERNANCE AND MANAGEMENT

Governing document

The charity is controlled by its deed of trust and governing document, and constitutes a company, limited by guarantee, as defined by the Companies Act 2006. Its Articles of Association were updated to accommodate current legal requirements, approved at an EGM in February 2015.

All of CHEC's work continues to be dependent on its global membership and supporters and to its office staff, volunteers and Board members. A debt of gratitude is due to them all. Details of the Trustees are attached to this report.

The Finance Committee meets regularly and reports to the Governing Board.

Risk management

The trustees have a duty to identify and review the risks to which the charity is exposed and to ensure appropriate controls are in place to provide reasonable assurance against fraud and error. Safeguarding is reviewed as appropriate.

The Trustees have referred to the guidance contained in the Charity Commission's general guidance on public benefit when reviewing aims and objectives and in planning future activities. The Charity's purpose focuses on raising global public awareness and providing education on all aspects of human ecology.

REFERENCE AND ADMINISTRATIVE DETAILS

Registered Company number

00966772 (England and Wales)

Registered Charity number

272018

Registered office

The Old Workshop
1 Ecclesall Road South
Sheffield
South Yorkshire
S11 9PA

Trustees

Mr J Bonham
Mr M Robinson
Prof. I Douglas
Mrs E Ekehorn
Mrs C Stephen
Mr M Mutter
Dr R Kalra
Ms J Samuels
Ms R Cox (appointed 23.11.20)
Mr S Loganathan (appointed 11.11.20)
Mr T Peel (appointed 21.11.20)
Ms E Robinson (appointed 11.11.20)
Dr J Ross (appointed 20.11.20)

Patrons

Mr N Stannard
Ms N Townsend

Honorary President

Mr Levi Oguike

Company Secretary

Mrs E Ekehorn

COMMONWEALTH HUMAN ECOLOGY COUNCIL LTD

**Report of the Trustees
for the Year Ended 31 December 2020**

REFERENCE AND ADMINISTRATIVE DETAILS

Independent Examiner

R Byrne

FCCA

Brown McLeod Limited

Chartered Accountants

The Old Workshop

1 Ecclesall Road South

Sheffield

South Yorkshire

S11 9PA

This report has been prepared in accordance with the special provisions of Part 15 of the Companies Act 2006 relating to small companies.

Approved by order of the board of trustees on 14 July 2021 and signed on its behalf by:



.....
Mr M Robinson - Trustee

**Independent Examiner's Report to the Trustees of
Commonwealth Human Ecology Council Ltd**

Independent examiner's report to the trustees of Commonwealth Human Ecology Council Ltd ('the Company')
I report to the charity trustees on my examination of the accounts of the Company for the year ended 31 December 2020.

Responsibilities and basis of report

As the charity's trustees of the Company (and also its directors for the purposes of company law) you are responsible for the preparation of the accounts in accordance with the requirements of the Companies Act 2006 ('the 2006 Act').

Having satisfied myself that the accounts of the Company are not required to be audited under Part 16 of the 2006 Act and are eligible for independent examination, I report in respect of my examination of your charity's accounts as carried out under section 145 of the Charities Act 2011 ('the 2011 Act'). In carrying out my examination I have followed the Directions given by the Charity Commission under section 145(5) (b) of the 2011 Act.

Independent examiner's statement

I have completed my examination. I confirm that no matters have come to my attention in connection with the examination giving me cause to believe:

1. accounting records were not kept in respect of the Company as required by section 386 of the 2006 Act; or
2. the accounts do not accord with those records; or
3. the accounts do not comply with the accounting requirements of section 396 of the 2006 Act other than any requirement that the accounts give a true and fair view which is not a matter considered as part of an independent examination; or
4. the accounts have not been prepared in accordance with the methods and principles of the Statement of Recommended Practice for accounting and reporting by charities (applicable to charities preparing their accounts in accordance with the Financial Reporting Standard applicable in the UK and Republic of Ireland (FRS 102)).

I have no concerns and have come across no other matters in connection with the examination to which attention should be drawn in this report in order to enable a proper understanding of the accounts to be reached.



R Byrne
FCCA
Brown McLeod Limited
Chartered Accountants
The Old Workshop
1 Ecclesall Road South
Sheffield
South Yorkshire
S11 9PA

Date:19-07-2021

COMMONWEALTH HUMAN ECOLOGY COUNCIL LTD

**Statement of Financial Activities
for the Year Ended 31 December 2020**

	Notes	Unrestricted fund £	Restricted fund £	31.12.20 Total funds £	31.12.19 Total funds £
INCOME AND ENDOWMENTS FROM					
Donations and legacies		1,478	5,000	6,478	1,401
Investment income	2	19,005	-	19,005	19,512
Total		20,483	5,000	25,483	20,913
EXPENDITURE ON					
Raising funds		26,200	-	26,200	36,895
Charitable activities					
Project expenditure		-	5,798	5,798	2,003
Total		26,200	5,798	31,998	38,898
Net gains/(losses) on investments		-	-	-	(550)
NET INCOME/(EXPENDITURE)		(5,717)	(798)	(6,515)	(18,535)
RECONCILIATION OF FUNDS					
Total funds brought forward		18,007	4,125	22,132	40,667
TOTAL FUNDS CARRIED FORWARD		12,290	3,327	15,617	22,132

The notes form part of these financial statements

COMMONWEALTH HUMAN ECOLOGY COUNCIL LTD

Balance Sheet 31 December 2020

	Notes	Unrestricted fund £	Restricted fund £	31.12.20 Total funds £	31.12.19 Total funds £
FIXED ASSETS					
Tangible assets	6	-	-	-	1,408
CURRENT ASSETS					
Debtors	7	-	-	-	1,179
Cash at bank		13,790	3,327	17,117	22,276
		<u>13,790</u>	<u>3,327</u>	<u>17,117</u>	<u>23,455</u>
CREDITORS					
Amounts falling due within one year	8	(1,500)	-	(1,500)	(2,731)
NET CURRENT ASSETS		<u>12,290</u>	<u>3,327</u>	<u>15,617</u>	<u>20,724</u>
TOTAL ASSETS LESS CURRENT LIABILITIES		<u>12,290</u>	<u>3,327</u>	<u>15,617</u>	<u>22,132</u>
NET ASSETS		<u>12,290</u>	<u>3,327</u>	<u>15,617</u>	<u>22,132</u>
FUNDS	9				
Unrestricted funds				12,290	18,007
Restricted funds				<u>3,327</u>	<u>4,125</u>
TOTAL FUNDS				<u>15,617</u>	<u>22,132</u>

The charitable company is entitled to exemption from audit under Section 477 of the Companies Act 2006 for the year ended 31 December 2020.

The members have not required the company to obtain an audit of its financial statements for the year ended 31 December 2020 in accordance with Section 476 of the Companies Act 2006.

The trustees acknowledge their responsibilities for

- (a) ensuring that the charitable company keeps accounting records that comply with Sections 386 and 387 of the Companies Act 2006 and
- (b) preparing financial statements which give a true and fair view of the state of affairs of the charitable company as at the end of each financial year and of its surplus or deficit for each financial year in accordance with the requirements of Sections 394 and 395 and which otherwise comply with the requirements of the Companies Act 2006 relating to financial statements, so far as applicable to the charitable company.

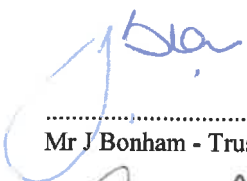
The notes form part of these financial statements

COMMONWEALTH HUMAN ECOLOGY COUNCIL LTD


Balance Sheet - continued
31 December 2020

These financial statements have been prepared in accordance with the provisions applicable to charitable companies subject to the small companies regime.

The financial statements were approved by the Board of Trustees and authorised for issue on 14 July 2021 and were signed on its behalf by:



.....
Mr J Bonham - Trustee



.....
Mr M Robinson - Trustee

The notes form part of these financial statements

COMMONWEALTH HUMAN ECOLOGY COUNCIL LTD

Notes to the Financial Statements for the Year Ended 31 December 2020

1. ACCOUNTING POLICIES

Basis of preparing the financial statements

The financial statements of the charitable company, which is a public benefit entity under FRS 102, have been prepared in accordance with the Charities SORP (FRS 102) 'Accounting and Reporting by Charities: Statement of Recommended Practice applicable to charities preparing their accounts in accordance with the Financial Reporting Standard applicable in the UK and Republic of Ireland (FRS 102) (effective 1 January 2019)', Financial Reporting Standard 102 'The Financial Reporting Standard applicable in the UK and Republic of Ireland' and the Companies Act 2006. The financial statements have been prepared under the historical cost convention, with the exception of investments which are included at market value, as modified by the revaluation of certain assets.

Income

All income is recognised in the Statement of Financial Activities once the charity has entitlement to the funds, it is probable that the income will be received and the amount can be measured reliably.

Expenditure

Liabilities are recognised as expenditure as soon as there is a legal or constructive obligation committing the charity to that expenditure, it is probable that a transfer of economic benefits will be required in settlement and the amount of the obligation can be measured reliably. Expenditure is accounted for on an accruals basis and has been classified under headings that aggregate all cost related to the category. Where costs cannot be directly attributed to particular headings they have been allocated to activities on a basis consistent with the use of resources.

Tangible fixed assets

Depreciation is provided at the following annual rates in order to write off each asset over its estimated useful life.

Fixtures and fittings - 15% on reducing balance

Taxation

The charity is exempt from corporation tax on its charitable activities.

Fund accounting

Unrestricted funds can be used in accordance with the charitable objectives at the discretion of the trustees.

Restricted funds can only be used for particular restricted purposes within the objects of the charity. Restrictions arise when specified by the donor or when funds are raised for particular restricted purposes.

Further explanation of the nature and purpose of each fund is included in the notes to the financial statements.

2. INVESTMENT INCOME

	31.12.20	31.12.19
	£	£
Investment income received	18,999	19,427
Deposit account interest	6	85
	<u>19,005</u>	<u>19,512</u>

COMMONWEALTH HUMAN ECOLOGY COUNCIL LTD

Notes to the Financial Statements - continued for the Year Ended 31 December 2020

3. NET INCOME/(EXPENDITURE)

Net income/(expenditure) is stated after charging/(crediting):

	31.12.20	31.12.19
	£	£
Depreciation - owned assets	-	249
Deficit on disposal of fixed assets	<u>1,408</u>	<u>-</u>

4. TRUSTEES' REMUNERATION AND BENEFITS

There were no trustees' remuneration or other benefits for the year ended 31 December 2020 nor for the year ended 31 December 2019.

Trustees' expenses

	31.12.20	31.12.19
	£	£
Trustees' expenses	<u>746</u>	<u>1,480</u>

5. COMPARATIVES FOR THE STATEMENT OF FINANCIAL ACTIVITIES

	Unrestricted fund £	Restricted fund £	Total funds £
INCOME AND ENDOWMENTS FROM			
Donations and legacies	1,401	-	1,401
Investment income	<u>19,512</u>	<u>-</u>	<u>19,512</u>
Total	<u>20,913</u>	<u>-</u>	<u>20,913</u>
EXPENDITURE ON			
Raising funds	36,895	-	36,895
Charitable activities			
Project expenditure	203	1,800	2,003
Total	<u>37,098</u>	<u>1,800</u>	<u>38,898</u>
Net gains/(losses) on investments	<u>(550)</u>	<u>-</u>	<u>(550)</u>
NET INCOME/(EXPENDITURE)	<u>(16,735)</u>	<u>(1,800)</u>	<u>(18,535)</u>
RECONCILIATION OF FUNDS			
Total funds brought forward	34,742	5,925	40,667
TOTAL FUNDS CARRIED FORWARD	<u>18,007</u>	<u>4,125</u>	<u>22,132</u>

COMMONWEALTH HUMAN ECOLOGY COUNCIL LTD

**Notes to the Financial Statements - continued
for the Year Ended 31 December 2020**

6. TANGIBLE FIXED ASSETS

	Fixtures and fittings £
COST	
At 1 January 2020	13,672
Disposals	<u>(13,672)</u>
At 31 December 2020	<u>-</u>
DEPRECIATION	
At 1 January 2020	12,264
Eliminated on disposal	<u>(12,264)</u>
At 31 December 2020	<u>-</u>
NET BOOK VALUE	
At 31 December 2020	<u>-</u>
At 31 December 2019	<u><u>1,408</u></u>

7. DEBTORS: AMOUNTS FALLING DUE WITHIN ONE YEAR

	31.12.20 £	31.12.19 £
Other debtors	-	895
Prepayments	-	284
	<u>-</u>	<u>1,179</u>

8. CREDITORS: AMOUNTS FALLING DUE WITHIN ONE YEAR

	31.12.20 £	31.12.19 £
Social security and other taxes	-	244
Other creditors	-	262
Accrued expenses	1,500	2,225
	<u>1,500</u>	<u>2,731</u>

9. MOVEMENT IN FUNDS

	At 1.1.20 £	Net movement in funds £	At 31.12.20 £
Unrestricted funds			
General fund	18,007	(5,717)	12,290
Restricted funds			
Project fund	4,125	(798)	3,327
TOTAL FUNDS	<u>22,132</u>	<u>(6,515)</u>	<u>15,617</u>

COMMONWEALTH HUMAN ECOLOGY COUNCIL LTD

**Notes to the Financial Statements - continued
for the Year Ended 31 December 2020**

9. MOVEMENT IN FUNDS - continued

Net movement in funds, included in the above are as follows:

	Incoming resources £	Resources expended £	Movement in funds £
Unrestricted funds			
General fund	20,483	(26,200)	(5,717)
Restricted funds			
Project fund	5,000	(5,798)	(798)
TOTAL FUNDS	<u>25,483</u>	<u>(31,998)</u>	<u>(6,515)</u>

Comparatives for movement in funds

	At 1.1.19 £	Net movement in funds £	At 31.12.19 £
Unrestricted funds			
General fund	34,742	(16,735)	18,007
Restricted funds			
Project fund	5,925	(1,800)	4,125
TOTAL FUNDS	<u>40,667</u>	<u>(18,535)</u>	<u>22,132</u>

Comparative net movement in funds, included in the above are as follows:

	Incoming resources £	Resources expended £	Gains and losses £	Movement in funds £
Unrestricted funds				
General fund	20,913	(37,098)	(550)	(16,735)
Restricted funds				
Project fund	-	(1,800)	-	(1,800)
TOTAL FUNDS	<u>20,913</u>	<u>(38,898)</u>	<u>(550)</u>	<u>(18,535)</u>

COMMONWEALTH HUMAN ECOLOGY COUNCIL LTD

**Notes to the Financial Statements - continued
for the Year Ended 31 December 2020**

9. MOVEMENT IN FUNDS - continued

A current year 12 months and prior year 12 months combined position is as follows:

	At 1.1.19 £	Net movement in funds £	At 31.12.20 £
Unrestricted funds			
General fund	34,742	(22,452)	12,290
Restricted funds			
Project fund	5,925	(2,598)	3,327
TOTAL FUNDS	<u>40,667</u>	<u>(25,050)</u>	<u>15,617</u>

A current year 12 months and prior year 12 months combined net movement in funds, included in the above are as follows:

	Incoming resources £	Resources expended £	Gains and losses £	Movement in funds £
Unrestricted funds				
General fund	41,396	(63,298)	(550)	(22,452)
Restricted funds				
Project fund	5,000	(7,598)	-	(2,598)
TOTAL FUNDS	<u>46,396</u>	<u>(70,896)</u>	<u>(550)</u>	<u>(25,050)</u>

10. RELATED PARTY DISCLOSURES

There were no related party transactions for the year ended 31 December 2020.

COMMONWEALTH HUMAN ECOLOGY COUNCIL LTD

**Detailed Statement of Financial Activities
for the Year Ended 31 December 2020**

	31.12.20 £	31.12.19 £
INCOME AND ENDOWMENTS		
Donations and legacies		
Grants	5,000	-
Subscriptions & donations	1,478	1,401
	<hr/> 6,478	<hr/> 1,401
Investment income		
Investment income received	18,999	19,427
Deposit account interest	6	85
	<hr/> 19,005	<hr/> 19,512
Total incoming resources	25,483	20,913
EXPENDITURE		
Charitable activities		
Project expenditure	5,798	1,800
Project consultancy	-	203
	<hr/> 5,798	<hr/> 2,003
Support costs		
Management		
Trustees' expenses	746	1,480
Rent, rates & insurance	7,679	9,638
Repairs & renewals	1,200	-
Light and heat	103	345
Postage, telephone & fax	645	613
Printing, publications & staty	13	1,079
Sundry expenses	1,696	1,268
Travel, conferences & admin	239	3,349
Administration costs	1,050	830
IT consultancy	8,272	8,174
Fixtures and fittings	-	249
Loss on sale of tangible fixed assets	1,408	-
	<hr/> 23,051	<hr/> 27,025
Finance		
Bank charges	16	75
Bank interest	-	39
	<hr/> 16	<hr/> 114
Governance costs		
Wages	1,633	7,566
Carried forward	1,633	7,566

This page does not form part of the statutory financial statements

COMMONWEALTH HUMAN ECOLOGY COUNCIL LTD

**Detailed Statement of Financial Activities
for the Year Ended 31 December 2020**

	31.12.20 £	31.12.19 £
Governance costs		
Brought forward	1,633	7,566
Accountancy and legal fees	1,500	2,190
	<u>3,133</u>	<u>9,756</u>
Total resources expended	<u>31,998</u>	<u>38,898</u>
Net expenditure	<u>(6,515)</u>	<u>(17,985)</u>

This page does not form part of the statutory financial statements

REGISTERED COMPANY NUMBER: 00966772 (England and Wales)
REGISTERED CHARITY NUMBER: 272018

Report of the Trustees and
Unaudited Financial Statements
for the Year Ended 31 December 2020
for
COMMONWEALTH HUMAN ECOLOGY COUNCIL LTD

Brown McLeod Limited
Chartered Accountants
The Old Workshop
1 Ecclesall Road South
Sheffield
South Yorkshire
S11 9PA

COMMONWEALTH HUMAN ECOLOGY COUNCIL LTD

**Contents of the Financial Statements
for the Year Ended 31 December 2020**

	Page
Report of the Trustees	1 to 4
Independent Examiner's Report	5
Statement of Financial Activities	6
Balance Sheet	7 to 8
Notes to the Financial Statements	9 to 13
Detailed Statement of Financial Activities	14 to 15

COMMONWEALTH HUMAN ECOLOGY COUNCIL LTD

Report of the Trustees for the Year Ended 31 December 2020

The trustees who are also directors of the charity for the purposes of the Companies Act 2006, present their report with the financial statements of the charity for the year ended 31 December 2020. The trustees have adopted the provisions of Accounting and Reporting by Charities: Statement of Recommended Practice applicable to charities preparing their accounts in accordance with the Financial Reporting Standard applicable in the UK and Republic of Ireland (FRS 102) (effective 1 January 2019).

OBJECTIVES AND ACTIVITIES

Objectives and aims

The aim of the Commonwealth Human Ecology Council (CHEC) is to further the importance of a holistic and sustainable view of the world and a continuing emphasis on development through the implementation of human ecology. CHEC's programmes strive to awaken the official world to the need for deeper human and ecological philosophies and for a wider coalition between all levels of society and the natural world on which they depend.

Mission Statement

Human Ecology embraces the principles of natural and moral philosophy. It draws on knowledge and understanding from the sciences and humanities in order to develop and promote holistic and sustainable initiatives, ideas and development projects with the aim of enhancing and strengthening people's relationships with each other and with their natural environments. Human Ecology operates at all levels of human co-operation, from families and communities to global initiatives such as those of the United Nations agencies. Human Ecology emphasises the contribution of the individual, the sharing of skills and experiences, and the dignity and insight of social and cultural and religious experiences. From this standpoint, human ecology works to create sustainable, lasting improvements in people's lives by fostering projects that engage and enhance the skills of local communities, involve all sectors of society, improve livelihoods and maintain environmental benefits.

Human Ecology is a philosophy and a process: it is constantly learning and adapting, just as it is constantly educating, encouraging and stimulating others. It has become an academic field of enquiry, a developmental philosophy, an approach to sustainability and a new means of unifying political, economic and social endeavours to provide a meaningful future for rural and urban people everywhere.

COMMONWEALTH HUMAN ECOLOGY COUNCIL LTD

Report of the Trustees for the Year Ended 31 December 2020

OBJECTIVES AND ACTIVITIES

Significant activities

During 2020, which marked CHEC's 50th anniversary, the organisation has focused on areas of great international concern such as climate change, air pollution, food and water security, plastic in the oceans, urban resilience as well as the role of education where CHEC believes human ecological thinking can help towards sustainability. Its efforts in this regard support the principles outlined by Heads of Government in the Commonwealth Blue Charter adopted at their London meeting in 2018. CHEC's work on mangroves, which was supported by the Commonwealth Secretariat, through its Commonwealth @70 initiative, highlighted the concerns of rising sea levels, tropical storms and protection of coastal fishing grounds through a project activated in Fiji, India, Malaysia, Maldives, Samoa and The Gambia.

CHEC UK works with other CHEC Chapters and contacts around the Commonwealth, and in partnership with other civil society organisations with a similar focus. CHEC is a member of the Informal Forum of Commonwealth Organisations (IFCO) which brings Commonwealth Accredited Organisations together to discuss where they can work in greater harmony and partnership. CHEC is also in Special Consultative Status with the UN Economic and Social Council (ECOSOC). As human ecology is a global subject, CHEC also works in partnership with ecological organisations, supporting conferences on sustainability and human ecology as well as other relevant activities. CHEC works in concert with both the Commonwealth Secretariat, to which it is accredited, and the Commonwealth Foundation. CHEC has also registered for COP26, to be held in Glasgow November 2021. Approval of the application is pending.

In October 2020 CHEC moved out of its office in London and become a virtual organisation. Meetings take place on Zoom during the Covid pandemic but face to face arrangements will be restored when conditions allow. An archive will be set up online to facilitate access for CHEC's Governing Board members.

Projects

Work on the bees and pollinators programme has been continued, but due to the COVID19 pandemic it had to be cut short. Ideas are also being developed on ponds and water management in Bangladesh and India and work on this will continue. CHEC received funding from the Commonwealth Secretariat for a project on mangroves (detailed above) to mark CHEC's 50th Anniversary and the 70th year since the signing of the London Declaration, which founded the modern Commonwealth as it is perceived today.

Publications and Website

In June 2020, CHEC published Human Ecology Journal No. 30 on Mangroves, which involved Australia, India, Malaysia, New Zealand, The Gambia and the United Kingdom. Work started on Human Ecology Journal No 31 on Pollution which will be available for the next CHOGM and COP26. CHEC's website keeps friends of human ecology alert and updated on discussions around the Commonwealth on climate change adaptation and mitigation; the state of the soil, rivers, lakes and oceans. It looks at how our consumption affects the environment and what we can do about it.

FINANCIAL REVIEW

Principal funding sources

The finances of CHEC are monitored by the Finance Committee. A Skipton savings account provide a backup income to support CHEC's work. Financial support is also received from the Human Ecology Foundation which incorporates the legacy of CHEC's Founder, Zena Daysh.

FUTURE DEVELOPMENTS

An active year is expected as CHEC will be involved with Commonwealth and other international meetings in the build up to Cop26, Glasgow, scheduled to be held in November 2021.

COMMONWEALTH HUMAN ECOLOGY COUNCIL LTD

Report of the Trustees for the Year Ended 31 December 2020

STRUCTURE, GOVERNANCE AND MANAGEMENT

Governing document

The charity is controlled by its deed of trust and governing document, and constitutes a company, limited by guarantee, as defined by the Companies Act 2006. Its Articles of Association were updated to accommodate current legal requirements, approved at an EGM in February 2015.

All of CHEC's work continues to be dependent on its global membership and supporters and to its office staff, volunteers and Board members. A debt of gratitude is due to them all. Details of the Trustees are attached to this report.

The Finance Committee meets regularly and reports to the Governing Board.

Risk management

The trustees have a duty to identify and review the risks to which the charity is exposed and to ensure appropriate controls are in place to provide reasonable assurance against fraud and error. Safeguarding is reviewed as appropriate.

The Trustees have referred to the guidance contained in the Charity Commission's general guidance on public benefit when reviewing aims and objectives and in planning future activities. The Charity's purpose focuses on raising global public awareness and providing education on all aspects of human ecology.

REFERENCE AND ADMINISTRATIVE DETAILS

Registered Company number

00966772 (England and Wales)

Registered Charity number

272018

Registered office

The Old Workshop
1 Ecclesall Road South
Sheffield
South Yorkshire
S11 9PA

Trustees

Mr J Bonham
Mr M Robinson
Prof. I Douglas
Mrs E Ekehorn
Mrs C Stephen
Mr M Mutter
Dr R Kalra
Ms J Samuels
Ms R Cox (appointed 23.11.20)
Mr S Loganathan (appointed 11.11.20)
Mr T Peel (appointed 21.11.20)
Ms E Robinson (appointed 11.11.20)
Dr J Ross (appointed 20.11.20)

Patrons

Mr N Stannard
Ms N Townsend

Honorary President

Mr Levi Oguike

Company Secretary

Mrs E Ekehorn

COMMONWEALTH HUMAN ECOLOGY COUNCIL LTD

**Report of the Trustees
for the Year Ended 31 December 2020**

REFERENCE AND ADMINISTRATIVE DETAILS

Independent Examiner

R Byrne

FCCA

Brown McLeod Limited

Chartered Accountants

The Old Workshop

1 Ecclesall Road South

Sheffield

South Yorkshire

S11 9PA

This report has been prepared in accordance with the special provisions of Part 15 of the Companies Act 2006 relating to small companies.

Approved by order of the board of trustees on 14 July 2021 and signed on its behalf by:



.....
Mr M Robinson - Trustee

**Independent Examiner's Report to the Trustees of
Commonwealth Human Ecology Council Ltd**

Independent examiner's report to the trustees of Commonwealth Human Ecology Council Ltd ('the Company')
I report to the charity trustees on my examination of the accounts of the Company for the year ended 31 December 2020.

Responsibilities and basis of report

As the charity's trustees of the Company (and also its directors for the purposes of company law) you are responsible for the preparation of the accounts in accordance with the requirements of the Companies Act 2006 ('the 2006 Act').

Having satisfied myself that the accounts of the Company are not required to be audited under Part 16 of the 2006 Act and are eligible for independent examination, I report in respect of my examination of your charity's accounts as carried out under section 145 of the Charities Act 2011 ('the 2011 Act'). In carrying out my examination I have followed the Directions given by the Charity Commission under section 145(5) (b) of the 2011 Act.

Independent examiner's statement

I have completed my examination. I confirm that no matters have come to my attention in connection with the examination giving me cause to believe:

1. accounting records were not kept in respect of the Company as required by section 386 of the 2006 Act; or
2. the accounts do not accord with those records; or
3. the accounts do not comply with the accounting requirements of section 396 of the 2006 Act other than any requirement that the accounts give a true and fair view which is not a matter considered as part of an independent examination; or
4. the accounts have not been prepared in accordance with the methods and principles of the Statement of Recommended Practice for accounting and reporting by charities (applicable to charities preparing their accounts in accordance with the Financial Reporting Standard applicable in the UK and Republic of Ireland (FRS 102)).

I have no concerns and have come across no other matters in connection with the examination to which attention should be drawn in this report in order to enable a proper understanding of the accounts to be reached.



R Byrne
FCCA
Brown McLeod Limited
Chartered Accountants
The Old Workshop
1 Ecclesall Road South
Sheffield
South Yorkshire
S11 9PA

Date:19-07-2021

COMMONWEALTH HUMAN ECOLOGY COUNCIL LTD

**Statement of Financial Activities
for the Year Ended 31 December 2020**

	Notes	Unrestricted fund £	Restricted fund £	31.12.20 Total funds £	31.12.19 Total funds £
INCOME AND ENDOWMENTS FROM					
Donations and legacies		1,478	5,000	6,478	1,401
Investment income	2	19,005	-	19,005	19,512
Total		20,483	5,000	25,483	20,913
EXPENDITURE ON					
Raising funds		26,200	-	26,200	36,895
Charitable activities					
Project expenditure		-	5,798	5,798	2,003
Total		26,200	5,798	31,998	38,898
Net gains/(losses) on investments		-	-	-	(550)
NET INCOME/(EXPENDITURE)		(5,717)	(798)	(6,515)	(18,535)
RECONCILIATION OF FUNDS					
Total funds brought forward		18,007	4,125	22,132	40,667
TOTAL FUNDS CARRIED FORWARD		12,290	3,327	15,617	22,132

The notes form part of these financial statements

COMMONWEALTH HUMAN ECOLOGY COUNCIL LTD

Balance Sheet 31 December 2020

	Notes	Unrestricted fund £	Restricted fund £	31.12.20 Total funds £	31.12.19 Total funds £
FIXED ASSETS					
Tangible assets	6	-	-	-	1,408
CURRENT ASSETS					
Debtors	7	-	-	-	1,179
Cash at bank		13,790	3,327	17,117	22,276
		<u>13,790</u>	<u>3,327</u>	<u>17,117</u>	<u>23,455</u>
CREDITORS					
Amounts falling due within one year	8	(1,500)	-	(1,500)	(2,731)
NET CURRENT ASSETS		<u>12,290</u>	<u>3,327</u>	<u>15,617</u>	<u>20,724</u>
TOTAL ASSETS LESS CURRENT LIABILITIES		<u>12,290</u>	<u>3,327</u>	<u>15,617</u>	<u>22,132</u>
NET ASSETS		<u>12,290</u>	<u>3,327</u>	<u>15,617</u>	<u>22,132</u>
FUNDS	9				
Unrestricted funds				12,290	18,007
Restricted funds				<u>3,327</u>	<u>4,125</u>
TOTAL FUNDS				<u>15,617</u>	<u>22,132</u>

The charitable company is entitled to exemption from audit under Section 477 of the Companies Act 2006 for the year ended 31 December 2020.

The members have not required the company to obtain an audit of its financial statements for the year ended 31 December 2020 in accordance with Section 476 of the Companies Act 2006.

The trustees acknowledge their responsibilities for

- (a) ensuring that the charitable company keeps accounting records that comply with Sections 386 and 387 of the Companies Act 2006 and
- (b) preparing financial statements which give a true and fair view of the state of affairs of the charitable company as at the end of each financial year and of its surplus or deficit for each financial year in accordance with the requirements of Sections 394 and 395 and which otherwise comply with the requirements of the Companies Act 2006 relating to financial statements, so far as applicable to the charitable company.

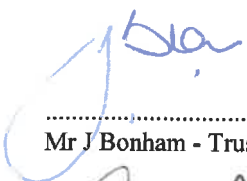
The notes form part of these financial statements

COMMONWEALTH HUMAN ECOLOGY COUNCIL LTD


Balance Sheet - continued
31 December 2020

These financial statements have been prepared in accordance with the provisions applicable to charitable companies subject to the small companies regime.

The financial statements were approved by the Board of Trustees and authorised for issue on 14 July 2021 and were signed on its behalf by:



.....
Mr J Bonham - Trustee



.....
Mr M Robinson - Trustee

The notes form part of these financial statements

COMMONWEALTH HUMAN ECOLOGY COUNCIL LTD

Notes to the Financial Statements for the Year Ended 31 December 2020

1. ACCOUNTING POLICIES

Basis of preparing the financial statements

The financial statements of the charitable company, which is a public benefit entity under FRS 102, have been prepared in accordance with the Charities SORP (FRS 102) 'Accounting and Reporting by Charities: Statement of Recommended Practice applicable to charities preparing their accounts in accordance with the Financial Reporting Standard applicable in the UK and Republic of Ireland (FRS 102) (effective 1 January 2019)', Financial Reporting Standard 102 'The Financial Reporting Standard applicable in the UK and Republic of Ireland' and the Companies Act 2006. The financial statements have been prepared under the historical cost convention, with the exception of investments which are included at market value, as modified by the revaluation of certain assets.

Income

All income is recognised in the Statement of Financial Activities once the charity has entitlement to the funds, it is probable that the income will be received and the amount can be measured reliably.

Expenditure

Liabilities are recognised as expenditure as soon as there is a legal or constructive obligation committing the charity to that expenditure, it is probable that a transfer of economic benefits will be required in settlement and the amount of the obligation can be measured reliably. Expenditure is accounted for on an accruals basis and has been classified under headings that aggregate all cost related to the category. Where costs cannot be directly attributed to particular headings they have been allocated to activities on a basis consistent with the use of resources.

Tangible fixed assets

Depreciation is provided at the following annual rates in order to write off each asset over its estimated useful life.

Fixtures and fittings - 15% on reducing balance

Taxation

The charity is exempt from corporation tax on its charitable activities.

Fund accounting

Unrestricted funds can be used in accordance with the charitable objectives at the discretion of the trustees.

Restricted funds can only be used for particular restricted purposes within the objects of the charity. Restrictions arise when specified by the donor or when funds are raised for particular restricted purposes.

Further explanation of the nature and purpose of each fund is included in the notes to the financial statements.

2. INVESTMENT INCOME

	31.12.20	31.12.19
	£	£
Investment income received	18,999	19,427
Deposit account interest	6	85
	<u>19,005</u>	<u>19,512</u>

COMMONWEALTH HUMAN ECOLOGY COUNCIL LTD

**Notes to the Financial Statements - continued
for the Year Ended 31 December 2020**

3. NET INCOME/(EXPENDITURE)

Net income/(expenditure) is stated after charging/(crediting):

	31.12.20	31.12.19
	£	£
Depreciation - owned assets	-	249
Deficit on disposal of fixed assets	<u>1,408</u>	<u>-</u>

4. TRUSTEES' REMUNERATION AND BENEFITS

There were no trustees' remuneration or other benefits for the year ended 31 December 2020 nor for the year ended 31 December 2019.

Trustees' expenses

	31.12.20	31.12.19
	£	£
Trustees' expenses	<u>746</u>	<u>1,480</u>

5. COMPARATIVES FOR THE STATEMENT OF FINANCIAL ACTIVITIES

	Unrestricted fund £	Restricted fund £	Total funds £
INCOME AND ENDOWMENTS FROM			
Donations and legacies	1,401	-	1,401
Investment income	<u>19,512</u>	<u>-</u>	<u>19,512</u>
Total	20,913	-	20,913
 EXPENDITURE ON			
Raising funds	36,895	-	36,895
Charitable activities			
Project expenditure	203	1,800	2,003
Total	<u>37,098</u>	<u>1,800</u>	<u>38,898</u>
Net gains/(losses) on investments	<u>(550)</u>	<u>-</u>	<u>(550)</u>
NET INCOME/(EXPENDITURE)	<u>(16,735)</u>	<u>(1,800)</u>	<u>(18,535)</u>
 RECONCILIATION OF FUNDS			
Total funds brought forward	34,742	5,925	40,667
TOTAL FUNDS CARRIED FORWARD	<u><u>18,007</u></u>	<u><u>4,125</u></u>	<u><u>22,132</u></u>

COMMONWEALTH HUMAN ECOLOGY COUNCIL LTD

**Notes to the Financial Statements - continued
for the Year Ended 31 December 2020**

6. TANGIBLE FIXED ASSETS

	Fixtures and fittings £
COST	
At 1 January 2020	13,672
Disposals	<u>(13,672)</u>
At 31 December 2020	<u>-</u>
DEPRECIATION	
At 1 January 2020	12,264
Eliminated on disposal	<u>(12,264)</u>
At 31 December 2020	<u>-</u>
NET BOOK VALUE	
At 31 December 2020	<u>-</u>
At 31 December 2019	<u><u>1,408</u></u>

7. DEBTORS: AMOUNTS FALLING DUE WITHIN ONE YEAR

	31.12.20 £	31.12.19 £
Other debtors	-	895
Prepayments	-	284
	<u>-</u>	<u>1,179</u>

8. CREDITORS: AMOUNTS FALLING DUE WITHIN ONE YEAR

	31.12.20 £	31.12.19 £
Social security and other taxes	-	244
Other creditors	-	262
Accrued expenses	1,500	2,225
	<u>1,500</u>	<u>2,731</u>

9. MOVEMENT IN FUNDS

	At 1.1.20 £	Net movement in funds £	At 31.12.20 £
Unrestricted funds			
General fund	18,007	(5,717)	12,290
Restricted funds			
Project fund	4,125	(798)	3,327
TOTAL FUNDS	<u>22,132</u>	<u>(6,515)</u>	<u>15,617</u>

COMMONWEALTH HUMAN ECOLOGY COUNCIL LTD

**Notes to the Financial Statements - continued
for the Year Ended 31 December 2020**

9. MOVEMENT IN FUNDS - continued

Net movement in funds, included in the above are as follows:

	Incoming resources £	Resources expended £	Movement in funds £
Unrestricted funds			
General fund	20,483	(26,200)	(5,717)
Restricted funds			
Project fund	5,000	(5,798)	(798)
TOTAL FUNDS	<u>25,483</u>	<u>(31,998)</u>	<u>(6,515)</u>

Comparatives for movement in funds

	At 1.1.19 £	Net movement in funds £	At 31.12.19 £
Unrestricted funds			
General fund	34,742	(16,735)	18,007
Restricted funds			
Project fund	5,925	(1,800)	4,125
TOTAL FUNDS	<u>40,667</u>	<u>(18,535)</u>	<u>22,132</u>

Comparative net movement in funds, included in the above are as follows:

	Incoming resources £	Resources expended £	Gains and losses £	Movement in funds £
Unrestricted funds				
General fund	20,913	(37,098)	(550)	(16,735)
Restricted funds				
Project fund	-	(1,800)	-	(1,800)
TOTAL FUNDS	<u>20,913</u>	<u>(38,898)</u>	<u>(550)</u>	<u>(18,535)</u>

COMMONWEALTH HUMAN ECOLOGY COUNCIL LTD

**Notes to the Financial Statements - continued
for the Year Ended 31 December 2020**

9. MOVEMENT IN FUNDS - continued

A current year 12 months and prior year 12 months combined position is as follows:

	At 1.1.19 £	Net movement in funds £	At 31.12.20 £
Unrestricted funds			
General fund	34,742	(22,452)	12,290
Restricted funds			
Project fund	5,925	(2,598)	3,327
TOTAL FUNDS	<u>40,667</u>	<u>(25,050)</u>	<u>15,617</u>

A current year 12 months and prior year 12 months combined net movement in funds, included in the above are as follows:

	Incoming resources £	Resources expended £	Gains and losses £	Movement in funds £
Unrestricted funds				
General fund	41,396	(63,298)	(550)	(22,452)
Restricted funds				
Project fund	5,000	(7,598)	-	(2,598)
TOTAL FUNDS	<u>46,396</u>	<u>(70,896)</u>	<u>(550)</u>	<u>(25,050)</u>

10. RELATED PARTY DISCLOSURES

There were no related party transactions for the year ended 31 December 2020.

COMMONWEALTH HUMAN ECOLOGY COUNCIL LTD

**Detailed Statement of Financial Activities
for the Year Ended 31 December 2020**

	31.12.20 £	31.12.19 £
INCOME AND ENDOWMENTS		
Donations and legacies		
Grants	5,000	-
Subscriptions & donations	1,478	1,401
	<hr/> 6,478	<hr/> 1,401
Investment income		
Investment income received	18,999	19,427
Deposit account interest	6	85
	<hr/> 19,005	<hr/> 19,512
Total incoming resources	<hr/> 25,483	<hr/> 20,913
EXPENDITURE		
Charitable activities		
Project expenditure	5,798	1,800
Project consultancy	-	203
	<hr/> 5,798	<hr/> 2,003
Support costs		
Management		
Trustees' expenses	746	1,480
Rent, rates & insurance	7,679	9,638
Repairs & renewals	1,200	-
Light and heat	103	345
Postage, telephone & fax	645	613
Printing, publications & staty	13	1,079
Sundry expenses	1,696	1,268
Travel, conferences & admin	239	3,349
Administration costs	1,050	830
IT consultancy	8,272	8,174
Fixtures and fittings	-	249
Loss on sale of tangible fixed assets	1,408	-
	<hr/> 23,051	<hr/> 27,025
Finance		
Bank charges	16	75
Bank interest	-	39
	<hr/> 16	<hr/> 114
Governance costs		
Wages	1,633	7,566
Carried forward	1,633	7,566

This page does not form part of the statutory financial statements

COMMONWEALTH HUMAN ECOLOGY COUNCIL LTD

**Detailed Statement of Financial Activities
for the Year Ended 31 December 2020**

	31.12.20 £	31.12.19 £
Governance costs		
Brought forward	1,633	7,566
Accountancy and legal fees	1,500	2,190
	<u>3,133</u>	<u>9,756</u>
Total resources expended	<u>31,998</u>	<u>38,898</u>
Net expenditure	<u>(6,515)</u>	<u>(17,985)</u>

This page does not form part of the statutory financial statements