

# SHREWTON RECREATIONAL CHARITY

England & Wales · Charity number 271740

## Details

---

**Other names** SHREWTON RECREATION GROUND

**Status** Registered

**Legal form** Other

**Registered** 1976-08-09

**Register** [View on the Charity Commission register](#)

## Contact

---

**Address** Arnewood  
Maddington Street  
Shrewton  
Salisbury  
SP3 4JN

**Phone** 07802460789

**Email** [svhtreasurer@hotmail.com](mailto:svhtreasurer@hotmail.com)

**Website** <https://shrewtonvillagehall.org.uk/>

## Activities

---

**Objects:** IN THE INTERESTS OF SOCIAL WELFARE, TO IMPROVE THE CONDITIONS OF LIFE OF THE INHABITANTS OF THE AREA OF BENEFIT WITHOUT DISTINCTION OF POLITICAL, RELIGIOUS OR OTHER OPINIONS BY THE PROVISION AND MAINTENANCE OF:(A) A VILLAGE HALL FOR USE BY INHABITANTS, INCLUDING USE FOR:(I) MEETINGS, LECTURES AND CLASSES, AND(II)OTHER FORMS OF RECREATION AND LEISURE-TIME OCCUPATION; AND(B) A RECREATION GROUND FOR USE BY THE INHABITANTS.

**Activities:** Improves the conditions of the life of the inhabitants of Shrewton and the surrounding neighbourhood without distinction of political, religious or other opinions by the provision and maintenance of a village hall, sports changing rooms and recreation ground.

## Classification

---

- **How:** Provides Buildings/facilities/open Space
- **What:** General Charitable Purposes, Amateur Sport, Recreation, Other Charitable Purposes
- **Who:** Children/young People, Elderly/old People, The General Public/mankind

## Geography

- **Area of benefit:** PARISH OF SHREWTON AND THE SURROUNDING NEIGHBOURHOOD
- Wiltshire

## Finances

Period end	Income	Expenditure	Assets	Employees
2024-12-31	£21,113	£27,599	-	-
2023-12-31	£12,862	£21,212	-	-
2022-12-31	£26,387	£23,479	-	-
2021-12-31	£31,224	£20,897	-	-
2020-12-31	£19,876	£15,078	-	-

## Trustees

Name	Role	Appointed
Amanda-Jane Tyler		2021-09-28
Andrew Macdonald		2020-04-21
Cheryl Tilbury		2021-09-28
MICHAEL COTTON		
Stephen Tarr		2023-05-31
Susan Tarr		2024-11-26

**SHREWTON RECREATIONAL CHARITY**

England & Wales - Charity number 271740

---

# Accounts

---



*Hello and welcome to your Village Hall*



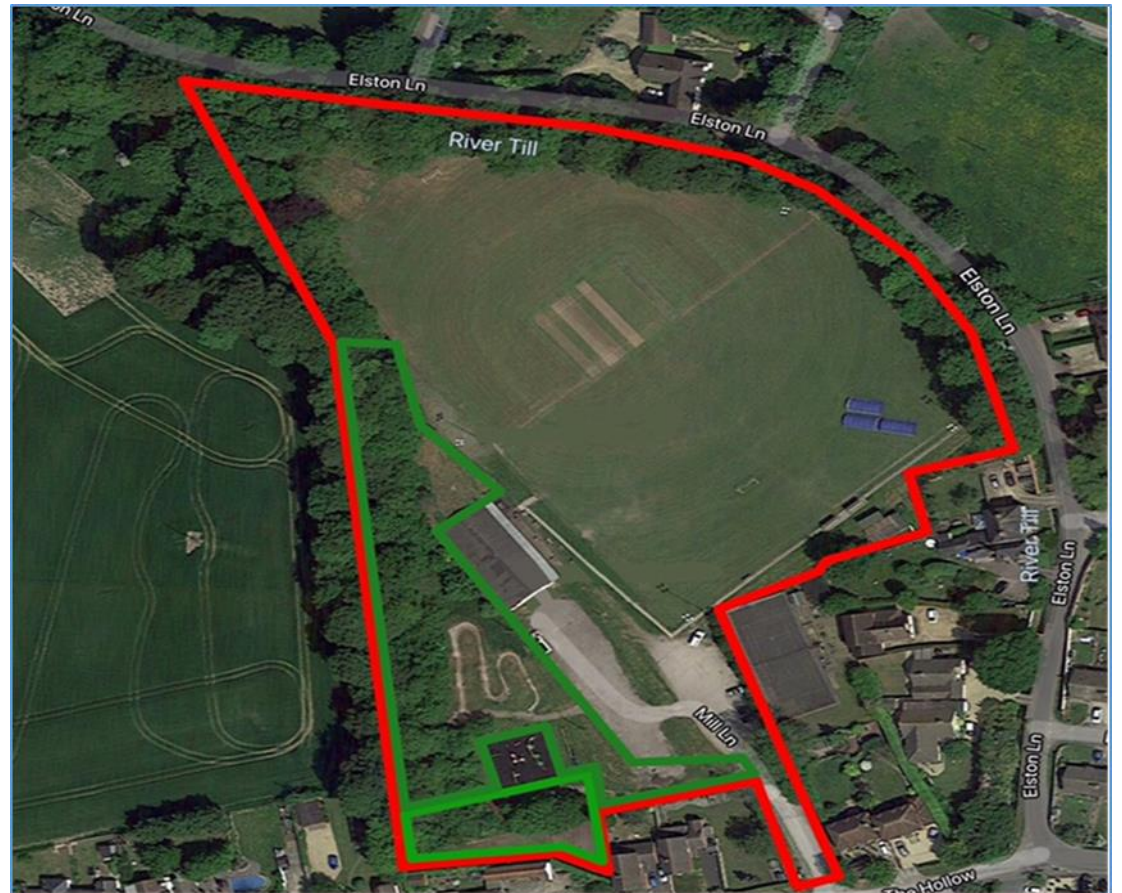
# SHREWTON VILLAGE HALL

The Hall and Grounds were started in 1948 – 75 years ago!

It was set up to be of benefit to the entire community and that continues to be the objective.

A Hall was built in the late 1970's.

Shrewton Recreational Charity continues to care for the Hall and the 8 acres of grounds we are registered with the Charity Commission (#271740).



# Who Are We?

The Charity is run entirely by a group of volunteers, elected Trustees, and includes representation from Club users and Orcheston and Shrewton Parish Councils.

- Matt Anderson-Emm - Representative Shrewton Football Club
- John Berry – Trustee and Representative Shrewton Parish Council
- Janet Blake – Representative Moviola
- Claire Chance - Representative Chatterbox Mother and Toddler Group
- George Clift – Representative Shrewton Cricket Club (Adult and Junior Teams)
- Mick Cotton – Trustee
- Gill Drennan – Representative Shrewton Dog Club
- Tasmine Grey – Facilities Manager
- Roger Hare – Representative Shrewton Football Club
- Amy Hatfield – Trustee
- Andrew McDonald – Trustee and Treasurer
- Cheryl Tilbury – Trustee, Representative Shrewton Running Club and Chair of Shrewton Village Hall
- Amanda Tyler – Trustee and Secretary
- Vacant – Representative Shrewton Youth Club

# How the Hall is managed

Monthly meeting of trustees, volunteers and representation from user groups.

Agenda items include:

- Standing agenda items
- Updates from user groups
- Financial summary
- Bookings/Invoices
- Fundraising ideas
- Community needs
- Groups to oversee areas - Grounds/Fundraising/Finance/Buildings and Facilities Group



We do need details for a pool of volunteers who we can call on to assist as/when needed.

# What have we done?

- Outside ground clearance (ongoing)
  - Hall maintenance, including replacing guttering and lighting
  - Outdoor areas with new picnic benches
  - Maintenance of BMX Track and Play Park
  - Fundraising events
- Improved documentation and procedures
- Safeguarding Policy
  - Equal Opportunities Policy
  - Complaints Procedure
  - Building Risk Assessment and Fire Maintenance
  - Financial Controls Policy
  - Terms and Conditions of Hire
  - New Website, Face Book, Community Support  
WhatsApp used to promote/publicise events
  - Updated information to the Charity Commission
  - Insurance and Licensing
  - Accurate records of meetings and AGMs
  - Gift Aid
  - Wi-Fi
  - CCTV

# Why do we need the Hall?

- It plays a huge part in the Village and surrounding areas but it has seen better days, and is desperately in need of refurbishment.
- The updating and refurbishment will make it fit for purpose and continue to provide activities which offer improved health and wellbeing/reduction in loneliness, have a positive impact on our environment and support the local rural economy.
- Generous donations have been received allowing new kitchen cupboards and worktops to be installed 5 years ago, but the welfare facilities, old bar area and obsolete stage all need addressing as does widening the entrance area for those with reduced mobility and/or pushchairs to gain easier access.
- In all, it needs modernising with better insulation and sustainable heating.
- Reusing the old stage space to create a meeting room for hiring and a new bar. We want it to be a modern space people will want to use and create an income to keep the Hall and Grounds going for the next generation. Fundraising and grant applications will continue to realise the vision.



Not a pretty building but beautiful grounds



# Interior – Ceilings is suspended with no insulation



Ceiling above  
the stage



# Cloakrooms

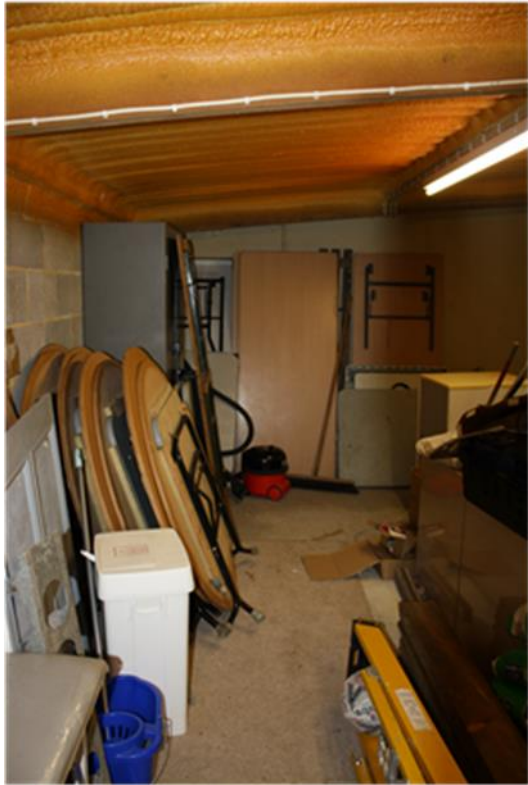


Heating in the Ladies

Walls keep getting damp and plaster falls off



# Storage Rooms for Groups using the Hall on a weekly basis



Build quality over 50 years ago areas are damp



# Kitchen and Bar area



A local resident  
donated the kitchen 5  
Years ago



The bar area is damp, cramped and  
old shelving can be difficult to keep clean

# Access/Egress



Front door – not very secure  
and no cover to prevent rain damage



Doors from balcony do not allow  
level access into the Main Hall

Despite the shortcomings we do what we can to make the room look it's best for events

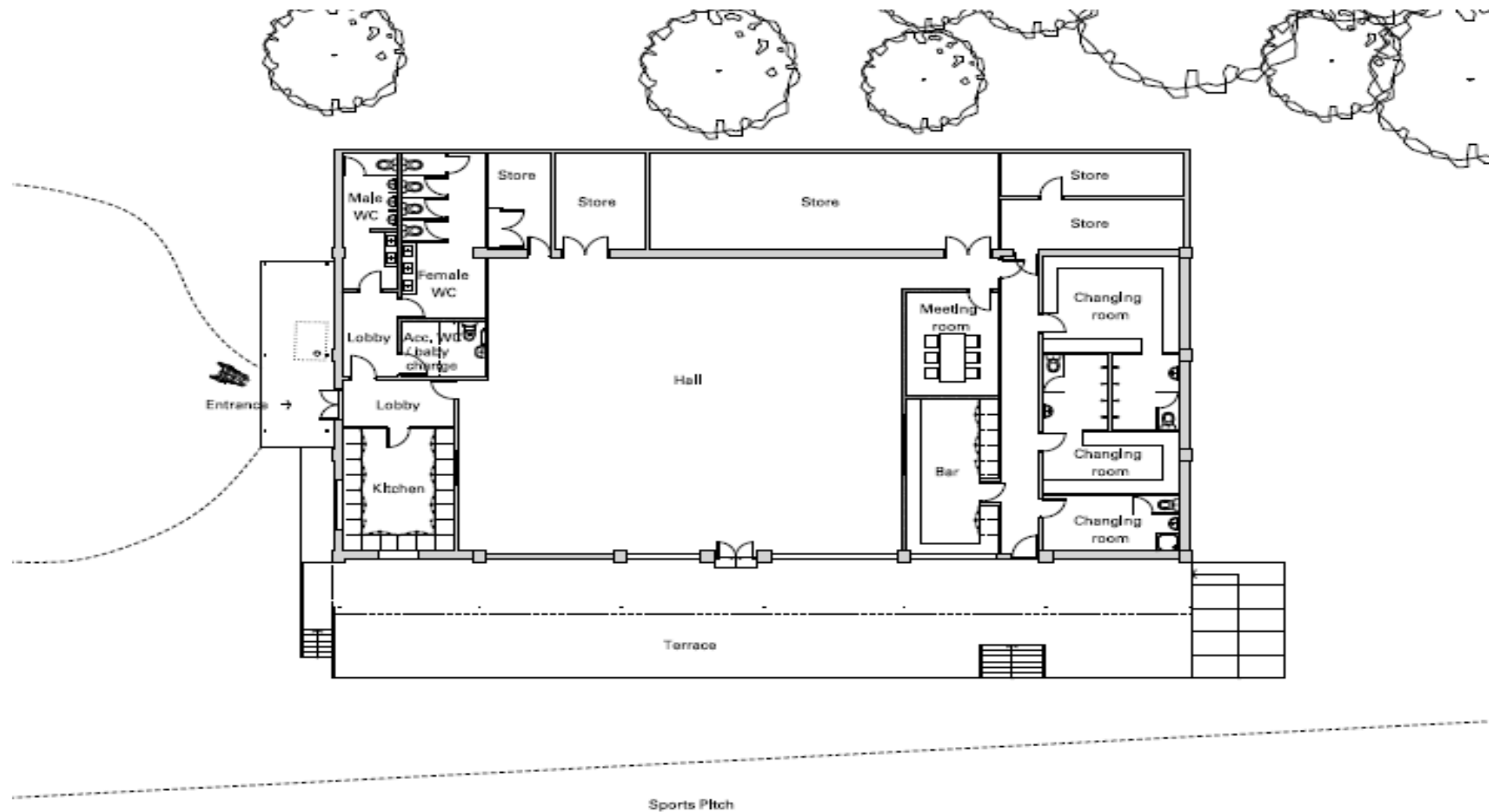


# The Vision

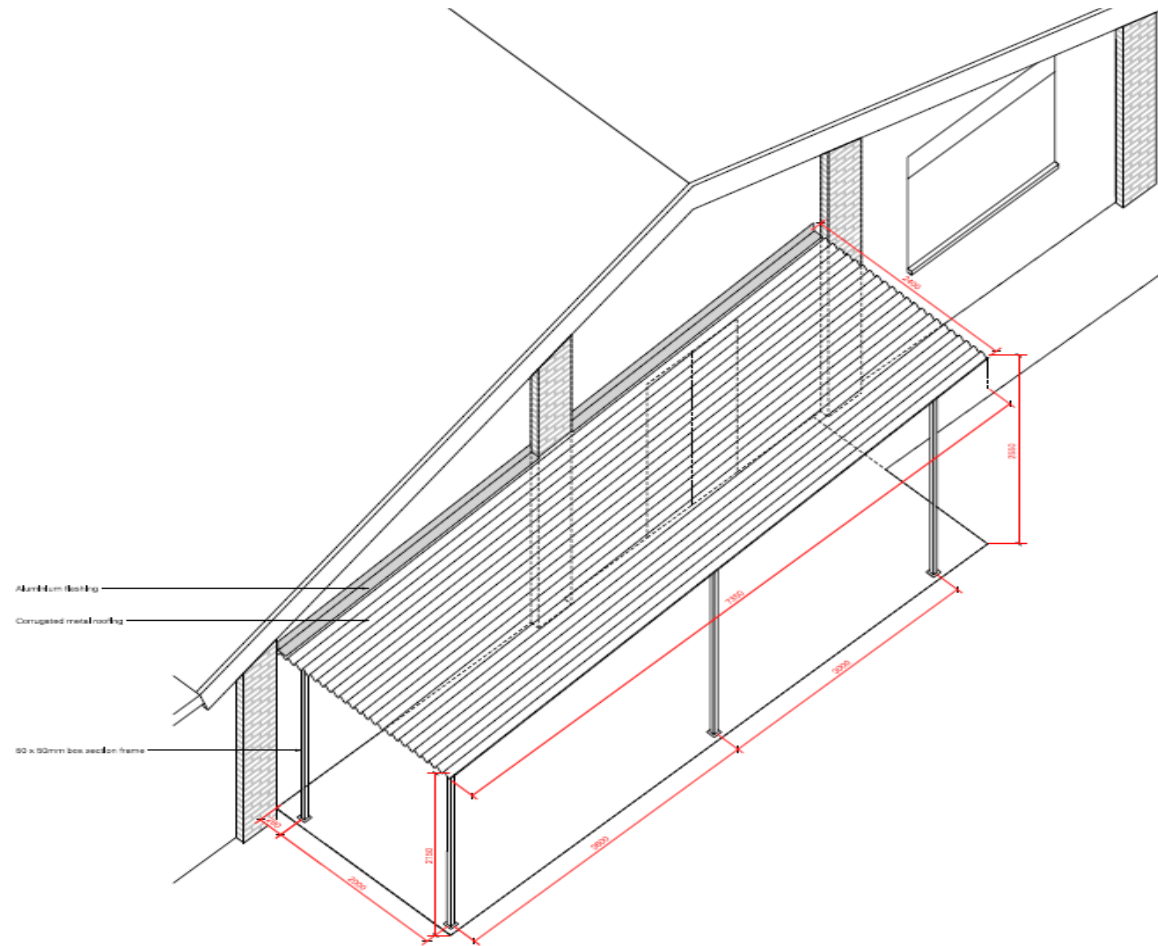
New design/plans provided free of charge by a local architect, details:

- A covered entrance
- Wider and more secure doors
- A lobby area for prams/mobility scooters, wet coats and umbrellas.
- New toilets including accessible WC/Baby Changing
- Removal of the stage to create a purpose built meeting room and more suitable bar area
- 5 purpose built secure and dry storage areas for the regular club users

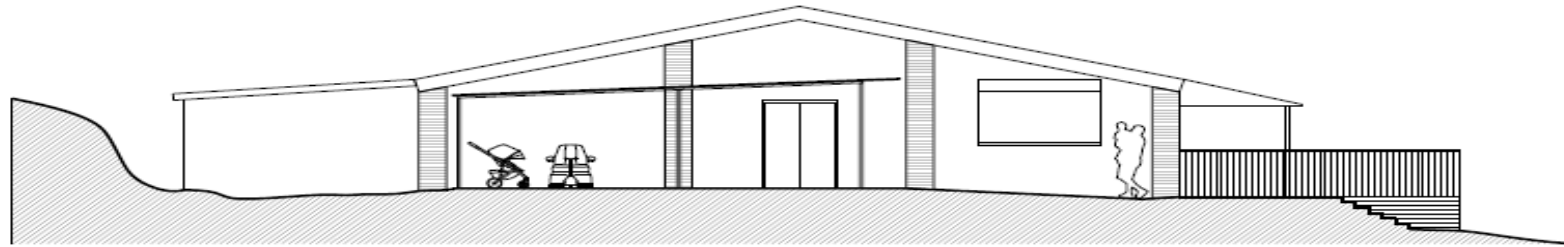
# Proposed Internal Plan



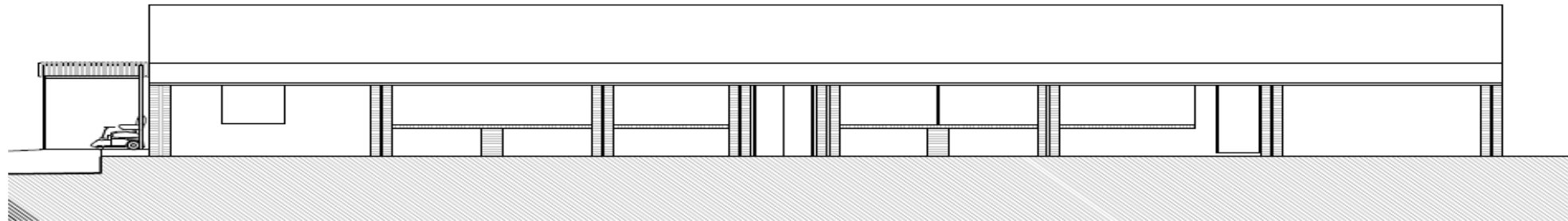
# Proposed Covered Entrance



# Proposed South Elevations



01 South-East Elevation



02 North-East Elevation

# Jubilee Garden

- Project lead – Mick Cotton



- Help us to keep the Village Hall running – become a volunteer/trustee
- Bring new ideas to the meetings
- Help us fundraise
- Help with the Jubilee Garden
- Help with painting
- Help publicise/promote events when they are happening



**Financial Statement - Summary**  
**report subject to audit**

<u>INCOME</u>		<u>EXPENDITURE</u>	
DONATIONS, REFUNDS & INTEREST INCL GIFT AID	£6,600.57	REPAIRS	£2,135.00
TRANSFER FROM COOP	£728.52	GROUNDS MAINTENANCE	£3,735.30
GRANTS & COVID SUPPORT	£3,672.00	JUBILEE GARDEN	£707.98
GROUNDS MAINT SUPPORT	£3,883.00	CCTV	£367.32
COMM GARDEN	£0.00	ELECTRICITY	£3,199.20
FUNDRAISING PROCEEDS	£42.10	WATER	£466.43
FILM NIGHT INCOME	£2,162.50	HEATING OIL	£661.50
RAFFLES	£200.00	WASTE COLLECTION	£508.07
BAR PROFIT	£0.00	VILLAGE HALL EXPENSES	£1,157.92
LETTINGS INCL CAR PARKING	£5,348.00	CARETAKER'S WAGES	£2,040.00
PLATINUM JUBILEE	£3,751.05	LICENCES, INSURANCE, MEMBERSHIP & AUDIT	£982.05
		FIRE INSPECTIONS	£141.60
CASH	0.00	FUNDRAISING EXPENSES & JUBILEE	£3,095.95
TOTAL INCOME	£26,387.74	MOVIOLA RENTAL CHARGES	£2,798.71
Excess of Income/Expenditure	<b>£2,908.71</b>	WEBSITE	£0.00
		EXCEPTIONAL CHARGES	£1,482.00
			<b>£23,479.03</b>
<b>Balance Sheet as 1 January 2022</b>			
Lloyds Bank	£22,222.55		
Coop. Account closed 27 Sep 2022	£233.25	<b>ASSETS</b>	
	£22,455.80		
<b>Balance Sheet as at 31 December 2022</b>			
Lloyds Bank Account	£24,551.99	Total Net Assets 1 January 2022	<b>£22,455.80</b>
Coop Bank	£0.00	Total Net Assets 31 December 2022	<b>£24,551.99</b>
Cash	£0.00		
	£24,551.99	<b>as recorded on 31st December 2022</b>	
<b>Represented by</b>			
Balance b/f from 31 December 2021 (both accounts)	£22,455.80		
Signed on behalf of the Trustees			
Cheryl Tilbury, Chair Shrewton Recreational Charity			
		.....	



Section A

Independent Examiner's Report

Report to the trustees/  
members of

Shrewton Recreational Charity

On accounts for the year  
ended

31 December 2022

Charity no  
(if any)

271740

I report to the trustees on my examination of the accounts of the above charity ("the Trust") for the year ended 31/12/2022

Responsibilities and  
basis of report

As the charity's trustees, you are responsible for the preparation of the accounts in accordance with the requirements of the Charities Act 2011 ("the Act").

I report in respect of my examination of the Trust's accounts carried out under section 145 of the 2011 Act and in carrying out my examination, I have followed all the applicable Directions given by the Charity Commission under section 145(5)(b) of the Act.

Independent  
examiner's statement

I have completed my examination. I confirm that no material matters have come to my attention in connection with the examination which gives me cause to believe that in, any material respect:

- the accounting records were not kept in accordance with section 130 of the Charities Act; or
- the accounts did not accord with the accounting records; or
- the accounts did not comply with the applicable requirements concerning the form and content of accounts set out in the Charities (Accounts and Reports) Regulations 2008 other than any requirement that the accounts give a 'true and fair' view which is not a matter considered as part of an independent examination.

I have no concerns and have come across no other matters in connection with the examination to which attention should be drawn in this report in order to enable a proper understanding of the accounts to be reached.

Name: Sara Sawyer, MAAT

Date: 2 October 2023

Relevant professional  
qualification(s) or body  
(if any):

Association of Accounting Technicians Professional Diploma Level 4

Address:

252 Calmore Road, Calmore, Southampton SO40 2RB