



Registered Charity Number 263620

---

# **ANNUAL REPORT**

## **2024 – 2025**

## Introduction

This year has been one of connection, creativity, and community for Eastleigh Borough and Romsey Mencap (EBRM). Across all our clubs and activities, members have continued to learn new skills, form lasting friendships, and celebrate their achievements together. From art exhibitions and themed social events to active sports sessions, every club has contributed to another successful year of inclusion and joy.

We are delighted that Clare Shaw joined us at the beginning of June as the Administration Manager, and she has just recently taken over from Richard Peck as the Operations Manager. Clare has made an immediate impact by improving our social media presence resulting in increased engagement, refining the website and building our partnership relationships with organisations in the Eastleigh area.

The ongoing success of our clubs and activities is a direct result of the dedication and invaluable contributions made by our staff and volunteers. Their commitment is evident not only in their day-to-day roles but also in the extra support they provide, often going above and beyond their immediate responsibilities. This unwavering support forms the backbone of our charity and is fundamental to everything we achieve together.

## Club Highlights

### Chill Out Club



Chill Out Club has continued to grow, welcoming new members and building friendships over drinks, pool games (including friendly tournaments!), and music in a relaxed, friendly setting. They've also enjoyed trips to the local tenpin bowling alley. Chill Out Club is a firm favourite, offering fun and belonging for everyone involved.

### Wednesday Club



Wednesday Club continues to deliver themed events full of laughter and creativity - from a cowboy party to a Spanish summer celebration and even a Harry Potter extravaganza. Games, quizzes, and shared meals keep members entertained and connected each month.





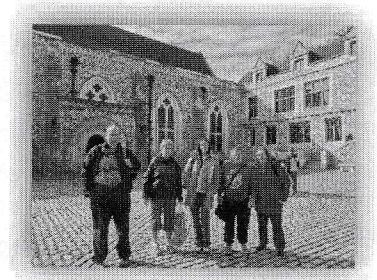
## Active Citizens



Our Active Citizens group explored new experiences this year - from a visit to Southampton's Sea City Museum to taking part in a sustainable natural dyeing project. Their creative work was exhibited at God's

House Tower in March 2025.

Weekly sessions encourage connection, discussion, and discovery, with themed topics and guest speakers planned for the coming year.

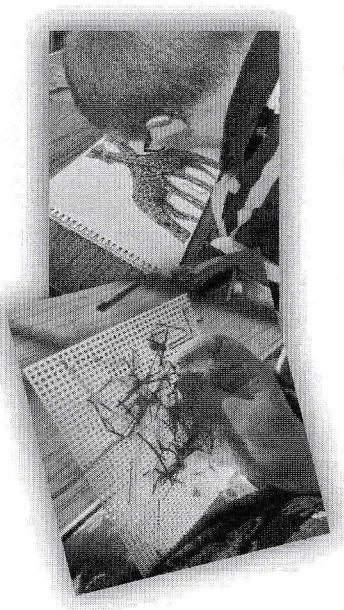


## Dance Club



Every Wednesday, the Dance Club brings rhythm and energy to Eastleigh. With the expert guidance of instructor Michelle, members enjoy movement, fitness, and fun. Our group even got to perform at the Eastleigh Community Showcase back in June. Participation continues to grow, and members are looking forward to performing at the Christmas party this year.

## Flagship Art



Flagship Art remains a vibrant creative hub, producing wonderful collaborative pieces and exhibitions. Highlights include the Pop Art exhibition at the D@rt Centre and a trip to Russell Cotes Art Gallery & Museum, exploring William Morris and Victorian design. Members' artwork also supports other clubs, such as the handcrafted cowboy game for Wednesday Club.





## Gardening Club

The Gardening Club members have grown tomatoes, potatoes, beetroot, runner beans, squash, pumpkin, onions, peppers, asparagus, rhubarb, and cape gooseberries, with pear and apple trees also producing fruit! They collaborated with the Active Citizens group on natural dye plants for an art project. Gardening sessions combine teamwork, skill-building, and plenty of social time over tea and snacks.

Huge thanks go to the volunteers from MACE for their work on the allotment and helping to keep it in good order.

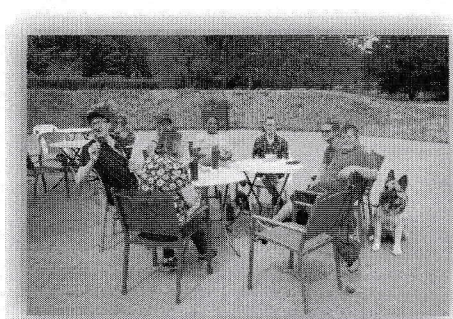


## Basketball



Led by coach Mike, the Basketball Club continues to provide fitness and fun through creative drills and competitive matches. Mike comes up with different games during training sessions which tests the members physically and mentally. They always finish with a competitive match with everyone trying to score the winning goals. New members have joined, and sessions remain a highlight of the sporting calendar.

## Walking Group



Meeting every Friday, the Walking Group has braved all weather to stay active and social. Walks around Eastleigh end with refreshments at the Blackbird Café, where lively conversations continue. Weekly word and quiz games add extra fun to each outing.

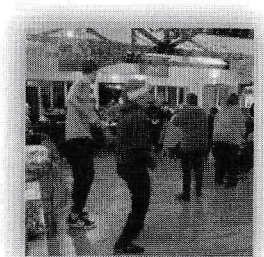




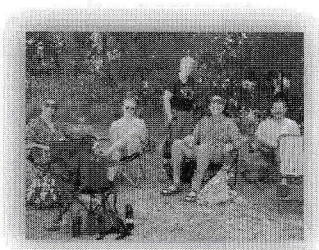
## Events

### Christmas Party 2024

Last year's Christmas Party was held on Tuesday 17 December at Fleming Park Bowling Centre. It was a great success with the Dance group and Active Citizens putting on a brilliant display of dance routines. Michelle ran the disco for the evening which encouraged everyone to get up and dance.

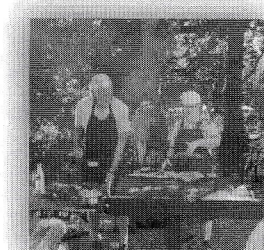


### Summer BBQ



Our annual Summer BBQ in July at Royal Victoria Country Park was blessed with glorious sunshine. Guests enjoyed delicious food, games, and plenty of time to relax.

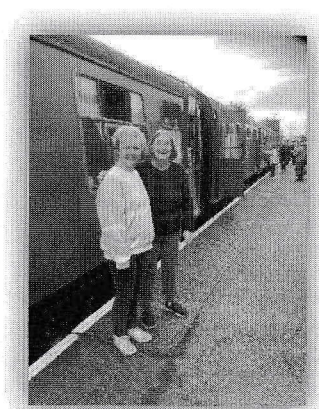
A huge thank you to our volunteers whose hard work made the day such a success.



### Watercress Line Trip



Members and supporters enjoyed a sunny day out on the Watercress Line, travelling from Alresford to Alton and back, with beautiful scenery and a glimpse of the famous *Sir Nigel Gresley* locomotive. Thanks to Anita for driving the minibus, and to Elaine and Oliver for their support throughout the day.



## CONTACT US:

**Eastleigh Borough & Romsey Mencap**

**Waverly, Old Palace Farm, Kings Somborne SO20 6NJ**

**Tel: 07853 204150**

**email: [info@ebrmencap.org.uk](mailto:info@ebrmencap.org.uk)**

**[www.ebrmencap.org.uk](http://www.ebrmencap.org.uk)**

## YOUR COMMITTEE IN 2024-2025

<b>Officers:</b>	Chair:	Elaine Fish
	Vice Chair:	Terry Wheeler
	Secretary:	Vacant
	Treasurer:	Paul Glover

<b>Other Committee Members:</b>	Janice Botting
	Stevan Floyd
	Beverley Du-Crow
	Heather Bevis – Minutes secretary
	Matthew Cole
	Abbie Matcham
	Ashley Martin
	Susan Perrin

### Staff Team:

Operations Manager:	Richard Peck/Clare Shaw
Active Citizens Co-ordinator:	Michelle Murdoch
Active Citizens Assistant:	Tiffany Leung
Basketball Coach:	Mike Glanville (non-staff member)
Chill Out Club Co-ordinator:	Lisa Warren
Dance Club Co-ordinator:	Michelle Murdoch
Dance Club Assistant:	Tiffany Leung

### Volunteers:

Terry Wheeler  
Ashley Martin  
Oliver Kimber

**Staff Team:**

Flagship Art Co-ordinator: Deborah Goatley-Birch (non staff member)

Gardening Club Co-ordinator: Terry Wheeler (volunteer)

Walking Group Co-ordinator: Terry Wheeler (volunteer)

Wednesday Club

**Volunteers:**

Susan Perrin

Linda Sims

John Chandler

Georgie Spinney

Janice Botting

Terry Wheeler

Heather Bevis

Elaine Fish

Oliver Kimber

Beverley Du-Crow

**A few words from the Chair**

It has been another fulfilling year for our members, staff and volunteers, thanks to everyone who has supported us with their time, expertise and donations, helping us to continue offering meaningful services to the learning disabled community in our area.

We have some exciting plans for 2025-26, which we will be sharing with club members and supporters soon.

Elaine Fish

## **How you can help**

As a small charity, we are always working to identify ways to grow and enhance the services we provide, both supporting people within our community and working with key stakeholders to learn about and improve the lives of the people we support.

We are always keen to hear from people who would like to help us and there are lots of ways you can get involved in our work and help to support people with learning disabilities living in our community.

### **Volunteer for us**

Our volunteers are involved in all of our group activities, fundraising and special events. There is lots of variety and the opportunity to gain experience, meet new people and contribute to valuable work in your community.

If you have an interest in supporting people with learning disabilities and helping a local charity, please get in touch to find out how you can help.

### **Fundraise for us**

Do you have a great idea for a fundraising event, is your workplace looking for a charity of the year partnership, or would you like to support us and need some ideas? We welcome enquiries from anyone who wants to find out more about supporting our work through fundraising.

### **Donations**

All donations, big or small, are always much appreciated to help us with our operating costs which are difficult to fund through grants. One-off, monthly or annual donations can be made via our JustGiving page ([Eastleigh Borough and Romsey Mencap Society - JustGiving](#)), and please do add Gift Aid if eligible.

Another simple way of supporting us is to do your online shopping via [easyfundraising.org.uk/causes/eastleigh-mencap/](http://easyfundraising.org.uk/causes/eastleigh-mencap/). Just sign up for free, and then shop online at your favourite stores through the easyfundraising portal.

## **CONTACT US:**

**Eastleigh Borough & Romsey Mencap**

**Waverly, Old Palace Farm, Kings Somborne SO20 6NJ**

**Tel: 07853 204150**

**email: [info@ebrmencap.org.uk](mailto:info@ebrmencap.org.uk)**

**[www.ebrmencap.org.uk](http://www.ebrmencap.org.uk)**





Registered Charity Number 263620

---

# **TREASURER'S REPORT**

## **2024 – 2025**

Paul Glover  
Treasurer

**STATEMENT OF INCOME & EXPENDITURE ACCOUNT –  
YEAR ENDED 30 SEPTEMBER 2025**

<b>Income</b>	<b>Restricted</b>	<b>Unrestricted</b>	<b>Total</b>	<b>Prior Year</b>
Fundraising		578	578	541
Grants & Donations		10323	10323	18382
Local/ Just Giving inc. Gift Aid		1687	1687	1741
Membership Fees		447	447	420
Active Citizens		1480	1480	2195
Basketball Club		1622	1622	1329
Chill Out Club		2465	2465	2458
Dance Club		1610	1610	958
Flagship Art Club	500	1357	1857	1849
Gardening Club		634	634	1846
Wednesday Club		1785	1785	1746
Administration				0
AGM		327	327	675
Deposit Account Interest		261	261	192
National Lottery Project				18930
Operations Manager				0
Outings		218	218	240
Website Redesign				0
<b>Total Income</b>	<b>500</b>	<b>24794</b>	<b>25294</b>	<b>53502</b>
<b>Expenditure</b>				
Fundraising Costs		400	400	192
Active Citizens		12033	12033	12192
Basketball Club		1643	1643	1646
Chill Out Club		1478	1478	1399
Dance		3407	3407	3968
Flagship Art Club	28	3642	3670	2254
Gardening Club		465	465	1246
Wednesday Club		1552	1552	1602
New Arts Project				80
Administration		2400	2400	2117
AGM		313	313	377
Insurance		737	737	737
National Lottery Project		3555	3555	2350
Operations Manager		541	541	510
Outings		222	222	183
Website Redesign		538	538	396
<b>Total Expenditure</b>	<b>28</b>	<b>32926</b>	<b>32954</b>	<b>31249</b>
<b>Excess of Income over Expenditure</b>	<b>472</b>	<b>-8132</b>	<b>-7660</b>	<b>22253</b>



## BALANCE SHEET AT 30 SEPTEMBER 2025

	Restricted £	Unrestricted £	Total £	<i>Prior year</i> £
<b>Current Assets</b>				
Bank Accounts	472	26437	26909	34569
Query/overs in cash	0	0	0	
<b>Total Current Assets</b>	472	26437	26909	34569
<b>Income &amp; Expenditure Account</b>				
Balance at 30 September 2024	0	34569	34569	12316
Excess of Income over expenditure for Year	472	-8132	-7660	22253
Balance carried forward	472	26437	26909	34569

## Breakdown of administrative costs

	2023/24	2024/25
Affiliations and memberships	112	88
DBS checks	0	64
Payroll costs	438	526
Hall hire	112	159
Printing	86	290
Transport	4	0
Salaries	1310	1201
Website fees	18	48
Other	37	24
<b>Total</b>	<b>2117</b>	<b>2400</b>

## **GRANTS AND DONATIONS RECEIVED IN 2024-25**

Barchester Charitable Foundation

Charities Trust

Garfield Weston

Hampshire County Council – various County Councillor Grants

HSBC Pensioner's Association Wessex Branch

The Misselbrook Trust

Much Loved (Various)

Pauline Spiers/ WI

William Todd via Just Giving

YAPP Charitable Trust



## **Independent examiner's report to the trustees of Eastleigh Borough and Romsey Mencap**

Registered Charity Number 263620

I report on the accounts of the Trust for the year ended 30 September 2025,

### **Respective responsibilities of trustees and examiner**

The charity's trustees are responsible for the preparation of the accounts. The charity's trustees consider that an audit is not required for this year under section 144(2) of the Charities Act 2011 (the 2011 Act) and that an independent examination is needed.

It is my responsibility to:

- examine the accounts under section 145 of the 2011 Act
- to follow the procedures laid down in the general Directions given by the commission under section 145(5)(b) of the 2011 Act
- to state whether particular matters have come to my attention

### **Basis of independent examiner's report**

My examination was carried out in accordance with the general Directions given by the Charity Commission. An examination includes a review of the accounting records kept by the charity and a comparison of the accounts presented with those records. It also includes consideration of any unusual items or disclosures in the accounts, and seeking explanations from you as trustees concerning any such matters. The procedures undertaken do not provide all the evidence that would be required in an audit and consequently no opinion is given as to whether the accounts present a 'true and fair view' and the report is limited to those matters set out in the next statement.

### **Independent examiner's statement**

In connection with my examination, no matter has come to my attention:

(1) which gives me reasonable cause to believe that in any material respect the requirements:

- to keep accounting records in accordance with section 130 of the 2011 Act and
- to prepare accounts which accord with the accounting records and comply with the accounting requirements of the 2011 Act have not been met or

(2) to which, in my opinion, attention should be drawn in order to enable a proper understanding of the accounts to be reached

**Lorraine Healy,**

9 Moorgreen Road, West End, Southampton SO30 3EA

17/02/2026