

Trustees Annual Report

Year End March 2021

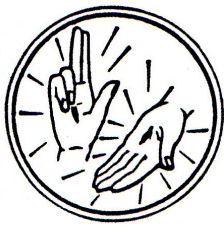
The Catholic Fellowship Brentwood Diocese

“Supporting individuals with disabilities and their families”

Registered Charity No: 263075

Executive Chair: Rev Bob Hamill

Patron: Allan Williams, The Bishop of Brentwood



The Catholic Fellowship Brentwood Diocese

"Supporting individuals with disabilities and their families"

Catholic Fellowship Brentwood Diocese Charity
Registered Charity No: 263075
Chair: Rev Bob Hamill
Patron: Allan Williams, The Bishop of Brentwood

Trustees' Annual Report

Objectives & Activities

The Catholic Fellowship Brentwood Diocese is dedicated to providing opportunities for people with disabilities and their families to access an inclusive and supportive network. Our mission is to promote the social, material, psychological, and spiritual needs of individuals with disabilities. We strive to create a friendly and supportive community where everyone feels included and valued whilst supporting family members of those living with disabilities.

Throughout the year, the Catholic Fellowship Brentwood Diocese has been significantly impacted by the COVID-19 Pandemic due to the government guidance and restrictions across the UK. The Pandemic has restricted the charities ability to provide its direct face to face services and activities to its members, however, groups across the charity should be congratulated on their ability to maintain contact with members promoting emotional and spiritual wellbeing.

All groups throughout 2020-2021 stopped any face to face activity which resulted in a considerable decrease in overall expenditure. The charity maintained in receipt of charitable donations and remained in a positive financial position.

The Executive Committee and Trustees of the charity pay their respects to those who have been affected by and sadly lost loved ones during the Pandemic.

The Trustees of the charity recognise that without the support of our volunteers, the charity would not be able to provide the services and support that it does to our members. We would like to extend our gratitude to all the dedicated volunteers who have contributed their time, energy, care and expertise to the charity and its members.

Our volunteers played a crucial role in supporting families socially and emotionally, organising events and attending committees meetings.

Achievements & Performance

Summary of Main Achievements: Over the past year, the Catholic Fellowship Brentwood Diocese had to adapt and overcome the challenges of COVID-19 in fulfilling our mission and the charitable objectives set out in our constitution.

We were aware that our members are some of the most vulnerable in our society when impacted by a global pandemic for many reasons. These include;

1. risk to health
2. risk to mental wellbeing
3. social isolation
4. sudden change in activities and restriction on people's ability to socialise.

In January 2020 we saw the impacts of COVID across the globe and it soon became apparent that 2020 was going to be a very difficult year for our charity, its members and volunteers. From March 2020 UK lockdowns started and the decision was taken to restrict face to face activities from the government guidance and subsequent changes in law. However, this raised further question of how we would support our members through 2020.

Due to being in a positive financial position with safe reserves, the charity was not negatively impacted financially by the Pandemic.



The Catholic Fellowship Brentwood Diocese

"Supporting individuals with disabilities and their families"

Catholic Fellowship Brentwood Diocese Charity
Registered Charity No: 263075
Chair: Rev Bob Hamill
Patron: Allan Williams, The Bishop of Brentwood

During 2019, The Catholic Fellowship Brentwood Diocese completed on the sale of the freehold land at Rawreth Lane, Rayleigh, Rochford, Essex following the agreement of Trustees to sell their respective interests in the land owned by them and the two other parties involved including The Brentwood Roman Catholic Diocese Trustee and the Jeanne Marie Gunn Trust. The land was originally gifted to the charity in 1977 by Thomas Gunn of the Jeanne Marie Gunn Trust under its previous name 'The Catholic Handicapped Fellowship'.

The land was sold as part of a compulsory purchase to allow access rights to a new development adjacent to the land under Details of Charge Code: 006148641141.

Mr Domenico Sidoli of Valans Solicitors (Temple Chambers, 3-7 Temple Avenue, London, EC4) was appointed as the solicitor acting on the charities behalf and was granted authority of the Trustees.

The sale price to The Catholic Fellowship Brentwood Diocese was agreed at £709,650 (15.94% of total land sale value) and was payable over 4 equal instalments, the first payment on completion which fell in the year ending March 2020 on 22nd May 2019. A second payment was received during the financial period ending March 2021 of £176,733.

As mentioned in the 2020 Trustees Annual Report, due to the sale of land the financial reserves held are higher than previous years and It was felt that this would be held and revisited due to the Pandemic. During the year, the Trustees and its committees suspended many of its meeting for the safety of volunteers and compliance with the legislation, therefore, no plans could be agreed on the increased financial position of the Charity.

The charity's funding primarily came from the sale of the land, donations, investment interest, and other trading activities.

The total funds raised from donations amounted to £5,650. Our investment accounts experienced interest income of £56 during this financial period with a year-end total of £118,600. These funds were unrestricted.

Please see the financial statements for further information and clarity on our charitable income and expenditure.

We would like to thank all the generous donors who have contributed to our charity. Their support has been invaluable and we look forward to being able to continue to provide essential services and organise meaningful support, events and a community for our members when restrictions and risks to health subside.

Financial Review

The charities finances remain positive. As demonstrated above, the charities overall financial asset position increased from 2020 – 2021 due to the sale of land and donations. The expenditure of the charity was considerably reduced to previous year as shown below due to the suspension of activities in response to the Pandemic.

The financial position of the charity at year-end 2021 was as follows:

- Starting Total Assets at Year-end 2020: £312,180
- Total Current Assets at Year-end 2021: £492,844
- No stocks held
- Creditors falling due with 12 months: £300
- Investment accounts across the charity: £118,600
- Cash in the banks at year-end 2019: £312,180



The Catholic Fellowship Brentwood Diocese

"Supporting individuals with disabilities and their families"

Catholic Fellowship Brentwood Diocese Charity
Registered Charity No: 263075
Chair: Rev Bob Hamill
Patron: Allan Williams, The Bishop of Brentwood

Income during 2020-2021:

- Donations and gifts: £5650
- Membership subscriptions: £0
- Investment interest: £56
- Separate material income: £176,733
- Other Interest: £1

Total operating expenditure during the period was £1,776, of which £1,638 was directly attributed to charitable activities. A total of £138 was spent on operating costs consisting of services and expenses of accounting and other miscellaneous expenses.

Please see the full years accounts for a further break down, analysis and independent examination of our nominated accountant.

Going Concern and Holding Reserves

The charity is aware that its assets sit at £494,844 of which £118,600 are within Charitable Investment Funds. As part of the charities intention looking at going concern, our investments accounts support the ongoing interest income generated to support the charities operating expenditure.

At year end 2021 the charity holds £493,144 cash in hand which represents 13.3 times running expenditure. Our holding reserves would normally be held at 2 times our running expenditure however, due to the compulsory sale of land, it was unexpected to receive the income from the sale of the land which payments will be received over the period of the next 12 months. The Charity is committed to planning further ahead to utilise these assets for our members, however, with the ongoing situation of the COVID-19 Pandemic, we are in a position where we will need to hold the funds until further planning and executive meetings can be held.

Statement of Intent

The charity and its Trustees are committed to maintaining transparency and accountability in managing the charity's finances. The financial figures provided above demonstrate our dedication to prudent financial stewardship while ensuring the fulfilment of our charitable objectives. We recognise that this year's reporting has been subject to delays which the charity is working to resolve for future years.

Possible Risk Factors

The charity has and continues to be directly impacted by COVID 19. Due to the current restrictions throughout the year it is not possible to carry out its normal activities to protect the safety of our members, volunteers and comply with the current government guidance and legislation.

The charity sees no risk to the charities financial position, however, does recognised that due to the limited ability to engage with our members we could have difficulty re-engaging members and volunteers after the pandemic.

Looking to the future, we recognise the need to continue to maintain our volunteer levels, expertise and adapt with social impacts on our members. When the charity's Executive Committee is able to reconvene meeting normally, future planning can be completed.

Structure, Governance and Management.

The charity remains to be constituted under a Charitable Constitution adopted in 1970 as amended in October 1998, October 2003 and October 2010. Changed to Trustees are adopted through a Deed of Appointment.



The Catholic Fellowship Brentwood Diocese

"Supporting individuals with disabilities and their families"

Catholic Fellowship Brentwood Diocese Charity
Registered Charity No: 263075
Chair: Rev Bob Hamill
Patron: Allan Williams, The Bishop of Brentwood

The appointment of Trustees as documented in our constitution remains to be through an Annual General Meeting.

The structure of the charity consists of:

4 x Trustees

1 x Executive Committee with 2 representatives from each sub-group

3 x Sub-groups with a Committee including;

- Havering
- Ilford
- Wanstead & Woodford

Due to the increase in sums of money and the demands on the charity to comply with charitable law, legislation and governance, the Executive Committee has discussed the options of employing members of staff to support the longevity of the charity as per our charitable constitution which allows the employment of key experts and staff. This is something that can be revisited after we have assessed the impacts of the pandemic on our charity.

Appointed trustees during reporting period:

Trustee name	Office (if any)
Fr Bob Hamill	Chairman
Megan Herbert	Treasurer
Susan Fahey	Trustee
Teresa McHale	Trustee

There have been no reported conflicts of interests during this year.
There are no funds held as custodian trustees on behalf of others.
There are no employed staff within the charity.

Declarations

The trustees declare that they have approved the trustees' report above.

Signed on behalf of the charity's trustees

Signature:

Full name: Daniel Ruscoe

Position: Chief Executive Officer

Date: 7th June 2023



Section A

Independent Examiner's Report

Report to the trustees/
members of

The Catholic Fellowship Brentwood Diocese

On accounts for the year
ended

01 April -2020 to 31st March-2021

Charity no
(if any)

263075

Set out on pages

1-2

I report to the trustees on my examination of the accounts of the above charity ("the Trust") for the year ended **31/03/2021**.

Responsibilities and
basis of report

As the charity's trustees, you are responsible for the preparation of the accounts in accordance with the requirements of the Charities Act 2011 ("the Act").

I report in respect of my examination of the Trust's accounts carried out under section 145 of the 2011 Act and in carrying out my examination, I have followed all the applicable Directions given by the Charity Commission under section 145(5)(b) of the Act.

Independent
examiner's statement

I have completed my examination. I confirm that no material matters have come to my attention in connection with the examination which gives me cause to believe that in, any material respect:

- the accounting records were not kept in accordance with section 130 of the Charities Act; or
- the accounts did not accord with the accounting records; or
- the accounts did not comply with the applicable requirements concerning the form and content of accounts set out in the Charities (Accounts and Reports) Regulations 2008 other than any requirement that the accounts give a 'true and fair' view which is not a matter considered as part of an independent examination.

I have no concerns and have come across no other matters in connection with the examination to which attention should be drawn in this report in order to enable a proper understanding of the accounts to be reached.

Signed:

Zeeshan Munawar

Date:

08/06/2023

Name:

Mr. Zeeshan Munawar

Relevant professional
qualification(s) or body
(if any):

ACCA

Address:

Green Street

London, E7 8LE

Section B

Disclosure

Only complete if the examiner needs to highlight material matters of concern (see CC32, Independent examination of charity accounts: directions and guidance for examiners).

Give here brief details of any items that the examiner wishes to disclose.

Not Applicable



CHARITY COMMISSION
FOR ENGLAND AND WALES

Charity Name: Catholic Fellowship Brentwood Diocese			Charity No (if any)	263075
Annual accounts for the period				
Period start date	01/04/2020	To	Period end date	31/03/2021

Section A Statement of financial activities

Recommended categories by activity	Guidance Notes	Unrestricted funds £ F01	Restricted income funds £ F02	Endowment funds £ F03	Total funds £ F04	Prior year funds £ F05
Incoming resources (Note 3)						
Income and endowments from:						
Donations and legacies	S01	5,650	-	-	5,650	9,119
Charitable activities	S02		-	-	-	
Other trading activities	S03		-	-	-	
Investments	S04	56	-		56	767
Separate material item of income	S05	176,733	-	-	176,733	135,941
Other	S06	1	-	-	1	938
Total	S07	182,440	-	-	182,440	146,765
Resources expended (Note 6)						
Expenditure on:						
Raising funds	S08	-	-	-	-	2,259
Charitable activities	S09	1,638	-	-	1,638	34,107
Separate material item of expense	S10	-	-	-	-	-
Other	S11	138	-	-	138	769
Total	S12	1,776	-	-	1,776	37,135
Net income/(expenditure) before investment gains/(losses)	S13	180,664	-	-	180,664	109,630
Net gains/(losses) on investments	S14	-	-	-	-	-
Net income/(expenditure)	S15	180,664	-	-	180,664	109,630
Extraordinary items	S16	-	-	-	-	-
Transfers between funds	S17	-	-	-	-	-
Other recognised gains/(losses):						
Gains and losses on revaluation of fixed assets for the charity's own use	S18	-	-	-	-	-
Other gains/(losses)	S19	-	-	-	-	-
Net movement in funds	S20	180,664	-	-	180,664	109,630
Reconciliation of funds:						
Total funds brought forward	S21	312,180	-	-	312,180	202,550
Total funds carried forward	S22	492,844	-	-	492,844	312,180

Section B Balance sheet

		Guidance Notes	Unrestricted funds £ F01	Restricted income funds £ F02	Endowment funds £ F03	Total this year £ F04	Total last year £ F05
Fixed assets							
Intangible assets	(Note 15)	B01	-	-	-	-	-
Tangible assets	(Note 14)	B02	-	-	-	-	-
Heritage assets	(Note 16)	B03	-	-	-	-	-
Investments	(Note 17)	B04	-	-	-	-	-
Total fixed assets		B05	-	-	-	-	-
Current assets							
Stocks	(Note 18)	B06	-	-	-	-	-
Debtors	(Note 19)	B07	-	-	-	-	-
Investments	(Note 17.4)	B08	118,600	-	-	118,600	118,544
Cash at bank and in hand	(Note 24)	B09	374,544	-	-	374,544	193,836
Total current assets		B10	493,144	-	-	493,144	312,380
Creditors: amounts falling due within one year	(Note 20)	B11	300	-	-	300	200
Net current assets/(liabilities)		B12	492,844	-	-	492,844	312,180
Total assets less current liabilities		B13	492,844	-	-	492,844	312,180
Creditors: amounts falling due after one year	(Note 20)	B14	-	-	-	-	-
Provisions for liabilities		B15	-	-	-	-	-
Total net assets or liabilities		B16	492,844	-	-	492,844	312,180
Funds of the Charity							
Endowment funds	(Note 27)	B17	-	-	-	-	-
Restricted income funds	(Note 27)	B18	-	-	-	-	312,180
Unrestricted funds		B19	492,844	-	-	492,844	-
Revaluation reserve		B20	-	-	-	-	-
Total funds		B21	492,844	-	-	492,844	312,180
Signed by one or two trustees on behalf of all the trustees			Signature		Print Name		Date of approval dd/mm/yyyy
					FR, BOB HAMILL		06/06/2023

Note 1 Basis of preparation

This section should be completed by all charities .

1.1 Basis of accounting

These accounts have been prepared under the historical cost convention with items recognised at cost or transaction value unless otherwise stated in the relevant note(s) to these accounts.

The accounts have been prepared in accordance with:

- and with*

✓

 the Statement of Recommended Practice: Accounting and Reporting by Charities preparing their accounts in accordance with the Financial Reporting Standard applicable in the UK and Republic of Ireland (FRS 102) issued on 16 July 2014
- and with*

✓

 the Financial Reporting Standard applicable in the United Kingdom and Republic of Ireland (FRS 102)
- and with the Charities Act 2011.

The charity constitutes a public benefit entity as defined by FRS 102.*

Yes

* -Tick as appropriate

1.2 Going concern

If there are material uncertainties related to events or conditions that cast significant doubt on the charity's ability to continue as a going concern, please provide the following details or state "Not applicable", if appropriate:

An explanation as to those factors that support the conclusion that the charity is a going concern;

Not applicable

Disclosure of any uncertainties that make the going concern assumption doubtful;

Not applicable

Where accounts are not prepared on a going concern basis, please disclose this fact together with the basis on which the trustees prepared the accounts and the reason why the charity is not regarded as a going concern.

Not applicable

1.3 Change of accounting policy

The accounts present a true and fair view and the accounting policies adopted are those outlined in note { }.

Yes*	✓	* -Tick as appropriate
No*		

Please disclose:

<i>(i) the nature of the change in accounting policy;</i>	Not applicable
<i>(ii) the reasons why applying the new accounting policy provides more reliable and more relevant information; and</i>	Not applicable

<i>(iii) the amount of the adjustment for each line affected in the current period, each prior period presented and the aggregate amount of the adjustment relating to periods before those presented, 3.44 FRS 102 SORP.</i>	Not applicable
--	-----------------------

1.4 Changes to accounting estimates

No changes to accounting estimates have occurred in the reporting period (3.46 FRS 102 SORP).

Yes*	<input checked="" type="checkbox"/>	* -Tick as appropriate
No*	<input type="checkbox"/>	

Please disclose:

<i>(i) the nature of any changes;</i>	Not applicable
<i>(ii) the effect of the change on income and expense or assets and liabilities for the current period; and</i>	Not applicable
<i>(iii) where practicable, the effect of the change in one or more future periods.</i>	Not applicable

1.5 Material prior year errors

No material prior year error have been identified in the reporting period (3.47 FRS 102 SORP).

Yes*	<input checked="" type="checkbox"/>	* -Tick as appropriate
No*	<input type="checkbox"/>	

Please disclose:

<i>(i) the nature of the prior period error;</i>	Not applicable
<i>(ii) for each prior period presented in the accounts, the amount of the correction for each account line item affected; and</i>	Not applicable
<i>(iii) the amount of the correction at the beginning of the earliest prior period presented in the accounts.</i>	Not applicable

Section C

Notes to the accounts

(cont)

Note 3

Analysis of income

Analysis		Unrestricted funds	Restricted income funds	Endowment funds	Total funds £	Prior year £
Donations and legacies:	Donations and gifts	5,650	-	-	5,650	9,119
	Gift Aid	-	-	-	-	-
	Legacies	-	-	-	-	-
	General grants provided by government/other charities	-	-	-	-	-
	Membership subscriptions and sponsorships which are in substance donations	-	-	-	-	-
	Donated goods, facilities and services	-	-	-	-	-
	Other	-	-	-	-	-
	Total	5,650	-	-	5,650	9,119
Charitable activities:		-	-	-	-	-
	Other	-	-	-	-	-
	Total	-	-	-	-	-
Other trading activities:		-	-	-	-	-
	Other	-	-	-	-	-
	Total	-	-	-	-	-
Income from investments:	Interest income	56	-	-	56	767
	Dividend income	-	-	-	-	-
	Rental and leasing income	-	-	-	-	-
	Other	-	-	-	-	-
	Total	56	-	-	56	767
Separate material item of income:	Income from Sale of Land	176,733	-	-	176,733	135,941
	Land Rental Income	-	-	-	-	-
	Income from Vist/Ticket	-	-	-	-	-
	Trip Income	-	-	-	-	-
	Total	176,733	-	-	176,733	135,941
Other:	Conversion of endowment funds into income	-	-	-	-	-
	Gain on disposal of a tangible fixed asset held for charity's own use	-	-	-	-	-
	Gain on disposal of a programme related investment	-	-	-	-	-
	Royalties from the exploitation of intellectual property rights	-	-	-	-	-
	Other-Interest Income	1	-	-	1	938
	Total	1	-	-	1	938
TOTAL INCOME		182,440	-	-	182,440	146,765

Other information:

All income in the prior year was unrestricted except for:
(please provide description and amounts)

Not applicable

Where any endowment fund is converted into income in the reporting period, please give the reason for the conversion.

Not applicable

Within the income items above the following items are material: (please disclose the nature, amount and any prior year amounts)

Not applicable

Note 4

Analysis of receipts of government grants

	Description	This year £	Last year £
Government grant 1	Income from Government Grants	-	-
Government grant 2		-	-
Government grant 3		-	-
Other		-	-
	Total	-	-

Please provide details of any unfulfilled conditions and other contingencies attaching to grants that have been recognised in income.

Not Applicable

Please give details of other forms of government assistance from which the charity has directly benefited.

Not Applicable

Section C

Notes to the accounts

(cont)

Note 6

Analysis of expenditure

		Unrestricted funds	Restricted income funds	Endowment funds	Total funds £	Prior year £
	Analysis					
Expenditure on raising funds:	Incurred seeking donations	-	-	-	-	2,259
	Incurred seeking legacies	-	-	-	-	-
	Incurred seeking grants					
	Operating membership schemes and social lotteries					
	Staging fundraising events					
	Fundraising agents					
	Operating charity shops					
	Operating a trading company undertaking non-charitable trading activity					
	Advertising, marketing, direct mail and publicity	-	-	-	-	-
	Start up costs incurred in generating new source of future income	-	-	-	-	-
	Database development costs	-	-	-	-	-
	Other trading activities					
	Investment management costs:	-	-	-	-	
	Portfolio management costs	-	-	-	-	-
	Cost of obtaining investment advice	-	-	-	-	-
	Investment administration costs	-	-	-	-	-
	Intellectual property licencing costs	-	-	-	-	-
	Rent collection, property repairs and maintenance charges	-	-	-	-	-
	Total expenditure on raising funds	-	-	-	-	2,259
Expenditure on charitable activities	The expenses incurred for charity objective "to provide for the spiritual, material and social needs of disabled people generally but particularly in the diocese of brentwood and to promote their general welfare by voluntary personal service and charitable gifts and the provision of facilities for their care and benefit generally"					
		1,638	-	-	1,638	34,107
	Total expenditure on charitable activities	1,638	-	-	1,638	34,107
Separate material item of expense		-	-	-	-	-
		-	-	-	-	-
		-	-	-	-	-
	Total	-	-	-	-	-
Other	Charity Accounting Fees	100		-	100	100
	Insurance Expense	-	-	-	-	107
	Cleaning & Maintenance	-	-	-	-	-
	Other Misc Expense	38		-	38	562
	Total other expenditure	138	-	-	138	769
TOTAL EXPENDITURE		1,776	-	-	1,776	37,135

Other information:

Analysis of expenditure on charitable activities

Activity or programme	Activities undertaken directly	Grant funding of activities	Support Costs	Total this year	Total prior year
	£	£	£	£	£
Activity 1	Subscriptions	30		30	151
Activity 2	Donations			-	780
Activity 3	Wanstead & Woodford Pub Group			-	-
Activity 4	Peter Newton Trust			-	12,488
Activity 5	Charitable gifts given to beneficiaries			-	390
Activity 6	Saturday Centre-Havering	18		18	-
Activity 7	Wanstead & Woodford Daycare Event (providing a short period of supportive care to people with disabilities and respite for families)			-	-
Activity 8	Christmas Card Sales (Fundraising)	1,068		1,068	739
Activity 9	Swimming Party-Wanstead & Woodford	112		112	
Activity 10	BBQ Family Social Event			-	831
Activity 11	General Running Costs for Charitable Activities/Events for Members			-	1,414
Activity 12	Charitable Events Food Expenses	410		410	3,256
Activity 13	Play Scheme Activities-Wanstead & Woodford			-	9,108
Activity 14	Senior Activities-Wanstead & Woodford			-	126
Activity 15	Parties, Outing & Birthdays - Ilford			-	3,364
Activity 16	Charitable Activities- Havering Group			-	1,460
Total		1,638	-	1,638	34,107

Prior year expenditure on charitable activities can be analysed as follows:

Not applicable

Within the expenditure items above the following items are material: (please disclose the nature, amount and any prior year amounts)

Not applicable

Section C**Notes to the accounts****Note 10** Details of certain items of expenditure**10.1 Fees for examination of the accounts**

Please provide details of the amount paid for any statutory external scrutiny of accounts and other services provided by your independent examiner. If nothing was paid please enter '0' in the appropriate box(es).

Independent examiner's fees**Assurance services other than audit or independent examination****Tax advisory fees****Other fees (for example: financial advice, consultancy, accountancy services) paid to the independent examiner**

This year £	Last year £
100.00	-
-	-
-	-
-	-

Note 11

Paid employees

Please complete this note if the charity has any employees.

11.1 Staff Costs

	This year £	Last year £
Salaries and wages	-	-
Social security costs	-	-
Pension costs (defined contribution scheme)		
Other employee benefits	-	-
Total staff costs	-	-

Please provide details of expenditure on staff working for the charity whose contracts are with and are paid by a related party

N/A

Please give details of the number of employees whose total employee benefits (excluding employer pension costs) fell within each band of £10,000 from £60,000 upwards. If there are no such transactions, please enter 'true' in the box provided.

No employees received employee benefits (excluding employer pension costs) for the reporting period of more than £60,000

N/A

Band	Number of employees
£60,000 to £69,999	
£70,000 to £79,999	
£80,000 to £89,999	
£90,000 to £99,999	
£100,000 to £109,999	

Please provide the total amount paid to key management personnel (includes trustees and senior management) for their services to the charity

11.2 Average head count in the year

The parts of the charity in which the employees work

	This year Number	Last year Number
Fundraising	-	-
Charitable Activities	-	-
Governance	-	-
Other	-	-
Total	-	-

11.3 Ex-gratia payments to employees and others (excluding trustees)

Please complete if an ex-gratia payment is made.

Please explain the nature of the payment

N/A

Please state the legal authority or reason for making the payment

N/A

Please state the amount of the payment (or value of any waiver of a right to an asset)

N/A

11.4 Redundancy payments

Please complete if any redundancy or termination payment is made in the period.

Total amount of payment

N/A

The nature of the payment (cash, asset etc.)

N/A

The extent of redundancy funding at the balance sheet date

N/A

Please state the accounting policy for any redundancy or termination payments

N/A

Section C	Notes to the accounts	(cont)
------------------	------------------------------	---------------

Note 19 Debtors and prepayments

Please complete this note if the charity has any debtors or prepayments.

19.1 Analysis of debtors

Trade debtors
Prepayments and accrued income
Other debtors

This year	Last year
£	£
-	-
-	-
-	-
-	-

Total

Please complete 19.2 where a material debtor is recoverable more than a year after the reporting date.

19.2 Analysis of debtors recoverable in more than 1 year (included in debtors above)

Trade debtors
Prepayments and accrued income
Other debtors

This year	Last year
£	£
-	-
-	-
-	-
-	-
Total	-

Section C	Notes to the accounts	(cont)
------------------	------------------------------	---------------

Note 20 **Creditors and accruals**

Please complete this note if the charity has any creditors or accruals.

20.1 Analysis of creditors

	Amounts falling due within one year		Amounts falling due after more than one year	
	This year £	Last year £	This year £	Last year £
Accruals for grants payable	-	-	-	-
Bank loans and overdrafts	-	-	-	-
Trade creditors	-	-	-	-
Payments received on account for contracts or performance-related grants	-	-	-	-
Accruals and deferred income	-	-	-	-
Taxation and social security	-	-	-	-
Other creditors	300	200	-	-
Total	300	200	-	-

20.2 Deferred income

Please complete this note if the charity has deferred income.

Please explain the reasons why income is deferred.

Movement in deferred income account

Balance at the start of the reporting period
 Amounts added in current period
 Amounts released to income from previous periods
 Balance at the end of the reporting period

This year £	Last year £
-	-
-	-
-	-
-	-

Section C	Notes to the accounts	(cont)
------------------	------------------------------	---------------

Note 24 **Cash at bank and in hand**

Bank Accounts

Current Account- Havering Group
 Current Account- Wanstead Group
 Deposit Account- Wanstead Group
 Current Account- Ilford Group
 HSBC Bank Account - Executive Group
 HSBC Money Manager Account - Executive Group

Investment Accounts

C.O.I.F Deposit Account
 C.O.I.F Deposit Account - Executive Acct
 C.O.I.F Deposit Account - Thomas Moore Acct

Other

Total

This year £	Last year £
14,730	10,589
46,595	46,470
-	-
4,398	4,398
293,383	116,941
15,438	15,438
5,683	5,676
112,917	112,868
	-
	-
493,144	312,380

Section C	Notes to the accounts	(cont)
------------------	------------------------------	---------------

Note 27 **Charity funds**

27.1 Details of material funds held and movements during the CURRENT reporting period

Please give details of the movements of material individual funds in the reporting period together with a balancing figure for 'Other funds'. The 'Total funds' figure below should reconcile to 'Total funds' in the balance sheet.

** Key: PE - permanent endowment funds; EE - expendible endowment funds; R - restricted income funds, including special trusts, of the charity; and U - unrestricted funds*

Fund names	Type PE, EE R or UR *	Purpose and Restrictions	Fund balances brought forward £	Income £	Expenditure £	Transfers £	Gains and losses £	Fund balances carried forward £
Donations & Gifts	UR	The Unrestricted funds represents the free funds of the charity which are not designated for the particular purpose.	312,180	182,440	-	-	-	494,620
Charitable Activities/Projects	UR	The expenses incurred for charity objective "to provide for the spiritual, material and social needs of disabled people generally but particularly in the diocese of brentwood and to promote their general welfare by voluntary personal service and charitable gifts and the provision of facilities for their care and benefit generally"		-	- 1,776	-	-	- 1,776
Other funds	N/a	N/a	-	-	-	-	-	-
Total Funds			312,180	182,440	- 1,776	-	-	492,844

Note 29**Additional Disclosures**

The following are significant matters which are not covered in other notes and need to be included to provide a proper understanding of the accounts. If there is insufficient room here, please add a separate sheet.

The Catholic Fellowship Brentwood Diocese provides services to people with disabilities and their families across the Catholic Diocese and Brentwood (Essex and East London) and is broken down into 4 main groups.

1) The Executive Committee - The executive committee ensures that the services provided to our members meet our charity's constitution and whereby the Trustees oversee, support and make decisions. Each sub-committee otherwise referred to as 'sub-group' share its charitable activities with this committee.

The executive also carries out their own charitable activities and events.

2) Havering Sub-Group - The Havering sub-group provides direct charitable activities and services to members through various charitable events, volunteer support, and weekly activities. They undertake fundraising activities and have delegated authority from the Executive to carry out their fundraising and charitable activities.

3) Ilford Sub-Group - The Ilford sub-group provides direct charitable activities and services to members through various charitable events, volunteer support, and activities. They undertake fundraising activities and have delegated authority from the Executive to carry out their fundraising and charitable activities.

4) Wanstead & Woodford Sub-Group - The havering sub-group provides direct charitable activities and services to members through various charitable events, volunteer support, and bi-weekly activities. They undertake fundraising activities and have delegated authority from the Executive to carry out their fundraising and charitable activities.