

The Spiritualists' National Union

Trustees Annual Report 2024



www.snu.org.uk



Contents

Introduction from the President	1
Aims and Objectives	6
Vision	7
Strategic Update	9
Developing our Strategy	11
Communications & Publicity	13
Science & Spiritualism	16
Education & Training - Healing	17
Healing Training & Awards, Committee Events	19
Ministry Development	20
The Arthur Findlay College	21
The Barbanell Centre	24
Working With Our Churches	25
Working With Our Volunteers	26
Developing Our Church Property	27
Case Studies	28
Safeguarding	31
Diversity & Inclusion	32
Annual General Meetings	33
Events	35
Education & Training, International	36
Open Week 2024	37
Our Finances	40
Structure	51
Trustees' Responsibilities	57
Independent Auditors Report	59



as a result of careful financial planning and making decisions that recognises the importance of churches, we have been able to convert temporary emergency loans - that have hampered committees in progressing - into grants, to alleviate the burden of debt.

This isn't just about numbers on a spreadsheet. The decisions made are having a real impact on our movement. I am proud that we have been able to support Horden Church with the refurbishment of their church, who only two years ago believed that their only option was to demolish the church.

Our heritage matters, and by protecting our history we can build towards our future. Saddleworth is another of our historic churches that was believed could not be saved. It has been. It is now a thriving church, completely refurbished and ready to serve its community. We are pleased to share some case studies in this report of these and other Churches that we have been able to help.

We are very aware that decisions we make as an NEC have real life impact and I never forget this. That's why we are saving churches and investing in them. We are working hard to make membership of the SNU worthwhile. Not just because of the awards and education that we offer, but because you are joining a family of Spiritualists. The NEC are always seeking opportunities to engage with communities and spread the word about what we believe.

One of the real joys and privileges I have as President is being able to visit churches and centres in every district, which I continue to do. We do not want there to be any sense of separation, of 'us and them' within the Union. I have held consultative meetings with members, church committees and district representatives. We will continue to engage with everyone to ensure we are delivering the absolute best for our Union.

Change is never easy. George Bernard Shaw summed it up perfectly: "Progress is impossible without change." We cannot hold up progress any longer, and have embarked on an ambitious programme of change. I appreciate that this can

be difficult for some - particularly those who are comfortable and familiar with things being done in a particular way. But part of this change means setting a higher standard, and ensuring that our policies and codes of conduct are enforced consistently.

Our religion deserves the highest standards of conduct. We have further modernised by bringing in professionals and expanding our staff this year. This new professional body means that our volunteers are better able to focus on progressing our religion and not just administer the Union's functions.

2025 is shaping up to be an exciting year for our Union. As always, I thank the fantastic churches, districts, members and volunteers who are planning and carrying out exciting demonstrations of Spiritualist healing. There have been many wonderful examples to see! After many decades of neglect, we are seeing the science of Spiritualism making a resurgence under the stewardship of Penny Hayward OSNU and her committee. Penny has engaged with many Universities, and we have a growing network of academics interested in our religion.

Thank you to all members of our Union for all that you do. The NEC and I are working hard to safeguard our Union's future not just for the next year, but for the future. It is the duty of us all to hand our religion to the generations to come, so that the light of Spiritualism continues to illuminate the path for others.

Minister Jackie Wright
President of The Spiritualists' National Union

Moving Forward

I begin my second term as President of the Spiritualists' National Union in a very different position to how I began my first term.

It has been a great pleasure to see our Union strengthened in many areas, and work underway to improve others. I reaffirm my commitment to you all that our Union will be stronger as we move forward, together. Our religion continues to grow. We continue with important changes that need to be made to ensure our religion thrives. This includes

the restructuring of our Union to better serve members and Churches. As a Union, we regularly hear the struggles and challenges our Churches, Districts and Centres face. I know this from visiting many myself. To help, we have agreed numerous grants for churches totalling £758,123, more details of which can be found on page 76. In addition, and

Report of the trustees for the year ended 31st December 2024

The Trustees are pleased to present their report, together with the audited financial statements of the charity, for the year ending 31st December 2024.

The financial statements comply with the Charities Act 2011, the Charities Statement of Recommended Practice second edition 2019 and FRS 102.





Aims & Objectives

The objectives of the charity are:



To Encourage

Spiritualist scientific research, working with scientific and educational establishments in the UK and internationally.



To Certify

To train and appoint Ministers, lecturers, exponents and teachers to allow them to promote the religion of Spiritualism to the highest standard.



To Publish

To source, commission and distribute Spiritualist literature and promote mission work through many forms of media, including raising our profile on social media platforms internationally.



To Support

To continue to develop the work of the Arthur Findlay College as a major international teaching centre for the advancement of psychic science and the training of exponents, in addition to using virtual tools to teach and promote the message of Spiritualism for those unable to attend the Arthur Findlay College.



To Promote

To work towards the promotion, advancement and diffusion of a knowledge of the religion and religious philosophy of Spiritualism on the basis of the SNU Seven Principles, as defined in the Articles of Association, to unite Spiritualist societies and churches into a Spiritualist brotherhood and to secure for them full recognition as religious bodies both within the community in which they operate, but also collectively within the wider society.

Vision

Our vision for a Union fit for the future:



Refocus the Union on being the Union for churches nationally and internationally

In 2024 we: Appointed a new overseas ambassador to give our overseas members a voice.
Continued to engage with Churches and Districts to ensure that all members can be heard and can contribute to the Union's development.
Established a new training programme to invest in our volunteers.

Keep Spiritualism growing

In 2024 we: Promoted our Spiritualist Healing, with a year of events planned in 2025.
Engaged with members on issues that matter to them.
Provided regular opportunities for all members to share ideas through our Philosophy Pamphlet series.

Reform the culture at every level

In 2024 we: Invested in our Equality, Diversity and Inclusion training.
Held regular strategic meetings of the National Executive Committee to identify and ensure meaningful reforms.
Rolled out an improved Safeguarding pack for Churches.

Modernise the Union's Policies & procedures

In 2024 we: Expanded our professional staffing to ensure the Union is able to modernise at a faster pace.
Sought external input into our policies to ensure they are fit for purpose.
Developed a digital package available for Churches and District Councils.
our Philosophy Pamphlet series.

Complaints system which is fair & fit for purpose

In 2024 we: Established a working party to gather feedback and develop options for improving the Union's complaints system.
Introduced a provision for independent external mediators and investigators.
Reviewed the resourcing and staffing structure to ensure that the new complaints system can be launched in 2025.

Strategic Update

The Union’s National Executive Committee has agreed the following strategic priorities to deliver on the vision of a Union fit for the future.

Promote the Religion and Religious teachings of Spiritualism based on the Seven Principles.

- Communications and Publicity – see Page 13
- Peace Walk 2024 – see Page 15
- Science and Spiritualism – see Page 16

Further develop Spiritualist Education and Training.

- Education and Training – see Page 36
- Healing – see Page 17
- Ministry Development – see Page 20
- Arthur Findlay College & Barbanell Centre – see Page 21

Provide support and training for our churches.

- Working with our Churches – see Page 25
- Working with our Volunteers to support Churches – see Page 26
- Developing our Church Properties – see Page 27
- Church Case Studies – see Page 28
- Safeguarding – see Page 31

Engagement with Members

- Diversity and Inclusion – see Page 32
- Annual General Meeting 2024 – see Page 33

Raise the profile of Spiritualism locally, nationally and internationally

- International – see Page 36
- Open Week 2024 – see Page 37



Developing Our Strategy In 2025

How the Union’s strategic priorities will be developed and delivered in 2025:

Promote the Religion and Religious teachings of Spiritualism based on the Seven Principles

- In 2025 we will: Develop new digital channels to better engage with churches and communities.
- Promote National Healing Year to spread understanding of Spiritualist healing to the wider public.
- Engage with community events locally and nationally.

Further develop Spiritualist Education & Training

- In 2025 we will: Continue to update and refresh our educational courses and training.
- Make training more accessible for our overseas members.
- Develop the Ministry to be more engaged with the public.

Provide support and training for our churches

- In 2025 we will: Continue to support Churches financially.
- Make training more accessible for our overseas members.
- Develop and roll-out Training Hubs in every District.
- Encourage every Church to share best practice with other Churches.



Engage with members, and increase individual membership

- In 2025 we will: Continue to review opportunities to increase our membership, and improve our membership offering.
- Develop better communication between members and member representatives.
- Work with our overseas ambassador to better engage with our overseas members and increase the international membership.

Raise the profile of Spiritualism locally, nationally and internationally

- In 2025 we will: Finalise and roll-out new websites for the Union and the Arthur Findlay College.
- Continue to develop and share the digital package for all Churches to promote themselves on social media.
- Explore and develop improved avenues for communication.
- Encourage every Church to share best practice with other Churches.

Ensure high standards of Governance

- In 2025 we will: Review and modernise the Union’s Policies and Bye-laws to ensure they are fit for purpose and fit for the future.
- Modernise the Union’s internal financial controls.
- Develop our Safeguarding provision, and support Churches, to ensure that everybody coming into contact with us is protected.



Communications & Publicity

2024 was another busy and exciting year for the Union and its communications.

Rhyl and District Spiritualist Centre

The year began with Rhyl and District Spiritualist Centre moving into its new premises, a glorious converted former Methodist Church in Rhuddlan.

Spotlight Initiative

With churches continuing to be at the heart of what the Union is and does, the 'Spotlight' initiative provided in-depth articles on activities within the Union community providing inspiration for all. On social media, the more regular, smaller scale spotlighting continued to shine a light on the good practice, examples and good news from across the

Union, including a variety of Inter-Faith celebrations in Manchester and Gateshead alongside Black History Month services at the Dorothy Hudson Spiritualist Centre.

Major Events

The communications team played an important role in the promotion of two of the Union's major events in the calendar year. There was a record attendance at the Peace Walk at the National Memorial Arboretum in July 2024 and it was considered a huge success.

"There was a record attendance at the Peace Walk at the National Memorial Arboretum in July 2024 and it was considered a huge success".





Peace Walk

In July 2024, members, representatives and churches from all across the Union came together once again at the National Memorial Arboretum in Staffordshire for the SNU's annual Peace Walk. After 2023's record-breaking levels of attendance, it was exciting to see Peace Walk 2024 welcome even higher numbers of attendees - so many, in fact, that the venue had to find extra seats!

The day consisted of two wonderful services that featured readings, songs, healing meditations, and more, separated by the walk itself up to the Union's own monument in the grounds of the Arboretum. A day of remembrance and giving thanks, with over 200 Spiritualists coming together to share the word of spirit and call for healing and peace across the world during difficult times.

Annual General Meeting

In September, the charity's annual general meeting in Newcastle was held, again offering a hybrid approach, working in tandem with technical support to enable as many as possible to attend, vote and participate in the meeting.

The number of people attending via Zoom increased from 2023 and it is hoped that this trend will continue into 2025 and beyond.

BBC Documentary

The Union is excited to report on its involvement in a major documentary project with the BBC that was filmed across various dates in the Summer and Autumn of 2024, and is currently scheduled to air later in 2025. The project is part of a drive to push Spiritualism and its history and pioneers out to a wider audience.

Digital Development Scheme

In October, applications were opened for the Union's Digital Development Scheme and received a strong interest in this first stage (of several), which will help churches, centres, districts and committees in this digital age by providing free digital resources such as SNU-provided emails and in boxes, social media set up support and more.

Bringing the Union's digital resources into the modern age will most certainly continue into 2025 as the next stages of the scheme are rolled out, this will include seminars, workshops and more.

A year of Change

In a year that was full of change, the focus on positive messaging and strong engagement with members and communities remained paramount. It is encouraging to see that engagement on Union social media platforms and content remains strong, with key metrics up on Facebook. Content interactions on Facebook were up 175.5%, link clicks up 960%, visits to the page up 335.3% and overall reach up by 82.9%.



Science & Spiritualism

In March 2024, the Union's new science working party, 'Arthur's Vision' (named after beloved pioneer and psychic sciences advocate, Arthur Findlay) kickstarted their initiative to 'bring science and Spiritualism closer together' with a sold-out science day at the Barbanell Centre.

The packed-out event, which had over 100 attendees split between in-person and online attendance via Zoom, included live experiments, a question-and-answer session and talks and updates from speakers. These included psychic artist Richard Stuttle, medium and experimenter Bo Schmedegaard and President of Colchester Spiritualist Centre, Chris Lane.

Official, medium and tutor Penny Hayward DSNU, who helped organise and host the day, said the group were "delighted to see so many people attending, to hear about the exciting steps forward. "It's encouraging that there is so much interest in advancing the science of Spiritualism - let's keep the momentum going!"

The group also launched a dedicated Science and Spiritualism page on the Union website at the same time, which includes surveys, participation experiments, updates and much more.

"It's encouraging that there is so much interest in advancing the science of Spiritualism let's keep the momentum going!"

Education & Training

The Education and Exponents Committee continues to manage the training of exponents from the initial stages at PAS (Platform Accreditation Scheme) level, through to certificates (CSNU) and diplomas (DSNU).

PAS training is conducted online, and opportunities to work on online divine services are abundant, with students able to access four services a week through the Committee's online weekly service or through the SNUJ platform. Final Assessment Boards (FABs) are held monthly online.

There are two ways of training for CSNU and for DSNU. We offer individual one to one online training with experienced tutors as well as intensive in person group training. During 2024, intensive in-person training courses for CSNU and for DSNU were held at the Barbanell Centre in Stafford. Due to the closure of the Centre, the location for the courses will be moved to Longton Church during 2025.

To assist us in our work we have a large team of volunteer markers, who support students working their way through the written courses which accompany each level. We also have a team of trained assessors who evaluate students' progress at FABs, giving feedback and support whether they have passed or needed re mediating.

The Committee is constantly reviewing the education and training courses on offer, and options for the development of the DSNU level coursework and teacher training course will be explored in 2025.

Healing

The Healing Committee continues to strive to improve and develop all aspects of Spiritualist Healing both nationally and internationally - online, and in all of our Districts, Churches and Centres.

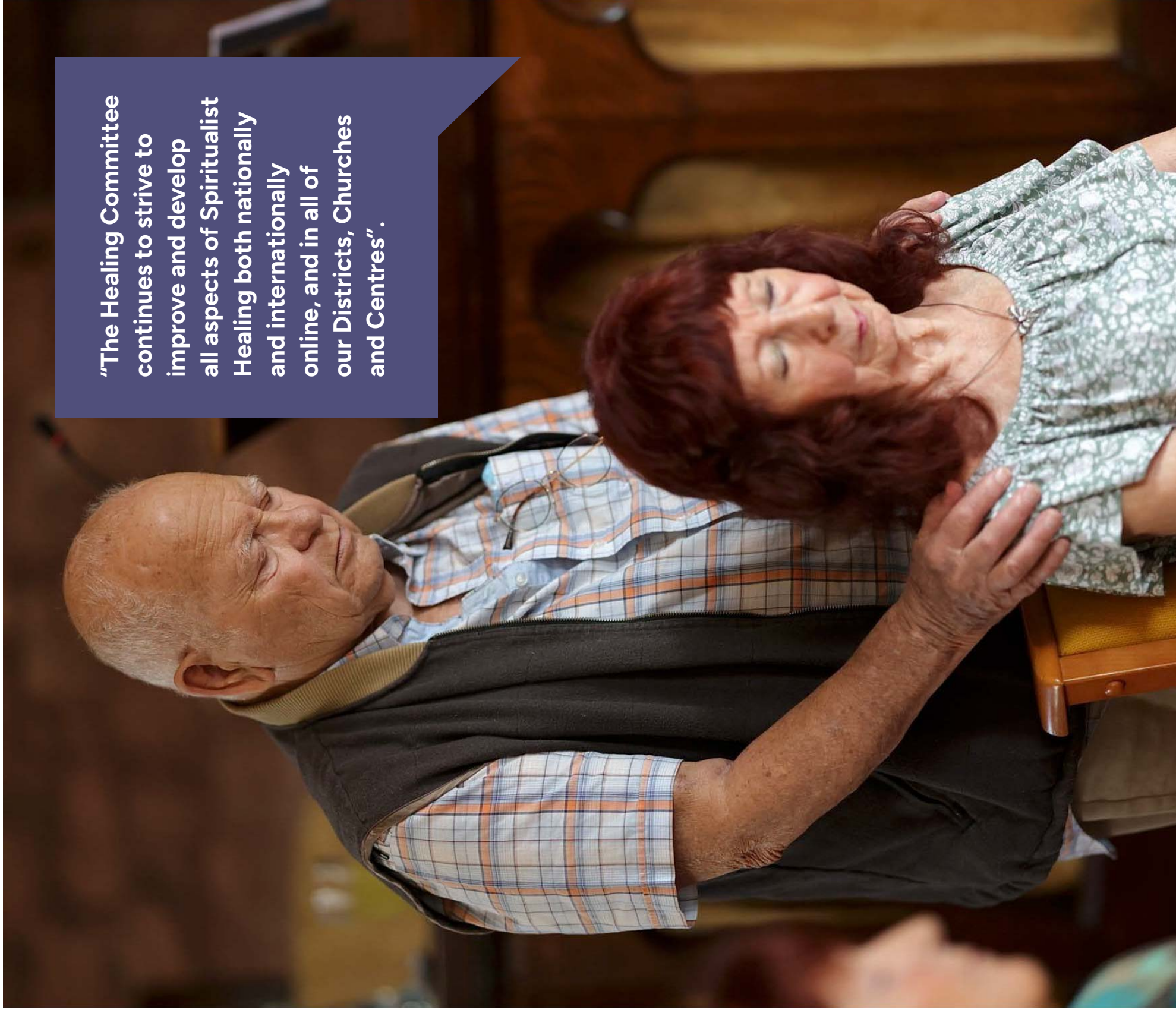
The Healing Committee has seen a steady rise in the number of people enrolling on to the Healing Accreditation Scheme to train to become Registered Accredited Spiritualist Healing Mediums, as well as those who have returned to Healing as a result of the Healing Amnesty which ran from September 2023 to May 2024.

253 people have enrolled in the Healing Accreditation Scheme during 2024.

In June 2024 a New Healing Code of Conduct was circulated to all Registered Spiritual Healing Mediums, which included a new SNU Safeguarding update and a full copy of the 'What Happens Next Card'.

The Healing Committee continues to recruit tutors for Healing courses along with additional trainers for the CSNUh training course. All new tutors and trainers get a comprehensive induction as well as ongoing support and mentoring.

"The Healing Committee continues to strive to improve and develop all aspects of Spiritualist Healing both nationally and internationally online, and in all of our Districts, Churches and Centres".



Healing Training & Awards

The number of CSNU and DSNU Healing Final Assessment Boards has significantly increased over the last couple of years

In 2024:

- Certificate of Recognition (CSNUh) Final Assessment Boards undertaken was **8**
- Diploma in Spiritualist Healing (DSNUH) Final Assessment Boards undertaken was **4**
- The number of students attending the Online Training sessions has significantly increased with more than **350** attending.
- The Number of Healing Upgrading Assessment carried out was over **60**

Supporting Districts & Church Healing Groups

Meetings with District Healing Representatives and Committee Members are held regularly in order to update representatives and offer them a forum to discuss Healing matters. The Healing Committee is also on hand to assist and support Districts and Churches with all Healing Matters within their Districts.

Healing Committee Events

The Healing Committee has organised or participated in the following events in 2024:

Healing Services

The Healing Committee regularly hold Healing Services on the Healing Zoom Room throughout the year. All Healing Services are open to everyone to attend and are fully publicised. Members of the Healing Committee and healing Award Holders also conduct Healing Services as part of the SNUi Open Access Sunday services which further promotes Spiritualist Healing within the Union and to the general public.

The Healing Committee Healing Week at the Arthur Findlay College

The course was well attended, and the course is again on the Arthur Findlay College calendar for 2025.

Healing Awareness Week

This is a UK wide annual event in which the SNU and other UK organisations who are all members of the Healing Forum organise workshops and seminars to promote the benefits of spiritual and spiritualist Healing.

The Barbanell Healing Day

This was a very successful event with over 90 Healers in attendance; ideas were discussed for the 2025 Year of SNU Spiritual Healing to raise public awareness of the benefits of Spiritualist Healing.

Future Planning

The NEC wish 2025 to be the Year of SNU Spiritualist Healing. The Healing Committee have consulted with Registered Healers and District Healing Representatives to discuss how we can make this a success.

The ambition is for each District to plan an event which will bring Spiritualist Healing to the General Public by holding an event in a public venue, where the District Healing Representative and Healers within the District can give talks, lead healing meditations, hold a Healing circle and offer one to one healing sessions along with providing refreshments, information leaflets and other information on how Healing can be accessed locally.



Ministry Development

A new Ministry Development Committee was appointed in 2024, which has been tasked with continuing to develop the high standards of Ministership and Officiacy. The Committee has been focused on adapting and improving the training provision for new trainee ministers, and professional development for existing ministers.

The Committee has been liaising with the National Executive Committee to explore opportunities for improving communications with Churches and members. This has resulted in a new Ministry Development Committee Newsletter which aims to keep the Ministry informed of engagement opportunities.

Minister Brenda Newall was appointed to the position of Faith Advisor to the HMP and YOI, who has been reviewing opportunities for spiritual care support by reaching out to Lead Chaplains in public and private sector prisons to promote the Spiritualist support available to prisoners, and ensure access to Spiritualist publications.

The Arthur Findlay College

59 years ago, Sir Arthur Findlay gave his home to the Union with the mission that it would create a leading education establishment for the betterment of Spiritualism.

We are not complacent with this precious gift. This year we have undertaken bold changes to the College with more to come. During 2024, we have seen an increase of 10% in students return to the College (2024: 3,498 2023: 3,172), to learn and develop their practice. There have also been new tutors who have qualified and already showing their dedication to continuing Arthur's legacy.

There have been restoration works undertaken during 2024 to both the fabric of the building and the beautiful items that are contained within its rooms. Funds kindly donated by members and visitors to the College have been put to good use and the results can be seen on pages 23. The Union is not just restoring but improving too and it is recognised that to keep the College competitive in the market it required investment. After listening to members who shared their challenges of accessing our College, the Board took the decision to repurpose rooms to ensure that the Arthur Findlay College is accessible to all. Planning consent has been obtained to create accessible rooms on the ground floor of the building.

It has been apparent for a number of years, especially since 2022, that multi bed rooms are not popular options for most students and so, in response, there is an intention to implement a programme of works to convert those rooms into twin and double en-suite rooms in 2025 - 2026. As Head Office had the opportunity to move into the Coach House, a much more suitable home for the administration staff, Redwoods will be converted into 8 single en-suite rooms. All of these developments are improving the overall experience for our students.

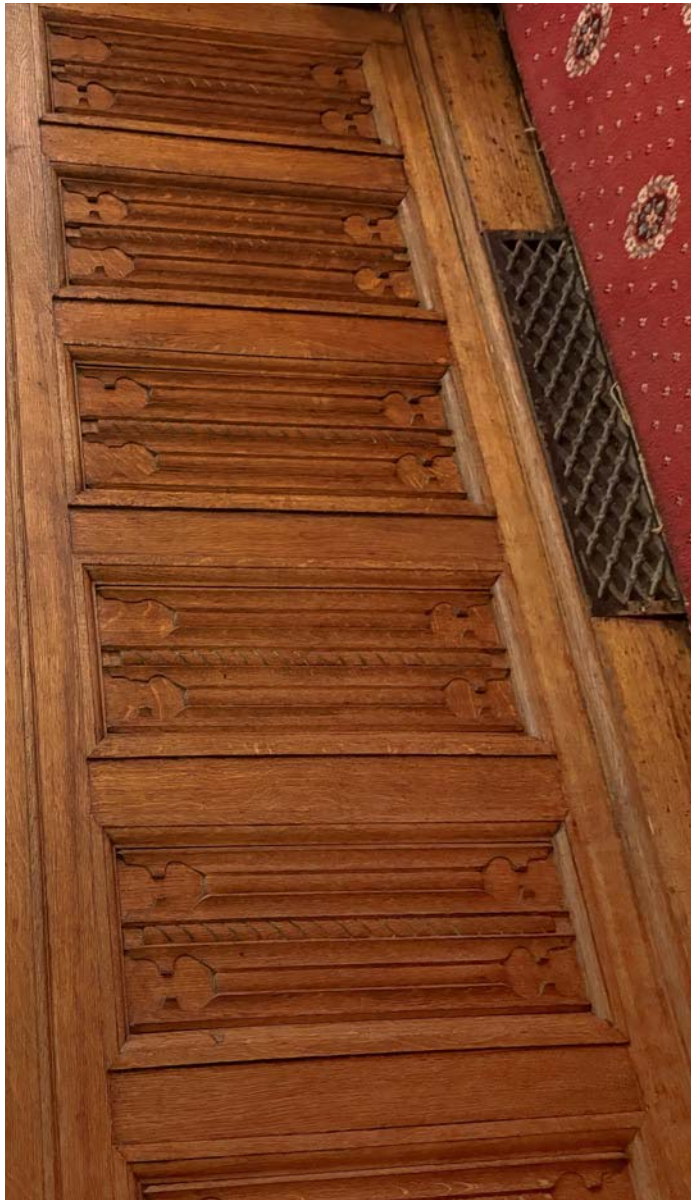
Members will be excited to know that 2026 is the 60th Anniversary of the College's opening. This will be a year of celebration for our college, and we look forward to welcoming you to a restored and rejuvenated College. £193,769 (2023: £149,324) was spent on repairs and maintenance during the accounting period which includes £27,145 from the Building Restoration Fund.

The Arthur Findlay College reported a surplus of £500,898 (2023: £280,477).



Arthur Findlay College Restoration Fund

The Building Restoration Fund launched in 2023 and during 2024 received additional donations totalling £25,157 (2023: £7,020) allowing the college to undertake restoration work on the oak panelling in the lecture room. The Union would like to pass on its heartfelt thanks to all who have contributed to the restoration of the College and its grounds.



Arthur Findlay College Tree and Garden Fund

Donation made to the tree and garden fund have been used to replant the flower beds on the south lawn.



The Barbanell Centre

Over the course of the past few years the Union has engaged extensively with the staff and team at the Barbanell Centre in efforts to revitalise the centre and deal with the difficult headwinds and challenges they have been facing. The Centre has been a vital part of the Union for the past decade, providing an accessible space for learning, education and development, a venue for Union officials to meet, as well as providing the home for Stafford Spiritualist Church.

Regrettably, it became apparent that the scope of the challenge and difficulties facing the Centre are not sustainable or surmountable in the long term. The running costs of the site are significant, and the building itself is in need of extensive investment and rejuvenation in the coming years. Sadly, despite sterling efforts by all involved, the Centre is not able to meet even its running costs, let alone further investment and works. It was therefore felt that the time had to come to accept that closure was unavoidable. The Board therefore took the very difficult decision to cease operations at the Barbanell Centre at the end of 2024.

This decision has not been taken lightly and has been actioned responsibly in light of the facts, finances and logistics. It is always a sad occasion to have to close a door or turn a page on a chapter in our Union's long, proud history, but we give thanks to everyone who has helped make the Centre an inviting and exciting home for SNU Spiritualism over the past decade.

During the year, the Barbanell Centre reported a loss of £88,643 (2023: (£64,796)).



Working With Our Churches

The work undertaken within the Churches continues. This has included the re-opening of Edmonton Church, who have had great success getting the church up and running following a lengthy closure. Runcorn Church, saved from closure in 2023, is going from strength to strength with the new committee working incredibly hard to raise monies.

The former church building has now been sold, and the Union is helping the Church in its search for a new home. The Dorothy Hudson Spiritualist Centre, known as Oldbury Church, has been a great success, forming a new committee, making improvements to their building, and arranging a packed calendar of activities, all of which has turned the Church around.

Following on from the success of the 2023 training videos, 2024 saw the introduction of training sessions aimed at District Council Secretaries. The sessions focused on how to organise a District AGM, a suite of corresponding templates was developed to help secretaries understand what is required and to ensure our churches and members received the correct information.

Late 2024 saw the development of a short guide for new Church committees, this guide aimed to pool together existing resources and signpost additional help for new Church committees. During 2025, Matthew Mold, Church Relations Coordinator, will focus on training and development of our volunteers, with training reviews for Support Officers and the development of training programmes for District Council Committees.



Working With Our Volunteers To Support Churches

The National Executive Committee has tasked Trustee and Director Pat Redman to oversee all volunteer and community engagement, with the aim to focus on how the Union can support Church volunteers, and how our Churches can better engage with the communities they serve. Throughout 2024, Pat undertook visits to many of our Churches, to gain an understanding of the barriers they faced and what their needs were. Following this a number of projects were developed, with the aim of linking our Churches with other community groups to reach out to the wider community.

This culminated in a project between The Studio and Widnes Church. The Studio, a registered arts charity, helped the Church remove undergrowth and trees, freeing up valuable parking space. In return Widnes Church has made space available for The Studio to practice as well as providing a meditation space for their members.

Many of the Churches that the Union visited reported the need for training and development. Pat has worked closely with Church Relations Coordinator, Matthew Mold, to ensure that the training needs of our volunteers are met. Throughout 2024, the Union has been looking at how best to match the skills of volunteers with the requirements of our Churches. Much of this work has been included in a review of the current Rules for Churches so as to ensure we have the correct framework in place to help support our volunteers.



Developing Our Church Property Together

During 2024, the Union's Property Manager, Andy Foley, continued to work with Churches across the UK providing advice, expertise and support. Andy works closely with the Church Relations Coordinator, Matthew Mold, to give support on issues ranging from utilities, contracts, insurance, compliance, risk management, maintenance and property issues, planning applications and project management, legal issues, permissions and disputes.

In order to support the churches and assist Andy to make the right decisions for each building, the Finance Committee agreed to set aside a budget of £20,000 from Aged Suspense to fund surveys and condition reports. Andy used the reports provided to help shape long-term maintenance programmes for the Churches and allow the Union to manage any serious defects highlighted.

Supporting and assisting our Churches and centres with vital renovation works, repairs and upkeep is an important part of the Union's annual work. In conjunction with Andy, the Union are pleased to present three case studies of Churches that we have helped. These include major renovation and revitalisations efforts that have completely transformed some of our wonderful churches and buildings.

As you will see from these three case studies, a recurring issue we are finding is that many of our Churches have been neglected for many years when it comes to their maintenance and upkeep. In some cases, this has seen very serious structural and repair problems taking root. We will continue to work with our hardworking committees and volunteers across the Union to address these problems and, wherever possible, explore the best possible means of keeping our Union's spaces of worship and service open, safe and fit for generations to come.

Case Study

Saddleworth Spiritualist Church



Saddleworth Spiritualist Church is one of our most beautiful centres. The building itself is ornate, grand and lined with two-storied rows of large windows, all overlooking the River Tame which runs adjacent. For all its splendour, it was nonetheless a building suffering from a number of serious defects and problems. This included major roofing issues which were causing serious leaks, major pointing issues which were also allowing water to penetrate, as well as exterior woodwork and windows having fallen into very poor condition.

The building was also suffering from water ingress, causing significant damp issues across the whole of the ground floor. It was clear that there had been no serious investment made into the property for decades. The Union was pleased to step in and provide a sizeable grant of £180,000 towards a major renovation of the church. The entire building was scaffolded and major roof repairs were undertaken.

Huge portions of pointing were repaired and all of the windows were renovated, which included some being replaced. Inside, any walls suffering with damp were removed, treated and replaced. To help minimise future issues with water and damp, a French drain was built around the circumference of the building, with an inbuilt soakaway system. The surrounding area was also landscaped. It has been a pleasure for the Union to work with Susan and the team at Saddleworth to not only rejuvenate this beautiful church and building, but help make it fit for the years of service to come.

“It was clear that there had been no serious investment made into the property for decades. The Union was pleased to step in.”

Case Study

Horden Spiritualist Church

Property Manager Andy first visited Horden in 2023 and was shocked at the condition that the church was in at the time. Despite the undeniable energy he felt on his arrival, it was clear that the building was in serious need of attention. There were reports of people falling through the rotten floor, and even rain leaking through on to a coffin!

Navigating a solution would not prove to be a simple task. A survey found that the building was not economically viable to save. Andy and the team at Horden explored the option of finding a replacement property, but found that nothing in the area was suitable. The possibility of demolishing and rebuilding the church was estimated to be in the region of half a million pounds, which was prohibitively expensive.

A third, less conventional alternative was suggested to the church - encasing the entire building in a 'superstructure' around it, which would keep the building watertight and help minimise any further deterioration. This superstructure supports the exterior fabric of the existing building.

Following extensive research, it was decided that this would be the best option.

We are pleased to report that the project is now complete, and the church has been saved. Not only this, but it has had a full renovation, including new walls, flooring, offices, toilets and a large kitchen. Overall, it has been a remarkable achievement by Gordon Pratt LSSSNU and the entire team at Horden.

In addition to Andy's services and assistance, the Union gave a sizeable grant of £65,000 towards the cost of this ambitious project to

save one of its churches, with the SNU Trust also helping by providing an additional loan of £28,000.

Horden is a wonderful example of the Union and its fantastic committees and volunteers coming together to save a church in even the direst of circumstances and conditions.

“In addition to Andy’s services and assistance, the Union gave a sizeable grant of £65,000 towards the cost of this ambitious project to save one of its churches, with the SNU Trust also helping by providing an additional loan of £28,000.”

Case Study

Smethwick Spiritualist Church

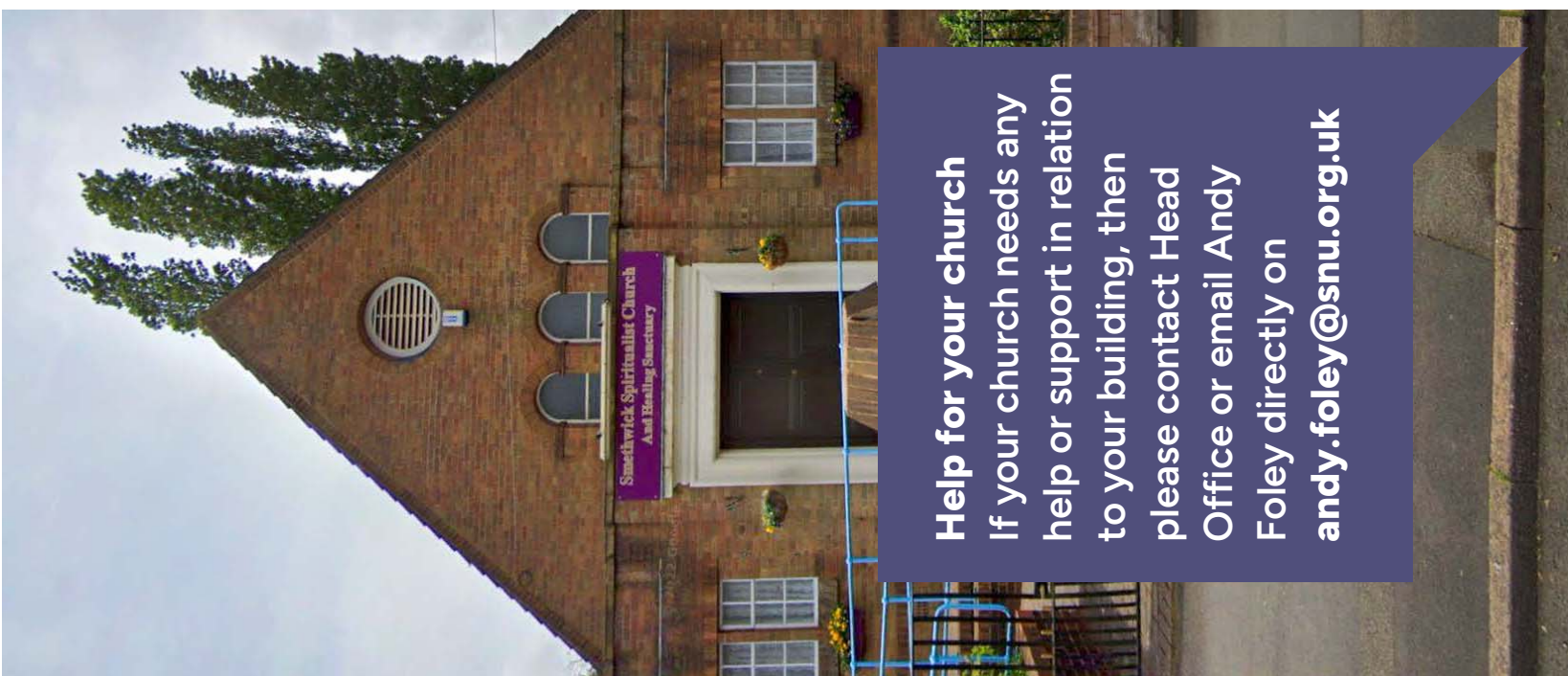
Smethwick Spiritualist Church is another that has been neglected, maintenance-wise, for decades. From its distinctive, characterful exterior to its signature-stained glass windows that line the main hall, it is a beautiful church nestled in the heart of a busy urban area that urgently required some attention and work.

The Union assisted with a grant of £60,000 in order for Nancy and the team at Smethwick to launch a renovation programme that would tackle major issues affecting the usability of the church and its spaces, as well as making it fit for modern needs and expectations.

The church electrics have been replaced in order to bring it to full compliance. An upgrade to the heating system and new facilities - including a disabled toilet - have all been installed. A common bugbear for our churches and older buildings; large areas of the roof needed to be replaced, and as part of this process, insulation was also installed in the ceiling areas to help with thermo efficiency.

Areas where the church was affected by damp were treated and, given the scope of the works, much of the church was redecorated. At the rear of the building, an area of overgrown land has been cleared and repurposed into a usable space, which has the added benefit of stopping the vegetation from encroaching into the building. During this work, waste material including asbestos was discovered, which was removed.

In the words of the committee, the project has completely 'transformed' Smethwick Spiritualist Church, with Property Manager Andy recently visiting to see the finished works and being extremely impressed with the 'fantastic' and 'transformative' outcome.



Help for your church
If your church needs any help or support in relation to your building, then please contact Head Office or email Andy Foley directly on andy.foley@snu.org.uk

Safeguarding

Promoting a safe and welcoming environment in our College, Churches and Centres, continues to be a key priority for the Union. As a charity, a religious organisation, an employer and a member of many local communities, the Union has the responsibility to provide everybody who comes into contact with us with a safe environment.

In 2024, the Union's approach and commitment to safeguarding was achieved by:

- Continuing to work with our external safeguarding partners, Thirtyone:eight, who provide strategic and management advice on developing our safeguarding provision, and a confidential hotline service for all members and Churches to seek advice or report safeguarding alerts.
- Updating and republishing our Safeguarding Policy.
- Strengthening the role of the Board's designated Safeguarding Lead to provide assurance to everybody at the Union that safeguarding is a key priority.
- Providing specialist safeguarding training to key members of the Union's management, representatives of the Union's branches, Committees, and the Ministry.
- Identifying training needs on safeguarding at District and Church level.
- Continuing to appoint Safeguarding Coordinators in every District, and Safeguarding Leads in every Church.

In 2025, the Union will further develop its safeguarding provision by:

- Reviewing and further improving the Safeguarding Policy and safeguarding pack for Churches.
- Rolling out specialist safeguarding training to the National Executive Committee, the sub-Committees, Head Office and College staff and volunteers, tutors and trainers, trainees and candidates taking awards.
- Developing the Union's Head Office function to be a source of advice and guidance on safeguarding matters.
- In line with the strategic review and modernisation of the Union's policies and Bye-laws, ensure that they reflect best practice in keeping everybody safe.
- Working more closely with Districts and Churches to provide confidence and training in dealing with safeguarding matters.

"Promoting a safe and welcoming environment in our College, Churches and Centres, continues to be a key priority for the Union. As a charity, a religious organisation, an employer and a member of many local communities, the Union has the responsibility to provide everybody who comes into contact with us with a safe environment."



Diversity & Inclusion

The guiding vision that continues to inform the Union's approach to equality, diversity and inclusion is that it needs to be fit for the 21st century.

To understand what is required to enable the Union to reflect its wider communities, it is vital that we engage with, and listen to, our members, Districts and Churches in the UK and internationally.

Annual General Meetings

Sean Taylor from the Union's National Executive Committee has been visiting a number of District Council AGMs which has provided the opportunity to meet with members and Church representatives.

The Union's AGM in 2024 was a fantastic opportunity to engage with our members. It also highlighted areas in which we can develop our accessibility to ensure that the AGM in 2025 can be accessed by many more members of the Union. We will ensure that:

- BSL is provided in-screen to enable online BSL users to engage.
- Accessible conference environment and accommodation.
- Conference lighting to meet the needs of attendees with a visual impairment.
- Accessible parking.

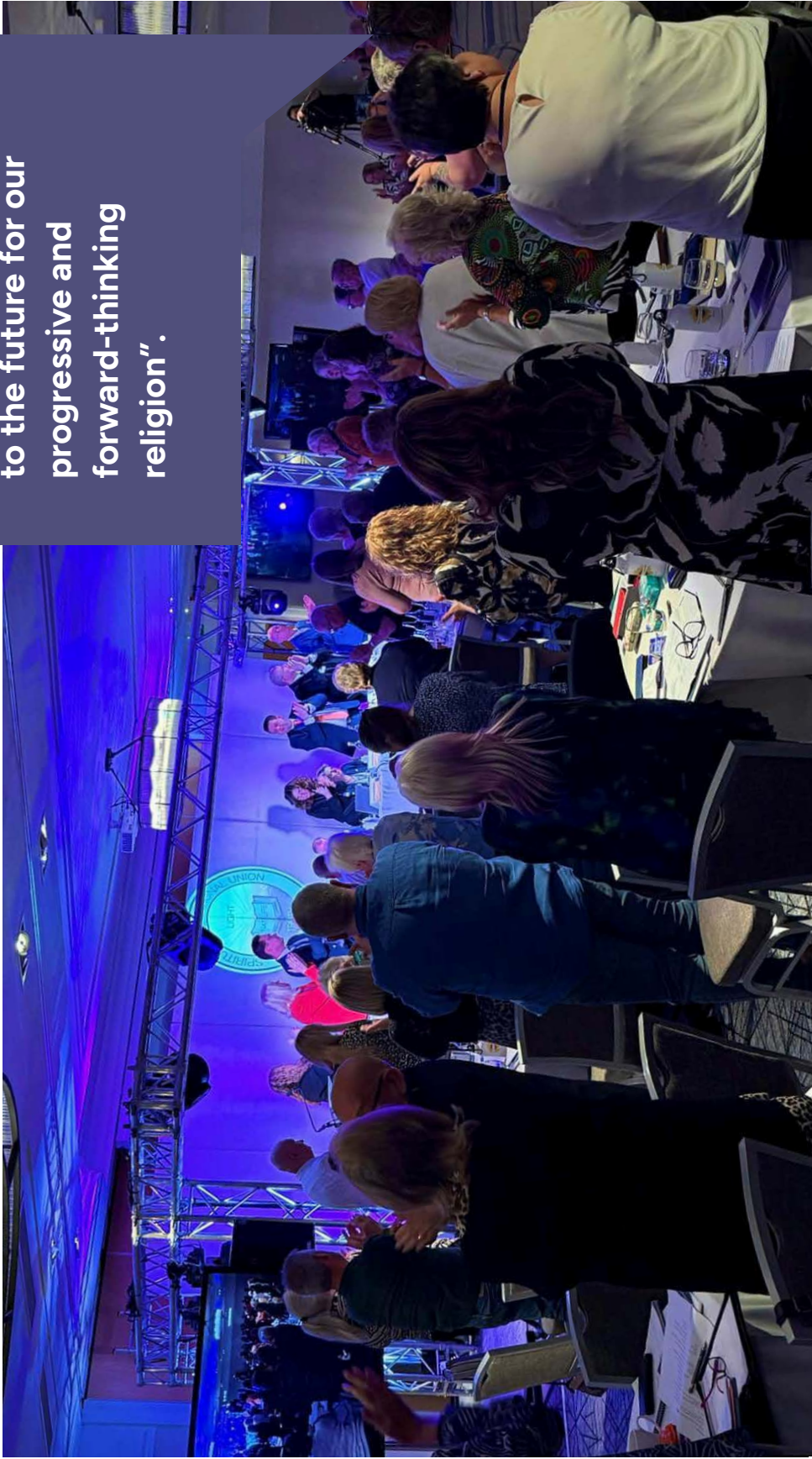
Delegates and members of the Spiritualists' National Union came together in September of 2024 for the Union's AGM, which took place in Newcastle, co-organised by the Northern District Council. Following on from its success in 2023, the event was once again a 'hybrid' format - allowing members to participate and join in discussions, debate and voting via Zoom, as well as in-person. Important motions were put forward to the members to discuss and vote on, passing amendments and key changes on how the Union operates and particularly how it can continue to modernise.

The Union were pleased to welcome more online delegates than ever before, which allowed for a weekend of fascinating and impassioned debate. There were also services of remembrance and contemplation, a dedication to arisen friends and those who had passed to spirit, and a customary evening of music and celebration on the Saturday evening after business had concluded.

The weekend's theme was 'moving forward' as members, officers, volunteers and staff alike looked ahead to the future for our progressive and forward-thinking religion.



“The weekend’s theme was ‘moving forward’ as members, officers, volunteers and staff alike looked ahead to the future for our progressive and forward-thinking religion”.





| Events

As part of Interfaith Week 2024, Sean Taylor attended the Interfaith Scotland National Conference in Dundee which was a valuable networking opportunity; going forwards Sean will attend the Scottish Interfaith group based in Glasgow to ensure that our Union and religion are represented. As part of the conference, he took part in a workshop entitled, “Engaging Young People in Interfaith Dialogue” which demonstrated Interfaith Scotland’s work with young people to further their Interfaith message. The Union’s social media platforms in 2025 will celebrate a diversity & inclusion calendar, including regular posts to celebrate and raise awareness of diversity and inclusion celebration events.

During 2025, there are plans to produce a short video featuring individual members of the Union, celebrating diversity among members of the Union. This will focus on the lived experience of the Union’s members, for example members who live with a physical or sensory impairment, BAME members, and members of the LGBTQI+ community.

The SNU has secured a stall for London Pride 2025. The event will be covered across all SNU social media platform. It is hoped that if successful, this could be further developed by reaching out to Brighton Pride, Birmingham Pride and similar events in the future.



| Education & Training

The Union continues to offer support, advice, and adjustments to members and Churches as required. For example, the inclusion of a therapy dog for a student attending AFC, helping a Church Committee explore ways of supporting a member with a hearing impairment, or explaining how Churches are able to support members who are transitioning through gender reassignment. These issues reflect just some of the needs of our members.

The Union is mindful that students of its education, training and healing courses are all unique individuals, and each have their own learning styles. Those with additional needs are given the opportunity to work with tutors virtually or in-person, to give their answers verbally or to work with a scribe in their Churches or at home. This enables students to submit coursework in an alternative way better suited to their needs.

| International

2024 saw a change of Chairperson for the SNUi, and an increase in the size of the SNUi’s Committee. The SNUi’s Committees meetings are held on a bi monthly basis, in an informal gathering in which requests, issues, and interests can be shared by all SNUi members. The Committee began a closer working relationship with the Education and Exponents Committee, which is producing some very encouraging results.

On our program at present, we have the Spiritual Research series from the Science Working Party, and we hold six services per week - one of which is an exam service and three of which are open to the general public. We have approximately sixty sessions a month across all of the programs. Members are very grateful for the opportunity that the SNUi gives for affordable mediumship training, for many it is an online church and community, which, for many, is their spiritual home. As always, we are working hard to bring more classes for those members not in Europe. We are actively promoting new and exciting sessions on the SNUi, and new tutors are beginning to step forward.



“Visitor feedback was overwhelmingly positive, and attendance figures for 2024 showed an impressive jump year-on-year, too - with over 600 more visitors”.

| Open Week 2024

The Arthur Findlay College's annual Open Week in May saw a packed programme of workshops, services, readings as much more, as a truly international audience flocked to Stansted Hall for this showcase of Spiritualism.

Taking place over the course of four days across the May bank holiday, the AFC's Open Week is a fantastic way of introducing SNU Spiritualism, its principles and teachings to newcomers. But so too does it provide a diverse collection of thought-provoking, investigative workshops and seminars for veterans, too. And, as is conventional for the world-renowned centre of learning and development, visitors came from all over the globe to attend!

Visitor feedback was overwhelmingly positive, and attendance figures for 2024 showed an impressive jump year-on-year, too - with over 600 more visitors attending when compared to the already-busy 2023 event.





| Our Finances

2024 was a successful year for the charity but one in which difficult decisions needed to be made.

Whilst inflation has reduced from the highs seen in 2022-2023, it remained higher than for many years and this impacted on the costs incurred by the Union. The disruption to supply chains across the globe caused by conflict also added to the prices the charity needed to pay for goods and services.

Support from our members, churches and students attending the Arthur Findlay College remained incredibly strong and we are grateful to everyone who continues to support our work. This income, along with funds and reserves built up over many years, has enabled us to continue to invest in the fabric of all our buildings.

During the accounting period total income increased to £5,540,514 (2023: £5,253,315) and total expenditure rose to £5,796,982 (2023: £4,788,789).

| Income

The charity generates income in various ways; donations, membership fees and our education programme is supplemented by income from property as well as dividends from our investment portfolios.

Income from our charitable activities has risen to £4,357,784 (2023: £3,739,888) thanks, in part, to the increase in students attending the Arthur Findlay College. Online content continues to be offered to all members and includes services of worship, education courses, healing, readings and training, as part of a varied programme.

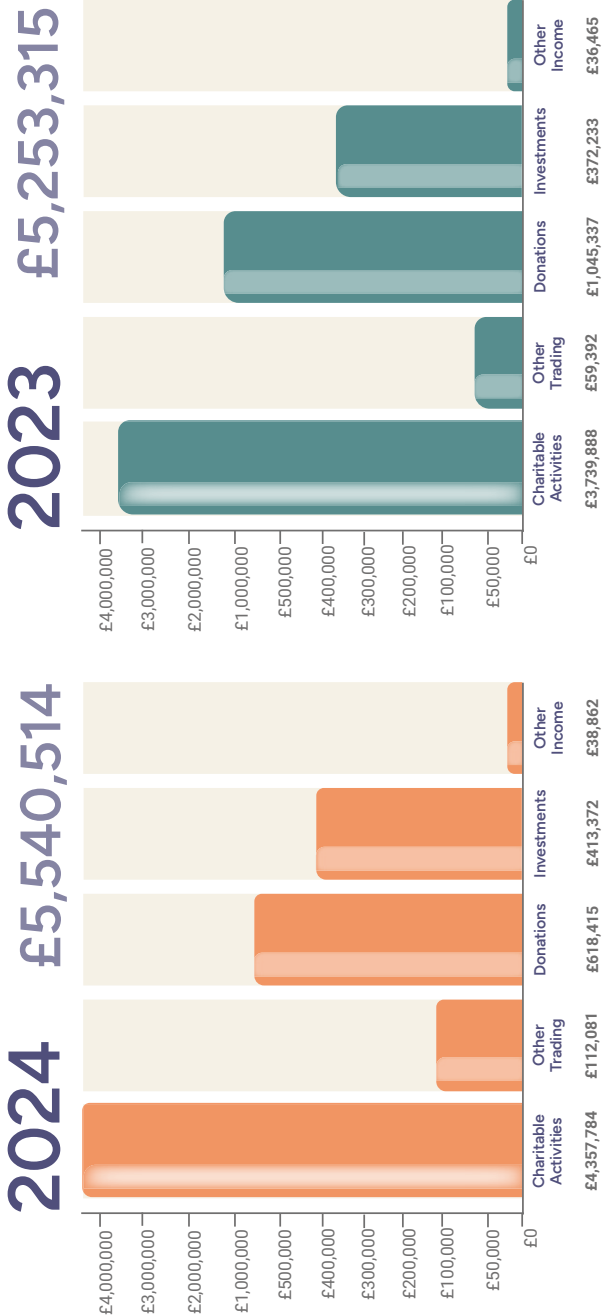
Donations and legacies were received during the year of £618,415 (2023: £1,045,337), including a legacy of £250,000 from Mrs Beryl Illstone, a long-standing member of the Union. The charity is extremely grateful for the very generous donation.

Small donations accounted for £107,659 (2023: £54,987), many thanks to those members who contributed in this way - every donation, no matter how small, is helpful!

Investment income increased during 2024 to £413,372 (2023: £372,233) as the charity benefited from increased bank interest rates.

The dividend income received by the Union across all portfolios increased by 7.5%, providing an income of £230,982 (2023: £213,870) as the portfolio shifted towards absolute return and fixed interest holdings, to take advantage of higher interest rates.

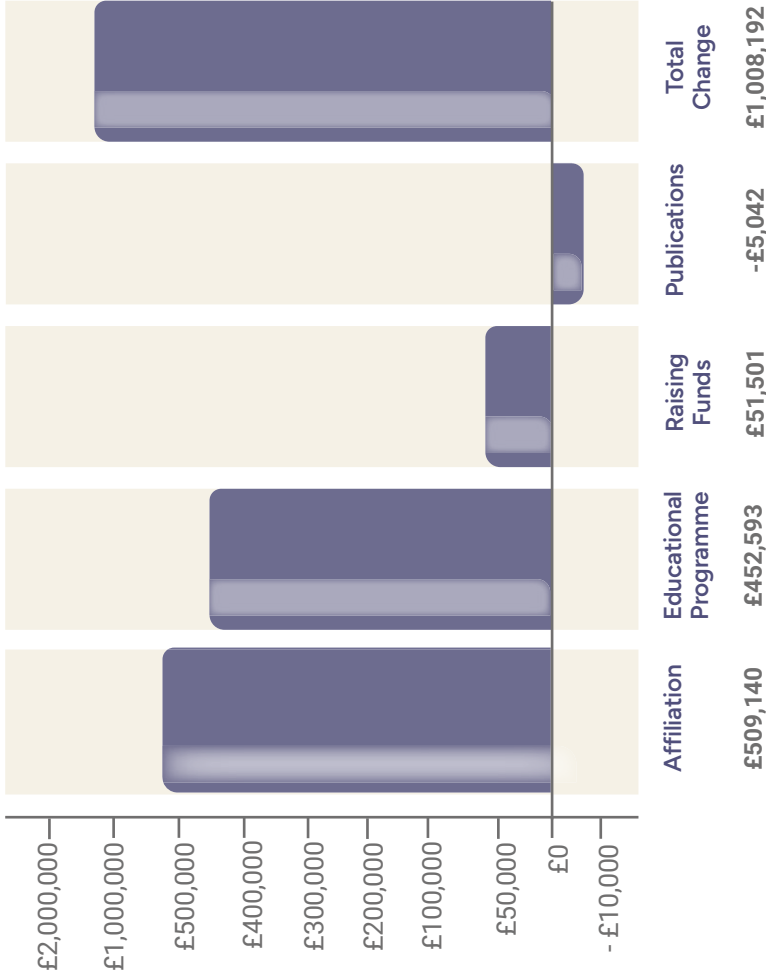
Graphic showing increase/decrease in income 2024/2023



| Expenditure

Total expenditure increased by £1,008,192 in the year, the following chart shows the key movements: Changes in expenditure year-on-year

Changes in Expenditure year-on-year



Affiliation Costs

The affiliation costs incurred by the Union increased by £509,140 to £1,055,232 (£2023: £496,092) as a result of increased grants awarded from the SNU Suspense account for closed churches.

Grants increased to £758,123 (2023: £196,540), further details can be found on page 76.

Educational Programme

Expenditure around the educational programme of £4,524,260 (2023: £4,071,667) includes all costs relating to the implementation of the course programme. Overheads for both the Arthur Findlay College and the Barbanell Centre increased as the up-tick in student numbers and the impact of inflation was felt across the procurement of all goods and services.

Staff Costs

Staff costs for the charity have increased to £2,132,681 (2023: £1,959,683) during the accounting period.

The total employee benefits for the 6 key management personnel (2023: 6) was £256,058 (2023: £300,362).

Remuneration of Key Personnel

The key management personnel of the organisation are responsible for the day-to-day running of the charity and are listed on page 51 of this report.

The remuneration of key management personnel is reviewed annually to take into account inflation, performance and the employment marketplace, in line with the SNU remuneration policy. It is the policy of the SNU that the charity should pay the minimum of the Real Living Wage for all employees.

The President's salary is reviewed every two years. The total aggregate remuneration of key management personnel is included in the notes to the accounts.

Investments & Reserves

Investment Policy

The Spiritualist's National Union is a charity whose purpose is to promote the advancement and diffusion of Spiritualism. The financial objective of the investment portfolio is to maintain the real value of the assets whilst generating a stable and sustainable return to help fund the charities activities over the medium to long term in order to secure the activities of the Union into the future.

The Charity's Aim

The SNU has £7,573,111 (market value) (2023: £8,586,062) of investment assets as of December 2024 excluding the Investment Properties which are not subject to this policy. The portfolio represents part of the charity's long term financial assets, the income from which helps finance the charities activities and objects.

The Trustees of the charity have collective responsibility for financial decision making but delegate some aspects of investment policy to the Finance Committee, who in turn utilise the discretionary managed services of RBC Brewin Dolphin Limited ("RBC Brewin Dolphin")

The discretionary managed service requires the investment managers to make the day-to-day decisions regarding investments within the portfolio with the trustees setting out the structure and parameters of the portfolio.

Investment Objectives and Attitude to Risk

The SNU needs to produce the best financial return within an acceptable level of risk. The SNU's need for income to some extent is dictated by the wish to help maintain the operations and objects of the charity and so the investment objective is to generate an income return of between 3.0%-3.5% per annum. Inflation remains an important consideration to the charity and so it is intended that the level of income generated by the portfolio should grow at least in line with inflation over the medium to long-term.

A secondary objective of the portfolio is to maintain the capital value in real terms over the medium to long term measured by UK CPI.

The Trustees understand that in order to mitigate inflation risk, this is likely to mean that investment will partly be in real assets, such as equities and that in the short-term the capital value will fluctuate. The Trustees are able to tolerate volatility of the capital value as long as the charity is able to meet its short-term commitments through accumulated income or liquid spendable capital assets.

The SNU's assets can be invested widely and should be diversified by asset class, geographical spread, and unit and investment trust investment manager and by sector and security. Asset classes that the Trustees consider could be included within the portfolio are cash, gilts, corporate bonds, equities, property, structured products, private equity, commodities and any other asset

that is deemed suitable for the charity. Access to these asset classes could be achieved directly or via collective investment vehicles such as unit or investment trusts. No single direct equity investment should exceed 5% of the total value of the portfolio. No collective funds will represent more than 12% of the total value.

The Finance Committee is charged with agreeing a suitable asset allocation strategy with the investment managers, which is set with the aim to achieve the overall charity's investment objectives. This is the RBC Brewin Dolphin Risk Classification Category 5 (Moderate Risk); with an Investment Objective: Income and Capital Growth.

The RBC Brewin Dolphin Risk Category 5 Index is used as a benchmark for the portfolio

Cash	Risk Category 5 Index Weighting
	2.5%
Equities	52.5%
Bonds	25.0%
Alternatives	20.0%

The Trustees would not expect the investment manager to invest more than 15 percentage points away from the Equities, Bonds and Alternatives element of this benchmark and 10 percentage points away from the benchmark for Cash. It is noted that the Alternative element of the index could be represented by a range of assets such as Infrastructure Funds, Private Equity, Hedge Funds or Structured Products. This list is not exhaustive.

Currency

The base currency of the charity's operations and liabilities is sterling and therefore the majority of the investment portfolio should be based in sterling. Investments may be made in non-sterling assets but should not exceed more than half of the total investment portfolio. Where hedging is used by unit and investment trust managers and the price of the asset is based in sterling, this will be considered a sterling-based asset.

Credit

Any cash balances held by the investment managers should be deposited with suitable institutions with at least an "A-" investment grade credit rating or better. Similarly, any fixed interest exposure should be focused on investment grade issuers. However, the Trustees accept that bond issues that are not rated by credit rating agencies may be included in the portfolio if the investment manager deems them suitable for their purpose.

Liquidity Requirements

The charity tends to utilise mainly income from the portfolio; however, capital could be used in extreme circumstances. The Trustees will retain the majority of any excess income to the extent it is not invested such to try and smooth any poor years of investment returns. To allow for volatility in income levels produced by the portfolio the Trustees wish to maintain at least a year's worth of expenditure in cash.

Time Horizon

The charity is expected to exist in perpetuity and investments should be managed to meet the investment objective and ensure its sustainability over the long-term. The charity can therefore adopt a long-term investment time horizon (10+ years).

Ethical Considerations

The SNU's assets should be invested in line with its aims and broadly speaking would prefer that any new investments did not conflict with the view and teachings of Spiritualism. Specifically, the Trustees would not wish to be invested in companies that derive more than 10% of revenue from armaments, tobacco, drugs testing or pornography. These restrictions apply to directly held securities.

The Trustees note that pooled funds are used by many investors looking to access a wider range of stocks and improve diversification. While investing in pooled funds means the charity could have indirect exposure to some of the restricted areas listed above, the level of potential exposure is considered small enough to be acceptable and not in conflict with the charity's aims.

The Trustees expect the investment manager to incorporate Environmental, Social and Governance (ESG) factors into their investment process and require the investment manager to be a signatory to the United Nations Principles for Responsible investment/ The UK Stewardship Code, reflecting the Charity's wish to invest in a sustainable manner.

Management Reporting and Monitoring

The Trustees have appointed RBC Brewin Dolphin to manage the portfolio(s) on a Discretionary basis in line with this policy. RBC Europe Limited provides custody of assets via its nominee arrangements as authorised and monitored by the Financial Conduct Authority (FCA). RBC Brewin Dolphin are required to produce a valuation and performance report for each Finance committee meeting. RBC Brewin Dolphin should only take instruction from any two trustees who are authorised by the Trustees to give instructions.

The Finance Committee has responsibility for agreeing investment strategy and monitoring the investment assets. The Committee meets regularly to review the portfolio, including an analysis of return, risk and asset allocation.

The Finance Committee reports formally to the NEC on at least an annual basis. This report should include a review of asset allocation, strategy performance, risk profile and consistency with the long-term investment objects.

Approval and Review

This Investment Policy Statement has been prepared by the Finance Committee and is approved by the NEC to provide a framework for the management of the SNU's investment assets. It will be reviewed on a regular basis to ensure its continuing appropriateness.

During the accounting period, the portfolio provided a total return of 7.9% (2023: 7.63)% after fees, while over the same period UK Consumer Price Inflation (CPI) added 2.5% (2023: 3.95%). The total value of reserves held on 31st December 2024 is £17,554,649 (2023:£17,431,915) . Details of designated funds are included in note 20.

Reserves policy

The SNU has numerous reserves within its balance sheet. Some of these reserves have restrictions placed upon them from external sources (Restricted Funds), usually where funds have been donated from a third party for use in a specific way. There are also other reserves which have been appropriated or earmarked for a specific purpose (unrestricted reserves).

The total level of funds held is £17,554,649 (2023: £17,431,914), of which £1,134,581 (2023: £799,877) is held as restricted funds and a further £10,273,641 (2023: £10,829,072) is held as designated funds. The capital and revaluation reserves total £3,087,174 (2023: £3,087,174).

Change in Funds 2024	
Restricted Funds	£ 334,704
Designated Funds	- £ 555,431
General Funds	£343, 462
	£ 122,735

During the accounting period, the following matters were addressed.

President’s Fund

When elected, President Jackie Wright pledged that any tutor fees earned when serving the College would be donated back to the Union and placed in a fund to assist churches cover the expenses of urgent, essential and mandatory items they need. Additionally, Minister Wright stated that she did not wish to receive any uplift in pay during her period in office.

The Board agreed that the Union would commit to donate an amount equivalent to any cost-of-living uplift due to Minister Wright, but not taken, into the Presidents Fund from General Funds. This action allows the Union to reflect the potential cost of an uplift of the President's pay whilst honouring Minister Wright's wishes.

This arrangement will be reviewed annually.
The fund currently stands at £17,442 (2023: £6,485)
Details of all funds can be found in Note 20 of the accounts.

Fund of Benevolence

During the audit process it was noted that the accounts relating to the Spiritualist’ National Union Fund of Benevolence should be included in the accounts of the Spiritualists’ National Union. The funds relating to the Fund of Benevolence have therefore been added to the Funds Note 86 in the accounts.

Bursary Funds

Following the 2024 Annual General Meeting where members asked for more information relating to bursary funds, current funds relating to bursary funds have been collated into one line in Note 86 under Bursary Funds to highlight their presence.

Head Office Bequest

During the accounting period the Union was in receipt of a bequest from Mrs Beryl Illstone who kindly left the proceeds of her home to the Spiritualists’ National Union to be used for the benefit of Head Office

General Funds

General funds of £3,059,253 (2023: £2,715,791) are held.

The NEC consider that the amount of general funds held is sufficient to support the running costs of the charity, including the maintenance of its assets, in the event of any major disruption to its income streams. However, the Board is cognisant that the charity is heavily reliant on the income generated by the Arthur Findlay College. To this end, the Trustees are exploring ways in which to diversify the charity’s income streams to further safeguard the future of both the SNU and Spiritualism.

Any identified additional income streams, when considered in conjunction with the Union's strategic plan and the wider operational needs of the charity, will form the basis of a formal reserves policy, going forward.

Suspense Fund

From time-to-time, SNU churches held in Sole Trust are closed and sold where it has not been possible to form a new committee to run the church. Once a church property is sold, the assets from the Church are added to the Union's suspense account, minus any property management fees, outstanding bills, legal fees etc.

The funds are then held in Suspense for a period of six years, before they are moved to Aged Suspense. The six-year period commences from the formal date of the church closure, as ratified by the National Executive Committee.

However, new churches and, in some cases, existing churches (depending on their Trust Deed) that are established within three-mile radius of the closed church, are entitled to apply to the Union for a grant from suspense funds within the six-year period. Once funds are moved into Aged Suspense, the Union can apply them at its discretion, for the furtherance of Spiritualism, in a variety of ways. During the accounting period, the Union has awarded grants to churches from Aged Suspense of £758,123 (2023: £196,540) in the form of winter fuel grants of £6,700 (2023: £32,000) as well as to help with repairs and improvements to church buildings. Further details can be found on page 63.

The Union is conscious that awarding grants depletes the funds available in Aged Suspense, and that the only income into the fund is received when churches close; a situation that the Union works hard to avoid. The Union continues to explore ways in which additional income streams can be found to ensure that the Suspense Fund can be maintained at appropriate levels in the future.

Currently the suspense account holds funds from the sale of the following church properties:

Walthamstow Lyceum
Barrow
Cirencester
Rochester Square
Wembley
Solihull
Peterborough
Skelmersdale
Leicester
Battersea
Newport
Aberdare
Bristol Soundwell
Hayes
Chippenham
Swindon

Principal Risks & Uncertainties

The Trustees review the Risk Management Strategy on an annual basis, and the management and mitigation of key corporate risks at each of its quarterly meetings.

The Trustees have identified the following key risks facing the Charity as of December 2024:

Governance

New governance arrangements are being rolled out in response to the recommendations of the Charity Governance Code to ensure that the Union is always following best practice.

Business Continuity

Disaster recovery plans are being reviewed and stress-tested to ensure that any impacts from external incidents or events are minimised, the Trustees are committed to continually reviewing the strategy for its appropriateness and the diversification of income streams.

Membership

New initiatives continue to be identified and rolled out to retain and increase the number of the individual members.

Safeguarding

The safeguarding provision is continually being developed with the support of external safeguarding consultants to ensure it is fit for purpose and serves to protect everybody who comes into contact with the charity.

Economic Uncertainty

Grants towards utility costs have been made available to Churches; the Trustees are continually reviewing opportunities to maximise income and streamline processes to reduce expenditure where possible.

Structure

Governance

The Spiritualists' National Union (SNU) is a company limited by guarantee, governed by its Memorandum and Articles of Association as amended 24th July 2021. It is registered as a religious charity with the Charity Commission (261898), the Office of the Scottish Charity Regulator (SC041714) and with Companies House (071661) The Union is committed to the principles of the Charity Governance Code.

Organisation

The Board of Trustees (the National Executive Committee) administers the charity. The Board usually meets formally on a quarterly basis, using a hybrid of in-person and virtual meetings. During 2024, the Board held five formal meetings.

The structure of the Board is as follows:

The Officers

The President, who acts as an ambassador for the Union and Principal to the Arthur Findlay College and the Barbanell Centre.

Two Vice-Presidents, one of whom chairs the General Purposes Committee, and the other who chairs the Ministry Development Committee and is the Board's designated Safeguarding Lead.

The Finance Director, who chairs the Finance Committee, which has oversight of property management and finance-related matters of the Union.

Designated Directors

The Education & Exponents Director, who manages and oversees the work of the Education & Exponents Committee, Healing Committee and SNUi.

Ordinary Directors

Three Ordinary Directors, who oversee respectively:

1. Spiritual Life and Philosophy
2. Volunteer and Community Engagement
3. Equality, Diversity and Inclusion, and the Environment

Council Director

The Council Director, who creates a two-way link between the Council and the Board.

Sub-Committees

The Board has designated a number of sub-Committees with delegated responsibility for oversight and management of key areas:

Collegiate Committee - Responsible for the provision of educational facilities at the Arthur Findlay College for the purpose of advancing the religion and religious philosophy of Spiritualism.

Ministry Development Committee - Responsible for all matters in connection with the Ministership and the Officiacy.

General Purposes Committee - Responsible for considering, advising upon and recommending changes in the structure of the Union relating to status and policy, and considering and advising the Board upon all matters in connection with the Union's constitution.

Education and Exponents Committee - Responsible for the administration of the Union's awards and accreditation.

Finance Committee - Responsible for overseeing the Union's finances under the Chairmanship of the Finance Director of the Union.

Healing Committee - Promoting and encouraging the practice, study and investigation of the art and science of Spiritualist healing.

Complaints Committee - Responsible for dealing with complaints in relation to matters for which responsibility is not assigned under the Bye-laws to another body.

The Council

The Council meets four times each year and acts as the advisory body to the National Executive Committee, providing a vital link between the Union, the Districts and the Churches.

Appointment Of Trustees

The President and Vice-Presidents are elected in alternate years, the President and one Vice-President in one year, the other Vice-President in the alternate year, each serving for a term of two years.

The election is by postal vote of eligible Church Representatives, Individual Members, Kindred Body Representatives and Pioneer Centre Representatives. The Financial Director is appointed biennially by the continuing or incoming President and Vice-Presidents, as the case may be, in consultation with the outgoing President or Vice-Presidents, from among Individual Members who are full members of affiliated bodies and have been duly nominated for this office.

The Designated Directors are appointed annually by the continuing or incoming Officers of the Union, in consultation with the outgoing Officers, from among Individual Members who are full members of affiliated bodies and have been duly nominated for these offices. Ordinary Members are appointed annually by the National Executive Committee from among Individual Members who are full members of affiliated bodies.

The Council Member to the National Executive Committee is elected annually by the members of the Council from among Councillors. All eligible members are circulated invitations to nominate Trustees prior to the AGM, advising them of the positions to be filled and the names of the retiring Trustees. Procedures for nomination provide an outline job description and an estimate of the time commitment involved in fulfilling the role.

Trustee Induction & Training

By the nature of the qualifications for office for election or appointment to the National Executive Committee, any candidates will have some experience of working at both district and national level. The training and induction procedure for Trustees ensures that all new members of the National Executive Committee are aware of the legal and regulatory requirements, and the responsibilities of holding office. The content of the training is kept under review, to ensure that the directors of the company are appraised of relevant charity and company law, and have sufficient knowledge and skills to discharge their duties as company directors and charity Trustees.

When considering the appointment of new Trustees, the National Executive Committee has regard to the requirement for any specialist skills needed within the different areas of the Union's work. The Trustees are all volunteers, with the exception of the President, which is a paid role.

Branches

The Union presently has two Branches: -

The Spiritualists' Lyceum Union, with special responsibility for the education and training of the young. The Lyceum predates the Union and has a long and proud history of teaching the young within the movement.

SNU International (SNUi), made up of subscribing members, some of whom are also Individual Members of the Union. The branch has a strong educational basis, through the provision of teaching and tuition to members, online. Membership is international and has attracted support from around the world. SNUi helps address the requirement within the Union's Articles to provide missionary work and thus spread the philosophy and teaching of SNU Spiritualism well beyond the UK.

District Councils

Local affairs and the furtherance of the objects of the Union within the UK are delegated to fourteen district councils. Each district council is run by a committee elected by the affiliated bodies and Individual Members within the district.

Membership

There are seven classes of members as detailed in the Articles of Association, namely: -

- (a) the accredited representatives of Branches.
- (b) the accredited representatives of District Councils
- (c) Church Representatives
- (d) Kindred Body Representatives
- (e) Pioneer Centre Representatives
- (f) Individual Members
- (g) Affiliate Members.

Volunteers

The Union is very involved in the community and is dependent on volunteers to fulfil many of its key functions at all operational levels. The National Executive Committee, its subcommittees, the Council and the District Councils are all operated by volunteers, without whose dedication the Union would find it impossible to operate in all the areas it does. In addition to those who work within the Union,

both at district and national level, many more hundreds of volunteers work tirelessly to run and maintain the national network of Churches and centres throughout the country. The Union pays tribute to their dedication and hard work to further the philosophy of Spiritualism, within their local community.

Public Benefit

In carrying out its activities during the year, the Trustees have had due regard to the Charity Commission's guidance on public benefit.

Spiritualist healing is open to all and is available at most of our 300 centres where donations can be given, if desired. The Union runs a training program to develop spiritual healing mediums. Education courses are available to promote speakers and mediums. Weekly church services are open to all. Our Churches and centres provide comfort to those who have been bereaved and hire out rooms for use by public services, charities and other community groups. Our Ministry works within the community, both to conduct official Spiritualist services, but also in supporting prison and hospital chaplaincy and the well-being of individuals, both within and without the movement. Our commitment, back in 2022, to providing Warm Spaces during winter for communities to access has proven popular and is set to continue into 2025.

Fundraising

The charity engages in fundraising activities with the general public in the form of accepting donations. The Trustees adhere to the obligations of the Charities (Protection and Social Investment) Act 2016 and the Code of Fundraising Practice issued by the Fundraising Regulator.

- Third parties such as professional fundraisers or commercial participators are not used to assist with fundraising.
- The charity received no formal substantiated complaints in this year regarding its fundraising practices.
- We do not petition or make direct approaches for fundraising purposes and place no pressure on individuals, vulnerable or otherwise, in the course of or in connection with the fundraising for the charity. The main source of our donations comes from our healing activities and our visitors, and it's always made clear that donations are voluntary.
- We monitor our fundraising activities by keeping records of donations received and ensure safe money handling practices are in place to keep donations secure, prior to banking.

Management

Directors and Trustees serving during 2024 and to date.

The Directors of the charitable company are its Trustees for the purposes of charity law, and throughout this report are collectively referred to as the Trustees.

President

Minister Jackie Wright

Vice President

Minister Julia Almond - to 15 October 2024

Minister Colin Lomax - from 16 October 2024

Vice President

Marie Lisseman – to 31 January 2025

Les Henderson – from 2 February 2025

Finance Director

James Underwood

Exponents & Education Director

Richard Cuthbert - to 28 September 2024

Mary Watkin - from 18 October 2024

Council Member

Jean Smart

Ordinary Director 1

Adam Berry - to 9 May 2024

Robert Dangerfield - from 30 May 2024 to 16 March 2025

Ordinary Member 2

Patricia Redman - from 10 February 2024

Ordinary Member 3

Sean Taylor - from 24 January 2024

Senior Staff

Responsible for the day-to-day running of the charity .

Head of Governance

Lisa Dawson – to 9 September 2024

Daniel James-Partridge – from 24 February 2025

Chief Operating Officer

Michelle Dale – from 24 March 2025

Head Office Manager

Rachael Loukes – to October 2024

Lindsey Penny – from October 2024

General Manager (Barbanell Centre)

Seamus Davies – to January 2025

General Manager (Arthur Findlay College)

Alessandro Blasi – to December 2024

(Acting) Vince Gillam – from December 2024 to April 2025

Auditors

Price Bailey LLP,

Tennyson House,

Cambridge Business Park,

Cambridge,

CB4 0WZ

Lloyds Bank

Westminster House

Swansea SA7 9HG

Close Brothers Group

10 Crown Place

London EC2A 4FT

Registered Office

The Coach House,

Stansted Hall,

Stansted Mountfitchet,

Essex

CM24 8UD

Solicitors

Anthony Collins Solicitors

134 Edmund Street

Birmingham

B3 2ES

Pannone Corporate LLP

378–380 Deansgate

Manchester

M3 4LY

Stockbrokers

Brewin Dolphin,

9 Colmore Row

Birmingham

B3 2BJ

Trustees’ Responsibilities In Relation to the Financial Statements

In preparing the Trustee report and the financial statements in accordance with applicable law and United Kingdom Accounting Standards (United Kingdom Generally Accepted Accounting Practice) company law requires the directors to prepare financial statements for each financial year.

Under that law, the directors have elected to prepare the financial statements in accordance with United Kingdom Generally Accepted Accounting Practice (United Kingdom Accounting Standards and applicable law). Under company law, the directors must not approve the financial statements unless they are satisfied that they give a true and fair view of the state of affairs of the charitable company, and of the incoming resources and application of resources, including the income and expenditure, of the charitable company for that period. In preparing these financial statements, the directors are required to:

1. Select suitable accounting policies and then apply them consistently.
2. Observe the methods and principles in the Charities SORP FRS102.
3. Make judgments and accounting estimates that are reasonable and prudent.
4. State whether applicable UK Accounting Standards have been followed, subject to any material departure disclosed and explained in the financial statements.
5. Prepare the financial statements on the going concern basis, unless it is inappropriate to presume that the charitable company will continue in operation.

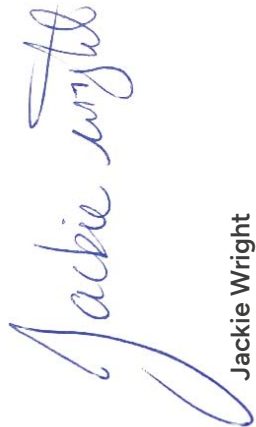
The Trustees are responsible for keeping adequate accounting records that are sufficient to show and explain the charitable company’s transactions and disclose with reasonable accuracy, at any time, the financial position of the charitable company and enable them to ensure that the financial statements comply with the Companies Act 2006, the Charities and Trustee-Director Investment (Scotland) Act 2005 and the Charities Accounts (Scotland) Regulations 2006 (as amended). They are also responsible for safeguarding the assets of the charitable company and hence for taking reasonable steps for the prevention and detection of fraud and other irregularities.

In so far as the Trustee are aware:

- there is no relevant audit information of which the charitable company’s auditor is unaware; and
- the Trustee-Directors have taken all steps that they ought to have taken to make themselves aware of any relevant audit information and to establish that the auditor is aware of that information.

The Trustee-Directors are responsible for the maintenance and integrity of the corporate and financial information included on the charitable company’s website. Legislation in the United Kingdom governing the preparation and dissemination of financial statements may differ from legislation in other jurisdictions. This report has been prepared in accordance with the provisions applicable to companies subject to the small companies’ regime.

By order of the National Executive Committee



Jackie Wright
President of the Spiritualists’ National Union
The Coach House,
Stansted Hall, Stansted Mountfitchet, Essex, CM24 8UD

INDEPENDENT AUDITORS' REPORT TO THE MEMBERS OF SPIRITUALISTS' NATIONAL UNION

Opinion

We have audited the financial statements of Spiritualists' National Union (the 'charity') for the year ended 31 December 2024 which comprise the Statement of Financial Activities, the Balance Sheet, the Statement of Cash Flows and the related notes, including a summary of significant accounting policies. The financial reporting framework that has been applied in their preparation is applicable law and United Kingdom Accounting Standards, including Financial Reporting Standard 102 'The Financial Reporting Standard applicable in the UK and Republic of Ireland' (United Kingdom Generally Accepted Accounting Practice).

In our opinion the financial statements:

- give a true and fair view of the state of the charitable company's affairs as at 31 December 2024 and of its incoming resources and application of resources, including its income and expenditure for the year then ended;
- have been properly prepared in accordance with United Kingdom Generally Accepted Accounting Practice; and
- have been prepared in accordance with the requirements of the Companies Act 2006.

Basis for opinion

We conducted our audit in accordance with International Standards on Auditing (UK) (ISAs (UK)) and applicable law. Our responsibilities under those standards are further described in the Auditors' responsibilities for the audit of the financial statements section of our report. We are independent of the charitable company in accordance with the ethical requirements that are relevant to our audit of the financial statements in the United Kingdom, including the Financial Reporting Council's Ethical Standard, and we have fulfilled our other ethical responsibilities in accordance with these requirements. We believe that the audit evidence we have obtained is sufficient and appropriate to provide a basis for our opinion.

Conclusions relating to going concern

In auditing the financial statements, we have concluded that the Trustees' use of the going concern basis of accounting in the preparation of the financial statements is appropriate.

Based on the work we have performed, we have not identified any material uncertainties relating to events or conditions that, individually or collectively, may cast significant doubt on the charitable company's ability to continue as a going concern for a period of at least twelve months from when the financial statements are authorised for issue.

Our responsibilities and the responsibilities of the Trustees with respect to going concern are described in the relevant sections of this report.

INDEPENDENT AUDITORS' REPORT TO THE MEMBERS OF SPIRITUALISTS' NATIONAL UNION
(CONTINUED)

Other information

The other information comprises the information included in the Annual Report other than the financial statements and our Auditors' Report thereon. The Trustees are responsible for the other information contained within the Annual Report. Our opinion on the financial statements does not cover the other information and, except to the extent otherwise explicitly stated in our report, we do not express any form of assurance conclusion thereon. Our responsibility is to read the other information and, in doing so, consider whether the other information is materially inconsistent with the financial statements or our knowledge obtained in the course of the audit, or otherwise appears to be materially misstated. If we identify such material inconsistencies or apparent material misstatements, we are required to determine whether this gives rise to a material misstatement in the financial statements themselves. If, based on the work we have performed, we conclude that there is a material misstatement of this other information, we are required to report that fact.

We have nothing to report in this regard.

Opinion on other matters prescribed by the Companies Act 2006

In our opinion, based on the work undertaken in the course of the audit:

- the information given in the Trustees' Report including the Strategic Report for the financial year for which the financial statements are prepared is consistent with the financial statements.
- the Trustees' Report and the Strategic Report have been prepared in accordance with applicable legal requirements.

Matters on which we are required to report by exception

In the light of our knowledge and understanding of the charitable company and its environment obtained in the course of the audit, we have not identified material misstatements in the Trustees' Report including the Strategic Report.

We have nothing to report in respect of the following matters in relation to which Companies Act 2006 requires us to report to you if, in our opinion:

- adequate accounting records have not been kept, or returns adequate for our audit have not been received from branches not visited by us; or
- the financial statements are not in agreement with the accounting records and returns; or
- certain disclosures of Trustees' remuneration specified by law are not made; or
- we have not received all the information and explanations we require for our audit.

Responsibilities of trustees

As explained more fully in the Trustees' Responsibilities Statement, the Trustees (who are also the directors of the charitable company for the purposes of company law) are responsible for the preparation of the financial statements and for being satisfied that they give a true and fair view, and for such internal control as the Trustees determine is necessary to enable the preparation of financial statements that are free from material misstatement, whether due to fraud or error.

In preparing the financial statements, the Trustees are responsible for assessing the charitable company's ability to continue as a going concern, disclosing, as applicable, matters related to going concern and using the going concern basis of accounting unless the Trustees either intend to liquidate the charitable company or to cease operations, or have no realistic alternative but to do so.

INDEPENDENT AUDITORS' REPORT TO THE MEMBERS OF SPIRITUALISTS' NATIONAL UNION
(CONTINUED)

Auditors' responsibilities for the audit of the financial statements

Our objectives are to obtain reasonable assurance about whether the financial statements as a whole are free from material misstatement, whether due to fraud or error, and to issue an Auditors' Report that includes our opinion. Reasonable assurance is a high level of assurance, but is not a guarantee that an audit conducted in accordance with ISAs (UK) will always detect a material misstatement when it exists. Misstatements can arise from fraud or error and are considered material if, individually or in the aggregate, they could reasonably be expected to influence the economic decisions of users taken on the basis of these financial statements.

Irregularities, including fraud, are instances of non-compliance with laws and regulations. We design procedures in line with our responsibilities, outlined above, to detect material misstatements in respect of irregularities, including fraud. The extent to which our procedures are capable of detecting irregularities, including fraud is detailed below:

- We reviewed systems and procedures to identify potential areas of management override risk. In particular we agreed the financial statements to underlying records, and we carried out testing of journal entries and other adjustments for appropriateness.
- We reviewed minutes of Trustee Board meetings.
- We reviewed any correspondence with the Charity Commission and the procedures in place for the reporting of any incidents to the Trustee Board including serious incident reporting.
- We reviewed the risk management processes and procedures in place including a review of the risk register.
- We made enquiries of management and officers of the charitable company regarding laws and regulations applicable to the organisation and discussed whether there had been any known breaches of laws and regulations in order to consider any possible further considerations or impact upon the charity.

Because of the inherent limitations of an audit, there is a risk that we will not detect all irregularities, including those leading to a material misstatement in the financial statements or non-compliance with regulation. This risk increases the more that compliance with a law or regulation is removed from the events and transactions reflected in the financial statements, as we will be less likely to become aware of instances of non-compliance. The risk is also greater regarding irregularities occurring due to fraud rather than error, as fraud involves intentional concealment, forgery, collusion, omission or misrepresentation.

A further description of our responsibilities for the audit of the financial statements is located on the Financial Reporting Council's website at: www.frc.org.uk/auditorsresponsibilities. This description forms part of our Auditors' Report.

INDEPENDENT AUDITORS' REPORT TO THE MEMBERS OF SPIRITUALISTS' NATIONAL UNION
(CONTINUED)

Use of our report

This report is made solely to the charitable company's members, as a body, in accordance with Chapter 3 of Part 16 of the Companies Act 2006. Our audit work has been undertaken so that we might state to the charitable company's members those matters we are required to state to them in an Auditors' Report and for no other purpose. To the fullest extent permitted by law, we do not accept or assume responsibility to anyone other than the charitable company and its members, as a body, for our audit work, for this report, or for the opinions we have formed.

Suzanne Goldsmith FCA (Senior Statutory Auditor)

for and on behalf of

Price Bailey LLP
Chartered Accountants
Statutory Auditors
Tennyson House
Cambridge Business Park
Cambridge
Cambridgeshire
CB4 0WZ

Date: 13 August 2025

STATEMENT OF FINANCIAL ACTIVITIES (INCORPORATING INCOME AND EXPENDITURE ACCOUNT)
FOR THE YEAR ENDED 31ST DECEMBER 2024

	Note	Unrestricted funds 2024 £	Restricted funds 2024 £	Total funds 2024 £	Total funds 2023 £
Income from:					
Donations and legacies	2	259,445	358,970	618,415	1,045,337
Charitable activities	3	4,355,751	2,033	4,357,784	3,739,888
Other trading activities	4	112,081	-	112,081	59,392
Investments	5	410,938	2,434	413,372	372,233
Other income	6	38,862	-	38,862	36,465
Total income		<u>5,177,077</u>	<u>363,437</u>	<u>5,540,514</u>	<u>5,253,315</u>
Expenditure on:					
Raising funds	7	-	57,858	57,858	6,357
Charitable activities	8	5,729,920	9,204	5,739,124	4,782,433
Total expenditure		<u>5,729,920</u>	<u>67,062</u>	<u>5,796,982</u>	<u>4,788,790</u>
Net (expenditure)/income before net gains on investments		<u>(552,843)</u>	<u>296,375</u>	<u>(256,468)</u>	<u>464,525</u>
Net gains on investments	15	340,761	38,442	379,203	282,063
Net (expenditure)/income		<u>(212,082)</u>	<u>334,817</u>	<u>122,735</u>	<u>746,588</u>
Transfers between funds	20	113	(113)	-	-
Net movement in funds before other recognised gains/(losses)		<u>(211,969)</u>	<u>334,704</u>	<u>122,735</u>	<u>746,588</u>
Other recognised gains/(losses):					
Losses on revaluation of fixed assets		-	-	-	(267,000)
Net movement in funds		<u>(211,969)</u>	<u>334,704</u>	<u>122,735</u>	<u>479,588</u>
Reconciliation of funds:					
Total funds brought forward		16,632,037	799,877	17,431,914	16,952,326
Net movement in funds		(211,969)	334,704	122,735	479,588
Total funds carried forward		<u>16,420,068</u>	<u>1,134,581</u>	<u>17,554,649</u>	<u>17,431,914</u>

The Statement of Financial Activities includes all gains and losses recognised in the year.

The notes on pages 66 to 96 form part of these financial statements

BALANCE SHEET
AS AT 31ST DECEMBER 2024

	Note	2024 £	2023 £
Fixed assets			
Tangible assets	13	4,948,639	4,961,866
Investments	15	7,573,111	8,584,062
Investment property	14	3,044,818	3,018,000
Total fixed assets		<u>15,566,568</u>	<u>16,563,928</u>
Current assets			
Stocks	16	59,266	56,620
Debtors	17	454,280	163,894
Investments	18	412,872	683,992
Cash at bank and in hand		1,748,804	1,036,631
Total current assets		<u>2,675,222</u>	<u>1,941,137</u>
Creditors: amounts falling due within one year	19	(687,141)	(1,073,151)
Net current assets		<u>1,988,081</u>	<u>867,986</u>
Total assets less current liabilities		<u>17,554,649</u>	<u>17,431,914</u>
Total net assets		<u>17,554,649</u>	<u>17,431,914</u>
Charity funds			
Restricted funds	20	1,134,581	799,877
Unrestricted funds	20	16,420,068	16,632,037
Total funds		<u>17,554,649</u>	<u>17,431,914</u>

The Trustees acknowledge their responsibilities for complying with the requirements of the Act with respect to accounting records and preparation of financial statements.

The financial statements were approved and authorised for issue by the Trustees and signed on their behalf by:



Minister J Wright
President
Date: 16 July 2025



Mr J Underwood
Financial Director
Date: 16 July 2025

The notes on pages 66 to 96 form part of these financial statements

STATEMENT OF CASH FLOWS
 FOR THE YEAR ENDED 31ST DECEMBER 2024

Cash flows from operating activities	
Net cash used in operating activities	
Cash flows from investing activities	
Dividends, interests and rents from investments	
Interest received	
Purchase of tangible fixed assets	
Proceeds from sale of investments	
Purchase of investments	
Net cash provided by investing activities	
Change in cash and cash equivalents in the year	
Cash and cash equivalents at the beginning of the year	
Cash and cash equivalents at the end of the year	

The notes on pages 66 to 96 form part of these financial statements

NOTES TO THE FINANCIAL STATEMENTS
 FOR THE YEAR ENDED 31ST DECEMBER 2024

1.	Accounting policies		
1.1	Basis of preparation of financial statements		
	The financial statements have been prepared in accordance with the Charities SORP (FRS 102) - Accounting and Reporting by Charities: Statement of Recommended Practice applicable to charities preparing their accounts in accordance with the Financial Reporting Standard applicable in the UK and Republic of Ireland (FRS 102) (effective 1 January 2019), the Financial Reporting Standard applicable in the UK and Republic of Ireland (FRS 102) and the Companies Act 2006 and the Charities and Trustee Investment (Scotland) Act 2005 and regulation 8 of the Charities Accounts (Scotland) Regulations 2006.		
	Spiritualists' National Union meets the definition of a public benefit entity under FRS 102. Assets and liabilities are initially recognised at historical cost or transaction value unless otherwise stated in the relevant accounting policy.		
	The presentational and functional currency is Pound Sterling.		
1.2	Accounting for branches		
	These financial statements fully incorporate the results of the following branches of the Spiritualists' National Union:		
	The Spiritualists' National Union Head Office		
	The Arthur Findlay College		
	The Fourteen District Councils of the Spiritualists' National Union		
	The Suspense Investment Account		
	Sundry Trust Funds		
	Spiritualists' National Union International		
	The Barbanell Centre- Stafford		
	The Spiritualists' Lyceum Union		

1.3 Legal status

The charity is a company limited by guarantee, with no share capital and is incorporated in England and Wales (registration number 00071661). It has registered with the Charity Commission in both England and Wales (charity number 261898) and Scotland (charity number SCO41714). The registered office is The Coach House, Stansted Hall, Stansted Mountfitchet, Essex, CM24 8UD.

In the event of the charity being wound up, the liability in respect of the guarantee is limited to 50 pence per member of the charity. The membership comprises Church Representatives, Individual Members, Kindred Body Representatives and Affiliate Members, details of the numbers of total members are included in the Trustee's Report.

1.4 Going concern

The trustees consider that there are no material uncertainties about the charity's ability to continue as a going concern. Trustees have made the decision to invest some of the current assets over the years into listed investments and investment properties which return a better income. These can be sold should this become necessary. The Board has completed a comprehensive review and is confident of the SNU's ability to continue as a going concern for a period of at least 12 months from the date of signing these accounts. As such, they continue to adopt the going concern basis of accounts in the financial statements.

NOTES TO THE FINANCIAL STATEMENTS
FOR THE YEAR ENDED 31ST DECEMBER 2024

1. Accounting policies (continued)

1.5 Income

Income is recognised when the charity has entitlement to the funds, any performance conditions attached to the items of income have been met, it is probable that the income will be received and the amount can be measured reliably.

Where income has related expenditure (as with fund raising or contract income), the income and related expenditure are reported gross in the Statement of Financial Activities.

Donations, grants and income from Church Affiliation fees and Trust Property Church fees are recognised when receivable. In the event that a donation is subject to fulfilling performance conditions before the charity is entitled to the funds, the income until either those conditions are met in full, or their fulfilment is wholly within the control of the charity is deferred and not recognised and it is probable that those conditions will be fulfilled in the reporting period. Income from Gift Aid tax claims is recognised for any donations with relevant Gift Aid certificates recognised in income for the year. Any amounts of Gift Aid not received by the year end are accounted for in income and accrued income in debtors.

For legacies, entitlement is taken on a case by case basis as the earlier of the date on which: the charity is aware that probate has been granted, the estate has been finalised and notification has been made by the executor(s) to the charity that a distribution will be made, or when a distribution is received from the estate. Receipt of a legacy, in whole or in part, is only considered probable when the amount can be measured reliably and the charity has been notified of the executor's intention to make a distribution. If the legacy is in the form of an asset other than cash or an asset listed on a recognised stock exchange, recognition is subject to the value of the asset being able to be reliably measured and title to the asset has passed to the charity. Where legacies have been notified and the charity is aware of the granting of probate, and the criteria for income recognition have not been met, then the legacy is a treated as a contingent asset and disclosed if material.

Income received in advance for a future fundraising event or for visitor fees received in advance of an event are deferred until the criteria for income recognition are met.

Interest on deposit funds held is included when receivable and the amount can be measured reliably by the charity which is normally upon notification of the interest paid or payable by the bank. Dividends are recognised once the dividend has been declared and notification has been received of the dividend due. This is normally upon notification by our investment advisor of the dividend yield of the investment portfolio. Income tax recoverable in relation to investment income is recognised at the time the investment income is receivable

Sponsorship from events, fundraising and events registration fees are recognised in income when the event takes place. Trading income is recognised on point of sale for both donated and purchased goods.

Other income is recognised in the period in which it is receivable and to the extent the goods have been provided or on completion of the service.

NOTES TO THE FINANCIAL STATEMENTS
FOR THE YEAR ENDED 31ST DECEMBER 2024

1. Accounting policies (continued)

1.6 Expenditure

Expenditure is recognised once there is a legal or constructive obligation to transfer economic benefit to a third party, it is probable that a transfer of economic benefits will be required in settlement and the amount of the obligation can be measured reliably. Expenditure is classified by activity. The costs of each activity are made up of the total of direct costs and shared costs, including support costs involved in undertaking each activity. Direct costs attributable to a single activity are allocated directly to that activity. Shared costs which contribute to more than one activity and support costs which are not attributable to a single activity are apportioned between those activities on a basis consistent with the use of resources. Central staff costs are allocated on the basis of time spent, and depreciation charges allocated on the portion of the asset's use.

Expenditure on raising funds includes all expenditure incurred by the Charity to raise funds for its charitable purposes and includes costs of all fundraising activities events and non-charitable trading.

Expenditure on charitable activities is incurred on directly undertaking the activities which further the Charity's objectives, as well as any associated support costs.

All expenditure is inclusive of irrecoverable VAT.

1.7 Interest receivable

Interest on funds held on deposit is included when receivable and the amount can be measured reliably by the Charity; this is normally upon notification of the interest paid or payable by the institution with whom the funds are deposited.

1.8 Gift Aid

In the case of a Gift Aid payment made within the Group, income is accrued when the payment is payable to the Parent Charity under a legal obligation. Measurement is at the fair value receivable, which will normally be the transaction value.

Where the right to receive Gift Aid has been established, the amount receivable is recognised as investment income in the Statement of Financial Activities.

1.9 Taxation

The Charity is considered to pass the tests set out in Paragraph 1 Schedule 6 of the Finance Act 2010 and therefore it meets the definition of a charitable company for UK corporation tax purposes. Accordingly, the Charity is potentially exempt from taxation in respect of income or capital gains received within categories covered by Chapter 3 Part 11 of the Corporation Tax Act 2010 or Section 256 of the Taxation of Chargeable Gains Act 1992, to the extent that such income or gains are applied exclusively to charitable purposes.

1.10 Tangible fixed assets and depreciation

Tangible fixed assets costing £2,500 or more are capitalised and recognised when future economic benefits are probable and the cost or value of the asset can be measured reliably.

Tangible fixed assets are initially recognised at cost. After recognition, under the cost model, tangible fixed assets are measured at cost less accumulated depreciation and any accumulated impairment losses. All costs incurred to bring a tangible fixed asset into its intended working condition should be included in the measurement of cost.

NOTES TO THE FINANCIAL STATEMENTS
FOR THE YEAR ENDED 31ST DECEMBER 2024

1. Accounting policies (continued)

1.10 Tangible fixed assets and depreciation (continued)

Depreciation is charged so as to allocate the cost of tangible fixed assets less their residual value over their estimated useful lives.

Depreciation is provided on the following bases:

Freehold property	- 2% reducing balance
Fixtures and fittings	- 10% - 33% straight line

1.11 Investment property

Investment properties are valued by the Trustees on an existing use open market value basis. Investment properties are not depreciated. The statement of financial activities includes the net gains and losses arising on the revaluation and disposals throughout the year.

1.12 Heritage assets

Heritage assets are defined as tangible property with historical, artistic, scientific, technological, geophysical or environmental qualities that are held and maintained principally for their contribution to knowledge and culture.

When it acquired the Arthur Findlay College, the Spiritualists' National Union secured certain heritage assets at no cost, including museum exhibition items.

The items include books, photographs, furniture, drawings, ceramics and paintings as well as other miscellaneous items and cataloguing the Union's collection is a continuing process.

None of the heritage assets are capitalised as there is no cost information available and valuations lack reliability.

The Trustees do not deem it practical to obtain a valuation of heritage assets held by the charity by donation due to the bespoke nature of such collections providing value to the Spiritualist community rather than to the wider market. In addition, the benefit to the user of the financial statements of obtaining such valuations is not deemed by the Trustees to outweigh the cost that would be incurred by the charity.

Where the cost of acquisition or market value is readily available to the charity such heritage assets should be recorded in fixed asset additions. Due to the nature of such collections the heritage asset may be deemed to have an indefinite life and therefore not be depreciated. Such assets are reviewed by the Museum Curator and the trustees for impairment during the preparation of the financial statements.

Expenditure that, in the view of the charity, is required to preserve or prevent further deterioration of individual collection and archive items should be recognised in the SOFA as it occurs.

The Spiritualists' National Union acquires historic items and artefacts in accordance with a statement of principles which requires that:

- The item must be of importance because of its historic interest.
- Ownership by the SNU should benefit the wider charity.
- The item will not be acquired unless the SNU is the most appropriate owner.

NOTES TO THE FINANCIAL STATEMENTS
FOR THE YEAR ENDED 31ST DECEMBER 2024

1. Accounting policies (continued)

1.13 Investments

Fixed asset investments are a form of financial instrument and are initially recognised at their transaction cost and subsequently measured at fair value at the Balance Sheet date, unless the value cannot be measured reliably in which case it is measured at cost less impairment. Investment gains and losses, whether realised or unrealised, are combined and presented as 'Gains/(Losses)' on investments' in the Statement of Financial Activities.

1.14 Stocks

Stocks are valued at the lower of cost and net realisable value after making due allowance for obsolete and slow-moving stocks. Cost includes all direct costs and an appropriate proportion of fixed and variable overheads.

1.15 Debtors

Trade and other debtors are recognised at the settlement amount after any trade discount offered. Prepayments are valued at the amount prepaid net of any trade discounts due.

1.16 Cash at bank and in hand

Cash at bank and in hand includes cash and short-term highly liquid investments with a short maturity of three months or less from the date of acquisition or opening of the deposit or similar account.

1.17 Liabilities and provisions

Liabilities are recognised when there is an obligation at the Balance Sheet date as a result of a past event, it is probable that a transfer of economic benefit will be required in settlement, and the amount of the settlement can be estimated reliably.

Liabilities are recognised at the amount that the Charity anticipates it will pay to settle the debt or the amount it has received as advanced payments for the goods or services it must provide.

Provisions are measured at the best estimate of the amounts required to settle the obligation. Where the effect of the time value of money is material, the provision is based on the present value of those amounts, discounted at the pre-tax discount rate that reflects the risks specific to the liability. The unwinding of the discount is recognised in the Statement of Financial Activities as a finance cost.

1.18 Concessionary loans

The charity has taken advantage of section 34 of FRS102 to recognise loans to member churches as concessionary loans. As such the charity initially recognises and measures the loan at the amount to be repaid, with the carrying amount adjusted in subsequent years to reflect repayments and any accrued interest and adjusted if necessary for impairment.

1.19 Financial instruments

The Charity only has financial assets and financial liabilities of a kind that qualify as basic financial instruments. Basic financial instruments are initially recognised at transaction value and subsequently measured at their settlement value with the exception of bank loans which are subsequently measured at amortised cost using the effective interest method.

NOTES TO THE FINANCIAL STATEMENTS
FOR THE YEAR ENDED 31ST DECEMBER 2024

1. Accounting policies (continued)

1.20 Operating leases

Rentals paid under operating leases are charged to the Statement of Financial Activities on a straight-line basis over the lease term.

1.21 Pensions

The Charity operates a defined contribution pension scheme and the pension charge represents the amounts payable by the Charity to the fund in respect of the year.

1.22 Fund accounting

General funds are unrestricted funds which are available for use at the discretion of the Trustees in furtherance of the general objectives of the Charity and which have not been designated for other purposes.

Designated funds comprise unrestricted funds that have been set aside by the Trustees for particular purposes. The aim and use of each designated fund is set out in the notes to the financial statements.

Restricted funds are funds which are to be used in accordance with specific restrictions imposed by donors or which have been raised by the Charity for particular purposes. The costs of raising and administering such funds are charged against the specific fund. The aim and use of each restricted fund is set out in the notes to the financial statements.

Investment income, gains and losses are allocated to the appropriate fund.

1.23 Volunteers

The value of the services provided by volunteers is not incorporated into these financial statements as it would be difficult to quantify. Further details are provided in the Trustee's Report.

NOTES TO THE FINANCIAL STATEMENTS
FOR THE YEAR ENDED 31ST DECEMBER 2024

2. Income from donations and legacies

	Unrestricted funds 2024 £	Restricted funds 2024 £	Total funds 2024 £
Donations	105,660	4,550	110,210
Legacies	-	250,000	250,000
Income from closed churches	104,164	-	104,164
Income from property held in suspense fund	49,621	-	49,621
Income from the Fund of Benevolence	-	104,420	104,420
	<u>259,445</u>	<u>358,970</u>	<u>618,415</u>

The income for the Fund of Benevolence is being shown as a consequence of consolidating the Fund of Benevolence accounts into the Spiritualists' National Union financial statements.

	Unrestricted funds 2023 £	Restricted funds 2023 £	Total funds 2023 £
Donations	54,927	60	54,987
Income from closed churches	953,050	-	953,050
Income from property held in suspense fund	37,300	-	37,300
	<u>1,045,277</u>	<u>60</u>	<u>1,045,337</u>

3. Income from charitable activities

	Unrestricted funds 2024 £	Restricted funds 2024 £	Total funds 2024 £
Affiliation Income	57,148	-	57,148
Visitor Fees	3,912,500	1,345	3,913,845
Healing	40,576	688	41,264
Course notes and publications	272,894	-	272,894
Other rental income	72,633	-	72,633
	<u>4,355,751</u>	<u>2,033</u>	<u>4,357,784</u>

NOTES TO THE FINANCIAL STATEMENTS
FOR THE YEAR ENDED 31ST DECEMBER 2024

NOTES TO THE FINANCIAL STATEMENTS
FOR THE YEAR ENDED 31ST DECEMBER 2024

3. Income from charitable activities (continued)

5. Investment income

	Unrestricted funds 2023 £	Restricted funds 2023 £	Total funds 2023 £
Affiliation Income	61,629	-	61,629
Visitor Fees	3,293,330	2,277	3,295,607
Healing	38,541	170	38,711
Course notes and publications	256,479	-	256,479
Other rental income	87,462	-	87,462
	<u>3,737,441</u>	<u>2,447</u>	<u>3,739,888</u>

	Unrestricted funds 2024 £	Restricted funds 2024 £	Total funds 2024 £
	230,982	-	230,982
Listed investment income	82,617	-	82,617
Investment property rents	97,339	2,434	99,773
Bank interest received	<u>410,938</u>	<u>2,434</u>	<u>413,372</u>

4. Income from other trading activities

	Unrestricted funds 2023 £	Restricted funds 2023 £	Total funds 2023 £
	213,870	-	213,870
Listed investment income	81,115	-	81,115
Investment property rents	74,530	2,718	77,248
Bank interest received	<u>369,515</u>	<u>2,718</u>	<u>372,233</u>

	Unrestricted funds 2024 £	Total funds 2024 £
	5,843	5,843
Fundraising events	18,375	18,375
Other rental income	73,499	73,499
Membership subscriptions	14,364	14,364
Commissions	<u>112,081</u>	<u>112,081</u>

6. Other incoming resources

	Unrestricted funds 2024 £	Total funds 2024 £
	38,862	38,862
Miscellaneous Income	<u>38,862</u>	<u>38,862</u>

	Unrestricted funds 2023 £	Restricted funds 2023 £	Total funds 2023 £
	6,584		6,584
Fundraising events	7,229		7,229
Other rental income	37,006		37,006
Membership subscriptions	8,573		8,573
Commissions	<u>59,392</u>		<u>59,392</u>

	Unrestricted funds 2023 £	Restricted funds 2023 £	Total funds 2023 £
	36,457	8	36,465
Miscellaneous Income	<u>36,457</u>	<u>8</u>	<u>36,465</u>

NOTES TO THE FINANCIAL STATEMENTS
FOR THE YEAR ENDED 31ST DECEMBER 2024

7. Expenditure on raising funds

Costs of raising voluntary income

	Restricted funds 2024 £	Total funds 2024 £
Direct	55,448	55,448
Finance and legal	352	352
Human resources	14	14
Staff costs	731	731
Information technology	163	163
Premises	331	331
General office expenses	473	473
Committee expenses	32	32
Other	177	177
Governance	137	137
	<u>57,858</u>	<u>57,858</u>

	Restricted funds 2023 £	Total funds 2023 £
Direct	4,236	4,236
Finance and legal	243	243
Human resources	777	777
Information technology	129	129
Premises	268	268
General office expenses	481	481
Committee expenses	30	30
Other	105	105
Governance	88	88
	<u>6,357</u>	<u>6,357</u>

NOTES TO THE FINANCIAL STATEMENTS
FOR THE YEAR ENDED 31ST DECEMBER 2024

8. Analysis of expenditure by activities

	Activities undertaken directly 2024 £	Support costs 2024 £	Total funds 2024 £
Affiliation	820,657	184,575	1,005,232
Educational programme	3,584,742	939,518	4,524,260
Publications	129,766	79,866	209,632
	<u>4,535,165</u>	<u>1,203,959</u>	<u>5,739,124</u>

	Activities undertaken directly 2023 £	Support costs 2023 £	Total funds 2023 £
Affiliation	330,654	165,438	496,092
Educational programme	3,234,782	836,885	4,071,667
Publications	143,085	71,589	214,674
	<u>3,708,521</u>	<u>1,073,912</u>	<u>4,782,433</u>

In 2024 the expenditure on charitable activities was £5,739,124 (2023: £4,782,433) of which £5,729,920 (2023: £4,780,240) was expenditure from unrestricted funds and £9,204 (2023: £2,193) was expenditure from restricted funds. Included in the total of restricted expenditure is £1,420 which relates to the Fund of Benevolence.

NOTES TO THE FINANCIAL STATEMENTS
 FOR THE YEAR ENDED 31ST DECEMBER 2024

Analysis of support costs

	Affiliation 2024 £	Educational programme 2024 £	Publications 2024 £	Total funds 2024 £
Finance and legal	26,948	137,171	11,661	175,780
Human resources	57,053	290,407	24,685	372,145
Information technology	12,475	63,501	5,398	81,374
Premises	25,320	128,886	10,956	165,162
General office expenses	36,208	184,303	15,668	236,179
Committee expenses	2,482	12,633	1,074	16,189
Other	13,571	69,078	5,872	88,521
Governance	10,518	53,539	4,552	68,609
	<u>184,575</u>	<u>939,518</u>	<u>79,866</u>	<u>1,203,959</u>

	Affiliation 2023 £	Educational programme 2023 £	Publications 2023 £	Total funds 2023 £
Finance and legal	18,826	95,230	8,146	122,202
Human resources	60,315	305,109	26,100	391,524
Information technology	10,036	50,768	4,343	65,147
Premises	20,760	105,016	8,983	134,759
General office expenses	37,356	188,970	16,165	242,491
Committee expenses	2,293	11,600	992	14,885
Other	8,174	41,351	3,537	53,062
Governance	7,678	38,841	3,323	49,842
	<u>165,438</u>	<u>836,885</u>	<u>71,589</u>	<u>1,073,912</u>

All support costs are allocated to charitable activities and fundraising costs based upon the proportion of time spent on each activity.

9. Auditors' remuneration

Fees payable to the Charity's auditor in respect of:

	2024 £	2023 £
Audit services	26,055	23,765
Accountancy	<u>3,895</u>	<u>3,565</u>

NOTES TO THE FINANCIAL STATEMENTS
 FOR THE YEAR ENDED 31ST DECEMBER 2024

10. Net expenditure/income

Net expenditure/income is stated after charging:

	2024 £	2023 £
Depreciation	113,992	103,151
Auditors' remuneration	29,950	27,330
Operating lease rentals	27,093	27,483
	<u>171,035</u>	<u>157,964</u>

11. Staff costs

	2024 £	2023 £
Wages and salaries	1,936,496	1,772,780
Social security costs	161,887	152,527
Contribution to defined contribution pension schemes	34,298	34,376
	<u>2,132,681</u>	<u>1,959,683</u>

The average number of persons employed by the Charity during the year was as follows:

	2024 No.	2023 No.
Administration	13	12
Educational programme	66	61
	<u>79</u>	<u>73</u>

The average headcount expressed as full-time equivalents was:

	2024 No.	2023 No.
Administration	7	10
Educational programme	33	48
	<u>40</u>	<u>58</u>

NOTES TO THE FINANCIAL STATEMENTS
FOR THE YEAR ENDED 31ST DECEMBER 2024

11. Staff costs (continued)

No employee received remuneration amounting to more than £60,000 in either year.

The charity considers its key management personnel to comprise the Trustees and the senior management team.

The total employee benefits of 6 key management personnel (2023: 6 key management personnel) were £256,058 (2023: £300,362). Included within total key personnel remuneration is employers national insurance of £23,031 (2023: £30,332) and employers pension of £4,302 (2023: £4,738). The number of key management personnel has stayed consistent with the prior year, with one member of KMP leaving and another member of staff joining KMP to replace the role.

12. Trustees' remuneration and expenses

During the year, one or more Trustees has been paid remuneration or has received other benefits from an employment with the Charity. The value of Trustees' remuneration and other benefits was as follows:

	2024	2023
	£	£
J Wright	50,000	50,000
	Remuneration	

During the year ended 31st December 2024, expenses totalling £22,159 were reimbursed or paid directly to 10 Trustees (2023 - £15,462 to 9 Trustees). These related to travel and subsistence for attendance at Trustee meetings.

NOTES TO THE FINANCIAL STATEMENTS
FOR THE YEAR ENDED 31ST DECEMBER 2024

13. Tangible fixed assets

Cost or valuation

At 1 January 2024
Additions
Disposals

At 31st December 2024

Depreciation

At 1 January 2024
Charge for the year
On disposals

At 31st December 2024

Net book value

At 31st December 2024

At 31st December 2023

Freehold property £	Fixtures and fittings £	Total £
5,912,916	645,160	6,558,076
53,806	47,273	101,079
-	(8,675)	(8,675)
5,966,722	683,758	6,650,480

997,307	598,903	1,596,210
87,083	26,909	113,992
-	(8,361)	(8,361)
1,084,390	617,451	1,701,841

4,882,332	66,307	4,948,639
4,915,609	46,257	4,961,866

NOTES TO THE FINANCIAL STATEMENTS
FOR THE YEAR ENDED 31ST DECEMBER 2024

14. Investment property

	Freehold investment property £
Valuation	
At 1 January 2024	3,018,000
Revaluation	26,818
	<u>3,044,818</u>
At 31st December 2024	<u><u>3,044,818</u></u>

The investment properties at Mountfield Road and Stanhope Avenue were valued internally by carrying out an online desktop valuation. The valuation utilised land registry information alongside previous sales data in line with each properties characteristics. The original cost of these properties was £NIL as the properties were bequeathed to the charity.

The value of the Bristol Belmont property value was considered by Trustees to be the same as the previous year at a value of £800,000. This is a rental property which has been donated to the Closed Churches Suspense Fund, which is a designated fund.

The latest professional valuation for Bristol Belmont took place in 2021, where the properties were valued at £800,000. All other investment properties were professionally valued within the year from £2,218,000 to £2,244,818 and showed a revaluation movement of £26,818.

All investment properties are held in the UK.

15. Fixed asset investments

	Listed investments £
Cost or valuation	
At 1 January 2024	8,511,394
Additions	149,731
Disposals	(668,244)
Gain on investments	379,203
Cash movement	(798,973)
	<u>7,573,111</u>
At 31 December 2024	<u><u>7,573,111</u></u>

NOTES TO THE FINANCIAL STATEMENTS
FOR THE YEAR ENDED 31ST DECEMBER 2024

	Listed investments £
Cost or valuation	
At 1 January 2023	8,235,562
Additions	1,141,429
Disposals	(1,123,540)
Gain on investment	282,063
Cash movement	48,548
	<u>8,584,062</u>
At 31 December 2023	<u><u>8,584,062</u></u>

All investments are carried at their fair value. Investments in equities and fixed interest securities are all traded in quoted public markets, primarily the London Stock Exchange. The basis of fair value for quoted investments is equivalent to the market value, using the bid price. Investment sales and purchases are recognised at the date of trade cost (that is their transaction value).

All investments were received either as a bequest to the union or transferred on closure.

Investments are allotted to each range as follows:

	2024 £	2023 £
Fixed interest	1,701,159	1,742,514
Equities	3,612,519	3,179,553
Cash deposits	603,816	1,938,485
Other	1,655,617	1,725,510
	<u>7,573,111</u>	<u>8,586,062</u>

The investments at cost for 2024 was £6,331,804 (2023: £6,322,388).

16. Stocks

	2024 £	2023 £
Closing Stock	<u>59,266</u>	<u>56,620</u>

Closing stock represents stock for education activities (including college catering) of £42,734 (2023: £37,750) and stock in relation to affiliation activities of £16,532 (2023: £18,870).

NOTES TO THE FINANCIAL STATEMENTS
FOR THE YEAR ENDED 31ST DECEMBER 2024

17. Debtors

Due within one year

Trade debtors
Other debtors
Prepayments and accrued income

2024 £	2023 £
11,796	17,291
391,728	95,965
50,756	50,638
<u>454,280</u>	<u>163,894</u>
<u><u>454,280</u></u>	<u><u>163,894</u></u>

Included within other debtors are concessionary loans made to member churches in furtherance of the SNU's charitable objectives. Movement on the loans during the year was as follows:

2024 £	2023 £
81,805	48,092
66,485	53,830
(15,716)	(20,117)
<u>132,574</u>	<u>81,805</u>
<u><u>132,574</u></u>	<u><u>81,805</u></u>

As at 31 January
New loans
Loan repayments

As at 31 December

18. Current asset investments

2024 £	2023 £
412,872	683,992
<u>412,872</u>	<u>683,992</u>

Short term deposit accounts

19. Creditors: Amounts falling due within one year

2024 £	2023 £
108,708	86,023
25,790	43,000
25,432	23,622
-	352,423
527,211	568,083
<u>687,141</u>	<u>1,073,151</u>
<u><u>687,141</u></u>	<u><u>1,073,151</u></u>

Trade creditors
Other taxation and social security
Other creditors
Contract Liability
Accruals and deferred income

NOTES TO THE FINANCIAL STATEMENTS
FOR THE YEAR ENDED 31ST DECEMBER 2024

Deferred Income

Deferred income at 1 January 2024
Resources deferred during the year
Amounts released from previous periods

2024 £	2023 £
482,615	171,398
487,144	482,615
(482,615)	(171,398)
<u>487,144</u>	<u>482,615</u>
<u><u>487,144</u></u>	<u><u>482,615</u></u>

Deferred income mainly relates to fees for courses at the Arthur Findlay College which are received in advance from students for courses taking place in the next year. In addition £29,204 relates to Individual membership and SNUi subscriptions paid during in accounting period but which relate to the following year (2023: £44,821).

NOTES TO THE FINANCIAL STATEMENTS
 FOR THE YEAR ENDED 31ST DECEMBER 2024

20. Statement of funds

Statement of funds - current year

	Balance at 1st January 2024 £	Income £	Expenditure £	Transfers in/out £	Gains/ (Losses) £	Balance at 31st December 2024 £
Unrestricted funds						
Designated funds						
Fixed asset fund	4,949,028	-	-	(389)	-	4,948,639
The Suspense Investment Account	5,346,867	190,187	(840,795)	(161,608)	224,141	4,758,792
Tree Garden Fund	12,447	2,872	(3,006)	-	-	12,313
Horse Fund	1,473	-	(1,473)	-	-	-
Science Equipment Fund	8,499	-	(792)	(2,192)	-	5,515
The AFC Foundation Fund	15,466	-	-	-	-	15,466
Land Adjacent to Stansted Hall	220,000	-	-	-	-	220,000
The AFC Tutor Training	3,154	-	-	-	-	3,154
Spiritualists' Lyceum Union	231,658	9,656	(1,663)	-	20,662	260,313
Window restoration	26,975	-	-	-	-	26,975
AFC Building restoration	7,020	25,157	(27,145)	-	-	5,032
Presidents fund	6,485	9,296	(2,939)	4,600	-	17,442
	10,829,072	237,168	(877,813)	(159,589)	244,803	10,273,641
General funds						
General funds	2,715,791	4,939,909	(4,852,107)	159,702	95,958	3,059,253
Capital Reserve	173,197	-	-	-	-	173,197
Revaluation reserve	2,913,977	-	-	-	-	2,913,977
	5,802,965	4,939,909	(4,852,107)	159,702	95,958	6,146,427
Total Unrestricted funds	16,632,037	5,177,077	(5,729,920)	113	340,761	16,420,068

NOTES TO THE FINANCIAL STATEMENTS
 FOR THE YEAR ENDED 31ST DECEMBER 2024

20. Statement of funds (continued)

	Balance at 1st January 2024 £	Income £	Expenditure £	Transfers in/out £	Gains/ (Losses) £	Balance at 31st December 2024 £
Restricted funds						
The Foundation Fund	644,031	187	(3,462)	-	38,256	679,012
The Gladys Mallaburn Trust	4,417	-	-	-	186	4,603
The SNU Healing Halifax St. Paul's	56,162	1,736	-	-	-	57,898
The SNU Prize	10,149	363	(10,512)	-	-	-
The SNU Prize	14,002	346	(778)	-	-	13,570
Spirit of Youth	2,089	-	-	-	-	2,089
The Glynn Edwards Memorial	400	-	-	-	-	400
AFC - Furniture and Paintings	155	-	(155)	-	-	-
The Healing Fund	30,276	688	(976)	-	-	29,988
The Brooks Education	16,073	1,293	(333)	-	-	17,033
Bursary funds	13,786	226	-	-	-	14,012
Other restricted	6,467	51	(228)	-	-	6,290
The Equipment Fund	113	-	-	(113)	-	-
The District Council Fund of Benevolence	863	254	(228)	-	-	889
The District Council Foundation	794	-	-	-	-	794
Healing Bursary	100	-	-	-	-	100
SNU Head Office - Bequest	-	250,000	(48,970)	-	-	201,030
Fund of Benevolence	-	108,293	(1,420)	-	-	106,873
	799,877	363,437	(67,062)	(113)	38,442	1,134,581
Total of funds	17,431,914	5,540,514	(5,796,982)	-	379,203	17,554,649

NOTES TO THE FINANCIAL STATEMENTS
FOR THE YEAR ENDED 31ST DECEMBER 2024

20. Statement of funds (continued)

Statement of funds - prior year

	Balance at 1st January 2023 £	Income £	Expenditure £	Transfers in/out £	Gains/ (Losses) £	Balance at 31st December 2023 £
Unrestricted funds						
Designated funds						
Fixed asset fund	4,949,028	-	-	-	-	4,949,028
The Suspende Investment Account	4,693,576	1,019,475	(326,414)	(176,637)	136,867	5,346,867
Tree Garden Fund	13,786	2,424	(3,763)	-	-	12,447
Horse Fund	1,165	308	-	-	-	1,473
Science Equipment Fund	8,499	-	-	-	-	8,499
The AFC Foundation Fund	15,466	-	-	-	-	15,466
Land Adjacent to Stansted Hall	220,000	-	-	-	-	220,000
The AFC Tutor Training	3,154	-	-	-	-	3,154
Spiritualists' Lyceum Union	211,569	9,308	(2,574)	-	13,355	231,658
Window restoration	26,975	-	-	-	-	26,975
AFC Building restoration	-	7,020	-	-	-	7,020
Presidents fund	-	6,485	-	-	-	6,485
	10,143,218	1,045,020	(332,751)	(176,637)	150,222	10,829,072
General funds						
General funds	2,690,828	4,203,062	(4,447,489)	179,030	90,360	2,715,791
Capital Reserve	173,197	-	-	-	-	173,197
Revaluation reserve	3,180,977	-	-	-	(267,000)	2,913,977
	6,045,002	4,203,062	(4,447,489)	179,030	(176,640)	5,802,965

NOTES TO THE FINANCIAL STATEMENTS
FOR THE YEAR ENDED 31ST DECEMBER 2024

20. Statement of funds (continued)

Statement of funds - prior year (continued)

	Balance at 1st January 2023 £	Income £	Expenditure £	Transfers in/out £	Gains/ (Losses) £	Balance at 31st December 2023 £
Total Unrestricted funds	16,188,220	5,248,082	(4,780,240)	2,393	(26,418)	16,632,037
Restricted funds						
The Foundation Fund	603,357	103	(3,160)	-	43,731	644,031
The Gladys Mallaburn Trust	6,667	-	-	-	(2,250)	4,417
The SNU Healing	3,239	44	-	-	-	3,283
Halifax St. Paul's	4,993	68	-	-	-	5,061
The SNU Prize	339	5	-	-	-	344
Spirit of Youth	53,820	2,342	-	-	-	56,162
The Glynn Edwards Memorial	10,149	-	-	-	-	10,149
AFC - Furniture and Paintings	14,334	193	(525)	-	-	14,002
The Healing Fund	2,089	-	-	-	-	2,089
The Brooks Education	2,575	-	-	-	-	2,575
Bursary funds	2,523	-	-	-	-	2,523
Other restricted	400	-	-	-	-	400
The Equipment Fund	155	-	-	-	-	155
The District Council						
Fund of Benevolence	9,752	-	(285)	(3,000)	-	6,467
The District Council Foundation	31,160	200	(1,711)	627	-	30,276
Healing Bursary	16,587	2,247	(2,761)	-	-	16,073
SNU Head Office - Bequest	940	31	(108)	-	-	863
Fund of Benevolence	794	-	-	-	-	794
The Equipment Fund	133	-	-	(20)	-	113
Healing Bursary	100	-	-	-	-	100
	764,106	5,233	(8,550)	(2,393)	41,481	799,877

NOTES TO THE FINANCIAL STATEMENTS
FOR THE YEAR ENDED 31ST DECEMBER 2024

20. Statement of funds (continued)

Total of funds	16,952,326	5,253,315	(4,788,790)	-	15,063	17,431,914

NOTES TO THE FINANCIAL STATEMENTS
FOR THE YEAR ENDED 31ST DECEMBER 2024

20. Statement of funds (continued)

UNRESTRICTED FUNDS

General Funds
The General Fund is the primary fund used to record all resource inflows and outflows that are not associated with any other designated or restricted funds. The activities being paid for through the general fund constitute the core administrative and operational tasks of the charity.

Revaluation Reserve

The Revaluation Reserve is a non-cash reserve and as such cannot be used to provide services. It contains unrealised gains arising from increases in the value of the SNU's property assets. The balance is reduced when such assets are:

- Revalued downwards or impaired and the gains are lost.
- Used in the provision of services and the gains are consumed through depreciation.
- Disposed of and the gains are realised.

DESIGNATED FUNDS

Designated funds are those where the SNU have set aside specific amounts as reserves for future policy purposes, or to cover contingencies. These reserves are created by either appropriating amounts out of the General Reserve, or by adherence to restrictions laid out in the governing documents of the charity. When expenditure, to be financed from a reserve, is incurred it is charged to the appropriate cost centre within the Income and Expenditure account. The reserve is then appropriated back into the General Fund balance.

The Fixed Asset Fund

The fixed asset fund represents the net book value of fixed assets on the balance sheet. Fixed Assets include all land and buildings in addition to all fixtures, fittings and equipment held by the Union.

The Closed Churches Suspense Fund

The funds from the sale of churches which have closed, and where the SNU was sole trustee and certain other funds are allocated to the Suspense Investment Account. New churches or existing churches within a set mileage of the closed church, can apply to utilise the funds in the form of a grant. If the funds are not utilised within six years, they are transferred to the aged suspense

Land adjacent to Stansted Hall

Land partly financed by a donation from the J V Trust. Should the land be sold, the charity may be liable to repay the donation and has made a provision of £220,000.

The Spiritualists' Lyceum Union

The Lyceum Union pre-dates the formation of the Spiritualists' National Union and was incorporated into the Union as a branch in 1956. It holds its own funds which are reflected in the main Union accounts, and these are to be applied for the purposes of promoting the aims and objectives and work of the Lyceum

Window Restoration Fund

Donation made to fund the installation and maintenance of windows within the Arthur Findlay College.

Tree and Garden Fund

Fund used to plant, replace and maintain trees and the grounds of the Arthur Findlay College.

The Arthur Findlay College Foundation Fund

This fund was created at the Annual General Meeting in 2000. Its purpose is:

- to provide financial support for the college, as appropriate
- to be collateral for a loan for the college

The funds are invested, and any interest is applied to the cost centre where all college income and expenditure are collated

20. Statement of funds (continued)

Science Equipment Fund
 Fund established to provide equipment and meet sundry costs to support the scientific research undertaken by the SNU.

The Arthur Findlay College Tutor Training Fund
 The purpose of this fund is to support the training needs of the tutors at the Arthur Findlay College. Training to be a tutor at the AFC is a long process of study and assessment and the fund is aimed at supporting students who have the potential and skills to teach at the AFC but perhaps lack the financial resources to embark upon the pathway to teaching at the AFC and Barbanell Centre. Applications to this fund will be considered by the Collegiate Committee on a case by case basis and the Committees decision will be final and binding on any application for a grant.

Horse Fund
 Fund established to support the upkeep and wellbeing of horses withing the grounds of the Arthur Findlay College.

AFC Building Restoration Fund
 The purpose of the fund is to support the cost of preserving the Arthur Findlay College and grounds.

The Presidents Fund
 The fund was established to assist SNU churches cover the expense of urgent, essential, and mandatory items they need.
 In the event that the Presidents Fund makes no grants for a two-year period, any remaining funds should be transferred to the SNU Aged Suspense Account.

RESTRICTED FUNDS

Restricted funds are created through donations or from other income received for a specific purpose which have restrictions as to their use. They may be capital funds, where the assets are required to be invested, or retained for actual use, rather than expended. The Trustees have the discretion to utilise the funds for the fund's relevant objectives.

SNU Head Office Bequest
 The Fund represents the bequest from Mrs Beryl Illstone who left a bequest for the benefit of Head Office.

The Foundation Fund
 The Spiritualists' National Union Foundation Fund was set up with the object of providing long-term income for the Spiritualists' National Union. The capital may be used as security or collateral for loans to the Union but shall not be applied for any other purpose without the authority of a resolution passed at two general meetings of members held not less than six months apart. The interest may be applied for any purpose benefitting the Union as the National Executive Committee may decide. At its inception in the time of President Gordon Higginson a target of £1m was established for the fund, whilst we still have not achieved this target the funds continues to help fund the day to day operations of the Union.

The Gladys Mallaburn Trust
 The fund was established in 1978 on receipt of a bequest from Gladys Mallaburn which stipulated that the funds should be invested in dated stock and any capital increase at the redemption dates being added to and forming part of the trust for reinvestment. After taking advice from our professional advisors the capital has been placed in our main portfolio and invested in a range of quoted stocks, but ring fenced in the name of the fund. In addition, the bequest provides that any interest on investments be utilised towards the general administration expenses of the head office of the Union and this is applied in line with the requirements of the trust.

20. Statement of funds (continued)

Bursary Funds
 Bursary funds established to assist members in the furtherance of their education and Spiritual learning, divided as follows:

The Ministers Development Fund
 The Ministers Development Fund was set up for the purpose of continuing the development and promotion of ministers and has been provided by two charitable organisations, namely the JV Trust and the Winifred Gandine-Stanton Trust, for the purpose of training those entering the ministry to ensure the highest standards are attained by those working in this field of the Union's work.

The Ministers Bursary Fund
 This fund was established to assist candidates in Ministerial training with the costs of such necessary training in cases of hardship which is precluding them from taking the necessary courses to allow the award of Officiant or Minister of the Union. In the past it has either been funded by donation from Charitable Trusts which operate within the wider movement or by specific fundraising activity. The fund also benefits from the annual donation of the proceeds of the sales of the book 21st Century view of the Seven Principles of Spiritualism written by Minister Barry Oates. Any income held within the fund is applied purely at the discretion of The Ministers Administration Committee.

The Education Bursary Fund
 This fund was established to assist candidates in training, usually those taking Union courses with the costs of such necessary training in cases of hardship. In the past it has either been funded by donation from Charitable Trusts which operate within the wider movement or by specific fundraising activity. Any income held within the fund is applied purely at the discretion of the Education and Exponents Committee.

The Education Fund
 The Education Fund is established to fund the training of exponents in both speaking and the demonstration of mediumship together with any necessary training in administration which facilitates the efficient functioning of the Churches and the District Councils.

The Exponents Fund
 The funds are held to assist in the training of exponents.

The SNU Healing Fund
 The Healing Fund was set up for the purpose of propagating Spiritualist healing. It is now managed under the direction of the Education and Exponents Committee and can be applied to support the promotion of strong healing practice within the Union and to support the training and development of Spiritualist Healing mediums.

Halifax St. Paul's Fund
 The Halifax St. Paul's Fund was set up under a Scheme by the Charity Commissioners for the income to be distributed at the discretion of the National Executive Committee to Churches within ten miles of Halifax and/or the capital to be used in Halifax.

The SNU Prize Fund
 The SNU Prize Fund is an amalgamation of several smaller funds which were set up to fund prizes awarded to members on an annual basis usually at the AGM.

Spirit of Youth
 The Spirit of Youth was set up as a fund for use by the Spirit of Youth Committee.

NOTES TO THE FINANCIAL STATEMENTS
FOR THE YEAR ENDED 31ST DECEMBER 2024

20. Statement of funds (continued)

The Glynn Edwards Memorial Fund

AFC Furniture & Paintings Restoration
The fund is used to assist with the costs of maintaining and restoring furniture and paintings within the Arthur Findlay College.

The Fund of Benevolence
The fund was established to provide support and assistance for Spiritualists who find themselves in need.

The Restricted Funds of the Union's 14 District Councils:

The Healing Fund
Healing Funds are held at District Council level to fund the assessment and training of healers to approved status and to ensure that assessors are trained to a level sufficient to conduct the necessary assessments at both district and national levels.

21. Linked Charity

The Fund of Benevolence (FOB) is a linked charity that in previous years has been inserted into the end of the SNU financial statements. This year it has been discussed with the Trustees and agreed that the funds in relation to the FOB are to be disclosed within these financial statements with clear identification on the impact they have on the final SNU results.

Within the year, The FOB has had income received of £108,293, of which £104,420 was included in the opening balance. The FOB had expenditure of £1,420 as highlighted within note 20 above.

22. Analysis of net assets between funds

	Unrestricted funds 2024 £	Restricted funds 2024 £	Designated funds 2024 £	Total funds 2024 £
Tangible fixed assets	3,044,818	-	4,948,639	7,993,457
Investments	4,032,336	740,488	3,213,159	7,985,983
Net current assets/(liabilities)	(1,114,487)	59,276	2,507,685	1,452,474
	<u>5,962,667</u>	<u>799,764</u>	<u>10,669,483</u>	<u>17,431,914</u>

NOTES TO THE FINANCIAL STATEMENTS
FOR THE YEAR ENDED 31ST DECEMBER 2024

	Unrestricted funds 2023 £	Restricted funds 2023 £	Designated funds 2023 £	Total funds 2023 £
Tangible fixed assets	3,018,000	-	4,949,028	7,967,028
Investments	2,290,160	706,107	5,927,065	8,923,332
Net current assets/(liabilities)	536,929	93,770	(50,096)	580,603
	<u>5,845,089</u>	<u>799,877</u>	<u>10,825,997</u>	<u>17,470,963</u>

23. Reconciliation of net movement in funds to net cash flow from operating activities

	2024 £	2023 £
Net income for the period (as per Statement of Financial Activities)	122,735	746,588

Adjustments for:

Depreciation charges	113,992	103,151
Interest received	(106,085)	(77,248)
Loss/(Gain) on investments	(379,203)	(282,063)
Dividends, interests and rents from investments	(307,287)	(287,826)
Loss on disposal of fixed assets	314	-
Decrease/(increase) in stocks	(2,646)	10,896
Increase in debtors	(290,386)	(17,824)
Increase/(decrease) in creditors	(386,010)	195,582
Loss/(Gain) on investment property	(26,818)	-

Net cash provided by/(used in) operating activities

	<u>(1,261,394)</u>	<u>391,256</u>
--	--------------------	----------------

24. Analysis of cash and cash equivalents

	2024 £	2023 £
Cash in hand	1,748,804	1,036,631
Short term cash investments	412,872	683,992
Total cash and cash equivalents	<u>2,161,676</u>	<u>1,720,623</u>

NOTES TO THE FINANCIAL STATEMENTS
FOR THE YEAR ENDED 31ST DECEMBER 2024

25. Analysis of changes in net debt

	At 1st January 2024	Cash flows	At 31st December 2024
	£	£	£
Cash at bank and in hand	1,036,631	712,173	1,748,804
Debt due within 1 year	(352,423)	352,423	-
	<u>684,208</u>	<u>1,064,596</u>	<u>1,748,804</u>

26. Capital commitments

	2024	2023
	£	£
Contracted for but not provided in these financial statements		
Capital projects	<u>-</u>	<u>8,100</u>

27. Pension commitments

The charity operates a defined contribution pension scheme. The assets of the scheme are held separately from those of the charity in an independently administered fund. Contributions payable by the charity amounted to £34,316 (2023: £34,376). At the year end, contributions totalling £20,780 (2023: £8,254) remained outstanding and are included in other creditors.

28. Operating lease commitments

At 31st December 2024 the Charity had commitments to make future minimum lease payments under non-cancellable operating leases as follows:

	2024	2023
	£	£
Not later than 1 year	24,960	27,288
Later than 1 year and not later than 5 years	17,829	42,594
	<u>42,789</u>	<u>69,882</u>

29. Members' liability

Each member of the charitable company undertakes to contribute to the assets of the company in the event of it being wound up while he/she is a member, or within one year after he/she ceases to be a member, such amount as may be required, not exceeding 50 pence for the debts and liabilities contracted before he/she ceases to be a member.

NOTES TO THE FINANCIAL STATEMENTS
FOR THE YEAR ENDED 31ST DECEMBER 2024

30. Related party transactions

In accordance with section 4(v)(vi) of the Memorandum of Association dated 19 July 2015, during the year the following Trustees' received fees from the charity in respect of medium fees, training fees and sale of goods.

	2024	2023
	£	£
J Wright	7,665	7,213
AM Bond	-	7,445
R Cuthbert	1,427	575
A Berry	1,184	-
J Almond	-	149
M Lisseman	5,993	885
	<u>16,269</u>	<u>16,267</u>

Minister J Wright received payments from the charity of £50,000 (2023: £50,000) for providing services in line with her role as President of the Union.

Minister J Wright received £7,665 (2023: £7,213) in respect of mediums fees of £6,956 and sale of goods of £709 (2023:£728). Medium fees of £6,956 were donated back to the Presidents Fund in Note 20.

The partner of J Underwood was reimbursed expenses in relation to mileage and subsidence totalling £314 (2023: £194)

The partner of R Dangerfield was reimbursed expenses in relation to mileage, subsidence, accommodation and equipment totalling £1,014 (2023: £NIL)

There were no other related party transactions.



Follow the SNU

Spiritualists' National Union
The Coach House, Stansted Hall,
Stansted Mountfitchet,
Essex CM24 8UD

01279 816363 | www.snu.org.uk | snu@snu.org.uk