



Bedfordshire South Branch
Registered Charity No.259020

Annual Report

The trustees present the annual report 2024



Celebrating 200 years of kindness

Contents

Introduction.....	2
Declaration of Conflict of Interest	3
Chair’s Report by Jo Byrne.....	3
Reference and Administration Details.....	4
Trustees during 2024.....	5
Staff.....	5
Accountants & Independent Examiners	5
Bankers	5
Volunteering.....	5
Achievements & Branch Statistics.....	6
Fundraisers.....	6
Microchipping Events	7
Charity Objectives	8
Statement of Trustee Responsibilities.....	9
Rescue and Foster Stories	9
Benny & Teddy.....	9
Brie’s Story	11
Our year in pictures - rescue gallery.....	13



Introduction

The trustees present their annual report and accounts for the year ended 31 December 2024. The trustees are satisfied with the performance of the charity branch during the year and the position on 31 December 2024 and consider that the charity is in a strong position to continue

its activities during the coming year, and that the charity's assets are adequate to fulfil its obligations.

Declaration of Conflict of Interest

The branch has a comprehensive Conflict of Interest policy and mitigation strategy to manage the conflicts. Conflicted Trustees leave the room when appropriate and cannot partake in any discussions or votes related to the connected party. Each committee meeting begins with any updates to conflicts of interest. Decisions relating to any remuneration, pay or other benefit will always exclude conflicted Trustees.

There were no conflicts of interest identified in 2024.

We always welcome interest and applications from possible new trustees. If you are interested in finding out more about becoming a Trustee, please email info@rspca-bedfordshiresouth.org.uk.

Chair's Report by Jo Byrne

I am pleased to present the Annual Report for our RSPCA Bedfordshire South Branch for 2024, highlighting our achievements, challenges, and the path forward for our Branch.

We successfully launched our first free microchipping event in November 2023, aimed at providing essential identification for pets as well as giving those struggling with the cost-of-living crisis an opportunity to have their animal companions chipped without charge. We chipped 98 animals at our first event, thus enhancing their chances of being reunited with their owners in case of separation. In total, across five events, we have chipped 996 animals.

Throughout the year, we organised several fundraising events to support our operations and welfare programs. These events not only raised vital funds but also increased community engagement and awareness of our small Branch.

I am delighted to report that our fostering programme continues to be successful, and we have rehomed a total of 269 animals during the year, including cats, rabbits, guinea pigs and other small furries. This programme is a testament to the dedication and hard work of our staff, fosterers, and volunteers.

Our Branch is very fortunate to have a strong team of Trustees who have passion and determination in guiding our Branch's success. We have our tireless Branch Manager who manages the day-to-day running of the Branch, dealing with an ever-increasing number of calls for help, co-ordinating the animal fosterers and volunteers, and ensuring the Branch adheres to all required organisational compliance. This year, we've been delighted to add our Branch Manager Assistant to the team to lend our Branch Manager a much-needed extra pair of hands! Our effervescent Shop Manager maintains the steady steering of our Ampthill Charity Shop, which continues to serve as a vital focal point for the local community – and donations are always welcome!

The commitment and leadership demonstrated by the entire Bedfordshire South Branch team has been instrumental in driving our mission forward and ensuring the smooth operation of our charity and I thank them all for their dedication and tenacity, particularly during these financially trying times.

Despite our successes, we face challenges – from rising veterinary bills and the increasing cost of pet food, to the increased number of calls for support and, sadly, rehoming animal companions lost, abandoned, or whose owners can no longer afford their care. To address these challenges effectively, we need to explore strategies to enhance fundraising efforts, recruit more fosterers, and – where we can afford to – provide support to pet owners struggling with veterinary expenses.

As we push forward through another year, I am confident that we have a strong foundation to build upon. With the dedication of our robust team, the support of our community, and a focus on the future, I believe we are well-positioned to overcome challenges and achieve even greater success in the coming year.

In conclusion, I would like to express my gratitude to the Trustees, staff, fosterers, volunteers, branch members, donors, and the community for their unwavering support and commitment to our mission. Together, RSPCA Bedfordshire South Branch will continue to make a meaningful difference in the lives of animals!



Reference and Administration Details

Charity Details

Charity Number: 259020

Registered Address: 34 Springfield Road, Luton, LU2 3HF, Tel: 07510 390872

Shop Address: 117 Dunstable Street Ampthill Beds MK45 2NG, Tel: 01525 838040

Trustees during 2024

Jo Byrne, Chair, from 15/09/2020 to present
Emily Stratton, Trustee, from 16/06/2022 to present
Lindsay Carignan, Trustee, from 16/06/2022 to present
Claire Robinson, Trustee, from 16/06/2022 to present
Barbara Grell, Trustee, from 21/10/21 to present
Prash Thakkar, Trustee, from 10/02/2020 to present
Lynda Harris from appointed 01/03/23 to present

Staff

Branch Manager – Alison Sutton
Assistant Branch Manager – Michelle Brinkley
Shop Manager – Marie Moir
Deputy Shop Manager – Sharon Cutler
Deputy Shop Manager - Tania Spittle

Accountants & Independent Examiners

Graham Hunt & Co
Chartered Accountants
Unit 15
Hockliffe Business Park
Watling Street
Hockliffe
Bedfordshire
LU7 9NB

Bankers

Barclays, 16 High St N, Dunstable LU6 1JZ
NatWest, 81 High St, Bedford MK40 1YN

Volunteering

As a Branch we rely on volunteers to make our aims of helping animals in need and improving animal welfare a reality. Our volunteers provide the backbone to our work and make a huge contribution to prevent cruelty and promote kindness. The numbers of volunteers vary throughout the year. Volunteer roles include:

- ✓ Administration
- ✓ Social Media
- ✓ Fostering
- ✓ Driving and transport
- ✓ Events
- ✓ Fundraising
- ✓ Shop work

- ✓ Trustee

Achievements & Branch Statistics

We re-homed:

- ✓ 171 cats
- ✓ 52 rabbits
- ✓ 46 small furries
- ✓ TOTAL: 269



We are always looking for new volunteers and rely on their hard work and commitment to be able to do all we can to help animals in need. Volunteering with us is a great way to meet likeminded people who share the same enthusiasm for animal welfare. Anyone can volunteer and we encourage volunteers from all sections of the community. If you would like to find out more, please e-mail: info@rspca-bedfordshiresouth.org.uk

Thank you to ALL our volunteers! We couldn't do it without you!

Fundraisers



This year we held craft fairs throughout the years raising vital funds to continue our work locally. Our team, trustees and volunteers worked tirelessly to continue to increase fundraising to cover ever increasing costs. In addition to our craft fairs we held several Facebook auctions and

started to reach out and build our social media presence to support our branch, tell the stories of our rescues and most of all build a good reputation locally and to increase online donations.



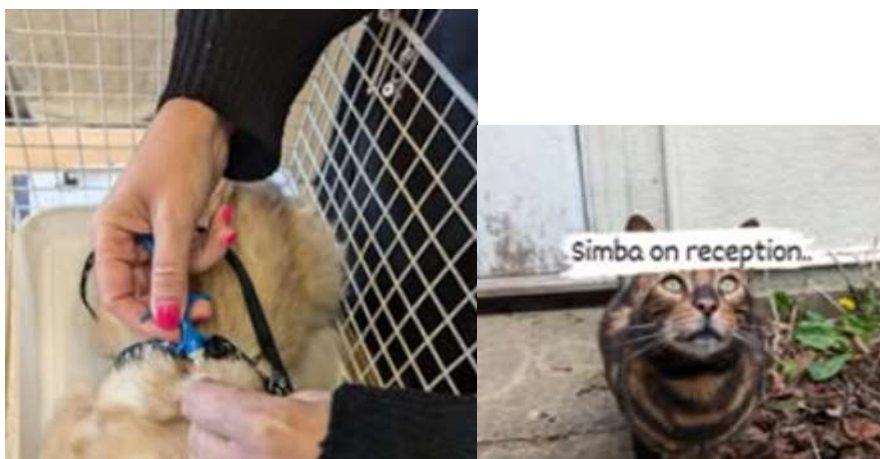
Microchipping Events



On June 24th, 2024, microchipping became mandatory for cats and the Branch therefore prepared to support our local community of cat owners to be compliant by offering free microchipping in the lead up to and following implementation of this new statute. Whilst we remain unclear who maybe policing the possible £500 fine, we welcome more cats and other pets to be microchipped.

A microchip with up-to-date details is the golden ticket home....

We microchipped a total of 996 animals, including cats, dogs and rabbits at our local microchipping events across the year.



Charity Objectives

The objectives of the Branch are to promote the work and objectives of the Society - to promote kindness and to prevent or suppress cruelty to animals by unlawful means, with reference to the area of the branch, in accordance with the policies of the Society. We are to concentrate on our charitable aims and continue to deliver benefits to the public. Under the Charities Act 2011, the advancement of animal welfare is recognised as a distinct statutory charitable purpose. The legislation and The Animal Welfare Act of the same year indicated an acceptance by society that treating a living creature with compassion has a moral benefit for the public. Whilst this public benefit is clear, it is sometimes difficult to balance against any detriment.

The Branch's animal welfare work, although local in nature, benefits society at large, and aims to help people in need with the care of their animals. The Branch helps unwanted, abandoned, and sick animals. We support our local Inspectorate by taking in mistreated or abandoned animals, including pets whose owners suffer ill health, financial difficulties, loss of housing or pass away. The Society's Inspectorate rescues animals in distress and enforces the law against cruelty and mistreatment of animals in England and Wales by bringing prosecutions.

The work is key to 'The prevention and suppression of cruelty' part of the RSPCA objectives and promotes humane sentiments towards animals which involve their moral benefit to humankind. The branch offers help and advice to rehome unwanted animals or strays. We take in numbers that reflect the space we have for the most abused and neglected animals and in order of most need. We think this is fair and compliant with welfare needs. The adoption fee charged is reasonable and highlights the ongoing personal and financial commitment of pet ownership. Animals in our care are given a health check, wormed, flea treated, vaccinated, neutered, and microchipped. We respond to enquiries from the public via telephone and email direct to the Branch Manager at: info@rspcabedfordshiresouth.org.uk

The Branch raises money to support its work through its charity shop in Ampthill, which also help to promote our rehoming, neutering and other messages in line with RSPCA policies, campaigns, and values. The Branch provides volunteering opportunities for those who wish to support our work, including fostering, raising awareness of animal welfare issues through the promotion of campaigns, fundraising and retail opportunities in our shop. This benefits local people and companies through providing the possibility of doing work which is both compassionate and rewarding and offers experience which may assist participants in finding paid work. We thank our volunteers for their hard work, dedication, and commitment. The trustees have reviewed the outcomes and achievements of our objectives and activities for the year, to ensure they have focused on our charitable aims and continue to deliver benefits to the public. In deciding what activities, the Branch should undertake we have complied with the duty under the Charities Act 2011 to have due regard to public benefit guidance published by the Commission.

Statement of Trustee Responsibilities

The trustees are required under the Charities Act 2011 to prepare financial statements for each financial year which give a true and fair view of the charity's financial activities during the year and of its financial position at the end of the year (unless the charity is entitled to prepare accounts on the alternative receipts and payments basis). In preparing the financial statements giving a true and fair view, the trustees should follow best practice and:

- ✓ Select suitable accounting policies and apply them consistently.
- ✓ Make judgements and estimates that are reasonable and prudent.
- ✓ State whether applicable accounting standards and statements of recommended practice have been followed, subject to any departures disclosed and explained in the financial statements
- ✓ Prepare the financial statements on a going concern basis unless it is inappropriate to presume the charity will continue in operation.

The trustees are responsible for keeping accounting records which disclose with reasonable accuracy the financial position of the charity, and which enable with reasonable accuracy the financial position of the charity, and which enables and ensures that the financial statements comply with applicable law and regulations. They are also responsible for safeguarding the assets of the charity and hence for taking reasonable steps for the prevention and detection of fraud and other irregularities.

Rescue and Foster Stories

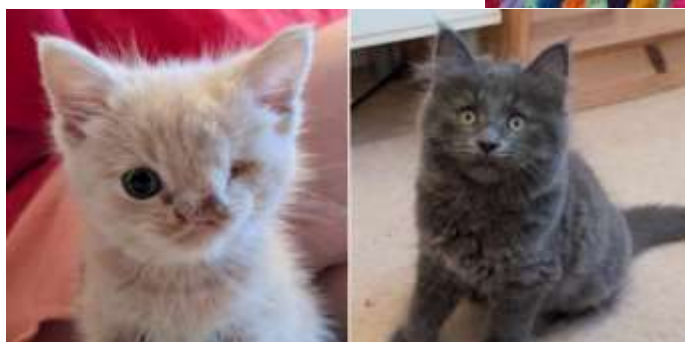
Benny & Teddy

In early September Beds South RSPCA received a request from a dog warden in Slough for an urgent space for a tiny little kitten, with just one eye and a cleft lip. We leapt into action.



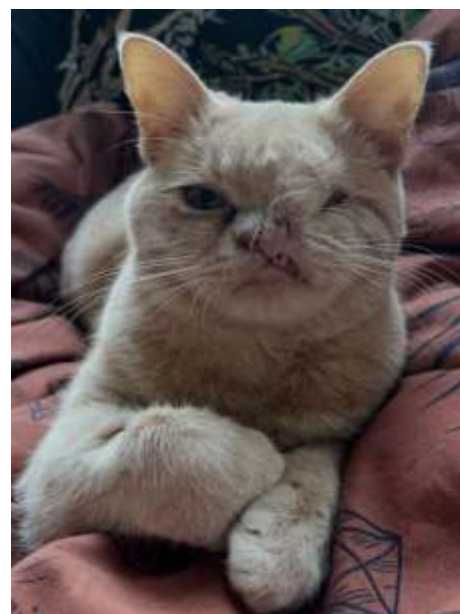
He had been handed in along with his mum, dad and two siblings, following a member of the public fleeing a domestic abuse situation. A vet check deemed the kitten - said to be 12 weeks old - was in good health but TINY! An extra surprise for our fosterer who took him in was that the kitten came accompanied by one of his siblings, easily three times the size of his little brother!

The kittens were officially named: Benjamin Button-Sized and Theodore Jet-Setter....aka Benny and the Jets...but we soon settled on, simply, Benny and Teddy.



The Boys grew fast, and Benny's appetite is second to none...meaning he was soon only HALF the size of his brother Teddy! Two subsequent vet checks gave Benny and Teddy the thumbs up for rehoming.

Today, The Boys are in their forever home - with Sam and Hannah - as well as Charlie, Tony and Merlin, their three other cats. Tony is blind so also an indoor-only cat (as Benny is) - and he loves to give the family's newest members a thorough washing before a proper snuggle and snooze.



Brie's Story

We can tell her story in the pictures....

Brie was suffering Pyometra. This is a serious uterine infection that affects unspayed female cats. It occurs within weeks of a cat being in estrus (or in heat) as a result of abnormal hormone changes. Bloody, purulent vaginal discharge and abdominal swelling are the most indicative symptoms of pyometra. Prompt veterinary treatment is critical because pyometra can be fatal if untreated.



As well as the Pyometra poor Brie had fly strike. Fly strike occurs when flies lay eggs on an animal, the eggs then pupate into larvae (also known as maggots) that feed on the flesh of the animal whilst they are still alive. This is, without a doubt, a very painful condition. It is also life threatening, and it is common for affected animals to go into shock once this process begins. Without treatment fly strike can be fatal.

Our volunteer spend many hours on a busy layby trying to trap Brie. They did NOT give up! Brie was immediately taken to the vet, and everything was done to save Brie's life.

Removing the maggots and Brie at the vet:



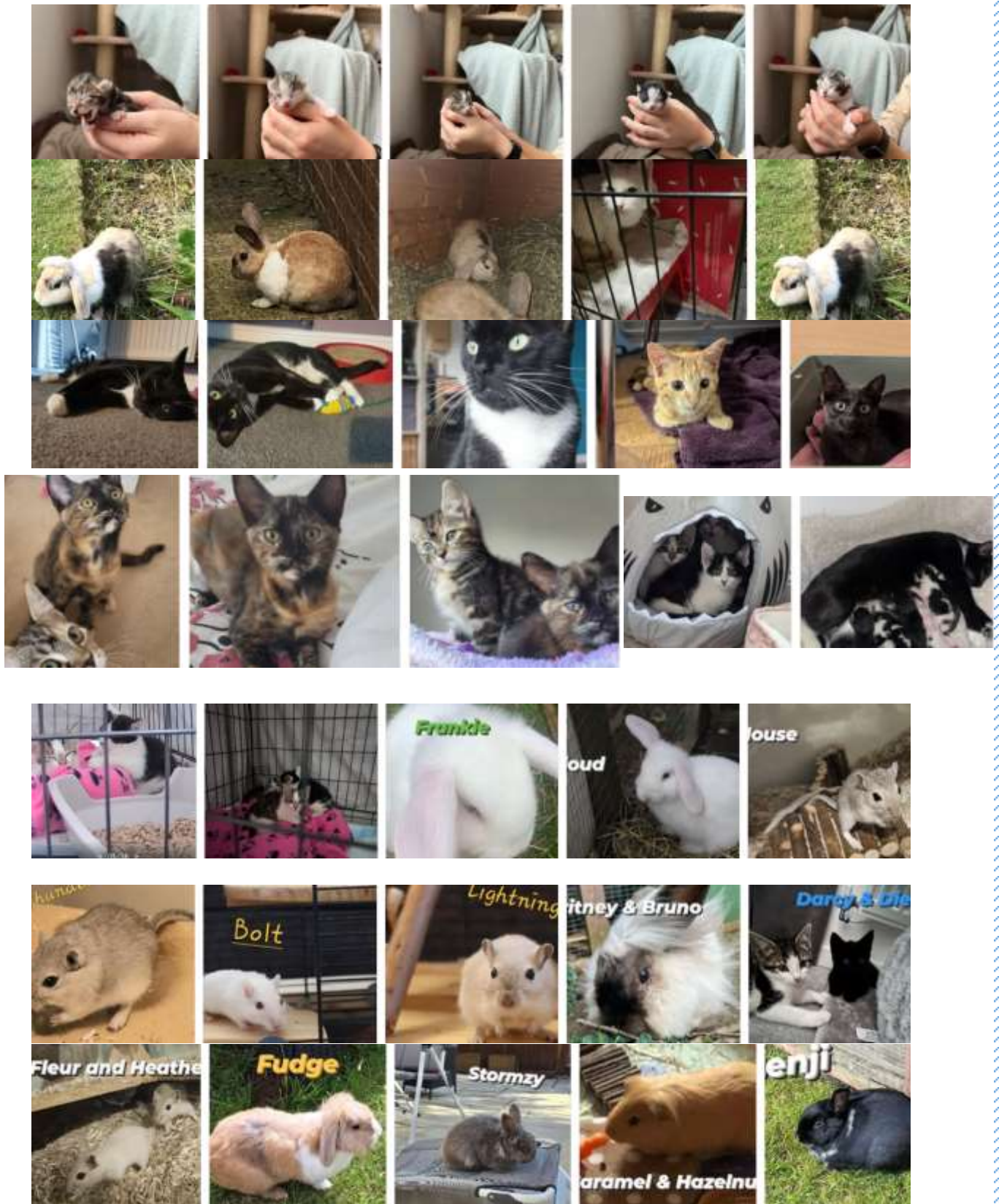
Brie today in her loving forever home and living her best life

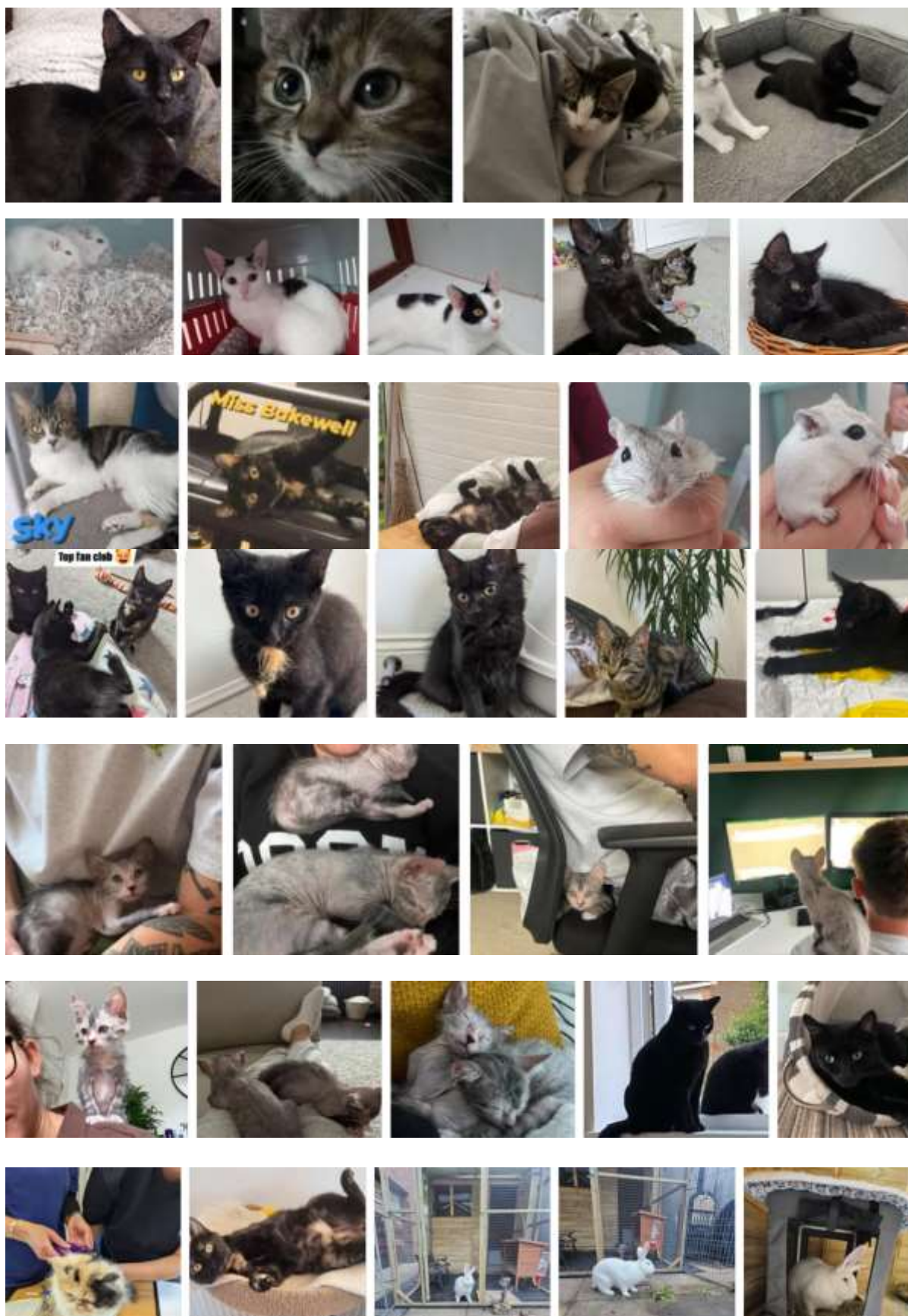


All this suffering could have been avoided had Brie been spayed.
But look at her NOW! What a tail, girl!

Our year in pictures - rescue gallery

We like to share. Here are some of our rescues this year.







REGISTERED CHARITY NUMBER: 259020

REPORT OF THE TRUSTEES AND
FINANCIAL STATEMENTS FOR THE YEAR ENDED 31 DECEMBER 2024
FOR
RSPCA BEDFORDSHIRE SOUTH BRANCH

Graham Hunt & Co
Chartered Accountants
Unit 15
Hockliffe Business Park
Watling Street
Hockliffe
Bedfordshire
LU7 9NB

RSPCA BEDFORDSHIRE SOUTH BRANCH

REPORT OF THE TRUSTEES **for the Year Ended 31 December 2024**

The trustees present their report with the financial statements of the charity for the year ended 31 December 2024. The trustees have adopted the provisions of Accounting and Reporting by Charities: Statement of Recommended Practice applicable to charities preparing their accounts in accordance with the Financial Reporting Standard applicable in the UK and Republic of Ireland (FRS 102) (effective 1 January 2019).

FINANCIAL REVIEW

Treasurers Report

In 2024, our fundraising efforts continued to improve, and we held a number of events which were very successful, and our income from fundraising was increased by over £6,000 vs 2023.

Sales from our shop in Ampthill were down vs prior year, and the Trustees, Branch manager and Shop manager are looking at ways to increase sales in 2025.

Our adoption income was similar to prior year, although due to the health and neglect of the animals, prior to being placed in our care, the veterinary expenses were significantly increased. However, we are very proud of our fostering and adoption programs which are very successful and an important service that we provide to the animals we rescue and the community.

We continue to work with vets and pet food suppliers to negotiate reduced fees where possible, but as the number of animals in our care increase, it is inevitable that costs associated with their care and welfare will increase also.

The trustees made the decision at the beginning of the year to recruit a Branch Assistant on a part time basis to support the Branch manager, who had been working a significant amount of overtime. All the trustees have full time jobs, and it is increasingly difficult to recruit volunteers. The additional payroll expense for this position was not intended to also increase income, but we will be looking for ways to increase income to offset this cost in 2025.

We received a legacy in 2024 totalling £177,718, with no specific request or restrictions on how we were to spend this money. The trustees would like to invest this money, (in addition to the £25,000 fund we had previously designated for a new shop or other investment), in a project that will not only allow us to help animals and our community but will also provide an ongoing income stream. We will continue to consider options in 2025.

Largely part to the addition of the Branch Assistant overall increase in payroll costs, increase in veterinary costs and reduction in shop sales, we would have made a loss in 2024 of approximately £31,000, if we had not received the legacy. We covered this shortfall by utilizing existing unrestricted funds from prior years.

All trustees remain committed to the aim of increasing income, and we are actively exploring investment opportunities, to further enhance the branch and to ensure we have enough funds available to be able to continue carrying out our amazing work, covering all aspects of animal welfare for animals in and out of our care, rescuing animals where necessary and supporting our fantastic team of fosters.

STRUCTURE, GOVERNANCE AND MANAGEMENT

Governing document

The charity is controlled by its governing document, a deed of trust and constitutes an unincorporated charity.

REFERENCE AND ADMINISTRATIVE DETAILS

Registered Charity number

259020

Principal address

34 Springfield Road
Luton
Bedfordshire
LU3 2HF

RSPCA BEDFORDSHIRE SOUTH BRANCH

REPORT OF THE TRUSTEES
for the Year Ended 31 December 2024

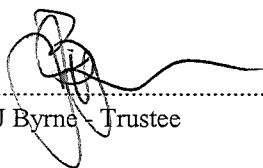
Trustees

J Byrne Chair
E Stratton
L Carignan (resigned 24.9.24)
C Robinson
R Rice (resigned 8.6.24)
B Grell
G Hooper (resigned 3.6.24)
L Francis (resigned 4.6.24)
P Thakkar
L Harris

Independent Examiner

Graham Hunt & Co
Chartered Accountants
Unit 15
Hockliffe Business Park
Watling Street
Hockliffe
Bedfordshire
LU7 9NB

Approved by order of the board of trustees on 19th May 2025 and signed on its behalf by:


.....
J Byrne - Trustee

**INDEPENDENT EXAMINER'S REPORT TO THE TRUSTEES OF
RSPCA BEDFORDSHIRE SOUTH BRANCH**

Independent examiner's report to the trustees of RSPCA Bedfordshire South Branch

I report to the charity trustees on my examination of the accounts of RSPCA Bedfordshire South Branch (the Trust) for the year ended 31 December 2024:

Responsibilities and basis of report

As the charity trustees of the Trust you are responsible for the preparation of the accounts in accordance with the requirements of the Charities Act 2011 ('the Act').

I report in respect of my examination of the Trust's accounts carried out under Section 145 of the Act and in carrying out my examination I have followed all applicable Directions given by the Charity Commission under Section 145(5)(b) of the Act.

Independent examiner's statement

Since your charity's gross income exceeded £250,000 your examiner must be a member of a listed body. I can confirm that I am qualified to undertake the examination because I am a member of the Institute of Chartered Accountants in England and Wales, which is one of the listed bodies.

I have completed my examination. I confirm that no material matters have come to my attention in connection with the examination giving me cause to believe that in any material respect:

1. accounting records were not kept in respect of the Trust as required by Section 130 of the Act; or
2. the accounts do not accord with those records; or
3. the accounts do not comply with the applicable requirements concerning the form and content of accounts set out in the Charities (Accounts and Reports) Regulations 2008 other than any requirement that the accounts give a true and fair view which is not a matter considered as part of an independent examination.

I have no concerns and have come across no other matters in connection with the examination to which attention should be drawn in this report in order to enable a proper understanding of the accounts to be reached.



Graham Hunt
The Institute of Chartered Accountants in England and Wales

Graham Hunt & Co
Chartered Accountants
Unit 15
Hockliffe Business Park
Watling Street
Hockliffe
Bedfordshire
LU7 9NB

Date: 20th May 2025.

RSPCA BEDFORDSHIRE SOUTH BRANCH

STATEMENT OF FINANCIAL ACTIVITIES
for the Year Ended 31 December 2024

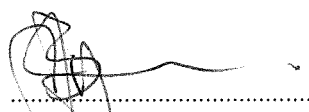
	Notes	Unrestricted fund £	Designated Fund £	31.12.24 Total funds £	31.12.23 Total funds £
INCOME AND ENDOWMENTS FROM					
Donations and legacies		208,990	-	208,990	36,633
Other trading activities	2	91,871	-	91,871	88,768
Total		<u>300,861</u>	<u>-</u>	<u>300,861</u>	<u>125,401</u>
EXPENDITURE ON					
Charitable activities					
Direct Charitable		153,825	-	153,825	126,032
NET INCOME/(EXPENDITURE)		147,036	-	147,036	(631)
RECONCILIATION OF FUNDS					
Total funds brought forward		188,474	25,000	213,474	214,105
TOTAL FUNDS CARRIED FORWARD		<u><u>335,510</u></u>	<u><u>25,000</u></u>	<u><u>360,510</u></u>	<u><u>213,474</u></u>

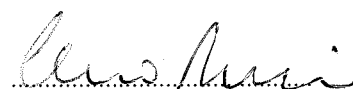
The notes form part of these financial statements

RSPCA BEDFORDSHIRE SOUTH BRANCH**BALANCE SHEET****31 December 2024**

	Notes	Unrestricted fund £	Designated Fund £	31.12.24 Total funds £	31.12.23 Total funds £
FIXED ASSETS					
Tangible assets	5	5,461	-	5,461	7,282
CURRENT ASSETS					
Debtors	6	4,754	-	4,754	3,977
Cash at bank		328,959	25,000	353,959	207,341
		<u>333,713</u>	<u>25,000</u>	<u>358,713</u>	<u>211,318</u>
CREDITORS					
Amounts falling due within one year	7	(3,664)	-	(3,664)	(5,126)
NET CURRENT ASSETS		<u>330,049</u>	<u>25,000</u>	<u>355,049</u>	<u>206,192</u>
TOTAL ASSETS LESS CURRENT LIABILITIES		<u>335,510</u>	<u>25,000</u>	<u>360,510</u>	<u>213,474</u>
NET ASSETS		<u>335,510</u>	<u>25,000</u>	<u>360,510</u>	<u>213,474</u>
FUNDS	8				
Unrestricted funds:					
General fund				335,510	188,474
Designated Fund				25,000	25,000
				<u>360,510</u>	<u>213,474</u>
TOTAL FUNDS				<u>360,510</u>	<u>213,474</u>

The financial statements were approved by the Board of Trustees and authorised for issue on
and were signed on its behalf by:


.....
J Byrne - Trustee


.....
C Robinson - Trustee

The notes form part of these financial statements

RSPCA BEDFORDSHIRE SOUTH BRANCH

NOTES TO THE FINANCIAL STATEMENTS **for the Year Ended 31 December 2024**

1. ACCOUNTING POLICIES

Basis of preparing the financial statements

The financial statements of the charity, which is a public benefit entity under FRS 102, have been prepared in accordance with the Charities SORP (FRS 102) 'Accounting and Reporting by Charities: Statement of Recommended Practice applicable to charities preparing their accounts in accordance with the Financial Reporting Standard applicable in the UK and Republic of Ireland (FRS 102) (effective 1 January 2019)', Financial Reporting Standard 102 'The Financial Reporting Standard applicable in the UK and Republic of Ireland' and the Charities Act 2011. The financial statements have been prepared under the historical cost convention.

Income

All income is recognised in the Statement of Financial Activities once the charity has entitlement to the funds, it is probable that the income will be received and the amount can be measured reliably.

Expenditure

Liabilities are recognised as expenditure as soon as there is a legal or constructive obligation committing the charity to that expenditure, it is probable that a transfer of economic benefits will be required in settlement and the amount of the obligation can be measured reliably. Expenditure is accounted for on an accruals basis and has been classified under headings that aggregate all cost related to the category. Where costs cannot be directly attributed to particular headings they have been allocated to activities on a basis consistent with the use of resources.

Tangible fixed assets

Depreciation is provided at the following annual rates in order to write off each asset over its estimated useful life.

Taxation

The charity is exempt from tax on its charitable activities.

Fund accounting

Unrestricted funds can be used in accordance with the charitable objectives at the discretion of the trustees.

Restricted funds can only be used for particular restricted purposes within the objects of the charity. Restrictions arise when specified by the donor or when funds are raised for particular restricted purposes.

Further explanation of the nature and purpose of each fund is included in the notes to the financial statements.

2. OTHER TRADING ACTIVITIES

	31.12.24	31.12.23
	£	£
Fundraising	10,873	4,785
Sale of Goods	59,376	64,064
Commission	-	133
Door to Door	21,622	19,786
	<hr/>	<hr/>
	91,871	88,768
	<hr/>	<hr/>

RSPCA BEDFORDSHIRE SOUTH BRANCH

NOTES TO THE FINANCIAL STATEMENTS - continued for the Year Ended 31 December 2024

3. TRUSTEES' REMUNERATION AND BENEFITS

There were no trustees' remuneration or other benefits for the year ended 31 December 2024 nor for the year ended 31 December 2023.

Trustees' expenses

There were no trustees' expenses paid for the year ended 31 December 2024 nor for the year ended 31 December 2023.

4. COMPARATIVES FOR THE STATEMENT OF FINANCIAL ACTIVITIES

	Unrestricted fund £	Designated Fund £	Total funds £
INCOME AND ENDOWMENTS FROM			
Donations and legacies	36,633	-	36,633
Other trading activities	88,768	-	88,768
Total	<u>125,401</u>	<u>-</u>	<u>125,401</u>
 EXPENDITURE ON			
Charitable activities			
Direct Charitable	<u>126,032</u>	<u>-</u>	<u>126,032</u>
 NET INCOME/(EXPENDITURE)	(631)	-	(631)
 RECONCILIATION OF FUNDS			
Total funds brought forward	<u>189,105</u>	<u>25,000</u>	<u>214,105</u>
 TOTAL FUNDS CARRIED FORWARD	<u><u>188,474</u></u>	<u><u>25,000</u></u>	<u><u>213,474</u></u>

RSPCA BEDFORDSHIRE SOUTH BRANCH**NOTES TO THE FINANCIAL STATEMENTS - continued**
for the Year Ended 31 December 2024**5. TANGIBLE FIXED ASSETS**

	Plant and machinery £	Fixtures and fittings £	Totals £
COST			
At 1 January 2024 and 31 December 2024	32,707	2,074	34,781
DEPRECIATION			
At 1 January 2024	26,469	1,030	27,499
Charge for year	1,560	261	1,821
At 31 December 2024	28,029	1,291	29,320
NET BOOK VALUE			
At 31 December 2024	4,678	783	5,461
At 31 December 2023	6,238	1,044	7,282

6. DEBTORS: AMOUNTS FALLING DUE WITHIN ONE YEAR

	31.12.24 £	31.12.23 £
Other debtors	416	416
VAT	4,007	3,230
Prepayments and accrued income	331	331
	4,754	3,977

7. CREDITORS: AMOUNTS FALLING DUE WITHIN ONE YEAR

	31.12.24 £	31.12.23 £
Trade creditors	697	3,744
Other creditors	2,967	1,382
	3,664	5,126

8. MOVEMENT IN FUNDS

	At 1.1.24 £	Net movement in funds £	At 31.12.24 £
Unrestricted funds			
General fund	188,474	147,036	335,510
Designated Fund	25,000	-	25,000
	213,474	147,036	360,510
TOTAL FUNDS	213,474	147,036	360,510

RSPCA BEDFORDSHIRE SOUTH BRANCH**NOTES TO THE FINANCIAL STATEMENTS - continued**
for the Year Ended 31 December 2024**8. MOVEMENT IN FUNDS - continued**

Net movement in funds, included in the above are as follows:

	Incoming resources £	Resources expended £	Movement in funds £
Unrestricted funds			
General fund	300,861	(153,825)	147,036
	<hr/>	<hr/>	<hr/>
TOTAL FUNDS	<u>300,861</u>	<u>(153,825)</u>	<u>147,036</u>

Comparatives for movement in funds

	At 1.1.23 £	Net movement in funds £	At 31.12.23 £
Unrestricted funds			
General fund	189,105	(631)	188,474
Designated Fund	25,000	-	25,000
	<hr/>	<hr/>	<hr/>
	214,105	(631)	213,474
	<hr/>	<hr/>	<hr/>
TOTAL FUNDS	<u>214,105</u>	<u>(631)</u>	<u>213,474</u>

Comparative net movement in funds, included in the above are as follows:

	Incoming resources £	Resources expended £	Movement in funds £
Unrestricted funds			
General fund	125,401	(126,032)	(631)
	<hr/>	<hr/>	<hr/>
TOTAL FUNDS	<u>125,401</u>	<u>(126,032)</u>	<u>(631)</u>

RSPCA BEDFORDSHIRE SOUTH BRANCH

NOTES TO THE FINANCIAL STATEMENTS - continued for the Year Ended 31 December 2024

8. MOVEMENT IN FUNDS - continued

A current year 12 months and prior year 12 months combined position is as follows:

	At 1.1.23 £	Net movement in funds £	At 31.12.24 £
Unrestricted funds			
General fund	189,105	146,405	335,510
Designated Fund	25,000	-	25,000
	<hr/>	<hr/>	<hr/>
	214,105	146,405	360,510
	<hr/>	<hr/>	<hr/>
TOTAL FUNDS	<u>214,105</u>	<u>146,405</u>	<u>360,510</u>

A current year 12 months and prior year 12 months combined net movement in funds, included in the above are as follows:

	Incoming resources £	Resources expended £	Movement in funds £
Unrestricted funds			
General fund	426,262	(279,857)	146,405
	<hr/>	<hr/>	<hr/>
TOTAL FUNDS	<u>426,262</u>	<u>(279,857)</u>	<u>146,405</u>

The General Fund is available for use in fulfilling the general objects of the Charity.

The Designated Fund represents funds that have been set aside to finance a new shop.

9. RELATED PARTY DISCLOSURES

Door to Door income of £21,622 was received from the National Society of the RSPCA during the year (2023: £19,786).

No payments were made to the Branch Emergency Fund during the year or in the previous year.

RSPCA BEDFORDSHIRE SOUTH BRANCH

DETAILED STATEMENT OF FINANCIAL ACTIVITIES for the Year Ended 31 December 2024

	31.12.24 £	31.12.23 £
INCOME AND ENDOWMENTS		
Donations and legacies		
Adoption Donations	22,926	23,570
Subscriptions & Donations	4,895	3,339
Gift aid	3,451	7,658
Legacies & Memoriam Donations	177,718	-
Grants Received	-	2,066
	<hr/>	<hr/>
	208,990	36,633
Other trading activities		
Fundraising	10,873	4,785
Sale of Goods	59,376	64,064
Commission	-	133
Door to Door	21,622	19,786
	<hr/>	<hr/>
	91,871	88,768
Total incoming resources	<hr/>	<hr/>
	300,861	125,401
EXPENDITURE		
Charitable activities		
Salaries, NI & Pensions	30,564	30,443
Rates and water	286	268
Insurance	521	950
Light and heat	1,617	1,347
Telephone & Internet	199	445
Sundry Expenses	4,477	5,800
Fostering	45,796	37,827
Fundraising Costs	1,016	1,791
Gift Aid Costs	1,929	1,506
Rent	10,000	10,000
Equipment Hire	1,020	1,503
Motor and Travelling	1,348	-
Repairs & Maintenance	-	238
Plant and machinery	1,560	2,079
Fixtures and fittings	261	511
Credit Card Charges	619	1,246
	<hr/>	<hr/>
	101,213	95,954
Support costs		

This page does not form part of the statutory financial statements

RSPCA BEDFORDSHIRE SOUTH BRANCH

DETAILED STATEMENT OF FINANCIAL ACTIVITIES
for the Year Ended 31 December 2024

	31.12.24	31.12.23
	£	£
Support costs		
Governance costs		
Staff Salaries, NI & Pension	50,447	28,697
Postage and stationery	258	367
Accountancy	1,255	700
Website & Computer Costs	236	147
Legal & Professional Fees	35	35
Subscriptions	381	132
	<hr/>	<hr/>
	52,612	30,078
	<hr/>	<hr/>
Total resources expended	153,825	126,032
	<hr/>	<hr/>
Net income/(expenditure)	147,036	(631)
	<hr/>	<hr/>

This page does not form part of the statutory financial statements

RSPCA BEDFORDSHIRE SOUTH BRANCH

CONTENTS OF THE FINANCIAL STATEMENTS
for the Year Ended 31 December 2024

	Page
Report of the Trustees	1 to 2
Independent Examiner's Report	3
Statement of Financial Activities	4
Balance Sheet	5
Notes to the Financial Statements	6 to 10
Detailed Statement of Financial Activities	11 to 12

REGISTERED CHARITY NUMBER: 259020

REPORT OF THE TRUSTEES AND
FINANCIAL STATEMENTS FOR THE YEAR ENDED 31 DECEMBER 2024
FOR
RSPCA BEDFORDSHIRE SOUTH BRANCH

Graham Hunt & Co
Chartered Accountants
Unit 15
Hockliffe Business Park
Watling Street
Hockliffe
Bedfordshire
LU7 9NB

RSPCA BEDFORDSHIRE SOUTH BRANCH

REPORT OF THE TRUSTEES **for the Year Ended 31 December 2024**

The trustees present their report with the financial statements of the charity for the year ended 31 December 2024. The trustees have adopted the provisions of Accounting and Reporting by Charities: Statement of Recommended Practice applicable to charities preparing their accounts in accordance with the Financial Reporting Standard applicable in the UK and Republic of Ireland (FRS 102) (effective 1 January 2019).

FINANCIAL REVIEW

Treasurers Report

In 2024, our fundraising efforts continued to improve, and we held a number of events which were very successful, and our income from fundraising was increased by over £6,000 vs 2023.

Sales from our shop in Ampthill were down vs prior year, and the Trustees, Branch manager and Shop manager are looking at ways to increase sales in 2025.

Our adoption income was similar to prior year, although due to the health and neglect of the animals, prior to being placed in our care, the veterinary expenses were significantly increased. However, we are very proud of our fostering and adoption programs which are very successful and an important service that we provide to the animals we rescue and the community.

We continue to work with vets and pet food suppliers to negotiate reduced fees where possible, but as the number of animals in our care increase, it is inevitable that costs associated with their care and welfare will increase also.

The trustees made the decision at the beginning of the year to recruit a Branch Assistant on a part time basis to support the Branch manager, who had been working a significant amount of overtime. All the trustees have full time jobs, and it is increasingly difficult to recruit volunteers. The additional payroll expense for this position was not intended to also increase income, but we will be looking for ways to increase income to offset this cost in 2025.

We received a legacy in 2024 totalling £177,718, with no specific request or restrictions on how we were to spend this money. The trustees would like to invest this money, (in addition to the £25,000 fund we had previously designated for a new shop or other investment), in a project that will not only allow us to help animals and our community but will also provide an ongoing income stream. We will continue to consider options in 2025.

Largely part to the addition of the Branch Assistant overall increase in payroll costs, increase in veterinary costs and reduction in shop sales, we would have made a loss in 2024 of approximately £31,000, if we had not received the legacy. We covered this shortfall by utilizing existing unrestricted funds from prior years.

All trustees remain committed to the aim of increasing income, and we are actively exploring investment opportunities, to further enhance the branch and to ensure we have enough funds available to be able to continue carrying out our amazing work, covering all aspects of animal welfare for animals in and out of our care, rescuing animals where necessary and supporting our fantastic team of fosters.

STRUCTURE, GOVERNANCE AND MANAGEMENT

Governing document

The charity is controlled by its governing document, a deed of trust and constitutes an unincorporated charity.

REFERENCE AND ADMINISTRATIVE DETAILS

Registered Charity number

259020

Principal address

34 Springfield Road
Luton
Bedfordshire
LU3 2HF

RSPCA BEDFORDSHIRE SOUTH BRANCH

REPORT OF THE TRUSTEES
for the Year Ended 31 December 2024

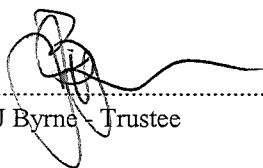
Trustees

J Byrne Chair
E Stratton
L Carignan (resigned 24.9.24)
C Robinson
R Rice (resigned 8.6.24)
B Grell
G Hooper (resigned 3.6.24)
L Francis (resigned 4.6.24)
P Thakkar
L Harris

Independent Examiner

Graham Hunt & Co
Chartered Accountants
Unit 15
Hockliffe Business Park
Watling Street
Hockliffe
Bedfordshire
LU7 9NB

Approved by order of the board of trustees on 19th May 2025 and signed on its behalf by:


.....
J Byrne - Trustee

**INDEPENDENT EXAMINER'S REPORT TO THE TRUSTEES OF
RSPCA BEDFORDSHIRE SOUTH BRANCH**

Independent examiner's report to the trustees of RSPCA Bedfordshire South Branch

I report to the charity trustees on my examination of the accounts of RSPCA Bedfordshire South Branch (the Trust) for the year ended 31 December 2024:

Responsibilities and basis of report

As the charity trustees of the Trust you are responsible for the preparation of the accounts in accordance with the requirements of the Charities Act 2011 ('the Act').

I report in respect of my examination of the Trust's accounts carried out under Section 145 of the Act and in carrying out my examination I have followed all applicable Directions given by the Charity Commission under Section 145(5)(b) of the Act.

Independent examiner's statement

Since your charity's gross income exceeded £250,000 your examiner must be a member of a listed body. I can confirm that I am qualified to undertake the examination because I am a member of the Institute of Chartered Accountants in England and Wales, which is one of the listed bodies.

I have completed my examination. I confirm that no material matters have come to my attention in connection with the examination giving me cause to believe that in any material respect:

1. accounting records were not kept in respect of the Trust as required by Section 130 of the Act; or
2. the accounts do not accord with those records; or
3. the accounts do not comply with the applicable requirements concerning the form and content of accounts set out in the Charities (Accounts and Reports) Regulations 2008 other than any requirement that the accounts give a true and fair view which is not a matter considered as part of an independent examination.

I have no concerns and have come across no other matters in connection with the examination to which attention should be drawn in this report in order to enable a proper understanding of the accounts to be reached.



Graham Hunt
The Institute of Chartered Accountants in England and Wales

Graham Hunt & Co
Chartered Accountants
Unit 15
Hockliffe Business Park
Watling Street
Hockliffe
Bedfordshire
LU7 9NB

Date: 20th May 2025.

RSPCA BEDFORDSHIRE SOUTH BRANCH

STATEMENT OF FINANCIAL ACTIVITIES
for the Year Ended 31 December 2024

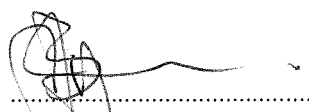
	Notes	Unrestricted fund £	Designated Fund £	31.12.24 Total funds £	31.12.23 Total funds £
INCOME AND ENDOWMENTS FROM					
Donations and legacies		208,990	-	208,990	36,633
Other trading activities	2	91,871	-	91,871	88,768
Total		<u>300,861</u>	<u>-</u>	<u>300,861</u>	<u>125,401</u>
EXPENDITURE ON					
Charitable activities					
Direct Charitable		<u>153,825</u>	<u>-</u>	<u>153,825</u>	<u>126,032</u>
NET INCOME/(EXPENDITURE)		147,036	-	147,036	(631)
RECONCILIATION OF FUNDS					
Total funds brought forward		188,474	25,000	213,474	214,105
TOTAL FUNDS CARRIED FORWARD		<u><u>335,510</u></u>	<u><u>25,000</u></u>	<u><u>360,510</u></u>	<u><u>213,474</u></u>

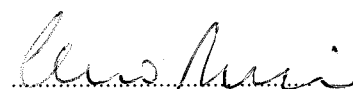
The notes form part of these financial statements

RSPCA BEDFORDSHIRE SOUTH BRANCH**BALANCE SHEET****31 December 2024**

	Notes	Unrestricted fund £	Designated Fund £	31.12.24 Total funds £	31.12.23 Total funds £
FIXED ASSETS					
Tangible assets	5	5,461	-	5,461	7,282
CURRENT ASSETS					
Debtors	6	4,754	-	4,754	3,977
Cash at bank		328,959	25,000	353,959	207,341
		<u>333,713</u>	<u>25,000</u>	<u>358,713</u>	<u>211,318</u>
CREDITORS					
Amounts falling due within one year	7	(3,664)	-	(3,664)	(5,126)
NET CURRENT ASSETS		<u>330,049</u>	<u>25,000</u>	<u>355,049</u>	<u>206,192</u>
TOTAL ASSETS LESS CURRENT LIABILITIES		<u>335,510</u>	<u>25,000</u>	<u>360,510</u>	<u>213,474</u>
NET ASSETS		<u>335,510</u>	<u>25,000</u>	<u>360,510</u>	<u>213,474</u>
FUNDS	8				
Unrestricted funds:					
General fund				335,510	188,474
Designated Fund				25,000	25,000
				<u>360,510</u>	<u>213,474</u>
TOTAL FUNDS				<u>360,510</u>	<u>213,474</u>

The financial statements were approved by the Board of Trustees and authorised for issue on
and were signed on its behalf by:


.....
J Byrne - Trustee


.....
C Robinson - Trustee

The notes form part of these financial statements

RSPCA BEDFORDSHIRE SOUTH BRANCH

NOTES TO THE FINANCIAL STATEMENTS **for the Year Ended 31 December 2024**

1. ACCOUNTING POLICIES

Basis of preparing the financial statements

The financial statements of the charity, which is a public benefit entity under FRS 102, have been prepared in accordance with the Charities SORP (FRS 102) 'Accounting and Reporting by Charities: Statement of Recommended Practice applicable to charities preparing their accounts in accordance with the Financial Reporting Standard applicable in the UK and Republic of Ireland (FRS 102) (effective 1 January 2019)', Financial Reporting Standard 102 'The Financial Reporting Standard applicable in the UK and Republic of Ireland' and the Charities Act 2011. The financial statements have been prepared under the historical cost convention.

Income

All income is recognised in the Statement of Financial Activities once the charity has entitlement to the funds, it is probable that the income will be received and the amount can be measured reliably.

Expenditure

Liabilities are recognised as expenditure as soon as there is a legal or constructive obligation committing the charity to that expenditure, it is probable that a transfer of economic benefits will be required in settlement and the amount of the obligation can be measured reliably. Expenditure is accounted for on an accruals basis and has been classified under headings that aggregate all cost related to the category. Where costs cannot be directly attributed to particular headings they have been allocated to activities on a basis consistent with the use of resources.

Tangible fixed assets

Depreciation is provided at the following annual rates in order to write off each asset over its estimated useful life.

Taxation

The charity is exempt from tax on its charitable activities.

Fund accounting

Unrestricted funds can be used in accordance with the charitable objectives at the discretion of the trustees.

Restricted funds can only be used for particular restricted purposes within the objects of the charity. Restrictions arise when specified by the donor or when funds are raised for particular restricted purposes.

Further explanation of the nature and purpose of each fund is included in the notes to the financial statements.

2. OTHER TRADING ACTIVITIES

	31.12.24	31.12.23
	£	£
Fundraising	10,873	4,785
Sale of Goods	59,376	64,064
Commission	-	133
Door to Door	21,622	19,786
	<u>91,871</u>	<u>88,768</u>

RSPCA BEDFORDSHIRE SOUTH BRANCH

NOTES TO THE FINANCIAL STATEMENTS - continued for the Year Ended 31 December 2024

3. TRUSTEES' REMUNERATION AND BENEFITS

There were no trustees' remuneration or other benefits for the year ended 31 December 2024 nor for the year ended 31 December 2023.

Trustees' expenses

There were no trustees' expenses paid for the year ended 31 December 2024 nor for the year ended 31 December 2023.

4. COMPARATIVES FOR THE STATEMENT OF FINANCIAL ACTIVITIES

	Unrestricted fund £	Designated Fund £	Total funds £
INCOME AND ENDOWMENTS FROM			
Donations and legacies	36,633	-	36,633
Other trading activities	88,768	-	88,768
Total	<u>125,401</u>	<u>-</u>	<u>125,401</u>
 EXPENDITURE ON			
Charitable activities			
Direct Charitable	<u>126,032</u>	<u>-</u>	<u>126,032</u>
 NET INCOME/(EXPENDITURE)	(631)	-	(631)
 RECONCILIATION OF FUNDS			
Total funds brought forward	<u>189,105</u>	<u>25,000</u>	<u>214,105</u>
 TOTAL FUNDS CARRIED FORWARD	<u><u>188,474</u></u>	<u><u>25,000</u></u>	<u><u>213,474</u></u>

RSPCA BEDFORDSHIRE SOUTH BRANCH**NOTES TO THE FINANCIAL STATEMENTS - continued**
for the Year Ended 31 December 2024**5. TANGIBLE FIXED ASSETS**

	Plant and machinery £	Fixtures and fittings £	Totals £
COST			
At 1 January 2024 and 31 December 2024	32,707	2,074	34,781
DEPRECIATION			
At 1 January 2024	26,469	1,030	27,499
Charge for year	1,560	261	1,821
At 31 December 2024	28,029	1,291	29,320
NET BOOK VALUE			
At 31 December 2024	4,678	783	5,461
At 31 December 2023	6,238	1,044	7,282

6. DEBTORS: AMOUNTS FALLING DUE WITHIN ONE YEAR

	31.12.24 £	31.12.23 £
Other debtors	416	416
VAT	4,007	3,230
Prepayments and accrued income	331	331
	4,754	3,977

7. CREDITORS: AMOUNTS FALLING DUE WITHIN ONE YEAR

	31.12.24 £	31.12.23 £
Trade creditors	697	3,744
Other creditors	2,967	1,382
	3,664	5,126

8. MOVEMENT IN FUNDS

	At 1.1.24 £	Net movement in funds £	At 31.12.24 £
Unrestricted funds			
General fund	188,474	147,036	335,510
Designated Fund	25,000	-	25,000
	213,474	147,036	360,510
TOTAL FUNDS	213,474	147,036	360,510

RSPCA BEDFORDSHIRE SOUTH BRANCH**NOTES TO THE FINANCIAL STATEMENTS - continued**
for the Year Ended 31 December 2024**8. MOVEMENT IN FUNDS - continued**

Net movement in funds, included in the above are as follows:

	Incoming resources £	Resources expended £	Movement in funds £
Unrestricted funds			
General fund	300,861	(153,825)	147,036
	<hr/>	<hr/>	<hr/>
TOTAL FUNDS	<u>300,861</u>	<u>(153,825)</u>	<u>147,036</u>

Comparatives for movement in funds

	At 1.1.23 £	Net movement in funds £	At 31.12.23 £
Unrestricted funds			
General fund	189,105	(631)	188,474
Designated Fund	25,000	-	25,000
	<hr/>	<hr/>	<hr/>
	214,105	(631)	213,474
	<hr/>	<hr/>	<hr/>
TOTAL FUNDS	<u>214,105</u>	<u>(631)</u>	<u>213,474</u>

Comparative net movement in funds, included in the above are as follows:

	Incoming resources £	Resources expended £	Movement in funds £
Unrestricted funds			
General fund	125,401	(126,032)	(631)
	<hr/>	<hr/>	<hr/>
TOTAL FUNDS	<u>125,401</u>	<u>(126,032)</u>	<u>(631)</u>

RSPCA BEDFORDSHIRE SOUTH BRANCH

NOTES TO THE FINANCIAL STATEMENTS - continued for the Year Ended 31 December 2024

8. MOVEMENT IN FUNDS - continued

A current year 12 months and prior year 12 months combined position is as follows:

	At 1.1.23 £	Net movement in funds £	At 31.12.24 £
Unrestricted funds			
General fund	189,105	146,405	335,510
Designated Fund	25,000	-	25,000
	<hr/>	<hr/>	<hr/>
	214,105	146,405	360,510
	<hr/>	<hr/>	<hr/>
TOTAL FUNDS	<u>214,105</u>	<u>146,405</u>	<u>360,510</u>

A current year 12 months and prior year 12 months combined net movement in funds, included in the above are as follows:

	Incoming resources £	Resources expended £	Movement in funds £
Unrestricted funds			
General fund	426,262	(279,857)	146,405
	<hr/>	<hr/>	<hr/>
TOTAL FUNDS	<u>426,262</u>	<u>(279,857)</u>	<u>146,405</u>

The General Fund is available for use in fulfilling the general objects of the Charity.

The Designated Fund represents funds that have been set aside to finance a new shop.

9. RELATED PARTY DISCLOSURES

Door to Door income of £21,622 was received from the National Society of the RSPCA during the year (2023: £19,786).

No payments were made to the Branch Emergency Fund during the year or in the previous year.

RSPCA BEDFORDSHIRE SOUTH BRANCH

DETAILED STATEMENT OF FINANCIAL ACTIVITIES for the Year Ended 31 December 2024

	31.12.24 £	31.12.23 £
INCOME AND ENDOWMENTS		
Donations and legacies		
Adoption Donations	22,926	23,570
Subscriptions & Donations	4,895	3,339
Gift aid	3,451	7,658
Legacies & Memoriam Donations	177,718	-
Grants Received	-	2,066
	<hr/> 208,990	<hr/> 36,633
Other trading activities		
Fundraising	10,873	4,785
Sale of Goods	59,376	64,064
Commission	-	133
Door to Door	21,622	19,786
	<hr/> 91,871	<hr/> 88,768
Total incoming resources	<hr/> 300,861	<hr/> 125,401
EXPENDITURE		
Charitable activities		
Salaries, NI & Pensions	30,564	30,443
Rates and water	286	268
Insurance	521	950
Light and heat	1,617	1,347
Telephone & Internet	199	445
Sundry Expenses	4,477	5,800
Fostering	45,796	37,827
Fundraising Costs	1,016	1,791
Gift Aid Costs	1,929	1,506
Rent	10,000	10,000
Equipment Hire	1,020	1,503
Motor and Travelling	1,348	-
Repairs & Maintenance	-	238
Plant and machinery	1,560	2,079
Fixtures and fittings	261	511
Credit Card Charges	619	1,246
	<hr/> 101,213	<hr/> 95,954
Support costs		

This page does not form part of the statutory financial statements

RSPCA BEDFORDSHIRE SOUTH BRANCH

DETAILED STATEMENT OF FINANCIAL ACTIVITIES
for the Year Ended 31 December 2024

	31.12.24	31.12.23
	£	£
Support costs		
Governance costs		
Staff Salaries, NI & Pension	50,447	28,697
Postage and stationery	258	367
Accountancy	1,255	700
Website & Computer Costs	236	147
Legal & Professional Fees	35	35
Subscriptions	381	132
	<hr/>	<hr/>
	52,612	30,078
	<hr/>	<hr/>
Total resources expended	153,825	126,032
	<hr/>	<hr/>
Net income/(expenditure)	147,036	(631)
	<hr/>	<hr/>

This page does not form part of the statutory financial statements

RSPCA BEDFORDSHIRE SOUTH BRANCH

CONTENTS OF THE FINANCIAL STATEMENTS
for the Year Ended 31 December 2024

	Page
Report of the Trustees	1 to 2
Independent Examiner's Report	3
Statement of Financial Activities	4
Balance Sheet	5
Notes to the Financial Statements	6 to 10
Detailed Statement of Financial Activities	11 to 12