



Trustees' Annual Report for the period

Period start date
From Day 01 Month 09 Year 2024 To Day 31 Month 08 Year 2025

Section A Reference and administration details

Charity name Oxford Christadelphians

Other names charity is known by Oxford Christadelphian Ecclesia; Oxford Christadelphian Church

Registered charity number (if any) 256668

Charity's principal address Christadelphian Hall

Tyndale Road

Oxford

Postcode OX4 1JL

Names of the charity trustees who manage the charity

	Trustee name	Office (if any)	Dates acted if not for whole year	Name of person (or body) entitled to appoint trustee (if any)
1	P Jeavons	Secretary		
2	J Clifford	Assistant Secretary		
3	A Drake	Treasurer		
4	P Richardson			
5	D Gibbs			
6	T Drake			
7	E Sharman			
8	J Robson			
9				
10				
11				
12				
13				
14				
15				
16				
17				
18				
19				
20				

Names of the trustees for the charity, if any, (for example, any custodian trustees)

Name	Dates acted if not for whole year

Names and addresses of advisers (Optional information)

Type of adviser	Name	Address

Name of chief executive or names of senior staff members (Optional information)

--

Section B Structure, governance and management

Description of the charity's trusts

Type of governing document

(e.g. individual, corporation)

"Faith and Practice" document which incorporates our constitution and rules

How the charity is constituted

(e.g. body, unincorporated members)

The Oxford Christadelphians are an independent, self-governing church within the worldwide Christadelphian fellowship. The church is a registered charity.

Trustee selection methods

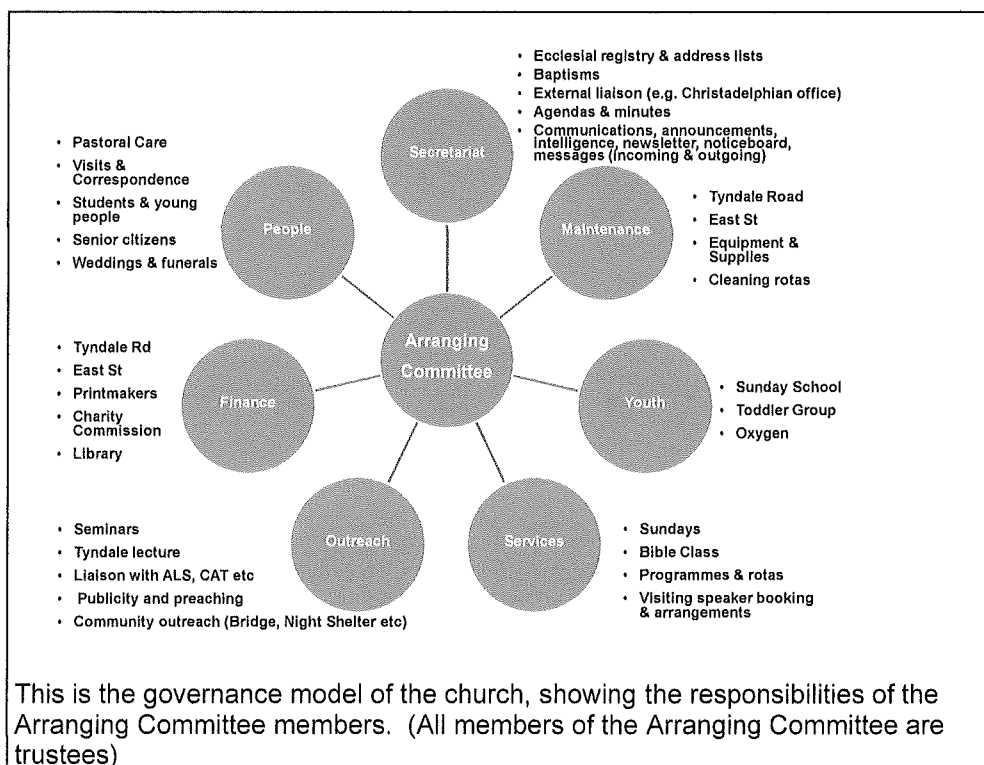
(e.g. registered office, elected body)

All trustees are elected by members of the church and are also members of the Arranging Committee of the church.

Additional governance issues (Optional information)

You **may choose** to include additional information, where relevant, about:

- policies and procedures adopted for the induction and training of trustees;
- the charity's organisational structure and any wider network with which the charity works;
- relationship with any related parties;
- trustees' consideration of major risks and the system and procedures to manage them.



Summary of the objects of the charity set out in its governing document

"We, professing our faith in God through the Lord Jesus Christ and seeking to obey his authority, undertake to live our lives according to his commandments, dependent only on His grace and the guidance of Holy Scripture. We dedicate ourselves to the work and worship in this Ecclesia and by our presence, prayers and gifts we strive to uphold the ministry of the word in this place for the glory of God. When and where we fail we confess our need of the Lord's mercy."

Summary of the main activities undertaken for the public benefit in relation to these objects (include within this section the statutory declaration that trustees have had regard to the guidance issued by the Charity Commission on public benefit)

Religious services, pastoral and social activities, outreach, support of charitable causes both in and outside the Christadelphian community. Most activities take place in the Oxford area.

Additional details of objectives and activities (Optional information)

You **may choose** to include further statements, where relevant, about:

- policy on grantmaking;
- policy programme related investment;
- contribution made by volunteers.

Summary of the main achievements of the charity during the year

"Achievements and performance" [Sep 2024 - Aug 2025]

Our official church membership is now 78, following the baptisms of two more of our Iranian friends in May and August 2025, and various other arrivals and departures.

We have had a good mix of Sunday services with 32 visiting speakers in the 2024/2025 year. Attendances dropped slightly on average over the year to 30 members in the hall and seven on Zoom each week, the Zoom option continuing to keep us connected with members and friends further away or those not well enough to be at the hall.

Bible Class continued to meet on Zoom each week, with the addition of our two house groups who meet once a month alongside an online reading group. We had nine "away" speakers either live or recorded, and even had a Bible Class "in the park" on a very warm summer's evening. On average there were 24 Zoom logins per week, which represents a 30% increase.

Footsteps (Sunday School) continued well. We still had four classes: crèche, early years, primary and upper class. Within the classes there were 14 children. The children enjoyed the Church outing to Cotswold Wildlife Park in July 2025. There was lots for everyone to do: animals to see, the train to ride on, parks to play in and we enjoyed a picnic together. Our thanks to the church for supporting this event. We also had a family service including a book giving at the end of July.

In December 2024, we hosted another 'Still No Room in the Inn' Service and some of our members were also involved with similar services at Littlemore and Blackbird Leys Churches. Our own, traditional Christmas Eve Service also attracted quite a number of visitors, some joining us for the first time. At Easter 2025, several of our members joined with 11 other churches for the Good Friday 'Walk of Witness' along the Cowley Road.

Some of our more practical 'outreach' activities were also well received. The Macmillan Coffee Morning in October 2024 raised £315 and the monthly meetings hosting the Age UK coffee morning have been increasingly well attended.

The reporting year (September 2024 – August 2025) has been another busy year for maintenance activities in the Church building. There have been several significant activities, the first of which was the expansion of the entrance lobby, including the removal of the glass-doored display cabinet and under-cupboard to create more space and install a picture window to enable the welcomers and those arriving to have a better view of the main hall. As part of this work, a new set of double doors was installed at the entrance, and matching double doors to the main hall and single doors to the toilet corridor and redecorated Footsteps room. Next for attention were the toilets and the corridor between the entrance hall and the kitchen. All three toilets and the corridor were deep cleaned and redecorated giving a brighter and fresher feel. A new baby-changing table was installed in the Disabled

Section D

Achievements and performance

Toilet. The redecoration of the entrance hall was undertaken by a contract company, who also installed new carpets to the entrance hall and corridor, new vinyl flooring to the toilets, and new laminate and carpet flooring in the Adelaide Room.

These works have made a big difference, with a fresher look to all the affected rooms. Additionally, the Velux windows in the kitchen and Adelaide Room were cleaned, and a matching window pole purchased. The three inward-facing sides of the doors to the Adelaide Room had a long-overdue top coat applied.

Website visits have ticked along steadily over the course of the year, with most visitors coming from the UK and a sprinkling of traffic from elsewhere in the world – though some of that is probably automated rather than human. The Bible reading plan remains by far the most-viewed page, followed by information about church services and meetings. The site continues quietly doing its job of keeping information available and findable.

This year, the Church continued its support of various charities including Viva, the children's charity; Oxford Homeless Pathways; the Icolyn Smith Foundation (which runs the Oxford Community Soup Kitchen); and others.

Section E

Financial review

Brief statement of the charity's policy on reserves

Our Building and Reserve Fund (a restricted fund) constitutes our reserves and enables us to finance major maintenance and refurbishment projects. Income for this fund comes from the rent of the workshop adjoining our Hall. A set of pre-authorised transfers to other funds support the general expenses and outgoing donations of the church. Extraordinary expenditure items which draw on the Building and Reserve Fund are subject to the approval of the church at a Business Meeting.

Details of any funds materially in deficit

No funds are in deficit

Further financial review details (Optional information)

You **may choose** to include additional information, where relevant about:

- the charity's principal sources of funds (including any fundraising);
- how expenditure has supported the key objectives of the charity;
- investment policy and objectives including any

Regular collections, gift aided donations, rental income and interest from the sale of the church's East Street house are the principal means of income. These have enabled us to cover the majority of our commitments during the year and members have continued to respond generously to international appeals for financial help with natural disasters.

ethical investment policy
adopted.

Section F

Other optional information

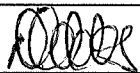
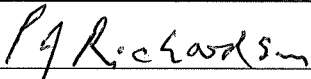
None

Section G

Declaration

The trustees declare that they have approved the trustees' report above.

Signed on behalf of the charity's trustees

Signature(s)		
Full name(s)	AGNIESZKA GIBBS	PAUL JAMES RICHARDSON
Position (eg Secretary, Chair, etc)	ASST TREASURER	-
Date	17. MAY 2026	24/05/26



Oxford Christadelphian Ecclesia				CC16a
Receipts and payments accounts				
For the period from	1 year ending	To	1 year ending	
	01-Sep-24		31-Aug-25	

Section A Receipts and payments

	Unrestricted funds to the nearest £	Restricted funds to the nearest £	Endowment funds to the nearest £	Total funds to the nearest £	Last year to the nearest £
A1 Receipts					
Donations, collections, Gift Aid	25,557	-	-	25,558	28,197
Tax rebate on Gift Aided donations	-	-	-	-	4,584
Rent	-	8,220	-	8,220	9,816
Interest earned	22,553	-	-	22,553	15,862
	-	-	-	-	-
	-	-	-	-	-
	-	-	-	-	-
	-	-	-	-	-
Sub total	48,110	8,220	-	56,331	58,459
A2 Asset and investment sales, etc.	-	-	-	-	-
Total receipts	48,109.63	8,220	-	56,331	58,459
A3 Payments					
Donations to external charities & causes	34,230	-	-	34,230	26,404
Preaching/outreach expenses	1,346	-	-	1,346	1,685
Pastoral & running costs	6,575	-	-	6,575	5,546
Maintenance of premises	2,493	22,317	-	24,810	9,709
Utilities	3,335	-	-	3,335	3,242
Insurance	2,189	-	-	2,189	2,197
	-	-	-	-	-
	-	-	-	-	-
	-	-	-	-	-
	-	-	-	-	-
Sub total	50,169	22,317	-	72,486	48,784
A4 Asset and investment purchases, etc.	-	-	-	-	-
Total payments	50,169	22,317	-	72,486	48,784
Net of receipts/(payments)	- 2,059	- 14,097	-	- 16,155	9,675
A5 Transfers between funds	8,225	- 8,225	-	-	-
A6 Cash funds last year end	519,598	32,837	-	552,435	542,759
Cash funds this year end	525,764	10,515	-	536,279	552,435

Section B Statement of assets and liabilities at the end of the period

Categories	Details	Unrestricted funds to nearest £	Restricted funds to nearest £	Endowment funds to nearest £
B1 Cash funds				-
	Current a/c	5,155	-	-
	Cash	-	-	-
	Flagstone	520,609	10,515	
	Total cash funds	525,764	10,515	-

(agree balances with receipts and payments account(s))

[illegible]

	Details	Fund to which asset belongs	Cost (optional)	Current value (optional)
B3 Investment assets	Part of Church premises	Unrestricted	-	-
			-	-
			-	-
			-	-
			-	-

[illegible]

	Details	Fund to which liability relates	Amount due (optional)	When due (optional)
B5 Liabilities	None		-	
			-	
			-	
			-	
			-	

Signed by one or two trustees on
behalf of all the trustees

Signature

A. Dahn

Print Name

A DRAKE

Date of approval	7/6/26

Mr A Drake
Treasurer
Oxford Christadelphian Ecclesia
2 Brookhampton Close
Stadhampton
OXFORD OX44 7XR

10 April 2026

Oxford Christadelphian Ecclesia Accounts 01/09/2024 – 31/08/2025

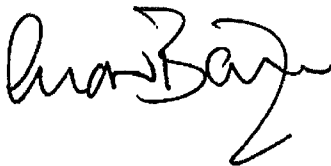
I have examined the above accounts in accordance with the directions and guidance of the Charity Commission and confirm that:

- The Ecclesia's accounts fall within the eligibility criteria for "Independent Examination"
- The accounting records are kept to the required standard
- The accounts agree with the records

I have not identified any matters of concern or issues that require the attention of the ecclesia.

On a purely practical basis I note that the accounts include some payments for which no supporting invoice/documentation is provided (eg to "M Hanson"). It is strongly recommended that appropriate documentation is provided in order to demonstrate that all expenditure is in line with the ecclesia's "charitable purpose".

On the same basis I suggest that given the relatively high level of cash reserves it would be appropriate to incorporate a "Reserves Policy" in the accounts "pack"



Andrew Baillie
58 Hill Farm Road
Marlow
Bucks
SL7 3LU