



# Trustees' Annual Report for the period

From 

Period start date
Day 01    Month 09    Year 2023

 To 

Period end date
Day 31    Month 08    Year 2024

## Section A Reference and administration details

Charity name 

Oxford Christadelphians
-------------------------

Other names charity is known by 

Oxford Christadelphian Ecclesia; Oxford Christadelphian Church
--

Registered charity number (if any) 

256668
--------

Charity's principal address 

Christadelphian Hall	
Tyndale Road	
Oxford	
Postcode	OX4 1JL

### Names of the charity trustees who manage the charity

	Trustee name	Office (if any)	Dates acted if not for whole year	Name of person (or body) entitled to appoint trustee (if any)
1	P Jeavons	Secretary		
2	J Clifford	Assistant Secretary		
3	A Drake	Treasurer		
4	P Richardson			
5	D Gibbs			
6	T Drake			
7	E Sharman			
8	J Robson			
9				
10				
11				
12				
13				
14				
15				
16				
17				
18				
19				
20				

### Names of the trustees for the charity, if any, (for example, any custodian trustees)

Name	Dates acted if not for whole year

## Names and addresses of advisers (Optional information)

Type of adviser	Name	Address

## Name of chief executive or names of senior staff members (Optional information)

--

## Section B Structure, governance and management

### Description of the charity's trusts

Type of governing document  
(eg. trust deed, constitution)

"Faith and Practice" document which incorporates our constitution and rules

How the charity is constituted  
(eg. trust, association, company)

The Oxford Christadelphians are an independent, self-governing church within the worldwide Christadelphian fellowship. The church is a registered charity.

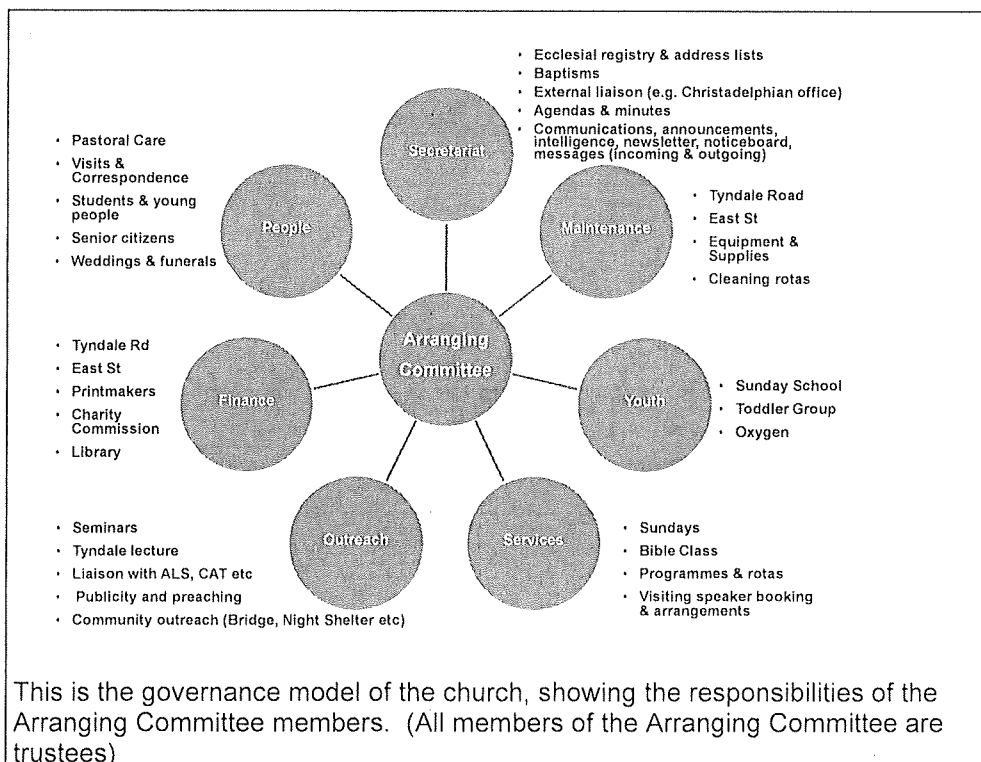
Trustee selection methods  
(eg. appointed by election, etc)

All trustees are elected by members of the church and are also members of the Arranging Committee of the church.

### Additional governance issues (Optional information)

You may choose to include additional information, where relevant, about:

- policies and procedures adopted for the induction and training of trustees;
- the charity's organisational structure and any wider network with which the charity works;
- relationship with any related parties;
- trustees' consideration of major risks and the system and procedures to manage them.



**Summary of the objects of the charity set out in its governing document**

"We, professing our faith in God through the Lord Jesus Christ and seeking to obey his authority, undertake to live our lives according to his commandments, dependent only on His grace and the guidance of Holy Scripture. We dedicate ourselves to the work and worship in this Ecclesia and by our presence, prayers and gifts we strive to uphold the ministry of the word in this place for the glory of God. When and where we fail we confess our need of the Lord's mercy."

**Summary of the main activities undertaken for the public benefit in relation to these objects (include within this section the statutory declaration that trustees have had regard to the guidance issued by the Charity Commission on public benefit)**

Religious services, pastoral and social activities, outreach, support of charitable causes both in and outside the Christadelphian community. Most activities take place in the Oxford area.

**Additional details of objectives and activities (Optional information)**

You **may choose** to include further statements, where relevant, about:

- policy on grantmaking;
- policy programme related investment;
- contribution made by volunteers.

**Summary of the main achievements of the charity during the year**

"Achievements and performance" [Sep 2023 - Aug 2024]

Our official church membership now stands at 76, which is the highest it has been for a number of years. The increase in our numbers was due to 13 more baptisms of our Iranian friends. Our Sunday services for worship and praise and Wednesday evening Bible Class continued throughout 2023/24.

Attendance on a Sunday morning, according to the register, was averaging about 32 members in the hall plus nine online (on Zoom) each week. Bible Class continued to meet on Zoom each week. In February 2024, following a survey of members, house groups for those who can meet in person have been scheduled into the programme once a month alongside the Zoom sessions. On average there have been 18 Zoom logins per week. An additional benefit with Zoom is that we have also had some visiting presenters from further afield.

Footsteps (Sunday School) continued well. From September 2023, we had an additional class, so four classes in total: crèche, early years, primary and upper class. Within these classes there were 12 children (although not all four classes were held every week, as it depends on attendance). The children enjoyed the Church outing to Beale Park in July 2024.

The two-yearly elections to the Arranging Committee were held this year, and we are very grateful to those who agreed to serve on the Committee and were duly elected with full support.

A small group met on Zoom every three months or so to consider the welfare of members. A separate group was set up to support the ongoing needs of our Iranian members and friends.

A few highlights from the 2023/2024 year included our hosting, in early December 2023, of a Christmas Oratorio entitled 'No Room at the Inn' written by Malcolm Atkins. This was a selection of carols and music interspersed with recent experiences of refugees. It was great to see the Hall full to bursting for this topical event. The 2023 Christmas Eve Service was very popular again with friends, family and neighbours joining us. January 2024 saw Tyndale Road host a service for Christian unity organised by the Methodist Church and involving four other local churches including ourselves. There was standing room only!

Regarding maintenance of the Church Building: essential repairs were carried out to the roof, including installation of snow guards to prevent tiles falling to the ground; both gas boilers were serviced; the kitchen hot water boiler was replaced; an Asbestos Survey Report was undertaken, and none was found at the Hall; an Electrical Installation Condition Report (EICR) was undertaken, and no issues were identified; broken chairs were repaired; and the crèche room was cleared and redecorated, primarily for use by the Footsteps Upper Class.

Our two newly-commissioned videos on the church website attracted 509 views over the course of this year, from a worldwide (though mainly UK)

## Section D

## Achievements and performance

audience.

Another Crafternoon was held in December 2023 which raised over £200 for Mind. We were joined by friends and neighbours for this event.

Age UK coffee mornings commenced taking place in the Hall every month, and these events have been a success, with various participants joining from the local area.

In December 2023, some of our members dropped off 60 sock bags to The Porch. The bags contained warm socks supplied by COG (Christadelphian Outreach Group) and other useful items. Also this year, the Church continued its support of various charities including the Leprosy Mission (specifically the Rainbow Children's Home, Vizianagaram, Andhra Pradesh, India - building a future for children affected by leprosy) and Viva, the children's charity.

Furthermore, the East Ham church had asked for financial help, specifically concerning transport for Iranian members and visitors, which had been costing them £60 per week. We agreed to offer them an initial contribution to cover £60 per week for six months, and invited them to come back to us after the six months are up if they need further support.

## Section E

## Financial review

### Brief statement of the charity's policy on reserves

Our Building and Reserve Fund (a restricted fund) constitutes our reserves and enables us to finance major maintenance and refurbishment projects. Income for this fund comes from the rent of the workshop adjoining our Hall. A set of pre-authorised transfers to other funds support the general expenses and outgoing donations of the church. Extraordinary expenditure items which draw on the Building and Reserve Fund are subject to the approval of the church at a Business Meeting.

### Details of any funds materially in deficit

No funds are in deficit

### Further financial review details (Optional information)

You **may choose** to include additional information, where relevant about:

- the charity's principal sources of funds (including any fundraising);
- how expenditure has supported the key objectives of the charity;
- investment policy and objectives including any

Regular collections, gift aided donations, rental income and interest from the sale of the church's East Street house are the principal means of income. These have enabled us to cover the majority of our commitments during the year and members have continued to respond generously to international appeals for financial help with natural disasters.

ethical investment policy  
adopted.



**Section F                      Other optional information**

None

**Section G                      Declaration**

The trustees declare that they have approved the trustees' report above.

Signed on behalf of the charity's trustees

Signature(s)		
Full name(s)	DENNIS JOHN GIBBS	EMMA LOUISE SHARMAN
Position (eg Secretary, Chair, etc)	TRUSTEE	TRUSTEE
Date	1. JUNE 2025	





Charity Name Oxford Christadelphian Ecclesia	No (if any) 256668
---	-----------------------

CC16a

## Receipts and payments accounts

For the period from	Period start date 01-Sep-23	To	Period end date 31-Aug-24
------------------------	--------------------------------	----	------------------------------

### Section A Receipts and payments

	Unrestricted funds to the nearest £	Restricted funds to the nearest £	Endowment funds to the nearest £	Total funds to the nearest £	Last year to the nearest £
<b>A1 Receipts</b>					
Donations, collections, Gift Aid	28,197	-	-	28,197	26,893
Tax rebate on Gift Aided donations	4,584	-	-	4,584	4,247
Rent	1,596	8,220	-	9,816	13,220
Interest earned	15,827	36	-	15,862	211
	-	-	-	-	-
	-	-	-	-	-
	-	-	-	-	-
	-	-	-	-	-
<b>Sub total</b>	<b>50,204</b>	<b>8,256</b>	<b>-</b>	<b>58,459</b>	<b>44,571</b>
<b>A2 Asset and investment sales, etc.</b>	-	-	-	-	498,730
<b>Total receipts</b>	<b>50,203.60</b>	<b>8,256</b>	<b>-</b>	<b>58,459</b>	<b>543,301</b>
<b>A3 Payments</b>					
Donations to external charities & causes	26,404	-	-	26,404	29,333
Preaching/outreach expenses	1,685	-	-	1,685	986
Pastoral & running costs	5,476	70	-	5,546	4,194
Maintenance of premises	2,987	6,722	-	9,709	3,549
Utilities	3,242	-	-	3,242	4,135
Insurance	2,197	-	-	2,197	1,982
	-	-	-	-	-
	-	-	-	-	-
	-	-	-	-	-
	-	-	-	-	-
<b>Sub total</b>	<b>41,991</b>	<b>6,793</b>	<b>-</b>	<b>48,784</b>	<b>44,179</b>
<b>A4 Asset and investment purchases, etc.</b>	-	-	-	-	-
<b>Total payments</b>	<b>41,991</b>	<b>6,793</b>	<b>-</b>	<b>48,784</b>	<b>44,179</b>
<b>Net of receipts/(payments)</b>	<b>8,212</b>	<b>1,463</b>	<b>-</b>	<b>9,675</b>	<b>499,122</b>
<b>A5 Transfers between funds</b>	<b>4,110</b>	<b>-</b>	<b>-</b>	<b>-</b>	<b>-</b>
<b>A6 Cash funds last year end</b>	<b>507,275</b>	<b>35,484</b>	<b>-</b>	<b>542,759</b>	<b>43,639</b>
<b>Cash funds this year end</b>	<b>519,598</b>	<b>32,837</b>	<b>-</b>	<b>552,435</b>	<b>542,759</b>



## Section B Statement of assets and liabilities at the end of the period

Categories	Details	Unrestricted funds to nearest £	Restricted funds to nearest £	Endowment funds to nearest £
<b>B1 Cash funds</b>				
	Current a/c	9,542	-	-
	Cash	22	-	-
	Flagstone	510,034	32,837	-
	<b>Total cash funds</b>	<b>519,598</b>	<b>32,837</b>	<b>-</b>
	(agree balances with receipts and payments account(s))	OK	OK	OK

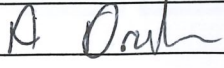
	Details	Unrestricted funds to nearest £	Restricted funds to nearest £	Endowment funds to nearest £
<b>B2 Other monetary assets</b>	Nil	-	-	-
		-	-	-
		-	-	-
		-	-	-
		-	-	-
		-	-	-

	Details	Fund to which asset belongs	Cost (optional)	Current value (optional)
<b>B3 Investment assets</b>	Part of Church premises	Unrestricted	-	-
			-	-
			-	-
			-	-
			-	-

	Details	Fund to which asset belongs	Cost (optional)	Current value (optional)
<b>B4 Assets retained for the charity's own use</b>	Church premises	Unrestricted	-	-
			-	-
			-	-
			-	-
			-	-
			-	-
			-	-
			-	-

	Details	Fund to which liability relates	Amount due (optional)	When due (optional)
<b>B5 Liabilities</b>	None		-	
			-	
			-	
			-	
			-	

Signed by one or two trustees on behalf of all the trustees

Signature	Print Name	Date of approval
	Alan Drake - Treasurer	31/5/25



Mr A Drake  
Treasurer  
Oxford Christadelphian Ecclesia  
2 Brookhampton Close  
Stadhampton  
OXFORD OX44 7XR

28 March 2025

Oxford Christadelphian Ecclesia Accounts 01/09/2023 – 31/08/2024

I have examined the above accounts in accordance with the directions and guidance of the Charity Commission and confirm that:

The Ecclesia's accounts fall within the eligibility criteria for "Independent Examination"  
The accounting records are kept to the required standard  
The accounts agree with the records

I have not identified any matters of concern or issues that require the attention of the ecclesia.

A handwritten signature in black ink, appearing to read 'A. Baillie', with a stylized flourish at the end.

Andrew Baillie  
58 Hill Farm Road  
Marlow  
Bucks  
SL7 3LU