



Trustees' Annual Report for the period

From	Period start date			To	Period end date		
	Day 01	Month 09	Year 2022		Day 31	Month 08	Year 2023

Section A Reference and administration details

Charity name	Oxford Christadelphians		
Other names charity is known by	Oxford Christadelphian Ecclesia; Oxford Christadelphian Church		
Registered charity number (if any)	256668		
Charity's principal address	Christadelphian Hall		
	Tyndale Road		
	Oxford		
	Postcode	OX4 1JL	

Names of the charity trustees who manage the charity

	Trustee name	Office (if any)	Dates acted if not for whole year	Name of person (or body) entitled to appoint trustee (if any)
1	P Jeavons	Secretary		
2	J Clifford	Assistant Secretary		
3	A Drake	Treasurer		
4	P Richardson			
5	D Gibbs			
6	L Gibbs			
7	T Drake			
8	T Harrison			
9	H Perryman			
10	J Perryman			
11				
12				
13				
14				
15				
16				
17				
18				
19				
20				

Names of the trustees for the charity, if any, (for example, any custodian trustees)

Name	Dates acted if not for whole year

Names and addresses of advisers (Optional information)

Type of adviser	Name	Address

Name of chief executive or names of senior staff members (Optional information)

--

Section B Structure, governance and management

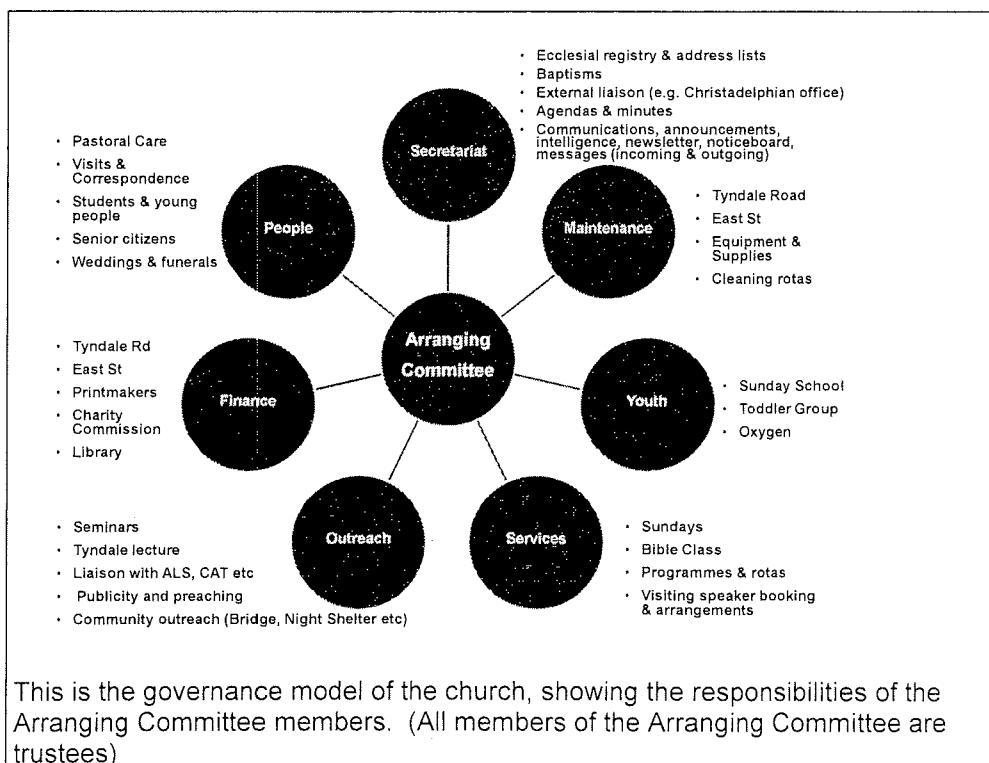
Description of the charity's trusts

Type of governing document (eg. trust deed, constitution)	"Faith and Practice" document which incorporates our constitution and rules
How the charity is constituted (eg. trust, association, company)	The Oxford Christadelphians are an independent, self-governing church within the worldwide Christadelphian fellowship. The church is a registered charity.
Trustee selection methods (eg. appointed by, elected by)	All trustees are elected by members of the church and are also members of the Arranging Committee of the church.

Additional governance issues (Optional information)

You **may choose** to include additional information, where relevant, about:

- policies and procedures adopted for the induction and training of trustees;
- the charity's organisational structure and any wider network with which the charity works;
- relationship with any related parties;
- trustees' consideration of major risks and the system and procedures to manage them.



Section C

Objectives and activities

Summary of the objects of the charity set out in its governing document

"We, professing our faith in God through the Lord Jesus Christ and seeking to obey his authority, undertake to live our lives according to his commandments, dependent only on His grace and the guidance of Holy Scripture. We dedicate ourselves to the work and worship in this Ecclesia and by our presence, prayers and gifts we strive to uphold the ministry of the word in this place for the glory of God. When and where we fail we confess our need of the Lord's mercy."

Summary of the main activities undertaken for the public benefit in relation to these objects (include within this section the statutory declaration that trustees have had regard to the guidance issued by the Charity Commission on public benefit)

Religious services, pastoral and social activities, outreach, support of charitable causes both in and outside the Christadelphian community. Most activities take place in the Oxford area.

Additional details of objectives and activities (Optional information)

You **may choose** to include further statements, where relevant, about:

- policy on grantmaking;
- policy programme related investment;
- contribution made by volunteers.

Summary of the main achievements of the charity during the year

"Achievements and performance" [Sep 2022 - Aug 2023]

Our Sunday services for worship and praise and Wednesday evening Bible Class continued throughout 2022/23. Our official church membership is now at 69, the highest it's been for quite a few years. Attendances at Sunday services have also been up.

Footsteps (Sunday School) has continued to provide a positive space for the children to interact with each other and spend time at the Hall.

An outing was organised in July 2023 to Snells Hall, East Hendred, and was enjoyed by those in attendance.

A 10-part Bible Basics course for Iranian people was held during this year. Also, during the first six months of 2023, a small group of our members met up with some of our Iranian friends in Ducklington Village Hall, enabling people to get to know one another and enjoy games and craft activities.

Refugee Voices (Confluence Collective Oxford), a music event run by Malcolm Atkins, was held at the Hall on Tuesday afternoons during this period. A small group, including some of our own members, have enjoyed learning songs from a wide variety of cultural backgrounds.

One very practical way in which we have been able to offer support to our Iranian friends is by financing the Windrush Bike Project. Eighteen residents of the Witney Hotel, including five of our regular Sunday attendees, have benefitted from this scheme.

In terms of maintenance of the Church Building, the cracked lintels were repaired. The brickwork gable over the entrance has been repaired and repointed. A number of lost/displaced slates on various parts of the roof were fixed and replaced as necessary. Snow guards have also been installed below the roof as protection for the general public, to prevent injury should tiles slide off.

The Adelaide Room has had a makeover with the old wallboards removed, cupboards emptied, sorted and refilled with labelled items, and fresh paint.

A professional video was commissioned for the recently-refreshed website.

We had a coffee morning for Macmillan Cancer Research on 1st October 2022 and raised £315.

In December 2022 we held a Crafternoon and were joined by friends and neighbours who helped us to raise over £200 for Mind.

The Church continued its support of local organisations and charities including Restore, Oxford Homeless Pathways, the Oxford Community Soup Kitchen and the Oxford Community Food Bank.

Section D

Achievements and performance

Section E

Financial review

Brief statement of the charity's policy on reserves

Our Building and Reserve Fund (a restricted fund) constitutes our reserves and enables us to finance major maintenance and refurbishment projects. Income for this fund comes from the rent of the workshop adjoining our Hall. A set of pre-authorised transfers to other funds support the general expenses and outgoing donations of the church. Extraordinary expenditure items which draw on the Building and Reserve Fund are subject to the approval of the church at a Business Meeting.

Details of any funds materially in deficit

No funds are in deficit

Further financial review details (Optional information)

You **may choose** to include additional information, where relevant about:

- the charity's principal sources of funds (including any fundraising);
- how expenditure has supported the key objectives of the charity;
- investment policy and objectives including any ethical investment policy adopted.

Regular collections, gift aided donations and rental income remain the principal means of income. These have enabled us to cover the majority of our commitments during the year and members have continued to respond generously to international appeals for financial help with natural disasters.

Section F

Other optional information

None

Section G

Declaration

The trustees declare that they have approved the trustees' report above.

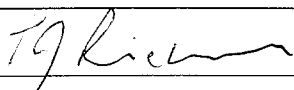

Signed on behalf of the charity's trustees

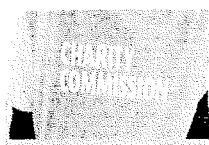
Signature(s)

Full name(s)

Position (eg Secretary, Chair, etc)

Date

	
PAUL RICHARDSON	PETER JERVENS
	SECRETARY
16/06/24	



Charity Name Oxford Christadelphian Ecclesia	Account number 150600
---	--------------------------

CC16a

Receipts and payments accounts

For the period from	Period start date 01-Sep-22	To	Period end date 31-Aug-23
------------------------	--------------------------------	----	------------------------------

Section A Receipts and payments

	Unrestricted funds to the nearest £	Restricted funds to the nearest £	Endowment funds to the nearest £	Total funds to the nearest £	Last year to the nearest £
A1 Receipts					
Donations, collections, Gift Aid	26,893	-	-	26,893	25,857
Tax rebate on Gift Aided donations	4,247	-	-	4,247	3,535
Rent	5,000	8,220	-	13,220	19,320
Interest earned	-	211	-	211	-
	-	-	-	-	-
	-	-	-	-	-
	-	-	-	-	-
	-	-	-	-	-
Sub total	36,139	8,431	-	44,570	48,712
A2 Asset and investment sales, etc.	498,730	-	-	498,730	-
Total receipts	534,869.05	8,431	-	543,300	48,712
A3 Payments					
Donations to external charities & causes	29,333	-	-	29,333	28,036
Preaching/outreach expenses	986	-	-	986	1,274
Pastoral & running costs	4,194	-	-	4,194	9,224
Maintenance of premises	3,549	-	-	3,549	1,216
Utilities	4,135	-	-	4,135	5,591
Insurance	1,982	-	-	1,982	2,866
	-	-	-	-	-
	-	-	-	-	-
	-	-	-	-	-
	-	-	-	-	-
Sub total	44,180	-	-	44,180	48,207
A4 Asset and investment purchases, etc.	-	-	-	-	-
Total payments	44,180	-	-	44,180	48,207
Net of receipts/(payments)	490,689	8,431	-	499,120	505
A5 Transfers between funds	3,636	- 3,636	-	-	-
A6 Cash funds last year end	12,950	30,689	-	43,639	-
Cash funds this year end	507,275	35,484		542,759	43,639

Section B Statement of assets and liabilities at the end of the period

Categories	Details	Unrestricted funds to nearest £	Restricted funds to nearest £	Endowment funds to nearest £
B1 Cash funds	Natwest Business a/c	7,264	5,742	-
	Virgin Money a/c	-	29,742	-
	Cash	12	-	-
	Flagstone	500,000	-	-
	Total cash funds	507,275	35,484	-
(agree balances with receipts and payments account(s))				

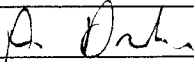
	Details	Unrestricted funds to nearest £	Restricted funds to nearest £	Endowment funds to nearest £
B2 Other monetary assets	Nil	-	-	-
		-	-	-
		-	-	-
		-	-	-
		-	-	-
		-	-	-

	Details	Fund to which asset belongs	Cost (optional)	Current value (optional)
B3 Investment assets	Part of Church premises	Unrestricted	-	-
			-	-
			-	-
			-	-
			-	-

	Details	Fund to which asset belongs	Cost (optional)	Current value (optional)
B4 Assets retained for the charity's own use	Church premises	Unrestricted	-	-
			-	-
			-	-
			-	-
			-	-
			-	-
			-	-
			-	-
			-	-

	Details	Fund to which liability relates	Amount due (optional)	When due (optional)
B5 Liabilities	None		-	
			-	
			-	
			-	
			-	

Signed by one or two trustees on behalf of all the trustees

Signature	Print Name	Date of approval
	Alan Drake - Treasurer	21/6/24