

# Trustees' Annual Report for the period

Period start date

Period end date

Day 01 Month 09 Year 2020

Day 31 Month 08 Year 2021

From

To

## Section A

## Reference and administration details

Charity name Oxford Christadelphians

Other names charity is known by Oxford Christadelphian Ecclesia; Oxford Christadelphian Church

Registered charity number (if any) 256668

Charity's principal address Christadelphian Hall

Tyndale Road

Oxford

Postcode

OX4 1JL

### Names of the charity trustees who manage the charity

	Trustee name	Office (if any)	Dates acted if not for whole year	Name of person (or body) entitled to appoint trustee (if any)
1	P Jeavons	Secretary		
2	J Clifford	Assistant Secretary		
3	A Drake	Treasurer		
4	P Richardson			
5	J Pitt-Francis	Joint-trustee (with No 6)		
6	N Pitt-Francis	Joint-trustee (with No 5)		
7	T Drake			
8	T Harrison			
9				
10				
11				
12				
13				
14				
15				
16				
17				
18				
19				
20				

### Names of the trustees for the charity, if any, (for example, any custodian trustees)

Name	Dates acted if not for whole year

## Names and addresses of advisers (Optional information)

Type of adviser	Name	Address

## Name of chief executive or names of senior staff members (Optional information)

--

## Section B Structure, governance and management

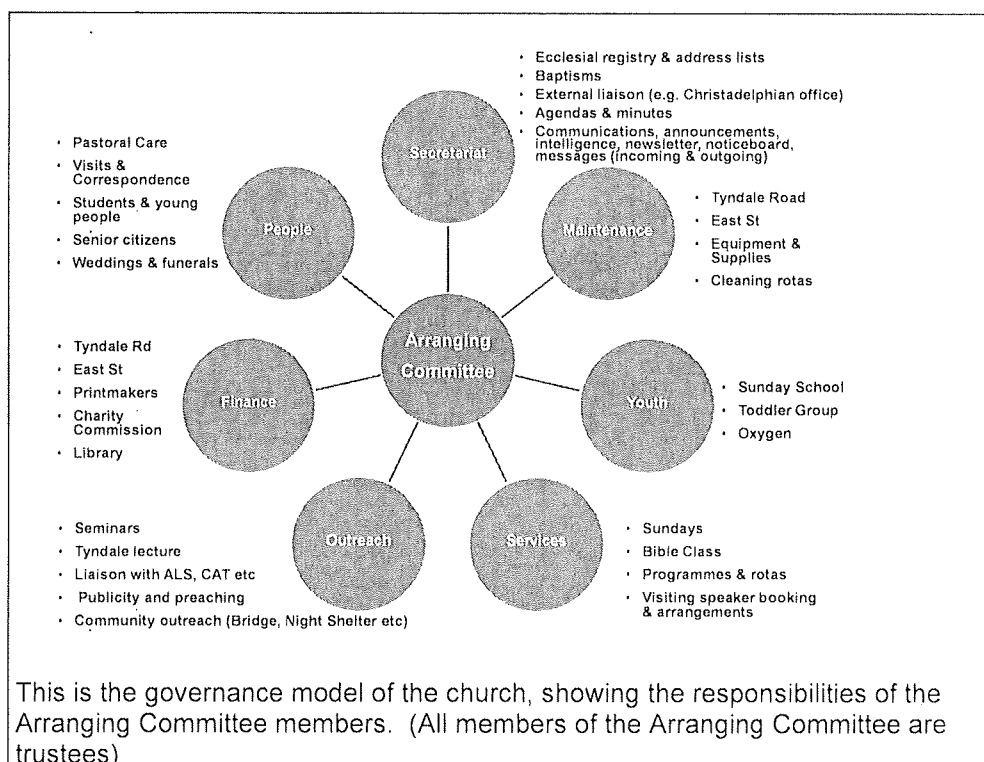
### Description of the charity's trusts

Type of governing document	"Faith and Practice" document which incorporates our constitution and rules
How the charity is constituted	The Oxford Christadelphians are an independent, self-governing church within the worldwide Christadelphian fellowship. The church is a registered charity.
Trustee selection methods	All trustees are elected by members of the church and are also members of the Arranging Committee of the church.

### Additional governance issues (Optional information)

You **may choose** to include additional information, where relevant, about:

- policies and procedures adopted for the induction and training of trustees;
- the charity's organisational structure and any wider network with which the charity works;
- relationship with any related parties;
- trustees' consideration of major risks and the system and procedures to manage them.



**Summary of the objects of the charity set out in its governing document**

"We, professing our faith in God through the Lord Jesus Christ and seeking to obey his authority, undertake to live our lives according to his commandments, dependent only on His grace and the guidance of Holy Scripture. We dedicate ourselves to the work and worship in this Ecclesia and by our presence, prayers and gifts we strive to uphold the ministry of the word in this place for the glory of God. When and where we fail we confess our need of the Lord's mercy."

**Summary of the main activities undertaken for the public benefit in relation to these objects (include within this section the statutory declaration that trustees have had regard to the guidance issued by the Charity Commission on public benefit)**

Religious services, pastoral and social activities, outreach, support of charitable causes both in and outside the Christadelphian community. Most activities take place in the Oxford area.

**Additional details of objectives and activities (Optional information)**

You **may choose** to include further statements, where relevant, about:

- policy on grantmaking;
- policy programme related investment;
- contribution made by volunteers.

## Section D

## Achievements and performance

Summary of the main achievements of the charity during the year

"Achievements and performance" [Sep 2020 - Aug 2021]

Our Sunday services for worship and praise and Wednesday evening Bible Class continued throughout 2020/21.

Our official membership now stands at 57, a little higher than it has been for a while, due to a baptism in June 2021 and the transfer of several members from other Christadelphian churches.

The church website had about 16,000 visits from 3,500 visitors, which is around a 14% increase in visitors since the previous year. Average time on page at 3m55s is apparently high by the standards of the World Wide Web, and this is usually a good sign of engagement.

Youth activities continued this year in some form or another, as Covid rules allowed. One of the highlights was creating linocut designs for printing Christmas cards, with proceeds going to The Porch and Viva, two local Oxford charities which we support. As usual, it is our policy to ensure that all those who work with children (e.g. Sunday School, toddlers and youth groups) undergo Disclosure and Barring Service (DBS) checks.

Several church members have organised computers, cameras and mixing desks at the Hall to make hybrid Sunday services a reality. Participants can now choose to come to the Hall or join online.

A majority voted to end all gender-based restrictions regarding the conducting of services, and this was implemented.

In February 2021, Chris Stratta from the Leprosy Mission led a Bible Class evening on the work of that charity. In response, we held a Special Collection to support a Leprosy Mission "Hub of Hope" in Mozambique.

The Church continued its support of local organisations and charities, such as The Porch, The Icolyn Smith Foundation (which supports the Oxford Community Soup Kitchen) and the Oxford Community Food Bank. We also made a donation for the purchase of books for Iranian Bible Study groups in Coventry.

## Section E

## Financial review

Brief statement of the charity's policy on reserves

Our Building and Reserve Fund (a restricted fund) constitutes our reserves and enables us to finance major maintenance and refurbishment projects. Income for this fund comes from the rent of the workshop adjoining our Hall. A set of pre-authorised transfers to other funds support the general expenses and outgoing donations of the church. Extraordinary expenditure items which draw on the Building and Reserve Fund are subject to the approval of the church at a Business Meeting.

Details of any funds materially in deficit

No funds are in deficit

#### Further financial review details (Optional information)

You may choose to include additional information, where relevant about:

- the charity's principal sources of funds (including any fundraising);
- how expenditure has supported the key objectives of the charity;
- investment policy and objectives including any ethical investment policy adopted.

Regular collections, gift aided donations and rental income remain the principal means of income. These have enabled us to cover the majority of our commitments during the year and members have continued to respond generously to international appeals for financial help with natural disasters.

### Section F Other optional information

None

### Section G Declaration

The trustees declare that they have approved the trustees' report above.

Signed on behalf of the charity's trustees

Signature(s)	J.F. Clifford	J.P. Francis
Full name(s)	JOHN CLIFFORD	JOE PITT-FRANCIS
Position (eg Secretary, Chair, etc)	ASST SECRETARY	COMMITTEE MEMBER
Date	26.06.2022.	26 JUNE 2022.



Oxford Christadelphian Ecclesia

## Receipts and payments accounts

CC16a

For the period  
from

01-Sep-20

To

31-Aug-21

### Section A Receipts and payments

	Unrestricted funds to the nearest £	Restricted funds to the nearest £	Endowment funds to the nearest £	Total funds to the nearest £	Last year to the nearest £
<b>A1 Receipts</b>					
Donations, collections, Gift Aid	28,282	-	-	28,282	25,401
Tax rebate on Gift Aided donations	-	-	-	-	4,125
Rent	11,700	6,240	-	17,940	16,300
Interest earned	-	-	-	-	-
	-	-	-	-	-
	-	-	-	-	-
	-	-	-	-	-
<b>Sub total</b>	<b>39,982</b>	<b>6,240</b>	<b>-</b>	<b>46,222</b>	<b>45,826</b>
<b>A2 Asset and investment sales, etc.</b>	-	-	-	-	-
<b>Total receipts</b>	<b>39,982.00</b>	<b>6,240</b>	<b>-</b>	<b>46,222</b>	<b>45,826</b>
<b>A3 Payments</b>					
Donations to external charities & causes	39,955	-	-	39,955	31,712
Preaching/outreach expenses	1,269	-	-	1,269	800
Pastoral & running costs	1,384	-	-	1,384	1,972
Maintenance of premises	2,133	-	-	2,133	4,971
Utilities	5,011	-	-	5,011	4,937
Insurance	1,684	-	-	1,684	1,664
	-	-	-	-	-
	-	-	-	-	-
	-	-	-	-	-
<b>Sub total</b>	<b>51,435</b>	<b>-</b>	<b>-</b>	<b>51,435</b>	<b>46,056</b>
<b>A4 Asset and investment purchases, etc.</b>	-	-	-	-	-
<b>Total payments</b>	<b>51,435</b>	<b>-</b>	<b>-</b>	<b>51,435</b>	<b>46,056</b>
<b>Net of receipts/(payments)</b>	<b>- 11,453</b>	<b>6,240</b>	<b>-</b>	<b>- 5,213</b>	<b>- 230</b>
<b>A5 Transfers between funds</b>	<b>10,440</b>	<b>- 10,440</b>	<b>-</b>	<b>-</b>	<b>-</b>
<b>A6 Cash funds last year end</b>	<b>14,404</b>	<b>33,399</b>	<b>-</b>	<b>48,212</b>	<b>-</b>
<b>Cash funds this year end</b>	<b>13,720</b>	<b>29,609</b>	<b>-</b>	<b>43,329</b>	<b>47,802</b>

## Section B Statement of assets and liabilities at the end of the period

Categories	Details	Unrestricted funds to nearest £	Restricted funds to nearest £	Endowment funds to nearest £
<b>B1 Cash funds</b>	Natwest Business a/c	13,309	77	-
	Virgin Money a/c	-	29,532	-
	Cash	412	-	-
	<b>Total cash funds</b>	<b>13,720</b>	<b>29,609</b>	<b>-</b>

(agree balances with receipts and payments account(s))


	Details	Unrestricted funds to nearest £	Restricted funds to nearest £	Endowment funds to nearest £
<b>B2 Other monetary assets</b>	Nil	-	-	-
		-	-	-
		-	-	-
		-	-	-
		-	-	-
		-	-	-

	Details	Fund to which asset belongs	Cost (optional)	Current value (optional)
<b>B3 Investment assets</b>	Part of Church premises	Unrestricted	-	-
	21 East St, Oxford	Unrestricted	-	-
			-	-
			-	-
			-	-

	Details	Fund to which asset belongs	Cost (optional)	Current value (optional)
<b>B4 Assets retained for the charity's own use</b>	Church premises	Unrestricted	-	-
			-	-
			-	-
			-	-
			-	-
			-	-
			-	-
			-	-
			-	-

	Details	Fund to which liability relates	Amount due (optional)	When due (optional)
<b>B5 Liabilities</b>	None		-	
			-	
			-	
			-	
			-	

Signed by one or two trustees on behalf of all the trustees

Signature	Print Name	Date of approval
	Alan Drake - Treasurer	27.06.2022

Mr A Drake  
Treasurer  
Oxford Christadelphian Ecclesia  
2 Brookhampton Close  
Stadhampton  
Oxford OX44 7XR

24 June 2022

**Oxford Christadelphian Ecclesia**

I confirm:-

I have followed the Directions of the Charity Commission under Section 145 (5) (b) of the 2011 Act in respect of independent examination for the accounting year September 2020 to August 2021.

The Ecclesia accounts are eligible to have an independent examination.


An independent examination is an external scrutiny that provides a limited check on specific matters. They are:-

- o The accounting records kept
- o Whether the accounts agree with those records
- o Whether the format of the accounts is correct

I have completed all the above checks and find the accounting records are kept the required standard.

I have not identified any matters of concern or issues I feel should be brought to the attention of the Ecclesia.

Signed



John Glavey B.A. Dip Ed Dip FA  
18 Jury Place  
17-19 Jury Street  
Warwick  
CV34 6RG