



Trustees' Annual Report for the period

From	Period start date			To	Period end date		
	Day 01	Month 09	Year 2019		Day 31	Month 08	Year 2020

Section A Reference and administration details

Charity name Oxford Christadelphians

Other names charity is known by Oxford Christadelphian Ecclesia; Oxford Christadelphian Church

Registered charity number (if any) 256668

Charity's principal address Christadelphian Hall

Tyndale Road

Oxford

Postcode

OX4 1JL

Names of the charity trustees who manage the charity

	Trustee name	Office (if any)	Dates acted if not for whole year	Name of person (or body) entitled to appoint trustee (if any)
1	P Jeavons	Secretary		
2	J Clifford	Assistant Secretary		
3	A Drake	Treasurer		
4	P Richardson			
5	J Pitt-Francis	Joint-trustee (with No 6)		
6	N Pitt-Francis	Joint-trustee (with No 5)		
7	S Ash			
8	K Watson			
9	T Drake			
10				
11				
12				
13				
14				
15				
16				
17				
18				
19				
20				

Names of the trustees for the charity, if any, (for example, any custodian trustees)

Name	Dates acted if not for whole year

Names and addresses of advisers (Optional information)

Type of adviser	Name	Address

Name of chief executive or names of senior staff members (Optional information)

--

Section B Structure, governance and management

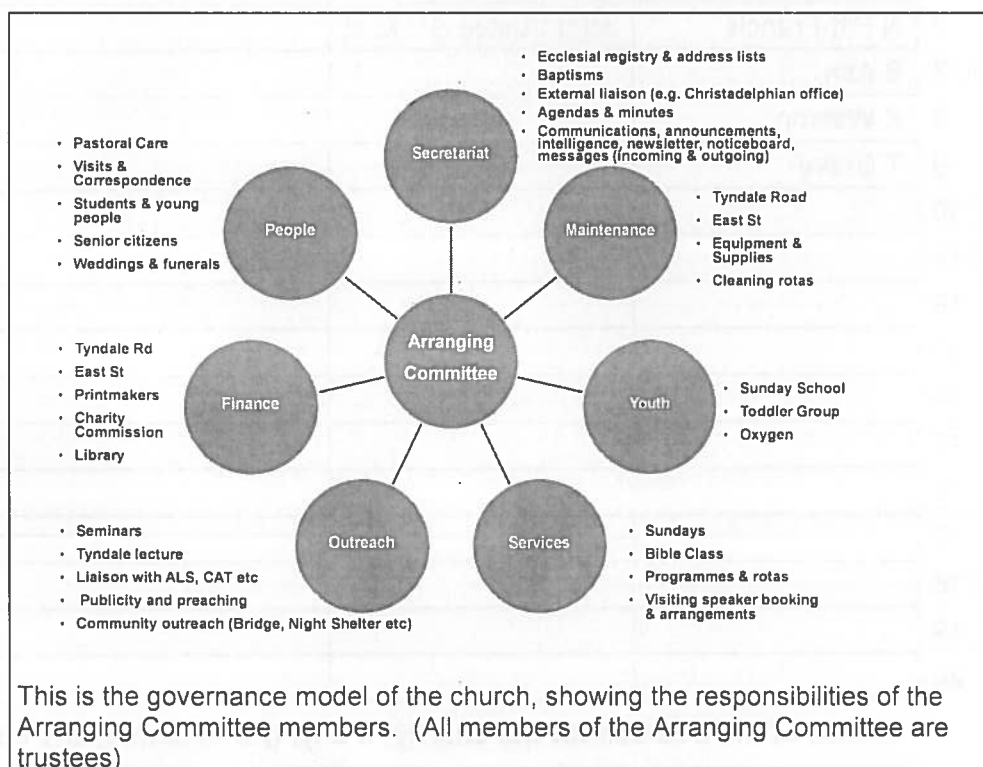
Description of the charity's trusts

Type of governing document (eg. trust deed, constitution)	"Faith and Practice" document which incorporates our constitution and rules
How the charity is constituted (eg. trust, association, company)	The Oxford Christadelphians are an independent, self-governing church within the worldwide Christadelphian fellowship. The church is a registered charity.
Trustee selection methods (eg. appointed by, elected by)	All trustees are elected by members of the church and are also members of the Arranging Committee of the church.

Additional governance issues (Optional information)

You **may choose** to include additional information, where relevant, about:

- policies and procedures adopted for the induction and training of trustees;
- the charity's organisational structure and any wider network with which the charity works;
- relationship with any related parties;
- trustees' consideration of major risks and the system and procedures to manage them.



Summary of the objects of the charity set out in its governing document

"We, professing our faith in God through the Lord Jesus Christ and seeking to obey his authority, undertake to live our lives according to his commandments, dependent only on His grace and the guidance of Holy Scripture. We dedicate ourselves to the work and worship in this Ecclesia and by our presence, prayers and gifts we strive to uphold the ministry of the word in this place for the glory of God. When and where we fail we confess our need of the Lord's mercy."

Summary of the main activities undertaken for the public benefit in relation to these objects (include within this section the statutory declaration that trustees have had regard to the guidance issued by the Charity Commission on public benefit)

Religious services, pastoral and social activities, outreach, support of charitable causes both in and outside the Christadelphian community. Most activities take place in the Oxford area.

Additional details of objectives and activities (Optional information)

You **may choose** to include further statements, where relevant, about:

- policy on grantmaking;
- policy programme related investment;
- contribution made by volunteers.

Summary of the main achievements of the charity during the year

"Achievements and performance" [Sep 2019-Aug 2020]

Our Sunday services for worship, praise and Bible study continued in 2019/20, and also a Wednesday evening Bible Class [though all via Google Meet, and later Zoom, from late March 2020 onwards, due to the coronavirus pandemic].

Our official membership is now at 53, which is slightly down from last year.

The Church website had roughly 16,400 visits – about the same as last year.

The Sunday School continued as normal until March 2020. We based our lessons on the Christadelphian Sunday School Union material and had four classes: infants, juniors, seniors and discussion group, with up to 15 children attending. From the spring lockdown we experimented with remote Sunday School on Zoom. This included varied material and a summer project on the theme of "Faith, Hope and Love". In the autumn we relaunched the programme with lessons for infants and juniors/seniors on Zoom. The discussion class had socially-distanced face-to-face meetings when that was possible. In the autumn the young people created 'hope'-themed linocut designs which were then printed and sold as Christmas cards. These proved popular and sales proceeds were donated to The Porch and Viva [see below]. The Sunday School teachers are DBS-checked and there is an ongoing process to keep this up to date.

The Annual Outing to Youlbury Scout Camp had to be cancelled due to the pandemic.

On Sunday 8th March we hosted a first aid course which was focused on parents of young children. About 10 parents attended including some of our neighbours on Tyndale Road.

Regarding Hall maintenance, an efficient Wi-Fi system was installed, enabling a limited number of people to join in the online services from the Hall when that was permitted.

The Church now has a contract with Chubb for the provision, rental and maintenance of improved fire safety equipment.

During this year we have built up a good relationship with the owners of the seven St Clement's properties that back on to our building. A lot of work has been done to get rid of the trees and ivy that were causing damage to the back of the Adelaide Room and the Printmakers' building.

The Church continued its support of local organisations and charities. In particular we increased the regularity of our contributions of supplies to The Porch (day centre for homeless people) and were asked by Sister Frances Dominica, one of the All Saints Sisters of the Poor who started the work from the porch of their convent in 1986, for a contribution to the book she has compiled about the history of The Porch. Although we weren't able to collect and donate items for the Food Bank during the pandemic, we continued to support them by sending £100 a month to help with their ongoing costs. We also continued to support Viva, the Oxford-based charity whose prayerful,

Section D**Achievements and performance**

worldwide practical work with vulnerable children is at times inspirational.

Section E**Financial review****Brief statement of the charity's policy on reserves**

Our Building and Reserve Fund (a restricted fund) constitutes our reserves and enables us to finance major maintenance and refurbishment projects. Income for this fund comes from the rent of the workshop adjoining our Hall. A set of pre-authorised transfers to other funds support the general expenses and outgoing donations of the church. Extraordinary expenditure items which draw on the Building and Reserve Fund are subject to the approval of the church at a Business Meeting.

Details of any funds materially in deficit

No funds are in deficit

Further financial review details (Optional information)

You may choose to include additional information, where relevant about:

- the charity's principal sources of funds (including any fundraising);
- how expenditure has supported the key objectives of the charity;
- investment policy and objectives including any ethical investment policy adopted.

Regular collections, gift aided donations and rental income remain the principal means of income. These have enabled us to cover the majority of our commitments during the year and members have continued to respond generously to international appeals for financial help with natural disasters.

Section F**Other optional information**

None

Section G**Declaration**

The trustees declare that they have approved the trustees' report above.

Signed on behalf of the charity's trustees

Signature(s)

J Pitt-Francis

Naomi Pitt-Francis

Full name(s)

JOSEPH MARK PITT-FRANCIS

NAOMI PITT-FRANCIS

Position (eg Secretary, Chair, etc)

COMMITTEE MEMBER/TRUSTEE

JOINT-TRUSTEE

Date

5 June 2021.



Charity Name Oxford Christadelphian Ecclesia	No (if any) 155555
---	-----------------------

Receipts and payments accounts

CC16a

For the period from	Period start date 01-Sep-19	To	Period end date 31-Aug-20
------------------------	--------------------------------	----	------------------------------

Section A Receipts and payments

	Unrestricted funds to the nearest £	Restricted funds to the nearest £	Endowment funds to the nearest £	Total funds to the nearest £	Last year to the nearest £
A1 Receipts					
Donations, collections, Gift Aid	25,401	-	-	25,401	20,714
Tax rebate on Gift Aided donations	4,125	-	-	4,125	830
Rent	9,400	6,900	-	16,300	20,220
Interest earned	-	-	-	-	-
	-	-	-	-	-
	-	-	-	-	-
	-	-	-	-	-
	-	-	-	-	-
Sub total	38,926	6,900	-	45,826	41,764
A2 Asset and investment sales, etc.	-	-	-	-	-
Total receipts	38,926.09	6,900	-	45,826	41,764
A3 Payments					
Donations to external charities & causes	31,712	-	-	31,712	23,181
Preaching/outreach expenses	800	-	-	800	862
Pastoral & running costs	1,972	-	-	1,972	1,857
Maintenance of premises	4,971	-	-	4,971	15,791
Utilities	4,937	-	-	4,937	4,790
Insurance	1,664	-	-	1,664	1,700
	-	-	-	-	-
	-	-	-	-	-
	-	-	-	-	-
	-	-	-	-	-
Sub total	46,056	-	-	46,056	48,181
A4 Asset and investment purchases, etc.	-	-	-	-	-
Total payments	46,056	-	-	46,056	48,181
Net of receipts/(payments)	- 7,130	6,900	-	- 230	- 6,417
A5 Transfers between funds	5,610	- 5,610	-	-	-
A6 Cash funds last year end	15,923	32,109	-	48,032	-
Cash funds this year end	14,403	33,399	-	47,802	48,032

Section B Statement of assets and liabilities at the end of the period

Categories	Details	Unrestricted funds to nearest £	Restricted funds to nearest £	Endowment funds to nearest £
B1 Cash funds	Natwest Business a/c	14,282	4,277	-
	Virgin Money a/c	-	29,122	-
	Cash	122	-	-
	Total cash funds	14,403	33,399	-
	(agree balances with receipts and payments account(s))			

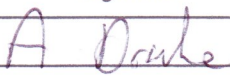
	Details	Unrestricted funds to nearest £	Restricted funds to nearest £	Endowment funds to nearest £
B2 Other monetary assets	Nil	-	-	-
		-	-	-
		-	-	-
		-	-	-
		-	-	-
		-	-	-
		-	-	-

	Details	Fund to which asset belongs	Cost (optional)	Current value (optional)
B3 Investment assets	Part of Church premises	Unrestricted	-	-
	21 East St, Oxford	Unrestricted	-	-
			-	-
			-	-
			-	-

	Details	Fund to which asset belongs	Cost (optional)	Current value (optional)
B4 Assets retained for the charity's own use	Church premises	Unrestricted	-	-
			-	-
			-	-
			-	-
			-	-
			-	-
			-	-
			-	-
			-	-

	Details	Fund to which liability relates	Amount due (optional)	When due (optional)
B5 Liabilities	None		-	
			-	
			-	
			-	
			-	

Signed by one or two trustees on behalf of all the trustees

Signature	Print Name	Date of approval
	Alan Drake - Treasurer	25/5/21

Mr A Drake
Treasurer
Oxford Christadelphian Ecclesia
2 Brookhampton Close
Stadhampton
Oxford OX44 7XR

19 June 2021

Oxford Christadelphian Ecclesia

I confirm:-

I have followed the Directions of the Charity Commission under Section 145 (5) (b) of the 2011 Act in respect of independent examination for the accounting year September 2019 to August 2020.

The Ecclesia accounts are eligible to have an independent examination.

An independent examination is an external scrutiny that provides a limited check on specific matters. They are:-

- The accounting records kept
- Whether the accounts agree with those records
- Whether the format of the accounts is correct

I have completed all the above checks and find the accounting records are kept the required standard.

I have not identified any matters of concern or issues I feel should be brought to the attention of the Ecclesia.

Signed



John Glavey B.A. Dip Ed Dip FA
18 Jury Place
17-19 Jury Street
Warwick
CV34 6RG