

OXFORD CHRISTADELPHIANS

England & Wales · Charity number 256668

Details

Other names	OXFORD CHRISTADELPHIAN ECCLESIA, OXFORD CHRISTADELPHIAN CHURCH
Status	Registered
Legal form	Other
Registered	1968-08-21
Register	View on the Charity Commission register

Contact

Address	Christadelphian Hall Tyndale Road Oxford OX4 1JL
Phone	01865251166
Email	info@oxfordchristadelphians.org.uk
Website	www.oxfordchristadelphians.org.uk

Activities

Objects: TO ADVANCE THE CHRISTADELPHIAN FAITH.

Activities: Religious services, pastoral and social activities, outreach, support of charitable causes both in and outside the Christadelphian community. Most activities take place in the Oxford area.

Classification

- **How:** Provides Services
- **What:** Religious Activities
- **Who:** Other Charities Or Voluntary Bodies, The General Public/mankind

Geography

- **Area of benefit:** OXFORD
- Oxfordshire

Finances

Period end	Income	Expenditure	Assets	Employees
2025-08-31	£56,331	£72,486	-	-
2024-08-31	£58,459	£48,784	-	-
2023-08-31	£534,870	£44,180	£542,759	0
2022-08-31	£41,392	£47,792	-	-
2021-08-31	£46,222	£51,435	-	-
2020-08-31	£45,826	£46,056	-	-

Trustees

Name	Role	Appointed
ALAN DRAKE		2011-05-23
Dennis Gibbs		2022-07-03
Emma Sharman		2024-07-14
JOHN CLIFFORD		
Jane Robson		2024-07-14
PAUL RICHARDSON		
Professor PETER JEAUVONS		2011-05-23
Trudy Drake		2018-09-01

OXFORD CHRISTADELPHIANS

England & Wales - Charity number 256668

Accounts



Trustees' Annual Report for the period

From **Period start date** Day 01 Month 09 Year 2024 **To** **Period end date** Day 31 Month 08 Year 2025

Section A Reference and administration details

Charity name Oxford Christadelphians

Other names charity is known by Oxford Christadelphian Ecclesia; Oxford Christadelphian Church

Registered charity number (if any) 256668

Charity's principal address

Christadelphian Hall
 Tyndale Road
 Oxford
Postcode OX4 1JL

Names of the charity trustees who manage the charity

	Trustee name	Office (if any)	Dates acted if not for whole year	Name of person (or body) entitled to appoint trustee (if any)
1	P Jeavons	Secretary		
2	J Clifford	Assistant Secretary		
3	A Drake	Treasurer		
4	P Richardson			
5	D Gibbs			
6	T Drake			
7	E Sharman			
8	J Robson			
9				
10				
11				
12				
13				
14				
15				
16				
17				
18				
19				
20				

Names of the trustees for the charity, if any, (for example, any custodian trustees)

Name	Dates acted if not for whole year

Names and addresses of advisers (Optional information)

Type of adviser	Name	Address

Name of chief executive or names of senior staff members (Optional information)

--

Section B Structure, governance and management

Description of the charity's trusts

Type of governing document
(e.g. articles of association)

"Faith and Practice" document which incorporates our constitution and rules

How the charity is constituted
(e.g. how the trustees are elected)

The Oxford Christadelphians are an independent, self-governing church within the worldwide Christadelphian fellowship. The church is a registered charity.

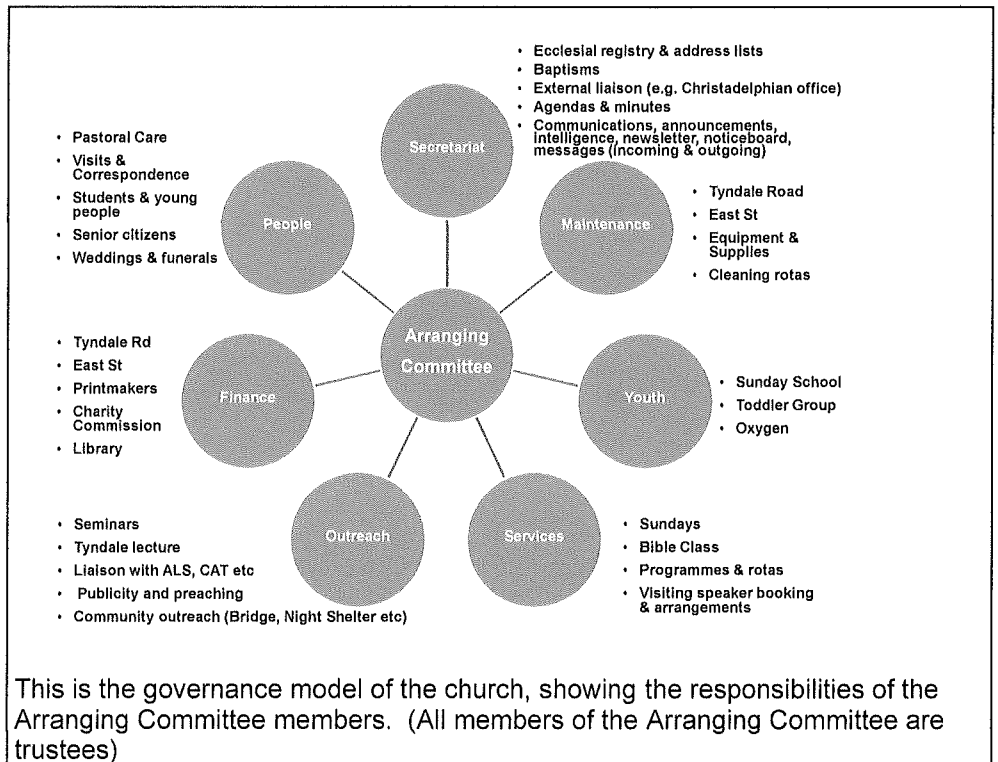
Trustee selection methods
(e.g. open ballot, secret ballot)

All trustees are elected by members of the church and are also members of the Arranging Committee of the church.

Additional governance issues (Optional information)

You **may choose** to include additional information, where relevant, about:

- policies and procedures adopted for the induction and training of trustees;
- the charity's organisational structure and any wider network with which the charity works;
- relationship with any related parties;
- trustees' consideration of major risks and the system and procedures to manage them.



Summary of the objects of the charity set out in its governing document

"We, professing our faith in God through the Lord Jesus Christ and seeking to obey his authority, undertake to live our lives according to his commandments, dependent only on His grace and the guidance of Holy Scripture. We dedicate ourselves to the work and worship in this Ecclesia and by our presence, prayers and gifts we strive to uphold the ministry of the word in this place for the glory of God. When and where we fail we confess our need of the Lord's mercy."

Summary of the main activities undertaken for the public benefit in relation to these objects (include within this section the statutory declaration that trustees have had regard to the guidance issued by the Charity Commission on public benefit)

Religious services, pastoral and social activities, outreach, support of charitable causes both in and outside the Christadelphian community. Most activities take place in the Oxford area.

Additional details of objectives and activities (Optional information)

You **may choose** to include further statements, where relevant, about:

- policy on grantmaking;
- policy programme related investment;
- contribution made by volunteers.

Summary of the main achievements of the charity during the year

"Achievements and performance" [Sep 2024 - Aug 2025]

Our official church membership is now 78, following the baptisms of two more of our Iranian friends in May and August 2025, and various other arrivals and departures.

We have had a good mix of Sunday services with 32 visiting speakers in the 2024/2025 year. Attendances dropped slightly on average over the year to 30 members in the hall and seven on Zoom each week, the Zoom option continuing to keep us connected with members and friends further away or those not well enough to be at the hall.

Bible Class continued to meet on Zoom each week, with the addition of our two house groups who meet once a month alongside an online reading group. We had nine "away" speakers either live or recorded, and even had a Bible Class "in the park" on a very warm summer's evening. On average there were 24 Zoom logins per week, which represents a 30% increase.

Footsteps (Sunday School) continued well. We still had four classes: crèche, early years, primary and upper class. Within the classes there were 14 children. The children enjoyed the Church outing to Cotswold Wildlife Park in July 2025. There was lots for everyone to do: animals to see, the train to ride on, parks to play in and we enjoyed a picnic together. Our thanks to the church for supporting this event. We also had a family service including a book giving at the end of July.

In December 2024, we hosted another 'Still No Room in the Inn' Service and some of our members were also involved with similar services at Littlemore and Blackbird Leys Churches. Our own, traditional Christmas Eve Service also attracted quite a number of visitors, some joining us for the first time. At Easter 2025, several of our members joined with 11 other churches for the Good Friday 'Walk of Witness' along the Cowley Road.

Some of our more practical 'outreach' activities were also well received. The Macmillan Coffee Morning in October 2024 raised £315 and the monthly meetings hosting the Age UK coffee morning have been increasingly well attended.

The reporting year (September 2024 – August 2025) has been another busy year for maintenance activities in the Church building. There have been several significant activities, the first of which was the expansion of the entrance lobby, including the removal of the glass-doored display cabinet and under-cupboard to create more space and install a picture window to enable the welcomers and those arriving to have a better view of the main hall. As part of this work, a new set of double doors was installed at the entrance, and matching double doors to the main hall and single doors to the toilet corridor and redecorated Footsteps room. Next for attention were the toilets and the corridor between the entrance hall and the kitchen. All three toilets and the corridor were deep cleaned and redecorated giving a brighter and fresher feel. A new baby-changing table was installed in the Disabled

Section D

Achievements and performance

Toilet. The redecoration of the entrance hall was undertaken by a contract company, who also installed new carpets to the entrance hall and corridor, new vinyl flooring to the toilets, and new laminate and carpet flooring in the Adelaide Room.

These works have made a big difference, with a fresher look to all the affected rooms. Additionally, the Velux windows in the kitchen and Adelaide Room were cleaned, and a matching window pole purchased. The three inward-facing sides of the doors to the Adelaide Room had a long-overdue top coat applied.

Website visits have ticked along steadily over the course of the year, with most visitors coming from the UK and a sprinkling of traffic from elsewhere in the world – though some of that is probably automated rather than human. The Bible reading plan remains by far the most-viewed page, followed by information about church services and meetings. The site continues quietly doing its job of keeping information available and findable.

This year, the Church continued its support of various charities including Viva, the children's charity; Oxford Homeless Pathways; the Icolyn Smith Foundation (which runs the Oxford Community Soup Kitchen); and others.

Section E

Financial review

Brief statement of the charity's policy on reserves

Our Building and Reserve Fund (a restricted fund) constitutes our reserves and enables us to finance major maintenance and refurbishment projects. Income for this fund comes from the rent of the workshop adjoining our Hall. A set of pre-authorised transfers to other funds support the general expenses and outgoing donations of the church. Extraordinary expenditure items which draw on the Building and Reserve Fund are subject to the approval of the church at a Business Meeting.

Details of any funds materially in deficit

No funds are in deficit

Further financial review details (Optional information)

You **may choose** to include additional information, where relevant about:

- the charity's principal sources of funds (including any fundraising);
- how expenditure has supported the key objectives of the charity;
- investment policy and objectives including any

Regular collections, gift aided donations, rental income and interest from the sale of the church's East Street house are the principal means of income. These have enabled us to cover the majority of our commitments during the year and members have continued to respond generously to international appeals for financial help with natural disasters.

ethical investment policy adopted.

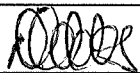
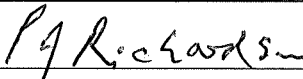
Section F Other optional information

None

Section G Declaration

The trustees declare that they have approved the trustees' report above.

Signed on behalf of the charity's trustees

Signature(s)		
Full name(s)	AGNIESZKA GIBBS	PAUL JAMES RICHARDSON
Position (eg Secretary, Chair, etc)	ASST TREASURER	-
Date	17. MAY 2026	24/05/26



Oxford Christadelphian Ecclesia				CC16a
Receipts and payments accounts				
For the period from	1-Sep-24 01-Sep-24	To	31-Aug-25 31-Aug-25	

Section A Receipts and payments

	Unrestricted funds to the nearest £	Restricted funds to the nearest £	Endowment funds to the nearest £	Total funds to the nearest £	Last year to the nearest £
A1 Receipts					
Donations, collections, Gift Aid	25,557	-	-	25,558	28,197
Tax rebate on Gift Aided donations	-	-	-	-	4,584
Rent	-	8,220	-	8,220	9,816
Interest earned	22,553	-	-	22,553	15,862
	-	-	-	-	-
	-	-	-	-	-
	-	-	-	-	-
Sub total	48,110	8,220	-	56,331	58,459
A2 Asset and investment sales, etc.	-	-	-	-	-
Total receipts	48,109.63	8,220	-	56,331	58,459
A3 Payments					
Donations to external charities & causes	34,230	-	-	34,230	26,404
Preaching/outreach expenses	1,346	-	-	1,346	1,685
Pastoral & running costs	6,575	-	-	6,575	5,546
Maintenance of premises	2,493	22,317	-	24,810	9,709
Utilities	3,335	-	-	3,335	3,242
Insurance	2,189	-	-	2,189	2,197
	-	-	-	-	-
	-	-	-	-	-
	-	-	-	-	-
Sub total	50,169	22,317	-	72,486	48,784
A4 Asset and investment purchases, etc.	-	-	-	-	-
Total payments	50,169	22,317	-	72,486	48,784
Net of receipts/(payments)	- 2,059	- 14,097	-	- 16,155	9,675
A5 Transfers between funds	8,225	8,225	-	-	-
A6 Cash funds last year end	519,598	32,837	-	552,435	542,759
Cash funds this year end	525,764	10,515	-	536,279	552,435

Section B Statement of assets and liabilities at the end of the period

Categories	Details	Unrestricted funds to nearest £	Restricted funds to nearest £	Endowment funds to nearest £
B1 Cash funds				-
	Current a/c	5,155	-	-
	Cash	-	-	-
	Flagstone	520,609	10,515	-
	Total cash funds	525,764	10,515	-

(agree balances with receipts and payments account(s))

Categories	Details	Unrestricted funds to nearest £	Restricted funds to nearest £	Endowment funds to nearest £
B2 Other monetary assets	Nil	-	-	-
		-	-	-
		-	-	-
		-	-	-
		-	-	-
		-	-	-

Categories	Details	Fund to which asset belongs	Cost (optional)	Current value (optional)
B3 Investment assets	Part of Church premises	Unrestricted	-	-
			-	-
			-	-
			-	-
			-	-

Categories	Details	Fund to which asset belongs	Cost (optional)	Current value (optional)
B4 Assets retained for the charity's own use	Church premises	Unrestricted	-	-
			-	-
			-	-
			-	-
			-	-
			-	-
			-	-
			-	-
			-	-

Categories	Details	Fund to which liability relates	Amount due (optional)	When due (optional)
B5 Liabilities	None		-	
			-	
			-	
			-	
			-	

Signed by one or two trustees on behalf of all the trustees

Signature	Print Name	Date of approval
A Drake	A DRAKE	7/6/26

Mr A Drake
Treasurer
Oxford Christadelphian Ecclesia
2 Brookhampton Close
Stadhampton
OXFORD OX44 7XR

10 April 2026

Oxford Christadelphian Ecclesia Accounts 01/09/2024 – 31/08/2025

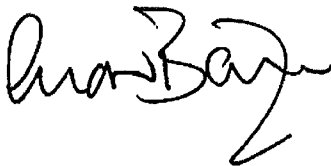
I have examined the above accounts in accordance with the directions and guidance of the Charity Commission and confirm that:

- The Ecclesia's accounts fall within the eligibility criteria for "Independent Examination"
- The accounting records are kept to the required standard
- The accounts agree with the records

I have not identified any matters of concern or issues that require the attention of the ecclesia.

On a purely practical basis I note that the accounts include some payments for which no supporting invoice/documentation is provided (eg to "M Hanson"). It is strongly recommended that appropriate documentation is provided in order to demonstrate that all expenditure is in line with the ecclesia's "charitable purpose".

On the same basis I suggest that given the relatively high level of cash reserves it would be appropriate to incorporate a "Reserves Policy" in the accounts "pack"



Andrew Baillie
58 Hill Farm Road
Marlow
Bucks
SL7 3LU

OXFORD CHRISTADELPHIANS

England & Wales - Charity number 256668

Accounts



Trustees' Annual Report for the period

From

Period start date	Period end date
Day 01 Month 09 Year 2023	Day 31 Month 08 Year 2024

 To

Section A Reference and administration details

Charity name

Other names charity is known by

Registered charity number (if any)

Charity's principal address

Names of the charity trustees who manage the charity

	Trustee name	Office (if any)	Dates acted if not for whole year	Name of person (or body) entitled to appoint trustee (if any)
1	P Jeavons	Secretary		
2	J Clifford	Assistant Secretary		
3	A Drake	Treasurer		
4	P Richardson			
5	D Gibbs			
6	T Drake			
7	E Sharman			
8	J Robson			
9				
10				
11				
12				
13				
14				
15				
16				
17				
18				
19				
20				

Names of the trustees for the charity, if any, (for example, any custodian trustees)

Name	Dates acted if not for whole year

Names and addresses of advisers (Optional information)

Type of adviser	Name	Address

Name of chief executive or names of senior staff members (Optional information)

--

Section B Structure, governance and management

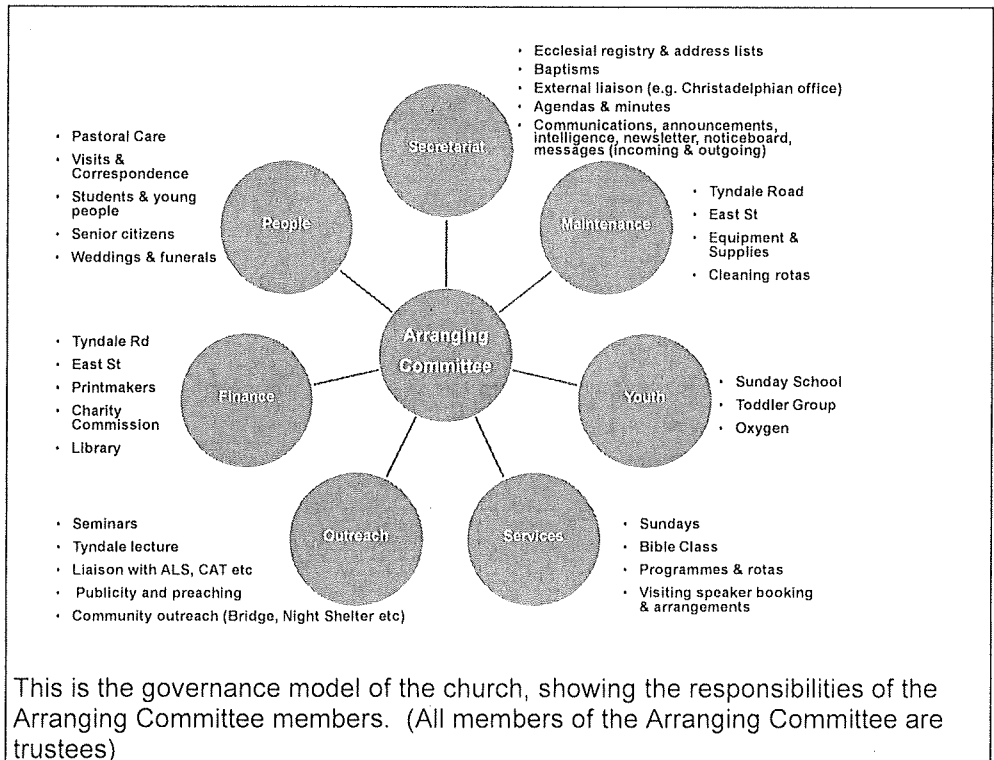
Description of the charity's trusts

Type of governing document <i>(eg. trust deed, constitution)</i>	"Faith and Practice" document which incorporates our constitution and rules
How the charity is constituted <i>(eg. trust, association, company)</i>	The Oxford Christadelphians are an independent, self-governing church within the worldwide Christadelphian fellowship. The church is a registered charity.
Trustee selection methods <i>(eg. appointed by election)</i>	All trustees are elected by members of the church and are also members of the Arranging Committee of the church.

Additional governance issues (Optional information)

You may choose to include additional information, where relevant, about:

- policies and procedures adopted for the induction and training of trustees;
- the charity's organisational structure and any wider network with which the charity works;
- relationship with any related parties;
- trustees' consideration of major risks and the system and procedures to manage them.



Summary of the objects of the charity set out in its governing document

"We, professing our faith in God through the Lord Jesus Christ and seeking to obey his authority, undertake to live our lives according to his commandments, dependent only on His grace and the guidance of Holy Scripture. We dedicate ourselves to the work and worship in this Ecclesia and by our presence, prayers and gifts we strive to uphold the ministry of the word in this place for the glory of God. When and where we fail we confess our need of the Lord's mercy."

Religious services, pastoral and social activities, outreach, support of charitable causes both in and outside the Christadelphian community. Most activities take place in the Oxford area.

Summary of the main activities undertaken for the public benefit in relation to these objects (include within this section the statutory declaration that trustees have had regard to the guidance issued by the Charity Commission on public benefit)**Additional details of objectives and activities (Optional information)**

You **may choose** to include further statements, where relevant, about:

- policy on grantmaking;
- policy programme related investment;
- contribution made by volunteers.

Summary of the main achievements of the charity during the year

"Achievements and performance" [Sep 2023 - Aug 2024]

Our official church membership now stands at 76, which is the highest it has been for a number of years. The increase in our numbers was due to 13 more baptisms of our Iranian friends. Our Sunday services for worship and praise and Wednesday evening Bible Class continued throughout 2023/24.

Attendance on a Sunday morning, according to the register, was averaging about 32 members in the hall plus nine online (on Zoom) each week. Bible Class continued to meet on Zoom each week. In February 2024, following a survey of members, house groups for those who can meet in person have been scheduled into the programme once a month alongside the Zoom sessions. On average there have been 18 Zoom logins per week. An additional benefit with Zoom is that we have also had some visiting presenters from further afield.

Footsteps (Sunday School) continued well. From September 2023, we had an additional class, so four classes in total: crèche, early years, primary and upper class. Within these classes there were 12 children (although not all four classes were held every week, as it depends on attendance). The children enjoyed the Church outing to Beale Park in July 2024.

The two-yearly elections to the Arranging Committee were held this year, and we are very grateful to those who agreed to serve on the Committee and were duly elected with full support.

A small group met on Zoom every three months or so to consider the welfare of members. A separate group was set up to support the ongoing needs of our Iranian members and friends.

A few highlights from the 2023/2024 year included our hosting, in early December 2023, of a Christmas Oratorio entitled 'No Room at the Inn' written by Malcolm Atkins. This was a selection of carols and music interspersed with recent experiences of refugees. It was great to see the Hall full to bursting for this topical event. The 2023 Christmas Eve Service was very popular again with friends, family and neighbours joining us. January 2024 saw Tyndale Road host a service for Christian unity organised by the Methodist Church and involving four other local churches including ourselves. There was standing room only!

Regarding maintenance of the Church Building: essential repairs were carried out to the roof, including installation of snow guards to prevent tiles falling to the ground; both gas boilers were serviced; the kitchen hot water boiler was replaced; an Asbestos Survey Report was undertaken, and none was found at the Hall; an Electrical Installation Condition Report (EICR) was undertaken, and no issues were identified; broken chairs were repaired; and the crèche room was cleared and redecorated, primarily for use by the Footsteps Upper Class.

Our two newly-commissioned videos on the church website attracted 509 views over the course of this year, from a worldwide (though mainly UK)

Section D

Achievements and performance

audience.

Another Crafternoon was held in December 2023 which raised over £200 for Mind. We were joined by friends and neighbours for this event.

Age UK coffee mornings commenced taking place in the Hall every month, and these events have been a success, with various participants joining from the local area.

In December 2023, some of our members dropped off 60 sock bags to The Porch. The bags contained warm socks supplied by COG (Christadelphian Outreach Group) and other useful items. Also this year, the Church continued its support of various charities including the Leprosy Mission (specifically the Rainbow Children's Home, Vizianagaram, Andhra Pradesh, India - building a future for children affected by leprosy) and Viva, the children's charity.

Furthermore, the East Ham church had asked for financial help, specifically concerning transport for Iranian members and visitors, which had been costing them £60 per week. We agreed to offer them an initial contribution to cover £60 per week for six months, and invited them to come back to us after the six months are up if they need further support.

Section E

Financial review

Brief statement of the charity's policy on reserves

Our Building and Reserve Fund (a restricted fund) constitutes our reserves and enables us to finance major maintenance and refurbishment projects. Income for this fund comes from the rent of the workshop adjoining our Hall. A set of pre-authorised transfers to other funds support the general expenses and outgoing donations of the church. Extraordinary expenditure items which draw on the Building and Reserve Fund are subject to the approval of the church at a Business Meeting.

Details of any funds materially in deficit

No funds are in deficit

Further financial review details (Optional information)

You **may choose** to include additional information, where relevant about:

- the charity's principal sources of funds (including any fundraising);
- how expenditure has supported the key objectives of the charity;
- investment policy and objectives including any

Regular collections, gift aided donations, rental income and interest from the sale of the church's East Street house are the principal means of income. These have enabled us to cover the majority of our commitments during the year and members have continued to respond generously to international appeals for financial help with natural disasters.

ethical investment policy adopted.



Section F Other optional information

None

Section G Declaration

The trustees declare that they have approved the trustees' report above.

Signed on behalf of the charity's trustees

Signature(s)		
Full name(s)	DENNIS JOHN GIBBS	EMMA LOUISE SHARMAN
Position (eg Secretary, Chair, etc)	TRUSTEE	TRUSTEE
Date	1. JUNE 2025	



Charity Name Oxford Christadelphian Ecclesia	No (if any) 256668
---	-----------------------

CC16a

Receipts and payments accounts

For the period from	Period start date 01-Sep-23	To	Period end date 31-Aug-24
------------------------	--------------------------------	----	------------------------------

Section A Receipts and payments

	Unrestricted funds to the nearest £	Restricted funds to the nearest £	Endowment funds to the nearest £	Total funds to the nearest £	Last year to the nearest £
A1 Receipts					
Donations, collections, Gift Aid	28,197	-	-	28,197	26,893
Tax rebate on Gift Aided donations	4,584	-	-	4,584	4,247
Rent	1,596	8,220	-	9,816	13,220
Interest earned	15,827	36	-	15,862	211
	-	-	-	-	-
	-	-	-	-	-
	-	-	-	-	-
Sub total	50,204	8,256	-	58,459	44,571
A2 Asset and investment sales, etc.	-	-	-	-	498,730
Total receipts	50,203.60	8,256	-	58,459	543,301
A3 Payments					
Donations to external charities & causes	26,404	-	-	26,404	29,333
Preaching/outreach expenses	1,685	-	-	1,685	986
Pastoral & running costs	5,476	70	-	5,546	4,194
Maintenance of premises	2,987	6,722	-	9,709	3,549
Utilities	3,242	-	-	3,242	4,135
Insurance	2,197	-	-	2,197	1,982
	-	-	-	-	-
	-	-	-	-	-
	-	-	-	-	-
Sub total	41,991	6,793	-	48,784	44,179
A4 Asset and investment purchases, etc.	-	-	-	-	-
Total payments	41,991	6,793	-	48,784	44,179
Net of receipts/(payments)	8,212	1,463	-	9,675	499,122
A5 Transfers between funds	4,110	-	4,110	-	-
A6 Cash funds last year end	507,275	35,484	-	542,759	43,639
Cash funds this year end	519,598	32,837	-	552,435	542,759

Section B Statement of assets and liabilities at the end of the period

Categories	Details	Unrestricted funds to nearest £	Restricted funds to nearest £	Endowment funds to nearest £
B1 Cash funds	Current a/c	9,542	-	-
	Cash	22	-	-
	Flagstone	510,034	32,837	-
	Total cash funds	519,598	32,837	-
	<small>(agree balances with receipts and payments account(s))</small>			

OK OK OK

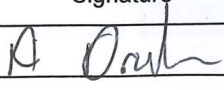
Categories	Details	Unrestricted funds to nearest £	Restricted funds to nearest £	Endowment funds to nearest £
B2 Other monetary assets	Nil	-	-	-
		-	-	-
		-	-	-
		-	-	-
		-	-	-
		-	-	-

Categories	Details	Fund to which asset belongs	Cost (optional)	Current value (optional)
B3 Investment assets	Part of Church premises	Unrestricted	-	-
			-	-
			-	-
			-	-
			-	-

Categories	Details	Fund to which asset belongs	Cost (optional)	Current value (optional)
B4 Assets retained for the charity's own use	Church premises	Unrestricted	-	-
			-	-
			-	-
			-	-
			-	-
			-	-
			-	-
			-	-
			-	-

Categories	Details	Fund to which liability relates	Amount due (optional)	When due (optional)
B5 Liabilities	None		-	
			-	
			-	
			-	
			-	

Signed by one or two trustees on behalf of all the trustees

Signature 	Print Name Alan Drake - Treasurer	Date of approval 31/5/25
--	--------------------------------------	-----------------------------

Mr A Drake
Treasurer
Oxford Christadelphian Ecclesia
2 Brookhampton Close
Stadhampton
OXFORD OX44 7XR


28 March 2025

Oxford Christadelphian Ecclesia Accounts 01/09/2023 – 31/08/2024

I have examined the above accounts in accordance with the directions and guidance of the Charity Commission and confirm that:

The Ecclesia's accounts fall within the eligibility criteria for "Independent Examination"
The accounting records are kept to the required standard
The accounts agree with the records

I have not identified any matters of concern or issues that require the attention of the ecclesia.

A handwritten signature in black ink, appearing to read 'Andrew Baillie', with a stylized flourish at the end.

Andrew Baillie
58 Hill Farm Road
Marlow
Bucks
SL7 3LU

OXFORD CHRISTADELPHIANS

England & Wales - Charity number 256668

Accounts



Trustees' Annual Report for the period

From	Period start date			Period end date		
	Day 01	Month 09	Year 2022	Day 31	Month 08	Year 2023

Section A Reference and administration details

Charity name	Oxford Christadelphians		
Other names charity is known by	Oxford Christadelphian Ecclesia; Oxford Christadelphian Church		
Registered charity number (if any)	256668		
Charity's principal address	Christadelphian Hall		
	Tyndale Road		
	Oxford		
	Postcode	OX4 1JL	

Names of the charity trustees who manage the charity

	Trustee name	Office (if any)	Dates acted if not for whole year	Name of person (or body) entitled to appoint trustee (if any)
1	P Jeavons	Secretary		
2	J Clifford	Assistant Secretary		
3	A Drake	Treasurer		
4	P Richardson			
5	D Gibbs			
6	L Gibbs			
7	T Drake			
8	T Harrison			
9	H Perryman			
10	J Perryman			
11				
12				
13				
14				
15				
16				
17				
18				
19				
20				

Names of the trustees for the charity, if any, (for example, any custodian trustees)

Name	Dates acted if not for whole year

Names and addresses of advisers (Optional information)

Type of adviser	Name	Address

Name of chief executive or names of senior staff members (Optional information)

--

Section B Structure, governance and management

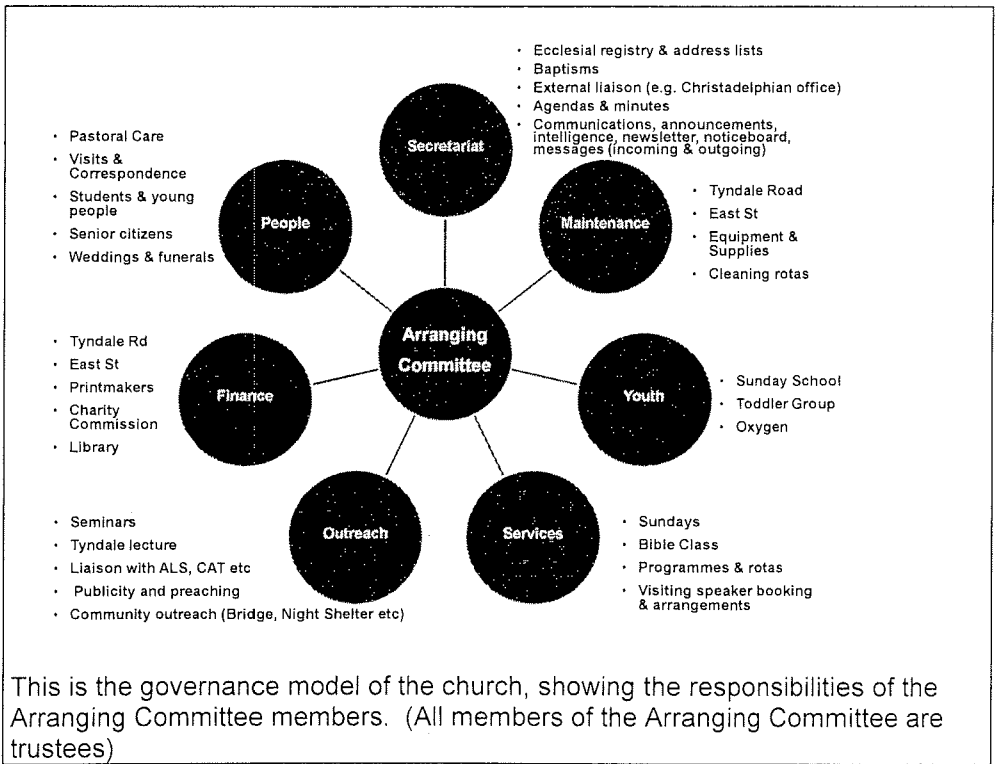
Description of the charity's trusts

Type of governing document <i>(eg. trust deed, constitution)</i>	"Faith and Practice" document which incorporates our constitution and rules
How the charity is constituted <i>(eg. trust, association, company)</i>	The Oxford Christadelphians are an independent, self-governing church within the worldwide Christadelphian fellowship. The church is a registered charity.
Trustee selection methods <i>(eg. appointed by, elected by)</i>	All trustees are elected by members of the church and are also members of the Arranging Committee of the church.

Additional governance issues (Optional information)

You **may choose** to include additional information, where relevant, about:

- policies and procedures adopted for the induction and training of trustees;
- the charity's organisational structure and any wider network with which the charity works;
- relationship with any related parties;
- trustees' consideration of major risks and the system and procedures to manage them.



Section C Objectives and activities

Summary of the objects of the charity set out in its governing document

"We, professing our faith in God through the Lord Jesus Christ and seeking to obey his authority, undertake to live our lives according to his commandments, dependent only on His grace and the guidance of Holy Scripture. We dedicate ourselves to the work and worship in this Ecclesia and by our presence, prayers and gifts we strive to uphold the ministry of the word in this place for the glory of God. When and where we fail we confess our need of the Lord's mercy."

Religious services, pastoral and social activities, outreach, support of charitable causes both in and outside the Christadelphian community. Most activities take place in the Oxford area.

Summary of the main activities undertaken for the public benefit in relation to these objects (include within this section the statutory declaration that trustees have had regard to the guidance issued by the Charity Commission on public benefit)

Additional details of objectives and activities (Optional information)

You **may choose** to include further statements, where relevant, about:

- policy on grantmaking;
- policy programme related investment;
- contribution made by volunteers.

Empty box for optional information.

Summary of the main achievements of the charity during the year

"Achievements and performance" [Sep 2022 - Aug 2023]

Our Sunday services for worship and praise and Wednesday evening Bible Class continued throughout 2022/23. Our official church membership is now at 69, the highest it's been for quite a few years. Attendances at Sunday services have also been up.

Footsteps (Sunday School) has continued to provide a positive space for the children to interact with each other and spend time at the Hall.

An outing was organised in July 2023 to Snells Hall, East Hendred, and was enjoyed by those in attendance.

A 10-part Bible Basics course for Iranian people was held during this year. Also, during the first six months of 2023, a small group of our members met up with some of our Iranian friends in Ducklington Village Hall, enabling people to get to know one another and enjoy games and craft activities.

Refugee Voices (Confluence Collective Oxford), a music event run by Malcolm Atkins, was held at the Hall on Tuesday afternoons during this period. A small group, including some of our own members, have enjoyed learning songs from a wide variety of cultural backgrounds.

One very practical way in which we have been able to offer support to our Iranian friends is by financing the Windrush Bike Project. Eighteen residents of the Witney Hotel, including five of our regular Sunday attendees, have benefitted from this scheme.

In terms of maintenance of the Church Building, the cracked lintels were repaired. The brickwork gable over the entrance has been repaired and repointed. A number of lost/displaced slates on various parts of the roof were fixed and replaced as necessary. Snow guards have also been installed below the roof as protection for the general public, to prevent injury should tiles slide off.

The Adelaide Room has had a makeover with the old wallboards removed, cupboards emptied, sorted and refilled with labelled items, and fresh paint.

A professional video was commissioned for the recently-refreshed website.

We had a coffee morning for Macmillan Cancer Research on 1st October 2022 and raised £315.

In December 2022 we held a Crafternoon and were joined by friends and neighbours who helped us to raise over £200 for Mind.

The Church continued its support of local organisations and charities including Restore, Oxford Homeless Pathways, the Oxford Community Soup Kitchen and the Oxford Community Food Bank.

Section D

Achievements and performance

--

Section E

Financial review

Brief statement of the charity's policy on reserves

Our Building and Reserve Fund (a restricted fund) constitutes our reserves and enables us to finance major maintenance and refurbishment projects. Income for this fund comes from the rent of the workshop adjoining our Hall. A set of pre-authorised transfers to other funds support the general expenses and outgoing donations of the church. Extraordinary expenditure items which draw on the Building and Reserve Fund are subject to the approval of the church at a Business Meeting.

Details of any funds materially in deficit

No funds are in deficit

Further financial review details (Optional information)

You **may choose** to include additional information, where relevant about:

- the charity's principal sources of funds (including any fundraising);
- how expenditure has supported the key objectives of the charity;
- investment policy and objectives including any ethical investment policy adopted.

Regular collections, gift aided donations and rental income remain the principal means of income. These have enabled us to cover the majority of our commitments during the year and members have continued to respond generously to international appeals for financial help with natural disasters.

Section F

Other optional information

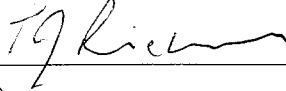

None

Section G

Declaration

The trustees declare that they have approved the trustees' report above.

Signed on behalf of the charity's trustees

Signature(s)		
Full name(s)	PAUL RICHARDSON	PETER JERVENS
Position (eg Secretary, Chair, etc)		SECRETARY
Date	16/06/24	



Charity Name
Oxford Christadelphian Ecclesia

Account number
150000

CC16a

Receipts and payments accounts

For the period from 01-Sep-22 To 31-Aug-23

Section A Receipts and payments

	Unrestricted funds to the nearest £	Restricted funds to the nearest £	Endowment funds to the nearest £	Total funds to the nearest £	Last year to the nearest £
A1 Receipts					
Donations, collections, Gift Aid	26,893	-	-	26,893	25,857
Tax rebate on Gift Aided donations	4,247	-	-	4,247	3,535
Rent	5,000	8,220	-	13,220	19,320
Interest earned	-	211	-	211	-
	-	-	-	-	-
	-	-	-	-	-
	-	-	-	-	-
Sub total	36,139	8,431	-	44,570	48,712
A2 Asset and investment sales, etc.	498,730	-	-	498,730	-
Total receipts	534,869.05	8,431	-	543,300	48,712
A3 Payments					
Donations to external charities & causes	29,333	-	-	29,333	28,036
Preaching/outreach expenses	986	-	-	986	1,274
Pastoral & running costs	4,194	-	-	4,194	9,224
Maintenance of premises	3,549	-	-	3,549	1,216
Utilities	4,135	-	-	4,135	5,591
Insurance	1,982	-	-	1,982	2,866
	-	-	-	-	-
	-	-	-	-	-
	-	-	-	-	-
Sub total	44,180	-	-	44,180	48,207
A4 Asset and investment purchases, etc.	-	-	-	-	-
Total payments	44,180	-	-	44,180	48,207
Net of receipts/(payments)	490,689	8,431	-	499,120	505
A5 Transfers between funds	3,636	- 3,636	-	-	-
A6 Cash funds last year end	12,950	30,689	-	43,639	-
Cash funds this year end	507,275	35,484		542,759	43,639

Section B Statement of assets and liabilities at the end of the period

Categories	Details	Unrestricted funds to nearest £	Restricted funds to nearest £	Endowment funds to nearest £
B1 Cash funds	Natwest Business a/c	7,264	5,742	-
	Virgin Money a/c	-	29,742	-
	Cash	12	-	-
	Flagstone	500,000	-	-
	Total cash funds	507,275	35,484	-

(agree balances with receipts and payments account(s))


Categories	Details	Unrestricted funds to nearest £	Restricted funds to nearest £	Endowment funds to nearest £
B2 Other monetary assets	Nil	-	-	-
		-	-	-
		-	-	-
		-	-	-
		-	-	-
		-	-	-

Categories	Details	Fund to which asset belongs	Cost (optional)	Current value (optional)
B3 Investment assets	Part of Church premises	Unrestricted	-	-
			-	-
			-	-
			-	-
			-	-

Categories	Details	Fund to which asset belongs	Cost (optional)	Current value (optional)
B4 Assets retained for the charity's own use	Church premises	Unrestricted	-	-
			-	-
			-	-
			-	-
			-	-
			-	-
			-	-
			-	-
			-	-

Categories	Details	Fund to which liability relates	Amount due (optional)	When due (optional)
B5 Liabilities	None		-	
			-	
			-	
			-	
			-	

Signed by one or two trustees on behalf of all the trustees

Signature	Print Name	Date of approval
	Alan Drake - Treasurer	2/6/24

OXFORD CHRISTADELPHIANS

England & Wales - Charity number 256668

Accounts



Trustees' Annual Report for the period

From	Period start date			To	Period end date		
	Day 01	Month 09	Year 2021		Day 31	Month 08	Year 2022

Section A Reference and administration details

Charity name

Other names charity is known by

Registered charity number (if any)

Charity's principal address

Postcode

Names of the charity trustees who manage the charity

	Trustee name	Office (if any)	Dates acted if not for whole year	Name of person (or body) entitled to appoint trustee (if any)
1	P Jeavons	Secretary		
2	J Clifford	Assistant Secretary		
3	A Drake	Treasurer		
4	P Richardson			
5	J Pitt-Francis	Joint-trustee (with No 6)		
6	N Pitt-Francis	Joint-trustee (with No 5)		
7	T Drake			
8	T Harrison			
9				
10				
11				
12				
13				
14				
15				
16				
17				
18				
19				
20				

Names of the trustees for the charity, if any, (for example, any custodian trustees)

Name	Dates acted if not for whole year

Names and addresses of advisers (Optional information)

Type of adviser	Name	Address

Name of chief executive or names of senior staff members (Optional information)

--

Section B Structure, governance and management

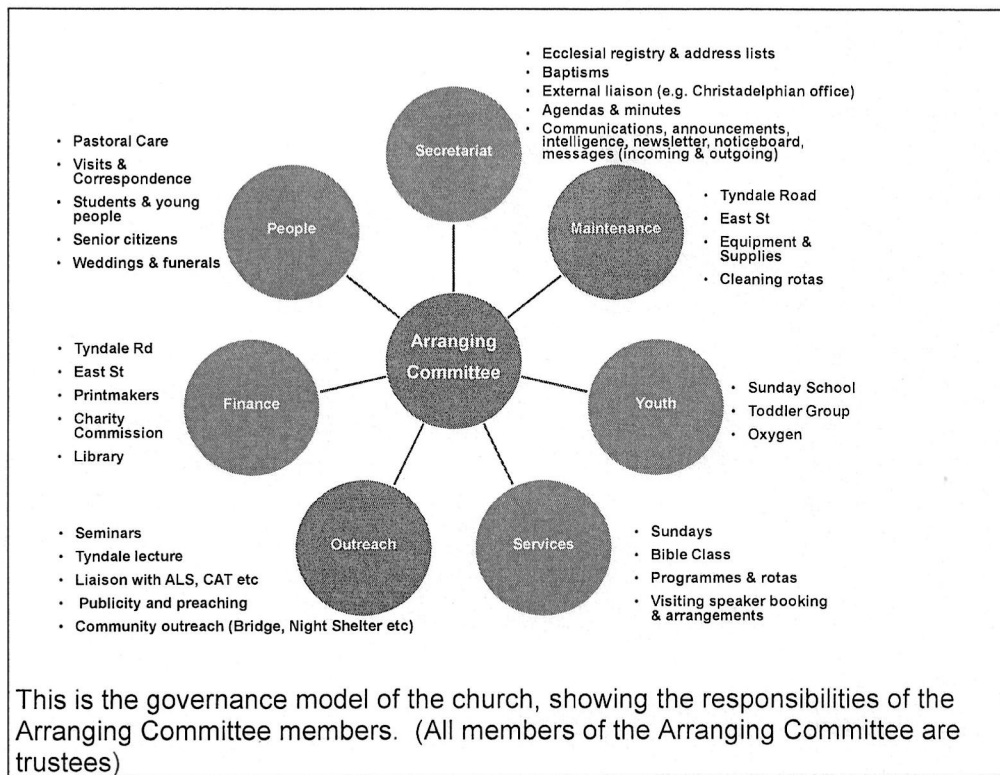
Description of the charity's trusts

Type of governing document (eg. trust deed, constitution)	"Faith and Practice" document which incorporates our constitution and rules
How the charity is constituted (eg. trust, association, company)	The Oxford Christadelphians are an independent, self-governing church within the worldwide Christadelphian fellowship. The church is a registered charity.
Trustee selection methods (eg. appointed by, elected by)	All trustees are elected by members of the church and are also members of the Arranging Committee of the church.

Additional governance issues (Optional information)

You may choose to include additional information, where relevant, about:

- policies and procedures adopted for the induction and training of trustees;
- the charity's organisational structure and any wider network with which the charity works;
- relationship with any related parties;
- trustees' consideration of major risks and the system and procedures to manage them.



Summary of the objects of the charity set out in its governing document

"We, professing our faith in God through the Lord Jesus Christ and seeking to obey his authority, undertake to live our lives according to his commandments, dependent only on His grace and the guidance of Holy Scripture. We dedicate ourselves to the work and worship in this Ecclesia and by our presence, prayers and gifts we strive to uphold the ministry of the word in this place for the glory of God. When and where we fail we confess our need of the Lord's mercy."

Summary of the main activities undertaken for the public benefit in relation to these objects (include within this section the statutory declaration that trustees have had regard to the guidance issued by the Charity Commission on public benefit)

Religious services, pastoral and social activities, outreach, support of charitable causes both in and outside the Christadelphian community. Most activities take place in the Oxford area.

Additional details of objectives and activities (Optional information)

You **may choose** to include further statements, where relevant, about:

- policy on grantmaking;
- policy programme related investment;
- contribution made by volunteers.

Summary of the main achievements of the charity during the year

"Achievements and performance" [Sep 2021 - Aug 2022]

Our Sunday services for worship and praise and Wednesday evening Bible Class continued throughout 2021/22.

Our membership rose slightly to 57 people.

The two-yearly elections to the Arranging Committee were held this year, and some new members agreed to serve in various capacities as some stepped down after many years of service. All those serving on the Arranging Committee act as trustees for the Oxford Christadelphians registered charity.

The church website over the year had around 15,000 visits from 4,500 visitors - slightly more people, slightly fewer visits than the previous year. These are mainly new visitors.

Sunday School has continued over the year, and the children have been really engaged in their learning and have loved taking part in the varied activities, such as baking, acting and collaborative craft. The children are also now joining in parts of the breaking of bread service too, which helps to make them feel part of church.

Approximately 40 people enjoyed an outing at Beale Wildlife Park in early July.

In terms of Hall maintenance, the Adelaide Room has been tidied and redecorated to improve its potential for crèche and Sunday School purposes. Also, the heating system for the Hall is under review, though no decisions have yet been taken. For security and insurance purposes we have carried out an audit of Hall keyholders.

The Tyndale Road street party was held on Jubilee Sunday (5th June) to celebrate the Queen's 70-year reign. It was a collaborative effort and several of our members joined our Tyndale Road neighbours and enjoyed a delicious array of food and drink.

Inspired by several members' own personal endeavours, the church bought four adults' and two children's litter pickers, and has started to help tidy the area around the church in Tyndale Road.

The Church continued its support of local organisations and charities including The Porch, the Oxford Community Soup Kitchen and the Oxford Community Food Bank.

Section E

Financial review

Brief statement of the charity's policy on reserves

Our Building and Reserve Fund (a restricted fund) constitutes our reserves and enables us to finance major maintenance and refurbishment projects. Income for this fund comes from the rent of the workshop adjoining our Hall. A set of pre-authorized transfers to other funds support the general expenses and outgoing donations of the church. Extraordinary expenditure items which draw on the Building and Reserve Fund are subject to the approval of the church at a Business Meeting.

Details of any funds materially in deficit

No funds are in deficit

Further financial review details (Optional information)

You **may choose** to include additional information, where relevant about:

- the charity's principal sources of funds (including any fundraising);
- how expenditure has supported the key objectives of the charity;
- investment policy and objectives including any ethical investment policy adopted.

Regular collections, gift aided donations and rental income remain the principal means of income. These have enabled us to cover the majority of our commitments during the year and members have continued to respond generously to international appeals for financial help with natural disasters.

Section F

Other optional information

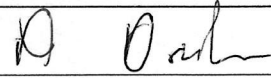
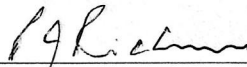
None

Section G

Declaration

The trustees declare that they have approved the trustees' report above.

Signed on behalf of the charity's trustees

Signature(s)		
Full name(s)	ALAN DRAKE	PAUL RICHARDSON
Position (eg Secretary, Chair, etc)	Treasurer	
Date	10/6/23	



Charity Name Oxford Christadelphian Ecclesia	No (if any) 256668
---	-----------------------

CC16a

Receipts and payments accounts

For the period from	Period start date 01-Sep-21	To	Period end date 31-Aug-22
------------------------	--------------------------------	----	------------------------------

Section A Receipts and payments

	Unrestricted funds to the nearest £	Restricted funds to the nearest £	Endowment funds to the nearest £	Total funds to the nearest £	Last year to the nearest £
A1 Receipts					
Donations, collections, Gift Aid	25,857	-	-	25,857	28,282
Tax rebate on Gift Aided donations	3,535	-	-	3,535	-
Rent	12,000	7,320	-	19,320	17,940
Interest earned	-	-	-	-	-
	-	-	-	-	-
	-	-	-	-	-
	-	-	-	-	-
Sub total	41,392	7,320	-	48,712	46,222
A2 Asset and investment sales, etc.	-	-	-	-	-
Total receipts	41,392.04	7,320	-	48,712	46,222
A3 Payments					
Donations to external charities & causes	28,036	-	-	28,036	39,955
Preaching/outreach expenses	1,274	-	-	1,274	1,269
Pastoral & running costs	9,224	-	-	9,224	1,384
Maintenance of premises	801	415	-	1,216	2,133
Utilities	5,591 #	-	-	5,591	5,011
Insurance	2,866	-	-	2,866	1,684
	-	-	-	-	-
	-	-	-	-	-
	-	-	-	-	-
Sub total	47,792	415	-	48,206	51,436
A4 Asset and investment purchases, etc.	-	-	-	-	-
Total payments	47,792	415	-	48,206	51,436
Net of receipts/(payments)	- 6,400	6,906	-	506	- 5,214
A5 Transfers between funds	5,825	- 5,825	-	-	-
A6 Cash funds last year end	13,720	29,609	-	43,329	-
Cash funds this year end	12,950	30,689	-	43,639	43,329

Mr A Drake
Treasurer
Oxford Christadelphian Ecclesia
2 Brookhampton Close
Stadhampton
Oxford OX44 7XR

05 June 2023

Oxford Christadelphian Ecclesia

I confirm:-

I have followed the Directions of the Charity Commission under Section 145 (5) (b) of the 2011 Act in respect of independent examination for the accounting year September 2021 to August 2022.

The Ecclesia accounts are eligible to have an independent examination.

An independent examination is an external scrutiny that provides a limited check on specific matters. They are:-

- The accounting records kept
- Whether the accounts agree with those records
- Whether the format of the accounts is correct

I have completed all the above checks and find the accounting records are kept the required standard.

I have not identified any matters of concern or issues I feel should be brought to the attention of the Ecclesia.

Signed

A handwritten signature in black ink that reads "John Glavey". The signature is written in a cursive style with a long horizontal flourish underneath.

John Glavey B.A. Dip Ed Dip FA
18 Jury Place
17-19 Jury Street
Warwick
CV34 6RG

OXFORD CHRISTADELPHIANS

England & Wales - Charity number 256668

Accounts

Trustees' Annual Report for the period

Period start date

Period end date

Day 01 Month 09 Year 2020

Day 31 Month 08 Year 2021

From

To

Section A

Reference and administration details

Charity name Oxford Christadelphians

Other names charity is known by Oxford Christadelphian Ecclesia; Oxford Christadelphian Church

Registered charity number (if any) 256668

Charity's principal address Christadelphian Hall

Tyndale Road

Oxford

Postcode

OX4 1JL

Names of the charity trustees who manage the charity

	Trustee name	Office (if any)	Dates acted if not for whole year	Name of person (or body) entitled to appoint trustee (if any)
1	P Jeavons	Secretary		
2	J Clifford	Assistant Secretary		
3	A Drake	Treasurer		
4	P Richardson			
5	J Pitt-Francis	Joint-trustee (with No 6)		
6	N Pitt-Francis	Joint-trustee (with No 5)		
7	T Drake			
8	T Harrison			
9				
10				
11				
12				
13				
14				
15				
16				
17				
18				
19				
20				

Names of the trustees for the charity, if any, (for example, any custodian trustees)

Name	Dates acted if not for whole year

Names and addresses of advisers (Optional information)

Type of adviser	Name	Address

Name of chief executive or names of senior staff members (Optional information)

--

Section B Structure, governance and management

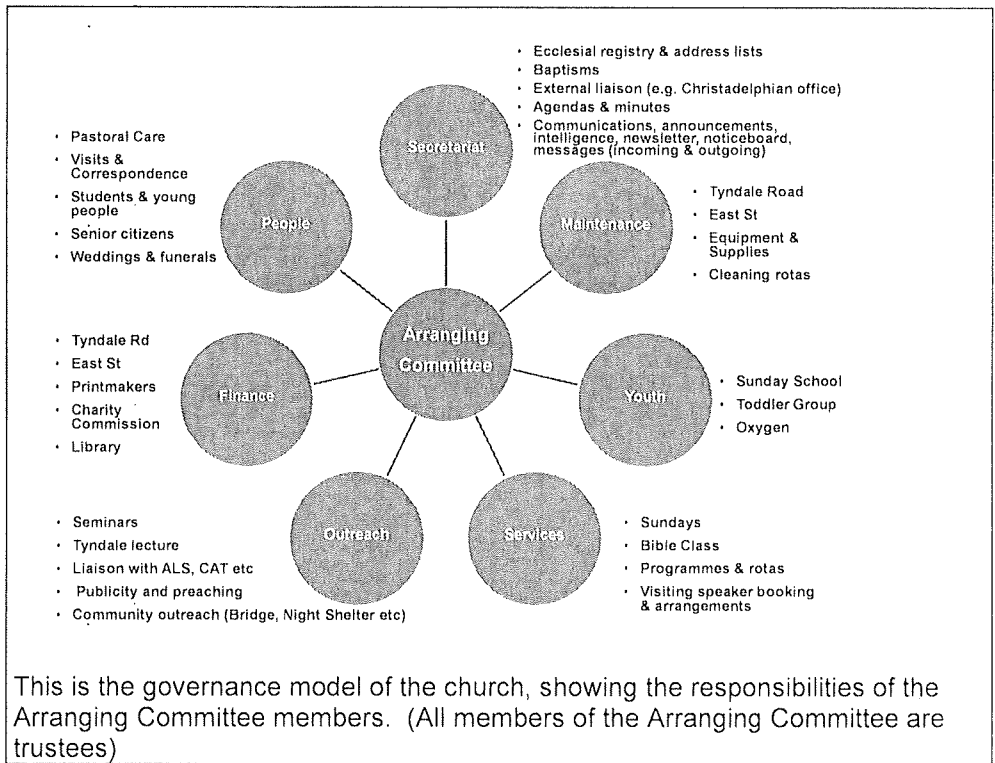
Description of the charity's trusts

Type of governing document <i>(e.g. constitution, memorandum of association)</i>	"Faith and Practice" document which incorporates our constitution and rules
How the charity is constituted <i>(e.g. members, trustees)</i>	The Oxford Christadelphians are an independent, self-governing church within the worldwide Christadelphian fellowship. The church is a registered charity.
Trustee selection methods <i>(e.g. appointment, election)</i>	All trustees are elected by members of the church and are also members of the Arranging Committee of the church.

Additional governance issues (Optional information)

You **may choose** to include additional information, where relevant, about:

- policies and procedures adopted for the induction and training of trustees;
- the charity's organisational structure and any wider network with which the charity works;
- relationship with any related parties;
- trustees' consideration of major risks and the system and procedures to manage them.



Summary of the objects of the charity set out in its governing document

"We, professing our faith in God through the Lord Jesus Christ and seeking to obey his authority, undertake to live our lives according to his commandments, dependent only on His grace and the guidance of Holy Scripture. We dedicate ourselves to the work and worship in this Ecclesia and by our presence, prayers and gifts we strive to uphold the ministry of the word in this place for the glory of God. When and where we fail we confess our need of the Lord's mercy."

Summary of the main activities undertaken for the public benefit in relation to these objects (include within this section the statutory declaration that trustees have had regard to the guidance issued by the Charity Commission on public benefit)

Religious services, pastoral and social activities, outreach, support of charitable causes both in and outside the Christadelphian community. Most activities take place in the Oxford area.

Additional details of objectives and activities (Optional information)

You **may choose** to include further statements, where relevant, about:

- policy on grantmaking;
- policy programme related investment;
- contribution made by volunteers.

Section D

Achievements and performance

Summary of the main achievements of the charity during the year

"Achievements and performance" [Sep 2020 - Aug 2021]

Our Sunday services for worship and praise and Wednesday evening Bible Class continued throughout 2020/21.

Our official membership now stands at 57, a little higher than it has been for a while, due to a baptism in June 2021 and the transfer of several members from other Christadelphian churches.

The church website had about 16,000 visits from 3,500 visitors, which is around a 14% increase in visitors since the previous year. Average time on page at 3m55s is apparently high by the standards of the World Wide Web, and this is usually a good sign of engagement.

Youth activities continued this year in some form or another, as Covid rules allowed. One of the highlights was creating linocut designs for printing Christmas cards, with proceeds going to The Porch and Viva, two local Oxford charities which we support. As usual, it is our policy to ensure that all those who work with children (e.g. Sunday School, toddlers and youth groups) undergo Disclosure and Barring Service (DBS) checks.

Several church members have organised computers, cameras and mixing desks at the Hall to make hybrid Sunday services a reality. Participants can now choose to come to the Hall or join online.

A majority voted to end all gender-based restrictions regarding the conducting of services, and this was implemented.

In February 2021, Chris Stratta from the Leprosy Mission led a Bible Class evening on the work of that charity. In response, we held a Special Collection to support a Leprosy Mission "Hub of Hope" in Mozambique.

The Church continued its support of local organisations and charities, such as The Porch, The Icolyn Smith Foundation (which supports the Oxford Community Soup Kitchen) and the Oxford Community Food Bank. We also made a donation for the purchase of books for Iranian Bible Study groups in Coventry.

Section E

Financial review

Brief statement of the charity's policy on reserves

Our Building and Reserve Fund (a restricted fund) constitutes our reserves and enables us to finance major maintenance and refurbishment projects. Income for this fund comes from the rent of the workshop adjoining our Hall. A set of pre-authorised transfers to other funds support the general expenses and outgoing donations of the church. Extraordinary expenditure items which draw on the Building and Reserve Fund are subject to the approval of the church at a Business Meeting.

Details of any funds materially in deficit

No funds are in deficit

Further financial review details (Optional information)

You may choose to include additional information, where relevant about:

- the charity's principal sources of funds (including any fundraising);
- how expenditure has supported the key objectives of the charity;
- investment policy and objectives including any ethical investment policy adopted.

Regular collections, gift aided donations and rental income remain the principal means of income. These have enabled us to cover the majority of our commitments during the year and members have continued to respond generously to international appeals for financial help with natural disasters.

Section F Other optional information

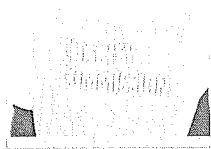
None

Section G Declaration

The trustees declare that they have approved the trustees' report above.

Signed on behalf of the charity's trustees

Signature(s)	J.F. Clifford	J.Pitt-Francis
Full name(s)	JOHN CLIFFORD	JOE PITT-FRANCIS
Position (eg Secretary, Chair, etc)	ASST SECRETARY	COMMITTEE MEMBER
Date	26.06.2022.	26 JUNE 2022.



Oxford Christadelphian Ecclesia				CC16a
Receipts and payments accounts				
For the period from	01-Sep-20	To	31-Aug-21	

Section A Receipts and payments

	Unrestricted funds to the nearest £	Restricted funds to the nearest £	Endowment funds to the nearest £	Total funds to the nearest £	Last year to the nearest £
A1 Receipts					
Donations, collections, Gift Aid	28,282	-	-	28,282	25,401
Tax rebate on Gift Aided donations	-	-	-	-	4,125
Rent	11,700	6,240	-	17,940	16,300
Interest earned	-	-	-	-	-
	-	-	-	-	-
	-	-	-	-	-
	-	-	-	-	-
Sub total	39,982	6,240	-	46,222	45,826
A2 Asset and investment sales, etc.					
	-	-	-	-	-
Total receipts	39,982.00	6,240	-	46,222	45,826
A3 Payments					
Donations to external charities & causes	39,955	-	-	39,955	31,712
Preaching/outreach expenses	1,269	-	-	1,269	800
Pastoral & running costs	1,384	-	-	1,384	1,972
Maintenance of premises	2,133	-	-	2,133	4,971
Utilities	5,011 #	-	-	5,011	4,937
Insurance	1,684	-	-	1,684	1,664
	-	-	-	-	-
	-	-	-	-	-
	-	-	-	-	-
Sub total	51,435	-	-	51,435	46,056
A4 Asset and investment purchases, etc.					
	-	-	-	-	-
Total payments	51,435	-	-	51,435	46,056
Net of receipts/(payments)	- 11,453	6,240	-	- 5,213	230
A5 Transfers between funds	10,440	10,440	-	-	-
A6 Cash funds last year end	14,404	33,399	-	48,212	-
Cash funds this year end	13,720	29,609	-	43,329	47,802

Section B Statement of assets and liabilities at the end of the period

Categories	Details	Unrestricted funds to nearest £	Restricted funds to nearest £	Endowment funds to nearest £
B1 Cash funds	Natwest Business a/c	13,309	77	-
	Virgin Money a/c	-	29,532	-
	Cash	412	-	-
	Total cash funds	13,720	29,609	-

(agree balances with receipts and payments account(s))


Categories	Details	Unrestricted funds to nearest £	Restricted funds to nearest £	Endowment funds to nearest £
B2 Other monetary assets	Nil	-	-	-
		-	-	-
		-	-	-
		-	-	-
		-	-	-
		-	-	-
		-	-	-

Categories	Details	Fund to which asset belongs	Cost (optional)	Current value (optional)
B3 Investment assets	Part of Church premises	Unrestricted	-	-
	21 East St, Oxford	Unrestricted	-	-
			-	-
			-	-
			-	-

Categories	Details	Fund to which asset belongs	Cost (optional)	Current value (optional)
B4 Assets retained for the charity's own use	Church premises	Unrestricted	-	-
			-	-
			-	-
			-	-
			-	-
			-	-
			-	-
			-	-
			-	-

Categories	Details	Fund to which liability relates	Amount due (optional)	When due (optional)
B5 Liabilities	None		-	
			-	
			-	
			-	
			-	

Signed by one or two trustees on behalf of all the trustees

Signature	Print Name	Date of approval
	Alan Drake - Treasurer	27.06.2022

Mr A Drake
Treasurer
Oxford Christadelphian Ecclesia
2 Brookhampton Close
Stadhampton
Oxford OX44 7XR

24 June 2022

Oxford Christadelphian Ecclesia

I confirm:-

I have followed the Directions of the Charity Commission under Section 145 (5) (b) of the 2011 Act in respect of independent examination for the accounting year September 2020 to August 2021.

The Ecclesia accounts are eligible to have an independent examination.

An independent examination is an external scrutiny that provides a limited check on specific matters. They are:-

- o The accounting records kept
- o Whether the accounts agree with those records
- o Whether the format of the accounts is correct

I have completed all the above checks and find the accounting records are kept the required standard.

I have not identified any matters of concern or issues I feel should be brought to the attention of the Ecclesia.

Signed



John Glavey B.A. Dip Ed Dip FA
18 Jury Place
17-19 Jury Street
Warwick
CV34 6RG

OXFORD CHRISTADELPHIANS

England & Wales - Charity number 256668

Accounts



Trustees' Annual Report for the period

From	Period start date			To	Period end date		
	Day 01	Month 09	Year 2019		Day 31	Month 08	Year 2020

Section A Reference and administration details

Charity name

Other names charity is known by

Registered charity number (if any)

Charity's principal address

Postcode

Names of the charity trustees who manage the charity

	Trustee name	Office (if any)	Dates acted if not for whole year	Name of person (or body) entitled to appoint trustee (if any)
1	P Jeavons	Secretary		
2	J Clifford	Assistant Secretary		
3	A Drake	Treasurer		
4	P Richardson			
5	J Pitt-Francis	Joint-trustee (with No 6)		
6	N Pitt-Francis	Joint-trustee (with No 5)		
7	S Ash			
8	K Watson			
9	T Drake			
10				
11				
12				
13				
14				
15				
16				
17				
18				
19				
20				

Names of the trustees for the charity, if any, (for example, any custodian trustees)

Name	Dates acted if not for whole year

Names and addresses of advisers (Optional information)

Type of adviser	Name	Address

Name of chief executive or names of senior staff members (Optional information)

--

Section B Structure, governance and management

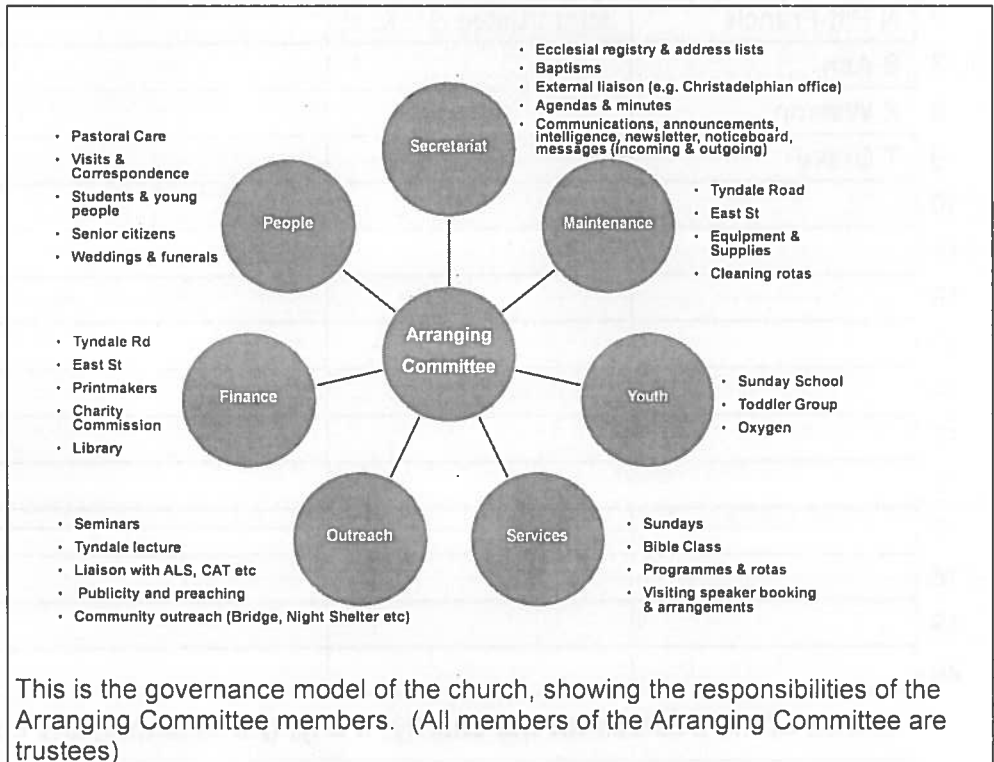
Description of the charity's trusts

Type of governing document <i>(eg. trust deed, constitution)</i>	"Faith and Practice" document which incorporates our constitution and rules
How the charity is constituted <i>(eg. trust, association, company)</i>	The Oxford Christadelphians are an independent, self-governing church within the worldwide Christadelphian fellowship. The church is a registered charity.
Trustee selection methods <i>(eg. appointed by, elected by)</i>	All trustees are elected by members of the church and are also members of the Arranging Committee of the church.

Additional governance issues (Optional information)

You may choose to include additional information, where relevant, about:

- policies and procedures adopted for the induction and training of trustees;
- the charity's organisational structure and any wider network with which the charity works;
- relationship with any related parties;
- trustees' consideration of major risks and the system and procedures to manage them.



Summary of the objects of the charity set out in its governing document

"We, professing our faith in God through the Lord Jesus Christ and seeking to obey his authority, undertake to live our lives according to his commandments, dependent only on His grace and the guidance of Holy Scripture. We dedicate ourselves to the work and worship in this Ecclesia and by our presence, prayers and gifts we strive to uphold the ministry of the word in this place for the glory of God. When and where we fail we confess our need of the Lord's mercy."

Summary of the main activities undertaken for the public benefit in relation to these objects (include within this section the statutory declaration that trustees have had regard to the guidance issued by the Charity Commission on public benefit)

Religious services, pastoral and social activities, outreach, support of charitable causes both in and outside the Christadelphian community. Most activities take place in the Oxford area.

Additional details of objectives and activities (Optional information)

You may choose to include further statements, where relevant, about:

- policy on grantmaking;
- policy programme related investment;
- contribution made by volunteers.

Summary of the main achievements of the charity during the year

"Achievements and performance" [Sep 2019-Aug 2020]

Our Sunday services for worship, praise and Bible study continued in 2019/20, and also a Wednesday evening Bible Class [though all via Google Meet, and later Zoom, from late March 2020 onwards, due to the coronavirus pandemic].

Our official membership is now at 53, which is slightly down from last year.

The Church website had roughly 16,400 visits – about the same as last year.

The Sunday School continued as normal until March 2020. We based our lessons on the Christadelphian Sunday School Union material and had four classes: infants, juniors, seniors and discussion group, with up to 15 children attending. From the spring lockdown we experimented with remote Sunday School on Zoom. This included varied material and a summer project on the theme of "Faith, Hope and Love". In the autumn we relaunched the programme with lessons for infants and juniors/seniors on Zoom. The discussion class had socially-distanced face-to-face meetings when that was possible. In the autumn the young people created 'hope'-themed linocut designs which were then printed and sold as Christmas cards. These proved popular and sales proceeds were donated to The Porch and Viva [see below]. The Sunday School teachers are DBS-checked and there is an ongoing process to keep this up to date.

The Annual Outing to Youlbury Scout Camp had to be cancelled due to the pandemic.

On Sunday 8th March we hosted a first aid course which was focused on parents of young children. About 10 parents attended including some of our neighbours on Tyndale Road.

Regarding Hall maintenance, an efficient Wi-Fi system was installed, enabling a limited number of people to join in the online services from the Hall when that was permitted.

The Church now has a contract with Chubb for the provision, rental and maintenance of improved fire safety equipment.

During this year we have built up a good relationship with the owners of the seven St Clement's properties that back on to our building. A lot of work has been done to get rid of the trees and ivy that were causing damage to the back of the Adelaide Room and the Printmakers' building.

The Church continued its support of local organisations and charities. In particular we increased the regularity of our contributions of supplies to The Porch (day centre for homeless people) and were asked by Sister Frances Dominica, one of the All Saints Sisters of the Poor who started the work from the porch of their convent in 1986, for a contribution to the book she has compiled about the history of The Porch. Although we weren't able to collect and donate items for the Food Bank during the pandemic, we continued to support them by sending £100 a month to help with their ongoing costs. We also continued to support Viva, the Oxford-based charity whose prayerful,

Section D

Achievements and performance

worldwide practical work with vulnerable children is at times inspirational.

Section E

Financial review

Brief statement of the charity's policy on reserves

Our Building and Reserve Fund (a restricted fund) constitutes our reserves and enables us to finance major maintenance and refurbishment projects. Income for this fund comes from the rent of the workshop adjoining our Hall. A set of pre-authorised transfers to other funds support the general expenses and outgoing donations of the church. Extraordinary expenditure items which draw on the Building and Reserve Fund are subject to the approval of the church at a Business Meeting.

Details of any funds materially in deficit

No funds are in deficit

Further financial review details (Optional information)

You may choose to include additional information, where relevant about:

- the charity's principal sources of funds (including any fundraising);
- how expenditure has supported the key objectives of the charity;
- investment policy and objectives including any ethical investment policy adopted.

Regular collections, gift aided donations and rental income remain the principal means of income. These have enabled us to cover the majority of our commitments during the year and members have continued to respond generously to international appeals for financial help with natural disasters.

Section F

Other optional information

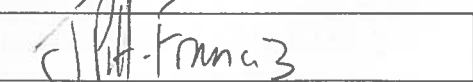
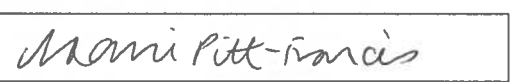
None

Section G

Declaration

The trustees declare that they have approved the trustees' report above.

Signed on behalf of the charity's trustees

Signature(s)		
Full name(s)	JOSEPH MARK PITT-FRANCIS	NAOMI PITT-FRANCIS
Position (eg Secretary, Chair, etc)	COMMITTEE MEMBER/TRUSTEE	JOINT-TRUSTEE
Date	5 June 2021.	



Charity Name Oxford Christadelphian Ecclesia	NO (if any) 158553
---	-----------------------

CC16a

Receipts and payments accounts

For the period from	Period end date 01-Sep-19	To	Period end date 31-Aug-20
---------------------	------------------------------	----	------------------------------

Section A Receipts and payments

	Unrestricted funds to the nearest £	Restricted funds to the nearest £	Endowment funds to the nearest £	Total funds to the nearest £	Last year to the nearest £
A1 Receipts					
Donations, collections, Gift Aid	25,401	-	-	25,401	20,714
Tax rebate on Gift Aided donations	4,125	-	-	4,125	830
Rent	9,400	6,900	-	16,300	20,220
Interest earned	-	-	-	-	-
	-	-	-	-	-
	-	-	-	-	-
	-	-	-	-	-
Sub total	38,926	6,900	-	45,826	41,764
A2 Asset and investment sales, etc.	-	-	-	-	-
Total receipts	38,926.09	6,900	-	45,826	41,764
A3 Payments					
Donations to external charities & causes	31,712	-	-	31,712	23,181
Preaching/outreach expenses	800	-	-	800	862
Pastoral & running costs	1,972	-	-	1,972	1,857
Maintenance of premises	4,971	-	-	4,971	15,791
Utilities	4,937 #	-	-	4,937	4,790
Insurance	1,664	-	-	1,664	1,700
	-	-	-	-	-
	-	-	-	-	-
	-	-	-	-	-
Sub total	46,056	-	-	46,056	48,181
A4 Asset and investment purchases, etc.	-	-	-	-	-
Total payments	46,056	-	-	46,056	48,181
Net of receipts/(payments)	- 7,130	6,900	-	- 230	- 6,417
A5 Transfers between funds	5,610	- 5,610	-	-	-
A6 Cash funds last year end	15,923	32,109	-	48,032	-
Cash funds this year end	14,403	33,399	-	47,802	48,032

Section B Statement of assets and liabilities at the end of the period

Categories	Details	Unrestricted funds to nearest £	Restricted funds to nearest £	Endowment funds to nearest £
B1 Cash funds	Natwest Business a/c	14,282	4,277	-
	Virgin Money a/c	-	29,122	-
	Cash	122	-	-
	Total cash funds	14,403	33,399	-
	<small>(agree balances with receipts and payments account(s))</small>			

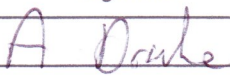
Categories	Details	Unrestricted funds to nearest £	Restricted funds to nearest £	Endowment funds to nearest £
B2 Other monetary assets	Nil	-	-	-
		-	-	-
		-	-	-
		-	-	-
		-	-	-
		-	-	-
		-	-	-

Categories	Details	Fund to which asset belongs	Cost (optional)	Current value (optional)
B3 Investment assets	Part of Church premises	Unrestricted	-	-
	21 East St, Oxford	Unrestricted	-	-
			-	-
			-	-
			-	-

Categories	Details	Fund to which asset belongs	Cost (optional)	Current value (optional)
B4 Assets retained for the charity's own use	Church premises	Unrestricted	-	-
			-	-
			-	-
			-	-
			-	-
			-	-
			-	-
			-	-
			-	-

Categories	Details	Fund to which liability relates	Amount due (optional)	When due (optional)
B5 Liabilities	None		-	
			-	
			-	
			-	
			-	

Signed by one or two trustees on behalf of all the trustees

Signature	Print Name	Date of approval
	Alan Drake - Treasurer	25/5/21

Mr A Drake
Treasurer
Oxford Christadelphian Ecclesia
2 Brookhampton Close
Stadhampton
Oxford OX44 7XR

19 June 2021

Oxford Christadelphian Ecclesia

I confirm:-

I have followed the Directions of the Charity Commission under Section 145 (5) (b) of the 2011 Act in respect of independent examination for the accounting year September 2019 to August 2020.

The Ecclesia accounts are eligible to have an independent examination.

An independent examination is an external scrutiny that provides a limited check on specific matters. They are:-

- The accounting records kept
- Whether the accounts agree with those records
- Whether the format of the accounts is correct

I have completed all the above checks and find the accounting records are kept the required standard.

I have not identified any matters of concern or issues I feel should be brought to the attention of the Ecclesia.

Signed

A handwritten signature in blue ink that reads "John Glavey". The signature is written in a cursive style with a long horizontal flourish at the end.

John Glavey B.A. Dip Ed Dip FA
18 Jury Place
17-19 Jury Street
Warwick
CV34 6RG