



# **Barts Guild**

*Friends of St Bartholomew's Hospital*

*since 1911*

## **One Hundred and Tenth Annual Report and Accounts**

**2021 – 2022**



## **Barts Guild Calendar 2023**

*Our depth and breadth of support*



**Friends of St Bartholomew's Hospital  
since 1911**

**PATRON: HRH THE DUKE OF GLOUCESTER KG GCVO**

**The 2023 Barts Guild calendar, this year in desktop format,  
showcases the work of the Guild in the Hospital today.  
One of its images, shown below, does justice to our maintenance of  
the Princess Alice Garden on behalf of the Hospital**





## **Barts Guild**

*Friends of St Bartholomew's Hospital since 1911*

## **Annual Report and Accounts 2021-2022**

### **Contents**

The Guild of the Royal Hospital of St Bartholomew .....	2
Report of the Trustees .....	3
Our Chairman's letter .....	15
Obituary .....	16
Minutes of the Annual General Meeting 2021 .....	17
Financial Statements 1 April 2021 to 31 March 2022 .....	21
Report of the Honorary Treasurer ...	21
Independent Examiner's Report ...	22
All Funds Year ended 31 March 2022 ...	23
Balance Sheet ...	24
Notes to the Accounts ...	25
Guild Members and Volunteers 2022 .....	36
Our Corporate Supporters .....	38

### **[www.bartsguild.org.uk](http://www.bartsguild.org.uk)**

The Guild wishes to express grateful thanks to TFW Printers ([sales@tfwprinters.co.uk](mailto:sales@tfwprinters.co.uk)) for their help in producing this Annual Report.

Photography: Bob Cooper; Neil Ritson

**THE GUILD OF THE ROYAL HOSPITAL OF ST BARTHOLOMEW**  
(also known as Barts Guild)

Registered Charity No 251628

Affiliated to ATTEND – Enhancing Health and Social Care, locally

**PATRON**

HRH The Duke of Gloucester KG GCVO

**PRESIDENT**

Mrs Ann Wickham

**VICE-PRESIDENTS**

The Lady Mayoress

Mrs Margaret Gillett

Mrs Daphne Hamilton Fairley OBE

Mrs Pauline Hirst

Mrs Mary Kelsey-Fry

Lady Judy Percival

Mrs Alison Shepherd

**OFFICERS OF THE GUILD**

at 31 March 2022

**Chairman**

Mr Christopher Hayward CC

**Vice-Chairman**

Mr Keith Bottomley CC

**Honorary Secretary**

Miss Judith Pleasance CC

**Honorary Treasurer**

Mr Keith Bottomley CC

**COMMITTEE OF MANAGEMENT**  
at 31 March 2022

**Ordinary members (elected)**

Mr James Ballinger  
Mr Steve Bench  
Mr James Benson  
Ms Lesley Evans  
Mr Chris Hayes  
Mrs Jenny Jeyarajah  
Mr Neil Ritson  
Mr Adrian Stirrup  
Mrs Hilary Tarr

**Co-opted members**

Mr Michael Hayden  
Mr Patrick Jennings  
Mr Ian McDowell  
Mrs Wendy Mead OBE CC  
Ms Jan O'Neill  
Miss Silvia Roccato  
Miss Jackie Roe, Princess Alice Garden Co-ordinator  
Sir Marcus Setchell KCVO  
Miss Niamh Whelan

**Those with other executive responsibilities or invited to attend meetings**

Mrs Elizabeth Clark, Administrator  
Mr Andy Haddon, Shop Manager

# Report of the Trustees

## Reference and administrative details of the charity, its trustees and advisers for the year ended 31 March 2022

### Trustees

Mr Christopher Hayward CC	Chairman	Appointed 28.10.21
Mr Keith Bottomley CC	Vice-Chairman	Appointed 28.10.21
Miss Judith Pleasance	Honorary Secretary	Appointed 28.10.21
Mr Keith Bottomley CC	Honorary Treasurer	
Mr Ian McDowell	Chairman	Retired 28.10.21
Mr Christopher Hayward CC	Vice-Chairman	Retired 28.10.21
Ms Lesley Evans	Honorary Secretary	Retired 28.10.21
Mr James Ballinger		Mrs Jenny Jeyarajah
Mr Steve Bench	Reappointed 28.10.21	Mr Neil Ritson
Mr James Benson	Appointed 28.10.21	Mr Adrian Stirrup
Ms Lesley Evans	Reappointed 28.10.21	Mrs Hilary Tarr
Mr Chris Hayes		

**Charity Registered Number:** 251628

### Address of principal office

St Bartholomew's Hospital  
West Smithfield  
London EC1A 7BE

### Independent Examiner

Blue Spire Limited  
Cawley Priory  
South Pallant  
Chichester PO19 1SY

### Bankers

National Westminster PLC  
P O Box No159  
332 High Holborn  
London WC1V 7PS

Cambridge & Counties Bank Limited  
Charnwood Court  
5B New Walk  
Leicester LE1 6TE

CCLA Charity Accounts  
Senator House  
85 Queen Victoria Street  
London EC4V 4ET

United Trust Bank Limited  
One Ropemaker Street  
London EC2Y 9AW

## Structure, governance and management

### Structure of the charity

Barts Guild is an Unincorporated Association charity. Its governing document is its Constitution which was revised, agreed and adopted by the Guild's Management Committee, the Guild's membership and the Charity Commission in November and December 2013. It was further amended, agreed and adopted in October 2018. In recent times the governing document has been updated in 2000, 2002, 2013 and 2018. (See also website [www.bartsguild.org.uk](http://www.bartsguild.org.uk).)

Five meetings of the Management Committee (MC) of trustees take place during the year. In addition, a number of sub-committees take the Guild's activities forward in the following areas: Grants; Finance and Accounts; Investments; Publications and Publicity; IT and Website; Shop and Business.

### **Recruitment and appointment of new trustees**

The charity in general meeting shall elect the officers and the other trustees. The trustees may appoint any person who is willing to act as a trustee. The number of trustees shall not be less than three but (unless otherwise determined by a resolution of the charity in general meeting) shall not be subject to any maximum. Any member or volunteer can be nominated for potential trusteeship.

Nominees for trusteeship/members of the Management Committee are interviewed by the Chairman, sometimes with the Hon. Secretary; two referees are required in every case and nominations are agreed by the MC before being proposed for election at the AGM. In its trustees the Committee looks for areas of expertise important to the modern charity (e.g. law, finance, IT) and/or practical applications to help the Guild in its day to day work in the shop and hospital trolley services and other activities. In a similar fashion trustees can also be removed by the MC.

At the 2021 AGM, Mr Christopher Hayward CC was elected Chairman for an initial three years on the retirement of Mr Ian McDowell. Mr Keith Bottomley CC was elected as Vice-Chairman for an initial three years on the retirement of Mr Christopher Hayward CC. Mr Bottomley continues in post as Hon. Treasurer of the Guild. Miss Judith Pleasance CC was elected Hon. Secretary for an initial three years on the retirement of Ms Lesley Evans. Appointed as a trustee was Mr James Benson for an initial three years, and reappointed as trustees were Mr Steve Bench for a second term of three years and Ms Lesley Evans for a period of one year.

### **Risk assessment**

The Management Committee has assessed the major risks to which the charity may be exposed and is satisfied that systems are in place to manage exposure to these risks. The categories of risk surveyed cover: governance; operations; finance; external environment; compliance. Some examples of risks include: the ability to sustain the needed level of volunteers and the current level of income, a fall in investment values and returns, reputational risks and unforeseen changes in the operation of the NHS.

These risks are mitigated by active management by the MC and its sub-committees, close consultation with Barts Health NHS Trust Voluntary Services, careful review of investments and monitoring of the professional investment advisers, and liaison at board and senior management level with both Barts Hospital and Barts Health NHS Trust. In addition, there is full compliance with the General Data Protection Regulation (GDPR) introduced on 25 May 2018.

The Management Committee resolved to establish a Risk Sub-Committee to assist and advise it in the regular review and assessment of the risks facing the charity in all areas of its work, and plan for the management of those risks.

### **Objectives and activities**

The objects of the Guild are to help the Royal Hospital of St Bartholomew by providing:

- **By personal service and by provision from the Charity's funds, such amenities for the patients and staff as would not be available to them under the National Health Service;**
- **Such other charitable assistance to the Hospital, its patients, former patients, staff, students and others involved with the affairs of the Hospital as the trustees may determine.**

The main activities undertaken by the Guild to carry out these objects for the public benefit are:

- running a general and souvenir shop as an amenity for patients, staff and visitors;
- providing a trolley service for inpatients, selling newspapers, toiletries, confectionery and convenience items;
- making grants for the provision of facilities on wards for patients and staff;
- making grants that aid NHS staff to increase their level of skill and that of their co-workers;
- funding the purchase of clinical equipment;
- maintaining the Princess Alice Garden for the comfort and enjoyment of patients, visitors and staff.

In relation to all the Guild's activities we have paid due regard to the guidance published by the Charity Commission concerning public benefit.

## **Achievements and performance**

### **The effect of Coronavirus: COVID-19**

Like all organisations in the UK and worldwide and for a second year, the impact of COVID-19 significantly disrupted the Guild's services and work. Hospital patient and visitor attendances were vastly restricted and volunteer attendances reduced. Following Hospital and national guidance, the trolley service to Hospital wards remained suspended. However, the shop has remained open since the onset of the pandemic thanks to the dedication of the Shop Manager and loyal volunteers.

It is however gratifying to note that the past year has seen a marked upturn in shop business, and many of the Guild's activities have been able to return to in-person events, notably the Annual General Meeting in October and meetings of the Management Committee since November. Hybrid meetings have been beneficial in permitting those prevented from attending in person to join virtually and take part in discussions. The Guild is working towards returning to the full gamut of activities and intends to add new ones as circumstances permit.

### **Shop services**

The shop remains a highly visible Guild presence in the King George V Building atrium, having already taken advantage of the increasing footfall mentioned above. Shop income was £100,305 net of VAT (2020-21: £85,917). Volunteer commitment remained strong throughout the year, enabling the shop to stay open and to cover the shop manager's annual leave. Due to ongoing hospital infection control restrictions, the trolley service remained suspended throughout 2020-21 but recommenced in July 2022.

### **Information technology**

The multifunctional website launched in May 2017 has greatly increased the Guild's online capability for new members to join, existing members to renew, for purchasing souvenirs, receiving donations and grant requests as well as providing news, notice of events and charity information.

### **Membership**

Membership of the Guild stands at 371 members at the year-end, 192 of them being subscription members and/or volunteers. There continues to be take-up of the offer of free Guild membership to students of Barts and The London School of Medicine and Dentistry (BLSMD). Student members number 179 (excluding recent graduates). In return for membership students may help, where practicable, with Guild activities, and greatly assisted us in previous times with much appreciated donations from their RAG Week. However, the chief purpose of the association is to attract the interest of a new generation of practitioners who may continue to support the Guild long after their student days have ended.

### **Grants**

Grants awarded to the Hospital in the year totalled £30,895 for 23 grants. 2021-22 was the second full year of COVID-19 restrictions and precautions, and two grants in particular were awarded with this in mind. Firstly, the Guild supplemented the generosity of several Livery Companies of the City of London who responded to our appeal on behalf of the Hospital for funds to support various projects aimed at reinforcing and enhancing staff wellbeing during those difficult times. Secondly, the Guild funded a collection of commissioned triptychs which would serve as a memento for Barts' successors as a reminder of the dedication of so many during one of the most challenging times for the NHS.

The Guild supports some final-year students of BLSMD for their Elective placements through the kind donation of Mrs Penny Wainwright and family. Of the remaining grants, over 70% of the resource supported patients' and staff's comforts and facilities, purchase of equipment and furniture for the Hospital, and support for staff training and team-building events. Examples included Christmas presents for patients, and provision of lunch at Extracorporeal Membrane Oxygenation nursing training courses. The remainder of grants took the form of educational funding for courses, study days and conferences for staff to keep abreast of new developments and to share and learn best practice so as to enhance patient care; for example, a Cardiology boot camp for Therapists. In the autumn and in conjunction with the Hospital, the Guild awarded the first BME Bursary for a Post-Graduate diploma (Leadership & Management in Health). The Chris Davies legacy was finally paid to Cancer & Palliative Care Psychological Services for a specialist Post-Graduate Diploma to be undertaken by a member of the department.

A full list of 2021-22 grants awarded to patients, staff and departments of the hospital is shown in the Notes to the Accounts.

### **Estimated numbers of beneficiaries served directly by the Guild**

The year saw over 47,500 sales transactions relating to footfall in the Shop, by patients, visitors and staff (2020-21: 40,500). The average sales value of a transaction was just over £2.

### **Contribution of Guild volunteers during the year**

Front line volunteers providing service for the shop and (in normal years) ward trolley rounds (Monday-Friday, Saturday-Sunday), contributed approximately 1760 hours of service. Other voluntary activities including management, support and administration are carried out by the charity's officers, other trustees and co-opted members of the Management Committee. Their remit covers management committee meetings, sub-committee meetings and consultations, management of membership, finance, grants, publications, website, IT, Princess Alice Garden and other areas necessary to the running of the charity. The Guild is hugely appreciative of the expertise and dedication of all who contribute so much to enable the charity to function effectively.

### **Financial review**

The Financial Statements are set out in this Annual Report. The salient features of financial performance and resource are outlined in the Hon. Treasurer's Report.

The charity's income for the year was £176,407 (2020-21: £135,142). Investment income totalled £17,563 (2020-21: £17,015). The Guild's total funds are £866,552 (2020-21: £802,107). The Guild greatly appreciated a grant of £12,000 from the City of London Corporation to help our work and service during the continuing demanding circumstances of the pandemic. (In this context it is also worthy of note that donations totalling £6,570 were made, through the Guild, by City Livery Companies intended to support NHS front line staff in the hospital). The treasury responsibility and financial oversight are undertaken most capably by Mr Keith Bottomley CC as Hon. Treasurer and Mrs Hilary Tarr as Assistant Treasurer/Bookkeeper, while several other trustees also have wide financial experience.

### **Reserves Policy**

Our policy for the financial reserves is that we should endeavour to hold sufficient to cover at least a year's expenditure on Shop-related and other expenses, together with the current aim of spending about £25,000 to £35,000 per year on grants, or somewhat more if needs arise. The outlay on the Princess Alice Garden in recent years is regarded as an exceptional grant in its extent but the new Garden will benefit the Hospital for many years to come.

Therefore with reserves of £866,552, the current resources are well in excess of this level. We are conscious that in recent years the charity's financial position has been much enhanced by the receipt of some substantial legacies and improved turnover in the relocated Shop. We believe that the current financial standing of the charity will enable us to further develop and to expand our grant-giving ability to help the NHS Trust, its staff and patients. Based on the current level of its reserves, the charity is well able to meet its projected obligations and liabilities and has no uncertainty over its continuing status as a 'going concern' as at the signing date.

### **Plans for future periods**

The trustees examine and consult on future needs and issues, mindful of being responsive to changing patient needs and hospital developments. Over a forthcoming five-year period we aspire to:

- enlarge the range of Shop stock, provided that space permits and is supported by our continuing review of stock policy;
- consider how we might facilitate online pre-ordering for some categories of Shop goods (including consideration of orders from inpatients in wards, especially if there are suitable means of technology);
- raise the level of grants (provided that the financial position allows through Shop income, improved fundraising, investments and bequests: for example, investment income has contributed well to the level of grants made);
- increase membership numbers, both subscription members and active volunteers, and including aspiration to increase the number of our corporate supporters: particularly by further raising of the Guild's profile within the City of London through increased networking and the recruitment of Corporate Friends there;



- assist the Hospital as a fundraising channel to meet specific and/or exceptional demands;
- support further Barts Hospital in the planned celebration of its 900<sup>th</sup> anniversary in 2023.

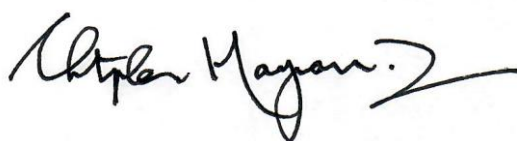
Maximising the website's capacity is important in helping with several of these initiatives.

## Support

Barts Health NHS Trust continues to be greatly supportive of its oldest service-providing volunteer charity. We are also very appreciative of the support for and interest in the Guild of our Royal Patron HRH The Duke of Gloucester and his officials. We welcome and value the Patron's counsel.

The Guild has always been grateful for offers of support from businesses and other outside bodies, especially local ones and those in the City of London, and has appreciated, too, the interest of those of their staff that have expressed support for us. Barts Guild has been particularly grateful in 2021-22 for the financial support provided by the City of London Corporation.

Approved by the trustees on 18 July 2022 and signed on their behalf



**Christopher Hayward CC**

**Chairman**

~~~~~

## Update for 2021-2022

The Annual Report focuses on the financial year 2021-2022, but in this section we also refer to activity that has taken place during the current financial year in order to bring readers as up-to-date as we can with the charity's developments. Some of this information has previously been noted in *Barts Guild News*, which is also available on the Publications page of the Guild website.

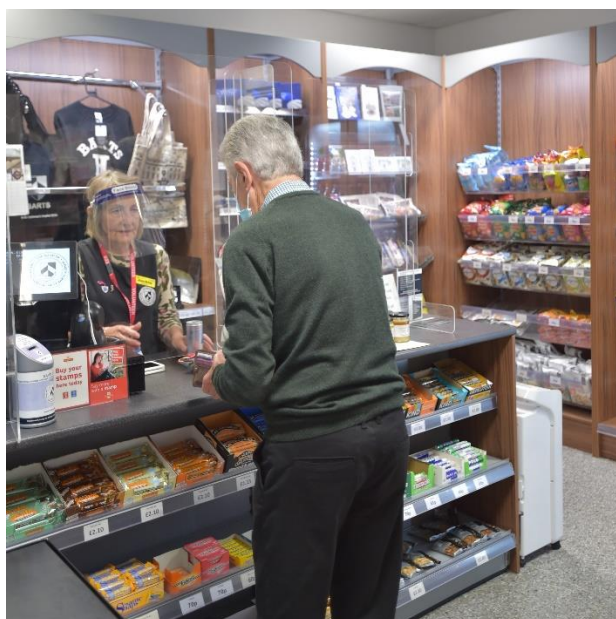
## Trustees and Management Committee (MC) members

The Guild's 2021 AGM had the fortunate distinction of being the first in-person Guild public event for 22 months. The meeting saw Christopher Hayward CC confirmed as the new Chairman and Keith Bottomley CC appointed as Vice-Chair, while Judith Pleasance CC was appointed as the new Honorary Secretary. Judith is a consultant and has been an elected Common Councillor since 2013. Following senior management roles in the arts and third sector, Judith has advised on marketing strategy and managing many projects, including those at Guildhall, Mansion House, Buckingham Palace and Windsor Castle.

Formal thanks were placed on record to outgoing Chairman Ian McDowell and outgoing Honorary Secretary Lesley Evans for their outstanding contribution to the Guild. We are pleased to report that Lesley's experience has not been lost to the Guild, however, as she was appointed as a trustee for one year. She was joined on the Management Committee in that role by James Benson. James is Interim Chief Executive Officer at Central London Community Healthcare NHS Trust, the UK's largest NHS community trust. He is committed to hospitals and community services working seamlessly for patients; he is also a qualified speech and language therapist.

The meeting also saw Steve Bench reappointed as a trustee for a further three years.

## Shop and trolley service



The Guild shop has remained open during another difficult year of hospital infection control restrictions, though with slightly improved hours of 0830-1600 Monday to Friday. Footfall and sales improved in the second half of the year, due in part to a partial relaxation of restrictions on visiting and an increase in outpatients attending clinics. Sadly, the trolley service remained suspended for a second year but was happily able to resume in July 2022. The shop counter remains protected by a Perspex screen, and the wearing of face masks remains a hospital requirement. The shop has continued to be a valuable and resilient service to staff and patients, and now once again to increasing numbers of visitors. Returning volunteers in the shop have improved coverage this year, and we now have at least one volunteer across all shifts for the first time since 2019.

Shop manager Andy Haddon remains committed to supporting and improving the shop service alongside the return of the trolley service. Our 10% staff discount on food and drink remains in place and continues to attract positive comment and goodwill towards the Guild. Purchases by bank card have been significantly higher than by cash. An alternative card payment service provider has been put in place with a view to significantly reducing our fees and standing charges. The product range, stock levels and prices continue to be closely monitored, and overall returns in terms of percentage have been maintained. Souvenir and clothing stock has been rearranged in the shop to expand the clothing section and to make it more accessible for browsing.

Guild Christmas cards and the 2023 Guild calendar will be available, either directly from the shop or online at [www.bartsguild.org.uk/souvenir-store](http://www.bartsguild.org.uk/souvenir-store).

## Grants

Grant awards during the year have been many and varied in their purpose. In the recent months, there has been a marked increase in applications following the production and distribution of a postcard to publicise the Guild as a grant-giving body, and a reception held in March for the Guild's officers and grants' sub-committee to take the rare opportunity to meet recipients and to receive feedback from them on the application process and ways in which grant availability could be more effectively made known.

The Guild recognises the importance of maintaining and advancing the great knowledge and skills of Barts Hospital's staff through their participation in medical educational and training programmes and conference attendance, especially at a time of pressure on NHS core funds and the demanding circumstances of the COVID pandemic. To this end, grants for attendance at course and conference events organised by the following organisations have been awarded: Physiotherapy for Breathing Pattern Disorders, The Society of Cardiothoracic Surgery, EuroELSO Congress, British Association of Head and Neck Oncologists, British Medical Journal and the Institute of Health Innovation, UCLP Centre for Neurorehabilitation and the National Hospital for Neurology, Princess Royal Spinal Cord Injuries Centre, British Society of Echocardiography, The Buteyko Breathing Association, and several others specialist providers and universities.

Senior Specialist Dietitian, Emily Templeman, describes her experience at a 'Cardiology Boot Camp':



"I applied for a Barts Guild grant to attend a teaching course designed for Allied Health Professionals and Physicians Associates to improve knowledge in cardiology. This was a 14-session eLearning course finishing with a 2-day simulation event to put all the theoretical learning into practice. Prior to attending the course, I didn't know why it was called a 'Cardiology Boot Camp' but the title was definitely eye-catching. Upon the first teaching session it became clear this was an intensive teaching course designed to put you through your paces and come out feeling like you had gained a whole lot of new skills and knowledge, suddenly the boot camp title was starting to make sense. The course content was extensive covering a wide range of topics from prevention of cardiac disease, diagnostics, cardiac surgery, heart failure, cardiac emergencies, cardiac arrest and septic shock.

I currently work in cardiac intensive care at St Bartholomew's Hospital as a Dietitian and I wanted to attend this training course to help improve my knowledge of cardiology. I studied extensively to become a dietitian and have 5 years of clinical experience working in the NHS, however much of what I have learned about cardiology has been through learning on the wards and researching independently to improve my knowledge. Therefore, I felt this teaching course was a great opportunity to gain some structured teaching from cardiac specialists at our specialist cardiac centre to really broaden my knowledge about the clinical area that I work in. My intentions were to gain a more extensive knowledge about the background of cardiac conditions, complications, and surgeries, an intention which has certainly been fulfilled.

There was a broad range of healthcare professionals on the teaching course ranging from dietitians, speech and language therapists, physiotherapists, occupational therapists, physicians' associates and pharmacists. It was great to see such a wide range of healthcare professionals all wanting to improve their knowledge in their specialist clinical areas. All coming from different backgrounds meant we all had different levels of cardiology knowledge prior to attending the course; this meant we could all learn from each other's questions and made for all-round more engaging teaching sessions.

I have taken away lots of key learning points from this training course and it has really helped me in my day-to-day work, especially when interpreting the medical notes and clinical backgrounds of my patients. This has helped improve the care that I provide to my patients as I have gained a greater understanding of the metabolic changes that the patient experiences and this helps my decision-making when it comes to providing nutritional support to my patients. I have used some of the lecture slides to educate my colleagues about what I have learnt on the course; I know they found my sharing of knowledge enjoyable and worthwhile. I am very grateful to Barts Guild for providing me the funding to attend this training course."

~~~~~

Barts Guild continues to award grants for equipment of various sorts. Seen here are a brand new, limescale-free, kettle and multi-cup teapot for staff in Therapies who are "a big department of tea-drinkers".

Also for the wellbeing of staff, funds were awarded (apparently to a big cheer from beneficiaries) for the purchase of an L-shaped sofa bed for the 6A Consultant team's shared office, needed because frequently one and occasionally two consultants stay overnight in the Hospital so as to review very sick patients regularly. Having a bed to lie down on for an hour or so is seen as invaluable to consultants who are often scheduled for clinical work the following day. This item also provides seating for group discussions and debriefing, and somewhere comfortable for sensitive conversations with patients' relatives.

A recent grant for direct patient benefit has enabled the purchase of specialist furniture for a discharge lounge for cardiac surgery patients on Floor 4, away from the distractions of a busy ward, improving patient experience in what can be a lengthy process. It also permits beds to be vacated for new admissions, particularly step-down patients from the intensive care area, so overall patient flow is improved.



Final-year medical student **Maisha Umama**, recipient of a Barts Guild Elective grant from the Dr Laurence Cartledge Memorial Fund, writes of her recent experience when pursuing her interest in Oncology. The photo shows Maisha at a Clinical Trials conference at Maggie's Centre. The hand says 'Be part of Research'.



"I would like to start by thanking the Barts Guild for providing me with a bursary to contribute to the costs of my elective. Thanks to their contribution, I was able to explore my interest in what I think (and hope!) could be my future career path. Oncology as a specialty has appealed to me for a long time, from both a clinical and an academic perspective. Academically, I completed a Medical Genetics degree prior to embarking on my career in medicine and have always found cancer genetics interesting, even opting to do optional modules related to cancer. Clinically, I felt that it involves all the aspects that drew me into medicine; a personal and holistic approach, building a relationship with your patient and working together to provide them with the best outcome. However, this perception I had of oncology was essentially based on very little; I have thankfully yet to have a close family member be affected by cancer and we did not have an Oncology placement built into our medical school curriculum. As such, my elective seemed like a perfect opportunity to explore that interest and as Barts Hospital is a leading cancer centre, it seemed like the perfect setting to do so.

My day-to-day schedule at Barts Hospital was highly variable, I was able to sit in clinics for many different cancer types, watch how clinical trials were undertaken, spend time on the ward, visit the Bart's branch of Maggie's Centre (a charity for supporting individuals with cancer), move through different radiotherapy departments to see what happens behind the scenes, not just the work the doctors do. Although I was told that my timetable is very flexible as your elective is a chance for you to also enjoy yourself and relax, I found myself spending most of my time at Barts Hospital, even opting to come in after I sprained my ankle because I found myself genuinely enjoying my time there. I was also able to get involved in a project that I hope will allow us to better understand the treatment options available for patients with prostate cancer. In my time there I attended a clinical trials conference where I was able to learn about new developments in cancer therapy, and it was exciting and baffling to see how much things have moved forward since I learned about the then new and upcoming developments 5 years ago in my Medical Genetics degree.

For me what was most interesting was hearing different people's perspectives on having cancer, both from patients and staff. One thing that has stuck with me is a conversation with a consultant oncologist where she explained that this whole idea of 'being positive and strong and fighting your cancer', especially on social media is unfair as all it really does is benefit other people by making the individual with cancer easier to be around. Actually, considering the circumstances, if individuals spent their whole time being sad and miserable they would be perfectly justified to: the cancer itself does not care if you are 'being strong'. It really made me think about this perspective of how cancer patients 'should be' that we unconsciously pick up, and the patience that we need to give people who are more 'difficult'. Overall this elective has not only confirmed my interest in Oncology, but given me a lot to consider when deciding what kind of Oncologist I want to be for my patients."

## Events

### ***AGM Guest Speaker***

As ever, those present at the 2021 Annual General Meeting were able to enjoy a fascinating talk from a guest speaker on a subject relevant to Barts and its work.

Our guest at the 2021 meeting, Charlotte Moore, has an especially connection to the Guild. Charlotte is the step great-granddaughter of Milicent Moore, our founder. In her talk, Charlotte gave an outline of Milicent's upbringing and background, and described what led Milicent to found the Guild alongside her friends. Charlotte is the author of a book about the history of her ancestral home in Sussex, 'Hancox: A House and a Family', which is warmly recommended to anyone with an interest in the history of Barts Guild and its founder.



## ***A Celebration of Christmas***

With great regret the Management Committee decided not to hold the traditional Celebration of Christmas concert in 2021. At a time of rising COVID-19 infections, a live concert would have been a risky enterprise and its usual venue – the Great Hall at Barts – does not lend itself to social distancing. The good news, however, is that preparations are well underway for 'A Celebration of Christmas 2022' at which we look forward to seeing as many of you as possible.

## ***Volunteers' Party – from Christmas to Easter***

With the traditional Christmas Party for Guild volunteers having to be cancelled due to COVID-19, we decided to arrange an Easter event to express our huge gratitude for their efforts. The venue, once again, was The Lord Raglan pub where drinks and a buffet were laid on, and special awards were presented by Guild Chairman Chris Hayward.



Mandy Handley, Helen Wilding and Gilly Braithwaite received trophies in recognition of their sterling contributions during the pandemic. The trio not only helped to keep the Guild Shop open during those difficult times, but also volunteered to triage arrivals at the Hospital. In addition, Jackie Sanderson was presented with a Certificate of Acknowledgement for her longstanding loyalty and support of the Guild. The four volunteers received a well-deserved standing ovation for their dedication.

## ***An appearance at the Old Bailey***



In his role as Sheriff of the City of London, Guild Chairman Chris Hayward was one of those responsible for the smooth running of the Central Criminal Court at the Old Bailey and for the provision of facilities for HM Judges to administer justice there. In August 2021, Chris kindly hosted a visit to the Old Bailey for Guild volunteers who enjoyed drinks and canapés in the Judges' Dining Room followed by a fascinating tour of the building.

## ***The Lord Mayor's Show***



After a COVID-enforced break, the Lord Mayor's Show returned in November 2021 with strong representation from the Guild. Huge crowds flocked to welcome the new Lord Mayor and enjoy this splendid piece of pageantry. Guild members, volunteers, supporters and Management Committee members turned out in force to march the five-mile route through the City and, as always, were cheered enthusiastically by spectators. We were pleased that carrying the Guild's banner, alongside volunteers, were family members of our late friend and colleague, Lorna Glace, who would always walk in the Show.

## ***Barts View Day 2022***



The Guild was delighted to be able to take part in the annual Barts Hospital View Day celebrations in May 2022. The event – which dates back nearly 500 years – took place in the Hospital square with live music, stalls and entertainment at the heart of the country's oldest working hospital. Visitors were able to learn of Barts' achievements during the pandemic, discover what's happening across the Hospital's campus, and find out more about the plans for the 900<sup>th</sup> anniversary celebrations of Barts in 2023. Volunteers from the Guild manned a stall at the event, selling souvenirs and donated items which were bid for in a silent auction to raise funds. We will hope for a dry day next year!



## ***Founders' Day 2023***

Since Founders' Day in 2022 coincided with the Bank Holiday to celebrate the Queen's Platinum Jubilee and London was consequently very crowded, it was decided to postpone the event until 2 June 2023. We hope that by that date, plaques in Harley Street and Gloucester Place to commemorate the founding of the Guild will have been installed. In lieu of the event, a Founders' Day greetings postcard was sent to all members, depicting the minutes of the Guild's first meeting.

## ***Wedding Celebration – at last!***



On the 1<sup>st</sup> May 2022, after two Covid-19 postponements, former Barts Guild Trustee, Dr Andrew Smith (*q. BL 2012*), finally managed to tie-the-knot with Dr Georgina Elliot (*q. BL 2017*). They got married in Ireland, at the beautiful Ballinacurra House, Kinsale.

Barts Guild wishes Andrew and Georgie every happiness in their life together.

## **Guild website**

Our website continues to be the best source of information on our activities. For those unable to visit the Shop in the Hospital, it also serves as a portal through which to purchase Guild souvenirs, proceeds from which go to help our work. The website enjoys around 450 visits each month, mostly by users from the UK, but also from the US, Australia and further afield. With each visitor spending an average of two minutes browsing, the most popular section of the site is the online souvenir store.

## **Engagement with Barts and The London Students' Association (BLSA)**

The programme of final-year student elective placements ran again in spring and summer 2022. The Barts Guild Elective Grants were awarded, and this year there were three students who received support to gain insight and experience in their chosen field, the money having been kindly donated by the Wainwright family in memory of Dr Laurence Cartledge, former Barts Ophthalmologist. Interestingly, two of the three students came to Barts Hospital for their placement, and it was a pleasure to meet with them on View Day when each placement overlapped. A report from Dr Maisha Umama can be read in this report, and it will be our intention to publish the two further reports in *Barts Guild News* and on the Guild's website in the coming months. Free membership of the Guild continues to be offered to students of Barts and The London School of Medicine and Dentistry, and there remains a healthy interest. As students graduate, they are invited to sign-up as paid members of the Guild.

## **Publications and Publicity**

### ***Calendar 2023***

The 2023 calendar, 'Depth and breadth of Guild activities', showcases the work of the Guild in the Hospital today, focusing particularly on the impact of grant-giving. In response to the changing needs of many who use the calendar, the 2023 format is entirely new. It is adapted for desktop use where limited or indeed no wall space is available, but can also be hung if space is available. We hope the new format will be appreciated, and we would welcome any feedback. Our sincere thanks go once again to Neil Ritson for his expertise in producing the new calendar which we are certain will have very wide appeal.

### ***Barts Guild News***

Jan O'Neill, our resident editor, continues to fill the pages of the twice-yearly Barts Guild News with a mix of news, views and some fascinating articles about the history, not just of the Guild but the hospital itself. Among the gems published in the past year's BGNs have been an appreciation of Barts surgeon Archibald McIndoe, a pioneer in reconstructive surgery, an account of the work of a Speech and Language Therapist, and the reflections of just some of those who have benefitted from elective grants thanks to the Guild. You can find an archive of Barts Guilds News, together with our other publications, at [www.bartsguild.org.uk](http://www.bartsguild.org.uk).

## **Princess Alice Garden**

The past year has seen the Guild's maintenance of the Princess Alice Garden continue, notwithstanding the restricted access to the garden due to the protective scaffolding and continuing deliberations concerning the structural repairs to the Henry VIII Gatehouse.

However, the garden is open for visitors who enjoy using the garden to find a space away from the busy activity of the Hospital, with the garden providing a welcome refuge where they can enjoy some relaxation sometimes interspersed with drinks and sandwiches.

In May, the plane trees were treated to a trim carried out under the direction of Jago Keen at Keen Consultants who continue to advise on arboriculture matters. The Guild and its horticultural experts are ever mindful of maintaining Lady Mary Keen's design criterion that the garden provides a place of tranquillity for the benefit of all at and those visiting St. Bartholomew's Hospital and the tree canopy, along with the calming yet colourful floral display, provide an essential element of this facility. Pictures are shown on page 15.

The Guild is most grateful to the Estates Team at the Hospital for all their support and encouragement in the work that the Guild undertakes at the garden.

We are also hugely grateful for the diligence and expertise of our gardeners Graeme and Noel, whose work enables the garden to remain in good order and well-stocked with some really lovely plants and shrubs, providing an ever-popular attraction for all at Barts.

## **And finally...**

As ever, the Officers, trustees and other members of the Management Committee are indebted to our volunteers whose dedication, hard work and sheer devotion to helping patients and staff represents the very essence of the Guild. Their 'boots on the ground' approach - whether at the hospital, or at the Lord Mayor's Show and other public events - is at the heart of what we do, and as the public face of our charity we could not ask for better representation.

~~~~~



# Our Chairman's letter



As I come to the end of my first year as your Chairman I do so with a sense of immense pride in the commitment of our Guild served so devotedly by its Management Committee and Volunteers.

We have 'weathered the storm' of the Coronavirus Pandemic during which we were able to keep our shop in the Hospital open although sadly not able to operate our trolley service around the wards.

At our belated 'Christmas Party' I was able to recognise the inspiring successes and commitment of a number of our volunteers who had devotedly served our Guild over a number of years. Our volunteers are at the very heart of what we are about and what we do, proactively keeping our presence as a constant in the life and work within the Royal Hospital of St Bartholomew. To each of them I say a heartfelt 'thank you' for all that they have done and continue to do.

I also want to record my thanks to my fellow Officers and members of the Guild's Management Committee. They too are volunteers who work together to strategically lead the long term success of our ancient charity. And it is of course our charitable giving to good causes and projects in the Hospital that makes such a practical difference to the recipients of our many grants. In particular, I want to mention our donation of £50,000 to the refurbishment project of the Great Hall which the Guild recently agreed to make. This is by far the largest ever grant we have made to this very special project and our Guild name will be recorded for posterity in the Great Hall of St Bartholomew as a result.

So, as we prepare to celebrate the 900<sup>th</sup> Anniversary of our Royal Hospital next year I can record that your Guild is in 'good heart' and remains as it has always been: devoted to the needs of others.

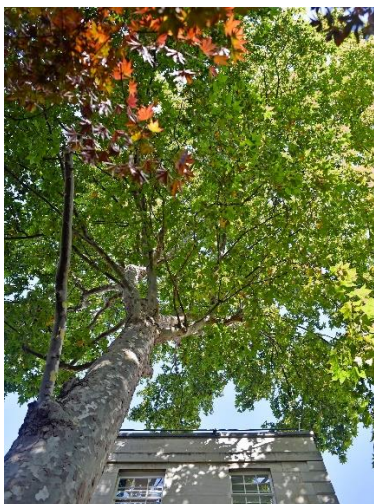
I am proud to lead such a dedicated team as your Chairman and I look forward with relish to the coming year.

With my warmest good wishes to all of you.

**Christopher M Hayward**

**Chairman**

~~~~~



**Tree canopy, Princess Alice Garden**



# Obituary

**Lady Judy Percival, 23rd May 1921 - 24th April 2022**



Lady Judy Percival joined the Guild in 1960, pushing trolleys around the wards, and battling with the temperamental lifts.

She had quite a remarkable and very full life. Born in Stone-in-Oxney, Kent, she was christened, married and her funeral service was held in the village church, St Mary the Virgin. She learnt ballet dancing from an early age and was awarded cups and medals. She was unable to take a place in Sadler's Wells, so in 1938 Judy auditioned for a Christmas Panto in the Coliseum with the Tiller Girls. After the party season Judy danced in a revue in the Garrick Theatre. Then the bombs began falling on London and audiences dwindled, but the show carried on and Judy met her future husband Ian at the stage door. Her next theatre was the Windmill – for a short time – because she joined ENSA (Entertainment National Services Association) entertaining troops around the country, followed by more Panto.

But she was missing Ian whom she had married in 1942, but he, now in the army, was off to India and Burma. She discovered that Col. Jack Hawkins (a budding actor) was forming an ENSA group to entertain the troops of the "forgotten army" in Burma. The group included Judy, Doris (singer), Ralph (pianist), a drummer and a conjuror who performed in makeshift jungle venues lit by the lights from the trucks! She eventually traced Ian in Calcutta and they had a joyous reunion.

Judy gave up her dancing career and settled into motherhood: Jane in 1946 and Robert in 1949, and Ian launched his legal and political career, Judy becoming the consummate political wife and when Ian was appointed Solicitor-General in Thatcher's government, Judy became great friends with Margaret Thatcher.

She also ran the Guild's flower shop and had an encyclopaedic knowledge, knowing all their Latin names. As well as creating glorious flower arrangements in Downing Street and The Temple (where they had a flat) she also created them for Barts Great Hall and St Bartholomew the Less for our meetings and for weddings and funerals.

In 1979 the Hospital's domestic workers went on strike and the Guild was asked to supply volunteers on the wards. A magnificent response from the Guild, including Judy. She recalled a hilarious time as they swept and polished the floors and furniture and made tea and coffee for the patients. Never had the wards been so clean or the patients so entertained! She always supplied asparagus from her garden to sell at our May Fair.

Judy served on the committee for many years and was elected Vice-President in 2000 in recognition of her 40 years' service as a volunteer. Her personality, warmth, sense of the ridiculous, her meticulous attention to detail and her love of Barts shone through everything she did and I shall miss her friendship after all these years. May she now rest in peace.

We send our condolences to her family.

## **Ann Wickham**

*Postscript: Lady Percival's family made a generous donation to the Guild. This has been put towards a grant awarded to enable the Hospital to open a new service. Outpatient Parenteral Antibiotic Therapy (OPAT) enables administration of intravenous antibiotics in the community for patients who would otherwise have to remain in hospital. This has helped to free up beds for patients needing admission to a cardiology ward.*

**The Guild has also been informed of the death of the following member:**

Miss Chris Jacques

# **The Guild of the Royal Hospital of St Bartholomew**



## **ANNUAL GENERAL MEETING 2021**

### **MINUTES**

of The Annual General Meeting of the Guild of the Royal Hospital of St Bartholomew,  
Thursday 28 October 2021 at 2pm in the Great Hall

#### **1. Opening of the AGM**

Ian McDowell, Chairman, opened the meeting and welcomed volunteers, trustees, members, committee members and guests to the Barts Guild Annual General Meeting 2021. The company numbered approximately forty attendees. Apologies had been received from six members of the Guild.

#### **2. President's welcome – Mrs Ann Wickham**

Mrs Wickham, President, gave the following address:

"May I wish you all a very warm welcome to our 109<sup>th</sup> Annual General Meeting and our 110<sup>th</sup> Anniversary. It is wonderful to be back in the Great Hall, meeting old and new friends in person! The Lady Mayoress, Mrs Hilary Russell, is unable to be with us today but has very kindly pre-recorded a message for us which we will hear later.

We are delighted to welcome our guest speaker, Charlotte Moore, who will tell us about her step-great-grandmother Milicent Moore, without whom none of us would be here today.

Colin Powell, the former US Secretary of State who sadly died of COVID-19 last week, wrote in his book 'The Powell Principles': "Leadership is the art of accomplishing more than the science of management says is possible." Quite a challenge! In this year's Annual Report and Accounts you can read exactly what the Guild has achieved despite the restrictions and prohibitions of COVID-19. Our financial management is in very good hands, our shop has never closed, we have continued to give grants to the staff and patients of Barts, our newsletter still reaches us twice a year, and the Princess Alice Garden continues to flourish despite the scaffolding. Also we supplied a magnificent Christmas tree in the Atrium which was so enjoyed by the staff and patients and lifted everyone's spirits. I do wonder how the science of management would have coped at Barts this last year.

Thank you, Ian, for your chairmanship and for encouraging and steering us through this most difficult period in our history but one which has made us stronger and more united than before. We have always worked on the principle that the achievements of today are the starting points of tomorrow.

We have all faced our own personal losses and challenges from the deaths and illnesses of family and close friends, loneliness, and the fear of what tomorrow might bring. We have, however, learned to recognise the true value of our friends and neighbours, and the encouraging smiles and helping hands of erstwhile strangers, and learned to smile and laugh again.

We have also learned the value of time and how we use it. Time is a very precious gift which is freely given to be used as we will. I have always believed that time, tempered with compassion, kindness, hope, love, an understanding smile, and spiced with a sense of humour, is the gift which the Guild has freely given to this great Hospital of St Bartholomew since our foundation in 1911 and we continue to do so today.

I cannot thank enough each and every one of you: volunteers, members, trustees, committee members, Andy Haddon who manages the shop, Lizzie Clark, our administrator, and Graeme and Noel who look after the Princess Alice Garden, for your time and expertise and for your loyalty and friendship. The Guild is like a silent army which is always there for Barts Hospital wherever and whenever we are needed.

As you know, in 2023 we will celebrate the foundation by Prior Rahere in 1123 of the Priory Church of St Bartholomew and St Bartholomew's Hospital; 900 years of compassion and care. There will be much to celebrate and the Guild will play its part.

In 1842, Tennyson mused in his poem Ulysses:

*'All experience is an Arch where thro'  
Gleams that untraveled world whose margin fades  
Forever and forever when I move.'*

We cannot know what the future holds for the Guild, for Barts or for any one of us. But what we all can do is to have the vision to use our time wisely and well to ensure a future built on the ethos of the Guild: compassion, kindness, love and faith for those who come after us so they may continue to freely give these gifts to the patients, staff and students of St Bartholomew's Hospital."

The Chairman thanked Ann Wickham for her address.

### **3. Minutes of the 2019 AGM**

The Minutes of the AGM held on 29 October 2020 were received by the meeting as a correct record.

### **4. Annual Report and Accounts 2019-20**

The Chairman commended the Annual Report and Accounts 2020-21 to the meeting. No comments on the Report were received from the floor.

The Hon. Treasurer presented the Report and Accounts for the 12 months ended 31 March 2021. These show the Guild's finances continuing in very good health. Independent examination had been carried out by Blue Spire Ltd, in the usual way, which has signed its report confirming that it has no concerns about the Guild's accounts.

The Treasurer highlighted the following key points arising from the accounts:

- Impact of the pandemic and lockdown on shop income; albeit huge thanks to the small group of volunteers and our shop manager, Andy Haddon, for keeping this much-valued service open for the hospital throughout;
- 23 grants totalling £35,000 in the year;
- Receipt of legacies of some £267,000 over the past three years, and appropriate ways will be sought to use these funds in line with the Guild's charitable objects.

Total income, excluding an unrealised gain on investments, fell short of total expenditure by £9,534 in the year. After an unrealised gain in the value of investments of £91,304, the total surplus for the year is £81,770. After direct expenses, the shop reported a loss of £13,540 which was substantially mitigated by receipt of a £10,000 retail grant from the City of London Corporation.

The Guild's investments have generated an income yield of 3.5% over the 12 months. £170,000 of free cash balances remain on two 12-month fixed deposits with Cambridge & Counties Bank and United Trust Bank. The deposits are protected under the Financial Services Compensation Scheme.

Total Charity Funds at 31 March 2021 were £802,107 up from £720,338 at 31 March 2020 and compared to £650,382 at 31 March 2019. All Charity Funds are unrestricted funds apart from £1,583 re Chris Davies legacy.

The Treasurer expressed renewed thanks to Assistant Treasurer and bookkeeper, Hilary Tarr, who undertook a fantastic job managing the significant number of financial transactions each year, and kept excellent records from which he does the easy bit and prepares the accounts.

Questions on the accounts were invited but none were forthcoming. Adoption of the accounts was proposed, seconded, and approved by the meeting.

## **5. Chairman - Election of Officers and Committee Members**

### **5.1 Officers**

The Chairman reported the following changes amongst officers of the Guild: Mr Ian McDowell stands down as Chair, having served two years; Ms Lesley Evans stands down as Hon. Secretary, having served two years.

Following the recommendation of the Management Committee in meeting on 1 October, the Chairman confirmed the following elections: Mr Christopher Hayward CC as Chair (currently Vice-Chair), Mr Keith Bottomley CC as Vice-Chair (previous Vice-Chair and also current Hon. Treasurer), and Miss Judith Pleasance CC as Hon. Secretary.

### **5.2 Members of the Committee of Management**

Following the recommendation of the Management Committee in meeting on 1 October, the following appointments were reported to the meeting: Mr James Benson as Trustee for an initial period of three years, Ms Lesley Evans to return as Trustee for one year, and Mr Steve Bench to continue as Trustee for a second term of three years. The Chairman welcomed all appointees.

### **6.1 Chairman's Report – Mr Ian McDowell**

The Chairman opened his remarks to the assembled company by referring to the test of competence for fire watchers detailed to protect St Paul's Cathedral in 1940; he stated that being Chair of the Guild was like walking blindfold across the cathedral's roof! He was however most grateful for much support received from colleagues and supporters.

Mentioning supporters, Ian could not omit the original founders of the Guild, namely Milicent Moore and her friends Agnes, Maria, Helen, Mary and Lady Eleanor. A toast was duly proposed to 'Our Founders'. In more recent times, he noted the energetic campaign spearheaded by Wendy Mead CC to save the Hospital from threatened closure, and the support for the Hospital from Livery Companies and staff in City institutions. He thanked Charlotte Moore, Milicent's step-great-granddaughter, for attending the meeting as guest speaker.

In January 2021 the Guild suffered the loss of a valued colleague and volunteer, Lorna Glace, whose untimely death has been the inspiration for the award of a grant in her name for cardiology, and also a grant which will be awarded to a BME staff member to develop their leadership potential. The recipient of the latter grant has thanked the Guild profusely for the award which has enabled her to commence a university course. The relatives of Lorna Glace have notified that they will be walking under the Guild banner in the forthcoming Lord Mayor's Show.

Ian concluded by thanking all volunteers including those responsible for the Guild's finances and publications. He thanked our most capable shop manager, and the outgoing Hon. Secretary, 'Evans the unflappable', presenting a bouquet of flowers to her. He thanked everybody for attending the meeting.

### **6.2 Incoming Chairman's response – Mr Christopher Hayward CC**

In introducing himself to the meeting, Christopher declared himself honoured, humbled and privileged to take on the role of Chair in a charity with such a long and outstanding history, and he had quickly developed passion for the Guild and its cause. He recognised that volunteers are at the heart of the Guild's activities, demonstrating a diversity of skills and talents, and he offered profound thanks to all volunteers and to shop manager Andy Haddon. He had been honoured to entertain a good number of Guild volunteers at the Old Bailey for a reception and tour in his previous capacity as Sheriff of the City of London.

Christopher paid tribute to individuals who had guided the Guild in recent times: to Chairman Ian McDowell for his enthusiastic leadership over two challenging years; to Hon. Secretary Lesley Evans for capably undertaking that tough job, now to be succeeded by Judith Pleasance CC whom he welcomed; to Keith Bottomley CC, a friend from the City Corporation who manages the Guild's finances so capably as Hon. Treasurer as well as supporting him in the role of Vice-Chairman; to Wendy Mead CC who has done so much for the Hospital and first told him about the Guild; and to our much-respected Guild

President, Ann Wickham, who leads the charity with style and elegance. Christopher acknowledged the resilience of the Guild and pledged to do his best to maintain and enhance this indisputable asset to Barts Hospital. With everybody's support, the Guild would march on from strength to strength.

**7. Address by the Lady Mayoress, Mrs Hilary Russell** (via pre-recorded video)

Mrs Russell greeted the meeting, declaring that she was very proud of Barts Guild and glad of its links with the mayoralty. She noted that it had been a challenging year, mentioning in particular the loss of Lorna Glace, but commended the awarding of two grants particularly associated with cardiology and the promotion of BME opportunities, both of which Lorna would have particularly endorsed.

It had been a triumph that the Guild shop had been kept open throughout the pandemic, and Mrs Russell offered her congratulations and thanks to all volunteers and others who had facilitated this effort as a service to the Hospital. She also appreciated the active fundraising that had taken place to benefit the wellbeing of Hospital staff.

Mrs Russell warmly thanked Ian McDowell for his two years as Chair of the Guild, and wished the incoming Chair every success in this role. She concluded by pledging support from the mayoralty for the Guild's future, declaring that "the triumphs of the future will surpass the triumphs of the past".

**8. Forthcoming events**

The Lord Mayor's Show, happily, can take place this year on Saturday 13 November, after having being cancelled in 2020 due to the pandemic. The Guild hopes to stage a Spring Celebration in 2022 in lieu of a Christmas Concert, and the date will be notified in due course. The autumn date of the Annual General Meeting in 2022 will also be announced as soon as possible next year.

**9. Any other business – Mr Ian McDowell**

There was no further business, and formal part of the meeting was closed.

\*\*\*\*\*

**All then enjoyed a talk by Guest Speaker Charlotte Moore**

Charlotte began by stating her link to Barts Guild as step-great-granddaughter of Milicent Moore who was instrumental in its foundation in 1911. Milicent was connected to the Hospital through her husband, Sir Norman Moore, an eminent physician.

Milicent was born in 1868 and led a privileged early life, growing up in Kent with an Army father and three older siblings. Her mother died of TB when Milicent was only five, and Milicent also lost her father when in her teens, by which time two of her siblings had also died. Her remaining sister had inherited the mental instability of their mother, but caring relatives had instilled in Milicent the need to occupy oneself and do something purposeful. Her disposition as a 'doer' eventually led her to found the Guild.

At the young age of 21, Milicent bought a house in East Sussex which she managed along with a farm. She shared the house with sister Mabel, Mabel's husband and their family, until she decided to let the house to a Church of England Temperance Society for recovering alcoholics. At this point Milicent moved to the east end of London where she occupied herself, when living among the underprivileged, by helping street women into worthwhile jobs.

While in London, Milicent met Sir Norman Moore through her friend Amy who was married to Sir Norman. Amy died of TB leaving three children, and some time afterwards Milicent and Sir Norman were married. As wife and consort to a physician of repute, Milicent nevertheless continued to use her energy to improve the life of others, of which the founding of Barts Guild is but one example. Sir Norman died in 1922 but Milicent lived until 1947, leaving a considerable legacy of good works, having been inspired by her faith and by her mother's first cousin, Florence Nightingale.

~~~~~

# Report of the Honorary Treasurer

## Report of the Honorary Treasurer for the year ended 31 March 2022

The year-end accounts for the 12 months to 31 March 2022 show the Guild's finances continuing in very good health.

Independent examination has been carried out by Blue Spire Ltd, in the usual way, who have signed their report confirming that they have no concerns about our accounts.

I would highlight the following key points arising from the numbers:

- Shop income has now increased from the lowest level impacted by the pandemic and lockdowns. Huge thanks to our wonderful volunteers and our shop Manager Andy Haddon for delivering this much-valued service for the hospital and it is fantastic now to see the trolley service back in operation.
- Grants totalling just over £23,000 in the year;
- Receipt of legacies of £33,146 and a total of some £300,000 over the last four years



Total income, excluding an unrealised gain on investments, exceeded total expenditure by £18,294 in the year. After an unrealised gain in the value of investments of £46,151, the total surplus for the year is £64,445.

After direct expenses, the shop reported a loss of £15,885 which was largely mitigated by receipt of a £12,000 retail grant from the City of London Corporation.

The Guild's investments have generated a total return performance over the 12 months of 11.6%. £170,000 of free cash balances remain on two 12-month fixed deposits with Cambridge & Counties Bank and United Trust Bank. The deposits are protected under the Financial Services Compensation Scheme.

Total Charity Funds at 31 March 2022 were £866,552 up from £802,107 at 31 March 2021 and compared to £650,382 at 31st March 2019, an increase of 33% over 3 years. All Charity Funds are now unrestricted funds following allocation of the Chris Davies legacy.

My grateful thanks as ever to our Assistant Treasurer and bookkeeper, Hilary Tarr, who does a fantastic job managing the not insignificant number of financial transactions each year and keeps excellent books from which I do the easy bit and prepare the accounts.

**Keith Bottomley CC**

**Honorary Treasurer**



## **Independent Examiner's Report to the Trustees of The Guild of the Royal Hospital of St Bartholomew**

I report to the charity trustees on my examination of the accounts of the charity for the year ended 31 March 2022.

### **Responsibilities and basis of report**

As the charity's trustees you are responsible for the preparation of the accounts in accordance with the requirements of the Charities Act 2011 ('the Act').

I report in respect of my examination of the charity's accounts carried out under section 145 of the Act and in carrying out my examination I have followed all the applicable Directions given by the Charity Commission under section 145(5)(b) of the Act.

### **Independent examiner's statement**

I have completed my examination. I confirm that no material matters have come to my attention in connection with the examination giving me cause to believe that in any material respect:

1. accounting records were not kept in respect of the charity as required by section 130 of the Act; or
2. the accounts do not accord with those records; or
3. the accounts do not comply with the applicable requirements concerning the form and content of accounts set out in the Charities (Accounts and Reports) Regulations 2008 other than any requirement that the accounts give a 'true and fair view' which is not a matter considered as part of an independent examination.

I have no concerns and have come across no other matters in connection with the examination to which attention should be drawn in this report in order to enable a proper understanding of the accounts to be reached.



Geoffrey Frost BSc (Hons) FCA  
Blue Spire Limited  
Cawley Priory  
South Pallant  
Chichester  
West Sussex  
PO19 1SY

Date: 8 August 2022



**THE GUILD OF THE ROYAL HOSPITAL OF ST BARTHOLOMEW**  
**FINANCIAL STATEMENTS FOR THE YEAR ENDED 31 MARCH 2022**

**All Funds Year Ended 31 March 2022**

**Statement of Financial Activities**

|                                                     |       | Unrestricted<br>Funds | 2021-22<br>Restricted<br>Funds | Total          | 2020-21<br>Total<br>Funds |
|-----------------------------------------------------|-------|-----------------------|--------------------------------|----------------|---------------------------|
|                                                     | Notes | £                     | £                              | £              | £                         |
| <b>Income and Endowments from:</b>                  |       |                       |                                |                |                           |
| Donations and Legacies                              | 2     | 48,304                | 4,400                          | 52,704         | 28,982                    |
| Charitable activities                               | 3     | 100,305               | -                              | 100,305        | 85,917                    |
| Other trading activities                            | 4     | 5,835                 | -                              | 5,835          | 3,228                     |
| Investments                                         | 5     | 17,563                | -                              | 17,563         | 17,015                    |
| <b>Total income</b>                                 |       | <b>172,007</b>        | <b>4,400</b>                   | <b>176,407</b> | <b>135,142</b>            |
| <b>Expenditure on:</b>                              |       |                       |                                |                |                           |
| Raising funds                                       | 6     | 3,882                 | -                              | 3,882          | 5,057                     |
| Charitable activities                               | 7     | 146,698               | 7,533                          | 154,231        | 139,619                   |
| <b>Total expenditure</b>                            |       | <b>150,580</b>        | <b>7,533</b>                   | <b>158,113</b> | <b>144,676</b>            |
| <b>Income/(expenditure) excluding investments</b>   |       | <b>21,427</b>         | <b>(3,133)</b>                 | <b>18,294</b>  | <b>(9,534)</b>            |
| <b>Net (loss)/gains on investments (unrealised)</b> | 11    | <b>46,151</b>         | <b>-</b>                       | <b>46,151</b>  | <b>91,304</b>             |
| Net income/(expenditure)                            |       | 67,578                | (3,133)                        | 64,445         | 81,770                    |
| Transfers between funds                             | 16    | -                     | -                              | -              | -                         |
| <b>Net movement in funds</b>                        |       | <b>67,578</b>         | <b>(3,133)</b>                 | <b>64,445</b>  | <b>81,770</b>             |
| <b>Reconciliation of funds:</b>                     |       |                       |                                |                |                           |
| Total funds brought forward                         | 16    | 798,974               | 3,133                          | 802,107        | 720,337                   |
| <b>Total funds carried forward</b>                  | 16    | <b>866,552</b>        | <b>-</b>                       | <b>866,552</b> | <b>802,107</b>            |

**THE GUILD OF THE ROYAL HOSPITAL OF ST BARTHOLOMEW**  
**CONSOLIDATED FINANCIAL STATEMENTS FOR THE YEAR ENDED 31 MARCH 2022**

**Balance Sheet as at 31 March 2022**

|                                                                       | Notes | 2021-22<br>£   | 2020-21<br>£   |
|-----------------------------------------------------------------------|-------|----------------|----------------|
| <b>Fixed assets</b>                                                   |       |                |                |
| Investments                                                           | 11    | 578,518        | 532,367        |
| <i>Total investments</i>                                              |       | <b>578,518</b> | <b>532,367</b> |
| <b>Current assets</b>                                                 |       |                |                |
| Stocks                                                                | 12    | 16,761         | 15,875         |
| Debtors                                                               | 13    | 906            | 2,308          |
| Cash at bank and in hand                                              | 14    | 286,404        | 261,564        |
| <i>Total current assets</i>                                           |       | <b>304,071</b> | <b>279,747</b> |
| <b>Liabilities</b>                                                    |       |                |                |
| Creditors: amounts falling due within one year                        | 15    | 16,037         | 10,007         |
| <i>Net Current Assets</i>                                             |       | 288,034        | 269,740        |
| <b>Total Net Assets</b>                                               |       | <b>866,552</b> | <b>802,107</b> |
| <b>The Funds of the Guild of the Royal Hospital of St Bartholomew</b> |       |                |                |
| Restricted income funds                                               | 16    | -              | 3,133          |
| Unrestricted funds                                                    | 16    | 866,552        | 798,974        |
| <b>Total charity funds</b>                                            |       | <b>866,552</b> | <b>802,107</b> |

These financial statements have been prepared in accordance with the Financial Reporting Standard 102 SORP.

Approved by the trustees on 22 July 2022 and signed on their behalf



**Christopher Hayward CC**  
Trustee

**Keith Bottomley CC**  
Trustee

# **THE GUILD OF THE ROYAL HOSPITAL OF ST BARTHOLOMEW**

## **FINANCIAL STATEMENTS FOR THE YEAR ENDED 31 MARCH 2022**

### **Notes to the Accounts**

#### **1. Accounting policies**

##### **General information, scope and basis of the financial statements**

The Guild of the Royal Hospital of St Bartholomew is an unincorporated charity registered in England and Wales under a constitution with the charity number 251628. The address of the principal office is given in the charity reference and administrative details page and the nature of the charity's operations and principal activities are provided in the Report of the Trustees.

The charity constitutes a public benefit entity as defined by FRS 102. The financial statements have been prepared in accordance with Accounting and Reporting by Charities: Statement of Recommended Practice applicable to charities preparing their accounts in accordance with the Financial Reporting Standard applicable in the UK and Republic of Ireland (FRS 102) issued in October 2019, the Charities Act 2011 and UK Generally Accepted Practice as it applies from 1 January 2019.

The financial statements are prepared on a going concern basis under the historical cost convention, modified to include certain items at fair value. The financial statements are presented in sterling which is the functional currency of the charity and rounded to the nearest pound.

The charity does not include a cash flow statement on the grounds that it is applying FRS 102 Section 1A.

##### **Incoming resources**

All incoming resources are included in the Statement of Financial Activities (SoFA) when the charity is legally entitled to the income after any performance conditions have been met, the amount can be measured reliably and it is probable that the income will be received.

For donations to be recognised, the charity will have been notified of the amounts and the settlement date in writing. If there are conditions attached to the donation and this requires a level of performance before entitlement can be obtained, then income is deferred until those conditions are fully met or the fulfilment of those conditions is within the control of the charity and it is probable that they will be fulfilled.

For legacies, entitlement is the earlier of the charity being notified of an impending distribution or the legacy being received. At this point income is recognised. On occasion, legacies will be notified to the charity; however it is not possible to measure the amount expected to be distributed. On these occasions, the legacy is treated as a contingent asset and disclosed.

Income from trading activities includes income earned from fundraising events and trading activities to raise funds for the charity. Income is received in exchange for supplying goods and services in order to raise funds and is recognised when entitlement has occurred.

Interest income is recognised using the effective interest method and is recognised as the charity's right to receive payment is established.

##### **Resources expended**

All expenditure is accounted for on an accruals basis and has been classified under headings that aggregate all costs related to the category. Expenditure is recognised where there is a legal or constructive obligation to make payments to third parties, it is probable that the settlement will be required and the amount of the obligation can be measured reliably. It is categorised under expenditure on charitable activities and includes grants to organisations and the cost of administering the activity of the charity.

Grants payable to third parties are within the charitable objectives. Where unconditional grants are offered, this is accrued as soon as the recipient is notified of the grant, as this gives rise to a reasonable expectation that the recipient will receive the grant. Where grants are conditional relating to performance, then the grant is only accrued when any unfulfilled conditions are outside of the control of the charity.

Support costs are those that assist the work of the charity but do not directly represent charitable activities and include office costs, governance costs and administrative payroll costs. They are incurred directly in support of expenditure on the objects of the charity. Support costs are allocated to expenditure on charitable activities on the basis that this is the sole activity of the charity.

Governance costs are those incurred in the governance of the charity and primarily associated with the constitution and statutory requirements.

### **Employee benefits**

When employees have rendered service to the charity, short-term employee benefits to which the employees are entitled are recognised at the undiscounted amount expected to be paid in exchange for that service.

### **VAT**

The charity is registered for VAT and prepares returns currently under the Flat Rate Scheme for small businesses. On this basis, costs are recorded inclusive of VAT within the SoFA, and income is reduced by the VAT payable at a rate of 4% within the SoFA.

### **Investments**

Investments are recognised initially at fair value which is normally the transaction price excluding transaction costs. Subsequently they are measured at fair value with changes recognised in 'Net gains/(losses) on investments' in the SoFA if the shares are publicly traded or their fair value can otherwise be measured reliably. Other investments are measured at cost less impairment.

### **Stocks**

Stocks are stated at the lower of cost and estimated selling price less costs to complete and sell. Cost includes all costs of purchase, costs of conversion and other costs incurred in bringing stock to its present location and condition. Provision is made for damaged, obsolete and slow-moving stock where appropriate.

### **Debtors receivable and creditors payable within one year**

Debtors and creditors with no stated interest rate and receivable or payable within one year are recorded at transaction price. Any losses arising from impairment are recognised in expenditure.

### **Cash and cash equivalents**

Cash and cash equivalents comprise cash in hand and call deposits, and other short-term highly liquid investments that are readily convertible to a known amount of cash and are subject to an insignificant risk of change in value.

### **Taxation**

The charity is considered to pass the tests set out in sections 521 to 536 Income Tax Act 2007 (ITA 2007); as such no income tax is payable on the charity's activities.

### **Fund accounting**

General funds are unrestricted funds which are available for use at the discretion of the trustees in furtherance of the general objectives of the charity and which have not been designated for other purposes.

Restricted funds are funds which are to be used in accordance with specific restrictions imposed by donors or raised by the charity for particular purposes. The cost of raising and administering such funds is charged against the specific fund. The aim and use of each restricted fund are set out in the notes to the financial statements.

## Going concern

The financial statements have been prepared on a going concern basis as the trustees believe that no material uncertainties exist. The trustees have considered the level of funds held and the expected level of income and expenditure for 12 months from authorising these financial statements. The budgeted income and expenditure is sufficient with the level of reserves for the charity to be able to continue as a going concern.

The trustees conclude that the impact of COVID-19 can be mitigated due to the reserves which can be utilised to support the charity during a period of reduced income.

## 2. Donations and legacies

|           | <b>Unrestricted<br/>Funds<br/>£</b> | <b>Restricted<br/>Funds<br/>£</b> | <b>2022<br/>Total Funds<br/>£</b> |
|-----------|-------------------------------------|-----------------------------------|-----------------------------------|
| Donations | 2,394                               | 4,400                             | 6,794                             |
| Grants    | 12,000                              | -                                 | 12,000                            |
| Legacies  | 33,146                              | -                                 | 33,146                            |
| Gift Aid  | 764                                 | -                                 | 764                               |
|           | <b>48,304</b>                       | <b>4,400</b>                      | <b>52,704</b>                     |

|                  | <b>Unrestricted<br/>Funds<br/>£</b> | <b>Restricted<br/>Funds<br/>£</b> | <b>2021<br/>Total Funds<br/>£</b> |
|------------------|-------------------------------------|-----------------------------------|-----------------------------------|
| <i>Donations</i> | <i>10,539</i>                       | <i>1,550</i>                      | <i>12,089</i>                     |
| <i>Grants</i>    | <i>10,000</i>                       | -                                 | <i>10,000</i>                     |
| <i>Legacies</i>  | <i>5,000</i>                        | -                                 | <i>5,000</i>                      |
| <i>Gift Aid</i>  | <i>1,893</i>                        | -                                 | <i>1,893</i>                      |
|                  | <b>27,432</b>                       | <b>1,550</b>                      | <b>28,982</b>                     |

## 3. Charitable activities

|                             | <b>Unrestricted<br/>Funds<br/>£</b> | <b>Restricted<br/>Funds<br/>£</b> | <b>2022<br/>Total Funds<br/>£</b> |
|-----------------------------|-------------------------------------|-----------------------------------|-----------------------------------|
| Guild Shop sales net of VAT | 100,305                             | -                                 | 100,305                           |
|                             | <b>100,305</b>                      | <b>-</b>                          | <b>100,305</b>                    |

|                                    | <b>Unrestricted<br/>Funds<br/>£</b> | <b>Restricted<br/>Funds<br/>£</b> | <b>2021<br/>Total Funds<br/>£</b> |
|------------------------------------|-------------------------------------|-----------------------------------|-----------------------------------|
| <i>Guild Shop sales net of VAT</i> | <i>85,917</i>                       | -                                 | <i>85,917</i>                     |
|                                    | <b>85,917</b>                       | <b>-</b>                          | <b>85,917</b>                     |

## 4. Other trading activities

|                                               | <b>Unrestricted<br/>Funds<br/>£</b> | <b>Restricted<br/>Funds<br/>£</b> | <b>2022<br/>Total Funds<br/>£</b> |
|-----------------------------------------------|-------------------------------------|-----------------------------------|-----------------------------------|
| Business rate refund Barts NHS Trust          | 1,585                               | -                                 | 1,585                             |
| Christmas concert                             | -                                   | -                                 | -                                 |
| Membership subscriptions (excluding Gift Aid) | 2,922                               | -                                 | 2,922                             |
| Fundraising                                   | 1,328                               | -                                 | 1,328                             |
|                                               | <b>5,835</b>                        | <b>-</b>                          | <b>5,835</b>                      |

#### 4. Other trading activities (continued)

|                                                      | <b>Unrestricted<br/>Funds</b> | <b>Restricted<br/>Funds</b> | <b>2021<br/>Total Funds</b> |
|------------------------------------------------------|-------------------------------|-----------------------------|-----------------------------|
|                                                      | <b>£</b>                      | <b>£</b>                    | <b>£</b>                    |
| <i>Business rate refund Barts NHS Trust</i>          | -                             | -                           | -                           |
| <i>Christmas concert</i>                             | 115                           | -                           | 115                         |
| <i>Membership subscriptions (excluding Gift Aid)</i> | 3,060                         | -                           | 3,060                       |
| <i>Fundraising</i>                                   | 53                            | -                           | 53                          |
|                                                      | <b>3,228</b>                  | <b>-</b>                    | <b>3,228</b>                |

#### 5. Investment income

|                         | <b>Unrestricted<br/>Funds</b> | <b>Restricted<br/>Funds</b> | <b>2022<br/>Total Funds</b> |
|-------------------------|-------------------------------|-----------------------------|-----------------------------|
|                         | <b>£</b>                      | <b>£</b>                    | <b>£</b>                    |
| Income from investments | 15,892                        | -                           | 15,892                      |
| Bank interest           | 1,671                         | -                           | 1,671                       |
|                         | <b>17,563</b>                 | <b>-</b>                    | <b>17,563</b>               |

|                                | <b>Unrestricted<br/>Funds</b> | <b>Restricted<br/>Funds</b> | <b>2021<br/>Total Funds</b> |
|--------------------------------|-------------------------------|-----------------------------|-----------------------------|
|                                | <b>£</b>                      | <b>£</b>                    | <b>£</b>                    |
| <i>Income from investments</i> | 15,580                        | -                           | 15,580                      |
| <i>Bank interest</i>           | 1,435                         | -                           | 1,435                       |
|                                | <b>17,015</b>                 | <b>-</b>                    | <b>17,015</b>               |

#### 6. Expenditure on raising funds

|                           | <b>Unrestricted<br/>Funds</b> | <b>Restricted<br/>Funds</b> | <b>2022<br/>Total Funds</b> |
|---------------------------|-------------------------------|-----------------------------|-----------------------------|
|                           | <b>£</b>                      | <b>£</b>                    | <b>£</b>                    |
| Cost of calendars*        | 2,830                         | -                           | 2,830                       |
| Cost of Christmas concert | -                             | -                           | -                           |
| Newsletter                | 1,052                         | -                           | 1,052                       |
|                           | <b>3,882</b>                  | <b>-</b>                    | <b>3,882</b>                |

|                                  | <b>Unrestricted<br/>Funds</b> | <b>Restricted<br/>Funds</b> | <b>2021<br/>Total Funds</b> |
|----------------------------------|-------------------------------|-----------------------------|-----------------------------|
|                                  | <b>£</b>                      | <b>£</b>                    | <b>£</b>                    |
| <i>Cost of calendars*</i>        | 2,660                         | -                           | 2,660                       |
| <i>Cost of Christmas concert</i> | 600                           | -                           | 600                         |
| <i>Newsletter</i>                | 1,797                         | -                           | 1,797                       |
|                                  | <b>5,057</b>                  | <b>-</b>                    | <b>5,057</b>                |

\* Approximately 30% of the calendars formed a free gift to the Hospital.

## 7. Expenditure on charitable activities

|                                                            | Unrestricted<br>Funds<br>£ | Restricted<br>Funds<br>£ | 2022<br>Total Funds<br>£ |
|------------------------------------------------------------|----------------------------|--------------------------|--------------------------|
| Cost of goods sold                                         | 69,019                     | -                        | 69,019                   |
| Shop-related expenses:                                     |                            |                          |                          |
| Salary                                                     | 41,829                     | -                        | 41,829                   |
| Volunteer travel expenses                                  | 270                        | -                        | 270                      |
| Other shop expenses                                        | 3,828                      | -                        | 3,828                    |
| Shop telephone costs                                       | 349                        | -                        | 349                      |
| Other expenses:                                            |                            |                          |                          |
| Consultancy fees                                           | 634                        | -                        | 634                      |
| AGM costs                                                  | 1,218                      | -                        | 1,218                    |
| Independent Examiner: Annual examination                   | 810                        | -                        | 810                      |
| Independent Examiner: Other services                       | 432                        | -                        | 432                      |
| Printing, postage, stationery                              | 1,145                      | -                        | 1,145                    |
| Insurance                                                  | 1,140                      | -                        | 1,140                    |
| Subscriptions                                              | 392                        | -                        | 392                      |
| Website upgrade costs                                      | 2,731                      | -                        | 2,731                    |
| Helpers'/grants' reception                                 | 500                        | -                        | 500                      |
| Business Rates                                             | 1,585                      | -                        | 1,585                    |
| Miscellaneous expenses                                     | 704                        | -                        | 704                      |
| Princess Alice Garden maintenance                          | 4,687                      | -                        | 4,687                    |
| <b>Total expenses</b>                                      | <b>131,273</b>             | <b>-</b>                 | <b>131,273</b>           |
| <b>Grants paid/awarded to St Bartholomew's Hospital</b>    |                            |                          |                          |
| PRINCE2 project management course                          | 1,446                      | -                        | 1,446                    |
| Contribution to Hospital staff wellbeing projects          | 620                        | 5,950                    | 6,570                    |
| Clothing for Radiotherapy patients post treatment          | 200                        | -                        | 200                      |
| Triptychs to celebrate staff efforts during pandemic       | 2,016                      | -                        | 2,016                    |
| Publish Case Report in European Heart Journal (4 awards)   | 1,195                      | -                        | 1,195                    |
| Catering/accreditation for Data Science cse for clinicians | 532                        | -                        | 532                      |
| BME Bursary: PG Dipl.(Leadership/Management in Health)     | 3,638                      | -                        | 3,638                    |
| Presents for Radiotherapy patients treated on Xmas Eve     | 248                        | -                        | 248                      |
| Therapies team-building event                              | 150                        | -                        | 150                      |
| Attend Breathing Pattern Disorder study day                | 30                         | -                        | 30                       |
| Chris Davies' legacy paid to Psychological Services        | -                          | 1,583                    | 1,583                    |
| Allergy Academy: Allergy in Practice course (4 days)       | 1,000                      | -                        | 1,000                    |
| EMCO Nursing training: lunch catering                      | 267                        | -                        | 267                      |
| Therapists team-building event, St Patrick's Day           | 39                         | -                        | 39                       |
| Cardiology boot camp, QMUL (2 places)                      | 225                        | -                        | 225                      |
| Two ice-dispensing machines for ICU wards                  | 9,888                      | -                        | 9,888                    |
| Licences and tablets for online training tool              | 950                        | -                        | 950                      |
| Attend EuroELSO conference 2022, London                    | 270                        | -                        | 270                      |
| Sofa bed for ICU Consultants' office                       | 650                        | -                        | 650                      |
| <b>Sub-total</b>                                           | <b>23,362</b>              | <b>7,533</b>             | <b>30,895</b>            |
| Unpaid grants 2021-22                                      | (7,938)                    | -                        | (7,938)                  |
| <b>Total grants</b>                                        | <b>15,425</b>              | <b>7,533</b>             | <b>22,958</b>            |
|                                                            | <b>146,698</b>             | <b>7,533</b>             | <b>154,231</b>           |

## 7. Expenditure on charitable activities (continued)

|                                                                                                  | <b>Unrestricted<br/>Funds</b> | <b>Restricted<br/>Funds</b> | <b>2021<br/>Total Funds</b> |
|--------------------------------------------------------------------------------------------------|-------------------------------|-----------------------------|-----------------------------|
|                                                                                                  | <b>£</b>                      | <b>£</b>                    | <b>£</b>                    |
| <i>Cost of goods sold</i>                                                                        | 62,258                        | -                           | 62,258                      |
| <i>Shop-related expenses:</i>                                                                    |                               |                             |                             |
| <i>Salary</i>                                                                                    | 32,348                        | -                           | 32,348                      |
| <i>Volunteer travel expenses</i>                                                                 | 46                            | -                           | 46                          |
| <i>Other shop expenses</i>                                                                       | 3,967                         | -                           | 3,967                       |
| <i>Shop telephone costs</i>                                                                      | 396                           | -                           | 396                         |
| <i>Other expenses:</i>                                                                           |                               |                             |                             |
| <i>Consultancy fees</i>                                                                          | 419                           | -                           | 419                         |
| <i>AGM costs</i>                                                                                 | -                             | -                           | -                           |
| <i>Independent Examiner – Annual examination</i>                                                 | 810                           | -                           | 810                         |
| <i>Independent Examiner – Other services</i>                                                     | 432                           | -                           | 432                         |
| <i>Printing, postage, stationery</i>                                                             | 925                           | -                           | 925                         |
| <i>Insurance</i>                                                                                 | 543                           | -                           | 543                         |
| <i>Subscriptions</i>                                                                             | 479                           | -                           | 479                         |
| <i>Website upgrade costs</i>                                                                     | 115                           | -                           | 115                         |
| <i>Miscellaneous expenses</i>                                                                    | 1,160                         | -                           | 1,160                       |
| <i>Princess Alice Garden maintenance</i>                                                         | 5,089                         | -                           | 5,089                       |
| <b>Total expenses</b>                                                                            | <b>108,987</b>                | <b>-</b>                    | <b>108,987</b>              |
| <b>Grants paid/awarded to St Bartholomew's Hospital</b>                                          |                               |                             |                             |
| <i>Removal expenses to apartment with lift access</i>                                            | 385                           | -                           | 385                         |
| <i>4 Handgrip Dynamometers for ICU Therapies assessment</i>                                      | 935                           | -                           | 935                         |
| <i>Staff Art Psychotherapy project</i>                                                           | 2,587                         | -                           | 2,587                       |
| <i>20 blood pressure monitors for early discharge patients</i>                                   | 517                           | -                           | 517                         |
| <i>Publish case report of patient's journey at Barts</i>                                         | 200                           | -                           | 200                         |
| <i>Furniture items for cardiology discharge lounge</i>                                           | 6,747                         | -                           | 6,747                       |
| <i>Christmas presents for patients in 23 wards at Barts</i>                                      | 2,760                         | -                           | 2,760                       |
| <i>Contribution to dental work consequent on cancer drug treatment</i>                           | 750                           | -                           | 750                         |
| <i>Permanent lights for trees in Barts Square</i>                                                | 3,240                         | -                           | 3,240                       |
| <i>Christmas tree in KGV Atrium</i>                                                              | 2,339                         | -                           | 2,339                       |
| <i>Therapies team-building event</i>                                                             | 70                            | -                           | 70                          |
| <i>Christmas presents for Radiography patients</i>                                               | 60                            | -                           | 60                          |
| <i>3 E-Tran Frames for use in Critical Care units as communication aid</i>                       | 331                           | -                           | 331                         |
| <i>Online course: Dysphagia for Speech &amp; Language therapists</i>                             | 300                           | -                           | 300                         |
| <i>Barts Guild Elective Grants</i>                                                               | 1,500                         | -                           | 1,500                       |
| <i>Two ice-making machines for Critical Care units, floors 1 and 6 (balance of contribution)</i> | 4,271                         | -                           | 4,271                       |
| <i>Two ice-making machines for Cardiology unit floor 3</i>                                       | 4,887                         | -                           | 4,887                       |
| <i>Licences and tablets for online training tool</i>                                             | 950                           | -                           | 950                         |
| <i>Course: Non-medical Prescribing for physiotherapists</i>                                      | 2,010                         | -                           | 2,010                       |
| <b>Sub-total</b>                                                                                 | <b>34,839</b>                 | <b>-</b>                    | <b>34,839</b>               |
| <i>Unpaid grants 2020-21</i>                                                                     | <i>(4,207)</i>                | <i>-</i>                    | <i>(4,207)</i>              |
| <b>Total grants</b>                                                                              | <b>30,632</b>                 | <b>-</b>                    | <b>30,632</b>               |
|                                                                                                  | <b>139,619</b>                | <b>-</b>                    | <b>139,619</b>              |



## 8. Independent examiner's fees

|                                      | <b>Unrestricted Funds</b> | <b>Restricted Funds</b> | <b>2022 Total Funds</b> |
|--------------------------------------|---------------------------|-------------------------|-------------------------|
|                                      | <b>£</b>                  | <b>£</b>                | <b>£</b>                |
| Examiner's fees – Annual examination | 810                       | -                       | 810                     |
| Examiner's fees – Other services     | 432                       | -                       | 432                     |
|                                      | <b>1,242</b>              | <b>-</b>                | <b>1,242</b>            |

|                                             | <b>Unrestricted Funds</b> | <b>Restricted Funds</b> | <b>2021 Total Funds</b> |
|---------------------------------------------|---------------------------|-------------------------|-------------------------|
|                                             | <b>£</b>                  | <b>£</b>                | <b>£</b>                |
| <i>Examiner's fees – Annual examination</i> | <i>810</i>                | <i>-</i>                | <i>810</i>              |
| <i>Examiner's fees – Other services</i>     | <i>432</i>                | <i>-</i>                | <i>432</i>              |
|                                             | <b>1,242</b>              | <b>-</b>                | <b>1,242</b>            |

## 9. Wages and salary cost

|                                     | <b>2022 Total funds</b> | <b>2021 Total funds</b> |
|-------------------------------------|-------------------------|-------------------------|
|                                     | <b>£</b>                | <b>£</b>                |
| Gross wages                         | 33,640                  | 26,412                  |
| Employer's national insurance costs | 3,387                   | 2,288                   |
| Employer's pension contributions    | 4,802                   | 3,648                   |
|                                     | <b>41,829</b>           | <b>32,348</b>           |

|                                                                   | <b>2022</b> | <b>2021</b> |
|-------------------------------------------------------------------|-------------|-------------|
| Staff numbers:                                                    |             |             |
| Average head count                                                | 1           | 1           |
| Analysed by function:                                             |             |             |
| Raising funds                                                     | 1           | 1           |
| Calculated on a full-time equivalent basis, analysed by function: |             |             |
| Raising funds                                                     | 1           | 1           |

The shop manager was employed by Barts Health NHS Trust which invoices Barts Guild for associated wages and salary costs.  
There were no employees with emoluments (excluding employer pension costs) above £60,000 in this or the preceding year.

## 10. Related party transactions

No remuneration was paid to trustees during this or the preceding year.

During the year under review, no trustee had travel expenses reimbursed.

There were no other transactions with related parties that require disclosure in the financial statements.

## 11. Investments

|                                               | 2022<br>£      | 2021<br>£      |
|-----------------------------------------------|----------------|----------------|
| Investments at market value – brought forward | 532,367        | 441,063        |
| Additions                                     | -              | -              |
| Change in market value                        | 46,151         | 91,304         |
| Investments at current market value           | <b>578,518</b> | <b>532,367</b> |

The charity's investments are held in COIF Charity Investment units.

## 12. Stock

|            | 2022<br>£     | 2021<br>£     |
|------------|---------------|---------------|
| Shop stock | <b>16,761</b> | <b>15,875</b> |

## 13. Debtors

|                | 2022<br>£  | 2021<br>£    |
|----------------|------------|--------------|
| Accrued income | <b>906</b> | <b>2,308</b> |

## 14. Cash at bank and in hand

|                                                  | 2022<br>£      | 2021<br>£      |
|--------------------------------------------------|----------------|----------------|
| National Westminster account                     | 115,346        | 91,314         |
| Cambridge & Counties Bank 12 month fixed deposit | 85,808         | 85,000         |
| United Trust Bank 12 month fixed deposit         | 85,000         | 85,000         |
| Shop cash float                                  | 250            | 250            |
|                                                  | <b>286,404</b> | <b>261,564</b> |

## 15. Current liabilities

|                              | 2022<br>£     | 2021<br>£     |
|------------------------------|---------------|---------------|
| Shop creditors               | 2,321         | 318           |
| Grants payable               | 12,404        | 7,938         |
| Other creditors and accruals | 1,310         | 1,751         |
|                              | <b>16,035</b> | <b>10,007</b> |

## 16. Analysis of net movement in funds

|                         | Total funds<br>brought<br>forward<br>£ | Total<br>incoming<br>resources<br>£ | Total<br>resources<br>expended<br>£ | Transfers<br>between<br>funds<br>£ | Total funds<br>carried<br>forward<br>£ |
|-------------------------|----------------------------------------|-------------------------------------|-------------------------------------|------------------------------------|----------------------------------------|
| <b>2022</b>             |                                        |                                     |                                     |                                    |                                        |
| <b>Restricted funds</b> |                                        |                                     |                                     |                                    |                                        |
| Chris Davies legacy +   |                                        |                                     |                                     |                                    |                                        |
| Barts NHS Welfare       | 3,133                                  | 4,400                               | (7,533)                             | -                                  | -                                      |
|                         | <b>3,133</b>                           | <b>4,400</b>                        | <b>(7,533)</b>                      | <b>-</b>                           | <b>-</b>                               |

## 16. Analysis of net movement in funds (continued)

|                                          | Total funds<br>brought<br>forward<br>£ | Total<br>incoming<br>resources<br>£ | Total<br>resources<br>expended<br>£ | Transfers<br>between<br>funds<br>£ | Total funds<br>carried<br>forward<br>£ |
|------------------------------------------|----------------------------------------|-------------------------------------|-------------------------------------|------------------------------------|----------------------------------------|
| <b>Unrestricted funds</b>                |                                        |                                     |                                     |                                    |                                        |
| General fund                             | 798,974                                | 172,007                             | (150,580)                           | -                                  | 820,401                                |
| Net gains on investments<br>(unrealised) | -                                      | 46,151                              | -                                   | -                                  | 46,151                                 |
| Total unrestricted funds                 | 798,974                                | 218,158                             | (150,580)                           | -                                  | 866,552                                |
| <b>Total funds</b>                       | <b>802,107</b>                         | <b>222,558</b>                      | <b>(158,113)</b>                    | <b>-</b>                           | <b>866,552</b>                         |

|                                            | Total funds<br>brought<br>forward<br>£ | Total<br>incoming<br>resources<br>£ | Total<br>resources<br>expended<br>£ | Transfers<br>between<br>funds<br>£ | Total funds<br>carried<br>forward<br>£ |
|--------------------------------------------|----------------------------------------|-------------------------------------|-------------------------------------|------------------------------------|----------------------------------------|
| <b>2021</b>                                |                                        |                                     |                                     |                                    |                                        |
| <b>Restricted funds</b>                    |                                        |                                     |                                     |                                    |                                        |
| Chris Davies legacy +<br>Barts NHS Welfare | 1,583                                  | 1,550                               | -                                   | -                                  | 3,133                                  |
|                                            | 1,583                                  | 1,550                               | -                                   | -                                  | 3,133                                  |
| <b>Unrestricted funds</b>                  |                                        |                                     |                                     |                                    |                                        |
| General fund                               | 718,754                                | 133,592                             | (144,676)                           | -                                  | 707,670                                |
| Net gains on investments<br>(unrealised)   | -                                      | 91,304                              | -                                   | -                                  | 91,304                                 |
| Total unrestricted funds                   | 718,754                                | 224,896                             | (144,676)                           | -                                  | 798,974                                |
| <b>Total funds</b>                         | <b>720,338</b>                         | <b>226,446</b>                      | <b>(144,676)</b>                    | <b>-</b>                           | <b>802,107</b>                         |

## 17. Analysis of net assets between funds

|                     | Unrestricted<br>Funds<br>£ | Restricted<br>Funds<br>£ | 2022<br>Total<br>Funds<br>£ | 2021<br>Total<br>Funds<br>£ |
|---------------------|----------------------------|--------------------------|-----------------------------|-----------------------------|
| Investments         | 578,518                    | -                        | 578,518                     | 532,367                     |
| Current assets      | 300,938                    | 3,133                    | 304,071                     | 279,747                     |
| Current liabilities | (16,037)                   | -                        | (16,037)                    | (10,007)                    |
|                     | <b>863,419</b>             | <b>3,133</b>             | <b>866,552</b>              | <b>802,107</b>              |

## 18. Defined contribution pension schemes

The charity makes contributions to a pension scheme on behalf of its shop manager who is employed by Barts Health NHS Trust. The total payable for the year under review was £3,648 (2021: £3,648). There were no amounts outstanding at the end of the current period or comparative financial year.

## 19. Financial Instruments

The carrying amounts of the charity's financial instruments are as follows:

|                                                          | <b>2022</b>        | <b>2021</b>        |
|----------------------------------------------------------|--------------------|--------------------|
|                                                          | <b>Total Funds</b> | <b>Total Funds</b> |
|                                                          | <b>£</b>           | <b>£</b>           |
| <b>Financial assets</b>                                  |                    |                    |
| Measured at fair value through net income/(expenditure): |                    |                    |
| Fixed asset investments                                  | 578,518            | 532,367            |
|                                                          | <b>578,518</b>     | <b>532,367</b>     |

The income, expense, net gains and net losses attributable to the charity's financial instruments are summarised as follows:

|                                                                           | <b>2022</b>        | <b>2021</b>        |
|---------------------------------------------------------------------------|--------------------|--------------------|
|                                                                           | <b>Total Funds</b> | <b>Total Funds</b> |
|                                                                           | <b>£</b>           | <b>£</b>           |
| <b>Income and expenditure</b>                                             |                    |                    |
| Financial assets measured at fair value through net income/(expenditure): |                    |                    |
| Investment income                                                         | 16,756             | 17,015             |
| <b>Net gains and losses (including changes in fair value)</b>             |                    |                    |
| Financial assets measured at fair value through net income/(expenditure)  |                    |                    |
| Unrealised (loss)/gains on investments                                    | 46,151             | 91,304             |

Fixed asset investments are held at fair value with valuations obtained using last traded or closing bid market prices as available.

## 20. Statement of Financial Activities 2020-21

|                                     | <b>Notes</b> | <b>Unrestricted Funds</b> | <b>Restricted Funds</b> | <b>Total</b>   |
|-------------------------------------|--------------|---------------------------|-------------------------|----------------|
|                                     |              | <b>£</b>                  | <b>£</b>                | <b>£</b>       |
| <b>Income and Endowments from:</b>  |              |                           |                         |                |
| Donations and Legacies              | 2            | 27,432                    | 1,550                   | 28,982         |
| Charitable activities               | 3            | 85,917                    | -                       | 85,917         |
| Other trading activities            | 4            | 3,228                     | -                       | 3,228          |
| Investments                         | 5            | 17,015                    | -                       | 17,015         |
| <b>Total income</b>                 |              | <b>133,592</b>            | <b>1,550</b>            | <b>135,142</b> |
| <b>Expenditure on:</b>              |              |                           |                         |                |
| Raising funds                       | 6            | 5,057                     | -                       | 5,057          |
| Charitable activities               | 7            | 139,619                   | -                       | 139,619        |
| <b>Total expenditure</b>            |              | <b>144,676</b>            | <b>-</b>                | <b>144,676</b> |
| <b>Income excluding investments</b> |              | <b>(11,084)</b>           | <b>1,550</b>            | <b>(9,534)</b> |

## 20. Statement of Financial Activities 2020-21 (continued)

|                                              | Notes | Unrestricted Funds<br>£ | Restricted Funds<br>£ | Total<br>£     |
|----------------------------------------------|-------|-------------------------|-----------------------|----------------|
| Net (loss)/gains on investments (unrealised) | 11    | 91,304                  | -                     | 91,304         |
| Net income/(expenditure)                     |       | 80,220                  | 1,550                 | 81,770         |
| Transfers between funds                      | 16    | -                       | -                     | -              |
| <b>Net movement in funds</b>                 |       | <b>80,220</b>           | <b>1,550</b>          | <b>81,770</b>  |
| <b>Reconciliation of funds:</b>              |       |                         |                       |                |
| Total funds brought forward                  |       | 718,754                 | 1,583                 | 720,337        |
| <b>Total funds carried forward</b>           |       | <b>798,974</b>          | <b>3,133</b>          | <b>802,107</b> |

~~~~~

## ... Whatever happened to cash?



In the 1950s a youngster might put a half crown, just gifted by grandparent, in this building society savings box supplied when an account was opened for a child. There are slots for all coin values except ¼d and ½d, with a gauge on the outside to check how much you had saved. Notes can be inserted through a hole in the base, a brown 10 shilling or a large green £1 note. The frustration was that you could not get the money out yourself to spend some of it! Coins have now largely disappeared from the savings system. A child still might collect some pocket money but few children may be serious savers. For adults, even cheques are becoming rare now that we have electronic means of money transfer.

The pandemic altered our use of cash almost overnight. Even before it struck, copper coins were a bit of a nuisance and it took time to hunt for the 'right change' in your pocket or purse. Many people trust money that they can see, and still go shopping with a handful of notes. However, chip and PIN has been part of our lives since 2006, and even that became quicker with the advent of contactless. The Guild's collecting boxes fared modestly before 2020 but they were quite difficult to place for several reasons. The advent of the pandemic saw a huge reduction in cash use because traders did not want to handle it, and this severely impacted charity collection. Happily, the box in the Guild shop has been used faithfully by customers who generously drop in their change and often add a donation.



# Guild Members and Volunteers 2022

Miss Shahrulch Aamir  
Miss Sadir Abdel Fattah  
Dr J. David Abell  
Mr Tamam Abid  
Miss Atena Ahmed  
Ms Santosh Alden  
Mrs Caroline Allington  
Mr Jeshua Amalesh  
Mrs Gillian Anderson  
Mrs Marilyn Anderson  
Mr Danny Angell-Payne  
Miss Megan Annetts  
Mr Edward Appiah-Kubi  
Ms Christine Ashby  
Mrs Sylvia Aspinall  
Dr William Atkins  
Miss Aneesa Baig  
Miss Sheelagh Bailey  
Mr Rodger Ball  
Mr James Ballinger  
Mr Rayyan Barakat  
Miss Anna Barnfield  
Miss Margaret Bates  
Mr Numan Baydemir  
Mr Stephen Bench  
Mr Brandon Beng  
Mr James Benson  
Mr Leslie Berry  
Dr David Besser  
Mrs Valerie Besser  
Dr David Best  
Mrs Louise Biggs  
Miss Carola Maria Bigogno  
Mrs Sue Boswell  
Mr Keith Bottomley CC  
Mr Gwynfor Bowen  
Mr Derek Boyce  
Dr Jeremy Bradley  
Mrs Gillian Braithwaite  
Ms Mary Breadman  
Mr Zachary Bridgen  
Ms Janice Bright  
Mrs Julia Briscoe  
Mr Oliver Britten  
Ms Carmen Brooker  
Mr Cameron Bruce  
Mr Gabriel Burchell  
Dr Andrew Burnett  
Ms Lesley Burnett  
Miss Kira Burroughs  
Mrs Rita Buttigieg  
Ms Jane Carey-Harris  
Mr Lawrence Carter

Mr Clyde Castelino  
Miss Suheyla Celik  
Mrs Jill Cevro  
Miss Jessica Challenger  
Lady Aileen Chalcstrey  
Miss Marina Chan  
Mr Jonathan Charnock  
Miss Sungha Cho  
Mrs Elizabeth Clark  
Mrs Jan Clark  
Mrs Elizabeth Cleaver  
Mr Patrick Coldstream  
Ms Sandra Collins  
Ms Judy Cook  
Mr Bob Cooper  
Ms Helen Cooper  
Miss Madeleine Corkery  
Miss Costanza Coronelli  
Mr Martin Cowen  
Ms Madeleine Craggs  
Mr Jasper Craib  
Mr & Mrs Philip Crawford  
Mr Conor Czech  
Mrs Melanie Dalby  
Miss Elisa Dalle Piagge  
Mr Stephen Dar  
Mrs Kate Dawson  
Ms Sveva de Luca  
Miss Tanvi Dhir  
Miss Salsabil Djelloul  
Mrs Val Doran  
Ms Felecia D'Souza  
Mr Aaroh Dubey  
Ms Saskia Eddy  
Mrs Jenny Edmonds  
Mr Omar Elhalwagy  
Mrs Angela Evans  
Mr Carl Evans  
Mr James Evans  
Ms Lesley Evans  
Ms Sue Evans  
Mrs Hilda Fazzani  
Mrs Janet Fell  
Mr Oscar Fellows  
Miss Alison Fenwick  
Mr Geoffrey Finn  
Mrs Anthea Finn  
Mr David Frank  
Ms Selina Franks  
Mrs Jemma Frederick  
Miss Sandra Gann  
Miss Kangbo Gao  
Mr Mark Garside

Miss Jennifer Gaze  
Mr Joseph Gbenro  
Mr Periklis Giannakis  
Miss Susan Gibson  
Ms Patricia Gillen  
Mrs Margaret Gillett  
Dr Cedric Gilson  
Ms Bubura Yee Ning Goh  
Ms Monique Gold  
Mrs Jane Graham  
Dr Heather Hackett  
Mr Andy Haddon  
Mr Andreas Hadjidemetriou  
Mrs Elsie Halsey  
Mr Rizwan Hameed  
Mrs Ellen Hamer  
Mrs Daphne Hamilton-Fairley OBE  
Mrs Sylvia Hampton  
Mrs Amanda Handley  
Miss Hina Anam  
Ms Janice Hatt  
Dr Marion Hatton  
Mr Michael Hayden  
Mr Chris Hayes  
Mr Christopher Hayward CC  
Miss Margaret Hazard  
Mr Paul Heasmer  
Mr David Henry  
Mrs Margaret Henry  
Miss Anna Hicks  
Mrs Abigail Hinchliffe  
Mrs Pauline Hirst  
Miss Hilary Hiscocks  
Miss Sian Hobson  
Mrs Deirdre Hoggarth  
Prof. Sir Deian Hopkin  
Mrs Margaret Hughes  
Mrs Brenda Hustler  
Miss Hio Lam Ip  
Mr Elsaid Islamaj  
Mr Patrick Jennings  
Mrs Jayne Jennings  
Mrs Jenny Jeyarajah  
Ms Annwen Jones  
Mr Milton Justinguthakaran  
Mr Raghuv Kanwar  
Miss Neringa Karpaviciute  
Miss Harman Kaur  
Mr Anthony Kaweesa  
Ms Rosie Kaye  
Lady Mary Keen  
Mrs Mary Kelsey-Fry  
Mrs Jane Keyes

Mr Hassan Khan  
 Miss Alison Knapp  
 Mr Asher Knight  
 Mrs Patricia Kraft  
 Mr Varun Vijay Kumar  
 Miss Kiriana Lagden  
 Miss Neha Lalani  
 Mr Tomas Lappy  
 Dr Hazem Lashin  
 Mrs Elaine Law  
 Mr Harvard Lee  
 Mr Jen Wei Lee  
 Miss Samantha Lee  
 Mr David L'enclume  
 Miss Fern Levin  
 Mrs Sarah Lister  
 Ms Barbara Little  
 Miss Jane Lloyd  
 Mr Gustavo Loback  
 Miss Valeria Locatelli  
 Dr Nicole Loi  
 Miss Emily Long  
 Mr Thomas Longbottom  
 Mr Timothy Loong  
 Miss Lorena Lucoli  
 Miss Valerie Luxton  
 Ms Caitlin MacClancy  
 Miss Antoinette Machin  
 Dr John Macken  
 Ms Jean Maestri  
 Mr Abhiram Magesh  
 Mr Pranavendran Mahendran  
 Ms Meera Mahesh  
 Mr James Malcolmson  
 Mr Mohammad Hamzah  
 Mrs Sophie Marshall  
 Mr Karl Martin  
 Mr Paul Martinelli  
 Ms Maria Martins  
 Mrs Susan Mason  
 Mr Adrian McCabe  
 Mr Ian McDowell  
 Mrs Wendy Mead OBE CC  
 Mr David Mears  
 Mr Nehman Mehaibain  
 Mr Sam Merry  
 Miss Aurora Militante  
 Ms Dorothy Miller  
 Hon. Sir Stephen Mitchell  
 Mrs Joan Morton  
 Mr Terence Moss  
 Dr John Munns  
 Mr Harris Nageswaran  
 Miss Gurveen Nagi  
 Mr Jayesh Nagpal  
 Dr Ahmed Naji  
 Mrs Pamela Nash

Mr Roger Nash  
 Mrs Jean Nathan  
 Mr George Nichols  
 Mrs Beverley Nickolls  
 Mrs Margaret Oates  
 Sister Elizabeth O'Connor  
 Miss Giulia Olayemi  
 Miss Sarah Syleyman Omran  
 Ms Jan O'Neill  
 Miss Favour Onwudiwe  
 Miss Shraya Pandya  
 Miss Manasi Panshikar  
 Mrs Barbara Pare  
 Mrs Jane Parker  
 Dr Andrew Pembroke  
 Dr Jacqueline Pembroke  
 Miss Ameshka Perera  
 Mr Andrew Phillips  
 Mrs Claire Phillips  
 Mr Edward Phillips  
 Miss Eva Phillips  
 Mr Simon Phillips  
 Miss Judith Pleasance CC  
 Miss Molly Price-Smith  
 Mr Nameer Rahman  
 Miss Anuska Rajen  
 Mr Mahateja Aditya Ramdhian  
 Mrs Norah Reed  
 Mr William Rees  
 Ms Anna Reinhardt  
 Mr Martin Remezy  
 Ms Joan Revellini  
 Miss Maryam Rhaddaoui  
 Mrs Angela Ringer  
 Mrs Jean Ritchie  
 Mr Neil Ritson  
 Ms Silvia Roccato  
 Miss Jackie Roe  
 Miss Margaret Roles  
 Mr Alistair Rookes  
 Mr Michael Rosen  
 Mrs June Rosenwould  
 Mrs Jean Rowland  
 Mrs Margaret Rumsey  
 Mr Ray Russo  
 Miss Sahel Saadat  
 Mr Aamir Saiyed  
 Ms Margaret Salmon  
 Mrs Jacqueline Sanderson  
 Miss Nadine Schottler  
 Sir Marcus Setchell KCVO  
 Mr Riyan Shah  
 Mr William Shand  
 Mr Sathyam Sharma  
 Dr Elizabeth Shaw  
 Mrs Alison Shepherd  
 Dr Stephen Shepherd

Mr Alexander Sherlock  
 Miss Shraddha Sheth  
 Mrs Pat Simmonds  
 Dr Paul Simmons  
 Mr Sidhant Singh  
 Mr Alex Skingle  
 Dr Andrew Smith  
 Miss Eleanor Smith  
 Ms Jean Smith  
 Mrs Sue Smith  
 Ms Elisabeth Smyth  
 Ms Blanca Solanas  
 Mr Pardeep Sondhi  
 Miss Michela Sorbini  
 Dr Elizabeth Sparrow  
 Mr Jan Valadao Spoorenberg  
 Mr Jack Stanton  
 Mr Adrian Stirrup  
 Mrs Rosamund Stocks  
 Ms Kathy Surname  
 Mrs Clare Sweatman  
 Mr Jit Yih Tan  
 Mr Yi Liane Daniel Tan  
 Mrs Hilary Tarr  
 Miss Emily Taylor  
 Mr Barnabas Tedder  
 Mr Kavi Thobhani  
 Mr Lewis Thomas  
 Mr Brian Yit Zheng Ting  
 Mr Mubeen Toufiq  
 Ms Julie Townsend  
 Mr Jimmy Tse  
 Mr King Chun Kingsley Tso  
 Mr Robert Tucker  
 Miss Daisy Umelo  
 Miss Helena Usuanlele  
 Dr Sarah Vepers  
 Miss Pirethegai Vimalarasa  
 Mrs Penny Wainwright  
 Mr Martin Wainwright MBE  
 Miss Mary Walker  
 Mr Oskar Wallis-King  
 Mrs Lynne Warnock  
 Miss Rosemary Waxman  
 Mr David Way  
 Dr Judith Webb  
 Ms Josephine Wellington  
 Miss Niamh Whelan  
 Dr Veronica White  
 Mrs Ann Wickham  
 Mr William Wicks  
 Miss Ardila Widjono  
 Ms Helen Wilding  
 Mr Daniel Williams  
 Miss Alice Wood  
 Mrs Margaret Wyatt  
 Miss Cerina Yan

Ms Lucy Yendole  
Miss Christy Yip

Ms Janet Young  
Miss Dorna Zarei

Mr Yuxuan Zhang  
Mr Hongguang Zhu

~~~~~

## Our Corporate Supporters

Barts Guild wishes to place on record our thanks to the following for their support:



**TFW Group**  
Providing corporate customer  
communications and specialising in print,  
design and digital



smile.amazon.co.uk

~~~~~

During the year, Barts Guild has produced some new publicity postcards to distribute within the Hospital, in the Guild shop and elsewhere.

The first two images shown below depict the front and reverse of a general promotional item for the Guild, outlining some of the ways in which we help the Hospital and encouraging support in the form of subscribing as a Guild member, joining us as a volunteer and making a donation to our work.

The second pair of images promotes the availability of grants from the Guild and encourages staff to apply. The postcards were first made available in March 2022, since when there has been a noticeable increase in applications for funding for a wide variety of events and projects. Reports from grant recipients appear in this Report, in our twice-yearly newsletter *Barts Guild News*, and on our website.





*Friends of St Bartholomew's Hospital since 1911*



The Guild helps Barts staff to Celebrate 70 years of the NHS with ice cream treats

The Guild of the Royal Hospital of St Bartholomew



*Friends of St Bartholomew's Hospital since 1911*

Hospitals are places of giving. They represent the best we do; the best we are as human beings.

Since 1911, Barts Guild has been a hub for volunteering and grant-giving to benefit Barts' patients and staff. Also, in recent years we have provided grants to students of The Barts and the London School of Medicine and Dentistry for their Elective Placements.

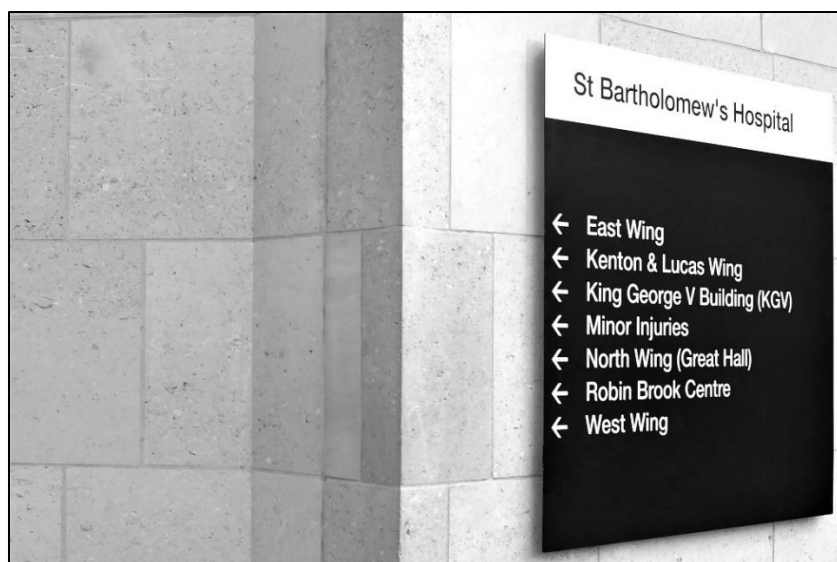
We have found creative ways to support the Hospital through wars and pandemics, as well as the day-to-day ups and downs.

The Guild's Shop in the Hospital's atrium sells confectionery, snacks and drinks, clothing, toiletries, souvenirs and books, and our Shop volunteers always find time for a friendly chat with patients, visitors and staff.

Please support the work of the Guild by:

- Joining us as a Subscription Member.
- Volunteering with us.
- Making a donation.

To find out more about us, please visit our website  
[www.bartsguild.org.uk](http://www.bartsguild.org.uk)



**A grant from Barts Guild could help you or your department to:**

- ← Obtain specialist equipment
- ← Streamline working methods
- ← Improve the experience and comfort of your patients
- ← Share best practice with others
- ← Increase your skills
- ← Enhance the hospital environment
- ← And more!

**Apply at [bartsguild.org.uk/grants](http://bartsguild.org.uk/grants)  
or email [contact@bartsguild.org.uk](mailto:contact@bartsguild.org.uk) for more  
information.**





**BARTS GUILD**

St Bartholomew's Hospital  
West Smithfield  
London EC1A 7BE

**Telephone:** 020 3765 8700

**Email:** [contact@bartsguild.org.uk](mailto:contact@bartsguild.org.uk)

**Contact Telephone numbers:**

**Guild Shop** 020 3465 6382

**Head of Volunteering, Barts Health NHS Trust**

020 3765 8896

**[www.bartsguild.org.uk](http://www.bartsguild.org.uk)**



**Barts Guild Facebook page**  
**A way to keep in touch with the Guild**  
**<https://www.facebook.com/BartsHospitalGuild>**

**Twitter @BartsGuild**