

**Mothers' UNION**  
Christian care for families  
Diocese of Guildford



**ANNUAL REPORT AND ACCOUNTS  
FOR YEAR ENDING 31ST DECEMBER 2024**

**The Mothers' Union – Guildford Diocese**  
**All Saints' Church Hall Office, 564 Woodham Lane, Woking, Surrey, GU21 5SH**  
**Registered Charity No – 249931**  
**Patron – Vacancy**

**Officers**

Diocesan Presidents	Mrs Sylvia Taylor, 47 Northcote Crescent, West Horsley KT24 6LX Mrs Diana Wood, 4 Leawood Road, Fleet GU51 5AL
Vice Presidents	Mrs Kim Darby, 10 Taleworth Park, Ashted KT21 2NH Mrs Dorothea Nattrass, 22a, Scotland Lane, Haslemere GU27 3AL
Administrator	Mrs Lesley Templeman, Cornerways, Horsell Park, Woking GU21 4LY
Treasurer	Mrs Elizabeth Newhouse, Whyteleafe, Druids Close, Ashted KT21 2UH
Chaplain	Revd. Betty Hayes, Cross Foxes, Old Welmore, Yateley GU24 6XU From June 2024
Banker	Lloyds Bank Plc 147, High Street, Guildford GU1 3AD
Independent Examiner	John C Oliver (MA, FCA), The White Cottage, Crampshaw Lane, Ashted KT21 2UD
Trustees	
Diocesan Presidents	Mrs Sylvia Taylor and Mrs Diana Wood
Vice Presidents	Mrs Kim Darby and Mrs Dorothea Nattrass
Unit Co-ordinators	Mrs Shirley Martin Mrs Sheila Sutherland
General Trustees	Mrs Jenny Banks Mrs Carol Bingham Mrs Elizabeth Newhouse

### **Vision, Aims and Objectives**

The vision of Mothers' Union is of a world where God's love is shown through loving, respectful and flourishing relationships.

The aim and purpose of Mothers' Union is to demonstrate the Christian faith in action by the transformation of communities worldwide through the nurture of the family in its many forms.

In furtherance of this aim and purpose Mothers' Union Guildford will carry out all or any of the following Objects:

- 2.1 To uphold Christ's teaching on the nature of marriage and to promote its wider understanding
- 2.2 To encourage parents to bring up their children in the faith and life of the Church
- 2.3 To maintain a world-wide fellowship of Christians united in prayer, worship and service
- 2.4 To promote conditions in society favourable to stable family life and the protection of children  
and
- 2.5 To help those whose family life has met with adversity.

Mothers' Union is firmly rooted in a voluntary ethos. Its governance, leadership and activities are driven by and undertaken through its members.

### Activities in Guildford Diocese

1. **Women's refuges:** The charity supports women in five refuges across the diocese. Members donate food, toiletries and other items, which are collected at the Members' meetings and taken to the refuges by volunteers. Members also respond to ad-hoc appeals for items needed (such as cots or buggies) and provide Christmas gift bags for the women and Easter eggs for the children. The charity gives a small grant to women leaving the refuge to purchase household goods.
2. **Woking Night Shelter and Guildford Action:** Members support these local charities which offer support to the homeless and those on low incomes by donating goods which are collected at Members' Meetings.
3. **Hospital Emergency Admissions:** A number of branches have direct links with local hospitals to provide small bags of basic toiletries. Members donate items for these bags at Members' Meetings.
4. **Prisons:** MU members volunteer at Send women's prison, leading craft activities and social sessions, and they also provide craft packs for prisoners to use on their own, a scheme that was set up during the pandemic.
5. **Parenting Programme:** The charity has a number of accredited parenting coordinators who can lead a range of parenting courses.
6. **Advocacy, Lobbying and Consultation:** Many campaigns on women's issues and family matters have been led by Mothers' Union nationally and internationally. Some members from Guildford Diocese form part of a panel feeding in views and opinions in furtherance of such campaigns.
7. **Communications:** The charity has a website which is continually reviewed and updated to provide a more accessible and useful portal for members and non-members. Members receive a twice-yearly magazine from the Mothers' Union ("Connected") and another from Guildford MU ("The Angel"). Regular newsletters are sent out by email to promote MU activities and events.
8. **Monthly Pilgrimage of Prayer:** This service is traditionally held at the Lady Chapel in Guildford Cathedral, led by members from various deaneries across the diocese in rotation.
9. **Intercessory Prayer:** A coordinator alerts a team by email when a particular emergency or prayer need arises, and in some cases small groups meet to focus on prayer for particular requests.
10. **Wave of Prayer:** Our "Wave of Prayer" is a continuous expression of our commitment in prayer to each other. It runs throughout the year so that the work and members of each and every area in which Mothers' Union is active is prayed for at some point. We include this in our Midday Prayers whenever we meet across the diocese.

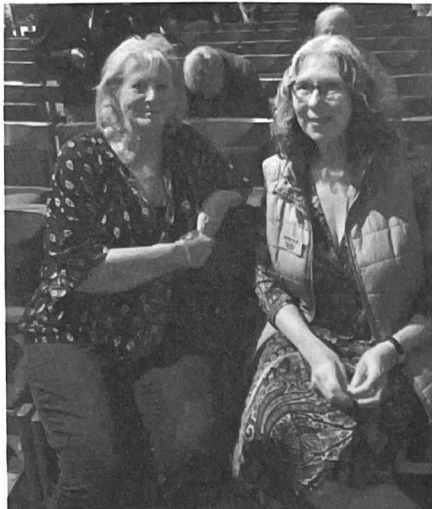
## **Financial Statement**

The finance committee met a number of times during 2024 to review the finances in more detail than time allowed during full trustee meetings.

The diocese continues to operate cautiously and seeks to use its funds prudently to support the aims and vision of Mothers' Union.

We have three bank accounts with Lloyds, a general business account, an account mainly used for members' subscriptions and one for MUE trading. We hold shares administered by the Guildford Diocese Board of Finance and have shares with the CBF Church of England Investment Fund; we also have a deposit account with the CBF Church of England Deposit Fund. We enjoyed a modest gain in the value of our investments over the year.

Members donate generously and fundraise in a variety of ways to support the work of Mothers' Union. In 2024 projects which we helped to finance including AFIA holidays and days out, support work in local prisons and women's refuges, the Make-a Mother's Day appeal, the Summer of Hope appeal and the diocesan summer party for families in need.



### **Joint Presidents' Report for 2024**

2024 marked the end of a triennium which had seen many changes at Mothers' Union headquarters, Mary Sumner House, and in Guildford Diocese. After much discussion and consultation, a new voting system was put in place in Guildford to elect the Diocesan President and members of the Trustee board. 'One member, one vote' meant that every member had a chance to be involved in the process and to have their voice heard. This was quite a complicated logistical exercise, but the outcome was very satisfactory with over a third of the members casting their votes.

The work of Mothers' Union across the diocese continues to be supported by the Bishop of Guildford and the Bishop of Dorking. We have had regular meetings with Bishop Andrew and were delighted to take up his offer of the use of his garden during Tent Week in June for a tea party for members. Over 100 attended and enjoyed a time of fellowship as well as a chance to hear presentations about MU projects.

We continue to hold Members' Meetings every May and November, and these are now supplemented by Branch Leaders' meetings which offer a further opportunity to keep members up to date with forthcoming events and to get feedback from members. Traditionally the Members' Meetings have been held during the daytime but in May the meeting was held in the evening, giving a chance for members at work during the day to attend.

A new initiative in 2024 was a Grandparenting Day held in October at the Church on the Heath in Elvetham. This was an opportunity for members to explore how they might share their faith with their grandchildren and to affirm and encourage them in this role. The meeting was well attended and the initiative will be taken forward in the future.

As we look back on our three years in office, we feel that the experiment of having two joint Presidents has been a successful one. We have taken it in turns to chair Board meetings and have shared the considerable workload of meetings within the diocese and across the province according to our availability and skills. Collaborative working has been the key and will continue to feature strongly as the charity moves into a new triennium, even though this will be with just one Diocesan President.



## Action and Outreach

### Refuges:

At present we support five refuges within the diocese: two in Woking, one in Guildford, one in Aldershot and one in Waverley. All families at the refuges were invited to our annual summer party in August which was very successful with about 70 children being entertained by a bouncy castle, a ball pool, a magician and crafts.

The members are very generous, and donations are brought (from a list of needs provided by the refuges) to our two Members' Meetings. 50 Christmas bags for the women at the refuges were assembled by our Hinchley Wood branch and contributions were given to their Christmas party.

### Prisons:

At Send women's prison, we hold card-making sessions twice a month as well as a social evening for the over 50s. We have about 12 volunteers who regularly go into the prison. Some members provide card-making packs that are provided for ladies who are not comfortable mixing with other prisoners.

### Other activities:

Some branches make up and supply emergency toiletry bags for hospitals.

Goods are collected and donated to the women's night shelter in Woking, the night shelter in Guildford and the drop-in centre for rough sleepers in Guildford. Our members also donate to Guildford Action, a local charity which provides services for people who have fallen through the net or find themselves outside normal society.

Many members use craft skills – knitting for babies and toddlers (with some garments given to local refugees and others sent to a linked MU charity in Uganda) or creating fiddle pinnies and twiddle muffs for dementia sufferers in local care homes. Members have also knitted knee rugs for stroke victims at local hospitals.

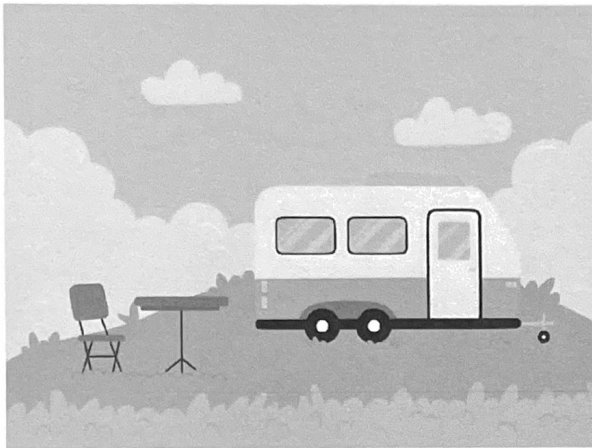


Shirley Martin (Action and Outreach Co-ordinator)

### **AFIA (Away from It All)**

AFIA has been able to support quite a number of families in need this year. Partnering with organisations such as the Kinship Care charity and the Salvation Army Housing Association, we have arranged holidays to caravan parks near the sea in West Sussex and Dorset. AFIA also paid for a coach to take a group of mothers and children from a local refuge out for the day. Despite the rain, they very much enjoyed their time by the sea in Brighton and the packed lunches we funded. AFIA also provided transport so that visitors including refugees and those based in refuges could attend the Mothers' Union summer party at Normandy Village Hall.

Liz Newhouse (AFIA coordinator)



### **A day trip to Brighton**





## Faith and Prayer



**Farewell thankyous** were sent to Revd Helen Kempster for her valued work as MU Chaplain and also to Wendy Faux, long-serving former member of the Faith & Prayer committee. Antonia Wilson voiced her wish to stand down from the committee. Her leadership has been highly valued and will be sorely missed. Dorothea Nattrass, while standing down as Vice President and trustee, has been asked to continue to sit on the committee and has agreed, for which members are most grateful.

**“Tea in the Tent”**: a most enjoyable afternoon was had by members at Willow Grange as guests of Bishop Andrew and his wife, Revd. Beverly Watson. Bishop Paul was also present. Our new diocesan chaplain, Revd. Betty Hayes, was enrolled and installed by Bishop Andrew. Members heard from a number of past Diocesan Presidents who shared memories of their time in office.

**Canterbury Provincial Gathering**: this was held at the King’s Centre in Oxford on 22 June and attended by nearly 300 members from across the Province. Guildford’s Antonia Wilson had done much of the organising, and Pippa and Steve Cramer (also Guildford MU members) presented a segment on ‘Hymns of Love’. Members appreciated presentations on MU work in various dioceses, shared a service of Holy Communion, and were entertained by comedian Andy Kind after lunch.

**Quiet Day**: this took place on 16 October at St Thomas on the Bourne, Farnham. Revd Professor Linda Morgan led a reflection on the theme of Homecoming for 20 members.

**16 Days of Activism against gender-based violence**: this was marked by Send branch members with a candle-lit vigil at their local shopping parade. The Diocese also has a display “Soles of our shoes” which showcases shoes that speak on behalf of the victims of domestic violence and abuse. The physical shoes are accompanied by comments from those that have walked away from abuse, and those who journey with them. The display is used by different branches across the diocese to highlight the issue of domestic abuse.

**Monthly Pilgrimage of Prayer services** continued at the Lady Chapel in Guildford Cathedral. Previous attempts to reach out to a wider audience via Zoom were discontinued due to unresolvable technical problems. Revd Canon Rosemary Donovan, an MU member, devised and led a special service of remembrance in November as Betty Hayes was not available that day. Members and relatives were comforted by the service as they honoured the lives of those who had died during the past year.

### Reports from Branches

Our branches vary in size – a few have just a handful of members while the largest have over 70. Activities vary from branch to branch, but all are involved in fundraising for MU projects and service to their local community.

Highlights from 2024 included: -

- Our Summer Party held at Normandy Village Hall. We welcomed 50 visitors, including some refugees and other families from refuges and the Bishop of Guildford. Children enjoyed a magic show, bouncy castle, soft play, craft activities, parachute games and the outdoor playground. About 25 MU volunteers supervised activities and served refreshments, and MU funds covered the costs of transport to the venue.
- Ashted branch makes 'Bags of love' for the parents of new pupils at the local CofE Infant School. These paper gift bags are handed out to parents as they drop off their children on the first day of the new school year. The bags contain tissues, a pack of wipes, lip salve, tea and coffee bags and a packet of biscuits, plus an invitation to a coffee morning and prayer card. A similar project also runs at Lyne branch.



- Cake stalls are always a popular way to raise money and were held by many branches over the course of the year.
- Members at Camberley St. Paul's branch are all encouraged to bring toilet rolls to each branch meeting! These are given to a local Christian charity, the Hope Hub, which works to support homeless people. On average 48 rolls per month are donated, and the branch also contributes Easter eggs and special food treats at Christmas.

## **Safeguarding**

I have now completed my third year as Safeguarding lead for Guildford Mothers' Union.

Mary Sumner House, the headquarters of the Mothers' Union, has now appointed a Lead for Safeguarding and approved the guidance for the UK and NI. The trustees of Guildford Diocese are working to follow this guidance.

We have commenced the process of obtaining DBS clearance for the trustees, using the thirtyone:eight organisation. I have also accessed updated training for my role through this organisation. The Diocese of Guildford continues to offer Guildford MU members access to their safeguarding training programme.

I have started visits to Guildford MU branches to give a talk and some training on safeguarding and welfare. These visits usually raise questions about various situations and help to raise members' awareness of safeguarding issues.

Jenny Banks

# Annual Accounts for the Year Ended 31 December 2024

## Statement of Financial Activities

	Notes	2024 £	2023 £
Income from			
Membership		24,346	25,717
Gift Aid received		0	1,750
Charitable activities		9,759	10,147
Other trading activities		1,022	2,656
Other income		232	4,251
Investment income	5	2,172	1,786
<b>Total</b>		<b>37,531</b>	<b>46,307</b>
Expenditure on			
Subscriptions to Mary Sumner House		15,640	15,840
Diocesan projects	7	7,305	7,122
Direct charitable expenses		2,640	1,519
Summer party for refugees and other guests		2,042	2,469
Retreats & conferences		117	420
Management & administration	3	16,209	17,416
Lady Day Service		1,741	1,523
<b>Total</b>		<b>45,694</b>	<b>46,309</b>
Net (deficit)/income before investment gains/(losses)		(8,163)	(2)
Net gain / (loss) on investments		2,118	5,050
<b>Net movement in funds</b>		<b>(6,045)</b>	<b>5,048</b>
Reconciliation of funds:			
Total funds brought forward		87,713	82,665
<b>Total funds carried forward</b>		<b>81,668</b>	<b>87,713</b>

## Balance Sheet as at 31 December 2024

	Notes	2024 £	2023 £
Fixed Assets			
Investments	5	66,794	64,676
Total Fixed Assets		66,794	64,676
Current Assets			
MUe Stock		134	127
Debtors		-	-
Cash held by branches		8,000	8,808
Cash at bank and in hand		18,654	23,856
Total Current Assets		26,788	32,791
Current Liabilities			
Creditors < 1 year	6	(11,914)	(9,754)
Net Current Assets		14,874	23,037
Total Assets less current liabilities		81,668	87,713
Total Funds		81,668	87,713

The notes on pages 14 - 16 form part of these financial statements.

Approved by the Trustees on 28 July 2025.

Signed on behalf of the Trustees



Sylvia Taylor

Diocesan President



Elizabeth Newhouse

Honorary Treasurer

## Notes to the Accounts

### 1 Basis of Accounting

- a) The financial statements have been prepared under the historical cost convention with items recognised at cost or transaction value unless otherwise stated in the relevant note(s) to these accounts. The financial statements have been prepared in accordance with the Statement of Recommended Practice: Accounting and Reporting by Charities preparing their accounts in accordance with the Financial Reporting Standard applicable in the UK and Republic of Ireland (FRS 102) issued in October 2019 and the Financial Reporting Standard applicable in the United Kingdom and Republic of Ireland (FRS 102) and the Charities Act 2011. The financial statements have been prepared in accordance with the provisions of FRS 102 Section 1A small entities.
- b) The Trustees consider that there are no material uncertainties about the charity's ability to continue as a going concern. There are no material uncertainties affecting the current year's accounts.
- c) The stock is valued at the lower of cost and net realisable value
- d) The unrealised gains/(losses) on investments are based on the market value at the end of the financial year. The market value is deemed to be the mid-market value, which is the average of the bid and the offer price. Unrealised gains/(losses) are included in the Statement of Financial Activities.
- e) Member subscriptions are considered to be donations in substance and are recognised in the year to which they relate. Subscriptions totalling £11,914 received in 2024 but relating to 2025 have been deferred and shown in creditors.
- f) Legacies and donations are accounted for as income either upon receipt or where the receipt of the legacy is virtually certain; this will be once confirmation has been received from the representatives of the estate that payment of the legacy will be made or property transferred and once all conditions attached to the legacy have been fulfilled
- g) Interest on funds held on deposit is included when receivable and the amount can be measured reliably by the charity; this is normally upon notification of the interest paid by the bank.
- h) Expenditure is recognised when a liability is incurred. VAT is charged against the category of resources expended for which it was incurred.

### 2 Income and Expenditure

The charity benefits greatly from the involvement and support of its volunteers. In accordance with FRS 102 and the Charities SORP (FRS 102), the economic contribution of general volunteers is not recognised in the accounts.



### 3 Analysis of Expenditure

		2024	2023
		£	£
Management & Administration	Office and hall rent	4,494	4,571
	Remuneration incl. postage etc.	7,124	7,754
	Telephone, Broadband, Zoom	1,481	1,324
	Insurance	405	450
	Travel incl. mileage	617	285
	The Angel magazine	1,511	2,340
	Other expenses	577	692
Total		16,209	17,416

### 4 Paid staff

The charity has 1 remunerated member of staff in 2024, there were 2 in 2023.

### 5 Investment Assets

<b>Fixed assets investments</b>	£
Carrying (market) value at beginning of year	64,676
Plus net gain on revaluation	2,118
Carrying (market) value at end of year	66,794

	Market value at year end	Income from investments for the year
	£	£
<b>Analysis of investments</b>		
COIF – 2,577.3 income shares in the CBF CofE		
Investment Fund	59,594	1,617
Guildford Diocesan BofF Fund – 311.39 shares	7,200	195
Deposit account interest		360
Total	66,794	2,172

### 6 Creditors & Accruals

Amounts falling due within one year

	2024	2023
	£	£
Subscriptions	11,914	9,754

## 7 Designated Funds for Diocesan Projects

Funds are held for their designated use for work within the Diocese or passed on to Mary Sumner House or as the Trustees decide.

### Movement of Funds

Details of funds held and movement in funds in the current reporting period. These funds are held in Cash at Bank.

	Brought forward	Income	Resources expended	Balance in the year	Carried forward
	£	£	£	£	£
Away from it all	7,557	1,811	4,604	(2,793)	4,764
Women's refuge	64	2,450	2,514	0	0
Work in prisons	2,351	462	187	275	2,626
Parenting	919	-	0	0	919
Literacy	1,443	609	0	609	2,052
<b>Total Designated Funds</b>	<b>12,334</b>	<b>5,332</b>	<b>7,305</b>	<b>(1,909)</b>	<b>10,361</b>

## 8 Transactions with Trustees and related parties

All Trustees give their time voluntarily and receive no remuneration or other benefits. No Officer received payment for professional or other services supplied to the charity. Trustees are reimbursed for expenses incurred whilst undertaking their duties. These are included in Management and Administration costs.

## **Independent Examiner's report to the Trustees of the Mothers' Union (Diocese of Guildford)**

I report to the Trustees on my examination of the accounts of the charity for the year ended 31 December 2024.

### **Responsibilities and basis of report**

As the charity trustees you are responsible for the preparation of the accounts in accordance with the requirements of the Charities Act 2011 ("the Act").

I report in respect of the charity's accounts carried out under section 145 of the 2011 Act and in carrying out my examination, I have followed all the applicable Directions given by the Charity Commission under section 145(5)(b) of the Act.

### **Independent examiner's statement**

I have completed my examination. I confirm that no material matters have come to my attention in connection with the examination which gives me cause to believe that, in any material respect:

- The accounting records were not kept in accordance with section 130 of the Act: or
- The accounts did not accord with the accounting records: or
- The accounts did not comply with the applicable requirements concerning the form and content of the accounts set out in the Charities (Accounts and Reports) Regulations other than any requirement that the accounts give a "true and fair" view, which is not a matter considered as part of an independent examination.

I have no concerns and have come across no other matters in connection with the examination to which attention should be drawn in this report in order to enable a proper understanding of the accounts to be reached.



John Oliver FCA  
The White Cottage  
Crampshaw Lane  
Ashtead  
KT21 2UD

28 June 2025