

# **The Mothers' Union**

## **Southwell & Nottingham Diocese**

(Registered charity, number 249878)

### **Annual Report & Financial Statements**

### **for the year ended 31 December 2021**



<b>Page</b>	<b>Contents</b>
2-6	Trustees' annual report
7	Independent examiner's report
8	Receipts & payments account
9	Statement of assets & liabilities
10-12	Notes to the accounts

**The Mothers' Union Southwell & Nottingham Diocese  
Trustees' annual report  
for the year ended 31 December 2021**

**Full name** The Mothers' Union Southwell & Nottingham Diocese

**Registered charity number** 249878

**Principal address**

Jubilee House, Westgate, Southwell, Nottinghamshire, NG25 0JH

**Trustees**

S Baird-Smith, Diocesan President, from 1/1/2022

P Brewin, Diocesan President, until 31/12/2021 (no longer a trustee)

J Hodson, Vice-President Newark & Nottingham A/D, from 1/1/2022

D Mellors, Vice-President Newark A/D, until 31/12/2021 (no longer a trustee)

H Catchpole, Vice-President Nottingham A/D, until 31/12/2021

V Mellors, until 31/12/2021 (no longer a trustee)

S Bancroft

M Pates

E Toplis

I Garratt

S Massey

S Brotherhood, deceased Feb 2021

The Board of Trustees meets three times a year. The Members of the Board of Trustees are: The Diocesan President, the two Archdeaconry Vice-Presidents, the Unit Co-ordinators, and the Deanery Leaders.

**Independent examiner**

John O'Brien, employee of Community Accounting Plus, Units 1 & 2, North West, 41 Talbot Street, Nottingham, NG1 5GL

**Governance and management**

The charity is operated under the rules of the Royal Charter of the Mothers Union charity number 240531, dated 15 June 1926 and last amended 4 July 2006.

Overall management of the charity is the responsibility of the trustees who are elected and co-opted under the terms of the constitution. Deanery Leaders are elected by branch leaders, Diocesan President and Unit Co-ordinators by members of Diocesan Council, and each Vice President by Members of Council in their Archdeaconry. Day to day project activity is managed and carried out by volunteers.

**Public benefit statement**

The Trustees confirm that they have complied with the duty in section 17 of the Charities Act 2006 to have due regard to the Charity Commission's general guidance on public benefit, 'Charities and Public Benefit'.

**State of the Diocese**

The membership of Mothers' Union Diocese of Southwell and Nottingham is 525 plus 33 honorary life members for the year ended 31 December 2021 with 27 active branches.

# The Mothers' Union Southwell & Nottingham Diocese

## Objectives and Activities

The Mothers' Union is a worldwide society whose aim is the advancement of the Christian religion in the sphere of marriage and family life. There are 5 objectives:

### 1) TO PROMOTE and support married life



Several members are involved in Marriage Preparation and Marriage Enrichment courses in co-operation with their incumbents. Members meet regularly in branches, deaneries and archdeaconries. Meetings provide for social and pastoral needs of members, often including lunch or afternoon tea. Speakers are invited to speak on a range of subjects of general interest and to raise awareness of issues and

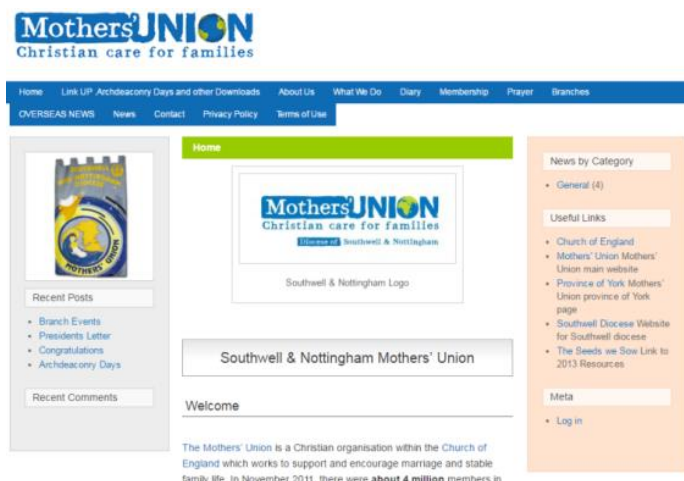
current and future projects. Diocesan Speakers' topics include this year's theme, Rebuilding Hope and Confidence.

A team of volunteer's co-ordinate hospital visits within the diocese. Services are held in local Care Homes.

The Mothers' Union diocesan website (set up in 2011) has kept members informed of local MU issues and has links to the Diocesan website. It also has links to the central Mothers' Union website. This enables members to access worldwide news and information about the organisation.

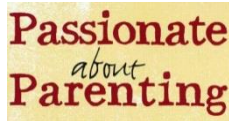


All members receive a triannual newsletter 'Link up' to keep members informed of Mothers' Union projects and news from around the Diocese. We also have a Linkup web page with all our latest news, events and uploaded reports and articles <https://mulinkupsouthwellandnottingham.wordpress.com/>



## The Mothers' Union Southwell & Nottingham Diocese

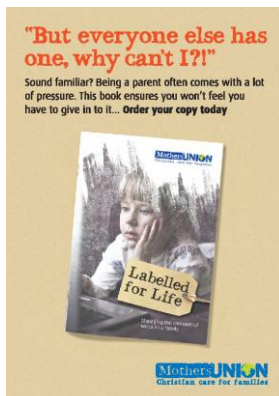
### 2) To ENCOURAGE parents to bring up their children in the faith and life of the Church



Our trained Parenting facilitators continue to offer to facilitate parenting groups. Shorter half day workshops have also been well received.

Many members are involved in Messy Church, Sunday Schools and Toddler groups in their parish churches. Volunteers at Time Travelling! (a Diocesan project for school-age children run in the Cathedral and in several parish churches) include a significant number of MU members.

The Hand in Hand resource has continued to be promoted throughout the diocese. It is an ongoing resource to help parents share their faith in the home. Labelled for Life is a resource designed to give parents, carers and teachers the confidence to handle the commercial and sexualised influences that children might face.



Members receive the MSH Connected Magazine twice a year.

Incumbents have been signposted to MU resources for Mothering Sunday & Father's Day.

### 3) TO MAINTAIN a worldwide fellowship of Christians, united in prayer, worship and service

The Indoor Members Prayer Circle keeps in regular contact with elderly members who are no longer able to attend meetings.

Many fund-raising events have taken place to support the Relief Fund, Literacy Projects and CCMP (Church and Community Mobilisation Process). 'Make a Mother's Day' campaign sells ethical gifts for Mothering Sunday.

We have 5 allocated overseas link Dioceses and we are building up these relationships to support their members in prayer and fellowship. We also maintain links with the Diocese of Matana in Burundi and Natal in South Africa.

MU Publications have been sold throughout the diocese to support our projects and also provide resources for use in branch meetings as well as greeting cards and gifts.



## **The Mothers' Union Southwell & Nottingham Diocese**

### **4) To PROMOTE conditions in society favourable to stable family life and the protection of children**

The diocese has embraced the national Bye, Buy Childhood campaign which seeks to protect children from excessive and inappropriate marketing. MU believes children should be valued as children and not targeted as adult consumers. The campaign challenges consumerism, seeks to empower parents in making positive choices in how they handle their finances and to challenge retailers, advertisers and the Government.



The Mothers' Union is working in partnership and promoting a new website Parentport which gives parents and carers information on what they can do if they have seen or heard something in the media that is inappropriate for their children. The campaign 16 days of Activism against Gender based violence was once again well supported.

### **5) TO HELP those whose family life has met with adversity**



We provide caravan holidays for families who have difficulty in coping and cannot afford a holiday. The 'Away from it All' holidays are proving extremely beneficial to families and individuals who have not had any kind of break in the last three years, often due to difficult circumstances beyond their control. This year our AFIA team

arranged for 29 families which included 122 individuals for the Spring Bank Holiday at Mablethorpe. This included 27 caravans (15 from 2020 and 12 from 2021) and 3 dinner, bed and breakfast holidays for older ladies who had never had a holiday. We were able to give the families who had caravan holidays a £50 co-op voucher for their holiday plus a £50 Christmas Hamper. This generated some very warm expressions of appreciation.

We run a Contact Centre in Retford where children can meet their non-custodial parent in a safe environment.

We support National Police Aid Charity. We provide toiletries for homeless people and women's refuges. Many members use their knitting skills to make premature baby clothes, trauma teddies and vests for African babies. We continue to make 'Prayer Shawls' to be given to those who are sick to bring assurance of Prayer and God's comfort.

### **COVID-19**

As the restrictions were lifting, more meetings were able to take place towards the end of 2021.

## **The Mothers' Union Southwell & Nottingham Diocese**

### **The charity's policy on reserves**

The charity aims to keep at least enough in the unrestricted funds to cover 3 months' ordinary expenditure.

The main risk to the charity would be a severe drop in membership and/ or fundraising. We try to manage our costs effectively and encourage new members to join e.g. the increase in deanery and diocesan member numbers.

Signed on behalf of the charity's trustees:

Signed \_\_\_\_\_ Date \_\_\_\_\_  
S Baird-Smith, Trustee

Signed \_\_\_\_\_ Date \_\_\_\_\_  
E Toplis, Trustee

**Independent examiner's report to the trustees of  
The Mothers' Union Southwell & Nottingham Diocese  
for the year ended 31 December 2021**

I report to the trustees on my examination of the accounts of The Mothers' Union Southwell & Nottingham Diocese (the charity) for the year ended 31 December 2021.

**Responsibilities and basis of report**

As the trustees of the charity you are responsible for the preparation of the accounts in accordance with the requirements of the Charities Act 2011 ('the Act').

I report in respect of my examination of the charity's accounts carried out under section 145 of the 2011 Act and in carrying out my examination I have followed all the applicable Directions given by the Charity Commission under section 145(5)(b) of the Act.

**Independent examiner's statement**

I have completed my examination. I confirm that no matters have come to my attention in connection with the examination giving me cause to believe that in any material respect:

1. accounting records were not kept in respect of the charity as required by section 130 of the Act; or
2. the accounts do not accord with those records.

I have no concerns and have come across no other matters in connection with the examination to which attention should be drawn in this report in order to enable a proper understanding of the accounts to be reached.

Signed \_\_\_\_\_ Date \_\_\_\_\_

John O'Brien MSc, FCCA, FCIE

Employee of Community Accounting Plus



**The Mothers' Union Southwell & Nottingham Diocese**  
**Receipts & payments account**  
**for the year ended 31 December 2021**

2020			Unrestricted	Restricted	2021
Total		Note	Funds	Funds	Total
Funds			Funds	Funds	Funds
£			£	£	£
	<b>Receipts</b>				
15528	Subscriptions & donations	2	-	13086	13086
10431	Diocesan funds		11114	126	11240
18386	Charitable funds		-	16566	16566
3177	Literature sales		3170	-	3170
3874	Deaneries & branches	3	-	53	53
96	Bank interest		12	-	12
754	Sundry receipts	4	633	-	633
<u>52246</u>	<b>Total receipts</b>		<u>14929</u>	<u>29831</u>	<u>44760</u>
	<b>Payments</b>				
13540	Charitable funds		-	15356	15356
622	Diocesan funds		669	-	669
12534	Management & administration	5	12334	-	12334
108	General expenses	6	1670	-	1670
2088	Literature		2105	-	2105
-	Link Up & marketing		16	-	16
15361	Mary Sumner House		-	13846	13846
6569	Deaneries & branches	3	-	4235	4235
<u>50822</u>	<b>Total payments</b>		<u>16794</u>	<u>33437</u>	<u>50231</u>
1424	<b>Net receipts/(payments)</b>		(1865)	(3606)	(5471)
62905	Cash funds at start of this period		13783	50546	64329
-	Transfers between funds	9	2000	(2000)	-
<u>64329</u>	<b>Cash funds at end of this period</b>		<u>13918</u>	<u>44940</u>	<u>58858</u>



**The Mothers' Union Southwell & Nottingham Diocese**  
**Statement of assets and liabilities**  
**at 31 December 2021**

2020			2021
£	<b>Cash assets</b>	Note	£
22293	Nat West current account		20992
22748	CBF deposit account		22760
19288	Cash & bank balances for deaneries & branches		15106
<u>64329</u>			<u><b>58858</b></u>
	<b>Other monetary assets</b>		
863	Stock (books & cards)		731
8530	Prepayments	7	999
<u>9393</u>			<u><b>1730</b></u>
	<b>Liabilities</b>		
	Creditors:		
(912)	Independent examination		(720)
-	Management & admin		(403)
<u>(7746)</u>	Advance receipts - 2021 subscriptions		<u>(5084)</u>
<u>(8658)</u>			<u><b>(6207)</b></u>

These financial statements are accepted on behalf of the charity by:

Signed \_\_\_\_\_ Dated \_\_\_\_\_  
E Toplis, Trustee

**The Mothers' Union Southwell & Nottingham Diocese**  
**Notes to the accounts**  
**for the year ended 31 December 2021**

**1. Receipts & payments accounts**

Receipts and payments accounts contain a summary of money received and money spent during the period and a list of assets and liabilities at the end of the period. Usually, cash received and cash spent will include transactions through bank accounts and cash in hand.

**2. Subscriptions & donations**

These comprise numerous donations and subscriptions from members, collected centrally or through the branches and deaneries.

**3. Deaneries & branches**

	Gross £	Transfers to Centre £	Net £
Receipts	35606	35553	53
Payments	(39788)	(35553)	(4235)
	<u>(4182)</u>	<u>-</u>	<u>(4182)</u>

**4. Sundry receipts**

	£
Archdeaconry days	132
Diocesan members admin	81
Collections	320
Sundry receipts	100
	<u>633</u>

**5. Management & administration**

	£
Accountant payments	1500
Secretary payments	5715
Treasurer payments	1500
Jubilee House rent	651
Gifts to Leaders	298
Insurance	438
Independent examination fee	912
Stationery & telephone	837
Payroll charges	205
Trustees expenses & travel	278
	<u>12334</u>

## **The Mothers' Union Southwell & Nottingham Diocese**

### **6. General expenses**

	£
General meeting expenses	180
Archdeaconry days	600
Conference expenses	680
Donations payments	110
Sundry payments	100
	<hr/>
	<b>1670</b>

### **7. Prepayments**

	£
Insurance	399
AFIA caravan deposits	600
	<hr/>
	<b>999</b>

### **8. Trustees' and officials' remuneration**

During the year trustees and officials received the following sums:

- J Hempstead, £1,500, as Diocesan Accountant;
- K McNish, £5,715 as Diocesan Secretary;
- G Noon, £1,500 for Treasurer's services;
- 4 Trustees also received a total of £278 for travel and other expenses.

## The Mothers' Union Southwell & Nottingham Diocese

### 9. Funds analysis

	Opening balance £	Receipts (Payments) £		Transfers £	Closing balance £
Restricted funds					
Charitable funds:					
Action and Outreach	150	-	-	-	150
Access & Contact Centre	4768	50	(798)	(1000)	3020
AFIA	20667	12831	(10933)	(1000)	21565
Count Your Blessings	-	3425	(3425)	-	-
Prison Work	196	-	-	-	196
Time Travelling	-	200	(200)	-	-
Parenting fund	2210	-	-	-	2210
Subs & donations:					
Worldwide	-	360	(360)	-	-
MSH Fabric	-	56	(56)	-	-
Overseas	180	813	(643)	-	350
Literacy	-	295	(295)	-	-
B+IDF	-	4	(4)	-	-
MSH Subs	920	11500	(12340)	-	80
Diocesan Projects	1901	50	-	-	1951
Big Summer Appeal	-	148	(148)	-	-
Discretionary fund	266	46	-	-	312
Other:					
Deaneries & Branches	19288	53	(4235)	-	15106
	50546	29831	(33437)	(2000)	44940

The transfers to the unrestricted fund from the Access and Contact Centre and the AFIA funds are to reflect the costs of managing these areas of work.

### 10. Glossary of terms

**Restricted funds:** These are funds given to the charity, subject to specific restrictions set by the donor, but still within the general objects of the charity.

**Prepayments:** These are services that the charity has paid for in advance, but not used during the accounting period.

**Creditors:** These are amounts owed by the charity, but not paid during the accounting period.

**Advance receipts:** These are amounts received by the charity in the accounting period, for use in a future period.