

The Mothers' Union
Southwell & Nottingham Diocese
(Registered charity, number 249878)
Annual Report & Financial Statements
for the year ended 31 December 2020



Page	Contents
2-6	Trustees' annual report
7	Independent examiner's report
8	Receipts & payments account
9	Statement of assets & liabilities
10-12	Notes to the accounts

**The Mothers' Union Southwell & Nottingham Diocese
Trustees' annual report
for the year ended 31 December 2020**

Full name The Mothers' Union Southwell & Nottingham Diocese

Registered charity number 249878

Principal address

Jubilee House, Westgate, Southwell, Nottinghamshire, NG25 0JH

Trustees

P Brewin, Diocesan President

D Mellors, Vice-President Newark A/D

H Catchpole, Vice-President Nottingham A/D

E Toplis

M Pates

V Mellors

S Baird-Smith, from Feb 2020

I Garratt

L Porter, until March 2020

S Bancroft

P Wainwright, until Dec 2020

J Hodson

S Brotherhood, until Feb 2021

S Massey

The Board of Trustees meets three times a year. The Members of the Board of Trustees are: The Diocesan President, the two Archdeaconry Vice-Presidents, the Unit Co-ordinators, and the Deanery Leaders.

Independent examiner

John O'Brien, employee of Community Accounting Plus, Units 1 & 2, North West, 41 Talbot Street, Nottingham, NG1 5GL

Governance and management

The charity is operated under the rules of the Royal Charter of the Mothers Union charity number 240531, dated 15 June 1926 and last amended 4 July 2006.

Overall management of the charity is the responsibility of the trustees who are elected and co-opted under the terms of the constitution. Deanery Leaders are elected by branch leaders, Diocesan President and Unit Co-ordinators by members of Diocesan Council, and each Vice President by Members of Council in their Archdeaconry. Day to day project activity is managed and carried out by volunteers.

Public benefit statement

The Trustees confirm that they have complied with the duty in section 17 of the Charities Act 2006 to have due regard to the Charity Commission's general guidance on public benefit, 'Charities and Public Benefit'.

State of the Diocese

The membership of Mothers' Union Diocese of Southwell and Nottingham is 622 plus 44 honorary life members for the year ended 31 December 2020 with 31 active branches and 2 branches in abeyance.

The Mothers' Union Southwell & Nottingham Diocese

Objectives and Activities

The Mothers' Union is a worldwide society whose aim is the advancement of the Christian religion in the sphere of marriage and family life. There are 5 objectives:

1) TO PROMOTE and support married life



Several members are involved in Marriage Preparation and Marriage Enrichment courses in co-operation with their incumbents. Members meet regularly in branches, deaneries and archdeaconries. Meetings provide for social and pastoral needs of members, often including lunch or afternoon tea. Speakers are invited to speak on a range of subjects of general interest and to raise awareness of issues and

current and future projects. Diocesan Speakers' topics include this year's theme, Building Hope and Confidence.

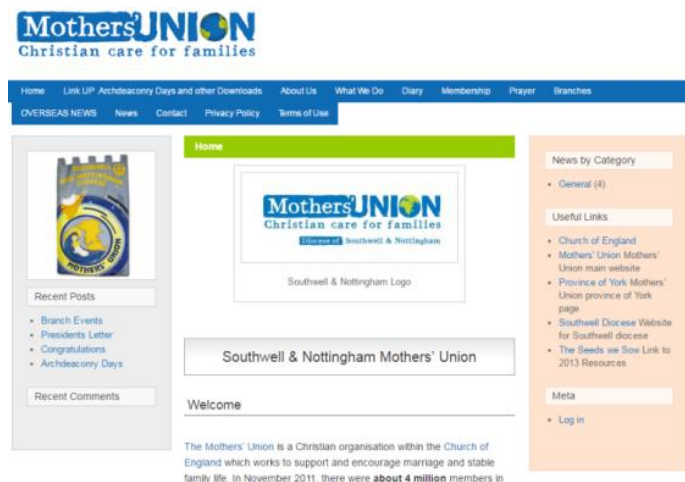
A team of volunteer's co-ordinate hospital visits within the diocese. Services are held in local Care Homes.

The Mothers' Union diocesan website (set up in 2011) has kept members informed of local MU issues and has links to the Diocesan website. It also has links to the central Mothers' Union website. This enables members to access worldwide news and information about the organisation. Many subscribe to the monthly 'e' newsletter from Mary Sumner House.



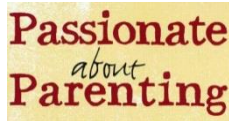
All members receive a triannual newsletter 'Link up' to keep members informed of Mothers' Union projects and news from around the Diocese. We also have a Linkup web page with all our latest news, events and uploaded reports and articles

<https://mulinkupsouthwellandnottingham.wordpress.com/>



The Mothers' Union Southwell & Nottingham Diocese

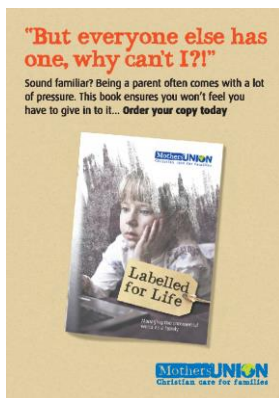
2) To ENCOURAGE parents to bring up their children in the faith and life of the Church



Our trained Parenting facilitators continue to offer to facilitate parenting groups. Shorter half day workshops have also been well received.

Many members are involved in Messy Church, Sunday Schools and Toddler groups in their parish churches. Volunteers at Time Travelling! (a Diocesan project for school-age children run in the Cathedral and in several parish churches) include a significant number of MU members. This year Time Travelling will be one of the beneficiaries of the funds we raise.

The Hand in Hand resource has continued to be promoted throughout the diocese. It is an ongoing resource to help parents share their faith in the home. Labelled for Life is a resource designed to give parents, carers and teachers the confidence to handle the commercial and sexualised influences that children might face.



The MU Magazine 'Families First' is available to members direct and is also widely available to purchase in the Sainsbury's chain of supermarkets. It continues to serve as an outreach tool, providing interesting and accessible information on all aspects of family life for parents who are not yet members.



Incumbents have been signposted to MU resources for Mothering Sunday & Father's Day.

3) TO MAINTAIN a worldwide fellowship of Christians, united in prayer, worship and service

The Indoor Members Prayer Circle keeps in regular contact with elderly members who are no longer able to attend meetings.

Many fund-raising events have taken place to support the Relief Fund, Literacy Projects and CCMP (Church and Community Mobilisation Process). 'Make a Mother's Day' campaign sells ethical gifts for Mothering Sunday.

We have 5 allocated overseas link Dioceses and we are building up these relationships to support their members in prayer and fellowship. We also maintain links with the Diocese of Matana in Burundi and Natal in South Africa.



The Mothers' Union Southwell & Nottingham Diocese

MU Publications have been sold throughout the diocese to support our projects and also provide resources for use in branch meetings as well as greeting cards and gifts.

4) To PROMOTE conditions in society favourable to stable family life and the protection of children

The diocese has embraced the national Bye, Buy Childhood campaign which seeks to protect children from excessive and inappropriate marketing. MU believes children should be valued as children and not targeted as adult consumers. The campaign challenges consumerism, seeks to empower parents in making positive choices in how they handle their finances and to challenge retailers, advertisers and the Government.



The Mothers' Union is working in partnership and promoting a new website Parentport which gives parents and carers information on what they can do if they have seen or heard something in the media that is inappropriate for their children. The campaign 16 days of Activism against Gender based violence was once again well supported.

5) TO HELP those whose family life has met with adversity



We provide caravan holidays for families who have difficulty in coping and cannot afford a holiday. The 'Away from it All' holidays are proving extremely beneficial to families and individuals who have not had any kind of break in the last three years, often due to difficult circumstances beyond their control. We had 15 families who were

due to go away in 2020 to Mablethorpe. These holidays had been paid for but due to the Covid pandemic had to be postponed until Spring Bank Holiday week 2021 once Government restrictions allowed. We sent those families a £50 Co-op Gift Card to buy some treats when they were due to be away and another at Christmas.

We run a Contact Centre in Retford where children can meet their non-custodial parent in a safe environment.

We support National Police Aid Charity. We provide toiletries for homeless people and women's refuges. Many members use their knitting skills to make premature baby clothes, trauma teddies and vests for African babies. We continue to make 'Prayer Shawls' to be given to those who are sick to bring assurance of Prayer and God's comfort.

The Mothers' Union Southwell & Nottingham Diocese

COVID-19

Since the onset of COVID 19 in March 2020 face to face branch and officer meetings have been unable to take place. We have been able to continue with officer meetings using zoom, but all fundraising activities have had to be cancelled.

Members have been very busy with various projects. These include:

Hospital – items made

- Scrub bags and scrubs;
- Linus blankets for children's wards;
- Baby blankets;
- Baby jackets;
- Premature baby hats.

Overseas

- Fish and Chip baby vests for Police Aid Convoy;
- Donations for Wullinkamma Arribaja baby clinic & nursery / school.

Gifts of Love

- Bags of toiletries supporting refugees.

On the Street

- Crafting woolly hats for rough sleepers.

The charity's policy on reserves

The charity aims to keep at least enough in the unrestricted funds to cover 3 months' ordinary expenditure.

The main risk to the charity would be a severe drop in membership and/ or fundraising. We try to manage our costs effectively and encourage new members to join e.g. the increase in deanery and diocesan member numbers.

Signed on behalf of the charity's trustees:

Signed _____ Date _____
P Brewin, Trustee

Signed _____ Date _____
E Toplis, Trustee

**Independent examiner's report to the trustees of
The Mothers' Union Southwell & Nottingham Diocese
for the year ended 31 December 2020**

I report to the trustees on my examination of the accounts of The Mothers' Union Southwell & Nottingham Diocese (the charity) for the year ended 31 December 2020.

Responsibilities and basis of report

As the trustees of the charity you are responsible for the preparation of the accounts in accordance with the requirements of the Charities Act 2011 ('the Act').

I report in respect of my examination of the charity's accounts carried out under section 145 of the 2011 Act and in carrying out my examination I have followed all the applicable Directions given by the Charity Commission under section 145(5)(b) of the Act.

Independent examiner's statement

I have completed my examination. I confirm that no matters have come to my attention in connection with the examination giving me cause to believe that in any material respect:

1. accounting records were not kept in respect of the charity as required by section 130 of the Act; or
2. the accounts do not accord with those records.

I have no concerns and have come across no other matters in connection with the examination to which attention should be drawn in this report in order to enable a proper understanding of the accounts to be reached.

Signed _____ Date _____

John O'Brien MSc, FCCA, FCIE

Employee of Community Accounting Plus

The Mothers' Union Southwell & Nottingham Diocese
Receipts & payments account
for the year ended 31 December 2020

2019			Unrestricted	Restricted	2020
Total		Note	Funds	Funds	Total
Funds			Funds	Funds	Funds
£			£	£	£
	Receipts				
16232	Subscriptions & donations	2	-	15528	15528
11839	Diocesan funds		10165	266	10431
24821	Charitable funds		-	18386	18386
4840	Literature sales		3177	-	3177
10211	Deaneries & branches	3	-	3874	3874
169	Bank interest		96	-	96
989	Sundry receipts	4	754	-	754
<u>69101</u>	Total receipts		<u>14192</u>	<u>38054</u>	<u>52246</u>
	Payments				
20711	Charitable funds		-	13540	13540
478	Diocesan funds		622	-	622
13936	Management & administration	5	12534	-	12534
1614	General expenses	6	108	-	108
3647	Literature		2088	-	2088
507	Link Up & marketing		-	-	-
16220	Mary Sumner House		-	15361	15361
11231	Deaneries & branches	3	-	6569	6569
<u>68344</u>	Total payments		<u>15352</u>	<u>35470</u>	<u>50822</u>
757	Net receipts/(payments)		(1160)	2584	1424
62148	Cash funds at start of this period		12943	49962	62905
-	Transfers between funds	9	2000	(2000)	-
<u>62905</u>	Cash funds at end of this period		<u>13783</u>	<u>50546</u>	<u>64329</u>

The Mothers' Union Southwell & Nottingham Diocese
Statement of assets and liabilities
at 31 December 2020

2019			2020
£	Cash assets	Note	£
18271	Nat West current account		22293
22651	CBF deposit account		22748
<u>21983</u>	Cash & bank balances for deaneries & branches		<u>19288</u>
<u>62905</u>			<u>64329</u>
	Other monetary assets		
393	Stock (books & cards)		863
<u>1275</u>	Prepayments	7	<u>8530</u>
<u>1668</u>			<u>9393</u>
	Liabilities		
	Creditors:		
(912)	Independent examination		(912)
<u>(6361)</u>	Advance receipts - 2021 subscriptions		<u>(7746)</u>
<u>(7273)</u>			<u>(8658)</u>

These financial statements are accepted on behalf of the charity by:

Signed _____ Dated _____
E Toplis, Trustee

The Mothers' Union Southwell & Nottingham Diocese
Notes to the accounts
for the year ended 31 December 2020

1. Receipts & payments accounts

Receipts and payments accounts contain a summary of money received and money spent during the period and a list of assets and liabilities at the end of the period. Usually, cash received and cash spent will include transactions through bank accounts and cash in hand.

2. Subscriptions & donations

These comprise numerous donations and subscriptions from members, collected centrally or through the branches and deaneries.

3. Deaneries & branches

	Gross £	Transfers to Centre £	Net £
Receipts	45765	41891	3874
Payments	(48460)	(41891)	(6569)
	<u>(2695)</u>	<u>-</u>	<u>(2695)</u>

4. Sundry receipts

	£
Archdeaconry days	465
Diocesan members admin	289
	<u>754</u>

5. Management & administration

	£
Accountant payments	1500
Secretary payments	5720
Treasurer payments	1500
Jubilee House rent	651
Gifts to Leaders	157
Insurance	461
Independent examination fee	912
Stationery & telephone	1339
Payroll charges	187
Trustees expenses - travel	107
	<u>12534</u>

The Mothers' Union Southwell & Nottingham Diocese

6. General expenses

	£
Archdeaconry days	108
	<u>108</u>

7. Prepayments

	£
AFIA caravan deposits	8530
	<u>8530</u>

8. Trustees' and officials' remuneration

During the year trustees and officials received the following sums:

- J Hempstead, £1,500, as Diocesan Accountant;
- K McNish, £5,720 as Diocesan Secretary;
- G Noon, £1,500 for Treasurer's services;
- 4 Trustees also received a total of £170 for travel and other expenses;
- 2 other officials also received a total of £62 for travel and other expenses.

The Mothers' Union Southwell & Nottingham Diocese

9. Funds analysis

	Opening balance	Receipts (Payments)		Transfers	Closing balance
	£	£	£	£	£
Restricted funds					
Charitable funds:					
Action and Outreach	150	-	-	-	150
Access & Contact Centre	4125	2275	(632)	(1000)	4768
AFIA	18643	12833	(9809)	(1000)	20667
Count Your Blessings	-	2148	(2148)	-	-
Prison Work	196	-	-	-	196
Time Travelling	-	951	(951)	-	-
Parenting fund	2210	-	-	-	2210
Subs & donations:					
Worldwide	-	1427	(1427)	-	-
MSH Appeal	-	1200	(1200)	-	-
MSH Fabric	-	80	(80)	-	-
Overseas	-	843	(663)	-	180
Wheels Appeal	-	120	(120)	-	-
Literacy	-	520	(520)	-	-
B+IDF	-	69	(69)	-	-
MSH Subs	754	11273	(11107)	-	920
Diocesan Projects	1902	-	-	-	1902
Big Summer Appeal	-	25	(25)	-	-
Make a Mother Day	-	150	(150)	-	-
Discretionary fund	-	266	-	-	266
Other:					
Deaneries & Branches	21982	3874	(6569)	-	19287
Families First	-	-	-	-	-
	49962	38054	(35470)	(2000)	50546

The transfers to the unrestricted fund from the Access and Contact Centre and the AFIA funds are to reflect the costs of managing these areas of work.

10. Glossary of terms

Restricted funds: These are funds given to the charity, subject to specific restrictions set by the donor, but still within the general objects of the charity.

Prepayments: These are services that the charity has paid for in advance, but not used during the accounting period.

Creditors: These are amounts owed by the charity, but not paid during the accounting period.

Advance receipts: These are amounts received by the charity in the accounting period, for use in a future period.