

# MOTHERS' UNION SOUTHWELL & NOTTINGHAM DIOCESE

England & Wales · Charity number 249878

## Details

---

Other names	THE MOTHERS' UNION (DIOCESE OF SOUTHWELL BRANCH), THE MOTHERS' UNION (DIOCESE OF SOUTHWELL)
Status	Registered
Legal form	Other
Registered	1966-10-27
Register	<a href="#">View on the Charity Commission register</a>

## Contact

---

Address 4 Ascott Gardens  
West Bridgford  
Nottingham  
NG2 7TH

Phone 01159819798

Email [musecretary@southwell.anglican.org](mailto:musecretary@southwell.anglican.org)

## Activities

---

**Objects:** (1) TO UPHOLD CHRIST'S TEACHING ON THE NATURE OF MARRIAGE AND TO PROMOTE IT'S WIDER UNDERSTANDING.(2) TO ENCOURAGE PARENTS TO BRING UP THEIR CHILDREN IN THE FAITH AND LIFE OF THE CHURCH.(3) TO MAINTAIN A WORLDWIDE FELLOWSHIP OF CHRISTIANS, UNITED IN PRAYER, WORSHIP AND SERVICE.(4) TO PROMOTE CONDITIONS IN SOCIETY FAVOURABLE TO STABLE FAMILY LIFE AND FOR THE PROTECTION OF CHILDREN.(5) TO HELP THOSE WHOSE FAMILY LIFE HAS MET ADVERSITY.

**Activities:** 101 General Charitable purposes,102 education/Training,105 relief of poverty,106 Overseas aid famine relief, religious activities

## Classification

---

- **How:** Provides Services
- **What:** General Charitable Purposes, Education/training, The Prevention Or Relief Of Poverty, Overseas Aid/famine Relief, Religious Activities
- **Who:** Children/young People, Elderly/old People, Other Charities Or Voluntary Bodies

## Geography

---

- **Area of benefit:** DIOCESE OF SOUTHWELL AND NOTTINGHAM
- Nottinghamshire

## Finances

---

Period end	Income	Expenditure	Assets	Employees
2024-12-31	£42,159	£44,492	-	-
2023-12-31	£35,849	£42,195	-	-
2022-12-31	£48,266	£48,414	-	-
2021-12-31	£44,760	£50,231	-	-
2020-12-31	£52,246	£50,822	-	-

## Trustees

---

Name	Role	Appointed
Anne Hensby		2025-01-01
Elizabeth Toplis		2016-01-01
Irene Garratt Mrs		2016-01-01
Jacqueline Dorothy Smith		2025-02-01
Maureen Pates		2019-01-01
Shelagh Mary Baird-Smith		2020-02-06
Susan Massey		2019-01-01

**MOTHERS' UNION SOUTHWELL & NOTTINGHAM DIOCESE**

England & Wales - Charity number 249878

---

# Accounts

---

# The Mothers' Union

## Southwell & Nottingham Diocese

(Registered charity, number 249878)

### Annual Report & Financial Statements for the year ended 31 December 2024



<b>Page</b>	
2-6	Trustees' annual report
7	Independent examiner's report
8	Receipts & payments account
9	Statement of assets & liabilities
10-13	Notes to the accounts



**The Mothers' Union Southwell & Nottingham Diocese  
Trustees' annual report  
for the year ended 31 December 2024**

**Full name** The Mothers' Union Southwell & Nottingham Diocese

**Registered charity number** 249878

**Principal address**

Jubilee House, Westgate, Southwell, Nottinghamshire, NG25 0JH

**Trustees**

S Baird-Smith, Diocesan President

H Catchpole until, 31/12/2024

S Bancroft until, 31/12/2024

E Toplis

A Hensby from, 01/01/2025

M Pates

I Garratt

S Massey

J Smith from, 01/01/2025

The Board of Trustees meets three times a year. The Members of the Board of Trustees are: The Diocesan President, the Newark and Nottingham Archdeaconry Vice-President, the Unit Co-ordinators, and the Deanery Leaders.

**Banking**

CCLA Investment Management Ltd, One Angel Lane, London, EC4R 3AB

National Westminster Bank Plc, Loughborough, Leicestershire, LE11 3NZ

**Independent examiner**

John O'Brien, employee of Community Accounting Plus, Units 1 & 2, North West, 41 Talbot Street, Nottingham, NG1 5GL

**Governance and management**

The charity is operated under the rules of the Royal Charter of the Mothers Union charity number 240531, dated 15 June 1926 and last amended 4 July 2006.

Overall management of the charity is the responsibility of the trustees who are elected and co-opted under the terms of the constitution. Deanery Leaders are elected by branch leaders, Diocesan President and Unit Co-ordinators by members of Diocesan Council, and each Vice President by Members of Council in their Archdeaconry. Day to day project activity is managed and carried out by volunteers.

**Public benefit statement**

The Trustees confirm that they have complied with the duty in section 17 of the Charities Act 2006 to have due regard to the Charity Commission's general guidance on public benefit, 'Charities and Public Benefit'.

**State of the Diocese**

The membership of Mothers' Union Diocese of Southwell and Nottingham is 348 plus 22 honorary life members for the year ended 31 December 2024 with 16 active branches.

# The Mothers' Union Southwell & Nottingham Diocese

## Objectives and Activities

**AIM:** A worldwide society whose Aim is the advancement of the Christian religion in the sphere of marriage and family life.

## FIVE OBJECTIVES

- TO PROMOTE and support married life.
- TO ENCOURAGE parents to bring up their children in the faith and life of the Church.
- TO MAINTAIN a worldwide fellowship of Christians, united in prayer, worship and service.
- TO PROMOTE conditions in society favourable to stable family life and the protection of children.
- TO HELP those whose family life has met with adversity.

## Summary of the main achievements during the period:

### TO PROMOTE and support married life.



Members are involved in Pastoral care in their marriages in co-operation with their incumbents. Members meet regularly in branches, deaneries and archdeaconries.

Meetings provide for social and pastoral needs of members, often including lunch or afternoon tea. Speakers are invited to speak on a range of subjects of general interest and to raise awareness of issues and current and future projects and many include this year's theme, Transformation Now.

A team of volunteer's co-ordinate hospital visits within the diocese. Services are held in local Care Homes.

The Mothers' Union Central website has kept members informed of local MU issues and has links to the Diocesan website. This enables members to access worldwide news and information about the organisation.

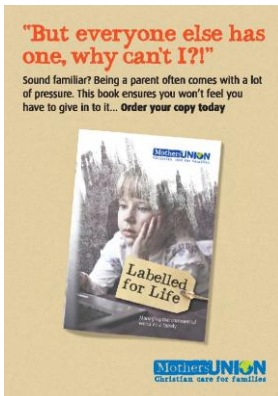
All members receive a triannual newsletter 'Link up' to keep members informed of Mothers' Union projects and news from around the Diocese.



## The Mothers' Union Southwell & Nottingham Diocese

**To ENCOURAGE parents to bring up their children in the faith and life of the Church**

Many members are involved in Messy Church, Sunday Schools and Toddler groups in their parish churches. Volunteers at Time Travelling! (a Diocesan project for school-age children run in the Cathedral and in several parish churches) include a significant number of MU members.



The Hand in Hand resource has continued to be promoted throughout the diocese. It is an ongoing resource to help parents share their faith in the home. Labelled for Life is a resource designed to give parents, carers and teachers the confidence to handle the commercial and sexualised influences that children might face.

Members receive the MSH Connected Magazine twice a year.

Incumbents have been signposted to MU resources for Mothering Sunday & Father's Day.

Respond  
Inform     Unite  
Support    Pray  
Empower



**The letters of RISE UP stand for Respond, Inform, Support, Empower, Unite and Pray.**

Domestic abuse can happen to anyone from any walk of life. It's our goal that Mothers' Union members and churches will work together to be a part of the change and will get involved with our RISE UP challenge.

[riseup@mothersunion.org](mailto:riseup@mothersunion.org)

**TO MAINTAIN a worldwide fellowship of Christians, united in prayer, worship and service.**

The Indoor Members Prayer Circle keeps in regular contact with elderly members who are no longer able to attend meetings.

Many fund-raising events have taken place to support the Burundi Literacy and Financial Education Programme. 'Make a Mother's Day' campaign sells ethical gifts for Mothering Sunday.

## The Mothers' Union Southwell & Nottingham Diocese

We have 5 allocated overseas link Dioceses and we are building up these relationships to support their members in prayer and fellowship. We also maintain links with the Diocese of Matana in Burundi and Natal in South Africa.

MU Publications have been sold throughout the diocese to support our projects and also provide resources for use in branch meetings as well as greeting cards and gifts.

### **TO PROMOTE conditions in society favourable to stable family life and the protection of children.**

The diocese has embraced the national Bye, Buy Childhood campaign which seeks to protect children from excessive and inappropriate marketing. MU believes children should be valued as children and not targeted as adult consumers. The campaign challenges consumerism, seeks to empower parents in making positive choices in how they handle their finances and to challenge retailers, advertisers and the Government.

The Mothers' Union is working in partnership and promoting a new website Parentport which gives parents and carers information on what they can do if they have seen or heard something in the media that is inappropriate for their children.

The campaign 16 days of Activism against Gender based violence was once again well supported.



### **TO HELP those whose family life has met with adversity.**



We provide caravan holidays for families who have difficulty in coping and cannot afford a holiday. The 'Away from it All' holidays are proving extremely beneficial to families & individuals who have not had any kind of break in the last three years, often due to difficult circumstances beyond their control. This year our AFIA team arranged for 14 families which included 55 individuals for the

Spring Bank Holiday week at Mablethorpe. This included 13 caravans. We were able to give the families who had caravan holidays a voucher for food for their holiday plus a Christmas Hamper and a Bag of Blessings for the children. This generated some very warm expressions of appreciation.

## The Mothers' Union Southwell & Nottingham Diocese



During 2024 the management of the Contact Centre in Retford (where children can meet their non-custodial parent in a safe environment) passed into the control of Children's Links. We continue to support the centre with volunteers and funds collected to help needy families access the service.

We support Police Aid Convoys.

We provide toiletries for homeless people and women's refuges.

Many members use their knitting skills to make premature baby clothes, trauma teddies and vests for African babies. We continue to make 'Prayer Shawls' to be given to those who are sick to bring assurance of Prayer and God's comfort.

### The charity's policy on reserves

The charity aims to keep at least enough in the unrestricted funds to cover 3 month's ordinary expenditure.

The main risk to the charity would be a severe drop in membership and/ or fundraising. We try to manage our costs effectively and encourage new members to join e.g. the increase in deanery and diocesan member numbers.

Signed on behalf of the charity's trustees:

Signed \_\_\_\_\_ Date \_\_\_\_\_  
S Baird-Smith, Trustee

Signed \_\_\_\_\_ Date \_\_\_\_\_  
E Toplis, Trustee

**Independent examiner's report to the trustees of  
The Mothers' Union Southwell & Nottingham Diocese  
for the year ended 31 December 2024**

I report to the trustees on my examination of the accounts of The Mothers' Union Southwell & Nottingham Diocese (the charity) for the year ended 31 December 2024.

**Responsibilities and basis of report**

As the trustees of the charity you are responsible for the preparation of the accounts in accordance with the requirements of the Charities Act 2011 ('the Act').

I report in respect of my examination of the charity's accounts carried out under section 145 of the 2011 Act and in carrying out my examination I have followed all the applicable Directions given by the Charity Commission under section 145(5)(b) of the Act.

**Independent examiner's statement**

I have completed my examination. I confirm that no matters have come to my attention in connection with the examination giving me cause to believe that in any material respect:

1. accounting records were not kept in respect of the charity as required by section 130 of the Act; or
2. the accounts do not accord with those records.

I have no concerns and have come across no other matters in connection with the examination to which attention should be drawn in this report in order to enable a proper understanding of the accounts to be reached.

Signed \_\_\_\_\_ Date \_\_\_\_\_  
John O'Brien MSc, FAIA, FCIE  
Employee of Community Accounting Plus

**The Mothers' Union Southwell & Nottingham Diocese  
Receipts & payments account  
for the year ended 31 December 2024**

2023 Total Funds £		Note	Unrestricted Funds £	Restricted Funds £	2024 Total Funds £
	<b>Receipts</b>				
11408	Subscriptions & donations	2	50	11251	11301
6921	Diocesan funds		5972	1592	7564
9468	Charitable funds		-	14072	14072
2788	Literature sales		1671	-	1671
4175	Deaneries & branches	3	-	5922	5922
738	Bank interest		358	905	1263
351	Sundry receipts	4	366	-	366
35849	<b>Total receipts</b>		<b>8417</b>	<b>33742</b>	<b>42159</b>
	<b>Payments</b>				
13071	Charitable funds		116	12330	12446
591	Diocesan funds		-	102	102
8579	Management & administration	5	9625	-	9625
917	General expenses	6	343	-	343
1878	Literature		1524	-	1524
101	Link Up & marketing		985	-	985
11103	Mary Sumner House		50	13531	13581
5954	Deaneries & branches	3	-	5986	5986
42194	<b>Total payments</b>		<b>12643</b>	<b>31949</b>	<b>44592</b>
(6345)	<b>Net receipts/(payments)</b>		(4226)	1793	(2433)
58710	Cash funds at start of this period		13547	38818	52365
-	Transfers between funds	9	1975	(1975)	-
52365	<b>Cash funds at end of this period</b>		<b>11296</b>	<b>38636</b>	<b>49932</b>

**The Mothers' Union Southwell & Nottingham Diocese**  
**Statement of assets and liabilities**  
**at 31 December 2024**

2023		2024
£		£
	<b>Cash assets</b>	
16491	Nat West current account	12858
23798	CCLA deposit account	25062
<u>12076</u>	Cash & bank balances for deaneries & branches	<u>12012</u>
<u>52365</u>		<u>49932</u>
	<b>Other monetary assets</b>	
347	Stock (books & cards etc.)	257
<u>600</u>	Prepayments	<u>600</u>
<u>947</u>		<u>857</u>
	<b>Liabilities</b>	
(840)	Independent examination	(876)
(344)	Management & admin	(178)
-	Payroll	(65)
<u>-</u>	Trustees expenses	<u>(119)</u>
<u>(1184)</u>		<u>(1238)</u>

These financial statements are accepted on behalf of the charity by:

Signed \_\_\_\_\_ Dated \_\_\_\_\_  
E Toplis, Trustee

**The Mothers' Union Southwell & Nottingham Diocese**  
**Notes to the accounts**  
**for the year ended 31 December 2024**

**1. Receipts & payments accounts**

Receipts and payments accounts contain a summary of money received and money spent during the period and a list of assets and liabilities at the end of the period. Usually, cash received and cash spent will include transactions through bank accounts and cash in hand.

**2. Subscriptions & donations**

These comprise numerous donations and subscriptions from members, collected centrally or through the branches and deaneries.

**3. Deaneries & branches**

	Gross £	Transfers to Centre £	Net £
Receipts	30817	24895	5922
Payments	<u>(30881)</u>	<u>(24895)</u>	<u>(5986)</u>
	<b><u>(64)</u></b>	<b><u>-</u></b>	<b><u>(64)</u></b>

**4. Sundry receipts**

	£
Archdeaconry days receipts	<u>366</u>
	<b><u>366</u></b>

**5. Management & administration**

	£
Accountant payments	1500
Secretary payments	3178
Treasurer payments	1872
Jubilee House Rent	651
Liability Insurance	486
Independent examination fee	840
PPS + Telephone	162
Printing & Stationery	167
Photocopying	30
Payroll charges	218
Trustees expenses - General	81
Trustees expenses - Travel	<u>440</u>
	<b><u>9625</u></b>

## The Mothers' Union Southwell & Nottingham Diocese

### 6. General expenses

	£
Archdeaconry days payments	178
Conference expenses	120
Sundry payments	45
	<u>343</u>

### 7. Prepayments

	£
AFIA caravan deposits	600
	<u>600</u>

### 8. Trustees' and officials' remuneration

During the year trustees and officials received the following sums:

- J Hempstead, £1,500 as Diocesan Accountant
- J Hempstead, £1,872 as Diocesan Treasurer
- K McNish, £365 as Diocesan Secretary
- J Mason, £2,813 as Diocesan Secretary
- 4 Trustees also received a total of £440 for travel expenses
- 2 Trustees also received a total of £81 for general expenses

## The Mothers' Union Southwell & Nottingham Diocese

### 9. Funds analysis

	Opening balance £	Receipts (Payments) £		Transfers £	Closing balance £
<b>Restricted funds</b>					
Charitable funds:					
Action and Outreach	155	8	-	-	163
Access & Contact Centre	3484	384	-	(500)	3368
AFIA	15949	11720	(11080)	(49)	16540
Count Your Blessings	-	2377	-	(2377)	-
Prison Work	200	6	-	-	206
Time Travelling	30	294	(1249)	951	26
Parenting fund	2278	116	-	-	2394
Subs & donations:					
MSH Fabric	-	50	(50)	-	-
Overseas	557	1000	(1482)	-	75
Literacy	95	263	(333)	-	25
B+IDF	-	21	(21)	-	-
MSH Subs	968	10492	(9892)	-	1568
MSH appeal	65	-	(65)	-	-
Diocesan Projects	2020	97	-	-	2117
Big Summer Appeal	696	692	(1388)	-	-
Worldwide	-	300	(300)	-	-
Discretionary fund	245	-	(103)	-	142
Other:					
Deaneries & Branches	12076	5922	(5986)	-	12012
	<b><u>38818</u></b>	<b><u>33742</u></b>	<b><u>(31949)</u></b>	<b><u>(1975)</u></b>	<b><u>38636</u></b>
<b>Unrestricted funds</b>					
General	13547	8418	(12644)	1975	11296
	<b><u>13547</u></b>	<b><u>8418</u></b>	<b><u>(12644)</u></b>	<b><u>1975</u></b>	<b><u>11296</u></b>

The transfers to the Unrestricted and Time travelling fund from the Access and Contact Centre, the AFIA Funds and Count Your Blessings are to reflect the costs of managing these areas of work.

#### Description of funds

*Charitable funds are run by the Diocese:*

Action & Outreach – Funds to support the charity.

Access & contact centre - Supports the work of the contact centre. Where the separated parents meet with their children.

AFIA (Away from it all) – Supports families that are in need of a holiday and haven't been on a holiday in 3 years.

Count your blessings – Each year members fundraise and share the funds between the chosen causes for the year.

Prison work – To support children in a crèche when spouse has visited a prison.

## **The Mothers' Union Southwell & Nottingham Diocese**

Time Travelling – This project is led by Southwell Minster, to support children visiting and learning about the Minister.

Parent fund – Funds held are to run parenting courses

*Deaneries and branches are funds held in the individual Deaneries and branches:*

Diocesan Projects – Funds available to be spent by the Diocese.

Discretionary fund – Funds to help pay subscriptions to Mary Sumner House.

All the other subs and donation funds are to be passed onto the national headquarters of Mothers Union.

*Other:*

Balances held by the Deaneries and branches.

### **10. Glossary of terms**

**Restricted funds:** These are funds given to the charity, subject to specific restrictions set by the donor, but still within the general objects of the charity.

**Prepayments:** These are services that the charity has paid for in advance, but not used during the accounting period.

**Creditors:** These are amounts owed by the charity, but not paid during the accounting period.

**MOTHERS' UNION SOUTHWELL & NOTTINGHAM DIOCESE**

England & Wales - Charity number 249878

---

# Accounts

---

# The Mothers' Union

## Southwell & Nottingham Diocese

(Registered charity, number 249878)

### Annual Report & Financial Statements for the year ended 31 December 2023



<b>Page</b>	
2-7	Trustees' annual report
8	Independent examiner's report
9	Receipts & payments account
10	Statement of assets & liabilities
11-14	Notes to the accounts



**The Mothers' Union Southwell & Nottingham Diocese  
Trustees' annual report  
for the year ended 31 December 2022**

**Full name** The Mothers' Union Southwell & Nottingham Diocese

**Registered charity number** 249878

**Principal address**

Jubilee House, Westgate, Southwell, Nottinghamshire, NG25 0JH

**Trustees**

S Baird-Smith, Diocesan President, from 1/1/2022

J Hodson, Vice-President Newark & Nottingham A/D, from 1/1/2022

H Catchpole

M Pates

S Bancroft

I Garratt

E Toplis

S Massey

The Board of Trustees meets three times a year. The Members of the Board of Trustees are: The Diocesan President, the Newark and Nottingham Archdeaconry Vice-President, the Unit Co-ordinators, and the Deanery Leaders.

**Banking**

CCLA Investment Management Ltd, One Angel Lane, London, EC4R 3AB  
National Westminster Bank Plc, Loughborough, Leicestershire, LE11 3NZ

**Independent examiner**

John O'Brien, employee of Community Accounting Plus, Units 1 & 2, North West, 41 Talbot Street, Nottingham, NG1 5GL

**Governance and management**

The charity is operated under the rules of the Royal Charter of the Mothers Union charity number 240531, dated 15 June 1926 and last amended 4 July 2006.

Overall management of the charity is the responsibility of the trustees who are elected and co-opted under the terms of the constitution. Deanery Leaders are elected by branch leaders, Diocesan President and Unit Co-ordinators by members of Diocesan Council, and each Vice President by Members of Council in their Archdeaconry. Day to day project activity is managed and carried out by volunteers.

**Public benefit statement**

The Trustees confirm that they have complied with the duty in section 17 of the Charities Act 2006 to have due regard to the Charity Commission's general guidance on public benefit, 'Charities and Public Benefit'.

**State of the Diocese**

The membership of Mothers' Union Diocese of Southwell and Nottingham is 525 plus 33 honorary life members for the year ended 31 December 2021 with 27 active branches.

## The Mothers' Union Southwell & Nottingham Diocese

### Objectives and Activities

**AIM:** A worldwide society whose Aim is the advancement of the Christian religion in the sphere of marriage and family life.

### FIVE OBJECTIVES

- TO PROMOTE and support married life.
- TO ENCOURAGE parents to bring up their children in the faith and life of the Church.
- TO MAINTAIN a worldwide fellowship of Christians, united in prayer, worship and service.
- TO PROMOTE conditions in society favourable to stable family life and the protection of children.
- TO HELP those whose family life has met with adversity.

The membership of Mothers' Union Diocese of Southwell and Nottingham is 477 plus 33 honorary life members for the year ended 31 December 2022 with 24 active branches.

### Summary of the main achievements during the period:

#### TO PROMOTE and support married life.



Members are involved in Pastoral care in their marriages in co-operation with their incumbents. Members meet regularly in branches, deaneries and archdeaconries.

Meetings provide for social and pastoral needs of members, often including lunch or afternoon tea. Speakers are invited to speak on a range of subjects of general interest and to raise awareness of issues and current and future projects and many include this year's theme, Transformation Now.

A team of volunteer's co-ordinate hospital visits within the diocese. Services are held in local Care Homes.

## The Mothers' Union Southwell & Nottingham Diocese

The Mothers' Union diocesan website has kept members informed of local MU issues and has links to the Diocesan website. This enables members to access worldwide news and information about the organisation.

All members receive a triannual newsletter 'Link up' to keep members informed of Mothers' Union projects and news from around the Diocese. We also have a Linkup web page with all our latest news, events and uploaded reports and articles <https://mulinkupsouthwellandnottingham.wordpress.com/>

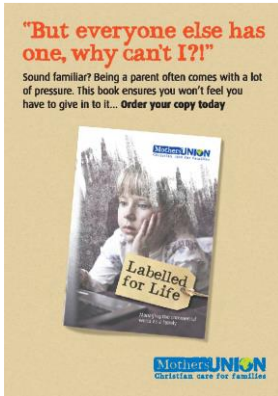


A screenshot of the website homepage. At the top is a blue navigation bar with links: Home, Link UP, Archdeaconry Days and other Downloads, About Us, What We Do, Diary, Membership, Prayer, Branches. Below this is a secondary bar with links: OVERSEAS NEWS, News, Contact, Privacy Policy, Terms of Use. The main content area has a green header "Home". On the left is a sidebar with "Recent Posts" (listing Branch Events, Presidents Letter, Congratulations, Archdeaconry Days) and "Recent Comments". The center features the Mothers' Union logo and tagline, followed by "Diocese of Southwell &amp; Nottingham" and "Southwell &amp; Nottingham Logo". Below this is a box with the text "Southwell &amp; Nottingham Mothers' Union" and a "Welcome" section. At the bottom, a paragraph states: "The Mothers' Union is a Christian organisation within the Church of England which works to support and encourage marriage and stable family life. In November 2011, there were about 4 million members in". On the right is a sidebar with "News by Category" (General (4)), "Useful Links" (listing Church of England, Mothers' Union main website, Province of York Mothers' Union province of York page, Southwell Diocese Website for Southwell diocese, The Seeds we Sow Link to 2013 Resources), "Meta" (Log in).

**To ENCOURAGE parents to bring up their children in the faith and life of the Church**

Many members are involved in Messy Church, Sunday Schools and Toddler groups in their parish churches. Volunteers at Time Travelling! (a Diocesan project for school-age children run in the Cathedral and in several parish churches) include a significant number of MU members.

## The Mothers' Union Southwell & Nottingham Diocese



The Hand in Hand resource has continued to be promoted throughout the diocese. It is an ongoing resource to help parents share their faith in the home. Labelled for Life is a resource designed to give parents, carers and teachers the confidence to handle the commercial and sexualised influences that children might face.

Members receive the MSH Connected Magazine twice a year.

Incumbents have been signposted to MU resources for Mothering Sunday & Father's Day.

Respond  
Inform      Unite  
Support     Pray  
Empower



The letters of RISE UP stand for Respond, Inform, Support, Empower, Unite and Pray.

Domestic abuse can happen to anyone from any walk of life. It's our goal that Mothers' Union members and churches will work together to be a part of the change and will get involved with our RISE UP challenge.

[riseup@mothersunion.org](mailto:riseup@mothersunion.org)

**TO MAINTAIN a worldwide fellowship of Christians, united in prayer, worship and service.**

The Indoor Members Prayer Circle keeps in regular contact with elderly members who are no longer able to attend meetings.

Many fund-raising events have taken place to support the Burundi Literacy and Financial Education Programme. 'Make a Mother's Day' campaign sells ethical gifts for Mothering Sunday.

We have 5 allocated overseas link Dioceses and we are building up these relationships to support their members in prayer and fellowship. We also maintain links with the Diocese of Matana in Burundi and Natal in South Africa.

MU Publications have been sold throughout the diocese to support our projects and also provide resources for use in branch meetings as well as greeting cards and gifts.

## The Mothers' Union Southwell & Nottingham Diocese

### **TO PROMOTE conditions in society favourable to stable family life and the protection of children.**

The diocese has embraced the national Bye, Buy Childhood campaign which seeks to protect children from excessive and inappropriate marketing. MU believes children should be valued as children and not targeted as adult consumers. The campaign challenges consumerism, seeks to empower parents in making positive choices in how they handle their finances and to challenge retailers, advertisers and the Government.



The Mothers' Union is working in partnership and promoting a new website Parentport which gives parents and carers information on what they can do if they have seen or heard something in the media that is inappropriate for their children.

The campaign 16 days of Activism against Gender based violence was once again well supported.

### **TO HELP those whose family life has met with adversity.**



We provide caravan holidays for families who have difficulty in coping and cannot afford a holiday. The 'Away from it All' holidays are proving extremely beneficial to families & individuals who have not had any kind of break in the last three years, often due to difficult circumstances beyond their control. This year our AFIA team arranged for 14 families which included 55 individuals for the

Spring Bank Holiday week at Mablethorpe. This included 13 caravans. We were able to give the families who had caravan holidays a voucher for food for their holiday plus a Christmas Hamper and a Bag of Blessings for the children. This generated some very warm expressions of appreciation.



During 2023 we ran a Contact Centre in Retford where children can meet their non-custodial parent in a safe environment.

We support Police Aid Convoys. We provide toiletries for homeless people and women's refuges.

Many members use their knitting skills to make premature baby clothes, trauma teddies and vests for African babies. We continue to make 'Prayer Shawls' to be given to those who are sick to bring assurance of Prayer and God's comfort.

## The Mothers' Union Southwell & Nottingham Diocese

### The charity's policy on reserves

The charity aims to keep at least enough in the unrestricted funds to cover 3 month's ordinary expenditure.

The main risk to the charity would be a severe drop in membership and/ or fundraising. We try to manage our costs effectively and encourage new members to join e.g. the increase in deanery and diocesan member numbers.

Signed on behalf of the charity's trustees:

Signed \_\_\_\_\_ Date \_\_\_\_\_  
S Baird-Smith, Trustee

Signed \_\_\_\_\_ Date \_\_\_\_\_  
E Toplis, Trustee

**Independent examiner's report to the trustees of  
The Mothers' Union Southwell & Nottingham Diocese  
for the year ended 31 December 2023**

I report to the trustees on my examination of the accounts of The Mothers' Union Southwell & Nottingham Diocese (the charity) for the year ended 31 December 2023.

**Responsibilities and basis of report**

As the trustees of the charity you are responsible for the preparation of the accounts in accordance with the requirements of the Charities Act 2011 ('the Act').

I report in respect of my examination of the charity's accounts carried out under section 145 of the 2011 Act and in carrying out my examination I have followed all the applicable Directions given by the Charity Commission under section 145(5)(b) of the Act.

**Independent examiner's statement**

I have completed my examination. I confirm that no matters have come to my attention in connection with the examination giving me cause to believe that in any material respect:

1. accounting records were not kept in respect of the charity as required by section 130 of the Act; or
2. the accounts do not accord with those records.

I have no concerns and have come across no other matters in connection with the examination to which attention should be drawn in this report in order to enable a proper understanding of the accounts to be reached.

Signed \_\_\_\_\_ Date \_\_\_\_\_  
John O'Brien MSc, FCCA, FCIE  
Employee of Community Accounting Plus

**The Mothers' Union Southwell & Nottingham Diocese**  
**Receipts & payments account**  
**for the year ended 31 December 2023**

2022			Unrestricted	Restricted	2023
Total		Note	Funds	Funds	Total
Funds			£	£	Funds
£					£
	<b>Receipts</b>				
13366	Subscriptions & donations	2	-	11408	11408
8500	Diocesan funds		6921	-	6921
17533	Charitable funds		-	9468	9468
3703	Literature sales		2788	-	2788
4748	Deaneries & branches	3	-	4175	4175
299	Bank interest		209	529	738
117	Sundry receipts	4	351	-	351
48266	<b>Total receipts</b>		<b>10269</b>	<b>25580</b>	<b>35849</b>
	<b>Payments</b>				
14241	Charitable funds		-	13071	13071
569	Diocesan funds		558	33	591
9722	Management & administration	5	8579	-	8579
1458	General expenses	6	917	-	917
3335	Literature		1878	-	1878
1457	Link Up & marketing		101	-	101
11633	Mary Sumner House		-	11103	11103
5999	Deaneries & branches	3	-	5954	5954
48414	<b>Total payments</b>		<b>12033</b>	<b>30161</b>	<b>42194</b>
(148)	<b>Net receipts/(payments)</b>		(1764)	(4581)	(6345)
58858	Cash funds at start of this period		11784	46926	58710
-	Transfers between funds	9	3527	(3527)	-
58710	<b>Cash funds at end of this period</b>		<b>13547</b>	<b>38818</b>	<b>52365</b>

**The Mothers' Union Southwell & Nottingham Diocese  
Statement of assets and liabilities  
at 31 December 2023**

2022			2023
£	<b>Cash assets</b>	<b>Note</b>	£
21796	Nat West current account		16491
23059	CCLA deposit account		23798
<u>13855</u>	Cash & bank balances for deaneries & branches		<u>12076</u>
<u>58710</u>			<u><b>52365</b></u>
<b>Other monetary assets</b>			
579	Stock (books & cards etc.)		347
<u>720</u>	Prepayments	7	<u>600</u>
<u>1299</u>			<u><b>947</b></u>
<b>Liabilities</b>			
Creditors:			
(756)	Independent examination		(840)
<u>-</u>	Management & admin		<u>(344)</u>
<u>(756)</u>			<u><b>(1184)</b></u>

These financial statements are accepted on behalf of the charity by:

Signed \_\_\_\_\_ Dated \_\_\_\_\_  
E Toplis, Trustee

**The Mothers' Union Southwell & Nottingham Diocese**  
**Notes to the accounts**  
**for the year ended 31 December 2023**

**1. Receipts & payments accounts**

Receipts and payments accounts contain a summary of money received and money spent during the period and a list of assets and liabilities at the end of the period. Usually, cash received and cash spent will include transactions through bank accounts and cash in hand.

**2. Subscriptions & donations**

These comprise numerous donations and subscriptions from members, collected centrally or through the branches and deaneries.

**3. Deaneries & branches**

	Gross £	Transfers to Centre £	Net £
Receipts	31983	27808	4175
Payments	<u>(33762)</u>	<u>(27808)</u>	<u>(5954)</u>
	<u><b>(1779)</b></u>	<u>-</u>	<u><b>(1779)</b></u>

**4. Sundry receipts**

	£
Diocesan meeting receipts	113
Archdeaconry days receipts	<u>238</u>
	<u><b>351</b></u>

**5. Management & administration**

	£
Accountant payments	1500
Secretary payments	3775
Jubilee House rent	651
Liability Insurance	483
Independent examination fee	756
PPS & Telephone	97
Printing & Stationary	870
Payroll charges	214
Trustees expenses - Travel	<u>233</u>
	<u><b>8579</b></u>

## The Mothers' Union Southwell & Nottingham Diocese

### 6. General expenses

	£
General meeting expenses	20
Diocesan meeting payments	57
Archdeaconry days payments	580
Conference expenses	202
Sundry payments	58
	<hr/>
	<b>917</b>

### 7. Prepayments

	£
AFIA caravan deposits	600
	<hr/>
	<b>600</b>

### 8. Trustees' and officials' remuneration

During the year trustees and officials received the following sums:

- J Hempstead, £1,500, as Diocesan Accountant;
- K McNish, £3,775 as Diocesan Secretary;
- 5 Trustees also received a total of £233 for travel and other expenses.

## The Mothers' Union Southwell & Nottingham Diocese

### 9. Funds analysis

	Opening balance £	Receipts (Payments) £		Transfers £	Closing balance £
<b>Restricted funds</b>					
Charitable funds:					
Action and Outreach	150	5	-	-	155
Access & Contact Centre	1568	1847	(382)	451	3484
AFIA	24464	4859	(12298)	(1076)	15949
Count Your Blessings	-	2902	-	(2902)	-
Prison Work	196	4	-	-	200
Time Travelling	150	270	(390)	-	30
Parenting fund	2210	68	-	-	2278
Subs & donations:					
MSH Fabric	-	80	(80)	-	-
Overseas	209	523	(175)	-	557
Literacy	95	200	(200)	-	95
B+IDF	-	11	(11)	-	-
MSH Subs	1378	9753	(10163)	-	968
MSH appeal	25	40	-	-	65
Diocesan Projects	1951	69	-	-	2020
Big Summer Appeal	397	449	(150)	-	696
Worldwide	-	325	(325)	-	-
Discretionary fund	278	-	(33)	-	245
Other:					
Deaneries & Branches	13855	4175	(5954)	-	12076
	<b>46926</b>	<b>25580</b>	<b>(30161)</b>	<b>(3527)</b>	<b>38818</b>

The transfers to the Unrestricted fund from the Access and Contact Centre, and the AFIA Funds are to reflect the costs of managing these areas of work.

#### Description of funds

*Charitable funds are run by the Diocese:*

Action & Outreach – Funds to support the charity.

Access & contact centre - Supports the work of the contact centre. Where the separated parents meet with their children.

AFIA (Away from it all) – Supports families that are in need of a holiday and haven't been on a holiday in 3 years.

Count your blessings – Each year members fundraise and share the funds between the chosen causes for the year.

Prison work – To support children in a crèche when spouse has visited a prison.

Time Travelling – This project is led by Southwell Minster, to support children visiting and learning about the Minister.

Parent fund – Funds held are to run parenting courses.

## The Mothers' Union Southwell & Nottingham Diocese

*Deaneries and branches are funds held in the individual Deaneries and branches:*

Diocesan Projects – Funds available to be spent by the Diocese.

Discretionary fund – Funds to help pay subscriptions to Mary Sumner House.

All the other subs and donation funds are to be passed onto the national headquarters of Mothers Union.

*Other:*

Balances held by the Deaneries and branches.

### 10. Glossary of terms

**Restricted funds:** These are funds given to the charity, subject to specific restrictions set by the donor, but still within the general objects of the charity.

**Prepayments:** These are services that the charity has paid for in advance, but not used during the accounting period.

**Creditors:** These are amounts owed by the charity, but not paid during the accounting period.

**MOTHERS' UNION SOUTHWELL & NOTTINGHAM DIOCESE**

England & Wales - Charity number 249878

---

# Accounts

---

# The Mothers' Union

## Southwell & Nottingham Diocese

(Registered charity, number 249878)

### Annual Report & Financial Statements for the year ended 31 December 2022

THANK YOU A.F.I.A & M.U.



Page	Contents
2-6	Trustees' annual report
7	Independent examiner's report
8	Receipts & payments account
9	Statement of assets & liabilities
10-13	Notes to the accounts

**The Mothers' Union Southwell & Nottingham Diocese  
Trustees' annual report  
for the year ended 31 December 2022**

**Full name** The Mothers' Union Southwell & Nottingham Diocese

**Registered charity number** 249878

**Principal address**

Jubilee House, Westgate, Southwell, Nottinghamshire, NG25 0JH

**Trustees**

S Baird-Smith, Diocesan President, from 1/1/2022

J Hodson, Vice-President Newark & Nottingham A/D, from 1/1/2022

H Catchpole

M Pates

S Bancroft

I Garratt

E Toplis

S Massey

The Board of Trustees meets three times a year. The Members of the Board of Trustees are: The Diocesan President, the two Archdeaconry Vice-Presidents, the Unit Co-ordinators, and the Deanery Leaders.

**Independent examiner**

John O'Brien, employee of Community Accounting Plus, Units 1 & 2, North West, 41 Talbot Street, Nottingham, NG1 5GL

**Governance and management**

The charity is operated under the rules of the Royal Charter of the Mothers Union charity number 240531, dated 15 June 1926 and last amended 4 July 2006.

Overall management of the charity is the responsibility of the trustees who are elected and co-opted under the terms of the constitution. Deanery Leaders are elected by branch leaders, Diocesan President and Unit Co-ordinators by members of Diocesan Council, and each Vice President by Members of Council in their Archdeaconry. Day to day project activity is managed and carried out by volunteers.

**Public benefit statement**

The Trustees confirm that they have complied with the duty in section 17 of the Charities Act 2006 to have due regard to the Charity Commission's general guidance on public benefit, 'Charities and Public Benefit'.

**State of the Diocese**

The membership of Mothers' Union Diocese of Southwell and Nottingham is 525 plus 33 honorary life members for the year ended 31 December 2021 with 27 active branches.

# The Mothers' Union Southwell & Nottingham Diocese

## Objectives and Activities

**AIM:** A worldwide society whose Aim is the advancement of the Christian religion in the sphere of marriage and family life.

## FIVE OBJECTIVES

- TO PROMOTE and support married life.
- TO ENCOURAGE parents to bring up their children in the faith and life of the Church.
- TO MAINTAIN a worldwide fellowship of Christians, united in prayer, worship and service.
- TO PROMOTE conditions in society favourable to stable family life and the protection of children.
- TO HELP those whose family life has met with adversity.

The membership of Mothers' Union Diocese of Southwell and Nottingham is 477 plus 33 honorary life members for the year ended 31 December 2022 with 24 active branches.

## Summary of the main achievements during the period:

### TO PROMOTE and support married life.



Several members are involved in Marriage Preparation and Marriage Enrichment courses in co-operation with their incumbents. Members meet regularly in branches, deaneries and archdeaconries.

Meetings provide for social and pastoral needs of members, often including lunch or afternoon tea. Speakers are invited to speak on a range of subjects of general interest and to raise awareness of issues and current and future projects. Diocesan Speakers' topics include this year's theme, Transformation Now.

A team of volunteer's co-ordinate hospital visits within the diocese. Services are held in local Care Homes.

## The Mothers' Union Southwell & Nottingham Diocese

The Mothers' Union diocesan website (set up in 2011) has kept members informed of local MU issues and has links to the Diocesan website. It also has links to the central Mothers' Union website. This enables members to access worldwide news and information about the organisation.

All members receive a triannual newsletter 'Link up' to keep members informed of Mothers' Union projects and news from around the Diocese.

We also have a Linkup web page with all our latest news, events and uploaded reports and articles <https://mulinkupsouthwellandnottingham.wordpress.com/>



A screenshot of the website homepage. At the top is a blue navigation bar with links: Home, Link UP, Archdeaconry Days and other Downloads, About Us, What We Do, Diary, Membership, Prayer, Branches. Below this is a secondary navigation bar with links: OVERSEAS NEWS, News, Contact, Privacy Policy, Terms of Use. The main content area has a green header with the word "Home". In the center is a large box containing the Mothers' Union logo and the text "Diocese of Southwell &amp; Nottingham". Below this is a button labeled "Southwell &amp; Nottingham Mothers' Union". To the left is a sidebar with "Recent Posts" (listing Branch Events, Presidents Letter, Congratulations, Archdeaconry Days) and "Recent Comments". To the right is another sidebar with "News by Category" (General (4)), "Useful Links" (Church of England, Mothers' Union Mothers' Union main website, Province of York Mothers' Union province of York page, Southwell Diocese Website for Southwell diocese, The Seeds we Sow Link to 2013 Resources), and "Meta" (Log in). At the bottom of the main content area is a "Welcome" section with a paragraph of text: "The Mothers' Union is a Christian organisation within the Church of England which works to support and encourage marriage and stable family life. In November 2011, there were about 4 million members in".

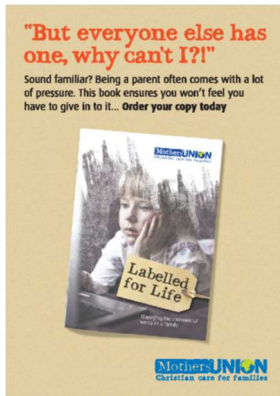
**To ENCOURAGE parents to bring up their children in the faith and life of the Church**



Our trained Parenting facilitators continue to offer to facilitate parenting groups.

Many members are involved in Messy Church, Sunday Schools and Toddler groups in their parish churches. Volunteers at Time Travelling! (a Diocesan project for school-age children run in the Cathedral and in several parish churches) include a significant number of MU members.

## The Mothers' Union Southwell & Nottingham Diocese



The Hand in Hand resource has continued to be promoted throughout the diocese. It is an ongoing resource to help parents share their faith in the home. Labelled for Life is a resource designed to give parents, carers and teachers the confidence to handle the commercial and sexualised influences that children might face.

Members receive the MSH Connected Magazine twice a year.

Incumbents have been signposted to MU resources for Mothering Sunday & Father's Day.

We are partners with a charity called Bags of Blessings who distribute donated gifts to deprived young people in the Nottingham area.



### **TO MAINTAIN a worldwide fellowship of Christians, united in prayer, worship and service.**

The Indoor Members Prayer Circle keeps in regular contact with elderly members who are no longer able to attend meetings.

Many fund-raising events have taken place to support the Relief Fund, Literacy Projects and CCMP (Church and Community Mobilisation Process). 'Make a Mother's Day' campaign sells ethical gifts for Mothering Sunday.

We have 5 allocated overseas link Dioceses and we are building up these relationships to support their members in prayer and fellowship. We also maintain links with the Diocese of Matana in Burundi and Natal in South Africa.

MU Publications have been sold throughout the diocese to support our projects and also provide resources for use in branch meetings as well as greeting cards and gifts.



### **TO PROMOTE conditions in society favourable to stable family life and the protection of children.**

The diocese has embraced the national Bye, Buy Childhood campaign which seeks to protect children from excessive and inappropriate marketing. MU believes children should be valued as children and not targeted as adult consumers. The campaign challenges consumerism, seeks to empower parents in making positive choices in how they handle their finances and to challenge retailers, advertisers and the Government.



The Mothers' Union is working in partnership and promoting a new website Parentport which gives parents and carers information on what they can do if they have seen or heard something in the media that is inappropriate for their children.

The campaign 16 days of Activism against Gender based violence was once again well supported.

# The Mothers' Union Southwell & Nottingham Diocese

**TO HELP those whose family life has met with adversity.**



We provide caravan holidays for families who have difficulty in coping and cannot afford a holiday. The 'Away from it All' holidays are proving extremely beneficial to families & individuals who have not had any kind of break in the last three years, often due to difficult circumstances beyond their control. This year our AFIA team arranged for 10 families which included 52 individuals for the

Spring Bank Holiday week at Mablethorpe. This included 10 caravans. We were able to give the families who had caravan holidays a £50 co-op voucher for their holiday plus a £50 Christmas Hamper. This generated some very warm expressions of appreciation.

We run a Contact Centre in Retford where children can meet their non-custodial parent in a safe environment.

We support Police Aid Convoys. We provide toiletries for homeless people and women's refuges.

Many members use their knitting skills to make premature baby clothes, trauma teddies and vests for African babies. We continue to make 'Prayer Shawls' to be given to those who are sick to bring assurance of Prayer and God's comfort.

## Policy on reserves:

### The charity's policy on reserves

The charity aims to keep at least enough in the unrestricted funds to cover 3 month's ordinary expenditure.

The main risk to the charity would be a severe drop in membership and/ or fundraising. We try to manage our costs effectively and encourage new members to join e.g. the increase in deanery and diocesan member numbers.

Signed on behalf of the charity's trustees:

Signed \_\_\_\_\_ Date 30.10.2023  
S Baird-Smith, Trustee

Signed \_\_\_\_\_ Date 30.10.2023  
E Toplis, Trustee

**Independent examiner's report to the trustees of  
The Mothers' Union Southwell & Nottingham Diocese  
for the year ended 31 December 2022**

I report to the trustees on my examination of the accounts of The Mothers' Union Southwell & Nottingham Diocese (the charity) for the year ended 31 December 2022.

**Responsibilities and basis of report**

As the trustees of the charity you are responsible for the preparation of the accounts in accordance with the requirements of the Charities Act 2011 ('the Act').


I report in respect of my examination of the charity's accounts carried out under section 145 of the 2011 Act and in carrying out my examination I have followed all the applicable Directions given by the Charity Commission under section 145(5)(b) of the Act.

**Independent examiner's statement**

I have completed my examination. I confirm that no matters have come to my attention in connection with the examination giving me cause to believe that in any material respect:

1. accounting records were not kept in respect of the charity as required by section 130 of the Act; or
2. the accounts do not accord with those records.

I have no concerns and have come across no other matters in connection with the examination to which attention should be drawn in this report in order to enable a proper understanding of the accounts to be reached.

Signed  Date 30.10.2023  
John O'Brien MSc, FCCA, FCIE  
Employee of Community Accounting Plus

**The Mothers' Union Southwell & Nottingham Diocese  
Receipts & payments account  
for the year ended 31 December 2022**

2021 Total Funds £		Note	Unrestricted Funds £	Restricted Funds £	2022 Total Funds £
	<b>Receipts</b>				
13086	Subscriptions & donations	2	312	13054	13366
11240	Diocesan funds		8494	6	8500
16566	Charitable funds		12	17521	17533
3170	Literature sales		3703	-	3703
53	Deaneries & branches	3	-	4748	4748
12	Bank interest		299	-	299
633	Sundry receipts	4	117	-	117
44760	<b>Total receipts</b>		<b>12937</b>	<b>35329</b>	<b>48266</b>
	<b>Payments</b>				
15356	Charitable funds		318	13923	14241
669	Diocesan funds		569	-	569
12334	Management & administration	5	9722	-	9722
1670	General expenses	6	1458	-	1458
2105	Literature		3335	-	3335
16	Link Up & marketing		1457	-	1457
13846	Mary Sumner House		246	11387	11633
4235	Deaneries & branches	3	-	5999	5999
50231	<b>Total payments</b>		<b>17105</b>	<b>31309</b>	<b>48414</b>
(5471)	<b>Net receipts/(payments)</b>		(4168)	4020	(148)
64329	Cash funds at start of this period		13918	44940	58858
-	Transfers between funds	9	2034	(2034)	-
58858	<b>Cash funds at end of this period</b>		<b>11784</b>	<b>46926</b>	<b>58710</b>

**The Mothers' Union Southwell & Nottingham Diocese  
Statement of assets and liabilities  
at 31 December 2022**

2021		2022
£		£
	<b>Cash assets</b>	
20992	Nat West current account	21796
22760	CCLA deposit account	23059
15106	Cash & bank balances for deaneries & branches	13855
<u>58858</u>		<u>58710</u>
	<b>Other monetary assets</b>	
731	Stock (books & cards etc.)	579
999	Prepayments	720
<u>1730</u>		<u>1299</u>
	<b>Liabilities</b>	
	Creditors:	
(720)	Independent examination	(756)
(403)	Management & admin	-
(5084)	Advance receipts - 2021 subscriptions	-
<u>(6207)</u>		<u>(756)</u>

These financial statements are accepted on behalf of the charity by:

Signed \_\_\_\_\_ Dated 30.10.2023  
E Toplis, Trustee

**The Mothers' Union Southwell & Nottingham Diocese**  
**Notes to the accounts**  
**for the year ended 31 December 2022**

**1. Receipts & payments accounts**

Receipts and payments accounts contain a summary of money received and money spent during the period and a list of assets and liabilities at the end of the period. Usually, cash received and cash spent will include transactions through bank accounts and cash in hand.

**2. Subscriptions & donations**

These comprise numerous donations and subscriptions from members, collected centrally or through the branches and deaneries.

**3. Deaneries & branches**

	Gross £	Transfers to Centre £	Net £
Receipts	36377	31629	4748
Payments	<u>(37628)</u>	<u>(31629)</u>	<u>(5999)</u>
	<u><b>(1251)</b></u>	<u><b>-</b></u>	<u><b>(1251)</b></u>

**4. Sundry receipts**

	£
Archdeaconry days receipts	<u>117</u>
	<u><b>117</b></u>

**5. Management & administration**

	£
Accountant payments	1500
Secretary payments	5715
Jubilee House rent	651
Independent examination fee	720
PPS & Telephone	406
Printing & Stationary	192
Payroll charges	187
Trustees expenses - General	44
Trustees expenses - Travel	206
Member expenses - Travel	87
Visitors expenses - Travel	<u>14</u>
	<u><b>9722</b></u>

## The Mothers' Union Southwell & Nottingham Diocese

### 6. General expenses

	£
General meeting expenses	30
Diocesan meeting payments	79
Archdeaconry days payments	40
Conference expenses	1065
Badge payments	148
Sundry payments	96
	<u>1458</u>

### 7. Prepayments

	£
AFIA caravan deposits	<u>720</u>
	<u>720</u>

### 8. Trustees' and officials' remuneration

During the year trustees and officials received the following sums:

- J Hempstead, £1,500, as Diocesan Accountant;
- K McNish, £5,720 as Diocesan Secretary;
- G Noon, £1,500 for Treasurer's services;
- 4 Trustees also received a total of £297 for travel and other expenses.

## The Mothers' Union Southwell & Nottingham Diocese

### 9. Funds analysis

	Opening balance £	Receipts (Payments) £		Transfers £	Closing balance £
<b>Restricted funds</b>					
Charitable funds:					
Action and Outreach	150	-	-	-	150
Access & Contact Centre	3020	655	(1107)	(1000)	1568
AFIA	21565	13637	(9738)	(1000)	24464
Count Your Blessings	-	3079	(3079)	-	-
Prison Work	196	-	-	-	196
Time Travelling	-	150	-	-	150
Parenting fund	2210	-	-	-	2210
Subs & donations:					
MSH Fabric	-	5	(5)	-	-
Overseas	350	336	(477)	-	209
Literacy	-	445	(350)	-	95
B+IDF	-	14	(14)	-	-
MSH Subs	80	11838	(10540)	-	1378
MSH appeal	-	25	-	-	25
Diocesan Projects	1951	-	-	-	1951
Big Summer Appeal	-	397	-	-	397
Discretionary fund	312	-	-	(34)	278
Other:					
Deaneries & Branches	15106	4748	(5999)	-	13855
	<b>44940</b>	<b>35329</b>	<b>(31309)</b>	<b>(2034)</b>	<b>46926</b>

The transfers to the unrestricted fund from the Access & Contact Centre, AFIA and the discretionary fund are to reflect the costs of managing these areas of work.

#### Description of funds

*Charitable funds are run by the Diocese:*

Action & Outreach – Funds to support the charity.

Access & contact centre - Supports the work of the contact centre. Where the separated parents meet with their children.

AFIA (Away from it all) – Supports families that are in need of a holiday and haven't been on a holiday in 3 years.

Count your blessings – Each year members fundraise and share the funds between the chosen causes for the year.

Prison work – To support children in a crèche when spouse has visited a prison.

Time Travelling – This project is led by Southwell Minster, to support children visiting and learning about the Minister.

Parent fund – Funds held are to run parenting courses.

## The Mothers' Union Southwell & Nottingham Diocese

*Deaneries and branches are funds held in the individual Deaneries and branches:*

Diocesan Projects – Funds available to be spent by the Diocese.

Discretionary fund – Funds to support a member in need.

All the other subs and donation funds are to be passed onto the national headquarters of Mothers Union.

*Other:*

Balances held by the Deaneries and branches.

### 10. Glossary of terms

**Restricted funds:** These are funds given to the charity, subject to specific restrictions set by the donor, but still within the general objects of the charity.

**Prepayments:** These are services that the charity has paid for in advance, but not used during the accounting period.

**Creditors:** These are amounts owed by the charity, but not paid during the accounting period.

**Advance receipts:** These are amounts received by the charity in the accounting period, for use in a future period.

**MOTHERS' UNION SOUTHWELL & NOTTINGHAM DIOCESE**

England & Wales - Charity number 249878

---

# Accounts

---

**The Mothers' Union**  
**Southwell & Nottingham Diocese**  
(Registered charity, number 249878)  
**Annual Report & Financial Statements**  
**for the year ended 31 December 2021**



<b>Page</b>	<b>Contents</b>
2-6	Trustees' annual report
7	Independent examiner's report
8	Receipts & payments account
9	Statement of assets & liabilities
10-12	Notes to the accounts

**The Mothers' Union Southwell & Nottingham Diocese  
Trustees' annual report  
for the year ended 31 December 2021**

**Full name** The Mothers' Union Southwell & Nottingham Diocese

**Registered charity number** 249878

**Principal address**

Jubilee House, Westgate, Southwell, Nottinghamshire, NG25 0JH

**Trustees**

S Baird-Smith, Diocesan President, from 1/1/2022

P Brewin, Diocesan President, until 31/12/2021 (no longer a trustee)

J Hodson, Vice-President Newark & Nottingham A/D, from 1/1/2022

D Mellors, Vice-President Newark A/D, until 31/12/2021 (no longer a trustee)

H Catchpole, Vice-President Nottingham A/D, until 31/12/2021

V Mellors, until 31/12/2021 (no longer a trustee)

S Bancroft

M Pates

E Toplis

I Garratt

S Massey

S Brotherhood, deceased Feb 2021

The Board of Trustees meets three times a year. The Members of the Board of Trustees are: The Diocesan President, the two Archdeaconry Vice-Presidents, the Unit Co-ordinators, and the Deanery Leaders.

**Independent examiner**

John O'Brien, employee of Community Accounting Plus, Units 1 & 2, North West, 41 Talbot Street, Nottingham, NG1 5GL

**Governance and management**

The charity is operated under the rules of the Royal Charter of the Mothers Union charity number 240531, dated 15 June 1926 and last amended 4 July 2006.

Overall management of the charity is the responsibility of the trustees who are elected and co-opted under the terms of the constitution. Deanery Leaders are elected by branch leaders, Diocesan President and Unit Co-ordinators by members of Diocesan Council, and each Vice President by Members of Council in their Archdeaconry. Day to day project activity is managed and carried out by volunteers.

**Public benefit statement**

The Trustees confirm that they have complied with the duty in section 17 of the Charities Act 2006 to have due regard to the Charity Commission's general guidance on public benefit, 'Charities and Public Benefit'.

**State of the Diocese**

The membership of Mothers' Union Diocese of Southwell and Nottingham is 525 plus 33 honorary life members for the year ended 31 December 2021 with 27 active branches.

# The Mothers' Union Southwell & Nottingham Diocese

## Objectives and Activities

The Mothers' Union is a worldwide society whose aim is the advancement of the Christian religion in the sphere of marriage and family life. There are 5 objectives:

### 1) TO PROMOTE and support married life



Several members are involved in Marriage Preparation and Marriage Enrichment courses in co-operation with their incumbents. Members meet regularly in branches, deaneries and archdeaconries. Meetings provide for social and pastoral needs of members, often including lunch or afternoon tea. Speakers are invited to speak on a range of subjects of general interest and to raise awareness of issues and

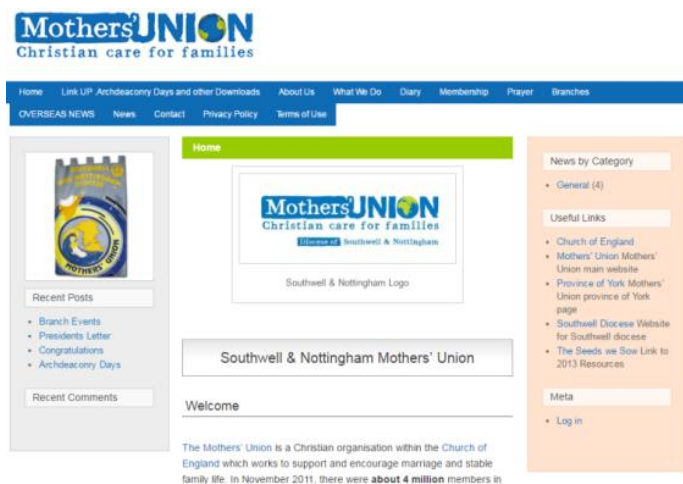
current and future projects. Diocesan Speakers' topics include this year's theme, Rebuilding Hope and Confidence.

A team of volunteer's co-ordinate hospital visits within the diocese. Services are held in local Care Homes.

The Mothers' Union diocesan website (set up in 2011) has kept members informed of local MU issues and has links to the Diocesan website. It also has links to the central Mothers' Union website. This enables members to access worldwide news and information about the organisation.

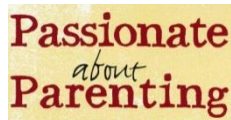


All members receive a triannual newsletter 'Link up' to keep members informed of Mothers' Union projects and news from around the Diocese. We also have a Linkup web page with all our latest news, events and uploaded reports and articles <https://mulinkupsouthwellandnottingham.wordpress.com/>



## The Mothers' Union Southwell & Nottingham Diocese

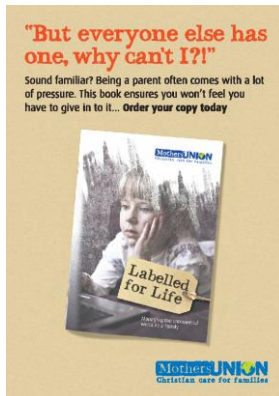
### 2) To ENCOURAGE parents to bring up their children in the faith and life of the Church



Our trained Parenting facilitators continue to offer to facilitate parenting groups. Shorter half day workshops have also been well received.

Many members are involved in Messy Church, Sunday Schools and Toddler groups in their parish churches. Volunteers at Time Travelling! (a Diocesan project for school-age children run in the Cathedral and in several parish churches) include a significant number of MU members.

The Hand in Hand resource has continued to be promoted throughout the diocese. It is an ongoing resource to help parents share their faith in the home. Labelled for Life is a resource designed to give parents, carers and teachers the confidence to handle the commercial and sexualised influences that children might face.



Members receive the MSH Connected Magazine twice a year.

Incumbents have been signposted to MU resources for Mothering Sunday & Father's Day.

### 3) TO MAINTAIN a worldwide fellowship of Christians, united in prayer, worship and service

The Indoor Members Prayer Circle keeps in regular contact with elderly members who are no longer able to attend meetings.

Many fund-raising events have taken place to support the Relief Fund, Literacy Projects and CCMP (Church and Community Mobilisation Process). 'Make a Mother's Day' campaign sells ethical gifts for Mothering Sunday.

We have 5 allocated overseas link Dioceses and we are building up these relationships to support their members in prayer and fellowship. We also maintain links with the Diocese of Matana in Burundi and Natal in South Africa.

MU Publications have been sold throughout the diocese to support our projects and also provide resources for use in branch meetings as well as greeting cards and gifts.



## The Mothers' Union Southwell & Nottingham Diocese

### 4) To PROMOTE conditions in society favourable to stable family life and the protection of children

The diocese has embraced the national Bye, Buy Childhood campaign which seeks to protect children from excessive and inappropriate marketing. MU believes children should be valued as children and not targeted as adult consumers. The campaign challenges consumerism, seeks to empower parents in making positive choices in how they handle their finances and to challenge retailers, advertisers and the Government.



The Mothers' Union is working in partnership and promoting a new website Parentport which gives parents and carers information on what they can do if they have seen or heard something in the media that is inappropriate for their children. The campaign 16 days of Activism against Gender based violence was once again well supported.

### 5) TO HELP those whose family life has met with adversity



We provide caravan holidays for families who have difficulty in coping and cannot afford a holiday. The 'Away from it All' holidays are proving extremely beneficial to families and individuals who have not had any kind of break in the last three years, often due to difficult circumstances beyond their control. This year our AFIA team

arranged for 29 families which included 122 individuals for the Spring Bank Holiday at Mablethorpe. This included 27 caravans (15 from 2020 and 12 from 2021) and 3 dinner, bed and breakfast holidays for older ladies who had never had a holiday. We were able to give the families who had caravan holidays a £50 co-op voucher for their holiday plus a £50 Christmas Hamper. This generated some very warm expressions of appreciation.

We run a Contact Centre in Retford where children can meet their non-custodial parent in a safe environment.

We support National Police Aid Charity. We provide toiletries for homeless people and women's refuges. Many members use their knitting skills to make premature baby clothes, trauma teddies and vests for African babies. We continue to make 'Prayer Shawls' to be given to those who are sick to bring assurance of Prayer and God's comfort.

### COVID-19

As the restrictions were lifting, more meetings were able to take place towards the end of 2021.

## **The Mothers' Union Southwell & Nottingham Diocese**

### **The charity's policy on reserves**

The charity aims to keep at least enough in the unrestricted funds to cover 3 months' ordinary expenditure.

The main risk to the charity would be a severe drop in membership and/ or fundraising. We try to manage our costs effectively and encourage new members to join e.g. the increase in deanery and diocesan member numbers.

Signed on behalf of the charity's trustees:

Signed \_\_\_\_\_ Date \_\_\_\_\_  
S Baird-Smith, Trustee

Signed \_\_\_\_\_ Date \_\_\_\_\_  
E Toplis, Trustee

**Independent examiner's report to the trustees of  
The Mothers' Union Southwell & Nottingham Diocese  
for the year ended 31 December 2021**

I report to the trustees on my examination of the accounts of The Mothers' Union Southwell & Nottingham Diocese (the charity) for the year ended 31 December 2021.

**Responsibilities and basis of report**

As the trustees of the charity you are responsible for the preparation of the accounts in accordance with the requirements of the Charities Act 2011 ('the Act').

I report in respect of my examination of the charity's accounts carried out under section 145 of the 2011 Act and in carrying out my examination I have followed all the applicable Directions given by the Charity Commission under section 145(5)(b) of the Act.

**Independent examiner's statement**

I have completed my examination. I confirm that no matters have come to my attention in connection with the examination giving me cause to believe that in any material respect:

1. accounting records were not kept in respect of the charity as required by section 130 of the Act; or
2. the accounts do not accord with those records.

I have no concerns and have come across no other matters in connection with the examination to which attention should be drawn in this report in order to enable a proper understanding of the accounts to be reached.

Signed \_\_\_\_\_ Date \_\_\_\_\_  
John O'Brien MSc, FCCA, FCIE  
Employee of Community Accounting Plus

**The Mothers' Union Southwell & Nottingham Diocese  
Receipts & payments account  
for the year ended 31 December 2021**

2020 Total Funds £		Note	Unrestricted Funds £	Restricted Funds £	2021 Total Funds £
<b>Receipts</b>					
15528	Subscriptions & donations	2	-	13086	13086
10431	Diocesan funds		11114	126	11240
18386	Charitable funds		-	16566	16566
3177	Literature sales		3170	-	3170
3874	Deaneries & branches	3	-	53	53
96	Bank interest		12	-	12
754	Sundry receipts	4	633	-	633
52246	<b>Total receipts</b>		<b>14929</b>	<b>29831</b>	<b>44760</b>
<b>Payments</b>					
13540	Charitable funds		-	15356	15356
622	Diocesan funds		669	-	669
12534	Management & administration	5	12334	-	12334
108	General expenses	6	1670	-	1670
2088	Literature		2105	-	2105
-	Link Up & marketing		16	-	16
15361	Mary Sumner House		-	13846	13846
6569	Deaneries & branches	3	-	4235	4235
50822	<b>Total payments</b>		<b>16794</b>	<b>33437</b>	<b>50231</b>
1424	<b>Net receipts/(payments)</b>		(1865)	(3606)	(5471)
62905	Cash funds at start of this period		13783	50546	64329
-	Transfers between funds	9	2000	(2000)	-
64329	<b>Cash funds at end of this period</b>		<b>13918</b>	<b>44940</b>	<b>58858</b>

**The Mothers' Union Southwell & Nottingham Diocese**  
**Statement of assets and liabilities**  
**at 31 December 2021**

2020 £		Note	2021 £
	<b>Cash assets</b>		
22293	Nat West current account		20992
22748	CBF deposit account		22760
19288	Cash & bank balances for deaneries & branches		15106
<u>64329</u>			<u>58858</u>
	 <b>Other monetary assets</b>		
863	Stock (books & cards)		731
8530	Prepayments	7	999
<u>9393</u>			<u>1730</u>
	 <b>Liabilities</b>		
	Creditors:		
(912)	Independent examination		(720)
-	Management & admin		(403)
<u>(7746)</u>	Advance receipts - 2021 subscriptions		<u>(5084)</u>
<u>(8658)</u>			<u>(6207)</u>

These financial statements are accepted on behalf of the charity by:

Signed \_\_\_\_\_ Dated \_\_\_\_\_  
E Toplis, Trustee

**The Mothers' Union Southwell & Nottingham Diocese**  
**Notes to the accounts**  
**for the year ended 31 December 2021**

**1. Receipts & payments accounts**

Receipts and payments accounts contain a summary of money received and money spent during the period and a list of assets and liabilities at the end of the period. Usually, cash received and cash spent will include transactions through bank accounts and cash in hand.

**2. Subscriptions & donations**

These comprise numerous donations and subscriptions from members, collected centrally or through the branches and deaneries.

**3. Deaneries & branches**

	Gross £	Transfers to Centre £	Net £
Receipts	35606	35553	53
Payments	<u>(39788)</u>	<u>(35553)</u>	<u>(4235)</u>
	<b><u>(4182)</u></b>	<b><u>-</u></b>	<b><u>(4182)</u></b>

**4. Sundry receipts**

	£
Archdeaconry days	132
Diocesan members admin	81
Collections	320
Sundry receipts	<u>100</u>
	<b><u>633</u></b>

**5. Management & administration**

	£
Accountant payments	1500
Secretary payments	5715
Treasurer payments	1500
Jubilee House rent	651
Gifts to Leaders	298
Insurance	438
Independent examination fee	912
Stationery & telephone	837
Payroll charges	205
Trustees expenses & travel	<u>278</u>
	<b><u>12334</u></b>

## The Mothers' Union Southwell & Nottingham Diocese

### 6. General expenses

	£
General meeting expenses	180
Archdeaconry days	600
Conference expenses	680
Donations payments	110
Sundry payments	100
	<u>1670</u>

### 7. Prepayments

	£
Insurance	399
AFIA caravan deposits	600
	<u>999</u>

### 8. Trustees' and officials' remuneration

During the year trustees and officials received the following sums:

- J Hempstead, £1,500, as Diocesan Accountant;
- K McNish, £5,715 as Diocesan Secretary;
- G Noon, £1,500 for Treasurer's services;
- 4 Trustees also received a total of £278 for travel and other expenses.

## The Mothers' Union Southwell & Nottingham Diocese

### 9. Funds analysis

	Opening balance £	Receipts (Payments) £		Transfers £	Closing balance £
<b>Restricted funds</b>					
Charitable funds:					
Action and Outreach	150	-	-	-	150
Access & Contact Centre	4768	50	(798)	(1000)	3020
AFIA	20667	12831	(10933)	(1000)	21565
Count Your Blessings	-	3425	(3425)	-	-
Prison Work	196	-	-	-	196
Time Travelling	-	200	(200)	-	-
Parenting fund	2210	-	-	-	2210
Subs & donations:					
Worldwide	-	360	(360)	-	-
MSH Fabric	-	56	(56)	-	-
Overseas	180	813	(643)	-	350
Literacy	-	295	(295)	-	-
B+IDF	-	4	(4)	-	-
MSH Subs	920	11500	(12340)	-	80
Diocesan Projects	1901	50	-	-	1951
Big Summer Appeal	-	148	(148)	-	-
Discretionary fund	266	46	-	-	312
Other:					
Deaneries & Branches	19288	53	(4235)	-	15106
	<b><u>50546</u></b>	<b><u>29831</u></b>	<b><u>(33437)</u></b>	<b><u>(2000)</u></b>	<b><u>44940</u></b>

The transfers to the unrestricted fund from the Access and Contact Centre and the AFIA funds are to reflect the costs of managing these areas of work.

### 10. Glossary of terms

**Restricted funds:** These are funds given to the charity, subject to specific restrictions set by the donor, but still within the general objects of the charity.

**Prepayments:** These are services that the charity has paid for in advance, but not used during the accounting period.

**Creditors:** These are amounts owed by the charity, but not paid during the accounting period.

**Advance receipts:** These are amounts received by the charity in the accounting period, for use in a future period.

**MOTHERS' UNION SOUTHWELL & NOTTINGHAM DIOCESE**

England & Wales - Charity number 249878

---

# Accounts

---

**The Mothers' Union**  
**Southwell & Nottingham Diocese**  
(Registered charity, number 249878)  
**Annual Report & Financial Statements**  
**for the year ended 31 December 2020**



<b>Page</b>	<b>Contents</b>
2-6	Trustees' annual report
7	Independent examiner's report
8	Receipts & payments account
9	Statement of assets & liabilities
10-12	Notes to the accounts

**The Mothers' Union Southwell & Nottingham Diocese  
Trustees' annual report  
for the year ended 31 December 2020**

**Full name** The Mothers' Union Southwell & Nottingham Diocese

**Registered charity number** 249878

**Principal address**

Jubilee House, Westgate, Southwell, Nottinghamshire, NG25 0JH

**Trustees**

P Brewin, Diocesan President

D Mellors, Vice-President Newark A/D

H Catchpole, Vice-President Nottingham A/D

E Toplis

M Pates

V Mellors

S Baird-Smith, from Feb 2020

I Garratt

L Porter, until March 2020

S Bancroft

P Wainwright, until Dec 2020

J Hodson

S Brotherhood, until Feb 2021

S Massey

The Board of Trustees meets three times a year. The Members of the Board of Trustees are: The Diocesan President, the two Archdeaconry Vice-Presidents, the Unit Co-ordinators, and the Deanery Leaders.

**Independent examiner**

John O'Brien, employee of Community Accounting Plus, Units 1 & 2, North West, 41 Talbot Street, Nottingham, NG1 5GL

**Governance and management**

The charity is operated under the rules of the Royal Charter of the Mothers Union charity number 240531, dated 15 June 1926 and last amended 4 July 2006.

Overall management of the charity is the responsibility of the trustees who are elected and co-opted under the terms of the constitution. Deanery Leaders are elected by branch leaders, Diocesan President and Unit Co-ordinators by members of Diocesan Council, and each Vice President by Members of Council in their Archdeaconry. Day to day project activity is managed and carried out by volunteers.

**Public benefit statement**

The Trustees confirm that they have complied with the duty in section 17 of the Charities Act 2006 to have due regard to the Charity Commission's general guidance on public benefit, 'Charities and Public Benefit'.

**State of the Diocese**

The membership of Mothers' Union Diocese of Southwell and Nottingham is 622 plus 44 honorary life members for the year ended 31 December 2020 with 31 active branches and 2 branches in abeyance.

# The Mothers' Union Southwell & Nottingham Diocese

## Objectives and Activities

The Mothers' Union is a worldwide society whose aim is the advancement of the Christian religion in the sphere of marriage and family life. There are 5 objectives:

### 1) TO PROMOTE and support married life



Several members are involved in Marriage Preparation and Marriage Enrichment courses in co-operation with their incumbents. Members meet regularly in branches, deaneries and archdeaconries. Meetings provide for social and pastoral needs of members, often including lunch or afternoon tea. Speakers are invited to speak on a range of subjects of general interest and to raise awareness of issues and

current and future projects. Diocesan Speakers' topics include this year's theme, Building Hope and Confidence.

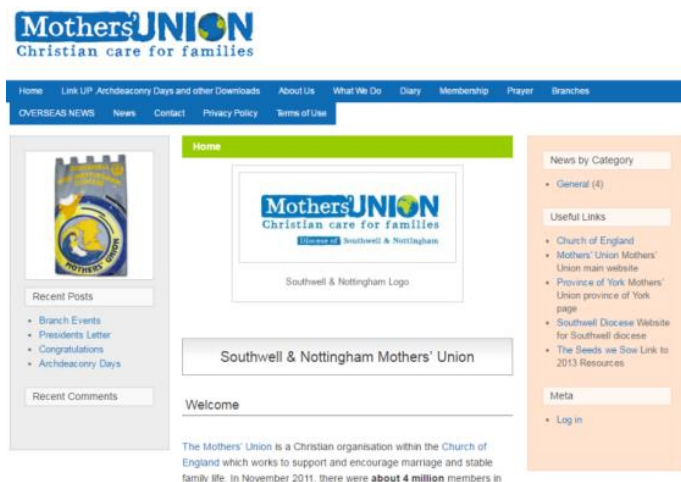
A team of volunteer's co-ordinate hospital visits within the diocese. Services are held in local Care Homes.

The Mothers' Union diocesan website (set up in 2011) has kept members informed of local MU issues and has links to the Diocesan website. It also has links to the central Mothers' Union website. This enables members to access worldwide news and information about the organisation. Many subscribe to the monthly 'e' newsletter from Mary Sumner House.



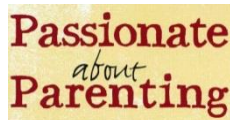
All members receive a triannual newsletter 'Link up' to keep members informed of Mothers' Union projects and news from around the Diocese. We also have a Linkup web page with all our latest news, events and uploaded reports and articles

<https://mulinkupsouthwellandnottingham.wordpress.com/>



## The Mothers' Union Southwell & Nottingham Diocese

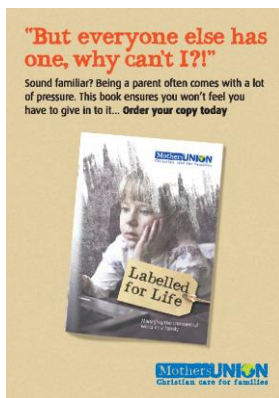
### 2) To ENCOURAGE parents to bring up their children in the faith and life of the Church



Our trained Parenting facilitators continue to offer to facilitate parenting groups. Shorter half day workshops have also been well received.

Many members are involved in Messy Church, Sunday Schools and Toddler groups in their parish churches. Volunteers at Time Travelling! (a Diocesan project for school-age children run in the Cathedral and in several parish churches) include a significant number of MU members. This year Time Travelling will be one of the beneficiaries of the funds we raise.

The Hand in Hand resource has continued to be promoted throughout the diocese. It is an ongoing resource to help parents share their faith in the home. Labelled for Life is a resource designed to give parents, carers and teachers the confidence to handle the commercial and sexualised influences that children might face.



The MU Magazine 'Families First' is available to members direct and is also widely available to purchase in the Sainsbury's chain of supermarkets. It continues to serve as an outreach tool, providing interesting and accessible information on all aspects of family life for parents who are not yet members.



Incumbents have been signposted to MU resources for Mothering Sunday & Father's Day.

### 3) TO MAINTAIN a worldwide fellowship of Christians, united in prayer, worship and service

The Indoor Members Prayer Circle keeps in regular contact with elderly members who are no longer able to attend meetings.

Many fund-raising events have taken place to support the Relief Fund, Literacy Projects and CCMP (Church and Community Mobilisation Process). 'Make a Mother's Day' campaign sells ethical gifts for Mothering Sunday.

We have 5 allocated overseas link Dioceses and we are building up these relationships to support their members in prayer and fellowship. We also maintain links with the Diocese of Matana in Burundi and Natal in South Africa.



## The Mothers' Union Southwell & Nottingham Diocese

MU Publications have been sold throughout the diocese to support our projects and also provide resources for use in branch meetings as well as greeting cards and gifts.

### 4) To PROMOTE conditions in society favourable to stable family life and the protection of children

The diocese has embraced the national Bye, Buy Childhood campaign which seeks to protect children from excessive and inappropriate marketing. MU believes children should be valued as children and not targeted as adult consumers. The campaign challenges consumerism, seeks to empower parents in making positive choices in how they handle their finances and to challenge retailers, advertisers and the Government.



The Mothers' Union is working in partnership and promoting a new website Parentport which gives parents and carers information on what they can do if they have seen or heard something in the media that is inappropriate for their children. The campaign 16 days of Activism against Gender based violence was once again well supported.

### 5) TO HELP those whose family life has met with adversity



We provide caravan holidays for families who have difficulty in coping and cannot afford a holiday. The 'Away from it All' holidays are proving extremely beneficial to families and individuals who have not had any kind of break in the last three years, often due to difficult circumstances beyond their control. We had 15 families who were

due to go away in 2020 to Mablethorpe. These holidays had been paid for but due to the Covid pandemic had to be postponed until Spring Bank Holiday week 2021 once Government restrictions allowed. We sent those families a £50 Co-op Gift Card to buy some treats when they were due to be away and another at Christmas.

We run a Contact Centre in Retford where children can meet their non-custodial parent in a safe environment.

We support National Police Aid Charity. We provide toiletries for homeless people and women's refuges. Many members use their knitting skills to make premature baby clothes, trauma teddies and vests for African babies. We continue to make 'Prayer Shawls' to be given to those who are sick to bring assurance of Prayer and God's comfort.

## The Mothers' Union Southwell & Nottingham Diocese

### COVID-19

Since the onset of COVID 19 in March 2020 face to face branch and officer meetings have been unable to take place. We have been able to continue with officer meetings using zoom, but all fundraising activities have had to be cancelled.

Members have been very busy with various projects. These include:

Hospital – items made

- Scrub bags and scrubs;
- Linus blankets for children's wards;
- Baby blankets;
- Baby jackets;
- Premature baby hats.

Overseas

- Fish and Chip baby vests for Police Aid Convoy;
- Donations for Wullinkamma Arribaja baby clinic & nursery / school.

Gifts of Love

- Bags of toiletries supporting refugees.

On the Street

- Crafting woolly hats for rough sleepers.

### The charity's policy on reserves

The charity aims to keep at least enough in the unrestricted funds to cover 3 months' ordinary expenditure.

The main risk to the charity would be a severe drop in membership and/ or fundraising. We try to manage our costs effectively and encourage new members to join e.g. the increase in deanery and diocesan member numbers.

Signed on behalf of the charity's trustees:

Signed \_\_\_\_\_ Date \_\_\_\_\_  
P Brewin, Trustee

Signed \_\_\_\_\_ Date \_\_\_\_\_  
E Toplis, Trustee

**Independent examiner's report to the trustees of  
The Mothers' Union Southwell & Nottingham Diocese  
for the year ended 31 December 2020**

I report to the trustees on my examination of the accounts of The Mothers' Union Southwell & Nottingham Diocese (the charity) for the year ended 31 December 2020.

**Responsibilities and basis of report**

As the trustees of the charity you are responsible for the preparation of the accounts in accordance with the requirements of the Charities Act 2011 ('the Act').

I report in respect of my examination of the charity's accounts carried out under section 145 of the 2011 Act and in carrying out my examination I have followed all the applicable Directions given by the Charity Commission under section 145(5)(b) of the Act.

**Independent examiner's statement**

I have completed my examination. I confirm that no matters have come to my attention in connection with the examination giving me cause to believe that in any material respect:

1. accounting records were not kept in respect of the charity as required by section 130 of the Act; or
2. the accounts do not accord with those records.

I have no concerns and have come across no other matters in connection with the examination to which attention should be drawn in this report in order to enable a proper understanding of the accounts to be reached.

Signed \_\_\_\_\_ Date \_\_\_\_\_  
John O'Brien MSc, FCCA, FCIE  
Employee of Community Accounting Plus

**The Mothers' Union Southwell & Nottingham Diocese  
Receipts & payments account  
for the year ended 31 December 2020**

2019 Total Funds £		Note	Unrestricted Funds £	Restricted Funds £	2020 Total Funds £
	<b>Receipts</b>				
16232	Subscriptions & donations	2	-	15528	15528
11839	Diocesan funds		10165	266	10431
24821	Charitable funds		-	18386	18386
4840	Literature sales		3177	-	3177
10211	Deaneries & branches	3	-	3874	3874
169	Bank interest		96	-	96
989	Sundry receipts	4	754	-	754
69101	<b>Total receipts</b>		<b>14192</b>	<b>38054</b>	<b>52246</b>
	<b>Payments</b>				
20711	Charitable funds		-	13540	13540
478	Diocesan funds		622	-	622
13936	Management & administration	5	12534	-	12534
1614	General expenses	6	108	-	108
3647	Literature		2088	-	2088
507	Link Up & marketing		-	-	-
16220	Mary Sumner House		-	15361	15361
11231	Deaneries & branches	3	-	6569	6569
68344	<b>Total payments</b>		<b>15352</b>	<b>35470</b>	<b>50822</b>
757	<b>Net receipts/(payments)</b>		(1160)	2584	1424
62148	Cash funds at start of this period		12943	49962	62905
-	Transfers between funds	9	2000	(2000)	-
62905	<b>Cash funds at end of this period</b>		<b>13783</b>	<b>50546</b>	<b>64329</b>

**The Mothers' Union Southwell & Nottingham Diocese**  
**Statement of assets and liabilities**  
**at 31 December 2020**

2019 £		Note	2020 £
	<b>Cash assets</b>		
18271	Nat West current account		22293
22651	CBF deposit account		22748
<u>21983</u>	Cash & bank balances for deaneries & branches		<u>19288</u>
<u>62905</u>			<u><b>64329</b></u>
	 <b>Other monetary assets</b>		
393	Stock (books & cards)		863
<u>1275</u>	Prepayments	7	<u>8530</u>
<u>1668</u>			<u><b>9393</b></u>
	 <b>Liabilities</b>		
	Creditors:		
(912)	Independent examination		(912)
<u>(6361)</u>	Advance receipts - 2021 subscriptions		<u>(7746)</u>
<u>(7273)</u>			<u><b>(8658)</b></u>

These financial statements are accepted on behalf of the charity by:

Signed \_\_\_\_\_ Dated \_\_\_\_\_  
E Toplis, Trustee

**The Mothers' Union Southwell & Nottingham Diocese**  
**Notes to the accounts**  
**for the year ended 31 December 2020**

**1. Receipts & payments accounts**

Receipts and payments accounts contain a summary of money received and money spent during the period and a list of assets and liabilities at the end of the period. Usually, cash received and cash spent will include transactions through bank accounts and cash in hand.

**2. Subscriptions & donations**

These comprise numerous donations and subscriptions from members, collected centrally or through the branches and deaneries.

**3. Deaneries & branches**

	Gross £	Transfers to Centre £	Net £
Receipts	45765	41891	3874
Payments	(48460)	(41891)	(6569)
	<b>(2695)</b>	-	<b>(2695)</b>

**4. Sundry receipts**

	£
Archdeaconry days	465
Diocesan members admin	289
	<b>754</b>

**5. Management & administration**

	£
Accountant payments	1500
Secretary payments	5720
Treasurer payments	1500
Jubilee House rent	651
Gifts to Leaders	157
Insurance	461
Independent examination fee	912
Stationery & telephone	1339
Payroll charges	187
Trustees expenses - travel	107
	<b>12534</b>

## The Mothers' Union Southwell & Nottingham Diocese

### 6. General expenses

	£
Archdeaconry days	<u>108</u>
	<u><b>108</b></u>

### 7. Prepayments

	£
AFIA caravan deposits	<u>8530</u>
	<u><b>8530</b></u>

### 8. Trustees' and officials' remuneration

During the year trustees and officials received the following sums:

- J Hempstead, £1,500, as Diocesan Accountant;
- K McNish, £5,720 as Diocesan Secretary;
- G Noon, £1,500 for Treasurer's services;
- 4 Trustees also received a total of £170 for travel and other expenses;
- 2 other officials also received a total of £62 for travel and other expenses.

## The Mothers' Union Southwell & Nottingham Diocese

### 9. Funds analysis

	Opening balance £	Receipts (Payments) £		Transfers £	Closing balance £
<b>Restricted funds</b>					
Charitable funds:					
Action and Outreach	150	-	-	-	150
Access & Contact Centre	4125	2275	(632)	(1000)	4768
AFIA	18643	12833	(9809)	(1000)	20667
Count Your Blessings	-	2148	(2148)	-	-
Prison Work	196	-	-	-	196
Time Travelling	-	951	(951)	-	-
Parenting fund	2210	-	-	-	2210
Subs & donations:					
Worldwide	-	1427	(1427)	-	-
MSH Appeal	-	1200	(1200)	-	-
MSH Fabric	-	80	(80)	-	-
Overseas	-	843	(663)	-	180
Wheels Appeal	-	120	(120)	-	-
Literacy	-	520	(520)	-	-
B+IDF	-	69	(69)	-	-
MSH Subs	754	11273	(11107)	-	920
Diocesan Projects	1902	-	-	-	1902
Big Summer Appeal	-	25	(25)	-	-
Make a Mother Day	-	150	(150)	-	-
Discretionary fund	-	266	-	-	266
Other:					
Deaneries & Branches	21982	3874	(6569)	-	19287
Families First	-	-	-	-	-
	<b>49962</b>	<b>38054</b>	<b>(35470)</b>	<b>(2000)</b>	<b>50546</b>

The transfers to the unrestricted fund from the Access and Contact Centre and the AFIA funds are to reflect the costs of managing these areas of work.

### 10. Glossary of terms

**Restricted funds:** These are funds given to the charity, subject to specific restrictions set by the donor, but still within the general objects of the charity.

**Prepayments:** These are services that the charity has paid for in advance, but not used during the accounting period.

**Creditors:** These are amounts owed by the charity, but not paid during the accounting period.

**Advance receipts:** These are amounts received by the charity in the accounting period, for use in a future period.