

Shine Trustees' Annual Report and Financial Statements 2024/25

Year ended 31st March 2025



Shine

Spina bifida • Hydrocephalus
Information • Networking • Equality



Contents

Message from our Chair and CEO	3	Thank you	24
Our impact	4	Income and expenditure 2024/25	26
Our achievements in the year	5	Financial review	27
Strategic Goal 1	6	Going concern and statement of public benefit	30
Strategic Goal 2	9	Reference and administration details	31
Strategic Goal 3	12	Our commitment to quality fundraising	33
Strategic Goal 4	16	Structure, Governance and Management	34
Strategic Goal 5	17	Board integrity	34
Strategic Goal 6	18	Statement of Trustees' Responsibilities	36
Strategic Goal 7	19	Independent Auditor's Report	37 onwards

Welcome from the Chair and CEO

We are proud to welcome you to Shine's Annual Report for the year 2024/25.

As the Chair and the CEO, we are delighted to share details of the remarkable strides Shine has made throughout the year to support our members, their families and professionals. From enhancing educational support for children to empowering young people and adults, our initiatives have made a significant impact on the lives of our members across England, Wales and Northern Ireland.

We have reviewed and consolidated initiatives such as the 'Shall Wee Talk' continence support programme, which has been reshaped to better cater to different age groups, and introduced the Shine STAR school awards, aimed at educating nursery and school staff about spina bifida and hydrocephalus. Our staff have also dedicated efforts to improve transition support for young people and worked with the NHS to establish more specialist clinics and access to better services across the nations.

Whilst we have continued to build on our strategic goals, ensuring that our services are tailored to meet the diverse needs of our members, we have also turned our focus to research and innovation, including a transformative new treatment, Non-Invasive Spinal Electrical Stimulation (NISE Stim), which promises a new era in neurorehabilitation for people living with spina bifida. Additionally, our focus on raising awareness and providing support for normal pressure hydrocephalus (NPH) has led to the development of a specialised service in Shine that addresses the unique challenges faced by individuals to get a diagnosis of NPH, the ensuing treatment and on-going support needed when living with the condition.

The success of our campaigns, including the mandatory fortification of flour with folic acid, marks a major milestone in our efforts to prevent neural tube defects. This achievement is a testament to the dedication and perseverance of our team and supporters. In the coming years, it is our intention to

campaign for greater public awareness on how folic acid supplementation can help to reduce the chances of pregnancies being affected by anencephaly, a fatal condition, and spina bifida.

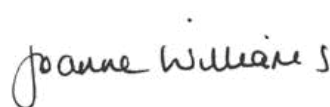
Shine's membership is at its highest ever, with over 14,500 babies, children, young people and adults living with hydrocephalus and/or spina bifida, and related conditions now registered with us.

We cannot thank the teams across Shine enough for the work they do. Ably guided by our senior leadership and management teams, they have once again risen to the challenge of delivering quality advice and support as our membership numbers have continued to grow – from the frontline service teams and our specialist leads to income generation and finance, from our communication and data staff to HR and internal services, EVERYONE has played their part in making 2024/25 a success.

Thanks must also go to the trustees, volunteers and supporters who make significant contributions to Shine, be they overseeing management and leadership of the charity, helping with day-to-day tasks such as admin or data checking, or fundraising and supporting us at the numerous events we are involved in throughout the year.

As we look ahead to the coming years, Shine remains committed to making a positive impact on the lives of those we support.

With our best wishes



Joanne Williams, Chair



Kate Steele, CEO



Our impact



Shine is continually working towards our vision of a society where all those whose lives are affected by spina bifida and/or hydrocephalus, and associated conditions are empowered and enabled through choice and equality of opportunity”.

We welcomed 923 new members to Shine, bringing our overall membership to

Last year, we provided one to one support to



4,650 people

We made a difference in the following areas...

Improving health and self-management

1681



We helped 1681 people to improve their condition knowledge, and 1489 people to manage their condition better.

1459



1459 enjoyed better health and wellbeing thanks to our support.

Reducing isolation and building community

1887



1887 people attended our events and engaged on our peer support forums.

3432



We enabled 3432 people to enjoy more positive relationships in their lives, and 3497 to feel better connected to others.

Enhancing access to essential services...

Our teams supported...

478 people

to have better access to education



1632 people

to access better care and support in their community



133 people

to get better accommodation to suit their condition



365 people

to have improved financial stability

87 people

to get into work, or get the support they needed to stay in work for longer



We also empowered people with the knowledge and confidence to seek support themselves.

As a result of our interventions, 1878 people felt more confident to self-advocate

Our achievements in the year

Consolidation

When we launched the Corporate Plan in 2022, our ambition was to create a structure and investment plan, which would ensure we were able to provide tailored support, advice and guidance for all Shine members and their parents/families/carers, no matter their age, condition(s) or location.

Three years in, and we have achieved this!

For each 'age and stage' in our members' lives, Shine offers:

- **1-2-1 Support and Guidance:** tailored to individual needs, and issues related to spina bifida, hydrocephalus, and associated conditions.
- **Online Events:** regular online sessions for information sharing and community engagement.
- **Face-to-Face Events:** regular in-person gatherings and attending conferences to foster community connections.
- **Regular updates:** on a host of condition-related, and social information such as welfare and benefits, housing, staying active and social opportunities
- **Health Advice:** sessions with our specialist health team to address concerns over physical health and mental well-being.
- **Clinic Attendance:** regular presence at NHS clinics to support our adult members, children and their families, complementing the NHS teams by offering additional support on a range of topics, as well as helping to understand medical terminology and information
- **Educational Support:** guidance on education and expectations of schools, understanding and support for children with spina bifida and hydrocephalus and shaping educational plans
- **Planning for the Future:** helping people consider options for independence, employment, staying and living well, finance and interests
- **Support for Parents/Carers of babies, children and young people:** WhatsApp groups and online sessions for parents to share experiences and receive support.
- **Shine40Plus Group:** a closed Facebook group for peer support and sharing experiences amongst our adult members over 40.
- **Promoting Specialist Information and Resources:** regular reminders and updates on available resources.
- **Awareness Weeks:** Spina Bifida, Hydrocephalus and NPH Awareness Weeks to raise public awareness and share members' stories.
- **Shine services:**



Shine Health Direct: a service providing urology and stoma products to members, delivered in partnership with Bullen Healthcare.



Legal Services: A partnership with leading law firms to offer legal advice and support.



Strategic Goal 1

Enabling Babies and Children (0 to 12 years old)

2,946 members
as of 31st
March 2025

1,428 children and
families who received
one-to-one support



Shine has been a tremendous support for us as parents, especially in the early days when we had no idea what to expect..." Parent of a young Shine member.'

Transition

It is important that our children with hydrocephalus and/or spina bifida, along with their families, have a positive experience of transitioning into new schools and environments, as they are more likely to feel connected, enjoy a sense of belonging and have a positive sense of social and emotional wellbeing, which allows them to learn and thrive.

However, our experience shows that transition plans can be disjointed and, in some cases, non-existent for babies and children living with hydrocephalus and/or spina bifida.

The knock-on effect is a lack of understanding of the conditions, and the potential cognitive impacts,

limited awareness of the needs of the individual child, and

a lack of adjustments and adaptations to ensure the child can get the best out of their new school and the education it provides.

We were, therefore, delighted to appoint Shine's

Education Officer in March 2024 to enhance our educational support.

12-months on, and in addition to more general education advice, Shine can consistently offer:

- Anytime specialist 1-2-1 support for parent/carers
- Information tailored to key transition times in a child's education
- Guidance and help to complete ECHPs (England), Individual Learning Plans (Wales) and Personal Learning Plans (Northern Ireland)
- Education newsletters
- Shine STAR school awards to engage and educate nursery and school staff to have better understanding of the conditions and strategies to enhance the school experience



Thank you to The Mackintosh Foundation and The Stockwell / Cliffe Charitable Trust for their support

“ Shine is an outstanding charity that has provided invaluable support to our school on our journey to achieving the SHINE School Award. Their guidance and assistance for both staff and parents have been truly exceptional, making a significant impact every step of the way...” (SENDCO, from school achieving the STAR Award)



Managing continence

Most people living with spina bifida will have some degree of continence issues with the bowel, bladder, or both. Early understanding of the importance of continence care can be life-changing for those children who have continence issues. Self-

management leads to a growth in self-confidence and longer-term independence.

An extensive review of our 'Shall Wee Talk' continence support programme informed a re-

shape of the service, which is now run as a six-week programme for different age groups, allowing the team to tailor information and language to the children's ages and levels of understanding. Once completed, the children will graduate from the programme but continue to have access to specialist support. Their place remains secure in the group if they are not ready to move on.

“ The difference just one session had on my son's mental state was huge. To know he isn't alone, that there are other boys like him, it was almost as if a visible weight was lifted from his shoulders.”

Thank you to BBC Children in Need and John Horniman's Children's Trust for their support

Spinal Stimulation – a new era of treatment

Shine has continued our ground-breaking research using Non-Invasive Spinal Electrical Stimulation (NISE Stim), which highlights a promising new era in neurorehabilitation. Developed in 2017 by Dr. Gad Alon and Gerti Motavalli, NISE Stim uses electrical impulses sent through electrodes placed over the spinal cord to stimulate sensory roots. This stimulation enhances neural connectivity within the spinal cord, impacting sensory, motor, and autonomic nervous systems.

NISE Stim strengthens neural connections and induces muscle contractions, promoting neuroplasticity. It offers potential improvements in muscle health, metabolic function, bone strength, circulation, and wound healing. Clinical studies since the 1980s have shown its safety, with rare instances of skin irritation under electrode.

The treatment is suitable for children with spina bifida and can begin as early as 8 weeks post-surgery. It is contraindicated for children with implanted electrical devices or uncontrolled epilepsy. The Shine NISE Stim Service, available in five locations across England, Wales, and Northern Ireland, has seen positive outcomes in children and adults, including increased circulation, sensation, and muscle strength.



It is still early days, but this innovative approach marks a significant advancement in neuro rehabilitation, which we hope to see rolled out to benefit more people living with spina bifida across the UK.

We truly believe that a combination of spinal

stimulation therapy and regular physiotherapy has improved our daughter's muscle tone and mobility, allowing her to do most of the things that any child of her age can do. With the help of Shine, we will continue to do spinal stimulation therapy to continue to help our daughter's mobility...

“ Our daughter has benefitted greatly from spinal stimulation therapy. Before we started, she had very limited sensation in the soles of her feet and her feet were in such a dorsi flex position that her toes were almost touching her shins. After a year of spinal stimulation, her sensation has improved dramatically. Whilst her foot positioning isn't 100% correct it now sits in a 90-degree angle, allowing her to crawl, climb and walk with a kaye walker.

Member story

At every spinal stimulation clinic we hold, we witness the real life impact this therapy has on children's comfort, mobility, and independence.

Recently, we saw a young man who had been following a tailored course of spinal stimulation aimed at strengthening the muscles in his trunk.

This approach was chosen to reduce any worsening of his existing scoliosis (curvature of the spine) and to reduce how hard he is having to work in sitting due to weak core and trunk muscles.

At his most recent appointment, we were thrilled to see that his independent sitting balance had improved when not wearing his back brace. Sitting with more stability has led to him feeling more confident when sitting and he is now working with his Occupational Therapist on learning independent dressing skills.

Following review from his medical team, the need

for a back brace may be reduced (currently he wears it 23 hours a day), and with it the need for surgery may be avoided.



We would like to extend our thanks to the following for their support of our spinal stimulation work

- ♥ Milles Charitable Foundation Limited
- ♥ The Casey Trust
- ♥ The Grace Trust
- ♥ The Hamamelis Trust
- ♥ Liam Fairhurst Foundation
- ♥ The Vandervell Foundation

Little Stars



Thank you for supporting our Little Stars:

- ♥ Baron Davenport's Charity
- ♥ The Charles S. French Charitable Trust
- ♥ Eastern Counties Educational Trust Limited
- ♥ Eleanor Rathbone Charitable Trust
- ♥ The Peter Harrison Foundation
- ♥ The Street Foundation

Strategic Goal 2

Empowering Young People (13 to 25 years old)

2,285 young people members

800

young people who have received **one-to-one** support

Similar to initiatives in goal 1 but for different ages, our teams have worked to more directly connect and communicate with our 13 to 17 year old members, and our 18 to 25 year old members,

encouraging them to take greater responsibility in advocating for themselves in accessing the services and support systems they want and need.



I used to think I was weak, that my conditions meant I couldn't do anything. Shine changed that." (Teen member)

Influencing pathways for transition

Improving transition support and access to services has been high on our agenda as experience tells us that there are large gaps in the system when young people reach the age of moving from children to adult health and other services.

The right services and good transition pathways will help young people adapt to the changes and challenges that come with adulthood. Shine has been working with clinics and professionals to find opportunities to improve existing services and identify potential partnerships and projects to create more opportunities to smooth the way for young people to continue receiving the necessary and tailored support and care as they get older.

We have also put a spotlight on transition in education. By combining the expertise, skills and

knowledge of our Youth Voice and Engagement Officer and our Education Officer, we have successfully supported many of our youth members at distinct stages of their education journey. This work is also shaping our future strategy to meet the needs of the young people we work with.



Before joining the teen socials, I never knew anybody with the same conditions as me. I was really worried at first about joining, but I cried with happiness after the first session because I no longer felt alone" (Teen member)

Developing Shine's services for Young People

Shine's Young People have been actively engaged in creating the framework for our young people's support service, which includes peer interaction, support through websites and social media, resources, and a network of partner agencies for signposting. This approach ensures that the work we do is tailored to their needs and preferences, promotes independence, self-advocacy and builds a sense of community.

“ I enjoyed being part of the video about school stresses. It was tough to talk about but it was good to have my voice heard. It was also nice to know I do not face these struggles alone. It was overwhelming to have so much in common with others after feeling alone with these issues for so long. It made me realise I am not the weirdo at school and other people struggle with the same things and it is down to my condition.



Innovative approaches to engagement and involvement

Our young people have been engaged in steering the direction of the services they wish to receive from us.

Drawing on their knowledge, experiences and needs, the groups have actively contributed to the development of co-produced e-newsletters, a toolkit to help with future planning and draft publications, the contents of which is relevant and resonates with their experiences, covering a range of topics including health updates, personal stories and practical advice.

Bringing the groups together not only provides valuable insight and information, but also fosters a sense of community and belonging, which also addresses our strategic goal 4 'a connected community'.

“ It's part of being something bigger... knowing we are not alone...”



Youth Work sessions

Set up to engage, empower and educate, these online and face to face sessions have provided safe spaces for our young people to meet others of the same age share experiences and explore areas of interest or challenge together, often focusing on their health and wellbeing.



It's helped us face challenges that once felt overwhelming..." (Shine teen members' feedback)

Member story – the difference Shine has made

"One of the many stand out moments for us as parents was the response from Shine at the point of diagnosis, when we discovered our baby had spina bifida at the 20-week scan. Within 12 hours of us reaching out we received a response and within 4 day we had a face-to-face meeting with a member of the Shine Team.

We have accessed a range of support over the years ranging from emotional support which has proved to be incredibly beneficial during challenging teenage years, vast input from Shines Specialist Health Team which has helped prepare Owain for independence, understand his disability and the confidence to manage his complex condition plus the importance of taking responsibility for his own health and wellbeing. Opportunities also for social interaction and develop friendships with other young people within the Shine community.

The support that Shine has put in place to Owain, ourselves, and professionals has enabled Owain to get the best out of life. Confidence has grown and he has a new found passion for wheelchair racing

he was recently been crowned Welsh Champion in the under 20 100M and 400 metre Wheelchair Racing. He has had a fantastic season and broken multiple club records at Newport Harrier Athletics in the T54 wheelchair racer category and has travelled across the country putting in some incredible

performances, winning both the Cardiff and Swansea 10K races! He is aiming for the Paralympics in 2028.

Owain has also just obtained his DofE Bronze award and Chief Scouts Platinum award and is due to return to his primary school and talk to pupils about accessing sport with a disability"

Owain's Mum and Dad

We would like to thank the following organisations, who have supported us in our work with our young people:

- ♥ Barnard Kenneth Hufton Charity
- ♥ The Basil Death Trust
- ♥ Sandra Charitable Trust



Strategic Goal 3

Adults of All Ages

9,324 adult members over 25

2,194 people who received one-to-one support

More than half Shine's adult membership has hydrocephalus, or hydrocephalus and spina bifida. In both conditions, understanding physical and/or mental health and the need for earlier intervention can prevent the escalation of issues that quickly become complex and difficult to treat or manage.

“ I can't believe the timing of this call. I was feeling so low. It's been so nice to talk to you, and I had no idea I could get all this support from Shine, thank you so much for calling me today...”

Our additional focus for adults has been on:

A new publication

Based on Shine's '1000 Voices' research, 'Understanding Spina Bifida in Adulthood' gives a wide range of insights and expert information into aspects of health and well-being, to improve approaches for early intervention and prevention of health complications.

'Shine on ...' health series

As part of our focus on improving self-management for adults, Shine introduced and piloted two new online courses for people living with spina bifida and/or hydrocephalus.

'Shine on Pain' and 'Shine on Wellbeing' are designed to run for small groups of members, with sessions taking place each week over several weeks to build knowledge and confidence in self-awareness and strategies for self-management.



“ I would highly recommend this sort of course to anyone in my situation. It was such a relaxed and welcoming atmosphere, and I wish all the best to all the other participants...” (Feedback from group participant)



Adult spina bifida clinics

The UK is still severely lacking in specialist spina bifida clinic provision for adults. This not only impacts access

to the right services at the right time for adults

living with the condition, but limits transition opportunities from child health to adult health services. We see so many fall through these gaps but know that, with the right statutory services in place, preventative medicine and healthcare can play a significant role in keeping our members in good health for longer.

Shine continued to build links with NHS services across England and Wales and had discussions with hospitals and health boards to progress the establishment of clinics across the nations. Progress has been slow, but we are pleased to have had the opportunity to build links and start discussions which we are confident will move forward in the coming 12 months.

Member story – Living with spina bifida

“Living with spina bifida in a two-story house was incredibly difficult. My bedroom and bathroom were upstairs, but my mobility issues made it impossible to access them safely. I slept in the living room and used the kitchen sink to



wash. Every day felt like a struggle, and my home, which should have been a place of comfort, became a source of stress and frustration. That's when Shine stepped in.

From the start, Shine was more than just a support service - they were my advocates. Laura and the team worked tirelessly, making countless calls and sending emails to occupational therapists and housing officers. It wasn't a quick process, but they never gave up.

Thanks to their persistence, I've now moved into a fully accessible home. Everything is designed with my needs in mind - from the layout of the rooms to the front and back gardens. The lift I have in the hall which leads up to the landing is just fantastic! I can hang washing on the line, enjoy the outdoors, and even go to the shops in my power wheelchair, which Shine also helped me secure funding for.

This move has completely transformed my life. I feel independent, safe, and empowered.

I'm so grateful to Laura and everyone at Shine. Honestly, this has changed my life big time. I have a new lease of life!”

Help with housing

A key issue for so many remains finding and keeping suitable and accessible housing.

Whilst this is not unique to Shine, it is a must that we work to support and guide our members on this issue so that they can live independently, if they so wish, and be safe and comfortable in their homes.

As well as up-to-date information and 1-2-1 support, our housing passport was reviewed and updated as a useful guide to finding the right accommodation for them and their families/dependents.

Normal Pressure Hydrocephalus

In the past 2 years, Shine has seen a significant growth in members with Normal Pressure Hydrocephalus (NPH).

Whilst we don't have any evidence to understand this increase in new members, anecdotally, more people are being diagnosed with the condition, and people are coming across Shine as the charity that delivers NPH-support services, via the website and information from NHS hospitals.

Both suggest a growing awareness of the condition, and better understanding of symptoms for referral to specialists for investigation.

To support this work, Shine introduced a new NPH Co-ordinator role in 2024, who has started to develop a specialist service to address the questions that so many ask, which commonly include:

- Understanding NPH and treatment options
- Continence concerns and support
- Cognitive changes and the impact on daily life
- Housing adaptations and home safety
- Support for unpaid carers to access respite and assistance with receiving care assessments/care packages
- Benefits for the person with NPH and their unpaid carer
- Future Planning and Care Needs

Links have been established with some lead neurosurgeons and NPH clinics across the country, to create referral systems, and increase awareness, provide information and direct support to individuals and their families.

Shine's first NPH awareness week took place in May 2024, with the next in May 2025.



What is Normal Pressure Hydrocephalus?

Normal pressure hydrocephalus (NPH) is a condition which mainly affects people over 60 years old.

Cerebrospinal fluid (CSF) is constantly produced and absorbed and flows through chambers within the brain (ventricles) and around the outside of the spinal cord. CSF protects the brain and spine, provides nutrients, and removes toxins. In NPH, the ventricles become enlarged by too much CSF building up, although the pressures inside the head are often found to be normal.

Symptoms of NPH include difficulty walking, cognitive impairment/dementia, and urinary incontinence. The dementia-like symptoms are often confused with Alzheimer's or Parkinson's diseases, leading to NPH being missed/misdiagnosed, but if picked up, NPH is a treatable and potentially reversible condition.

Therefore, our work on raising awareness across the general public and health and care professionals is vital to getting timely diagnosis and treatment, both of which can lead to improved patient outcomes in NPH.

Music legend Billy Joel (left) was diagnosed with NPH in 2025.



“ I live alone with no family or friends. The thought of having a shunt fitted was terrifying...you were so kind and reassuring explaining the procedure to me and the benefit it would bring to me. I cannot thank you enough.”
(Member quote shared with Shine Support and Development Worker).



NORMAL PRESSURE HYDROCEPHALUS

Member story

“SHINE came to my attention when I was initially diagnosed with “Hydrocephalus” in February 2023 in my mid fifties and looking for specialist support.

It seems I have had the condition since birth, and I’m aware hydrocephalus and spina bifida are closely related conditions.

Your colleague Francesca Greaves provided some excellent support to me after my diagnosis as I worked through with relevant clinical specialists including a Neuro surgeon whether I also had normal pressure hydrocephalus (NPH) and therefore needed surgical treatment.

I ended up having a Endoscopic Third Ventriculostomy (ETV) brain surgery in mid November 2024 after Surgeon agreed in September 2024 I most likely had early stage

NPH, to try and manage the symptoms, which went very well without complications and I am currently recovering from that, but benefiting from a reduction in symptoms.

I think its fair to say that the info and support SHINE provided to me helped me to realise I had NPH in combination with Hydrocephalus and work this through with the Neuro Surgeon, so I had the surgery at hopefully an early enough stage for it to make a difference in treating the symptoms”.



706

members with
Normal Pressure Hydrocephalus

301

people with NPH who
received one-to-one support

Strategic Goal 4

A Connected Community

1,887

people engaged with **Shine's social and peer support platforms**



It's helpful because it's a community. So few people live the way that I and other Shine members do. Having a place - a refuge - to speak about experiences or simply be, is comforting. It's also useful for answering questions about spina bifida that I wouldn't have been able to easily obtain otherwise."



Shine's membership continued to grow in 2024/25, and we introduced smarter ways of working to become more innovative and time-efficient to meet demand for our services.

WE

✓ Worked with our members to produce new and updated information and resources

✓ Improved data and development of our database

✓ Engaged people in helping to deliver our awareness weeks

✓ Started to review our website

✓ Consulted with our membership on how we communicate and what they need most from us

✓ Had support from volunteers in admin, fundraising and running groups and events

✓ Introduced regular, tailored and automated information by email

✓ Moved our Together magazine to mostly digital distribution

✓ Successfully delivered our Spina Bifida, Hydrocephalus and Folic Acid Awareness Weeks, and launched a new NPH Awareness Week



✓ Informed our members more often of our events with dates and times well in advance

Strategic Goal 5

Preventing Spina Bifida and Anencephaly

It may appear that Shine's work on primary prevention of spina bifida is at odds with how we value and celebrate the lives of all those living with spina bifida and/or hydrocephalus. However, it is crucial to recognise that spina bifida isn't the only condition prevented by folic acid. Folic acid also prevents the nearly as common, and always fatal condition, anencephaly.

Our goal of recommending folic acid is about making informed choices to increase the chances of a healthy pregnancy and a positive outcome for the baby. Preventing congenital conditions is not about devaluing anyone's existence, it is about enhancing the quality of life for everyone, including future generations.

Mandatory fortification

In November 2024, our campaign for mandatory fortification of flour became law at last!

Our CEO provided a quote for the official government press release:

“After more than 30 years of campaigning, Shine can finally celebrate the introduction of this very important public health initiative. This move will mean that far fewer families will have to undergo the trauma of a potentially fatal or life-affecting diagnosis for an unborn baby. This is a major milestone, and we are so grateful to everyone who has played a part in getting this legislation over the line”.

Shine had the opportunity to share our campaign experiences and lessons learnt on the international stage, participating in online sessions for the International Federation of Spina Bifida and Hydrocephalus.

Supplementation

Our Health team led on Shine's 'Folic for Life' campaign, which raises awareness of the importance and need for women of child-bearing age to taking folic acid supplements to reduce the chances of a pregnancy being affected by a neural tube defect, and that they need to take folic acid supplements for at least 8 weeks before becoming pregnant, and for the first trimester of pregnancy.

The work in 2024/25 focused on building our presence and engagement for the campaign via social media to spread the word as widely as possible. We were extremely grateful for the support we received from Vitabiotics for this work.

We also met with Public Health Wales for guidance on developing a strategy to engage governments and public health agencies across England, Wales and NI in a sustainable campaign about folic acid supplementation.



Folic for Life
Because you never know

Pregnacare
Vitabiotics

Strategic Goal 6

Changing Experiences of Pregnancies Affected by Neural Tube Defects

59 people we supported with Pregnancy advice

“ Shine was there for support and information whenever my husband and I needed it. You helped us through that time of our lives where we felt very lost and had so many fears...”

Pregnancy pathway

Shine's specialist health team take calls each week from parents to be, who have had a diagnosis of an unborn baby with spina bifida, or from individuals and couples wanting to prepare for a next pregnancy.

The team piloted an internal pregnancy care pathway to introduce a consistent, quality-assured pregnancy advice service. Requests for support are responded to within 24 working hours, and importantly we check

that antenatal services have discussed all the options for the pregnancy, including fetal surgery, with parents-to-be.

Part of our commitment to quality assurance for this service has been to meet with the Fetal Surgery Team commissioners and NHS service providers to share parents-to be/parents experiences and feedback of NHS prenatal services and the process for referrals to fetal surgery following diagnosis.

Training and development for professionals

Statistically, few health professionals will come across either spina bifida or hydrocephalus in their career. However, when they do, it is vital that they are aware of the conditions, possible prognosis and outcomes. This includes pre-natal diagnosis.

Shine has continued to promote our free CPD-accredited online antenatal training to healthcare professionals, to develop this awareness, and have provided training directly to nursing and midwifery undergraduates in several universities.

Anencephaly support

Anencephaly is a neural tube defect. It is not particularly well-known, and unlike spina bifida, it is always fatal.

Research suggests that circa 400 pregnancies¹ are affected by anencephaly each year.

Shine has been supporting a growing number of parents, who have lost a baby to anencephaly, for several years. Some losses date back decades, yet the memories and heartache remain with people forever.

In 2024/25, we welcomed 50 new members to our closed anencephaly support group, bringing the membership of bereaved parents and some grandparents of the group to 898.

It is important that we can offer support and information for anyone who needs us. As well as our existing online, closed anencephaly support group, we have opened up the opportunity for those in our anencephaly support group to engage with Shine, in different ways, if they so choose.

1. EUROCAT (2020): 5 per 10,000 = 1 in 2000 affected pregnancies [England & Wales]; ONS: 817,515 conceptions England & Wales in 2020

Strategic Goal 7

A major step forward in the past 12 months has been the increasing involvement and support we have had from, and have provided to, health, social care, education and many other professionals.

Closer working and partnerships aid Shine in quality-assuring the work we do, and the information we provide. It also helps us to reach wider audiences, to raise vital awareness and educate others about the conditions and the impact on people's lives.

Working with Professionals

Support from professionals	Supporting professionals
<p>Shine</p> <ul style="list-style-type: none">• Launched our Health Advisory Panel, a team of experts who advise Shine's Health team.• review and validate our information and resources.• Began working in collaboration with four local authorities to develop a CPD-accredited course for social workers.• Presented at major professional conferences in the UK and Europe.	<p>Shine</p> <ul style="list-style-type: none">• Provided our free professional membership to 1,590 individuals from across Health, Care, Education and other professions.• Gave our professional members access to 5 CPD-accredited specialist courses• Offered research support through study participant and PPI recruitment, letters of support• Shared research findings via our research blog throughout the year.

Society for Research into Hydrocephalus and Spina Bifida (SRHSB) – an overwhelming success for Shine Health!

Welcoming eminent clinicians and scientists from across the world, the Society for Research into Hydrocephalus and Spina Bifida highlights the latest 'knowledge, understanding and research into prevention, treatment and management of hydrocephalus and spina bifida'.

In September 2024, Shine supported the society to deliver its international conference in Manchester.

Shine's Health team had the opportunity to present on a few of the innovative projects they are leading on (ageing with spina bifida; spinal stimulation; continence management; collaborating with professionals) which culminated in the team being collectively awarded the President's Talk Prize for "outstanding talks capturing



the scope of Shine's activities".

This was such an honour for Shine, and well-deserved recognition of the incredible work the team are doing, led by Gill Yaz, Shine's Head of Health.

“ SRHSB is where I've met the most important people in my professional life, had my questions answered with patience and generosity, had my enthusiasm fired, and had more support than I could have ever wished. In turn, I've used this knowledge to inform members, parents, politicians, school staff, colleagues and other professionals, hopefully to make life with spina bifida or hydrocephalus a tiny bit easier. Gill Yaz, Shine's Head of Health

Being granted the opportunity to speak about our work to the Society was, as I said, the highlight of my career. For my team to be awarded the President's Prize was an honour I'm still trying to process. I'm immensely proud of my team, and Shine's wider community, and to have our work acknowledged this way is very, very special. But the partnerships and friendships forged at SRHSB have made it happen, and I'm truly grateful.

Thank you so much."

Shine also had the honour of launching the very first Dr Richard Morgan Prize, set up in memory of the late Dr Richard Morgan, who devoted much of his life to changing lives for people



living spina bifida and hydrocephalus through his holistic approach to better health management.

Hydrocephalus

Often referred to as a hidden disability, most people (professionals; the workplace/employers; the general public) are not familiar with the condition, nor its effects.

A key task for Shine over the past 12 months has been to gain even more insight into the experiences of our members of all ages, living with hydrocephalus, and to use these insights to educate and engage professionals to better understand what they can do to meet the needs, and wants, of those they come into contact with.

Research

Shine has continued to be actively involved in a breadth of research, being undertaken nationally and internationally, which will further improve the lives and experiences of individuals with spina bifida and hydrocephalus, NPH and associated issues.



Here's what we're currently involved in...

Spinal stimulation

ICP changes in eye veins

Global Fortification

Quality of Life Assessment Tool

Improvements in antenatal services

Health inequalities in children with spina bifida

Robotic mammography research

Fetoscopic vs Open Fetal Surgery

Ageing with spina bifida

Cognitive effects of hydrocephalus

Antenatal counselling

Investigating early signs of NPH at memory clinics

Folate Controversy: exploring public understanding of scientific information

Cognitive decline patterns in people with spina bifida

Quality of life for those living with NPH

Pressure Sore Prevention

Campaigns

Once again, Shine joined forces with other national charities and networks to add our members' voices to issues that matter to them most.

These included:

- Promoting the importance of access to NHS screening programmes, and breaking down the barriers that limit access
- Calling for improved continence services
- Promoting the rights of people living with disabilities, and those who support them, through the Disabled Children's Partnership and the Care and Support Alliance
- Challenging welfare reforms through the Disability Benefits Consortium
- Collecting shared experiences and lobbying through the Wales Neurological Alliance and Neurological Alliance England

International work - "Saving Lives! Improving Futures"

As well participation in conferences and webinars, Shine has continued its direct work with the Festus Fajemilo Foundation (FFF) in Nigeria.

Activity included a visit to Nigeria in July 2024, to provide specialist training to Nigerian nurses to teach clean intermittent catheterisation, bowel washouts and good hygiene for improved continence care and management across the country. Even though the service is often delivered with the most basic equipment, it is making a dramatic difference.

Here's how:

- 266 babies, children, young people and adults in Nigeria have been supported by the programme
- 89 nurses have been trained in continence care and management, learning the theory but also developing the practical skills
- 9 hospitals are running regular continence clinics
- FFF runs a regular clinic in Lagos, Nigeria's biggest city.
- An outreach programme to bridge the gap between the families, communities and hospitals is now in place.

We also secured a grant to fund successful shunt, and other surgery, for Nigerian children and young people.

We are extremely proud of our partnership with FFF, and we hope to continue long into the future. There is still much more to do in a country with over 234 million people!

Shine continued its membership of the International Federation for Spina Bifida and Hydrocephalus. Our CEO had the opportunity to participate in member events and online webinars, promoting the importance of folic acid, and sharing lessons learnt from the successful campaign for fortification across the UK.



Global Health
Partnerships
FORMERLY THET



INTERNATIONAL FEDERATION
FOR SPINA BIFIDA
AND HYDROCEPHALUS

What's next?

Shine must continually evolve to meet the changing needs and expectations of its members and stakeholders.

As societal issues, economic conditions, and technological advancements shift, Shine needs to continually adapt our strategies, services, and communication methods to remain relevant and effective. This evolution ensures that Shine can provide the most impactful support to our growing number of members, whether through updated programmes, enhanced resources, or innovative solutions. By staying attuned to the latest trends and feedback from our community, we can foster stronger relationships, increase engagement, and build trust, which are crucial for long-term success and sustainability.

Financial stability is also critical. Diversifying funding sources, optimising operational efficiencies, and leveraging new fundraising techniques are essential to maintaining and growing financial health. As traditional funding streams fluctuate, Shine has started to explore alternative avenues such as digital campaigns, corporate partnerships, and other opportunities. Evolving and growing our income strategies will allow us to secure the necessary funds to expand our reach, innovate our services, and make a greater impact on our community.

Making an IMPACT!

In the coming 12 months, we will continue to deliver our existing core services mentioned in this report.

We will also ramp up our campaigning and influencing to improve the shape of services for people living with spina bifida, hydrocephalus and associated conditions to improve access and support to enable our members to get the right services at the right time.

living with spina bifida, hydrocephalus or associated conditions from across the LGBTQ+ community and minority groups.

Enhancing our offer to members

- Continue to meet growing demand for Shine's services
- Consolidate and tailor services for different ages and conditions across our membership.
- Undertake more research and gain greater insights
- Develop and implement a hydrocephalus-specific strategy
- Increase reach and engagement from individuals



- On-going campaigning on welfare reform and emerging issues

- Open more volunteering opportunities with the launch of a new volunteering strategy

Improving our specialist information and resources

- Launch our new book: 'Understanding Spina Bifida in Adulthood'
- Publish a 'Young Person's Guide' and regular news updates covering all aspects of living with spina bifida/hydrocephalus



- Review and update Shine's website for greater accessibility for all to our expert information
- Digitalise new member packs
- Increase the range of resources available through a variety of mediums
- Introduce an independently assessed quality mark for Shine's health information
- Publish information and advice on emerging issues which may affect our members

Campaigning

- Lobby public health agencies to promote the importance of folic acid supplementation
- Respond to the Government's green paper on welfare reforms
- Contribute to national campaigns to improve services and pathways for people living with hydrocephalus

Working with professionals, representative bodies and statutory services

- Increase Shine presence within NHS services across England and Wales.
- Collaborate with clinics to develop and implement pathways for transition from child to adult services.
- Call for nationally commissioned services and/or improved access to existing services for adults with spina bifida and/or hydrocephalus.

- Launch our new professional engagement strategy
- Grow our professional membership and tailor information, research and resources to specific areas of work
- Work to improve patient access and support to pre-and post-natal surgery services.
- Monitor the implementation of mandatory fortification.
- Raise awareness of the symptoms and routes to diagnosis for normal pressure hydrocephalus.

Research and development

- In addition to continuing to engage with the on-going research projects, we plan to gather data and gain greater insights into
- Shine members' experiences of living with hydrocephalus.
- The impact of welfare reform on people living with disabilities
- Promoting greater awareness of the UK consensus guidelines for the delivery of unexpected news in obstetric ultrasound



International work

- Working with SBH Scotland and SBH Ireland to strengthen opportunities for joint working
- Continuing partnership and links with international organisations
- Develop a framework for other international organisations to use on learning from the continence care programme in Nigeria
- Contribute to international conferences
- Have member representation on the International Federation's Ageing with Spina Bifida adult group.

Thank you

Thank you to everyone who has supported Shine financially again this year. Everyone has a particular reason for choosing to support Shine.

Mr Brian Marsh OBE, Chairman of the Marsh Charitable Trust tells us why the Trust continues to support Shine ...



“ We are pleased to be able to support Shine once again, in a grant-making relationship which has spanned almost 40 years. At the MCT, we value long-term relationships with organisations we support through our grants programme, and we are pleased to be able to support the important work of Shine in this way. We recognise the important support that Shine provide to those who seek their support, and we are pleased to contribute towards the continuation of their work.”



As always, we are extremely grateful to the thousands of individuals, companies, trusts and foundations and others who contribute vital funding which allows us to deliver the breadth of work we do.

Put simply, Shine could not do everything we do without this amazing support from so many!

The list is far too numerous to mention everyone, but we have highlighted just a few...

Corporates and Groups

Integra Neurosciences – Codman

Bullen Healthcare

Davies and Partners

Enable Law

British Homing World

Show of the Year

Vitabiotics Ltd

The Anderson Foundation

Queen's University Belfast

Individuals

Simon Cresswell
(Also Apex Foundation)

Katie and Sarah Philipson
and Terry Donnelly

Adam Smith

Alex Leo

Andy Williams

Bev Geary

Patrick Stokes

Phil Thompson

Ryan Kelly

Tom Stevenson

Joe and Tara Smith

Lucy Burgess

Ryan Donnelly

Stan Brown

The Milton Family

Louise, Georgia and Thea Evans
and Jack Kendall

Jon Clark

Steve Joynes

James Cadle

Gemma and Michael Milner

Heather Hughes

Mark Timms

Thomas McKeown

Daniel Townsend

Rhys Williams

Kerrie Moulton and Adam Williams

Olivia Newton and Lewis Soames

Nathan Adcock

Val Conway

Melissa Young

David Trippett





Trusts and Foundations

Addenbrooke's Charitable Trust

Apax Foundation

Doris Field Charitable Trust

G J W Turner Trust

Hadrian Trust

Homelands Charitable Trust

Marsh Charitable Trust

Medicash Foundation

Michael Cornish Charitable Trust

Oakdale Trust

PF Charitable Trust

Sir Donald and Lady
Edna Wilson Charitable Trust

Sir James Knott Trust

The Basil Brown Charitable Trust

The Belstead Ganzoni Charitable
Settlement

The Chandris Foundation

The Chapple Trust

The Davis-Rubens Charitable Trust

The Douglas Compton James
Charitable Trust

The Enkalon Foundation

The Eric Stanton
(Northampton) Trust

The Eveson Trust

The Fowler, Smith and Jones Trust

The Frazer Trust

The Gale Family Charity Trust

The Garfield Weston Foundation

The Geoffrey Watling Charity

The Gerald Palmer Eling Trust

The Gowling WLG (UK)
Charitable Trust

The Henry Smith Charity

The J Reginald Corah
Foundation Fund

The Jones 1986 Charitable Trust

The Joseph and Annie Cattle Trust

The Karen June Thornton
Charitable Trust

The Lawson Trust

The National Lottery Community
Fund for England

The National Lottery Community

Fund for Northern Ireland

The National Lottery Community
Fund for Wales

The Noble Charitable Trust

The Norman Family Charitable Trust

The Olive and Jesse Palmer Fund

The Paul Bassham Charitable Trust

The Peter Sowerby Foundation

The Pierrepont Trust

The Privy Purse charitable Trust

The Rest-Harrow Trust

The Roger and Douglas Turner
Charitable Trust

The Shanly Foundation

The Simon Gibson Charitable Trust

The Sir James Roll Charitable Trust

The Theodore Maxxy
Charitable Trust

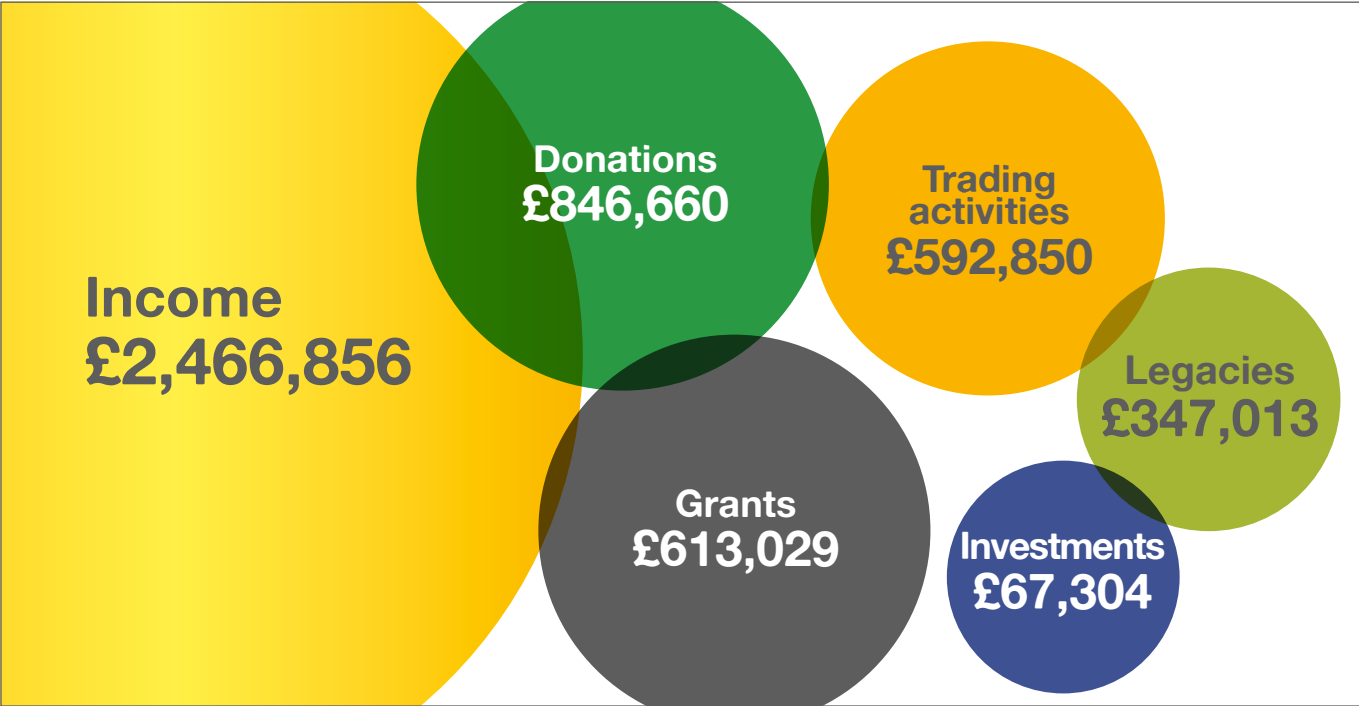
The Valentine Charitable Trust

Wynn Foundation Limited

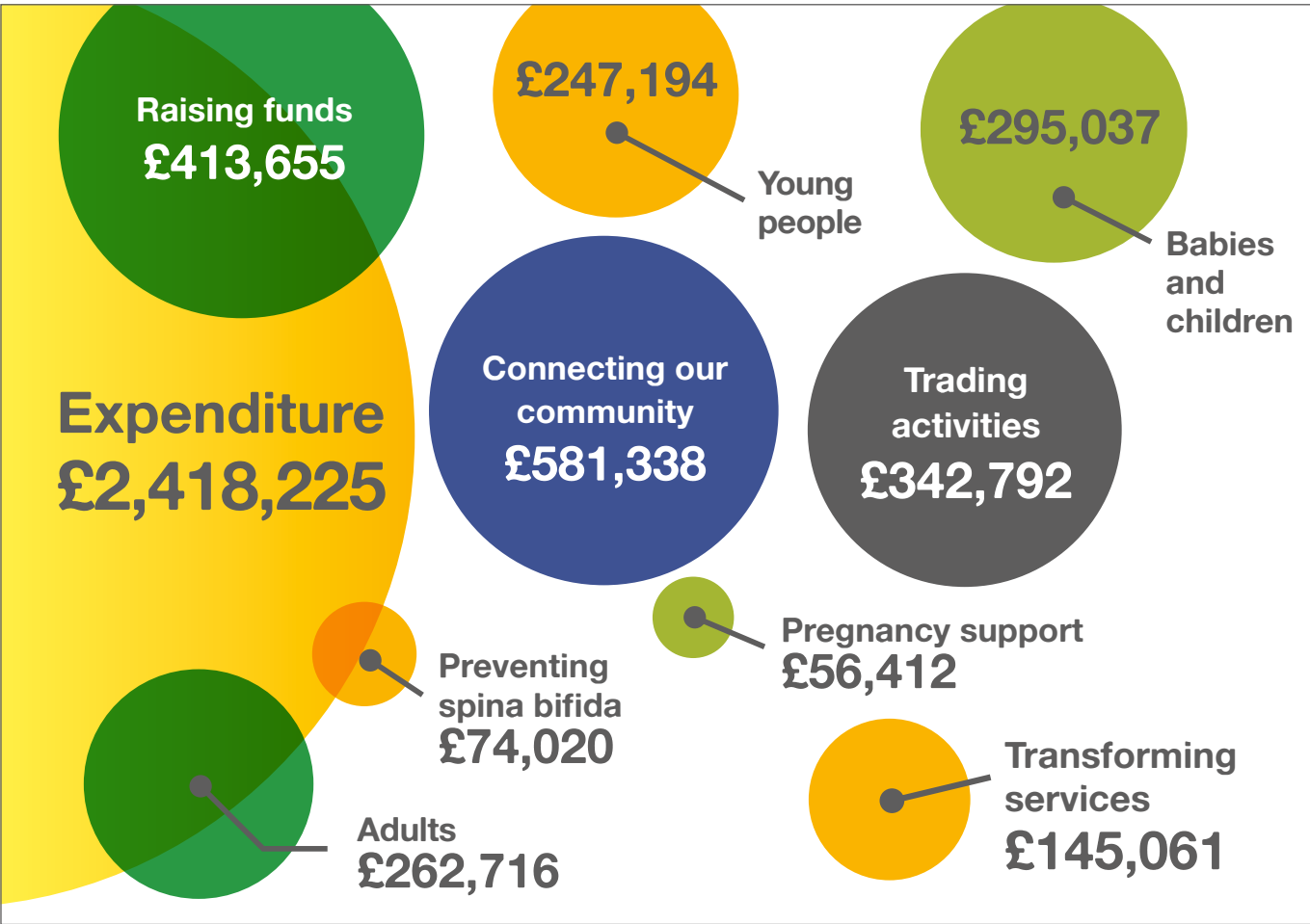
Yorkshire Building Society
Charitable Foundation

Income and expenditure 2024/25

Total Income



Total Expenditure





Financial Review

The table below provides a six-year financial summary, showing that we continue to deliver a robust financial position, as we seek to ensure long-term sustainability.

£000's	2024/25	2023/24	2022/23	2021/22	2020/21	2019/20
Income	£2,467	£2,155	£2,347	£1,894	£2,343	£2,192
Net movement in funds	£10	-£65	£338	£171	£506	£113

Trustees approved the 2024/25 budget with a deficit of £180,766 intending to use reserves generated from the sale of 42 Park Road to invest in new services for our members.

Shine reports an actual surplus of £9,645 (2023/24 £65,252 deficit), which consists of a £59,509 unrestricted deficit, a £64,406 designated surplus, and a £4,748 restricted surplus.

Total income for 2024/25 was £2,466,856 (2023/24 £2,155,115). This is a 14% increase year on year, although the charity did receive one off donations of £159,522 from two local groups (Teeside ASBAH and Shine Surrey) which closed down. Therefore, excluding these closing funds income nonetheless increased by 7% with growth in legacies, grants and investment income being partially offset by a decrease in individual donations and trading activities. The largest element of our trading activity continues to be our virtual balloon races and although this income stream faces several challenges and continues to

decline, nonetheless during the year 4,397 business supporters bought a balloon, many entering multiple races.

Public donations from individuals (excluding legacies), corporates and community groups (excluding the two local groups) recorded an 8% decrease year on year and we believe the cost-of-living challenges faced by many individuals is a factor, nonetheless annual income remained higher than the 4 years before COVID19.

The National Lottery community fund and other charitable trusts continue to fund an important part of Shine's work and income from charitable trusts and foundations recorded the highest annual income in the last ten years.

Legacies continue to be a major source of funding and were the highest value since 2020/21. We are incredibly grateful that people continue to remember us in their wills.

As mentioned two local groups decided to close in 2024, with balances of funds being transferred to Shine, upon which trustees have created designated funds to support members in Surrey and the North East, these funds are reported in note 21 and in relation to the North East a new support and development worker based in Northumberland has been appointed.

After many years of trading, our charity shop in Gorseinon closed its doors at Christmas. Trading conditions on the high street had worsened since the COVID pandemic and despite valiant efforts by the shop manager and volunteers we had been unable to maintain a financially viable shop, with some regret trustees agreed a managed closure, returning the property to the landlord.

Trustees remain confident that Shine has a broad income base and provides sufficient staff resources to deliver sustainable income levels.

Expenditure

Total expenditure in the year was £2,418,225 (2023/24 £2,274,459). Of this, expenditure on charitable activities increased by £118,297 (7.7%) to £1,661,788, representing 68.7% of total expenditure (67.9% in 2023/24). This reflects a conscious decision to invest in services with two new service staff positions created in the year. Expenditure on raising funds increased by a more modest amount of £25,469 to £756,447.

A reduced level of staff turnover was experienced, with 9 leavers in the year (12 in 2023/24). Recruitment efforts have however been successful and staffing levels in Shine's services increased during the year with 34 full-time equivalent posts compared to 31 in 2023/24.

Shine is confident it remains an attractive organisation to work for and has active recruitment plans which aim to maintain service staffing levels in 2025/26.

Under the accounting standard SORP (Statement of Recommended Practice) 2015, the full defined benefit pension deficit must be declared on the balance sheet. There was a 2024/25 actuarial loss of £38,477 (2023/24 gain of £1,382) and reflects the outcome of the 2023 triannual review. A payment plan to eliminate

this deficit remains in place, and the charity remains confident that it will meet the required pension contributions from its projected income without impacting its planned level of charitable activity. Further pension details are shown in note 19 of the accounts.

Financial Reserves Policy

Reserves are maintained at a level that enables the charity to manage financial risk and sustain services. Trustees have set a minimum free reserve to be held for the following purposes:

- Statutory obligations.
- Provide a 4-month commitment to our vulnerable members to wind up the affairs of the charity in an orderly fashion, in the advent that the trustees cease to be confident in Shine's ability to continue.
- Offset the risks of an unexpected shortfall in income and an adverse movement in the defined benefit pension scheme liability.
- A working capital facility.

The level of reserves required to meet these requirements is calculated to be £895,000.

The free reserves position is reported to trustees as part of the monthly management accounts and quarterly forecasting. To set our free reserves target, trustees have sought to balance the needs of Shine's members against financial risks. COVID19, the war in Ukraine and conflict in Gaza has demonstrated that our world is less certain than previously thought and our reserves target reflects this need for caution.

At the year-end Shine held free reserves of £1,108,978, being general unrestricted funds excluding designated funds. This represents 6.2 months of committed expenditure cover, which is above the reserves target and has been boosted by the one-off sum realised from the sale of 42 Park Road in April 2022.

To bring our reserves in line with our target the charity continues to utilise its reserves in a managed fashion investing in members' futures and in addition to the new posts created in 2022 and 2023, the charity has

appointed a Normal Pressure Hydrocephalus (NPH) & Dementia Coordinator, this is in response to an increase in members presenting this condition. Taken together, these changes have raised the service staff establishment to 34 FTE and compares to a pre COVID position of 27 FTE.

Restricted reserves must be applied to the specific purpose(s) intended by the donor so do not form part of the free reserves. Funds totaled £119,700 at the year end and are planned to be expended in 2025/26.

Designated funds have been established by trustees and are excluded from free reserves, these closed at £575,439 and consist of the following:

- Funds for 3 additional Support and Development Workers in the Southwest, East Anglia and the North East – who will enhance the support we can provide to our members in more rural, isolated areas. This first position has been made possible by the generosity of the late Florence Bartle who kindly chose to remember Shine in her will. The last post has been made possible by the transfer of closing funds from Teeside ASBAH.
- A fund to support our work in Gloucestershire – based on a legacy we have received.
- A fund for a Deputy Health Manager.
- A fund for an Education Officer.
- A fund for a Normal Pressure Hydrocephalus & Dementia Coordinator.
- A fund to support our specialist physiotherapy work.
- A fund to support research and development.
- A fund to support our digital development.

Notwithstanding the existence of the above funds, unrestricted funds continue to be used to cover the costs of some new posts; notably the deputy health manager, education officer and the East Anglian support and development worker.

Investment Policy

Under the governing document, the charity can make any investment the trustees see fit. R. C. Brown Investment Management plc are Shine's investment managers with the remit to manage

the investments in line with the policy outlined below.

Investments are held as part of the long-term reserves of Shine. The aim is that they should maintain their value and generate income for Shine.

The portfolio must only be invested in assets with a balanced risk profile. This will include utilisation of pooled funds, which provide diversification of assets, and ensures that the risk of losing a single holding is minimised.

- Investments may be held in a range of asset classes, including equities, corporate bonds, and gilts.
- There will be no direct investment in 'alternative' investments such as hedge funds or derivatives.
- There will be no direct investment in overseas equities. Any such investment must be made through pooled funds managed in the UK.

The trustees have agreed that the funds should be invested in a broad, balanced portfolio. On the advice of our investment managers, Shine works towards ethical investments, yet decisions have to be balanced with the charity's obligations for responsible investment to further our purpose and aims..

During the year R. C. Brown Investment Management plc continued to manage the Shine portfolio, funds performed below their benchmark, recording a 1.71% gain during 2024/25 versus the benchmark gain of 3.66 (ARC steady growth index), with earlier gains being partly offset by losses in the final quarter as markets responded adversely to US trade tariff announcements.

Investments are held to support the reserves policy.

Risk Management and Internal Control

The Board of Trustees is responsible for the identification and management of the major risks facing the charity. A Risk Register is maintained and shared annually with trustees (more frequently if a significant issue arises). Risk management at operational level is managed by the senior leadership team; major risks have been reviewed and systems established to manage these risks.

Therefore, the risk register currently covers five strategic areas.

1. Governance & strategy

2. Income generation

3. Services

4. Finance

5. External influences, including inflation and the war in Ukraine

6. International work

During the year there remains 1 red retained risk, which is members' access to statutory services, and Shine continues to support our members and families with information and guidance on their rights, and

avenues to access the services they need. Shine continues to make structural and strategic changes to the organisation to mitigate these and other risks.

Going Concern and Statement of Public Benefit

Going Concern

This report highlights Shine's financial performance over the last six years, the level of reserves held, and the principal risks and uncertainties faced. The activities of the charity, its objectives, and the policies for managing its capital and financial risk are detailed in the Trustees' Report.

The budget for 2025/26 was prepared by senior leadership and approved by the trustees in March 2025. The expectation is that income levels can be increased as we continue to invest in fundraising resources. Expenditure levels will be allowed to increase in line with the expansion in service provision, therefore a total deficit of £240,123 is budgeted which includes a restricted deficit of £37,354 as funds received in prior periods are expended and a deficit of £202,769 across unrestricted and designated funds.

We can do this because our reserves exceed the minimum level, the budget and its assumptions are reviewed against two key financial measures:

- In-year cash flow
- Free reserve cover

Management accounts are prepared by senior leadership and issued monthly to trustees; the current financial position and financial outlook are

reviewed at quarterly trustee meetings. Given the level of reserves and outlook, the trustees have a reasonable expectation that the charity has adequate resources to continue in operational existence for the foreseeable future being at least twelve months from date of approval of these financial statements. Accordingly, they continue to adopt the going concern basis of accounting in preparing financial statements.

Statement of Public Benefit

The trustees confirm that they have complied with the duty in section 17 of the Charities Act 2011 to have regard to the Charity Commission's general guidance on public benefit, 'Charities and Public Benefit'.

Shine's charitable objects are enshrined within its memorandum and articles, and as such trustees ensure that the charity's activities are carried out for public benefit through its strategic goals. This report allows us to show how charitable funds are spent and the impact and benefits this has on the lives of people affected by spina bifida and/or hydrocephalus, and associated conditions.

Reference and Administration Details

Royal Patron **HRH The Duchess of Gloucester GVC**O

Trustees

The trustees of Spina Bifida, Hydrocephalus, Information, Networking, Equality – SHINE are the charity’s trustees under charity law and directors of the charitable company and throughout the report are collectively referred to as the trustees.

The trustees serving during the year were as follows:

Professor Roger Bayston
Michael Brown (Vice Chair)
Jenny Goy (Hon. Treasurer)
Surekha Kukadia
Dr Richard Oakley
Professor John Pickard CBE (appointed 4th December 2024)
Joanne Sedgwick
Joe Waggott
Joanne Williams (Chair)
Roanne Woodward (appointed 4th December 2024)

It is confirmed that none of the serving trustees had any beneficial interest in any contract with Shine in the year.

Senior Leadership Team
Chief Executive Kate Steele
Director of Services Gill Valentine
Director of Finance Stephen Ellen

Principal Professional Advisers

Auditors

Azets Audit Services

Westpoint
Lynchwood
Peterborough
PE2 6FZ

Bankers

The Co-operative Bank Plc

PO Box 250
Skelmersdale
WN8 6WT

Insignis Cash Solutions

St John's Innovation Centre
Cowley Road
Cambridge
CB4 0WS

Solicitors

Greenwoods GRM LLP

Westpoint
Lynchwood
Peterborough
PE2 6FZ

Investment Managers

R.C. Brown Investment Management PLC

1 The Square
Temple Quay
Bristol
BS1 6DG

HR

Vero HR

St James House
Flaxley Road
Kingston Park
Peterborough
PE2 9FT

Administrative Details

The full name of the charity is spina bifida, hydrocephalus, information, networking, equality – SHINE. We are commonly known as SHINE.

The registered charity number is 249338 (England and Wales)

The company registration is 00877990

Registered Office: SHINE, Unit 4, Minerva Business Park, Peterborough, PE2 6FT

Telephone 01733 555988 • Email firstcontact@shinecharity.org.uk • www.shinecharity.org.uk



Our Commitment to Quality Fundraising

Shine is registered with the Fundraising Regulator and proud to commit to the Regulator's Fundraising Promise.

We are committed to maintaining high standards of fundraising in line with the Code of Fundraising Practice:

- We will be clear, honest, and open.
- We will be respectful.
- We will be fair and reasonable.
- We will be accountable and responsible.

Our approach to fundraising consists of:

- marketing appeals to individuals who have already expressed an interest in Shine.
- running charitable events for which participants raise money.
- encouraging people to participate in other events to raise funds on our behalf.
- community fundraising; and
- soliciting donations from corporate partners, charitable trusts, and individual donors.

We also encourage people to remember us in their will with a gift or legacy.

We do not use third-party professional fundraising agencies.

Where people or organisations raise funds in aid of Shine, we request they follow our standards. Shine's fundraising team provides tools and resources to enable supporters to deliver fun, safe, and successful fundraising activities. The trustees are of the view that during the year to 31 March 2025 we have been compliant with these standards.

Unfortunately, despite procedures in place Shine is aware of one instance in the year of the misappropriation of donations totalling £580 at an event hosted by a Shine supporter.

To protect vulnerable people and other members of the public, Shine has a safeguarding policy, and our fundraising commitment is displayed on our website. We are careful to protect the personal data of supporters and give clear options to stop being contacted by us.

As part of our compliance with the code of fundraising practice, we ensure our approach to fundraising is not unreasonably intrusive or persistent and does not aim to solicit donations by pressuring potential supporters.

We take these steps to make sure people have a choice about whether to fundraise for Shine.

Shine and our members are incredibly grateful for the continued dedication and support of our fundraisers. From everyone at Shine, thank you for your ongoing generosity.



Structure, Governance and Management

Structure

Spina bifida, Hydrocephalus, Information, Networking, Equality – SHINE (Shine) is a company limited by guarantee registered in England and Wales (Registration No. 00877990) formed in 1966. Shine is registered as a charity with the Charity Commission for England and Wales (Registration No. 249338).

The charity owns the entire share capital of Shine (Trading) Limited, registered in England and Wales (No. 01031004). The consolidated accounts include Shine (Trading) Limited (see note 9). The principal activity of the company is to raise funds for charity. The board of directors of Shine trading meets separately and consists of the Chief Executive and two trustees. The trustees are not remunerated for this role.

Objects

The charity's objects are specifically restricted to the relief of persons who have spina bifida and/or hydrocephalus or allied or related disorders by providing care, welfare, treatment, education, and integration into society.

Governance

Shine is governed by Articles of Association, which were amended in 2018.

Organisational purpose

Shine has a clear, sustainable corporate strategy for 2022 to 2027 consistent with the charity's purpose and an evaluation and monitoring framework to monitor impact and measure outputs.

Shine consults with a wide range of stakeholder groups to determine the priorities for the charity.

Leadership

The trustee board is responsible for the charity's governance and its subsidiary.

Board Integrity

Appointment of trustees

New Articles of Association were adopted by special resolution in 2018 specifying that anyone willing to act as a trustee, and permitted by law to do so, may be

appointed by the board of trustees.

A trustee must be a natural person aged 16 years or older; the minimum number of trustees is 3, and the maximum is 16. Trustees are appointed for a term of 3 years; trustees are eligible for reappointment up to two subsequent terms (each of 3 years). No trustee can serve for more than 9 consecutive years unless the trustees consider it is in the best interests of the charity that a particular trustee should continue to serve. Professor Roger Bayston and Michael Brown continue to serve as trustees on this basis.

Trustee induction and training

During the recruitment process, the skills and experience are considered with a concerted effort to ensure we are drawing from all sections of society. An initial interview is conducted by members of the senior leadership team. Candidates are then interviewed by a panel drawn from the board of trustees.

This year we have appointed two new trustees, Professor John Pickard who amongst many honors is Emeritus Professor of Neurosurgery (Cambridge University) and brings to the board additional clinical expertise and extensive contacts within the NHS and wider international community; Roanne Woodward who is a young woman born with spina bifida and has first-hand experience of the challenges and triumphs faced by individuals with spina bifida and hydrocephalus.

New trustees undergo an induction; they are fully appraised of the full range of Shine's services, projects and campaigns and provided with relevant background literature. They receive awareness training, if required, on spina bifida and hydrocephalus. Depending on their specific skills and areas of expertise, they will be put in touch with relevant staff.

Trustees are briefed on their legal obligations under charity and company law, the Articles of Association and the Board's decision-making process. They are also informed about Shine's Corporate Plan, key risks, recent financial performance, and prospects for the charity.

Trustees do not receive any remuneration or financial benefit for acting as trustees of Shine; any expenses paid are disclosed in note 11 of the financial statements.

Decision making, risk and control

The Board of Trustees is the governing body with overall

legal responsibility for the charity. The Board sets the strategic direction for Shine. It meets at least four times a year, either in person or virtually.

The minutes of meetings are made available to all trustees on a timely basis. The board regularly reviews operational plans, budgets, performance, and Shine's main risks. The day-to-day management of the charity is delegated to the Chief Executive, who reports to the Board. The Chief Executive is assisted in the day-to-day management by the senior leadership team.

Senior Staff Remuneration Policy

The remuneration of senior staff is set by benchmarking with similar-sized charities, and the market rate required to attract the best people to the job.

Diversity and Inclusion

Shine has a transparent recruitment process, advertising widely and looking at how we can attract a diverse pool of candidates.

Safeguarding

Safeguarding policies and processes were reviewed and updated in 2024/25, and additional policies specifically focusing on online safety were introduced in June 2024 ensuring that we are continually improving our approaches to safeguarding, incorporating all updated legislation, and embracing current best practice to protect the welfare of our members, staff and volunteers.

An annual safeguarding plan is agreed by trustees. The plan is prepared by the Director of Services, who is Designated Safeguarding Lead for the charity, in conjunction with Joanne Williams and Jenny Goy, who are trustee leads for safeguarding.

Safeguarding training is provided for all staff, trustees, and volunteers. Incidents are reported, assessed, and enacted as appropriate with full consideration given to the requirement to report to the Charity Commission.

GDPR

Extensive work was undertaken to ensure Shine's ongoing compliance with the General Data Protection Regulation (GDPR). We have a designated GDPR lead, and the data management action plan is reviewed by trustees annually.

Section 172 Statement

The trustees must act in accordance with a set of general duties. These duties are laid out in s172 of the UK Companies Act 2006 which is summarised as follows: A

Director of a Company must act in the that they consider, in good faith, would be most likely to promote the benefit of its members, and in doing so have regard to:

- The consequences of any decision in the long term. The main purpose of our reserves policy is to ensure long-term financial sustainability.
- The interests of the charity's employees
- The need to foster the charity's business relationship with suppliers, customers, and others
- The impact of the charity's operations on the community and environment
- The desirability of the charity's maintaining a reputation for high standards of business
- The need to act fairly between members of the charity.

The trustees believe they have completed their duties under s172, taking care to balance competing interests for the overall good of the charity.

Related Parties

The charity collaborates with several local associations. These are independent charities for spina bifida and hydrocephalus and collaboration which may cover a range of activities. The charity also works in partnership with many other bodies, voluntary, statutory, and international, in carrying out work to support service users, undertake research and disseminate information.

Volunteers

In 2024/25, Shine had 58 registered volunteers (50 2023/24) to whom we remain eternally grateful and recorded 1,212 volunteered hours being a reduction versus 2023/24 (1,902 hours), reflected the closure of our one charity shop. The volunteering roles included:

- Working in our charity shop (up to December)
- Participating in the health advisory panel
- Giving talks and representing Shine
- Acting as peer support
- Supporting our members to grow in confidence and address the challenges of living with the conditions.
- Advising on the development of resources
- Fulfilling the role of Shine ambassador
- Fundraising
- Supporting our local groups

Statement of trustees' responsibilities

The trustees (who are also directors of Spina bifida, Hydrocephalus, Information, Networking, Equality – SHINE), are responsible for preparing the annual report and the financial statements in accordance with applicable law and United Kingdom Generally Accepted Accounting Practice. Company law requires the directors to prepare financial statements for each financial year which give a true and fair view of the situation of the charitable group and of the net income or expenditure of the group for the year. In preparing these financial statements the directors are required to:

- select suitable accounting policies and then apply them consistently.
- observe the methods and principles in the Charities SORP
- make judgements and estimates that are reasonable and prudent.
- state whether applicable accounting standards have been followed, subject to any material departures disclosed and explained in the financial statements; and
- prepare the financial statements on the going concern basis unless it is inappropriate to presume

that the charity will continue in business.

The trustees are responsible for keeping proper accounting records that disclose with reasonable accuracy at any time the financial position of the charity and the group and enable them to ensure that the financial statements comply with the Companies Act 2006.

They are also responsible for safeguarding the charity and group's assets and hence for taking reasonable steps to prevent and detect fraud and other irregularities.

Statement as to disclosure of information to auditors

As far as the trustees are aware, there is no relevant audit information of which the group's auditors are unaware. Additionally, the trustees have taken all the necessary steps that they ought to have taken as trustees to make themselves aware of all relevant audit information and to establish that the group's auditors are aware of that information.

The trustees are responsible for the maintenance and integrity of the corporate and financial information included on the charitable company's website.

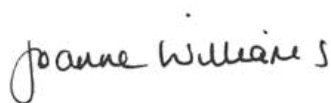
Legislation in the United Kingdom governing the preparation and dissemination of financial statements may differ from legislation in other jurisdictions.

Appointment of Auditors

The continued appointment of Azets Audit Services Limited was confirmed by the Board of Trustees on the 3rd December 2024.

This report has been prepared in accordance with the special provisions relating to small companies within Part 15 of the Companies Act 2006.

By order of the Board of Trustees



Joanne Williams

Chair

4th September 2025

SPINA BIFIDA, HYDROCEPHALUS, INFORMATION, NETWORKING, EQUALITY - SHINE

INDEPENDENT AUDITOR'S REPORT

TO THE MEMBERS OF SPINA BIFIDA, HYDROCEPHALUS, INFORMATION, NETWORKING, EQUALITY - SHINE

Opinion

We have audited the financial statements of Spina Bifida, Hydrocephalus, Information, Networking, Equality - SHINE (the 'charity') and its subsidiary for the year ended 31 March 2025 which comprise the Group Statement of Financial Activities, the Group and Parent Charitable Company Balance Sheets, the Group and Parent Charitable Company Cash Flow Statements and the notes to the financial statements, including a summary of significant accounting policies. The financial reporting framework that has been applied in their preparation is applicable law and United Kingdom Accounting Standards, including Financial Reporting Standard 102 *The Financial Reporting Standard applicable in the UK and Republic of Ireland* (United Kingdom Generally Accepted Accounting Practice).

In our opinion, the financial statements:

- give a true and fair view of the state of the Group and Parent Charitable Company affairs as at 31 March 2025 and of its incoming resources and application of resources, for the year then ended;
- have been properly prepared in accordance with United Kingdom Generally Accepted Accounting Practice; and
- have been prepared in accordance with the requirements of the Companies Act 2006.

Basis for opinion

We conducted our audit in accordance with International Standards on Auditing (UK) (ISAs (UK)) and applicable law. Our responsibilities under those standards are further described in the *Auditor's responsibilities for the audit of the financial statements* section of our report. We are independent of the Group and Parent Charitable Company in accordance with the ethical requirements that are relevant to our audit of the financial statements in the UK, including the FRC's Ethical Standard, and we have fulfilled our other ethical responsibilities in accordance with these requirements. We believe that the audit evidence we have obtained is sufficient and appropriate to provide a basis for our opinion.

Conclusions relating to going concern

In auditing the financial statements, we have concluded that the Trustees' use of the going concern basis of accounting in the preparation of the financial statements is appropriate.

Based on the work we have performed, we have not identified any material uncertainties relating to events or conditions that, individually or collectively, may cast significant doubt on the charity's ability to continue as a going concern for a period of at least twelve months from when the financial statements are authorised for issue.

Our responsibilities and the responsibilities of the Trustees with respect to going concern are described in the relevant sections of this report.

Other information

The other information comprises the information included in the annual report other than the financial statements and our auditor's report thereon. The Trustees are responsible for the other information contained within the annual report. Our opinion on the financial statements does not cover the other information and, except to the extent otherwise explicitly stated in our report, we do not express any form of assurance conclusion thereon. Our responsibility is to read the other information and, in doing so, consider whether the other information is materially inconsistent with the financial statements or our knowledge obtained in the course of the audit, or otherwise appears to be materially misstated. If we identify such material inconsistencies or apparent material misstatements, we are required to determine whether this gives rise to a material misstatement in the financial statements themselves. If, based on the work we have performed, we conclude that there is a material misstatement of this other information, we are required to report that fact.

We have nothing to report in this regard.

SPINA BIFIDA, HYDROCEPHALUS, INFORMATION, NETWORKING, EQUALITY - SHINE

INDEPENDENT AUDITOR'S REPORT (CONTINUED)

TO THE MEMBERS OF SPINA BIFIDA, HYDROCEPHALUS, INFORMATION, NETWORKING, EQUALITY - SHINE

Opinions on other matters prescribed by the Companies Act 2006

In our opinion, based on the work undertaken in the course of our audit:

- the information given in the Trustees' report for the financial year for which the financial statements are prepared, which includes the directors' report prepared for the purposes of company law, is consistent with the financial statements; and
- the directors' report included within the Trustees' report has been prepared in accordance with applicable legal requirements.

Matters on which we are required to report by exception

In the light of the knowledge and understanding of the Group and Parent Charitable Company and its environment obtained in the course of the audit, we have not identified material misstatements in the directors' report included within the Trustees' report.

We have nothing to report in respect of the following matters in relation to which the Companies Act 2006 requires us to report to you if, in our opinion:

- adequate accounting records have not been kept, or returns adequate for our audit have not been received from branches not visited by us; or
- the financial statements are not in agreement with the accounting records and returns; or
- certain disclosures of trustees' remuneration specified by law are not made; or
- we have not received all the information and explanations we require for our audit; or
- the Trustees were not entitled to prepare the financial statements in accordance with the small companies regime and take advantage of the small companies' exemptions in preparing the Trustees' report and from the requirement to prepare a strategic report.

Responsibilities of Trustees

As explained more fully in the statement of Trustees' responsibilities, the Trustees, who are also the directors of the charity for the purpose of company law, are responsible for the preparation of the financial statements and for being satisfied that they give a true and fair view, and for such internal control as the Trustees determine is necessary to enable the preparation of financial statements that are free from material misstatement, whether due to fraud or error.

In preparing the financial statements, the Trustees are responsible for assessing the Group and Parent Charitable Company's ability to continue as a going concern, disclosing, as applicable, matters related to going concern and using the going concern basis of accounting unless the Trustees either intend to liquidate the charitable company or to cease operations, or have no realistic alternative but to do so.

Auditor's responsibilities for the audit of the financial statements

Our objectives are to obtain reasonable assurance about whether the financial statements as a whole are free from material misstatement, whether due to fraud or error, and to issue an auditor's report that includes our opinion. Reasonable assurance is a high level of assurance but is not a guarantee that an audit conducted in accordance with ISAs (UK) will always detect a material misstatement when it exists. Misstatements can arise from fraud or error and are considered material if, individually or in the aggregate, they could reasonably be expected to influence the economic decisions of users taken on the basis of these financial statements.

A further description of our responsibilities is available on the Financial Reporting Council's website at: <https://www.frc.org.uk/auditorsresponsibilities>. This description forms part of our auditor's report.

SPINA BIFIDA, HYDROCEPHALUS, INFORMATION, NETWORKING, EQUALITY - SHINE

INDEPENDENT AUDITOR'S REPORT (CONTINUED)

TO THE MEMBERS OF SPINA BIFIDA, HYDROCEPHALUS, INFORMATION, NETWORKING, EQUALITY - SHINE

Extent to which the audit was considered capable of detecting irregularities, including fraud

Irregularities, including fraud, are instances of non-compliance with laws and regulations. We design procedures in line with our responsibilities, outlined above and on the Financial Reporting Council's website, to detect material misstatements in respect of irregularities, including fraud.

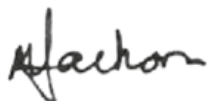
We obtain and update our understanding of the entity, its activities, its control environment, and likely future developments, including in relation to the legal and regulatory framework applicable and how the entity is complying with that framework. Based on this understanding, we identify and assess the risks of material misstatement of the financial statements, whether due to fraud or error, design and perform audit procedures responsive to those risks, and obtain audit evidence that is sufficient and appropriate to provide a basis for our opinion. This includes consideration of the risk of acts by the entity that were contrary to applicable laws and regulations, including fraud.

In response to the risk of irregularities and non-compliance with laws and regulations, including fraud, we designed procedures which included:

- Enquiry of management and those charged with governance around actual and potential litigation and claims as well as actual, suspected and alleged fraud;
- Reviewing minutes of meetings of those charged with governance;
- Assessing the extent of compliance with the laws and regulations considered to have a direct material effect on the financial statements or the operations of the entity through enquiry and inspection;
- Reviewing financial statement disclosures and testing to supporting documentation to assess compliance with applicable laws and regulations;
- Performing audit work over the risk of management bias and override of controls, including testing of journal entries and other adjustments for appropriateness, evaluating the business rationale of significant transactions outside the normal course of business and reviewing accounting estimates for indicators of potential bias.

Because of the inherent limitations of an audit, there is a risk that we will not detect all irregularities, including those leading to a material misstatement in the financial statements or non-compliance with regulation. This risk increases the more that compliance with a law or regulation is removed from the events and transactions reflected in the financial statements, as we will be less likely to become aware of instances of non-compliance. The risk of not detecting a material misstatement resulting from fraud is higher than for one resulting from error, as fraud may involve collusion, forgery, intentional omissions, misrepresentations, or the override of internal control.

This report is made solely to the company's members, as a body, in accordance with section 391 of the Companies Act 2014. Our audit work has been undertaken so that we might state to the company's members those matters we are required to state to them in an auditor's report and for no other purpose. To the fullest extent permitted by law, we do not accept or assume responsibility to anyone other than the company and the company's members as a body, for our audit work, for this report, or for the opinions we have formed.



Mr Mark Jackson FCA DChA (Senior Statutory Auditor)
for and on behalf of Azets Audit Services

15/09/2025
.....

Chartered Accountants
Statutory Auditor

Westpoint
Lynch Wood
Peterborough
Cambridgeshire
United Kingdom
PE2 6FZ

SPINA BIFIDA, HYDROCEPHALUS, INFORMATION, NETWORKING, EQUALITY - SHINE

STATEMENT OF FINANCIAL ACTIVITIES INCLUDING INCOME AND EXPENDITURE ACCOUNT

FOR THE YEAR ENDED 31 MARCH 2025

Current financial year

	Notes	Unrestricted funds 2025 £	Designated funds 2025 £	Restricted funds 2025 £	Total 2025 £	Total 2024 £
Income from:						
Donations and legacies	3	1,119,151	159,522	528,029	1,806,702	1,478,934
Other trading activities	4	592,850	-	-	592,850	635,710
Income from investments	5	67,304	-	-	67,304	40,471
Total income		1,779,305	159,522	528,029	2,466,856	2,155,115
Expenditure on:						
Raising funds	6	756,447	-	-	756,447	730,978
Charitable activities	7	1,053,716	31,375	576,687	1,661,778	1,543,481
Total resources expended		1,810,163	31,375	576,687	2,418,225	2,274,459
Net gains/(losses) on investments	12	(509)	-	-	(509)	55,474
Net outgoing resources before transfers		(31,367)	128,147	(48,658)	48,122	(63,870)
Gross transfers between funds		10,335	(63,741)	53,406	-	-
Net (outgoing)/incoming resources		(21,032)	64,406	4,748	48,122	(63,870)
Other recognised gains and losses						
Actuarial loss on defined benefit pension schemes		(38,477)	-	-	(38,477)	(1,382)
Net movement in funds		(59,509)	64,406	4,748	9,645	(65,252)
Fund balances at 1 April 2024		1,168,487	511,033	114,952	1,794,472	1,859,724
Fund balances at 31 March 2025		1,108,978	575,439	119,700	1,804,117	1,794,472

The statement of financial activities includes all gains and losses recognised in the year.

All income and expenditure derive from continuing activities.

The statement of financial activities also complies with the requirements for an income and expenditure account under the Companies Act 2006.

SPINA BIFIDA, HYDROCEPHALUS, INFORMATION, NETWORKING, EQUALITY - SHINE

STATEMENT OF FINANCIAL ACTIVITIES (CONTINUED) INCLUDING INCOME AND EXPENDITURE ACCOUNT

FOR THE YEAR ENDED 31 MARCH 2025

Prior financial year

		Unrestricted funds 2024 £	Designated funds 2024 £	Restricted funds 2024 £	Total 2024 £
	Notes				
Income from:					
Donations and legacies	3	1,074,858	-	404,076	1,478,934
Other trading activities	4	635,710	-	-	635,710
Income from investments	5	40,471	-	-	40,471
Total income		1,751,039	-	404,076	2,155,115
Expenditure on:					
Raising funds	6	730,978	-	-	730,978
Charitable activities	7	1,025,342	48,196	469,943	1,543,481
Total resources expended		1,756,320	48,196	469,943	2,274,459
Net gains/(losses) on investments	12	55,474	-	-	55,474
Net outgoing resources before transfers		50,193	(48,196)	(65,867)	(63,870)
Gross transfers between funds		(96,304)	72,500	23,804	-
Net (outgoing)/incoming resources		(46,111)	24,304	(42,063)	(63,870)
Other recognised gains and losses					
Actuarial loss on defined benefit pension schemes		(1,382)	-	-	(1,382)
Net movement in funds		(47,493)	24,304	(42,063)	(65,252)
Fund balances at 1 April 2023		1,215,980	486,729	157,015	1,859,724
Fund balances at 31 March 2024		1,168,487	511,033	114,952	1,794,472

The statement of financial activities includes all gains and losses recognised in the year.

All income and expenditure derive from continuing activities.

The statement of financial activities also complies with the requirements for an income and expenditure account under the Companies Act 2006.

SPINA BIFIDA, HYDROCEPHALUS, INFORMATION, NETWORKING, EQUALITY - SHINE

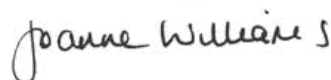
BALANCE SHEETS

AS AT 31 MARCH 2025

	Notes	Group 2025 £	Charity 2025 £	Group 2024 £	Charity 2024 £
Fixed assets					
Investments	15	847,083	847,086	834,112	834,115
Current assets					
Debtors	17	265,165	234,528	252,216	217,594
Cash at bank and in hand		905,322	891,066	885,550	870,690
		1,170,487	1,125,594	1,137,766	1,088,284
Creditors: amounts falling due within one year	18	(188,917)	(167,011)	(177,406)	(150,911)
Net current assets		981,570	958,583	960,360	937,373
Total assets less current liabilities		1,828,653	1,805,669	1,794,472	1,771,488
Net assets excluding pension liability		1,828,653	1,805,669	1,794,472	1,771,488
Defined benefit pension liability	19	(24,536)	(24,536)	-	-
Net assets		1,804,117	1,781,133	1,794,472	1,771,488
Income funds					
Restricted funds	20	119,700	119,700	114,952	114,952
<u>Unrestricted funds - general</u>					
Designated funds	21	575,439	575,439	511,033	511,033
General unrestricted funds		1,108,978	1,085,994	1,168,487	1,145,503
		1,684,417	1,661,433	1,679,520	1,656,536
		1,804,117	1,781,133	1,794,472	1,771,488

As permitted by section 408 of the Companies Act 2006, the charitable company has not presented its own statement of financial activities and related notes. The charitable company's surplus for the year was £9,645 (2024 - deficit for the year of £65,252).

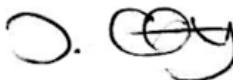
The financial statements were approved by the board of directors and authorised for issue on 04/09/2025 and are signed on its behalf by:



Mrs J Williams

Trustee

Company Registration No. 00877990



Mrs J Goy

Trustee

SPINA BIFIDA, HYDROCEPHALUS, INFORMATION, NETWORKING, EQUALITY - SHINE

STATEMENT OF CASH FLOWS

FOR THE YEAR ENDED 31 MARCH 2025

	Notes	2025 £	£	2024 £	£
Cash flows from operating activities					
Cash absorbed by operations	26		(47,532)		(214,822)
Investing activities					
Interest and income from investments		67,304		40,471	
Net cash generated from investing activities			67,304		40,471
Net cash used in financing activities			-		-
Net increase/(decrease) in cash and cash equivalents			19,772		(174,351)
Cash and cash equivalents at beginning of year			885,550		1,059,901
Cash and cash equivalents at end of year			905,322		885,550

SPINA BIFIDA, HYDROCEPHALUS, INFORMATION, NETWORKING, EQUALITY - SHINE

NOTES TO THE FINANCIAL STATEMENTS

FOR THE YEAR ENDED 31 MARCH 2025

1 Accounting policies

Company information

Spina Bifida, Hydrocephalus, Information, Networking, Equality - SHINE is a private company limited by guarantee incorporated in England and Wales. The registered office is Unit 4, The Forum, Minerva Business Park, Peterborough, Cambridgeshire, PE2 6FT, United Kingdom.

1.1 Accounting convention

The financial statements have been prepared in accordance with the charity's governing document, the Companies Act 2006 and "Accounting and Reporting by Charities: Statement of Recommended Practice applicable to charities preparing their accounts in accordance with the Financial Reporting Standard applicable in the UK and Republic of Ireland (FRS 102)" (as amended for accounting periods commencing from 1 January 2019). The charity is a Public Benefit Entity as defined by FRS 102.

The financial statements have departed from the Charities (Accounts and Reports) Regulations 2008 only to the extent required to provide a true and fair view. This departure has involved following the Statement of Recommended Practice for charities applying FRS 102 rather than the version of the Statement of Recommended Practice which is referred to in the Regulations but which has since been withdrawn.

The financial statements are prepared in sterling, which is the functional currency of the charity. Monetary amounts in these financial statements are rounded to the nearest £.

The financial statements have been prepared under the historical cost convention. The principal accounting policies adopted are set out below.

The consolidated accounts incorporate the results of the charity and of its wholly owned subsidiary.

1.2 Going concern

At the time of approving the financial statements, the Trustees have a reasonable expectation that the charity has adequate resources to continue in operational existence for the foreseeable future. Thus the Trustees continue to adopt the going concern basis of accounting in preparing the financial statements.

1.3 Charitable funds

Unrestricted funds are available for use at the discretion of the Trustees in furtherance of their charitable objectives unless the funds have been designated for other purposes.

Designated funds comprise funds which have been set aside at the discretion of the Trustees for specific purposes. The purposes and uses of the designated funds are set out in the notes to the financial statements.

Restricted funds are subject to specific conditions by donors as to how they may be used. The purposes and uses of the restricted funds are set out in the notes to the financial statements.

Endowment funds are subject to specific conditions by donors that the capital must be maintained by the charity.

SPINA BIFIDA, HYDROCEPHALUS, INFORMATION, NETWORKING, EQUALITY - SHINE

NOTES TO THE FINANCIAL STATEMENTS (CONTINUED)

FOR THE YEAR ENDED 31 MARCH 2025

1 Accounting policies

(Continued)

1.4 Incoming resources

Income is recognised when the charity is legally entitled to it after any performance conditions have been met, the amounts can be measured reliably, and it is probable that income will be received.

Cash donations are recognised on receipt. Other donations are recognised once the charity has been notified of the donation, unless performance conditions require deferral of the amount. Income tax recoverable in relation to donations received under Gift Aid or deeds of covenant is recognised at the time of the donation.

Legacies are recognised on receipt or otherwise if the charity has been notified of an impending distribution, the amount is known, and receipt is expected. If the amount is not known, the legacy is treated as a contingent asset.

Gifts donated for resale are included as income when they are sold. No amounts are included in the financial statements for services donated by volunteers.

Grant income is recognised according to the terms of each individual agreement.

All other income is dealt with on an accruals basis.

1.5 Resources expended

Expenditure is recognised once there is a legal or constructive obligation to transfer economic benefit to a third party, it is probable that a transfer of economic benefits will be required in settlement, and the amount of the obligation can be measured reliably.

Expenditure is classified by activity. The costs of each activity are made up of the total of direct costs and shared costs, including support costs involved in undertaking each activity. Direct costs attributable to a single activity are allocated directly to that activity. Shared costs which contribute to more than one activity and support costs which are not attributable to a single activity are apportioned between those activities on a basis consistent with the use of resources. Central staff costs are allocated on the basis of time spent, and depreciation charges are allocated on the portion of the asset's use.

Direct expenditure is analysed and charged to the department incurring the cost. Expenditure is included when incurred, the majority of costs being directly attributable to specific activities. Costs that can not be directly attributable to particular headings, are allocated to activities on a basis consistent with use of the resources. Premises and other overheads have been allocated on a head count basis.

Fundraising costs are those incurred in seeking voluntary contributions and do not include the costs of disseminating information in support of charitable activities.

Governance costs are those incurred in connection with the governance arrangements of the charity and compliance with constitutional and statutory requirements.

1.6 Cash and cash equivalents

Cash and cash equivalents include cash in hand, deposits repayable on demand and overdrafts. Deposits are repayable on demand if they are in practice available within 24 hours without a penalty. Liquid resources comprise assets held as a readily disposable store of value.

SPINA BIFIDA, HYDROCEPHALUS, INFORMATION, NETWORKING, EQUALITY - SHINE

NOTES TO THE FINANCIAL STATEMENTS (CONTINUED)

FOR THE YEAR ENDED 31 MARCH 2025

1 Accounting policies

(Continued)

1.7 Financial instruments

Financial instruments are recognised when the charity becomes party to the contractual provisions of the instrument.

Financial assets are offset, with the net amounts presented in the accounts when there is a legally enforceable right to set off the recognised amounts and there is an intention to settle on a net basis or to realise the asset and settle the liability simultaneously.

Basic financial assets

Basic financial assets, which include debtors and cash and bank balances, are initially measured at transaction price including transaction costs and are subsequently carried at amortised cost using the effective interest method unless the arrangement constitutes a financing transaction, where the transaction is measured at the present value of the future receipts discounted at a market rate of interest. Financial assets classified as receivable within one year are not amortised.

Basic financial liabilities

Basic financial liabilities, including creditors and bank loans are initially recognised at transaction price unless the arrangement constitutes a financing transaction, where the debt instrument is measured at the present value of the future payments discounted at a market rate of interest. Financial liabilities classified as payable within one year are not amortised.

Debt instruments are subsequently carried at amortised cost, using the effective interest rate method.

Trade creditors are obligations to pay for goods or services that have been acquired in the ordinary course of operations from suppliers. Amounts payable are classified as current liabilities if payment is due within one year or less. If not, they are presented as non-current liabilities. Trade creditors are recognised initially at transaction price and subsequently measured at amortised cost using the effective interest method.

Derecognition of financial liabilities

Financial liabilities are derecognised when the charity's contractual obligations expire or are discharged or cancelled.

1.8 Provisions

Provisions are recognised when the charity has a legal or constructive present obligation as a result of a past event, it is probable that the charity will be required to settle that obligation and a reliable estimate can be made of the amount of the obligation.

The amount recognised as a provision is the best estimate of the consideration required to settle the present obligation at the reporting end date, taking into account the risks and uncertainties surrounding the obligation. Where the effect of the time value of money is material, the amount expected to be required to settle the obligation is recognised at present value. When a provision is measured at present value, the unwinding of the discount is recognised as a finance cost in net income/(expenditure) in the period in which it arises.

1.9 Employee benefits

The cost of any unused holiday entitlement is recognised in the period in which the employee's services are received.

Termination benefits are recognised immediately as an expense when the company is demonstrably committed to terminate the employment of an employee.

SPINA BIFIDA, HYDROCEPHALUS, INFORMATION, NETWORKING, EQUALITY - SHINE

NOTES TO THE FINANCIAL STATEMENTS (CONTINUED)

FOR THE YEAR ENDED 31 MARCH 2025

1 Accounting policies

(Continued)

1.10 Retirement benefits

For employees choosing to participate, the charity operates a defined contribution pension scheme providing benefits additional to those from the State. The assets are held in a separately administered scheme. The pensions cost charge represents contributions payable by the company to the pension scheme in respect of the year.

Previously, the charity were part of a separately administered defined benefit scheme and is still required to make contributions to fund a deficit in the scheme.

The cost of providing benefits under defined benefit plans is determined separately for each plan using the projected unit credit method, and is based on actuarial advice.

The net interest element is determined by multiplying the net defined benefit liability by the discount rate, taking into account any changes in the net defined benefit liability during the period as a result of contribution and benefit payments. The net interest is recognised in income/(expenditure) for the year.

Remeasurement changes comprise actuarial gains and losses, the effect of the asset ceiling and the return on the net defined benefit liability excluding amounts included in net interest. These are recognised immediately in other recognised gains and losses in the period in which they occur and are not reclassified to income/(expenditure) in subsequent periods.

The net defined benefit pension asset or liability in the balance sheet comprises the total for each plan of the present value of the defined benefit obligation (using a discount rate based on high quality corporate bonds), less the fair value of plan assets out of which the obligations are to be settled directly. Fair value is based on market price information, and in the case of quoted securities is the published bid price. The value of a net pension benefit asset is limited to the amount that may be recovered either through reduced contributions or agreed refunds from the scheme.

1.11 Leases

Rentals payable under operating leases, including any lease incentives received, are charged as an expense on a straight line basis over the term of the relevant lease.

2 Critical accounting estimates and judgements

In the application of the charity's accounting policies, the trustees are required to make judgements, estimates and assumptions about the carrying amount of assets and liabilities that are not readily apparent from other sources. The estimates and associated assumptions are based on historical experience and other factors that are considered to be relevant. Actual results may differ from these estimates.

The estimates and underlying assumptions are reviewed on an ongoing basis. Revisions to accounting estimates are recognised in the period in which the estimate is revised where the revision affects only that period, or in the period of the revision and future periods where the revision affects both current and future periods.

SPINA BIFIDA, HYDROCEPHALUS, INFORMATION, NETWORKING, EQUALITY - SHINE

NOTES TO THE FINANCIAL STATEMENTS (CONTINUED)

FOR THE YEAR ENDED 31 MARCH 2025

3 Donations and legacies

	Unrestricted funds 2025 £	Designated funds 2025 £	Restricted funds 2025 £	Total 2025 £	Total 2024 £
Donations and gifts	687,138	159,522	-	846,660	713,637
Legacies receivable	347,013	-	-	347,013	276,221
Grants receivable	85,000	-	528,029	613,029	489,076
	1,119,151	159,522	528,029	1,806,702	1,478,934
For the year ended 31 March 2024	1,074,858	-	404,076		1,478,934

SPINA BIFIDA, HYDROCEPHALUS, INFORMATION, NETWORKING, EQUALITY - SHINE

NOTES TO THE FINANCIAL STATEMENTS (CONTINUED)

FOR THE YEAR ENDED 31 MARCH 2025

3 Donations and legacies

(Continued)

	Unrestricted funds 2025 £	Designated funds 2025 £	Restricted funds 2025 £	Total 2025 £	Total 2024 £
Donations and gifts					
Individuals	391,884	-	-	391,884	425,059
Trusts	174,140	-	-	174,140	164,609
Corporate donors	83,457	-	-	83,457	85,928
Local associations	-	159,522	-	159,522	3,089
Health Trusts	37,657	-	-	37,657	34,952
	<u>687,138</u>	<u>159,522</u>	<u>-</u>	<u>846,660</u>	<u>713,637</u>
Grants receivable for core activities					
National Lottery Community fund					
Northern Ireland Shining Opportunities	-	-	99,974	99,974	97,696
National Lottery Community fund					
Cymru People & Places	-	-	112,520	112,520	57,867
Early Intervention (Community lottery & others)	-	-	185,927	185,927	172,174
Tropical Health and Education Trust	-	-	27,736	27,736	39,329
The Henry Smith Charity	60,000	-	-	60,000	60,000
Garfield Weston Foundation	25,000	-	-	25,000	25,000
Margaret Giffen Charitable Trust	-	-	-	-	5,000
BBC Children in Need	-	-	15,000	15,000	-
Peter Harrison Foundation	-	-	21,000	21,000	-
The Eveson Trust	-	-	12,500	12,500	-
Other	-	-	53,372	53,372	32,010
	<u>85,000</u>	<u>-</u>	<u>528,029</u>	<u>613,029</u>	<u>489,076</u>

4 Other trading activities

	2025 £	2024 £
Income of trading subsidiary	579,800	608,455
Donations sold through shops	12,413	25,913
Publications and attendance fees	637	1,342
	<u>592,850</u>	<u>635,710</u>

SPINA BIFIDA, HYDROCEPHALUS, INFORMATION, NETWORKING, EQUALITY - SHINE

NOTES TO THE FINANCIAL STATEMENTS (CONTINUED) *FOR THE YEAR ENDED 31 MARCH 2025*

5 Income from investments

	2025 £	2024 £
Income from listed investments	23,339	22,279
Interest receivable	43,965	18,192
	<u>67,304</u>	<u>40,471</u>

NOTES TO THE FINANCIAL STATEMENTS (CONTINUED)
FOR THE YEAR ENDED 31 MARCH 2025

	2025 £	2024 £
<u>Fundraising and publicity</u>		
Direct staff costs	273,817	263,697
Other fundraising direct costs	62,195	51,466
Support costs (see note 8)	77,643	80,677
	<hr/>	<hr/>
Fundraising and publicity	413,655	395,840

	Shine (Trading) Limited £	Shops £	Total 2025 £	Total 2024 £
<u>Trading costs</u>				
Direct staff costs	205,646	18,354	224,000	223,816
Other direct operational costs	15,765	4,745	20,510	21,702
Support costs (see note 8)	84,044	14,238	98,282	89,620
Trading costs	305,455	37,337	342,792	335,138
			756,447	730,978

SPINA BIFIDA, HYDROCEPHALUS, INFORMATION, NETWORKING, EQUALITY - SHINE

NOTES TO THE FINANCIAL STATEMENTS (CONTINUED)

FOR THE YEAR ENDED 31 MARCH 2025

7 Charitable activities	Enabling babies and children to achieve their potential		Empowering young people		Adults of all ages to have choices and opportunities		A connected community		Preventing Spina Bifida		Changing experiences of pregnancies		Transforming attitudes		Total 2025		Total 2024	
	£	£	£	£	£	£	£	£	£	£	£	£	£	£	£	£	£	£
Direct staff costs	227,354	190,486	202,447	447,976	57,040	43,471	111,783	1,280,557	1,173,433									
Other direct costs	32,365	27,117	28,820	63,772	8,120	6,188	15,913	182,295	165,212									
	259,719	217,603	231,267	511,748	65,160	49,659	127,696	1,462,852	1,338,645									
Share of support costs (see note 8)	30,182	25,288	26,876	59,471	7,572	5,771	14,840	170,000	173,041									
Share of governance costs (see note 8)	5,136	4,303	4,573	10,119	1,288	982	2,525	28,926	31,795									
	295,037	247,194	262,716	581,338	74,020	56,412	145,061	1,661,778	1,543,481									
Analysis by fund																		
Unrestricted funds - general															1,053,716	1,025,342		
Unrestricted funds - designated															31,375	48,196		
Restricted funds															576,687	469,943		
															1,661,778	1,543,481		

SPINA BIFIDA, HYDROCEPHALUS, INFORMATION, NETWORKING, EQUALITY - SHINE

NOTES TO THE FINANCIAL STATEMENTS (CONTINUED)

FOR THE YEAR ENDED 31 MARCH 2025

8 Support and governance costs

	Fundraising and publicity £	Trading costs £	Charitable activities £	2025 £	2024 £
Support costs					
Staff costs	18,480	23,689	40,527	82,696	70,581
IT costs	15,808	9,281	57,400	82,489	63,996
Premises costs	39,657	14,196	31,372	85,225	85,618
Other support costs	17,936	36,878	40,701	95,515	123,143
	<u>91,881</u>	<u>84,044</u>	<u>170,000</u>	<u>345,925</u>	<u>343,338</u>
Governance costs				2025 £	2024 £
Staff costs				12,971	12,571
Audit fees				15,214	9,624
Other governance costs				741	9,600
				<u>28,926</u>	<u>31,795</u>

SPINA BIFIDA, HYDROCEPHALUS, INFORMATION, NETWORKING, EQUALITY - SHINE

NOTES TO THE FINANCIAL STATEMENTS (CONTINUED)

FOR THE YEAR ENDED 31 MARCH 2025

9 Commercial operations in trading subsidiary

The charity has one wholly owned trading subsidiary undertaking, Shine (Trading) Limited which sells balloons for virtual balloon races. The company gift aids virtually all its taxable profits to Shine. A summary of its trading results is shown below. Audited accounts have been filed with the Registrar of Companies.

Shine (Trading) Ltd Profit & Loss Account	2025 £	2024 £
Turnover	579,800	608,455
Cost of sales	(193,867)	(192,036)
Gross profit	385,933	416,419
Administration expenses	(65,286)	(60,677)
Operating profit	320,647	355,742
Amount payable by gift aid to Shine	(320,647)	(355,742)
Profit on ordinary activities	-	-
Shine (Trading) Ltd Balance Sheet	2025 £	2024 £
Current assets	130,896	164,816
Current liabilities	(107,909)	(141,829)
Net current assets	22,987	22,987
Total net assets	22,987	22,987
Aggregate share capital and reserves	22,987	22,987

SPINA BIFIDA, HYDROCEPHALUS, INFORMATION, NETWORKING, EQUALITY - SHINE

NOTES TO THE FINANCIAL STATEMENTS (CONTINUED)

FOR THE YEAR ENDED 31 MARCH 2025

10 Employees

Number of employees

The average monthly number of full time equivalent employees during the year was:

	2025 Number	2024 Number
Services	34	31
Fundraising and publicity	8	8
Shops	1	1
Administration	3	3
Shine (Trading) Limited	6	5
	<u>52</u>	<u>48</u>

Employment costs

	2025 £	2024 £
Wages and salaries	1,643,674	1,545,971
Redundancy costs	18,877	1,000
Social security costs	150,508	141,548
Other pension costs	55,339	51,324
Other staff related benefits	5,140	4,283
	<u>1,873,538</u>	<u>1,744,126</u>

The number of employees whose annual remuneration was £60,000 or more were:

	2025 Number	2024 Number
£80,001 - £90,000	1	1
£60,001 - £70,000	1	1

Pension contributions for higher paid employees were £12,475 (2024 - £10,465).

SPINA BIFIDA, HYDROCEPHALUS, INFORMATION, NETWORKING, EQUALITY - SHINE

NOTES TO THE FINANCIAL STATEMENTS (CONTINUED)

FOR THE YEAR ENDED 31 MARCH 2025

11 Trustees

None of the Trustees (or any persons connected with them) received any remuneration or benefits from the charity during the year.

In respect of attending meetings of committees, travel expenses amounting to £741 (2024 - £1,401) have been reimbursed to 5 (2024 - 4) members of the Board of Trustees.

At the year end, £nil (2024 - £nil) of the above expenses are unpaid and included as a creditor.

The accounts include a charge of £2,413 (2024 - £3,312) to provide the Trustees with indemnity insurance.

12 Net gains/(losses) on investments

	Total 2025 £	Total 2024 £
Revaluation of investments	(14,986)	54,956
Gain/(loss) on sale of investments	14,477	518
	<u>(509)</u>	<u>55,474</u>

13 Taxation

Spina Bifida, Hydrocephalus, Information, Networking, Equality - SHINE is a registered charity. It only applies its funds in accordance with its charitable objectives, and is not trading with a view to making distributable profits, therefore corporation tax is not chargeable.

The trading subsidiary has gifted its profits to Spina Bifida, Hydrocephalus, Information, Networking, Equality - SHINE under Gift Aid therefore no corporation tax is payable

SPINA BIFIDA, HYDROCEPHALUS, INFORMATION, NETWORKING, EQUALITY - SHINE

NOTES TO THE FINANCIAL STATEMENTS (CONTINUED)

FOR THE YEAR ENDED 31 MARCH 2025

14 Tangible fixed assets

	Equipment £	Software and website £	Total £
Group Cost			
At 1 April 2024	11,830	25,757	37,587
At 31 March 2025	11,830	25,757	37,587
Depreciation and impairment			
At 1 April 2024	11,830	31,031	37,587
At 31 March 2025	11,830	31,031	37,587
	Equipment £	Software and website £	Total £
Charity Cost			
At 1 April 2024	9,191	18,728	27,919
At 31 March 2025	9,191	18,728	27,919
Depreciation and impairment			
At 1 April 2024	9,191	18,728	27,919
At 31 March 2025	9,191	18,728	27,919
Carrying amount			
At 31 March 2025	-	-	-
At 31 March 2024	-	-	-

The charity owns a freehold interest in some land that is leased to another charity at a peppercorn rent and used in furtherance of the charitable objects. The lease ends in 2084 and no value is included in the accounts for the property.

15 Fixed asset investments

	Group 2025 £	Charity 2025 £	Group 2024 £	Charity 2024 £
Investments in subsidiaries	-	3	-	3
Listed investments	847,083	847,083	834,112	834,112
	847,083	847,086	834,112	834,115

SPINA BIFIDA, HYDROCEPHALUS, INFORMATION, NETWORKING, EQUALITY - SHINE

NOTES TO THE FINANCIAL STATEMENTS (CONTINUED)

FOR THE YEAR ENDED 31 MARCH 2025

15 Fixed asset investments

(Continued)

Movements in fixed asset investments

Group and Charity

Cost or valuation

	2025 £	2024 £
At 31 March 2024	815,987	733,130
Additions within portfolio	84,344	160,726
Disposals within portfolio	(63,496)	(148,394)
Valuation changes	(11,906)	70,525
	824,929	815,987
Cash held for investment	22,154	18,125
At 31 March 2025	847,083	834,112

16 Financial instruments

	Group 2025 £	Charity 2025 £	Group 2024 £	Charity 2024 £
Carrying amount of financial assets				
Trade debtors	120,631	8,786	156,621	10,890
Accrued income	39,299	39,299	58,234	58,234
Amounts due from subsidiary undertakings	-	86,003	-	115,334
Bank and cash	905,322	891,066	885,550	870,690
Measured at cost	1,065,252	1,025,154	1,100,405	1,055,148
Fixed asset investments	847,083	847,086	834,112	834,115
Measured at market value	847,083	847,086	834,112	834,115
Carrying amount of financial liabilities				
Trade creditors	25,268	25,039	9,299	9,142
Accruals and deferred income	87,127	79,194	83,383	76,797
Other creditors	31,091	29,849	32,710	31,662
Other taxation and social security	45,431	32,929	52,014	33,310
Measured at cost	188,917	167,011	177,406	150,911

SPINA BIFIDA, HYDROCEPHALUS, INFORMATION, NETWORKING, EQUALITY - SHINE

NOTES TO THE FINANCIAL STATEMENTS (CONTINUED)

FOR THE YEAR ENDED 31 MARCH 2025

17 Debtors

	Group 2025 £	Charity 2025 £	Group 2024 £	Charity 2024 £
Amounts falling due within one year:				
Trade debtors	120,631	8,786	156,621	10,890
Amounts due from subsidiary undertakings	-	86,003	-	115,334
Prepayments and accrued income	144,534	139,739	95,595	91,370
	<u>265,165</u>	<u>234,528</u>	<u>252,216</u>	<u>217,594</u>

The net amount owed by the subsidiary includes amounts owing for gift aid receivable and payment for services provided.

18 Creditors: amounts falling due within one year

	Group 2025 £	Charity 2025 £	Group 2024 £	Charity 2024 £
Other taxation and social security	45,431	32,929	52,014	33,310
Trade creditors	25,268	25,039	9,299	9,142
Other creditors	31,091	29,849	32,710	31,662
Accruals and deferred income	87,127	79,194	83,383	76,797
	<u>188,917</u>	<u>167,011</u>	<u>177,406</u>	<u>150,911</u>

SPINA BIFIDA, HYDROCEPHALUS, INFORMATION, NETWORKING, EQUALITY - SHINE

NOTES TO THE FINANCIAL STATEMENTS (CONTINUED)

FOR THE YEAR ENDED 31 MARCH 2025

19 Retirement benefit schemes

The Pensions Trust - The Growth Plan

SHINE participates in The Pension Trust's Growth Plan (The Plan), a multi-employer scheme which provides benefits to some 521 non-associated participating employers. The scheme is a defined benefit scheme in the UK.

It is not possible for the charity to obtain sufficient information to enable it to account for the scheme as a defined benefit scheme. Therefore it accounts for the scheme as a defined contribution scheme.

The scheme is subject to the funding legislation outlined in the Pensions Act 2004 which came into force on 30 December 2005. This, together with documents issued by the Pensions Regulator and Technical Actuarial Standards issued by the Financial Reporting Council, set out the framework for funding defined benefit occupational pension schemes in the UK.

The scheme is classified as a 'last-man standing arrangement'. Therefore the charity is potentially liable for other participating employers' obligations if those employers are unable to meet their share of the scheme deficit following withdrawal from the scheme. Participating employers are legally required to meet their share of the scheme deficit on an annuity purchase basis on withdrawal from the scheme.

A full actuarial valuation for the scheme was carried out at 30 September 2023. This actuarial valuation showed assets of £514.9m, liabilities of £531.0m and a deficit of £16.1m. To eliminate this funding shortfall, the trustees and the participating employers have agreed that additional contributions will be paid to the scheme as follows:

Deficit contributions

From 1 April 2025 to 31 March 2028:	£2,100,000 per annum (payable monthly)
-------------------------------------	---

Unless a concession has been agreed with the Trustee the term to 31 March 2028 applies.

Note that the scheme's previous valuation was carried out with an effective date of 30 September 2020. This valuation showed assets of £800.3m, liabilities of £831.9m and a deficit of £31.6m. To eliminate this funding shortfall, the Trustee asked the participating employers to pay additional contributions to the scheme as follows:

Deficit contributions

From 1 April 2022 to 31 January 2025:	£3,312,000 per annum (payable monthly and increasing by 3% each on 1st April)
---------------------------------------	--

The recovery plan contributions are allocated to each participating employer in line with their estimated share of the Series 1 and Series 2 scheme liabilities.

Where the scheme is in deficit and where the charity has agreed to a deficit funding arrangement the company recognises a liability for this obligation. The amount recognised is the net present value of the deficit reduction contributions payable under the agreement that relates to the deficit. The present value is calculated using the discount rate detailed in these disclosures. The unwinding of the discount rate is recognised as a finance cost.

SPINA BIFIDA, HYDROCEPHALUS, INFORMATION, NETWORKING, EQUALITY - SHINE

NOTES TO THE FINANCIAL STATEMENTS (CONTINUED) FOR THE YEAR ENDED 31 MARCH 2025

19 Retirement benefit schemes

(Continued)

Present values of provision

	31 March 2025	31 March 2024	31 March 2023
Present value of provision	38,148	16,884	36,146

An amount of £13,612 (2024 - £16,884) is included within short term creditors and £24,536 (2024 - £Nil) in long term liabilities.

Reconciliation of opening and closing provisions

	Year Ending 31 March 2025	Year Ending 31 March 2024
Provision at start of period	16,884	36,146
Unwinding of the discount factor (interest expense)	445	1,382
Deficit contribution paid	(17,214)	(20,657)
Remeasurements - impact of any change in assumptions	242	13
Provision at end of period	38,148	16,884

Income and expenditure impact

	Year Ending 31 March 2025	Year Ending 31 March 2024
Interest expense	445	1,382
Remeasurements - impact of any change in assumptions	242	13
Costs recognised in income and expenditure account	38,478	1,395

SPINA BIFIDA, HYDROCEPHALUS, INFORMATION, NETWORKING, EQUALITY - SHINE

NOTES TO THE FINANCIAL STATEMENTS (CONTINUED)

FOR THE YEAR ENDED 31 MARCH 2025

19 Retirement benefit schemes

(Continued)

Assumptions

	31 March 2025 % per annum	31 March 2024 % per annum	31 March 2023 % per annum
Rate of discount	4.84	5.31	5.52

The discount rates shown above are the equivalent single discount rates which, when used to discount the future recovery plan contributions due, would give the same results as using a full AA corporate bond yield curve to discount the same recovery plan contributions.

The following schedule details the deficit contributions agreed between the company and the scheme at each year end period:

Deficit contributions schedule

Year ending	31 March 2025	31 March 2024	31 March 2023
Year 1	13,612	17,214	20,657
Year 2	13,612	-	17,214
Year 3	13,612	-	-

The charity must recognise a liability measured as the present value of the contributions payable that arise from the deficit recovery agreement and the resulting expense in the income and expenditure account i.e. the unwinding of the discount rate as a finance cost in the period in which it arises.

It is these contributions that have been used to derive the charity's balance sheet liability.

The Plan is closed to new entrants and there were no active members of the scheme during the year.

The Scheme has identified a potential issue in respect of the calculation of benefits paid and has instigated a review. The outcome of the review is unknown and the potential financial impact of the review if an issue is identified is unknown. A potential liability may arise, but no provision is included in these accounts as the amount cannot be quantified.

SPINA BIFIDA, HYDROCEPHALUS, INFORMATION, NETWORKING, EQUALITY - SHINE

NOTES TO THE FINANCIAL STATEMENTS (CONTINUED)

FOR THE YEAR ENDED 31 MARCH 2025

20 Restricted funds

The income funds of the charity include restricted funds comprising the following unexpended balances of donations and grants held on trust for specific purposes:

	Balance at 1 April 2023 £	Movement in funds			Transfers £	Balance at 1 April 2024 £	Movement in funds			Transfers £	Balance at 31 March 2025 £
		Income £	Expenditure £				Income £	Expenditure £			
National Lottery Community Fund – Early intervention programme across England	79,559	172,174	(209,292)		8,070	50,511	185,927	(205,744)		7,227	37,921
National Lottery Community fund Northern Ireland Shining Opportunities	35,064	97,696	(100,798)		-	31,962	99,974	(99,057)		(480)	32,399
International Projects: Contenance care and management project (Nigeria)	(1,570)	39,329	(28,234)		-	9,525	27,736	(36,427)		-	834
Coop Grant	2,118	-	(325)		-	1,793	-	(1,340)		-	453
National Lottery Community fund: Cymru People & Places	-	57,867	(63,841)		14,154	8,180	112,520	(134,845)		26,958	12,813
National Lottery Community fund: Cymru Shining lights	21,473	-	(23,053)		1,580	-	-	-		-	-
Regional Projects "Here for you"	15,121	5,000	(15,122)		-	4,999	57,000	(48,362)		-	13,637
Welfare Grants	(2,090)	6,790	(4,685)		-	15	-	-		-	15
Support Groups	1,835	-	1,306		-	3,141	-	(188)		-	2,953
South West Country SDW	-	8,500	(8,500)		-	-	-	-		-	-
NPH Coordinator	-	1,000	-		-	1,000	1,000	(2,000)		-	-
Spinal Stimulation	-	10,720	(6,894)		-	3,826	13,250	(32,769)		15,693	-
Margaret Giffen Charitable Trust - supporting our work in Northamptonshire	5,505	5,000	(10,505)		-	-	-	-		-	-
BBC Children in Need Contenance Support	-	-	-		-	-	18,000	(14,245)		4,008	7,763
Awards for All Pain and Wellbeing	-	-	-		-	-	12,622	(1,710)		-	10,912
	157,015	404,076	(469,943)		23,804	114,952	528,029	(576,687)		53,406	119,700

SPINA BIFIDA, HYDROCEPHALUS, INFORMATION, NETWORKING, EQUALITY - SHINE

NOTES TO THE FINANCIAL STATEMENTS (CONTINUED)

FOR THE YEAR ENDED 31 MARCH 2025

21 Designated funds

The income funds of the charity include the following designated funds which have been set aside out of unrestricted funds by the trustees for specific purposes:

Group & Charity	Balance at 1 April 2023 £	Net movement £	Balance at 1 April 2024 £	Net movement £	Balance at 31 March 2025 £
Interest in land and property and other fixed assets	1,214	(1,214)	-	-	-
Florence Bartle fund	96,287	(28,876)	67,411	(32,680)	34,731
Services in Northern Ireland, Wales and Gloucestershire	29,228	(16,881)	12,347	(5,628)	6,719
Digital development	25,000	-	25,000	-	25,000
Research	50,000	-	50,000	(19,577)	30,423
North East Service Fund	-	-	-	139,333	139,333
Surrey Service Fund	-	-	-	1,440	1,440
- East Anglian SDW	75,000	-	75,000	-	75,000
- Deputy Health Manager	135,000	-	135,000	(2,317)	132,683
- Education Officer	50,000	-	50,000	-	50,000
- Physio service (Spinal Stimulation)	25,000	(1,225)	23,775	(14,468)	9,307
- Normal Pressure Hydrocephalus	-	72,500	72,500	(1,697)	70,803
	<u>486,729</u>	<u>24,304</u>	<u>511,033</u>	<u>64,406</u>	<u>575,439</u>

The designated funds comprise:

- the group and charity's interest in land and property and other fixed assets, net of the outstanding mortgage.
- the Florence Bartle fund which is part of a legacy that is to be spent on the relief of Spina Bifida in Cornwall and the South West.
- the services in Northern Ireland, Wales and Gloucestershire that is for work specifically in those areas.
- the digital development fund that is to develop a long-term IT/digital strategy to aid in future-proofing Shine's approaches to technology and automation.
- the research fund that is to improve access to health and care services in line with Shine's strategic goals.
- the service funds that are to fund new posts as detailed above.
- the North East and Surrey Service Funds are for work specifically in those areas.

SPINA BIFIDA, HYDROCEPHALUS, INFORMATION, NETWORKING, EQUALITY - SHINE

NOTES TO THE FINANCIAL STATEMENTS (CONTINUED)

FOR THE YEAR ENDED 31 MARCH 2025

22	Analysis of net assets between funds	Unrestricted funds		Designated funds		Restricted funds		Total Unrestricted funds		Designated funds		Restricted funds		Total	
		2025	£	2025	£	2025	£	2025	£	2024	£	2024	£	2024	£
Group	Fund balances at 31 March 2025 are represented by:														
	Investments	847,083		-		-		847,083		-		-		834,112	
	Current assets/(liabilities)	286,431		575,439		119,700		981,570		511,033		114,952		960,360	
	Provisions and pensions	(24,536)		-		-		(24,536)		-		-		-	
		1,108,978		575,439		119,700		1,804,117		511,033		114,952		1,794,472	
Charity	Fund balances at 31 March 2025 are represented by:														
	Investments	847,086		-		-		847,086		-		-		834,115	
	Current assets/(liabilities)	263,444		575,439		119,700		958,583		511,033		114,952		937,373	
	Provisions and pensions	(24,536)		-		-		(24,536)		-		-		-	
		1,085,994		575,439		119,700		1,781,133		511,033		114,952		1,771,488	

SPINA BIFIDA, HYDROCEPHALUS, INFORMATION, NETWORKING, EQUALITY - SHINE

NOTES TO THE FINANCIAL STATEMENTS (CONTINUED)

FOR THE YEAR ENDED 31 MARCH 2025

23 Operating lease commitments

Group and Charity

At the reporting end date the charity had outstanding commitments for future minimum lease payments under non-cancellable operating leases, which fall due as follows:

	2025 £	2024 £
Within one year	45,460	48,420
Between two and five years	28,783	75,826
	<u>74,243</u>	<u>124,246</u>

24 Related party transactions

Remuneration of key management personnel

The remuneration of key management personnel, who on a full time equivalent basis are the 2.6 (2024 - 2.6) members of the senior management team, is as follows.

	2025 £	2024 £
Aggregate compensation including pension contributions	<u>190,093</u>	<u>187,045</u>

Transactions with related parties

Owing to the nature of the charity's operations, some of the Trustees may themselves, or may have family members that access services from the charity. Consequently there will be transactions between those Trustees or their family members. These are on the same basis as other service users of the charity.

25 Control

No one individual has overall control of the charity.

SPINA BIFIDA, HYDROCEPHALUS, INFORMATION, NETWORKING, EQUALITY - SHINE

NOTES TO THE FINANCIAL STATEMENTS (CONTINUED) FOR THE YEAR ENDED 31 MARCH 2025

26	Cash generated from operations	2025 £	2024 £
	Surplus/(deficit) for the year	9,645	(65,252)
	Adjustments for:		
	Investment income recognised in statement of financial activities	(67,304)	(40,471)
	Investment management fees recognised in statement of financial activities	(9,854)	(9,014)
	Gain on disposal of investments	(14,477)	(518)
	Fair value gains and losses on investments	14,986	(54,956)
	Depreciation and impairment of tangible fixed assets	-	1,214
	Movements in working capital:		
	(Increase) in debtors	(12,949)	(7,016)
	Increase/(decrease) in creditors	10,797	(19,547)
	Increase/(decrease) in pension liability	21,624	(19,262)
	Cash absorbed by operations	(47,532)	(214,822)
27	Analysis of changes in net funds		
	The group and charity had no debt during the year.		



SHINE Registered Office

Unit 4, Minerva Business Park, Peterborough, PE2 6FT

Telephone 01733 555988

Email firstcontact@SHINEcharity.org.uk

www.shinecharity.org.uk

Charity number 249338, Company number 00877990



Shine

Spina bifida • Hydrocephalus
Information • Networking • Equality