



**RSPCA TAMESIDE AND GLOSSOP
BRANCH
(Reg Charity No: 232260)**



**ANNUAL REPORT AND ACCOUNTS
FOR THE YEAR ENDED
31ST DECEMBER 2020**

INDEX TO ANNUAL REVIEW, REPORT AND ACCOUNTS
FOR THE YEAR ENDING
31ST December 2020

Chairman's Report	Page 1
Trustees	Page 3
Regional HQ Information	Page 4
Trustees' Report	Page 5
Constitution	Page 5
Areas of Priority	
Public Benefit	
Governance	Page 6
Training, Risk Management &	Page 7
Related Parties	
Investment & Reserves Policies	Page 7
Future Plans	Page 7
Achievements & Performance	Page 7
Branch Statistics	Page 8
Accounts for the year ending	Page 9
31 December 2020	
Independent Examiner's Report	Page 10
Statement of Financial Activities	Page 11
Balance Sheet	Page 12
Notes to the Accounts	Pages 13 to16
Inspectors' Report	Page 17

CHAIRMAN'S REPORT - 2020

I am sure that no one will forget 2020 and the impact it has had on all our lives and the lives of so many of the animals in RSPCA care.

In the first two months of the year we were in the midst of planning our fundraising events including annual Stamford Park Family Fun Day, Hollingworth Festival and Glossop Carnival dogs shows, rosettes were ordered, schedules and posters designed and discussions on long term planning for our major fundraiser, the next Christmas Ball, following on from the success of 2019. March brought the first lockdown putting an end to all the above for the foreseeable future. Luckily rosettes don't have a sell by date and we have enough to be able to put on 3 dog shows at a moment's notice.

The closure of all non-essential shops has had a huge impact on so many branches and other charities which rely on income from their shops. As we have a share in the profits of Bury and Oldham Branch's Glossop shop, we will miss this source of income. However, as we don't have paid staff salaries or building costs to finance we agreed to donate half our share of the door to door scheme to the Society's Branch Emergency Fund in order to support those branches facing the very real possibility of being forced to close their doors.

In March, knowing that the lockdown was fast approaching, we brought an elderly border collie into foster care from the Bury and Oldham branch kennels in Strinesdale as we didn't know how long the situation would last and, at 13 years of age, we felt that she should spend her final years in a home environment.

In July RSPCA Bury and Oldham informed us that they would not be renewing our dog boarding agreement and we would like to thank them for the care they have given to our branch dogs during the 3 years the centre has been open.

Despite this set back and thanks only to our wonderful fosterers, including Newgate Kennels who donate 2 places (often more) to the branch we have been able to continue to accept dogs in need of places of safety from inspectors. Initially, due in the main to Covid-19 restrictions, rehoming wasn't possible unless adopters were known to branch volunteers, Trustees and foster carers, as we could no longer send our pre and post adoption support visitors into potential adopters' homes. This greatly reduced the number of dogs we were able to rehome. Our grateful thanks also go to the staff at Bowler's Boarding Cattery for their help in caring for branch cats, often referred directly from the RSPCA's Greater Manchester Animal Hospital and rescued by RSPCA inspectors.

Due to the Pandemic and subsequent loss of income so many individuals have experienced the Trustees agreed to increase the value of our vouchers by as much as 20% in some instances in order to ensure that owned animals get to see a vet and receive any emergency treatment they need. Changes to veterinary surgeries' guidelines and subsequent reduction in the number of appointments for surgical procedures during the various lockdowns has meant that individuals have often put off neutering operations and vaccinations have been delayed.



Thankfully, the situation is improving all the time and we are grateful for the help local veterinary practices give to the branch by accepting our welfare treatment and neutering vouchers on behalf of owners experiencing financial hardship.

Unusually, for this branch we facilitated the rehoming of two birds, an African Grey Parrot and his cockatiel housemate. It was a "home to home" rehoming as one of our Trustees was able to oversee the transfer of ownership. *(NB. We don't have facilities to care for birds, small mammals, equines or exotics.)*

We placed several mothers with litters of kittens and one litter of large mixed breed puppies into foster homes during the year. All thrived and went on to live with their forever families and to date are doing really well in their new homes.

Due to the government's restrictions and closure of the Stalybridge Fire Station's Community Room we had to stop face to face committee meetings. Following a short break, Trustees began to meet via Zoom and with permission from HQ our AGM was delayed until November 2020 in order to accept our 2019 Annual Report and Accounts. All our Trustees agreed to continue in post until the next AGM when a vote could be carried out in person. We had hoped face to face meetings would be made possible by 2021 but once again we are relying on zoom.

Worryingly, a large reduction in the National Society's income and reserves has resulted in a significant reduction in the number of RSPCA uniformed officers who cover the whole of England and Wales. Inspectors 273 (340)*, Animal Rescue Officers ARO's 90 (88 Animal Collection Officers & 50 Animal Welfare officers - a percentage of whom will be absorbed into the ARO role)*. Subsequently, an even greater workload is placed on their shoulders. Worthy of note is that there are 129,110 serving police officers employed to cover the same area of the UK. (*Home Office Police Workforce, England and Wales as at 31.3.2020 – 2nd edition*)

We are grateful to our local group Chief Inspector, Ben Strangwood, for his continuing attendance at our 40 minute monthly zoom meetings which means that we are now kept up to date on the restructuring of the inspectorate and animal welfare issues in Greater Manchester. (*See the Greater Manchester Group Report - page 17*)



The branch is extremely grateful to our volunteers and supporters, without whom the branch couldn't continue to support our inspectors and those animals in most need.

A handwritten signature in black ink that reads "Irene Platt". The signature is written in a cursive style with a long horizontal line extending from the bottom of the name.

Irene Platt
Honorary Chair

Date: 30.5.2020

**Inspectorate numbers 2019*

R.S.P.C.A. TAMESIDE AND GLOSSOP BRANCH
HONORARY OFFICERS AND COMMITTEE MEMBERS

PRESIDENT: Vacant.

VICE PRESIDENTS: Andrew Gwynne MP. Angela Rayner MP,
Jonathan Reynolds MP.

HONORARY CHAIRMAN: Irene Platt, 48 Regent Drive, Mossley OL5 9NZ (Tel:
01457 83 3788)

HONORARY SECRETARY: Kathleen Birch

HONORARY TREASURER: Lynn Andrew

REGIONAL BOARD REPRESENTATIVE: Kathleen Birch

RE-HOMING COORDINATOR: Gail Hilton (Tel: 07954 122 481)

OTHER COMMITTEE MEMBERS: Angela Clough, Kay Dinsdale, Richard Howard, Anne
Kenyon, Elizabeth Wood.

A maximum of 14 Trustees/Management Committee members may be elected from eligible members of the branch at
the Annual General Meeting & 3 co-options are allowed.

FUNDRAISING CO-ORDINATORS

GLOSSOP: Anne Kenyon

TAMESIDE: Vacant

WEBSITE COORDINATORS/

CONTRIBUTORS: Gail Hilton/Kay Dinsdale/Irene Platt

VETERINARY ADVISOR: Ian McConnell BSc (Hons) BVM&S, GPCert(Endo),
MRCVS

BANKERS: Barclays Bank Ltd., Unit 33 Arcades Shopping Centre,
Ashton-under-Lyne
The Royal Bank of Scotland plc, Drummond House (CL)

INDEPENDENT EXAMINER: John Simpson ACA

BRANCH ANSWERPHONE: 07954 122 481

WEBSITE ADDRESS: www.rspca-tameside-glossop.org.uk

FACEBOOK: www.facebook.com/rspcatamesideandglossop

EMAIL: office@rspca-tameside-glossop.org.uk

TAMESIDE AND GLOSSOP BRANCH
operates in the North Region of the RSPCA

National Cruelty and Advice Line: 0300 1234 999

**Branch Affairs Committee & Chairman
of the North West Regional Board:** Gerry Miles, RSPCA Wigan and District Branch

National Control Centre (*Cruelty & Advice Line*):- 0300 1234 999

RSPCA North Regional Office: PO Box BR29, Leeds. LS13 2XL

Operational Superintendent North:- Supt. Matt Sacks, (RHQ)

Assistant Director Branches and Partnerships:- Sandra Fruish, (RHQ)

Operations Manager (branches):- Richard Cummins, (RHQ)

**Operations Manager North West & Branch
Partnership Manager:-** Denise McCabe, (RHQ)

THE ROYAL SOCIETY FOR THE PREVENTION OF CRUELTY TO ANIMALS
TAMESIDE AND GLOSSOP BRANCH
(Reg Charity No: 232260)

REPORT OF THE TRUSTEES FOR THE YEAR ENDED 31ST DECEMBER 2020

The Royal Society for the Prevention of Cruelty to Animals was established in 1824. It is a charity, entirely supported by voluntary donations and its main function is to prevent cruelty to animals. This is achieved by 273 inspectors, supported by 90 animal rescue officers (AWOs) in England and Wales.

Constitution: The **TAMESIDE AND GLOSSOP BRANCH** was established in 1899 and is an unincorporated charitable association and a separately registered branch (charity number: 232260) of the Royal Society for the Prevention of Cruelty to Animals. The Branch is constituted under the RSPCA Rules for Branches. The primary role of RSPCA branches is to support the Society's Inspectorate, giving priority to the acceptance of case animals and those signed over for welfare offences/concerns, or unowned sick and injured animals presented with an Inspectorate incident number.

Objects: The objects of the Branch are to promote the work and objects of the Society - to promote kindness and to prevent or suppress cruelty to animals by all lawful means - with particular reference to the area of the Branch ie Tameside and Glossop, in accordance with the policies of the Society.

RSPCA Areas of Priority in Animal Welfare

(No significance is to be attached to the order in which these priorities are given)

Companion Animals: with particular importance being attached to responsible pet ownership, methods of population control.

Farm Animals: with particular reference to cruelties involved in certain intensive systems, and to the transport, export and slaughter of food animals.

Animal Experimentation: with particular emphasis on reducing both the total number of experiments which are carried out, and the numbers and suffering of such animals as are in fact used in these experiments.

Wild Animals: with particular reference to animals in captivity, blood sports, exploited species and the use of traps, snares and poisons in the control of wild animals.

Public Benefit:

The trustees have reviewed the outcomes and achievements of our objectives and activities for the year, to ensure they remain focused on our charitable aims, and continue to deliver benefits to the public. We have complied with the duty under the Charities Act 2011 to have due regard to public benefit guidance published by the Commission. Under the Charities Act 2011, the advancement of animal welfare is recognised as a distinct statutory charitable purpose. This legislation and the Animal Welfare Act of the same year indicate an acceptance by society that treating living creatures with compassion has a moral benefit for the public as a whole. Whilst this public benefit is clear, it is sometimes difficult to quantify and must be balanced against any detriment. The Branch's animal welfare work, although local in nature, benefits society at large, and also aims to help people in need with the care of their animals. The next section of this report highlights the Branch's main activities and demonstrates the benefit provided to the public. All our charitable activities, as described in more detail below, focus on promoting kindness and preventing or suppressing cruelty to animals and are undertaken to further these purposes for the public benefit.

We support our local Inspectors by: taking in previously mistreated or abandoned animals, including pets whose owners suffer ill-health, financial difficulties or who have passed away. The Society's Inspectorate (as well as providing education, information and advice) rescues animals in distress and enforces laws against the cruel mistreatment of animals in England and Wales by bringing prosecutions. This work is key to 'the prevention or suppression of cruelty' part of the RSPCA objects, and promotes humane sentiments towards animals which involves moral benefit to humankind as a whole.

We continue to support individuals in need, including homeless families, to feed and care for their dogs and other animals including those who are found accommodation via “A Bed for Every Night (ABEN) scheme” operating throughout Greater Manchester and specifically for the shelter in the Tameside area.

We provide subsidised veterinary treatment for animals which are sick or injured and belong to local residents on low incomes. We do this through a voucher scheme. This work benefits those on means tested benefits by giving them financial help to obtain care for companion animals in need of veterinary treatment. These vouchers are only issued when an animal is in urgent need of veterinary treatment and its owner doesn't have enough money to meet the Veterinary Surgeon's fees.

We provide subsidised neutering and microchipping of companion animals for those in the Branch area on low incomes. We do this on a day to day basis through a voucher scheme with the help and generosity of local veterinary surgeons accepting the vouchers as part payment. This scheme helps to control companion animal populations through neutering and helps those owners in receipt of certain means tested benefits by giving them financial help to neuter and microchip their animals, thereby promoting responsible pet ownership.

Animals in our care receive veterinary treatment, vaccination, neutering, micro-chipping and are assessed for rehoming. This work helps to control the incidence and spread of disease and suffering through vaccination and neutering.

We rehome animals in need to caring individuals and families. Whilst we recognise that companion animals provide measurable benefits to people's physical and mental health, we consider the provision of pets as subsidiary to the main charitable aim of this service, which is to prevent animal suffering. Our policy to charge a reasonable adoption fee for animals aims to highlight the ongoing personal and financial commitment of pet ownership. It would not be in the best interests of animals, and therefore would fall outside our objects, to rehome to those who could not afford them.

We respond to enquiries (both direct and via the Society's national call centre) from the public about animals locally. The public benefits from knowing that we can intervene to assist animals in need or, depending on the nature of their enquiry, direct them to our National Society's inspectors via the help and advice centre, local veterinary practices or species and breed specific rescue centres.

We offer free animal care advice by phone, leaflets and at our public events. Sadly the Coronavirus-19 emergency has continued to impact on our public events which have had to be discontinued for the duration of the restrictions imposed by central and local government in order to preserve the health and life of the population.

Within the terms of our governing document, we support the National Society, other RSPCA branches and local organisations by collaborating on fund raising events and campaigns.

Voluntary opportunities included: Trusteeship & Fostering (which carried on throughout the year). However Pre and Post Adoption Home Visiting, and Fundraising opportunities have been put on hold for the duration of the epidemic. Volunteers are recruited from all sectors of the community who support our work, but again much of our volunteering work is in abeyance preventing individuals from gaining previous valuable experience in caring for animals, interacting with professionals (eg social workers, housing officers & CPNs) and other members of the public. We very much hope that, once the worst effects of the pandemic cease, the branch will once again be able to benefit local people and companies by providing the possibility of doing work which is compassionate and rewarding.

Governance: Up to fourteen trustees are elected annually at the Annual General Meeting and drawn from individuals who have been members of the National Society and Branch for at least 3 months. All new prospective Trustees are briefed on the responsibilities of the role prior to accepting the position and are offered in-service training such as financial reporting, recruitment of volunteers, public speaking on an ad hoc basis as required. The branch is also empowered to co-opt up to 3 additional Trustees, who bring their skills and experience to the branch.

All major decisions are made by the trustees at 11 monthly management meetings each year. These meetings continue to take place during the Covid-19 pandemic using monthly zoom meeting and urgent decisions are made possible through emails and/or phone calls to those trustees without internet access.

Paid Staff: The Branch is managed and operated on a day to day basis entirely by volunteers working from their own homes and has no paid staff.

Address: The branch has an address for correspondence only which is: Care Of, Heyrod Village Hall, John Street, Heyrod, Stalybridge, SK15 3BW, and may be contacted via email, phone, website or through the chair (see list of committee members on page 1)

Training: Training is provided by the National Society of the RSPCA.

Risk Management: The Management Committee regularly reviews the major risks to which the charity is exposed annually. Where appropriate, systems and procedures have been established to mitigate identified risks.

Related Parties: The charity is guided by the national body of the RSPCA. The charity is able to purchase goods for resale for fundraising purposes and, most importantly, medicines from the national body to treat the animals in branch care under veterinary supervision.

Investment Policy: There are no restrictions on the charity's power to invest however it is branch policy that these funds both unrestricted and restricted should be invested ethically. The investment strategy is set by the Trustees annually and takes into account recent demand for funds. This strategy is set within an overall policy which states that funds in excess of short term needs will be invested in low risk investments with a view to ensuring capital appreciation of the fund at a reasonable market rate. In the year under review, in order to break-even, the charity required an income of £58,360 and this was exceeded by £1,859.

Reserves Policy: It is the policy of the charity to maintain unrestricted funds, which are the free reserves of the charity, at a level, which equates to at least 12 months unrestricted expenditure. This reserve is considered necessary in order to mitigate any fluctuation in income and ensure that our service to animal welfare is maintained, including funds to cover boarding costs of animals brought into the branch for re-homing by RSPCA Inspectors, applications from people on low income for financial help to meet assisted veterinary neutering costs or emergency assisted veterinary treatment costs for their animals, management and administration costs.

Future Plans: As the pandemic continues our plans to organise community animal action days have had to be put on hold for the foreseeable future. However, we are committed to helping owners who are experiencing financial hardship or have lost their homes, through donations of animal food and vouchers towards their veterinary costs. We will continue to recruit volunteer foster carers who are able to offer their time and homes to care for those animals in need of extra TLC, because of illness, injury or age.

Achievements and Performance:

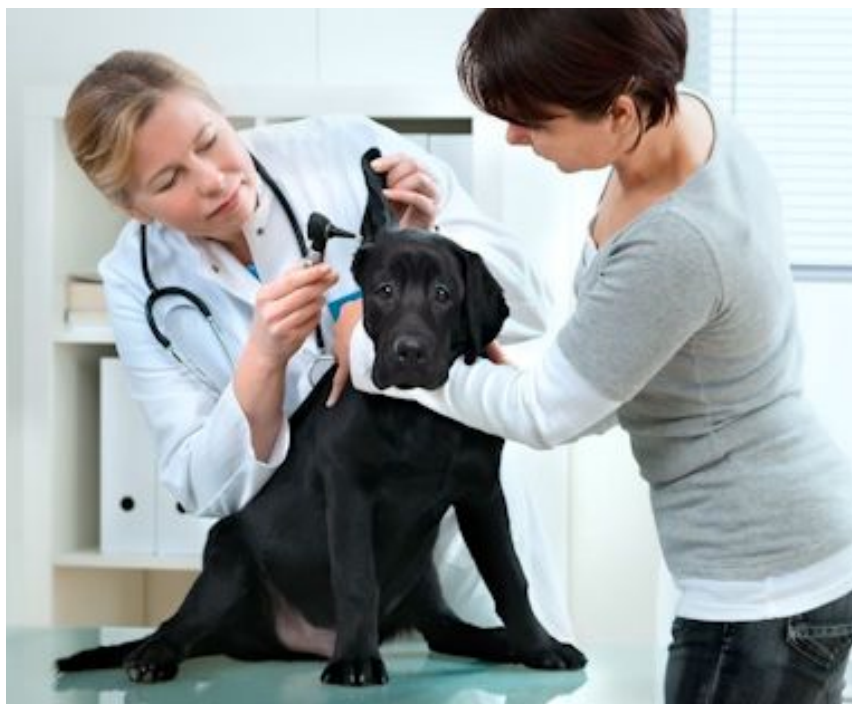
During the pandemic we are reluctant to put pressure onto the staff at the RSPCA's Greater Manchester Animal Hospital (GMAH) and have increased the value of our assisted treatment and neutering vouchers in order to contribute to the cost of local private veterinary care, where possible, for residents experiencing financial hardship ensuring that they are able to access the veterinary care which every responsible owner wants for their pet. We are hopeful that once life returns to some semblance of normality and veterinary students in their final years are able to take up placements in the hospital, residents in Greater Manchester and beyond who are dependent on state benefits will be able to fully access GMAH's services.

We donate pet food to local food banks for owners who are experiencing extreme financial hardship. This has meant that families have been able to continue to feed their animals and no longer had to forego meals themselves or be faced with the prospect of having to give up their much loved companion animals. We liaise with local veterinary surgeons to help fund extra expense involved in the treatment of strays (mainly cats) and take them into branch care if we have room.

BRANCH STATISTICS

2020				2019
ANIMALS REHOMED				
DOGS	CATS	MISC (incl Rabbits)	TOTAL	TOTAL
47	90	2	139	164
WELFARE NEUTERING - Privately owned				
DOGS	CATS	MISC (incl Rabbits)	TOTAL	TOTAL
0	6	2	8	44
WELFARE TREATMENT – Privately owned				
DOGS	CATS	MISC (incl Rabbits)	TOTAL	
4	12	0	16	22

When compared with 2019 (72 dogs and 90 cats) our dog adoptions fell by approximately 35% due to the pandemic and cessation of our kennel boarding agreement at RSPCA Bury, Oldham and District branch. However, thanks to the efforts of staff at the boarding cattery our cat rehoming numbers continue to remain fairly static.





RSPCA TAMESIDE AND GLOSSOP BRANCH

(Reg Charity No: 232260)



ACCOUNTS FOR THE YEAR ENDED 31ST DECEMBER 2020

**Report of the Independent Examiner to the Trustees of
The Royal Society for the Prevention of Cruelty to Animals
Tameside & Glossop Branch**

I report on the accounts of the charity for the year ended 31 December 2020, which are set out on pages 11 to 16.

Respective responsibilities of trustees and examiner

The charity's trustees are responsible for the preparation of the accounts. The charity's trustees consider that an audit is not required for this year (under section 144(2) of the Charities Act 2011 (the 2011 Act) and that an independent examination is needed.

It is my responsibility to:

- examine the accounts under section 145 of the 2011 Act;
- follow the procedures laid down in the general Directions given by the Charity Commission under section 145(5)(b) of the 2011 Act; and
- state whether particular matters have come to my attention.

Basis of independent examiner's report

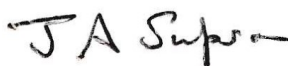
My examination was carried out in accordance with the general Directions given by the Charity Commission. An examination includes a review of the accounting records kept by the charity and a comparison of the accounts presented with those records. It also includes consideration of any unusual items for disclosures in the accounts, and seeking explanations from you as trustees concerning such matters. The procedures undertaken do not provide all the evidence that would be required in an audit, and consequently no opinion is given as to whether the accounts present a "true and fair view" and the report is limited to those matters set out in the statement below. I have prepared the financial statements from the books written up by the charity.

Independent examiner's qualified statement

This charity, in common with many others of similar size and organisation, derives a substantial proportion of its income from voluntary donations which cannot be fully controlled until they are entered into the accounting records, and are therefore not susceptible to independent verification.

In connection with my examination, no other matter, except that referred to in the above paragraph, has come to my attention:

1. which gives me reasonable cause to believe that in any material respect the requirements
 - to keep accounting record in accordance with section 130 of the 2011 Act; and
 - to prepare accounts which accord with the accounting records and to comply with the accounting requirements of the 2011 Acthave not been met; or
2. to which, in my opinion, attention should be drawn in order to enable a proper understanding of the accounts to be reached



John A Simpson
Chartered Accountant

Date 1st June 2021

48 Bredbury Green, Romiley, Stockport, SK6 3DN

THE ROYAL SOCIETY FOR THE PREVENTION OF CRUELTY TO ANIMALS
TAMESIDE & GLOSSOP BRANCH

Statement of Financial Activities
For the year ended 31 December 2020

	Notes	Unrestricted Funds £	Restricted Funds £	Total 2020 £	Total 2019 £
Incoming Resources					
Donations, legacies and similar incoming resources	2	46,560	0	46,560	35,217
Activities in furtherance of the charity's objective	3	15,545	0	15,545	24,745
Activities for generating funds	4	25	0	25	0
Investment income	5	89	0	89	261
Total incoming resources		62,219	0	62,219	60,223
Resources Expended					
Costs of generating funds	6	0	0	0	3,007
Charitable expenditure:					
Activities in furtherance of the charity's objects	7	55,254	0	55,254	53,519
Management and administration	8	3,106	0	3,106	6,166
Total resources expended		58,360	0	58,360	62,692
Net movement in funds for the year		3,859	0	3,859	5,747
Balance at 1 January 2020		138,282	0	138,282	140,751
Balance at 31 December 2020		142,141	0	142,141	140,751

The notes on pages 13 to 16 form part of these accounts.

THE ROYAL SOCIETY FOR THE PREVENTION OF CRUELTY TO ANIMALS
TAMESIDE AND GLOSSOP BRANCH

Balance Sheet as at 31 December 2020

	Notes	Unrestricted Funds £	Restricted Funds £	Total 2020 £	Total 2019 £
Fixed assets					
Motor Vehicles	10	3,579	0	3,579	4,772
Investments	11	75	0	75	75
		<u>3,654</u>	<u>0</u>	<u>3,654</u>	<u>4,847</u>
Current assets					
Stocks		612	0	612	1,412
Debtors	12	784	0	784	10,391
Cash at bank		142,362	0	142,362	126,283
		<u>143,758</u>	<u>0</u>	<u>143,758</u>	<u>138,086</u>
Creditors: amounts falling due within one year	13	<u>5,271</u>	<u>0</u>	<u>5,271</u>	<u>4,651</u>
Net current assets		<u>138,487</u>	<u>0</u>	<u>138,487</u>	<u>133,435</u>
Total net assets		<u>142,141</u>	<u>0</u>	<u>142,141</u>	<u>138,282</u>

Funds

Unrestricted funds	142,141	138,282
Restricted funds	0	0
Total funds	<u>142,141</u>	<u>138,282</u>

Approved by the board of trustees on
Thursday 24th May 2020
and signed on its behalf by Lynn Andrew

Lynn Andrew

THE ROYAL SOCIETY FOR THE PREVENTION OF CRUELTY TO ANIMALS
TAMESIDE & GLOSSOP BRANCH

Notes to the accounts
for the year ended 31 December 2020

1 Accounting Policies

Basis of preparation

These accounts have been prepared under the historical cost convention with items recognised at cost or transaction value unless otherwise stated in the relevant notes to the accounts.

The accounts have been prepared in accordance with the Statement of Recommended Practice, Accounting by Charities preparing their accounts in accordance with FRS 102 and with the Charities Act 2011.

The charity constitutes a public benefit as defined by FRS 102.

Incoming resources

Donations, legacies and similar incoming resources - These are included in the Statement of Financial Activities (SOFA) when:

The charity becomes entitled to the donation, legacy or similar income and any conditions for the receipt are met;

The trustees are reasonably certain they will receive it; and

The trustees are reasonably certain that its value can be reliably measured.

Tax reclaims on donations and gifts - Incoming resources from tax claims are included on the SOFA at the same time as the gift to which they relate.

Investment income - This and any tax credits are included in the accounts when receivable

Expenditure and liabilities

Generally liabilities are recognised as soon as there is a legal or constructive obligation committing the charity to the expenditure.

Tangible fixed assets for use by the charity and depreciation

Tangible fixed assets for use by the charity, when owned, are stated at cost less depreciation. The van is being depreciated over 6 years.

Investments

Investments are stated at market value at the balance sheet date. The SOFA includes the net gains and losses arising on revaluation.

Stocks

Stocks consist of purchased goods for resale. Stocks are valued at the lower of cost or net realisable value. Items donated for resale are not included in the accounts until they are sold.

THE ROYAL SOCIETY FOR THE PREVENTION OF CRUELTY TO ANIMALS
TAMESIDE & GLOSSOP BRANCH

Notes to the accounts
For the year ended 31 December
2020

2 Donations and gifts	Unrestricted	Restricted	2020	2019
			£	£
Subscriptions	164		164	3
Collection boxes	311		311	2,088
General donations	12,351		12,351	3,209
Legacies	5,844		5,844	-
Door to door collections	25,173		25,173	25,897
Profit share	2,717		2,717	4,020
	<u>46,560</u>	<u>0</u>	<u>46,560</u>	<u>35,217</u>
3 Activities in furtherance of the charity's objects			2020	2019
			£	£
Special events			4,020	3,970
Animal sales and adoptions			11,525	20,775
			<u>15,545</u>	<u>24,745</u>
4 Activities for general funds			2020	2019
			£	£
Sales of goods			<u>25</u>	<u>0</u>
5 Investment income			2020	2019
			£	£
Bank interest			89	248
Dividends			-	13
			<u>89</u>	<u>261</u>
6 Costs of generating funds			2020	2019
			£	£
Event expenses			0	3007
			<u>0</u>	<u>3007</u>

THE ROYAL SOCIETY FOR THE PREVENTION OF CRUELTY TO ANIMALS
TAMESIDE & GLOSSOP BRANCH

Notes to the accounts
For the year ended 31 December 2020

7 Activities in furtherance of the charity's objects	Unrestricted £	Restricted £	2020 £	2019 £
Vets fees	2,758		2,758	2,480
Boarding	25,190		25,190	25,857
Home-checker, fostering expenses & associated veterinary fees	12,316		12,316	21,764
Donation to RSPCA BEF*	11,898		11,898	-
Cat fostering and expenses	484		484	251
Depreciation	1,193		1,193	1,193
Vehicle costs	1,415		1,415	1,974
	<u>55,254</u>	<u>0</u>	<u>55,254</u>	<u>53,519</u>

*BEF = Branch Emergency Fund

8 Management and administration	Unrestricted 2020 £	Unrestricted 2019 £
Postage and stationary	335	262
Other costs	2,271	5,404
Independent examiner's fees	500	500
	<u>3,106</u>	<u>6,166</u>

9 Trustees' remuneration

The trustees received no remuneration during the year ended 31 December 2020
(2019: £ Nil).

During 2020 trustees expenses for RSPCA business amounted to £237 (2019 £310) mainly
having been spent on travel for the charity.

THE ROYAL SOCIETY FOR THE PREVENTION OF CRUELTY TO ANIMALS
TAMESIDE & GLOSSOP BRANCH

Notes to the accounts
For the year ended 31 December 2020

10 Fixed Assets	2020	
	£	
Motor Vehicle		
Cost at 01 January 2020	7,158	
Addition	0	
Cost at 31 December 2020	<u>7,158</u>	
Accumulated Depreciation at 31/12/19	2,386	
Depreciation 2019	1,193	
Accumulated Depreciation at 31/12/20	<u>3,579</u>	
Net Book Value at 31/12/20	<u>3,579</u>	
11 Investments	2020	2019
	£	£
Market value at 1 January 2019	75	75
(Loss) / gain on revaluation	0	0
Market value at 31 December 2019	<u>75</u>	<u>75</u>
Historical cost at 31 December 2019	<u>24</u>	<u>24</u>
<i>All investments are listed UK securities</i>		
12 Debtors	2020	2019
	£	£
VAT receivable	784	841
Profit share receivable	0	4,020
Boarding paid in advance	0	5,530
	<u>784</u>	<u>10,391</u>
13 Creditors	2020	2019
	£	£
Accruals	5,271	4,651
	<u>5,271</u>	<u>4,651</u>

14 Related party transactions

Goods and services were purchased from the national RSPCA charity to the value of £3523. These goods were either sold during the year or held in stock at the year end. The total also includes medicines purchased for the treatment of animals. The charity received £20,513 from the National RSPCA mainly relating to door to door collections.

Greater Manchester Group: Annual Report for 2020

Chief Inspector Ben Strangwood

Summary

It goes without saying that 2020 had huge challenges. First the Coronavirus pandemic, lockdown, and furloughing staff, then the organisational restructure and associated redundancies, followed by some officers and managers moving teams/areas.

The north was particularly hard-hit by the restructure, in terms of the number of people, expertise, and dedication that we lost. The old Manchester N3 group sadly lost a number of officers. ACOs Gina Ratcliff, Jess Pierce and Emma Pollard were made redundant as a result of the ACO role becoming disestablished. However, Jess was able to secure an Animal Rescue Officer role in the West Yorkshire group. Inspector Nick Waterworth was moved to the Derbyshire/Staffordshire group and Inspectors Danni Jennings, Emma Dingley, Lorna Campbell and Dan Tomlinson were pulled into the Lancashire group due to their locations. Lorna and Dan were unfortunately made redundant, but Dan was able to secure a position as a Branch Partnership Manager.

The borders of the Manchester group now cover the whole of Greater Manchester, meaning a number of officers have now moved into the new Greater Manchester team. Inspector Demi Hodby joined us from the old N7 (East Lancs/WestYorks) group. AWO Sonia Hulme has joined us from the old N2 (Cheshire) group. Inspectors Paul Heaton, Rachel Henderson, Deb Beats and AWO Alison Wilford have joined us from the N4 (Merseyside) group.

Inspectors Nat Avery, Catherine Byrnes, Jess Araujo, Beth Fazackerley, Ryan King, Angela Paxton-Taylor, and AWOs Dave Cottingham, Steve Wickham and Helen Chapman remain in the new Manchester team. So we have 10 Inspectors and 5 AWOs. The AWOs are undergoing some additional training during 2021 to upskill them into the new Animal Rescue Officer role, which was developed as part of the restructure.



The Trainee Inspector cohort graduated in February 2020. This included Beth Fazackerley, who did her field training and probation period in N3, along with Ryan King who is now with us after a stint in North London, and Rachel Henderson who joined Manchester from the Merseyside group. So congratulations were well deserved for those guys!

I recognise that 2020 was incredibly difficult for all of you and your branches as well, with 2021 still proving very tough with lots of challenges. However, please accept my thanks for all of your hard work and the support that you have given to me, my team, our colleagues, and the animals that they rescue. It's really appreciated and we couldn't do so much of our work without you.

Investigations, Rescues and Collections of note during 2020

A horrendously matted dog was found on Hale Lane, Failsworth, in June by a member of the public. She was so badly neglected it was impossible to tell what breed of dog she was and her matted fur left her unable to walk. Inspector Lorna Campbell took the dog to GMAH where staff got to work on shaving her. Fortunately there were no serious problems once 5 kilograms of fur had been shaved off after four hours of clipping. She was also completely transformed and staff were then able to identify her as a Labradoodle (see before and after photos below). The owner was never traced, but the dog was successfully rehomed.



February was a very cold and wet month with Storms Ciara and Dennis causing havoc. Inspector Dan Tomlinson received a complaint about a homeless lady with her dog which was fine but the dog was a lurcher and he felt the dog could do with a coat.

Inspector Jess Araujo located the lady a few days later and gave the dog a new pink coat. A lovely happy dog and her owner in Clayton.

Inspector Lorna Campbell investigated a paramedic from Stalybridge for causing unnecessary suffering to Pippa, a 9 year old German Shepherd dog, and Ollie, a 10 year old Cocker Spaniel.

He pleaded guilty at court. He was banned from keeping all animals for 5 years, ordered to pay £400 costs and also ordered to do 100 hours unpaid work.



In January 2020, Animal Collection Officer and Equine Officer Gina Ratcliff accompanied Her Royal Highness Princess Anne on her trip to Parbold Equestrian Centre, run by The British Horse Society. This was to meet the young participants enrolled on the 'Changing Lives Through Horses' scheme which aims to place neglected or abandoned horses from the RSPCA into BHS centres for rehabilitation and adoption. The young participants are aged between 16-18 and are not in employment education or training (NEET). The aim is to improve low self esteem and education through interaction. 96% of participants went back into education on completion.



In July 2019, Inspector Emma Dingley launched an investigation into Greenmount Wildbird Hospital, near Bury, following information received highlighting concerns about the condition of birds at the location. Over the course of two days, over 200 birds were removed by Emma and the team and examined by the vet Bev Panto from Stapeley Grange. The matter went to court in early 2020 and the owner was banned for life from keeping birds, ordered to pay costs, and received a four month community order.

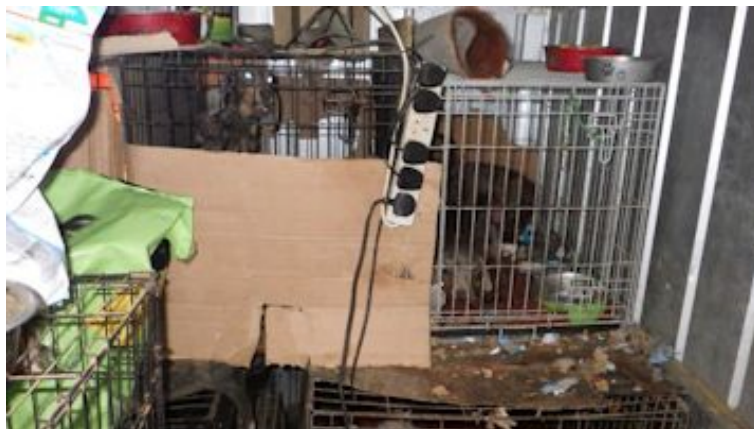


A man from Audenshaw was caught on CCTV kicking a cat and it was shared thousands of times on social media. The matter was investigated by Inspector Jess Araujo. She obtained a name and address for the individual and he was interviewed.

At a later date he pleaded guilty to the offence and was given a £120 fine and ordered to pay £400 costs.

Inspector Danielle Jennings investigated a man from Rochdale for causing unnecessary suffering to a Dachshund puppy and failing to meet the needs of 26 others by keeping them in filthy cages inside a shed at his property.

He pleaded guilty at court and was ordered to pay £1085 costs and banned from keeping animals for 5 years. All the dogs were rehomed quickly.

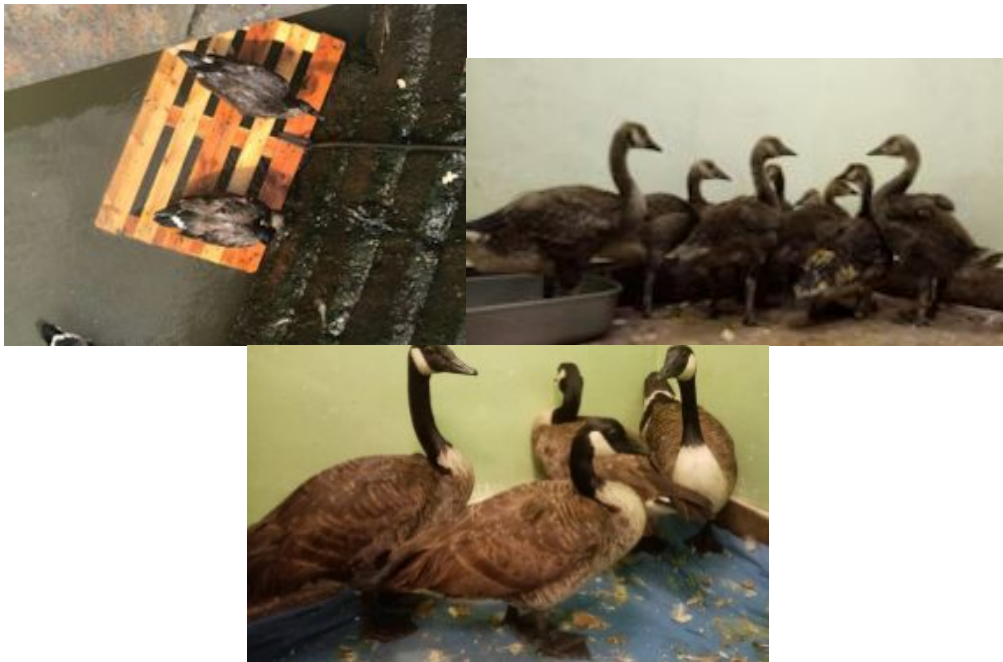




In October, Inspector Ryan King picked up a stray parrot in Oldham who had gotten a little lost.

Luckily, through some detective work and a press release, Ryan managed to track down the owner and was able to happily reunite them!

In June, AWO Steve Wickham and Inspector Jess Araujo were assisted by GMF&RS in catching 18 Canada Geese, goslings and swans at various locations on the Bridgewater Canal in Manchester following a diesel spillage. The birds were taken to Stapeley Grange for a thorough clean up before being released back onto a clean stretch of the canal under a licence from Natural England. Photos show before and after catching and cleaning.



In November, Inspector Paul Heaton went to the aid of a robin that had been caught in a glue trap in Levenshulme. These are designed to catch pest rodents but are well known for catching non-target species. Unfortunately they are legal, and sadly the robin had to be euthanased as it was too badly injured.



The RSPCA is currently running a “Wild Animals and Glue Traps” project; as we feel that if these traps have to be used, they should only be used by trained professionals. The press release with Paul’s robin went viral on social media, so did a great job of raising awareness of the issues of using glue traps.

In November, AWO Steve Wickham picked up a cat in Rochdale that had its leg in an illegal gin trap. She was taken to GMAH for treatment. The cat's leg was very badly damaged and had to be amputated as a result, before going for rehoming.



Thank you once again for the amazing support from our branches which allows us to achieve all the more through working together for Animal Welfare. We look forward to working together in partnership and ever more collaboratively in keeping with the recently introduced 2021-2030 RSPCA Strategy - Together for Animal Welfare.

Ben Strangwood
Chief Inspector - Manchester



RSPCA TAMESIDE AND GLOSSOP BRANCH

(Registered Charity No: 232260)

www.rspca-tameside-glossop.org.uk

office@rspca-tameside-glossop.org.uk

www.facebook.com/rspcatamesideandglossop

twitter: twitter.com/RSPCAbranch

Answerphone 0795 412 2481