



Garfield Weston
FOUNDATION



Annual Report

Report and accounts of the Trustees • 2022



Garfield Weston
FOUNDATION

Annual Report

**Report and accounts of the Trustees
Financial year to 5 April 2022**

Reference and administrative information

The Garfield Weston Foundation is a general grant-giving charity endowed by the late W Garfield Weston and members of his family, which is registered with the Central Register of Charities, registration number 230260. The Foundation is recognised by the HM Revenue and Customs as an approved charity for tax purposes, the reference number being X96978.

Principal Office	Weston Centre 10 Grosvenor Street London W1K 4QY
Trustees	Sir Guy H Weston, Chairman Anna Catrina Hobhouse Jana R Khayat Sophia M Weston Eliza L Mitchell Melissa Murdoch George G Weston Alannah Weston Geordie Dalglish
Director	Philippa Charles
Secretary to the Trustees	Janette Cattell
Bankers	Coutts & Co 440 Strand London WC2R 0QS
Solicitors	Slaughter and May 1 Bunhill Row London EC1Y 8YY
Auditors	UHY Hacker Young LLP Quadrant House 4 Thomas More Square London E1W 1YW
Fund Managers	Investec 30 Gresham Street London EC2V 7QN Goldman Sachs Asset Management International Plumtree Court, 25 Shoe Lane London EC4A 4AU (until 30 November 2021) Oxford University Endowment Management 27 Park End Street Oxford OX1 1HU (from 1 December 2021)



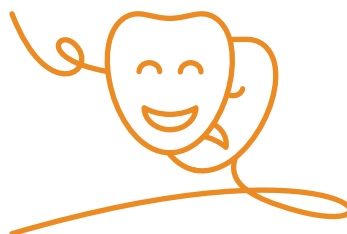
a record for Environment

1,988 individual grants made across the UK

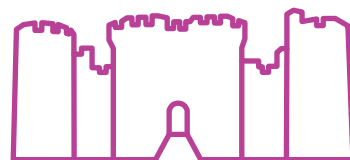
£89 million



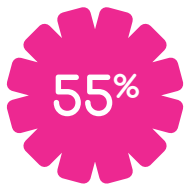
Total donations over
£89 million



External evaluation
of **£30.2 million**
Weston Culture Fund
commissioned



£11.4 million granted
to Museums and
Heritage



55% of grants to charities working with Youth were multi-year commitments



Over £2 million granted to charities working in mental health



£9.8 million granted to organisations working in Education



Over £5.2 million for Community, supporting local facilities across the UK



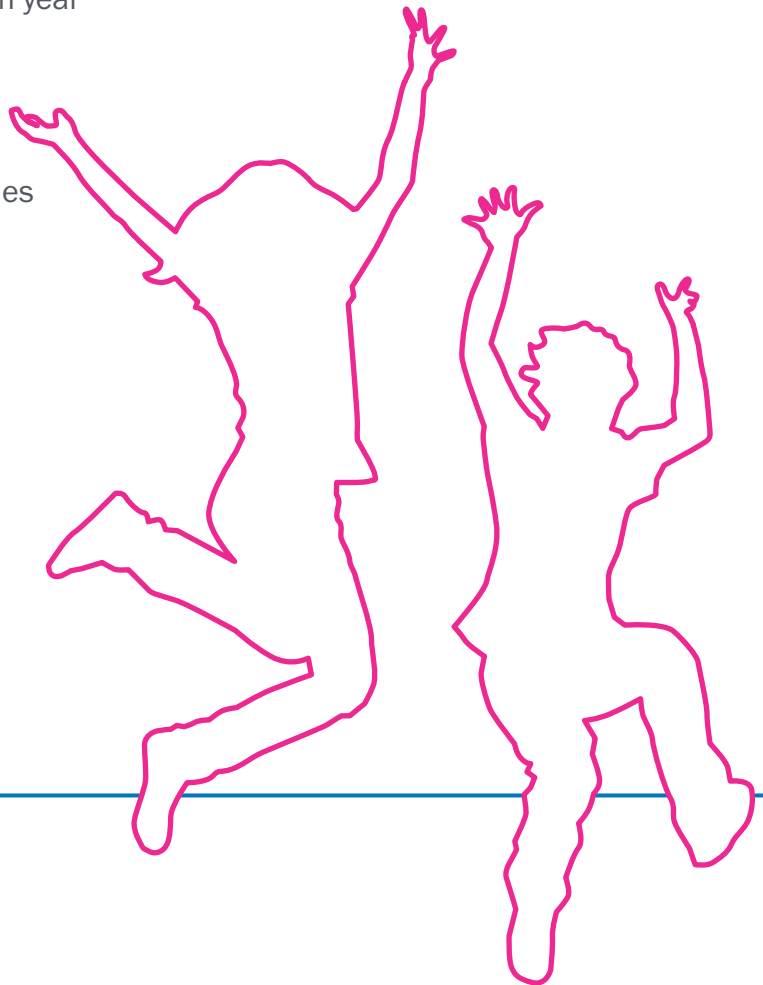
126 charities have benefited from the Weston Charity Awards which entered their 7th year



Up 153% on last year grants to Youth charities



Over **£22 million** granted to organisations working nationally across the UK





Chairman's report

As the Chairman of the Foundation, I have pleasure in introducing the Annual Report of the Trustees for the year to 5 April 2022.

As this report goes to print, we are saddened to learn of the death of Her Majesty Queen Elizabeth II who was a dedicated patron to so many wonderful charities, we express our profound appreciation for her life's work, service and dedication.

Accounting policies

The financial statements have been prepared in accordance with the accounting policies set out in the notes to the accounts and comply with the charity's governing document, the Charities Act 2011 and Accounting and Reporting by Charities: Statement of Recommended Practice applicable to charities preparing their accounts in accordance with the Financial Reporting Standard applicable in the UK and Republic of Ireland published on 16 July 2014 (FRS102).

Structure, governance and management

Structure

The operation of the Foundation is governed by a Trust Deed dated 10 October 1958.

At 5 April 2022, the Foundation owned 79.2% of Wittington Investments Limited, a company registered in England. Wittington Investments is the ultimate holding company of Associated British Foods plc, which is listed on the London Stock Exchange, Fortnum and Mason plc and Heal's plc. Under the terms of the Trust Deed, the investment in the Wittington Investments Limited group of companies forms the permanent capital endowment of the Foundation and the Trustees may not dispose of that investment except by a unanimous vote of all the Trustees.

Governance and management

In accordance with the Trust Deed, after the death of Mr W Garfield Weston and his wife, their descendants became Trustees. The number of Trustees is limited to ten but must be at least five. If the number of Trustees drops below five, new Trustees fall to be appointed from among the lineal descendants of W Garfield Weston.

Being family members, incoming Trustees are aware of the aims and objectives of the Foundation and the manner in which the Trustees carry out their responsibilities. Nearly all of the Trustees are on the board of other charitable entities either in the UK, the United States or Canada. The Foundation is a member of the Foundations Forum and the Association of Charitable Foundations and also receives the main charities' journals. This ensures that the Trustees are well placed to keep up to date with developments in charity practice and regulations. In addition, the Trustees receive direct information in relation to important areas from both their Secretary, who attends monthly meetings and is a practising lawyer with expertise in the charity sector, and from their auditors UHY Hacker Young LLP.

The Trustees are directly responsible for the management of the Foundation and hold regular meetings in order to consider grant applications for £100,000 or more and to ratify smaller grants which have been made since their previous meeting. Additional meetings are included as required to deal with any time-sensitive funding requests. The initial processing of grant applications is dealt with by an experienced team of staff, but every application is seen by at least one of the Trustees who also actively participate in meetings with, and visits to, applicants. The Trustees also hold an annual meeting in order to adopt the Annual Report and Accounts and to carry out a formal review of the fulfilment of the Charity's aims and objectives, policies and the investment performance over the year.

Risk management and policies

The Trustees are satisfied that appropriate policies, protection, systems and checks remain in place in order to mitigate exposure to major risks and to ensure that the Foundation operates in accordance with ethical and environmental guidelines and protections. The Director and Secretary review operational risks and policies on an ongoing basis and these are formally considered by the Trustees at their Annual Meeting.

The principal risks relate to investment performance, and operational risks in terms of grant-making arising from system malfunctions or fraudulent applications. There is also a reputational risk for the charity in terms of its relationship with the underlying trading activities of companies held through Wittington Investments Limited.

Operational: the computer system and internal procedures, including authorised signatories, are regularly updated and reviewed and all grant applicants are screened by a skilled grants administration team. During the course of the year

the arrangements whereby staff are seconded to the Foundation from Wittington Investments Limited have been reviewed and updated to ensure that they comply with all statutory and ethical requirements, including, but not limited to, those under the Data Protection Act 2018 and the Modern Slavery Act 2015, to address DEI-related issues and to provide safeguarding for staff and applicants.

Investments: the Trustees regularly review the performance of the underlying assets and their shareholding in the Wittington Investments Limited group and receive reports directly from those who are managing the businesses. The non-Wittington investments are also managed in accordance with a policy which balances risk with investment returns (see below).

Reputation: the direct involvement of members of the Trustee board in the activities of the Wittington group also enables them to be fully appraised of events which might give rise to unwelcome media attention and hence reputational risks.

Conflicts of interest: the Trustees have in place a detailed policy regarding conflicts of interest, both in terms of their grant-making decisions, and also in terms of the fact that some of them are directors of Wittington group companies; this potential for conflict is carefully managed with proper procedures (including as regards the exercise of the Trustees' voting powers at the Wittington Investments Limited AGM and any other shareholder meetings) and the taking of independent advice where necessary.

Ethical and environment: as well as implementing their own policies to protect the environment (for example, nearly all applications are made online and the Trustees receive meeting papers electronically, thus reducing the need for paper and printing and facilitating remote working), the Trustees also keep under scrutiny the ethical and environmental practices as carried out by the underlying businesses in the Wittington group and their independent investment managers. In relation to its staff secondees, the Foundation adheres to the practices laid down by Wittington Investments Limited and Associated British Foods in connection with the Modern Slavery Act and corporate responsibility – for more details see www.wittington-investments.co.uk/wp-content/uploads/ModernSlaveryHumanTraffickingStatement2020.pdf www.abf.co.uk/responsibility

Equity, Diversity and Inclusion: the Trustees are committed to inclusion in our society; addressing disadvantage and 'levelling the playing field' for all has been a central theme of the Foundation for over six decades as we value diversity in its widest

sense. We aim to be accessible, transparent and straightforward in our approach to grant-making and we actively support charities which in turn support diverse groups and communities, including those suffering discrimination in all its forms. The Trustees and our staff are committed to inclusion and discussion on EDI is continuous to ensure our commitment is embedded on a daily basis. We continue to monitor the diversity of our staff team and we have appointed a EDI champion who has knowledge and live experience of EDI issues.

Safeguarding: the Trustees have a safeguarding policy which is aimed at protecting their own staff as well as vulnerable beneficiaries. The Trustees also require grant applicants to confirm that they have appropriate safeguarding policies in place to protect their staff, volunteers and beneficiaries.

Income and grant-making aims and objectives

The Trust Deed contains broad charitable objects which allow the Trustees, at their discretion, to pay or apply the income and, subject to the restrictions set out below, the capital of the Trust Fund to or for the benefit of any charitable bodies, trusts, associations, institutions or organisations.

Despite the continuing challenges and fluctuations in share prices and dividend levels resulting from the economic impact of the Covid-19 pandemic and the war in Ukraine, total income receipts for the year rose slightly to just over £84 million (2021: £83.96 million). The Trustees have once again been able to draw on prudent levels of income reserves to make total grants of over £89.88 million in support of 1,988 appeals. This is reduced from the figure for 2021 (£98.32 million in support of 2,129 appeals) owing to the fact that in the 2020/2021 financial year the Trustees provided much-needed extra support to charities which were struggling to fund their operations during the pandemic, but are now conscious of the need to maintain income reserves at an acceptable level in order to be able to provide ongoing support when required should the current difficult economic climate continue.

The total outstanding forward commitments at the end of the financial year were just over £48 million as compared with just over £38 million in 2021. Commitments consist of future payments of £22 million (2021: £6 million) due to charities under existing multi-year grant arrangements, and pledges of just over £26.1 million (2021: £32 million) that require charities to fulfil specific prerequisite obligations. The increase in future payments reflects a concerted effort on the part of

the Trustees over the past year to make longer-term grant commitments given the pressures of inflation as well as the need to recover from the pandemic. The Trustees' aim is that pledges should not exceed 20% of their annual projected expenditure, but the current figure includes an outstanding significant pledge of £10 million to Moorfields Eye Hospital for a new centre for advancing eye health (which the Trustees felt was important to support at an early stage in order to encourage support from other donors), so the balance is comfortably within the Trustees' target. Moorfields has been asked to give three months' notice for any release of funds so that the Trustees can effectively manage cash flow.

While the Trustees were pleased to be able to make some substantial grants for key capital projects, including £5 million for the new Museum of London at Smithfield, £3 million for the V&A new Storehouse project, £3 million to build new Onside Youth centres and grants exceeding £1 million for a number of medical, educational and environmental projects, charities remain comparatively cautious in terms of undertaking capital projects and, where these were in contemplation prior to the pandemic, the overall costs of completing the same have risen considerably. The Trustees have therefore done their best to assist with shortfalls and enable such projects finally to move towards completion. The Trustees have also continued to provide support for the core costs of charities which are still suffering from the effects of the Covid-19 pandemic. See the Director's Report and full list of grants made for more details.

Grant-making policy

The Foundation continues to accept only appeals from UK registered charities. No applications from individuals are considered and the Trustees do not typically fund projects outside the UK, nor do they fund animal welfare charities, unless for the purpose of supporting a specific environmental project or where to do so assists with other charitable purposes, such as providing assistance for those with disabilities.

The Trustees' aim is to keep the application process as simple and streamlined as possible. Step-by-step guidelines as to how to make a grant application (more than 95% of which are now submitted on-line), together with helpful details of the criteria which are taken into consideration when assessing applications and the information which should be submitted with an application, are available on the Foundation's website www.garfieldweston.org.

These guidelines are also published in Welsh (although applications from Welsh charities must still be made in English).

All applications are considered on an individual basis; the Trustees do not consider funding requests made within 12 months of the outcome of a previous application, but, in relation to funding for core costs, they will consider providing funds to be spread over a period of years. Whenever possible, visits are made by Trustees and/or the Director or one of the other members of the Foundation's grants team in order to gain a better understanding of applicants' requirements. Regular contact is maintained with recipients of grants for monitoring purposes, while also taking care to minimise the burden on the recipient charities.

In order to provide further transparency in the grant-making process, the Foundation publishes its grants through 360Giving. It also commissions independent reviews of grant-giving initiatives, such as the Weston Anniversary Awards in 2018 and the Weston Culture Fund in 2021, in order to assess their effectiveness and to improve the experience for both successful and unsuccessful applicants. These findings are published and shared openly and made accessible on the website.

Public benefit

The Trustees have complied with section 2(1)(b) of the Charities Act 2011, having due regard to the Charity Commission's guidance on public benefit when reviewing the Foundation's aims and objectives, when setting the grant-making policy and in making awards.

Achievements and performance

Despite the current economic uncertainty, I am pleased to be able to report that Wittington Investments Limited has managed to slightly increase its dividend payments to the Foundation so that we have been able to continue to provide funding of nearly £90 million across a broad range of charitable purposes at a time when the sector, and those whom it supports, have been most in need.

I and my fellow Trustees once again extend our sincere thanks to the Director and her team for their forward-thinking, flexible and sensitive approach to the funding needs arising out of the Covid-19 pandemic and its aftermath.

Investment performance

The Trustees are satisfied that the investment structure (represented by the Wittington group of companies) which was contributed by my

grandfather to the Foundation remains a sustainable long-term model, particularly in terms of providing a regular and reliable income stream to enable the Foundation to fulfil its charitable purposes. The value of the group of companies (which is directly attributable to the share price of Associated British Foods) continues to fluctuate in line with equity markets generally, but the Trustees remain confident that any such fluctuations will not have a lasting effect on their ability to provide support to grant applicants.

It should be noted that in each financial year for the Foundation there is not a direct correlation between the amounts which Wittington pays by way of dividends and the amounts which are received by the Trustees by reference to their percentage shareholding; this is owing to the fact that the two entities have different accounting year ends.

In terms of non-Wittington investments, the Trustees took the decision in November 2021 to liquidate their investment in the Goldman Sachs Asset Management Global Multi-Manager Alternatives Portfolio. Of these funds, £25 million were invested into the Oxford University Endowment Management (OUem) fund and the balance of just over £9.9 million was added to the Trustees' existing portfolio with Investec.

As at 5 April 2022, the Investec portfolio was valued at over £77.7 million (2021: £64.5m excluding the £9.9 m addition). Performance net of fees at +6.2% was below the benchmark of RPI plus 4% over a rolling three year period (+8.4%), but the Trustees recognise the challenges posed by this benchmark in the current period of inflation. Moreover the portfolio outperformed the ARC (Asset Risk Consultants) Charity Steady Growth Index (the average volatility of which is similar to that of the portfolio), over the year to 31 March 2022 with a positive return (net of fees) of 7.4% as compared with +5.8% for the Index. The annual income distributions to the Foundation from the Goldmans Sachs and Investec portfolios totalled £2.8 million.

The OUem offers an alternative form of investment in a broad range of asset classes, focusing on real returns in excess of inflation and therefore fits well within the Trustees' benchmark of RPI plus 4%. The three year annualised return to 31 March 2022 for the fund as a whole was 13.9% and was well above the fund's objective of CPI+5%. The distribution policy of OUem is to pay an annual distribution of 4.25% of the fund's NAV over the past 20 quarters which is estimated to yield just over £1million per annum for the Foundation.

The capital value of the Savills' Charities Property Fund was £6.93 million as at 5 April 2022 (2021: £5.967m), with an income yield of 3.5%.

Further analysis of the investment assets can be found in Note 9 to the Financial Statements. A copy of Wittington Investments Limited's accounts for the year to 18 September 2021 can be obtained from Companies House.

Financial review

In accordance with required accounting policy, grants are recognised in the statement of financial activities when approved by the Trustees and communicated to the recipients, irrespective of the future period over which payments are to be made, and the obligations outstanding at the year end are recognised as creditors.

Costs

These continue to be very low in relation to the levels of income and donations made and are kept under review by the Director and Trustees to ensure they remain lean as a proportion of grant expenditure.

Reserves

The Trustees' policy is to maintain reserves of approximately 50% of the Foundation's annual income bearing in mind the general timing of income receipts, their general pattern of giving and the current economic climate. As a result of the record level of grants awarded last year, total income reserves at the end of the year had reduced to £24.1 million and this will be taken into account when assessing levels of grant-making for the following financial year.

Investment objectives

The Trustees' investment objectives in relation to their non-Wittington group assets as set out in the policy statement are to preserve the absolute value of the capital, whilst maintaining its 'real' value.

This involves adopting a relatively conservative investment strategy, investing in a balanced portfolio without geographical, currency or sector restriction, subject to the terms of a Charity Commission Order dated 19 September 2001. The primary benchmark for investment performance remains at RPI plus 4% over a rolling three year period, although comparison is also made on an annual basis with the ARC (Asset Risk Consultants) Charity Steady Growth Index for Investec and, in the case of OUem, the MSCI All Country World Index.

The Trustees are satisfied that the two investment managers have suitable policies in place regarding their stock selection to ensure that this complies with the latest ESG practices and they continue to keep this under review. The Trustees' principal

investment, namely Associated British Foods plc, is a highly diversified global company with an extensive and practical approach to responsible business. The Trustees have a direct line of sight into this business, making the Foundation's approach to responsible investment more transparent and with a higher degree of clarity than other models might afford.

Trustees' responsibilities for the financial statements

The Trustees are responsible for preparing the Trustees' Annual Report and the financial statements in accordance with applicable law and United Kingdom Accounting Standards (United Kingdom Generally Accepted Accounting Practice).

The law applicable to charities in England and Wales requires the Trustees to prepare financial statements for each financial year which give a true and fair view of the state of affairs of the charity and of the incoming resources and application of resources of the charity for that period. In preparing these financial statements, the Trustees are required to:

- select suitable accounting policies and then apply them consistently
- observe the methods and principles in the Charities SORP
- make judgements and estimates that are reasonable and prudent
- state whether applicable accounting standards and statements of recommended practice have been followed, subject to any material departures disclosed and explained in the financial statements
- prepare the financial statements on the going concern basis unless it is inappropriate to presume that the charity will continue in operation

The Trustees are responsible for keeping proper records which disclose with reasonable accuracy the financial position of the charity and enable them to ensure that the financial statements comply with the Charities Act 2011, the Charity (Accounts and Reports) Regulations 2008 and the provisions of the Trust Deed. They are also responsible for safeguarding the charity's assets and hence taking reasonable steps for the prevention and detection of fraud and breaches of law and regulations.

The Trustees are responsible for the maintenance and integrity of the charity and financial information

included on the charity's website. Legislation in the United Kingdom governing the preparation and dissemination of financial statements may differ from legislation in other jurisdictions.

Plans for future periods

The challenges experienced by all charities during the Covid-19 pandemic, on which I reported last year, are still having a significant impact on the sector and this is likely to be further aggravated by the rising levels of inflation, which will be felt in all areas, but will have particular significance for charities which support the poorest and most vulnerable in our society as well as for those undertaking capital projects. We as Trustees will continue to do our best to react to the changing needs of the charitable sector and to provide support where it is most needed and can most effectively be utilised to make a difference.

As predicted in last year's report, the levels of grants this year are closer to 2020 levels. However, the Trustees will continue to maintain our ability to respond promptly and effectively to the requests in support of a broad range of charitable causes, relying upon the consistent performance of the Foundation's investment endowment and prudent income reserves.

Sir Guy H Weston

Chairman of the Trustees

17 October 2022



Director's report

Once again it has been a busy year for the Trustees and staff of the Foundation, following last year's exceptional expenditure to meet the demands

of the pandemic. This year we are pleased that our expenditure has matched pre-pandemic levels with donations of almost £90 million.

The pandemic, global conflict, climate crisis and rise in inflation all contributed to a backdrop of continuous change which creates a range of ongoing challenges across the voluntary sector. As charities continue to adapt, the Trustees have maintained their commitment to openness and flexibility, supporting a wide range of charities with a breadth of funding including unrestricted and multi-year grants that help organisations plan for the future. It is perhaps no surprise that our largest areas of donations this year included Health, Welfare, Youth and Environment, all reflecting urgent need and our focus on the most vulnerable in our society.

The 2021 United Nations Climate Change Conference, more commonly referred to as COP26, was held in Glasgow and sharpened society's focus on the environmental crisis. The Trustees extended their commitment to supporting organisations tackling these issues and we are delighted to report that we achieved a record level of funding across the environment sector this year, with grants exceeding £7.4 million. The Trustees were pleased to see the first cohort of environmental charities engaging in our Weston Communicating Climate (WCC) programme. Initiated by the Foundation following extensive research, and developed in partnership with the Media Trust, the WCC programme supported 30 charities to extend the reach, power and impact of their communications to influence the public and the media's understanding of climate change and the need to take to take action. The following section details more of this exciting initiative and the impact it has had on the charity participants. We are especially pleased that the programme will extend into a second year with additional partnership funding from commercial media consultancy MG OMD. Other significant grants made to the sector included the Rivers Trust, to build capacity across its member trusts; to Bristol Zoo for its new home and conservation

programmes; and to the John Innes Centre to create a world-leading research facility supporting global food security in the face of the climate crisis.

Given the challenges of the past few years, the Trustees were delighted that the Foundation's proactive focus on Youth charities this year was successful, resulting in a record year of donations of £18.6 million. Over half of all grants to Youth organisations were multi-year commitments, made after listening carefully to the sector which battles the challenges of a reduced workforce alongside the increasingly complex needs of young people. The Trustees combined core cost grants to grassroots charities with infrastructure support for larger organisations, thereby balancing long-term investment for the future with more immediate need. By working in partnership with charities and sector bodies, we were able to reach deeper into the sector and support a record number of first-time grantees. We know from previous experience that working in partnership with others enables us to reach more of those in need and we aim to develop this approach further in coming years.

In relation to Health, many charities in this sector have been forced to pause or scale back research and capital projects, as staff have been deployed to frontline Covid response work and social distancing requirements have impacted activities and events. This year saw major projects restarting and the Trustees granted over £11.4 million across the Health category; including major investments of £1 million to Cancer Research UK to support the Francis Crick Institute's digital infrastructure, vital for data management by scientists working to tackle human diseases, and a grant of £1 million to the Thrombosis Research Institute for its research work.

We are committed to continuously improving and, just as we adapt and learn from each of our partnerships, we remain engaged with our charity partners and stakeholders to understand the opportunities for improvement and where we can build on existing strengths. Our approach aims to be clear, transparent and straightforward for our charity partners to access and apply to. We measure ourselves by the speed and responsiveness of our communications, the impact and effectiveness of our grants, the feedback of those who apply to us and by evaluating and by learning from our activities. We hope you enjoy reading about some examples of the great work our charity partners have been undertaking with our support.

Philippa Charles
Director

Supporting young people

This year, the Foundation set a new record for donations to the Youth sector with grants totalling £18.6 million. This was achieved through our proactive work in strengthening existing partnerships, developing new ones, and as a result of consistent communications work, highlighting the Trustees' commitment to supporting youth organisations.

With Covid-19 widening the opportunity, education and attainment gaps for young people from marginalised and disadvantaged backgrounds, the Trustees made a series of strategic grants to help youth charities plan for the future with confidence. We combined multi-year donations to support impactful programming that improves young people's life chances with investment in capital infrastructure and facilities to ensure that young people continue to have safe places to go. The largest capital infrastructure grant the Trustees made was to OnSide Youth Zones, a charity focused on creating a UK-wide network of state of-

the-art youth facilities in deprived areas. There are currently 13 Youth Zones that collectively reach around 52,000 young people a year, who attend the facilities seven days a week for a range of diversionary and development activities, mentoring and support. OnSide has an ambitious goal to create 20 new Youth Zones over the next five years, more than doubling its reach to 120,000 young people making 1 million visits a year. The Trustees pledged £3 million to underpin this growth and to encourage other funders to support OnSide's goal.

Well over half of Youth grants in 2021/22 were committed over multi-year periods to help charities gain financial stability as they emerged from Covid and to ensure their vital work with marginalised young people could continue. Two such grants were to the Construction Youth Trust and the Prince's Trust.

The Construction Youth Trust supports young people to achieve their potential by creating opportunities within the construction industry.



The generous support of the Garfield Weston Foundation will enable us to provide long-term intensive support to 1,000 at-risk young people across our hub areas over the next three years. We can't wait to begin working with young people to build on their individual strengths and interests, develop their soft skills, and help them access training, employment, and career opportunities within the construction industry after they finish school or college.

Tommy Farrell, Partnerships Manager, Construction Youth Trust





Thanks to the generous grant from Garfield Weston, Sported will be able to grow our support of the passionate, dedicated local community sports groups across Northern Ireland.

Tom Burstow, Acting CEO, Sported

Social mobility is at the heart of the Trust's approach, focusing on young people from low-income backgrounds, under-represented groups and those facing significant barriers to employment. Last year the Trust worked with over 16,000 young people from low-income backgrounds. Transitions Coaching is the charity's intensive programme that supports high-risk 14-18-year-olds through their transition from education, to ensure they avoid a cycle of unemployment and poverty. The year-long structured programme combines one-to-one coaching, hands-on practical activities, work experience, training and ongoing support to ensure progression is sustained. The Trustees granted £150,000 over three years to support up to 1,000 vulnerable young people through Transitions Coaching.

A similar investment was made in the Prince's Trust for its Explore programme, the charity's most intensive intervention, which helps young people gain the life skills they need to stabilise their lives and move into education, employment, training, or volunteering. The programme includes one-to-one support, a confidence and skills building residential course and up to six months of mentoring from one of the Trust's 5,800 trained volunteers. Explore was forced to scale back during the pandemic, but the Trust is poised to expand the programme to reach over 10,000 young people over the next three to five years from its centres in London, Birmingham, Stoke, Manchester, Liverpool, Newcastle, Cardiff, Glasgow, Dundee and Belfast. The Trustees' grant of £1.5 million over three years will help to sustain Explore in its early relaunch, directly supporting over 5,000 young people.

Each year the Trustees support hundreds of local charities across the UK to work with their local youth communities. However, given the immense challenges that the pandemic presented not only to young people, but also to the youth sector, in

2021/22 the Trustees wanted to ensure their funding was as far-reaching as possible and, crucially, reached organisations that had not been supported by the Foundation before. By working with the national youth infrastructure bodies across England, Scotland, Wales and Northern Ireland, we were delighted that almost 40% of youth charities supported in the year were new to the Foundation, an increase of 15 percentage points on the previous year. Three of the 145 new grantees were the Nottingham School of Boxing, Cymru Children & Youth Sports Foundation, and the Corpus Christi Youth Centre in Northern Ireland. All three organisations had seen a large increase in the level and complexity of need from young people and the Trustees were delighted to support their important work with funding over two years.

In addition to supporting frontline organisations working with young people, the Trustees also supported a number of youth charities to build capacity and capability. Two such organisations are Girlguiding and Sported.

With the help of over 80,000 volunteers across 25,000 units across the UK, Girlguiding helps 240,000 girls aged 4-18 to develop their confidence, life skills and to make a positive difference in their communities. Despite this volume, the charity is aware that it has a weak presence among many marginalised communities and has launched a new strategy to co-create a Girlguiding offer with underrepresented community

groups. A new team will work with local volunteers and community partners to implement targeted pilots in communities across Northern Ireland, Scotland and Wales. The pilot is designed to be a short-term, intensive capacity-building intervention that can be phased away once the new infrastructure and relationships are established and handed over to the local guiding movement. The Trustees were happy to support this 18 month pilot in the hope that increased opportunities for girls will be developed and sustained by local groups, supported by the national Girlguiding infrastructure.

Sported is the UK's largest network of community groups, all of which use sport and physical activity to address education and employability, health and wellbeing, crime and anti-social behaviour, community cohesion and inequality in sports participation. Sported supports these community groups to become stronger and more sustainable and its 2,600 members are currently supporting half a million young people to overcome barriers to reach their full potential. Almost 70% of Sported's groups in Northern Ireland are entirely volunteer-led



A tonne of thanks goes to the Garfield Weston Foundation. The projects supported will provide a safe environment for young people to develop and become a better version of themselves through sports therapy and mentoring activities.

Phillip Mpukusa, CEO, Cymru Children & Youth Sports Foundation



This funding from Garfield Weston has allowed for us to offer more diverse programmes to the young people within the West Belfast remit. The grant has enabled us to create innovative projects such as residential and community clean ups to develop young peoples' confidence and increase their awareness on the world around them.

John Muir, Manager, Corpus Christi Youth Centre





This grant will be essential to our work supporting vulnerable young people's physical and mental health after the Covid pandemic.

George Overton, Manager,
Nottingham School of Boxing

and find it hard to access grants, which are typically far smaller than those available in the other UK nations, yet sport is one of the few activities that crosses divides and unites young people in the country. Sported aims to increase the strength of small community groups in the country but historically has struggled to secure investment in its Northern Ireland operations. Having previously supported the charity's work in Wales, the Trustees were delighted to grant £100,000 over two years to build capacity in Northern Ireland.

The impact of the pandemic on our young people has been profound. The rise in youth unemployment has seen an increase in youth

homelessness and the Trustees donated to many organisations working in this space, the largest being Depaul UK. Depaul UK supports around 3,000 young people a year experiencing or at risk of homelessness. Nightstop is Depaul's homeless prevention model that provides emergency accommodation in the homes of trained volunteers who offer their spare rooms to young people in crisis. Communities and charities run Nightstop services in over 30 locations around the UK which Depaul oversees, in addition to delivering the service itself in eight regions. The pandemic presented major challenges to the Nightstop model: demand for emergency housing increased significantly with thousands of young people facing homelessness due to family breakdown, abuse and youth unemployment, while host volunteers withdrew from the scheme due to their age and their need to shield at home. Remobilising and recruiting volunteer hosts is a key priority to enable Depaul to expand Nightstop and the Trustees made a grant of £450,000 across three years to underpin this growth across England, Scotland and Wales.

Our natural world

In recognition of the scale and complexity of challenges facing our environment and climate, the Trustees remain committed to supporting a broad range of charities and issues from landscape preservation, species conservation and food systems to vital research and social action. Over the past few years, the Foundation has proactively encouraged applications from organisations striving to protect and preserve our natural world and has developed a range of partnerships and initiatives to drive this forward. We were delighted, therefore, that in 2021/22 we exceeded our previous record for grant-making to the Environment sector with total donations reaching £7.4 million. Weston Communicating Climate (WCC), our partnership with The Media Trust, saw the first cohort of 30 environment and climate charities graduate from a six-month intensive communications skills training programme and a further 420 charities participated in communications workshops with the support of 480 corporate volunteers. We initiated WCC following research the Foundation commissioned in 2020 that identified the critical challenges environment charities face in communicating the importance and urgency of their work to policy makers and the general public that the sector is facing.



The climate framing workshop completely changed the way I communicate about climate change.

Carys Evans, Communications and Campaigns Officer, Wildlife Trusts Wales


Having completed the programme, 97% of WCC's first cohort said they expect to reach wider audiences, 92% are now collaborating with other environmental organisations and 77% agree that they know how to use communications to amplify the voices of underrepresented communities. The Trustees are delighted with the success of WCC. The programme has also leveraged additional investment from media company MG OMD which enables the programme to run for a second year. In addition to funding WCC, the Trustees also made an additional unrestricted grant to the Media Trust to support their core work in engaging experts from the media and creative industries to volunteer to build skills and capability of charity partners.



As well as grants supporting frontline activities, the Trustees made a series of strategic investments that will have a global impact, including the John Innes Centre and the Zoological Society London (ZSL). The John Innes Centre is an international centre of excellence in microbial science. The charity is collaborating with The Sainsbury Laboratory (a world leading plant science research centre) to tackle the complex challenge of feeding the growing global human population while also combatting climate change. Together the charities are developing HP3 – Healthy Plants, Healthy People, Healthy Planet – new cutting-edge and future proofed research facilities that will supercharge the institutions' abilities to translate scientific knowledge into practical solutions to help ensure global food security. The Trustees were delighted to pledge £1 million towards HP3's Crop Improvement Centre, a key component of the new facility.

ZSL is perhaps best known for operating London and Whipsnade Zoos, however the organisation is also an international conservation science charity. Its breeding programmes contribute to global efforts to conserve healthy and genetically diverse populations for re-wilding, and its scientific research in areas such as animal behaviour, nutrition, and reproduction, ensures healthy futures for many species. ZSL is also working hard to protect the UK's biodiversity and convenes specialist organisations across the UK, providing scientific vigour to complement conservation action on the ground and to enable it to be evaluated. While the pandemic has presented a challenge to all charities' finances, zoo visitors provide two-thirds of ZSL's income, which was depleted significantly during Covid-19. The Trustees were delighted to grant £1.5 million over three years to support ZSL and to ensure its vital work to relieve threats to the UK's biodiversity can continue.

The Trustees' grant to the National Trust (NT) in 2021/22 was for a significant landscape conservation project that has community engagement at its core. Divis and the Black Mountain rest in the heart of the Belfast Hills and



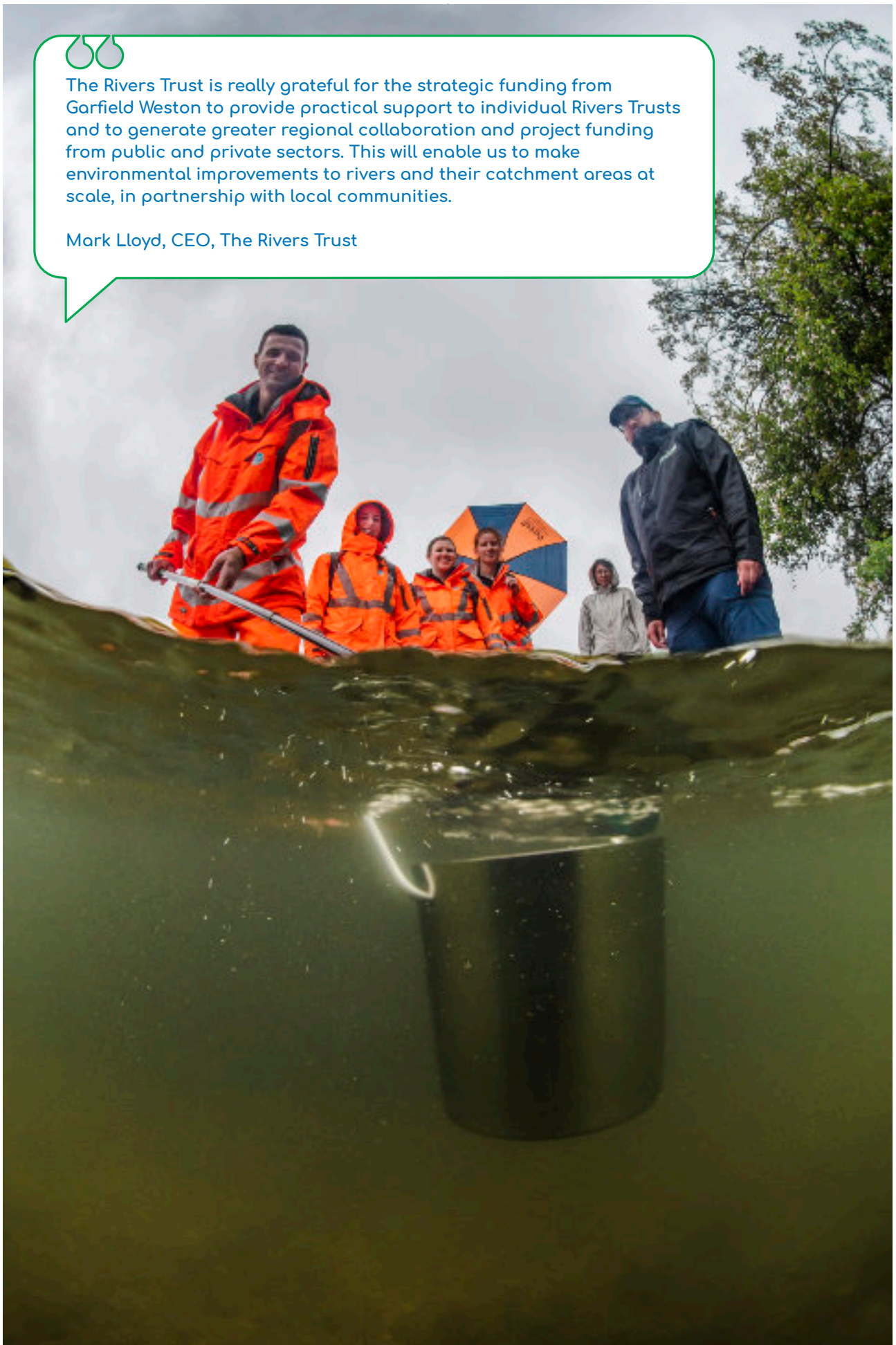
At Media Trust, we simply couldn't do the transformational work we do without the support of our key funders like the Garfield Weston Foundation. Thanks to GWF, we're matching thousands of media industry volunteers with charities looking for communications support, thereby helping to drive positive change for the communities and charities they serve.

Su-Mei Thompson, CEO, Media Trust



The Rivers Trust is really grateful for the strategic funding from Garfield Weston to provide practical support to individual Rivers Trusts and to generate greater regional collaboration and project funding from public and private sectors. This will enable us to make environmental improvements to rivers and their catchment areas at scale, in partnership with local communities.

Mark Lloyd, CEO, The Rivers Trust



provide free green space to some of the most marginalised communities in the UK. Despite the positive impact that being connected to nature has on our lives, the NT's research shows that almost 200,000 local people currently do not use the mountain. The NT is therefore embarking on a major project to restore and protect the mountain's at-risk peatland and wildlife, interpret its 9,000-year history of human involvement and engage local communities, with a particular focus on young people experiencing barriers to education and employment, people living with a disability, those living in poverty and people across sectarian boundaries. The Trustees were happy to grant £300,000 to help local people connect to this important at-risk landscape to ensure its long-term sustainability.

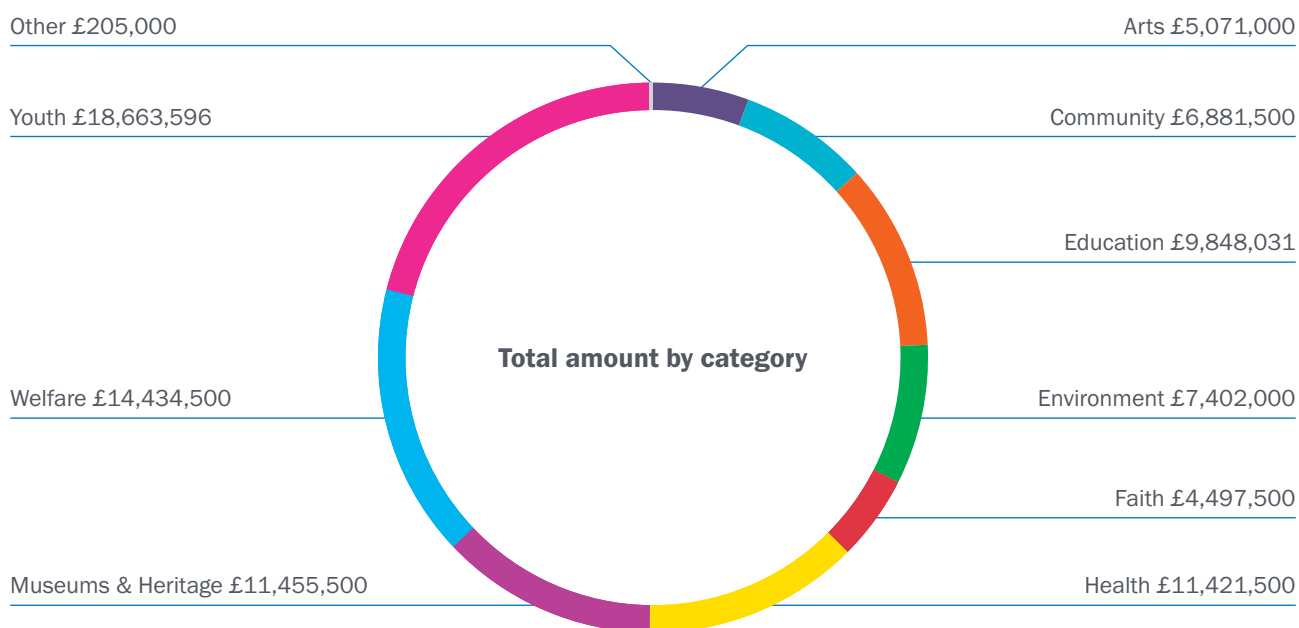
Beyond money, the Trustees' grants help to build the voluntary sector's capability, capacity and confidence. These '3 Cs' define the Foundation's partnerships that develop skills and opportunities with expert organisations. Weston Communicating Climate with the Media Trust is one such partnership and another was the Trustees' grant to

the Rivers Trust (RT), the umbrella organisation for 60 member Rivers Trusts in the UK and Ireland. It works with its members to protect rivers, conserve wetlands, restore soils, plant trees and build urban drainage schemes: projects that create more space for nature, greater public facilities, reduce flood risk and pollution and absorb carbon from the atmosphere. The RT has an ambitious goal to quadruple the size and environmental impact of the network over the next five years and the charity's team of Regional Development Managers is pivotal to this goal. In addition to building capacity and capability in local Rivers Trusts to deliver conservation projects, this team has helped secure millions in funding for the network and influenced policy makers. The team is vital to the ongoing growth and strength of the Rivers network and the Trustees were happy to grant £300,000 over three years to ensure the team's continuation.

Action needs to be taken now to fight climate change and the Trustees invite charities working in this vital sector to partner with the Foundation.

Summary of grants awarded in the year ended 5 April 2022

Category	Over £20,000	No. of grants	£20,000 and under	No. of grants	Total amount £	Total no. of grants
Arts	4,240,000	75	831,000	61	5,071,000	136
Community	4,455,000	93	2,426,500	213	6,881,500	306
Education	9,272,031	80	576,000	63	9,848,031	143
Environment	7,141,000	41	261,000	24	7,402,000	65
Faith	2,190,000	53	2,307,500	260	4,497,500	313
Health	10,410,000	102	1,011,500	73	11,421,500	175
Museums & Heritage	11,255,000	33	200,500	17	11,455,500	50
Welfare	11,759,000	233	2,675,500	197	14,434,500	430
Youth	16,790,596	217	1,873,000	149	18,663,596	366
Other	205,000	4	-	-	205,000	4
Totals	77,717,627	931	12,162,500	1,057	89,880,127	1,988



Other 4

Arts 136

Youth 366

Community 306

Number of grants by category

Education 143

Welfare 430

Environment 65

Museums & Heritage 50

Faith 313

Health 175

Yorkshire & The Humber £3,330,000

East Midlands £2,436,000

West Midlands £3,734,000

Eastern £4,834,031

Wales £3,765,500

South West £7,541,000

Total amount by region

National (inc. London)
£41,264,096

South East £6,940,500

Scotland £6,031,500

Northern Ireland £2,469,000

North West £4,480,500

North East £3,004,000

Non-UK £50,000

East Midlands 104

Yorkshire & The Humber 123

Eastern 142

West Midlands 123

Wales 86

South West 213

National (inc. London) 484

South East 258

Non-UK 1

Scotland 166

North East 87

Northern Ireland 49

North West 151

Number of grants by region

Independent auditors' report to the Trustees of the Garfield Weston Foundation

Opinion

We have audited the financial statements of Garfield Weston Foundation (the charity) for the year ended 5 April 2022 which comprise the Statement of Financial Activities, the Balance Sheet, the Cashflow Statement and notes to the financial statements, including significant accounting policies. The financial reporting framework that has been applied in their preparation is applicable law and United Kingdom Accounting Standards, including FRS 102 The Financial Reporting Standard applicable in the UK and Republic of Ireland (United Kingdom Generally Accepted Accounting Practice).

In our opinion the financial statements:

- give a true and fair view of the state of the charity's affairs as at 5 April 2022 and of its incoming resources and application of resources for the year then ended
- have been properly prepared in accordance with United Kingdom Generally Accepted Accounting Practice and
- have been prepared in accordance with the Charities Act 2011

Basis for opinion

We conducted our audit in accordance with International Standards on Auditing (UK) (ISA (UK)) and applicable law. Our responsibilities under those standards are further described in the Auditor's responsibilities for the audit of the financial statements section of our report. We are independent of the charity in accordance with the ethical requirements that are relevant to our audit of the financial statements in the UK, including the FRC's Ethical Standard, and we have fulfilled our other ethical responsibilities in accordance with these requirements. We believe that the audit evidence we have obtained is sufficient and appropriate to provide a basis for our opinion.

Conclusions relating to going concern

In auditing the financial statements, we have concluded that the Trustees' use of the going concern basis of accounting in the preparation of the financial statement is appropriate.

Based on the work we have performed, we have not identified any material uncertainties relating to events or conditions that, individually or collectively, may cast significant doubt on the charity's ability to continue as a going concern for a period of at least twelve months from when the financial statements are authorised for issue.

Our responsibilities and the responsibilities of the Trustees with respect to going concern are described in the relevant sections of this report.

Other information

The other information comprises the information included in the annual report other than the financial statements and our auditor's report thereon. The Trustees are responsible for the other information contained within the financial statements. Our opinion on the financial statements does not cover the other information and, except to the extent otherwise explicitly stated in our report, we do not express any form of assurance conclusion thereon.

Our responsibility is to read the other information and, in doing so, consider whether the other information is materially inconsistent with the financial statements or our knowledge obtained in the course of the audit, or otherwise appears to be materially misstated. If we identify such material inconsistencies or apparent material misstatements, we are required to determine whether there is a material misstatement in the financial statements or a material misstatement of the other information. If, based on the work we have performed, we conclude that there is a material misstatement of this other information, we are required to report that fact. We have nothing to report in this regard.

Matters on which we are required to report by exception

In the light of the knowledge and understanding of the charity and its environment obtained in the course of the audit, we have not identified material misstatements in the Trustees' report. We have nothing to report in respect of the following matters where the Charities Act 2011 requires us to report to you if, in our opinion:

- adequate accounting records have not been kept, or returns adequate for our audit have not been received from branches not visited by us
- the financial statements are not in agreement with the accounting records and returns
- certain disclosures of Trustees' remuneration specified by law are not made
- we have not received all the information and explanations we require for our audit

Responsibilities of Trustees

As explained more fully in the Trustees' responsibilities statement set out on page 8, the Trustees are responsible for the preparation of the financial statements and for being satisfied that they give a true and fair view, and for such internal control as the Trustees determine is necessary to enable the preparation of financial statements that are free from material misstatement, whether due to fraud or error.

In preparing the financial statements, the Trustees are responsible for assessing the charity's ability to continue as a going concern, disclosing, as applicable, matters related to going concern and using the going concern basis of accounting unless the Trustees either intend to liquidate the charity or to cease operations, or have no realistic alternative but to do so.

Auditors' responsibilities for the audit of the financial statements

We have been appointed as auditor under section 151 of the Charities Act 2011 and report in accordance with the Act and relevant regulations made or having effect thereunder.

Our objectives are to obtain reasonable assurance about whether the financial statements as a whole are free from material misstatement, whether due to fraud or error, and to issue an auditor's report that includes our opinion. Reasonable assurance is a high level of assurance, but is not a guarantee that an audit conducted in accordance with ISAs (UK) will always detect a material misstatement when it exists. Misstatements can arise from fraud or error and are considered material if, individually or in the aggregate, they could reasonably be expected to influence the economic decisions of users taken on the basis of these financial statements.

Details of the extent to which the audit was considered capable of detecting irregularities, including fraud and non-compliance with laws and regulations are set out below.

A further description of our responsibilities for the audit of the financial statements is located on the Financial Reporting Council's website at: www.frc.org.uk/auditorsresponsibilities This description forms part of our auditor's report.

Extent to which the audit was considered capable of detecting irregularities including fraud

Irregularities, including fraud, are instances of non-compliance with laws and regulations. We design procedures in line with our responsibilities, outlined above, to detect material misstatements in respect of irregularities, including fraud. The extent to which our procedures are capable of detecting irregularities, including fraud is detailed below.

Based on our understanding of the charity and the industry in which it operates, we identified that the principal risks of non-compliance with laws and regulations related to the acts by the charity, which were contrary to applicable laws and regulations including fraud, and we considered the extent to which non-compliance might have a material effect on the financial statements. We also considered those laws and regulations that have a direct impact on the preparation of the financial statements such as the Charities Act 2011.

We evaluated management's incentives and opportunities for manipulation of the financial statements (including the risk of override of controls), and determined that the principal risk related to the valuation of the unquoted investment in Wittington Investments Limited ('Wittington') of which the Foundation owns 683,073 50p ordinary shares (79.2%).

The valuation of Wittington requires significant estimation as it is an unquoted company and there is no readily identifiable market price for its shares. Accordingly, the value of the Foundation's investment has been assessed by the Trustees on the basis of the share of the value of the underlying net assets of Wittington attributable to the Foundation's holding as at 5 April 2022. As Wittington's financial statements are audited as at 18 September 2021, there is a varying degree of estimation required to assess the net asset value as at 5 April 2022 and therefore there is more potential for misstatement in this area.

We assessed Management's valuation methodology and considered whether it was in accordance with the accounting policies of the Foundation, applicable accounting standards and industry practice. Wittington's principal asset is a majority holding (54.5%) in Associated British Foods plc. Therefore, the value of the Foundation's investment in Wittington is driven predominantly by the Associated British Foods plc share price as at 5 April 2022. As the shares are listed on the London Stock Exchange, the value of this holding can be determined easily.

Other audit procedures performed included: review of the financial statement disclosures to underlying supporting documentation to assess compliance with relevant laws and regulations, review of correspondence with legal advisors, review of minutes of meetings held by those charged with governance, enquiries of management and testing of journals and evaluating whether there was evidence of bias by the Trustees that represented a risk of material misstatement due to fraud.

There are inherent limitations in the audit procedures described above and the further removed non-compliance with laws and regulations is from the events and transactions reflected in the financial statements, the less likely we would become aware of it. Also, the risk of not detecting a material misstatement due to fraud is higher than the risk of not detecting one resulting from error, as fraud may involve deliberate concealment by, for example, forgery or intentional misrepresentations, or through collusion.

Use of our report

This report is made solely to the charity's Trustees, as a body, in accordance with Chapter 3 of Part 8 of the Charities Act 2011 and regulations made under section 154 of that Act. Our audit work has been undertaken so that we might state to the charity's Trustees those matters we are required to state to them in an auditor's report and for no other purpose. To the fullest extent permitted by law, we do not accept or assume responsibility to anyone other than the charity and the charity's Trustees as a body, for our audit work, for this report, or for the opinions we have formed.

UHY Hacker Young
Chartered
Accountants
Statutory Auditor

Quadrant House
4 Thomas More Square
London E1W 1YW

17 October 2022

UHY Hacker Young LLP is eligible to act as an auditor in terms of section 1212 of the Companies Act 2006.

Statement of financial activities for the year ended 5 April 2022

		Unrestricted funds				
		Income funds	Expendable capital	Restricted funds	Total funds	Total funds
	Notes	£'000	£'000	£'000	2022 £'000	2021 £'000
Income and endowments from						
Investments	2	82,204	1,800	-	84,004	83,963
Total income		82,204	1,800	-	84,004	83,963
Expenditure						
Costs of generating funds:						
Raising funds		-	183	-	183	154
Charitable activities:						
Grant making activities	4	90,765	-	-	90,765	98,583
Total expenditure		90,765	183	-	90,948	98,737
Net (outgoings)/income		(8,561)	1,617	-	(6,944)	(14,774)
Other recognised gains and losses						
Gains/(losses) on revaluation and disposal of investment assets						
		-	5,466	(2,603,502)	(2,598,036)	2,349,207
Net movement in funds before transfers between funds		(8,561)	7,083	(2,603,502)	(2,604,980)	2,334,433
Gross transfers between funds	12	3,045	(3,045)	-	-	-
Net movement in funds		(5,516)	4,038	(2,603,502)	(2,604,980)	2,334,433
Reconciliation of funds						
Total funds brought forward						
		29,624	106,242	9,661,597	9,797,463	7,463,030
Total funds carried forward						
		24,108	110,280	7,058,095	7,192,483	9,797,463

All recognised gains and losses have been included in the Statement of Financial Activities and the amounts included are derived entirely from the continuing activities of the Foundation.

Balance sheet as at 5 April 2022

	Notes	2022		2021	
		£'000	£'000	£'000	£'000
Fixed assets					
Investments	9		7,168,184		9,767,172
Current assets					
Debtors	10	1,186		1,322	
Cash at bank		71,920		67,401	
		73,106		68,723	
Creditors: amounts falling due within one year	11(a)	(48,807)		(38,432)	
Net current assets			24,299		30,291
Net assets			7,192,483		9,797,463
Restricted funds					
Permanent endowment funds	12 and 13		7,058,095		9,661,597
Unrestricted funds					
Expendable capital fund	12 and 13		110,280		106,242
Income funds	12 and 13		24,108		29,624
			7,192,483		9,797,463

The financial statements on page 23 to 65 were approved by the Trustees on 17 October 2022 and were signed on their behalf by:

Sir Guy H Weston

George G Weston
Trustees

Cash flow statement for the year ended 5 April 2022

		2022	2021
	Notes	£'000	£'000
Cashflows from operating activities			
Net (expenditure)/income for the reporting period (as per the Statement of financial activities):		(2,604,980)	2,334,433
Adjustments for:			
Losses/(gains) on investments		2,608,052	(2,349,501)
Dividends and interest from investments		(84,004)	(83,964)
Decrease in debtors		136	214
Increase in creditors		10,375	4,657
Net cash used in operating activities		(70,421)	(94,161)
Cash flow from investing activities			
Dividends and interest from investments		84,004	83,963
Proceeds from disposal of investments		15,281	10,470
Purchase of investments		(23,348)	(11,094)
Net cash provided by investing activities		75,937	83,339
Net increase/(decrease) in cash and cash equivalents	14	5,516	(10,822)
Cash and cash equivalents at the beginning of the period	14	68,258	79,080
Cash and cash equivalents at the end of the period	14	73,774	68,258

Notes to the financial statements for the year ended 5 April 2022

1 Accounting policies

The financial statements have been prepared in accordance with applicable UK accounting standards (UK Generally Accepted Accounting Practice), including Financial Reporting Standard FRS 102 'The Financial Reporting Standard applicable in the United Kingdom and the Republic of Ireland' ("FRS 102"). In particular, they comply with the Charities Act 2011 and the Statement of Recommended Practice 'Accounting and Reporting by Charities (the "SORP")'.

The financial statements have been prepared to give a 'true and fair' view and have departed from the Charities (Accounts and Report) Regulations 2008 only to the extent required to provide a 'true and fair' view. This departure has involved following the Charities SORP (FRS 102).

The Foundation constitutes a public benefit entity as defined by FRS 102. The financial statements are prepared on the historical cost basis except that certain financial instruments are stated at fair value.

The financial statements have been prepared in sterling, which is the functional currency of the Foundation. Monetary amounts in these financial statements are rounded to £'000s.

The particular accounting policies adopted by the Trustees are described below:

a Going concern

After making enquiries, the Trustees have a reasonable expectation that the Foundation has adequate resources to continue in operational existence for the foreseeable future. For this reason they continue to adopt the going concern basis in preparing the consolidated financial statements.

Having reviewed the best estimate of future cash flow to September 2023, and having applied reverse stress tests, the possibility that the financial headroom could be exhausted is considered to be extremely remote. The Trustees understand the risks, sensitivities and judgements included in the cash flow forecast and have a high degree of confidence in these cash flows. There is substantial financial headroom between this cash flow forecast and the cash on hand and funding available to the Foundation over the period.

b Incoming resources

Dividends are included when received. Interest receivable on fixed interest securities and bank deposits is included on an accruals basis. All incoming resources are recognised once the Charity has entitlement to the resources, it is probable that the resources will be received and the monetary value of incoming resources can be measured with sufficient reliability.

c Resources expended and irrecoverable VAT

Liabilities are recognised as resources expended as soon as there is a legal or constructive obligation committing the Charity to the expenditure. All expenditure is accounted for on an accruals basis and has been classified under headings that aggregate all costs related to the category.

Grants awarded are charged in the year when formally awarded by the Trustees and communicated to the recipient irrespective of the period covered by the donation as they are regarded by the Trustees as financial obligations.

Irrecoverable VAT is charged against the category of resources expended for which it was incurred.

d Allocation of overhead and support costs

Overhead and support costs are allocated first between charitable activity and governance. Overhead and support costs relating to charitable activities have been apportioned based on the value of individual grant awards made as it is considered that more is spent awarding, monitoring and assessing grants of greater value. The allocation of overhead and support costs is analysed in note 5.

e Costs of generating funds

The costs of generating funds consist of investment management fees and commissions.

f Charitable activities

Costs of charitable activities include grants made and an apportionment of overhead and support costs as shown in notes 3 and 4.

g Governance costs

Governance costs comprise all costs involving the public accountability of the Charity and its compliance with regulation and good practice. These costs include costs related to statutory audit and legal fees together with an apportionment of overhead and support costs.

h Interest in Wittington Investments Limited

At 5 April 2022 the Foundation owned 79.2% (2021: 79.2%) of Wittington Investments Limited, a company registered in England. Wittington Investments Limited is the ultimate holding company of Associated British Foods plc, and a wide range of investments including Fortnum & Mason plc and Heal's plc, two hotels, a real estate portfolio and significant financial investments. Associated British Foods plc is listed on the London Stock Exchange. The Foundation receives its income from Wittington Investments Limited by way of dividends and records its investment in that company at Trustees' valuation.

As the activities of Wittington Investments Limited and its subsidiaries are fundamentally different from the activities of the Foundation, consolidated accounts have not been prepared as the Trustees are of the opinion that the adopted policy gives a true and fair view of the Foundation's assets and sources of income. Details of the consolidated accounts of Wittington Investments Limited are shown in note 9 to these accounts. The Trustees have agreed this policy with the Charity Commission.

i Fixed assets investments

Investments are stated at market value as at the balance sheet date. The statement of financial activities includes the net gains and losses arising on revaluation and disposals throughout the year.

j Realised gains and losses

All gains and losses are taken to the statement of financial activities as they arise. Realised gains and losses on investments are calculated as the difference between sales proceeds and opening market value. Unrealised gains and losses are calculated as the difference between the market value at the year end and opening market value. Realised and unrealised gains are not separated in the Statement of Financial Activities.

k Fund accounting

Details of the nature and purpose of each fund are set out in note 13.

l Financial instruments

Financial assets and financial liabilities are shown in note 8 to these accounts and are recognised when the Foundation becomes a party to the contractual provisions of the instrument.

Financial assets which qualify as basic financial instruments, including trade and other receivables and cash, are subsequently valued at amortised cost and assessed for impairment at the end of each reporting period.

Other financial assets, including investments, are subsequently valued at fair value.

Financial liabilities are classified according to the substance of the contractual arrangements entered into. All financial assets and liabilities are initially measured at transaction price including transaction costs, except for those financial assets classified as at fair value through profit or loss, which are initially measured at fair value. If an arrangement constitutes a financing transaction, the financial asset or financial liability is measured at the present value of the future payments discounted at a market rate of interest for a similar debt instrument.

Financial assets are derecognised only when either the contractual rights to the cash flows from the financial asset expire or are settled or all of the risks and rewards of ownership of the financial asset are substantially transferred to another party.

Financial liabilities are derecognised only when the obligation specified in the contract is discharged, cancelled or expires.

Investments are stated at market value at the balance sheet date. The market values of the managed portfolios are advised by the portfolio managers. The statement of financial activities includes the net gains and losses arising in revaluation and disposals through the year.

- **Quoted investments** comprise publicly quoted, listed securities including shares, bonds and units. Quoted investments are stated at fair value at the balance sheet date.
- **Unquoted investments** are valued at the Trustees' best estimate of fair value as explained in note 9.

2 Investment income

	Managed funds £'000	Charities property fund £'000	Unlisted £'000	2022 £'000	2021 £'000
Unlisted equities	-	-	82,140	82,140	82,140
Listed equities	1,093	-	-	1,093	1,048
Listed unit trusts	146	245	-	391	368
Listed corporate bonds and gilts	315	-	-	315	322
	1,554	245	82,140	83,939	83,878
Cash deposits – interest				39	53
Other Income				26	32
				84,004	83,963

The unlisted investment income comprises dividends received from Wittington Investments Limited.

Investment income – comparatives for the year ended 5 April 2021

	Managed funds £'000	Charities property fund £'000	Unlisted £'000	2021 £'000	2020 £'000
Unlisted equities	-	-	82,140	82,140	82,140
Listed equities	1,048	-	-	1,048	1,288
Listed unit trusts	132	236	-	368	466
Listed corporate bonds and gilts	322	-	-	322	395
	1,502	236	82,140	83,878	84,289
Cash deposits – interest				53	297
Other Income				32	175
				83,963	84,761

3 Grant-making activities

	2022 £'000	2021 £'000
Grants awarded and associated costs (note 4)	90,765	98,583

The list of individual grants made during the year is set out in note 16 and grants paid during the year are summarised by category in note 11.

Significant aspects of the grant activity during the year are described on pages 2 to 17 of the Trustees' report.

4 Analysis of charitable expenditure

The Charity undertook no direct charitable activities but awarded grants to a number of institutions in furtherance of its charitable activities. As a consequence of supporting charitable organisations, the Foundation achieves public benefit. The Foundation's grant policy is to accept only appeals from UK registered charities. Registration provides an element of assurance of public benefit, although for charities registered before the implementation of the Charities Act 2006 the public benefit was a presumption.

	Grant funded activity £'000	Support costs £'000	Governance costs £'000	2022 Total £'000	2021 Total £'000
Arts	5,071	72	35	5,178	32,645
Community	6,881	97	48	7,026	6,578
Education	9,848	139	68	10,055	6,649
Environment	7,402	104	51	7,557	7,172
Faith	4,498	63	31	4,592	3,724
Health	11,422	161	79	11,662	8,468
Museums & Heritage	11,455	162	79	11,696	7,311
Welfare	14,434	204	100	14,738	19,676
Youth	18,664	263	129	19,056	7,524
Other	205	3	1	209	408
	89,880	1,268	621	91,769	100,155
Return relating to grants made in prior years	(250)	-	-	(250)	(319)
Expired commitments	(754)	-	-	(754)	(1,253)
	88,876	1,268	621	90,765	98,583

Analysis of charitable expenditure – comparatives for the year ended 5 April 2021

	Grant funded activity £'000	Support costs £'000	Governance costs £'000	2021 Total £'000	2020 Total £'000
Arts	32,047	401	197	32,645	10,552
Community	6,457	81	40	6,578	9,075
Education	6,527	82	40	6,649	15,161
Environment	7,041	88	43	7,172	4,633
Faith	3,656	46	22	3,724	4,511
Health	8,313	104	51	8,468	19,482
Museums & Heritage	7,177	90	44	7,311	2,778
Welfare	19,316	242	118	19,676	12,413
Youth	7,387	92	45	7,524	9,262
Other	400	5	3	408	1,994
	98,321	1,231	603	100,155	89,861
Return relating to grants made in prior years	(319)	-	-	(319)	(685)
Expired commitments	(1,253)	-	-	(1,253)	(550)
	96,749	1,231	603	98,583	88,626

5 Allocation of support costs and overheads

	Governance costs £'000	Grant making activity £'000	Total 2022 £'000	Total 2021 £'000	Basis of Apportionment
Legal & professional fee costs	109	-	109	38	N/A
Staff costs	156	622	778	741	Staff time
Other costs	356	646	1,002	1,055	Staff time
	621	1,268	1,889	1,834	

The costs relating to grant-making activity represent costs incurred in assessing applications, administration of the grants awarded and post grant monitoring.

The Foundation does not employ any staff. Staff costs comprise charges of £698,953 (2021: £614,050) from Wittington Investments Limited in respect of the work undertaken by its employees for the Foundation and £78,505 (2021: £78,750) consultant charges.

Included within other support costs and overheads are amounts relating to accountancy of £51,360 (2021: £50,490), computing and IT costs of £26,293 (2021: £26,293) and accommodation costs of £411,600 (2021: £402,490).

Nine (2021: nine) Trustees received expenses totalling £589 (2021: £537) relating to travel and subsistence.

The total support cost attributable to charitable activities is then apportioned pro rata to the value of grants awarded in the year as set out in note 4.

Allocation of support costs and overheads – comparatives for the year ended 5 April 2021

	Governance costs £'000	Grant making activity £'000	Total 2021 £'000	Total 2020 £'000	Basis of Apportionment
Legal & professional fee costs	38	-	38	23	N/A
Staff costs	148	593	741	644	Staff time
Other costs	417	638	1,055	1,088	Staff time
	603	1,231	1,834	1,755	

6 Analysis of governance costs

	2022 £'000	2021 £'000
Auditors' remuneration – audit services	26	25
Staff costs	155	148
Other support costs	440	430
	621	603

The governance costs comprise costs of running the Foundation and planning for future developments, including audit fees and costs of complying with constitutional and statutory requirements, such as Trustees' meetings and the preparation of accounts satisfying public accountability.

7 Trustees' remuneration

a Trustees' remuneration

No remuneration was paid to the Trustees for their services to the Foundation.

b Directors' remuneration

As stated in notes 1(h) and 9, the Foundation owns 79.2% of Wittington Investments Limited which in turn holds 54.5% of Associated British Foods plc and 100% of Fortnum & Mason plc plus a number of other wholly owned subsidiaries.

Four of the Trustees, Guy Weston, George Weston, Anna Catrina Hobhouse and Alannah Weston are directors of Wittington Investments Limited. Of these three Guy Weston and Anna Hobhouse received remuneration from Wittington Investments Limited.

George Weston is a director of Associated British Foods plc and received remuneration from the company in that capacity. Anna Catrina Hobhouse is chairperson and a director of Fortnum & Mason plc and received remuneration from Wittington in that capacity

Remuneration (comprising salary, fees, bonus and benefits) paid to Trustees in their capacity as directors of these companies, which is authorised by clause 13 of the Trust Deed, as set out in the most recently available accounts of the relevant companies was as follows:

	Year ended 18 September 2021 £'000	Year ended 12 September 2020 £'000
Anna Catrina Hobhouse – as a non- executive director of Wittington Investments Limited	21	18
as a chairperson and director of Fortnum & Mason plc	110	99
Guy H Weston – as a director of Wittington Investments Limited	345	372
George G Weston – as a director of Associated British Foods plc (note below)	3,390	1,138

Note: full details of George G Weston's remuneration, pension and options are set out in the Remuneration Report contained in the Annual Report and Accounts 2021 of Associated British Foods plc.

c | Key management remuneration

Key management personnel's remuneration constituted the total aggregate amount of £360,615 (2021: £347,320).

8 Financial instruments

	2022 £'000	2021 £'000
Carrying amount of financial assets		
Debt instruments measured at amortised cost	1,186	1,322
Instruments measured at fair value through profit or loss	7,168,184	9,767,172
	<u>7,169,370</u>	<u>9,768,494</u>
Carrying amount of financial liabilities		
Measured at amortised cost	48,807	38,432
	<u>48,807</u>	<u>38,432</u>

9 Investments

At valuation Fixed asset investments	Managed funds £'000	Charities property fund £'000	Unlisted £'000	Total £'000
At 6 April 2021	99,608	5,967	9,661,597	9,767,172
Movement in year	2,515	962	(2,602,465)	(2,598,988)
At 5 April 2022	102,123	6,929	7,059,132	7,168,184
At Cost*				
At 6 April 2021 and at 5 April 2022	68,500	5,000	4,745	78,245

*The cost at 5 April 2021 and 2022 is the historical cost of the investment in the managed funds and the charities property fund or, in the case of unlisted investments, the valuation at the date of the gift to the Foundation.

Investments – comparatives for the year ended 5 April 2021

At valuation Fixed asset investments	Managed funds £'000	Charities property fund £'000	Unlisted £'000	Total £'000
At 6 April 2020	82,998	6,057	7,330,630	7,419,685
Movement in year	16,610	(90)	2,330,967	2,347,487
At 5 April 2021	99,608	5,967	9,661,597	9,767,172
At Cost*				
At 6 April 2020 and at 5 April 2021	68,500	5,000	4,745	78,245

Analysis of value of investment assets at 5 April 2022 by type

	Managed funds £'000	Charities property fund £'000	Unlisted £'000	Total £'000
Unlisted securities	-	-	7,059,132	7,059,132
Listed equities	23,680	6,929	-	30,609
Listed unit trusts	41,236	-	-	41,236
Listed corporate bonds and gilts	5,601	-	-	5,601
Charitable unauthorised unit trust	24,352	-	-	24,352
Money market fund	5,400	-	-	5,400
Cash held within the portfolio	1,854	-	-	1,854
	102,123	6,929	7,059,132	7,168,184

Analysis of value of investment assets by type – comparatives for the year ended 5 April 2021

	Managed funds £'000	Charities property fund £'000	Unlisted £'000	Total £'000
Unlisted securities	-	-	9,661,597	9,661,597
Unlisted UCITS SICAV Fund	35,117	-	-	35,117
Listed equities	29,436	5,967	-	35,403
Listed unit trusts	28,869	-	-	28,869
Listed corporate bonds and gilts	5,329	-	-	5,329
Cash held within the portfolio	857	-	-	857
	99,608	5,967	9,661,597	9,767,172

The managed funds are managed on a discretionary total return basis.

The charities property fund comprises units in the Savills Charities' Property Fund.

Unlisted investments

The unlisted investments comprise 683,073 50p ordinary shares (79.2%) of Wittington Investments Limited, an unquoted company, see note 1 (h).

The business of Wittington Investments Limited is the management of investments in a wide range of assets. As it is an unquoted company there is no readily identifiable market price for its shares. Accordingly, the value of the Foundation's investments has been assessed by the Trustees on the basis of the share of the value of the underlying net assets of Wittington attributable to the Foundation's holding.

Wittington's principal asset is a holding of 54.5% of the issued ordinary capital of Associated British Foods plc ('ABF') which is listed on The London Stock Exchange. In assessing the value of the underlying net assets of Wittington the value of its investment in ABF has been based on the closing share price as at 5 April 2022.

In addition, Wittington holds a wide range of other assets managed in four different business segments:

- **Luxury Retail:** comprising the 100% ownership of Fortnum & Mason and Heal's, two long established retailers.
- **Real Estate:** investing in high-quality investment properties in the retail, office and distribution sectors across the UK. Wittington also takes strategic positions in selective development opportunities, alongside local partners or sector specialists.
- **Hotels:** as an extension of its Real Estate strategy, Wittington invests in hotels with high-quality real estate backing and with a broad mix of customers from corporate, event and leisure markets. Wittington currently owns The Grand Hotel, Brighton and the Richmond Hill Hotel.
- **Private Markets & Other Investments:** Wittington invests both directly and via externally managed funds in private equity and private debt markets. Other investments are principally composed of liquid investments in short-dated investment grade bonds and listed equities.

The most recent financial year end for Wittington was 18 September 2021. As such, aside from the investment in ABF, Wittington's remaining investments have been valued using net asset values in the 31 March 2022 management accounts, which are considered to be their fair values. At 5 April 2022 the fair value of Wittington including Associated British Foods Plc is considered to be £8.91bn and the Foundation's share of this (79.24%) is £7.06bn.

At the date of this report, restrictions relating to the Covid-19 pandemic have completely eased domestically. The situation is still uncertain and new variants of concern and their resistance to vaccines could still lead to Governments and authorities imposing restrictions on an international, national, regional and local level. The reintroduction of such restrictions would fundamentally affect the trading outlook for all of the Wittington Group's business segments. As economies around the world have reopened, all our businesses are experiencing logistic challenges, Covid-related labour absences and significant inflationary pressures in raw materials, supply chains and energy. Against this backdrop, the Wittington group of businesses have performed resiliently, with profits and cash balances restored to pre-Covid levels. Despite this, the closing price of shares in Associated British Foods plc at 5th April was 33% lower on the prior year.

The Wittington group owns two hotels and a portfolio of investment properties. The portfolio is held at cost less provision for impairment within the financial statements. The third-party valuations prepared at 18 September 2021 were considerably higher than this carrying value when considering the portfolio in total. The trustees do not expect material movement in the market value of the properties compared to the valuation as at 18 September 2021.

The Trustees have no current intention of disposing of the interest in Wittington.

10 Debtors

	2022 £'000	2021 £'000
Debtor: amounts falling due within one year		
Accrued interest	241	471
Amount due from investment managers	355	851
Loan receivable	590	-
	<u>1,186</u>	<u>1,322</u>

The loan receivable reflects an interest free loan to Mission Employable of £590,000 to be repaid over 12 months.

11 a | Creditors: amounts falling due within one year

	2022 £'000	2021 £'000
Grants payable	48,089	38,043
Accrued expenses	369	360
Trade creditors	349	29
	<u>48,807</u>	<u>38,432</u>

b | Total grants payable

	Grants payable b'fwd £'000	Grants awarded £'000	Grants paid £'000	Grants lapsed £'000	Grants payable c'fwd £'000
Arts	6,623	5,071	(9,398)	(10)	2,286
Community	2,453	6,881	(6,450)	(70)	2,814
Education	2,473	9,848	(8,988)	(30)	3,303
Environment	2,836	7,402	(4,741)	(275)	5,222
Faith	2,477	4,498	(4,777)	(158)	2,040
Health	12,705	11,422	(9,722)	-	14,405
Museums & Heritage	3,715	11,456	(11,481)	-	3,690
Welfare	3,175	14,434	(12,731)	(185)	4,693
Youth	1,401	18,663	(10,508)	(25)	9,531
Other	185	205	(285)	-	105
	38,043	89,880	(79,081)	(753)	48,089

Grants payable consist of future payments of £22 million (2021: £6 million) due to charities under existing multi-year arrangements, and pledges of just over £26.1 million (2021: £32 million) that require charities to fulfil specific prerequisite obligations.

Total grants payable – comparatives for the year ended 5 April 2021

	Grants payable b'fwd £'000	Grants awarded £'000	Grants paid £'000	Grants lapsed £'000	Grants payable c'fwd £'000
Arts	9,050	32,047	(34,149)	(325)	6,623
Community	1,945	6,457	(5,929)	(20)	2,453
Education	4,801	6,527	(8,320)	(535)	2,473
Environment	735	7,041	(4,940)	-	2,836
Faith	1,714	3,656	(2,615)	(278)	2,477
Health	11,425	8,313	(7,033)	-	12,705
Museums & Heritage	1,887	7,177	(5,274)	(75)	3,715
Welfare	1,100	19,316	(17,221)	(20)	3,175
Youth	531	7,387	(6,517)	-	1,401
Other	-	400	(215)	-	185
	33,188	98,321	(92,213)	(1,253)	38,043

12 Analysis of charitable funds

Analysis of Fund movements	Balance at 6 April 2021 £'000	Incoming resources £'000	Resources expended £'000	Transfers £'000	Gains and losses £'000	Balance at 5 April 2022 £'000
Permanent endowment	9,661,597	-	-	-	(2,603,502)	7,058,095
Unrestricted expendable capital	106,242	1,800	(183)	(3,045)	5,466	110,280
Unrestricted income fund	29,624	82,204	(90,765)	3,045	-	24,108
Total	9,797,463	84,004	(90,948)	-	(2,598,036)	7,192,483

Permanent endowment

The permanent endowment funds comprise the original capital fund, and gains thereto, established to provide income for grant payments in accordance with the objectives of the Foundation. The capital may not be converted into income. The funds are represented by the investments included in fixed assets. Unrealised gains on revaluation of these investments are credited to the funds.

Unrestricted expendable capital

In accordance with the authority given to the Trustees under an Order of the Charity Commission dated 19 September 2001, £65,747,000 was transferred to an expendable capital fund in relation to which income and capital are distributable at the discretion of the Trustees. £5 million was invested in 2001/02 in the Charities Property Fund and £60 million was invested in 2002/03 with investment managers in balanced portfolios on a discretionary total return basis. Income and investment gains and losses are taken to this fund and the amount allocated to income by the Trustees, £3,045,313 (2021: £3,832,000), is shown as a transfer to the income fund.

Unrestricted income funds

The income of the Foundation is expendable at the discretion of the Trustees in furtherance of the objects of the Foundation. Gains on investments held in the income funds are credited to these funds.

Analysis of charitable funds – comparatives for the year ended 5 April 2021

Analysis of Fund movements	Balance at 6 April 2020 £'000	Incoming resources £'000	Resources expended £'000	Transfers £'000	Gains and losses £'000	Balance at 5 April 2021 £'000
Permanent endowment	7,330,630	-	-	2	2,330,965	9,661,597
Unrestricted expendable capital	90,249	1,739	(154)	(3,834)	18,242	106,242
Unrestricted income fund	42,151	82,224	(98,583)	3,832	-	29,624
Total	7,463,030	83,963	(98,737)	-	2,349,207	9,797,463

13 Analysis of net assets between funds

Fund balances at 5 April 2022 are represented by	Income fund £'000	Expendable capital fund £'000	Endowment funds £'000	Total funds £'000
Investments	-	110,089	7,058,095	7,168,184
Current assets	71,920	1,186	-	73,106
Creditors: amounts falling due within one year	(47,812)	(995)	-	(48,807)
Total net assets	24,108	110,280	7,058,095	7,192,483

Analysis of net assets between funds – comparatives for the year ended 5 April 2021

Fund balances at 5 April 2021 are represented by	Income fund £'000	Expendable capital fund £'000	Endowment funds £'000	Total funds £'000
Investments	-	105,575	9,661,597	9,767,172
Current assets	67,401	1,322	-	68,723
Creditors: amounts falling due within one year	(37,777)	(655)	-	(38,432)
Total net assets	29,624	106,242	9,661,597	9,797,463

14 Analysis of changes in cash and cash equivalents during the year

	2021 £'00	Cash flow £'000	2022 £'000
Cash at bank	67,401	4,519	71,920
Cash held for future investment	857	997	1,854
	68,258	5,516	73,774

Analysis of changes in cash balances during the year – comparatives for the year ended 5 April 2021

	2020 £'00	Cash flow £'000	2021 £'000
Cash at bank	75,585	(8,184)	67,401
Cash held for future investment	3,495	(2,638)	857
	79,080	(10,822)	68,258

Cash held for future investment is classified within Investments on the Balance Sheet. (See note 9)

15 Statement of financial activities for the year ended 5 April 2021

		Unrestricted funds				
	Notes	Income funds £'000	Expendable capital £'000	Restricted funds £'000	Total funds 2021 £'000	Total funds 2020 £'000
Income and endowments from						
Investments	2	82,224	1,739	-	83,963	84,761
<i>Total income</i>		82,224	1,739	-	83,963	84,761
Expenditure						
Costs of generating funds:						
Raising funds		-	154	-	154	169
Charitable activities:						
Grant making activities	4	98,583	-	-	98,583	88,626
<i>Total expenditure</i>		98,583	154	-	98,737	88,795
<i>Net (outgoings)/income</i>		(16,359)	1,585	-	(14,774)	(4,034)
Other recognised gains and losses						
Gains/(losses) on revaluation and disposal of investment assets		-	18,242	2,330,965	2,349,207	(2,506,012)
<i>Net movement in funds before transfers between funds</i>		(16,359)	19,827	2,330,965	2,334,433	(2,510,046)
Gross transfers between funds	13	3,832	(3,834)	2	-	-
<i>Net movement in funds</i>		(12,527)	15,993	2,330,967	2,334,433	(2,510,046)
Reconciliation of funds						
Total funds brought forward		42,151	90,249	7,330,630	7,463,030	9,973,076
Total funds carried forward		29,624	106,242	9,661,597	9,797,463	7,463,030

16 Grants awarded

The grants highlighted with * indicate pledges made during the year which are accounted for in the year they are awarded, although the cash grant may not be released for up to two years.

Grants over £20,000		
Arts		£
Theatr Clwyd Trust	Mold	500,000*
Birmingham Repertory Theatre	Birmingham	150,000
Gecko Theatre	Ipswich	150,000
Wildscreen	Bristol	150,000
Northern Ireland Opera	Belfast	150,000
Thames Festival Trust	London	100,000
Orchestras For All	London	90,000
Openup Music	Bristol	80,000
Outside In	Chichester	80,000
Good Chance Theatre	London	75,000*
Hall for Cornwall Trust	Truro	75,000
Art UK	London	75,000
National Youth Ballet of Great Britain	Edenbridge	75,000
Community Music Wales Ltd	Merthyr Tydfil	75,000
Oldham Coliseum Theatre	Oldham	75,000
The People's Orchestra	West Bromwich	75,000
The Edge Theatre & Arts Centre	Manchester	75,000
Mortal Fools	Prudhoe	75,000
Patrick Allan Fraser of Hospitalfield Trust	Arbroath	75,000
The Roundhouse	London	75,000
NORCA & Sistema in Norwich	Norwich	70,000
The Big House Theatre Company	London	70,000
Impact Arts (Projects) Ltd	Glasgow	60,000
National Youth Jazz Orchestra Ltd	London	60,000
The Line Art Walk	London	60,000
Writing on the Wall	Liverpool	50,000
Brass Bands England	Barnsley	50,000
Theatre Peckham	London	50,000
Hampstead Theatre Ltd	London	50,000
Oxford Philharmonic Orchestra Trust	London	50,000
RWA (Royal West of England Academy)	Bristol	50,000
Dante or Die Theatre Ltd	London	45,000
Cherwell Theatre Company	Banbury	45,000
Z-arts	Manchester	40,000
Manchester Collective	Manchester	40,000
Park Theatre	London	40,000
Corn Exchange (Newbury) Trust	Newbury	40,000

Outside Edge Theatre Company	London	40,000
Herts Inclusive Theatre	Watford	40,000
The Poetry Archive	Exeter	40,000
Open House Festival	Bangor	35,000
Ex Cathedra	Birmingham	30,000
Poet in the City	London	30,000
The Birchvale Players	Dalbeattie	30,000*
Chisenhale Gallery	London	30,000
Spare Tyre Theatre Company	London	30,000
Craft Central	London	30,000
More Music	Morecambe	30,000
Burnley Youth Theatre	Burnley	30,000
Making Space for Crafts Ltd	Havant	30,000
OperaUpClose	Southampton	30,000
A Space: Growing Creative Communities	Southampton	30,000
The Living Paintings Trust	Newbury	30,000
Entelechy Arts	London	30,000
Drake Music	London	30,000
Signal Film and Media	Barrow-in-Furness	30,000
Alphabetti Theatre	Newcastle upon Tyne	30,000
Belfast Exposed Photography Gallery	Belfast	30,000
Volcano Theatre Company Ltd	Swansea	30,000
South East Dance	Brighton	25,000
Talisman Theatre Company	Kenilworth	25,000
Forward Arts Foundation	London	25,000
Victor Batte-Lay Foundation	Colchester	25,000
Icarus Theatre Collective	High Wycombe	25,000*
Natural History Museum	London	25,000
World Heart Beat Music Academy	London	25,000
Wasps Trust	Glasgow	25,000
Artichoke Trust	London	25,000
Barnet, Enfield and Haringey Mental Health NHS Trust Charity	London	25,000
DanceSyndrome	Accrington	25,000
Wise Children	Bristol	25,000
Reading Repertory Theatre	Reading	25,000
British Youth Opera	London	25,000
Junction Arts Ltd	Chesterfield	25,000
London School of Mosaic	London	25,000*
Total for Arts		4,240,000
(Total number of grants: 75)		

Community		£
Redhills CIO	Durham	250,000*
The Deptford Ragged Trust	London	250,000*
Helpforce	London	225,000
Possilpark People's Trust	Glasgow	200,000
Media Trust	London	200,000
The Branch Trust	Chipping Norton	100,000*
Baytree Centre	London	90,000
St Cuthbert's Centre	London	90,000
Rathfriland & District Regeneration Company Ltd	Rathfriland	85,000
Claremont Project (Islington)	London	75,000
The Boiler House Community Space	London	75,000*
Ethical Property Foundation	London	70,000
Young and Inspired	London	60,000
Maundy Relief	Accrington	60,000
First Steps Women's Centre	Dungannon	60,000
Business in the Community	London	60,000
The Eric Liddell Community	Edinburgh	60,000
The Vine Centre	Aldershot	50,000
Brighton Unemployed Centre Families Project	Brighton	50,000
Ardoyne Association	Belfast	50,000
Leafair Community Association Ltd	Derry	50,000
Samaritans	Epsom	50,000
REACH Community Projects	Haverhill	50,000
The Ridge SCIO	Dunbar	50,000
Thanet Community Development Trust	Ramsgate	50,000
Handcrafted Projects	Langley Moor	50,000
Kyra Women's Project	York	45,000
Feeding Britain (Foodbank)	London	45,000
Vulcan Boxing Club	Hull	40,000
The Bow Foodbank Ltd	London	40,000
Love Withington Baths	Manchester	40,000*
Lymington Community Association	Lymington	40,000
Faithworks Wessex	Bournemouth	40,000
Blyth Tall Ship	Blyth	40,000
Spencer Contact	Northampton	40,000
City Gate Community Projects – FareShare Sussex	Brighton	40,000
North Edinburgh Arts	Edinburgh	40,000
Women in Sport	London	35,000
DART (Darvel Area Regeneration Team)	Darvel	30,000*
High Trees Community Development Trust	London	30,000
Birmingham LGBT	Birmingham	30,000

CatZero	Hull	30,000
Liverpool Six Community Association	Liverpool	30,000
Glasgow East End Community Carers Ltd	Glasgow	30,000
Ryedale Community Transport	York	30,000*
Carrick Hill Residents Association	Belfast	30,000
Giroscope Ltd	Hull	30,000
Bishop Creighton House	London	30,000
Community InfoSource	Glasgow	30,000
Trowbridge Future	Trowbridge	30,000
NewStarts	Bromsgrove	30,000
The Venture Trust	Edinburgh	30,000
The PCC of the Ecclesiastical Parish of Framlingham	Framlingham	30,000*
Community Voluntary Action Ledbury & District	Ledbury	30,000
Communigrow	Maidstone	30,000
Compact for Race Equality in South Tyneside	South Shields	30,000
Ethical Property Foundation	London	30,000
Cymer Afan Community Library	Port Talbot	30,000
Leverhulme Community Hub	Isle of Harris	30,000
FoodCycle	London	30,000
Access Social Care	Coventry	30,000
National Funding Scheme	Richmond	30,000
Barlow Moor Community Association Ltd	Manchester	30,000
Gwynfi Miners Community Hall	Port Talbot	30,000
Nartheck Sparkhill	Birmingham	30,000
North Bristol Advice Centre	Bristol	25,000
High Peak Community Arts	High Peak	25,000
Sherston Village Hall	Sherston	25,000*
Nottingham Women's Centre	Nottingham	25,000
Perth Green Community Association	Jarrow	25,000*
Cambridge Samaritans	Cambridge	25,000*
Flavel Centre Trust	Dartmouth	25,000
Good Shepherd Services	Wolverhampton	25,000
T21	Stamford	25,000
Age UK Norwich	Norwich	25,000
Dimension Skatepark	Bourne	25,000*
Chellaston Community Association	Derby	25,000
Youth & Community Connexions	London	25,000
John Trotter Trust	Barnet	25,000*
Lochaber Wheeled Sport Society	Fort William	25,000*
Legacy WM	Birmingham	25,000

Making a Difference to Maidstone	Maidstone	25,000
Vineyard Community Centre	Richmond	25,000
Home To Work	Cleator Moor	25,000
Crawley Community Action	Crawley	25,000
Time and Talents Association	London	25,000
Sussex Sailability	Shoreham-by-Sea	25,000
Surviving Economic Abuse	London	25,000
Bollington Community Association (Bridgend Centre)	Bollington	25,000
Potton Hall for All	Sandy	25,000
St Hilda's East Community Centre	London	25,000
Concrete Garden	Glasgow	25,000
The Isle of Kerrera Development Trust	Oban	25,000*
Total for Community		4,455,000
(Total number of grants: 93)		

Education		£
Imperial College London	London	1,000,000
University of Bristol	Bristol	1,000,000
The University of Glasgow	Glasgow	500,000
The British Academy	London	500,000
International Centre for Life Trust	Newcastle upon Tyne	300,000*
Red Balloon Educational Trust	Cambridge	270,031
Royal Academy of Dance	London	250,000
Baker Dearing Educational Trust	London	250,000
Royal College of Music	London	250,000
University of Dundee	Dundee	250,000*
The University College of Osteopathy	London	250,000*
Social Finance Limited	London	225,000
University of Chichester	Chichester	200,000*
Liverpool School of Tropical Medicine	Liverpool	200,000
University of Leeds	Leeds	200,000
SOAS, University of London	London	200,000
The University of Salford	Salford	180,000
The RSA	London	150,000
National Literacy Trust	London	150,000
Aston University	Birmingham	100,000
Ivanhoe College	Leicestershire	100,000*
Ulster University	Belfast	100,000
Engineering Development Trust	Southampton	100,000
The Springboard Charity	London	100,000
Rambert School of Ballet & Contemporary Dance	Twickenham	100,000
The Geshar Trust	London	100,000
TVCP	Stockton-on-Tees	90,000

The Kemnal Academies Trust	Sidcup	90,000
Little Gate Farm	Beckley	90,000
Team Domenica	Brighton	90,000
City Year UK	London	80,000
Future Frontiers	London	80,000
In2scienceUK	London	75,000
Chefs in Schools	London	75,000
Techniquet	Cardiff	68,000
Goldsmiths, University of London	London	54,000
Cued Speech UK	Totnes	50,000
School Food Matters	London	50,000
Hartpury University and Hartpury College	Gloucester	50,000
Portland College	Nottingham	50,000
Future First Alumni Ltd	London	50,000
Real Action (Q.P.C.T) Ltd	London	45,000
Kernow Education Arts Partnership	Redruth	45,000
City, University of London	London	45,000
The Cranedale Educational Charitable Trust	Malton	40,000
City & Guilds of London Art School	London	40,000
Association for Character Education	Birmingham	40,000
Harpurs Hill Children & Family Centre	Coleraine	40,000
The Kinetic Science Foundation	Ipswich	40,000
Hull & East Yorkshire Children's University	Hull	40,000
Scottish Book Trust	Edinburgh	40,000
Challenge Partners	London	30,000
Andrew Reed Foundation (London Orphan Asylum, Reed's School)	Cobham	30,000
College of Osteopaths	Borehamwood	30,000
The Forest School	Knaresborough	30,000
Oakley Pre-school	Bedford	30,000*
Friends of Treetops School	Grays	30,000
North East Autism Society	Chester-le-Street	30,000*
The St Marylebone CE School	London	30,000*
The Hurst School	Tadley	30,000
The Bristol Ensemble	Bristol	30,000
Inspire Education Business Partnership	London	30,000
The Royal Belfast Academical Institution	Belfast	30,000
Life Education Wessex & Thames Valley	Milborne St Andrew	30,000
The John Fielding School PTA	Boston	25,000*
ECONOMY	London	25,000
Newport Girls' High School Academy Trust	Newport	25,000

Greenpower Education Trust	Fontwell	25,000
The Russell Martin Foundation	Brighton	25,000
Kings College Guildford	Guildford	25,000*
Student Hubs	London	25,000
The Roche Court Educational Trust	Salisbury	25,000
Royal Academy of Culinary Arts Adopt a School Trust	London	25,000
Colyton Grammar School Academy Trust	Colyton	25,000*
Dr Challoner's Grammar School	Amersham	25,000*
The Mendip School	Shepton Mallet	25,000*
Inspire Schools Educational Foundation	Whitstable	25,000
The Rainbow Centre	Fareham	25,000
NICE, Centre for Movement Disorders	Birmingham	25,000
The Literacy Pirates	London	25,000
Total for Education		9,272,031
(Total number of grants: 80)		

Environment £

Zoological Society of London	London	1,500,000
Bristol Clifton and West of England Zoological Society Ltd	Bristol	1,500,000*
John Innes Centre	Norwich	1,000,000*
Royal Botanic Garden	Edinburgh	500,000*
University of Cambridge	Cambridge	500,000
The National Trust	Swindon	300,000*
The Rivers Trust	Callington	300,000
Cool Earth Action	Penryn	200,000
Hubbub Foundation UK	London	100,000
South Georgia Heritage Trust	Dundee	100,000
The Beaver Trust	Kington	90,000
Ulster Wildlife Trust	Belfast	60,000
Groundwork Northern Ireland	Belfast	60,000
Botanic Gardens Conservation International	Richmond	50,000
Dynamic Earth Charitable Trust	Edinburgh	50,000
UKHarvest	Chichester	50,000
Green Action Trust	Shotts	50,000*
Media Trust	London	50,000
Amphibian and Reptile Conservation Trust	Bournemouth	50,000
Vision Redbridge Culture and Leisure	Ilford	45,000
Keep Northern Ireland Beautiful	Belfast	40,000
Lincolnshire Rivers Trust	Grantham	40,000
Herefordshire Wildlife Trust	Leominster	30,000
The Resurgence Trust	Bideford	30,000

Environmental Funders Network	Aylesbury	30,000
Southside Housing Association Ltd	Glasgow	30,000
Global Canopy Foundation	Oxford	30,000
Cheshire Wildlife Trust	Malpas	30,000
The Garden Classroom	London	30,000
Glasgow Wood Recycling	Glasgow	25,000
Stepney City Farm	London	25,000
EcoACTIVE	London	25,000
Great Bustard Group	Salisbury	25,000
Climate Change All Change	London	25,000
Nottinghamshire Wildlife Trust	Nottingham	25,000*
The Springhead Trust Ltd	Shaftesbury	25,000
Bat Conservation Trust	London	25,000
Organic Research Centre	Cirencester	25,000
Yorkshire Dales Millennium Trust	Clapham via Lancaster	25,000
Ancient Tree Forum	Gloucestershire	25,000
Scottish Badgers (SCIO)	Forfar	21,000
Total for Environment		7,141,000
(Total number of grants: 41)		

Faith £

Exeter Cathedral	Exeter	250,000*
Home for Good	London	180,000
Finchley Reform Synagogue	Finchley	100,000
Holy Trinity (Hull) Development Trust	Hull	100,000
Leicester Cathedral	Leicester	75,000
St Vincent de Paul Society (England and Wales)	London	75,000
St Mary & Archangel Michael Coptic Orthodox Church	London	50,000*
All Saints Highertown	Truro	50,000*
Youthscape	Luton	50,000
Faith & Belief Forum	London	50,000
Faith in Later Life	London	45,000
Holy Trinity & St Matthias, Tulse Hill	London	40,000
inHope	Bristol	40,000
Elstow Abbey	Bedford	35,000
All Saints Church	Newtown	30,000*
St Winfrid's Church	Totton	30,000*
Eyemouth Parish Church	Eyemouth	30,000*
The Parish of Christ Church Roath Park	Cardiff	30,000*
The Spire Church	Farnham	30,000*
Castlemilk Baptist Church	Glasgow	30,000
Letton Hall Trust	Shipdham	30,000
Hope City Church	Sheffield	30,000
Growing Hope	London	30,000

St Marylebone Parish Church	London	30,000
Sailors' Society	Southampton	30,000
East Harptree, St Laurence	Bristol	30,000
St Mary's Church Bourne Street	London	30,000
All Saints Church Maidstone PCC	Maidstone	30,000*
The Matthew 25 Mission	Eastbourne	30,000
PCC of St Edward the Confessor, Mottingham	London	25,000*
Ballymena Methodist Church	Ballymena	25,000*
All Saints' Church	Wokingham	25,000*
Bridgwater Baptist Church	Bridgwater	25,000*
Nazeing PCC	Nazeing	25,000*
The PCC of the Ecclesiastical Parish of St Botolph's, Longthorpe	Peterborough	25,000*
The PCC of the Ecclesiastical Parish of St Mary The Virgin	Monken Hadley	25,000*
The Parish Church of St Elli	Llanelli	25,000
The Lambeth Partnership	London	25,000
St John the Baptist Church, Low Bentham	Nr Lancaster	25,000
St Paul's Church, Chippenham with Langley Burrell	Chippenham	25,000
Netherlee and Stamperland Church	Glasgow	25,000*
Christ Church Kilkeel	Newry	25,000*
East Northamptonshire Faith Group	Rushden	25,000*
St Andrew's Church in the Westlands	Newcastle under Lyme	25,000*
Brightwalton and Catmore PCC	Brightwalton	25,000
Wells Cathedral Chorister Trust	Wells	25,000
Lavant Church – St Nicholas	Lavant	25,000
Sussex Street Christian Centre	Rhyl	25,000
St John the Evangelist, Orangefield, Church of Ireland	Belfast	25,000
Sandes Soldiers' and Airmen's Centres	Belfast	25,000
St James with St Clement Moss Side	Manchester	25,000
Windmill Community Church	Wolverhampton	25,000
Godmanchester Baptist Church	Godmanchester	25,000
Total for Faith		2,190,000
(Total number of grants: 53)		

Health		£
Thrombosis Research Institute	London	1,000,000

Cancer Research UK	London	1,000,000
Anna Freud National Centre for Children and Families	London	500,000
Stroke Association	London	450,000
Barts Charity	London	350,000
Alzheimer's Society	London	300,000
MQ Mental Health Research	London	300,000
Muscular Dystrophy UK	London	300,000
Marie Curie	London	250,000
Charlie House	Aberdeen	250,000
Alzheimer's Research UK	Cambridge	240,000
Diabetes UK	London	225,000
Cure Leukaemia	Birmingham	200,000
Birmingham Women's & Children's Hospital Charity	Birmingham	200,000
Wellbeing of Women	London	200,000
Horatio's Garden	Salisbury	200,000*
Alder Hey Children's Charity	Liverpool	150,000
Young Epilepsy	Lingfield	150,000
Meningitis Now	Stroud	150,000
Ayrshire Cancer Support	Ayrshire	150,000*
Brain & Spine Foundation	London	100,000
The Children's Hospital Charity	Sheffield	100,000
The Children's Trust	Tadworth	100,000
Blood Cancer UK	London	100,000
St Ann's Hospice	Cheadle	100,000
St Catherine's Hospice	Crawley	100,000
Teenage Cancer Trust	London	100,000
Ayrshire Hospice	Ayr	100,000*
James' Place Charity	Liverpool	90,000
Dementia UK	London	90,000
The Meath Epilepsy Charity	Godalming	80,000
British Liver Trust	Bournemouth	75,000
Cerebral Palsy Cymru	Cardiff	75,000*
Dementia Support	Tangmere	75,000
Best Beginnings	London	75,000
Different Strokes	Milton Keynes	75,000
National Rheumatoid Arthritis Society	Maidenhead	60,000
Next Steps Mental Health Resource Centre	Norton	60,000
Spinal Research	London	60,000
West Kent Mind	Sevenoaks	60,000
Epilepsy Research UK	London	50,000
Arise Foundation	London	50,000
The Multiple Sclerosis Therapy Centre (NW)	Manchester	50,000
Colchester & Ipswich Hospitals Charity	Ipswich	50,000
Newlife the Charity for Disabled Children	Cannock	50,000
Southampton Hospital Charity	Southampton	50,000

iheart	London	50,000
Princess Alice Hospice	Esher	50,000
Strength & Learning Through Horses	London	50,000
Mental Health Foundation	London	50,000
Maudsley Charity	London	50,000*
Encephalitis Society	Malton	45,000
Bone Cancer Research Trust	Leeds	45,000
RNOH Charity	Stanmore	45,000
SLOW	London	45,000
Darlington Mind Ltd	Darlington	40,000
Headway Hertfordshire Ltd	Hitchin	40,000
Dementia Matters	Newcastle upon Tyne	40,000
St Margaret's Centre	Durham	40,000
Ovarian Cancer Action	London	40,000
CPotential	London	40,000
Step 2 (Young Peoples Health)	Bradford	40,000
Back Up	London	40,000
Barnsley Independent Alzheimer's and Dementia Support	Barnsley	40,000
Dorothy House	Bradford on Avon	40,000
Paul's Cancer Support Centre	London	30,000
IPSUM	Swindon	30,000
Big C	Norwich	30,000
Primary Care Respiratory Society	Knowle	30,000
Sport In Mind	Reading	30,000
Blue Smile	Cambridge	30,000
Prostate Cancer Research	London	30,000
The Mulberry Centre	Isleworth	30,000
Tourette Syndrome (UK) Association	Farnborough	30,000
Jessie May	Bristol	30,000
Trevi	Plymouth	30,000
Scottish Huntington's Association	Paisley	30,000
Positive East	London	30,000
Tom's Trust	Cambridge	30,000
East and North Hertfordshire NHS Trust Charitable Fund	Stevenage	30,000*
Cancer Support Scotland	Glasgow	30,000
Castel Froma Neuro Care	Birmingham	30,000
Action For M.E.	Bristol	30,000
Paintings in Hospitals	London	30,000
Shift.ms	Leeds	30,000
YPI counselling	Basingsoke	30,000
Cruse Bereavement Care Scotland	Perth	30,000
Bath Mind	Bath	30,000
Cancer Support UK	London	25,000

Manchester Mind	Manchester	25,000
The INSPIRE Foundation	Salisbury	25,000
Headway East London	London	25,000
Action Against Age-Related Macular Degeneration	London	25,000
HEART UK	Maidenhead	25,000
Merlin MS Centre	St Austell	25,000
Oakleaf Enterprise	Guildford	25,000
Headway Essex	Colchester	25,000
Beacon Counselling	Stockport	25,000
St Wilfrid's Hospice	Bosham	25,000
Maternal Mental Health Alliance	London	25,000
Leicestershire Action for Mental Health Project	Leicester	25,000
Playlist for Life	Glasgow	25,000
Total for Health		10,410,000
(Total number of grants: 102)		

Museums & Heritage		£
Museum of London	London	5,000,000
Victoria and Albert Museum	London	3,000,000
Blenheim Palace Heritage Foundation	Woodstock	350,000
Poole Museum Foundation	Poole	250,000*
Friends of the Harris Museum	Preston	250,000
Historic Royal Palaces	Surrey	250,000
Friends of the National Libraries	Reading	250,000*
Barts Heritage	London	200,000*
Bletchley Park Trust	Milton Keynes	200,000
The Friends of the Ipswich Museums	Ipswich	150,000
Link4Life	Rochdale	120,000
The Lord Leycester Hospital	Warwick	100,000*
St Paul's Cathedral	London	100,000
Beckford Tower Trust	Bath	100,000*
The Handel House Trust Ltd	London	100,000
Black Country Living Museum	Dudley	75,000
Royal Society of Sculptors	London	75,000
Sir John Soane's Museum	London	75,000
Mary Rose Trust	Portsmouth	75,000
Stow Maries Great War Aerodrome Trust	Chelmsford	60,000
Thackray Museum of Medicine	Leeds	50,000
Historic Coventry Trust	Coventry	50,000
Anglesey Column Trust	Porthaethwy	50,000
North Staffordshire Railway Company (1978) Ltd	Cheddleton	50,000*
Migration Museum Project	London	40,000

Strathnaver Museum	Bettyhill	30,000*
Severn Valley Railway Charitable Trust Ltd	Kidderminster	30,000
Murston All Saints Trust	Sittingbourne	30,000
London Historic Buildings Trust	London	30,000
People's History Museum Manchester		30,000
Archbishop's Palace Conservation Trust	Sevenoaks	30,000*
Northern Viaduct Trust	Kirkby Stephen	30,000*
Braemar Community Ltd	Aberdeenshire	25,000*
Total for Museums & Heritage		11,255,000
(Total number of grants: 33)		

Welfare		£
One Small Thing	London	500,000
Age NI	Belfast	300,000
The Forward Trust	London	300,000
Royal British Legion Industries (RBLI)	Nr Maidstone	300,000
The Royal British Legion	London	250,000
Sense	London	250,000
Nordoff Robbins Music Therapy	London	225,000
St Mungo Community Housing Association	London	210,000
Catch22 Charity Limited	London	200,000
Mustard Tree	Manchester	154,000
Supporting Wounded Veterans	London	150,000
The National House Project	Crewe	150,000
Sophie Hayes Foundation	London	150,000
The National Autistic Society	London	140,000
Unlocked Graduates	London	120,000
Framework Housing Association	Nottingham	100,000
Forest School Camps	Ely	100,000
Queen Elizabeth's Foundation for Disabled People	Leatherhead	100,000
Reach Learning Disability	Southwell	100,000
Resources for Autism	London	100,000
Working Chance	London	100,000
Carers UK	London	100,000
Unseen UK	Bristol	90,000
Age Well East	Colchester	90,000
Electric Umbrella	Sarratt	90,000
Breaking Barriers	London	80,000
With Kids	Glasgow	75,000
Helen Bamber Foundation	London	75,000
The Preshal Trust	Glasgow	75,000
The 999 Club & Lady Florence Trust	London	75,000
Geeza Break	Glasgow	75,000
Ormiston Families	Ipswich	70,000
Gingerbread	London	60,000
Loaves N Fishes	Dudley	60,000

Middlesex Association for the Blind	Stanmore	60,000
3D Drumchapel	Glasgow	60,000
Superkidz Community Trust	London	60,000
My Life Films Ltd	Richmond	60,000
Fresh Start	Edinburgh	60,000
Bethany Christian Trust	Edinburgh	60,000
Tailor Ed Foundation	Edinburgh	60,000
West Cornwall Women's Aid	Penzance	60,000
Age UK West Sussex, Brighton & Hove	Littlehampton	50,000*
Moor Allerton Elderly Care	Leeds	50,000
Rainbow Hub NW Ltd	Ormskirk	50,000
Age UK Essex	Chelmsford	50,000
The Upper Room (St Saviour's)	London	50,000
Independent Age	London	50,000
Re-engage	London	50,000
Bawso	Cardiff	50,000
Ouseburn Farm Charity Ltd	Newcastle upon Tyne	50,000
Positive Action for Refugees and Asylum Seekers	Leeds	50,000
The Booth Centre	Manchester	50,000
East Belfast Methodist Mission Hostel	Belfast	50,000
Caudwell Children	Newcastle under Lyme	50,000
Savana Inc Ltd	Stoke-on-Trent	50,000
Disability Sports Coach	London	50,000
The Choir with No Name	London	50,000
Retail Trust	London	50,000
Family Links the Centre for Emotional Health	Oxford	50,000
FarmCornwall	Penzance	50,000
Northumbria Calvert Trust	Hexham	50,000
CHEXS	Waltham Cross	50,000
The Big Issue Foundation	London	50,000
Hope into Action: UK	Peterborough	50,000
Circles South West	Bournemouth	50,000
The Woodland Centre Trust (Camp Mohawk)	Wargrave	50,000
Life Cycle UK	Bristol	50,000
MHA (Methodist Homes)	Derby	50,000
Synergy Theatre Project	London	50,000
Home-Start Cymru	Cardiff	50,000
SPEAR Housing Association Ltd	Twickenham	50,000
Good Morning Project Ltd	Glasgow	45,000
Home-Start Kirklees	Huddersfield	45,000
The Spitz Charitable Trust	London	45,000
Project Colt	Elland	45,000
Dundee Women's Aid	Dundee	45,000*
Me2 Club	Wokingham	45,000
Improving Lives Notts Ltd	Nottingham	40,000

The Snowdrop Project	Sheffield	40,000
Share Community	London	40,000
Rising Sun Domestic Violence and Abuse Service	Canterbury	40,000
The Dash Charity	Slough	40,000
Youth and Families Matter	Totton	40,000
St Augustine's Community Care Trust – Homelink Day Care & Respite Centre	Twickenham	40,000
Joanna Leeds	Leeds	40,000
Luton All Women's Centre	Luton	40,000
I AM Celebrating Autism in Greater Manchester	Manchester	40,000
TheHorseCourse	Weymouth	40,000
Age UK Blackburn with Darwen	Blackburn	40,000
Woman's Trust	London	40,000
The Groundwork South Trust Ltd	Uxbridge	40,000
Monklands Women's Aid	Airdrie	40,000
St Petrocs	Truro	40,000
The Porch	Oxford	40,000*
The Louise Project	Glasgow	40,000
The Nehemiah Project	London	40,000
DEAF ACTION	Edinburgh	40,000
DENS Limited	Hemel Hempstead	36,000
Alive Activities Ltd	Bristol	35,000
Cyrenians	Edinburgh	35,000
The Spires Centre	London	30,000
Essex Dementia Care	Braintree	30,000
Music In Detention	London	30,000
Safer Living Foundation	Nottingham	30,000
Suffolk Refugee Support	Ipswich	30,000
Families Outside	Edinburgh	30,000
Coventry Haven Women's Aid	Coventry	30,000
Extratime	Brighton & Hove	30,000
CHAS Bristol (Churches Housing Aid Society)	Bristol	30,000
Beacon House Ministries	Colchester	30,000
AF&V Launchpad Ltd	Lochgilphead	30,000
Bendrigg Trust	Kendal	30,000
Chess Homeless	Chelmsford	30,000
Age Scotland	Edinburgh	30,000
Allsorts Gloucestershire	Stroud	30,000
Children and Families Across Borders (CFAB)	London	30,000
Disability Direct	Derby	30,000
Hope Housing (Bradford) Ltd	Bradford	30,000
Oxfordshire Association for the Blind	Oxford	30,000
Resolve	Welwyn Garden City	30,000
Barca-Leeds	Leeds	30,000
The National Deaf Children's Society	London	30,000

Include Me 2 Club SCIO	Glasgow	30,000
Disability Stockport CIO	Stockport	30,000
Forest of Dean Children's Opportunity Centre	Coleford	30,000
Keynsham and District Mencap Society	Bristol	30,000
Age UK Lancashire	Ormskirk	30,000
St Paul's Hostel	Worcester	30,000
NOAH Enterprise	Luton	30,000
North Tyneside Disability Forum Ltd	Shiremoor	30,000
Barnabus (Manchester)	Manchester	30,000
Musical Connections	York	30,000
Wintercomfort for the Homeless	Cambridge	30,000
Zarach	Leeds	30,000
Family Care Trust	Solihull	30,000*
Calibre Audio	Aylesbury	30,000
Katherine Low Settlement	London	30,000
Caring in Bristol Ltd	Bristol	30,000
New Hope	Watford	30,000
South West Community Chaplaincy Ltd	Exeter	30,000
Heeley City Farm	Sheffield	30,000
Storybook Dads	Denbury	30,000
Challengers	Guildford	30,000
Cumbria Family Support	Penrith	30,000
Home-Start Barnet	London	30,000
Link Age Southwark	London	30,000
Boccia England	Nottingham	30,000
Homeless People and the Oxford Churches – Gatehouse	Oxford	30,000
Barons Court Project	London	30,000
The Alcohol Education Trust	Dorchester	30,000
Launchpad Reading	Reading	30,000
VOICES	Bath	30,000
Justlife Foundation Ltd	Manchester	30,000
Newark Emmaus Trust	Nottingham	30,000
Azad Kashmir Welfare Association	Birmingham	30,000
Families InFocus (Essex)	Chelmsford	30,000
women@thewell	London	30,000
Home-Start South East Dorset	Bournemouth	30,000
Care Home Volunteers	Swindon	26,000
Bridgewater Housing Association	Erskine	25,000
Sight Advice South Lakes	Kendal	25,000
Acorn Recovery Projects	Burnley	25,000
Remap 2010	Sevenoaks	25,000
The Nia Project	London	25,000
Skills for People	Newcastle upon Tyne	25,000
Walthew House	Stockport	25,000
Voices in Exile	Brighton	25,000
Royal Voluntary Service	Cardiff	25,000

Nottingham & Nottinghamshire Refugee Forum	Nottingham	25,000
Warwickshire Young Carers	Balsall Common	25,000
Age UK Ealing	Greenford	25,000
INSIGHT Counselling, Coaching & Support Services	Bedworth	25,000
NWG Network	Derby	25,000
Plymouth Age Concern/ Age UK Plymouth	Plymouth	25,000
SAHWR Registered Charity	St Albans	25,000
Acorns	North Shields	25,000
Transforming Choice	Liverpool	25,000
Age UK Solihull	Solihull	25,000
Blind in Business	London	25,000
Wild Young Parents' Project	Redruth	25,000
Care for the Carers	Eastbourne	25,000
Church Revitalisation Trust	London	25,000
Salvesen Mindroom Centre	Edinburgh	25,000
Harbour Place Grimsby	Grimsby	25,000
Hope Housing Training & Support	Bournemouth	25,000*
Via Wings	Dromore	25,000*
Warming Up the Homeless	Bexhill-on-Sea	25,000
Kids Inspire	Chelmsford	25,000
Refugee Acton Kingston	London	25,000
The Lantern Trust	Weymouth	25,000
Age UK Sutton	Sutton	25,000
Calderdale SmartMove	Halifax	25,000
Family Support Work	Brighton	25,000
The Thomley Hall Centre Ltd	Aylesbury	25,000
Age Concern Southend on Sea CIO	Westcliff-on-Sea	25,000
Early Years Scotland	Glasgow	25,000
Family Addiction Support Service	Glasgow	25,000
Kingston Carers' Network	Tolworth	25,000
Together Dementia Support	Manchester	25,000
The Bike Project	London	25,000
Age UK Bath and North East Somerset	Bath	25,000
Changing Tunes	Bristol	25,000
Family Support Link	Wellingborough	25,000
High Level (Northern) Trust	Rochdale	25,000
City Hearts (UK)	Sheffield	25,000
Off The Fence Trust Ltd	Hove	25,000
Winter Night Shelter	Milton Keynes	25,000
Break	Norwich	25,000
Grace House North East	Sunderland	25,000
Midaye	London	25,000
Springboard	Chippenham	25,000
Spurgeons	Rushden	25,000

The Birchall Trust	Barrow	25,000
tide – Together in Dementia Everyday	Liverpool	25,000
Hibbert Almshouses Charity Clapham	London	25,000*
Genesis Trust Bath	Bath	25,000
Glasgow's Golden Generation	Glasgow	25,000
The Boaz Trust	Manchester	25,000
Approach Dementia Support	Stoke-on-Trent	25,000
Age Concern Liverpool	Liverpool	25,000
Cornerstone Supported Housing & Counselling Ltd	Crook	25,000
MYTIME Young Carers	Poole	25,000
Homeplus NI	Belfast	25,000
Imara CIO	Nottingham	25,000
Home-Start Mid & West Suffolk	Eye	25,000
Living Without Abuse	Loughborough	25,000
Purple Patch Arts	Leeds	25,000
Bell View (Belford)	Belford	25,000
Fortalice	Bolton	25,000
Salford Loaves and Fishes Ltd	Salford	25,000
Good Morning Down	Downpatrick	24,000
Home-Start Exeter, East and Mid Devon	Exmouth	24,000
Total for Welfare		11,759,000
(Total number of grants: 233)		

Youth		£
Onside Youth Zones	Bolton	3,000,000
The Prince's Trust	London	1,500,000
Depaul UK	London	450,000
Buttle UK	London	400,000
Girlguiding UK	London	304,596
MyBnk	London	300,000
Construction Youth Trust	London	300,000
DFN Project SEARCH	London	290,000
Marine Society & Sea Cadets	London	250,000
Step by Step Partnership Ltd	Aldershot	225,000
Childnet International	London	150,000
Urdd Gobaith Cymru	Y Bala	150,000
St Basils	Birmingham	100,000
Sported Foundation	London	100,000
Knights Youth Centre	London	100,000
Christian Youth Enterprises Sailing Centre	Chichester	100,000*
Coram's Fields and the Harmsworth Memorial Playground	London	100,000
Llamau	Cardiff	90,000
XLP	London	90,000
Golddigger Trust	Sheffield	90,000
Ocean Youth Trust North	Berwick-upon-Tweed	90,000

Sister System	London	90,000
Urban Devotion	Birmingham	90,000
UK Youth	London	80,000*
Active Regen Community Foundation Ltd	Rotherham	80,000
Berwick Youth Project	Berwick-upon-Tweed	80,000
Burnley Boys and Girls Club	Burnley	80,000
Corpus Christi Youth Centre	Belfast	80,000
LIFEbeat	Leicestershire	80,000
Somerford Youth and Community Centre	Christchurch	80,000
Success4All c.i.o.	Newcastle upon Tyne	80,000
The Pirate Castle	London	80,000
Future Men	London	80,000
The Exodus Project	Barnsley	75,000*
Copenhagen Youth Project	London	75,000
The Yard	Edinburgh	75,000
Youth Leads UK	Salford	75,000
Bar 'n' Bus Trust	Benfleet	70,000
Bishops Stortford Youth Project	Bishops Stortford	70,000
Edge Hill Youth and Community Centre	Liverpool	70,000
The Attlee Centre	London	70,000
Youth Action	Blackburn	70,000
London Football Journeys	London	60,000
South Bristol Consortium for Young People	Bristol	60,000
British Exploring Society	London	60,000
abandofbrothers	Eastbourne	60,000
Leap Confronting Conflict	London	60,000
Railway Children	Cheshire	60,000
Patchwork Project	Newcastle	60,000
In2Out	Wetherby	60,000
Art Against Knives	London	60,000
Active Horizons	Erith	60,000
Door 84 Youth and Community Centre	York	60,000
Fusion Health & Well Being	Grimsby	60,000
Hexham Youth Initiative	Hexham	60,000
Hyson Green Youth Club	Nottingham	60,000
Just42	Woodbridge	60,000
Kidderminster & District Youth Trust	Kidderminster	60,000
Livewire Youth Project	Saltash	60,000
Sandwell Youth in Action	Smethwick	60,000
Swan Youth Project	Downham Market	60,000
Tain Youth Cafe (YMCA)	Tain	60,000
Tarner Community Project	Brighton	60,000
The Crib	London	60,000
The Kings Arms	Petersfield	60,000

The Pavillion (Greater Easterhouse)	Glasgow	60,000
Twyn Community Hub	Merthyr Tydfil	60,000
Wycombe Youth Action	Gerrards Cross	60,000
The Avenues Youth Project	London	60,000
The Hebe Foundation	London	60,000
The Winchester Project	London	60,000
Youth Resource Services (The Rendezvous, Sherborne) Ltd	Sherborne	60,000
Oasis Children's Venture	London	60,000
Reestablish	Leeds	55,000
Carmarthen Youth Project (Dr Mz)	Carmarthen	50,000
Youth Sport Trust	Loughborough	50,000
Settle Support	London	50,000
Andover Young Carers	Andover	50,000
CATCH Leeds	Leeds	50,000
Full Circle @ Docklands Ltd	Bristol	50,000
In The Mix Project	Wiveliscombe	50,000
Mitalee Youth Association	Luton	50,000
Nottingham School of Boxing	Nottingham	50,000
Prout Bridge Project	Beaminster	50,000
Tanyard Youth Project Ltd	Pembroke	50,000
The New Tavistock Youth Cafe	Tavistock	50,000
The Willows Centre Troedyrhiw	Merthyr Tydfil	50,000
Water Adventure Centre	Droylsden	50,000
Whitton Youth Partnership	Ipswich	50,000
Youth Initiatives NI	Belfast	50,000
NE Youth	Blaydon-on-Tyne	50,000
Hot Chocolate Trust	Dundee	50,000
Roundabout Ltd	Sheffield	50,000
The Boathouse Youth	Blackpool	50,000
Pennywell Youth Project	Sunderland	50,000
Northumbria Coalition Against Crime	Newcastle	45,000
Nature Vibezzz	London	45,000
Prospex	London	45,000
Voice of Young People in Care	Belfast	45,000
Action4Youth	Aylesbury	40,000
Sistema Scotland	Stirling	40,000
1851 Marine Trust	Portsmouth	40,000
Resurgo	London	40,000
Adventure Therapy	Ilfracombe	40,000
Asperger's Children and Carers Together	Sheffield	40,000
Bradby Club for Young People	Rugby	40,000
Challenge Wales	Penarth	40,000
Cheesy Waffles Project CIO	Durham	40,000

Clipstone Miners Welfare Community Trust	Mansfield	40,000
Community Youth Project	Newbury	40,000
East Lothian Young Carers	Haddington	40,000
Fusion Family and Youth Projects	Huntingdon	40,000
Grey Lodge Settlement	Dundee	40,000
Hayle Youth Project	Hayle	40,000
JusB Ltd	Bromley	40,000
Mayfield and Easthouses Youth 2000 Project	Dalkeith	40,000
North Paddington Youth Club	London	40,000
Ocean Youth Connexions	London	40,000
Ochil Youths Community Improvement	Dollar	40,000
Paisley YMCA	Paisley	40,000
Pilmey Development Project	Edinburgh	40,000
Portsmouth Sail Training Trust	Portsmouth	40,000
Projects4change	Newcastle upon Tyne	40,000
REACH Across	L'Derry	40,000
Renfrew YMCA SCIO	Renfrew	40,000
Rose Hill Junior Youth Club	Woodstock	40,000
Seeds4Success	Warminster	40,000
TAG Youth Club for Disabled Young People	Ham	40,000
The Bidgley Power Foundation	Birmingham	40,000
The DASH Club	Glasgow	40,000
The Rooted Forum	London	40,000
The Wolfpack Project	Nottingham	40,000
Townsend Youth Partnership	Bournemouth	40,000
Tweeddale Youth Action	Peebles	40,000
Wester Hailes Youth Agency	Edinburgh	40,000
Willowfield Parish Community Association	Belfast	40,000
Young Steps Ltd	Dagenham	40,000
Youth Vision	Edinburgh	40,000
Motiv8 South Ltd	Portsmouth	40,000
Jon Egging Trust	London	40,000
Life Connections	Leeds	40,000
Generation: You Employed, UK	Egham	35,000
Downside Fisher Youth Club	London	35,000
One In A Million	Bradford	30,000
The Sapphire Foundation	London	30,000
Penicuik and District YMCA/YWCA (Penicuik Y)	Penicuik	30,000
London Tigers	London	30,000
Streets of Growth	London	30,000
It's Your Life	London	30,000

Didcot TRAIN - Inspiring Young People	Didcot	30,000
People and Drugs Ltd	Blyth	30,000
Girvan Youth Trust	Girvan	30,000
Soft Touch Arts	Leicester	30,000
About Youth	Edinburgh	30,000
Brandon Carrside Youth and Community Project	Durham	30,000
Buzz Action Foundation CIO	Alderbury	30,000
E R Mason Youth Centre	Birmingham	30,000
Community Youth Project	Martock	30,000
Fairbeats! Music	London	30,000
Ferrywell Youth Project	Edinburgh	30,000
Godolphin Cross Community Association	Helston	30,000
MADE4UINML2	Wishaw	30,000
MAPA Bradford	Bradford	30,000
Mid Argyll Youth Development Services	Lochgilphead	30,000
New Life Support	Goole	30,000
Nottinghamshire Clubs For Young People	Nottingham	30,000
Parkhead Youth Project	Glasgow	30,000
Petworth Youth Association/ Sylvia Beaufoy Centre	Petworth	30,000
Shakespeare Street Youth Club	Glasgow	30,000
Shelford and Stapleford Youth Initiative	Cambridge	30,000
Surrey Clubs for Young People	Charlwood	30,000
Tobin Centre (Moortown) Ltd	Cookstown	30,000
Waterbeach and Landbeach Action for Youth	Cambridge	30,000
Youth in Romsey	Romsey	30,000
Key4Life	Butleigh	30,000
WorkingRite	Edinburgh	30,000
YMCA North Tyneside	North Shields	30,000
Clapton Common Boys Club	London	30,000
ENYP	Norwich	30,000
The Advocacy Academy	London	30,000
Yes Futures	London	30,000
Build Up Foundation	London	30,000
The Chichester City Centre Drop-in	Chichester	30,000
Warwick Percy Estate Community Projects Ltd	Warwick	30,000
The Shallowford Trust	Newton Abbot	30,000*
Kent Estuary Youth (KEY) Project	Milnthorpe	30,000
Streetwise Young People's Project	Newcastle upon Tyne	30,000
The Brokerage	London	30,000
Spark Inside	London	30,000
Castlemilk Youth Complex	Glasgow	30,000
Midland Boxing Club	Belfast	30,000*

Lancashire Association of Boys & Girls Clubs	Lancaster	25,000
Football Beyond Borders	London	25,000
1st Wash Common Scout Group	Newbury	25,000*
Southwick Neighbourhood Youth Project	Sunderland	25,000
Glasgow Disabled Scouts	Glasgow	25,000
Youth Action Alliance	London	25,000
Aldridge Foundation	London	25,000
Alabaré Christian Care and Support	Salisbury	25,000
Sparkle (South Wales) Ltd	Newport	25,000
North Yorkshire County Scout Council	Thirsk	25,000*
Berkshire Youth Ltd	Reading	25,000
The Island N1	York	25,000
Ashdon Jazz Academy	London	25,000
Mixtup	Swansea	25,000
People Speak Up	Llanelli	25,000
The Learning Space	Gavinton	25,000
BelEve UK	London	25,000
Emerge Advocacy	Guildford	25,000
The Eikon Charity	Addlestone	25,000
The Rhondda Netball Foundation	Rhondda Cynon Taf	25,000
Isleworth Explorers Club	Isleworth	25,000
The British Youth Council	London	25,000
Canvey Island Youth Project	Canvey Island	25,000
Beat Routes	Slough	25,000
TwentyTwenty	Loughborough	25,000
Harborough District Children and Young Person's Charity	Market Harborough	21,000
Total for Youth		16,790,596
(Total number of grants: 217)		

Other		£
Global Leadership Foundation	London	100,000
Institute for Voluntary Action Research	London	40,000
Reach Volunteering	London	40,000
Directory of Social Change	Liverpool	25,000
Total for Other		205,000
(Total number of grants: 4)		

Grants of £20,000 and less		
Arts		£
Two Destination Language	Stockton-on-Tees	20,000
The National Youth Jazz Collective	London	20,000
Sydenham Arts Ltd	London	20,000
Delight	Caterham	20,000
Good Vibrations	London	20,000

Trestle Theatre Company	St Albans	20,000
Big Telly Theatre Company	Portstewart	20,000
Young Actors Theatre Islington	London	20,000
Alexander Whitley Dance Company	Ipswich	20,000
Artlink Hull	Hull	20,000
The Mozartists	London	20,000
Young Musicians Symphony Orchestra	London	20,000
Stuart Hall Foundation	London	20,000
YDance	Glasgow	20,000
Cahoots NI	Belfast	20,000
Settle Stories Ltd	Settle	20,000
Arts Education Exchange	Margate	20,000
Commedia of Errors Theatre Company	Belfast	20,000
Speech Bubbles CIO	London	20,000
Futures Theatre Company	London	20,000
Head2Head Theatre	Surrey	20,000
Wyldwood Arts	Cinderford	20,000
Shakespeare at the Tobacco Factory	Bristol	15,000
Northern Opera Group	Leeds	15,000
The Children's Bookshow	London	15,000
Fluid Motion Theatre Company	Basingstoke	15,000
Chapel Arts Studios	Andover	15,000
The National Youth Brass Band of Great Britain	Bedford	15,000
Nemo Arts	Glasgow	15,000
Raw Material Music and Media	London	15,000
Middle Child Theatre	Hull	15,000
Wonder Arts	Merseyside	15,000
Theatre Alibi	Exeter	15,000
In Another Place	Liverpool	10,000
Music@Malling Ltd	West Malling	10,000
The Merry Opera Company Ltd	Edenbridge	10,000
Tunnell Trust	Edinburgh	10,000
Scarabeus Theatre	London	10,000
Ensemble Reza	Haywards Heath	10,000
Angel Shed Theatre Company	London	10,000
Barefoot Opera	St Leonards-on-Sea	10,000
Turf Projects	Croydon	10,000
Drake Music Scotland	Edinburgh	10,000
The Telling	London	10,000
Open Arts	Belfast	10,000
Ensemble Cymru	Bangor	10,000
Anjali Dance Company	Wigginton	10,000
Candoco Dance Company	London	10,000
Shapeshifter Productions	London	8,000
Stanhope Silver Prize Band	Bishop Auckland	7,500

Brighton Early Music Festival	Brighton	7,500
White City Theatre Project CIO	London	7,500
Royal Opera House Covent Garden Foundation	London	7,500
Deal Music and Arts Ltd	Canterbury	7,500
Royal Opera House Covent Garden Foundation	London	7,500
Drunken Chorus	London	5,000
Misfits Music Foundation	Birmingham	5,000
Komedia Productions	Brighton	4,000
Citadel Arts Group	Edinburgh	3,500
The Regal Film Society	Minehead	3,000
Under the Edge Arts	Wotton-under-Edge	2,500
Total for Arts		831,000
(Total number of grants: 61)		

Community		£
The Recover Team Ltd	Welwyn Garden City	20,000
Vauxhall Community Law and Information Centre	Liverpool	20,000
Meadow Vale Community Association	Bristol	20,000*
ASCEND	Watford	20,000
Daventry Volunteer Centre	Daventry	20,000
Community One Stop Shop	Edinburgh	20,000
Brewham Village Hall	Bruton	20,000*
Ninfield Memorial Hall	Ninfield	20,000*
Painters Forstal Community Association	Painters Forstal	20,000*
The Zink Project	Buxton	20,000*
Grassmarket Community Project	Edinburgh	20,000
St Antony's Centre for Church & Industry	Manchester	20,000
Action Station South Tyneside Ltd	South Shields	20,000
Pitsmoor Adventure Playground CIO	Sheffield	20,000
SCRATCH	Southampton	20,000
Voluntary Impact Northamptonshire	Northampton	20,000
Auchencairn Initiative	Castle Douglas	20,000*
Medbourne Village Hall Trust	Market Harborough	20,000*
Rastrick Junior	Brighouse	20,000*
Bentilee Volunteers CIO	Stoke-on-Trent	20,000
Liberty Choir	Hastings	20,000
The Wilts and Berks Canal Trust	Chippenham	20,000
Buttershaw Christian Family Centre	Bradford	20,000
Buxton Civic Association	Buxton	20,000
Gendered Intelligence	London	20,000
Whitehaven Community Trust Ltd	Cumbria	20,000

Gillingham Community Church	Gillingham	20,000*
St Michael's Parish Church	Wakefield	20,000
Kinning Park Complex	Glasgow	20,000
Medrwn Mon	Llangefni	20,000
Aurora Wellbeing Centres	Workshop	20,000
Kinship Carers	Liverpool	20,000
South West Lancashire Independent Community Advice Network	Skelmersdale	20,000
Derbyshire Unemployed Workers Centre	Chesterfield	20,000
Ruskin Museum	Coniston	20,000
Colchester and East Essex Cricket Club	Colchester	20,000
Volunteer Centre Sutton	Sutton	20,000
CAFAG (Chell Area Family Action Group)	Stoke-on-Trent	20,000
ZSV Trust	London	20,000
Diversity Matters North West Ltd	Hyde	20,000
Local Initiatives in New Galloway	Castle Douglas	20,000*
Beyond Limits	Bishop Auckland	20,000
Catalyst Stockton	Stockton-on-Tees	20,000
Nucleus Community Action Ltd	London	20,000
Westwood and Coldhurst Women's Association	Oldham	20,000
The Mustard Tree Foundation	Reading	20,000
Amulree Village Hall Trust Fund	Dunkeld	20,000*
Foothold Cymru	Llanelli	15,000
Excelsior Trust	Norwich	15,000
Hope Community Church	Aintree	15,000
R-evolution	Cottingham	15,000
Healthy Generations	London	15,000
Filwood Playing Fields Trust	Bristol	15,000*
Community Resources for Change	Dagenham	15,000
Made In Hackney	London	15,000
Sunderland North Family Zone	Sunderland	15,000
We Are Family	London	15,000
Open Door Exmouth	Exmouth	15,000
Tarrant Monkton and Launceston Village Hall	Blandford	15,000
Flourish House	Glasgow	15,000
SocietyLinks Tower Hamlets	London	15,000
Hexham & Tynedale Community Trust	Hexham	15,000
St John The Evangelist	Little Thornton	15,000
Tectona Trust Ltd	Plymouth	15,000
Hour Community	Framlingham	15,000
U3A Foyle	Londonderry	15,000

Home-Start Birmingham South	Birmingham	15,000
Kent Enterprise Trust	Ramsgate	15,000
Whitchurch Community Services Association	Whitchurch	15,000
Southampton City Farm	Southampton	15,000
St Luke's Advice Service	Brighton	15,000
Houghton Field Association	Leicester	15,000*
Fair Shares	Gloucester	15,000
Hands Together Ludlow	Ludlow	15,000
Wotton Community Sports Foundation	Wotton-under-Edge	15,000
Silver Jubilee Charitable Foundation	London	15,000
Meals on Wheels Cumbria	Carlisle	12,000
Bawtry Heritage Group	Doncaster	12,000*
The Dads Lane Community Association CIO	Birmingham	10,000*
Cycle-R	Cannock	10,000
Lanivet Parish Sport and Recreational Trust	Lanivet	10,000
Minchinhampton Market House CIO	Stroud	10,000*
Slaley Commemoration Hall	Hexham	10,000*
Longtown Memorial Hall Community Centre Club Ltd	Longtown	10,000
Port Vale Foundation Trust	Stoke-on-Trent	10,000
Rotherfield Village Hall	Rotherfield	10,000*
The John Lucy Trust	Warwick	10,000*
Wembdon Village Hall & Playing Fields Trust	Bridgwater	10,000*
Grace Church Bolton	Bolton	10,000
Larne Wellbeing Hub	Larne	10,000
South Central Community Transport	Liverpool	10,000
Welsh Border Community Transport	Buckley	10,000
B Healthy Together	Edinburgh	10,000
Charlton Athletic Community Trust	London	10,000
Heron Corn Mill (Beetham) Ltd	Milnthorpe	10,000
LGBT+ Consortium	Exeter	10,000
Ashfield Citizens Advice Bureau	Kirkby in Ashfield	10,000
Banbury Community Church	Banbury	10,000
Inner South West London Samaritans	London	10,000
Keighley Association Women & Children's Centre	Keighley	10,000
Tower Hamlets Parents Centre	London	10,000
Yad Veachisomoch L'chaim	Salford	10,000
Greater Manchester Community Chaplaincy	Manchester	10,000
Ipswich BMX Club UK	Ipswich	10,000

Neuadd Goffa Criccieth Memorial Hall	Criccieth	10,000
RUC Athletic Association	Belfast	10,000
Auchterarder Community Sports and Recreation	Auchterarder	10,000*
Community Focus Inclusive Arts	London	10,000
SANCTUS	Chelmsford	10,000
Trowbridge Town Hall	Trowbridge	10,000
Gateway (York) CIO	York	10,000
Storeroom2010	Cowes	10,000
Burnley FC in the Community	Burnley	10,000
Helping Hands Community Trust	Leicester	10,000
Lincolnshire Traveller Initiative	Waddington	10,000
Poole Waste Not Want Not	Poole	10,000
The Parent House	London	10,000
Snitterfield Village Hall	Stratford-upon-Avon	10,000*
Citizens Advice Bureau Cornwall Ltd	Liskeard	10,000
The Bryncynon Community Revival Strategy	Ynysboeth	10,000
Westfield Community Development Association	Hinckley	10,000
Blackburn with Darwen Healthy Living	Blackburn	10,000
Brighter Futures	Rhyl	10,000
Storm Family Centre	London	10,000
Interloch Transport	Dunoon	10,000
Northampton Hope Centre	Northampton	10,000
Trustees of The Belchamp St Paul & District Community House	Sudbury	10,000
Shopper-Aide Ltd	Campbeltown	10,000
Centre of Wellbeing, Training & Culture	Rochdale	10,000
Watford Football Club Community Sports and Education Trust	Watford	10,000
Castle Point Social Car Scheme	Benfleet	10,000
Epping Playground Association	Epping	10,000
Apna Ghar Minority Ethnic Womens Centre	South Shields	10,000
Chieveley Recreation Centre	Chieveley	10,000
Lighthouse Charity Trust	Sheringham	10,000
Community Dialogue	Belfast	10,000
Crossroads Youth and Community Association	Glasgow	10,000
CreateBolton	Bolton	10,000
Safety First Community Training Centre	Bradford	10,000
Silver Links/OKM	Hornchurch	8,000
Parent Club	London	8,000
Charles Young Centre	South Shields	7,500

Great Braxted Pavilion Management Committee	Witham	7,500*
Port Isaac Village Hall	Port Isaac	7,500*
Beatroute Arts	Glasgow	7,500
Confederation of Indian Organisations UK	Leicester	7,500
Abbey People CIO	Cambridge	7,500
Citizen Outreach Coalition	Liverpool	7,500
Caxton House Community Centre	London	7,500
Parkfields Community Centre	Mold	7,500
People's Enterprise and Empowerment Forum	Brierfield	7,500
Grit Street Aid	Salford	7,500
The Edlington Hill Top Centre Associates	Doncaster	7,500
Exeter Food Action	Exeter	7,500
Neuadd Eleanor Village Hall	Ruthin	7,500
The PCC of the Ecclesiastical Parish of Claygate	Esher	7,500
Borwick & Priest Hutton War Memorial Hall	Carnforth	7,500
Greatway Foundation	Edinburgh	7,500
Seghill Colliery Institute	Northumberland	7,500
The Perceval Institute	Wadebridge	7,500
Friends of Jesmond Library	Newcastle upon Tyne	7,000
All FM	Manchester	6,500
St Nicks	York	6,500
Young Asian Voices	Sunderland	6,500
Dorothy Parkes Centre	Smethwick	6,500
Community Action Network	Bournemouth	6,000
Community Enterprise Ltd	Livingston	6,000
Burnham Overy Village Hall	King's Lynn	6,000
Bangladeshi Parents Association in Newham	London	5,000
Eardisland Village Hall Management Committee	Eardisland	5,000*
Little Hadham Village Hall	Little Hadham	5,000
Bournemouth Churches Housing Association	Bournemouth	5,000
Resume Foundation	Leicester	5,000
Lisburn Downtown Centre	County Down	5,000
Boston Community Transport	Boston	5,000
Canolfan Deuluol	Tregaron	5,000
Ditch Debt with Dignity	Aberdeen	5,000
Dunston Community Centre	Gateshead	5,000
Hope and Vision Communities	Reading	5,000
Powerhouse Community Network	Dagenham	5,000

North Norfolk Community Transport	North Walsham	5,000
Wickhambrook Memorial Social Centre	Newmarket	5,000
Bridgerule Village Hall Ltd	Holsworthy	5,000
Care Lochaber	Fort William	5,000
Outside In Pathways Ltd	London	5,000
Darts (Doncaster Community Arts)	Doncaster	5,000
Groundwork West Midlands	Tipton	5,000
Manchester Action on Street Health	Manchester	5,000
Meadow Well Connected	North Shields	5,000
Ravenscliffe Community Association	Bradford	5,000
The Community Council of Shropshire	Shrewsbury	5,000
Worcester Community Trust	Worcester	5,000
Eye Playing Fields Association	Eye	5,000
Stanton Lacy Village Hall	Ludlow	5,000
Child Okeford Village Hall	Blandford	5,000
George Nympton Village Hall	George Nympton	5,000
St Mary's Bacton Suffolk	Stowmarket	5,000
St Tudy Village Hall	Bodmin	5,000
Higher Folds Community Centre	Leigh	5,000
Connexions Community Hub	Gainsborough	5,000
King's Church Darlington	Darlington	5,000
Leven Playing Field Association	Beverley	5,000
Active and In Touch	Frome	5,000
Morebattle Institute	Kelso	5,000
Titchfield Village Trust	Titchfield	5,000
Gate & District Welfare Association	Llanelli	4,000
Moorsholm Memorial Hall	Saltburn	3,500
Gurseva	Hounslow	3,000
Pontyates Miners Welfare Association	Llanelli	3,000
Education 2000	Huddersfield	3,000
Shettleston Community Growing Project	Glasgow	3,000
Horsham Debt Advice Service	Horsham	2,500
Stour Valley Vineyard Church	Sudbury	1,000
Total for Community		2,426,500
(Total number of grants: 213)		

Education

£

Holt Pre-School Fundraising Committee	Trowbridge	20,000*
The Talent Foundry Trust	London	20,000*
GASP Motor Project	Guildford	20,000

The Gallions Music Trust & Gallions Primary School	London	20,000
Ariel Trust Ltd	Liverpool	20,000
Curwen Print Study Centre	Cambridge	20,000
Mayor's Fund for London	London	20,000
Stamford Welland Academy	Stamford	15,000
Life Education Notts	Nottingham	15,000
Converge (c/o York St John University)	York	15,000
Lifeskills – Learning for Living	Bristol	15,000
Sistema Cymru - Codi'r To	Caernarfon	15,000
Leith School of Art	Edinburgh	15,000
North Halifax Grammar School	Halifax	15,000
Music 4 U	Aberdeen	15,000
Physics Partners Ltd	Sevenoaks	15,000
Autism Wessex	Christchurch	10,000
Hinton St George Parent & Friends Association	Ilminster	10,000
St Cuthbert's Catholic Academy	Blackpool	10,000*
Port Isaac Community Primary School	Port Isaac	10,000
Positive Behaviour Support for Learning	London	10,000
Warren Association Trust	Lowestoft	10,000*
Queen Alexandra College	Birmingham	10,000
Wensum Trust	Norwich	10,000*
Chapel St Leonards Primary School	Skegness	10,000
Open Road West Norfolk	King's Lynn	10,000
The Mullany Fund	Swansea	10,000
Trent Compassion Trust	Nottingham	10,000
East Harptree Nursery Preschool and Forest School	Bristol	10,000
Dame Vera Lynn Children's Charity	Cuckfield	10,000
The Jigsaw Trust	Cranleigh	10,000*
Friends of St Bartholomew's School	London	10,000
Cricket Green School	Mitcham	10,000
Phoenix Academy	Walsall	10,000
Easton Community Children's Centre	Bristol	7,500*
Carr Junior School Fund	York	7,500*
The Dalai Lama Centre for Compassion	Oxford	7,500
St George's CE Primary School, Battersea	London	5,000
Friends of Ashton	Craigend	5,000
Ready Steady Read	Hull	5,000
Somerles Junior School	Luton	5,000
St George's RC Primary School	York	5,000*
Busbridge Infant School PTA	Godalming	5,000
Magic Lantern	London	5,000

Oakwell Rise Primary Academy	Barnsley	5,000
Friends of Stoke Poges School	Stoke Poges	5,000
Jewish History Association of South Wales	Cardiff	5,000
English Martyrs Catholic Primary School	Worthing	5,000*
Woodchester Endowed Church of England Primary School	Stroud	5,000
Adderley Primary School	Saltley	5,000
Sherborne St John School Association	Sherborne St John	3,000
Walton Leigh School Parents Staff Association	Walton-on-Thames	3,000
Monkton Park Primary School	Chippenham	3,000
Brockholes CE (C) School	Holmfirth	3,000
Riverside Area Special School	Goole	3,000
Ringsfield Primary School PFA	Beccles	3,000
Corbets Tey School PFA	Upminster	3,000*
Bidwell Brook Special School PTA	Dartington	3,000
King's Meadow Academy	Fitzwilliam	2,500*
Mickle Trafford Preschool	Chester	2,000*
Doverly Down Lower School Parents Association	Leighton Buzzard	2,000
Sidmouth CE Primary School PTFA	Sidmouth	2,000
Brandon Primary School PTA	Durham	1,000
Total for Education		576,000
(Total number of grants: 63)		

Environment		£
Clydesdale Community Initiatives	Lanark	20,000*
Arkwright Meadows Community Gardens	Nottingham	20,000
SCOTLAND: The Big Picture	Kingussie	20,000
Marine Research and Conservation Foundation	Lydeard St Lawrence	20,000
Awel Aman Tawe	Swansea	15,000*
Nairn River Enterprise	Nairn	15,000
Creekside Education Trust	London	15,000
Shropshire Wildlife Trust	Shrewsbury	15,000
Full Circle Food Project	Ashington	10,000
Andover Trees United	Andover	10,000
The Hidden Gardens Trust	Glasgow	10,000
Urban Partnership Group	London	10,000
Culpeper Community Garden Association	London	10,000
Cynnal Cymru – Sustain Wales	Cardiff	10,000
The Frozen Ark Project	Newstead Village	10,000

Birmingham Open Spaces Forum	Birmingham	10,000
River Holme Connections	Huddersfield	10,000
Avon Wildlife Trust	Bristol	7,500
United Response	London	7,500
Scottish Youth Film Foundation	Edinburgh	5,000
The Otterhead Estate Trust Company Ltd	Ilminster	5,000
The Royal Horticultural Society	London	2,500
Tarka Country Trust	Barnstaple	2,000
Sholing Valleys Study Centre	Southampton	1,500*
Total for Environment		261,000
(Total number of grants: 24)		

Faith		£
Balderton Methodist Church	Balderton	20,000
North Lynn Methodist Church	King's Lynn	20,000
St Peter & St Paul Church	Aston Rowant	20,000
St Peter and St Mary	Stowmarket	20,000*
Hope Church Rhydyfelin	Rhondda-Cynon-Taff	20,000*
Hillfields Church	Coventry	20,000
All Saints' Church Brightlingsea	Colchester	20,000*
Christ Church, Fulwood	Sheffield	20,000*
Saint Helen's Church	Kelloe	20,000*
St Matthews Bethnal Green	London	20,000*
Sutton in the Elms Baptist Church	Leicester	20,000*
Daventry Contact	Daventry	20,000
Little Bealings PCC	Little Bealings	20,000
St Martin & Meriadoc, Camborne Cluster of Churches	Penzance	20,000
St Mary's Church	Feltwell	20,000*
St Michael and All Angels Church, Hughenden	High Wycombe	20,000*
Sutton St James Anglican Church	Macclesfield	20,000*
The Fishermen's Mission	Whiteley	20,000
Newquay Evangelical Church	Newquay	20,000
St Peter & All Hallows Church, West Huntspill	Highbridge	20,000*
Hope Church Coatbridge	Coatbridge	20,000*
Free Church of Scotland	Coatbridge	20,000*
The PCC of St Petroc	Bodmin	20,000*
Wellingborough United Reformed Church	Wellingborough	20,000*
The Ecclesiastical Parish of East Barnet	East Barnet	20,000
St John the Baptist Church, Hatherleigh	Okehampton	20,000*
St Andrews Church, Wheatfield	Thame	20,000

The PCC of the Ecclesiastical Parish of St James	Silsden	20,000*
Termonamongan Parish Church	Castlederg	20,000*
All Saints & St Andrews Church	York	20,000
St James' Church	Weybridge	20,000
PCC of St Mary the Virgin	Wheatley	20,000
St Saviour's Church	London	20,000*
Trinity Church	Buxton	20,000*
St Mary's Church, Wycliffe	Barnard Castle	15,000*
Urban Church	Warrington	15,000*
North Springfield Baptist Church	Chelmsford	15,000*
Wiveton PCC	Wiveton	15,000*
Equipping for Life (EFL)	Belfast	15,000
Elim Connect	Malvern	15,000
St George's Church	Stamford	15,000
Holy Trinity Wester Hailes Church of Scotland	Edinburgh	15,000
New Life Church	Coalville	15,000
St Martin's Marple	Stockport	15,000
Gamlingay with Hatley St George and East Hatley PCC	Sandy	15,000*
St. Matthew's PCC Netley Marsh	Southampton	15,000*
Bluntisham Baptist Church	Huntingdon	15,000
St Cleer Parish Church	Liskeard	15,000*
The PCC of St Thomas of Canterbury	Goring-on-Thames	15,000
PCC of St Martin's Fangfoss	York	15,000*
West Grinstead PCC	Horsham	15,000
New Inn Congregational Church	Pontypool	15,000*
St Peter and St Paul Church, Bishops Hull	Taunton	15,000
The PCC of the Ecclesiastical Parish of Stoke St Michael	Coventry	15,000
All Saints Church Clapham Park	London	12,000
Sutton St James Baptist Church	Sutton St James	10,000
Kings People's Church	Bolton	10,000
Carleton Rode Baptist Church	Attleborough	10,000*
Godfirst Christchurch	Christchurch	10,000*
Holy Trinity Church	Hurstpierpoint	10,000
St.Mary Higham Ferrers Appeal Committee	Higham Ferrers	10,000*
Emmanuel Parish Church, Wylde Green	Birmingham	10,000
Hope Community Church	Bristol	10,000
St Wilfrid's Church and Church Hall	Pevensey Bay	10,000
Harbour Church	Portsmouth	10,000

New Life Church	Warwick	10,000*
St Bartholomew's Church	Lostwithiel	10,000*
Tresillian and Lamorran with Merther PCC	Truro	10,000*
Woven St John's	Nottingham	10,000*
Grange Hill Methodist Church	Chigwell	10,000
Southampton City Mission (CIO)	Southampton	10,000
Diocese of Hexham and Newcastle, Justice & Peace Refugee Project	Newcastle	10,000
St Mary the Virgin Furneux Pelham	Buntingford	10,000
ELT Baptist Church	London	10,000
Parish of Llantrisant Fardre	Pontypridd	10,000
St Margaret's Church, Reydon	Southwold	10,000
YESU	Sheringham	10,000
St John's Church	Millom	10,000
St Thomas' Church	Rhyl	10,000*
Aberdare St Fagan PCC	Aberdare	10,000
The PCC of the Ecclesiastical Parish of St Philip and St James	Ilfracombe	10,000
St John the Evangelist, Upper Norwood	London	10,000
The Huddersfield Parish Church of St Peter	Huddersfield	10,000
St Peter's Church	Shipley	10,000*
Christ Church W4	Chiswick	10,000
St Laurence Church & Centre, Catford	London	10,000
Wigan Deanery Trust	Wigan	10,000
St Nicolas Great Bookham PCC	Leatherhead	10,000
Friends of St Ruan and St Grade Historic Church Buildings	Helston	10,000
Linton United Reformed Church	Cambridge	10,000
St Andrew's Church, Wickhambreaux	Canterbury	10,000
St Mael and St Sulien Church	Corwen	10,000*
The Bridge Project	Tadcaster	10,000
St Elizabeth's Church, Horwich	Bolton	10,000
Church of Saint Peter, Stanton Lacy	Ludlow	10,000*
St Mary the Virgin	Baldock	10,000*
Capel Llwyndyrus	Pwllheli	10,000*
Church of St Mary	Stoke by Nayland	10,000
St Mary's Church, Creggan	Londonderry	10,000
St Andrew's Church Helions Bumpstead	Haverhill	10,000
St Thomas and St Luke's	Dudley	10,000
St Barnabas, Sutton PCC	Sutton	10,000*

The PCC of St Mary's Merton	London	10,000
United Christian Broadcasters Ltd	Stoke-on-Trent	10,000
The PCC of St John the Baptist France Lyanch	Stroud	10,000
Ignite Penrith	Penrith	8,500
St Mary's Church Shelton	Huntingdon	8,000
St Nicholas Church, Bawtry	Doncaster	8,000
Twyford United Reformed Church	Twyford	8,000
St Philip & St James	Whittington	7,500
GreenHouse Mentoring	Luton	7,500
PCC of St George's, Jesmond	Newcastle upon Tyne	7,500*
St Michael's	Alnwick	7,500
St Pauls Methodist Church and Community Centre	Huddersfield	7,500*
St Giles' Church, Shermanbury	Henfield	7,500
St Mary's Church	Broughton Astley	7,500
All Saints Church Eaton	Retford	7,500
Kelshall PCC	Royston	7,500
Lanivet Parochial Church	Lanivet	7,500*
The Friends of St Cyrs Church	Stinchcombe	7,500*
Oldfield Park Baptist Church	Bath	7,500
St John's Church, Walton	Chesterfield	7,500
St Stephens Church, Soundwell	Bristol	7,500
Anglican Church of St Peter Mancroft	Norwich	7,500
St. Leonards Church Tortworth PCC	Wotton-under-Edge	7,500
Norton-Juxta-Twycross Church Council	Atherstone	7,500
St David's, Newbold-on-Stour	Stratford-upon-Avon	7,500
Parish Church of St John the Divine, Menston with Woodhead	Ilkley	7,500
PCC St.Mary Virgin, Northill	Biggleswade	7,500
St Nicholas' Church	Chiswick	7,500
Euxton Parish Church	Chorley	7,500
St Marys Becontree	Dagenham	7,500
Panshanger Church	Welwyn Garden City	7,500
St Peter's Church, Wrestlingworth	Sandy	7,500
The Light House (Christian Care Ministry) Trust Ltd	Coventry	7,500
Waterstock PCC for the Church	Waterstock	7,500
Honing with Crostwright PCC	North Walsham	7,500
St Botolph's Hadstock	Cambridge	7,500
St Peter ad Vincula Church Ratley PCC	Banbury	7,500

Trinity Methodist Church Centre	Kidderminster	7,500
Beacon Church	Exeter	7,500*
Almondbury Methodist Church	Huddersfield	7,500
St Andrew's Church	Rushmere St Andrew	7,500
St Barnabas Church and Community Centre	Oldham	7,500
St. Nicholas'	Little Saxham	7,500*
Fulwell Methodist Church	Sunderland	7,000
St Lawrence Church, Sandhurst	Gloucester	6,000*
St Mary Magdalene Castle Ashby	Northampton	6,000
Without Walls Christian Fellowship	Stanton under Bardon	6,000
Parish Church of St Constantine & St Aegidius, Milton Abbot	Tavistock	6,000
Oxford Churches Debt Centre	Oxford	6,000
The PCC of the Ecclesiastical Parish of Harwood	Bolton	6,000
Saint Mark's (C of E) Church, Kempshott	Basingstoke	6,000
All Saints Church Annesley	Nottinghamshire	6,000
Glenorchy United Reformed Church	Exmouth	6,000
Abercynon Parish	Abercynon	6,000
Becontree Heath Islamic Society (DCM) Ltd	Dagenham	5,000
Culcheth Methodist Church	Warrington	5,000
Emmanuel United Reformed Church Haydon Wick	Swindon	5,000
Holy Trinity & St Barnabas Episcopal Church	Paisley	5,000*
Smallhythe PCC	Tenterden	5,000*
St James the Great, Salt	Stafford	5,000*
St Martins Church	Dover	5,000*
The Bridge Church	Chepstow	5,000
Upavon Baptist Chapel	Pewsey	5,000*
Christ Church and St John the Evangelist	Gosport	5,000
Markfield Congregational Church	Markfield	5,000
St James the Great Talaton	Exeter	5,000
St James' Church	Staveley	5,000
Kidderminster Baptist Church	Kidderminster	5,000
St Peters Church Ealing	London	5,000
St Mary the Virgin	Kelling	5,000
St Michael & All Angels, Ashton	Preston	5,000
St Andrew's Church, Deal (SAPOR)	Deal	5,000*
St Peter's Church	Winchcombe	5,000*

Gospel Temple Apostolic Church	London	5,000
Parish of Kenfig Hill	Bridgend	5,000
PCC of Postlebury	Frome	5,000
Sharon Full Gospel Church	Pontypool	5,000
St John The Baptist Alnmouth/ Alnmouth PCC	Alnmouth	5,000
St Paul's Church	Salisbury	5,000
All Saints' Church North Runcton	King's Lynn	5,000
All Saint's Church	Rotherby	5,000
Loughton & Chigwell District Synagogue	Loughton	5,000
St John the Baptist, Tunstall	Sittingbourne	5,000
St Luke's Church	Stone Cross	5,000
St Nicholas' Church Bradfield	Sheffield	5,000
St Paul's Church, Gorefield	Wisbech	5,000
West Hendred PCC	West Hendred	5,000
Alness Baptist Church	Alness	5,000*
St Andrew's Church	Eastbourne	5,000
St James the Great	Bratton	5,000
St James-the-Less Church	London	5,000*
St Mark's Church	Peterborough	5,000*
The PCC of the Ecclesiastical Parish of All Saints with St Columb's, Notting Hill	London	5,000
Eglwys Dewi Sant Church	Cardiff	5,000
St Mary the Virgin	Wenvoe	5,000
St. Mary's Church Clydach	Swansea	5,000
Newham Youth For Christ	London	5,000
St Neot Church PCC	Liskeard	5,000
Catalyst Vineyard Church	Aberdeen	5,000
Church of St Mary Magdalene	Gillingham	5,000
St Faith's Church & Community Centre	Hexton	5,000
All Saints' Church	Kington Magna	5,000
Caersalem Baptist Church	Cardiff	5,000
St Cyprian's Church Sneinton	Nottingham	5,000
St Peters Welford on Avon PCC	Stratford-upon-Avon	5,000
The Chapel of Our Lady of the Crag Trust	Knaresborough	5,000
Stamford Methodist Church	Stamford	5,000
Fintry Kirk, Church of Scotland	Glasgow	5,000
St Michael & All Angels Church	Middleton Tyas	5,000
The PCC of the Ecclesiastical Parish of St Mary, Beddington	Wallington	5,000
All Saints High Bray Church	Brayford	5,000

All Souls Church	Eastbourne	5,000
St Mark's Anlaby Common PCC	Hull	5,000
Batcombe PCC	Dorchester	5,000
Glascote Methodist Church	Tamworth	5,000
St John the Baptist Church, Great Amwell	Ware	5,000
Women on the Frontline Ministries	Ilford	5,000
Wilsford Church Council	Wilsford	5,000
Holy Trinity Church	Tarleton	5,000
The English Province of the Order of Preachers	Oxford	5,000
The Shrine of Our Lady St Mary of Glastonbury	Glastonbury	5,000
Highlands Methodist Church	Leigh-on-Sea	5,000
St Augustine's Church	Rugeley	5,000
Apex Church	Peterhead	5,000
Sowerby Parochial Hall	Thirsk	5,000
St Mary's Church Timsbury PCC	Timsbury	5,000
Amazing Grace Chapel	Hull	5,000
Great Bourton PCC	Banbury	5,000
St John the Baptist Church, Tiffield	Towcester	5,000
St Swithin's Church	Royston	5,000
St Mary the Virgin Great Warley	Brentwood	4,000
Whitfield with Ninebanks PCC	Hexham	3,500
The Blessed Virgin Mary Church Nettlecombe	Withycombe	3,500
Combs St Mary	Stowmarket	3,000
All Saints' Parish Church Croxley Green	Rickmansworth	3,000
Chelmsford Methodist Circuit	Chelmsford	3,000
St Peter's Church	Wormleighton	3,000
St Mary's Church, Carew	Tenby	3,000*
Life Everlasting Parish	Ilford	3,000
Saint John the Baptist Church, Carno	Caersws	3,000
St John the Baptist Church	Mildenhall	3,000
St Nicholas's Church	Montgomery	3,000
The PCC of the Ecclesiastical Parish of St. Michael's and St Luke's	Beccles	3,000
Oadby Baptist Church	Leicester	3,000
All Saints Church Parish Church Woodchurch	Ashford	3,000
Billericay Methodist Church	Billericay	3,000
St Nicholas Church Snitterby	Kirton in Lindsey	3,000
Amington Parish Church	Tamworth	3,000
St Margaret's Church Putney	London	3,000

St Marys Church Little Finborough	Stowmarket	3,000*
St Theodore's Church	Caerphilly	3,000
St Peter's Church, Nowton	Bury St Edmunds	3,000
St Mary with St Leonard, Broomfield	Chelmsford	3,000
St John the Evangelist Church, Whitfield	Brackley	3,000
St John the Baptist	Halstead	3,000
Grimsby Trinity Church of the Nazarene	Grimsby	2,500
Wigton Road Methodist Church	Carlisle	2,500
Ridgeway Methodist Church	Plymouth	2,000
All Saints Church, Hundon	Sudbury	2,000
Total for Faith		2,307,500
(Total number of grants: 260)		

Health		£
Heart Care (Walsall Rehabilitation and Healthy Living Trust)	Walsall	20,000
Huntington's Disease Association	Liverpool	20,000
The Food Chain	London	20,000
Sheffield Hospitals Charity	Sheffield	20,000*
Music for my Mind	Harpenden	20,000
The Ryan MS Therapy Centre	Coulsdon	20,000
Samson Centre for Multiple Sclerosis	Guildford	20,000
The Movement Centre	Oswestry	20,000
Attend	London	20,000
Headway Norfolk & Waveney Ltd	Gorleston	20,000
The Martin Gallier Project	New Ferry	20,000
Mersey Counselling & Therapy Centre	Wallasey	20,000*
Swindon MS and Neuro Therapy Centre	Swindon	20,000
Community Support Network South London	London	20,000
Impact Living	Bradford	20,000
The Richard Dimpleby Cancer Fund	London	20,000
Headway Cambridgeshire	Cambridge	20,000
Alice House Hospice	Hartlepool	20,000
Berkshire Multiple Sclerosis Therapy Centre Ltd	Reading	20,000
Better Pathways	Birmingham	20,000
Chilli Studios (Newcastle and Gateshead Arts Studio) Ltd	Newcastle upon Tyne	20,000
Kintsugi Hope	Boreham	20,000
St Wilfrid's Hospice	Eastbourne	20,000
Womankind Bristol Women's Therapy Centre	Bristol	20,000

Wellspring Therapy & Training	Harrogate	20,000
BucksVision	Aylesbury	20,000
Step One Charity	Exeter	15,000
Blue Sky Trust	Newcastle	15,000
Association for Rehabilitation of Communication and Oral Skills	Malvern	15,000
The Ehlers-Danlos Support UK	Borehamwood	15,000
White House Cancer Support Ltd	Dudley	15,000
Spoons	Manchester	15,000
Mindspace	Perth	15,000
Action East Devon	Cranbrook	15,000
Herefordshire Headway	Hereford	15,000
HUMEN	London	15,000
The Forget Me Not Children's Hospice	Huddersfield	15,000
Dundee and Angus ADHD Support Group	Dundee	15,000
Teeth Team Ltd	Hull	15,000
Create Hope	Bracknell	15,000
Time to Talk West Berkshire	Newbury	15,000
The Youth Counselling Project	Seaford	10,000
St Raphael's Hospice	Sutton	10,000
The Jewish Association for Mental Illness (Jami)	Edgware	10,000*
The Hugs Foundation	Bodmin	10,000
Home from Hospital Care	Birmingham	10,000
British Thyroid Foundation	Harrogate	10,000
Mind in Harrow	Harrow	10,000
Overgate Hospice	Halifax	10,000
Dianne Oxberry Trust	Manchester	10,000
Nurse Lifeline	London	10,000
CancerWise	Chichester	10,000
Focus Counselling	Bath	10,000
InterAct Stroke Support	London	10,000
Harlow Stroke Support Group	Harlow	10,000
Brittle Bone Society	Dundee	10,000
Fight Against Blindness	Royston	10,000
A Slice of Happiness	Watford	10,000
The Brigstowe Project	Bristol	10,000
Multiple Sclerosis Therapy Centre Norfolk	Norwich	10,000
Willow Wood Hospice	Ashton-under-Lyne	9,000
Spinal Injuries Scotland	Glasgow	8,000
Smile Group	Macclesfield	7,500
Wiltshire Search and Rescue	Devizes	7,500
Art Therapy Yorkshire	Scarborough	7,500
Yes to Life	London	7,000
Essex Respite & Care Association	Chelmsford	5,000
The Thyroid Trust	London	5,000

Action on Pre-eclampsia	Evesham	5,000
St Andrew's First Aid	Glasgow	5,000
Horticultural Therapy Trust	Plymouth	5,000
Green Health Thames Valley	Reading	3,000
Headroom Young People's Charity	Fleet	2,000
Total for Health		1,011,500
(Total number of grants: 73)		

Museums & Heritage		£
Quaker Tapestry at Kendal Ltd	Kendal	20,000*
Shambellie House Trust	Dumfries	20,000
Lyme Regis Philpot Museum Trust Ltd	Lyme Regis	20,000
7th Armoured Division Commemorative Fund	Harwich	18,000*
The Museum of Leathercraft	Northampton	15,000*
Devon & Exeter Institution	Exeter	15,000
Empathy Museum	London	15,000
The Hospital of William Browne, Merchant	Stamford	15,000
Bamburgh Heritage Trust	Beadnell	10,000
Thames Sailing Barge Trust	Maldon	10,000
The Long Shop Museum	Leiston	10,000
The Susan Trust	Chelmsford	7,500
Waverley Steam Navigation Co Ltd	Glasgow	5,000
Sheffield General Cemetery Trust	Sheffield	5,000
Shaftesbury Abbey & Museum Preservation Trust Co Ltd	Shaftesbury	5,000
Bath Industrial Heritage Trust	Bath	5,000
Halesworth and District Museum	Halesworth	5,000*
Total for Museums & Heritage		200,500
(Total number of grants: 17)		

Welfare		£
Disability Equality Scotland	Glasgow	20,000
True Butterflies Foundation	Truro	20,000
Grove Cottage (Bishop's Stortford Mencap)	Bishop's Stortford	20,000
Shine (East Norfolk)	Great Yarmouth	20,000
The Motherhood Plan	York	20,000
Home-Start Wyre Forest	Kidderminster	20,000
Gateshead Older People's Assembly	Gateshead	20,000
Home-Start Watford & Three Rivers	Watford	20,000
Your Voice Counts	Gateshead	20,000
SIFA Fireside	Birmingham	20,000

Baby Equipment Loan Service & Toy Library	Wallsend	20,000
Nene Valley Christian Family Refuge	Northampton	20,000
Age UK Bexley	Bexley	20,000
Carers in Bedfordshire	Bedford	20,000
CYCA – Connecting Youth, Children and Adults	Llanelli	20,000
Hope for the Young	London	20,000
Lancaster and District Homeless Action Service	Lancaster	20,000
Student Action for Refugees	London	20,000
Talbot House Support Centre	Manchester	20,000
The Nancy Oldfield Trust	Norwich	20,000
Oxfordshire Sexual Abuse and Rape Crisis Centre	Oxford	20,000
Advocacy Matters	Sutton Coldfield	20,000
Carers FIRST	Strood	20,000
Community Drug and Alcohol Recovery Services	London	20,000
EFA London	London	20,000
Enterprise Homes Group	Wolverhampton	20,000
Entraide (Mutual Aid)	Solihull	20,000
Unity Works Social Enterprises	London	20,000
Assist Trust	Norwich	20,000
Bridge Care Ltd	Bath	20,000
The Maypole Project	Bromley	20,000
Veterans Outdoors	Ivybridge	20,000
First Step Community Project	Musselburgh	20,000
Work Rights Centre	London	20,000
Canterbury and District Early Years Project	Canterbury	20,000
GISDA	Gwynedd	20,000
The Hope Programme	Luton	20,000
Baraka Community Association	London	20,000
Home-Start South West Kent	Tunbridge Wells	20,000
POW Nottingham Ltd	Nottingham	20,000
The Margins Project	London	20,000
Sight Support Derbyshire	Derby	20,000*
Aid Box Community	Bristol	20,000
Edinburgh Development Group	Edinburgh	20,000
Adfam National	London	20,000
Circles South East	Didcot	20,000
Mosaic – Supporting Bereaved Children	Blandford Forum	20,000
Music Action International	Manchester	20,000
VOCAL – Voice of Carers Across Lothian	Edinburgh	20,000
Aspire (Association for Spinal Injury Research, Rehabilitation and Reintegration)	Stanmore	20,000

North Tyneside Carers Centre	North Shields	20,000
Independent Arts	Newport	20,000
CARAS	London	20,000
700 Club	Darlington	20,000
Age UK Westminster	London	20,000
Children Heard and Seen	Oxford	20,000
Aiming Higher	Blackpool	20,000
Felinfoel Family Centre	Llanelli	20,000
Age Exchange	London	20,000
Access Adventures	Staines-upon-Thames	20,000
Watford Women's Centre	Watford	20,000
Home-Start County Borough of Wrexham	Wrexham	20,000
Age UK Milton Keynes	Milton Keynes	20,000
Perth Autism Support SCIO	Perth	20,000
The National Association of Children of Alcoholics	Bristol	20,000
Let Me Know (LMK)	London	20,000
Afro Innovation Group	Leicester	20,000
The Friary	Nottingham	20,000
Safety Net	Brighton	20,000
EVA Women's Aid Ltd	Redcar	20,000*
Emmaus Mossley	Mossley	17,000*
The Brunswick Centre	Glasgow	15,000
BUILD Charity Ltd	Norwich	15,000
South Glasgow Childcare Partnership Forum SCIO	Glasgow	15,000
Winchester and District Young Carers	Winchester	15,000
CLEAR Emotional Trauma and Therapy Specialists	Truro	15,000
Home-Start Wokingham District	Reading	15,000
Home-Start Reading	Reading	15,000
Abigail Housing	Leeds	15,000
Southwark Irish Pensioners Project	London	15,000
The Southmead Project	Bristol	15,000
Deptford Methodist Mission–Disabled People's Contact	London	15,000
PramaLife	Poole	15,000
Redbridge Carers Support Service	Ilford	15,000
Promise Inclusion Ltd	Bracknell	15,000
Restart Lives	Hertford Heath	15,000
Autism Berkshire	Reading	15,000
Home-Start Lambeth	London	15,000
Surrey Drug and Alcohol Care Ltd	Guildford	15,000
Home-Start East Surrey	Redhill	15,000
Disablement Association Hillingdon	Hayes	15,000
Somali Welfare Trust	Ilford	15,000
Papworth Trust	Huntingdon	15,000

Home-Start Haringey, Hackney and Waltham Forest	London	15,000
Action on Disability	London	15,000
Baobab Centre for Young Survivors in Exile	London	15,000
Home-Start Wandsworth	London	15,000
Link Visiting Scheme	Wokingham	15,000
St Chad's Sanctuary CIO	Birmingham	15,000
Slough Homeless, Our Concern (SHOC)	Slough	15,000
The Fatherhood Institute	London	15,000
Afasic	London	15,000
Home-Start Warrington	Warrington	15,000
Home-Start West Dorset	Dorchester	15,000
Bren Project	Chester	15,000
Chester Sexual Abuse Support Service	Chester	15,000
Policy Centre for African Peoples	London	15,000
The Include Project	Redhill	15,000
Aspirations Programme	Southend-on-Sea	15,000
Flamingo Chicks	Bristol	14,000
Lewes District Churches HOMELINK	Lewes	11,500
Bloomin' Arts Ltd	Lingfield	11,000
Home-Start Kernow	Redruth	10,000
Splice Child and Family Project Ltd	Pyle	10,000
Astriid	Faversham	10,000
Braintree District Mencap Society	Braintree	10,000
Cliff House Community Support Services Ltd	Knaresborough	10,000
Embassy	Northwich	10,000
Gilgal Birmingham	Birmingham	10,000
Harehills English Language Project	Leeds	10,000
Orchard Trust	Lydbrook	10,000
Positive Help	Edinburgh	10,000
Down Syndrome Development Trust	Seaford	10,000
Home-Start Craven	Keighley	10,000
Jericho Road Project	Nottingham	10,000
SHAPE	Birmingham	10,000
N-Compass – towards a brighter future	Preston	10,000
The Chronicle Sunshine Fund	Newcastle upon Tyne	10,000
Equation	Nottingham	10,000
Space	Chester	10,000
Younger People with Dementia (Berkshire)	Wokingham	10,000
Plymouth Highbury Trust	Plymouth	10,000
The Prison Phoenix Trust	Oxford	10,000
Wycombe Refugee Partnership	High Wycombe	10,000
Age UK Oxfordshire	Abingdon	10,000
Burnage Good Neighbours	Manchester	10,000

Hebron Trust	Norwich	10,000
Leeds Destitute Asylum-seekers Support	Leeds	10,000
S.H.E UK	Mansfield	10,000
SPEAK WITH IT	Wakefield	10,000
ALDAG (Always Learning And Developing)	Ashted	10,000*
Ahimsa	Plymouth	10,000
Age Concern Mole Valley	Dorking	10,000
Aphasia Re-Connect	Bromley	10,000
Artbox London	London	10,000
Home-Start Goole & District	Goole	10,000
Streetbikes	Huddersfield	10,000
A&A Services West Midlands	Darlaston	10,000
Alumah CIO	Brandon	10,000
It's a Penalty	Leatherhead	10,000
MahaDevi Yoga Centre	London	9,000
Home-Start South Warwickshire	Stratford-upon-Avon	8,000
Sensory Soft Play	Hastings	7,500
Veterans Lifeline	Smarden	7,500
Abingdon Carousel	Abingdon	7,500
Focus Birmingham	Birmingham	7,500
Southend Mencap	Southend-on-Sea	7,500
Trimsaran Family Centre	Kidwelly	7,500
Care for Kids North Devon	Barnstaple	7,500
Melton Mencap	Melton Mowbray	7,500*
Sussex Pathways	Lewes	7,500
Disability North	Newcastle upon Tyne	6,500
Legacy WM	Birmingham	6,500
N-Vision. Blackpool, Fylde and Wyre Society for the Blind	Blackpool	6,500
Sefton Women's and Children's Aid	Bootle	6,500
Stockport Without Abuse	Stockport	6,500
Hijinx	Cardiff	6,500
Neuro Therapy Centre	Chester	6,500
Nottingham & Nottinghamshire Refugee Forum	Nottingham	6,500
One Roof Leicester	Leicester	6,500
Stockport Women's Centre	Stockport	6,500
Enrych Buckinghamshire	Aylesbury	6,000
Ekota Care Trust Limited	London	6,000
Levenshulme Good Neighbours	Levenshulme	5,000
Oundle Mencap Holiday	Oundle	5,000
Newry City Afc Special Olympic Club	Newry	5,000
Pasda - Supporting Parents and Carers of Autistic Adults	Edinburgh	5,000
Happy Hill Essex CIO	Braintree	5,000
Turning Corners	London	5,000
Soundabout	Oxford	5,000

Circle of Support (COS) for Autism Families Ltd	Londonderry	5,000
Action for Elders Trust	Swansea	5,000
DangerPoint Ltd	Talacre	5,000
Grace House North East	Sunderland	5,000
Music Action International	Manchester	5,000
Positive Action in the Community	Nelson	5,000
The Brick	Wigan	5,000
St Davids Diocesan Council for Social Responsibility – Plant Dewi	Carmarthen	5,000
Venus Working Creatively with Young Women	Bootle	5,000
Sally Urwin	Corbridge	5,000
Alternatives to Violence Project Britain	London	5,000
Irish Chaplaincy	London	5,000
Care Links West Midlands	Smethwick	5,000
Age Concern Chandler's Ford	Eastleigh	3,000
Blooming Blossoms Trust	London	2,500
Forever Young Club	Edinburgh	2,500
What? Why? Children in Hospital	Edinburgh	2,500
Total for Welfare		2,675,500
(Total number of grants: 197)		

Youth		£
Ability North London	London	20,000
Newark Youth London Ltd	London	20,000
Hope UK	Kettering	20,000
Citywise Mentoring Ltd	Manchester	20,000
The Boys Clubhouse	London	20,000
Power The Fight	London	20,000
The Ben Kinsella Trust	London	20,000
Connects & Co.	Norwich	20,000
Samsons Academy	Bedford	20,000
St Peters Immaculata Youth Centre	Belfast	20,000
Stepney Bank Stables	Newcastle upon Tyne	20,000
ACET UK	Chester	20,000
YMCA Milton Keynes	Milton Keynes	20,000
Young Lewisham Project	London	20,000
London Play	London	20,000
upReach Charitable Company	London	20,000
Building4Hope	Birmingham	20,000
Eagle's Nest Project	Staffordshire	20,000
Birmingham City Clubs For Young People	Halesowen	20,000
Choices Youth Support	Manchester	20,000
Cymru Children & Youth Sports Foundation	Swansea	20,000
Daisies Kids Club	London	20,000
Fairway Fife	Dunfermline	20,000
Ieuentid Tysul Youth	Llandysull	20,000

Kaos Youth Club	Rochford	20,000
Kilwinning Community Football Academy	Kilwinning	20,000
LLTCA	Banbridge	20,000
MAGDALENE:CC SCIO	Edinburgh	20,000
Move Momentum	Winchester	20,000
North Berwick Youth Project	North Berwick	20,000
Sound Progression Ltd	Cardiff	20,000
The Belvidere Centre	Wirral	20,000
The Handy Trust	Southampton	20,000
Thurso Youth Club SCIO	Thurso	20,000
Tranent Youth and Community Facility	Tranent	20,000
Off The Record – South East Hampshire	Havant	20,000
Sport 4 Life UK	Birmingham	20,000
Skylarks Charity	Twickenham	20,000
PeacePlayers International – Northern Ireland	Belfast	20,000
Blackpool Boys and Girls Club	Blackpool	20,000
Ride High Limited	Milton Keynes	20,000
Blue Watch Youth Centre	Sunderland	20,000
Young Womens Outreach Project	Gateshead	20,000
N-Gage	Wythenshawe	20,000
Hutton Football Club	Brentwood	20,000
Porch Project	Hadleigh	20,000
The Nell Bank Charitable Trust Ltd	West Yorkshire	15,000*
Bloomsbury Football Foundation	London	15,000
Cotswold Edge District Scout Council	Coalpit Heath	15,000
Wedmore Playing Fields Management Committee	Mark	15,000*
St Matthew's Project	London	15,000
The Bangladesh Youth Movement	London	15,000
The Lowdown	Northampton	15,000
Toucan for Children CIO	Mitcheldean	15,000
Element Creative Projects CIO	London	15,000
Connect Alloa	Alloa	15,000
East Side Youth Centre Ltd	High Wycombe	15,000
Fourteen-A Ltd	Cardiff	15,000
Hengoed Community Project	Hengoed	15,000
Langport and Huish Episcopi Youth Group	Langport	15,000
Limelights – The Club for Young People	Poole	15,000
Rotherham Blackburn Club for Young People	Rotherham	15,000
Shanklin Voluntary Youth and Community Centre	Shanklin	15,000
Shining Stars London	London	15,000
The 393 Club	Sheffield	15,000

Turf	Glasgow	15,000
Vision 4 Youth	Yateley	15,000
Falcon Support Services E.M Ltd	Loughborough	15,000
Mission Initiative Newcastle East	Newcastle upon Tyne	15,000
Warning Zone	Leicester	15,000
Newburn and District Sea Cadet Corps	Newcastle upon Tyne	15,000
Westbourne Park Family Centre	London	15,000
Gospel Oak Community Forum	Birmingham	10,000
Rockets Sport and Educational Foundation	Reading	10,000
Oriel Ministries	Cornwall	10,000
Central London Youth Development Trust	London	10,000
West Kent Extra	Kent	10,000
Ripon Young Mens Christian Association	Ripon	10,000
104th Edinburgh North East Scout Group	Edinburgh	10,000
10th Warrington Scout Group	Warrington	10,000*
Pannal Ash Junior Football Club	Harrogate	10,000
Run With It	Hull	10,000
1st Wotton under Edge Scout Group	Gloucestershire	10,000
Highland Cycle Ability Centre	Nairn	10,000
Sandwell Asian Development Association	West Bromwich	10,000
Swansea Music Art Digital	Swansea	10,000
The Ayr Ark	Ayr	10,000
11th High Wycombe Scout Group	High Wycombe	10,000*
Speyside Youth	Banffshire	10,000
Achievement Bute	Rothsay	10,000
Bolton Community Development Partnership	Bolton	10,000
Cupar YMCA-YWCA	Cupar	10,000
Hipp!!Bones	Nr Shaftesbury	10,000
Hungerford Youth and Community	Hungerford	10,000
Pontfaen Young Farmers Club	Builth Wells	10,000
Square Peg Activities Ltd	Sutton Coldfield	10,000
Tarbert Youth Group	Tarbert	10,000
The Grove at Bedminster Down	Bristol	10,000
The Wee Haven Youth Project	Edinburgh	10,000
Student Life	Ipswich	10,000
Hornimans Adventure Playground	London	10,000
4th Leicester Scout Group	Braunstone	10,000
2nd Bude and Jacobstow Scout Group	Launceston	10,000*

Eildon West Youth Hub	Galashiels	10,000
Parallel Youth Enterprise	London	10,000
Local Village Network	London	10,000
Sidewalk Youth Organisation	Scarborough	7,500
Cardiff and Vale Area Scouts	Cardiff	7,500*
CEEP Limited	Lancaster	7,500
Just Kidding	London	7,500
YMCA Scarborough	Scarborough	7,500
Crowborough for Young People Ltd	Crowborough	7,500
Youth Learning Network Ltd	London	7,500
Hart Voluntary Action	Fleet	7,500
Little Green Pig	Brighton	7,500
Boys' and Girls' Clubs of Wales	Cardiff	6,500
Salford Foundation	Salford	6,500
The Children's Foundation	Newcastle upon Tyne	6,500
The Exodus Project	Barnsley	6,500
Pentabus Theatre	Bromfield	6,500
All Stars London	Hemel Hempstead	6,500
Humberside Scouts	Raywell	5,000*
1st Warsash Sea Scout Group	Southampton	5,000
25th Castletown Scout Group	Sunderland	5,000
Wallsend Sea Cadets	Tyne and Wear	5,000
Sneinton Play Centre	Nottingham	5,000
Tyler's Trust	Barnham	5,000
Youth Impact	Campbeltown	5,000
Chapter2	Reading	5,000
Honiton Town Community Football and Sports Association	Honiton	5,000
Kids N' Action	London	5,000
Eagle's Nest Project	Staffordshire	5,000
Rochdale Connections Trust	Rochdale	5,000
The Enthusiasm Trust	Derby	5,000
Glasgow Children's Holiday Scheme	Glasgow	5,000
Refreshing Minds	London	5,000
T.S. Broadsword Sea Training Corps	Hendon	5,000
Girlguiding Caernarfonshire	Gwynedd	5,000
Girlguiding Paxwood Kent	Wilmington	4,000
30th Glasgow Scout Group	Glasgow	4,000*
4th Fife Cardenden Scout Group	Cardenden	3,000
Frodsham Youth Association	Frodsham	3,000
Youth Create	Bishop's Stortford	3,000
1st Bingley Scouts	Bradford	3,000*
1st Bridge of Weir Scout Group	Bridge of Weir	3,000*

1st Radyr Scout Group	Cardiff	3,000*
5th Rugby Newbold Scout Group	Rugby	2,500
4th Eling Sea Scouts	Southampton	2,000
19th Purley Scout Group	Shirley	1,000
Total for Youth		1,873,000
(Total number of grants: 149)		

Total grants of £20,000 and less	<u>£12,162,500</u>
Total grants over £20,000	<u>£77,717,627</u>

Total grants	<u>£89,880,127</u>
Total number of grants: 1,988	



Garfield Weston

FOUNDATION

Weston Centre
10 Grosvenor Street
London W1K 4QY

www.garfieldweston.org



Socially and environmentally responsible design
10% of invoice value (ex VAT) donated to
The Hardman Trust
www.wolfdesignltd.co.uk