



Garfield Weston
FOUNDATION



Annual Report

Report and accounts of the Trustees · 2021



Garfield Weston
FOUNDATION

Annual Report

**Report and accounts of the Trustees
Financial year to 5 April 2021**

Reference and administrative information

The Garfield Weston Foundation is a general grant-giving charity endowed by the late W Garfield Weston and members of his family, which is registered with the Central Register of Charities, registration number 230260. The Foundation is recognised by the Inland Revenue as an approved charity for tax purposes, the reference number being X96978.

Principal Office

Weston Centre
10 Grosvenor Street
London W1K 4QY

Trustees

Sir Guy H Weston, Chairman
Geordie Dalglish
Anna Catrina Hobhouse
Jana R Khayat
Eliza L Mitchell
Melissa Murdoch
George G Weston
Alannah Weston
Sophia M Weston

Director

Philippa Charles

Secretary to the Trustees

Janette Cattell

Bankers

Coutts & Co
440 Strand
London WC2R 0QS

Solicitors

Slaughter and May
1 Bunhill Row
London EC1Y 8YY

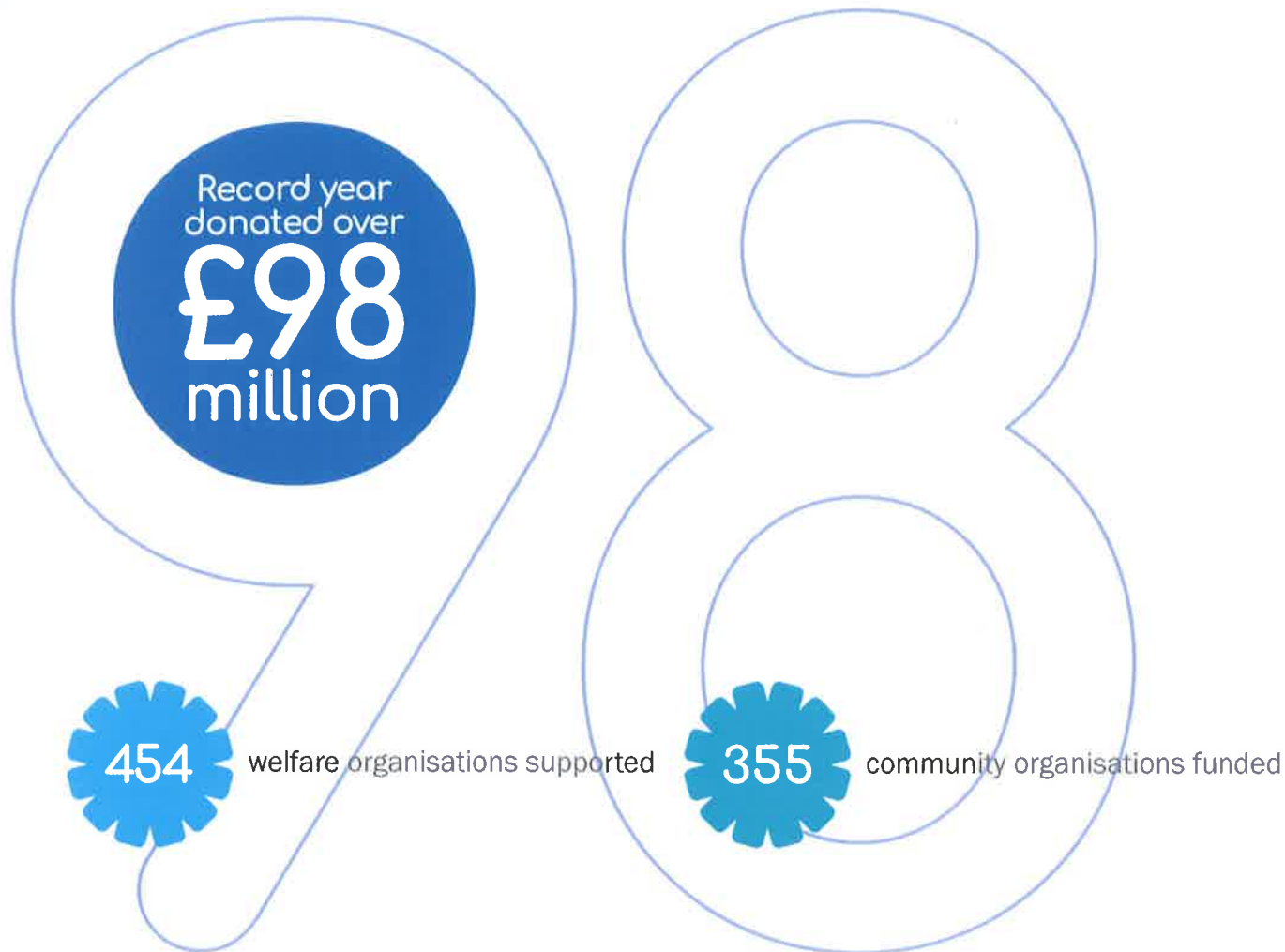
Auditors

UHY Hacker Young LLP
Quadrant House
4 Thomas More Square
London E1W 1YW

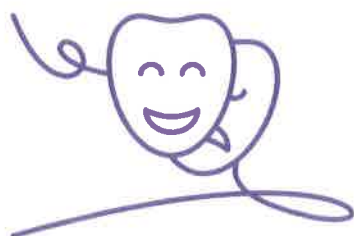
Fund Managers

Investec
30 Gresham Street
London EC2V 7QN

Goldman Sachs Asset Management International
Peterborough Court, 133 Fleet Street
London
EC4A 2BB



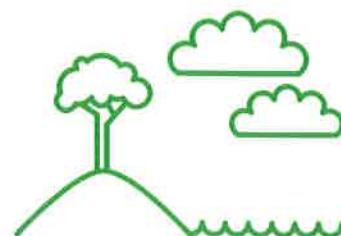
Over 2,100 grants made across the UK



Weston Culture Fund grants **£30.2 million** to support the UK's arts to restart, recover, and re-engage with audiences



£19 million granted to welfare organisations



Record year of environmental giving with **£7 million**



granted to organisations tackling homelessness



granted to Social & Sustainable Capital and Charity Bank to support the financial & operational resilience of the sector

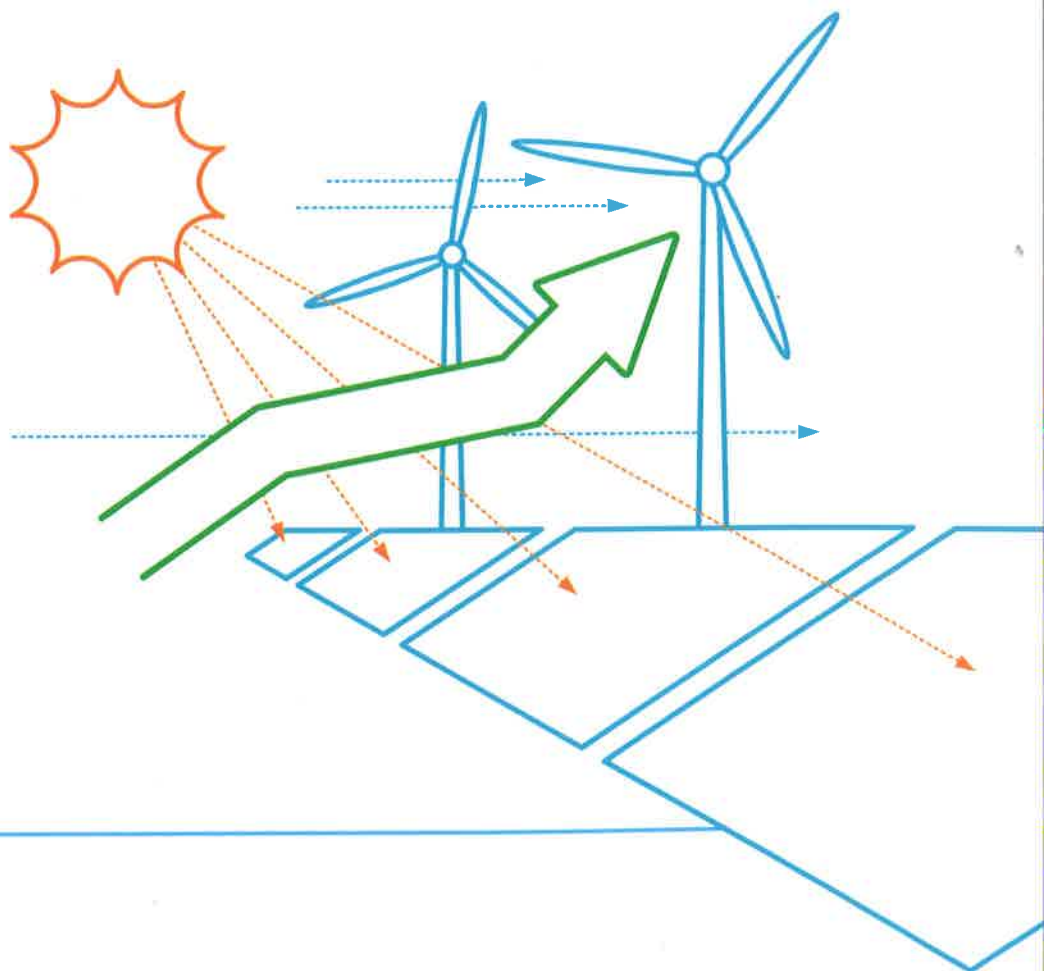
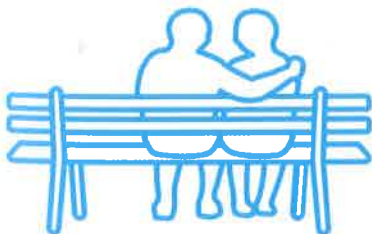


granted to welfare organisations



granted to charities supporting young people

Weston Communicating Climate programme launched in partnership with the Media Trust to help environment charities build impact in communications and profile-raising



£1.3 million

granted to charities supporting the elderly



Chairman's report

As the Chairman of the Foundation, I have pleasure in introducing the Annual Report of the Trustees for the year to 5 April 2021.

Accounting policies

The financial statements have been prepared in accordance with the accounting policies set out in the notes to the accounts and comply with the charity's governing document, the Charities Act 2011 and Accounting and Reporting by Charities: Statement of Recommended Practice applicable to charities preparing their accounts in accordance with the Financial Reporting Standard applicable in the UK and Republic of Ireland published on 16 July 2014 (FRS102).

Structure, governance and management

Structure

The operation of the Foundation is governed by a Trust Deed dated 10 October 1958.

At 5 April 2021, the Foundation owned 79.2% of Wittington Investments Limited, a company registered in England. Wittington Investments is the ultimate holding company of Associated British Foods plc, which is listed on the London Stock Exchange, Fortnum and Mason plc and Heal's plc. Under the terms of the Trust Deed, the investment in the Wittington Investments Limited group of companies forms the permanent capital endowment of the Foundation and the Trustees may not dispose of those investments except by a unanimous vote of all the Trustees.

Governance and management

In accordance with the Trust Deed, after the death of Mr W Garfield Weston and his wife, their descendants became Trustees. The number of Trustees is limited to ten but must be at least five. If the number of Trustees drops below five, new Trustees fall to be appointed from among the lineal descendants of W Garfield Weston.

Being family members, incoming Trustees are aware of the aims and objectives of the Foundation and the manner in which the Trustees carry out their responsibilities. Nearly all of the Trustees are

on the board of other charitable entities either in the UK, the United States or Canada. The Foundation is a member of the Foundations Forum and the Association of Charitable Foundations and also receives the main charities' journals. This ensures that the Trustees are well placed to keep up to date with developments in charity practice and regulations. In addition, the Trustees receive direct information in relation to important areas from both their Secretary, who attends monthly meetings and is a practising lawyer with expertise in the charities' field, and from their auditors UHY Hacker Young LLP.

The Trustees are directly responsible for the management of the Foundation and hold regular meetings in order to consider grant applications for £100,000 or more and to ratify smaller grants which have been made since their previous meeting. Additional meetings are included as required to deal with any time-sensitive funding requests. The initial processing of grant applications is dealt with by an experienced team of staff, though every eligible application is seen by at least one of the Trustees who also actively participate in meetings with, and visits to, applicants. The Trustees also hold an annual meeting in order to adopt the Annual Report and Accounts and to carry out a formal review of the fulfilment of the Charity's aims and objectives, policies and the investment performance over the year.

Risk management and policies

The Trustees are satisfied that appropriate policies, protection, systems and checks remain in place in order to mitigate exposure to major risks and to ensure that the Foundation operates in accordance with ethical and environmental guidelines and protections. The Director and Secretary review operational risks and policies on an ongoing basis and these are also formally considered by the Trustees at their Annual Meeting.

The principal risks relate to investment performance, and operational risks in terms of grant-making arising from system malfunctions or fraudulent applications. There is also a reputational risk for the charity in terms of its relationship with the underlying trading activities of companies held through Wittington Investments Limited.

Operational: the computer system and internal procedures are regularly updated and reviewed and all grant applicants are screened by a skilled grants management team. Appropriate processes, guidelines and staff training are also in place to ensure compliance with various statutory and ethical requirements, including, but not limited to,

those under the Data Protection Act 2018 and the Modern Slavery Act 2015, to address DEI-related issues and to provide safeguarding for staff and applicants. The systems and processes which are in place to enable staff to work remotely from the office have proved to be effective and robust during the Covid-19 lockdown periods.

Investments: the Trustees regularly review the performance of the underlying assets and their shareholding in the Wittington Investments Limited group and receive reports directly from those who are managing the businesses. The non-Wittington investments are also managed in accordance with a policy which balances risk with investment returns (see below).

Reputation: the direct involvement of members of the Trustee board in the activities of the Wittington group also enables them to be fully appraised of events which might give rise to unwelcome media attention and hence reputational risks.

Conflicts of interest: the Trustees have in place a detailed policy regarding conflicts of interest, both in terms of their grant-making decisions, and also in terms of the fact that some of them are directors of Wittington group companies; this potential for conflict is carefully managed with proper procedures (including as regards the exercise of the Trustees' voting powers at the Wittington Investments Limited AGM and any other shareholder meetings) and the taking of independent advice where necessary.

Ethical and environment: as well as implementing their own approaches to protect the environment (for example, nearly all applications are made online and the Trustees receive meeting papers electronically, thus reducing the need for paper printing and facilitating remote working), the Trustees also keep under scrutiny the ethical and environmental practices as carried out by the underlying businesses in the Wittington group and their independent investment managers. The Foundation does not employ its own staff but, in relation to its secondees, adheres to the practices laid down by Wittington and Associated British Foods in connection with the Modern Slavery Act and corporate responsibility – for more details see: www.wittington-investments.co.uk/wp-content/uploads/ModernSlaveryHumanTraffickingStatement2020.pdf
www.abf.co.uk/responsibility

Diversity, Equity and Inclusion: the Trustees are committed to inclusion in our society; addressing disadvantage has been a central theme of the Foundation for over six decades as we value diversity in its widest sense. We aim to be accessible, transparent and straightforward in our

approach to grant-giving and actively support charities which in turn support diverse groups and communities, including those suffering discrimination in all its forms. The Trustees and our staff are committed to inclusion and discussion on DEI is continuous to ensure our commitment is embedded into our work on a daily basis. We continue to monitor the diversity of our staff team, we have improved our applicant monitoring and have a DEI champion with knowledge and lived experience of DEI issues.

Safeguarding: the Trustees have a safeguarding policy which is aimed at protecting their own staff as well as vulnerable beneficiaries supported by our charity partners. The Trustees also require grant applicants to confirm that they have appropriate safeguarding policies in place to protect their staff, volunteers and beneficiaries.

Income and grant-making aims and objectives

The Trust Deed contains broad charitable objects which allow the Trustees, in their discretion, to pay or apply the income and, subject to the restrictions set out below, the capital of the Trust Fund to or for the benefit of any charitable bodies, trusts, associations, institutions or organisations.

Despite the general reduction in corporate dividends in UK markets resulting from the economic impact of the Covid-19 pandemic, total income receipts for the year were £83.9 million (2020: £84.7 million). This, combined with the ability to draw on prudent levels of income reserves, has enabled the Trustees to provide total grants at a record level of over £98.3 million in support of 2129 appeals (2020: £88.1 million in support of 2121 appeals). The total outstanding forward commitments at the end of the financial year were just over £38 million, as compared with £33.1 million in 2020; this figure is inflated by outstanding significant pledges to the National Portrait Gallery (£5m) for a capital building project and Moorfields Eye Hospital (£10m) for a new National Centre for Advancing Eye Health which the Trustees felt was important to support at an early stage to encourage support from other donors. These organisations have been asked to give three months' notice of any request for release of funds so that the Trustees can effectively manage cashflow. This year has also seen a general increase in the number of pledges as opposed to outright grants in order to support charities to create positive momentum with fundraising in the current uncertain economic environment; however, aside from the £15 million referred to above, the figures are within the Trustees' aim that the total

forward commitments should not exceed 20% of their annual projected expenditure.

Requests for grants for capital projects have reduced over the past year in line with reduced confidence across the sector in launching major new capital campaigns. However, the Trustees have continued to provide for these as well as providing funding specifically to support the core costs of charities whose existence has been threatened by the economic consequences of the Covid-19 pandemic, and also assisting charities whose resources have been stretched to the brink in terms of providing much needed social and health care, including assisting the ability to provide such services remotely. The Trustees have also made substantial contributions to Social and Sustainable Capital (£5m) and the Charity Bank (£1m) which can in turn be used to provide loans to support charities in carrying out their objectives.

The number and quality of applications received for the Weston Culture Fund was significant, with requests totalling £128 million; the Trustees made grants of over £30.2 million as compared with the original target of £25 million. See the Director's Report and full list of grants made for more details on the Weston Culture Fund and the Foundation's overall response to the Covid-19 pandemic.

Grant-making policy

The Foundation continues to accept only appeals from UK registered charities. No applications from individuals are considered and the Trustees do not typically fund projects outside the UK, nor do they fund animal welfare charities, unless for the purpose of supporting a specific environmental project, as was the case, for example, with grants to WWF UK and RSPB Scotland.

The Trustees' aim is to keep the application process as simple and streamlined as possible. Step-by-step guidelines as to how to make a grant application (more than 95% of which are now submitted on-line), together with clear details of the criteria which are taken into consideration when assessing applications and the information which should be submitted with an application are available on the Foundation's website (www.garfieldweston.org). These guidelines are also published in Welsh (although applications from Welsh charities must still be made in English).

All applications are considered on an individual basis; the Trustees do not consider any funding request made within 12 months of the outcome of a previous application but, in relation to funding for core costs, they will consider providing funds to be spread over a period of years. Where desirable and possible, visits are made by Trustees and/or the

Director or a member of the Foundation's grants team to gain a better understanding of an applicant's requirements. Regular contact is maintained with recipients of grants for monitoring purposes, while also taking care to minimise the burden on the recipient charities.

To provide further transparency in the grant-making process, the Foundation publishes its grants through 360Giving. It also commissions independent reviews of grant-giving initiatives, such as the Weston Anniversary Awards in 2018 and the Weston Culture Fund this year, to assess their effectiveness and to continually improve the experience for applicants. These findings are published and shared openly, made accessible on the website and highlighted in social media.

Public benefit

The Trustees have complied with section 2(1)(b) of the Charities Act 2011, having due regard to the Charity Commission's guidance on public benefit when reviewing the Foundation's aims and objectives, when setting the grant-making policy and in making awards.

Achievements and performance

I am delighted to be able to report that Wittington Investments Limited broadly maintained its dividend payments to the Foundation so that we have been able to provide record amounts of funding at a time when the sector, and those whom it supports, has been most in need.

I and my fellow Trustees once again extend our sincere thanks to the Director and her team for their forward-thinking, flexible and sensitive approach to the funding needs arising out of the Covid-19 pandemic, especially in relation to the additional work generated by the Weston Culture Fund initiative and a more intensive timetable of Trustee meetings throughout the year so swift decisions could be made.

Investment performance

The Trustees are satisfied that the investment structure (represented by the Wittington group of companies) which was contributed by my grandfather to the Foundation remains a sustainable long-term model, particularly in terms of providing a regular and reliable income stream to enable the Foundation to fulfil its charitable purposes. The value of the group of companies (which is directly attributable to the share price of Associated British Foods) has recovered in line with equity markets generally and the Trustees remain confident that any fluctuations in value of the

shares in Associated British Foods and of the non-Wittington Investments, and any reduction in the ability of those entities to pay dividends in the short term, will not have a lasting effect on their ability to provide support to grant applicants.

It should be noted that in each financial year for the Foundation there is not a direct correlation between the amounts which Wittington pays by way of dividends and the amounts which are received by the Trustees by reference to their percentage shareholding; this is owing to the fact that the two entities have different accounting year ends.

In terms of non-Wittington investments, as at 5 April 2021 the Trustees' portfolio with Investec was valued at over £64.5 million (2020: £51.3m), having recovered in line with equity markets generally from the fall during the last two months of the 2020 financial year caused by the outbreak of Covid-19 and associated lockdown measures. The portfolio is also once again nearly 3% ahead of the benchmark of RPI plus 4% over a rolling three year period. As against the ARC (Asset Risk Consultants) Charity Steady Growth Index (the average volatility of which is similar to that of the portfolio), which provides results to 30 March each year, net of fees the portfolio returned +22.7% over a three year period as compared to +21.6% for the Index. In line with a decrease in dividend payments by UK companies generally, the portfolio's distributable income for the year has reduced from £1.8 million to just under £1.4 million, but this has not affected the level of quarterly distributions to the Foundation.

The investment in the Goldman Sachs Asset Management Global Multi-Manager Alternatives Portfolio which is aimed at providing a complementary investment strategy for the Investec portfolio in order to balance a reasonable return against protection from downside risk, was valued at £35.1 million as at 5 April 2021 (2020: £31.7m) after annual withdrawals of £1.6 million, with the performance +2% above that of the HFRX Hedge Fund Index. The fund provided downside protection in the first quarter of 2020, being down -8% as against the MSCI World index low of -20%, but the Trustees continue to keep the investment under review.

The capital value of the Savills' Charities Property Fund was £5.967 million as at 5 April 2021 (2020: £6.057m), with an income yield of 3.8%.

Further analysis of the investment assets can be found in Note 9 to the Financial Statements. A copy of Wittington Investments Limited's accounts for the year to 12 September 2020 can be obtained from Companies House.

Financial review

In accordance with required accounting policies, grants are recognised in the statement of financial activities when approved by the Trustees and communicated to the recipients, irrespective of the future period over which payments are to be made, and the obligations outstanding at the year end are recognised as creditors.

Costs

These continue to be very low in relation to the levels of income and donations made and are kept under review by the Director and Trustees to ensure they remain lean as a proportion of grant expenditure.

Reserves

The Trustees' policy is to maintain reserves of approximately 50% of the Foundation's annual income bearing in mind the general timing of income receipts, their general pattern of giving and the current economic climate. As a result of the record level of grants awarded, total income reserves at the end of the year had reduced to £29.6 million and this will be taken into account when assessing levels of grant-making for the following financial year.

Investment objectives

The Trustees' investment objectives in relation to their non-Wittington group assets as set out in the policy statement are to preserve the absolute value of the capital, whilst maintaining its 'real' value. The managers are instructed to adopt a relatively conservative investment strategy investing in a balanced portfolio without geographical, currency or sector restriction, subject to the terms of a Charity Commission Order dated 19 September 2001. The primary benchmark for investment performance remains at RPI plus 4% over a rolling three year period, although comparison is also made on an annual basis with the ARC (Asset Risk Consultants) Charity Steady Growth Index and, in the case of the Goldman Sachs portfolio, the HFRX Hedge Fund Index.

The Trustees are satisfied that the two investment managers have suitable policies in place regarding their stock selection to ensure that these comply with the latest ESG practices. The Trustees' principal investment, namely Associated British Foods plc, is a highly diversified global company with an extensive and practical approach to responsible business. The Trustees have a direct line of sight into this business, making the Foundation's approach to responsible investment more transparent and with a higher degree of clarity than other models might afford.

Trustees' responsibilities for the financial statements

The Trustees are responsible for preparing the Trustees' Annual Report and the financial statements in accordance with applicable law and United Kingdom Accounting Standards (United Kingdom Generally Accepted Accounting Practice). The law applicable to charities in England and Wales requires the Trustees to prepare financial statements for each financial year which give a true and fair view of the state of affairs of the charity and of the incoming resources and application of resources of the charity for that period. In preparing these financial statements, the Trustees are required to:

- select suitable accounting policies and then apply them consistently
- observe the methods and principles in the Charities SORP
- make judgements and estimates that are reasonable and prudent
- state whether applicable accounting standards and statements of recommended practice have been followed, subject to any material departures disclosed and explained in the financial statements
- prepare the financial statements on the going concern basis unless it is inappropriate to presume that the charity will continue in operation

The Trustees are responsible for keeping proper records which disclose with reasonable accuracy the financial position of the charity and enable them to ensure that the financial statements comply with the Charities Act 2011, the Charity (Accounts and Reports) Regulations 2008 and the provisions of the Trust Deed. They are also responsible for safeguarding the charity's assets and hence taking reasonable steps for the prevention and detection of fraud and breaches of law and regulations.

The Trustees are responsible for the maintenance and integrity of the charity and financial information included on the charity's website. Legislation in the United Kingdom governing the preparation and dissemination of financial statements may differ from legislation in other jurisdictions.

Plans for future periods

Despite the hope for economic and social recovery provided by the Covid-19 vaccination programme, some of the challenges experienced over the past year by charities and their beneficiaries are likely to continue for some time into the future. We have all had to adapt to a new environment and ways of working and the Trustees will continue in their aim to respond to the changing needs of the charity sector.

The record value of grants this year, made in these unique circumstances, has been exceptional and it is expected that the level of grants next year will return to 2020 levels. However, the Trustees will continue to work to provide funding where it is most needed and can most effectively be utilised to make a difference. We will also maintain our ability to respond promptly and effectively to a crisis, relying upon the consistent performance of the Foundation's investment endowment and prudent income reserves.

Sir Guy H Weston

Chairman of the Trustees

18 October 2021



Director's Report

I hope that this report finds you and your loved ones in good health. A year ago, it would have been unthinkable that we would be producing a

second annual report with the coronavirus pandemic continuing to impact our daily lives.

'Extraordinary' is perhaps the word many of us associate with 2020, and all of us at the Foundation have been consistently humbled by the amazing work of our nation's charities. Over the past year our charity partners have been exceptional: while vulnerable people were forced into greater isolation and need, the vital charities that support them found innovative ways to adapt and deliver their services while battling financial instability, sickness, volunteer shortages, staff on furlough and, at home, coping with home-schooling, bereavement and myriad pressures.

The Foundation's Trustees and staff have been inspired by the sector and have worked incredibly hard to ensure that the Foundation was able to grant a record-breaking sum of over £98 million to over 2,000 organisations across the UK. My grateful thanks go to our passionate and determined team who worked tirelessly under challenging circumstances. For further insight please see our brief, separate document entitled 'A Covid-19 Experience' which is available on our website as a tribute to the sector and which summarises our response to the pandemic.

Throughout the year the Trustees convened a range of extraordinary Board meetings alongside their usual timetable, to consider swiftly the many funding requests from organisations supporting vulnerable people. Examples include grants to charities such as SafeLives that speedily developed and disseminated guidance to over 2,000 frontline practitioners and first responders tackling domestic abuse and violence; to St Mungo's which gave one-to-one support to 1,600 homeless people to reduce their chances of returning to the streets after lockdown; to FareShare that distributed food to charities supporting vulnerable families across the UK; and to many organisations supporting our nation's young people including The Mix, Place2Be, Onside, Greenhouse Sports and the Scout Association to name just a few.

However, 2020 was not entirely defined by emergency funding. The Trustees also made a range of strategic grants for innovations to support the voluntary sector and its resilience into the future. These included an investment in Charity Bank and a grant to Social and Sustainable Capital (SASC). Charity Bank takes a unique approach to repayable finance within the voluntary sector and is committed to supporting organisations that facilitate positive social change – while many mainstream lenders scaled back their loans during the pandemic, Charity Bank increased its loan programme and the Trustees were delighted to commit £1 million in the knowledge it would be leveraged into loans of around £8 million across the sector. Similarly, SASC also provides financial support to charities that meet social need, and the organisation shares the Foundation's view that specialist charities and local people are best suited to find solutions for their communities, rather than advocating a 'one size fits all' model. SASC developed its Social and Sustainable Housing fund to address the significant and unmet need for safe, quality housing for charities working to prevent homelessness. Through this fund SASC makes loans to enable charities to purchase housing stock directly so their vulnerable clients are not subject to the uncertainties of private rental. The Trustees were pleased to make a grant of £5 million to SASC's housing fund.

This last year has also demonstrated a greater appetite for working in partnership across the sector. At times this has been driven by financial necessity, but also by a passion and commitment to supporting the most vulnerable in our communities. We have seen a range of collaborations, from locally based organisations coming together to support their shared communities, to national organisations working together to tackle major challenges such as homelessness, elderly isolation, and mental health. Funders too have come together to ensure that decisions are made swiftly, information is shared and funds are deployed to where they are most urgently needed. We donated funds alongside other funders to the National Emergencies Trust and The Fore and joined working groups including the Operations Working Group at the Department of Culture Media and Sport (DCMS) and the Arts Funders Forum to ensure we remained well connected with changes as they evolved.

We have also strengthened our existing partnerships, with an example being our ongoing collaboration with Pilotlight, with which we run the Weston Charity Awards. These awards offer structured mentoring and business coaching to frontline charities working in the fields of Youth, Community and Welfare. Established in 2014 the Awards now extend across the North of England,

the Midlands and Wales. In 2020 the Awards supported 20 organisations and since they began the Weston Charity Awards have worked with 130 charities that themselves support over 650,000 people. We are excited to see the Awards continue for their seventh year in 2021.

Another sector that has been especially impacted by the pandemic has been the arts, and particularly organisations that work hard to generate income from activities such as tickets, food and beverage sales and venue hire. To support the sector the Foundation launched the Weston Culture Fund to enable organisations to restart work, refresh their activities and re-engage with audiences following Covid-19 closures. The scale of need was evident with requests totalling over £128 million for a £25 million fund. The Trustees were impressed by the ingenuity of the sector and were delighted to increase the fund by over 20% to grant more than £30 million in total. The following section highlights some examples of the exceptional organisations that the fund supported.

Covid-19 also highlighted many social and health disparities in the UK; the Trustees have always believed in supporting everyone to thrive and participate fully in society, so funding organisations that address these issues continues to be a focus for the Foundation. Grants made during the year included a partnership with The Fore to help small charities working within and led by marginalised communities become more resilient and sustainable; the Brilliant Club to increase the number of pupils from under-represented backgrounds into university and to the Weston Jerwood Creative Bursaries to create paid entry-level roles for young people from diverse backgrounds, not only developing more diverse workforces but transforming the way arts organisations recruit. We also scrutinised every aspect of the Foundation's operations and made changes accordingly. We have further diversified our staff team, had all our communications and processes externally audited from an accessibility perspective, undertook unconscious bias training, and we continue to listen to and learn from our charity partners. While mindful of the workload of applicants, we have also improved the collection of demographic data about their beneficiaries to monitor and inform our work in a pragmatic way and ensure we continue to reach the most disadvantaged.

While Covid-19 impacted our daily lives, our Trustees also remain aware of the climate challenges faced by our planet and they supported more charities working to improve our environment than ever before. During the year we released our research report 'Prioritising our Planet' which

highlighted, direct from the sector, the key difficulties the environmental sector faces. We took immediate and direct action and launched the 'Weston Communicating Climate Programme' in partnership with the Media Trust, details of which follow in the next section. The pandemic and its impact are not yet over, however for over 60 years the Foundation has partnered with charities to help them thrive and our Trustees and team remain determined to do our best for those who need us, now more than ever.

Philippa Charles
Director

Weston Culture Fund

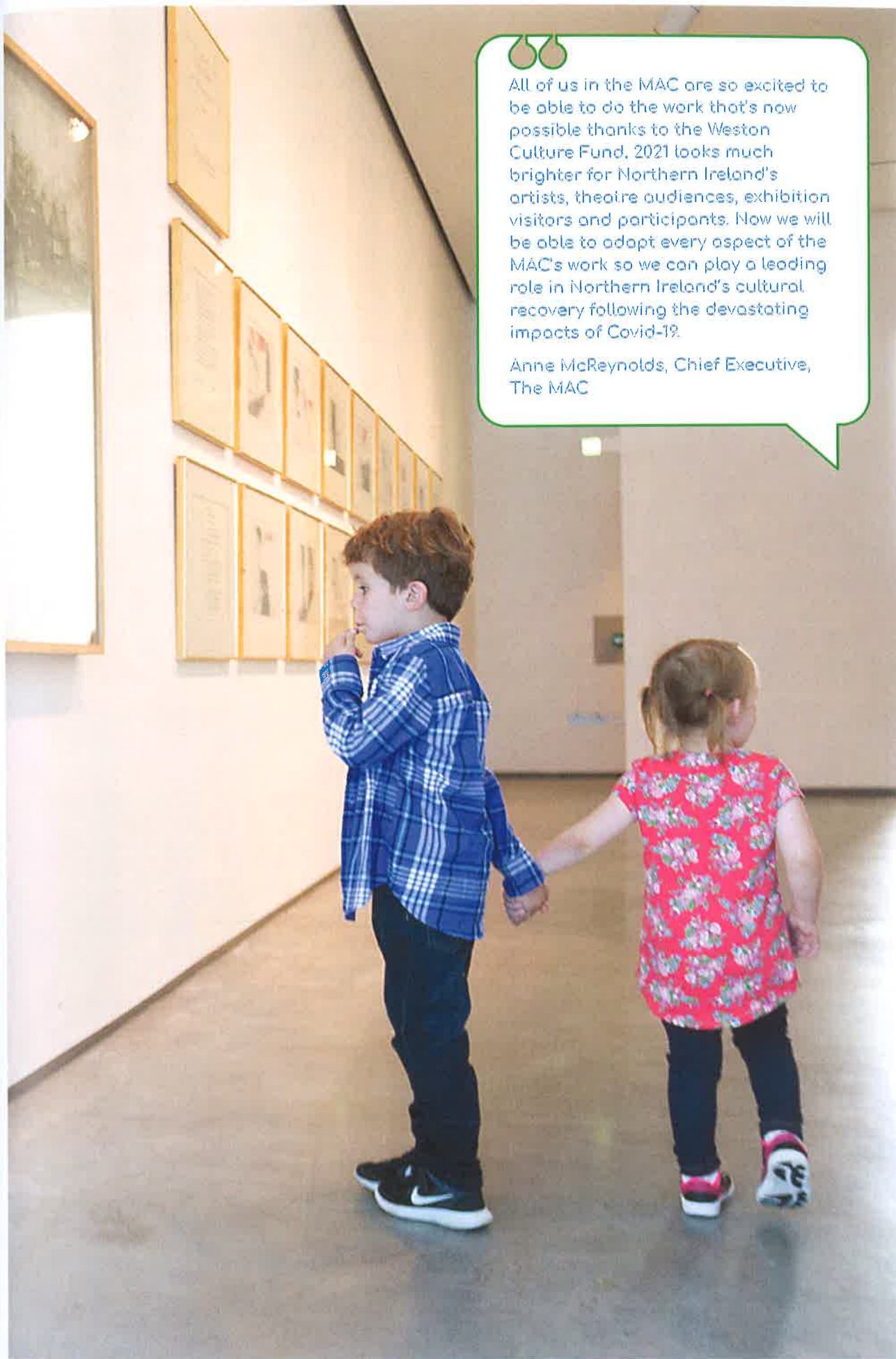
The UK's cultural sector is among the best in the world and has been hit particularly hard by the pandemic, its ongoing series of lockdowns and uncertainty as to when public places can reopen. This has been especially the case for organisations that work hard to generate significant proportions of their income from activities such as ticket sales, venue hire and food and beverage offerings. Many organisations found themselves relying on reserves and having to furlough staff to preserve resources, while wanting to honour contracts with freelance artists, being determined to maintain contact with their audiences and local communities and to continue programme development. This intense combination of challenges has left some of the UK's cultural institutions in a precarious position. The Foundation acted swiftly to support the arts and created a fund to aid the sustainability of

cultural charities in appreciation of the crucial role they play within our local communities; providing employment, volunteering, learning and outreach opportunities which all contribute to our collective wellbeing. The resulting Weston Culture Fund was a national initiative designed to support mid-sized and large-scale cultural organisations to restart important work and refresh their plans to bring audiences back. Applicants were invited to apply for costs associated with three areas: restarting and reopening; making critical adaptations; and for developing programming to reach existing and new audiences. We received applications totalling £128 million: the Trustees held three extraordinary Board meetings in January 2021 to review the Culture Fund applications and awarded a total of £30.2 million in 106 grants ranging from £100,000 to £1.5 million depending on the size of the organisation.



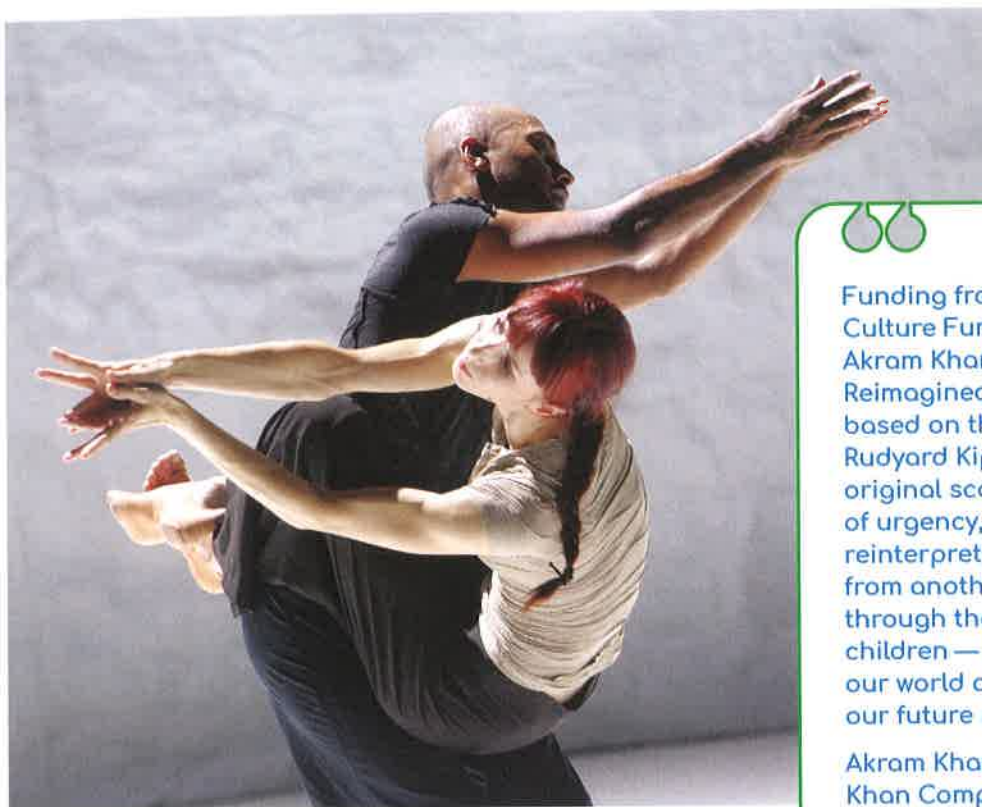
This generous grant enables Ballet Black to create high quality films of two of our ballets. These digital alternatives to live performances mean we can continue to introduce diverse audiences to classical ballet.

Cassa Pancho MBE,
Founder, CEO & Artistic
Director, Ballet Black



All of us in the MAC are so excited to be able to do the work that's now possible thanks to the Weston Culture Fund, 2021 looks much brighter for Northern Ireland's artists, theatre audiences, exhibition visitors and participants. Now we will be able to adapt every aspect of the MAC's work so we can play a leading role in Northern Ireland's cultural recovery following the devastating impacts of Covid-19.

Anne McReynolds, Chief Executive,
The MAC



Funding from the Weston Culture Fund will support Akram Khan's *Jungle Book Reimagined*, a brand-new work based on the original story by Rudyard Kipling and set to an original score. With a new sense of urgency, Akram will reinterpret this known story from another perspective, through the lens of today's children — those who will inherit our world and who will become our future storytellers.

Akram Khan, Founder, Akram Khan Company



Thanks to the incredible support from the Weston Culture Fund, we can stay connected with audiences across the UK. We have just launched our brand-new online video on demand platform, giving us much-needed flexibility for the future.

Juliet Tweedie, Head of Development, Centre for the Moving Image





We are delighted that the Weston Culture Fund will enable us to develop our creative and entrepreneurial approaches to adapting programmes and platforms in direct response to the pandemic, using children's literature to help our communities survive and thrive.

Mairi Kidd, Chief Executive, Seven Stories

The Trustees took many factors into account when making decisions. These included ensuring a good geographical spread across the UK with a focus on areas of low arts engagement and high on the indices of deprivation; applications with a clear commitment to diversity, equity and inclusion; a fair spread of art form/cultural activity that reflected the interconnectedness of the cultural sector (e.g. receiving venues need content from touring companies to attract audiences while touring companies need work to survive and continue to engage freelance artists); and organisations that demonstrated ingenuity in their approach. These considerations were also balanced with a view to prudent financial management and business planning, though our Trustees were mindful that planning was very difficult during such uncertainty.

Creating and running the Weston Culture Fund was very informative and we learned a lot from our partners in the arts sector who told us they believed that audience engagement with the arts

would alter permanently due to the pandemic. They noted that while this offered opportunities to grow and diversify audiences, it also presented challenges as organisations would be competing for audiences on a much wider basis. Devising new ways to maintain audiences' engagement will be vital to organisations' sustainability and, while apprehensive about the future, many have told us they were excited by the opportunities the pandemic created to experiment and try new things.

Many organisations also commented on the impact of the pandemic on freelance artists and wanted to ensure they could continue to generate high-quality content to keep talented professionals in work and, for touring companies, to ensure that venues were able to reopen with fresh shows to encourage their audiences to return. The level of partnerships and collaborations that emerged as a result of Covid-19 was also very evident, with supportive and practical activities happening across the country, which was heartening and inspiring.



We are hugely excited to be reconnecting with our audiences and to be developing unique experiences, platforms and partnerships with international artists and curators. We'll be using the programme to test, embed and share new ways of working.

Amanda Spruyt, Head of Learning, Nottingham Contemporary

Ongoing learning is important to us and we will continue to monitor the impact of the Culture Fund. We have commissioned Dr Beth Breeze, Director of Centre for Philanthropy, University of Kent, to conduct a longitudinal study on the impact of the Weston Culture Fund and we look forward to sharing the results in future years, while staying in touch with the 106 Weston Culture Fund grantees as they work to emerge from the pandemic.



The Weston Culture Fund grant has made an immediate difference to our ability to bounce back quickly. It will mean we can offer employment to disabled and non-disabled musicians. The funding will act as a catalyst for creating a new talent development scheme and new technology for increasing access for events for D/deaf audiences.

Jonathan Harper, CEO and Executive Producer, Paraorchestra

Valuing our natural world

While Covid-19 has been a dominating theme this year, our Trustees were also mindful that the issues facing our planet and how humans interact with our natural world and consume resources remain critical. This year we launched a report commissioned with IG Advisors to survey and research the UK environment sector. We undertook this important exercise to learn more about the challenges of the sector directly from those working on a wide range of issues connected to the protection and preservation of our natural world. The resulting report, entitled 'Prioritising Our Planet', highlighted that the sector is facing critical challenges when it comes to communicating what their work involves and the need for everyone to act in relation to the urgency of the climate and environment crisis.

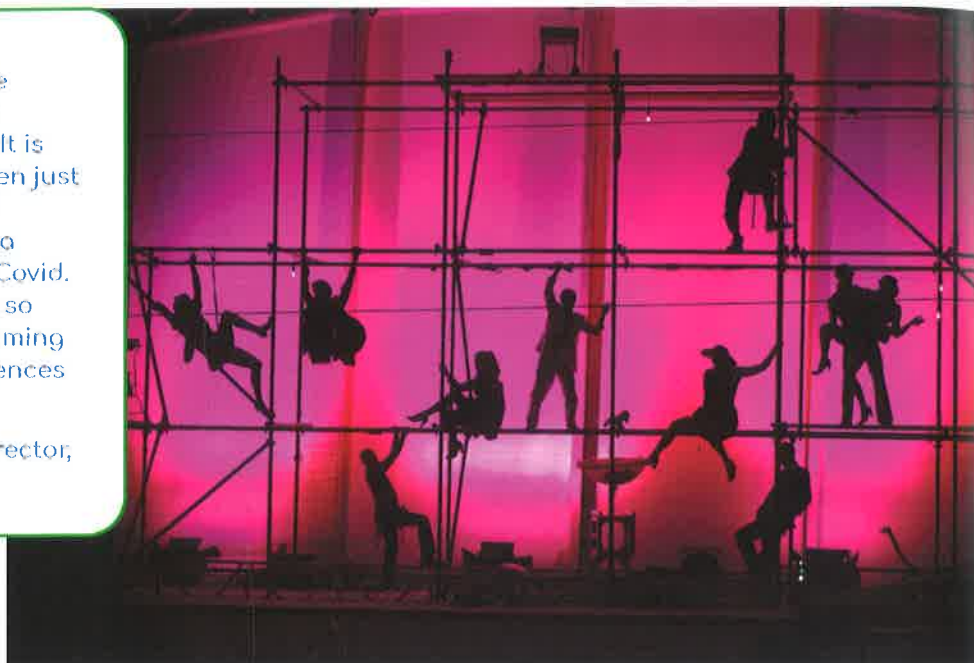
In response to the learning from this research, we took decisive action to invite The Media Trust, a specialist communications charity the Foundation has supported over the past decade, to run a skills-building programme for environment charities.





The support from the Weston Culture Fund changes everything. It is the difference between just surviving the next 12 months, to ensuring a creative future post Covid. This support gets us so much closer to welcoming our artists and audiences back to the big top.

Tom Rack, Artistic Director,
NoFit State Circus



We are incredibly grateful for such extraordinary support from the Garfield Weston Foundation. Although the pandemic continues to pose very serious challenges, this transformational gift is a huge vote of confidence in our plans to rebuild our activities, reopen our theatres, and will enable us to reimagine our future as a National Theatre for everyone.

Lisa Burger, Executive Director,
National Theatre





The generous grant from the Weston Culture Fund provides crucial support ... it will enable us to reopen our Hall to present live concerts and continue our On Demand programme throughout the rest of the year. It's a real vote of confidence and trust.

Michael Eakin, Chief Executive, Royal Liverpool Philharmonic

The Media Trust excels in helping charities develop a stronger voice by partnering them with expert media and creative industry professionals. Together we launched 'Weston Communicating Climate', a six-month skills programme to build

capability, capacity and confidence with expert-led communications training covering a wide range of activities from clarity of messaging to social media. Over 80 environmental charities applied to the programme and 30 were selected to receive structured communications training, peer networking support, and media interview training. The programme also includes four free sector-wide communications masterclasses to ensure as many organisations as possible can benefit. With the COP26 UN climate summit to be held in the UK in November 2021 and the Covid-19 crisis exposing the need for greater national and global solidarity, there has arguably never been a more important time to help enable more impactful communications.

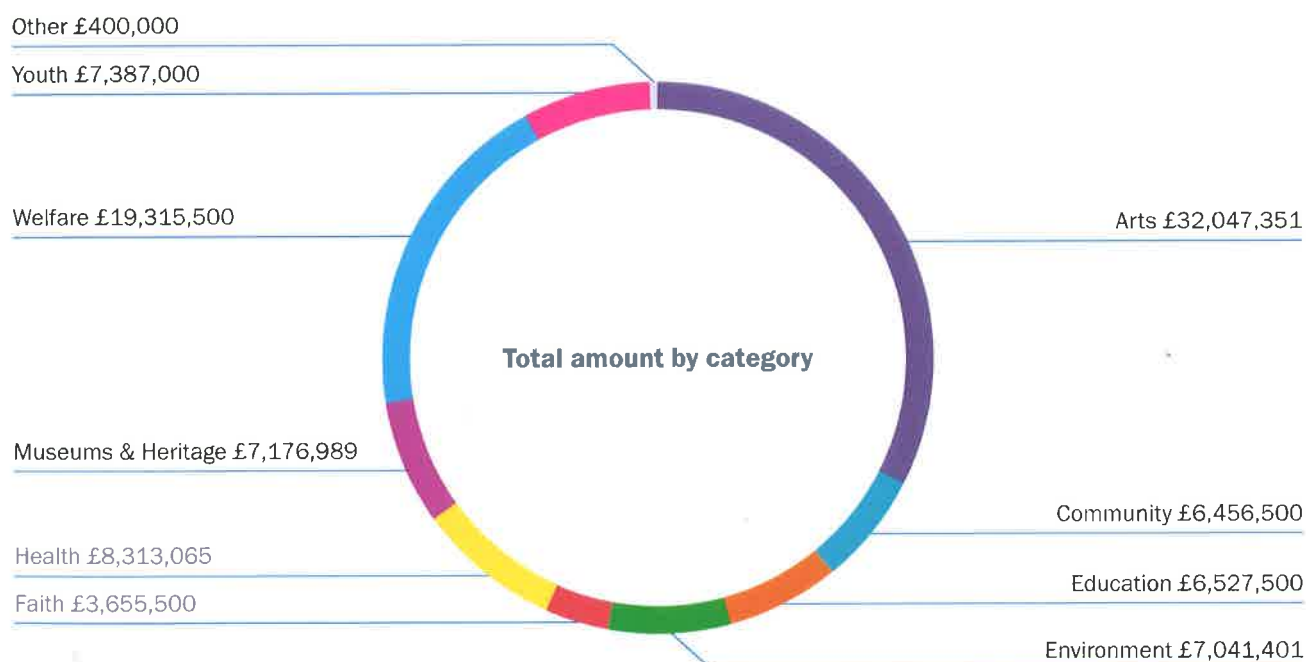


Weston Culture funding gave the Museum the resources – and confidence – to completely re-design the way we engage people. As we re-open our doors, we now have additional capacity to reach new audiences across Cornwall, the UK and beyond.

Richard Doughty, Director, National Maritime Museum Cornwall

Summary of grants awarded in the year ended 5 April 2021

Category	Over £20,000	No. of grants	£20,000 and under	No. of grants	Total amount £	Total no. of grants
Arts	31,050,351	167	997,000	78	32,047,351	245
Community	3,745,000	80	2,711,500	275	6,456,500	355
Education	5,939,500	66	588,000	57	6,527,500	123
Environment	6,323,401	50	718,000	66	7,041,401	116
Faith	1,000,000	30	2,655,500	337	3,655,500	367
Health	7,196,065	85	1,117,000	79	8,313,065	164
Museums & Heritage	6,940,989	47	236,000	21	7,176,989	68
Welfare	16,131,000	167	3,184,500	253	19,315,500	420
Youth	5,425,000	98	1,962,000	166	7,387,000	264
Other	400,000	7	-	-	400,000	7
Totals	84,151,306	797	14,169,500	1,332	98,320,806	2,129



Other 7

Youth 264

Arts 245

Welfare 420

Community 355

Museums & Heritage 68

Education 123

Health 164

Environment 116

Faith 367

Number of grants by category

Yorkshire & The Humber £7,101,292

East Midlands £3,755,279

West Midlands £4,790,236

Eastern £3,466,098

Wales £4,585,901

South West £6,510,105

National (inc. London)
£40,160,436

South East £7,384,700

Scotland £5,973,231

Northern Ireland £2,996,748

North West £7,061,910

North East £4,434,870

Non-UK £100,000

Total amount by region

Yorkshire & The Humber 139

East Midlands 120

West Midlands 137

Eastern 135

Wales 105

South West 228

National (inc. London) 485

South East 282

Non-UK 1

North East 111

Scotland 160

North West 176

Northern Ireland 50

Number of grants by region

Independent auditors' report to the Trustees of the Garfield Weston Foundation

Opinion

We have audited the financial statements of Garfield Weston Foundation (the charity) for the year ended 5 April 2021 which comprise the Statement of Financial Activities, the Balance Sheet, the Cashflow Statement and notes to the financial statements, including significant accounting policies. The financial reporting framework that has been applied in their preparation is applicable law and United Kingdom Accounting Standards, including FRS 102 The Financial Reporting Standard applicable in the UK and Republic of Ireland (United Kingdom Generally Accepted Accounting Practice).

In our opinion the financial statements:

- give a true and fair view of the state of the charity's affairs as at 5 April 2021 and of its incoming resources and application of resources for the year then ended
- have been properly prepared in accordance with United Kingdom Generally Accepted Accounting Practice and
- have been prepared in accordance with the Charities Act 2011

Basis for opinion

We conducted our audit in accordance with International Standards on Auditing (UK) (ISAs (UK)) and applicable law. Our responsibilities under those standards are further described in the Auditor's responsibilities for the audit of the financial statements section of our report. We are independent of the charity in accordance with the ethical requirements that are relevant to our audit of the financial statements in the UK, including the FRC's Ethical Standard, and we have fulfilled our other ethical responsibilities in accordance with these requirements. We believe that the audit evidence we have obtained is sufficient and appropriate to provide a basis for our opinion.

Conclusions relating to going concern

In auditing the financial statements, we have concluded that the Trustees' use of the going concern basis of accounting in the preparation of the financial statement is appropriate.

Based on the work we have performed, we have not identified any material uncertainties relating to events or conditions that, individually or collectively, may cast significant doubt on the charity's ability to continue as a going concern for a period of at least twelve months from when the financial statements are authorised for issue.

Our responsibilities and the responsibilities of the Trustees with respect to going concern are described in the relevant sections of this report.

Other information

The other information comprises the information included in the annual report other than the financial statements and our auditor's report thereon. The Trustees are responsible for the other information contained within the financial statements. Our opinion on the financial statements does not cover the other information and, except to the extent otherwise explicitly stated in our report, we do not express any form of assurance conclusion thereon.

Our responsibility is to read the other information and, in doing so, consider whether the other information is materially inconsistent with the financial statements or our knowledge obtained in the course of the audit, or otherwise appears to be materially misstated. If we identify such material inconsistencies or apparent material misstatements, we are required to determine whether there is a material misstatement in the financial statements or a material misstatement of the other information. If, based on the work we have performed, we conclude that there is a material misstatement of this other information, we are required to report that fact. We have nothing to report in this regard.

Matters on which we are required to report by exception

In the light of the knowledge and understanding of the charity and its environment obtained in the course of the audit, we have not identified material misstatements in the Trustees' report. We have nothing to report in respect of the following matters where the Charities Act 2011 requires us to report to you if, in our opinion:

- adequate accounting records have not been kept, or returns adequate for our audit have not been received from branches not visited by us
- the financial statements are not in agreement with the accounting records and returns
- certain disclosures of Trustees' remuneration specified by law are not made
- we have not received all the information and explanations we require for our audit

Responsibilities of Trustees

As explained more fully in the Trustees' responsibilities statement set out on page 8, the Trustees are responsible for the preparation of the financial statements and for being satisfied that they give a true and fair view, and for such internal control as the Trustees determine is necessary to enable the preparation of financial statements that are free from material misstatement, whether due to fraud or error.

In preparing the financial statements, the Trustees are responsible for assessing the charity's ability to continue as a going concern, disclosing, as applicable, matters related to going concern and using the going concern basis of accounting unless the Trustees either intend to liquidate the charity or to cease operations, or have no realistic alternative but to do so.

Auditors' responsibilities for the audit of the financial statements

We have been appointed as auditor under section 151 of the Charities Act 2011 and report in accordance with the Act and relevant regulations made or having effect thereunder.

Our objectives are to obtain reasonable assurance about whether the financial statements as a whole are free from material misstatement, whether due to fraud or error, and to issue an auditor's report that includes our opinion. Reasonable assurance is a high level of assurance, but is not a guarantee that an audit conducted in accordance with ISAs (UK) will always detect a material misstatement when it exists. Misstatements can arise from fraud or error and are considered material if, individually or in the aggregate, they could reasonably be expected to influence the economic decisions of users taken on the basis of these financial statements.

Details of the extent to which the audit was considered capable of detecting irregularities, including fraud and non-compliance with laws and regulations are set out below.

A further description of our responsibilities for the audit of the financial statements is located on the Financial Reporting Council's website at: www.frc.org.uk/auditorsresponsibilities This description forms part of our auditor's report.

Extent to which the audit was considered capable of detecting irregularities including fraud

Irregularities, including fraud, are instances of non-compliance with laws and regulations. We design procedures in line with our responsibilities, outlined above, to detect material misstatements in respect of irregularities, including fraud. The extent to which our procedures are capable of detecting irregularities, including fraud is detailed below.

Based on our understanding of the charity and the industry in which it operates, we identified that the principal risks of non-compliance with laws and regulations related to the acts by the charity, which were contrary to applicable laws and regulations including fraud, and we considered the extent to which non-compliance might have a material effect on the financial statements. We also considered those laws and regulations that have a direct impact on the preparation of the financial statements such as the Charities Act 2011.

We evaluated management's incentives and opportunities for manipulation of the financial statements (including the risk of override of controls), and determined that the principal risk related to the valuation of the unquoted investment in Wittington Investments Limited ('Wittington') of which the Foundation owns 683,073 50p ordinary shares (79.2%).

The valuation of Wittington requires significant estimation as it is an unquoted company and there is no readily identifiable market price for its shares. Accordingly, the value of the Foundation's investment has been assessed by the Trustees on the basis of the share of the value of the underlying net assets of Wittington attributable to the Foundation's holding as at 5 April 2021. As Wittington's financial statements are audited as at 12 September 2020, there is a varying degree of estimation required to assess the net asset value as at 5 April 2021 and therefore there is more potential for misstatement in this area.

We assessed Management's valuation methodology and considered whether it was in accordance with the accounting policies of the Foundation, applicable accounting standards and industry practice. Wittington's principal asset is a majority holding (54.5%) in Associated British Foods plc. Therefore, the value of the Foundation's investment in Wittington is driven predominantly by the Associated British Foods plc share price as at 5 April 2021. As the shares are listed on the London Stock Exchange, the value of this holding can be determined easily.

Other audit procedures performed included: review of the financial statement disclosures to underlying supporting documentation to assess compliance with relevant laws and regulations, review of correspondence with legal advisors, review of minutes of meetings held by those charged with governance, enquiries of management and testing of journals and evaluating whether there was evidence of bias by the Trustees that represented a risk of material misstatement due to fraud.

There are inherent limitations in the audit procedures described above and the further removed non-compliance with laws and regulations is from the events and transactions reflected in the financial statements, the less likely we would become aware of it. Also, the risk of not detecting a material misstatement due to fraud is higher than the risk of not detecting one resulting from error, as fraud may involve deliberate concealment by, for example, forgery or intentional misrepresentations, or through collusion.

Use of our report

This report is made solely to the charity's Trustees, as a body, in accordance with Chapter 3 of Part 8 of the Charities Act 2011 and regulations made under section 154 of that Act. Our audit work has been undertaken so that we might state to the charity's Trustees those matters we are required to state to them in an auditor's report and for no other purpose. To the fullest extent permitted by law, we do not accept or assume responsibility to anyone other than the charity and the charity's Trustees as a body, for our audit work, for this report, or for the opinions we have formed.

UHY Hacker Young
Chartered
Accountants
Statutory Auditor

Quadrant House
4 Thomas More Square
London E1W 1YW

18 October 2021

UHY Hacker Young LLP is eligible to act as an auditor in terms of section 1212 of the Companies Act 2006.

Statement of financial activities for the year ended 5 April 2021

		Unrestricted funds				
	Notes	Income funds £'000	Expendable capital £'000	Restricted funds £'000	Total funds 2021 £'000	Total funds 2020 £'000
Income and endowments from						
Investments	2	82,224	1,739	-	83,963	84,761
Total income		82,224	1,739	-	83,963	84,761
Expenditure						
Costs of generating funds:						
Raising funds		-	154	-	154	169
Charitable activities:						
Grant making activities	4	98,583	-	-	98,583	88,626
Total expenditure		98,583	154	-	98,737	88,795
<i>Net (outgoings)/ income</i>		<i>(16,359)</i>	<i>1,585</i>	<i>-</i>	<i>(14,774)</i>	<i>(4,034)</i>
Other recognised gains and losses						
Gains/(losses) on revaluation and disposal of investment assets						
		-	18,242	2,330,965	2,349,207	(2,506,012)
<i>Net movement in funds before transfers between funds</i>		<i>(16,359)</i>	<i>19,827</i>	<i>2,330,965</i>	<i>2,334,433</i>	<i>(2,510,046)</i>
Gross transfers between funds	13	3,832	(3,834)	2	-	-
<i>Net movement in funds</i>		<i>(12,527)</i>	<i>15,993</i>	<i>2,330,967</i>	<i>2,334,433</i>	<i>(2,510,046)</i>
Reconciliation of funds						
Total funds brought forward		42,151	90,249	7,330,630	7,463,030	9,973,076
Total funds carried forward		29,624	106,242	9,661,597	9,797,463	7,463,030

All recognised gains and losses have been included in the Statement of Financial Activities and the amounts included are derived entirely from the continuing activities of the Foundation.

Balance sheet as at 5 April 2021

	Notes	2021		2020	
		£'000	£'000	£'000	£'000
Fixed assets					
Investments	9		9,767,172		7,419,685
Current assets					
Debtors	11	1,322		1,535	
Cash at bank		67,401		75,585	
		<u>68,723</u>		<u>77,120</u>	
Creditors: amounts falling due within one year	12(a)	(38,432)		(33,775)	
Net current assets			<u>30,291</u>		<u>43,345</u>
Net assets			<u>9,797,463</u>		<u>7,463,030</u>
Restricted funds					
Permanent endowment funds	13 and 14		9,661,597		7,330,630
Unrestricted funds					
Expendable capital fund	13 and 14		106,242		90,249
Income funds	13 and 14		<u>29,624</u>		<u>42,151</u>
			<u>9,797,463</u>		<u>7,463,030</u>

The financial statements on page 25 to 68 were approved by the Trustees on 18 October 2021 and were signed on their behalf by:

Guy H Weston

George G Weston
Trustees

Cash flow statement for the year ended 5 April 2021

		2021	2020
	Notes	£'000	£'000
Cashflows from operating activities			
Net cash outflow from operating activities	15	(94,161)	(80,956)
Cash flow from investing activities			
Dividends and interest from investments		83,963	84,761
Proceeds from disposal of investments		10,470	7,916
Purchase of investments		(11,094)	(5,904)
Net cash provided by from investing activities		83,339	86,773
(Decrease)/increase in cash	16	(10,822)	5,817

Notes to the financial statements for the year ended 5 April 2021

1 Accounting policies

The financial statements have been prepared in accordance with applicable UK accounting standards (UK Generally Accepted Accounting Practice), including Financial Reporting Standard FRS 102 'The Financial Reporting Standard applicable in the United Kingdom and the Republic of Ireland' ("FRS 102"). In particular, they comply with the Charities Act 2011 and the Statement of Recommended Practice 'Accounting and Reporting by Charities (the "SORP")'.

The financial statements have been prepared to give a 'true and fair' view and have departed from the Charities (Accounts and Report) Regulations 2008 only to the extent required to provide a 'true and fair' view. This departure has involved following the Charities SORP (FRS 102).

The Foundation constitutes a public benefit entity as defined by FRS 102. The financial statements are prepared on the historical cost basis except that certain financial instruments are stated at fair value.

The financial statements have been prepared in sterling, which is the functional currency of the Foundation. Monetary amounts in these financial statements are rounded to £'000s.

The particular accounting policies adopted by the Trustees are described below:

a Going concern

Whilst the Covid-19 pandemic remains a worldwide crisis and at the date of this report, the commercial situation has improved materially since the date of the prior year report. Specifically, the progressive re-opening of the retail and hospitality sectors in the UK in the months following May 2021 has seen a rapid recovery in the inventory levels, working capital requirements and cash balances of Associated British Foods plc, with the closing price of shares at 5 April 2021 being 41% higher on prior year as a consequence. The valuations of Wittington's investments in UK financial markets also improved year on year, with the FTSE100 index 24% higher year on year; at 0.78% the yield on 10 year UK Treasury bonds was 1.5x prior year yields. In this context, the Trustees consider that there are no material uncertainties about the Foundation's ability to continue as a going concern. There remains some uncertainty as to the levels of dividend income which will be paid by UK companies over the next year as a result of the longer-term financial impact of the Covid-19 pandemic, however the Foundation aims to draw on its income reserves where necessary to maintain grant levels as far as possible.

b Incoming resources

Dividends are included when received. Interest receivable on fixed interest securities and bank deposits is included on an accruals basis. All incoming resources are recognised once the Charity has entitlement to the resources, it is probable that the resources will be received and the monetary value of incoming resources can be measured with sufficient reliability.

c Resources expended and irrecoverable VAT

Liabilities are recognised as resources expended as soon as there is a legal or constructive obligation committing the Charity to the expenditure. All expenditure is accounted for on an accruals basis and has been classified under headings that aggregate all costs related to the category.

Grants awarded are charged in the year when formally awarded by the Trustees and communicated to the recipient irrespective of the period covered by the donation as they are regarded by the Trustees as financial obligations.

Irrecoverable VAT is charged against the category of resources expended for which it was incurred.

d Allocation of overhead and support costs

Overhead and support costs are allocated first between charitable activity and governance. Overhead and support costs relating to charitable activities have been apportioned based on the value of individual grant awards made as it is considered that more is spent awarding, monitoring and assessing grants of greater value. The allocation of overhead and support costs is analysed in note 5.

e Costs of generating funds

The costs of generating funds consist of investment management fees and commissions.

f Charitable activities

Costs of charitable activities include grants made and an apportionment of overhead and support costs as shown in notes 3 and 4.

g Governance costs

Governance costs comprise all costs involving the public accountability of the Charity and its compliance with regulation and good practice. These costs include costs related to statutory audit and legal fees together with an apportionment of overhead and support costs.

h Interest in Wittington Investments Limited

At 5 April 2021 the Foundation owned 79.2% (2020: 79.2%) of Wittington Investments Limited, a company registered in England. Wittington Investments Limited is the ultimate holding company of Associated British Foods plc, and a wide range of investments including Fortnum & Mason plc and Heal's plc, two hotels, a real estate portfolio and significant financial investments. Associated British Foods plc is listed on the London Stock Exchange. The Foundation receives its income from Wittington Investments Limited by way of dividends and records its investment in that company at Trustees' valuation.

As the activities of Wittington Investments Limited and its subsidiaries are fundamentally different from the activities of the Foundation, consolidated accounts have not been prepared as the Trustees are of the opinion that the adopted policy gives a true and fair view of the Foundation's assets and sources of income. Details of the consolidated accounts of Wittington Investments Limited are shown in note 9 to these accounts. The Trustees have agreed this policy with the Charity Commission.

i Fixed assets investments

Investments are stated at market value as at the balance sheet date. The statement of financial activities includes the net gains and losses arising on revaluation and disposals throughout the year.

j Realised gains and losses

All gains and losses are taken to the statement of financial activities as they arise. Realised gains and losses on investments are calculated as the difference between sales proceeds and opening market value. Unrealised gains and losses are calculated as the difference between the market value at the year end and opening market value. Realised and unrealised gains are not separated in the Statement of Financial Activities.

k Fund accounting

Details of the nature and purpose of each fund are set out in note 14.

l Financial instruments

Financial assets and financial liabilities are shown in note 8 to these accounts and are recognised when the Foundation becomes a party to the contractual provisions of the instrument.

Financial assets which qualify as basic financial instruments, including trade and other receivables and cash, are subsequently valued at amortised cost and assessed for impairment at the end of each reporting period.

Other financial assets, including investments, are subsequently valued at fair value.

Financial liabilities are classified according to the substance of the contractual arrangements entered into. All financial assets and liabilities are initially measured at transaction price including transaction costs, except for those financial assets classified as at fair value through profit or loss, which are initially measured at fair value. If an arrangement constitutes a financing transaction, the financial asset or financial liability is measured at the present value of the future payments discounted at a market rate of interest for a similar debt instrument.

Financial assets are derecognised only when either the contractual rights to the cash flows from the financial asset expire or are settled or all of the risks and rewards of ownership of the financial asset are substantially transferred to another party.

Financial liabilities are derecognised only when the obligation specified in the contract is discharged, cancelled or expires.

Investments are stated at market value at the balance sheet date. The market values of the managed portfolios are advised by the portfolio managers. The statement of financial activities includes the net gains and losses arising in revaluation and disposals through the year.

- **Quoted investments** comprise publicly quoted, listed securities including shares, bonds and units. Quoted investments are stated at fair value at the balance sheet date.
- **Unquoted investments** are valued at the Trustees' best estimate of fair value as explained in note 9.

2 Investment income

	Managed funds £'000	Charities property fund £'000	Unlisted £'000	2021 £'000	2020 £'000
Unlisted equities	-	-	82,140	82,140	82,140
Listed equities	1,048	-	-	1,048	1,288
Listed unit trusts	132	236	-	368	466
Listed corporate bonds and gilts	322	-	-	322	395
	1,502	236	82,140	83,878	84,289
Cash deposits – interest				53	297
Other Income				32	175
				83,963	84,761

The unlisted investment income comprises dividends received from Wittington Investments Limited.

Investment income – comparatives for the year ended 5 April 2020

	Managed funds £'000	Charities property fund £'000	Unlisted £'000	2020 £'000	2019 £'000
Unlisted equities	-	-	82,140	82,140	77,529
Listed equities	1,288	-	-	1,288	1,325
Listed unit trusts	214	252	-	466	450
Listed corporate bonds and gilts	395	-	-	395	354
	1,897	252	82,140	84,289	79,658
Cash deposits – interest				297	216
Other Income				175	86
				84,761	79,960

3 Grant-making activities

	2021 £'000	2020 £'000
Grants awarded (note 4)	98,583	88,626

The list of individual grants made during the year is set out in note 18 and grants paid during the year are summarised by category in note 12.

Significant aspects of the grant activity during the year are described on pages 2 to 19 of the Trustees' report.

4 Analysis of charitable expenditure

The Charity undertook no direct charitable activities but awarded grants to a number of institutions in furtherance of its charitable activities. As a consequence of supporting charitable organisations, the Foundation achieves public benefit. The Foundation's grant policy is to accept only appeals from UK registered charities. Registration provides an element of assurance of public benefit, although for charities registered before the implementation of the Charities Act 2006 the public benefit was a presumption.

	Grant funded activity £'000	Support costs £'000	Governance costs £'000	2021 Total £'000	2020 Total £'000
Arts	32,047	401	197	32,645	10,552
Community	6,457	81	40	6,578	9,075
Education	6,527	82	40	6,649	15,161
Environment	7,041	88	43	7,172	4,633
Faith	3,656	46	22	3,724	4,511
Health	8,313	104	51	8,468	19,482
Museums & Heritage	7,177	90	44	7,311	2,778
Welfare	19,316	242	118	19,676	12,413
Youth	7,387	92	45	7,524	9,262
Other	400	5	3	408	1,994
	98,321	1,231	603	100,155	89,861
Return relating to grants made in prior years	(319)	-	-	(319)	(685)
Expired commitments	(1,253)	-	-	(1,253)	(550)
	96,749	1,231	603	98,583	88,626

Analysis of charitable expenditure – comparatives for the year ended 5 April 2020

	Grant funded activity £'000	Support costs £'000	Governance costs £'000	2020 Total £'000	2019 Total £'000
Arts	10,345	148	59	10,552	7,566
Community	8,898	127	50	9,075	12,900
Education	14,865	212	84	15,161	10,140
Environment	4,543	65	25	4,633	6,861
Faith	4,423	63	25	4,511	7,108
Health	19,102	272	108	19,482	7,880
Museums & Heritage	2,724	39	15	2,778	5,718
Welfare	12,170	174	69	12,413	14,729
Youth	9,081	129	52	9,262	7,500
Other	1,955	28	11	1,994	553
	88,106	1,257	498	89,861	80,955
Return relating to grants made in prior years	(685)	-	-	(685)	(3,130)
Expired commitments	(550)	-	-	(550)	(1,499)
	86,871	1,257	498	88,626	76,326

5 Allocation of support costs and overheads

	Governance costs £'000	Grant making activity £'000	Total 2021 £'000	Total 2020 £'000	Basis of Apportionment
Legal & professional fee costs	38	-	38	23	N/A
Staff costs	148	593	741	644	Staff time
Other costs	417	638	1,055	1,088	Staff time
	603	1,231	1,834	1,755	

The costs relating to grant-making activity represent costs incurred in assessing applications, administration of the grants awarded and post grant monitoring.

The Foundation does not employ any staff. Staff costs comprise charges of £614,050 (2020: £583,090) from Wittington Investments Limited in respect of the work undertaken by its employees for the Foundation and £78,750 (2020: £60,750) consultant charges.

Included within other support costs and overheads are amounts relating to accountancy of £50,490 (2020: £35,450), computing and IT costs of £26,293 (2020: £81,722) and accommodation costs of £402,490 (2020: £455,626).

Nine (2020: nine) Trustees received expenses totalling £537 (2020: £13,780) relating to travel and subsistence.

The total support cost attributable to charitable activities is then apportioned pro rata to the value of grants awarded in the year as set out in note 4.

Allocation of support costs and overheads – comparatives for the year ended 5 April 2020

	Governance costs £'000	Grant making activity £'000	Total 2020 £'000	Total 2019 £'000	Basis of Apportionment
Legal & professional fee costs	23		23	24	N/A
Staff costs	129	515	644	728	Staff time
Other costs	346	742	1,088	1,117	Staff time
	498	1,257	1,755	1,869	

6 Analysis of governance costs

	2021 £'000	2020 £'000
Auditors' remuneration – audit services	25	24
Staff costs	148	129
Other support costs	430	345
	603	498

The governance costs comprise costs of running the Foundation and planning for future developments, including audit fees and costs of complying with constitutional and statutory requirements, such as Trustees' meetings and the preparation of accounts satisfying public accountability.

7 Trustees' remuneration

a Trustees' remuneration

No remuneration was paid to the Trustees for their services to the Foundation.

b Directors' remuneration

As stated in notes 1(h) and 9, the Foundation owns 79.2% of Wittington Investments Limited which in turn holds 54.5% of Associated British Foods plc and 100% of Fortnum & Mason plc plus a number of other wholly owned subsidiaries.

Three of the Trustees, Guy Weston, George Weston and Anna Catrina Hobhouse are directors of Wittington Investments Limited. Of these three Guy Weston and Anna Hobhouse received remuneration from Wittington Investments Limited. Alannah Weston was appointed as a director of Wittington Investments Limited in May 2020. George Weston is a director of Associated British Foods plc and received remuneration from the company in that capacity. Anna Catrina Hobhouse is chairperson and a director of Fortnum & Mason plc and received remuneration from Wittington in that capacity.

Remuneration (comprising salary, fees, bonus and benefits) paid to Trustees in their capacity as directors of these companies, which is authorised by clause 13 of the Trust Deed, as set out in the most recently available accounts of the relevant companies was as follows:

	Year ended 12 September 2020 £'000	Year ended 14 September 2019 £'000
Anna Catrina Hobhouse – as a non- executive director of Wittington Investments Limited	18	20
as a chairperson and director of Fortnum & Mason plc	99	-
Guy H Weston – as a director of Wittington Investments Limited	372	363
George G Weston – as a director of Associated British Foods plc (note below)	1,138	4,146

	Year ended 12 July 2020 £'000	Year ended 10 July 2019 £'000
Anna Catrina Hobhouse – as a director of Fortnum & Mason plc	5	48

Note: full details of George G Weston's remuneration, pension and options are set out in the Remuneration Report contained in the Annual Report and Accounts 2020 of Associated British Foods plc.

c Key management remuneration

Key management personnel's remuneration constituted the total aggregate amount of £347,320 (2020: £332,202).

8 Financial instruments

	2021 £'000	2020 £'000
Carrying amount of financial assets		
Debt instruments measured at amortised cost	1,322	1,535
Instruments measured at fair value through profit or loss	9,767,172	7,419,685
	<u>9,768,494</u>	<u>7,421,220</u>
Carrying amount of financial liabilities		
Measured at amortised cost	38,432	33,775
	<u>38,432</u>	<u>33,775</u>

9 Investments

At valuation Fixed asset investments	Managed funds £'000	Charities property fund £'000	Unlisted £'000	Total £'000
At 6 April 2020	82,998	6,057	7,330,630	7,419,685
Movement in year	16,610	(90)	2,330,967	2,347,487
At 5 April 2021	99,608	5,967	9,661,597	9,767,172
At Cost*				
At 6 April 2020 and at 5 April 2021	68,500	5,000	4,745	78,245

* The cost at 5 April 2020 and 2021 is the historical cost of the investment in the managed funds and the charities property fund or, in the case of unlisted investments, the valuation at the date of the gift to the Foundation.

The managed funds are managed on a discretionary total return basis.

The charities property fund comprises units in the Savills Charities' Property Fund.

The unlisted investments comprise 683,073 50p ordinary shares (79.2%) of Wittington Investments Limited, an unquoted company, see note 1 (h).

Investments – comparatives for the year ended 5 April 2020

At valuation Fixed asset investments	Managed funds £'000	Charities property fund £'000	Unlisted £'000	Total £'000
At 6 April 2019	96,424	6,226	9,824,775	9,927,425
Movement in year	(13,426)	(169)	(2,494,145)	(2,507,740)
At 5 April 2020	82,998	6,057	7,330,630	7,419,685
At Cost*				
At 6 April 2019 and at 5 April 2020	68,500	5,000	4,745	78,245

Analysis of value of investment assets at 5 April 2021 by type

	Managed funds £'000	Charities property fund £'000	Unlisted £'000	Total £'000
Unlisted securities	-	-	9,661,597	9,661,597
Unlisted UCITS SICAV Fund	35,117	-	-	35,117
Listed equities	29,436	5,967	-	35,403
Listed unit trusts	28,869	-	-	28,869
Listed corporate bonds and gilts	5,329	-	-	5,329
Cash held within the portfolio	857	-	-	857
	99,608	5,967	9,661,597	9,767,172

Analysis of value of investment assets by type – comparatives for the year ended 5 April 2020

	Managed funds £'000	Charities property fund £'000	Unlisted £'000	Total £'000
Unlisted securities	3	-	7,330,630	7,330,633
Unlisted UCITS SICAV Fund	26,981	-	-	26,981
Listed equities	12,774	6,057	-	18,831
Listed unit trusts	8,009	-	-	8,009
Listed corporate bonds and gilts	31,736	-	-	31,736
Cash held within the portfolio	3,495	-	-	3,495
	82,998	6,057	7,330,630	7,419,685

The business of Wittington Investments Limited is the management of investments in a wide range of assets. As it is an unquoted company there is no readily identifiable market price for its shares. Accordingly, the value of the Foundation's investments has been assessed by the Trustees on the basis of the share of the value of the underlying net assets of Wittington attributable to the Foundation's holding.

Wittington's principal asset is a holding of 54.5% of the issued ordinary capital of Associated British Foods plc ('ABF') which is listed on The London Stock Exchange. In assessing the value of the underlying net assets of Wittington the value of its investment in ABF has been based on the closing price as at 5 April 2021. In arriving at this valuation no regard has been paid to the percentage controlling interest held by the Foundation.

In addition, Wittington holds a wide range of other assets managed in five different business segments:

- Other Retail, comprising the 100% ownership of Fortnum & Mason and Heal's, two long established retailers.
- Real Estate, investing in high-quality investment properties in the retail, office and distribution sectors across the UK. It also takes strategic positions in selective development opportunities, alongside local partners or sector specialists.
- Hotels, Wittington currently owns The Grand Brighton and Richmond Hill Hotel.
- Private Equity, investing both directly and via externally managed funds in private equity.
- Other Investments are principally composed of liquid investments in short-dated investment grade bonds and listed equities.

Whilst the Covid-19 pandemic remains a worldwide crisis at the date of this report, the commercial situation has improved since the date of the prior year report. Specifically, the progressive re-opening of the retail and hospitality sectors in the UK in the months following May 2021 has seen a rapid recovery in the inventory levels, working capital requirements and cash balances of Associated British Foods plc, with the closing price of shares at 5 April 2021 being 41% higher on prior year as a consequence. The valuations of Wittington's investments in UK financial markets also improved year on year, with the FTSE100 index 24% higher year on year; at 0.78% the yield on 10 year UK Treasury bonds was 1.5x prior year yields.

The group owns two hotels and a portfolio of investment properties. The portfolio is held at cost less provision for impairment within the financial statements. The third-party valuations prepared by the third party at 12 September 2020 were considerably higher than this carrying value when considering the portfolio in total. The Trustees do not expect material movement in the market value of the properties compared to the valuation as at 12 September 2020. In terms of cash collection, the portfolio has continued to perform considerably better than the industry average.

The value of these has been based on the Trustees' valuation at 5 April 2021 which takes into account the most recent set of audited financial statements of Wittington Investments Limited summarised below. The Trustees have no current intention of disposing of the interest in Wittington.

	12 September 2020 £'000	14 September 2019 £'000
Equity shareholders' funds	6,792	6,830
Total net assets	11,106	11,202
Revenues	14,133	16,025
Operating Costs	(13,281)	(14,726)
Profit attributable to equity holders	220	555
Minority interests	217	417
Profit for the period	437	972
Dividends payable	104	101

10 Capital commitments

The Trustees have made a commitment of £1 million to the Charity Bank, using capital to be withdrawn from the portfolio with Goldman Sachs, which is being accounted for as an investment as it will be an investment in Charity Bank's equity.

11 Debtors

	2021 £'000	2020 £'000
Debtor: amounts falling due within one year		
Accrued interest	471	205
Amount due from investment managers	851	1,330
	1,322	1,535

12 a | Creditors: amounts falling due within one year

	2021 £'000	2020 £'000
Grants payable	38,043	33,188
Accrued expenses	360	576
Trade creditors	29	11
	<u>38,432</u>	<u>33,775</u>

b | Total grants payable

	Grants payable b'fwd £'000	Grants awarded £'000	Grants paid £'000	Grants lapsed £'000	Grants payable c'fwd £'000
Arts	9,050	32,047	(34,149)	(325)	6,623
Community	1,945	6,457	(5,929)	(20)	2,453
Education	4,801	6,527	(8,320)	(535)	2,473
Environment	735	7,041	(4,940)	-	2,836
Faith	1,714	3,656	(2,615)	(278)	2,477
Health	11,425	8,313	(7,033)	-	12,705
Museums & Heritage	1,887	7,177	(5,274)	(75)	3,715
Welfare	1,100	19,316	(17,221)	(20)	3,175
Youth	531	7,387	(6,517)	-	1,401
Other	-	400	(215)	-	185
	<u>33,188</u>	<u>98,321</u>	<u>(92,213)</u>	<u>(1,253)</u>	<u>38,043</u>

The grants payable as at 5 April 2021 include grants awarded in the current year as well as grants awarded in prior years.

Total grants payable – comparatives for the year ended 5 April 2020

	Grants payable b'fwd £'000	Grants awarded £'000	Grants paid £'000	Grants lapsed £'000	Grants payable c'fwd £'000
Arts	8,260	10,345	(9,555)	-	9,050
Community	1,024	8,898	(7,872)	(105)	1,945
Education	8,521	14,866	(18,561)	(25)	4,801
Environment	1,130	4,543	(4,923)	(15)	735
Faith	1,733	4,424	(4,398)	(45)	1,714
Health	600	19,102	(8,177)	(100)	11,425
Museums & Heritage	2,972	2,724	(3,609)	(200)	1,887
Welfare	1,245	12,170	(12,315)	-	1,100
Youth	618	9,081	(9,108)	(60)	531
Other	-	1,955	(1,955)	-	-
	<u>26,103</u>	<u>88,108</u>	<u>(80,473)</u>	<u>(550)</u>	<u>33,188</u>

13 Analysis of charitable funds

Analysis of Fund movements	Balance at 6 April 2020 £'000	Incoming resources £'000	Resources expended £'000	Transfers £'000	Gains and losses £'000	Balance at 5 April 2021 £'000
Permanent endowment	7,330,630	-	-	2	2,330,965	9,661,597
Unrestricted expendable capital	90,249	1,739	(154)	(3,834)	18,242	106,242
Unrestricted income fund	42,151	82,224	(98,583)	3,832	-	29,624
Total	7,463,030	83,963	(98,737)	-	2,349,207	9,797,463

Permanent endowment

The permanent endowment funds comprise the original capital fund, and gains thereto, established to provide income for grant payments in accordance with the objectives of the Foundation. The capital may not be converted into income. The funds are represented by the investments included in fixed assets. Unrealised gains on revaluation of these investments are credited to the funds.

Unrestricted expendable capital

In accordance with the authority given to the Trustees under an Order of the Charity Commission dated 19 September 2001, £65,747,000 was transferred to an expendable capital fund in relation to which income and capital are distributable at the discretion of the Trustees. £5 million was invested in 2001/02 in the Charities Property Fund and £60 million was invested in 2002/03 with investment managers in balanced portfolios on a discretionary total return basis. Income and investment gains and losses are taken to this fund and the amount allocated to income by the Trustees, £3,832,000 (2020: £3,753,000), is shown as a transfer to the income fund.

Unrestricted income funds

The income of the Foundation is expendable at the discretion of the Trustees in furtherance of the objects of the Foundation. Gains on investments held in the income funds are credited to these funds.

Analysis of charitable funds – comparatives for the year ended 5 April 2020

Analysis of Fund movements	Balance at 6 April 2019 £'000	Incoming resources £'000	Resources expended £'000	Transfers £'000	Gains and losses £'000	Balance at 5 April 2020 £'000
Permanent endowment	9,824,772	-	-	-	(2,494,142)	7,330,630
Unrestricted expendable capital	103,892	2,149	(169)	(3,753)	(11,870)	90,249
Unrestricted income fund	44,412	82,612	(88,626)	3,753	-	42,151
Total	9,973,076	84,761	(88,795)	-	(2,506,012)	7,463,030

14 Analysis of net assets between funds

Fund balances at 5 April 2021 are represented by	Income fund £'000	Expendable capital fund £'000	Endowment funds £'000	Total funds £'000
Investments	-	105,575	9,661,597	9,767,172
Current assets	67,401	1,322	-	68,723
Creditors: amounts falling due within one year	(37,777)	(655)	-	(38,432)
Total net assets	29,624	106,242	9,661,597	9,797,463

Analysis of net assets between funds – comparatives for the year ended 5 April 2020

Fund balances at 5 April 2020 are represented by	Income fund £'000	Expendable capital fund £'000	Endowment funds £'000	Total funds £'000
Investments	-	89,055	7,330,630	7,419,685
Current assets	75,585	1,535	-	77,120
Creditors: amounts falling due within one year	(33,434)	(341)	-	(33,775)
Total net assets	42,151	90,249	7,330,630	7,463,030

15 Reconciliation of net (expenditure)/income to net cash flow from operating activities

	2021 £'000	2020 £'000
Net income/(expenditure) for the reporting period (as per the statement of financial activities):	2,334,433	(2,510,046)
Adjustments for:		
(Gains)/losses on investments	(2,349,501)	2,506,026
Dividends and interest from investments	(83,964)	(84,761)
Decrease in debtors	214	716
Increase in creditors	4,657	7,109
Net cash used in operating activities	(94,161)	(80,956)

16 Analysis of changes in cash balances during the year

	2020 £'00	Cash flow £'000	2021 £'000
Cash at bank	75,585	(8,184)	67,401
Cash held for future investment	3,495	(2,638)	857
	79,080	(10,822)	68,258

Analysis of changes in cash balances during the year – comparatives for the year ended 5 April 2020

	2019 £'00	Cash flow £'000	2020 £'000
Cash at bank	70,066	5,519	75,585
Cash held for future investment	3,197	298	3,495
	73,263	5,817	79,080

17 Statement of financial activities for the year ended 5 April 2020

		Unrestricted funds				
	Notes	Income funds £'000	Expendable capital £'000	Restricted funds £'000	Total funds 2020 £'000	Total funds 2019 £'000
Income and endowments from						
Investments	2	82,612	2,149	-	84,761	79,960
<i>Total income</i>		82,612	2,149	-	84,761	79,960
Expenditure						
Costs of generating funds:						
Raising funds		-	169	-	169	139
Charitable activities:						
Grant making activities	4	88,626	-	-	88,626	76,326
<i>Total expenditure</i>		88,626	169	-	88,795	76,465
<i>Net (outgoings)/income</i>		(6,014)	1,980	-	(4,034)	3,495
Other recognised gains and losses						
(Losses)/gains on revaluation and disposal of investment assets						
		-	(11,870)	(2,494,142)	(2,506,012)	35,828
<i>Net movement in funds before transfers between funds</i>						
		(6,014)	(9,890)	(2,494,142)	(2,510,046)	39,323
Gross transfers between funds	12	3,753	(3,753)	-	-	-
<i>Net movement in funds</i>		(2,261)	(13,643)	(2,494,142)	(2,510,046)	39,323
Reconciliation of funds						
Total funds brought forward		44,412	103,892	9,824,772	9,973,076	9,933,753
Total		42,151	90,249	7,330,630	7,463,030	9,973,076

18 Grants awarded

The grants highlighted with * indicate pledges made during the year which are accounted for in the year they are awarded, although the cash grant may not be released for up to two years.

Grants over £20,000					
Arts		£			
National Theatre (NT)	London	1,500,000	Live Theatre	Newcastle upon Tyne	249,000
Sage Gateshead	Gateshead	875,000	Battersea Arts Centre	London	248,633
Wales Millennium Centre	Cardiff	823,000	Stockton Arts Centre Ltd (ARC)	Stockton-on-Tees	240,000
The Old Vic Theatre Trust 2000	London	814,000	Theatre Royal (Norwich) Trust Ltd	Norwich	240,000
Royal Liverpool Philharmonic Society	Liverpool	750,000	Scarborough Theatre Trust Ltd	Scarborough	237,752
Royal Shakespeare Company (RSC)	Stratford-upon-Avon	750,000	Kirklees Theatre Trust	Huddersfield	237,500
The Shakespeare Globe Trust	London	750,000	North West Play Resource Centre	Derry/Londonderry	232,500
Leeds Playhouse	Leeds	708,720	Bournemouth Symphony Orchestra	Poole	225,200
Sheffield Theatres Trust	Sheffield	702,400	Play to the Crowd	Winchester	205,865
The MAC	Belfast	696,248	Cwmni'r Frân Wen	Anglesey	200,000
Hallé Concerts Society	Manchester	647,750	Akram Khan Company	London	200,000
Sadler's Wells Trust Ltd	London	626,000	Frantic Assembly	London	200,000
Birmingham Royal Ballet	Birmingham	600,000	The Young Vic	London	200,000
Northern Ballet	Leeds	600,000	Wakefield Theatre Trust	Wakefield	200,000
Belgrade Theatre Trust (Coventry) Ltd	Coventry	510,000	The Bluecoat	Liverpool	199,184
Eden Court Highlands	Inverness	500,000	Graeae Theatre Company	London	198,107
Lyric Theatre NI	Belfast	434,500	English Folk Dance and Song Society	London	196,000
London Symphony Orchestra	London	398,820	Cast	Doncaster	189,707
Liverpool and Merseyside Theatres Trust	Liverpool	390,000	Cumbernauld Theatre Trust Ltd	Cumbernauld	186,821
Ulster Orchestra Society Ltd	Belfast	390,000	Aurora Orchestra	London	185,410
Centre for the Moving Image	Edinburgh	355,300	National Theatre of Scotland	Glasgow	185,000
HOME	Manchester	349,110	Project Space Leeds (The Tetley)	Leeds	184,000
Northern Stage (Theatrical Productions) Ltd	Newcastle upon Tyne	320,000	Lyric Hammersmith Theatre	London	183,000
Octagon Theatre Trust Ltd	Bolton	320,000	Manchester Young People's Theatre Ltd	Manchester	178,090
Palace Theatre Watford Ltd	Watford	315,000	Children's Discovery Centre	London	174,700
The Lowry Centre Trust	Salford	304,500	Greenock Arts Guild Ltd	Greenock	170,000
Theatre Royal (Plymouth) Ltd	Plymouth	300,546	Hull Truck Theatre	Hull	169,677
Nottingham Playhouse	Nottingham	290,750	Phoenix Dance Theatre	Leeds	167,441
Lighthouse, Poole's Centre For The Arts	Poole	290,000	East Street Arts	Leeds	166,036
Scottish Opera	Glasgow	285,610	The Customs House	South Shields	164,400
Nofit State Community Circus	Cardiff	276,260	Seven Stories, The National Centre for Children's Books	Newcastle upon Tyne	160,000
The Albany	London	273,992	National Dance Company Wales	Cardiff	155,862
MK Gallery	Milton Keynes	270,000	Theatre Royal Stratford East	Stratford	155,178
De La Warr Pavilion Charitable Trust	Bexhill-on-Sea	268,000	Sunderland Culture Ltd	Sunderland	150,970
Midlands Arts Centre	Birmingham	267,761	Chineke Foundation	London	150,000
English Touring Theatre	London	264,100	The Barn Theatre Project	Cirencester	150,000
Little Angel Theatre	London	251,662	The Courtyard Trust	Hereford	144,404
			The Reader	Liverpool	143,776
			Taunton Theatre Association Ltd	Taunton	136,250

Barbican Theatre	Plymouth	135,550
Paines Plough	London	134,035
Wilton's Music Hall	London	133,638
Newlyn Art Gallery & The Exchange	Penzance	128,544
Cockpit Arts	London	127,970
Awen Cultural Trust	Bridgend	111,029
Orchestras Live	Leeds	107,500
MOSTYN	Llandudno	106,750
Ballet Black	London	106,284
Nottingham Contemporary	Nottingham	105,890
China Plate Theatre	Birmingham	102,100
Mercury Theatre Colchester	Colchester	100,598
Armonico Consort	Warwick	100,471
Brighton Dome & Brighton Festival	Brighton	100,000
Coventry City of Culture Trust	Coventry	100,000
Ballet Cymru (Gwent Ballet Theatre Ltd)	Newport	100,000
Colchester Arts Centre	Colchester	100,000
Hastings Contemporary	Hastings	100,000
Improbable	London	100,000
Nevill Holt Opera	Leicestershire	100,000
Rosehill Arts Trust Ltd	Whitehaven	100,000
The Paraorchestra and Friends	Bristol	100,000
Viva Chamber Orchestra Ltd (Sinfonia Viva)	Derby	100,000
Kindred Studios	London	80,000
Montrose Playhouse Project SCIO	Montrose	75,000*
Chapter (Cardiff) Ltd	Cardiff	75,000
Sunderland Music Arts and Culture Trust	Sunderland	75,000*
National Children's Orchestras of Great Britain (NCO)	Weston-super-Mare	75,000
Half Moon Young People's Theatre	London	75,000
Stoke-on-Trent and North Staffordshire Theatre Trust	Newcastle under Lyme	70,000
Yorkshire Sculpture Park	Wakefield	65,000
The Voices Foundation	London	60,000
Ballet Black	London	50,000
Koestler Trust	London	50,000*
Kirklees Theatre Trust	Huddersfield	50,000*
Theatre Development Trust - Theatre Artists Fund	London	50,000
Primary	Nottingham	50,000*
Autograph	London	50,000
Queens Hall Arts	Hexham	50,000
Tara Arts Group Ltd	London	50,000
The Plough Arts Centre	Torrington	50,000
Rubicon Dance	Cardiff	50,000
Artistic Directors of the Future	London	50,000

Dundee Contemporary Arts Ltd	Dundee	50,000
HOME	Manchester	47,500
Deafinitely Theatre	London	45,000
New Wolsey Theatre	Ipswich	40,000
The Music Works (Charity)	Gloucester	40,000*
The Stroud Subscription Rooms Trust	Stroud	40,000
The Fry Art Gallery Society	Saffron Walden	40,000
Unity Theatre Liverpool	Liverpool	40,000
Icandance	London	40,000
The Theatre	Chipping Norton	40,000
The Ashton Group Theatre	Barrow-in-Furness	40,000
Creation Theatre Company	Banbury	35,000
Brixton House	London	35,000
Theatres Trust	London	33,000
Northern Stage (Theatrical Productions)	Newcastle upon Tyne	30,000
English Stage Company (Royal Court Theatre)	London	30,000
Fuel Productions Ltd	London	30,000
The Makers Guild in Wales	Cardiff	30,000
Hackney Empire Ltd	London	30,000
Arts Emergency	London	30,000
Mortal Fools	Prudhoe	30,000
South East London Arts Network	London	30,000
Stage One	London	30,000
Young At Art	Belfast	30,000
Disability Arts in Shropshire	Shrewsbury	30,000
Dulwich Picture Gallery	London	30,000
Papatango Theatre Company Ltd	London	30,000
Bamboozle Theatre Company Ltd	Leicester	30,000
Crescent Theatre	Birmingham	30,000
Geese Theatre Company	Birmingham	30,000
The Dovecot Foundation	Edinburgh	30,000
Awards for Young Musicians	Bristol	30,000
Boundless Theatre	London	30,000
London Chamber Orchestra Trust	London	30,000
The Aloud Charity	Cardiff	30,000
Towner Eastbourne	Eastbourne	25,000
More Music	Morecambe	25,000
London Music Fund	London	25,000
Toonspeak Young People's Theatre	Glasgow	25,000
The Poetry Translation Centre	London	25,000
Arts & Business Cymru	Cardiff	25,000
Readipop	Reading	25,000*
Open Clasp Theatre Company	Newcastle upon Tyne	25,000

NK Theatre Arts	Stockport	25,000
Craftspace	Birmingham	25,000
Oxmarket Gallery	Chichester	25,000
Pegasus Opera Company	London	25,000
Royal College of Organists	New Milton	25,000
Total for Arts		31,050,351

(Total number of grants: 167)

Community		£
The Auckland Project	Bishop Auckland	300,000*
In Kind Direct	London	250,000
The Clement James Centre	London	250,000*
The Fore	London	180,000
Oxford Youth Lab	London	150,000
Hamara Healthy Living Centre	Leeds	100,000
The Liliesleaf Trust UK	London	100,000*
Trees for Life	Forres	100,000*
Women's Work Derbyshire Ltd	Derby	80,000
Bradford Trident Ltd	Bradford	75,000*
Derby City Mission	Derby	50,000*
Toynbee Hall	London	50,000
Coram's Fields	London	50,000
Torbay Coast and Countryside Trust	Paignton	50,000*
The Lightbox	Woking	50,000
GroceryAid	Sandhurst	50,000
The Bible Reading Fellowship (BRF)	Abingdon	50,000
Wadebridge Foodbank and StoreHouse	Wadebridge	50,000*
Rich Mix Cultural Foundation (Rich Mix)	London	50,000
PCC Christ Church Brunswick	Manchester	40,000*
Willowfield Parish Community Association	Belfast	40,000
b-inspired	Leicester	40,000
Back on Track	Manchester	40,000
Bede House Association	London	40,000
Central London Samaritans	London	40,000
Peter Pan Moat Brae Trust	Dumfries	35,000
Batheaston New Village Hall	Bath	35,000*
Christians Against Poverty	Bradford	30,000
Kent Coast Volunteering	Broadstairs	30,000
Crystal Palace Community Trust	London	30,000
The Hinge Centre	Bridlington	30,000
Zest Health for Life	Leeds	30,000
Full Fact	London	30,000
Firvale Community Hub	Sheffield	30,000*
St Paul's Boxing Academy CIO	Hull	30,000*

Beccles Lido Ltd	Beccles	30,000
Friends of Tarlair Community Group	Gardenstown	30,000*
Kiveton Park and Wales Community Development Trust	Rotherham	30,000*
Crosslight Advice	London	30,000
Talking Money	Bristol	30,000
174 Trust	Belfast	30,000
Wallsend Boys Club	Wallsend	30,000*
Woodhouse Close Church Community Centre	Bishop Auckland	25,000
Lancashire Women	Accrington	25,000
Tenbury Community Pool Ltd (TCP)	Tenbury Wells	25,000*
Beechbrae SCIO	Blackridge	25,000
InSpire at St Peters	London	25,000
Ethical Property Foundation	London	25,000
Hesketh Bank Community Centre	Hesketh Bank	25,000
Monifieth Community Resource Group	Monifieth	25,000
Berkeley Books	Berkeley	25,000*
First Steps Women's Centre	Dungannon	25,000
Hunwick Cricket Club	Crook	25,000*
Grundisburgh Village Hall	Woodbridge	25,000*
SPACE	Edinburgh	25,000
Time and Talents Association	London	25,000
Well Women Centre	Wakefield	25,000
Park Life Heavitree	Exeter	25,000
Bungay Honey Pot Centre	Bungay	25,000*
Fernheath Community Sports Association	Bournemouth	25,000*
WM Morrison Darlington Enterprise Trust	Darlington	25,000
Circus Eruption	Swansea	25,000*
Active Communities	Paisley	25,000*
South Ridgeway Community Association	Manorbier	25,000*
Narthex Sparkhill	Birmingham	25,000
Glentool and Bargrennan Community Trust	Newton Stewart	25,000*
Eric Liddell Centre	Edinburgh	25,000
Neuadd Y Plwyf Llanefydd	Denbigh	25,000*
Tweedsmuir Community Company	Biggar	25,000*
Ashford Place	London	25,000
Aawaz	Accrington	25,000
Ashbourne Sports and Community Partnership	Ashbourne	25,000*
Fernhurst Recreation Ground Trust	Fernhurst	25,000*
Accrington Stanley Football in the Community Trust Ltd	Accrington	25,000
Chopwell Regeneration CIO	Newcastle upon Tyne	25,000*

Fare Share North East	Newcastle upon Tyne	25,000
Pecan	London	25,000
Linwood Community Development Trust	Linwood	25,000*
Sheppey Matters	Sheerness	25,000
Stonegrove Community Trust	Middlesex	25,000
Total for Community		3,745,000
(Total number of grants: 80)		

Education

£

Seashell Trust	Cheshire	500,000
National Space Centre	Leicester	500,000
Winchester Science Centre	Winchester	488,500
We The Curious	Bristol	440,000
Glasgow Science Centre	Glasgow	350,000
The Brilliant Club	London	300,000
UK Sailing Academy	Cowes	300,000
Plumpton College	Lewes	261,000
ENTHUSE	York	200,000
CAPA College	Wakefield	100,000*
The Royal African Society	London	100,000
Marlow Education Trust - Sir William Borlase's Grammar School	Marlow	100,000
Ravenscliffe High School and Sports College	Halifax	100,000
Black Mountains College	Brecon	90,000
MyBnk	London	75,000
The Brooke Weston Trust	Corby	75,000
Ada National College for Digital Skills	London	75,000
The Reading Agency	London	75,000
University of Sunderland	Sunderland	75,000
SATRO	Guildford	60,000
Classics for All	London	60,000
English National Ballet School	London	60,000
Royal College of Music	London	50,000
The Springboard Charity	London	50,000
Treloar Trust	Holybourne	50,000*
The Royal Latin School Fund	Buckingham	50,000
St Joseph's Specialist Trust	Cranleigh	50,000*
Chipping Campden School	Chipping Campden	50,000
The Access Project	London	50,000
The Children's Literacy Charity	London	50,000
The Broxbourne School	Broxbourne	50,000
Tunbridge Wells Grammar School for Boys	Tunbridge Wells	50,000
The English Dominican Congregation (Stone) Charitable Fund - St Rose's Special School	Stroud	50,000
The BRIT School	Croydon	50,000
Stephen Lawrence Charitable Trust	London	45,000
The AHQY Centre	London	40,000

Denefield School	Reading	40,000*
National Numeracy	Lewes	40,000
TalentEd	London	40,000
The Philosophy Foundation	Forest Hill	30,000
Team Up for Social Mobility	London	30,000
Future Frontiers	London	30,000
The Centre for Literacy in Primary Education	London	30,000
The Fifth Trust	Nr Canterbury	30,000*
Cambourne Village College Charitable Trust	Cambourne	30,000*
The University of Sheffield	Sheffield	30,000*
Ward Jackson Church of England Primary School	Hartlepool	30,000
Get Further	London	30,000
Debate Mate Schools Ltd	London	30,000
BeyondAutism	London	30,000
Music Masters	London	30,000
The Oxford Trust	Oxford	30,000
Rodborough School	Surrey	30,000*
Children's University Trust	Manchester	30,000*
Living Paintings	Newbury	25,000
The Poetry School	London	25,000
University of Southampton	Southampton	25,000
Schoolreaders	Bedford	25,000
The Guardian Foundation	London	25,000
Edinburgh Science	Edinburgh	25,000
First Steps	Glasgow	25,000
Future Training	Bristol	25,000*
Ablaze Bristol	Bristol	25,000*
First Story Ltd	London	25,000
The Peter Pan Centre for Children with Special Needs	Newcastle under Lyme	25,000
Wilson's School	London	25,000
EBP South	Portsmouth	25,000
Total for Education		5,939,500
(Total number of grants: 66)		

Environment

£

WWF UK	Woking	952,000
University of Plymouth	Plymouth	500,000
The Woodland Trust	Grantham	500,000*
The National Trust	Swindon	350,000
Yorkshire Wildlife Trust	York	312,000
Blue Marine Foundation	London	300,000
The Langholm Initiative	Langholm	300,000*
Birdlife International	Cambridge	250,000
RSPB Scotland	Edinburgh	250,000*
Ashden Sustainable Solutions Better Lives	London	240,000
Rewilding Britain	Steining	150,000
Fauna & Flora International	Cambridge	150,000

Fair Isle Bird Observatory Trust	Forres	150,000
Hubbub Foundation UK	London	100,000
The Big Give	London	100,000
Action for Conservation	London	100,000
Chelsea Physic Garden Company	London	100,000
The Royal Agricultural Society of England	Kenilworth	90,000
Media Trust	London	88,401
Keep Britain Tidy	Wigan	80,000
WRAP	Banbury	80,000
Wildscreen	Bristol	75,000
The Rivers Trust	Callington	75,000
Buglife – The Invertebrate Conservation Trust	Peterborough	65,000
CHEM Trust	London	60,000
Sustainable Inshore Fisheries Trust (SIFT)	Edinburgh	60,000
Northumberland National Park Foundation	Hexham	50,000
Thames21	London	50,000
The National Lobster Hatchery	Padstow	50,000
Green Alliance	London	50,000
The Country Trust	Chelmsford	50,000
Bumblebee Conservation Trust	Eastleigh	50,000
EMERGE 3RS	Manchester	50,000*
Brogdale Collections	Faversham	45,000
CleanupUK	Tetbury	40,000
Tyne Rivers Trust	Corbridge	40,000
Marine Conservation Society	Ross-on-Wye	30,000
Soil Association	Bristol	30,000*
Global Action Plan	London	30,000
Nuffield Farming Scholarships Trust	Taunton	30,000*
Gasworks Dock Partnership	London	30,000
The Conservation Volunteers	Stirling	25,000
South West Coast Path Association	Plymouth	25,000
Concrete Garden	Glasgow	25,000
Vincent Wildlife Trust	Ledbury	25,000*
Buxton Civic Association	Buxton	25,000
Brockwell Park Community Greenhouses	London	25,000*
The Orchard Project	London	25,000
Whirlow Hall Farm Trust Ltd	Sheffield	25,000
International Dendrology Society	Kington	21,000
Total for Environment		6,323,401
(Total number of grants: 50)		

Faith

£

Christ Church Cathedral Reinstatement Trust	New Zealand	100,000
Woolf Institute	Cambridge	100,000

Newcastle Cathedral Trust	Newcastle upon Tyne	40,000
Church of Saint Patrick	Wallington	40,000*
St Margaret the Queen	Streatham	30,000*
Faith & Belief Forum	London	30,000
St Jude's Church	Plymouth	30,000*
Heswall PCC	Heswall	30,000*
St John's Church	Broadstone	30,000*
PCC for Newport Minster, the church of St Thomas a Becket and St Thomas the Apostle	Newport	30,000*
Hope Methodist Church, Higham Ferrers	Rushden	30,000*
inHope	Bristol	30,000
Ringlestone Community Centre Development Group	Rochester	30,000*
St Paul's Church	Stockton-on-Tees	30,000*
Kings Cross Church	London	30,000*
Catholic Parish of East Brighton, Diocese of Arundel & Brighton	Brighton	30,000*
Blandford Forum PCC	Blandford Forum	30,000*
Holy Trinity Church	St Austell	30,000*
Bethesda Chapel	Narberth	25,000*
Portishead Methodist Church	Bristol	25,000*
All Saints' Church	Castle Cary	25,000*
St Andrew's Church/Carlton PCC	Nuneaton	25,000*
PCC of St Michael and St George Fulwell	Teddington	25,000*
St Michael and All Angels at Clifton Hampden	Nr Abingdon	25,000
Kirkleatham PCC	Redcar	25,000*
Newport Pagnell United Reformed Church	Newport Pagnell	25,000*
Penwith RC Parish	Penzance	25,000*
St Mary's Church Ely	Ely	25,000*
Peterborough Cathedral Development & Preservation Trust CIO	Peterborough	25,000*
St James in the City	Liverpool	25,000*
Total for Faith		1,000,000
(Total number of grants: 30)		

Health

£

Alzheimer's Society	London	500,000
Sue Ryder	London	500,000
British Heart Foundation	London	500,000
Place2Be	London	350,000
Cystic Fibrosis Trust	London	300,000
Marie Curie	London	250,000
Leicester Hospitals Charity	Leicester	250,000
The Institute of Cancer Research (ICR)	London	250,000
The Scar Free Foundation	London	206,065
The Pace Centre	Stoke Mandeville	200,000

Breast Cancer Now	London	200,000
British Lung Foundation	London	150,000
Prostate Cancer UK	London	150,000*
BEAT	Norwich	150,000
Brain Tumour Research	Milton Keynes	140,000
Nordoff Robbins	London	100,000
Anna Freud National Centre for Children and Families	London	100,000
Stroke Association	London	100,000
Blood Cancer UK	London	100,000
Royal Osteoporosis Society	Bath	100,000
Priscilla Bacon Norfolk Hospice Care Ltd	Norwich	100,000*
The Hull and East Yorkshire Medical Research Centre (The Daisy Appeal)	Cottingham	100,000
Motor Neurone Disease Association	Northampton	75,000
The Brain Tumour Charity	Fleet	75,000
Dr Kershaw's Hospice	Oldham	75,000
Action Duchenne Ltd	London	60,000
Trust Links Ltd	Westcliff-on-Sea	60,000
Addenbrooke's Charitable Trust	Cambridge	50,000
Guy's and St Thomas' Charity	London	50,000
Tenovus Cancer Care	Cardiff	50,000
Meningitis Now	Stroud	50,000
Florence Nightingale Foundation	London	50,000
Antibiotic Research UK	York	50,000
Dementia UK	London	50,000
RICE - The Research Institute for the Care of Older People	Bath	50,000
The Multiple Sclerosis Trust	Letchworth	50,000
Dementia Support	Tangmere	50,000
Wings for Life UK	London	50,000
British Tinnitus Association	Sheffield	50,000
Thames Hospice	Maidenhead	50,000
Headway Somerset	Taunton	50,000
The Bobath Centre for Children and Adults with Cerebral Palsy	Watford	50,000
Rowans Hospice	Waterlooville	50,000
Footsteps Foundation	Oxon	45,000
Acacia Family Support	Sutton Coldfield	45,000
CAUSE	Belfast	40,000
West Kent Mind	Sevenoaks	40,000
The Back-Up Trust ("Back Up")	London	40,000
Visyon Ltd	Congleton	40,000
East Cheshire Hospice	Macclesfield	40,000
Bath MIND	Bath	30,000
Hope House Children's Hospices	Oswestry	30,000

Lewis-Manning Hospice Care	Poole	30,000
The Cellar Trust	Shipley	30,000
Oakleaf Enterprise	Guildford	30,000
Positive East	London	30,000
Brain Injury Matters (NI)	Belfast	30,000
Restore	Oxford	30,000
Rochdale and District Mind	Rochdale	30,000
The Meath Epilepsy Charity	Godalming	30,000
Community Housing and Therapy	London	30,000*
The Blackthorn Trust	Barming	30,000
LGBT Health and Wellbeing	Edinburgh	30,000
The Norfolk Hospice	King's Lynn	30,000
Multiple System Atrophy Trust	London	30,000
Heartbeat NWCC	Preston	30,000
Alex, The Leukodystrophy Charity	London	30,000
Headway Suffolk	Ipswich	30,000
Mind in Furness Ltd	Barrow-in-Furness	25,000
The Rainbow Centre	Fareham	25,000
Dandelion Time	Maidstone	25,000
Spinal Muscular Atrophy Support UK	Stratford-upon-Avon	25,000
The Counselling and Family Centre	Altrincham	25,000
ADHD Foundation	Liverpool	25,000*
Castel Froma Neuro Care	Leamington Spa	25,000
The Down's Syndrome Association	Teddington	25,000
YoungDementia UK	Witney	25,000
Wessex Cancer Trust	Eastleigh	25,000
Tyneside and Northumberland Mind	Gateshead	25,000
Aberconwy Mind	Llandudno	25,000*
OCD Action	London	25,000
Atlas Women's Centre	Lisburn	25,000*
Integrated Neurological Services	Twickenham	25,000
RNID (The Royal National Institute for Deaf People)	Peterborough	25,000
Evelina Children's Heart Organisation	London	25,000
Total for Health		7,196,065
(Total number of grants: 85)		

Museums & Heritage

£

Museum of Science and Industry, Manchester	York	1,000,000*
Historic Royal Palaces	Surrey	750,000*

Birmingham Museums Trust	Birmingham	590,000
The Westminster Abbey Foundation	London	400,000
Mary Rose Trust	Portsmouth	300,000
Renfrewshire Leisure Ltd	Paisley	300,000*
The Amelia Scott Cultural Trust	Tunbridge Wells	250,000
Aerospace Bristol	Bristol	244,000
National Holocaust Centre and Museum	Nottingham	214,500
The Wallace Collection	London	205,000
Derby Museums	Derby	203,139
Lakeland Arts	Windermere	200,000
Chatham Historic Dockyard Trust	Chatham	177,500
The Loughborough Bellfoundry Trust	Leicestershire	150,000*
The Salisbury Museum	Salisbury	150,000*
Museum of Brands	London	120,000
National Maritime Museum Cornwall	Falmouth	117,650
British Library	London	100,000
Dorset County Museum	Dorchester	100,000
Lambeth Palace Library Trust Fund	London	100,000
Bressingham Steam Preservation Co Ltd	Diss	100,000
Banbury Museum & Gallery	Banbury	77,200
The Mills Archive Trust	Reading	75,000
Garden Museum	London	75,000
The Common Room of the Great North Ltd	Newcastle upon Tyne	75,000
The Cartoon Art Trust Ltd	London	60,000
Braemar Community Ltd	Aberdeenshire	50,000*
The Box Foundation	Plymouth	50,000
Roman Baths Foundation	Bath	50,000
The Willow Tea Rooms Trust	Glasgow	50,000
The Piece Hall Trust	Halifax	50,000
Painshill Park Trust Ltd	Cobham	50,000
Bursledon Brickworks Museum Trust	Southampton	50,000*
Museum of Power	Langford	50,000*
National Coal Mining Museum for England	Wakefield	50,000
Churches Conservation Trust	London	50,000*
Benjamin Franklin House	London	45,000
Heritage Craft Association	Wellington	30,000
Avoncroft Museum	Bromsgrove	30,000
Fenland Black Oak CIO	Tonbridge	27,000
Re-Form Heritage/UKHBPT	Stoke-on-Trent	25,000
The New Forest Heritage Trust	Lyndhurst	25,000
Gloucester Culture Trust	Gloucester	25,000

Unicorn Preservation Society	Dundee	25,000
Kent & East Sussex Railway Company Ltd	Tenterden	25,000
Blue Town Remembered	Isle of Sheppey	25,000*
Wisbech and Fenland Museum	Wisbech	25,000*
Total for Museums & Heritage		6,940,989
(Total number of grants: 47)		

Welfare		£
SASC Trust	London	5,000,000
Age UK	London	500,000
FareShare	London	500,000
The Fore	London	500,000
SafeLives	Bristol	450,000
Shelter	London	350,000
Buttle UK	London	300,000
Revitalise Respite Holidays	London	300,000
Smart Works Charity	London	300,000
Royal National Institute of Blind People	London	300,000
Betel of Britain	Birmingham	250,000*
St Mungo's Community Housing Association	London	250,000
Elsie Normington Foundation	Inverness	250,000*
Clinks	London	225,000
Homeless Link	London	210,000
Anawim Women Working Together	Birmingham	200,000
Cruse Bereavement Care	Richmond	200,000
Sense	London	200,000
Spring Housing Association	Birmingham	200,000
Council for At Risk Academics (CARA)	London	150,000
Llamau	Cardiff	100,000
Harmony Education Trust	Edinburgh	100,000
Prison Advice & Care Trust (Pact)	London	100,000
Refugee Education UK	London	100,000
Welsh Refugee Council	Cardiff	100,000
Autism Bedfordshire	Bedford	75,000
Oasis Domestic Abuse Service	Margate	75,000
Family Gateway	Wallsend	70,000
Northumbria Calvert Trust	Hexham	65,000
Safe and Sound Group	Derby	60,000
Bradford Rape Crisis and Sexual Abuse Survivors Service	Bradford	60,000
Become Charity	London	60,000
Prisoners Abroad	London	60,000
Bench Outreach	London	60,000
First Light South West Ltd	Plymouth	60,000

Refugee and Migrant Centre	Wolverhampton	60,000
Islington Centre for Refugees and Migrants	London	60,000
Home for Good	London	50,000
Groundwork London	London	50,000
Wearside Women in Need	Sunderland	50,000*
Sturts Community Trust	West Moors	50,000
Opening Doors London	London	50,000
Sophie Hayes Foundation	London	50,000
Hope into Action: UK	Peterborough	50,000
Action for Stammering Children	London	50,000
The Rose Road Association	Southampton	50,000
Lake District Calvert Trust	Keswick	50,000
Team Domenica	Brighton	50,000
Herefordshire Vennture	Hereford	50,000
Veterans Aid	London	50,000
Centre for Contemporary Arts (CCA)	Glasgow	50,000
Clean Break Theatre Company	London	50,000
CARA (Centre for Action on Rape and Abuse)	Colchester	50,000
Pace (Parents Against Child Exploitation)	Leeds	50,000
Pan Intercultural Arts	London	50,000
Contact	London	50,000
Hourglass	Long Melford	50,000
Behind Closed Doors	Bradford	45,000
Juno Women's Aid	Nottingham	45,000
Hawkspring	Bristol	45,000
Richmond Advice and Information on Disability	Teddington	45,000
Greenbank Project	Liverpool	45,000
Migrateful	London	40,000
Manchester Communication Academy	Manchester	40,000
Feeding Britain	London	40,000
Blyth Star Enterprises Ltd	Blyth	40,000*
Leeway Domestic Violence and Abuse Services	Norwich	40,000
Mid-Ulster Women's Aid	Cookstown	40,000
The Women's Centre Cornwall (TWCC) Ltd	Bodmin	40,000
The Estuary League of Friends	Exeter	40,000
Epic Partners	Nottingham	40,000
CARIS Haringey	London	40,000
Parents and Children Together	Reading	40,000
Marie Collins Foundation	Bedale	40,000
Time to Talk Befriending	Brighton and Hove	40,000
Iceni Ipswich	Ipswich	30,000
Jesus Centres Trust	London	30,000
WomenCentre Ltd	Halifax	30,000
Deaf Action	Edinburgh	30,000

disAbility Cornwall & Isles of Scilly	Hayle	30,000
Kids In Action	Dunstable	30,000
Swings & Smiles	Thatcham	30,000
999 Club	London	30,000
Diverse Abilities	Poole	30,000
NOAH Enterprise	Luton	30,000
Abbeyfield Ballachulish Society Ltd	Ballachulish	30,000*
Link Age Southwark	London	30,000
Yellow Submarine Holidays	Oxford	30,000
Spitalfield Crypt Trust	London	30,000
Aanchal Women's Aid	Essex	30,000
The Nehemiah Project	London	30,000
Families for Children Trust	Buckfastleigh	30,000
Bethany Christian Trust	Edinburgh	30,000
Boccia England	Nottingham	30,000
Reading Community Learning Centre	Reading	30,000
West Norfolk Deaf Association	King's Lynn	30,000
Justlife Foundation Ltd	Manchester	30,000
Halton Carers Centre	Runcorn	30,000
Calvert Trust Exmoor	Barnstaple	30,000
The Bridge (East Midlands)	Loughborough	30,000
Trafford Domestic Abuse Services	Trafford	30,000
Cardboard Citizens	London	30,000
Her Centre	London	30,000
Home-Start South Leicestershire	Market Harborough	30,000
Home-Start in East Lancashire	Nelson	30,000
The JPK Sussex Project	Eastbourne	30,000*
Amaze	Brighton	30,000
Birmingham and Solihull Women's Aid	Birmingham	30,000
Giving World	Leicester	30,000
Home-Start Hampshire	Fareham	30,000
Home-Start Trafford, Salford & Wigan	Stretford	30,000
Oasis Cardiff	Cardiff	30,000
Waltham Forest Churches Night Shelter	London	30,000
Council for the Homeless (NI)	Belfast	25,000
Fife Gingerbread	Glenrothes	25,000
One Parent Families Scotland	Edinburgh	25,000
Yellow Door (Solent)	Southampton	25,000
700 Club	Darlington	25,000
Aldingbourne Trust	Chichester	25,000
Crossroads Derbyshire	Glossop	25,000
The Carers Centre - Bristol & South Gloucestershire	Bristol	25,000

Govan Home and Education Link Project	Glasgow	25,000
Stepping Stones (Luton)	Luton	25,000
Motiv8 South Ltd	Portsmouth	25,000
Action For M.E.	Bristol	25,000
Chichester Diocesan Association for Family Support	Brighton	25,000
The Living Room	Stevenage	25,000
Walton Lea Partnership	Warrington	25,000
First Stop Darlington	Darlington	25,000
Shabang Inclusive Learning	Huddersfield	25,000
Listening Books	London	25,000
Reading Force	Kingston upon Thames	25,000
The Magpie Project	London	25,000
Home-Start Hertfordshire	Stevenage	25,000
Improving Lives Plymouth	Plymouth	25,000
Roundabout Ltd	Sheffield	25,000*
Together Kent	Canterbury	25,000*
Umbrella Derby and Derbyshire	Derby	25,000*
Street Connect	Glasgow	25,000
Bath and North East Somerset Carers Centre	Bath	25,000
Sonus	Eastleigh	25,000
Fortalice	Bolton	25,000
The Preshal Trust	Glasgow	25,000
Possability People Ltd	Brighton	25,000
White Lodge Centre	Chertsey	25,000
The Matthew Project	Norwich	25,000
The Hamlet Centre Trust	Norwich	25,000
The Ark Family Resource Centre	Harwich	25,000
The Hardman Trust	Newport	25,000
Finding Rhythms CIO	London	25,000
Hospitality and Hope	South Shields	25,000
Suzy Lamplugh Trust	London	25,000
Peter Bedford Housing Association	London	25,000
Cleveland Housing Advice Centre (CHAC)	Middlesbrough	25,000
Refugee Resouce	Oxford	25,000
Safety Net (UK)	Carlisle	25,000
Speakup Self Advocacy Ltd	Rotherham	25,000
Fresh Visions People Ltd	Surrey	25,000
Rowan Humberstone Ltd	Cambridge	25,000
West Cumbria Carers	Cockermouth	25,000
Domestic Abuse Volunteer Support Services	Tunbridge Wells	25,000
Malvern Special Families	Malvern	25,000
Somerset and Avon Rape and Sexual Abuse Support	Bristol	25,000
Foundation for Change	London	25,000
Age UK Northumberland	Ashington	25,000
Re-Solv	Stone	25,000
Families First - St Andrews	St Andrews	21,000
Total for Welfare		16,131,000
(Total number of grants: 167)		

Youth		£
OnSide Foundation	Bolton	500,000
Rock UK Adventure Centres Ltd	Irthlingborough	250,000
St John Ambulance	London	200,000
Centrepont Soho	London	150,000
Brook	Liverpool	150,000
42nd Street	Manchester	150,000
The Mix	London	100,000
Depaul UK	London	100,000
Farms for City Children	Exeter	100,000
The Scout Association	London	100,000
Greenhouse Sports	London	100,000
Bookmark Reading Charity	London	100,000
The Albert Kennedy Trust	London	100,000
YMCA England & Wales	London	95,000
Off The Record	Bristol	90,000
Making The Leap	London	80,000
The Clock Tower Sanctuary	Brighton	80,000
ReachOut	London	80,000
The Wheels Project	Bristol	75,000
City of Exeter (YMCA Exeter)	Exeter	75,000*
Valleys Kids	Tonypandy	75,000
Launch It	London	75,000
Kidz Klub Leeds	Leeds	60,000
The No Way Trust Ltd	Hull	60,000
Shrewsbury House	Liverpool	60,000
Level Trust	Luton	60,000
UK Youth	London	50,000
Above Adventure	Kilmarnock	50,000*
Brathay Trust	Ambleside	50,000
Lodge Hill Trust	Watersfield	50,000
Kids Run Free	Alcester	50,000
Croydon Drop In (CDI)	Croydon	45,000
SELFA	Skipton	45,000
Burnley Boys & Girls Club	Burnley	40,000
Wyrley Juniors Football Club	Walsall	40,000*
Youth Concern	Aylesbury	40,000
The Hull Children's University	Hull	40,000
One Church Brighton	Brighton	40,000
Herts Young Home	Hatfield	40,000
Link to Change	St Neots	40,000
The Larder West Lothian	Livingston	40,000
Focus Charity	Leicester	40,000
New Horizon Youth Centre	London	40,000
YMCA DownsLink Group	Hove	40,000
No Limits	Southampton	40,000
Winning Scotland Foundation	Edinburgh	40,000
Greater Manchester Youth Network	Manchester	40,000
Khulisa	London	40,000

The Cameron Bepolka Trust	Winchester	40,000
The Breck Foundation	Whyteleafe	35,000
St Edmunds Society	Norwich	35,000
Key4Life	Glastonbury	30,000
Weston Church Youth Project	Southampton	30,000
YPAC Manchester	Manchester	30,000
Birmingham YMCA	Birmingham	30,000
NE Youth	Newcastle upon Tyne	30,000
Endeavour Training Ltd	Sheffield	30,000
Romsey Mill	Cambridge	30,000
The Avenues Youth Project	London	30,000
Fuse Youth Cafe	Glasgow	30,000
Fellowship Afloat Charitable Trust	Maldon	30,000*
StreetGames UK Ltd	Manchester	30,000
Young Women's Trust	London	30,000
Superkidz Community Trust	London	30,000
Youth Initiatives NI	Belfast	30,000
YMCA Cardiff	Cardiff	30,000
Blackwell Adventure	Blackwell	30,000
Access Sport CIO	London	30,000
YMCA South Devon	Paignton	30,000
Trelya	Penzance	30,000
Barnstondale Centre	Wirral	30,000
UpRising	London	30,000
All Saints Youth Project	Birmingham	30,000
Wings South West	Bideford	30,000
Regenerate.com	London	30,000
Young Urban Arts Foundation	London	30,000
Dreamscheme Northern Ireland	Belfast	30,000
The Change Foundation	Croydon	30,000
Caius House	London	25,000
CHEXS	Waltham Cross	25,000
In2Out	Wetherby	25,000
YMCA North Tyneside	North Shields	25,000
Streetwise Young People's Project	Newcastle upon Tyne	25,000
SkyWay Charity	Hackney	25,000
The Chellington Centre	Carlton	25,000
Isleworth Explorers Club	Isleworth	25,000
Street League	Manchester	25,000
4th Morpeth Scout Group	Morpeth	25,000*
Pennywell Youth Project	Sunderland	25,000
Ditch the Label	Brighton	25,000
Spark!	Brentford	25,000
IMO Charity	Blackburn	25,000
Mousetrap Theatre Projects	London	25,000
Reaching Higher	London	25,000
Service Six	Wellingborough	25,000
The Foyer Federation	London	25,000
The Kids Network	London	25,000

YMCA Newcastle	Newcastle upon Tyne	25,000
Total for Youth		5,425,000
(Total number of grants: 98)		

Other		£
Association of Chairs	London	90,000
Localgiving Foundation	London	75,000
Association of Charitable Foundations	London	75,000
Small Charities Coalition	London	50,000
New Philanthropy Capital	London	50,000
IFB Research Foundation	London	30,000
Charity Finance Group	London	30,000
Total for Other		400,000
(Total number of grants: 7)		

Grants of £20,000 and less

Arts		£
Transform Theatre Projects	Leeds	20,000
Theatre Royal (Norwich) Trust Ltd	Norwich	20,000
Icon Theatre	Chatham	20,000
The People's Orchestra	West Bromwich	20,000
Miracle Theatre Trust Ltd	Redruth	20,000
The Spring Arts & Heritage Centre	Havant	20,000
Armonico Consort	Warwick	20,000
Saltburn Community & Arts Association	Saltburn-by-the-Sea	20,000
The Barn Theatre Project	Cirencester	20,000
Outside Edge Theatre Company	London	20,000
Park Theatre	London	20,000
Creative Youth	Kingston upon Thames	20,000
Sound and Music	London	20,000
RABBLE Theatre	Reading	20,000
East Riding Theatre	Beverley	20,000
Company Three	London	20,000
International Curators Forum	London	20,000
Kabosh Theatre Company	Belfast	20,000
Skimstone Arts	Newcastle upon Tyne	20,000
WHALE Arts Agency	Edinburgh	20,000
November Club	Morpeth	15,000
Cahoots NI	Belfast	15,000
Devon Guild of Craftsmen	Bovey Tracey	15,000
Drake Music	London	15,000
Upswing Aerial	London	15,000
Silent Uproar	Hull	15,000
Herts Inclusive Theatre	Watford	15,000
Culture&	London	15,000
Theatre Alibi	Exeter	15,000
Mahogany Opera Group	London	15,000

Peer Productions	Woking	15,000
Petherton Arts Trust Ltd	Yeovil	15,000
Royal College of Music	London	15,000
Gloucestershire Academy of Music (GAM)	Gloucester	15,000
Compass Live Art	Leeds	15,000
Pegasus Theatre Trust	Oxford	15,000
ORA Singers	London	15,000
Stepping Out Theatre	Bristol	15,000
The Little Theatre Gateshead Ltd	Tyne and Wear	10,000
South Hill Park Trust Ltd	Bracknell	10,000
Citadel Arts	St Helens	10,000
Young Musicians Symphony Orchestra	London	10,000
Music for Everyone	Nottingham	10,000
The Cut (New Cut Arts)	Halesworth	10,000
Arts GatewayMK Ltd	Milton Keynes	10,000
Forget-me-Not Chorus	Llandough	10,000
DanceWest	London	10,000
Future Talent	London	10,000
Regal Theatre	Minehead	10,000
The Edinburgh Quartet Trust	Edinburgh	10,000
Cherwell Theatre Company	Banbury	10,000
Cascade Theatre Company	Truro	10,000
Horsebridge Arts and Community Centre	Whitstable	10,000
RicNic	London	10,000
International Guitar Foundation (IGF)	London	10,000
Aproxima SCIO	Glasgow	10,000
Big Brum Theatre in Education Company Ltd	Birmingham	10,000
Somerset Art Works	Langport	10,000
McNicol Ballet Collective	Huddersfield	10,000
Cranleigh Arts Centre Ltd	Surrey	10,000
The Paper Birds Theatre Company	Leeds	10,000
The Lorimer Society	Glasgow	10,000
Seaham Music Academy	Seaham	9,000
Royal Opera House Covent Garden Foundation	London	7,500
Youth Music Centre	London	7,500
Dirliebane Theatre Company	Edinburgh	7,000
Grand Union Music Theatre Ltd	London	6,000
The Huddersfield Choral Society	Huddersfield	5,000
The Baluji Music Foundation	London	5,000
The Bright Umbrella Drams Co	Belfast	5,000
Mid Wales Music Trust	Brecon	5,000
The Rodolfus Foundation	London	5,000
Margate Bookie	Margate	5,000

Garage Art Group	Evesham	5,000
Todmorden Amateur Operatic and Dramatic Society	Todmorden	4,500
Sudden Productions	Birmingham	4,000
The Hosking Houses Trust	Stratford-upon-Avon	3,500
The Hepworth Brass Band	Huddersfield	3,000
Total for Arts		997,000

(Total number of grants: 78)

Community		£
Elven Centre	Bury St Edmunds	20,000*
BEfriend	Brentford	20,000
Forthspring Inter Community Group	Belfast	20,000
Spencer Contact	Northampton	20,000
Storm Family Centre	London	20,000
Bentilee Volunteers	Stoke-on-Trent	20,000
Netherthird Initiative		
Comm Em	Cumnock	20,000*
St Mark's Church, Newby	Scarborough	20,000*
Kent Enterprise Trust	Herne Bay	20,000
The Churn Project	Cirencester	20,000
Blackburn with Darwen Healthy Living	Blackburn	20,000
Bath City Farm	Bath	20,000
Genesis Trust	Bath	20,000
Llanwarne and District Village Hall	Hereford	20,000*
The John Clements Sports and Community Trust	Hitchin	20,000*
Barlow Moor Community Association Ltd	Manchester	20,000
Lisvane Old School Community Centre	Cardiff	20,000*
Catalyst	Stockton-on-Tees	20,000
Huish Champflower Village Hall and King George V Memorial Field Trust	Taunton	20,000*
KCU (Kettering Community Unit)	Kettering	20,000
Laburnum Boat Club	London	20,000
RAY Ceredigion	Aberaeron	20,000
Chilwell Memorial Hall and Institute	Nottingham	20,000*
Mull & Iona Community Trust	Isle of Mull	20,000
Saheliya	Edinburgh	20,000
OASIS Community Church & Community Centre	Worksop	20,000*
The Suited & Booted Centre Ltd	London	20,000
Pentlands Community Space	Edinburgh	20,000*
Bollington Community Association - The Bridgend Centre	Bollington	20,000
City Gate Community Projects - FareShare Sussex	Brighton	20,000

Wecock Community Association	Waterlooville	20,000*
Pilton Community Health Project	Edinburgh	20,000
Give a Book	London	20,000
Marsden Community Trust Ltd	Huddersfield	20,000*
The Salvation Army	London	20,000
Bilston Resource Centre	Bilston	20,000
Stitches in Time Ltd	London	20,000
All-Aboard Watersports	Bristol	20,000
Rotherham Federation of Communities	Rotherham	20,000
Southmead Development Trust	Bristol	20,000
The Cowshed	Hurst	20,000
Tideswell & District Voluntary Youth Club	Tideswell	20,000
Aylsham & District Care Trust	Aylsham	20,000
East Markham Community Playing Field Association	East Markham	20,000*
YMCA Walsall	Walsall	20,000
Hive	Sudbury	20,000*
Llanddewi Velfrey Village Hall	Narberth	15,000
Stripey Stork	Reigate	15,000
Levenmouth Foodbank Community Support Project	Methil	15,000
The Association of Teesdale Day Clubs	Barnard Castle	15,000
Castlehill Community Association	Cupar	15,000*
Hindolveston Village Hall	E Dereham	15,000*
The Oulton Institute	Leeds	15,000*
North Hertfordshire Minority Ethnic Forum	Hitchin	15,000
Glasgow City Mission	Glasgow	15,000*
Pallion Action Group	Sunderland	15,000
Celtic Harmony	Welwyn	15,000*
Caring Hands in the Vale	Evesham	15,000
Itchenor Memorial Hall	Itchenor	15,000*
Wilmslow Guild	Wilmslow	15,000*
Crest Co-operative	Conwy	15,000
Beyond Limits	Bishop Auckland	15,000
Kings Cross Brunswick Neighbourhood Association	London	15,000
Beverley Cherry Tree Community Centre	Beverley	15,000
JADE Youth & Community	Sheffield	15,000
West Everton Community Council	Liverpool	15,000
ETHOS - Extending The Hand Of Support	Hereford	15,000
Glossop and District Volunteer Bureau	Glossop	15,000
Greenhill YMCA	Newcastle, Co Down	15,000*
Barking Churches Unite	Barking	15,000

British Gymnastics Foundation	Newport	15,000
Haven Community Project	Birmingham	15,000
Meriden Adventure Playground Association	Solihull	15,000
Marine In The Community	Liverpool	15,000*
Frittenden Memorial Hall Trust	Cranbrook	15,000*
Strathfoyle Women's Activity Group Ltd	Londonderry	15,000
Irish Community Services	London	15,000
PBIC Ltd	Bedford	15,000
The Hindmarsh Hall	Alnwick	15,000*
CCDL Innovation	Truro	15,000
People Know How	Edinburgh	11,000*
Slough Foodbank	Slough	10,000
St Luke's Advice Service	Brighton	10,000
Littleworth Community Association	Stafford	10,000*
Crookham Village Hall	Cornhill on Tweed	10,000*
Gwelfor Community Centre	Holyhead	10,000
North Glasgow Community Food Initiative	Glasgow	10,000
Garnant Family Centre	Garnant	10,000*
Ivybridge & District Community Transport Association	Ivybridge	10,000
Ditchingham Village Hall	Bungay	10,000*
West Down Parish Hall	Ilfracombe	10,000*
Westoning Village Hall/ Spensley Trust	Westoning	10,000*
Rathfriland Football Club	Rathfriland	10,000*
Pengarth Day Centre	Penzance	10,000
Northamptonshire Community Foundation for FOOD 4 HEROES	Northampton	10,000
Farnworth Baptist Church	Bolton	10,000
Cornwall Community Foundation	Launceston	10,000
The Victory Room	Bucklebury	10,000*
Colne Open Door Centre Ltd	Colne	10,000
Levenshulme Inspire Foundation	Manchester	10,000
HoardingUK Ltd	London	10,000
Combe Community Hub Ltd	Combe	10,000*
Constantine Enterprises Company	Falmouth	10,000*
Burry Port Plant Dewi - Ty Mair	Burry Port	10,000
Debt Advice Foundation	Darwen	10,000
Dorset Race Equality Council	Bournemouth	10,000
Atholl Baptist Centre	Pitlochry	10,000*
Community Voluntary Action Ledbury & District	Ledbury	10,000
9 Lives Furniture	Rickmansworth	10,000

Holme Village Community Centre	Holmfirth	10,000*	Community Association for West Hampstead	London	8,000*
Hospices of Hope Ltd	Sevenoaks	10,000*	Sunderland Women's Centre	Sunderland	8,000
New Heights Warren Farm Community Project	Birmingham	10,000	Bethshan North East	Washington	8,000*
PLANED	Narberth	10,000*	Penrith Cricket Club	Penrith	8,000
Northumberland Pride	Gateshead	10,000	Brighthelm Church and Community Centre	Brighton	7,500*
Urras Coimhearsnachd Bhradhagair agus Arnoil	Isle of Lewis	10,000	Thursley Village Hall CIO	Godalming	7,500
Voluntary Action	Coventry	10,000	South Denbighshire Community Partnership	Denbighshire	7,500
Lamphey Church	Pembroke	10,000*	Community Action Machynlleth & District	Machynlleth	7,500
Shipton Reading Room	Cheltenham	10,000*	St Tudy Village Hall	St Tudy	7,500*
FSN	Hastings	10,000	Somerford ARC Community Centre	Christchurch	7,500
Welwyn Garden City Centenary Foundation	Welwyn Garden City	10,000	St Mary's Bartlow	Bartlow	7,500*
The Lantern Trust	Weymouth	10,000	Ravenshead Community Project	Nottingham	7,500
Wyldwood Arts	Lydbrook	10,000	Wellspring Family Centre	Dereham	7,500
Edstaston Village Hall	Wem	10,000*	Fordham Village Hall	Fordham	7,500*
Milne Hall Management Committee	Westhill	10,000*	Lee Brockhurst Village Hall	Lee Brockhurst	7,500*
St Mark's Church	Redcar	10,000	Kingsmeadow @MadeForever	Bristol	7,500
Fittie Community Development Trust	Aberdeen	10,000*	Our Place Our Families	Renfrew	7,500
Sandleheath Village Hall CIO	Fordingbridge	10,000*	Hayaat Women Trust	Cardiff	7,500
GLOW	Belfast	10,000	The House on the Corner Community Project	Walsall	7,500
North Walsham Play	North Walsham	10,000*	Chain Lane Community Hub	Knaresborough	7,500
Alice Charity	Newcastle	10,000	Dean Court Community Association	Oxford	7,500*
Auckland Youth and Community Centre Ltd	Bishop Auckland	10,000	SERVE	Rushden	7,000*
Fermanagh Rural Community Initiative	Enniskillen	10,000	TLC - St Luke's	Manchester	7,000
Reidvale Neighbourhood Centre	Glasgow	10,000	Darts (Doncaster Community Arts)	Doncaster	6,500
Sharks Community Trust	Carrington	10,000	Groundwork West Midlands	Tipton	6,500
Ainsdale Lunch and Leisure	Merseyside	10,000*	Manchester Action on Street Health	Manchester	6,500
Gresley Old Hall Community Welfare Centre	Swadlincote	10,000	Meadow Well Connected	North Shields	6,500
The Anne Matthews Trust	Machynlleth	10,000	Ravenscliffe Community Association	Bradford	6,500
Winsford Youth & Community Forum	Cheshire	10,000	The Community Council of Shropshire	Shrewsbury	6,500
Caputh Hall Charitable Trust	Murthly	10,000*	Worcester Community Trust	Worcester	6,500
Otterhampton Village Hall CIO	Bridgwater	10,000*	Filwood Hope	Bristol	6,000
Fatima Women's Association	Oldham	10,000	Just Good Friends (North West) Ltd	Lytham St Anne's	5,500
Leiston United Reformed Church	Leiston	10,000*	Barton Village Institute	Richmond	5,000*
Friends First	Hove	10,000	Dukeries Community Workshop	Ollerton	5,000
Oxfordshire Chinese Community & Advice Centre	Oxford	10,000	Newark and Sherwood Community Hub	Newark	5,000
Moor Allerton Sports and Social Centre	Leeds	10,000	Lambton Street Youth & Community Hub	Sunderland	5,000
Tower Hamlets Somali Organisations Network	London	10,000	Family Central - New Life Community Church	Rochdale	5,000
Drylaw Telford Community Association	Edinburgh	10,000	TRIP Community Transport Association	Honiton	5,000
The Centre for African Entrepreneurship	Swansea	10,000			

Boston Community Transport	Boston	5,000
Houghton Regis Memorial Hall	Houghton Regis	5,000
Area Training & Activity Centre Ltd	Morpeth	5,000
Birmingham Samaritans	Birmingham	5,000
ForHousing	Salford	5,000
Hour Community	Framlingham	5,000
Open Door Exmouth	Exmouth	5,000
The Suit Works	Sheffield	5,000
Alice Marshall Hall	Chipping Norton	5,000*
The Marske Centre Ltd	Redcar	5,000
Menstrie Community Action Group	Menstrie	5,000
Sunderland Amateur Boxing Club	Sunderland	5,000
Silver Links/OKM	Hornchurch	5,000
The Friendship Cafe	Gloucester	5,000
Period Power	Stafford	5,000
War Memorial Hall at Platt	Sevenoaks	5,000*
TimeBank	London	5,000
New Hutton Institute	Kendal	5,000*
ROPETH	Suffolk	5,000
The FAN Charity	Cardiff	5,000
South Clifton Coronation Hall	South Clifton	5,000*
FURNICHURCH	Mablethorpe	5,000
York Rescue Boat	York	5,000
Hett Village Hall Association	Durham	5,000*
Uttlesford Community Travel	Great Dunmow	5,000
East Yorkshire Community Transport	Goole	5,000
Parr Sports & Community Centre	St Helens	5,000
Ystradgynlais Volunteer Centre	Ystradgynlais	5,000
Hardingstone Village Hall Association	Northampton	5,000*
Teesside Athletic FC Ltd	Redcar	5,000
Mediation MK	Milton Keynes	5,000
Nettlestone and Seaview Shed	Seaview	5,000*
Congolese Development Project	Swansea	5,000
Inchmarlo Community Workshop (SCIO)	Banchory	5,000
New Hope Global	Birmingham	5,000
The artFix Circle	London	5,000
Nairn Coastal Rowing Club	Nairn	5,000*
Lambeth Somali Community Association	London	5,000
Beverley Community Lift	Beverley	5,000
The Broomhall Centre	Sheffield	5,000
Vallance Community Sports Association	London	5,000

St Paul's Family Centre	Llanelli	5,000
The Licoricia of Winchester Appeal	Winchester	5,000*
Tomintoul and Glenlivet Outdoor Bowling Club	Moray	4,000*
Offenham Village Hall	Offenham	4,000*
Farrington Detached Youth and Community	Sunderland	4,000
Bishops Hull Village Hall and Playing Field Trust	Taunton	4,000*
Trent Memorial Hall	Trent	4,000*
Mynydd Isa Women's Institute	Mold	3,500*
Abergorki Community Hall	Treorchy	3,500
St Goran CLT Ltd	St Austell	3,500
Avery Fields Community Sports Trust	Birmingham	3,000*
SAMEE	Bournemouth	3,000
Olive Community Project	Stockport	3,000
New York Lecture Hall Managers	Lincoln	3,000*
North Tyneside Disability Forum Ltd	Shiremoor	3,000
Upchurch Village Hall	Sittingbourne	3,000
Peace Mala	Swansea	3,000
Woking and District Men's Shed	Woking	3,000*
Walton Community Centre	Walton-on-the-Naze	3,000
Cliviger Village Hall	Cliviger	3,000*
Carmarthen Community Money Advice Centre	Carmarthen	3,000*
Glympton Village Hall	Woodstock	3,000
Beckford Community Village Hall Ltd	Tewkesbury	3,000
Community Regeneration Outreach Projects Ltd	Plymouth	3,000
West Kent Community Radio	Tunbridge Wells	3,000
Polruan Village Hall	Polruan-by-Fowey	3,000*
Isle of Wight Street Pastors	Newport	3,000
The Widows Empowerment Trust	Manchester	3,000
Wilberfoss, Kexby and Newton Playing Fields Association	Wilberfoss	2,500*
Sunderland Community Transport CIO	Sunderland	2,500
South Northants Volunteer Bureau	Towcester	2,500
Bethel New Life Apostolic Church and Community Centre	Coventry	2,500*
Hunslet Rugby Foundation	Leeds	2,500
South Green & District War Memorial Fund	Billericay	2,000*
Saddle Up Ranch	Letham Angus	2,000
St Mary's Parish Centre	Ponteland	2,000
Wigmore Village Hall	Leominster	2,000

Burton upon Trent and District YMCA	Burton upon Trent	2,000
Community Link Stafford & District	Stafford	2,000
Northmoor Community Association	Manchester	2,000
Rubicon Dance	Cardiff	2,000
The Manchester Men's Room	Manchester	2,000
St Andrews Community Network	Liverpool	2,000
Tetbury Rail Lands Regeneration Trust	Tetbury	2,000
Penrhyncoch Village Hall	Aberystwyth	2,000*
Cound Guildhall	Shrewsbury	2,000
Pomeroy Resource Ltd	Dungannon	1,000*
Landkey Millennium Green Trust	Barnstaple	1,000*
Total for Community		2,711,500
(Total number of grants: 275)		

Education		£
Essex Youthbuild	Chelmsford	20,000
Hampshire Cultural Trust	Winchester	20,000
Harpurs Hill Children & Family Centre	Coleraine	20,000
Art History Link-Up	Wiggonholt	20,000
KM Charity Team	Whitstable	20,000
Ladbroke JMI School	Potters Bar	20,000*
Life Education Wessex & Thames Valley	Milborne St Andrew	20,000
The Armitage Foundation	London	20,000
The Forest School	Winnersh	20,000
New Bridge Multi Academy Trust	Oldham	20,000
Megan Baker House	Ledbury	20,000
Learn English at Home	London	20,000
St Joseph's RC Primary School	Ross-on-Wye	20,000
Elmwood and Penrose Federation	Bridgwater	15,000*
Stepping Stones Play and Learn Group	Colchester	15,000
Warren Road Primary School	Orpington	15,000*
MK SNAP	Milton Keynes	15,000
TRACKS Autism	Stevenage	15,000
The Dalai Lama Centre for Compassion	Oxford	10,000
The Foundation for Conductive Education	Birmingham	10,000
The Volunteer Tutors Organisation	Glasgow	10,000
Wyvern School Foundation Trust	Crowborough	10,000
Royal National College for the Blind	Hereford	10,000*
Quest For Learning	Didcot	10,000
Pavilion Preschool Aigburth	Liverpool	10,000

Friends of Castledon School	Wickford	10,000*
St Mary's Music School Trust	Edinburgh	10,000
Haygrove School	Bridgwater	10,000*
The Primary Shakespeare Company	London	10,000
Lifting Limits	London	10,000
Jacari	Bristol	8,000
Down Syndrome Training & Support Service Ltd	Bradford	7,500
Henley Music School	Henley-on-Thames	7,500
Springboard	Chippenham	7,500
St John's C of E Primary School	Surrey	7,500
Marlow Opportunity Playgroup	Wooburn Green	5,000
Two Rivers High School (Endeavour Multi-Academy Trust)	Tamworth	5,000*
Christ Church C of E Primary School	London	5,000*
Clapgate Primary School	Leeds	5,000*
Forest Bridge School	Maidenhead	5,000
Bishop Grosseteste University	Lincoln	5,000
Boughton Monchelsea Primary School PTA	Maidstone	5,000
The Rowdown Inspire to Aspire Foundation	New Addington	5,000
The Duchess's High School Trust	Alnwick	5,000
Clio's Company	London	5,000
All Saints' Church in Wales Primary School	Wrexham	5,000
St Thomas Moorside CE (VA) Primary School	Oldham	5,000*
Glen Urquhart Childcare Centre	Inverness	5,000
Lyme Regis Boat Building Academy	Lyme Regis	5,000
Chiddingstone Primary School Parent Teacher Association	Edenbridge	5,000*
Ashcombe Friends Association	Weston-super-Mare	5,000
Selby District Peter Pan Nursery	Sherburn in Elmet	5,000*
Jobsearch - Employment - Mentoring (JEM)	Derby	3,000
Hill View Infant Academy	Sunderland	2,000
Shrewsbury Bookfest	Shrewsbury	2,000
Delph Side C P School	Skelmersdale	2,000
Sheepscombe School	Stroud	1,000
Total for Education		588,000
(Total number of grants: 57)		

Environment		£
Countryside Restoration Trust	Barton	20,000*
The Garden Classroom	London	20,000

Lake District Foundation	Kendal	20,000*
Amphibian and Reptile Conservation Trust	Bournemouth	20,000
Countryside Learning Scotland	Perth	20,000
Art Gene Ltd	Barrow-in-Furness	20,000
Vauxhall (City) Farm	London	20,000
Helensburgh Community Woodlands Group	Helensburgh	20,000*
Pilton Green Man CIO with Friends of Manning's Pit	Barnstaple	20,000*
The Sheep Trust	Harrogate	20,000
Sylva Foundation	Abingdon	20,000
Thrive: gardening for health	Reading	20,000
Peterborough Environment City Trust	Peterborough	20,000
University of Cumbria	Carlisle	20,000
Carymoor Environmental Trust	Castle Cary	20,000
Goodwood Education Trust	West Sussex	20,000*
Welsh Dee Trust	Denbighshire	15,000
Durham Wildlife Trust	Sunderland	15,000
Erlas Victorian Walled Garden	Wrexham	15,000
Wilderness Foundation UK	Chelmsford	15,000
East Ayrshire Coalfield Environment Initiative	Kilmarnock	15,000
Institution of Environmental Sciences	London	15,000
The Group for Recycling in Argyll and Bute Trust	Argyll	15,000
Chichester Ship Canal Trust	Chichester	15,000*
Stonebridge City Farm	Nottingham	15,000
Forest Farm		
Peace Garden	Ilford	12,000
Calthorpe Community Garden	Kings Cross	10,000
New-U Enterprises Ltd	Norwich	10,000*
Wild Planet Trust	Paignton	10,000*
Normandy Community Therapy Garden	Guildford	10,000
Wild Things - Environmental Education in Action	Forres	10,000
Hartlepower	Hartlepool	10,000*
The Schumacher Institute	Bristol	10,000*
Wellbeing At Garon Park	Southend-on-Sea	10,000
Butterfly Conservation	Wareham	10,000
UK Overseas Territories Conservation Forum	Wendover	10,000
ActivLives	Ipswich	10,000
The Frozen Ark	Nottingham	7,500
CommuniGrow	Maidstone	7,500
Wicked Weather Watch	Corsham	7,500
Friends Of Staunton Country Park	Havant	7,500*
The Berkeley Reafforestation Trust	Oxford	7,500

Initiative for Nature Conservation Cymru	Llanarthne	7,500
South London Botanical Institute	London	7,500
Plastic Free North Devon	Braunton	5,000
Wild About Clifford	Avon	5,000*
Scottish Badgers SCIO	Forfar	5,000
Shropshire Hills AONB Trust	Craven Arms	5,000
The Ted Ellis Trust	Norwich	5,000*
Caring for God's Acre	Craven Arms	5,000
St Cuthbert's Church Bellingham	Hexham	5,000*
Bulwell Forest Garden	Nottingham	5,000
Berwickshire Marine Reserve	Eyemouth	5,000
International Otter Survival Fund	Isle of Skye	5,000
GreenSeas Trust	London	5,000
The Collingwood Foundation	Morpeth	5,000*
Knockbreda Methodist Church	Belfast	5,000
Our Only World	Wadebridge	5,000
Castle Loch Lochmaben Community Trust	Lockerbie	4,000
Westland Countryside Stewards	Kilhampton	4,000
Little Ouse Headwaters Project	South Lopham	3,500
Cetacean Research & Rescue Unit	Banff	2,500
Forest Gate Community Garden	London	2,500
Solihull Conservation Volunteers	Solihull	1,000
Friends of Rede Common	Strood	500
Friends of East Pines Park	Blackpool	500
Total for Environment		718,000
(Total number of grants: 66)		

Faith

£

The Church of St John the Baptist	Bishopsteignton	20,000*
Cemetery Road Baptist Church	Sheffield	20,000*
The Ecclesiastical Parish of St Mary & St Melor	Amesbury	20,000
Agape Community Church, Ty Sign	Risca	20,000*
St Mary's Cathedral	Edinburgh	20,000*
St Nicholas Church	Rugby	20,000*
Historic Chapels Trust	London	20,000
Quaker Service	Belfast	20,000
St Mary's Church	Fishguard	20,000
Paston Parochial Church Council	North Walsham	20,000*
Solomon Academic Trust	Oxford	20,000
St John The Divine Church Willenhall	Coventry	20,000

Crossgate Church Ltd	Preston	20,000*
The Friends of St Michael the Archangel Church	Mere	20,000*
The PCC of the Ecclesiastical Parish of Holy Trinity	Hastings	20,000*
St Ives Methodist Church	St Ives	20,000*
Nottingham and Derby Methodist District	Nottingham	20,000*
ZSV Trust	London	20,000
Cairnlea Church	Airdrie	20,000*
Chivelstone PCC	Kingsbridge	20,000*
Harwood Methodist Church	Bolton	20,000*
Emmanuel Group of Churches	Northampton	20,000
Doncaster Minster	Doncaster	20,000
St Peters Church Rhooose	Barry	20,000*
Shepherd Drive Baptist Church	Ipswich	20,000*
St James Church, Bix	Henley	20,000*
Broughton St John Baptist Parish	Preston	20,000
The PCC of the Ecclesiastical Parish of St Luke	Edgbaston	20,000
Ainon Baptist Church	Tongwynlais	20,000*
PCC of Rayleigh	Rayleigh	20,000*
Church Mission Society	Oxford	15,000*
All Saints Church	Hove	15,000*
St Peters Church, Yaxley	Peterborough	15,000*
Stretton in Rutland PCC	Oakham	15,000*
Hook Norton Baptist Church	Banbury	15,000*
St Mary the Virgin Church, Great Brickhill	Milton Keynes	15,000*
St Cyprians Frecheville	Sheffield	15,000*
Parish Centre @ St Johns Church	Filey	15,000*
Winchester, Hyde: St Bartholomew	Winchester	15,000*
Ardrossan and Saltcoats Kirkgate Parish Church	Saltcoats	15,000*
All Saints' Church, Barling Magna	Southend-on-Sea	15,000*
Archdiocese of Cardiff	Caerdydd	15,000*
Gamblesby Methodist Church	Penrith	15,000*
PCC Longcot	Faringdon	15,000*
St Stephen with St Thomas Church	London	15,000*
Leeds Minster - PCC of Leeds City Parish	Leeds	15,000*
Gorse Hill Baptist Church	Swindon	15,000
All Saints'	Chevington	15,000*
Barkingside Methodist Church	Ilford	15,000
Preston Minster	Preston	15,000*
St Mary's Church, Llanfairtalhaiarn	Abergele	15,000*
The Shore Community Church	Bognor Regis	15,000
Amberley PCC	Stroud	15,000*

St Michael's Church, Mitchel Troy	Monmouth	15,000*
The Religious Society of Friends (Quakers)		
Marazion Local Meeting	Marazion	15,000*
PCC St John's Church Ryhall	Stamford	13,000*
Brighthouse Central Methodist Church	Brighthouse	10,000*
Christ Church, New Mill	Holmfirth	10,000*
St Michaels	Bishop's Stortford	10,000*
St Stephen's Comely Bank Church of Scotland	Edinburgh	10,000
St Matthews/Widcombe PCC	Bath	10,000
Holy Trinity Drayton Parslow	Milton Keynes	10,000*
Liverton PCC	Guisborough	10,000
Sarum College	Salisbury	10,000
Cullen & Deskford Parish Church	Cullen	10,000*
St Martin with St Torney Church Lewannick	Launceston	10,000*
St Michael & All Angels Church, Alberbury	Shrewsbury	10,000*
St Michael & All Angels Church PCC	Abbey Wood	10,000
Braceborough Educational Charity	Stamford	10,000*
South Hams Christian Fellowship	Kingsbridge	10,000*
Trinity Methodist Church	Ellesmere Port	10,000
Friends of All Saints Church	Rochester	10,000
Llandudno Youth for Christ	Llandudno	10,000
All Saints' Church	Mendham	10,000*
The PCC of the Ecclesiastical Parish of Oadby	Oadby	10,000*
The PCC of St Bartholomew Binley	Coventry	10,000
Ipswich Unitarian Meeting House	Ipswich	10,000*
The Giving Hands Mission	Dudley	10,000
St Mary's Church Broughton Gifford	Wiltshire	10,000*
St Chad's Church	Sutton Coldfield	10,000*
St James the Great	Sherborne	10,000*
St Barnabas Church	Crawley	10,000*
All Saints Church, Catton	York	10,000
The Kilbroney Centre	Rostrevor	10,000
St Lawrence	York	10,000
Christ Church	Bexleyheath	10,000*
St Oswald's Church Fulford	York	10,000*
Lugar Parish Church	Cumnock	10,000*
Renewal North West	Stockport	10,000*
Church of St Mary Magdalene, Wethersfield	Braintree	10,000*
Tabernacle Baptist Church	Cardiff	10,000*

Ludham St Catherine	Great Yarmouth	10,000
Holy Nativity Church, Eastfield	Scarborough	10,000*
St Helens Church PCC	Newark	10,000*
Church of St James The Great Aslackby	Sleaford	10,000*
Ombersley Spire and Church Appeal	Ombersley	10,000*
St Mary's Church	Totnes	10,000*
All Saints, Great Oakley	Harwich	10,000
Holy and Undivided Trinity Church, Edale	Hope Valley	10,000*
Holy Trinity Cuckfield PCC	Haywards Heath	10,000*
Redeemed Christian Church of God	Aylesbury	10,000*
St James The Great, Devauden	Chepstow	10,000*
Drumbanagher Parish Church	Newry	10,000*
St Peter's Church Halliwell	Bolton	10,000*
The Matthew 25 Mission	Eastbourne	10,000
Parish Church of St Andrew	Langford	10,000*
St Paul's Harlow Town Centre with St Mary's Little Parndon	Harlow	10,000*
Holy Trinity, Idle	Bradford	10,000*
Croydon Minster	Croydon	10,000*
Comber Youth For Christ	Comber	10,000*
St Mary's Church, Westwell	Ashford	10,000*
Uley with Owlpen & Nympsfield PCC	Dursley	10,000*
St Helen's Church	Worcester	10,000*
Gosport Waterfront Baptist Church	Gosport	10,000
Christ Church	Barnstaple	10,000*
St Albans Masorti Synagogue	St Albans	10,000
St Lawrence Church	Kingsbridge	10,000*
St Leonard's Streatham	London	10,000
PCC Of The Ecclesiastical Parish of Tong and Laisterdyke - Good Neighbour Project	Bradford	10,000
Arlington Baptist Church	Cirencester	10,000*
St Mary the Virgin	Northampton	10,000*
Gwithian Chapel Ltd	Salisbury	10,000*
St Mary's Yate	Bristol	10,000*
The PCC of the Ecclesiastical Parish of St Stephen Canonbury	London	10,000
Work Place Chaplaincy Scotland	Glasgow	10,000
HCJB-UK Ltd	Bradford	9,000
All Saints, Boyne Hill	Maidenhead	8,000*
Kingsland PCC	Leominster	8,000*
Saint Laurence Church	Malton	8,000*
Braintree Youth Project Charity (BYPC)	Braintree	8,000

Morning Star Trust	Chichester	8,000
St Mary the Virgin Church	Brading	7,500*
St Marys Church	Northampton	7,500*
St John's Church	Leyland	7,500
Church of the Venerable Bede	Newcastle upon Tyne	7,500*
Glan Ely Community Hall, Church of the Resurrection	Cardiff	7,500
St Michael's Church and All Angels Church, Lyneham	Chippenham	7,500*
St Andrews PCC	Melton Mowbray	7,500
Dyke and Edinkillie Church of Scotland	Dyke	7,500*
The Ecclesiastical Parish of Loftus-in-Cleveland, Saint Leonard	Saltburn-by-the-Sea	7,500*
South Yorkshire Chaplaincy and Listening Service	Sheffield	7,500
Christ Church, Holloway	Matlock	7,500*
PCC of the Parish of Up Holland and Dalton	Skelmersdale	7,500*
St John's Church	Porth	7,500*
St Paul's Methodist Centre	Aberystwyth	7,500*
St Helen's Church	Northwich	7,500*
St John the Baptist Church Hawkchurch	Axminster	7,500*
St Barnabus Church	Northolt	7,500*
St John the Evangelist Church, Little Wilbraham	Cambridge	7,500*
St John the Evangelist Scottish Episcopal Church	Wick	7,500*
Suckley Parish Academy and Community Enterprises	Worcester	7,500*
St Bartholomew	Northumberland	7,500*
St Denys, Rotherfield	Crowborough	7,500
Seagoe Parish Church/Killicomaine Community Church	Portadown	7,500
PCC of Crowle with Bredicot	Worcester	7,500
PCC St Luke Eltham Park	London	7,500*
Highbury Congregational Church	Cheltenham	7,500*
St Mary the Virgin, Oxenhope	Keighley	7,500*
St Mary's Church, Wirksworth	Matlock	7,500*
Aberdeen Street Pastors	Aberdeen	7,500
St Nicholas' Church Bracon Ash PCC	Norwich	7,500*
Church of the Good Shepherd	Tadworth	7,500
Holy Trinity Church	Caister-on-Sea	7,500*
St Margaret's Church	Braceby	7,000
Badby PCC	Daventry	7,000*
Heslington Church	York	6,000*
Bengeworth Church House	Evesham	6,000
St Mary the Virgin Church	Cowes	6,000

Wylam St Oswin Church	Wylam	6,000*
Chichester Anna Chaplaincy	Chichester	5,000
St Paul's Church, Over Tabley	Knutsford	5,000*
Hope Church Rhondda	Tonypandy	5,000
New Testament Church of God	Manchester	5,000
Pett Methodist Church	Pett	5,000
St Catherine's Church	Ware	5,000*
St John the Baptist Church, Abthorpe	Towcester	5,000*
St Mary the Virgin	Elland	5,000
St Michael & All Angels Church	Doncaster	5,000
St Michael and All Angels, Harston	Grantham	5,000*
Croughton All Saints Medieval Paintings Restoration Fund PCC	Brackley	5,000*
St Mark's PCC	Highcliffe	5,000
Scrivelsby with Dalderby PCC	Horncastle	5,000*
St Andrews Wootton Rivers	Marlborough	5,000
St Giles South Mymms	Potters Bar	5,000*
Easton Christian Family Centre	Bristol	5,000
St Michael's Church, Brent Knoll	Highbridge	5,000
Parish of Badshot Lea and Hale	Farnham	5,000*
St Laurence Church	Long Eaton	5,000*
St Neot Church	Liskeard	5,000*
Roydon United Reformed Church	Harlow	5,000*
Grantont Parish Church	Edinburgh	5,000
Heckington Methodist Church	Sleaford	5,000
Lochgilphead Parish Church of Scotland	Lochgilphead	5,000
The Parish Church of All Saint's	Wellington	5,000
St John The Evangelist Carlton-in-Lindrick	Worksop	5,000*
St Marys East Claydon	Buckingham	5,000*
Wimborne St Giles Parish Church	Verwood	5,000*
St Lawrence Church, Bradwell	Milton Keynes	5,000*
St Cynbryd's Church	Llanddulas	5,000
Bolsover Methodist Church	Chesterfield	5,000
All Saints Church	Okehampton	5,000*
Bolsover PCC	Chesterfield	5,000*
Church of St Margaret of England Little Faringdon	Swindon	5,000*
Great Sampford Baptist Church	Great Sampford	5,000*
Newbald PCC	Beverley	5,000*
St John the Evangelist	Guernsey	5,000*

St Mary Magdalen Church	Leicester	5,000*
PCC St Andrew's Church, Oddington	Kidlington	5,000
Saint Peter's Church, Willersey	Broadway	5,000
St Marks Baptist Church	Bristol	5,000
St John the Evangelist Pool Quay Powys	Welshpool	5,000*
Linwood Church of St Cornelius	Market Rasen	5,000*
St Giles Church, Cheddington	Leighton Buzzard	5,000*
St Helen's Church	Rochester	5,000*
St Mary & St Eanswythe	Folkestone	5,000*
St John and St Leonard	Bedford	5,000
Dungannon Youth For Christ	Dungannon	5,000
Friends of St Johns Denby	Huddersfield	5,000*
St Denys Goadby Marwood	Melton Mowbray	5,000*
St Bartholomew's Church	Burwash	5,000*
St John's Church	Belmont	5,000*
The Friends of St Mary's Church Newport	Saffron Walden	5,000*
St Peter's Church, Terwick	Petersfield	5,000
Croydon cum Clopton Parish Church	Royston	5,000*
St Barnabas Clapham Common	London	5,000
PCC of St Mary & St Edward Parish Church, West Hanningfield	Chelmsford	5,000*
St John the Baptist Church, Snape	Saxmundham	5,000
St Michael's Church	Stoney Stanton	5,000
Sorted Church	Bradford	5,000
Winton United Chapel	Kirkby Stephen	5,000*
Larne Baptist Church	Larne	5,000
St Mary Magdalene PCC	Peterborough	5,000
Grindon Church Community Project	Sunderland	5,000
Immanuel Parish Church Highters Heath	Birmingham	5,000
St Nicholas Church	Birchington	5,000
Baunton PCC	Cirencester	5,000
Cathays Methodist Church	Cardiff	5,000
Holy Cross Church PCC	Hoggeston	5,000
St Michael, Parish of Stowe-Nine-Churches	Church Stowe	5,000
St Nicholas Church Alcester Ecclesiastical Parish	Alcester	5,000
Ruscombe & Twyford PCC: St Mary the Virgin Twyford	Reading	5,000
Friends of Lanteglos Church	Topsham	5,000
St James Church Westhead	Ormskirk	5,000*

The Shed Project	Isle of Lewis	5,000
St Edburghas Church Yardley	Birmingham	5,000*
St Nicholas Church	Oakley	5,000*
Billingford PCC	Diss	5,000*
Carryduff Presbyterian Church	Belfast	5,000*
Church of the Epiphany, Austwick	Lancaster	5,000*
St Agatha's Church Sparkbrook	Birmingham	5,000*
St Mary's Church	White Waltham	5,000*
Friends of St Mary Magdalene, Huntshaw	Rothwell	5,000*
St John's	West Wickham	5,000*
St Mary Magdalene	Leicestershire	5,000*
St Giles Church	Pontefract	4,000*
St Tathan Church, St Athan	Barry	4,000*
PCC of St Peter's Church Wootton Wawen	Claverdon	4,000*
Acle St Edmund's Parish Church	Norwich	4,000*
All Saints Church Hanley	Stoke on Trent	4,000*
St John the Baptist Church Greatham	Hartlepool	4,000*
St Wystan's Church/ Repton PCC	Derby	4,000
St Mary's Church	Bideford	4,000
Buckland Chapel Trust	Yelverton	4,000*
The Church of St John the Baptist Penhow PCC	Newport	4,000*
St George's Church Huyton	Liverpool	4,000
St Andrews, Good Easter	Chelmsford	3,500
Trinity Methodist Church	Skipton	3,500
Watlington Methodist Church	Watlington	3,500*
Church of the Holy Spirit, Hubberston	Milford Haven	3,500*
St Peter's Church Mill End	Rickmansworth	3,500*
PCC of St Peter's, Horbury with St John's, Horbury Bridge	Wakefield	3,500
St Cuthbert's Church, Brislington	Bristol	3,500
St Columba's United Reformed Church	Billingham	3,500*
All Saints Church	Long Eaton	3,000*
St Mary's Church Chilham	Canterbury	3,000
Capel Bryn Iwan	Carmarthenshire	3,000*
St Thomas Church	Kidsgrove	3,000
Ashton under Hill Free Church Trust	Evesham	3,000
St Michael-in-Lewes	Lewes	3,000
Carnoustie Church of Scotland	Carnoustie	3,000*
St Bartholomew	Wick	3,000*
St Mary's Church	Kilvington	3,000*
Titchmarsh PCC	Kettering	3,000*

The PCC of Sudbourne	Woodbridge	3,000
Champions Church	Skipton	3,000*
St Bartholomew's Church	Bodmin	3,000*
St Luke's Methodist Church Centre	Rochester	3,000
Wanstead Parish	London	3,000*
St John the Baptist Church, Alkborough PCC	Alkborough	3,000*
Unity Church	Orpington	3,000*
St Mary the Virgin	Northampton	3,000
St Mary's Church, Hunton	Maidstone	3,000*
Christ Church	Alsager	3,000
Caribbean Hindu Cultural Society	London	3,000*
St Mary's Bitterley	Ludlow	3,000*
St Thomas Church, Musbury	Rossendale	3,000
St Peter's Church, Rendcomb	Cirencester	3,000
Federation of Jewish Services	Manchester	3,000
St Swithin's Church	Craven Arms	3,000
PCC St Columba	Liverpool	3,000
PCC St Paul's Church	Liverpool	3,000
PCC St Oswald's Church Netherton	Bootle	3,000
St Michael & All Angels	Pelton	2,500*
St Mary's Church	Codford St Mary	2,500*
Brompton-on-Swale Methodist Church	Brompton-on-Swale	2,500*
St Catwg's Church, Pentyrch	Cardiff	2,500*
Denchworth PCC	Wantage	2,500
St George's Church	Clun	2,500*
Coleford Baptist Church	Coleford	2,500
St Margaret's Church	Fleggburgh	2,500*
The Church of St Mary the Virgin Little Houghton	Northampton	2,500*
Church Hall Committee of Holy Trinity Nailsea PCC	Bristol	2,500*
Lytham Methodist Church	Lytham St Annes	2,500
Tretire with Michaelchurch & Pencoyd PCC	Hereford	2,500
St Mary's Church	Copythorne	2,000*
St Saviours Church, Oxton	Prenton	2,000*
St Thomas a Becket Church, Huntingdon	Kington	2,000*
St Peter & St Paul, Ermington	Ivybridge	2,000
All Saints' Church Crowfield	Ipswich	2,000*
St Edwards Church	Chilton Polden	2,000*
St Matthew's Church	Redhill	2,000*
Werrington Church	Launceston	2,000*
St Peter's Church, Goldhanger	Maldon	2,000
Parochial Church Council, Long Riston	Hull	2,000*

The Friends of St Margaret's, Crick	Northampton	2,000
St Andrews Heritage Society, Spratton	Northampton	2,000
Bishopstoke Evangelical Church	Eastleigh	1,500*
St Catherine's Church, New Brancepeth	Durham	1,500*
St Leonard's Hatfield	Leominster	1,500*
Tabernacle English Baptist Church	Newport	1,500
Holy Trinity Prestwood	Great Missenden	1,000
St Hilda's Church	Halifax	1,000
St Edith's Church, Little Grimsby	Fotherby	1,000
Holy Cross Church	Middlezoy	1,000*
Bethel Methodist Church	Mid-Glamorgan	1,000
Dorrington PCC	Dorrington	1,000
St Thomas' C of E Church	Shrewsbury	500
Total for Faith		2,655,500
(Total number of grants: 337)		

Health		£
Brothers in Arms	Glasgow	20,000
IHEART Principles	London	20,000
Being There	Manchester	20,000
Lambeth and Southwark Mind	London	20,000
Headway Hertfordshire	Hitchin	20,000
Muscular Dystrophy Support Centre	Coventry	20,000
Womens Counselling and Therapy Service	Leeds	20,000
St Margaret's Centre	Durham	20,000
The Care Workers' Charity	London	20,000
Gloucestershire Counselling Service	Stroud	20,000
Lifecentre	Chichester	20,000
Prader-Willi Syndrome Association UK	Derby	20,000
Youth Talk	St Albans	20,000
Hafal	Swansea	20,000
Headway Derby	Derby	20,000
Prince & Princess of Wales Hospice	Glasgow	20,000
Women & Health	London	20,000
Dyspraxia Foundation	Hitchin	20,000
Cathedral Youth Club	Londonderry	20,000
The Health and Wellness Hub	Motherwell	20,000
Playskill	Watford	20,000
Grief Encounter	London	20,000
Escape Intervention Services Ltd	South Shields	20,000
MS Therapy Centre Lothian	Edinburgh	20,000
Sands (Stillbirth and neonatal death charity)	London	20,000

Arts for Recovery in the Community	Stockport	20,000
Harrow Multiple Sclerosis Therapy Centre Ltd	London	20,000
The Laura Centre	Leicester	20,000
The Anne Robson Trust	Stevenage	20,000
Huntingtons Disease Association Northern Ireland	Belfast	20,000
Hospice Hope	Ravenstone	16,500
Dorset Mind	Bournemouth	15,000*
Trekstock	London	15,000
Chilterns MS Centre	Aylesbury	15,000
South Kent Mind	Folkestone	15,000
Teeth Team	Hull	15,000
YPI counselling	Basingstoke	15,000
The Stuart Low Trust	London	15,000
Chapter (West Cheshire) Ltd	Ellesmere Port	15,000
Rekindle Home	Newtown	15,000
Brent Centre for Young People	London	15,000
Cambridge Acorn Project	Cambridge	15,000
Tilehouse Counselling	Hitchin	15,000
The Sussex Beacon	Brighton	15,000
Mind Monmouthshire	Abergavenny	15,000
Epilepsy Outlook	Hartlepool	10,000
Focus Counselling	Bath	10,000
Pennywell Neighbourhood Centre	Sunderland	10,000
Wellspring Therapy & Training	Harrogate	10,000*
Key Changes (Islington Music Forum Ltd)	London	10,000
The Otakar Kraus Music Trust	Hampton	10,000
Source Youthwork	Wilmslow	10,000
Birmingham Centre for Arts Therapies (BCAT)	Birmingham	10,000
Norwich Samaritans	Norwich	10,000
RT Community Projects	Durham	10,000
Number 22 Community Counselling Services	Maidenhead	10,000
Washington Mind	Washington	10,000
The Leamy Foundation	Alexandria	10,000
Chrysalis Centre for Change	St Helens	10,000
Anorexia and Bulimia Care	Bristol	10,000
BASIC - Brain And Spinal Injury Centre	Salford	10,000
Children's Respite Trust	Uckfield	10,000
Shine Youth	Solihull	10,000
ADHD Richmond and Kingston	London	10,000
Speakeasy	Bury	10,000
Community Counselling (North Yorkshire) Ltd	Malton	10,000
Marches Counselling Service	Hereford	10,000
Headway North Staffordshire	Stoke-on-Trent	8,000

Brecon and District Mind	Brecon	7,500
Edinburgh Forget Me Not Garden	Edinburgh	7,500
Mind in Enfield	London	7,500
Harlow Stroke Support Group	Harlow	5,000
Attend	London	5,000
Horticultural Therapy Trust	Plymouth	5,000
Pregnancy Crisis Care (Plymouth & SE Cornwall)	Plymouth	5,000
Headway Portsmouth & South East Hampshire	Portsmouth	5,000
Tees Esk and Wear Valleys NHS Trust General Charitable Fund	Middlesbrough	5,000
React	Kew	5,000
Harry's Hydrocephalus Awareness Trust (Harry's HAT)	Yateley	5,000*
Total for Health		1,117,000
(Total number of grants: 79)		

Museums & Heritage

		£
Valley Heritage	Bacup	20,000*
Rame Conservation Trust	Torpoint	20,000
The Textile Conservation Foundation	Reading	20,000
The Friends of Rossendale Museum at the Whitaker	Rossendale	20,000
Barnsley Museums and Heritage Trust	Barnsley	20,000
The Daniel Adamson Preservation Society	Liverpool	15,000
Sutton Hoo Ship's Company	Woodbridge	15,000
Leconfield Hall	Petworth	15,000
Wanlockhead Museum Trust	Wanlockhead	10,000
Friends of Shenstone Tower	Lichfield	10,000*
Westonzoyland Engine Trust	Bridgwater	10,000
Kids in Museums	London	10,000
Friends of Chatham Traction	Medway	10,000
The Sandwich Medieval Trust	Sandwich	10,000
Windmill Hill Windmill Trust	Herstmonceux	7,500
Stroud District (Cowle) Museum Trust	Stroud	6,000
Tanat Valley Light Railway	Oswestry	5,000*
Slough Fort Preservation Trust	Rochester	4,000
Sheffield General Cemetery Trust	Sheffield	3,500
Lowdham Railway Heritage	Lowdham	3,000
Broadcast Television Technology Trust	Camberley	2,000
Total for Museums & Heritage		236,000
(Total number of grants: 21)		

Welfare

		£
The Birchall Trust	Barrow-in-Furness	20,000
Homeless Care	Maidstone	20,000
Open Door North East	Middlesbrough	20,000
Age UK Barnet	London	20,000
Space4Autism	Macclesfield	20,000
Tom Harrison House	Liverpool	20,000
Little Gate Farm	Rye	20,000
Women's Health and Family Services	London	20,000
Age Concern North Norfolk	Sheringham	20,000
Autistic Society Greater Manchester Area	Manchester	20,000
Bridgend Carers Centre	Bridgend	20,000
Community Drug and Alcohol Recovery Services	London	20,000
Middlesex Association for the Blind	Stanmore	20,000
Where Next Association	Redditch	20,000
Wintercomfort for the Homeless	Cambridge	20,000
Disability Peterborough	Peterborough	20,000
Off The Fence Trust	Hove	20,000
Synergy Theatre Project	London	20,000
Tender Education & Arts	London	20,000*
Indepen-dance (Scotland) Ltd	Glasgow	20,000
Positive Action in Housing	Glasgow	20,000
The Lullaby Trust	London	20,000
Aspire	Stanmore	20,000
Tourettes Action	Farnborough	20,000
Designability Charity Ltd	Bath	20,000
Involve Kent	Maidstone	20,000
Springfield Project	Birmingham	20,000
Watford & District Mencap Society	Rickmansworth	20,000
Otley Old People's Welfare Centre Committee	Leeds	20,000
Better Understanding of Dementia for Sandwell	Oldbury	20,000
Edinburgh Development Group (EDG)	Edinburgh	20,000
Paces Sheffield	Sheffield	20,000
Borderlands (South West) Ltd	Bristol	20,000
Disabled & Carers Information Centre Association	Dundee	20,000
Groundswell UK	London	20,000
Cambridge Cyrenians	Cambridge	20,000
Home Start Shepway	Folkestone	20,000*
4Sight Vision Support	Bognor Regis	20,000
Bloody Good Period	London	20,000
Mosac	London	20,000
The Child Accident Prevention Trust	London	20,000
Home-Start Norfolk	Swaffham	20,000
Home-Start Nottingham	Nottingham	20,000

Routes to Roots (Poole) CIO	Poole	20,000
Sleep Pod	Tunbridge Wells	20,000
The Hollow Lane Club	Exeter	20,000
Donnington Doorstep	Oxford	20,000
Extra – Support for Families	Jaywick	20,000
Friends and Families of Special Children	Plymouth	20,000
Koala North West	Birkenhead	20,000
The Sunnybank Trust Ltd	Epsom	20,000
Action for Family Carers	Maldon	20,000
Azalea	Luton	20,000
Home-Start Camden and Islington	London	20,000
Imagine If Trust	Liverpool	20,000
Unlock	Maidstone	20,000
Chaos Theory	Essex	20,000
Peterborough Women's Aid	Peterborough	20,000
The Family Haven	Gloucester	20,000
Interest Link Borders	Duns	20,000
Oswin Project	Bothal, Morpeth	20,000
CAP UK	Totnes	20,000
Savera UK	Liverpool	20,000
Tempus Novo	Doncaster	20,000
Amicus Trust Ltd	Bedford	20,000
Arts For All	London	20,000
KIDCARE 4U	Newport	20,000
Our Time	London	20,000
Warrington Disability Partnership	Warrington	20,000
West London Mission	London	20,000
Cranstoun	Esher	20,000
International Care Network	Bournemouth	20,000
Disability Solutions West Midlands	Stoke-on-Trent	17,500
Home-Start East Sussex	Newhaven	15,000
High Level (Northern) Trust	Rochdale	15,000
CREST	South Shields	15,000
Age UK Mid Devon	Tiverton	15,000
Home-Start Morecambe and Lancaster	Morecambe	15,000
Project Colt	Elland	15,000
Accuro (Care Services)	Nr Bishops Stortford	15,000
Leeds Mencap	Leeds	15,000
Caithness KLICS SCIO	Wick	15,000
Jubilee House Care Trust Ltd	Welwyn Garden City	15,000
Street Soccer NI	Belfast	15,000
Home-Start Cambridgeshire	Papworth Everard	15,000
Beyond Food Foundation	London	15,000
Euan's Guide	Edinburgh	15,000
My Life Films Ltd	Richmond	15,000
National Association for the Children of Alcoholics	Bristol	15,000

Wycombe Youth Action	High Wycombe	15,000
BritSom	Mill Hill	15,000
Exeter Community Initiatives	Exeter	15,000
Salisbury World Refugee Centre	London	15,000
Home-Start South East Dorset	Bournemouth	15,000
Age Exchange	London	15,000
Create Hope	Bracknell	15,000
Llandaff 50+	Cardiff	15,000
Support for Families	Stirling	15,000
Startuponline	Bicester	15,000
Street Storage	London	15,000
Rossendale Trust	Macclesfield	15,000
Steps2Recovery	London	15,000
Sibs	Oxenhope	15,000
Cape Community Day Care Centre	Smethwick	15,000
Enfys Foundation	Neath	15,000
Home-Start CHAMS	Crawley	15,000
Home-Start Ceredigion	Lampeter	15,000
Kennedy Street Foundation CIO	Brighton and Hove	15,000
Home-Start Manchester	Manchester	15,000
The Life Project Bath	Bath	15,000
ClearVision Project	London	15,000
North East Sensory Services (NESS)	Aberdeen	15,000
Speaking Up		
Speaking Out	Macclesfield	15,000
Peasholme Charity	York	15,000
Visibility Scotland	Glasgow	15,000
Advice Support Knowledge Information	London	15,000
Hope at Home	Bromsgrove	15,000
Wolverhampton DV Forum	Wolverhampton	15,000
SAMs Charity	Glasgow	14,000
Betws Family Centre	Betws	12,000
Cymdeithas Gofal The Care Society	Aberystwyth	10,000
Highland Cycle Ability Centre	Nairn	10,000
Home-Start Richmondshire	Catterick Garrison	10,000
Accessible Arts & Media	York	10,000
Assist Trust	Norwich	10,000
Bury Society for Blind and Partially Sighted People	Bury	10,000
Aid Box Community	Bristol	10,000
Foyle Down Syndrome Trust	Waterside	10,000
Home-Start Banbury & Chipping Norton	Banbury	10,000
Surrey Drug and Alcohol Care Ltd	Guildford	10,000

Home-Start Birmingham North and Inner City	Birmingham	10,000
Northumberland County Blind Association	Morpeth	10,000
Think Children	Newark	10,000
Derby County Community Trust	Derby	10,000
DIAL South Essex	Grays	10,000
Home-Start Stroud and Gloucester	Stroud	10,000
Home-Start West Lothian	Livingston	10,000
St Christopher's Family Centre	Bradford	10,000
Christian Kitchen	London	10,000
East London Advanced Technology Training	London	10,000
Lifeline (Harrogate) Ltd	Harrogate	10,000
Muirhead Outreach Project	Glenrothes	10,000
One North East London	Essex	10,000
The Strathmore Rugby Club Community Trust	Forfar	10,000
Women Acting In Today's Society	Birmingham	10,000
CLOWNS	Minehead	10,000
Disability Bowls England	Nottingham	10,000
Hillingdon Women's Centre	Hillingdon	10,000
Refugees at Home	London	10,000
Southend Blind Welfare Organisation	Westcliff-on-Sea	10,000
Asperger's Children & Carers Together (ACCT)	Sheffield	10,000
Bikes for Refugees (Scotland)	Edinburgh	10,000
Ryders Green Methodist Day Centre	West Bromwich	10,000
Me2 Club	Woodley	10,000
St Vincent's Family Project	London	10,000
The Cyril Flint Volunteering Chairty	Urmston	10,000
Steel Bones	Bury St Edmunds	10,000
Access Adventures	Amptill	10,000
Leeds Weekend Care Association	Leeds	10,000
Live!	Chester	10,000
Sub-Sahara Advisory Panel	Cardiff	10,000
Home-Start North West Hampshire	Basingstoke	10,000
Musical Keys	Norwich	10,000
Abused Men in Scotland	Edinburgh	10,000
Action on Dementia	Sunderland	10,000
Asperger East Anglia	Norwich	10,000
CHIPS	Hertford	10,000
Home-Start I.O.W	Newport	10,000
South Cheshire CLASP	Crewe	10,000
Go Dharmic UK Welfare	London	10,000
IndoAmerican Refugee and Migrant Organisation	London	10,000

Peggy Dodd Centre	Bath	10,000
SNAPS Yorkshire CIO	Leeds	10,000
Students and Refugees Together	Plymouth	10,000
Supporting Carers and Families Together	Rayleigh	10,000
Telford Crisis Support	Telford	10,000
Young Carers Development Trust	Bath	10,000
Bolton Deaf Society	Bolton	10,000
Caerphilly People First	Bargoed	10,000
Disability Advice Service (East Suffolk)	Martlesham Heath	10,000
Middlesbrough Neighbourhood Welfare	Teesside	10,000
National Appropriate Adult Network (NAAN)	Ashford	10,000
Norfolk and Norwich SEND Association	Norwich	10,000
Slough Refugee Support	Slough	10,000
Fat Macy's	London	10,000
Community Chaplaincy - Norfolk	Norwich	10,000
Disability Can Do	Blackwood	10,000
Preston Domestic Violence Services	Preston	10,000
Prison Fellowship Northern Ireland	Belfast	10,000
Bromley Brighter Beginnings	Bromley	10,000
Riverside Community Trust	Ayr	10,000
Dressability	Swindon	8,500
Neutral Ground Child Contact Centre	Abbey Wood	7,500
The Include Project	Redhill	7,500
Age Concern New Forest	Southampton	7,500
Age UK Hertfordshire	Welwyn Garden City	7,500
Cherry Trees	Guildford	7,500
Deaf-SELF	London	7,500
Age Concern Mole Valley	Dorking	7,500
Kincardine and Deeside Befriending	Stonehaven	7,500
Asylum and Refugee Community	Blackburn	7,500
SPACE	Hertfordshire	7,500
Choices Islington	London	7,500
SoundCafe Leicester	Leicester	7,500
The Downright Special Network	Hull	7,500
The HealthBus Trust	Bournemouth	7,000
Action for Elders Trust	Swansea	6,500
Carer Support South Lakes	Kendal	6,500
DangerPoint Ltd	Talacre	6,500
Grace House North East	Sunderland	6,500
Music Action International	Manchester	6,500
Positive Action in the Community	Nelson	6,500

The Brick	Wigan	6,500
St Davids Diocesan Council for Social Responsibility – Plant Dewi	Carmarthen	6,500
Venus Working Creatively with Young Women	Bootle	6,500
Kairos Women Working Together	Coventry	6,500
Southampton Family Trust	Southampton	6,000
Disabled Persons Housing Service	Aberdeen	5,000
Circle of Support for Autism Families	Derry/Londonderry	5,000
Axe Valley & West Dorset Ring & Ride Service Ltd	Honiton	5,000*
Down Syndrome Development Trust	Seaford	5,000
Argyll & Bute Rape Crisis	Dunoon	5,000
Tools for Self Reliance	Northampton	5,000
Walworth Golden Oldies Community Care Project	London	5,000
Freedomwheels (E.D.T.S.)	Exeter	5,000
Lifeline Community Action	Bishop Auckland	5,000
North Staffordshire Aspergers/Autism Association	Stoke-on-Trent	5,000
Age Concern North Dorset	Sturminster Newton	5,000
Forth Valley Disability Sport	Stirling	5,000
East Sussex Hearing Resource Centre	Eastbourne	5,000
Time Out Group (North West)	Alderley Edge	5,000
Centre of Sign-Sight-Sound	Colwyn Bay	5,000
21 Together	Maidstone	5,000
Cerebral Palsy Plus	Bristol	5,000
The Congolese Association of Merseyside (CAM)	Bootle	5,000
Friends of Guys Marsh Prison	Marnhull	4,000
The Bivol Trust	Portsmouth	3,000
Haven Project	Liverpool	3,000
Cloona Child Contact Services	Belfast	2,500
Kingdom Faith Church	Horsham	2,500
Barnsley Sexual Abuse and Rape Crisis Services	Barnsley	2,500
Hull Street Angels Trinity	Hull	2,500
Bridge Child Contact Centre	Hull	2,500
Your Future Education CIO	Hadston	2,500
Home-Start Horizons	Leicester	2,000
Nottinghamshire Deaf Society	Nottingham	2,000
Wirral Mencap	Birkenhead	2,000
Family Gateway	Wallsend	2,000

Phoenix Domestic Abuse Services	Blaina	2,000
Disability Direct	Derby	2,000
Trust House Lancashire	Preston	2,000
Church on The Street Ministries	Burnley	2,000
The Stable Family Home Trust	Hampshire	1,000
Total for Welfare		3,184,500
(Total number of grants: 253)		

Youth		£
5th Skipton Scout Group	Skipton	20,000*
Youth Leads UK	Bolton	20,000
Change of Scene	Farnham	20,000
Northallerton Scouts and Guides	Northallerton	20,000*
Frontier Youth Trust	London	20,000
StreetDoctors	London	20,000
Baraka Youth Association	London	20,000
Oasis Childrens Venture	London	20,000
Sporting Marvels	Rhondda Cynon Taf	20,000
Build Up Foundation	London	20,000
The Pushkin Trust	Newtownstewart	20,000*
Jon Egging Trust	Redditch	20,000
Hull Youth Support Trust	Hull	20,000
The Sycamore Project	Bolton	20,000
Haldane Youth Services	Alexandria	20,000
9th Heywood (St Michaels) Scout Group	Rochdale	20,000
Transitions UK	Hitchin	20,000
BF Adventure	Penryn	20,000
Fighting Words Belfast	Belfast	20,000
The Gifted Organisation Ltd	Cheshunt	20,000
The Running Charity	London	20,000
Track Academy by Connie Henry	London	20,000
Sussex Clubs for Young People	Worthing	20,000
Active Fusion	Doncaster	20,000
Youth Resource Services (The Rendezvous, Sherborne) Ltd	Sherborne	20,000
Devas Club	London	20,000
Lambourne End Centre for Outdoor Learning	Lambourne End	20,000
Reeltime Music	Motherwell	20,000
Smile for Life Children's Charity	Newcastle upon Tyne	20,000
Teen Talk (Harwich)	Harwich	20,000
Working Options in Education	Luton	20,000
Marches Family Network	Leominster	20,000
Hackney Playbus	London	20,000
Venture Scotland	Edinburgh	20,000
Moving On (Durham) Ltd	Durham	20,000
South Central Youth Ltd	London	20,000
Youth Scotland	Edinburgh	20,000

Cirencester Housing for Young People	Cirencester	20,000
Canongate Youth	Edinburgh	20,000
Columba 1400	Staffin	20,000
Kingstanding Regeneration Trust	Kingstanding	20,000*
1st Weaverham Sea Scouts	Weaverham	20,000
Base 51	Nottingham	20,000
The Link Family and Community Centre	Newtownards	20,000
Kazzum Arts Project	London	20,000
Sussex Nightstop	Brighton	20,000
Friends of the Award (Edinburgh and the Lothians)	Edinburgh	20,000
Just Like Us	London	20,000
The Boleh Trust	Pewsey	15,000
Andover Young Carers	Andover	15,000
Hounslow Action for Youth	Hounslow	15,000
Pilton Youth and Children's Project	Edinburgh	15,000
Bosence Farm Community	Cornwall	15,000
Tweeddale Youth Action	Peebles	15,000
ENYP	Norwich	15,000
The Matrix Trust	Guildford	15,000
Ormside Mill Residential Centre Ltd	Appleby-in-Westmorland	15,000
Patrician Youth Centre	County Down	15,000
4th Dunstable Scout Group	Dunstable	15,000
Nightsafe	Blackburn	15,000
The Economist Educational Foundation	London	15,000
Trinity Youth & Children's Project	Middlesbrough	15,000
Multi-Cultural Family Base	Edinburgh	15,000
First Give	London	15,000
Kilmarnock Road Children & Young People Family Resource Centre	Hartlepool	15,000
Duffryn Community Link	Newport	15,000*
The East to West Trust	Egham	15,000
Eyres Monsell Club for Young People	Leicester	15,000
Inner Flame	Swindon	15,000
Elgin Youth Development Group	Elgin	15,000
The Bridge Mentoring Plus Scheme	Bridgend	15,000
CREATE Paisley	Paisley	12,000
Chichester Information Shop for Young People	Chichester	10,000
Wester Hailes Youth Agency	Edinburgh	10,000
John Schofield Trust	Surrey	10,000
Boroughmuir Rugby & Community Sports Club	Edinburgh	10,000

Burnmoor 1st Scout Group	Durham	10,000*
Purbeck Youth & Community Foundation	Wareham	10,000
Clevedon YMCA	Clevedon	10,000*
Eagle's Nest Project	Staffordshire	10,000
Sandwell Asian Development Association	West Bromwich	10,000
Ballymena Sea Cadets	Antrim	10,000
PASSION4FUSION	West Lothian	10,000
Liss Youth Centre (Crossover)	Liss	10,000
Second Chance Childrens Charity	Titchfield	10,000
9th Heywood (St Michaels) Scout Group	Rochdale	10,000
South West Youth Ministries (SWYM)	Devon	10,000
Right Track Scotland Ltd	Coatbridge	10,000
3Pillars Project	London	10,000
Trinity Youth Association	Northumberland	10,000
Caxton Youth Organisation	London	10,000
New Era Foundation	London	10,000
Alive and Kicking Theatre Company	Leeds	10,000
Evergreen Play Association	London	10,000
Winchester Street Reach	Winchester	10,000
Grimethorpe Activity Zone	Barnsley	10,000
Fishwick Rangers Youth and Community Development Scheme	Preston	10,000
Lifecentre Hattersley	Hyde	10,000
Positive View Foundation	Kent	10,000
The Miracle Foundation SCIO	Motherwell	10,000
Croydon Youth Theatre Organisation	London	10,000
Sea-Change Sailing Trust	Maldon	10,000
North Avenue Youth Centre	Chelmsford	10,000
Samuel Lithgow Youth Centre	London	10,000
The Space	Cheddar	10,000
Front Lounge	Dundee	10,000
Saffron Young Peoples Project	Leicester	10,000
Alyth Youth Partnership SCIO	Alyth	7,500
2nd Brewood Scout Group	Stafford	7,500
Powerhouse Community Network	Dagenham	7,500
Alternatives Dundee	Dundee	7,500
Clapton Common Boys Club	London	7,500
Wonder Fools	Glasgow	7,500
1st Lampeter Scout Group	Lampeter	7,500

Littlehampton Sea Cadets	Littlehampton	7,500*
Egremont Youth Partnership	Egremont	7,500
Activity Club for Children with Special Needs – Thumbs Up Club	Reading	7,500
Tough Loving	Preston	7,500
The Speedwell Trust	Dungannon	7,500
Urban Uprising	Edinburgh	7,500
Clewer Scout and Guide Group	Windsor	7,500
Eagle's Nest Project	Staffordshire	6,500
Rochdale Connections Trust	Rochdale	6,500
The Enthusiasm Trust	Derby	6,500
Incredible Kids	Bristol	6,500
Montgomery Area Scout Council	Machynlleth	6,500
Heron Corn Mill (Beetham) Ltd	Milnthorpe	5,000
Kids N' Action	London	5,000
The Ethel Trust	Sheffield	5,000
The Rock Youth Project	Carlisle	5,000
Girlguiding MNW Willow Tree Centre	Harefield	5,000
The Lammas Scout and Guide Group	Nottinghamshire	5,000*
Twickenham Sea Cadets	Teddington	5,000
Coach AnnieZ Foundation	Nuneaton	5,000
93rd Newcastle Scout Group	Newcastle upon Tyne	5,000*
Glenboig Development Trust	Glenboig	5,000
AYR: Newton Wallacetown Church – Newton Youth Ministries	Ayr	5,000
Cara-Friend	Belfast	5,000
Teen Action	London	5,000
Hall Green Youth	Solihull	5,000
The Jock Neish Scouting Centre	Forfar	5,000*
1st Hathersage Scout Group	Hope Valley	5,000
St Agnes Scouts and Guides Parents Committee	Manchester	5,000*
Barking and Dagenham Youth Dance Ltd (BDYD)	Barking	5,000
Children's Book Project	London	5,000
Let Us Play	Wolverhampton	5,000
Project MotorHouse	Ramsgate	5,000
The Connections Bus Project	Cambridge	5,000*
1st Horndean Scout Group	Horndean	5,000
Sandmartins Activity Club CIO	Wareham	5,000
The Horrabridge Youth Club	Yelverton	4,000
7th Batley (St Andrew's) Scout Group	Batley	3,500*

Exmouth Unit 395 of the Sea Cadets Corps	Exmouth	3,000
7th Coventry Scout Group	Coventry	3,000
Sharon Youth Association	Manchester	2,500
Gilcrux Village Hall & Educational Trust	Wigton	2,500*
Gorebridge Opportunities Ltd (GO)	Gorebridge	2,500
Eastleigh District Scout Council	Hampshire	2,000
New Roots Housing Project	Nottinghamshire	2,000
Active Fusion	Doncaster	2,000
Greater Manchester Youth Network (GMYN)	Manchester	2,000
Moving On (Durham) Ltd	Durham	2,000
YMCA Humber	Grimsby	2,000
1st Alsager Scout Group	Alsager	2,000
9th/21st Plymouth Scout Group	Plymouth	1,500*
1st Thornton Cleveleys Scout Group	Thornton Cleveleys	1,000
Total for Youth		1,962,000
(Total number of grants: 166)		

Total grants of £20,000 and less	<u>£14,169,500</u>
Total grants over £20,000	<u>£84,151,306</u>

Total grants	<u>£98,320,806</u>
Total number of grants: 2,129	