

THE GUILD OF HEALTH AND ST RAPHAEL

England & Wales · Charity number 211016

Details

Other names THE GUILD OF HEALTH LIMITED

Status Registered

Legal form Charitable company

Company number [00487460](#)

Registered 1962-09-22

Register [View on the Charity Commission register](#)

Contact

Address Brookes Stephens
New Media House
Davidson Rd
Lichfield
Staffs
WS14 9DZ

Phone 07398164477

Email director@gohealth.org.uk

Website www.gohealth.org.uk

Activities

Objects: 1. TO BRING TOGETHER CHRISTIAN PEOPLE, INCLUDING DOCTORS, PSYCHOLOGISTS AND MINISTERS OF RELIGION, TO WORK IN FELLOWSHIP FOR FULLER HEALTH, BOTH FOR THE INDIVIDUAL AND THE COMMUNITY.2 TO ENABLE ALL MEMBERS TO STUDY THE INTER-ACTION BETWEEN PHYSICAL, MENTAL AND SPIRITUAL FACTORS IN WELL BEING.3 TO SUSTAIN AND STRENGTHEN BY PRAYER THE SICK, THOSE WHO MINISTER TO THEM, AND ALL THOSE WHO EXERCISE THE DIVINE GIFT OF HEALING.4 TO HELP MEN AND WOMEN TO REALISE IN THEMSELVES, AS MEMBERS OF THE CHRISTIAN FAMILY, THE ABUNDANT LIFE OFFERED BY CHRIST.

Activities: The principal activities of the charity have continued to be discussions and the dissemination of literature, prayer meditation and intercessions. The charity has also continued to increase its work in the country by promoting conferences and retreats.

Classification

- **How:** Provides Services, Acts As An Umbrella Or Resource Body
- **What:** The Advancement Of Health Or Saving Of Lives, Religious Activities
- **Who:** The General Public/mankind

Geography

- **Area of benefit:** NATIONAL
- Northern Ireland
- Scotland
- Throughout England And Wales

Finances

Period end	Income	Expenditure	Assets	Employees
2025-03-31	£76,232	£160,781	-	-
2024-03-31	£57,504	£150,547	-	-
2023-03-31	£63,873	£137,884	-	-
2022-03-31	£49,000	£122,000	-	-
2021-03-31	£51,442	£116,178	-	-

Trustees

Name	Role	Appointed
Catherine Ann Nelson		2020-07-01
Dr David Ernest McDonald		2014-10-13
Dr MICHAEL PLATT		2012-12-09
Ken Herbert		2017-12-04
Nicola Charles Burr		2024-02-07
Rev Alanna Jane Harris		2025-11-08
Rev ELEANOR JANE WILLIAMS		2024-02-07
Rev Peter Rodney Clark		2024-03-13
Rev Philip Ronald Evans		2025-11-08
Steven Jeffrey Coles		2021-10-30
Victoria Showunmi		2020-07-16

THE GUILD OF HEALTH AND ST RAPHAEL

England & Wales - Charity number 211016

Accounts

REGISTERED COMPANY NUMBER: 00487460 (England and Wales)
REGISTERED CHARITY NUMBER: 211016

REPORT OF THE TRUSTEES AND
UNAUDITED FINANCIAL STATEMENTS
FOR THE YEAR ENDED 31 MARCH 2025
FOR
THE GUILD OF HEALTH AND ST RAPHAEL LTD
(A COMPANY LIMITED BY GUARANTEE)

Brookes Stephens
New Media House
Davidson Road
Lichfield
Staffordshire
WS14 9DZ

THE GUILD OF HEALTH AND ST RAPHAEL LTD

CONTENTS OF THE FINANCIAL STATEMENTS
FOR THE YEAR ENDED 31 MARCH 2025

	Page
The Guild Prayer	1
Report of Chairperson and CEO	2 to 3
Report of the Trustees	4 to 17
Independent Examiner's Report	18
Statement of Financial Activities	19
Balance Sheet	20 to 21
Notes to the Financial Statements	22 to 28
Detailed Statement of Financial Activities	29 to 30

THE GUILD OF HEALTH AND ST RAPHAEL LTD

**THE GUILD PRAYER
FOR THE YEAR ENDED 31 MARCH 2025**

Loving God,
through Christ you offer to creation
your gifts of healing, wholeness, and salvation.
Bless and strengthen us in answering your call
to cultivate these gifts within your Church.
Fill us with your grace,
so that each member of the Guild
may reveal the Good News of your love.
We make our prayer through Jesus Christ,
who lives and reigns with you in the life-giving Spirit,
ever one God,
now and forever.
Amen

THE GUILD OF HEALTH AND ST RAPHAEL LTD

REPORT OF CHAIRPERSON AND CEO
FOR THE YEAR ENDED 31 MARCH 2025

From the Chairperson:

Thank you so much for your interest in the work of the Guild of Health and St Raphael. It is wonderful, compelling, vital work! Read on for an update on what has happened over the last year and for an insight into what lies ahead.

In a world and in a country where so many are in physical, mental or spiritual pain, the 'fullness of life' and its healing power found in Jesus Christ and revealed through His church is much needed. The Guild has been equipping churches and individual Christians to be healing presences in their communities for many years now, and long may it continue.

As ever, it remains a great pleasure to work with the team - Gillian, Wendy, Sue, Theresa and Graham - and with our Board of Trustees - Victoria, Catherine, Nicky, Eleanor, Rod, Ken, David and Michael. They are an amazing group of people, generous with their time and insightful in all kinds of ways. I am grateful to them all for giving of themselves so generously. I am also very grateful to Professor John Swinton for serving and supporting in his role of President of the Guild of Health and St Raphael. The third and final year of his term will end in November 2025, and a new President will step into the role, but his contribution has been immense, and he leaves big shoes to fill! His Denis Duncan lecture on being a Restorative Presence will stick with me and with all those who listened for many years to come.

This year, I read a beautiful book by Revd Dr Sam Wells, Vicar of St Martin-in-the-Fields in central London, called 'Walk Humbly'. Much of it reminded me of the humble, patient, loving work of the Guild and its members, with the following particularly standing out:

"And so every time we form, establish, restore, and deepen tender, understanding, gentle, humble relationships with one another, we imitate and anticipate the way God seeks to be with us, and glimpse the glory of eternity."

That's what I love about the Guild. Its work is embedded in the 'normality' of our day-to-day lives, in the busy-ness, in the muddle, in the ups and downs. And the work is a beautiful, life-changing, healing 'glimpse of the glory of eternity'. My own little church, in southwest London, went through the Guild's Everyday Healing Course this year, and it wonderfully, simultaneously connected us to our community and to all that is happening 'in the heavens'. If you haven't yet taken part in the course, which you can do as an individual or as a group at church, do check it out. I highly recommend it.

Finally, let me conclude with a really big 'thank you' to you and all the other members, supporters, funders and prayer supporters of the Guild. We could not do it without you

Mr Steve Coles, Chair of the Trustees

From the Chief Executive Officer:

Dear friends,

I am delighted to present to you this annual report showing how, together, we are growing a movement.

Not a movement of noise or performance, but of people who care. Who show up with open hearts. Who long for healing-not only for themselves, but for their communities and the wider world. A movement rooted in the belief that wholeness is possible, and that flourishing-spiritual, emotional, physical-is part of God's desire for us all.

This year, GoHealth has deepened its calling to nurture this movement: a growing community of people across the UK and beyond who are discovering what it means to live out healing, hope, and faith in tangible, connected ways. We haven't stepped back from the complexity of the world-we've stepped in, together. Supporting one another, learning, praying, and working to bring light where it's most needed.

THE GUILD OF HEALTH AND ST RAPHAEL LTD

REPORT OF CHAIRPERSON AND CEO
FOR THE YEAR ENDED 31 MARCH 2025

As I reflect on 2024-2025, I am moved by the strength and grace of this community - our members, contacts, the GoHealth team and the trustees. Collectively we have sought the grace of God to offer what we can, seek what healing we need, and reach into the world with compassion. It can be a tough ministry especially doing it with our house style of depth over distraction and care over complacency. We are building a healing presence in the world-through your homes, churches, workplaces, and communities. And in this report, we showcase and give thanks to God through whom all of this is possible.

This year, our work has been grounded in relationship and belonging. Not just belonging as a theological idea, but as a lived reality. We have seen it come alive in many places:

- At the Healing Festival, where people gathered not as spectators but as a community inspired to grow and act.
- In the GoHealth Community, where weekly prayer, podcasts, blogs, and courses continue to nourish the hearts and minds of people longing to live with integrity and compassion.
- In our season of listening, where members shared stories of real change-not just in thought, but in life and leadership.
- In the flow of prayer requests, the strength of partnerships, and the quiet resilience of those supporting others through trauma, burnout, and grief.

At the heart of all this is a shared conviction: **healing is for everyone-and it happens best when we do it together.** We are all called to participate in Christ's healing work. This year, we have built on that foundation with new energy and focus: from preparing the LiFT Programme, blending spiritual wisdom with lifestyle medicine, to developing Healing Conversations for our Healthy Healing Hubs, to resourcing clergy, communities, and individuals facing the burdens of a rapidly changing world.

We've continued to listen-to science, to scripture, to one another. And through it all, we've held firm to a vision both ancient and urgently needed: that Christianity, at its best, is a healing force. It honours medicine and mystery. It holds pain with tenderness. It says: you are seen, you are held, you are not alone.

This report captures some of what we've done this year-new offerings, growing networks, national teaching, local training, and bold partnerships. But beyond the bullet points is a deeper truth: this is about people. About building a movement that helps others to flourish. That equips the weary. That believes small acts of care-offered in GP surgeries, church halls, living rooms, and over cups of tea-can shape a different kind of future.

To those reading-thank you. Whether you've been walking with us for years or are just beginning, you are part of something bigger. A movement of love, courage, and healing. Your presence matters. Your prayers matter. Your commitment makes a difference.

Together, we are growing something sacred.

I am especially grateful for our inspiring team-Graham, Wendy, Theresa, and Sue-whose creativity, compassion, and dedication bring this mission to life every day. And heartfelt thanks to our Chair, Steve Coles, and to the whole Board, whose wisdom and steady guidance have shaped and supported all we do.

With deep gratitude and hope for what lies ahead,

Dr Gillian Straine

Chief Executive Officer, The Guild of Health and St Raphael

THE GUILD OF HEALTH AND ST RAPHAEL LTD

REPORT OF THE TRUSTEES
FOR THE YEAR ENDED 31 MARCH 2025

The trustees who are also directors of the charity for the purposes of the Companies Act 2006, present their report with the financial statements of the charity for the year ended 31 March 2025. The trustees have adopted the provisions of Accounting and Reporting by Charities: Statement of Recommended Practice applicable to charities preparing their accounts in accordance with the Financial Reporting Standard applicable in the UK and Republic of Ireland (FRS 102) (effective 1 January 2019).

Summary of the purposes of the charity as set out in its governing document.

The objects of The Guild of Health and St. Raphael Limited are:

- to bring together Christians including doctors, psychologists, other health professionals and ministers of religion, to work in fellowship for fuller health, both for the individual and the community.
- to enable members to study the interaction between physical, mental and spiritual factors in wellbeing through conferences, publications and other educational endeavours.
- to sustain and strengthen by prayer and sacrament people who are sick or suffering in anyway, and all those who minister to them.
- to help men and women to realise in themselves, as members of the Christian family, the abundant life offered by Christ and share this in the world.

THE GUILD OF HEALTH AND ST RAPHAEL LTD

REPORT OF THE TRUSTEES FOR THE YEAR ENDED 31 MARCH 2025

OBJECTIVES AND ACTIVITIES

Objectives and aims

Summary of our vision, purpose and why we exist

We are an ecumenical, Christian charity with over 100 years' experience in holistic health and healing.

We exist to enable churches and individual Christians to be healing presences in the world - for the benefit of all. This is the mission Jesus has given us and what God empowers us to do.

Our purpose is to equip and inspire people to nurture health and healing in ourselves, our communities, and our world.

Our vision is to see and be flourishing communities made up of flourishing individuals.

At GoHealth, we believe that we are each on a unique health and wellbeing journey. We start where we are, as we are. Our wellbeing - individually and collectively - lies at the intersection of faith, science, evidence-based healthcare, and flourishing communities. This is holistic health, and our spiritual life is a core part of our humanity. Christian faith invites people to follow Jesus Christ - which includes an honest engagement with the experience of suffering and his command to heal.

For us, it is important to acknowledge that our individual health is inextricably linked with our community and wider world, so that we know that holistic health is enabled through just and flourishing communities. Sadly, individual and collective suffering are widespread, and the health of our planet is being undermined. Much of this is driven and exacerbated by social injustice, including health inequalities.

Modern medicine has theological foundations which grew out of practical healthcare offered by faith communities. We continue to celebrate science as a key tool to understand the world and ourselves, and we recognise its limitations. It is important to sense that health is complex and multifaceted, yet the siloed nature of many academic contexts limits the knowledge we foster and use to shape health practice and community life. Further, healthcare is not the sole jurisdiction of healthcare professionals. Everyone has a part to play in enabling health for themselves and others. At GoHealth we believe that with attention and training we can grow in our capacity to be healers.

Given the various global instabilities, faith-based organisations have a significant opportunity to work with local and national bodies in bringing positive impacts to their communities. But we face this situation with hope and energy, because history shows that when people of faith offer health and healing, lives are changed and the church grows.

GoHealth joins with others in the wider movement pursuing health and wellbeing for all and we are excited about the distinctive contribution we bring. We are not a community of the healed, but we are empowered by God to journey with our health challenges and the pain of the world, towards flourishing.

REPORT OF THE TRUSTEES
FOR THE YEAR ENDED 31 MARCH 2025

OBJECTIVES AND ACTIVITIES

An overview of the year 2024-2025

Introduction to strategic activity

The Guild's small team seeks to deliver our ambitious vision in several modes which are carefully crafted to align with our values and be impactful and relevant to the world in which we operate:

1. To be active learners, tending to our own journeys towards health, and wellbeing, and encouraging others as they tend to theirs.
2. To nurture communities and networks of learning, knowledge, and practice
3. To provoke and inspire wider engagement in health and healing that is person-centred, rooted in Christian faith, valuing of medical science, and serving our communities.
4. To be a mobilising and animating presence within the wider movement of wellbeing and health, bringing the perspectives and power of our faith to this work.

We never work in isolation-nor could we. That's why we intentionally multiply our impact by nurturing communities of learning, practice, and shared wisdom. These communities empower individuals and groups to feel more confident and better equipped to carry the gifts of healing and health into their own contexts. We call this our "multiplier model," with a focus on three key networks: our mailing list, the GoHealth Community and the Healthy Healing Hub network. Alongside this, we offer training, curate engaging content across social media, and accept invitations to preach and speak-ensuring our message reaches wider audiences and that GoHealth's mission continues to grow. At the heart of all we do is the energy we put into resourcing members and everyone who comes into contact with us to be a healing presence in their life and community.

Before we get to the detail of our activity, there are a number of key headlines for the year.

- From January 2025, we took as our theme 'Belonging' to root our wide-ranging activities in a way that could help us focus the vast possibilities of healing and faith into an approach that explores how authentic connection fosters healing and spiritual growth. This year-long gentle focus invites individuals and communities to reflect on what it means to belong-to God, to one another, and to the wider world-through shared stories, theological reflection, and practical action. Rooted in the belief that healing arises from deep relational bonds, the approach encourages churches and individuals to become healing presences in a fragmented world and directly aligns with the work of this organisation.

- To faithfully serve those we are called to reach, this year we have developed a theory of change and created audience pen portraits. These tools helped us to listen more closely, understand the journeys people are on, and focus our resources and offerings in ways that meet real needs. We seek not just to grow in reach, but in depth-measuring impact not only in numbers, but in stories of healing, growth, and transformation. These stories help us discern where flourishing is beginning to take root.

- As we grow, this year we introduced a time of collective reflection, reaching out to our members and wider community to listen deeply-to hear how our work has impacted their lives, and how we might better support their vocation to be healing presences in the world. This season of listening was marked at the Festival of Healing, where those present were invited to recommit to our shared purpose for the year ahead. Rooted in this discernment, we reshaped our support for members-moving from longer thematic content to weekly, timely resources designed to meet people where they are, as they are, and to nurture health and healing in the everyday.

THE GUILD OF HEALTH AND ST RAPHAEL LTD

REPORT OF THE TRUSTEES FOR THE YEAR ENDED 31 MARCH 2025

OBJECTIVES AND ACTIVITIES

Operational highlights

In this section, we summarise our activities this year under the four ways that we offer our gifts into the world and tend to our community and network.

1. We deepen our faith, including through prayer and exploring theological and liturgical perspectives.

Prayer and faith are central to all we do at GoHealth, shaping our work and our response to the world around us. We support others in prayer through intercession requests, an online prayer portal with resources for individuals and churches, and timely prayers during national or global events. Our theological reflections help us and support others to discern God's movement in our community and respond with faith and compassion.

In 2024-5, this included the following:

- Our primary way of offering sustained and meaningful support is through the GoHealth Community, where members receive weekly emails with new content, including blogs, online courses, gatherings, and prayers. This ongoing engagement provides a rich and accessible space for learning, reflection, and connection.
- This year from April until the end of December, we offered theological reflections, prayers and blessings through longer series with accompanying podcasts and courses. From January this shifted to weekly content with a variety of resourcing, including podcasts and courses, and always with new prayers and blessings.
- Prayers, new liturgy and sensitive invitations into belonging formed the spine of the Healing festival, where we were blessed with live music from Phill Melstrom from The Church of Scotland.
- We have responded in times of crisis with prayer material and support, for example during flareups of war and violence across the globe.
- We continue to take prayer requests 24/7 through the website. The intercessions are shared with the GoHealth Community.
- We have continued to populate our Prayer Portal with a range of content for members to use personally and/or in church services.

2. We engage with science, the world, and our communities

Our distinctive approach brings faith and healing into conversation with insights from academia, contemporary culture, and the lived experiences of our members and their communities. We serve as a hub to gather, interpret, and share this dynamic blend-integrating theological and scientific understanding into our training, resources, and wider activities. This integration enables us to be a grounded, relevant, and transformative organisation.

In 2024-5, this included the following:

- We hosted the Advisory Group, a gathering of experts, to help us learn and shape content on the topic of history. We chose history as a focus because our personal and collective pasts deeply influence our health today and reveal areas needing healing. Exploring church healing traditions, inherited traits, past experiences, sacred places, and historic injustices helps shape meaningful resources for Christians and church leaders. Attendees included Prof. Amanda Porterfield and The Very Revd. David Lunan.
- We launched 'The Pain we Know' series, which was based on previous year's advisory group. This series was written by Wendy Lloyd and supported through interviews on the podcast.

REPORT OF THE TRUSTEES
FOR THE YEAR ENDED 31 MARCH 2025

OBJECTIVES AND ACTIVITIES

- We forged and sustained partnerships with other organisations in academia, para church communities and those in the wellbeing sector. These included Sarum College, Holy Rood House, ChurchWorks, Whole person Health Trust, and Mind and Soul Foundation. The partnerships led to a range of activities including participating in conversations, cross promotion of resources, and negotiating discounts for The GoHealth Community.
- We attended a variety of events hosted by other organisations. This included joining the leadership team at The Wounded Shepherds conference exploring clergy trauma and exhibiting at The Association of Chaplaincy in General Practice conference.
- We offer theological advice to medical and science-based projects that want to engage in the field of spiritual healing. This has included advising on a major funding bid for chaplaincy within NHS GP surgeries.

3. We shape content and opportunities to learn, reflect and connect.

We curate, co-produce and contribute to a range of resources, training opportunities and events. This is a wide-ranging list which reflects the breadth of our vision, but we focused the outcomes of this activity on growing the mailing list, increasing the GoHealth Community and resourcing the Healthy Healing Hub network. It is within these that community is tended to so that, as our motto goes, 'Together we Flourish'.

In 2024-5, this included the following:

- The GoHealth Community has been resourced with a variety of topics from April to November: 'The Pain we Know', a short series focussing of the ministry of laying on of hands, 'Healing Histories', 'Creation Cares', 'Rest and Reset'. Each topic came with a weekly bespoke blog, prayers, and activities to deepen knowledge and practice.
- In Advent the series was presented for the first time as an Advent Calendar on the website! The title was Waiting well with Hope and Defiance (with a focus on the Magnificat)
- From January, we continued to resource the community weekly with new blogs, courses and podcast-based reflection. The switch was in light of the time for reflection and allowed the team to work on the LiFT Programme, a lifestyle medicine-based tool which launched in April 2025.
- The blogs, courses and prayers are largely created in house, but we on occasion invite in trusted partners. This year that has included voices from Holy Rood House, The Bield and Dr Richard Pile, the clinical advisor to the team.
- Monthly online gatherings of the GoHealth Community attendance numbers grew steadily, with very positive feedback.
- We added 3 hubs to the Healthy Healing Hub network and provided training at two of our beacon hubs.
- We listened and responded to the needs of the Healthy Healing Hub network. This included working on small group resources and launching 'Healing Conversations' Resource.
- Four cohorts went through the Everyday Healing course.
- An in-person version of The Everyday Healing course was piloted to allow us to make improvements ahead of a launch.
- 12 episodes of the GoHealth podcast were launched. Guests on the podcast included Dr Sharon Prentis, Dr Susanna Hyde, and Dr Luigi Gioga. The podcast was generously supported by a grant from The Anchor Foundation.

REPORT OF THE TRUSTEES
FOR THE YEAR ENDED 31 MARCH 2025

OBJECTIVES AND ACTIVITIES

- We launched 5 new online self-led courses on the Articulate platform: My Healing, God's Mission, Burn Like Stars, A Thriving World, Belonging in a divided world: mental health and community, Where healing and reconciliation meet: seeking peace in today's world.
- We have entered into a number of training relationships with organisation bulk buying our online self-led courses. This includes The Salvation Army, The Methodist Church and the Diocese of London.
- Our annual Denis Duncan Lecture was delivered by Prof. John Swinton on the topic of Presence and Belonging, looking at mental health and the church. It was filmed in Aberdeen and launched online live to a large online audience.
- The Healing Festival included a fantastic live lecture from Brooke Prentis exploring healing and the natural world, touching on issues of diversity and inclusion. We had live music, and new liturgy exploring a recommitment to the work of GoHealth for members.
- The Chaplaincy course was run twice, always with high numbers of attendees as we stretch our networks into new places. We continue to develop this course in this important sector.
- We worked to develop the scripts and course ahead of the launch of the Spiritual Intelligence course in later in 2025.
- We were called upon by other organisations to offer expertise in health and healing, clergy wellbeing, and health mission. This year this included the following:
 - o Greenbelt, speaking in partnership with the Iona Community in The Wild Goose Tent.
 - o Writing biblical commentary and worship resources for Weekly Worship (Church of Scotland)
 - o Speaking about wellbeing to groups within the Methodist church, those working in priority areas in the Church of Scotland, Hope into Action and to senior leaders in the Church in Wales.

4. We share what we are learning and make it available as widely as possible

We work hard to communicate what we are doing and be a clear voice in a noisy wellbeing market, speaking of the hope and power of the Christian faith for human healing and flourishing.

In 2024-5, this included the following:

- Our wider communications work includes social media content, short films, e-newsletters and promotional materials. We aim to be a healthy voice encouraging, inspiring and empowering people with compassion.
- We continually update and improve our website to maximise engagement.
- Leaflets for events were developed with accompanying new web pages
- Marketing ideas like free journal and gift membership
- We provided expert input to panels and organisations; for example, The National Healing Advisors group, ChurchWorks, and WHO health group.
- Preaching in venues including in Cambridge, London, and Lichfield
- We have been invited to appear on local and national radio to provide expertise on the role of church in community, mental health, or wellbeing in general. This year, this included UCB radio.
- Gillian Straine gave the 2025 Bishop of Birmingham lecture.

REPORT OF THE TRUSTEES
FOR THE YEAR ENDED 31 MARCH 2025

OBJECTIVES AND ACTIVITIES

Keeping the lights on

As with every organisation, there is a range of day-to-day activities that we engage in to ensure that we are a healthy and sustainable organisation. This includes:

- Staff support and training.
- Team time aways
- Wellbeing for the team
- Work from home safely
- Tending to our organisational development, culture and structure, through policy work, time together as a team, and regular meetings.
- Maintaining a Trustee Handbook for our Trustees and essential policies for staff, including General Data Protection Regulations, Health and Safety, and Safeguarding.
- Maintaining good governance and financial health.

Some statistics and feedback

2024-5

GoHealth Community grew by 75%

Website: 36000 new users, 8300 active users

People who came to an online gathering 160

People who did an online self led course 347

Denis duncan ticket bookings 443

Social media Facebook:

Reach 126000 (+198% cf last year)

Links clicked 5500 (+112% cf last year)

Visits 3972 (+75% cf last year)

Follows 132 (+63% cf last year)

Mailing List growth of 57%

Sent 147K emails to our mailing lists

Training Numbers

Everyday Healing course - 109 participants, including 9 church groups

Podcast. 8 episodes. 1846 listens. An increase of 41% on the previous year

THE GUILD OF HEALTH AND ST RAPHAEL LTD

REPORT OF THE TRUSTEES FOR THE YEAR ENDED 31 MARCH 2025

OBJECTIVES AND ACTIVITIES

Our people, structures and ways of working

ENABLERS, CUSTODIANS AND COORDINATORS OF THE WORK

We have a range of roles that contribute to the development and delivery of our work. Everyone who is part of the Guild of Health and St Raphael supports our purpose, vision and values, and seeks to be in service to the ministry of healing. We seek to collaborate in ways that bring our values and working principles alive. We ask everyone who is part of the Guild to commit to being proactive in how they invest in their own health and wellbeing journey and the health of the organisation overall.

Our key roles are outlined below:

Members

Our work is only possible because of our members - The GoHealth Community. Our members help advance our purpose within their own communities, help shape our work and contribute financially. We are legally set up as a membership organisation, giving members the right to vote at our AGM.

Healthy Healing Hub (HHH) roles

HHH coordinators support their Hub's engagement in training and healing practices. They are responsible for ensuring excellent communication links between their community and the Guild. All HHH coordinators are automatically also members of our GoHealth Community (in an individual capacity). HHH church leaders: The Guild connects with each hub's leadership via the HHH Coordinators. HHH church leaders are strongly encouraged to join the GoHealth Community in an individual capacity - for the peer support and wider resourcing this can provide, especially as their role can leave some leaders feeling isolated and overextended

Volunteers (in development)

We train and support volunteers to lead training courses and promote the work of the Guild in their local community.

THE GUILD OF HEALTH AND ST RAPHAEL LTD

REPORT OF THE TRUSTEES
FOR THE YEAR ENDED 31 MARCH 2025

OBJECTIVES AND ACTIVITIES

Expert friends

We work with experts in producing high quality training, articles, and materials. This includes specialists in public health, lifestyle medicine, psychotherapy, movement makers, trauma, and music. Our advisory group, which invites in specialist voices, helps us engage with and further develop the academic and theological thinking that underpins our work. We have a Clinical Advisor who is a practising medical professional, who supports the team in relation to medical expertise.

Clinical Advisor for the Team: Dr Richard Pile, Clinical Advisor to the Board: Dr Mike Platt

Patrons

We are honoured to have three patrons

**The Archbishop of Canterbury, The Archbishop of York, The President of the Methodist Conference
Prof John Swinton**

President

The Board appoints a president for a three-year term to promote the Guild at national level. This person lends their endorsement to our work, helps the team where possible with events and resources, and helps get us seen and heard.

Board

Trustees have been recruited for their interest in our work combined with a professional skill (medical and allied health professionals) or their interest and experience in the healing ministry or associated work. We also recruit trustees with expertise in governance, finance and charity law. They are nominated and elected at the Annual General Meeting. We have a diverse board, including in terms of age, experience, denomination, skills and experience. Specific board roles and groups currently include: Chair Treasurer Finance sub-committee

Mr Steve Coles (Chairperson), Ms Nicola Burr, Dr David McDonald, Dr Catherine Nelson, Dr Michael Platt, Dr Victoria Showunmi, Revd Canon Dr Eleanor Williams, Revd Rod Clark, Mr Ken Herbert

THE GUILD OF HEALTH AND ST RAPHAEL LTD

REPORT OF THE TRUSTEES
FOR THE YEAR ENDED 31 MARCH 2025

OBJECTIVES AND ACTIVITIES

Team

Our work is coordinated and delivered by a small, dispersed and dedicated staff team. To maintain a nimble team structure and make best use of limited resources, we also use a range of consultants and agencies to augment our capacity in particular functions including our communications and marketing. Current staff roles are: CEO Our delivery team (includes the CEO) Resource Development Partner Online Learning Partner Our support team (includes the CEO) Executive Assistant to the team Company Secretary

CEO: The Revd. Dr. Gillian Straine, Training Partner: Graham Fender Allison, Resource Partner: Wendy Lloyd, Executive Admin to the team: Theresa McDowall, Company Secretary: Dr Sue Martin

Public benefit

In shaping our aims and objective the Trustees have considered the Charity Commission's guidance on public benefit. All our charitable activities focus on promoting the healing ministry of the Christian Church, through the objects outlined above, and are undertaken to further our charitable purposes for the public benefit. In this way, the trustees have complied with the duty to have regard to the guidance issued by the Commission under section 4(b) of Charities (Protection and Social Investment) Act 2016.

Summary of the main activities in relation to those purposes for the public benefit, in particular, the activities and performance of projects or services identified in the accounts.

Recognising our need to adapt to meet the needs of an ever-changing society the focus of the charity's work in the future will be through the Healthy Healing Hubs network, the GoHealth community and our work in training.

THE GUILD OF HEALTH AND ST RAPHAEL LTD

REPORT OF THE TRUSTEES
FOR THE YEAR ENDED 31 MARCH 2025

FINANCIAL REVIEW

Financial position

Review of the charity's financial position at the end of March 2025

The Guild of Health & St Raphael has continued to fund its activities through a combination of revenue income (including membership payments, charges for courses and other content, workshops and training, and grant payments), investment income, fundraising and planned withdrawal from investments. Overall income has risen from £57,503 to £76,231, an increase of 32.6% which is encouraging. Within this overall picture there have been significant increases in membership based income and training-based income with a reduction in investment income of around 17%.

The developmental activities of the Guild have been sustained and supported by the use of reserves to fund the development of key projects and resources including Healthy Healing Hubs, the GoHealth Community, online courses, Podcasts and online material. This was in line with the Trustees agreed strategy set out in the Investment and Reserves Policy. By this policy a deficit budget approach has been implemented.

The activities funded from these sources have generated significant costs - £160,781, an increase from £150,546 the previous year, an increase of around 6.5%.

Given the Trustees strategy the financial position remains, in the short to medium term, satisfactory. As at 31st March 2025 the net assets of the charity stand at £435,550. Whilst this is a significant reduction from the previous year of around 16.5% there remain sufficient funds to support the ongoing strategy for a further period.

Trustees will need to revisit the strategy to establish a clear route towards a balanced budget through income maximization and careful cost management. In the light of this the Guild's Investment and Reserves Policy will be reviewed and revised.

The Guild is guided by the Church of England in terms of the management of its investment portfolio which is ethically framed. The principal risks facing the charity is ongoing volatility in the financial markets.

Revd. Rod Clark
Treasurer

Reserves policy

The charity's reserves policy is to hold a minimum of 3.5 years of planned expenditure as long term reserves to ensure continued autonomy, financial security and to provide for contingencies.

This policy will be reviewed and revised to ensure it continues to be appropriate and necessary to the long term growth and development of the charity.

STRUCTURE, GOVERNANCE AND MANAGEMENT

Governing document

The charity is controlled by its governing document, a deed of trust, and constitutes a limited company, limited by guarantee, as defined by the Companies Act 2006.

THE GUILD OF HEALTH AND ST RAPHAEL LTD

REPORT OF THE TRUSTEES FOR THE YEAR ENDED 31 MARCH 2025

STRUCTURE, GOVERNANCE AND MANAGEMENT

Operating model, structure and governance

A DISPERSED TEAM OF MOVEMENT BUILDERS

We are a small team actively helping to build the health and wellbeing movement in ways that integrate the distinctiveness and gifts of a Christian perspective of healing. This is why we are proactive in adopting a multiplier mindset to our work and practice - finding ways to make it easy for people to join in and contribute to this endeavour. Our dispersed nature supports this Intention - it is not an accident or the result of a pragmatic decision to work from home. Rather, through our GoHealth Community and Healthy Healing Hub network we are able to reach people where we are, who in turn can serve those with whom they interact with wherever they live and work and have their being. Operating in a dispersed manner reflects our central belief that each person is a healer, and that we exist to help all people flourish, promote the healing ministry and support this central church mission.

GROWING AS A COMMUNITY

Whenever we gather and in all we do, we seek to support and foster community. We work alongside both individuals and churches, and partner with other organisations where our collaboration can have mutual benefit. In the way we operate, we seek to draw in and nurture a community of practice, fostering links of support, rooted in relationship and learning.

A CHARITY AND COMPANY TO SUPPORT THE WORK

We have two legal structures that exist to support and enable the work:

- a company limited by guarantee which does not have share capital; it is a membership organisation and is governed by our Articles of Association (Company no. 487460)
- a registered charity (Charity no. 211016).

These entities serve the overall purpose of the Guild. Our Trustees serve on the boards of both the company and charity.

Members of the GoHealth Community are automatically also members of the company, with voting rights at the AGM. In shaping our aims and objectives the trustees take into account the Charity Commission's guidance on public benefit. All our charitable activities focus on promoting the healing ministry of the Christian Church through the objects and are undertaken to further our charitable purposes for the public benefit.

Registered Office: Brookes Stephens Chartered Accountants, New Media House, Davidson Road, Lichfield, Staffordshire, WS14 9DZ.

Banking: The Co-Operative Bank
PO Box 250
Skelmersdale
WN8 6WT

SHAPING AND MAKING DECISIONS

All trustees and staff commit to serving the purpose of the Guild and to working in ways that demonstrate our values and working principles. Our decisions (relating to both strategic direction and operations) are rooted in this foundation.

THE GUILD OF HEALTH AND ST RAPHAEL LTD

REPORT OF THE TRUSTEES FOR THE YEAR ENDED 31 MARCH 2025

STRUCTURE, GOVERNANCE AND MANAGEMENT

Our strategic direction is set by the Board with the input and shaping of the CEO and wider team. The financial interests of the Guild are monitored by the Treasurer and Finance Committee, but all financial decisions are made and ratified at board level. Operational matters are devolved to staff team members under the management of the CEO and controlled by Standing Financial Instructions. These include deciding and delivering the activities they discern can best serve the strategic direction and overall purposes of the Guild.

At our Annual General Meeting, members ratify the appointment of trustees and any changes to our Articles of Association. Trustees have been recruited for their professional skills (medical and allied health professionals) or their interest and experience in the healing ministry or associated work. They are nominated and elected at the AGM and are required annually to declare any interests and benefits.

ACCOUNTABILITY AND SUPPORT

Our Trustees are accountable to UK laws relating to company and charity governance, acting as guardians of the Guild's assets. This includes a responsibility to serve the purposes of the Guild, and to strive towards best practice. We also expect all our trustees to uphold the Nolan Principles. Our Trustee Handbook outlines the role and responsibilities of Trustees in more detail and is required reading for every Trustee. Our Company Secretary works to build best practice in our organisational governance and supports Trustees so that they can ensure our compliance with statutory requirements.

The Trustees are aware that they are responsible for ensuring that any risks arising from the Guild's activities are mitigated as far as possible, adequately insured where necessary, and that all expenditure is properly authorised and the payment thereof subject to internal checks.

The CEO is supported and line managed by the Chair of Trustees. The CEO currently supports and line manages all members of the staff team. The staff team proactively nurtures a supportive space that prioritises people's health and wellbeing. Staff are encouraged to be self-directive in their learning and development. Our appraisal systems are designed for personal growth. Our staff Wellbeing Policy outlines and highlights the importance of living out the health and wellbeing we promote in the Guild, including time for retreats and training. It also references a range of wider support (including mentoring, supervision and counselling opportunities) that can be explored (with line management support) if needed.

Our Healthy Healing Hubs operate as independent, linked entities which can use our Healthy Healing Hub 'badge'. They benefit from the support and input of our team, ongoing training and resourcing, and can explore peer support with people involved in other Healthy Healing Hubs. The Guild is not responsible for the actions or behaviours of anyone involved in Healthy Healing Hubs. Each organisation is responsible for its own governance, including in relation to safeguarding. Our membership tiers (Bronze, Silver and Gold) require churches to have completed identified training courses and to be implementing key models/practices. We collaborate closely with 'Beacon Hubs' to deliver training and share good practice within our wider network. Our AGM is a key event for all members, and particularly leaders and co-ordinators of Healthy Healing Hubs, to connect and build relationships of support across the network.

Individuals who are part of the GoHealth Community are encouraged to take up opportunities we provide for peer support, resourcing and wider engagement. To support members in their journey, we offer a monthly bundle of resources and an invitation to gather together. Members are also encouraged to join our private Facebook group and participate in the Everyday Healing course so they can learn more about our approach and form trusting relationships with others who are part of the community. Our 'Community Lifestyle Medicine Toolkit' helps individuals to concretely measure the impact of their journey with us and how it is affecting their flourishing. We invite all members to commit annually to the vision of the Guild and their part in being a healing presence in the world.

THE GUILD OF HEALTH AND ST RAPHAEL LTD

REPORT OF THE TRUSTEES
FOR THE YEAR ENDED 31 MARCH 2025

REFERENCE AND ADMINISTRATIVE DETAILS

Registered Company number

00487460 (England and Wales)

Registered Charity number

211016

Registered office

New Media House
Davidson Road
Lichfield
Staffordshire
WS14 9DZ

Principal address

23 The Close
Lichfield
Staffordshire
WS13 7LD

Trustees

Mrs N C Burr
Reverend R Clark
Mr S J Coles
Mr K Herbert
Dr D E McDonald
Dr C A Nelson
Dr M W Platt
Dr V Showunmi
The Revd. Canon Dr E J Williams

Company Secretary

Dr S Martin

Independent Examiner

Brookes Stephens
New Media House
Davidson Road
Lichfield
Staffordshire
WS14 9DZ

Approved by order of the board of trustees on 8th November '25 and signed on its behalf by:



Mr S J Coles - Trustee

**INDEPENDENT EXAMINER'S REPORT TO THE TRUSTEES OF
THE GUILD OF HEALTH AND ST RAPHAEL LTD**

Independent examiner's report to the trustees of The Guild Of Health And St Raphael Ltd ('the Company')

I report to the charity trustees on my examination of the accounts of the Company for the year ended 31 March 2025.

Responsibilities and basis of report

As the charity's trustees of the Company (and also its directors for the purposes of company law) you are responsible for the preparation of the accounts in accordance with the requirements of the Companies Act 2006 ('the 2006 Act').

Having satisfied myself that the accounts of the Company are not required to be audited under Part 16 of the 2006 Act and are eligible for independent examination, I report in respect of my examination of your charity's accounts as carried out under Section 145 of the Charities Act 2011 ('the 2011 Act'). In carrying out my examination I have followed the Directions given by the Charity Commission under Section 145(5) (b) of the 2011 Act.

Independent examiner's statement

I have completed my examination. I confirm that no matters have come to my attention in connection with the examination giving me cause to believe:

1. accounting records were not kept in respect of the Company as required by Section 386 of the 2006 Act; or
2. the accounts do not accord with those records; or
3. the accounts do not comply with the accounting requirements of Section 396 of the 2006 Act other than any requirement that the accounts give a true and fair view which is not a matter considered as part of an independent examination; or
4. the accounts have not been prepared in accordance with the methods and principles of the Statement of Recommended Practice for accounting and reporting by charities (applicable to charities preparing their accounts in accordance with the Financial Reporting Standard applicable in the UK and Republic of Ireland (FRS 102)).

I have no concerns and have come across no other matters in connection with the examination to which attention should be drawn in this report in order to enable a proper understanding of the accounts to be reached.



Leon Stephens FCA

Brookes Stephens
New Media House
Davidson Road
Lichfield
Staffordshire
WS14 9DZ

Date: 8 November 2025

THE GUILD OF HEALTH AND ST RAPHAEL LTD

STATEMENT OF FINANCIAL ACTIVITIES
(INCORPORATING AN INCOME AND EXPENDITURE ACCOUNT)
FOR THE YEAR ENDED 31 MARCH 2025

	Notes	Unrestricted fund £	Restricted fund £	2025 Total funds £	2024 Total funds £
Income and endowments from					
Donations and legacies		296	-	296	300
Charitable activities					
General		44,372	4,560	48,932	31,624
Other trading activities	2	6,391	-	6,391	1,053
Investment income	3	20,613	-	20,613	24,526
Total		<u>71,672</u>	<u>4,560</u>	<u>76,232</u>	<u>57,503</u>
Expenditure on					
Raising funds	4	10,262	-	10,262	11,751
Charitable activities					
General		146,137	2,230	148,367	136,750
Other		2,152	-	2,152	2,045
Total		<u>158,551</u>	<u>2,230</u>	<u>160,781</u>	<u>150,546</u>
Net gains/(losses) on investments		(1,027)	-	(1,027)	11,713
NET INCOME/(EXPENDITURE)		<u>(87,906)</u>	<u>2,330</u>	<u>(85,576)</u>	<u>(81,330)</u>
Reconciliation of funds					
Total funds brought forward		515,496	5,630	521,126	602,456
Total funds carried forward		<u><u>427,590</u></u>	<u><u>7,960</u></u>	<u><u>435,550</u></u>	<u><u>521,126</u></u>

The notes form part of these financial statements

THE GUILD OF HEALTH AND ST RAPHAEL LTD

BALANCE SHEET
31 MARCH 2025

	Notes	Unrestricted fund £	Restricted fund £	2025 Total funds £	2024 Total funds £
Fixed assets					
Tangible assets	9	714	-	714	-
Investments	10	403,562	-	403,562	524,689
		<u>404,276</u>	<u>-</u>	<u>404,276</u>	<u>524,689</u>
Current assets					
Debtors	11	3,737	-	3,737	1,050
Cash at bank		29,005	7,960	36,965	6,898
		<u>32,742</u>	<u>7,960</u>	<u>40,702</u>	<u>7,948</u>
Creditors					
Amounts falling due within one year	12	(9,428)	-	(9,428)	(11,511)
Net current assets		<u>23,314</u>	<u>7,960</u>	<u>31,274</u>	<u>(3,563)</u>
Total assets less current liabilities		<u>427,590</u>	<u>7,960</u>	<u>435,550</u>	<u>521,126</u>
NET ASSETS		<u>427,590</u>	<u>7,960</u>	<u>435,550</u>	<u>521,126</u>
Funds	13				
Unrestricted funds				427,590	515,496
Restricted funds				7,960	5,630
Total funds				<u>435,550</u>	<u>521,126</u>

The charitable company is entitled to exemption from audit under Section 477 of the Companies Act 2006 for the year ended 31 March 2025.

The members have not required the company to obtain an audit of its financial statements for the year ended 31 March 2025 in accordance with Section 476 of the Companies Act 2006.

The trustees acknowledge their responsibilities for

- ensuring that the charitable company keeps accounting records that comply with Sections 386 and 387 of the Companies Act 2006 and
- preparing financial statements which give a true and fair view of the state of affairs of the charitable company as at the end of each financial year and of its surplus or deficit for each financial year in accordance with the requirements of Sections 394 and 395 and which otherwise comply with the requirements of the Companies Act 2006 relating to financial statements, so far as applicable to the charitable company.

The notes form part of these financial statements

THE GUILD OF HEALTH AND ST RAPHAEL LTD

BALANCE SHEET - continued
31 MARCH 2025

These financial statements have been prepared in accordance with the provisions applicable to charitable companies subject to the small companies regime.

The financial statements were approved by the Board of Trustees and authorised for issue on ~~8 November 25~~ and were signed on its behalf by:



Mr S J Coles - Trustee

The notes form part of these financial statements

NOTES TO THE FINANCIAL STATEMENTS
FOR THE YEAR ENDED 31 MARCH 2025

1. ACCOUNTING POLICIES

Basis of preparing the financial statements

The financial statements of the charitable company, which is a public benefit entity under FRS 102, have been prepared in accordance with the Charities SORP (FRS 102) 'Accounting and Reporting by Charities: Statement of Recommended Practice applicable to charities preparing their accounts in accordance with the Financial Reporting Standard applicable in the UK and Republic of Ireland (FRS 102) (effective 1 January 2019)', Financial Reporting Standard 102 'The Financial Reporting Standard applicable in the UK and Republic of Ireland' and the Companies Act 2006. The financial statements have been prepared under the historical cost convention, with the exception of investments which are included at market value, as modified by the revaluation of certain assets.

Income

All income is recognised in the Statement of Financial Activities once the charity has entitlement to the funds, it is probable that the income will be received and the amount can be measured reliably.

Expenditure

Liabilities are recognised as expenditure as soon as there is a legal or constructive obligation committing the charity to that expenditure, it is probable that a transfer of economic benefits will be required in settlement and the amount of the obligation can be measured reliably. Expenditure is accounted for on an accruals basis and has been classified under headings that aggregate all cost related to the category. Where costs cannot be directly attributed to particular headings they have been allocated to activities on a basis consistent with the use of resources.

Tangible fixed assets

Depreciation is provided at the following annual rates in order to write off each asset over its estimated useful life.

Computer equipment - 33.33% on cost

Taxation

The charity is exempt from corporation tax on its charitable activities.

Fund accounting

Unrestricted funds can be used in accordance with the charitable objectives at the discretion of the trustees.

Restricted funds can only be used for particular restricted purposes within the objects of the charity. Restrictions arise when specified by the donor or when funds are raised for particular restricted purposes.

Further explanation of the nature and purpose of each fund is included in the notes to the financial statements.

Pension costs and other post-retirement benefits

The charitable company operates a defined contribution pension scheme. Contributions payable to the charitable company's pension scheme are charged to the Statement of Financial Activities in the period to which they relate.

THE GUILD OF HEALTH AND ST RAPHAEL LTD

NOTES TO THE FINANCIAL STATEMENTS - continued
FOR THE YEAR ENDED 31 MARCH 2025

2. OTHER TRADING ACTIVITIES

	2025	2024
	£	£
Fundraising events	5,379	689
Shop income	1,012	89
Training	-	275
	<u>6,391</u>	<u>1,053</u>

3. INVESTMENT INCOME

	2025	2024
	£	£
Other fixed asset invest - FII	<u>20,613</u>	<u>24,526</u>

4. RAISING FUNDS

Raising donations and legacies

	2025	2024
	£	£
Support costs	<u>771</u>	<u>-</u>

5. NET INCOME/(EXPENDITURE)

Net income/(expenditure) is stated after charging/(crediting):

	2025	2024
	£	£
Depreciation - owned assets	<u>357</u>	<u>-</u>

6. TRUSTEES' REMUNERATION AND BENEFITS

There were no trustees' remuneration or other benefits for the year ended 31 March 2025 nor for the year ended 31 March 2024.

Trustees' expenses

There were no trustees' expenses paid for the year ended 31 March 2025 nor for the year ended 31 March 2024.

THE GUILD OF HEALTH AND ST RAPHAEL LTD
NOTES TO THE FINANCIAL STATEMENTS - continued
FOR THE YEAR ENDED 31 MARCH 2025

7. STAFF COSTS

The average monthly number of employees during the year was as follows:

Staff	2025	2024
	<u>5</u>	<u>5</u>

No employees received emoluments in excess of £60,000.

8. COMPARATIVES FOR THE STATEMENT OF FINANCIAL ACTIVITIES

	Unrestricted fund £	Restricted fund £	Total funds £
Income and endowments from			
Donations and legacies	300	-	300
Charitable activities			
General	24,784	6,840	31,624
Other trading activities	1,053	-	1,053
Investment income	24,526	-	24,526
Total	<u>50,663</u>	<u>6,840</u>	<u>57,503</u>
Expenditure on			
Raising funds	11,751	-	11,751
Charitable activities			
General	135,540	1,210	136,750
Other	2,045	-	2,045
Total	<u>149,336</u>	<u>1,210</u>	<u>150,546</u>
Net gains on investments	11,713	-	11,713
NET INCOME/(EXPENDITURE)	(86,960)	5,630	(81,330)
Reconciliation of funds			
Total funds brought forward	602,456	-	602,456
Total funds carried forward	<u>515,496</u>	<u>5,630</u>	<u>521,126</u>

THE GUILD OF HEALTH AND ST RAPHAEL LTD
 NOTES TO THE FINANCIAL STATEMENTS - continued
 FOR THE YEAR ENDED 31 MARCH 2025

9.	TANGIBLE FIXED ASSETS	
		Computer equipment
		£
	COST	
	Additions	1,071
		<u> </u>
	DEPRECIATION	
	Charge for year	357
		<u> </u>
	NET BOOK VALUE	
	At 31 March 2025	714
		<u> </u>
	At 31 March 2024	-
		<u> </u>
10.	FIXED ASSET INVESTMENTS	
		Listed investments
		£
	MARKET VALUE	
	At 1 April 2024	524,689
	Disposals	(120,100)
	Revaluations	(1,027)
		<u> </u>
	At 31 March 2025	403,562
		<u> </u>
	NET BOOK VALUE	
	At 31 March 2025	403,562
		<u> </u>
	At 31 March 2024	524,689
		<u> </u>
	There were no investment assets outside the UK.	
	Cost or valuation at 31 March 2025 is represented by:	
		Listed investments
		£
	Valuation in 2025	403,562
		<u> </u>

THE GUILD OF HEALTH AND ST RAPHAEL LTD

NOTES TO THE FINANCIAL STATEMENTS - continued
FOR THE YEAR ENDED 31 MARCH 2025

11. DEBTORS: AMOUNTS FALLING DUE WITHIN ONE YEAR

	2025	2024
	£	£
Trade debtors	3,139	1,050
Prepayments and accrued income	598	-
	<u>3,737</u>	<u>1,050</u>

12. CREDITORS: AMOUNTS FALLING DUE WITHIN ONE YEAR

	2025	2024
	£	£
Trade creditors	3,410	3,476
Accruals and deferred income	1,312	2,200
Deferred income	4,706	5,835
	<u>9,428</u>	<u>11,511</u>

Deferred income relates to the proportion of a grant received in the year relating to the period to 30 November 2025.

13. MOVEMENT IN FUNDS

	At 1.4.24	Net movement in funds	At 31.3.25
	£	£	£
Unrestricted funds			
General fund	515,496	(87,906)	427,590
Restricted funds			
Restricted	5,630	2,330	7,960
TOTAL FUNDS	<u>521,126</u>	<u>(85,576)</u>	<u>435,550</u>

Net movement in funds, included in the above are as follows:

	Incoming resources	Resources expended	Gains and losses	Movement in funds
	£	£	£	£
Unrestricted funds				
General fund	71,672	(158,551)	(1,027)	(87,906)
Restricted funds				
Restricted	4,560	(2,230)	-	2,330
TOTAL FUNDS	<u>76,232</u>	<u>(160,781)</u>	<u>(1,027)</u>	<u>(85,576)</u>

THE GUILD OF HEALTH AND ST RAPHAEL LTD

NOTES TO THE FINANCIAL STATEMENTS - continued
FOR THE YEAR ENDED 31 MARCH 2025

13. MOVEMENT IN FUNDS - continued

Comparatives for movement in funds

	At 1.4.23 £	Net movement in funds £	At 31.3.24 £
Unrestricted funds			
General fund	602,456	(86,960)	515,496
Restricted funds			
Restricted	-	5,630	5,630
TOTAL FUNDS	<u>602,456</u>	<u>(81,330)</u>	<u>521,126</u>

Comparative net movement in funds, included in the above are as follows:

	Incoming resources £	Resources expended £	Gains and losses £	Movement in funds £
Unrestricted funds				
General fund	50,663	(149,336)	11,713	(86,960)
Restricted funds				
Restricted	6,840	(1,210)	-	5,630
TOTAL FUNDS	<u>57,503</u>	<u>(150,546)</u>	<u>11,713</u>	<u>(81,330)</u>

A current year 12 months and prior year 12 months combined position is as follows:

	At 1.4.23 £	Net movement in funds £	At 31.3.25 £
Unrestricted funds			
General fund	602,456	(174,866)	427,590
Restricted funds			
Restricted	-	7,960	7,960
TOTAL FUNDS	<u>602,456</u>	<u>(166,906)</u>	<u>435,550</u>

THE GUILD OF HEALTH AND ST RAPHAEL LTD
 NOTES TO THE FINANCIAL STATEMENTS - continued
 FOR THE YEAR ENDED 31 MARCH 2025

13. MOVEMENT IN FUNDS - continued

A current year 12 months and prior year 12 months combined net movement in funds, included in the above are as follows:

	Incoming resources £	Resources expended £	Gains and losses £	Movement in funds £
Unrestricted funds				
General fund	122,335	(307,887)	10,686	(174,866)
Restricted funds				
Restricted	11,400	(3,440)	-	7,960
TOTAL FUNDS	<u>133,735</u>	<u>(311,327)</u>	<u>10,686</u>	<u>(166,906)</u>

14. RELATED PARTY DISCLOSURES

There were no related party transactions for the year ended 31 March 2025.

THE GUILD OF HEALTH AND ST RAPHAEL LTD

DETAILED STATEMENT OF FINANCIAL ACTIVITIES
FOR THE YEAR ENDED 31 MARCH 2025

	2025 £	2024 £
Income and endowments		
Donations and legacies		
Donations	296	300
Other trading activities		
Fundraising events	5,379	689
Shop income	1,012	89
Training	-	275
	<u>6,391</u>	<u>1,053</u>
Investment income		
Other fixed asset invest - FII	20,613	24,526
Charitable activities		
Membership	17,528	12,233
Sponsorships	-	1,800
Training	8,760	6,331
Other	8,785	4,420
Articulate	4,005	-
Grants	9,854	6,840
	<u>48,932</u>	<u>31,624</u>
Total incoming resources	76,232	57,503
Expenditure		
Other trading activities		
Marketing & Website Developments	615	4,230
Admin	794	470
Consultancy	5,580	4,320
Advertising	2,205	2,731
Marketing Events	297	-
	<u>9,491</u>	<u>11,751</u>
Charitable activities		
Wages	98,704	90,472
Social security	2,983	1,926
Pensions	2,021	1,763
Website hosting	4,710	5,334
Carried forward	108,418	99,495

This page does not form part of the statutory financial statements

THE GUILD OF HEALTH AND ST RAPHAEL LTD

DETAILED STATEMENT OF FINANCIAL ACTIVITIES
FOR THE YEAR ENDED 31 MARCH 2025

	2025	2024
	£	£
Charitable activities		
Brought forward	108,418	99,495
Consultancy	9,030	7,000
Events & Presentation	3,978	7,582
Partnership payments	-	550
Other	8,393	8,340
Newsletter, journal & online	8,555	3,320
	<u>138,374</u>	<u>126,287</u>
Other		
Governance	2,152	2,045
Support costs		
Management		
Computer equipment	357	-
Finance		
Insurance	130	619
Telephone	2,123	1,387
Bank charges	891	514
Bookkeeping & support	2,863	2,693
Payroll & HR support	1,676	1,623
Professional fees & subs	1,292	1,779
Independent Examiners fee	1,432	1,848
	<u>10,407</u>	<u>10,463</u>
Total resources expended	<u>160,781</u>	<u>150,546</u>
Net expenditure before gains and losses	<u>(84,549)</u>	<u>(93,043)</u>
Realised recognised gains and losses		
Realised gains/(losses) on fixed asset investments	(1,027)	11,713
Net expenditure	<u><u>(85,576)</u></u>	<u><u>(81,330)</u></u>

This page does not form part of the statutory financial statements

THE GUILD OF HEALTH AND ST RAPHAEL

England & Wales - Charity number 211016

Accounts

The Guild of Health and St Raphael Ltd

ANNUAL REPORT AND FINANCIAL STATEMENTS

FOR THE YEAR ENDED 31 MARCH 2024



A company limited by guarantee and not having share capital

Company Registration no: 00487460

Charity Registration no: 211016

CONTENTS

REPORTS OF THE CHAIR.....	3
FINANCIAL REVIEW.....	4
STRUCTURE, GOVERNANCE AND MANAGEMENT.....	5
REPORT OF THE CHIEF EXECUTIVE OFFICER.....	6
REPORT OF THE TRUSTEES.....	8
REFERENCE AND ADMINISTRATIVE INFORMATION.....	9
STATEMENT OF TRUSTEES' RESPONSIBILITIES.....	10
REPORT OF THE INDEPENDENT EXAMINER.....	11
STATEMENT OF FINANCIAL ACTIVITIES.....	12
BALANCE SHEET.....	13
NOTES TO THE FINANCIAL STATEMENTS.....	14

REPORT OF THE CHAIRPERSON

I am so pleased that you are interested in the work of the Guild. It is nearly three years since I took on the role of Chair of Trustees and I am more convinced than ever that individuals, communities and nations need the fullest forms of healing, health and wellbeing, which Jesus Christ came to bring.

It remains a great pleasure to work with the team - Gillian, Wendy, Sue, Theresa and Graham - and with our newly expanded Board of Trustees - Victoria, Catherine, Ken, David and Michael - who are joined by three new Trustees - Nicky, Eleanor and Rod. They are an amazing group of people and conversations with them always leave me with food for thought, inspiration and renewed energy. As always, I am grateful to them all for giving their time, expertise and wisdom so generously. I am also very grateful to Professor John Swinton for serving and supporting in his role of President of the Guild of Health and St Raphael.

I am part of a small book club as part of my church. Earlier this year we read 'Jesus and the Disinherited' by Howard Thurman, the extraordinary Black preacher, leader, pastor, activist, academic and author. In the book, he says

"The religion of Jesus makes the love-ethic central. This is no ordinary achievement. It seems clear that Jesus started out with the simple teaching concerning love embodied in the timeless words of Israel: "Hear, O Israel: The Lord our God is one Lord: and thou shalt love the Lord thy God with all thy heart, and with all thy soul, and with all thy might," and "thy neighbour as thyself." Once the neighbour is defined, then one's moral obligation is clear. In a memorable story, Jesus defined the neighbour by telling of the Good Samaritan. With sure artistry and great power, he depicted what happens when a man responds directly to human need across the barriers of class, race, and condition. Every man is potentially every other man's neighbour. Neighbourliness is nonspatial; it is qualitative. A man must love his neighbour directly, clearly, permitting no barriers between."

When I hear about the work of GoHealth, I hear stories of where churches are making 'the love-ethic central', where churches are responding 'directly to human need', and are being good neighbours. It is what the world needs.

The Guild of Health and St Raphael, 120 years after it was founded, is actively addressing the needs of the 21st century and is as relevant, expert and applicable as ever. In this past year, topics explored through podcasts, articles, teaching, workshops, talks, prayers, discussions and reflections have included pain, trauma and burnout. All those resources remain available and, if you haven't yet done so, do check them out and spread the word about them. They are beautiful, powerful, helpful and healing.

Finally, let me conclude with a really big 'thank you' to you and all the other members, supporters, funders and prayers of the Guild. We could not do it without you.



Steve Coles
Chairperson

FINANCIAL REVIEW

Review of the charity's financial position at the end of March 2024

The financial position of the Guild of Health and St. Raphael Ltd is satisfactory, with reconciled investments amounting to £524,689 at the 31 March 2024, compared with £602,975 at the end of March 2023. It should be noted that the trustees agreed to withdrawals from the investments of £60,000 during the year to fund the planned budget deficit. There have also been fluctuations in the value of the investments caused by the markets' reactions to the Cost of Living crisis and ongoing global instability.

Income has fallen to £57,504 for the year, compared with £63,872 in 2023. We aim through the development of our key projects and resources - Healthy Healing Hubs, online training and self-led courses, consultancy and individual membership - to see our income increase year on year. The strategy remains to generate enough income to be self-sustaining from revenue and donated income by a staged process of reducing deficits. In the meantime, there will be planned withdrawals from reserves to cover the planned deficits.

Principal sources of funds

The Guild has invested assets of £524,689 which realised our main source of income. In line with the strategic decision of the board of trustees, we are migrating to a financial model which should see our main income realised through the Healthy Healing Hub project, through membership subscriptions, the sale of resources, training, and attracting new grants.

Investment policy

The Guild is guided by the Church of England in terms of the management of its investment portfolio which is ethically framed. The principal risk facing the charity's finances is the ongoing volatility in the investment markets.



Steve Coles
Chairperson

STRUCTURE, GOVERNANCE AND MANAGEMENT

Constitution

The company (namely The Guild of Health and St. Raphael Limited) is a company limited by guarantee and does not have share capital and is governed by its Memorandum and Articles of Association.

Policy of recruitment and training of new trustees

The power of appointing and removing trustees is vested in the members of the company. The trustees have the power at any time to appoint any person to be a trustee either to fill a vacancy or as an additional member, and the members vote on the new trustee appointment at the following Annual General Meeting. The total number of trustees must not be less than nine. At each Annual General Meeting, one third of the trustees retire from office when they will be eligible for re-election. There is an induction programme for new trustees and training is offered as required.

Management

The Guild has a board of trustees. Previously all decisions were made by the full board at trustees' meetings. Some decision-making now takes place in the Finance Committee, but comes to the board of trustees for ratification according to an agreed Terms of Reference

Trustees have been recruited for their professional skill (medics and allied health professionals) or their interest and experience in the healing ministry or associated work. They are nominated and elected at the Annual General Meeting. They are required to declare any interests and benefits.

Patrons and President

The board of trustees is honoured to have three patrons reflecting its ecumenical nature: the Archbishop of Canterbury, the Archbishop of York, and the president of the Methodist Council. The trustees have appointed Professor John Swinton to be the President for a three-year term to promote the Guild at a national level.

Financial Risk Management

The trustees are aware that they are responsible for ensuring that any risks arising from their activities are adequately insured where possible and that all expenditure is properly authorised and the payment thereof subject to internal checks.

Volunteers

The value of services provided by volunteers is not incorporated into the financial statements.

REPORT OF THE CHIEF EXECUTIVE OFFICER

I'm delighted to be sharing this Annual Report with you celebrating all the different ways we've been working to integrate healing, community, faith and science to make a powerful difference in people's lives. At GoHealth, we seek to turn up in the world offering compassion and being inspiring and empowering. And this year this has led to growth and flourishing. We have settled into new ways of working, honing how we deliver our purpose, working with experts and producing high quality resources to reach as many people and organisations as possible with our vision.

For over 120 years the Guild of Health and St Raphael have been focused on the healing ministry of the Christian Church, interweaving healing and mission following the mandate of Jesus Christ. There are as many ways to do this as there are human beings, because each of us is a unique beloved creation of God, who wants us to experience life in all its abundance. It is a vision of being that puts flourishing in a symbiotic relationship with vocation. It is not a one size fits all approach. So, whether you are ordained or lay, expert or beginner, in good health or otherwise, we can all live into being a healing presence in our own life and in our communities.

In this year's series Burn Like Stars, we explored how to 'shine like stars', as St Paul said, getting into a conversation with theology and science about how to work deeply and keep well, especially those who feel tired and 'singed out'. But shining like a star, burning on well, is something that we aim to do as an organisation too.

The American Christian singer songwriter Flamy Grant puts it this way:

Everyone has a star that lights their way

We see our paths by someone else's shine.

This year the Guild has illuminated the path for many exploring how to be a healing presence in their own life. At the heart of being a healing presence is that idea that through our lives and activity we light the way for others. And at the heart of being a healing presence is that idea that through our work, life and presence we light the way for others. Illuminating the truth in the faith that even when we are ill, there is hope; even when it seems dark, God is with us; even when the world seems broken, lost and abandoned, Jesus promised that every prayer is heard, and that God will never leave us.

But doing this in can be tough. Especially today when the church is in decline, there are wars and aggressions, the climate is in crisis and there is economic and political uncertainty, so it is important to find connections with others for inspiration, support and healing.

At a recent gathering of the GoHealth Community one member commented – "I have found my tribe". This is what we hope to be – kindred spirits shining for others and gathering in for support when times are tough.

None of this is possible without the GoHealth team – Wendy Lloyd, Graham Fender-Allison, Theresa McDowall and Sue Martin. It is a privilege to work with you, and an honour to know you. Thank you to Steve Coles, our Chair, for your wisdom and support, and his leadership of the board. And indeed, thank you to the whole board. There are many 'alongsiders' with whom we work, not least the team at Creative Stream, Steve Collins who helps with Marketing and Wendy Ball, our communications consultant.

The Guild has no official office, no building. But I would like to acknowledge and pay respects to all members and leaders in our 120-year history for keeping safe this precious gift and passing it on to us.

And finally, the Guild is our members. We work to serve you and to build up a movement of healing presences, thank you for being part of this journey and for all you do as healing presences in the world.

The Guild of Health and St Raphael Ltd

May God bless you all.

A handwritten signature in black ink, consisting of a stylized 'G' followed by a series of loops and a long horizontal stroke.

Reverend Doctor Gillian Straine
Chief Executive Officer

REPORT OF THE TRUSTEES

FOR THE YEAR ENDED 31 MARCH 2024

The financial statements comply with the Charities Act 2001, the Companies Act 2006, the Memorandum and Articles of association, and Accounting and Reporting by Charities: Statement of Recommended Practice applicable to charities preparing their accounts in accordance with the Financial Reporting Standard applicable in the UK and Republic of Ireland (FRS102) (effective 1 January 2015).

Summary of the purposes of the charity as set out in its governing document.

The objects of The Guild of Health and St. Raphael Limited are:

- to bring together Christians including doctors, psychologists, other health professionals and ministers of religion, to work in fellowship for fuller health, both for the individual and the community.
- to enable members to study the interaction between physical, mental and spiritual factors in wellbeing through conferences, publications and other educational endeavours.
- to sustain and strengthen by prayer and sacrament people who are sick or suffering in anyway, and all those who minister to them.
- to help men and women to realise in themselves, as members of the Christian family, the abundant life offered by Christ and share this in the world.

In shaping our aims and objective the Trustees have considered the Charity Commission's guidance on public benefit. All our charitable activities focus on the promoting the healing ministry of the Christian Church, through the objects outlined above, and are undertaken to further our charitable purposes for the public benefit. In this way, the trustees have complied with the duty to have regard to the guidance issued by the Commission under section 4(b) of Charities (Protection and Social Investment) Act 2016.

Summary of the main activities in relation to those purposes for the public benefit, in particular, the activities and performance of projects or services identified in the accounts.

Recognising our need to adapt to meet the needs of an ever-changing society the focus, the charity's work in the future will be through the Healthy Healing Hubs project, the GoHealth community and Chrism.



Steve Coles
Chairperson

REFERENCE AND ADMINISTRATIVE INFORMATION

The directors of the charitable company (the charity) are its trustees for the purposes of Charity Law.

Trustees: Mr Steve Coles (Chairperson)
Dr David McDonald
Ms Nicola Burr
Reverend Rodney Clark
Mr Ken Herbert
Dr Catherine Nelson
Dr Michael Platt
Dr Victoria Showunmi
Reverend Canon Dr Eleanor Williams

Company Secretary Dr Sue Martin

Chief Executive Officer Reverend Doctor Gillian Straine

Registered Office: Azets
2nd Floor, Regis House
45 King William Street
London
EC4R 9AN

Company
Registration Number: 00487460

Charity
Registration Number: 211016

Bankers: The Co-Operative Bank
PO Box 250
Skelmersdale
WN8 6WT

Independent Examiner: John Howard
Azets Audit Services
2nd Floor
Regis House
45 King William Street
London
EC4R 9AN

STATEMENT OF TRUSTEES' RESPONSIBILITIES

The Charity Trustees (who are also the directors of The Guild of Health and St Raphael Ltd for the purposes of company law) are responsible for preparing a trustees' annual report and financial statements in accordance with applicable law and United Kingdom Generally Accepted Accounting Standards (United Kingdom Generally Accepted Accounting Practice).

Company law requires the trustees to prepare financial statements for each year which give a true and fair view of the state of affairs of the charitable company and of the incoming resources and application of resources, including the income and expenditure of the charitable company for that period. In preparing those financial statements, the Trustees are required to:

- Select suitable accounting policies and then apply them consistently.
- Observe the methods and principles of the Charities SORP.
- Make judgements and estimates that are reasonable and prudent.
- State whether applicable UK accounting standards have been followed, subject to any departures and explained in the financial statements.
- Prepare the financial statements on the going concern basis unless it is inappropriate to presume that the company will continue in business.

The trustees are responsible for keeping proper accounting records which disclose with reasonable accuracy at any time the financial position of the charity and to enable them to ensure that the financial statements comply with the Companies Act 2006. They are also responsible for safeguarding the assets of charity and hence taking reasonable steps for the prevention and detection of fraud and other irregularities.

This report has been prepared in accordance with the small company regime (section 419 (2) of the Companies Act 2006)

Approved by the Board on 2nd October 2024 and signed on its behalf by



Steve Coles
Chairperson

REPORT OF THE INDEPENDENT EXAMINER

Independent Examiner's Report to the Trustees of The Guild of Health and St Raphael Ltd.

I report to the charity trustees on my examination of the accounts of the Company for the year ended 31 March 2024.

Responsibilities and basis of report

As the charity's trustees of the Company (and also its directors for the purposes of company law) you are responsible for the preparation of the accounts in accordance with the requirements of the Companies Act 2006 ("the 2006 Act").

Having satisfied myself that the accounts of the Company are not required to be audited under Part 16 of the 2006 Act and are eligible for independent examination, I report in respect of my examination of your charity's accounts as carried out under section 145 of the Charities Act 2011 ("the 2011 Act"). In carrying out my examination I have followed the Directions given by the Charity Commission under section 145(5)(b) of the 2011 Act.
Independent Examiner's statement

I have completed my examination. I confirm that no matters have come to my attention in connection with my examination giving me cause to believe:

accounting records were not kept in respect of the Company as required by section 386 of the Act 2006; or the accounts do not accord with those records; or

the accounts do not comply with the accounting requirements of section 396 of the 2006 Act other than any requirement that the accounts give a "true and fair view" which is not a matter considered as part of an independent examination; or

the accounts have not been prepared in accordance with the methods and principles of the Statement of Recommended Practice for accounting and reporting by charities applicable to charities preparing their accounts in accordance with the Financial Reporting Standard applicable in the UK and Republic of Ireland (FRS 102).
I have no concerns and have come across no other matters in connection with the examination to which attention should be drawn in this report in order to enable a proper understanding of the accounts to be reached.

Use of my report

This report is made solely to the charity's trustees, as a body, in accordance with Chapter 3 of Part 8 of the Charities Act 2011. My examination has been undertaken so that I might state to the Charity's Trustees those matters I am required to state to them in an independent examiner's report and for no other purpose. To the fullest extent permitted by law, I do not accept or assume responsibility to anyone other than the charity and the charity's trustees as a body, for my examination, for this report, or for the opinions I have formed.

Azets Audit Services

John Howard
Azets Audit Services
2nd Floor
Regis House
45 King William Street
London
EC4R 9AN

Date: 29 November 2024

STATEMENT OF FINANCIAL ACTIVITIES

FOR THE YEAR ENDED 31 MARCH 2024

INCOME AND EXPENDITURE ACCOUNT

	Notes	2024 Unrestricted funds £	2024 Restricted funds £	2024 Total funds £	2023 Total funds £
INCOME FROM:					
	2				
Donations and legacies		300	-	300	535
Charitable activities		25,838	6,840	32,678	34,567
Investment income		24,526	-	24,526	28,771
Total Income		50,664	6,840	57,504	63,873
EXPENDITURE ON:					
	3				
Cost of Raising Funds		11,511	-	11,511	20,269
Charitable Activities		137,826	1,210	139,036	117,615
Total Expenditure		149,337	1,210	150,547	137,884
Net income/(expenditure) before gains on investments		(98,673)	5,630	(93,043)	(74,011)
Net gains/(losses) on investment assets		11,713	-	11,713	(37,785)
NET INCOME FOR THE YEAR AND NET MOVEMENT IN FUNDS		(86,960)	5,630	(81,330)	(111,796)
RECONCILIATION OF FUNDS					
Balances brought forward 1 April 2023		602,456	-	602,456	714,252
Balances carried forward 31 March 2024	11	515,496	5,630	521,126	602,456

The Guild of Health and St Raphael Ltd

BALANCE SHEET

AT 31 MARCH 2024

	Notes	2024 £	2023 £
FIXED ASSETS			
Tangible fixed assets	4	-	-
Investments	5	524,689	602,975
Total fixed assets		524,689	602,975
CURRENT ASSETS			
Debtors	6	1,050	350
Cash at bank and in hand		6,898	15,898
Total current assets		7,948	16,248
LIABILITIES			
	7		
Creditors: amounts following due within one year		(11,511)	(16,767)
NET CURRENT ASSETS		(3,563)	(519)
NET ASSETS		521,126	602,456
THE FUNDS OF THE CHARITY			
Unrestricted income fund		515,496	602,456
Restricted funds		5,630	-
TOTAL CHARITY FUNDS		521,126	602,456

For the financial year ended 31 March 2024, the charitable company was entitled to exemption from audit under Section 477 of the Companies Act 2006 relating to small companies. No member of the company has deposited a notice, pursuant to section 476, requiring an audit of these financial statements under the requirements of the Companies Act 2006.

The directors acknowledge their responsibilities for complying with the requirements of the Act with respect to accounting records and for the preparation of accounts.

These financial statements have been prepared in accordance with the provisions applicable to companies subject to the small companies' regime.

These financial statements were approved by the Trustees on 2nd October 2024 and signed on their behalf by:



Steve Coles
Chairperson
Company Registration No 00487460

NOTES TO THE FINANCIAL STATEMENTS FOR THE YEAR ENDED 31 MARCH 2024

1) ACCOUNTING POLICIES

The following principal accounting policies have been consistently used in the preparation of the financial statements:

a) Basis of preparation

The financial statements have been prepared in accordance with Accounting and Reporting by Charities: Statement of Recommended Practice applicable to charities preparing their accounts in accordance with Financial Reporting Standard applicable in the United Kingdom and Republic of Ireland (Charities SORP FRS 102), the Financial Reporting Standard applicable in the UK and Republic of Ireland (FRS 102) and the Charities Act 2011.

The charity constitutes a public benefit entity as defined by FRS 102.

The accounts are presented in sterling and are rounded to the nearest pound.

b) Assessment of going concern

The Trustees have assessed whether the use of the going concern assumption is appropriate in preparing these accounts. The Trustees have made this assessment in respect to a period of one year from the date of approval of these accounts.

The Trustees of the charity have concluded that there are no material uncertainties related to events or conditions that may cast significant doubt on the ability of the charity to continue as a going concern. The Trustees are of the opinion that the charity will have sufficient resources to meet its liabilities as they fall due. The most significant areas of judgement that affect items in the accounts are detailed above.

With regard to the next accounting period, the year ending 31 March 2025, the most significant area that affect the carrying value of the assets held by the charity is the level of investment return and the performance of the investment markets (see the investment policy section of the trustees' report for more information).

c) Income recognition

Income is recognised when the charity has entitlement to the income, it is likely to be received and the amount can be reliably estimated. Tax recoverable on gift aid is accrued in the financial statements. Legacies are accounted for when the Trustees are notified of the legacy and the receipt is probable.

d) Expenditure Recognition

Expenditure is recognised on an accruals basis. Direct charitable expenditure are the costs incurred in achieving the charitable objectives of the Charity. Governance costs are the costs associated with the legal and statutory duties of the Charity. Grants payable are accounted for when approved by the Trustees.

NOTES TO THE FINANCIAL STATEMENTS (Continued)
FOR THE YEAR ENDED 31 MARCH 2024

e) Allocation of support and governance costs

Support costs represent indirect charitable expenditure. In order to carry out the primary purposes of the charity it is necessary to provide support in the form of personnel development, financial procedures, provision of office services and equipment and a suitable working environment.

Governance costs comprise the costs involving the public accountability of the charity (including audit costs) and costs in respect to its compliance with regulation and good practice. Support costs and governance costs are apportioned to healthcare establishment expenses only.

f) Tangible Fixed Assets and Depreciation

Individual assets costing £1,000 or more, with an expected useful life exceeding one year, are capitalised at cost.

Depreciation is provided to write off the cost, less estimated residual values, of all tangible fixed assets over their expected useful lives. It is calculated on a straight line basis over three years.

g) Fixed Asset Investments

Listed investments are a form of basic financial instrument and are initially recognised at their transaction value and subsequently measured at their fair value as at the balance sheet date using the closing quoted market price

The charity does not acquire put options, derivatives or other complex financial instruments.

As noted above, one of the main forms of financial risk faced by the charity is that of volatility in equity markets and investment markets due to wider economic conditions, the attitude of investors to investment risk, and changes in sentiment concerning equities and within particular sectors or sub sectors.

Realised gains (or losses) on investment assets are calculated as the difference between disposal proceeds and their opening carrying value or their purchase value is acquired subsequent to the first day of the financial year. Unrealised gains and losses are calculated as the difference between the fair value at the year end and their carrying value at that date. Realised and unrealised investment gains (or losses) are combined in the statement of financial activities and are credited (or debited) in the year in which they arise.

h) Debtors

Debtors are recognised at their settlement amount, less any provision for non-recoverability. Prepayments are valued at the amount prepaid.

i) Cash at bank and in hand

Cash at bank and in hand represents such accounts and instruments that are available on demand or have a maturity of less than three months from the date of acquisition. Deposits for more than three months but less than one year have been disclosed as short term deposits. Cash placed on deposit for more than one year is disclosed as a fixed asset investment.

NOTES TO THE FINANCIAL STATEMENTS (Continued)
FOR THE YEAR ENDED 31 MARCH 2024

- j) **Creditors and provisions**
 Creditors and provisions are recognised when there is an obligation at the balance sheet date as a result of a past event, it is probable that a transfer of economic benefit will be required in settlement, and the amount of the settlement can be estimated reliably. Creditors and provisions are recognised at the amount the charity anticipates it will pay to settle the debt.
- k) **Fund accounting**
 General funds represent incoming resources received or generated for expenditure on the general objectives of the charity.
- l) **Pension costs**
 Contributions in respect of the charity's stakeholder pension scheme are charged to the statement of financial activities in the period in which they become payable to the scheme. The assets of the scheme are held separately from those of the charity in an independently administered fund.
- m) **Critical accounting estimates and judgements**
 In preparing the financial statements, management is required to make estimates and assumptions which affect reported income, expenses, assets, liabilities and disclosure of contingent assets and liabilities. Use of available information and application of judgements are inherent in the formation of estimates, together with the past experience and expectations of future events that are believed to be reasonable under the circumstances. Actual results in the future could differ from such estimates. Management do not consider there to be any material accounting estimates or judgements that need disclosure in these financial statements.

2) INCOME

	2024 Unrestricted £	2024 Restricted £	2024 Total Funds £	2023 Total funds £
a) Donations & Legacies				
Donations	300	-	300	535
Gift aid	-	-	-	-
Legacies	-	-	-	-
	300	-	300	535
b) Charitable activities				
Membership Income	12,233	-	12,233	11,893
Training	6,606	-	6,606	18,208
Literature & Resource Sales	89	-	89	326
Events & Presentations	690	-	690	2,613
Other	6,220	6,840	13,060	1,527
	25,838	6,840	32,678	34,567
d) Investment Income	24,526	-	24,526	28,771
	24,526	-	24,526	28,771

NOTES TO THE FINANCIAL STATEMENTS (Continued)
FOR THE YEAR ENDED 31 MARCH 2024

3) EXPENDITURE

	2024 Unrestricted £	2024 Restricted £	2024 Total Funds £	2023 Total Funds £
a) Raising funds				
Marketing & Website Development	4,230	-	4,230	7,200
Administration	470	-	470	1,299
Consultancy	4,320	-	4,320	10,404
Advertising	2,731	-	2,731	1,366
	<u>11,751</u>	<u>-</u>	<u>11,751</u>	<u>20,269</u>
b) Charitable Activities				
Website Hosting	5,334	-	5,334	5,526
Newsletter, Journal & Online	2,110	1,210	3,320	2,196
Consultancy	7,000	-	7,000	1,000
Events, Conferences & Seminars	7,583	-	7,583	3,558
Partnership Payments	550	-	550	-
Staff Salaries (note 9)	94,160	-	94,160	85,663
Staff training, travel & expenses	8,340	-	8,340	4,984
Governance	2,044	-	2,044	1,434
Telephone, postage and stationery	1,386	-	1,386	2,346
Support costs:				
Bookkeeping and support	2,693	-	2,693	3,627
Payroll and HR support	1,623	-	1,623	2,907
Professional fees and subs	1,779	-	1,779	576
Insurance	618	-	618	1,118
Bank charges	518	-	518	580
Independent Examiner's Fee	1,848	-	1,848	2,100
	<u>137,586</u>	<u>1,210</u>	<u>138,796</u>	<u>117,615</u>
Total charitable costs	<u><u>149,337</u></u>	<u><u>1,210</u></u>	<u><u>150,547</u></u>	<u><u>137,884</u></u>

NOTES TO THE FINANCIAL STATEMENTS (Continued)
FOR THE YEAR ENDED 31 MARCH 2024

4) TANGIBLE FIXED ASSETS	2024	2023
	£	£
Office Equipment		
Cost		
At 1 April 2023	1,246	1,246
Additions in year	-	-
At 31 March 2024	<u>1,246</u>	<u>1,246</u>
Depreciation		
At 1 April 2023	1,246	1,246
Charge for the year	-	-
At 31 March 2024	<u>1,246</u>	<u>1,246</u>
Net Book Value		
At 31 March 2023 and 2024	<u>-</u>	<u>-</u>
5) FIXED ASSET INVESTMENTS	2024	2023
	£	£
Listed investments		
Market value at 1 April 2023	602,975	700,760
Withdrawals	(90,000)	(60,000)
Unrealised gains/(losses)	11,714	(37,785)
Market value at 31 March 2024	<u>524,689</u>	<u>602,975</u>
Cost at 31 March 2024	<u>453,095</u>	<u>453,095</u>
6) DEBTORS	2024	2023
	£	£
Other debtors	<u>1,050</u>	<u>350</u>
	<u>1,050</u>	<u>350</u>

NOTES TO THE FINANCIAL STATEMENTS
(Continued)
FOR THE YEAR ENDED 31 MARCH 2024

7)	LIABILITIES	2024	2023
	Creditors: Amounts falling due within one year	£	£
	Accruals and deferred income	8,035	1,800
	Other creditors	3,476	14,967
		<u>11,511</u>	<u>16,767</u>

8) **COMPANY LIMITED BY GUARANTEE**

The company is limited by guarantee and has no share capital. At the year-end there were 12 members (2023: 12). In the event of the company winding-up, the liability of the members is limited to £1 each and the balance of the fund would be transferred to an association with objects similar to this company.

9)	STAFF COSTS AND NUMBERS	2024	2023
		£	£
	Staff costs analysed:		
	Salaries	90,473	82,426
	Social security costs	1,925	1,613
	Pension contributions	1,762	1,624
		<u>94,160</u>	<u>85,663</u>

No employees had emoluments in excess of £60,000 (2023: £60,000)

The key management personnel of the Charity comprise the Trustees and the charity Director. The employee benefits of the key management personnel of the Charity were £47,415 (2023: £43,128).

Average number of employees during the year was as follows:

	2024	2023
Administration:	5	5

NOTES TO THE FINANCIAL STATEMENTS (Continued)

FOR THE YEAR ENDED 31 MARCH 2024

10) TRUSTEES' REMUNERATION

Trustees neither receive nor waived any emoluments in the year (2023: nil).

Travel and accommodation expenses totalling £65 (2023: £259) were reimbursed to 2 Trustees (2023: 4) during the year.

11) RECONCILIATION OF FUNDS

	2024	2023
	£	£
At 1 April 2023	602,456	714,252
Net movement in funds in year	<u>(81,330)</u>	<u>(111,796)</u>
At 31 March 2024	<u>521,126</u>	<u>602,456</u>
Represented by:		
Fixed assets	524,689	602,975
Current assets	7,948	16,248
Current liabilities	<u>(11,511)</u>	<u>(16,767)</u>
	<u>521,126</u>	<u>602,456</u>

THE GUILD OF HEALTH AND ST RAPHAEL

England & Wales - Charity number 211016

Accounts



The Guild of Health & St Raphael Ltd

The Annual Report

2022 - 2023



A company limited by guarantee and not having share capital

Company Registration no: 00487460 | Charity Registration no: 211016



The Guild Prayer

Loving God
 through Christ you offer to creation
 your gifts of healing, wholeness, and salvation.
 Bless and strengthen us in
 answering your call to cultivate these gifts within
 your Church.
 Fill us with your grace,
 so that each member of the Guild
 may reveal the Good News of your love.
 We make our prayer through Jesus Christ,
 who lives and reigns with you in the life-giving Spirit,
 ever one God, now and forever.
 Amen



Contents

The Guild Prayer	2
Contents	3
Message from the Chairperson & the Chief Executive	4
Summary of our vision, purpose and why we exist	6
An overview of the year 2022-2023	7
Some stats & feedback	13
The way ahead	14
Our people, structures and ways of working	16
Operating Model, Structure and Governance	18
Statement of Trustees' Responsibilities	19
Report of the Trustees	21
Finance Report	22
Statement of Financial Activities	23
Balance sheet at 31 March 2023	25
Notes to the Financial Statements	26
The Good Practice Charter	31

On the Everyday Healing course.

"We have thoroughly enjoyed the rollercoaster of the past four weeks. So many moments of wow, sadness, thought provoking, daunting, inspiring and we both agreed last night when it finished, that we were sad that it was the last one. So from the bottom of my heart thank you. It has been a privilege to spend this short time with you." Trevor

From the Chairperson:



Welcome to the 2022-2023 Trustees Annual Report of the Guild of Health and St Raphael. I am so pleased that you are interested in the work of the Guild. Another year on in my line as Chair of Trustees and I am even more interested in it, more passionate about it, and more convinced of the need for its mission and ministry.

It has been a great pleasure to work with the team - Gillian, Wendy, Sue, Theresa and Graham - and with the Board of Trustees - Victoria, Rosemarie, Catherine, Ken, David and Michael - over the last year. Each is brilliant, committed, kind and skilful, making the Guild of Health and St Raphael team greater than the sum of its parts. Together, the parts of the body work together, each playing their own role but also in unity of purpose with each other. I am grateful to them all. I am also very grateful to Professor John Swinton for taking on the role of President of the Guild of Health and St Raphael and look forward to working with him.

On the subject of purpose, one of the most exciting developments of 2022-2023 has been the work on the Guild's Charter, which encompasses its vision, mission, values and over-arching strategy. Working with Wendy Ball, the team and the board are now able to clearly articulate the profound nature and mission of the Guild, drawing on its long history and deeply held values, for people in our local communities feeling the very current effects of the Covid-19 pandemic, cost of living crisis and global instability.

In his book 'Love is the Way', Bishop Michael Curry eloquently summarises a theological understanding that lies at the heart of the work of the Guild:

"People are not things. No one is an It, an object, a thing. In Genesis .. God is portrayed as vehemently opposing violence directed at any human being, 'for in his own image God made humankind'. As Dr. King often said, the being is of infinite worth and dignity not by vote of parliament or congress, not by edict of prince, potentate, prime minister, or president, but by the divine decree of God."

At the Guild of Health and St Raphael, we are acutely aware that violence directed at any human being - whether physical or mental violence, racial or gender-based violence, socioeconomic or sexual violence - is a matter of health, up to and including life or death. We are also aware that self-worth, dignity, inclusion and love are all matters of health too, and contribute to life in all its fullness. To help me understand the effects of trauma and how our churches can be 'trauma informed' I am looking forward to our annual Denis Duncan Lecture, on the 30 November 2023. I will be attending - do join me.

Before then though, I look forward to seeing many of you at our AGM (Annual General Meeting) on the 11 November 2023.

Finally, as ever, thanks to you and all the other members, supporters, funders and prayers of the Guild. We could not do it without you.

Mr Steve Coles, Chair of the trustees



Wendy, Graham and Gillian

From the Chief Executive:



Welcome to this review of the year and for your interest in our vision and activity as an organisation committed to healing and faith for the flourishing of all people, the Christian church and the Kingdom of God. It is an ambitious vision and has remained at the heart of The Guild of Health and St Raphael for nearly 20 years.

This has been a year of blessing and busyness as the whole team continued to nurture the gift of the Guild and the vision of our founders in the complex world that is our mission field. Along with all members, trustees and friends, we are so excited to join in with a vital movement in bringing together a holistic view of health, with science and medicine through the community.

We are small, but we have a mighty message - that our way of approaching health and healing leads to human flourishing in the name of God. In this report, you will read how we are building and growing through the people we are privileged to train and work with. A verse that seems important to me, and especially when things are tough, is the voice of John the Baptist crying in the wilderness, 'Prepare the way of the Lord! That feels like what we do: we help people take the way of the Lord, the ways of forgiveness, healing, and acceptance, into their communities.

You might think that wilderness is an odd choice, but the world does feel like one at times. The church is in decline, loneliness and the impacts of covid-19 pandemic continue to be felt, and the world looks increasingly unstable. Indeed, The King's Fund recently published a report to say that the UK lags behind its peers on important health outcomes.

Wildernesses are places of spiritual encounter with God. A place where we trust God to provide. Where we become empowered and inspired not because of who

we are and our survival skills, but because we realise on whom we are dependent. And our dependence on God is a foundation stone in this work, because there is simply so much to do. We are very busy in this wilderness, engaging with ecumenical church leaders, training 100s of lay and ordained Christians, and existing on the Internet having over 10,000 interactions annually. Dive into the report to see what we have been up to.

I would like to thank the Guild team with whom it is an absolute privilege and blessing to work: Wendy Lloyd, Graham Fender-Allison, Sue Martin and Theresa McDowall, who joined the team this year. Thank you also to Steve Coles for his wise and calm leadership of the board, and indeed to all the trustees. There are many 'alongsiders' with whom we work, not least the team at Creative Stream. Steve Collins who helps with marketing and Wendy Ball, our communications consultant.

And finally, the Guild is our members. We work to serve you and to build up a movement to proclaim the value of the Christian approach to health and healing. Thank you for being part of this vision. Please pray for us, as we pray for you.

The Revd. Dr. Gillian Straine, CEO (Chief Executive Officer)



Theresa



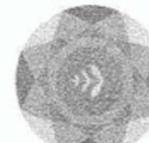
Sue



HUBS



COMMUNITY



CHRISM



Summary of our vision, purpose and why we exist

We are an ecumenical, Christian charity with over 100 years' experience in holistic health and healing. We exist to equip and inspire churches and individual Christians to be healing presences in the world – for the benefit of all. This is the mission Jesus has given us and what God empowers us to do.

Our purpose is to equip and inspire people to nurture health and healing in ourselves, our communities and our world.

Our vision is to see and be flourishing communities made up of flourishing individuals.

At the Guild, we believe that we are each on a unique health and wellbeing journey. We start where we are, as we are. Our wellbeing – individually and collectively – lies at the intersection of faith, science, evidence-based healthcare and flourishing communities. This is holistic health, and our spiritual life is a core part of our humanity. Christian faith invites people to follow Jesus Christ – which includes an honest engagement with the experience of suffering and his command to heal.

For us, it is important to acknowledge that our individual health is inextricably linked with our community and wider world, so that we know that holistic health is enabled through just and flourishing communities. Sadly, individual and collective suffering are widespread, and the health of our planet is being undermined. Much of this is driven and exacerbated by social injustice, including health inequalities.

Modern medicine has theological foundations which grew out of practical healthcare offered by faith communities. We continue to celebrate science as a key tool to understand the world and ourselves and we recognise its limitations. It is important to sense that health is complex and multifaceted, yet the siloed nature of many academic contexts limits the knowledge we foster and use to shape health practice and community life. Further, healthcare is not the sole jurisdiction of healthcare professionals. Everyone has a part to play in enabling health for themselves and others. At the Guild we believe that with attention and training we can grow in our capacity to be healers.

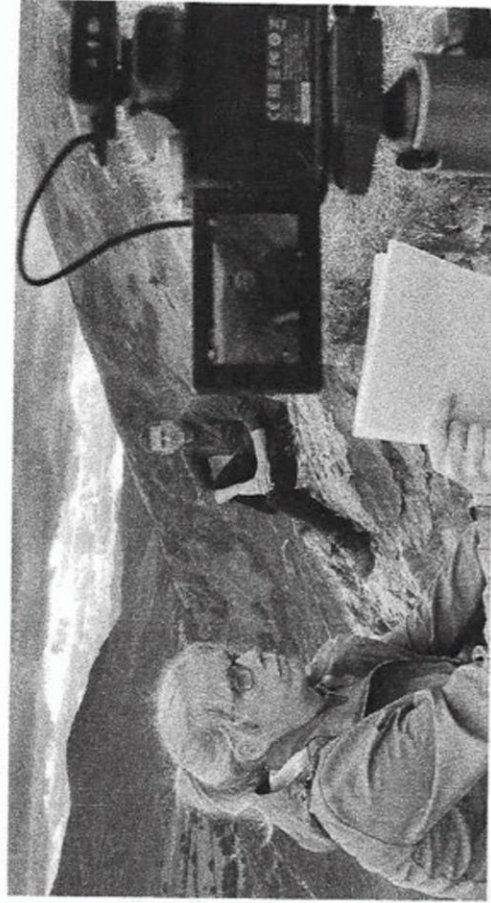
Facing the impacts of covid-19 and other global and local challenges, faith-based organisations have a significant opportunity to work with local and national bodies in bringing positive impacts to their communities. As part of its mission, the Church is called to heal. History has shown that healing and the missional growth of the Church are linked.

Taking it all together, the Guild of Health and St Raphael joins with others in the wider movement pursuing health and wellbeing for all and we are excited about the distinctive contribution we bring. We are not a community of the healed, but we are empowered by God to journey with our health challenges and the pain of the world, towards flourishing.



An overview of the year 2022-2023

The Guild's small team seeks to deliver our ambitious vision in several modes which are carefully crafted to be impactful and relevant to the world in which we operate, and in a way that is aligned with our values:



- 1 To be active learners, tending to our own journeys towards health, and wellbeing, and encouraging others as they tend to theirs.**
- 2 To nurture communities and networks of learning, knowledge, and practice (especially, but not limited to, churches and Christian networks).**
- 3 To provoke and inspire wider engagement in health and healing that is person-centred, rooted in Christian faith, valuing of medical science, and serving our communities.**
- 4 To be a mobilising and animating presence within the wider movement of wellbeing and health, bringing the perspectives and power of our faith to this work.**

We do not and we cannot work alone. Therefore, we purposefully try to maximize our impact by enabling communities of knowledge, learning and practice. These support individuals and groups to feel more confident and equipped to bring the gifts of healing and health where they are.

This is our "multiplier model" and our efforts are focused on two groups:

- Our GoHealth Community and
- Our Healthy Healing Hub network

We also deliver training, messaging and resources to reach other audiences with our work so as to encourage the Guild's aims to be met, and both the Go-Health community and the Healthy Healing Hub networks to grow.

What this has looked like in 2022-23?

In this section, we summarise all our activities this year under the four ways that we offer our gifts into the world and tend to our community and network.



We deepen our faith, including through prayer and exploring theological and liturgical perspectives.

Prayer and a Christian faith underpin all the work we do.

In 2022-3, this included the following:

- The Go-health community was resourced monthly with a range of topics that touched on health and healing. Each was looked at from the distinctive perspective of the Christian faith, theology and spirituality, picking up on our interdisciplinary engagement.
- We have responded in times of crisis with prayer responses and support. This included the death of HM Queen Elizabeth II, and during the invasion of Ukraine where we made resources freely available to everyone.
- We continue to take prayer requests 24/7 through the website. The intercessions are shared with the Go-health Community.
- We have developed our Prayer portal with a range of content for members to use personally and/or in church services.

On Faith, Place And Health: Harnessing The Power Of Faith Groups To Tackle London's Health Inequalities



Bishop of London launching a health inequality report. The Guild was invited to attend the event.

Working with one of our Gold Healthy Healing Hubs



Graham, Fender-Allison, delivering training with YMCA chaplains



Diocese of St Andrew's clergy training day on health and mission in Scotland



Leedsfield Cathedral goes digital



Social prescribing training day at the Healthy Healing Hub with Dr David Smart and Sue Griffiths

Gillian filming for the YMCA chaplain training workshop



Gillian Straine and Wendy Lloyd



We engage with science, the world, and our communities

Our unique way of working involves us having a conversation about faith and healing while drawing into the insights of the academy, what is happening in contemporary culture and the healing needs of our members and their communities.

We see ourselves as a place to centralise, translate and share this "mash up", integrating scientific insights into our training, resources and wider activities.

In 2022-3 this led to the following achievements:

- We added 5 hubs to the Healthy Healing Hub network. This involved training through the introduction to the healing ministry course (which became The Everyday Healing Course) and then active listening to continue the support to these hubs.
- We have published 2 editions of the *Crism* journal. Authors include The Revd Prof Helen Leathard, Prof Fraser Watts, and the Revd Prof Jane Boyce-Tillman. Topics included covid-19 recovery, Christology, Spiritual Intelligence, Yoga, Climate change, and music.
- We hosted several online taster events and sent surveys to our members to collate information about their healing training needs and support needs.
- We listened and responded to the needs of the H-H network, including hosting a private Facebook group to encourage peer to peer learning.
- We hosted Dr Richard Pile to explore Lifestyle medicine with our community.
- We collaborated with Dr David Smart and Sue Griffiths to develop resources on Social Prescribing for church communities.
- We forged and sustained partnerships with other organisations in academia, para church communities and those in the wellbeing sector. These included Sarum college, Holy Road House, Churchworks, Sanctuary mental health, and The Tragedy and Congregations project.
- We continued to support Peter Walker's 'Leaves of the Trees' installation including in Westminster Abbey.
- We engaged in cross sector conversations for example, with FaithAction's Ethical Advisory group, The Churchworks' coffee house events, and with the Bishop of London in her work around health inequalities.
- We supported a Gold Healthy Healing Hub to win £20K to explore music and liturgical healing.



The Church of Scotland

presents the 2022 Denis Duncan Lecture

A Mountain-top Experience?

Outdoor adventure, being in nature and healing in Christ



Revd. Dr. Richard Tiplady
Adventurous & Faithful

10 November 2022 7-9pm
FREE ONLINE EVENT

REGISTER TODAY TO RESERVE YOUR PLACE

gohealth.org.uk

The purpose of the church is to be God's agency of healing in the world.

The Very Revd. David Lunan, Denis Duncan Centre 2017





GOHEALTH PODCAST

With
The Revd. Dr. Gillian Straine



Waiting Well

An Advent Journey with the
GoHealth Community



GOHEALTH

EVERYDAY HEALING

An introduction to the
Christian Tradition



GOHEALTH

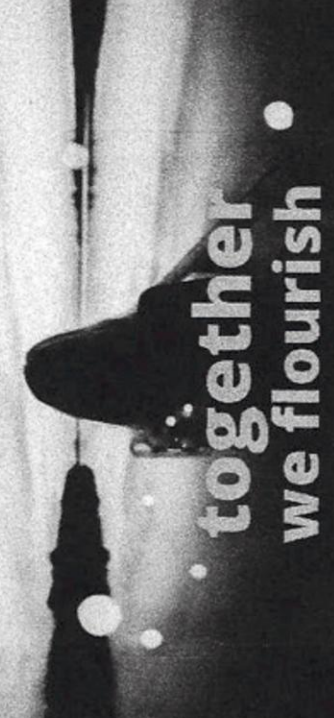


Flourishing together
A POSITIVE BOOST



Alex Strain
With special guest
Maggie Maclellan & Tyronne

together we flourish




We shape content and opportunities to learn, reflect and connect.

This is a wide-ranging list which reflects the breadth of our vision, but we focused the outcomes of this activity to grow the GoHealth Community and the Healthy Healing Hub network.

- The GoHealth Community has been resourced with 12 topics across the year, including How to Flourish, the Body, and the Power of the Wilderness. Each topic comes with a bespoke blog, prayers, and practices to deepen knowledge and practice. The motto is "Together we Flourish", seeing ourselves as part of this process.
- The Advent retreat is always a highlight. This year we journeyed with the desert fathers and mothers. Interweaving scripture, prayer, and the wisdom of the Christian faith into each day of Advent, we learned how to walk well together for the birth of Jesus. Daily practices helped us grow in patience and joy, becoming healthier and more hopeful, at a time that is often chaotic, and in a world that is full of uncertainty. This year we welcomed special guests to offer video reflections in Advent – The Bishop of London, Padraig O Tuama, Nraeto Onwuzurumba and Claire Gilbert.
- Four cohorts went through the introduction to the Healing Ministry course, which became the Everyday Healing course after we invested in professionally filmed content and workbook.
- Nine episodes of the GoHealth podcast were launched across two seasons: Learning to heal and Together we Flourish. Topics included addiction, gender, music, science and positivity. Guests included The Revd Will van der Hart who authored a book with Bear Grylls, The Very Red, Martin Fair who was with the Queen shortly before her death, and Bishop Adrian Newman who retired because of migraines.
- Our annual Denis Duncan lecture was delivered by The Revd Dr Richard Tiplady. We filmed in the Lake District and tackled the topic of the healing power of the wilderness.
- Each Denis Duncan lecture is turned into an online course. We hosted online and in-person workshops on trauma, social prescribing, and lifestyle medicine, and in-person workshops on Healthy Healing Hubs and trauma. This included our AGM day at Gold Healthy Healing Hub Lichfield Cathedral.
- We were called upon by other organisations to offer expertise in health and healing, clergy wellbeing, and health mission. This year this included workshops at the following events:
 - The National Cathedral Conference in Newcastle
 - Senior leader training at Lichfield cathedral.
 - Diocese of Oxford clergy training conference
 - Diocese of St Andrews clergy training day
 - The Retreat Organisation annual conference
 - Lichfield Churches Together training evening
 - Staffordshire ecumenical senior church leaders network workshop
 - Science and Christianity lecture series for Sarum College
 - National healing advisor conference
- We are increasingly being recognised as an organisation which can create and deliver bespoke curricula within educational institutions. In 2022-3, this included:
 - A commission to create and deliver a level 6 and level 7 Common Awards course module for the Scottish Episcopal Institute (12 session modules, plus marking and moderation) – "Theological perspective in the healthcare", and "Healing, Healing and mission".
 - A commission from the YMCA to create and deliver a one-day workshop for YMCA chaplains. This included working in collaboration with Hilary Ison on trauma. The YMCA has continued to invest in this workshop. We are developing it and running it again in 2023-4 and looking to license it to the organisation in the future.
 - The Revd. Dr. Gillian Straine is also asked to preach on health and healing at a wide range of locations. In 2022-3, this included Lichfield cathedral, Canterbury cathedral, St Paul's Knightsbridge.

"Just to thank you for your amazing ongoing work through the Guild of Health and St Raphael, as exemplified by the latest emails for The GoHealth Community. I hope it is of help to many leaders and people, as I am sure it will be to me." Robert



We share what we are learning and making as widely as possible

We work hard to communicate what we are doing and be a clear voice in a noisy wellbeing market, speaking of the hope and power of the Christian faith for human healing and flourishing.

In 2022-3, this is what this looked like:

- Website curation to provide information on what is available and useful articles and resources to the general public.
- Our wider communications work includes social media content, short films, e-newsletters and promotional materials, for example the Lent campaign. We aim to be a healthy voice encouraging, inspiring and empowering people with compassion.
- We provided expert input to panels and organisations; for example, The Archbishop's Council, The Bishop of London, Relational Church, Churchworks and FaithAction.
- We have been invited to appear on local and national radio to provide expertise on the role of church in community, mental health, or wellbeing in general. This year, this included the BBC Sunday shows around the UK, UCB radio and Premier FM.
- Occasionally, we are invited to debate and engage in apologetics on other platforms. This year, Gillian Straine appeared on the Lifefulness podcast.



Keeping the lights on

As with every organisation, there is a range of day-to-day activities that we engage in to ensure that we are a healthy and sustainable organisation.

This includes:

- Staff and volunteer support and training.
- Tending to our organisational development, culture and structure, through policy work, time together as a team, and regular meetings.
- Developing a Trustee Handbook for our Trustees and essential policies for staff, including General Data Protection Regulations, Health and Safety and Safeguarding.
- Maintaining good governance and financial health.

About a hub,

"Everyone is welcome. We're offering a warm space, refreshments and companionship. But most importantly we want to offer a place of hope and healing. We want people to be able to bring their experience of life, their worries and troubles to this space and be offered opportunity for one-to-one healing prayer as well as a chance for communal healing during a weekly prayer service." HHH leader



Some stats & feedback

In this section, we summarise all our activities this year under the four ways that we offer our gifts into the world and tend to our community and network.

Online



The Healthy Healing Hub Network grew by **60%**



GoHealth Community grew by **40%**



Our Website gohealth.org.uk has **7.8k Views**



Social Media Facebook reach **92,527**

Training courses

In person and online workshops

610 people across the year

3 Introduction to the Healing Ministry courses



15 Theological college students

95 people trained

17 churches trained



An increase of **40%** on the previous year

Lectures



Denis Duncan tickets booked **247**

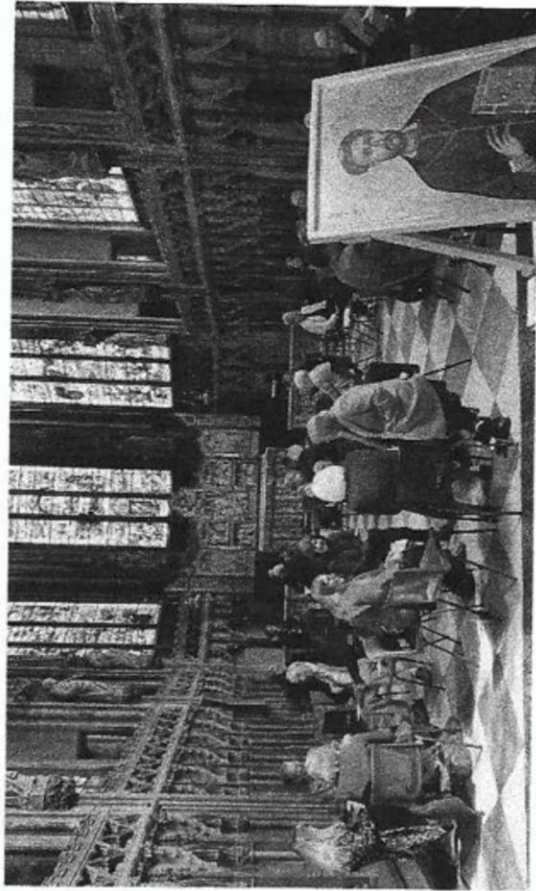


Advent Journeys on Waiting Well **113**



The way ahead

As we raise our eyes to next year and the future of the Guild, the team and the trustees are excited and positive about the strides we have in place, the focus we have on our values and work, and the difference that we can make in the world through our members, training and communications.



Our focus is on resourcing and growing our membership – drawing people into our movement, equipping them, and inspiring them to offer the healing and hope of Jesus Christ in their communities. We aim to engage with more people and churches across the UK, get out on the road to increase our visibility and ensure that the people we connect with have a positive and accurate impression of the work we do.

A significant shift is to join together the interdisciplinary output of Christism with the resourcing of the Go-Health Community and the training resources. We are moving to themed editions of Christism from January 2024 which will be informed by an advisory group.

This shift will have the following outcomes:

- Our work will be aligned with the best thinking in the academy and other experts
- Our outputs will be streamlined, which will bring efficiency for the team and clarity to the marketing.
- Other significant work for the year ahead includes upgrading our online learning experience, extending the Everyday Healing course to be run by churches in person, and improving and upgrading the website to make it more welcoming, easy to use and attractive for those who want to join in with our vision.



On the HHH project:

The Bishop of Carlisle, the Rt Rev James Newcome, is the Church of England's lead bishop for health and social care and has previously endorsed the Healthy Healing Hubs initiative.

Bishop James said: "I am thrilled that we now have our first Healthy Healing Hub up and running in the county."

"More than ever, we need to combat the feelings of isolation and loneliness which so many people in our communities are experiencing, particularly post-pandemic. My prayer would be that those people who feel moved to visit the Appleby Hub are blessed and feel supported by this wonderful healing ministry."



On the YMCA training:

"The Guild of Health and St Raphael have been invaluable partners in developing and delivering the Shalom training for Chaplains at YMCA. They took time to listen, understand and clarify the project needs. YMCA people had specifically asked that we find the most knowledgeable organisation in the subject areas of spirituality, healing and pastoral support and GoHSR were definitely the right fit. The course was accessible for both volunteer and paid Chaplains as well as others who hold a pastoral role. People have already asked me when the training will be run again as they know people who would benefit from it."

Mollie Penny, Chaplaincy Team Leader, OneYMCA



Our people, structures and ways of working

Enablers, custodians and coordinators of the work

We have a range of roles that contribute to the development and delivery of our work. Everyone who is part of the Guild of Health and St Raphael supports our purpose, vision and values, and seeks to be in service to the ministry of healing. We seek to collaborate in ways that bring our values and working principles alive. We ask everyone who is part of the Guild to commit to being proactive in how they invest in their own health and wellbeing journey and the health of the organisation overall.

Our key roles are outlined below:

Members

Our work is only possible because of our members - The GoHealth Community. Our members help advance the purpose within their own communities, help shape our work and contribute financially. We are legally set up as a membership organisation, giving members the right to vote at our AGM.

Volunteers (in development)

We train and support volunteers to lead training courses and promote the work of the Guild in their local community.

Expert Friends

We work with experts in producing high quality training, articles, and materials. This includes specialists in public health, lifestyle medicine, psychotherapy, movement makers, trauma, and music. Our advisory group, which invites specialist voices, helps us engage with and further develop the academic and theological thinking that underpins our work.

We have a Clinical Advisor who is a practising medical professional, who supports the team in relation to medical expertise.

Clinical Advisor for the Teams: Dr Richard Pile
Clinical Advisor to the Board: Dr Mike Platt



Members and trustees at the AGM in 2022 in Richfield Cathedral

Patrons

We are honoured to have three patrons:
The Archbishop of Canterbury
The Archbishop of York
The President of the Methodist Conference



The trustees walking on the charter

President

The Board appoints a president for a three-year term to promote the Guild at national level. This person lends their endorsement to our work, helps the team where possible with events and resources, and helps get us seen and heard.

Prof John Swinton

Board

Trustees have been recruited for their interest in our work combined with a professional skill (medical and allied health professionals) or their interest and experience in the healing ministry or associated work. We also recruit trustees with expertise in governance, finance and charity law. They are nominated and elected at the Annual General Meeting. We have a diverse board, including in terms of age, experience, denomination, skills and expertise.

Specific board roles and groups currently include: Chair, Treasurer, and Finance sub-committee

Mr Steve Coles (Chairperson)

Mrs Rosemarie Davidson-Gotobad

Mr Ken Herbert

Dr David McDonald

Dr Catherine Nelson

Dr Michael Platt

Dr Victoria Showunmi

Team

Our work is coordinated and delivered by a small, dispersed and dedicated staff team. To maintain a nimble team structure and make best use of limited resources, we also use a range of consultants and agencies to augment our capacity in particular functions including our communications and marketing. Current staff roles are:

CEO: The Revd Dr Gillian Straine

Resource Development Partner: Wendy Lloyd

Training Partner: Graham Fender-Allison

Executive Admin to the team: Theresa McDowall

Company Secretary: Dr Sue Martin



Steve Collins addressing members at the AGM in 2023

On the Everyday Healing course:

"The course opened my eyes to the fact that healing is part of the Church's core business! The conversations in our breakout group changed the way I think about the healing ministry. I now know where to turn for resources and further training." Gerda



Operating Model, Structure and Governance

A dispersed team of movement builders

We are a small team actively helping to build the health and wellbeing movement in ways that integrate the distinctiveness and gifts of a Christian perspective of healing. This is why we are proactive in adopting a multiplier mindset to our work and practice - finding ways to make it easy for people to join in and contribute to this endeavour.

Our dispersed nature supports this intention - it is not an accident or the result of a pragmatic decision to work from home. Rather, through our Go-Health Community and Healthy Healing Hub network we are able to reach people where we are, who in turn can serve those with whom they interact wherever they live and work and have their being. Operating in a dispersed manner reflects our central belief that each person is a healer, and that we exist to help all people flourish, promote the healing ministry and support this central church mission.

Growing as a community

Whenever we gather and in all we do, we seek to support and foster community. We work alongside both individuals and churches, and partner with other organisations where our collaboration can have mutual benefit. In the way we operate, we seek to draw in and nurture a community of practice, fostering links of support, rooted in relationship and learning.

On the Common Award curriculum planning and delivery in SEI:

"This is by far one of the best and most useful courses that Scottish Episcopal Institute has run to date. The course was both intellectually challenging and stimulating and is already in use within my ministry. The tutor thought very carefully about how her work could help and inspire the students and tailored every aspect of the course at all levels. This is a perfect example of what a course should look like and how applicable it is in ministry."

Eleanor

Shaping and making decisions

All trustees and staff commit to serving the purpose of the Guild and to working in ways that demonstrate our values and working principles. Our decisions (relating to both strategic direction and operations) are rooted in this foundation.

Our strategic direction is set by the Board with the input and shaping of the CEO and wider team. The financial interests of the Guild are monitored by the Finance Committee, but all financial decisions are made and ratified at board level. Operational matters are devolved to staff team members under the management of the CEO and controlled by Standing Financial Instructions. These include deciding and delivering the activities they discern can best serve the strategic direction and overall purposes of the Guild.

At our annual AGM, members ratify the appointment of trustees and any changes to our Articles of Association. Trustees have been recruited for their professional skills (medical and allied health professionals) or their interest and experience in the healing ministry or associated work. They are nominated and elected at the Annual General Meeting. They are required to declare any interests and benefits.

Accountability and support

Our Trustees are accountable to UK laws relating to company and charity governance, acting as guardians of the Guild's assets. This includes a responsibility to serve the purposes of the Guild, and to strive towards best practice. We also expect all our trustees to uphold the Nelson Principles. Our Trustee Handbook outlines the role and responsibilities of Trustees in more detail and is required reading for every Trustee. Our Company Secretary works to build best practice in our organisational governance and supports Trustees so that they can ensure our compliance with statutory requirements.

The Trustees are aware that they are responsible for ensuring that any risks arising from the Guild's activities are mitigated as far as possible, adequately insured where necessary, and that all expenditure is properly authorised and the payment thereof subject to internal checks.

The CEO is supported and line managed by the Chair of Trustees. The CEO currently supports and line manages all members of the staff team. The staff

team proactively nurtures a supportive space that prioritises people's health and wellbeing. Staff are encouraged to be self-directive in their learning and development. Our appraisal systems are designed for personal growth. Our staff Wellbeing Policy outlines and highlights the importance of living out the health and wellbeing we promote in the Guild, including time for retreats and training. It also references a range of wider support (including mentoring, supervision and counselling opportunities) that can be explored (with line management support) if needed.

Our Healthy Healing Hubs operate as independent, linked entities which can use our Healthy Healing Hub 'badge'. They benefit from the support and input of our team, ongoing training and resourcing, and can explore peer support with people involved in other Healthy Healing Hubs. The Guild is not responsible for the actions or behaviours of anyone involved in Healthy Healing Hubs. Each organisation is responsible for its own governance, including in relation to safeguarding. (See appendix p.31 for our Good Practice Charter for Healthy Healing Hubs). Our membership tiers (Bronze, Silver and Gold) require churches to have completed identified training courses and to be implementing key models/practices. We collaborate closely with 'Beacon Hubs' to deliver training and share good practice within our wider network. Our AGM is a key event for all members, and particularly leaders and co-ordinators of Healthy Healing Hubs, to connect and build relationships of support across the network.

Individuals who are part of the Go-Health Community are encouraged to take up opportunities we provide for peer support, resourcing and wider engagement. To support members in their journey, we offer a monthly bundle of resources and an invitation to gather together (starting September 2023). Members are also encouraged to join our private Facebook group and participate in the Everyday Healing course so they can learn more about our approach and form trusting relationships with others who are part of the community. We are currently developing a 'Community Lifestyle Medicine Toolkit' that will help individuals concretely measure the impact of their journey with us and how it is affecting their flourishing. We invite all members to commit annually to the vision of the Guild and their part in being a healing presence in the world.



Statement of Trustees' Responsibilities

The Charity Trustees (who are also the directors of The Guild of Health and St Raphael Ltd for the purposes of company law) are responsible for preparing a trustees' annual report and financial statements in accordance with applicable law and United Kingdom Generally Accepted Accounting Standards (United Kingdom Generally Accepted Accounting Practice).

Company law requires the Trustees to prepare financial statements for each year which give a true and fair view of the state of affairs of the charitable company and of the incoming resources and application of resources, including the income and expenditure of the charitable company for that period. In preparing those financial statements, the Trustees are required to:

- Select suitable accounting policies and then apply them consistently.
- Observe the methods and principles of the Charities SORP.
- Make judgements and estimates that are reasonable and prudent.
- State whether applicable UK accounting standards have been followed, subject to any departures and explained in the financial statements.
- Prepare the financial statements on the going concern basis unless it is inappropriate to presume that the company will continue in business.

The Trustees are responsible for keeping proper accounting records which disclose with reasonable accuracy at any time the financial position of the charity and to enable them to ensure that the financial statements comply with the Companies Act 2006. They are also responsible for safeguarding the assets of charity and hence taking reasonable steps for the prevention and detection of fraud and other irregularities.

This report has been prepared in accordance with the small company regime (section 419 (2) of the Companies Act 2006).

Approved by the Board on 20th September 2023 and signed on its behalf by

Steve Coles
Chairperson

On vision of the organisation

"Gillian Straine's work as CEO of GoHealth has been transformational. She has led the Guild into a new era and now through a pandemic, releasing churches to discover their capacity as places of healing. Encouraging partnerships with other providers she has highlighted the potential of church communities for social prescribing and overseen the creation of resources which equip faith communities to be hubs of wellbeing. Gillian's personal story as a cancer survivor, her experience as a priest, her wisdom as a practical theologian and skills as a trainer position her uniquely for this work of the Kingdom."

Bishop of London



Report of the Trustees

For the year ended 31 March 2023

The financial statements comply with the Charities Act 2006, the Companies Act 2006, the Memorandum and Articles of Association, and Accounting and Reporting by Charities: Statement of Recommended Practice applicable to charities preparing their accounts in accordance with the Financial Reporting Standard applicable in the UK and Republic of Ireland (FRS102) (effective 1 January 2015).

Summary of the purposes of the charity as set out in its governing document.

The objects of The Guild of Health and St. Raphael Limited are:

- to bring together Christians including doctors, psychologists, other health professionals and ministers of religion, to work in fellowship for fuller health, both for the individual and the community.
- to enable members to study the interaction between physical, mental and spiritual factors in wellbeing through conferences, publications and other educational endeavours.

• to sustain and strengthen by prayer and sacrament people who are sick or suffering in anyway, and all those who minister to them.

• to help men and women to realise in themselves, as members of the Christian family, the abundant life offered by Christ and share this in the world.

In shaping our aims and objective the Trustees have considered the Charity Commission's guidance on public benefit. All our charitable activities focus on the promoting the healing ministry of the Christian Church, through the objects outlined above, and are undertaken to further our charitable purposes for the public benefit. In this way, the trustees have complied with the duty to have regard to the guidance issued by the Commission under section 4(b) of Charities (Protection and Social Investment) Act 2016.

A summary of the main activities in relation to those purposes for the public benefit, in particular, the activities and performance of projects or services can be found in the accounts.

Recognising our need to adapt to meet the needs of an ever-changing society the focus of the charity's work in the future will be through the Healthy Healing Hubs project, the GoHealth community and Christm.

Steve Coles
Chairperson

Bishop of London at the ChurchWorks wellbeing Conference, May 2023

"The Guild of Health and St Raphael encourages and equips church nationally to become Healthy Healing hubs, to give churches and Christians the resources and networks they need to get back to basics in terms of mission and healing. They provide great resources, one of the real practical ways to equip us to support churches and tackling mental health issues."



Finance Report

Review of the charity's financial position at the end of March 2023

The financial position of the Guild of Health and St. Raphael Ltd is satisfactory, with reconciled investments amounting to £602,975 at 31 March 2023, compared with £700,760 at 31 March 2022.

It should be noted that the Trustees agreed to withdrawals from the investments of £60,000 during the 2022-2023 financial year to fund the planned budget deficit. As last year, there have also been large fluctuations in the value of the investments caused by the markets' reactions to the Covid-19 pandemic and the more recent Cost of Living crisis. This has led to a fall in the underlying value of the investments.

Income rose to £63,873 for the year, compared with £49,137 in 2022, which is a very welcome shift. Our aim is to see our income increase year on year by attracting new members, through the sale of resources and training, and through a revised subscription model for churches who register as a Healthy Healing Hubs. Our plan remains to generate enough income to enable the Guild to be self-sustaining from revenue income and some fundraised income, by a staged process of reducing deficits by the year ending 31 March 2024. In the meantime, there will be planned withdrawals from investment reserves to cover the planned deficits.

During the 2022-2023 financial year, the Trustees were acutely aware of the impacts of the Cost of Living Crisis on the Guild's staff. The Trustees therefore decided, after an extraordinary mid-year review of salaries, to

award an increase to all staff. A further increase was decided upon and implemented on 1 April 2023. As the health and wellbeing of the staff is intrinsically linked to their financial wellbeing, these increases were deemed right and appropriate by the Trustees.

Principal sources of funds

The Guild has invested assets of £602,975 which realised our main source of income in the form of drawdowns from those investments. In line with the strategic decision of the Board of Trustees, we are migrating to a financial model which should see our main income realised through the Healthy Healing Hub project, through membership subscriptions, the sale of resources, training, and attracting new grants. The Guild will continue to develop its conferences which contribute a modest income.

Investment policy

The Guild is guided by the Church of England in terms of the management of its investment portfolio which is ethically framed. The principal risk facing the charity is volatility in the investment markets.

Steve Coles
Chairperson

On the podcast:

"On one of the podcasts you talked about a moment when a lady said to you, 'What have you done to deserve this?', when you were going through treatment. As a young disabled person, I was put on a lot of adult wards and a lot of well-meaning people said the same to me. Like you, I internalised it all. Thank you for sharing that because I've never heard someone share a similar experience."



Statement of Financial Activities

Report of the Independent Examiner to the Trustees of the Guild of Health and St Raphael Ltd

I report to the charity trustees on my examination of the accounts of the Company for the year ended 31 March 2023. Responsibilities and basis of report

As the charity's trustees of the Company (and also its directors for the purposes of company law) you are responsible for the preparation of the accounts in accordance with the requirements of the Companies Act 2006 ("the 2006 Act").

Having satisfied myself that the accounts of the Company are not required to be audited under Part 16 of the 2006 Act and are eligible for independent examination, I report in respect of my examination of your charity's accounts as carried out under section 145 of the Charities Act 2011 ("the 2011 Act"). In carrying out my examination I have followed the Directions given by the Charity Commission under section 145(5)(b) of the 2011 Act.

Independent Examiner's statement

I have completed my examination. I confirm that no matters have come to my attention in connection with my examination giving me cause to believe:

- accounting records were not kept in respect of the Company as required by section 386 of the Act 2006; or
- the accounts do not accord with those records; or
- the accounts do not comply with the accounting requirements of section 396 of the 2006 Act other than any requirement that the accounts give a "true and fair view" which is not a matter considered as part of an independent examination; or

• the accounts have not been prepared in accordance with the methods and principles of the Statement of Recommended Practice for accounting and reporting by charities applicable to charities preparing their accounts in accordance with the Financial Reporting Standard applicable in the UK and Republic of Ireland (FRS 102).

I have no concerns and have come across no other matters in connection with the examination to which attention should be drawn in this report in order to enable a proper understanding of the accounts to be reached.

Use of my report

This report is made solely to the charity's trustees, as a body, in accordance with Chapter 3 of Part 8 of the Charities Act 2011. My examination has been undertaken so that I might state to the Charity's Trustees those matters I am required to state in an independent examiner's report and for no other purpose. To the fullest extent permitted by law, I do not accept or assume responsibility to anyone other than the charity and the charity's trustees as a body, for my examination, for this report, or for the opinions I have formed.

Azets Audit Services

2nd Floor

Regis House

45 King William Street

London

EC4R 9AN

Date: 20th September 2023

Statement of Financial Activities (cont...)

For the year ended 31 March 2023 Income and Expenditure Account

	Notes	2023 Unrestricted Funds £	2023 Restricted Funds £	2022 Total Funds £
INCOME FROM:	2			
Donations and Legacies		535	-	640
Charitable Activities		34,567	-	18,266
Other Trading Activities		-	-	-
Investment Income		28,771	-	30,231
Total Income		63,873	-	49,137
EXPENDITURE ON:	3			
Cost of Raising Funds		20,269	-	13,180
Charitable Activities		117,615	-	109,082
Total Expenditure		137,884	-	122,262
Net Income/(expenditure) Before Gains on Investments		(74,011)	-	(73,125)
Net Gains/(losses) on Investment Assets		(37,785)	-	52,667
NET INCOME FOR THE YEAR AND NET MOVEMENT IN FUNDS		(111,796)	-	(20,458)
RECONCILIATION OF FUNDS				
Balances Brought Forward 1 April 2022		714,252	-	734,710
Balances carried forward 31 March 2023	11	602,456	-	714,252

On online workshops:

"I'm really pleased I booked on for this evening, it was as others I've been on, helpful with good input, relevant to myself and ministry, and it gives the chance to meet with others - without leaving home - in the breakout rooms." Janet Fleicher

Balance sheet at 31 March 2023

	Notes	2023 £	2022 £
FIXED ASSETS			
Tangible Fixed Assets	4	-	-
Total Fixed Assets	5	602,975	700,760
CURRENT ASSETS			
Debtors	6	350	409
Short Term Investments		-	-
Cash at Bank and in Hand		15,898	15,499
Total Current Assets		16,248	15,908
LIABILITIES	7		
Creditors: amounts following during the year		(16,767)	(2,416)
NET CURRENT ASSETS		(519)	13,492
NET ASSETS		602,456	714,252
THE FUNDS OF THE CHARITY			
Unrestricted Income Fund		602,456	714,252
Restricted Funds		-	-
TOTAL CHARITY FUNDS		602,456	714,252

For the financial year ended 31 March 2023, the charitable company was entitled to exemption from audit under Section 477 of the Companies Act 2006 relating to small companies. No member of the company has deposited a notice, pursuant to section 476, requiring an audit of these financial statements under the requirements of the Companies Act 2006.

The directors acknowledge their responsibilities for complying with the requirements of the Act with respect to accounting records and for the preparation of accounts.

These financial statements have been prepared in accordance with the provisions applicable to companies subject to the small companies' regime.

These financial statements were approved by the Trustees on 20th September 2023 and signed on their behalf by:

Mr Steve Coles
Chairperson

Company Registration No 00487460



Notes to the financial statements

For the year ended 31 March 2023

3) ACCOUNTING POLICIES

The following principal accounting policies have been consistently used in the preparation of the financial statements:

a) Basis of Preparation

The financial statements have been prepared in accordance with Accounting and Reporting by Charities: Statement of Recommended Practice applicable to charities preparing their accounts in accordance with Financial Reporting Standard applicable in the United Kingdom and Republic of Ireland (Charities SORP FRS 102), the Financial Reporting Standard applicable in the UK and Republic of Ireland (FRS 102) and the Charities Act 2011.

The charity constitutes a public benefit entity as defined by FRS 102.

The accounts are presented in sterling and are rounded to the nearest pound.

b) Assessment of Going Concern

The Trustees have assessed whether the use of the going concern assumption is appropriate in preparing these accounts. The Trustees have made this assessment in respect to a period of one year from the date of approval of these accounts.

The Trustees of the charity have concluded that there are no material uncertainties related to events or conditions that may cast significant doubt on the ability of the charity to continue as a going concern. The Trustees are of the opinion that the charity will have sufficient resources to meet its liabilities as they fall due. The most significant areas of judgement that affect items in the accounts are detailed above.

With regard to the next accounting period, the year ending 31 March 2024, the most significant area that affect the carrying value of the assets held by the charity is the level of investment return and the performance of the investment markets (see the investment policy section of the trustees' report for more information).

c) Income Recognition

Income is recognised when the charity has entitlement to the income, it is likely to be received and the amount can be reliably estimated. Tax recoverable on gift aid is accrued in the financial statements. Legacies are accounted for when the Trustees are notified of the legacy and the receipt is probable.

d) Expenditure Recognition

Expenditure is recognised on an accruals basis. Direct charitable expenditure are the costs incurred in achieving the

charitable objectives of the Charity. Governance costs are the costs associated with the legal and statutory duties of the Charity. Grants payable are accounted for when approved by the Trustees.

e) Allocation of Support and Governance Costs

Support costs represent indirect charitable expenditure in order to carry out the primary purposes of the charity. It is necessary to provide support in the form of personnel development, financial procedures, provision of office services and equipment and a suitable working environment. Governance costs comprise the costs involving the public accountability of the charity (including audit costs) and costs in respect to its compliance with regulation and good practice. Support costs and governance costs are apportioned to healthcare establishment expenses only.

f) Tangible Fixed Assets and Depreciation

Individual assets costing £1,000 or more, with an expected useful life exceeding one year, are capitalised at cost.

Depreciation is provided to write off the cost, less estimated residual values, of all tangible fixed assets over their expected useful lives. It is calculated on a straight-line basis over three years.

g) Fixed Asset Investments

Listed investments are a form of basic financial instrument and are initially recognised at their transaction value and subsequently measured at their fair value as at the balance sheet date using the closing quoted market price.

The charity does not acquire put options, derivatives or other complex financial instruments.

As noted above, one of the main forms of financial risk faced by the charity is that of volatility in equity markets and investment markets due to wider economic conditions, the attitude of investors to investment risk, and changes in sentiment concerning equities and within particular sectors or sub sectors.

Realised gains (or losses) on investment assets are calculated as the difference between disposal proceeds and their opening carrying value, or their purchase value is acquired subsequent to the first day of the financial year. Unrealised gains and losses are calculated as the difference between the fair value at the year end and their carrying value on that date. Realised and unrealised investment gains (or losses) are combined in the statement of financial activities and are credited (or debited) in the year in which they arise.

h) Debtors

Debtors are recognised at their settlement amount, less any provision for non-recoverability. Prepayments are valued at the amount prepaid.

i) Cash at Bank and In Hand

Cash at bank and in hand represents such accounts and instruments that are available on demand or have a maturity of less than three months from the date of acquisition. Deposits for more than three months but less than one year have been disclosed as short-term deposits. Cash placed on deposit for more than one year is disclosed as a fixed asset investment.

j) Creditors and Provisions

Creditors and provisions are recognised when there is an obligation at the balance sheet date as a result of a past event. It is probable that a transfer of economic benefit will be required in settlement, and the amount of the settlement can be estimated reliably. Creditors and provisions are recognised at the amount the charity anticipates it will pay to settle the debt.

k) Fund Accounting

General funds represent incoming resources received or generated for expenditure on the general objectives of the charity.

l) Pension Costs

Contributions in respect of the charity's stakeholder pension scheme are charged to the statement of financial activities in the period in which they become payable to the scheme. The assets of the scheme are held separately from those of the charity in an independently administered fund.

m) Critical Accounting Estimates and Judgements

In preparing the financial statements, management is required to make estimates and assumptions which affect reported income, expenses, assets, liabilities and disclosure of contingent assets and liabilities. Use of available information and application of judgements are inherent in the formation of estimates, together with the past experience and expectations of future events that are believed to be reasonable under the circumstances. Actual results in the future could differ from such estimates. Management do not consider there to be any material accounting estimates or judgements that need disclosure in these financial statements.

	2023 Unrestricted Funds £	2023 Restricted Funds £	2022 Total Funds £
2) INCOME			
a) Donations & Legacies			
Donations	535	-	640
Gift Aid	-	-	-
Legacies	-	-	-
	535	-	640
b) Charitable Activities			
Membership Income	11,893	-	9,478
Traffing	18,208	-	5,634
Literature & Resource Sales	326	-	149
Events & Presentations	2,613	-	2,580
Other	1,527	-	425
	34,567	-	2,580
d) Investment Income			
Interest	28,771	-	30,231

In 2023 income of ENII (2022: ENII) was restricted income and all other amounts were to unrestricted funds.

3) EXPENDITURE

	2023 Unrestricted Funds £	2023 Restricted Funds £	2022 Total Funds £
a) Raising Funds			
Marketing & Website Development	7,200	-	600
Administration	1,299	-	1,038
Consultancy	10,404	-	10,094
Advertising	1,366	-	1,448
	20,269	-	13,180
b) Charitable activities			
Website hosting	5,526	-	6,149
Newsletter, Journal & Online	2,196	-	3,139
Membership Administration	-	-	219
Consultancy	1,000	-	-
Events, Conferences & Seminars	3,558	-	2,920
Partnership Payments	-	-	-
Staff Salaries (note 9)	85,663	-	75,230
Recruitment Costs	-	-	8,400
	4,984	-	1,481
Staff Training, Travel & Expenses	1,434	-	313
Government	2,346	-	4,270
Telephone, Postage and Stationery			
Support Costs	3,627	-	2,852
Bookkeeping and Support	2,907	-	1,432
Payroll and HR Support	576	-	308
Professional Fees and Subs	1,118	-	-
Insurance	580	-	329
Bank Charges	2,100	-	2,040
Independent Examiner's Fee	117,615	-	109,082
Total charitable costs	137,884	-	122,262

In 2023 expenditure of ENII (2022: ENII) related to restricted expenditure and all other amounts were from unrestricted funds.

4) TANGIBLE FIXED ASSETS

	2023 £	2022 £
Office Equipment		
Cost		
At 1 April 2022	1,246	1,246
Additions in year	-	-
At 31 March 2023	1,246	1,246
Depreciation		
At 1 April 2022	1,246	1,246
Charge for the year	-	-
At 31 March 2023	1,246	1,246
Net Book Value		
At 31 March 2022 and 2023	-	-

5) FIXED ASSET INVESTMENTS

	2023 £	2022 £
Listed Investments		
Market Value at 1 April 2022	700,760	708,093
Withdrawals	(60,000)	(60,000)
Unrealised Gains/(Losses)	(37,785)	52,667
Market Value at 31 March 2023	602,975	700,760
Cost at 31 March 2023	453,095	513,095

6) DEBTORS

	2023 £	2022 £
Prepayments	-	-
Other Debtors	350	409
	350	409

7) LIABILITIES

	2023 £	2022 £
Creditors: Amounts falling due within one year		
Taxation and Social Security	-	-
Accruals	1,800	1,800
Other Creditors	14,967	616
	16,767	2,416

8) COMPANY LIMITED BY GUARANTEE

The company is limited by guarantee and has no share capital. At the year-end there were 12 members (2022: 12). In the event of the company winding-up, the liability of the members is limited to £1 each and the balance of the funds would be transferred to an association with objects similar to this company.

9) STAFF COSTS AND NUMBERS

	2023 £	2022 £
Staff Costs Analysed:		
Salaries	82,426	71,775
Social Security Costs	1,613	1,943
Pension Contributions	1,624	1,512
	85,663	75,230

No employees had emoluments in excess of £60,000 (2022: ENIL)

The key management personnel of the Charity comprise the Trustees and the charity Director. The employee benefits of the key management personnel of the Charity were £43,128 (2022: £43,690).

Average number of employees during the year was as follows:

	2023	2022
Administration	5	4

10) TRUSTEES' REMUNERATION

Trustees neither received nor waived any emoluments in the year (2022: nil).

Travel and accommodation expenses totalling £259 (2022: £191) were reimbursed to 4 Trustees (2022: 4) during the year.

11) RECONCILIATION OF FUNDS

	2023 £	2022 £
At 1 April 2022	714,252	734,710
Net Movement in Funds in Year	(111,796)	(20,458)
At 31 March 2023	602,456	714,252
Represented by:		
Fixed Assets	602,975	700,760
Current Assets	16,248	15,908
Current Liabilities	(16,767)	(2,416)
	602,456	714,252

The Good Practice Charter



This charter is a promise to everyone that comes into contact with this Healthy Healing Hub. It is here to protect you and your community. We require all Healthy Healing Hubs to annually assert their commitment to the following principles.

PRINCIPLE ONE: THEOLOGY

Our Healthy Healing Hub is rooted in theology - in a belief in the mission of God for the salvation and healing of all creation, inspired by the example and teaching of Jesus in the Gospels, and trusting in the work of the Holy Spirit as the agent of healing.

PRINCIPLE TWO: PRAYER

Those who offer healing ministry through this Healthy Healing Hub do so in prayerful communion with God who is the source of healing. Prayer ministry is just one way healing ministry is provided in this place.

PRINCIPLE THREE: PARTNERSHIP

This Healthy Healing Hub works in partnership with health care professionals, ensuring any health concerns are also treated with any necessary procedures or medication. It also works in partnership with those trained and regulated in counselling and psychological therapies and will refer those requesting ministry as needs are identified and with their full permission.

PRINCIPLE FOUR: DIGNITY

Everyone requesting and offering ministry for healing will be valued with the utmost dignity and respect. A clear explanation of how the ministry will take place will be given beforehand and they will be able to make clear what they are comfortable with.

PRINCIPLE FIVE: SAFETY

Everyone participating in the healing ministry will operate in full compliance with the safeguarding procedures of this church. Confidentiality, without compromising any safeguarding measures, can be assured and anything that needs to be shared will be done so in the full knowledge of the one who has disclosed the information.

PRINCIPLE SIX: INTEGRITY

No claims of cure or healing will be made without medical verification and absolutely no blame or suggested criticism will be made whatever the outcome of healing ministry. Any concerns or grievances that anyone may have regarding how they have been treated will be taken seriously and will have access to a clear process of complaint and accountability.

PRINCIPLE SEVEN: EXPERTISE

Everyone who offers healing ministry regularly participates in training and learning about the healing ministry. They are part of a support network where supervision, accountability and mutual prayer support are prioritised. There is an awareness of what is beyond the limits of the expertise and experience of this church and we seek to refer individuals to other experts should such a need arise.

PRINCIPLE EIGHT: PASTORAL

Everyone who offers healing ministry is pastorally sensitive, sensitive to discrimination and bias (both conscious and unconscious), good at listening and empathises well with the concerns of others.

PRINCIPLE NINE: ACCESSIBLE

The space where healing ministry is offered is accessible to all and seeks to create an atmosphere of welcome and puts at ease all who enter. The healing work is made visible on the website and social media platforms and those wishing to connect with it can easily do so through a variety of online and in person means. Information about the Healthy Healing Hub will be disseminated in the community, for example, through GP surgeries and other services offered in the community.

PRINCIPLE TEN: HEALTHY

This Healthy Healing Hub will always seek to offer a hopeful and helpful space for all who need it, understanding health and healing to be the essence of the abundant life offered by the Gospel of Jesus Christ. All who minister here will seek to prioritise their own health and wellbeing.

We assert our commitment to these principles.

Signature:



GOHEALTH
GOHEALTH.ORG.UK

The Guild of Health and St Raphael Ltd, Charity no. 21096 | Company no. 0459248

I have come that they may have life,
and have it to the full.

John 10:10



GOHEALTH

**THE GUILD OF HEALTH
& ST RAPHAEL**



gohealth.org.uk

THE GUILD OF HEALTH AND ST RAPHAEL

England & Wales - Charity number 211016

Accounts

The Guild of Health and St Raphael Ltd

ANNUAL REPORT AND FINANCIAL STATEMENTS

FOR THE YEAR ENDED 31 MARCH 2022



A company limited by guarantee and not having share capital

Company Registration no: 00487460

Charity Registration no: 211016

Contents

REPORT OF THE CHAIRPERSON	3
FINANCIAL REVIEW	5
STRUCTURE, GOVERNANCE AND MANAGEMENT	6
REPORT OF THE CHIEF EXECUTIVE OFFICER.....	7
REPORT OF THE TRUSTEES	11
REFERENCE AND ADMINISTRATIVE INFORMATION.....	12
STATEMENT OF TRUSTEE RESPONSIBILITIES.....	13
REPORT OF THE INDEPENDENT EXAMINER	14
STATEMENT OF FINANCIAL ACTIVITIES.....	15
BALANCE SHEET	16
NOTES TO THE FINANCIAL STATEMENTS.....	17

REPORT OF THE CHAIRPERSON

Welcome to the 2021-2022 Trustees Annual Report of the Guild of Health and St Raphael. It is my pleasure to be writing this introduction, having joined the Guild as Chair of Trustees in October 2021.

Over the last year, it has been a privilege to work closely with Gillian, to get to know longer-standing team members Graham and Wendy and to see their incredible output of work, to recruit and begin working closely with Sue as Company Secretary, and to have interviewed and welcomed Theresa to the team as Executive Administrator in the last few months. What a wonderful team they are!

I'm very grateful to our Board of Trustees, who give their time, expertise, advice and guidance in and through the meetings of the Board, a full-day annual Away Day, the AGM, a finance committee and via email for all kinds of ad hoc requests. I am also very grateful for the president of the Guild, Professor Jim McManus, for his immense support and for the incredible knowledge and experience he brings to the role. He deserves a very big 'thank you' for all he has done over the last 5 years.

During an Away Day with the Board of Trustees, Jim introduced us to the work of Professor Sandro Galea, a Dean at the School of Public Health at Boston University in the United States. I have been avidly consuming his writing since. In his book *Well: What We Need to Talk About When We Talk About Health*, he describes how our individual and collective health is affected by matters such as equality, justice, money, employment, inclusion, access to the outdoors, and friendships or, rather, affected by the absence or lack of those things.

Strikingly, Professor Galea includes a whole chapter on why we must talk about love and hate when we talk about health. In writing about love he says:

Love ... does not mean simply love between individuals – romantic love or the love of a parent for a while. It means an unwillingness to tolerate injustice, disease, or pain among anyone, anywhere.'

He then goes on to write about *agape* (which he defines as 'unconditional love for humanity that is not tied to the hope of gain') and health, and says:

It is an active love that seeks to do good and improve conditions for all ... Whenever people act on behalf of others by seeking to make the world better for them, they put this love into practice. Our poor health is inextricably linked with a history of hate and exclusion that has produced societal structures that make us sicker. Accordingly, we have no real choice but to reject hate and embrace love's potential to shape a better society – if for no other reason than the alternative, hate, hasn't worked.

If ever there was a compelling argument for why the Church should be leading the way in creating healthy people and health communities – healthy in body, mind, and spirit – it's that.

In the Bible, in Matthew 12:30-31, we are told to:

'Love the Lord your God with all your heart and with all your soul and with all your mind and with all your strength.'

And to

'Love your neighbour as yourself.' There is no commandment greater than these.'

Loving our neighbour helps them to be healthier, to flourish more, to live a fuller life. What a wonderful gift that is to give.

The Guild of Health and St Raphael Ltd

As we look forward into 2022-2023, there are exciting things ahead: a project to review how we communicate the profound mission and values of the Guild, our AGM at Lichfield Cathedral, another series of beautiful advent reflections, new Healthy Healing Hubs launching and much more. Professor John Swinton will be joining the Guild as president from October 2022 and I'm very much looking forward to working with him. The Board of Trustees will be continuing to learn and develop in the practices of good charity governance, with an annual plan of work for each year to include reviewing risks, ensuring policies are up to date and relevant, hearing from the team and assessing the finances of the charity.

Finally, thanks to you and all the other members, supporters, funders and pray-ers of the Guild. We couldn't do it without you.

A handwritten signature in black ink, appearing to read 'Steve Coles', written in a cursive style.

Steve Coles
Chairperson

FINANCIAL REVIEW

Review of the charity's financial position at the end of March 2022

The financial position of the Guild of Health and St. Raphael Ltd is satisfactory, with reconciled investments amounting to £700,760 at 31 March 2022, compared with £708,093 at the end of March 2021. It should be noted that the Trustees agreed to withdrawals from the investments of £60,000 during the year to fund the planned budget deficit. There have also been large fluctuations in the value of the investments caused by the markets' reactions to the pandemic.

Income has fallen to £49,137 for the year, compared with £51,442 in 2021. Our aim through the development of the Healthy Healing Hub project is to see our income increase year on year by attracting new members, through the sale of resources and training and through a revised subscription model for churches who register as a Healthy Healing Hubs. Despite the effects of the pandemic, our plan remains to generate enough income to enable the Guild to be self-sustaining from revenue income by a staged process of reducing deficits by the year ending 31 March 2024. In the meantime, there will be planned withdrawals from reserves to cover the planned deficits.

Also, despite the effects of the pandemic, the trustees decided to continue with the launch of the Healthy Healing Hub project which happened in November 2021, acknowledging that this project is the key part of the strategy to make the Guild financially sustainable. There will be continued withdrawals from reserves to ensure the Guild can maintain its ongoing commitments and responsibilities as an employer and to enable the Guild to develop its relationships with other bodies, in the furtherance of its charitable objectives.

Principal sources of funds

The Guild has invested assets with a market value of £700,760 at the year end and over the year these investments showed a positive movement in value £52,667 which has added to the financial position. In line with the strategic decision of the Board of Trustees, we are migrating to a financial model which should see our main income realised through the Healthy Healing Hub project, through membership subscriptions, the sale of resources, training, and attracting new grants. The Guild will continue to develop its conferences and training sessions which contribute a modest income.

Investment policy

The Guild is guided by the Church of England in terms of the management of its investment portfolio which is ethically framed. The principal risk facing the charity is volatility in the investment markets.



Steve Coles
Chairperson

STRUCTURE, GOVERNANCE AND MANAGEMENT

Constitution

The company (namely The Guild of Health and St. Raphael Limited) is a company limited by guarantee and does not have share capital and is governed by its Articles of Association.

Policy of recruitment and training of new trustees

The power of appointing and removing trustees is vested in the members of the company. The trustees have the power at any time to appoint any person to be a trustee either to fill a vacancy or as an additional member, and the members vote on the new trustee appointment at the following Annual General Meeting. The total number of trustees must not be less than six. At each Annual General Meeting, one third of the trustees retire from office when they will be eligible for re-election. There is an induction programme for new trustees and training is offered as required.

Management

The Guild has a board of trustees. Previously all decisions were made by the council at full board of trustees' meetings. Some decision-making now takes place in the Finance Committee but comes to the board of trustees for ratification.

Trustees have been recruited for their professional skill (medical and allied health professionals) or their interest and experience in the healing ministry or associated work. They are nominated and elected at the Annual General Meeting. They are required to declare any interests and benefits.

Patrons and President

The Board of Trustees is honoured to have three patrons reflecting its ecumenical nature: the Archbishop of Canterbury, the Archbishop of York, and the president of the Methodist Council. The trustees have appointed Professor Jim McManus to be the President for a three-year term to promote the Guild at a national level. The trustees have decided not to appoint a Vice-President as this was felt not to be necessary.

Financial Risk Management

The Trustees are aware that they are responsible for ensuring that any risks arising from their activities are adequately insured where possible and that all expenditure is properly authorised and the payment thereof subject to internal checks.

Volunteers

The value of services provided by volunteers is not incorporated into the financial statements.

REPORT OF THE CHIEF EXECUTIVE OFFICER

Introduction

When organisations like the Guild of Health and St Raphael get to around 80 years old, many come to a natural end – either they have served their function, or else their original aims and objectives are no longer relevant. Those who go on longer do so either because they reinvent themselves or they reinvigorate their work based on the founding vision of their founders. The Guild of Health and St Raphael is now well beyond its 80th birthday and so I have been pondering which we have been doing – reinventing or reinvigorating?

We were originally set up to 'preach spiritual healing to the church which has lost the power to practise it' and to challenge the church which had become resigned to suffering and disease, so much so that people found 'this world of comparatively no account'. The Guild was born to give confidence to churches and Christians to recover the power of the faith to bring healing and hope in this world.

I have no doubt that today, the vision of our founders is still relevant, urgent and needed. Indeed, if you scan your eyes over our aims and objectives, you might, like me, still nod at how important each one is, and how exciting it is to be involved with an organisation with these relevant and expansive aims. And in this report, I will go through our areas of activity to demonstrate how we have been meeting these aims in the past year.

Delivering these aims for the church today, and in the world that we live in, comes with some unique challenges: particularly, the decline of the church in a pluralistic and materialistic world where individualism challenges the value of community life. Additionally, we live in deeply unstable times, not only politically but because of the shadow of Covid and the cost-of-living crisis. These bring additional healing needs and challenges to operations and growth.

Words cannot quite express my gratitude and pride in the Guild team. Together, we have had an extraordinary year of creatively running the membership communities, sensing where we need to put our energies and responding to where God is leading us. We have run many courses, created content, and interacted with thousands of people through events, the website and our online presence. And this has led to growth.

Looking beyond, this has led to strategic development in volunteers, consultancy development and new partnerships in the current year – but it was in 2021-22 that we saw the foundations of this growth, growth which I am confident our founders would have approved.

I had a conversation recently about the difference between prophecy and "a good idea", and how to tell the difference. Prophecy is a prediction of the future based on the prophet having a particular relationship with God. Good ideas are those which are tested by seeing if they work out in the end. Are we a prophetic organisation, or are we just delivering good ideas that seem to be working?

I don't feel entirely comfortable with either way of framing our work. To me, the Guild of Health and St Raphael is a gift, and we are joining in with the work of God through the Guild in today's world – sharing the hope and healing of the faith, reaching those in need, training church leaders, working with medicine and science, and proclaiming the vision that all people can flourish in mind, body and soul in this life. Thanks be to God.

The Healthy Healing Hub Project

The Healthy Healing Hub (HHH) project is the main way the Guild today supports, trains and networks churches to be a place of healing and hope in the community. Through the Good Practice in the Healing Ministry Charter, and training and badging, the churches have confidence in the ministry they offer and others have confidence to partner with them.

In the 2021-22 period, we welcomed 5 Bronze tier HHHs. We have also welcomed three Gold hubs; these are centres of excellence from which we can base regional training. In total, we ran 8 training courses (all full to capacity), and there is no sign that interest is dwindling. Feedback has been positive, with one recent participant commenting:

This was an excellent and really grounding course that made sense. It not only gives a thorough explanation of the theology of healing, but Gillian provides practical advice on how to explain the meaning behind Jesus' healing ministry and how we can make sense of that today. It was really encouraging, and I would recommend this to anyone wanting to know more about healing in ministry." NB July 2021

We learnt this year that people value the training not only for the content, but for the learning style that we use – person-centred, where story and sharing are valued. Feedback has helped us identify that it is the connection with others engaged in the healing ministry that is of particular value to our members, and this is an area that we are going to build upon.

The project continues to develop: I have recently talked to a prison chaplain who wants to establish an HHH chaplaincy, with the interfaith chaplains. In the future, we will be introducing a fair price policy, professionally filming the training videos, developing a volunteer community, and launching the silver and gold training courses.

Previously, the Guild has offered training on a variety of topics such as contemplation, social prescribing, mental health and green theology. In order to bring order and clarity to the organization, workshops and bespoke training of this type all now come under the HHH project, with member churches accessing them as part of their membership. This will allow HHHs to update their training and explore new ways of offering the healing ministry.

We continue to develop partnerships with organisations which are aligned with our values.

I would like to offer particular thanks to Graham Fender Allison who leads the training development of the Healthy Healing Hub project and leads many of the training sessions.

The GoHealth Community

The GoHealth Community is our individual membership community where members receive a monthly bundle of resources on a topic, which we then explore through prayer and practice. This year we have explored topics including praying for healing, the environment, gender and our body, and mental health, to name just a couple.

We have moved away from commissioning blogs, and instead focused on the community itself with the tagline: 'Together we flourish'. This motto has proved popular as it denotes the power of community, connection, and a broad understanding of the ministry of healing.

This year we have added just over 100 new members to the GoHealth Community. We saw particular growth through the email Advent retreat, where over 40 people joined. We have learnt that people especially value the connection with others who have similar interests, and the role of prayer. These are two areas that we will develop in the coming year.

I would like to offer particular thanks to Wendy Lloyd who manages the GoHealth Community content, and brings to the role specialist skills around community growth and marketing.

The GoHealth Podcast

Podcasting is one of the most important communication tools at our disposal because they get away from soundbites and instead can explore topics at depth. This year the GoHealth Podcast has helped us reach new audiences who are encouraged to continue the conversation in the GoHealth community, the HHH project or other events.

We launched our second season of the podcast, *Learning to Heal*, where we explored in conversation topics such as addiction, death and dying, and living with chronic illness. I chatted to a wide range of guests, who generously gave us their time and wisdom, including Brian Draper, Paula Gooder and Claire Gilbert.

In 2021-22, there were 1307 listens to the podcast, which represents an increase of around 300% on the previous year.

Again, huge thanks to Wendy Lloyd who manages and produces the podcast.

Chrism and research

Our journal Chrism continues to be a source of interest for many members, and we have seen a modest increase in membership this year. Unfortunately, the conference was postponed. This represents the struggle many organizations are having with in-person gatherings following the pandemic. I continue to look for a sub editor to help with timely production after a number of issues have been delayed in publication. However, we were delighted to publish a number of excellent articles, including by Jim McManus and The Bishop of London amongst others. Chrism remains a viable and unique journal and, with just a little more support, I am confident that we will continue to improve its circulation.

Website and online learning development

We continue to invest in the website, as it is our most useful form of engagement, marketing and our membership place. Indeed, in this period over 20000 people visited the website, up 160% from the previous year. 68% were new visitors. The majority were from the UK, but there was also significant interest from the US. Most referrals to the website were from Facebook.

As a small charity, we strive for efficiency. One of the ways that we do this is by using the Denis Duncan lectures to create group and individual training resources held on the moodle platform. These are available free to members and are run as group learning events in the GoHealth Community.

Events

As noted above, in-person gatherings continued to be difficult in this period. However, we ran many events online, including the 2021 Denis Duncan Lecture with Dr Ruth Valerio. This event had over 130 tickets sold and was run in partnership with the Church of Scotland who continue to value the relationship. We also ran a number of smaller online events and training, including the healing potential of the hybrid church, a social prescribing workshop, and a quiet morning and a music and healing workshop.

Our Online Presence

Social media continues to be a powerful way to reach new audiences, find new members and attract people with training events. We continue to work with a marketing consultant who helps us refine and promote our message, and to get people involved in our work. Over the last year we have reached over 164,000 on Facebook (up 177% on previous year)

Becoming a national voice

Alongside creating an online presence, I work hard to elevate the Guild as a reliable and powerful voice on health, healing, and faith in the public square. This has led to growth in networks and membership, training opportunities, consultation work for the Guild and a number of new projects.

In this year, I appeared on UCB Radio, Premier FM and twice on the BBC Local Sunday shows. I was also interviewed at length by the Lifestyliness podcast, a leading secular platform that explores the role of community in spiritual development.

I preached in several locations around the UK including Canterbury Cathedral, Brasenose College Oxford, Lichfield Cathedral and Bath and Wells Cathedral. I also spoke at a number of training events, including Sion college in London, for the Diocese of Bangor, and as a group of theological advisors to the Bishop of London. I also sat on the steering group for the Archbishop of Canterbury's commission on the review of social care in the UK. I led online workshops for the Heartedge community, the National Healing Advisors network, and New Faith Deal Focus groups for FaithAction.

Financial issues

I am grateful to Chris Garman in 2021-22 for his assistance with the financial operations for this year as we continue to improve operations in terms of efficiency, policy, and governance. While operating with a deficit budget is not ideal, we are going in the right direction financially. Income is stable and, with the investment in staff and web developments, I remain confident that we will see the growth that we are aiming for. Further donations, commissioned work and consultancy fees would also be good income streams to reduce the deficit.

And finally....

I am blessed to work with a gifted and visionary staff team - I really could not do it without them. So an enormous thank you to Wendy Lloyd and Graham Fender Allison. I have learnt so much from you both – thank you for giving the Guild your energy and wisdom, and for being prepared to help me and the trustees develop God's mission in the Guild to bring healing and hope to many.

It is with sadness that Chris Garman decided to leave the Guild to more actively pursue his retirement. I would like to thank him for his work, and wish him all the very best.

We welcomed our new Company Secretary, Dr Sue Martin. Sue comes to us with enormous experience of health governance, and trustee work and I am absolutely delighted that she is part of the team.

I am also thrilled to be working with the new Chair, Steve Coles, and would like to thank him for everything that he has already brought to the Guild in terms of the trustees, and the support and guidance he has offered me as CEO and the staff team as a whole. We are very blessed that Steve, who comes with a huge range of skills and experience in the third sector, feels called to lead the board of the trustees .

I would also like to thank the board of trustees and particularly David McDonald who took on the acting chair role this year before Steve was appointed.

Finally, thank you to all the members and supporters – please pray for me, as I pray for you.

Reverend Doctor Gillian Straine

Chief Executive Officer

REPORT OF THE TRUSTEES

FOR THE YEAR ENDED 31 MARCH 2022

The financial statements comply with the Charities Act 2001, the Companies Act 2006, the Memorandum and Articles of association, and Accounting and Reporting by Charities: Statement of Recommended Practice applicable to charities preparing their accounts in accordance with the Financial Reporting Standard applicable in the UK and Republic of Ireland (FRS102) (effective 1 January 2015).

Summary of the purposes of the charity as set out in its governing document.

The objects of The Guild of Health and St. Raphael Limited are:

- to bring together Christians including doctors, psychologists, other health professionals and ministers of religion, to work in fellowship for fuller health, both for the individual and the community.
- to enable members to study the interaction between physical, mental and spiritual factors in wellbeing through conferences, publications and other educational endeavours.
- to sustain and strengthen by prayer and sacrament people who are sick or suffering in anyway, and all those who minister to them.
- to help men and women to realise in themselves, as members of the Christian family, the abundant life offered by Christ and share this in the world.

In shaping our aims and objective the Trustees have considered the Charity Commission's guidance on public benefit. All our charitable activities focus on the promoting the healing ministry of the Christian Church, through the objects outlined above, and are undertaken to further our charitable purposes for the public benefit. In this way, the trustees have complied with the duty to have regard to the guidance issued by the Commission under section4(b)of Charities (Protection and Social Investment) Act2016.

Summary of the main activities in relation to those purposes for the public benefit, in particular, the activities and performance of projects or services identified in the accounts.

Recognising our need to adapt to meet the needs of an ever-changing society the focus, the charity's work in the future will be through the Healthy Healing Hubs project, the GoHealth community and Chrism



Steve Coles
Chairperson

REFERENCE AND ADMINISTRATIVE INFORMATION

The directors of the charitable company (the charity) are its trustees for the purposes of Charity Law.

Trustees: Mr Steve Coles (Chairperson)
Mrs Rosemarie Davidson-Gotobed
Mr Ken Herbert
Dr David McDonald
Dr Catherine Nelson
Dr Michael Platt
Dr Victoria Showunmi
Mr Steve Coles

Company Secretary Dr Sue Martin

Chief Executive Officer Reverend Doctor Gillian Straine

Registered Office: Azets
2nd Floor, Regis House
45 King William Street
London
EC4R 9AN

Company
Registration Number: 00487460

Charity
Registration Number: 211016

Bankers: The Co-Operative Bank
PO Box 250
Skelmersdale
WN8 6WT

Independent Examiner: Philip Clark FCA
Azets Audit Services
2nd Floor
Regis House
45 King William Street
London
EC4R 9AN

STATEMENT OF TRUSTEES' RESPONSIBILITIES

The Charity Trustees (who are also the directors of The Guild of Health and St Raphael Ltd for the purposes of company law) are responsible for preparing a trustees' annual report and financial statements in accordance with applicable law and United Kingdom Generally Accepted Accounting Standards (United Kingdom Generally Accepted Accounting Practice).

Company law requires the trustees to prepare financial statements for each year which give a true and fair view of the state of affairs of the charitable company and of the incoming resources and application of resources, including the income and expenditure of the charitable company for that period. In preparing those financial statements, the Trustees are required to:

- Select suitable accounting policies and then apply them consistently.
- Observe the methods and principles of the Charities SORP.
- Make judgements and estimates that are reasonable and prudent.
- State whether applicable UK accounting standards have been followed, subject to any departures and explained in the financial statements.
- Prepare the financial statements on the going concern basis unless it is inappropriate to presume that the company will continue in business.

The trustees are responsible for keeping proper accounting records which disclose with reasonable accuracy at any time the financial position of the charity and to enable them to ensure that the financial statements comply with the Companies Act 2006. They are also responsible for safeguarding the assets of charity and hence taking reasonable steps for the prevention and detection of fraud and other irregularities.

This report has been prepared in accordance with the small company regime (section 419 (2) of the Companies Act 2006)

Approved by the Board on 30th August, 2022 and signed on its behalf by



Steve Coles
Chairperson

REPORT OF THE INDEPENDENT EXAMINER

Independent Examiner's Report to the Trustees of The Guild of Health and St Raphael Ltd.

I report to the charity trustees on my examination of the accounts of the Company for the year ended 31 March 2022.

Responsibilities and basis of report

As the charity's trustees of the Company (and also its directors for the purposes of company law) you are responsible for the preparation of the accounts in accordance with the requirements of the Companies Act 2006 ("the 2006 Act").

Having satisfied myself that the accounts of the Company are not required to be audited under Part 16 of the 2006 Act and are eligible for independent examination, I report in respect of my examination of your charity's accounts as carried out under section 145 of the Charities Act 2011 ("the 2011 Act"). In carrying out my examination I have followed the Directions given by the Charity Commission under section 145(5)(b) of the 2011 Act.
Independent Examiner's statement

I have completed my examination. I confirm that no matters have come to my attention in connection with my examination giving me cause to believe:

- accounting records were not kept in respect of the Company as required by section 386 of the Act 2006; or
- the accounts do not accord with those records; or
- the accounts do not comply with the accounting requirements of section 396 of the 2006 Act other than any requirement that the accounts give a "true and fair view" which is not a matter considered as part of an independent examination; or
- the accounts have not been prepared in accordance with the methods and principles of the Statement of Recommended Practice for accounting and reporting by charities applicable to charities preparing their accounts in accordance with the Financial Reporting Standard applicable in the UK and Republic of Ireland (FRS 102).
- I have no concerns and have come across no other matters in connection with the examination to which attention should be drawn in this report in order to enable a proper understanding of the accounts to be reached.

Use of my report

This report is made solely to the charity's trustees, as a body, in accordance with Chapter 3 of Part 8 of the Charities Act 2011. My examination has been undertaken so that I might state to the Charity's Trustees those matters I am required to state to them in an independent examiner's report and for no other purpose. To the fullest extent permitted by law, I do not accept or assume responsibility to anyone other than the charity and the charity's trustees as a body, for my examination, for this report, or for the opinions I have formed.

Azets Audit Services
2nd Floor
Regis House
45 King William Street
London
EC4R 9AN

Date:

STATEMENT OF FINANCIAL ACTIVITIES

FOR THE YEAR ENDED 31 MARCH 2022

INCOME AND EXPENDITURE ACCOUNT

	Notes	2022 Unrestricted funds £	2022 Restricted funds £	2021 Total funds £
INCOME FROM:	2			
Donations and legacies		640	-	5,847
Charitable activities		18,266	-	15,440
Other trading activities		-	-	-
Investment income		30,231	-	30,155
Total Income		<u>49,137</u>	<u>-</u>	<u>51,442</u>
EXPENDITURE ON:	3			
Cost of Raising Funds		13,180	-	34,430
Charitable Activities		109,082	-	81,748
Total Expenditure		<u>122,262</u>	<u>-</u>	<u>116,178</u>
Net (Expenditure) / income before gains on investments		(73,125)	-	(64,736)
Net gains on investment assets		52,667	-	134,459
NET INCOME FOR THE YEAR AND NET MOVEMENT IN FUNDS		(20,458)	-	69,723
RECONCILIATION OF FUNDS				
Balances brought forward 1 April 2021		734,710	-	664,987
Balances carried forward 31 March 2022	12	<u>714,252</u>	<u>-</u>	<u>734,710</u>

BALANCE SHEET

AT 31 MARCH 2022

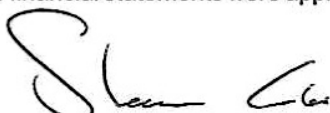
	Notes	2022 £	2021 £
FIXED ASSETS			
Tangible fixed assets	4	-	-
Investments	5	700,760	708,093
Total fixed assets		<u>700,760</u>	<u>708,093</u>
CURRENT ASSETS			
Debtors	5	409	178
Short Term Investments		-	60
Cash at bank and in hand		15,499	30,432
Total current assets		<u>15,908</u>	<u>30,670</u>
LIABILITIES			
Creditors: amounts following due within one year	6	<u>(2,416)</u>	<u>(4,053)</u>
NET CURRENT ASSETS		<u>13,492</u>	<u>26,617</u>
NET ASSETS		<u>661,584</u>	<u>734,710</u>
THE FUNDS OF THE CHARITY			
Unrestricted income fund		714,252	734,710
Restricted funds		-	-
TOTAL CHARITY FUNDS		<u>714,252</u>	<u>734,710</u>

For the financial year ended 31 March 2022, the charitable company was entitled to exemption from audit under Section 477 of the Companies Act 2006 relating to small companies. No member of the company has deposited a notice, pursuant to section 476, requiring an audit of these financial statements under the requirements of the Companies Act 2006.

The directors acknowledge their responsibilities for complying with the requirements of the Act with respect to accounting records and for the preparation of accounts.

These financial statements have been prepared in accordance with the provisions applicable to companies subject to the small companies' regime.

These financial statements were approved by the Trustees on 30th August 2022 and signed on their behalf by:



Steve Coles
Chairperson
Company Registration No 00487460

NOTES TO THE FINANCIAL STATEMENTS

FOR THE YEAR ENDED 31 MARCH 2022

1) ACCOUNTING POLICIES

The following principal accounting policies have been consistently used in the preparation of the financial statements:

a) Basis of preparation

The financial statements have been prepared in accordance with Accounting and Reporting by Charities: Statement of Recommended Practice applicable to charities preparing their accounts in accordance with Financial Reporting Standard applicable in the United Kingdom and Republic of Ireland (Charities SORP FRS 102), the Financial Reporting Standard applicable in the UK and Republic of Ireland (FRS 102) and the Charities Act 2011.

The charity constitutes a public benefit entity as defined by FRS 102.

The accounts are presented in sterling and are rounded to the nearest pound.

b) Assessment of going concern

The Trustees have assessed whether the use of the going concern assumption is appropriate in preparing these accounts. The Trustees have made this assessment in respect to a period of one year from the date of approval of these accounts.

The Trustees of the charity have concluded that there are no material uncertainties related to events or conditions that may cast significant doubt on the ability of the charity to continue as a going concern. The Trustees are of the opinion that the charity will have sufficient resources to meet its liabilities as they fall due. The most significant areas of judgement that affect items in the accounts are detailed above.

With regard to the next accounting period, the year ending 31 March 2023, the most significant area that affect the carrying value of the assets held by the charity is the level of investment return and the performance of the investment markets (see the investment policy section of the trustees' report for more information).

c) Income recognition

Income is recognised when the charity has entitlement to the income, it is likely to be received and the amount can be reliably estimated. Tax recoverable on gift aid is accrued in the financial statements. Legacies are accounted for when the Trustees are notified of the legacy and the receipt is probable.

d) Expenditure Recognition

Expenditure is recognised on an accruals basis. Direct charitable expenditure are the costs incurred in achieving the charitable objectives of the Charity. Governance costs are the costs associated with the legal and statutory duties of the Charity. Grants payable are accounted for when approved by the Trustees.

NOTES TO THE FINANCIAL STATEMENTS (Continued)
FOR THE YEAR ENDED 31 MARCH 2022

e) Allocation of support and governance costs

Support costs represent indirect charitable expenditure. In order to carry out the primary purposes of the charity it is necessary to provide support in the form of personnel development, financial procedures, provision of office services and equipment and a suitable working environment.

Governance costs comprise the costs involving the public accountability of the charity (including audit costs) and costs in respect to its compliance with regulation and good practice. Support costs and governance costs are apportioned to healthcare establishment expenses only.

f) Tangible Fixed Assets and Depreciation

Individual assets costing £1,000 or more, with an expected useful life exceeding one year, are capitalised at cost.

Depreciation is provided to write off the cost, less estimated residual values, of all tangible fixed assets over their expected useful lives. It is calculated on a straight line basis over three years.

g) Fixed Asset Investments

Listed investments are a form of basic financial instrument and are initially recognised at their transaction value and subsequently measured at their fair value as at the balance sheet date using the closing quoted market price

The charity does not acquire put options, derivatives or other complex financial instruments.

As noted above, one of the main forms of financial risk faced by the charity is that of volatility in equity markets and investment markets due to wider economic conditions, the attitude of investors to investment risk, and changes in sentiment concerning equities and within particular sectors or sub sectors.

Realised gains (or losses) on investment assets are calculated as the difference between disposal proceeds and their opening carrying value or their purchase value is acquired subsequent to the first day of the financial year. Unrealised gains and losses are calculated as the difference between the fair value at the year end and their carrying value at that date. Realised and unrealised investment gains (or losses) are combined in the statement of financial activities and are credited (or debited) in the year in which they arise.

h) Debtors

Debtors are recognised at their settlement amount, less any provision for non-recoverability. Prepayments are valued at the amount prepaid.

i) Cash at bank and in hand

Cash at bank and in hand represents such accounts and instruments that are available on demand or have a maturity of less than three months from the date of acquisition. Deposits for more than three months but less than one year have been disclosed as short term deposits. Cash placed on deposit for more than one year is disclosed as a fixed asset investment.

NOTES TO THE FINANCIAL STATEMENTS (Continued)
FOR THE YEAR ENDED 31 MARCH 2022

j) Creditors and provisions

Creditors and provisions are recognised when there is an obligation at the balance sheet date as a result of a past event, it is probable that a transfer of economic benefit will be required in settlement, and the amount of the settlement can be estimated reliably. Creditors and provisions are recognised at the amount the charity anticipates it will pay to settle the debt.

k) Fund accounting

General funds represent incoming resources received or generated for expenditure on the general objectives of the charity.

l) Pension costs

Contributions in respect of the charity's stakeholder pension scheme are charged to the statement of financial activities in the period in which they become payable to the scheme. The assets of the scheme are held separately from those of the charity in an independently administered fund.

m) Critical accounting estimates and judgements

In preparing the financial statements, management is required to make estimates and assumptions which affect reported income, expenses, assets, liabilities and disclosure of contingent assets and liabilities. Use of available information and application of judgements are inherent in the formation of estimates, together with the past experience and expectations of future events that are believed to be reasonable under the circumstances. Actual results in the future could differ from such estimates. Management do not consider there to be any material accounting estimates or judgements that need disclosure in these financial statements

2) INCOME

	2022 Unrestricted £	2022 Restricted £	2021 Total funds £
a) Donations & Legacies			
Donations	640	-	2,634
Gift aid	-	-	513
Legacies	-	-	2,700
	<u>640</u>	<u>-</u>	<u>5,847</u>
b) Charitable activities			
Membership Income	9,478	-	5,368
Training	5,634	-	1,420
Literature & Resource Sales	149	-	80
Events & Presentations	2,580	-	1,072
Other	425	-	7,500
	<u>18,266</u>	<u>-</u>	<u>15,440</u>
d) Investment Income			
Interest	<u>30,231</u>	<u>-</u>	<u>30,155</u>

In 2022 income of £Nil was restricted income and all other amounts were to unrestricted funds.

NOTES TO THE FINANCIAL STATEMENTS (Continued)
FOR THE YEAR ENDED 31 MARCH 2022

3) EXPENDITURE

	2022 Unrestricted £	2022 Restricted £	2021 Unrestricted £
a) Raising funds			
Marketing & Website Development	600	-	24,419
Administration	1,038	-	263
Consultancy	10,094	-	9,748
Advertising	1,448	-	-
	13,180	-	34,430
b) Charitable Activities			
Website Hosting	6,149	-	1,518
Newsletter, Journal & Online	3,139	-	2,047
Membership Administration	219	-	2,388
Consultancy	-	-	764
Events, Conferences & Seminars	2,920	-	1,012
Partnership Payments	-	-	2,500
Staff Salaries (note 10)	75,230	-	60,175
Recruitment costs	8,400	-	-
Staff training, travel & expenses	1,481	-	1,265
Governance	313	-	333
Telephone, postage and stationery	4,270	-	2,095
Equipment and IT maintenance	-	-	885
Support costs:			
Bookkeeping and support	2,852	-	1,883
Payroll and HR support	1,432	-	1,945
Professional fees and subs	308	-	209
Insurance	-	-	446
Bank charges	329	-	123
Independent Examiner's Fee	2,040	-	2,160
	109,082	-	81,748
Total charitable costs	122,262	-	116,178

In 2022 expenditure of £Nil related to restricted expenditure and all other amounts were from unrestricted funds.

NOTES TO THE FINANCIAL STATEMENTS (Continued)
FOR THE YEAR ENDED 31 MARCH 2022

4) TANGIBLE FIXED ASSETS	2022	2021
	£	£
Office Equipment		
Cost		
At 1 April 2021	1,246	1,246
Additions in year	-	-
At 31 March 2022	<u>1,246</u>	<u>1,246</u>
Depreciation		
At 1 April 2021	1,246	1,246
Charge for the year	-	-
At 31 March 2022	<u>1,246</u>	<u>1,246</u>
Net Book Value		
At 31 March 2021 and 2022	<u>-</u>	<u>-</u>
5) FIXED ASSET INVESTMENTS	2022	2021
	£	£
Listed investments		
Market value at 1 April 2021	708,093	633,634
Withdrawals	(60,000)	(60,000)
Unrealised gains/(losses)	52,667	134,459
Market value at 31 March 2022	<u>700,760</u>	<u>708,093</u>
Cost at 31 March 2022	<u>513,095</u>	<u>573,095</u>
6) DEBTORS	2022	2021
	£	£
Prepayments	-	-
Other debtors	409	178
	<u>409</u>	<u>178</u>

The Guild of Health and St Raphael Ltd

7) SHORT TERM INVESTMENT		2022	2021
		£	£
At 1 April 2021		-	60
At 31 March 2022		<u>-</u>	<u>60</u>

These investments are held with CCLA.

8) LIABILITIES		2022	2021
Creditors: Amounts falling due within one year		£	£
Taxation and social security		-	-
Accruals		1,800	1,800
Other creditors		616	2,253
		<u>2,416</u>	<u>4,053</u>

9) COMPANY LIMITED BY GUARANTEE

The company is limited by guarantee and has no share capital. At the year-end there were 12 members (2021: 12). In the event of the company winding-up, the liability of the members is limited to £1 each and the balance of the fund would be transferred to an association with objects similar to this company.

10) STAFF COSTS AND NUMBERS		2022	2021
		£	£
Staff costs analysed:			
Salaries		71,775	58,777
Social security costs		1,943	268
Pension contributions		1,512	1,130
		<u>75,230</u>	<u>60,175</u>

No employees had emoluments in excess of £60,000 (2021: £NIL)

The key management personnel of the Charity comprise the Trustees and the charity Director. The employee benefits of the key management personnel of the Charity were £43,690 (2021: £41,106).

Average number of employees during the year was as follows:

	2022	2021
Administration:	4	4

NOTES TO THE FINANCIAL STATEMENTS (Continued)

FOR THE YEAR ENDED 31 MARCH 2022

11) TRUSTEES' REMUNERATION

Trustees neither receive nor waived any emoluments in the year (2021: nil).

Travel and accommodation expenses totalling £191 (2021: £333) were reimbursed to 4 Trustees (2021: 4) during the year.

12) RECONCILIATION OF FUNDS

	2022	2021
	£	£
At 1 April 2021	734,710	664,987
Net movement in funds in year	(73,130)	69,723
At 31 March 2022	<u>661,584</u>	<u>734,710</u>
Represented by:		
Fixed assets	648,093	708,093
Current assets	15,908	30,670
Current liabilities	(2,417)	(4,053)
	<u>661,584</u>	<u>734,710</u>

THE GUILD OF HEALTH AND ST RAPHAEL

England & Wales - Charity number 211016

Accounts

The Guild of Health & St Raphael Limited

ANNUAL REPORT AND FINANCIAL STATEMENTS

FOR THE YEAR ENDED 31 MARCH 2021



A company limited by guarantee and not having share capital

Company Registration no: 00487460

Charity Registration no: 211016

Contents

REPORT OF THE CHAIR	3
FINANCIAL REVIEW	5
STRUCTURE, GOVERNANCE AND MANAGEMENT	6
REPORT OF THE CHIEF EXECUTIVE OFFICER	7
REPORT OF THE TRUSTEES	11
REFERENCE AND ADMINISTRATIVE INFORMATION	12
STATEMENT OF TRUSTEES' RESPONSIBILITIES	13
REPORT OF THE INDEPENDENT EXAMINER	14
STATEMENT OF FINANCIAL ACTIVITIES	15
BALANCE SHEET	16
NOTES TO THE FINANCIAL STATEMENTS	17

REPORT OF THE CHAIRPERSON

"So when you see the 'abomination of desolation' spoken of by Daniel, standing where it ought not to be (let the reader understand i.e. in the Holy Place), then let those who"

Matthew 24.15, Mark 13.14

These are the words of Jesus; this is the Word of the Lord.

One of those powerful and devastating statements, given by Jesus to his disciples during his last days, but it contained the salvific message, for those who see the signs, wherever they are, to head for safety. In our western modern era, it need not mean literally to go to the mountains or hasten from the city but, metaphorically, to quickly distance ourselves from the 'prince of this world' and abide in the bosom of God, to hold fast to Truth and Everlasting Love. It is the message for all Ages; and we know that, even now in many areas of the globe, people really do have to flee their homes to head for the mountains or seek refuge in a foreign land.

The Holy Place, today, is planet Earth. The temple of Jerusalem is our Global City. There are no foreigners. We are one, in each other and in God just as God is in us all – these are the words of Jesus, declaring God's unconditional eternal Love for 'those who' Turn to the Creator, Divine Protector, Saviour, Wonderful Counsellor, the Sovereign of Peace. Good News, indeed!

As I write this, I am coincidentally listening to a song by John Legend:

All of me loves all of you, your curves and all your edges, all your perfect imperfections. Give your all to me, I give my all to you. You're my end and my beginning. Even when I lose, I'm winning.

Isn't that amazing: An amazing Grace? To be both alpha and omega with God, in unconditional love, and have Jesus lose his earthly life to win for us eternity. In Christ, we share the 'win-win'.

I am aware that I am writing more about biblical authority than The Guild of Health and St. Raphael here, for this is what underpins and overarches our part in mission – the healing ministry of Christ for all nations and for all peoples, and for our precious habitat which is the home of God and all Creation.

My apocalyptic reference at the start of this piece was most probably the archetypal stark forewarning in the beginning - as God made order out of chaos to give us Life, so there would have to be chaos again and again for the New Order to be continually reworked and embedded over time until 'Kingdom come'. And the last days of Jesus' earthly ministry are paradigmatic of the Last Days of his heavenly ministry, in which we all have a part to play.

That shocking phrase, written by Daniel many decades before Christ spoke it, can, of course, be seen in relation to the COVID-19 pandemic which has brought devastation to individuals, families, businesses, industries, organisations, institutions, but this is part of a wider global desolation. War and famine, pestilence and earthquake in diverse places have always been with us, just as poor and destitute neighbours are still with us, and we must pay grave heed to mass extinction and calamitous environmental damage now upon us, and numerous gross injustices and inequalities and systemic corruptions on which humankind is indicted. Through tyrannies and democracies alike, 'defilement of the sanctuary of power' (Daniel 11.31) provides more damning evidence than human weakness and failure for not doing God's will on Earth as it is in Heaven; Abomination, indeed, sets up desolation.

If the power of love is to replace the love of power, and perfect love to cast out fear, it is a monumental project to rebuild that temple – but we know and trust the architect and master builder who are one with the creative energy pouring out on us all. We, the labourers, have individual and collective responsibility to help finish the job. Restoration of the Holy Covenant is work in progress.

As we moved from 2020 into 2021, I wrote in Guild News that it was the start of the third decade of the 21st century, and we would dedicate this to healing, through the light and love of Jesus Christ, for truth and

The Guild of Health & St Raphael Limited

reconciliation towards peace within human unity and the oneness with God that is promised. We know that it will be hard work – we have centuries of evidence for that ongoing spiritual battle – but we continue onwards and upwards in the knowledge that the Holy Spirit works in us, and with us, and through us; and the more of ‘those who’ join and turn to God, the sooner we will reach our divine home.

The growth in membership of the Guild, and the increasing number of hands that are turning to this one ‘building industry’ is truly remarkable, and the far-reaching output and uptake of resources to enable the work is heart-warming. Members can read below what has been achieved, and what is planned, and we are really grateful to Gillian for her vision and energy, and to her brilliant team for their skills and commitment.

During the year, we sadly had to say goodbye to Sue Chapman and Steve Radley who both needed to pursue other career paths, and we are indebted to them for the foundation work they put in respectively in managing and developing the membership body, and in managing business matters and finance onto a secure footing.

We are pleased to have our new Company Secretary, Christopher Garman, who brings a sharp eye and mind along with impressive efficiency to guide business processes and our finances, and to have our three new trustees, Victoria Showunmi, Catherine Nelson and Rosemarie Davidson-Gotobed who have a wealth of expertise, skills and dedication that they have already been applying in full force.

We are thankful for our Board of Trustees who have given generously and tirelessly of their own time in careful governance and supporting staff, and for our president, Professor Jim McManus, for his immense support as a champion for the Guild and his facilitation of connections and partnerships that we have forged. We are pleased that Jim is continuing in his much-valued role for the next year.

The COVID shadow continues to hang over civilisation – not just as a threat but with certain judgmental functions in a ‘sheep-goats’ sort of way: The imposed lockdowns have shown different ways for people to work and be kinder to themselves and the environment; in many domains we have become more neighbourly, sensitive, watchful, considerate and helpful; interdependence has started to become a central value for a sharing community. The negative fallouts have revealed glaring deficiencies and failings in society, and the many injustices, inequalities, and iniquities exposed through a compounding effect on the existing wider desolation. Through the global impact of a microbe, a giant magnifying glass has shown up the fingerprints of culpable perpetrators – and that is all of us in some degree in collusion with self-serving ways of the world. A desperate need for mental and spiritual health and wellbeing is now a pandemic within a pandemic – but we know the remedy and the way. Our GoHealth Community and indeed all the work of the Guild is a torch to illuminate the path through the Light and Love of Christ.

Doctor David McDonald
Chairperson

FINANCIAL REVIEW

Review of the charity's financial position at the end of March 2021

The financial position of the Guild of Health and St. Raphael is satisfactory, with reconciled investments amounting to £708,098 at the 31 March 2021, compared with £633,634 at the end of March 2020. It should be noted that the trustees agreed to withdrawals from the investments of £60,000 during the year to fund the planned budget deficit. There have also been large fluctuations in the value of the investments caused by the markets' reactions to the pandemic.

Income has fallen to £51,442 for the year, compared with £53,225 in 2020. We aim through the development of the Healthy Healing Hub project is to see our income increase year on year by attracting new members, through the sale of resources and training and through a revised subscription model for churches who register as a Healthy Healing Hubs. The plan remains, despite the effects of the pandemic, to generate enough income to be self-sustaining from revenue income by a staged process of reducing deficits by the year ending 31 March 2024. In the meantime, there will be planned withdrawals from reserves to cover the planned deficits.

The trustees, despite the effects of the pandemic, decided to continue with the launch of the Healthy Healing Hubs project which happened in November 2021 acknowledging this is the key part of the strategy to make the Guild financially sustainable. There will be continued withdrawals from reserves to ensure the Guild can maintain its ongoing commitments and responsibilities as an employer and to enable the Guild to develop its relationships with other bodies, in the furtherance of its charitable objectives.

Principal sources of funds

The Guild has invested assets of £708,098 which realised our main source of income of £30,155. In line with the strategic decision of the board of trustees, we are migrating to a financial model which should see our main income realised through the Healthy Healing Hub project, through membership subscriptions, the sale of resources, training, and attracting new grants. The Guild will continue to develop its conferences which contribute a modest income.

Investment policy

The Guild is guided by the Church of England in terms of the management of its investment portfolio which is ethically framed. Principal risks facing the charity is volatility in the investment markets.

Dr David McDonald
Chairperson

STRUCTURE, GOVERNANCE AND MANAGEMENT

Constitution

The company (namely The Guild of Health and St. Raphael Limited) is a company limited by guarantee and does not have share capital and is governed by its Memorandum and Articles of Association.

Policy of recruitment and training of new trustees

The power of appointing and removing trustees is vested in the members of the company. The trustees have the power at any time to appoint any person to be a trustee either to fill a vacancy or as an additional member, and the members vote on the new trustee appointment at the following Annual General Meeting. The total number of trustees must not be less than nine. At each Annual General Meeting, one third of the trustees retire from office when they will be eligible for re-election. There is an induction programme for new trustees and training is offered as required.

Management

The Guild has a board of trustees. Previously all decisions were made by the council at full board of trustees' meetings. Some decision-making now takes place in the sub-committees but comes to the board of trustees for ratification.

Trustees have been recruited for their professional skill (medics and allied health professionals) or their interest and experience in the healing ministry or associated work. They are nominated and elected at the Annual General Meeting. They are required to declare any interests and benefits.

Patrons and President

The board of trustees is honoured to have three patrons reflecting its ecumenical nature: the Archbishop of Canterbury, the Archbishop of York, and the president of the Methodist Council. The trustees have appointed Professor Jim McManus to be the President for a three-year term to promote the Guild at a national level. The trustees have decided not to appoint a Vice-President as this was felt not to be necessary.

Financial Risk Management

The trustees are aware that they are responsible for ensuring that any risks arising from their activities are adequately insured where possible and that all expenditure is properly authorised and the payment thereof subject to internal checks.

Volunteers

The value of services provided by volunteers is not incorporated into the financial statements.

REPORT OF THE CHIEF EXECUTIVE OFFICER

Introduction

At the beginning of last year, the team and I were preparing ourselves for a busy 12 months with the launch of our new website, a reformation of the membership communities, new resource types, exciting events, and the development of the Healthy Healing Hub project. And then the COVID-19 pandemic hit our shores. In the very early days of the first lockdown, the team gathered on Zoom and I asked two questions – how much do you think this pandemic will impact our plans for the year, and how much will it impact the lives of people in this country? The resounding feeling was that the effects of the COVID-19 would be profound and lasting, and that we had a duty not only to respond to the emerging needs of the isolated, suffering and grief stricken in the name of Christ, but we had to shape the Guild so that we could deliver the aims and objectives of the charity into the world that was going to emerge from the pandemic, not the world we had just left behind.

I am beyond proud of what the team and I have achieved this year in a turbulent and difficult period of history to not only delivering everything we set out to do, but to have pivoted and reconceived some of the work in the light of the pandemic, while also providing many people with healing and hope in the darkest of times. This is a charity that I am proud to lead, and I am grateful to each member, the whole staff team, all the trustees, and others who support us in different ways.

What has been achieved is possible only through what we do together and so in each section of the report I outline in green the opportunities for all members and friends of the Guild to continue to build on the work as we look to the future. If you feel inspired, just email me on director@gohealth.org.uk.

The Healthy Healing Hub Project

The pandemic meant that the piloting of the Healthy Healing Hub project could not proceed as planned – so we moved it online. The process of listening to a wide variety of church leaders was seminal and we learnt that an attainment model would be desirable, of the importance of peer-to-peer learning, and the need to share best practice. From this we developed the tiered process of membership. All training courses to date have sold out and to date over 100 individuals have gone through the training

Many churches and chaplaincies from around the country have shown interest, and I am regularly invited to speak to groups of all sizes about the project. At the time of writing, the course is about to be moved to the Moodle platform, the silver tier training is being developed and we are about to launch the first Healthy Healing Hubs who will be mapped on the website and start on the support packages.

In this way, we have moved from the branches model of the Guild, which was fading away, to a modern badging model where people and churches can engage in training, get a nationally recognised qualification, and ask key questions about how God is calling them to be a place for healing for the whole community. It helps to make the key move away from seeing the healing ministry as perhaps a once-a-month service, to a vision that healing and wholeness is the everyday work of a growing church.

The future and how you can get involved – We need more churches and chaplaincies to sign up, volunteers to run the courses, and specialised training for churches on the silver tier. Can your church sign up to the training? Are you a specialist who could offer training through this project, for example, in Christian listening, pastoral ministry, mental health outreach etc?

The GoHealth Community

The pandemic has shown the value of online communities just at a moment in our history when we were

The Guild of Health & St Raphael Limited

making major changes to our membership. With sadness, we ended the publication of Guild News this year.

It was replaced with membership community resourced in a way to suit the world – and new members are joining us every month. Members now receive a monthly bundle of resource including blogs, prayers and films.

The GoHealth Community is more than just a resource producer. We are a growing network of individuals who seek to flourish, to pray for those in need, and together to reach into the world with the Good News of Jesus Christ in the healing ministry. And we are growing because at its heart The GoHealth Community clearly demonstrates our values as an organisation to connect, to listen and to welcome.

The future and how you can get involved – have you updated your members so that you receive great content monthly? Perhaps you have skills and experience in the healing ministry and feel called to write for us? Might you want to get involved in our online community or join the prayer group online? Who do you know who might be interested to join the GoHealth Community?

The GoHealth Podcast

Podcasting is one of the most important communication tools at our disposal because they get away from soundbites and instead can explore topics at depth. And it helps us reach new audiences. In our first season, *Sacramental stories* we demonstrate the complexity and power of the healing ministry through the stories of real human lives. At the time of writing, our episodes have been listened to over 800 times, and it is growing every day.

The future and how you can get involved – We are planning the next season – do you know someone who would be great to interview? Have you listened to the podcast? Have you subscribed? The more people who subscribe, the more people who will find us.

Chrism and research

Our journal Chrism continues to be a source of interest for many members, and we have seen a small increase in membership this year. We plan to publish the papers of our first Chrism conference on *Covid-19 and the response of the Church* due to be held in Sarum in October 2021. We are also engaged in research on the spiritual coping methods used during the lockdowns with Coventry university. This is ahead of a major funding grant to explore the ways in which the healing ministry have helped people cope and recover.

The future and how you can get involved – We greatly encourage article ideas even if you have not written academically in the past – do you have an idea? Or do you have editorial experience and would like to get involved?

Online learning platform

Even before the pandemic hit the headlines, we were planning an online learning environment. We are a small charity, and to reach the level of audiences needed, the online learning environment is essential. This year we have invested in the Moodle online platform, and through the work of Graham Fender Allison we are refining this to make it an efficient and satisfying way to engage in the training. This year we have launched 10 courses and have many more planned.

The future and how you can get involved – Have you had a go at the *Learning to heal* course? It is an online learning course using the Denis Duncan members to explore the meaning of healing, and it is free for members! Perhaps there is someone you know who would be keen to engage with the online learning courses?

Events

This year's events did not go ahead as planned but, like the rest of the country, we pivoted and moved operations online. We were thrilled to make a connection with the Iona Community and welcomed the leader, the Reverend Ruth Harvey, to deliver the Denis Duncan Lecture online (400 booked). As usual, this event

The Guild of Health & St Raphael Limited

was run in collaboration with the Church of Scotland.

In March, we were also delighted to host The Bishop of London, the Right Reverend Sarah Mullally, who spoke about mental health and the role of the church (sold out at 500 tickets). On top of these major events, I was also able to 'Zoom' around the country leading workshops on the healing ministry to various groups including Chichester University, Diocese of Leeds, Diocese of Monmouth and clergy training in the Scottish Episcopal church.

The future and how you can get involved – Have you seen the event content on the YouTube channel? Is there a healing training event that you would like to organise?

Our Online Presence

Whether or not you use social media, or even agree with it, its influence is enormous and the most cost-effective way for us to reach a large audience with the work we are engaged in. All our marketing is done through social media, and regular adverts in the Church Times. It is imperative that we do not hide our lamp under a bushel, and in a noisy and busy marketplace, we need clear and attractive messaging to raise our profile. And so, this year, I have been working with a marketing consultant to help raise our profile. Over the last year we have reached approximately 68,600 on Facebook, attracted 237 new followers (four times higher than the previous period), and engagement with 11,400 people through liking, sharing and clicking on Facebook alone – this leads to membership growth, event sales and our reputation increased.

The future and how you can get involved – Have you found us on Facebook, Twitter and LinkedIn? If you are on those platforms, the most important thing to do is engage with the posts by liking, sharing, and commenting - the more people who engage with our posts, the more people will see our work.

Becoming a national voice

I am pleased to report that the Guild of Health and St Raphael is supporting the Bishop of Carlisle, the lead bishop in the Church of England on health, in coordinating all the healing advisors. He also endorses our Healthy Healing Hub project. During the pandemic, I served on a national church group advising senior leaders on mental health during the lockdown, and in the Diocese of London on supporting clergy wellbeing. I regularly appear on UCB radio talking about health and faith and was interviewed in the Church Times for a major piece on mental health and the church. Most recently, I have been asked to serve on the theological stream of the Archbishop of Canterbury's commission on the review of social care in the UK. And I also led a months' worth of reflections from St Paul's Cathedral in January 2021, in some of the darkness days of the pandemic.

The future and how you can get involved – Our success as an organisation depends, I believe, on both a top down and a grassroots approach. Wherever you operate, your voice is the best publicity that we have. Please tell people about our website, our events, and courses, and together we will help all people flourish and the Guild to grow.

Financial issues

I am grateful to Chris Garman and his assistance with the financial operations for this year as we continue to improve operations in terms of efficiency, policy, and governance. While operating with a deficit budget is not ideal, we are going in the right direction financially. This year I am particularly pleased that we invested in the website, the online learning platform and marketing of the Guild without a significant drop in income, and a reduction in spending from the previous year (reflecting our constant drive to improve efficiency). This bodes well for the coming year with lower spending on infrastructure, and a reduction in restriction around travel and events, where we have historically picked up memberships and other income potential.

And finally....

This year we have seen a few changes in the staff team. Steve Radley left to concentrate on his photography work, and Sue Chapman, who had done extraordinary work coordinating the membership of the Guild, also decided to leave to seek a full-time position.

I was delighted to welcome Chris Garman to the team. Chris is the new Company Secretary, also taking on some financial responsibility too.

The Guild of Health & St Raphael Limited

I am blessed to work with a gifted and visionary staff team. I really could not do it without them, so an enormous thank you to Wendy Lloyd and Graham Fender Allison.

I would also like to thank the board of trustees and David McDonald who is chairing the group. Lucyann Ashdown, who stepped down as chairperson, has been an enormous source of encouragement and support throughout this last year, which has included for me both moving house and home schooling two young children. I am grateful to her for her wisdom, vision, and friendship.

Finally, thank you to all the members and supporters – please pray for me, as I pray for you.

Reverend Doctor Gillian Straine
Chief Executive Officer

REPORT OF THE TRUSTEES

FOR THE YEAR ENDED 31 MARCH 2021

The financial statements comply with the Charities Act 2001, the Companies Act 2006, the Memorandum and Articles of association, and Accounting and Reporting by Charities: Statement of Recommended Practice applicable to charities preparing their accounts in accordance with the Financial Reporting Standard applicable in the UK and Republic of Ireland (FRS102) (effective 1 January 2015).

Summary of the purposes of the charity as set out in its governing document.

The objects of The Guild of Health and St. Raphael Limited are:

- to bring together Christians including doctors, psychologists, other health professionals and ministers of religion, to work in fellowship for fuller health, both for the individual and the community.
- to enable members to study the interaction between physical, mental and spiritual factors in wellbeing through conferences, publications and other educational endeavours.
- to sustain and strengthen by prayer and sacrament people who are sick or suffering in anyway, and all those who minister to them.
- to help men and women to realise in themselves, as members of the Christian family, the abundant life offered by Christ and share this in the world.

In shaping our aims and objective the Trustees have considered the Charity Commission's guidance on public benefit. All our charitable activities focus on the promoting the healing ministry of the Christian Church, through the objects outlined above, and are undertaken to further our charitable purposes for the public benefit. In this way, the trustees have complied with the duty to have regard to the guidance issued by the Commission under section 4(b) of Charities (Protection and Social Investment) Act 2016.

Summary of the main activities in relation to those purposes for the public benefit, in particular, the activities and performance of projects or services identified in the accounts.

Recognising our need to adapt to meet the needs of an ever-changing society the focus, the charity's work in the future will be through the Healthy Healing Hubs project, the GoHealth community and Chrism

Doctor David McDonald
Chairperson

REFERENCE AND ADMINISTRATIVE INFORMATION

The directors of the charitable company (the charity) are its trustees for the purposes of Charity Law.

Trustees: Doctor David McDonald (Chairperson)
 The Reverend Lucyann Ashdown (Vice-Chairperson)
 Mrs Rosemarie Davidson-Gotobed
 Mr Ken Herbert
 The Reverend Professor Helen Leathard
 Doctor Catherine Nelson
 Doctor Michael Platt
 Doctor Victoria Showunmi

Company Secretary Mr Christopher Garman

Chief Executive Officer Reverend Doctor Gillian Straine

Registered Office: 23 The Close
 Lichfield
 Staffordshire
 WS13 7LD

Company
Registration Number: 00487460

Charity
Registration Number: 211016

Bankers: The Co-Operative Bank
 PO Box 250
 Skelmersdale
 WN8 6WT

Independent Examiner: Philip Clark FCA
 Azets Audit Services
 2nd Floor
 Regis House
 45 King William Street
 London
 EC4R 9AN

STATEMENT OF TRUSTEES' RESPONSIBILITIES

The Charity Trustees (who are also the directors of The Guild of Health and St Raphael Ltd for the purposes of company law) are responsible for preparing a trustees' annual report and financial statements in accordance with applicable law and United Kingdom Generally Accepted Accounting Standards (United Kingdom Generally Accepted Accounting Practice).

Company law requires the trustees to prepare financial statements for each year which give a true and fair view of the state of affairs of the charitable company and of the incoming resources and application of resources, including the income and expenditure of the charitable company for that period. In preparing those financial statements, the Trustees are required to:

- Select suitable accounting policies and then apply them consistently.
- Observe the methods and principles of the Charities SORP.
- Make judgements and estimates that are reasonable and prudent.
- State whether applicable UK accounting standards have been followed, subject to any departures and explained in the financial statements.
- Prepare the financial statements on the going concern basis unless it is inappropriate to presume that the company will continue in business.

The trustees are responsible for keeping proper accounting records which disclose with reasonable accuracy at any time the financial position of the charity and to enable them to ensure that the financial statements comply with the Companies Act 2006. They are also responsible for safeguarding the assets of charity and hence taking reasonable steps for the prevention and detection of fraud and other irregularities.

This report has been prepared in accordance with the small company regime (section 419 (2) of the Companies Act 2006)

Approved by the Board on 19 July 2021 and signed on its behalf by



Dr David McDonald
Chairperson

REPORT OF THE INDEPENDENT EXAMINER

Independent Examiner's Report to the Trustees of The Guild of Health and St Raphael Limited.

I report to the charity trustees on my examination of the accounts of the Company for the year ended 31 March 2021.

Responsibilities and basis of report

As the charity's trustees of the Company (and also its directors for the purposes of company law) you are responsible for the preparation of the accounts in accordance with the requirements of the Companies Act 2006 ("the 2006 Act").

Having satisfied myself that the accounts of the Company are not required to be audited under Part 16 of the 2006 Act and are eligible for independent examination, I report in respect of my examination of your charity's accounts as carried out under section 145 of the Charities Act 2011 ("the 2011 Act"). In carrying out my examination I have followed the Directions given by the Charity Commission under section 145(5)(b) of the 2011 Act.

Independent Examiner's statement

I have completed my examination. I confirm that no matters have come to my attention in connection with my examination giving me cause to believe:

accounting records were not kept in respect of the Company as required by section 386 of the Act 2006; or the accounts do not accord with those records; or

the accounts do not comply with the accounting requirements of section 396 of the 2006 Act other than any requirement that the accounts give a "true and fair view" which is not a matter considered as part of an independent examination; or

the accounts have not been prepared in accordance with the methods and principles of the Statement of Recommended Practice for accounting and reporting by charities applicable to charities preparing their accounts in accordance with the Financial Reporting Standard applicable in the UK and Republic of Ireland (FRS 102).

I have no concerns and have come across no other matters in connection with the examination to which attention should be drawn in this report in order to enable a proper understanding of the accounts to be reached.

Use of my report

This report is made solely to the charity's trustees, as a body, in accordance with Chapter 3 of Part 8 of the Charities Act 2011. My examination has been undertaken so that I might state to the Charity's Trustees those matters I am required to state to them in an independent examiner's report and for no other purpose. To the fullest extent permitted by law, I do not accept or assume responsibility to anyone other than the charity and the charity's trustees as a body, for my examination, for this report, or for the opinions I have formed.

Azets Audit Services

Azets Audit Services
2nd Floor
Regis House
45 King William Street
London
EC4R 9AN

Date: 20 August 2021

STATEMENT OF FINANCIAL ACTIVITIES

FOR THE YEAR ENDED 31 MARCH 2021

INCOME AND EXPENDITURE ACCOUNT

	Notes	2021 Unrestricted funds £	2021 Restricted funds £	2020 Total funds £
INCOME FROM:	2			
Donations and legacies		5,847	-	1,386
Charitable activities		15,440	-	11,812
Other trading activities		-	-	-
Investment income		30,155	-	40,027
Total Income		51,442	-	53,225
EXPENDITURE ON:	3			
Cost of Raising Funds		34,430	-	30,188
Charitable Activities		81,748	-	90,897
Total Expenditure		116,178	-	121,085
Net (Expenditure) / income before gains on investments		(64,736)	-	(67,860)
Net gains/losses on investment assets		134,459	-	(134,318)
NET INCOME FOR THE YEAR AND NET MOVEMENT IN FUNDS		69,723	-	(202,178)
RECONCILIATION OF FUNDS				
Balances brought forward 1 April 2020		664,987	-	867,165
Balances carried forward 31 March 2021	12	734,710	-	664,987

The Guild of Health & St Raphael Limited

BALANCE SHEET

AT 31 MARCH 2021


	Notes	2021 £	2020 £
FIXED ASSETS			
Tangible fixed assets	4	-	-
Investments	5	708,093	633,634
Total fixed assets		708,093	633,634
CURRENT ASSETS			
Debtors	5	178	2,918
Short Term Investments		60	60
Cash at bank and in hand		30,432	40,955
Total current assets		30,670	43,933
LIABILITIES			
Creditors: amounts following due within one year	6	(4,053)	(12,480)
NET CURRENT ASSETS		26,617	31,353
NET ASSETS		734,710	664,987
THE FUNDS OF THE CHARITY			
Unrestricted income fund		734,710	664,987
Restricted funds		-	-
TOTAL CHARITY FUNDS		734,710	664,987

For the financial year ended 31 March 2021, the charitable company was entitled to exemption from audit under Section 477 of the Companies Act 2006 relating to small companies. No member of the company has deposited a notice, pursuant to section 476, requiring an audit of these financial statements under the requirements of the Companies Act 2006.

The directors acknowledge their responsibilities for complying with the requirements of the Act with respect to accounting records and for the preparation of accounts.

These financial statements have been prepared in accordance with the provisions applicable to companies subject to the small companies' regime.

These financial statements were approved by the Trustees on 19 July 2021 and signed on their behalf by:



Dr David McDonald
Chairperson
Company Registration No 00487460

NOTES TO THE FINANCIAL STATEMENTS

FOR THE YEAR ENDED 31 MARCH 2021

1) ACCOUNTING POLICIES

The following principal accounting policies have been consistently used in the preparation of the financial statements:

a) Basis of preparation

The financial statements have been prepared in accordance with Accounting and Reporting by Charities: Statement of Recommended Practice applicable to charities preparing their accounts in accordance with Financial Reporting Standard applicable in the United Kingdom and Republic of Ireland (Charities SORP FRS 102), the Financial Reporting Standard applicable in the UK and Republic of Ireland (FRS 102) and the Charities Act 2011.

The charity constitutes a public benefit entity as defined by FRS 102.

The accounts are presented in sterling and are rounded to the nearest pound.

b) Assessment of going concern

The Trustees have assessed whether the use of the going concern assumption is appropriate in preparing these accounts. The Trustees have made this assessment in respect to a period of one year from the date of approval of these accounts.

The Trustees of the charity have concluded that there are no material uncertainties related to events or conditions that may cast significant doubt on the ability of the charity to continue as a going concern. The Trustees are of the opinion that the charity will have sufficient resources to meet its liabilities as they fall due. The most significant areas of judgement that affect items in the accounts are detailed above.

With regard to the next accounting period, the year ending 31 March 2021, the most significant area that affect the carrying value of the assets held by the charity is the level of investment return and the performance of the investment markets (see the investment policy section of the trustees' report for more information).

c) Income recognition

Income is recognised when the charity has entitlement to the income, it is likely to be received and the amount can be reliably estimated. Tax recoverable on gift aid is accrued in the financial statements. Legacies are accounted for when the Trustees are notified of the legacy and the receipt is probable.

d) Expenditure Recognition

Expenditure is recognised on an accruals basis. Direct charitable expenditure are the costs incurred in achieving the charitable objectives of the Charity. Governance costs are the costs associated with the legal and statutory duties of the Charity. Grants payable are accounted for when approved by the Trustees.

NOTES TO THE FINANCIAL STATEMENTS (Continued)

FOR THE YEAR ENDED 31 MARCH 2021

e) Allocation of support and governance costs

Support costs represent indirect charitable expenditure. In order to carry out the primary purposes of the charity it is necessary to provide support in the form of personnel development, financial procedures, provision of office services and equipment and a suitable working environment.

Governance costs comprise the costs involving the public accountability of the charity (including audit costs) and costs in respect to its compliance with regulation and good practice. Support costs and governance costs are apportioned to healthcare establishment expenses only.

f) Tangible Fixed Assets and Depreciation

Individual assets costing £1,000 or more, with an expected useful life exceeding one year, are capitalised at cost.

Depreciation is provided to write off the cost, less estimated residual values, of all tangible fixed assets over their expected useful lives. It is calculated on a straight line basis over three years.

g) Fixed Asset Investments

Listed investments are a form of basic financial instrument and are initially recognised at their transaction value and subsequently measured at their fair value as at the balance sheet date using the closing quoted market price

The charity does not acquire put options, derivatives or other complex financial instruments.

As noted above, one of the main forms of financial risk faced by the charity is that of volatility in equity markets and investment markets due to wider economic conditions, the attitude of investors to investment risk, and changes in sentiment concerning equities and within particular sectors or sub sectors.

Realised gains (or losses) on investment assets are calculated as the difference between disposal proceeds and their opening carrying value or their purchase value is acquired subsequent to the first day of the financial year. Unrealised gains and losses are calculated as the difference between the fair value at the year end and their carrying value at that date. Realised and unrealised investment gains (or losses) are combined in the statement of financial activities and are credited (or debited) in the year in which they arise.

h) Debtors

Debtors are recognised at their settlement amount, less any provision for non-recoverability. Prepayments are valued at the amount prepaid.

i) Cash at bank and in hand

Cash at bank and in hand represents such accounts and instruments that are available on demand or have a maturity of less than three months from the date of acquisition. Deposits for more than three months but less than one year have been disclosed as short term deposits. Cash placed on deposit for more than one year is disclosed as a fixed asset investment.

NOTES TO THE FINANCIAL STATEMENTS (Continued)
FOR THE YEAR ENDED 31 MARCH 2021

- j) Creditors and provisions
 Creditors and provisions are recognised when there is an obligation at the balance sheet date as a result of a past event, it is probable that a transfer of economic benefit will be required in settlement, and the amount of the settlement can be estimated reliably. Creditors and provisions are recognised at the amount the charity anticipates it will pay to settle the debt.
- k) Fund accounting
 General funds represent incoming resources received or generated for expenditure on the general objectives of the charity.
- l) Pension costs
 Contributions in respect of the charity's stakeholder pension scheme are charged to the statement of financial activities in the period in which they become payable to the scheme. The assets of the scheme are held separately from those of the charity in an independently administered fund.
- m) Critical accounting estimates and judgements
 In preparing the financial statements, management is required to make estimates and assumptions which affect reported income, expenses, assets, liabilities and disclosure of contingent assets and liabilities. Use of available information and application of judgements are inherent in the formation of estimates, together with the past experience and expectations of future events that are believed to be reasonable under the circumstances. Actual results in the future could differ from such estimates. Management do not consider there to be any material accounting estimates or judgements that need disclosure in these financial statements

2) INCOME

	2021	2021	2020
	Unrestricted	Restricted	Total funds
	£	£	£
a) Donations & Legacies			
Donations	2,634	-	505
Tax recovery	513	-	881
Legacies	2,700	-	-
	<u>5,847</u>	<u>-</u>	<u>1,386</u>
b) Charitable activities			
Membership Income	5,368	-	6,242
Training	1,420	-	550
Literature & Resource Sales	80	-	1,290
Events & Presentations	1,072	-	1,200
Other	7,500	-	2,530
	<u>15,440</u>	<u>-</u>	<u>11,812</u>
d) Investment Income			
Interest	<u>30,155</u>	<u>-</u>	<u>40,027</u>

In 2020 income of £2,000 was restricted income and all other amounts were to unrestricted funds.

NOTES TO THE FINANCIAL STATEMENTS (Continued)
FOR THE YEAR ENDED 31 MARCH 2021

3) EXPENDITURE

	2021 Unrestricted £	2021 Restricted £	2020 Total funds £
a) Raising funds			
Marketing & Website Development	24,419	-	19,570
Administration	263	-	8,797
Consultancy	9,748	-	-
Professional fees & bank	-	-	721
Office Costs	-	-	1,100
	34,430	-	30,188
b) Charitable Activities			
Website Hosting	1,518	-	507
Newsletter, Journal & Online	2,047	-	6,588
Membership Administration	2,388	-	-
Consultancy	764	-	-
Events, Conferences & Seminars	1,012	-	5,585
Partnership Payments	2,500	-	16,402
Staff Salaries	60,175	-	50,208
Staff Travel & Expenses	1,265	-	6,137
Governance	333	-	3,670
Telephone, postage and stationery	2,095	-	-
Repairs and maintenance	885	-	-
Support costs:			
Bookkeeping and support	1,883	-	-
Payroll and HR support	1,945	-	-
Professional fees	209	-	-
Insurance	446	-	-
Bank charges	123	-	-
Independent Examiner's Fee	2,160	-	1,800
	81,748	-	90,897
Total charitable costs	116,178	-	121,085

In 2020 expenditure of £2,000 related to restricted expenditure and all other amounts were from unrestricted funds.

NOTES TO THE FINANCIAL STATEMENTS (Continued)
FOR THE YEAR ENDED 31 MARCH 2021

4) TANGIBLE FIXED ASSETS	2021	2020
	£	£
Office Equipment		
Cost		
At 1 April 2020	1,246	1,246
Additions in year	-	-
At 31 March 2021	<u>1,246</u>	<u>1,246</u>
Depreciation		
At 1 April 2020	1,246	1,246
Charge for the year	-	-
At 31 March 2021	<u>1,246</u>	<u>1,246</u>
Net Book Value		
At 31 March 2020 and 2021	<u>-</u>	<u>-</u>
5) FIXED ASSET INVESTMENTS	2021	2020
	£	£
Listed investments		
Market value at 1 April 2020	633,634	857,952
Withdrawals	(60,000)	(90,000)
Unrealised gains/(losses)	134,459	(134,318)
Market value at 31 March 2021	<u>708,093</u>	<u>633,634</u>
Cost at 31 March 2021	<u>573,095</u>	<u>633,095</u>
6) DEBTORS	2021	2020
	£	£
Prepayments	-	3,902
Accrued income	178	1,015
	<u>178</u>	<u>4,917</u>

NOTES TO THE FINANCIAL STATEMENTS (Continued)
FOR THE YEAR ENDED 31 MARCH 2021

7) SHORT TERM INVESTMENT	2021	2020
	£	£
At 1 April 2020	60	60
At 31 March 2021	<u>60</u>	<u>60</u>

These investments are held with CCLA.

8) LIABILITIES	2021	2020
Creditors: Amounts falling due within one year	£	£
Taxation and social security	-	390
Accruals	1,800	1,740
Other creditors	2,253	4,344
	<u>4,053</u>	<u>6,474</u>

9) COMPANY LIMITED BY GUARANTEE

The company is limited by guarantee and has no share capital. At the year-end there were 12 members (2020: 12). In the event of the company winding-up, the liability of the members is limited to £1 each and the balance of the fund would be transferred to an association with objects similar to this company.

10) STAFF COSTS AND NUMBERS	2021	2020
	£	£
Staff costs analysed:		
Salaries	58,777	49,536
Social security costs	268	322
Pension contributions	1,130	350
	<u>60,175</u>	<u>50,208</u>

No employees had emoluments in excess of £60,000 (2020: £NIL)

The key management personnel of the Charity comprise the Trustees and the charity Director. The employee benefits of the key management personnel of the Charity were £41,106 (2020: £32,340).

Average number of employees during the year was as follows:

	2021	2020
Administration:	4	3

NOTES TO THE FINANCIAL STATEMENTS (Continued)
FOR THE YEAR ENDED 31 MARCH 2021

11) TRUSTEES' REMUNERATION

Trustees neither receive nor waived any emoluments in the year (2020: nil).

Travel and accommodation expenses totalling £333 (2020: £2,450) were reimbursed to 4 Trustees (2020: 4) during the year.

12) RECONCILIATION OF FUNDS

	2021	2020
	£	£
At 1 April 2020	664,987	867,165
Net movement in funds in year	69,723	(202,178)
At 31 March 2021	<u>734,710</u>	<u>664,987</u>
Represented by:	708,093	633,634
Fixed assets		
Current assets	30,670	43,933
Current liabilities	(4,053)	(12,480)
	<u>734,845</u>	<u>664,987</u>