

# COMMUNITY DEVELOPMENT CHESTERFIELD

England & Wales · Charity number 1206790

## Details

---

Other names	Dronfield Woodhouse Community Support Hub, CDC GROUP, THE ROTHER ACTIVE YOUTH CLUB (THE RAY CLUB), TUPTON FOODBANK, Walton Knitters
Status	Registered
Legal form	CIO
Registered	2024-01-30
Register	<a href="#">View on the Charity Commission register</a>

## Contact

---

Address	CDC Cosy Hub Burns Close Chesterfield
Phone	07849113356
Email	<a href="mailto:info@cdchesterfield.com">info@cdchesterfield.com</a>
Website	<a href="http://www.cdchesterfield.com">www.cdchesterfield.com</a>

## Activities

---

**Objects:** THE OBJECTS OF THE CHARITY ARE:1. TO FURTHER OR BENEFIT THE RESIDENTS OF CHESTERFIELD AND THE SURROUNDING AREAS WITHOUT DISTINCTION OF SEX, SEXUAL ORIENTATION, RACE OR OF POLITICAL, RELIGIOUS OR OTHER OPINIONS BY ASSOCIATING TOGETHER THE SAID RESIDENTS AND THE LOCAL AUTHORITIES, VOLUNTARY AND OTHER ORGANISATIONS IN A COMMON EFFORT TO ADVANCE EDUCATION AND TO PROVIDE FACILITIES IN THE INTERESTS OF SOCIAL WELFARE FOR RECREATION AND LEISURE TIME OCCUPATION WITH THE OBJECTIVE OF IMPROVING THE CONDITIONS OF LIFE FOR THE RESIDENTS.IN FURTHERANCE OF THESE OBJECTS BUT NOT OTHERWISE, THE TRUSTEES SHALL HAVE POWER:TO ESTABLISH OR SECURE THE ESTABLISHMENT OF A COMMUNITY CENTRE AND TO MAINTAIN OR MANAGE OR CO- OPERATE WITH ANY STATUTORY AUTHORITY IN THE MAINTENANCE AND MANAGEMENT OF SUCH A CENTRE FOR ACTIVITIES PROMOTED BY THE CHARITY IN FURTHERANCE OF THE ABOVE OBJECTS.

**Activities:** We work with a fabulous group of positive volunteers who help us provide the younger Community of Chesterfield with the vital experiences they deserve. Children have so much to offer to the

world - we believe in the power that they hold, and know that they will mold future generations to come. At CDC, we are here to give them the support they need in order to shape them into leaders of the future

## Classification

---

- **How:** Provides Buildings/facilities/open Space, Provides Advocacy/advice/information, Acts As An Umbrella Or Resource Body
- **What:** General Charitable Purposes, Recreation
- **Who:** Children/young People, Elderly/old People, People With Disabilities, Other Charities Or Voluntary Bodies, The General Public/mankind

## Geography

---

- Derbyshire

## Finances

---

Period end	Income	Expenditure	Assets	Employees
2025-12-31	£175,684	£190,175	-	-
2024-12-31	£73,588	£56,803	-	-

## Trustees

---

Name	Role	Appointed
Danny Mark Pawelski Henman	Chair	2024-01-30
Grace Eleanor Wright		2024-01-30
Jennifer Mary Flood		2024-01-30
Leann Parsons		2024-10-22
Sylvia Emily Tidmarsh		2024-01-30

**COMMUNITY DEVELOPMENT CHESTERFIELD**

England & Wales - Charity number 1206790

---

# Accounts

---



# **Community Development Chesterfield (CDC)- 1206790**

**Annual Report and Financial Statement for the  
Year Ending 31 December 2025**



# Welcome

**Registered Charity No. 1206790**

**Trustees:**

- **Dan Henman**
- **Grace Wright**
- **Jenny Flood**
- **Sylvia Tidmarsh**
- **Leann Parsons**

**Chief Executive: Danny Henman**

**Director: Grace Wright**

**Charity Manager: Charlotte Underwood**

**Registered address: CDC Cosy Hub, Burns Close, Chesterfield S40 2SW**



**Danny Henman**

Chief Executive Officer

## CEO & Chair of Trustees Welcome

2025 has been a transformational year for Community Development Chesterfield (CDC). What began as a vision to create a safe, inclusive space for young people has developed into a fully established, multi-service charity supporting individuals and families across Chesterfield and surrounding areas. This year has been defined not only by growth in numbers, but by the depth of our impact, the strengthening of our services and a clear move towards long-term sustainability.

Throughout the year, we have responded to increasing levels of need within our communities. The ongoing cost-of-living crisis has continued to place significant pressure on families, with rising food costs, financial instability and increasing levels of social isolation. In response, CDC has expanded its services to ensure that support is accessible, consistent and delivered with dignity. Our approach remains rooted in understanding real community need and ensuring that no individual or family is excluded from support.

We have continued to deliver weekly youth provision supporting over 140 young people, resulting in more than 7,000 attendances across the year. Alongside this, we have provided in excess of 10,000 meals through youth sessions and holiday programmes, ensuring that every young person attending our services has access to nutritious food in a safe and welcoming environment.

A standout achievement this year has been the scale and quality of our Holiday Activity and Food programme. This level of delivery would not have been possible without the exceptional leadership of Grace Wright and Charlotte Underwood, who have planned, coordinated and delivered the programme to an incredibly high standard. Their dedication has ensured that every session has been safe, engaging and impactful and their work has played a significant role in strengthening the reputation and reach of CDC throughout 2025.

Our CDC Cosy Hub continues to be a vital community asset, in constant use throughout the week and providing a safe and welcoming space for a wide range of activities and groups. We are also proud to have completed the installation of solar panels at the hub, funded by Chesterfield Borough Council, supporting both environmental sustainability and long-term cost reduction.

As we look ahead, we are excited about the opportunities that lie ahead, particularly the development of our new community hub at Bonsall Court. While we are still awaiting access, this represents a major step forward in expanding our reach and delivering additional services to communities in need.

I would like to personally thank our staff, volunteers, trustees, partners and funders. Your commitment, passion and belief in what we do continues to drive CDC forward every day.

Together, we are building something that is making a real and lasting difference.

**Danny Henman**  
**Chair of Trustees, CEO & Founder**



# Trustees' Annual Report for the Year Ending 31 December 2025

## GOVERNANCE

Community Development Chesterfield (CDC) is a Charitable Incorporated Organisation registered as Charity No. 1206790, governed by a deed dated 30th January 2024.

As the organisation has grown, governance arrangements have developed accordingly. Greater structure has been introduced across financial management, safeguarding and reporting processes, ensuring that CDC operates in a transparent, accountable and sustainable manner. This has enabled the organisation to scale its services while maintaining high standards and strong organisational control.





## **BACKGROUND**

Community Development Chesterfield was established in 2024 following the transition from The Rother Active Youth Club, a community group founded in 2014. The organisation was created to expand on the foundations of youth provision and develop a broader, more impactful charity that could respond to a wider range of community needs.

Throughout 2025, CDC has continued to evolve into a well-established and trusted organisation, delivering services across Chesterfield, Poolsbrook, Duckmanton and surrounding areas. The charity has maintained its core focus on supporting young people and families while significantly expanding its reach and scope.

## **OBJECTIVES AND ACTIVITIES**

The charity's objectives remain focused on improving the quality of life for residents across Chesterfield and surrounding areas. This is achieved through the provision of inclusive services that promote social welfare, education, wellbeing and community cohesion.

CDC continues to take a holistic approach to delivery, recognising that challenges such as food insecurity, social isolation, mental health and youth disengagement are interconnected. Our activities are therefore designed to provide both immediate support and longer-term outcomes, ensuring individuals and families are supported in a meaningful and sustainable way.



## **ACHIEVEMENTS, IMPACT AND PERFORMANCE**

Throughout 2025, Community Development Chesterfield has delivered a wide and increasingly comprehensive range of services, responding directly to the needs of the communities we serve. This year has been characterised by growth in scale, expansion into new areas and a deepening of impact across all services.

Youth provision remains at the heart of our work. Weekly sessions have provided safe, structured environments for over 140 young people, offering not only recreational opportunities but also stability, routine and trusted adult support. These sessions play a vital role in supporting young people who may be experiencing challenges at home, disengagement from education or social isolation. Across the year, these sessions have resulted in over 7,000 attendances, demonstrating both demand and sustained engagement.

Each youth session includes a hot meal, ensuring that no young person attending CDC goes without access to nutritious food. Across all youth provision and holiday programmes, more than 10,000 meals have been provided throughout the year. This integrated approach to youth work and food support reflects the realities faced by many families and ensures that participation is accessible to all.



## **Holiday Activity and Food (HAF) Programme**

The Holiday Activity and Food programme has been one of the most significant and impactful areas of delivery in 2025. Through this programme, CDC has been able to provide large-scale, fully funded holiday provision to children and young people across multiple communities.

In 2025, the programme expanded significantly, with delivery extended into Duckmanton and Poolsbrook. This expansion enabled CDC to reach new communities, many of which experience high levels of deprivation and limited access to structured holiday activities.

Across the year, CDC delivered over 16 fully funded sessions during the Spring programme and a further 16 sessions during the Winter programme. The Summer programme represented the largest delivery period, with a total of 36 fully funded sessions delivered across the holiday period. Each session supported between 30 and 40 young people, resulting in well over 2,000 attendances across all HAF programmes.

Each session provided a combination of physical activity, enrichment, creative learning and a nutritious meal. However, the impact of the programme extends far beyond activity provision. For many families, HAF represents essential childcare, enabling parents and carers to maintain employment and manage household responsibilities. For young people, it provides a safe, engaging environment that supports physical health, emotional wellbeing and social development.



The success of the HAF programme in 2025 has been driven by strong leadership and meticulous planning. Special recognition must be given to Grace Wright and Charlotte Underwood, who have led the programme in its entirety. From programme design and logistics to staff training and delivery oversight, they have ensured that every session meets the high standards expected of CDC. Their commitment has been instrumental in delivering a programme that is both high-quality and impactful at scale.



Photos include us enjoying activities at our main locations, Hunlock Gardens and Winding Wheel Theater.





## Food Support and Community Provision

Food insecurity has remained a key issue throughout 2025, and CDC has responded through a combination of pantry services, emergency food provision and integrated food support within youth and community activities.

Duckbrook Pantry has become a vital resource for the community, supporting hundreds of households through a membership-based model that provides access to affordable food. This approach enables families to access consistent support while maintaining dignity and choice, helping to reduce financial pressure over the longer term.

Tuption Foodbank, ran by Sylvia, continues to provide emergency support for individuals and families in crisis, ensuring that immediate needs are met while also connecting individuals to wider support services. Together, these services form a coordinated approach to addressing food insecurity within the communities we serve. We applaud Sylvia in her achievements with the foodbank, this is its 17<sup>th</sup> year.





<p>Open every Thursday 10am-12pm 1pm-4pm</p> <p>And on the last Thursday of every month we will be opening 10am-1pm 3pm- 6pm</p>	<p>Good quality food at low costs each week.</p> <p>What we offer: -£5 weekly shop -£10 weekly shop</p> <p>Both shops will include frozen, fresh, ambient and fresh fruit and veg.</p>
<p> Poolbrook, Social Welfare, S43 3Lp. (Back entrance)</p> <p>Cost to access our pantry is a one off payment each year of £8 for a 12 month membership</p>	



## Early Years, Community and Wellbeing Services

CDC has continued to develop its early years and community provision throughout 2025. Baby groups and stay-and-play sessions provide safe and welcoming environments for parents, carers and young children, supporting early development while reducing isolation among families.

Regular coffee mornings and community sessions provide accessible opportunities for residents to connect, helping to build relationships and reduce loneliness. These sessions are particularly important for individuals who may otherwise have limited social interaction.

The CDC Cosy Hub remains central to this provision, acting as a highly utilised community space that is in use throughout the week. It supports both CDC-led services and external community groups, reinforcing its role as a key community asset.

Mental health support has also remained a priority, with counselling services providing accessible and affordable support for individuals experiencing emotional or psychological challenges. This provision supports early intervention and contributes to improved wellbeing across the community.





## **Infrastructure and Future Growth**

2025 has seen significant investment in infrastructure and sustainability. The installation of solar panels at the CDC Cosy Hub, funded by Chesterfield Borough Council, represents a major step forward in reducing operational costs and improving environmental sustainability.

Preparations have also continued for the development of the CDC Community Hub at Bonsall Court. While access to the building is still pending, planning and preparation work has been undertaken to ensure that the space can be effectively utilised once operational. This new hub will provide significant opportunities to expand services and reach new communities.

## **Partnerships and Collaboration**

Partnership working has been central to CDC's success throughout 2025. The organisation has worked closely with Chesterfield Borough Council, Derbyshire County Council and a range of community partners to identify need and deliver targeted support.

Funding partnerships have played a critical role in enabling delivery, with support received from organisations including The National Lottery, Morrisons Foundation, Foyle Foundation, KFC Foundation, DWF Foundation, the Police and Crime Commissioner, the Duke of Devonshire and the Albert Hunt Trust. These partnerships have enabled CDC to expand services, invest in infrastructure and reach more individuals and families.



Funders, Donors, Supporters and Friends



Funded by  
Foundation  
Derbyshire





## Case Studies

The impact of CDC's work is best understood through the experiences of those we support. One young person attending weekly youth sessions began the year withdrawn and lacking confidence. Through regular attendance, they gradually built relationships, engaged in activities and developed a sense of belonging. By the end of the year, they were actively participating and supporting others, demonstrating increased confidence and social skills.

A family accessing Duckbrook Pantry during a period of financial difficulty reported that the service had significantly reduced their weekly stress. The ability to access affordable food consistently allowed them to stabilise their finances while maintaining dignity and independence.

During the Summer HAF programme, a parent shared that without the provision, they would have struggled to maintain employment due to childcare challenges. Their child attended multiple sessions, gaining new experiences, building friendships and accessing regular meals. For this family, the programme provided both practical and emotional support.



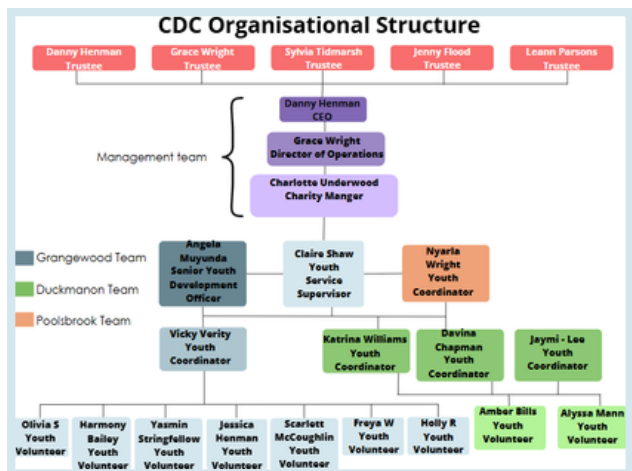


## Staff and Volunteer Recognition

Community Development Chesterfield's success throughout 2025 is a direct result of the dedication and commitment of its staff and volunteers. As the organisation has grown, the development of a structured staff team has enabled greater consistency, improved safeguarding and higher quality delivery across all services.

Special recognition is given to our Youth Team, whose leadership, particularly within the Holiday Activity and Food programme, has been instrumental. Their ability to coordinate and deliver complex programmes at scale has ensured that CDC continues to meet the highest standards of delivery.

The wider staff team and volunteers continue to play a vital role in ensuring that services are delivered with professionalism, care and consistency. Their contribution is fundamental to the impact achieved by the organisation.





## Financial Review

In the year to 31st December 2025, Community Development Chesterfield received £175,684 in income, with the majority derived from grant funding and local authority support. Total expenditure was £190,975, reflecting investment into service delivery, infrastructure and organisational growth.

The organisation recorded a planned deficit as a result of this investment, with a closing bank balance of £15,427 at the end of the year. These figures reflect a strategic approach to growth, ensuring that CDC is well-positioned to continue delivering impactful services in the future.

Signed:

A handwritten signature in black ink, appearing to read 'D. Duff'.

Role: Chair of Trustees & CEO

Date: 13<sup>th</sup> April 2026



2025 Financial statement CDC Annual report  
COMMUNITY DEVELOPMENT CHESTERFIELD

FINANCIAL STATEMENT - YEAR ENDED 31 DECEMBER 2025

RECEIPTS & PAYMENT ACCOUNT		Unrestricted Funds £	Restricted Funds £	TOTAL 2025 £	TOTAL 2024 £
<b>RECEIPTS</b>	Notes				
Donations	1	4394	4631	9025	8417
Grants from local authority	2	44335	1000	45335	27900
Grants from funders	3	120095		120095	33415
Other income	4	1229		1229	3856
<b>TOTAL</b>		<b>170053</b>	<b>5631</b>	<b>175684</b>	<b>73588</b>
<b>PAYMENTS</b>	Notes				
Activity	5	10987		10987	5957
Business expenses	6	9559		9559	5611
Baby activity		334		334	733
Electricity		2519		2519	948
Equipment	7	51649		51649	9296
IT, Equipment, Software	8	14761		14761	
Grant	9	1000		1000	
Recurring payments	10	5330		5330	
Holiday Activity & Food	11	41724		41724	22509
Charity Shop		1164		1164	
Storage		1117		1117	
Food	12	7790		7790	3336
Vehicle		7657		7657	2805
Outdoor project		1622		1622	688
Building insurance		2014		2014	860
Maintenance		8544		8544	1496
Safeguarding		1734		1734	344
Training		2425		2425	254
Wages		14593		14593	830
Water rates		283		283	627
Young Minds		856		856	
Adjustments / Refunds		-588		-588	
Tupton Food Bank	13		2431	2431	
Walton Knitters	14		1470	1470	
<b>TOTAL</b>		<b>187074</b>	<b>3901</b>	<b>190975</b>	<b>56294</b>



2025 Financial statement CDC Annual report  
COMMUNITY DEVELOPMENT CHESTERFIELD

FINANCIAL STATEMENT - YEAR ENDED 31 DECEMBER 2025  
Continued...

	Unrestricted Funds £	Restricted Funds £	TOTAL <u>2025 £</u>	TOTAL <u>2024 £</u>
Receipt /payments Surplus/deficit	<17021>	1730	<15286>	17294
Bank balance 1 <sup>st</sup> January 2025	24910	5732	30637	7616
<b>Bank balance 31<sup>st</sup> Dec. 2025</b>	<b>7889</b>	<b>7462</b>	<b>15351</b>	<b>24910</b>
Deposit account interest 31 Dec 2025	76		76	
<b>Total funds in bank accounts on 31 Dec 2025</b>	<b>7965</b>	<b>7462</b>	<b>15427</b>	<b>24910</b>



## STATEMENT OF ASSETS AND LIABILITIES

### Assets

Total cash funds in bank accounts = £15,427

### Liabilities

None reported

## REPORT

In the year to 31<sup>st</sup> December 2025, Community Development Chesterfield (CDC) received a total of £175,684, the largest categories being grant funding of £45,335 from local authorities and £120,035 from other funders – See notes 1 and 2.

Payments totalled £190,175, the highest spending categories being Equipment at £51,649 and Holiday, Activity and Food at £41,724 – See notes 5 to 14.

CDC began 2025 with £24,910 in the bank. In late January two new projects – Walton Knitters and Tupton Food bank – were incorporated into CDC. Their opening cash held in the bank is recorded as £5,422 for Tupton Food Bank and £310 for Walton Knitters. All figures allocated to Tupton Food Bank and Walton Knitters are recorded as restricted funds, for their use only.

At 31<sup>st</sup> December 2025 CDC recorded a deficit of receipts over payments of <£17,294>. Restricted funds recorded a £1,730 surplus. CDC recorded a bank credit balance of £7,889 plus an additional £76 interest earned in a deposit account. Restricted funds reported a credit balance of £874 for Walton Knitters and £6,788 for Tupton Food Bank – A total of £7,462. The total cash held in bank accounts at 31<sup>st</sup> December 2025 was £15,427.

## NOTES

1. Donations - The unrestricted funds total of £4394 included the following donations - Adyen £463, Chesterfield Rotary £500, Bigger Fish £350. The following restricted donations were allocated to Tupton Food Bank £3797 and Walton Knitters £834.
2. Grants from local authority - The unrestricted grants total included the following - from Chesterfield Borough Council (CBC) £23,635 and £20,700 from Derby RCC. A restricted grant of £1000 from CBC was allocated to Walton Knitters.
3. Other funders of unrestricted funds included Morrisons £10000, Foyle Foundation £5000, KFC Foundation £3000, DWF Foundation £3000, Erewash £2500, DVA Hub £3000, Lottery £20000, PCC £5000, Duke of Devonshire £4000, Albert Hunt £5000.
4. Other income includes hire receipts of £772.
5. This covers the costs for activities run by CDC from local bases in Chesterfield, Poolsbrook and Duckmanton. For the cost of activities covered by the HAF programme, see note 11.
6. Business expenses Includes costs for Transport & Travel £973, Marketing £1,933, Annual registrations £350, Cleaning & consumables £330, Waste collection £599, Xero wage administration £1,050.
7. Equipment includes £15,240 Solar panels installation, £1645 for Baby & Toddler group and £5068 for the Pantry project.
8. Includes £8550 Mid Solutions package, £1407 to Mentoring and £2000 to Digilearn.
9. This grant from CBC was forwarded to Walton Knitters when their bank account was opened.
10. Recurring payments cover regular payments to service providers including Wix.com, Sky, Twinkle, Mid Solutions, Cricut, Apple.com, BACP, Book When, Virtual landline.
11. Holiday Activity and Food (HAF). We received grants totalling £41724 from Street Games to cover three Holiday, Activity and Food programmes through 2025. Our spend by category was Staff £7140, Venue hire £1025, Fees £7610, Physical activities £3383, Enrichment activities £9211, Training £269, Match funding £7579. Other costs of £5482 include Printing & Stationery, Coach travel, Staff uniform and BBQ equipment.
12. Our biggest single food supplier was FareShare costing £1900. The balance was spent across a range of supermarkets and wholesalers.
13. Tupton Food Bank spent £2431 from the restricted funds held.
14. Walton Knitters spent £1470 from the restricted funds held.

These accounts were prepared for the Trustees of Community Development Chesterfield on

2<sup>nd</sup> March 2026 by Eric Nicholas, Treasurer.

These accounts were approved by the Trustees of Community Development Chesterfield on 13<sup>th</sup> April 2026

Eric Nicholas, Treasurer



# Contact us



info@cdchesterfield.com



@CDCHESTERFIELD

## CDC Cozy Hub



## Bonsall Court Community Room



**COMMUNITY DEVELOPMENT CHESTERFIELD**

England & Wales - Charity number 1206790

---

# Accounts

---

## Community Development Chesterfield

Annual report and financial statement for year  
ending 31 December 2024

Registered Charity No. 1206790

Chief Executive:  
Danny Henman

Registered address: CDC Cosy Hub, Burns Close, Chesterfield S40 2SW  
. Registered Charity No. **1206790**

Director:  
Grace Wright

## Trustees' Annual Report for the year ending 31 December 2024

### TRUSTEES

Danny Henman  
Grace Wright  
Sylvia Tidmarsh  
Jennifer Flood  
Leann Parsons

### REGISTERED OFFICE

CDC Cosy Hub  
Burns Close  
Chesterfield  
Derbyshire  
S402SW

### GOVERNANCE

Community Development Chesterfield (CDC) is a Charitable Incorporated Organisation registered as Charity No. 1206790. CDC is governed by a deed dated 30th January 2024. The trustees administer the charity and meet both formally and informally for this purpose during the year. It is the trustees who are responsible for appointing new trustees.

### OBJECTIVES AND ACTIVITIES

The mission of Community Development Chesterfield includes:

1. To further or benefit the residents of chesterfield and the surrounding areas without distinction of sex, sexual orientation, race or of political, religious or other opinions by associating together the said residents and the local authorities, voluntary and other organisations in a common effort to advance education and to provide facilities in the interests of social welfare for recreation and leisure time occupation with the objective of improving the conditions of life for the residents.

In furtherance of these objects but not otherwise, the trustees shall have power:

To establish or secure the establishment of a community centre and to maintain or manage or co-operate with any statutory authority in the maintenance and management of such a centre for activities promoted by the charity in furtherance of the above objects.'

## BACKGROUND

Community Development Chesterfield (CDC) was previously known as The Rother Active Youth Club (The RAY Club) which was a community group founded in 2014. Since January 2024 the community group was closed and the Charity No. 1206790 was formed. The trustees and members of Community Development Chesterfield have tried hard to continue implementing our mission statement values of The RAY Club through the core activities. The key activities and achievements during the year are noted below.

## ACHIEVEMENTS AND PERFORMANCE

Community Development Chesterfield (CDC) was incredibly proud to be established in 2024. Our journey began by continuing the wonderful work initiated by Cllr Jenny Flood with The RAY Club. The RAY Club operated as a school holiday program that provided the Holiday Activity and Food initiative for the Rother Ward. In October 2023, Dan and Grace took over The RAY Club from Jenny, and their primary goal was to transform it into a year-round service, as they believed that the younger community deserved a warm, safe, and healthy environment throughout the year.

Dan's first task was to secure a venue, and fortunately, Jenny—a valuable source of knowledge—had the ideal location in mind! This led them to the Umbrellas Cosy Hub. From this spot, Dan and Grace organized RAY nights every Wednesday from 4:30 PM to 6:30 PM, providing a full warm meal to all participants. The initial turnout was slow, but attendance soon began to rise. As participation grew, they sought out volunteers and were pleasantly surprised by the community's support, leading to the recruitment of two volunteers to assist with RAY nights.

As 2024 arrived, CDC was officially born. Dan and Grace aspired to create a charity that would have a broad impact, and their dream came true. RAY nights continued, with a minor adjustment to Tuesday evenings from 4:30 PM to 6:30 PM, which remains in effect today.

In February 2024, Dan and Grace signed the lease for the newly named CDC Cosy Hub, which became the main office and home for Community Development Chesterfield. This location provided the warm, safe, and healthy environment that many young community members now consider their home.

Following the lease signing, progress was swift, and numerous achievements unfolded. The Cosy Cubs, led by community member Johnathan, continued on Thursday mornings from 10 AM to 11 AM. Unfortunately, in the summer of 2024, The Cosy Cubs had to leave us due to the need for a larger venue, and we expressed our gratitude for their use of the building and their remarkable contributions to the community.

Amid all these significant changes, our 2024 Holiday Activity and Food (HAF) program was underway. The spring activities included bird box making, kite crafting, sports, a trip to The Deep, and much more. Summer featured 16 sessions lasting four hours each, ranging from seaside visits to crafts, enrichment, and sports. The winter was exceptionally cold, necessitating some adjustments. Unfortunately, due to the closure of one of our venues, we had to make immediate changes. Thankfully, the HAF program was a tremendous success, culminating in our annual pantomime. Special thanks go to Grace for organizing the 2024 HAF.

We were also thrilled to welcome our first employee, Charlotte Underwood, who is in charge of all administrative management for the organization and is crucial for the charity's success in 2025.

In conclusion, we must highlight that Walton Knitters and Tupton Foodbank have joined the Community Development Chesterfield family. They are now officially recognized under our umbrella as working names on the charity commission. Its important to note that follow a strict protocol for taking community groups under CDC. You can find photos of our initiatives on our website at [www.cdchesterfield.com](http://www.cdchesterfield.com).

We look forward to continuing our journey in 2025 and beyond, with a focus on expanding our reach and impact within the Chesterfield community. Our plans include further developing partnerships with local schools and organizations to offer more diverse programs and services that cater to the needs of children, families, and individuals in the area.

We're excited to introduce new initiatives such as a community stay and play group which fills a massive gap in community services at the moment. Additionally, we aim to launch a series of workshops aimed at skill-building for both young people and adults, covering topics from digital literacy to creative arts.

Our commitment to inclusivity, safety, and support remains at the core of CDC's mission, and we are dedicated to ensuring that every member of our community feels valued and empowered. We invite everyone to join us on this exciting journey, whether as participants, volunteers, or supporters. Together, we can continue to build a brighter, more connected future for Chesterfield. Thank you for being a part of our story, and we look forward to the new chapters ahead.

## **VOLUNTEERS**

Community Development Chesterfield is a volunteer driven organization and the trustees once again wish to recognize the exceptional level of commitment of all those involved. Community Development Chesterfield is only in existence because of our volunteers. We would not be able to offer any of the activities noted in this report without them particularly – Angela Muyunda, Claire Shaw, Vicky Verity, Lisa Mckenzie, Duckmanton youth team, Tupton foodbank team and many others.

The trustees of Community Development Chesterfield thank everyone who has given their time and gifted their finance so generously in 2024.



**FINANCE REVIEW**

**COMMUNITY DEVELOPMENT CHESTERFIELD  
FINANCIAL STATEMENT FOR THE YEAR ENDED 31 DECEMBER  
2024**

RECEIPTS & PAYMENT ACCOUNT	Unrestricted Funds	£	Designate d Funds £	Restricted Funds	£	Endowment Funds	£	TOTAL 2024 £
<b>RECEIPTS</b>								
Donations	8417							8417
Grants from local authority	27900							27900
Grants from funders	33415							33415
1.								
Hire fees	3856							38856
<b>TOTAL</b>	<b>73588</b>		<b>0</b>		<b>0</b>		<b>0</b>	<b>73588</b>
<b>PAYMENTS</b>								
Activity includes Toys & Games		5957						5957
Business expenses		4738						4738
Baby activity (launched 2025)		733						733
Cleaning & Consumables		873						873
Electric		948						948
Holiday Activity & Food		22509						22509
2.								
Equipment		9296						9296
Food		3336						3336
Vehicle		2805						2805
Note 3.								
Garden		688						688
Building Insurance		860						860
Maintenance		1496						1496
Safeguarding		344						344
Training		254						254
Wages		830						830
Note 4.								
Water rates		627						627
<b>TOTAL</b>		<b>56294</b>		<b>0</b>		<b>0</b>		<b>56294</b>
Surplus Receipts over Payments		<u>17294</u>						<u>17287</u>
Bank Current Account balance on 31 <sup>st</sup> December 2023		<u>7616</u>						<u>7616</u>
Bank Current Account balance on 31 <sup>st</sup> December 2024		<b>24910</b>						<b>24910</b>
<b>Statement of assets &amp; liabilities</b>								
Cash funds in bank current account		24910						
24910								
Liabilities			1802					
Note 5.								
1802								

## REPORT

In the year to 31<sup>st</sup> December 2024 Community Development Chesterfield received £73588, the largest category of giving being grant funding. £27900 was received from the local authority (Chesterfield Borough Council) and Derbyshire County Council. £33415 was received from other funders.

Payments totalled £56294, the highest spending categories being Holiday, Activity and Food at £22509 and Equipment at £9296.

We began 2024 with £7616 in the bank. At 31<sup>st</sup> December 2024 we recorded a surplus of receipts over payments of £17294. On 31<sup>st</sup> December 2024 the closing bank balance was £24910.

NOTE 1. We received £33415 in grants. The largest funder was Street Games who distributed the Holiday, Activity and Food (HAF) funding on behalf of Derbyshire County Council. We received £21439 HAF funding in 2024.

NOTE 2. Across the three active HAF periods in 2024 we spent £22509.

NOTE 3. The vehicle category includes the purchase of a vehicle in June, the insurance and fuel used.

NOTE 4. Wage payments began in November when an administration assistant was appointed. They will continue into 2025.

NOTE 5. Chesterfield Borough Council are notoriously slow to charge for the electricity used in our Cosy Hub building. The last bill received covered the period to the end of March 2023. I estimate that £1802 is owed to the council for the electricity used since the last bill to the end of December 2024. This estimate cannot be guaranteed as the calculation can only be made on last known unit rates as we are not updated on price changes.

These accounts were prepared for the Trustees of Community Development Chesterfield on 7<sup>th</sup> January 2025 by Eric Nicholas, Treasurer.



These accounts were approved by the Board of Trustees of Community Development Chesterfield on 8<sup>th</sup> January 2025 and signed on its behalf by Danny Henman, Chair of Trustees and Chief Executive Officer – CDC Group.

