

ERIC KNOWS

England & Wales · Charity number 1206621

Details

Status Registered

Legal form CIO

Registered 2024-01-19

Register [View on the Charity Commission register](#)

Contact

Address The Four Clocks Centre
154a Newgate Street
Bishop Auckland
DL14 7EH

Phone 07830111034

Email ella.bains@ericknows.org

Website <https://ericknows.org>

Activities

Objects: THE OBJECT OF THE CIO IS:FOR THE PUBLIC BENEFIT TO ADVANCE THE EDUCATION OF CHILDREN AND YOUNG ADULTS WITH SPECIAL EDUCATIONAL NEEDS OR DISABILITIES OR WHO ARE NEURODIVERSE, BY MEANS OF BUT NOT EXCLUSIVELY:- THE PROVISION OF EDUCATIONAL SESSIONS IN SCIENCE, TECHNOLOGY, ENGINEERING, MATHS, AND OTHER CURRICULUM SUBJECTS;- ASSISTING THEIR PARENTS AND CARERS BY PROVIDING INFORMATION AND ADVICE TO HELP THEM TO SUPPORT THEIR CHILDREN TO SUCCEED IN EDUCATIONAL SETTINGS.

Activities: Eric Knows provides training and employment support to disabled and autistic people. We work collaboratively with employment support agencies, colleges, universities, and other not for profit organisations. Eric Knows also operates to support SEND children, young people and their families whilst providing a safe space to flourish and thrive. We are primarily run by disabled and ND people.

Classification

- **How:** Provides Services, Provides Advocacy/advice/information
- **What:** Education/training, Disability
- **Who:** Children/young People, People With Disabilities, The General Public/mankind

Geography

- Darlington
- Durham
- Hartlepool
- Middlesbrough
- Redcar And Cleveland
- Stockton-on-tees

Finances

Period end	Income	Expenditure	Assets	Employees
2025-01-31	£65,329	£24,683	-	-

Trustees

Name	Role	Appointed
ANDREW DAWSON		2024-01-19
Amie Alissa Watson		2025-07-18
Rachel Bennet		2024-01-19
Tony Armstrong		2024-11-15

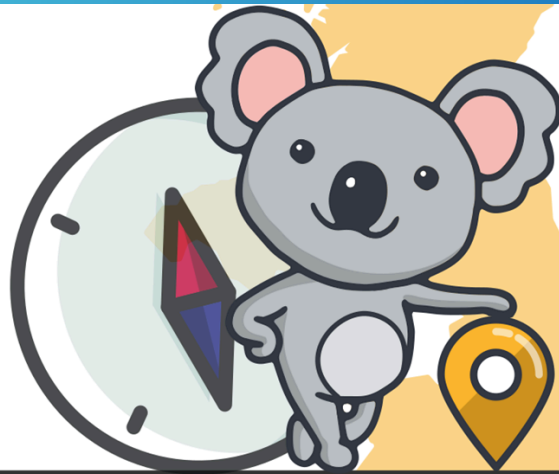
ERIC KNOWS

England & Wales - Charity number 1206621

Accounts

ERICKNOWS

TRUSTEES ANNUAL REPORT 2024



ERICKNOWS
WHERE TO GO

Who is Eric?

Eric is a koala, he has a mission, to make the world a more accessible place. Ever thought that a wheelchair user shouldn't be penalised for not having use in their legs by being surrounded by stairs? Or that the autistic child shouldn't be told they are behind their age-related expectations but being taught in a noisy classroom with 30 kids, LED lighting and busy wall displays? Put simply, Eric is the koala embodiment of the social model of disability.



If societal barriers are removed and replaced for enabling strategies, this world becomes a lot more accessible. People can thrive. Quality of life improves, for everyone. And its not hard to do. But it's not going to happen with no plan for change.

Eric is your go-to koala that encompasses everything inclusive. Come and see his website. <https://ericknows.co.uk>

WHO DOES ERIC HELP?

Our beneficiaries are those who have physical and/or learning disabilities, and those who are neurodivergent. This includes (but is not limited to) those who are autistic, have a traumatic brain injury, have ADHD or dyspraxia. We must stress that we provide supportive services to adults, young people and children, and their families.



Ella Bains

Founder Eric Knows Charity

HOW DO WE HELP PEOPLE?

Eric is an online resource, his website provides accessibility information on venues and places to go. The website is all about being able to find what you need more easily. As an example; if you have 3 neurodivergent children with sensory needs you can find venues who can cater for your needs as a family without judgement and hassle.

The entire website is built by experts by experience. All our staff, are disabled or neurodivergent in some way. They understand our mission and are passionate about creating a more inclusive world.

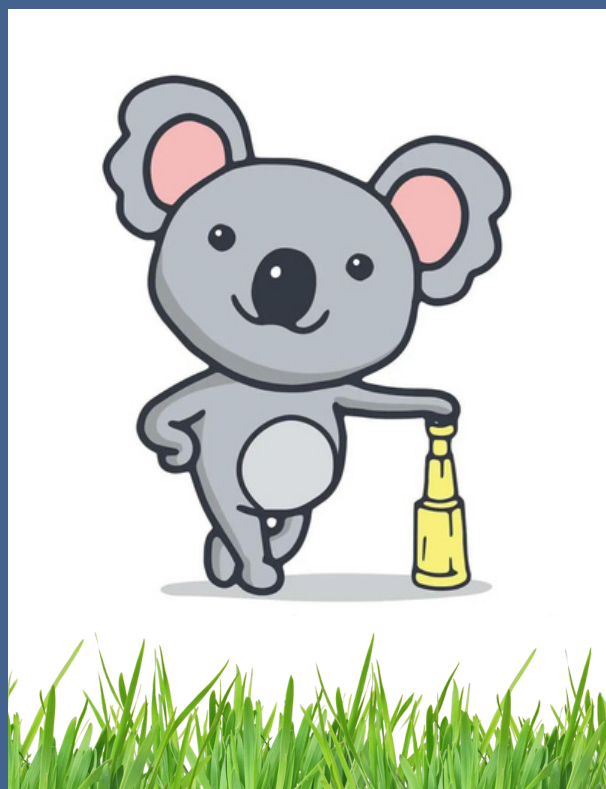
Additionally, every member of our team has had historical and long term difficulties in employment of some nature, either finding or maintaining employment or being in college.

WHO DOES ERIC HELP?

The children and young people we work with all have SEND (special educational needs and disabilities) of some kind. We work with families to create inclusive environments for play and learning, we have also run support groups covering what it really means to be autistic, discussing matters like stimming, sensory needs, executive dysfunction and emotional regulation. We have in the past run STEM sessions specifically set up for SEND children and their families and created an inclusive and social learning environment where the children and young people can thrive.

WHERE IS ERIC BASED?

Our office is based in the Four Clocks Centre in Bishop Auckland. We aim to develop outreach sessions with children and young people in the Bishop and Spennymoor areas. The website covers the North of England, with growing information in other areas such as the midlands and the south.



WHY?

People who are disabled, or neurodivergent have been marginalised by society, making them more likely to be disadvantaged and overlooked in the job market, more at risk of social isolation and consequently poor mental and physical health. Based on years of working in the NHS, Ella developed Eric on the back of seeing how debilitating an environment that is not accommodating to those with disabilities of any kind can be. She realised that there is a significant gap between something that is there to serve the general public to something that is there to serve those with disabilities. The gap means that people are not seen as equal and serves to place further disadvantage in people's way, often with more than enough challenges to face already. Eric was developed to close this gap and our team works to do this in a multifaceted way.

WHO DOES ERIC HELP?

SEND Students who study in school often face barriers that if the environment and teaching styles were adjusted, would experience far less barriers. We aim to provide outreach support and education to SEND students and their families. Traditional healthcare and educational systems often leave people feeling unseen and further disempowered by a lack of understanding and appreciation.

NHS waiting times for assessment for autism and ADHD for instance often exceed 4 years. Educational Healthcare Plans (the only legally binding document which stipulates that educational establishments must accommodate someone's needs) are extremely hard to obtain. People are often turned down the 1st and 2nd time of applying, it can take years to acquire an EHCP. By which time, pupils and students are significantly behind, unseen and more likely to become disengaged from the educational process. The confidence of a child is directly moulded by their sense of where they fit in the world and their sense of achievement. If a child sees they are different and 'below educational expectations' without the support to make their learning environment more accessible, the child will see this as something that only sits in their locus of control, something that they are fault with. Where as nothing could be further from the truth. More needs to be done to support our children and young people with SEND. Figures in County Durham indicate that over 1 in 5 pupils have a SEND of some kind.

WHO DOES ERIC HELP?

In summary we offer the following:

- Online resource providing information on the accessibility of venues and charities
- Training opportunities for disabled and neurodivergent people
- Employment opportunities for disabled and neurodivergent people
- Support groups for disabled and neurodivergent people
- Educational groups for SEND children and young people

We primarily run an online resource, the idea of which is; if you have disabilities or needs of any kind, you can find what you need more easily through the website, equally if something is not suitable for your needs, you know this prior to going so you can plan the best trip possible. People who need community support or access to charities or social prescribing can find what they need more easily through the website.

Our website offers vital training opportunities to those who have either struggled at college, FE or in an employment setting. We provide training that allows people to train for AQA certificates, written by us, bespoke to what we do. Some of our students have never even had a job interview. They have been overlooked and placed at the bottom of the pile every single time opportunities were available.

Our training opportunities allow people to see what it is like to be valued in an inclusive workplace and build an idea of the kind of things they would like to do; either in work or part of further study. We are a gateway organisation that helps springboard people's careers by showing them the benefits of doing meaningful employment and being somewhere where their ideas are valued and embraced.

We are working to restart our community outreach support groups for autistic adults. We are also working to restart our STEM sessions for SEND children, this stopped for a while due to lack of funding.

HISTORY

Eric Knows was originally created in 2018 after Ella became heavily disillusioned with healthcare systems in the UK. Little did she know, her child, (3 years old at the time) would be diagnosed with autism 2 years after the concept of Eric became a reality. She went on to have 2 more neurodivergent children, each with their own challenges including behavioural and educational needs. Throughout covid Ella laid the foundations for an online resource suitable for everyone to use, with a focus on good quality information for those with disabilities or additional needs.

In 2020 Eric was established as a CIC. In 2021, Ella successfully gained a place on the School of Social Entrepreneurs (SSE), and graduated in 2022. During this time we successfully gained funding from the National Lottery, the People's Postcode Lottery and Area Action Partnerships (AAPs). At the start of 2023 we secured further funding from the Shackleton Foundation to deliver STEM sessions to SEND children and young people. Over 3 years our team realised that our work more closely aligned with the objectives and social mission of a charity and we started the application process to found a charity in Summer 2023.



ORGANISATIONS WE WORK WITH

- Learning a New Way CIC; to deliver valuable training to disabled students, allowing them to train for AQA certificates
- Hiyed CIC; who we partner with on a lot of projects, meaning they can provide our in work support to our disabled students
- Durham University; we provide internships for their autism programme, and their social enterprise internship, and we team with them to provide business students the opportunity to review provision and plan for growth with goal led mindset.
- Sunderland University; we have teamed with Sunderland University to carry out research on the perspectives of disabled and ND people when accessing community resources. We are hoping this is a gateway body of work which will highlight the need to look at other aspects in more detail.
- Bedford University; We have teamed with them to provide our disabled staff with remote and accessible learning opportunities for apprenticeships.
- Positive Transformations; an organisation helping us to access further and higher education establishments, to provide our staff with accessible learning opportunities.
- Durham Enable; we work with them to access many young people who have been let down by both FE and employers. We provide training and learning opportunities.
- Durham Works; we work with them to access many young people who have been let down by both FE and employers. We provide training and learning opportunities.
- The Job Centre; we work with them to access many people (of any age) who have been let down by both FE and employers. We provide training and learning opportunities.
- Media Savvy CIC; they assist us with our social media training and marketing.

OUR ACHIEVEMENTS OVER 2024!

Events over the last year.

- We worked tirelessly with our MP to reclaim funds back from the DWP that had gotten lost in the refund system. This delay in funds posed a significant challenge for us transitioning from a CIC to a CIO.
- We continued to run STEM club for autistic children (no diagnosis necessary) throughout the first half of 2024.
- Space Day 11th May 2024 whereby over 250 SEND children and their families got to attend a day dedicated to all things science and space. 10 lucky youngsters got to speak with an astronaut live on board the international space station!! We had media coverage for this and met with a local MP.
- We began forming a solid data base of funds we can apply for as a CIO, and working with our partners to form a funding pipeline.
- Applied for and secured the Bishop and Shildon (BASH) Area Action Partnership (AAP) funding.
- Ongoing search and many many applications to different funders, this was a primary focus throughout the last 6 months of 2024 to ensure our financial security and provide us with a stable plan for the future.
- Had several meetings with our web designer, Richard Havelock about strategy and making the website more streamlined and accessible. This work remains ongoing.
- He highlighted areas that require improvement, and advised of the strategic steps to be taken in preparation to develop the website.
- 2-3 years ago we began some research looking at the perspectives of disabled and neurodivergent people when accessing community resources. At the start of 2025, we reached out to Sunderland University to see how these results (over 400 people answered!) could be used.
- We teamed with Learning a New Way to write our own AQA certificates that reflect what we do to integrate into our accessible work placements.
- We teamed with Learning a New Way and HIYED to create and prepare our accessible work placements.



ERIC KNOWS STORIES

MEET ALEX



Alex came to us at the start of 2023, she has been with us through our transition into a charity. When I first met Alex, she had not had an interview before, and had no previous employment. She came to us for an interview and when asked what she wanted in life she said 'I just want to be useful'. Alex underwent training and became a digital creation officer in a part time position with us. She is now on a level 6 digital marketing apprenticeship with us and Bedford University! Alex describes her experience with us as 'the best un-birthday ever!' (she loves Alice in Wonderland).

MEET JOSHUA



Meet Joshua,

I first got told about this job back in January when I got back to college on the 16th of January, when Tracy had come into the college to talk to my teacher Laura, about how many days I would be working.

There are many great listings I have done through my 11 months, they are all based on my favourite places I have visit in the north east of England like museums, zoos, theme parks, aquariums and others places that I may have not done yet on the website.

I would like to say it has been a blast working on listings and going out as a group, to places to take down notes for the website, like the Shildon railway museum about its accessibility, for people with walking difficulties or travel aids.

STATS OF OUR INVOLVEMENT WITH OUR BENEFICIARIES

8 autistic adults through our autism support group

7 disabled employees/interns/apprentices

8 children through STEM group

197 children through Space day!!!
Plus their families and loved ones



6203 Website visitors



Ericknows.co.uk

ERIC KNOWS BELIEVES THAT....

....everyone no matter what their disability or personal needs or circumstances can make a difference by being experts by lived experience. It is not someone's diagnosis, condition or injury that disables them, it is an environment that does this. When we address the environment to accommodate needs, people thrive. We have demonstrated that by coming together and working with people who share the same ideas and passion as we do that any obstacle can be accomplished, that people can develop new skills, retain employment where others would reject them, we embrace and empower people by not only believing in them but by ensuring they believe in themselves. We have proved that we at Eric Knows can make dreams a reality.

SPECIAL THANKS TO OUR SUPPORTERS

Our financial supporters

We would like to thank each and every one of our supporters who have provided us grants. This allows us to continue and grow the work we do, and reach more people:

1. The National Lottery
2. Bishop and Shildon area action partnership
3. Heart of England Community Foundation
4. Iron Mongers
5. Sir James Knott
6. Hiyed CIC

<p>Type of governing document (trust deed, royal charter)</p>	<p>Constitution of a charitable incorporated organisation whose only voting members are its charity trustees. We have a constitution.</p>
<p>How is the charity constituted? (e.g. unincorporated association, CIO)</p>	<p>We are a charitable incorporated organisation. Charity number 1206621.</p>
<p>Trustee selection methods including details of any constitutional provisions e.g. election to post or name of any person or body entitled to appoint one or more trustees</p>	<p>We went from 3 to 4 trustees in the 2024, to bring additional skillsets and experience. We are aiming to recruit another trustee in 2025. In 2025 we will also be undergoing a skills audit and recruiting more trustees to fill any skills gaps.</p>


Financial Review

<p>Review of the charity's financial position at the end of the period</p>	<p>Para 1.21</p>	<p>£41,540 was carried into 2025, from our incomings during 2024, most of our incomings were acquired at the end of 2024 and are restricted funds assigned to specific projects, e.g. our accessible work placements. The £41,540 is for us to develop our training pathway for disabled people, employing more beneficiaries and allowing us to complete our 'proof of concept' year of accessible work placements.</p>
<p>Statement explaining the policy for holding reserves stating why they are held</p>	<p>Para 1.22</p>	<p>We are working towards increasing our reserves, our aim throughout 2025 is to increase these to between 4 and 6 months of operational costs.</p>
<p>Explanation of any uncertainties about the charity continuing as a going concern</p>	<p>Para 1.23</p>	<p>No concerns or uncertainties about the charity continuing.</p>

There are no funds held as custodian trustees on behalf of others.

Trustee name	Dates acted if not for whole year
Andrew Dawson	From Jan 2024
Drew White	From June 2024
Tony Armstrong	From November 2024
Rachel Bennet	From Jan 2024

Declarations

The trustees declare that they have approved the trustees' report above. Signed on behalf of the charity's trustees	
Signature(s)	
Full name(s)	Andrew Dawson
Position (eg Secretary, Chair, etc)	Trustee
Date	7 May 2025

Eric Knows

Charity No. 1206621

Trustees' Report and Unaudited Accounts

31 January 2025

	Pages
Trustees' Annual Report	2
Independent Examiner's Report	3
Statement of Financial Activities	4
Balance Sheet	5
Notes to the Accounts	6 to 13
Detailed Statement of Financial Activities	14 to 15

The trustees present their report with the unaudited financial statements of the charity for the period ended 31 January 2025.

REFERENCE AND ADMINISTRATIVE DETAILS

Charity No. 1206621

Trustees

The following trustees served during the year:

T. Armstrong

R. Bennet

A. Dawson

D. White

Accountants

Accounting for Good CIC

2 Geordie Ridley Place

Upper Precinct Wesley Court

Blaydon on Tyne

Tyne and Wear

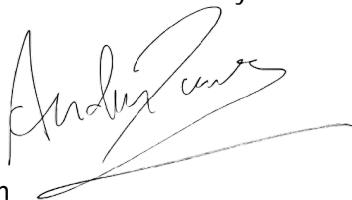
NE21 5BT

Statement of trustees' responsibilities in relation to the financial statements

The charity trustees are responsible for preparing a trustees' annual report and financial statements in accordance with applicable law and United Kingdom Accounting Standards (United Kingdom Generally Accepted Accounting Practice).

The trustees are responsible for keeping proper accounting records that disclose with reasonable accuracy at any time the financial position of the charity and to enable them to ensure that the financial statements comply with the Charities Act 2011, the applicable Charities (Accounts and Reports) Regulations, and the provisions of the Trust deed. The Trustees are also responsible for safeguarding the assets of the charity and hence taking reasonable steps for the prevention and detection of fraud and other irregularities.

Signed on behalf of the charity's trustees



A. Dawson

Trustee

7 May 2025

Eric Knows
Independent Examiners Report
Independent Examiner's Report to the trustees of Eric Knows

I report to the trustees on my examination of the financial statements of Eric Knows for the period ended 31 January 2025.

Responsibilities and basis of report

As the charity's trustees you are responsible for the preparation of the financial statements in accordance with the requirements of the Charities Act 2011 ('the Act').

I report in respect of my examination of the charity's financial statements carried out under section 145 of the 2011 Act and in carrying out my examination I have followed all the applicable Directions given by the Charity Commission under section 145(5)(b) of the Act.

Independent examiner's statement

I have completed my examination. I can confirm that no material matters have come to my attention in connection with the examination giving me cause to believe that in any material respect:

- the accounting records were not kept in respect of the charity as required by section 130 of the Act; or
- the financial statements do not accord with those records; or
- the financial statements do not comply with the applicable requirements concerning the form and content of financial statements set out in the Charities (Accounts and Reports) Regulations 2008 other than any requirement that the financial statements give a 'true and fair' view which is not a matter considered as part of an independent examination.

I have no concerns and have come across no other matters in connection with the examination to which attention should be drawn in this report in order to enable a proper understanding of the financial statements to be reached.



Kay Wightman FFA FTA
Accounting for Good CIC
2 Geordie Ridley Place
Upper Precinct Wesley Court
Blaydon on Tyne
Tyne and Wear
NE21 5BT
7 May 2025

Eric Knows
Statement of Financial Activities
for the period ended 31 January 2025

	Notes	Unrestricted funds 2025 £	Restricted funds 2025 £	Total funds 2025 £
Income and endowments from:				
Donations and legacies	2	704	-	704
Charitable activities	3	-	64,229	64,229
Other	4	396	-	396
Total		1,100	64,229	65,329
Expenditure on:				
Raising funds	5	-	463	463
Charitable activities	6	-	16,063	16,063
Other	7	1,994	6,163	8,157
Total		1,994	22,689	24,683
Net gains on investments		-	-	-
Net income	8	(894)	41,540	40,646
Transfers between funds		-	-	-
Net income before other gains/(losses)		(894)	41,540	40,646
Other gains and losses				
Net movement in funds		(894)	41,540	40,646
Reconciliation of funds:				
Total funds carried forward		(894)	41,540	40,646

Eric Knows
Balance Sheet
at 31 January 2025

Charity No. 1206621

2025

£

Fixed assets

Tangible assets	10	<u>565</u>
		565

Current assets

Cash at bank and in hand		<u>41,615</u>
		41,615

Creditors: Amount falling due within one year	11	<u>(1,534)</u>
---	----	----------------

Net current assets		40,081
--------------------	--	--------

Total assets less current liabilities		<u>40,646</u>
---------------------------------------	--	---------------

Net assets excluding pension asset or liability		<u>40,646</u>
---	--	---------------

Total net assets		<u><u>40,646</u></u>
------------------	--	----------------------

The funds of the charity

Restricted funds	12	
Restricted income funds		<u>41,540</u>
		41,540

Unrestricted funds	12	
General funds		<u>(894)</u>
		(894)

Reserves	12	
----------	----	--

Total funds		<u><u>40,646</u></u>
-------------	--	----------------------

Approved by the trustees on 7 May 2025

And signed on their behalf by:



A. Dawson

Trustee

7 May 2025

for the period ended 31 January 2025

1 Accounting policies

Basis of preparation

The financial statements have been prepared in accordance with Statement of Recommended Practice: Accounting and Reporting by Charities preparing their accounts in accordance with the Financial Reporting Standard applicable in the UK and Republic of Ireland (FRS 102) issued on 16 July 2014 and the Financial Reporting Standard applicable in the United Kingdom and Republic of Ireland (FRS 102) and the Charities Act 2011.

Change in basis of accounting or to previous accounts

There has been no change to the accounting policies (valuation rules and method of accounting) since last year and no changes have been made to accounts for previous years.

Fund accounting

Unrestricted funds These are available for use at the discretion of the trustees in furtherance of the general objects of the charity.

Designated funds These are unrestricted funds earmarked by the trustees for particular purposes.

Revaluation funds These are unrestricted funds which include a revaluation reserve representing the restatement of investment assets at their market values.

Restricted funds These are available for use subject to restrictions imposed by the donor or through terms of an appeal.

Income

Recognition of income Income is included in the Statement of Financial Activities (SoFA) when the charity becomes entitled to, and virtually certain to receive, the income and the amount of the income can be measured with sufficient reliability.

Income with related expenditure Where income has related expenditure the income and related expenditure is reported gross in the SoFA.

Donations and legacies Voluntary income received by way of grants, donations and gifts is included in the the SoFA when receivable and only when the Charity has unconditional entitlement to the income.

Tax reclaims on donations and gifts Income from tax reclaims is included in the SoFA at the same time as the gift/donation to which it relates.

Donated services and facilities These are only included in income (with an equivalent amount in expenditure) where the benefit to the Charity is reasonably quantifiable, measurable and material.

Volunteer help The value of any volunteer help received is not included in the accounts.

Investment income This is included in the accounts when receivable.

Gains/(losses) on revaluation of fixed assets This includes any gain or loss resulting from revaluing investments to market value at the end of the year.

Gains/(losses) on investment assets This includes any gain or loss on the sale of investments.

Notes to the Accounts

Expenditure

Recognition of expenditure Expenditure is recognised on an accruals basis. Expenditure includes any VAT which cannot be fully recovered, and is reported as part of the expenditure to which it relates.

Expenditure on raising funds These comprise the costs associated with attracting voluntary income, fundraising trading costs and investment management costs.

Expenditure on charitable activities These comprise the costs incurred by the Charity in the delivery of its activities and services in the furtherance of its objects, including the making of grants and governance costs.

Grants payable All grant expenditure is accounted for on an actual paid basis plus an accrual for grants that have been approved by the trustees at the end of the year but not yet paid.

Governance costs These include those costs associated with meeting the constitutional and statutory requirements of the Charity, including any audit/independent examination fees, costs linked to the strategic management of the Charity, together with a share of other administration costs.

Other expenditure These are support costs not allocated to a particular activity.

Taxation

The charity is exempt from tax on its charitable activities.

Tangible fixed assets and depreciation

Depreciation is provided at the following annual rates in order to write off each asset over its estimated useful life:

Plant & Machinery 25% Straight Line

Freehold investment property

Investment properties are measured initially at cost and subsequently at fair value at each balance sheet date and are not depreciated. All gains or losses are taken to the Statement of Financial Activities as they arise.

Stocks

Stock is included at the lower of cost or net realisable value. Donated items of stock are recognised at fair value which is the amount the charity would have been willing to pay for the items on the open market.

Trade and other debtors

Trade and other debtors are recognised at the settlement amount due after any trade discount offered. Prepayments are valued at the amount prepaid net of any trade discounts due.

Cash and cash equivalents

Cash and cash equivalents comprise cash at bank and on hand, demand deposits with banks and other short-term highly liquid investments with original maturities of three months or less and bank overdrafts. In the statement of financial position, bank overdrafts are shown within borrowings or current liabilities. In the Statement of Cash Flows, cash and cash equivalents are shown net of bank overdrafts that are repayable on demand and form an integral part of the company's cash management.

Trade and other creditors

Short term creditors are measured at the transaction price. Other creditors and provisions are recognised where the charity has a present obligation resulting from a past event that will probably result in the transfer of funds to a third party and the amount due to settle the obligation can be measured or estimated reliably. Creditors and provisions are normally recognised at their settlement amount after allowing for any trade discounts due.

Research and development

Expenditure on research and development is written off in the year in which it is incurred.

Foreign currencies

Monetary assets and liabilities denominated in currencies other than the functional currency of the charity are translated at the rates of exchange prevailing at the end of the reporting period.

Transactions in currencies other than the functional currency of the charity are recorded at the rate of exchange on the date that the transaction occurred.

All exchange differences are taken into account in arriving at net income/expenditure.

Leased assets

Where the charity enters into a lease which entails taking substantially all the risks and rewards of ownership of an asset, the lease is treated as a finance lease.

Leases which do not transfer substantially all the risks and rewards of ownership to charity are classified as operating leases.

Assets held under finance leases are initially recognised as assets of the charity at their fair value at the inception of the lease or, if lower, at the present value of the minimum lease payments. The corresponding liability to the lessor is included in the balance sheet date as a finance lease obligation.

Lease payments are apportioned between finance expenses and reduction of the lease obligation so as to achieve a constant rate of interest on the remaining balance of the liability. Finance expenses are recognised immediately, unless they are directly attributable to qualifying assets, in which case they are capitalised in accordance with the charity's policy on borrowing costs.

Assets held under finance leases are depreciated in the same way as owned assets.

Operating lease payments are recognised as an expense on a straight-line basis over the lease term.

In the event that lease incentives are received to enter into operating leases, such incentives are recognised as a liability. The aggregate benefit of incentives is recognised as a reduction of rental expense on a straight-line basis.

Pension costs

The charity operates a defined contribution plan for its employees. A defined contribution plan is a pension plan under which the charity pays fixed contributions into a separate entity. Once the contributions have been paid the charity has no further payments obligations. The contributions are recognised as expenses when they fall due. Amounts not paid are shown in accruals in the balance sheet. The assets of the plan are held separately from the charity in independently administered funds.

Receipt of donated goods, facilities and services

All donated goods, facilities and services received are recognised within incoming resources and expenditure at an estimate of the value to the charity.

2 Income from donations and legacies

	Unrestricted	Total 2025
	£	£
Donation Received	704	704
	<u>704</u>	<u>704</u>

Donated goods, facilities and services received

	Total 2025 £
National Lottery Awards for All	19,990
Sir James Knott	10,000
Bishop & Shildon AAP	10,000
The Wesleyan Foundation	9,881
County Durham Community Foundation	4,818
Ironmongers' Company	9,540
	<u>64,229</u>

3 Income from charitable activities

	Restricted	Total 2025
	£	£
Charitable Activities	64,229	64,229
	<u>64,229</u>	<u>64,229</u>

4 Other income

	Unrestricted	Total 2025
	£	£
Sales	396	396
	<u>396</u>	<u>396</u>

5 Expenditure on raising funds

	Restricted	Total 2025
	£	£
<i>Fundraising trading costs</i>		
Merchandise	463	463
	<u>463</u>	<u>463</u>

6 Expenditure on charitable activities

	Restricted	Total 2025
	£	£
<i>Expenditure on charitable activities</i>		
Salaries	16,063	16,063
<i>Governance costs</i>		
	<u>16,063</u>	<u>16,063</u>

7 Other expenditure

	Unrestricted	Restricted	Total 2025
	£	£	£
Employee costs	88	51	139
Premises costs	920	2,848	3,768
Amortisation, depreciation, impairment, profit/loss on disposal of fixed assets	1	16	17
General administrative costs	71	145	216
Legal and professional costs	914	3,103	4,017
	<u>1,994</u>	<u>6,163</u>	<u>8,157</u>

8 Net income before transfers

	2025
This is stated after charging:	£
Depreciation of owned fixed assets	17
Independent Examiner's fee	1,030

9 Staff costs

	2025
Social security costs	36
Pension costs	15
	<u>51</u>

No employee received emoluments in excess of £60,000.

The average monthly number of full time equivalent employees during the year was as follows:

	2025
	Number
	1
	<u>1</u>

10 Tangible fixed assets

	Plant & Machinery	Total
	£	£
Cost or revaluation		
Additions	582	582
At 31 January 2025	<u>582</u>	<u>582</u>
Depreciation and impairment		
Depreciation charge for the year	17	17
At 31 January 2025	<u>17</u>	<u>17</u>
Net book values		
At 31 January 2025	<u>565</u>	<u>565</u>

11 Creditors:

amounts falling due within one year

	2025
	£
Other taxes and social security	21
Other creditors	1,512
Accruals	1
	<u>1,534</u>

12 Movement in funds

	Incoming resources (including other gains/losses) £	Resources expended £	At 31 January 2025 £
Restricted funds:			
Restricted income funds:			
The National Lottery Awards for All	19,990	(19,069)	921
Sir James Knott	10,000	(1,144)	8,856
The Wesleyan Foundation	9,881	(1,517)	8,364
Bishop & Shildon AAP	10,000	(959)	9,041
County Durham Community Foundation	4,818	-	4,818
Ironmongers' Company	9,540	-	9,540
<i>Total</i>	<u>64,229</u>	<u>(22,689)</u>	<u>41,540</u>
Unrestricted funds:			
General funds	1,100	(1,994)	(894)
Total funds	<u><u>65,329</u></u>	<u><u>(24,683)</u></u>	<u><u>40,646</u></u>

Purposes and restrictions in relation to the funds:

Restricted funds:

The National Lottery Awards for All	Disabled and neurodivergent young people with training and education in a real work setting.
Sir James Knott	Disabled and neurodivergent young people with training and education in a real work setting.
The Wesleyan Foundation	Disabled and neurodivergent young people with training and education in a real work setting.
Bishop & Shildon AAP	Disabled and neurodivergent young people with training and education in a real work setting.
County Durham Community Foundation	Disabled and neurodivergent young people with training and education in a real work setting.
Ironmongers' Company	Disabled and neurodivergent young people with training and education in a real work setting.

13 Analysis of net assets between funds

	Unrestricted funds	Total
	£	£
Fixed assets	565	565
Net current assets	40,081	40,081
	<u>40,646</u>	<u>40,646</u>

14 Reconciliation of net debt

	Cash flows	At 31 January 2025
	£	£
Cash and cash equivalents	41,615	41,615
	<u>41,615</u>	<u>41,615</u>
Net debt	<u>41,615</u>	<u>41,615</u>

15 Commitments

Operating lease commitments

Annual commitments under non-cancellable operating leases are as follows:

	2025	2025
	Land and buildings	Other
	£	£
Operating leases with expiry date:		

Pension commitments

	2025
	£
The pension cost charge to the charity amounted to:	<u>15</u>

Eric Knows
Detailed Statement of Financial Activities
for the period ended 31 January 2025

	Unrestricted funds 2025 £	Restricted funds 2025 £	Total funds 2025 £
Income and endowments from:			
Donations and legacies			
Donation Received	704	-	704
	<u>704</u>	<u>-</u>	<u>704</u>
Charitable activities			
Charitable Activities	-	64,229	64,229
	<u>-</u>	<u>64,229</u>	<u>64,229</u>
Other			
Sales	396	-	396
	<u>396</u>	<u>-</u>	<u>396</u>
Total income and endowments	1,100	64,229	65,329
Expenditure on:			
Costs of other trading activities			
Merchandise	-	463	463
	<u>-</u>	<u>463</u>	<u>463</u>
Total of expenditure on raising funds	-	463	463
Charitable activities			
Charitable Activities	-	16,063	16,063
	<u>-</u>	<u>16,063</u>	<u>16,063</u>
Total of expenditure on charitable activities	-	16,063	16,063
Employee costs			
Employer's NIC	-	36	36
Pension costs	-	15	15
Staff entertainment	88	-	88
	<u>88</u>	<u>51</u>	<u>139</u>
Premises costs			
Rent	920	2,848	3,768
	<u>920</u>	<u>2,848</u>	<u>3,768</u>
General administrative costs, including depreciation and amortisation			
Depreciation of Plant & Machinery	1	16	17
Bank charges	23	-	23
Software, IT support and related costs	13	145	158
Sundry expenses	35	-	35

Eric Knows
Detailed Statement of Financial Activities

	<u>72</u>	<u>161</u>	<u>233</u>
Legal and professional costs			
Audit/Independent examination fees	480	550	1,030
Accountancy and bookkeeping	434	-	434
Consultancy fees	-	2,033	2,033
Other legal and professional costs	-	520	520
	<u>914</u>	<u>3,103</u>	<u>4,017</u>
Total of expenditure of other costs	<u>1,994</u>	<u>6,163</u>	<u>8,157</u>
Total expenditure	1,994	22,689	24,683
Net gains on investments	-	-	-
Net income	<u>(894)</u>	<u>41,540</u>	<u>40,646</u>
Net income before other gains/(losses)	<u>(894)</u>	<u>41,540</u>	<u>40,646</u>
Other Gains	-	-	-
Net movement in funds	<u>(894)</u>	<u>41,540</u>	<u>40,646</u>
Reconciliation of funds:			
Total funds brought forward	-	-	-
Total funds carried forward	<u>(894)</u>	<u>41,540</u>	<u>40,646</u>

Eric Knows

Charity No. 1206621

Trustees' Report and Unaudited Accounts

31 January 2025

Eric Knows
Contents

	Pages
Trustees' Annual Report	2
Independent Examiner's Report	3
Statement of Financial Activities	4
Balance Sheet	5
Notes to the Accounts	6 to 13
Detailed Statement of Financial Activities	14 to 15

The trustees present their report with the unaudited financial statements of the charity for the period ended 31 January 2025.

REFERENCE AND ADMINISTRATIVE DETAILS

Charity No. 1206621

Trustees

The following trustees served during the year:

T. Armstrong

R. Bennet

A. Dawson

D. White

Accountants

Accounting for Good CIC

2 Geordie Ridley Place

Upper Precinct Wesley Court

Blaydon on Tyne

Tyne and Wear

NE21 5BT

Statement of trustees' responsibilities in relation to the financial statements

The charity trustees are responsible for preparing a trustees' annual report and financial statements in accordance with applicable law and United Kingdom Accounting Standards (United Kingdom Generally Accepted Accounting Practice).

The trustees are responsible for keeping proper accounting records that disclose with reasonable accuracy at any time the financial position of the charity and to enable them to ensure that the financial statements comply with the Charities Act 2011, the applicable Charities (Accounts and Reports) Regulations, and the provisions of the Trust deed. The Trustees are also responsible for safeguarding the assets of the charity and hence taking reasonable steps for the prevention and detection of fraud and other irregularities.

Signed on behalf of the charity's trustees



T. Armstrong

Trustee

7 May 2025

Eric Knows
Independent Examiners Report
Independent Examiner's Report to the trustees of Eric Knows

I report to the trustees on my examination of the financial statements of Eric Knows for the period ended 31 January 2025.

Responsibilities and basis of report

As the charity's trustees you are responsible for the preparation of the financial statements in accordance with the requirements of the Charities Act 2011 ('the Act').

I report in respect of my examination of the charity's financial statements carried out under section 145 of the 2011 Act and in carrying out my examination I have followed all the applicable Directions given by the Charity Commission under section 145(5)(b) of the Act.

Independent examiner's statement

I have completed my examination. I can confirm that no material matters have come to my attention in connection with the examination giving me cause to believe that in any material respect:

- the accounting records were not kept in respect of the charity as required by section 130 of the Act; or
- the financial statements do not accord with those records; or
- the financial statements do not comply with the applicable requirements concerning the form and content of financial statements set out in the Charities (Accounts and Reports) Regulations 2008 other than any requirement that the financial statements give a 'true and fair' view which is not a matter considered as part of an independent examination.

I have no concerns and have come across no other matters in connection with the examination to which attention should be drawn in this report in order to enable a proper understanding of the financial statements to be reached.



Kay Wightman FFA FTA
Accounting for Good CIC
2 Geordie Ridley Place
Upper Precinct Wesley Court
Blaydon on Tyne
Tyne and Wear
NE21 5BT
7 May 2025

Eric Knows
Statement of Financial Activities
for the period ended 31 January 2025

		Unrestricted funds 2025 £	Restricted funds 2025 £	Total funds 2025 £
	Notes			
Income and endowments from:				
Donations and legacies	2	704	-	704
Charitable activities	3	-	64,229	64,229
Other	4	396	-	396
Total		1,100	64,229	65,329
Expenditure on:				
Raising funds	5	-	463	463
Charitable activities	6	-	16,063	16,063
Other	7	1,994	6,163	8,157
Total		1,994	22,689	24,683
Net gains on investments		-	-	-
Net income	8	(894)	41,540	40,646
Transfers between funds		-	-	-
Net income before other gains/(losses)		(894)	41,540	40,646
Other gains and losses				
Net movement in funds		(894)	41,540	40,646
Reconciliation of funds:				
Total funds carried forward		(894)	41,540	40,646

Eric Knows
Balance Sheet
at 31 January 2025

Charity No. 1206621

2025

£

Fixed assets

Tangible assets	10	<u>565</u>
		565

Current assets

Cash at bank and in hand		<u>41,615</u>
		41,615

Creditors: Amount falling due within one year	11	<u>(1,534)</u>
---	----	----------------

Net current assets		40,081
--------------------	--	--------

Total assets less current liabilities		<u>40,646</u>
---------------------------------------	--	---------------

Net assets excluding pension asset or liability		<u>40,646</u>
---	--	---------------

Total net assets		<u><u>40,646</u></u>
------------------	--	----------------------

The funds of the charity

Restricted funds	12	
Restricted income funds		<u>41,540</u>
		41,540

Unrestricted funds	12	
General funds		<u>(894)</u>
		(894)

Reserves	12	
----------	----	--

Total funds		<u><u>40,646</u></u>
-------------	--	----------------------

Approved by the trustees on 7 May 2025

And signed on their behalf by:



A. Dawson

Trustee

7 May 2025

for the period ended 31 January 2025

1 Accounting policies

Basis of preparation

The financial statements have been prepared in accordance with Statement of Recommended Practice: Accounting and Reporting by Charities preparing their accounts in accordance with the Financial Reporting Standard applicable in the UK and Republic of Ireland (FRS 102) issued on 16 July 2014 and the Financial Reporting Standard applicable in the United Kingdom and Republic of Ireland (FRS 102) and the Charities Act 2011.

Change in basis of accounting or to previous accounts

There has been no change to the accounting policies (valuation rules and method of accounting) since last year and no changes have been made to accounts for previous years.

Fund accounting

Unrestricted funds These are available for use at the discretion of the trustees in furtherance of the general objects of the charity.

Designated funds These are unrestricted funds earmarked by the trustees for particular purposes.

Revaluation funds These are unrestricted funds which include a revaluation reserve representing the restatement of investment assets at their market values.

Restricted funds These are available for use subject to restrictions imposed by the donor or through terms of an appeal.

Income

Recognition of income Income is included in the Statement of Financial Activities (SoFA) when the charity becomes entitled to, and virtually certain to receive, the income and the amount of the income can be measured with sufficient reliability.

Income with related expenditure Where income has related expenditure the income and related expenditure is reported gross in the SoFA.

Donations and legacies Voluntary income received by way of grants, donations and gifts is included in the the SoFA when receivable and only when the Charity has unconditional entitlement to the income.

Tax reclaims on donations and gifts Income from tax reclaims is included in the SoFA at the same time as the gift/donation to which it relates.

Donated services and facilities These are only included in income (with an equivalent amount in expenditure) where the benefit to the Charity is reasonably quantifiable, measurable and material.

Volunteer help The value of any volunteer help received is not included in the accounts.

Investment income This is included in the accounts when receivable.

Gains/(losses) on revaluation of fixed assets This includes any gain or loss resulting from revaluing investments to market value at the end of the year.

Gains/(losses) on investment assets This includes any gain or loss on the sale of investments.

Notes to the Accounts

Expenditure

Recognition of expenditure Expenditure is recognised on an accruals basis. Expenditure includes any VAT which cannot be fully recovered, and is reported as part of the expenditure to which it relates.

Expenditure on raising funds These comprise the costs associated with attracting voluntary income, fundraising trading costs and investment management costs.

Expenditure on charitable activities These comprise the costs incurred by the Charity in the delivery of its activities and services in the furtherance of its objects, including the making of grants and governance costs.

Grants payable All grant expenditure is accounted for on an actual paid basis plus an accrual for grants that have been approved by the trustees at the end of the year but not yet paid.

Governance costs These include those costs associated with meeting the constitutional and statutory requirements of the Charity, including any audit/independent examination fees, costs linked to the strategic management of the Charity, together with a share of other administration costs.

Other expenditure These are support costs not allocated to a particular activity.

Taxation

The charity is exempt from tax on its charitable activities.

Tangible fixed assets and depreciation

Depreciation is provided at the following annual rates in order to write off each asset over its estimated useful life:

Plant & Machinery	25% Straight Line
-------------------	-------------------

Freehold investment property

Investment properties are measured initially at cost and subsequently at fair value at each balance sheet date and are not depreciated. All gains or losses are taken to the Statement of Financial Activities as they arise.

Stocks

Stock is included at the lower of cost or net realisable value. Donated items of stock are recognised at fair value which is the amount the charity would have been willing to pay for the items on the open market.

Trade and other debtors

Trade and other debtors are recognised at the settlement amount due after any trade discount offered. Prepayments are valued at the amount prepaid net of any trade discounts due.

Cash and cash equivalents

Cash and cash equivalents comprise cash at bank and on hand, demand deposits with banks and other short-term highly liquid investments with original maturities of three months or less and bank overdrafts. In the statement of financial position, bank overdrafts are shown within borrowings or current liabilities. In the Statement of Cash Flows, cash and cash equivalents are shown net of bank overdrafts that are repayable on demand and form an integral part of the company's cash management.

Trade and other creditors

Short term creditors are measured at the transaction price. Other creditors and provisions are recognised where the charity has a present obligation resulting from a past event that will probably result in the transfer of funds to a third party and the amount due to settle the obligation can be measured or estimated reliably. Creditors and provisions are normally recognised at their settlement amount after allowing for any trade discounts due.

Research and development

Expenditure on research and development is written off in the year in which it is incurred.

Foreign currencies

Monetary assets and liabilities denominated in currencies other than the functional currency of the charity are translated at the rates of exchange prevailing at the end of the reporting period.

Transactions in currencies other than the functional currency of the charity are recorded at the rate of exchange on the date that the transaction occurred.

All exchange differences are taken into account in arriving at net income/expenditure.

Leased assets

Where the charity enters into a lease which entails taking substantially all the risks and rewards of ownership of an asset, the lease is treated as a finance lease.

Leases which do not transfer substantially all the risks and rewards of ownership to charity are classified as operating leases.

Assets held under finance leases are initially recognised as assets of the charity at their fair value at the inception of the lease or, if lower, at the present value of the minimum lease payments. The corresponding liability to the lessor is included in the balance sheet date as a finance lease obligation.

Lease payments are apportioned between finance expenses and reduction of the lease obligation so as to achieve a constant rate of interest on the remaining balance of the liability. Finance expenses are recognised immediately, unless they are directly attributable to qualifying assets, in which case they are capitalised in accordance with the charity's policy on borrowing costs.

Assets held under finance leases are depreciated in the same way as owned assets.

Operating lease payments are recognised as an expense on a straight-line basis over the lease term.

In the event that lease incentives are received to enter into operating leases, such incentives are recognised as a liability. The aggregate benefit of incentives is recognised as a reduction of rental expense on a straight-line basis.

Pension costs

The charity operates a defined contribution plan for its employees. A defined contribution plan is a pension plan under which the charity pays fixed contributions into a separate entity. Once the contributions have been paid the charity has no further payments obligations. The contributions are recognised as expenses when they fall due. Amounts not paid are shown in accruals in the balance sheet. The assets of the plan are held separately from the charity in independently administered funds.

Receipt of donated goods, facilities and services

All donated goods, facilities and services received are recognised within incoming resources and expenditure at an estimate of the value to the charity.

2 Income from donations and legacies

	Unrestricted	Total 2025
	£	£
Donation Received	704	704
	<u>704</u>	<u>704</u>

Donated goods, facilities and services received

	Total 2025
	£
National Lottery Awards for All	19,990
Sir James Knott	10,000
Bishop & Shildon AAP	10,000
The Wesleyan Foundation	9,881
County Durham Community Foundation	4,818
Ironmongers' Company	9,540
	<u>64,229</u>

3 Income from charitable activities

	Restricted	Total 2025
	£	£
Charitable Activities	64,229	64,229
	<u>64,229</u>	<u>64,229</u>

4 Other income

	Unrestricted	Total 2025
	£	£
Sales	396	396
	<u>396</u>	<u>396</u>

5 Expenditure on raising funds

	Restricted	Total 2025
	£	£
<i>Fundraising trading costs</i>		
Merchandise	463	463
	<u>463</u>	<u>463</u>

6 Expenditure on charitable activities

	Restricted	Total 2025
	£	£
<i>Expenditure on charitable activities</i>		
Salaries	16,063	16,063
<i>Governance costs</i>		
	<u>16,063</u>	<u>16,063</u>

7 Other expenditure

	Unrestricted	Restricted	Total 2025
	£	£	£
Employee costs	88	51	139
Premises costs	920	2,848	3,768
Amortisation, depreciation, impairment, profit/loss on disposal of fixed assets	1	16	17
General administrative costs	71	145	216
Legal and professional costs	914	3,103	4,017
	<u>1,994</u>	<u>6,163</u>	<u>8,157</u>

8 Net income before transfers

	2025
This is stated after charging:	£
Depreciation of owned fixed assets	17
Independent Examiner's fee	1,030

9 Staff costs

	2025
Social security costs	36
Pension costs	15
	<u>51</u>

No employee received emoluments in excess of £60,000.

The average monthly number of full time equivalent employees during the year was as follows:

	2025
	Number
	1
	<u>1</u>

10 Tangible fixed assets

	Plant & Machinery	Total
	£	£
Cost or revaluation		
Additions	582	582
At 31 January 2025	<u>582</u>	<u>582</u>
Depreciation and impairment		
Depreciation charge for the year	17	17
At 31 January 2025	<u>17</u>	<u>17</u>
Net book values		
At 31 January 2025	<u>565</u>	<u>565</u>

11 Creditors:
amounts falling due within one year

	2025
	£
Other taxes and social security	21
Other creditors	1,512
Accruals	1
	<u>1,534</u>

12 Movement in funds

	Incoming resources (including other gains/losses) £	Resources expended £	At 31 January 2025 £
Restricted funds:			
Restricted income funds:			
The National Lottery Awards for All	19,990	(19,069)	921
Sir James Knott	10,000	(1,144)	8,856
The Wesleyan Foundation	9,881	(1,517)	8,364
Bishop & Shildon AAP	10,000	(959)	9,041
County Durham Community Foundation	4,818	-	4,818
Ironmongers' Company	9,540	-	9,540
<i>Total</i>	<u>64,229</u>	<u>(22,689)</u>	<u>41,540</u>
Unrestricted funds:			
General funds	1,100	(1,994)	(894)
Total funds	<u><u>65,329</u></u>	<u><u>(24,683)</u></u>	<u><u>40,646</u></u>

Purposes and restrictions in relation to the funds:

Restricted funds:

The National Lottery Awards for All	Disabled and neurodivergent young people with training and education in a real work setting.
Sir James Knott	Disabled and neurodivergent young people with training and education in a real work setting.
The Wesleyan Foundation	Disabled and neurodivergent young people with training and education in a real work setting.
Bishop & Shildon AAP	Disabled and neurodivergent young people with training and education in a real work setting.
County Durham Community Foundation	Disabled and neurodivergent young people with training and education in a real work setting.
Ironmongers' Company	Disabled and neurodivergent young people with training and education in a real work setting.

13 Analysis of net assets between funds

	Unrestricted funds	Total
	£	£
Fixed assets	565	565
Net current assets	40,081	40,081
	<u>40,646</u>	<u>40,646</u>

14 Reconciliation of net debt

	Cash flows	At 31 January 2025
	£	£
Cash and cash equivalents	41,615	41,615
	<u>41,615</u>	<u>41,615</u>
Net debt	<u>41,615</u>	<u>41,615</u>

15 Commitments

Operating lease commitments

Annual commitments under non-cancellable operating leases are as follows:

	2025	2025
	Land and buildings	Other
	£	£
Operating leases with expiry date:		

Pension commitments

	2025
	£
The pension cost charge to the charity amounted to:	<u>15</u>

Eric Knows
Detailed Statement of Financial Activities
for the period ended 31 January 2025

	Unrestrict ed funds 2025 £	Restricted funds 2025 £	Total funds 2025 £
Income and endowments from:			
Donations and legacies			
Donation Received	704	-	704
	<u>704</u>	<u>-</u>	<u>704</u>
Charitable activities			
Charitable Activities	-	64,229	64,229
	<u>-</u>	<u>64,229</u>	<u>64,229</u>
Other			
Sales	396	-	396
	<u>396</u>	<u>-</u>	<u>396</u>
Total income and endowments	1,100	64,229	65,329
Expenditure on:			
Costs of other trading activities			
Merchandise	-	463	463
	<u>-</u>	<u>463</u>	<u>463</u>
Total of expenditure on raising funds	-	463	463
Charitable activities			
Charitable Activities	-	16,063	16,063
	<u>-</u>	<u>16,063</u>	<u>16,063</u>
Total of expenditure on charitable activities	-	16,063	16,063
Employee costs			
Employer's NIC	-	36	36
Pension costs	-	15	15
Staff entertainment	88	-	88
	<u>88</u>	<u>51</u>	<u>139</u>
Premises costs			
Rent	920	2,848	3,768
	<u>920</u>	<u>2,848</u>	<u>3,768</u>
General administrative costs, including depreciation and amortisation			
Depreciation of Plant & Machinery	1	16	17
Bank charges	23	-	23
Software, IT support and related costs	13	145	158
Sundry expenses	35	-	35

Eric Knows
Detailed Statement of Financial Activities

	<u>72</u>	<u>161</u>	<u>233</u>
Legal and professional costs			
Audit/Independent examination fees	480	550	1,030
Accountancy and bookkeeping	434	-	434
Consultancy fees	-	2,033	2,033
Other legal and professional costs	-	520	520
	<u>914</u>	<u>3,103</u>	<u>4,017</u>
Total of expenditure of other costs	<u>1,994</u>	<u>6,163</u>	<u>8,157</u>
Total expenditure	1,994	22,689	24,683
Net gains on investments	-	-	-
Net income	(894)	41,540	40,646
Net income before other gains/(losses)	(894)	41,540	40,646
Other Gains	-	-	-
Net movement in funds	(894)	41,540	40,646
Reconciliation of funds:			
Total funds brought forward	-	-	-
Total funds carried forward	<u>(894)</u>	<u>41,540</u>	<u>40,646</u>