

# NORTHSTOWE CHURCH NETWORK

England & Wales · Charity number 1206577

## Details

---

**Status** Registered

**Legal form** CIO

**Registered** 2024-01-17

**Register** [View on the Charity Commission register](#)

## Contact

---

**Address** 6 Woodpecker Close  
Northstowe  
Cambridge  
6 Woodpecker Close  
CB24 1AW

**Phone** 01954261181

**Email** [contact@northstowe.church](mailto:contact@northstowe.church)

**Website** [www.northstowe.church](http://www.northstowe.church)

## Activities

---

**Objects:** 3. THE OBJECTS OF THE LEP, TO BE CARRIED OUT FOR THE PUBLIC BENEFIT IN THE GEOGRAPHIC AREA OF NORTHSTOWE IN CAMBRIDGESHIRE (HEREINAFTER REFERRED TO AS 'THE AREA OF BENEFIT'), ARE:(3.1) TO ADVANCE THE CHRISTIAN FAITH IN ACCORDANCE WITH THE PRINCIPLES AND PRACTICES OF THE PARTICIPATING DENOMINATIONS IN THE AREA OF BENEFIT. IN FURTHERANCE OF THIS OBJECT, BUT NOT OTHERWISE, THE LEP MAY ENGAGE IN A RANGE OF ACTIVITIES, EITHER ON ITS OWN OR WITH OTHERS, INCLUDING (BUT NOT RESTRICTED TO):

- THE CELEBRATION OF PUBLIC WORSHIP IN ACCORDANCE WITH THE DOCTRINES, PRACTICES AND TRADITIONS SET OUT IN THE PARTNERSHIP AGREEMENT ENTERED INTO BY THE PARTICIPATING DENOMINATIONS;
- THE TEACHING OF THE CHRISTIAN FAITH;
- MISSION AND EVANGELISM;
- PASTORAL WORK, INCLUDING VISITING THE SICK AND THE BEREAVED;
- THE PROVISION OF FACILITIES WITH A CHRISTIAN ETHOS FOR THE LOCAL COMMUNITY, INCLUDING (BUT NOT RESTRICTED TO) THE ELDERLY, THE YOUNG AND OTHER GROUPS WITH SPECIAL NEEDS.
- THE SUPPORT, WITHIN A CHRISTIAN ETHOS, OF CHARITABLE ORGANISATIONS IN THE UK AND OVERSEAS.

(3.2) TO FURTHER OR BENEFIT THE RESIDENTS IN AND AROUND THE AREA OF BENEFIT WITHOUT DISTINCTION OF SEX, SEXUAL ORIENTATION, RACE OR OF POLITICAL, RELIGIOUS OR OTHER OPINIONS BY ASSOCIATING TOGETHER THE SAID RESIDENTS AND THE LOCAL AUTHORITIES, VOLUNTARY AND OTHER ORGANISATIONS IN A COMMON EFFORT TO ADVANCE EDUCATION AND TO PROVIDE FACILITIES IN THE INTERESTS OF SOCIAL WELFARE FOR RECREATION AND LEISURE TIME OCCUPATION WITH THE OBJECTIVE OF IMPROVING THE CONDITIONS OF LIFE FOR THE RESIDENTS. IN FURTHERANCE OF THESE OBJECTS BUT NOT OTHERWISE, THE TRUSTEES SHALL HAVE POWER:

IN FURTHERANCE OF THESE OBJECTS BUT NOT OTHERWISE, THE TRUSTEES SHALL HAVE POWER: TO ESTABLISH OR SECURE THE ESTABLISHMENT OF A COMMUNITY CENTRE AND TO MAINTAIN OR MANAGE OR CO-OPERATE WITH ANY STATUTORY AUTHORITY IN THE MAINTENANCE AND MANAGEMENT OF SUCH A CENTRE FOR ACTIVITIES PROMOTED BY THE CHARITY IN FURTHERANCE OF THE ABOVE OBJECTS.

**Activities:** We support local Christians in faith, worship, mission and vocation, while welcoming all residents to join public worship, civic events, Life Events, community and interfaith activities, and to receive pastoral care. We are also preparing a bid for an inclusive community centre with a Christian chapel and flexible rooms for all to hire.

## Classification

---

- **How:** Makes Grants To Organisations, Provides Buildings/facilities/open Space, Acts As An Umbrella Or Resource Body
- **What:** Religious Activities, Recreation
- **Who:** Children/young People, Elderly/old People, People With Disabilities, The General Public/mankind

## Geography

---

- **Area of benefit:** LOCAL
- Cambridgeshire

## Finances

Period end	Income	Expenditure	Assets	Employees
2024-12-31	£39,661	£21,687	-	-

## Trustees

Name	Role	Appointed
<b>Rev Dr Elizabeth Ruth Cope</b>	Chair	2023-07-16
Michelle Kemp		2025-04-27
Rebecca Lyndsey Jayne Eccleston		2023-07-16
William Dering Addison		2023-07-16

**NORTHSTOWE CHURCH NETWORK**

England & Wales - Charity number 1206577

---

# Accounts

---



# NORTHSTOWE CHURCH NETWORK

*praying, exploring, and sharing*

*Registered Charity Number 1206577*



## Northstowe Church Network Annual Report for the year ending 31<sup>st</sup> Dec 2024

Charity Information.....	1
Area of Benefit: The Northstowe Development.....	2
Overview of the Northstowe Church Network.....	3
Values, Objectives, and Aims.....	4
Achievement, Performance, and Public Benefit.....	6
2024 in Statistics.....	6
Demonstrating Public Benefit.....	8
Mission Initiative Electoral Roll and Ecumenical Membership of the Northstowe Church Network.....	9
Report on Trustee Meetings.....	10
Ministry Provision.....	10
Safeguarding.....	11
Church Policies.....	11
Financial Review.....	12
Reserves Policy.....	12
Assets Report.....	12
Statement of Financial Activities.....	13

# Charity Information

## ***Address for correspondence***

Church House, 6 Woodpecker Close, Northstowe, CB24 1AW  
contact@northstowe.church

## ***Trustees***

- William Addison (warden)
- Rebecca Eccleston (treasurer)
- Hannah Mellows
- Cameron Witheridge-Pearce (resigned end December 2024)

The clergy serve ex officio:

- The Revd Dr Elizabeth Cope (chair)
- The Revd Stephen Dove (until November 2024)

## ***Charitable Status***

The Northstowe Church Network registered as an Association Model Charitable Incorporated Organisation (CIO) on 17 January 2024, with Charity number: **1206577**.

## Constitution

The stipulations for the governance of the charity are set out in the [CIO Constitution](#)

The [Partnership Agreement](#), approved by the Relevant Authority of each of the Participating Denominations, sets out the agreed principles and practises in ecclesial matters.

The LEP looks to the Participating Denominations for support, encouragement and advice, which is given through the Ecumenical Support Cabinet. The Trustees work with the Ecumenical Support Cabinet to maintain the [Operating Procedures](#), which describe the local leadership and governance of the LEP.

## Area of Benefit: The Northstowe Development

[Northstowe](#) is a new town near Cambridge, being developed on the former Oakington Barracks and airfield site. It will house over 24,000 residents across three phases:

- **Phase 1:** 1,500 homes, The Pathfinder CofE Primary School, Western Park (with Pavilion) and a planned community centre. (The Cabin, a temporary Portakabin, is currently in use)
- **Phase 2:** 3,500 homes, the Northstowe Learning Community (including Northstowe Secondary College, Sixth Form. Primary School and Martin Bacon Academy) with a Town Centre and additional recreational facilities planned
- **Phase 3:** 5,000 homes, three primary schools, and outdoor spaces.

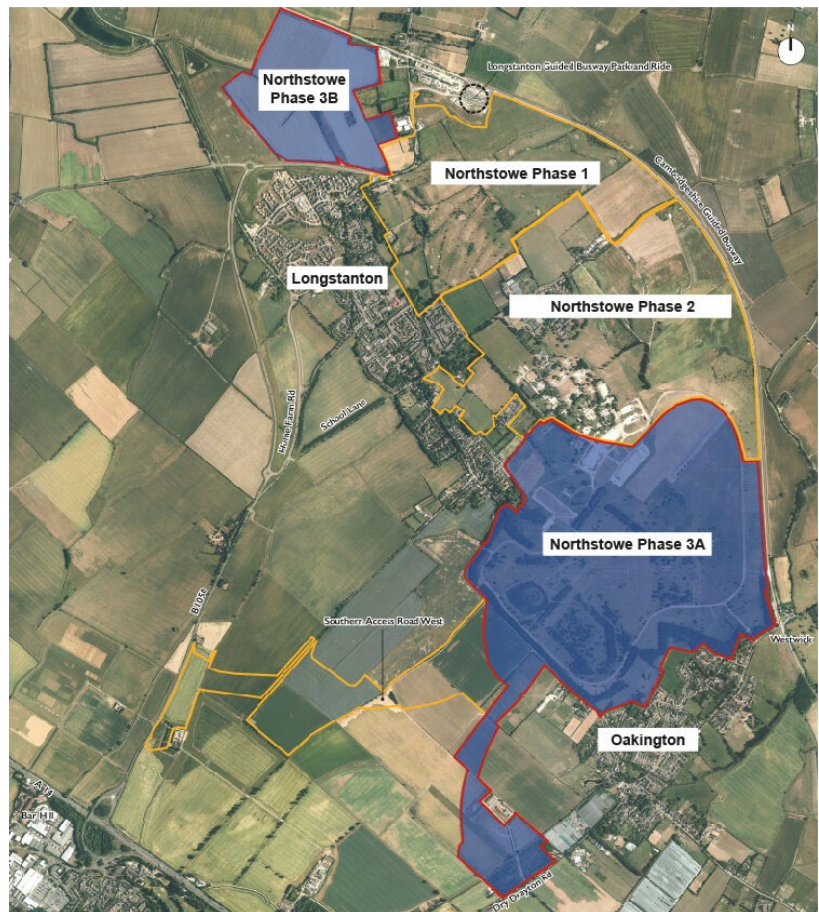


Image from <https://www.northstowe.com/phase3>

Area of Benefit aligns with the civic parish boundaries of the new town. It spans parts of the 5folds Benefice, Cottenham, and Oakington ecclesiastical parishes.

# Overview of the Northstowe Church Network

The Northstowe Church Network (NCN) is:

- A **network of missional and worshipping communities**: These include Pathfinder Church, Little Explorers, the Compline Community, while also supporting new initiatives as they develop.
- A **'local ecumenical partnership'** of the Church of England, the Baptist Union of Great Britain, and the United Reformed Church. NCN collaborates closely with other Christian traditions involved in Churches Together in Cambridgeshire and has a Shared Vision with the Quakers and Methodists.
- A **charitable organisation** that provides an umbrella for shared mission and ministry in the growing new town of Northstowe.

Founded in 2018 as a fresh start pioneer initiative led by Revd Dr Elizabeth Cope (Beth), NCN began with three households, all new to Northstowe and each other. Today, it engages approximately 70 adults and children across three worshipping communities, as well as much wider involvement in the life of the schools and community of Northstowe. Rooted in a commitment to **"praying, exploring, and sharing,"** NCN celebrates the connections between spirituality and everyday life as it grows alongside the town it serves.

NCN's worship and pastoral care reflect its ecumenical identity, offering diverse styles of worship to help individuals encounter God in ways that resonate with their spiritual journeys. From family-friendly gatherings to contemplative services, these varied expressions contribute to spiritual wellbeing, inclusivity, and community cohesion. The whole network also gathers for festivals and special occasions, fostering a sense of belonging and celebrating unity in diversity



*"Start with the Church & the mission will probably get lost. Start with mission & it is likely that the Church will be found"* +Graham Cray, *Mission Shaped Church* (2009:124).

UNDERPINNED BY PRAYER AND ONGOING LISTENING TO GOD AND THE COMMUNITY

[\*service first image from <http://www.soulaction.co.za/8596-2/>]

Focusing on discerning and joining in with what God is doing in Northstowe, NCN does not replicate existing church activities in surrounding villages. Instead, it uses a service-first approach (pictured, with strong overlaps with the Asset-Based Community Development model) partnering with others to co-create sustainable, community-led projects. This model promotes activities are accessible to all, including those with disabilities, financial difficulties, or other barriers to participation.

## Values, Objectives, and Aims

*Values: praying, exploring, and sharing*

The **objects** of the Local Ecumenical Partnership (LEP) are given in our constitution as:

- (1) **To advance the Christian faith** in accordance with the principles and practices of the Participating Denominations in the area of benefit. In furtherance of this object, but not otherwise, the LEP may engage in a range of activities, either on its own or with others, including (but not restricted to):
- the celebration of public worship in accordance with the doctrines, practices and traditions set out in the Partnership Agreement entered into by the Participating Denominations;
  - the teaching of the Christian faith;
  - mission and evangelism;
  - pastoral work, including visiting the sick and the bereaved;
  - the provision of facilities with a Christian ethos for the local community, including (but not restricted to) the elderly, the young and other groups with special needs.
  - the support, within a Christian ethos, of charitable organisations in the UK and overseas.
- (2) To further or benefit the residents in and around the area of benefit without distinction of sex, sexual orientation, race or of political, religious or other opinions by associating together the said residents and the local authorities, voluntary and other organisations in a common effort to advance education and to provide facilities in the interests of social welfare for recreation and leisure time occupation with the objective of improving the conditions of life for the residents. In furtherance of these objects but not otherwise, the trustees shall have power: **To establish or secure the establishment of a community centre** and to maintain or manage or co-operate with any statutory authority in the maintenance and management of such a centre for activities promoted by the charity in furtherance of the above objects.

The aims for the next 5 years were adopted at the first church meeting after charity registrations:

Inspired by Isaiah 54, we will 'stretch wide the tent' – bringing together those new to faith with those of many Trinitarian Christian traditions – grasping missional and formational opportunities to allow everyone, from the youngest to the oldest, to develop our relationship and love of God, equipping us to fulfil God's purposes for us in the places He has called us to be.

Therefore, we commit to sharing – partnering with those who live, work, study, or are called to love Northstowe, creating safe spaces where questions can be asked, confidence developed, and Spirit-breathed plans turned into action. We dare to explore new expressions of church as well as pioneering future inherited modes of church. These individual missional and worshipping communities will develop contextually and organically. Locally led, they will be part of a visible and sustainable network, not just sharing ecumenical governance but periodically coming together in prayer, worship, and to do things that could not be done alone. Across the network, we long to be known for our peaceful, prayerful presence, having the confidence to hold the ministry of hospitality and loving service alongside acts of Christian worship.

Through the 'tent pegs' of prayer and exploration of the still-unfolding story of God's encounter with his people, we will be rooted, deep into the soil, which is slowly, person by person, house by house, school by school, and phase by phase becoming Northstowe.

To put this into practice, 15 measurable objectives were agreed as part of the BMO review process and adopted by the church meeting in April 2024 as a focus for the quinquennial. These cover **areas for the whole Network** (developing the organisation, auditing, supporting whole-church faith-in-action), and **a focus on specific areas as part of 'Developing Multiple Expressions – Experimental, Inherited, and Built'**.

# Achievement, Performance, and Public Benefit

## 2024 in Statistics

The NCN welcomes anyone interested in taking part to its services and activities—whether church members or part of the broader community. We have made significant strides in engaging the community, offering support, and advancing its mission to serve the people of Northstowe. Our activities this year have directly aligned with the Charity Commission’s Public Benefit Test, ensuring that our work has a clear and tangible impact on the local community. A formal review document has been shared with members. Here are some highlights of how we’ve served and engaged Northstowe over the past year:

### Community Engagement

- **Large Community Events:** Participated in 7 key community events (the Northstowe Half, Running Festival, Light Up Northstowe, Midsummer Festival, Pathfinder School Fayre, Great Big Green Week, and Spring Clean in Green). Collaborated with Pathfinder Primary on 3 Gardening Mornings, fostering connections and eco-commitments.
- **Afternoon Teas:** Hosted 5 themed gatherings, such as a Pancake Party and Jazz Session, attracting around 50 attendees from diverse backgrounds.
- **Seasonal Highlights:**
  - **All Hallows Eve Campfire:** Welcomed over 50 families for this annual community favourite.
  - **Beer and Carols:** Drew 100+ participants, accompanied by a 13-piece scratch brass band, with community groups and leaders reading poems and scripture
  - **Lantern Making Workshops:** Partnered with Northstowe Arts for community creativity in preparation for Light Up Northstowe
  - **Advent Windows:** Connected 25 households through a now established seasonal tradition.
  - **Leading a multicultural service for remembrance** approx. 100 people from across the community and representing multiple faiths

### Worshipping Communities

- **Regular Gatherings:**
  - **Pathfinder Church, Little Explorers, and the Compline Community:**  
Together engage 70 regular participants:
    - 28 children (0–10)
    - 3 teenagers (11–17)
    - 39 adults (18–69)
  - **Pathfinder Church Sunday Gatherings:** Average weekly attendance of 22 (including 8 children), with seasonal variation.

- **Little Explorers:** 36 adults and 28 children attended in 2024, with weekly gatherings often nearing venue capacity (10 adults, 11 children).
- **Compline Community:** Reflective fortnightly gatherings attract on average 5 adults and 1 teenager, with larger groups (12 participants) for special services like Holy Week or Communion Meals.
- **Midweek groups** – Food and Faith, Book Group and LLF discussion groups
- **Weekly Prayer meetings using** Lectio 365
- **Festival Highlights:**
  - **Easter:** Attracted 26 attendees (including 22 communicants), with 9 at the Dawn Service.
  - **Christmas:** Over 300 people joined Advent and Christmas events, including Beer and Carols, Christingle services at Martin Bacon Academy and Little Explorers, and Midnight Campfire Communion (15 participants).

## Youth and Schools Work

- **Northstowe Youth Hive:** Played a pivotal role in establishing the Hive as an independent CIO this year. The Hive welcomed 6 Youth Members in 2024 and engage with over 30 young people weekly.
- **Pathfinder CofE Primary:** Weekly collective worship reached nearly 500 children and adults. Chaplaincy included:
  - 2 days/week pastoral presence, Worship Gang mentoring, “time to talk” club, and CW delivery RE and Christian Ethos support
  - special events, termly staff reflective breakfasts, Rooted Station development
- **Northstowe Secondary College:** Lunchtime clubs (until Summer 2024) supported 8–12 young people with additional needs, in partnership with Romsey Mill.
- **Civic and Seasonal Engagement:**
  - **School Remembrance Service:** Reached over 600 young people at the Northstowe Learning Community.
  - **Christingle Services:** Engaged 107 children and families at Martin Bacon Academy

## Life Event Services

Although Northstowe currently lacks a registered church building for weddings or to support key life event services:

- Clergy conducted a wedding for a Northstowe couple at St. Andrew’s, Swavesey, and an infant baptism at All Saints’, Longstanton.
- Pastoral ministry is provided for those facing loss or death.

## Team Development

- 5 team members hold Food Hygiene certificates, 5 have First Aid certification, 3 participated in an Intergenerational Worship Training series
- 6 lay people have undertaken Safeguarding Training (as well as both ministers)

## Demonstrating Public Benefit

NCN's activities are rooted in the theological belief that God's love extends to all people, inspiring efforts to create a positive impact in the world. Working collaboratively with individuals and groups of all beliefs, NCN seeks to make Northstowe a thriving, inclusive place to live.

Trustees of the Northstowe Church Network have the responsibility of co-operating with the Pioneer Minister, the Rev'd Dr Elizabeth Cope, in promoting in the geographic area of Northstowe the whole mission of the Church: pastoral, evangelistic, social and ecumenical. When planning our activities for the year, the ministers, ministry team, leadership teams, and trustees have considered the Commission's guidance on public benefit.

Key areas of public benefit include:

- **Advancing Christian Faith:** NCN provides an inclusive, ecumenical, "Northstowe-shaped" rhythm of worship, teaching and prayer, alongside pastoral care, fostering a sense of community, and supporting individuals and families in their spiritual and practical needs within Northstowe and the surrounding area.
- **Marking Life Events:** Even though we do not yet have a Parish Centre of Worship, NCN finds creative ways to offer services for weddings, funerals, baptisms, and civic occasions such as Remembrance events, reflecting the role of the Church of England in public life.
- **Fostering community cohesion and reducing social isolation:** NCN has established significant traditions like Remembrance by the Lake, Advent Windows, and Beer and Carols which contribute to community cohesion and cultural identity. Initiatives such as the Deckchair Listening Project and partnerships in key community events (e.g., the Running Festival, Midsummer Festival, and Light Up Northstowe) further strengthen connections across the town.
- **Supporting Vulnerable Groups:** NCN ministers distribute foodbank vouchers and collaborate with professional agencies through projects including the Northstowe Support Partnership's Health and Wellbeing subgroup.
- **Advancing Education:** NCN supports students' moral, spiritual, and social development through chaplaincy and pastoral care at The Pathfinder CofE Primary School, contributes to the Religious Education curriculum, and provides a foundation governor, as well as offering occasional support to other local schools, showing considerable breadth and depth.
- **Youth Development:** NCN founded the Northstowe Youth Hive, an independent charity empowering young people to 'have fun, develop, and make a difference'. NCN members volunteer with Youth Hive-linked programs, promoting youth voice and active participation in line with Article 12 of the UNCRC. This approach also shapes how NCN involves children in prayer and discernment for the church's life.

- **Environmental Responsibility:** Sustainability underpins NCN's work, from organizing regular litter picks to working towards Eco Church Silver status.
- **Equipping our members to volunteer in a wider capacity in the community, living out their faith and working in community partnerships-** e.g., volunteering with the Northstowe Hub (as trustees, or in the Community Café), with the Northstowe Youth Hive, Friends of Pathfinder School, at the Allotments, or in other ways.

By living out its commitment to “praying, exploring, and sharing,” NCN demonstrates how faith can inspire meaningful contributions to social, emotional, and spiritual wellbeing. These efforts help Northstowe grow as a holistically healthy and inclusive community where everyone can flourish.

## **Mission Initiative Electoral Roll and Ecumenical Membership of the Northstowe Church Network**

Membership of the Northstowe Church Network is made up of all those who are on any of the (Church of England) Northstowe Church Network Mission Initiative Electoral Roll (whose stipulations mirror the Church Representation Rules for a parish), the Northstowe Church Network Baptist Church membership, or the Northstowe Church Network United Reformed Church.

All members have opted to be members of all the rolls to which they are eligible.

When the Roll closed on 5th April 2025 the Anglican Electoral Roll stood at 23 adults, with no changes from 2024. Ther CIO Membership was 24<sup>1</sup> lay people (no changes) and 1 clergyperson (down from 2 in 2024 when we had a curate).

The Electoral Roll is available on request from the church office

---

<sup>1</sup> While young people can be voting members Northstowe Church Network, they are only eligible to join the Electoral Roll of the Pathfinder Church Bishop's Mission Order when they are 16. Church Children are not counted on the Roll but play a full part in the life of the church, and their voices are listened to and acted upon.

# Report on Trustee Meetings

Trustee meetings routinely cover Safeguarding, Finance, and Correspondence, with updates on students and partnerships, alongside prayer, discernment, and attention to the public benefit of the charity. Key discussions in 2024 included:

1. January: budget, and policy updates; opportunities for women, AGM preparation.
2. March: LGBTQ+ inclusion, youth work recruitment, strategic planning.
3. April: branding, financial development, community and ecumenical event planning.
4. July: Safeguarding, financial policies, volunteer recruitment, church-school partnerships.
5. September: Community engagement, school chaplaincy, faith land bid preparations.
6. November: Budget approval, charitable contributions, eco award progress, schools work and Network growth planning.

**Personnel:** In addition to the elected and ex officio trustees, Rachel Addison served as Deanery Link before handing over to Rachel Cope, and Michelle Kemp serves as Safeguarding Officer. The role of Secretary was vacant at the 2024 AGM, with responsibilities shared by Trustees until someone is appointed in 2025. While there are no legal provisions for BMO Churchwardens, it's common practice for BMOs to appoint individuals to share local oversight with the designated Leader.

## Ministry Provision

**The Revd Dr Elizabeth (Beth) Cope** is the full-time Pioneer Minister for Northstowe, as well as serving as the Bishop's Advisor for New Housing and on Churches Together England's New Housing Group. While the local church are increasingly contributing to Ministry Share, we are grateful that EDBF receives a grant from the [Benefact Trust](#) to subsidise associated costs.

**The Revd Stephen Dove** served as Pioneer Assistant Minister from June 2022 until November 2024, when he left to complete final curacy placements ready to move on to his First Incumbency. The Trustees thank him for his ministry in Northstowe.

# Safeguarding

Michelle Kemp has served as our safeguarding officer since 2022, overseeing [safeguarding@northstowe.church](mailto:safeguarding@northstowe.church), and continues in this role for 2025.

The Trustees are committed to safeguarding all members of our church community, particularly children and vulnerable adults. Our ecumenical agreement is that we will adhere to legislation, national Church of England frameworks, and the Ely Diocesan Safeguarding procedures, utilizing the Parish Safeguarding Dashboards (details at [www.elydiocese.org/safeguarding](http://www.elydiocese.org/safeguarding)).

Our safeguarding statement and policy are prominently displayed on our website, with supporting leaflets and posters available weekly. Leaders wear lanyards to indicate their safeguarding status:

- Blue: On Team (but role is ineligible for DBS disclosure).
- Pink: DBS checked and compliant with all relevant training and checks.

All ministers and volunteers working with children or vulnerable adults are safely recruited following Church of England guidelines, with appropriate checks, including DBS, completed. Mandatory safeguarding training (C0, C1, C2, and Domestic Violence Awareness) is up to date for all required roles.

We encourage all regular participants to consider completing C0 training to further foster a safe and informed community.

**Ely Diocesan Safeguarding Duty Telephone Number: 01353 652747**

## Church Policies

These notices and policies are available to view or download via the church website:

1. [Safeguarding Poster](#)
2. [Safeguarding Policy](#)
3. [Church complaints policy](#)
4. [Data privacy notice](#)
5. [Equalities policy statement](#)
6. [Health and Safety Policy](#)
7. [Financial Control Policy](#)
8. [Photography Policy](#)
9. [Recruitment of ex-offenders](#)
10. [Whistleblowers Policy](#)

# Financial Review

The total donations and gift aid claimed in 2024 was £28,696. We are very grateful to the Church Schools of Cambridge, and the Growing Faith partnership for their financial support to the work in Northstowe last year. £10,499 of restricted funds were received during the year.

Ministry and activity costs during the year were £12,187, partly funded by the restricted funds, and £9,500 was given to Ely Diocese in grateful recognition of their support of the post of a Pioneer and Assistant Minister, but also the safeguarding, advice and pastoral support.

Net income for the year was £17,974 of which £12,687 was unrestricted. Trustees designated funds for future building of the church, and at the end of the year there were total funds of £64,181.

## Reserves Policy

The Church Council aim to keep at least 3 months' running costs in our reserves.

*As in the Charity Commission guidance, we use the term 'reserves' to describe the part of a charity's funds that are available to be used in the future for whatever the charity needs. 'Reserves' are therefore the resources we have or can make available to spend for any or all of the charity's purposes once we have met our commitments and covered our other planned expenditure. ('Restricted funds' can never be regarded as general reserves)*

## Assets Report

Our most significant assets are:

- Shipping container
- PA equipment
- 5 gazebos
- A set of deckchairs
- Tables for use in the school hall

## Independent Examiner's report to the Trustees of the Northstowe Church Network

Northstowe Church Network - Charity Number 1206577

This report on the financial statements of the Northstowe Church Network for the year ending 31<sup>st</sup> December 2024 which are set out in the preceding page/s, is in respect of an examination carried out in accordance with accounting regulations and section 130 of the Charities Act 2011.

It is my responsibility to:

- Examine the accounts
- To follow the procedures laid down by the Charity Commission
- To state whether particular matters have come to my attention

### Preservation of Statement of Accounts

The trustees of a charity must preserve any statement of accounts prepared by them under section 133 of the Charities Act 2011 for a period of at least 6 years from the end of the financial year to which the accounts relate.

### Basis of Independent Examiner's Report

My examination was carried out in accordance with the general directions given by the Charity Commission. That examination includes a review of the accounting records kept by the trustees of the Northstowe Church Network and a comparison of the accounts with those records. It also includes consideration of any unusual items or disclosures in the financial statements.

### Independent Examiner's Statement

In the course of my examination, no matter has come to my attention:

1. which gives me reasonable cause to believe that in, any material respect, the requirements to keep accounting records in accordance with section 133 of the Act; and to prepare financial statements which accord with accounting records and comply the accounting requirements of the Act and the regulations have not been met; or
2. to which, in my opinion, attention should be drawn in order to enable a proper understanding of the accounts to be reached

Signed:

*PR Fuller*

Date:

*23<sup>rd</sup> April 2025*

Mr P. R. Fuller  
92 Boxworth End  
Swavesey  
Cambridge  
CB24 4RA

NORTHSTOWE CHURCH NETWORK  
ANNUAL REPORT AND FINANCIAL STATEMENTS 2024

STATEMENT OF FINANCIAL ACTIVITIES

	Unrestricted	Other Restricted	2024 Total	Unrestricted	Other Restricted	2023 Total
<b>Income</b>						
Donations and Legacies	28,696	-	<b>28,696</b>	27,929	-	<b>27,979</b>
Other Income – Grants	-	10,499	<b>10,499</b>	166	10,360	<b>10,526</b>
Investment Income	162	-	<b>162</b>	227	-	<b>227</b>
Church/Charitable Activities	304	-	<b>304</b>	401	-	<b>401</b>
Income Total	29,162	10,499	<b>39,661</b>	28,723	10,360	<b>39,083</b>
<b>Expenditure</b>						
Charitable Activities	6,975	5,212	<b>12,187</b>	3,459	4,778	<b>8,237</b>
Support and Governance	9,500	-	<b>9,500</b>	13,673	-	<b>13,673</b>
Expenditure total	16,475	5,212	<b>21,687</b>	17,132	4,778	<b>21,910</b>
<b>Net income/(expenditure)</b>	<b>12,687</b>	<b>5,287</b>	<b>17,974</b>	<b>11,591</b>	<b>5,582</b>	<b>17,173</b>
<b>RECONCILIATION OF FUNDS</b>	8					
Total funds b/f	38,138	8,069	<b>46,207</b>	26,547	2,487	<b>29,034</b>
Total funds c/f	50,825	13,356	<b>64,181</b>	38,138	8,069	<b>46,207</b>

All income and expenditure relates to continuing activities

The notes on pages 15 to 16 form part of these financial statements.

NORTHSTOWE CHURCH NETWORK  
ANNUAL REPORT AND FINANCIAL STATEMENTS 2024


BALANCE SHEET

	Notes	Unrestricted Funds	Restricted Other	2024 Total
<b>FIXED ASSETS</b>				
Tangible assets	1	4,103	-	<b>4,103</b>
<b>TOTAL FIXED ASSETS</b>		<b>4,103</b>	<b>-</b>	<b>4,103</b>
<b>CURRENT ASSETS</b>				
Cash at bank and in hand		48,290	13,356	<b>61,646</b>
<b>TOTAL CURRENT ASSETS</b>		<b>48,290</b>	<b>13,356</b>	<b>61,646</b>
<b>CURRENT LIABILITIES</b>				
Creditors: amounts falling due within 1 year	2	1,568	-	<b>1,568</b>
<b>NET CURRENT ASSETS</b>		<b>46,722</b>	<b>13,356</b>	<b>60,078</b>
<b>TOTAL NET ASSETS</b>	3	<b>50,825</b>	<b>13,356</b>	<b>64,181</b>

	Notes	Unrestricted Funds	Restricted Other	2023 Total
<b>FIXED ASSETS</b>				
Tangible assets	1	2,598	-	2,598
<b>TOTAL FIXED ASSETS</b>		<b>2,598</b>	<b>-</b>	<b>2,598</b>
<b>CURRENT ASSETS</b>				
Cash at bank and in hand	2	37,091	8,069	45,160
<b>TOTAL CURRENT ASSETS</b>		<b>37,091</b>	<b>8,069</b>	<b>45,160</b>
<b>CURRENT LIABILITIES</b>				
Creditors: amounts falling due within 1 year	2	1,551	-	1,551
<b>NET CURRENT ASSETS</b>		<b>35,540</b>	<b>8,069</b>	<b>43,609</b>
<b>TOTAL NET ASSETS</b>	3	<b>38,138</b>	<b>8,069</b>	<b>46,207</b>

The notes on pages 15 to 16 form part of the financial statements

The financial statements were approved by the Church Council on: 10/02/2025

and signed on its behalf by:  E. R. Cope (Chair)

NORTHSTOWE CHURCH NETWORK  
ANNUAL REPORT AND FINANCIAL STATEMENTS 2024

1. TANGIBLE FIXED ASSETS

	Equipment	<b>2024 TOTAL</b>	Equipment	2023 TOTAL
VALUE B/F AT BEGINNING OF YEAR	2,598	<b>2,598</b>	-	-
Additions	1,752	<b>1,752</b>	2,598	2,598
VALUE C/F AT END OF YEAR	4,350	<b>4,350</b>	2,598	2,598
DEPRECIATION B/F AT BEGINNING OF YEAR	-	-	-	-
Depreciation charge	247	<b>247</b>	-	-
DEPRECIATION C/F AT END OF YEAR	247	<b>247</b>	-	-
<b>NET BOOK VALUE AT END OF YEAR</b>	4,103	<b>4,103</b>	2,598	2,598

2. CREDITORS

	Unrestricted	Restricted	<b>2024 TOTAL</b>	Unrestricted	Restricted	2023 TOTAL
Accruals	1,423	-	<b>1,423</b>	1,000	-	1,000
Expenses due	145	-	<b>145</b>	551	-	551
	1,568	-	<b>1,568</b>	1,551	-	1,551

3. RESTRICTED AND UNRESTRICTED FUNDS

**Name of Restricted fund**

Feasibility Study	Funds received from the URC to conduct a feasibility study
Youth Hive Funds	Funds received to support youth work in Northstowe
Church Schools Cambridge	Funding to support projects in the school
Growing Faith Project	Funds to experiment with intergenerational learning at the overlap of home, school and church

NORTHSTOWE CHURCH NETWORK  
ANNUAL REPORT AND FINANCIAL STATEMENTS 2024

RECONCILIATION OF MOVEMENT OF FUNDS

YEAR ENDED 31 DECEMBER 2024

	Funds b/f 1 Jan 2024	Incoming Resources	Resources Expended	Funds c/f 31 Dec 2024
<b>Restricted Funds</b>				
Feasibility Study	2,487	-	-	2,487
Church Schools Cambridge	-	499	(499)	-
Growing Faith	5,582	10,000	(4,713)	10,869
	<u>8,069</u>	<u>10,499</u>	<u>(5,212)</u>	<u>13,356</u>

YEAR ENDED 31 DECEMBER 2023

	Funds b/f1 Jan 2023	Incoming Resources	Resources Expended	Funds c/f 31 Dec 2023
<b>Restricted Funds</b>				
Growing Faith	-	10,000	(4,418)	5,582
Feasibility Study	2,487	-	-	2,487
Church Schools Cambridge	-	360	(360)	-
	<u>2,487</u>	<u>10,360</u>	<u>(4,778)</u>	<u>8,069</u>

4. TRUSTEE'S EXPENSES

Trustees' expenses paid during the year were £NIL (2023: Nil)

5. RELATED PARTY DISCLOSURES

There are no related party disclosures during the 2024 year.