

# “More Than Food: The Power of Community — Ordinary People Doing Extraordinary Things to Feed Hope, Restore Dignity, and Build a Brighter Future”

## COLCHESTER FOODBANK 2024-2025

*These moments capture the heart of Colchester Foodbank — volunteers, partners, and neighbours standing side by side to bring hope where it's needed most. Every collection, every smile, and every act of kindness reflects the power of people coming together to make a difference*



## Contents



1.	A Message from the Directors
2.	Co-Directors..cont'd
3.	Achievements
4.	Data
5.	A message from the Chair
6.	Our Trustees
7.	HR and Welfare
8.	Organising Team
9.	Our Fantastic Volunteers
10.	Treasurer
11.	Satellites
•	Tollgate
•	New Town
•	Monkwick
•	Central- Eld Lane
•	Tiptree
•	Highwoods
•	Rowhedge
•	Myland and Greenstead
•	Brightlingsea
•	Wivenhoe
12.	Citizens Advice
13.	City Council
14.	Tots2Teens and Essex Free School Uniform
15.	A Fond Farewell
16.	Celebrating Win
17.	The Outreach Programme and Duke of Edinburgh (DofE)
18.	Real Life
19.	Partners and Supporters
20.	Our Patron and Trussell Area Manager

# A Message from the Co-Directors

As we reflect on another year at Colchester Foodbank, we are both humbled and inspired by what has been achieved—and by the resilience, kindness, and courage of our community.

This year has been a powerful reminder of both the urgency and the possibility of change. As Co-Directors, we have worked side by side with our incredible team, volunteers, and partners to respond not only to immediate crisis, but to build the foundations for long-term transformation.

Our charitable purpose remains clear and unwavering: to relieve poverty and financial hardship through the provision of emergency food, practical support, and connection to wider services—helping individuals and families move from crisis to stability.

Over the past year, we have strengthened the core of our operations—supporting and developing our team, extending our opening hours, and improving access across all 11 of our Foodbank centres. With every parcel distributed, we have ensured that people are met with dignity, compassion, and practical support. But our work has gone far beyond food. Together, we've built and embedded an Organising Team with a clear goal: to challenge the systems that keep people trapped in poverty. From hosting local listening campaigns and community roundtables, to launching our School Ambassadors programme that empowers young people to speak out, we are turning lived experience into action.

We've continued to provide wraparound support for those in crisis—helping people build confidence, find stability, and move forward. We've supported our volunteers through training in conflict resolution, first aid, and health and safety, and strengthened partnerships with local agencies to offer holistic support. With allies such as the Trussell Trust, we've campaigned for policy change at every level, ensuring that voices from our community are heard where decisions are made.

We've also had to make difficult decisions around funding and staffing, doing everything possible to sustain key roles and maintain stability during a time of immense pressure for charities and the people we serve.

This report tells more than facts and figures—it shares stories of lives touched and supported, of people walking through our doors in crisis and leaving with warmth, dignity, and hope. Every choice we've made has been guided by the Charity Commission's public benefit principles, ensuring that our actions deliver meaningful and measurable change for our community.

# Co-DIRECTORS

This year, we've also seen change within our own team. We said a fond farewell to a long-standing trustee as they stepped back from their role— leaving behind an enduring mark on our journey. Win, you are greatly missed at our meetings, and your wisdom and warmth continue to guide us. And to our dear Brian Ford, one of the last working founders of Colchester Foodbank, we extend our heartfelt thanks and deep gratitude. Your years of dedication, leadership, and unwavering belief in this mission have helped shape who we are today.

As we look ahead, we remain hopeful and determined. We are here not just to feed people, but to fight for a future where no one needs a foodbank.

To our volunteers, supporters, funders, and partner organisations—thank you. Your compassion, commitment, and belief in what we do have made this work possible.

With heartfelt thanks and solidarity,  
Nikki Ranson & Armin Lange  
Co-Directors, Colchester Foodbank



# Achievements

## Our Year of Impact

This year, Colchester Foodbank has continued to be a vital lifeline for thousands of individuals and families across our community. We've not only responded to urgent need but also deepened our commitment to dignity, compassion, and long-term change. Our organising team and volunteers have worked tirelessly, ensuring no one faces crisis alone.

In a joyful and powerful show of solidarity, we held our first Suit & Glitz Auction Gala, a celebration of community generosity and compassion. The event brought together supporters, partners, and local champions, raising essential funds while reminding us that behind every food parcel is a person — with hopes, talents, and dreams.

We were honoured to receive the Mayor's Making a Difference Award 2025, presented by Mayor Lesley Scott-Boutell. This recognition reflects the hard work and unwavering compassion of our team and volunteers who walk alongside people through crisis every day.

We are proud and grateful to have been chosen by Mayor Mike Lilley as the Mayoral Charity of the Year 2025–2026. This partnership will shine a spotlight on food poverty and help strengthen the collective action needed to tackle its root causes.



Grateful



## Colchester Foodbanks Annual Report – People Fed This Year

This year, Colchester Foodbanks have continued to serve our local community with dedication and care, providing vital support to families and individuals facing food insecurity. Across all our locations in Colchester, we have seen a consistent and significant demand for food parcels, reflecting both the ongoing need and the generosity of our volunteers and supporters.

### Key Figures

Total parcels distributed for adults: 12,173

Total parcels distributed for children: 7,760

Total parcels distributed across all locations: 19,933

Number of operational foodbank locations: 11

Over the course of the year, our foodbanks have supported thousands of individuals, with parcels delivered directly to homes for those unable to access our centres due to mobility issues or lack of transport. Our dedicated volunteers have ensured that every person who walks through our doors, or receives a delivery, is met with care and compassion. However, this year has also brought new challenges. Donations of food and toiletries have fallen by approximately 25%, largely due to the continuing pressures of the cost-of-living crisis. To ensure no one goes hungry, Colchester Foodbank has had to purchase an average of £10,000 worth of food and toiletries each month, supplementing donated stock to keep up with demand.

### Monthly and Regional Trends

Analysis of the distribution shows consistent demand throughout the year, with notable peaks around key periods such as school holidays and the winter months. Adult parcels consistently outnumbered those for children, highlighting the challenges faced by single adults and working families in accessing sufficient food.

### Conclusion

The scale of need in Colchester underscores the importance of our foodbanks and the critical role played by our volunteers, partner organisations, and community donors. Each parcel distributed represents more than just food—it provides support, dignity, and reassurance to individuals and families navigating difficult circumstances. Colchester Foodbanks remain committed to responding to need efficiently, expanding our reach wherever possible, and working closely with partner organisations to ensure holistic support for all who rely on our services.

# A message from the Chair Chair of Trustees

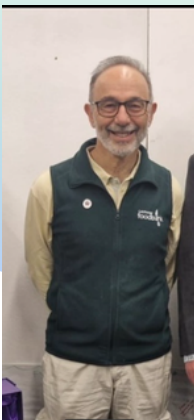
## Peter Tibber

2024 was another tough year for many people in and around Colchester. The foodbank provided support to over 20,000 of them. We not only met their immediate needs with our food parcels but also signposted them to some of our invaluable partners, such as Citizens Advice and Colchester City Council, who can help our clients find a sustainable exit from food poverty.

We did this against a backdrop of a significant fall in donations, both financial and in kind. This is entirely understandable in the current economic climate. But it means we have had to dip into our reserves, which remain solid, in order to make up the shortfall and we have had to up our game on fundraising.

Throughout the year we have had hanging over our heads the need to find a permanent home for the foodbank. The Tollgate Partnership has been wonderfully generous and understanding in providing us with temporary accommodation over the last few years but we have always known that this arrangement cannot last forever. Several opportunities came and went, but as I write we are on the verge of acquiring a new permanent home.

This will be transformative. Over time it will give us the capacity to develop our existing services and to develop new ones, providing a more complete offer to those in food poverty, addressing long term solutions not just sticking plaster, and making the foodbank a real force for good in our city. Of course, this comes with challenges. Buying our new home will severely deplete our reserves and require us to take on major financial commitments. We are already taking steps to prepare for this. We will also continue to be dependent on the many generous donors, big and small, who support us financially and in other ways. A huge thanks to you all.



# KINDNESS

5



# OUR CHAIR

I am excited and optimistic about the future, not least because of the wonderful people who make up the foodbank. It is led by two inspirational leaders, Nikki and Armin, who bring together their complementary skills to form a superb team. They are ably supported by Phoebe, Katie and Ade. We couldn't possibly envisage taking on the financial responsibilities of our own building were it not for the professional expertise, advice and commitment of our superb treasurer, Jenny.

I am very fortunate to work with a great group of trustees, some long standing others more recent. They provide a bracing combination of support and challenge. Together we have provided oversight of the management of the foodbank through tough times, supported the search for a new home and put in place stronger governance. After many years of service Win has stepped down as a trustee (although she continues as lead for Brightlingsea). I thank her warmly for all her support, particularly through the period as we transitioned to new leadership. Other trustees are likely to step down in the near future too, so I am looking for new recruits!

I must also pay special tribute to Brian Ford, who retired this year. Brian was one of the three founding members of Colchester Foodbank, alongside Rev. Andrew Fordyce and Rev. Hilary LeSeve. What began from Brian's front room in 2008 has grown into one of Colchester's most vital charities — a community lifeline that has supported tens of thousands of local people. Since those humble beginnings, Brian has poured his heart into this mission. His warmth, wisdom, and deep compassion have touched so many lives. He leaves behind a legacy that we will always be grateful for — and he will be truly, truly missed.

Finally, a huge thanks to our 240+ volunteers who do everything, with a smile (generally!) and a warm welcome for every client who walks through our doors.

Without them, there would be no foodbank.



# OUR TRUSTEES

## SABINA HINCHLIFFE



After graduating with a BA in English Literature, I worked for over 12 years as a topflight EA and events manager for one of the UK's largest investment houses, an Independent Parliamentary Body and one of the UK's largest examination awarding organisations.

Since then, I have successfully managed multiple recruitment micro businesses and raised my family in Colchester.

My foodbank journey began just after Covid, when I began volunteering for my local satellite, realising that there was a need for a more organised approach locally. I was determined to try and help individuals and families that fell between the gaps needing basic food and hygiene products.

My trustee role came about in September 2024.

I really wanted to do more at a strategic level with the foodbank and I hopes I can add value and bring a diverse voice to the table. One that is beneficial to the bigger ideas and future of the Colchester foodbank.

## MARK NORRINGTON



Mark Alfred Norrington  
Wivenhoe Essex

I've been a volunteer at Wivenhoe foodbank since its inception in 2018 and lead volunteer since 2019. I joined the Colchester board of trustees in 2019.

I originally volunteered at the foodbank to help the local community that I had recently moved to and this has led to being involved in many other community events as well. Even in leafy Wivenhoe there is a need to help feed those that are struggling and help signpost those in need of assistance to other agencies, which is what we do once a week in the local

Congregational church hall.

My big hope for the coming year is that we find a new long term home for the main HQ and warehouse for the foodbank so that all our efforts can be concentrated on helping those in the community who are most in need.

# KINDNESS

# OUR TRUSTEES



## JULIE RUSIECKI

As the longest serving Trustee for Colchester Foodbank, I have been volunteer, Secretary to the Board of Trustees and Trustee and have worked with a lot of wonderful people along the way. You don't work at the Foodbank for fame or glory, but because you are appalled that in this twenty-first century, when more people than ever have vast amounts of personal money and technology has made everything so easy for everyone – (really?) – there are an increasing number of ordinary individuals who are genuinely in need of a helping hand.

We all know about the increase in food and fuel costs and we've all had to make compromises, doing without the treats that make life so much better, settling for less than we'd like, leaving holidays and outings aside for this year. But what if, despite working and cutting household costs, there just isn't enough money to pay the day-to-day expenses of life, especially with young families, and debt looms large. I've been told you cannot understand what it is like until you've experienced it, but I don't want anyone to have to experience this before they can offer to help.

So, I give thanks for the generosity of people who freely give what they can spare to make it possible for Colchester Foodbank to offer support to those who need it.

That's not just a food parcel and some fresh produce, but advice from support agencies who recognize that our society has a real problem to deal with. If we can solve the problem at source, we can make change happen.

By the time this report is published, I will have retired and made way for younger people and new ideas to flourish. Will I be sad? Of course I will. Working at the Foodbank has been an incredible experience, and I am grateful to have worked with the inspirational individuals who now lead the Foodbank. I leave all in their most

capable hands, knowing that the future is bright where they shine the light.

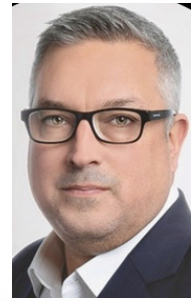


## DEREK SUTHERLAND

After stepping away from my career in Data and Finance, I wanted to find a meaningful way to use my time and skills locally, which led me to Colchester Foodbank. Joining as a trustee felt like the right move, allowing me to apply my experience in managing budgets, handling complex data, and ensuring things run efficiently. I hope to use this background to help the foodbank maintain its financial stability, ensure good governance, and maximize its resources so it can continue to provide essential support to people in our community who are facing real difficulties.

# OUR TRUSTEES

## SHANE ALDONS



### Trustee's Reflections – Shane

My first full year as a Trustee has flown by, and 2025 has the potential to be a landmark year in the history of Colchester Foodbank — one which I am incredibly proud to be a part of. At the time of writing, the Leadership Team is engaged in detailed and thoughtful discussions regarding the Foodbank's future location. This is a decision that could and should shape the organisation for years to come, and it is being approached with the highest priority, considering all stakeholders. The Trustees, alongside Co-Directors Armin and Nikki, remain fully committed to ensuring that every perspective is taken into account.

From my viewpoint, this has already been a successful year. But what defines success for a Foodbank? It lies in continuing to meet the essential needs of everyone who walks through our doors across the borough. It lies in the continued generosity of donors, both in food and financial contributions. And it lies in the growth and dedication of our volunteer team. I am particularly pleased that many young people who joined us through the Duke of Edinburgh Award Scheme have chosen to stay, drawn by the friendly and welcoming environment created by our incredible volunteering teams.

So, what does the year ahead bring? First and foremost, hopefully, new premises. This will be followed by continued growth in donations, and further collaboration with key partners in the community to better support those in need.

The Foodbank, Trustees, Co-Directors, and Volunteers will continue to serve everyone in Colchester who requires our help — with smiles on our faces and a profound sense of pride in the work we do.



## LORNA PREECE

Hello, I'm Lorna, I am honoured to be on the board of Trustees at Colchester Foodbank. I have 18 years experience of working with Next Chapter, previously Colchester & Tendring Women's Refuge, where I have and continue to be dedicated to supporting our community. For the past 10 years, I have had the privilege of serving as a refuge services manager, leading initiatives and guiding the refuge practitioners with a focus on compassion.

Whilst holding my position at Next Chapter, I served on the board of Colchester Borough Homes. During my time there, I gained valuable insights into governance, strategic planning and community advocacy, working on complex housing issues and implementing policies that made a real difference in the lives of residents.

As I step into this new role as a trustee, I am excited to bring my experience and passion for community service to the forefront. I am committed to fostering a supportive and inclusive environment, empowering individuals and families, and ensuring that everyone has access to the resources they need to thrive and succeed.

I look forward to working closely with my fellow trustees, the dedicated staff, and all of our stakeholders to continue making a positive impact. Thank you for welcoming me into this new role, and I am eager to contribute to the ongoing success of Colchester Foodbank.



# HR AND WELFARE



# Hope

Hello I'm PHOEBE

I am the HR/Welfare Officer and have been working for Colchester Foodbank for 16 months, with 2.5 years volunteering before becoming staff.

I joined the foodbank team when my sons went to school and can't believe how fast time has flown.

I am always happy to get involved and enjoy helping out in all aspects of the foodbanks work, from answering the phone to date sorting baked beans and Hoovering.

My main role includes the HR aspects of the volunteers and staff at the Foodbank. This year we are making great progress ensuring all our client facing volunteers have a valid DBS check and we are in the process of moving our volunteer data on to the Trussell Assemble System. We are also welcoming lots of new volunteers at the warehouse in Tollgate.

In my welfare role I have given out £2749 directly to clients in supermarket vouchers and have been actively involved in giving out the Mensa Heaters in our 4 Free Heater Events.

I am very proud of how successful our Gala was in November and can't wait for this years big event. I also do some small scale fundraising such as my toy raffle, selling on vinted and recycling batteries and ink cartridges.

- **Listening**
- **Supporting**
- **Referring**
- **Advocating**
- **Signposting**
- **Safeguarding**
- **Assessing**
- **Empowering**
- **Liaising**
- **Monitoring**
- **Recruiting**
- **Onboarding**
- **Training**
- **Advising**
- **Disciplining**
- **Documenting**
- **Scheduling**
- **Appraising**
- **Auditing**
- **Complying**



# ORGANISING TEAM



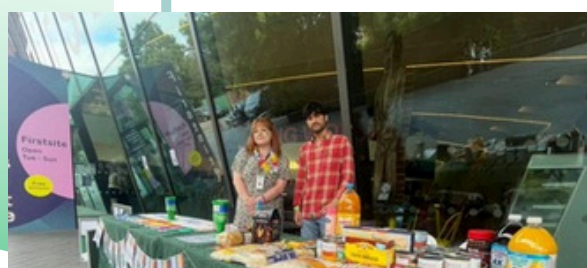
Over the past year, The Organising Team has continued to be a force for change—campaigning, advocating, and building meaningful relationships across Colchester and beyond to tackle the root causes of food insecurity in our community.

Our team has taken to the streets—literally—attending key local events such as Colchester Pride, The Food and Drink Festival, Rice and Spice Festival and The Roman Festival. These vibrant community spaces have not only been opportunities to raise vital funds and awareness, but also to share our message and introduce our new fans, which have proven to be a huge hit!

A major highlight this year has been our sustained campaign work with the local council.

Thanks to persistent lobbying and strong community support, we've influenced changes in guidance to housing officers around the provision of cookers, carpets, and curtains in social housing. These small yet essential items make a significant difference in preventing financial hardship for new tenants, and we are proud to have helped shift the conversation and the policy. Looking to the future, we are working closely with the council in the context of devolution to ensure sustainable, long-term change. We've begun developing accessible resources that equip social housing tenants with the knowledge and support they need in a shifting political landscape.

- **Empower**
- **Mobilise**
- **Advocate**
- **Influence**
- **Transform**
- **Educate**
- **Engage**
- **Uplift**
- **Unite**
- **Amplify**
- **Challenge**
- **Inspire**
- **Lead**
- **Organise**
- **Collaborate**
- **Innovate**
- **Campaign**
- **Build**
- **Connect**
- **Equip**



Looking to the future, we are working closely with the council in the context of devolution to ensure sustainable, long-term change. We've begun developing accessible resources that equip social housing tenants with the knowledge and support they need in a shifting political landscape community connection initiatives have also gone from strength to strength. The Cuppa Kindness scheme has expanded from 4 to 9 cafes across Colchester—providing warm spaces, free drinks, and a sense of belonging for those who need it most as well as building a business community who is conscious of our community needs. Education remains at the heart of our organising work. We are excited to be launching our School Ambassadorship Scheme, designed to empower young people to become hunger-aware, socially conscious citizens. This program aims to prevent food insecurity among youth and nurture the next generation of foodbank supporters and leaders.

At a national level, we continue to stand alongside key campaigns such as Guarantee Our Essentials, and this year we took our message directly to Westminster, joining others in lobbying MPs to push for systemic change. Our collaborative work with Citizens UK has brought a strategic edge to our campaigning, using power mapping to better understand and influence the local political landscape as devolution reshapes power in our region. We've also supported the Democracy in Action course at the University of Essex—nurturing democratic engagement among young adults.

Finally, we've deepened our commitment to evidence-based advocacy by partnering with both Anglia Ruskin University (ARU) and University of Essex on groundbreaking research into the intersection of health and hardship—ensuring our work is informed, targeted, and impactful.

This year has shown the strength of what can be achieved when communities come together to organise. We are proud of the wins we've made and are energised for the work ahead.



*Believe*

# SOME OF OUR FANTASTIC VOLUNTEERS

*We ♥ our Volunteers*



# SOME OF OUR FANTASTIC Volunteers







# TREASURER

## Jenny Turnbull

### GOVERNANCE

Firstly, I'd like to say thank you to Taylor Rushby, Chartered Accountants, for their continued support in carrying out the Independent Examination. In particular, we are grateful to Nick Taylor for his guidance and support in presenting the accounts in the format required by the Charities Commission. The Trustees have regularly been kept abreast of the financial position during the year and forecast for future years, for transparency and to inform their operational and strategic decisions. In particular, expenditure on food items is tightly controlled by the Trustees by setting budgets for operational purposes.

### INCOMING RESOURCES

Despite economic challenges funding has remained close to the previous year, with many individuals, business organisations, philanthropic groups and faith groups choosing to support the Foodbank, as in previous years. We thank them for their ongoing support.

In overall terms, incoming resources totalled £392k, compared to £377k in 2023, an increase of 4% year on year.

This is thanks to significant increase in Grant income as a result of efforts by the Directors, generating an additional £76k income from a variety of sources plus £7.5k surplus from the November Gala and auction.

However, this is offset by a 7% fall in Donations, mainly from online sources.

### RESOURCES EXPENDED

Costs for the year on operational activities and organisational governance increased to £320k, a £52k or 22%, increase over 2023. Again, there has been a significant increase in expenditure required for food purchases, at £96k in 2024 versus £54k in 2023 and £21k in 2022. As covered elsewhere in the annual report, this results from a fall off of donations of food received.

### STATEMENT OF FUNDS

The net funds of the Charity increased by £72k in the year, to end at £831k. Of this £783k is held as Cash at Bank.

# Satellites

## Tollgate Foodbank – Our Central Hub of Hope

Tollgate Foodbank continues to thrive as our flagship site, opening its doors Monday to Saturday, 10am–2pm, with the help of an incredible 95 dedicated volunteers. This site is more than a foodbank—it is the beating heart of our wider support system, offering not only emergency food but also a warm, welcoming environment and a vital connection to the services our community needs most.

Each day, we provide a warm place for a cup of tea and a friendly chat, helping to ease loneliness, build trust, and create a space where everyone feels valued. Saturdays are made even more special by the young people completing their Duke of Edinburgh Award placements, which have been exceptionally successful, providing life skills and a sense of purpose to our future leaders.

As our main hub for support services, Tollgate hosts a wide range of partner organisations throughout the week, including:

- Colchester City Council (twice weekly)
- Citizens Advice (twice weekly, offering practical and confidential guidance)
- Tots2Teens, supporting families and children
- Essex Free School Uniform Exchange, helping children access essential schoolwear
- Re-Focus, delivering a weekly support group for individuals with additional needs

We also run a pet foodbank in partnership with Blue Cross, so no family member—two-legged or four—goes hungry.

Tollgate is home to a growing book corner that encourages reading across all ages, as well as seasonal initiatives like the Winter Coat Rail and Winter Warm Bags, helping families stay warm and cared for through the colder months. Our Heater Days distributed free electric heaters to those struggling with heating costs, offering immediate relief during tough times.

# Satellites

## TOLLGATE Cont'd

This site also serves as the base for our organising team, and the home of our wider Outreach Programme—a project we launched to give people the chance to build self-esteem, confidence, and slowly rebuild themselves within a work-like environment. The programme offers gentle, one-to-one support, signposting, and encouragement for those navigating crisis, helping them take positive steps forward. Outreach volunteers are on hand when needed, providing a listening ear, a helping hand, and tailored support in a calm, understanding space.

And at Christmas, we proudly host the beloved Giving Tree, ensuring no child goes without a gift or the magic of the festive season—because every child deserves to feel remembered and cherished.

Tollgate isn't just where people come for help. It's where they come to be heard, supported, and uplifted. It stands as a shining example of what community in action truly looks like.



# Satellites

## NEW TOWN - ST STEPHENS

I am Andrew Topple and I am the Administrator at St Stephen's Church and one of the Foodbank Leads here. I am supported by three other leads; Denise who is a member at St Stephen's Church, Sally who is a member from Wimpole Road Methodist Church with whom we work closing on this and other activities and Annie another St Stephen's Church member. We are also supported by a band of other volunteers drawn from across both Churches and also the local community. It is such a pleasure to have this collaborative working relationship which we also see across the works we do including the Soup Run (co-ordinated by Wimpole Road and well supported by St Stephen's members) and our Toddler groups.

The New Town Satellite continues to open twice a week; on Monday evenings and Thursday during the day. Some of our sessions are very busy and others less so.

With both these sessions we are open to non Foodbank clients popping in for a drink and a chat. This seems to work really well, with a well-established community meeting regularly on a Thursday. We have not witnessed any situations where this might put potential Foodbank users from attending, moreover it helps to provide a friendly welcome to all who visit for whatever reason. We are also blessed by the support of Citizens Advice, with both Kerry and Sylvia (until recently) being with us on a regular basis. This has proved so helpful. We are also able to signpost clients to other activities & services offered within the immediate areas, such as the Wimpole Road Warm Space on a Wednesday and the Community Café (also run alongside the Foodbank) at St Margaret's.

We remain deeply indebted to our volunteers and also the central support we get from the main Foodbank at Tollgate.

We long and pray for the day when we are no longer needed, but right now that feels a long way off!

# Satellites

## MONKWICK

**This year has been quite busy for Monkwick (we like to keep busy and support as many people as we can!). As well as our clients, who present with such varied difficulties, our Community Café is going strong and gives people a chance to get out of their property and chat with others.**

**We ran a warm space over the winter months providing hot food twice a month, free to clients or a small donation. This worked well and we will do it again this year. In addition to CAB once a month, we have hosted a Council-run Damp & Mould event, Dementia Support, Slow Cooker Club, an RHS planting seeds event, Peer Support from the NHS, a Colchester Borough Homes market and further support event, several Colchester MP Pam Cox surgery's, free heaters and MacMillan Coffee morning.**

**We are looking forward to a new Debt Management service being with us every week except the first of each month.**

**We remain very grateful to the huge support that Cllr Dave Harris gives us in promoting these events to Monkwick and Berechurch residents and to Hollies Bakery on Mersea Road for letting us have any leftover bread and cakes weekly to support clients in need.**



# Satellites

## CENTRAL - ELD LANE

It would be great to report a drop in client numbers this year, but unfortunately, the need remains high. Numbers fluctuate week to week—sometimes we see as many as forty clients across our three sessions, other times as few as twelve. We even had a session with no clients at all. The reasons for these changes are unclear, making stock ordering difficult. With limited storage space and tricky access, we constantly balance between having too much or too little.

Another ongoing issue is clients arriving without vouchers. Since Centre Plus stopped issuing vouchers last year—replacing them with a general signposting sheet—many clients, especially those from the Job Centre, have needed guidance. We often directed them to Colchester C360, but its sudden closure in January left a gap. In response, we allowed Eld Lane volunteers to issue vouchers for those with signposting forms. Surprisingly, demand didn't surge—possibly because clients quickly found alternatives, or perhaps some chose not to seek help without easy access.

We still complete pink vouchers or white consent forms for JCP clients, but doing this outside in poor weather is difficult. Paperwork gets wet, and privacy is compromised when discussing sensitive issues in public. We do our best in these challenging conditions.

We value the regular visits from Citizens Advice, but budget cuts mean they now attend only once a month. We inform clients of this, but for those with chaotic lives, remembering an appointment weeks ahead can be a real barrier.

Our three weekly sessions are run by a dedicated team of six regular volunteers. We're especially grateful for the support of Anna and Jane, who fill rota gaps, and Karou and Lee from Open Door, who continue to assist us.



# Satellites

## TIPTREE

Tiptree Food Bank has had a busy and rewarding year, with demand for food parcels remaining high. We were overwhelmed by the amazing generosity of our local community during Harvest Festival, with local churches and schools donating so much, and the support continued at

Christmas with both gifts and generous cash donations. These contributions have helped us keep our shelves full, ensuring we can provide food and toiletries to everyone who needs them.

While a few of our volunteers have moved on to new adventures, our wonderful team has kept spirits high, delivering parcels with dedication and a smile. Around two-thirds of our food parcels go directly to clients who cannot visit the food bank due to mobility or transport challenges, making our volunteer efforts even more essential.

We are so grateful to our incredible volunteers and to Tiptree United Reformed Church for allowing us to use their premises free of charge. Thanks to them, we can continue serving our community with care, compassion, and a warm welcome for everyone who walks through our doors—or receives our deliveries.



## HIGHWOODS

This last year has been a hectic but rewarding one, we have had 3 new Volunteers join our team and soon we will be wishing Rev Charlie Day a fine farewell as she ventures off on maternity leave.



We have a great community around us with donations coming from St Luke's, St Marks, and The Ark Churches also The Gilbert & Bishop William Ward schools, to name just a view.

Our client numbers have steadily increased over the last year and, whilst it is good to know that we have been able to help so many people, it is also sad to know that there are still so many people in need of the Foodbank's services. However, while there is a need for such resources we will continue to try and meet that need.



# Satellites

## ROWHEDGE

Mariners Chapel, Rowhedge, Colchester

The Rowhedge Foodbank continues to be well used at the Mariners Chapel with a growing number of people accessing it. This year 319 adults and 387 children have benefitted from the foodbank. We have noticed that there has been an increased use by single people in the village.

We continue to receive generous donations from individuals and local community events including Village Lunch Club, Open Gardens, Parish Council Community Awards and other local organisations.

The Foodbank has also received regular food donations from people living in the village, from Fingringhoe and the local Coop.

As a result of the money donations we have been able to continue ensuring that clients have fresh fruit, vegetables, ham, butter, cheese and bread in addition to their food parcels. The funding, which includes the hardship fund, a donation from a local resident has continued to help provide additional items needed in households e.g help with utility bills and electrical items.

The Rowhedge team continue to do a marvellous job – they are so welcoming kind and thoughtful to every client that comes through the door. Because we are a small hub we're able to give opportunities to build relationships and signpost if needed. We actively encourage people to talk so additional help or funding can be sourced

We have had a number of positive comments from clients saying how the Food Bank has helped them and didn't know what they would have done without it.

The Citizens Advice Bureau attends monthly and holds private meetings with anyone who has requested their help on a range of issues and have been instrumental in ensuring clients apply for benefits they are entitled to, advice regarding pathways to housing and any other concerns they have.

We have continued to ensure strong partnership working with a number of agencies which has enabled us to make a big difference to some families. These partnerships, with different charities and mainstream organisations, include the Mariners Chapel in Rowhedge, Citizens Advice Bureau, Signpost and NEST. At Christmas we worked with NEST to provide Christmas hampers for families.

This has resulted in the Foodbank team supporting a family to improve their living conditions through the team along with other volunteers helping to make their house ready for a council inspection and then supporting them with applying for funding for repairs.

# Satellites

## ROWHEDGE...cont'd

Two particularly strong, effective and well established partnerships are with St. Lawrence's Primary School which has resulted in the Foodbank being able to reach out to more families in need particularly during the school holidays where we have helped around 45 families during the summer, Christmas and Easter holidays. We are really grateful to Anne and her team for organising the family list and her input in ensuring the parcels are ready for the families to pick up.

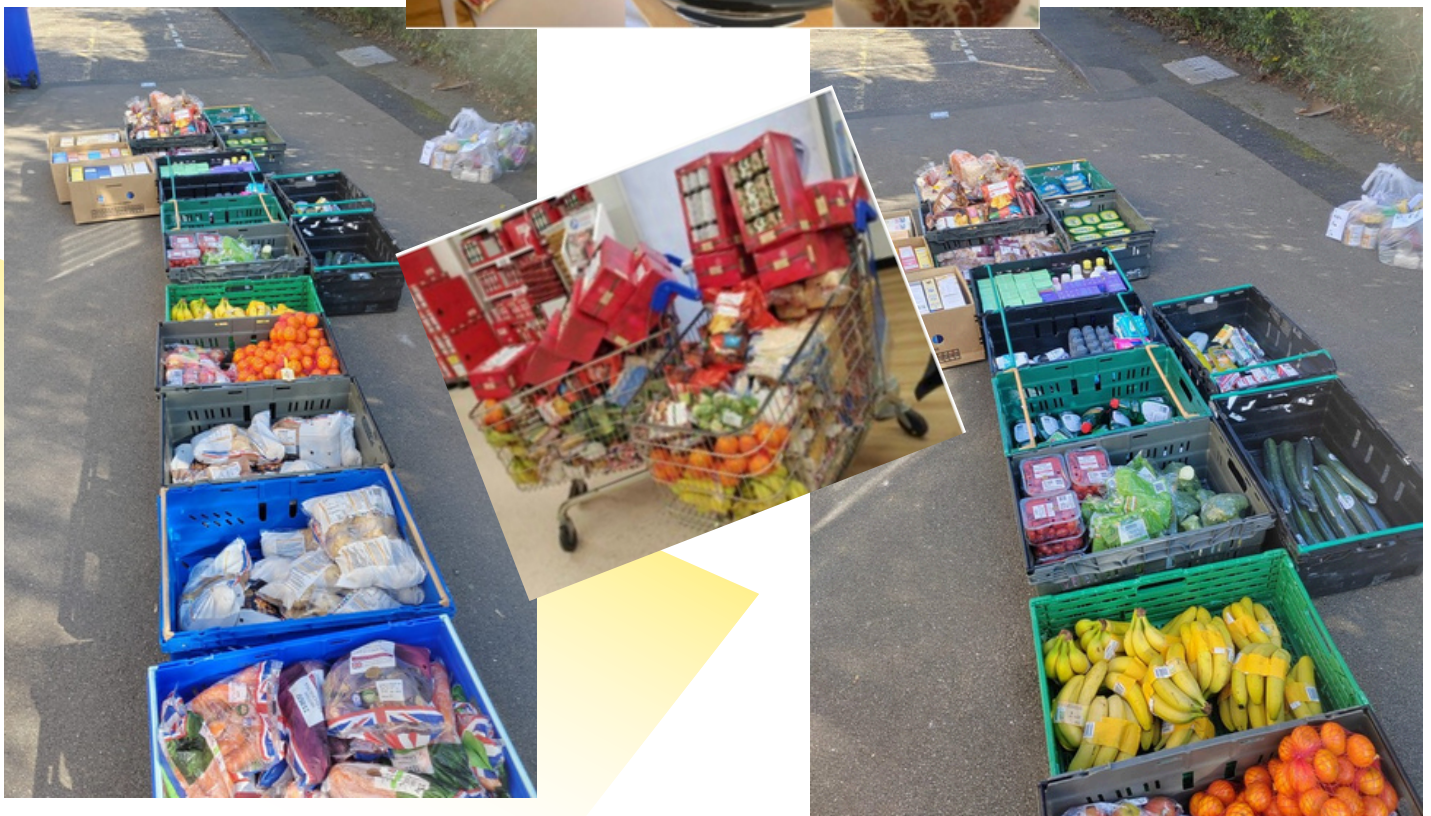
The Mariners Chapel continues to host the Foodbank, provides storage space, a private area for CAB meetings, advertises the Foodbank at the Sunday service and makes a hardship fund available if necessary.

While many families and individuals access the Foodbank at the Mariners Chapel we have also continued to provide a delivery service to those who are unable to collect heavy bags of food or indeed manage to access the bank itself in person.

The Rowhedge Team now consists of 10 volunteers. Team meetings are termly and these meetings continue to strengthen both our knowledge, our team identity and a positive 'can do approach'. Over the year the team has changed with three new volunteers coming on board. Sadly we said goodbye to one of our long standing volunteers.

The Slow Cooker Club ran for 6 weeks from January through to February and this reached 8 families. Participants were eager to share their efforts and we put photographs and comments about the food on our Facebook page.

We can see from the usage of the foodbank that there continues to be a need for our services and are grateful for the on going support of the main Tollgate Foodbank which has made this possible.



# Satellites

## MYLAND

At Myland, we continue to do what we can, given our restricted space for packs! This year, we have seen a few changes. We used to have a few regular donations from kind local people, but these have drastically reduced. Also, our client base has changed; we still have a few 'frequent fliers' that we help with packs, and with conversation, guiding them to help from the other agencies at Tollgate. These clients are usually single households, many being supported by mental health charities. Lately, we have seen an increase in family applications; some temporary help due to benefit delays etc., some RAMA, some people who are simply struggling. We try to guide people to visit the Community Pantry nearby to supplement our packs of tinned and dried goods.

## GREENSTEAD

What a year it's been at Greenstead Foodbank! Once again, we've been kept busy, with lots of people coming through our doors for help and support. We've noticed our community has been changing, with many of our services this year going to R.A.M.A., single men living in HMOs, and referrals from Beyond the Box. At times this has stretched us, especially when we've been short of volunteers, but as always our team has pulled together to make sure no one is turned away. More than just food, we are proud to offer a warm, safe space to anyone who needs it. Sometimes it's a bag of shopping, other times it's simply a cup of tea, a friendly chat, and a place to feel welcome. That sense of community is just as important as the practical help we give.

This year, we've been able to expand what we offer, including:

- Citizens Advice visiting twice a month with expert guidance.
- A new Colchester Borough Homes advice service, also twice a month.
- The launch of a School Uniform Exchange, helping families with back-to-school costs.
- Our Book Shelf, giving people free books to take home.
- Kettle Packs for people experiencing homelessness, ensuring access to hot drinks and simple meals.

Other highlights include:

- Distributing a record number of heaters earlier this year to tackle fuel poverty.
- Looking forward to this year's Heater Day, which will once again support those most in need during the colder months.
- Volunteers attending the Glamour and Glitz Gala, raising awareness and funds.
- 16 volunteers coming together for our Christmas dinner – a joyful celebration that we hope will be even bigger this year.

Our volunteers continue to be the beating heart of Greenstead Foodbank. Their kindness, hard work, and good humour are what keep us going, whether through collections, fundraisers, or simply offering a warm welcome to every person who walks through our doors.

All in all, it's been a positive and uplifting year. We're so proud of what's been achieved and so grateful for the continued support of our community. Together, we've shown once again that Greenstead Foodbank is more than just a place to pick up food – it's a place of hope, warmth, and belonging.

Finally, we'd like to say a heartfelt thank-you to everyone who has supported us this year – our volunteers, partner organisations, local churches, schools, businesses, and the many individuals who have donated food, funds, or time. We couldn't do what we do without you.

# Satellites

## BRIGHTLINGSEA

What a year it has been here at Brightlingsea! Once again, we have been so blessed by the generosity of our local community and supporters.

A huge thank you goes to:

- Smiths the Butchers
- Bumbles the Greengrocers
  - The Bakery
  - Sainsbury's
  - Co-op
- Tesco and Spar
- St. Mary's Church, Great Bentley

...and of course, to the ever-generous Brightlingsea community, who never fail to step up and support us in our mission to help those in need.

We were especially grateful for everyone's support at the Brightlingsea Winter Festival and the Brightlingsea Free Music Festival. These events not only raised vital funds but also raised awareness of the work we do locally.

This year also brought a very special moment of pride as Brightlingsea Foodbank was awarded The King's Award for Voluntary Service in 2024. Unfortunately, quite a few of our volunteers were unable to attend the official ceremony at the time, so the Mayor of the moment, Mr. Richard Morgan, kindly held an official presentation at our Town Hall and there was a celebration of our volunteers ongoing commitment to supporting clients in crisis, which was recognised in the most fitting way – though they will probably hate me for saying it, this recognition was so well deserved!

We will sadly be saying goodbye to two of our wonderful volunteers in the near future: Pandy, who is moving back to Dorset in October, and Wendy, who will be heading to Lincolnshire once she finds her new home. We will miss them both very much.



# Satellites

## WIVENHOE



2024 was another busy year for the Wivenhoe Foodbank, sadly the cost of living pressures on households continue to make it difficult for many families and individuals to make ends meet. Having a monthly session with the local Citizens Advice at the foodbank has provided an additional service to the local community and has been well used and appreciated.

Again the local community has continued to make generous donations to the foodbank, in particular the foodbank would like to thank the following;

Wivenhoe Allotment and Garden Association, (for supplies of fresh fruit and veg during the summer months),

Wivenhoe Bookshop for sponsoring a recital of a Dickensian Christmas Carol which resulted in over £800 of donations,

The local band my Tribe for organising a concert to launch their new album in aid of the foodbank which also raised more than £800,

The local churches which all provided donations to the foodbank especially during Harvest Festival.

Local upholsterers DeVos for organising a collection for donations during the art trail, and not forgetting the local donation points in the town at Wivenhoe One Stop and the East of England Co-op.

We continue to work with other agencies and local stakeholders with a particular thank you to the continuing support of Wivenhoe Congregational Church for hosting the foodbank.

We supported a number of events to raise the profile of the foodbank and to raise funds over the year, including a Tombola stall at the community event organised by the Town Council in September.

Lastly a big thank you to the team of volunteers which run the foodbank, as without them we wouldn't be able to operate.



# CITIZENS ADVICE

Narrative from Citizens Advice Colchester for Foodbank Annual Report  
2024/25

Dated: 19/06/2025

Financial Inclusion

We are fortunate to have three caseworkers from Citizens Advice Colchester who help clients to address the underlying issues that cause them to use the Foodbank in the first place. These advisers (supported by the Citizens Advice Energy Team) attend Tollgate each week with regular visits to other satellite locations.

At the end of March we said goodbye and thank you to Sylvia Jeffcock who has tirelessly supported foodbank clients for the past three years - we wish her a wonderful retirement! The advisers use their specialist money, debt and benefits knowledge to ensure people can claim all the benefits they are due, allowing them to maximise their income and deal with any existing debt.

People using the Foodbank are often struggling with a raft of issues, in particular energy, debt and housing problems made worse by the current cost of living crisis. Collaborative working across teams within Citizens Advice allows a holistic approach to help local residents take control over all the issues they face whether dealing with bills, finances, budgeting or making future decisions.

This collaboration means that clients have the opportunity to speak an adviser face to face, offering immediate, practical support to those who may otherwise face barriers in getting the assistance they need. Clients are also able to contact Citizens Advice via phone, email or using self-help information on their website.

Working together means that people get help addressing underlying issues without worrying how they will survive the next day. Together we are really making a difference to people's lives. Client quotes "I needed help and I did not know what to do, I went to Citizens Advice and got so much help. I am really glad I went and I would definitely recommend this to anyone else who is in my situation, a very big thank you to all the staff for their support to move forward."

"The lady that helped me was amazing and listened, I could not have got by without her. I will always be so grateful."

"I am very grateful for the willingness of the members of your team for their time, support and advice, the flexibility to accommodate my learning needs and understanding my worry at being judged, your colleagues have been very compassionate, thank you."



# CITY COUNCIL



**We are incredibly proud of our strong and growing partnership with Colchester City Council.**

**Together, we share a deep commitment to supporting the residents of Colchester — not only in moments of crisis but in helping them move towards greater stability and independence. This partnership is built on mutual trust, shared values, and a joint determination to make sure that no one in our community is left behind.**

**Each Monday and Friday, Deborah from the Financial Equality & Wellbeing Team runs a drop-in service at our main depot, providing vital support for clients who are often facing extremely challenging circumstances. Working closely with our Foodbank team, she helps people access benefit advice, discretionary funding, rent and council tax assistance, and debt support. Deborah and her colleagues also help connect people with other essential council services and community partners, ensuring that every client receives a tailored package of support to help them move from crisis to a more sustainable position.**

**We are also deeply grateful for the work of Sharon, the Community Integration Support Officer, who joins us at our Greenstead Foodbank every other Tuesday. Sharon works closely with our clients who need help navigating immigration and refugee issues, offering advice, advocacy, and signposting to the right services. Her work helps to break down barriers, build understanding, and promote inclusion, ensuring that everyone who comes through our doors feels welcomed, respected, and supported.**

**Our sincere thanks go to Roz, Deborah, Deb, Ada, and Sharon for their dedication, compassion, and ongoing commitment to helping our clients find hope and stability during difficult times. Their partnership has been instrumental in enabling Colchester Foodbank to extend its reach and impact — together, we are breaking down barriers, opening doors, and building a stronger, fairer, and more connected Colchester for all.**





# TOTS2TEENS



## Tots2Teens – A Message from Eunice and Barbara

**“What an incredible year it has been for us at Tots2Teens!”**

**Now celebrating our 6th year, 2025 has been one of our busiest and most rewarding years yet. We’ve had the privilege of supporting hundreds of families with children aged 0–16 — working closely with professional agencies and responding to countless self-referrals from families who simply needed a bit of extra help.**

**We remain so grateful to our wonderful partners at Tollgate Foodbank, where we have a dedicated section to store, organise, and prepare donations for families. A special thank you to Nikki Ranson, Armin Lange and all the volunteers that help when we aren't there. They all continue to be an incredible source of support and encouragement.**

**We’ve also been blessed with community partners who go above and beyond. Nicola Davey and the Greenstead Community Centre have once again opened their doors to us, helping us reach families across Colchester. Working alongside Michelle from ECFWS and Les Nichols from NEST for the Winter Warmer Appeal was another highlight of the year — coming together to make sure local families had warm clothes, bedding, and essentials to get through the colder months.**

**The demand for formula milk and baby food has surged to unprecedented levels this year, and we’ve worked hard to meet that growing need wherever possible. Every tin of milk, every nappy, and every donated item has made a real difference to a family facing tough times.**

**This year has been full of challenges, but also full of kindness. We continue to be blown away by the generosity of our community — from local families and schools to churches, businesses, and individuals — who give their time, resources, and hearts to help others.**

**From the bottom of our hearts, thank you. We truly couldn’t do what we do with**

**With love and gratitude,  
Eunice & Barbara  
Tots2Teens**



## ESSEX FREE SCHOOL UNIFORM

**The Essex Free School Uniform Project provides both new and gently used school uniforms and essential school items to families across the county throughout the entire school year. Items are generously donated by parents, PTAs, local schools, and businesses who share our commitment to ensuring every child has access to the basics they need to learn with confidence.**

**We believe every child deserves the opportunity to start school feeling equal to their peers. By offering free uniforms and school essentials, at the foodbank we help to relieve financial pressure on families who are already struggling with the rising cost of living.**

**Through this project, we work closely with schools, community partners, and local organisations to ensure that no child in Essex goes without the essentials needed for education. Together, we’re helping young people start each school day ready to learn, grow, and feel proud of who they are.**



# A FOND FAREWELL

## Farewell to Brian Ford – One of Our Founding Fathers

What started in a spare bedroom has grown into one of Colchester's most vital and valued charities—and we owe so much of that journey to Brian Ford, one of the founding members of Colchester Foodbank, who has now retired.

Back in 2008, Brian, along with Rev Andrew Fordyce of St Margaret's Church in Monkwick and Rev Hilary LeSeve, began distributing food donations through the church to local people in crisis. The idea was simple: to help neighbours who were struggling. But the impact was profound.

As Brian recalls, "The legend is true—the first warehouse was my bedroom. I used to have a spare bedroom, where we would store the donations, and I packed the first parcels in my kitchen."

A pivotal moment came when Brian received a leaflet about a food bank in Bishop's Stortford. "I thought it was a good idea," he said. "Through this, we got in touch with the Trussell Trust, who gave us various contact details, and we sat down to discuss what we wanted to do." That conversation laid the groundwork for Colchester Foodbank as we know it today.

In 2009, they asked local churches to donate their harvest collections, and from those early contributions grew a thriving organisation that now serves the whole community. Today, Colchester Foodbank operates from a central hub at Tollgate Retail Park, with ten satellite centres across the city, offering not just food but wraparound support, advice, and connection.

Brian has poured his heart into this community, and his warmth, wisdom, and kindness have touched countless lives. Despite being a founder, he has always credited the team: "It has always been a team effort. I was only a member of a group who collectively wanted to give back to the community and make it a better place."

Now retiring at 77, Brian reflects with humility on how far the Foodbank has come—and how great the need has grown. His legacy is not just in the food parcels packed or the systems built, but in the enduring spirit of compassion and dignity that defines everything we do.

Brian, we are forever grateful for everything you've given. You'll be truly missed, and we wish you every happiness in this next chapter—you've more than earned it. 🌟



# Celebrating Win Pomroy's Ongoing Dedication

Although Win Pomroy has stepped down as a Trustee, she remains at the heart of Colchester Foodbank, continuing to make a real difference in our community. Her compassion, energy, and unwavering commitment have touched countless lives—both volunteers and clients alike. Win's warm presence, her willingness to listen, and her dedication to supporting those in need ensure that she is still very much part of the Foodbank family. From Brightlingsea to beyond, she continues to share her time, her wisdom, and her heart, helping to guide, encourage, and inspire everyone around her. We are deeply grateful that Win's passion for helping others continues to shine so brightly.

## 10 Years, Where Has it Gone?

Is it almost 10 years since I took on the mantle of Coordinator for Brightlingsea Foodbank, a satellite of Colchester Foodbank, following an appeal in our local paper? It would appear so! This short resume highlights the unique relationship between our 'Mother ship' Colchester Foodbank at Tollgate and ourselves in Brightlingsea. It is unique because the Colchester 'Mother ship' allows us to make use of the vast amount of knowledge and experience that our volunteers bring to the table without constantly questioning what we are doing!! We are unique in that we are probably the only satellite that acts as the main issuing agency for our pink vouchers, as well as just accepting them from other agencies for food parcels! We do have the odd referrals from the schools, but that is it for some reason. We have tried to encourage interest in holding vouchers, but no result is forthcoming!

Our uniqueness enables us to offer effective 'signposting' to CA and Peabody Outreach on the same morning that clients attend the foodbank, as these organisations are in rooms within the Town Council offices – an almost 'One-Stop Shop'!

It goes beyond immediate relief and helps for the client, by offering a broader network of assistance and addressing any underlying issues being faced at that time. None of it would have been possible without the support of the diverse team of Brightlingsea volunteers, who come from all walks of life. Many have been with us since we started, providing the support needed and giving 101%.

We have just introduced a new structure to our foodbank, forming a committee of volunteers who are taking over a lot of the tasks, leaving me free to coordinate in a better manner and to look at other aspects that can help us move forward.

During this time, we have experienced the co-Directors total support and interest, providing the experience and advice to make our lives easier.

I have learnt a lot over the last ten years, the least being how resilient and proud people in crisis can be, and how it is possible to maintain client confidentiality, even in a small town like ours!

I became a Trustee of Colchester Foodbank and learnt how to act in the best interests of the twelve satellites comprising it. Toward the end of this time, however, due to personal circumstances, I resigned my Trusteeship, leaving three good friends (oh Julie! How I miss those delicious lunches at yours!).

So here we are today, still learning, still fundraising, still moving forward,  
'Brightlingsea Foodbank - (a Satellite of Colchester Foodbank) - You are my passion in life'



# Outreach 2024

We are proud to share that our Outreach Project has now entered its fifth year, continuing to grow in strength and impact across our community. Through close collaboration with valued partners such as MCTC, North Essex Youth Justice Service, Suffolk Youth Justice Service, and Next Chapter, to name but a few, we've been able to reach even more people who need a helping hand.

Over the past year, our dedicated team of fourteen Outreach volunteers have collectively contributed an incredible 1,120 hours of their time to support others. Their kindness, consistency, and professionalism have helped individuals rebuild confidence, develop essential life skills, and find the courage to take positive steps forward.

The Outreach Project plays a vital role in helping people move from crisis to stability. Whether it's assisting with practical challenges, helping someone navigate services, or simply being a compassionate listener, our volunteers make a tangible difference. Many of the people we support are rebuilding their lives after difficult experiences, and the reassurance and encouragement they receive through Outreach often mark the first steps toward independence and self-belief. Importantly, the project also helps to build resilience and confidence to re-enter the workplace or begin training and education opportunities. By restoring self-esteem and offering a safe, supportive space, the Outreach team empowers individuals to recognise their own potential and to see that a brighter, more stable future is achievable.

As we continue through 2024, we remain committed to strengthening our partnerships, expanding our reach, and maintaining a person-centred approach—ensuring that everyone who turns to us finds not only help, but also hope, belonging, and the tools to thrive.



## Duke of Edinburgh

During the past year we have welcomed 13 Duke of Edinburgh students and their accompanying parents to complete the volunteering element of their Award at Colchester Foodbank.

The aim of the volunteering section of the Award is to inspire young people to make a meaningful contribution within their communities, influence change, and shape the world they want to live in.

During their time with us the students and their parents focused on picking and packing the food parcels and also sorting the incoming donations.

The feedback received from all participants has been surprise at the scale of the operation we run here in Colchester.

Whilst the majority of our students are working towards their Bronze Award, we have been delighted to welcome back returning students to complete their volunteering hours towards their Silver Award. In fact we have gained a new Saturday volunteer as the mother of one of our students has decided to join us on a regular basis following her son completing his hours.

# REAL LIFE - LIVED - HOPEFUL

## **Emma's Story** – “I just wanted to give my kids a normal life.”

Emma is a single mum of two young children. After fleeing an abusive relationship, she was placed in temporary accommodation with very little support. With no access to cooking facilities, mounting bills, and the cost of school uniforms approaching, Emma came to Colchester Foodbank in tears.

Our team not only provided emergency food but connected Emma with relevant local support services that helped her. She also received help with her children's clothing and school uniform, and household essentials to help her get back on her feet.

Emma reports that her eldest child has become more confident, speaking openly about kindness and community, and she is beginning to feel hopeful about the future. Emma is now attending a part-time training course with the aim of returning to work next year.

# SUPPORT



## **David's Story** – “When I lost my job, I lost my footing.”

David had worked full-time in retail for over a decade before a sudden redundancy turned his life upside down. Struggling with rent, council tax arrears, and delays in Universal Credit payments, he found himself choosing between heating and eating.

At Colchester Foodbank, David was met with understanding and practical help. Alongside a food parcel, he was referred to a debt advice charity, a local employment support service, and a men's mental health group.

With their support, David now feels more stable and has recently started a part-time role while continuing to look for full-time employment. He told us, “The Foodbank gave me breathing space to think clearly again.”

## **Craig's Story** – “They believed in me when I didn't believe in myself.”

Craig had been struggling with his mental health for some time and had to take a leave of absence from work. The loss of routine and income left him feeling isolated and overwhelmed, and he turned to Colchester Foodbank for support during one of his lowest points.

As well as receiving emergency food, Craig was offered space, encouragement, and the support he felt he needed. Thanks to this steady encouragement—Craig was able to return to work. He says he'll always be grateful for the understanding, warmth, and fantastic support he received from everyone at the Foodbank.

## PARTNERSHIPS & SUPPORTERS

### WE ARE DEEPLY GRATEFUL TO OUR PARTNERS:

*LOCAL SUPERMARKETS – TESCO, CO-OP, LIDL, SAINSBURYS, WAITROSE*

*FAITH GROUPS – OVER 25 CHURCHES AND MOSQUES*

*SCHOOLS OVER 20+ SCHOOLS*

#### *CORPORATE PARTNERS*

- Abbeyfield Community Church
- Aldham Church
- All Saints Church, Fordham
- All Saints Church, Great Horksley
- All Saints Church, Shrub End
- All Saints' Church, Inworth
- All Saints' Church, Messing
- CASTLE METHODIST
- Christ Church
- Church of Latter Day Saints
- Cornerstone Church
- East Mersea Church
- Eld Lane Baptist Church
- Elim Church, Greenstead
- Equippers Church
- Kelvedon & Feering Churches
- Lion Walk Church
- Lexden Methodist Church
- Life House Church
- Mersea Road Baptist Church
- Redeemer Church
- St Andrew Wormingford
- St Andrews Belchamp St Paul
- St Andrews Church Alresford
- St Andrews Marks Tey
- St Andrew's Church Greenstead
- St Anne's
- St Barnabas Church
- St Benedicts College
- St Fillian Care Home
- St Helena School
- St James Primary School
- St James School Colchester
- St John Payne
- St John the Baptist Layer
- St Luke's Church, Tiptree
- St Luke's School, Tiptree
- St Margaret's Monkwick
- St Marys Church, Easthorpe
- St Marys Church, Layer Breton
- St Marys Great Bentley
- St Marys Kelvedon
- St Peters Church, Boxted
- St Peter's Church, Great Totham
- St Stephens Indian Orthodox Church
- St Theresa's Church
- Tiptree United Reformed Church
- United Reform Church, Chapel
- COLCHESTER DEAF CHURCH
- Holy Trinity Primary School / Holy Trinity School
- Baynards Primary School
- Birch Primary School
- Bishop William Ward Primary School
- Bocking Primary School
- Braiswick Primary School
- Brooklands Primary
- Copford Cof E Primary School
- Colchester High School
- Colchester Royal Grammar School
- Colchester Sixth Form College
- Colne Community College
- Elmstead Primary School
- Fingeringhoe Primary School
- Gilbert School
- Great Tey Primary School
- Heathlands Primary School
- Highwoods Primary School
- Icen Academy
- Kendall Primary School
- Lakelands Primary School
- Layer Primary School
- Lexden Primary School
- Milton Lodge Care Home
- Montgomery Primary School
- Old School House Nursery
- Orchard Barns Nursery
- Oxford House School
- Perrywoods
- Prettygate School
- Roach Vale Primary School
- Stanway Primary School
- Stanway Secondary School
- Stratford St Mary Primary School
- The Gilbert School
- The Trinity School
- Tolleshunt Knights Preschool
- TRINITY SCHOOL
- Fiveways Primary School
- Kingsford Infant School
- Colchester Inst Step 2



## PARTNERSHIPS & SUPPORTERS

### WE ARE DEEPLY GRATEFUL TO OUR PARTNERS:

*LOCAL SUPERMARKETS – TESCO, CO-OP, LIDL, SAINSBURYS, WAITROSE*

*FAITH GROUPS – OVER 25 CHURCHES AND MOSQUES*

*SCHOOLS OVER 20+ SCHOOLS*

#### *CORPORATE PARTNERS*

- Asda Colchester
- Asda Tiptree
- B& M Tollgate
- Bon Culina
- Bookers
- Brightlingsea Co-ops
- Brightlingsea Sainsburys
- Brightlingsea Spar
- Co-op Chesterwell
- Co-op Dedham
- Co-op Fiveways
- Co-op Greenstead
- Co-op Icen Way
- Co-op Mersea Road
- Co-op Mile End Road
- Co-Op Old Heath
- Co-op Prettygate
- Co-op Samson Road
- Co-op Station Road Brightlingsea
- Co-op West Bergholt
- Co-op Wimpole Road
- Colchester Co-op
- Lidl Abbots Road
- Lidl Gosbecks Rd
- Morrisons Little Clacton
- One Stop North Station Road
- Sainsbury's Colchester
- Sainsbury's Colchester Layer Road Local
- Sainsbury's Stanway
- Sainsburys Brightlingsea
- Tesco Colchester 2
- Tesco Colchester Exp
- Tesco Colchester Extra
- Tesco Colchester Magdln Exp
- Tesco Crouch St Colchst Exp
- Tesco Express Brightlingsea
- Waitrose Colchester
- Agro Chemex
- Ashworth Financial Planning
- Atlantis Gym
- Bower Group
- Bower Planning
- Cahill Design Consultant
- Call Assist
- CGN Restaurants MACDONALDS
- Dice and Slice
- Fenwicks
- Fowler Smith Mortgages
- Gateway Qualifications
- Gray Daws Travel
- Green Building Renewable
- Harrow Business Services
- HBS Educational Suppliers
- Hiscox
- Howden Insurance
- Lilly Pud Puddings
- Live and Let Live
- Marfleet Contractors
- McLoughlin Fruit Farm
- Mercedes Benz
- Mercers Farm
- Mercury Theatre
- Mosaic Publicity
- Monumental Ink
- PLAN BMS Emma Dixon
- PRIDE
- RIVERFORD ORGANIC FARM
- SAI Group
- SISK and Son
- Stagecoach
- Studio 5
- Tall Trees Care Home
- Titan
- Victoria Inn
- WRS Insurance & Cadman
- Construction
- The Dog and Pheasant
- Bon Culina
- Bungalow Bakery
- 10k Run
- 1ST COPFORD BROWNIES
- 1ST STANWAY SCOUTS
- 3 Rivers Trefoil Guild
- 8th Colchester Brownies
- 8th Colchester Scouts
- Brightlingsea Foodbank
- CRANMERE COURT
- Colchester Polio District Group
- Colchester Rotary
- COLCHESTER SAI CENTRE
- COLCHESTER TREFOIL GUILD
- Drury Road Allotment
- HIC SUMUS COMMUNITY CHOIR
- Ireton Road Neighbourhood
- Langenhoe Lion Corner
- Community Shop
- Rowhedge Foodbank
- Squirrels Field Close
- Tiptree Community Hub



# Message from our Patron- Sir Bob



I congratulate all involved with Colchester Food Bank who for another year have assisted in putting food on the table for those in need, and in other ways providing support for people who need assistance.

It is a sad reflection on 21st century Britain that our local Food Bank is now in its second decade of existence.

This has been a particularly challenging year with the search for new premises, happily now resolved with a move being planned to Greenstead Road which will be geographically more central.

Sir Bob Russell – Joint Patron, Colchester Food Bank

## Message from our Trussell Area Manager Becky Hill



Three years ago, Colchester Foodbank embarked on a partnership with Citizens Advice so that those coming to the food bank could receive expert advice and support to maximise their income. This allowed people to have more money in the first place to buy the essentials that they need and prevent them from needing to use the food bank again. Three years on, there are signs that this intervention is working as the number of people using the food bank has started to drop. But whilst this is an encouraging sign of the change that's possible when people are supported in the right way, numbers are still 25% higher than they were 3 years ago.

So there is still much work to be done. And that is why the food bank continues to work tirelessly to ensure that they serve the most vulnerable in the community, for as long as they're needed. I am so thankful for the hard-work and dedication of the team that make the food bank what it is.

- Rebekah Hill, Area Manager for Essex at Trussell



**CHARITY COMMISSION**  
FOR ENGLAND AND WALES

Colchester Foodbank CIO			Charity No	1204958		
Annual accounts for the period						
Period start date	01/01/2024	To	Period end date	31/12/2024		

## Section A Statement of financial activities

	Unrestricted funds	Restricted income funds	Endowment funds	Total funds	Prior year funds
	£	£	£	£	£
	F01	F02	F03	F04	F05
<b>Incoming resources (Note 3)</b>					
<b>Income and endowments from:</b>					
Donations and legacies	241,215	-	-	241,215	-
Gift Aid relief	5,062	-	-	5,062	-
Charitable activities	-	-	-	-	-
Other trading activities	-	-	-	-	-
Investments	9,351	-	-	9,351	-
Grants received	69,326	66,886	-	136,212	-
Other	-	-	-	-	-
<b>Total</b>	<b>324,954</b>	<b>66,886</b>	<b>-</b>	<b>391,840</b>	<b>-</b>
<b>Resources expended (Note 6)</b>					
<b>Expenditure on:</b>					
Raising funds	-	-	-	-	-
Charitable activities	249,917	66,886	-	316,803	-
Governance costs	2,907	-	-	2,907	-
Other	-	-	-	-	-
<b>Total</b>	<b>252,824</b>	<b>66,886</b>	<b>-</b>	<b>319,710</b>	<b>-</b>
<b>Net income/(expenditure) before investment gains/(losses)</b>	<b>72,130</b>	<b>-</b>	<b>-</b>	<b>72,130</b>	<b>-</b>
Net gains/(losses) on investments	-	-	-	-	-
<b>Net income/(expenditure)</b>	<b>72,130</b>	<b>-</b>	<b>-</b>	<b>72,130</b>	<b>-</b>
<b>Extraordinary items</b>	<b>-</b>	<b>-</b>	<b>-</b>	<b>-</b>	<b>-</b>
<b>Transfers between funds</b>	<b>-</b>	<b>-</b>	<b>-</b>	<b>-</b>	<b>-</b>
<b>Other recognised gains/(losses):</b>					
Gains and losses on revaluation of fixed assets for the charity's own use	-	-	-	-	-
Other gains/(losses)	-	-	-	-	-
<b>Net movement in funds</b>	<b>72,130</b>	<b>-</b>	<b>-</b>	<b>72,130</b>	<b>-</b>
<b>Reconciliation of funds:</b>					
Total funds transferred in	734,182	25,000	-	759,182	-
<b>Total funds carried forward</b>	<b>806,312</b>	<b>25,000</b>	<b>-</b>	<b>831,312</b>	<b>-</b>

## Section B Balance sheet

	Unrestricted funds £ F01	Restricted income funds £ F02	Endowment funds £ F03	Total this year £ F04	Total last year £ F05
<b>Fixed assets</b>					
Tangible assets (Note 10)	48,394	-	-	48,394	-
<b>Total fixed assets</b>	48,394	-	-	48,394	-
<b>Current assets</b>					
Stocks (Note 11)	-	-	-	-	-
Debtors (Note 12)	12,900	-	-	12,900	-
Cash at bank and in hand (Note 13)	748,065	35,441	-	783,506	-
<b>Total current assets</b>	760,965	35,441	-	796,406	-
<b>Creditors: amounts falling due within one year</b> (Note 14)	3,047	10,441	-	13,488	-
<b>Net current assets/(liabilities)</b>	757,918	25,000	-	782,918	-
<b>Total assets less current liabilities</b>	806,312	25,000	-	831,312	-
<b>Creditors: amounts falling due after one year</b>	-	-	-	-	-
<b>Provisions for liabilities</b>	-	-	-	-	-
<b>Total net assets or liabilities</b>	806,312	25,000	-	831,312	-
<b>Funds of the Charity</b>					
Endowment funds	-			-	-
Restricted income funds (Note 15)		25,000		25,000	-
Unrestricted funds (Note 15)	806,312		-	806,312	-
Revaluation reserve				-	
<b>Total funds</b>	806,312	25,000	-	831,312	-

Signed on behalf of all the trustees by:

Signature	Print Name	Date of approval dd/mm/yyyy
	Peter Tibber	10/09/2025
	Julie Rusiecki	10/09/2025

**Section C****Notes to the accounts****Note 1 Basis of preparation**

*This section should be completed by all charities.*

**1.1 Basis of accounting**

These accounts have been prepared under the historical cost convention with items recognised at cost or transaction value unless otherwise stated in the relevant note(s) to these accounts.

The accounts have been prepared in accordance with:

- the Statement of Recommended Practice: Accounting and Reporting by Charities preparing their accounts in accordance with the Financial Reporting Standard applicable in the UK and Republic of Ireland (FRS 102) issued on 16 July 2014
- and with the Charities Act 2011.

The charity constitutes a public benefit entity as defined by FRS 102.\*

**1.2 Going concern**

*If there are material uncertainties related to events or conditions that cast significant doubt on the charity's ability to continue as a going concern, please provide the following details or state "Not applicable", if appropriate:*

An explanation as to those factors that support the conclusion that the charity is a going concern;

**Not applicable**

Disclosure of any uncertainties that make the going concern assumption doubtful;

**Not applicable**

Where accounts are not prepared on a going concern basis, please disclose this fact together with the basis on which the trustees prepared the accounts and the reason why the charity is not regarded as a going concern.

**Not applicable**

**1.3 Change of accounting policy**

The accounts present a true and fair view and the accounting policies adopted are those outlined in note 2.

Yes\*

✓

No\*

\* -Tick as appropriate

**Please disclose:**

<b>(i) the nature of the change in accounting policy;</b>	
<b>(ii) the reasons why applying the new accounting policy provides more reliable and more relevant information; and</b>	

<b><i>(iii) the amount of the adjustment for each line affected in the current period, each prior period presented and the aggregate amount of the adjustment relating to periods before those presented, 3.44 FRS 102 SORP.</i></b>	
--	--

#### 1.4 Changes to accounting estimates

No changes to accounting estimates have occurred in the reporting period (3.46 FRS 102 SORP).

Yes*	<input checked="" type="checkbox"/>	* -Tick as appropriate
No*	<input type="checkbox"/>	

**Please disclose:**

<b><i>(i) the nature of any changes;</i></b>	
<b><i>(ii) the effect of the change on income and expense or assets and liabilities for the current period; and</i></b>	
<b><i>(iii) where practicable, the effect of the change in one or more future periods.</i></b>	

#### 1.5 Material prior year errors

No material prior year error have been identified in the reporting period (3.47 FRS 102 SORP).

Yes*	<input checked="" type="checkbox"/>	* -Tick as appropriate
No*	<input type="checkbox"/>	

**Please disclose:**

<b><i>(i) the nature of the prior period error;</i></b>	
<b><i>(ii) for each prior period presented in the accounts, the amount of the correction for each account line item affected; and</i></b>	
<b><i>(iii) the amount of the correction at the beginning of the earliest prior period presented in the accounts.</i></b>	

## Note 2

## Accounting policies

### 2.2 INCOME

This standard list of accounting policies has been applied by the charity except for those ticked "No" or "N/a". Where a different or additional policy has been adopted then this is detailed in the box below.

<b>Recognition of income</b>	These are included in the Statement of Financial Activities (SoFA) when: <ul style="list-style-type: none"> <li>the charity becomes entitled to the resources;</li> <li>it is more likely than not that the trustees will receive the resources; and</li> <li>the monetary value can be measured with sufficient reliability.</li> </ul>	Yes ✓	No	N/a
<b>Offsetting</b>	There has been no offsetting of assets and liabilities, or income and expenses, unless required or permitted by the FRS 102 SORP or FRS 102.	Yes ✓	No	N/a
<b>Grants and donations</b>	Grants and donations are only included in the SoFA when the general income recognition criteria are met (5.10 to 5.12 FRS102 SORP).	Yes ✓	No	N/a
<b>Legacies</b>	In the case of performance related grants, income must only be recognised to the extent that the charity has provided the specified goods or services as entitlement to the grant only occurs when the performance related conditions are met (5.16 FRS 102 SORP). Legacies are included in the SOFA when receipt is probable, that is, when there has been grant of probate, the executors have established that there are sufficient assets in the estate and any conditions attached to the legacy are either within the control of the charity or have been met.	Yes ✓	No	N/a ✓
<b>Government grants</b>	The charity has received government grants in the reporting period	Yes ✓	No	N/a
<b>Tax reclaims on donations and gifts</b>	Gift Aid receivable is included in income when there is a valid declaration from the donor. Any Gift Aid amount recovered on a donation is considered to be part of that gift and is treated as an addition to the same fund as the initial donation unless the donor or the terms of the appeal have specified otherwise.	Yes ✓	No	N/a
<b>Contractual income and performance related grants</b>	This is only included in the SoFA once the charity has provided the related goods or services or met the performance related conditions.	Yes ✓	No	N/a
<b>Donated goods</b>	Donated goods are measured at fair value (the amount for which the asset could be exchanged) unless impractical to do so.  The cost of any stock of goods donated for distribution to beneficiaries is deemed to be the fair value of those gifts at the time of their receipt and they are recognised on receipt. In the reporting period in which the stocks are distributed, they are recognised as an expense at the carrying amount of the stocks at distribution.  Donated goods for resale are measured at fair value on initial recognition, which is the expected proceeds from sale less the expected costs of sale, and recognised in 'Income from other trading activities' with the corresponding stock recognised in the balance sheet. On its sale the value of stock is charged against 'Income from other trading activities' and the proceeds from sale are also recognised as 'Income from other trading activities'.	Yes ✓	No	N/a ✓
	Goods donated for on-going use by the charity are recognised as tangible fixed assets and included in the SoFA as incoming resources when receivable.	Yes ✓	No	N/a
	Gifts in kind for use by the charity are included in the SoFA as income from donations when receivable.	Yes ✓	No	N/a
<b>Donated services and facilities</b>	Donated services and facilities are included in the SOFA when received at the value of the gift to the charity provided the value of the gift can be measured reliably.  Donated services and facilities that are consumed immediately are recognised as income with an equivalent amount recognised as an expense under the appropriate heading in the SOFA.	Yes ✓	No	N/a ✓
<b>Support costs</b>	The charity has incurred expenditure on support costs.	Yes ✓	No	N/a
<b>Volunteer help</b>	The value of any voluntary help received is not included in the accounts but is described in the trustees' annual report.	Yes ✓	No	N/a
<b>Income from interest, royalties and dividends</b>	This is included in the accounts when receipt is probable and the amount receivable can be measured reliably.	Yes ✓	No	N/a
<b>Income from membership subscriptions</b>	Membership subscriptions received in the nature of a gift are recognised in Donations and Legacies.  Membership subscriptions which gives a member the right to buy services or other benefits are recognised as income earned from the provision of goods and services as income from charitable activities.	Yes ✓	No	N/a ✓

<b>Settlement of insurance claims</b>	Insurance claims are only included in the SoFA when the general income recognition criteria are met (5.10 to 5.12 FRS102 SORP) and are included as an item of other income in the SoFA.	Yes	No	N/a
				✓
<b>Investment gains and losses</b>	This includes any realised or unrealised gains or losses on the sale of investments and any gain or loss resulting from revaluing investments to market value at the end of the year.	Yes	No	N/a
				✓
<b>2.3 EXPENDITURE AND LIABILITIES</b>				
<b>Liability recognition</b>	Liabilities are recognised where it is more likely than not that there is a legal or constructive obligation committing the charity to pay out resources and the amount of the obligation can be measured with reasonable certainty.	Yes	No	N/a
		✓		
<b>Governance and support costs</b>	Support costs have been allocated between governance costs and other support. Governance costs comprise all costs involving public accountability of the charity and its compliance with regulation and good practice.	Yes	No	N/a
		✓		
	Support costs include central functions and have been allocated to activity cost categories on a basis consistent with the use of resources, eg allocating property costs by floor areas, or per capita, staff costs by the time spent and other costs by their usage.	Yes	No	N/a
		✓		
<b>Grants with performance conditions</b>	Where the charity gives a grant with conditions for its payment being a specific level of service or output to be provided, such grants are only recognised in the SoFA once the recipient of the grant has provided the specified service or output.	Yes	No	N/a
				✓
<b>Grants payable without performance conditions</b>	Where there are no conditions attaching to the grant that enables the donor charity to realistically avoid the commitment, a liability for the full funding obligation must be recognised.	Yes	No	N/a
				✓
<b>Redundancy cost</b>	The charity made no redundancy payments during the reporting period.	Yes	No	N/a
		✓		
<b>Deferred income</b>	No material item of deferred income has been included in the accounts.	Yes	No	N/a
		✓		
<b>Creditors</b>	The charity has creditors which are measured at settlement amounts less any trade discounts	Yes	No	N/a
				✓
<b>Provisions for liabilities</b>	A liability is measured on recognition at its historical cost and then subsequently measured at the best estimate of the amount required to settle the obligation at the reporting date	Yes	No	N/a
		✓		
<b>Basic financial instruments</b>	The charity accounts for basic financial instruments on initial recognition as per paragraph 11.7 FRS102 SORP. Subsequent measurement is as per paragraphs 11.17 to 11.19, FRS102 SORP.	Yes	No	N/a
		✓		
<b>2.4 ASSETS</b>				
<b>Tangible fixed assets for use by charity</b>	These are capitalised if they can be used for more than one year, and cost at least £1,000	Yes	No	N/a
		✓		
	They are valued at cost.	Yes	No	N/a
		✓		
<b>Intangible fixed assets</b>	The depreciation rates and methods used are disclosed in note 9.2.	Yes	No	N/a
	The charity has intangible fixed assets, that is, non-monetary assets that do not have physical substance but are identifiable and are controlled by the charity through custody or legal rights. The amortisation rates and methods used are disclosed in note 9.5			✓
	They are valued at cost.	Yes	No	N/a
				✓
<b>Heritage assets</b>	The charity has heritage assets, that is, non-monetary assets with historic, artistic, scientific, technological, geophysical or environmental qualities that are held and maintained principally for their contribution to knowledge and culture. The depreciation rates and methods used as disclosed in note 9.6.1.4.	Yes	No	N/a
				✓
	They are valued at cost.	Yes	No	N/a
				✓
<b>Investments</b>	Fixed asset investments in quoted shares, traded bonds and similar investments are valued at initially at cost and subsequently at fair value (their market value) at the year end. The same treatment is applied to unlisted investments unless fair value cannot be measured reliably in which case it is measured at cost less impairment.	Yes	No	N/a
				✓
	Investments held for resale or pending their sale and cash and cash equivalents with a maturity date of less than 1 year are treated as current asset investments	Yes	No	N/a
				✓
<b>Stocks and work in progress</b>	Stocks held for sale as part of non-charitable trade are measured at the lower or cost or net realisable value.	Yes	No	N/a
				✓
	Goods or services provided as part of a charitable activity are measured at net realisable value based on the service potential provided by items of stock.	Yes	No	N/a
				✓
	Work in progress is valued at cost less any foreseeable loss that is likely to occur on the contract.	Yes	No	N/a
				✓
<b>Debtors</b>	Debtors (including trade debtors and loans receivable) are measured on initial recognition at settlement amount after any trade discounts or amount advanced by the charity. Subsequently, they are measured at the cash or other consideration expected to be received.	Yes	No	N/a
		✓		

<b>Current asset investments</b>	The charity has investments which it holds for resale or pending their sale and cash and cash equivalents with a maturity date less than one year. These include cash on deposit and cash equivalents with a maturity date of less than one year held for investment purposes rather than to meet short term cash commitments as they fall due.	Yes	No	N/a
				✓
	They are valued at fair value except where they qualify as basic financial instruments.	Yes	No	N/a
				✓

## Note 3

## Analysis of income

		Unrestricted funds	Restricted income funds	Endowment funds	Total funds £	Prior year £
<b>Analysis</b>						
<b>Donations and legacies:</b>	Donations and gifts	241,215	-	-	241,215	-
	Gift Aid	5,062	-	-	5,062	-
	Legacies	-	-	-	-	-
	General grants provided by government/other charities	69,326	66,886	-	136,212	-
	Membership subscriptions and sponsorships which are in substance donations	-	-	-	-	-
	Donated goods, facilities and services	-	-	-	-	-
	Other	-	-	-	-	-
<b>Total</b>		<b>315,603</b>	<b>66,886</b>	<b>-</b>	<b>382,489</b>	<b>-</b>
<b>Charitable activities:</b>		-	-	-	-	-
		-	-	-	-	-
		-	-	-	-	-
	Other	-	-	-	-	-
<b>Total</b>		<b>-</b>	<b>-</b>	<b>-</b>	<b>-</b>	<b>-</b>
<b>Other trading activities:</b>		-	-	-	-	-
		-	-	-	-	-
		-	-	-	-	-
	Other	-	-	-	-	-
<b>Total</b>		<b>-</b>	<b>-</b>	<b>-</b>	<b>-</b>	<b>-</b>
<b>Income from investments:</b>	Interest income	9,351	-	-	9,351	-
	Dividend income	-	-	-	-	-
	Rental and leasing income	-	-	-	-	-
	Other	-	-	-	-	-
<b>Total</b>		<b>9,351</b>	<b>-</b>	<b>-</b>	<b>9,351</b>	<b>-</b>
<b>Separate material item of income:</b>	Fundraising	-	-	-	-	-
		-	-	-	-	-
		-	-	-	-	-
		-	-	-	-	-
<b>Total</b>		<b>-</b>	<b>-</b>	<b>-</b>	<b>-</b>	<b>-</b>
<b>Other:</b>	Conversion of endowment funds into income	-	-	-	-	-
	Gain on disposal of a tangible fixed asset held for charity's own use	-	-	-	-	-
	Gain on disposal of a programme related investment	-	-	-	-	-
	Royalties from the exploitation of intellectual property rights	-	-	-	-	-
	Other	-	-	-	-	-
	<b>Total</b>	<b>-</b>	<b>-</b>	<b>-</b>	<b>-</b>	<b>-</b>
<b>TOTAL INCOME</b>		<b>324,954</b>	<b>66,886</b>	<b>-</b>	<b>391,840</b>	<b>-</b>

**Note 4**                      **Analysis of receipts of government grants and other grants**

	<b>Description</b>	<b>This year £</b>
<b>Colchester City Council</b>		3,205
<b>Essex Association of Local Councils</b>		12,500
<b>Trussell Trust</b>		66,886
<b>The National Lottery</b>		20,000
<b>Utilita</b>		11,125
<b>Essex Community Foundation</b>		8,000
<b>The Albert Hunt Trust</b>		5,000
<b>JD Foundation</b>		2,500
<b>Hedley Foundation</b>		2,000
<b>Other</b>		4,996
	<b>Total</b>	<b>136,212</b>

<b>Description</b>	<b>Last year £</b>
	-
	-
	-
	-
	-
<b>Total</b>	<b>-</b>

**Note 5**                      **Donated goods, facilities and services**

	This year £	Last year £
Seconded staff	-	-
Use of property	-	-
Other	-	-
	-	-

**Please provide details of the accounting policy for the recognition and valuation of donated goods, facilities and services.**

Items of equipment have been donated which have been included as tangible fixed assets at an estimated market value at the time of receipt.

**Please give details of other forms of other donated goods and services not recognised in the accounts, eg contribution of unpaid volunteers.**

The charity receives donated food items. There is no valuation of these goods and they are not recognised in the accounts as either income or stock held at the year end.  
The main premises are being occupied rent-free; the notional cost and income are not recognised in the accounts.

## Note 6

## Analysis of expenditure

Analysis	This year				Last year			
	Unrestricted funds	Restricted income funds	Endowment funds	Total funds	Unrestricted funds	Restricted income funds	Endowment funds	Total funds
	£				£			
<b>Expenditure on charitable activities:</b>								
Warehouse and storage costs	946	-	-	946	-	-	-	-
Premises repairs and maintenance	-	-	-	-	-	-	-	-
Rates and water	-	-	-	-	-	-	-	-
Light and heat	309	-	-	309	-	-	-	-
Satellite centres	-	-	-	-	-	-	-	-
Insurance	6,554	-	-	6,554	-	-	-	-
Advertising and signage	606	-	-	606	-	-	-	-
Wages and salaries	98,039	15,136	-	113,175	-	-	-	-
Managerial services	-	-	-	-	-	-	-	-
Food poverty advisors	-	49,000	-	49,000	-	-	-	-
Social Security and other pension costs	5,157	-	-	5,157	-	-	-	-
Van and travel expenses	9,384	-	-	9,384	-	-	-	-
Computer and telephone costs	1,936	-	-	1,936	-	-	-	-
Stationery and office supplies	2,081	-	-	2,081	-	-	-	-
Training and volunteer support	3,389	-	-	3,389	-	-	-	-
Food items	95,869	-	-	95,869	-	-	-	-
Bank and other costs	1,325	-	-	1,325	-	-	-	-
Fundraising event costs	4,895	-	-	4,895	-	-	-	-
Other expenses	1,437	2,750	-	4,187	-	-	-	-
Depreciation, disposal and impairment	17,990	-	-	17,990	-	-	-	-
<b>Total expenditure on charitable activities</b>	<b>249,917</b>	<b>66,886</b>	<b>-</b>	<b>316,803</b>	<b>-</b>	<b>-</b>	<b>-</b>	<b>-</b>
<b>Expenditure on governance:</b>								
Subscriptions	1,544	-	-	1,544	-	-	-	-
Annual report costs	-	-	-	-	-	-	-	-
Payroll processing costs	763	-	-	763	-	-	-	-
Independent Examiner's fees	600	-	-	600	-	-	-	-
Other costs	-	-	-	-	-	-	-	-
<b>Total expenditure on governance</b>	<b>2,907</b>	<b>-</b>	<b>-</b>	<b>2,907</b>	<b>-</b>	<b>-</b>	<b>-</b>	<b>-</b>
<b>Separate material item of expense</b>								
	-	-	-	-	-	-	-	-
	-	-	-	-	-	-	-	-
	-	-	-	-	-	-	-	-
<b>Total</b>	<b>-</b>	<b>-</b>	<b>-</b>	<b>-</b>	<b>-</b>	<b>-</b>	<b>-</b>	<b>-</b>
<b>Other</b>								
	-	-	-	-	-	-	-	-
	-	-	-	-	-	-	-	-
	-	-	-	-	-	-	-	-
	-	-	-	-	-	-	-	-
<b>Total other expenditure</b>	<b>-</b>	<b>-</b>	<b>-</b>	<b>-</b>	<b>-</b>	<b>-</b>	<b>-</b>	<b>-</b>
<b>TOTAL EXPENDITURE</b>	<b>252,824</b>	<b>66,886</b>	<b>-</b>	<b>319,710</b>	<b>-</b>	<b>-</b>	<b>-</b>	<b>-</b>

**Note 7** Details of certain items of expenditure**Fees for examination of the accounts**

*Please provide details of the amount paid for any statutory external scrutiny of accounts and other services provided by your independent examiner. If nothing was paid please enter '0' in the appropriate box(es).*

**Independent examiner's fees**

**Assurance services other than audit or independent examination**

**Tax advisory fees**

**Other fees (for example: financial advice, consultancy, accountancy services) paid to the independent examiner**

This year £	Last year £
600	-
-	-
-	-
-	-

## Note 8

## Paid employees

## Staff Costs

	This year £	Last year £
Salaries and wages	113,175	-
Social security costs	-	-
Pension costs (defined contribution scheme)	5,157	-
Other employee benefits	-	-
<b>Total staff costs</b>	<b>118,332</b>	<b>-</b>

No employees received employee benefits (excluding employer pension costs) for the reporting period of more than £60,000

## Average head count in the year

## The parts of the charity in which the employees work

	This year Number	Last year Number
Fundraising	-	-
Charitable Activities	5	-
Governance	1	-
Other	-	-
<b>Total</b>	<b>6</b>	<b>-</b>

**Note 9**                      **Defined contribution pension scheme or defined benefit scheme accounted for as a defined contribution scheme.**

*Please complete this note if a defined contribution pension scheme is operated.*

	This year	Last year
	£	£
Amount of contributions recognised in the SOFA as an expense	5,157	-

## Note 10

## Tangible fixed asset

Please complete this note if the charity has any tangible fixed assets

## Cost or valuation

	Freehold land & buildings	Other land & buildings	Plant, machinery and motor vehicles	Fixtures, fittings and equipment	Total
	£	£	£	£	£
Transferred in	-	-	26,800	69,258	96,058
Additions	-	-	8,500	5,559	14,059
Revaluations	-	-	-	-	-
Disposals	-	-	6,000	12,464	18,464
Transfers *	-	-	-	-	-
At end of the year	-	-	29,300	62,353	91,653

## Depreciation and impairments

<b>Basis</b>			Reducing balance	Reducing balance	
<b>Rate</b>			20%	15%	

Transferred in	-	-	11,606	32,127	43,733
Disposals	-	-	3,542	6,340	9,882
Depreciation	-	-	2,814	6,594	9,408
Impairment	-	-	-	-	-
At end of the year	-	-	10,878	32,381	43,259

## Net book value

Net book value transferred in at the beginning of the year	-	-	15,194	37,131	52,325
Net book value at the end of the year	-	-	18,422	29,972	48,394

<b>Note 11</b>	<b>Stocks</b>
----------------	---------------

The charity receives and collects donated goods for distribution. A relatively small amount of purchases supplement the amount of stock. The Trustees have not valued the donated goods and, therefore, do not disclose a value of stock held at the period end.

Section C	Notes to the accounts	(cont)
-----------	-----------------------	--------

**Note 12 Debtors and prepayments**

*Please complete this note if the charity has any debtors or prepayments.*

**12.1 Analysis of debtors**

Accrued bank interest

Accrued Gift Aid

Prepayments and accrued income

Other debtors

**Total**

This year	Last year
£	£
2,237	-
10,663	-
-	-
12,900	-

**Note 13**                      **Cash at bank and in hand**

Short term cash investments (less than 3 months maturity date)  
Short term deposits at bank  
Cash at bank and on hand  
Other  
Total

This year £	Last year £
-	-
731,109	-
52,397	-
-	-
783,506	-

<b>Section C</b>	<b>Notes to the accounts</b>	<b>(cont)</b>
------------------	------------------------------	---------------

**Note 14**                      **Creditors and accruals**

*Please complete this note if the charity has any creditors or accruals.*

**14.1 Analysis of creditors**

	Amounts falling due within one year		Amounts falling due after more than one year	
	This year £	Last year £	This year £	Last year £
Accruals for grants payable	-	-	-	-
Bank loans and overdrafts	-	-	-	-
Trade creditors	-	-	-	-
Payments received on account for contracts or performance-related grants	-	-	-	-
Accruals and deferred income	13,488	-	-	-
Taxation and social security	-	-	-	-
Other creditors	-	-	-	-
<b>Total</b>	<b>13,488</b>	<b>-</b>	<b>-</b>	<b>-</b>

**Section C**
**Notes to the accounts**
**(cont)**
**Note 15**
**Charity funds**
**15.1 Details of material funds held and movements during the CURRENT reporting period**

*\* Key: PE - permanent endowment funds; EE - expendible endowment funds; R - restricted income funds, including special trusts, of the charity; and U - unrestricted funds*

Fund names	Type PE, EE R or UR *	Purpose and Restrictions	Fund balances brought forward £	Income £	Expenditure £	Transfers £	Gains and losses £	Fund balances carried forward £
General Fund	UR		734,182	324,954	- 252,824	-	-	806,312
Poverty Advisor Project	R		25,000	66,886	- 66,886	-	-	25,000
			-	-	-	-	-	-
			-	-	-	-	-	-
			-	-	-	-	-	-
			-	-	-	-	-	-
			-	-	-	-	-	-
			-	-	-	-	-	-
			-	-	-	-	-	-
<b>Other funds</b>	<b>N/a</b>	<b>N/a</b>	-	-	-	-	-	-
<b>Total Funds</b>			<b>759,182</b>	<b>391,840</b>	<b>- 319,710</b>	<b>-</b>	<b>-</b>	<b>831,312</b>

During the year expenditure on food was recorded through the General Fund and the Trustees have reallocated balances from Designated funds to the General Fund to reflect the use of the amounts that had been designated at the beginning of the year.  
The Trustees have also decided to move unrestricted funds from the Property Fund back to the General Fund.

**Note 16**                      **Transactions with trustees and related parties**

**16.1 Trustee remuneration and benefits**

None of the trustees have been paid any remuneration or received any other benefits from an employment with their charity or a related entity in this year or the last.

**16.2 Trustees' expenses**

No trustee expenses have been incurred in this year or the last.

**16.3 Transactions with related parties**

On 1st January 2024 Colchester Foodbank CIO succeeded to an unincorporated charity, Colchester Foodbank (charity number 1152387). The Trustees of the old charity became the Trustees of the new CIO and all assets of the old charity were transferred across at that date.

## **Colchester Foodbank CIO**

### ***Independent examiner's report to the Trustees of Colchester Foodbank CIO***

I report on the accounts of the organisation for the year ended 31st December 2024.

#### **Respective responsibilities of trustees and examiner**

The charity's trustees are responsible for the preparation of the accounts in accordance with the requirements of the Charities Act 2011 ("the Act"). The charity's trustees consider that an audit is not required for this year under section 144(2) of the Act and that an independent examination is needed.

It is my responsibility to:

- examine the accounts under section 145 of the Act;
- to follow the procedures laid down in the General Directions given by the Charity Commissioner under section 145(5)(b) of the Act; and
- to state whether particular matters have come to my attention.

#### **Basis of independent examiner's report**

The charity's gross income exceeded £250,000 and I am qualified to undertake the examination by being a qualified member of The Institute of Chartered Accountants in England and Wales. My examination was carried out in accordance with the General Directions given by the Charity Commissioner. An examination includes a review of the accounting records kept by the charity and a comparison of the accounts presented with those records. It also includes consideration of any unusual items or disclosures in the accounts, and the seeking of explanations from you as trustees concerning any such matters. The procedures undertaken do not provide all the evidence that would be required in an audit and, consequently no opinion is given as to whether the accounts present a 'true and fair view' and the report is limited to those matters set out in the statement below.

#### **Independent examiner's statement**

In connection with my examination, no matter has come to my attention:

which gives me reasonable cause to believe that, in any material respect, the requirements:

- (a) to keep accounting records in accordance with section 130 of the 2011 Act;
- (b) to prepare accounts which accord with the accounting records; and
- (c) to comply with the applicable requirements set out in the Charities (Accounts and Reports) Regulations 2008; or

to which, in my opinion, attention should be drawn in order to enable a proper understanding of the accounts to be reached.

Nick Taylor  
Chartered Accountant  
The Coach House  
Headgate  
Colchester  
CO3 3BT

The date upon which my opinion is expressed is:  
10<sup>th</sup> September 2025