

# GLOW : NEWCASTLE CULTURAL EDUCATION PARTNERSHIP

England & Wales · Charity number 1204883

## Details

---

**Status** Registered

**Legal form** CIO

**Registered** 2023-09-22

**Register** [View on the Charity Commission register](#)

## Contact

---

**Address** South Gosforth First School  
Alnmouth Drive  
Newcastle Upon Tyne  
NE3 1YF

**Phone** 01912853453

**Email** [admin@sghfs.uk](mailto:admin@sghfs.uk)

## Activities

---

**Objects:** TO ADVANCE EDUCATION FOR YOUNG PEOPLE (AGED 0 TO 25) BY PROMOTING, IMPROVING, AND DEVELOPING CREATIVE LEARNING AND ACCESS TO CREATIVE AND CULTURAL RESOURCES IN SCHOOLS AND COMMUNITIES, LOCAL EDUCATION AUTHORITIES AND OTHER ORGANISATIONS, SUPPORTING OR PROVIDING EDUCATION IN NEWCASTLE AND SURROUNDING AREAS.

**Activities:** Taking a co-creative and collaborative approach, we work to support children and young people to flourish as creative, connected, active, and engaged citizens. We work across education, creative and cultural sectors with children and young people and their wider communities.

## Classification

---

- **How:** Provides Services
- **What:** Education/training
- **Who:** Children/young People

## Geography

- Newcastle Upon Tyne City

## Finances

Period end	Income	Expenditure	Assets	Employees
2025-02-28	£154,269	£100,437	-	-

## Trustees

Name	Role	Appointed
<b>Anna Disley</b>	Chair	2023-09-22
Gary Wright		2024-05-15
Gemma Louise Johnson		2024-04-30
Jane Dube		2024-04-30
KATHRYN NICHOLSON		2024-05-13
Professor Venda Louise Pollock		2024-05-01
Robert Adams		2023-09-22
Stephanie Jane Whitehead		2024-04-30

**GLOW : NEWCASTLE CULTURAL EDUCATION PARTNERSHIP**

England & Wales - Charity number 1204883

---

# Accounts

---

**GLOW: NEWCASTLE CULTURAL EDUCATION PARTNERSHIP**

**REPORT AND FINANCIAL STATEMENTS**  
**For the period 22.09.2023 to 28.02.2025**

**Charity Number 1204883**

# **GLOW: NEWCASTLE CULTURAL EDUCATION PARTNERSHIP**

## **ANNUAL REPORT AND FINANCIAL STATEMENTS**

For the period 22.09.2023 to 28.02.2025

---

<b>Contents</b>	<b>Page</b>
Trustees annual report	1 to 11
Independent examiners report	12
Statement of Financial Activities (including income and expenditure account)	13
Balance sheet	14
Notes to the financial statements	15 to 22



## Trustees' Annual Report

For the period 22 September 2023 to 28 February 2025

The trustees are pleased to present their annual trustees' report together with the financial statements of the charity for the period 22 September 2023 to 28 February 2025.

The financial statements comply with the Charities Act 2022, the memorandum and articles of association and accounting and reporting by charities: statement of recommended practice applicable to charities preparing their accounts in accordance with the financial reporting standard applicable in the UK and Republic of Ireland (FRS102) (effective October 2019).

### 1. Objectives and Activities

#### Our Vision

Glow Newcastle envisages a future where all young people aged 0–25 have equitable access to high-quality cultural opportunities, both in and out of school, to flourish as creative, connected, active, and engaged members of communities.

#### Our Mission

By adopting a co-creative and collaborative approach we aim to ensure that:

- There is greater equity of opportunity and increased engagement with arts and culture for all children and young people, particularly those from underserved groups.
- Creativity and Arts within the school curriculum is enhanced through education and cultural sector partnerships.
- We raise the profile of Arts and creativity within our communities.
- Young people are aware of career pathways in the arts and cultural sector and know how to access these opportunities.
- Newcastle's creative, cultural, and education sectors become better connected and resourced.

#### Activity, Evaluation and Outputs in this period:

##### Charity Governance

GLOW Newcastle CIO was established with three trustees, Chair Anna Disley, Rob Adams and Becky Jackson in September 2023. In May 2024 we welcomed seven new trustees, we're delighted to be supported by such passion and varied expertise.

- Stephanie Whitehead
- Gary Wright
- Kathryn Nicholson (Treasurer)
- Prof Sue Scott
- Gemma Johnson
- Jane Dube
- Vee Pollock

We were sad to see Becky Jackson step down from her founding role in July 2024 due to her existing and expanding commitments, however we're pleased to continue working with her and Craggs Primary school and enjoyed her wonderful presentation at our November 2024 launch and celebration event.



## Trustees' Annual Report

For the period 22 September 2023 to 28 February 2025

We have established the following core policies:

- Safeguarding
- Equality, Diversity and Inclusion
- Health and Safety
- Financial Procedures
- Expenses
- Privacy

In Spring 2024 we set up our charity bank account with the Cooperative Bank registered with HMRC and created two fixed term part time staff roles: Director, into which we appointed Bex Mather, and Programme Manager into which we appointed Ann Winter.

We appointed bookkeepers and a contract for our independent examination of accounts. We established financial procedures and protocols and set up organisational insurance.

A substantial amount of our activity in this period was undertaken within our role as a local cultural education partnership (LCEP) and we're very thankful to our colleagues at North East Museums and fellow LCEPs across the region for their collegiate work and support. We are thankful for the support we've received from Arts Council England, North East Combined Authority Education Improvement programme, the Community Foundation North East and to our many partners and colleagues across education, cultural, health and youth sectors.

### **Activities undertaken in this period.**

To deliver our mission we undertake the following activities:

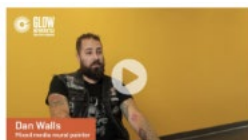
- Build relationships and convening the sectors with an interest in children and young people, creative education and culture.
- Seek and generate opportunities to widen participation in high quality arts and cultural experiences.
- Co-design Artist Residencies in schools promoting a co-creative approach between artists, young participants and teachers, underpinned by research and reflective learning.
- Provide continued professional development for teachers and artist practitioners.
- Promote and improve access to creative careers.
- Seek to create youth leadership and youth voice opportunities.

We have an active role as a conduit supporting relationships within and across sectors. At our November launch and celebration event we were delighted to welcome the Minister for Schools, Catherine McKinnell, who gave a keynote speech about the important role of arts and culture in young peoples' lives. She spoke alongside Cllr Lesley Storey from Newcastle City Council, board member Gary Wright, founding board member Becky Jackson and Director Bex Mather. The event was attended by over 50 cultural, educational and public sector organisations with 100 people in attendance, including freelance professionals who partner with us to deliver our programmes. At the event we launched our **#GlowTogether network** which supports information sharing, partnership building and advocacy, attracting 151 sign-ups in this period.

We have been active in establishing our communications including setting up social media platforms, establishing and refining our website. We now share sector-relevant information, celebrate projects, staff and activities through our newsletter The GLOW. We have signed up and contact facilities to the #GlowTogether network and newsletter via our website. Our regular call outs for freelancers to work with us on specific residences has also helped to raise our profile in this period.

## Projects

### Creative Careers Gallery



#### GLOW NEWCASTLE CREATIVE CAREERS GALLERY PRESENTS: DAN WALLS

After creating his own Legal Graffiti Wall in Bishop Auckland, and supporting young people to access it, Dan Walls started his own company...



#### GLOW NEWCASTLE CREATIVE CAREERS GALLERY PRESENTS: KAY GREYSON

Nominated by Youth Music for the 'Inspirational Music Leader' Award, Kay Greyson has been performing for over ten years. Over this time she...



#### GLOW NEWCASTLE CREATIVE CAREERS GALLERY PRESENTS: GEMMA JOHNSON

Gemma is Head of People and Safeguarding at The Glasshouse International Centre for Music (formerly known as The Sage Gateshead). As part of...



#### GLOW NEWCASTLE CREATIVE CAREERS GALLERY PRESENTS: AMY FAWDINGTON

Amy Fawdington is the Deputy Executive Director at Northern Stage, one of our leading performing arts theatres in Newcastle upon Tyne. Her previous...



#### GLOW NEWCASTLE CREATIVE CAREERS GALLERY PRESENTS: LISA OPIE

Lisa Opie is Managing Director of Ubisoft Reflections in Newcastle upon Tyne and Ubisoft Learning in Leamington Spa. Ubisoft is a leading global...



#### GLOW NEWCASTLE CREATIVE CAREERS GALLERY PRESENTS: PATRICK NEWTON

Patrick Newton is Programme and Marketing Coordinator at the Tyneside Cinema. Over the last four years on the programme team, he's been helping...

14 professionals working at all levels in Newcastle's Creative and Cultural sectors, including freelance, senior management, apprentices, directors, public facing and technical staff, agreed to be interviewed on film about their career pathways. Each practitioner has a unique page on our site, which includes links and referrals provided by themselves for young people interested in working in these sectors. This resource aims to demystify roles with the cultural sectors and myths regarding who can have a career within arts and cultural organisations. Some interviewees speak candidly about their own backgrounds. The resource aims to support inclusion and aspiration for *all* children and young people to consider roles within the creative and cultural sector.

### #MOBO2025 Fringe "Beyond the Screen"



Tyneside Cinema invited us to project manage their activity as official partners to the MOBOs 2025 Fringe. We worked with a locally based, global majority technical and professional team and over 70 young people from schools and youth groups in Newcastle and Gateshead to make a film of a new dance piece.

**Residencies.**

**Spark, Mix, Connect: Our Art, Our Way with Newcastle Bridges School – Kenton site**



With Newcastle Bridges School invited we co-created an artist residency focused on construction. Artist Lindsey Stevenson worked with two groups of Year 7 students to create models of their dream houses and a 3D plan of their ideal town. The students then exhibited their work in the Farrell Institute for Architecture at Newcastle University and performed as Exhibition Explainers at a closed viewing for staff, parents and carers.

**Put Your Stamp On It: Graffiti / Wall art / Mural art, personal identity, collaboration and shared ownership of space with Mary Astell Academy**



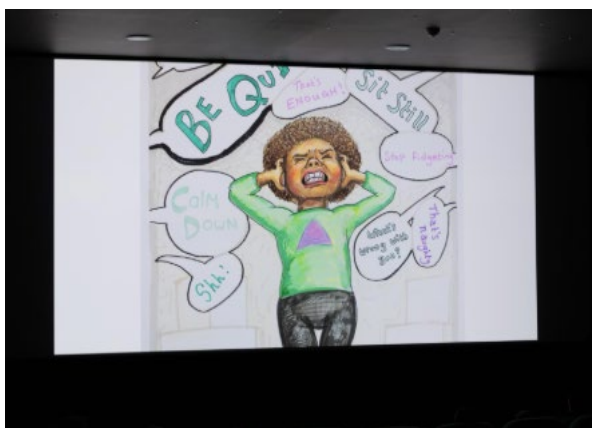
Our growing relationship with Prosper Learning Trust enabled us to create an artist residency which would explore and experiment with mural art and graffiti with their Year 8 students. Artist Dan Walls worked with the pupils to design their own tags or signatures, and practice spray-painting them before embarking on the final residency output, which was a magnificent 2m x 4m mural at the main entrance to the school.

**Building up STEAM: Create to Empower with Newcastle College Childcare Department**



Newcastle College Childcare Department invited us to work with their Level 1 and Level 2 students to co-create an artists' residency investigating and making STEAM (Science, Technology, Art and Maths) products. Artist Lindsey Stevenson worked with the groups to inspire and support their creations, which were later installed in an exhibition which was highlighted in the college's Ofsted report.

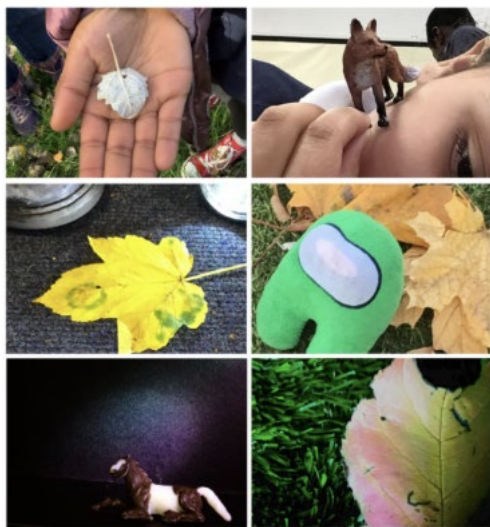
**Listen Up, Pass the Mic! Play, Lead and Communicate with Hawthorn Primary School**



Hawthorn Primary School were keen to co-create an artist's residency with us which built on their oracy work to enriched the communication skills of children in year 3 and year 4. Artist and theatre practitioner Jonluke McKie collaborated with the children to create a beautiful short film which explores different ways children can experience the world and making friendship. The project supported children to explore and understand how they can help each other feel valued, heard and connected. The project culminated in a celebratory screening at Tyneside Cinema attended by the young artist themselves and their wider community.



**Autumn Transformations: Turn yourself into a Colour Change Catcher, a Falling Leaves Forager, a Hibernation Hunter, a Migration Mapper, and a Specialist Spotter of Shifting Seasons with Atkinson Road Primary Academy**



As part of their research and exploration into their ambition to host a photography club at the school, we worked with Atkinson Road Primary Academy to co-create an artists' residency which would support the children to describe their local Benwell environment and community through photography, audio-visual technology and creative writing. Lindsay Duncanson and John Quinn worked with Year 3 and Year 4 pupils and their teaching teams to explore, represent and express their sensory experiences of Benwell during the autumn and winter. An immersive exhibition is planned for the spring term.

**Show Up, Stand Up: My Voice My Choice with Walker Riverside Academy**



Walker Riverside Academy invited us to work with their Year 9 pupils to co-create a residency exploring experiences of racial discrimination reported by students in the school. We partnered with Northern Roots artists Kema Kay and Kay Greyson to devise and shoot a film drawing together personal experiences shared by the group and positive messages of change and renewal.

**GLOW Creative Connections.**

We began working on our GLOW Creative Connections Action Learning Project, supported by the North East Combined Authority Excellence in Education programme. This project explores collaborations between artist-practitioners and teachers/educational staff through creative residencies aiming to support the social emotional and mental health of young people. We will publish a report of the findings in 2025.



Trustees' Annual Report

For the period 22 September 2023 to 28 February 2025

### **Continued Professional Development (CPD)**

We incorporate CPD into our artist residencies creating opportunities for colleagues in education to have explicit CPD opportunities with artist-practitioners. Alongside these opportunities we also programme specific stand alone CPD opportunities. In this period this included a sessions led by Kate Maines-Beasley on creative and play practice with children in their early years. We also programmed a session with multidisciplinary artist John Quinn entitled: DEALING WITH FEELING: RELEATE, CREATE AND THRIVE is a fun, practical, hands-on session, exploring creative approaches to emotional learning and restorative practice.

### **Engagement Figures.**

Over 500 children and young people took part in creative residencies and projects with GLOW Newcastle in this period.

Over 80 teachers and artist-practitioners took part in continued professional development with GLOW Newcastle in this period.

We commissioned 18 freelance colleagues

We estimate that attendance at events, screenings and longer-term exhibits of work will have reached 1500 children and young people and their wider communities. This number is set to grow as the resources developed through the projects are shared within training, celebrations and events beyond this period.

Over 50 cultural and educational organisations and schools have engaged in our activities within this period.

## **2. Public Benefit Statement**

We are confident that we are achieving our mission and making a significant contribution directly to the lives and experiences of children and young people in Newcastle. We do this by working directly with children and young people engaging with them in culture; by supporting staff working in sectors impacting children and young people; by promoting opportunities for children and young people in arts and culture and by advocating for the importance of young people's engagement in arts and culture. To date the work we do is free of charge for the young people engaging in it and targeted in the most socio-economically disadvantaged areas of the city.

## **3. Policy on Grant Making**

We have not offered any grants in this period.

## **4. Policy on Social Investment**

We have not made any social investments in this period.

## **5. Contributions by Volunteers**

Other than the roles undertaken voluntarily by our trustees, we have not engaged any volunteers in this period.



Trustees' Annual Report

For the period 22 September 2023 to 28 February 2025

## **6. Fundraising**

We held no specific fundraising events in this year. Our funds as detailed within the accounts are predominantly grants from trusts, foundations and schools. We are very pleased to have been awarded three years' funding from the Newcastle Cultural Investment Fund, Community Foundation which will begin in our next financial period.

## **7. Investments**

We hold no investments.

## **8. Financial Review**

The results for the period and the charity's financial position at the end of the year are shown in the attached financial statements.

During the period 22 September 2023 to 28 February 2025 the charity had income of £104,835 of which £53,500 was restricted, expenditure of £100,437 of which £80,436 was restricted. There was an operating surplus of £4,398 of which a deficit of £26,936 was restricted. At 28 February 2025 the charity had net assets of £53,832 of which £25,556 was restricted.

Included in the net assets for this period is a brought forward amount of £49,434 which were funds held prior to charity registration.

We consider 3 months' organisational costs to be an appropriate level of reserves.

## **9. Risk Management**

Our identified risks include the safeguarding of children and vulnerable people within our work. We acknowledge this is an on-going risk event with good management processes, policies and insurances in place. Our safeguarding policy details our approach.

We have a small core staffing team who hold a significant amount of organisational knowledge between them. Should a staff member decide to leave the organisation this would have a significant impact. We do also work with freelancers including repeat engagements enabling us to build working relationships. We have good relationships with the wider freelance workforce should we need to draw upon freelance staffing capacity.

We are a young organisation and are working hard to build relationships with funders. Securing financial investment is a risk particularly in the current climate.

## **10. Plans for future periods**

In 2025 – 2026 we will complete our Glow Creative Connections Action Research project, launch the project report and build on the learning from that project with more work around the role of culture in supporting young people who experience barriers to learning through SEND and SEMH challenges.

We will host at least three #GlowTogether 'Let's Talk About...' events which focus on thematic areas of concern connecting organisations and colleagues across sectors to further our mission.

We will create at least four creative residency projects and continue to create work opportunities for freelance artist-practitioners and creatives.



## Trustees' Annual Report

For the period 22 September 2023 to 28 February 2025

We will grow our work to promote creative careers, building on the successful creation of our Creative Careers Gallery. We have a Creative Careers social media campaign planned to coincide with 'Careers week' and will engage in a tour of careers fairs and workshops with the gallery resource.

We will diversify our income streams and develop more relationships with grant funders.

We aim to build our core funding to provide stability and a solid base for further growth.

We aim to operate enough surplus to build our reserves up to meet our target going forward.

We will continue to build effective and strategic partnerships and work to sustain and develop our organisation and mission.

We will progress with our plans to include young people more fully within the workings of our organisation.

### 11. Reference and administrative details of the charity, it's trustees and advisors

Registered Charity Name	GLOW Newcastle Cultural Education Partnership
Charity Number	1204883
Registered office	South Gosforth First School Alnmouth Drive Newcastle NE3 1YF
Trustees and members of the board	Stephanie Whitehead Rob Adams Gary Wright Kathryn Nicholson (Treasurer) Anna Disley (Chair) Prof Sue Scott Gemma Johnson Jane Dube Vee Pollock
Employed Director for the charity	Bex Mather
Independent Examiner	Doug Maltman FMAAT Connected Voice Business Services One Strawberry Lane Newcastle Upon Tyne NE1 4BX
Bankers	Coop Charity Business Account

### 12. Funds held as custodian

We do not hold funds on behalf of any other entity.

### 13. Exemptions from disclosures

We have no exemptions from disclosures.



Trustees' Annual Report

For the period 22 September 2023 to 28 February 2025

#### **14. Structure, governance and management**

We are a charitable incorporated organisation with a foundation model constitution.

##### **Board induction, training and protocols.**

Most members of the board were recruited via an application process responding to a call-out publicised through our social media and wider networks. We had more viable applicants than we could invite onto the board. Upon joining our board all trustees were welcomed to a pre-board induction meeting with our Chair and Director. All board members were sign-posted to free training. All board members have access to our governing document, organisational policies, and are presented with progress reports at each board meeting along with financial accounts and budget forecasts. The trustees work with the director to determine the overall strategy and ensure good governance. Decisions are taken by the board of trustees at quarterly meetings with minutes recorded.

#### **15. Related parties**

There are no related parties.

#### **16. Statement of Trustee Responsibilities.**

The trustees are responsible for preparing the Trustees' Annual Report and the Financial Statements in accordance with applicable law and United Kingdom Accounting Standards (United Kingdom Generally Accepted Accounting Practice).

Charity SORP requires the trustees to prepare financial statements for each financial year, which give a true and fair view of the state of affairs of the charity and of incoming resources and application of resources, including the receipts and payments of the charity for that year. In preparing those financial statements, the trustees are required to:

- select suitable accounting policies and apply them consistently.
- observe the methods and principles in the Charities SORP.
- make judgements and estimates that are reasonable and prudent.
- state whether applicable accounting standards have been followed, subject to any material departures disclosed and explained in the financial statements.
- prepare the financial statements on the going concern basis unless it is inappropriate to presume that the charity will continue in operation.

The trustees are responsible for keeping accounting records that disclose with reasonable accuracy at any time the financial position of the charity. They are also responsible for safeguarding the assets of the charity and hence for taking reasonable steps for the prevention and detection of fraud and other irregularities.

Approved by the Trustees on 30 September 2025 and signed on their behalf by:

A Disley  
Chair

## **GLOW: NEWCASTLE CULTURAL EDUCATION PARTNERSHIP**

### **INDEPENDENT EXAMINER'S REPORT TO THE TRUSTEES**

For the period 22.09.2023 to 28.02.2025

---

I report on the financial statements of Glow: Newcastle Cultural Educational Partnership for the period 22.09.2023 to 28.02.2025, which are set out on pages 13 to 22.

#### **Respective responsibilities of trustees and examiner**

The charity's trustees are responsible for the preparation of the accounts. The charity's trustees consider that an audit is not required for this year under section 144 of the Charities Act 2022 ("the Charities Act) and that an independent examination is needed.

Having satisfied myself that the charity is not subject to audit under company law and is eligible for independent examination, it is my responsibility to:

- examine the accounts under section 145 of the Charities Act,
- to follow the procedures laid down in the general Directions given by the Charity Commission (under section 145(5)(b) of the Charities Act), and
- to state whether particular matters have come to my attention.

#### **Basis of independent examiner's statement**

My examination was carried out in accordance with general Directions given by the Charity Commission. An examination includes a review of the accounting records kept by the charity and a comparison of the accounts presented with those records. It also includes consideration of any unusual items or disclosures in the accounts, and seeking explanations from the trustees concerning any such matters. The procedures undertaken do not provide all the evidence that would be required in an audit, and consequently no opinion is given as to whether the accounts present a 'true and fair view' and the report is limited to those matters set out in the statement below.

#### **Independent examiner's statement**

In connection with my examination, no material matters have come to my attention which gives me cause to believe that in, any material respect:

- the accounting records were not kept in accordance with section 130 of the Charities Act; or
- the accounts did not accord with the accounting records; or
- the accounts did not comply with the applicable requirements concerning the form and content of accounts set out in the Charities (Accounts and Reports) Regulations 2008 other than any requirement that the accounts give a "true and fair" view which is not a matter considered as part of an independent examination.

I have come across no other matters in connection with the examination to which attention should be drawn in this report in order to enable a proper understanding of the accounts to be reached.

Doug Maltman FMAAT  
Fellow Member of the Association of Accountancy Technicians  
Connected Voice Charity Business Services  
One Strawberry Lane  
Newcastle upon Tyne  
NE1 4BX  
Date: 30 September 2025

## GLOW: NEWCASTLE CULTURAL EDUCATION PARTNERSHIP

### STATEMENT OF FINANCIAL ACTIVITIES

For the period 22.09.2023 to 28.02.2025

	Notes	Unrestricted Funds £	Restricted Funds £	Total 22.09.2023 to 28.02.2025 £
<b>Income from:</b>				
Charitable activities				
Grants and contracts	6	30,000	53,500	<b>83,500</b>
Other trading activities	7	21,335	-	<b>21,335</b>
<b>Total income</b>		<b>51,335</b>	<b>53,500</b>	<b>104,835</b>
<b>Expenditure on:</b>				
Charitable activities				
Operation of the charity	8	20,001	80,436	<b>100,437</b>
<b>Total expenditure</b>		<b>20,001</b>	<b>80,436</b>	<b>100,437</b>
<b>Net income/(expenditure)</b>		31,334	( 26,936 )	<b>4,398</b>
Exceptional item	5	29,434	20,000	<b>49,434</b>
<b>Net income/(expenditure)</b>		60,768	( 6,936 )	<b>53,832</b>
Transfers between funds		( 32,492 )	32,492	-
<b>Net income/(expenditure) and net movement of funds</b>		<b>28,276</b>	<b>25,556</b>	<b>53,832</b>
<b>Reconciliation of funds</b>				
Total funds brought forward		-	-	-
<b>Total funds carried forward</b>		<b>28,276</b>	<b>25,556</b>	<b>53,832</b>

The Statement of Financial Activities includes all gains and losses recognised in the year. All income and expenditure derive from continuing activities

The notes on pages 15 to 22 form an integral part of these accounts.

**BALANCE SHEET**

As at 28.02.2025

	Notes	£	Total 2025 £
<b><u>Current assets</u></b>			
Cash at bank and in hand	14	54,162	
<b>Total current assets</b>		<b>54,162</b>	
<b>Creditors:</b> amounts falling due within one year	15	<b>( 330 )</b>	
<b>Net current assets</b>			<b>53,832</b>
<b>Total assets less current liabilities</b>			<b>53,832</b>
<b>Total net assets or liabilities</b>			<b>53,832</b>
<b><u>Funds of the charity</u></b>			
Unrestricted income funds			28,276
Restricted income funds			25,556
<b>Total funds</b>			<b>53,832</b>

The notes on pages 15 to 22 form an integral part of these accounts. These financial statements were approved by the Board on: 30 September 2025

and are signed on its behalf by:

K Nicholson  
Trustee

# **GLOW: NEWCASTLE CULTURAL EDUCATION PARTNERSHIP**

## **NOTES TO THE FINANCIAL STATEMENTS**

For the period 22.09.2023 to 28.02.2025

---

### **1 Accounting Policies**

The principal accounting policies adopted, judgements and key sources of estimation uncertainty in the preparation of the financial statements are as follows:

### **2 Basis of accounting**

#### **2.1 Basis of preparation**

These accounts have been prepared under the historical cost convention with items recognised at cost or transaction value unless otherwise stated in the relevant note(s) to these accounts.

The accounts have been prepared in accordance with Accounting and Reporting by Charities: Statement of Recommended Practice applicable to charities preparing their accounts in accordance with the Financial Reporting Standard applicable in the UK and Republic of Ireland (FRS 102) (effective October 2019) – Charities SORP (FRS 102), the Financial Reporting Standard applicable in the UK and Republic of Ireland (FRS 102) and the Charities Act 2022.

Glow: Newcastle Cultural Educational Partnership meets the definition of a public benefit entity under FRS

#### **2.2 Preparation of the accounts on a going concern basis**

The charity reported total unrestricted funds at the year end of £28,276 and has already secured a significant amount of funding for the current year. The trustees are of the view that the immediate future of the charity for the next 12 to 18 months is secure and that on this basis the charity is a going concern.

### **3 Income**

#### **3.1 Recognition of income**

Income is recognised when the charity has entitlement to the resources, any performance conditions attached to the item(s) of income have been met, it is more likely than not that the resources will be received and the monetary value can be measured with sufficient reliability

#### **3.2 Offsetting**

There has been no offsetting of assets and liabilities, or income and expenses, unless required or permitted by FRS102 SORP or FRS102.

#### **3.3 Grants and donations**

Income from government and other grants, whether 'capital' grants or 'revenue' grants, is recognised when the charity has entitlement to the funds, any performance conditions attached to the grants have been met, it is probable that the income will be received and the amount can be measured reliably and is not deferred.

Income received in advance of the provision of a specified service is deferred until the criteria of income recognition are met.

## **GLOW: NEWCASTLE CULTURAL EDUCATION PARTNERSHIP**

### **NOTES TO THE FINANCIAL STATEMENTS**

For the period 22.09.2023 to 28.02.2025

---

#### **3.4 Donated goods and services**

Donated goods are measured at fair value (the amount for which the asset could be exchanged) unless impractical to do so.

Donated services and facilities are included in the SoFA when received at the value of the gift to the charity provided that the value of the gift can be measured reliably. Donated services and facilities that are consumed immediately are recognised as income with the equivalent amount recognised as an expense under the appropriate heading in the SoFA.

#### **3.5 Volunteer help**

The value of volunteer help received is not included in the accounts but is described in the trustees' annual report.

#### **3.6 Interest receivable**

Interest on funds held on deposit is included when receivable and the amount can be measured reliably by the charity; this is normally upon notification of the interest paid or payable by the bank.

#### **3.7 Income from membership subscriptions**

Membership subscriptions received in the nature of a gift are recognised in donations and legacies.

Membership subscriptions which gives a member the right to buy services or other benefits are recognised as income earned from the provision of goods and services as income from charitable activities.

#### **3.8 Investment gains and losses**

This includes any realised or unrealised gains or losses on the sale of investments and any gain or loss resulting from revaluing investments to market value at the end of the year.

#### **3.9 Fund accounting**

Unrestricted funds are available to spend on activities that further any of the purposes of the charity. Designated funds are unrestricted funds of the charity which the trustees have decided at their discretion to set aside to use for a specific purpose. Restricted funds are donations which the donor has specified are to be solely used for particular areas of the charity's work or for specific projects being undertaken by the

### **4 Expenditure and liabilities**

#### **4.1 Liability recognition**

Liabilities are recognised when it is more likely than not that there is a legal or constructive obligation committing the charity to pay out resources and the amount of the obligation can be measured with reasonable certainty.

#### **4.2 Charitable activities**

Expenditure on charitable activities includes the costs of work and other activities undertaken to further the purposes of the charity and their associated support costs.

## **GLOW: NEWCASTLE CULTURAL EDUCATION PARTNERSHIP**

### **NOTES TO THE FINANCIAL STATEMENTS**

For the period 22.09.2023 to 28.02.2025

---

#### **4.3 Governance and support costs**

Support costs have been allocated between governance cost and other support. Governance costs comprise all costs involving public accountability of the charity and its compliance with regulation and good practice.

Support costs are those functions that assist the work of the charity but do not directly undertake charitable activities. Support costs include central functions and have been allocated to activity cost categories on a basis consistent with the use of resources.

#### **4.4 Irrecoverable VAT**

Irrecoverable VAT is charged as a cost against the activity for which the expenditure was incurred.

#### **4.5 Creditors**

The charity has creditors which are measured at settlement amounts less any trade discounts.

#### **4.6 Provisions for liabilities**

A liability is measured on recognition at its historical cost and then subsequently measured at the best estimate of the amount required to settle the obligation at the reporting date.

## GLOW: NEWCASTLE CULTURAL EDUCATION PARTNERSHIP

### NOTES TO THE FINANCIAL STATEMENTS

For the period 22.09.2023 to 28.02.2025

	Unrestricted Funds £	Restricted Funds £	Total 22.09.2023 to 28.02.2025 £
<b>5 Exceptional item</b>			
Funds held prior to registration as a charity	29,434	20,000	49,434
	<u>29,434</u>	<u>20,000</u>	<u>49,434</u>
<b>Analysis of income</b>			
	Unrestricted Funds £	Restricted Funds £	Total 22.09.2023 to 28.02.2025 £
<b>6 Charitable activities</b>			
<u>Income from grants</u>			
Arts Council	20,000	-	20,000
Newcastle Council	10,000	-	10,000
CBNE PI	-	21,400	21,400
Community Foundation	-	5,000	5,000
NECA	-	27,100	27,100
	<u>30,000</u>	<u>53,500</u>	<u>83,500</u>
<b>7 Other trading activities</b>			
Residence - Schools	21,000	-	21,000
CPD training	335	-	335
	<u>21,335</u>	<u>-</u>	<u>21,335</u>

Income was £104,835 of which £51,335 was unrestricted or designated and £53,500 was restricted

## GLOW: NEWCASTLE CULTURAL EDUCATION PARTNERSHIP

### NOTES TO THE FINANCIAL STATEMENTS

For the period 22.09.2023 to 28.02.2025

#### Analysis of expenditure on charitable activities

	Unrestricted	Restricted	Total
	Funds	Funds	22.09.2023
	£	£	to
			28.02.2025
			£
<b>8 Charitable activities</b>			
<u>Direct costs</u>			
Artist payment in residence	-	22,836	<b>22,836</b>
Consultancy	-	375	<b>375</b>
Careers roadshow	-	2,815	<b>2,815</b>
School Project expenses	-	4,702	<b>4,702</b>
Project staff expenses	228	-	<b>228</b>
Event costs	-	1,912	<b>1,912</b>
Design and printing	-	826	<b>826</b>
<u>Support costs</u>			
Staff salaries	-	35,258	<b>35,258</b>
Staff NI	427	2,622	<b>3,049</b>
Staff Pension	344	175	<b>519</b>
Freelance staff	18,476	1,907	<b>20,383</b>
Staff expenses	-	857	<b>857</b>
CPD	-	552	<b>552</b>
Advertising	-	1,125	<b>1,125</b>
Digital communication	-	216	<b>216</b>
IT software and subscriptions	214	858	<b>1,072</b>
Website platform and hosting	-	1,584	<b>1,584</b>
Insurance	-	612	<b>612</b>
Legal and professional	-	750	<b>750</b>
Bookkeeping	120	168	<b>288</b>
Payroll fees	-	94	<b>94</b>
<u>Governance costs</u>			
Independent examiner's fees for reporting on the accounts	192	192	<b>384</b>
	<u>20,001</u>	<u>80,436</u>	<u><b>100,437</b></u>

Expenditure on charitable activities was £100,437 of which £20,001 was unrestricted or designated and £80,436 was restricted

#### 9 Fees for examination of the accounts

**22.09.2023**  
to  
**28.02.2025**  
**£**

Independent examiner's fees for reporting on the accounts

**384**

**384**

There were no other fees paid to the examiner (: £nil)

## GLOW: NEWCASTLE CULTURAL EDUCATION PARTNERSHIP

### NOTES TO THE FINANCIAL STATEMENTS

For the period 22.09.2023 to 28.02.2025

---

#### 9 Analysis of staff costs and the cost of key management personnel

	22.09.2023 to 28.02.2025 £
Salaries and wages	35,684
Social security costs	3,049
Pension costs (defined contribution pension plan)	519
	<u>39,252</u>

No employee received remuneration above £60,000 (: £nil)

The key management personnel of the charity, comprise the trustees. The total employee benefits of the key management personnel of the charity were £0.

#### 10 Staff numbers

The head count was 2 staff.

#### 11 Transactions with trustees

None of the trustees have been paid any remuneration or received any other benefits from an employment with their charity or a related entity.

##### Trustees' expenses

No trustee expenses have been incurred in the year.

##### Transaction(s) with related parties

There have been no related party transactions in the reporting period.

#### 12 Defined contribution pension scheme

The charity operates a defined contribution pension scheme. The assets of the scheme are held separately from those of the charity in an independently administered fund.

The employer's pension costs represent contributions payable by the charity to the fund and amount to £519. There was £0 outstanding as at 22.09.2023 to 28.02.2025

#### 13 Corporation Taxation

The charity is exempt from tax on income and gains falling within section 505 of the Taxes Act 1988 or section 252 of the Taxation of Chargeable Gains Act 1992 to the extent that these are applied to its charitable objectives.

## GLOW: NEWCASTLE CULTURAL EDUCATION PARTNERSHIP

### NOTES TO THE FINANCIAL STATEMENTS

For the period 22.09.2023 to 28.02.2025

<b>14 Cash at bank and in hand</b>		<b>22.09.2023</b>
		<b>to</b>
		<b>28.02.2025</b>
		<b>£</b>
Cash at bank		<u>54,162</u>
		<u>54,162</u>
<b>15 Creditors and accruals (payable within 1 year)</b>		<b>22.09.2023</b>
		<b>to</b>
		<b>28.02.2025</b>
		<b>£</b>
Accruals		
Independent examination of accounts		192
Other accruals		138
		<u>330</u>

### 16 Events after the end of the repo Unrestricted Funds

No events (not requiring adjustment to the accounts) have occurred after the end of the reporting period but before the accounts are authorised which relate to conditions that arose after the end of the reporting period.

### 17 Analysis of charitable funds

#### Analysis of movements in unrestricted funds

	<b>Fund balances brought forward</b>	<b>Incoming resources</b>	<b>Resources expended</b>	<b>Transfers</b>	<b>Fund balances carried forward</b>
<b>Unrestricted funds</b>	<b>£</b>	<b>£</b>	<b>£</b>	<b>£</b>	<b>£</b>
General unrestricted fund	-	51,335	( 20,001 )	( 3,058 )	<b>28,276</b>
<b>Totals</b>	<u>-</u>	<u>51,335</u>	<u>( 20,001 )</u>	<u>( 3,058 )</u>	<u><b>28,276</b></u>

#### Purpose of unrestricted funds

General unrestricted fund      The 'free reserves' of the charity

## GLOW: NEWCASTLE CULTURAL EDUCATION PARTNERSHIP

### NOTES TO THE FINANCIAL STATEMENTS

For the period 22.09.2023 to 28.02.2025

#### 17 Analysis of charitable funds continued

##### Analysis of movement in restricted funds

Restricted funds	Fund balances brought forward £	Incoming resources £	Resources expended £	Transfers £	Fund balances carried forward £
NECA	-	27,100	( 1,544 )	-	25,556
CBNE PI		26,400	( 78,892 )	52,492	-
<b>Totals</b>	<b>-</b>	<b>53,500</b>	<b>( 80,436 )</b>	<b>52,492</b>	<b>25,556</b>

##### Purpose of restricted funds

NECA	Funds to set up our Glow Creative Connections Action Research Project with three arts-education residencies.
CBNE PI	To develop our Local Cultural Education Partnership activity and develop GLOW Newcastle as a new CIO with specific outputs.

##### Transfers between funds

	Reason for transfer	Amount £
Note 5 Exceptional item	Unrestricted funds held prior to charity registration.	29,434
Note 5 Exceptional item	Restricted funds held prior to charity registration.	20,000
Between unrestricted and restricted funds.	Unrestricted match funding for PI Fund.	32,492

#### 18 Capital commitments

As at 28.02.2025, the charity had no capital commitments

#### 19 Analysis of net assets between funds

	Unrestricted Funds £	Restricted Funds £	Total 22.09.2023 to 28.02.2025 £
Cash at bank and in hand	28,606	25,556	54,162
Other net current assets/(liabilities)	( 330 )	-	( 330 )
	<b>28,276</b>	<b>25,556</b>	<b>53,832</b>