



Annual Report

Our second full year of operating as a registered charity



Chair of Trustee's Report

It is with deep gratitude and humility that I reflect on all that the Weave Foundation—together with your generous support—has accomplished over the past year.

Our theme for the year was education, and this focus has shaped every part of our work. We equipped our project partners with online training in Safeguarding, Bible study resources, and practical financial support for school equipment, textbooks, and feeding programmes. These feeding programmes continue to transform children's ability to learn, giving them the best possible chance to thrive. Thanks to your kindness, 200 children at Makumba School received meals every week, and we were able to fund a Principal to oversee and strengthen the work at Nsobe.

But education extends far beyond the classroom. Our soccer clubs remain a vital source of guidance and belonging for young people, offering after-school lessons in health and hygiene, Bible studies, homework support, and mentoring. These spaces give children purpose, confidence, and hope—something every child deserves.

This year also brought some wonderful fundraising moments. Despite challenging weather, participants in both the Triple 5 Challenge (a 5k run, 5k paddle, and 5k run) and the Weavers Walk along the Sefton Coastal Way completed their events with determination and joy, knowing their efforts would make a real difference. Our Give Up, Give Hope Lent campaign was another great success and will return in 2026. In addition, our team attended the Women's New Wine Conference at Connect Church in Scunthorpe, where hosting a stall allowed us to share our mission, build new connections, and raise further support.

We also want to honour Alison, one of our founding members, who has stepped down to focus on supporting projects within her church. Her dedication has shaped the very foundations of the Weave Foundation, and we remain deeply grateful for her ongoing presence and encouragement.

At the same time, we are delighted to welcome Dan and Rachel Wilson as trustees. Their fresh insight, energy, and enthusiasm are already helping to drive our work forward in exciting ways.

There is so much more we have achieved together—countless moments of impact that, woven together, form a rich and beautiful tapestry of hope. For every step taken, every life touched, and every person who has played a part, I am profoundly thankful. Knowing that together, we are truly Weavers of Hope.

Keith Smith

Chair, Weave Foundation



Charity Information



Charity Name:

Weave Foundation

Date of Incorporation:

08 September, 2023

Charity Number:

1204633

Trustee Board:

Abigail Mayhew
Keith Smith
Rebecca Smith
Sam Wearing
Daniel Wilson
Rachel Wilson

Aims:

Prevention or relief of
poverty
Advancement of
education
Advancement of the
Christian Faith

Registered Office:

9 Town End Farm
Witherslack
Grange-Over-Sands
LA11 6RN



Charity Aims

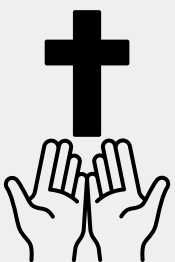
Weave Foundation aims to work towards:



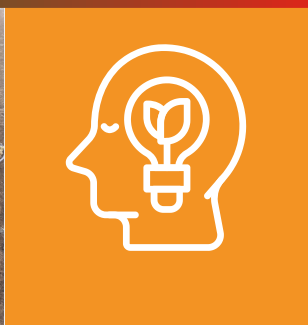
The prevention or relief of poverty anywhere in the world, particularly, but not exclusively in Zambia, by providing grants to individuals in need and/or charities, or other organisations working to prevent or relieve poverty.



The advancement of education of orphans and other vulnerable children in any part of the world, particularly, but not exclusively in Zambia, by the provision of funding for qualified teachers, buildings and essential equipment.



The advancement of the Christian religion by working with and strengthening the work of Christian churches and Christian organisations in any part of the world, in providing grassroots services to communities affected by poverty and to join in evangelism, church-planting, prayer, the discipling of Christians and the training of leaders.





2025 THEME

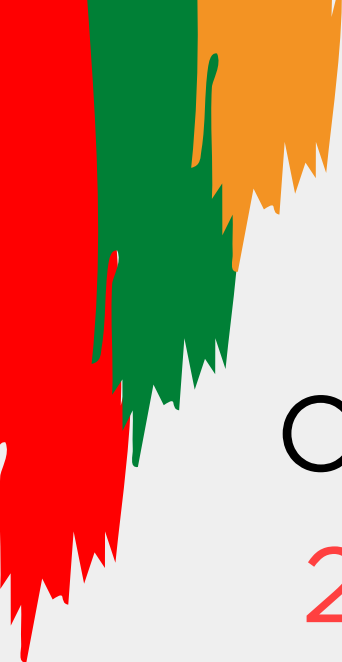
EDUCATION

Education became a defining theme for Weave Foundation throughout 2025, shaping many of the projects we supported across our partner communities. We helped strengthen school environments by providing materials to build benches and tables, ensuring students had safe and comfortable places to learn.

Our commitment to empowering women continued through workshops and skills-based training, giving women greater confidence, knowledge, and opportunities for independence. We also invested in spiritual and leadership development by supplying Bible study guides and offering regular education and training for our Project Partners, including essential safeguarding sessions to help protect children and vulnerable adults.

This focus on education—practical, spiritual, and developmental—has strengthened communities and laid foundations that will continue to grow long into the future.

We are full of anticipation as we step into our 2026 Theme of 'Discipleship'. This focus invites us to go deeper in relationship, strengthen spiritual foundations, and invest intentionally in the growth of our Project Partners and the communities they serve. We can't wait to see what opportunities, transformation, and stories of faith this new theme will bring as we continue weaving hope, connection, and purpose together.



Our Impact

2

Countries

16

Project Partners

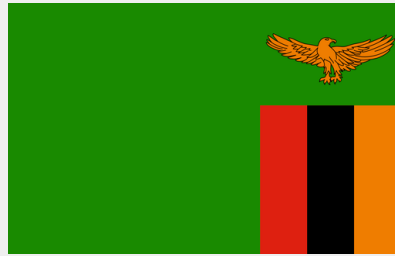


In 2025, Weave Foundation experienced a year marked by generosity, growth, and strengthened relationships across all our partner communities.

Our fundraising efforts continued to be a vital lifeline, with events such as Go Without Give Hope, 555, and WW enabling us to support essential projects throughout the year. We were also delighted to be part of New Wine 2025, where we shared stories of transformation and extended an open invitation for supporters to join us again at New Wine 2026.

We explored new opportunities for partnership, including a connection with Cornerstone, Wirral as we continue to build networks that strengthen discipleship and leadership development. Our commitment to community care remained central, especially through our support of Christmas dinners, ensuring families could celebrate with dignity and joy.

Food security remained a core focus, and we successfully delivered a full year of feeding projects, providing 200 meals every week to children and families in need. Alongside this, we helped several partners with land extensions, enabling them to grow more food and expand their long-term sustainability efforts.



This year also brought significant progress in education, youth development, and community empowerment. We supported the acquisition of an FAZ E football licence, provided goal posts, and supplied equipment to build school desks, strengthening both sports and learning environments. We funded textbooks for Nsobe School, provided a keyboard for Chosen, and supported Gracious Zulu, a dedicated teacher at GradaPro Prosperous School, with new glasses to enhance her work in the classroom.

Women's empowerment continued to flourish as we provided sewing machines both for our Women's Empowerment programme and for Mama Foster, helping create pathways to income and independence.

Spiritual growth remained a priority, with monthly Project Partner training sessions and regular Bible studies equipping leaders with confidence and biblical grounding. Our weekly Worship Wednesday videos on our Social Media platforms continued to bring encouragement and unity across our global community.

Behind the scenes, we have begun preparations for the 2026 Zambia Trip, laying the groundwork for deeper relational engagement with our partners.

Our connection with Beulah also has been strengthened, with a course on discipleship and leadership training for our project partners in March 2026, which will also provide vital funding to the Beulah Centre.

We received a great blessing in 2025 of £10,000 from the closure of Challenge of 2:52 and Soap Box, both of which directly supported several of our project partners. This achievement reflects the generosity of our supporters and the shared belief in the work being done across all our communities.





Challenges



While 2025 brought many moments of encouragement, it also presented challenges that shaped how we work and how we plan for the future. One of the ongoing difficulties has been return communication with some of our Project Partners, particularly around receiving receipts and evidence of how funds have been used. Strengthening these processes remains a priority as we continue to build trust, accountability, and clarity across all partnerships.

Within our Trustee team, we navigated a period of transition. We experienced changes to the committee, including the stepping down of Alison Robinson and the welcoming of Rachel and Daniel Wilson. Although positive in the long term, these shifts naturally required time to adjust and re-establish communication rhythms. This was made more challenging by the geographical distance between Trustees, as our team is spread across the UK, making in-person collaboration less frequent.

Financial administration also brought practical hurdles. We encountered banking charges and occasional issues with Project Partner bank accounts, which created delays and added complexity to transferring funds securely and efficiently. These challenges highlighted the need for ongoing review of our financial systems and support structures.

External factors played their part too. Several of our fundraising events were affected by weather, impacting attendance and income. These moments reminded us of the unpredictability of outdoor events and the importance of flexibility in our planning.

Despite these challenges, each one has helped refine our processes, strengthen our communication, and shape a more resilient foundation for the years ahead.



Advancing Sustainable Development Through Education, Empowerment, and Partnership

In 2025, our work continued to strengthen communities across Zambia through initiatives that align closely with the United Nations Sustainable Development Goals (SDGs). Each project—whether in education, youth development, women’s empowerment, or spiritual formation—contributed to long-term, sustainable transformation.



Strengthening Education and Youth Development (SDG 4: Quality Education)

This year brought significant progress in enhancing learning environments and supporting young people. We facilitated the acquisition of an FAZ E football licence, provided goal posts, and supplied materials for the construction of school desks—investments that enrich both academic and sporting opportunities. Our support extended to the provision of textbooks for Nsobe School, a keyboard for Chosen, and new glasses for Gracious Zulu, a dedicated teacher at GradaPro Prosperous School. These contributions ensure that students and educators alike have the tools they need to thrive.



Empowering Women and Expanding Economic Opportunity (SDG 5: Gender Equality & SDG 8: Decent Work and Economic Growth)



Women’s empowerment remained a central focus. By providing sewing machines for our Women’s Empowerment programme and for Mama Foster, we helped create pathways to income generation and financial independence. These initiatives not only uplift individual women but also strengthen families and communities through sustainable economic participation.

Reduced Inequalities & SDG 16: Peace, Justice and Strong Institutions)



Spiritual and leadership development continued to flourish through monthly Project Partner training sessions and regular Bible studies. These gatherings equip local leaders with confidence, biblical grounding, and practical skills to serve their communities with integrity. Our weekly Worship Wednesday videos further fostered unity and encouragement across our global community.



Deepening Global Partnerships (SDG 17: Partnerships for the Goals)



Behind the scenes, preparations began for the 2026 Zambia Trip, laying the foundation for deeper relational engagement with our partners. Our connection with Beulah also strengthened, with plans for a discipleship and leadership training course in March 2026 that will provide vital support to the Beulah Centre. These collaborations reflect our commitment to long-term, sustainable partnership.

A Year Marked by Generosity and Shared Purpose

We were blessed in 2025 with a £10,000 gift from the closure of Challenge of 2:52 and Soap Box. This contribution directly supported several of our project partners and stands as a testament to the generosity of our supporters and the shared belief in the work being carried out across all our communities.

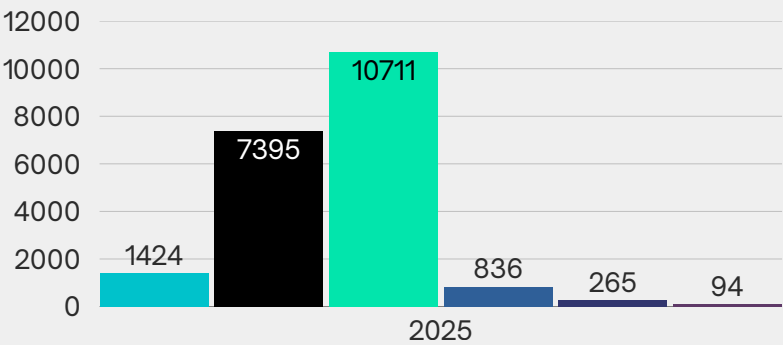
Together, these achievements demonstrate our ongoing commitment to sustainable development—empowering individuals, strengthening institutions, and building resilient communities for generations to come.



Financial Highlights

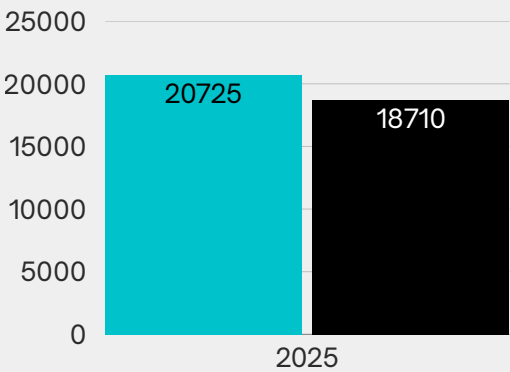
Income Streams

- Fundraising
- Regular Donors
- One-off Donations
- Activities for generating funds
- Campaigns
- Easy Fundraising



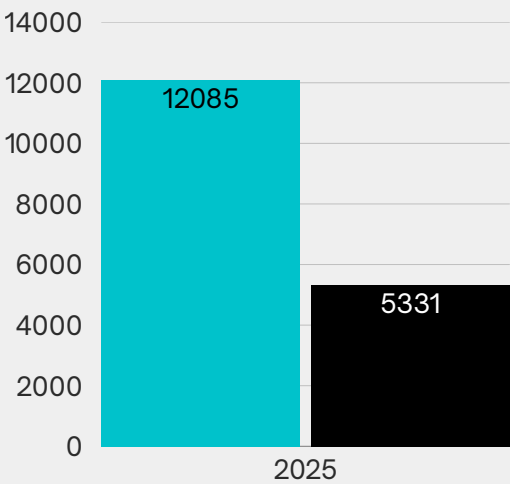
Income v Expenditure

- Income
- Expenditure



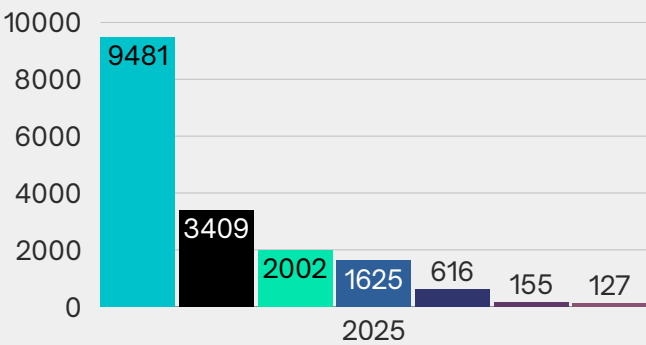
Expenditure

- Zambia
- Nepal



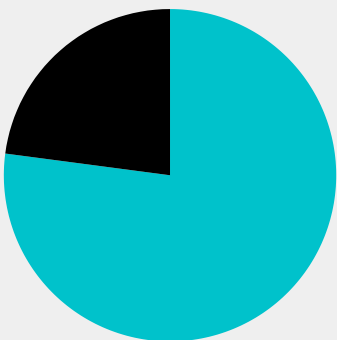
Payment Categories

- Education
- Sports
- Meals
- Women's Empowerment
- Churches
- Music
- Healthcare



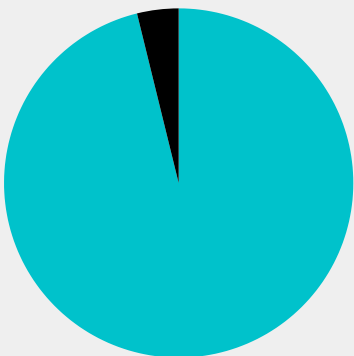
Administration Payments

- Other Expenditure
- Administration 11.7%



Money Transfer Costs

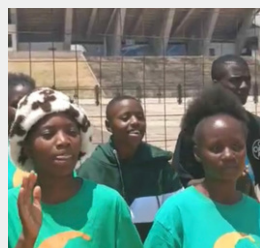
- Other Expenditure
- Bank Charges 1.5%



Fundraising Highlights

Throughout the year, we delivered a strong programme of fundraising and community engagement. In February, our stall at the New Wine Women's Event raised over £300, setting a positive tone for the months ahead. We continued this momentum with two major sponsored challenges — the Triple 5 in July and the Weavers Walk in October — both of which generated vital funds and strengthened local involvement. Alongside these events, we ran a Lent food campaign and a Christmas dinner campaign to support families during key moments of the year. Additional income was raised through the sale of Christmas cards and other items, as well as a social media competition that helped boost both awareness and donations. Together, these efforts reflect a committed and creative approach to sustaining our work.





Thank You

As we step into the future, we are filled with faith and expectation for what God will do through the Weave Foundation. Our vision is to strengthen our existing partnerships, grow our impact in Zambia and Nepal, and expand our supporter base to sustain and develop our work. We are committed to equipping more leaders, supporting education, and weaving hope into communities through practical aid, discipleship, and training. With your continued prayers and generosity, we believe the best is yet to come!



weavefoundation.co.uk





CHARITY COMMISSION
FOR ENGLAND AND WALES

Charity Name
WEAVE FOUNDATION

No (if any)
1204633

Receipts and payments accounts

CC16a

For the period from	Period start date 01/01/2025	To	Period end date 31/12/2025
------------------------	---------------------------------	----	-------------------------------

Section A Receipts and payments

	Unrestricted funds to the nearest £	Restricted funds to the nearest £	Endowment funds to the nearest £	Total funds to the nearest £	Last year to the nearest £
A1 Receipts					
One Off Donation	475	10,236	-	10,711	5,424
Monthly Donation	1,840	5,555	-	7,395	6,375
Fundraising	824	600	-	1,424	638
Activities for generating funds	716	120	-	836	349
Campaigns		265	-	265	175
Easy Fundraising	94		-	94	169
	-	-	-	-	-
	-	-	-	-	-
Sub total (Gross income for AR)	3,949	16,776	-	20,725	13,130
A2 Asset and investment sales, (see table).					
	-	-	-	-	-
	-	-	-	-	-
Sub total	-	-	-	-	-
Total receipts	3,949	16,776	-	20,725	13,130
A3 Payments					
Costs of charitable activities	336		-	336	135
Bank/Payment Charges	171		-	171	139
Insurance	387		-	387	378
Trustee Meeting - Accommodation	340		-	340	302
Website/Domain	60		-	60	475
Project Payment	2,994	14,423	-	17,417	7,386
Grants Paid	-	-	-	-	469
Postage	-	-	-	-	4
	-	-	-	-	-
Sub total	4,287	14,423	-	18,710	9,288
A4 Asset and investment purchases. (see table)					
	-	-	-	-	-
	-	-	-	-	-
Sub total	-	-	-	-	-
Total payments	4,287	14,423	-	18,710	9,288
Net of receipts/(payments)	- 338	2,353	-	2,014	3,841
A5 Transfers between funds	-	-	-	-	-
A6 Cash funds last year end	491	3,350	-	3,841	-
Cash funds this year end	153	5,703	-	5,855	3,841

Section B Statement of assets and liabilities at the end of the period

Categories	Details	Unrestricted funds to nearest £	Restricted funds to nearest £	Endowment funds to nearest £
B1 Cash funds	Bank	153	5,703	-
		-	-	-
		-	-	-
	Total cash funds	153	5,703	-
	(agree balances with receipts and payments account(s))	OK	OK	OK
		Unrestricted funds to nearest £	Restricted funds to nearest £	Endowment funds to nearest £
B2 Other monetary assets	Details			
		-	-	-
		-	-	-
		-	-	-
		-	-	-
		-	-	-
		-	-	-
B3 Investment assets	Details	Fund to which asset belongs	Cost (optional)	Current value (optional)
			-	-
			-	-
			-	-
			-	-
			-	-
B4 Assets retained for the charity's own use	Details	Fund to which asset belongs	Cost (optional)	Current value (optional)
			-	-
			-	-
			-	-
			-	-
			-	-
			-	-
			-	-
			-	-
B5 Liabilities	Details	Fund to which liability relates	Amount due (optional)	When due (optional)
			-	
			-	
			-	
			-	
			-	
Signed by one or two trustees on behalf of all the trustees	Signature	Print Name	Date of approval	