

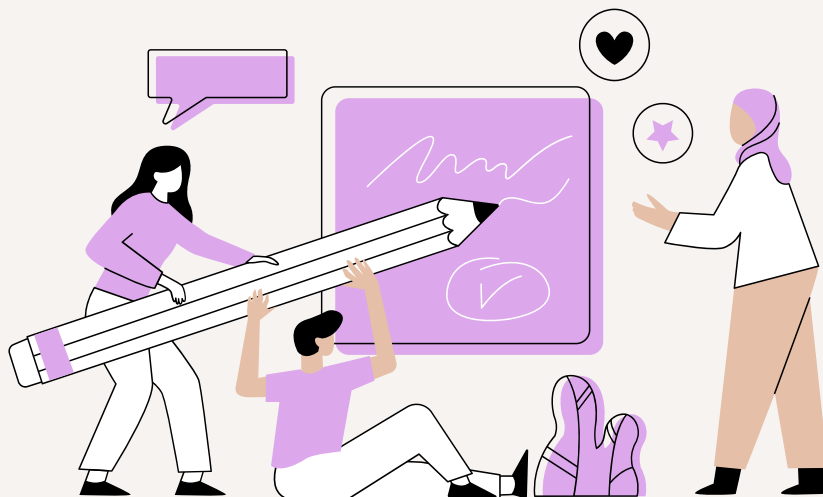


Cards for Bravery
making cards - brightening lives - raising funds

ANNUAL REPORT 2023

Charity number: 1203710

TABLE OF CONTENTS



01

Important Information

02

A Message from our Trustees

03

About Us

04

Year In Numbers

05

Achievements and Performance

06

Financial Summary

07

Financial Activities Statement

08

Financial Review

☎ 07438 786951

✉ contact@cardsforbravery.com

📍 74 Heath Row, Bishops
Stortford, CM23 5DF



IMPORTANT INFORMATION

The charity is registered as a Charitable Incorporated Organisation (CIO) with the Charity Commission for England and Wales. The charities governing document is a foundation model constitution. The charity registration number is 1203710. The organisation was founded on May 6th 2015 and gained charitable registration on the 23rd June 2023. The objective of the charity is to 'relieve the needs of people and their families, primarily in the UK but also in other countries, suffering from mental or physical illness or injury of any description (or in need of emotional support as a result of such illness or hospitalisation) in particular but not exclusively through the provision and delivery of small gifts, messages, greetings cards, activity packs, and other similar items and activities as the trustees may see fit.'

Method of appointment/election of trustees

The charity trustees shall manage the affairs of the CIO and may for that purpose exercise all the powers of the CIO. Other than the first appointed trustees, every trustee must be appointed for a term of three years by a resolution passed at a properly convened meeting of the charity trustees.

Organisation structure and decision making

The trustees meet once every two months, and at additional times where necessary, to direct the activities of the charity. The charity trustees shall manage the affairs of the CIO and may for that purpose exercise all the powers of the CIO.

Risk management

The trustees have assessed and annually review the major risks to which the charity is exposed, and are satisfied that systems and procedures are in place to mitigate the charity's exposure to those risks.

Other

This annual account and reports were created with guidance issued by the Charity Commission and SORP.

MESSAGE FROM OUR TRUSTEES

As we reflect on 2023, we are filled with a deep sense of pride and gratitude for all that we've accomplished as a charity.

This has been a year of tremendous growth, both in the scale of our impact and the recognition of our work, and it's only fitting that we take a moment to celebrate these achievements together.

One of the most significant milestones this year was our registration with the Charity Commission in June. This official recognition marks a major step forward for us. It also sets the stage for future growth, enabling us to reach even more people with our mission.

In 2023, we also celebrated a record-breaking year for the number of cards distributed—more than ever before. Each card represents a personal connection and a message of hope, and this milestone is a powerful reminder of the positive change we can create when we come together with a shared purpose.

These achievements would not have been possible without the unwavering support of our community—our volunteers, donors, partners, and everyone who believes in what we do. As we look ahead, we are more committed than ever to building on this momentum and continuing to make a meaningful difference to hospitalised and seriously ill children and their families

Thank you for being part of this journey with us. Together, we've made 2023 a truly remarkable year, and we are excited for all that lies ahead.



Katie Callaghan
Chair



Chelsea Wong
Treasurer



Molly Clark



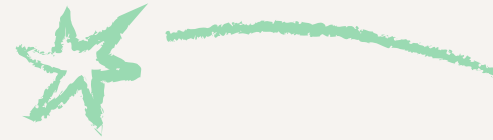
Leah Attwood



Annabelle Rafferty



About us



Cards for Bravery is a charity dedicated to **brightening the days** of **hospitalised and seriously ill children** and their **families**. These children and young people tend to be admitted to hospitals, hospices, CAMHS units or being cared for at home. We provide a range of services such as the distribution of **positive handmade cards, bravery packages** and **activity packs**.

Katie Callaghan founded Cards for Bravery at 13 years old in 2015 during a 4 month long hospital admission after her best friend gave her a card that brightened her day. This **sparked** the idea to **create handmade cards** for the other patients in her ward. Beginning with distribution in one hospital, Cards for Bravery has since **grown** to working with over **35** hospitals, CAMHS Units and hospices to deliver a range of services to children across the UK. The charity has **expanded** over the years and is **maintained** by a group of **dedicated volunteers**, many who are chronically ill themselves—relating to the charity's aims and ethos.



Katie, our founder, at 13

2023 YEAR IN NUMBERS

11

**NEW PARTNERSHIPS WITH
HOSPITALS, HOSPICES, AND
CAMHS UNITS**

100

**CHRISTMAS
PACKAGES
DELIVERED**

4

**BRAVERY
PACKAGES
DISTRIBUTED**

6

**EVENTS
HOSTED**

5,125

CARDS DISTRIBUTED

70

**NEW CARD
MAKING VOLUNTEERS**

500

**ACTIVITY PACKS
DISTRIBUTED**

ACHIEVEMENTS AND PERFORMANCE

Activity Packs

Our activity packs are a way for hospitalised children to have a form of entertainment while they are enduring hospital stays. This year, we distributed **500** activity packs to various hospitals.



Bravery Packages

Our team put together tailored bravery packages to be distributed to hospitalised young people and/or living with chronic conditions. Our team distributed a total of **four** bravery packages this year, where each package was personalised depending on the candidate and their interests.

Card Distribution

Our main activity is distributing cards to our 30+ partnerships made with hospitals and units around the UK. This year, we made **11** more partnerships and distributed roughly **5,125** cards to hospitalised children to brighten their days during a difficult time.





Events



As a new charity, we concentrated hard on finding fundraising opportunities within our usual activities. We hosted **six** events this year including **four** fundraising events and **two** card making event, raising a total of £2113 from the beginning of the year (1/01/23).

Volunteers

We rely heavily on our volunteers to help us run the charity and also with making cards. Our main team had a total of 10 volunteers with roles ranging from admin, social media to card distribution. We also set a record of card-making volunteers this year, reaching a total of **70 card making volunteers** making cards for us.



Other Projects



We had various other projects this year including Easter and Christmas related. For Easter, we distributed a total of **20** gift bags to children spending the holiday in hospital. We also did our annual distribution of Christmas packages, and Christmas cards. We were able to distribute **1,030** Christmas cards and **100 Christmas packages** to over 13 hospitals across the UK.



FINANCIAL ACTIVITIES STATEMENT

to the nearest £

Financial Period: 23rd June 2023 – 31st December 2023

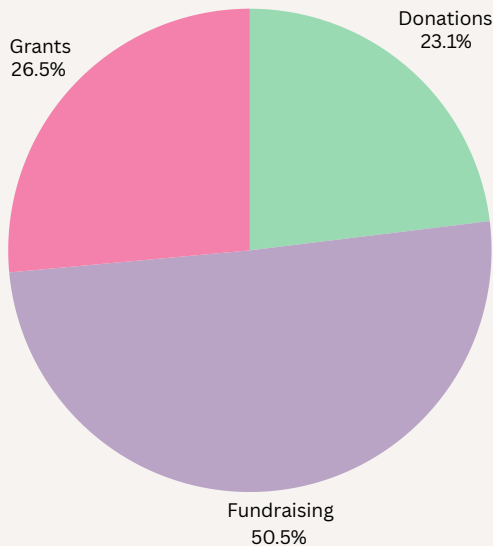
Income from	Unrestricted Funds 2023	Restricted Funds 2023	Total Funds 2023
Donations	£436	–	£436
Fundraising	£954	–	£954
Grants	–	£500	£500
Total Income	£1390	£500	£1890

Expenditure on	Unrestricted Funds 2023	Restricted Funds 2023	Total Funds 2023
Projects	£1141	£500	£1641
Maintenance	£2189	–	£2189
Events	£103	–	£103
Total Expenditure	£3433	£500	£3933

FINANCIAL SUMMARY

Income

2023 Year 23/06/23 – 31/12/23



In the financial period of 2023 from the beginning of charitable registration we had a total income of **£1890**.

This income came from donations, fundraising events and grants.

Donations include personal donations made through bank transfers, Paypal Giving Fund, and more.

Fundraising Events include income from any fundraising activities we held within the year.

Grants include any income we were granted from organisations.

In the financial year of 2023 from the beginning of charitable registration we had a total expenditure of **£3933**.

This expenditure was spent on maintenance, projects, and events.

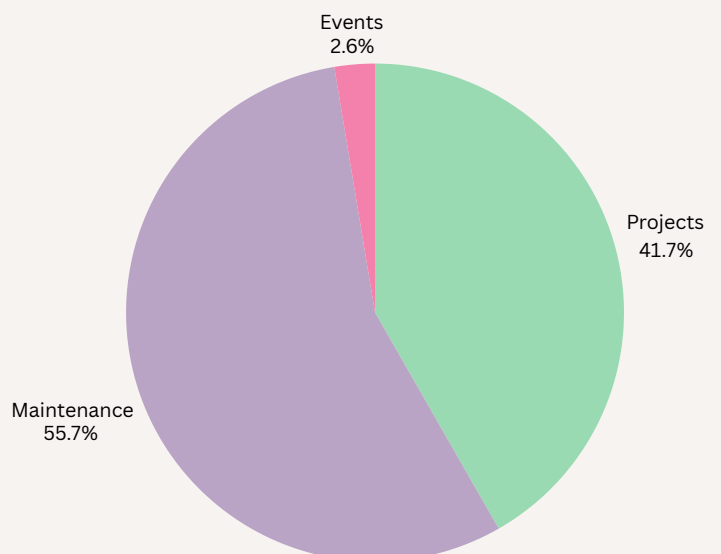
Projects include expenditure spent on our charitable activities such as card distribution, bravery packages, our Christmas packages and more.

Maintenance includes any expenditure spent on the daily running costs of the charity such as volunteer expenses, admin costs, charitable materials and more.

Events include any expenditure spent on running either fundraising or card-making events, include hall hire.

Expenditure

2023 Year 23/06/2023 – 31/12/2023



FINANCIAL REVIEW

Review of charities financial position year ending 2023

2023 marked a significant milestone for Cards for Bravery as it was our first year with charitable registration. This new status brought about increased maintenance costs, primarily to support the administrative processes and compliance associated with registration. Despite these additional expenses, our financial position at the end of the year remains secure. As we look ahead, our focus will be on increasing our income and building our reserves to ensure long-term sustainability and continued growth of our charitable mission.

Reserves policy statement

The trustees aim for the charity to hold free reserves equivalent to twelve months' operational costs. In a situation where there is a deficit, the trustees will ensure that fundraising activities are prioritised and, if appropriate, the charity's activities will be scaled back. Due to being a newly registered charity, at present our reserves meet the required threshold however our unrestricted funds are low. Plans to increase unrestricted funds in the coming year and two years will address this. In the meantime, trustees regard this as a low risk to the charity.

Trustee Declaration:

The trustees declare that they have approved the trustees report above.

Signed on behalf of the charity's trustees

Signature(s)



Full Name(s)

Katie Callaghan

Chelsea Wong

Position

Chair

Treasurer

Date Signed

21/10/2024

21/10/2024



CHARITY COMMISSION
FOR ENGLAND AND WALES

Charity Name CARDS FOR BRAVERY	No (if any) 1203710
--	-------------------------------

Receipts and payments accounts

CC16a

For the period from	Period start date 23/06/2023	To	Period end date 31/12/2023
------------------------	---------------------------------	----	-------------------------------

Section A Receipts and payments

	Unrestricted funds to the nearest £	Restricted funds to the nearest £	Endowment funds to the nearest £	Total funds to the nearest £	Last year to the nearest £
A1 Receipts					
Donations	436		-	436	-
Fundraising	954	-	-	954	-
Grants		500	-	500	-
	-	-	-	-	-
	-	-	-	-	-
	-	-	-	-	-
	-	-	-	-	-
	-	-	-	-	-
Sub total (Gross income for AR)	1,390	500	-	1,890	-
A2 Asset and investment sales, (see table).					
	-	-	-	-	-
	-	-	-	-	-
Sub total	-	-	-	-	-
Total receipts	1,390	500	-	1,890	-

A3 Payments

	-	-	-	-	-
Projects	1,141	500	-	1,641	-
Maintenance	2,189	-	-	2,189	-
Fundraising Events	103	-	-	103	-

	-	-	-	-	-
	-	-	-	-	-
	-	-	-	-	-
	-	-	-	-	-
	-	-	-	-	-
Sub total	3,433	500	-	3,933	-

A4 Asset and investment purchases, (see table)					
		-	-	-	
	-	-	-	-	
Sub total	-	-	-	-	

Total payments	3,433	500	-	3,933	-
-----------------------	--------------	------------	----------	--------------	----------

Net of receipts/(payments)	- 2,043	-	-		-
A5 Transfers between funds	-	-	-	-	-
A6 Cash funds last year end	4,752	-	-	4,752	-
Cash funds this year end	2,709	-	-		-

Section B Statement of assets and liabilities at the end of the period

Categories	Details	Unrestricted funds to nearest £	Restricted funds to nearest £	Endowment funds to nearest £
B1 Cash funds		-	-	-
		-	-	-
		-	-	-
	Total cash funds	-	-	-
	(agree balances with receipts and payments account (s))	Agreement Error	OK	OK

		Unrestricted funds	Restricted funds	Endowment funds
		to nearest £	to nearest £	to nearest £
B2 Other monetary assets	Details			
		-	-	-
		-	-	-
		-	-	-
		-	-	-
		-	-	-
		-	-	-

		Fund to which asset belongs	Cost (optional)	Current value (optional)
B3 Investment assets	Details			
			-	-
			-	-
			-	-
			-	-
			-	-



		Fund to which asset belongs	Cost (optional)	Current value (optional)
B4 Assets retained for the charity's own use	Details			
				-
				-
				-
			-	-
			-	-
			-	-
			-	-

		-	-
		-	-

B5 Liabilities

Details	Fund to which liability relates	Amount due (optional)	When due (optional)
		-	
		-	
		-	
		-	
		-	

Signed by one or two trustees on behalf of all the trustees

Signature	Print Name	Date of approval
	CHELSEA WONG	21/10/2024
	KATIE CALLAGHAN	21/10/2024