



ANNUAL REPORT

**Report of Activities and Impact
1 April 2024 - 31 March 2025**

Table Of Content

1. Trustees Report

2. Activities and Impact Report

3. Social media engagement/Press articles

4. Fundraising

5. The SEEAWA Team

Trustees Report:

As we reflect on the past year, it is with immense pride that we share our activities with you for the last year. In 2024-25, the Southeast and East Asian Women's Association (SEEAWA) has been on a remarkable journey, marked by growth, collaboration, and a deepening commitment to our mission.

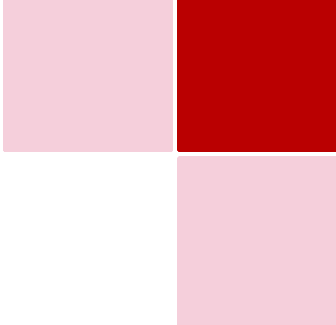
Looking back over the year

For the past year, we have experienced significant growth, moving from a startup phase to a dynamic organisation with a new and dedicated team. We now have 6 part-time staff members on board. Each team member brings unique skills and perspectives, allowing us to enhance our operational capacity and implement our vision more effectively. Our 8 trustees and committed volunteers have also been invaluable in supporting our team.

This year, we successfully launched 9 diverse projects that reflect our mission and the needs of the communities we serve. Each project has been designed to create meaningful impact and foster positive change. They have ranged from helping those escape perpetrators of domestic violence, to helping them become leaders within our communities. We have engaged with various stakeholders and beneficiaries, which has enriched our understanding and strengthened our approach.

In our quest to build community and raise awareness about our work, we held 7 successful events throughout the year. These gatherings not only showcased our projects but also provided a platform for engagement, dialogue, and collaboration. They ranged from an Easter community funding raising activity to support those affected by the Myanmar earthquake, to a panel discussion on ESEA identity. We are grateful for the support and enthusiasm of our community members, whose participation makes our events vibrant and impactful.

Collaboration has been a cornerstone of our strategy. This year, we cultivated valuable partnerships with different ESEA (East and Southeast Asian) organisations, including UDWA, Newham Chinese Association, Stars of Myanmar, ESEA Sisters, East Asian Girl Gang and the BFI. These alliances have allowed us to share resources, knowledge, and best practices, ultimately enhancing our effectiveness and reach. We believe that by working together, we can tackle challenges more comprehensively and create sustainable solutions.



This year, our fundraising efforts have been nothing short of extraordinary, thanks to the unwavering dedication of our incredible fundraising team. Together, we have not only met but surpassed our goals, enabling us to make a tangible difference in the lives of those we serve. Our creative community events through to our successful applications to complex funds and grants, has fueled our mission with passion and purpose.

Featuring in national press, we highlighted issues of domestic violence in the ESEA community. SEEAWA featured in the article by Migrant Press, '[East and/or Southeast Asian women survivors remain excluded and unsupported in the UK](#)'. In the BBC article '[I didn't feel able to come forward](#)' - Chinese victims tell BBC about serial rapist, SEEAWA highlighted the barriers to reporting rape as someone from overseas. In the Guardian article, '[They suffer in silence](#)': case of serial rapist Zhenhao Zou' SEEAWA provided perspective from Chinese and ESEA communities, highlighting the barriers to justice. Finally, On [BBC Radio 1](#) our Women Support officer, Lyn, shared information on how to access help in the UK for victims of domestic violence, sexual assault, or rape.

Looking forward to the coming year

As we move forward, we remain committed to our mission and the values. We are excited about the opportunities for the coming year and are determined to build on our achievements. Our focus will continue to be on expanding our projects and research, deepening our community engagement, and strengthening partnerships.

I would like to extend my heartfelt thanks to our staff, volunteers, trustees, partners, and supporters. Your dedication and passion have been integral to our success. Together, we have laid a solid foundation for the future of the Southeast and East Asian Women's Association, and I look forward to what we can accomplish together in the coming year.

Thank you for your continued support.

Sarah Yeh, Chair

On behalf of the Board of Trustees

SUMMARY OF ACTIVITIES & IMPACT

April 2024 – March 2025



Who We Are

SEAWA (Southeast and East Asian Women's Association) empowers ESEA women in the UK through advocacy, support, and community-led initiatives.

We walk with women — not ahead of them — ensuring safety, dignity, healing and leadership



Our Year at a Glance

9 Projects delivered

6 part-time staff + 8 trustees + volunteers

Featured in BBC, The Guardian & Migrant Women Press

7 Community events held

£300K+ raised through grants & events

Key Projects & Impact



Wrap Around Support
63 women supported



Volunteer Programme
5 trained volunteers



Women Leadership Programme
15 women trained on feminist leadership



Safe Accommodation
Housing for NRPF women



Racist Attacks Response
50 families supported



Democratic Participation
389 participants, 72 voter registrations



Uplift Project
Created Pathways to Safety toolkit



Collaborative Research
21 Filipino women's voices recorded



Urgent Support Fund for Women

Media & Social Reach



Facebook reach: 966



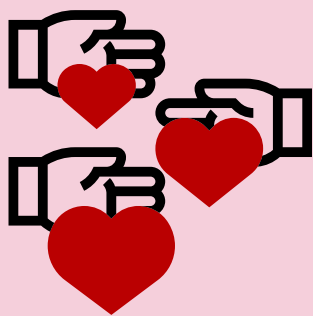
Instagram views: 345



Featured in BBC, Guardian, Migrant Women Press



Fundraising Highlights



£300,000+ Raised

- 8 successful, 80% core grants for multiple years
2 pending
- £500 from ESEA Heritage Month event at AllBright Mayfair
- Multiple-year funding secured

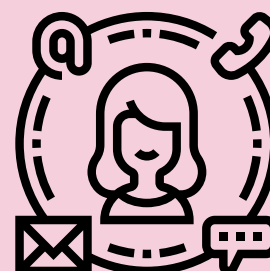
The SEEAWA Team

| | |
|------------|--|
| Staff | Sarah Reid, Jutheanne Cruz-Wild, Flora Miskin, Florence Yilmaz, Lyn Yavuz, Yvette Van-Cliff |
| Trustees | Susan Cueva, Yin Myint, Sarah Yeh, Melissa Allada, Yvette Mercado, Mei-Yee Man Oram, Eileen Wada Willett, Cathy Zhao |
| Volunteers | Sarah Ventura, Thae Hlaing, Thiri Sone, Crisela Bernardino, Evelyn Anuncio, Rowena Pineda, Naomi Jacobs |

Funders & Partners



Contact Us



@seeawa_uk

facebook.com/seeawa.uk

info@seeawa.org.uk

www.seeawa.org.uk

Room 202, Pelican House, 144 Cambridge Heath Road, London E1 5QJ

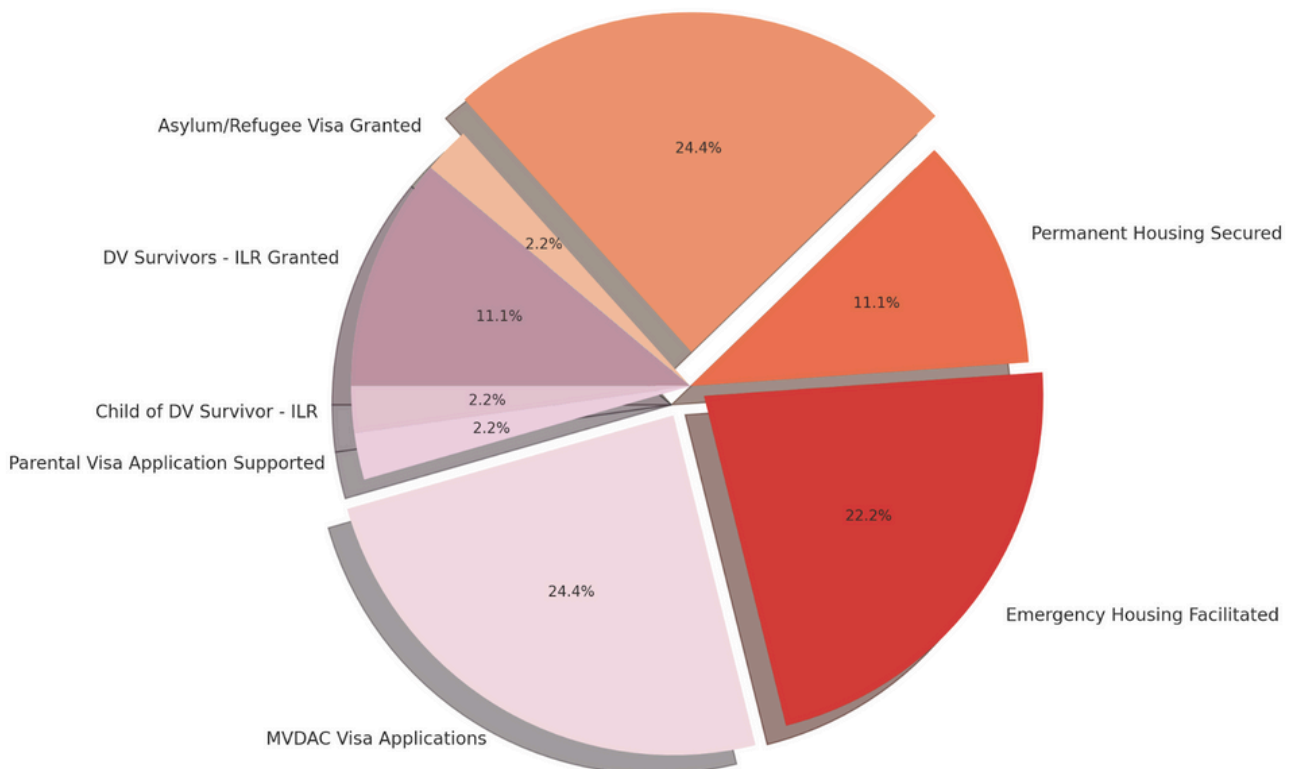
Activities and Impact

1. Wrap Around Support Services

“Walking with our women, not ahead of them.”

Supported by the National Lottery, SEEAWA’s casework programme offers culturally rooted, trauma-informed care to East and Southeast Asian women facing domestic abuse, immigration challenges, housing instability, and systemic injustice. With compassion and dignity, we meet each woman where she is—centering her voice, healing, and agency every step of the way.

Our work is not just about resolving crises; it's about **walking alongside** our sisters through some of the most tender and transformative chapters of their lives. We hold space for their stories, honour their strengths, and support their right to thrive, not just survive. Between **1st April 2024 until 31st March 2025**, our team held **63 active case files**, each one representing a life, a journey, and a constellation of needs and hopes. Through this work, we offered holistic support that included:





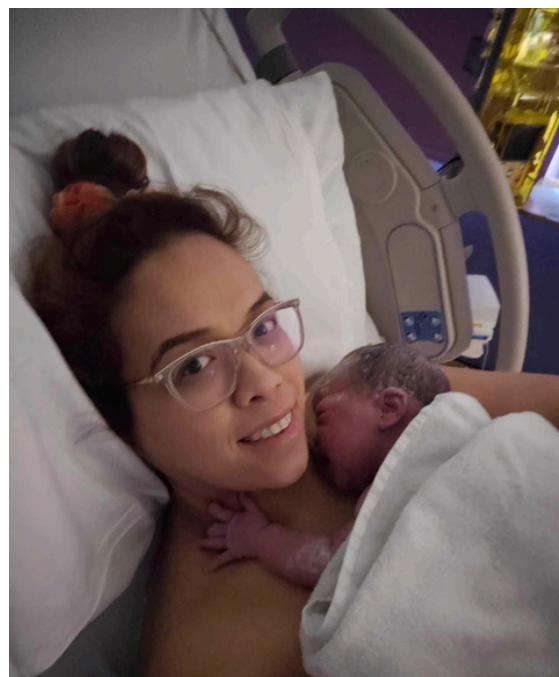
TESTIMONIAL:

Among the many women SEEAWA has walked alongside, one mother's journey stands as a powerful reminder of the depth and dignity of this work. When she first reached out to SEEAWA, she was facing an unimaginable set of challenges: an active eviction notice, the trauma of her second child being abducted, and coercive control from the father of her children— all while pregnant with her third.

From the very beginning, SEEAWA offered more than professional support. They became a steady presence in her life. The team advocated on her behalf with housing services, liaised with legal aid, and coordinated with social workers to ensure she was not navigating these systems alone.

When she went into labour, SEEAWA remained by her side—even remotely. A team member stayed with her online throughout her labour, offering calm, care, and companionship in one of the most vulnerable moments of her life.

Moments after giving birth, she sent SEEAWA a photo of her newborn—a gesture that spoke volumes. It was more than a thank you. It was an offering of trust, a sacred exchange between a survivor and the women who stood beside her when the world felt like it was falling apart. This is the heart of SEEAWA's work: to meet women in their most tender moments, to hold space without judgment, and to walk with them, hand in hand, towards safety, dignity, and healing.



Our mission remains clear: to ensure that no woman stands alone in her time of need.

2. Volunteer Programme

At SEEAWA, our volunteer programme is more than a support mechanism—it is a living expression of our values: solidarity, care, and the collective power of women uplifting one another. Our volunteers are not simply a helping hand, they are compassionate **witnesses, advocates, and bridges** between systems and stories.

Over the past year, we have trained and supported a small but deeply committed team of **five volunteers for our casework and mental health support**, including **two Filipino missionary women** who have shown extraordinary dedication. These volunteers meet weekly with our Women's Support Officer for guidance, reflection, and casework collaboration. Together, they walk alongside survivors — interviewing supporting, and holding space with deep cultural sensitivity and respect. In these sessions, they also engage with legal frameworks such as the **Children Act 1989**, which safeguards the welfare and housing rights of British children. These discussions bring to life the very real impact that advocacy and policy have on the everyday lives of the women we serve.

But at SEEAWA, knowledge is never disconnected from care. Alongside casework, we host **weekly education and reflection circles** with **three additional volunteers**, exploring the many dimensions of **domestic abuse**—from its hidden psychological scars to its generational impact on women and children. These sessions include realworld case studies, such as those of **Sarah Everard** and **Bennylyn Burke**. The societal impact of gender-based violence, with case studies including the tragedies of Sarah Everard and Bennylyn Burke news.stv.tv/north/bennylyn-burke-murdered-filipinamother-came-to-scotland-in-hope-of-a-better-life-for-her-and-daughter-jellica and [Crime and Investigation](#) whose tragic stories remind us why this work must be both urgent and important.

To equip our volunteers with the tools they need to serve with confidence and integrity, SEEAWA also offers referral and access to:

- **Mental Health Responder Training**
- **Trauma-Informed Care Workshops**
- **Mindspring Psychoeducation Modules**
- **Safeguarding training**

This training programme ensures our volunteers are not only well-informed but also wellheld —because those who care for others must also be nurtured. 8 In every conversation, every referral, and every moment of listening, our volunteers embody what it means to be part of a community that believes healing is possible, and that no woman should ever have to walk alone. Their contributions ripple outwards, creating safer pathways and planting seeds of change in the hearts of those we serve.

3. Rise and Lead: Feminist Leadership Training

Rooted in sisterhood and shared purpose, **Rise and Lead** blossomed through our partnership with the **Women's Resource Centre (WRC)** and generous support from the **London Community Foundation**. This nurturing leadership programme was designed to honour and uplift the lived wisdom of **15 women** from **Chinese, Indonesian, Burmese, and Filipino backgrounds**—each carrying their own stories of strength, survival, and deep care for community.

Held across two sacred, spacious days in **October and November 2024**, Rise and Lead created more than a workshop, it opened a collective field for reflection, reconnection, and growth. Guided by feminist values and cultural attunement, this gathering offered a brave and inclusive space for participants to root into their inner power while learning tangible tools for advocacy and leadership.

The training included modules on power dynamics, self-advocacy, public speaking, and trauma-informed organising. SEEAWA also supported the delivery of VAWG “Train-theTrainer” modules in collaboration with Kanlungan Filipino Consortium, ensuring a ripple effect of empowerment across communities.

The circle welcomed a beautifully diverse group of women, survivors, working mothers, migrant workers, and postgrad students, each bringing her own voice and vision. Through storytelling, embodiment practices, and strategy-sharing, the programme invited participants to reimagine what it means to lead: not through hierarchy, but through healing, compassion, and community-rooted courage.

Rise and Lead is a testament to what becomes possible when women are seen, heard, and held, as leaders not only in policy spaces, but in the everyday revolutions of care that shape our world. They are:

- **Survivors of domestic abuse**
- **Trafficked women in recovery**
- **Working mothers**
- **Postgraduate and doctoral students**
- **Migrant workers in precarious employment**

Feedback from participants:

Below is the actual feedback from one participant, KC. We asked her to rate us 1 to 5 and 5 being the highest. She rated all categories with 5 and 4 to the venue.

Facilitators - The facilitators were kind, kept on time while still being flexible to participant response, and held the space in an inspiring and informative way. I liked when the groups were shuffled around so that we got to work with different people and get familiar within the space.

Content - I learnt new techniques to be reflective and assertive, in a digestible way. Could do a deep dive into the "power" section - made me relook at past situations and behaviours differently.

Venue - I think the multiple rooms to have childminding while hosting workshop, and kitchen was great, and fit the size of the group well.

Travel reimbursement - Lyn was consistent, speedy and kind with the travel reimbursements process. Food - Delicious food! great selection, flavour and generous portions

Other comments - Lyn and team did a great job in hosting a weighty subject in an accessible way. Only comment maybe would be on the size of image from the projector to see writing, however the preparation of prints was a great tool and meant we could take notes directly referring to what was being presented. Very helpful. Any suggestions to keep food warm? and the second session had more non dairy options for dessert which I appreciated.



4. Safe Accommodation Project

At SEEAWA, we believe that **every woman deserves to feel safe, held, and seen—regardless of her immigration status**. Through the collaborative work we did with **Kanlungan** and **Bahay Kubo Housing Association**, we've been honoured to co-create pathways to safety for East and Southeast Asian (ESEA) women fleeing **gender-based violence** and living with **No Recourse to Public Funds (NRPF)**—a reality that often leaves migrant women isolated, vulnerable, and at the edges of survival.

SEEAWA has remained deeply committed to the invisible work that holds visible outcomes. We actively focused on **weaving together safety nets** through culturally responsive systems, partnerships, and community-grounded advocacy.

Key contributions:

- **Development of house rules and welcome packs**
- **Referrals to statutory and private safe housing provisions**
- **Creation of a local community services directory**
- **Research into local DV services in Haringey**
- **Resource lists for NRPF women, enhancing accessibility**
- **Participation in bi-weekly interagency meetings for coordinated care**

Southeast and East Asian Women's Association (SEEAWA) has delivered substantial outcomes in supporting survivors of domestic violence through alternative, community-based interventions.



We prioritised coordinated care, strategic referrals to statutory and private safe housing, and intensive casework—ensuring that women in highly vulnerable situations still receive timely, culturally competent support. These milestones reflect our adaptive approach and deep commitment to safeguarding and empowering East and Southeast Asian women, even in the face of structural limitations.

5. Response to racist attacks in the community

On 14 September 2024, SEEAWA hosted a healing and resilience-building Away Day in Brighton, bringing together 50 women and families impacted by the rise in antiimmigration protests. In response to racist attacks and to equip the community with confidence to face this trauma, we held different confidence building activities:

Activities included:

- Multilingual workshops on home and community safety
- Voting rights education and GLA survey participation
- Story-sharing circles for trauma recovery
- Collaborations with United Domestic Workers Association and the Burmese and Mumshie community groups



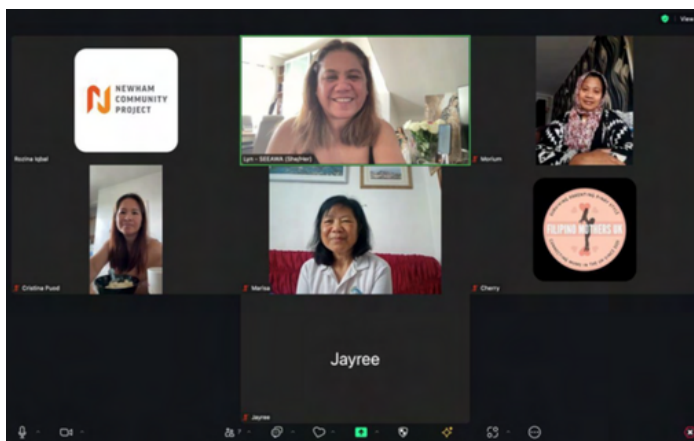
This day affirmed the collective power of community care amidst adversity

Let's Talk: Online Community Dialogue on Racism

As part of our commitment to nurturing safer, more inclusive communities, SEEAWA hosted Let's Talk, an online gathering facilitated by community advocate **Rozina from Newham**. With warmth and clarity, Rozina guided us through vital conversations around **hate crime prevention**, grounding her insights in lived experience and community wisdom.

Rooted in the protections outlined by the **Equality Act 2010** and the collaborative obligations of the **Crime and Disorder Act 1998**, the session created space for women and community members to reflect, share, and strengthen their understanding of their rights and roles in fostering collective safety.

This initiative deepened our digital presence and offered compassionate, practical tools to help protect and empower ESEA communities—nurturing safety, connection, and resilience in the face of rising hostility.



6. Democratic Participation Project

The Democratic Participation Project, supported by the Greater London Authority, empowers underrepresented communities across London by enhancing their democratic literacy and increasing access to civic participation. The project has placed a strong emphasis on face-to-face engagement, recognizing its unique power in building trust, fostering dialogue, and overcoming language and digital access barriers.

Through a mix of in-person events, community outreach, and targeted online content, the initiative supports Londoners – particularly migrants, older residents, low-income groups, and those with limited digital fluency – in understanding and exercising their democratic rights, including voter registration, access to ID, and civic involvement beyond elections.

Objectives

This project aligns directly with the GLA's strategic aims to:

- **Enhance political literacy among** Londoners and civil society organisations;
- **Address barriers to democratic participation**, including voter registration and identification requirements;
- **Encourage civic engagement** beyond voting through deliberative and participatory mechanisms;
- **Strengthen the capacity** of civil society groups to embed democratic participation in their work.

Key Achievements and Metrics

| Project Activity | Progress |
|--|--|
| In-person events held | 5 events across 4 boroughs: Southwark, Newham, Kensington & Chelsea, Tower Hamlets |
| Total attendees at in-person events | 389 participants |
| Participant surveys completed | 101 |
| Voter Authority Certificate applications supported | 43 |
| Other ID applications supported | 32 |
| Voter registrations supported | 72 |
| Community groups trained | 5 |
| Community/ civil society organisations engaged | 7 |

Community Reach and Demographics

The project successfully reached and engaged individuals from a broad spectrum of **underregistered and under-represented groups**, with the following participation levels:

- **94** Black, Asian, and Minority Ethnic Londoners
- **32** Older Londoners (60+)
- **30** Migrant Londoners (including Commonwealth and EU citizens)
- **26** D/deaf and disabled Londoners
- **23** Low-income individuals
- **51** Homeless, social and private renters
- **3** LGBTQIA+ Londoners
- **1** Young Londoner (18–25)

7. Uplift: Capacity Building for Women's Services

Launched in October 2024, the SEEAWA Capacity Building for Women's Services project is a multi-year initiative dedicated to enhancing support systems for East and Southeast Asian (ESEA) women in Newham and neighbouring boroughs. By developing culturally relevant services, engaging with community networks, and producing impactful resources, SEEAWA aims to become a leading provider of support services for migrant women facing gender- and race-based challenges.

This project reflects SEEAWA's long-term commitment to building sustainable, culturally grounded services that meet the evolving needs of ESEA women. Despite challenges such as language barriers and capacity limitations, the team has proactively addressed issues through volunteer interpretation, partnership engagement, and resource reallocation.

With continued support from the Uplift Fund and strengthened collaboration through the WIN Network, SEEAWA is well-positioned to meet both funder expectations and its own vision: to provide empowering, relevant, and trusted services for London's ESEA women.



Target beneficiaries include migrant and ESEA women experiencing domestic violence, racism, immigration issues, housing insecurity, and economic hardship. The project is built around the ethos of providing care, fostering empowerment, and offering safe, inclusive support pathways.

Key project activities include:

- Development of the “**Pathways to Safety**” toolkit for domestic violence survivors of East and Southeast Asian heritage.
- Establishment of **befriending services** and culturally relevant support sessions.
- **Active participation** in the Women in Newham Network (WINN), contributing to collaborative service provision and shared learning.
- **Community engagement workshop** to amplify survivor's voices, and engage them in co-creating the Pathways to Safety toolkit.

8. Collaborative Research :

Contradictions in UK Migrant Law and Women's Advocacy: The Case of Trafficked/Undocumented Filipino Women

This collaborative research project, in partnership with the University of Nottingham, investigates the relationship between the UK's tied visa system and patterns of abuse affecting migrant women – particularly those from the Filipino community. Under tied visa conditions, migrant workers or spouses are bound to a specific employer or partner, creating a power imbalance that can facilitate coercion, exploitation, and abuse.

The project critically assesses how this restrictive immigration policies may directly or indirectly enable **trafficking, domestic violence, and honour-based abuse**, in contrast with the UK's broader legal commitments to human rights and protections against domestic abuse.

Community Engagement and Impact

To date, the research team has engaged **21 Filipino** women as participants, whose testimonies and lived experiences form the foundation of the study's findings. Many of these women have experienced precarity, legal vulnerability, or invisibility after fleeing abusive employers or partners – frequently resulting in their classification as undocumented migrants.

Their voices are crucial in illuminating how immigration systems, though not designed to inflict harm, may inadvertently reproduce the very patterns of abuse that other UK laws aim to dismantle.

By situating the issue of tied visas within the context of UK legal frameworks on domestic and honour-based abuse, this project contributes to a vital national conversation. It seeks not only to document systemic failures but to challenge narratives that portray undocumented women as threats, rather than as survivors in need of support.

The research will provide a foundation for future advocacy, policymaking, and community mobilisation, ensuring that the lived realities of migrant women are no longer sidelined in public discourse or legislative reform.

Social media engagement/website

Over the past year, SEEAWA has used social media very effectively to engage directly with our audiences. We have used it to raise awareness about our organisation to our users, funders and other organisations in the field, as well as report on our activities and hire staff, trustees and volunteers.

In the last three months, we have hired a part time staff member to help with social media. In the coming year, we will also be expanding her hours and as the requirement for social media on projects grows. We will also be hiring additional staff to take on this important work.

A total of **16 posts** have been published across Facebook and Instagram using material from project partner ShoutOut UK (SOUK). Notable metrics include:

Top Facebook post (London Voter Registration Week):

Reach: 966 | Impressions: 1,051 | Interactions: 24

Top Instagram post (Anonymous registration graphic):

Views: 345 | Reach: 316 | Interactions: 5

As the digital campaign continues to evolve, new video content is in production to expand online impact.

Media and Press

| Date | Medium and details | Link |
|-------|---|---|
| 11.24 | <p>Blog post by Migrant Women Press by Aileen Angsutorn Lees</p> <p><i>'East and/or South East Asian women survivors remain excluded and unsupported in the UK</i></p> | https://migrantwomenpress.com/2024/11/25/esea-women-survivors-remain-excluded-and-unsupported-in-the-uk/ |
| 3.25 | <p>Article in The Guardian by Aamna Modhin</p> <p><i>'They suffer in silence': case of serial rapist Zhenhao Zou highlights barriers to justice for east Asian women in UK</i></p> | https://www.theguardian.com/society/2025/mar/06/serial-rape-case-zou-barriers-to-justice-east-asian-women-uk |
| 4.25 | <p>Article in BBC Global China Unit and BBC News by Wanqing Zhang, Larissa Kennelly and Kirstie Brewer '</p> <p><i>I didn't feel able to come forward' - Chinese victims tell BBC about serial rapist</i></p> | https://www.bbc.co.uk/news/articles/c7vn5vj9394o |
| 2025 | <p>Book published by Harper Collins</p> <p><i>"I am not a tourist: Conversations on being British Chinese" by Daisy J. Hung</i></p> | https://harpercollins.co.uk/products/i-am-not-a-tourist-daisy-j-hung?variant=41459589316686 |

Fundraising Report

Fundraising for this financial year was initially developed and run by Trustees before a staff was appointed as Fundraising and Income Generating Manager in July 2024. Between July 2024- April 2025, the staff applied for 14 projects that include grants, funds and pilots; and was successful with 8, unsuccessful with 6, and awaiting to hear from 2 more grants.

This has given us over £300K income, with multiple year funding up to 3 years.

The focus of the first year in the role was on securing grants; as well as understanding our existing followers and the charitable landscape.

We also had the kind support of our trustee, who is also the founder of East Asian Girl Gang Eileen Wada Willett who hosted and facilitated a talk during ESEA Heritage Month whether modern beauty culture was empowering or toxic at All Bright Mayfair in October. This event explored beauty, feminism, and whether women can truly control their own beauty narratives with a panel of ESEA women including the writer Carolyn Acome, artist Xu Yang and Consultant Aesthetician Dr. Terry Loong and over £500 from the event went towards SEEAWA.

The SEEAWA Team

Trustees

Sarah Yeh
Yvette Mercado
Susan Cueva
Eileen Wada Willett
Cathy Zhao
Yin Myint
Mei-Yi Man Oram
Melissa Allada
Keren Austria, (resigned September 2024)
Kimi Jolly, (resigned September 2024)
Tra My Hickin, (resigned September 2024)

Staff

Lyn Yavuz
Amanda Lago
Sarah Reid
Florence Yilmaz
Jutheanne Cruz-Wild
Flora Miskin (appointed June 2025)
Liesel Longboan (resigned November 2024)
Anna Li (resigned March 2025)

Funders

Greater London Authority - GLA
Civic Power
Smallwood Trust
AB Charitable Trust
Lloyds Foundation
University of Nottingham
Focus on Labour Exploitation

Volunteers

Sarah Ventura
Thae Hlaing
Thiri Sone
Crisela Bernardino
Evelyn Anuncio
Rowena Pineda
Naomi Jacobs

Contact Us



+44 7351687633



www.seeawa.org.uk



info@seeawa.org.uk



**SEEAWA Room 202 Pelican House 144
Cambridge Heath Road, London E1 5QJ**



Receipts and payments accounts

Southeast and East Asian Women's Association

Charity number: 1203182

For the year ended 31 March 2025

| Receipts and payments | £ |
|--------------------------------------|-------------------|
| Receipts | |
| Donations Received | 490.00 |
| Grants Received | 175,003.00 |
| Interest Income | 1,158.76 |
| Other Revenue | 230.00 |
| Total Receipts | 176,881.76 |
| Payments | |
| Salaries | 50,914.23 |
| Pensions Costs | 310.51 |
| Freelancer Fees | 20,999.94 |
| Advertising & Marketing | 275.00 |
| Audit & Accountancy fees | 816.00 |
| Bank Fees | 64.68 |
| DBS Checks | 208.80 |
| Events - Materials | 1,855.52 |
| Events - Travel and Accommodation | 1,648.03 |
| Events - Venue and Catering | 4,206.31 |
| Events - Volunteer Expenses | 414.73 |
| Facilitator's Fees | 3,028.20 |
| General Expenses | 90.82 |
| Insurance | 96.00 |
| IT Software and Consumables | 144.00 |
| Participator Fees | 200.00 |
| Rent | 1,800.00 |
| Staff Training | 101.00 |
| Subscriptions | 75.00 |
| Telephone & Internet | 17.74 |
| Travel - National | 52.56 |
| Volunteer Expenses | 600.00 |
| Vouchers:Beneficiaries food,Data | 600.00 |
| Total Payments | 88,519.07 |
| Net of Receipts / Payments | 88,362.69 |
| Cash Funds from last year end | 8,183.72 |
| Cash Funds this year end | 96,546.41 |


| | |
|---|----------|
| Statement of assets and liabilities at the end of the period | £ |
|---|----------|

| | |
|-------------------|--|
| Cash Funds | |
|-------------------|--|

| | |
|------------|-----------|
| Cash funds | 96,546.41 |
|------------|-----------|

| | |
|---------------------------------|------------------|
| Cash Funds this year end | 96,546.41 |
|---------------------------------|------------------|

Signed by one or two trustees on behalf of all the trustees:

| | |
|------------------|---|
| Signature |  |
| Print Name | Susan Cueva |
| Date of approval | 21 June 2025 |



Independent examiner's report to the trustees / members of :

Southeast and East Asian Women's Association

Charity number: 1203182

On the accounts to 31 March 2025

I report to the trustees on my examination of the accounts of the Southeast and East Asian Women's Association for the year ended 31 March 2025.

Responsibilities and basis of report

As the charity trustees of the Trust you are responsible for the preparation of the accounts in accordance with the requirements of the Charities Act 2011 ('the Act').

I report in respect of my examination of the Trust's accounts carried out under s. 145 of the 2011 Act and in carrying out my examination I have followed all the applicable Directions given by the Charity Commission under s. 145(5)(b) of the Act.

Independent examiner's statement

I have completed my examination. I confirm that no material matters have come to my attention in connection with the examination giving me cause to believe that in any material respect:

- (1) accounting records were not kept in respect of the Trust as required by section 130 of the Act; or
- (2) the accounts do not accord with those records.

I have no concerns and have come across no other matters in connection with the examination to which attention should be drawn in this report in order to enable a proper understanding of the accounts to be reached.

Signed

Name:

Jacqueline Taylor

Address:

42 Harbour View Road, Paghon PO21 4RP.

Date:

23rd June 2025

Relevant professional qualification or body: N/A



Receipts and payments accounts

Southeast and East Asian Women's Association

Charity number: 1203182

For the year ended 31 March 2025

| Receipts and payments | £ |
|--------------------------------------|-------------------|
| Receipts | |
| Donations Received | 490.00 |
| Grants Received | 175,003.00 |
| Interest Income | 1,158.76 |
| Other Revenue | 230.00 |
| Total Receipts | 176,881.76 |
| Payments | |
| Salaries | 50,914.23 |
| Pensions Costs | 310.51 |
| Freelancer Fees | 20,999.94 |
| Advertising & Marketing | 275.00 |
| Audit & Accountancy fees | 816.00 |
| Bank Fees | 64.68 |
| DBS Checks | 208.80 |
| Events - Materials | 1,855.52 |
| Events - Travel and Accommodation | 1,648.03 |
| Events - Venue and Catering | 4,206.31 |
| Events - Volunteer Expenses | 414.73 |
| Facilitator's Fees | 3,028.20 |
| General Expenses | 90.82 |
| Insurance | 96.00 |
| IT Software and Consumables | 144.00 |
| Participator Fees | 200.00 |
| Rent | 1,800.00 |
| Staff Training | 101.00 |
| Subscriptions | 75.00 |
| Telephone & Internet | 17.74 |
| Travel - National | 52.56 |
| Volunteer Expenses | 600.00 |
| Vouchers:Beneficiaries food,Data | 600.00 |
| Total Payments | 88,519.07 |
| Net of Receipts / Payments | 88,362.69 |
| Cash Funds from last year end | 8,183.72 |
| Cash Funds this year end | 96,546.41 |


| | |
|---|----------|
| Statement of assets and liabilities at the end of the period | £ |
|---|----------|

| | |
|-------------------|--|
| Cash Funds | |
|-------------------|--|

| | |
|------------|-----------|
| Cash funds | 96,546.41 |
|------------|-----------|

| | |
|---------------------------------|------------------|
| Cash Funds this year end | 96,546.41 |
|---------------------------------|------------------|

Signed by one or two trustees on behalf of all the trustees:

| | |
|------------------|---|
| Signature |  |
| Print Name | Susan Cueva |
| Date of approval | 21 June 2025 |



Independent examiner's report to the trustees / members of :

Southeast and East Asian Women's Association

Charity number: 1203182

On the accounts to 31 March 2025

I report to the trustees on my examination of the accounts of the Southeast and East Asian Women's Association for the year ended 31 March 2025.

Responsibilities and basis of report

As the charity trustees of the Trust you are responsible for the preparation of the accounts in accordance with the requirements of the Charities Act 2011 ('the Act').

I report in respect of my examination of the Trust's accounts carried out under s. 145 of the 2011 Act and in carrying out my examination I have followed all the applicable Directions given by the Charity Commission under s. 145(5)(b) of the Act.

Independent examiner's statement

I have completed my examination. I confirm that no material matters have come to my attention in connection with the examination giving me cause to believe that in any material respect:

- (1) accounting records were not kept in respect of the Trust as required by section 130 of the Act; or
- (2) the accounts do not accord with those records.

I have no concerns and have come across no other matters in connection with the examination to which attention should be drawn in this report in order to enable a proper understanding of the accounts to be reached.

Signed

Name: Jacqueline Taylor

Address: 42 Harbour View Road, Paghon PO21 4RP.

Date: 23rd June 2025

Relevant professional qualification or body: N/A