

PLATEFUL CAFE

England & Wales · Charity number 1202710

Details

Status Registered

Legal form CIO

Registered 2023-04-13

Register [View on the Charity Commission register](#)

Contact

Address 22 Honley Road
Catford
Lewisham
London
SE6 2HZ

Phone 07984239912

Email iolanda@platefulcafe.co.uk

Website www.platefulcafe.co.uk

Activities

Objects: THE OBJECTS OF THE CIO ARE:1. TO RELIEVE THE POVERTY OF THOSE GRANTED REFUGEE STATUS AND GRANTED ASYLUM AND THEIR DEPENDENTS IN SOUTH EAST LONDON AND NEIGHBOURING BOROUGHES BY THE PROVISION OF VOCATIONAL SKILLS TRAINING, ADVICE AND SUPPORT TO ENABLE SUCH PEOPLE TO OBTAIN EMPLOYMENT;2. TO ADVANCE THE EDUCATION AND TRAINING OF THOSE GRANTED REFUGEE STATUS, THOSE WHO HAVE BEEN GRANTED ASYLUM AND THOSE WHO ARE SEEKING ASYLUM IN SOUTH EAST LONDON AND NEIGHBOURING BOROUGHES SO AS TO ADVANCE THEM IN LIFE AND HELP THEM TO ADAPT WITHIN A NEW COMMUNITY;3. TO EDUCATE THE GENERAL PUBLIC OF THE RIGHTS AND NEEDS OF REFUGEES AND ASYLUM SEEKERS; AND4. THE PROMOTION OF SOCIAL INCLUSION FOR THE PUBLIC BENEFIT AMONG PEOPLE WHO ARE REFUGEES, THEIR DEPENDENTS OR SEEKING ASYLUM IN SOUTH EAST LONDON AND NEIGHBOURING BOROUGHES, AND WHO ARE SOCIALLY EXCLUDED ON THE GROUNDS OF THEIR SOCIAL AND ECONOMIC POSITION BY OFFERING ACTIVITIES, TRAINING AND SUPPORT DIRECTED TO ENABLING THEM TO INTEGRATE INTO SOCIETY.

Activities: Plateful Cafe empowers refugees to obtain mainstream employment in the catering industry by providing hospitality training and employment in a cafe. The cafe also runs a shop selling products made by local refugees and delivers monthly community dinners. Plateful Cafe also caters for outside events and offers private dining in people homes. Asylum-seekers volunteer at the cafe.

Classification

- **How:** Provides Services, Provides Advocacy/advice/information
- **What:** General Charitable Purposes, Education/training, Disability, The Prevention Or Relief Of Poverty, Human Rights/religious Or Racial Harmony/equality Or Diversity
- **Who:** People Of A Particular Ethnic Or Racial Origin

Geography

- Bromley
- Greenwich
- Lewisham
- Southwark

Finances

Period end	Income	Expenditure	Assets	Employees
2025-04-30	£28,441	£27,144	-	-
2024-04-30	£68,983	£45,374	-	-

Trustees

Name	Role	Appointed
Andrew Peter Rowland		2026-01-20
Enxhi Lami		2022-04-22
Iolanda Chirico		2026-01-10
Samuel Carter		2026-05-29
waeed almbasbes		2022-04-22
yasmin Al Hamadi		2022-04-22

PLATEFUL CAFE

England & Wales - Charity number 1202710

Accounts



plateful
café

annual report

2025/26

Plateful Café empowers refugees through food, employment, and training.

In 2024, we delivered paid opportunities, shared global cuisines, and fostered community through events, building towards a permanent home in Lewisham.

This report highlights our impact, and growth this year.



1	Our founder
2	The importance of supporting refugees
3	About Plateful
3	Our mission
5	Our impact
7	Our volunteers
14	Our highlights of the year
15	Our training programme
16	Our online shop and pop-up events
17	Our catering and supper club
18	Our catering reviews
19	Our partnerships
21	Our team
26	Our chefs
29	Our residency at Parkside Community Centre
32	Our plans for 2025
33	A call for support





Our founder

1

Our second year of operations has been one of uncertainty, but great resilience and incredible support from our community of supporters, friends and beneficiaries. Our delicious food is a hit at pop-ups, external catering and private dining. Food has an incredible power to bring people together and break down barriers. At the dinner table, we are united by our shared humanity and love of good food. We continue to cater for dinners, events and also at markets successfully, and the impact is shown in this report.

Our cooks continue to perfect their dishes and improve skills in preparing a variety of menus for different audiences and according to strict timescales. It is reassuring to see all of them improving their skills and knowledge, and also getting jobs after their time at Plateful Café. We are also very proud to support a baker from Sudan who has set up Nubian Delights. Her cookies and cakes continue to grow in popularity, and we are delighted to see her business grow.

Despite not having a physical venue, we managed to prepare and deliver food to many locations and new and old supporters. We have been inspired by their unwavering support and the excellent reviews they have provided.

Our wonderful and hardworking team of volunteers are the driving force behind our charity, as we do not have paid staff apart from the cooks who receive the London Living wage. At any given time, we work with at least 50 volunteers, from all walks of life, of all ages and many nationalities. They continue to each give a minimum of two hours per week for a staggering 5200 hours per year.

In 2025, we forged new partnerships with Mikes Table, Spitalfields Farm, and Brixton Windmill, Linklaters Law Firm, SET Social, and continue to work with Netflix, Katten Law Firm, Pistachios in the Field, Hill Station Café, and more!

What will 2025 bring?

At the moment of writing, at the end of a very busy Refugee Week, we are proud to announce a new residency at the Hill Station café, where we will be every Wednesday evening in the summer, and also a new residency at Spitalfields Farm launched on the 18th of July with a Taste of Sudan meal and live jazz music.

It remains challenging to operate as a volunteer-led organisation without fixed-term staff members in place. I continue to dedicate myself full-time as a volunteer, working seven days a week, often over eight hours a day, managing volunteers, overseeing operations, and supporting with cooking and deliveries. Despite the demands, I'm hopeful that our ongoing fundraising efforts will soon enable us to employ a dedicated Café Manager and Trainer. We're also currently in discussions for a potential venue, and we're optimistic that it will lead to a positive outcome.





The importance of supporting refugees



As 2024 came to a close, we were relieved to hear the news of the fall of President Bashar al-Assad's brutal 24-year dictatorship. In 2025, we hope the regime's fall has a positive effect on the situation in Syria. However, with the UK alongside many other European countries choosing to pause decisions of asylum claims from Syrian nationals, there is certain to be growing fear and uncertainty amongst Syrian asylum seekers in the UK (Right to remain, 2024). Furthermore, Asylum seekers are prohibited from working and are provided just £7 per day by the Government to cover their basic necessities. How would you manage living on £7 a day? (Refugee Council, 2024).

The moment someone is finally granted refuge in the UK should be symbolic of the end to instability and a moment of relief and liberation. However, many newly recognised refugees face homelessness, poverty and unemployment amongst many other challenges. This is because once their asylum claim is finally accepted, just 28 days later, they must leave their Home Office accommodation and government financial support stops. This is where Plateful Café steps in. Our 8-week training programme offers more than just skills; it provides a stable foundation for refugees to rebuild their lives, overcome barriers, and work towards long-term independence. We are extremely proud of our offerings that include providing our trainees with UK work experience, a Level 2 Food Hygiene qualification, barista and catering skills, CV and interview support, and tailored 1:1 guidance toward their future employment goals. Alongside this, the chance to share their cultural heritage through food helps foster connection and integration into their new community here in South East London.

Unlike traditional top-down approaches, our training program is built from the ground up, shaped by the needs of refugees themselves. We meet people, our refugees, where they are, and walk alongside them to support them. This ethos is what sets us apart.

With over 50% of refugees unemployed even five years after arrival in the UK (compared to 4.2% in the general population) (Refugee Council, 2023), refugees must have access to this training. When trainees complete the programme, opportunities don't stop. They are invited to join our paid team of chefs, lead community dinners, or deliver cooking workshops, creating a lasting pathway to empowerment.

However, despite the strength of our training program, we are not yet able to offer a secure, consistent income to all our chefs. Without a permanent venue, we're limited in the number of paid opportunities we can provide, meaning we rely instead on market stalls, monthly dinners, and catering opportunities. While we pay the London Living Wage for every shift, we simply can't sustain regular hours for all the incredible chefs who complete our programme.

This lack of stability impacts our chefs deeply. Many are ready and eager to work, to contribute, and to build a future, but are held back by the gaps between events or lack of space to cook. A permanent venue would transform our impact. It would allow us to operate a full-time café, expand our training capacity, and offer long-term employment to more chefs. Above all, we want to offer our chefs a permanent space where they can feel confident and grow.



About Plateful



Plateful Café is a refugee-led charity which provides employment opportunities to refugees and brings together our community through the love of food. Plateful Café was set up in December 2022 by our founder Iolanda Chirico with the mission to empower refugees to obtain mainstream employment in the catering industry. We work with a vast range of creative refugees who share dishes from their home country and are paid London Living Wage to bring them to the public.

They are provided with tailored training to expand their existing culinary skills alongside building vital skills for the workplace in the UK.

Our mission

Our vision: A community where everyone, regardless of their journey, finds belonging, dignity, and purpose through the unifying power of food and creativity.

Our Mission: To empower refugees by providing meaningful employment opportunities in a welcoming café environment, fostering community connections, breaking down barriers, and celebrating diverse cultures through the shared language of food.

Our values:

① Inclusion

We believe everyone deserves to be welcomed, regardless of their background or circumstances. Without our diverse community, Plateful Café would not be the vibrant, unique place it is. Our charity is here to treat everyone with respect and provide opportunities that acknowledge amazing talents, skills, and humanity.

② Empowerment

We believe refugees deserve meaningful work, skills development, and opportunities for self-expression. This is why we are proudly a real-living wage provider for our talented chefs. We also empower refugees to become artists, artisans and more! When these products are sold at our events, the creator receives the full 100% of the profits from the sale.

③ Community

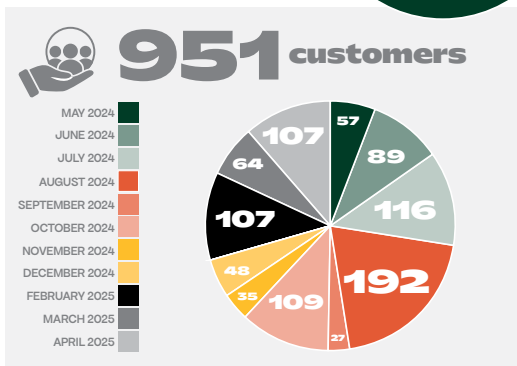
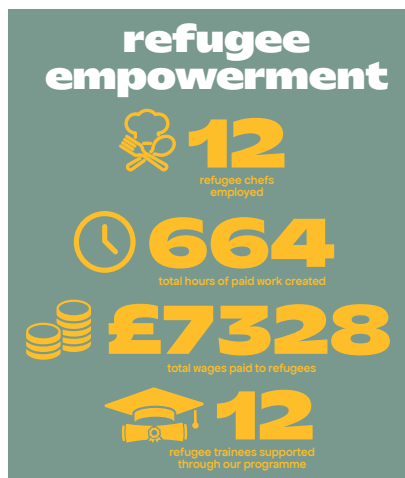
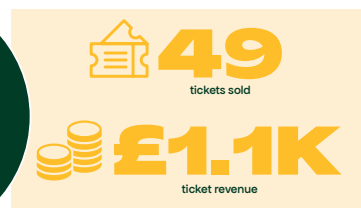
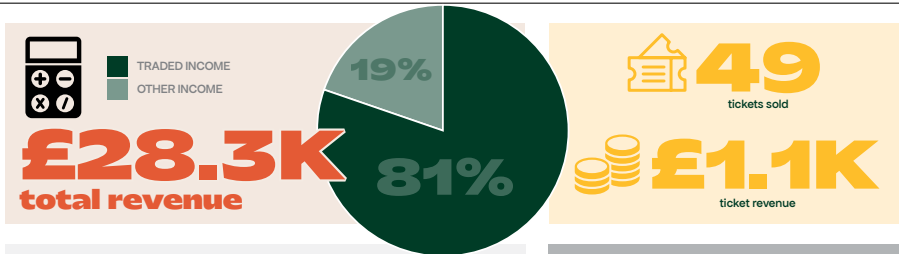
At the core of our charity is the community. Our refugees, volunteers, local community and you all make this possible! We believe that sharing cultural heritage, food, stories, and traditions can build bridges between diverse groups, foster relationships, and reduce isolation.





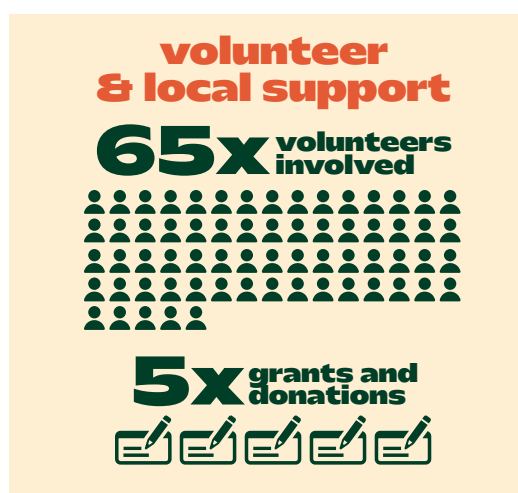
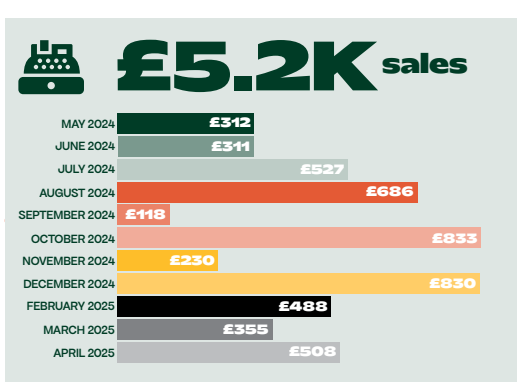
Our impact

5



20 top products

Product	Number sold
1 Chicken Shawarma wrap	141
2 Falafel wrap	119
3 Falafel	69
4 Syrian chilli paste	66
5 Fatayer	49
6 Kibbeh	43
7 Basbousa cake	37
8 Mini pizza	35
9 Apple jam	30
10 Water	29
11 Carrot jam	28
12 Potato finger	23
13 Yemeni tea	22
14 Syrian truffles	21
15 Pumpkin jam	19
16 Chips	18
17 Watermelon slice	11
18 Halloumi cheese and oil	10
19 Cards	9
20 Samosas	9



our growing reach

CLOSED

Our café closed in April 2024 but we continued to operate through external catering, pop-ups and markets to continue our mission.

Local partners we've collaborated with: Set Social, Pistachio in the Park, Hill Station Café, Facework, Refugee Council, Lewisham Refugee and Migrant Network, Netflix, Team Lewis, Linklaters and Katten.

Our new partners include: Spitalfields Farm and Lewisham Art House.

Languages spoken across our team: Arabic, Farsi, Amharic, French, Spanish, Tigrinya and Italian.

Our amazing founder and incredible team of volunteers dedicate their time and energy completely for free!

Every penny we raise goes directly to supporting refugees and making a difference.





Our volunteers

7



Tejan

My name is Tejan Pereira. I am 25 years old and live in south London. I've been volunteering at Plateful Café since its inception in 2022.

I volunteer at Plateful Café because I'm inspired by its mission to empower local refugees through food. Through my three years at the café I've met such fantastic people – both refugees and volunteers who are all committed to making our community a more inclusive and delicious place!

In my spare time I'm a keen runner and have recently taken up laying tennis and, in turn, putting all of south London's green spaces to use! Other than that, I work for an urban planning tech start-up in my day job and I'm a keen food and music lover which makes Plateful Café a good fit!



Mateo

Hi! I'm Mateo and I work as a volunteer filmmaker for Plateful Café. I started working for Plateful last summer just after I had finished my Master's Degree and was keen to do some filmmaking (I'd studied film and journalism at Uni).

I saw the role for volunteer filmmaker advertised online, and since joining everyone has been extremely nice and friendly to me and it's been great to help out where I can (and also to try some of the delicious food!)

I really respect Plateful's mission and the amount of work that its volunteers put into making it a successful charity. Having left education and not really knowing what to do with myself, being able to volunteer at Plateful was a fantastic opportunity to broaden my horizons.

I have recently started a job at a music venue in marketing/social media/events management. I am certain my work at Plateful – where I was able to develop my skills and gain hands-on practical experience – was the main reason for my being hired.

Overall, it's been great to volunteer at Plateful and I wish to continue to do so well into the future!



Our volunteers

8



Zayn

I am a volunteer coordinator for Plateful Café. I manage recruitment of volunteers. In my day-to-day life I work for a university in HR.

I volunteer for Plateful Café for the thrill of making a difference to the refugees who come here. I know how traumatic and unsettling it is. My auntie and uncle were refugees from Uganda so I have second-hand experience.

Between work and charity-work I walk 10K a weekend and run 2K. I also enjoy watching crime shows and I love sport – football, tennis and horse racing. I am also learning and practicing to become a part-time football trader.



Katryn

I joined Plateful Café in December 2024 as a coordinator. I'm attracted to working with a charity that provides support for asylum and refugee people. That the charity provides food for the community is new to me.

I previously worked in contemporary dance theatre and have enjoyed world food for a long time. I'm so happy to be working with over 20 volunteers to engage and bring connectivity between all the groups and create the monthly newsletter.

I have 14 years' experience as a director for a non-profit business which includes fundraising, financial management for project-based activity working with financial income from funders and public.

I have managed and fundraised successfully with several years of professional experience in arts and cultural management. Financial management has been the core of running a business. My work has been primarily based in the not-for-profit sector. I have a great focus toward equality and inclusivity, safeguarding, equity, diversity, inclusion and belonging.



Our volunteers



Adeleke

I have always been passionate about using my skills and experience to create real impact in society. Volunteering at Plateful Café gave me the chance to support a meaningful cause by helping refugees and vulnerable people while also gaining valuable experience working in the UK.

Before joining Plateful Café I worked as an accountant and internal auditor at First Technical University in Nigeria. I also have experience in the banking sector, which gave me a solid background in finance and internal controls as an account support officer.

Academically, I hold a Master's Degree in Finance and Risk and a Bachelor's Degree in Finance.

When I joined Plateful Café it was a start-up. This gave me the unique opportunity to get involved from the beginning and take on a wide range of responsibilities. Unlike in a big

company where roles are more limited, I was able to learn quickly and contribute directly to the organisation's growth.

I helped set up financial systems, created monthly management reports and designed dashboards to support better decision-making. My work contributed to the café's growth from a small project into a fully functioning restaurant and helped improve its profitability and financial stability.

Overall, volunteering at Plateful Café allowed me to apply my finance background to a meaningful cause, gain practical UK experience and grow, both professionally and personally.



Our volunteers

10



Ella

I joined Plateful as a social media manager in May. Since joining, I've been supporting the promotion of events and collabs and focussing on raising awareness about the amazing impact Plateful Café is having on the local community. Its been really rewarding to help share stories and show how the work we do is making a real difference in people's lives.

I joined Plateful because the charity's mission is really close to my heart. I was interested in social media and saw this as a great opportunity to develop new skills in that area. I also recently moved to London and was hoping to find a sense of community where I can make a difference. It's been such a positive and inspiring experience to be part of a team.



Erica

Feeling frustrated by the limited government support for refugees in England, I saw volunteering with Plateful Café as a way to make a tangible difference. Along the way, I met their incredible chefs - driven individuals eager to share their love of cooking, build workplace skills, and find a sense of purpose through food.

I managed Plateful's social media, keeping their Instagram community informed about upcoming events, introducing the chefs, food and recipes from their homeland, and helping to challenge the stereotypes often attached to refugees.

I love Plateful's mission and hope they continue to thrive in supporting refugees on their journey to rebuilding their lives through meaningful work.



Our volunteers

11



Meg

I moved to London from the USA in 2019. I started volunteering with Plateful Café in the beginning of the year and it's been an incredible experience.

I've worked in marketing for the past five years and wanted a way to use my professional skill-set to help others, so when I came across this opportunity I knew it was a perfect fit!

Now I help manage the website for Iolanda and the charity, leading the team of website volunteers and making sure our site is up to scratch in terms of content, SEO, messaging and so much more.

Volunteering here has been nothing short of rewarding and I can't wait to see what the rest of the year brings.



Jo

Jo Munro has been our driver for over two years driving products and food to a number of locations and also helping at markets, pop-ups etc.

Jo is patient, hard working and very sympathetic to our cause. Without her help we would not have been able to run some events or cater. These activities require a lot of logistical and practical help which Jo continues to provide with great patience and flexibility.



Our volunteers

12



Adela

We would like to congratulate Adela Resuli for all her efforts with designing our leaflets, menus etc. For months she has worked tirelessly to create unique designs for our promotional materials, paying great attention to detail and always executing to deadline.

At very short notice and sometimes over the weekend, Adela worked on new promotional material having it ready by Monday.

Adela, thanks a lot for your flexibility, great work ethic and professionalism. It continues to be a great pleasure working with you!



Enxhi

Enxhi Lami is our Treasurer and has been with Plateful Café since the start.

She has set up all our financial systems and procedures and continues to train and support our finance volunteers. She is responsible for cashflow, budgets, management accounts and at the end of the year she prepares the accounts which are then sent to the Auditor for independent examination.

She has worked tirelessly over the past two years and continues to give at least two hours per week to upload the monthly income and expenditure on Free Agent.

Enxhi is a qualified accountant and we are privileged to have her on board!





Our highlights of the year

Community Champions

Plateful café was delighted to be voted members and associates of Lewisham Council as a community champion in the community/faith group category which recognises the work we do for the refugee community.

The Albany

In June 2024, we proudly delivered our biggest catering event to date at The Albany for Lewisham Council's Refugee Week Sanctuary Celebration, a powerful event for our chefs and community. As the UK's first Borough of Sanctuary, Lewisham welcomed hundreds to honour the contributions of refugees, migrants and asylum seekers and thus is the perfect place for a base. It was a joy to serve food that told stories, sparked connection, and celebrated the spirit of sanctuary.

Pullens Festival 2024

Pullens Festival 2024 marked our biggest festival participation to date and was a true highlight of the year. Held on 31 August, the event brought together music, art, poetry, workshops and community spirit. We had the opportunity to serve a well-received menu of hot food while also showcasing and selling our artisan jams, condiments and sweets made by our refugee chefs. It was a great day of community and culture.





Our training programme

15

We recruit out of work refugees who have a passion for home cooking and take them through an eight-week training programme which takes them from home cooks to confident cooks in a professional café.

The training programme includes:

UK work experience

Level 2 Food Safety and Hygiene qualification

English speaking practice

A foundation course in working in a community café

Trainees also receive 1:1 help towards their long-term employment goals including signposting to extra training, advice looking for jobs with a local employer and well being support.

They also have the option to get involved in events, monthly community dinners, private catering and the making of our products.

During this course, trainees learn the practical culinary skills needed to work in a busy café cooking lunch, dinner, pastries and cakes, and three course meals served at our busy monthly community dinners.

They also develop practical expertise and the knowledge to produce a range of food products to cater for a busy service in a café.

We began offering training at Parkside Community Centre in June 2023 to give our cooks the opportunity to build confidence, gain hands-on experience with professional kitchen equipment, and learn how to prepare and serve dishes in a commercial setting. The programme also included online training in food hygiene and allergen awareness, as well as barista skills. To support English language development, we provided one-to-one English conversation sessions throughout the course.

Alongside the training, we provide holistic support for our chefs, including assistance with everyday challenges, and a warm, welcoming community where they feel valued and supported.





Our online shop and pop-up events

16

At Plateful Café, a key chain of our income and marketing is bringing our mission to life through our products. These are sold on our online shop at platefulcafe.co.uk and at local markets.

Each product we sell, whether a hand-knitted product, or a unique piece of artwork, is lovingly crafted by our community of refugees. It shows their skills, traditions and often through their artwork, their stories.

Our preserved foods are a customer favourite, especially our range of imaginative, flavour-packed jams that always have repeat customers. Markets are an especially joyful time for us, allowing us to meet new people, share our story, and invite customers to connect. And, when the holidays come around, we offer bespoke, seasonal products that make perfect gifts and add a meaningful touch to the festivities.





Our catering and supper club

17

Whether it's a wedding, office event, or an intimate dinner at home, Plateful Café brings unforgettable food and purpose to every occasion. Our catering service prioritises beautifully presented meals, and dishes rooted in the cultural heritage of our incredible refugee chefs. We regularly host catered events including Community Dinner Fundraisers and Dinners with live music which bring the community together and spread the joy of supporting our mission.

In January, we had the joy of catering two incredibly special occasions that marked exciting milestones for Plateful Café. We hosted our very first wedding reception for the wonderful Anne-Marie and Gids and, we also helped Clare celebrate her birthday in style, serving up a delicious spread that made the evening truly memorable.

In February, we launched our collaborative supper club with Mike's Table, held at the iconic Brixton Windmill. This one-of-a-kind event brought together 36 guests to enjoy a vibrant Sudanese-inspired vegetarian feast, live jazz by musicians Rudi Creswick and Kaidi Akinnibi, and heartfelt hospitality. Our talented refugee chefs from Plateful Café, Maysoon, Manizha and Bahara, served up samosas, koshari, and a stunning Valentine's cake, while Mike's Table co-chefs Andi and Simon complemented the menu with a sweet potato, coconut and chilli soup, and vegetable tagine. The collaborative menu showcased the creativity and skill of everyone involved, with guests eager to try every dish. The evening also featured a joyful raffle with handmade gifts from Brixton Windmill and Plateful Café, and a pop-up shop selling artisanal refugee-made goods. All proceeds supported Plateful Café's mission to empower refugee chefs with fair pay, training, and opportunities in hospitality.

In May, we proudly launched our brand-new Supper Club initiative, kicking off with a special private fundraising dinner in a warm Brockley home. On March 29th, 18 guests gathered around a table to enjoy a lovingly prepared Iranian vegetarian feast, cooked by one of our talented chefs. The evening raised over £700 in support of our mission to empower refugees through food and hospitality.





Our catering reviews

18

Partnering with Refugee Cafe is a true privilege. Their work not only supports people rebuilding their lives but also brings our team closer to different cultures and stories. For our customers, it's a chance to enjoy authentic dishes from around the world. It's a beautiful exchange – food, culture, and community all coming together.

Jacqui Shimidzu
Hill Station Café CIC

Plateful were **INCREDIBLE** from start to finish. Amazing menu, wonderful flexibility to deliver what I wanted for my 50th birthday party, unbelievably tasty food, generous portions, very reasonably priced, delivered to our door – **AND** a spectacular birthday cake, literally the cherry on the icing on the cake of a fabulous, memorable birthday. We couldn't have asked for more. **THANK YOU!**

Simon

The food from Plateful Cafe was a huge hit with everyone. Meaningful (and affordable) for us to be supporting this amazing cause.

Elizabeth
Mayor of London, Violence Reduction Unit





Our partnerships

19

Maysoon Mohammed, Nubian Delights

Hello, I'm Maysoon, founder of Nubian Delights. My love for baking began in Sai (Nubba land north Sudan), where I learned from my grandmother that baking is about more than just sweets – it's about sharing love, memories, and tradition.



I came to the UK to build a better future for my family and to follow my passion. Starting over in a new country wasn't easy, but it gave me the chance to turn my dream into a business. Working with Plateful Café has been a truly uplifting experience for me.

As a new business starter, I was struggling to find customers and promote my work. Being part of Plateful Café gave me so much more than just kitchen space – it gave me support, encouragement, and real opportunities. They invited me to take part in the Mike's Table event where I had the honour of presenting my bakes alongside professional chefs. It was a big moment for me and helped me believe in myself even more.

Plateful Café also encouraged me to join a number of local events, which made a real difference. I began to meet new people, gain confidence, and reach potential customers – many of whom were referred to me through the café. These experiences pushed me to challenge myself and created even better products, because I wanted to make them proud. Their belief in me and my mission – that everyone deserves a sweet treat – has helped shape the growth of Nubian Delights in the most beautiful way.

Katya Griffin, Lewisham Borough of Sanctuary network



Plateful Café is a valued partner in the Lewisham Borough of Sanctuary network.

Lewisham Council was delighted to be able to support Plateful Café's work through the Borough of Sanctuary 2025 small grant of £1,500.

The grant enabled the organisation to offer a free Refugee Week community meal, offering employment and work experience to refugee chefs and offering an opportunity for Lewisham's communities to socialise and learn about each other.

Plateful Café's work exemplifies what being a place of sanctuary is all about: it enables people seeking sanctuary to lead, to use their existing skills, develop new ones and to rebuild their lives; it fosters a sense of community, solidarity and belonging.





Our team

21

Our trustee board of all refugees:

Esmat Keshavarz

Esmat brings 29 years of experience in education, having served as a teacher, principal, and high school education counsellor in Iran. At Plateful Café, she shares not only her deep educational expertise but also her passion for arts and crafts, enriching our community with creativity.

Maysoon Mohammed

Maysoon is the proud founder of Nubian Delights, a vibrant bakery business offering cakes, mini cakes, cupcakes, and biscuits with a unique Sudanese twist. Backed by a degree in Business Management, she combines her entrepreneurial skills with a passion for baking to bring bold flavours and beautifully crafted treats to the community.

Hafiza Ayesha Syeda (Co-treasurer)

Hafiza brings over 20 years of experience in accounting and risk assessment across Pakistan and the UK. An Association of Chartered Certified Accountants (ACCA) member with a BSc (Hons) in Applied Accounting, she plays a vital role as Co-Treasurer, helping us with financial transparency at Plateful Café.

Enxhi Lami (Co-Treasurer)

Enxhi is also a qualified ACCA member with a strong academic background in finance. She holds an MSc in Global Finance (Distinction) from the University of Westminster, London, and a BSc in Finance and Banking (Highest Honours) from the European University of Tirana, Albania. As Co-Treasurer, Enxhi brings impactful financial advice to Plateful Café.

Andy Rowland

Andy brings extensive leadership experience and a strong track record in both strategic and operational management. With a deep commitment to social impact, he has led enterprises through times of growth and crisis, always with a focus on community engagement. His dedication to an empowerment ethos makes him a valued member at Plateful Café.

Iolanda Chirico (Founder)

Iolanda has over 30 years of experience in the charity sector, dedicated to supporting refugees and creating pathways to inclusion. She is the founder of three impactful initiatives—Action for Refugees in Lewisham, Refugee Café, and Plateful Café—all rooted in her unwavering commitment to supporting refugees. Through her leadership, countless refugees have found opportunities, support, and a sense of belonging.



Our team

22

Our creators:

At Plateful Café, we're proud to support not only refugee chefs but also talented artists from displaced communities. Many of the artworks we showcase and sell are deeply personal expressions and portray stories of loss, resilience, identity, and hope. For the artists, creating this work can be an emotional journey, often rooted in difficult experiences and memories.

Supporting these artists is about providing a platform for creativity as a form of healing and empowerment.

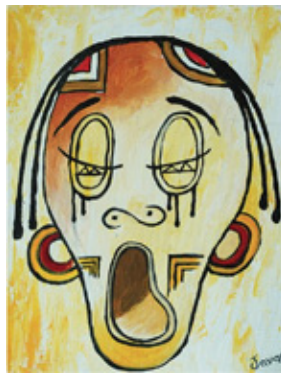
Javad Karimi

I'm 24 years old and was born in Afghanistan, but when I was young my family took us from our home to seek refuge in Iran.

My family's living conditions were very difficult in Iran because we were living there as refugees. Therefore, we were not supported like the local people. Many resources were not available to us and I was prohibited from studying.

I've loved painting since I was a child and for as long as I can remember I've always painted. I've always dreamed of being an artist, but also an art professor so I can give many people the education and opportunities I never had growing up.

I took the idea of this painting from the bottom of my heart.



'Mask' - acrylic paint on canvas

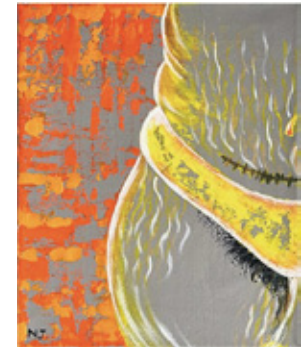
Nazgol Golmuradi

I am a 20 year old artist from Iran. I came to Greece when I was 17 with my father, but he was deported back to Iran not long after we arrived. I endured many hardships in Greece, both in the refugee camps and in Athens, alone without my father. Until I started painting again.

I have been interested in painting since I was a child. As long as I can remember, I always painted and even though I did not have the support from my family, for a while I even took classes and learned basic techniques. Where I am from, women do not get to choose their paths, which is one of the reasons why we came to Europe—my family wanted me to have freedoms.

I always try to express my feelings when I paint, or create more conceptual pieces about my own life or the lives of others. It is very important to me that my painting be based on reality. However, sometimes I also create fantasy paintings, which allow me to live in my imagination, and find an escape from reality sometimes. In Greece, we immigrants are deprived of our rights, and life can be hell sometimes. So, in fact, the only thing that matters to me now is to live a quiet and trouble-free life in a corner of the world. It doesn't matter to me which country I go to, the only thing that matters to me is peace. I seek peace.

My wish for every artist is to have the opportunity to express their talents and leave a positive legacy for others in the future. May your souls be brightened with our talent.



'Be Kind to Yourself'
acrylic paint on canvas



Our team



Our volunteers:

Without volunteers, Plateful Café wouldn't exist. Every meal we serve, every event we run, and every opportunity we create has volunteers involved at every step of the process.

They all bring their skills and time, making a huge difference!

Finance	Enxhi, Ayesha, Adeleke
Events	Amina, Lawrence, Monia, Sara, Shannon, Smriti, Tejan, Bella
Website	Alex, Alex Humphries, Richard, Tejan, Yehia, Sara
Admin	Gabriel, Lisa, Orla
Social Media	Erica, Yehia
Design	Adela, Katya
Corporate	Asrar
Fundraising	Helmut
Filmmakers	Lawrence, Mateo
Traders	Jo, Tamara, Lotte

And many others!

A word from our volunteer - Aref:

Aref is a Kurd from Afrin, Syria, he came to the UK seeking safety and the chance to rebuild a life marked by years of conflict, multiple displacement with his family, persecution, discrimination and instability. Aref arrived in the UK hoping for dignity, stability, and the opportunity to contribute.



But shortly after his arrival, the UK government announced a pause on asylum decisions for Syrians. "I had only just arrived, trying to understand the system and find my footing," he explains. "Then suddenly everything stopped, my life, my plans, all frozen."

Since that announcement in December 2024, he has lived in a constant state of limbo. "It's been mentally exhausting," he says. "You can't work, can't study properly, can't make plans. You're just stuck, waiting, with no control over your future."

The uncertainty has taken a toll. "This pause means I can't move forward with my life. I want to study, work, and contribute, but I'm not allowed. Instead, I live with anxiety every day."

Ending the pause would be life-changing. "If the government resumed decisions, I could finally start living, not just surviving. I could rebuild, focus on my goals, and give something back."



Our team

24

The possibility of being forced to return to Syria. “It’s not safe. The country is fractured. HTS, a group known for Islamist extremism, controls the central government and imposes harsh and radical rules. But many areas are outside even their control. There are warlords, armed militias, and regions with no real governance at all.”

He continues: “The danger is real. Sectarian, ethnic, political, and religious differences can still cost people their lives. kidnappings, detentions, and assassinations are common. The same old regime henchmen are still active, and many current officials are under global sanctions. Israeli airstrikes regularly hit targets inside Syria. It’s chaos, there is no safety, no justice, and no protection.”

When asked that conservatives suggested most Syrian asylum claims were related to the threat posed by Assad’s government and those people could return when it was safe to do so?

“It’s a dangerous oversimplification. The threat was never only Assad. 14 years of war destroyed the country’s structure. It’s the entire ecosystem of chaos that still exists. The country is fractured, sectarian and ethnic hostility have become more prominent, with lawless areas controlled by different armed groups. The danger is still there, just with more faces and more flags. Syria isn’t safe to return to. Not for me.”

You!

By reading this annual report, you are part of our team! Thank you for being so supportive. Want to do even more? Whether it’s donating, volunteering, or spreading the word, every action makes a difference.

Visit <https://platefulcafe.co.uk> to get involved and help us keep the mission going!







Our chefs

26

Hadis

I am Hadis, a Persian woman. I came to the UK around four years ago. I worked as a physiotherapist back home and hadn't any experience working at a café before immigration.

My first experience working in a café started at Plateful Café, where I learned to work as a chef, barista, cashier, and waitress. I learned about salesmanship and customer service.

I learned how to prepare and cook several Syrian appetisers, main courses, and desserts.

Working there was a great opportunity to connect with international people, improve my English language and increase my confidence in the work environment of a new country. I was sad to be away from my family and homeland. By holding Iranian events there, I was able to show parts of my country's culture, art, history, and food style, and this had a positive effect on changing my mood.

With the experience and resume I gained there, I was able to apply for jobs at other cafés and get accepted.

I would like to thank Iolanda for all her efforts and kindness in supporting us women to enter the workforce and earning money to have a better life. I hope she is always successful on her path and receives more support.



Faten

I am Faten from Syria. I came to the UK around five years ago. I wasn't working in Syria because I got married at a young age, so I was good at cooking.

My first experience working in a café started with Plateful Café, where I learned to work as a chef, barista and in customer service. I have become more experienced in dealing with customers and more experienced in cooking and serving dishes, especially Syrian dishes.

People used to love the dishes we used to serve, such as shawarma, kibbeh, falafel and various salads.

I got to know people from different countries, and I learned different dishes from them, and my English was improved. It was difficult to integrate here because of the language, but the coffee shop helped us a lot with that.

It was great to work with Iolanda. Maybe now I am more able to work thanks to that. Great support for refugees is a reason to help them build a successful new life in a country different from their country.

So thank you from the heart Iolanda.





Our chefs

27

Kevin

My name is Kevin. I come from Albania.

I came in to the UK three years ago and I used to work in the first year of moving here as a grocery store staff member.

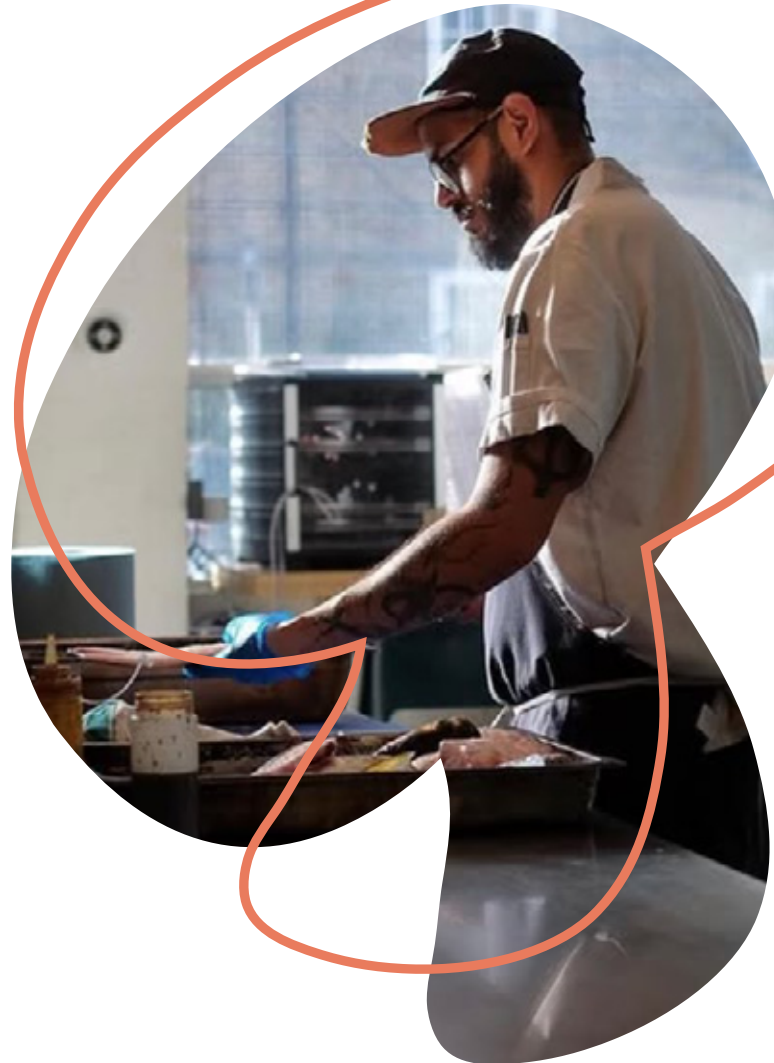
Eventually I moved out in another area that I used to work and after some research of other different job opportunities I was presented to Plateful Café.

My first experience in Plateful Café started by working as a barista, chef, cashier, cleaner, dish washer and waiter in the first months of working there. I learned how to serve to the costumers, how to talk to the customers, and how to prepare all sorts of drinks, food and desserts.

Working there was a really good opportunity to talk and meet so many international and interesting people to be able to know other cultures and food around the world.

Finally, I would like to thank Iolanda for this opportunity and her efforts and her kindness for helping us build experience for other work opportunities in the future.

I hope she is successful on her path and receives the support that she needs.







Our residency at Parkside Community Centre

29

Plateful Café was at Parkside from June 2023 to April 2024.

We started by providing hospitality training from June to August and then ran taster sessions in August for resident engagement and to develop a customer base. We officially opened to the public on the 7th of September running the Café at Parkside from Thursdays to Saturdays 9.30am-3pm offering a delicious Syrian inspired menu covering breakfast, lunch, hot/cold drinks and snacks.

We understood that the space could offer many opportunities, so we also sold a variety of our artisan products made by local refugees such as jams/condiments as well as paintings and bespoke products for festivities such as Christmas and forthcoming Valentine.

Residents were not always available during the day of the café due to work commitments, so we launched our Community Dinner programme, running two sold out events themed around Iranian cuisine with music, art and poetry.

Our goal was and is to make top quality food for affordable prices for all. Our food was popular, with 5 star reviews on Google Business, and we engaged with residents to match our pricing to their expectations.

Our programme for training refugees was also successful. We had eight refugees in our first cohort, from Syria and Iran. They were trained to work in a commercial kitchen, in using equipment safely, preparing and serving their traditional dishes in a café, obtained Food Hygiene and Allergens certificates, customer service and Barista training.

We worked with them once they graduated to find further employment. One moved on to permanent work as a chef in a local nursery and two more secured





Our residency at Parkside Community Centre



work placements in an independent café. We are assisting one chef to launch his own business selling Spirulina growing kits. Two more cooks are being assisted to re qualify in Pharmacy and physiotherapy as their qualifications are not accepted in the UK.

A total of 12 local BAME young people also volunteered in the café's front and back of the house. The young people assisted the cooks in the kitchen and also served at the front of house which improved their customer service and cooking skills.

Our mission aligned with one of the key objectives of the borough's council - defending the rights of refugees and asylum seekers, along with a network of not-for-profit organisations in this sector, offering a rich source of potential referrals and collaboration opportunities.

We developed partnerships with several local organisations including Lewisham (Catering and ESOL departments) and Goldsmiths College (Student Action for Refugees), Greenwich Cake Club, the Refugee Council, Hill Trader, Migration Museum, Sanstore, Lewisham Local, and Creative Impact Club. This network was and is very important to us. It helps us promote the café in the local area, provide activities and classes to our chefs and the community, and continue building momentum for the organisation.

In 2024, our plans shifted dramatically. We were thrilled about the venue opportunity which had a good kitchen and a spacious front of house sitting 24 people. For many of our chefs, the café wasn't just a place of work, but a vital source of routine, training, income and confidence. In the 30th April 2024 our Café closed after an 8 month pilot and its closure was deeply felt across our team and wider community. In May 2024, we looked for new opportunities. Despite the excitement around launching pop-ups and community dinners from our base

at The Star of Greenwich pub, we were unfortunately unable to progress with the venue as hoped.

Without a permanent base, we've faced significant operational challenges. We've been limited in the number of chefs we can train and employ at once, and the lack of a kitchen on-site means we're constantly navigating the logistics of preparing food off-site and transporting it, making it harder to grow. Yet despite these setbacks, our commitment to our mission has never wavered.

To overcome these hurdles, we're actively searching for a new permanent space that can house our chefs, support our operations, and serve as a true community hub. In the meantime, we've expanded into new income-generating initiatives, from catering weddings and corporate events to launching intimate private dining experiences where our chefs cook directly in people's homes. These new strands not only provide vital income but also help our chefs continue to integrate, build language skills and connect with local communities. We've also launched fundraisers to support our training programmes, with the ultimate goal of building a stronger, more stable future for those we serve.





Our plans for 2025

32



Secure our venue to open a café run by local refugees



Minimum number of refugees trained in the Introduction to Working in the Hospitality Sector course



Minimum number of trainee work placements in supporting a local café



Minimum number of new chefs securing employment in the catering sector



Secure funds to employ a full-time Café Manager/Trainer



Recruit a professional chef to our advisory board



Establish and maintain at least two new partnerships with corporates



Maintain existing residencies and create residencies in new locations



Recruit two new refugees to our board

In 2025, our priority is to secure a permanent venue to open our community café, run by local refugees. This space will not only serve delicious food but also act as a hub for training, events and community support. From this space, we plan to deliver our Introduction to Working in the Hospitality Sector course to at least 30 refugees, helping them build the confidence and skills needed to thrive in the industry. Following this training, we aim to secure at least five work placements in supportive local cafés and empower a minimum of three of our new chefs to move into employment in the catering sector. To support this growth, we're actively working to raise funds to hire a full-time Café Manager and Trainer, who will provide consistent guidance and mentorship to our chefs.

To ensure our work continues to grow in impact, we're strengthening our foundations. We aim to recruit a professional chef to join our advisory board, bringing valuable industry expertise, and we plan to welcome two new refugees onto our board to ensure lived experience continues to shape everything we do. We'll also focus on building new relationships by establishing at least two new partnerships with corporate supporters while maintaining and expanding our partnerships and frequent event spaces across London. With the right support, 2025 will be an exciting year for Plateful Café as we move closer to our vision of a community where refugees can flourish through employment and belonging.



A call for support



With the closure of our café, we're now searching for a new home to continue and grow our work. A new space will allow us to expand training, host more events, and support even more refugees in our community.

Any support is appreciated! You can donate, volunteer or get our delicious products [here](#)

Know a refugee - or are one - seeking support?

Contact us [here](#)







plateful
cafe



PLATEFUL CAFE

(Charity number: 1202710)

Financial Statements for the 12 month period ending on 30 April 2025

Table of Content:

Statement of financial activities (including the income and expenditure account).....	2
Statement of financial position.....	3
Notes to the financial statements.....	4

**STATEMENT OF FINANCIAL ACTIVITIES (INCLUDING THE INCOME AND EXPENDITURE ACCOUNT) FOR
THE 12-MONTH PERIOD ENDING 30 APRIL 2025**

	Note	Unrestricted 2025 £	Unrestricted 2024 £	Restricted 2025 £	Restricted 2024 £	Total 2025 £	Total 2024 £
Income and Endowments:							
Donations		753	2,670	5,873	34,877	6,626	37,547
Charitable Activities		19,293	31,436	2,522	-	21,815	31,436
Total Income		20,046	34,106	8,395	34,877	28,441	68,983
Expenditure:							
Charitable Activities	2	14,909	15,437	12,235	28,937	27,144	45,374
Total Expenditure		14,909	15,437	12,235	28,937	27,144	45,374
Net Income/Expenditure		5,137	18,669	-3,840	4,940	1,297	23,609
Total Funds brought forward		18,699	-	4,940	-	23,609	-
Total Funds carried forward		23,806	18,669	1,100	4,940	24,906	23,609

STATEMENT OF FINANCIAL POSITION AS AT 30th April 2025

	Note	2025 £	2024 £
FIXED ASSETS	4	85	108
CURRENT ASSETS			
Cash at Bank & In Hand		25,021	23,501
NET CURRENT ASSETS		25,021	23,501
Accrued liabilities		-200	-
TOTAL ASSETS LESS CURRENT LIABILITIES		<u>24,906</u>	<u>23,609</u>
 FUNDS			
Restricted Funds	5 & 6	1,100	4,940
Unrestricted Funds	5 & 6	<u>23,806</u>	<u>18,669</u>
		24,906	23,609
TOTAL FUNDS		<u>24,906</u>	<u>23,609</u>

The financial statements were approved and authorised for issue by the Trustees on 20 July 2025, and were signed below on their behalf by:



Enxhi Lami

Notes to the financial statements for the 12-month period ending on 30 April 2025

1 Accounting policies: The principal accounting policies adopted, judgements and key sources of estimation uncertainty in the preparation of the financial statements are as follows:

- a. Basis of preparation: The financial statements have been prepared in accordance with Accounting and Reporting by Charities: Statement of Recommended Practice applicable to charities preparing their accounts in accordance with the Financial Reporting Standard applicable in the UK and Republic of Ireland (FRS 102) (Second Edition, effective 1 January 2019) – (Charities SORP (FRS102), the Financial Reporting Standard applicable in the UK and Republic of Ireland (FRS 102) and the Companies Act 2006.

The Charity meets the definition of a public benefit entity under FRS 102. Assets and liabilities are initially recognised at historical cost or transaction value unless otherwise stated in the relevant accounting policy note.

Preparation of the accounts as a going concern: Having reviewed the funding facilities available to the charity together with the expected future cash flows, the trustees have a reasonable expectation that charity has adequate resources to continue its activities for the foreseeable future and consider that there were no material uncertainties over the charity's financial viability. Accordingly, they also continue to adopt the going concern basis in preparing the financial statements.

- b. Income: All income is included in the Statement of Financial Activities (SoFA) when the charity is legally entitled to the income after any performance conditions have been met, the amount can be measured reliably, and it is probable that the income will be received. The SORP requirements are followed in relation to positions where there is a time restriction.

For donations to be recognised the charity will have been notified of the amounts and the settlement date in writing. If there are conditions attached to the donation and this requires a level of performance before entitlement can be obtained, then income is deferred until those conditions are fully met or the fulfilment of those conditions is within the control of the charity, and it is probable that they will be fulfilled. Gift Aid receivable on donations is recognised as unrestricted income.

No amount is included in the financial statements for general volunteer time in line with the SORP (FRS 102).

- c. Donated services and facilities: Donated facilities and donated professional services are recognised in income at their fair value when their economic benefit is probable, it can be measured reliably, and the charity has control over the item. Fair value is determined based on the value of the gift to the charity. For example, the amount the charity would be willing to pay in the open market for such facilities and services. A corresponding amount is recognised in expenditure.

Gifts in kind donated for resale are included at fair value, being the expected proceeds from sale less the expected costs of sale. Where estimating the fair value is practicable upon receipt it is recognised in stock and 'Income from other trading activities'. Upon sale, the value of the stock is charged against 'Income from other trading activities' and the proceeds are recognised as 'Income from other trading activities'. Where it is impracticable to fair value the items due to the volume of low value items they are not recognised in the financial statements until they are sold. This income is recognised within 'Income from other trading activities'.

- d. Fund accounting: Unrestricted funds are available for use at the discretion of the trustees in furtherance of the general objectives of the charity and which have not been designated for other purposes.

Designated funds comprise unrestricted funds that have been set aside by the trustees for

Notes to the financial statements for the 12-month period ending on 30 April 2025

particular purposes. The aim and use of each designated fund is set out in the notes to the financial statements.

Restricted funds are funds which are to be used in accordance with specific restrictions imposed by donors or which have been raised by the charity for particular purposes. The cost of raising and administering such funds are charged against the specific fund. The aim and use of each restricted fund is set out in the notes to the financial statements.

- e. Expenditure and Irrecoverable VAT: All expenditure is accounted for on an accruals basis and has been classified under headings that aggregate all costs related to the category. Expenditure is recognised where there is a legal or constructive obligation to make payments to third parties, it is probable that the settlement will be required, and the amount of the obligation can be measured reliably. It is categorised under the following headings:

Costs of charitable activities include costs directly associated with delivering the charity's objectives and an apportionment of overhead, support, and governance costs.

Irrecoverable VAT is charged as an expense against the activity for which expenditure arose.

- f. Allocation of support costs: Support costs are those functions that assist the work of the charity but do not directly undertake charitable activities. Support costs include finance, H.R., I.T, general office and premises and governance costs which support the charitable activities of the charity.
- g. Critical accounting judgement and key sources of estimation uncertainty: In the application of the accounting policies, Trustees are required to make judgements, estimates and assumptions about the carrying value of assets and liabilities that are not readily apparent from other sources. The estimates and underlying assumptions are based on historical experience and other factors that are considered to be relevant. Actual results may differ from these estimates.

The estimates and underlying assumptions are reviewed on an ongoing basis. Revisions to accounting estimates are recognised in the period in which the estimate is revised if the revision affects only that period, or in the period of the revision and future periods if the revision affected current and future periods. There are no estimates or judgements which the Trustees consider are subject to significant uncertainty.

- h. Operating leases: Operating lease rentals are charged to the Statement of Financial Activities over the period of the lease.
- i. Tangible fixed assets: Tangible fixed assets are stated at cost (or deemed cost) or valuation less accumulated depreciation and accumulated impairment losses. Cost includes costs directly attributable to making the asset capable of operating as intended.

Depreciation is provided on all tangible fixed assets, at rates calculated to write off the cost, less estimated residual value, of each asset on a systematic basis over its expected useful life as follows: Kitchen equipment.

- j. Debtors: Trade debtors and other debtors are recognised at the settlement amount due. Prepayments are valued at the amount prepaid net of any trade discounts due. Accrued income is valued at the amount due.
- k. Cash at bank and in hand: Cash at bank and in hand includes cash and short term highly liquid investments with a short maturity date of three months or less.

Notes to the financial statements for the 12-month period ending on 30 April 2025

2 CHARITABLE ACTIVITIES

		Staff Cost £	Direct £	Support £	Total £
Charitable activities	2024	12,522	30,834	2,018	45,374
	2025	401	25,200	1,543	27,144

Included under Support costs are governance costs of £112 in 2025 (in 2024 £300).

3 STAFF COSTS AND KEY PERSONNEL

No remuneration was paid to trustees during the year. Expenses reimbursed to them in their capacity as trustees

amounted to £Nil. The staff costs of remaining staff were:

	2025 £	2024 £
Wages and Salaries	401	12,522

During the year no staff were paid more than £60,000.

The charity employed 1 staff with a total full time equivalent of 0.1FTE (in 2024 0.5 FTE)

4 FIXED ASSETS

	Kitchen Equipment 2025 £	Kitchen Equipment 2024 £
Assets at cost		
Balance at 1 December	155	-
Additions	-	155
Balance at 30 April	155	155
Accumulated depreciation		
Balance at 1 December	47	-
Depreciation for the year	23	47
Balance at 30 April	70	47
Net book value	85	108

Notes to the financial statements for the 12-month period ending on 30 April 2025 (continued)

5 FUNDS

2024

	Balance B/F £	Incoming Resources £	Expenditure £	Balance C/F £
Restricted funds				
Training & Development Grant	-	15,777	12,415	3,362
Founder Grant	-	8,100	4,000	4,100
Ingredient Grant	-	1,000	1,000	-
Manager Salary Grant	-	10,000	12,522	-2,522
	-	34,877	29,937	4,940
General reserves	-	34,106	15,437	18,669
Total reserves	-	68,983	45,374	23,609

The Total Reserves figures for 2024 for Incoming Resources, Expenditure and Balance is different as the 'Grants for Ingredients' was not included in this calculation.

2025

	Balance B/F £	Incoming Resources £	Expenditure £	Balance C/F £
Restricted funds				
Training & Development Grant	3,362	-	3,362	-
Manager Salary Grant	-2,522	2,522	-	-
Founder Grant	4,100	-	3,000	1,100
Ingredient Grant	-	3,000	3,000	-
Workshop Grant	-	1,373	1,373	-
LBL Refugee Week Community meal Grant	-	1,500	1,500	-
	4,940	8,395	12,235	1,100
General reserves	18,669	20,046	14,909	23,806
Total reserves	23,609	28,441	27,144	24,906

During the year the charity received funding from the Lottery fund for its shop (2025: £nil).

6 ANALYSIS OF NET ASSETS BETWEEN FUNDS

	Fixed Assets 2025 £	Fixed Assets 2024 £	Net Current Assets 2025 £	Net Current Assets 2024 £	Total 2025 £	Total 2024 £
Restricted funds	-	-	1,100	4,940	1,100	4,940
Unrestricted funds	85	108	23,721	18,561	23,806	18,669
	85	108	24,821	23,501	24,906	23,609

The 2024 Net Current Asset figure has been amended to include the £1000 of the Ingredient Grant which has brought the total to £23,609 compared to £22,609.

7 TAXATION

The company is a registered charity and no provision is considered necessary for taxation.



Section A

Independent Examiner's Report

Report to the trustees

Charity Name
Plateful Café

**On accounts for the year
ended**

30 April 2025

**Charity no
(if any)**

1202710

I report to the trustees on my examination of the accounts of the above charity ("the Trust") for the year ended 30 April 2025.

**Responsibilities and
basis of report**

As the charity's trustees, you are responsible for the preparation of the accounts in accordance with the requirements of the Charities Act 2011 ("the Act").

I report in respect of my examination of the Trust's accounts carried out under section 145 of the 2011 Act and in carrying out my examination, I have followed all the applicable Directions given by the Charity Commission under section 145(5)(b) of the Act.

**Independent
examiner's statement**

I have completed my examination. I confirm that no material matters have come to my attention in connection with the examination (other than that disclosed below *) which gives me cause to believe that in, any material respect:

- the accounting records were not kept in accordance with section 130 of the Charities Act; or
- the accounts did not accord with the accounting records; or
- the accounts did not comply with the applicable requirements concerning the form and content of accounts set out in the Charities (Accounts and Reports) Regulations 2008 other than any requirement that the accounts give a 'true and fair' view which is not a matter considered as part of an independent examination.

I have no concerns and have come across no other matters in connection with the examination to which attention should be drawn in this report in order to enable a proper understanding of the accounts to be reached.

Signed:

Date:

26 September 2025

Name:

John Axon

**Relevant professional
qualification(s) or body
(if any):**

FCMA

Address:

85 Montbelle Road

London

SE9 3NY

Section B**Disclosure**

Only complete if the examiner needs to highlight material matters of concern (see CC32, Independent examination of charity accounts: directions and guidance for examiners).

PLATEFUL CAFE

England & Wales - Charity number 1202710

Accounts

plateful
cafe

annual report

April 2023 – April 2024

WORLD FLAVOURS BY OUR REFUGEE CHEFS

CONTENTS

Page 3: Note from our founder

Page 4: Why Plateful

Page 7: What We Do

Page 13: Who We Help

Page 23: Our journey so far

Page 26: Introducing our chefs

Page 28: What we offer our chefs

Page 30: Celebrating Achievements

Page 28: Our plans for 2024

Page 38: Our partners and funders

A NOTE FROM IOLANDA CHIRICO – THE FOUNDER



One year on I am delighted to write this introduction piece and celebrate one year of achievements.

Why did I set up Plateful café in December 2019?

I strongly believe in the power of food to bring down barriers and people together. Back in 2018 at Action for Refugees in Lewisham I hosted 3 community Iranian dinners which sold out straight away.

When refugees had a chance to cook traditional food from their countries, attitudes changed. Both for those who ate as well as those who prepared the food. Relationships were forged. For the first time, I saw the refugees relaxed and I saw they were sitting down at the dinner table with the guests. They were laughing and talking with each other. They were not afraid, not embarrassed anymore for not speaking the language because they could talk about the ingredients of the particular dish. Rather than being seen as refugees with no skills, no experience and no knowledge, they were able to use the language of food to share their heritage.

I wanted that wonderful feeling of belonging and togetherness to continue not just at sporadic dinners but on a continuous basis around a table laid in a commercial hospitality setting making a valuable contribution to the place we live and to the people around us.

In September 2019 I founded Refugee Café and in December 2022 Plateful Café to continue on the road to establish a physical café and becoming a more integral part of the local community.

Providing employment opportunities from creating delicious food is the mission of the charity. Bringing people together through food, we have given refugees a way to support themselves, break stereotypes and find inclusion in their new communities.

It's based on the idea that when you know your neighbour, you don't fear them. When you bake bread with them, you're more likely to see their humanity.

In the past year we have been on an incredible journey together and since September 2023 to April 2024 we ran a café from Parkside Centre in SE10 offering breakfast, lunches and dinners.

The healthy, vibrant menu introduces and celebrates the communities and cultures of the cooks. Community events, workshops and feasts are central to relationship building as well as a variety of unique artisan products sold online, at markets.

Some refugees never overcome the trauma of losing everything. Losing their families, homes, jobs and sense of place from their country of origin. The café currently works with many people fleeing the civil war in Syria. The trauma resides in their hearts, bodies and minds. The loss shows up in the way they talk. In the way they interact with people, as they remember. They keep telling me even after ten years, I wish I could go back because life in Syria was so much more enjoyable. I had my family around me. But here I'm alone. Still after ten years, they feel so isolated."

Beyond the actual running of the café, we continue to provide care to the people we work with. Many have complex stories. The norm is that they have experienced hardship and loss. Most of the families were smuggled across various borders and countries. Some may have traveled more than a year to arrive. Their journeys were perilous.

To be employable, they have to overcome prejudice and beliefs about who they are. They require constant encouragement and support.

Getting basic needs met such as grocery shopping can be daunting for a refugee. Embarrassment about speaking English can create problems when seeking a job. Even leaving the house and navigating the streets can be overwhelming.

It's ironic that we work with people who have such complex needs, that can be solved through the simple common denominator that we all share – eating together.

I am deeply grateful to our chefs, funders, staff, volunteers and supporters who have come together to set up Plateful café and achieve so much in our first year. Plateful exists because of you.

I hope you enjoy reading about what we have achieved so far.

Why Plateful?

We live in a society where immigrants and refugees in general are seen as a threat instead of asset.

The current immigration system in the UK is designed to present a very “hostile environment” to migrants.

As our name implies the plate is central to everything we do. A full plate means you’re fulfilled, safe, and not wanting. It also implies arrival, togetherness, and the ability to provide to others. Our plate is one of variety, filled with food from many sources and cultures. We celebrate and appreciate how much they have enriched our society, in so many ways, not least through food.

The humble beetroot shows that we’re a family kitchen, not something manufactured or artificial. Our food is healthy, handmade, and unique. And the cafe itself helps refugees in south London put down roots and flourish in their new environment.

About Plateful



Plateful café is a refugee-led charity which provides employment for refugees and brings together communities through the art of food. Plateful Café was set up in December 2022 by founder Iolanda Chirico with the mission to empower refugees to obtain mainstream employment in the catering industry. We work with refugees in sharing cultural dishes from their home countries, where they are paid London living wage to serve them at our café. They are provided with tailored training to expand their existing culinary skills, whilst being given the environment to utilise their existing abilities.

What we tackle

Refugee unemployment & poverty

Ethnic & socio-economic inequality

Language barriers & improving cultural cohesion

What we do



**We operate
in various
environments:**



Our physical café



Peabody Housing Association approached us at the beginning of the year to offer a café space at Parkside Community Centre in SE10 8FY. We were thrilled about the venue opportunity, which has a good kitchen and a spacious front of house – sitting 24 people.

The location is in a prime position within a new housing development with a potential customer base of 8000 people. We recruited a Kitchen Manager in June and started training a group of 7 female cooks from Syria and Iran from July to September. The training included: Level 2 Hygiene and Allergens Courses, Barista training, and hands-on practical training in working in a commercial kitchen and cooking menu dishes.

Our physical café opened to the public in September 2023, offering a wide menu of breakfast, lunch, and hot & cold drinks. The café was open from Thursdays to Saturdays weekly and our opening hours were 9:30-15:00.

Since opening our physical café, we have received affirmation that our café is providing quality food with entirely 5 star google reviews. The café closed on 30th April 2024 after a 8 months pilot.



OUR CUSTOMER REVIEWS

Sarah Rodrigues
Local Guide · 8 reviews

★★★★★ a month ago

Everytime I attend an event this cafe has run, it has always been such a lovely affair. The food is amazing, so simple and humble yet so full of flavour that really makes you feel like you're eating someone's original "grandma's" recipe. The live music on is so lovely and it's just an all round lovely place to be and spend time. Wish I lived closer so that I could make a weekly trip!

Food: 5 | Service: 5 | Atmosphere: 5

Sam Light
3 reviews

★★★★★ a month ago

Lunch | £1-10

This place is fantastic! The food is great and the staff are lovely. I hope they stay here for a long time

Food: 5 | Service: 5 | Atmosphere: 5

Hannah Smallwood
2 reviews

★★★★★ 3 months ago

Dine in | Lunch | £1-10

Lovely cafe serving delicious food from around the world, and selling home made jams. Even better knowing it all supports refugees from the area with training and onto full time employment!

Food: 5 | Service: 5 | Atmosphere: 5

Helen OK
3 reviews

★★★★★ 5 months ago

Dine in | £1-10

What a gorgeous cafe. We just had coffee and some fabulous pastries but will be back for the yummy looking middle eastern lunches very soon.

They also do external catering so why not book them for your party?

Run by refugees so you're also supporting a great cause.

Oh and try the little cheeses in a jar to take away 🍷

Food: 5 | Service: 5 | Atmosphere: 5

Recommendation for vegetarians: Highly recommend

Vegetarian offerings: Vegetarian menu or section

Kristyna Novakova
1 review

★★★★★ 3 months ago

Great falafels, hummus, and tea. The cafe is run by refugees and volunteers - delicious food for a good cause. Definitely recommend!

Food: 5 | Service: 5 | Atmosphere: 5

Jo Munro
28 reviews

★★★★★ a month ago

Dine in | Brunch | £10-20

Excellent cafe, very friendly and tasty food. A welcome addition to the area.

Food: 5 | Service: 5 | Atmosphere: 5

Isabella Andersen
3 reviews

★★★★★ a month ago

Dinner | £1-10

I have attended lots of the events they have here and have never been disappointed! Always incredible food that I haven't been able to find at such a reasonable price anywhere else, often live music and a lovely atmosphere.

And it's great to feel like your money is going to a good cause 🙌

Food: 5 | Service: 5 | Atmosphere: 5

Recommendation for vegetarians: Highly recommend

Albert Grain
22 reviews

★★★★★ 5 months ago

Dine in | Lunch | £1-10

Delicious food for a great cause - all staffed by refugees or volunteers. And super cheap! Really good falafels, hummus, and babaganoush. Very kid/baby friendly, too

Food: 5 | Service: 5 | Atmosphere: 5

Recommendation for vegetarians: Highly recommend

Vegetarian offerings: Large vegetarian selection, Clearly labeled vegetarian dishes

Vegetarian options: Pretty sure everything was vegetarian/vegan? Certainly most things were.

Kid-friendliness: Plenty of high chairs, all on one level and easy buggy access

Wheelchair accessibility: All level and wheelchair accessible

cangying x
2 reviews

★★★★★ a month ago

Dine in | Dinner | £10-20

Amazing café - not only was the food amazing but the atmosphere and the charity initiative it supports is absolutely wonderful and first of its kind. Will definitely be revisiting soon!

Food: 5 | Service: 5 | Atmosphere: 5

Francesca Scott-Sills
3 reviews

★★★★★ 3 months ago

Dine in | Dinner | £10-20

I came here for Plateful's Yalda celebration, the food was lovely and the music was beautiful :) all the volunteers were so nice and helpful too ❤️ will definitely come back and highly recommend to friends x

Food: 5 | Service: 5 | Atmosphere: 5

Recommendation for vegetarians: Highly recommend

Vegetarian offerings: Large vegetarian selection

Gabriel Barneche
4 reviews

★★★★★ 6 months ago

Recommend it! Delicious food and friendly staff/volunteers. Special thanks to lolanda who runs the charity. Will definitely be back soon!

Food: 5 | Service: 5 | Atmosphere: 5

Sophie Hanson
19 reviews

★★★★★ a month ago

Dine in | Dinner | £1-10

Had a brilliant evening here with live jazz, delicious wraps and it was BYOB which is always welcome. Lovely crowd, will be going back!

Food: 5 | Service: 5 | Atmosphere: 5

Frances Ray
3 reviews

★★★★★ 6 months ago

Dine in | Lunch | £1-10

Great cafe with delicious Middle Eastern food. Very reasonably priced. Lovely, friendly staff 😊

Food: 5 | Service: 5 | Atmosphere: 5

Recommendation for vegetarians: Somewhat recommend

Vegetarian offerings: Vegetarian menu or section

Sidney Panton
4 reviews

★★★★★ a month ago

Dine in | Dinner

The live jazz evening was a relaxed, fun atmosphere with great food. All of the people helping out were attentive and took enormous care in making sure everyone was having a good time.

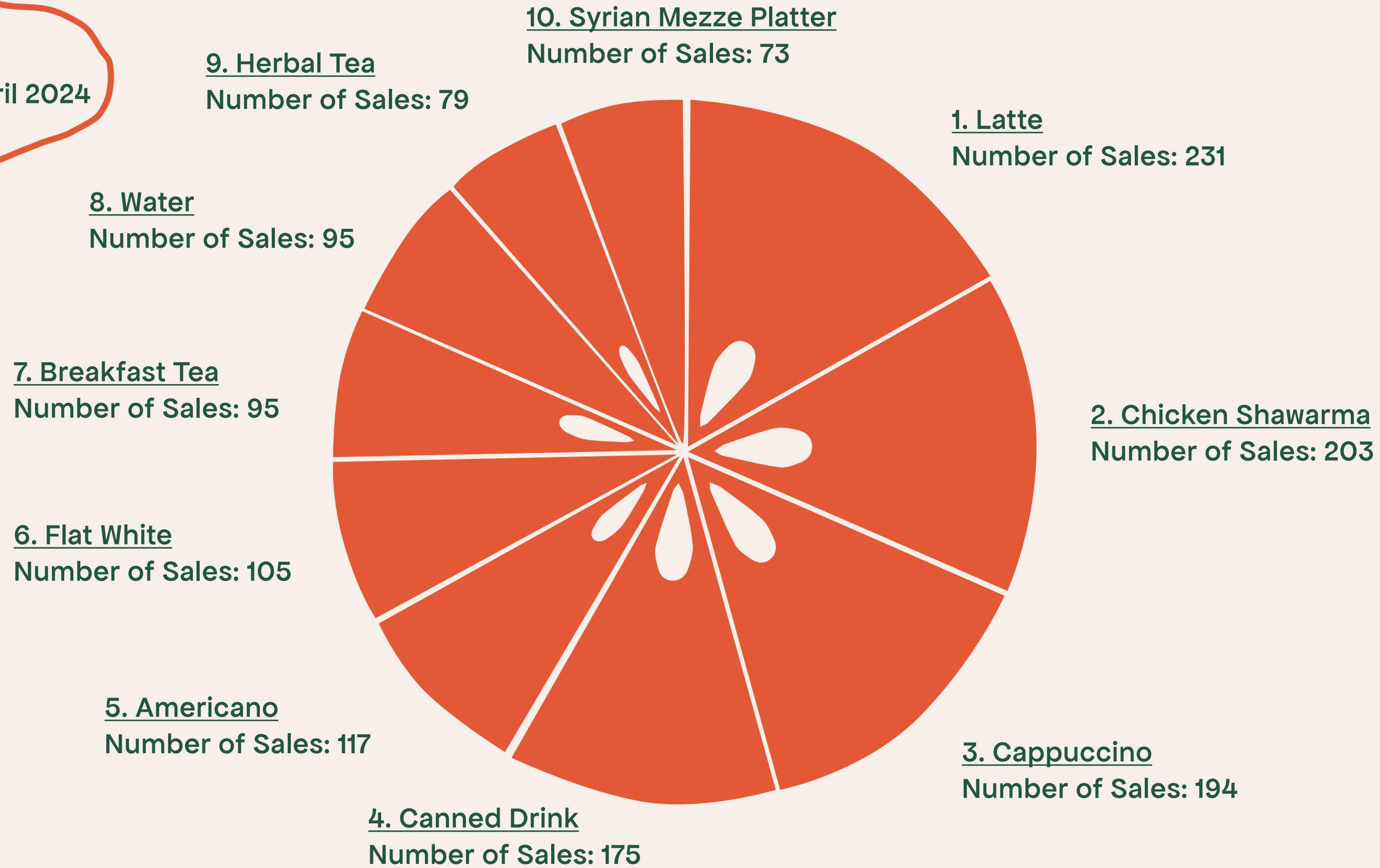
Food: 5 | Service: 5 | Atmosphere: 5

Recommendation for vegetarians: Highly recommend

Vegetarian offerings: Clearly labeled vegetarian dishes

Top 10 sold items

TOTAL SALES:
September 2023 – April 2024
2,856 = £11,363.23



Who we help

WHO WE HELP



Our inclusive café benefitted many people of various backgrounds. The chefs acquired valuable skills during their time at the café which they can carry for their future prospects.

As a refugee-led café, refugees are at the forefront of the operations for the café. The trustee board are all refugees, providing an integral role in sustaining our charity.

However, our café not only provides for refugees, but our volunteers are also from all scopes of life and whilst volunteering with us, they are encouraged to branch out, trying new things and learning useful new skills.

We are also determined to unite the local community through both our daytime café and our community dinners/events.

Online shop



Christmas Hamper 2023



Persian Carrot Jam



Seasonal Hamper



Valentine's Day Card



Valentine's Day Hamper

We sell products made by refugees in our online shop on platefulcafe.co.uk and we tailor our products to target our customer base during certain holidays. For example in December we sold Christmas gifts and in February Valentine Gifts.

Our products consists of preserved foods (e.g. chutneys), knitted items, and artwork - all handcrafted by refugees.

Markets



We regularly sell our refugee-produced goods at local markets. These markets not only help to sell our products, but they also promote our cafe and encourage new customers.

At these markets we sell the same products as in the online shop.



Catered Events

We regularly hosted catered events, provided at our physical cafe out of open hours (usually evenings). Our tickets are always affordable and popular with the local community.



EVENTS WE CATERED:

- February 2023
VALENTINE DINNER
AT GOLDSMITHS COLLEGE
- October 2023
IRANIAN THREE COURSE DINNER
- December 2023
YALDA NIGHT
- February 2024
FIRST PLATEFUL LATE
- March 2024
PLATEFUL LATE &
NOWROZ CELEBRATION
- April 2024
PLATEFUL LATE

THE CLASSES AND WORKSHOPS WE OFFERED:

- March 2024
SUSHI MAKING CLASS
- September 2023
MENDING WORKSHOP
- March 2024
EXPLORING NET ZERO
IN FOOD SME LONDON





CATERED EVENTS



We continue to offer catering for private events including birthdays, workshops, celebrations and a sample dishes for buffet style to sitting down menu are the above.

Please consider us for one of your events!



Our journey so far



OUR JOURNEY SO FAR

Since September 2023, we hosted around

20 events

in Parkside Cafe, and have sold about

500 tickets

and as a part of this have provided approximately

**160 hours of paid work
for our refugee chefs**

and the help of

20 volunteers

across the events.

OUR EVENTS GIVE VISITORS THE CHANCE...

...to learn about the customs and traditions
of a new community and culture.

...to meet like minded people
and new friends who are also committed
to supporting local refugees.

... to try really tasty food!

...to music and other artistic practices
from refugee creators or those
who strongly support refugee causes.

Introducing our chefs

Faten



FROM SYRIA
My favourite dish is Fatteh.

Yasmin



FROM SYRIA
My favourite dish is stuffed vine leaves.

Nahed



FROM SYRIA
My favourite dishes are Rice with peas and cashew nuts falafel.

Sara



FROM IRAN
I am eager to showcase Iranian cuisine.

Sana



FROM SYRIA
I like to cook rice with peas.

Asmahan



FROM SYRIA
I like to bake bread.

Hadis



FROM IRAN
I like to make Iranian foods, desserts and sweets in the cafe.

“I would say working at Plateful Café changed my mental health and gave me a better mindset. Plateful Café also gave me a chance how to sharpen my English speaking and be more active and interactive.”

Kevin (Front-of-House)

“Improving my English language, giving me a lot of experience about working in a café, making a new community, improving my communication, making money, giving me information to make my new life in the UK, and giving me self-confidence.”

Hadis (Chef)



What we offer our chefs:
Training
Employment
Supportive community

WHAT WE OFFER OUR CHEFS

We recruit out of work refugees who have a passion for home cooking and take them through a journey starting from a 8 weeks training programme which takes them from home cooking to confident cooks in our café.

The training programme includes:

→ UK work experience

→ Level 2 Food Safety and Hygiene qualification

→ English speaking practice

→ A foundation course in working in a community cafe

Trainees also receive 1:1 help towards your long-term employment goals including signposting to extra training, advice looking for jobs with a local employer and well being support.



They also have the option to get involved in events, monthly community dinners, private catering and making our products.

During this course, trainees learn the practical culinary skills to work in a busy cafe cooking professionally the lunch, dinner dishes, pastries and cakes, and the three courses meals served at monthly community dinners.

They also develop practical expertise and produce a range of food products to cater for a busy service in a cafe.

We started offering training at Parkside community centre in June 2023.

The classes offered an opportunity to the cooks to interact and build their language skills and confidence, feel valued and appreciated and earn an income.

Alongside the classes we offer our chefs holistic support signposting, helping them with everyday matters and a welcoming community.

Celebrating Achievements

CELEBRATING ACHIEVEMENTS

Whilst each chef faces individual challenges, the key benefits which are mentioned time and time again fall into four categories:

Wellbeing

Increased confidence and self esteem
Improved mental health
Reduced social isolation

Income

Increased employability

Integration

Wider social networks and connections

Language Skills

Improved Communication skills

Volunteering at Plateful



Volunteers are the lifeblood of Plateful Café and without them we would not exist as at present we have funds to pay Kitchen Manager and chefs only.

At any time we have at least 40 volunteers helping in different areas from graphic design, website, fundraising to admin, finance, events, press and more.

Our volunteers come from all walks of life – from professionals to students and asylum seekers on placement.

We also have a long-term partnership with Lewisham College who sends students from their catering department on work placement and also Goldsmiths Students Action for Refugees who continue to collaborate on projects such as stalls at the college and also fundraising events.

Asrar



“It has been an incredible fulfilling experience, especially knowing I am supporting a charity that empowers refugees helping them gain valuable skills for a brighter future.”

Asrar (Fundraising Volunteer)

“As a mum of two children it is important to help them understand and appreciate the world around them, showing them that it’s not all about work, but also enriching our passions.”

Shahnaz (Corporate Volunteer)

Shahnaz



“My decision to volunteer with Plateful stemmed from my awareness of the disadvantages and struggles of refugees and asylum-seekers in the UK. Plateful’s aim to reduce socio-economic and ethnic inequality resonates with me deeply.”

Orla (Admin Volunteer)



“I first started volunteering at Plateful Café all the way back to when the cafe started at the tail end of 2021. I had previously volunteered with Iolanda at the Refugee Café and when Iolanda mentioned that she wanted to start a new project, I jumped at the idea! Over the last few years, Iolanda has been such an inspiring person to work alongside. It is her passion and the passion shared by so many other volunteers at Plateful Café to make London and our local communities a more friendly place for refugees that motivates me to keep volunteering at Plateful Café. My experience at this charity has meant that I’ve met so many wonderful people from a whole host of different backgrounds and that’s something I’m really thankful – long may Plateful continue!”

Tejan (Events and Social Media Volunteer)



“I love working with Plateful, working alongside the chefs and volunteers who have faced unimaginable challenges to reach and settle in the UK.”

Anne (Driver)

“I am passionate about Plateful Café vision of providing social inclusion, employment opportunities and education to refugees and asylum-seekers through the universal language of food.”

Shannon (Fundraising Volunteer)



Life after Plateful

We want Plateful to be a first step in a journey to fuller integration not the end destination.

Nahed, one of our chefs has secured employment in a local nursery but continues to work occasionally with us when we cater for events.

Hadis has finished a barista course with the Red Cross and is now looking for further work as a barista as well as started a band with fellow country people performing Iranian songs.

Yasmin now teaches Arabic at a local mosque and has also just passed her practical driving test.

Sana, Asmahan and Faten continue to attend English language classes at Lewisham College and have significantly improved their spoken English since working at the café.

Our plans for 2024

In May 2024 we moved to Star of Greenwich pub and continued to offer pop ups there as well as three course dinners featuring new cuisines.

We are now waiting on the outcome of a tender to buy the building and refurbish it. If successful we will also fit a new kitchen as at present there is not one and we need to cook elsewhere and bring the food in.

We will continue in our efforts to find a permanent place to call home and without doubt we will draw inspiration from the many supporters and followers we continue to support our work.



Our partners

Star of Greenwich pub have supported us from the start and since October 2023 we have been running pop ups.

The Migration museum and Hill Trader cafe continue to sell our jams and condiments and we would like to have new shops selling our products and promote our charity.

Could you be the next one?



“We work with the Plateful Café as they provide excellent quality food, whilst also having a huge impact on our local community. Our customers love that they can taste different types of food in our community pub - much of which they’d never normally try. The fact that it is all served professionally and with a smile, whilst also doing good is even better. We firmly believe that food can be a way to build bridges between people and that’s why we continue to partner with the Plateful Café.”

James Gasdby (Star of Greenwich)

“Plateful Café have been brilliant partners for the Migration Museum and our Migrant Makers Market. As partner organisations, our values are similar and so we are very happy to support the Plateful Café. Supporting, working with and telling the stories of refugees is a key part of the museum’s work, and so collaborating with the Plateful Café on events and products to sell in the museum shop is of great importance to us.”

Katy Clinch (Retail Manager, Migration Museum)

“Plateful Café has given some of our refugee students a chance to experience working in a catering environment. It has also provided staff at the college with opportunities to buy products made by local refugees or to have catering provided for family events.”

Pascale Herreman (Esol Lecturer, Lewisham College)

Our funders

Our work would not have been possible without grants from the trusts and foundations below.

We are all very grateful for believing in us in our first year of operation!





plateful
cafe

platefulcafe.co.uk

Instagram @platefulcafe Facebook Plateful Cafe X PlatefulCafe
#platefulcafe

Contact iolanda@platefulcafe.co.uk
Charity number 1202710

**STATEMENT OF FINANCIAL ACTIVITIES (INCLUDING THE INCOME AND EXPENDITURE ACCOUNT)
FOR THE 15-MONTH PERIOD ENDING 30 APRIL 2024**

	Note	Unrestricted £	Restricted £	Total £
Income and Endowments:				
Donations		2,670	34,877	37,547
Charitable Activities		31,436	-	31,436
Total Income		34,106	34,877	68,983
Expenditure:				
Charitable Activities	2	16,437	28,937	45,374
Total Expenditure		16,437	28,937	45,374
Net Income/Expenditure		17,669	5,940	23,609
Total Funds brought forward		-	-	-
Total Funds carried forward		17,669	5,940	23,609

BALANCE SHEET AS AT 30th April 2024

	Note	£	2024 £
FIXED ASSETS	4		108
CURRENT ASSETS			
<u>Cash at Bank & In Hand</u>		23,501	
		23,501	
NET CURRENT ASSETS			23,501
TOTAL ASSETS LESS CURRENT LIABILITIES			<u>23,609</u>
FUNDS			
Restricted Funds	5 & 6		4,940
Unrestricted Funds	5 & 6		<u>17,669</u>
			23,609
TOTAL FUNDS			<u>23,609</u>

The financial statements were approved and authorised for issue by the Trustees on 10 October 2024, and were signed below on their behalf by:



Enxhi Lami

Notes to the financial statements for the 15-month period ending on 30 April 2024

1 Accounting policies: The principal accounting policies adopted, judgements and key sources of estimation uncertainty in the preparation of the financial statements are as follows:

- a. Basis of preparation: The financial statements have been prepared in accordance with Accounting and Reporting by Charities: Statement of Recommended Practice applicable to charities preparing their accounts in accordance with the Financial Reporting Standard applicable in the UK and Republic of Ireland (FRS 102) (Second Edition, effective 1 January 2019) – (Charities SORP (FRS102), the Financial Reporting Standard applicable in the UK and Republic of Ireland (FRS 102) and the Companies Act 2006.

The Charity meets the definition of a public benefit entity under FRS 102. Assets and liabilities are initially recognised at historical cost or transaction value unless otherwise stated in the relevant accounting policy note.

Preparation of the accounts as a going concern: Having reviewed the funding facilities available to the charity together with the expected future cash flows, the trustees have a reasonable expectation that charity has adequate resources to continue its activities for the foreseeable future and consider that there were no material uncertainties over the charity's financial viability. Accordingly, they also continue to adopt the going concern basis in preparing the financial statements.

- b. Income: All income is included in the Statement of Financial Activities (SoFA) when the charity is legally entitled to the income after any performance conditions have been met, the amount can be measured reliably, and it is probable that the income will be received. The SORP requirements are followed in relation to positions where there is a time restriction.

For donations to be recognised the charity will have been notified of the amounts and the settlement date in writing. If there are conditions attached to the donation and this requires a level of performance before entitlement can be obtained, then income is deferred until those conditions are fully met or the fulfilment of those conditions is within the control of the charity, and it is probable that they will be fulfilled. Gift Aid receivable on donations is recognised as unrestricted income.

No amount is included in the financial statements for general volunteer time in line with the SORP (FRS 102).

- c. Donated services and facilities: Donated facilities and donated professional services are recognised in income at their fair value when their economic benefit is probable, it can be measured reliably, and the charity has control over the item. Fair value is determined based on the value of the gift to the charity. For example, the amount the charity would be willing to pay in the open market for such facilities and services. A corresponding amount is recognised in expenditure.

Gifts in kind donated for resale are included at fair value, being the expected proceeds from sale less the expected costs of sale. Where estimating the fair value is practicable upon receipt it is recognised in stock and 'Income from other trading activities'. Upon sale, the value of the stock is charged against 'Income from other trading activities' and the proceeds are recognised as 'Income from other trading activities'. Where it is impracticable to fair value the items due to the volume of low value items they are not recognised in the financial statements until they are sold. This income is recognised within 'Income from other trading activities'.

- d. Fund accounting: Unrestricted funds are available for use at the discretion of the trustees in furtherance of the general objectives of the charity and which have not been designated for other purposes.

Designated funds comprise unrestricted funds that have been set aside by the trustees for

Notes to the financial statements for the 15-month period ending on 30 April 2024

particular purposes. The aim and use of each designated fund is set out in the notes to the financial statements.

Restricted funds are funds which are to be used in accordance with specific restrictions imposed by donors or which have been raised by the charity for particular purposes. The cost of raising and administering such funds are charged against the specific fund. The aim and use of each restricted fund is set out in the notes to the financial statements.

- e. Expenditure and Irrecoverable VAT: All expenditure is accounted for on an accruals basis and has been classified under headings that aggregate all costs related to the category. Expenditure is recognised where there is a legal or constructive obligation to make payments to third parties, it is probable that the settlement will be required, and the amount of the obligation can be measured reliably. It is categorised under the following headings:

Costs of charitable activities include costs directly associated with delivering the charity's objectives and an apportionment of overhead, support, and governance costs.

Irrecoverable VAT is charged as an expense against the activity for which expenditure arose.

- f. Allocation of support costs: Support costs are those functions that assist the work of the charity but do not directly undertake charitable activities. Support costs include finance, H.R., I.T, general office and premises and governance costs which support the charitable activities of the charity.
- g. Critical accounting judgement and key sources of estimation uncertainty: In the application of the accounting policies, Trustees are required to make judgements, estimates and assumptions about the carrying value of assets and liabilities that are not readily apparent from other sources. The estimates and underlying assumptions are based on historical experience and other factors that are considered to be relevant. Actual results may differ from these estimates.

The estimates and underlying assumptions are reviewed on an ongoing basis. Revisions to accounting estimates are recognised in the period in which the estimate is revised if the revision affects only that period, or in the period of the revision and future periods if the revision affected current and future periods. There are no estimates or judgements which the Trustees consider are subject to significant uncertainty.

- h. Operating leases: Operating lease rentals are charged to the Statement of Financial Activities over the period of the lease.
- i. Tangible fixed assets: Tangible fixed assets are stated at cost (or deemed cost) or valuation less accumulated depreciation and accumulated impairment losses. Cost includes costs directly attributable to making the asset capable of operating as intended.

Depreciation is provided on all tangible fixed assets, at rates calculated to write off the cost, less estimated residual value, of each asset on a systematic basis over its expected useful life as follows: Kitchen equipment.

- j. Debtors: Trade debtors and other debtors are recognised at the settlement amount due. Prepayments are valued at the amount prepaid net of any trade discounts due. Accrued income is valued at the amount due.
- k. Cash at bank and in hand: Cash at bank and in hand includes cash and short term highly liquid investments with a short maturity date of three months or less.

Notes to the financial statements for the 15-month period ending on 30 April 2024

2 CHARITABLE ACTIVITIES

	Staff Cost £	Direct £	Support £	2024 Total £
Charitable activities	12,522	30,834	2,018	45,374
	<u>12,552</u>	<u>30,834</u>	<u>2,018</u>	<u>45,374</u>

Included under Support costs are governance costs of £300.

3 STAFF COSTS AND KEY PERSONNEL

No remuneration was paid to trustees during the year. Expenses reimbursed to them in their capacity as trustees amounted to £Nil.

The staff costs of remaining staff were:

	2024 £
Wages and Salaries	12,522
	<u>12,522</u>

During the year no staff were paid more than £60,000.

The charity employed 1 staff with a total full time equivalent of 0.5.

4 FIXED ASSETS

	2024 Kitchen Equipment £
Assets at cost	
Balance at 1 December	-
Additions	<u>155</u>
Balance at 30 April	<u>155</u>
Accumulated depreciation	
Balance at 1 December	-
Depreciation for the year	<u>47</u>
Balance at 30 April	<u>47</u>
Net book value	<u>108</u>

Notes to the financial statements for the 15-month period ending on 30 April 2024 (continued)

5 FUNDS

	Balance B/F £	Incoming Resources £	Expenditure £	Balance C/F £
Restricted funds				
Training & Development Grant	-	15,777	12,415	3,362
Founder Grant	-	8,100	4,000	4,100
Manager Salary Grant	-	10,000	12,522	-2,522
	-	<u>33,877</u>	<u>28,937</u>	<u>4,940</u>
General reserves	-	<u>34,106</u>	<u>16,437</u>	<u>17,669</u>
Total reserves	-	<u>67,983</u>	<u>45,374</u>	<u>22,609</u>

During the year the charity received funding from the Lottery fund for its shop (2020: £nil).

6 ANALYSIS OF NET ASSETS BETWEEN FUNDS

	Fixed Assets £	Net Current Assets £	Total £
Restricted funds	-	4,940	4,940
Unrestricted funds	<u>108</u>	<u>17,561</u>	<u>17,669</u>
	<u>108</u>	<u>22,501</u>	<u>22,609</u>

7 TAXATION

The company is a registered charity and no provision is considered necessary for taxation.



Section A

Independent Examiner's Report

Report to the trustees

Plateful Cafe

On accounts for the year
ended

30 April 2024

Charity no
(if any)

1202710

Set out on pages

Use this area to provide the page numbers of additional sheets.

I report to the trustees on my examination of the accounts of the above charity ("the Trust") for the year ended 30 April 2024.

Responsibilities and
basis of report

As the charity's trustees, you are responsible for the preparation of the accounts in accordance with the requirements of the Charities Act 2011 ("the Act").

I report in respect of my examination of the Trust's accounts carried out under section 145 of the 2011 Act and in carrying out my examination, I have followed all the applicable Directions given by the Charity Commission under section 145(5)(b) of the Act.

Independent
examiner's statement

I have completed my examination. I confirm that no material matters have come to my attention in connection with the examination which gives me cause to believe that in, any material respect:

- the accounting records were not kept in accordance with section 130 of the Charities Act; or
- the accounts did not accord with the accounting records; or
- the accounts did not comply with the applicable requirements concerning the form and content of accounts set out in the Charities (Accounts and Reports) Regulations 2008 other than any requirement that the accounts give a 'true and fair' view which is not a matter considered as part of an independent examination.

I have no concerns and have come across no other matters in connection with the examination to which attention should be drawn in this report in order to enable a proper understanding of the accounts to be reached.

Signed:

Date:

13 October 2024

Name:

John Axon

Relevant professional
qualification(s) or body
(if any):

CIMA

Address:

85 Montbelle Road, London, SE9 3NY