

Charity registration number 1202607 (England and Wales)

**LEWISHAM DONATION HUB**  
**ANNUAL REPORT AND UNAUDITED FINANCIAL STATEMENTS**  
**FOR THE YEAR ENDED 31 MARCH 2025**

# LEWISHAM DONATION HUB

## LEGAL AND ADMINISTRATIVE INFORMATION

---

|                                    |                                 |                             |
|------------------------------------|---------------------------------|-----------------------------|
| Trustees                           | Y Dearden                       |                             |
|                                    | C Emanuel                       |                             |
|                                    | M Szlenkier                     |                             |
|                                    | S Williams                      |                             |
|                                    | C McCarthy                      | (Appointed 4 December 2024) |
|                                    | E Khramkov                      | (Appointed 8 July 2024)     |
| Charity number (England and Wales) | 1202607                         |                             |
| Principal address                  | Unit D                          |                             |
|                                    | Place Ladywell                  |                             |
|                                    | 261 Lewisham High Street        |                             |
|                                    | Lewisham                        |                             |
|                                    | SE13 6AY                        |                             |
| Independent examiner               | Frances Wilde FCCA DChA         |                             |
|                                    | Warner Wilde Limited            |                             |
|                                    | Chartered Certified Accountants |                             |
|                                    | 4 Marigold Drive                |                             |
|                                    | Bisley                          |                             |
|                                    | Surrey                          |                             |
|                                    | GU24 9SF                        |                             |

---

# LEWISHAM DONATION HUB

## CONTENTS

---

|                                   | <b>Page</b> |
|-----------------------------------|-------------|
| Trustees' report                  | 1 - 15      |
| Independent examiner's report     | 16          |
| Statement of financial activities | 17          |
| Balance sheet                     | 18          |
| Statement of cash flows           | 19          |
| Notes to the financial statements | 20 - 29     |

---

## **Report of the Trustees**

### **For the year ended 31<sup>st</sup> March 2025**

The financial statements have been prepared in accordance with the accounting policies set out in note to the financial statements and comply with the charity's governing document, the Charities Act 2011 and "Accounting and Reporting by Charities: Statement of Recommended Practice applicable to charities preparing their accounts in accordance with the Financial Reporting Standard applicable in the UK and Republic of Ireland (FRS 102)" (effective 1 January 2019).

### **Welcome from our Chair**

It is my pleasure to introduce our second Annual Report. It sets out Lewisham Donation Hub's key activities, financial performance, and impact between 1<sup>st</sup> April 2024 and 31<sup>st</sup> March 2025.

Reflecting on our second year as a registered charity, I'm truly grateful for the unwavering support of our community, which has enabled us to positively impact the lives of some of the most vulnerable people in south-east London.

On behalf of the trustees, I would like to express my sincere thanks to our staff, volunteers, partners and community of supporters – your dedication, hard work, generosity of spirit and donations have powered our work. I would also like to acknowledge the ongoing support we have received from Lewisham Council.

Building on our first year as a charity, this past 12 months has seen Lewisham Donation Hub expand its reach and strengthen its partnerships. Despite the challenges we faced in securing our premises longer term, we continued to make significant progress in meeting our charitable purposes. The Hub recorded just over 12,000 support instances (visits) during this 12-month period and diverted 75,000kg of potential waste from landfill. This is testament to the resilience and commitment of everyone involved, including our pool of volunteers who have given the Hub approximately 25,000 hours of their time.

We have been successful this year in achieving 3-year grant funding for our Food Support and General Support Co-ordinator posts. Securing this long-term funding brings greater stability for our staff and strengthens our ability to provide a better and more consistent service to those who come to us for support.

I would also like to recognise the work of my fellow trustees - Lewisham Donation Hub's mission has guided every decision and action that we have taken throughout the year, and I am very grateful for their support.

In terms of monetary income, we received £129,298 this financial year. To better demonstrate the scale of our charity and given we have moved to accounting on an accruals basis this year, for the first time we have also valued the material donations and services received, taking our total income to £569,800.

We continue to remain acutely aware of the global climate crisis, the cost-of-living crisis and the conflicts around the world which continue to impact so many individuals and families. And, as we move into our third year as a charity, we renew our commitment to being a beacon of hope and practical support for the people living in south-east London.

We believe that with a core team of employed staff and a dedicated pool of volunteers, we can maintain the passion and community involvement that has continued to define and power our charity.

**Yvette Dearden**

***Chair of the Board of Trustees***

## About Us

### Vision and charitable objectives

*Our vision is of a society where nothing that can be re-used goes to waste; where people do not have to rely on donations to access food and other essential items; where people who find themselves facing hardship receive the support they need; and where everyone can make a home.*

Lewisham Donation Hub was founded in June 2020 and established as a Charitable Incorporated Organisation on 3 April 2023.

The objects in the constitution of the CIO are:

1. The prevention or relief of poverty primarily but not exclusively in Southeast London by providing grants, items and services to individuals in need and/or charities or other organisations working to prevent or relieve poverty.
2. To promote for the public benefit primarily but not exclusively in Southeast London the protection and preservation of the environment by working to minimise waste and achieve reductions in greenhouse gas emissions and raw material use through the provision of community resource sharing, re-use and repair initiatives.

### How we work

The first of our charitable objectives is carried out by the provision of two core services: food support, and a 'general support' service that includes all non-food items. These are delivered, in person, three days per week, on a drop-in basis:

Through these services, LDH:

- Provides food and general support in person at the Hub, free of charge, with no referral process.
- Provides a range of services in one place, reducing the need for visitors to travel to multiple sites and to different organisations. By providing food and other items in person, it enables us to support people in crisis who are struggling to access more complex assessment-based services, enabling people to move forward in their lives.
- Provides an array of essential items including household items (homeware, kitchenware), safety tested household electricals, communication devices (laptops, desktops, tablets and phones), clothing, footwear, sanitary products, toiletries, equipment for the homeless, white goods (predominantly fridge/freezers and washing machines) and items for new parents (including prams).
- Provides new homes for preloved items that enrich people's lives, for example bicycles and scooters, musical instruments, art supplies, children's toys and games, books, and decorative items for the home.
- Uses community monetary donations to purchase essential electricals, food and toiletries for which demand exceeds supply. Essential electricals include kettles, irons, toasters, hair clippers, microwaves and slow cookers.

The second objective is carried out by acting as a one-stop reuse organisation. The activities of LDH are focussed on promoting resource efficiency, underpinned by the waste hierarchy and moving towards a circular economy.

LDH does this by:

- Providing an outlet for items from businesses and organisations that are destined for waste disposal, including landfill.
- Offering the community a local alternative to landfill disposal by encouraging re-use.
- Repairing, refurbishing and upgrading donated items for reuse, including bicycles, mobile phones, laptops, and baby buggies.
- Reducing food, household and commercial waste.
- Educating and changing the behaviour of organisations and the community.

The trustees have taken due regard of the guidance issued by the Charity Commission and confirm the activities of Lewisham Donation Hub are undertaken for the public benefit.

### **Strategies**

To meet our objectives and maximise the impact of our work in 2024/2025, we focused on the following strategic areas.

1. **Partnerships.** Through deepening and strengthening relationships with other organisations within and outside the nonprofit sector, we aimed to build in predictability of the volume and type of donations we expect to receive. We were motivated by the huge potential value that partnerships bring in minimising commercial waste, sourcing high value donations, and as a way to share knowledge and generate new ideas.
2. **Engaging volunteers.** Volunteers are the lifeblood of Lewisham Donation Hub. Our service requires hundreds of hours of volunteer time. Through empowering volunteers to continue taking on responsibilities, we hoped to find new ways to drive positive change and ultimately deliver a better service for our visitors. Lewisham Donation Hub has a diverse volunteering team, with approximately 75% of volunteers in the asylum process. Engagement of volunteers therefore needs to be sensitive and relevant to their experiences.

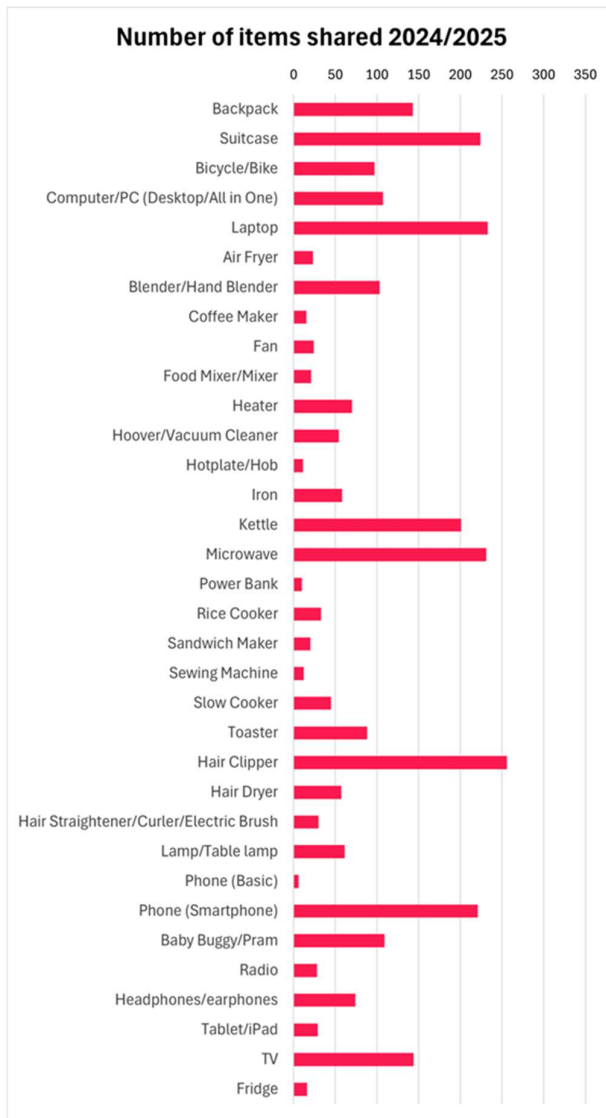
## **Impact & Achievements**

Between 1<sup>st</sup> April 2024 and 31<sup>st</sup> March 2025, we recorded just over 12,000 support instances (visits). We estimate that we also supported over 1,500 visitors for whom we could not record visits.

Across the year, Food support saw ~2100 individuals and therefore provided food for approximately 6,300 people when accounting for household size (based on mean average family size of 3). We shared approximately 150,000 portions of food provided by The Felix Project and 140,000kg of excess bread and pastries from Gail's Bakery, in addition to community donations of non-perishable foods. Sourced through InKind Direct and supplemented with community donations, we shared toiletries (including dental hygiene, period and personal hygiene products) 7,413 times, and nappies 2,536 times. In total, 167,000 carrier bags-worth of food and toiletries went to homes in Southeast London.

General support saw ~1700 individuals, meaning that it provided a huge variety of essential items to over 5000 people. Many of these visitors were in temporary accommodation and faced with an empty flat and little means to equip it with the basics, let alone make it feel like home. We shared approximately 3000 essential items along with over 60,000kg of clothing, shoes, toys and kitchenware.





This plot shows (conservative estimates of) the number of each item shared over the last 12 months. Of these, 590 were digital devices to allow individuals and families to get online, and able to access services and educational resources that would otherwise have been out of reach.

*"I sincerely felt loved and cared for at the time I received the laptop alongside other home appliances. The laptop have been so helpful to my family and that can never be over emphasised. I want to seize this opportunity to say a very big thank you to the team @Lewisham donations hub. We are really grateful for the support." Visitor J*

*"Receiving the laptop has made a real difference to me. It has enabled me to studies and my children as well, which would have been very difficult otherwise. I truly appreciate the kindness and dedication of your team. Charities like yours play such an important role in the community— offering practical help and genuine care when people need it most. It's reassuring to know there are people who are willing to give their time and resources to help others." Visitor F*

*"Everyone was very kind to us. We were asked to return a few hours later, and when we came back, we were received with respect and warmth, and helped with several things we needed. Among them, we received an Apple laptop in excellent condition, something we really didn't expect. It was a big surprise and a deeply emotional moment; my wife couldn't hold back her tears. We knew that, in our current situation, having access to such a device would be almost impossible, and that's why we value it so much.*

*This laptop has meant a lot to our family. It has allowed us to communicate, reply to emails, complete important forms, and look for essential information related to our process. But above all, it has been a great help for our daughter, she uses it for her schoolwork, to connect to her school platform, and also in her free time to draw and create fashion designs, something she is truly passionate about.... In addition to the laptop, you also gave us clothes, some household items, and food. We went there looking for a bit of help and left with so much more, not only material things, but also a great dose of kindness, hope, and humanity. It was a very special day, not so much because of what we received, but because of the people we met and the noble work you do." Visitor R*

We also had success in our two strategic areas.

## **1. Partnerships**

We successfully strengthened our existing partnerships. Most prominently, LDH was asked to attend several events run by The Felix Project, including when His Majesty The King opened its new facility in Deptford and a delivery round with David Morrissey volunteering. The Felix Project also offered LDH the loan of an electric van in March 2025 and we are looking forward to the significant impact that will have on our service.

This was also the case for our partnership with InKind Direct. They visited our site and invited LDH as a partner charity to the Royal Foundation's 'Together at Christmas', in celebration of volunteering, at Westminster Abbey. Our partnership with Knit for Peace, now in its fifth year, continued to flourish and led to a visit where we had the chance to show them the happiness that their knitted creations bring to so many!

Growing relationships led to several important visits and talks throughout the year. For example, members of the Mayor's Office, the GLA and civil servants from the Cabinet Office interested in the role community hubs play in building resilience.

Our CEO sat on the panel at Goldsmith's University's roundtable discussion on the Rwanda policy and its implications and gave the 'Tim Yeager Memorial Community Lecture' (*After the Riots: Community responses and how hardship harms us all*).

As well as further computer collections from our existing partnership with UCL and Gravity 9 Solutions, we forged a new relationship with a software company in central London (EPAM), who have begun to donate batches of high-end laptops that no longer meet their requirements. We could not have hoped for higher quality donations to share with our visitors. And finally, we also connected with another new partner, Our Technician – driven by our shared concern for the impact of digital deprivation as well as the need to conserve precious resources, they are now also redirecting surplus equipment to LDH.

A fantastic partnership with the Foundation for International Education led to internships with two students from US Universities keen to learn more about grassroots organisations, who each joined us for 10 weeks starting in April and November.

In August we were invited to represent LDH at the Bromley parkrun 15th anniversary. What began as a suggested collection of trainers, expanded into an impressive haul of winter coats, food, toiletries and equipment for the homeless. It was a great opportunity to raise awareness in the nearby borough and was followed up with a similar event at Hillyfields parkrun.

Following a nomination by The Homestead Cafe in Beckenham Place Park, we have been accepted as one of the carefully vetted organisations that has proven alignment with 1% for the Planet's Impact Areas. By becoming an Environmental Partner, we hope to gain access to potential funding from 1% for the Planet's network of businesses committed to environmental giving.

And finally, we have engaged with many local schools – giving talks, offering opportunities for volunteering and receiving donations.

## **2. Engaging volunteers**

We continued to have success in recruiting new volunteers and retaining existing ones. From our pool of 160 volunteers, we have between 70 and 90 volunteers each week who together give approximately 500 hours.

One way we enhanced the engagement of our volunteers was through establishing a Volunteer Advisory Panel (VAP). VAP was established in July 2024 and was set up to represent the large pool of volunteers. It consists of members of the volunteer community who have been nominated to the Panel by their peers and at least half of the group are experts through experience.

By working with the Volunteer Manager, this resulted in producing induction videos in 3 languages, running a number of workshops including one on values, running training events and developing a Volunteer Induction Pack.

Another area of success was our Corporate Volunteering programme. Corporate volunteers have enjoyed taking a day away from their offices, and in return, we have benefitted from their hard work and financial donations. We encourage companies to donate a minimum of £50 per person per day.

Since May 2024, we have organised 18 days of group volunteering and received £3,075.00 in donations from various companies. Several companies have returned multiple times, strengthening their partnerships with us. Additionally, some are collecting material donations, including previously used computers and phones. In the future, our ambition is to explore other ways to increase their support for Lewisham Donation Hub, such as becoming their charity of the year.

Quotes from some of our corporate volunteers:

*“Thank you to the Lewisham Donation Hub for allowing us to spend time with you and see your absolutely incredible work supporting local people. In just one day we saw the variety of requests that you receive; for a warm jacket or a pair of gloves; for a saucepan or a cake tin; for a mobile phone or a hairdryer; an umbrella, toiletries, food... all the things that we are fortunate enough to take for granted. We saw the respect with which you treated every individual who came to your door and the quiet gratitude with which these items were received. We heard the many languages spoken that were needed to understand each request and the laughter as you tried your best to communicate when there was no common language. It was a privilege for us to contribute in even the smallest of ways to your work.”* Team from Digital.ai

*“It’s a great way for corporate teams to spend some time with each other in a non-office environment, working together differently and discovering more about each other. I’d really recommend volunteering at the Lewisham hub to others. We had an extraordinary day doing what we could to support this tremendously important local hub in Lewisham which provides some of the most vulnerable people in the community with free food, clothing, electrical goods, shoes, and pretty well anything you might need. It was a huge privilege to help in a variety of ways including putting up shelves, clearing space for new items, and sorting donations. We were given a great welcome and were looked after fantastically – it was a real pleasure to meet the amazing people who run this hub.”* Team from Diageo

*“Hays started a volunteering initiative every year during May, where teams and individuals can take a day out from the office to volunteer. We found out about the opportunity at the Hub through Neighbourly. It’s been a really enlightening experience. The Hub supports people with all sorts of basic needs that most people take for granted, such as cutlery and plates to eat from. I served a couple of families and realised that trying to support a family without the basics must be so difficult. We had a few visitors today that had been moved into empty properties so they needed everything, but had no money to make a stable home for themselves and their families. My eyes were open to the reality of other people’s lives.”* Team from Hays

Finally, we further broadened our offer of volunteering opportunities to include hosting a number of Duke of Edinburgh students. Several local schools also brought sixth form students for one-off or regular enrichment activities.

## Treasurer's Report

Over the past year, we have continued to steward our resources with care and integrity, ensuring that every pound spent contributes meaningfully to our mission. Despite increased demand for services, and challenges of securing grant funding for core costs, we have remained financially resilient.

This report includes a summary of income and expenditure, key financial highlights, and an overview of reserves and risk management. I hope it offers reassurance to our supporters, beneficiaries, and stakeholders that we are managing our finances responsibly and sustainably.

### Income

Our total reported income for 2024/25 was £569,800. This consisted of:

| Total Reported Income 2024/25 (£)    |         |         |
|--------------------------------------|---------|---------|
| Restricted Grant Funding             | 38,949  |         |
| Unrestricted Grant Funding           | 10,000  |         |
| Donations                            | 71,411  |         |
| Gift Aid                             | 8,938   |         |
| Total Income                         |         | 129,298 |
|                                      |         |         |
| Donated Food (via The Felix Project) | 295,518 |         |
| Donated goods                        | 103,304 |         |
| Use of premises                      | 30,000  |         |
| Pro Bono CEO work                    | 11,680  |         |
| Total in kind                        |         | 440,502 |
| Total Reported Income                |         | 569,800 |

Detailed breakdown of income sources:

|   | 2024/25 (£) | 2023/24 (£) |
|---|-------------|-------------|
| Total grants received   | 48,949      | 99,525      |
| Online giving*  | 63,612      | 39,504      |
| Gift aid  | 8,938       | 3,273       |
| Corporate donations   | 2,800       | 1,550       |
| Payroll giving and matched funding                            | 3,574       | 1,745       |
| Other (includes third party fundraising and Lewisham Lottery) | 1,425       | -           |
|   | 129,298     | 164,458     |

\*includes Just Giving, Paypal, CAF, Benevity, Easy Fundraising

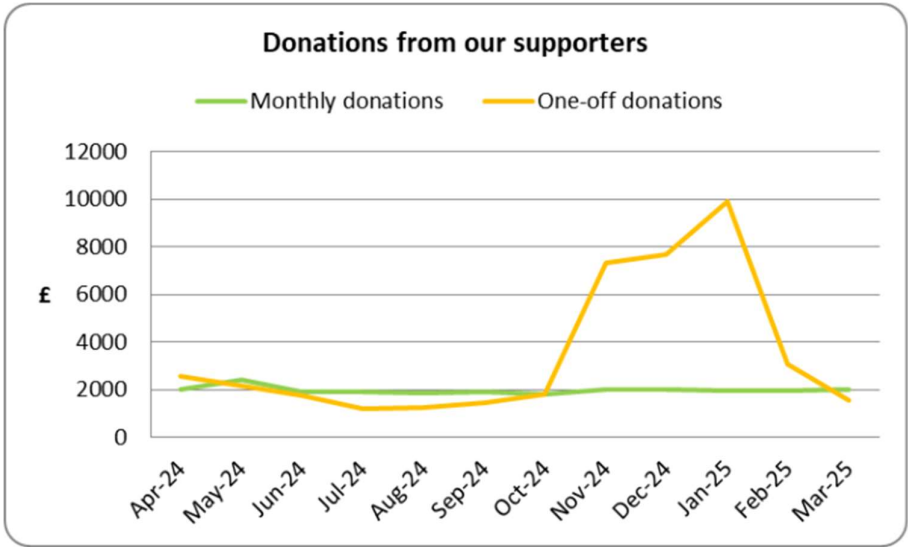
We are very grateful to everyone who has supported us this year. We received grant funding to cover employment costs for two part-time roles (Food Support and General Support Co-ordinators) from the JUSACA Charitable Trust and The Albert Hunt Trust. This has provided stability and continuity in the services we provide.

Grants to support our service were received from Lewisham Council Food Justice Grant, Co-operative Local Community Fund, Point North, Stef & Philips Foundation, Sainsburys, Lewisham Council Repair, Reuse, Recycle and Borough of Sanctuary Grants. These were used to purchase basic food and toiletry supplies when we were unable to meet demand, over 350 household electrical appliances (such as microwaves, kettles and blenders) and spare parts to support our IT repair/upgrade programme.

The Jack Petchey Foundation grant (received for a second year) enabled us to purchase back-to-school supplies, stationery, geometry sets and scientific calculators.

We were also very grateful for the unrestricted grants from FB Coales Family Trust and The Leathersellers’ Foundation, which helped to cover our overheads.

We rely heavily on financial donations from the local community, receiving on average £1,970 per month from regular monthly donors with a boost in one-off donations, for example during our Winter Appeal which included generous donations from Helikon Shipping and Christ Church Beckenham.



Our fundraising group ended the year working on plans for our first major fundraising event in May 2025 and improving links with corporate sponsors.

## Expenditure

Our expenditure for 2024/25 consisted of

- £22,810 on our Food Support service; we spend approximately £400 a week to ensure we have a constant supply of basic food items. We also purchase toiletries, nappies and period products (at substantially discounted prices via InKind Direct).
- £15,219 on our General Support service; using grant funding to purchase essential electricals, cover cost of upgrading computers and laptops, as well as supplementing our supply of shoes (at heavily discounted prices).
- £119,182 on employment costs.
- £5,581 on administration and other overheads.
- £10,815 on volunteer expenses (our service is made possible by the dedication of our volunteers many of whom are seeking asylum, and we therefore refund travel costs for anyone in need, who volunteers for a minimum of 4 hours per day).

## Reserves Policy

Lewisham Donation Hub operates a risk-based reserves policy to protect the operational requirements of the charity from short-term disruption to ensure that the Hub can continue to provide food and general support to service users. If the Hub were suddenly unable to operate, there would be serious problems for the vulnerable and disadvantaged people who rely on the Hub.

The Hub aims to have reserves to bridge any possible delays in receiving promised grants or managing payment in arrears contracts. This has been defined as a minimum of three months budgeted trading activity. At March 31, 2025, actual unrestricted and free reserves were £41,807.

## Risk Management

| Risk Category                     | Description   | Impact | Likelihood | Mitigation Strategies  |
|-----------------------------------|---|--------|------------|--|
| <b>Financial Risks</b>            |   |        |            |  |
| Funding Shortfalls                | Insufficient funding hindering service delivery.          | High   | Medium     | Diversify funding sources, develop robust fundraising strategies, maintain a reserve fund.                 |
| Donation Fluctuations             | Variability in donation volume and type.                  | Medium | High       | Implement donor engagement plan, develop partnerships with businesses, use data analytics for forecasting. |
| Fraud and Financial Mismanagement | Potential for fraud or mismanagement leading to financial | High   | Low        | Maintain strong financial controls, conduct regular audits,  |

|                                |  |        |        |  |
|--------------------------------|--|--------|--------|--|
|                                | losses and reputational damage.  |        |        | provide training on financial policies.  |
| <b>Operational Risks</b>       |  |        |        |  |
| Loss of premises               | Planned closure of Place Ladywell  | High   | High   | LDH, and in particular the CEO, are in regular contact with Lewisham Council to address the planned closure of the premises. The Council is actively searching for new premises for LDH. |
| Service Delivery Disruptions   | Interruptions due to logistical challenges or staff shortages.           | High   | Medium | Develop continuity plan, cross-train staff and volunteers, review logistics processes.   |
| Volunteer and Staff Retention  | Difficulty in retaining volunteers and staff, impacting service quality. | Medium | High   | Implement recognition programs, provide training and development, gather feedback regularly.   |
| Technology Failures            | IT infrastructure failures disrupting operations.                        | Medium | Medium | Invest in robust IT systems, implement disaster recovery plan, train staff on cybersecurity.   |
| <b>Health and Safety Risks</b> |  |        |        |  |
| Workplace Accidents            | Accidents within facilities causing injuries.                            | High   | Medium | Conduct health and safety training, enforce safety protocols, perform routine safety audits.   |
| Health Hazards                 | Exposure to health hazards, such as foodborne illnesses.                 | High   | Low    | Adhere to food safety guidelines, inspect food storage areas, implement incident management policies.  |
| Pandemic/Epidemic Risks        | Health risks from infectious diseases impacting operations and health.   | High   | Medium | Develop and implement health protocols, provide PPE, adjust operations to minimise contact and ensure hygiene, monitor public health updates, and adapt to changing guidelines.          |

**Simon Williams**  
**Treasurer**



## Reference and administration details

|                                    |   |
|------------------------------------|---|
| <b>Charity's principal address</b> | Unit D, Place Ladywell 261 High Street Lewisham SE13 6AY                                      |
| <b>Registered charity number</b>   | 1202607   |
| <b>Founder and CEO</b>             | Laurence Smith  |
| <b>Independent examiner</b>        | Frances Wilde FCCA DChA<br>Warner and Wilde Ltd,<br>4 Marigold Drive, Bisley, Surrey GU24 9SF |

## Structure, governance and management

All new trustees are recruited and appointed by the Board.

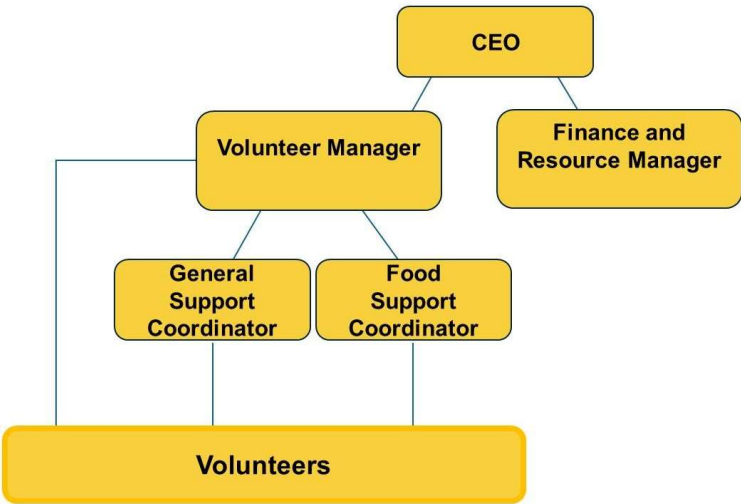
Trustees serving during the year and up to the date of signature of the financial statements

| Trustee name        | Office (if any) | Dates acted if not for whole year |
|---------------------|-----------------|-----------------------------------|
| Yvette Dearden      | Chair           |                                   |
| Simon Williams      | Treasurer       |                                   |
| Carolyn Emanuel     |                 |                                   |
| Magdalena Szlenkier |                 |                                   |
| Evgenii Khramkov    |                 | Appointed 8 July 2024             |
| Catherine McCarthy  |                 | Appointed 4 Dec 2024              |

Other trustees who served during the financial year

|                     |  |  |
|---------------------|--|--|
| Christabel Jay      |  | Resigned 18 Sept 2024                          |
| Gemma del Pozzo     |  | Resigned 18 Sept 2024                          |
| Olayinka Shittu     |  | Resigned 1 Jan 2025                            |
| Elisabeth Pritchard |  | Appointed 8 July 2024<br>Resigned 18 Sept 2024 |
| Fereshteh Yavari    |  | Appointed 8 July 2024<br>Resigned 17 June 2025 |

**Organisational Structure**



The trustees’ report was approved by the board of trustees.

*Y. Dearden*

.....

**Y Dearden**

**Chair**

**Dated : 26 October 2025**

# LEWISHAM DONATION HUB

## INDEPENDENT EXAMINER'S REPORT

### TO THE TRUSTEES OF LEWISHAM DONATION HUB

---

I report to the trustees on my examination of the financial statements of Lewisham Donation Hub (the charity) for the year ended 31 March 2025.

#### **Responsibilities and basis of report**

As the trustees of the charity you are responsible for the preparation of the financial statements in accordance with the requirements of the Charities Act 2011.

I report in respect of my examination of the charity's financial statements carried out under section 145 of the Charities Act 2011. In carrying out my examination I have followed the Directions given by the Charity Commission under section 145(5)(b) of the Charities Act 2011.

#### **Independent examiner's statement**

Since the charity's gross income exceeded £250,000, the independent examiner must be a member of a body listed in section 145 of the Charities Act 2011. I confirm that I am qualified to undertake the examination because I am a member of the Association of Chartered Certified Accountants, which is one of the listed bodies.

Your attention is drawn to the fact that the charity has prepared the financial statements in accordance with the relevant version of the Statement of Recommended Practice applicable to charities preparing their financial statements in accordance with the Financial Reporting Standard applicable in the UK and Republic of Ireland (FRS 102) in preference to the Accounting and Reporting by Charities: Statement of Recommended Practice issued on 1 April 2005 which is referred to in the extant regulations but has now been withdrawn. I understand that this has been done in order for the financial statements to provide a true and fair view in accordance with UK Generally Accepted Accounting Practice.

I have completed my examination. I confirm that no matters have come to my attention in connection with the examination giving me cause to believe that in any material respect:

- 1 accounting records were not kept in respect of the charity as required by section 130 of the Charities Act 2011.
- 2 the financial statements do not accord with those records; or
- 3 the financial statements do not comply with the applicable requirements concerning the form and content of financial statements set out in the Charities (Accounts and Reports) Regulations 2008 other than any requirement that the financial statements give a true and fair view, which is not a matter considered as part of an independent examination.

I have no concerns and have come across no other matters in connection with the examination to which attention should be drawn in this report in order to enable a proper understanding of the financial statements to be reached.

*FJWilde*

#### **Frances Wilde FCCA DChA**

Warner Wilde Limited  
Chartered Certified Accountants  
4 Marigold Drive  
Bisley  
Surrey  
GU24 9SF  
Date: ..... 28/10/2025

# LEWISHAM DONATION HUB

## STATEMENT OF FINANCIAL ACTIVITIES INCLUDING INCOME AND EXPENDITURE ACCOUNT

**FOR THE YEAR ENDED 31 MARCH 2025**

|   |       | Unrestricted<br>funds<br>2025<br>£ | Restricted<br>funds<br>2025<br>£ | Total<br>2025<br>£ | Unrestricted<br>funds<br>2024<br>£ | Restricted<br>funds<br>2024<br>£ | Total<br>2024<br>£ |
|---|-------|------------------------------------|----------------------------------|--------------------|------------------------------------|----------------------------------|--------------------|
|   | Notes |                                    |                                  |                    |                                    |                                  |                    |
| <b>Income from:</b>                                   |       |                                    |                                  |                    |                                    |                                  |                    |
| Donations and legacies                                | 3     | 530,851                            | -                                | 530,851            | 113,015                            | 17,162                           | 130,177            |
| Charitable activities                                 | 4     | -                                  | 38,949                           | 38,949             | -                                  | 73,530                           | 73,530             |
| <b>Total income</b>                                   |       | 530,851                            | 38,949                           | 569,800            | 113,015                            | 90,692                           | 203,707            |
| <b>Expenditure on:</b>                                |       |                                    |                                  |                    |                                    |                                  |                    |
| Charitable activities                                 | 5     | 548,033                            | 55,416                           | 603,449            | 54,026                             | 71,739                           | 125,765            |
| <b>Total expenditure</b>                              |       | 548,033                            | 55,416                           | 603,449            | 54,026                             | 71,739                           | 125,765            |
| <b>Net income/(expenditure) and movement in funds</b> |       | (17,182)                           | (16,467)                         | (33,649)           | 58,989                             | 18,953                           | 77,942             |
| <b>Reconciliation of funds:</b>                       |       |                                    |                                  |                    |                                    |                                  |                    |
| Fund balances at 1 April 2024                         |       | 58,989                             | 18,953                           | 77,942             | -                                  | -                                | -                  |
| <b>Fund balances at 31 March 2025</b>                 |       | 41,807                             | 2,486                            | 44,293             | 58,989                             | 18,953                           | 77,942             |

The statement of financial activities includes all gains and losses recognised in the year. All income and expenditure derive from continuing activities.

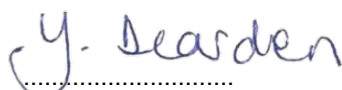
# LEWISHAM DONATION HUB

## BALANCE SHEET

AS AT 31 MARCH 2025

|   | Notes | 2025<br>£ | £      | 2024<br>£ | £      |
|---|-------|-----------|--------|-----------|--------|
| <b>Fixed assets</b>                                   |       |           |        |           |        |
| Tangible assets                                       | 11    |           | 436    |           | 654    |
| <b>Current assets</b>                                 |       |           |        |           |        |
| Debtors   | 12    | 3,447     |        | 4,214     |        |
| Cash at bank and in hand                              |       | 63,465    |        | 98,591    |        |
|   |       | 66,912    |        | 102,805   |        |
| <b>Creditors: amounts falling due within one year</b> | 13    | (23,055)  |        | (25,517)  |        |
| <b>Net current assets</b>                             |       |           | 43,857 |           | 77,288 |
| <b>Total assets less current liabilities</b>          |       |           | 44,293 |           | 77,942 |
| <b>The funds of the charity</b>                       |       |           |        |           |        |
| Restricted income funds                               | 16    |           | 2,486  |           | 18,953 |
| Unrestricted funds                                    | 17    |           | 41,807 |           | 58,989 |
|   |       |           | 44,293 |           | 77,942 |

The financial statements were approved by the trustees on 26 October 2025.



Y Dearden  
Trustee

# LEWISHAM DONATION HUB

## STATEMENT OF CASH FLOWS

**FOR THE YEAR ENDED 31 MARCH 2025**

|   | Notes | 2025<br>£ | £        | 2024<br>£ | £      |
|---|-------|-----------|----------|-----------|--------|
| <b>Cash flows from operating activities</b>                 |       |           |          |           |        |
| Cash (absorbed by)/generated from operations                | 20    |           | (35,126) |           | 99,245 |
| <b>Investing activities</b>                                 |       |           |          |           |        |
| Purchase of tangible fixed assets                           |       | -         |          | (654)     |        |
| <b>Net cash used in investing activities</b>                |       |           | -        |           | (654)  |
| <b>Net cash generated from financing activities</b>         |       |           | -        |           | -      |
| <b>Net (decrease)/increase in cash and cash equivalents</b> |       |           | (35,126) |           | 98,591 |
| Cash and cash equivalents at beginning of year              |       |           | 98,591   |           | -      |
| <b>Cash and cash equivalents at end of year</b>             |       |           | 63,465   |           | 98,591 |

# LEWISHAM DONATION HUB

## NOTES TO THE FINANCIAL STATEMENTS

### FOR THE YEAR ENDED 31 MARCH 2025

---

#### 1 Accounting policies

##### Charity information

Lewisham Donation Hub is a Charitable Incorporated Organisation.

##### 1.1 Accounting convention

The financial statements have been prepared in accordance with the charity's governing document, the Charities Act 2011, FRS 102 "The Financial Reporting Standard applicable in the UK and Republic of Ireland" and the Charities SORP "Accounting and Reporting by Charities: Statement of Recommended Practice applicable to charities preparing their accounts in accordance with the Financial Reporting Standard applicable in the UK and Republic of Ireland (FRS 102)". The charity is a Public Benefit Entity as defined by FRS 102.

The financial statements have departed from the Charities (Accounts and Reports) Regulations 2008 only to the extent required to provide a true and fair view. This departure has involved following the Statement of Recommended Practice for charities applying FRS 102 rather than the version of the Statement of Recommended Practice which is referred to in the Regulations but which has since been withdrawn.

The financial statements are prepared in sterling, which is the functional currency of the charity. Monetary amounts in these financial statements are rounded to the nearest £.

The financial statements have been prepared under the historical cost convention, [modified to include the revaluation of freehold properties and to include investment properties and certain financial instruments at fair value]. The principal accounting policies adopted are set out below.

##### 1.2 Going concern

At the time of approving the financial statements, the trustees have a reasonable expectation that the charity has adequate resources to continue in operational existence for the foreseeable future. Thus the trustees continue to adopt the going concern basis of accounting in preparing the financial statements.

##### 1.3 Charitable funds

Unrestricted funds are available for use at the discretion of the trustees in furtherance of their charitable objectives.

Restricted funds are subject to specific conditions by donors or grantors as to how they may be used. The purposes and uses of the restricted funds are set out in the notes to the financial statements.

Endowment funds are subject to specific conditions by donors that the capital must be maintained by the charity.

##### 1.4 Income

Income is recognised when the charity is legally entitled to it after any performance conditions have been met, the amounts can be measured reliably, and it is probable that income will be received.

Cash donations are recognised on receipt. Other donations are recognised once the charity has been notified of the donation, unless performance conditions require deferral of the amount. Income tax recoverable in relation to donations received under Gift Aid or deeds of covenant is recognised at the time of the donation.

Legacies are recognised on receipt or otherwise if the charity has been notified of an impending distribution, the amount is known, and receipt is expected. If the amount is not known, the legacy is treated as a contingent asset.

# LEWISHAM DONATION HUB

## NOTES TO THE FINANCIAL STATEMENTS (CONTINUED) FOR THE YEAR ENDED 31 MARCH 2025

---

### 1 Accounting policies

(Continued)

#### 1.5 Expenditure

Expenditure is recognised once there is a legal or constructive obligation to transfer economic benefit to a third party, it is probable that a transfer of economic benefits will be required in settlement, and the amount of the obligation can be measured reliably.

Expenditure is classified by activity. The costs of each activity are made up of the total of direct costs and shared costs, including support costs involved in undertaking each activity. Direct costs attributable to a single activity are allocated directly to that activity. Shared costs which contribute to more than one activity and support costs which are not attributable to a single activity are apportioned between those activities on a basis consistent with the use of resources. Central staff costs are allocated on the basis of time spent, and depreciation charges are allocated on the portion of the asset's use.

#### 1.6 Tangible fixed assets

Tangible fixed assets are initially measured at cost and subsequently measured at cost or valuation, net of depreciation and any impairment losses.

Depreciation is recognised so as to write off the cost or valuation of assets less their residual values over their useful lives on the following bases:

|                       |                       |
|-----------------------|-----------------------|
| Fixtures and fittings | 3 years straight line |
|-----------------------|-----------------------|

The gain or loss arising on the disposal of an asset is determined as the difference between the sale proceeds and the carrying value of the asset, and is recognised in the statement of financial activities.

#### 1.7 Impairment of fixed assets

At each reporting end date, the charity reviews the carrying amounts of its tangible assets to determine whether there is any indication that those assets have suffered an impairment loss. If any such indication exists, the recoverable amount of the asset is estimated in order to determine the extent of the impairment loss (if any).

#### 1.8 Cash and cash equivalents

Cash and cash equivalents include cash in hand, deposits held at call with banks, other short-term liquid investments with original maturities of three months or less, and bank overdrafts. Bank overdrafts are shown within borrowings in current liabilities.

#### 1.9 Financial instruments

The charity has elected to apply the provisions of Section 11 'Basic Financial Instruments' and Section 12 'Other Financial Instruments Issues' of FRS 102 to all of its financial instruments.

Financial instruments are recognised in the charity's balance sheet when the charity becomes party to the contractual provisions of the instrument.

Financial assets and liabilities are offset, with the net amounts presented in the financial statements, when there is a legally enforceable right to set off the recognised amounts and there is an intention to settle on a net basis or to realise the asset and settle the liability simultaneously.

#### **Basic financial assets**

Basic financial assets, which include debtors and cash and bank balances, are initially measured at transaction price including transaction costs and are subsequently carried at amortised cost using the effective interest method unless the arrangement constitutes a financing transaction, where the transaction is measured at the present value of the future receipts discounted at a market rate of interest. Financial assets classified as receivable within one year are not amortised.



# LEWISHAM DONATION HUB

## NOTES TO THE FINANCIAL STATEMENTS (CONTINUED) FOR THE YEAR ENDED 31 MARCH 2025

### 1 Accounting policies

(Continued)

#### **Basic financial liabilities**

Basic financial liabilities, including creditors and bank loans are initially recognised at transaction price unless the arrangement constitutes a financing transaction, where the debt instrument is measured at the present value of the future payments discounted at a market rate of interest. Financial liabilities classified as payable within one year are not amortised.

Debt instruments are subsequently carried at amortised cost, using the effective interest rate method.

Trade creditors are obligations to pay for goods or services that have been acquired in the ordinary course of operations from suppliers. Amounts payable are classified as current liabilities if payment is due within one year or less. If not, they are presented as non-current liabilities. Trade creditors are recognised initially at transaction price and subsequently measured at amortised cost using the effective interest method.

#### **Derecognition of financial liabilities**

Financial liabilities are derecognised when the charity's contractual obligations expire or are discharged or cancelled.

#### 1.10 Employee benefits

The cost of any unused holiday entitlement is recognised in the period in which the employee's services are received.

Termination benefits are recognised immediately as an expense when the charity is demonstrably committed to terminate the employment of an employee or to provide termination benefits.

#### 1.11 Retirement benefits

Payments to defined contribution retirement benefit schemes are charged as an expense as they fall due.

### 2 Critical accounting estimates and judgements

In the application of the charity's accounting policies, the trustees are required to make judgements, estimates and assumptions about the carrying amount of assets and liabilities that are not readily apparent from other sources. The estimates and associated assumptions are based on historical experience and other factors that are considered to be relevant. Actual results may differ from these estimates.

The estimates and underlying assumptions are reviewed on an ongoing basis. Revisions to accounting estimates are recognised in the period in which the estimate is revised where the revision affects only that period, or in the period of the revision and future periods where the revision affects both current and future periods.

### 3 Income from donations and legacies

|                            | Unrestricted<br>funds<br>2025<br>£ | Restricted<br>funds<br>2025<br>£ | Total<br>2025<br>£ | Unrestricted<br>funds<br>2024<br>£ | Restricted<br>funds<br>2024<br>£ | Total<br>2024<br>£ |
|----------------------------|------------------------------------|----------------------------------|--------------------|------------------------------------|----------------------------------|--------------------|
| Donations and gifts        | 81,411                             | -                                | 81,411             | 101,618                            | 17,162                           | 118,780            |
| Grants                     | -                                  | -                                | -                  | 5,995                              | -                                | 5,995              |
| Donated goods and services | 440,502                            | -                                | 440,502            | -                                  | -                                | -                  |
| Other                      | 8,938                              | -                                | 8,938              | 5,402                              | -                                | 5,402              |
|                            | <u>530,851</u>                     | <u>-</u>                         | <u>530,851</u>     | <u>113,015</u>                     | <u>17,162</u>                    | <u>130,177</u>     |

# LEWISHAM DONATION HUB

## NOTES TO THE FINANCIAL STATEMENTS (CONTINUED) FOR THE YEAR ENDED 31 MARCH 2025

### 3 Income from donations and legacies

(Continued)

|                                  | Unrestricted<br>funds<br>2025<br>£ | Restricted<br>funds<br>2025<br>£ | Total<br>2025<br>£ | Unrestricted<br>funds<br>2024<br>£ | Restricted<br>funds<br>2024<br>£ | Total<br>2024<br>£ |
|----------------------------------|------------------------------------|----------------------------------|--------------------|------------------------------------|----------------------------------|--------------------|
| <b>Donations and gifts</b>       |                                    |                                  |                    |                                    |                                  |                    |
| FB Coales Family Trust           | 5,000                              | -                                | 5,000              | -                                  | -                                | -                  |
| The Leathersellers<br>Foundation | 5,000                              | -                                | 5,000              | -                                  | -                                | -                  |
| Corporate donations              | 2,800                              | -                                | 2,800              | 750                                | -                                | 750                |
| Individual giving                | 68,611                             | -                                | 68,611             | 62,253                             | -                                | 62,253             |
| Grants                           | -                                  | -                                | -                  | 20,000                             | -                                | 20,000             |
| Transfer from Open<br>Collective | -                                  | -                                | -                  | 18,615                             | 17,162                           | 35,777             |
|                                  | <u>81,411</u>                      | <u>-</u>                         | <u>81,411</u>      | <u>101,618</u>                     | <u>17,162</u>                    | <u>118,780</u>     |

### 4 Income from charitable activities

|                              | Restricted<br>funds<br>2025<br>£ | Restricted<br>funds<br>2024<br>£ |
|------------------------------|----------------------------------|----------------------------------|
| <b>Charitable activities</b> |                                  |                                  |
| Performance related grants   | <u>38,949</u>                    | <u>73,530</u>                    |

# LEWISHAM DONATION HUB

## NOTES TO THE FINANCIAL STATEMENTS (CONTINUED) FOR THE YEAR ENDED 31 MARCH 2025

### 5 Expenditure on charitable activities

|   | Charitable<br>activities<br>2025<br>£ | Charitable<br>activities<br>2024<br>£ |
|---|---------------------------------------|---------------------------------------|
| <b>Direct costs</b>                                       |                                       |                                       |
| Staff costs   | 119,182                               | 26,459                                |
| Depreciation and impairment                               | 218                                   | -                                     |
| Volunteer travel  | 10,815                                | 9,991                                 |
| Administration  | 2,837                                 | 2,035                                 |
| Host fees   | 1,402                                 | 2,077                                 |
| Other staff costs   | 905                                   | 3,084                                 |
| Fixtures and Fittings                                     | 219                                   | 416                                   |
| Van hire  | 120                                   | 931                                   |
| Premises  | 30,000                                | -                                     |
|   | <u>165,698</u>                        | <u>44,993</u>                         |
| <b>Share of support and governance costs (see note 6)</b> |                                       |                                       |
| Support   | 436,851                               | 79,362                                |
| Governance  | 900                                   | 1,410                                 |
|   | <u>603,449</u>                        | <u>125,765</u>                        |
| <b>Analysis by fund</b>                                   |                                       |                                       |
| Unrestricted funds  | 548,033                               | 54,026                                |
| Restricted funds  | 55,416                                | 71,739                                |
|   | <u>603,449</u>                        | <u>125,765</u>                        |

### 6 Support costs allocated to activities

|                                 | 2025<br>£      | 2024<br>£     |
|---------------------------------|----------------|---------------|
| Client service: Food service    | 318,328        | 26,201        |
| Client service: General support | 118,523        | 53,161        |
| Governance costs                | 900            | 1,410         |
|                                 | <u>437,751</u> | <u>80,772</u> |
| <b>Analysed between:</b>        |                |               |
| Charitable activities           | <u>437,751</u> | <u>80,772</u> |

# LEWISHAM DONATION HUB

## NOTES TO THE FINANCIAL STATEMENTS (CONTINUED) FOR THE YEAR ENDED 31 MARCH 2025

### 6 Support costs allocated to activities (Continued)

|                                   | 2025<br>£  | 2024<br>£    |
|-----------------------------------|------------|--------------|
| <b>Governance costs comprise:</b> |            |              |
| Independent examination           | 900        | 1,410        |
|                                   | <u>900</u> | <u>1,410</u> |

### 7 Net movement in funds

|  | 2025<br>£ | 2024<br>£ |
|--|-----------|-----------|
|--|-----------|-----------|

The net movement in funds is stated after charging/(crediting):

|  |              |              |
|--|--------------|--------------|
| Fees payable for the independent examination of the charity's financial statements | 900          | 1,410        |
| Depreciation of owned tangible fixed assets  | 218          | -            |
|  | <u>1,118</u> | <u>1,410</u> |

### 8 Trustees

None of the trustees (or any persons connected with them) received any remuneration or benefits from the charity during the year.

### 9 Employees

The average monthly number of employees during the year was:

|  | 2025<br>Number | 2024<br>Number |
|--|----------------|----------------|
|  | 5              | 3              |
|  | <u>5</u>       | <u>3</u>       |

|                         | 2025<br>£      | 2024<br>£     |
|-------------------------|----------------|---------------|
| <b>Employment costs</b> |                |               |
| Wages and salaries      | 112,372        | 26,459        |
| Social security costs   | 4,443          | -             |
| Other pension costs     | 2,367          | -             |
|                         | <u>119,182</u> | <u>26,459</u> |

There were no employees whose annual remuneration was more than £60,000.

#### Remuneration of key management personnel

The remuneration of key management personnel was as follows:

|                        | 2025<br>£     | 2024<br>£ |
|------------------------|---------------|-----------|
| Aggregate compensation | 68,907        | -         |
|                        | <u>68,907</u> | <u>-</u>  |

# LEWISHAM DONATION HUB

## NOTES TO THE FINANCIAL STATEMENTS (CONTINUED) FOR THE YEAR ENDED 31 MARCH 2025

### 10 Taxation

The charity is exempt from taxation on its activities because all its income is applied for charitable purposes.

### 11 Tangible fixed assets

|                                    | Fixtures and fittings<br>£ |
|------------------------------------|----------------------------|
| <b>Cost</b>                        |                            |
| At 1 April 2024                    | 654                        |
| At 31 March 2025                   | 654                        |
| <b>Depreciation and impairment</b> |                            |
| Depreciation charged in the year   | 218                        |
| At 31 March 2025                   | 218                        |
| <b>Carrying amount</b>             |                            |
| At 31 March 2025                   | 436                        |
| At 31 March 2024                   | 654                        |

### 12 Debtors

|   | 2025<br>£ | 2024<br>£ |
|---|-----------|-----------|
| <b>Amounts falling due within one year:</b> |           |           |
| Trade debtors                               | 110       | 3,221     |
| Prepayments and accrued income              | 3,337     | 993       |
|   | 3,447     | 4,214     |

### 13 Creditors: amounts falling due within one year

|                                    | 2025<br>£ | 2024<br>£ |
|------------------------------------|-----------|-----------|
|                                    | Notes     |           |
| Other taxation and social security | 1,314     | 3,257     |
| Deferred income                    | 14 17,143 | -         |
| Trade creditors                    | 2,539     | 20,850    |
| Other creditors                    | 299       | -         |
| Accruals                           | 1,760     | 1,410     |
|                                    | 23,055    | 25,517    |

# LEWISHAM DONATION HUB

## NOTES TO THE FINANCIAL STATEMENTS (CONTINUED) FOR THE YEAR ENDED 31 MARCH 2025

### 14 Deferred income

|                       | 2025<br>£ | 2024<br>£ |
|-----------------------|-----------|-----------|
| Other deferred income | 17,143    | -         |

Deferred income is included in the financial statements as follows:

|                                     | 2025<br>£ | 2024<br>£ |
|-------------------------------------|-----------|-----------|
| Deferred income is included within: |           |           |
| Current liabilities                 | 17,143    | -         |
| Movements in the year:              |           |           |
| Deferred income at 1 April 2024     | -         | -         |
| Resources deferred in the year      | 17,143    | -         |
| Deferred income at 31 March 2025    | 17,143    | -         |

### 15 Retirement benefit schemes

|   | 2025<br>£ | 2024<br>£ |
|---|-----------|-----------|
| <b>Defined contribution schemes</b>                                 |           |           |
| Charge to profit or loss in respect of defined contribution schemes | 2,367     | -         |

The charity operates a defined contribution pension scheme for all qualifying employees. The assets of the scheme are held separately from those of the charity in an independently administered fund.

# LEWISHAM DONATION HUB

## NOTES TO THE FINANCIAL STATEMENTS (CONTINUED) FOR THE YEAR ENDED 31 MARCH 2025

### 16 Restricted funds

The restricted funds of the charity comprise the unexpended balances of donations and grants held on trust subject to specific conditions by donors as to how they may be used.

|  | At 1 April<br>2024<br>£ | Incoming<br>resources<br>£ | Resources<br>expended<br>£ | At 31 March<br>2025<br>£ |
|--|-------------------------|----------------------------|----------------------------|--------------------------|
| The Trade Desk                           | 3,210                   | -                          | (3,210)                    | -                        |
| Lewisham Food Justice Grant              | (3)                     | 2,000                      | (1,997)                    | -                        |
| Lee Charity for William Hatcliffe        | 7,296                   | -                          | (7,296)                    | -                        |
| London Catalyst                          | 2,500                   | -                          | (2,500)                    | -                        |
| TNL- Cost of Living Crisis               | 1,832                   | -                          | (1,832)                    | -                        |
| Axis Foundation                          | 3,000                   | -                          | (3,000)                    | -                        |
| Co-op Local Community Fund               | 1,118                   | 1,949                      | (3,067)                    | -                        |
| Jack Petchey Foundation                  | -                       | 1,500                      | (1,500)                    | -                        |
| Borough of Sanctuary- Lewisham Council   | -                       | 1,500                      | (14)                       | 1,486                    |
| Point North                              | -                       | 1,000                      | (1,000)                    | -                        |
| Jusaca                                   | -                       | 24,000                     | (24,000)                   | -                        |
| The Albert Hunt Trust                    | -                       | 5,000                      | (5,000)                    | -                        |
| Stef & Philips foundation                | -                       | 500                        | (500)                      | -                        |
| Sainsbury's                              | -                       | 500                        | (500)                      | -                        |
| Repair, Reuse, Recycle- Lewisham Council | -                       | 1,000                      | -                          | 1,000                    |
|  | <u>18,953</u>           | <u>38,949</u>              | <u>(55,416)</u>            | <u>2,486</u>             |

|                       |                                  |                                     |                                     |                                   |
|-----------------------|----------------------------------|-------------------------------------|-------------------------------------|-----------------------------------|
| <b>Previous year:</b> | <b>At 1 April<br/>2023<br/>£</b> | <b>Incoming<br/>resources<br/>£</b> | <b>Resources<br/>expended<br/>£</b> | <b>At 31 March<br/>2024<br/>£</b> |
|                       | -                                | 90,692                              | (71,739)                            | 18,953                            |

### 17 Unrestricted funds

The unrestricted funds of the charity comprise the unexpended balances of donations and grants which are not subject to specific conditions by donors and grantors as to how they may be used. These include designated funds which have been set aside out of unrestricted funds by the trustees for specific purposes.

|                       | At 1 April<br>2024<br>£          | Incoming<br>resources<br>£          | Resources<br>expended<br>£          | At 31 March<br>2025<br>£          |
|-----------------------|----------------------------------|-------------------------------------|-------------------------------------|-----------------------------------|
| General funds         | <u>58,989</u>                    | <u>530,851</u>                      | <u>(548,033)</u>                    | <u>41,807</u>                     |
| <b>Previous year:</b> | <b>At 1 April<br/>2023<br/>£</b> | <b>Incoming<br/>resources<br/>£</b> | <b>Resources<br/>expended<br/>£</b> | <b>At 31 March<br/>2024<br/>£</b> |
| General funds         | -                                | 113,015                             | (54,026)                            | 58,989                            |

# LEWISHAM DONATION HUB

## NOTES TO THE FINANCIAL STATEMENTS (CONTINUED) FOR THE YEAR ENDED 31 MARCH 2025

### 18 Analysis of net assets between funds

|                              | Unrestricted<br>funds<br>2025<br>£ | Restricted<br>funds<br>2025<br>£ | Total<br>2025<br>£ |
|------------------------------|------------------------------------|----------------------------------|--------------------|
| <b>At 31 March 2025:</b>     |                                    |                                  |                    |
| Tangible assets              | 436                                | -                                | 436                |
| Current assets/(liabilities) | 41,371                             | 2,486                            | 43,857             |
|                              | <u>41,807</u>                      | <u>2,486</u>                     | <u>44,293</u>      |
|                              |                                    |                                  |                    |
|                              | Unrestricted<br>funds<br>2024<br>£ | Restricted<br>funds<br>2024<br>£ | Total<br>2024<br>£ |
| <b>At 31 March 2024:</b>     |                                    |                                  |                    |
| Tangible assets              | 654                                | -                                | 654                |
| Current assets/(liabilities) | 58,335                             | 18,953                           | 77,288             |
|                              | <u>58,989</u>                      | <u>18,953</u>                    | <u>77,942</u>      |

### 19 Related party transactions

There was the following related party transactions during the year:  
The Jusaca Charitable Trust gave a grant of £41,143 in the year (of which £17,143 was deferred). Carolyn Emanuel is a trustee of both charities.

Steve Smith (who is related to the CEO) is reimbursed for computer upgrade costs carried out for the Charity (£3221.83 during the year).

(2024 - None).

| 20 Cash (absorbed by)/generated from operations      | 2025<br>£       | 2024<br>£     |
|--|-----------------|---------------|
| (Deficit)/surplus for the year                       | (33,649)        | 77,942        |
| <b>Adjustments for:</b>                              |                 |               |
| Depreciation and impairment of tangible fixed assets | 218             | -             |
| <b>Movements in working capital:</b>                 |                 |               |
| Decrease/(increase) in debtors                       | 767             | (4,214)       |
| (Decrease)/increase in creditors                     | (19,605)        | 25,517        |
| Increase in deferred income                          | 17,143          | -             |
| <b>Cash (absorbed by)/generated from operations</b>  | <u>(35,126)</u> | <u>99,245</u> |



# LEWISHAM DONATION HUB

## NOTES TO THE FINANCIAL STATEMENTS (CONTINUED) *FOR THE YEAR ENDED 31 MARCH 2025*

---

### **21 Analysis of changes in net funds**

The charity had no material debt during the year.